

869  
F.B.

---

LEVEL BOOK

No. 410

---

MICROFILMED

DEC 15 1964

X-section Myrtle St Vermont to Park Blvd  
N. 80 wide 12' walls 13' 1/2

21  
19  
13  
Linsell  
Evans  
Herr.

1

B.M.	S.M. near Albert S. Brooks	287.19
O.M.	2.01 239.20	
T.P.	7.57 285.71 11.06	278.14

E.L. Vermont

X	3.7	282.0
---	-----	-------

W	3.5	281.9
---	-----	-------

4	3.6	282.1
---	-----	-------

M	3.1	282.6
---	-----	-------

2	3.7	282.0
---	-----	-------

W	3.8	281.9
---	-----	-------

S	3.8	281.9
---	-----	-------

0+25 E

S	3.3	282.4
---	-----	-------

W	3.3	282.4
---	-----	-------

4	3.0	282.7
---	-----	-------

M	3.2	282.5
---	-----	-------

4	3.3	282.4
---	-----	-------

W	3.2	282.5
---	-----	-------

N	3.2	282.5
---	-----	-------

285.71

0750

N	3.6	282.1
wh	3.4	282.3
"A	3.4	282.3
M	3.2	282.5
"A	3.0	282.7
wh	3.1	282.6
S	3.2	282.5

0775

S	3.2	282.5
wh	3.2	282.5
"A	3.2	282.5
M	3.2	282.5
"A	3.3	282.4
wh	3.4	282.3
N	3.9	281.8

285.71

110

N	4.1	281.6
wh	3.7	282.0
"A	3.4	282.3
M	3.2	282.5
"A	3.2	282.5
wh	3.1	282.6
S	3.3	282.4

1125

S	3.9	281.8
wh	3.9	281.8
"A	3.8	281.9
M	4.0	281.7
"A	4.1	281.6
wh	4.1	281.6
N	4.4	281.3

2 2

285.71

1450

N	4.9	280.8
wh	5.1	280.6
"	4.7	281.0
M	4.7	281.0
"	4.6	281.1
wh	4.0	281.7
S	4.0	281.7

1175

S	4.4	281.3
wh	5.1	280.6
"	5.3	280.4
M	5.4	280.3
"	5.4	280.3
wh	5.6	280.1
N	6.3	279.4

285.71

210

N	7.7	278.0
wh	6.8	278.9
"	6.6	279.1
M	6.3	279.4
"	5.9	279.8
wh	5.7	280.0
S	5.5	280.2

2125

S	6.4	279.3
wh	6.5	279.2
"	7.0	278.7
M	7.5	278.2
"	8.5	277.2
wh	11.4	274.3
N	15.2	270.5

+20

T.P.	2.03	280.17	7.57	278.14
------	------	--------	------	--------

U3

3

280.17

2750

-30	23.8	256.4
X	16.8	263.4
wh	13.2	267.0
"	7.5	272.7
M	4.4	275.8
"	3.0	277.2
wh	2.5	277.7
S	1.8	278.4

2775

S	3.5	276.7
wh	4.6	275.6
"	6.2	274.0
M	9.6	270.6
"	13.7	266.5
wh	17.4	262.8
X	22.3	257.9
+50	33.9	246.3

280.17

370

-50	30.4	241.8
X	26.1	254.1
wh	22.8	257.4
"	18.5	261.7
M	14.0	266.2
"	10.8	269.4
wh	8.1	272.1
S	3.7	276.5

3725

S	2.5	277.7
wh	5.2	275.0
"	7.4	272.8
M	8.6	271.6
"	10.9	269.3
wh	13.8	266.9
X	14.1	266.1
+30	21.9	258.3

4

4

	280.17		
	3150		
N		6.7	273.5
Crk		4.4	275.8
"		3.8	276.4
M		3.2	277.0
"		2.5	277.7
Crk		2.1	278.1
S		1.7	278.5
T.P	6.71	289.85	2.03 278.14
		3175	
S		4.8	280.1
Crk		4.8	280.1
"		5.2	279.7
M		5.5	279.4
"		5.9	279.0
Crk		6.1	278.8
N		6.5	278.4

284.85

5  
5

	440		
N		4.9	280.0
Crk		4.6	280.3
"		4.4	280.5
M		4.2	280.7
"		3.9	281.0
Crk		3.6	281.3
S		3.8	281.1
	4125		
S		3.0	281.9
Crk		3.2	281.7
"		3.4	281.5
M		3.9	281.0
"		4.2	280.7
Crk		4.7	280.2
N		5.1	279.8

284.85

4150

N	9.2	275.7
wh	6.8	278.1
1/4	5.4	279.5
M	4.7	280.2
1/4	4.1	280.8
wh	3.3	281.6
S	2.9	282.0

4475

S	3.4	281.5
wh	5.0	279.9
1/4	5.6	279.3
M	7.2	277.7
1/4	9.1	275.8
wh	10.6	274.3
N	13.0	271.9
+20	19.1	265.8

284.85

510

-40	32.1	252.8
N	15.7	266.1
wh	13.8	271.1
1/4	11.8	273.1
M	10.2	274.7
1/4	8.4	276.5
wh	6.8	278.1
S	4.9	280.0

5425

S	6.7	278.2
wh	10.6	274.3
1/4	12.4	272.5
M	15.9	269.5
1/4	17.4	267.5
wh	20.0	264.9
N	25.8	259.1
+50	<del>40.2</del> 40.2	244.7

66



28485

5+50

-30	27.2	257.7
N	25.0	259.9
crk	23.4	261.5
"	20.9	264.5
N	17.5	267.1
"	15.0	269.9
crk	13.7	271.2
S	11.0	273.9
+15	8.3	276.6
	5+75	
-15	7.8	277.1
S	11.9	273.0
crk	14.2	270.7
"	16.2	268.7
N	16.1	268.8
"	16.1	268.8
crk	16.2	268.7
N	16.0	268.9
+20	16.7	268.2

28485

77

6+0 = W.L. Richmond 27 30' wide

N	8.2	276.7
crk	9.7	275.2
"	11.0	273.9
N	12.2	272.7
"	12.4	272.5
crk	10.8	274.1
S	8.0	276.9
	W. curb	
S	6.9	278.0
crk	9.6	275.3
"	10.3	274.6
N	9.7	275.2
"	8.4	276.5
crk	7.5	277.4
N	6.6	278.3

284.85

W 1/4

N	5.6	279.3
crk	6.2	278.7
1/4	7.3	277.6
M	8.4	276.5
1/4	8.7	276.2
crk	8.4	276.5
S	6.5	278.4

center

S	5.5	279.4
crk	7.0	277.9
1/4	7.1	277.8
M	7.4	277.5
1/4	6.3	278.6
crk	5.6	279.3
N	4.8	280.1

8  
8

E 1/4

N	4.1	280.8
crk	4.9	280.0
1/4	5.7	279.2
M	6.2	278.5
1/4	6.2	278.7
crk	6.1	278.8
S	4.3	280.6

E. crk

S	3.8	281.6
crk	4.7	280.2
1/4	5.4	279.5
M	5.5	279.4
1/4	5.0	279.9
crk	4.4	280.5
N	3.7	281.2

28485

E.L. Richmond

N	2.9	282.0
W	3.3	281.6
"	3.8	281.1
N	4.3	280.6
"	4.6	280.3
W	4.0	280.9
S	2.4	282.5

0+75 E

S	2.6	282.3
W	3.0	281.9
"	3.5	281.4
N	3.7	281.2
"	3.3	281.6
W	2.9	282.0
N	2.5	282.4

28485

99

0+50

N	1.6	283.3
W	2.0	282.9
"	2.2	282.7
N	2.3	282.6
"	2.0	282.9
W	1.7	283.2
S	1.5	283.4
T.P.	6.31	289.66
		1.50
		283.35

0+75

S	5.8	283.9
W	6.0	283.7
"	6.3	283.4
N	6.3	283.4
"	6.1	283.6
W	6.0	283.7
N	6.0	283.7

28966

140

N	5.7	284.0
erb	5.3	284.4
"	5.5	284.2
M	5.5	284.2
"	5.6	284.1
erb	5.5	284.2
S	5.3	284.9

1425

S	4.5	285.2
erb	5.0	284.7
"	5.2	284.5
M	5.1	284.6
"	5.1	284.6
erb	5.3	284.4
N	5.4	284.3

10 10

1450

N	5.1	284.6
erb	4.9	284.8
"	4.9	284.8
M	4.8	284.9
"	4.7	285.0
erb	4.5	285.2
S	4.4	285.3

1475

S	4.2	285.5
erb	4.3	285.4
"	4.5	285.2
M	4.7	285.0
"	4.9	284.8
erb	4.9	284.8
N	5.0	284.7

289.66

2+0

N	6.0	283.7
cut	5.6	284.1
3/4	5.3	284.4
M	4.8	284.9
1/4	4.5	285.2
cut	4.3	285.4
S	4.2	285.5

2+25

S	4.0	285.7
cut	4.2	285.5
3/4	4.6	285.1
M	5.1	284.6
1/4	5.7	284.0
cut	6.8	282.9
N	7.7	282.0

289.66

11

2+50 = W.L. Albert st 80' wide

- 20	14.8	274.9
N	10.1	279.6
cut	7.5	282.2
1/4	6.0	283.7
M	4.9	284.8
1/4	4.0	285.7
cut	3.7	286.0
S	3.5	286.2

N. CURVE

S	3.0	286.7
cut	3.7	286.0
1/4	4.1	285.6
M	5.0	284.7
1/4	7.0	282.7
cut	8.5	281.2
N	10.8	278.9
+ 60	24.1	265.6

289.66

IV "A"

-40	25.9	-
N	11.8	277.9
crk	7.5	
"A	6.4	
M	5.5	284.2
"A	4.3	
crk	3.4	
S	2.9	286.8

Center

S	2.5	287.2
crk	3.2	
"A	3.3	
M	4.8	284.9
"A	6.4	
crk	8.9	
N	12.8	276.9
+50	29.4	

289.66

E "A"

-50	30.9	
N	14.9	274.8
crk	9.7	
"A	7.0	
M	4.6	285.1
"A	3.5	
crk	2.9	
S	2.1	287.5

E curb

S	1.9	287.8
crk	2.9	
"A	3.5	
M	5.4	284.3
"A	8.0	
crk	11.0	
N	16.8	272.9
+50	33.2	

1P/10

289.66

E.L. A/tert

-50	32.8	
N	19.6	270.1
erb	15.0	
"4	9.7	
M	6.4	283.3
"4	3.4	
erb	2.3	
S	2.0	287.7
0+25 F		
S	2.1	287.6
erb	2.8	
"4	4.5	
M	9.4	280.3
"4	13.7	
erb	18.1	
N	19.3	270.4
+ 450	25.6	

289.66

132

0+50

-50	31.8	
-30	38.5	
N	26.6	263.1
erb	21.3	
"4	16.2	
A	12.4	277.3
"4	6.8	
erb	3.2	
S	2.2	287.5
0+75		
S	2.3	287.4
erb	5.7	
"4	11.1	
M	15.3	274.4
"4	19.0	
erb	23.7	
N	28.3	261.4
+20	35.3	
+40	29.6	

28966

1+0

-30

-10

N

Cbk

1/4

M

1/4

Cbk

S

T.P.

2.60

281.83

10.98

277.23

1+25

S

Cbk

1/4

M

1/4

Cbk

N

+8

+30

28.1

34.3

30.3

259.4

26.2

21.1

17.0

272.7

14.6

10.1

3.5

286.2

+2.9

284.7

-3.3

7.6

11.6

270.2

16.0

13.5

25.5

256.3

26.1

19.4

281.83

1+50

-30

+5

Cbk

1/4

M

1/4

Cbk

S

S

Cbk

1/4

M

1/4

Cbk

+7

N

+30

15.3

24.2

25.2

21.7

18.0

12.8

269.0

9.6

6.4

1.6

280.2

1+75

4.9

276.9

8.8

11.7

14.2

267.6

18.3

22.0

23.9

20.1

261.7

13.0

143



281.83

3 to W.L. Herbert st 80' wide

-30	13.0	268.8
N	19.5	262.3
+8	23.1	
Crk	21.2	
"A	18.0	
M	15.0	266.8
"A	12.8	
Crk	9.4	
S	6.0	275.8

W. corch

S	4.6	277.2
Crk	7.7	
"A	9.6	
M	14.3	267.5
"A	17.2	
Crk	21.4	
+5	23.0	
N	19.7	262.1
+30	13.4	

281.83

W "A

-30	12.6	
N	18.8	263.2
+10	21.6	
Crk	21.0	
"A	16.8	
M	13.0	268.8
"A	8.4	
Crk	6.9	
S	3.5	278.3

Center

S	0.6	281.2
Crk	5.4	
"A	9.6	
M	12.8	269.0
"A	17.5	
Crk	20.2	
N	17.4	264.4
+30	11.6	

14

281.83

E 1/4

-30	11.8	
N	16.8	265.0
Crk	19.8	
1/4	17.5	
M	13.8	268.0
1/4	8.9	
Crk	5.4	
S	0.5	281.3

E Crk

S	2.0	279.8
Crk	6.4	
1/4	9.3	
M	13.7	268.1
1/4	17.2	
Crk	19.1	
N	17.0	264.8
+30	13.0	

281.83

E.L. Herbert

-30	13.6	
N	18.1	263.7
Crk	18.2	
1/4	17.4	
M	14.4	267.4
1/4	11.9	
Crk	8.2	
S	4.1	277.7

0+25 E

-20	2.4	
S	5.9	275.9
Crk	11.5	
+7	13.2	
1/4	12.4	
M	10.5	271.3
1/4	11.0	
Crk	11.9	
N	12.7	269.1
+30	16.3	

15  
16

281.83

0+50

-30

N

6.3

21.8 279.0

Cob

3.3

1/4

4.2

M

5.3 276.5

1/4

6.5

Cob

7.5

S

8.4 273.4

+20

6.3

T.A.

13.10

0+75

274.66

0.27 281.56

-20

S

15.8

14.6 280.1

Cob

14.0

1/4

13.0

M

11.9 282.8

1/4

11.0

Cob

10.6

N

10.8 283.9

294.66

1+0

N

7.6 287.1

Cob

7.0

1/4

7.1

M

7.5 287.2

1/4

8.5

Cob

9.1

S

9.4 285.3

1+25

S

6.6 288.1

Cob

5.9

1/4

6.0

M

5.5 289.2

1/4

4.9

Cob

4.7

N

5.5 289.2

1716

29466

1750

N	5.6	289.1
Crk	4.6	
"A	4.5	
M	4.6	290.1
"A	4.5	
Crk	4.6	
S	4.8	289.9

1775

S	3.7	291.0
Crk	3.5	
"A	3.6	
M	3.4	291.3
"A	3.4	
Crk	4.0	
N	7.4	287.3
+20	11.0	

294.66

187

270

-20	9.3	
N	7.6	287.1
+5	9.1	
Crk	6.5	
"A	3.9	
M	3.0	291.7
"A	2.6	
Crk	2.6	
S	2.6	292.1

2725

S	2.2	292.5
Crk	2.3	89.4
"A	2.0	92.2
M	3.4	291.3
"A	5.2	89.5
Crk	6.8	88.9
+10	8.3	86.4
N	7.2	287.5
+20	6.6	88.1

29466

2150

-30	7.4	87.3
N	7.5	287.2
+5	7.7	87.0
Crk	6.3	88.4
"	5.5	89.2
M	4.0	290.7
"	3.1	91.6
Crk	2.3	92.4
S	2.4	292.3

2175

S	3.0	291.7
Crk	3.4	91.3
"	4.3	90.4
M	4.6	290.1
"	5.0	89.7
Crk	5.2	89.3
N	4.7	290.0

29466

340

"	3.6	291.1
Crk	3.9	90.5
"	4.3	90.4
M	4.0	290.7
"	3.8	90.9
Crk	3.7	91.0
S	3.6	291.1

3425

S	2.9	291.8
Crk	2.6	92.1
"	2.4	92.3
M	2.3	292.4
"	2.2	92.5
Crk	2.4	92.3
N	2.6	292.1
T.P	2.73	300.45
	1.94	292.72

18  
19

300.45

3750

N	6.7	293.8
wh	6.8	93.7
"A	7.0	93.5
M	7.0	293.5
"A	7.2	93.3
wh	7.1	93.4
S	7.7	292.8

3775

S	6.6	293.9
wh	6.6	93.9
"A	6.2	94.3
M	6.0	294.5
"A	6.2	94.3
wh	6.0	94.5
N	5.9	294.6

300.45

4408 = M.L. PARK BIRD

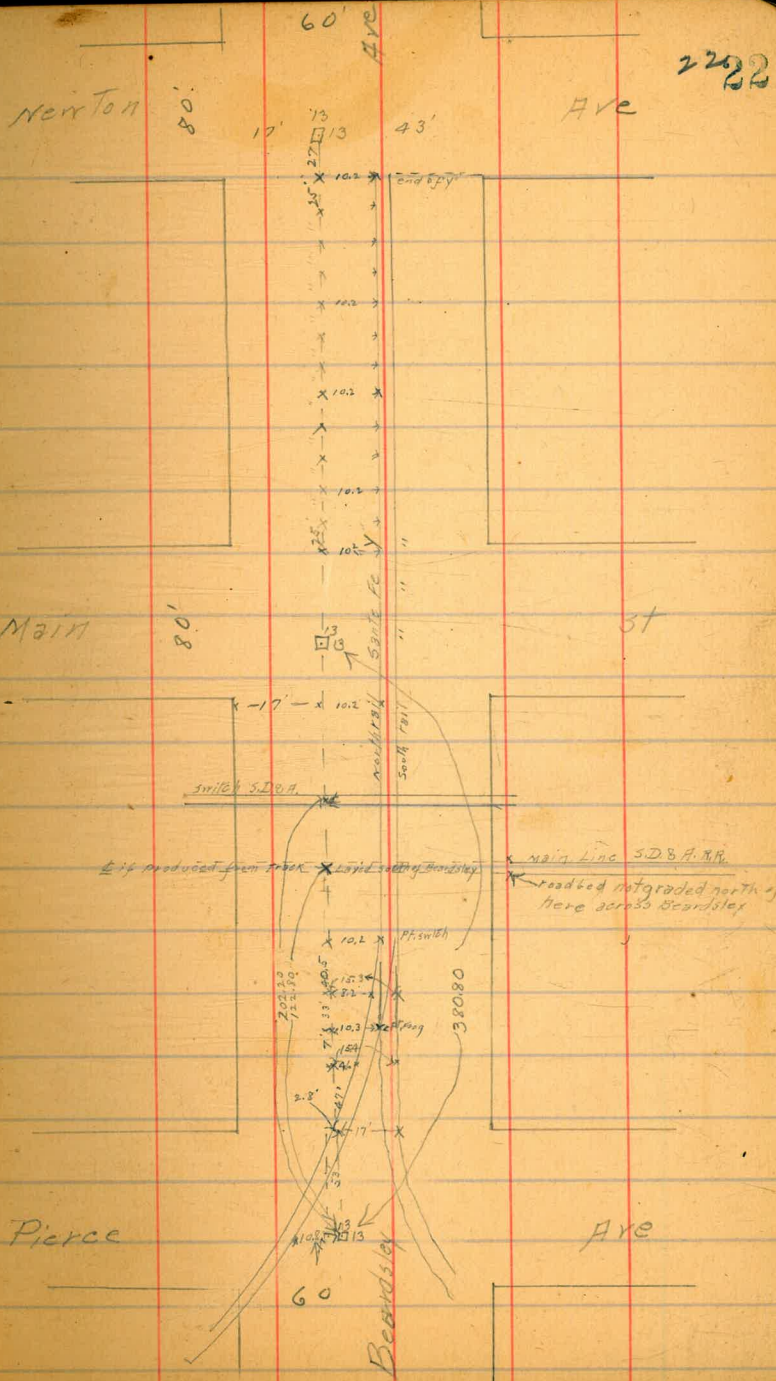
120

N	4.7	295.8
wh	4.9	95.6
"A	4.8	95.2
M	4.8	295.7
"A	5.0	95.5
wh	5.1	95.4
S	4.8	295.7

20  
21

1/4 Sec 13  
Evan  
Mn

Location of R.R. Tracks Beardsley Ave





223

Levels for Gridge Cedar st. W.L. 31<sup>st</sup> to E. of E.L. Ida st

Φ of Cedar used as base Levels taken on + distances North & South

274

B.M. R.R. SPK N.E. Cedar & 30<sup>th</sup> 224.07  
 B.M. 663 230.70

<sup>2</sup>/<sub>10</sub> Sample  
 13 Errors  
 Kern

T.P. 122 221.76 10.16 220.57  
 0+0 = W.L. 31<sup>st</sup>

+15 S 2.8 219.0  
 +10 " 3.3 185  
 0+0 = Φ Cedar 3.8 180  
 +10 N 4.9 169  
 +15 " 5.5 163

0+20 E

+15 N 10.8 210.9  
 +10 " 10.1 102  
 0+0 8.2 136  
 +10 S 7.1 147  
 +15 S 6.6 152

0+40 E

+15 S 12.5 209.3  
 +10 S 12.9 89  
 0+0 14.1 72  
 +10 N 15.2 66  
 +15 N 15.5 63

T.P. 0.06 208.98 12.84 208.92

0+60

+15 N 7.8 201.2  
 +10 7.3 2012  
 0+0 = Φ Cedar 6.0 2030  
 +10 S 4.9 2041  
 +15 S 4.3 2047

0+65 E 57 2023  
 6.1 2029  
 7.5 2015  
 8.5 2005

+15 N 8.9 2001

31<sup>st</sup>  
 0+80 = E.L. Ida st

+20 N 14.9 1941  
 +15 N 14.8 1942  
 +10 14.7 1942  
 0+0 14.9 1941  
 +10 S 13.7 1952  
 +15 S 13.8 1952

T.P. 1.07 197.94 12.11 196.87

0+92

0+20 S 8.8 1891  
 0+15 S 9.3 1886  
 0+10 " 10.0 1879  
 0+5 " 9.3 1886  
 0+0 10.0 1879  
 0+10 N 10.2 1872  
 0+15 N 10.1 872  
 20 N 10.0 879

1+0 E

+20 N 13.6 842  
 15 " 13.6 843  
 10 " 13.8 841  
 0+0 13.5 844  
 +10 S 12.9 850  
 +15 S 12.7 852  
 1+0 S 13.3 846

T.P. 0.44 185.62 12.76 185.18

185.62

1+20

+203		8.5	177 <sup>1</sup>
+155		9.1	76 <sup>5</sup>
+105		9.0	76 <sup>6</sup>
0+0		9.5	76 <sup>1</sup>
+10		10.0	75 <sup>6</sup>
+15 N		10.1	75 <sup>5</sup>
+20 N		10.3	75 <sup>3</sup>
T.P.	1.54	175.71	174.17

1+20

+20 N		6.2	169 <sup>5</sup>
+15 N		6.2	69 <sup>5</sup>
0+10 N		5.9	69 <sup>8</sup>
0+0		5.6	70 <sup>1</sup>
+105		5.0	70 <sup>2</sup>
+155		4.8	70 <sup>8</sup>
+203		4.7	71 <sup>0</sup>

1+60

0+255		7.6	68 <sup>1</sup>
+20 "		7.5	68 <sup>2</sup>
+15 "		7.5	68 <sup>2</sup>
+10 "		7.6	68 <sup>1</sup>
0+0		7.5	68 <sup>2</sup>
+10 N		8.0	67 <sup>2</sup>
+15 "		8.1	67 <sup>6</sup>
+20 "		8.2	67 <sup>5</sup>
+25 "		8.3	67 <sup>4</sup>

1+80

+25 N		9.8	65 <sup>9</sup>
+20 "		10.9	64 <sup>8</sup>
+15 "		11.5	64 <sup>2</sup>
+10 "		9.9	65 <sup>8</sup>
0+0		9.4	66 <sup>3</sup>
+10 S		9.7	66 <sup>0</sup>
+15 "		9.7	66 <sup>0</sup>
+20 "		9.9	65 <sup>8</sup>
+25 "		9.9	65 <sup>8</sup>

175.71

2+0

+155		10.9	64 <sup>8</sup>
+20 "		10.6	65 <sup>1</sup>
+15 "		10.8	64 <sup>9</sup>
+10 "		11.8	63 <sup>9</sup>
0+0		10.7	65 <sup>0</sup>
+10 N		9.9	65 <sup>8</sup>
+15 "		9.6	66 <sup>1</sup>
+20 "		9.1	66 <sup>6</sup>
+25 "		8.9	66 <sup>8</sup>

2+20

+25 N		7.3	68 <sup>4</sup>
+20 "		7.9	67 <sup>8</sup>
+15 "		8.4	67 <sup>2</sup>
+10 "		8.6	67 <sup>1</sup>
0+0		9.2	66 <sup>5</sup>
+10 S		9.9	65 <sup>8</sup>
+15 "		10.3	65 <sup>4</sup>
+20 "		11.2	64 <sup>5</sup>
+25 "		11.8	63 <sup>9</sup>

2+40

+155		7.5	68 <sup>2</sup>
+20 "		7.0	68 <sup>2</sup>
+15 "		6.2	69 <sup>5</sup>
+10 "		5.2	70 <sup>5</sup>
0+0		3.2	72 <sup>4</sup>
+10 N		1.3	74 <sup>4</sup>
T.P.	11.85	185.62	173.77
+15 N		10.4	75.2
+20 "		8.9	76.7

295

185.62

		2+60		
+26N			+0.9	186.5
+15N			0.2	85.4
+10N			1.1	84.4
0+0			4.3	81.3
+10S			6.4	79.2
+15S			7.6	78.2
+20N			8.6	77.2
+25N			10.2	75.4
T.P.	12.80	197.86	0.56	185.06

2+80 = 18.6 Idg st

+25S			16.2	81.2
+20N			13.9	84.0
+15N			12.3	85.6
+10N			10.5	87.4
0+0			6.9	91.0
0+10N			4.2	93.2
+15N			3.2	94.2
+20N			2.3	95.6

		3+0		
+20N			+3.4	201.3
+15N			+2.4	200.3
+10N			+1.1	199.0
0+0			1.1	196.1
+10S			3.3	94.6
+15N			4.7	93.3
+20N			6.2	91.2
+25N			8.0	89.2

T.P.	12.27	209.59	0.54	197.32
------	-------	--------	------	--------

		3+20		
+25S			13.7	195.9
+20N			12.6	197.0
+15N			11.4	198.2
+10N			10.4	199.2
0+0			7.3	202.3
+10N			5.2	204.4
+15N			4.0	205.6
+20N			2.7	206.9

T.P.	11.55	220.06	1.08	208.51
------	-------	--------	------	--------

		3+40		
+20N			7.6	212.5
+15N			8.5	211.6
+10N			9.7	210.2
0+0			12.4	207.7
+10S			15.7	204.4
+15N			17.0	203.1
+20N			18.4	201.7

		3+60		
+20S			14.6	205.5
+15N			12.3	207.2
+10N			10.8	209.3
0+0			8.0	212.1
+10N			5.1	215.2
+15N			3.7	216.4
+20N			2.4	217.2

		3+80		
+15N			+0.2	220.3
+10N			1.0	219.1
0+0			3.3	216.8
+10S			6.1	214.0
+15N			7.2	212.4
+20N			8.3	211.8

	9.77	228.89	0.94	219.12
--	------	--------	------	--------

27  
27

228.89

4+0

+20.5	13.3	215.6
+15.5	11.8	217.1
+10.11	10.8	218.1
0+0	8.5	220.4
0+10 N	6.7	222.2
0+15 N	5.2	223.7

4+20

+15 N	2.2	226.7
+10.11	3.1	225.8
0+0	5.1	23.8
+10.5	7.4	21.5
+15.11	8.6	20.3
+20.11	9.8	19.1

28  
28

Levels Grade St 1+60 E of Fern to 4+0 E of Fern  
 taken  $\frac{1}{2}$  of sidewalk  $\frac{1}{2}$  of St

B.M.	215	271.90	269.75
T.P.	761	266.89	17.62 259.28
		1+60 E	
S		9.4	257.5
M		9.3	257.6
N		8.3	258.6
		1+80	
N		9.1	257.8
M		10.0	256.9
S		9.9	257.0
		2+0	
S		10.4	256.5
M		10.5	256.4
N		9.6	257.3
		2+20	
N		9.9	257.0
M		10.5	256.4
S		10.5	256.4

266.9

29  
29

	2+40		
		10.7	256.2
		10.7	256.2
		10.0	256.9
	2+60		
		10.2	256.7
		10.9	256.0
		10.8	256.1
	2+80		
		11.4	255.5
		10.9	256.0
		10.2	256.7
	3+0		
		9.8	257.1
		10.5	256.4
		10.6	256.3
	3+20		
		10.2	256.7
		9.8	257.1
		9.3	257.6

266.9

3+20

N	9.4	257.5
M	8.9	258.0
S	9.6	257.3

3+60

S	9.2	257.7
M	7.9	259.0
N	8.9	258.0

3+80

N	8.2	258.7
M	7.4	259.5
S	8.3	258.6

4+0

S	7.1	259.8
M	6.5	260.4
N	6.9	260.5

3-30



X-section Kansas St. Adams to Copley  
" " " 50 wide 14' walk

$\frac{3}{100}$  sample  
13 Evans  
1 cm.

331

B.M. S.W. Mon Adams to Kansas 388.06

393.31

0+50

B.M. 5.25 393.31

0+0 = N.L. Adams

E 4.7 388.6

E 4.3 389.0

erb 4.8 388.5

erb 4.3 389.0

" 5.4 387.9

" 4.5 388.8

M 5.0 388.3

M 4.7 388.6

" 5.5 387.8

" 5.1 388.2

erb 4.7 388.6

erb 4.7 388.6

N 4.9 388.4

N 4.4 388.9

0+25 N

0+75

N 4.6 388.7

N 4.2 389.1

erb 4.9 388.4

erb 4.5 388.8

" 5.0 388.3

" 4.5 388.5

M 4.6 388.7

M 4.6 388.7

" 4.5 388.8

" 4.5 388.8

erb 4.3 389.0

erb 4.3 389.0

E 4.3 389.0

E 4.1 389.2

3933/

170

E	4.4	388.9
cb	4.4	388.9
"	4.5	388.8
M	4.3	389.0
"	5.1	388.2
cb	4.2	389.1
W	4.4	388.9

1725

W	4.8	388.5
cb	4.7	388.6
"	4.8	388.5
M	4.6	388.7
"	4.7	388.6
cb	4.6	388.7
E	4.5	388.8

3933/

1750

E	4.6	388.7
cb	4.8	388.5
"	4.7	388.6
M	4.6	388.7
"	4.7	388.6
cb	4.9	388.4
W	4.5	388.8

1775

W	4.8	388.5
cb	4.6	388.7
"	4.7	388.6
M	4.7	388.7
"	4.8	388.5
cb	4.8	388.5
E	5.0	388.3

32

32

393.3/

210

E	4.9	388.4
cb	4.8	388.5
"	4.4	388.9
"	4.3	389.0
"	4.5	388.8
cb	4.3	389.0
"	4.3	389.0

2125

"	4.3	389.0
cb	4.6	388.7
"	4.6	388.7
"	4.6	388.7
"	5.0	388.3
cb	4.9	388.4
E	4.9	388.4

note Kanobo at graded from works st to  
Copley mt official

393.31

33

2150 = S.L. Works of same

E	4.7	388.6
cb	4.9	388.4
"	4.9	388.4
"	4.6	388.7
"	4.7	388.6
cb	4.9	388.4
"	4.5	388.8
T.R.	6.15	394.21
		5.25
		388.06
		5. curv

"	5.3	388.9
cb	5.6	388.6
"	6.4	387.8
"	6.2	388.0
"	5.6	388.6
"	6.0	388.2
cb	5.7	388.5
E	5.9	388.3

39421

5 1/4

E	6.2	388.0
erb	6.1	388.1
1/4	6.0	388.2
M	5.9	388.3
1/4	6.1	388.1
+12	6.3	387.9
erb	5.6	388.6
W	5.3	388.9

center

W	5.2	389.0
erb	5.5	388.7
+1	6.3	387.9
1/4	5.6	388.6
M	5.2	389.0
1/4	5.3	388.9
erb	5.5	388.7
E	5.6	388.6

39421

N 1/4

-E	6.2	388.0
erb	5.8	388.4
1/4	5.5	388.7
M	5.2	389.0
1/4	5.7	388.5
+12	6.2	388.0
erb	5.5	388.7
W	5.2	389.0

N curb

W	5.1	389.1
erb	5.4	388.8
+1	6.3	387.9
1/4	5.5	388.7
M	5.3	388.9
1/4	5.4	388.8
erb	6.5	387.7
E	5.9	388.3

34

34

39421

N.L. Works

E	5.6	388.6
crk	5.6	388.6
+1	6.5	387.7
"4	5.9	388.3
M	5.2	389.0
"4	5.4	388.8
+12	6.2	388.8
crk	5.2	389.0
N	5.0	389.2

0450' N

N	4.7	389.5
crk	5.1	389.1
+1	6.0	388.2
"4	5.1	389.1
M	5.0	389.2
"4	5.6	388.6
+12	6.1	388.1
crk	5.5	388.7
E	5.0	389.2

39421

140

E	5.1	389.1
crk	5.3	388.9
+1	6.1	388.1
"4	5.3	388.9
M	5.0	389.2
"4	5.1	389.1
+12	5.7	388.5
crk	5.9	389.2
N	4.6	389.6

1450

N	4.4	389.8
crk	4.7	389.5
+1	5.5	388.7
"4	4.8	389.4
M	4.7	389.5
"4	5.2	389.0
+12	6.0	388.2
crk	5.2	389.0
E	4.9	389.3

35  
35

39421

2+0

E	4.7	389.5
Wh	5.0	389.2
+1	5.8	388.4
"4	5.0	389.2
M	4.4	389.8
"4	4.7	389.5
+12	5.3	388.9
Wh	4.6	389.6
W	4.3	389.9

2+50

W	4.0	390.2
Wh	4.3	389.9
+1	5.3	388.9
"4	4.6	389.6
M	4.2	390.0
"4	4.9	389.3
+12	5.5	388.7
Wh	4.7	389.5
E	4.3	389.9

39421

2+10 = S.L. Collier at 80 wide

E	4.2	390.0
Wh	4.6	389.6
+1	5.5	388.7
"4	4.7	389.5
M	4.0	390.2
"4	4.6	389.6
+12	5.1	389.1
Wh	4.2	390.0
W	4.1	390.1

3 curls

W	4.1	390.1
Wh	4.8	389.4
"4	4.3	389.9
M	4.0	390.2
"4	4.5	389.7
+12	5.3	388.9
Wh	4.4	389.8
E	4.0	390.2

36  
36

39421

S 1/4

E	4.0	390.2
crk	4.8	389.4
+1	5.3	388.9
"4	4.3	389.9
M	3.8	390.4
"4	4.2	390.0
crk	4.8	389.4
W	4.2	390.0

center

W	3.8	390.4
crk	5.0	389.2
"4	3.9	390.3
M	3.6	390.6
"4	4.5	389.7
+12	5.1	389.1
crk	4.4	389.8
E	4.0	390.2

39421

N 1/4

E	4.3	389.9
crk	4.6	389.6
+1	5.2	389.0
"4	4.7	389.5
M	3.7	390.5
"4	4.0	390.2
crk	4.8	389.4
W	4.2	390.0

N crk

W	3.8	390.4
crk	4.7	389.5
"4	3.9	390.3
M	3.7	390.5
"4	4.4	389.8
+12	5.0	389.2
crk	4.4	389.8
E	4.2	390.0

37  
37

39421

N. L. Collier

E	3.9	390.3
crk	4.3	389.9
+1	5.1	389.1
"	4.3	389.9
M	3.6	390.6
"	4.1	390.1
+12	4.6	389.6
crk	3.7	390.5
W	3.5	390.7

0450 N

W	3.3	390.9
crk	3.6	390.6
+1	4.3	389.9
"	3.8	390.4
M	3.2	391.0
"	3.9	390.3
+12	4.7	389.5
crk	3.9	390.3
E	3.4	390.8

39421

140

E	3.3	390.9
crk	3.4	390.8
+1	4.4	389.8
"	3.8	390.4
M	3.1	391.1
"	3.6	390.6
+12	4.4	389.8
crk	3.5	390.7
W	3.1	391.1

1450

W	3.0	391.2
crk	3.3	390.9
+1	4.3	389.9
"	3.6	390.6
M	3.1	391.1
"	3.5	390.7
+12	4.3	389.9
crk	3.6	390.6
E	3.1	391.1

38



394.21

270

E	3.0	391.2
erb	3.5	390.7
+1	4.2	390.0
"4	3.4	390.8
M	2.9	391.3
"A	3.5	390.7
+12	4.2	390.0
erb	3.2	391.0
W	2.9	391.3

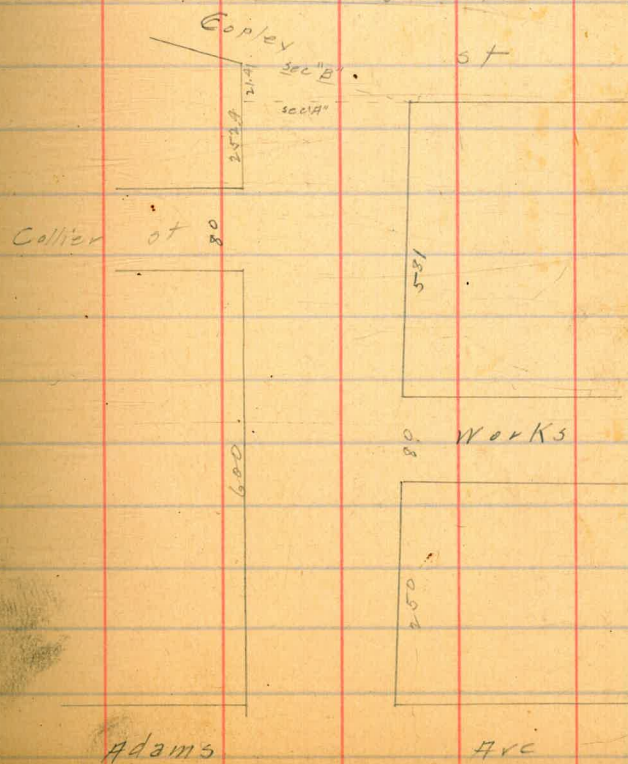
2731 = S.L. Cooley on E X-sec "A"

W	3.0	391.2
erb	3.3	390.9
+1	4.2	390.0
"4	3.5	390.7
M	3.0	391.2
"A	3.5	390.7
+12	4.3	389.9
erb	3.4	390.8
E	3.1	391.1

394.21

2752 = S.L. Cooley on M X-sec "B"

E	3.1	391.1
erb	3.5	390.7
gutter	4.3	389.9
"4	3.6	390.6
M	3.0	391.2
"A	3.9	390.3
gutter	4.2	390.0
erb	3.3	390.9
W	3.1	391.1



39

39

X-section J<sup>st</sup> 30<sup>th</sup> to 37<sup>th</sup>  
 " " 80 wide 14' w/13' 1/2's

3/4 dump  
 10 Erms  
 Ken

See grade book 75

40

40

B.M. 9.39 79.39 70.00

0+50  
 79.39

0+0 = F.L. 30<sup>th</sup> st

N	1.8	77.6
Crk	2.8	76.6
"	3.1	76.3
N	3.5	75.9
"	4.1	75.3
Crk	4.3	75.1
S	4.2	75.2
0+25 E.		
S	4.2	75.2
Crk	4.6	74.8
"	4.3	75.1
N	4.1	75.3
"	3.8	75.6
Crk	3.5	75.9
N	0.8	78.6

N	4.2	75.2
Crk	4.2	75.2
"	4.4	75.0
N	4.7	74.7
"	4.9	74.5
Crk	5.0	74.4
S	5.1	74.3
0+75		
S	5.1	74.3
Crk	5.3	74.1
"	5.2	74.2
N	5.1	74.3
"	4.9	74.5
Crk	4.8	74.6
N	4.7	74.7

140  
79.39

N	4.7	74.7
erb	5.0	74.4
"	5.1	74.3
M	5.2	74.2
"	5.3	74.1
erb	5.4	74.0
S	5.5	73.9

1425

S	5.5	73.9
erb	5.4	74.0
"	5.4	74.0
M	5.3	74.1
"	4.5	74.9
erb	5.0	74.4
N	4.9	74.5

1450  
79.39

N	4.9	74.5
erb	5.0	74.4
"	5.1	74.3
M	5.3	74.1
"	5.3	74.1
erb	5.1	74.3
S	5.0	74.4

1475

S	5.3	74.1
erb	5.1	74.3
"	5.2	74.2
M	5.0	74.4
"	5.0	74.4
erb	4.7	74.7
N	4.1	75.3

2+0  
79.39

N	4.3	75.1
erb	4.6	74.8
1/4	4.7	74.7
M	4.9	74.5
1/4	5.0	74.4
erb	5.1	74.3
S	5.2	74.2

2+25

S	4.8	74.6
erb	4.9	75.0
1/4	4.7	74.7
M	4.9	74.5
1/4	4.7	74.7
erb	4.7	74.7
N	4.4	75.0

2+50  
79.39

N	4.4	75.0
erb	4.6	74.8
1/4	4.7	74.7
M	4.8	74.6
1/4	4.9	74.5
erb	4.8	74.6
S	4.7	74.7

2+75

S	4.8	74.6
erb	4.8	74.6
1/4	4.3	75.1
M	4.2	75.2
1/4	4.2	75.2
erb	4.4	75.0
N	4.1	75.3

3+0  
79.39

N	4.1	75.3
wb	4.2	75.2
1/4	3.9	75.5
M	3.7	75.7
1/4	4.6	74.8
erb	4.1	75.3
S	4.1	75.3

3+25

S	3.8	75.6
wb	4.1	75.3
1/4	4.2	75.2
N	4.3	75.1
1/4	4.2	75.2
wb	4.2	75.2
N	3.9	75.5

3+50  
79.39

N	3.8	75.6
erb	4.3	75.1
1/4	4.2	75.2
M	4.2	75.2
1/4	4.2	75.2
erb	3.8	75.6
S	3.4	76.0

3+75

S	3.6	75.8
erb	4.2	75.2
1/4	4.2	75.2
M	4.2	75.2
1/4	4.3	75.1
wb	4.3	75.1
N	4.1	75.3

4+0  
79.39

N	4.2	75.2
erb	4.2	75.2
1/4	4.1	75.3
M	4.2	75.2
1/0	4.3	75.1
erb	3.8	75.6
S	3.6	75.8

4+25

S	3.8	75.6
erb	3.8	75.6
1/4	4.1	75.3
M	3.9	75.5
1/4	3.6	75.8
erb	3.7	75.7
N	4.0	75.4

44

4+50  
79.39

N	3.9	75.5
erb	3.8	75.6
1/4	4.1	75.3
M	3.8	75.6
1/4	3.9	75.5
erb	4.1	75.3
S	3.8	75.6

4+75

S	4.1	75.3
erb	4.1	75.3
1/4	4.1	75.3
M	3.8	75.6
1/4	3.5	75.9
erb	3.8	75.6
N	3.8	75.6

570  
79.39

N	3.7	75.7
Crk	3.5	75.9
"	3.6	75.8
M	3.8	75.6
"	3.9	75.5
Crk	4.0	75.4
S	3.9	75.5

5725

S	4.1	75.3
Crk	3.8	75.6
"	3.8	75.6
M	3.8	75.6
"	3.7	75.7
Crk	3.8	75.6
N	3.4	76.0

5750  
79.89

N	3.1	76.3
Crk	3.2	76.2
"	3.8	75.6
M	3.9	75.5
"	3.8	75.6
Crk	4.0	75.4
S	4.0	75.4

5775

S	4.0	75.4
Crk	4.0	75.4
"	4.0	75.4
M	3.9	75.5
"	3.9	75.5
Crk	3.5	75.9
N	3.1	76.3

79.39

6+0  
79.39

N	3.1	76.3
Crk	3.2	76.1
"A	3.6	76.8
M	3.4	76.0
"A	3.1	76.3
Crk	3.0	76.4
S	3.2	76.2

6+25

S	3.7	75.7
Crk	3.7	75.7
"A	3.6	75.8
M	3.3	76.1
"A	3.4	75.9
Crk	3.0	76.4
N	3.0	76.4

46

6+50  
79.39

N	3.0	76.4
Crk	3.1	76.3
"A	2.6	76.8
M	2.8	76.6
"A	3.3	76.1
Crk	3.5	75.9
S	3.9	75.5

6+75

S	3.9	75.5
Crk	3.8	75.6
"A	3.8	75.6
M	3.5	75.9
"A	3.3	76.1
Crk	3.1	76.3
N	3.0	76.4

T.P. 6.29 82.80 2.88 76.51



82.80

7+0  
82.80

N	6.4	76.4
Crk	6.8	76.0
"	6.8	76.0
M	6.9	75.9
"	6.7	76.1
Crk	6.4	76.4
S	7.0	75.8

7+25

S	7.0	75.8
Crk	7.1	75.7
"	7.1	75.7
M	6.9	75.9
"	6.9	75.9
Crk	7.0	75.8
N	6.3	76.5

47

7+50  
82.80

N	6.7	76.1
Crk	6.9	75.9
"	6.6	76.2
M	6.6	76.2
"	6.8	76.0
Crk	6.9	75.9
S	7.1	75.7

7+75

S	6.9	75.9
Crk	6.9	75.9
"	6.6	76.2
M	6.2	76.6
"	6.5	76.3
Crk	6.6	76.2
N	6.4	76.4

8+0 - N.L. 31<sup>st</sup> Contract let for grading  
82.80

N	6.2	76.6
erh	6.5	76.3
1/4	6.4	76.4
N	6.5	76.3
1/4	6.5	76.3
erh	6.7	76.1
S	6.8	76.0

EL. 31<sup>st</sup> = 0+0

S	6.5	76.3
erh	6.7	76.1
1/4	6.4	76.4
N	6.5	76.3
1/4	6.4	76.4
erh	6.3	76.5
N	6.2	76.6

0+25 E  
82.80

N	5.6	77.2
erh	6.1	76.7
1/4	6.3	76.5
N	6.3	76.5
1/4	6.1	76.7
erh	6.2	76.6
S	5.9	76.9

0+50

S	6.1	76.7
erh	6.1	76.7
1/4	5.8	77.0
N	5.8	77.0
1/4	6.1	76.7
erh	6.0	76.8
N	5.6	77.2

0+75  
82.80

N	5.5	77.3
erb	5.4	77.4
"A	5.5	77.3
M	5.5	77.3
"A	5.4	77.4
erb	5.9	76.9
S	6.0	76.8

170

S	5.7	77.1
erb	5.9	76.9
"A	5.7	77.1
M	5.6	77.2
"A	5.9	76.9
erb	5.9	77.4
N	5.4	77.4

1+25  
82.80

N	5.0	77.8
erb	4.6	78.2
"A	5.3	77.5
M	5.5	77.3
"A	5.6	77.2
erb	5.5	77.3
S	5.4	77.4

1750

S	5.2	77.6
erb	5.9	77.4
"A	5.3	77.5
M	5.2	77.6
"A	5.1	77.7
erb	4.9	77.9
N	4.8	78.0

1725  
82.80

N	4.7	78.1
Crk	4.8	78.0
"	4.9	77.9
M	4.8	78.0
"	5.2	77.6
Crk	5.3	77.5
S	5.5	77.3

210

S	5.3	77.5
Crk	5.4	77.4
"	5.3	77.5
M	5.1	77.7
"	5.0	77.8
Crk	4.9	77.9
N	4.8	78.0

2125  
82.80

N	4.3	78.5
Crk	4.6	78.2
"	4.5	78.3
M	4.8	78.0
"	4.6	78.2
Crk	4.8	78.0
S	5.1	77.7

2150

S	4.3	78.5
Crk	4.7	78.1
"	4.6	78.2
M	4.6	78.2
"	4.6	78.2
Crk	4.3	78.5
N	4.1	78.7

2+96  
82.80

N	4.3	78.5
crk	4.6	78.2
"A	4.6	78.2
M	4.7	78.1
"A	4.7	78.1
crk	4.7	78.1
S	4.6	78.2

3+0

S	4.3	78.5
crk	4.7	78.1
"A	4.8	78.0
M	4.3	78.5
"A	4.2	78.6
crk	4.3	78.5
N	4.2	78.6

3+25  
82.80

N	3.8	79.0
crk	4.3	78.5
"A	4.4	78.4
M	4.3	78.5
"A	4.2	78.6
crk	4.4	78.4
S	4.2	78.6

3+50

S	4.1	78.7
crk	4.2	78.6
"A	3.7	79.1
M	3.5	79.3
"A	3.6	79.2
crk	3.6	79.2
N	4.0	78.8

3775  
82.80

N	3.7	79.1
Crk	3.9	78.9
"A	3.9	78.9
M	3.8	79.0
"A	4.0	78.8
Crk	4.0	78.8
S	3.8	79.0

410

S	3.0	79.8
Crk	3.6	79.2
"A	3.5	79.3
M	3.4	79.4
"A	3.3	79.5
Crk	3.6	79.2
N	3.1	79.7

4225  
82.80

N	3.2	79.6
Crk	3.3	79.5
"A	3.2	79.6
M	3.3	79.5
"A	3.2	79.6
Crk	3.1	79.7
S	2.8	80.0

4150

S	2.0	80.8
Crk	2.7	80.1
"A	2.8	80.0
M	2.9	79.9
"A	2.8	80.0
Crk	3.1	79.7
N	2.8	80.0

	82.50			
	4775			
	82.80			
N		2.7	80.1	
Crk		2.7	80.1	
"A		2.5	80.3	
M		2.3	80.5	
"A		2.4	80.4	
Crk		2.5	80.3	
S		2.2	80.6	
	540			
S		1.9	80.9	
Crk		2.2	80.6	
"A		2.1	80.7	
M		1.8	81.0	
"A		2.0	80.8	
Crk		2.3	80.5	
N		2.3	80.5	
T.P.	690	87.67	2.03	80.77

	5725			
	87.67			
N		6.9	80.8	
Crk		6.6	81.1	
"A		6.6	81.1	
M		6.0	81.7	
"A		6.2	81.5	
Crk		6.4	81.3	
S		6.1	81.6	
	5750			
S		5.6	82.1	
Crk		5.5	82.2	
"A		5.5	82.2	
M		5.9	81.8	
"A		6.1	81.6	
Crk		6.1	81.6	
N		6.3	81.4	

5+76  
87.67

N	5.8	81.9
Crk	5.7	82.0
"4	5.7	82.0
M	5.5	82.2
"4	5.3	82.4
Crk	5.0	82.7
S	4.9	82.8
6+02 m.l. 32 <sup>nd</sup> st		
S	5.0	82.7
Crk	4.9	82.8
"4	5.0	82.7
M	4.8	82.9
"4	4.9	82.8
Crk	5.0	82.7
N	5.0	82.7

3/24/13

Meander line around  
Pueblo lot  
1823

54  
Halek  
Moore  
Hall  
Bunker

Sta	4	4	Mag. C.
141+41	= pt in centre of sand spit		
3+25			
138+22		47°15'	N87°30'W N88°30'W ✓ ✓
4+90v			
133+32	?	102°0'	N40°15'W N41°15'W ✓ 17 ✓
2+10v			
131+22		36°00'	N61°45'E N60°45'E ✓ 16 ✓
2+50v			
128+72		18°00'	S82°15'E S83°15'E ✓ 15 ✓
5+40v			
123+02		14°45'	S64°15'E S65°15'E ✓ 10 ✓
4+00v			
119+02		19°30'	S49°30'E S50°30'E ✓ 13 ✓
2+30v			
116+72		18°00'	S29°40'E S31°00'E ✓ 17 ✓
2+40v			
114+12	*	10°00'	S12°1'E S13°00'E ✓ 11 ✓
5+60v			
108+42	6°00'		S2°10'E S3°00'E ✓ 10 ✓
7+30v			
99+12	3°30'	58°E	S9°00'E ✓ 9 ✓
22+00v			
97+12	0°45'	S23°30'E	S33°0'E ✓ 8 ✓
15 80v			
61+32	1°25'	S14°5'E	S20°45'E ✓ 9 ✓
14 00v			
47+32	2°15'	S0°15'E	S10°20'E ✓ 6 ✓
7+30v			
40+02	3°30'	S23°30'E	S30°35'E ✓ 5 ✓
16+00v			
24+02	4°00'	S6°E	S40°05'E ✓ 4 ✓
8+00v			
16+02	10°5'	S10°10'E	S11°05'E ✓ 3 ✓
13+10v			
5+92	85°05'	S9°E	S10°00'E ✓ 2 ✓
5+92			
0+00		S 76°E	S175°05'W 1

Sea Sketch, Page 56 →



Sta.	R	L	Mag. C	Sta.	R	L	Mag. C
2+00v 187+77	4625		N4630'E N4535'E ✓ 36 ✓	3+60v 344+27		3000	N3050'W N3155'W ✓ 55
2+80v 184+97	1800'		N015'W N1010'W ✓ 35 ✓	3+50v 240+77	1850		N050'W N155'W ✓ 54
2+40v 182+57		1730'	N1815'W N1910'W ✓ 34 ✓	6+70v 234+07		3500'	N1940'W N2045'W ✓ 53
2+60v 179+97		1180'	N045'W N1040'W ✓ 33 ✓	1+60v 222+47		2210	N1520'E N1415'E ✓ 52
3+75v 176+27	4415		N1045'E N950'E ✓ 32 ✓	2+90v 229+57	2040		N3730'E N3625'E ✓ 51
1+30v 174+97	3830		N3330'W N3425'W ✓ 31 ✓	3+00v 226+57	3830		N1640'E N1545'E ✓ 50
2+80v 172+17		9440	N67°W N67055'W ✓ 30 ✓	1+30v 225+27		4420	N2150'W N22045'W ✓ 49
3+15v 167+02	2180'		N2730'E N26045'E ✓ 29 ✓	2+90v 222+37	4200		N2230'E N2135'E ✓ 48
2+60v 166+42		400'	N645'E N5045'E ✓ 28 ✓	1+90v 220+57		3110	N1920'W N20025'W ✓ 47
3+30v 163+12	1445		N1045'E N945'E ✓ 27 ✓	2+10v 218+47	4240		N1140'E N1045'E ✓ 46
2+50v 160+62	1930		N4°W N500'W ✓ 26 ✓	1+90v 216+57		2900'	N29°W N29055'W ✓ 45
3+50v 157+12		900'	N2330'W N2430'W ✓ 25 ✓	1+90v 214+67		1600	N N055'W ✓ 44
4+70v 152+42	1305		N430'W N1530'W ✓ 24 ✓	3+00v 211+67	5510		N16°W N1505'E ✓ 43
2+50v 149+92	1915		N2730'W N28035'W ✓ 23 ✓	5+10v 206+57		820	N39°W N4005'W ✓ 42
1+90v 145+02		3930	N4630'W N47050'W ✓ 22 ✓	6+70v 199+87		3010	N3040'W N31045'W ✓ 41
1+90v 146+12	6215		N720'W N8020'W ✓ 21 ✓	1+70v 198+17		1650	N040'W N1035'W ✓ 40
1+40v 144+72		2930	N6940'W N7035'W ✓ 20 ✓	1+30v 196+87	3900'		N1510'E N1415'E ✓ 39
1+10v 143+62		6530	N40°W N4105'W ✓ 19 ✓	2+70v 194+17		3720	N2850'W N29045'W ✓ 38
5+40v 138+22	6540		N1520'E N2425'E ✓ 18 ✓	4+40v 189+77		3800	N1330'E N12035'E ✓ 37

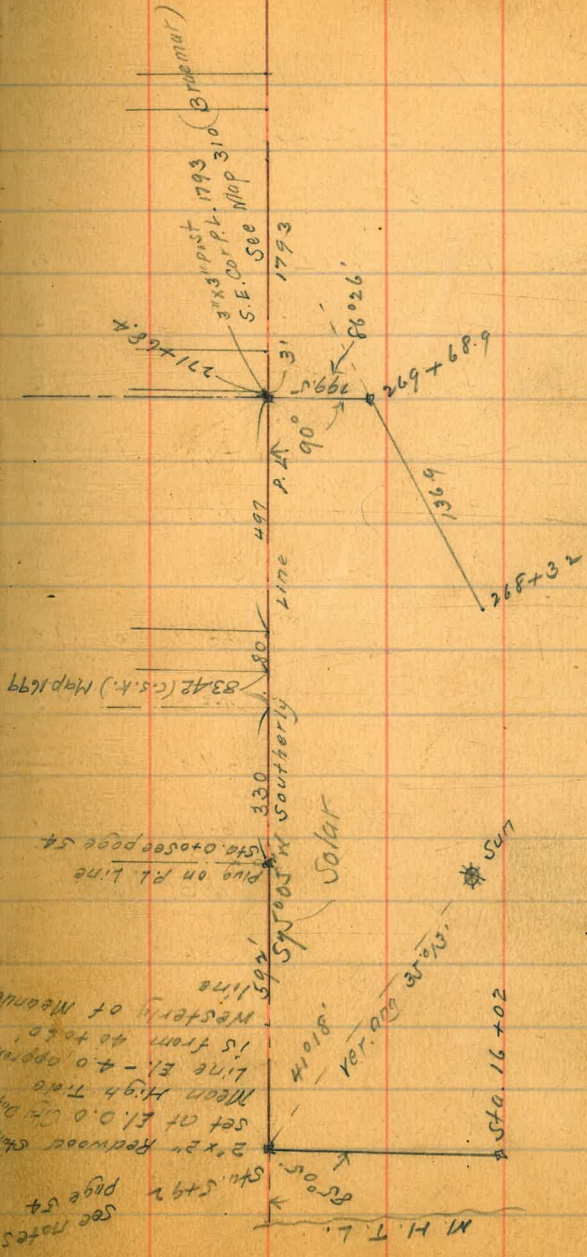
3 2  
4 2  
4 0  
9 0

Solar observation taken at N. line

Ph. 1803 Mar 21-13 8:30 AM

Vertical angle 35° 0' 3"  
Horizontal " 418 Right

271+63 ±	90° 00'	N 76° E 37459 W	750	✓
± 99.5				
269+68.9		86° 26'	N 143° W 10511 W	53 ✓
1+36.9	34° 30'	N 72° 20' E 971° 25' E	64	✓
95		N 37° 30' E 38° 55' E	63	✓
267+87	54° 30'	N 72° 30'	N 163° 00' W 117° 25' W	62 ✓
1+65				
265+72		N 56° E 55° 05' E	61	✓
3+70	6° 30'			
262+08				
577.5				
259+27		39° 00'	N 49° 30' E 48° 35' E	60 ✓
2+10				
257+17	34° 00'	N 88° 30' E 87° 35' E	59 ✓	
1+60				
255+57	52° 30'	N 43° 30' E 53° 35' E	58 ✓	
49+4				
250+67				
5+8				
247+87	12° 00'	N 28° W 55° 28' W	57 ✓	
		N 55° 41' W 55° 41' W	56 ✓	
		N 55° 13'	55 ✓	



See notes page 54  
Sta. 542  
3x2 Redwood stake  
Set at E.I.O. of line  
Mean Hgt. Tide  
Line E.I. - 4.0 opp. N  
is from 40 to 60  
Westerly of Meander

Solar  
Sta. 16 + 02

Spruce Southern  
330  
300  
270  
240  
210  
180  
150  
120  
90  
60  
30  
0

Pin on R.L. line  
Sta. 0 + 50 see page 54

3342 (C.S.K.) Map 1679

341 1793  
S. E. 1/4 Sec 16, T. 16 N., R. 16 W.

(meander)  
S. E. 1/4 Sec 16, T. 16 N., R. 16 W.

P. A. T.

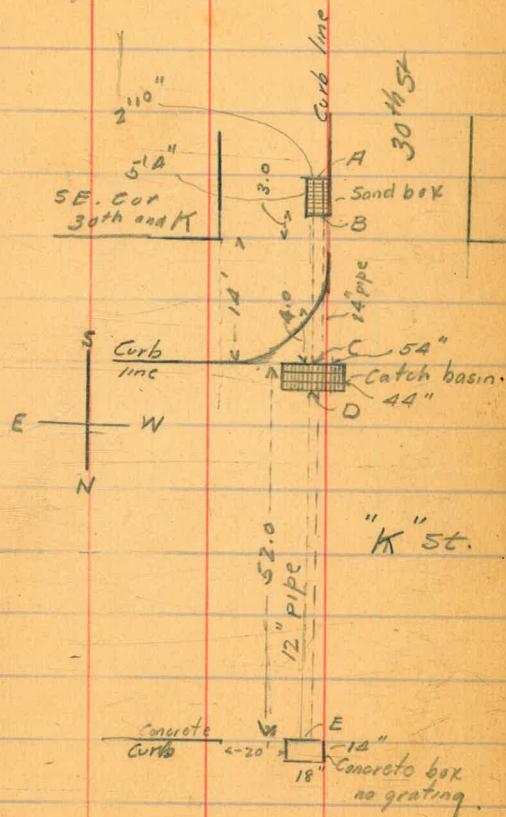
Levels at Sand box and Catch basin

on Hand 30th St. S.E. Corner		73.65
2.41	76.06	
5.05	74.99	6.12
Top of grating at A		4.65
Flow line of pipe at A		7.0
Top of grating at B		4.61
Flow line of pipe at B		7.01
Top of grating at C		5.41
Flow line of pipe at C		8.01
Top of grating at D		5.43
Flow line of pipe at D		6.98
Flow line of pipe at E		6.19
Bottom of box at E		6.3
Top of box at E		5.1

see book 837- P-80.0

Lindberg 57

Apr. 16-03  
B.M. R.R. Spike NE cor "L" and 30th St  
Spike 0.6 above ground



Standard-Iron Works.

Beardsley - 22<sup>nd</sup> and Pierce

near get off 22

5/ Blount x Sec of Chatham Blvd (70)  
 16/ Taylor for P.L. Rd of Point Lima Heights Sanit  
 13/ City

	638	93.90	875.2	over Jennings N. angle
	745	100.60	0.75	931.5
				875.2 53.30 93.90 71.15 93.15 745 100.60
				Rd of Jennings St (80)
W. on bk		4.5	96.1	
"		4.3	96.3	
"		4.0	96.6	
"		4.0	96.6	
E. on bk		3.6	97.0	

bank + Sid walks on in N to P line

50' N of Jennings

E on bank	3.1	97.5
"	3.8	96.8
"	3.7	96.9
"	4.2	96.4
on W bank	4.0	96.6

100.60  
 100' N of Jennings St

on W bank	3.5	97.1
"	3.8	96.8
"	3.4	97.2
"	3.6	97.0
on E bank	3.1	97.5
on E bk	2.9	97.7

143 on W = Ruelle line N to P L heights  
 144 on E

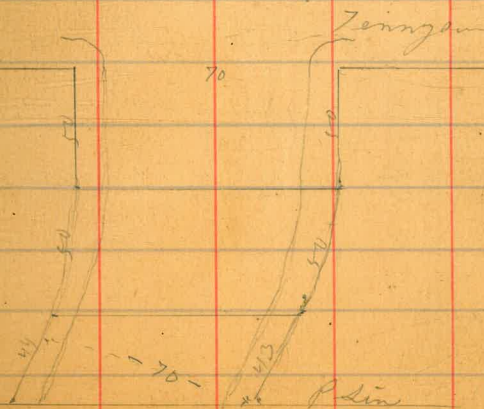
3.3 97.3

3.2 97.4

3.5 97.1

on W bk 3.5 97.4

bank + walk on d here



10060

S side of Tennyson

W	48	95.8
bt	50	95.6
"	53	95.3
"	49	95.7
"	50	95.6
on E bush	41	96.5

bush & walk are in on E side of this block

100 S of Tennyson

on E bush	76	93.0
	81	92.5
	80	92.6
	84	92.2
W bt	85	92.1

Break in grade at this line

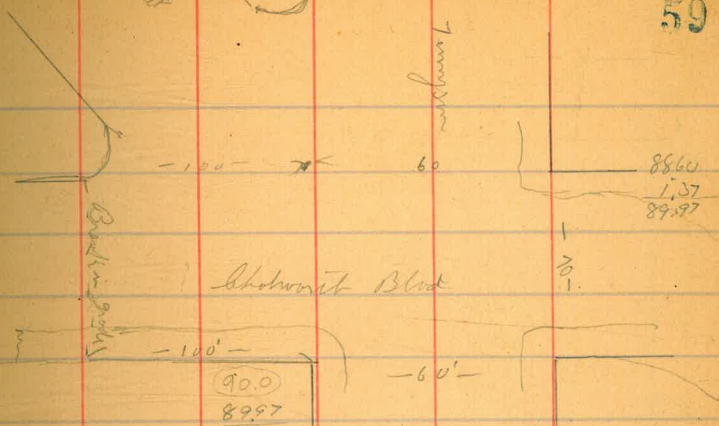
TP 137 8997 120 8860

59

Shrub

60'

Tennyson



Abandonment Block

200 S of Tennyson

W bt	31	86.9
	40	86.0
b	36	86.4
	34	86.4
W bt	31	86.9

275 S of Tennyson (60')

on E bush	79	82.1
	74	82.6
b	75	82.5
	80	82.0
W bt	75	82.5

8997

900

S line of Quincy St

Wbl	10.1	79.9
	10.4	79.6
	9.9	80.1
	10.0	80.0
on Ell	8.9	81.1

bank & Sid Walk are in or E side

88 S to R.R. Ref W

on bk TP	463	81.60	13.00	76.97
----------	-----	-------	-------	-------

Sbk or bank	463	76.97
-------------	-----	-------

64 S on W side = NRR Rail

on Rail	3.9	77.7
---------	-----	------

on Row bank	4.7	76.9
-------------	-----	------

115.2 S on E side = NRR Rail

on Rail	5.9	75.7
---------	-----	------

200 S of Quincy St

Ell	4.9	76.7
-----	-----	------

	5.5	76.1
--	-----	------

b	5.3	76.3
---	-----	------

	5.0	76.6
--	-----	------

Wbl	4.6	77.0
-----	-----	------

8160

Whatsome

60

275 S = 2nd Pae St (60')

Wbl	3.7	77.9
	4.3	77.3
b	4.1	77.5
	4.6	77.0
Ell	4.5	77.1

S of Pae

Ell	3.6	78.0
-----	-----	------

	3.6	78.0
--	-----	------

b	3.3	78.3
---	-----	------

	3.5	78.1
--	-----	------

Wbl	2.6	79.0
-----	-----	------

100 S of Pae St

Wbl	9.5	81.1
-----	-----	------

	1.3	80.3
--	-----	------

b	1.0	80.6
---	-----	------

	1.5	80.1
--	-----	------

Ell	1.2	80.4
-----	-----	------

TP	9.38	89.98	1.00	80.60
----	------	-------	------	-------

8997  
 15  
 76.97  
 4.63  
 81.60  
 2.38  
 89.78

8998

(90.0)

200 Sq Pa

EBL	72	82.8
	76	82.4
b	72	82.8
	76	82.4
WHL	72	82.8

275 S of - Rd of Elsmore (6)

WHL	52	84.8
	58	84.2
		84.6
b	54	84.6
	58	84.2
EBL	53	84.7

S of Elsmore

EBL	37	86.3
	39	86.1
b	35	86.5
	40	86.0
WHL	34	86.6

TP 10.95 100.35 058 8940

10035

Chalsum

61

100 Sq Elsmore

WHL	101	90.2
	105	89.8
b	101	90.2
	104	89.9
EBL	101	90.2

200 S of Elsmore

EBL	55	94.8
	58	94.5
b	58	94.5
	60	94.3
WHL	56	94.7

275 S of - Rd of Ellyhart

WHL	21	98.2
	28	97.5
b	24	97.9
	27	97.6
EBL	20	98.3

TP 11.44 111.42 032 100.63

8998
8940
10.35
100.35
11.44
111.42

111.47

111.5

S line of Oly plant

Eh	11.1	100.4
	11.2	100.3
b	11.0	100.5
	11.3	100.2
Wb	11.1	100.4

100 S of Oly plant

Wb	6.4	105.1
	6.8	104.7
b	6.3	105.2
	6.5	105.0
Eh	6.3	105.2

200 S of Oly plant

Eh	0.8	110.7
	1.0	110.5
b	0.9	110.6
	1.5	110.0
Wb	1.0	110.5

TP 1216 12357 012 11135

12357

Cholera

62

300 N2 S = Macaulay st on W (60)

Wb	7.5	116.0
	8.0	115.5
b	7.7	115.8
	8.0	115.5
Eh	7.6	115.9

S 2 Macaulay st on W

Eh	4.6	118.9
	4.9	118.6
b	4.6	118.9
	4.8	118.7
Wb	4.2	119.3

TP 1030 12322 009 12352

84 S 2 Macaulay st on East (60)

Wb	9.7	124.0
	10.5	123.2
b	10.1	123.6
	10.5	123.2
Eh	9.8	123.9

End of bank at Pivots same on W bank

12358

101.47  
 12  
 16.25  
 123.57  
 09  
 123.42  
 10.30  
 123.72

12358  
 12359



## S of Macaulay St on East

Ebb	89	124.8	
	78	125.9	133.72
b	71	126.6	134.72
			7.85
			123.09
	71	126.6	
W on bank	67	127.0	

95 S of Macaulay = rd (Arlington Drive)

W on TP 1050 14345 078 132.98

bank & gutter are in from Public line

S N line of Arlington Drive (84)

W on bank	104	133.0	132.91
			1.50
	109	132.5	142.41
			7.67
b	109	132.5	142.72
			11.70
			136.42
	111	132.3	
Ebb	114	132.0	

S of Arlington Drive

## S line of Arlington Drive

Ebb	75	135.9
	75	135.9
b	71	136.3
	72	136.2
W on bank	70	136.4

TP 1100 15474 078 142.63

bank & gutter are in on W side

from Arlington to 125 S = a Public line

125 S of Arlington

W on bank	87	146.0
	91	145.6
b	91	145.6
	95	145.2
Ebb	95	145.2

Side walk bank & gutter are in on west side of St to Ridge Road a angle of about 2° to R for the line

TP 1170 16642 002 15-472

16642

	110 <sup>on W</sup> of P2 = Ridge Road (50)	2L	
EH	111 <sup>on E</sup>	115	154.9
		118	154.6
b		114	155.0
		115	154.9
on W bank		113	155.1

S side of Ridge Road

Side mark bank + built in on W side

110 South to Parallel line

on W bank		43	162.1
		56	160.8
b		53	161.1
		56	160.8
EH		54	161.0

57 S = Point of curve about 34° to R

EH		23	164.1
		25	163.9
b		21	164.3
		23	164.1
on W bank		24	164.0

16672

Cholmonitz

64

TP	211	17238	165	164.77	16642
					164.77
					172.38
	on W	55' S of P6			
	m2	77'			
on W bank			61	166.3	
			54	166.0	
b			59	166.5	
			64	166.0	
EH			63	166.1	
		Side mark across here			
		55 S on W side of stream			End of curve
		77 S - E side			
EH			44	168.0	
			48	167.6	
b			45	167.9	
			30	167.4	
on W bank			47	167.7	
		Curve + built in on W side to (wildwood?)			24
		75 S = N side of			
on W bank			26	169.8	
			26	169.8	
b			25	169.9	
			27	169.7	
EH			27	169.7	

17238

TP 956 18020 174 17064

115 across = S L — st 17238

W or bank 66 173.6

45 175.7

b 63 173.9

68 173.4

ll 64 173.8

1170 19020 170 17850

112 S = End of bank

E or 97 180.5

98 180.4

96 180.6

99 180.3

W or bank 99 180.3

bank + gutter ends here

200' S of ( — ) st

W or 41 186.1

38 186.4

b 33 186.9

33 186.9

E or 28 187.4

17238

170.64

180.20

178.50

190.20

189.75

201.33

200.37

11.50

211.91

19020

Balance

65

TP 1275 20133 162 18854

300' S of — st

E or 72 194.1

75 193.8

b 75 193.8

77 193.6

W or 84 192.9

400' S of — st

W or 30 198.3

26 198.7

b 20 199.3

18 199.5

E or 20 199.3

TP 1154 21191 096 20037

500' S of — st

E or 84 203.5

80 203.9

b 7.7 204.0

82 203.7

W or 84 203.5

21191

	600	S of	—	St
W.H.			38	208.1
			40	207.9
b			38	208.1
			40	207.9
E.H.			38	208.1
TP	750	217.7	202	209.89
	700	S of	—	St
E.H.			58	211.9
			38	211.9
b			55	212.2
			57	212.0
W.H.			55	212.2
	750	S of	—	St
W.H.			42	213.5
			43	213.4
b			40	213.7
			42	213.5
E.H.			42	213.5

21191  
21191  
209.59  
780  
217.69

Puckin Peak

21769

beats unit

66

(217.7)

	800	S of	—	
E.H.			42	213.5
			42	213.5
b			40	213.7
			43	213.4
W.H.			42	213.5
	900	S of	—	
W.H.			46	213.1
			49	212.8
b			46	213.1
			49	212.8
E.H.			52	212.5
	1000	S of	—	
E.H.			61	211.6
			60	211.7
b			55	212.2
			52	212.5
W.H.			57	212.0

217.69

217.7

Centrist)

1050

S of

wh

53

212.4

b

55

212.2

55

212.2

217.69  
5.01  
212.69  
9.37  
222.06

59

211.8

ell

63

211.4

1100

S of

ell

59

211.8

58

211.9

b

54

212.3

56

212.1

wh

54

212.3

1125

S of = rd of Del Mar on west

wh

50

212.7

52

212.3

b

57

212.6

53

212.4

ell

51

212.6

TP

9.37

222.06

50

212.69

222.06

222.1

Chatsworth

67

145' S of rd = rd of Del Mar

e

48

217.3

49

217.2

b

48

217.3

52

216.9

wh

55

216.6

100

S of

Del Mar

wh

25

219.6

23

219.8

b

19

220.2

19

220.2

ell

22

219.9

200

S of

Del Mar

ell

35

218.6

39

218.2

b

37

218.4

41

218.0

wh

45

217.6

22206

(2221)

300 S of Del Mar

WB 83 213.8

80 214.1

b 75 214.6

73 214.8

E H 74 214.7

1.55 212.55 110 211.00

400 S of Del Mar

E H 19 210.6

19 210.6

b 19 210.6

23 210.2

WB 25 210.0

500 S of Del Mar

WB 76 204.9

76 204.9

b 74 205.1

75 205.0

E H 78 204.7

TP 135 201.31 1239 200.14

22206  
 11.00  
 211.00  
 1.15  
 212.15  
 12.39  
 200.14  
 1.14  
 201.31  
 12.33  
 188.68  
 7.50  
 196.18

2013A

Chatonville

68

600 S of Del Mar

E H 28 198.5

25 198.8

b 22 199.1

23 199.0

WB 23 199.0

700 S of Del Mar

WB 86 192.7

86 192.7

b 86 192.7

88 192.5

E H 92 192.1

TP 750 196.2 192.8 1263 188.68

800 S of Del Mar

E H 101 186.1

101 186.1

93 186.7

97 186.5

WB 95 186.7

850 S about same El as 900 line

approx N.E. of  
 Pescadero

19618

(1962)

Culvert	875'	S of Del Mar		
Wbh			11.2	185.0
			11.5	184.7
b			11.6	184.6
			11.8	184.4
ELL			11.8	184.4
	900'	S Del Mar		(approx S. S. of Crescent?)
ELL			11.6	184.6
			11.7	184.5
b			11.4	184.8
			11.3	184.9
Wbh			11.3	184.9
	1000'	S = about the Point of Curve		
Wbh			6.8	189.4
			6.9	189.3
b			7.2	189.0
			7.2	189.0
ELL			7.3	188.9

19618

Lakewood

69

	100'	S of Pb on W = about the End of Return		
ELL			0.1	196.1
			0.2	196.0
b			+0.2	196.4
			+0.2	196.4
Wbh			0.0	196.2
TP	1862	2062	0.58	195.60
(about 100?)	Center of Blvd	Point of Curve		(catalina)
			4.8	201.4
(about 50?)	Center of Blvd + Point of Curve			(catalina)
b			2.4	203.8
	370	2257	4.41	201.81
	528	203.28	7.57	198.23
			1.80	201.58

19618  
 195.60  
 10.62  
 206.22  
 4.41  
 201.81  
 3.70  
 205.51  
 7.57  
 198.23  
 5.28  
 203.28  
 1.80  
 201.58

8 plow  
8 70  
13 1/2

X sec of Vidal st (70)  
Ed Western add 300' E in Pt Loma Villen

	8.70	9.62	87.52	over 7000 Warrington
	0.90	9.567	1.45	94.77
	Probably in E of Western add			
S		17	94.0	
10'		19	93.8	87.2
		19	93.8	87.2
b		37	92.0	94.77
		73	88.4	95.0
		105	85.2	
n		136	82.1	
	25'	E of	Western add	
n		144	81.3	
		105	85.2	
		76	88.1	
b		55	90.2	
		34	92.3	
		73	94.4	
S		00	95.7	

95.67

Vidal  
70

	50'	E of	P.L.	
S			0.8	94.9
			2.2	93.5
			4.1	91.6
b			6.0	89.7
			8.5	87.2
			11.3	84.4
n			14.3	81.4
	75'	E of	P.L.	
n			11.5	84.2
			9.0	86.7
			7.0	88.7
b			5.0	90.7
			3.3	92.4
			2.0	93.4
S			2.3	93.4



9567

	100	Eg	Pd	
S			23	93.4
			27	93.0
			30	92.7
b			33	92.4
			37	92.0
			58	89.9
n			89	86.8

	125	Eg	Pd	
n			104	85.3
			76	88.1
			56	90.1
b			54	90.3
			44	91.3
			25	93.2
S			22	93.5

95-67

Udal

71

	150	Eg	Pd	
S			42	91.5
			49	90.8
			60	89.7
b			76	88.1
			97	86.0
			127	83.0
n			153	80.4

TP 762 9264 1065 8502 ✓

	175	Eg	Pd	
n			130	77.6
			137	78.9
			115	81.1
b			75	85.1
			34	89.2
			21	90.5
S			15	91.1

9567  
1065  
8502  
7.62  
9264

9264

	200	E f	P.2	
S			14	91.2
			26	90.0
			43	88.3
b			86	84.0
			127	79.9
			129	79.7
g			141	78.5
	2373	E =	Villa Priva n	
n			120	80.6
			121	80.5
			121	80.5
b			108	81.8
			92	83.4
			70	85.6
S			63	86.3

9264

C. adol

72

	250	E		
S			65	86.1
			66	86.0
			76	85.0
b			104	82.2
n/4 =			107	81.9
+ 6 = Villa Priva			106	82.0
275' E				
S			83	84.3
b			93	83.3
n			97	82.9
+ 4'			86	84.0
	300'	E =	Villa Priva n S	
S			45	88.1

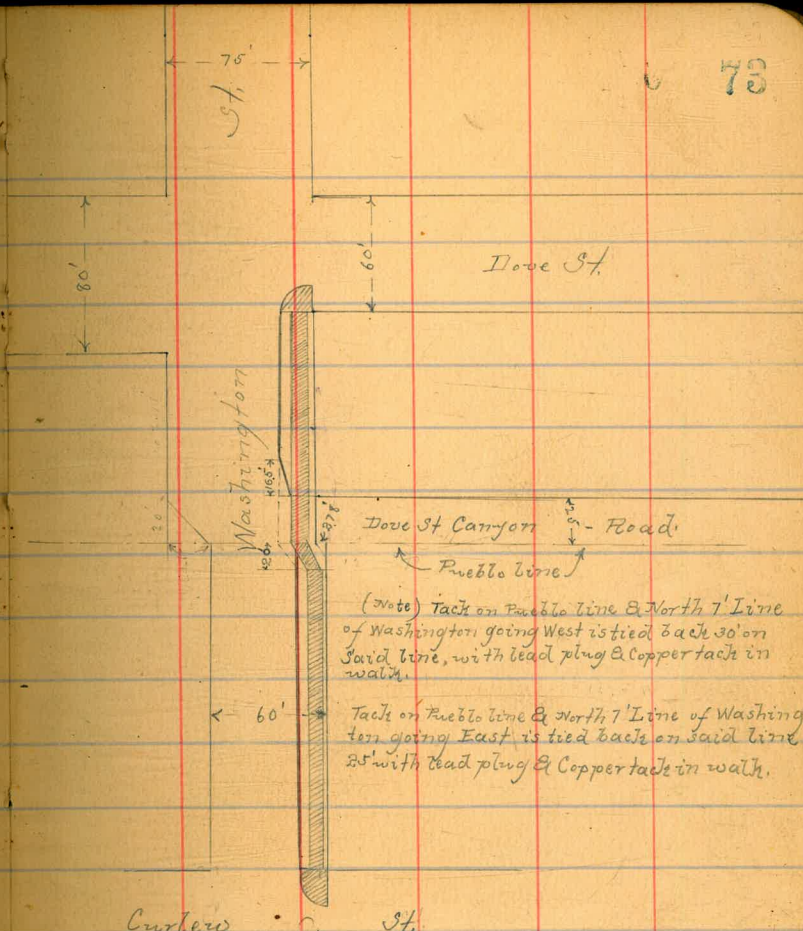
85.39  
17.8  
17.6

(94) 227.3 <sup>sq m</sup> } = Villa Prim  
 300 <sup>sq S</sup>

S	45
	82
	90
b	106
	106
	118
n	120

643 9900 004 9264

Check 11.51 8752 B.M.



Change in curb line for St Dept Aug 13-1913

Donnan  
 Sheemaker  
 Shaw.

9  
13  
13

Great Xlec of S Spruce St  
Taylor Granoda to Dale  
7.9

(30) (Skew of old St)

322.57

Spruce  
74

	207	32260	320.53	Bm on the new shome 420	100	W 8	Dale	
	520	32237	5.53	317.07			48	3176
				W 2 of Dale St			54	17.0
n			5.3	317.1			56	16.8
			5.6	14.8			56	16.8
			6.0	14.4			57	14.7
b			6.1	316.3			57	14.7
			6.1	14.3			6.0	16.4
			5.5	14.9		150	W 8	Dale
S			5.6	16.8			4.7	17.5
	50	W 8	Dale				4.9	17.5
S			5.0	17.4			4.7	17.7
			4.9	17.5			4.6	17.8
			4.8	17.4			4.5	17.9
b			4.6	17.8			4.8	17.4
			4.4	18.0			4.4	18.0
			4.2	18.2				
n			4.0	18.4				

320.53  
2.07  
322.60  
5.53  
317.07  
5.50  
322.57

32237

	200	wf	Date	
n			25 3199	
			34 19.0	
			35 18.9	
b			34 19.0	
			35 18.9	
			37 18.7	
S			37 18.7	

	250	wf	Date	
S			07 217	
			09 215	
			10 214	
b			10 21.4	
			13 21.1	
			14 21.0	
n			14 21.0	
TP	741	<u>32917</u>	061 <u>32176</u>	

32917

Spruce  
75

	300	wf	Date	
n			60 3232	
			62 23.0	
			61 23.1	
b			63 22.9	
			62 23.0	
			60 23.2	
S			58 23.4	

	350	wf	Date	
S			54 23.8	
			53 23.9	
			52 23.9	
b			52 24.0	
			50 24.2	
			49 24.3	
n			47 24.5	

32237  
61  
32176  
741  
32817

32917

	460	wf	Date
n			48 224.4
			51 241
			52 240
b			53 239
			54 238
			53 239
S			53 239
	450	wf	Date
S			58 234
			56 236
			52 240
l			51 241
			52 240
			55 237
n			53 239

32917

Spinel

76

	500	wf	Date
n			55 223.7
			56 236
			55 237
b			58 234
			59 233
			59 233
S			58 223.4
	435		575 3202
	550	wf	Date
S			47 230
			47 230
			47 230
			48 229
			48 229
			45 232
n			44 233

32917  
 555  
 223.32  
 435  
 327.67

5-99 w of Dale

n 50 222.7

54 223

52 225

b 54 223

53 224

52 225

s 52 225

600' w - E of Granoda

s 67 21.0

71 20.4

77 20.0

c 70 20.7

70 20.7

74 20.3

w 69 20.8

check TP

710 20.57

598 End Line  
SE Granoda

## 6th St or Park Boulevard

April, 1914

Josephine  
Belford

78

440 202.87 198.47

BM NW Cor 5th &amp; Hawthorn

10.79 212.90 0.26 202.61

220.57

9.55 220.57 1.88 211.02

6.61 224.80 2.38 218.19

N.W. Hawthorn

77' S of S.L. Joy = n line 75' walk

W.L. 6th

89 211.7

W.L. 6th

5.7 219.1

20' E

9.6 211.0

20' E

5.4 219.4

63' n. of Hawthorn = s. line 75' walk

25' S. of S.L. Joy

W.L. 6th

top of walk 67 213.9

W.L. 6th

top of walk 33 221.5

16' E = end of walk

top of walk 67 213.9

6' E = end of walk

3.4 221.4

20' E

7.1 213.5

20' E

3.6 221.2

101' n. of Hawthorn = S.L. 8' drive

S.L. Joy

W.L. 6th

5.0 215.6

curb

2.8 222.0

20' E

5.5 215.1

20' E

2.8 222.0

128' n = S.L. 75' walk

2.82 221.98 BM SW cor  
6th & Joy

W.L. 6th

4.4 216.2

20' E

4.0 216.6

153' n = S.L. 8' drive

W.L. 6th

3.5 217.1

20' E

3.2 217.4



79



S.E. 16 - use ch. 4 in 7rd wire 8" guto 50

S.W. 17 <sup>th</sup>	36.67	-	S.E. 38.83	209.57
SW 18 <sup>th</sup>	49.17	" "	50.33	199.77
" " 19 <sup>th</sup>	64.67	" "	67.00	
" " 20 <sup>th</sup>	82.33	" "	86.50	
" " 21 <sup>st</sup>	99.33	" "	104.50	
" " 22 <sup>d</sup>	112.33	" "	113.50	
250' E of 22 <sup>d</sup>	118.50			
SW 24 <sup>th</sup>	128.00	S.E.	126.50	
S.W. 25 <sup>th</sup>	154.50			

87.67  
 84.24 S.E. 32<sup>nd</sup>  
 3.43

87.67  
 83.18  
 4.49

87.67  
 9.40  
 83.27

