

870
F.B.

LEVEL BOOK.

No. 410 T

870

MICROFILMED

DEC 15 1964

EUGENE DIETZGEN CO.,

Drawing Materials and Surveying Instruments.

NEW YORK.

CHICAGO.

SAN FRANCISCO.

TABLES FOR EXCAVATIONS AND EMBANKMENTS.
 DISTANCES FROM CENTER OF ROADWAY FOR CROSS-SECTIONING.
 ROADWAY 20 FEET WIDE. SIDE SLOPES 1 TO 1.
 FOR SINGLE TRACK EXCAVATION.

Copyright, 1902. No. 39340.

	0	.1	.2	.3	.4	.5	.6	.7	.8	.9	
0	10.0	10.1	10.2	10.3	10.4	10.5	10.6	10.7	10.8	10.9	0
1	11.0	11.1	11.2	11.3	11.4	11.5	11.6	11.7	11.8	11.9	1
2	12.0	12.1	12.2	12.3	12.4	12.5	12.6	12.7	12.8	12.9	2
3	13.0	13.1	13.2	13.3	13.4	13.5	13.6	13.7	13.8	13.9	3
4	14.0	14.1	14.2	14.3	14.4	14.5	14.6	14.7	14.8	14.9	4
5	15.0	15.1	15.2	15.3	15.4	15.5	15.6	15.7	15.8	15.9	5
6	16.0	16.1	16.2	16.3	16.4	16.5	16.6	16.7	16.8	16.9	6
7	17.0	17.1	17.2	17.3	17.4	17.5	17.6	17.7	17.8	17.9	7
8	18.0	18.1	18.2	18.3	18.4	18.5	18.6	18.7	18.8	18.9	8
9	19.0	19.1	19.2	19.3	19.4	19.5	19.6	19.7	19.8	19.9	9
10	20.0	20.1	20.2	20.3	20.4	20.5	20.6	20.7	20.8	20.9	10
11	21.0	21.1	21.2	21.3	21.4	21.5	21.6	21.7	21.8	21.9	11
12	22.0	22.1	22.2	22.3	22.4	22.5	22.6	22.7	22.8	22.9	12
13	23.0	23.1	23.2	23.3	23.4	23.5	23.6	23.7	23.8	23.9	13
14	24.0	24.1	24.2	24.3	24.4	24.5	24.6	24.7	24.8	24.9	14
15	25.0	25.1	25.2	25.3	25.4	25.5	25.6	25.7	25.8	25.9	15
16	26.0	26.1	26.2	26.3	26.4	26.5	26.6	26.7	26.8	26.9	16
17	27.0	27.1	27.2	27.3	27.4	27.5	27.6	27.7	27.8	27.9	17
18	28.0	28.1	28.2	28.3	28.4	28.5	28.6	28.7	28.8	28.9	18
19	29.0	29.1	29.2	29.3	29.4	29.5	29.6	29.7	29.8	29.9	19
20	30.0	30.1	30.2	30.3	30.4	30.5	30.6	30.7	30.8	30.9	20
21	31.0	31.1	31.2	31.3	31.4	31.5	31.6	31.7	31.8	31.9	21
22	32.0	32.1	32.2	32.3	32.4	32.5	32.6	32.7	32.8	32.9	22
23	33.0	33.1	33.2	33.3	33.4	33.5	33.6	33.7	33.8	33.9	23
24	34.0	34.1	34.2	34.3	34.4	34.5	34.6	34.7	34.8	34.9	24
25	35.0	35.1	35.2	35.3	35.4	35.5	35.6	35.7	35.8	35.9	25
26	36.0	36.1	36.2	36.3	36.4	36.5	36.6	36.7	36.8	36.9	26
27	37.0	37.1	37.2	37.3	37.4	37.5	37.6	37.7	37.8	37.9	27
28	38.0	38.1	38.2	38.3	38.4	38.5	38.6	38.7	38.8	38.9	28
29	39.0	39.1	39.2	39.3	39.4	39.5	39.6	39.7	39.8	39.9	29
30	40.0	40.1	40.2	40.3	40.4	40.5	40.6	40.7	40.8	40.9	30
31	41.0	41.1	41.2	41.3	41.4	41.5	41.6	41.7	41.8	41.9	31
32	42.0	42.1	42.2	42.3	42.4	42.5	42.6	42.7	42.8	42.9	32
33	43.0	43.1	43.2	43.3	43.4	43.5	43.6	43.7	43.8	43.9	33
34	44.0	44.1	44.2	44.3	44.4	44.5	44.6	44.7	44.8	44.9	34
35	45.0	45.1	45.2	45.3	45.4	45.5	45.6	45.7	45.8	45.9	35
36	46.0	46.1	46.2	46.3	46.4	46.5	46.6	46.7	46.8	46.9	36
37	47.0	47.1	47.2	47.3	47.4	47.5	47.6	47.7	47.8	47.9	37
38	48.0	48.1	48.2	48.3	48.4	48.5	48.6	48.7	48.8	48.9	38
39	49.0	49.1	49.2	49.3	49.4	49.5	49.6	49.7	49.8	49.9	39
40	50.0	50.1	50.2	50.3	50.4	50.5	50.6	50.7	50.8	50.9	40

Calculated by F. E. Paradis, C. E.

Note: - Walk and quarter
 distance changed in
 account of using 5' walks

Smg
 10-27-13

3/4 Sec 6 Dr Baker's Road (60') 1
 71 7/8 From End of Rosecrans St to San Dimas
 13 1/2 Sec

71.0	28.72		21.32
73.9	33.81	2.20	26.22
122.4	42.48	.061	33.25
11.60	56.53	0.55	44.93
88.1	61.34	1.00	55.33

S End of Rosecrans St

70	45	56.8	
		56.0	curb for 5' walk
60	60	55.3	
		54.4	1/4 " 12 1/2' cur
71	72	54.1	
6	72	54.1	
74	73	54.0	
		53.9	1/4 for 12 1/2' cur
68	78	53.5	
		53.5	curb for 5' walk
E	78	53.5	

6134

25' S of Russians

East L.	80	53.3 ¹⁴ 57.0 ^{5 mark}
U	67	54.6 55.0 ^{new 1/4}
4 1/4	62	55.1
6E	54	55.9
4 1/4	44	54.9 57.3 ^{new 1/4}
U.	27	58.4 59.3 ^{5 mark}
W-L	12	60.1

30' S of

W	80	61.3 60.0
U	26	58.7 57.7
1/4	40	57.3
L	46	56.7
1/4	67	54.4 54.2
6	83	53.0 52.3
E	97	51.6

6134

La. Bolivia

2

75' S of Russians

E	110	50.3 51.7
U	82	53.1
1/4	69	54.4 54.1
L	56	55.7
1/4	47	54.6 57.0
U	31	58.2 59.5
W	06	60.7

100' S of Russians

W	20	59.3 57.8
U	50	56.3
1/4	63	55.0 55.3
L	70	54.3
U	83	53.0 52.5
U	76	51.0 50.7
E	110	50.3

5609

56.0

	225	S of	Rosecrans	
E			9.1 46.9	47.7
N			7.4 48.5	
44			6.1 49.9	49.6
S			4.6 51.4	
94			3.5 52.5	52.9
N			1.8 54.2	55.1
W			0.0 56.0	

250 S of Rosecrans

W			1.0 55.0	
N			2.8 53.2	54.1
44			4.4 51.5	52.0
S			5.6 50.4	
94			7.0 49.0	48.6
N			8.5 47.5	
E			10.2 45.8	46.6

5607

56.0

J. Baker

4

	275	S of	Rosecrans	
E			11.3 44.7	47.2
N			9.2 46.8	
44			7.8 48.2	47.8
S			6.3 49.7	
94			5.3 50.7	51.2
N			3.5 52.5	53.3
W			1.8 54.2	

300 S of Rosecrans

W			3.1 52.9	
N			5.4 50.6	51.8
44			6.2 49.8	50.0
S			7.5 48.5	
94			8.7 47.3	47.0
N			10.0 46.0	
E			12.1 43.9	45.0

5604

325 S4 Russians

E		150	41.0	
H		132	42.8	41.9
H		120	44.0	43.7
L		100	46.0	✓
H		92	47.8	48.6
H	+5	65	49.5	
H		62	49.8	
W		47	51.6	50.7

350 S4 Russians

W		54	50.6	
H		65	49.5	50.0
H		77	48.3	48.6
L		92	46.8	✓
H		111	44.9	44.4
H		129	43.1	
E		159	40.1	41.6

5604

560

375 S4 Russians

E		150	40.4	
H		134	42.6	41.5
H		118	44.3	43.8
L		102	45.7	✓
H		89	47.1	47.5 52.04
H		74	48.6	53.5 50.45 52
W		63	49.7	49.1 50.88

7P 036 5081 559 5045 ✓

400 S4 Russians

W		20	48.0	
H		36	47.2	47.6
H		51	45.7	46.1
L		67	44.1	✓
H		77	43.1	42.7
H		94	41.4	
E		112	39.6	40.5

5081

425 S of Rosecans

E	130	39.8	38.4
N	118	39.0	
NE	99	40.9	40.4
S	88	42.0	
SE	74	43.4	43.8
N	59	44.9	45.8
W	40	46.8	

450 S of Rosecans

W	69	43.9	43.2
N	82	42.6	
NE	100	40.8	41.2
S	113	39.5	
SE	124	38.4	38.1
N	136	37.2	
E	150	35.8	36.5

5081

475 S of Rosecans

E	170	33.8	
N	163	32.5	33.1
NE	138	37.0	35.9
S	122	38.6	5081 743 43.34 43.42
SE	112	39.4	40.1
N	94	41.4	
W	81	42.7	42.0

TP

008
500

43.5

43.46

S of Rosecans

W	743	43.28	
N	174	42.1	41.4
NE	27	40.8	
SE	41	39.4	39.8
S	52	38.3	
SW	66	36.9	36.5
N	81	35.4	
E	97	33.7	34.5

In Hole
6.

4346

43.5

525 Sg Rosemary

E	9.7	33.7	
H	7.1	34.4	35.1
4L	5.7	37.8	37.4
b	4.5	39.3	
4L	3.2	40.3	40.8
H	1.4	42.1	
W	0.0	43.5	42.8

530 Sg Rosemary

W	0.1	43.4	
H	1.4	42.1	42.7
4L	3.1	40.4	40.8
b	4.8	39.2	
4L	6.0	37.5	37.1
H	7.5	36.0	
E	10.1	33.4	34.1

4346

43.5

575 Sg Rosemary

E	13.1	30.4	
H	8.7	34.8	32.6
4L	7.0	36.5	36.1
b	5.6	37.9	
4L	4.2	39.3	39.8
H	2.3	41.7	
W	1.0	42.5	41.8

601 Sg Rosemary

W	2.1	41.4	
H	2.9	40.5	41.0
4L	4.8	38.7	39.2
b	6.9	36.6	
4L	9.1	34.4	33.6
H	12.4	31.1	
E	16.6	26.9	29.0

Dr. Peters

7

4346
#3.5

625' Sy Rousseau

20' E (FL)	21.8	21.7	
E	190	24.5	260 new cl
H	160	27.5	
V	140	29.5	29.0
L	94	34.1	
TV	77	35.8	
Z	7.0	35.5	37.2
H	44	39.1	
		39.8	
W	3.0	40.5	

TP 0.13 41.2 ✓
41.24

650' Sy Rousseau

W	20	39.2	
H	40	37.2	39.2
V	70	34.2	35.0
L	98	31.4	
TV	136	27.6	26.9
H	163	24.9	23.8
E	184	22.8	
20' E (FL)	214	19.6	

4124 ✓

Di Baker 8

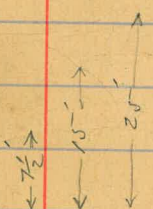
664.9 on E } = angle diff = 30' 1/2 diff = 1.5'
661.9 on W

20' E (FL)

221	19.1		
E	196	21.6	
H	166	24.4	
V	144	26.8	26.3
L	117	29.5	
TV	106	30.6	
Z	83	32.9	33.6
H	56	35.6	
		36.4	
W	40	37.2	

Same line as above for 50' street

W	40	37.2	
H	56	35.4	
V	75	32.7	
L	107	30.5	
TV	123	28.9	
H	143	24.7	
E	166	21.6	
TP	780	36.2 ✓	1208 29.6 ✓



Interpolate between 1/4 and curb, getting new reading at 1/3 of dist. from 1/4 curb.

36.96 ✓

37.0

28 S of E } = 50' S (50' wide)
20 S of W

10' E of E

E	14.9	24.0	
W	13.0	24.1	
	11.4	25.4	
	11.2	24.0	16.4 mm 1/4
1/4	9.2	27.8	
1/6	7.9	29.1	
1/4	6.9	30.1	
		31.7	mm 1/2
1/4	4.4	32.4	
W	1.0	36.0	

50' S of Angle

W	2.8	34.2	✓
1/4	6.8	30.3	
		29.8	mm 1/2
1/4	8.2	28.8	
C	9.9	27.1	✓
1/4	10.8	25.2	
		25.8	
1/4	11.4	25.4	
E	12.6	24.4	✓

36.96

37.0

Dr. Baker

9

75' S of Angle

E	12.5	24.5	✓
1/4	11.3	25.7	
		25.9	
1/4	10.5	24.2	
1/6	9.2	27.8	✓
1/4	8.0	29.0	
		30.2	
1/4	6.3	30.7	
W	3.7	33.3	✓

100' S of Angle

W	1.3	35.7	✓
1/4	4.6	32.4	
		31.9	
1/4	5.9	31.1	
1/6	7.2	29.8	✓
1/4	8.3	28.7	
		28.1	
1/4	9.2	27.8	
E	10.5	26.5	✓

3696

370

125 S y Angle

E	87	28.3
G	72	29.8 30.1
1/4	61	30.9
E	47	32.3
1/4	35	33.5
TP	936	422/ 427
	415	32.8 34.3
bc	74	34.8
w	36	38.6

130 S y Angle

w	20	40.2
H	51	37.1 36.6
1/4	68	35.4
b	80	34.2
1/4	95	32.7 31.7
H	109	31.3
E	120	30.2

422

422

D. L. King

10

175 S y Angle

E	116	30.6
H	97	32.5 32.9
1/4	83	33.9
b	72	35.0
1/4	64	34.8 37.0
H	45	37.7
w	13	40.9

200 S y Angle

w	02	42.0
H	23	39.9 38.8
1/4	58	36.4
b	65	35.7
1/4	76	34.6 33.9
H	86	33.5
E	103	32.9

42.7

42.7

225' S of Angle

E	29	32.8
W	82	34.0
		34.7
N	61	36.1
S	36	38.6
N	24	39.8
		40.6
W	12	41.0
N	704	42.6
BM	050	41.67
(50') via	2355 on W } 2288 on E } = center line of Rd 175	
W	05	41.7
W	18	40.4
		40.0
N	28	39.4
S	40	38.2
N	52	37.0
		35.2
W	80	34.3
E	98	32.4

42.7

42.7

same line as before for (60')

(60') via	2355 on W } 2288 on E } = center line of Rd 175		
W	05	41.7	41.6 new curb
W	18	41.4	
N	31	39.1	39.1 new 1/4
S	46	37.6	
N	80	34.7	33.8 new 1/4
W	98	33.4	31.6 new curb
E	113	30.9	
(60')	15' S on W } 21.2' S on E } = 250' S of Angle		
E	115	30.7	
		31.3 new curb	
W	103	31.9	
		34.2 new 1/4	
N	72	34.0	
S	60	36.2	
N	50	37.2	
		37.5	
W	38	38.4	
		39.0	
W	25	39.7	

El. at 1/4 of distance
line to curb will give
El. 1/2 of dist between curb and P.D. will give new curb El.

42.7

47.7

275 S of Angle

W	29	39.3
		38.8
H	39	38.3
		37.6
Y	49	37.3
b	62	36.0
Y	76	34.6
		34.2
H	90	33.2
		32.1
E	113	30.9

300 S of Angle

E	101	32.1
		32.3
H	86	33.6
		34.4
Y	70	34.2
b	61	36.1
Y	53	34.9
		37.1
H	46	37.6
		38.1
W	37	38.5

TP 1080 49.05 39.2 38.35

315 S of angle

W	87	42.4
---	----	------

49.8

49.1

325 S of Angle

W	74	41.7
		40.7
H	94	39.7
		38.5
Y	110	38.1
b	117	37.4
Y	128	36.3
		36.0
H	141	35.0
		34.3
E	155	33.6

350 S of Angle

E	148	34.3
		34.9
H	136	35.5
		35.8
Y	124	34.7
b	108	38.3
Y	95	39.6
		40.0
H	80	41.1
		41.6
W	70	42.1

D. Parker

12

49.05 ✓

49.1

375 S of Angle

w	60	43.1 ✓ 42.4 ✓
ll	73	41.8 ✓ 40.8 ✓
y	87	40.4 ✓
b	100	39.1 ✓
y	115	37.4 ✓ 37.3 ✓
ll	128	35.8 ✓ 35.5 ✓
E	145	34.6 ✓

400 S of Angle

E	137	35.4 ✓ 35.9 ✓
ll	127	35.4 ✓ 37.3 ✓
y	115	37.4 ✓
b	103	38.8 ✓
y	88	40.3 ✓ 40.0 ✓
ll	76	41.5 ✓ 42.1 ✓
w	63	42.8 ✓

TP

890

5340

455

4450

mail 12.3

5340 ✓

534

P. Ballou

13

405' S of E } = What?
425' S of W }

w	107	42.7
ll	120	41.4
y	138	39.6
b	152	39.2
y	163	37.1
ll	173	34.1
E	195	33.9

425' S of Angle

E	195	33.9 ✓ 35.5 ✓
ll	163	37.1 ✓ 38.4 ✓
y	146	38.8 ✓
b	120	41.4 ✓
y	100	43.4 ✓ 44.0 ✓
ll	78	45.6 ✓ 46.5 ✓
w	59	47.5 ✓

5340
53.4

450 S of Angle

W	34	50.0	48.8
bl	57	47.7	46.3
74	72	45.8	
6	97	43.7	
44	118	41.6	41.3
ll	133	40.1	38.8
E	158	37.6	

(60.3) 4648' same } P. L. elev. N. L. of Regus St (52) width
4588' same }

E	158	37.6	38.8 39.0
ll	130	40.4	40.9
44	111	42.3	
6	88	44.6	
Bm on Man	763	45.77	
44	67	46.7	47.2
ll	47	48.7	49.7
W	27	50.7	

5390
53.4

9.5 Baker
14

N. L. of Regus St

W	22	51.2	50.2
ll	43	49.1	47.6
44	63	47.1	
6	84	45.0	
44	106	42.8	42.3
ll	127	40.7	39.2
E	158	37.6	

N. L. of Regus

E	152	38.2	39.5
ll	126	40.8	41.8
44	103	43.1	43.5
6	81	45.3	
44	60	47.4	48.0
ll	38	49.6	50.6
W	17	51.7	

5340

5340
 282
 50.54
 50.54
 53.86

Center of Rogers

W	14	52.0	
		51.0	
N	34	50.0	
		48.3	
Y	56	47.8	
S	83	45.1	
	108	42.6	
		42.0	
W	130	40.4	
		39.4	
E	157	38.4	
S 14 of			
E	157	38.2	
		39.3	
W	130	40.4	
		40.3	41.8
Y	112	42.2	
S	84	45.0	
	57	48.3	
		48.3	
W	29	50.5	
		51.7	
N	05	52.9	
532	55.86	286	50.54

5386

55.9

In Baker
 15

S bl of Rogers

W	25	53.4	
		52.3	
W	47	51.2	
		49.0	
Y	73	48.5	
S	108	45.1	
	136	42.3	
		41.8	
W	155	40.4	
		38.9	
E	175	37.4	
(603) S line of Rogers			
E	174	37.5	
		39.1	
W	157	40.7	
		41.6	42.1
Y	134	42.5	
S	113	44.6	
	77	48.2	
		49.6	49.0
W	50	50.9	
		52.0	
N	28	53.1	

5586

25' S on W } = 25' S of Regus
31' S on E }

W	33	52.6	
		51.2	
H	60	49.9	
		48.1	
44	84	47.8	
b	100	45.9	
44	120	43.9	
		43.5	
H	136	42.3	
		41.2	
E	158	40.1	
30' S of Regus			
W	40	51.9	
H	64	49.5	
50' S of Regus			
E	133	42.6	
		43.4	43.6
H	112	44.7	
		46.3	
44	91	46.8	
b	70	48.9	
4	48	51.1	
		51.7	
H	25	53.4	
		53.9	54.4
W	04	55.5	

5586

559

Gr/Balus

16

75' S of Regus

E	116	44.3	5586
		45.5	54.5
H	93	44.6	60.2
		47.1	60.77
44	72	48.7	
b	50	50.9	
44	26	53.3	
		53.9	
H	00	55.9	
		57.0	
TP	632	60.77	141
			54.45
W		27	58.1
100' S of Regus			
W		0.0	60.8
H		26	58.3
			59.5
44		54	55.4
			56.1
b		76	53.2
44		98	51.0
			50.4
H		120	48.8
			47.5
E		146	46.2

6504

650

225'

S of

Regus

6504
3.26
61.78
7.55
69.33

E

S

144 50.6

H

11.9 53.4 51.8

Y

10.2 54.8 54.4

L

8.3 56.7

Y

6.2 58.8 59.3

H

4.1 60.9 62.7

W

1.4 64.6

250' S of

Regus

E

9.6 55.4

H

7.1 57.3 56.3

Y

6.1 58.9 58.5

L

4.8 60.2

Y

3.1 61.9 62.3

H

1.4 63.6

TP

755

69.33

32.6 61.78 64.8

W

3.4 65.9

6933

69.33

2684' S in W } = Angl 30 R
2706' S in E }

W

12 68.3

H

30 66.3 67.3

Y

5.3 64.0 64.6

L

7.6 61.5

Y

9.3 60.0 59.6

H

11.0 58.3 57.2

E

13.2 56.1

(61')

238' S in W } = N Quantong
252' S in E }

E

12.6 56.5

H

10.0 59.3 57.9

Y

8.2 61.1 60.7

L

6.3 63.0

Y

4.3 65.0 65.5

H

2.3 67.0 68.0

W

0.4 68.9

Dr. Babler

18

69.33

N	lb of	Quantrough		
N		10	68.3	
bb		28	66.5	67.4
γ		43	65.0	65.4
6		62	63.1	
γ		79	61.4	61.0
ll		95	59.8	58.5
E		120	57.3	

N 1/4 of Quantrough

E				
E		120	57.3	
ll		95	59.8	58.5
γ		78	61.5	61.1
6		63	63.0	
γ		47	64.6	65.0
ll		33	66.0	67.0
W		13	68.0	

69.33

Dr Baker

19

Center of Quantrough

W		15	67.8	
ll		36	65.7	66.8
γ		50	64.3	64.7
6		66	62.7	
γ		82	61.1	60.5
ll		96	58.7	58.3
E		115	57.8	

S 1/4 of Quantrough

E		116	57.7	
ll		99	59.4	58.5
γ		82	61.1	60.7
6		68	62.5	
γ		52	64.1	64.5
ll		37	65.6	66.6
W		17	67.6	

69.33

S 66.7 Quarkhänge

W	17	67.6	
U	39	65.4	66.5
U	54	63.9	64.3
L	70	62.3	
U	85	60.8	60.4
U	100	59.3	58.3
E	119	57.4	

(61) S 66.7 Quarkhänge

E	121	57.2	
U	101	59.2	58.2
U	88	60.5	60.2
L	72	62.1	
U	57	63.4	63.9
U	40	65.3	66.5
W	15	67.8	

69.23

36.5 m E } = 25' S
25.5 m W

S. B. 20

W	1.6	67.7	
U	41	65.1	66.4
U	65	62.8	63.4
L	86	60.7	
U	102	59.1	58.8
U	115	57.8	57.2
E	127	56.6	

50 S 9 Quarkhänge

E	141	55.2	
U	120	57.3	56.2
U	104	58.9	58.5
L	83	61.0	
U	60	63.3	63.8
U	40	65.3	66.3
W	20	67.3	

TP 070 66.03 370 65.63

65' S

W 04 65.6

69.33

370

65.63

40

66.03

6603

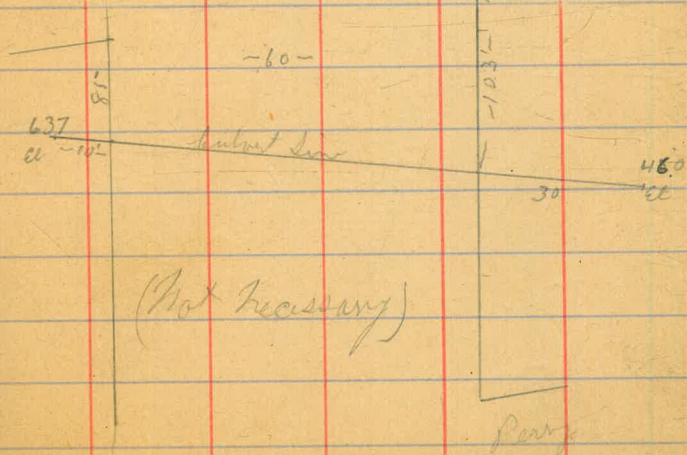
75' Sy Quadrangle

W	3.2	62.8	
W	5.2	40.8	61.8
W	6.2	59.8	60.0
W	7.6	58.4	
W	9.2	54.8	56.5
W	10.6	55.4	54.7
E	12.2	53.8	
85' S in W } <i>subcut line</i> 92' S in E }			
10' W of W	2.3	63.7	
W	4.5	61.5	
W	7.3	58.7	60.1
W	8.7	57.3	59.7
W	10.8	55.2	
W	12.8	53.7	52.4
W	16.2	49.8	48.7
E	18.5	47.5	
10' E of E	17.7	48.4	
30' E of E	19.6	46.4	

6603

100' Sy Quadrangle

30' E of E	20.0	46.0	
10' E of E	20.8	45.7	
E	16.0	50.0	
W	11.2	54.8	52.4
W	8.3	57.7	57.0
W	7.0	59.0	
W	4.6	67.4	62.0
W	2.3	63.7	64.9
W	0.0	66.0	

D. Perkins
21

66.03

	110	S of	Quartrough		
30' E of E			230	43.0	
20' S of E			220	44.0	
E L			138	53.0	✓
W			91	54.9	55.0
Y			63	59.7	59.0
L			38	62.2	✓
Y			17	64.8	64.8
TP	586	71.1	079	65.4	✓
W		71.0	48	65.3	67.5
W			25	68.6	✓
	125'	S of	Quartrough		
W			10	70.1	✓
W			28	68.3	69.2
Y			46	64.5	67.0
L			70	64.1	✓
Y			96	61.5	61.0
W			115	59.5	57.9
E			148	56.3	✓
20' E of E			190	52.1	

71.10

D. Baker

22

	150	S of	Quartrough		
E			130	58.1	✓
W			101	61.0	59.6
Y			78	63.3	62.7
W			55	65.6	✓
Y			31	68.0	68.7
W			0.3	70.8	70.5
TP	874	74.0	586	65.4	✓
W		74.0	09	70.2	✓
	175'	S of	Quartrough		
W			+05	74.5	✓
W			21	71.9	73.2
Y			45	69.5	70.1
Y			72	66.8	✓
Y			92	64.8	64.2
W			117	62.3	60.6
E			151	58.9	✓

740
740

	200	S of	Quar bridge		
E			139	60.1	740.2
H			107	61.7	740.2
				63.3	740.2
			83	65.7	740.2
				65.1	740.2
L			60	67.0	740.2
1/4			36	70.4	71.0
H			1.3	72.7	74.2
TP	936	74.1	730	66.7	74.1
		76.08			
W			0.5	75.6	
	225	S of	Quar bridge		
W			0.4	75.7	
H			30	72.1	74.4
			54	70.7	71.3
L			78	68.3	
W			100	66.1	65.5
H			124	63.7	62.1
E			155	60.6	

741

In Books
23

741

	250	S of	Quar bridge		
E			150	60.8	
H			120	64.1	62.4
			100	66.1	65.6
L			78	68.3	
1/4			54	70.7	71.3
H			28	73.3	74.7
W			00	76.1	
	275	S of	Quar bridge		
W			0.8	75.3	
H			33	72.8	74.0
			56	70.8	71.1
L			78	68.3	
1/4			102	65.9	65.3
H			126	63.5	63.1
E			133	62.8	

7608

74.1

(610) 3054 S m m y = N d of Perry (80')
2944 S m E

W		32	72.9	
U		53	71.9	
U		77	69.0	7608
U		96	68.4	1024
TP	626	72.1	72.1	65.84
U		74	64.7	64.2
U		96	62.4	61.2
E		123	59.8	
	N 66 of Perry			
E		136	58.5	
U		111	61.0	59.8
U		93	62.8	62.4
U		73	64.8	
U		47	67.4	67.9
U		26	69.5	70.7
W		02	71.9	

7210

72.1

24

N	14 of Perry	06	71.5	
U		28	69.3	70.4
U		50	67.7	67.6
U		77	64.4	
U		98	63.3	61.7
U		124	59.7	58.7
E		145	57.6	
	Center of Perry			
U		147	57.4	
U		123	59.8	58.6
U		98	62.3	61.0
U		73	64.8	
U		47	67.4	68.0
U		24	69.7	70.7
U		03	71.8	

7210

	S	1/4 of Perry		
W		0.2	71.9	
U		2.4	69.7	70.8
4		4.6	67.5	68.1
6		6.8	65.3	
45		8.9	63.2	62.6
U		11.4	60.7	59.9
E		13.0	59.1	

	S	1/4 of Perry		
E		12.0	60.1	
d		9.7	62.4	61.2
1/4		7.8	64.3	63.8
C		6.6	65.5	
1/4		5.7	67.0	67.4
cut		3.4	68.7	69.3
W		2.2	69.9	
W		0.0	72.1	

7210

72.1

L. B. 25

	(30')	S	1/4 Perry	
W			0.0	72.1
U			2.1	70.0
4			4.0	68.1
6			5.5	66.6
44			7.3	64.8
U			8.6	63.5
E			11.1	61.0

Bm

6.50

6.50

no bent
Perry S. 9.

-6.1-

15.0

-5.0-

-5.0-

3/7 Hatch
Moore
13 Hall

Xacc of opening of 40th St.

BM Mon	300	114.27	111.266	NWA-39 ^M Wadman
	0.25	102.08	124.4	101.83
	1.83	91.91	120.0	90.08
	0.23	86.24	5.90	86.01
		N.H. Wadman		
W		0.7		
cb		2.2		
1/0		3.6		
c		4.6		
1/0		5.9		
cb		7.5		
E		8.7		
10'E		9.1		
		25' on $\frac{1}{2}$ Curve.		
10'E		9.6		
E		8.7		
b		7.7		
1/0		6.1		
c		5.3		

86.24

1/0	4.8
cb	4.1
W	3.4
	50' 17" Curve
W	7.1
S	7.0
1/0	7.4
c	7.8
1/0	8.4
cb	8.7
E	9.0
10'E	9.5
	74' end of curve
10'E	10.0
E	9.8
cb	9.8
1/0	9.8
c	10.6
1/0	10.0
cb	9.9
W	10.3

8024

10' W			11.1	
			50' E of Curve.	
10' S			12.9	
B			12.4	
cb			11.7	
1/0			11.3	
c			11.7	
1/0			11.8	
cb			11.9	
N			10.5	
10' N			11.1	
			50' E	
10' N			12.8	
N			13.3	
FP	0.86	75.84	11.26	74.98
cb			3.2	
1/0			3.3	
.			2.4	
1/0			3.4	
cb			3.8	

75.84

S			3.8	
10' S			4.4	
			75' E	
10' S			5.5	
S			5.3	
cl			4.9	
1/0			4.6	
c			4.6	
1/0			4.3	
cb			4.0	
N			3.5	
10' N			3.7	
			100' E	
10' N			3.9	
			4.1	
			4.8	
			5.1	
			5.5	
			5.6	

75-84

cb	5.8
S	5.8
10'S	6.5
125'E	
10'S	7.4
S	6.9
cb	6.8
1/0	6.6
c	6.5
1/0	6.3
cb	5.4
N	4.9
10'N	4.6

150'E

10'N	5.2
N	5.7
cb	6.3
1/0	6.9
c	7.5

75-84

1/0	7.8
cb	7.9
S	8.0
10'S	8.7
175'E	
10'S	9.4
S	9.1
cb	9.0
1/0	8.4
c	7.5
1/0	7.1
cb	6.7
N	6.3
10'N	6.9

200'E

10'N	6.5
N	7.0
cb	7.4
1/0	7.9

7584

c	8.0 ₅
1/1	9.1
cb	9.7
s	10.1
10's	10.4

225' E

10's	10.4
s	10.1
cb	9.6
1/1	9.1
c	8.4
1/1	7.9
cb	7.5
N	6.9
10's	6.3

250' E

10's	5.4
cb	5.9
cb	6.5

7584

1/1	6.8
c	7.2
1/1	7.8
cb	8.6
s	9.1
10's	10.1

275' E

10's	9.8
s	8.9
cb	8.2
1/1	7.9
c	6.7
1/1	5.9
cb	5.3
N	4.4

300' E

N	3.5
cb	4.2
1/1	4.9

75.84

c	5.9
1/4	6.6
cb	7.2
s	8.0
10's	8.2

325 F

10's	8.1
s	7.6
cb	6.9
1/4	5.9
c	5.0
1/2	4.0
cb	3.3
N	2.9

360 F

N	3.0
cb	3.2
1/4	4.1
c	3.1

75.84

1/4	6.0
cb	6.8
s	7.3
10's	7.6

382.8 = end of Tangent

10's	8.6
s	7.6
cb	7.8
1/4	6.0
c	5.3
1/2	4.4
cb	3.4
N	2.9

T.P. 344 74.03 525 70.59

25' east on Curve

N	0.9
cb	1.6
1/4	2.7
c	3.6

7403

1/0	4.3
cb	5.2
S	5.7
10'S	6.6

50' E on Curve

10'S	6.8
S	5.9
cb	5.2
1/0	4.4
c	3.7
1/0	2.5
cb	1.5
N	1.0

66' E on Curve = intersection of N.W. 1/4 City line

N	0.8
+5'	1.9
cb	2.0
1/0	2.3
c	2.8
1/0	3.7

7403

cb	4.3
S	5.2
10'S	6.4

77' E on Curve - El. City

S	4.4
cb	3.6
1/0	3.0
c	2.5
1/0	2.3
cb	2.2
+5'	2.0
	1.1
N	0.8

BM spike in Pale N. 200 72.03

Elev. Spike of
at beyond are
filled.

X-section Calif St from La Jolla to
Henry Calif 75' wide 12' walks

4/10 sample
to Evans
Kerr

32

B.M. M. & Harshard Artic 63.43
B.M. 4.68 68.11
T.P. 12.00 76.74 3.37 64.74

X-section "A"

X		11.0	65.7
wh		10.9	65.8
"A		10.9	65.8
M		10.9	65.8
"A		10.2	66.5
wh		10.2	66.5
S		9.6	67.1

X-section "B"

S		9.6	67.1
wh		10.2	66.5
"A		10.1	66.6
M		10.1	66.6
"A		9.4	67.3
wh		9.0	67.7
N		8.6	68.1

76.7

SEC "C"

N		5.9	70.8
wh		6.6	70.1
"A		7.4	69.3
M		8.1	68.6
"A		8.7	68.0
wh		9.4	67.3
S		9.6	67.1

+25' N of "C"

S		8.0	68.7
wh		7.0	69.7
"A		6.5	70.2
M		5.5	71.2
"A		4.6	72.1
wh		3.7	73.0
N		2.6	74.1

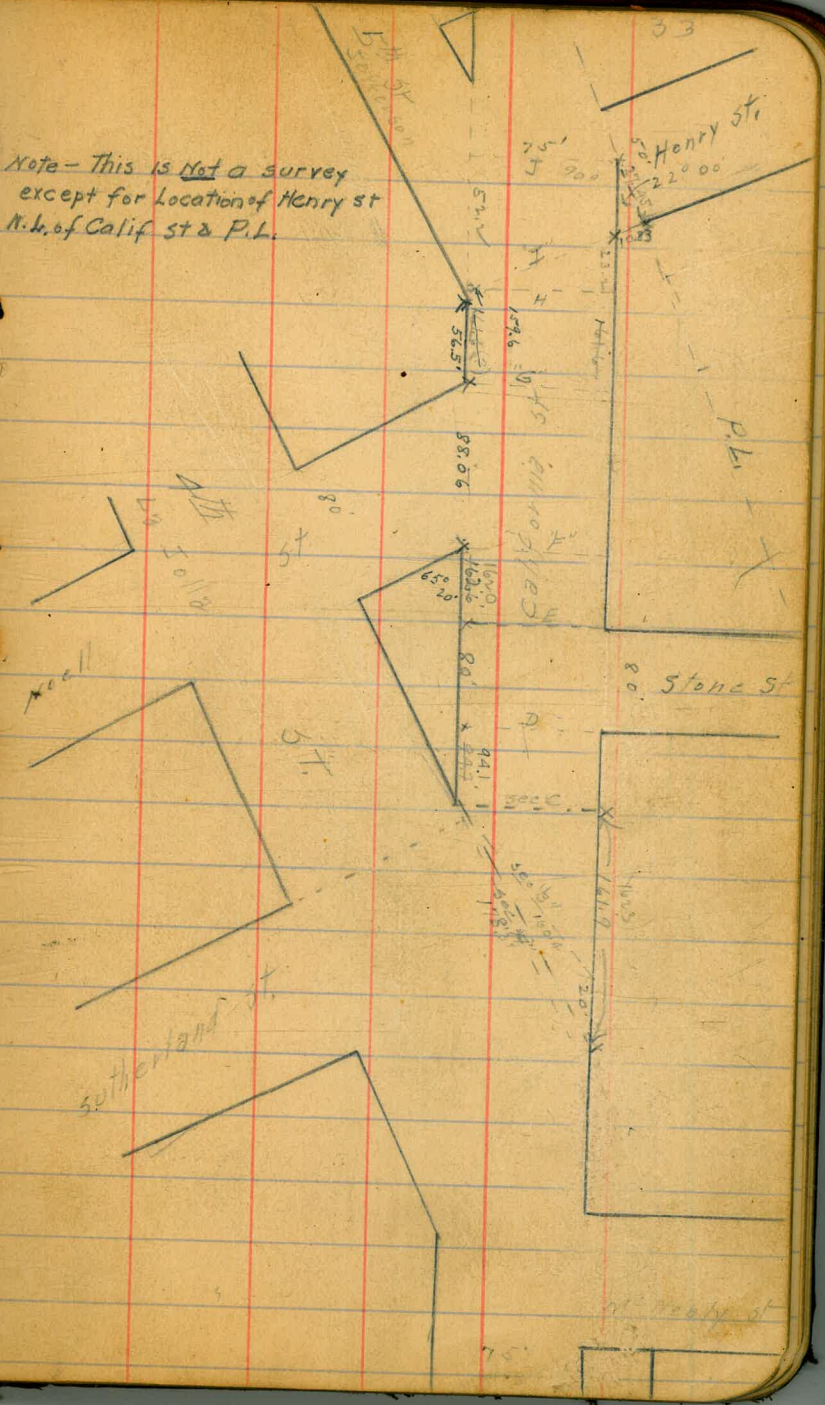
Calif. St

76.74

2400

N		+1.0	77.7
Crk		0.5	76.2
1/4		1.8	74.9
M		3.2	73.5
1/4		4.2	72.5
Crk		4.1	72.6
S		4.9	71.8
TIP	12.78	89.34	76.56
		0.18	
		0.75	
S		75.1	74.2
Crk		14.3	75.0
1/4		13.3	76.0
M		12.5	76.8
1/4		11.0	78.3
Crk		9.5	79.8
N		7.7	81.6

Note - This is Not a survey
except for Location of Henry St
N. h. of Calif St & P.L.



California St

8934

Stone No. 1
class

r-sect "D" at 947 = F.L. Stone at 80

N	4.9	84.4
Crk	5.9	83.4
"A	8.1	81.2
M	9.0	80.3
"A	9.9	79.4
Crk	11.3	78.0
S	12.0	77.3

F. Corb

S	10.0	79.3
Crk	8.4	80.9
"A	7.3	82.0
M	6.6	82.7
"A	5.7	83.6
Crk	3.7	85.6
N	2.6	86.7

89.34

34

E "4

N	0.3	89.0
Crk	1.9	87.4
"A	3.8	85.5
M	4.7	84.6
"A	5.4	83.9
Crk	6.6	82.7
S	8.4	80.9

Center

S	6.8	82.5
Crk	5.6	83.7
"A	3.9	85.4
M	2.5	86.8
"A	0.7	88.6
T.P. at 12.95	102.19	89.24
Crk	12.3	
N	10.4	91.8

California St.

102.19

N 1/4

N	7.9	94.3
Crk	9.5	92.7
1/4	11.5	90.7
M	13.9	88.3
1/4	15.0	87.2
Crk	16.6	85.6
S	18.4	83.8
N curb		
S	16.7	85.5
Crk	15.2	87.0
1/4	13.4	88.8
M	10.4	91.8
1/4	9.6	92.6
Crk	7.5	94.7
N	6.0	96.2

35

102.19

N.L. Stone St. E

N	4.4	97.8
Crk	6.0	96.2
1/4	7.8	94.4
M	9.5	92.7
1/4	11.2	91.0
Crk	13.6	88.6
S	15.2	87.0
+15	15.8	86.4
0+50		
-15	11.2	91.0
S	9.7	92.5
Crk	7.6	94.6
1/4	5.9	96.8
M	4.2	98.0
1/4	3.0	99.2
Crk	1.6	90.6
N	40.7	102.9
T.P	12.74	114.24
	0.69	101.50

California, St

1424

0+75

N	8.8	105.4
Crk	10.3	103.9
"A	12.0	102.2
M	13.7	100.5
"A	14.7	99.5
Crk	16.0	98.2
S	17.8	96.4
+15	20.9	93.3

1+0

-15	17.9	96.3
S	15.2	99.0
Crk	13.6	100.6
"A	12.1	102.1
M	10.0	104.2
"A	8.3	105.9
Crk	6.7	107.5
N	4.3	109.9

T.P. 1270 126.78 0.16 114.08

12678

1626'

~~1460'~~

E.L. Noell St 1

(Noell St
no closed)

36

X-sec "F"

N	8.3	118.5
Crk	10.0	116.8
"A	12.2	114.8
M	14.2	112.6
"A	16.0	110.8
Crk	18.2	108.6
S	20.1	106.7
+15	21.6	105.2

F CORN

-15	19.1	107.7
S	17.1	109.7
Crk	16.4	110.4
"A	14.9	112.4
M	13.0	113.8
"A	10.5	116.3
Crk	8.7	118.1
N	6.9	119.9

California Sh

12678

E¹⁴

N	5.7	121.1
Crk	7.6	119.2
"A	9.2	117.6
M	10.4	116.4
"A	12.75	114.1
Crk	14.4	112.4
S	15.3	111.5
+15	17.7	109.1

Center

-15	14.6	112.2
S	13.3	113.5
Crk	11.8	115.0
"A	10.2	116.6
M	8.5	118.3
"A	7.3	119.5
Crk	5.7	121.1
N	3.8	123.0

12678

37

W¹⁴

N	2.3	124.5
Crk	4.0	122.8
"A	5.5	121.3
M	6.7	120.1
"A	8.2	118.6
Crk	9.7	117.1
S	11.1	115.7
+15	12.8	114.0

W Crk

-15	10.7	116.1
S	9.0	117.8
Crk	7.6	119.2
"A	5.8	121.0
M	4.2	122.6
"A	3.2	123.6
Crk	1.9	124.9
N	0.6	126.2

T.P. 12.50 139.15 0.13 126.65

California 81

139.15

1-sec "G" 10.1. Noel "G"

N	10.8	128.3
Cal	12.0	127.1
"A	13.0	126.1
M	13.8	125.3
"A	15.3	123.6
Cal	17.0	122.1
S	18.1	121.0
+15	19.9	119.2

0+50 W of "G"

+15	12.7	126.8
S	10.6	128.5
Cal	8.8	130.3
"A	7.8	131.3
M	6.5	132.6
"A	5.3	133.8
Cal	4.2	134.9
N	3.3	135.8
T.P.	12.67	151.68
	0.14	139.01

151.68

38

140

N	8.6	143.1
Cal	10.1	141.6
"A	11.2	140.5
M	12.3	139.4
"A	13.5	138.2
Cal	15.2	136.5
S	16.8	134.9
+15	18.7	133.0

159.6

~~146.8~~ = "H"

-15	13.3	138.4
S	11.2	140.5
Cal	9.1	142.6
"A	7.6	144.1
M	5.9	145.8
"A	3.7	148.0
Cal	2.1	149.6
N	0.2	151.5
T.P.	6.07	157.25
	0.50	151.18

California St.

15720

39

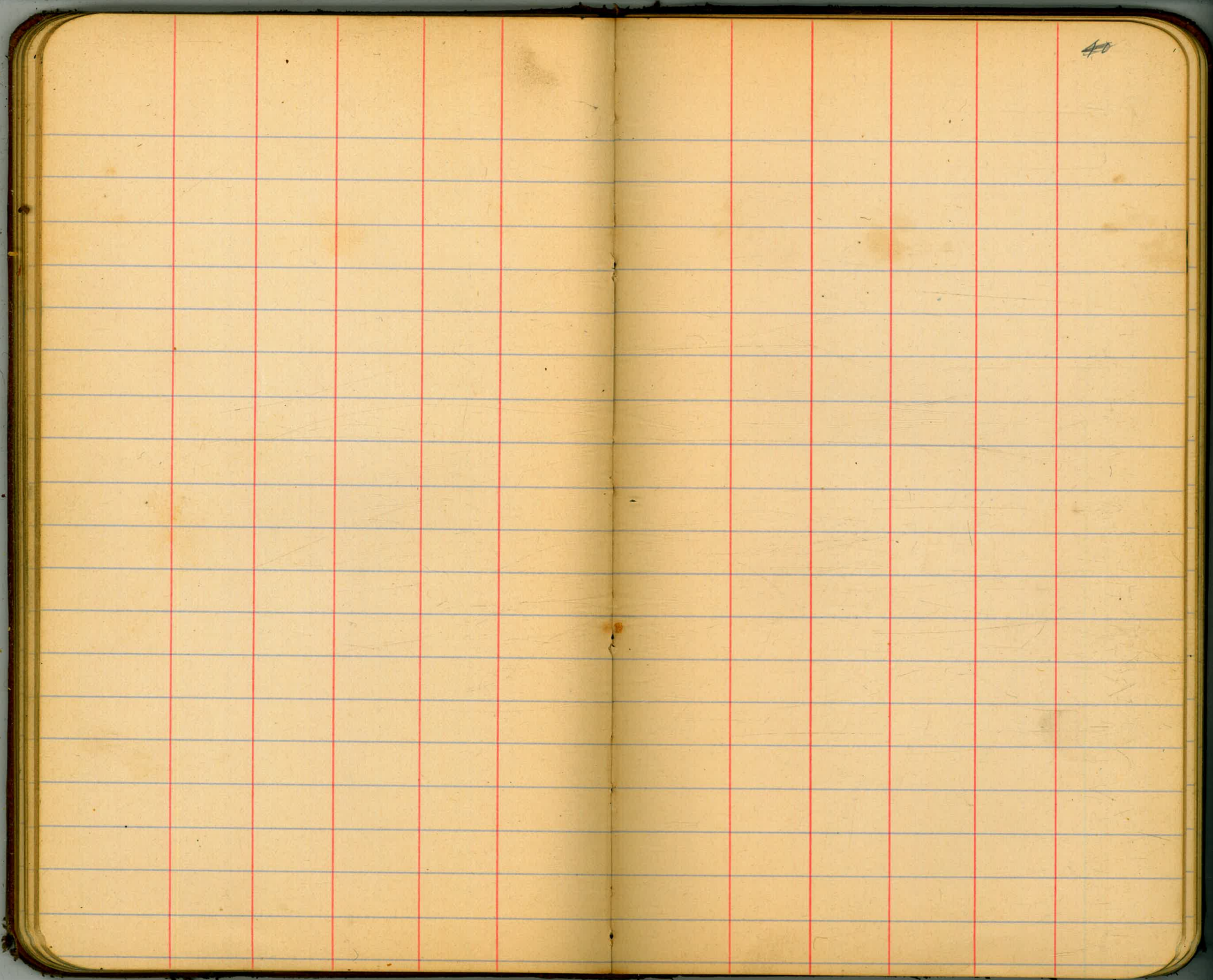
1-sec I

N	3.7	153.5
erb	5.9	151.3
1/4	8.1	149.1
M	10.3	146.9
1/4	12.2	145.0
erb	14.2	143.0
0	16.7	140.5
-15	17.8	139.4

1-sec J

-15	15.0	142.2
5	11.9	145.3
erb	10.2	147.0
1/4	8.0	149.2
M	6.0	151.2
1/4	4.8	152.4
erb	3.2	154.0
N	1.2	156.0

40



X-section Robinson Albatross E. for 375'
 Robinson 60' wide 16 1/2" walks. Cement curb & walks
 in on south side from Albatross West for 130'
 " " north " " " " " " " "

4/13
 Sample
 Evans
 Kerr

B.M. N.E. B.P. Albatross & Robinson 267.06

B.M. 0.77 267.83

N.L. Albatross

N 1.4

Crk 1.6

M 2.0

Crk 2.2

S 2.3

0+50 N

S 2.8

Crk 2.9

M 2.7

Crk 2.3

N 2.1

1+0

N 2.7

Crk 3.0

N 3.0

Crk 3.3

S 3.3

Alley = 1+30 = end of cement curb on S.

S 3.4

Crk 3.3

M 3.5

Crk 3.4

N 3.4

1+45 = N.L. Alley

N 3.5

Crk 3.7

M 4.0

Crk 4.2

S 4.2

2+0

S 5.0

Crk 5.0

M 4.7

Crk 4.3

N 4.2

x-section E 1/2 of 29th St from Ash to "A" 1/3
 20' walk to 10' 1/2 from Ash to Sou. Line of Sou Park Add 1/3
 10' " " 10' 1/2 from Sou Line Sou Park To N. L. 1/4
 Quirk
 Shaw
 Kern

S.M. 3rd S.E. Sec 29th St 207.21

B.M. 0.78 207.99

S.L. Ash

F 4.6 203.4

Crk 4.9 203.1

1/4 5.2 202.8

M 4.6 203.4

+ 40 = W.L. 4.7 203.3

0+15

W. 16.7 191.3

M 10.1 197.9

1/4 6.9 201.1

Crk 5.2 202.8

E 3.6 204.4

0+25

E 3.5 204.5

Crk 5.0 203.0

1/4 6.3 201.7

M 7.2 200.8

+ 15 9.3 198.7

+ 20 13.4 194.6

W 16.0 192.0

Ash

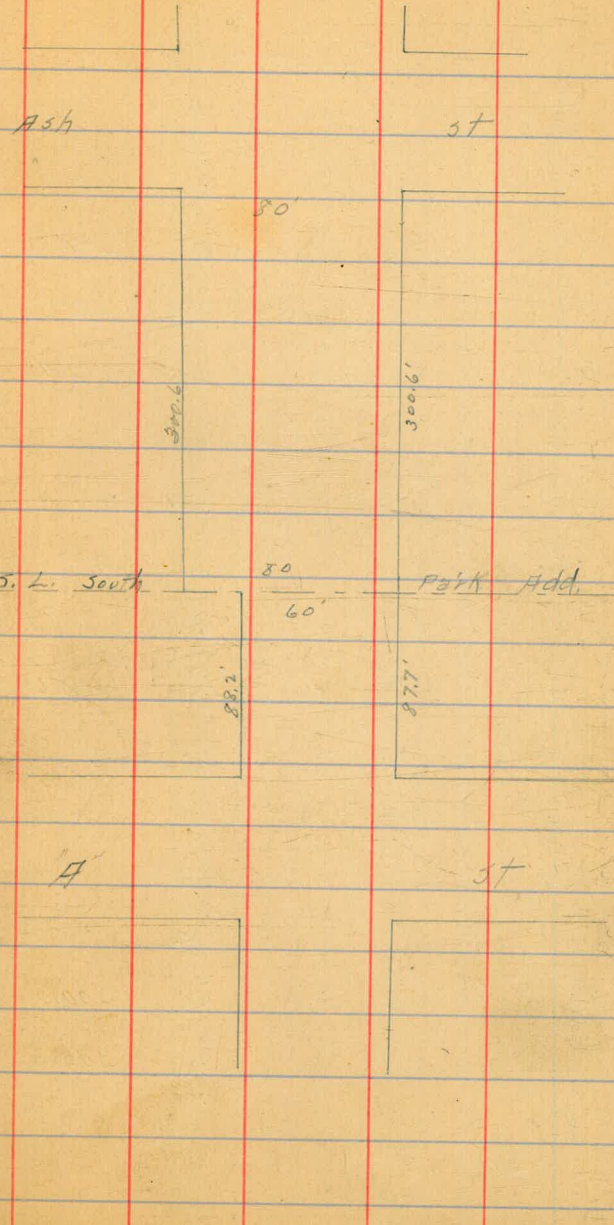
St

S. L. South

Park Add.

A

St



207.99

0+50

W		13.2	198.8
M		7.4	200.6
"A		5.3	202.7
Crk		5.0	203.0
E		3.6	204.4

1+0

E		5.7	202.3
Crk		6.9	201.1
"A		7.9	200.1
M		8.5	199.5
W		19.3	188.7
T.P.	6.60	201.61	12.98

1+25

W		18.6	183.0
M		3.4	198.2
"A		1.6	200.0
Crk		1.8	200.3
E		0.7	200.9

201.61

1+50

E		2.2	199.4
Crk		3.5	198.1
"A		4.0	197.4
M		4.1	197.5
+5		4.3	197.3
W		20.3	181.3

2+00

W		22.0	179.6
+10		22.0	179.6
+35		6.2	195.4
M		5.5	196.1
"A		4.9	196.7
Crk		4.3	197.3
E		2.4	199.2

2+50

E		2.8	198.8
Crk		4.8	196.8
"A		6.5	195.1
M		7.5	194.1
+25		19.8	181.8
W		22.3	179.3

43

201.61

2+75

W	24.1	187.5
+10	22.5	179.1
M	10.1	191.5
"4	7.2	194.4
crk	5.4	196.2
E	3.1	198.5

3+00⁶ = Sou. Line Sou Park

E	3.0	198.6
crk	7.2	194.4
"4	9.1	192.5
M	11.7	189.9
+25	25.2	176.4
W	25.0	176.6

0+0 = S. L. Sou Park for E 1/2 of 60' of

W	23.1
M	9.1
W "4	7.2
crk	5.2
E	3.0

44

0+25 S. of S. L. of S. Park

E	4.8
crk	6.9
"4	9.0
M	11.0
+19	14.8
W	19.6

0+50

W	13.5
+5	16.4
M	12.1
"4	10.0
crk	7.7
E	5.9

0+88² on W 30+87² on E = N. L. A 5'

E	8.9
crk	11.0
"4	13.3
M	16.0
+20	17.1
W	22.2

x-section Alley BJK 2 Cottontail Ahd,
Alley 15' wide

4
1/13
Lena
Shaw
Ken

45

B.M.	Brass	Height	UPAS	284.71
B.M.	8.08	292.99		
T.P.	6.11	294.15	495	288.04
		0+0 = F.L. 6 th	5+	
S		5.3		288.9
M		5.3		288.9
N		5.5		288.7
		0+50		
N		3.8		288.4
M		3.8		290.4
S		3.6		290.6
		1+0		
S		3.4		290.8
M		3.5		290.7
N		3.0		291.7
		1+50		
N		4.5		289.7
M		4.4		289.8
S		3.6		290.6

294.15

2+0

S	7.4	286.8
M	7.9	286.3
N	7.8	286.4
	2+50	
N	9.6	284.6
M	9.8	284.4
S	9.8	284.4
	3+0 = F.L. 7 th	5+
S	11.8	282.4
M	11.8	282.4
N	11.9	282.3

see page 46

X-section Alley Blk 2 Crittadius Add 7
Alley 20' wide H.I. 13
Drunk
Shaw
Ker

H.I.

294.15 see page 45

0+0 = N.L. Alley E.W.

E	5.0	289.2
M	4.5	289.7
W	4.4	289.8

0+50 N

W	4.1	290.1
M	4.8	289.4
E	4.4	289.8

1+0 N

E	4.6	289.6
M	4.6	289.6
W	4.2	290.0

1+50

W	4.0	290.2
M	4.5	289.7
E	4.6	289.6

294.2

2+0

E	4.3	289.9
M	4.5	289.7
W	4.0	290.2

2+50

W	3.7	290.5
M	4.1	290.1
E	4.0	290.2

3+0

E	4.0	290.2
M	4.0	290.2
W	3.9	290.3

3+50

W	4.2	290.0
M	4.6	289.6
E	4.4	289.8

4+0

E	6.9	287.3
M	6.7	287.5
W	6.5	287.7

46

294.15

4450

W		8.7	285.5
M		8.9	285.3
F		9.1	285.1
T.P	3.52	285.57	11.80 282.35

4484

E		1.8	284.1
M		1.8	284.1
W		1.3	284.6

4487

W		3.0	282.9
M		3.5	282.4
E		4.4	281.5

540

E		6.1	279.8
M		4.6	281.3
W		4.6	281.3

5480 = Top of Canyon

W		11.5	274.4
M		11.3	274.6
E		13.1	272.8

x-section Brant st Washington E 450'
 " " To mid 10' walls,

7/10 Dunkle
 Shaw
 Ken

2634

48
 Brant

B.M. curb st N.E. Brant Washington

0+50

B.M. 2.81 263.41 260.80

0+0 = N.L. Washington

E 2.9 40.7

crk 3.5 40.1

" 4.0 59.6

M 4.4 59.2

" 4.8 58.8

crk 5.1 58.5

" 5.2 58.4

0+25

- 40 23.1 40.5

" 26.8 41.8

crk 20.0 43.6

" 18.6 45.0

M 17.7 45.9

" 18.5 45.1

+9 16.9 45.7

crk 13.2 50.4

E 7.2 56.4

+10 3.6 40.0

PLOTTED

- 10

E

crk

"

M

"

crk

"

+40

- 60

- 40

"

crk

"

M

"

crk

E

+15

57.7 57.9

3.1 55.5

15.1 48.5

13.8 49.8

11.2 53.4

12.1 51.5

14.2 49.4

16.9 46.7

35.7 27.9

0+75

43.8 19.8

41.6 22.0

23.2 40.4

14.5 49.1

9.4 54.2

6.3 57.3

4.6 59.0

6.6 57.0

7.2 56.4

5.0 58.6

PLOTTED

26341

170

E	+4.7	248.3
crk	1.4	42.2
1/4	8.0	55.4
M	17.4	44.2
1/4	22.4	41.2
crk	26.3	37.3
W	29.3	34.3
+40	32.4	31.2

1725

-30	19.4	44.2
W	17.5	44.1
crk	16.7	44.9
1/4	14.7	48.9
M	11.5	52.1
1/4	8.3	55.3
crk	3.0	60.6
F	0.0	63.4

T.P. 13.09 274.44 0.26 263.35

PLOTTED

274.44

49
Byant

1750

F	3.5	272.9
crk	4.9	71.5
1/4	7.4	69.0
M	11.3	45.1
1/4	14.7	41.7
crk	13.7	42.7
W	16.6	59.8
+35	23.7	52.7

1775

20 W	17.7	58.7
W	12.6	43.8
crk	9.7	44.7
1/4	6.8	49.4
M	5.3	71.1
1/4	3.3	73.1
crk	2.0	74.4
F	2.2	74.3

PLOTTED

274.44

2+0

E	1.6	274.9
erb	2.7	73.7
1/4	2.3	74.1
M	3.4	73.0
1/4	5.5	70.9
erb	6.7	49.7
W	8.0	48.4
+20	12.0	44.4

2+50

W	5.6	70.8
erb	4.6	71.8
1/4	3.5	72.9
M	2.7	73.7
1/4	1.7	74.7
erb	0.8	75.6
E	0.7	75.7

T.P.	4.67	280.17	0.94	274.50
------	------	--------	------	--------

PLOTTED

280.17

50

Brent

3+0

F	2.4	277.8
erb	3.4	74.8
1/4	3.9	74.3
M	4.6	75.4
1/4	5.7	74.5
erb	6.4	73.8
W	8.0	72.2

3+50

W	2.1	73.1
erb	5.6	74.4
1/4	4.9	75.3
M	4.4	75.8
1/4	3.5	76.7
erb	2.9	77.3
E	2.1	78.1

PLOTTEJ

28017

Brent 51

440

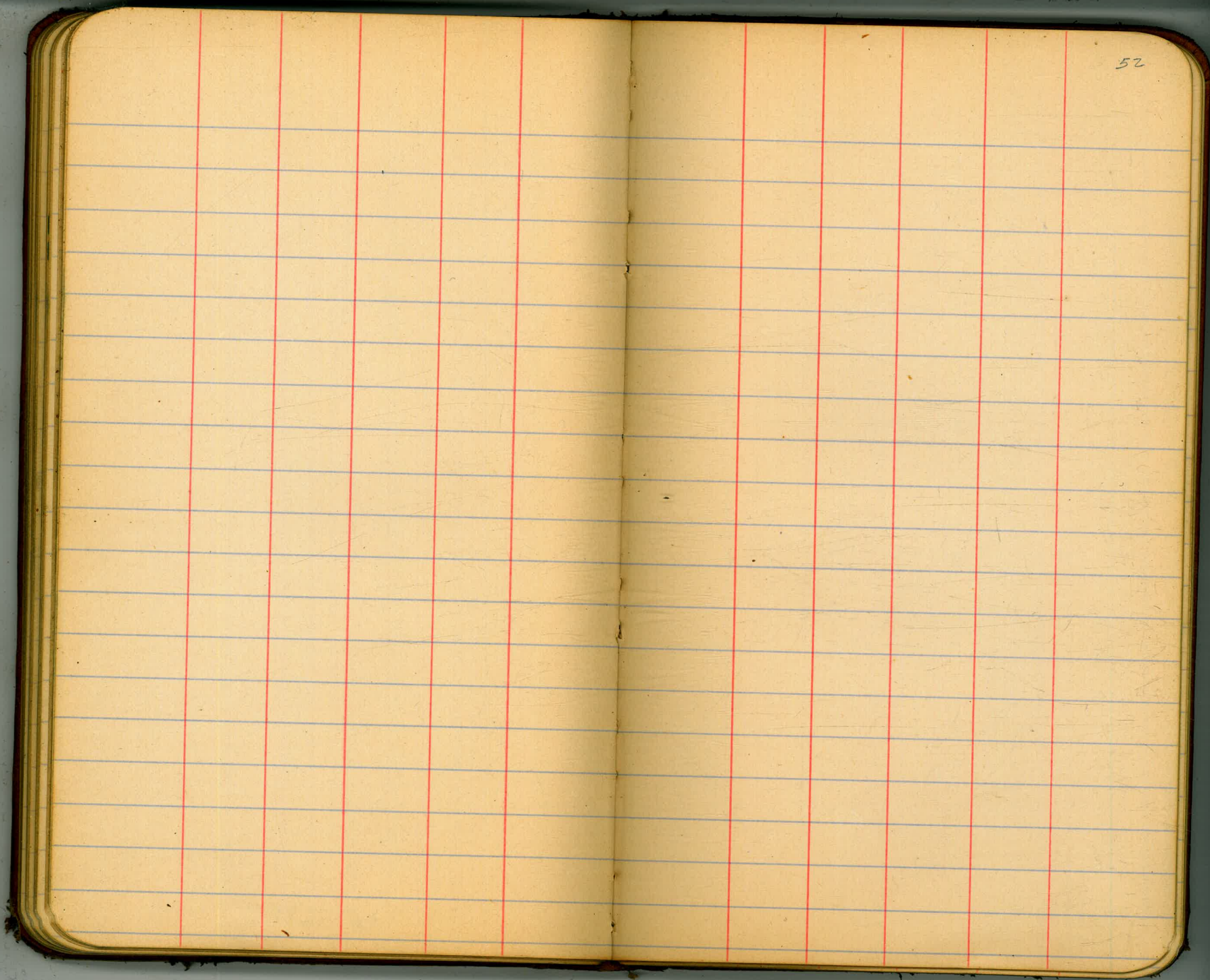
F	2.3	277.9
erb	3.3	76.9
1/4	3.5	74.4
M	4.7	75.3
1/4	5.7	74.5
erb	6.6	73.4
W	7.5	72.7

4450

W	16.5	63.7
erb	15.8	64.4
1/4	13.7	66.5
M	12.9	67.3
1/4	10.9	69.3
erb	9.0	71.2
F	7.3	72.9
J.P. HOB. EL	5.15	75.02

PLOTED

PLOTED



10.40

"F"

0+0	4.9	5.5
+25	6.8	3.6
+35	7.5	2.9
+50	10.3	0.1
+77	12.8	-2.4

"F"

0+0	4.9	5.5
+20	6.4	4.0
+25	7.6	2.8
+50	10.7	-0.3
+77	12.8	-2.4

"G"

0+0	4.9	5.5
+25	7.9	2.5
+50	11.1	-0.6
+77	12.7	-2.3

"H" = M. Car Tank

0+0	4.9	5.5
+25	3.5	1.9
+50	11.9	-1.0
+77 = M. Car Tank	12.7	-2.3

"I"

0+0 = E.L. Proposed Tank	4.1	6.3
+25	3.1	2.3
+50	11.4	-1.0
+77	12.8	2.4

"J"

0+0	4.9	5.5
+25	3.7	1.7
+50	11.2	-0.8
+77	12.0	-1.6

"K"

0+0	4.0	6.4
+25	3.3	2.1
+50	11.1	-0.7
+77	11.4	-1.0

"L"

0+0	4.0	6.4
+25	7.9	2.5
+56	10.8	-0.4
+77	11.9	-1.5

"M"

0+0	4.0	6.4
+25	7.4	3.0
+50	9.9	0.5
+77	10.8	-0.4

10.40

"Y"

0+0	4.0	6 ⁴
+25	5.4	4 ⁰
+50	8.6	18
+77	8.9	15

"O"

0+0	4.0	6 ⁴
+25	6.3	4 ¹
+50	7.3	3 ¹
+77	5.3	5 ¹

"P"

0+0	4.0	6 ⁴
+25	5.4	5 ⁰
+50	5.4	5 ⁰
+63	3.5	6 ⁹
+69	+3.1	13 ⁵
+77	+4.3	14 ²

x-section Lincoln st from Park Blvd ^{4/10} Sample
to Georgia st ^{Shaw}
80' wide 14' walks 13' 1/2's ^{Kerr}

B.M. Brass Plg Lincoln & Park Blvd 332.20

B.M. 3.91 336.11

Fil. Park Blvd

N	2.9	333.2
Crk	3.6	332.5
"A	4.2	331.9
M	4.2	331.9
"A	4.8	331.3
+11	4.7	331.7
Crk	4.3	331.8
S	4.3	331.8

0+50 E

S	3.6	332.5
Crk	3.5	332.6
+2	4.0	332.1
"A	3.8	332.3
M	3.1	333.0
"A	3.3	332.8
Crk	3.2	332.9
+2	2.6	333.5
N	2.2	333.9

336.11

1+0

N	1.8	334.3
+12	1.9	334.2
Crk	2.6	333.5
* "A	2.6	333.5
M	2.6	333.5
"A	3.2	332.9
Crk	3.5	332.6
+2	2.6	333.5
S	2.8	333.3

1+50

S	1.9	334.2
+9	2.0	334.1
Crk	3.3	332.8
"A	3.0	333.1
M	3.0	333.1
"A	2.4	333.7
Crk	2.3	333.8
+3	2.0	334.1
N	1.9	334.2

56

336.11

1+70

N	2.6	333.5
Crk	2.8	333.3
"4	3.0	333.1
M	3.8	332.3
"4	4.0	332.1
Crk	3.8	332.3
+2	3.8	332.3
+4	2.5	333.6
5	1.4	334.7

2+0

5	1.2	334.9
+4	1.6	334.5
+10	5.0	331.1
Crk	5.5	330.6
"4	5.3	330.8
M	5.0	331.1
"4	4.9	331.7
Crk	4.6	331.5
N	3.9	332.2

336.11

2+50

N	6.7	329.4
Crk	7.7	328.4
"4	8.2	327.9
M	8.1	328.0
"4	8.4	327.7
Crk	8.9	327.2
+2	7.5	328.6
+5	7.4	328.7
+11	2.6	333.5
5	2.4	333.7

2+80

5	3.5	332.6
+11	10.5	325.6
Crk	11.2	324.9
"4	11.0	325.1
M	10.5	325.6
"4	10.4	325.7
Crk	9.9	326.2
N	9.4	326.7

59

336.11

3+0 = M.L. Georgia St

N	10.8	325.3
Cub	10.9	325.2
'14	11.6	324.5
M	11.3	324.8
'14	11.6	324.5
Cub	11.2	324.9
S	10.8	325.3

Levels on curb 4th & "D" St,

4/26/11
Simple
L. H. Kim

59

B.M. Brass 19 S.M. 4th & D 43.707

B.M. 6.20 4991 ~~47~~

N.E. 4th & D = Ath side 5.50

" " " " = D " " 5.55

100' N on 4th curb 4.48

" " " property 4.29

" " " as given to Contractor

" " " = Kingsgrade 4.19

100' E on "D" St, 3.96

5
13

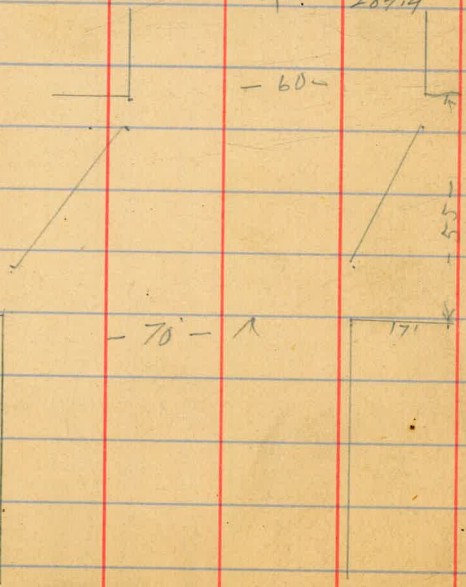
brought
Taylor
Fitz
x Sec of 1st St (60')
S 2 Lewis to S 2 Stetson

658
1048
285.56
2934

27898
28299
nw 1/4
wash 1st

S 2 of Lewis st

E
80 285.4
84 285.0
76 285.8
b
76 285.8
80 285.4
94 284.0
w
90 284.4



2934

60

S 2 of Lewis

w
60 287.4
70 286.4
65 286.9
62 287.2
56 287.8
55 287.9
E
52 288.2
S 1/2 of Lewis
E
50 288.4
49 288.5
52 288.1
b
56 287.8
59 287.5
60 287.4
w
59 287.5

29342

Lester J Lewis

W	58	287.6
	56	287.8
	55	287.9
b	55	287.9
	53	287.1
	52	287.7
E	52	288.2

N H J Lewis

a	48	288.6
	50	288.4
	50	288.4
b	51	288.3
	53	288.1
	56	287.8
W	55	287.9

29342

125

61

N H J Lewis

W	50	288.4
	52	288.7
	52	288.7
b	50	288.4
	49	288.5
	49	288.5
E	50	288.4

N L J Lewis

E	49	288.5
	47	288.7
	47	288.7
b	46	288.8
	48	288.6
	48	288.6
W	53	288.1

29342

50'

n f

Lewis

W

46 288.8

49 288.5

50 288.4

b

47 288.7

45 288.9

45 288.9

E

43 289.1

100'

n f

Lewis

E

35 289.9

37 289.7

40 289.4

b

43 289.1

45 288.9

46 288.8

W

44 289.0

TP

346

292.83

405 289.39

29283

150'

n f

Lewis

W

25 290.3

31 289.7

34 289.7

b

35 289.3

28 290.0

30 289.8

E

27 290.1

200'

n f

Lewis

E

24 290.4

22 290.6

29 289.9

b

34 289.4

41 288.7

39 288.9

W

38 289.0

10

62

29342

401

289.39

346

292.83

29283

	280	n	Sum
W			39 288.9
			38 289.0
			43 288.5
b			43 288.5
			38 289.0
			40 288.8
E			46 288.2

	250	n	Sum
E			50 287.8
			49 287.9
			47 288.6
b			29 289.9
			28 290.0
			30 289.8
W			39 288.9

29283

124

63

	275	n	Sum
W			45 288.3
			43 288.5
			40 288.8
b			44 288.9
			47 288.1
			49 288.9
E			50 287.8

	300	n = S. Broadway	(50)
E			50 287.8
			50 287.8
			49 287.9
b			47 288.1
			33 289.5
			34 289.4
W			33 289.5

292.83

	S	1/4 of	Broadway	
W			40	288.8
			37	289.1
			41	288.7
L			57	287.7
			47	288.1
			50	287.8
E			50	287.8
	S	1/4 of	Broadway	
E			47	288.1
			57	287.7
			50	287.8
L			50	287.8
			50	287.8
			46	288.7
W			44	288.9

292.83

125

64

	Center of	Broadway	
W		50	287.8
		57	287.7
		50	287.8
L		57	287.7
		50	287.8
		50	287.8
E		46	288.2
	N	1/4 of	Broadway
E		47	288.1
		47	287.9
		48	288.0
L		52	287.6
		50	287.8
		52	287.6
W		51	287.7

	n	bl of Broadway	
w			
		52	287.6
		50	287.8
		50	287.8
b		50	287.8
		52	287.6
		50	287.8
E		45	288.3
	n	line of Broadway	
E		45	288.3
		50	287.8
		53	287.5
b		57	287.7
		52	287.6
		52	287.6
w		53	287.5

	10' w	50'	n of Broadway	
w				
			74	
			72	285.6
			65	286.3
			53	287.5
b			46	288.2
			44	288.4
			46	288.2
E			45	288.3
		75'	n of Broadway	
E			36	289.2
			40	288.8
			45	288.3
b			52	287.6
			57	287.1
			67	286.1
			102	277.6
			13.2	277.0
	15' w of rd		710	288.2
	TP	688		
		29561		

29283
410
288.75
688
285.6

295.61

100 n of Broadway

w	86	287.0
	72	288.4
	66	289.0
b	72	288.4
	70	288.6
	64	289.2
E	62	289.4

150 n of Broadway

E	60	289.6
	66	289.0
	63	289.3
b	65	289.1
	69	288.7
	70	288.6
w	70	288.6

295.61

200 n of Broadway

w	57	289.9
	59	289.7
	61	289.5
b	55	290.1
	54	290.2
	49	290.2
E	47	290.9

250 n of Broadway

E	29	292.7
	31	292.5
	34	292.2
b	40	291.6
	44	291.2
	41	291.5
w	42	291.3

100

66

295.11

297' on S of Station 31 50

W

26 293.0

22 293.4

16 294.0

b

13 294.3

18 293.8

20 293.6

E

26 293.0

SE Prof. 200

33 292.8

Continued in Book 865

Page 25

67

5/13
 5/13
 13
 blimp
 1000
 4050
 3550

n d of Bst
 W 2.0 36.5
 E 2.0 36.5

limb is straight to A st

TP 793 5171 172 4378

S d of A st

E (4.25) 47.5

W (4.75) 47.0

n d of A st

W (3.75) 48.0

E (3.25) 48.5

TP 533 5468 216 4985

limbs all OK
 S d of A st

E (2.95) 57.95

W (4.95) 49.85

n d of A st

W 4.90 50.0
 5.00 49.85

E 5.25 52.0
 5.70

TP 680 6168 290 5243

200 100
 100 100
 80 100

Buck

5.5
 51.5
 500
 5.5
 5.50
 520

Ash st

500
 480
 520
 485

A st

470.
 365
 475
 365
 80

B st

59.25

200' n of Ash

E 63 53.0'

W 81 51.1'

S 2 of Beech

W (415
4.25) 55.0'E (430
4.25) 55.0'

N 2 of Beech

E (225
2.25) 57.0'W (2.30
2.30) 57.0' 56.95' 13m

TP 624 6394 155 57.70

200' n of Beech

W 5.70

E (490
4.55) 59.00 59.40

S 2 of Cedar

E (345
3.40) 60.50W (4.95
5.00) 59.0'

n 2 Cedar

W 390
391 600E 730
1.60 624

TP 1205 75.96 0.03 63.91

69

Date

600

620

(624)

Cedar

570

6050

6000

7000

6000

590

W

570

Beech

75-96

707 8203 1.00 74.96

S Lf Date

E (30 / 30) 79.4

W (4.95 / 3.0) 77.4

n Lf Date St

W (30 / 2.96) 79.0

E (1.0) 81.0

1044 8934 1.0 76.98

Bm NW Date

S L Elm St

W (3.45 / 3.45) 86

E (1.45 / 1.35) 88.0

TP 1042 9832 1.49 87.90

n Lf Elm

E (8.40 / 8.40) 90.0

W (10.40 / 10.40) 88.0

TP 7.48 10449 1.32 9.70

S Lf Fir

W (4.5 / 4.5) 100.0

E (2.58 / 2.58)

100

102

100

102

88

90

86

88

79

81.0

(.3) / 77.0

(.3) / 79.0

25

Firm

Fir

Elm

Date

10448

N 2 of Fin

E			25	102 ✓
			255	
W			448	100 ✓
			450	

TP	520	10778	190	10288
----	-----	-------	-----	-------

150 N of Fin

E			295	✓
---	--	--	-----	---

W			285	✓
---	--	--	-----	---

TP	1280	11766	292	10486
----	------	-------	-----	-------

S 2 of Grape

E			07	117 ✓
			075	

W			88	117 ✓
			87	

TP	1280	12943	103	11663
----	------	-------	-----	-------

N 2 of Grape

W			116	118 ✓
			115	

E				118 ✓
---	--	--	--	-------

TP	1311	14228	026	12917
----	------	-------	-----	-------

TP	1308	15384	152	14076
----	------	-------	-----	-------

S 2 Hawthorne

E			40	150 ✓
			385	

W			390	150 ✓
			370	

1.71

1520

1820

Hawthorn

750

150

118

118

Grape

117

117

105

105

100

102

Fin

N S of Hawthorn

W			1520	
		1.80		
E		1.85	1520	
		1.85		
TP	1250	1664	0.00	15362
TP	1243	17799	0.18	16596

S S of Ivy

E			177	
		1.0		
W		1.30	175	
		1.05		

N S of Ivy

W			1755	
		1.25		
E		1.58	177	
		1.0		
TP	1150	1870	251	17548

S S of Juniper

W			186	
		1.1		
E		1.15	187	
		0.0		
TP	680	19379	0.03	18697

N S of Juniper

E			187	
		6.85		
W		6.8	185	
		7.8		
		7.85	18594	

197.

198.

Kalmia

197.

198.

↓

186.

187.

Juniper

186.

187.

Juniper

1755

177.

Ivy

175.

177.

Bm

19379

TP 875 20092 162 19217

S 2 f Kolmia

W 40⁵ 197 ✓
40E 30 198 ✓
30

N 2 f Kolmia

E 28 198 ✓
2.9W 1386 197 ✓
385

TP 865 20811 145 19946

S 2 f Laurel

E 16 2065 ✓
135W 41 204 ✓
41

N 2 f Laurel

W 41 204 ✓
41E 16 2065 ✓
16

447 21147 111 20700

S 2 f Maple

E 245 209 ✓
24W 440 209 ✓
440
440

Maple

207

209

204

2065

Laurel

204

2065

2117

22 Graph

W

(45
44

207

E

(245
24

209

74

25

51

72

51

24.3

34.6

24.5
30

34.5
50
34.5
40
34
30
24.0
20
33.5
10

60.2



23
48
22.4
10.4

51

36.4
1 MP
36.4
4.07 35.0
37.0 35.1
38.0 34.9
34.7
34.0

22

51

Eastline 262

32.7

Eastcb 432

58.5

center 455

56.1

Westcb 480

53.7

West Prop 22.4

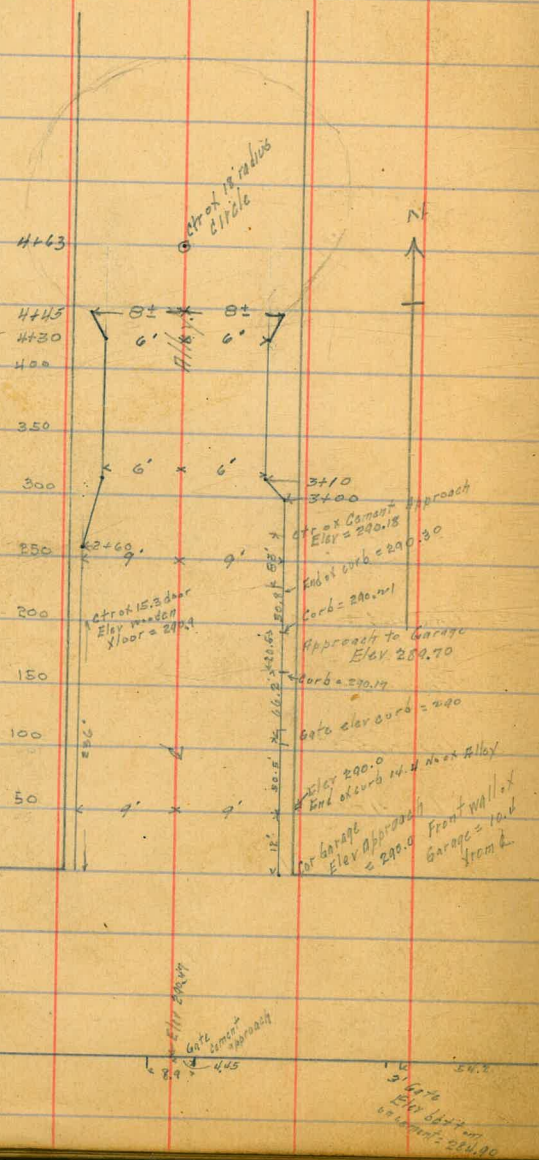
36.4

Count 1117

4/19/19 Gregory Miller

Tentative Layout of Paving
in Alley
BLK 2 CRITTENDENS

289.07
5.77
295.04
5.32
299.72
5.49
295.01
5.44
299.72
5.07
294.74



4/19/19 Gregory Miller Levels for Drain in E
of Alley Blk 2
Crittendens

78

or BM	6.52	295.59	289.07	SP. 5th 6th Upas
T.P.	5.62	295.34	5.87	289.92
235' No. of NL. of E+W Alley	5.16	290.18		Approach to Garage on E side.
T.P.	1.43	286.68	10.09	285.25
463' No. of NL. of E+W Alley	1.77	284.91		Approach to Garage on E side.
✓ ✓ ✓ ✓ ✓	1.7	285.0		Site of C.B. 2 x Alley
484.5 ✓ ✓	2.1	284.6		
488' ✓ ✓	4.6	282.1		
500' ✓ ✓	5.5	281.2		
515' ✓ ✓	8.6	278.1		
T.P.	1.00	274.98	12.70	273.98
540' No. of NL. of E+W Alley	3.1	271.88		
555' ✓ ✓ ✓	9.3	265.68		
T.P.	0.41	262.49	12.90	262.08
578' No. of NL. of E+W Alley	6.6	255.89		
581' ✓ ✓ ✓	10.9	251.59		
591' ✓ ✓ ✓	16.9	251.6		
T.P.	0.29	249.69	13.09	249.60
600' No. of NL. of E+W Alley	2.8	246.9		
615' ✓ ✓	9.0	240.7		

244.69

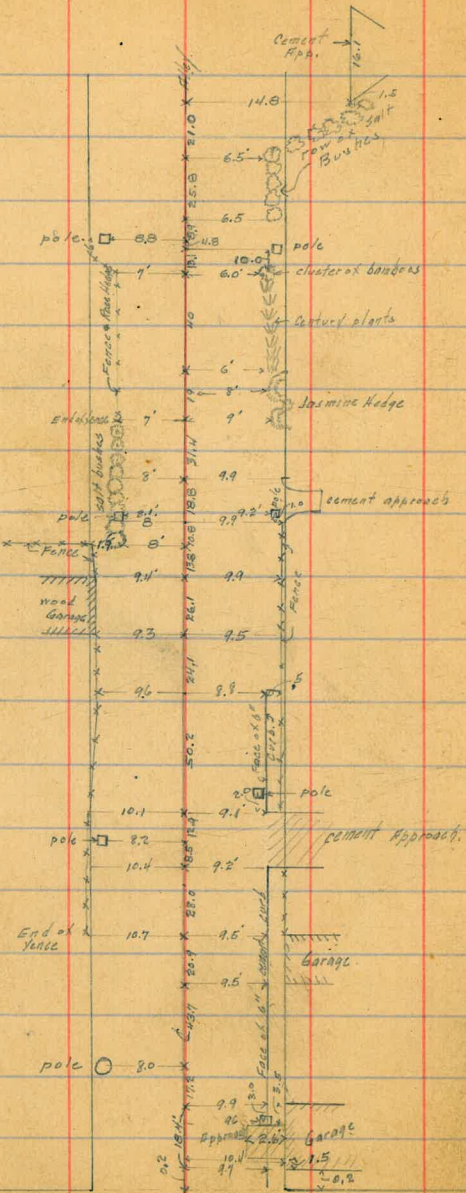
79

T.P.	1.36	238.90	1215	237.54
631' No of N.L. of E. W. 1/4 of			5.1	233.8
643' - - - - -			10.5	228.4
651' - - - - -			11.4	227.5 = bottom of cut

6/12/19
Grogan
Miller
Shan

Location of Improvements
in Alley Block 2
CRITTENDEN

184
100
103
104



East and west alley

80

			E
28907	0+00 c.s. End N.S. Alley	289.27	289.60
6.15		5.45	
295.12			
5.10			
289.67	0+25		
30.5			
294.72	0+50	289.34	
4.81		5.35	
289.91	0+75		
3.14			
293.05	1+00	289.47	
		5.22	
	1+25		
	1+50	289.59	
		5.15	
	1+75		
	2+00	289.67	
		5.05	
	2+25		
	2+50	289.77	
		4.95	
	2+75		
	3+00	289.87	
		4.85	
	3+25	289.90	
		4.82	
	3+50	289.32	
		5.70	
	3+75	289.93	
		4.80	
	4+00	289.58	
		5.47	
	4+25		
	4+50	285.19	
		7.96	
	4+75		
	5+00		

6/12/19
Gregory
Miller
Shaw
182
W.A.
183
19

45.50

45.25

49.91
45.25
4.66

49.91
5.80
44.11

49.91
4.19
45.72 = 45.75

2.87
1.9
3.05

12 20 17
80

49.91
4.32
45.53 = 45.62

49.91
4.48

43.71
5.29

45.43 = 45.50

49.00
3.05

49.91
45.95
3.96

45.95

49.91
4.20
4.64
44.36
49.91
4.36
5.35

N.E. "D" 44.50 Prop 4.19

S.E. "C" 47.50 7' 4.38
Cru 4.48

DISTANCES FROM CENTER OF ROADWAY FOR CROSS-SECTIONING
ROADWAY 14 FEET WIDE. SIDE SLOPES 1½ TO 1.
FOR SINGLE TRACK EMBANKMENT.

0	.1	.2	.3	.4	.5	.6	.7	.8	.9	
7.00	7.15	7.30	7.45	7.60	7.75	7.90	8.05	8.20	8.35	0
8.50	8.65	8.80	8.95	9.10	9.25	9.40	9.55	9.70	9.85	1
10.00	10.15	10.30	10.45	10.60	10.75	10.90	11.05	11.20	11.35	2
11.50	11.65	11.80	11.95	12.10	12.25	12.40	12.55	12.70	12.85	3
13.00	13.15	13.30	13.45	13.60	13.75	13.90	14.05	14.20	14.35	4
14.50	14.65	14.80	14.95	15.10	15.25	15.40	15.55	15.70	15.85	5
16.00	16.15	16.30	16.45	16.60	16.75	16.90	17.05	17.20	17.35	6
17.50	17.65	17.80	17.95	18.10	18.25	18.40	18.55	18.70	18.85	7
19.00	19.15	19.30	19.45	19.60	19.75	19.90	20.05	20.20	20.35	8
20.50	20.65	20.80	20.95	21.10	21.25	21.40	21.55	21.70	21.85	9
22.00	22.15	22.30	22.45	22.60	22.75	22.90	23.05	23.20	23.35	10
23.50	23.65	23.80	23.95	24.10	24.25	24.40	24.55	24.70	24.85	11
25.00	25.15	25.30	25.45	25.60	25.75	25.90	26.05	26.20	26.35	12
26.50	26.65	26.80	26.95	27.10	27.25	27.40	27.55	27.70	27.85	13
28.00	28.15	28.30	28.45	28.60	28.75	28.90	29.05	29.20	29.35	14
29.50	29.65	29.80	29.95	30.10	30.25	30.40	30.55	30.70	30.85	15
31.00	31.15	31.30	31.45	31.60	31.75	31.90	32.05	32.20	32.35	16
32.50	32.65	32.80	32.95	33.10	33.25	33.40	33.55	33.70	33.85	17
34.00	34.15	34.30	34.45	34.60	34.75	34.90	35.05	35.20	35.35	18
35.50	35.65	35.80	35.95	36.10	36.25	36.40	36.55	36.70	36.85	19
37.00	37.15	37.30	37.45	37.60	37.75	37.90	38.05	38.20	38.35	20
38.50	38.65	38.80	38.95	39.10	39.25	39.40	39.55	39.70	39.85	21
40.00	40.15	40.30	40.45	40.60	40.75	40.90	41.05	41.20	41.35	22
41.50	41.65	41.80	41.95	42.10	42.25	42.40	42.55	42.70	42.85	23
43.00	43.15	43.30	43.45	43.60	43.75	43.90	44.05	44.20	44.35	24
44.50	44.65	44.80	44.95	45.10	45.25	45.40	45.55	45.70	45.85	25
46.00	46.15	46.30	46.45	46.60	46.75	46.90	47.05	47.20	47.35	26
47.50	47.65	47.80	47.95	48.10	48.25	48.40	48.55	48.70	48.85	27
49.00	49.15	49.30	49.45	49.60	49.75	49.90	50.05	50.20	50.35	28
50.50	50.65	50.80	50.95	51.10	51.25	51.40	51.55	51.70	51.85	29
52.00	52.15	52.30	52.45	52.60	52.75	52.90	53.05	53.20	53.35	30
53.50	53.65	53.80	53.95	54.10	54.25	54.40	54.55	54.70	54.85	31
55.00	55.15	55.30	55.45	55.60	55.75	55.90	56.05	56.20	56.35	32
56.50	56.65	56.80	56.95	57.10	57.25	57.40	57.55	57.70	57.85	33
58.00	58.15	58.30	58.45	58.60	58.75	58.90	59.05	59.20	59.35	34
59.50	59.65	59.80	59.95	60.10	60.25	60.40	60.55	60.70	60.85	35
61.00	61.15	61.30	61.45	61.60	61.75	61.90	62.05	62.20	62.35	36
62.50	62.65	62.80	62.95	63.10	63.25	63.40	63.55	63.70	63.85	37
64.00	64.15	64.30	64.45	64.60	64.75	64.90	65.05	65.20	65.35	38
65.50	65.65	65.80	65.95	66.10	66.25	66.40	66.55	66.70	66.85	39
67.00	67.15	67.30	67.45	67.60	67.75	67.90	68.05	68.20	68.35	40

Calculated by F. E. Paradis, C. E.

