

873

873  
F.B.

---

LEVEL BOOK.

No. 410 T

---



EUGENE DIETZGEN CO.,

Drawing Materials and Surveying Instruments.

NEW YORK.

CHICAGO.

SAN FRANCISCO.

TABLES FOR EXCAVATIONS AND EMBANKMENTS.  
 DISTANCES FROM CENTER OF ROADWAY FOR CROSS-SECTIONING  
 ROADWAY 20 FEET WIDE. SIDE SLOPES 1 TO 1.  
 FOR SINGLE TRACK EXCAVATION.

Copyright, 1902. No. 39340.

MICROFILMED

DEC 15 1964

	0	.1	.2	.3	.4	.5	.6	.7	.8	.9	
0	10.0	10.1	10.2	10.3	10.4	10.5	10.6	10.7	10.8	10.9	0
1	11.0	11.1	11.2	11.3	11.4	11.5	11.6	11.7	11.8	11.9	1
2	12.0	12.1	12.2	12.3	12.4	12.5	12.6	12.7	12.8	12.9	2
3	13.0	13.1	13.2	13.3	13.4	13.5	13.6	13.7	13.8	13.9	3
4	14.0	14.1	14.2	14.3	14.4	14.5	14.6	14.7	14.8	14.9	4
5	15.0	15.1	15.2	15.3	15.4	15.5	15.6	15.7	15.8	15.9	5
6	16.0	16.1	16.2	16.3	16.4	16.5	16.6	16.7	16.8	16.9	6
7	17.0	17.1	17.2	17.3	17.4	17.5	17.6	17.7	17.8	17.9	7
8	18.0	18.1	18.2	18.3	18.4	18.5	18.6	18.7	18.8	18.9	8
9	19.0	19.1	19.2	19.3	19.4	19.5	19.6	19.7	19.8	19.9	9
0	20.0	20.1	20.2	20.3	20.4	20.5	20.6	20.7	20.8	20.9	10
1	21.0	21.1	21.2	21.3	21.4	21.5	21.6	21.7	21.8	21.9	11
2	22.0	22.1	22.2	22.3	22.4	22.5	22.6	22.7	22.8	22.9	12
3	23.0	23.1	23.2	23.3	23.4	23.5	23.6	23.7	23.8	23.9	13
4	24.0	24.1	24.2	24.3	24.4	24.5	24.6	24.7	24.8	24.9	14
5	25.0	25.1	25.2	25.3	25.4	25.5	25.6	25.7	25.8	25.9	15
6	26.0	26.1	26.2	26.3	26.4	26.5	26.6	26.7	26.8	26.9	16
7	27.0	27.1	27.2	27.3	27.4	27.5	27.6	27.7	27.8	27.9	17
8	28.0	28.1	28.2	28.3	28.4	28.5	28.6	28.7	28.8	28.9	18
9	29.0	29.1	29.2	29.3	29.4	29.5	29.6	29.7	29.8	29.9	19
0	30.0	30.1	30.2	30.3	30.4	30.5	30.6	30.7	30.8	30.9	20
1	31.0	31.1	31.2	31.3	31.4	31.5	31.6	31.7	31.8	31.9	21
2	32.0	32.1	32.2	32.3	32.4	32.5	32.6	32.7	32.8	32.9	22
3	33.0	33.1	33.2	33.3	33.4	33.5	33.6	33.7	33.8	33.9	23
4	34.0	34.1	34.2	34.3	34.4	34.5	34.6	34.7	34.8	34.9	24
5	35.0	35.1	35.2	35.3	35.4	35.5	35.6	35.7	35.8	35.9	25
6	36.0	36.1	36.2	36.3	36.4	36.5	36.6	36.7	36.8	36.9	26
7	37.0	37.1	37.2	37.3	37.4	37.5	37.6	37.7	37.8	37.9	27
8	38.0	38.1	38.2	38.3	38.4	38.5	38.6	38.7	38.8	38.9	28
9	39.0	39.1	39.2	39.3	39.4	39.5	39.6	39.7	39.8	39.9	29
0	40.0	40.1	40.2	40.3	40.4	40.5	40.6	40.7	40.8	40.9	30
1	41.0	41.1	41.2	41.3	41.4	41.5	41.6	41.7	41.8	41.9	31
2	42.0	42.1	42.2	42.3	42.4	42.5	42.6	42.7	42.8	42.9	32
3	43.0	43.1	43.2	43.3	43.4	43.5	43.6	43.7	43.8	43.9	33
4	44.0	44.1	44.2	44.3	44.4	44.5	44.6	44.7	44.8	44.9	34
5	45.0	45.1	45.2	45.3	45.4	45.5	45.6	45.7	45.8	45.9	35
6	46.0	46.1	46.2	46.3	46.4	46.5	46.6	46.7	46.8	46.9	36
7	47.0	47.1	47.2	47.3	47.4	47.5	47.6	47.7	47.8	47.9	37
8	48.0	48.1	48.2	48.3	48.4	48.5	48.6	48.7	48.8	48.9	38
9	49.0	49.1	49.2	49.3	49.4	49.5	49.6	49.7	49.8	49.9	39
0	50.0	50.1	50.2	50.3	50.4	50.5	50.6	50.7	50.8	50.9	40

Calculated by F. E. Paradis, C. E.



3/18/19  
 Gregory  
 Bunker  
 Bunker

CROSS-SECTION OF COPLEY AVE  
 FROM THE WEST LINE OF OREGON  
 TO THE EAST END OF COPLEY  
 80' STREET 14' WALKS 13' 1/4'S

SE CORNERS  
 AND  
 IOAHO.

B.M.	8.39	393.70	385.31
T.P.	6.65	397.22	3.13 390.57

WEST LINE OF OREGON (80' WIDE, 14' CURB)

S	6.7	390.5
cl	6.4	90.8
1/4	6.6	90.4
C	6.5	90.7
1/4	6.6	90.4
cl	6.8	90.4
N	6.7	90.5

WEST CURB

N	6.7	90.5
cl	6.6	90.4
1/4	6.3	90.9
C	6.3	90.9
1/4	6.3	90.9
cl	6.3	90.9
S	6.4	90.8

PLOTTED

397.2

1

WEST QUARTER.

S	6.4	390.8
cl	6.5	90.7
1/4	6.5	90.7
C	6.2	91.0
1/4	6.3	90.9
cl	6.6	90.4
N	6.7	90.5

CENTER

N	6.7	90.5
cl	6.3	90.9
1/4	6.4	90.8
C	6.0	91.2
1/4	6.0	91.2
cl	6.0	91.2
S	6.1	91.1

EAST QUARTER

S	6.4	90.8
cl	6.4	90.8
1/4	5.9	91.3



397.22

Copley

3972

2

C	5.7	391.5
1/4	6.1	91.1
+12	6.9	90.3
cb	6.2	91.0
N	6.9	90.3

1/4	6.3	390.9
+12	5.8	91.4
cb	6.0	91.2
N	5.9	91.3

EAST CURB

50' EAST

N	6.6	90.6
cb	6.3	90.9
+1	6.8	90.4
1/4	6.2	91.0
C	5.6	91.4
1/4	5.8	91.4
cb	6.4	90.8
S	5.4	91.8

N	5.5	91.7
cb	5.9	91.3
+1	6.6	90.6
1/4	5.7	91.5
C	5.1	92.1
1/4	5.4	91.8
+12	6.1	91.1
cb	5.0	92.3
S	4.7	92.5

EAST LINE

S	5.2	92.0
cb	5.4	91.8
+1	6.4	90.8
1/4	5.9	91.5
C	5.5	91.7

PLOTTED



397.22

Copley

100' EAST

S	4.7	392.5
cb	4.8	92.4
+1	5.8	91.4
1/4	5.2	92.0
c	4.7	92.5
1/4	5.4	91.8
+12	6.3	90.9
cb	5.3	91.9
N	5.1	92.1

150' EAST

N	4.7	92.5
cb	4.9	92.3
+1	5.8	91.4
1/4	4.8	92.4
c	4.2	93.0
1/4	4.9	92.3
+12	5.6	91.6
cb	4.6	92.6
S	4.4	92.8

PLOTTED

397.3

3

200' EAST

S	3.9	393.3
cb	4.3	92.9
+1	5.2	92.0
1/4	4.6	92.4
c	3.9	93.3
1/4	4.6	92.4
+12	5.4	91.8
cb	4.6	92.4
N	4.4	92.8

250' EAST

N	4.1	93.1
cb	4.3	92.9
+1	5.2	92.0
1/4	4.5	92.7
c	3.8	93.4
1/4	4.4	92.8
+12	5.1	92.1
cb	3.9	93.3
S	3.8	93.4



397.22

Copley

see sketch → 270° EAST = WEST LINE VVADA PL. 50' WIDE  
10' CURBS  
7.5' 1/4"

S	4.0	933.7
cb	4.2	930
+1	4.8	924
1/4	4.2	930
C	3.6	934
1/4	4.5	927
+1/2	5.1	921
cb	4.3	929
N	4.1	931
WEST CURB.		
N	4.5	927
cb	5.2	920
1/4	4.5	927
C	3.7	935
1/4	4.3	929
+1/2	4.9	923
cb	4.2	930
S	3.9	933

PLOTTED

397.2

4

WEST QUARTER.

S	3.9	933.3
cb	4.3	929
1/4	4.3	929
C	3.7	935
1/4	4.5	927
cb	4.9	923
N	4.8	924

CENTER VVADA PL.

N	4.4	928
cb	4.8	924
1/4	4.3	929
C	3.6	934
1/4	4.3	929
cb	4.6	926
S	3.8	934

CENTER + 5 = WEST LINE IDAHO ST

50' WIDE  
10' CURBS  
10' 1/4"

S	5.0	927
cb	4.8	924
1/4	4.2	930



397.22

## Copley

397.2

5

WEST CURB IDAHO = EAST LINE UVADA PL.

C	3.7	93.5
1/4	4.5	92.7
cl	4.9	92.3
N	4.6	92.4

H	4.0	93.2
cl	4.2	93.0
+1	5.1	92.1
1/4	4.5	92.7

EAST QUARTER UVADA PL.

N	4.6	92.6
cl	4.8	92.4
1/4	4.4	92.8
c	3.8	93.4
1/4	4.2	93.0
cl	4.9	92.3
S	5.0	92.2

C	3.6	93.4
1/4	4.3	92.9
cl	5.3	91.9
S	6.0	91.2

WEST 1/4 IDAHO

S	5.2	91.8
cl	5.4	91.8
1/4	4.3	92.9

EAST CURB UVADA PL.

S	5.0	92.2
cl	5.0	92.2
1/4	4.2	93.0
C	3.7	93.5
1/4	4.5	92.7
cl	5.1	92.1
H	4.4	92.8

C	3.7	93.5
1/4	4.5	92.7
+12	5.0	92.2
cl	4.6	92.8
H	3.9	93.3

PLOTTED



397.22

Copley

## CENTER IDAHO

N	4.0	92.2
cb	4.3	92.9
+1	5.1	92.1
1/4	4.3	92.9
C	3.7	93.5
1/4	4.4	92.8
cb	5.2	92.2
S	5.3	91.9

## EAST QUARTER IDAHO

S	5.5	91.7
cb	5.4	91.8
1/4	4.5	91.7
C	3.7	93.5
1/4	4.6	92.4
+1/2	5.1	92.1
cb	4.3	92.9
N	4.1	93.1

PLOTTED

397.3

6

## EAST CURB IDAHO

N	4.1	92.1
cb	4.4	92.8
+1	5.1	92.1
1/4	4.4	92.8
C	3.8	93.4
1/4	4.4	92.8
cb	5.4	91.8
S	6.0	91.2

## EAST LINE IDAHO

S	4.7	92.5
cb	4.9	92.3
1/4	4.2	93.0
C	3.6	93.6
1/4	4.3	92.9
+1/2	4.9	92.3
cb	4.2	93.0
N	4.0	93.2

(13)



397.22

Copley

397.2

7

2' EAST OF 10AHO

100' EAST

N	4.0	93.2
cl	4.2	93.0
+1	4.9	92.3
1/2	4.3	92.9
C	3.6	93.6
1/4	4.2	93.0
cl	4.0	93.2
S	3.7	93.5

N	4.2	93.0
cl	4.3	92.9
+1	5.0	92.2
1/2	4.3	92.9
C	3.6	93.6
1/4	4.2	93.0
+1/2	4.8	92.4
cl	3.9	93.3
S	3.5	93.7

50' EAST.

150' EAST

S	3.8	93.4
cl	4.0	93.2
+1	4.8	92.4
1/4	4.1	93.1
C	3.6	93.6
1/2	4.3	92.9
+1/2	5.0	92.2
cl	4.2	93.0
N	3.9	93.3

S	3.6	93.6
cl	3.9	93.3
+1	4.7	92.5
1/4	4.2	93.0
C	3.6	93.6
1/2	4.3	92.9
+1/2	5.0	92.2
cl	4.3	92.9
N	4.2	93.0

PLOTTED



397.22

Copley

200' EAST

N	4.2	3930
cb	4.5	927
+1	5.2	920
1/4	4.5	927
c	3.7	935
1/4	4.4	928
+1/2	4.7	925
cb	3.8	934
S	3.6	934

250' EAST

S	3.9	933
cb	4.1	931
+1	4.9	923
1/4	4.3	929
c	3.9	933
1/4	4.6	924
+1/2	5.5	917
cb	4.7	925
N	4.6	924

PLOTTED

397.2

8

300' EAST-WEST LINE UTAH

80' WIDE  
14' CURBS  
13' 1/4'S

N	5.0	3922
cb	4.9	923
+1	5.6	916
1/4	4.8	924
c	4.1	931
1/4	4.5	927
+1/2	4.9	923
cb	4.3	929
S	4.2	930

WEST CURB

S	4.3	929
cb	5.2	920
1/4	4.4	928
c	4.1	931
1/4	4.9	923
+1/2	5.6	916
cb	5.0	922
H	4.8	924



397.22

Copley

WEST QUARTER UTAH

N	4.9	92.3
cb	5.1	92.1
+1	5.8	91.4
1/4	5.0	92.2
c	4.4	93.0
1/4	4.5	92.7
cb	4.9	92.3
s	4.5	92.7

CENTER

s	3.9	93.3
cb	4.8	92.4
1/4	4.6	92.6
c	4.1	93.1
1/4	5.0	92.2
+12	5.7	91.5
cb	5.0	92.2
N	5.0	92.2

397.3

EAST QUARTER

N	5.0	92.2
cb	5.1	92.1
+1	5.8	91.4
1/4	4.9	92.3
c	4.1	93.1
1/4	4.7	92.5
cb	5.1	92.1
s	4.6	92.6

EAST CORN

s	4.6	92.6
cb	5.4	91.8
1/4	4.6	92.6
c	4.4	92.8
1/4	5.2	92.0
+12	6.0	91.2
cb	5.2	92.0
N	5.1	92.1

9

PLOTTED



397.22

Copley

EAST LINE UTAH

N	5.2	392.0
cb	5.2	92.0
+1	6.1	91.1
1/4	5.1	92.1
C	4.4	92.8
1/4	4.8	92.4
+1/2	5.3	91.9
cb	4.6	92.6
S	4.4	92.8

50' EAST

S	4.6	92.6
cb	4.9	92.3
+1	5.7	91.5
1/4	5.1	92.1
C	4.5	92.7
1/4	5.3	91.9
+1/2	6.2	91.0
cb	5.3	91.9
N	5.2	92.0

PLOTTED

397.7

10

see sketch, 80' EAST = WEST LINE VISTA PLACE

N	5.6	391.6
cb	5.6	91.6
+1	6.4	90.8
1/4	5.3	91.9
C	4.7	92.5
1/4	5.3	91.9
+1/2	5.9	91.3
cb	5.0	92.2
S	4.6	92.6

T.P. 2.16 394.96 4.42 392.80

WEST CURB

S	2.4	92.6
cb	2.9	92.1
+1	3.8	91.2
1/4	3.1	91.9
C	2.5	92.5
1/4	3.1	91.9
cb	4.1	90.9
N	3.7	91.3



391.96

Copley

## WEST QUARTER

N	4.0	391.0
ct	4.0	91.0
1/4	3.2	91.8
c	2.5	92.5
1/4	3.2	91.8
+12	3.8	91.2
ct	2.7	92.3
s	2.2	92.4

## CENTER

s	2.4	92.6
ct	3.1	91.9
+1	3.9	91.1
1/4	3.2	91.8
c	2.7	92.3
1/4	3.4	91.4
ct	4.0	91.0
N	3.6	91.4

PLOTTED

395.0

11

## EAST QUARTER

N	3.8	391.2
ct	4.2	90.8
1/4	3.5	91.5
c	2.7	92.3
1/4	3.2	91.8
+12	4.0	91.0
ct	3.0	92.0
s	2.6	92.4

## EAST CORNER = Sec. A see sketch

s	2.9	92.1
ct	3.1	91.9
+1	4.1	90.9
1/4	3.2	91.8
c	2.8	92.2
1/4	3.6	91.4
ct	4.3	90.7
N	2.7	91.3



394.96

Copley

Sec. B

N	3.4	391.4
cb	3.6	91.4
+1	4.2	90.8
1/4	3.7	91.3
C	2.8	92.2
1/4	3.1	91.9
+12	4.0	91.0
cb	3.1	91.9
S	2.9	92.1

Sec. C

S	2.9	92.1
cb	3.1	91.9
+1	4.1	90.9
1/4	3.2	91.8
C	2.7	92.3
1/4	3.6	91.4
+12	4.2	90.8
cb	3.5	91.5
N	3.3	91.7

PLOTTED

394.96

12

50' EAST OF Sec C

N	3.3	391.7
cb	3.6	91.4
+1	4.5	90.5
1/4	3.6	91.4
C	3.0	92.0
1/4	3.5	91.5
+12	4.0	91.0
cb	3.3	91.7
S	3.1	91.9

100' EAST

S	3.2	91.8
cb	3.6	91.4
+1	4.5	90.5
1/4	3.7	91.3
C	3.2	91.8
1/4	3.9	91.1
+12	4.8	90.2
cb	3.9	91.1
N	3.6	91.4



39496

Copley

25' WIDE  
3.75' CURBS  
14.5'

see sketch 159.47 EAST - WEST LINE EYRIE R.

N	4.0	391.0
cb	4.2	90.8
+1	5.0	90.0
1/4	4.5	90.5
c	3.8	91.2
1/2	4.1	90.9
+1/2	4.7	90.3
cb	3.9	91.1
S	3.6	91.4

WEST CURB EYRIE

S	3.6	91.4
cb	3.9	91.1
+1/2	4.7	90.3
1/4	4.1	90.9
c	3.8	91.2
1/2	4.5	90.5
+1/2	5.0	90.0
cb	4.2	90.8
N	4.0	91.0

PLOTTED

39496

13

WEST QUARTER

N	4.1	390.9
cb	4.2	90.8
+1	5.1	89.9
1/4	4.5	90.5
c	3.7	91.3
1/2	4.0	91.0
+1/2	4.8	90.2
cb	4.0	91.0
S	3.7	91.3

CENTER

S	3.7	91.3
cb	4.0	91.0
+1/2	4.8	90.2
1/4	4.0	91.0
c	3.7	91.3
1/2	4.5	90.5
+1/2	5.1	89.9
cb	4.2	90.8
N	4.1	90.9



39496  
EAST QUARTER

Copley

39496

14

EAST LINE EYRIE

N	4.1	390.9
cb	4.2	90.8
+1	5.1	89.9
1/4	4.4	90.4
c	3.8	91.2
1/4	4.0	91.0
+1/2	4.8	90.2
cb	4.1	90.9
S	3.7	91.3

EAST CURB

S	3.7	91.3
cb	4.2	90.8
+1	4.8	90.2
1/4	4.1	90.9
c	3.8	91.2
1/4	4.4	90.4
+1/2	5.0	90.0
cb	4.2	90.8
N	4.1	90.9

PLOTTED

N	4.1	390.9
cb	4.3	90.7
+1	5.0	90.0
1/4	4.5	90.5
c	3.8	91.2
1/4	4.0	91.0
+1/2	4.9	90.1
cb	4.1	90.9
S	3.7	91.3

sketch 3.63' EAST = WEST LINE KANSAS

S	3.9	91.1
cb	4.1	90.9
+1	4.9	90.1
1/4	4.4	90.6
c	3.9	91.1
1/4	4.5	90.5
+1/2	5.2	89.8
cb	4.3	90.7
N	4.1	90.9



394.96

Copley

WEST CURB

N	4.0	391.0
cb	4.4	90.4
+1	5.2	89.8
1/4	4.5	90.5
c	4.1	90.9
1/4	4.2	90.6
cb	4.8	90.2
S	4.6	90.4

WEST QUARTER

S	4.5	90.5
cb	4.3	90.7
1/4	4.1	90.9
c	4.0	91.0
1/4	4.6	90.4
+12	5.2	89.8
cb	4.4	90.6
N	4.2	90.8

PLOTTED

394.96

15

CENTER

N	4.3	390.7
cb	4.6	90.4
+1	5.2	89.8
1/4	4.5	90.5
c	4.0	91.0
1/4	4.1	90.9
cb	3.9	91.1
S	3.8	91.2

EAST QUARTER

S	4.1	90.9
cb	4.3	90.7
1/4	4.1	90.9
c	4.1	90.9
1/4	4.6	90.4
+12	5.1	89.9
cb	4.6	90.4
N	4.3	90.7



39496

EAST CURB

Copley

N	4.7	890.3
cb	4.9	90.1
1/4	4.7	90.3
c	4.2	90.8
1/4	4.7	90.3
cb	4.8	90.2
S	5.0	90.0

SEC D.

S	4.0	91.0
cb	4.9	90.1
1/4	4.8	90.2
c	4.2	90.8
1/4	4.9	90.1
cb	4.9	90.1
N	5.1	89.9

PLOTTED

39496

16

SEC E = EAST LINE KANSAS

N	5.1	889.9
cb	4.9	90.1
1/4	4.9	90.1
c	4.3	90.7
1/4	5.0	90.0
cb	4.1	90.9
S	3.8	91.2

SEC F

S	3.7	91.3
cb	4.5	90.5
+1/4	5.3	89.7
1/4	5.0	90.0
c	4.3	90.7
1/4	5.0	90.0
cb	5.0	90.0
N	5.1	89.9



394.96

Copley

50' EAST

N	5.7	389.3
cb	5.0	90.0
1/4	5.6	89.4
C	4.8	90.3
1/4	5.3	89.7
cb	5.2	89.8
S	4.7	90.3

100' EAST

S	5.2	89.8
cb	5.5	89.5
1/4	5.6	89.4
C	5.0	90.0
1/4	5.8	89.3
cb	6.1	88.9
N	6.2	88.8

PLOTTED

394.96

17

150' EAST

N	6.5	388.5
cb	6.2	88.8
1/4	6.0	89.0
C	5.4	89.6
1/4	6.0	89.0
cb	6.0	89.0
S	6.0	89.0

200' EAST

S	6.5	88.5
cb	6.3	88.7
1/4	6.4	88.5
C	5.9	89.1
1/4	6.6	88.4
cb	6.9	88.1
N	7.0	88.0

249.8' EAST = END

N	7.1	87.9
cb	7.0	88.0
1/4	7.0	88.0



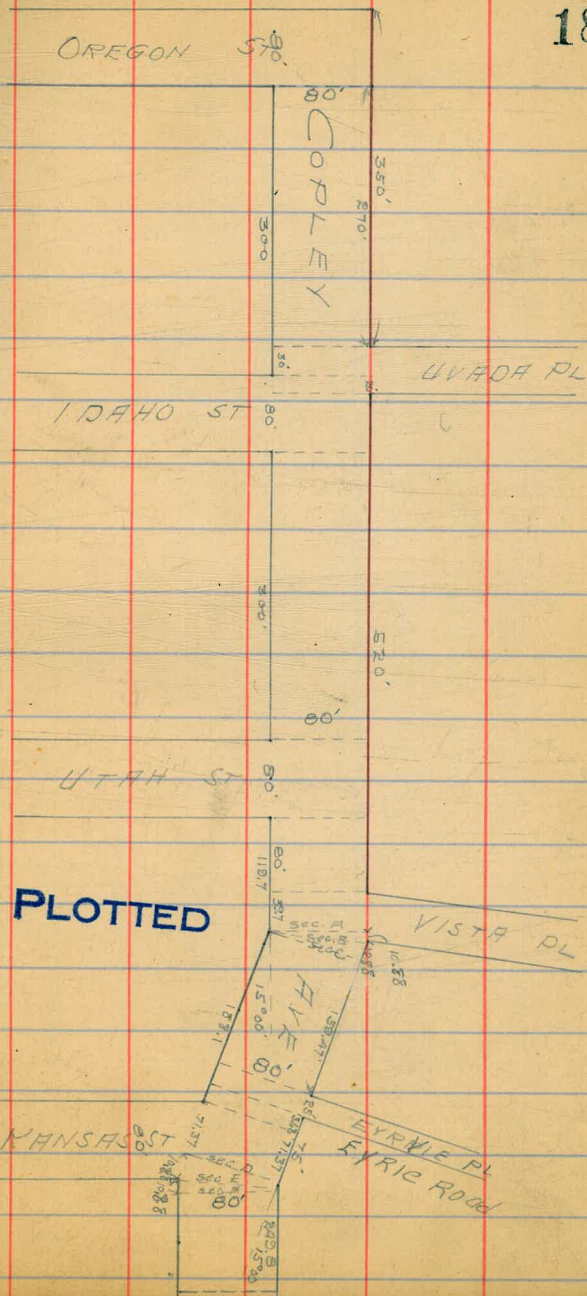
39496

Copley

C	6.4	388.4
1/4	7.0	88.0
cb	6.7	88.3
S	6.8	88.2

PLOTTED

18



PLOTTED



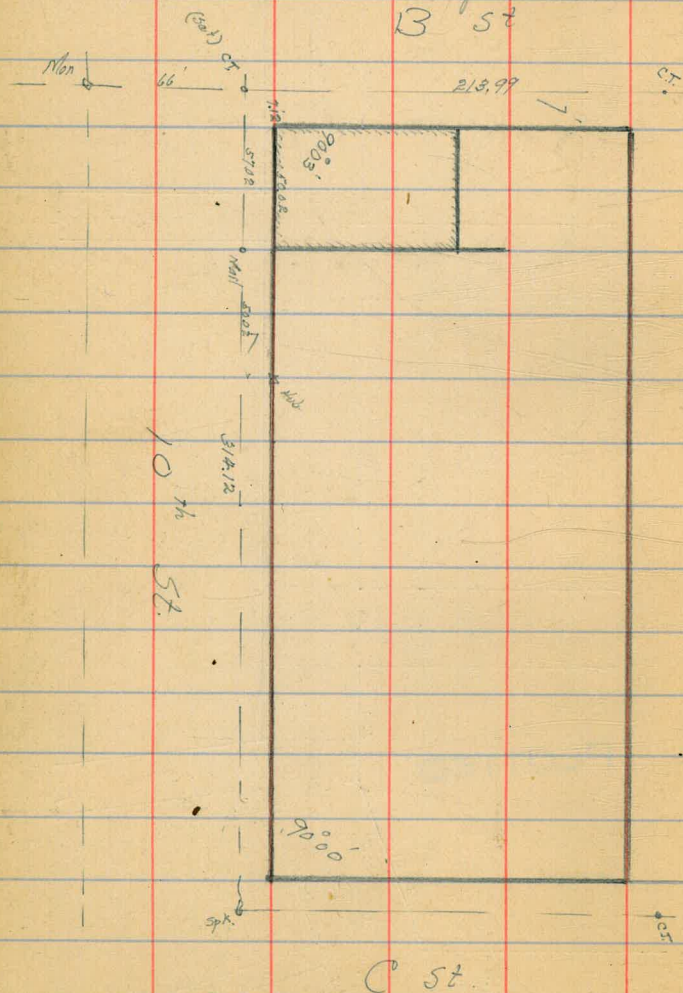
St. 124  
1/3 Hatch  
1/3 Moore  
1/3 Hall

# Survey of Eugene house

10<sup>th</sup> B St

(South wall is on lot line at SE Cor  
and 0.12 S. of line at SW Cor.  
NW Cor is 0.12 S. of B St line.

B St





3 change X Sec of Udal St (60')  
 24 7.6  
 13 3.7 E of Catalina Blvd to W of San Clemente

7.73	95.25		87.52	man Tennessee Warden
87.5	101.39	2.61	92.64	
7.25	108.64	0.0	101.39	
4.94	105.54	8.17	100.57	Hub now Adolescent
1.10	93.77	12.84	92.67	
4.77	85.77	12.77	81.00	

E of Catalina Blvd

2		10.5	75.3
4		9.6	76.2
4		8.7	77.1
6		7.9	77.9
7		7.0	78.8
11		5.9	79.9
5		5.2	80.6

PLOTTED

85.77

Udal

20

25' E of Catalina

5		2.6	83.2
6		3.3	82.5
4		4.4	81.4
6		5.5	80.3
9		6.9	78.9
11		7.6	78.2
7		8.3	77.5

50' E of Catalina

2		5.1	80.7
11		4.5	81.3
4		4.0	81.8
6		3.3	82.5
4		2.4	83.4
11		0.6	85.2
5		0.0	85.8
7P	12.23	95.86	21.4 83.65

PLOTTED



95-86

75 <sup>1</sup>	E g	bobelin
S		71 88.7
u		75 88.4
s		82 87.7
b		88 87.1
v		94 86.5
u		95 86.4
n		99 86.0

PLOTTED

E g	bobelin
Ar	48 91.1
	47 91.2
	40 91.9
C	38 92.1
	36 92.3
	35 92.4
	32 92.7

95-86

Total

21

125 <sup>1</sup>	E g	bobelin
g		0.1 95.8
u		0.5 95.4
v		0.7 95.2
b		1.0 94.9
s		1.3 94.6
u		1.5 94.4
n		1.3 94.6

PLOTTED

TP 10.08 <sup>102.75</sup> ~~102.77~~ 319 <sup>12.67</sup> ~~12.67~~ 92.67

150	E g	bobelin
n		60 96.8
u		50 97.8
s		45 98.3
b		50 97.8
v		55 97.3
u		51 97.7
S		51 97.7



10275

	175'	Eg	botilina
S			32 99.6
H			33 99.5
Y			24 100.4
L			17 101.6
Y			13 101.5
H			30 99.8
N			51 97.7

PLOTTED

200' Eg

	200'	Eg	botilina
N			48 98.0
H			28 100.0
Y			08 102.0
TP	1045	<u>10900</u>	113 98.62 .62
b			51 104.0
Y			33 105.8
H			32 105.9
S			41 105.0

210' E.g.

S			08 108.3
H			15 107.6

10707

Gidre

22

	225'	Eg	botilina
S			08 108.3
H			17 107.4
Y			26 105.5
L			51 104.0
Y			20 102.1
H			20 100.1
A			105 98.6

PLOTTED

250' Eg

	250'	Eg	botilina
N			102 98.9
H			85 100.6
Y			70 102.1
L			54 103.7
Y			40 105.1
H			22 106.9
S			08 108.3



109.07

275

Σ f boteline

S	12	107.9
B	27	106.4
y	42	104.9
z	55	103.6
v	69	102.2
H	81	101.0
n	97	99.4

300

Σ f boteline

n	97	99.9
H	74	101.7
y	66	102.5
t	52	103.9
y	37	105.4
H	27	106.4
S	15	107.6

TP

474

110.94

287 106.20

110.94

Nadal

23

325

Σ f boteline

S	37	107.2
H	46	
y	57	
t	67	104.3
y	78	
H	90	
H	103	100.6

325

Σ f boteline

n	97	101.0
H	86	
y	74	
t	68	104.2
y	60	
H	49	
S	41	106.8

PLOTTED

PLOTTED



11094

325' E of

botline

S	40	106.7
bl	49	
7	57	
1	66	104.3
4	76	
6	85	
11-	97	101.2

400'

E of

botline

n	97	101.2
bl	85	
7	77	
1	68	104.1
	62	
	53	
	43	106.6

PLOTTED

11094

425'

E of

botline

S	47	106.2
bl	55	
7	64	
1	71	103.8
4	78	
6	87	
11	95	101.4

450'

E of

botline

n	96	101.3
bl	90	
7	82	
1	72	103.7
	64	
	57	
S	47	106.2

PLOTTED

Nodal

24



11094

25

475' E1 batelma

S	48	106.1
u	59	
7	68	
1	75	103.4
4	83	
u	91	
n	100	100.9

497' E = w of San Clemente

PLOTTED

3	1040	100.5	H
u	90		
4	87		
6	78	103.1	
4	71		
u	61		
S	54	104.5	

TP 0.88 101.42 1040 10654 ✓

0.35 9072 1105 9039 ✓

1.00 8119 1083 8019 ✓

1.65 7954

millst. w. del  
Bm



$\frac{3}{25}$   
 $\frac{13}{13}$

about  
Feb  
Shan  
x sec of Missouria (80')  
University to Boundary

240 358.30

355.90

Bar Joint  
University

N 2 of University on

W

51 353.2

W

43 354.0

W

56 352.7

W

45 353.8

W

60 352.3

W

50 353.3

W

56 352.7

W

52 353.1

W

PLOTTED

58 352.5

W

PLOTTED

55 352.8

W

58 352.5

E

53 353.0

E

56 352.7

75

n y

Univ

25 n y Univ

E

54 352.9

E

54 352.9

W

51 353.2

W

55 352.8

W

50 353.3

W

54 352.9

W

47 353.6

W

51 353.2

W

48 353.5

W

55 352.8

W

43 354.0

W

52 353.1

W

40 354.3

W

51 353.2

W

358.30

Missouri

26



358.30

100 m of University Ave

W	40	354.3
H	43	354.0
Y	57	353.2
L	48	353.5
Y	50	353.3
H	53	353.0
E	54	352.9

PLOTTED

125 m of Univ

E	54	352.9
H	51	353.2
Y	51	353.2
L	47	353.6
Y	48	353.5
H	42	354.1
W	38	354.5

358.20

150 m of University

W	38	354.5
H	41	354.2
Y	48	353.6
L	47	353.6
Y	51	353.2
H	51	353.2
E	55	352.8

175 m of Univ

E	56	352.7
H	48	353.5
Y	50	353.3
L	46	353.7
Y	46	353.7
H	35	354.8
W	36	354.7

PLOTTED

Missouri

27



35830

	200'	n of	University Ave	
N			34	354.9
W			39	354.4
Y			49	353.4
L			47	353.6
Y			52	353.1
W			56	352.7
E			58	352.5

PLOTTED

225' n of

	225'	n of	Univ	
E			61	352.2
W			60	352.3
Y			58	353.0
L			49	353.4
Y			50	353.3
H			41	354.2
W			37	354.6

TP

251

357.23

358

354.72

357.23

Missouri

28

	250'	n of	University	
W			26	354.6
H			33	353.9
Y			41	353.1
L			47	353.0
Y			46	352.6
H			53	351.9
E			58	351.4

PLOTTED

275'

	275'	n of	Univ	
E			56	351.6
L			56	351.6
Y			50	352.2
L			46	352.6
Y			46	352.6
H			36	353.6
W			30	354.2



357.25

300 n of University

W	33	353.9
N	42	353.0
Y	48	352.4
E	52	352.0
S	56	351.6
W	58	351.4
E	65	350.7

PLOTTED

325 n of Univ

E	73	349.9
	70	350.2
	63	350.9
	57	351.5
	52	352.0
	41	353.1
	38	353.4

357.23

350 n of University at

W	43	352.9
N	52	352.0
Y	61	351.1
E	63	350.9
S	68	350.4
W	72	350.0
E	76	349.4

PLOTTED

375 n of Univ

E	89	348.3
N	78	349.4
Y	73	349.9
E	70	350.2
S	71	350.1
W	58	351.4
W	45	352.7

Missouri

29



357.23

400

N of  
357.23

University am

W	4.9	352.3
R	5.8	351.4
U	7.6	349.6
L	7.8	349.4
Y	8.2	349.0
M	8.8	348.4
E	9.9	347.3

PLOTTED

425

N of

Univ

E	11.2	346.0
L	10.0	347.2
Y	9.2	348.0
L	8.6	348.6
Y	8.4	348.8
L	7.0	350.2
L	6.5	350.7
W	5.7	351.5

73

357.23

450

N of  
357.23

University

W	6.5	350.7
L	7.4	349.8
L	7.7	349.5
Y	8.8	348.4
L	9.1	348.1
Y	10.0	347.2
L	10.8	346.4
E	12.3	344.9

+10'

PLOTTED

710

595

357.23

12.09

345.14

E	7.0	344.1
L	5.7	345.4
Y	4.5	346.6
L	4.0	347.1
Y	3.6	347.5
L	1.8	349.3
W	0.6	350.5

Missouri

30

357.23  
12.09  
345.14  
- 95  
351.09



35109

300' n of University an  
351.09

W		1,2	349.9
W		2,3	348.8
W	+3'	3,11	348.0
W	+4'	4,6	346.5
W		4,9	346.2
W		5,2	345.9
W	+3'	5,3	345.8
W	+6'	6,6	344.5
W		7,4	343.7
E		9,3	341.8

PLOTTED

525' n of Univ

E		100	341.1
W		96	341.5
W	+6'	87	342.4
W		6,3	344.8
W		6,0	345.1
W		5,8	345.3
W	+4'	4,8	347.1
W		2,8	348.3
W		1,8	349.3

35109

Missouri

31

550' n of University an  
351.09

W		25	348.6
W		4,2	346.9
W	+9'	5,11	346.0
W		7,0	344.1
W		6,9	344.2
W		7,0	344.1
W	+5'	9,5	341.6
W		10,7	340.1
E		2,8	341.3

PLOTTED

575' n of Univ

E		95	341.6
E	+10'	95	341.6
W		107	340.4
W	+7'	105	340.6
W		77	343.4
W		75	343.6
W		75	343.6
W	+3'	60	345.1
W		5,4	345.7
W		3,3	347.8



35109

598 n = S of Lincoln St (80)

351.09

W	56	345.5
H	70	344.1
Y	80	343.1
L	81	343.0
Y	82	342.9
	89	341.1
H	97	341.4
E	92	341.9

PLOTTED

S of Lincoln Ave

E	93	341.8
H	92	341.9
Y	86	342.5
L	83	342.8
	79	343.1
Y	91	342.0
	102	340.9
H	105	340.6
	103	340.8
W	69	344.2

S

35109

Missouri

32

S of Lincoln

351.09

W	95	341.6
H	85	342.6
Y	74	343.7
L	82	342.9
Y	85	342.6
H	85	342.6
E	84	342.7

PLOTTED

center of Lincoln

E	76	343.5
H	79	343.2
Y	78	343.3
L	79	343.2
Y	57	345.4
	26	348.5
H	30	348.1
W	82	342.9



35-109

N 146 Lincoln

W	85	342.6
W	85	342.6
Y	82	342.9
L	76	343.5
Y	78	343.3
W	78	343.3
E	77	343.4

PLOTTED

N 146 Lincoln

E	77	343.4
W	76	343.5
Y	78	343.3
L	79	343.2
Y	81	343.0
W	88	342.3
W	84	342.7

35-109

Missouri

33

N 146 Lincoln  
35-109

W	86	342.5
W	80	343.1
Y	80	343.1
L	77	343.4
Y	75	343.6
W	74	343.7
E	70	344.1

PLOTTED

N 146 Lincoln

E	69	344.2
W	69	344.2
Y	73	343.8
L	72	343.9
Y	76	343.5
W	75	343.6
W	83	342.8



35109

50

n.f.  
351.09

Lincoln

W	82	342.9
bb	74	343.7
y	70	344.1
b	67	344.4
9	69	344.2
h	62	344.9
E	60	345.1

PLOTTED

75

n.f.

Lincoln

E	54	345.7
H	54	345.7
y	62	344.9
t	61	345.0
y	66	344.5
h	71	344.0
W	75	343.6

TP

1014

35328

795 34314

Rec'd

35328

100

n.f.  
353.28

Lincoln

W	94	343.9
	88	344.5
	82	345.1
b	77	345.6
	80	345.3
	71	346.2
E	69	346.4

PLOTTED

125

n.f.

Lincoln

E	62	347.1
	65	346.8
	74	345.9
b	73	346.0
	77	345.6
	81	345.2
W	92	344.1

Missouri

34



353.24

150

n 7  
353.28

Lincoln

w

8.3 345.0

8.0 345.3

7.1 346.2

b

6.6 346.7

6.8 346.5

5.8 347.5

E

5.3 348.0

PLOTTED

175

n 7

Lincoln

E

4.3 349.0

4.9 348.4

6.2 347.1

b

5.9 347.4

6.5 346.8

7.3 346.0

w

7.8 345.5

353.24

200

n 7  
353.28

Lincoln

w

6.9 346.4

6.1 347.2

5.9 347.4

b

5.3 348.0

5.2 348.1

4.1 349.2

E

3.8 349.5

PLOTTED

225

n 6

Lincoln

E

3.3 350.0

3.5 349.8

4.6 348.7

b

4.7 348.6

5.2 348.1

5.0 348.3

w

5.6 347.7

Missouri

35



35326

250'

n of  
353.28

Lincoln

W

47 348.6

114 348.9

114 348.9

b

38 349.5

29 349.4

31 350.2

E

27 350.6

PLOTTED

275'

n of

Lincoln

E

24 350.9

24 350.9

33 350.0

b

310 350.2

37 349.9

36 349.7

W

40 349.3

35328

300'

n of

Lincoln

W

35 349.8

31 350.2

26 350.7

b

23 351.0

25 350.8

19 351.3

E

19 351.4

PLOTTED

325'

n of

Lincoln

E

17 351.6

16 351.7

18 351.5

b

16 351.7

19 351.4

23 351.0

W

26 350.7

Missouri

36



35328

350 n f Lincoln

W 15 351.8

16 351.7

13 352.0

b 13 352.0

17 351.6

13 352.0

E 12 352.1

375' n f Lincoln

E 10 352.3

10 352.3

12 352.1

b 10 352.3

12 352.1

13 352.0

W 13 352.0

TP 700 35915 113 35215

$$\begin{array}{r}
 35328 \\
 113 \\
 \hline
 35215 \\
 700 \\
 \hline
 35915
 \end{array}$$

35915

Missouri

37

460 n f Lincoln

W 64 352.8

65 352.7

67 352.5

b 65 352.7

68 352.4

65 352.7

E 64 352.6

425' n f Lincoln

E 68 352.4

66 352.6

65 352.7

b 61 353.1

63 352.9

59 353.3

W 58 353.4

PLOTTED

PLOTTED



33915

450' n of Lincoln

W	55	353.7
	59	353.3
	60	353.2
b	58	353.4
	62	353.0
	66	352.6
E	68	352.4

PLOTTED

475' n of Lincoln

E	56	353.6
	55	353.7
	57	353.5
b	53	353.9
	57	353.5
	54	353.8
W	50	354.2

33915

500' n of Lincoln

W	47	354.5
	51	354.1
	55	353.7
b	53	353.9
	55	353.7
	51	354.1
E	54	353.8

PLOTTED

525' n of Lincoln

E	52	354.0
	52	354.0
	52	354.0
b	50	354.2
	55	353.7
	47	354.5
W	46	354.6

Missouri

38



35915

550' n of Lincoln

W	43	354.9
	45	354.7
	52	354.0
b	48	354.4
	52	354.0
	51	354.1
E	51	354.1

PLOTTED

575' n of Lincoln

E	50	354.2
	51	354.1
	50	354.2
b	48	354.4
	51	354.1
	43	354.9
W	47	354.5

35915

Missouri

39

600' n = S of Park St (80')

W	44	354.8
	44	354.8
	48	354.4
b	46	354.6
	50	354.2
	46	354.6
E	47	354.5

PLOTTED

S 668 Park

E	47	354.5
	46	354.6
	50	354.2
b	44	354.8
	49	354.2
	46	354.6
W	44	354.8



35915

	S	1/4 of	Palk	
W			46	354.6
			48	354.4
			46	354.6
b			45	354.7
			47	354.5
			45	354.7
E			50	354.2
		center of	Palk	
E			50	354.2
			45	354.7
			45	354.7
b			44	354.8
			45	354.7
			44	354.8
W			43	354.9

PLOTTED

35915

Missouri

40

	N	1/4 of	Palk	
			54	353.4
W			54	353.8
			54	353.8
			54	353.8
			44	354.8
			44	354.8
			44	354.8
			56	353.6
E			60	353.2
		center of	Palk	
E			57	354.1
			42	355.0
			42	355.0
b			43	354.9
			44	354.8
			38	355.4
W			36	355.6

PLOTTED



35915

N L of Polk

W 39 355.3

40 355.2

46 354.6

b 44 354.8

48 354.4

45 354.7

E 52 354.0

PLOTTED

25' n of Polk

a 52 354.0

45 354.7

47 354.5

l 44 354.8

44 354.8

47 354.9

w 35 355.7

35915

Missouri

41

50 28 Polk

w 42 355.0

39 355.2

36 355.6

b 44 354.8

44 354.8

46 354.6

E 53 353.9

PLOTTED

75' n of Polk

E 55 353.7

50 354.2

50 354.2

l 46 354.6

47 354.5

41 355.1

w 37 355.5



35915

100 n of Park

W	34	355.8	35915
	39	355.3	$\frac{336}{674}$
	46	354.6	36415

b	46	354.6
	48	354.4
	49	354.3

PLOTTED

E	51	354.1
---	----	-------

125' n of Park

E	54	353.8
	51	354.1
	57	354.1

b	45	354.7
	47	354.5
	38	355.4

W	34	355.8
---	----	-------

TP	674	36255	334	353.8
----	-----	-------	-----	-------

36255

Missouri

42

150 n of Park

W	71	355.5
	70	355.6
	81	354.5

b	78	354.8
	86	355.0
	88	353.8

PLOTTED

E	89	353.7
---	----	-------

175' n of Park

E	91	353.5
	87	353.9
	86	354.0

b	78	354.8
	80	354.6
	75	355.1

W	72	355.4
---	----	-------



36255

	200	n.f.	Palk	
W			74	355.2
			80	354.6
			77	354.9
b			77	354.9
			83	354.3
			86	354.0
E			85	354.1
	225	n.f.	Palk W	
E			82	354.4
			81	354.5
			78	354.8
b			74	355.2
			75	355.1
			74	355.2
W			70	355.6

PLOTTED

36255

Missouri

43

	250	n.f.	Palk	
W			70	355.6
			73	355.3
			72	355.4
b			71	355.5
			74	355.2
			70	355.6
E			73	355.3
	275	n.f.	Palk	
E			65	356.1
			64	356.2
			68	355.6
b			66	356.0
			68	355.6
			66	356.0
W			65	356.1

PLOTTED



36255

300 n of Polk

W	59	356.7
	57	356.9
	51	357.5
b	56	357.0
	57	356.9
	53	357.3
E	51	357.5

PLOTTED

325' n of Polk

E	43	358.3
	42	358.4
	48	357.8
L	48	357.8
	54	357.2
	50	357.6
W	50	357.6

36255

Massena

44

350 n of Polk st

W	45	358.3
	41	358.5
	46	358.0
b	40	358.6
	37	358.9
	30	359.6
E	32	359.4

PLOTTED

384 n = Boundary st on E old map

E	13	361.3
	16	361.0
	24	360.2
L	27	359.9
	31	359.5
	31	359.5
W	34	359.2

TP

864

36908

185

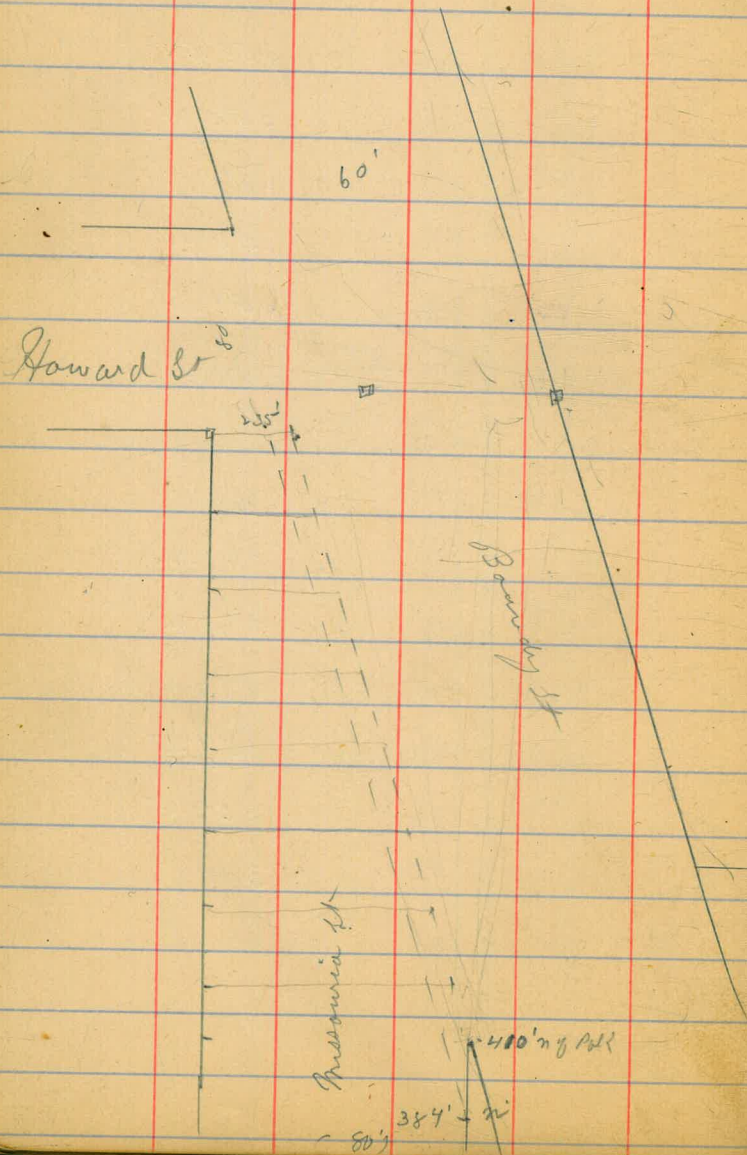
36070

$$\begin{array}{r} 36255 \\ 185 \\ \hline 36070 \\ 868 \\ \hline 36908 \end{array}$$



410' n = Wd Boundary or E

W



369.34

Missouri

45

410' n = Boundary St or E

W

88 360.6

88 360.6

87 360.7

b

83 361.1

82 361.2

**PLOTTED**

74 362.0

E

73 362.1

425' n of Path

W

85 360.9

83 361.1

81 361.3

b

76 361.8

72 362.2

H

67 362.7

+ 9 = Boundary

64 363.0



26938

450 n of Polk

w	75	361.9
	72	362.2
	68	362.6
b	64	363.0
	56	363.8
ll	51	364.3
+15' = Boundary St	51	364.3

PLOTTED

475 n of Polk

w	61	363.3
	60	363.4
	57	363.7
b	53	364.1
y	45	364.9
+8' = Boundary St	42	365.1

26938

Missouri

46

500 n of Polk

w	50	364.4
	50	364.4
	47	364.7
b	44	365.0
1/4 = Boundary St	39	365.5
544	6	Polk
w	44	365.0

PLOTTED

40 365.4

41 365.3

38 365.6

550 n of Polk

w	38	365.6
ll	35	365.9
y	35	365.9
+11' = Boundary St	31	366.3



575' n of Park

W		24	367.0
ll		28	366.6
y		28	366.6
+H		2.6	366.8

PLOTTED

600' n = S of Howard St (80')

W		23	367.1	369.38
ll		24	367.0	4.85
+ 95' = Boundary St		25	366.9	367.53
				6.42
				370.95
TP	642	370.95	485	364.53
				32
				370.65
	669	377.34	0.30	370.65
			0.02	377.32

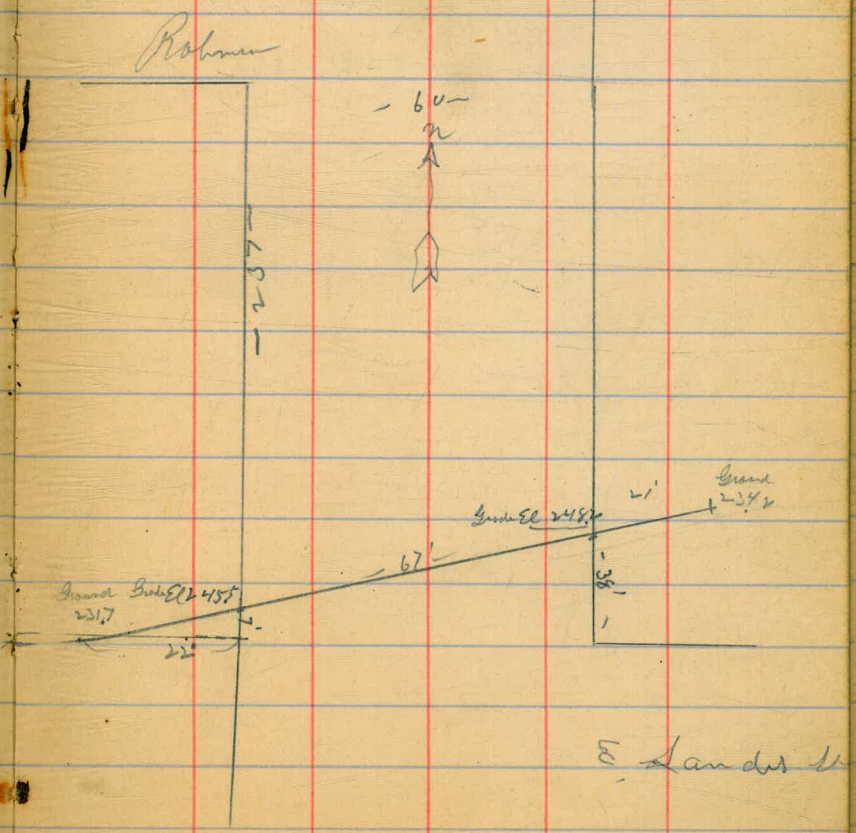
 Adjust  
 on 600  
 from 485



4/ (Clay) Series for Culvert + Slopes  
 8/ Taylor on Alabama St at Sandis St  
 13/ Hwy

	0.4	243.49	243.09	TP B836 P 39
22' W of WA		11.8	231.7	
WA		11.0	232.5	
Cent		10.4	233.1	
E 2		9.8	233.7	
21' E of E 2		9.3	234.2	
		243.49		
130' S of Robbin				
13' E of E 2			246.0	
160' S of Rob				
20' E of E 2		9.8	233.7	
180' S of Rob				
20' E of E 2		9.6	233.9	
20' W of WA		2.4	241.1	
200' S of Rob				
20' E of E 2		9.3	234.2	
20' W of WA		10.6	232.9	
hd Sandis				
10' E of E 2		3.9	239.6	
20' W of WA		11.8	231.7	

28' culvert next st above this





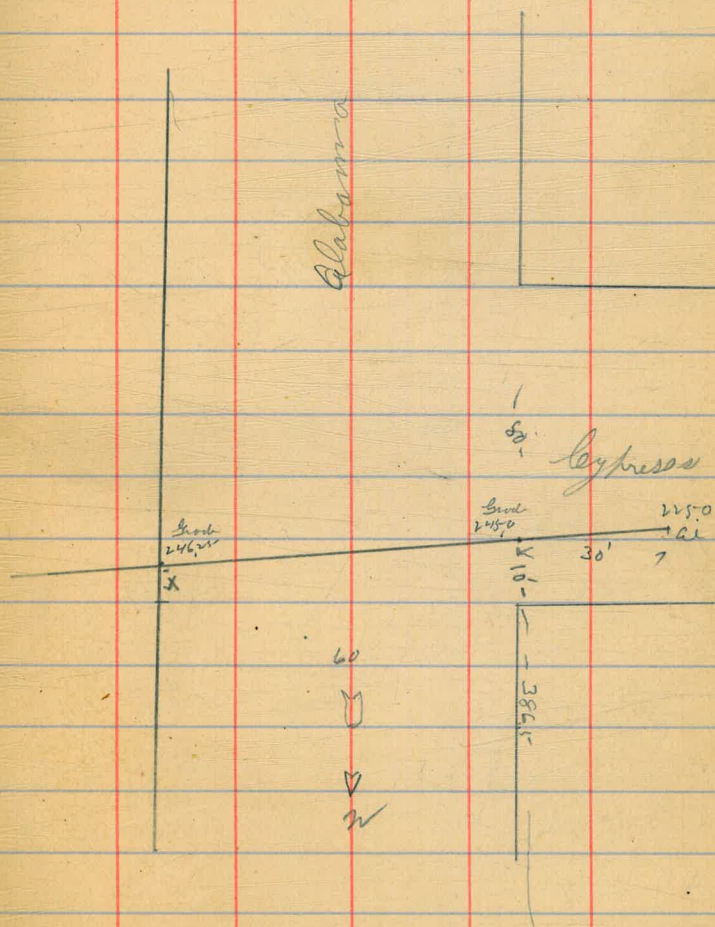
# Clay levels for Culvert on Alabama St  
 8 Trench at lay press st  
 5 1/2 ft

10' culvert, 1st above this

49

	200	2345	3325
30' W of ml		95	225.0
ml		77	226.8
Cent		54	228.7
E L		42	230.3
21' E of L		22	232.3

Slopes are Regular





4 Bench Levels for Culvert on Alabama  
 8 Tyler Bet Dwight + Myrtle  
 13 L<sub>5</sub>

No culvert is really needed here

766  
50

251.7

11.5' E of 2	5.2	246.4
E 2	8.4	
TP 3.40	245.90	9.20 242.50
Cent	5.8	
W 1	8.3	
27' W of W 1	10.4	235.5

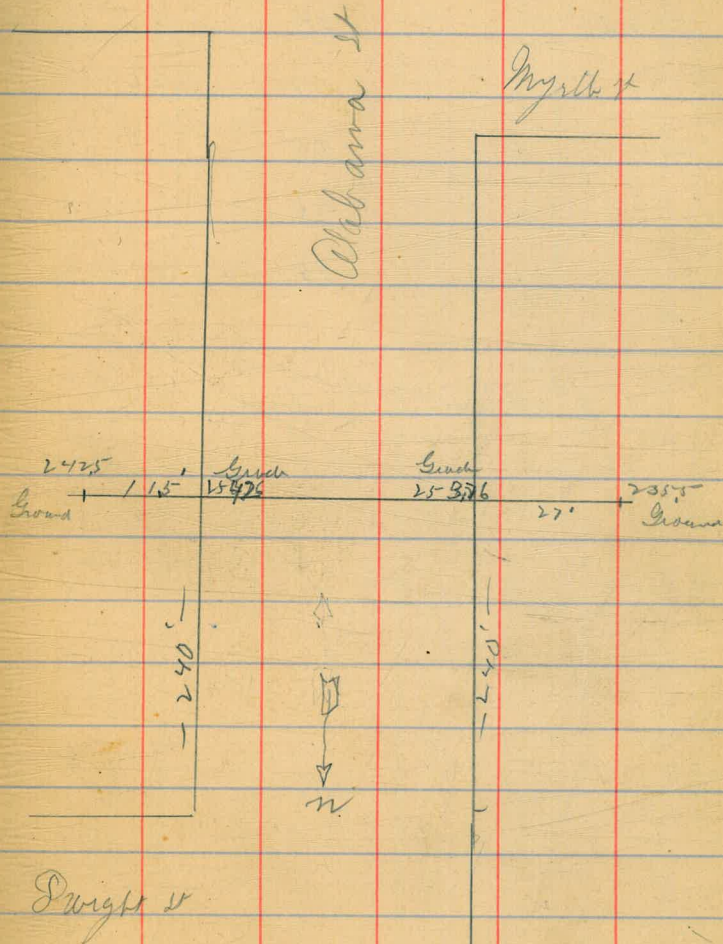
225' S of Dwight

26' W of W 1	6.5	239.4
--------------	-----	-------

275' S

25' W of W 1	1.5	344.4
--------------	-----	-------

Bot of Slope on right





4  
8  
13  
Change  
Taylor  
City

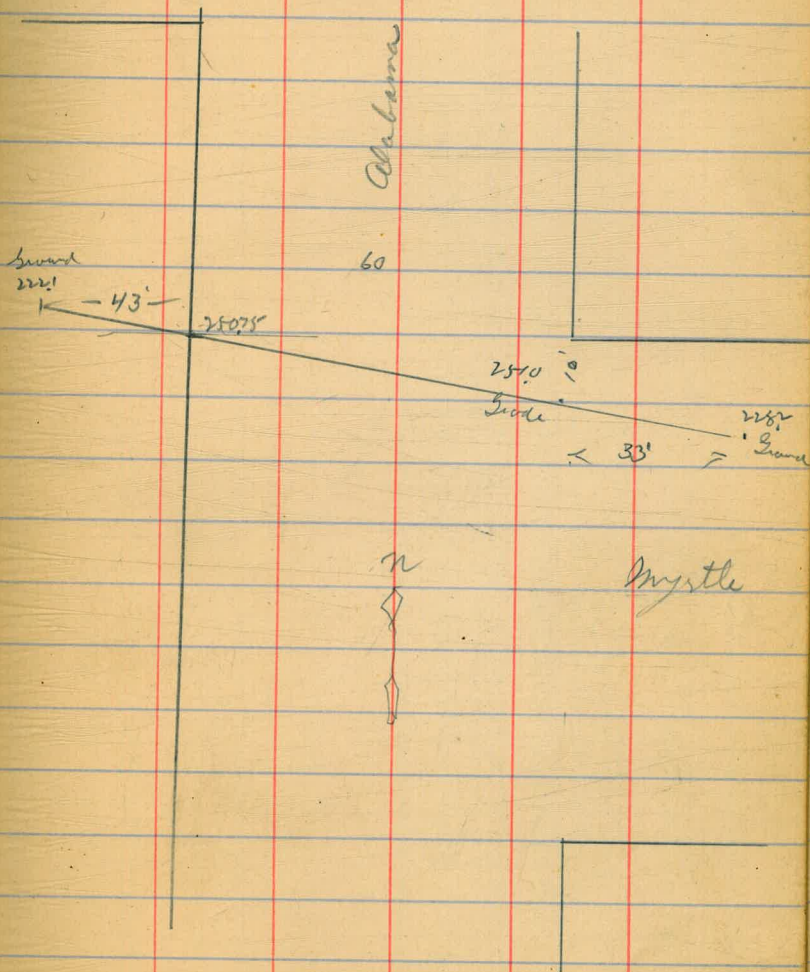
Levels for Culvert on Alabama  
at Myrtle St

10' Pipe at Street above etc.

51

	240	231.6		229.2	ben D
33' E of EL			3.4	228.2	
EL			4.7	226.9	
Cent			6.5		
WL			7.8		
43' W of WL			9.6	222.1	

all slopes regular





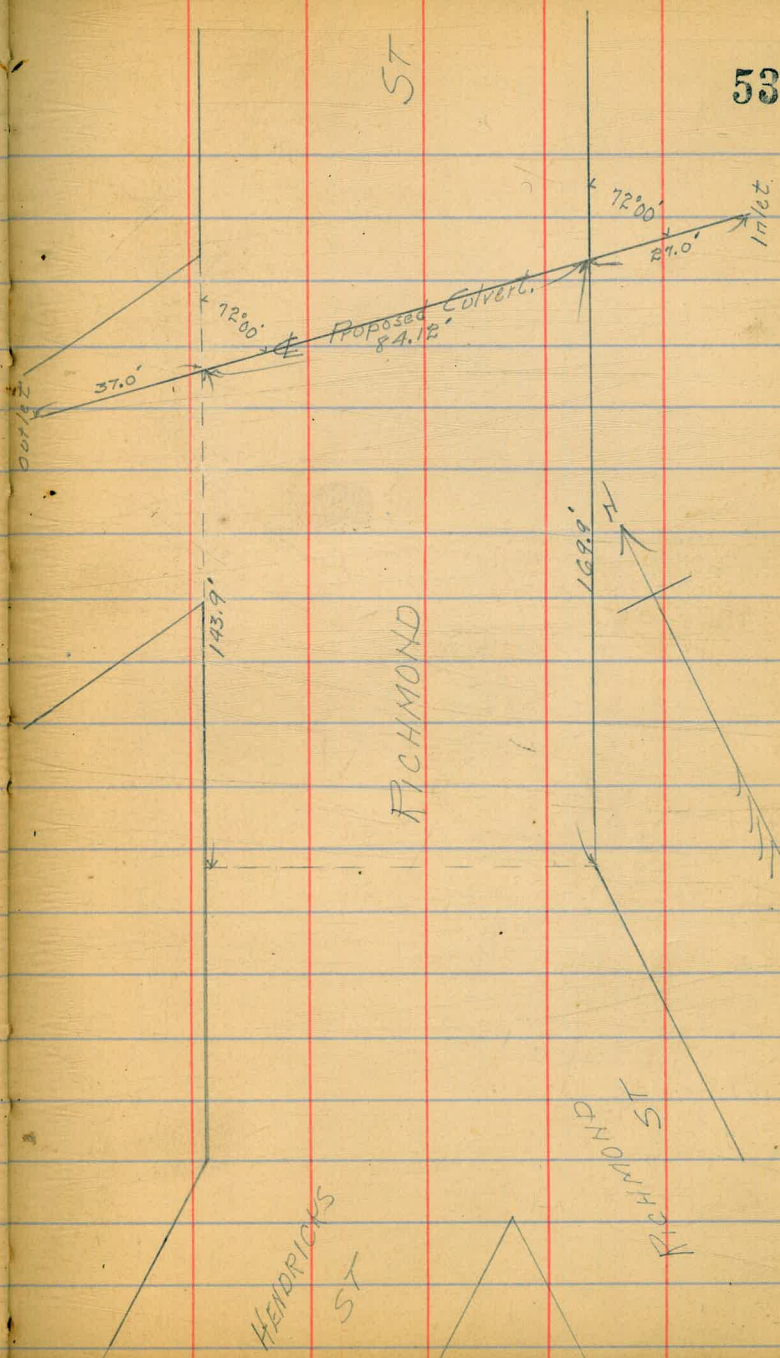
52



4/9/13  
 Gregory  
 Shustaku  
 Shaw

NOTES FOR CULVERT  
 ON  
 RICHMOND ST.  
 AT  
 PASCOE.

B.M.	6.47	303.63		297.16	SW. Colwood University
T.P.	0.84	293.94	10.53	293.10	
West end of culv			24.9	269.0	
West prop line			22.9	271.0	
6 E. of W. prop line			22.3	271.6	
7 W. of Ctr. of Rich.			2.6	291.3	
9 E. - - -			2.9	291.0	
11 W - E. prop line			16.0	277.9	
East Prop line			17.0	276.9	
East end of culv			17.5	276.4	





54



3/13  
Oregon  
Photographic  
Studio

CROSS-SECTION OF 50' WIDE  
SUTTER STREET 10' WALKS  
7 1/2' 1/4'S  
FROM  
EAST LINE BELLEVUE AVE.  
TO  
WEST LINE JACKSON ST

279.11

55

100' EAST

B.M.	8.28	279.11	270.83	END OF CURB ON KITE ST. SEC. BOOK B2 PAGE 81	N	5.5	273.6
					ch	5.6	273.5
N		2.5	276.6		1/4	5.7	273.9
ch		2.8	276.3		C	6.0	273.1
1/4		3.1	276.0		1/4	6.1	273.0
C		2.6	276.5		ch	6.4	272.7
1/4		2.9	276.2		S	6.3	272.8
ch		2.8	276.3				
S		2.5	276.6		S		

50' EAST

150' EAST

S		3.7	275.4		S	8.8	270.3
ch		3.9	275.2		ch	8.5	270.6
1/4		3.8	275.3		1/4	8.3	270.8
C		3.6	275.5		C	8.5	270.6
1/4		3.7	275.4		1/4	8.1	271.0
ch		3.8	275.3		ch	7.9	271.2
N		3.1	276.0		N	7.5	271.6



279.11

300' EAST

N	10.0	269.1
cb	10.3	268.8
1/4	10.3	268.8
c	10.4	268.7
1/4	10.7	268.4
cb	10.6	268.5
S	11.3	267.8
T.P.	2.18	268.42
	12.87	266.24

350' EAST

S	4.7	263.7
cb	4.4	264.0
1/4	4.2	264.2
c	3.9	264.5
1/4	3.8	264.6
cb	3.5	264.9
N	3.2	265.2

268.42

56

286.76 EAST = Sec. A (see sketch)

N	5.7	262.7
cb	6.0	262.4
1/4	6.0	262.4
c	6.0	262.4
1/4	6.4	262.0
cb	6.7	261.7
S	7.3	261.1

East Line of Belknap Hob

90°

SUTTER

286.76

ST



JACKSON



268.42

296.76 EAST = Sec. B

S	8.1	260.3
ct	7.7	260.7
1/4	7.3	261.1
C	7.0	261.4
1/4	6.4	262.0
ct	6.1	262.3
N	5.8	262.6

306.76 EAST = Sec. C = W.L. JACKSON

N	6.3	262.1		
ct	7.0	261.4		
1/4	7.2	261.2		
C	7.9	260.5		
1/4	8.2	260.2		
ct	8.3	260.1		
S	8.4	260.0		
T.P.	3.59	361.15	10.86	257.56
B.M.			4.12	257.03

N.E. on  
Sutton's Island

57



X sect. Laudis firm

west line Oregon 60'

12.04 <sup>H.I.</sup> 303.89 ✓

291.85

East line Arnold = 265' west Villa Terrace <sup>Sq. line</sup>

S. line

11.7 292.2

11.6 292.3

11.2 292.7

C

11.1 292.8

11.0 292.9

11.5 292.4

N. line

11.2 292.7

263' W Villa Terrace

M. line

7.4 296.5

7.7 296.2

8.0 295.9

10.3 293.6

10.4 293.5

10.2 293.7

8.3 295.6

+5

+5

No. line

8.0 295.9

8.4 295.5

E. line Arnold to

street 10' walks <sup>3039 X 9</sup>

Sept. 15/16

225' W

Childs

58

Evans

Alford

7.2 296.7

7.3 296.6

7.2 296.7

7.2 296.7

6.9 297.0

6.4 297.5

5.9 298.0

No. line

200' W

No. line

5.2 298.7

5.5 298.4

5.8 298.1

C

5.6 298.3

5.6 298.3

5.6 298.3

No. line

5.8 298.1



LANDIS ST.

303.9

175' W.

no. line	5.3	298.6
	5.0	298.9
	4.5	299.4
c	4.8	299.1
	4.7	299.2
	4.3	299.6
no. line	4.4	299.5

150' W

no. line	3.6	300.3
	3.7	300.2
	3.9	300.0
c	4.0	299.9
	3.8	300.1
	3.6	300.3
no. line	3.4	300.5

59

303.89

125' W

no. line	2.0	301.9
	2.1	301.8
	1.9	302.0
c	1.8	302.1
	2.1	301.8
	2.0	301.9
no. line	2.0	301.9

100' W.

no. line	1.0	302.9
	0.8	303.1
	0.8	303.1
c	1.0	302.9
	0.8	303.1
	0.6	303.3
no. line	0.5	303.4



LANDIS ST.

3038949.

60

J.P.

HI.  
1282 316.45 0.26 303.63

316.45

95' W

no line

75' W

no line

7.0 309.4

11.5 305.0

6.3 310.2

11.7 304.8

5.8 310.6

11.9 304.6

C

5.3 311.2

C

11.8 304.7

4.7 311.7

11.6 304.9

4.1 312.3

11.2 305.3

no line

5.2 311.2

no line

11.2 305.3

7' W

50 W

no line

2.0 314.4

no line

7.4 309.0

1.8 314.6

7.4 309.0

1.6 314.8

8.3 308.2

C

1.9 314.5

C

9.4 307.0

2.1 314.3

9.7 306.7

+5

2.4 314.0

9.3 307.2

3.4 313.0

no line

9.3 307.2

no line

4.6 311.8



LANDIS ST.

316.45

327.8

61

West line Villa Terrace

263' west Oregon

No line	1.5	315.0
gutter	1.7	314.7
	2.3	314.2
	1.5	315.0
C	1.3	315.2
gutter	1.3	315.2
	1.5	315.0
	0.8	315.6
No line	0.3	316.2

No. line	8.5	319.3
	8.8	319.0
	8.5	319.3
	8.7	319.1
	10.1	317.7
	9.0	318.8
	8.4	319.4
	7.1	320.7
No. line	7.2	320.6

T.P. 11.70 <sup>H.I.</sup> 327.79 - 0.34 316.09

225' W

② = 365' W, <sup>original</sup> East line Villa Terrace

No. line	10.4	317.4
gutter	10.7	317.1
	11.4	316.4
	11.1	316.7
C	10.7	317.1
gutter	11.7	316.1
	12.4	315.4
	11.9	315.9
No. line	11.6	316.2

No. line	5.3	322.5
	5.4	322.4
	5.6	322.2
C	5.6	322.2
	5.8	322.0
	6.0	321.8
No. line	5.7	322.1



LANDIS ST.

327.79

62

200' W.

J.P.

13.03 <sup>H.F.</sup> 340.03 0.79 327.00

150' W

So. line

2.9 324.9

3.1 324.7

3.1 324.7

2.9 324.9

2.4 325.4

2.3 325.5

2.3 325.5

No. line

175' W.

No. line

10.9 329.1

11.3 328.7

No. line

4.02 328.0

0.4 327.4

0.5 327.3

1.2 326.6

1.5 326.3

1.5 326.3

1.3 326.5

No. line

No. line

125' W

8.8 331.2

9.0 331.0

8.9 331.1

8.7 331.3

8.7 331.3

9.0 331.0

9.4 330.6



LANDIS ST.

3400ft

100' W.

no. line	7.5	332.5
	7.1	332.9
	6.2	333.8
c	6.1	333.9
	5.8	334.2
	7.4	332.6

no. line	7.5	332.5
----------	-----	-------

75' W.

no. line	4.9	335.1
	4.4	335.6
	4.8	335.5
c	4.2	335.8
	5.1	334.9
	5.0	335.0
no. line	4.8	335.2

3400

63

60' W.

no. line	3.2	336.8
	2.8	337.2
	2.4	337.6
c	2.7	337.3
	3.3	336.7
	3.4	336.6
no. line	3.1	336.9

25' W.

no. line	<del>3.2</del>	
	2.2	337.8
	2.3	337.7
	2.2	337.8
c	2.0	338.0
	1.9	338.1
	1.9	338.1
no. line	2.5	337.5



LANDIS ST.

3400

64

5' W.

solino 1.3 3387

1.1 3389

1.6 3384

C 2.1 3379

2.1 3379

1.7 3383

solino 1.6 3384

West line (segu)

solino 1.8 3387

2.2 3378

2.3 3377

C 2.4 3376

2.3 3377

2.6 3374

solino 2.4 3376



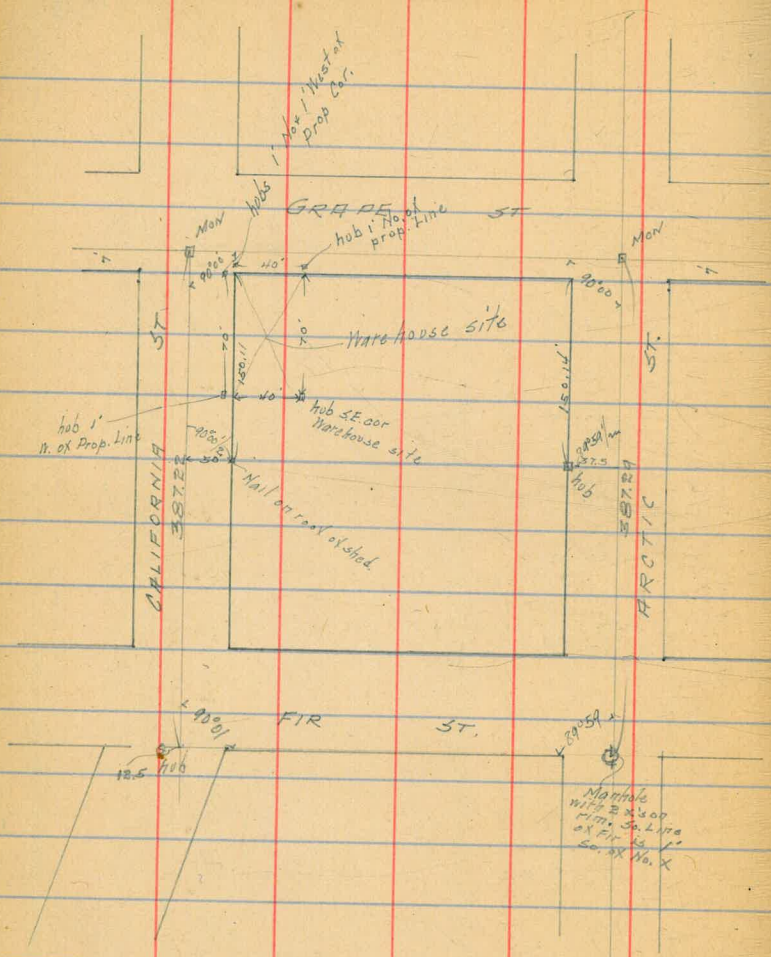
65



12/27/16 Gregory  
Morton  
Miller

SURVEY OF BLOCK  
MIDDLETOWN

66

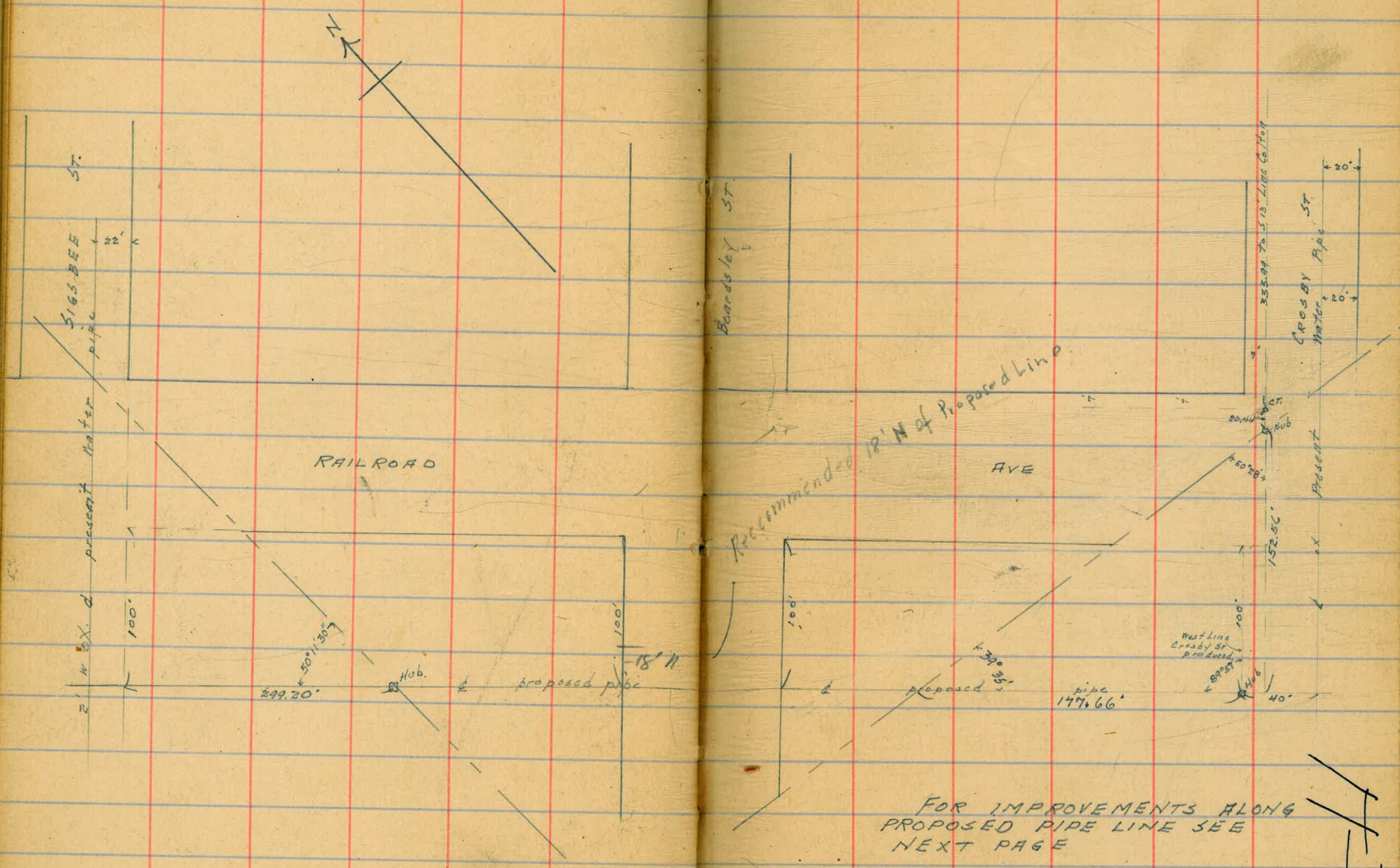




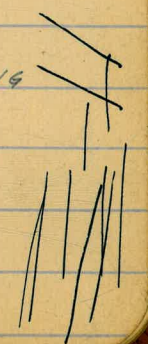
7/25/18

Gregory  
Miller  
Moore

Survey of R.O.W. for  
Water Main  
from Sigbee to Crosby.  
100' So. of Railroad Ave.



FOR IMPROVEMENTS ALONG  
PROPOSED PIPE LINE SEE  
NEXT PAGE

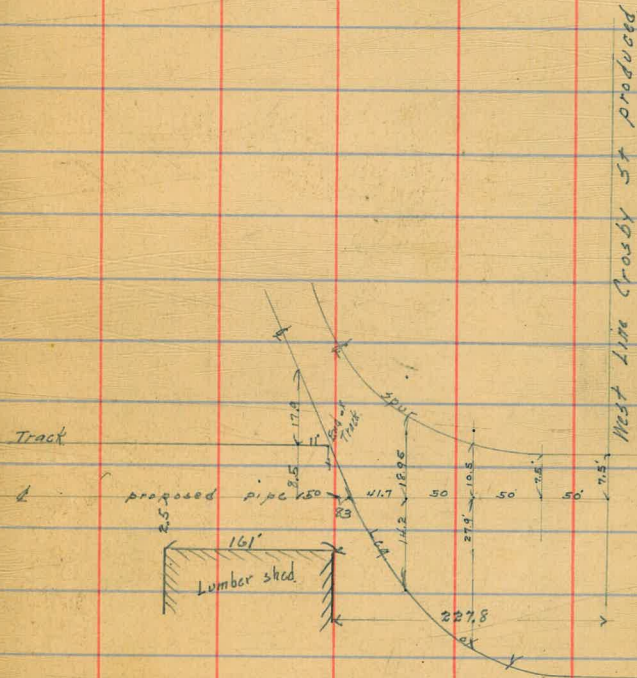
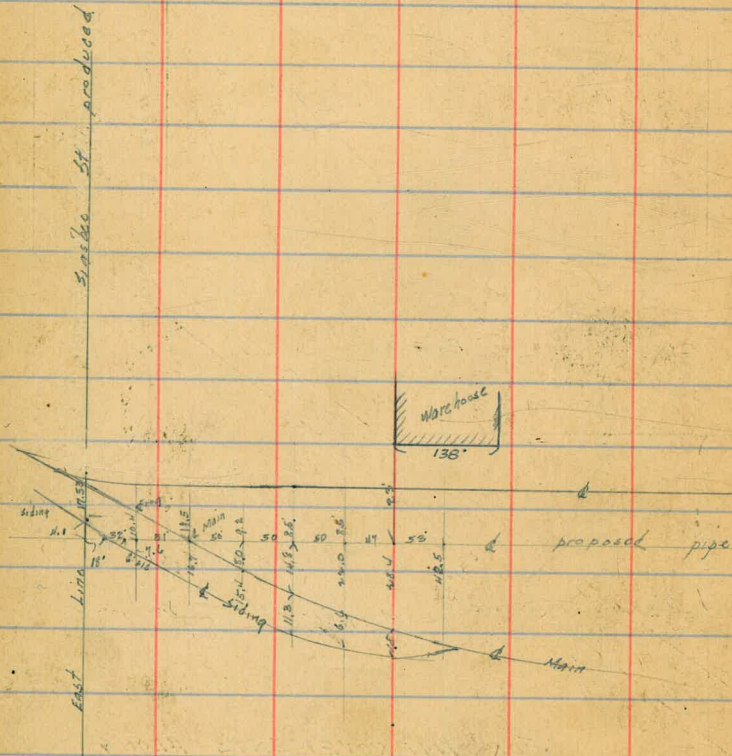




2/25/18

Location of Tracks etc along  
Proposed Pipe Line  
shown on Preceding page.

68





	176	101.76	100.00	Top 4/6	
0.0			4.39	97.37	94.9 2.47
+50			4.92	96.84	94.8 <sup>2.04</sup> / <sub>3.8</sub>
1+00			5.08	96.68	94.9 2.0
1+50			3.67	98.09	94.6 2.49
1+90			5.10	96.66	
2+00			5.01	96.75	94.5 2.25
2+50			4.79	96.97	94.4 2.57
3+05			4.27	97.49	94.3 3.19
3+50			4.54	97.22	94.2 3.0
4+00			4.65	97.11	94.1 3.0
4+50			5.09	96.67	94.0 2.67
5+00	2.55	98.79	5.52	96.24	* 93.9 2.34
5+50			2.88	95.91	93.35 2.56
6+00			4.05	94.74	92.6 2.14
+20			5.89	92.90	<sup>2.15</sup> / <sub>2.0</sub> Top pipe
+37			5.70	92.99	ditch
+60			4.15	94.64	92.40 2.24
7+10			4.45	94.34	92.10 2.24

9879

69

7+60	4.65	94.14	91.95	2.2	
8+10	4.73	94.06	91.73	2.33	
8+60	4.89	93.90	91.50	2.4	
9+10	4.68	94.11	91.28	2.83	
9+60	4.88	93.91	91.06	2.85	
9+96	7.26	91.53	89.99	2.54	20' from pipe
10+10	4.94	93.85	90.86	3.0	
10+60	5.12	93.67	90.68	3.0	
11+15	4.63	94.16	90.54	3.65	
11+60	5.77	93.02	90.34	3.68	
12+10	5.60	93.19	90.18	3.0	Track
12+60	5.60	93.19	90.0	3.2	
	5.83				



10/10/18

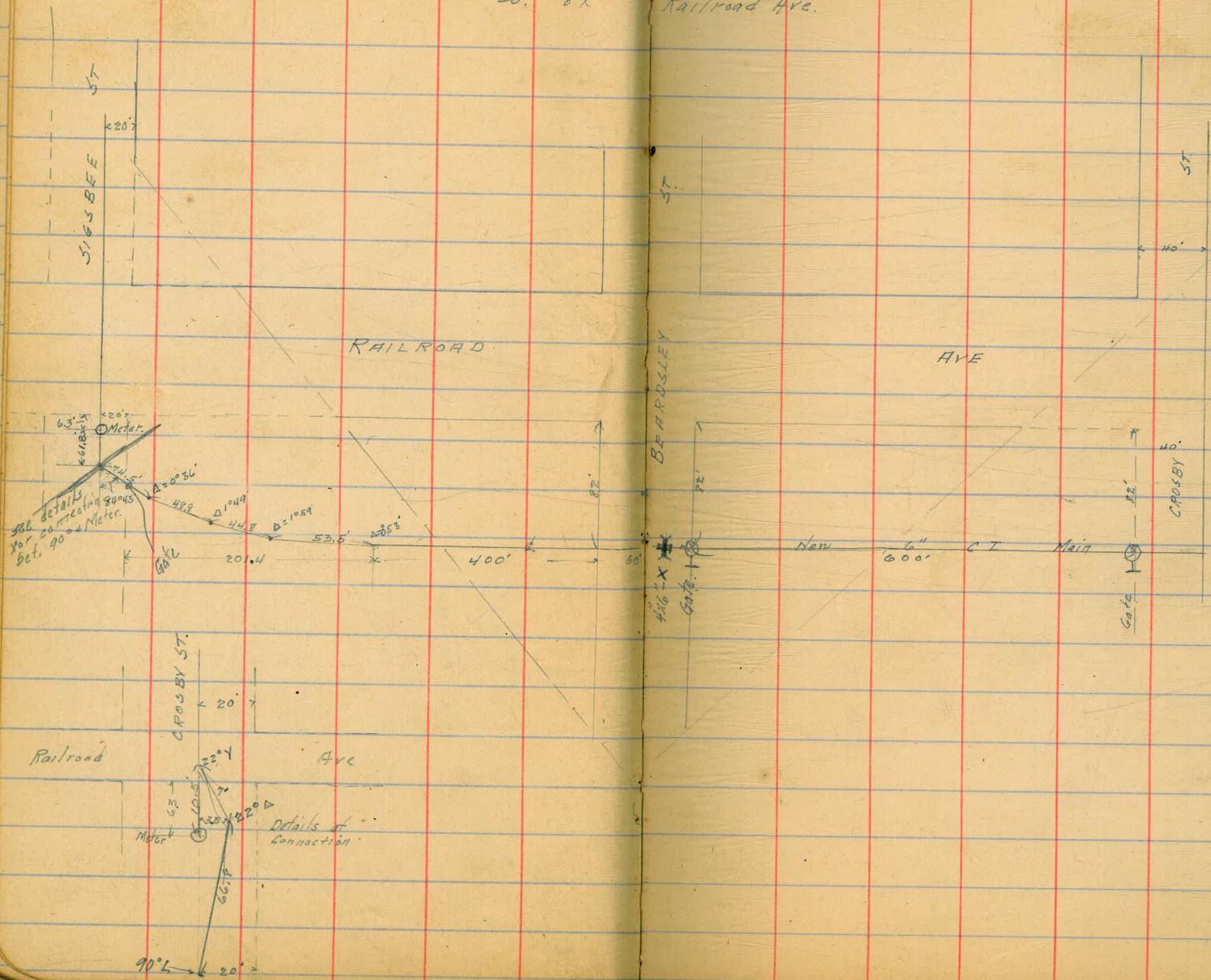
FINAL

LOCATION

6" Cast Iron  
So. oX

Water Main  
Railroad Ave.

70





71



72



78



74



75



76



77



78



79



DISTANCES FROM CENTER OF ROADWAY FOR CROSS-SECTIONING

ROADWAY 16 FEET WIDE. SIDE SLOPES 1½ TO 1.

FOR SINGLE TRACK EMBANKMENT.

	0	.1	.2	.3	.4	.5	.6	.7	.8	.9
0	8.0	8.2	8.3	8.5	8.6	8.8	8.9	9.1	9.2	9.4
1	9.5	9.7	9.8	10.0	10.1	10.3	10.4	10.6	10.7	10.9
2	11.0	11.2	11.3	11.5	11.6	11.8	11.9	12.1	12.2	12.4
3	12.5	12.7	12.8	13.0	13.1	13.3	13.4	13.6	13.7	13.9
4	14.0	14.2	14.3	14.5	14.6	14.8	14.9	15.1	15.2	15.4
5	15.5	15.7	15.8	16.0	16.1	16.3	16.4	16.6	16.7	16.9
6	17.0	17.2	17.3	17.5	17.6	17.8	17.9	18.1	18.2	18.4
7	18.5	18.7	18.8	19.0	19.1	19.3	19.4	19.6	19.7	19.9
8	20.0	20.2	20.3	20.5	20.6	20.8	20.9	21.1	21.2	21.4
9	21.5	21.7	21.8	22.0	22.1	22.3	22.4	22.6	22.7	22.9
10	23.0	23.2	23.3	23.5	23.6	23.8	23.9	24.1	24.2	24.4
11	24.5	24.7	24.8	25.0	25.1	25.3	25.4	25.6	25.7	25.9
12	26.0	26.2	26.3	26.5	26.6	26.8	26.9	27.1	27.2	27.4
13	27.5	27.7	27.8	28.0	28.1	28.3	28.4	28.6	28.7	28.9
14	29.0	29.2	29.3	29.5	29.6	29.8	29.9	30.1	30.2	30.4
15	30.5	30.7	30.8	31.0	31.1	31.3	31.4	31.6	31.7	31.9
16	32.0	32.2	32.3	32.5	32.6	32.8	32.9	33.1	33.2	33.4
17	33.5	33.7	33.8	34.0	34.1	34.3	34.4	34.6	34.7	34.9
18	35.0	35.2	35.3	35.5	35.6	35.8	35.9	36.1	36.2	36.4
19	36.5	36.7	36.8	37.0	37.1	37.3	37.4	37.6	37.7	37.9
20	38.0	38.2	38.3	38.5	38.6	38.8	38.9	39.1	39.2	39.4
21	39.5	39.7	39.8	40.0	40.1	40.3	40.4	40.6	40.7	40.9
22	41.0	41.2	41.3	41.5	41.6	41.8	41.9	42.1	42.2	42.4
23	42.5	42.7	42.8	43.0	43.1	43.3	43.4	43.6	43.7	43.9
24	44.0	44.2	44.3	44.5	44.6	44.8	44.9	45.1	45.2	45.4
25	45.5	45.7	45.8	46.0	46.1	46.3	46.4	46.6	46.7	46.9
26	47.0	47.2	47.3	47.5	47.6	47.8	47.9	48.1	48.2	48.4
27	48.5	48.7	48.8	49.0	49.1	49.3	49.4	49.6	49.7	49.9
28	50.0	50.2	50.3	50.5	50.6	50.8	50.9	51.1	51.2	51.4
29	51.5	51.7	51.8	52.0	52.1	52.3	52.4	52.6	52.7	52.9
30	53.0	53.2	53.3	53.5	53.6	53.8	53.9	54.1	54.2	54.4
31	54.5	54.7	54.8	55.0	55.1	55.3	55.4	55.6	55.7	55.9
32	56.0	56.2	56.3	56.5	56.6	56.8	56.9	57.1	57.2	57.4
33	57.5	57.7	57.8	58.0	58.1	58.3	58.4	58.6	58.7	58.9
34	59.0	59.2	59.3	59.5	59.6	59.8	59.9	60.1	60.2	60.4
35	60.5	60.7	60.8	61.0	61.1	61.3	61.4	61.6	61.7	61.9
36	62.0	62.2	62.3	62.5	62.6	62.8	62.9	63.1	63.2	63.4
37	63.5	63.7	63.8	64.0	64.1	64.3	64.4	64.6	64.7	64.9
38	65.0	65.2	65.3	65.5	65.6	65.8	65.9	66.1	66.2	66.4
39	66.5	66.7	66.8	67.0	67.1	67.3	67.4	67.6	67.7	67.9
40	68.0	68.2	68.3	68.5	68.6	68.8	68.9	69.1	69.2	69.4

Calculated by F. E. Paradis, C. E.

388.7  
111  
00

675  
25  
7.2

6.68  
102  
5.26  
263  
408

388.7  
277  
161  
279  
84  
194  
21  
220

263  
263  
492  
735

773  
1300  
207

11.3

207  
85  
122  
26  
148

527  
263  
1036

256  
87  
179

3410  
257  
247

