

875

875
F.B.

LEVEL BOOK.

No. 410 T

EUGENE DIETZGEN CO.,

Drawing Materials and Surveying Instruments.

NEW YORK.

CHICAGO.

SAN FRANCISCO.

TABLES FOR EXCAVATIONS AND EMBANKMENTS.
DISTANCES FROM CENTER OF ROADWAY FOR CROSS-SECTIONING
ROADWAY 20 FEET WIDE. SIDE SLOPES 1 TO 1.
FOR SINGLE TRACK EXCAVATION.

Copyright, 1902. No. 39340.

	0	.1	.2	.3	.4	.5	.6	.7	.8	.9	
0	10.0	10.1	10.2	10.3	10.4	10.5	10.6	10.7	10.8	10.9	0
1	11.0	11.1	11.2	11.3	11.4	11.5	11.6	11.7	11.8	11.9	1
2	12.0	12.1	12.2	12.3	12.4	12.5	12.6	12.7	12.8	12.9	2
3	13.0	13.1	13.2	13.3	13.4	13.5	13.6	13.7	13.8	13.9	3
4	14.0	14.1	14.2	14.3	14.4	14.5	14.6	14.7	14.8	14.9	4
5	15.0	15.1	15.2	15.3	15.4	15.5	15.6	15.7	15.8	15.9	5
6	16.0	16.1	16.2	16.3	16.4	16.5	16.6	16.7	16.8	16.9	6
7	17.0	17.1	17.2	17.3	17.4	17.5	17.6	17.7	17.8	17.9	7
8	18.0	18.1	18.2	18.3	18.4	18.5	18.6	18.7	18.8	18.9	8
9	19.0	19.1	19.2	19.3	19.4	19.5	19.6	19.7	19.8	19.9	9
0	20.0	20.1	20.2	20.3	20.4	20.5	20.6	20.7	20.8	20.9	10
1	21.0	21.1	21.2	21.3	21.4	21.5	21.6	21.7	21.8	21.9	11
2	22.0	22.1	22.2	22.3	22.4	22.5	22.6	22.7	22.8	22.9	12
3	23.0	23.1	23.2	23.3	23.4	23.5	23.6	23.7	23.8	23.9	13
4	24.0	24.1	24.2	24.3	24.4	24.5	24.6	24.7	24.8	24.9	14
5	25.0	25.1	25.2	25.3	25.4	25.5	25.6	25.7	25.8	25.9	15
6	26.0	26.1	26.2	26.3	26.4	26.5	26.6	26.7	26.8	26.9	16
7	27.0	27.1	27.2	27.3	27.4	27.5	27.6	27.7	27.8	27.9	17
8	28.0	28.1	28.2	28.3	28.4	28.5	28.6	28.7	28.8	28.9	18
9	29.0	29.1	29.2	29.3	29.4	29.5	29.6	29.7	29.8	29.9	19
0	30.0	30.1	30.2	30.3	30.4	30.5	30.6	30.7	30.8	30.9	20
1	31.0	31.1	31.2	31.3	31.4	31.5	31.6	31.7	31.8	31.9	21
2	32.0	32.1	32.2	32.3	32.4	32.5	32.6	32.7	32.8	32.9	22
3	33.0	33.1	33.2	33.3	33.4	33.5	33.6	33.7	33.8	33.9	23
4	34.0	34.1	34.2	34.3	34.4	34.5	34.6	34.7	34.8	34.9	24
5	35.0	35.1	35.2	35.3	35.4	35.5	35.6	35.7	35.8	35.9	25
6	36.0	36.1	36.2	36.3	36.4	36.5	36.6	36.7	36.8	36.9	26
7	37.0	37.1	37.2	37.3	37.4	37.5	37.6	37.7	37.8	37.9	27
8	38.0	38.1	38.2	38.3	38.4	38.5	38.6	38.7	38.8	38.9	28
9	39.0	39.1	39.2	39.3	39.4	39.5	39.6	39.7	39.8	39.9	29
0	40.0	40.1	40.2	40.3	40.4	40.5	40.6	40.7	40.8	40.9	30
1	41.0	41.1	41.2	41.3	41.4	41.5	41.6	41.7	41.8	41.9	31
2	42.0	42.1	42.2	42.3	42.4	42.5	42.6	42.7	42.8	42.9	32
3	43.0	43.1	43.2	43.3	43.4	43.5	43.6	43.7	43.8	43.9	33
4	44.0	44.1	44.2	44.3	44.4	44.5	44.6	44.7	44.8	44.9	34
5	45.0	45.1	45.2	45.3	45.4	45.5	45.6	45.7	45.8	45.9	35
6	46.0	46.1	46.2	46.3	46.4	46.5	46.6	46.7	46.8	46.9	36
7	47.0	47.1	47.2	47.3	47.4	47.5	47.6	47.7	47.8	47.9	37
8	48.0	48.1	48.2	48.3	48.4	48.5	48.6	48.7	48.8	48.9	38
9	49.0	49.1	49.2	49.3	49.4	49.5	49.6	49.7	49.8	49.9	39
0	50.0	50.1	50.2	50.3	50.4	50.5	50.6	50.7	50.8	50.9	40

Calculated by F. E. Paradis, C. E.

MICROFILMED

DEC 15 1964

1
1
3

X dec 8 33rd St (60') 22 9 52 am

G to H Page 73

Spit 13m

	250	85.73		8323	204422
	665	80.21	1207	7366	8323
	485	79.62	554	7477	250
					85.73
					1207
					73.66
					76.47
					80.37
					554
W			5.1	74.5	74.77
H			7.6	72.0	485
H			9.8	69.8	79.62
S			11.4	68.2	
H			11.7	68.2	
Ch			11.8	67.8	
E			12.0	67.6	
	25	mf	See		
E			10.6	69.0	
			10.3	69.3	
			10.1	69.5	
b			10.3	69.3	
yr			9.8	69.8	
			8.5	71.1	
			5.0	74.6	
W			4.9	74.7	

796v

50 n y gwt

w		49	74.7
		43	75.3
		46	75.0
b		85	71.1
		89	70.7
		89	70.7
E		90	70.6

100 n y gwt

E		51	74.5
		52	74.4
		52	74.4
b		53	74.1
		39	75.7
		28	76.8
w		30	76.6

796v

150 n y gwt

w		19	77.7
		11	78.5
		20	77.6
b		28	76.8
		30	76.6
		29	76.7
E		32	76.4

7P 11.1 90v 541 79.1

200 n y gwt

E		11.3	78.9
		11.0	79.2
		11.1	79.1
b		11.3	78.9
		11.0	79.2
		11.7	78.5
w		12.6	77.6

33d

1

796v

$$\begin{array}{r} 59.11 \\ 11.11 \\ \hline 90.22 \end{array}$$

9022

250 mg Gr

W	116	78.6
	114	78.8
	106	79.6
b	105	79.7
	104	80.0
	95	80.7
E	87	81.5

300 n = S L f 7 J (80)

E	57	84.5
d	59	84.3
1/4	68	83.4
b	70	83.2
1/4	80	82.2
d	90	81.2
W	99	80.3

9022

3392

2

S L f 7 J

W	89	81.3
	75	82.7
	68	83.4
b	61	84.1
	60	84.2
	51	85.1
E	49	85.3

R + i = 15 n f S L = S L f 7 J on E

E	47	85.5
S	1/4	f 7 J
E	38	86.4
	46	85.6
	49	85.3
b	49	85.3
	53	84.9
	58	84.4
W	63	83.9

9000

center of

7 ft

W	50	85.2
	48	85.4
	42	86.0
b	40	86.2
	43	85.9
	42	86.0
E	34	86.8

n

1/4 of

7 ft

E	39	86.3
	38	86.4
	39	86.3
b	36	86.6
	34	86.8
	40	86.2
W	47	85.5

n 4 + 12 = 15' 58" h L = h L from E

W	49	85.3
---	----	------

n h + 9'

E	42	86.0
---	----	------

9000

334

3

n

66 ft

7 ft

W	47	85.5
	39	86.3
	32	87.0
b	39	86.3
	32	87.0
	33	86.9
E	24	87.8

n

line of

7 ft

E	16	88.6
	25	87.7
	26	87.6
b	26	87.6
	30	87.2
	40	86.2
	37	86.5
W	12	89.0

9622

13' 297 = 150' S of Linn Grove

n			70.1	90.3	
			05	89.7	
73'			30	87.2	
			27	87.5	
b			20	88.2	8022
			22	88.0	247
	Gutter		22	88.0	87.76
a			18	89.2	801
E			13	88.9	7576
TP	801	95-76	247	87.5	
	125'	S of	Linn Grove		
E			58	90.0	
n			58	90.0	
	Gutter		70	88.8	
y			70	88.8	
b			69	88.9	
y			74	88.4	
	75'		70	88.8	
n			80	89.8	
n			50	90.3	

95-76

100' S of Linn Grove

n			45	91.3	
n			55	90.3	
			66	89.2	
b			62	89.6	
			63	89.5	
	Gutter		64	89.4	
n			69	90.9	
E			46	91.2	
	50'	S of	Linn Grove		
a			40	91.8	
			41	91.7	
		Gutter	52	90.2	
			53	90.5	
t			52	90.6	
			60	89.8	
			58	90.0	
n			52	90.6	

332

4

95-76

S side of Lower Grove (70')

W	55	90.3
	53	90.5
	51	90.7
	45	91.3
	43	91.5
Center	45	91.3
	37	92.1
E	35	92.3

Lower Grove narrowed to S

S side of Lower Grove

E	33	92.5
W	(33)	92.5
	43	91.5
	42	91.6
	40	91.8
b	43	91.5
	48	91.0
	52	90.6
W	55	90.3

Side of N

E	42	91.6
---	----	------

95-76

334

5

S side of Lower Grove

W	52	90.6
	51	90.7
	45	91.3
b	40	91.8
	38	92.0
	37	92.1
E	35	92.3

Center of Lower Grove

b	33	92.5
	35	92.3
	38	92.0
b	41	91.7
	46	91.2
	52	90.6
W	53	90.5

95.76

N 14 f Lemo Grav

N 52 90.6

52 90.6

46 91.2

b 44 91.4

41 91.7

40 91.8

E 36 92.2

N 66 f Lemo Grav

E 32 92.6

40 91.8

45 91.3

b 47 91.1

49 90.9

51 90.7

N 53 90.5

Bm 320 92.56

SP-14 SE
334 Semmly

95.7

N 52 f Lemo Grav

N 52 90.6

52 90.6

49 90.9

b 49 90.9

46 91.2

44 91.4

E 31 92.7

TP 5.20 27.71 325 92.51

25 21 f Lemo Grav

E 62 91.5

69 90.8

65 91.2

b 66 91.1

67 91.0

71 90.6

71 90.6

W

33.9

6

95.76
5.20
92.51
6.20
97.71

9771

67

n f = 82 E St 80

(cm)

w

70 90.7

70 90.7

66 91.1

b

61 91.6

63 91.4

70 90.7

e

62 91.5

S

cut
table

E St

e

62 91.5

71 90.6

64 91.3

b

61 91.6

58 91.9

70 90.7

w

70 90.7

9771

S

14 f

E St

w

69 90.8

70 90.7

62 91.5

b

60 91.7

65 91.2

70 90.7

e

63 91.4

center of

E St

e

62 91.5

67 91.0

65 91.2

b

61 91.6

62 91.5

66 91.1

w

65 91.2

33d

7

9771

N 1/4 y E st

W	64	91.3
	65	91.2
	60	91.7
b	60	91.7
	63	91.4
	66	91.1
E	60	91.7
	N 66 y	E st
E	55	92.2
	65	91.2
	61	91.6
b	60	91.7
	57	92.0
	64	91.3
W	63	91.4

PLOTTED

9771

N 2 y E st

W	60	91.7
	60	91.7
	55	92.2
b	57	92.0
	60	91.7
	62	91.5
E	48	92.9
	25' N y	E st
E	38	93.9
	57	92.0
	53	92.4
b	49	92.8
	48	92.9
	52	92.5
W	53	92.4

332

8

9771

53' n = S of Benesch (47)

W	44	93.3
	41	93.6
	41	93.6
b	42	93.5
	48	92.9
	47	93.0
E	33	94.4

S of Benesch

E	34	94.3
	37	94.0
	41	93.6
b	37	94.0
	37	94.0
	36	94.1
W	40	93.7

PLOTTED

9771

330

S 114 y Benesch

W	36	94.1
	33	94.4
	34	94.3
b	34	94.3
	37	94.0
	33	94.4
E	29	94.8

Center of Benesch

E	24	95.3
	29	94.8
	33	94.4
b	31	94.6
	31	94.6
	30	94.7
W	33	94.4

9771

n 1/4 of Benesch

W	28	94.9
	28	94.9
	28	94.9
b	29	94.8
	29	94.8
	28	94.9
E	23	95.4

n 1/4 of Benesch

E	20	95.7
	26	95.1
	27	95.0
b	27	95.0
	25	95.2
	26	95.1
W	25	95.2

PLOTTED

9771

n line of Benesch

W	22	95.5
	21	95.6
	22	95.5
l	23	95.4
	25	95.2
	22	95.5
E	12	96.5

TP 11.57 107.74 154 96.17

50 26 Benesch

E	77	100.0
	87	99.0
	85	99.2
l	86	99.1
	89	98.8
	90	98.7
W	91	98.6

339

10

9771
154
96.17
11.57
107.74

16774

100 n f Beneed

W	62	101.5
	60	101.7
	55	102.2
b	49	102.8
	52	102.5
	62	101.5
E	66	101.1

150 n f Beneed

E	53	102.4
	49	102.8
	95	104.2
b	34	104.3
	30	104.7
	27	105.0
95	32	104.5

PLOTTED

16774

339

11

200 n = 521 D 11 (80)

W	16	106.1
	18	105.9
	21	105.6
b	22	105.5
	23	105.4
	23	105.4
E	22	105.5

10774
96
106.80
770
114.50

TP 770 11450 024 10680 034 D

Intersect of D in Book 852

n l f D 11

W	77	106.8
	75	107.0
	72	107.3
b	72	107.3
	75	107.0
	70	107.5
E	67	107.8

11450

50 mg D.H.

E

51 109.4

55 109.0

58 108.7

b

58 108.7

60 108.5

64 108.1

E W

66 107.9

100 mg D.H.

E W

46 109.9

45 110.0

45 110.0

b

48 109.7

50 109.5

51 109.4

E

54 109.1

PLOTTED

11450

332

12

E 150 mg D.H.

E

50 109.5

49 109.6

43 110.2

b

45 110.0

44 110.1

40 110.5

W

37 110.8

200 mg D.H.

W

26 111.9

26 111.9

27 111.8

b

24 112.1

21 112.4

20 112.5

E

19 112.6

TP 1160 12385

25 112.5

11450
225
11225
1160
12385

12385

250 n of Dat

E		61	117.7
		68	117.0
		65	117.3
b		75	116.3
		85	115.3
		88	115.0
W		95	114.3

300 n = S of Dat (50')

W		65	117.3	12385
		61	117.7	12187
		53	118.5	1303
				13490
b		45	119.3	
		38	120.0	
		29	120.9	
E		18	122.0	

C?

(Intersections of Bet in Book 85)

TP	1300	13490	198	12187	334B
----	------	-------	-----	-------	------

PLOTTED

13490

334

13

n of Dat

W		139	121.8
		121	122.8
		115	123.4
b		107	124.2
		100	124.9
		96	125.3
E		86	126.3

50 n of Dat

E		54	129.5
		51	129.8
		72	127.7
b		78	127.1
		82	126.7
		84	126.5
W		87	126.2

13490

100 mg B.S.

W 25 132.4

15 133.4

15 133.4

20 132.7

20 132.9

16 133.3

E 06 134.8

TP 1140 14500 130 13360

130 mg B.S.

E 67 138.8

72 137.8

77 137.3

b 82 136.8

83 136.7

90 136.0

W 104 134.6

PLOTTED

134.90
1.30
133.60
11.40
145.00

14500

339

14

200 mg B.S.

W 108 134.2

98 135.2

84 136.6

b 69 138.1

60 139.0

49 140.1

E 40 141.0

250 mg B.S.

E 24 143.6

37 141.3

48 140.2

b 57 139.3

70 138.0

80 137.0

W 103 134.7

14500

300 n = S of B (80')

W	95	135.5
	82	136.8
	66	138.4
b	49	140.1
	32	141.8
	15	143.8
E	0.1	144.9

S of B st

E	04	144.6
	15	143.8
	26	142.4
b	48	140.2
	66	138.4
	78	137.2
W	88	136.2

PLOTTED

14500

330

15

S 147 B st

W	86	136.4
	76	137.4
	64	138.6
b	47	140.3
	28	142.2
	13	143.7
E	0.0	145.0

Center of B st

E	02	144.8
	17	143.3
	30	142.0
b	42	140.8
	60	139.0
	76	137.4
W	91	135.9

14500

N 1/4 of B st

W	93	135.7
	75	137.5
	53	139.7
b	46	140.4
	34	141.6
	22	142.8
E	10	144.0

N 1/4 of B st

E	12	143.8
	26	142.4
	34	141.6
b	44	140.6
	53	139.7
	74	137.6
W	93	135.7

PLOTTED

14520

330

N 1/4 of B st

10' W of rd	115	133.5
W	96	135.4
	78	137.2
	57	139.3
b	45	140.5
	38	141.2
	28	142.2
E	19	143.1

TP 8m 14897 425 14075
50 m of B st

E	61	142.9
	75	141.5
	93	139.7
b	111	137.9
	129	136.1
	145	134.5
W	163	132.7
70' W of rd	180	131.0

16

14500
511
14075
822
148.97

Rock

14897

(149.0)

	100	mg	Bar	
10' w of rd			18.1	130.9
W			15.3	133.7
			12.4	136.6
			10.1	138.9
b			9.3	139.7
			8.1	140.9
			6.8	142.2
E			4.6	144.4
	150	mg	Bar	
E			27	146.3
			3.9	143.1
			7.7	141.3
b			9.1	139.9
			11.9	137.1
			14.6	134.4
W			14.6	134.4
10' w of rd			14.7	134.3

PLOTTED

14897

(149.0)

3309

17

	200	mg	Bar	
10' w of rd			5.7	143.3
W			4.3	144.5
			5.0	144.0
			5.8	143.2
b			7.1	141.9
			6.2	142.8
			4.0	145.0
E			1.3	147.7
	70	1000	1500	335
				145.6
	230	mg	B	
E			6.7	149.2
			6.6	149.3
			6.8	149.1
b			6.2	149.7
			6.5	149.4
			7.2	148.7
W			7.7	148.2

1497
335
145.62
16.28
11.59

No Culvert Required here

15592

250' n7 Bst

W			56	150.3	15592
			43	151.6	154.33 154.33 154.33 154.33 154.33
			30	152.9	153.17 153.17 153.17 153.17 153.17
b			23	153.6	153.30 153.30 153.30 153.30 153.30
			21	153.8	153.80 153.80 153.80 153.80 153.80
			23	153.6	153.60 153.60 153.60 153.60 153.60
E			22	153.7	153.70 153.70 153.70 153.70 153.70
	SL of A?				
TP	1209	16648	153	154.29	Peak at E of 250
E			131	165.7	H.W.S.E. 9+33
			25	164.0	
			36	162.9	15
b			57	161.4	
			65	160.0	
			79	158.6	
			96	156.9	
W			11.6	154.9	
10' n7W2					
TP	1030	17530	131	165.7	H.S.E. 9+33
	1200	18080	050	174.80	
	1133	19959	054	186.20	

PLOTTED

18

19859

1174	21024	402	19860
642		00	20924
		205	21321

19859

19860

19861

19862

19863

19864

19865

Bln Bst 2
100' E of 300

PLOTTL

4
3
13

Sec of 34th St (60')
Summer line to a st

558 9814 9256

015 8567 1262 8552

033 7348 1252 7315

475 7420 403 6945

Bm 3rd Pub
92 334
Summer
Page 6
This Book

9256

8552

98.14

12.62

85.52

85.15

85.67

12.52

73.15

73.33

73.48

403

69.65

471

74.20

N line of Summer Street

83 459

91 451

91 451

98 444

96 444

98 444

104 438

S of Summer Street is Bottom (Crickent)
10' Summer

PLOTTED

7420

34d

19

50' n of Summer Street

83 459

81 441

73 469

70 473

68 474

66 474

59 483

100' n of Summer Street

36 706

40 703

43 499

48 494

50 492

53 489

57 486

74.20

180 n of Same Sum

E 23 71.9

20 73.3

16 72.6

b 15 72.7

10 73.2

8 73.4

0.6 73.6

TP 1210 8572 058 7362

200 n = 52 Bensch $\frac{(5-3)n}{(50)E}$

W 87 77.0

90 74.7

91 74.4

100 75.7

100 75.7

104 75.3

E 107 75.0

8572

S 466 Bensch

E 105 75.3

a 99 75.8

9 96 74.1

b 93 76.4

t 93

4 87 77.0

h 82 77.5

W 81 77.6

S 446 Bensch

W 72 78.5

76 78.1

78 77.9

b 87 77.0

90 74.7

94 74.3

E 100 75.7

3472

20

PLOTTED

8572

Center of Benscht

E	92	74.5
	89	74.8
	85	77.3
b	80	77.7
	72	78.5
	68	78.9
W	66	79.1

N 1/4 of Benscht

W	59	79.8
	62	79.5
	66	79.1
b	74	78.3
	77	78.0
	83	77.4
E	87	77.0

PLOTTED

8572

342

21

N 1/4 of Benscht

E	82	77.5
	78	77.9
	70	78.7
b	67	79.0
	60	79.7
	54	80.3
W	51	80.6

N 2/4 of Benscht

W	42	81.5
	44	81.3
	50	80.7
b	58	79.9
	63	79.4
	70	78.7
E	76	78.1

200' S of Dist on E
200' S " " " W

8572

150 S of D St

E	42	81.5
	37	82.0
	30	82.7
b	25	83.2
	12	84.5
	03	85.4

TP	1086	95.5	105	84.7
----	------	------	-----	------

W		97	85.8
---	--	----	------

100 S of D St

W	72	88.3
	77	87.8
	84	87.1
b	90	86.5
	94	86.1
	95	86.0
E	99	85.6

PLOTTED

9553

50 S of D St

E	67	88.8
	64	89.1
	64	89.1
b	57	89.8
	55	90.0
	50	90.5
W	42	91.3

S of D St (80)

W	08	94.7		
	08	94.7		
	15	94.0		
b	25	93.0		
	27	92.8		
	37	91.8		
E	43	91.3		
TP	1276	10755	084	94.9

Intersection of D St in Block 852

Sd has been graded off

34*

22

9553
84
94.69
1276
107.45

10745-

10745

n line of Dst

E		8.7	98.8
		9.2	98.3
		9.0	98.5
b		8.5	99.0
		8.0	99.5
		7.9	99.6
W		7.9	99.6
new line		8.5	99.7
	50' n of	Dst	Br
w		5.8	101.7
		6.0	101.5
		6.0	101.5
b		6.2	101.3
		6.4	101.1
		6.6	100.9
E		6.2	101.3

10745

342

23

100 n of Dst

E		2.8	104.7	
		2.9	104.6	
		2.7	104.8	
b		3.0	104.5	
		3.2	104.3	
		2.2	105.3	
W		2.2	105.3	
TP	12.90	11950	0.85	106.0
	150	n of	Dst	
w		8.6	110.9	
		9.4	110.1	
		10.1	109.4	
b		10.4	109.1	
		11.2	108.3	
		11.1	108.4	
E		11.5	108.0	

10745-
~~81~~
~~106.60~~
~~12.90~~
~~119.50~~

PLOTTED

11950

200' n of DSI

E	62	1133	
	67	1128	
	80	1115	119.50
b	79	1116	117.14
	65	1130	11.22
	59	1134	130.56
W	50	1145	

250' n of DSI

W	21	1174	
	42	1153	
	43	1173	
b	26	1169	
	26	1169	
	20	1175	
E	11	1184	

TP 1122 13036 036 11914

PLOTTED

13036

1304

34*

24

300' n-S of East (80)

E	35	1269	13036
	47	1257	56
	58	1246	129.90
b	64	1240	1252
	80	1224	142.32
	93	1211	
W	110	1194	

TP 1252 14232 056 12980

Inter section of East in Block 852
N of East

W	110	1310	
	92	1331	
	75	1348	
b	64	1359	
	62	1361	
	55	1368	
E	48	1375	

14232

50 mg bst

W			26	1397	14232
					14412
U			17	1406	1235
					15447
Y			09	1414	41
					154106
b			03	1420	1227
					16683
Y			01	1423	

TP 1235 15447 020 14212

U			114	1431	
E			111	1434	

100 mg bst

E			55	1490	
			57	1488	
			65	1483	
b			59	1486	
			60	1485	
			62	1483	
W			64	1481	

TP 1227 16683 041 15406

PLOTTED

16683

347

1668

25

150 mg bst

W			95	1573	
			100	1568	
			104	1564	
b			111	1557	
			120	1548	
			129	1539	
E			136	1532	

200 mg b

E			80	1588	
			67	1601	
			52	1616	
b			41	1627	
			26	1642	
			13	1655	
W			06	1663	

16683

250' n of bat

E			38	163.5	16683 142 163.41 12.11 175.02 140 176.62 3.80 180.42
fl			17	165.1	
TP	1261	178.0 178.02	142	165.41	
H			108	167.2	
B			89	169.1	
y			73	170.7	
h			63	171.7	
W			55	172.5	

300' n = S of Bat (80')

W			104	178.4
fl			16	176.4
			28	175.2
l			43	173.7
			56	172.4
			76	170.4
E			96	168.4

PLOTTED

17802

342

26

S of B

E			80	170.0
			61	171.9
			47	173.3
b			34	174.6
			20	176.0
			06	177.4
TP	780	184.2	140	176.2
W			52	179.2

S of B

W			46	179.8
			63	178.1
			75	176.9
l			85	175.9
			98	174.6
			111	173.3
E			130	171.4

in meters

18442

Center of Bot

E	120	1734
	109	1735
	93	1751
b	80	1764
	70	1774
	58	1786
W	40	1804

N 1/4 of Bot

W	30	1814
	45	1799
	65	1779
b	75	1769
	86	1758
	100	1744
E	113	1731

PLOTTED

18442

342

27

N 1/4 of Bot

E	99	1745
	92	1752
	74	1770
b	62	1781
	57	1787
	40	1804
W	24	1820

N 1/4 of Bot

W	15	1829
	36	1808
	40	1804
b	58	1786
	68	1776
	78	1766
E	84	1760

1844v

	50	nf	Bar		
E			43	180.1	18402
ll			38	180.6	187
y			32	181.3	18255
b			26	181.8	191.50
TP	885	19140	187	18255	1286
y			81	183.3	178.34
ll			70	184.4	179.39
W			60	185.4	
	100	nf	Bar		
W			40	187.4	
			46	186.8	
			53	186.1	
b			59	185.5	
			65	184.9	
			73	184.1	
E			79	183.5	

PLOTTED

17140

3411

28

	150	nf	Bar		
E			100	181.4	
			90	182.4	
			80	183.4	
b			72	184.3	
			66	184.8	
			60	185.4	
W			56	185.8	
	175	nf	B		
W			69	184.5	
TP	200	nf	B		
W			96	181.8	
ll			107	180.7	
y			113	180.1	
b			120	179.4	
y			128	178.6	
TP	088	17934	1286	1785.4	
ll			10	178.3	
e			18	177.5	

179.34

179.3

250 776 B₀₅

E	86	170.7	179.30
	75	171.8	181.3
	67	172.6	166.17
			4.88
			171.05
b	57	173.4	
	48	174.5	
	41	175.2	
W	32	176.1	

TP 488 171.1 171.05 1313 166.17 $\frac{171.1}{171.05}$ $\frac{1313}{166.17}$ $\frac{171.1}{171.05} \approx 1.00058$ $\frac{1313}{166.17} \approx 7.899$
 300 $n = 52$ Qst $\frac{171.1}{171.05} \approx 1.00058$ $\frac{1313}{166.17} \approx 7.899$

W	49	164.2	
	57	165.4	
	65	164.6	
b	68	164.3	
	72	163.9	
	80	163.1	
E	90	162.1	

PLOTTED

171.05

29

1307	182.66	1416	1695.9
802	190.10	088	182.64
068	178.42	1236	177.74
		1322	165.20

B₀₅ Page 18

171.05
146
169.59
1307
182.64
88
177.74
802
190.10
1236
177.74
68
178.42
1322
165.20

PLOTTED

4/14/54
 4/15/54
 5/1/54
 X sec of 35 ft at (60')
 Lemon Grove to Bat

013	6958		6945	3m up Post NW 34/2 Lemon Grove
145	5861	1252	5716	P 19 H 20 E 35 ft down
670	<u>5692</u>	839	5022	

N line of Lemon Grove

E		67	50.2	6945 13
L		68	50.1	69.58 12.52
		68	50.1	57.16 1.41
B		64	50.5	58.67 839
		65	50.4	50.22 670
		64	50.5	56.92
W		67	50.2	

56.92

35 ft

80

50 in of Lemon Grove

W		57	51.2
		61	50.8
		60	50.9
		60	50.9
		59	51.0

100 in of Lemon Grove

E		55	51.4
		57	51.8
		57	51.8
		57	51.8
		53	51.6
		53	51.6
W		51	51.8

PLOTTED

5692

150' n of Semer Gum

W	44	52.5
	45	52.4
	47	52.2
b	45	52.4
	48	52.1
	49	52.0
E	50	51.9

200' n = S of Beresch St (50')

E	50	51.9
	49	52.0
	48	52.1
b	44	52.5
	46	52.3
	43	52.4
W	39	53.0

PLOTTED

5692

352

31

S. blf Beresch

W	34	53.5
	41	52.8
	45	52.4
b	43	52.6
	44	52.5
	44	52.5
E	44	52.5

S. 1/4f Beresch

E	45	52.4
	46	52.3
	45	52.4
b	43	52.6
	45	52.4
	42	52.7
W	39	53.0

Center of Benesch

W	39	530
	40	529
	45	524
b	45	524
	46	523
	45	524
E	50	519

n 1/4 b Benesch

E	46	523
	43	526
	45	524
b	43	526
	43	526
	38	531
W	38	531

PLOTTED

n 1/4 Benesch

W	38	531
	38	531
	41	528
b	43	526
	45	524
	43	526
E	45	524

n line of Benesch

E	48	521
	42	527
	44	525
b	40	529
	42	527
	37	532
W	37	532

5692

30' n of Bensen

W	31	53.8
	31	53.8
	38	53.1
b	38	53.1
	42	52.7
	45	52.4
E	45	52.4

TP

714 6127 279 5413

100' n of Bensen

E	82	53.1
	85	53.1
	83	53.0
b	78	53.5
	75	53.8
	71	54.2
W	70	54.3

5692
279
5413
714
41.27

6127

150' n of Bensen

W	65	54.8
	62	55.1
	61	55.2
	68	54.5
	68	54.5
	65	54.8
E	74	53.9

209' n = S of TP at (80)

E	58	55.5
	53	56.0
	57	55.6
b	57	55.6
	53	56.0
	53	56.0
W	50	56.3

350

33

PLOTTED

6127

S 66 of ID st

W	50	56.3
	51	56.2
	56	55.7
S	59	55.4
	62	55.1
	65	54.8
E	67	54.4

S 1/4 of ID st

E	63	55.0
	60	55.3
	59	55.4
S	56	55.7
	56	55.7
	50	56.0
W	50	56.0

PLOTTED

6127

352

34

center of ID st

W	48	56.5
	49	56.4
	52	56.1
S	55	55.8
	56	55.7
	58	55.5
E	55	55.8

N 1/4 of ID

E	57	56.2
	53	56.0
	50	56.3
S	51	56.2
	52	56.1
	50	56.3
W	49	56.4

6127

6127

352

35

	n	ht of	D	st
W			50	56.3
			49	56.4
			52	56.1
b			52	56.1
			48	56.5
			52	56.1
E			51	56.2

	50	ht of	D	st
W			46	56.7
			44	56.9
			48	56.5
b			46	56.7
			44	56.9
			46	56.7
E			42	57.1

6127
 592
 57.35
 8.19
 65.64

	n	ht of	D	st
E			50	56.3
			49	56.4
			47	56.6
b			50	56.3
			52	56.1
			47	56.6
W			46	56.7

	100	ht of	D	st
E			40	57.3
			40	57.3
			40	57.3
b			45	56.8
			40	57.3
			35	57.8
			34	57.9
W			39	57.35

TP 829 65.64

PLOTTED

6564

	150	nf	Dat	
W			67	58.9
			73	58.3
			75	58.1
b			83	57.3
			81	57.5
			79	57.7
E			74	58.2
	256'	nf	Dat	
E			74	58.2
	157	76	D	
E	+7		90	56.6
	+4'		74	58.2
	142	70	D	
E			98	55.8
	+5		74	58.2
	175'	78	D	
E			75	58.1

PLOTTED

6564

3502

36

	200	nf	Dat	
E			74	58.2
			71	58.5
			67	58.9
b			71	58.5
			71	58.5
			67	58.9
			66	59.0
	208'	n		
E			75	58.1
	210'	n		
E			88	56.8
	217'	n		
E			95	56.1
	+8'		102	55.4
			73	58.3
	230'	n		
E			95	56.1
			77	57.9
			60	59.4
			60	59.4

65-64

65-64

3500

37

	250	27	ID	
E			8.8	56.8
	+5'		9.2	56.4
H			7.7	57.9
	+5'		7.3	58.3
Y			6.0	59.6
L			6.1	59.5
Y			6.1	59.5
H			5.8	59.8
W			5.9	59.7

	275'	27	ID	
W			5.4	60.2
			5.7	59.9
			6.3	59.3
L			5.3	60.3
	+5'		6.1	59.5
Y			9.3	56.3
H			11.3	54.3
E			11.2	54.4

300 n = S of East (80')

E	10.2	55.4
	10.2	55.4
	5.9	59.7
b	6.3	59.3
	6.3	59.3
	4.8	60.8
2	5.0	60.6

S of East

4	4.7	60.9
	4.9	60.7
	4.7	60.9
b	6.4	59.2
	6.7	58.9
+6'	6.1	59.5
	9.7	55.9
E	9.6	56.0

PLOTTED

65-64

S 1/4 of best

E	95	56.1
	97	55.9
+2	75	58.1
	67	58.9

b	44	41.2
	45	41.1
	47	40.9

W	49	40.7
---	----	------

center of best

W	45	41.1
	45	41.1
	43	41.3

b	39	41.7
+7	43	41.3
	55	40.1
	70	56.6

E	93	56.3
---	----	------

65-64

38-38

38

N 1/4 of best

E	94	56.2
+8	93	56.3
H	57	59.9
	59	59.7

b	40	41.6
	40	41.6
	41	41.5

W	43	41.3
---	----	------

N 1/4 of best

W	38	41.8
	38	41.8
	41	41.5

b	40	41.6
	54	40.2

	56	40.0
	60	59.6
	90	56.4
	91	56.5

E	+5	+6
---	----	----

PLOTTED

6564

n 27 605

E		61	59.5	
		51	40.5	
		41	41.5	65-64
b		42	41.4	$\frac{4.71}{61.43}$
		43	41.3	64
		39	41.7	65.84
W		36	42.0	

7p 641 6784 421 6143

Rock

50 n 7 621

W		59	41.9
		59	41.9
		54	42.4
b		54	42.4
		56	42.2
		57	42.1
E		50	42.8

PLOTTED

6784

352

100 n 6 6 21

39

E		52	42.6
		52	42.5
		52	42.6
b		52	42.6
		52	42.6
		52	42.6
W		52	42.6

150 n 6 6 21

W		41	43.7
		41	43.7
		42	43.4
b		43	43.6
		46	43.2
		51	43.7
E		50	42.8

6784

200 n of Bst

E 43 43.5

38 44.0

34 44.4

b 35 44.3

34 44.4

35 44.3

W 38 44.0

578 69.94 308 64.76

250 n of Bst

W 48 45.1

48 45.1

48 45.1

b 49 45.0

51 44.8

49 45.0

E 50 44.9

PLOTTED

6994

300 n = S of Bst S

E 39 46.0

37 46.2

37 46.2

b 36 46.3

34 46.5

35 46.4

35 46.4

70 283 6510 767 62.7

220 5793 937 5473

877 5906 764 5029

1122 6982 046 5860

020 6952

354

40

6994

767

62.7

283

6510

937

5473

5906

764

5029

877

5906

46

5860

020

6952

52

Bm Page

30

PLOTTED

Banches on Warrington St 50
in Western add

4 | blount X Sec 8 Warrington St (50)
7 | Taylor in Western add
13 | City

Warrington St - 50
Cross streets = 70
Public line S of Western add

41

	575	9327	8539	0222	8752	8252	
			943	8384	8252		
TP	569	9844	052	9275	SE total 571 Warrington 3.27 943		
TP	096	9185	755	9089	8384		
TP	017	9933	1266	7919	937		
TP	017	6655	1295	6638	9275 569 9844 943		
TP	331	5725	1261	5394	9089 943 9275 569 9844 943		
TP	573	5828	4170	5255	9185 9275 569 9844 943		
TP	1062	6116	774	5054	9185 9275 569 9844 943		
TP	359	5315	1160	4936	9185 9275 569 9844 943		
TP	160	4342	1133	4182	9185 9275 569 9844 943		
			134	4208	9185 9275 569 9844 943		
	1033	3303	1072	3270	9185 9275 569 9844 943		
TP	061	2131	1233	2070	9185 9275 569 9844 943		
	320	1174	1277	854	9185 9275 569 9844 943		

	975	9359	8354				
E				97	83.9		0+00
				99			
				100			
W				102	83.4		
				104			
				107			
W				104	83.5		
	50	nd	pd				0+50
W				94	84.2		
				102			
				100			
W				97	83.9		
				93			
				87			
E				84	85.2		

PLOTTED

May 13/13 C.A.L.

9359

	100	n	f	P2	
E				70	86.6
				74	
				76	
b				80	85.6
				83	
				86	
W				91	82.5

	125	n	f	P2	
W				91	82.5
				86	
				80	
b				71	86.5
				60	
				52	
E				48	88.8

PLOTTED

JULY 1951

9359

Warrington

42

	150	n	f	P2	
E				51	88.5
				56	
				58	
b				62	87.4
				71	
				74	
W				83	85.3

	200	n	f	P2	
W				59	87.7
				56	
				54	
b				51	88.5
				46	
				47	
E				45	89.1

PLOTTED

9359

	S	bb of	Qidal	2+12
E			41	89.5
			42	
			46	
b			48	88.8
			50	
			53	
W			55	88.1

	S	1/4 of	Qidal	2+23.5
W			46	89.0
			44	
			42	
b			39	89.7
			38	
			37	
E			37	89.9

PLOTTED

9359

Warrington

43

		center of	Qidal	2+35
E			30	90.6
			29	
			31	
b			32	90.4
			33	
			33	
W			38	89.8

	W	1/4 of	Qidal	2+46.5
W			28	90.8
			27	
			26	
b			22	91.4
			22	
			22	
E			22	91.4
TP	615	98.20	084	9275

PLOTTED

9359
084
92.75
615
98.20

87m n E
Qidal

9890

N lb Adal 2+58

E 68 92.1

65

65

b 63 92.6

67

71

W 74 91.5

N lb Adal 2+70

W 67 92.2

63

62

b 61 92.8

62

63

E 62 92.7

PLOTTED

9890

Warrington

44

50' N lb Adal 3+20

E 39 95.0

39

38

b 36 95.3

36

38

W 37 95.2

100' N lb Adal 3+70

W 28 96.1

24

26

b 29 96.0

34

40

E 45 94.4

PLOTTED

9890

150' n of Udal 4+20

E 50 93.9

44

41

b 38 95.1

39

36

W 34 95.5

200' n = S 2 Wattain St (70') 4+70

W 29 96.0

34

37

b 42 94.7

46

51

E 59 93.0

PLOTTED

9890

Wainings

45

S 66 Wattain 4+82

E 64 92.5

57

50

b 44 94.5

40

35

W 28 96.1

S 44 Wattain 4+93.5

W 33 95.6

38

44

b 50 93.9

56

60

E 70 91.9

PLOTTED

9890

Center of Vallan

5+05

E 72 91.7

66

59

b 56 93.3

50

46

W 40 94.9

N 1/4 of Vallan

5+16.5

W 40 94.9

SE 45

14 47

b 52 93.7

1/4 54

1/4 63

E 75 91.4

PLOTTED

9890

Warrington

46

5+28

E 77 91.2

66

58

b 57 93.8

48

47

W 43 94.6

N 1/2 of Vallan

5+40

W 46 94.3

49

50

b 56 93.3

61

68

E 80 90.9

314

9092

801

9089

NE 1/4 Vallan
Warrington9890
801
90.89
3.04
93.93

PLOTTED

9393

50 n f Voltan 5+90

E 37 90.2

27

23

b 20 91.9

17

14

W 09 93.0

75 n f Voltan 6+15

W 22 91.7

28

33

b 38 90.1

44

48

E 53 88.6

PLOTTED

9393

100 n f Voltan 6+40

E 90 84.9

79

72

b 65 87.4

59

52

W 40 89.9

130 n f Voltan 6+70

W 96 84.3

103

111

b 117 82.2

125

133

E 148 79.1

7p 110 8313 11.90 8203

PLOTTED

Wamye

47

6+40

9393

11.90

82.03

110

8313

8313

	150	n f	Volcan	6+90
E			72	75.9
			55	
			47	
b			40	79.1
			32	
			24	
w			15	81.6
	200	n = 52	Whitten	7+40
w			103	72.8
H			133	
TP	009	70.66	1256	7057
y			35	
b			59	64.8
			90	
			110	
E			139	57.7
TP	231	62.63	1234	58.32

PLOTTED

6263
Profile only

Warrigla

48

Scents of	Whitten	(7+75)
Wd	+05	63.1
b	73	55.3
Ed	133	49.3
n d f	Whitten	8+10
Wd	44	58.2
b	130	49.6
TP	011	5042
Ed	1252	5051
	63	44.1
50	n b	Whitten
	89	41.5
	92	41.2
	50	45.4
75	n d	
	89	41.5
100	n f	Whitten
	109	39.5
	107	39.7
	104	40.0

PLOTTED

5042

	150	n of	Whitten	9+60	
E			98	40.6	5042 131 4871 1126 6097
b			120	38.4	843 52154
W			125	37.9	
	200	n of	Whitten = Sd	Xenophon	10+10 (70)
W			136	36.8	
b			122	38.2	
E			48	45.6	
			cent of Xenophon		10+45
E			25	47.9	
b			92	41.2	
W			126	37.8	
			n. of Xenophon		10+80
W			64	44.0	
b			40	46.4	
TP	1226	6197	171	48.7	
E			843	52154	Bm NE

PLOTTED

6097

610

	50	n of	Xenophon		Warrington
W			78	53.2	49 11+30 6097 113 5984 947 1295 1626 524 6128
b			29	58.1	
TP	947	6931	113	59.8	
E			60	63.3	
	75	n of	Xenophon		11+55
E			28	66.5	
b			89	60.4	
W			155	53.8	
	100	n of	Xenophon		11+80
W			162	53.1	
b			92	60.1	
E			00	69.3	
	125	n of	Xenophon		12+05
E			26	66.7	
b			102	59.1	
TP	524	6160	1295	5636	
W			94	52.2	

PLOTTED

61.60

150' n of Xenophon 12+30

W 130 48.6

b 7,2 54.4

E 14 60.2

170' n of Xenophon 12+50

E 68 54.8

b 105 51.1

W 167 44.9

190' n of Xenophon 12+70

E 83 53.3

b 130 48.6

200' n = S of Youngs (70') 12+80

W 174 44.2

b 122 49.4

E 64 55.2

cent of Youngs 13+15

E 17 59.9

b 112 50.4

W 182 43.4

PLOTTED

61.60

N of Youngs

W 11.08 50.52

b 43 57.3

TP 1293 (74.51 / 74.52) 002 61.58

E 89 65.6

25' n of Youngs 13+75

E 35 71.0

b 130 61.5

W 183 56.2

50' n of Youngs 14+00

W 158 58.7

b 70 67.5

E 65 74.0

75' n of Youngs 14+25

E 71.5 76.0

b 72 67.3

W 160 58.5

PLOTTED

Warrington

50

13+50

61.60

61.58

12.98

74.52

PLOTTED

7451

74.51

100' n of Young 11 14+50

E 7.05 75.0

b 8.4 66.1

125' n of Young 14+75

E 0.1 74.4

b 10.3 64.2

150' n Young 15+00

E 1.7 72.8

b 11.5 63.0

200' n of Young 15+50

E 4.6 69.9

0.60 62.19 12.92 61.59

100' n of Young 14+50

W 6.8 55.4

125' n of Young 14+75

W 9.4 52.8

150' n 15+00

W 11.2 51.0

PLOTTED

6219

Warrington

15+50

51

200' n of Young = 82 Zouch (70)

W 15.3 46.9

b 3.4 58.8

center of Zouch 15+85

E 7.1.8 64.0

b 6.1 56.1

W 15.4 46.8

n of Zouch 16+20

W 12.64 49.55

b 8.4 53.8

E 1.4 60.8

25' n of Zouch 16+45

E 3.1 59.1

b 7.0 55.2

W 10.0 52.2

50' n of Zouch 16+70

W 13.9 48.3

b 8.0 54.2

E 4.8 57.4

PLOTTED

6219
12.64
49.55

Bm NW

		6219			
	75'	n of	Zouch	16+95	
E			70 55.2	6219	
b			130 49.2	1098	
TP	120	<u>5241</u>	1098 51.2	51.2	
W			10.5 41.9	120	
	100'	n of	Zouch	17+20	
W			14.0 38.4		
b			74 45.0		
E			14 51.0		
	150'	n of	Zouch	17+70	
W			65 45.9		
b			70.4 52.8		
TP	1232	<u>6309</u>	164 50.77		
E			47 57.4		
	175'	n of	Zouch	17+95	
E			70.9 64.0		
b			46 58.5		
W			12.9 50.2		

PLOTTED

		6309		Warrington	
	200'	n of	= 92	Alcott	52 18+20 5(70)
W			130	50.1	
b			51	48.0	
E			73.5	66.3	
		center of	Alcott		18+55
E			06	62.5	
b			10.9	52.2	
		n of	Alcott		18+90
E			1.9	61.2	
b			12.3	50.8	
	50'	n of	Alcott		19+40
E			4.0	59.1	
b			13.0	50.1	
	100'	n of	Alcott		19+90
E			0.6	62.5	
b			9.0	54.1	
	125'	n of	Alcott		20+15
E			0.6	62.5	
b			5.3	57.8	

PLOTTED

6309

	150'	n of	Alcott	20+40
E			35	59.6
b			72	55.9
TP	357	<u>5348</u>	1268	5041
	Center of		Alcott	18+55
W		54.6	101	43.9
	N of		Alcott	18+90
W			1190	4208
	50	n of	Alcott	19+40
W			136	40.4
	65'	n		19+55
W			126	41.4
	100'	n of	Alcott	19+90
W			56	48.4
	125'	n of	Alcott	20+15
W			110	53.0
	300'	<u>5343</u>	357	5041
	150'	n of	Alcott	20+40
W			31	50.3

PLOTTED

5343

Warrington

53

	200'	n of	Alcott = 52	Browning	20+90
W			110	42.4	
b			61	47.3	
E			89	52.5	
	Center of		Browning		21+25
E			107	42.7	
TP	086	<u>4126</u>	1303	4040	
b			42	37.1	
W			90	32.3	
	N of		Browning		21+60
W			123	29.0	
b			98	31.5	
E			78	33.5	
Bm			855	3271	
	40'	n	of	Browning	22+00
E			74	33.9	
	50'	n of	Browning		22+10
E			45	36.8	
b			100	31.3	
W			128	28.5	

PLOTTED

4126

	160	n of	Browning	22+60
W			5.0	36.3
TP	1232		<u>51.63</u>	195
				39.31
center			66	45.0
	150	n of	Browning	23+10
W			10.0	41.6
b			8.4	51.2
	200	n of	Browning	23+60
W			9.0	42.6
TP	1312		<u>6304</u>	171
				49.92
	100	n of	Browning	22+60
E			10.3	52.7
	150	n of	Browning	23+10
E			2.2	60.8
	200	n = S of	centerless	(70) 23+60
E			+5.4	68.5
b			10.2	52.8
	20	n of S of		23+80
E			+1.0	64.00

PLOTTED

6304

Warrington

54

23+95

			center of	centerless	
E			4.2	58.8	
b			15.0	48.0	
TP	143		<u>5135</u>	1712	49.92
W			13.2	38.2	
			7		
			n of	centerless	24+30
E			5.2	45.5	
b			7.0	44.4	
W			6.3	45.1	
			60	n of S of	centerless
			11.3	40.1	✓
TP	1285		<u>6401</u>	0.19	57.16
TP	1263		<u>7645</u>	19	63.82
	50	n of	centerless		24+80
W			11.0	65.5	
center			8.6	67.9	
E			9.4	67.1	
TP	1291		<u>8925</u>	0.11	76.34

PLOTTED

89.5

55

	100	n =	beats	25+30
w			11.6	77.7
b			5.2	84.1
	150	n =	beats	25+80
w			4.8	84.5
	210	n =	P line	26+40
w			2.7	86.6
	13.05	101.98	0.32	88.93
	100	n =	beats	25+30
e			12.0	90.0
	130	n =	beats	25+80
e			0.8	101.2
b			4.2	93.8
	210	n =	P line	26+40
e			4.8	107.8
b			4.3	97.7

PLOTTED

May-13-13
C.A.L.

11/13
 Clough
 Taylor
 City

X Sec of Whitten St (70')
 Through Western Ada

Bm N.E. Wells
 Whitten
 13860 P1

BR	147	75.41		7414
7P	070	64.36	11.95	6366
	576	58.04	11.78	5258
Pueblo Sec. N.J. of Western ada				
n		58.04	130	45.0
			140	
			144	
l			150	43.0
			146	
			143	
S			145	43.5
7P ₂	973	6777	00	5807

PLOTTED

May 14-13
 E.A.L.

6777

Whitten
 56

	50	Eg	PL	
S		67.77	105	57.3
			102	
			103	
h			99	57.9
			94	
			94	
W			93	58.5
	60	Eg	PL	
S			73	60.5
h			80	
	100	Eg	PL	
n			60	61.8
			61	
			61	
h			59	61.9
			57	
S			52	62.6

PLOTTED

6777

150 E J P L 1+50

S 41 63.7

44

47

b 52 62.6

54

59

n 62 61.6

200 E J P L 2+00

n 38 64.0

38

39

b 40 63.8

37

37

S 36 64.2

PLOTTED

6777

Whitten

57

250 E J P L 2+50

S 18 66.0

17

17

b 14 66.4

12

06

n 06 67.2

TP 10.83 78.59 0.01 67.76

$$\begin{array}{r} 67.76 \\ 10.83 \\ \hline 78.59 \end{array}$$

300 E of W L y Wells St (50') - 3+00

n 74 71.2

73

77

b 81 70.5

86

90

S 93 69.3

Intersection is in B 860

PLOTTED

PLOTTED

78.59

	E	L of	Wells at	3750	
S			44	74.2	S
			44		
			46		
b			44	74.2	b
			46		
			45		
n			45	74.1	n

Bm 1220 8635 444 ¹⁴¹ 74.25 wells

	56'	E of	Wells at	4+00	
n			78	78.6	n
			87		
			92		
b			92	77.2	b
			92		
			92		
S			88	77.6	S

PLOTTED

8635

Whitton

58

	100'	E of	Wells at	4+50	
			47	81.7	
			50		
			52		
			53	81.1	
			52		
			51		
			51	81.3	

1221 9768 088 8547

	150'	E of	Wells at	5+00	
			127	85.0	
			128		
			125		
			126	85.1	
			121		
			124		
			127	85.0	

PLOTTED

9768

200' E of Wells 5+50

S 80 89.7

77

77

b 77 90.0

73

77

n 73 90.4

250' E of Wells 6+00

n 30 94.7

30

25

b 18 95.9

12

11

S 08 96.9

7P

612

10357

0.29

9739

PLOTTED

10357

W. Miller

59

300' E = W of Warden St (50) 6+50

S 54 98.1

56

63

b 68 96.7

70

68

n 70 96.5

E of Warden St 7+00

n 78 95.7

72

62

b 57 97.8

52

50

S 50 98.5

PLOTTED

10251

	50	E f	Warden	7+50
S			62	97.3
			67	
			77	
b			86	94.9
			96	
			105	
n			112	92.3
TP	284	95.59	1080	92.71
	100	E f	Warden	8+00
n			59	89.7
			54	
			47	
L			37	91.9
			32	
			22	
S			17	93.9

PLOTTED

9539

Whitaker

60

8+50

	150	E f	Warden	
S			37	92.4
			44	
			53	
b			66	89.0
			77	
			87	
n			92	86.4
TP	200	E f	Warden	9+00
n			130	82.6
			118	
			103	
b			95	86.1
			89	
			80	
S			74	88.2
TP	036	8371	1224	8325

PLOTTED

8371

	250	E of Warden	9+50	
S (S)		2.1	81.6	
		2.2		
		3.1		
b (C)		3.4	80.3	
		4.4		
		6.3		
n (N)		7.7	76.0	
	300	E = W of Warrington	10+00	
S (S)		11.3	72.4	
TP	004	<u>7144</u>	12.34	71.90
h		1.8		
		4.9		
b (C)		8.3	63.1	
		10.0		
		11.0		
n (N)		13.0	58.4	

PLOTTED

7144

Whittier

61

		W of Warrington		
S (S)		2.0	69.4	10+10
h		5.0		
		8.7		
b (C)		11.5	59.9	
		12.8		
		W	1/4 of Warrington	10+17.5
S (S)		4.7	66.7	
h		7.4		
		11.0		
b (C)		13.3	58.1	
		Center of Warrington		10+25
S (S)		6.8	64.6	
h		9.9		
1/4		13.1		
		E	1/4 of Warrington	10+32.5
S (S)		8.6	62.8	
h		11.0		
1/4				

PLOTTED

71.44

5946

Whittier

62

	8	bb of Warrington	10+40	
Sbb		167		
TP	422	<u>6257</u>	1309 58.35	
Bb	435	<u>6267</u>	425 58.32	131 NW
	W bb	of Warrington	10+10	
n 2 (N)		77	55.0	
n bb		57		
	W 1/4	of Warrington		
n 2 (N)		102	52.5	10+17.5
n bb		76		
n 1/4		66		
	114	<u>5946</u>	58.32	Bm NW Warrington Sbb
		Center of Warrington	10+25	
n 2 (N)		98	49.7	
bb		74		
4		62		
Cent (C)		44	55.1	

PLOTTED

	E	1/4 of Warrington		
n N		116	47.9	10+32.5
bb		90		
4		75		
	Cent C	60	53.5	
	E	bb of Warrington	10+40	
n N		134	46.1	
bb		110		
4		96		
b C		77	51.8	
4		60		
		24		
TP	002	<u>5848</u>	1.00	5846

PLOTTED

5848

E of Warrington 10+50

S (S) 1.0 57.5

h 5.1

y 8.0

b (C) 9.5 49.0

y 10.8

h 12.7

851 5534 11.65 46.83

h (N) 11.7 44.1

50 E of Warrington 11+00

h (N) 11.6 43.8

11.4

11.0

b (C) 10.6 44.7

10.0

9.7

S (S) 8.5 46.8

PLOTTED

5534

100 E of Warrington

S (S) 8.0 47.3 11+50

8.5

8.6

b (C) 7.5 47.8

6.3

5.5

h (N) 4.5 50.8

150 E of Warrington 12+00

g (S) 4.6 50.7

3.1

1.1

TP 13.29 6673 18.7 53.47

b (C) 10.0 56.7

7.0

5.2

h (N) 3.1 63.6

175 E of Warrington 12+25

h (N) 1.5 66.2

PLOTTED

Whetton

63

6673

200 E of Warrington 12+50

n 0.2 66.5

2.2

4.8

b 7.2 59.5

9.0

11.5

S 13.4 53.3

225' E of Warrington 12+75

S 14.6 52.1

13.0

11.2

b 9.0 57.7

6.4

4.2

n 2.0 64.7

PLOTTED

6673

Whittier

64

250 E of Warrington 13+00

n 1.8 64.9

3.4

4.2

b 5.2 61.1

8.6

11.8

S 13.3 53.4

270 E - Plain E of Westernada 13+20

S 12.4 54.3

10.5

7.2

b 4.5 62.2

2.8

1.1

n 7.2 67.9

Bm

8.42 58.31 Bm NW Warrington

PLOTTED

May 14-13-CA.L

14/ blange X sec of Xenophon St (70')
 B Taylor Through Western add
 Fitz

102 7036 6934 Bm. NW
 Xenophon
 8860 14

117 5917 1236 5800 n 79 60.9 1400

Puebla line W side of Western add

n 80 51.2 0+00 82 88

96 b 98 59.0

107 117

b 115 47.7 128

136 S 142 54.6

162 125 E of Rd 1+25

S 152 44.0 S 94 59.4

50 E of Rd 0+50 H 93

S 102 49.0 150 E of Rd 1+50

84 S 73 61.5

68 70

c 36 55.6 66

24 b 63 62.5

20 62

n 14 57.8 60

1083 6883 117 5800 n 60' 62.8

PLOTTED

MAY 14-13
 C.A.L.

PLOTTED

6883

Xenophon

65

6883

	200	E of Pd		2+00
n		40	64.8	
		37		
		34		
b		35	65.3	
		36		6883
		41		6785
				994
				77.77
S		42	64.6	
TP	994	7777	100	6783
	250	E of Pd		2+50
S		97	68.1	
		101		
		100		
b		97	68.1	
		98		
		101		
n		107	67.4	

PLOTTED

7777

Xenophon

66

	300	E = W of Wells at (50)		
n		84	69.35	3+00
		84		
		81		
b		79	69.9	
		70		
		66		
S		66	71.2	
Intersection of Wells in Bark 860				
		E of wells at		3+50
S		64	71.4	
		65		
		66		
b		67	70.9	
		69		
		67		
n		69	70.9	

PLOTTED

7777

	50	E of	Wells	
n			34	74.4 4+00
			35	
			32	
b			29	74.9
			23	
			23	
S			23	75.5
TP	1056	8614	219	75.58
	100	E of	Wells	4+50
S			77	78.4
			83	
			88	
b			94	76.7
			101	
			104	
n			107	75.4

PLOTTED

8614

67

	150	E of	Wells	
n			99	76.2 5+00
			94	
			88	
b			84	77.7
			77	
			70	
S			42	79.9
	200	E of	Wells	5+50
S			26	83.5
			33	
			40	
b			45	81.6
			50	
			58	
n			70	79.1

PLOTTED

8614

	250	Eg	Woods	6+00
n			45	81.6
ll			36	82.5
TP	540	9042	112	85.02
y			70	
b			58	84.6
			43	
			34	
S			22	88.2
	300	E = W of Warden (50')		
S			38	86.6
			46	
			53	
b			64	83.8
			81	
ll			87	
n			93	81.1

PLOTTED

9042

xenophon

68

	n	ll	Warden	6+60
n			98	80.6
			92	
			83	
b			73	83.1
			63	
			55	
S			49	85.5
	n	148	Warden	6+67.5
S			55	84.9
			65	
			70	
b			80	82.4
			94	
			101	
n			107	79.7
	567	4399	1210	78.32

PLOTTED

8399

Center of Warden N 6+75

N 4.6 78.4

4.2

3.5

b 2.5 81.5

1.8

0.9

S 0.0 84.0

E 1/4 of Warden 6+82.5

S 1.0 83.0

2.0

3.0

b 3.6 80.4

4.8

b 5.2 77.5

n 5.7 78.3

n 2.6

PLOTTED

8399

Xenophon

69

E 1/4 of Warden

n 6.6 77.4 6+90

6.2

5.8

b 5.2 78.8 8399

4.6

3.6

S 2.6 81.4

E line of Warden 7+00

S 4.9 79.1

6.1

7.0

b 7.8 76.2

8.3

8.3

n 9.7 74.3

TP 0.40 70.64 1275 71.24

PLOTTED

7164

50' E of Warden 7+50

n 130 58.6

120

99

b 96 62.0

94

80

s 79 63.7

TP 090 5969 1285 5879

75' E of Warden 7+75

s 50 54.7

50

40

b 46 55.1

72

88

n 91 50.6

TP 102 4838 1233 4736

PLOTTED

4838

scribble

70

100 E of Warden 8+00

n 43 44.1

43

43

b 37 44.7

26

20

s 20 46.4

150 E of Warden 8+50

s 97 38.7

103

107

b 114 37.0

121

130

n 132 35.2

TP 914 4473 1279 3558

PLOTTED

4473

	200	E of Warden	9+00
n		128	31.9
		124	
		125	
b		120	32.7
		114	
		103	
S		96	35.1
	225	E of	
n		124	32.3
b		124	
	250	E of Warden	9+50
S		92	35.5
		96	
		114	
b		102	34.5
		106	
b		88	
n		78	36.9

PLOTTED

4473

Xeroph

71

	300	E - W of Warrington	(50)
n		05	44.2 10+00
		24	44.72
		46	44.19
		68	37.9
		78	56.57
		84	11.85
		79	68.56
S		79	36.8
		route of Warrington	10+25
S		65	38.2
bent		37	41.0
TP	1233	56.51	0.55 44.18
n		100	46.5
		E line of Warrington	10+50
n		395	52.56
bent		90	47.5
S		110	45.5
TP	1185	68.36	0.0 56.51

PLOTTED

6836

	50	E	of	Waring to	11+00
S			58	62.6	
b			12	67.2	
TP	1207	7399	049	6792	
n			88	71.2	
	75	E of	Waring to	11+25	
n			00	80.0	
b			23	77.7	
	100	E of	Waring to	11+50	
S			07	79.3	
TP	1274	9200	073	7926	
b			100	82.00	
n			77	84.3	
	150	E of	Waring to	12+00	
S			65	85.5	
b			15	90.5	
TP	1282	10339	113	9057	
n			85	94.9	

PLOTTED

10337

Xenophon

72

	200	E of	Waring to		
S			78	95.6	12+50
b			10	102.4	
TP	1133	114.46	026	10213	
n			38	110.7	
	250	E of	Waring to	13+00	
S			50	109.5	
TP	1205	126.03	048	11398	
b			91	116.9	
n			26	123.8	
	270	E =	PSE of Waring	13+20	
n			023	12580	B/n
b			42	121.8	
S			92	116.8	
TP	064	11407	1260	11343	
	02	101.68	1237	10170	
			10.28	9089	Bm n2 Valtan

PLOTTED

MAY 14-13

C.A.L.

Σ change
 18 7/8
 14 2/5
 X sec of 33d st (60)
 N of G St to N of H St

7490

332

73

100 9356 9226
 061 8241 1176 8180
 5/6 7490 1267 6924
 N of G St

Bm 26 33
 + Lennons

9356
 1176
 8180
 67
 8241
 1267
 6924
 7490

N cut of G St

E
 73 67.6
 70 67.9
 69 68.0
 68 68.1
 53 69.6
 34 71.5
 W 04 74.5

L

E

E

L

W

99 74.0
 38 71.1
 58 69.1
 70 67.9
 80 66.9
 80 66.9
 83 66.6
 N 1/4 of G St
 97 65.7
 89 66.0
 84 66.5
 78 67.1
 63 68.6
 46 70.3
 20 72.9

7490

1

Center of Gut

W	40	70.9
	49	70.0
	71	67.8
b	85	66.4
	92	65.7
	98	65.1
E	98	65.1
	S 1/4 of Gut	
E	106	64.3
	103	64.6
	97	65.2
b	92	65.7
	77	67.2
	60	68.9
W	49	70.0

7490

33d

74

S. Burd of Gut

W	58	69.1
	68	68.1
	86	66.3
b	98	65.1
	104	64.5
	107	64.2
E	108	64.1

S Line of Gut

E	116	63.3
	113	63.6
	108	64.1
b	102	64.7
	90	65.9
	75	67.4
W	68	68.1

74.90

	50	Sy	Sst	
W			88	66.1
			98	65.1
			114	63.5
b			116	63.3
			120	62.9
			127	62.2
E			127	62.2
TP	275	<u>6500</u>	1245	<u>62.5</u>
	100	Sy	Sst	
E			49	60.1
			40	61.0
			37	61.3
b			32	61.8
			35	61.5
			27	62.3
W			405	65.5

65.00

332

75

	150	Sy	Sst	
W			13	63.7
			30	62.0
			41	60.9
b			48	60.2
			66	58.4
			84	56.6
E			98	55.2
	200	Sy	S	
W			42	60.8
			70	58.0
			101	54.9
b			122	52.8
TP	337	<u>5500</u>	1247	<u>52.5</u>
			50	50.9
			63	49.6
E			69	49.0
W & E	2025	S = Pueblo	60.5	
E & E			77	48.5

74.90
 1205
 62.5
 1245
 1247
 1249
 1250
 1251
 1252
 1253
 1254
 1255
 1256
 1257
 1258
 1259
 1260

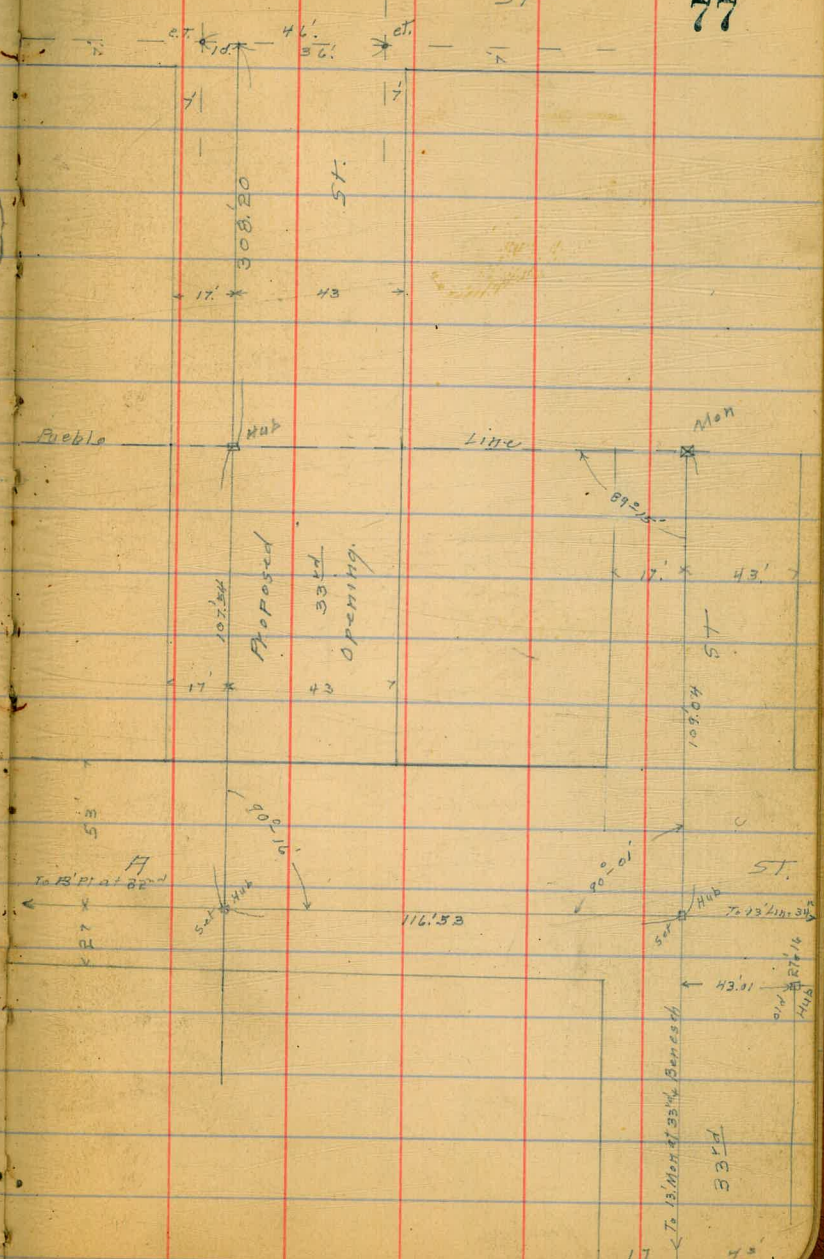
Proposed Opening of 33' 7" 3/8/26 mllr.
 AT A ST.

77

ASH

ST

Note: for later ties
 in this section see Book.
 1285-49



78

79

DISTANCES FROM CENTER OF ROADWAY FOR CROSS-SECTIONING

ROADWAY 16 FEET WIDE. SIDE SLOPES 1½ TO 1.

FOR SINGLE TRACK EMBANKMENT.

	0	.1	.2	.3	.4	.5	.6	.7	.8	.9
0	8.0	8.2	8.3	8.5	8.6	8.8	8.9	9.1	9.2	9.4
1	9.5	9.7	9.8	10.0	10.1	10.3	10.4	10.6	10.7	10.9
2	11.0	11.2	11.3	11.5	11.6	11.8	11.9	12.1	12.2	12.4
3	12.5	12.7	12.8	13.0	13.1	13.3	13.4	13.6	13.7	13.9
4	14.0	14.2	14.3	14.5	14.6	14.8	14.9	15.1	15.2	15.4
5	15.5	15.7	15.8	16.0	16.1	16.3	16.4	16.6	16.7	16.9
6	17.0	17.2	17.3	17.5	17.6	17.8	17.9	18.1	18.2	18.4
7	18.5	18.7	18.8	19.0	19.1	19.3	19.4	19.6	19.7	19.9
8	20.0	20.2	20.3	20.5	20.6	20.8	20.9	21.1	21.2	21.4
9	21.5	21.7	21.8	22.0	22.1	22.3	22.4	22.6	22.7	22.9
10	23.0	23.2	23.3	23.5	23.6	23.8	23.9	24.1	24.2	24.4
11	24.5	24.7	24.8	25.0	25.1	25.3	25.4	25.6	25.7	25.9
12	26.0	26.2	26.3	26.5	26.6	26.8	26.9	27.1	27.2	27.4
13	27.5	27.7	27.8	28.0	28.1	28.3	28.4	28.6	28.7	28.9
14	29.0	29.2	29.3	29.5	29.6	29.8	29.9	30.1	30.2	30.4
15	30.5	30.7	30.8	31.0	31.1	31.3	31.4	31.6	31.7	31.9
16	32.0	32.2	32.3	32.5	32.6	32.8	32.9	33.1	33.2	33.4
17	33.5	33.7	33.8	34.0	34.1	34.3	34.4	34.6	34.7	34.9
18	35.0	35.2	35.3	35.5	35.6	35.8	35.9	36.1	36.2	36.4
19	36.5	36.7	36.8	37.0	37.1	37.3	37.4	37.6	37.7	37.9
20	38.0	38.2	38.3	38.5	38.6	38.8	38.9	39.1	39.2	39.4
21	39.5	39.7	39.8	40.0	40.1	40.3	40.4	40.6	40.7	40.9
22	41.0	41.2	41.3	41.5	41.6	41.8	41.9	42.1	42.2	42.4
23	42.5	42.7	42.8	43.0	43.1	43.3	43.4	43.6	43.7	43.9
24	44.0	44.2	44.3	44.5	44.6	44.8	44.9	45.1	45.2	45.4
25	45.5	45.7	45.8	46.0	46.1	46.3	46.4	46.6	46.7	46.9
26	47.0	47.2	47.3	47.5	47.6	47.8	47.9	48.1	48.2	48.4
27	48.5	48.7	48.8	49.0	49.1	49.3	49.4	49.6	49.7	49.9
28	50.0	50.2	50.3	50.5	50.6	50.8	50.9	51.1	51.2	51.4
29	51.5	51.7	51.8	52.0	52.1	52.3	52.4	52.6	52.7	52.9
30	53.0	53.2	53.3	53.5	53.6	53.8	53.9	54.1	54.2	54.4
31	54.5	54.7	54.8	55.0	55.1	55.3	55.4	55.6	55.7	55.9
32	56.0	56.2	56.3	56.5	56.6	56.8	56.9	57.1	57.2	57.4
33	57.5	57.7	57.8	58.0	58.1	58.3	58.4	58.6	58.7	58.9
34	59.0	59.2	59.3	59.5	59.6	59.8	59.9	60.1	60.2	60.4
35	60.5	60.7	60.8	61.0	61.1	61.3	61.4	61.6	61.7	61.9
36	62.0	62.2	62.3	62.5	62.6	62.8	62.9	63.1	63.2	63.4
37	63.5	63.7	63.8	64.0	64.1	64.3	64.4	64.6	64.7	64.9
38	65.0	65.2	65.3	65.5	65.6	65.8	65.9	66.1	66.2	66.4
39	66.5	66.7	66.8	67.0	67.1	67.3	67.4	67.6	67.7	67.9
40	68.0	68.2	68.3	68.5	68.6	68.8	68.9	69.1	69.2	69.4

Calculated by F. E. Paradis, C. E.

79.56 RR Sp. Wells
 213.5 NE Ida + B
 213.70 B + Ida or ally
 Sp. m. d.

3244 NE A 111 8323

36 52 15619

9275
 9335
 9350
 8384
 525
 89.09
 355
 8524

30820
 10211
 11574

Tennyson 200
 Udahl 70
 Voltaire 200
 Whittier 70
 Xenophon 200
 Yonge 70
 Zouch 200
 -1550
 70
 1620
 200
 1820
 200
 2020
 70
 2090
 200
 2290
 70
 2360
 200
 2560
 70
 2630



Alcott 200
 Browning
 Curtis

7954
 751
 89.07
 20
 88.87
 465
 93.52
 798
 858