

876

876
F.B.

LEVEL BOOK.

No. 410 T

EUGENE DIETZGEN CO.,

Drawing Materials and Surveying Instruments.
 NEW YORK. CHICAGO. SAN FRANCISCO.

TABLES FOR EXCAVATIONS AND EMBANKMENTS.
 DISTANCES FROM CENTER OF ROADWAY FOR CROSS-SECTIONING
 ROADWAY 20 FEET WIDE. SIDE SLOPES 1 TO 1.
 FOR SINGLE TRACK EXCAVATION.

Copyright, 1902. No. 39340.

	0	.1	.2	.3	.4	.5	.6	.7	.8	.9	
0	10.0	10.1	10.2	10.3	10.4	10.5	10.6	10.7	10.8	10.9	0
1	11.0	11.1	11.2	11.3	11.4	11.5	11.6	11.7	11.8	11.9	1
2	12.0	12.1	12.2	12.3	12.4	12.5	12.6	12.7	12.8	12.9	2
3	13.0	13.1	13.2	13.3	13.4	13.5	13.6	13.7	13.8	13.9	3
4	14.0	14.1	14.2	14.3	14.4	14.5	14.6	14.7	14.8	14.9	4
5	15.0	15.1	15.2	15.3	15.4	15.5	15.6	15.7	15.8	15.9	5
6	16.0	16.1	16.2	16.3	16.4	16.5	16.6	16.7	16.8	16.9	6
7	17.0	17.1	17.2	17.3	17.4	17.5	17.6	17.7	17.8	17.9	7
8	18.0	18.1	18.2	18.3	18.4	18.5	18.6	18.7	18.8	18.9	8
9	19.0	19.1	19.2	19.3	19.4	19.5	19.6	19.7	19.8	19.9	9
10	20.0	20.1	20.2	20.3	20.4	20.5	20.6	20.7	20.8	20.9	10
11	21.0	21.1	21.2	21.3	21.4	21.5	21.6	21.7	21.8	21.9	11
12	22.0	22.1	22.2	22.3	22.4	22.5	22.6	22.7	22.8	22.9	12
13	23.0	23.1	23.2	23.3	23.4	23.5	23.6	23.7	23.8	23.9	13
14	24.0	24.1	24.2	24.3	24.4	24.5	24.6	24.7	24.8	24.9	14
15	25.0	25.1	25.2	25.3	25.4	25.5	25.6	25.7	25.8	25.9	15
16	26.0	26.1	26.2	26.3	26.4	26.5	26.6	26.7	26.8	26.9	16
17	27.0	27.1	27.2	27.3	27.4	27.5	27.6	27.7	27.8	27.9	17
18	28.0	28.1	28.2	28.3	28.4	28.5	28.6	28.7	28.8	28.9	18
19	29.0	29.1	29.2	29.3	29.4	29.5	29.6	29.7	29.8	29.9	19
20	30.0	30.1	30.2	30.3	30.4	30.5	30.6	30.7	30.8	30.9	20
21	31.0	31.1	31.2	31.3	31.4	31.5	31.6	31.7	31.8	31.9	21
22	32.0	32.1	32.2	32.3	32.4	32.5	32.6	32.7	32.8	32.9	22
23	33.0	33.1	33.2	33.3	33.4	33.5	33.6	33.7	33.8	33.9	23
24	34.0	34.1	34.2	34.3	34.4	34.5	34.6	34.7	34.8	34.9	24
25	35.0	35.1	35.2	35.3	35.4	35.5	35.6	35.7	35.8	35.9	25
26	36.0	36.1	36.2	36.3	36.4	36.5	36.6	36.7	36.8	36.9	26
27	37.0	37.1	37.2	37.3	37.4	37.5	37.6	37.7	37.8	37.9	27
28	38.0	38.1	38.2	38.3	38.4	38.5	38.6	38.7	38.8	38.9	28
29	39.0	39.1	39.2	39.3	39.4	39.5	39.6	39.7	39.8	39.9	29
30	40.0	40.1	40.2	40.3	40.4	40.5	40.6	40.7	40.8	40.9	30
31	41.0	41.1	41.2	41.3	41.4	41.5	41.6	41.7	41.8	41.9	31
32	42.0	42.1	42.2	42.3	42.4	42.5	42.6	42.7	42.8	42.9	32
33	43.0	43.1	43.2	43.3	43.4	43.5	43.6	43.7	43.8	43.9	33
34	44.0	44.1	44.2	44.3	44.4	44.5	44.6	44.7	44.8	44.9	34
35	45.0	45.1	45.2	45.3	45.4	45.5	45.6	45.7	45.8	45.9	35
36	46.0	46.1	46.2	46.3	46.4	46.5	46.6	46.7	46.8	46.9	36
37	47.0	47.1	47.2	47.3	47.4	47.5	47.6	47.7	47.8	47.9	37
38	48.0	48.1	48.2	48.3	48.4	48.5	48.6	48.7	48.8	48.9	38
39	49.0	49.1	49.2	49.3	49.4	49.5	49.6	49.7	49.8	49.9	39
40	50.0	50.1	50.2	50.3	50.4	50.5	50.6	50.7	50.8	50.9	40

Calculated by F. E. Paradis, C. E.

MICROFILMED

DEC 15 1964

Section of Herbert St, 20' wide, from the North
 line of Robinson Ave to the North line of Balboa
 Park. 14 cut 8S, 13 quarters.
 April 4-1913. {Dorman.
 Otter.
 Levine.

BH 30123 Plug NW Cor University Ave, & University Blvd.
 H.I.

3.88 305.61 301.23

1.97 297.85 9.20 296.38 Top Hydro.

South line of Robinson St.

Pl. L. 4.6

cl 4.8

g 4.9

1/4 4.7

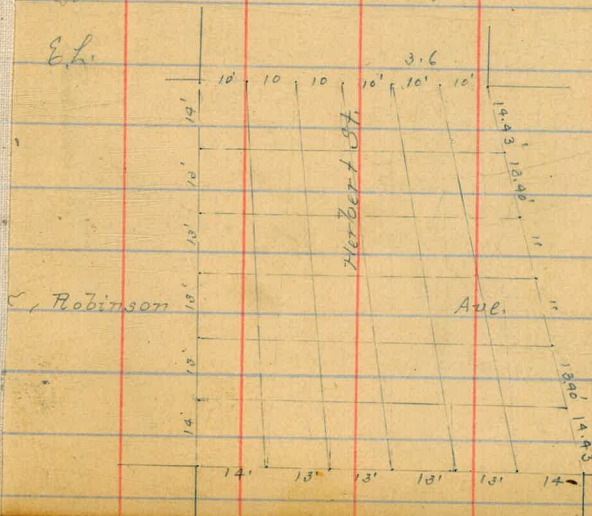
a 4.6

1/4 4.9

g 4.4

cl 3.8

El. 3.6



+

H.I.
297.85

Herbert off. (80 wide)

North end of Robinson Ave

E.L.	1.3
+ 2	2.6
cl	2.8
1/2	3.1
c	3.2
1/4	2.9
cl	3.3
OK.L.	3.3

North 1/2 of Robinson Ave

OK.L.	2.7
cl	2.3
1/2	2.2
c	2.5
1/4	2.3
cl	1.7
E.L.	1.6

Center of Robinson Ave

E.L.	2.5
cl	2.2

+

H.I.
297.85

1

1/4	2.5
c	3.3
1/2	2.9
cl	2.7
OK.L.	3.0

South 1/2 of Robinson Ave

OK.L.	3.7
cl	3.9
1/4	4.1
c	3.7
1/2	2.6
cl	2.8
E.L.	2.5

South end of Robinson Ave

E.L.	2.6
cl	3.3
1/2	3.1
c	3.7
1/4	4.7
cl	4.3

H.I.
297.85

Herbert St. (80' wide)

W.L.	3.6
South line of Robinson Ave.	
W.L.	3.8
cl	4.4
1/4	4.7
c	3.1
1/4	3.6
cl	3.5
E.L.	3.7
+25 E.L.	3.2
cl	3.8
1/4	4.5
c	4.5
1/4	5.1
cl	5.6
W.L.	6.3
+50 W.L.	8.5
cl	6.5
1/4	5.8
c	5.4

H.I.
297.85

2

1/2	5.1			
cl	5.7			
E.L.	4.2			
+75 E.L.	5.0			
cl	5.5			
1/2	6.3			
c	6.9			
1/4	7.9			
cl	9.6			
W.L.	12.6			
+87 W.L. only	18.6			
#	1.28	296.66	1.47	296.38
+100 W.L.	15.3			
cl	23.0			
1/4	21.3			
c	17.8			
1/4	13.6			
cl	8.0			
E.L.	5.2			

	+	HI. 296.66	Herbert H/80 (wide)	
1+25 E.L.			8.1	
cb			13.3	
#	0.28	284.09	12.85	283.81
1/2			6.7	
c			13.9	
+11			16.8	
1/2			15.2	
cb			8.5	
Or.L.			2.0	
1+50 Or.L.			4.6	
cb			10.6	
1/2			15.2	
+10			20.2	
c			19.0	
1/2			11.5	
cb			6.2	
8.L. 1+75 E.L.			0.1	
			9.9	
cb			15.1	
1/2			18.8	

	+	HI. 284.09		
+9			22.6	
c			21.8	
1/2			16.6	
cb			11.1	
Or.L.			5.3	
2+00 Or.L.			4.4	
cb			10.2	
#	0.56	272.47	12.18	271.91
1/2			4.1	
c			7.9	
1/2			13.6	
cb			12.1	
E.L. 2+25 E.L.			8.3	
+10			15.6	
cb			17.4	
cb			16.7	
1/2			11.7	
c			6.7	
1/2			1.7	
cb			+3.9	

	+	H.I. 272.47	-	Herbert Vt (80 wide)
OK L.			+9.7	
2+00				
OK L.			+3.9	
cb			0.4	
1/4			4.8	
c			8.5	
1/4			12.2	
#	0.01	259.55	12.93	259.54
cb			3.8	
E.L.			7.0	
2+70 E.L. only			11.4	
2+75 E.L.			9.5	
+10			11.5	
cb			11.2	
1/2			7.0	
c			2.5	
1/2			+1.8	
cb			+5.0	
OK L.			+8.2	
3+00 = North line of Pennula				Vt (same 14' curb 13' quarter)
3+00				
OK L.			+0.1	259.1

	+	H.I. 259.55	-	
				4
cb			2.4	257.2
1/2			5.1	254.5
c			8.6	251.0
+5			12.4	247.2
1/4			10.6	249.0
cb			9.4	250.2
E.L.			6.7	252.9
North curb of Pennsylvania Vt.				
E.L.			7.0	252.6
cb			9.2	250.4
1/2			10.7	248.9
c			12.7	246.9
+7			8.9	250.8
1/4			7.8	251.8
cb			5.5	254.1
OK L.			3.8	255.8

+ H.I.
259.55

Herbert St (80' wide)

North 1/2 of Pennsylvania St.

Or. L.	6.8	
cl	7.9	
1/4	9.6	
+10	13.2	
c	12.3	
1/2	11.0	
cl	9.7	
E.L.	7.9	

Center of Pennsylvania St.

E.L.	9.3	257.3
cl	9.5	257.1
1/4	9.4	250.2
c	11.6	248.0
+7	13.5	246.1
1/2	11.3	248.3
cl	9.7	249.9
Or. L.	9.1	250.5

South 1/2 of Pennsylvania St.

Or. L.	10.5	
--------	------	--

+ H.I.
259.55

5

cl	11.0
+7	11.5
1/2	12.3
c	11.2
1/4	9.5
cl	5.9
E.L.	6.0

South end of Pennsylvania St.

E.L.	2.4
cl	3.5
1/4	5.7
c	9.0
1/2	13.2
+2	14.7
cl	12.0
Or. L.	11.6

H.I.
259.55

Harbet (H/80 wide)

.00 = South line of Pennsylvania St.

OK L.			13.4	
cb			14.4	
1/2			9.3	
c			3.6	
1/2			1.0	
cb			+1.0	
E.L.			+3.7	
+8 West line only			15.1	
#	13.03	27 2.57	0.01	259.54
+25 E.L.			+1.8	
cb			0.1	
1/2			3.2	
c			7.9	
1/2			11.2	
cb			14.7	
OK L.			17.3	
+50 OK L.			9.0	
cb			5.6	
1/2			1.7	

H.I.
272.57

6

#	12.99	284 .54	1.02	271.55
c			9.8	
1/2			5.8	
cb			2.7	
E.L.			1.6	
+75 E.L.			+5.1	
cb			+3.5	
1/2			+1.0	
c			2.7	
1/2			6.2	
cb			11.2	
OK L.			16.2	
+100 OK L.			7.8	
cb			3.7	
#	12.68	29 7.22	0.00	294.59
1/2			12.1	
c			9.5	
1/2			6.8	
cb			6.1	
E.L.			6.1	

F.I.
297.22

Herbert St (80' wide)

1225 E.L.	4.4
cl	4.4
1/4	4.6
c	6.2
1/4	6.5
cl	6.8
OK.L. 1400	11.4
OK.L.	6.6
cl	5.3
1/4	4.8
c	4.5
1/4	4.1
cl	4.1
E.L. 2400	4.1
E.L.	2.5
cl	3.4
1/4	3.7
c	4.2
1/4	4.7
cl	5.4

F.I.
297.22

7

OK.L. 2450	6.0
OK.L.	7.2
cl	6.3
1/4	5.2
c	4.5
1/4	3.8
cl	3.2
E.L.	3.4
3400 = North line of Cypress St (80' wide Hambr 182' wide)	
3400 E.L.	2.3
cl	2.5
1/4	3.8
c	5.0
1/4	5.5
cl	7.0
OK.L.	7.3

H.I.
297.22

Herbert St (80 wide)

North end of Cypress St.

W.L.	7.8
cb	6.5
1/2	6.2
c	5.4
1/2	4.6
cb	3.0
E.L.	3.0

North 1/2 of Cypress St.

E.L.	3.5
cb	3.5
1/2	3.9
c	5.9
1/2	5.7
cb	6.2
W.L.	7.4

Center of Cypress St.

W.L.	7.2
cb	6.7
1/2	5.9

H.I.
297.22

8

c	6.0
1/2	4.5
cb	4.0
E.L.	4.0

North 1/4 of Cypress St.

E.L.	3.9
cb	4.5
1/2	5.0
c	5.7
1/2	6.4
cb	6.8
W.L.	7.6

South end of Cypress St.

W.L.	8.5
cb	7.0
1/2	6.0
c	5.2
1/2	5.0
cb	3.9
E.L.	3.4

000 South line of Cypress St.

E.L.			2.9	
cl			4.2	
1/2			5.0	
c			5.7	
1/2			6.1	
cl			6.9	
M.L.			7.5	
#	4.02	295.17	6.57	291.15
⁺⁵⁰ M.L.			7.4	
cl			5.7	
1/2			4.9	
c			4.6	
1/2			3.8	
cl			3.1	
E.L.			1.7	
⁺¹⁰⁰ E.L.			3.3	
cl			3.8	
1/2			4.1	
c			4.5	

1/2		5.6
cl		6.7
⁺⁵⁰ M.L.		7.1
M.L.		5.6
cl		5.6
1/2		5.8
c		5.7
1/2		5.3
cl		4.7
⁺¹⁰⁰ E.L.		4.0
E.L.		3.9
cl		4.1
1/2		4.8
c		5.2
1/2		5.1
cl		4.6
M.L.		3.6

H.I.
295.17

Herbert St (80' wide)

2450 N.L.	2.3
cb	3.7
1/4	4.2
c	4.5
1/2	4.2
cb	4.3
E.L.	4.1
2400 = North line of Brooks (80' wide) is amb. 13' quarter	
2400 E.L.	4.0
cb	4.7
1/4	4.7
c	4.6
1/2	4.6
cb	4.0
N.L.	3.4
North end of Brooks	
N.L.	3.6
cb	4.0
1/2	4.4
c	4.7

H.I.
295.17

10

1/2	5.3
cb	5.2
E.L.	5.1
North 1/4 of Brooks	
E.L.	5.1
cb	5.4
1/2	5.5
c	5.0
1/2	4.3
cb	3.9
N.L.	3.4
Center of Brooks	
N.L.	3.6
cb	3.7
1/2	4.0
c	5.0
1/2	5.5
cb	5.4
E.L.	5.2

+ H.I.
295.17

Herbert H (80 wide)

North 1/2 of Brook:

E.L.	5.1
cl	5.7
1/2	5.8
c	5.3
1/2	4.5
cl	4.0
N.L.	3.8

South end of Brook

N.L.	3.6
cl	4.0
1/2	4.6
c	5.2
1/2	6.0
cl	6.0
E.L.	5.6

oo-South line of Brook:

° E.L.	6.3
cl	6.2
1/2	6.3

+ H.I.
295.17

11

c	5.2
1/2	4.4
cl	4.0
^R N.L.	3.7
+50 N.L.	4.3
cl	5.2
1/2	5.9
c	6.2
1/2	7.0
cl	7.3
E.L.	7.5
+100 E.L.	9.0
cl	8.9
1/2	8.1
c	7.2
1/2	7.0
cl	6.1
N.L.	4.9

H.I.
295.17

Herbert OH (80' wide)

H.I.
291.61

12

1450	Or. L.			5.1	
	cb			5.4	
	1/2			6.4	
	c			7.6	
	1/2			9.6	
	cb			9.9	
	E.L.			12.9	
1475	#	7.90	291.61	11.46	293.71
	E.L.			12.5	
	cb			7.0	
	1/2			5.4	
	c			4.1	
	1/2			2.1	
	cb			1.5	
	Or. L.			1.0	
2400	Or. L.			1.6	
	cb			1.6	
	1/2			1.9	
	c			4.0	
	1/2			5.7	

cb				7.5	
E.L.				12.1	
2425	E.L.			16.9	
	cb			11.5	
	1/2			7.5	
	c			5.0	
	1/2			2.5	
	cb			2.6	
	Or. L.			2.9	
2450	Or. L.			12.1	
	cb			11.3	
	1/2			11.0	
	c			11.8	
#	-0.02	278.64	12.95	278.66	
	1/2			0.7	
	cb			3.1	
	E.L.			7.2	

H.I.
278.69

Herbert St (80' wide)

2+75 E.L.		10.6
cb		9.4
1/4		8.5
c		8.7
1/2		8.8
cb		9.5
OK.L.		9.9
3+00 = North line of Myrtle St (80' wide) 14' curb 13 1/4"		
#	2.09	270.95
		10.29
		269.36
3+00 OK.L.		8.3
cb		8.2
1/2		7.3
c		6.0
1/2		5.2
cb		5.5
E.L.		7.2
OK.L.+7		
E.L.		7.1
cb		7.3
1/2		7.2

H.I.
270.45

13

c		9.2
1/4		9.6
cb		10.5
OK.L.		12.0
North curb of Myrtle St		
OK.L.		10.1
cb		10.0
1/2		9.6
a		9.0
1/4		8.4
cb		7.9
E.L.		7.1
North 1/2 of Myrtle St.		
E.L.		6.1
cb		6.2
1/4		6.6
c		6.1
1/4		5.4
cb		5.8
OK.L.		6.7

H.I.
270.45

Herbert St (30 wide)

Center of Myrtle St

OK. L.		3.6	
cb		2.2	
1/4		1.1	
c		1.5	
1/4		2.7	
cb		2.4	
E.L.		3.1	
#	12.05	281.91	2.09 268.36

South 1/2 of Myrtle St

E.L.		11.3	
cb.		9.5	
1/4		8.5	
c		8.8	
1/4		7.7	
cb		9.3	
OK. L.		11.5	

North end of Myrtle St

OK. L.		8.4	
cb		6.9	

H.I.
281.41

14

1/4		6.1	
c		4.9	
1/4		4.4	
cb		5.4	
E.L.		6.9	

South line of Myrtle St

E.L.		3.6	
cb		1.4	
1/4		0.0	
c		0.4	
1/4		3.2	
cb		4.2	
OK. L.		5.6	
#	12.77	291.43	2.75 278.68

H.I.
291.43

Herbert H (80 wide)

+25
Or L.

12.9

cl

11.6

1/2

8.2

c

4.6

1/4

4.0

cl

5.2

E.L.

6.4

+50

E.L.

4.0

cl

3.0

1/4

2.4

c

3.1

1/4

6.1

cl

9.1

Or L.

10.5

+75

Or L.

8.4

cl

6.4

1/4

4.0

c

2.8

1/4

2.1

cl

2.0

H.I.
291.93

15

E.L.
1400

2.2

E.L.

1.5

cl

1.9

1/4

2.3

c

2.5

1/4

3.7

cl

5.7

Or L.
1450

7.0

Or L.

4.6

cl

4.1

1/4

3.3

c

2.9

1/4

2.5

#

6.31

296.16

1.58

289.85

cl

7.0

E.L.

6.4

30.8
90.00

296.16

Herbert St (90' wide)

2700
E.L.

5.9

cl

6.3

1/4

6.6

c

6.7

1/4

6.9

cl

7.0

O.K.L.

6.8

2750

O.K.L.

5.2

cl

4.7

1/4

4.8

c

5.6

1/4

5.7

cl

5.6

E.L.

5.3

3100 = North line of Alpen St (3000 on West 3000 on East) 14' curb

3100

E.L.

4.8

cl

4.8

1/4

4.5

c

3.7

1/4

3.6

71.1
296.16

16

cl

4.1

O.K.L.

4.1

North curb of Alpen St.

O.K.L.

4.0

cl

4.0

1/4

4.1

c

4.4

1/4

4.6

cl

4.6

E.L.

4.6

North 1/2 of Alpen St.

E.L.

4.4

cl

4.2

1/4

4.1

c

3.7

1/4

3.4

cl

3.7

O.K.L.

4.2

7.I.
296.16

Herbert St (80' wide)

Center of Myer St
 N.L. 3.7
 c/b 3.2
 1/4 3.1
 c 3.2
 1/2 3.8
 c/b 4.3
 E.L. 4.6

South 1/2 of Myer St.

E.L. 3.8
 c/b 3.8
 1/4 3.3
 c 3.2
 1/2 2.7
 c/b 3.0
 N.L. 3.5

South curb of Myer St.

N.L. 3.4
 c/b 3.1
 1/2 2.9

7.I.
296.16

17

c 3.0
 1/4 3.0
 c/b 3.4
 E.L. 3.1
 North line of Balboa Park
 E.L. 3.8
 c/b 3.3
 1/4 3.0
 c 3.0
 1/2 3.2
 c/b 2.9
 N.L. 2.8
 # 3.21

29 2.95 = 293.03 See below

BM 302.55 Spn Hole S.E. Cor Park Blvd & Cypress.

+ 3.05
 305.60
 - 6.57
 299.03
 - 2.40
 301.43
 - 10.35
 291.08
 + 8.26
 299.34
 - 3.31
 296.03

Xsection of McNeely St 80' wide, 14' curbs, 13' quarters
 from the East line of California to the middle-town
 line.

B.M. 63.43 Mon SW Cor Harasity & Arctic.

April 9-13 (Honnart,
 Bedford,
 Hesline.)

H.I.
 75.48

18

	+	H.I.	-			
	1.45	64.88	63.43	$\frac{1}{2}$	6.4	69.1
	12.96	75.48	62.52	$\frac{+25}{\sqrt{L}}$	10.0	65.5
				cl	10.0	65.5
cc = East line of California St				$\frac{1}{4}$	9.4	66.1
00 $\frac{1}{2}$ L.		11.3	64.2	c	9.5	66.0
cl		11.1	64.4	$\frac{1}{4}$	9.3	66.2
$\frac{1}{2}$		11.0	64.5	cl	9.6	65.9
c		10.3	65.2	+10	2.0	73.8
$\frac{1}{4}$		10.4	65.1	$\frac{11.2}{+50}$	2.2	73.3
cl		10.6	64.9	96.2	+0.4	75.9
$\frac{1}{2}$		10.2	65.3	+8	+0.5	74.8
$\frac{+2}{\frac{1}{2}$ L.		4.3	71.2	+10	8.0	67.5
+4		4.0	71.5	cl	9.5	67.0
+8		9.9	65.6	$\frac{1}{2}$	8.9	66.6
cl		10.4	65.1	c	8.6	66.9
$\frac{1}{4}$		10.4	65.1	$\frac{1}{4}$	8.7	66.8
c		10.1	65.4	cl	8.8	66.7
$\frac{1}{2}$		11.0	64.5	$\frac{1}{2}$	8.6	66.9
cl		11.0	64.5			
+10		10.7	64.8			

PLOTTED

	+	H.I. 75.98		McNealey St (50 wide)
+7.5			9.3	71.2
+8			9.7	66.8
cb			9.6	66.9
1/4			9.3	67.2
c			8.3	67.3
1/4			8.4	67.1
cb			7.6	67.9
+3			6.2	69.3
#	5.90	80.67	0.71	74.77
+9			2.6	78.1
M.L.			2.4	78.3
1400				
M.L.			0.3	80.4
+5			0.1	80.6
cb			9.6	71.1
+6			12.2	68.5
1/4			12.5	68.3
c			12.9	67.8
1/4			12.5	68.3
cb			12.3	68.4
+9			8.1	72.6

PLOTTED

	+	H.I. 90.67		
			0.7	80.0
			0.4	80.3
			+0.4	81.1
			4.9	75.8
			7.9	72.8
			9.6	71.1
			10.3	70.4
			11.1	69.6
			6.0	74.7
			+0.8	81.0
			+0.4	81.1
	12.56	92.99	0.24	80.43
			11.3	81.7
			11.9	81.1
			12.6	80.4
			11.5	81.5
			11.1	81.9
			12.4	80.6
			10.5	82.5

H.I.
92.99

McMuley St (80 wide)

¹⁺²⁰ D.L.	9.6	83.4
cl	11.2	81.8
1/2	9.9	83.3
c	9.7	83.3
1/2	10.0	83.0
cl	10.0	83.0
1/2	10.4	82.6
¹⁺⁵⁰ D.L.	7.9	85.1
cl	7.6	85.4
1/2	7.3	85.7
c	7.4	85.9
1/2	7.0	86.0
cl	6.6	86.4
D.L.	7.3	85.7
2+00 = West line of Arctic St (75 wide) 12.75 quarter		
²⁺⁰⁰ D.L.	0.6	92.4
cl	0.2	92.8
1/4	0.1	92.9
c	0.3	92.7
1/2	0.5	92.5

PLOTTED

H.I.
92.99

20

cl		0.5	92.5		
1/2		0.2	92.8		
#	12.94	10.5, 5.5	0.29	92.71	H. 3.7 X W. 6.7 A & M
West end of Arctic St.					
1/2		11.1	94.5		
cl		11.1	94.5		
1/2		11.0	94.6		
c		10.6	95.0		
1/2		10.9	94.7		
cl		11.5	94.1		
D.L.		11.3	94.3		
West 1/2 of Arctic St.					
D.L.		10.1	95.5		
cl		9.6	96.0		
1/4		9.2	96.4		
c		9.5	97.1		
1/2		9.3	97.3		
cl		9.6	97.0		
1/2		9.0	96.6		

71.
105.55

McNealey St (80' wide)

Center of Arctic St.		
M.L.	6.7	98.9
cl	6.3	99.3
1/2	6.1	99.5
c	6.7	98.9
1/2	7.3	98.3
cl	8.2	97.4
V.L.	8.7	96.9
East 1/2 of Arctic St.		
V.L.	7.0	97.6
cl	6.8	99.3
1/2	5.6	100.0
c	4.9	100.7
1/2	3.9	101.7
cl	4.1	101.5
M.L.	3.8	101.8
East curb of Arctic St.		
M.L.	1.9	103.7
cl	2.1	103.5
1/2	2.5	103.1

PLOTTED

105.55

21

c			3.0	102.6
1/2			3.9	101.7
cl			4.6	101.0
V.L.			5.6	100.1
100'	East line of Arctic St.			
1/2			3.8	101.8
cl			2.9	102.7
1/2			2.0	103.6
c			1.0	104.6
1/4			0.3	105.3
#	12.86	117.25	0.66	104.89
cl			11.4	105.9
M.L.			11.3	106.0
1/2			7.1	110.3
cl			7.8	109.5
1/4			8.5	108.8
c			10.0	107.3
1/4			11.0	106.3
cl			11.5	105.8
V.L.			12.0	105.3

H.I.
117.25

McCleary St (80' wide)

+63 on the North line of McCleary = intersection of
Middleton line, to 63 on South line

St.	6.9	1104
cb	6.7	1106
1/4	6.9	1104
c	5.9	1115
1/4	4.7	1126
cb	3.9	1134
St.	3.0	1143

+63 on North line to +95 on St. or along parallel line

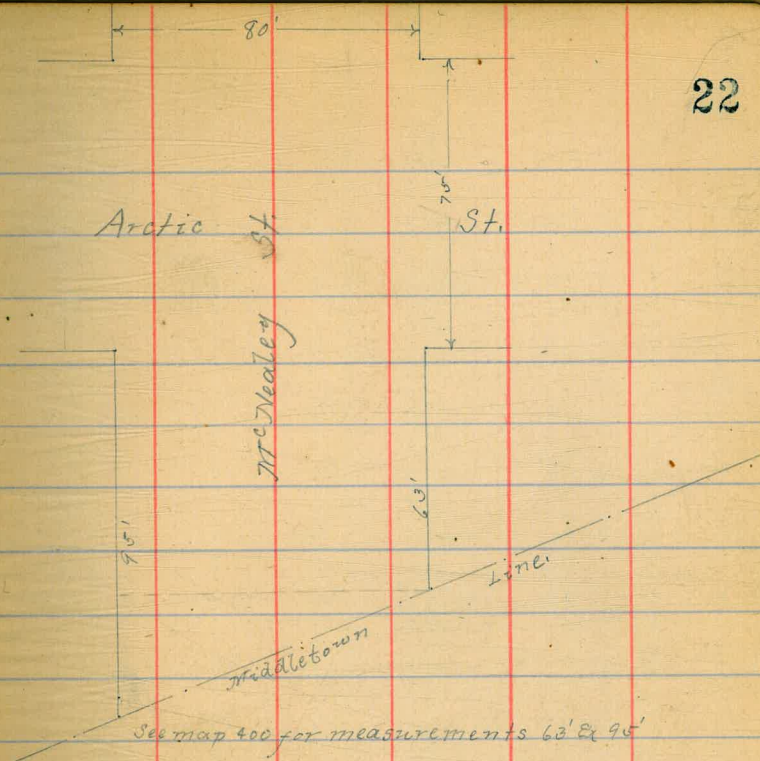
St.	3.0	1143
cb	3.4	1139
1/4	3.8	1135
c	3.9	1134
1/4	4.6	1127
cb	4.0	1133
St.	1.8	1156

PLOTTED

#	12.31	129.60	0.96	116.27
	10.52	138.28	0.90	127.76

4.70 133.59 = 133.58 v.g.
- B.M. N.W. Cor. Columbia & Pringle.

22



PLOTTED

5/12/13
 Taylor
 July
 X Dec of Locust St (70)
 From Pk 548 Roseville to New Main St

37.89

270	2403	2132	
10.78	31.39	362	2041
9.40	37.89	290	2849
Puebl	Sin	40' 59"	Addisn St
		59'	32.0
		63	31.6
		70	30.9
		73	30.6
		76	30.3
		79	30.0
		81	29.8

7' Pack SW
 New Main
 Roseville 2132
 188 Men
 2771
 245.03
 362
 30.41
 10.98
 31.39
 1.90
 28.49
 9.40
 37.89
 6.21
 31.67

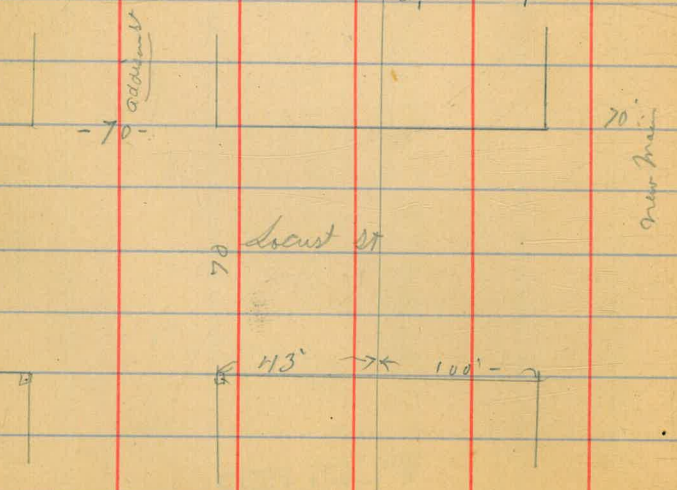
50 54 PA

83	29.6
80	29.9
76	30.3
73	30.6
70	30.9
66	31.3
60	31.9

100' S = N of New Main St

65	31.4
68	31.1
71	30.8
74	30.5
78	30.1
81	29.8
84	29.5

37.89
 37.85
 10.20
 47.48



100' 47.48 064 37.25

5
12
D

X Sec of Emery St (70')
Pd Sd of Roseville to New Main

4749

Pretty Lin 40' S of Addison St

E

55 42.0

53 42.2

50 42.5

b

P

45 43.0

38 43.7

33 44.2

W

24 45.1

Addison
70'

100'

Emery

45 * 78

New Main

60'

4749

50 58 Pd

W

34 44.1

43 43.2

47 42.8

b

50 42.2

57 41.8

63 41.2

E

66 40.9

(758)

78' 50' W } = n of New Main
100' 50' E

e

55 42.0

49 42.6

47 43.3

b

36 43.9

30 44.5

25 45.0

W

16 45.9

Take on the Blvd

70

1243 5901 0.90 4658

70

249 5652

70' Blvd

24

4749
4658
1243
5901
249
5652
70' Blvd

Σ (length)
 Σ Taylor
 Σ July

X sec of Willow St (70)
 Low Public Line S of Roseville to New Main St

62.83

Top of culvert

El on mt Blvd

447'

S or W

y = 22

New Main

478'

S or E

25

665' 62.83

565.2

Public Line 47' S of address

W

26

60.2

56.18

E

45

58.3

27

60.1

66.5

62.83

41

58.7

30

59.8

36

59.2

b

33

59.5

b

10

29

59.9

36

59.2

22

60.6

38

59.0

13

61.5

E

40

58.8

W

04

62.1

Address

70'

70'

Willow

37.6

47.8

60' 21"

40'

47'

447'

345'

blough X Sec of New Main st (70)
 July W of Roseville Meet
 7/14

W 205
 S of 2946

Rosecrans 20 41

Track SW
 Rosecrans
 new main

2946

New Main
 26

S Top of walk
 on curb

76 21.9
 82
 81

2041
 2946

n

67 22.6
 67
 72

b

P.

78 21.7
 83
 80

b

69 22.6
 70
 70

n

86 20.9

S

64 23.1

100' W of Rosecrans

S

57 23.8

60

66

b

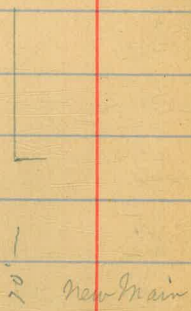
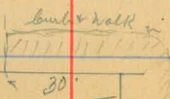
64 23.1

60

57

n

55 24.0



574700

2946

150 w f Rosecrans

n 40 25.5

42

47

b 41 25.4

43

43

s 43 25.2

200 w f Rosecrans

s 30 26.5

28

28

b 28 26.7

34

29

n 35 26.0

2946

New Train

27

250 w f Rosecrans

n 15 28.0

17

18

1 13 28.2

4 15

TP 995 38.02 109 28.7

6 102

s 109 27.4

300 w = E 28 Locust V.

s 96 28.7

90

89

1 87 29.6

91

90

n 88 29.5

2946
6.07
28.37
2.95
38.32

3852

E 1/4 of Locust

7	86	29.7
	87	
	88	
	84	29.9
	87	
	89	
5	91	29.2
	E 1/4 of Locust	
5	90	29.3
	84	
	82	
6	80	30.3
	84	
	84	
2	83	30.0

3882

New Main

28

Center of Locust

n	78	30.5
	80	
	80	
6	75	30.8
	77	
	81	
5	86	29.7
	W 1/4 of Locust	
5	81	30.2
	76	
	74	
6	72	31.1
	75	
	77	
n	76	30.7

3832

W of Locust

n 72 31.1

74

72

b 69 31.4

72

73

s 77 30.6

W of Locust

s 75 30.8

69

67

b 66 31.7

70

71

n 70 31.3

3832

New Main

29

50 W of Locust

n 57 32.6

56

57

b 52 33.1

54

54

s 59 32.4

100 W of Locust

s 45 33.8

39

40

b 40 34.3

40

39

n 40 34.3

3832

150' W-Y Locust

2 24 35.9

23

23

6 21 36.2

24

29

5 27 35.6

TP 1143 4950 025 3807

200 W-Y Locust

5 109 38.6

115

117

6 114 38.1

117

120

WT 119 37.6

3832
15
2607
1143
4950
293

4950

Newman

30

250' W-Y Locust

2 101 39.4

97

94

6 91 40.4

96

97

9 90 40.5

300' W-Y } = E L of Emergence 20'
303 W-Y }
5 (60)

5 43 45.2

53

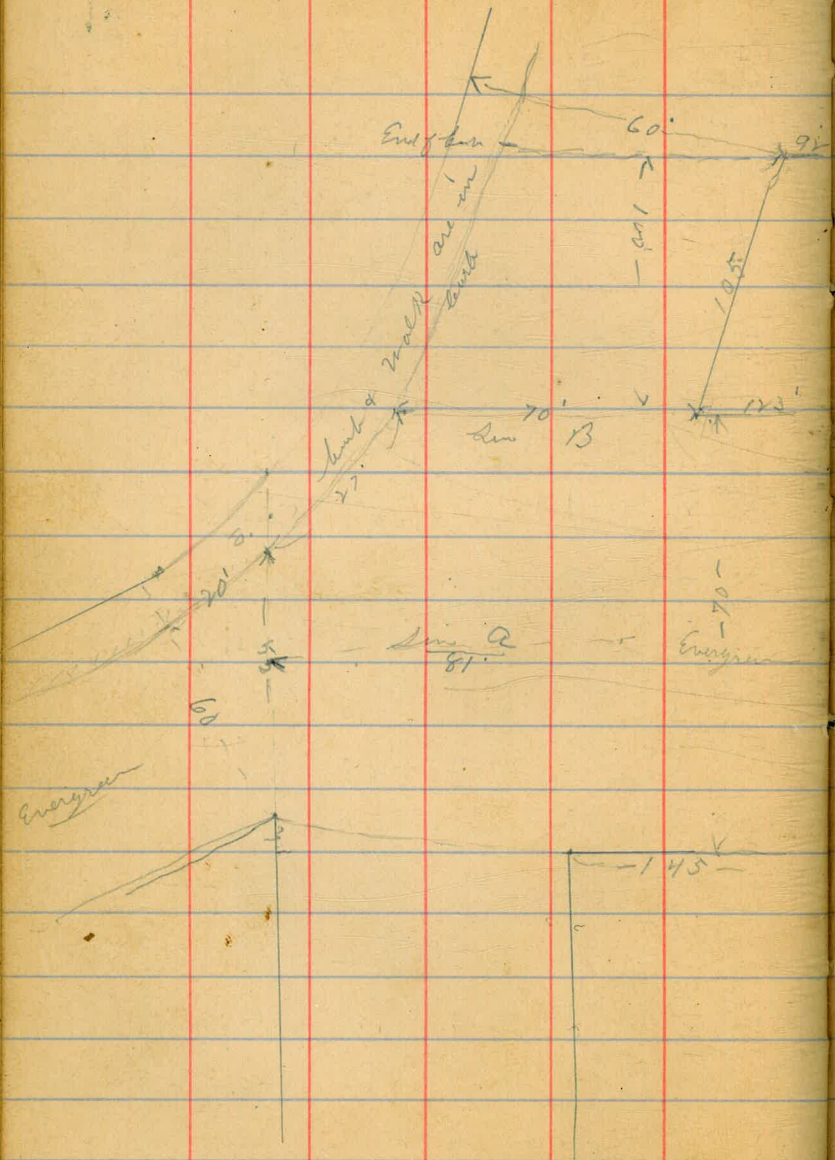
63

6 66 42.9

71

72

2 76 41.9



(81) Sim A

n	54	44.1
bar	47	44.8
S	33	46.2

S End of bar on bank 20' S of Sd

S	225	47.25
---	-----	-------

Elm bank at Sd 55' W of SE bar

S	27	46.8
---	----	------

4950

(70) Sim B

$\frac{293}{46.67}$
 $\frac{16.87}{57.44}$

Sim on the bank	27	46.8
-----------------	----	------

bar	27	46.8
-----	----	------

n = NW Emergence	35	46.0
------------------	----	------

TP 1087	5744	293	46.57
---------	------	-----	-------

70 Page
 24
 June Post

(60) st	100	W of	Emerald	
n			57	51.7
u			53	52.1
y			51	52.3
b			53	52.3
y			53	52.3
on bank End of			49	52.5
S				
TP	654	6357	041	5703
Break in line	137	W of	End of	turn
of line S			50	58.6
on S side			56	58.0
			56	58.0
			56	58.0
			57	57.9
			60	57.6
Br			705	56.5

✓ 705
Ply 24

63 W of	Ed of	Willow		
W	1		49	58.7
10'			45	59.1
11'			43	59.3
t			40	59.6
			38	59.8
on S bank			32	60.4
	W	2 of	Willow	
on S bank			15	62.1
			21	61.5
			25	61.1
			26	61.0
			30	60.6
n			27	60.9

5744
47
5703
654
6357

5
29
13
10
14

X sec of Hensley St / 80)
entire length

340 75.33 71.93
N of N St

E		8.5	66.8
cb.		8.3	67.0
1/4		8.0	67.3
b		8.5	66.8
1/4		8.1	67.2
cb		8.7	66.6
w		9.0	66.3
	50 m of	N St	
w		7.4	67.9
		7.0	68.3
		7.0	68.3
b		7.1	68.2
		7.1	68.2
		7.2	68.1
E		6.8	68.5

71.93
340
27.33

75.33

Hensley
33

100 m of N St

E		5.4	69.9
		5.8	69.5
b		6.1	69.2
		6.3	69.0
		6.0	69.3
		6.3	69.0
w		6.4	68.9

150 m of N St

w		5.2	69.1
		6.0	69.3
		5.7	69.6
b		5.7	69.6
		6.1	69.2
E		5.8	69.5
E		6.0	69.3

7532

200' n of N st

E	50	70.3
	53	70.0
	51	70.2
b	50	70.3
	51	70.2
	53	70.0
W	50	70.3

250' n of N st

W	48	70.5
	45	70.8
	45	70.8
b	43	71.0
	41	71.2
	42	71.1
E	40	71.3

7533

299' n of N

E	30	72.3
	34	71.9
	45	70.8
b	37	71.6
	34	71.9
	36	71.7
W	39	71.4

300' n of S of N st (Paved)

W	48	70.5
	53	70.0
	55	69.8
b	53	70.0
	51	70.2
	44	70.9
E	44	70.9

556

7249

341

71.93

Bm

Hensley

34

71.93
556
7249

7749

(77.5)

n of Mt

E 54 72.1

67 70.8

66 70.9

b 66 70.9

68 70.7

72 70.3

W 64 71.1

i n of Mt

W 49 72.6

67 70.8

66 70.9

b 64 71.1

64 71.1

62 71.3

E 38 73.7

7749

(77.5)

50 n of Mt

E 39 73.6

42 73.3

48 72.7

b 47 72.8

54 72.1

53 72.2

W 50 72.5

150 n of Mt

W 58 71.7

58 71.7

53 72.2

51 72.4

48 72.7

49 72.6

E 45 73.0

125' n of Mt

W 55 72.0

W 81 = Bottom
69.4

W 55 72.0

Hensley

35

7749

(77.5)

150' n f 9m 21'

E	46	72.9
	49	72.6
	50	72.5
b	57	71.8
	50	72.5
	73	70.2
Bottom 73'	82	69.3
W	60	71.5

200' n f 11m 21'

W	40	73.5
	55	72.0
	46	72.9
b	67	70.8
	54	72.1
	42	73.3
E	38	73.7

7749

(77.5)

250' n f 11m 21'

E	1	39	73.6
		50	72.5
73'		63	71.2
		38	73.7
b		29	74.6
		26	74.9
		23	75.2
W		20	75.5

300' n f 12m 21'

W	17	75.8
	20	75.5
	21	75.4
b	21	75.4
	18	75.7
	16	75.9
E	13	76.2

70 794

8391

15 75.97

on bank

Sunday

36

(cluded)
(80)7749
152
75.97
794
83.91

8391

n of 2 st

E	5.8	78.1
	6.0	77.9
	6.1	77.8
b	6.5	77.4
	6.4	77.5
	6.5	77.4
W	6.4	77.5
	5.0	n of 2 st
W	6.4	77.5
	5.8	78.1
	4.7	79.2
b	5.5	78.4
	4.6	79.3
	4.2	79.7
E	4.7	79.2

8391

Hensley

37

100' n of 2 st

E	1	4.0	79.9
		4.0	79.9
		4.4	79.5
b		5.4	78.5
		6.4	77.5
		7.0	76.9
W		6.8	77.1
	150'	n of 2	
W		5.8	78.1
		5.7	78.2
		5.5	78.4
b		5.7	78.2
		5.7	78.2
		5.0	78.9
E		3.9	80.0

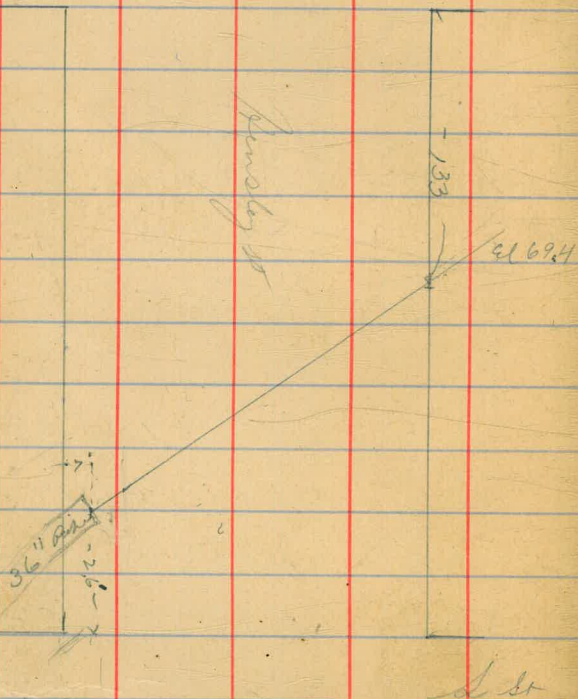
Same El at 160' n

5' along
 29 75
 13 1/2
 Culvert on Hendley St
 Bet M + L St

547 8144 8597 TP

Bottom of Pipe Culvert	105	70.9
Level of street	103	71.1
WSq "	120	69.4
8' w of wa "	121	69.3

MS



Alamy
Foster
Mann

XSec of Arizona St (80')
Adams to Elbayer

1071 37762

36691

SW Arizona
Adams

50

S of

Adams on

Arizona
39

S of Adams on

Ground

W

49 372.7

W

10.3 367.3

36691

46 373.0

cut

102 367.4

1071
37762

56 372.0

1/4

102 367.4

L

62 371.4

6

95 368.1

61 371.5

1/4

89 368.7

59 371.7

cut

85 369.1

77

56 372.0

E

76 370.0

E

34 374.2

50 S of Adams on

E

100

S of

Adams

33 374.3

E

05 377.1

43 373.3

77

66 371.0

cl

72 370.4

49 372.7

1/4

80 369.6

L

46 373.0

6

78 369.3

54 372.2

1/4

63 371.3

56 372.0

cl

56 372.0

W

63 371.3

W

44 373.2

377.62

150 S of Adams

W	77	369.9
	69	370.7
	58	371.8
b	48	372.8
	54	372.2
	47	372.9
E	35	374.1

200 S of Adams

E	43	373.3
	51	372.5
	60	371.6
b	59	371.7
	68	370.8
	81	369.5
W	88	368.8
TP	630	375.48
	844	369.18

375.48

375.5

Arizona

40

250 S of Adams

W	63	369.2
	60	369.5
	48	370.7
b	42	371.3
	43	371.2
	35	372.0
E	30	372.5

300 S of Adams

E	23	373.2
	30	372.5
	48	370.7
b	48	370.7
	53	370.2
	68	368.7
W	77	367.8

377.62
 54.0
 369.18
 6.50
 375.48

170 S

373.6

372.7

371.8

372.1

371.2

370.0

369.2

375.48

375.5

350

S of

Adams av

N

80 367.5

73 368.2

56 369.9

S

52 370.3

49 370.6

33 372.2

E

23 373.2

400

S of

Adams

E

28 372.7

35 372.0

49 370.6

S

52 370.3

58 369.7

75 368.0

N

74 368.1

375.48

375.5

450

S of

Adams

N

89 366.6

74 368.1

59 369.6

S

51 370.4

50 370.5

39 371.6

E

36 371.9

500

S of

Adams

E

24 373.1

45 371.0

53 370.0

S

60 370.5

62 369.3

78 367.7

N

24 366.1

Arizona

41

375.48

375.5

550 S of Adams av

W	90	366.5
	79	367.6
	63	369.2
b	54	370.1
	59	369.6
	48	370.7
E	37	371.8

600 S = n by Madison (80')

E	41	371.4
	49	370.6
	60	369.5
b	59	369.6
	64	369.1
	86	366.9
N	96	365.9

TP

836

374.9

965

365.9

nwh

374.9

374.2

n by Madison

n	80	366.2
	71	367.1
	54	368.8
b	48	369.4
	48	369.4
	40	370.2
E	35	370.7

n by Madison

E	41	370.1
	40	370.2
	51	369.1
b	34	368.8
	63	367.9
	75	366.7
N	88	365.4

avg

42

375.48
 965
 365.93
 536
 374.17

37419

374.2

S 1/4 of Madison

W	80	366.2
	67	367.5
	57	368.5
b	50	369.2
	44	369.8
	37	370.5
E	31	371.1
S 1/4 of Madison		
E	27	371.5
	39	370.3
	45	369.7
b	52	369.0
	60	368.2
	73	366.9
W	84	365.8

37419

374.2

Arizona

43

S 1/4 Madison

W	89	365.3
	76	366.6
	66	367.6
b	60	368.2
	54	368.8
	48	369.4
E	40	370.2
S 1/4 Madison		
E	40	370.2
	48	369.4
	58	368.4
b	63	367.9
	69	367.3
	77	366.5
W	89	365.3

37419

(374.2)

25' S of Madison

N	85	365.7
	70	367.2
	64	367.8
S	67	368.0
	46	369.6
	27	371.5
E	26	371.6

50' S of Madison

E	27	371.5
	33	370.9
	47	369.5
S	56	368.6
	59	368.3
	70	367.2
N	81	366.1

37419

(374.2)

Arizona

44

100' S of Madison

N	86	365.6
	73	366.9
	67	368.0
S	50	368.9
	40	370.2
	42	370.0
E	30	371.2

125' S of Madison

E	30	371.2
	36	370.6
	30	371.2
S	46	369.6
	63	367.9
	76	366.6
N	91	365.1

TP 477 371.57 739 366.80

Rock

37419
739
366.80
377
371.57

371.57

371.6

150 S of Madison

W	70	364.6
	52	366.4
	42	367.4
S	33	368.3
	30	368.6
	22	369.4
E	05	371.1

200 S of Madison

E	10	370.6	371.0
	12	370.4	369.6
	20	369.0	368.7
S	40	367.6	368.2
	52	366.4	367.2
	64	365.2	366.2
W	80	363.6	364.4

371.57

371.6

Arizona

45

250 S of Madison

W	93	362.3
	77	363.9
	66	365.0
S	58	365.8
	46	367.0
	20	369.6
E	15	370.1

300 S of Madison

E	22	369.4
	42	367.4
	60	365.6
S	73	364.3
	79	363.7
	94	362.2
W	113	360.3

37157

3716

	350	S of	Madison	
W			13.2	358.4
			11.3	360.3
			9.8	361.8
C			7.7	363.9
			6.8	364.8
			5.6	366.0
E			5.0	366.6

360'S

358.2

360.0

361.6

363.4

364.4

366.6

367.7

375' S of

E			2.2	369.4
W			4.0	367.6

400' S of

Madison

E			5.4	366.2
			5.8	365.8
			9.0	362.6
L			10.0	361.6
			10.9	360.7
			12.6	359.0
W			14.3	357.3

635'

36482

1310

35847

36482

Aniford

46

	1150	S of	Madison	
W			9.1	355.7
			7.5	357.3
			6.1	358.7
L			4.0	360.8
			2.5	362.3
			0.1	364.7
E			0.0	364.8

500' S of

Madison

E			1.2	363.6
			2.0	362.8
			4.7	360.1
L			6.6	358.2
			8.0	356.8
			9.0	355.8
W			10.0	354.8

37157

360

35847

635

36482

36482

550 S of Modoc

W	113	353.5
	102	354.6
	94	355.4
S	86	356.2
	71	357.7
	50	359.8
E	25	362.3

600 S = N of Modoc 20 (80')

E	36	359.2
	62	358.6
X	76	357.2
S	98	355.0
	105	354.3
	116	353.2
W	128	352.0

700 650 35920 1212 35270

35920

Arizona

47

N 1/4 of Modoc

W	75	351.7
	62	353.0
	50	354.2
S	48	354.4
	38	355.4
	15	357.7
E	00	359.2

N 1/4 of Modoc

E	00	359.2
	12	358.0
	33	355.9
S	52	354.0
	55	353.7
	66	352.6
W	77	351.5

36482
 1212
 35270
 150
 35920

35920

Center of Monnae

W	8.3	350.9
	6.8	352.4
	6.0	353.2
b	5.2	354.0
	2.4	356.8
	0.9	358.3
E	7.04	352.6

S 1/4 of Monnae

E	0.7	358.5
	1.4	357.8
	2.5	356.7
b	4.9	354.3
	6.3	352.9
	7.4	351.8
W	8.5	350.7

35920

Arizona

48

S 1/4 of Monnae

W	9.0	350.2
	7.9	351.3
	6.9	352.3
b	6.3	352.9
	4.1	355.1
	2.5	356.7
E	1.3	357.9

S line of Monnae

E	1.7	357.5
	3.0	356.2
	5.0	354.2
b	7.2	352.0
	7.6	351.6
	8.4	350.8
W	9.3	349.9

359.20

25' S of Monum

W	91	350.1
	91	350.1
	86	350.6
b	70	352.2
	40	355.2
	36	355.6
E	30	356.2

50' S of Monum

E	33	355.9
	48	354.4
	72	352.0
b	81	351.1
	85	350.7
	102	349.0
W	106	348.6

359.20

100' S of Monum

W	123	346.9
	112	348.0
	112	348.0
b	104	348.8
	92	350.0
	80	351.2
E	60	353.2

150' S of Monum

E	80	351.2
	102	349.0
	107	348.5
b	118	347.4
	122	347.0
	121	347.1
W	144	344.8

TP 420 357.07 1233 346.87

Arizona

49

359.20
 1233
 346.87
 420
 357.07

35107

(351.1)

200 S of Minnie

W	76	343.5
	56	345.5
	44	346.7
b	45	346.6
	38	347.3
	27	348.4
E	15	349.6

250 S of Minnie

E	33	347.8
	43	346.8
	54	345.7
b	59	345.2
	61	345.0
	68	344.3
W	84	342.7

280'S

347.6

346.4

345.8

345.2

344.7

343.9

342.7

35107

(351.1)

Arizona

50

300 S of Minnie

W	84	342.7
	74	343.7
	66	344.5
b	59	345.2
	52	345.9
	49	346.2
E	36	347.5

350 S of Minnie

E	35	347.6
	45	346.6
	46	346.5
b	54	345.7
	66	344.5
	70	344.1
W	85	342.6

35107

(351.1)

400 S y Monna

W	84	342.7
	72	343.9
	70	344.1
b	65	344.6
	65	344.6
	58	345.3
E	32	347.9

450 S y Monna

E	44	346.7
	60	345.1
	62	344.9
b	71	344.0
	66	344.5
	78	343.3
W	103	340.8

35107

(351.1)

500 S y Monna

W	99	341.2
	98	341.3
	83	342.8
b	68	344.3
	71	344.0
	63	344.8
E	47	346.4

550 S y Monna

E	53	345.8
	58	345.3
	76	343.5
b	82	342.9
	77	343.4
	88	342.3
W	101	341.0

TP 502 347.22 886 342.1

347.23

Arizona

51

35107
886
342.21
602
347.22

34722

575 S of

Moore

W	72	340.0
	52	342.0
	36	343.6
b	43	342.9
	40	343.2
	19	345.3
E	17	345.5

600 S = N of Moore an (80)

E	12	346.0
	18	345.4
	39	343.3
b	50	342.2
	54	341.8
	66	340.6
W	77	339.5

34722

Arizona

52

N of Moore

W	69	340.3
	65	340.7
	48	342.4
b	42	343.0
	40	343.2
	28	344.4
E	21	345.1

N of Moore

E	28	344.4
	37	343.5
	44	342.8
b	39	343.3
	42	343.0
	62	341.0
W	73	339.9

347.22

Center of Meade

W	67	340.5
	58	341.4
	53	341.9
b	49	342.3
	45	342.7
	38	343.4
E	26	344.6

S line of Meade

E	28	344.4
	38	343.4
	46	342.6
b	51	342.1
	60	341.2
	54	341.6
W	69	340.3

347.22

Arizona

53

S line of Meade

W	80	339.2
	72	340.0
	63	340.9
b	51	342.1
	46	342.6
	39	343.3
E	21	345.1

S line of Meade

E	15	345.7
	29	344.3
	42	343.0
b	46	342.6
	56	341.4
	77	339.5
W	80	339.2

347.22

50 S f Meads

W	86	338.6
	80	339.2
	66	340.6
b	56	341.6
	46	342.6
	28	344.4
E	25	344.7

100 S f Meads

E	27	344.5
	37	343.5
	52	342.0
b	59	341.3
	70	340.2
	71	340.1
W	88	338.4

347.22

Arizona

54

150 S f Meads

W	77	339.5
	77	339.5
	80	339.2
b	69	340.3
	58	341.4
	53	341.9
E	37	343.5

200 S f Meads

E	43	342.9
	53	341.9
	66	340.6
b	60	341.2
	71	340.1
	92	338.0
W	95	337.7

347.22

250 S of Meade

W	10.1	337.1
	9.8	337.4
	8.1	339.1
b	7.1	340.1
	7.7	339.5
	6.0	341.2
E	4.3	342.9

275 S of Meade

E	3.3	343.9
	4.1	343.1
	6.8	340.4
b	7.9	339.3
	8.4	338.8
	9.4	337.8
W	10.6	336.6

TP

476

342.98

9.0

338.2

342.98

(343.0)

Arizona

55

300 S of Meade

W	6.5	336.5
	5.2	337.8
	3.3	339.7
b	3.6	339.4
	3.3	339.7
	2.0	341.0
E	0.7	342.1

325 S of Meade

E	0.0	343.0
	0.7	342.3
	3.2	339.8
b	3.5	339.5
	5.5	337.5
	5.9	337.1
W	6.7	336.3

347.22
9.0
338.22
4.76
342.98

342.98

343.0

350 S of Meade

W 71 335.9

47 338.3

46 338.4

S 46 338.4

40 339.0

32 339.8

E 20 341.0

375 S of Meade

E 16 341.4

28 340.2

27 340.3

S 47 338.3

60 337.0

65 336.5

W 74 335.6

342.98

343.0

Arizona

56

400 S of Meade

W 68 336.2

63 336.7

63 336.7

S 40 339.0

32 339.8

16 341.4

E 08 342.2

425 S of Meade

E 24 340.6

36 339.4

40 339.0

S 43 338.7

64 336.6

70 336.0

W 80 335.0

342.98
343.0

450 S of Meade
W 82 334.8
55 337.5
60 337.0
b 57 337.3
52 337.8
41 338.9
E 18 341.2

470 S of Meade
E 22 340.8
39 339.1
32 339.8
b 44 338.6
65 336.5
66 336.4
W 81 334.9

342.98
343.0

Arizona

57

500 S of Meade
W 77 335.3
73 335.7
63 336.7
b 52 337.8
37 339.3
44 338.6
E 27 340.3

525 S of Meade
E 18 341.2
30 340.0
43 338.7
b 57 337.3
62 336.8
68 336.2
W 86 334.4

34298

3430

550 sy Mead

W 86 334.4

75 335.5

55 337.5

55 337.5

47 338.3

26 340.4

E 17 341.3

600' S = N of El Cajon (150')

E 29 340.1

40 339.0

48 338.2

b 60 337.0

71 335.9

77 335.3

W 89 334.1

387 339.8 ¹¹ Bm at El Cajon

6/5

Change Taylor Feb, Ee of Trenches on 2nd St

378 879 5.01

3m SE M+9

585 835 6.29 2.50

on return NE

2nd E line of 9th St

N Pair of lanes 5.65 2.70

Main line 5.60 2.75

S Track 5.70 2.65

2nd Sutter (Corner) W L of 10th (80) 4.50 3.85

N Sutter 4.60 3.75

Main line 4.60 3.75

S Track 4.55 3.80

2nd Sutter (Corner) E L of 10th 4.0 4.35

N Sutter 4.10 4.25

Main line 4.10 4.25

S Track 3.90 4.45

TP 448 966 3.17 5.18

W L of 11th (80)

N Sutter 4.60 5.06

2 Sutter 4.60 5.06

Main line 4.70 4.96

S Track 4.60 5.06

S Sutter 4.60 5.06

966

E L of 11th St

N Sutter 4.85 4.81

Main line 4.60 5.06

S line 4.95 4.71

S Sutter 4.75 4.91

TP 5.13 7.49 7.30 2.26

W L of 12th St (80)

N Sutter 4.80 2.69

Main Sutter 4.90 2.59

Main line 4.90 2.59

S Track 4.90 2.69

S Sutter 4.75 2.74

E L of 12th St

N Sutter 4.95 2.54

Main Sutter 4.95 2.54

Main line 4.90 2.59

S Track 5.0 2.49

S Sutter 5.0 2.49

TP 4.62 7.98 4.13 3.36

	W 2 of	13 th	15
N Track		44	3.58
S line		44	3.58
Swivel		45	3.48
S Swivel		46	3.38

center of 13 on brassings

N brass		425	3.73
Main brass		430	3.68
S brass	}	43	3.68
S brass		44	3.58

E 2 of 13th 15

N line		41	3.88
S line		44	3.58
S Swivel		44	3.58

TP

2,444 860 382 416

W 2 of Mathinal on diagonal

N Swivel		45	4.10
N line		43	4.30
S line		45	4.10

E line of Mathinal on

N Swivel		48	3.80
N line		40	4.60
S line		40	4.60

TP 586 1134 310 550

W 2 of 15th 15 (80)

N Swivel		76	3.76
N line		46	6.76
S line		47	6.66

E 2 of 15th 15

N Swivel		52	6.16
N line		40	7.36
S line		39	7.46

TP

822 1762 196 940

W 2 of 16th 15

N Track		710	10.52
S Track		715	10.47

center of 16th

N brass		642	11.20
S "		652	11.10

17.62

E 2 of 16th

N Track			5.00	12.62
S Track			5.30	12.52
TP	1003	<u>2563</u>	202	15.60
	W 2 of		17 th	(80)
N Track			67	18.93
S Track			7.0	18.63
	E 2 of		17 th	
N Track			4.6	21.03
S Track			4.6	21.03
TP	640	<u>2952</u>	257	23.12
	W 2 of		18 th	
N Track			4.55	24.97
S Track			4.45	25.07
	E 2 of		18 th	
N Track			30	26.52
S Track			30	26.52
TP	800	<u>3600</u>	152	28.00

36.00

61

W 2 of 19th

N Track			5.85	30.15
S Track			5.70	30.30
	E 2 of		19 th	
N Track			4.3	31.70
S Track			4.2	31.80
TP	620	<u>4187</u>	103	34.97
	W 2 of		20 th	
N Track			6.00	35.77
S Track			6.30	35.57
	E 2 of		20 th	
N Track			4.5	37.37
S Track			4.65	37.02
Dr			6.71	34.96
TP	677	<u>4684</u>	176	40.0
	W 2 of		21 st	
N Track			5.9	40.98
S Track			6.1	40.78
S Sinter			7.2	39.68

NE @ 20
+ 72

46.88

E line of 21st

n Track			43	42.58
S Track			455	42.33
S Switch			46	42.28
TP	651	5169	170	45.18

W 2 of 22nd st

n Track			565	46.04
S Track			555	46.14

E 2 of 22nd st

n Track			445	47.24
S Track			430	47.39
TP	570	5274	462	47.07
TP	571	5513	341	49.36

W 2 of 24th st

n Track			555	49.58
S Track			590	49.23

TP E 2 of 24th st

n Track			530	49.63
S Track			570	49.43
TP	684	5856	211	52.92

59.76

W 2 of 25th st

n Track			59	53.86
S Track			63	53.46

E line of 25th st

Start bar main			535	54.41
n Track			56	54.16
S Track			56	54.16

Grant st crossing

n brass			530	54.46
S brass			525	54.51

E 2 Grant st

n Track			46	55.16
S Track			45	55.26
TP	733	6474	235	57.41

W 2 of 26th st

n Track			56	59.14
S Track			535	59.39

E 2 of 26th st

n Track			495	59.79
S Track			480	59.94
			475	59.79

62

6474

E line of Franklin

N Track		425	60.49
S Track		390	60.84
TP	640	<u>6889</u>	245 62.29

W L of 277 ft

N Track		48	63.89
S Track		43	64.39

E L of 277 ft

N Track		47	63.99
S Track		41	64.79

W L of Evans

N Track		43	64.39
S Track		35	65.19

E L of Evans

N Track		40	64.69
S Track		37	65.49

TP 641 7265 245 66.24

W L of Hensley 27

N Track		645	66.20
S Track		60	66.65

7265

E line of Hensley

N Track		59	66.75
S Track		55	67.10
TP	546	<u>7350</u>	461 68.04

Rough line at 28 ft

N Track		52	67.90
S Track		53	68.20

TP 578 7586 342 70.08

W L 297 ft

N Track		55	70.36
S Track		49	70.96

S Sinter 50 70.86

E L of 29 ft

N Track		51	70.71
---------	--	----	-------

S Track		44	71.46
---------	--	----	-------

S Sinter		49	70.96
----------	--	----	-------

TP 575 7813 288 72.94

W L 30 ft

N Track		46	73.53
---------	--	----	-------

S Track		41	73.68
---------	--	----	-------

63

⑨

7813

E div of 30th 21stN Track 475 73.38⁴⁸S Track 435 73.78⁸⁴

TP 493 7856 450 73.63

350 E of 29th = P.O. S Track lanes

N Track 40 74.56

S Track 40 74.56

W 2nd of 31st 21st

E L Track 340 75.16

E 2nd of 31st

E Track 31 75.46

TP 470 8010 316 75.40

492 7692 610 74.00

W 2nd of 32nd 21st

E L Track 795 70.97

E 2nd of 32nd 21st

E Track from N Ebn 89 70.02

x-section Harney st San Diego to Boyd
 " " 50 wide 10' walks.

Quartz
 Shale
 Rock

B.M. from cor San Diego & Harney 33.26

B.M. 12.53 45.79

410-14-1 San Diego

N		13.0	39.8
Crk		12.9	32.9
"4		12.6	33.2
M		12.4	33.4
"4		12.6	33.2
Crk		12.6	33.2
E		12.2	33.6
	0+50 N		
	45.8		
E		9.5	36.3
Crk		9.5	36.3
"4		10.5	35.3
"4		10.2	35.6
M		10.0	35.8
"4		10.4	35.4
+6		10.6	35.2
Crk		9.4	36.4
N		9.6	36.2

45.79

65

1+0

N		7.1	38.7
+8		7.5	38.3
Crk		8.2	37.6
"4		7.8	38.0
M		7.7	38.1
"4		7.8	38.0
Crk		8.3	37.5
+2		7.4	38.4
E		7.2	38.6

1+50

E		4.9	40.9
Crk		5.2	40.6
+1		5.8	40.0
"4		6.2	40.6
M		4.9	40.9
"4		3.1	42.7
Crk		5.7	40.1
+2		4.9	39.9
N		4.9	39.9

45.79

1478 = 2' S of S. rail S.D.E. RR.

W	4.6	41.2
wh	3.9	41.9
"4	3.9	41.9
M	3.9	41.9
"4	3.9	41.9
wh	4.3	41.5
E	4.9	40.9

1480 = S. rail
15.9

E	3.8	42.0
M	3.8	42.0
W	3.8	42.0

1487
2' N of N rail

W	4.4	41.4
wh	3.9	41.9
"4	3.6	42.2
M	3.7	42.1
"4	3.9	41.9
wh	4.0	41.8
E	4.6	41.2

45.79

210

66

E	2.6	43.2
wh	2.8	43.0
"4	2.9	42.9
M	2.8	43.0
"4	2.8	43.0
+5	3.2	42.6
wh	2.6	43.2
W	2.6	43.2
T.P.	12.44	58.13
		0.10
		45.69

2150

W	11.6	46.5
wh	12.1	46.0
"4	12.1	46.0
M	12.1	46.0
"4	12.3	45.8
wh	12.5	45.6
E	12.6	45.5

58.13

~~58.13~~

3+0

E	2.8	49.3
erb	2.7	49.4
"4	2.3	49.8
M	2.2	49.9
"4	2.4	49.7
erb	2.9	49.7
W	2.5	50.3

3+50

W	4.2	53.9		
erb	4.6	53.5		
"4	4.2	53.9		
M	4.2	53.9		
"4	4.3	53.8		
erb	4.6	53.5		
E	4.1	54.0		
T.P.	12.81	70.48	0.46	57.67

70.48

67

4+0

E	11.0	59.5
erb	12.1	58.4
"4	12.3	58.2
M	12.1	58.4
"4	12.3	58.2
erb	12.2	58.3
W	12.3	58.2

4+45 = S.L. Jaun 5+50 wide for x-sec see book 886 p. 18

W	7.9	62.6		
erb	9.4	61.1		
"4	9.2	61.3		
M	8.9	61.6		
"4	8.7	61.8		
erb	9.0	66.5		
E	2.5	68.0		
T.P.	12.89	83.24	0.13	70.35

83.24

N.L. Jaun

E	6.4	76.8
ck	8.7	74.5
"A	10.0	73.2
"A	11.3	71.9
"A	11.9	71.3
ck	12.3	70.9
W	13.3	69.9

0+50

W	8.1	75.1
ck	6.9	72.3
"A	5.9	77.3
M	4.8	78.4
"A	3.8	79.4
ck	2.8	80.4
E	0.9	82.3

83.24

68

0+70

E	3.9	79.3
ck	5.4	77.8
"A	6.2	77.0
M	6.9	76.3
"A	6.9	76.3
ck	7.7	75.5
W	8.5	74.7

1+10

W	23.1	60.1
ck	22.5	60.7
"A	22.5	60.7
M	23.7	59.5
"A	21.5	61.7
ck	21.3	61.9
E	20.7	62.5

83.24

1450

F		15.9	67.3
Col		15.4	67.8
"4		15.0	68.2
M		15.7	67.5
"4		16.1	66.1
Col		16.2	67.0
W		16.4	66.8
T.P.	1465	88.82	6.07 77.17
		240	
W		8.4	80.4
Col		9.6	79.2
"4		8.2	79.6
M		9.8	79.0
"4		10.7	78.1
Col		10.8	79.0
E		12.0	76.8
T.P.	1157	99.63	10.6 87.76

99.63

69

2750

E		7.3	92.3
Col		8.8	90.8
"4		9.0	90.6
M		8.2	91.4
"4		7.9	91.7
Col		7.9	91.7
W		6.0	93.6
T.P.	1262	111.39	0.36 98.77
		370	3.1 Boyd St.
W		5.3	94.3
Col		5.6	94.0
"4		6.2	93.4
M		5.6	94.0
"4		4.6	95.0
Col		4.1	95.5
E		3.2	96.4

8/14 through X. Sec of Hensley St (80)
 Taylor N of N St to S End of St
 July

70.57

Hensley
 70

700
 760 7329 6569
 500 7506 323 7006
 1141 70.57 890 6616

Bm NE Corner
 4m

on Cont
 near Cont
 Hensley 75m

N line of N St (80)

E

34
 36
 32
 35
 33
 39
 41

b

w

N Cont of N St

50
 44
 43
 45
 42
 42
 38
 54
 52
 57
 60
 62
 63
 64

N 74 f N St

w

b

E

E

b

w

7057

N¹/₄ + 9' = 2' on Rail (any mass)

W	5.2
	5.1
	5.0
L	4.5
	4.7
	4.7
E	4.7
El Rail W	4.4
El Rail E	3.7

Center + 5' = 2'S Rail ^{+5m W} ^{+5" 6} ^{+6m E Sinter}

E	4.5
	4.3
	4.8
L	4.8
	5.0
	5.2
W	5.3

7057

71

Center + 11' = 2' on Rail Double Track

W	4.8
	4.6
	4.5
L	4.5
	4.5
	4.4
E	4.3
El Rail W	3.9
El Rail E	3.4

S¹/₄ + 7' = 2'S Rail Double Track

E	4.3
	4.5
	4.5
L	4.6
	4.7
	4.7
W	4.7

7057

S curb of 91 st

W 55

58

60

b 62

60

55

E 53

S line of 91 st

E 51

57

55

b 55

59

58

W 53

7057

Hensley

72

50 S of 91 st

W 39

40

37

b 35

40

43

E 44

100 S of 91 st ✓

E 38

35

36

b 33

30

30

W 29

7057

1236 S = Paella Sim

W

20

23

23

27

29

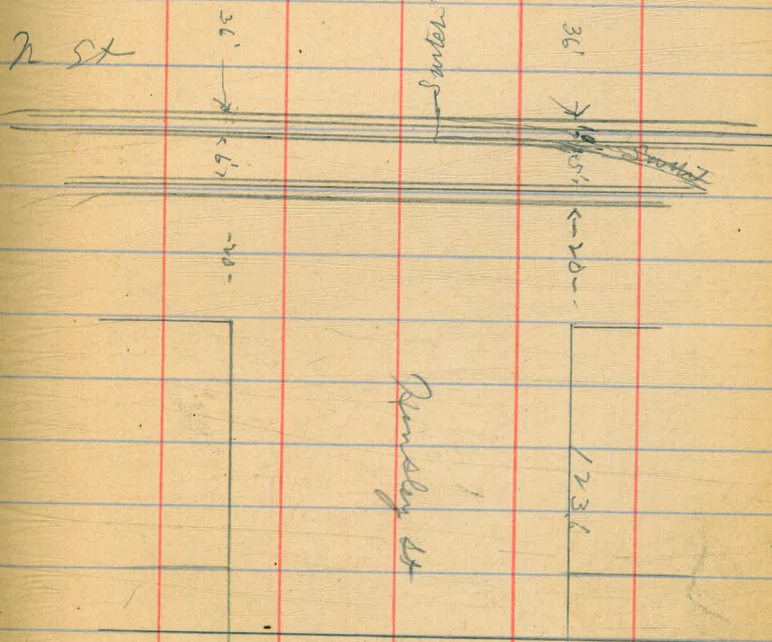
33

E

34

73

25x



74

75

77

78

79

290.97
 290.17
 1.22
 293.95

302.55

293.75
 0.98
 294.83
 - 11.11
 283.72
 + 1.19
 284.91
 + 6.23
 278.68

75.97
 8.47
 81.44

86.0

19663
 7
 20363
 80
 12363

DISTANCES FROM CENTER OF ROADWAY FOR CROSS-SECTIONING
 ROADWAY 16 FEET WIDE. SIDE SLOPES 1½ TO 1.
 FOR SINGLE TRACK EMBANKMENT.

	0	.1	.2	.3	.4	.5	.6	.7	.8	.9
0	8.0	8.2	8.3	8.5	8.6	8.8	8.9	9.1	9.2	9.4
1	9.5	9.7	9.8	10.0	10.1	10.3	10.4	10.6	10.7	10.9
2	11.0	11.2	11.3	11.5	11.6	11.8	11.9	12.1	12.2	12.4
3	12.5	12.7	12.8	13.0	13.1	13.3	13.4	13.6	13.7	13.9
4	14.0	14.2	14.3	14.5	14.6	14.8	14.9	15.1	15.2	15.4
5	15.5	15.7	15.8	16.0	16.1	16.3	16.4	16.6	16.7	16.9
6	17.0	17.2	17.3	17.5	17.6	17.8	17.9	18.1	18.2	18.4
7	18.5	18.7	18.8	19.0	19.1	19.3	19.4	19.6	19.7	19.9
8	20.0	20.2	20.3	20.5	20.6	20.8	20.9	21.1	21.2	21.4
9	21.5	21.7	21.8	22.0	22.1	22.3	22.4	22.6	22.7	22.9
10	23.0	23.2	23.3	23.5	23.6	23.8	23.9	24.1	24.2	24.4
11	24.5	24.7	24.8	25.0	25.1	25.3	25.4	25.6	25.7	25.9
12	26.0	26.2	26.3	26.5	26.6	26.8	26.9	27.1	27.2	27.4
13	27.5	27.7	27.8	28.0	28.1	28.3	28.4	28.6	28.7	28.9
14	29.0	29.2	29.3	29.5	29.6	29.8	29.9	30.1	30.2	30.4
15	30.5	30.7	30.8	31.0	31.1	31.3	31.4	31.6	31.7	31.9
16	32.0	32.2	32.3	32.5	32.6	32.8	32.9	33.1	33.2	33.4
17	33.5	33.7	33.8	34.0	34.1	34.3	34.4	34.6	34.7	34.9
18	35.0	35.2	35.3	35.5	35.6	35.8	35.9	36.1	36.2	36.4
19	36.5	36.7	36.8	37.0	37.1	37.3	37.4	37.6	37.7	37.9
20	38.0	38.2	38.3	38.5	38.6	38.8	38.9	39.1	39.2	39.4
21	39.5	39.7	39.8	40.0	40.1	40.3	40.4	40.6	40.7	40.9
22	41.0	41.2	41.3	41.5	41.6	41.8	41.9	42.1	42.2	42.4
23	42.5	42.7	42.8	43.0	43.1	43.3	43.4	43.6	43.7	43.9
24	44.0	44.2	44.3	44.5	44.6	44.8	44.9	45.1	45.2	45.4
25	45.5	45.7	45.8	46.0	46.1	46.3	46.4	46.6	46.7	46.9
26	47.0	47.2	47.3	47.5	47.6	47.8	47.9	48.1	48.2	48.4
27	48.5	48.7	48.8	49.0	49.1	49.3	49.4	49.6	49.7	49.9
28	50.0	50.2	50.3	50.5	50.6	50.8	50.9	51.1	51.2	51.4
29	51.5	51.7	51.8	52.0	52.1	52.3	52.4	52.6	52.7	52.9
30	53.0	53.2	53.3	53.5	53.6	53.8	53.9	54.1	54.2	54.4
31	54.5	54.7	54.8	55.0	55.1	55.3	55.4	55.6	55.7	55.9
32	56.0	56.2	56.3	56.5	56.6	56.8	56.9	57.1	57.2	57.4
33	57.5	57.7	57.8	58.0	58.1	58.3	58.4	58.6	58.7	58.9
34	59.0	59.2	59.3	59.5	59.6	59.8	59.9	60.1	60.2	60.4
35	60.5	60.7	60.8	61.0	61.1	61.3	61.4	61.6	61.7	61.9
36	62.0	62.2	62.3	62.5	62.6	62.8	62.9	63.1	63.2	63.4
37	63.5	63.7	63.8	64.0	64.1	64.3	64.4	64.6	64.7	64.9
38	65.0	65.2	65.3	65.5	65.6	65.8	65.9	66.1	66.2	66.4
39	66.5	66.7	66.8	67.0	67.1	67.3	67.4	67.6	67.7	67.9
40	68.0	68.2	68.3	68.5	68.6	68.8	68.9	69.1	69.2	69.4

Calculated by F. E. Paradis. C. E.

