

878

878
F.B.

MEMORANDUM

KEUFFEL & ESSER CO.

DRAWING MATERIALS

AND

SURVEYING INSTRUMENTS.

NEW YORK.

CHICAGO.

SAN FRANCISCO.

ST. LOUIS.

TABLES FOR EXCAVATIONS AND EMBANKMENTS.

DISTANCES FROM CENTER OF ROADWAY FOR CROSS-SECTIONING.

ROADWAY 18 FEET WIDE. SIDE SLOPES 1 TO 1.

FOR SINGLE TRACK EXCAVATION.

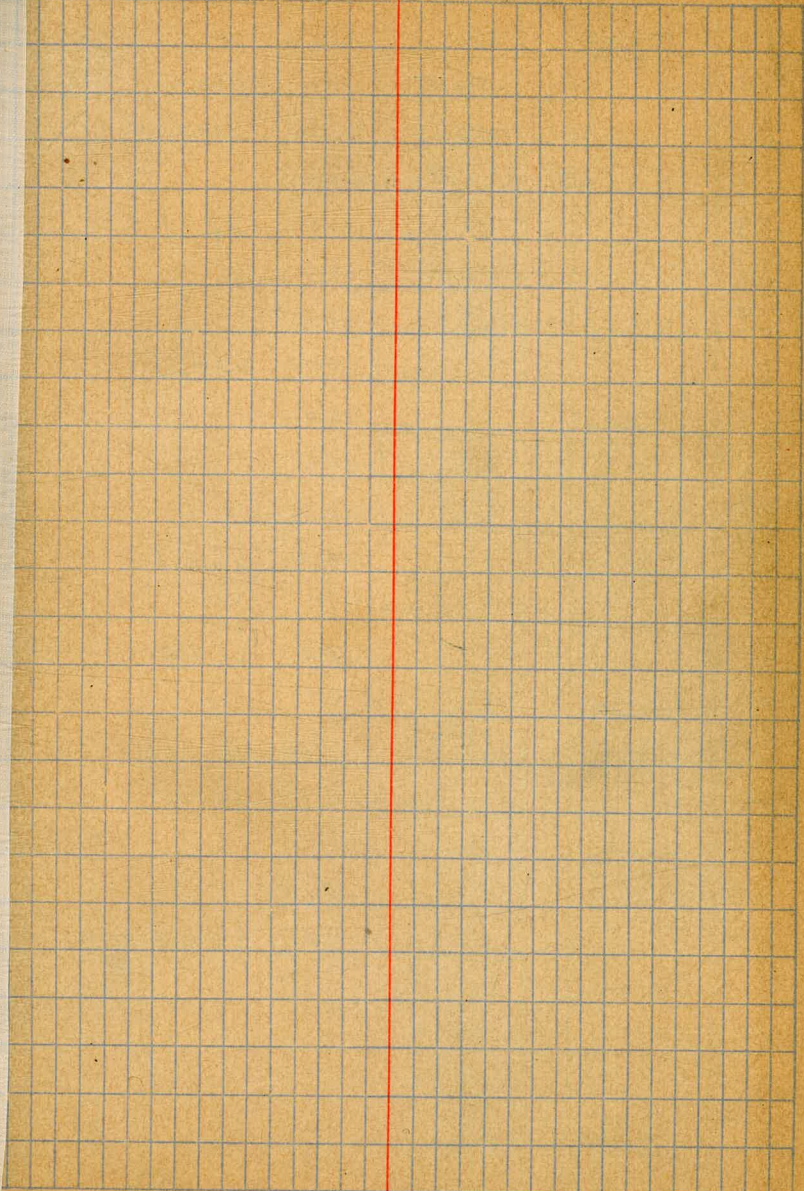
"Copyright, 1895, by Keuffel & Esser Co."

	0	.1	.2	.3	.4	.5	.6	.7	.8	.9	
0	9.0	9.1	9.2	9.3	9.4	9.5	9.6	9.7	9.8	9.9	0
1	10.0	10.1	10.2	10.3	10.4	10.5	10.6	10.7	10.8	10.9	1
2	11.0	11.1	11.2	11.3	11.4	11.5	11.6	11.7	11.8	11.9	2
3	12.0	12.1	12.2	12.3	12.4	12.5	12.6	12.7	12.8	12.9	3
4	13.0	13.1	13.2	13.3	13.4	13.5	13.6	13.7	13.8	13.9	4
5	14.0	14.1	14.2	14.3	14.4	14.5	14.6	14.7	14.8	14.9	5
6	15.0	15.1	15.2	15.3	15.4	15.5	15.6	15.7	15.8	15.9	6
7	16.0	16.1	16.2	16.3	16.4	16.5	16.6	16.7	16.8	16.9	7
8	17.0	17.1	17.2	17.3	17.4	17.5	17.6	17.7	17.8	17.9	8
9	18.0	18.1	18.2	18.3	18.4	18.5	18.6	18.7	18.8	18.9	9
10	19.0	19.1	19.2	19.3	19.4	19.5	19.6	19.7	19.8	19.9	10
11	20.0	20.1	20.2	20.3	20.4	20.5	20.6	20.7	20.8	20.9	11
12	21.0	21.1	21.2	21.3	21.4	21.5	21.6	21.7	21.8	21.9	12
13	22.0	22.1	22.2	22.3	22.4	22.5	22.6	22.7	22.8	22.9	13
14	23.0	23.1	23.2	23.3	23.4	23.5	23.6	23.7	23.8	23.9	14
15	24.0	24.1	24.2	24.3	24.4	24.5	24.6	24.7	24.8	24.9	15
16	25.0	25.1	25.2	25.3	25.4	25.5	25.6	25.7	25.8	25.9	16
17	26.0	26.1	26.2	26.3	26.4	26.5	26.6	26.7	26.8	26.9	17
18	27.0	27.1	27.2	27.3	27.4	27.5	27.6	27.7	27.8	27.9	18
19	28.0	28.1	28.2	28.3	28.4	28.5	28.6	28.7	28.8	28.9	19
20	29.0	29.1	29.2	29.3	29.4	29.5	29.6	29.7	29.8	29.9	20
21	30.0	30.1	30.2	30.3	30.4	30.5	30.6	30.7	30.8	30.9	21
22	31.0	31.1	31.2	31.3	31.4	31.5	31.6	31.7	31.8	31.9	22
23	32.0	32.1	32.2	32.3	32.4	32.5	32.6	32.7	32.8	32.9	23
24	33.0	33.1	33.2	33.3	33.4	33.5	33.6	33.7	33.8	33.9	24
25	34.0	34.1	34.2	34.3	34.4	34.5	34.6	34.7	34.8	34.9	25
26	35.0	35.1	35.2	35.3	35.4	35.5	35.6	35.7	35.8	35.9	26
27	36.0	36.1	36.2	36.3	36.4	36.5	36.6	36.7	36.8	36.9	27
28	37.0	37.1	37.2	37.3	37.4	37.5	37.6	37.7	37.8	37.9	28
29	38.0	38.1	38.2	38.3	38.4	38.5	38.6	38.7	38.8	38.9	29
30	39.0	39.1	39.2	39.3	39.4	39.5	39.6	39.7	39.8	39.9	30
31	40.0	40.1	40.2	40.3	40.4	40.5	40.6	40.7	40.8	40.9	31
32	41.0	41.1	41.2	41.3	41.4	41.5	41.6	41.7	41.8	41.9	32
33	42.0	42.1	42.2	42.3	42.4	42.5	42.6	42.7	42.8	42.9	33
34	43.0	43.1	43.2	43.3	43.4	43.5	43.6	43.7	43.8	43.9	34
35	44.0	44.1	44.2	44.3	44.4	44.5	44.6	44.7	44.8	44.9	35
36	45.0	45.1	45.2	45.3	45.4	45.5	45.6	45.7	45.8	45.9	36

Calculated by Julien A. Hall, M. Am. Soc. C. E.

For Keith's Railroad Curve Tables see end of book.

$69.16 = 1.204120$
 $109.150 = 2.176091$
 1.078079
 1.2278
 67.3900
 17278
 8.41700
 150
 80
 230
 1.204120
 2.567225
 2.841397
 0.6923
 230
 209790
 3007320
 100488
 20
 13966
 20
 1608390
 232561



4/13
 23
 Shaw

CROSS-SECTION OF
 WIGHTMAN ST
 FROM
 E. L. ALABAMA ST
 W. L. IDAHO ST
 60' WIDE
 10' WALKS
 10' QUARTERS

B.M. 1.43 274.58 273.15 N.E. MISS. UNIV
 T.P. 0.06 273.10 11.54 273.04 ✓

E. L. ALABAMA

N 11.4 261.7
 12.0
 12.6
 C 14.8 258.3
 +5 16.4
 1/4 15.4
 cb 13.0
 S 12.2 260.9

85' EAST

S 9.3 263.8
 cb 9.8
 1/4 10.3
 C 11.7 261.4
 1/4 10.6
 cb 9.8
 N 9.3 263.8

27310
 75' EAST

Wightman
 2

N	5.4	269.7
cb	5.5	
1/4	5.2	
C	5.1	268.0
1/4	5.0	
cb	4.7	
S	4.4	268.7

195' EAST

S	0.4	272.7
cb	0.7	
1/4	0.7	
C	0.6	272.5
1/4	0.8	
cb	0.7	
N	0.6	272.5
T.P.	12.09 285.13 ✓	0.06 273.04

175' EAST

N	7.8	277.3
cb	7.8	
1/4	8.0	
C	8.1	277.0
1/4	8.3	
cb	8.4	
S	8.4	276.7

985.13

995' EAST

S	5.5	279.6
cl	5.3	
1/4	5.2	
C	4.9	280.2
1/4	4.8	
cl	5.0	
N	5.1	280.0

955' EAST

N	3.2	281.9
cl	3.3	
1/4	3.6	
C	3.6	281.5
1/4	3.5	
cl	4.0	
S	4.3	280.8

267.5 ON NO.
267.6 - 50

W.L. MISSISSIPPI ST (GRADED)

S	6.9	278.2
cl	7.1	
1/4	6.8	
C	6.5	278.3
1/4	6.7	
cl	6.6	
N	6.3	278.8

Wightman

EAST LINE MISSISSIPPI ST

83

N	5.3	279.8
cl	5.6	
1/4	5.8	
C	6.0	279.1
1/4	6.1	
cl	6.1	
S	5.9	279.2

10' EAST

S	1.6	283.5
TR	2.5	
cl	3.4	
1/4	3.0	282.1
C	2.4	281.8
1/4	2.7	
cl	2.4	
N	1.4	283.7

60' EAST

N	0.0	285.1
TR	1.6	
cl	1.4	
1/4	1.4	283.7
C	1.5	283.6
1/4	2.1	
cl	2.3	
TR	2.4	
S	0.6	284.5

285113

T.P.

10.13

294.86

0.40

284.93

110' EAST

S	9.9	285.0
+2	11.1	
ct	10.7	
1/4	10.5	
C	10.3	284.6
1/2	10.0	
ct	10.2	
+8	10.2	
H	8.3	286.6

160' EAST

N	6.8	288.1
+2	8.2	
ct	8.2	
1/4	8.5	
C	8.6	286.3
1/4	9.1	
ct	9.3	
+8	9.3	
S	8.1	286.8

Wrightman
294.86

4

210' EAST

S	7.3	287.6
+2	8.6	
ct	7.3	
1/4	6.6	
C	6.8	288.1
1/4	7.2	287.7
ct	7.1	
+8	7.3	
H	5.7	289.2

260' EAST

H	4.5	290.4
ct	4.9	
1/4	5.7	
C	5.5	289.4
1/4	5.9	
ct	6.2	
S	7.0	287.9

370' EAST = W.L. LOUISIANA ST (GRADED) 60'

S	5.5	289.4
ct	5.8	
1/4	5.7	
C	5.4	289.5
1/4	5.3	
ct	4.9	
H	4.6	290.3

394.86

2948

EAST LINE

LOUISIANA

N	3.5	291.4
cb	3.8	291.0 ✓
1/4	4.4	290.4 ✓
c	4.1	290.8 ✓
1/4	4.4	290.4 ✓
cb	4.9	289.9 ✓
S	4.6	290.3

2' EAST

S	4.0	290.9
cb	3.1	291.7 ✓
1/4	3.4	291.4 ✓
c	2.6	292.3
1/4	2.0	292.8 ✓
cb	1.7	293.1 ✓
N	1.5	293.4

50' EAST

T.P.	12.77	307.19	0.44	294.42
N			10.7	296.5
cb			11.2	295.9 ✓
1/4			11.7	295.5
c			12.1	295.1
1/4			12.4	294.7 ✓
cb			12.3	294.8 ✓
S			12.5	294.7

307.19

Wightman

5

100' EAST

S	8.7	298.5
cb	8.3	298.8 ✓
1/4	8.4	298.7 ✓
c	8.3	298.9
1/4	8.0	299.1 ✓
cb	7.7	299.4 ✓
N	7.2	300.0

150' EAST

N	4.6	302.6
cb	5.0	302.1 ✓
1/4	5.2	301.9
c	5.1	302.1
1/4	5.4	301.7 ✓
cb	5.5	301.6 ✓
S	5.6	301.6

300' EAST

S	3.2	304.0
cb	3.3	303.8 ✓
1/4	3.2	306.9 ✓
c	3.0	304.2
1/4	2.9	304.2 ✓
cb	2.4	304.7 ✓
N	2.0	305.2

307.19

#50' EAST

307.1

N	0.0	307.2
cl	0.4	306.7 ✓
1/4	0.9	306.4 ✓
C	1.1	306.1 ✓
1/4	1.3	305.8 ✓
cl	1.1	306.0 ✓
S	1.2	306.0

#68' EAST

S	1.1	306.1
cl	1.1	306.0 ✓
1/4	1.4	305.7 ✓
C	1.6	305.6
1/4	1.2	305.9 ✓
cl	1.02	307.4
N	1.04	307.6

#70' EAST = W.L. TEXAS ST (GRADED) 60'

N	1.8	305.4
cl	2.0	305.1 ✓
1/4	3.0	304.1
C	3.0	304.2
1/4	3.3	303.8 ✓
cl	3.2	303.9 ✓
S	3.0	304.2

BEING GRADED BET TEXAS + ARIZONA ST

T.P.	1.75	300.15 ✓	8.79	298.40 ✓
------	------	----------	------	----------

300.15

E.L. ARIZONA ST 60'

Wightman

6

S	10.0	290.2
cl	10.2	90.0
1/4	10.5	89.7
C	10.1	290.1
1/4	9.9	90.3
cl	9.1	91.1
N	8.9	291.3

50' EAST

N	7.3	292.9
cl	7.6	92.6
1/4	7.7	92.5
C	8.0	292.2
1/4	8.3	91.9
cl	7.6	92.6
S	7.9	292.3

100' EAST

S	5.7	294.5
cl	5.4	94.8
1/4	6.1	94.1
C	5.6	294.6
1/4	5.0	95.2
cl	4.8	95.4
N	4.9	295.3

200.15

150' EAST

N	3.5	296.7
cb	3.7	96.5
1/4	3.5	96.7
C	3.9	296.3
1/4	4.5	95.7
cb	4.1	96.1
S	4.3	295.9

200' EAST

S	4.1	296.1		
cb	3.8	96.4		
1/4	3.9	96.3		
C	3.3	296.9		
1/4	3.1	97.1		
cb	3.1	97.1		
N	3.1	297.1		
TP	12.88	310.51	2.52	297.63

250' EAST

N	13.3	297.2
cb	13.6	96.9
1/4	13.7	96.8
C	13.9	296.6
1/4	14.0	96.5
cb	14.2	96.3
S	14.0	296.5

310.51

276.5' EAST - W. L. ARNOLD ST (65' WIDE)

7

S	14.0	296.5
cb	13.7	96.8
1/4	13.3	97.2
C	13.3	297.2
1/4	13.2	97.3
cb	13.0	97.5
N	12.8	297.7

WEST CORB

N	12.4	298.1
cb	12.6	
1/4	13.0	
C	13.0	297.5
1/4	13.4	
cb	13.4	
S	13.8	296.8

N. 1/4

S	13.0	297.5
cb	12.8	
1/4	12.8	
C	12.4	298.1
1/4	12.8	
cb	12.3	
N	12.0	298.5

310.51

CENTER

N	11.8	298.7
cb	12.1	
1/4	12.0	
c	12.1	298.4
1/4	12.2	
cb	12.3	
S	12.5	298.0

EAST 1/4

S	12.2	298.3
cb	12.0	
1/4	11.6	
c	11.6	298.9
1/4	11.3	
cb	11.5	
N	11.5	299.0

EAST CORB

N	10.5	300.0
cb	10.7	
1/4	10.8	
c	10.9	299.6
1/4	10.8	
cb	10.9	
S	11.2	299.3

Wightman 8

EAST LINE ARNOLD

S	10.8	299.7
cb	10.6	
1/4	10.4	
c	10.3	300.2
1/4	10.1	
cb	10.1	
N	10.2	300.5

50' EAST

N	8.6	301.9
cb	8.7	
1/4	8.5	
c	8.4	301.6
1/4	8.8	
cb	8.8	
S	8.9	301.6

100' EAST

S	6.7	303.8
cb	6.9	
1/4	6.8	
c	6.7	303.8
1/4	6.7	
cb	6.7	
N	7.0	303.5

310.51

150' EAST

N	3.9	306.6
cb	3.9	
1/4	3.7	
C	3.8	306.7
1/4	3.5	
cb	3.6	
S	3.7	306.8

300' EAST

S	0.0	310.5
cb	0.1	
1/4	+0.3	310.8
C	+0.1	310.6
1/4	0.2	
cb	0.6	
N	0.5	310.0

T.P.	12.67	322.46	0.72	309.79
------	-------	--------	------	--------

250' EAST

N	9.5	313.0
cb	9.1	
1/4	8.9	
C	8.8	313.7
1/4	8.5	
cb	8.2	
S	8.0	314.5

322.46

Wightman

65'

265' EAST = W.L. VILLA TERRACE

(BENTON Graded)

S	6.3	316.2
cb	5.9	
1/4	6.3	
C	6.3	316.2
1/4	6.2	
cb	6.0	
N	5.7	316.8

E. L. VILLA TERRACE

N	4.5	318.0
cb	4.2	
1/4	3.7	
C	2.8	319.7
1/4	1.8	
cb	0.8	

T.P.	12.85	334.89	1.02	321.87
------	-------	--------	------	--------

S	11.2	323.1
---	------	-------

50' EAST

S	6.2	328.1
cb	7.2	
1/4	8.3	
C	9.5	324.8
1/4	10.1	
cb	11.0	
N	12.0	322.3

334.29

100' EAST

N		6.3	328.0
cb		5.4	
1/4		4.5	
C		4.0	330.3
1/4		3.4	
cb		3.0	
S		2.5	331.8
T.P.	12.63	346.55	0.37 333.92

150' EAST

S		11.6	335.0
cb		12.1	
1/4		12.6	
C		13.1	333.5
1/4		13.5	
cb		14.2	
N		14.7	331.9

200' EAST

N		11.7	334.9
cb		10.9	
1/4		9.9	
C		9.9	336.7
1/4		9.8	
cb		9.6	
S		9.4	337.2

346.55

250' EAST

S		7.5	339.1
cb		7.7	
1/4		8.1	
C		8.5	338.1
1/4		8.6	
cb		9.2	
N		9.4	337.2

265' EAST = W.L. OREGON ST. (GRADED)

N		9.1	337.5
cb		9.0	
1/4		8.8	
C		8.1	338.5
1/4		7.7	
cb		7.5	
S		7.1	339.5

E.L. OREGON ST

S		4.9	341.7
cb		5.2	
1/4		5.4	
C		5.6	341.0
1/4		5.5	
cb		5.6	
N		5.7	340.9

10

346.55

50' EAST

N	4.3	342.3
cb	4.5	
1/4	4.3	
C	4.1	342.5
1/4	3.8	
cb	3.8	
S	3.6	342.0

100' EAST

S	2.8	343.8
cb	3.0	
1/4	3.1	
C	3.3	343.3
1/4	3.1	
cb	3.2	
N	3.2	343.4

150' EAST

N	2.1	344.5
cb	2.5	
1/2	2.2	
C	2.3	344.3
1/4	2.4	
cb	2.2	
S	2.3	344.3

Wightman

11

300' EAST

S	1.5	345.1
cb	2.0	
1/4	1.8	
C	1.7	344.9
1/4	1.8	
cb	1.8	
1/4	1.6	345.0

355' EAST = W.L. IDAHO ST.

N	1.7	344.9
cb	1.5	
1/4	1.8	
C	1.8	344.8
1/4	1.7	
cb	1.6	
S	1.7	344.9

T.P. 439 344.34 ✓

B.M. 2.01 347.33 ✓

344.95 ✓
NE Idaho
45' from

Grades Wightman - Wk Oregon to Elk Terrace

BM 338.01
 $\begin{array}{r} 1.73 \\ 339.74 \\ 12.59 \\ \hline 327.15 \end{array}$

SW Oregon + Wightman
 $\begin{array}{r} 327.15 \\ 30 \\ \hline 327.45 \end{array}$

W L Oregon + 50.

339.74

prop grade

SL			1.3	328.4	324.29	C 11.1
NL			4.2	335.5	333.41	C 11.0
		1+00				
NL			7.0	332.7	329.71	C 11.0
SL			3.6	336.1	330.33	C 11.8
		1+50				
SL			6.4	333.3	326.37	C 11.9
NL			10.8	328.9	325.94	C 11.0
TP	0.30	327.45	12.59	327.15		
		2+00				
NL			3.9	323.5	322.17	C 11.3
SL			5.0		322.41	
		2+65				

LEVELS FOR REGRADING
OF
HAWTHORN ST. (30' WIDE)
FROM E.L. FERN TO WL. 314

BM	3.51	288.61	280.10	APR SE Hawthorn St
E.L. FERN ST				
So.		9.4	274.2	
No. L		8.4	275.2	
T.P.	3.33	274.73	12.21	271.40
50' EAST				
-2		0.1	274.6	
No. L		1.3	273.4	
+2		1.8	272.9	
So. L		2.7	272.0	
+1		1.5	273.2	
80' EAST				
-10		2.4	272.3	
-2		2.5	272.2	
So. L		4.5	270.2	
No. L		3.5	271.2	
+1		2.4	272.3	
+10		2.4	272.3	
130' EAST				
-10		10.5	264.2	
No. L		10.6	264.1	
So. L -3		11.9	262.8	
So. L		10.7	264.0	
+2		6.4	267.8	
T.P.	5.97	267.93	12.77	261.96

267.93

13

150' EAST

-10		1.2	266.7
-3		2.3	265.6
So. L		5.2	262.7
+2		6.1	261.8
No. L		5.6	262.3
+10		4.5	263.4
190' EAST			
-10		4.7	263.2
-1		5.6	262.3
No. L		6.5	261.4
So. L		7.8	260.1
+8		8.3	259.6
+10		5.4	262.5
225' EAST = WEST END OF WALL			
-20		16.6	251.3
-5.8 = WALL BOTTOM		16.0	251.9
So. L		9.7	258.2
+3		8.1	259.8
No. L		6.4	261.5
+10		5.1	262.8
		4.6	263.3
240' EAST			
-10		4.4	263.5
No. L		6.8	263.1
+11		6.4	261.5
		8.6	259.3
So. L		10.6	257.3

USE THIS READING
ONLY ON BACK SECTION

267.93

+5.8 = WALL BOTTOM 15.1 252.8

+5.8 = ✓ TOP 5.9 262.0

290' EAST

-5.8 WALL TOP 5.9 262.0

-5.8 ✓ BOTTOM 13.9 254.0

SoL 6.9 261.0

No.L 5.7 262.2

+4 2.6 265.3

+10 2.4 265.5

330' EAST

-10 40.1 268.0

-5 0.5 267.4

No.L 2.9 265.0

+2 3.8 264.1

+77 4.9 268.0

SoL 3.7 264.2

+5.8 = WALL TOP 2.2 265.7

350' EAST

-5.8 WALL TOP 0.2 267.7

SoL 1.7 266.2

+2 2.7 265.2

No.L 1.5 266.4

T.P. 11/2 277.32 0.73 267.20

+3 4.6 268.7

+10 9.0 269.3

278.32

14

390' EAST

-10 5.6 272.7

No.L 6.1 272.2

SoL 7.0 271.3

450' EAST

-10 4.4 273.9

SoL 4.4 273.9

No.L 3.0 275.3

500' EAST

No.L 2.1 276.2

SoL 3.2 275.1

550' EAST

SoL 2.2 276.1

No.L 1.4 276.9

597.5' EAST = WALL 31st

No.L 0.4 277.9

SoL 1.7 276.6

Handage figured
July 9-1913
S.H.S.

This page features horizontal blue lines for writing. It is divided into four vertical columns by three red margin lines. The columns are of varying widths, with the two inner columns being the narrowest.

This page features a blue grid pattern. A single vertical red margin line is positioned on the left side of the grid. The grid consists of small squares, typical of graph paper.

6/13/13
 show
 show

CROSS-SECTION OF
 NEALE ST
 IN MIDDLETOWN ADD.

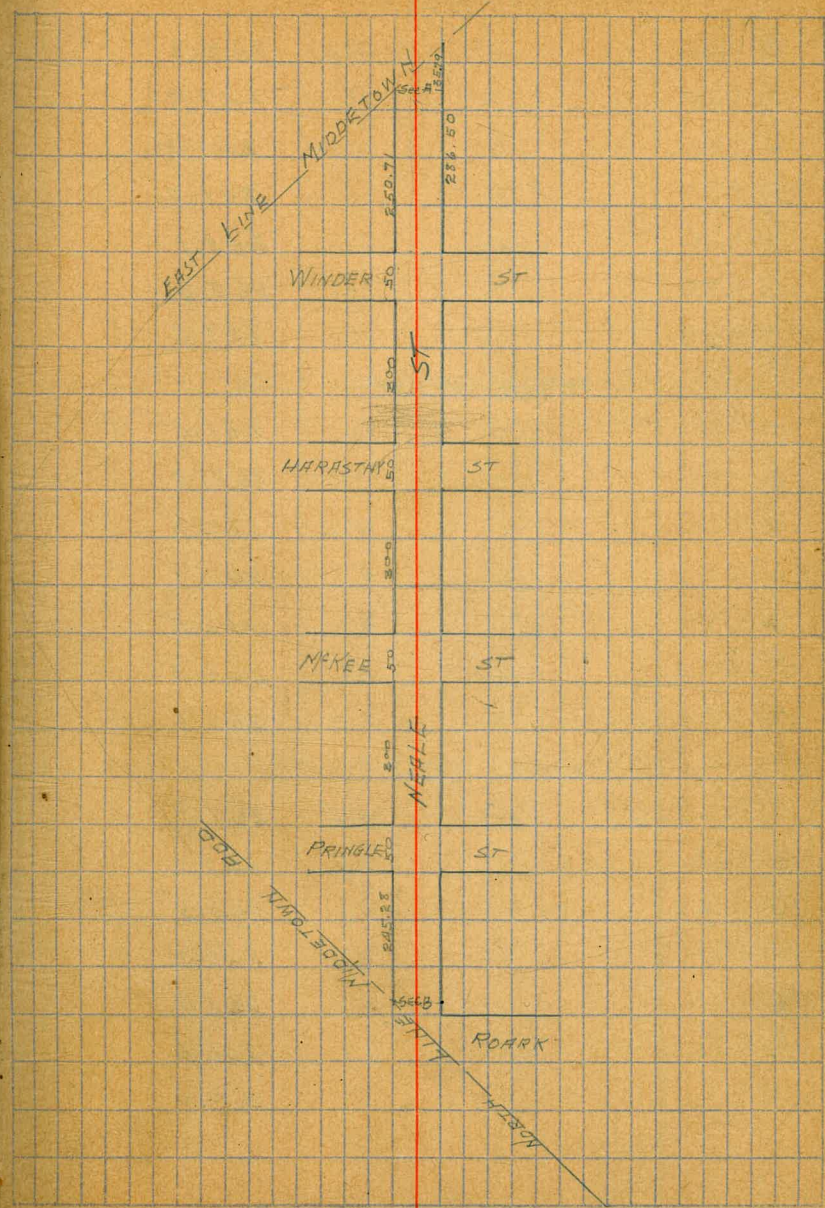
50' WIDE
 10' WALKS
 7.5' QUARTERS

N 1/2

18

B.M.	208	271.21	269.83	15' HUB NEALE & WINDER
EAST LINE MIDDLETOWN ADD				
S		1.0	270.9	✓
ob		1.2	270.7	
1/4		1.4	270.5	
C		1.6	270.3	✓
1/4		1.9	270.0	
ob		2.2	269.7	
N		2.4	269.5	✓
SEC. A				
N		2.4	269.5	✓
ob		2.8	269.1	
1/4		3.1	268.5	
C		3.9	268.0	✓
1/4		4.0	267.9	
ob		4.4	267.5	
S		5.0	266.9	
50.71' WEST OF SEC. A				
S		10.0	261.9	✓
ob		9.0	262.9	
1/4		8.6	263.3	
C		7.9	264.0	✓
1/4		7.5	264.4	
ob		7.0	264.9	
N		6.6	265.3	✓

N. 6
 55' = 43' wide



PLOTTED

C.A.L 6/13/13

MIDDLETOWN

271.91

100.71' WEST

N	9.6	262.3	✓
cb	10.0	261.9	
1/4	10.4	261.5	
C	10.2	261.7	✓
1/4	10.8	261.1	
cb	11.1	260.8	
S	12.3	259.6	✓

150.71' WEST

S	10.3	261.6	✓
cb	9.6	262.3	
1/4	9.3	262.6	
C	9.1	262.8	✓
1/4	9.4	262.5	
cb	8.6	263.3	
N	8.3	263.6	✓

200.71' WEST

N	4.4	267.5	✓
cb	4.9	267.0	
1/4	6.1	265.8	
C	5.3	266.6	✓
1/4	5.7	266.2	
cb	6.3	265.6	
S	6.6	265.3	✓

PLOTTED

17

250.71' WEST = E.L. WINDER ST

S	271.91	3.1	268.8	✓
cb		2.7	269.2	
1/4		2.3	269.6	
C		2.5	269.4	✓
1/4		2.2	269.7	
cb		1.9	270.0	
N		2.0	269.9	✓

WEST LINE WINDER ST

N		0.8	271.1	✓
cb		0.5	271.4	
1/4		1.2	270.7	
C		1.3	270.6	✓
1/4		1.5	270.4	
cb		1.6	270.3	
S		1.5	270.4	✓

50' WEST

S		2.4	269.5	✓
cb		3.4	268.5	
1/4		3.5	268.4	
C		3.3	268.6	✓
1/4		3.7	268.2	
cb		3.5	268.4	
N		4.0	267.9	✓

PLOTTER

271.91

100' WEST

N		9.2	262.7	✓
cb		8.5	263.4	
1/4		8.2	263.7	
C		7.7	264.2	✓
1/4		8.1	263.8	
cb		8.0	263.9	
S		6.8	265.1	✓
T.P.	0.15	259.62	12.44	259.47

150' WEST

S		0.6	259.0	✓
cb		1.2	258.4	
1/4		1.3	258.3	
C		1.4	258.2	✓
1/4		1.5	257.8	
cb		2.4	257.2	
N		3.2	256.4	✓

200' WEST

N		9.8	249.8	✓
cb		9.3	250.3	
1/4		8.8	250.8	
C		8.3	251.3	✓
1/4		7.8	251.8	
cb		7.9	251.7	
S		7.2	252.4	✓
T.P.	0.14	248.00	11.76	247.86

PLOTTED

18

225' WEST

S		248.00	8.4	239.6	✓
cb			8.3	239.7	
1/4			7.0	241.0	
C			8.1	239.9	✓
1/4			8.4	239.6	
cb			8.9	239.1	
N			6.6	241.4	✓
T.P.	0.24	236.03	12.91	235.09	

250' WEST

N			8.7	227.3	✓
cb			10.9	225.1	
1/4			12.3	223.7	
C			12.5	223.5	✓
1/4			11.8	224.2	
cb			13.1	222.9	
S			14.5	221.5	✓
T.P.	0.37	223.71	12.69	223.34	

275' W

S			15.7	208.0	✓
cb			14.2	209.5	
1/4			14.5	209.2	
C			13.3	210.4	✓
1/4			11.6	212.1	
cb			9.4	214.3	
N			6.6	217.1	✓

PLOTTED

T.P.	-0.01	211.44	1826	211.15	
	300' WEST - E.L. HARASTHY ST (50' WIDE)				
N			5.0	206.4	✓
cb			6.9	204.5	
1/4			9.0	202.4	
c			11.4	200.0	✓
1/2			14.2	197.2	
cb			16.1	195.3	
S			16.0	195.4	✓
EAST CURB					
S			19.9	191.5	✓
cb			20.0	191.4	
1/4			17.5	193.9	
c			14.7	196.7	✓
1/2			12.4	199.0	
cb			10.7	200.7	
N			10.9	200.5	✓
T.P.	0.03	199.19	1828	199.16	
EAST 1/4					
N			2.2	197.0	✓
cb			2.4	196.8	
1/4			3.5	195.7	
c			5.3	193.9	✓
1/2			8.0	191.2	
cb			10.0	189.2	
S			10.2	189.0	✓

PLOTTED

CENTER					
S	199.19	13.2	186.0	✓	
cb		12.5	186.7		
1/4		10.2	189.0		
c		8.0	191.2	✓	
1/2		7.0	192.2		
cb		5.9	193.3		
N		4.7	194.5	✓	
WEST 1/4					
N		6.6	192.6	✓	
cb		8.3	190.9		
1/4		9.7	189.5		
c		10.4	188.8	✓	
1/2		12.4	186.8		
cb		14.5	184.7		
S		15.7	183.5	✓	
WEST CURB					
S		18.1	181.1	✓	
cb		16.7	182.5		
1/4		15.0	184.2		
c		12.8	186.4	✓	
1/2		12.0	187.2		
cb		10.3	188.9		
N		8.2	191.0	✓	

PLOTTED

199.19

WEST LINE HARASTHY

N		10.1	189.1	✓
cb		12.3	186.9	
T.P.	0.19	186.45	12.93	186.86
1/4		0.9	185.6	
C		2.5	184.0	✓
1/4		4.7	181.8	
cb		6.4	180.1	
S		8.6	177.9	✓
25' WEST				
S		14.8	171.6	✓
cb		10.8	175.7	
1/4		9.4	177.1	
C		8.0	178.5	✓
1/4		5.9	180.6	
cb		4.6	181.9	
N		3.5	183.0	✓
T.P.	0.46	174.20	12.71	173.74
50' WEST				
N		2.6	171.6	✓
cb		3.3	170.9	
1/4		4.0	170.2	
C		5.0	169.2	✓
1/4		6.3	167.9	
cb		7.6	166.6	
S		10.0	164.2	✓

PLOTTED

20

T.P.	0.16	161.59	12.77	161.43
75' WEST				
S			9.3	152.3 ✓
cb			7.2	154.2
1/4			6.2	155.4
C			5.1	156.5 ✓
1/4			4.2	157.4
cb			3.3	158.3
N			2.7	158.9 ✓
T.P.	0.36	149.31	12.64	148.95
100' WEST				
N			3.0	146.3 ✓
cb			3.9	145.4
1/4			4.5	144.8
C			4.8	144.5 ✓
1/4			5.9	143.4
cb			7.0	142.3
S			7.8	141.5 ✓
T.P.	1.86	138.25	12.92	136.39

PLOTTED

138.85

195' WEST

S	4.8	133.5	✓
cb	5.6	132.7	
1/4	5.0	133.3	
C	3.8	134.5	✓
1/4	3.5	134.8	
cb	2.9	135.4	
N	1.3	137.0	✓

150' WEST

N	8.2	130.1	✓
cb	10.2	127.5	
1/4	10.7	127.6	
C	10.3	128.0	✓
1/4	10.6	127.7	
cb	11.5	126.8	
S	12.4	125.9	✓

175' WEST

S	3.5	134.8	✓
cb	3.4	134.9	
1/4	3.5	134.8	
C	3.9	134.4	✓
1/4	4.0	134.3	
cb	3.6	134.7	
N	2.9	135.4	✓

TP	12.35	149.62	0.98	137.27
----	-------	--------	------	--------

PLOTTED

21

300' WEST

N	149.62	5.5	144.1	✓
cb		5.3	144.3	
1/4		4.2	145.4	
C		3.8	145.8	✓
1/4		3.7	145.9	
cb		4.5	145.1	
S		5.0	144.6	✓
TP	12.71	161.61	0.72	148.90

225' WEST

S		5.4	156.2	✓
cb		4.2	157.4	
1/4		3.6	158.0	
C		3.2	158.4	✓
1/4		3.6	158.0	
cb		4.0	157.6	
N		5.1	156.5	✓

TP	12.48	173.83	0.26	161.35
----	-------	--------	------	--------

250' WEST

N		4.7	169.1	✓
cb		5.0	168.8	
1/4		4.4	169.4	
C		3.9	169.9	✓
1/4		3.9	169.9	
cb		5.4	168.4	
S		6.8	167.0	✓

PLOTTED

173.83

T.P.	12.01	185.81	0.03	173.80	
	375' WEST				
S			9.1	176.7	✓
cb			7.9	177.9	
1/4			6.4	179.4	
C			5.6	180.2	✓
1/4			5.3	180.5	
cb			6.3	179.5	
N			8.2	177.6	✓
T.P.	13.04	197.84	1.01	184.80	
	300' WEST = E.L. McKEEST 50' WIDE				
N			9.5	188.3	✓
cb			10.2	187.6	
1/4			10.7	187.1	
C			11.2	186.6	✓
1/4			11.4	186.4	
cb			11.5	186.3	
S			12.1	185.4	✓
	EAST CURB				
S			9.2	188.6	✓
cb			8.9	188.9	
1/4			9.0	188.8	
C			8.6	189.2	✓
1/4			7.9	189.9	
cb			7.4	190.4	
N			6.8	191.0	✓

PLOTTED

22

EAST QUARTER				
N	197.84	5.0	192.8	✓
cb		5.8	192.0	
1/4		6.1	191.7	
C		6.7	191.1	✓
1/4		6.9	190.9	
cb		7.0	190.8	
S		7.3	190.5	✓
CENTER				
S		6.0	191.8	✓
cb		5.2	192.6	
1/4		5.0	192.8	
C		4.6	193.2	✓
1/4		3.9	193.9	
cb		3.3	194.5	
N		2.2	195.6	✓
WEST QUARTER				
N		2.2	195.6	✓
cb		2.9	194.9	
1/4		3.5	194.3	
C		4.0	193.8	✓
1/4		4.5	193.3	
cb		5.1	192.7	
S		5.9	191.9	✓

PLOTTED

197.84

WEST CURB

S	5.9	191.9	✓
cb	5.2	192.6	
1/4	4.6	193.2	
C	3.8	194.0	✓
1/4	3.2	194.6	
cb	2.9	194.9	
N	2.1	195.7	✓

WEST LINE MCKEE ST

N	+2.3	200.1	✓	
cb	+1.7	199.5		
1/4	+0.8	198.6		
C	+0.2	198.0	✓	
1/4	0.2	197.6		
cb	0.6	197.2		
S	1.3	196.5	✓	
T.P.	12.91	202.95	0.70	197.14

50' W

S	2.6	207.4	✓	
cb	1.4	208.6		
T.P.	12.22	221.70	0.47	202.48
1/4	12.0	209.7		
C	11.2	210.5	✓	
1/4	10.4	211.3		
cb	9.3	212.4		
N	8.1	213.6	✓	
T.P.	12.28	233.96	0.02	231.68

PLOTTED

233.96

23

100' W

N	233.96	5.8	228.2	✓
cb		7.2	226.8	
1/4		8.3	225.7	
C		9.4	224.6	✓
1/4		10.6	223.4	
cb		11.7	222.3	
S		13.7	220.3	✓
T.P.	13.05	246.95	0.06	233.90
	150' W		✓	
S		12.3	234.7	✓
cb		10.5	236.5	
1/4		9.0	238.0	
C		7.8	239.2	✓
1/4		6.9	240.1	
cb		5.7	241.3	
N		4.2	242.8	✓
	175' W			
N		40.4	247.3	✓
cb		0.9	246.1	
1/4		1.9	245.1	
C		2.6	244.4	✓
1/4		3.2	243.8	
cb		5.0	242.0	
S		5.6	241.4	

346.95

300' W

S		3.9	243.1	✓
cb		3.3	246.7	
1/4		1.1	245.9	
T.P.	9.75	256.48	0.22	246.93
C		9.8	246.5	✓
1/4		9.1	247.3	
cb		8.3	248.2	
N		7.3	249.2	✓
350' W				
N		4.5	252.0	✓
cb		5.2	251.3	
1/4		5.9	250.6	
C		6.5	250.0	✓
1/4		7.2	249.3	
cb		7.9	248.6	
S		8.6	247.9	✓
300' W = EL. PRINGLE ST 50' WIDE				
S		4.7	251.8	✓
cb		4.1	252.4	
1/4		3.6	252.9	
C		3.1	253.4	✓
1/4		2.4	254.1	
cb		1.8	254.7	
N		1.0	255.5	✓

PLOTTED

24

EAST CURB

N	256.48	0.7	255.8	✓
cb		1.5	255.0	
1/4		2.0	254.5	
C		2.6	253.9	✓
1/4		3.1	253.4	
cb		3.4	253.1	
S		4.1	252.4	✓
EAST QUARTER				
S		3.9	252.6	✓
cb		3.2	253.3	
1/4		2.8	253.7	
C		2.4	254.1	✓
1/4		1.9	254.6	
cb		1.4	255.1	
N		0.7	255.8	✓
CENTER				
N		0.8	255.7	✓
1/4		1.5	255.0	
1/4		1.9	254.6	
C		2.3	254.2	✓
1/4		2.7	253.8	
1/4		3.1	253.4	
S		3.7	252.8	✓

PLOTTED

356.48

WEST QUARTER

S	3.5	253.0	✓
cb	3.0	253.5	
1/4	2.5	254.0	
C	2.1	254.4	✓
1/4	1.8	254.7	
cb	1.6	254.9	
N	1.0	255.5	✓

WEST CORN

N	0.8	255.7	✓
cb	1.4	255.1	
1/4	1.7	254.8	
C	2.2	254.3	✓
1/4	2.6	253.9	
cb	3.0	253.5	
S	3.4	253.1	✓

WEST LINE PRINGLE ST

S	2.9	253.6	✓
cb	2.6	253.9	
1/4	2.2	254.3	
C	1.8	254.7	✓
1/4	1.3	255.2	
cb	0.9	255.6	
N	0.4	256.1	✓

PLOTTED

25

50' WEST

N	256.48	1.1	255.4	✓
cb		1.9	254.6	
1/4		2.3	254.2	
C		2.6	253.9	✓
1/4		2.9	253.6	
cb		3.3	253.2	
S		3.7	252.8	✓

100' WEST

S		7.8	248.5	✓
cb		7.1	249.4	
1/4		6.6	249.9	
C		6.3	250.2	✓
1/4		6.0	250.5	
cb		5.7	250.8	
N		5.2	251.3	✓

150' WEST

N		9.7	246.8	✓
cb		10.1	246.4	
1/4		10.5	246.0	
C		11.2	245.3	✓
1/4		11.8	244.7	
cb		12.1	244.4	
S		12.6	243.9	✓
T.P.	0.64	244.01	1311	243.37

PLOTTED

344.0

300' W

S	7.9	236.1	✓
cb	7.5	236.5	
1/4	7.4	236.6	
C	6.6	237.4	✓
1/4	5.9	238.1	
cb	4.7	239.3	
N	3.0	241.0	✓

295' W

N	9.5	234.5	✓	
cb	11.5	232.5		
1/4	12.6	231.4	✓	
C	12.6	231.4	✓	
T.P.	0.5 W 332.2	12.31	231.70	
1/4		1.7	230.5	
cb		2.6	229.6	
S		4.6	227.6	✓

245.28' W = SEC B.

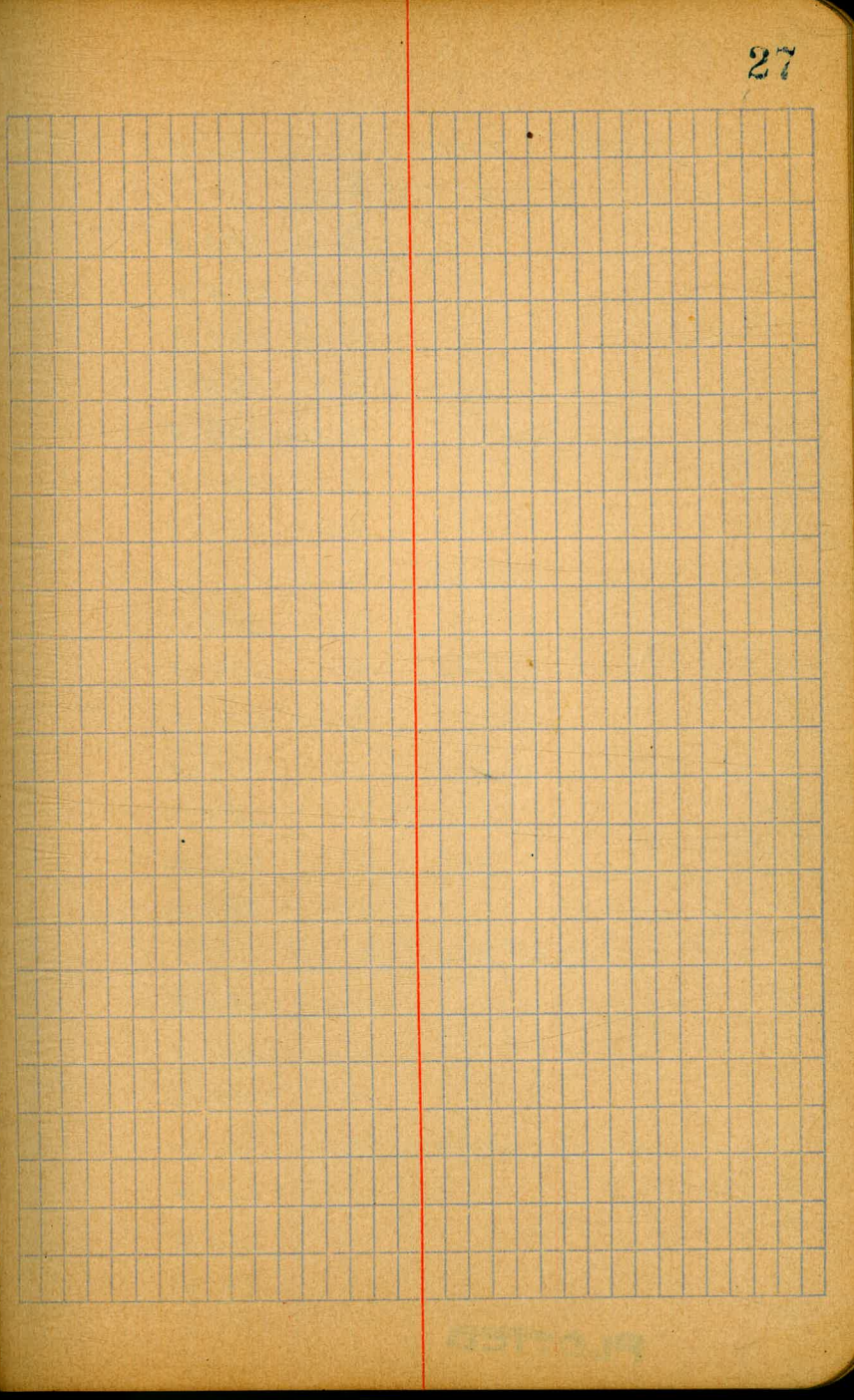
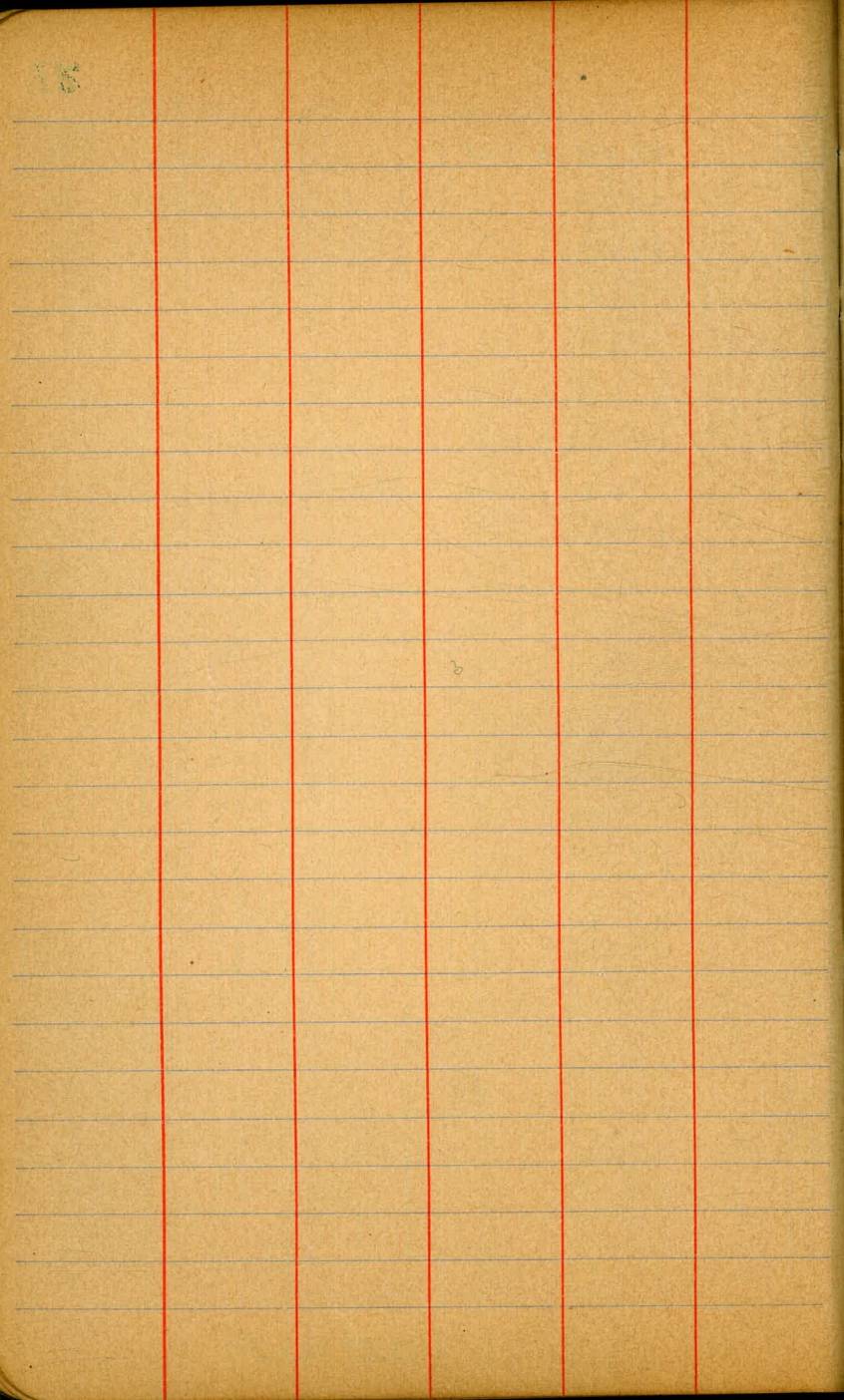
S	13.3	218.9	
cb	11.5	220.7	
1/4	10.0	222.2	
C	8.9	223.3	
1/4	7.7	224.5	
cb	6.7	225.5	
N	5.9	226.3	
T.P.	12.31 244.01	0.5 W	231.70

PLOTTED

C.A.L.
6/13/13

26

T.P.	11.72	255.09	0.64	243.37
T.P.	11.93	266.04	0.88	254.21
			1.53	264.51



SUTTER

CROSS SECTION OF
BOONE ST 50' WIDE
IN MIDDLETOWN ADD

OFF T.P. 2.78 267.29 264.51 sec page 26

SEC. A

S	2.0	265.3
ch	1.9	265.4
1/4	3.0	264.3
C	3.9	263.4
1/4	4.4	262.9
ch	5.6	261.7
N	9.2	258.1

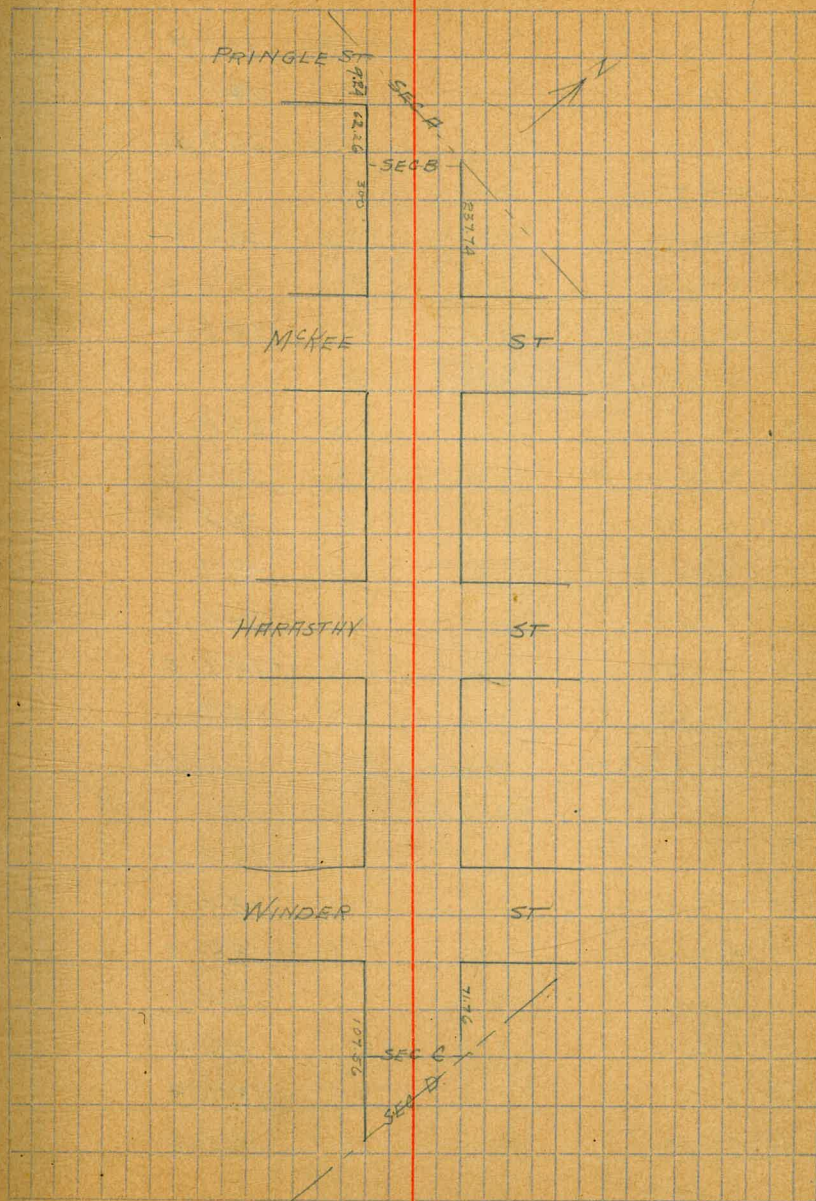
SEC. B

N	9.2	258.1
ch	8.4	258.9
1/4	8.3	259.0
C	7.9	259.4
1/4	7.6	259.7
ch	6.9	260.4
S	5.9	261.4

37.74' E of B

S	11.4	255.9		
ch	12.2	255.1		
1/4	12.8	254.5		
T.P.	0.16	254.13	13.02	254.27
C	0.5	253.9		
1/4	0.8	253.6		
ch	1.5	252.9		
N	2.6	251.8		

PLOTTED



05170.4

62.74' E. of B

N	7.0	247.4
cb	5.4	249.0
1/4	4.2	250.2
C	3.9	250.5
1/2	3.5	250.9
cb	3.0	251.4
S	2.4	252.0

87.74' E. of B

S.	6.0	248.4		
cb	7.7	246.7		
1/4	8.9	245.5		
C	10.1	244.3		
1/2	11.2	243.2		
cb	12.2	242.2		
N	15.4	239.0		
T.P.	0.19	141.84	12.78	141.65

112.74' E

N	13.0	128.8
cb	10.2	131.6
1/4	7.6	133.2
C	7.1	134.7
1/2	5.7	136.1
cb	3.9	137.9
S	1.2	140.6

PLOTTED

137.74' E

S	141.84	10.8	131.0	
cb		13.1	128.7	
T.P.	0.16	129.14	12.86	128.98
1/2		1.6	127.5	
C		3.2	125.9	
1/4		4.8	124.3	
cb		6.2	122.9	
N		9.4	118.7	

162.74' E

N		30.0	109.1	
cb		18.0	111.1	
1/4		13.6	115.5	
C		11.0	118.7	
1/2		9.6	132.2	
cb		8.5	133.3	
S		6.9	122.2	
T.P.	0.03	116.58	12.59	116.55

187.74' E

S		7.5	109.1
cb		9.1	107.5
1/4		11.9	104.7
C		12.3	104.3
1/2		12.0	104.6
cb		15.4	101.2
N		21.3	94.3

116.58

T.P.	-0.01	105.50	11.07	105.51
		212.74'	EAST	
N			22.2	83.3
cb			19.4	86.1
1/4			17.0	88.5
C			16.0	89.5
1/4			13.6	91.9
cb			10.2	95.3
S			5.6	99.9
T.P.	0.14	93.12	12.52	92.98
		237.74'	EAST = W.L. MCKEE ST 50' WIDE	
S			4.1	89.0
cb			6.1	87.0
1/4			8.4	84.7
C			13.2	79.9
1/4			16.1	77.0
cb			20.1	73.0
N			21.0	72.1
715			10.0	83.1
		WEST CURB		
N			18.9	74.2
cb			24.4	68.7
1/4			20.6	72.5
C			15.8	77.3
1/4			12.0	81.1
cb			11.1	82.0
S				83.8

PLOTTED³

30

T.P.	0.58	80.85	12.85	80.27
		WEST QUARTER		
S			0.0	80.9
cb			2.5	78.4
1/4			3.5	77.4
C			6.0	74.9
1/4			10.6	70.3
cb			11.6	69.3
N			6.2	74.7
		CENTER MCKEE		
N			7.3	73.6
cb			12.5	68.4
1/4			13.4	67.5
C			9.3	71.6
1/4			8.3	72.6
cb			6.5	74.4
S			2.5	78.4
		EAST QUARTER		
S			5.1	75.6
cb			9.5	71.4
1/4			11.9	69.0
C			13.5	67.4
1/4			16.0	64.9
1/4			11.9	69.0
N			9.6	73.3

80.85

EAST CURB

N	4.1	76.8
cb	10.7	70.2
1/4	13.6	67.3
C	17.6	63.3
1/4	16.0	64.9
cb	12.6	68.3
S	9.2	71.7

EAST LINE MCKEE ST

S	14.0	66.9			
cb	17.4	63.5			
1/4	18.0	62.9			
C	14.0	66.9			
1/4	10.7	70.2			
cb	6.0	74.9			
N	0.2	80.7			
T.P.	11.55	191.36	1.04	199.81	✓

25' EAST

N	7.7	83.7
cb	12.4	79.0
1/4	16.2	75.2
C	20.2	71.2
1/4	23.4	68.0
cb	26.5	64.9
S	30.0	61.4

PLOTTED

31

50' E

S	91.36	26.8	64.6
cb		21.3	70.1
1/4		17.0	74.4
C		12.8	78.6
1/4		9.5	81.6
cb		4.4	87.0
N		0.3	91.1

75' E

N		40.2	91.6
cb		3.5	88.9
1/4		5.4	86.0
C		8.6	82.8
1/4		12.4	79.0
cb		15.5	75.9
S		21.7	69.7

100' E

S		18.4	73.0
cb		12.7	78.7
1/4		10.6	80.8
C		7.8	83.6
1/4		5.0	86.4
cb		3.1	88.3
N		1.1	90.3

PLOTTED

91.36

125' E

N		4.3	87.1
cb		7.4	84.0
1/4		10.0	81.4
c		12.1	79.3
T.P.	0.15	78.72	12.82
1/4		0.9	
cb		2.8	75.9
S		5.8	72.9

150' E

S		15.5	63.2
cb		12.3	66.4
1/4		9.2	69.5
c		6.7	72.0
1/4		5.4	73.3
cb		3.1	75.6
N		1.0	77.7
T.P.	0.70	66.36	13.06

175' E

N		2.8	63.6
cb		6.4	60.0
1/4		8.1	58.3
c		10.1	56.3
1/4		11.3	55.1
cb		13.4	53.0
S		15.5	50.9

PLOTTED

32

T.P. 0.78 54.45 12.69 53.67

200' E

S		54.45	11.5	43.0
cb			9.3	45.2
1/4			7.9	46.6
c			6.1	48.4
1/4			4.6	49.9
cb			2.5	52.0
N			0.5	54.0

225' E

N			7.7	46.8
cb			10.0	44.5
1/4			11.6	42.9
T.P.	3.81	46.04	12.22	42.23
c			4.9	41.1
1/4			6.7	39.3
cb			7.9	38.1
S			11.0	35.0
120			11.4	34.6

250' E

S			2.1	43.9
cb			4.0	42.0
1/4			4.9	41.1
c			6.3	39.7
1/4			7.4	38.6
cb			9.1	36.9

192.49

T.P.	12.45	204.34	0.60	191.89
------	-------	--------	------	--------

75' E

N			11.1	193.1
ch			9.6	94.7
1/4			8.3	96.0
c			5.6	98.7
1/4			3.4	200.9
ch			2.5	201.8
S			0.7	203.6

T.P.	13.15	217.45	0.04	204.30
------	-------	--------	------	--------

100' E

S			5.5	212.0
ch			7.4	10.1
1/4			9.9	7.6
c			12.4	5.1
1/4			19.6	3.9
ch			16.4	1.1
N			14.3	3.2
+30			13.0	4.5

195' E

N			3.6	13.9
ch			2.4	15.1
1/4			2.1	15.4
c			2.3	15.2
1/4			2.7	14.8
ch			0.6	16.9

PLOTTED

34

T.P.	12.96	230.37	0.01	217.41
------	-------	--------	------	--------

S			11.4	19.0
---	--	--	------	------

150' E

S			2.5	27.9
ch			2.9	27.5
1/4			3.3	27.1
c			3.5	26.9
1/4			4.1	26.3
ch			5.0	25.4
N			5.5	24.9

T.P.	12.63	241.36	0.64	229.73
------	-------	--------	------	--------

175' E

N			9.5	31.9
ch			6.7	34.7
1/4			4.9	36.5
c			3.3	38.1

T.P.	12.98	254.49	0.85	221.51
------	-------	--------	------	--------

1/4			13.2	41.3
ch			13.2	42.3
S			12.3	42.2

58

25449

300 E

S	5.0	249.5
db	6.6	47.9
1/2	7.7	46.8
C	9.2	45.3
1/4	10.5	44.0
db	11.9	42.5
N	14.0	40.5

335 E

N	7.0	47.5
db	5.8	48.7
1/2	3.8	50.7
C	2.7	51.8
1/4	2.2	52.3
db	2.2	52.3
S	0.4	54.1

T.P. 12.73 26913 0.09 254.40

350 E

S	10.6	53.5
db	11.5	55.5
1/2	11.3	55.8
C	11.7	55.4
1/4	12.5	54.5
db	13.0	54.1
N	13.4	53.7

PLOTTED

26713

35

300 E-WINDY

N	7.1	40.0
db	6.7	40.4
1/2	7.0	40.1
C	6.6	40.5
1/4	6.4	40.7
db	6.6	40.5
S	6.3	40.8
BM	2.97	364.16

Hand NE
Windy
Boone

PLOTTED

Gregory Miller Show

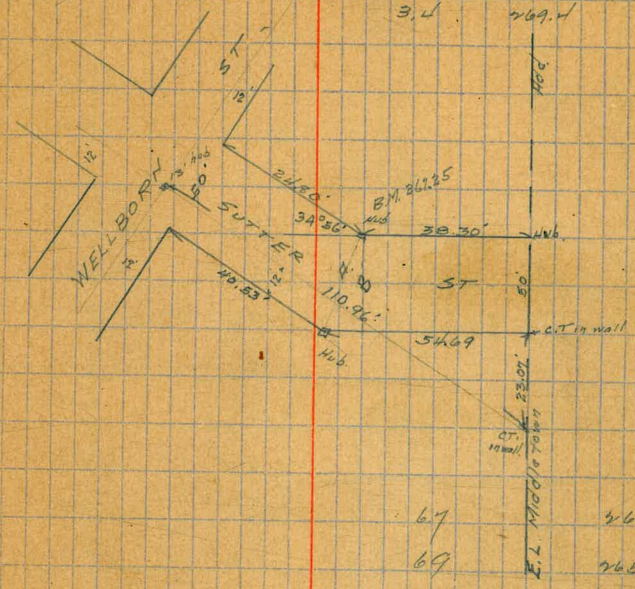
CROSS SECTION at
SUTTER ST
from E.L. Wellborn St to
E.L. Middle town Add
50' wide
10' cbs

	5.59	268.81		263.22	SPSE Latt + Bob
	5.50	272.75	1.50	267.25	
E.L. Wellborn					
N			8.7	264.1	
cb			8.5	264.3	
1/4			8.7	264.1	
c			8.6	264.2	
1/2			8.0	264.8	
cb			8.2	264.6	
3			8.6	264.2	
10' F					
3			7.1	265.7	
+3			7.8	265.0	
cb			7.6	265.2	
1/4			7.2	265.4	
c			7.7	265.1	
1/2			7.7	265.1	
cb			7.6	265.2	
N			6.7	266.1	
20' F					
N			5.4	267.4	
cb			6.6	266.2	
1/4			7.2	265.6	
c			6.9	265.9	
1/2			6.7	266.1	

38.3 E. 1 B = E.L. Middle Town Add

36

5	2.1	270.7
+9	2.5	270.3
cb	3.4	269.4
1/4	3.1	269.7
1/2	3.0	269.8
cb	3.2	269.2
1/4	4.3	268.5
+1	3.5	269.3
N	3.4	269.4
cb		
+7		
3		
5		
cb		
+2		
1/4		
c		
1/2		
cb		
+1		
N		
N		
+9		
cb		
1/4		
1/2		
c		
+1		
cb		
3		



24.80' E on N
40.53' E - S

15.73' E on N
00 E - - - N

see above for Middle town Add Line
(Boob Trick!)

CROSS-SECTION OF G ST 60' WIDE
 From the East Line of 27th ST 10' WALKS
 To West of 28th ST

NW 27th ST
 Mon.

B.M. 8.07 177.05 168.98

T.P. 0.42 177.13 0.34 176.71

EAST LINE 27th ST

N 14.7 162.4
 1/4 15.0 63.1
 1/2 15.1 62.0
 C 15.6 61.5
 1/4 16.5 60.6
 1/2 17.4 59.7
 S 19.5 57.6

50' EAST

N 14.1 630
 1/4 12.9 642
 1/2 11.6 655
 C 10.7 664
 1/4 9.5 676
 1/2 8.6 685
 S 7.7 694

100' EAST

N 1.7 75.4
 1/4 2.2 74.9
 1/2 2.6 74.5
 C 3.1 73.7
 1/4 5.6 71.5
 1/2 9.3 69.8
 S 1.8 68.3

T.P. 3.24 180.42 0.42 176.71

150' EAST

S 6.2 174.3
 1/4 5.6 74.8
 1/2 5.0 75.4
 C 4.3 76.1
 1/4 3.7 76.7
 1/2 3.3 77.1
 S 2.5 77.9

200' EAST

N 1.6 78.8
 1/4 1.8 78.6
 1/2 2.2 78.2
 C 2.6 77.8
 1/4 2.8 77.6
 1/2 3.3 77.1
 S 3.8 76.6

250' EAST

S 4.3 76.1
 1/4 4.0 76.4
 1/2 4.2 76.2
 C 4.2 76.3
 1/4 3.8 76.6
 1/2 3.4 77.0
 S 3.1 77.3

170.42

300' EAST

N		10.1	170.3
cb		10.2	70.2
1/4		10.3	70.1
C		10.9	69.6
1/4		10.7	69.7
cb		10.4	70.0
S		9.8	70.6
T.P.	0.01	167.61	12.82
		167.60	

350' EAST

S		4.7	62.9
cb		4.5	63.1
1/4		4.2	63.4
C		4.6	63.0
1/4		4.2	63.4
cb		4.7	62.9
N		4.7	62.9

400' EAST

N		10.1	57.5
cb		10.3	57.3
1/4		10.1	57.5
C		10.5	57.1
1/4		11.0	56.6
cb		11.3	56.3
S		11.5	56.1
T.P.	0.02	154.77	12.36
		154.95	

167.41

154.77

38

495' EAST

S		5.2	49.6
cb		5.0	51.8
1/4		1.3	53.5
C		1.0	53.8
1/4		0.5	54.3
cb		0.2	54.6
N		0.0	54.8

450' EAST

N		4.9	49.9
cb		5.4	49.4
1/4		5.2	49.4
C		7.1	47.7
1/4		7.8	47.0
cb		9.9	44.9
S		12.5	42.3

475' EAST

S		12.3	36.5
cb		14.7	40.1
1/4		11.9	42.9
C		10.0	44.8
1/4		9.4	45.4
1/4		9.3	45.5
N		9.5	45.3
T.P.	0.09	142.40	12.46
		142.31	

142.10

500' EAST

N		5.1	137.3	
cl		4.9	37.5	
W		5.2	37.2	
C		5.5	36.9	
1/4		6.9	35.5	
cl		8.8	33.6	
S		10.8	31.6	
T.P.	0.65	130.78	12.27	130.13

525' EAST

S		3.7	27.1
cl		2.2	28.6
W		0.6	30.2
C		0.1	30.7
1/4		0.1	30.7
cl		0.4	30.4
N		0.5	30.3

535' EAST

N		2.0	28.8	
cl		1.7	29.1	
1/4		2.4	28.4	
C		3.3	27.5	
1/4		3.5	27.3	
cl		4.3	26.5	
S		5.9	24.9	
T.P.	0.53	119.39	11.92	118.56

142.40

39

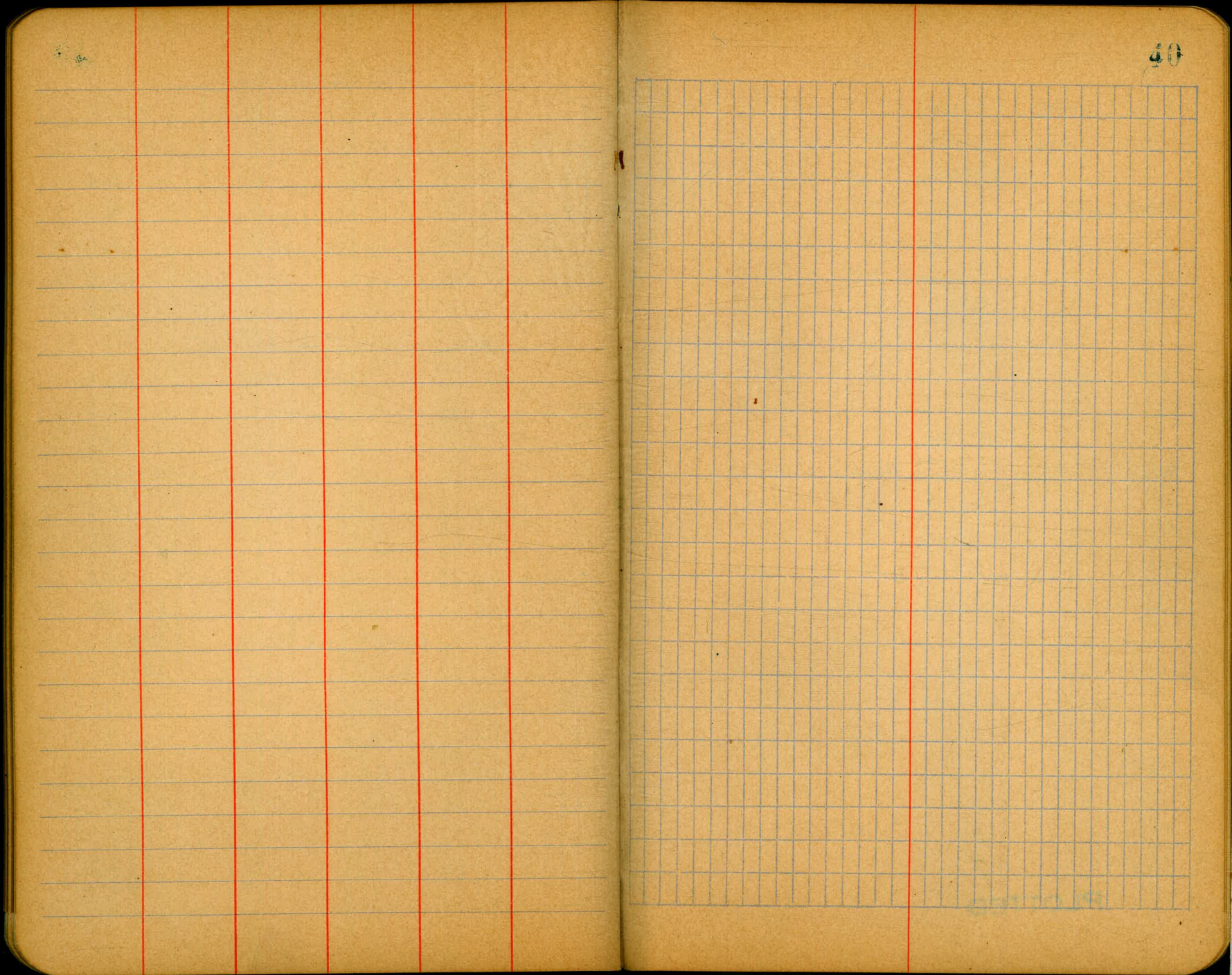
575' EAST

S		4.4	115.0
cl		4.4	115.0
W		4.2	115.2
C		4.3	115.1
1/4		3.7	115.7
cl		3.4	116.0
N		3.4	110.0

600' EAST = W.L. 38TH ST

N		6.4	13.0	
cl		6.4	13.0	
1/4		6.5	12.9	
C		6.9	12.5	
1/4		7.2	12.2	
cl		7.2	12.2	
S		7.8	11.6	
T.P.	11.60	130.16	0.83	118.56
T.P.	12.98	143.09	0.03	130.11
T.P.	12.78	154.18	1.69	141.40
T.P.	12.41	166.58	2.01	154.17
T.P.	12.32	178.81	2.09	166.49
T.P.	9.59	177.28	11.12	167.69
OR BM			8.35	168.93

MAY 31st
*F MON.



4/2/13
B. Brown
St. Louis
Craw

CROSS-SECTION
OF
WITHERBY ST.
IN MIDDLETOWN FOD

50' WIDE
10' WALKS

NE. Angle side
+ Sunset Blvd.

BM	2.05	284.95		287.90
T.P.	0.06	272.38	12.63	275.32

SECTION A (see sketch)

E		5.8		244.4
ch		5.9		44.5
1/4		6.5		45.9
C		6.4		44.0
1/2		6.1		44.3
ch		6.3		44.1
W		6.6		45.8

25' 50.

W		6.6		45.8
ch		6.9		
1/4		7.1		
C		7.0		45.4
1/2		6.4		
ch		6.1		
E		6.2		46.2

75' 50

E		7.6		44.8
ch		7.7		
1/4		8.1		
C		8.4		44.0
1/2		8.3		
ch		8.0		
W		8.1		44.3

PLOTTED

27898

withering
41

125' 50

W				10.4		242.0
ch				10.1		
1/4				9.9		
C				9.8		42.6
1/2				9.8		
ch				9.7		
E				9.8		43.6

175' 50

E				11.6		40.8
ch				12.1		
1/4				12.4		
C				13.1		57.3
1/2				13.4		
ch				13.6		
W				13.8		58.6

T.P.	0.73	260.38		12.73		259.65
------	------	--------	--	-------	--	--------

225' 50

W				6.4		54.0
ch				5.5		
1/4				4.8		
C				4.4		56.0
1/2				4.0		
ch				3.8		
E				3.8		56.6

260.38

249.89 So = N.L. 50' WIDE. JUAN ST ON WEST

E	5.5	254.9
cb	5.7	
1/4	6.4	
C	6.8	53.4
1/2	7.3	
cb	7.7	
W	8.4	52.0

No. CURB.

W	9.4	51.0
cb	8.7	
1/4	8.2	
C	7.8	52.4
1/2	7.3	53.1
cb	6.8	
E	6.2	54.2

No. QUARTER

E	6.5	53.4
cb	7.3	
1/4	7.9	
C	8.5	51.9
1/2	8.9	
cb	9.4	
W	10.2	50.2

PLOTTED

260.38

with the 42

CENTER

W	11.1	249.3
cb	10.1	
1/4	9.5	
C	9.0	51.4
1/2	8.4	
cb	8.2	
E	7.5	52.9

So. QUARTER

E	8.3	52.1
cb	8.9	
1/4	9.3	
C	9.8	50.6
1/2	10.4	
cb	10.9	
W	11.9	48.5

So. CURB

W	12.2	48.2
cb	11.4	
1/4	10.9	
C	10.6	48.8
1/2	9.9	
cb	9.6	
E	8.8	51.6

260.38

260.38

260.38
15.45 PM

SO LINE JUAN ST (50' WIDE)

E		9.9	250.5
cb		10.5	
1/4		11.3	
C		11.9	48.5
1/4		12.5	
cb		12.9	
W		13.4	47.0
T.P.	1.34	248.81	12.85
	50' 30"		247.53
W		6.2	42.7
cb		5.2	
1/4		4.8	
C		4.0	44.9
1/4		3.3	
cb		2.8	
E		1.6	47.3
	100' 30"		
E		3.9	45.0
cb		5.5	
1/4		5.7	
C		7.0	41.9
1/4		7.9	
cb		8.7	
W		9.6	39.3

PLOTTED

248.9

with 43

134.8' SO. = N.L. HORTON AVE 50' WIDE

W		11.8	237.1
cb		10.0	
1/4		8.9	
C		7.8	41.1
1/4		6.3	
cb		5.9	
E		4.7	44.7
	No. CURB		
E		5.2	43.7
cb		6.4	
1/4		6.7	
C		8.2	40.7
1/4		9.1	
cb		10.9	
W		12.7	35.2
	No. QUARTER		
W		14.0	44.9
cb		11.9	
1/4		10.4	
C		8.8	40.1
1/4		7.5	
cb		7.0	
E		5.9	43.0

24877

CENTER

E	7.0	341.9
cb	7.8	
1/4	8.1	
C	9.5	39.4
1/4	10.8	
cb	12.1	
W	14.5	34.4

So. QUARTER.

W	15.0	33.9
cb	12.4	
1/4	10.7	
C	9.7	39.2
1/4	8.9	
cb	8.4	
E	7.8	41.1

So. CURB

E	8.0	40.9
cb	8.8	
1/4	9.2	
C	10.6	38.9
1/4	11.3	
cb	13.1	
W	15.9	33.0

PLOTTED

34877

witherb/ 44

So. LINE HORTON AVE

W		17.3	231.6
cb		14.4	
1/4		12.3	
C		10.5	38.1
1/4		9.5	
cb		9.3	
E		8.6	40.3
T.P.	260	239.70	11.77
			237.10

12.6' So. = N.L. MAIN ST (50' WIDE)

E		0.2	39.5
cb		0.9	
1/4		2.0	
C		3.3	34.4
1/4		4.9	
cb		6.6	
W		9.5	30.2

No. CURB

W		11.0	28.7
cb		7.7	
1/4		6.0	
C		4.5	35.2
1/4		3.1	
cb		1.8	
E		0.7	39.0

23970

NO. QUARTER.

E	1.2	238.5
ct	2.6	
1/4	4.0	
C	5.5	34.2
1/4	7.4	
ct	9.2	
W	12.6	27.1

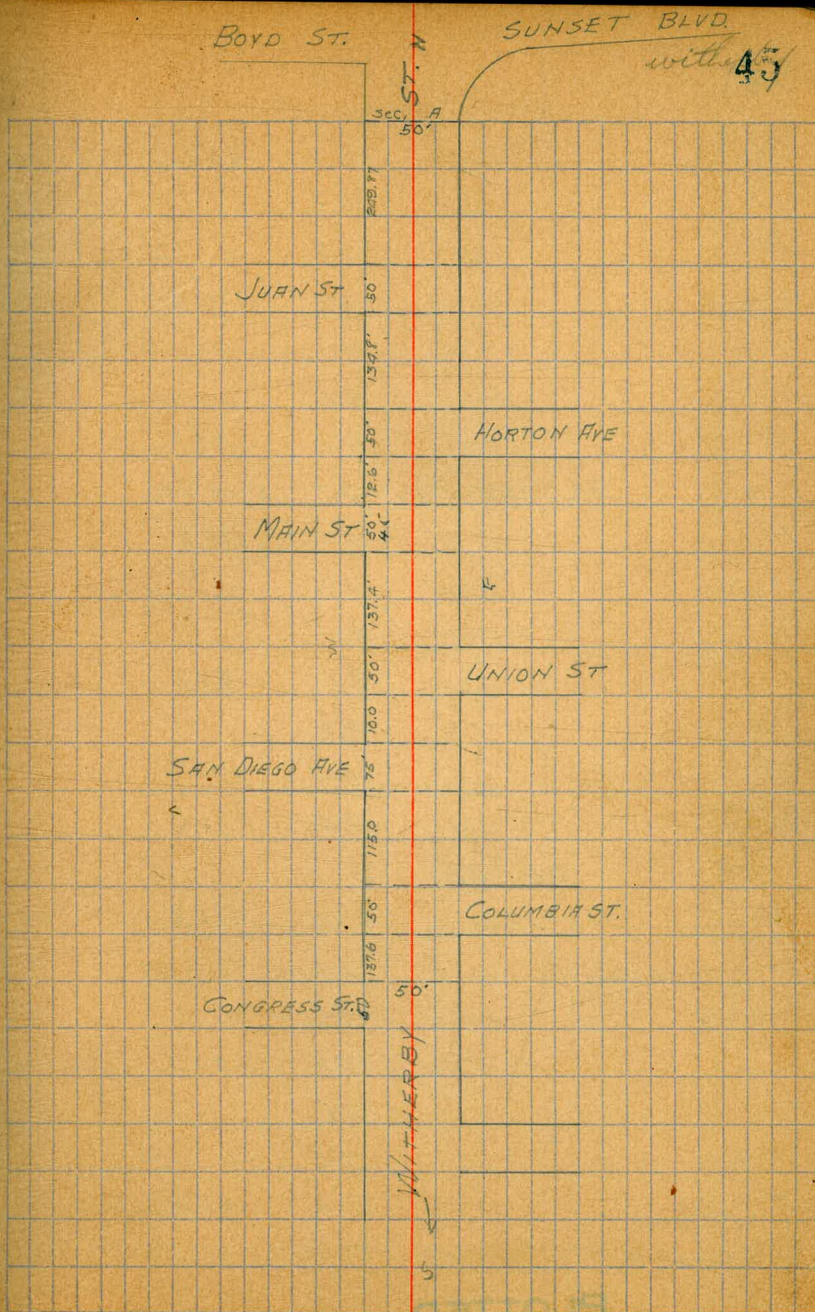
CENTER.

W	13.6	24.1
ct	10.3	
1/4	8.3	
C	6.2	33.5
1/4	4.6	
ct	3.1	
E	1.6	38.1

SO. QUARTER.

E	2.1	37.6
ct	3.5	
1/4	5.5	
C	7.4	32.3
1/4	9.4	
ct	11.5	
W	15.2	24.5

PLOTTED



239.70

SO. CURB

W	16.2	223.5
cb	13.2	
1/4	10.8	
C	8.3	31.4
1/4	6.1	
cb	4.2	
E	2.6	37.1

SO. LINE MAIN ST (50' WIDE)

E	4.0	35.7
cb	5.9	
1/4	8.1	
C	10.1	29.6
1/4	12.8	
cb	15.5	
W	18.2	21.5

25' SO.

W	24.0	15.7
cb	21.0	
1/4	18.6	
C	15.8	23.9
1/4	13.8	
cb	12.2	
E	10.3	29.4
T.P.	0.35	227.42
		12.63
		227.07

PLOTTED

227.42

with 46

50 50

E	7.8	219.4
cb	8.7	
1/4	9.5	
C	10.9	14.5
T.P.	0.24	214.60
		13.06
		214.36
cb	0.8	
cb	2.8	
W	5.7	8.9
	87.4' SO.	
W	15.0	99.6
cb	14.1	
1/4	13.6	
C	11.9	2.7
1/4	11.3	
cb	10.4	
E	11.1	3.5
T.P.	0.31	202.99
		12.42
		202.18
	137.4' SO = N.L. UNION ST (50' WIDE)	
E	11.7	91.3
cb	11.6	
1/4	12.1	
C	12.5	90.5
1/4	13.1	
T.P.	0.28	190.63
		12.64
		190.35
cb	1.4	
W	2.4	188.7

190.63

No. CURB

W	5.0	185.6
ct	4.0	
1/4	3.0	
C	2.6	82.0
1/4	2.3	
ct	2.0	
E	2.0	88.6

No. QUARTER

E	4.1	84.5
ct	4.1	
1/4	4.1	
C	4.8	85.8
1/4	5.3	
ct	6.0	
W	6.7	83.9

CENTER

W	8.5	82.1
ct	7.9	
1/4	7.5	
C	6.9	83.7
1/4	6.0	
ct	6.0	
E	5.9	84.7

PLOTTED

190.63

with
47

So. QUARTER

E	7.6	183.0
ct	7.6	
1/4	8.0	
C	8.9	81.7
1/4	9.4	
ct	9.9	
W	10.6	80.0

So. CURB

W	12.3	78.3
ct	12.2	
1/4	11.7	
C	11.4	79.2
1/4	10.7	
ct	10.2	
E	10.1	80.5

So. LINE UNION ST.

E	12.5	78.1
ct	13.1	
1/4	13.4	
C	13.9	74.7
1/4	14.3	
ct	14.6	
W	14.7	75.9
T.P. 006	177.63	13.06
		177.57

177.63

10' So. = N.L. SAN DIEGO AVE (75' WIDE)
(12' WALKS)

W	4.2	173.4
cb	3.7	
1/4	3.5	
C	3.1	74.5
1/4	3.0	
cb	2.5	
E	2.1	75.5

No. CURB

E	5.3	72.3
cb	5.7	
1/4	5.8	
C	6.0	71.4
1/4	6.3	
cb	6.7	
W	6.9	70.7

No. QUARTER.

W	10.4	67.2
cb	9.8	
1/4	9.4	
C	9.3	68.3
1/4	9.3	
cb	9.4	
E	9.4	68.2

PLOTTED

177.63

width by

48

CENTER

E		13.1	164.5
cb		13.1	
1/4		13.0	
C		13.3	64.3
1/4		13.5	
cb		13.4	
W		14.2	63.4
T.P.	0.27	164.84	12.96
			164.67

So. QUARTER

W		5.3	59.6
cb		5.3	
1/4		5.0	
C		5.0	59.9
1/4		5.4	
cb		4.9	
E		4.8	60.1

So. CURB.

E		9.0	55.9
cb		9.3	
1/4		8.9	
C		9.0	55.9
1/4		9.0	
cb		9.4	
W		9.1	55.8

164.94

So. LINE SAN DIEGO AVE

W		11.8	153.1
cl		12.3	
1/4		12.3	
C		12.3	52.5
1/4		12.2	
cl		12.2	
E		12.0	52.9
T.P.	0.45	152.79	152.34
	50' So.		
E		10.8	42.0
cl		10.7	
1/4		10.6	
C		10.4	42.4
1/4		10.3	
cl		10.1	
W		9.4	43.4
T.P.	0.46	140.20	139.74
	100' So		
W		6.4	33.8
cl		7.2	
1/4		7.8	
C		7.9	32.3
1/4		8.2	
cl		8.1	
E		7.8	32.4

PLOTTED

140.20

width of

49

115' So. = N. L. COLUMBIA ST. (50' WIDE)

E		10.5	129.7
cl		10.2	
1/4		10.2	
C		10.3	29.9
1/4		9.9	
cl		9.5	
W		9.5	30.4
	No. CURB		
W		12.4	27.8
cl		12.2	
1/4		12.0	
C		12.0	28.2
1/4		12.1	
cl		12.1	
E		13.0	27.2
T.P.	0.03	127.27	127.24
	No. QUARTER		
E		3.6	23.7
cl		1.9	
1/4		1.1	
C		1.1	26.2
1/4		1.3	
cl		1.6	
W		1.9	25.4

12727

CENTER

W	5.0	122.3
cb	4.2	
1/4	3.9	
C	3.6	23.7
1/4	3.9	
cb	5.0	
E	7.0	20.3

SO. QUARTER

E	9.8	17.5
cb	7.5	
1/4	6.3	
C	5.4	21.9
1/4	6.0	
cb	6.8	
W	7.8	19.5

SO. CURB

W	10.8	14.5
cb	9.8	
1/4	8.9	
C	8.4	18.9
1/4	8.6	
cb	10.1	
E	11.8	15.5

PLOTTED

12727

with check
50

SO. LINE COLUMBIA ST

E		15.1	112.3
cb		13.0	
1/4		11.4	
C		11.3	14.0
1/4		14.8	
cb		13.3	
W		16.4	10.9
TR	127	115.63	12.91
		20' SO.	114.36
W		12.4	103.2
cb		9.3	
1/4		7.7	
C		6.7	8.9
1/4		6.9	
cb		7.3	
E		2.4	13.2
TR		1.2	
		30' SO.	
E		9.4	6.2
cb		9.8	
1/4		9.8	
C		10.3	5.3
1/4		10.8	
cb		11.6	
W		12.2	3.4

20

115.63

50' 50

W		2.7	112.9	
cb		2.8		
1/4		3.1		
C		3.4	12.2	
1/4		3.2		
cb		3.0		
E		2.7	12.9	
T.P.	11.98	127.46	0.15	115.49
T.P.	12.93	140.26	0.13	127.33

100' 50

E		12.4	27.9
cb		12.6	
1/4		11.9	
C		11.9	28.2
1/4		11.6	
cb		11.3	
W		11.4	28.9

1376' 50. = N.L. CONGRESS ST.

W		0.5	39.8
cb		0.4	
1/4		0.5	
C		0.6	39.7
1/4		0.4	
cb		0.5	
E		0.1	40.3

PLOTTED

117. 11.05
99.5

WITH 2304

51

T.P.	0.48	134.74	6.00	134.26
T.P.	0.30	122.60	12.44	122.30
T.P.	0.32	109.81	13.11	109.49
T.P.	1.14	97.85	15.10	96.71
T.P.	0.10	85.06	12.89	84.96
T.P.	1.89	74.66	12.29	72.77
T.P. chk			11.05	63.6

FINISH
S.N.Y.
101st St
Rd. mode
see Guide Books
39. Page 51
Elev should be 63.4

PLOTTED

PLOTTED

7/13
 Begon
 Shaw

CROSS-SECTION OF
 ARISTA ST (50' WIDE 10' WALKS)
 FROM THE N. LINE OF CHERRY ST
 TO THE S. OF CHESNUT ST

262.60

B.M.	0.95	268.05	267.07	NE MUDROCK AND TRIAS
T.P.	1.41	267.90	15.6	266.49
T.P.	7.10	268.60	12.40	255.50

No. LINE CHERRY ST (50' WIDE 10' WALKS)

E	9.6	2530
cl	12.0	506
1/2	13.4	492
C	15.4	472
1/4	17.2	454
cl	19.5	431
W	23.0	396
+15	29.6	33.0

No. CURB

-15	27.3	353
W	20.8	41.8
cl	17.5	451
1/4	15.2	474
C	12.6	500
1/2	10.6	520
cl	8.5	541
E	7.5	55.1

PLOTTED

No. QUARTER

E	5.6	257.0
cl	7.3	55.3
1/2	8.1	54.5
C	10.2	52.4
1/4	12.4	50.2
cl	14.9	47.7
W	19.0	43.6
+15	25.0	37.0

CENTER

W	17.5	45.1
cl	13.4	49.2
1/4	9.8	52.8
C	7.7	54.9
1/2	6.6	56.0
cl	5.4	57.2
E	4.1	58.5

SO. QUARTER

E	2.9	59.7
cl	4.0	58.0
1/2	5.4	57.2
C	6.6	56.0
1/4	8.3	54.3
cl	11.2	51.4
W	15.2	47.4

40

362.60

SO. CURB

W	14.1	2485
cb	10.5	52.1
1/4	7.3	55.3
c	5.7	56.9
1/6	4.1	58.5
cb	3.0	59.6
E	2.2	60.4

SO. LINE CHERRY ST

E	1.4	61.2		
cb	2.1	60.5		
1/4	3.2	59.4		
c	5.0	57.6		
1/6	6.7	55.9		
cb	8.1	54.5		
W	12.5	50.1		
T.P.	8.23	263.73	7.10	255.50

50' SO.

W	11.7	52.0
cb	8.7	55.0
1/4	6.1	57.6
c	4.5	59.2
1/6	3.0	60.7
cb	1.9	61.8
E	1.2	62.5

PLOTTED

263.73

54

100' SO.

E	1.1	56.26
cb	2.1	61.6
1/4	3.5	60.7
c	5.1	58.6
1/6	6.8	56.9
cb	9.3	54.4
W	11.8	51.9

150' SO.

W	13.3	50.4
cb	11.6	52.1
1/4	9.3	54.4
c	7.5	56.2
1/6	5.1	58.6
cb	3.5	60.2
E	2.3	61.4

200' SO.

E	9.1	54.6		
cb	10.4	53.3		
1/4	11.6	52.1		
c	13.1	50.6		
T.P.	0.96	252.69	12.10	251.72
1/6	3.1	49.6		
cb	3.4	49.3		
W	4.4	48.3		

54

259.69
350' SO

W	6.3	246.4
cb	5.3	47.4
1/4	4.8	47.9
C	4.4	48.3
1/4	3.9	48.8
cb	3.0	49.7
E	1.4	51.3

300' SO = N.L. PINE ST. (50' WIDE)

E	4.9	47.8
cb	5.9	46.8
1/4	6.5	46.3
C	7.6	45.1
1/4	8.5	44.2
cb	9.2	43.5
W	9.7	43.0

NO. CURB

W	9.5	43.2
cb	9.1	43.6
1/4	8.7	44.0
C	8.0	44.7
1/4	7.3	45.4
cb	6.5	46.2
E	5.6	47.1

PLOTTED

259.69

55

NO. QUARTER

E	5.4	247.3
cb	6.4	46.3
1/4	7.1	45.6
C	7.7	45.0
1/4	8.3	44.4
cb	8.9	43.8
W	9.4	43.3

CENTER

W	9.3	43.4
cb	8.8	43.9
1/4	8.3	44.4
C	7.8	44.9
1/4	7.1	45.6
cb	6.4	46.3
E	5.6	47.1

SO. QUARTER

E	6.0	46.7
cb	7.0	45.7
1/4	7.7	45.0
C	8.4	44.3
1/4	8.9	43.8
cb	9.4	43.3
W	10.2	42.5

252.69

SO. CURB

W	10.6	242.1
cb	9.8	42.9
1/4	9.1	43.6
C	8.7	44.0
1/2	7.8	44.9
cb	7.2	45.5
E	6.6	46.1

SO. LINE PINE ST

E	7.1	45.6		
cb	8.2	44.5		
1/4	8.5	44.2		
C	9.5	43.2		
1/2	10.1	42.6		
cb	10.7	42.0		
W	11.2	41.5		
T.P.	1.72	247.35	7.06	245.63

50' So.

W	3.7	43.7
cb	4.9	42.5
1/4	5.4	42.0
C	6.2	41.2
1/2	7.0	40.4
cb	7.7	39.7
E	8.4	39.0

PLOTTED

247.35

56

100' So.

W	11.4	236.0
cb	9.7	37.7
1/4	8.5	38.9
C	7.6	39.8
1/2	6.5	40.9
cb	6.0	41.4
E	4.3	43.1

150' So.

E	4.3	43.1
cb	6.2	41.2
1/4	7.7	39.7
C	9.2	38.2
1/2	10.4	37.0
cb	12.0	35.4
W	14.1	33.3

200' So.

W	13.0	34.4
cb	10.1	37.3
1/4	8.2	39.2
C	7.0	40.4
1/2	5.9	41.5
cb	4.4	43.0
E	3.0	44.4

247.35

350' So.

E	4.1	243.3
cb	4.6	42.8
1/2	5.3	42.1
C	5.9	41.5
1/2	7.0	40.4
cb	8.1	39.3
W	10.8	36.6

300' So = N.L. MADRONA (see Book Page

W	10.4	37.0
cb	8.1	39.3
1/2	6.8	40.6
C	6.2	41.2
1/2	5.3	42.1
cb	4.8	42.6
E	4.4	43.0

T.P. 3.26 244.23 6.38 240.97

S. L. MADRONA ST

E	0.4	43.8
cb	1.1	43.1
1/2	1.6	42.6
C	2.4	41.8
1/2	3.1	41.1
cb	4.0	40.2
W	5.3	38.9

PLOTTED

244.23

57

50' So.

W	7.4	236.8
cb	6.4	37.8
1/2	5.3	38.9
C	4.7	39.5
1/2	3.8	40.4
cb	2.8	41.4
E	2.0	42.2

100' So.

E	1.9	42.3
cb	3.0	41.2
1/2	4.4	39.8
C	5.5	38.7
1/2	6.6	37.6
cb	7.8	36.4
W	9.4	34.8

150' So.

W	11.8	32.4
cb	10.8	33.4
1/2	9.6	34.6
C	7.8	36.4
1/2	6.3	37.9
cb	5.2	39.0
E	4.9	39.3

344.23

175' So.

E		8.3	231.9	
cb		9.8	34.4	
1/4		11.0	33.2	
C		12.4	31.8	
1/4		13.3	30.9	
T.P.	0.20	231.60	12.23	231.40
cb		3.5	28.1	
W		6.0	25.6	

205' So.

-30		21.9	209.7
W		19.9	117.0 ✓
cb		15.8	15.8
1/4		13.6	18.0
C		10.7	20.9
1/4		7.3	24.3
cb		3.6	28.0
E		1.1	30.5

230' So.

E		11.0	206
cb		15.0	16.6
1/4		19.0	12.6
C		22.6	9.0
1/4		26.1	5.5
cb		28.0	203.6
W		34.6	197.0 ✓
+65		52.0	199.6

PLOTTED

133

231.60

-50		40.5	191.58	
-35		46.5	185.1	
-15		32.5	199.1	
W		26.2	205.4 ✓	
cb		21.6	10.0	
1/4		17.0	14.6	
C		13.9	17.7	
1/4		10.3	21.3	
cb		8.1	23.5	
E		5.3	26.8	
390' So. = N/L HICKORY (50' WIDE)				
E		9.1	22.5	
T.P.	0.50	217.55	12.55	219.05
cb		2.1	17.5	
1/4		5.9	13.7	
C		11.7	7.9	
1/4		15.3	204.3	
cb		20.5	199.1	
W		22.4	97.2	
+10		20.5	99.1	
No. CURB				
W		17.1	202.5	
cb		11.2	198.4	
1/4		20.4	99.2	
C		15.7	203.9	
1/4		8.5	71.1	
cb		4.8	14.8	
E		0.1	19.5	

319.55

NO. QUARTER

F	2.3	217.3
cb	6.4	137
1/4	13.6	06.0
C	16.8	207.8
1/2	19.0	200.6
cb	17.8	201.8
W	12.2	207.4

CENTER

W	8.0	11.6
cb	11.5	8.1
1/4	17.1	202.5
C	18.0	201.6
1/4	16.1	203.5
cb	12.2	207.2
E	4.8	14.8

SO. QUARTER

E	7.7	11.9
cb	15.0	204.6
1/4	13.7	205.9
C	13.1	206.5
1/4	10.2	209.4
cb	4.2	13.4
W	1.9	17.7

PLOTTED

219.55

59

SO. CURB

W			12.4	222.0
cb			0.5	19.1
1/4			2.6	17.0
C			4.2	15.4
1/2			7.5	12.1
cb			9.8	9.8
E			13.1	204.1
T.P.			12.0	207.6
SO. LINE HICKORY ST				
E			3.5	14.1
cb			1.6	18.0
T.P.	10.48	230.00	0.03	219.52
1/4			10.0	220.0
C			8.7	21.3
1/4			7.7	22.3
cb			5.7	04.3
W			2.1	27.9
T.P.	8.54	238.37	0.17	229.83
		20' 50		
W			5.8	32.6
cb			6.9	31.5
1/4			7.4	31.0
C			7.8	30.6
1/4			8.1	30.3
cb			8.8	29.6
E			10.4	28.0

338.37

50' So.

E		5.2	333.7	
cb		5.3	331	
1/4		4.8	336	
C		4.7	337	
1/4		4.6	338	
cb		4.2	342	
W		3.6	348	
T.P.	10.11	345.19	3.29	335.08

100' So.

W		6.8	384
cb		6.9	383
1/4		7.1	381
C		7.1	381
1/4		7.0	382
cb		7.2	380
E		7.0	382

150' So.

E		4.4	40.8
cb		4.8	40.4
1/4		5.1	40.1
C		5.4	39.8
1/4		5.5	39.7
cb		5.7	39.5
W		5.7	39.5

PLOTTED

245.19

60

300' So

W		6.7	385
cb		6.0	392
1/4		5.8	394
C		5.5	397
1/4		4.8	404
cb		4.4	408
E		3.9	413

250' So

E		3.0	422
cb		4.1	411
1/4		4.9	403
C		5.8	394
1/4		6.3	389
cb		6.9	383
W		7.3	377

300' So. = N/L, CHESNUT ST (50' WIDE)

W		9.9	353
cb		8.8	364
1/4		8.2	370
C		7.8	374
1/4		6.9	383
cb		5.8	394
E		4.7	405

345.19

NO. CURB

E	5.2	240.0
cb	6.3	389
1/2	7.2	380
C	8.2	370
1/4	9.0	362
cb	9.5	357
W	10.6	346

NO. QUARTER

W	11.4	338
cb	10.3	349
1/2	9.3	359
C	8.6	366
1/4	8.0	372
cb	7.1	381
E	6.1	391

CENTER

E	6.8	384
cb	7.7	375
1/2	8.4	368
C	9.1	361
1/4	9.7	355
cb	10.4	348
W	11.4	338

PLOTTED

245.19

61

SO. QUARTER

W	12.8	2324
cb	11.4	338
1/2	10.3	349
C	9.5	357
1/4	8.6	366
cb	8.0	372
E	7.6	376

SO. CORN

E	7.7	375
cb	8.3	369
1/2	9.0	362
C	9.9	353
1/4	11.1	341
cb	12.1	331
W	13.3	319

SO. LINE CHESNUT.

W	14.1	311
cb	12.8	324
1/2	11.6	336
C	10.5	347
1/4	9.3	359
cb	8.9	363
E	8.5	367

PLOTTED

TP	12.10	257.57	0.32	244.87
TP	12.23	269.64	0.16	257.41
IBM			2.55	

267.09
 TRANS
 1/2 1/2 1/2 1/2

10/4/21
S

Levels on Dirt Curb
Witherby St
from Hickory to Sunset.

	8.03	259.09	251.06	
	S.L. Hickory on E			
Wcb		7.30	251.79	✓
Ecb		5.80	253.29	✓
	50' S			
Ecb		5.60	253.49	✓
Wcb		6.50	252.59	✓
	100' S			
Wcb		5.80	253.29	✓
Ecb		4.40	254.69	✓
	125' S			
Ecb		4.00	255.09	✓
W		5.30	253.79	✓
	150' S			
Wcb		5.30	253.79	✓
Ecb		4.40	254.69	✓
	196' S = P.C.			
Ecb		4.70	254.39	✓
Wcb		5.70	253.39	✓
	250' S			
Wcb		6.20	252.89	✓
	300' S = N.L. Chestnut on E			
Wcb		6.00	253.09	✓

Measurements all taken on E. side

48.0
25.00 W

62

351.8' S = 3 L Chestnut on E

Wcb (cement) 3L chestnut	6.07	253.02	✓
Ecb	5.30	253.79	✓
	5.02	254.07	✓ on 3/4 SE
	400' S		
Ecb	4.7	254.4	✓
cement cb on W.			
	450' S		
Ecb	4.3	254.8	✓
cement cb on W.			
	500' S		
Ecb	4.0	255.1	✓
cement cb on W.			
	550' S		
Ecb	3.6	255.5	✓
cement cb on W.			
	600' S		
Ecb	3.1	256.0	✓
cement cb on W.			
	650' S		
Ecb	2.6	256.5	✓
Wcb cement N.L. Whitman			
T.P.	7.47	263.85	✓
	7.71	256.38	✓
	700' S		
Ecb	6.9	257.0	✓
St not graded on W.			

265.85

750' S

Ecb

6.30 257.55 ✓

800' S

Ecb

5.8 258.1 ✓

850' S

Ecb

5.2 258.7 ✓

900' S

Ecb

4.9 259.0 ✓

950' S

Ecb

4.4 259.5 ✓

979.44' S = N. Sunset Blvd (at Lita/Esco)

Ecb

4.1 259.8 ✓

INGLESIDE LEVELS

63

5.86 259.93 ✓

254.07

Dirt cb at Pt A

5.80 254.13 ✓

✓ - - - B

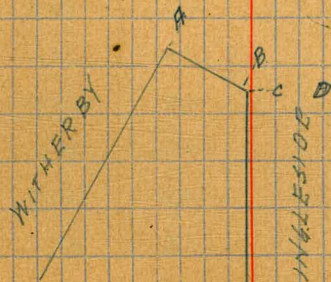
4.00 255.93 ✓

✓ - - - C

3.80 256.13 ✓

✓ - - - D

2.4 257.5



10/13/21 Gregory Moore Miller Show Levels on E of 30th St Woolman to Greedley Showing grade of Present Road.

BP NW
30th + Woolman

64

	070	88.73	88.03
3L Woolman = 0+00			2.1 ✓ 86.3
+ 50			2.2 86.5
1			2.4 86.3
+ 50			3.7 85.0
2			6.2 82.5
+ 50			9.0 79.7
3 = HL Valle			11.0 77.7
+ 50			12.8 75.9
T.P. 169	77.65	12.77	75.96
+ 80 = SL Valle			3.2 74.5
4			4.0 73.7
+ 50			5.1 72.6
5			6.8 70.9
+ 50			8.2 69.5
6			9.8 67.9
+ 25			10.1 67.6
+ 50			9.7 68.0
+ 80 H.L. Martin			8.6 69.1
7			7.8 69.9
+ 30			6.4 71.3
+ 60 = SL Martin			5.4 72.3
8			4.7 73.0
+ 50			4.1 73.6
9			3.4 74.3

+ 50	3.0	74.7
10	3.1	74.6
+ 60 = H.L. Greedley	2.9	74.8
chk	4.0	73.63 = 73.66
		SHOW Martin

10/3/84 Gregor
 CROSS SECTION OF
 WIGHTMAN AVE 60' wide
 10' cbs

on BM	1259	309.98	297.39	SE Wightman + Arnold
				E. L. Arnold.
S on inside corner walk	12.30	297.68		on cement
cb	12.50	297.48		✓ ✓
gutter	13.10	296.88		on paving
1/4	12.47	297.51		✓ ✓
c	14.17	297.81		✓ ✓
1/4	14.07	297.91		✓ ✓
gutter	12.27	297.71		✓ ✓
cb	11.52	298.46		on cement
N on inside corner walk	11.29	298.69		
				4' E
N	9.6	300.4		
+7	9.6	300.4		
+8	10.8	299.2		
cb	10.8	299.2		
+3	11.0	299.0		
+2	11.5	298.5		
+9	11.7	298.3		
1/4	9.5	300.5		
+5	9.0	301.0		
+7	11.4	298.6		
c	11.2	298.6		
+7	11.4	298.6		
1/4	9.7	300.3		

cb	9.6	300.4	
S	10.2	299.8	
			20' E
S	9.3	300.7	
cb	9.2	300.8	
1/4	9.0	301.0	
c	9.0	301.0	
1/4	8.5	301.5	
+1	11.2	298.8	
+7	11.1	298.9	
+8	8.8	301.2	
cb	8.8	301.2	
N	8.7	301.3	
			35' E
N	8.4	301.6	
cb	8.5	301.5	
+6	8.4	301.6	
+7	11.0	299.0	
1/4	11.2	298.8	
+2	10.7	299.3	
+5	8.4	301.6	
c	8.4	301.6	
1/4	8.4	301.6	
cb	8.5	301.5	
S	8.7	301.3	

30998

53'E

S	8.3	301.7
cb	8.2	301.8
1/4	8.2	301.8
C	8.0	302.0
+5	7.8	302.2
+6	10.2	299.8
1/4	10.8	299.2
+2	10.5	299.5
+5	8.0	302.0
cb	8.0	302.0
N	7.9	302.1

65'E

N	7.7	302.3
cb	7.6	302.4
+8	7.4	302.6
1/4	10.2	299.8
+3	10.0	300.0
+8 +7	9.2	300.8
+8	7.4	302.6
C	7.6	302.4
1/4	7.8	302.2
cb	7.7	302.3
S	7.7	302.3

75'E

S	7.3	302.7
---	-----	-------

WIGHTMAN

66

cb	7.3	302.7
1/4	7.4	302.6
C	7.3	302.7
+1	7.3	302.7
+3	9.6	300.4
+6	10.1	299.9
+9	9.9	300.1
1/4	7.4	302.6
cb	7.4	302.6
N	7.3	302.7
92'E		
N	7.0	303.0
cb	6.4	303.6
1/4	6.3	303.7
+2	7.2	302.8
+3	9.2	300.8
C	8.2	301.8
+1	6.2	303.8
1/4	6.7	303.3
cb	6.6	303.4
S	6.6	303.4
102'E		
S	6.0	304.0
cb	6.0	304.0
1/4	6.2	303.8
+5	6.1	303.9

309.98

+7	7.8	302.2
C	8.2	301.2
+5	8.3	301.7
+6	6.0	304.0
1/4	5.8	304.2
cb	5.8	304.2
N	6.1	303.9

120° E

N	5.3	304.7
cb	4.7	305.3
1/4	5.1	304.9
+4	5.2	304.8
+5	8.3	301.7
C	8.0	302.0
+3	7.0	303.0
+5	4.9	305.1
1/4	5.0	304.0
cb	5.4	304.6
S = front of garage	4.8	305.2

128° E

S	4.6	305.4
cb	4.9	305.1
1/4	4.8	305.2
C	5.0	305.0
1/4	4.4	305.6
cb	4.3	305.7
N	4.7	305.3

WIGHTMAN

67

134° E

N	3.7	306.3
cb	3.6	306.4
1/4	3.7	306.3
+4	4.0	306.0
+6	7.3	302.7
C	7.3	302.7
+6	7.5	302.5
+8	4.1	305.9
1/4	4.1	305.9
cb	4.0	306.0
S	4.0	306.0

155° E

S	2.8	207.2
cb	2.5	307.5
+2	4.4	305.6
+7	7.0	303.0
1/4	7.0	303.0
+6	7.1	302.9
+7	2.5	307.5
C	2.6	307.4
1/4	1.8	308.2
cb	1.8	308.2
N	2.2	307.8

30998

165' E

N	1.1	308.9
cb	0.9	309.1
1/4	1.0	309.0
C	1.0	309.0
+2	2.1	308.1
+5	1.7	308.3
+6	4.7	305.3
1/4	5.3	304.7
+8	5.2	304.8
cb	1.4	308.6
S	1.9	308.1

171' E

S	1.7	308.3
+2	2.0	308.0
+3	1.3	308.7
cb	0.7	309.3
+2	4.3	305.7
1/4	4.8	305.2
+4	0.5	309.5
+7	1.4	308.6
C	0.5	309.5
1/4	0.2	309.8
cb	0.0	310.0
N	0.0	310.0
T.P.	873	31858
	0.13	30985

WIGHTMAN

68

182' E

N	7.5	311.1
cb	7.2	311.4
1/4	7.9	310.7
C	8.2	310.4
+8	8.4	310.2
1/4	9.6	309.0
+5	13.2	305.4
+7	13.2	305.4
+8	11.5	307.1
+9	8.6	310.0
cb	8.6	310.0
+7	9.5	309.1
S	9.5	309.1

196' E

S	8.4	310.2
cb	7.5	311.1
+3	9.8	309.8
+7	10.3	308.3
+8	12.2	306.4
1/4	12.2	306.4
+5	10.6	309.0
+6	7.0	311.6
C	6.4	312.2
1/4	6.3	312.3
cb	6.1	312.5
N	6.1	312.5

31858

213'E

N	5.0	313.6
cb	4.5	314.1
1/4	4.4	314.2
+5	4.0	314.6
C	4.5	314.1
+4	5.2	313.4
+8	5.9	312.7
1/4	7.4	311.2
+3	10.3	308.3
cb	10.0	308.6
+2	6.0	312.6
+7	6.8	311.8
S	6.7	311.9

228'E

S	6.0	312.6
+4	5.5	313.1
+5	4.8	313.8
+9	4.5	314.1
cb	7.1	310.5
+1	7.5	310.1
+6	7.7	310.9
1/4	5.6	313.0
e	3.2	315.4
1/2	3.6	315.0
cb	3.9	314.7
N	4.0	314.6

WIGHTMAN

69

237'E

N	3.8	314.8
cb	3.5	315.1
1/4	3.8	314.8
+7	3.3	315.3
C	2.3	316.3
+6	2.5	316.1
1/4	4.5	314.1
+4	6.4	312.2
+8	6.4	312.2
+9	3.9	314.7
cb	3.9	314.7
S	5.4	313.2

244'E

S	4.5	314.1
cb	3.5	315.1
+1	4.7	313.9
+7	4.0	314.6
1/4	2.5	316.1
C	2.0	316.6
+3	3.0	315.6
1/2	3.4	315.2
cb	3.2	315.4
N	3.3	315.3

318.58

252'E

N	2.9	315.7
cb	2.7	315.9
1/4	3.2	315.4
c	3.0	315.6
1/4	2.5	316.1
cb	3.0	315.6
+3	3.0	315.6
S	3.5	315.1

265'E = W.L. VILLATERRACE

S = inside edge of walk	2.34	316.24	on cement
cb	2.49	316.09	✓ -
gutter	3.1	315.5	
1/4	2.7	315.9	
c	2.8	315.8	
1/2	2.9	315.7	
cb	2.60	315.98	on cement
N = inside corner of walk	2.32	316.26	✓ -

WIGHTMAN

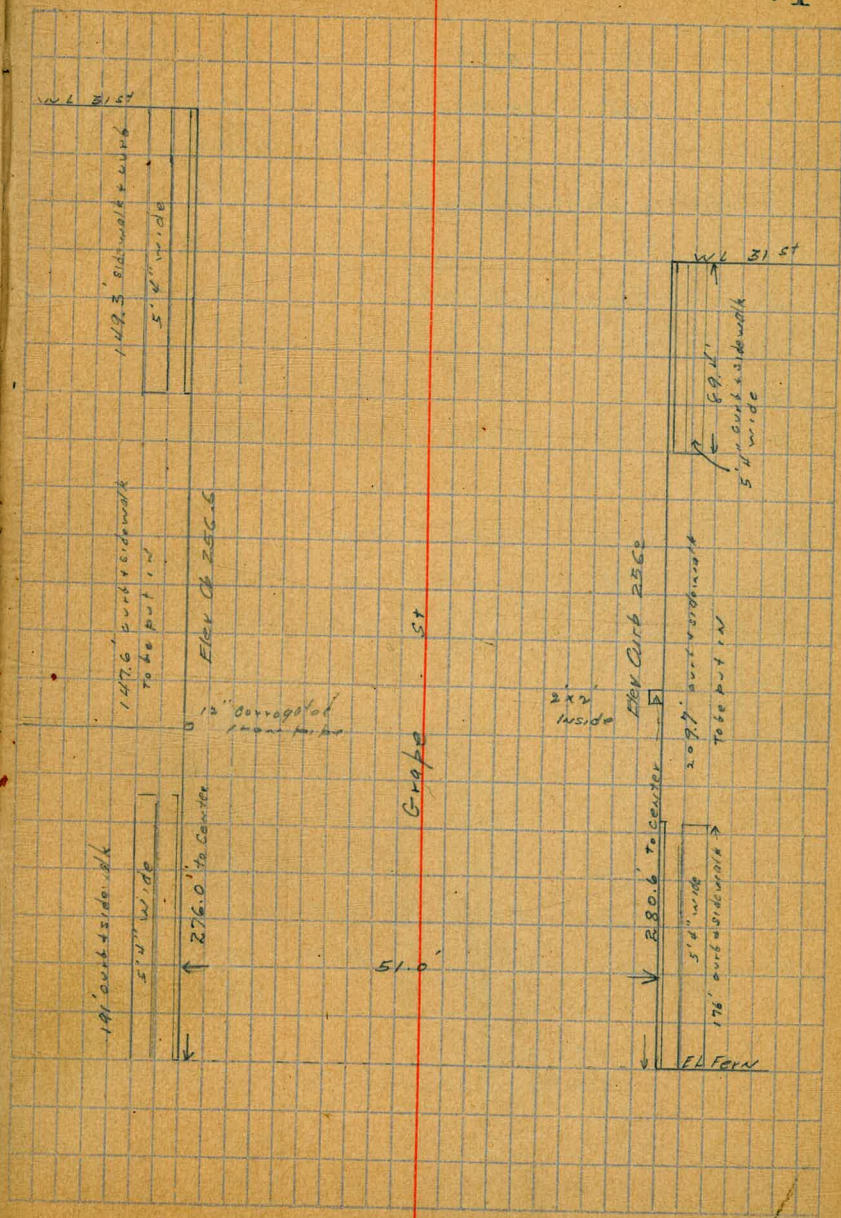
70

11/10/24

Location of Catch Basins on Grape
Between Fern & 31st

Moore
Everts
Keller

	0.50	269.97		269.47	SE Crap + Fern
TP	3.36	262.23	11.10	258.87	
on top concrete wall on S side			8.74	459.49	South side
flowline 12" corrugated iron pipe			9.30	254.93	North

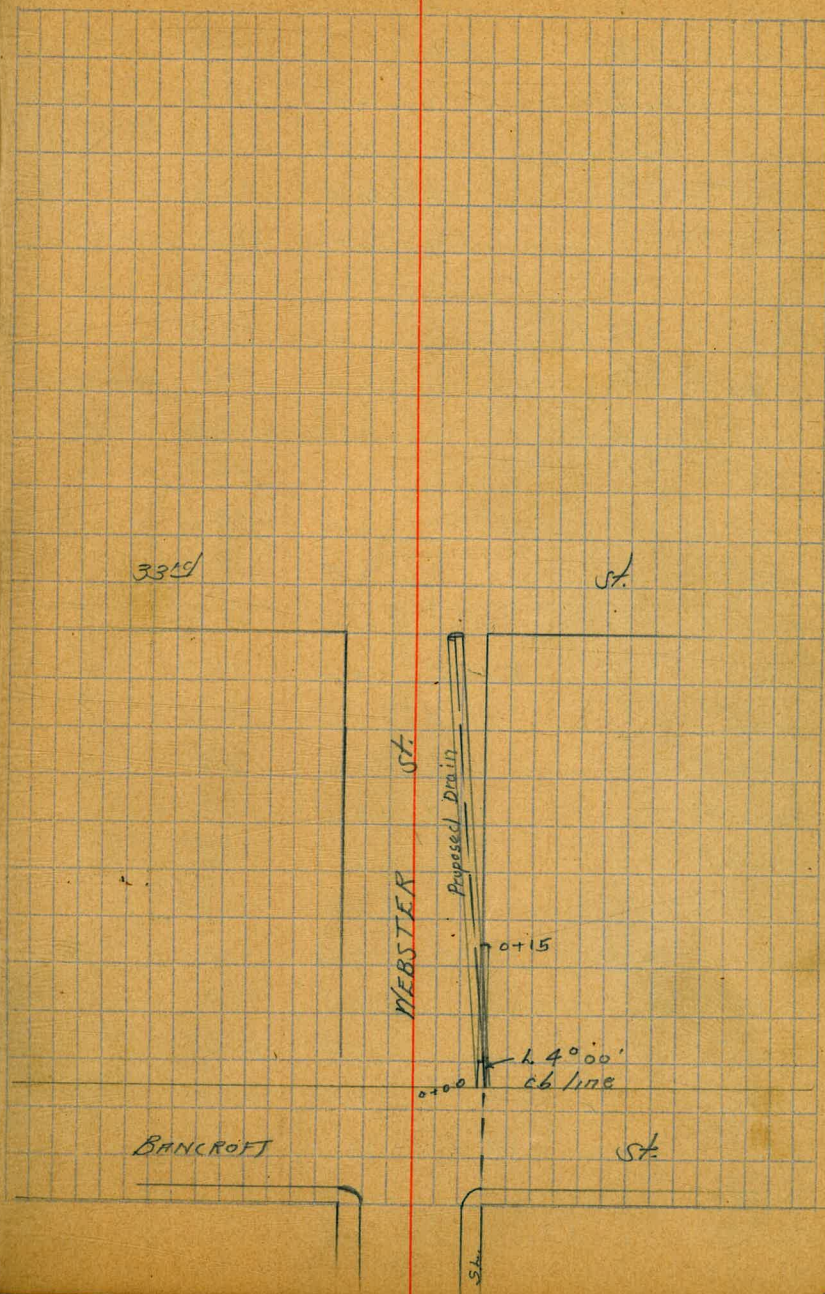


Walker
5-7-07

LEVELS FOR DRAIN
Webster + Bancroft St.

531. BM. 3' tie out to ck				
Webster + 3225	0.51	85.63		85.12
T.P.	0.45	73.50	12.58	73.95
T.P.	3.07	63.61	12.96	60.54
0+00 = Floor line of 8" Corrugated Iron Pipe		6.68		57.93
0+00 on top of cb.		5.65		57.96
		R = 7.89		
0+15 on Floor line at End of Exst. culvert				55.92
0+50		9.7		54.4
1+00		12.9		50.7
T.P.	0.50	51.32	12.79	50.82
1+31			2.5	48.8
T.P.	0.44	38.74	13.02	38.30
1+64			1.8	36.9
1+96			14.6	27.1
2+01			17.5	27.2
2+30 = End			20.3	18.4
T.P.	12.78	51.00	0.52	38.22
T.P.	13.11	63.84	0.27	50.73
T.P.	13.06	74.71	0.19	63.65
T.P.	12.63	89.24	0.10	76.61
chk. on BM Webster 13225			4.12	85.12
				85.12
			0.20 =	Accident

Approx. 1' south of line



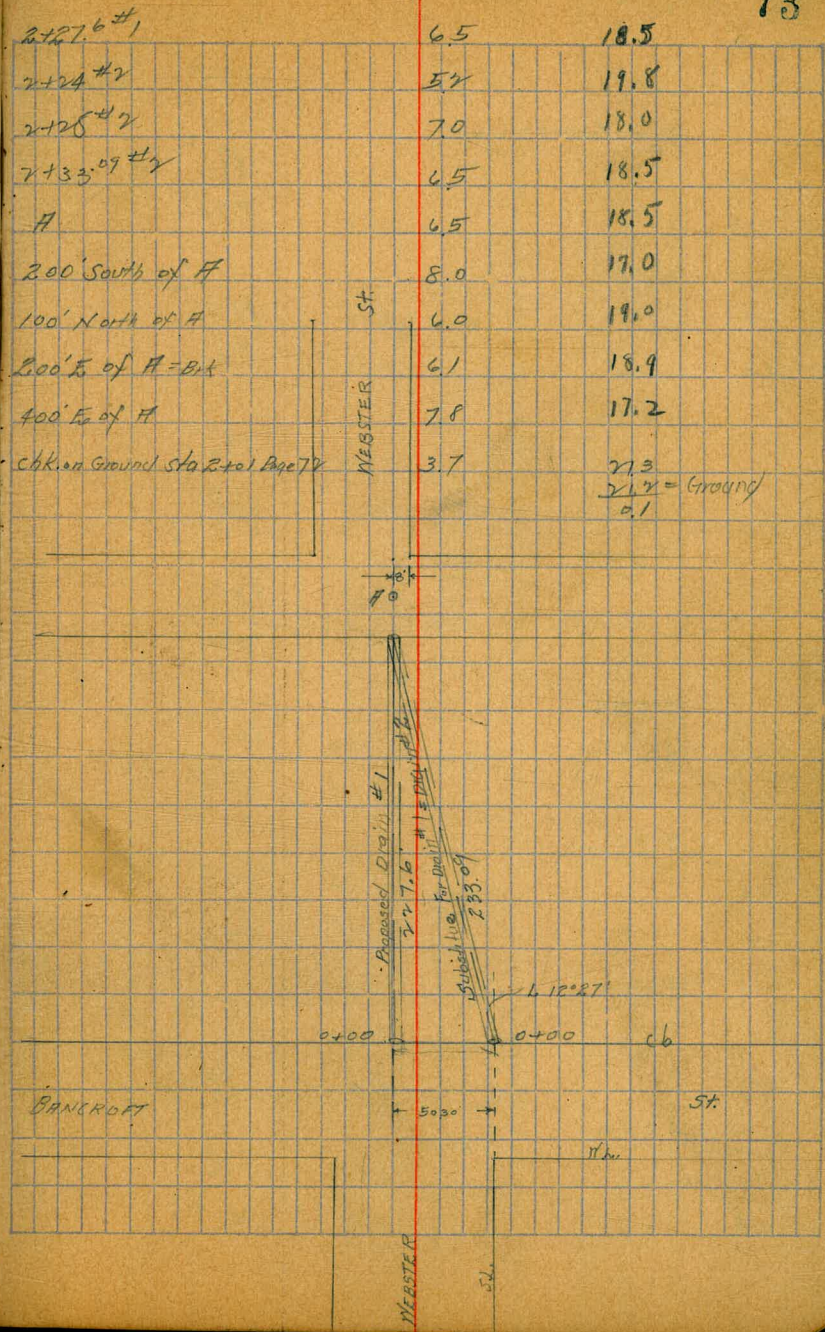
LEVELS FOR DRAIN ON WEBSTER ST.
EAST OF BANCROFT

WATER 3' to cut back

Webster + Bancroft	0.38	67.85		62.47
0+00 #1 on top cb			4.89	57.96
+00 on flow line			5.92	57.93
0+18 #2			5.2	57.7
+25 #1			6.8	56.1
+50 #1			8.3	54.6
+100 #1			11.5	51.4
+36 #1			12.4	50.5
0+00 #1 on top cb			3.78	59.1
+13 #1			4.2	58.7
+17 #1			5.8	57.1
+50 #1			7.8	55.1
+100 #1			11.0	51.9
T.P.	0.49	50.25	13.09	49.76
+130 #1			1.1	49.2
+47 #1			4.2	46.1
+75 #1			14.6	35.7
+147 #2			4.8	45.5
+159 #2			7.9	42.4
T.P.	0.40	37.77	12.88	37.37
+189 #2			7.7	30.1
+13 #2			16.8	21.0
+192 #1			9.5	28.3
T.P.	0.36	25.01	13.12	24.65
+19 #1			5.3	19.7
+23 #1			7.0	18.0

2501

73



8/29/11
 500 ft
 Curb Levels on Cape MAY Fluo
 Abbott to Ocean
 80' wide
 20' curbs

NUMB	1.34	11.71	8.89	Cape MAY Abbott
	WL Abbott = 00			
N/cb		2.26	8.95	
S/cb		2.50	8.71	
	0+50			
S/cb		3.02	8.19	
N/cb		2.80	8.41	
	1+00			
N/cb		3.25	7.96	
S/cb		3.53	7.68	
	1+50			
S/cb		3.98	7.23	
N/cb		3.75	7.46	
	2+00			
N/cb		4.20	7.01	
S/cb		4.38	6.83	
	2+50			
S/cb		4.92	6.27	
N/cb		4.79	6.42	
	3+00			
N/cb		5.26	5.95	
S/cb		5.41	5.80	
	3+50			
S/cb		5.85	5.36	
N/cb		5.76	5.45	

11.71

74

	4+00	
N/cb	6.21	5.00
S/cb	6.38	4.83
	4+50	
SL	5.1	6.11
cb Top cement	6.83	4.38
cb	5.9	5.3
1/4	6.6	4.6
c	6.6	4.6
1/4	6.9	4.3
cb Top cement	6.77	4.24 also ground
N/cb	4.9	6.2
	4+78 = end of curb on South	
N/cb	5.2	6.0
cb ground	5.2	6.0
cb top cement	6.98	4.23
1/4	4.6	6.6
c	5.0	5.6
1/4	5.4	5.8
cb ground	5.5	5.7
cb end top cement	7.16	4.05
SL	5.9	5.3
	4+99 end of curb on N/cb	
SL	6.5	4.7
cb	5.5	5.7
1/4	6.0	5.2

11/21

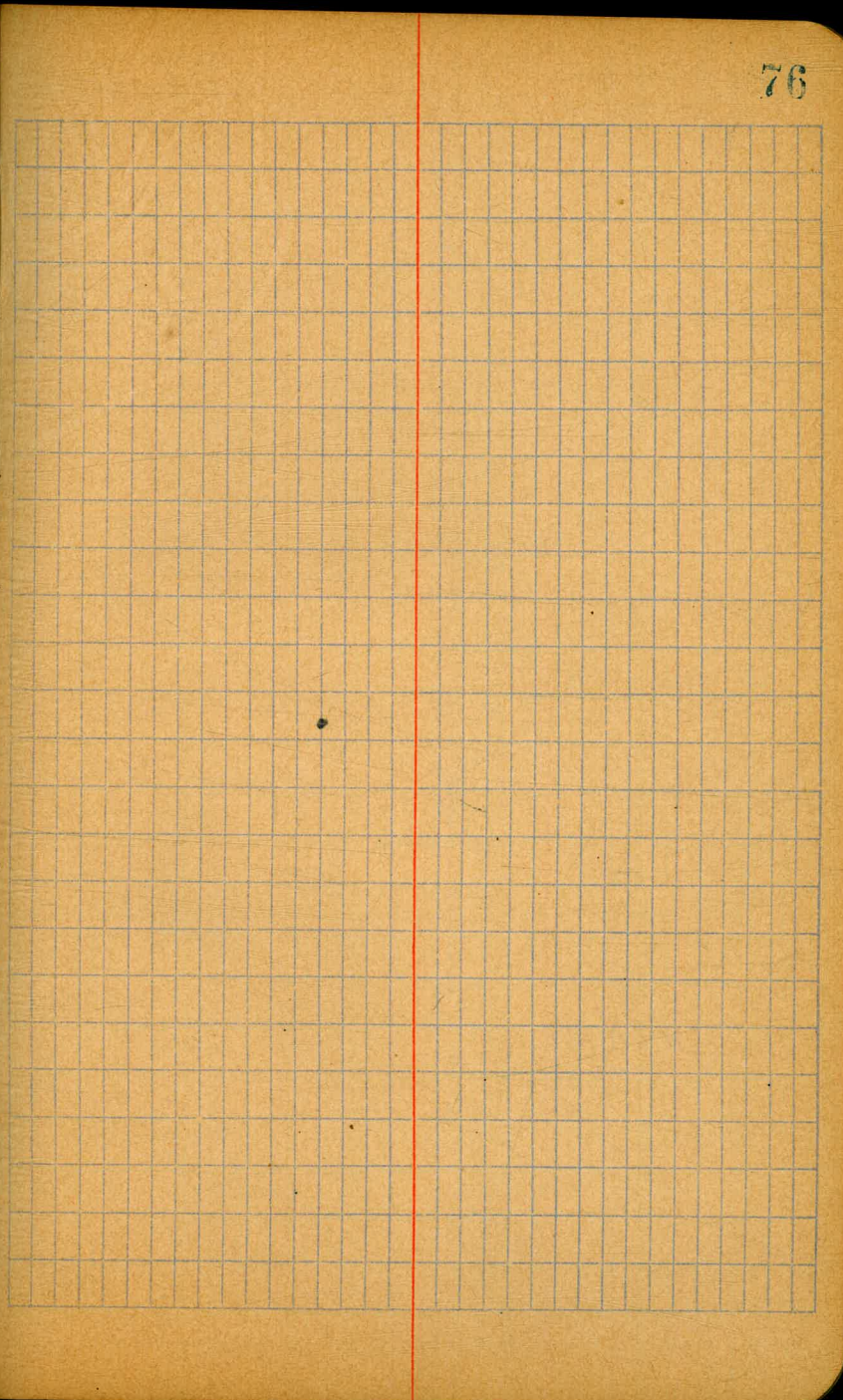
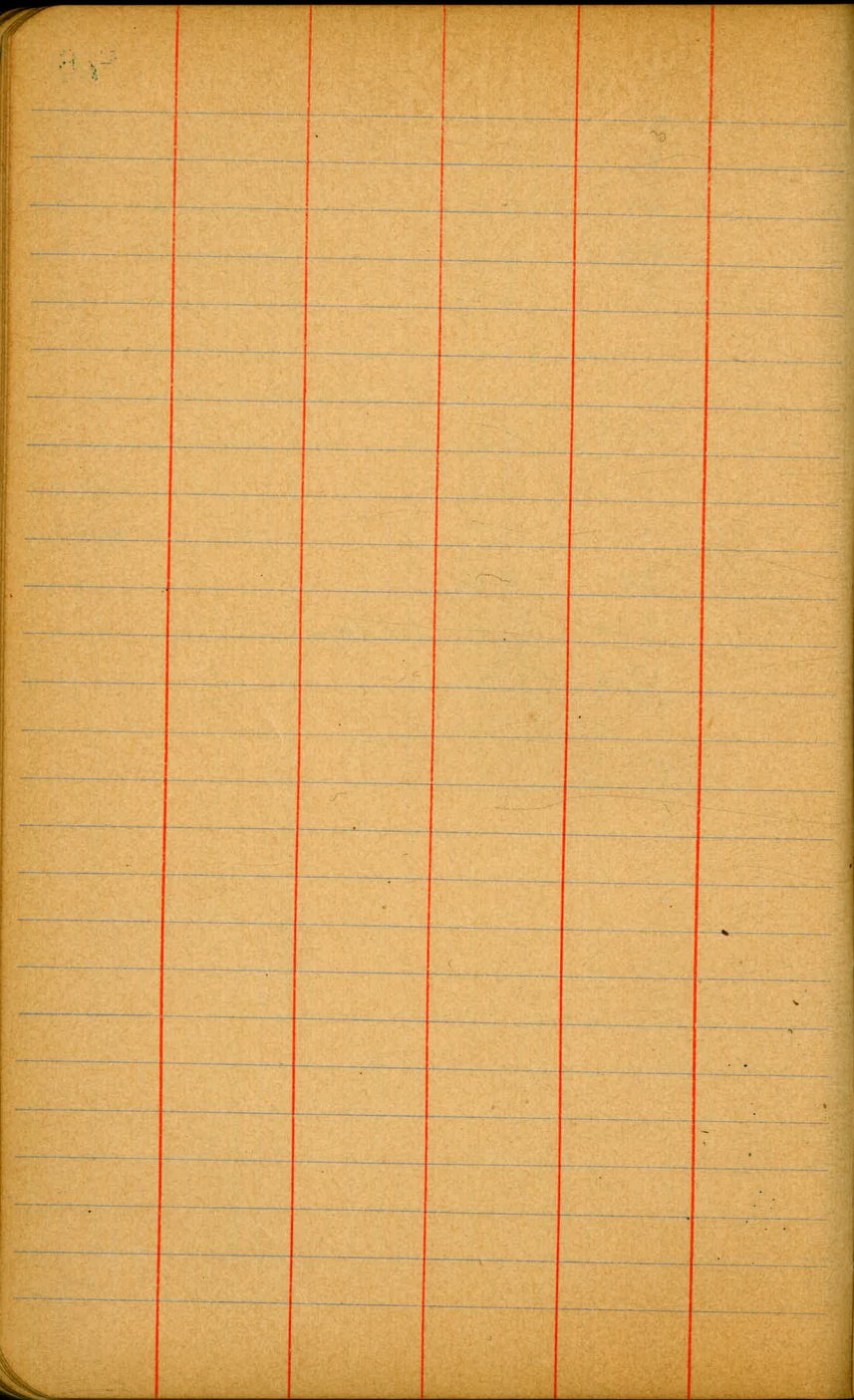
c	5.6	5.6
1/4	6.2	5.0
cb ground	6.6	4.6
cb top cement	8.15	3.0
NL	5.5	5.7

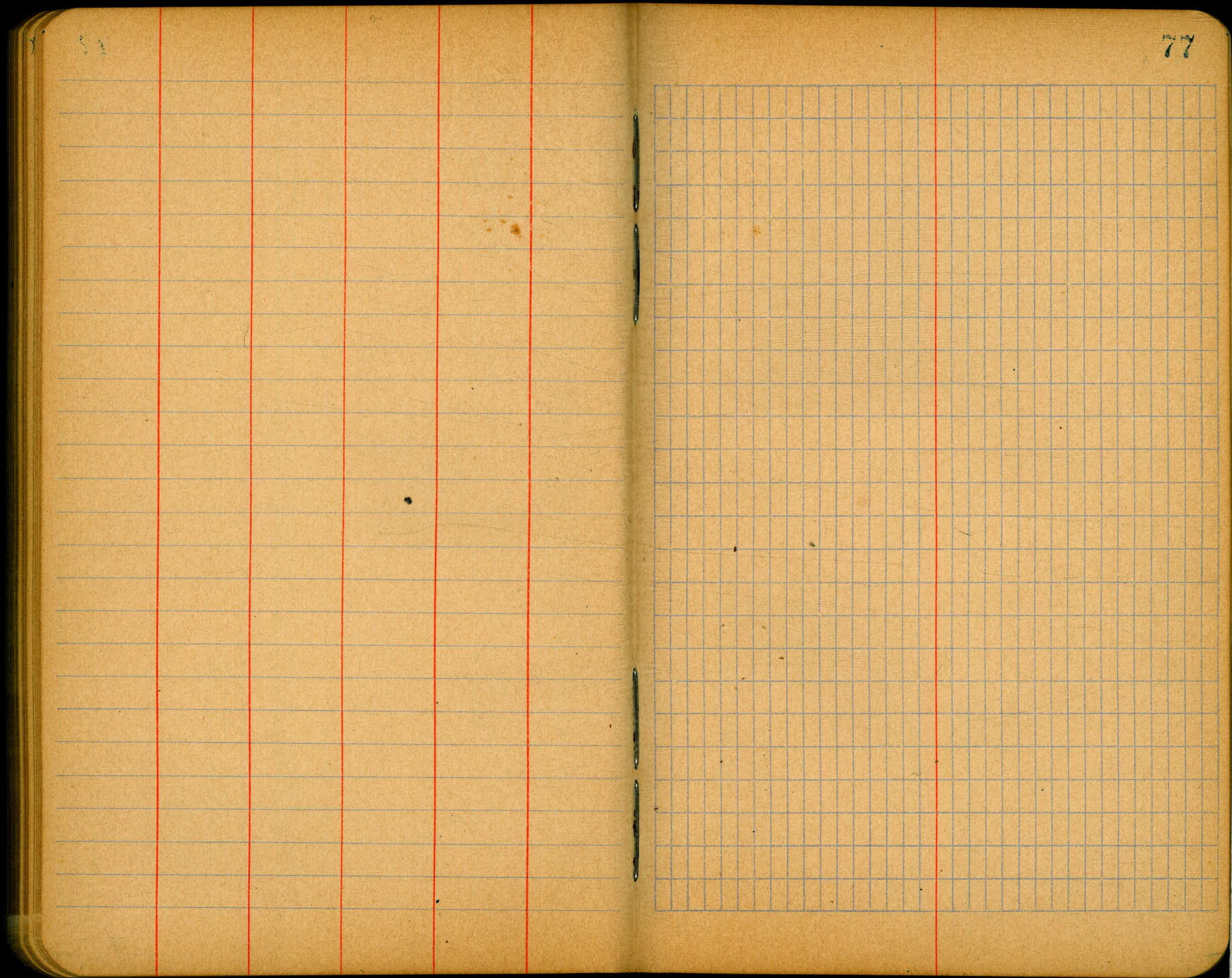
Levels for culvert North curb

at water end = 0.0

end curb on North = 0.00	8.15	3.0
0 + 0.1	6.6	4.6
0 + 3.3	7.8	3.4
0 + 4.0	11.7	-0.5
0 + 5.0 approx. present M.H. tide	17.5	-1.7
1	17.3	-3.1

75





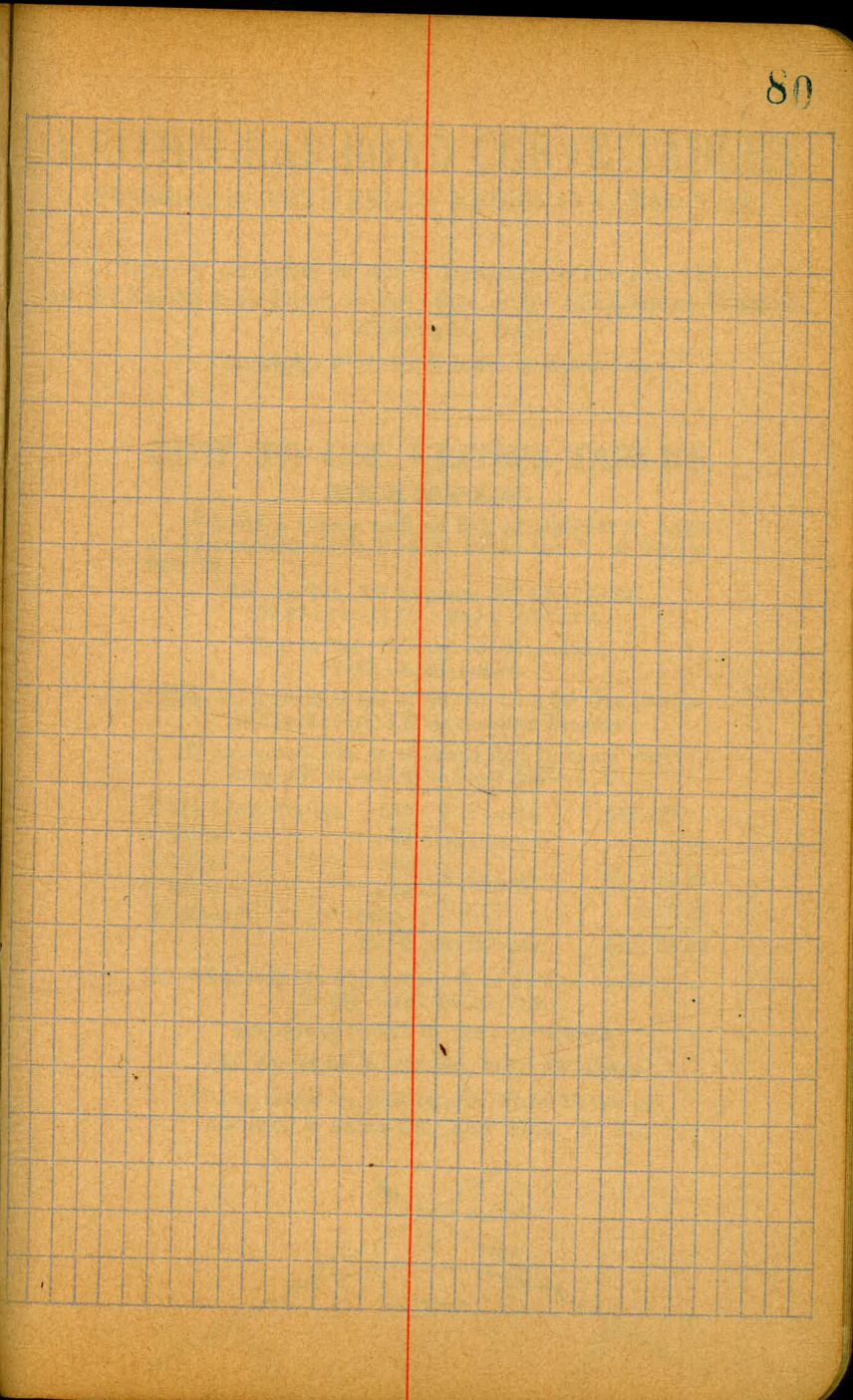
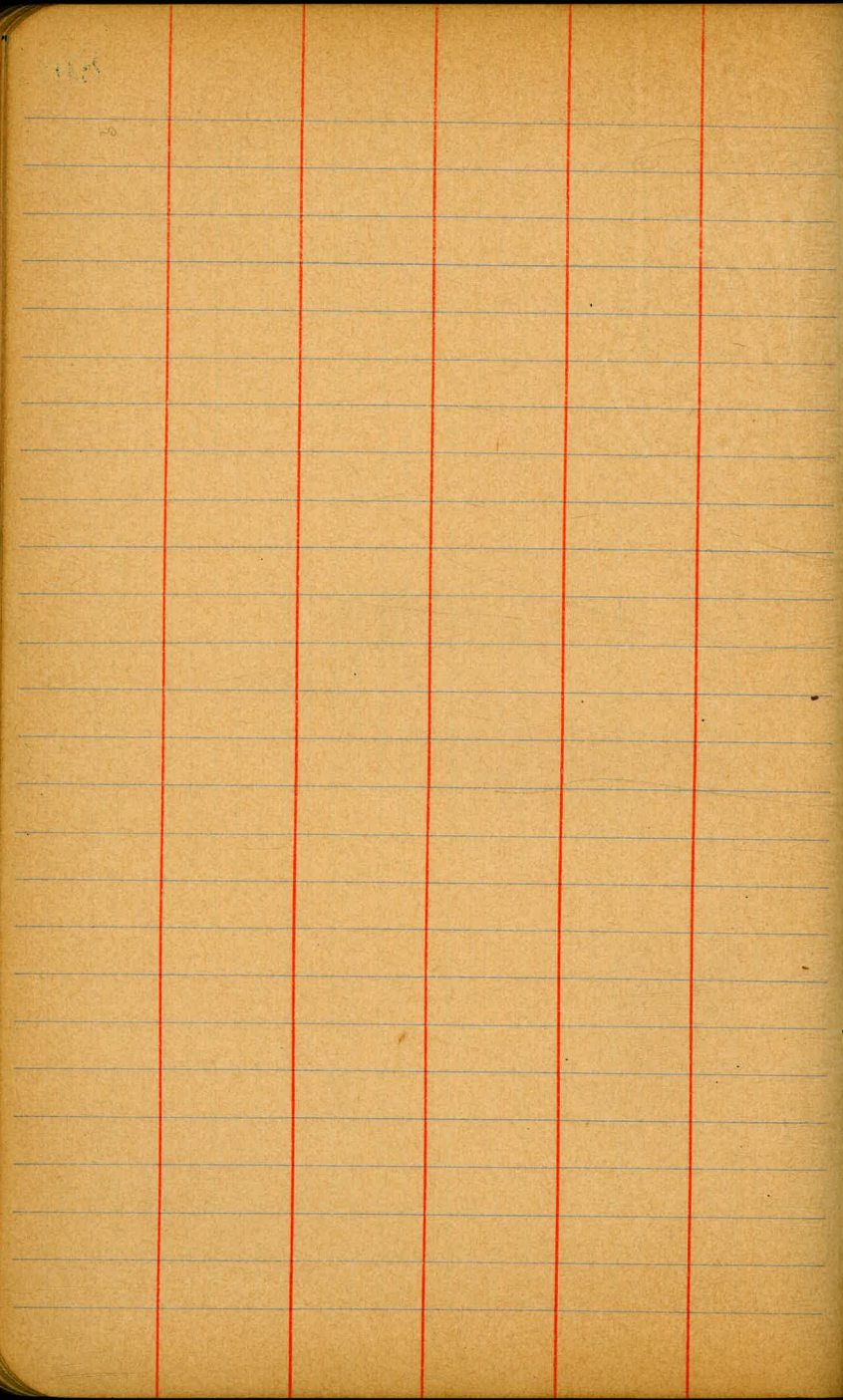
77

A grid of 20 columns and 20 rows, typical of a ledger page. The grid is formed by light blue horizontal and vertical lines. A single vertical red line is positioned to the left of the grid, serving as a margin. The grid is currently empty.

A ledger page with 20 columns and 20 rows, similar to the right page. It features three vertical red lines that create four distinct columns: a narrow left margin, a wide central area, a narrow right margin, and a final narrow column. The grid is currently empty.

A page of aged, yellowish paper with horizontal blue lines. Four vertical red lines are drawn across the page, creating five columns of varying widths. The page is otherwise blank.

A page of aged, yellowish paper with a grid of small blue squares. A single vertical red line is drawn near the right edge, creating a narrow margin. The page is otherwise blank.



Natural Tangents

deg.	0'	10'	20'	30'	40'	50'	60'	70'	80'	90'
0	0000	0029	0058	0087	0116	0145	0174	0203	0232	0261
1	0175	0204	0233	0262	0291	0320	0349	0378	0407	0436
2	0349	0378	0407	0436	0465	0494	0523	0552	0581	0610
3	0524	0553	0582	0611	0640	0669	0698	0727	0756	0785
4	0729	0758	0787	0816	0845	0874	0903	0932	0961	0990
5	0904	0933	0962	0991	1020	1049	1078	1107	1136	1165
6	1051	1080	1109	1138	1167	1196	1225	1254	1283	1312
7	1228	1257	1286	1315	1344	1373	1402	1431	1460	1489
8	1405	1434	1463	1492	1521	1550	1579	1608	1637	1666
9	1584	1613	1642	1671	1700	1729	1758	1787	1816	1845
10	1763	1792	1821	1850	1879	1908	1937	1966	1995	2024
11	1944	1973	2002	2031	2060	2089	2118	2147	2176	2205
12	2126	2155	2184	2213	2242	2271	2300	2329	2358	2387
13	2309	2338	2367	2396	2425	2454	2483	2512	2541	2570
14	2493	2522	2551	2580	2609	2638	2667	2696	2725	2754
15	2679	2708	2737	2766	2795	2824	2853	2882	2911	2940
16	2867	2896	2925	2954	2983	3012	3041	3070	3099	3128
17	3057	3086	3115	3144	3173	3202	3231	3260	3289	3318
18	3249	3278	3307	3336	3365	3394	3423	3452	3481	3510
19	3443	3472	3501	3530	3559	3588	3617	3646	3675	3704
20	3640	3669	3698	3727	3756	3785	3814	3843	3872	3901
21	3839	3868	3897	3926	3955	3984	4013	4042	4071	4100
22	4040	4069	4098	4127	4156	4185	4214	4243	4272	4301
23	4245	4274	4303	4332	4361	4390	4419	4448	4477	4506
24	4452	4481	4510	4539	4568	4597	4626	4655	4684	4713
25	4663	4692	4721	4750	4779	4808	4837	4866	4895	4924
26	4877	4906	4935	4964	4993	5022	5051	5080	5109	5138
27	5095	5124	5153	5182	5211	5240	5269	5298	5327	5356
28	5317	5346	5375	5404	5433	5462	5491	5520	5549	5578
29	5543	5572	5601	5630	5659	5688	5717	5746	5775	5804
30	5774	5803	5832	5861	5890	5919	5948	5977	6006	6035
31	6009	6038	6067	6096	6125	6154	6183	6212	6241	6270
32	6249	6278	6307	6336	6365	6394	6423	6452	6481	6510
33	6494	6523	6552	6581	6610	6639	6668	6697	6726	6755
34	6745	6774	6803	6832	6861	6890	6919	6948	6977	7006
35	7002	7031	7060	7089	7118	7147	7176	7205	7234	7263
36	7265	7294	7323	7352	7381	7410	7439	7468	7497	7526
37	7536	7565	7594	7623	7652	7681	7710	7739	7768	7797
38	7813	7842	7871	7900	7929	7958	7987	8016	8045	8074
39	8098	8127	8156	8185	8214	8243	8272	8301	8330	8359

360
113 49
10 21 15
57 36 4
351.5
927 44
80

deg.	0'	10'	20'	30'	40'	50'	60'
80	5.6713	5.7694	5.8708	5.9758	6.0844	6.1970	6.3138
81	6.3138	6.4348	6.5606	6.6912	6.8269	6.9682	7.1154
82	7.1154	7.2687	7.4287	7.5958	7.7704	7.9530	8.1443
83	8.1443	8.3450	8.5555	8.7769	9.0098	9.2553	9.5144
84	9.5144	9.7882	10.078	10.385	10.711	11.059	11.430
85	11.430	11.826	12.250	12.706	13.197	13.727	14.300
86	14.300	14.924	15.605	16.350	17.169	18.073	19.081
87	19.081	20.206	21.470	22.903	24.542	26.432	28.636
88	28.636	31.242	34.368	38.189	42.964	49.104	57.290
89	57.290	68.750	85.940	114.588	171.885	343.770	

Natural Cotangents

13. 24
 21. 25
 28. 28
 37. 28
 48. 25
 64. 18
 83. 17
 94. 17
 100. 15
 109. 15
 131. 13
 137. 12
 143. 12
 160. 10
 180. 10
 212. 5
 230. 3
 245. 2
 261. 4

247.87
 100751
 50037550
 100751
 6117650
 100751
 50037550
 100751
 15012650

265
 50
 20
 75
 22
 53

377
 754
 754
 61
 3790
 4824
 010
 1060
 100751
 150
 50037550
 100751
 15012650

7920
 327.00
 39620
 377
 47544
 332.23
 511060
 377
 349.46
 377
 325.69
 377
 321.92
 491
 317.00

265
 21,000
 1855
 2450
 2385
 650
 130
 1200
 1060

396
 792
 385.7
 126
 192.6
 28

North
 0400 - 338.0 = 237.0
 0450 - 334.04 = 333.23
 1 - = 330.08 - 349.46
 450 = 326.12 = 325.69
 2400 = 322.16 = 321.92
 465 = 317.00 = 317.00

South
 0 + 27 78
 137 11
 450

338.00
 396
 334.04
 396
 330.08
 396
 326.12
 396
 322.16
 516
 317.00

2501
 184
 4.61

250
 212
 38
 636
 24
 6747
 6384
 131
 267.6

DISTANCES FROM CENTER OF ROADWAY FOR CROSS-SECTIONING.
 ROADWAY 14 FEET WIDE. SIDE SLOPES 1 1/2 TO 1.
 FOR SINGLE TRACK EMBANKMENT.

	0	.1	.2	.3	.4	.5	.6	.7	.8	.9	
0	7.0	7.2	7.3	7.5	7.6	7.8	7.9	8.1	8.2	8.4	0
1	8.5	8.7	8.8	9.0	9.1	9.3	9.4	9.6	9.7	9.9	1
2	10.0	10.2	10.3	10.5	10.6	10.8	10.9	11.1	11.2	11.4	2
3	11.5	11.7	11.8	12.0	12.1	12.3	12.4	12.6	12.7	12.9	3
4	13.0	13.2	13.3	13.5	13.6	13.8	13.9	14.1	14.2	14.4	4
5	14.5	14.7	14.8	15.0	15.1	15.3	15.4	15.6	15.7	15.9	5
6	16.0	16.2	16.3	16.5	16.6	16.8	16.9	17.1	17.2	17.4	6
7	17.5	17.7	17.8	18.0	18.1	18.3	18.4	18.6	18.7	18.9	7
8	19.0	19.2	19.3	19.5	19.6	19.8	19.9	20.1	20.2	20.4	8
9	20.5	20.7	20.8	21.0	21.1	21.3	21.4	21.6	21.7	21.9	9
10	22.0	22.2	22.3	22.5	22.6	22.8	22.9	23.1	23.2	23.4	10
11	23.5	23.7	23.8	24.0	24.1	24.3	24.4	24.6	24.7	24.9	11
12	25.0	25.2	25.3	25.5	25.6	25.8	25.9	26.1	26.2	26.4	12
13	26.5	26.7	26.8	27.0	27.1	27.3	27.4	27.6	27.7	27.9	13
14	28.0	28.2	28.3	28.5	28.6	28.8	28.9	29.1	29.2	29.4	14
15	29.5	29.7	29.8	30.0	30.1	30.3	30.4	30.6	30.7	30.9	15
16	31.0	31.2	31.3	31.5	31.6	31.8	31.9	32.1	32.2	32.4	16
17	32.5	32.7	32.8	33.0	33.1	33.3	33.4	33.6	33.7	33.9	17
18	34.0	34.2	34.3	34.5	34.6	34.8	34.9	35.1	35.2	35.4	18
19	35.5	35.7	35.8	36.0	36.1	36.3	36.4	36.6	36.7	36.9	19
20	37.0	37.2	37.3	37.5	37.6	37.8	37.9	38.1	38.2	38.4	20
21	38.5	38.7	38.8	39.0	39.1	39.3	39.4	39.6	39.7	39.9	21
22	40.0	40.2	40.3	40.5	40.6	40.8	40.9	41.1	41.2	41.4	22
23	41.5	41.7	41.8	42.0	42.1	42.3	42.4	42.6	42.7	42.9	23
24	43.0	43.2	43.3	43.5	43.6	43.8	43.9	44.1	44.2	44.4	24
25	44.5	44.7	44.8	45.0	45.1	45.3	45.4	45.6	45.7	45.9	25
26	46.0	46.2	46.3	46.5	46.6	46.8	46.9	47.1	47.2	47.4	26
27	47.5	47.7	47.8	48.0	48.1	48.3	48.4	48.6	48.7	48.9	27
28	49.0	49.2	49.3	49.5	49.6	49.8	49.9	50.1	50.2	50.4	28
29	50.5	50.7	50.8	51.0	51.1	51.3	51.4	51.6	51.7	51.9	29
30	52.0	52.2	52.3	52.5	52.6	52.8	52.9	53.1	53.2	53.4	30
31	53.5	53.7	53.8	54.0	54.1	54.3	54.4	54.6	54.7	54.9	31
32	55.0	55.2	55.3	55.5	55.6	55.8	55.9	56.1	56.2	56.4	32
33	56.5	56.7	56.8	57.0	57.1	57.3	57.4	57.6	57.7	57.9	33
34	58.0	58.2	58.3	58.5	58.6	58.8	58.9	59.1	59.2	59.4	34
35	59.5	59.7	59.8	60.0	60.1	60.3	60.4	60.6	60.7	60.9	35
36	61.0	61.2	61.3	61.5	61.6	61.8	61.9	62.1	62.2	62.4	36

Calculated by Julien A. Hall, M. Am. Soc. C. E.