

880

880
F.B.

LEVEL BOOK

No. 410 T

MICROFILMED

DEC 15 1964

EUGENE DIETZGEN CO.,

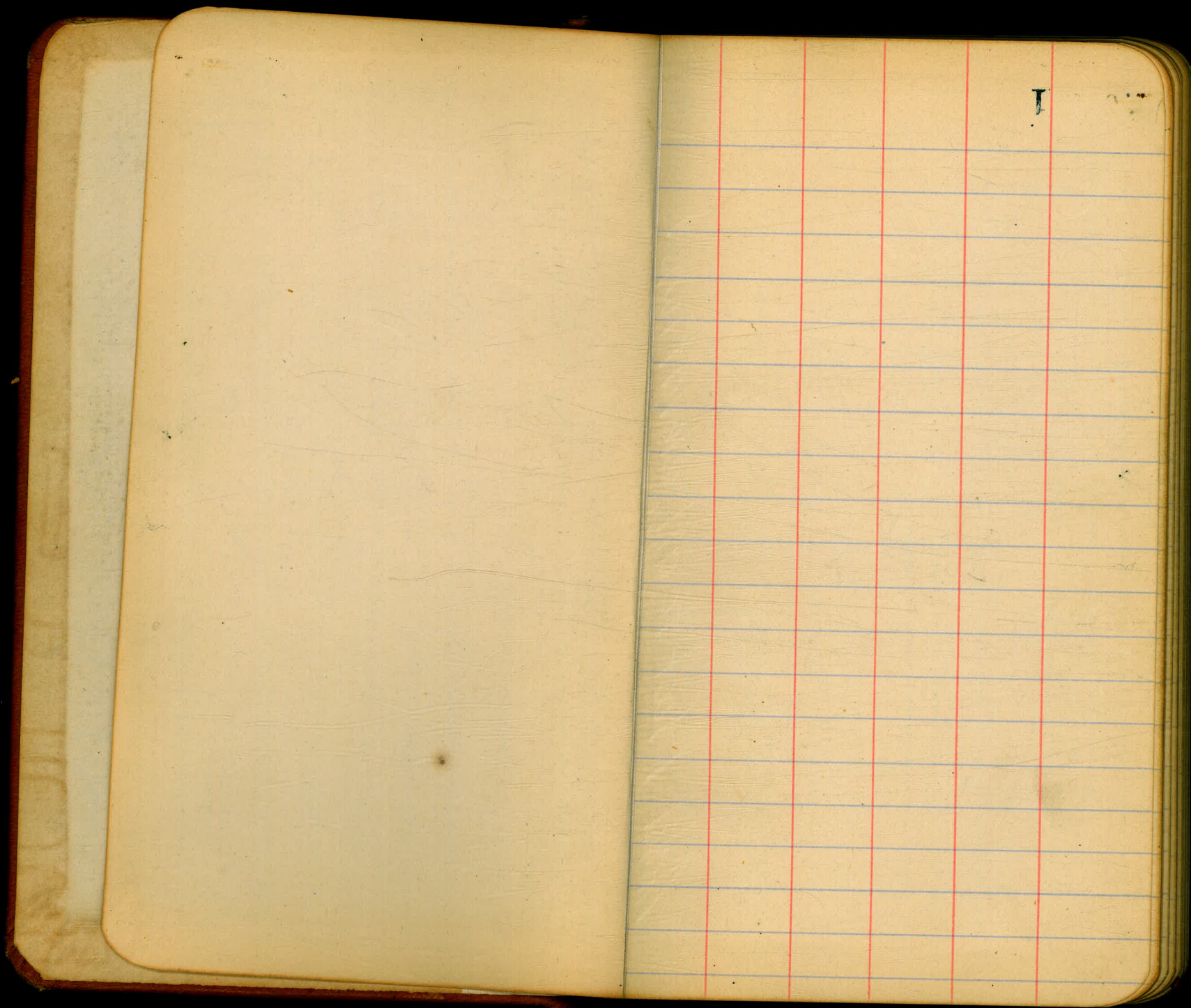
Drawing Materials and Surveying Instruments.
 NEW YORK. CHICAGO. SAN FRANCISCO.

TABLES FOR EXCAVATIONS AND EMBANKMENTS.
 DISTANCES FROM CENTER OF ROADWAY FOR CROSS-SECTIONING
 ROADWAY 20 FEET WIDE. SIDE SLOPES 1 TO 1.
 FOR SINGLE TRACK EXCAVATION.

Copyright, 1902. No. 39340.

	0	.1	.2	.3	.4	.5	.6	.7	.8	.9	
0	10.0	10.1	10.2	10.3	10.4	10.5	10.6	10.7	10.8	10.9	0
1	11.0	11.1	11.2	11.3	11.4	11.5	11.6	11.7	11.8	11.9	1
2	12.0	12.1	12.2	12.3	12.4	12.5	12.6	12.7	12.8	12.9	2
3	13.0	13.1	13.2	13.3	13.4	13.5	13.6	13.7	13.8	13.9	3
4	14.0	14.1	14.2	14.3	14.4	14.5	14.6	14.7	14.8	14.9	4
5	15.0	15.1	15.2	15.3	15.4	15.5	15.6	15.7	15.8	15.9	5
6	16.0	16.1	16.2	16.3	16.4	16.5	16.6	16.7	16.8	16.9	6
7	17.0	17.1	17.2	17.3	17.4	17.5	17.6	17.7	17.8	17.9	7
8	18.0	18.1	18.2	18.3	18.4	18.5	18.6	18.7	18.8	18.9	8
9	19.0	19.1	19.2	19.3	19.4	19.5	19.6	19.7	19.8	19.9	9
10	20.0	20.1	20.2	20.3	20.4	20.5	20.6	20.7	20.8	20.9	10
11	21.0	21.1	21.2	21.3	21.4	21.5	21.6	21.7	21.8	21.9	11
12	22.0	22.1	22.2	22.3	22.4	22.5	22.6	22.7	22.8	22.9	12
13	23.0	23.1	23.2	23.3	23.4	23.5	23.6	23.7	23.8	23.9	13
14	24.0	24.1	24.2	24.3	24.4	24.5	24.6	24.7	24.8	24.9	14
15	25.0	25.1	25.2	25.3	25.4	25.5	25.6	25.7	25.8	25.9	15
16	26.0	26.1	26.2	26.3	26.4	26.5	26.6	26.7	26.8	26.9	16
17	27.0	27.1	27.2	27.3	27.4	27.5	27.6	27.7	27.8	27.9	17
18	28.0	28.1	28.2	28.3	28.4	28.5	28.6	28.7	28.8	28.9	18
19	29.0	29.1	29.2	29.3	29.4	29.5	29.6	29.7	29.8	29.9	19
20	30.0	30.1	30.2	30.3	30.4	30.5	30.6	30.7	30.8	30.9	20
21	31.0	31.1	31.2	31.3	31.4	31.5	31.6	31.7	31.8	31.9	21
22	32.0	32.1	32.2	32.3	32.4	32.5	32.6	32.7	32.8	32.9	22
23	33.0	33.1	33.2	33.3	33.4	33.5	33.6	33.7	33.8	33.9	23
24	34.0	34.1	34.2	34.3	34.4	34.5	34.6	34.7	34.8	34.9	24
25	35.0	35.1	35.2	35.3	35.4	35.5	35.6	35.7	35.8	35.9	25
26	36.0	36.1	36.2	36.3	36.4	36.5	36.6	36.7	36.8	36.9	26
27	37.0	37.1	37.2	37.3	37.4	37.5	37.6	37.7	37.8	37.9	27
28	38.0	38.1	38.2	38.3	38.4	38.5	38.6	38.7	38.8	38.9	28
29	39.0	39.1	39.2	39.3	39.4	39.5	39.6	39.7	39.8	39.9	29
30	40.0	40.1	40.2	40.3	40.4	40.5	40.6	40.7	40.8	40.9	30
31	41.0	41.1	41.2	41.3	41.4	41.5	41.6	41.7	41.8	41.9	31
32	42.0	42.1	42.2	42.3	42.4	42.5	42.6	42.7	42.8	42.9	32
33	43.0	43.1	43.2	43.3	43.4	43.5	43.6	43.7	43.8	43.9	33
34	44.0	44.1	44.2	44.3	44.4	44.5	44.6	44.7	44.8	44.9	34
35	45.0	45.1	45.2	45.3	45.4	45.5	45.6	45.7	45.8	45.9	35
36	46.0	46.1	46.2	46.3	46.4	46.5	46.6	46.7	46.8	46.9	36
37	47.0	47.1	47.2	47.3	47.4	47.5	47.6	47.7	47.8	47.9	37
38	48.0	48.1	48.2	48.3	48.4	48.5	48.6	48.7	48.8	48.9	38
39	49.0	49.1	49.2	49.3	49.4	49.5	49.6	49.7	49.8	49.9	39
40	50.0	50.1	50.2	50.3	50.4	50.5	50.6	50.7	50.8	50.9	40

Calculated by F. E. Paradis, C. E.



1

Gamma Street. 80' Wide
 E. line 38 St. to City Limits 14' Walks.
 13' 14"

RR. spike.				
B.M. N.E. Cor. Una & Main.			14.60	
8-63.	22.23			
T.P.	2.23	22.20	2.26	19.97
T.P.	8.18	19.39	10.99	11.21
T.P.	6.29	13.79	11.89	7.50
T.P.	12.71	23.65	2.85	10.94
N.W. S.W. Cor 38 St + Gamma				
T.P.	4.17	26.23	1.59	22.06

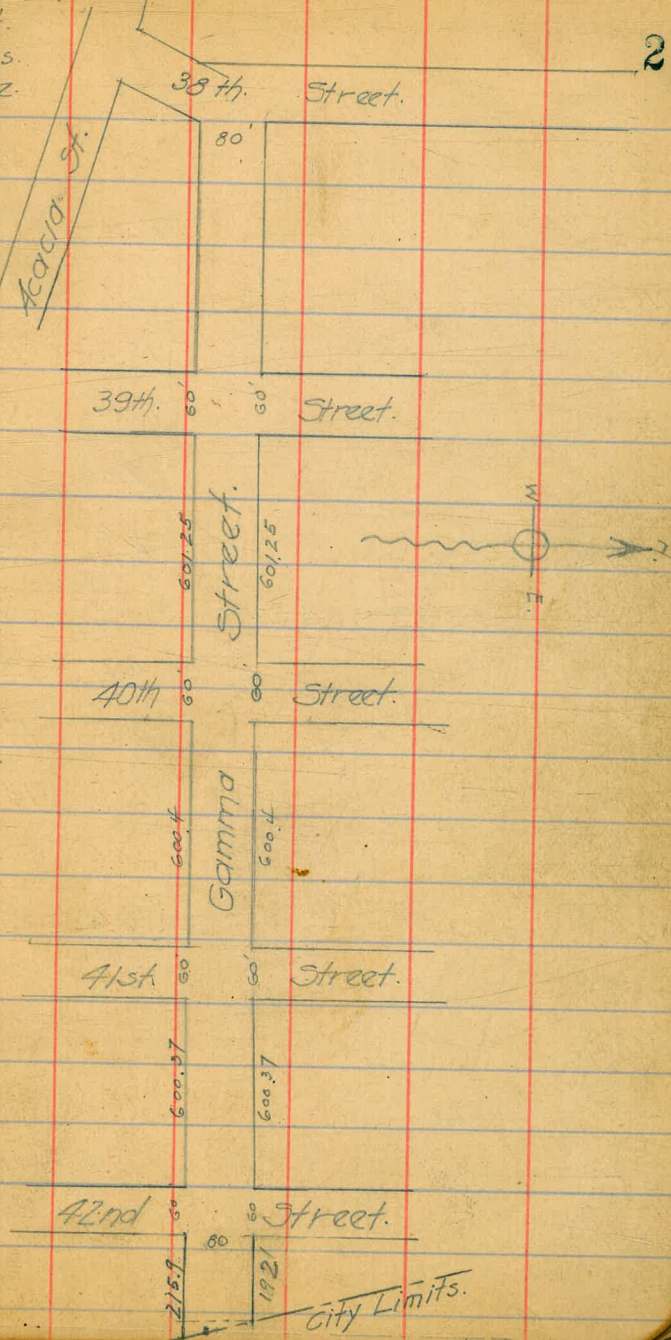
E. line 38th St.

S.L.	4.2	22.0
Curb.	8.4	17.8
1/4	12.5	13.7
1/2	15.5	10.7
3/4	17.1	9.1
Curb.	17.1	19.1
N.L.	17.2	9.0
+30	17.3	8.9

Add 1. foot to all elevations
 in this book.

as all are just one foot low.
 P.S.W.

April 8th - 1913
 West
 Evans
 Moore.



26.23

25' S. of EL 38 St.

-30	17.1	9.1
NL	17.0	9.2
NCurb.	16.5	9.7
N 1/4	15.6	10.6
£	13.0	13.2
S 1/4	8.9	17.3
S Curb.	4.0	22.2

50' E - 38 St.

S 1/4	4.2	22.0
£	8.9	17.3
N 1/4	12.5	13.7
NCurb.	14.6	11.6
NL	16.6	9.6
+30	16.9	9.3

75' E

-30	15.8	10.4
NL	15.4	10.8
N 1/4	12.2	14.0
£	8.1	18.1

26.23

3

S 1/4	3.8	22.4
100' E.		
£		
N 1/4	2.4	23.8
NCurb.	8.7	17.5
NL	13.5	12.7
+30	16.4	9.8

125' E.

-20	15.8	10.4
NL	11.2	15.0
NCurb.	5.1	21.1
N 1/4	10.4	26.6

150' E.

N 1/4	10.6	26.8
NCurb.	4.0	22.2
NL	10.1	16.1
+20	15.0	11.2

26.23

175'E

-20	147	17.5
N.L	9.2	17.0
N.C	4.5	21.7

200'E

N.C	4.2	22.0
N.L	8.8	17.4
+20	13.4	12.8

225'E

-20	11.9	14.3
N.L	8.6	17.6
N.C	3.1	23.1

250'E

N.C	3.5	22.7
N.L	7.2	19.0
+20	10.6	15.6

275'E

-20	9.4	16.8
N.L	5.1	21.1
N.C	0.4	25.8

26.23

300'E

N.L	2.5	23.7
+20	6.7	19.5
T.P.	12.79	38.02
	1.00	25.23

25'E

S.L	10.2	27.8
-----	------	------

50'E

S.Curb	10.6	27.4
--------	------	------

S.L

S.L

S.Curb

75'E

100'E

S.Curb	5.1	32.9
	4.0	38.8
	4.9	33.1
+0.3		38.3

S.L	(+3.9)	41.9
-----	--------	------

125'E

⊕	10.4	27.6
---	------	------

S/A	5.4	32.6
-----	-----	------

S.Curb	1.5	36.5
--------	-----	------

150'E

⊕	5.1	32.9
---	-----	------

S/A	1.2	36.8
-----	-----	------

4

38.02

175' E.

£	4.7	33.3
S/A	0.6	37.4
	200' E.	
N/A	9.2	28.9
£	5.3	32.7
S/A	1.0	37.0
	225' E	
N/A	10.2	27.8
£	6.0	32.0
S/A	1.2	36.8
	250' E. ²⁵⁰	
N/A	9.2	28.8
£	5.2	32.8
S/A	1.6	36.4
	275' E	
N/A	9.8	28.2
£	6.5	31.5
S/A	2.6	35.4

38.02

300' E

N/A	5.7	32.3
£	2.3	35.7
S/A	0.4	37.6
	325' E	
N. Curb	6.8	31.2
N/A	2.8	35.2
£	.00	39.0
	350' E	
+20	9.1	28.9
N.L.	8.6	29.4
N. Curb.	5.1	32.7
N/A	1.6	36.4
	375' E	
N.L.	2.3	35.7
N. Curb.	1.6	36.4
+5	2.1	35.9
N/A	(0.4)	38.4
T.P.	1.48	36.54

12.16 48.70

5

→ Used again

48.70

100'E.

S. Little

6.8 41.9

125'E.

S.L.

7.3 41.4

S.Curb.

8.2 40.5

150'E.

S.L.

7.6 41.1

S.Curb.

9.4 39.3

175'E.

S.L.

7.0 41.7

S.Curb.

9.2 39.5

200'E.

S.L.

7.0 41.7

S.Curb.

8.8 39.9

225'E.

S.L.

7.0 41.7

S.Curb.

9.4 39.3

250'E.

S.L.

7.6 41.1

48.70

S.Curb.

10.1 38.6

275'E.

S.L.

8.6 40.1

S.Curb.

11.0 37.7

300'E.

S.L.

9.6 39.1

S.Curb.

10.3 38.4

S 1/4

12.2 36.5

325'E.

S.L.

5.6 43.1

S.Curb.

7.0 41.7

S 1/2

8.9 39.8

E.

11.4 37.3

350'E.

S.L.

4.6 44.1

S.C.

5.7 49.0

S 1/4

7.4 41.3

E.

9.5 39.2

Keeled T.P.	375' E.	36.54		49.50		
12.96	49.50		£		4.0	45.5
CL	9.6	39.9	5/4		2.9	46.6
5/4	7.4	42.1	S.C.		2.5	47.0
S.Curb.	5.9	44.6	S.L.		2.7	46.8
S.L.	4.3	45.2		450' E.		
	400' E.		S.L.		2.8	46.7
S.L.	3.0	46.5	S.C.		2.4	47.1
S.Curb.	4.3	45.2	5/4		2.1	47.4
5/4	5.7	43.8	£		2.3	47.2
£.	6.6	42.9	N/4		2.1	47.4
N/4	7.7	41.8	N.C.		1.9	47.6
N.C.	8.4	41.1	N.L.		1.5	48.0
+10	9.0	40.5		475' E.		
N.L.	10.7	38.8	N.L.		1.3	48.2
	425' E.		N.C.		1.7	47.8
N.L.	5.5	44.0	1/4		1.9	47.6
+6.	4.0	45.5	£		1.9	47.6
N.C.	4.6	44.9	1/4		1.8	47.7
+6	5.9	43.6	S.C.		2.1	47.4
N/4	4.5	45.0	S.L.		2.5	47.0

49.50

500'E

S.L.	2.1	47.4
S.C.	1.8	47.7
S/A	1.6	47.9
E	1.5	48.0
N/A	1.3	48.2
N.C.	1.1	48.4
N.L.	0.7	48.8

525'E

N.L.	40.1	49.6
N.C.	0.5	49.0
N/A	0.8	48.7
E	1.1	48.4
1/A	1.2	48.3
N.C.	1.0	48.5
S.L.	1.2	48.3
T.P.	1.24	48.26

9.63

57.89

8

57.89

550'E

S.L.	8.2	49.7
S.C.	8.9	49.0
1/A	9.0	48.9
E	9.0	48.9
1/A	8.8	49.1
N.C.	8.6	49.3
N.L.	8.5	49.4

575'E

N.L.	7.7	50.2
N.C.	8.0	49.9
1/A	8.1	49.8
E	8.3	49.6
1/A	8.3	49.6
S.C.	8.8	49.1
S.L.	8.5	49.4

N.L. 39 St. 60' Wide. 10' Walks.
10' 1/2's.

S.L.	8.1	49.8
S.C.	8.3	49.6
1/A	8.1	49.8

57.89

£	7.9	50.0
1/4	7.7	50.2
N.C.	6.8	51.1
N.L.	6.6	51.3
West Curb.		
N.L.	6.2	51.7
NC	6.6	51.3
1/4	7.3	50.6
£	7.7	50.2
1/4	7.8	50.1
C	8.0	49.9
S.L.	8.2	49.7
W. 1/4		
S.L.	8.3	49.6
C	8.2	49.7
1/4	7.9	50.0
£	7.4	50.5
1/4	7.1	50.8
C	6.9	51.0
N.L.	6.7	51.2

57.89

9

Center.

N.L.	6.7	51.2
C	7.0	50.9
1/4	7.0	50.9
£	7.2	50.7
1/4	7.6	50.3
C	8.2	49.7
S.L.	8.4	49.5
East 1/4		
S.L.	8.0	49.9
C	7.7	50.2
1/4	7.2	50.7
£	6.8	51.1
1/4	6.7	51.2
C	6.3	51.6
N.L.	5.5	52.4
East Curb.		
N.L.	5.0	52.9
C	6.1	51.8

57.89

N/A	6.6	51.3
£	7.3	50.6
1/4	7.6	50.3
C	7.4	50.5
S.L.	8.0	49.9

East Line 39 1/2 St.

S.L.	7.9	50.0
C	7.2	50.7
1/4	7.3	50.6
£	7.2	50.7
1/4	6.3	51.6
C	5.4	52.5
N.L.	4.8	53.1

25' East.

N.L.	4.5	53.4
C	5.3	52.6
1/4	6.5	51.4
£	6.9	51.0

57.89

10

3/4

C

S.L.

S.L.

N.L.

N.L.

S.L.

6.8 51.1

6.9 51.0

7.1 50.8

6.0 51.9

5.4 52.5

5.3 52.6

5.4 52.5

5.4 52.5

5.5 52.4

4.9 53.0

4.5 53.4

4.4 53.5

4.3 53.6

4.4 53.5

4.4 53.5

4.6 53.3

5.0 52.9

50' E

75' E

57.89

100'E

S.L. 3.0 54.9

3.6 54.3

3.9 54.0

3.9 54.0

3.9 54.0

4.0 53.9

N.L. 4.1 53.8

125'E

N.L. 3.2 54.7

3.0 54.9

2.2 55.7

2.8 55.1

3.1 54.8

3.1 54.8

S.L. 3.2 54.7

1450 E

S.L. 1.6 56.3

2.3 55.6

2.3 57.6

11

57.89

2.3 55.6

1.7 56.2

2.1 55.8

2.2 55.7

175'E

N.L. 0.9 57.0

1.1 56.8

0.4 57.5

1.1 56.8

1.2 56.7

0.9 57.0

S.L. 0.4 57.5

T.P. 0.66 57.23

12.26 69.49

200'E

S.L. 11.2 58.3

11.3 58.2

11.4 58.1

69.49

£	11.8	57.7
	11.9	57.6
	12.3	57.2
N.L.	12.4	57.1
	225'E.	
N.L.	11.6	57.9
	11.5	58.0
	10.9	58.6
£	10.8	58.7
	10.2	59.3
	9.8	59.7
S.L.	9.5	60.0
	250'E.	
S.L.	7.1	62.4
	7.7	61.8
	8.2	61.3
	9.0	60.5
	9.3	60.2
	9.6	59.9
N.L.	10.3	59.2

6949

12

	275'E.	
N.L.	9.0	60.5
	8.6	60.9
	7.8	61.7
£	7.1	62.4
	6.1	63.4
	5.9	63.6
S.L.	5.8	63.7
	300'E.	
S.L.	5.0	64.5
	5.1	64.4
	5.5	64.0
	6.1	63.4
	6.7	62.8
	7.5	62.0
N.L.	7.8	61.7
	325'E.	
N.L.	7.2	62.3
	5.8	63.7
	5.2	64.3

	69.49		
±		4.8	64.7
		4.3	65.2
		4.0	65.5
S.L.		4.0	65.5
	350'E		
S.L.		2.1	67.4
		2.5	67.0
		2.9	66.6
		3.1	66.4
		3.5	66.0
		4.0	65.5
N.L.		4.9	64.6
	375'E		
N.L.		3.3	66.2
		2.6	66.9
		1.8	67.7
		1.5	68.0
		0.9	68.6
		00	69.5
S.L.		+1.0	68.5

	69.49		
T.P.		0.15	69.34
	12.88	82.22	
		400'E.	
±		11.4	70.8
N/A		11.7	70.5
C		12.0	69.7
N.L.		13.2	69.0
		425'E.	
N.L.		11.1	71.1
C		10.1	72.1
1/4		8.5	73.7
±		7.2	75.0
		450'E.	
±		3.6	78.6
N/A		4.6	77.6
+5		5.4	76.8
+6		6.3	75.9
N.C.		6.5	75.7
N.L.		8.8	73.4

82.22

475'E

-15	9.7	72.5
N.L.	7.7	74.5
+12	4.4	77.8
N.C.	4.5	77.7
+7	4.2	78.0
+8	3.0	79.2
1/4	2.3	79.9

500'E

N 1/4	2.1	80.1
+2	2.6	79.6
+3	3.4	78.8
C	4.9	77.3
N.L.	7.4	74.8
+15	9.8	72.4

525'E

-15	10.2	72.0
N.L.	8.4	73.8
+12	6.7	75.5
C	5.2	77.0
1/4	3.4	78.8
ϕ	1.5	80.7

82.22

550'E

ϕ	2.2	80.0
N/A	4.2	78.0
+10	4.7	77.5
C	6.2	76.0
N.L.	7.9	74.3
+15	9.9	72.3

575'E

-15	9.1	73.1
N.L.	6.9	75.3
+12	5.3	76.9
C	4.5	77.7
+2	4.3	77.9
+12	3.1	79.1
1/4	2.4	79.8
ϕ	0.7	81.5

T.P.

1.92 80.30

12.86 93.16

14

93.16

400'E.

S.L.	22.2	71.0
C	22.5	70.7
1/4	22.9	70.3

425'E.

S.L.	18.5	74.7
C.	17.9	75.3
£.	17.3	75.9

450'E.

S.L.	15.3	77.9
S.C.	13.9	79.3
£.	14.3	78.9

475'E.

£.	11.7	81.5
5/4	10.8	82.4
SC.	11.3	81.9
S.L.	12.4	80.8

93.16

500'E.

S.L.	7.2	86.0
SC.	9.2	84.0
1/4	10.0	83.2
£.	11.0	82.2

525'E.

S.L.	4.5	88.7
S.C.	8.3	84.9
1/4	11.1	82.1

550'E.

S.L.	4.0	89.2
C	6.5	86.7
1/4	10.2	83.0

575'E.

S.L.	3.2	90.0
C	4.9	88.3
1/4	8.8	84.4

15

93.16

W.L. 40 St.

60' Wide
10' Walks
10' / 4's

S.L.	1.7	91.5
C	4.5	88.7
1/4	6.7	86.5
⊕	9.4	83.8
1/4	12.1	81.1
1/4	12.3	80.9
+2	13.1	80.1
C	14.2	79.0
N.L.	16.1	77.1
+15	19.4	73.8
	W. Curb.	
-15	19.0	74.2
N.L.	14.8	78.4
	13.3	79.9
	12.1	81.1
	8.6	84.6
	6.2	87.0
	3.6	89.6
S.L.	1.3	91.9

93.16

N/A.

16

S.L.	0.8	92.4
C	3.4	89.8
1/4	6.1	87.1
⊕	9.0	84.2
	12.2	81.0
	13.9	79.3
N.L.	15.1	78.1
+15	19.6	73.6
	⊕	
-15	18.7	74.5
N.L.	15.3	77.9
C	14.0	79.3
1/4	11.2	82.0
⊕	8.3	84.9
1/4	5.6	87.6
C	3.1	90.1
S.L.	0.6	92.6

93.16 9

~~E/A~~

S.L.	0.5	92.7
	3.1	90.1
	5.9	87.3
	8.9	84.3
	11.3	81.9
	14.0	79.2
N.L.	15.6	77.6
+15	17.1	76.1
	16.6	76.6
N.L.	14.1	79.1
	13.6	79.6
	10.6	82.6
	7.1	86.1
	5.4	87.8
	2.4	90.8
S.L.	0.4	92.8

E. Curb.

93.16

E. Line 40th St.

17

S.L.	0.6	92.6
C	2.6	90.6
+6	3.9	89.3
+8	5.0	88.2
$\frac{1}{4}$	5.2	88.0
+7	5.5	87.7
E.	6.4	86.8
$\frac{1}{4}$	10.2	83.0
C.	12.6	80.6
N.L.	15.0	78.2
-15	16.4	76.8
	25' E.	
+15	15.6	77.6
N.L.	14.3	78.9
C	12.1	81.1
$\frac{1}{4}$	9.3	83.9
+8	7.3	85.9
E.	6.7	86.5
$\frac{1}{4}$	5.6	87.6
+3	3.9	89.3
C	2.4	90.8
S.L.	1.0	92.2

93-16

S.L.	50'E.	1.4	91.8
S.C.		2.9	90.3
+10		4.5	88.7
+11		6.0	87.2
1/4		6.0	87.2
£		6.4	86.8
1/4		8.9	84.3
C.		11.8	81.4
N.L.		12.4	80.8
+15		15.2	78.0

75'E.

-15		13.1	80.1
N.L.		11.3	81.9
C		10.7	82.5
1/4		9.0	84.2
£		6.9	86.3
1/4		6.8	86.4
+2		5.4	87.8
C.		4.0	89.2
S.L.		2.2	91.0

93-16

18

100'E.

S.L.		2.9	90.3
C.		4.7	88.5
+11		6.0	87.2
1/4		7.4	85.8
£		7.4	85.8
1/4		9.0	84.2
C		10.4	82.8
N.L.		12.6	80.6
+15		15.2	78.0

125'E.

-15		14.5	78.7
N.L.		12.7	80.5
C.		10.4	82.8
1/4		9.0	84.0
£		7.8	85.4
1/4		7.7	85.5
+2		6.5	86.7
C		5.1	88.1
S.L.		2.9	90.3

9316

150'E.

S.L.	3.8	89.4
C	4.1	89.1
+10	4.8	88.4
1/4	6.4	86.8
1/2	7.2	86.0
3/4	8.6	84.6
C	10.6	82.6
N.L.	12.2	81.0
+15	14.2	79.0

175'E.

-15	13.1	80.1
N.L.	10.8	82.4
C	10.0	83.2
1/4	7.2	86.0
1/2	6.3	87.0
3/4	6.4	86.9
+2	5.6	87.6
C	5.0	88.3
S.L.	3.5	89.7

9316

200'E.

S.L.	2.3	90.9
C	3.5	89.7
+11	4.2	89.0
1/4	5.9	87.3
1/2	5.5	87.7
3/4	7.0	86.2
C	9.1	84.1
N.L.	9.7	83.5
+15	10.7	82.5

225'E.

-15	10.7	82.5
N.L.	9.8	83.4
C	8.6	84.6
1/4	6.2	87.0
1/2	5.2	88.0
3/4	5.5	87.7
+2	4.1	89.1
C	3.0	90.2
S.L.	1.3	91.9

19

93.16
250'E.

S.L.	2.2	91.0
C	3.6	89.6
+11	4.3	88.9
1/4	5.7	87.5
£	5.4	87.8
1/4	6.5	86.7
C	9.0	84.2
N.L.	10.2	83.0
+15	11.7	81.5

275'E.

-15	12.6	80.6
N.L.	11.3	82.0
C	10.6	82.6
1/4	7.5	85.7
£	6.2	87.0
1/4	6.7	86.5
+2	5.0	88.2
C	4.1	89.1
S.L.	2.6	90.6

93.16

20

300'E.

S.L.	3.2	90.0
C	4.7	88.5
+11	5.8	87.4
1/4	7.6	85.6
£	7.5	85.7
1/4	9.9	83.3
C	12.0	81.2
N.L.	13.1	80.1
+15	14.3	78.9

T.P.	2.21	88.74	6.63	86.53
------	------	-------	------	-------

325'E.

-15	11.5	77.2
N.L.	8.7	80.0
C	7.9	80.8
1/4	5.3	83.4
£	4.2	84.5
1/4	4.3	84.4
+2	2.5	85.2
C	0.7	88.0
S.L.	70.4	89.1

88.74
350' E.

S.L.	0.7	88.0
C	1.7	87.0
+11	3.3	85.4
1/4	5.1	83.6
1/2	5.5	83.2
1/4	6.7	82.0
C	8.4	80.3
N.L.	9.7	79.0
+15	13.2	76.5

375' E.

-15	11.2	77.5
N.L.	11.2	77.5
C	9.4	79.3
1/4	7.8	80.9
1/2	6.1	82.6
1/4	5.8	82.9
+1	4.2	84.5
C	2.9	85.8
S.L.	1.7	87.0

88.74
400' E.

21

S.L.	3.5	85.2
C	4.0	84.7
+11	4.7	84.0
1/4	6.5	82.2
1/2	7.0	81.7
1/4	8.5	80.2
C	9.6	79.1
N.L.	9.4	79.3
+10	9.9	78.8

425' E.

-10	12.2	76.5
N.L.	11.5	77.2
C	10.3	78.4
1/4	9.0	79.7
1/2	7.4	81.3
1/4	7.7	81.0
+1	6.7	82.0
C	6.4	82.3
S.L.	5.0	83.7

88.74
450'E.

SL	6.1	82.6
C	7.3	81.4
+12	7.8	80.9
1/4	8.6	80.1
⊘	8.2	80.5
1/4	9.1	79.6
N.Curb.	10.5	78.2
N.L.	11.8	76.9
+10	13.2	75.5

475'E.

-10	13.9	74.8
N.L.	12.5	76.2
C	11.4	77.3
1/4	9.9	78.8
⊘	9.2	79.5
1/4	9.9	78.8
+1	9.0	79.7
C	8.9	79.8
SL	8.1	80.6

88.74
500'E.

22

S.L	8.8	79.9
C	10.1	78.6
+12	10.4	78.3
1/4	11.6	77.1
⊘	11.4	77.3
1/4	12.5	76.2
C	13.9	74.8
N.L.	15.0	73.7
+10	15.8	72.9

525'E.

-10	16.4	72.3
N.L.	16.1	72.6
C	15.8	72.9
1/4	14.6	74.1
⊘	12.4	75.3
1/4	13.7	75.0
+1	13.0	75.7
C	12.2	76.5
S.L.	9.9	78.8

T.P.	693	88.74 [✓]	11.38	77.36 [✓]
		84.29 [✓]		
		550'E.		
S.L.		8.4	75.9	
C.		9.3	75.0	
+11		9.9	74.4	
1/4		10.5	73.8	
⊕		10.3	74.0	
1/4		11.0	73.3	
C		11.7	72.6	
N.L.		12.5	72.8	
		575'E.		
N.L.		12.2	72.1	
C		11.9	72.4	
1/4		11.5	72.8	
⊕		10.8	73.5	
1/4		10.9	73.4	
+2		10.2	74.1	
C		10.1	74.2	
S.L.		9.6	74.7	

84.29			
W. Line A/St.	50' Wide	10' Walks.	23
	10' ²³		
S.L.	10.2	74.1	
C.	10.8	73.5	
1/4	11.1	73.2	
⊕	11.1	73.2	
1/4	12.1	72.2	
C	12.4	74.9	
N.L.	12.8	74.5	
	W. Curb.		
N.L.	12.8	71.5	
C	12.4	71.9	
1/4	12.1	72.2	
⊕	11.4	72.9	
1/4	11.3	73.0	
C	10.6	73.7	
S.L.	10.4	73.9	

8429

W 1/4

S.L.	10.5	73.8
C	10.7	73.6
1/4	11.0	73.3
☒	11.1	73.2
1/4	11.9	72.4
C	12.4	71.9
N.L.	13.0	71.3

E. A/ St.

N.L.	12.5	71.8
C	11.9	72.4
1/4	11.3	73.0
☒	10.8	73.5
1/4	10.5	73.8
C	10.2	74.1
S.L.	10.1	74.2

8429

E 1/4

24

S.L.	10.5	73.8
C	10.7	73.6
1/4	11.1	73.2
☒	11.1	73.2
1/4	11.7	72.6
C	12.3	72.0
N.L.	12.9	71.4

E. Curb.

N.L.	12.3	72.0
C	11.6	72.7
1/4	11.7	72.6
☒	10.8	73.5
1/4	11.1	73.2
C	10.6	73.7
S.L.	10.1	74.2

84.29

E Line A/St.

S.L.	100	74.3
C	104	73.9
1/4	10.9	73.4
Φ	10.7	73.6
1/4	11.7	72.6
1/2	11.3	73.0
C	11.6	72.7
N.L.	12.0	72.3

25'E.

N.L.	11.7	72.6
C	11.3	73.0
+12	11.0	73.3
1/4	11.2	73.1
Φ	10.5	73.8
1/4	10.8	73.5
+2	10.3	74.0
C	10.3	74.0
S.L.	10.1	74.2

84.29.

25

50'E.

S.L.	9.6	74.7
C	10.0	74.3
+11	10.1	74.2
1/4	10.5	73.9
Φ	10.2	74.1
1/4	10.8	73.5
+2	10.7	73.6
C	11.0	73.3
N.L.	11.5	72.8

75'E.

N.L.	11.0	73.3
C	10.8	73.5
+10	10.3	74.0
1/4	10.5	73.8
Φ	9.9	74.4
1/4	10.3	74.0
+3	10.0	74.3
C	9.9	74.4
S.L.	9.5	74.8

8429

100'E.

S.L.	9.2	75.1
C	9.7	74.6
+10	10.1	74.2
1/4	10.3	74.0
Φ	9.9	74.4
1/4	10.3	74.0
+4	10.4	73.9
C	10.3	74.0
N.L.	10.9	73.4

125'E.

N.L.	10.9	73.4
C	10.6	73.7
1/4	10.2	74.1
Φ	9.9	74.4
1/4	9.9	74.4
C	9.4	74.9
S.L.	9.1	75.2

8429

150'E.

S.L.	8.6	75.7
C	9.3	75.0
1/4	10.0	74.3
Φ	9.4	74.9
1/4	10.1	73.2
C	10.9	73.4
N.L.	11.2	73.1

175'E.

N.L.	11.6	72.7
C	11.1	73.2
1/4	10.4	73.9
Φ	10.0	74.3
1/4	10.1	74.2
C	9.8	74.5
S.L.	8.9	75.4

26

84.29

200'E

SL	9.0	75.3
C	9.7	74.6
1/4	10.1	74.2
ϕ	10.3	74.0
1/4	10.9	73.4
C	11.6	72.7
N.L.	12.2	72.1

225'E

N.L.	12.6	71.7
C	12.1	72.2
1/4	11.6	72.7
ϕ	10.8	73.5
1/4	10.7	73.6
C	10.8	73.5
S.L.	9.2	75.1

84.29

250'E

S.L.	9.2	75.1
C	9.9	74.4
1/4	11.0	73.3
ϕ	10.8	73.5
1/4	12.0	72.3
C	12.6	71.7
N.L.	13.0	71.3

275'E

N.L.	12.8	71.5
C	12.7	71.6
11+9	12.6	71.7
1/4	11.5	72.8
ϕ	9.0	75.3
1/4	9.4	74.9
C	9.8	74.5
S.L.	9.4	74.9
T.P. Top of *35' 32	11.76	72.53

27

April 10 - 1913.

West.
Evans.
Moore.

72.53

8413

28

350'E.

	11.60	84.13		
		300'E		
N.L.		12.2	71.9	
C		12.2	71.9	
1/4		11.7	72.4	
£		10.2	73.9	
1/4		10.0	74.1	
+4		9.8	74.3	
+5		8.9	75.2	
C		7.9	76.2	
S.L.		9.0	75.1	
		325'E		
S.L.		8.1	76.0	
		9.9	74.2	
		10.7	73.4	
		10.6	73.5	
		11.3	72.8	
+3		11.6	72.5	
+4		10.9	73.2	
C		11.2	72.9	
N.L.		11.3	72.8	

N.L.	10.7	73.4
C	10.0	74.1
+10	9.6	74.5
+11	10.2	73.9
1/4	9.8	74.3
£	9.8	74.3
1/4	10.3	73.8
+3	10.6	73.5
+4	10.0	74.1
C	9.6	74.5
S.L.	8.6	75.5

375'E.

S.L.	8.3	75.8
C	8.6	75.5
+9	8.4	75.7
+10	9.2	74.9
1/4	8.8	75.3
£	8.5	75.6
1/4	8.8	75.3
+3	9.0	75.1
+4	8.3	75.8
C	9.1	75.0
N.L.	9.5	74.6

84.13

400'E.

N.L	8.1	76.0
C	8.7	75.4
+10	8.5	75.6
+11	9.0	75.1
$\frac{1}{4}$	8.5	75.6
$\frac{1}{4}$	7.4	76.7
$\frac{1}{4}$	7.7	76.4
+3	7.8	76.3
+4	7.2	76.9
C	7.2	76.9
S.L	7.2	76.9

425'E.

S.L	7.3	76.8
C	5.9	78.2
+11	5.8	78.3
+12	6.8	77.3
$\frac{1}{4}$	6.9	77.2
$\frac{1}{4}$	6.5	77.6
$\frac{1}{4}$	7.3	76.8
+3	7.7	76.4
+4	7.1	77.0
C	7.5	76.6
N.L	7.7	76.4

84.13

450'E.

29

N.L	6.1	78.0
C	5.9	78.2
+9	6.8	77.3
+10	7.4	76.7
$\frac{1}{4}$	7.3	76.8
$\frac{1}{4}$	7.3	76.8
$\frac{1}{4}$	8.0	76.1
C	8.0	76.1
S.L	8.3	75.8

475'E.

S.L	9.6	74.5
C	9.2	74.9
$\frac{1}{4}$	8.8	75.3
$\frac{1}{4}$	7.8	76.3
$\frac{1}{4}$	8.2	75.9
C	7.6	76.5
N.L	7.7	76.4

84.13

500'E

N.L.	8.0	76.1
C.	8.3	75.8
+9	8.5	75.6
+10	9.2	74.9
1/4	9.0	75.1
£	8.2	75.9
1/4	8.7	75.4
+3	9.2	74.9
+4	8.4	75.7
C	9.5	74.6
S.L.	10.4	73.7

525'E

S.L.	12.0	72.1
C	11.1	73.0
1/4	10.2	73.9
£	8.7	75.4
1/4	8.7	75.4
+2	8.6	75.5
+3	8.0	76.1
C	8.9	75.2
N.L.	7.6	76.5

84.13

550'E

N.L.	6.2	77.9
C	5.9	78.2
+10	6.3	77.8
+11	7.6	76.5
1/4	7.6	76.5
£	7.8	76.3
1/4	9.8	74.3
+3	10.3	73.8
+4	9.9	74.2
C	10.4	73.7
S.L.	11.9	72.2

575'E

S.L.	10.5	73.6
C	9.2	74.9
+9	8.5	75.6
+10	8.9	75.2
1/4	8.4	75.7
£	6.8	77.3
1/4	6.7	77.4
+1	6.8	77.3
+2	5.6	78.5
C	4.7	79.4
N.L.	4.2	79.9

30

8413

W.L.

42 St

60' Wide
10' Walks
10' 1/4's.

N.L.	3.0	81.1
C	3.0	81.1
4/11	4.3	79.8
4/12	5.1	78.0
1/4	5.1	79.0
£	5.3	78.8
1/4	6.3	77.8
7/4	6.8	77.3
7/5	6.2	77.9
C	6.7	77.4
S.L.	8.0	76.1
W. Curb.		
S.L.	7.5	76.6
C.	6.0	78.1
1/4	5.4	78.7
£	4.5	79.6
1/4	4.0	80.1
C	3.3	80.8
N.L.	3.3	80.8

8413

W 1/4

31

N.L.	3.4	80.7
N.C.	3.5	80.6
1/4	3.7	80.4
£	4.1	80.0
1/4	5.2	78.9
C	6.2	77.9
S.L.	7.9	76.2
£ 42 St.		
S.L.	7.6	76.5
C	6.3	77.8
1/4	5.2	78.9
£	3.4	80.7
1/4	2.7	81.4
C	2.8	81.3
N.L.	2.9	81.2

8413

E/A

NL.	2.3	81.8
C	2.6	81.5
1/4	2.8	81.3
⊕	3.4	80.7
1/4	5.2	78.9
C	6.6	77.5
S.L.	7.9	76.2

E. Curb.

S.L.	8.1	76.0
C	7.8	76.3
1/4	5.3	78.8
⊕	3.8	80.3
1/4	3.3	80.8
C	2.5	81.6
N.L.	1.4	82.7

8413

E.L. 42 St.

32

N.L.	0.7	83.4
C	2.0	82.1
1/4	3.1	81.0
⊕	4.3	79.8
1/4	5.6	78.5
C	7.1	77.0
S.L.	8.1	76.0
T.P.	5.78	78.35

8.73 87.08

25' E.

S.L.	11.0	76.1
C	9.7	77.4
1/4	8.0	79.1
⊕	6.7	80.4
1/4	5.3	81.8
C	4.2	82.9
N.L.	3.1	84.0

87.08

50'E

N.L	3.4	83.7
C	4.5	82.6
$\frac{1}{4}$	5.5	81.6
$\frac{1}{2}$	7.0	80.1
$\frac{3}{4}$	8.0	79.1
C	9.2	77.9
S.L.	10.3	76.8
+10	11.6	75.5

75'E

-10	12.4	74.7
S.L.	11.1	76.0
C	9.8	77.3
$\frac{1}{4}$	8.6	78.5
$\frac{1}{2}$	7.2	79.9
$\frac{3}{4}$	6.3	80.8
C	4.9	82.2
N.L.	3.6	83.5

87.08

33

100'E

N.L.	3.7	83.4
C	5.2	81.9
$\frac{1}{4}$	6.2	80.9
$\frac{1}{2}$	7.4	79.7
$\frac{3}{4}$	8.8	78.3
C	9.8	77.3
S.L.	11.3	75.8
+10	12.3	74.8

125'E

-10	11.9	76.2
S.L.	11.0	76.1
C	9.8	77.3
$\frac{1}{4}$	8.9	78.2
$\frac{1}{2}$	7.7	79.4
$\frac{3}{4}$	6.7	80.4
C	6.1	81.0
N.L.	4.8	82.3

8708

150'E

N.L.	5.4	81.7
C	6.6	80.5
1/4	7.6	79.5
E	8.2	78.9
1/4	9.3	77.8
C	10.6	76.5
S.L.	12.0	75.1
+10	12.8	74.3

175'E

-10	13.5	73.6
S.L.	12.6	74.5
C	10.7	76.4
1/4	8.9	78.2
E	7.8	79.3
1/4	7.5	79.6
C	6.7	80.4
N.L.	5.5	81.6

8708

34

192.1 on N. Side - City Limits

N.L.	5.7	81.4
C	6.2	80.9
1/4	7.4	79.7
E	8.4	78.7
1/4	9.4	77.7
C	11.6	75.5
S.L.	13.0	74.1
+10	14.4	72.7

215.9'E on S. Side - City Lim.

-10	14.6	72.5
S.L.	13.3	73.8
C	12.1	75.0
1/4	10.2	76.9
E	8.9	78.2
1/4	7.4	79.7
C	6.3	80.8
N.L.	5.7	81.4

87.08

T.P. 9.39 77.69

2.29 79.98

T.P. 8.70 71.28

2.16 73.44

T.P. 12.79 60.65

0.50 61.15

T.P. 12.90 48.25

1.92 50.17

T.P. 9.76 40.41

1.69 42.10

T.P. 12.85 29.25

2.93 32.18

32.24

Hub. S.W. Cor

10.18 22.00 (Correct 22.06)

38 & Gammog.

Natch Phone pole.

T.P. 7.46 24.78

CROSS SECTIONS of DELTA STREET.

East line Acadia St. to City Limits.

80' Wide, 14' Walks - 13' 1/4's.

April-11-1913.

West.
Evans
Moore.

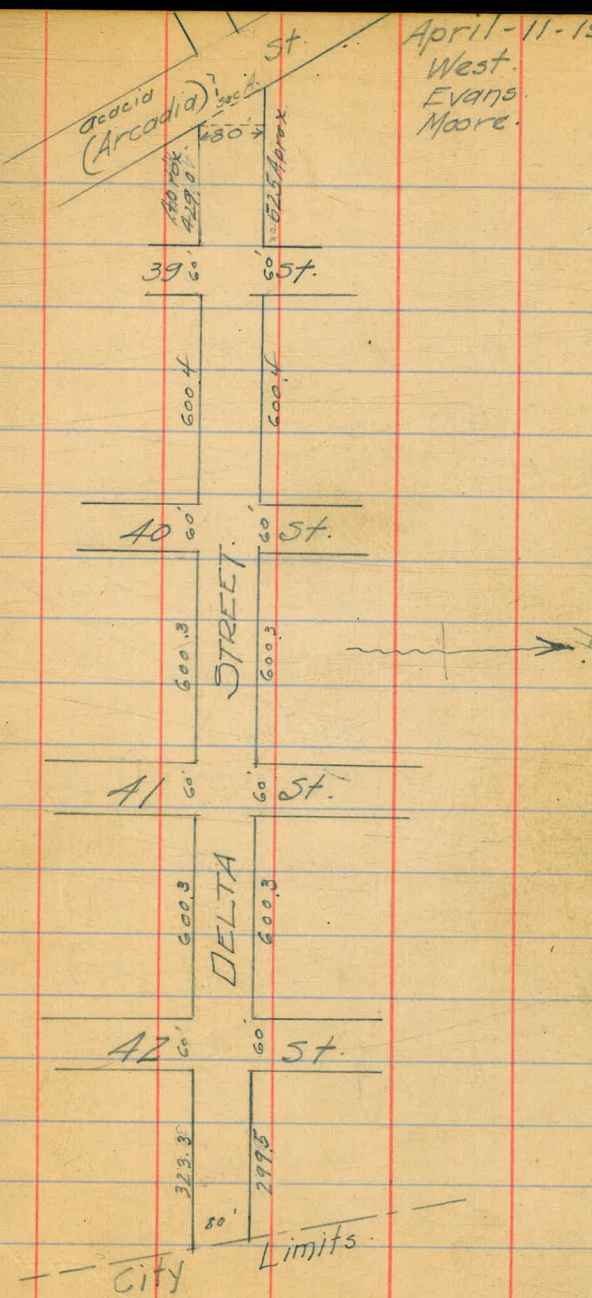
36

T.P. Notch. Phone Pole. 11.80 36.58 24.78

T.P. 11.82 46.94 1.46 35.12

SEC A-E.L. (Acadia) Acadia
being 429' W of W.L. 39th St. on S.L.
and 525' W " " " " " " N.L.

N.L.		14.9	32.0
N.C.		13.1	33.8
1/4		12.4	34.5
E		11.5	35.4
+9		11.6	35.3
1/4		14.0	32.9
+5		12.0	34.9
C		12.3	34.6
+9		13.6	33.3
S.L.		11.4	35.5
S.L.	429' W. 39 th St.	11.4	35.5
+6		11.4	35.5
+7		13.2	33.7
+11		13.1	33.8
C		11.5	35.4
1/4		11.8	35.1
E		9.7	37.2
1/4		9.1	37.8
C		8.4	38.5
N.L.		7.8	39.1



46.94

400' W. 39st

N.L.	7.2	39.7
C	7.9	39.0
1/4	8.4	38.5
E	8.7	38.2
1/4	9.0	37.9
C	9.7	37.2
+3	9.8	37.1
+6	12.1	34.8
+9	9.6	37.3
S.L.	10.3	36.6

350' W.

S.L.	9.2	37.7
C	8.4	38.5
1/4	7.8	39.1
E	7.0	39.9
1/4	6.7	40.2
C	6.6	40.3
N.L.	6.3	40.6

46.94

300' W.

N.L.	5.6	41.3
C	6.3	40.6
1/4	6.6	40.3
E	6.9	40.0
1/4	7.8	39.1
C	7.5	39.4
S.L.	7.7	39.2

250' W.

S.L.	5.4	41.5
C	5.8	41.1
1/4	5.9	41.0
+12	6.1	40.8
E	6.8	40.1
+6	6.0	40.9
1/4	5.2	41.7
C.	5.0	41.9
N.L.	4.7	42.2

200' W.

N.L.	3.6	43.3
C	3.7	43.2
1/4	4.0	42.9

37

46.94

£	5.4	41.5
+L	4.3	42.6
1/4	4.1	42.8
C	4.2	42.7
S.L	4.1	42.8
150' W.		
S.L	3.8	43.1
C	3.5	43.4
1/4	3.4	43.5
£	3.0	43.9
1/4	2.9	44.0
C	2.8	44.1
N.L.	2.7	44.2
100' W.		
NL	1.7	45.2
C	1.9	45.0
1/4	2.1	44.8
£	2.3	44.6
1/4	2.4	44.5

46.94

38

S.C	2.5	44.4
S.L	2.4	44.5
50' W.		
S.L	2.6	44.3
C	2.5	44.4
1/4	2.2	44.7
£	1.8	45.1
1/4	1.9	45.0
C	1.8	45.1
N.L.	1.3	45.6
W.L. 39.5 ft. 60' Wide 10' Walks + 1/4"		
N.L	1.4	45.5
C	1.7	45.2
1/4	1.4	45.5
£	1.7	45.2
1/4	2.2	44.7
C	2.7	44.2
S.L	3.2	43.7

46.94
 Top Stake
 T.P. S-W Cor. 39+ Delta. 2.42 44.52

11.97 56.49

W. Curb.

S.L. 126 43.9

C 121 44.4

1/4 11.6 44.9

ϕ 10.9 45.6

1/4 10.6 45.9

C 11.1 45.4

N.L. 11.3 45.2

W 1/4

N.L. 10.5 46.0

C 10.9 45.6

1/4 10.5 46.0

ϕ 10.8 45.7

1/4 11.4 45.1

C 11.8 44.7

S.L. 12.4 44.1

56.49

ϕ 39 st.

S.L. 11.8 44.7

C 11.6 44.9

1/4 11.3 45.2

ϕ 10.9 45.6

1/4 10.5 46.0

C 10.4 46.1

N.L. 10.3 46.2

E 1/4

N.L. 10.1 46.4

C 10.5 46.0

1/4 10.5 46.0

ϕ 10.7 45.8

1/4 11.1 45.4

C 11.2 45.3

S.L. 11.4 45.1

56.49

E Curb.

SL	11.0	45.5
C	11.0	45.5
1/4	10.5	46.0
Φ	10.0	46.5
1/4	10.2	46.3
C	10.2	46.3
NL	10.2	46.3

E.L. 39 St.

NL	10.2	46.3
C	10.1	46.4
1/4	9.8	46.7
Φ	9.2	47.3
1/4	10.0	46.5
C	10.7	45.8
SL	10.6	45.9

56.49

50' E of 39 St.

40

SL	9.4	47.1
C	9.5	47.0
1/4	9.5	47.0
Φ	9.2	47.3
1/4	9.1	47.4
C	9.3	47.2
NL	8.5	48.0

100' E

NL	7.6	48.9
C	8.1	48.4
1/4	8.0	48.5
Φ	7.7	48.8
1/4	8.1	48.4
C	8.3	48.2
SL	8.5	48.0

150' E

SL	7.6	48.9
C	7.4	49.1
1/4	7.1	49.4

5649

Φ	6.7	49.8
1/4	6.9	49.6
C	7.0	49.5
N.L.	6.3	50.2

200'E.

N.L.	4.8	51.7
C.	5.6	50.9
1/4	6.1	50.4
Φ	5.8	50.7
1/4	6.2	50.3
C	6.8	49.7
S.L.	7.4	49.1

250'E.

S.L.	4.9	51.6
C	5.0	51.5
1/4	4.8	51.7
Φ	4.8	51.7
1/4	4.4	52.1
C	3.8	52.7
N.L.	2.9	53.6

5649

300'E.

N.L.	4.2	56.7
C	0.7	55.8
1/4	1.7	54.8
Φ	2.6	53.9
1/4	2.9	53.6
C	2.8	53.7
S.L.	3.0	53.5
T.P.	1.42	55.07

11.88 66.95

350'E.

S.L.	11.2	55.8
C	11.3	55.7
1/4	11.0	56.0
Φ	10.1	56.9
1/4	9.2	57.8
C	9.2	57.8
N.L.	8.6	58.4

41

66.95

400'E

N.L.	7.5	59.5
C	8.2	58.8
1/4	8.8	58.2
£	9.2	57.8
1/4	9.5	57.5
C	9.7	57.3
S.L.	9.9	57.1

450'E

SL	9.2	57.8
C	7.9	59.1
1/4	7.9	59.1
£	7.5	59.5
1/4	6.8	60.2
N.L.	6.5	60.5

500'E

N.L.	5.7	61.3
C	6.1	60.9
1/4	6.3	60.7

66.95

42

£	6.4	60.6
1/4	7.4	59.6
C	7.4	59.6
SL	7.1	59.9

550'E

SL	5.6	61.4
C	6.2	60.8
1/4	6.5	60.5
£	6.1	60.9
1/4	5.4	61.6
C	4.9	62.1
N.L.	4.4	62.6

W.L. 40st.

60' Wide
10' Walks 4/45.

N.L.	3.2	63.8
C	3.8	63.2
1/4	4.5	62.5
£	5.1	61.9
1/4	5.3	61.7
C	5.6	61.4
SL	5.5	61.5

66.95

W. Curb.

S.L.	5.9	61.1
C	5.5	61.5
1/4	5.1	61.9
E	4.8	62.2
1/4	4.4	62.6
C	3.7	63.3
N.L.	3.1	63.9

W. 1/4

N.L.	2.9	64.1
C	3.6	63.4
1/4	4.3	62.7
E	4.8	62.2
1/4	4.9	62.1
C	5.3	61.7
S.L.	5.8	61.2

V. ADST

S.L.	5.7	61.3
C	5.2	61.8

66.95

43

1/4	4.7	62.3
E	4.5	62.5
1/4	4.1	62.9
C	3.4	63.6
N.L.	2.5	64.5

E. 1/4

N.L.	2.3	64.7
C	3.2	63.8
1/4	4.0	63.0
E	4.5	62.5
1/4	4.7	62.3
C	5.3	61.7
S.L.	5.6	61.4

E. Curb.

S.L.	5.1	61.9
C	4.7	62.3
1/4	4.5	62.5
E	4.2	62.8
1/4	3.6	63.4

66.95

C.	22	64.8
N.L.	06	66.4
E.L. 405A		
N.L.	03	66.7
C	17	65.3
1/4	33	63.7
1/4	40	63.0
1/4	44	62.6
C	44	62.6
S.L.	50	62.0
50'E.		
S.L.	48	62.2
C	43	62.7
1/4	38	63.2
1/4	28	64.2
1/4	26	64.4
+5	28	64.2
+6	19	65.1
C	14	65.6
N.L.	05	66.5

66.95

44

100'E		
N.L.	+02	67.2
C	1.2	65.8
+10	2.5	64.5
1/4	2.2	64.8
1/4	2.2	64.8
1/4	3.2	63.8
C	3.9	63.1
S.L.	4.3	62.7
150'E		
S.L.	3.3	63.7
C	2.7	64.3
+6	2.7	64.3
+7	3.3	63.7
1/4	2.6	64.4
1/4	1.9	65.1
1/4	1.9	65.1
C	1.4	65.6
N.L.	00	67.0

66.95

T.P.

1.11 65.84

9.55 75.39

200'E.

NL.

9.2 66.2

C

9.6 65.8

1/4

10.1 65.3

E

9.6 65.8

1/4

10.3 65.1

+5

10.5 64.9

+6

10.0 65.4

C

10.2 65.2

S.L.

10.3 65.1

250'E.

S.L.

8.5 66.9

C

8.6 66.8

+7

8.7 66.7

+8

9.1 66.3

1/4

8.6 66.8

E

8.2 67.2

1/4

8.6 66.8

+3

8.8 66.4

+4

8.3 67.1

75.39

45

C

8.3 67.1

N.L.

7.9 67.5

300'E.

N.L.

6.6 68.8

C

6.9 68.5

+6

6.8 68.6

+7

7.2 68.2

1/4

6.9 68.5

E

6.4 69.0

1/4

6.8 68.6

+5

7.1 68.3

+6

6.6 68.8

C

6.7 68.7

S.L.

6.5 68.9

350'S.

S.L.

5.2 70.2

C

5.1 70.3

+6

5.1 70.3

+7

6.0 69.4

1/4

5.4 70.0

E

5.0 70.4

1/4

5.4 70.0

7539

C	5.1	70.3
N.L.	4.6	70.8

400'E

N.L.	3.5	71.9
C.	3.8	71.6
$\frac{1}{4}$	4.7	70.7
$\frac{1}{2}$	4.7	70.7
$\frac{1}{4}$	5.3	70.1
+5	5.7	69.7
+6	5.3	70.1
C	5.4	70.0
S.L.	5.6	69.8

450'E

SL	5.8	69.6
C.	5.1	70.3
+8	5.0	70.4
+9	5.3	70.1
$\frac{1}{4}$	4.9	70.5
$\frac{1}{2}$	3.9	71.5
$\frac{1}{4}$	3.8	71.6
+3	4.1	71.3
+4	3.4	72.0

7539

C	3.2	72.2
N.L.	2.5	72.9

500'E

N.L.	1.2	74.2
C	2.2	72.2
+9	2.8	72.6
+10	3.4	72.0
$\frac{1}{4}$	3.2	72.2
$\frac{1}{2}$	3.1	72.3
$\frac{1}{4}$	4.5	70.9
+3	4.7	70.7
+4	4.3	71.1
C	4.7	70.7
S.L.	5.3	70.1

550'E

SL	5.4	70.0
C	4.5	70.9
+10	4.4	71.0
$\frac{1}{4}$	3.5	71.9
$\frac{1}{2}$	2.1	73.3
$\frac{1}{4}$	2.0	73.4

46

75.39

+3		2.0	73.4
+6		0.9	74.5
T.P.		1.02	74.37
N.L.	7.79	82.16	
		550'E.	
N.Curb.		6.3	75.9
N.L.		4.6	77.6
	W.L. 41st.	60' Wide 10' Walk + 1/4	
N.L.		1.1	81.1
C.		3.1	79.1
+9		4.6	77.6
1/4		6.3	75.9
E		7.5	74.7
1/4		9.0	73.2
C		10.8	71.4
S.L.		12.2	70.0
	W.Curb.		
S.L.		12.4	69.8
S.C		10.8	71.4
1/4		9.1	73.1
E		7.2	75.0

82.16

47

1/4		5.7	76.5
+4		4.7	77.5
C		2.4	79.8
N.L.		0.6	81.6
	W 1/4		
N.L.		1.1	81.1
C		3.1	79.1
1/4		5.9	76.3
E		7.2	75.0
1/4		9.3	72.9
C		11.2	71.0
S.L.		12.9	69.3
	E 41st.		
S.L.		12.2	70.0
C		10.6	71.6
1/4		9.1	73.1
E		7.0	75.2
1/4		5.4	76.8
C		2.6	79.6
N.L.		0.6	81.6

82.16

E/A

N.L.	1.0	81.2
C.	2.7	79.5
1/4	5.2	77.0
E	6.8	75.4
1/4	8.8	73.4
C	11.0	71.2
S.L.	12.4	69.8

E. Curb.

S.L.	12.5	69.7
C.	10.8	71.4
1/4	8.7	73.5
E	6.7	75.5
1/4	5.5	76.7
+3	4.0	78.2
C.	2.3	79.9
N.L.	0.6	81.6

E.L. A1ST

N.L.	0.6	81.6
C.	3.0	79.2

Δ ST

48

82.16

+9	4.5	77.7
+11	5.8	76.4
1/4	5.7	76.5
E	6.7	75.5
1/4	9.0	73.2
C	11.0	71.2
S.L.	12.7	69.5
+10	14.1	68.1

50'E A1ST

-10	14.9	67.3
S.L.	13.0	69.2
C	11.5	70.7
1/4	10.1	72.1
E	8.5	73.7
1/4	7.7	74.5
+2	7.6	74.6
+4	6.2	76.0
C	4.9	77.3
N.L.	2.6	79.6

82.16
100'E.

N.L.	6.1	76.1
C.	7.8	74.4
+10	9.0	73.2
+12	10.3	71.9
1/4	10.4	71.8
Φ	11.0	71.2
1/4	12.7	69.5
C	13.9	68.3
S.L	14.5	67.7
+10	15.1	67.1
150'E.		
-10	14.5	67.7
S.L.	14.4	67.8
C	14.3	67.9
1/4	13.7	68.5
Φ	12.7	69.5
1/4	12.5	69.7
+3	12.6	69.6
+6	11.7	70.5
C.	11.0	71.2
N.L.	9.8	72.4

82.16

49

T.P. Top of 30+31. 8.98 73.18

2.72 75.90

200'E.

N.L	5.9	70.0
C	6.6	69.3
1/4	6.8	69.1
Φ	6.5	69.4
1/4	6.7	69.2
C	6.5	69.4
S.L.	6.6	69.3
+10	6.7	69.2

250'E.

S.L	6.2	69.7
C	5.7	70.2
1/4	6.5	69.4
Φ	5.7	70.2
1/4	5.9	70.0
+4	6.1	69.8
+6	5.1	70.8
C	5.4	70.5
N.L.	6.0	69.9

7590

300'E

N.L.	5.1	70.8
C	5.4	70.5
+9	5.4	70.5
+11	6.4	69.5
1/4	6.0	69.9
£	5.7	70.2
1/4	6.5	69.4
C	6.7	69.2
S.L.	7.0	68.9

350'E

S.L.	10.7	65.2
C.	9.7	66.2
1/4	8.6	67.3
£	6.6	69.3
1/4	6.7	69.2
C	6.0	69.9
N.L.	4.7	71.2

7590

400'E

N.L.	4.0	71.9
C.	4.8	71.1
+10	5.0	70.9
+11	5.9	70.0
1/4	5.7	70.2
£	5.9	70.0
1/4	7.3	68.6
C	9.3	68.6
S.L.	10.3	65.6
+10	11.8	64.1

450'E

-10	11.2	64.7
SL	9.1	66.8
C	7.2	68.7
1/4	5.8	70.1
£	3.9	72.0
1/4	3.9	72.0
+3	4.2	71.7
+5	2.6	73.3
C	2.2	73.7
N.L.	2.2	73.7

50

75.90

500'E.

N.L.	6.1	69.8
C.	5.9	70.0
1/4	6.1	69.8
ϕ	6.0	69.9
1/4	7.0	68.9
C	8.9	67.0
S.L.	11.1	64.8
+10	13.0	62.9

550'E.

-10	12.3	63.6
SL	10.9	65.0
C	8.1	67.8
1/4	6.2	69.7
ϕ	5.4	70.5
1/4	5.5	70.4
C	5.8	70.1
N.L.	7.0	68.9

51

75.90

T.P. Top 46+47.

6.33 69.57

4.75 74.32

W.L. 42.5ft. 60' Wide
10' Walks + 1/4's.

N.L.	9.0	65.3
C.	6.3	68.0
1/4	5.0	69.3
ϕ	4.0	70.3
1/4	3.4	70.9
C	3.7	70.6
SL	5.5	68.8
+10	8.3	66.0
W Curb.		
-10	7.4	66.9
SL	5.5	68.8
C	3.5	70.8
1/4	3.6	70.7
ϕ	4.5	69.8
	5.8	68.5
1/4	6.9	67.4
C	8.9	65.4
N.L.		

7432.

W 1/4

N.L.	9.5	64.8
C.	7.2	67.1
1/4	6.1	68.2
⊕	4.8	69.5
1/4	3.7	70.6
C.	4.0	70.3
S.L.	5.5	68.8
+10	7.8	66.5

⊕ 42 St.

-10	6.8	67.5
S.L.	5.2	69.1
C.	3.5	70.8
1/4	3.8	70.5
⊕	5.3	69.0
1/4	7.1	67.3
C.	7.8	66.5
N.L.	9.1	65.2
+10	11.2	63.1

7432

E 1/4

-10	11.8	62.5
N.L.	10.6	63.7
C.	9.3	65.0
1/4	8.0	66.3
⊕	5.5	68.8
1/4	3.7	70.6
C.	3.3	71.0
S.L.	4.8	69.5
+10	7.3	67.0

E Curb.

-10	6.3	68.0
S.L.	4.6	69.7
C.	3.4	70.9
1/4	3.7	70.6
⊕	5.7	68.6
1/4	8.3	66.0
C.	9.8	64.5
N.L.	11.5	62.8
+10	12.7	61.6

52

74.32

E.L. 42 St.

-10	12.5	61.8
NL.	11.7	62.6
C	10.3	64.0
1/4	8.4	65.9
⊕	5.5	68.8
1/4	4.1	70.2
C	3.4	70.9
SL.	4.1	70.2
+10	5.7	68.6

25'E.

-S.L.	2.9	71.4
C	3.6	70.7
1/4	4.9	69.4
⊕	6.8	67.5
1/4	9.9	64.4
C	11.5	62.8
N.L.	13.7	60.6
+10	14.7	59.6

74.32

50'E.

53

-10	15.0	59.3
NL.	14.0	60.3
C	12.0	62.3
1/4	9.2	65.1
⊕	6.1	68.2
1/4	4.3	70.0
C	3.6	70.7
SL.	2.4	71.9

75'E.

SL.	2.3	72.0
C	4.0	70.3
1/4	5.3	69.0
⊕	7.3	67.0
1/4	9.8	64.5
C	12.4	61.9
NL.	14.3	60.0
+10	15.1	59.2
+20	16.2	58.1

7432

100'E

-25	17.6	56.7
N.L.	14.9	59.4
C	12.1	62.2
1/4	9.5	64.8
E	7.8	66.5
1/4	6.4	67.9
C	4.9	69.4
S.L.	4.0	70.3

125'E

S.L.	5.4	68.9
C	5.9	68.4
1/4	7.7	66.6
E	8.1	66.2
1/4	9.3	65.0
C	12.6	61.7
N.L.	13.8	60.5
+25	18.8	55.5

7432

150'E

54

-25	20.1	54.2
N.L.	16.4	57.9
C	15.1	59.2
1/4	12.7	61.6
E	11.1	63.2
1/4	10.0	64.3
C	8.4	65.9
S.L.	7.7	66.6

T.P.

11.75 62.57

4.52 67.09

175'E

S.L.	2.3	64.8
C	2.6	64.5
1/4	4.6	62.5
E	6.8	60.3
1/4	9.0	58.1
C	11.4	55.7
N.L.	13.0	54.1
+25	15.2	51.9

67.09

200'E

-25	16.5	50.6
N.L.	15.1	52.0
C	13.9	53.2
1/4	11.1	56.0
⊕	8.2	58.9
1/4	7.1	60.0
C	4.9	62.2
S.L.	4.0	63.1

225'E

S.L.	9.5	57.6
C	10.1	57.0
1/4	11.1	56.0
⊕	13.1	54.0
1/4	15.0	52.1
C	16.0	51.1
N.L.	17.3	49.8
+20	17.6	49.5

55

67.09

T.P.

12.29 54.80

1.29 56.09

250'E

S.L.	3.0	53.1
C	5.0	51.1
1/4	5.1	51.0
⊕	5.5	50.6
1/4	6.4	49.7
C	6.8	49.3
N.L.	7.8	48.3
+10	8.1	48.0

275'E:

-10	8.4	47.7
N.L.	9.2	46.9
C	9.4	46.7
1/4	8.7	47.4
⊕	8.4	47.7
1/4	8.6	47.5
C	8.5	47.6
S.L.	8.2	47.9

5609

299.5E - City Limits on N.L.

S.L	10.8	45.3
C	11.0	45.1
1/4	11.0	45.1
1/4	11.1	45.0
1/4	10.6	45.5
C	9.9	46.2
N.L.	9.0	47.1

SOCA- 323.3E - City Lim. on S.L.

N.L	9.0	47.1
C	10.0	46.1
1/4	10.8	45.3
1/4	11.5	44.6
1/4	11.8	44.3
C	12.1	44.0
S.L	12.5	43.6

T.P.	12.72	68.49	0.32	55.77
------	-------	-------	------	-------

T.P.	12.81	81.06	0.24	68.25
------	-------	-------	------	-------

S.L. Ground at City Lim. on Garrison St.	7.3	73.7	73.8 = OK
------------------------------------------------	-----	------	-----------

56

CROSS-SECTIONS OF
EPSILON ST.
80' Wide, 14' Walks, 13' ¹/₄'s.

T.P. 39+1/4 44.52

T.41 51.93

Sec A = 76' W. of WL 39 St on NL
= 639.6' W. of WL 40 St on SL

NL	12.1	39.8
C	12.0	39.9
¹ / ₄	11.7	40.2
E	11.3	40.6
¹ / ₄	10.5	41.4
C	10.4	41.5
SL	9.9	42.0

Sec C = 40' W. of EL 39 St.

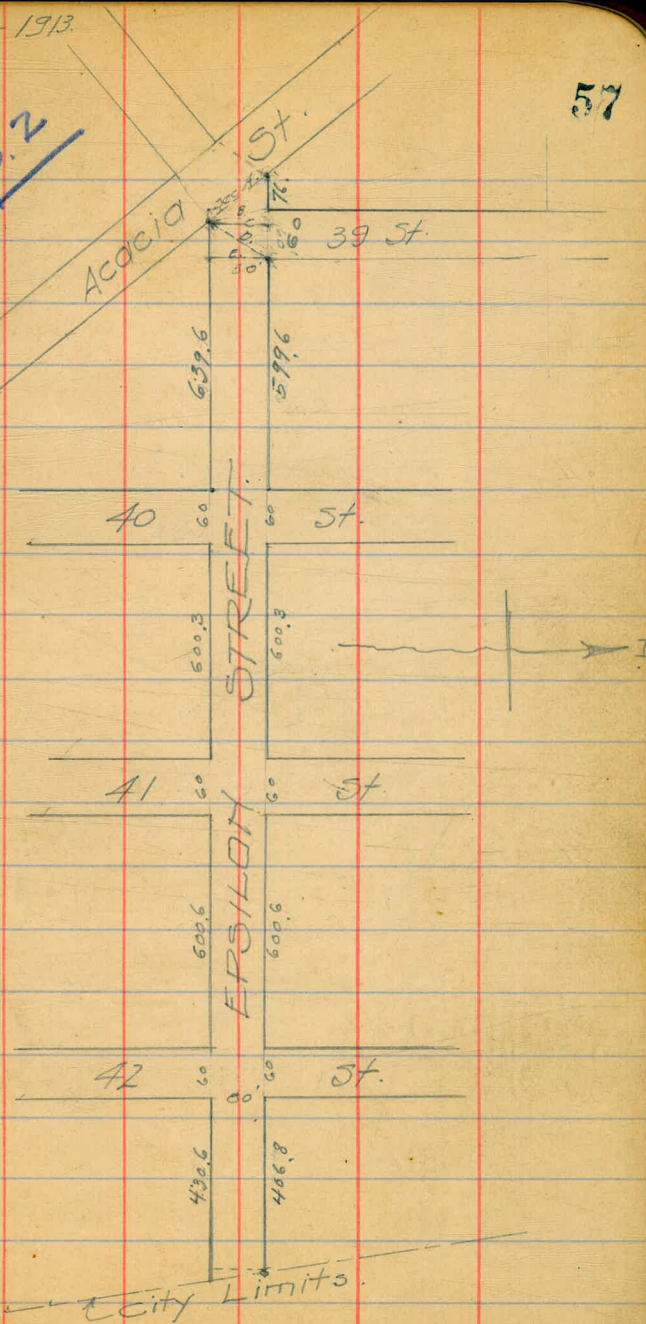
SL	10.0	41.9
C	9.9	42.0
¹ / ₄	9.6	42.3
E	10.1	41.8
¹ / ₄	9.9	42.0
C	9.8	42.1
NL	10.0	41.9

April 14 - 1913.

West
Evans.
Moore.

See note p. 2

57



51.93

Sec B. (sketch)

SL	10.0	41.9
C	9.9	42.0
1/4	9.9	42.0
E	10.3	41.6
1/4	10.1	41.8
C	10.3	41.6
NL	10.3	41.6

Sec D.

NL	9.0	42.9
C	9.0	42.9
1/4	8.9	43.0
E	9.4	42.5
1/4	9.5	42.4
C	9.7	42.2
SL	10.0	41.9

599.6W 40st 50c F -- EL 39st produced.

SL	9.1	42.8
C	9.0	42.9
1/4	8.6	43.3

51.93

58

E	8.5	43.4
1/4	8.5	43.4
C	8.7	43.2
NL	9.0	42.9

550'W 40st.

NL	8.2	43.7
C	8.0	43.9
1/4	7.2	44.7
E	7.5	44.4
1/4	7.5	44.4
C	8.0	43.9
SL	8.0	43.9

500'W 40st.

SL	7.5	44.4
C	7.3	44.6
1/4	7.3	44.6
E	7.5	44.4
1/4	6.8	45.1
C	6.4	45.5
NL	7.1	44.8

51.93

450' W.

N.L.	6.6	45.3
C	6.6	45.3
1/4	6.2	45.7
⊕	6.1	45.8
1/4	5.9	46.0
C	6.3	45.6
S.L.	6.4	45.5

400' W.

S.L.	6.4	45.5
C	6.2	45.7
1/4	6.0	45.9
⊕	5.6	45.3
1/4	5.0	46.9
C	5.7	46.2
N.L.	6.1	45.8

350' W.

N.L.	3.0	48.9
C	3.9	48.0
1/4	4.8	47.1

51.93

⊕

4.9 47.0

59

1/4

4.7 47.2

C

5.4 46.5

S.L.

5.9 46.0

300' W.

S.L.

5.2 46.7

C

5.7 46.2

1/4

5.4 46.5

⊕

5.2 46.7

1/4

5.0 46.9

C

4.8 47.1

N.L.

4.4 47.5

250' W.

N.L.

4.1 47.8

C

4.3 47.6

1/4

4.6 47.3

⊕

4.9 47.0

1/4

5.0 46.9

C

5.1 46.8

S.L.

5.6 46.3

51.93

200' W

SL.		4.9	47.0
C		4.6	47.3
1/4		4.0	47.9
E		3.9	48.0
1/4		3.0	48.9
C		3.0	48.9
N.L.		3.1	48.8

T.P.	7.49	56.34	3.08	48.85
------	------	-------	------	-------

150' W

N.L.		6.7	49.6
C		6.8	49.6
1/4		7.1	49.2
E		7.7	48.6
1/4		8.0	48.3
C		8.2	48.1
SL.		8.0	48.3

100' W

SL.		7.9	48.4
C		6.9	49.4

56.34

60

S/A		6.0	50.3
E		6.0	50.3
1/4		6.1	50.2
C		5.6	50.7
N.L.		5.1	51.2

50' W

N.L.		3.4	52.9
C		4.0	52.3
1/4		4.3	52.0
E		4.8	51.5
1/4		5.3	51.0
C		6.2	50.1
SL.		6.8	49.5

W.L. 4154

	2.5	53.8	53.7 before
--	-----	------	----------------

OK for check

Epsilon St. 80' Wide

T.P. 39 + Delta. 44.52

3.10 47.62

T.P. 1.66 45.96

8.25 54.21

T.P. Tie Pt. 40 + Epsilon. 1.18 53.03

9.49 62.52

W.L. 40 St.

NL. 8.8 53.7

C 9.7 52.5

1/4 10.2 52.3

E 10.4 52.1

1/4 10.0 52.5

C 10.1 52.4

S.L. 10.7 51.8

W Curb.

S.L. 10.7 51.8

C 9.8 52.7

1/4 E 9.8 52.7

10.1 52.4

1/4 9.9 52.6

C 9.6 52.9

NL. 9.1 53.4

6252

61

W 1/4.

NL. 9.1 53.4

C 9.3 53.2

1/4 9.5 53.0

E 9.7 52.8

1/4 9.5 53.0

C 9.6 52.9

S.L. 10.5 52.0

E 40 St.

S.L. 10.4 52.1

C 9.9 52.6

1/4 9.6 52.9

E 9.3 53.2

1/4 8.9 53.6

C 8.8 53.7

NL. 8.7 53.8

E 1/4

NL. 8.3 54.2

C 8.5 54.0

1/4 8.7 53.8

6252

Φ	9.2	53.3
1/4	9.7	52.8
C	10.2	52.3
S.L.	10.7	51.8
E. Curb.		
S.L.	10.3	52.2
C	9.6	52.9
1/4	9.5	53.0
Φ	8.7	53.8
1/4	8.5	54.0
C	8.0	54.5
NL.	7.4	55.1
E.L. 40 St.		
NL.	6.3	56.2
C	7.5	55.0
+10	8.1	54.4
+11	8.7	53.8
1/4	8.5	54.0
Φ	8.6	53.9
1/4	9.2	53.3

6252

50

62

C	9.1	53.4
S.L.	9.8	52.7
50'E.		
S.L.	9.4	53.1
C	8.9	53.6
1/4	8.6	53.9
Φ	8.0	54.5
1/4	7.7	54.8
C	6.8	55.7
NL.	5.8	56.7
100'E.		
NL.	5.8	56.7
C	6.3	56.2
1/4	6.8	55.7
Φ	7.2	55.3
1/4	8.0	54.5
C	8.3	54.2
S.L.	8.9	53.6

6252
150'E

SL	8.3	54.2
C	7.6	54.9
1/4	7.2	55.3
⊕	6.6	55.9
1/4	6.6	55.9
C	6.2	56.3
NL	5.7	56.8

200'E

NL	5.3	57.2
C	5.9	56.6
1/4	6.6	55.9
⊕	6.7	55.8
1/4	7.3	55.2
C	7.6	54.9
SL	7.2	55.3

250'E

SL	6.9	55.6
C	7.4	55.1
1/4	7.3	55.2

6252

63

⊕	6.6	55.9
1/4	6.0	56.5
C	5.0	57.5
NL	4.8	57.7

300'E

NL	5.0	57.5
C	6.0	56.5
1/4	6.1	56.4
⊕	6.2	56.3
1/4	6.5	56.0
C	6.1	56.4
S-L	6.4	56.1

350'E

SL	10.1	52.4
C	9.6	52.9
1/4	8.7	53.8
⊕	7.9	54.6
1/4	7.6	54.7
C	6.6	55.9
NL	5.5	57.0

62-52

400'E.

NL.	7.0	55.5
C.	8.2	54.3
75	8.3	54.2
76	8.9	53.6
1/4	8.5	54.0
⊕	9.2	53.3
1/4	10.6	51.9
C	11.3	51.2
SL.	12.3	50.2

450'E.

SL.	9.8	52.7
C.	9.0	53.5
1/4	8.8	53.7
⊕	8.3	54.2
1/4	8.4	54.1
C	8.0	54.5
NL.	7.4	55.1

500'E.

NL.	6.6	55.9
C.	6.6	55.9

62,52

64

1/4	6.2	56.3
⊕	6.6	55.9
1/4	7.9	54.6
C	8.4	54.1
SL.	9.3	53.2

550'E.

SL.	9.1	53.4
C	8.6	53.9
1/4	8.3	54.2
⊕	7.6	54.9
1/4	7.3	55.2
C.	6.3	56.2
NL.	5.8	56.7

W.L. 41 St.

NL	5.2	57.3
C	6.2	56.3
1/4	7.1	55.4
⊕	7.6	54.9
1/4	8.5	54.0

62-52

C	9.4	53.1
S.L.	10.0	52.5
T.P. Hub. S.W. Cor. of 41 + Epsilon	9.99	52.53
9.64	62.17	
W. Curb.		
S.L.	9.7	52.5
C.	9.0	53.2
1/4	8.3	53.9
ϕ	7.2	55.0
1/4	6.9	55.3
+3	7.0	55.2
+4	6.5	55.7
C.	5.9	56.3
N.L.	4.9	57.3
W 1/4		
N.L.	5.1	57.1
C.	6.1	56.1
1/4	6.7	55.5
ϕ	7.1	55.1
1/4	8.1	54.1

62-17

65

C.	9.2	53.0
S.L.	10.0	52.2
ϕ 41st		
S.L.	10.3	51.9
C	8.6	53.6
1/4	7.4	54.8
ϕ	6.5	55.7
1/4	6.4	55.8
C	5.7	56.5
N.L.	5.0	57.2
E 1/4		
N.L.	6.1	56.1
C	6.5	55.7
1/4	6.6	55.6
ϕ	6.6	55.6
1/4	7.5	54.7
C	8.7	53.5
S.L.	11.0	51.2

6217

E Curb.

SL	12.6	49.6
C	10.6	51.6
1/4	8.8	53.4
£	7.8	54.4
1/4	7.6	54.6
+3	8.2	54.0
44	7.6	54.6
C	7.5	54.7
NL	7.3	54.9
+10	7.2	55.0

E.L. 415f.

-10	8.5	53.7
N.L.	7.9	54.3
E	9.1	53.1
+9	9.2	53.0
+10	10.0	52.2
1/4	9.4	52.8
£	9.9	52.3
1/4	10.9	51.3
C	12.1	50.1
SL	13.9	49.4 48.3
-10	15.1	47.1

6217

50'E

66

-10	20.2	42.0
SL	19.3	42.9
C	18.4	43.8
1/4	17.5	44.7
£	16.0	46.2
1/4	15.9	46.3
C	15.0	47.2
NL	14.6	47.6
+10	13.8	48.4

75'E

-10	11.7	50.5
NL	13.2	49.0
C	13.8	48.4
+10	14.6	47.6
+11	15.2	47.0
1/4	14.9	47.3
£	14.7	47.5
1/4	15.0	47.2
C	16.6	45.6
SL	15.9	46.3
+10	15.5	46.7

62-17.

100'E

-10	13.1	49.1
S.L.	13.7	48.5
C.	14.4	47.8
1/4	14.0	48.2
Φ	12.9	49.3
1/4	12.7	49.5
C	12.1	50.1
N.L.	9.3	52.9
+10	7.5	54.7

150'E

-10	4.7	57.3
N.L.	6.3	55.9
C	7.8	54.4
+8	8.4	53.8
+9	9.2	53.0
1/4	8.8	53.4
Φ	9.4	52.8
1/4	10.0	52.2
C	10.3	51.9
S.L.	9.9	52.3
+10	9.5	52.7

62-17

200'E

-10	10.1	52.1
S.L.	9.1	53.1
C.	8.5	53.7
1/4	8.1	54.1
Φ	7.2	55.0
1/4	6.5	55.7
+3	6.6	55.6
+4	5.9	56.3
C	5.1	57.1
N.L.	3.8	58.4

250'E

N.L.	2.1	60.1
C.	3.0	59.2
1/4	4.4	57.8
Φ	5.4	56.8
1/4	7.1	55.1
C	8.6	53.6
S.L.	10.2	52.0
+10	11.5	50.7

67

62.17

300'E

-10	8.3	53.9
S.L.	7.3	54.9
C	5.9	56.3
$\frac{1}{4}$	4.4	57.8
$\frac{1}{4}$	2.8	59.4
$\frac{1}{4}$	2.1	60.1
C	1.9	60.3
N.L.	0.8	61.4

350'E

N.L.	1.7	60.5
C.	1.6	60.6
$\frac{1}{4}$	1.1	61.1
$\frac{1}{4}$	1.4	60.8
+10	1.6	60.6
$\frac{1}{4}$	2.4	59.8
C	3.0	59.2
S.L.	3.8	58.4
+10	4.0	58.2

400'E

62.17

-10	2.2	60.0
S.L.	1.2	61.0
C	1.0	61.2
$\frac{1}{4}$	1.0	61.2
$\frac{1}{4}$	0.4	61.8
$\frac{1}{4}$	1.5	60.7
C	3.6	58.6
N.L.	6.3	55.9
+10	7.2	55.0

450'E

-10	9.3	52.9
N.L.	7.8	54.4
C	4.1	58.1
$\frac{1}{4}$	1.7	60.5
$\frac{1}{4}$	1.5	60.7
$\frac{1}{4}$	1.8	60.4
+1	1.3	60.9
C	0.6	61.6
S.L.	0.2	62.0

68

	6217		
T.P.		0.92	61.25
	2.35	63.60	
	500' E.		
S.L.		2.0	61.6
C		4.2	59.4
1/4		4.3	59.3
+1		5.0	58.6
+4		4.5	59.1
⊕		4.6	59.0
1/4		5.8	57.8
C		7.8	55.8
N.L.		10.4	53.2
+10		12.3	51.3
+20		13.0	50.6
	550' E.		
-20		16.3	47.3
N.L.		15.8	47.8
C		14.4	49.2
1/4		12.6	51.0
⊕		10.7	52.9

	63.60		69
1/4		10.9	52.7
C		10.2	53.4
S.L.		8.2	55.4
T.P.		11.62	51.98
	3.25	55.23	
	W.L.	42.5'	60' Wide 10' Walks + 1/4
-10		8.3	46.9
S.L.		9.1	46.1
C		9.5	45.7
1/4		9.5	45.7
⊕		9.4	45.8
1/4		10.3	44.9
C		10.5	44.7
N.L.		10.7	44.5
+10		10.8	44.4
+20		11.4	43.8

55.23

W. Curb.

-10	12.5	42.7
NL.	12.1	43.1
C	11.0	44.2
1/4	10.9	44.3
£	10.2	45.3
1/4	10.6	44.9
C	10.6	44.9
S.L.	10.1	45.4
+10	10.1	45.4

W. 1/4

-10	11.4	43.8
S.L.	11.2	44.0
C	11.1	44.1
1/4	11.1	44.1
£	10.7	44.5
1/4	12.0	43.2
C	11.9	43.3
NL	12.9	42.3
+10	12.9	42.3

55.23

£ 48 St.

70

-10	13.0	42.2
N.L.	13.3	41.9
C	13.2	42.0
1/4	12.7	42.5
£	11.6	43.6
1/4	12.2	43.2
C	12.4	42.8
S.L.	12.2	43.0
+10	12.7	42.5

E 1/4

-10	13.7	41.5
S.L.	13.8	41.4
C	13.7	41.5
1/4	13.5	41.7
£	13.3	41.9
1/4	13.6	41.6
C	13.5	41.7
NL	13.0	42.2
+10	12.2	43.0

55.23

E Curb.

-10	11.3	43.9
NL	11.9	43.3
C	12.9	42.3
1/4	13.6	41.6
1/2	13.4	41.8
1/4	14.2	41.0
C	14.2	41.0
SL	14.7	40.5
+10	14.8	40.4

E. L. 42 St.

-10	14.2	41.0
SL	13.6	41.6
C	13.6	41.6
1/4	13.6	41.6
1/2	13.2	42.0
1/4	12.8	42.4
C	11.4	43.8
NL	11.0	44.2
+10	11.2	44.0

55.23

25'E 42 St.

71

-10	8.2	47.0
NL	8.6	46.6
C	10.1	45.1
1/4	10.6	44.6
1/2	11.2	44.0
1/4	11.0	44.2
C	10.3	44.9
SL	10.6	44.6
+10	11.4	43.8

50'E 42 St.

-10	5.3	49.9
SL	6.3	48.9
C	8.1	47.1
1/4	8.4	46.8
1/2	8.9	46.3
1/4	8.4	46.8
C	7.2	48.0
NL	6.7	48.5
+10	6.0	49.2

5523

75'E.

NL.	4.8	50.4
C	6.0	49.2
1/4	6.8	48.4
ϕ	6.4	48.8
1/4	5.1	50.1
C	3.9	51.3
S.L.	3.2	52.0

100'E.

SL.	2.0	53.2
C	2.3	52.9
1/4	3.4	51.8
ϕ	4.5	50.7
1/4	4.4	50.8
C	3.6	51.6
NL.	2.5	52.7

125'E.

NL.	1.8	53.4
C	2.6	52.6
1/4	3.2	52.0

5523

72

ϕ	3.1	52.1
1/4	2.6	52.6
C	2.5	52.7
SL	1.8	53.4

150'E.

SL.	2.5	52.7
C	3.1	52.1
1/4	3.6	51.6
ϕ	3.8	51.4
1/4	4.1	51.1
C	3.8	51.4
NL.	3.4	51.8

175'E.

NL.	5.1	50.1
C	4.7	50.5
1/4	5.2	50.0
ϕ	5.2	50.0
1/4	4.6	50.6
C	4.2	51.0
SL.	4.2	51.0

5523

200'E.

SL	5.3	49.9
C	5.7	49.5
1/4	7.0	48.2
ϕ	7.3	47.9
1/4	6.6	48.6
C	6.7	48.5
NL	7.7	47.5

225'E.

NL	10.0	45.2
C	10.7	44.5
1/4	11.3	43.9
ϕ	11.8	43.4
1/4	11.1	44.1
C	10.6	44.6
SL	10.6	44.6

250'E.

73

5523

T.P.	12.49	42.74
------	-------	-------

11.25 53.99

250'E.

SL	14.6	39.4
C	14.3	39.7
1/4	14.3	39.7
ϕ	14.0	40.0
1/4	13.2	40.8
C	12.5	41.5
NL	12.0	42.0

275'E.

NL	13.1	40.9
C	14.6	39.4
1/4	15.1	38.9
ϕ	15.5	38.5
1/4	16.0	38.0
C	16.3	37.7
SL	16.0	38.0

53.99.

300'E.

SL.	16.0	38.0
C	15.9	38.1
1/4	16.0	38.0
E	16.0	38.0
1/4	16.0	38.0
C	15.9	38.1
N.L.	15.8	38.2
-10	15.9	38.1

325'E.

-10	15.2	38.8
N.L.	15.5	38.5
C	15.4	38.6
1/4	15.3	38.7
E	15.1	38.9
1/4	15.5	38.5
C	14.3	39.7
SL.	14.4	39.6
+20	14.4	39.6

53.99

350'E.

74

-10	10.3	43.7
SL.	10.1	43.9
C	11.1	42.9
1/4	12.1	41.9
E	12.7	41.3
1/4	13.1	40.9
C	13.8	40.2
N.L.	13.5	40.5
+10	14.0	40.0

375'E.

-10	12.0	42.0
N.L.	11.0	43.0
C	8.8	45.2
1/4	7.2	46.8
E	6.1	47.9
1/4	4.2	49.8
C	3.5	50.5
SL.	2.2	51.8

53.99

408'E. = City Lim on N.L.

75

S.L.	0.3	53.7
C	0.3	53.7
1/4	0.4	53.6
1/2	0.9	53.1
3/4	1.2	52.8
C	1.9	52.1
N.L.	2.5	51.5

430'E. = C.L. on S.L.

N.L.	2.5	51.5
C.	1.8	52.2
1/4	0.9	53.1
1/2	0.4	53.6
3/4	+0.4	54.4
C.	+0.6	54.6
S.L.	+0.4	54.4

T.P.	1003	43.96
------	------	-------

4.09 48.05

Grat SL A City Lim.	4.5	43.6	43.6 - OK.
------------------------	-----	------	------------

76

Sta { 515.2 - N.L. 42 to City limits
 534.5 - S.L. 42 " "

18.5
 20.0
 36
 450

DISTANCES FROM CENTER OF ROADWAY FOR CROSS-SECTIONING.

ROADWAY 16 FEET WIDE. SIDE SLOPES 1½ TO 1.

FOR SINGLE TRACK EMBANKMENT.

	0	.1	.2	.3	.4	.5	.6	.7	.8	.9	
0	8.0	8.2	8.3	8.5	8.6	8.8	8.9	9.1	9.2	9.4	0
1	9.5	9.7	9.8	10.0	10.1	10.3	10.4	10.6	10.7	10.9	1
2	11.0	11.2	11.3	11.5	11.6	11.8	11.9	12.1	12.2	12.4	2
3	12.5	12.7	12.8	13.0	13.1	13.3	13.4	13.6	13.7	13.9	3
4	14.0	14.2	14.3	14.5	14.6	14.8	14.9	15.1	15.2	15.4	4
5	15.5	15.7	15.8	16.0	16.1	16.3	16.4	16.6	16.7	16.9	5
6	17.0	17.2	17.3	17.5	17.6	17.8	17.9	18.1	18.2	18.4	6
7	18.5	18.7	18.8	19.0	19.1	19.3	19.4	19.6	19.7	19.9	7
8	20.0	20.2	20.3	20.5	20.6	20.8	20.9	21.1	21.2	21.4	8
9	21.5	21.7	21.8	22.0	22.1	22.3	22.4	22.6	22.7	22.9	9
10	23.0	23.2	23.3	23.5	23.6	23.8	23.9	24.1	24.2	24.4	10
11	24.5	24.7	24.8	25.0	25.1	25.3	25.4	25.6	25.7	25.9	11
12	26.0	26.2	26.3	26.5	26.6	26.8	26.9	27.1	27.2	27.4	12
13	27.5	27.7	27.8	28.0	28.1	28.3	28.4	28.6	28.7	28.9	13
14	29.0	29.2	29.3	29.5	29.6	29.8	29.9	30.1	30.2	30.4	14
15	30.5	30.7	30.8	31.0	31.1	31.3	31.4	31.6	31.7	31.9	15
16	32.0	32.2	32.3	32.5	32.6	32.8	32.9	33.1	33.2	33.4	16
17	33.5	33.7	33.8	34.0	34.1	34.3	34.4	34.6	34.7	34.9	17
18	35.0	35.2	35.3	35.5	35.6	35.8	35.9	36.1	36.2	36.4	18
19	36.5	36.7	36.8	37.0	37.1	37.3	37.4	37.6	37.7	37.9	19
20	38.0	38.2	38.3	38.5	38.6	38.8	38.9	39.1	39.2	39.4	20
21	39.5	39.7	39.8	40.0	40.1	40.3	40.4	40.6	40.7	40.9	21
22	41.0	41.2	41.3	41.5	41.6	41.8	41.9	42.1	42.2	42.4	22
23	42.5	42.7	42.8	43.0	43.1	43.3	43.4	43.6	43.7	43.9	23
24	44.0	44.2	44.3	44.5	44.6	44.8	44.9	45.1	45.2	45.4	24
25	45.5	45.7	45.8	46.0	46.1	46.3	46.4	46.6	46.7	46.9	25
26	47.0	47.2	47.3	47.5	47.6	47.8	47.9	48.1	48.2	48.4	26
27	48.5	48.7	48.8	49.0	49.1	49.3	49.4	49.6	49.7	49.9	27
28	50.0	50.2	50.3	50.5	50.6	50.8	50.9	51.1	51.2	51.4	28
29	51.5	51.7	51.8	52.0	52.1	52.3	52.4	52.6	52.7	52.9	29
30	53.0	53.2	53.3	53.5	53.6	53.8	53.9	54.1	54.2	54.4	30
31	54.5	54.7	54.8	55.0	55.1	55.3	55.4	55.6	55.7	55.9	31
32	56.0	56.2	56.3	56.5	56.6	56.8	56.9	57.1	57.2	57.4	32
33	57.5	57.7	57.8	58.0	58.1	58.3	58.4	58.6	58.7	58.9	33
34	59.0	59.2	59.3	59.5	59.6	59.8	59.9	60.1	60.2	60.4	34
35	60.5	60.7	60.8	61.0	61.1	61.3	61.4	61.6	61.7	61.9	35
36	62.0	62.2	62.3	62.5	62.6	62.8	62.9	63.1	63.2	63.4	36
37	63.5	63.7	63.8	64.0	64.1	64.3	64.4	64.6	64.7	64.9	37
38	65.0	65.2	65.3	65.5	65.6	65.8	65.9	66.1	66.2	66.4	38
39	66.5	66.7	66.8	67.0	67.1	67.3	67.4	67.6	67.7	67.9	39
40	68.0	68.2	68.3	68.5	68.6	68.8	68.9	69.1	69.2	69.4	40

Calculated by F. E. Paradis. C. E.

