

882

882

F. B.

FIELD BOOK.

No. 400

MICROFILMED

DEC 15 1964

X-section Pennsylvania Ave E.L. 10th St 5 1/2 Double
 To Mt. Park Blvd Penn. 80 miles 14 1/2 miles 13 1/2 1/3 4 1/2
 Lane
 Turn
 Moore

B.M. curb stake N.W. Robinson Vermont. 287.00

B.M. 3.03 290.03

T.P. 1.00 283.00 8.03 282.00

T.P. 0.45 270.41 13.04 269.96

E.L. 10th St

N 11.8 258.6

T.P. 0.28 257.82 12.87 257.54

crk 1.4 256.4

" 5.3 252.5

M 9.3 248.5

" 13.0 244.8

crk 15.9 241.9

S 19.9 237.9

+14 23.0 234.8

+30 16.1 246.7

0+25 E. 14.8 243.0

-30 20.2 237.6

S 21.2 236.6

crk 18.1 239.7

M. 14.7 243.1

" 10.7 247.1

crk 5.7 252.1

N 0.8 257.0

+15 +4.7 262.5

Grade Book 78.

-15 0+75 +1.8 259.6

N 3.3 254.5

crk 7.5 250.3

" 12.0 245.8

M 18.4 239.4

" 15.1 242.7

crk 11.5 246.3

S 6.1 251.7

+15 2.6 255.2

1+25

S +4.4 262.2

crk 3.3 254.5

" 7.2 250.6

M 12.1 245.7

+9 14.3 243.5

" 13.0 244.8

crk 10.1 247.7

N 7.5 250.2

T.P. 12.15 268.27 1.10 256.72

268.87

1775

- 15	16	267.3
X	6.8	262.1
Calc	11.7	257.2
1/9	14.2	254.7
M	18.1	250.8
+ 1/10	24.4	247.5
Calc	16.8	252.1
S	10.3	258.6
+ 15	4.8	264.1

2425

- 20	5.2	263.7
S	14.2	254.7
+ 10	17.5	251.4
Calc	18.3	252.6
1/4	11.7	257.2
M	7.2	261.7
1/4	2.6	266.3
Calc	+ 2.4	271.3
+ 7	+ 6.5	275.4
N	+ 7.0	275.9

2

2450

N	+ 9.3	278.2
Calc	+ 8.2	277.1
+ 4	+ 8.6	277.5
1/4	+ 2.6	271.5
M	1.8	267.1
1/4	7.9	261.0
Calc	13.0	255.9
+ 7	15.1	253.8
S	13.7	255.2
+ 10	5.4	263.5

340

- 20	0.8	268.1
S	7.9	261.0
+ 9	11.7	257.2
Calc	9.8	259.1
T.P.	1.89	266.98
1/4	15.4	264.6
M	10.1	269.9
1/4	4.6	275.4
+ 7	1.9	278.1
Calc	2.1	277.9
N	1.5	278.5

1297

279.95

27995

3+20

N	2.2	277.8
erb	2.4	277.5
"	8.1	271.9
M	12.1	267.9
"	16.4	263.6
erb	21.2	258.9
S	15.6	264.4
+20	8.1	271.9

3+50

-20	5.2	274.8
S	11.0	269.0
erb	15.8	264.2
+10	18.2	261.8
"	18.8	262.2
M	14.5	265.5
"	11.4	268.6
+7	9.4	270.0
erb	5.2	274.8
+2	4.1	275.9
N	3.8	276.2

3

4+0

N	3.9	276.1
erb	4.9	275.6
"	7.5	272.5
M	10.6	269.4
"	12.8	267.2
erb	12.1	267.9
S	7.4	272.6
+15	3.3	276.9

4+25

-15	4.0	276.0
S	6.5	273.5
erb	5.9	274.1
"	6.4	273.6
M	6.4	273.6
"	6.5	273.5
erb	4.5	275.5
N	3.4	276.6

279.95

4150

N		1.0	279.0
erb		1.3	278.7
"		0.4	279.6
M		+0.7	281.7
"		+2.4	282.4
erb		0.1	279.9
S		1.7	278.3
+15		2.4	277.6

T.P.	13.18	292.34	0.79	279.16
------	-------	--------	------	--------

4180: m. h. Vermont 90 m. h. 0.000000

S		10.9	281.4
erb		11.1	280.2
"		10.8	280.5
M		10.5	280.9
"		10.3	281.0
erb		10.2	281.1
N		8.8	283.5

N. 2000

N		9.1	283.2
erb		9.5	282.9
"		9.7	282.6
M		10.0	282.3
"		10.4	281.9
erb		10.6	281.7
S		10.5	281.8

N "A

S		10.5	281.8
erb		10.3	282.0
"		9.8	282.5
M		9.2	283.1
"		9.0	283.3
erb		8.8	283.5
N		8.9	283.9

Center

N		8.0	284.3
erb		8.2	284.1
"		8.3	284.0
M		8.6	283.7
"		8.6	283.7
erb		8.9	283.4
S		9.0	283.3

1973

5

E^{1/4}

0.50 E

S	8.9	283.4
Wh	8.8	283.5
1/4	8.6	283.7
M	8.5	283.8
1/4	8.3	284.0
Wh	8.1	284.2
N	8.1	284.2

N	5.7	286.6
Wh	6.3	286.0
1/4	6.5	285.8
M	6.4	285.9
1/4	6.6	285.7
Wh	6.8	285.5
S	6.6	285.7

F curb

1.0

N	8.2	284.1
Wh	8.4	283.9
1/4	8.5	283.8
M	8.7	283.6
1/4	8.9	283.4
Wh	9.1	283.2
S	8.7	283.6

S	5.9	286.4
Wh	5.8	286.5
1/4	5.3	287.0
M	5.5	286.8
1/4	5.5	286.8
Wh	5.2	287.1
N	4.6	287.7

F. L. Vermont

1.50

S	8.4	283.9
Wh	8.4	283.9
1/4	8.1	284.2
M	7.8	284.5
1/4	7.4	284.9
Wh	6.8	285.5
N	6.5	285.8

N	4.2	288.1
Wh	4.4	287.9
1/4	4.6	287.7
M	4.7	287.6
1/4	4.7	287.6
Wh	4.6	287.7
S	4.8	287.5

210

S	4.1	288.2
ck	4.2	288.1
"	3.9	288.4
M	4.0	288.3
"	3.8	288.5
ck	3.7	288.6
N	3.4	288.9

2150

N	3.0	289.3
ck	3.5	288.8
"	3.2	288.6
M	3.8	288.5
"	3.7	288.6
ck	3.8	288.5
S	3.8	288.5

310

S	3.0	289.3
ck	3.3	289.0
"	3.3	289.0
M	3.2	289.1
"	2.9	289.4
ck	2.8	289.5
N	2.7	289.5

3150

N	4.3	288.0
ck	4.1	288.2
"	4.2	288.1
M	3.5	288.8
"	3.4	288.9
ck	3.4	288.9
S	3.4	288.9

3175

S	4.5	287.8
ck	4.7	287.6
"	5.2	287.0
M	5.5	286.8
"	6.5	286.8
ck	6.0	286.3
N	5.7	286.6

410

N	6.4	285.9
ck	8.6	283.7
"	10.0	282.3
M	13.5	278.8
"	13.8	278.5
"	12.6	279.7
ck	14.0	281.3
S	9.5	282.8

292.3

-15	14.8	277.5
5	17.0	275.3
+3	19.8	272.5
erb	19.4	272.9
"4	14.5	277.9
N	11.8	280.5
"4	7.3	285.0
erb	6.8	285.5
N	4.8	287.5

4450

N	4.8	287.5
erb	5.6	286.7
"4	6.6	285.7
N	11.3	281.0
"4	14.0	278.3
erb	16.7	275.6
5	21.2	270.5
+20	24.7	267.6
5	20.5	271.5

4775

-20	23.2	269.1
5	17.4	274.9
erb	16.8	275.5
"4	11.2	281.1
N	6.9	285.4
"4	5.5	286.8
erb	5.1	287.2
N	4.5	287.8

510

N	3.8	288.5
erb	4.1	288.2
"4	4.6	287.7
N	5.2	287.1
"4	6.3	286.0
erb	6.6	285.7
5	7.8	284.5
+15	12.5	279.8

5750

5	3.9	288.4
erb	3.9	288.9
"4	3.1	289.2
N	3.2	289.1
"4	3.1	289.2
erb	3.2	289.1
N	3.1	289.2

640 W.L. Richmond 30 10 11 21 15

N	1.2	290.5
erb	2.2	290.1
"4	2.0	290.3
N	2.0	290.3
"4	2.0	290.3
erb	1.7	290.6
5	1.9	290.4

7

292.34

W. curb

S	1.4	290.9
wh	1.5	291.0
"4	1.2	291.1
M	1.4	290.9
"4	1.6	290.7
wh	1.5	290.8
N	1.7	290.6

W "4

N	1.6	290.7
wh	1.2	291.1
"4	0.9	291.4
M	0.7	291.6
"4	0.9	291.4
wh	1.1	291.2
S	1.3	291.0

center

S	1.0	291.3
wh	1.2	291.3
"4	0.6	291.7
M	0.8	291.5
"4	0.8	291.5
wh	1.0	291.3
N	1.4	290.9

E "4

N	0.9	291.4
wh	0.5	291.8
"4	0.6	291.7
M	0.4	291.9
"4	0.0	292.3
wh	0.5	291.8
S	1.0	291.3
T.P.	3.70	291.18

294.88

E CURB

S	3.6	291.3
wh	3.0	291.9
"4	2.8	292.1
M	2.7	292.2
"4	2.8	292.1
wh	3.0	291.9
N	2.8	292.1

E.L. Richmond

N	2.6	292.3
wh	2.7	292.2
"4	2.6	292.3
M	2.6	292.3
"4	2.8	292.1
wh	3.3	291.6
S	3.8	291.1

29A.88

0250 F

S	3.4	291.5
ck	2.9	292.0
"	2.6	292.3
M	2.5	292.4
"	2.4	292.5
ck	2.5	292.4
N	2.2	292.7

140

N	2.7	292.2
ck	2.8	292.1
"	3.5	291.4
M	3.8	291.1
"	4.2	290.7
ck	4.8	290.1
S	5.2	289.7

1750

S	5.2	289.7
ck	5.2	289.7
"	4.8	290.1
M	4.6	290.3
"	4.1	290.8
ck	3.5	291.4
N	3.3	291.5

240

N	3.8	291.1
ck	3.8	291.1
"	3.8	291.1
M	3.8	291.1
"	3.9	291.0
ck	4.0	290.9
S	4.1	290.8

2450 = m.l. Albert St for X-section see book 877, page 2

S	6.0	288.4
ck	7.2	287.7
"	7.7	287.2
M	8.5	286.4
"	8.3	286.6
ck	10.5	284.4
N	12.8	282.1

T.P.	6.09	282.15	12.80	282.08
T.P.	1.65	270.79	13.01	269.44

270.79

E.L.H. Bert 5+

N	20.0	250.8
wh	18.3	252.5
1/4	15.8	255.0
M	14.9	255.9
1/4	14.4	256.4
wh	12.9	257.9
S	11.0	259.8
0+25		
-30	19.8	251.3
S	20.6	250.2
wh	21.8	249.0
1/4	23.0	247.8
M	23.6	247.2
1/4	24.6	246.2
wh	23.2	247.6
N	20.2	250.6
+25	15.2	255.6
0+50		
-15	7.7	253.1
N	11.5	257.3
wh	14.9	255.9
1/4	16.4	254.4
M	18.8	252.0
1/4	20.7	250.1
wh	22.8	248.0
S	25.6	245.2
+15	27.0	243.5
+40	25.4	245.4

10

1+0

-40	27.6	243.2
S	27.0	243.8
+10	26.8	244.0
wh	24.7	246.1
1/4	20.6	250.2
M	13.4	257.4
1/4	6.8	264.0
wh	0.7	270.1
N	+5.7	276.5
1+25		
N	+4.3	275.1
wh	2.9	267.9
1/4	9.6	261.2
M	15.7	255.1
1/4	21.5	249.3
wh	27.2	243.6
S	26.2	244.6
+40	24.2	246.6
1+75		
-40	16.2	254.6
-15	26.8	244.0
S	24.8	246.0
wh	23.5	247.3
1/4	21.4	249.4
M	19.5	251.3
1/4	15.9	254.9
wh	12.0	258.8
N	6.6	264.2
+10	2.2	268.6

270.79

2+0 = m. L. Herbert st for section see book 876

N	11.1	259.7
crk	15.3	255.3
1/4	18.2	252.6
M	20.5	250.3
1/4	21.8	249.0
crk	23.2	247.6
S	25.1	245.7

E. L. Herbert

S	7.5	263.3
crk	13.5	257.3
1/4	17.7	253.1
M	20.2	250.6
1/4	19.7	251.1
crk	18.9	251.9
N	18.5	252.3

0+25 E

-40	20.7	250.1
N	15.5	255.3
crk	14.2	256.6
1/4	14.5	256.3
M	15.6	255.2
1/4	17.8	253.0
crk	15.2	255.6
S	9.2	261.6
+15	3.1	267.7

11

0+50

-25	5.8	265.0
S	11.6	259.2
crk	15.0	255.8
1/4	12.1	258.4
M	9.4	261.4
1/4	7.0	263.8
crk	5.2	265.6
N	6.1	264.7
+30	15.6	255.2

T.P. 12.7 282.11 0.85 269.94

0+75

-30	10.1	262.0
N	8.6	265.5
crk	8.1	276.0
1/4	10.3	271.8
M	14.0	268.1
1/4	17.6	264.5
crk	21.4	260.7
S	24.6	257.5
+50	17.7	265.4

282.11

1+0

= 35			19.0	263.1
5			24.2	257.9
			18.6	263.5
Crk			14.9	267.2
14			11.5	270.6
11			6.6	276.5
14			1.0	281.1
Crk			+1.5	283.6
N			1.3	280.8
+20			8.5	273.6
T.P.	12.77	294.58	0.30	281.81
		1+25		
N			7.7	286.9
Crk			6.5	288.1
14			7.5	287.1
11			12.1	283.5
14			17.2	277.4
Crk			21.6	273.0
5			25.2	269.4
+30			31.3	263.3

12

1+50

-20			22.2	272.4
5			15.4	279.2
Crk			11.9	282.7
14			9.6	285.0
11			4.9	289.7
14			2.9	291.7
Crk			2.9	291.7
N			3.8	290.8
		1+75		
N			0.9	293.7
Crk			0.9	293.7
14			1.6	293.0
11			2.0	292.6
14			2.3	292.3
Crk			3.4	291.2
51			4.1	290.5
T.P.	10.30	303.98	0.95	293.63
		2+00		
5			11.1	292.9
Crk			10.1	293.9
14			9.9	294.1
11			9.5	294.5
14			8.8	295.2
Crk			8.8	295.2
N			8.7	295.3

30398

2150

N	7.1	296.9
erb	7.4	296.6
"4	6.6	297.4
M	6.4	297.6
"4	7.4	296.6
erb	8.1	295.9
S	8.2	295.8

310

S	7.0	297.0
erb	6.3	297.7
"4	6.8	297.2
M	6.0	298.0
"4	6.5	297.5
erb	6.4	297.6
N	6.3	297.7

3150

N	7.0	297.0
erb	6.7	297.3
"4	6.4	297.6
M	6.0	298.0
"4	6.9	297.1
erb	6.9	297.1
S	6.5	297.5

16

410

S	7.4	296.6
erb	7.3	296.7
"4	7.2	296.8
M	7.2	296.8
"4	7.7	296.3
erb	7.5	296.5
N	7.3	296.7

4150

N	6.2	297.8
erb	5.9	298.1
"4	5.3	298.7
M	5.2	298.8
"4	5.4	296.6
erb	5.5	298.5
S	4.7	299.3

4165 = M.L. Berk Blvd on S

S	4.0	300.0
erb	4.5	299.5
"4	4.5	299.5
M	4.6	299.4
"4	4.7	299.3
erb	5.0	299.0
N	5.2	298.8

303.98

14

4165 on 5 85+02 on N = W.L. Park Blvd.

N	3.2	300.8
ck	4.2	299.8
14	4.1	299.9
M	4.3	299.7
14	4.3	299.7
ck	4.1	299.9
5	4.0	300.0

Xsection of Hickory St. 50' WIDE
 from the 10' WALKS
 West line of WITHERBY
 To the East line of TRIAS.

16

BM 1.33 266.46 265.13 30' N pole
50' E. of NE
Cor. With 45' N

T.P. 0.16 254.34 12.28 254.18 cl

WEST LINE WITHERBY ST

N 3.0 C

cl 3.1 +5

1/4 3.3 1/4

C 3.2 cl

1/4 3.2 S

cl 3.5

S 3.8 S

25' WEST

S 5.8 cl

+3 5.9 +2

+8 7.4 1/4

cl 7.8 C

+3 6.3 1/4

1/4 5.9 cl

C 5.8 N

1/4 5.5 T.P.

cl 5.1

N 5.0

50' WEST

7.9

8.3

8.2

9.0

10.7

12.6

10.1

9.3

75' WEST

13.1

15.0

17.7

15.2

13.5

11.2

10.9

11.2

12.4

0.28 242.55

12.07

242.27

349.55

100' WEST

N	7.6
+8	10.3
cb	9.1
1/4	8.5
c	9.2
1/4	9.5
+4	10.6
cb	12.9
+6	8.7
S	7.6

130' WEST

-10	12.8
S	14.6
cb	14.2
1/4	12.1
c	12.8
1/4	10.4
cb	8.2
N	5.4

17

140' WEST

N	7.8
+7	9.6
cb	12.1
1/4	10.8
c	9.1
1/4	9.4
cb	10.7
S	13.7

160' WEST

S	9.7
cb	7.5
1/4	6.6
c	6.2
1/4	5.8
cb	5.4
N	8.1
+10	7.9
+15	5.0

180' WEST

N	0.8
cb	1.1
1/4	0.7
c	1.1
1/4	1.9
cb	2.9

242.55

S		4.8	
T.P.	10.68	852.42	0.81
			241.74

300' WEST

S		11.0
cb		9.7
1/4		8.9
c		8.2
1/4		7.5
cb		7.3
N		7.9

220' WEST

N		6.7
cb		7.1
1/4		7.0
c		7.2
1/4		7.5
cb		8.1
S		9.1

250' WEST

S		6.4
cb		6.1
1/4		5.6
c		5.2
1/4		5.2
cb		5.1
N		4.9

18

300' WEST - E.L. HORTENSIA St (50' WIDE)

N		1.8
cb		1.7
1/4		1.8
c		3.0
1/4		2.3
cb		2.2
S		2.8

EAST CURB

S		2.0
cb		1.6
1/4		1.7
c		2.2
1/4		2.7
cb		2.2
N		2.0

EAST QUARTER

N		3.2
cb		2.9
1/4		2.8
c		1.8
1/4		1.6
cb		1.6
S		1.4

252.42

CENTER

S	0.9
cb	1.3
1/4	1.0
C	1.1
1/4	1.3
cb	2.0
N	3.0

WEST QUARTER

N	3.0			
cb	1.8			
1/4	1.1			
C	0.5			
1/4	0.3			
cb	0.3			
S	0.1			
T.P.	10.90	262.76	0.56	251.86

WEST CURB

S	10.1
cb	10.0
1/4	10.2
C	10.6
1/4	11.2
cb	12.3
N	13.1

19

WEST LINE HORTENSIA

N	12.9	use for back section
cb	8.7	- forward ✓
1/4	11.8	use for back s ✓
C	8.9	- forward ✓
1/4	10.8	- back ✓
cb	9.3	- forward ✓
S	9.9	
1/4	9.6	
cb	9.5	
S	9.5	

50' WEST

S	6.6
cb	6.6
1/4	6.4
C	6.1
1/4	5.8
cb	5.6
N	5.3

100' WEST

N	1.7			
cb	1.8			
1/4	2.2			
C	2.5			
1/4	2.8			
cb	2.7			
S	3.0			
T.P.	7.50	267.95	2.31	260.45

267.95

150' WEST

S	5.0
ct	5.0
1/4	5.0
c	4.8
1/4	4.8
ct	4.3
N	4.3

200' WEST

N	3.6
ct	3.8
1/4	4.1
c	4.3
1/6	4.4
ct	4.5
S	4.6

250' WEST

S	4.9
ct	4.7
1/4	4.7
c	4.5
1/4	4.2
ct	4.1
N	3.8

20

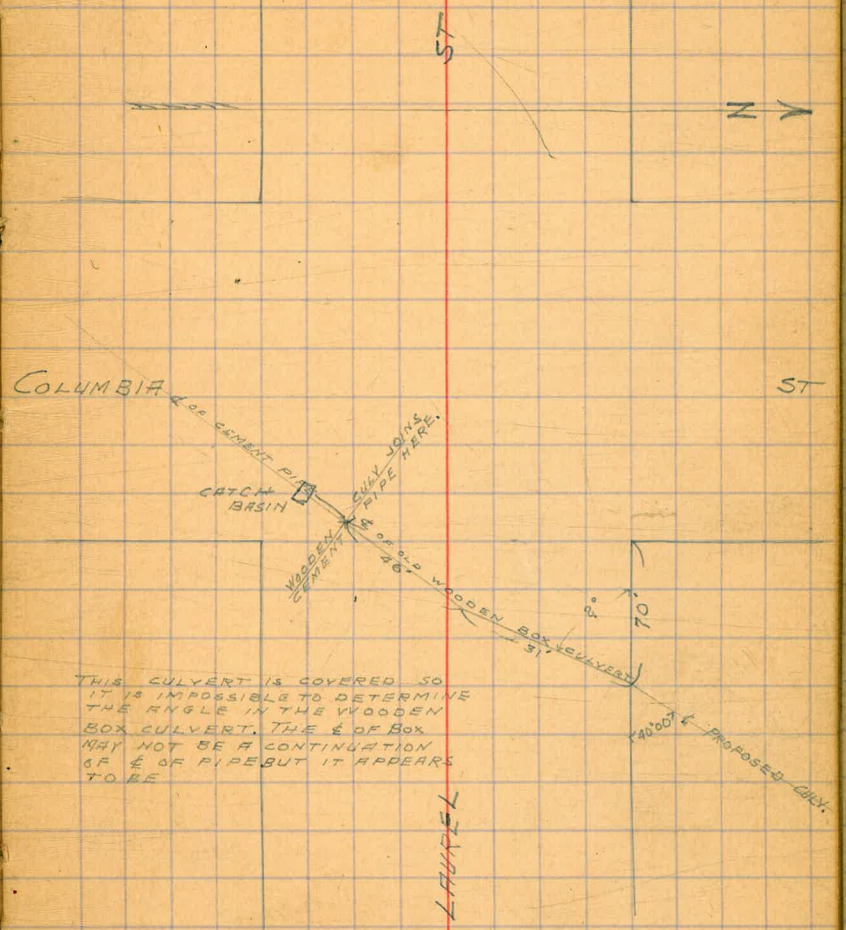
300' WEST = E.L. TRIHS

N			3.9	
ct			4.2	
1/4			4.6	
c			4.8	
1/4			4.8	
ct			5.0	
S			5.2	
T.P.	5.70	266.86	6.79	261.16
B.M.			1.75	265.11

4/13
 Gregory
 Chambers
 Moore

LOCATION + LEVELS, CULVERT
 ON LAUREL ST CULVERT
 BETWEEN COLUMBIA AND STATE

B.M.	1.90	58.23	56.33	Mon. NE LAUREL + INDIA
	0.16	45.50	12.89	45.34
	3.01	38.62	9.89	35.61
END OF WOODEN BOX		11.4	27.2	
25' No.		11.1	27.5	
50' No.		10.7	27.9	



THIS CULVERT IS COVERED SO
 IT IS IMPOSSIBLE TO DETERMINE
 THE ANGLE IN THE WOODEN
 BOX CULVERT. THE E OF BOX
 MAY NOT BE A CONTINUATION
 OF E OF PIPE BUT IT APPEARS
 TO BE

5/15/3
Gregory
Shrubster
Edwards

Cross Section of Laurel St (20' WIDE
10' WALKS
18' 1/2'S)
From the East Line of India
to the West Line of Brant

NO.
58.4

22

BM	R. 12	58.45	56.33	NE INDIA + LAUREL	ct	15.5	42.9
EAST LINE INDIA ST					S	17.4	41.0
50' E							
N		1.3	57.1		S	17.2	41.2
ct.		2.4	56.0		ct.	16.6	41.8
1/4		3.2	55.2		1/4	15.1	43.3
C		3.4	55.0		C	14.4	44.0
1/4		3.5	54.9		1/4	12.2	46.2
ct		3.5	54.9		ct	9.5	48.9
S		4.0	54.4		N	9.1	49.3
15' EAST							
75' E							
S		14.0	44.4		N	11.7	46.7
ct.		11.3	47.1		ct.	11.7	46.7
1/4		11.6	46.8		1/4	14.1	44.3
C		9.3	49.1		C	15.9	42.5
1/4		4.9	53.5		1/4	16.5	41.9
ct		5.3	53.1		ct	17.4	41.0
15		4.9	53.5		S	17.4	41.0
N		0.1	58.3				
25' EAST.							
100' E							
N		2.1	56.3		S	18.0	40.4
1/4		6.1	52.3		ct.	16.6	41.8
ct		6.4	52.0		1/4	16.9	41.5
1/4		6.9	51.5		C	16.1	42.3
C		12.1	46.3		1/4	14.8	43.6
1/4		13.0	45.4		ct.	13.2	45.2
					N	12.9	45.5

59.45

47.8

49.

47.8

23

T.P. 1.68 47.76 12.37 46.08

125' EAST

N		2.5	45.3
cb		3.7	44.1
1/4		4.3	43.5
c		4.8	43.0
1/4		5.5	42.3
cb		7.5	40.3
S		10.4	37.4

150' E

S		9.5	38.3
cb		6.4	41.4
1/4		6.2	41.6
c		5.7	42.1
1/4		5.5	42.3
cb		4.2	43.6
N		2.9	44.9

175' E

N		3.2	44.6
cb		4.1	43.7
1/4		6.1	41.7
c		7.0	40.8
1/4		7.0	40.8
cb		5.4	42.4
S		6.5	41.3

100' E = W.L. COLUMBIA ST (GRADED) TS

S		8.4	39.4
cb		8.4	39.4
1/4		8.7	39.1
c		8.3	39.5
1/4		7.9	39.9
cb		6.8	41.0
		4.8	43.0
		6.7	41.7
N		3.1	44.7

EAST LINE COLUMBIA ST

N		7.4	40.4	
cb		8.2	39.6	
1/4		8.6	39.2	
c		9.6	38.2	
1/4		10.2	37.6	
cb		10.0	37.8	
S		9.3	38.5	
T.P.	7.04	45.26	9.54	38.22

25' E

S		10.1	35.2
cb		10.3	35.0
1/4		10.3	35.0
c		9.9	35.4
1/4		9.3	36.0
cb		11.4	33.9
N		6.1	39.2

45.26

45.3

50' EAST

N	9.7	35.6
cb	11.2	34.1
1/4	11.0	34.3
c	10.7	34.6
1/4	10.8	34.5
cb	10.5	34.8
S	10.5	34.8

75' EAST

S	7.6	37.7
cb	9.3	36.0
1/4	9.5	35.8
c	9.7	35.6
1/4	10.1	35.2
cb	11.0	34.3
N	12.8	32.5

85' E

N	9.3	36.0
cb	9.0	36.3
1/4	8.7	36.6
c	8.5	36.8
+10	8.2	37.1
1/4	6.0	39.3
T.P.	10.36	54.73
cb	0.89	44.37
	9.7	45.0
S	7.2	47.5

49
54.7

24

100' EAST

S	8.2	46.5
cb	9.2	45.5
1/4	9.3	45.4
1/4	12.5	42.2
+8	17.0	37.7
c	17.1	37.6
1/4	17.4	37.3
cb	18.0	36.7
N	18.8	41.9

125' E

N	16.0	38.7
cb	14.0	40.7
1/4	13.1	41.6
c	12.1	42.6
1/4	10.0	44.7
cb	8.1	46.6

T.P.	8.76	62.83	0.66	54.07
S			7.5	55.3

150' E

S	1.7	61.1
cb	9.0	53.8
1/4	8.2	54.6
c	9.8	53.0
1/4	13.5	49.3
cb	15.4	47.4
N	16.7	46.1

6283

81.51

25

175' EAST

N			9.1	53.7
cb			6.8	56.0
1/4			6.0	56.8
C			5.0	57.8
T.P.	13.00	74.54	1.29	61.54
1/4			13.7	60.8
cb			11.8	62.7
S			9.4	65.1

300' E. = W.L. STATE ST (75' WIDE)
(12' WALKS)

S			1.6	72.9
cb			6.2	68.3
1/4			9.1	65.4
C			10.9	63.6
1/4			13.2	61.3
cb			14.1	60.4
N			15.6	58.9
T.P.	12.55	74.9 74.86	12.23	62.31

WEST CURB

N			14.4	60.5
cb			11.7	63.2
1/4			9.6	65.3
C			7.6	67.3
T.P.	12.58	81.51	5.93	68.93
1/4			11.6	69.9
cb			10.6	70.9

S.

S

cb

1/4

C

1/4

cb

N

N

cb

1/4

C

1/4

cb

S

S

cb

1/4

C

1/4

cb

N

WEST 1/4

CENTER

EAST 1/4

6.5 75.0

6.0 75.5

8.0 73.5

8.0 73.5

11.1 70.4

12.8 68.7

16.2 65.3

16.8 64.7

15.0 66.5

10.2 69.3

11.5 70.0

8.0 73.5

6.7 74.8

5.8 75.7

5.2 76.3

4.7 76.8

5.4 76.1

6.5 75.0

7.3 74.2

7.5 74.0

9.5 72.0

12.1 69.4

8151

94.00

26

EAST CURB

N	11.4	70.1
cb	9.2	72.3
1/4	8.3	73.2
C	6.6	74.9
1/4	5.3	76.2
cb	5.3	76.2
S	4.8	76.7

50' EAST

S	1.5	92.5
cb	3.6	90.4
1/4	4.4	89.6
C	4.7	89.3
1/4	6.1	87.9
cb	8.4	85.6
N	10.1	83.9

EAST LINE STATE ST

S	1.3	80.2
cb	2.7	78.8
1/4	3.9	78.2
C	2.4	79.1
1/4	3.3	78.2
cb	5.3	76.2
N	7.6	73.9

75' EAST

N	5.0	89.0		
cb	3.4	90.6		
1/4	2.5	91.5		
C	1.0	93.0		
T.P.	12.95	106.82	0.13	93.87
1/4			13.0	93.8
cb			11.4	95.4
S			10.3	96.5

25' EAST

N	2.5	79.0		
cb	2.6	78.9		
T.P.	12.60	94.00	0.11	81.40
1/4			11.0	83.0
C			8.8	85.2
1/4			7.6	86.4
cb			7.2	86.8
S			6.5	87.5

100' EAST

S	4.9	101.9
cb	6.5	100.3
1/4	7.6	99.2
C	9.5	98.3
1/4	9.9	96.9
cb	11.3	95.5
N	12.6	94.2

106.82

131.0

27

125' EAST

200' E - W.L. UNION ST { 75' WIDE
12' WALKS

N		8.0	98.8
cb		6.3	100.5
1/2		4.6	102.2
c		3.1	103.7
1/4		2.5	104.3
cb		1.5	105.3
S		0.8	106.0
T.P.	13.13	119.47	0.48

106.34

150' EAST

W. CURB

S		8.0	111.5
cb		8.5	111.0
1/4		9.0	110.5
c		10.6	108.9
1/2		11.4	108.1
cb		12.5	107.0
N		14.8	104.7

175' EAST

W. 1/4

N		8.9	110.6
cb		7.3	112.2
1/2		6.4	113.1
c		5.3	114.2
1/4		4.6	115.0
cb		4.1	115.4
S		3.5	116.0

T.P. 11.89 131.02 0.34 119.13

10.9 120.1

11.7 119.3

11.5 119.5

11.2 119.8

11.5 119.5

12.9 118.1

14.6 116.4

11.8 119.2

11.5 119.5

11.3 119.7

11.0 120.0

11.3 119.7

11.6 119.4

11.8 119.2

10.9 120.1

11.0 120.0

10.9 120.1

10.6 120.4

10.7 120.3

11.0 120.0

10.8 120.2

131.02

CENTER

N	9.8	121.2
cb	10.3	120.7
1/4	10.1	120.9
c	10.0	121.0
1/4	10.1	120.9
cb	10.1	120.9
S	10.0	121.0

EAST 1/2

S	9.8	121.2
cb	10.0	121.0
1/4	9.8	121.2
c	9.7	121.3
1/4	9.9	121.1
cb	10.1	120.9
N	9.7	121.3

EAST CURB

N	9.2	121.8
cb	9.8	121.2
1/4	9.4	121.6
c	9.2	121.8
1/4	9.4	121.6
S	9.7	121.3
S	9.8	121.2

131.0

28

EAST LINE UNION ST.

S	8.6	122.4
cb	9.6	121.4
1/4	9.2	121.8
c	8.9	122.1
1/4	9.3	121.7
cb	9.5	121.5
N	8.7	122.3

TP

12.67

135.03

8.66

122.36

3' EAST

N	7.3	127.7
TR	11.8	123.2
cb	13.4	121.6
1/4	13.3	121.7
c	12.9	122.1
1/4	13.4	121.6
cb	13.6	121.4
TR	12.5	122.5
S	4.4	130.6

25' E.

S	2.1	132.9
TR	1.8	133.2
cb	12.4	122.6
1/4	12.2	122.8
c	11.9	123.1
1/4	12.1	122.9

135.03

N⁹
145.7

29

cb			11.3	123.7
+5			12.4	122.6
+9			1.2	133.8
N			2.4	132.6

31' EAST

N			0.9	134.1
T.P.	11.96	145.66	1.33	133.70
cb			9.5	136.2
+6			9.5	136.2
1/4			12.7	133.0
c			13.6	132.1
1/4			11.0	134.7
cb			11.4	134.3
S			12.2	133.5

42' EAST

S			11.0	134.7
cb			9.9	133.8
1/2			9.5	136.2
c			8.8	136.9
1/4			7.2	138.5
cb			7.9	137.8
N			9.0	136.7

50' EAST

N			8.3	137.4
cb			7.3	138.4
1/4			7.2	138.5

c			8.0	137.7
1/4			8.6	137.1
cb			9.1	136.6
S			10.3	135.4

100' EAST

S			6.0	139.7
cb			4.3	141.4
1/4			3.2	142.5
c			2.2	143.5
1/4			1.2	144.5
cb			0.7	145.0
N			0.4	145.3
T.P.	10.29	155.54	0.41	145.25

150' EAST

N			7.0	148.5
cb			7.0	148.5
1/4			7.3	148.2
c			7.8	147.7
1/4			7.8	145.7
cb			10.0	45.5
S			11.6	143.9

155.54

75 STREET
12 WALKS
200 EAST = W.L. HORTON AVE (see sketch)
(next page)

S	9.7	145.8
cb	8.8	146.7
1/4	6.6	148.9
C	5.3	150.2
1/4	4.1	151.4
cb	3.5	152.0
N	3.0	152.5

WEST CURB = SEC A

N	2.4	153.1
cb	3.0	152.5
1/4	3.7	151.8
C	4.8	150.7
1/4	6.4	149.1
cb	8.5	147.0
S	9.4	146.1

WEST 1/4 = SEC B

S	8.8	146.7
cb	8.0	147.5
1/4	6.8	149.5
C	4.6	150.9
1/4	3.6	151.9
cb	2.6	152.9
N	1.8	153.7

155.5

30

CENTER = Sec C (extra long)

N	1.2	154.3
cb	2.3	153.2
1/4	3.5	152.0
C	4.6	150.9
1/4	6.5	149.0
cb	7.5	148.0
S	8.5	147.0

SEC D = W. LINE CORLEWST

PO WIDE
14 WALKS

S	9.0	146.5
cb	7.6	147.9
1/4	6.4	149.1
C	4.7	150.8
1/4	3.5	152.0
cb	2.3	153.2
N	1.2	154.3

WEST CURB

N	1.2	154.3
cb	2.3	153.2
1/4	3.5	152.0
C	4.7	150.8
1/4	6.3	149.2
cb	7.5	148.0
S	9.5	146.0

155.54

EAST CURB

N	1.5	154.0
cb	2.8	152.7
1/4	4.5	151.0
C	6.3	149.2
1/4	8.7	146.8
cb	10.4	145.1
S	11.1	144.4

EAST LINE CURLEW ST

S	10.3	145.2
cb	9.7	145.8
1/4	9.1	146.4
C	6.5	149.0
1/4	4.7	150.8
cb	3.1	152.4
N	1.7	153.8

50' EAST

N	2.1	153.4
cb	3.3	152.2
1/4	4.3	151.2
C	5.6	149.9
1/4	6.5	149.0
cb	7.0	148.5
S	7.8	147.7

48
155.5

32

100' EAST

S		5.0	150.5	
cb		3.9	151.6	
1/4		3.3	152.2	
C		1.9	153.6	
1/4		1.1	154.4	
cb		0.7	154.8	
N		0.0	155.5	
TP	#37	157.24	0.17	156.37

150' EAST

N		1.0	156.7
cb		1.7	156.0
1/4		2.4	155.3
C		3.1	154.6
1/4		4.6	153.1
cb		5.8	151.9
S		6.5	151.2

200' EAST = WL. BRANT ST

S		4.9	152.8	
cb		4.0	153.7	
1/4		3.6	154.1	
C		2.4	155.3	
1/4		1.6	156.1	
cb		1.3	156.4	
N		0.5	157.2	
TP	0.82	146.40	12.16	145.58

146.40

33

T.P.	0.05	133.62	12.83	133.57	
T.P.	0.12	123.78	9.96	123.66	sw. Kalma
ON B.M.			18.19	111.59	+ Muir ✓

5/16/3
Gregory
Shimada
Chan

Levels on TRIAS ST
From PINE TO CHERRY 50' WIDE
10' WALKS

274.0

34

BM	207	267.20	265.13	W	4.1	269.9
T.P.	8.27	275.34	0.13	+9'	4.3	269.
T.P.	3.43	273.98	4.79	cb	5.2	268.8
N. L. PINE ST.				C	4.5	269.5
W		3.4	270.6	+14'	4.8	69.2
+9'		3.4	270.6	cb	4.2	269.8
cb		4.3	269.7	E	4.2	69.8
C		3.7	270.3			
+14'		4.2	269.8	E	4.7	69.3
cb		3.8	270.2	cb	4.7	269.3
E		3.5	270.5	+1'	5.4	68.6
25' No.				C	4.9	269.1
E		3.9	270.1	cb	5.4	268.6
cb		4.0	270.0	+1'	4.7	69.3
+1		4.5	269.5	W	4.3	69.7
C		4.0	270.0			
cb		4.7	269.3			
100' No.						
+1		3.9	270.1	W	4.1	69.9
W		3.6	270.4	+9'	4.7	69.3
				cb	6.1	267.9
				C	5.5	268.5
				+14'	5.8	68.2
				cb	5.0	269.0
				E	5.0	69.0

spite in pit
50' E of NE
Mitahy + Stat.

50' No

45' No.

273.98

274.0

195' No

E	5.4	68.6
ct	5.7	268.3
+1	6.5	68.5
C	6.0	268.0
ct	6.9	267.1
+1	5.3	68.7
W	5.1	68.9

150' No

W	5.4	68.6
+9	5.4	68.6
ct	7.2	266.8
C	6.7	267.3
+14	7.2	66.8
ct	6.3	267.7
F	6.0	68.0

175' No

E	7.1	66.9
ct	7.2	266.8
+1	8.0	66.0
C	7.4	266.6
ct	8.1	265.9
+1	6.6	67.4
W	6.2	67.8

274.0

35

200' No

W	5.8	68.2
+9	6.9	67.1
ct	8.7	265.3
C	8.2	265.8
ct	8.9	265.1
+1	8.2	65.8
E	8.2	65.8

225' No

E	9.8	64.2
+9	9.3	64.7
ct	9.9	264.1
C	9.1	264.9
ct	9.6	264.4
+1	8.3	65.7
W	7.6	66.4

250' No

W	8.8	65.2
+9	9.3	64.7
ct	10.5	263.5
C	10.0	264.0
+14	10.8	63.2
ct	10.4	263.6
E	10.8	63.2

373.98

274.0

36

375' No

E	11.8	62.2
+9	11.4	62.6
cf	11.4	262.6 ✓
C	10.7	263.3 ✓
+14	11.2	62.8
cf	9.3	264.7 ✓
W	8.5	65.5

300' No. = So. LINE CHERRY ST

W	10.3	63.7
cf	10.9	263.1
+1	11.9	62.1
C	11.5	262.5
cf	12.2	261.8
E	12.8	61.2
B.M.	6.91	267.07

NE TRIEAST
+ MEDRONDY

37

CROSS SECTION OF
THIRD ST
From N.L. Hawthorn
to S.L. 11/

50' WIDE
14' WALKS

168.14

38

B.M.

4.26

176.20

171.94

NE 240
+ Hawthorn

50' No

N.L. HAWTHORN

E

+2.8

170.9

W

5.9

170.3

cb

4.6

163.5

cb

5.2

171.0

1/4

10.5

157.6

1/4

4.8

171.4

C

15.3

152.8

C

4.0

172.2

1/4

19.5

148.6

1/4

2.9

173.8

cb

23.1

145.0

cb

1.8

174.4

W

23.8

144.3

E

0.6

175.6

+2.5

17.7

150.1

25' No.

75' No.

E

0.5

175.7

-2.5

16.5

151.6

cb

9.5

166.7

W

23.4

144.7

T.P.

4.71

168.14

12.77

163.43

cb

23.4

144.7

1/4

8.5

159.6

1/4

19.9

148.2

C

12.1

156.0

C

14.6

153.5

1/4

13.8

154.3

1/4

10.3

157.8

cb

15.1

153.0

W

5.7

162.4

W

16.6

151.5

E

+0.3

168.4

35' N

100' No.

W

22.5

145.6

E

2.3

165.8

cb

21.3

146.8

cb

7.4

160.7

1/4

18.0

150.1

1/4

12.3

155.8

C

14.0

154.1

C

19.7

149.4

1/4

9.3

158.8

1/4

22.6

145.5

cb

1.8

162.3

cb

22.6

145.5

E

+5.8

173.9

W

19.4

148.7

+1.5

13.8

154.3

168.14

125' No

W	14.1	154.0
cb	21.6	146.5
1/4	22.1	146.0
C	21.6	146.5
1/4	19.8	148.3
cb	14.9	153.7
E	11.1	157.0

150' No

-10	10.0	158.1
E	15.3	152.8
cb	18.9	149.2
1/4	20.4	147.7
C	20.8	147.3
1/4	19.6	148.5
cb	16.4	151.7
W	8.0	160.1

175' No

W	2.7	165.1
cb	7.3	160.8
1/4	11.8	156.3
C	15.6	152.5
1/4	19.0	149.1
cb	18.4	149.7
E	17.6	150.5
+15	10.1	158.0

168.14

200' No

-15	10.9	157.2
E	16.8	151.3
cb	18.1	150.0
1/4	17.2	150.9
C	12.5	155.6
1/4	5.4	162.7
T.P.	12.49	172.54
cb		3.1
T.P.	12.82	181.65
W		7.0

225' No

W	5.0	176.6
cb	15.0	166.6
1/4	20.5	161.1
C	24.0	157.6
1/4	27.2	154.1
1/4	29.5	152.1
E	29.0	152.6
+20	19.6	162.0

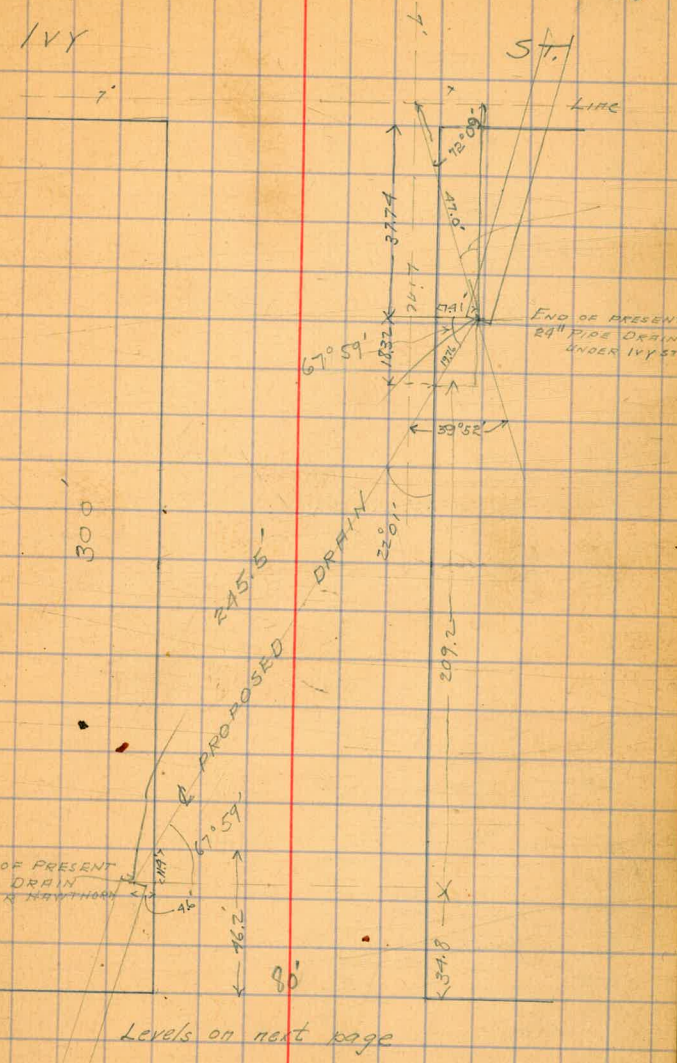
250' No

-15	22.7	158.9
E	27.4	154.2
cb	26.6	155.0
1/4	22.8	158.8
C	18.5	163.1

39

181.65

1/4			14.2	167.4
cb			7.8	173.8
W			2.2	179.4
T.P.	10.59	191.12	1.12	180.53
<u>275' No.</u>				
W			7.0	184.1
cb			10.6	180.5
1/4			16.2	179.9
C			21.3	169.8
1/4			22.5	168.6
cb			22.5	168.3
E			24.8	166.3
+15			23.6	167.5
+25			20.0	171.1
<u>300' No. = SL. IVY</u>				
E			5.3	185.8
cb			4.8	186.3
1/4			11.9	186.8
C			3.5	187.6
1/4			3.0	188.1
cb			2.2	188.9
W			1.0	190.1
T.P.	12.84	203.68	0.28	190.84
T.P.	6.44	209.78	0.34	203.34
ON BM			4.33	205.45



Levels on next page

LEVELS OVER DRAIN ON
THIRD ST
BETWEEN HAWTHORN - IVY

41

B.M.	H.26	176.20	171.94	NE 2nd Church
T.P.	636	163.79	12.77	163.43
T.P.	650	159.81	12.48	151.31
00 = S. END OF IVY ST DRAIN ON BOTTOM			1.70	
+50			6.6	
+100			8.6	
+130			11.0	
+180			11.6	
2400			13.0	
2445.5 = N. END OF HAWTHORN ST DRAIN ON BOTTOM			13.07	

$\frac{L}{20}$ blayh
 20 Taylor
 13 24
 X Sec of Juniper St (80')
 California to 4th St

	0.29	47.6		46.87
	0.55	35.10	12.61	24.55
	3.18	29.16	9.12	25.98
		29.2		
n		E of California		
		10.7		18.2
		10.2		19.0
		10.5		18.7
b		9.8		19.4
4		9.9		19.3
	78	10.6		18.6
		13.0		16.2
	75	11.7		17.5
S		10.1		19.1
	50	E of California		
S		7.0		22.2
		8.6		20.6
		7.2		22.0
b		6.3		22.9
		7.0		22.2
		6.5		22.7
n		5.9		23.3
	100	E of California		
n		3.4		25.8
		4.0		25.2
		4.3		24.9
b		4.6		24.6
		5.2		24.0
		5.6		23.6
9		5.8		23.4

SW O
 Juniper
 India
 46.87
 29
 47.16
 12.61
 24.55
 35.10
 9.12
 25.98
 29.16
 29.2
 29.16
 10.7
 18.2
 10.2
 19.0
 10.5
 18.7
 25.98
 31.8
 29.16
 0.70
 18.46
 9.82
 38.28

S
 b
 n
 n
 b
 S
 TP
 n
 b
 S

$\frac{29.16}{29.2}$

Juniper St
 42

150	E of California	4.3	24.9
		4.3	24.9
		4.3	24.9
		4.2	25.0
		3.6	25.6
		2.2	27.0
		1.5	27.7
175	E of West of Arctic St (75')	0.7	28.5
		1.5	27.7
		2.7	26.5
		3.1	26.1
		2.7	26.5
		3.2	26.0
		3.3	25.9
38.3		0.70	28.46
38.28			
	Indication of Arctic 7.45 in Peak		315
	E of Arctic St (75')		
		6.1	32.2
		7.2	31.1
		7.4	30.9
		7.7	30.9
		7.8	30.5
		8.0	30.3
		8.5	29.8

3828
38,3

50' E of Arctic St

S	5,4	32,9
	5,2	33,1
	5,4	32,9
b	5,3	33,0
	5,4	32,9
n	5,2	33,1
n	5,0	33,3

3828
31
37,97
4670
4867
4687

100' E of Arctic St

n	16	36,7
	11	37,2
	15	36,8
b	17	36,6
	19	36,4
	17	36,6
S	40	34,3
	60	32,3

48,7

TP 1070
150

4867
E of Arctic St

S	12,8	35,9
	7,0	41,7
	6,8	41,9
	6,8	41,9
b	6,8	41,9
	6,3	42,4
	6,2	42,5
n	5,8	42,9

4867
48,7

Juniper

43

192' E of Arctic

S	8,3	40,4
b	2,1	46,6
	200' E of Arctic = wd India	(757) (Rosed)
n	1,4	47,3
	(1,3)	47,4
	(1,8)	46,9
	(1,8)	47,5
		46,9
b	1,7	47,0
	1,9	44,8
	2,0	46,7
S	1,8	46,8
	1,80	4687 Bm

From India St if Stake St
has not been changed since B 373 was
taken - blangeh -

	718	8208	10	7490	SW S
S	79	11.98	9096	7898	State St
			310		
			11.7	79.3	
S			12.4	78.4	
			12.2	78.8	
b			12.0	79.0	
			12.2	78.8	
n			12.3	78.7	
			11.5	79.5	
n	50	E of	State St		
			9.0	82.0	
			8.3	82.7	
			8.0	83.0	
b			8.0	83.0	
			8.0	83.0	
			8.1	82.9	
S			8.1	82.9	
	100	E of	State St		
S			4.5	84.5	
			4.5	84.5	
			5.0	84.0	
			4.8	84.2	
			5.5	85.5	
			5.7	85.3	
			5.8	85.2	

	90 96	Juniper	44
	125'	E of	State St
			3.8
			87.2
			3.0
			88.0
			3.0
			88.0
			3.0
			88.0
			3.0
			88.0
			2.4
			88.4
	150'	E of	State St
			0.3
			90.7
			1.0
			90.0
			1.5
			89.5
			0.0
			91.0
	9.03		99.44
			89.44
			0.85
			80.11
			7.0
			92.4
			7.4
			92.0
			9.2
			90.2
	190'	E of	State St
			10.0
			89.4
			6.0
			93.4
			5.5
			93.9
			5.7
			93.7
			5.8
			93.1
			6.1
			93.3
			4.3
			95.1

89404

99.44

200

E = W of Union st (boxed)

S	4.3	95.1
	5.0	94.4
	5.0	94.4
b	5.0	94.4
	5.2	94.2
	3.6	93.8
n	5.4	94.0

Union to Front has not been changed B 373
 Albatross to Front has all Wall & curb in + cement gutter on N side the gutter on S side W 50 needs cleaning out B 373 P 28 shows it OK
 Sid walk & curb all in Front to 1st
 Cement gutter on N side

1956

45

965

19555

185.90

n w
Front
Front

W of Front st

n curb	8.6	187.0
Gutter	9.4	86.2
	8.3	87.3
b	8.2	87.4
	8.1	87.0
Gutter	9.0	84.6
S curb	8.6	87.0
50' E of Front		
S curb	5.5	90.1
Gutter	6.3	89.3
	5.7	89.9
b	5.3	90.3
	5.4	90.2
Gutter	5.8	89.8
n curb	4.9	90.7
100' E of Front		
n curb	1.6	94.0
Gutter	2.5	93.1
	2.3	93.3
b	2.2	93.3
	2.7	92.9
Gutter	3.4	92.2
S curb	2.5	93.1

185.90
 9.65
 191.55
 191.67
 11.82
 207.27

TP 1180

207.27

0.08

191.47

207.27

207.3

	150	E of	Front of	
S lb			11.1	196.2
Butter			11.9	95.4
			11.0	96.3
b			10.6	94.7
			10.4	94.9
Butter			10.6	96.7
N lb			9.8	99.5
	200	E = N 2 of	10.1	200.1
N lb			6.33	200.24 ✓
Butter			7.2	200.1
			7.2	200.1
b			7.2	200.1
			7.6	199.7
Butter			8.9	98.4
S lb			8.3	99.0
		E of	12.1	201.0
S lb			6.3	201.0
Butter			6.7	200.6
			5.8	1.5
b			5.4	1.9
			5.1	2.2
Butter			5.0	2.3
N lb			4.3	3.0

lamba Side walk all in 1st to end
40ft E 100' on S side

207.27

207.3

Juniper

46

	10' E of	1st	st
N lb		4.0	203.3
Butter		4.0	3.3
		3.7	3.4
b		4.0	3.3
		4.6	2.7
Butter		6.0	1.3
S lb		5.9	1.4
	50' E of	12.1	2.8
S lb		4.5	2.8
Butter		4.7	2.4
		3.6	3.7
b		3.5	3.8
		3.2	4.1
Butter		2.8	4.4
N lb		2.8	4.5
	100' E of	12.1	4.0
N lb		1.3	4.0
Butter		1.3	4.0
		1.8	4.1
b		2.2	4.7
		2.6	4.3
Butter		3.0	4.3
S lb		2.8	4.5

End of bank on S side

Top

709

212.44

234

204.93

21244
2124

	150	E of	1st	2nd
S fl			6.6	20.58
Butt			6.6	5.8
			6.4	4.0
b			6.1	4.3
			5.9	4.5
Butter			5.4	7.0
n fl			5.0	7.4
	200	E = W	2nd	(Graded)
n fl			3.5	20.00 ✓
Butt			3.8	8.5
			4.2	8.2
l			4.3	8.1
			4.6	7.8
Butter			4.9	7.5
S fl			4.5	7.9
	E	2nd		
S fl			4.5	7.9
Butter			4.5	7.9
			3.7	8.7
l			3.7	8.7
			4.0	8.4
Butter			4.0	8.4
n fl			3.5	8.9
TP	11.33	221.20	187	210.5

Sidewalk & curb in W 140' of N line Bet
2nd & 3rd + Graded on 1/2 street w/

221.9 47

221.20

	50	E of 2nd	1st	2nd
n fl			12.1	209.8
Butt			12.7	9.0
"			12.9	9.0
b			12.5	9.4
"			12.6	11.3
"			10.5	11.4
fl			11.0	10.9
SL			10.5	10.4
	100	E of 2nd	1st	
SL			5.9	14.0
fl			6.2	15.7
4			5.8	14.1
fl			6.0	15.9
Butt			12.5	10.4
4			11.7	10.2
Butt			12.2	9.7
Butt			12.3	9.4
n fl			12.0	9.9
	101	E	9	2
n fl			4.9	17.0
u			6.1	15.8
9			6.8	15.1
l			6.0	15.9

221.90

221.9

220.90

221.9

Munpa

48

	150	E of	2nd st	st
SL			3.3	218.4
			2.9	19.0
			2.3	19.5
b			1.7	20.2
			1.8	20.1
			1.3	20.6
nl			1.0	20.9

	175	E of	2nd st	st
nl			0.6	21.3
			0.8	21.1
			1.5	20.4
l			1.7	20.2
			2.2	19.7
			2.8	19.1
SL			3.1	18.8

	200	E = W of	3rd st	(80)
SL			6.9	15.0
			5.8	16.1
			4.5	17.4
b			4.3	17.6
			4.0	17.9
			3.3	18.6
nl			3.6	18.3

	W of	3rd st	
n		7.0	217.9
		5.0	14.9
		4.4	17.5
b		4.8	17.1
		3.9	14.0
		7.0	14.9
S		8.3	13.4

	760	W of	3rd st	
TP		218.4	10.86	218.64
		218.64		218.64
S			6.6	12.0
			3.3	15.3
			1.7	17.2
b			2.0	14.4
			1.6	17.0
			1.8	16.8
n			4.3	14.3

	center of	3rd st	
		4.4	14.2
		2.2	14.4
		2.2	14.4
b		2.2	14.4
		3.2	15.4
		3.5	15.1
S		6.5	12.1

218.64
218.6

206.22
206.3

June 19

	E	1/4 f	3 d st	
S			76	211.0
			63	12.3
			38	14.8
S			30	15.6
			22	16.4
			35	15.1
N			5.0	13.6
	E	1/4 f	3 d st	
N			6.2	12.4
			40	14.6
			40	14.6
b			35	15.1
			30	13.6
			20	11.6
S			25	11.1
	E	1/4 f	3 d st	
S			77	11.2
			77	10.9
			63	12.3
b			65	12.1
			68	11.8
			23	11.3
N			64	12.2

218.19
18.94
205.25
9.45
196.77
1.00
197.77

	25'	E f	3 d	st	
25' S of S L				44	201.8
S L				64	199.8
"				10.0	94.2
"				10.0	94.2
"				10.0	94.2
"				11.2	95.0
"				12.4	93.8
N L				13.2	93.0
6' n of N L				10.0	94.2
30' n of N L				9.0	97.2
7' P 100				9.45	196.77
					197.8
					197.77
	50'	E f	3 d st		
30' n of N L				0.5	97.3
8' n of N L				1.2	96.6
N L				8.0	89.8
"				16.0	81.8
"				15.0	82.8
"				13.5	84.3
"				13.0	84.8
"				11.0	86.8
S				6.0	91.8
10' S of S L				+10	198.8
20' S of S L				+10	198.8

7P 0.28 206.22 12.70 205.94

Then comes H

19772
197.8

	65'	♀ f	3d st	
nl			7.0	190.8
ll			18.0	79.8
"			18.2	79.4
b			19.0	78.8
	75'	♀ f	3d st	
25' S of SL			1.3	94.5
SL			12.7	85.1
ll			18.2	79.4
"			20.0	77.5
l			15.0	82.8
4			13.0	84.8
ll			11.8	86.0
nl			6.3	91.5
8' N of nl			1.0	94.8
30' N of nl			0.3	97.5
	100'	♀ f	3d st	
30' N of nl			0.3	97.5
8' N of nl			1.0	94.8
nl			4.8	93.0
ll			4.2	93.6
4			4.8	93.0
b			12.8	85.0

19777
97.8

Juniper

50

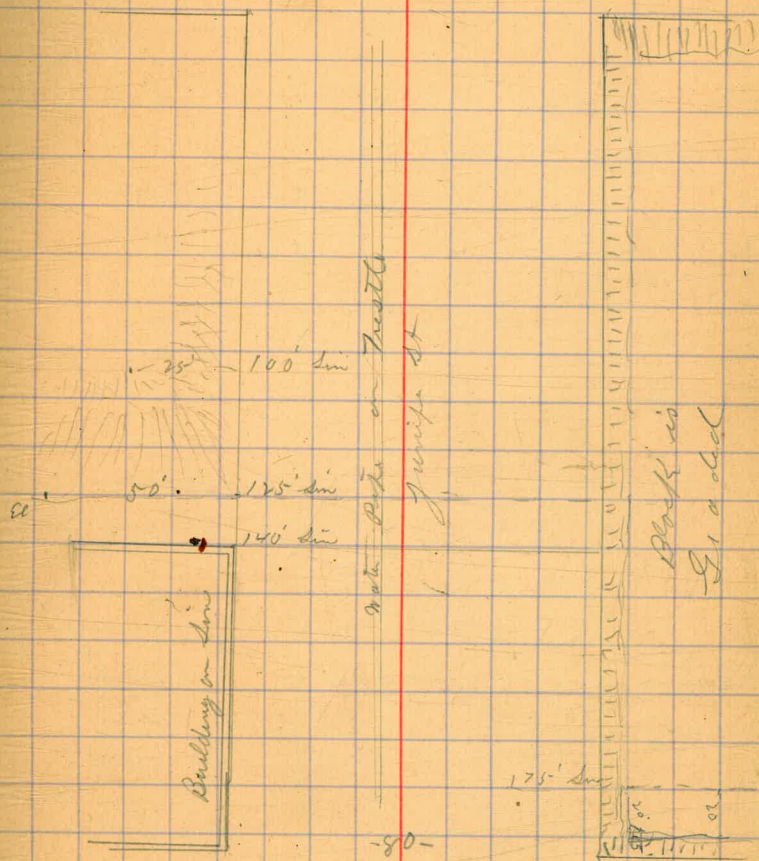
	125'	♀ f	3d st	
50' N of nl			0.2	197.4
5' N of nl			1.0	94.8
nl			3.0	94.8
ll			3.7	94.1
4			10.2	87.6
7' 001	196.7		11.11	186.66
	186.67		3d st	32 Bent
	100' ♀ f		3d st	186.66
and 5' N of 5				
25' S of SL			5.0	81.7
SL			12.0	74.7
ll			12.2	74.5
4/4			10.3	76.4
	125'	♀ f	3d st	
50' S of SL			14.4	72.3
SL			12.5	74.2
ll			11.8	74.9
4			10.8	75.9
b			7.6	79.1

18667		1867		
140	E f	3d	u.	
50' Sof 5' in		14.0	172.7	
5' L. Cor of Building		12.2	74.5	18666
bl		10.6	74.1	1283
7		8.8	77.9	199.57
6		6.7	80.0	
4		6.0	84.7	

150		E f		3d		u.
5' L. at Building		8.2	78.5			
u		8.6	78.1			
4		7.0	79.7			
1		4.6	82.1			
4		2.0	84.7			
TP	1283	199.5	199.49	10	18666	

140		E f		3d		u.
30' n of rd		1.7	97.8			
5' n of rd		2.0	97.5			
rd		5.4	94.1			
bl		10.0	89.5			

150		E f		3d		u.
30' n of rd		1.6	97.9			
5' n of rd		1.9	97.5			
rd		7.5	92.0			
bl		13.0	86.5			



19849

1995

52

	175	87	3d st	
30 7832			15	198.0
W2			20	97.5
W			32	94.3
Y			24	97.3
L			28	94.7
Y			34	94.1
W			40	95.5
S2 at Bunking			45	95.0
TP	1283	21104	128	198.1
	1305	22107	0.02	211.02
	425	227.25	1.05	223.02
			2.20	224.95
				✓ Bm 217 Koblenz 4
TP	162	21869	10.14	217.07
	200	2187	W2 f	W2 f Panel
W2			5.8	212.9
W			5.7	13.0
Y			6.4	12.3
L			6.6	12.1
Y			6.8	11.9
W			7.0	11.7
S2			6.6	12.1

134.3' E = W.L. ALLEY ON No.

No. 4.21

So. 5.05

149.3' E = E.L. ALLEY ON No.

So. 5.06

No. 4.23

172' E

No. 4.32

So. 5.27

188' E

So. 5.50

No. 4.62

213' E

No. 5.30

So. 6.04

238' E

So. 6.66

No. 5.87

263' E

No. 6.55

So. 7.15

288' E

So. 7.68

No. 7.14

313' E

No. 7.77

So. 8.35

335.46' E = Sec. B

So. 8.89

No. 8.35

on Sec. D.

No. 8.35

So. 9.28

473.39

50' N

Ecb	3.88	69.31	on cement
gutter	4.2	69.2	
1/2	4.0	69.4	
c	3.7	69.7	
1/2	4.1	69.3	
+2	4.3	69.1	
cb	3.6	69.8	
W	3.5	69.9	

75' N

W	3.7	69.7	
+8	3.9	69.5	
cb	4.7	68.7	
1/2	4.5	68.9	
c	4.1	69.3	
1/2	4.4	68.0	
gutter	4.7	68.7	
cb	4.19	69.20	on cement

100' N

Ecb	4.68	68.71	on cement
gutter	5.1	68.3	
1/2	4.9	68.5	
c	4.6	68.8	
1/2	5.0	68.4	
cb	5.3	68.1	

Trias

50

+2

W

4.2 69.2

3.2 70.0

125' N

W

+8

cb

1/2

c

1/2

gutter

cb

4.5 68.9

4.5 68.9

6.1 67.3

5.6 67.8

5.2 68.2

5.6 67.8

5.9 67.5

5.30 68.09

on cement

150' N

Ecb

gutter

1/2

c

1/2

cb

+2

W

6.14 67.25

on cement

6.7 66.7

6.3 67.1

5.9 67.5

6.2 67.1

6.8 66.6

5.1 68.3

4.8 68.6

175' N

W

+8

cb

1/2

c

5.6 67.8

6.6 66.8

7.6 65.8

7.1 66.3

6.6 66.8

273.39

Trios

1/2	7.1	266.3
gutter	7.6	65.8
cb	7.04	66.35 on cement
1491.6 = center of 15' driveway on East.		
Ecb. = center of cement drive	7.95	65.44
200' N		
Ecb	7.88	65.51 on cement
gutter	8.3	65.1
1/2	7.9	65.5
c	7.5	65.9
1/2	7.9	65.5
+6.5	8.4	65.0
cb	7.6	65.8
+2	6.3	67.1
W	5.2	68.2
225' N		
W	7.1	66.3
+8	7.6	65.8
cb	8.5	64.9
+1	9.2	64.2
1/2	8.7	64.7
c	8.4	65.0
1/2	8.9	64.5
gutter	9.3	64.1
cb	8.74	64.65

250' N

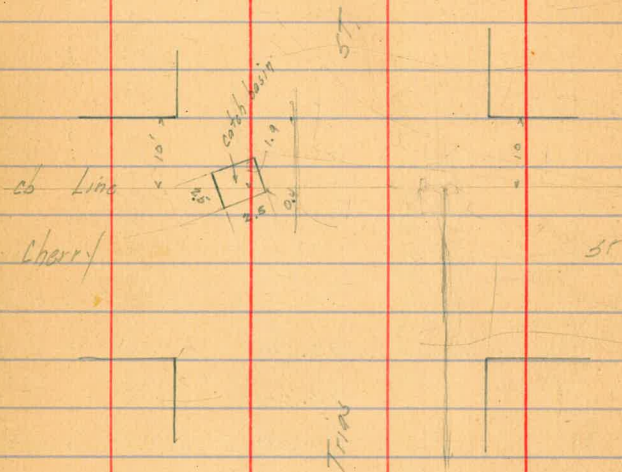
59

Ecb	9.62	263.77 on cement
gutter	10.1	63.3
1/2	9.6	63.8
c	9.3	64.1
1/2	9.6	63.8
+6.5	9.8	63.6
cb	9.2	64.2
+1	8.6	64.8
W	8.2	65.2
275' N		
W	7.7	65.7
+8	8.7	64.7
cb	9.6	63.8
+1	10.7	62.7
1/2	10.4	63.0
c	10.0	63.4
1/2	10.4	63.0
gutter	10.9	62.5
cb	10.55	62.84 on cement
300' N = 5L. Chetty also N. end of curb		
cb	11.38	62.01 on cement
gutter	11.6	61.8
1/2	11.2	62.4
c	10.8	62.6
1/2	11.1	62.3

cb	11.4	262.0	1/4	12.1	261.3	
13	10.2	63.2	cb	12.2	61.2	
W	9.7	63.7	E	12.7	60.7	
4.6' N. = N. end of 5' walk on east				N. Quarter		
E. Line	11.21	62.18	E	13.2	60.2	
3 curb			cb	12.4	61.0	
W	10.2	63.2	1/4	12.2	61.2	
cb	11.7	61.7	c	12.0	61.4	
1/4	11.4	62.0	1/4	12.1	61.3	
c	11.1	62.3	cb	12.1	61.3	
1/4	11.5	61.9	W	11.5	61.9	
cb	11.6	61.8	14 drive	N. curb		
E	12.0	61.4	14 drive	11.6	61.8	on lawn
3. Quarter = N. edge of ^{grove} cedar drive ^{100 E.}				12.74	60.65	edge c.B.
E	12.4	61.0	+1.5	12.74	60.65	= ctr ✓
cb	11.9	61.5	1/4	12.30	61.1	wedge drive
1/4	11.8	61.6	c	12.2	61.2	14 drive
c	11.4	62.0	1/4	12.5	60.9	
1/4	11.6	61.8	cb	13.0	60.4	
cb	11.8	61.6	E	13.4	60.0	
W	11.1	62.3		N. L. Cherry		
Center of Cherry				14.2	59.2	
W	11.3	62.1	cb	14.1	59.3	
cb	12.1	61.3	1/4	12.8	60.6	
1/4	12.0	61.4	c	12.7	60.7	
c	11.7	61.7	+2 = E. edge drive			

$\frac{1}{2}$			
4.15 = red gravel drive to H.	12.6	260.8	
OB	12.6	260.8	
	12.5	260.9	on lamp
W	11.7	61.7	✓ ✓

Flow line of 8" pipe. 14.31 = 259.05



Moore
Steck
Earle
Kelley

Cross Section of Alley
Bk 14 Lincoln Park Add 20' wide

61.06

62

	212	61.06	58.94
		WL 25th = 0.00	
N	paving	4.66	56.4
C	✓	5.06	56.0
S	✓	4.76	56.3
		3' W	
S		4.7	56.4
C		4.7	56.4
N		4.3	57.1
		25' W	
N		3.8	57.3
C		4.3	57.1
S	on NL of 3' cem. walk	4.15	56.91
		50' W	
S		3.89	57.17
C		4.3	57.1
N		3.8	57.3
		100'	
N		4.7	56.4
C		4.8	56.3
S		4.7	56.4
		134.5 W	
S	Cr. Garage Cem floor	4.65	56.41
		136.8 W	
N	✓ ✓ dirt ✓	5.2	55.9

NEBP
25th + M

		146' W	
S	Cr. Garage dirt floor	5.4	55.7
		150' W	
S		5.3	55.8
C		5.6	55.5
N		5.5	55.6
		158.8' W	
N	✓ ✓ ✓ ✓	5.0	55.7
		176.8' W	
N	✓ ✓ ✓ ✓	5.6	55.5
		186.4' W	
S	✓ ✓ ✓ ✓	6.0	55.1
		194.8' W	
N	✓ ✓ Cem ✓	5.60	55.5
		200' W	
N		6.1	55.0
C		6.5	54.6
S		6.2	54.9
		204.8' W	
N	✓ ✓ dirt ✓	6.2	54.9
		245' W	
S	✓ ✓ wooden ✓	6.60	54.5
TP	2.74	57.06	6.74
			54.32 ✓
		250'	
N		2.7	54.4
C		2.7	54.4

57.06

S		2.6	54.8
	255.2' W		
S	cr Garage con floor	2.60	54.5
	300' W		
S		3.0	54.1
C		3.2	53.9
N		3.1	54.0
	350' W		
N		3.5	53.6
C		3.7	53.4
S		3.8	53.3
	356' W		
N	✓ ✓ ✓ ✓	3.6	53.44
	391' W		
N	✓ ✓ ✓ ✓	3.7	53.4
	400' W		
S		4.7	52.4
C		4.7	52.4
N		4.4	52.7
	412.2' W		
N	cr of Double Garage det floor	4.4	52.7
	450' W		
N		5.0	52.1
Cr		5.2	52.1
S		5.0	52.1

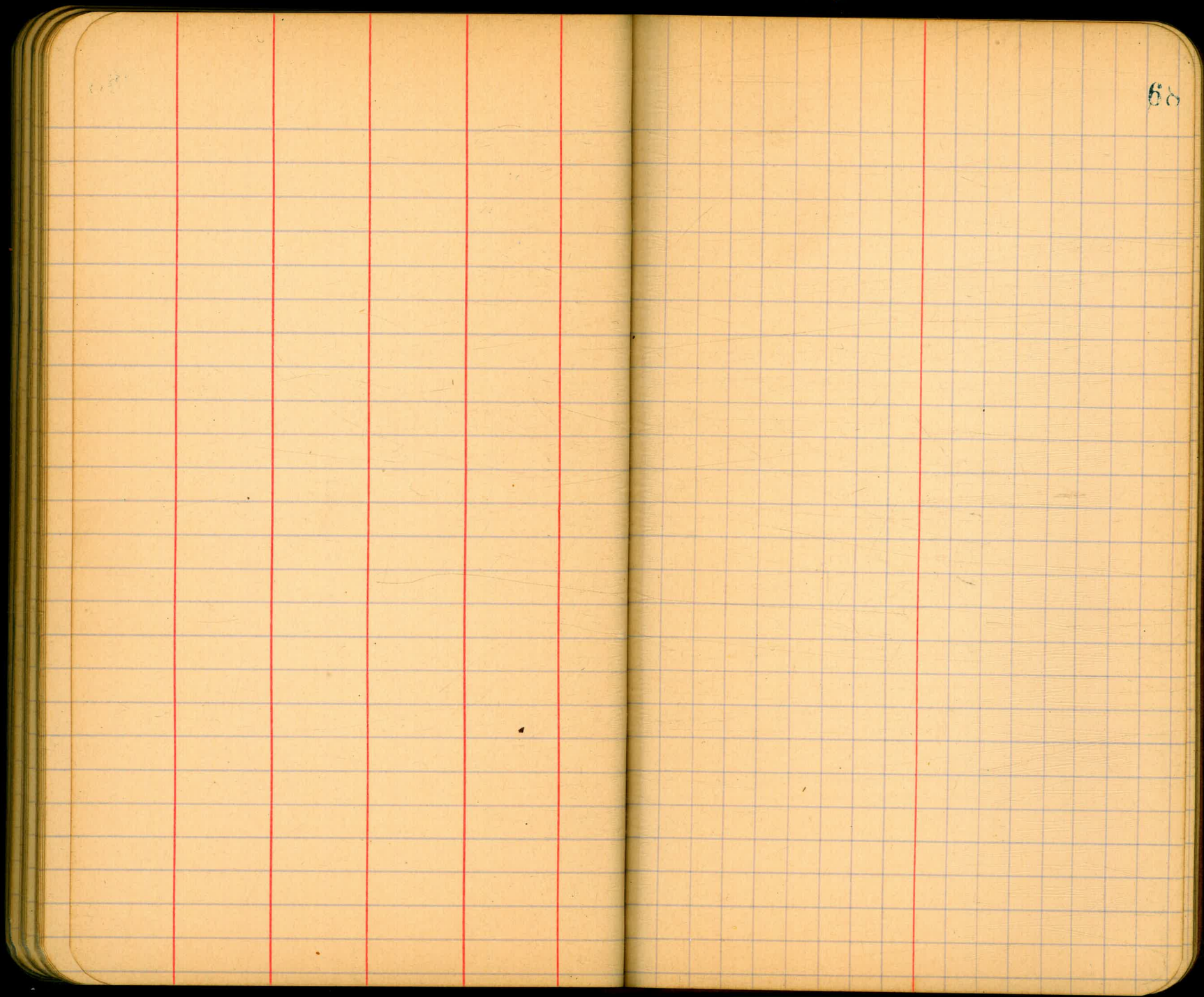
57.06

	500' W		
S		5.1	52.0
C		5.1	52.0
N		5.1	52.0
	550' W		
N		5.3	51.8
Cr		5.4	51.7
S		5.4	51.7
	518' W		
S	pepper tree 20" diam		2' in Alley
	525' W		
S		5.4	51.7
C		5.5	51.6
N		5.8	51.3
	600.5' W		Approx = EL with
N	Alley return	5.16	51.90
N		5.3	51.8
C		5.5	51.6
S	no Alley Return on S.	5.6	51.5
	T. P. check BM	2.05	55.01 ✓ 52.98 ^{BM} NE with M

63

65

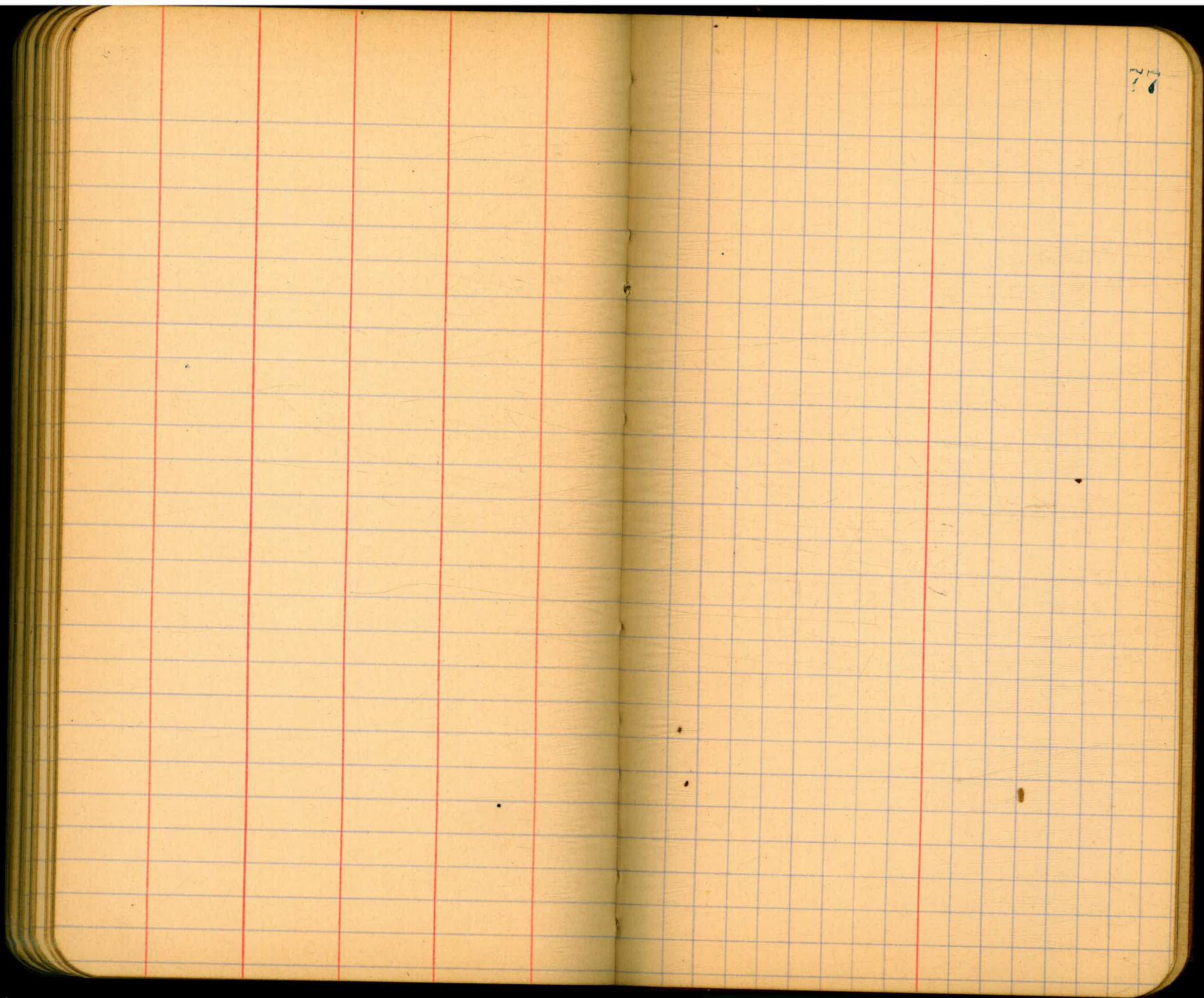
66



68

75

76



77

78

