

884

884  
F.B.

---

FIELD BOOK.

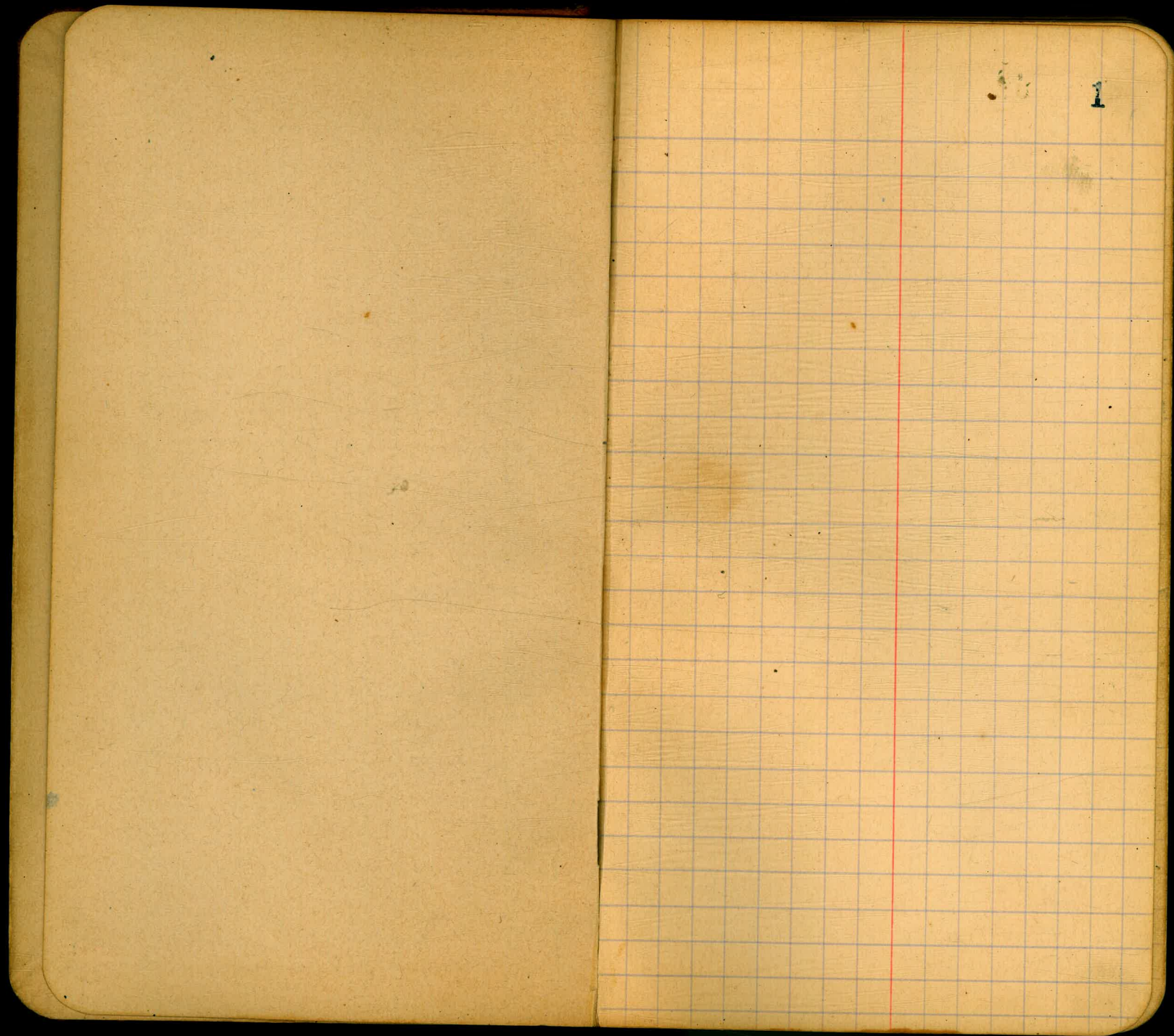
No. 400

---

Property of City Eng  
San Diego, Calif.

MICROFILMED

DEC 15 1964



CROSS SECTION  
Borden Street  
E.L. Prospect to N.L. Marine  
80' wide - 14 Walks, 13' Quarters.

E.W. Brass Plag. N. Cor. Corn. Or Prospect. \$44.26

0.15 85.09

T.P. 11.49 73.60

2.15 75.75

T.P. N. Cor. Borden + Prospect. Cor. Walk. 6.80 68.95

4.09 73.04

E.L. Prospect - Sec A.

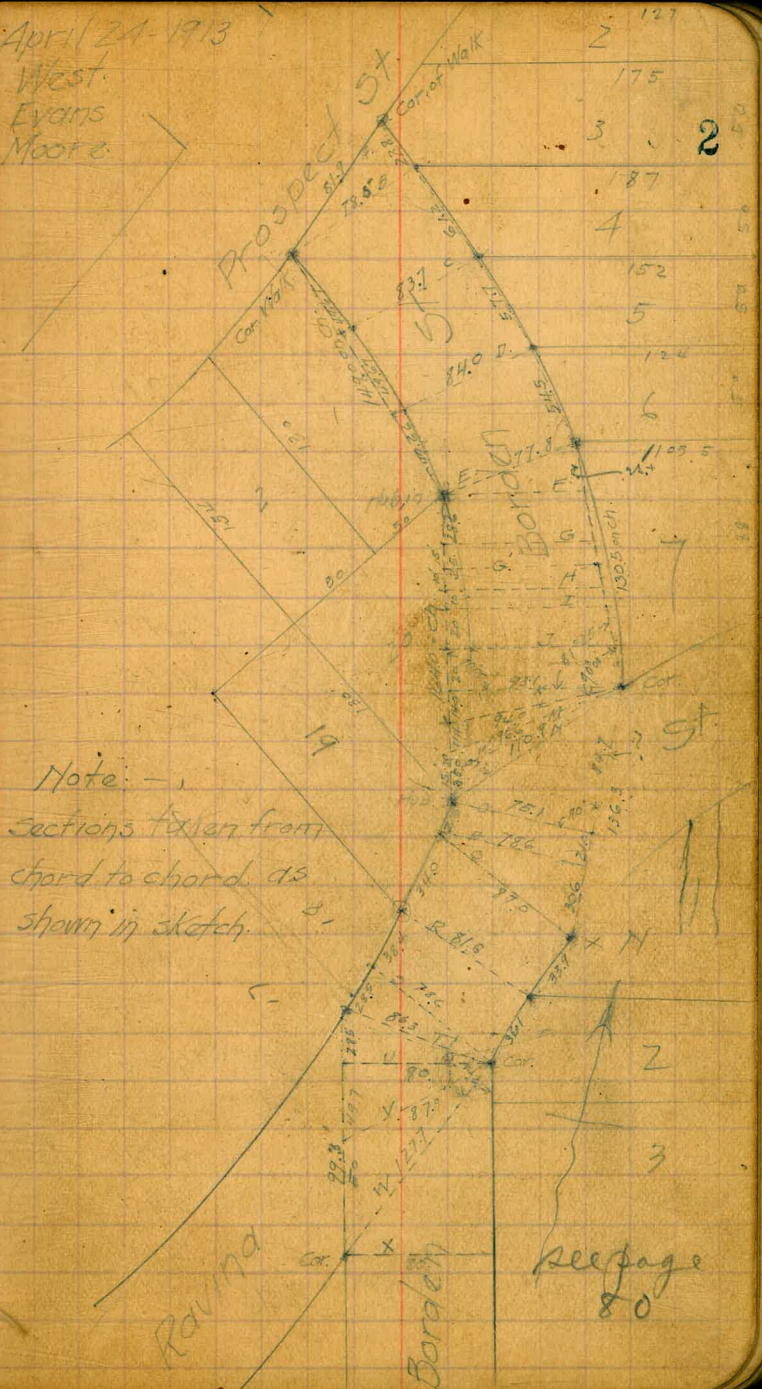
WL	38	69.2
C	4.1	68.9
1/4	3.9	69.1
1/2	4.1	68.9
3/4	3.8	69.2
C	4.1	68.9
EL	3.8	69.2

Sec B.

EL	30	70.0
C	3.6	69.4
1/4	3.5	69.5
1/2	3.8	69.2
3/4	3.8	69.2
C	3.9	69.1
WL	3.5	69.2

25.6  
53.6  
83.6

April 24 1913  
West.  
Evans  
Moore.



Note: -  
Sections taken from  
chord to chord as  
shown in sketch.

see page  
80

7304

## Sec C

WL	4.5	68.5
C	4.6	68.4
1/4	4.4	68.6
E	3.9	69.1
1/4	4.0	69.0
C	3.5	69.5
EL	3.2	69.8

## Sec D

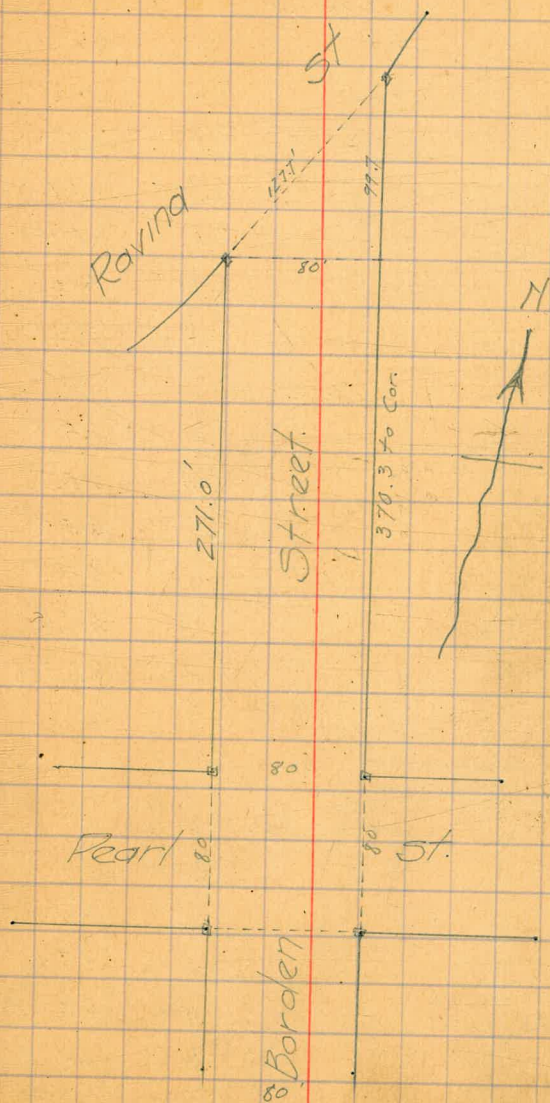
EL	4.2	68.8
C	4.5	68.5
1/4	4.9	68.1
E	4.8	68.2
1/4	5.1	67.9
C	5.3	67.7
WL	5.3	67.7

## Sec E

WL	7.2	65.8
C	6.5	66.5
1/4	6.4	66.6
E	5.9	67.1
1/4	5.3	67.7
C	5.5	67.5
EL	6.7	66.3

Borden

3



73.04

Sec F.

EL	9.0	64.0
C	8.1	64.9
1/4	7.4	65.6
1/2	6.4	66.6
3/4	6.6	66.4
C	6.8	66.2
WL	7.2	65.8

Sec G

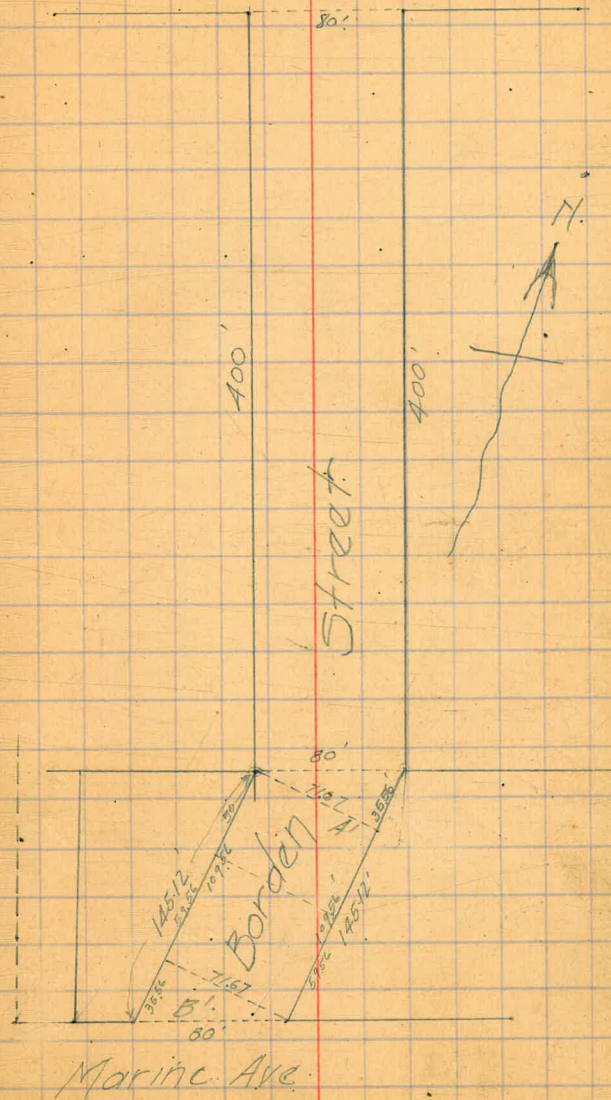
WL	8.2	64.8
C	7.7	65.3
1/4	7.6	65.4
1/2	8.1	64.9
3/4	9.4	63.6
C	10.3	62.7
EL	12.4	60.6
1/5	12.6	60.4

Sec G'

-15	13.1	59.9
#L	13.3	59.7
C	12.1	60.9
1/4	10.9	62.1
1/2	9.7	63.3
3/4	7.2	63.8
C	8.9	64.1
WL	8.8	64.2

Borden

Pearl Street 4



7304

Sec H

WL	96	63.4
C	95	63.5
1/4	10.3	62.7
ϕ	11.2	61.8
1/4	13.0	60.0
C	13.9	59.1
EL	16.8	56.2
T.P.	11.37	61.67

1.83 63.50

+15	7.9	55.6
-15	15.0	48.5
EL	12.4	51.1
+5	13.4	50.1
C	14.1	49.4
+10	13.0	50.5
1/4	7.4	56.1
ϕ/10	6.5	57.0
ϕ	4.6	58.9
1/5	3.2	60.3
1/4	2.9	60.6
C	1.7	62.3
WL	1.0	62.5

Sec I

Borden

63.50

Sec J

WL	3.1	60.4
ϕ	6.0	59.5
1/10	9.6	53.9
1/4	14.0	49.5
T.P. Joint Sewer pipe	5.27	58.23
T.P.	12.93	50.57

3.02 53.59

Sec J

ϕ	9.3	44.3
+5	13.2	40.4
1/4	15.5	38.1
C	15.0	38.6
EL	14.7	38.9
+15	14.6	39.0
+30	14.4	39.2

Sec K

E Curb	2.0	51.6
1/4	6.3	47.3
ϕ	13.1	40.5
1/4	16.2	37.4
+8	15.6	38.0
C	10.1	43.5
+6	4.2	49.4
+11	1.5	52.1

Borden

5

53.57

Sec L.

58.23

-15	15.9	37.7
WL	15.7	37.9
C	16.1	37.5
1/4	12.6	41.0
⊕	9.7	43.9
1/4	4.8	48.8
F. Curb.	2.0	51.6

Sec M.

E/4	3.4	50.2
⊕	6.0	47.6
1/4	10.5	43.1
C	12.7	40.9
WL	15.9	37.7
+15	16.2	37.4
+25	16.3	37.3
+35	15.2	38.4
+40	19.0	43.6

up bank. No. 19.0  
Sec N

-140	bottom.	21.7	31.9
-100		16.5	37.1
-50		15.4	38.2
WL		6.6	47.0
C		7.8	45.8
1/4		5.9	47.7
⊕		3.2	50.4
⊕		1.8	51.8

734

65.57

Section K.

EL  
WL

EL

FCurb.

EL

FC

EL

C

1/4

⊕

1/4

C

WL

+30 = E. present road.

Sec O

WL

C

1/4

⊕

1/4

C

EL

11.6  
11.8  
Sec L

11.6

13.7

Sec M'

11.6

12.5

Sec N

11.6

11.1

11.6

11.4

12.1

12.3

11.0

8.7

11.0

9.2

8.0

6.3

4.4

3.7

2.9

54.0

53.8

54.0

51.9

54.0

53.1

54.0

54.5

54.0

54.2

53.5

53.3

54.6

56.7

54.6

56.4

57.6

59.3

61.2

61.7

62.7



6557

Sec P.

EL	2.6	63.0
C	3.1	62.6
1/4	3.6	62.0
1/4	4.7	60.9
1/4	6.5	59.1
C	7.9	57.7
WL	8.8	56.8
T.P. Top Bridge Rail. <sup>W side</sup>	5.89	59.68

7.39 67.07

Sec Q.

WL	10.3	56.8
C	9.3	57.8
1/4	7.5	59.6
1/4	5.4	61.7
1/4 <sup>+5</sup>	4.4	62.7
1/4	4.9	62.2
C	4.3	62.8
EL	3.9	63.2

Sec R.

EL	6.3	60.8
C	6.7	60.4
1/4	7.9	59.2
1/4	8.3	58.8
+2	8.8	58.3
+3	9.7	57.4
1/4	10.1	57.0

Borden

7

67.07

+3	9.0	58.1
C	9.2	57.9
WL	9.5	57.6

Sec S.

-15	14.4	52.7
WL	13.8	53.3
C	11.6	55.5
1/4 <sup>+5</sup>	9.6	58.5
1/4	9.3	57.8
1/4	9.2	57.9

1/4	10.0	57.1
C	9.6	57.5
EL	9.0	58.1

Sec T.

EL	9.0	58.1
C	9.7	57.4
1/4	9.7	57.4
1/4	9.1	58.0
1/4	10.2	56.9
C <sup>+5</sup>	12.8	54.3
WL	13.7	53.4
+15	16.2	50.9
+25	18.0	49.1
	21.0	46.1

67.07

Sec U

+20	11.9	55.2
WL	12.0	55.1
C	10.7	56.4
1/4	9.9	57.2
<del>E</del>	9.0	58.1
<del>E</del>	8.7	58.4
1/4	9.4	57.7
C	9.6	57.5
EL	9.0	58.1

Sec V

EL	9.0	58.1
C	9.2	57.9
1/4	8.8	58.3
<del>E</del>	8.1	59.0
1/4	8.0	59.1
C	7.6	59.5
WL	7.9	59.2

Sec W

WL	5.9	61.2
C	6.0	61.1
1/4	5.9	61.2
<del>E</del>	6.5	60.6
1/4	7.7	59.4
C	9.0	58.1
FL	9.0	58.1

Borden

8

67.07

Sec X = 271' N of N.L. Pearl

FL	3.9	63.2
C	4.3	62.8
1/4	5.4	61.7
<del>E</del>	5.4	61.7
1/4	5.6	61.5
C	5.7	61.4
WL	5.9	61.2

250' N of N.L. Pearl

WL	6.0	61.1
C	5.3	61.8
1/4	5.4	61.7
<del>E</del>	5.0	62.1
1/4	5.0	62.1
C	3.5	63.6
EL	3.2	63.9

200' N

EL	3.1	64.0
C	3.6	63.5
1/4	4.2	62.9
<del>E</del>	4.2	62.9
1/4	4.8	62.3
C	5.2	61.9
WL	5.5	61.6

67.07

150' N.

WL	5.4	61.7
C	4.8	62.3
1/4	4.6	62.5
⊖	4.0	63.1
1/4	4.0	63.1
C	3.2	63.9
EL	2.7	64.4

100' N.

EL	2.5	64.6
C	2.8	64.3
1/4	3.9	63.2
⊖	3.8	63.3
1/4	4.1	63.0
C	4.6	
WL	4.9	62.2

50' N.

WL	4.7	62.4
C	4.3	62.8
1/4	3.8	63.3
⊖	3.2	63.9
1/4	3.0	64.1
C	2.1	65.0
EL	2.1	65.0

Borden

9

67.07

T.P.

8.30 72.11

N.L. Pearl St.

80' Wide, 14' Walks - 13' 1/4's

FL	6.6	65.5
C	6.8	65.3
1/4	7.3	64.8
⊖	8.0	64.1
1/4	8.1	64.0
C	8.8	63.3
WL	8.9	63.2

N. Corb.

WL	9.1	63.0
C	8.4	63.7
1/4	8.1	64.0
⊖	7.5	64.6
1/4	7.1	65.0
C	6.3	65.8
EL	5.8	66.3

N 1/4

EL	6.2	65.9
C	6.3	65.8
1/4	7.0	65.1
⊖	7.3	64.8
1/4	7.8	64.3
C	8.6	63.5
WL	7.1	63.0

UL

72.11

4 Pearl St.

WL	8.8	63.3
C	8.0	64.1
1/4	7.5	64.6
1/2	6.9	65.2
3/4	6.8	65.3
C	6.1	66.0
EL	5.7	66.4

5/4

EL	5.5	66.6
C	5.8	66.3
1/4	6.7	65.4
1/2	6.8	65.3
3/4	7.3	64.8
C	8.4	63.7
WL	8.8	63.3

3. Carb.

WL	8.4	63.7
C	7.9	64.2
1/4	7.6	64.6
1/2	6.7	65.4
3/4	6.7	65.4
C	6.2	65.9
EL	5.1	67.0

Borden

10

72.11

5 L Pearl

EL	5.5	66.6
C	6.0	66.1
1/4	6.8	65.3
1/2	6.7	65.4
3/4	7.3	64.8
C	7.7	64.4
WL	8.2	63.9

50'S.

WL	8.1	64.0
C	7.4	64.7
1/4	7.0	65.1
1/2	6.3	65.8
3/4	6.2	65.9
C	5.4	66.7
EL	5.0	67.1
	4.8	67.3

100'S.

EL	4.2	67.9
C	4.5	67.7
1/4	5.3	66.8
1/2	5.5	66.6
3/4	6.3	65.8
C	6.8	65.3
WL	7.0	65.1

72.11

150'S.

WL	6.3	65.8
C	5.9	66.2
1/4	5.5	66.6
1/4	4.8	67.3
1/4	4.6	67.5
C	3.8	68.3
EL	3.3	68.8

200'S.

EL	2.7	69.4
C	3.2	68.9
1/4	3.7	68.4
1/4	4.1	68.0
1/4	5.1	67.0
C	6.0	66.1
WL	6.1	66.0

250'S.

WL	5.6	66.5
C	5.1	67.0
1/4	4.2	67.9
1/4	3.2	68.9
1/4	2.9	69.2
C	2.1	70.0
EL	1.5	70.6

72.11

T.P.	3.10	69.01
------	------	-------

9.46 78.47

300'S.

EL	6.7	71.8
C	7.4	71.1
1/4	8.1	70.4
1/4	8.7	69.8
1/4	9.6	68.9
C	9.9	68.6
WL	10.4	68.1

350'S.

WL	9.1	69.4
C	8.8	69.7
1/4	8.4	70.1
1/4	7.6	70.9
1/4	7.5	71.0
C	6.4	72.1
EL	6.0	72.5

400'S - Anglept.

EL	5.0	73.5
C	5.4	73.1
1/4	6.6	71.9
1/4	6.7	71.8
C	7.2	71.3
1/4	7.7	70.8
WL	8.0	70.5

7847

Sec A' See Sketch.

WL.	8.0	70.5
C	8.0	70.5
$\frac{1}{4}$	7.2	71.3
E	6.9	71.6
$\frac{1}{4}$	6.4	72.1
C	5.5	73.0
EL.	4.6	73.9

50's. of Sec A.

EL.	5.2	73.3
C	5.8	72.7
$\frac{1}{4}$	6.8	71.7
E	7.0	71.5
$\frac{1}{4}$	7.7	70.6
C	8.0	70.5
WL	8.0	70.5

109.50' S of Sec A

WL	7.9	70.6
C	7.7	70.8
$\frac{1}{4}$	7.6	70.9
E	7.2	71.3
$\frac{1}{4}$	7.1	71.4
C	6.5	72.0
EL.	5.5	73.0

Borden 12

7847

Sec B' - NL Marine

EL	5.5	73.0
C	6.5	72.0
$\frac{1}{4}$	7.2	71.3
E	7.4	71.1
$\frac{1}{4}$	7.6	70.9
C	7.7	70.8
WL	7.8	70.7

T.P.	8.40	70.07
------	------	-------

C	4.85	74.92
---	------	-------

Brass Plug.  
Sec + Boll.

3.16	71.76	71.84
		71.76
		.08

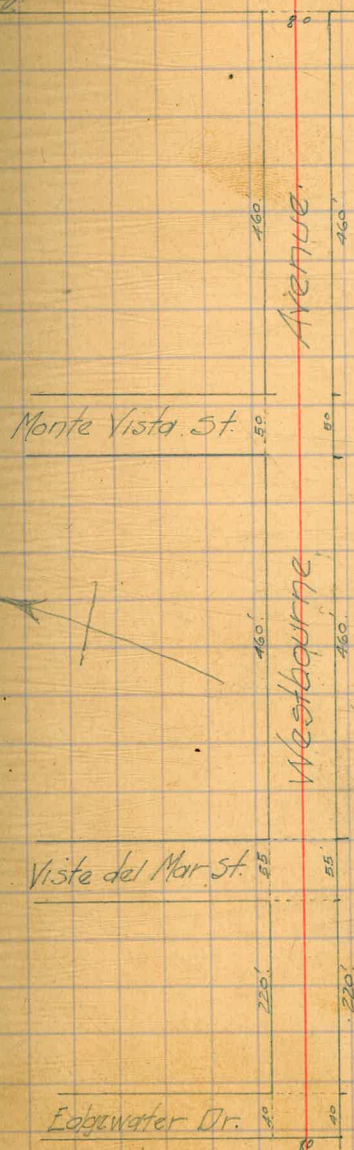
CROSS SECTIONS  
 WESTBOURNE AVENUE  
 W.L. La Jolla Boul. to W.L. Edgewater Dr.  
 30' Wide, 14' Walks 13'  $\frac{1}{4}$ 's.

B.M. Brass Plug Mon. Sid + Boul.		71.85
4.37	76.22	
T.P. Top Meter Box.	7.05	69.17
8.84	78.01	
T.P. Lower Bolt in Guy wire clamp W. side Boul.	5.00	73.01
5.25	78.26	
T.P. Nail fence 50' W Cor. Boul.	0.23	78.03
1.14	79.77	
W.L. La Jolla Boul.		
SL	0.7	79.1
#13	0.7	79.1
C	1.5	78.3
$\frac{1}{4}$	1.0	78.8
$\frac{1}{2}$	0.9	78.9
$\frac{1}{4}$	1.1	78.7
C	1.3	78.5
NL	1.3	78.5
	50' W	77.3
NL	2.5	77.2
C	2.6	77.1
$\frac{1}{8}$	2.1	77.7
$\frac{1}{4}$	2.6	77.2
E	2.3	77.5
$\frac{1}{4}$	2.6	77.2
C	2.3	77.5
SL	2.5	77.3

April - 28 - 1913

13

West  
 Evans La Jolla Boulevard  
 North



el

79.77

100'W.

SL.	4.0	75.8
+8	4.0	75.8
+9	4.3	75.5
C	3.9	75.9
1/4	3.9	75.9
E	3.7	76.1
+9	4.3	75.6
1/4	4.1	75.7
+4	3.7	76.1
C	4.4	75.4
+2	4.5	75.3
+3	4.2	75.6
NL.	4.2	75.6

150'W.

NL.	5.8	74.0
+9	5.8	74.0
+10	6.1	73.7
C	5.7	74.1
+7	5.3	74.5
1/4	5.6	74.2
+3	5.9	73.9
+9	5.2	74.6
E	5.4	74.4
1/4	5.6	74.2
C	5.4	74.4
DL	5.3	74.5

Wrestbourne

14

79.77

200'W.

SL	6.7	73.1
C	6.6	73.2
1/4	6.8	73.0
E	6.7	73.1
+5	6.4	73.4
1/4	7.0	72.8
+5	6.7	73.1
C	7.1	72.7
NL.	7.2	72.6

250'W.

NL	8.7	71.1
C	8.3	71.5
+7	8.7	71.1
1/4	8.3	71.5
+4	7.8	72.0
E	8.0	71.8
1/4	7.8	72.0
C	7.6	72.2
SL	7.7	72.1

275'W.

SL	8.4	71.4
C	8.7	71.1
1/4	9.0	70.8
E	8.3	71.6
+7	7.8	72.0



79.77

1/4	8.8	71.0
+7	8.1	71.7
C	8.8	71.0
NL	9.5	70.3

300' W.

NL	10.4	69.4
C	9.9	69.9
+7	9.4	70.4
1/4	10.0	69.8
+6	9.2	70.6
E	9.5	70.3
1/4	9.6	70.2
C	9.2	70.6
SL	9.1	70.7

350' W.

SL	10.2	69.6
C	10.4	69.4
1/4	10.6	69.2
E	10.7	69.1
+6	10.6	69.2
1/4	11.2	68.6
+7	10.8	69.2
C	11.4	68.4
NL	11.8	68.0

Westbourne 15

79.77

400' W

NL	13.0	66.8
C	12.4	67.4
+5	11.9	67.9
1/4	12.4	67.4
+6	11.7	68.1
E	11.8	68.0
1/4	11.7	68.1
C	11.8	68.0
SL	11.6	68.2

T.P. second step greenhouse 10.39 69.38

0.57 69.95

460' W = E.L. Monte Vista  
Street on the North side St.  
50 feet wide, 10' walks, 7 1/2' 1/4's.

SL	3.1	66.9
C	3.4	66.6
1/4	3.5	66.5
E	3.5	66.5
1/4	3.8	66.2
+6	3.5	66.5
C	3.9	66.1
NL	4.4	65.6

01

69.95

E. Curb.

NL.	4.5	65.5
C	4.2	65.8
+5	3.7	66.3
$\frac{1}{4}$	4.1	65.9
$\frac{1}{4}$	3.9	66.1
$\frac{1}{4}$	3.7	66.3
C	3.7	66.3
S.L.	3.3	66.7

E.  $\frac{1}{4}$ .

SL.	3.3	66.7
C	3.8	66.2
$\frac{1}{4}$	3.9	66.1
$\frac{1}{4}$	4.0	66.0
$\frac{1}{4}$	4.1	65.9
+6	3.9	66.1
C	4.2	65.8
N.L.	4.5	65.5

 $\frac{1}{4}$ 

NL.	4.6	65.4
C	4.2	65.8
$\frac{1}{4}$	4.1	65.9
$\frac{1}{4}$	4.0	66.0
$\frac{1}{4}$	4.0	66.0
C	3.7	66.3
SL	3.3	66.7

69.95

W.  $\frac{1}{4}$ .

SL.	3.2	66.8
C	4.0	66.0
$\frac{1}{4}$	4.1	65.9
$\frac{1}{4}$	4.2	65.8
$\frac{1}{4}$	4.2	65.8
K10	3.9	66.1
C	4.2	65.8
N.L.	4.4	65.6

W. Curb

NL.	4.9	65.1
C	4.3	65.7
$\frac{1}{4}$	4.5	65.5
$\frac{1}{4}$	4.3	65.7
$\frac{1}{4}$	4.4	65.6
C	4.1	65.9
SL.	3.7	66.3

W.L. Monte Vista

SL.	4.3	65.7
C	4.5	65.5
$\frac{1}{4}$	4.5	65.5
$\frac{1}{4}$	4.6	65.4
$\frac{1}{4}$	4.6	65.4
K10	4.3	65.7
C	4.6	65.4
NL.	5.1	64.9

Westbourne 16

69.95

50'W.

NL.	5.9	64.1
C	6.0	64.0
1/4	5.8	64.2
+3	5.3	64.7
E	5.6	64.4
1/4	5.6	64.4
C	5.6	64.4
SL.	5.0	65.0

100'W.

SL.	7.0	63.0
C	7.2	62.8
1/4	7.1	62.9
E	6.7	63.3
+10	6.6	63.4
1/4	7.1	62.9
C	6.6	63.4
+3	7.5	62.7
NL.	7.5	62.5

125'W.

NL.	7.7	62.3
C	7.2	62.8
+4	6.5	63.5
1/4	7.0	63.0
+4	6.7	63.3
E	7.5	62.5

69.95

Wrightbourne 17

1/4	7.8	62.2
C	7.8	62.2
SL.	7.7	62.3

150'W.

SL.	8.0	62.0
C	8.2	61.8
1/4	8.3	61.7
E	8.3	61.7
1/4	8.5	61.5
+6	8.0	62.0
C	8.4	61.6
NL.	8.4	61.6

200'W.

NL.	9.8	60.2
C	9.5	60.5
+5	9.1	60.9
1/4	9.7	60.3
E	9.4	60.6
1/4	9.3	60.7
C	9.3	60.7
SL.	8.9	61.1

01

69.95

250' W.

SL	9.2	60.8
C	10.1	59.9
1/4	10.3	59.7
E	10.3	59.7
1/4	10.5	59.5
C	10.3	59.7
NL	10.4	59.6

300' W.

NL	12.5	57.5
C	12.0	58.0
1/4	11.8	58.2
E	11.5	58.5
1/4	11.4	58.6
C	11.4	58.6
SL	10.9	59.1
T.P.	11.32	58.63

1.84

60.47

350' W.

X		
SL	2.5	58.0
C	2.8	57.7
1/4	2.9	57.6
E	3.1	57.4
1/4	3.3	57.2
C	3.3	57.2
NL	3.7	56.8

60.47

400' West.

Westbound 18

NL	5.2	55.3
C	4.7	55.8
1/4	4.8	55.7
E	4.5	56.0
1/4	4.3	56.2
C	4.3	56.2
SL	3.8	56.7

460' W. = EL. Viste del Mar St.

55' wide, 10' walks, 8.75' 1/4's.

SL	5.4	55.1
C	5.4	54.9
1/4	5.7	54.8
E	6.1	54.4
1/4	6.7	53.8
C	6.9	53.6
NL	7.1	53.4

E Curb.

NL	7.9	52.6
C	7.3	53.2
1/4	7.3	53.2
E	6.3	54.2
1/4	6.0	54.5
C	6.0	54.5
SV	5.8	54.7

60.47

E/4

SL	61	54.4
C	62	54.3
1/4	62	54.3
E	65	54.0
1/4	72	53.3
C	76	52.9
NL	80	52.5

E

NL	83	52.2
C	80	52.5
1/4	76	52.9
E	70	53.5
1/4	66	53.9
C	67	53.8
SL	62	54.3

W/4

SL	66	53.9
C	71	53.4
1/4	72	53.3
E	76	52.9
1/4	80	52.5
C	84	52.1
NL	87	51.8

60.47

Waelbourn 19

W. Curb.

NL	9.3	51.2
C	8.9	51.6
1/4	8.4	52.1
E	8.1	52.4
1/4	7.8	52.7
C	7.6	52.9
SL	7.0	53.5

W.L. Vista del Mar St.

SL	76	52.9
C	80	52.5
1/4	84	52.1
E	88	51.7
1/4	89	51.6
C	92	51.3
NL	97	50.8
T.P. Hob. NW Cor.	9.71	50.76

2.75 53.51

25' W.

NL	3.8	49.7
C	3.3	50.2
1/4	3.2	50.3
E	2.9	50.6
1/4	2.1	51.4
C	1.8	51.7
SL	1.4	52.1

5351

50' W.

SL	3.2	50.3
C	3.4	50.1
1/4	3.6	49.9
E	3.7	49.8
1/4	4.1	49.4
+5	3.9	49.6
C	4.6	48.9
NL <sup>+13</sup>	6.0	47.5
	5.1	48.4

100' W.

NL	10.6	42.9
C	10.3	43.2
1/4	10.3	43.2
E	9.8	43.7
1/4	9.4	44.1
C	9.0	44.5
SL	8.9	44.6
T.P. Redd Stone	12.48	41.03

0.17 41.20

150' W.

SL	3.3	37.9
C	3.6	37.6
1/4	3.9	37.3
E	3.8	37.4
1/4	4.1	37.1
C	4.8	36.4
NL	4.9	36.3

41.20

Wetburne 20

200' W.

NL	9.8	31.4
C	9.8	31.4
1/4	9.7	31.5
E	9.6	31.6
1/4	9.2	32.0
C	8.7	32.5
SL	8.6	32.6

220' W - EL. Edgewater Drive  
40' Wide, 10' Walks, 5' 1/4's.

SL	10.5	30.7
+5	13.1	28.0
+10	15.7	25.4
C	12.5	28.7
+3	12.6	28.6
+4	9.9	31.3
1/4	10.1	31.0
E	10.6	30.6
1/4	10.6	30.6
C	10.9	30.3
NL	11.3	29.8

E Curb.

NL	11.9	29.3
C	11.5	29.7
1/4	11.3	29.9
E	10.8	30.4

	4120		
1/4		10.7	30.5
C		10.7	30.5
+1		16.7	24.5
+9		16.2	25.0
+10		10.7	30.5
SL		10.6	30.6
+5		13.3	27.9
+10		10.5	30.7
+15		10.4	30.8
	E 1/4		
+15		10.5	30.7
+10		10.6	30.6
-5		13.4	27.8
SL		10.7	30.5
+3		10.8	30.4
+4		16.2	25.0
+12		16.7	24.5
C		10.7	30.5
1/4		10.9	30.3
1/4		11.0	30.2
1/4		11.7	29.5
C		11.7	29.5
NL		12.1	29.1

	4120	Wrestbourne	21
	£		
NL		12.4	28.8
C		12.0	29.2
1/4		11.9	29.3
1/4		11.5	29.7
1/4		11.4	29.8
+12		11.3	29.9
C		14.0	27.2
+4		17.4	23.8
+11		17.6	23.6
SL		12.0	29.2
	W 1/4		
SL		12.2	29.0
+1		17.8	23.4
+9		17.5	23.7
C		12.4	28.8
1/4		12.1	29.1
1/4		12.0	29.2
1/4		12.3	28.9
C		12.4	28.8
NL		12.7	28.5

4/20

W. Curb

NL	13.0	28.2
C	12.6	28.6
1/4	12.6	28.6
E	12.4	28.8
1/4	12.1	29.1
C	12.0	29.2
+4	17.8	23.4
+9	17.8	23.4
+11	12.1	29.1
SL	12.2	29.0

WL. Edgewater Drive

SL	12.3	28.9
+2	17.4	23.8
+9	17.6	23.6
+11	14.0	27.2
C	12.6	28.6
1/4	12.8	28.4
E	13.2	28.0
1/4	13.1	28.1
C	13.1	28.1
NL	13.2	28.0

15'W. for slopes

NL	14.0	27.2
C	13.7	27.5
1/4	13.6	27.6

4/20

Wratbourne

22

+3	13.9	27.3
+5	18.9	22.3
+11	16.7	24.5
<del>E</del>	13.7	27.5
<del>1/4</del>	13.3	27.9
C	12.9	28.3
+4	17.4	23.8
+8	20.9	20.3
+11	18.1	23.1
SL	13.1	28.1
T.P. Rock N.E. Cor.	10.83	30.37



CROSS SECTION.

Belvedere Avenue  
 W.L. La Jolla Blvd to E.L. Edgewater  
 60' Wide, 10' Walls, 10' / 4's.

April-28-1913.  
 West  
 Evans  
 Moore.

23

Lower Bolt in Tel guy wire. 73.01

4.21 77.22

W Line La Jolla Blvd.

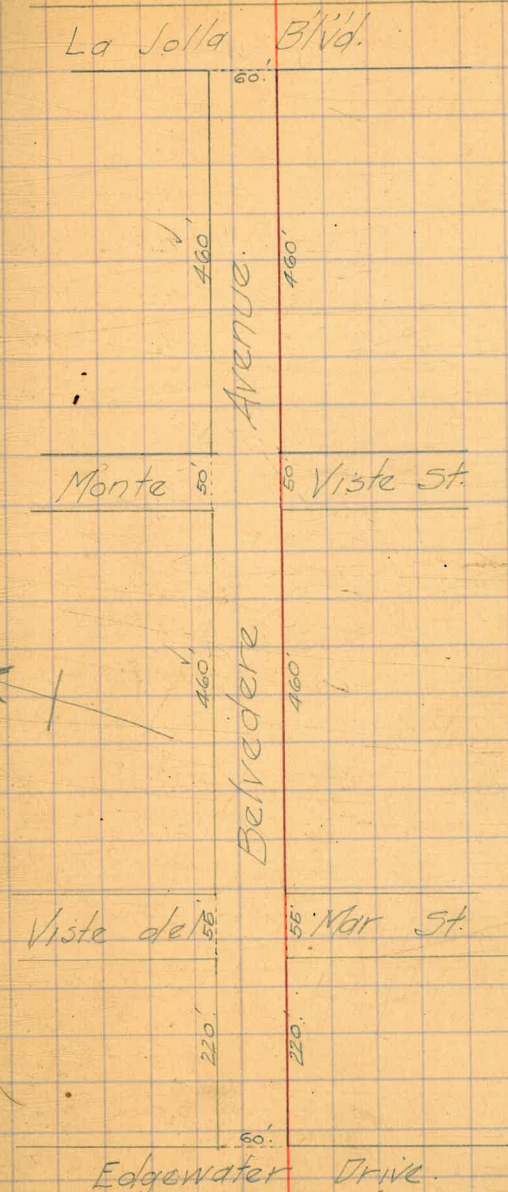
S.L.	16	75.6
C	17	75.5
1/4	18	75.4
E	18	75.4
1/4	19	75.3
C	19	75.3
NL	21	75.1

50' W

NL	45	72.7
C	46	72.6
1/4	44	72.8
E	45	72.7
1/4	45	72.7
C	47	72.5
SL	45	72.7

100' W

SL	78	69.4
C	80	69.2
1/4	77	69.5
E	76	69.6
1/4	75	69.7
C	74	69.8
NL	74	69.8



77.22

150' W.

NL	10.5	66.7
C	10.7	66.5
1/4	10.6	66.6
£	10.7	66.5
1/4	10.5	66.7
C	10.7	66.5
SL	10.6	66.6

200' W.

SL	12.3	64.9
C	12.3	64.9
1/4	12.3	64.9
£	12.4	64.8
1/4	12.4	64.8
C	12.5	64.7
NL	12.3	64.9
T.P.	12.73	64.49

2.67 67.16

250' W.

NL	3.4	63.8
C	3.7	63.5
1/4	3.4	63.8
£	3.5	63.7
1/4	3.4	63.8
C	3.3	63.9
SL	3.2	64.0

67.16

Belvedere

24

300' W.

SL	4.1	63.1
C	4.4	62.8
1/4	4.4	62.8
£	4.5	62.7
1/4	4.7	62.5
C	4.9	62.3
NL	4.7	62.5

350' W.

NL	6.7	60.5
C	7.0	60.2
1/4	7.3	59.9
£	6.4	60.8
1/4	5.2	62.0
C	5.7	62.1
SL	5.0	62.2

375' W.

SL	4.9	62.3
C	5.2	62.0
1/4	5.7	61.5
£	6.7	60.5
1/4	7.6	59.6
C	8.4	58.8
NL	8.0	59.2

66

67.16

400' W.

NL	8.2	59.0
C	6.8	60.4
1/4	6.2	61.0
E	5.7	61.5
1/4	5.3	61.9
C	5.0	62.2
SL	4.7	62.5

425' W.

SL	4.3	62.9
C	5.2	62.0
1/4	5.3	61.9
E	5.7	61.5
1/4	6.3	60.9
C	6.9	60.3
NL	7.2	60.0

460' W. EL. Monte Vista St.

50' Wide, 10' Walks, 7 1/2" / 4.5.

NL	7.7	59.5
C	7.3	59.9
1/4	6.9	60.3
E	6.6	60.6
1/4	6.1	61.1
C	5.9	61.3
SL	5.5	61.7

67.16

Belvedere

25

E. Corb.

SL	5.7	61.5
C	6.1	61.1
1/4	6.2	61.0
E	6.7	60.5
1/4	7.0	60.2
C	7.5	59.7
NL	7.9	59.3

E 1/4

NL	7.8	59.4
C	7.5	59.7
1/4	7.0	60.2
E	6.6	60.6
1/4	6.1	61.1
C	5.8	61.4
SL	5.3	61.9

E

SL	5.1	62.1
C	5.9	61.3
1/4	6.2	61.0
E	6.3	60.9
1/4	6.7	60.5
C	7.2	60.0
NL	7.8	59.4

67.16

W 1/4.

NL	7.7	59.5
C	7.0	60.2
1/4	6.4	60.8
E	6.2	61.0
1/4	6.0	61.2
C	5.7	61.5
SL	5.1	62.1

W Curb.

SL	5.3	61.9
C	6.1	61.1
1/4	5.9	61.3
E	6.0	61.2
1/4	6.1	61.1
C	7.3	59.9
NL	7.7	59.5

W.L. Monte Vista.

NL	7.7	59.5
C	7.2	60.0
1/4	6.4	60.8
E	6.0	61.2
1/4	6.0	61.2
C	6.1	61.1
SL	5.6	61.6

67.16

Belvedere

26

50' W.

SL	6.3	60.9
C	6.4	60.8
1/4	6.6	60.6
E	7.0	60.2
1/4	7.1	60.1
C	7.5	59.7
NL	7.8	59.4

100' W.

NL	7.9	59.3
C	7.8	59.4
1/4	7.5	59.7
E	7.3	59.9
1/4	7.1	60.1
C	7.1	60.1
SL	7.0	60.2

125' W.

SL	7.3	59.9
C	7.0	60.2
1/4	6.0	61.2
E	6.6	60.6
1/4	7.8	59.4
C	8.5	58.7
NL	8.4	58.8

6716

150' W.

NL	8.9	58.3
C	9.4	57.8
1/4	9.0	57.2
ϕ	8.7	58.5
1/4	8.6	58.6
C	8.3	58.9
SL	8.2	59.0
T.P.	7.57	59.59

0.88

60.47

200' W.

SL	2.9	57.6
C	3.0	57.5
1/4	2.8	57.7
ϕ	3.2	57.3
1/4	3.4	57.1
C	3.7	56.8
NL	3.8	56.7

250' W.

NL	4.6	55.9
C	4.9	55.6
1/4	4.5	56.0
ϕ	4.5	56.0
1/4	4.3	56.2
C	4.3	56.2
SL	4.2	56.3

6047

Belvedere

27

300' W.

SL	5.4	55.1
C	5.6	54.9
1/4	5.5	55.0
ϕ	5.8	54.7
1/4	6.0	54.5
C	5.9	54.6
NL	6.2	54.3

350' W.

NL	7.6	52.9
C	7.6	52.9
1/4	7.4	53.7
ϕ	7.4	53.1
1/4	7.1	53.4
C	7.4	53.1
SL	7.3	53.2

400' W.

SL	8.8	51.7
C	9.0	51.5
1/4	9.2	51.3
ϕ	9.3	51.2
1/4	9.4	51.1
C	9.3	51.2
NL	9.3	51.2

55' Wide, 60.47' <sup>10' W/S</sup> 8.75' <sup>1/4'S</sup>  
 460' W - EL. Vista del Mar St.

5030

Belvedere

28

NL	12.1	484
C	12.2	483
1/4	11.9	486
E	11.6	489
1/4	11.1	494
C	10.7	498
SL	10.9	496
T.P. Hub. SE Cor.	10.71	49.76

0.54 5030

E Curb

SL	0.6	49.7
C	0.8	49.5
1/4	1.0	49.3
E	1.6	48.7
1/4	2.0	48.3
C	2.7	47.6
NL	2.6	47.7
E 1/4		
NL	2.9	47.6
C	2.9	47.6
1/4	2.2	48.1
E	1.7	48.6
1/4	1.1	49.2
C	0.7	49.6
SL	0.6	49.7

SL	0.6	49.7
C	1.1	49.2
1/4	1.4	48.9
E	2.1	48.2
1/4	2.4	47.9
C	3.2	47.1
NL	3.4	46.9

W 1/4

NL	3.6	46.7
C	3.2	47.1
1/4	2.7	47.6
E	2.3	48.0
1/4	2.0	48.3
C	1.6	48.7
SL	1.4	48.9

W Curb

SL	1.9	48.4
C	2.0	48.3
1/4	2.2	48.1
E	2.6	47.7
1/4	3.1	47.2
C	3.8	46.5
NL	4.0	46.3

50.30

W. L. Vista del Mar.

NL	4.1	46.2
C	3.7	46.6
1/4	3.4	46.9
E	2.9	47.4
1/4	2.6	47.7
C	2.3	48.0
SL	2.4	47.9

50' W.

SL	4.8	45.5
C	4.8	45.5
1/4	4.6	45.7
E	4.8	45.5
1/4	5.4	44.9
C	6.1	44.2
NL	6.3	44.0

100' W.

NL	9.8	40.5
C	9.7	40.6
1/4	10.1	40.2
E	10.0	40.3
1/4	9.6	40.7
C	9.7	40.6
SL	9.8	40.5

Belvedere

29

50.30

T.P. 12.94 37.36

0.70 38.06

150' W.

SL	2.0	36.1
C	1.9	36.2
1/4	2.0	36.1
E	1.9	36.2
1/4	1.8	36.3
C	1.9	36.2
NL	1.9	36.2

200' W.

NL	6.0	32.1
C	6.0	32.1
1/4	5.9	32.2
E	5.5	32.6
1/4	5.8	32.3
C	6.2	31.9
SL	6.1	32.0

220' W. = W.L. Edgewater Dr.

SL	7.3	30.8
C	7.3	30.8
1/4	7.1	31.0
E	7.2	30.9
1/4	6.9	31.2
C	7.0	31.1
NL	7.2	30.9

T.P. Rock. N.E. Cor. West boorne.

7.75 30.31

30.37

30.31

30.31

CROSS SECTION  
 Edgewater Drive  
 N.L. Westbourne to W.L. Viste del Mar.  
 40' wide - 10 Walks; 5' 1/4's.

T.P. Rock N.E. Westbourne.

7.75 38.09'

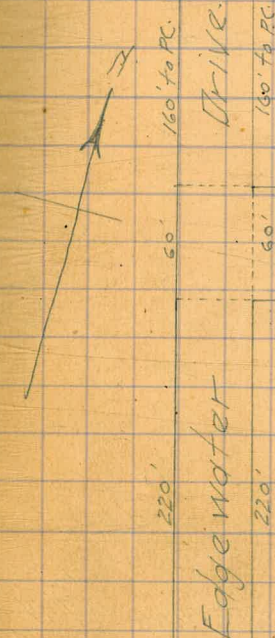
N.L. Westbourne.

EL	8.1	30.0
C	8.9	29.2
1/4	9.1	29.0
1/4	9.3	28.8
1/4	9.6	28.5
C	9.8	28.3
WL	10.2	27.9
50' N		
WL	10.5	27.6
C	10.0	28.1
1/4	9.7	28.4
1/4	9.5	28.6
1/4	9.2	28.9
C	9.0	29.1
EL	8.3	29.8
100' N		
EL	8.5	29.6
C	9.3	28.8
1/4	9.4	28.7
1/4	9.8	28.3
1/4	10.1	28.0

30.31  
 30.37  
 30.34 = Ave.

April 22 - 1913.  
 West  
 Evans  
 Moore

25' ch on C.  
 31.25 " 100' R.  
 18.75 " 60' R.



Edgewater Drive

Belvedere Ave.

Westbourne Avenue.

Street.  
 Mar  
 del  
 Viste



3809

C	10.3	27.8
WL	11.0	27.1
150' W.		
WL	10.3	27.8
C	10.1	28.0
1/4	9.7	28.4
E	9.5	28.6
1/4	9.2	28.9
C	9.0	29.1
EL	7.9	30.2

200' W.

EL	7.4	30.7
C	8.3	29.8
1/4	8.5	29.6
E	9.0	29.1
1/4	9.1	29.0
C	9.4	28.7
WL	9.9	28.2

220' W. - 5-L Belvedere, 80' wide

13' 1/2" 1/4" W.

WL	9.5	28.6
C	8.8	29.3
1/4	8.7	29.4
E	8.6	29.5
1/4	8.2	29.9
C	8.0	30.1
EL	7.2	30.9

3809

Edgewaters

S. Corb.

EL	7.3	30.8
C	8.1	30.0
1/4	8.2	29.9
E	8.4	29.7
1/4	8.5	29.6
C	8.9	29.2
WL	9.5	28.6

5/4

WL	9.4	28.7
C	8.9	29.2
1/4	8.6	29.5
E	8.5	29.6
1/4	8.3	29.8
C	8.2	29.9
EL	7.1	31.0

E

EL	7.2	30.9
C	8.0	30.1
1/4	8.3	29.8
E	8.6	29.5
1/4	9.0	29.1
C	9.2	28.9
WL	9.7	28.4

38.09

N 1/4

WL	9.5	28.6
C	9.0	29.1
1/4	8.8	29.3
1/4	8.6	29.5
1/4	8.0	30.1
C	7.8	30.3
SL	7.0	31.1

N Corb.

SL	7.0	31.1
C	8.0	30.1
1/4	8.1	30.0
1/4	8.4	29.7
1/4	8.6	29.5
C	9.0	29.1
WL	9.5	28.6

N.L. Belvedere

WL	9.3	28.8
C	8.8	29.3
1/4	8.6	29.5
1/4	8.4	29.7
1/4	8.2	29.9
C	8.0	30.1
EL	7.3	30.8

38.09

Edgewater

32

50' N

EL	7.4	30.7
C	7.8	30.3
1/4	8.3	29.8
1/4	8.8	29.3
1/4	8.9	29.2
C	9.3	28.8
WL	9.6	28.7

100' N

WL	9.6	28.5
C	9.3	28.8
1/4	9.1	29.0
1/4	8.9	29.2
1/4	8.7	29.4
C	8.5	29.6
EL	8.0	30.1

160' N = Point Corral <sup>60' R. on S.E. 100' N. on N.W.</sup>

EL	8.2	29.9
C	8.5	29.6
1/4	8.9	29.2
1/4	9.1	29.0
1/4	9.3	28.8
C	9.3	28.8
WL	9.5	28.6

38.09

T.P.

9.58 28.51

6.15

34.66

31.25 } chords.  
18.75 }25' N. from P.C. on  $\mathcal{L}$ .  $\left. \begin{array}{l} R=100' \\ R=60' \end{array} \right\}$ 

WL

6.2 28.5

C

5.9 28.8

1/4

5.8 28.9

1/2

5.5 29.2

3/4

5.4 29.3

C

5.2 29.5

EL

5.0 29.7

50' N. of P.C. on  $\mathcal{L}$ .

EL

4.5 30.2

C

4.7 30.0

1/4

4.8 29.9

1/2

5.0 29.7

3/4

5.2 29.5

C

5.4 29.3

WL

6.2 28.5

+10

6.4 28.3

+15

7.3 27.4

75' N. ( $\mathcal{L}$ )

-15

12.0 22.7

W or NL

11.0 23.7

C

8.9 25.8

34.66

Edgewater

33

1/4

7.3 27.4

1/2

6.5 29.2

3/4

4.8 29.9

C

4.3 30.4

SL

4.2 30.5

100' N. on  $\mathcal{L}$ 

SL

3.2 31.5

C +8

3.1 31.6

1/4

3.8 30.9

1/2

5.3 29.4

3/4

7.2 27.5

C

8.6 26.1

1/4 +3

9.2 25.5

1/2

10.7 24.0

NL

12.1 22.6

+25

15.4 19.3

125' N. on  $\mathcal{L}$  - PT. = 160' W. of  
Vista del Mar Str.

-20

8.4 26.3

-16

8.8 25.9

NL

13.9 20.8

+3

14.0 20.7

+5

11.0 23.7

C

10.2 24.5

+3

9.8 24.9

1/4

9.5 25.2

1/2

5.1 29.6

3/4

4.4 30.3

C

3.8 30.9

SL

3.4 31.3

3466

130' W. of NW Vista del Mar

-10	2.0	32.7
SL	2.1	32.6
E	7.0	27.7
1/4	7.4	27.3
+2	7.9	26.8
+3	11.2	23.5
E	11.9	22.8
1/4	9.4	25.3
+1	11.4	23.3
C	10.2	24.5
NL	5.9	28.8
+5	2.2	32.5

100' W. of NW Vista del Mar

-2	1.2	33.5
NL	5.1	29.6
+5	5.1	29.6
+8	1.2	33.5
C	1.1	33.6
1/4	1.2	33.5
E	5.3	29.4
1/4	8.0	26.7
+3	8.9	25.8
C	8.9	25.8
SL	5.3	29.4
+10	0.6	34.1

Edgewater

34

3466

T.P.	10.7	33.59'
5.72	39.31	
50' W.		
SL	3.6	35.7
C	3.6	35.7
1/4	3.6	35.7
E	3.5	35.8
1/4	3.5	35.8
C	3.6	35.7
NL	3.8	35.5

NW Vista del Mar

NL	1.6	37.7
C	1.6	37.7
1/4	1.9	37.4
E	1.7	37.6
1/4	1.5	37.8
C	1.4	37.9
SL	1.6	37.7
FP Hub. S.W. Cor.	1.61	37.70



Mount Vista

7207			
100' N			
WL	63.19	8.8	63.3
C	62.94	8.8	63.3
1/4	62.81	8.3	63.8
1/2	63.19	8.3	63.8
3/4	63.06	8.2	63.9
C	63.44	8.2	63.9
EL	63.69	7.7	64.4
150' N			
EL	62.91	8.5	63.6
C	62.66	8.8	63.3
1/4	62.28	8.7	63.4
1/2	62.41	8.9	63.2
3/4	62.03	8.9	63.2
C	62.16	9.4	62.7
WL	62.41	9.4	62.7
160' N = Break in Grade			
200' N			
WL	60.58	10.1	62.0
C	60.33	9.8	62.3
1/4	60.20	9.4	62.7
1/2	60.58	9.7	62.4
3/4	60.45	9.6	62.5
C	60.83	10.0	62.1
EL	61.08	9.8	62.3

7207			
TR	1.91	65.02	9.02 63.05
220' N = 3L Belvedere Ave			
EL	60.25		3.4 61.6
C	60.00		3.6 61.4
1/4	59.62		3.2 61.8
1/2	59.75		3.0 62.0
3/4	59.37		3.0 62.0
C	59.50		3.1 61.9
WL	59.75		3.5 61.5
N L Belvedere			
WL			5.6 59.4
C			5.5 59.5
1/4			5.5 59.5
1/2			5.6 59.4
3/4			5.6 59.4
C			5.6 59.4
EL			5.5 59.5
50' N			
EL	15		7.7 57.3
C			6.9 58.1
1/4			7.1 57.9
1/2			7.2 57.8
3/4			7.1 57.9
1/4			7.0 58.0
C			7.0 58.0
WL			7.0 58.0

6502

75' N

WL	8.3	56.7
C	9.0	56.0
1/4	9.0	56.0
1/4	9.1	55.9
1/4	9.7	55.3
C	11.2	53.8
EL	11.8	53.2
+15	11.4	53.6

100' N

-15	11.8	53.2
EL	13.0	52.0
C	14.4	50.6
1/4	14.0	51.0
1/4	13.5	51.5
1/4	13.2	51.8
C	13.1	51.9
WL	12.2	52.8
+15	8.9	56.1

110' N

-15	9.0	56.0
T.P. Top Stake	11.46	53.56

155

55.11

Monte Vista  
See Sketch.

37

55.11

Sec A = 110' N 50' wide

WL	3.9	51.2
C	4.7	50.4
1/4	4.8	50.3
1/4	5.3	49.8
1/4	5.0	50.1
C	3.7	51.4
EL	3.0	52.1
+15	1.4	53.7

25' N of Sec A. 69.28' wide

Note: -, The E.L. produced, of Monte Vista st, is here used as a base + offsets taken as shown to left + right. See sketch, Page

Rt 623 - EL	1.3	53.8
00-base	1.8	53.3
Lt +25 - W.	3.3	51.8
50' W	5.7	49.4
60' W	10.3	44.8
63.05 W = WL	6.6	48.5
73.05 for slope	1.6	53.5

55-11

50' N Sec A 88.56 wide.

12.46' E = EL.	1.4	53.7
00 = base	2.7	52.4
25' W.	3.2	51.9
50' "	5.8	49.3
65' "	7.6	47.5
70' "	10.7	44.4
76.10" = WL.	7.6	47.5
86.10 W for slope.	2.5	52.6

75' N Sec A 107.84 wide.

18.68' E = EL.	2.0	53.1
00 = base.	3.2	51.9
20' W.	5.7	49.4
40' W	3.7	51.4
60' "	7.1	48.0
80' " = bottom drain	12.4	42.7
89.16 W = WL.	8.6	46.5
104.15 W for slope	2.3	52.8

100' N Sec A 127.12 wide.

94.89 for slope	8.6	46.5
24.89 E = EL.	8.8	46.3
00 = base.	9.8	45.3
+20 W	10.5	44.6
45' W.	4.6	50.5
70' W	7.5	47.6
100' W bottom drain	12.8	42.3
102.23 W = WL	10.8	44.3
117.23 W for slope	3.8	51.3

55-11

Montu Vista

38

110' N of Sec A 134.84 wide.

37.38 for slope	7.8	47.3
27.38' E = EL.	8.7	46.2
00 = base.	10.3	44.8
15' W.	11.2	43.9
30' W.	16.2	38.9
35' W	11.1	44.0
50' W	4.3	50.8
60' "	4.9	50.2
90' "	10.4	44.7
103' " bottom drain	13.6	41.5
107.46 W = WL	11.0	44.1
122.46" for sl	5.1	50.0

120.5' N of Sec A 142.94 wide.

40' E for slope	3.6	51.5
30' E = EL.	4.8	50.3
15' "	8.5	46.6
10' "	13.5	41.6
00 = base.	10.3	44.8
25' W. bottom	15.7	39.4
30' "	11.7	43.4
40' " "	18.2	36.9
45' " "	10.7	44.4
52' "	5.0	50.1
65' W.	5.9	49.2
100' " bottom	13.9	41.2
112.94 W = WL	9.4	45.7
127.94 for slope	5.5	49.6

89.16

13.05 (1.5)

12.55 (1.5)

11.05 (1.5)

9.55 (1.5)

8.05 (1.5)

6.55 (1.5)

5.05 (1.5)

3.55 (1.5)

2.05 (1.5)

0.55 (1.5)



55.11

150.5' N of Sec A = 128.5' wide.

10' E for slope	4.5	50.6
00 = EL - base:	5.5	49.6
15' W	9.2	45.9
28' W	13.0	42.1
33' W bottom	18.6	36.5
40' W	13.3	41.8
58' W	7.1	48.0
78' W	8.9	46.2
103' W	15.1	40.0
128.5' W - W.L.	9.2	45.9
143.5' W for slope	7.5	47.6

280.5' S. 2 Areas = 160' N of Sec A. 135.3' wide.

10' E for slope:	3.9	51.2
00 = EL - base:	5.3	49.8
10' W	7.0	48.1
17 1/2' W	8.6	46.5
25' W	11.3	43.8
32 1/2' W	13.2	41.9
40' W	18.6	36.5
50' W = W.L. for 00' st.	11.7	43.4
60' W	7.3	47.8
75' W	8.1	47.0
100' W	13.3	41.8
108' W = bottom	16.7	38.4

Monte Vista

55.11

39

120' W	11.5	43.6
135.3' W - W.L.	9.7	45.4

T.P. 6.20 48.91'

2.74 51.65'

T.P. 11.49 40.16'

8.16 48.32'

T.P. - Hub SW Cor Vista del Nor 1061 37.71 3770

37.70

.01

OK  
for Check→ Continued North on Page 46  
+ 47 etc.

CROSS SECTION  
 Surfton Place  
 E.L. Viste del Mar to W.L. Monte Vista.  
 50' Wide, 10' walks, 7.5' / 4s.

April 29-1913  
 West  
 Evans  
 Moore  
 48.31

T.P. Hub S.W. Cor. Surfton.  
 & Viste del Mar sts. 37.70

10.61 48.31

E.L. Viste del Mar

SL	82	40.1
C	83	40.0
1/4	82	40.1
ϕ	82	40.1
1/4	83	40.0
C	86	39.7
NL	88	39.5

P

50' E

NL	6.7	41.6
C	6.9	41.4
1/4	6.7	41.6
ϕ	6.6	41.7
1/4	6.6	41.7
C	6.2	42.1
SL	6.1	42.2

100' E

SL	35	44.8
C	38	44.5
1/4	39	44.4
ϕ	41	44.2
1/4	43	44.0

C	4.7	43.6
NL	4.8	43.5
NL	2.9	45.4
C	2.6	45.7
1/4	2.4	45.9
ϕ	2.0	46.3
1/4	1.9	46.4
C	1.7	46.6
SL	1.4	46.9
T.P.	1.0	47.21

150' E

7.32 54.53  
 200' E

SL	5.7	48.8
C	5.7	48.8
1/4	6.0	48.5
ϕ	6.1	48.4
1/4	6.4	48.1
C	6.7	47.8
NL	7.0	47.5

250' E

NL	5.9	48.6
C	5.4	49.1
1/4	5.1	49.4
ϕ	4.8	49.7

5453

1/4	45	500
C	4.3	50.2
SL	4.0	50.5
300' E.		
SL	2.9	51.6
C	3.3	51.2
1/4	3.7	50.8
1/2	4.0	50.5
1/4	4.4	50.1
C	5.0	49.5
NL	5.8	48.7
1/2	8.2	46.3
350' E.		
10	9.3	45.2
NL	8.3	46.2
C	6.5	48.0
1/4	5.2	49.3
1/2	4.1	50.4
1/4	3.2	51.3
C	2.8	51.7
SL	2.4	52.0
374.7 E.		
SL	2.8	51.7
C	4.5	50.0
1/4	5.4	49.1
1/2	6.3	48.2
1/4	7.0	47.5
C	7.6	46.9
NL	9.0	45.5
1/2	9.5	45.0

5453  
West line of Monte Vista St 41  
374.7 E on NL, 401.4 E on SL.

NL	9.0	45.5
C	9.5	46.0
1/4	8.6	45.9
1/2	8.4	46.1
1/4	8.3	46.2
C	8.7	45.8
SL	10.1	44.4
T.P.	7.32	47.21

0.25 47.46

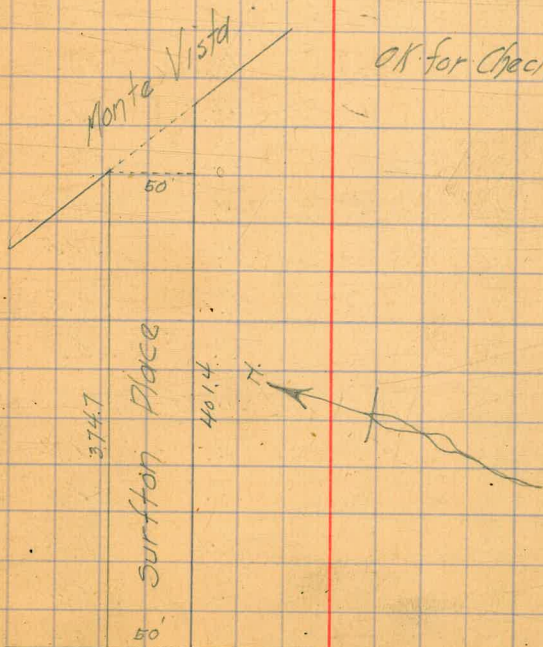
Hub. SW Cor. Surfston.

9.77 37.69

37.70  
37.69

OK for Check.

.01



Vista del Mar St.

Viste del Mar Street.  
 N.L. Westbourne to 150' N of N.L. Surfston.  
 55' wide, 10' walks - 8.75' / ft.

April 29-1913  
 West  
 Evans  
 Moore.

42

Hub 5. W. Cor Surfston.

37.70

9.77 47 47

150' N of N.L. Surfston on E.L.

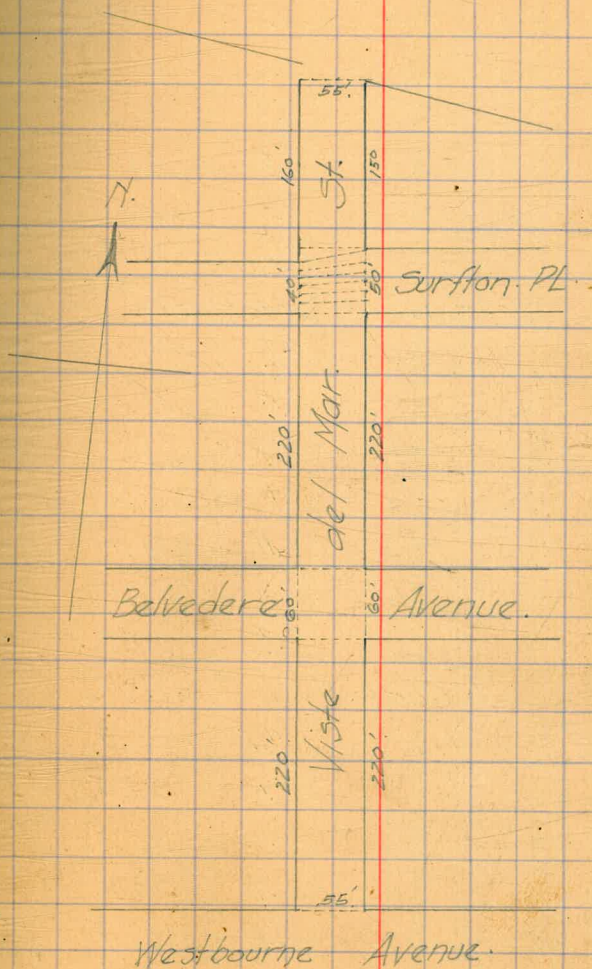
EL	10.8	36.7
C	10.3	37.2
1/4	10.0	37.5
1/2	10.3	37.2
3/4	11.0	36.5
C	11.1	36.4
WL	11.0	36.5

100' N. N.L. Surf on E.L.

WL	10.4	37.1
C	10.0	37.5
1/4	9.2	38.3
1/2	9.2	38.3
3/4	9.0	38.5
C	9.2	38.3
EL	8.9	38.6

50' N N.L. Surf on E.L.

EL	8.3	39.2
C	8.9	38.6
1/4	9.1	38.4
1/2	9.1	38.4
3/4	9.1	38.4
C	9.1	38.4
WL	9.8	37.7



47.47

N.L. Surf on EL, 10' N on WL

WL	9.9	37.6
C	9.5	38.0
1/4	9.3	38.2
1/2	8.9	38.6
3/4	8.8	38.7
C	8.6	38.9
EL	8.8	38.7

(10' marks) N.L. Surf on both sides

40' wide on west side  
50' " " East side

EL	8.8	38.7
C	8.5	39.0
1/4	8.6	38.9
1/2	8.9	38.6
3/4	9.1	38.4
C	9.6	37.9
WL	9.7	37.8

N. Curb

WL	9.2	38.3
C	9.0	38.5
1/4	9.0	38.5
1/2	8.9	38.6
3/4	8.6	38.9
C	8.6	38.9
EL	8.8	38.7

47.47

Vista del mar

43

N 1/4

EL	7.5	40.0
C	8.2	39.3
1/4	8.5	39.0
1/2	8.7	38.8
3/4	9.0	38.5
C	9.5	38.0
WL	9.9	37.6

E

WL	9.7	37.8
C	9.7	37.8
1/4	9.2	38.3
1/2	8.8	38.7
3/4	8.5	39.0
C	8.2	39.3
EL	7.5	40.0

S 1/4

EL	7.6	39.9
C	8.2	39.3
1/4	8.4	39.1
1/2	8.9	38.6
3/4	9.2	38.3
C	9.5	38.0
WL	9.6	37.9

47.47

J. Curb.

WL		7.6	379
C		7.6	379
1/4		7.1	384
E		8.8	387
1/4		8.4	391
C		8.2	393
EL		7.7	398

S.L. Surfston.

EL	39.25	7.3	40.2
C	39.0	8.1	39.4
1/4	38.5	8.3	39.2
E	38.5	8.8	38.7
1/4	38.0	9.1	38.4
C	38.00	9.6	37.9
WL	38.25	9.7	37.8

20'S S.L. Surfston.

WL	38.98	9.6	37.9
C	38.73	9.3	38.2
1/4	38.73	8.7	38.8
E	39.23	8.4	39.1
1/4	39.23	8.0	39.5
C	39.73	7.6	39.9
EL	39.98	6.7	40.8

80'South = 00 on west

Rat = Saline Surfston 1 Belvedere = 03 636

47.47

70'S.

EL	41.50
C	41.55
1/4	41.05
E	41.05
1/4	40.55
C	40.55
WL	40.50

4.4	43.1
4.7	42.8
5.4	42.1
5.7	41.8
6.4	41.1
7.0	40.5
7.2	40.3

120'S.

WL	42.61
C	42.26
1/4	42.36
E	42.86
1/4	42.86
C	43.36
EL	43.61
T.P.	

4.1	43.4
4.0	43.5
3.2	44.3
2.7	44.8
2.2	45.3
2.0	45.5
1.4	46.1
0.92	46.55

9.62 56 17

170'S.

EL	45.43
C	45.18
1/4	44.68
E	44.68
1/4	44.18
C	44.18
WL	44.43

8.6	47.6
9.0	47.2
9.1	47.1
9.5	46.7
10.0	46.2
11.0	45.2
11.5	44.7

Vista del mar

44

56.17

270's - NL Belvedere 60' wide

10' Walks - 10' 1/4's

WL	46.25	10.0	46.2
C	46.00	9.9	46.3
1/4	46.00	9.4	46.8
1/2	46.50	9.2	47.0
3/4	46.50	8.8	47.4
C	47.0	8.5	47.7
EL	47.25	7.8	48.4

S.L. Belvedere

EL	48.25	6.4	49.8
C	48.00	6.5	49.7
1/4	47.50	6.5	49.7
1/2	47.50	6.7	49.5
3/4	47.00	7.0	48.9
C	47.00	7.7	48.5
WL	47.25	8.1	48.1

20's S.L.

WL	47.57	7.7	48.5
C	47.32	7.6	48.6
1/4	47.32	7.2	49.0
1/2	47.82	6.8	49.4
3/4	47.82	6.3	49.9
C	48.32	5.9	50.3
EL	48.57	5.5	50.7

Red S.L. Belvedere to NW Westbourne 01590

56.17

Meta del mar 45

70's

EL	4936	5.2	51.07
C	4911	5.8	50.4
1/4	48.61	5.9	50.3
1/2	48.61	6.1	50.1
3/4	48.71	6.6	49.6
C	48.11	7.3	48.9
WL	4836	7.5	48.7

120's

WL	4916	6.5	49.7
C	4891	6.0	50.2
1/4	4891	5.2	51.0
1/2	49.41	5.1	51.1
3/4	49.41	4.8	51.4
C	49.91	4.7	51.3
EL	50.16	3.9	52.3

170's

EL	5096	3.4	52.8
C	50.71	3.8	52.4
1/4	50.21	3.5	52.7
1/2	50.21	4.4	51.8
3/4	49.71	5.0	51.2
C	49.71	5.8	50.4
WL	49.96	6.3	49.9

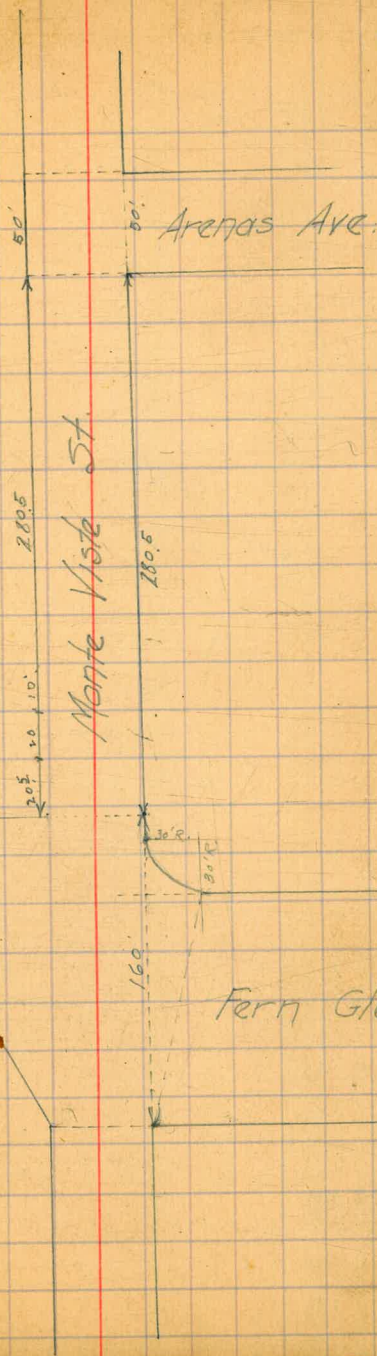
56-17

220'S = N.L. Westbourne

WL	50.75	5.4	50.8
C	50.50	5.0	51.2
1/4	50.50	4.5	51.7
E	51.00	4.0	52.2
1/4	51.00	3.6	52.6
C	51.50	3.2	53.0
EL	51.75	2.8	53.4
T.P.		5.43	50.74
		02	O.K.

46

Jurfton Pt.





# CROSS SECTIONS

Monte Vista Street

H.L. Fern to S.L. Sea Avenue.  
50' Wide, 10' Walks - 7 1/2" 1/4"

May 1 - 1913  
West  
Evans  
Moore

47

Top Stake

0.77 54.33

53.56

250' S. of S.L. Arenas

-20	15.6	38.7
-10	18.6	35.7
WL.	14.8	39.5
C	11.9	42.4
1/4	10.5	43.8
E	9.0	45.3
1/4	7.3	47.0
C	5.6	48.7
EL.	4.0	50.3

From p 39

P

225' S.

EL	4.1	50.2
C	6.4	47.9
1/4	7.7	46.6
E	8.6	45.7
1/4	9.5	44.8
C	9.9	44.4
WL.	10.3	44.0
+20	14.0	40.3

Sea Avenue

50'

N

460'

Monte Vista Street

460'

50'

50'

50'

Arenas Ave

5433

200'S.

-20	10.8	43.5
WL	8.9	45.4
C	7.7	46.6
1/4	6.7	47.6
E	5.9	48.4
1/4	5.0	49.3
C	4.1	50.2
EL	2.4	51.9

175'S.

EL	4.1	50.2
C	4.8	49.5
1/4	5.2	49.1
E	6.0	48.3
1/4	6.6	47.7
C	7.2	47.1
WL	8.0	46.3
+20	8.8	45.5

150'S.

-20	5.6	48.7
WL	5.0	49.8
C	4.5	49.8
1/4	4.0	50.3
E	3.8	50.5
1/4	3.6	50.7
C	3.3	51.0
FL	2.7	51.6

5433

Montevista

48

125'S.

EL	2.1	52.2
C	2.5	51.8
1/4	2.9	51.4
E	3.1	51.2
1/4	3.3	51.0
C	3.7	50.6
WL	4.1	50.2

100'S.

WL	4.6	49.7
C	4.2	50.1
1/4	3.8	50.5
E	3.6	50.7
1/4	3.5	50.8
C	3.8	50.5
EL	5.2	49.1
+10	5.6	48.7

75'S.

-10	6.7	47.6
EL	7.4	46.9
C	7.9	46.4
1/4	7.9	46.4
E	7.2	47.1
1/4	7.1	47.2
C	7.1	47.2
WL	6.2	48.1

5433

50'5

-10	11.2	43.1
WL	11.7	42.6
C	10.4	43.9
1/4	9.5	44.8
E	8.5	45.8
1/4	8.0	46.3
C	7.5	46.8
EL	6.8	47.5
25'5		
EL	6.1	48.2
C	7.0	47.3
1/4	7.9	46.4
E	8.8	45.5
1/4	9.4	44.9
C	10.3	44.0
WL	12.2	42.1
+15	16.0	38.3
7 1/2 50' wide 10' walk		
S.L. Playa de las Arenas Av.		
-15	17.5	36.8
WL	15.0	39.3
C	13.3	41.0
1/4	12.3	42.0
E	10.8	43.5
1/4	10.4	43.9
C	8.5	45.8
EL	8.8	45.5
+15	11.3	43.0

Monte Vista

49

5433

T.P.	6.93	51.30	7.96	44.37
3 Curb				
-15			9.2	42.1
EL			9.5	41.8
C			9.5	41.8
1/4			10.0	41.3
E			10.6	40.7
1/4			11.5	39.8
C			12.9	38.4
WL			12.9	38.4
+15			14.6	36.7
3 1/4				
-15			14.6	36.7
WL			12.7	38.6
C			12.1	39.2
1/4			11.5	39.8
E			11.2	40.1
1/4			10.7	40.6
C			10.5	40.8
EL			11.8	39.5
+15			11.8	39.5

51.30  
£

-15	11.8	39.5
EL	12.6	38.7
C	12.8	38.5
1/4	13.1	38.2
E	13.2	38.1
1/4	13.6	37.7
C	13.6	37.7
WL	14.0	37.3
+15	14.5	36.8
+20	12.5	38.8

N 1/4

-15	10.9	40.4
WL	11.2	40.1
C	11.8	39.5
1/4 +2	13.2	38.1
E	13.5	37.8
E	13.3	38.0
1/4	13.1	38.2
C	13.0	38.3
+9	12.1	39.2
EL	10.3	41.0
+15	10.0	41.3

N-Carb.

-15	8.5	42.8
EL	9.0	42.3
+5	9.1	42.2
+6	10.3	41.0

51.30

Montevista

50

C	11.6	39.7
+5	12.0	39.3
+6	9.5	41.8
1/4	9.6	41.7
E	9.8	41.5
1/4	10.9	40.4
C	10.3	41.0
WL	10.5	40.8
+15	10.7	40.6

NL. Areas - 460's - 5-L Sea Ave.

-10	9.9	41.4
WL	10.1	41.2
C	10.1	41.2
1/4	9.8	41.5
E	8.9	42.4
1/4	8.7	42.6
C	8.0	43.3
EL	6.8	44.5

430's - 5-L Sea Ave.

EL	5.7	45.6
C	6.0	45.3
1/4	6.2	45.1
E	6.4	44.9
1/4	6.8	44.5
C	7.0	44.3
WL	7.2	44.1
+10	7.0	44.3

10

51.30  
400'S.

WL	36	47.7
C	30	48.3
1/4	26	48.7
1/2	38	47.5
3/4	37	47.6
C	33	48.0
EL	36	47.7
T.P. Old Harrow.	124	50.06

8.65 58.71

375'S.

EL	7.7	51.0
C	5.8	52.9
1/4	4.2	54.5
1/2	4.3	54.4
3/4	3.5	55.2
C	2.0	56.7
WL	3.1	55.6

350'S.

WL	3.7	55.0
C	3.3	56.4
1/4	3.4	55.3
1/2	3.9	54.8
3/4	5.3	53.4
C	6.8	51.9
EL	7.1	51.6

58.71

Monte Vista

51

325'S.

EL	7.6	51.1
C	7.5	51.2
1/4	5.2	53.5
1/2	2.4	56.3
3/4	3.2	55.5
C	3.2	55.5
WL	3.4	55.3

300'S.

WL	2.9	55.8
C	2.5	56.2
1/4	3.3	55.4
1/2	6.4	52.3
3/4	8.2	50.3
C	7.9	50.8
EL	8.2	50.5

275'S.

EL	7.9	50.8
C	8.3	50.4
1/4	8.8	49.9
1/2	8.8	49.9
3/4	9.0	49.7
C	8.9	49.8
WL	9.2	49.5

3c

58.71

250'S

WL	9.6	49.1
C	9.4	49.3
1/4	9.3	49.4
E	8.9	49.8
1/4	8.3	50.4
C	7.8	50.9
EL	7.6	51.1

200'S

EL	7.7	50.8
C	8.0	50.7
1/4	8.4	50.3
E	9.1	49.6
1/4	9.2	49.5
C	9.4	49.3
WL	9.9	48.8

150'S

WL	9.0	49.7
C	8.8	49.9
1/4	8.9	49.8
E	8.9	49.8
1/4	8.4	50.3
C	8.2	50.5
EL	7.8	50.9

Monte Vista

52

58.71

T.P.	7.85	50.86
------	------	-------

697

57.83

100'S

EL	7.0	50.8
C	7.5	50.3
1/4	7.5	50.3
E	7.9	49.9
1/4	8.0	49.8
C	8.3	49.5
WL	8.5	49.3

50'S

WL	8.6	49.2
C	8.1	49.7
1/4	8.0	49.8
E	7.9	49.9
1/4	7.6	50.2
C	7.1	50.7
EL	6.7	51.1

S.L. 569 Ave.

EL	6.7	51.1
C	7.2	50.6
1/4	7.6	50.2
E	7.7	50.1
1/4	8.1	49.7
E	8.3	49.5
WL	8.4	49.4

		57.83		
T.P. Hub N.E. Cor Bluff St.		5.01	52.82	
T.P.		0.70	57.13	
	12-10	69.23		
T.P.		3.02	66.21	
	8-14	74.35		
B.M. Sed + Boul.		2.45	71.90	71.845
			11.85	
			.05	ERROR

CROSS SECTION

Olivetás Street

S.L. Sea Ave to N.L. Fern Glen

40' Wide, 10' Walks - 5' 1/4's

Sub. N.E. Cor Bluff

52.77

12.59 65.36

S.L. Sea Ave

WL	58	59.6
C	53	60.1
1/4	50	60.4
1/2	47	60.7
3/4	45	60.9
C	43	61.1
EL	40	61.4

50' S.

EL	40	61.4
C	44	61.0
1/4	47	60.7
1/2	49	60.5
3/4	52	60.2
C	53	60.1
WL	59	59.5

100' S.

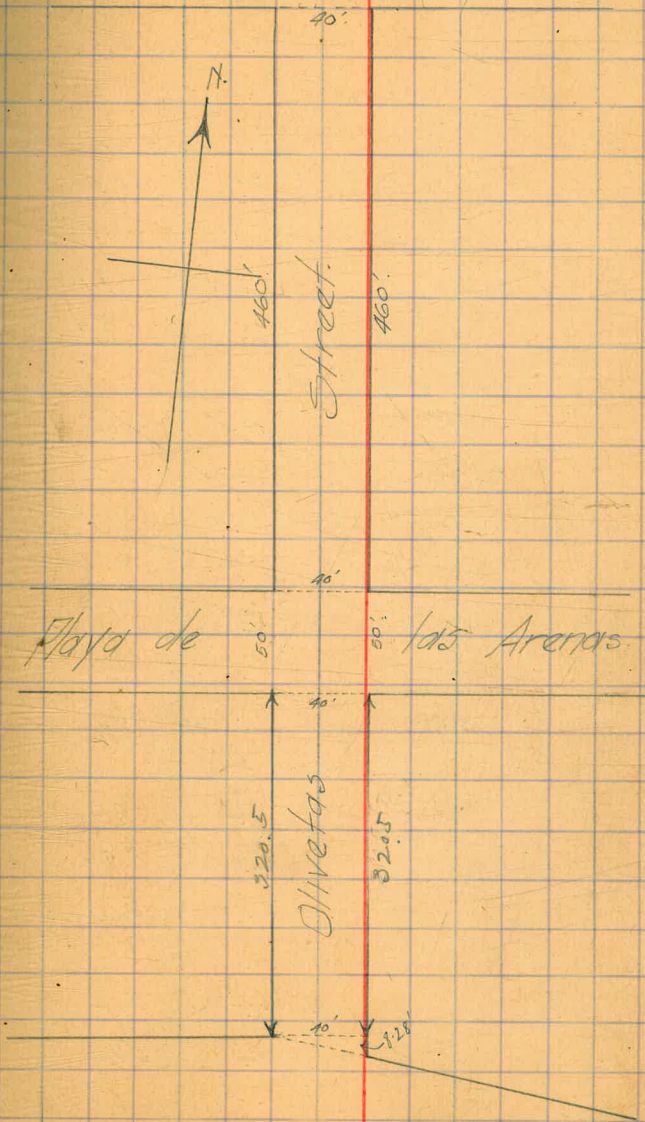
WL	62	59.2
C	56	59.8
1/4	54	60.0
1/2	51	60.3
3/4	48	60.6
C	46	60.8
EL	43	61.1

May 2, 1913.

West  
Everts  
Moore.

54

Sea Avenue





65.36

150' S.

EL.	4.8	60.6
C	5.1	60.3
1/4	5.2	60.2
1/2	5.4	60.0
3/4	5.4	60.0
C	5.5	59.9
WL.	6.4	59.0

200' S.

WL.	6.1	59.3
C	6.0	59.4
1/4	6.0	59.4
1/2	5.8	59.6
3/4	5.4	60.0
C	5.2	60.2
EL.	4.9	60.5

250' S.

EL.	5.2	60.2
C	5.6	59.8
1/4	5.8	59.6
1/2	6.0	59.4
3/4	6.2	59.2
C	6.4	59.0
WL.	6.8	58.6

6536 *Clivitas*

55

300

WL.	7.2	58.2
C	7.0	58.4
1/4	6.8	58.6
1/2	6.5	58.9
3/4	6.4	59.0
C	6.1	59.3
EL.	5.8	59.6
T.P.	5.83	59.63

6.04 65.57

350' S.

EL.	6.8	58.8
C	7.1	58.5
1/4	7.2	58.4
1/2	7.2	58.4
3/4	7.4	58.2
C	7.5	58.1
WL.	7.7	57.9

400' S.

WL.	9.0	56.6
C	8.6	57.0
1/4	8.3	57.3
1/2	8.1	57.5
3/4	7.9	57.7
C	7.7	57.9
EL.	7.6	58.0

6557

435' S

EL.	9.7	55.9
C	9.9	55.7
1/4	10.3	55.3
1/2	10.7	54.9
1/4	10.9	54.7
C	11.1	54.5
WL.	11.3	54.3

460' S = N.L. Arands. 50' wide

WL.	14.1	51.5
C	12.2	53.4
1/4	11.4	54.2
1/2	11.1	54.5
1/4	10.8	54.8
C	10.6	55.0
+9	10.3	55.3
EL.	12.3	53.3

S.L. Arands

EL.	8.1	57.5
C	8.8	56.8
1/4	9.2	56.4
1/2	9.6	56.0
1/4	9.9	55.7
C	10.2	55.4
WL.	10.8	54.8

6557

Olivitas

56

25' S

WL.	12.1	53.5
C	11.6	54.0
1/4	11.3	54.3
1/2	11.0	54.6
1/4	10.7	54.9
C	10.2	55.4
EL.	9.4	56.2

50' S

EL.	9.6	56.0
C	9.7	55.9
1/4	9.5	56.1
1/2	9.8	55.8
1/4	10.0	55.6
C	10.3	55.3
WL.	11.0	54.6

75' S

WL.	11.3	54.3
C	10.5	55.1
1/4	10.0	55.6
1/2	9.3	56.3
1/4	8.5	57.1
C	8.0	57.6
EL.	7.6	58.0

6557

100'S

EL.	8.2	57.4
C	8.6	57.0
1/4	8.5	57.1
1/4	8.2	57.4
1/4	8.2	57.4
C	8.3	57.3
WL	8.4	57.2

125'S

WL	6.6	59.0
C	6.2	59.4
1/4	6.0	59.6
1/4	5.8	59.8
1/4	5.4	60.2
C	4.7	60.9
EL	4.1	61.5

150'S

EL	4.6	61.0
C	5.0	60.6
1/4	5.2	60.4
1/4	5.3	60.3
1/4	5.4	60.2
C	5.7	59.9
WL	6.2	59.4

6557

Olivetas

57

200'S

WL	5.6	60.0
C	5.3	60.3
1/4	5.2	60.4
1/4	5.0	60.6
1/4	4.8	60.8
C	4.8	60.8
EL	4.4	61.2

250'S

EL	3.2	62.4
C	3.5	62.1
1/4	3.6	62.0
1/4	3.7	61.9
1/4	3.9	61.7
C	4.0	61.6
WL	4.3	61.3

300'S

WL	3.1	62.5
C	3.0	62.6
1/4	2.8	62.8
1/4	2.7	62.9
1/4	2.6	63.0
C	2.4	63.2
EL	2.1	63.5

65.67

Olivitas

320.5 - N.L. Fern on WL.

EL.	2.1	63.5
C	2.5	63.1
1/4	2.7	62.9
E	2.8	62.8
1/4	2.6	63.0
C	2.4	63.2
WL	2.8	62.8

Sec. A - 320.5 on WL. 328.3.5 on EL.  
= N.L. Fern Glen

WL	2.8	62.8
C	2.6	63.0
1/4	2.6	63.0
E	2.9	62.7
1/4	2.8	62.8
C	2.8	62.8
EL.	2.5	63.1
T.P.	1.53	64.04

12.31 76.35

T.P. Bolt in Tel. Guy.

333

73.02 73.01

73.01

.01 checks ok.

CROSS SECTION  
 Fern Glen. Widths as shown  
 W.L. Boulevard to E.L. Monte Viste

May 2-1913  
 West  
 Moore  
 Evans

59

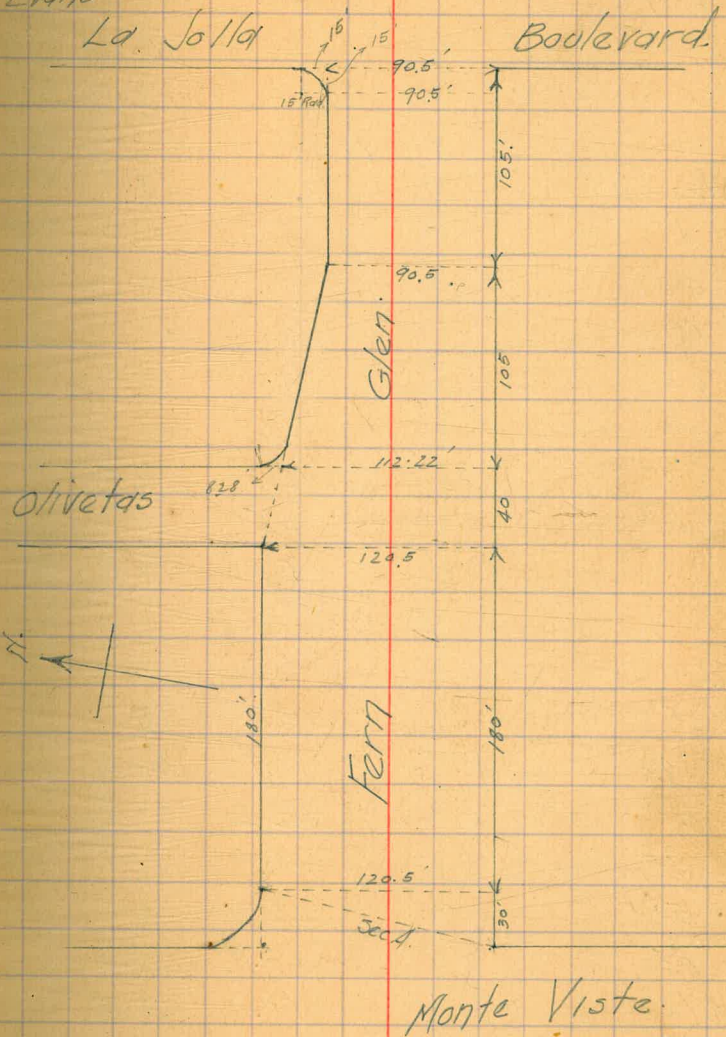
Bolt in Tel. Guy.		73.01
333	76.34	
W.L. Boul.		
5.L.	5.9	70.4
+10	8.6	67.7
+25	8.7	67.6
+50	5.8	70.5
+65	7.0	69.3
+75	12.2	64.1
+85	13.0	63.3
+87	8.2	68.1
+90.5	7.0	69.3
105.5 = NL.	6.2	70.1

Sec. 15' E. of W.L. Boul.

SL	4.0	72.3
+45	4.7	71.6
90.5	4.8	71.5
105.5	4.9	71.4

15' W. of W.L. Boul.

SL	5.6	70.7
+10	7.6	68.7
+25	10.7	65.6
+50	8.0	68.3
+65	9.0	67.3
+67	13.3	63.0



Note - All plusses are distances

North of the S.L. of Fern Glen.

76.34

76.34

Fern Glen 60

75' W.

+77	14.5	61.8
+82	10.0	66.3
+905 = NL	7.9	68.4
NL = +905	25' W.	
+85	8.0	68.3
+80	9.3	67.0
+67	13.6	62.7
+65	14.5	61.8
+50	10.4	65.9
+30	9.6	66.7
+10	12.3	64.0
SL	6.5	69.8
	5.8	70.5
	50' W.	
SL	6.7	69.6
+15	7.2	69.1
+30	9.7	66.6
+40	12.2	64.1
+45	15.5	60.8
+50	15.1	61.2
+65	14.3	62.0
+70	10.9	65.4
+75	9.9	66.4
+905 = NL	8.9	67.4

-905 = NL
+70
+60
+55
+47
+45
+35
+25
SL
SL
+25
+45
+55
+60
+65
+905 = NL
T.P.
+946 = NL
+77
+66
+62
+45

3.19

69.53

125' W.

9.7	66.6
11.1	65.2
12.3	64.0
14.9	61.4
15.5	60.8
13.3	63.0
10.7	65.6
9.0	67.3
7.4	68.9
105' W = Angle on NL	
8.2	68.1
8.4	67.9
9.6	66.7
13.5	62.8
16.4	59.9
14.7	61.6
10.8	65.5
10.00	66.34
4.5	65.0
7.8	61.7
10.3	59.2
7.0	62.5
2.2	67.3

	69.53		
+25		2.0	67.5
SL		1.9	67.6
	150' W.		
SL		2.7	66.8
+25		2.7	66.8
+50		3.1	66.4
+63		3.9	65.6
+70		5.8	63.7
+80		11.7	57.8
+90		7.0	62.5
+99.82 = NL		5.2	64.3
	175' W.		
+105.00 = NL		5.9	63.6
+102		6.0	63.5
+83		12.8	56.7
+75		9.0	60.6
+60		5.7	63.8
+25		3.6	65.9
SL		3.6	65.9
	200' W.		
SL		4.4	65.1
+25		4.2	65.3
+50		7.5	62.0
+65		6.8	62.7
+75		9.0	60.5
+80		11.4	58.1

	69.53	Jern Island	
			61
+85		14.0	55.5
+95		9.1	60.4
+110.18 = NL		6.4	63.1 <sup>25' wide 10' W.</sup>
	210' W = E.L. Olivetids on North		
+112.33 = NL		6.4	63.1
+104		7.5	62.0
+90		10.0	59.5
+84		12.7	56.8
+82		15.5	54.0
+72		8.6	60.9
+60		7.4	62.1
+50		7.9	61.6
+25		4.6	64.9
SL		4.8	64.7
	E. Curb produced.		
SL		5.2	64.3
+25		5.3	64.2
+30		5.7	63.8
+55		8.8	60.7
+70		12.5	57.0
+77		17.0	52.6
+80		13.2	56.3
+100		8.0	61.5
+ NL		6.4	63.1

69.53

E/A Produced.

+	NL.	6.7	62.8
+ 100		7.7	61.8.
+ 77		13.6	55.9
+ 75		16.6	52.9
+ 71		16.6	52.9
+ 70		13.1	56.4
+ 60		11.4	58.1
+ 50		9.5	60.0
+ 30		5.7	63.8
+ 25		5.5	64.0
SL.		5.3	64.1
	£ pro		
SL.		5.3	64.2
+ 25		5.6	63.9
+ 30		5.9	63.6
+ 50		9.6	59.9
+ 51		10.7	58.8
+ 60		13.0	56.5
+ 70		17.0	52.5
+ 77		16.9	52.6
+ 78		13.2	56.3
+ 100		10.2	59.3
+ 110		7.3	62.2
+	NL.	6.6	62.9

69.53

W/A produced.

+	NL.	6.6	62.9
+ 100		7.5	62.0
+ 100		9.3	60.2
+ 85		11.7	57.8
+ 72		13.9	55.6
+ 70		17.4	52.1
+ 65		17.4	52.1
+ 63		13.1	56.4
+ 60		10.0	59.5
+ 45		9.0	60.5
+ 30		6.2	63.3
+ 25		6.0	63.5
SL.		5.6	63.9
	W. Curb. produced.		
SL		5.7	63.8
+ 25		6.0	63.5
+ 30		6.4	63.1
+ 45		9.2	60.3
+ 60		13.2	56.3
+ 61		18.0	51.5
+ 65		18.0	51.5
+ 67		15.0	54.5
+ 85		10.9	58.6
+ 100		7.1	62.4
+	NL.	6.4	63.1

Iron Blend

62



69.53

WL

+120.5 = NL	6.8	62.7
+100	7.3	62.2
+75	10.8	58.7
+70	13.2	56.3
+65	18.2	51.3
+58	13.1	56.4
+45	7.4	62.1
+25	6.3	63.2
SL	6.1	63.4
25' W of WL Olivetas		
SL	7.0	62.5
+25	7.2	62.3
+45	8.0	61.5
+55	14.2	55.3
+57	19.2	50.3
+65	20.0	49.5
+67	15.0	54.5
+90	9.4	60.1
+100	8.1	61.4
+120.5 = NL	7.8	61.7
50' W		
+120.5 = NL	8.6	60.9
+95	9.8	59.7
+73	16.0	53.5
+68	19.4	50.1

69.53

From Island

+60	13.3	56.2
+45	10.0	59.5
+25	7.9	61.6
SL	7.7	61.8
75' W		
SL	8.5	61.0
+25	10.0	59.5
+40	11.7	57.8
+52	13.4	56.1
+60	20.0	49.5
+65	19.0	50.5
+74	17.4	52.1
+90	14.9	57.6
+110	10.3	59.2
+120.5 = NL	10.2	59.3
T.P.	10.53	59.00
1.76, 60.76		
100' W		
+120.5 = NL	13.8	57.0
+95	4.1	56.7
+75	6.5	54.3
+68	13.0	47.8
+66	11.1	49.7
+55	8.1	52.7
+38	4.2	56.6

60.76

+ 25		
SL	3.0	57.8
	1.1	59.7
	125' W.	
SL		
+ 15	1.7	59.1
+ 30	3.6	57.2
+ 55	8.0	52.8
+ 60	10.8	50.0
+ 62	13.8	47.0
+ 64	10.6	50.2
+ 84	6.6	54.2
+ 95	5.7	55.1
+120.5 - NL.	6.1	54.7
	150' W.	
+120.5 - NL.	8.6	52.2
+ 98	7.4	51.4
+ 60	14.0	46.8
+ 50	9.8	51.0
+ 43	8.8	52.0
+ 35	4.7	56.1
+ 20	3.1	57.7
DL	3.3	57.5

60.76

Jern Island

64

180' W

SL	6.1	54.7
+ 25	5.2	55.6
+ 35	4.7	56.1
+ 60	6.4	54.4
+ 90	14.2	46.6
+ 95	19.0	41.8
+ 100	14.2	46.8
+120.5 - NL	10.6	50.2
	Sec A = 180' W on NL. 210' W on S.L.	
+ NL	10.6	50.2
+ 110	14.6	46.2
+ 108	19.2	41.6
+ 102	14.8	46.2
+ 95	14.2	46.6
+ 78	7.9	52.9
+ 45	7.4	53.4
+ 30	6.9	53.9
SL	8.7	52.1
TR. Top Stake	7.22	53.54

53.54

53.54

.42

OK.

CROSS SECTION

Playa de las Arenas Avenue  
 W.L. La Jolla Boul. to EL. Monte Vista St  
 50' Wide 10' Walks - 7 1/2' / 4's

May 2-1913

West  
 Evans  
 Moore

65

Top Meter Box 69.17

0.86 70.03

W.L. La Jolla Boul.

NL.	1.4	68.6
C	1.8	68.2
1/4	1.7	68.3
Φ	1.3	68.7
1/4	1.1	68.9
C	1.1	68.9
SL.	1.3	68.7

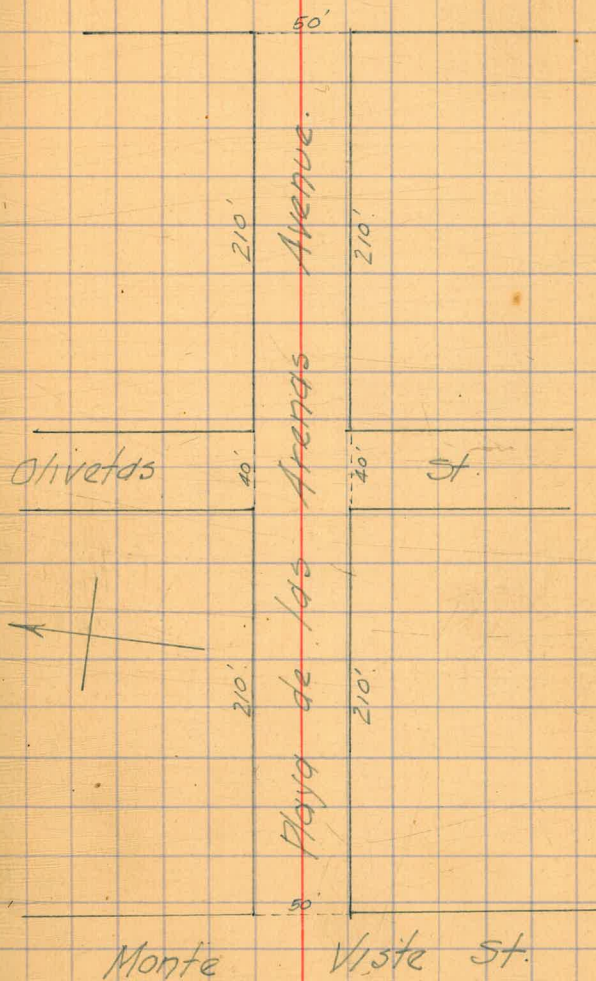
50' W.

SL.	4.5	65.5
C	4.4	65.6
1/4	4.4	65.6
Φ	4.6	65.4
1/4	4.5	65.5
C	4.2	65.8
NL.	4.1	65.9

75' W.

NL.	6.3	63.7
+8	6.2	63.8
C	9.0	61.0
+2	9.1	60.9
1/4	5.8	64.2

La Jolla Boulevard



7003

150'W.

	7003	
€	5.8	64.2
1/4	5.8	64.2
C	5.8	64.2
SL	5.7	64.3
	100'W.	
SL	7.0	63.0
C	7.3	62.7
<del>4.5</del>	7.5	62.5
1/4	7.1	60.9
€	10.5	59.5
1/4	12.0	58.0
C	9.8	60.2
+2	8.4	61.6
NL	8.4	61.6
-5	12.5'W.	13.6
NL	10.0	60.0
+1	14.0	56.0
+6	14.0	56.0
C	9.9	60.1
1/4	9.6	60.4
€	9.3	60.7
1/4	9.0	61.0
C	8.7	61.3
SL	8.2	61.8

2L	9.4	60.6
C	9.5	60.5
1/4	9.6	60.4
€	10.2	59.8
1/4	10.9	59.1
+3	11.2	58.8
+6	13.0	57.0
C	14.0	56.0
NL	15.4	54.6
+20	14.4	55.6
+23	11.3	58.7
	175'W.	
-20	12.9	57.1
-18	15.0	55.0
NL	16.0	54.0
+5	16.1	53.9
+7	12.8	57.2
C	12.5	57.5
1/4	11.7	58.3
€	11.0	59.0
1/4	10.6	59.4
C	10.5	59.5
SL	10.3	59.7

58.46

E. Gorb.

	70.03	11.85	58.18				
T.P.				SL		1.8	56.7
	0.28	58.46		C		1.4	57.1
	200' W			1/4		1.5	57.0
SL.		0.1	58.4	E		1.7	56.8
C		0.1	58.4	1/4		1.9	56.6
1/4		0.2	58.3	C		2.3	56.2
E		0.2	58.3	NL		3.5	55.0
1/4		0.5	58.0	+3		4.0	54.5
C		0.8	57.7	+4		6.3	52.3
+8		2.6	55.9	+15		6.3	52.3
NL.		4.8	53.7	+18		3.6	54.9
+5		5.8	52.7				
+12		3.0	55.5	-18		3.6	54.9
	210' W = E.L. Olivetas	40' wide	10' wide	-10		6.8	51.7
-20		2.9	55.6	-9		4.5	54.0
-18		5.8	52.7	NL		3.6	54.9
NL.		6.0	52.5	C		2.9	55.6
+2		2.9	55.6	1/4		2.2	56.3
C		1.5	57.0	E		2.1	56.4
1/4		1.1	57.4	1/4		2.1	56.4
E		0.9	57.6	C		2.0	56.5
1/4		0.8	57.7	SL		2.1	56.4
C		0.8	57.7				
SL.		1.0	57.5				

5846

£

SL	25	560
C	22	563
1/4	23	562
£	24	561
1/4	26	559
C	3.1	554
NL	3.7	548

W 1/4

NL	4.3	542
C	3.6	549
1/4	3.3	552
£	3.0	555
1/4	2.9	556
C	2.7	558
SL	2.8	557

W Corb.

SL	3.1	554
C	3.0	555
1/4	3.1	554
£	3.3	552
1/4	3.5	550
C	3.7	548
NL	4.4	541

5846

Areas

68

W.L. Olivetds.

NL	6.7	51.8
C	4.8	53.7
1/4	4.0	54.5
£	3.8	54.7
1/4	3.7	54.8
C	3.6	54.9
SL	3.7	54.8

25' W

SL	5.2	53.3
C	5.2	53.3
1/4	5.2	53.3
£	5.2	53.3
1/4	5.5	53.0
C	6.9	51.6
NL	7.7	50.8
+10	6.5	52.0

50' W

NL	8.3	50.2
+4	8.4	50.1
+8	9.9	48.6
C	7.9	50.6
1/4	7.4	51.1
£	6.9	51.6
1/4	7.0	51.5
C	7.5	51.0
SL	7.7	50.8

58.46

75' W.

SL	9.0	495
C	8.6	499
1/4	8.7	498
⊕	8.7	498
1/4	8.6	499
C	8.3	502
+3	8.0	505
+5	11.0	475
+9	9.0	495
NL	8.1	504

100' W.

NL	8.8	497
C	10.2	483
1/4	12.2	463
⊕	10.9	476
1/4	10.7	478
C	10.3	482
SL	10.4	481

125' W.

-8	13.2	453
SL	13.9	426
	14.1	444
C	15.0	435
1/4 <sup>+3</sup>	12.5	469
⊕	12.3	462
1/4	11.6	469
C	10.5	480
NL	8.9	496
	8.2	523

58.46

Arenas

69

150' W.

NL	9.3	492
C	9.9	486
1/4	10.6	479
⊕	11.5	470
1/4	12.4	461
C	13.5	450
+8	14.8	437
SL	17.0	415
+3	17.0	415
+5	15.0	435
TP	13.00	45.46

634

51.80

175' W.

-1	8.9	42.9
SL	11.4	40.4
⊕	10.8	41.0
+2	8.6	43.2
1/4	8.2	43.6
⊕	7.3	44.5
1/4	6.7	45.1
C	6.2	45.6
NL	5.8	46.0

51.80

Armas

70

200' W.

NL	6.9	44.9
C	8.4	43.4
<del>A</del>	9.4	42.4
E	10.6	41.2
+2	10.7	41.1
+5	12.4	39.4
<del>1/4</del>	12.5	39.3
+3	10.4	41.4
C	9.7	42.1
SL	7.4	44.4

210' W - Ek. Monte Vista

SL	6.1	45.7
C	10.0	41.8
+3	10.4	41.4
<del>1/4</del>	13.0	38.8
E	13.0	38.8
+4	10.8	41.0
<del>1/4</del>	10.3	41.5
C	9.7	42.1
NL	7.4	44.4

Harrow Tooth.

1.77 50.03

5006  
5023

OK.

.03



CROSS SECTIONS  
 Vine Street, 40 wide, 10 w 5 1/4.  
 N.L. Sea Ave. to 100 N. of N.L. Marine Ave.  
**OLIVETAS. Ave.**

May 5 - 1913.  
 West.  
 Evans.  
 Moore.

71

Hub N.E. Cor Bluff St. 52.77

11.77 64.54

N.L. Sea Avenue.

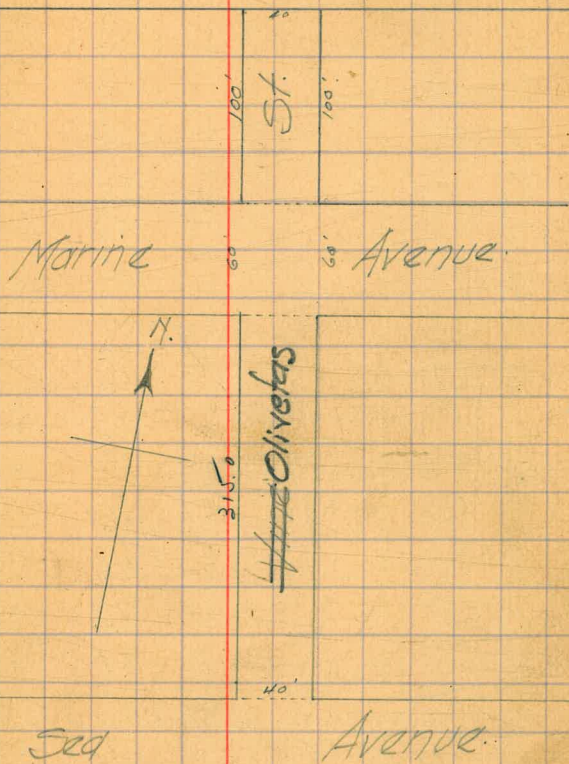
WL.	4.6	59.9
C	4.1	60.4
1/4	3.8	60.7
E	3.6	60.9
1/4	3.3	61.2
C	3.0	61.5
EL.	2.7	61.8

50' N.

EL.	2.8	61.7
C	3.2	61.3
1/4	3.4	61.1
E	3.6	60.9
1/4	3.8	60.7
C	4.1	60.4
WL.	4.2	60.3

100' N.

WL.	4.6	59.9
C	4.2	60.3
1/4	4.1	60.4
E	3.8	60.7
1/4	3.7	60.8
C	3.4	61.1
EL.	2.9	61.6



64.54

150' N.

EL.	3.6	60.9
C	4.0	60.5
1/4	4.1	60.4
1/2	4.2	60.3
3/4	4.3	60.2
C	4.6	59.9
WL.	5.1	59.4

200' N.

WL.	5.5	59.0
C	5.1	59.4
1/4	5.0	59.5
1/2	4.9	59.6
3/4	4.7	59.8
C	4.3	60.2
EL.	3.8	60.7

250' N.

EL.	4.4	60.1
C	4.8	59.7
1/4	5.1	59.4
1/2	5.3	59.2
3/4	5.5	59.0
C	5.6	58.9
WL.	6.0	58.5

64.54

View

72

300' N.

WL.	5.8	58.7
C	5.5	59.0
1/4	5.4	59.1
1/2	5.1	59.4
3/4	4.9	59.6
C	4.7	59.8
EL.	4.3	60.2

10' W. 10' 1/2 - 315' N. = 2 L. Norrington Ave 60' wide

EL.	4.0	60.5
C	4.4	60.1
1/4	4.8	59.7
1/2	5.1	59.4
3/4	5.4	59.1
C	5.6	58.9
WL.	6.3	58.2

S. Curb.

WL.	6.2	58.3
C	5.8	58.7
1/4	5.6	58.9
1/2	5.2	59.3
3/4	4.8	59.7
C	4.5	60.0
EL.	4.1	60.4

6454

5/4

EL	44	60.1
C	47	59.8
1/4	49	59.6
⊕	52	59.3
1/4	55	59.0
C	58	58.7
WL	62	58.3
⊕ Marine		
WL	6.1	58.4
C	5.8	58.7
1/4	5.5	59.0
⊕	5.2	59.3
1/4	5.0	59.5
C	4.8	59.7
EL	4.4	60.1
N/A		
EL	4.4	60.1
C	4.8	59.7
1/4	5.2	59.3
⊕	5.4	59.1
1/4	5.6	58.9
C	5.7	58.8
WL	6.2	58.3

6454

View 73

N Curb

WL	6.2	58.3
C	5.8	58.7
1/4	5.6	58.9
⊕	5.4	59.1
1/4	5.1	59.4
C	4.8	59.7
EL	4.5	60.0
N.L. Marine		
EL	4.5	60.0
C	4.9	59.6
1/4	5.2	59.3
⊕	5.3	59.2
1/4	5.6	58.9
C	5.7	58.8
WL	6.0	58.5
50' N		
WL	6.4	58.1
C	5.7	58.8
1/4	5.5	59.0
⊕	5.5	59.0
1/4	5.4	59.1
C	5.1	59.4
EL	4.3	60.2

6454

Vinn

74

100' N.

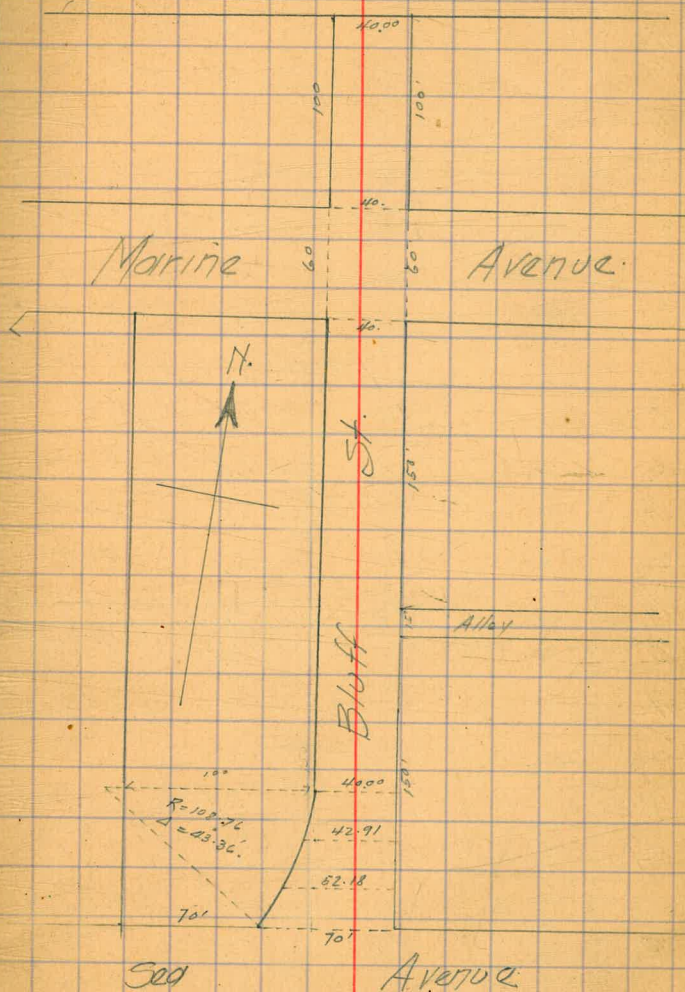
EL.	53	592
C	57	588
<del>A</del>	58	587
<del>Φ</del>	58	587
<del>A</del>	59	586
C	60	585
WL.	65	580

CROSS SECTIONS  
 Bluff St. La Jolla 40' W. 10' C. S. 5'  
 N.L. Sed Ave, to 100' N NL Marine Ave

May 5 - 1913.  
 West  
 Evans  
 Moore

75

	11.77	64.54	52.77
	N.L. Sed Ave 70' wide		
EL.	11.8		52.7
C	12.1		52.4
1/4	12.6		51.9
ϕ	13.1		51.4
1/4	13.6		50.9
C	14.0		50.5
WL	14.3		50.2
	25' N = 52.18' wide		
WL	13.8		50.7
C	13.1		51.4
1/4	13.0		51.5
ϕ	12.6		51.9
1/4	12.3		52.2
C	12.1		52.4
EL.	11.7		52.8
	50' N = 42.91' wide		
EL.	11.5		53.0
C	11.8		52.7
1/4	12.0		52.5
ϕ	12.4		52.1
1/4	12.7		51.8
C	12.8		51.7
WL	13.4		51.1



64.54

75' N = 40' wide

WL	13.2	51.3
C	12.7	51.8
1/4	12.6	51.9
1/2	12.5	52.0
3/4	12.3	52.2
C	12.0	52.5
EL	11.6	52.9

100' N.

EL	11.8	52.7
C	12.3	52.2
1/4	12.4	52.1
1/2	12.6	51.9
3/4	12.8	51.7
C	13.0	51.5
WL	13.4	51.1

150' N.

WL	13.4	51.1
C	13.1	51.4
1/4	12.8	51.7
1/2	12.6	51.9
3/4	12.2	52.3
C	12.0	52.5
EL	11.5	53.0

64.54

Bluff

76

200' N

EL	12.4	52.1
C	12.6	51.9
1/4	12.8	51.7
1/2	12.9	51.6
3/4	13.0	51.5
C	13.1	51.4
WL	13.5	51.0

250' N.

WL	14.1	50.4
C	13.5	51.0
1/4	13.3	51.2
1/2	13.1	51.4
3/4	12.8	51.7
C	12.7	51.8
EL	12.8	51.7
TP	12.58	51.96

3.88

55.84

262' N

EL	3.9	51.9
C	4.2	51.6
1/4	4.5	51.3
1/2	4.6	51.2
3/4	4.9	50.9
C	4.9	50.9
WL	5.2	50.6

5584

268' N.

-	11.5	44.3
WL.	11.0	44.8
C	10.2	45.6
1/4	10.3	45.5
1/4	9.8	46.0
1/4	7.0	48.8
C	4.4	51.4
EL.	4.1	51.7

275' N.

EL.	4.5	51.3
C	4.4	51.4
1/4	4.5	51.3
1/4	4.7	51.0
1/4	4.9	50.9
C	6.7	49.1
WL.	9.1	46.7
+10	12.0	43.8

285' N.

-10	9.5	46.3
THG	6.0	49.8
WL.	5.6	50.2
C	5.2	50.6
1/4	5.0	50.8
1/4	4.6	51.2
1/4	4.4	51.4

5584

Bluff 77

C	4.2	51.6
EL.	4.1	51.7

300' N.

EL.	4.3	51.5
C	4.5	51.3
1/4	4.7	51.1
1/4	5.1	50.7
1/4	5.2	50.6
C	5.4	50.4
WL.	5.4	50.4

10' N.  
10' N.

315' N = 5L. Maxine Ave 60' N.

WL.	5.9	49.9
+1	5.9	49.9
+2	7.7	46.1
C	7.0	46.8
+3	5.5	50.3
1/4	5.3	50.5
1/4	5.0	50.8
1/4	4.8	51.0
C	4.5	51.3
EL.	4.1	51.7

5-Curb.

EL.	4.3	51.5
C	4.7	51.1
1/4	5.0	50.8
1/4	5.1	50.7

5584

1/4	5.2	50.6
C	5.2	50.6
+1	7.7	48.1
WL.	8.8	47.0
+2	6.0	49.8

3/4

WL.	5.5	50.3
C	5.2	50.6
1/4	5.2	50.6
E	5.1	50.9
1/4	4.7	51.1
C	4.6	51.2
EL.	4.2	51.6

E Marine

EL.	4.1	51.7
C	4.7	51.1
1/4	5.0	50.8
E	5.2	50.6
1/4	5.1	50.7
C	5.3	50.5
WL.	5.5	50.3

N 1/4

WL.	5.8	50.0
C	5.5	50.3
1/4	5.3	50.5
E	5.4	50.4

5584

Bluff 78

1/4	5.1	50.7
C	4.9	50.9
EL.	4.4	51.4

N Carb.

EL.	4.6	51.2
C	4.9	50.9
1/4	5.1	50.7
E	5.2	50.6
1/4	5.4	50.4
C	5.7	50.1
WL.	6.0	49.8

N L Marine Ave

WL.	6.0	49.8
C	5.6	50.2
1/4	5.4	50.4
E	5.2	50.6
1/4	5.1	50.7
C	5.0	50.8
EL.	4.6	51.2

50' N

EL.	5.2	50.6
C	5.5	50.3
1/4	5.7	50.1
E	5.9	49.9
1/4	6.0	49.8
C	6.2	49.6
WL.	6.5	49.3



55.84

Bluff

79

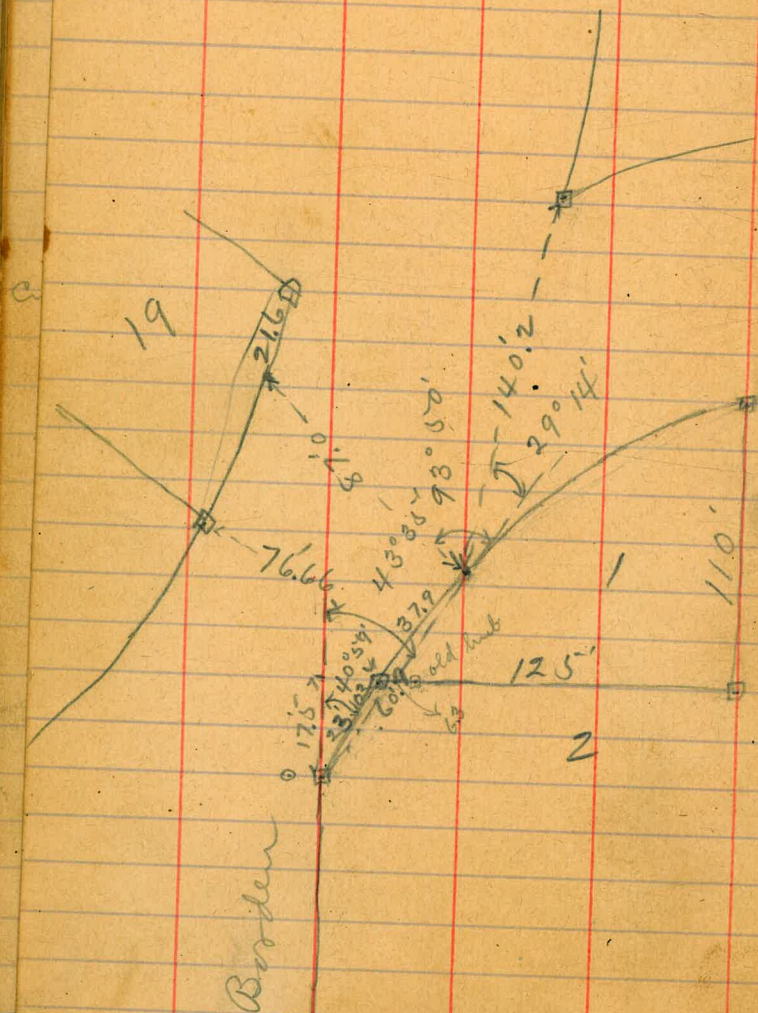
100'

WL.	6.8	49.0	
C	6.6	49.2	
1/4	6.5	49.3	
E	6.3	49.2	
1/4	6.2	49.6	
C	6.0	49.8	
EL.	5.6	50.2	
T.P. Hub. NE Cor Bluff.	3.7	52.77	52.77
			52.77
			00
		OK.	



Oct 23/13  
Childs  
Allen  
Bunker

(81)



60.9  
23.03  
87

37.7

84.259 = Basin Play Summit. W. Co. Conn + Pa. Co.

81.999 = of the file grt. S.E. Co. Conn + Pa. Co.

N.E. Co. inside P.L. Basin Play con. near = 71.845  
Sea ave. + Boulevard.

S.W. Co. West Conn + Boulevard = of the conference lot grt  
= 79.26.

out sea + Marine E side Blvd. head of file in  
trac. file grt alley = 71.651

73.95 currier + prospect -  
66.25 Boulevard of the N.E. Co.



37.9