

885

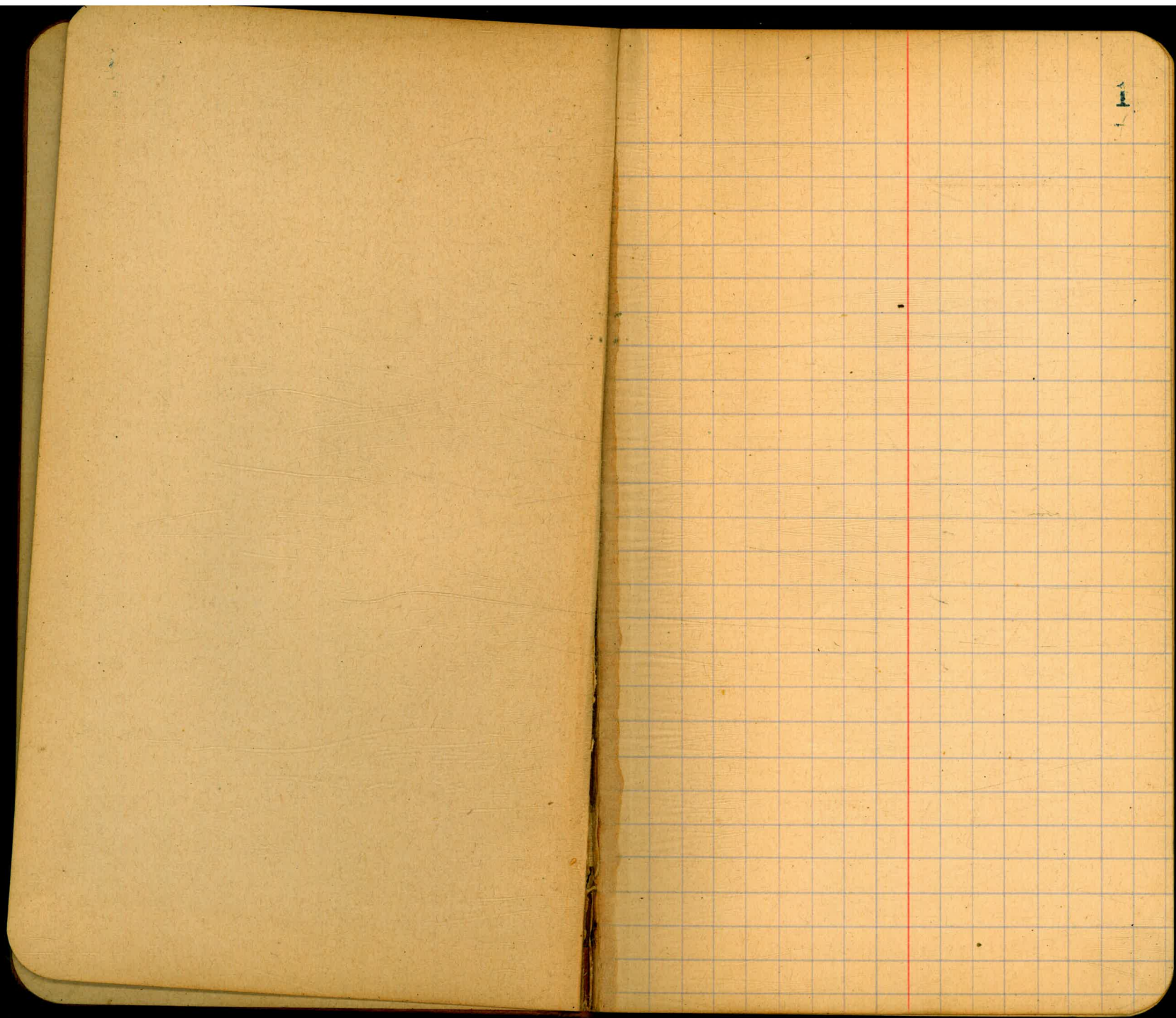
885
F.B.

FIELD BOOK.

No. 400

MICROFILMED

DEC 15 1964



7/11/13
 Gregory
 Shuman
 Shaw.

CROSS-SECTION OF
 MADRONA ST.
 FROM THE EAST LINE OF
 ARISTA ST
 TO -

B.M. 3.98 244.91 240.93 MAN COR MAD ARISTA

EAST LINE ARISTA ST (50' WIDE)

N.	1.9
ct	1.9
1/4	1.8
C	1.6
1/4	1.5
ct	1.3
S	1.1

EAST CURB

S	1.9
ct	1.9
1/4	2.1
C	2.3
1/4	2.6
ct	2.4
N	2.4

EAST QUARTER

N	2.9
ct	2.8
1/4	3.0
C	2.9
1/4	2.6
ct	2.3
S	2.3

CENTER

S	3.2
ct	3.0
1/4	3.3
C	3.9
1/4	3.8
ct	3.6
N	3.7

WEST QUARTER

N	4.6
ct	4.5
1/4	4.3
C	4.3
1/4	4.1
ct	3.9
S	3.8

WEST CURB

S	4.6
ct	4.6
1/4	4.8
C	5.3
1/4	5.4
ct	5.5
N	5.7

244.91

WEST LINE ARISTA

N			8.0
cb			7.5
1/4			7.5
C			7.1
1/4			6.8
cb			6.1
S			6.0

T.P.	0.12	232.16	12.87	232.04
------	------	--------	-------	--------

S		50' WEST	
---	--	----------	--

S			0.1
cb			0.7
1/4			1.4
C			1.8
1/4			2.3
cb			2.4
N			2.9

100' WEST

N			10.5	
cb			10.4	
1/4			10.5	
C			10.0	
1/4			9.9	
cb			9.9	
S			9.9	
T.P.	0.14	219.42	12.88	219.28

219.42

135' WEST

S			2.9
cb			2.9
1/4			3.4
C			4.0
1/4			7.1
cb			5.3
N			6.1

150' WEST.

-20			22.6
N			24.2
cb			28.3
1/4			21.8
C			18.3
1/4			15.3
cb			13.1
S			9.6
+20			9.5

158' WEST.

-20			11.2	
S			12.9	
T.P.	0.37	206.71	13.08	206.34
cb			5.0	
1/4			8.3	
C			10.8	
1/4			13.1	
cb			19.1	

192.68

275' WEST

-25		19.4
S		33.3
cb		28.4
1/4		20.2
C		14.3
1/2		11.0
cb		6.5
N		1.1
T.P.	7.96	199.41
		1.23
		191.45
	300' WEST = F.L. CONDE ST (50' WIDE)	
		same slope
N		3.4
cb		7.1
1/4		11.3
C		15.0
1/4		18.8
cb		22.3
S		30.0
+25		44.8
+40		34.5
	EAST CURB	
-47		38.5
-38		46.8
S		27.6
cb		19.7
1/4		14.7

199.41

EAST QUARTER

C		10.9
1/2		7.8
cb		4.3
1/4		1.5
		same slope
	EAST QUARTER	
		same slope
		0.9
cb		3.8
1/4		6.9
C		10.9
1/2		14.0
cb		19.0
S		26.6
+40		48.0
+50		40.0
	CENTER	
-55		43.0
-40		49.5
S		26.6
cb		18.8
1/4		13.7
C		9.2
1/4		5.6
cb		3.6
N		0.2
		same slope

5

199.41

WEST QUARTER

N	0.0
cb	3.4
1/4	5.4
C	9.0
1/4	13.4
cb	17.4
S	23.0
+47	50.8
+63	43.4

WEST CORE

+70	43.8
+53	52.0
S	23.3
cb	18.3
1/4	14.0
C	9.8
1/4	5.9
cb	3.7
N	+0.1

WEST LINE CONDE ST

N	+0.1	199.5
cb	5.3	199.5
1/4	7.1	
C	10.8	
1/4	13.6	

199.41

6

cb	17.0
S	22.4
+60	53.5
+75	44.2

25' WEST

same slope	15.1
S	10.5
cb	6.8
1/4	3.3
C	3.3

T.P.	11.17	210.41	0.17	199.84
1/4			11.4	
cb			8.1	
N			2.7	
+20			1.2	

50' WEST

N	0.4
cb	1.4
1/4	5.5
C	8.5
1/4	10.5
cb	13.6
S	18.8
	same slope

210.41

224.23

75' WEST

150' WEST

SAME slope

S			11.0	
cb			6.6	
1/4			3.9	
C			1.3	
T.P.	12.69	222.02	1.08	209.33
1/4			11.5	
cb			10.0	
N			8.8	

N				0.3
cb				1.9
1/4				3.5
C				7.2
1/4				10.7
cb				12.2
S				20.4
				20.3

100' WEST

175' WEST

10.1 use for back section.
H.R. - forward -

N			10.1	
cb			5.3	
1/4			11.0	
C			11.3	
1/4			11.7	
cb			12.1	
cb			12.7	
S			13.9	

S				22.5
cb				22.6
1/4				23.0
C				14.4
1/4				12.4
cb				7.9
N				3.3

125' WEST.

200' WEST

S			15.4	
cb			15.2	
1/4			15.0	
C			3.8	
1/4			2.7	
cb			1.7	
cb			0.5	
N			+0.2	222.2
T.P.	3.33	224.23	1.12	220.90

N				7.1
cb				12.0
T.P.	4.90	216.18	12.95	211.28
T.P.	0.29	203.82	12.65	203.53
1/4				4.3
C				4.4
1/4				4.1
cb				4.2
S				10.8

203.72

8

225' WEST

S	14.6
cb	10.6
1/4	7.2
C	6.0
1/4	6.6
cb	7.1
N	3.6

250' WEST

N	10.4			
cb	12.8			
1/4	16.4			
C	16.3			
T.P.	1.09	191.98	12.93	190.89
1/4	6.0			
cb	7.8			
S	11.4			
T.P.	0.83	179.78	13.03	178.95
SAME SLOPE				

275' WEST

S	11.7
cb	10.8
1/4	11.3
C	9.4
1/4	7.2
cb	5.0
N	1.7

T.P. 0.12 166.97 12.93 166.85

300' WEST = EL. HARNEY ST (50' WIDE)

N	2.5
cb	6.3
1/4	8.8
C	11.0
1/4	12.6

T.P. 4.22 159.54 11.65 155.32

cb	6.5
S	7.8

EAST CURB

S	13.8
cb	12.4
1/4	11.3
C	8.7
1/4	6.5
cb	3.9
N	0.0

EAST QUARTER.

SAME SLOPE	
N	1.6
cb	5.5
1/4	8.5
C	11.6
1/4	14.0
cb	15.6
S	17.6

159.54

9

CENTER

S	21.2
cb	19.2
1/4	17.0
C	13.0
1/4	10.0
cb	6.7
N	1.7
WEST QUARTER	
same slope	
N	2.1
cb	7.0
1/4	10.8
C	14.5
1/4	18.5
cb	20.7
S	25.7
WEST CURB	
same	
S	26.6
cb	22.0
1/4	18.2
C	14.6
1/4	10.8
cb	6.8
N	1.9
same	

WEST LINE HARNEY ST

N	same slope	0.4	
cb		5.3	
1/4		10.3	
C		13.8	
1/4		17.9	
cb		22.2	
S		28.0	
T.P. ^{on Hub}		1.05	160.15
			0.44
			159.10
50' WEST			
S		30.4	
cb		24.4	
1/4		20.9	
C		17.1	
1/4		13.7	
cb		9.1	
N		4.7	
100' WEST			
N		10.4	
T.P.		0.43	147.75
			12.73
			147.42
cb		2.8	
1/4		6.6	
C		11.2	
1/4		14.8	
cb		18.7	
S		23.0	

147.85

150' WEST

S			30.0	
cb			25.5	
1/4			21.3	
C			18.3	
1/4			15.5	
cb			13.3	
N			11.4	
T.P.	0.19	134.97	13.07	134.78

200' WEST

N			10.9	
cb			12.2	
T.P.	0.16	122.59	12.54	122.43
1/4			1.3	
C			2.9	
1/4			5.5	
cb			8.9	
S			12.3	

207' WEST

S			14.7	
cb			11.8	
1/4			9.8	
C			5.8	
1/4			4.7	
cb			2.5	
N			0.9	

122.59

10

225' WEST

N				5.2
cb				7.1
1/4				9.0
C				9.6
1/4				10.4
cb				12.0
T.P.	1.33	110.91	13.01	109.58
S				4.1

250' WEST

S				15.8
cb				14.0
1/4				13.2
C				10.4
1/4				8.7
cb				5.4
N				3.4
T.P.	0.79	92.69	13.01	97.90

275' WEST

N				5.2
cb				6.9
1/4				8.9
C				10.6
1/4				12.8
cb				14.8
S				15.6

98.69

300' WEST = E.L. TWIGGS ST (50' WIDE)

S	24.0
cb	21.1
1/4	18.6
C	16.2
1/2	13.8
cb	10.7
N	6.5

E. CURB

N	5.1
cb	9.8
1/4	14.4
C	16.9
1/4	19.5
cb	22.1
S	26.2
±20	27.0

E. QUARTER

-20	28.4
S	27.0
cb	22.8
1/4	19.3
C	17.0
1/4	12.8
cb	8.9
N	3.9

98.69

CENTER.

N	3.1
cb	8.8
1/4	13.1
C	16.1
1/2	19.3
cb	24.2
S	28.0
±20	29.6

W. QUARTER

-20	30.9
S	29.4
cb	24.2
1/4	19.7
C	16.1
1/4	12.9
cb	8.2
N	2.5

W. CURB

N	2.2
cb	7.6
1/4	12.9
C	16.4
1/4	20.7
cb	24.5
S	30.0
±20	32.0

98.69

12

	W. L. TWIGGS	ST	
-20		34.0	
S		31.3	
cb		26.3	
1/4		21.7	
C		18.4	
1/4		14.5	
cb		10.9	
N		3.8	
T.P.		3.84	94.85 ON HOLE

01

13

-20
S
cb
1/4
C
1/4
cb
N
T.F

11

-3
S
c
/4
c
/4
ab
N
T.

14

S
C
1/4
C
1/4
ob
N
T.

18

19

20

21

22

CROSS SECTION OF
DWIGHT ST
From the East Line of
Ray St
To the East Line of Missouri St.

60' WIDE
10' WALKS

CURB and SIDEWALK IN FROM E.L.
RAY TO E.L. HART ST ON No.
SIDE.

33859

28

150' EAST.

B.M.	2.03	338.79	336.76	SF. 30 th + Cap.	S	5.0	333.6
T.P.	5.80	338.59	6.00	332.79	cb	5.4	33.7
					1/4	6.2	
					1/4	5.5	
N		5.8	332.8		c	5.2	33.4
cb		6.06	32.53		1/4	5.1	
1/4		6.7			cb	5.3	
c		6.6			cb	4.8	33.8
1/4		6.5	32.1		N	4.6	34.0
cb		6.7					
S		6.2	32.1		N	4.1	34.5
		6.5	32.3		cb	4.4	34.2
		6.3			cb	4.9	
	50' EAST				1/4	4.7	
S		6.0	32.6		c	4.8	33.8
cb		6.2	32.4		1/4	5.0	
1/4		7.0			cb	5.6	
c		6.5			cb	4.8	33.8
1/4		6.1	32.5		S	4.7	33.9
cb		6.3					
N		6.2	32.9		S	4.6	34.0
		5.7	32.9		cb	4.7	33.9
		5.21	33.4		1/4	5.6	
	100' EAST				1/4	5.1	
N		5.0	33.6		c	4.7	33.9
cb		5.2	33.4		1/4	4.7	
1/4		5.8			cb	4.7	
c		5.8			cb	4.1	34.5
1/4		5.8	32.8		N	3.9	34.7
cb		6.1					
S		6.6					
		5.9	32.7				
		5.6	33.0				

PLOTTED

200' EAST

240' EAST = W.L. GRIM ST

65' WIDE
10' WALKS

WEST CURB

N		4.8 forward sec. 33.8	
		4.1 back sec. 33.45	
cb		4.9	33.7
1/4		5.1	33.5
C		5.2	33.4
1/4		5.4	33.2
cb		5.3	33.3
S		5.3 forward 33.3	
		4.7 back 33.9	

W. QUARTER

S		5.5	33.1
cb		5.4	
1/4		5.4	
C		5.2	33.4
1/4		5.2	
cb		5.0	
N		4.8	33.8

CENTER

N		4.4	34.2
cb		4.6	
1/4		4.7	
C		4.8	33.8
1/4		4.9	
cb		4.9	
S		5.0	33.4

PLOTTED

EAST QUARTER

S		5.0	33.6
cb		5.1	
1/4		5.0	
C		4.8	33.8
1/4		4.7	
cb		4.8	
N		4.6	34.0

EAST CURB

		4.8 back sec.	33.8
		4.7 forward	34.5
N		4.9	
cb		4.9	
1/4		4.9	
C		4.9	33.7
1/4		5.1	
cb		5.1	
S		5.3 back	33.3
		4.6 forward	34.0

E. L. GRIM ST

S		4.4	34.2
cb		4.6	34.0
		5.3	
1/4		5.0	
C		4.5	34.1
1/4		4.6	
cb		4.9	
		4.1	34.5
N		3.8	34.8

338.59

50' EAST

N	4.2	334.4
cb	4.5	34.1
1/4	5.2	
C	5.0	33.4
1/4	5.4	
cb	6.0	
	5.2	33.4
S	5.0	33.6

100' EAST

S	5.3	33.3
cb	5.1	33.2
	6.3	
1/4	5.7	
C	5.3	33.3
1/4	5.5	
cb	5.6	
	4.9	33.7
N	4.7	33.9

150' EAST

N	5.1	33.5
cb	5.3	33.3
	5.9	
1/4	5.9	
C	5.7	32.9
1/4	6.1	
cb	6.6	32.9
	5.7	32.9
S	5.7	32.9
T.P.	4.75	337.87
	5.50	333.09

PLOTTED

337.87

30

200' EAST

S	5.2	332.7
cb	5.4	32.8
	6.2	
1/4	5.7	
C	5.2	32.7
1/4	5.2	
cb	5.3	
	4.9	33.0
N	4.7	33.2

250' EAST

N	5.1	32.8
cb	5.3	32.6
	5.7	
1/4	5.7	
C	5.6	32.3
1/4	5.9	
cb	4.6	
	5.9	32.0
S	5.5	32.4

265' E = W.L. ^{31st} HART ST (65' WIDE 10' WALKS)

S	5.6	32.3
cb	5.8	32.1
	6.5	
1/4	5.9	
C	5.7	32.2
1/4	6.0	
cb	5.6	
	5.3	32.4
N	5.1	32.8

337.87

W. CURB

N	5.3 back sec. 32.4 5.8 forward 332.1	
cl	5.8	
1/4	5.9	
C	6.0	31.9
1/4	6.0	
cl	6.4	
S	6.6 forward 31.3 5.8 back 32.1	

W. QUARTER

S	6.1	31.8
cl	5.9	
1/4	5.8	
C	5.8	32.1
1/4	5.9	
cl	5.6	
N	5.5	32.4

CENTER

N	5.0	32.9
cl	5.2	
1/4	5.4	
C	5.4	32.8
1/4	5.5	
cl	5.6	
S	5.8	32.1

PLOTTED

337.87

31

E. QUARTER

S	6.1	331.8
cl	6.0	
1/4	5.9	
C	5.8	32.1
1/4	5.6	
cl	5.5	
N	5.5	32.4

E. CURB

N	5.8 back sec 32.1 5.3 forward 32.6	
cl	5.7	
1/4	5.8	
C	5.9	32.0
1/4	6.0	
cl	6.0	
S	6.1 forward 31.8 6.7 back 31.2	

E. L. PART ST^{31st}

S	5.2	32.7
cl	5.3	32.6
1/4	5.4	32.5
C	5.4	32.5
1/4	5.4	32.5
cl	5.1	32.8
S	4.6	33.3

337.77

50' E

N	4.1	333.8
cl	5.0	32.9
1/4	5.3	32.6
c	4.9	33.0
1/4	5.0	32.9
cl	5.1	32.8
S	4.4	33.5

100' EAST

S	4.2	33.7
cl	4.9	33.0
1/4	4.8	33.1
c	5.0	32.9
1/4	4.8	33.1
cl	4.6	33.3
N	3.8	34.1

150' EAST

N	4.4	33.5
cl	4.7	33.2
1/4	4.6	33.3
c	4.8	33.1
1/4	4.9	33.0
cl	5.0	32.9
S	4.2	33.7

PLOTTED

also Xsections

337.87

200' EAST

S	3.9	334.0
cl	4.5	33.4
1/4	4.2	33.7
c	4.6	33.9
1/4	4.1	33.8
cl	3.9	34.0
N	3.7	34.2

250' EAST

N	3.0	34.9
cl	3.0	34.9
1/4	3.4	34.5
c	3.5	34.4
1/4	3.7	34.2
cl	3.8	34.1
S	4.0	33.9

265' E = W.L. HERMAN ST (65' WIDE)

S	4.2	33.7
cl	4.8	33.9
1/4	3.6	34.3
c	3.5	34.4
1/4	3.2	34.7
cl	3.4	34.5
N	3.7	34.2

337.87

wt

W. CURB

N	3.8	334.1
cb	3.8	334.1
1/4	3.9	334.0
C	3.7	334.2
1/4	3.9	334.0
cb	4.2	333.7
S	4.5	332.4

W QUARTER

S	4.4	333.5
cb	3.8	334.1
1/4	3.4	334.5
C	3.2	334.7
1/4	3.3	334.6
cb	3.6	334.3
N	3.7	334.2

CENTER

N	3.4	334.5
cb	3.3	334.6
1/4	3.2	334.7
C	3.1	334.8
1/4	3.2	334.7
cb	3.5	334.4
S	4.2	333.7

PLOTTED

also X sections

337.87

33

E. QUARTER

S	4.7	333.2
cb	3.8	334.1
1/4	3.4	334.5
C	3.4	334.5
1/4	3.4	334.5
cb	3.3	334.4
N	3.7	334.2

E CURB

N	3.8	334.1
cb	3.7	334.2
1/4	3.3	334.6
C	3.2	334.7
1/4	3.3	334.6
cb	4.0	333.9
S	4.5	333.4

E. L. HERMAN ST

S	3.4	334.5
cb	3.3	334.6
1/4	2.9	335.0
C	2.8	335.1
1/4	2.8	335.1
cb	2.8	335.1
N	2.9	335.0

33787

50' EAST

N	2.4	35.5
cl	2.3	35.6
1/4	2.2	35.7
C	2.4	35.5
1/4	2.5	35.4
cl	2.3	35.4
S	2.5	35.4

100' EAST ✓

S	2.7	35.2
cl	2.5	35.4
1/4	2.4	35.5
C	2.2	35.7
1/4	2.3	35.6
cl	2.3	35.6
N	2.1	35.8

150' EAST ✓

N	1.8	36.1
cl	2.0	35.9
1/4	1.9	36.0
C	2.3	35.6
1/4	2.2	35.7
cl	2.4	35.5
S	2.5	35.4

PLOTTED

also X sections

33787

34

300' EAST ✓

S	2.0	35.9
cl	2.1	35.8
1/4	1.8	36.1
C	1.8	36.1
1/4	1.8	36.1
cl	1.6	36.3
N	1.5	36.4

350' EAST ✓

N	0.8	37.1
cl	0.9	37.0
1/4	1.2	36.7
C	1.5	36.4
1/4	1.6	36.3
cl	1.9	36.0
S	1.8	36.1

265' E = W L. ^{3rd} MISSOURI ST (65' WIDE)

S	1.7	36.2
cl	1.5	36.4
1/4	1.3	36.6
C	1.1	36.8
1/4	1.0	36.9
cl	0.9	37.0
N	0.6	37.3

WEST CORB ✓

N.	0.6	37.3
cb	0.8	37.1
1/4	1.1	36.8
c	1.0	36.9
1/4	1.1	36.8
cb	1.2	36.7
s	1.3	36.6

WEST QUARTER ✓

s	1.4	36.5
cb	1.2	36.7
1/4	1.2	36.7
c	1.0	36.9
1/4	0.9	37.0
cb	1.1	36.8
N.	1.0	36.9

CENTER ✓

N	0.8	37.1
cb	1.0	36.9
1/4	1.2	36.7
c	1.3	36.6
1/4	1.1	36.8
cb	1.5	36.4
s	1.6	36.3

PLOTTED

also X sections

EAST QUARTER ✓

s	1.1	36.8
cb	1.0	36.9
1/4	1.0	36.9
c	1.1	36.8
1/4	1.1	36.8
cb	1.0	36.9
N	0.8	37.1

E. CORB ✓

N	0.6	37.3
cb	0.8	37.1
1/4	0.5	37.4
c	0.9	37.0
1/4	1.1	36.8
cb	1.0	36.9
s	1.2	36.9

32d
E. L. MISSOURI ST. ✓

s	1.1	36.8
cb	0.8	37.1
1/4	0.8	37.1
c	0.6	37.3
1/4	0.6	37.3
cb	0.8	37.1
N	0.8	37.1

PLOTTED

also X sections

5.36 SW STR NE DWIGHT
+ PART

35

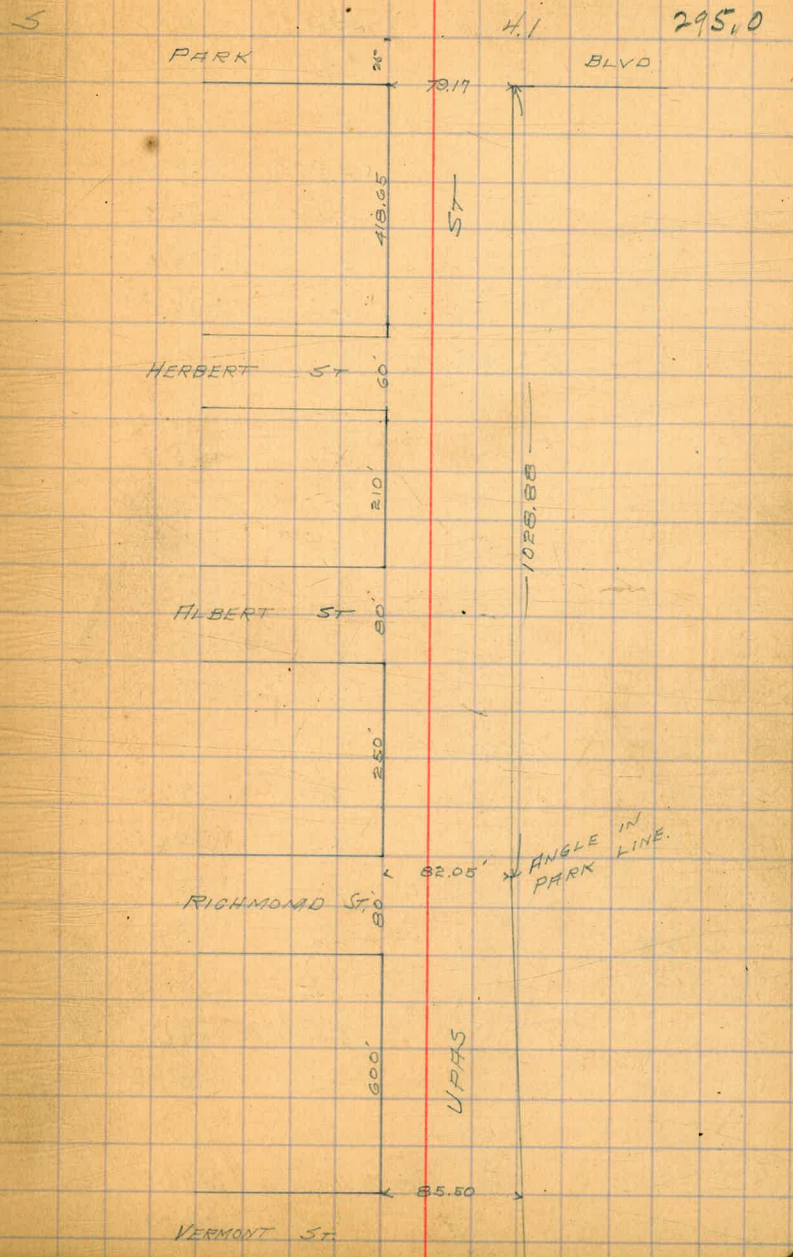
36

1/21/42
Gregory
Shaw
Simon

CROSS-SECTION OF
UPAS ST (14' WALKS)
From the W.L. PARK BLVD
To ✓ E ✓ VERMONT ST
(see sketch on Page 37 for width of
Upas St.)

UPAS ST 37

OH BM	3.72	306.27	302.55	SE. Park BLVD. 40' WALK
T.P.	1.50	299.09	297.29	
W.L. PARK BLVD.				
N		3.2	295.9	
cb		3.2	295.9	
1/4		3.3	295.8	
C		3.0	296.1	
1/4		3.4	295.7	
cb		3.2	295.9	
S		3.3	295.8	
25' W				
S		3.7	295.4	
cb		3.7	295.4	
1/4		3.8	295.3	
C		3.4	295.7	
1/4		3.8	295.3	
cb		3.0	296.1	
N		1.9	297.2	
50' W				
N		4.2	294.9	
cb		4.2	294.9	
1/4		4.3	294.8	
C		3.8	295.3	
1/4		4.0	295.1	
cb		3.7	295.4	



100' WEST

S	5.3	293.8	1/4	6.9	292.7
cb	5.3	293.8	C	7.1	292.0
1/4	5.4	293.7	1/4	6.7	292.4
C	4.5	294.6	cb	6.2	292.9
1/4	5.1	294.0	S	5.9	293.2
cb	5.1	294.0			
N	4.8	294.3	S	5.9	293.2

300' W

			cb	5.2	293.9
N	6.3	292.8	1/4	5.6	293.5
cb	5.9	293.2	C	6.3	292.8
1/4	5.8	293.3	1/4	6.1	293.0
C	6.3	292.8	cb	5.9	293.2
1/4	6.2	292.9	N	6.1	293.0
cb	6.6	292.5			
S	6.9	292.2	N	6.5	292.6

350' W

			cb	6.7	292.4
S	6.7	292.4	1/4	7.1	292.0
cb	6.6	292.5	C	7.2	291.9
1/4	7.2	291.9	1/4	7.4	291.7
C	7.3	291.8	cb	7.3	291.8
1/4	7.5	291.6	S	7.1	292.0
cb	7.6	291.5			
N	7.8	291.3	S	6.6	292.5

400' W

			cb	6.7	293.0
N	7.7	291.4	1/4	6.6	292.5
cb	7.2	291.9	C	7.3	291.8

350' W

cb							
1/4		7.3	291.8	S		59	293.2
cb		7.5	291.6		CENTER		
N		7.6	291.5	S		59	293.2
	418.65 W = E. L. HERBERT ST. (60' WIDE)			cb		59	293.2
N		7.7	291.4	1/4		61	293.0
cb		7.6	291.5	C		61	293.0
1/4		7.2	291.9	1/4		6.6	292.5
C		7.3	291.8	cb		7.3	291.8
1/4		6.9	292.2	N		6.6	292.5
cb		6.4	292.7		W QUARTER		
S		6.4	292.7	N		6.5	292.6
	E. CURB			cb		7.0	292.1
S		6.2	292.9	1/4		6.4	292.7
cb		6.2	292.9	C		6.0	293.1
1/4		6.6	292.5	1/4		5.8	293.3
C		6.8	292.3	cb		5.8	293.3
1/4		7.1	292.0	S		6.1	293.0
cb		7.5	291.6		W CURB		
N		7.8	291.3	S		5.8	293.3
	E. QUARTER			cb		5.9	293.2
N		7.2	291.9	1/4		5.6	293.5
cb		7.5	291.6	C		6.0	293.1
1/4		6.9	292.2	1/4		6.2	292.9
C		6.4	292.7	cb		6.9	292.2
1/4		6.2	292.9	N		6.9	292.2
cb		5.9	293.2				

299.09

W. LINE HERBERT ST

N	7.0	292.1
cb	6.9	292.2
1/4	6.7	292.4
C	6.2	292.9
1/4	6.1	293.0
cb	6.2	292.9
S	5.9	293.2

50' WEST

S	5.3	292.8
cb	6.2	292.9
1/4	6.9	292.2
C	7.3	291.8
1/4	7.3	291.8
cb	7.3	291.8
N	7.2	291.9

100' W.

N	7.2	291.9
cb	7.6	291.5
1/4	8.0	291.1
C	8.3	290.8
1/4	8.0	291.1
cb	7.5	291.6
S	7.4	291.7

UPAS ST.

40

150' W.

S	8.7	290.4
cb	8.5	290.6
1/4	8.5	290.6
C	8.5	290.6
1/4	8.4	290.7
cb	8.5	290.6
N	8.2	290.9

210' W = E. L. ALBERT ST (80' WIDE)

N	9.8	289.3
cb	10.3	288.8
1/4	10.5	288.6
C	10.6	288.5
1/4	10.8	288.3
cb	10.9	288.2
S	10.9	288.2

W. L. ALBERT ST (FOR INTERSECTION SEE ALBERT ST)

S	11.5	287.6
cb	11.6	287.5
1/4	12.0	287.1
C	12.3	286.8
1/4	12.3	286.8
cb	12.2	286.9
N	12.1	287.0

299.09

50' WEST.

N	12.3	286.8
cb	12.3	286.8
1/4	11.6	287.5
C	11.5	287.6
1/4	11.4	287.7
cb	11.2	287.9
S	11.0	288.1

100' W

S	11.4	287.7
cb	11.9	287.2
1/4	12.1	287.0
C	12.0	287.1
1/4	11.9	287.2
cb	12.2	286.9
N	12.1	287.0

T.P. 1.39 287.79 12.69 286.40

150' W

N	1.3	286.5
cb	1.7	286.1
1/4	1.8	286.0
C	1.4	286.4
1/4	1.0	286.8
cb	1.5	286.3
S	1.1	286.7

UPAS ST.

287.79

41

200' W

S	2.7	285.1
cb	2.4	285.4
1/4	2.8	285.0
C	2.9	284.9
1/4	3.6	284.2
cb	3.8	284.0
N	3.6	284.2

250' W = E.L. RICHMOND ST. (80' WIDE)

N	3.6	284.2
cb	3.6	284.2
1/4	4.3	283.5
C	4.6	283.2
1/4	4.6	283.2
cb	4.6	283.2
S	4.6	283.2

E. CURB

S	4.4	283.4
cb	4.7	283.1
1/4	4.8	283.0
C	4.7	283.1
1/4	4.7	283.1
cb	3.8	284.0
N	3.6	284.2

E QUARTER

N	4.0	283.8
cb	4.0	283.8
1/4	4.9	282.9
C	4.7	283.1
1/4	4.7	283.1
cb	4.8	283.0
S	4.2	283.6

CENTER

S	4.0	283.8
cb	4.7	283.1
1/4	4.6	283.2
C	4.8	283.0
1/4	4.8	283.0
cb	4.6	283.2
N	4.1	283.7

W. QUARTER

N	4.1	283.7
cb	4.9	282.9
1/4	5.1	282.7
C	5.1	282.7
1/4	4.9	282.9
cb	4.7	283.1
S	4.3	283.5

W CURB

S	4.2	283.6
cb	4.8	283.0
1/4	4.9	282.9
C	5.1	282.7
1/4	5.1	282.7
cb	4.8	283.0
N	4.0	283.8

W. L. RICHMOND ST.

N	4.3	283.5
cb	4.4	283.4
1/4	4.7	283.1
C	5.1	282.7
1/4	5.3	282.5
cb	5.2	282.6
S	4.6	283.2

50' W

S	5.3	282.5
cb	6.0	281.8
1/4	5.8	282.0
C	5.4	282.4
1/4	5.3	282.5
cb	4.7	283.1
N	4.2	283.6

287.79

100' W.

N	3.9	2829
cb	4.9	2829
1/4	5.5	2823
C	5.9	2819
1/4	6.2	2816
cb	6.4	2814
S	6.6	2812

150' W.

S	7.3	2805
cb	7.0	2808
1/4	6.6	2812
C	6.2	2816
1/4	5.8	2820
cb	5.5	2823
N	4.8	2830

200' W.

N	4.9	2829
cb	5.1	2827
1/4	5.5	2823
C	5.7	2821
1/4	5.8	2820
cb	6.9	2809
S	7.2	2806

UPAS ST.

287.79

43

250' W.

S	7.7	2801
cb	6.7	2811
1/4	6.2	2816
C	5.9	2819
1/4	5.8	2820
cb	5.7	2821
N	5.1	2827

300' W.

N	5.4	2824
cb	5.7	2821
1/4	5.5	2823
C	5.6	2822
1/4	5.5	2823
cb	5.7	2821
S	6.9	2809

350' W.

S	6.2	2816
cb	6.3	2815
1/4	6.1	2817
C	5.9	2819
1/4	5.9	2819
cb	6.0	2818
N	5.6	2822

287.79

-R

400' W

N	4.8	283.0
cb	5.6	282.2
1/4	6.2	281.6
C	6.0	281.8
1/4	6.2	281.6
cb	6.3	281.5
S	6.4	281.4

450' W

S	6.6	281.2
cb	6.9	280.9
1/4	6.5	281.3
C	6.3	281.5
1/4	6.2	281.6
cb	5.5	282.3
N	5.1	282.7

500' W

N	6.4	281.4
cb	6.4	281.4
1/4	6.5	281.3
C	6.6	281.2
1/4	7.0	280.8
cb	7.2	280.6
S	7.3	280.5

UPAS

ST

44

550' W

S	9.2	278.6
cb	8.8	279.0
1/4	8.3	279.5
C	8.2	279.6
1/4	8.2	279.6
cb	7.9	279.9
N	7.8	280.0

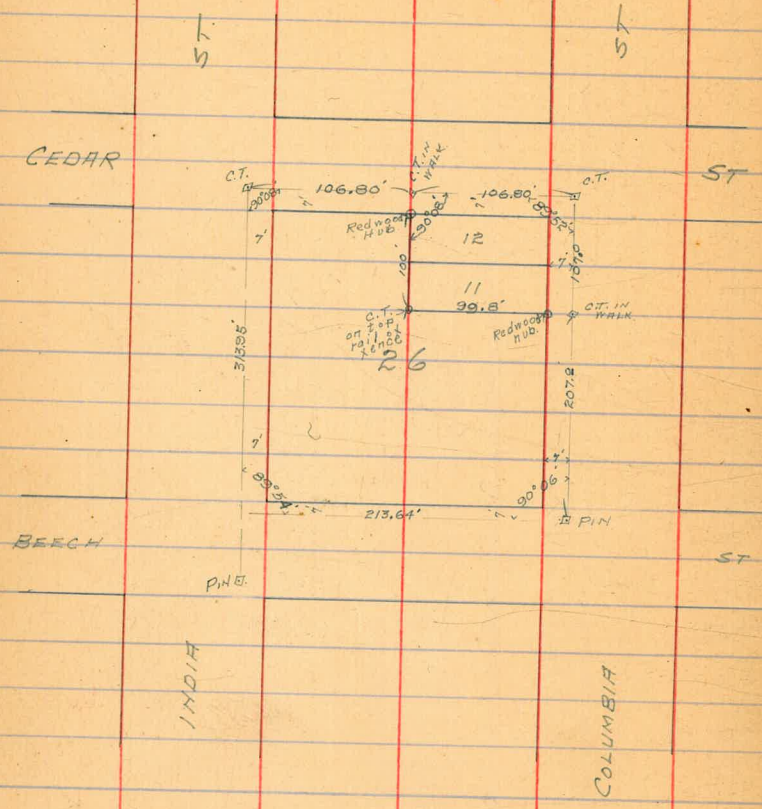
600' W = E.L. VERMONT ST

N	7.9	279.9
cb	8.8	279.0
1/4	8.8	279.0
C	8.8	279.0
1/4	9.0	278.8
cb	9.2	278.6
S	9.5	278.3
ON B.M.	4.78	

 PARK B.M.
 283.01 - RICH. + UPAS
 282.96

1/22/4
Derry
Shawmut
Moore

SURVEY OF
LOTS 11 + 12
BLOCK 26 MIDDLETOWN
FOR FIRE STATION



47

11/19/12
Gregory,
Moore
Miller

LEVELS ON
ARISTA ST. 50' wide
10' walks
from S.L. Whitman
To 135' So. x

(This Street already graded from Whitman to)
135' So.

BM	0.02	247.28		247.26	Inside car return SE around 10' curb
T.P.	0.27	235.04	12.51	234.77	
T.P.	0.78	222.81	13.01	222.03	

8.4

8.2

S. L. WHITMAN

E		4.0
cb		4.1
ctr		4.2
cb		3.9
W		4.1

50' So.

W		5.4
cb		5.4
ctr		5.7
cb		5.5
E		5.4

100' So.

E		7.0
cb		7.2
c		7.4
cb		7.2
W		7.0

135' So.

W		8.5
cb		8.4
c		8.5

355.57

+80 = EL.

5.4

350.2 ✓

+40

30.6

320.2 ✓

50

370' No.

+45

27.9

322.9 ✓

E.L.

5.4

350.2 ✓

+50

27.7

323.1 ✓

+15

bolt head

6.2

349.4 ✓

+65

26.6

324.2 ✓

9.3

346.3 ✓

+20

10.4

345.2 ✓

+80 = W.L.

10.9

329.9 ✓

T.P.

464

350.83 ✓

9.38

346.4 ✓

+89

1.9

348.9 ✓

+30

18.5

332.3 ✓

400' No. of Madison

+33

20.1

330.7 ✓

W.L.

21.6

329.2 ✓

+40

19.4

331.4 ✓

+2

25.3

325.5 ✓

+71

9.7

341.1 ✓

+7

29.8

321.0 ✓

+80 = W.L.

1.9

348.9 ✓

+12

33.7

317.1 ✓

+23

0.2

350.6 ✓

+18

33.0

317.8 ✓

+85

+0.3

351.1 ✓

+20

34.2

316.6 ✓

380' No.

+30

35.7

315.1 ✓

-6

0.4

350.4 ✓

+33

35.2

315.6 ✓

W.L.

6.5

344.3 ✓

+36

33.2

317.6 ✓

+12

17.2

333.6 ✓

+38

34.7

316.1 ✓

+40

23.0

327.8 ✓

+40

33.9

316.9 ✓

+43

24.8

326.0 ✓

+47

23.8

327.0 ✓

+47

24.5

326.3 ✓

+73

1.6

349.2 ✓

+65

bolt head

5.6

345.2 ✓

E.L.

1.1

349.7 ✓

1.4

349.4 ✓

E.L.

0.8

350.0 ✓

390' No.

E.L.

0.8

350.0 ✓

+8

1.5

349.3 ✓

+13

9.5

341.3 ✓

355.14

30' W. of Base Line	2.5	352.6
42' ✓ ✓ ✓ ✓	10.3	344.8
49' ✓ ✓ ✓ ✓	19.2	336.9
52' ✓ ✓ ✓ ✓	23.1	321.7
30.4' So. of 0.0 on Base Line B		
Base Line	2.7	352.4
33' W. of ✓	3.2	351.9
49' ✓ ✓ ✓ ✓	10.8	344.3
53' ✓ ✓ ✓ ✓	19.2	335.9
63' ✓ ✓ ✓ ✓	28.1	329.0
40.4' So. of 0.0 on B.L. B		
Base Line	3.0	352.1
10' W. of ✓ ✓ ✓	2.3	352.8
32' ✓ ✓ ✓ ✓	3.4	351.7
35' ✓ ✓ ✓ ✓	4.2	350.9
42' ✓ ✓ ✓ ✓	8.5	346.6
52' ✓ ✓ ✓ ✓ ✓	14.5	338.6
60' ✓ ✓ ✓ ✓ ✓	24.2	330.9
50.4' So. of 0.0		
Base Line	3.2	351.9
19' W. of ✓ ✓ ✓	2.5	352.6
32' ✓ ✓ ✓ ✓	3.5	351.6
42' ✓ ✓ ✓ ✓	10.2	344.9
52' ✓ ✓ ✓ ✓	17.4	336.7
58' ✓ ✓ ✓ ✓	24.4	332.7

355.14

52

60.4' So. of 0.0 on B		
Base Line	3.8	351.3
22' W. of ✓ ✓	2.9	352.2
35' ✓ ✓ ✓ ✓	7.9	347.2
43' ✓ ✓ ✓ ✓	15.3	339.8
53' ✓ ✓ ✓ ✓	22.1	333.0
70.4' So. of 0.0 on B		
Base Line	4.1	351.0
23' W. of ✓ ✓ ✓	4.0	351.1
35' ✓ ✓ ✓ ✓	11.2	343.9
45' ✓ ✓ ✓ ✓	19.0	336.1
52' ✓ ✓ ✓ ✓	23.3	331.8
80.4' So. of 0.0 on B		
Base Line	4.2	350.9
15' W. of ✓ ✓ ✓	4.2	350.9
26' ✓ ✓ ✓ ✓	6.7	348.4
39' ✓ ✓ ✓ ✓	15.2	339.9
50' ✓ ✓ ✓ ✓	24.8	332.3
105.4' So. of 0.0 on B		
Base Line	4.5	350.6
25' W. of ✓ ✓ ✓	5.3	349.8

11/15/21

Gregory
Phares
Miller
Shaw

CROSS SECTION OF

Alley Bk 8

20 wide

PARK ADD.

from 29th to 30th

5' x Kalmia

H. 47

294.18

289.71

BP SE

30th Kalmia

2 + 50

H.L. 30th

3+4 = fence

3.2

291.0 ✓

N

4.75

289.43 ✓

on Curb

C

3.1

290.8 ✓

C

5.0

289.14 ✓

on parking

N

3.3

290.9 ✓

S

4.9

289.29 ✓

on Curb

3+00

+ 50

N

3.7

290.5 ✓

S

4.8

289.4 ✓

C

3.5

290.7 ✓

C

4.7

289.5 ✓

+ 5.7 = fence

3.3

290.9 ✓

N

4.1

290.1 ✓

3+50

+ 8.6 = center of dbl garage on N

3+4.5 = fence

3.1

290.8 ✓

-2

4.0

290.2 ✓

= approach

C

3.6

290.7 ✓

N

4.2

290.0 ✓

N

3.3

290.9 ✓

C

4.0

290.2 ✓

4+00

S

4.1

290.1 ✓

N

3.3

290.9 ✓

1+53.5 = center of garage on N dirt

C

3.5

290.7 ✓

3+1.1 = fence

2.8

291.4 ✓

+ 5.4 = fence

3.5

290.7 ✓

C

2.7

291.5 ✓

4+50

N

2.5

291.7 ✓

5+4.8 = fence

3.9

290.3 ✓

+2

2.6

291.6 ✓

= front of garage

C

4.1

290.1 ✓

1+96

N

4.1

290.1 ✓

-1.7

2.3

291.9 ✓

= front of garage

5+00

N

2.1

291.8 ✓

N

5.4

288.8 ✓

C

2.5

291.7 ✓

C

5.5

288.7 ✓

+ 8.2 = fence

2.7

291.5 ✓

+ 5.1 = fence

5.7

288.5 ✓

294.18

54

5+50

S 8.4 285.8 ✓

c 83 285.9 ✓

N 83 285.9 ✓

6+01.4 = E.L. 29th

N 12.1 282.1 ✓

c 11.7 282.5 ✓

S 11.1 283.1 ✓

7/31/42 1400.0 Cross Section of Alley
 Mel Earle Blk 1 Frary Hgts 15' wide

332.97

55

	7.05	332.97	325.92
		SL UPAS = 00	
W paving	7.05	325.92	
C ✓	7.25	25.72	
E ✓	6.95	26.02	
	2' S		
E	5.9	27.1	
C	7.1	25.9	
+5	6.3	26.7	
W	4.7	28.3	
	10' S		
W	4.6	28.4	
C	5.0	28.0	
E	4.7	28.3	
	50' S		
E	5.2	27.8	
C	5.1	27.9	
W	5.1	27.9	
	100' S		
W	5.4	27.6	
C	5.3	27.7	
E	5.2	27.8	
	106' S		
W - 4.2 Cr. of Garage Conc. floor	5.14	27.83	
	118' S		
W - 4.2 ✓ ✓ ✓	5.18	327.79	

N.B.P.
 W. 30th 10/42

	134' S	
W - 4.1 Garage Conc. floor	5.15	327.82
	145' S	
W - 4.0 ✓ ✓ ✓	5.22	327.75
	150' S	
E	5.5	27.5
C	5.6	27.4
W	5.7	27.3
	200' S	
W	6.6	26.4
C	6.2	26.8
E	6.3	26.7
	250' S	
E	7.4	25.9
C	7.1	25.9
W	7.4	25.6
	255' S	
E - 10.5' garage Conc. floor	6.80	26.17
	273' S	
W - 6.5 ✓ ✓ ✓	7.20	25.77
	300' S	
W	7.8	25.2
C	7.6	25.4
E	7.4	25.6
	307' S	
E - 6.5 ✓ ✓ ✓	7.10	325.87

332.97

307'S

E - 2.5 Conc. Apron to	7.47	375.50	Last Garage
	350'S		
E	8.4	24.6	
C	8.4	24.6	
E	8.7	24.3	
	390'S		
E - 5.5 Garage Conc. floor	8.45	24.57	
	398.6'S		
W on Nedge Conc. Apron	9.20	23.77	
C	8.7	24.3	
E	8.7	24.3	
T.P.	3.00	327.21	8.76 324.21
	406'S		
E - 6' Garage Conc. floor	2.70	24.5	
	429'S		
W watch this for grade edge Conc. Apron	3.47	23.74	Flow line of drain
	448.7'S		
E	3.4	23.8	
C	3.4	23.8	
W S edge Conc. Apron	3.30	23.91	
	492'S		
E on line Garage Wood floor Conc. floor	3.33	23.88	when Alley is paved
	500'S		
W - 5.4 Nedge Garage floor Conc.	4.33	22.88	Under Construction
W	4.1	23.1	
W	4.0	22.7	

327.21

56

	3.7	323.5	
	530'S		
E Garage Conc. floor S. entrance	3.82	23.39	wL of Garage on Alley Line
	537'S		
E	4.0	23.2	
C	4.3	22.9	
W	4.5	22.7	
+5.4' S edge Conc. Garage floor	4.33	22.88	under construction
	550'S		
W	4.5	22.7	
C	4.6	22.6	
E	4.7	22.8	
	590'S		
E	5.3	21.9	
C	5.4	21.8	
W	5.2	22.0	
	598.7'S = N.L. of Thorn		
W on Alley Return	5.89	21.37	
C	5.9	21.3	
E ✓ ✓ ✓	5.80	321.41	
check BM SE Thorn + GRIM	6.37	320.84	B.P. 90NB 320.90
✓ on curb SE ✓			

323.6 to 448.7 on W Garage to 500'

8/25/33
Moore
7/21/33
Eagle

Cross Section of
DeFoe St from St. Voltaire
to N.H. Brighton

60' wide
10' s/w
10' 1/4 s

31.33

DeFoe

57

Station	Notes	Dist	Elev	Notes	Dist	Elev
		57	25.83	EMB	100'	26.53
	St. Voltaire = 0+0					
W			25.83	E		26.53
E	on cement ct		25.49	ct		26.23
	1/4		25.43	1/4		26.33
	c		25.53	c		26.23
	1/4		25.63	1/4		25.93
ct	for yardage		25.83	ct		25.63
ct	on cement ct		25.10	W		26.13
E			26.43		150'	25.93
	5'S			W		25.73
E			26.33	ct		25.83
ct			25.73	1/4		26.13
1/2			26.63	c		26.13
c			25.63	1/4		26.13
1/2			25.43	ct		26.13
ct			25.73	E		26.33
W			26.53		200'	26.13
	50'S			E		26.03
W			26.13	ct		26.23
ct			25.63	1/4		26.13
1/4			25.93	c		25.73
W			26.13	1/4		25.63
1/2			26.13	ct		25.93
ct			26.13	W		

31.33

215' S = N L Muir = 50' wide

			cb
w/	5.4	25.93	10' S/w 1/4
v	cb	5.6	25.73 75' N/S
l	1/4	5.6	25.73
E	c	5.2	26.13
	1/4	5.1	26.23
	cb	5.3	26.03
	E	5.1	26.23
	N cb		
E	5.4	25.93	
cb	5.5	25.83	
1/4	5.0	26.33	
c	5.2	26.13	
1/4	5.6	25.73	
cb	5.7	25.63	
w/	5.6	25.73	
	N 1/4		
w/	5.8	25.53	
cb	5.6	25.73	
1/4	5.5	25.83	
c	5.2	26.13	
1/4	5.0	26.33	
cb	5.0	26.33	
E	5.1	26.23	
	C		
E	4.9	25.43	

31.33

De Foe

58

	5.0	26.33
	5.0	26.33
	5.2	26.13
	5.5	25.83
	5.6	25.73
	5.5	25.83
	S 1/4	
	5.6	25.73
	5.5	25.83
	5.5	25.83
	5.2	25.13
	5.1	26.23
	5.0	26.33
	5.2	26.13
	S cb	
	5.1	26.23
	5.2	26.13
	5.1	26.23
	5.2	26.13
	5.5	25.83
	5.6	25.73
	5.7	25.63
	SL Muir	
	5.5	25.83
	5.5	25.83
	5.5	25.83

31.33

c	5.2	26.03
1/4	5.1	26.23
cb	5.2	26.13
E	5.0	26.33
	50' S	
E	4.8	26.53
cb	4.9	26.43
1/4	5.1	26.23
c	5.1	26.23
1/4	5.5	25.83
cb	5.4	25.93
w	5.2	26.13
	100' S	
w	5.1	26.23
cb	5.4	25.93
1/4	5.4	25.93
c	5.0	26.33
1/4	5.0	26.33
cb	4.9	26.43
E	4.6	26.73
	150' S	
E	4.1	27.23
cb	4.5	26.83
1/4	4.8	26.53
c	4.9	26.43
1/4	5.3	26.03

31.33

De Foe

59

cb	5.2	26.13
w	4.7	26.63
	200' S	
w	5.0	26.33
cb	5.2	26.13
1/4	5.1	26.23
c	4.7	26.63
1/4	4.5	26.83
cb	4.4	26.93
E	4.2	27.13
	215' S = N.L. Long Branch =	
E	4.1	27.23 50' wide
cb	4.5	26.83 10' s/w
1/4	4.6	26.73 7.5' 1/4 S
c	4.7	26.63
1/4	5.1	26.23
cb	5.3	26.03
w	5.1	26.23
T.P.	2.70	31.71
		2.32 29.01
		Top Pine Hot SE Dense Long Branch
	N cb	
w	5.8	25.91
cb	5.6	26.11
1/4	5.3	26.41
c	5.0	26.71
1/4	4.8	26.91
cb	5.0	26.71

31.71

E	4.2	27.51
	N 1/4	
E	4.5	27.21
cb	4.8	26.91
1/4	4.8	26.91
e	5.0	26.71
1/4	5.3	26.41
cb	5.4	26.31
w	5.7	26.01
	Center	
w	5.6	26.11
cb	5.4	26.31
1/4	5.3	26.41
e	5.1	26.61
1/4	4.9	26.81
cb	4.9	26.81
E	4.8	26.91
	S 1/4	
E	5.0	26.71
cb	4.9	26.81
1/4	4.9	26.81
e	5.1	26.61
1/4	5.3	26.41
cb	5.4	26.31
w	5.7	26.01

31.71

De Foe

60

	S ct	
w	5.8	25.91
cb	5.6	26.11
1/4	5.4	26.31
e	5.1	26.61
1/4	5.0	26.71
cb	5.1	26.61
E	5.0	26.71
	St. of Long Branch	
E	4.7	27.01
cb	5.1	26.61
1/4	5.2	26.51
e	5.2	26.51
1/4	5.3	26.21
cb	5.8	26.91
w	5.7	26.01
	50' S	
w	5.4	26.31
cb	5.6	26.11
1/4	5.3	26.41
e	5.1	26.61
1/4	4.8	26.91
cb	4.5	27.21
e	4.4	27.31
	100' S	
E	4.6	27.11

31.71

cb	5.0	26.71
1/4	5.1	26.61
c	5.2	26.51
1/4	5.4	26.31
cb	5.5	26.21
w	5.5	26.21
150' S		
w	5.6	26.11
cb	5.7	26.01
1/4	5.7	26.01
c	5.6	26.11
1/4	5.5	26.21
cb	4.9	26.81
E	4.2	27.51
200' S		
E	4.3	27.41
+8	4.9	26.81
cb	6.1	25.61
1/4	6.5	25.21
c	6.9	24.81
1/4	7.0	24.71
+7	7.0	24.71
cb	5.6	26.11
w	5.6	26.11
212' S		
w	5.6	26.11

31.71

DeFoe

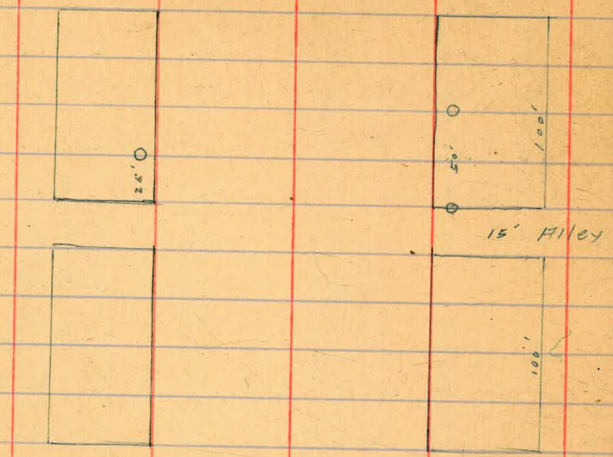
61

cb	5.8	25.91
+4	7.1	24.61
1/4	7.1	24.61
c	6.8	24.91
1/4	6.6	25.11
cb	6.2	25.51
+6	4.8	26.91
E	4.8	26.91
215' S = N.W. Brighton		
E on inside Corner Return (Concret)	6.05	25.66 Graded +
cb on corner Return	6.25	25.46 Sidewalk
1/4	6.6	25.11 Graded
c	6.8	24.91
1/4	7.1	24.61
cb on Corner Return	6.78	24.93
w	6.5	25.21
check on E on SE DeFoe + Brighton	6.15	25.56 25.56 ^{BP}

See Page 62 for Tree Location

Location of Eucalyptus Trees on

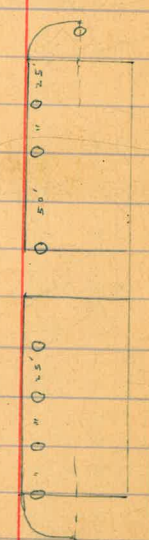
Brighton Five



Long Branch



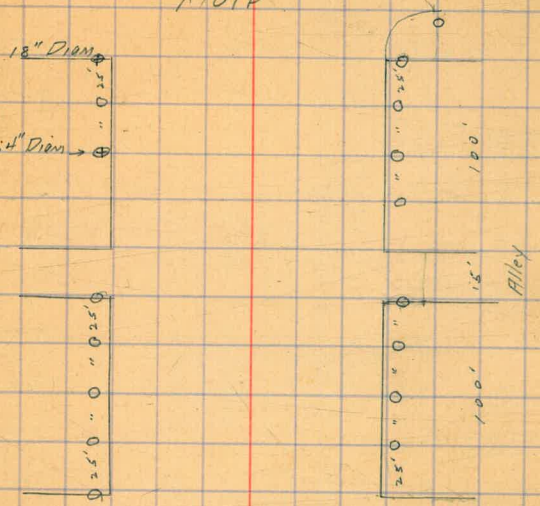
Muir



DeFoe, Voltaire to Brighton

Muir

Dead Stump 18" Diam
Dead Stump 24" Diam



Voltaire

Trees are 14" to 24" Diam and located from 1.0' to 1.5' inside curb line of DeFoe and where shown on Alleys are on Alley line

Walker
8.5-27
18.7

X. Section Alley in GRANDVIEW Hds.
Bet. MARKET and G st. 29.28' Wide at 2711
From E. 27th to W. 28th 29.94' " " 285

161.22

63

	6.48	148.59	142.11	SE. BP Island + 823	N T.P. 1254	4.4 173.66	010	161.17	156.8
	0+00 = 14' E. E. cb line 29th							1+40	
S top cb		6.32	142.27		N	9.7			163.8
S on gutter on ground		6.7	141.9		S	10.6			163.1
S		6.0	142.6		+13	10.3			163.4
N " " "		4.4	144.2		S	9.6			163.1
N top of		3.95	144.64		+2	8.6			165.1
	two story with living apartment above 0+64 = W end Garage on South Cor. Floor Cor. Apron							1+80	
N		2.7	143.9		-2	2.2			171.5
S		4.7	143.9		S	3.5			170.2
+11.5 = toe Cor Apron		4.92	143.67		S	3.7			169.8
S+1 = top of Apron at Garage		4.67	143.92		+13	3.0			170.7
	0+37 = E end of Above Garage 4.11 = top of Apron 144.48				N	1.4			172.3
S +3 = toe Apron		4.32	144.27		2+00 = ridge of ^{very} Humble Cottage on South 15' Back				
S		3.3	145.3		N	0.7			173.0
N		3.7	144.9		+3	1.6			172.1
T.P.	12.50	161.22	0.17	142.42	S	1.7			172.0
	0+54 = ^{Cor} 2 steps to Above house on top Floor				+10	1.8			171.9
N		9.3	151.9		S	1.1			172.6
S		9.5	151.7		+1.5 ^{Base} at Cottage on Ground	0.9			172.8
+143 = steps on Ground		9.3	151.9		T.P. 175	174.78	0.63	173.03	
+143 = top step		8.78	152.48		2+30 = E edge Above Cottage				
	1+00				-1.5 = Base of Cottage on Ground	1.5			173.3
S		4.9	156.3		S	1.5			173.3
S		4.9	156.3		S	0.9			173.9

17478

N	2.4	174.4
2+36 = N edge of Garage on South by Co. floor		
N	0.1	174.7
♀	0.8	174.0
S+1.5 = top of floor	1.39	173.39
2+51 = E edge Above Garage		
-1.5 = top of floor	1.53	173.25
♀	0.5	174.3
N	0.3	174.5
2+75		
N	0.7	174.1
♀	1.4	173.4
S	2.3	172.5
+5	2.6	172.2
3+00		
S	3.8	171.0
♀	3.3	171.5
N	2.7	172.1
3+23		
N	5.3	169.5
♀	5.4	169.4
S	6.6	168.2
3+40		
-5	9.4	165.4
S	9.4	165.4
♀	8.6	166.2

17478

64

+3	9.2	165.6
+5	8.1	166.7
N	7.8	167.0
3+59		
N	12.2	162.6
♀	12.6	162.2
+9	13.0	161.8
+10	13.8	161.0
S	13.8	161.0
+5	14.0	160.8
T.P. 1.88	163.67	18.99
3+64		
-5	4.1	159.6
S	4.1	159.6
♀	3.8	159.9
N	3.6	160.1
+5	3.6	160.1
3+80		
-5	5.2	158.5
N	5.2	158.5
♀	5.2	158.5
S	4.7	159.0
+5	5.7	158.0
3+88		
-5	8.1	155.6
S	8.1	155.6

16367

13850

65

♀	7.6	156.1
N	6.5	157.2
+5	6.3	157.4

4+08

-5	10.8	152.9
N	10.8	152.9
♀	10.6	153.1
S	10.4	153.3

4+23 = ♀ shed on South 2.5 Back 12' Wide

-2.5 = Base of shed on Ground 13.9 149.8

S	13.7	150.0
♀	12.8	150.9
N	12.3	151.4
T.P.	0.00 151.25	144.2 151.25

4+48

-5	4.7	146.5
N	4.7	146.5
♀	5.8	145.4
S	5.9	145.3
+5	7.2	144.0
T.P.	0.04 138.50	12.79 138.46

4+83

S-5	3.3	135.2
S	2.9	135.6
♀	2.7	135.8
N	2.4	136.1

5+11

N	7.4	131.1
♀	7.9	130.6
S	8.4	130.1

T.P. 0.16 125.64 13.02 125.48

5+45

-15	8.9	116.7
S	8.7	116.9
♀	7.9	117.7
N	7.0	118.6
+15	7.2	118.4

5+70 = ♀ Euc. tree on South 2.5' Back

-15	13.6	112.0
N	13.2	112.4
♀	12.2	113.4
S	12.6	113.0
+15	13.7	111.9

T.P. 4.17 116.99 12.82 112.82

5+88

-15	5.8	111.2
S	5.8	111.2
♀	6.5	110.5
N	6.5	110.5
+15	6.2	110.8

6+05

-15	8.0	109.0
-----	-----	-------

11699

66

N	7.9	109.1
E	8.1	108.9
S	7.9	109.1
+10	6.5	110.5

6+15' = N.L. 28th Section Parallel with 28th

-5	3.9	113.1
S	4.3	112.7
E	3.3	113.7
N	2.9	114.1
+5	3.0	114.0

3'E N.L. 28th Section Parallel with 28th

-5	1.6	115.4
N	1.7	115.3
E	2.4	114.6
S	3.4	113.6
+5	3.6	113.4

T.P.	3.66	109.63	11.02	105.97
------	------	--------	-------	--------

cht. on S.W. B.P. Island + 28 th	11.54	98.09
---	-------	-------

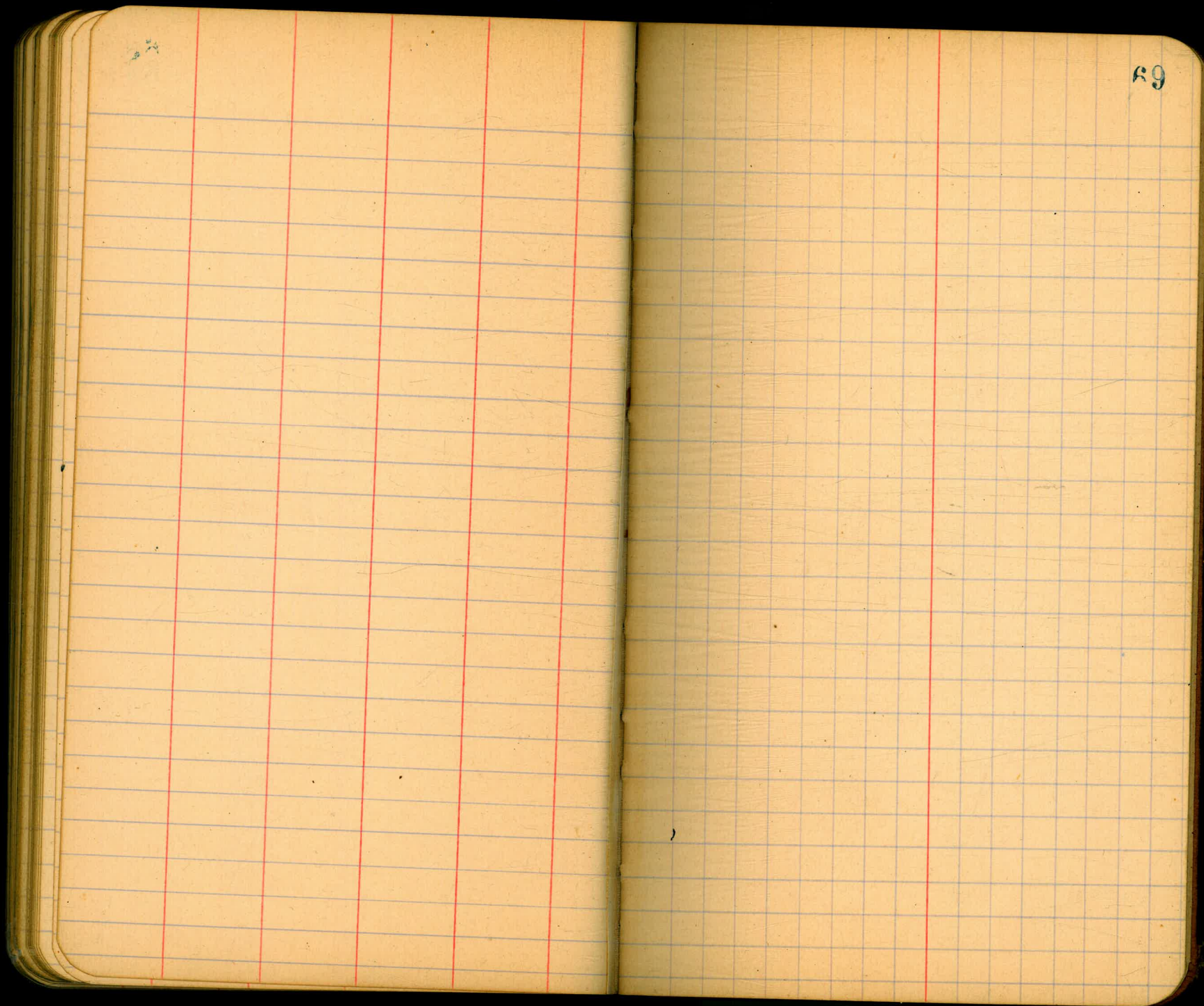
98.03 = B.M.
0.06 in Error

66

67

67

68



69

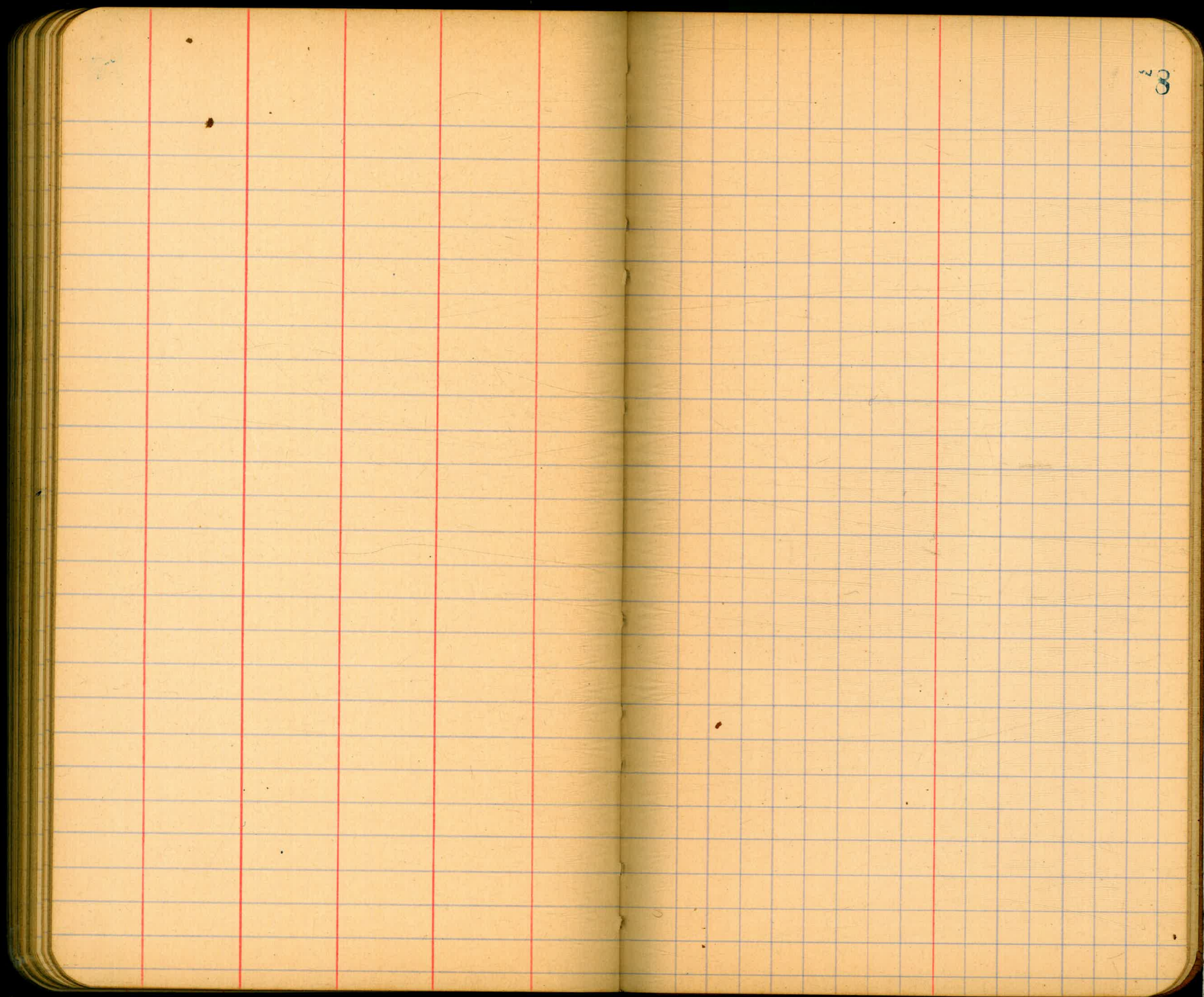
71

72

73

78

77



80

00
0+50
0+86
1+53
1+96
2+50

98.8
2586

109
115
100
586
317
615
2586

