

F.B.
890

LEVEL BOOK

373

KEUFFEL & ESSER CO.

DRAWING MATERIALS
AND
SURVEYING INSTRUMENTS.

NEW YORK.

CHICAGO. SAN FRANCISCO. ST. LOUIS.

TABLES FOR EXCAVATIONS AND EMBANKMENTS.

DISTANCES FROM CENTRE OF ROADWAY FOR CROSS-SECTIONING.
ROADWAY 18 FEET WIDE. SIDE SLOPES 1 TO 1.
FOR SINGLE TRACK EXCAVATION.

"Copyright, 1895, by Keuffel & Esser Co."

	0	.1	.2	.3	.4	.5	.6	.7	.8	.9	
0	9.0	9.1	9.2	9.3	9.4	9.5	9.6	9.7	9.8	9.9	0
1	10.0	10.1	10.2	10.3	10.4	10.5	10.6	10.7	10.8	10.9	1
2	11.0	11.1	11.2	11.3	11.4	11.5	11.6	11.7	11.8	11.9	2
3	12.0	12.1	12.2	12.3	12.4	12.5	12.6	12.7	12.8	12.9	3
4	13.0	13.1	13.2	13.3	13.4	13.5	13.6	13.7	13.8	13.9	4
5	14.0	14.1	14.2	14.3	14.4	14.5	14.6	14.7	14.8	14.9	5
6	15.0	15.1	15.2	15.3	15.4	15.5	15.6	15.7	15.8	15.9	6
7	16.0	16.1	16.2	16.3	16.4	16.5	16.6	16.7	16.8	16.9	7
8	17.0	17.1	17.2	17.3	17.4	17.5	17.6	17.7	17.8	17.9	8
9	18.0	18.1	18.2	18.3	18.4	18.5	18.6	18.7	18.8	18.9	9
10	19.0	19.1	19.2	19.3	19.4	19.5	19.6	19.7	19.8	19.9	10
11	20.0	20.1	20.2	20.3	20.4	20.5	20.6	20.7	20.8	20.9	11
12	21.0	21.1	21.2	21.3	21.4	21.5	21.6	21.7	21.8	21.9	12
13	22.0	22.1	22.2	22.3	22.4	22.5	22.6	22.7	22.8	22.9	13
14	23.0	23.1	23.2	23.3	23.4	23.5	23.6	23.7	23.8	23.9	14
15	24.0	24.1	24.2	24.3	24.4	24.5	24.6	24.7	24.8	24.9	15
16	25.0	25.1	25.2	25.3	25.4	25.5	25.6	25.7	25.8	25.9	16
17	26.0	26.1	26.2	26.3	26.4	26.5	26.6	26.7	26.8	26.9	17
18	27.0	27.1	27.2	27.3	27.4	27.5	27.6	27.7	27.8	27.9	18
19	28.0	28.1	28.2	28.3	28.4	28.5	28.6	28.7	28.8	28.9	19
20	29.0	29.1	29.2	29.3	29.4	29.5	29.6	29.7	29.8	29.9	20
21	30.0	30.1	30.2	30.3	30.4	30.5	30.6	30.7	30.8	30.9	21
22	31.0	31.1	31.2	31.3	31.4	31.5	31.6	31.7	31.8	31.9	22
23	32.0	32.1	32.2	32.3	32.4	32.5	32.6	32.7	32.8	32.9	23
24	33.0	33.1	33.2	33.3	33.4	33.5	33.6	33.7	33.8	33.9	24
25	34.0	34.1	34.2	34.3	34.4	34.5	34.6	34.7	34.8	34.9	25
26	35.0	35.1	35.2	35.3	35.4	35.5	35.6	35.7	35.8	35.9	26
27	36.0	36.1	36.2	36.3	36.4	36.5	36.6	36.7	36.8	36.9	27
28	37.0	37.1	37.2	37.3	37.4	37.5	37.6	37.7	37.8	37.9	28
29	38.0	38.1	38.2	38.3	38.4	38.5	38.6	38.7	38.8	38.9	29
30	39.0	39.1	39.2	39.3	39.4	39.5	39.6	39.7	39.8	39.9	30
31	40.0	40.1	40.2	40.3	40.4	40.5	40.6	40.7	40.8	40.9	31
32	41.0	41.1	41.2	41.3	41.4	41.5	41.6	41.7	41.8	41.9	32
33	42.0	42.1	42.2	42.3	42.4	42.5	42.6	42.7	42.8	42.9	33
34	43.0	43.1	43.2	43.3	43.4	43.5	43.6	43.7	43.8	43.9	34
35	44.0	44.1	44.2	44.3	44.4	44.5	44.6	44.7	44.8	44.9	35
36	45.0	45.1	45.2	45.3	45.4	45.5	45.6	45.7	45.8	45.9	36

Calculated by Julien A. Hall, M. Am. Soc. C. E.

Benches in Homestead Run					Mean 1
	587	10246		9649	364 Seagel
	100	9154	1192	9045	
Bm			675	8460	13' H S End Pardee St
TP	109	8015	1248	7906	
Bm			1075	6910 6940	13' H S End 35' W of Rd
TP	181	7022	1174	6841	
Bm			318	6787 6709	13' H S End Howard St
TP	115	5825	1312	5710	
	205	4905	1125	4700	H S W End Howard Street
TP	054	3692	1245	3600	
TP	652	3063	1281	2411	
Bm			1125	1934	H 13' H Howard St Howard St
Bm			093	2970	Bm in Schaller Bridge
Bm	1194	4052	505	2854	5' H W End at Road to H Run
TP	1079	4974	153	3899	
			484	4494	13' H Howard + Howard St
	1219	6182	010	4964	
	1115	7287	015	6172	
Bm	1204	8411	084	7203	13' H Howard St
Bm				7781	13' W End Howard

8731

73'

n f

Shaft

E

10 86.3

17 85.6

20 85.3

b

21 85.2

46 82.7

74 79.9

w

115 75.8

50'

n f

Shaft

w

134 93.9

94 77.9

62 81.1

b

44 82.9

32 84.1

33 84.0

18 85.5

E

18 85.5

8731

n s y

Shaft

E

29 84.4

47 82.6

55 81.8

1

84 78.9

670

8383

1018

77.3

4

75 76.3

4

110 72.8

w

n s y

Shaft

E

704 84.2

14 82.4

24 81.4

1

54 78.4

85 75.3

125 71.3

w

Hawaii

(80)

8383

h

1/4

of Shafter

E

0.0 83.8

1.6 82.2

3.0 80.8

b

5.5 78.3

9.3 74.5

13.3 70.5

w

center of

Shafter

E

0.0 83.8

1.6 82.2

3.2 80.6

b

6.3 77.5

10.2 73.6

13.8 70.0

w

-

8383

S

1/4

Shafter

4

E

0.8 83.0

1.8 82.0

4.1 79.7

b

7.1 76.7

11.8 72.0

14.6 69.2

w

-

S

1/4

Shafter

E

1.4 82.6

3.0 80.8

5.0 78.8

b

9.0 74.8

12.5 71.3

15.4 68.2

w

-

8383				7220				Howard
S side of Shaft		Shaft		50		54		5
E		30	80.8	W		119	60.3	
		50	78.8			98	62.4	
		65	77.3			80	64.2	
b		100	73.8	b		68	65.4	
y		132	70.6			42	68.0	
	124	<u>7220</u>	1287	70.96		22	70.0	
u		51	67.1	E		14	70.8	
W		75	64.7		100	56	Shaft	
	W side of Shaft			E		73	64.9	
W		20	70.2			88	63.4	
	N side of Shaft					94	62.8	
W		30	69.2	E		102	62.0	
	N 1/4 Shaft					104	61.8	
W		40	68.2			118	60.4	
	Center of Shaft			W		127	59.5	
W		50	67.2					
	S 1/4 of Shaft							
W		55	66.7					
	S side of Shaft							
W		63	65.9					

7220

157 S of Shopton

W 12.3 59.9

12.0 60.2

12.1 60.1

b 12.3 59.9

13.3 58.9

TP 0.30 59.62 12.88 59.32

1.3 58.3

E 3.0 56.6

200 S of Shopton

E 3.0 56.6

4.0 55.6

TS 4.2 55.4

6.3 53.3

b 8.3 51.3

5.6 54.0

4.0 55.6

W 3.0 56.6

5962

250 S of Shopton

W 9.6 50.0

11.9 47.7

9.5 50.1

b 6.7 52.9

4.2 55.4

3.7 55.9

E 2.3 57.3

300 S = end of Tompkins St 60'

E 4.3 55.3

5.3 54.3

5.8 53.8

b 6.6 53.0

8.8 50.8

11.8 47.8

W 14.4 45.2

TP 773 54.60 12.75 46.87

Hawaii
6

		5460	
	N	bb of	Temp/Kins
N			10.0 44.6
			8.3 46.3
			5.3 49.3
b			2.4 52.2
			1.5 53.1
			1.1 53.5
E			0.0 54.6
	N	1/4 of	Temp/Kins
E			0.9 53.7
			1.8 52.8
			1.8 52.8
b			3.2 51.2
			7.0 47.6
			8.8 45.8
N			11.0 43.6

		5460		Howard
	Location of	Temp/Kins		7
		10.6	44.0	
		9.9	44.7	
		9.4	45.0	
	b	5.6	49.0	
		2.9	51.7	
		2.7	51.9	
	E	2.4	52.2	
	S	1/4 of	Temp/Kins	
		2.8	51.8	
		3.8	50.8	
		4.2	50.4	
	b	7.5	47.1	
		9.7	44.9	
		11.0	43.6	
	N	11.0	43.6	

5460				4210				Howard
	S	66 f	7 am / Paris		50	S of	7 am / Paris	8
W			11.4 43.4	W			4.5 37.6	
			12.6 42.0				4.2 37.9	
			10.9 43.7				1.8 40.3	
b			8.7 45.9				1.0 41.1	
			5.3 49.3				0.0 42.1	
			4.7 49.9				0.0 42.1	
E			4.0 50.6	E			1.3 40.8	
	S line of		7 am / Paris		87	S = 2	n of RR Rail on West	
E			3.9 48.7	E			6.1 36.0	
			6.1 48.5				5.3 36.8	
			7.0 47.6				5.6 36.5	
b			10.0 44.6				5.5 36.6	
			13.0 41.6				5.4 36.7	
			13.6 41.0				4.7 37.4	
W			11.6 43.0	W			4.5 37.6	
	86	S of	7 am / Paris					
E			10.0 44.6					
TP	-0.02	4210	12.46 42.14					

4210
 87.55 on W } = 1/2 mi of Rain gauge to be
 112.5 on E }

4210
 122 S of Tomkins St
 Baham 9

W	45	37.6
	46	37.5
	54	36.7
b	55	36.6
	56	36.5
	56	36.5
E	56	36.5

E	42	37.9
	56	36.5
	61	36.0
b	60	36.1
	67	35.4
	67	35.4
W	60	36.1

104 S of Tomkins

140 S of Tomkins

El of Rain

	90	33.1
W	46	37.5
	45	37.9
E	46	37.5
	40	38.1

W	92	32.9
	86	33.5
b	125	29.6

96.5 on W } = 2.5 mi of Rain
 122.5 on E }

W	44	37.7
	49	37.2
	49	37.2
b	49	37.2
	49	37.2
	43	37.8
E	42	37.9

b	120	30.1
E	78	34.3
TP	054	30.58
W	1206	30.04
W	30	27.6
b	26	28.0
E	13	29.3

30.58

150

S of

Temp Kings

W

+1.4 32.0

5.5 25.1

7.2 23.4

E

6.8 23.8

6.8 23.8

6.6 24.0

E

7.0 23.6

156

S of = creek

10.0 20.6

E

165

S of Temp Kings

8.2 22.4

E

8.7 21.9

10.0 20.6

E

8.0 22.6

7.7 22.9

9.0 21.6

W

9.2 21.4

175

E

6.0 24.6

30.54

200

S of

Temp Kings

W

8.8 21.8

9.8 20.8

Bottom

10.8 19.8

9.7 20.9

E

5.5 25.1

5.2 25.4

5.0 25.6

E

5.1 25.5

213

S of

Temp Kings = 2-3' below surface

W-Edge

Bottom of

2-3' below

10.9 19.7

225

S of

Temp Kings

W

2.6 28.0

250

S of

Temp Kings

E

4.5 26.1

5.0 25.6

5.5 25.1

E

5.2 25.4

5.2 28.4

2.0 28.6

2.0 28.6

W

1.9 28.7

TP 486

327

1.7

28.6

Howard

10

2i S of Rail

W		48	28.9
		46	29.1
		44	29.3
b		42	29.5
		37	30.0
		35	30.2
E		30	30.7
	N line of Hamilton		
E		37	30.0
H		40	29.7
75 = v in Row		40	29.7
of Row		40	29.7
144 7' = v S of Row		41	29.6
b		42	29.5
y		46	29.1
H		53	28.4
+ T		61	27.6
W2		92	24.5

N line of Hamilton

W		104	23.3
		88	24.9
		60	27.7
		52	28.5
b		45	29.2
		38	29.9
		35	30.2
	Ed on Rail	33	30.4
	N line of Hamilton		
b		30	30.7
		34	30.3
		41	29.6
b		62	27.5
		78	25.9
		94	24.3
		100	23.7

3372

Center of Hamilton

W	97	24.0
	94	24.3
	96	24.1
b	82	25.5
	54	28.3
	38	29.9
E	32	30.5

S

1/4 of

Hamilton

E	38	29.9
	64	27.3
	72	26.5
b	78	25.9
	83	25.4
	88	24.9
W	93	24.4

3372

S bk of Hamilton

W	89	24.8
	84	25.3
	78	25.9
b	72	26.5
	67	27.0
	66	27.1
E	56	28.1

S

1/4 of

Hamilton

E	51	28.6
	57	28.0
	65	27.2
b	73	26.4
	73	26.4
	76	26.1
W	78	25.9

TP

11.00

4472

0.0

3372

Hamilton

13

3372
11.00
4472

4472

25' S of

Hamlets

W

111 33.6

117 33.0

122 32.5

S

128 31.9

132 31.5

132 31.5

E

131 31.6

50 S of

Hamlets

E

66 38.1

67 38.0

63 38.4

S

52 39.5

36 41.1

26 42.1

W

21 42.6

TD

627

5099

00

4472

5099

75' S of

Hamlets

W

33 47.7

36 47.4

44 46.6

S

51 45.9

58 45.2

61 44.9

E

60 45.0

100 S of

Hamlets

E

08 50.2

09 50.1

10 50.0

S

10 50.0

13 49.7

24 48.6

W

40 47.0

Hamlets

14

	135	S of Hamlet		
W			90	42.0
			82	42.8
			77	43.3
b			68	44.2
			61	44.9
			58	45.2
E			54	45.6
	140	S of Hamlet		
E			103	40.7
bl			120	38.6
Y			126	38.4
	150	S of Hamlet		
E			62	46.8
			82	42.8
			103	40.7
b			144	36.6
			154	35.6
			110	40.0
W			120	39.0
			1	

	160	S	of Hamlet	
W			170	36.0
bl			165	34.5
	175	S of Hamlet		
W			86	42.4
			63	44.7
			62	44.8
b			56	45.4
			38	47.2
			15	49.5
E			405	51.5
	200	S of Hamlet		
TD	1254	6353	00	5099
E			60	57.5
			77	55.8
			74	56.1
b			81	55.4
			100	53.5
			112	52.3
W			123	51.2

5099
1514
2.55

6353

225'

S of

Hamulter

W

53 58.2

41 59.5

32 60.3

b

36 59.9

37 59.8

38 59.7

E

33 60.2

250'

S of

Hamulter

E

12 62.3

14 62.1

12 62.3

b

07 62.8

16 61.9

32 60.3

W

45 59.0

TP

628

6897

084

6269

6897

300

S = n dir of

Siegel st (60)

16

W

72 61.8

51 63.9

38 65.2

b

30 66.0

23 66.7

28 66.2

E

30 66.0

n

W of

Siegel

E

26 66.4

24 66.6

20 67.0

b

20 67.0

32 66.0

42 64.8

W

67 62.3

6353
84
62.69
62.69
62.69

6897

6897

Kawad

17

	N	1/4	of	Seigel
W				58 63.2
				36 65.4
				22 66.8
				11 67.9
				10 68.0
				17 67.3
E				20 67.0

6897
123
6704

	S	1/4	of	Seigel
W				74 61.6
				64 62.6
				50 64.0
b				47 64.3
				45 64.5
				49 64.1
E				38 65.2

Center of Seigel = Pueblo Line

E				12 67.8
				07 68.3
				03 68.7
b				08 68.2
				20 67.0
				38 65.2
W				48 64.2

	S	1/4	of	Seigel
E				44 64.6
				50 64.0
				51 63.9
b				50 63.4
				62 62.8
				70 62.0
W				80 61.0

The Street has been roughly
graded S of P line

123 67.04 ✓ Bot

S *sin f* *Suz*

W 82 60.8

72 61.8

60 63.0

L 57 63.3

56 63.4

55 63.5

E 47 64.3

l	Along	x sec. of	35-44-25 (80')	Homestead Union	4 NW	98.01			
25	to	410	2801	93.91	4 NW				
10	to	145'	n of Shopton S (80')		4 NW				19
			Pueblo line		50	n of	Shopton		93.91
								95	88.5
W		4/10	93.9					96	88.4
		26	95.4					87	99.3
		17	96.3					73	90.7
		12	96.8					76	90.4
b		07	97.3					73	90.7
		07	97.3					66	91.2
		00	98.0						
E		101	98.1					102	87.8
	100	n of	Shopton					114	86.6
E		28	95.2					112	86.7
		31	94.9					112	86.8
		34	94.6					116	86.4
b		36	94.4					125	85.5
		48	93.2					130	85.0
		52	92.4						
W		65	91.5		TP	017	85.14	1304	84.97

93.91
 410
 98.01
 10.04
 84.97
 17
 85.14

4 NW
 Shopton

8514

N 1/4 of Shofte

W		09	84.3
		06	84.5
		01	85.0
b		00	85.1
		00	85.1
		102	85.0
E		110	86.1

N 1/4 of Shofte

E		03	84.8
		05	84.6
		10	84.1
b		14	83.7
		17	83.4
		23	82.8
W		30	82.1

8514

Center of Shofte

W		29	81.2
		32	81.9
		27	82.4
b		23	82.8
		18	83.3
		12	83.9
E		08	84.3

S 1/4 of Shofte

E		23	82.8
		25	82.6
		33	81.8
b		36	81.5
		42	80.9
		45	80.6
W		50	80.1

3544

20

8514

S

667

Shofler

W

54 79.7

57 79.4

53 79.8

6

50 80.1

51 80.0

41 81.0

E

37 81.4

S

L of

Shofler

E

51 80.0

57 79.4

64 78.7

6

66 78.5

68 78.3

68 78.3

W

78 77.3

8514

50

S of

Shofler

W

124 72.7

127 72.4

127 72.4

6

120 73.1

114 73.7

104 84.7

E

99 75.2

TP

919

2288

1250

7264

100

S of

Shofler

E

64 66.4

62 66.6

65 66.3

6

65 66.3

74 65.4

93 63.5

W

95 63.3

TP

815

2000

1095

6184

35-21

21

8514
 1250
 72.64
 12
 2288
 1095
 6184
 51.6
 70.03

70.03

125

S of

Shafter

w

11.3 58.7

10.6 59.4

7.4 62.6

b

6.5 63.5

6.9 63.1

9.3 60.7

E

9.9 60.1

140

S of

Shafter

E

5.2 64.8

9.2 60.8

10.6 59.4

b

7.3 62.7

12.2 57.8

13.2 56.8

w

14.1 55.9

70.03

150

S of

Shafter

w

13.4 56.6

11.8 58.2

8.8 61.2

b

6.2 63.8

7.7 62.3

6.4 63.6

E

4.1 65.9

170

S of

Shafter

E

3.4 66.6

4.0 66.0

4.2 65.8

b

4.4 65.6

5.7 64.3

7.1 62.9

w

9.3 60.7

35.4

22

7003				7003				35-44
	200	S	of Skopje		300	S = 7 of Tomphens	(80)	23
W			98 60.2					
			72 62.8	W		830	61.75	7003
			38 66.2			70	63.0	8.50
b			30 67.0			57	64.3	61.73
			26 67.4			44	65.6	3.65
	+10		20 67.4	b		38	66.2	65.40
			12 68.8			32	66.8	
E			06 69.4			34	66.6	
	250	S of	Skopje	E				
E			10 69.0	W	365	65.40	8.30	61.75
			19 68.1		W	H of Tomphens		Brown W Tomphens
			26 67.4	W			31	62.3
b			32 66.8				24	63.0
			42 65.8				15	62.9
			60 64.0	b			02	65.2
W			108 59.2				00	65.4
							708	66.2
				W			708	66.2

6540

	N	1/4 of	Temp. in	
E			+0.2	65.6
			+0.3	65.7
			0.5	64.9
b			0.9	64.5
			1.9	63.5
			2.0	63.4
W			2.7	62.7
	Center of		Temp. in	
W			4.0	61.4
			3.1	62.3
			2.4	63.0
b			1.7	63.7
			1.2	64.2
			1.6	63.8
E			0.3	65.1

65403500

24

	S	1/4 of	Temp. in	
E			0.8	64.6
			0.8	64.6
			1.3	66.1
b			2.0	63.4
			2.5	62.9
			3.2	62.2
W			4.8	60.6
	S	1/4 of	Temp. in	
W			5.0	60.4
			3.4	62.0
			2.6	62.9
b			2.3	63.1
			1.9	63.5
			1.9	63.5
E			1.8	63.6

6540

	S	S of	Temp	Revs
E			26	62.8
			27	62.7
			24	63.0
L			32	62.2
			28	62.6
			32	62.2
W			34	60.0

25' S of

		Temp	Revs
W		69	58.5
		66	58.8
		67	58.7
L		66	58.8
		62	59.2
		58	59.6
E		57	59.7

6540

3542

25

	50'	S of	Temp	Revs
E			112	56.2
			112	56.2
			115	53.9
L			119	53.5
			120	53.4
			120	53.4
W			118	53.6

70' 049 5248 1240 53W

	75'	S of	Temp	Revs
W			51	48.4
			53	48.2
			54	48.1
L			54	48.1
			49	48.6
			47	48.8
E			43	49.2

6540

1240

1240

53.49

53.77

5349

4121

3521

26

	100	S of	7 amp lines	
E			85	45.0
			89	44.6
			88	44.7
b			87	44.8
			86	44.9
			98	43.7
W			98	43.7

5349
 1250
 40.65
 1.6
 41.21

	137	S =	2' S of	Rail
E			35	37.7
			34	37.8
			35	37.7
b			36	37.6
			38	37.4
			38	37.4
W			40	37.2

129.4 m E
 1280 W S = 2' n of Rail

	TP	056	4121	1284	40.63
W				39	37.3
				39	37.3
				39	37.3
b				39	37.3
				38	37.4
				36	37.6
E				35	37.7

	150	S of	7 amp lines	
W			82	32.0
			80	32.2
			74	32.8
b			64	34.8
			58	35.4
			54	35.8
E			52	36.0

El of Rail

W			31	38.1
E			27	38.5

	200'	S of	Temp/hrs	
E			10.0 31.2	
			10.3 30.9	
			10.7 30.5	
S			10.7 30.5	
			10.8 30.4	
			11.4 30.0	
W			11.5 29.7	
	250'	S of	Temp/hrs	
W			12.8 28.4	
			12.9 28.9	
			11.7 29.5	
S			11.0 30.2	
			10.7 30.5	
			10.5 30.7	
E			10.3 30.9	

	300'	S = 2	L of	Hamilton	St (130)
E				11.4	29.8
				11.5	29.7
				11.8	29.4
S				12.0	29.2
				12.4	29.0
				12.2	29.0
W				12.8	28.4
	TP	678	.3766	10.33	30.88
	25'	S of	N of	Hamilton	
				13.0	24.7
				9.8	27.9
				9.0	28.7
				8.7	29.0
				8.4	29.3
				8.1	29.6
				7.7	30.0

4121
10.33
30.88
+6.78
37.66

7.2 16.00

37.66

50

S of

n2 of Hamulth

E

118 25.9

120 25.7

120 25.7

b

124 25.3

93 29.4

99 27.8

w

60 31.7

60'

S of

n line

w

00 37.7

32 34.5

54 32.3

b

64 31.1

83 29.4

80 29.7

E

90 28.7

TP

1023

47.64

035 37.41

47.64

28' S on W } = 74-1 Band
88' S on E }

28

w

54 42.2

44 43.2

37 43.9

b

29 44.7

22 45.4

14 46.2

E

06 47.0

77' S on W } = 2' n of Rail
96' S on E }

E

04 47.2

13 46.3

20 45.6

b

27 44.9

36 44.0

43 43.3

w

51 42.5

El of Rail

E

015 47.5

w

51 42.5

4764

86' S on W }
105' S on E }

2' sq Rail

W

52

42.4

44

43.2

34

44.2

b

27

44.9

16

46.0

06

47.0

E

00

47.6

118' S on W }
124' S on E }

= cut

E

10

46.6

20

45.6

28

44.8

b

32

44.4

39

43.7

44

43.3

W

50

42.6

TP

1300

6049

015

4749

120

S on

W

W 1/2

1.3

59.2

1/4

3.0

57.5

6049

3500

29

130'

= 529

Hamilton on W

S of

N of Hamilton

W

+05

61.0

1.8

58.7

26

57.9

b

33

57.2

37

56.8

40

56.5

E

50

55.5

TP

1298

2347

00

6049

155'

S of

N of Hamilton

= 50 on E

E

107

62.8

87

64.8

80

65.5

b

78

65.7

82

65.3

87

64.8

W

82

65.3

4764
715
47.49
60.49
12.98
73.47

7347

	200'	Ref	Siegel	2'
W			6.7	66.8
			5.9	67.6
			4.9	68.6
b			3.4	70.1
			3.4	70.1
			3.6	69.9
E			4.8	68.7
	175'	Ref	Siegel	
E			0.0	73.5
			1.7	71.8
			2.9	70.6
b			3.4	70.1
			5.5	68.0
			8.2	65.3
W			8.7	64.8

7347

	150'	n of	Siegel	
W			9.2	64.3
			8.4	65.1
			7.0	66.5
b			5.5	68.0
			3.6	69.9
			1.6	71.9
TP	640	77.5	2.6	70.85
E			3.2	74.1
	125'	n of	Siegel	
E			4.0	73.3
			7.0	70.3
			8.5	67.8
b			10.7	66.6
			12.2	65.1
			15.0	61.7
W			12.2	65.1

350

50

7347
 6.6
 70.85
 6.00
 77.45

7725

100' n of Sugar

W	112	66.1
	111	66.2
	108	66.5
S	111	66.2
	99	67.4
	77	69.6
E	53	72.0

75' n of Sugar

E	74	69.9
	80	69.3
	82	69.1
S	90	68.3
	88	68.5
	82	69.1
W	75	69.8

7725

50' n of Sugar

W	78	69.5
	77	69.6
	72	70.1
S	64	70.9
	62	71.1
	38	73.5
E	30	74.3

25' n of Sugar

E	86	76.7
	14	75.9
	47	72.6
S	62	71.0
	67	70.6
	70	70.3
W	69	70.4

31-72

31

22 of Sept 21

W	65	70.8
	68	70.5
	70	70.3
b	67	70.6
	39	71.4
	45	72.8
E	26	74.7

30 of 22 of Sept
= Puerto Rico

E	57	71.6
	63	71.0
	64	70.9
	76	69.7
	80	69.3
	86	68.7
	93	68.0
Bm	785	2940

6 25 13	Longitude 74° 45'	X sec of Through	Pardner Homestead Union	W (80')			94.55		Pardner
		5.23	94.55	89.32	100	n of	Shofle		89.32
		1.15	n of	S Shofle	21 = P line	W			89.32 5.23 94.55
W				5.2				85	86.1
				6.0				86	86.0
				7.4				82	86.4
				6.6				64	88.2
b				5.0				50	89.6
				3.7				36	91.0
E				1.0		E		15	93.1
							75	n of	S Shofle
E		1.25	n of	Shofle				24	92.4
				0.8				44	90.2
				3.0				56	89.0
				3.8				69	87.7
b				6.0				83	86.3
				8.5				95	85.1
				7.1		W		123	82.3
W				6.4					

9455

	50'	n of	Shofter	
W			73	87.3
			96	85.0
			83	86.3
b			72	87.4
			50	89.6
			27	91.9
E			06	94.0

	25'	n of	Shofter	
E			17	92.9
			26	92.0
			38	90.8
b			51	89.5
			70	87.6
			95	85.1
W			114	83.2

9455

Parker

34

	N line of	Shofter 24 (80)	
W		120	82.6
		96	85.0
		76	87.0
b		56	89.0
		45	90.1
		45	90.1
E		43	90.3

	N line of	Shofter	
E		67	87.9
		67	87.9
		67	87.9
b		70	87.6
		90	85.6
		106	84.0
W		131	81.5

9455

	N	1/4 of	Shofte	
W			140	80.6
			120	82.6
			102	84.4
E			86	85.0
			93	85.3
			87	85.9
E			82	86.4

center of Shofte

E			96	85.0
			98	84.8
			100	84.6
E			105	84.1
			116	83.0
			129	81.7
W			139	80.7

9455

Pardee

35

	S	1/4 of	Shofte	
W			134	81.2
			123	82.3
			120	82.6
E			113	83.3
			108	83.8
			104	84.2
E			100	84.6

S 1/4 of Shofte

E			96	85.0
			106	84.0
			107	83.9
E			110	83.6
			117	82.9
			120	82.6
W			124	82.2

9455

S S of Shop 6

W 115 83.1

113 83.3

109 83.7

6 102 84.4

96 85.0

92 85.4

E 92 85.4

50 S of Shop 6

E 80 86.6

86 86.0

92 85.4

6 88 85.8

94 85.2

87 85.9

W 94 85.2

9455

100 S of Shop 6

W 112 83.4

108 83.8

103 84.3

6 92 85.4

92 85.4

90 85.6

E 81 86.5

TP 040 85.30 965 84.90

150 S of Shop 6

E 07 84.6

16 83.7

26 82.7

6 24 82.9

35 81.8

45 80.8

W 44 80.9

Panda

36

94.55

2.65

87.90

2.00

85.30

8530

200

S of Shopline

W

80 76.3

84 76.9

80 77.3

b

68 78.5

68 78.5

56 79.7

E

45 80.8

250

S of Shopline

E

92 76.1

99 75.4

107 74.6

b

113 74.0

125 72.8

126 72.7

W

125 72.8

TP

0.67

7292

1305 72.5

NEH
Pardie
7292

7292

300

S = N half 7292

E

07 72.2

10 71.9

23 70.6

b

28 70.1

33 69.6

28 70.1

W

19 71.0

W

668

7292

W

22 70.7

28 70.1

43 68.6

b

41 68.8

38 69.1

29 70.0

E

27 70.2

Pardie

37

8520
13 05
72.47
72.67
72.92

	$\frac{1}{4}$ f	Temp	Hum
E		44	68.5
		47	68.2
		49	68.0
b		50	67.9
		49	68.0
		47	68.7
W		35	69.4

center of

	Temp	Hum
W	43	68.6
	48	68.1
	53	67.6
b	56	67.3
	58	67.1
	57	67.2
E	59	67.0

	$\frac{1}{4}$ f	Temp	Hum
E		78	65.1
		88	64.1
		86	64.3
b		85	64.7
		62	66.1
		56	67.3
W		46	68.3

S center of

	Temp	Hum
W	63	66.6
	72	65.7
	73	65.6
b	86	64.3
	104	62.5
	111	61.8
E	111	61.8

72.92

S dir of Temp/Rains

E 130 59.9
 125 60.4
 115 61.4
 6 94 63.5
 85 64.4
 85 64.7
 W 77 65.2

TP 1.81 62.03 1270 60.22

25' S of Temp/Rains

W 0.0 62.0
 0.0 62.0
 0.8 61.2
 6 1.3 60.7
 25 59.5
 40 58.0
 E 5.0 57.0

62.03

50 S of Temp/Rains

E 10.2 51.8
 95 52.5
 87 53.3
 6 77 54.3
 70 55.0
 55 56.5
 W 46 57.4

25' S of Temp/Rains

W 9.7 52.3
 10.8 51.2
 11.2 50.8
 6 13.0 49.0
 TP 1.15 51.23 11.95 50.08
 27 48.5
 34 47.8
 E 4.0 47.2

Pardue

39

72.92
 1270
 60.22
 7.81
 62.03
 11.95
 50.08
 1.15
 51.23

5123

	150	S of	Temp	Kms
E			135	37.7
			133	37.9
			130	38.2
b			125	38.7
			118	39.4
			118	39.4
W			117	39.5
TP	101	3940	1284	38.39
	200	S of	Temp	Kms
W			30	36.4
			24	37.0
			32	36.2
b			40	35.4
			46	34.8
			50	34.4
E			54	34.0

3940

Page

41

	250	S of	Temp	Kms	
E			59	33.5	5123
W			90	30.4	1284
			72	32.2	5839
			72	32.2	101
					3940
b			69	32.5	
			70	32.4	
			69	32.5	
W			69	32.5	
	300	S = rd of Hamilton St			(155)
W			85	30.9	
			82	31.2	
			83	31.1	
b			104	29.0	
			56	33.8	
			54	34.0	
			41	35.3	
E			35	35.9	

114' culvert from the E
cross the

3940

	25'	5 of 9 of Hamble		
E			13	38.1
			22	37.2
			23	37.1
b			32	36.2
			50	34.4
			78	31.6
W		can come out here	110	28.4
TP	1200	4976	164	3776
	50	5 of 9 of Hamble		
W			125	37.3
			126	37.2
			114	38.2
b			100	39.8
			92	40.6
			78	42.0
E			64	43.4

4976

Parker

42

	75'	5 of 9 of Hamble			
E			0.0	49.8	3940 164 3776 12 49.76 2.72 47.04 42.95 59.99 64
			2.8	47.0	59.35 9.48 68.83
			37	46.1	
b			50	44.8	
			57	44.1	
			61	43.7	
W			69	42.9	
TP	1295	5989	272	4704	
	948	6883	064	5935	
	100	5 of 9 of Hamble			
W			98	59.0	
			86	60.2	
			78	61.0	
b			68	62.0	
			60	62.8	
			53	63.5	
E			45	64.3	

6883

107 S=2' n of Rail

E	45	64.3
	53	63.5
	61	62.7
b	70	61.8
b ₁	78	61.0
	86	60.2
W	95	59.3
H		

E of Rail

E	44	64.4
W	94	59.6

116 S=2' S of Rail

W	95	59.3
	84	60.4
	75	61.3
b	65	62.3
	60	62.8
	53	63.5
E	42	64.6

6883

137 S of n lin

E	48	64.0
	61	62.7
	67	62.1
b	76	61.2
	81	60.7
	89	59.9
W	92	59.6

TP 1390 81.69 014 6869

148 S of n l

W	98	71.9
	100	71.7
	100	71.7
b	100	71.7
	90	72.7
	80	73.7
E	65	75.2

Parker
436883
10
68.69
81.69

or 148

81.69

155

S = 2nd of Hammett = 225 ^{max} n f

E	15	80.2
	33	78.4
	45	77.5
L	46	77.1
	50	76.7
	50	76.7
W	48	76.9

SE4

91.00

175

n f Sugar

E	26	88.4
	32	87.8
	42	86.8
b	48	86.2
	50	86.0
	57	85.3
W	68	84.2

TP

1086

91.00

155 80.14

	200	n f Sugar
W	88	82.2
	79	83.1
	72	83.8
b	68	84.2
	65	84.5
	60	85.0
E	55	85.5

150

n f Sugar

W	70	84.0
	67	84.3
	62	84.8
b	57	85.3
	47	86.3
	38	87.2
E	30	88.0

Pandee

44

8169
~~8074~~
 1086
 91.00

9100

125

n.f.

Sugil

E

25 88.5

42 86.8

55 85.5

S

66 84.4

73 83.7

79 83.1

W

84 82.6

100

n.f.

Sugil

W

83 82.7

78 83.2

72 83.8

S

65 84.5

62 84.8

52 85.8

E

42 86.8

9100

75

n.f.

Sugil

E

31 87.9

37 87.3

47 86.3

S

59 85.1

53 85.5

52 85.4

W

65 84.5

50

n.f.

Sugil

W

76 83.4

66 84.4

58 85.2

S

49 86.1

43 86.7

34 87.6

E

20 89.0

Panda

45

91.00

25'

n of

Buget

E 1,7 89.3

2,6 88.4

3,3 87.7

6 4,3 86.7

5,5 85.5

6,6 84.4

W 7,8 83.2

n s of Sept 21 30' n 192

W 6,4 84.6

6,7 84.3

6,0 85.0

6 4,7 86.3

3,7 87.3

3,0 88.0

E 2,0 89.0

21.00

Order

46

Public Serv S of Domestic Union

21 88.9

31 87.9

41 86.9

49 86.1

640 84.60

69 84.1

76 83.4

Ben 13'4
S End

	145'	n of Shofte - Buick Lane	127	82.8
E line				
	125'	n of Shofte	135	82.0
EL				
	100'	n of Shofte	142	81.3
EL				
	50'	n of Shofte	157	79.8
EL				
			124	83.1
			98	85.7
to			70	88.5
			33	90.2
			24	93.1
W			00	95.5

	25'	n of Shofte	10	94.5
			27	92.8
			49	90.6
			67	88.8
			93	86.2
			121	83.6
			158	79.7
		n line of Shofte	11 (80)	
			144	81.1
			114	84.1
			86	86.9
			60	89.5
			44	91.1
			24	93.1
			18	93.7

9549

	N	bl f	Shafter st	
W			25	93.0
			23	93.2
			30	92.5
b			43	91.2
			70	88.5
			98	85.7
E			128	82.7

	N	1/4 S	Shafter	
E			112	86.3
			76	87.9
			56	89.9
b			40	91.5
			29	92.6
			24	93.1
W			24	93.1

9548

Pasco

49

	center of	Shafter st	
W		32	92.3
		28	92.7
		38	91.7
b		44	91.1
		57	90.4
		75	88.0
E		106	84.9

	S	1/4 S	Shafter	
E			111	84.4
			77	87.8
			54	90.1
b			46	90.9
			40	91.20 Bm 13 +
			39	91.6
W			40	91.5

9549

S bl f Shafter

W	4.6	90.9
	4.3	91.2
	4.2	91.3
b	4.6	90.9
	4.8	90.7
	6.6	88.9
E	1.67	84.8

S long f Shafter

E	11.0	86.5
	6.9	88.9
	4.5	91.0
b	4.6	90.9
	4.8	90.7
	4.6	90.9
W	4.6	90.9

9548

Page

50

25' S f Shafter

W	5.2	90.3	9548
	5.4	90.1	98.65
	5.5	90.0	85.46
b	5.8	89.7	87.98
	6.0	89.5	
	8.5	87.0	
E	12.9	84.6	

50' S f Shafter

W	6.1	89.4
	6.1	89.4
	6.3	89.2
b	6.5	89.0
	7.7	87.8
	9.8	85.7
W	7.9	81.7
E	5.9	81.7

75' S of Shoptin

E	92	78.4
	46	83.0
	27	84.9
S	15	86.1
	0.0	87.6
	40.4	88.0
W	71.0	88.6

100' S of Shoptin

W	05	87.1
	13	86.3
	24	85.2
S	30	84.6
	42	83.4
	68	80.8
E	108	76.8

125' S of Shoptin

E	120	75.6
	87	78.9
	60	81.6
S	44	83.2
	37	83.9
	32	84.4
W	29	84.7

150' S of Shoptin

W	52	82.4
	58	81.8
	66	81.0
S	66	81.0
	75	80.1
	102	77.4
E	140	73.6

8758

175' S of Shofler

E	16.2	71.4
	133	74.3
	116	76.0
b	10.2	77.4
	9.1	78.5
	9.3	78.3
W	7.8	79.8

200' S of Shofler

W	11.6	76.0
	11.5	76.1
	11.9	75.7
b	12.9	74.7
TP	0.0	<u>74.50</u>
	13.8	74.50
	1.0	73.5
	2.2	72.3
E	5.2	69.3

7450

Page
52

225' S of Shofler

E	4.8	69.7
	3.9	70.4
	3.2	71.3
b	2.5	72.0
	1.5	73.0
	1.5	73.0
W	1.4	73.1

250' S of Shofler

W	2.8	71.7
	2.9	71.6
	3.3	71.2
b	3.7	70.8
	4.1	70.5
	5.0	69.5
E	6.4	68.1

8758
1308
74.50

7450

300

S = 1/2 of Tompkins I (S)

E 65 68.0

66 67.9

64 68.1

S 62 68.2

57 68.8

54 69.1

W 52 69.3

N 1/2 of Tompkins

W 58 68.7

55 69.0

58 68.7

S 65 68.0

60 68.5

60 68.5

E 59 68.6

7450

Pasco

53

N 1/4 of Tompkins

E 58 68.7

60 68.5

67 67.8

S 70 67.5

63 68.2

63 68.2

W 66 67.9

Center of Tompkins

W 69 67.6

71 67.4

68 67.7

S 73 67.2

75 67.0

66 67.9

E 60 68.5

7450

	S	1/4 f	Temp	f Kms
E			68	67.7
			71	67.4
			78	66.7
b			76	66.9
			720	67.30
			76	66.9
W			74	67.1
	S	66 f	Temp	f Kms
W			81	66.4
			85	66.0
			75	67.0
b			75	67.0
			79	66.6
			74	67.1
E			73	67.2

BM 1314

7450

Pasco

54

	S	Temp	f Beckplins	
E		75	67.0	
		79	66.6	
		82	66.3	
b		85	66.0	
		83	66.2	
		99	64.6	
W		94	64.9	
	25	S f	Temp	f Kms
W			10.9	63.6
			11.1	63.4
			11.1	63.4
b			11.1	63.4
			104	64.1
			97	64.8
E			10.0	64.5
	TP	138	63.63	12.25
			62.25	

7450
12.25
61.38
63.63

63.63

	50	S of	Temp	Reins
E			10	62.6
			0.0	63.6
			0.2	63.4
b			24	61.2
			34	60.2
			40	59.6
W			38	59.8
	75	S of	Temp	Reins
W			118	51.8
			100	53.6
			72	56.4
b			60	57.6
			48	58.8
			35	60.1
E			28	60.8

63.63

Pasco

55

	100	S of	Temp	Reins
E			46	59.0
			63	57.3
			86	55.0
b			105	52.1
			118	51.8
			140	49.6
W			170	46.6
	125	S of	Temp	Reins
E			83	55.3
			101	53.5
			114	52.2
	TP	0.23	50.20	1240
b			20	48.9
			47	46.2
			70	43.9
W			100	40.9
	130	S of		
E			66	44.3
W			70	43.9

1362
~~1222~~
 50.57
 23
 50.90

138 S on W } - 2' n of Road
439' S on W }

175 S of Tampkins

W	94	41.5
	90	41.9
	90	41.9
b	83	42.6
	80	42.9
	78	43.1
E	75	43.4

W	98	41.1
	95	41.4
	85	42.4
b	85	42.4
	81	42.8
	78	43.1
E	74	43.5

5090
1182
39.08
354
42.62

El of Road

185 S of Tampkins

W	85	42.4
E	67	44.2

E	60	44.9
	80	41.9

150 S of Tampkins

Same Elevations for 2' S of Road

E	76	43.3
	79	43.0
	83	42.6
b	82	42.7
	88	42.1
	94	41.5
or	100	40.9

b	112	39.7
	130	37.9
	132	37.7
	138	37.1
W	140	36.9
T.P	354	42.62
	1182	39.08

4262

	700	S of	Temp	Wind
W			65	36.1
			60	36.6
			56	37.0
b			52	37.4
			46	38.0
			30	39.6
E			0.0	42.6

225

S of

Temp

Wind

E			20	40.6
			43	38.3
			50	37.6
b			51	37.5
			55	37.1
			55	37.1
W			57	36.9

4262

57

	240	S of	Temp	Wind	Calcut on Wd
W			76	35.0	
			84	34.2	
			76	35.0	
b			70	35.6	
			60	36.6	
			40	38.6	
E			26	40.0	

250

S of

Temp

Wind

Calcut on Ed

E			70	35.6
			76	35.0
			74	35.2
b			52	37.4
			53	37.3
			55	37.1
W			60	36.6

256

S

of

Temp

Wind

E

34 39.2

4423

S

1/4 of

Hamlet

W	80	36.2
	73	36.9
	68	37.4
b	66	37.6
	59	38.3
	55	36.7
E	50	39.2

S

1/4 of

Hamlet

E	78	36.4
	76	36.6
	72	37.0
b	78	36.4
	74	36.8
	70	37.2
W	65	37.7

4425

Pasco

59

S

1/4 of

Hamlet

W	52	39.0
	55	38.7
	49	39.3
b	56	38.6
	60	38.2
	57	38.5
E	58	38.4

25

S of

Hamlet

E	13	42.9
	20	42.2
	25	41.7
b	24	41.8
	27	41.8
	06	43.6
TP	1250	5102
W	96	46.8

4423

20

44.03

12.16

56.87

5639

50

S of

Hamilton

08 55.6

38 52.6

67 49.7

6 105 45.9

75 48.9

67 50.2

E 57 51.2

TP 1275 6914 00 56.39

75 S of Hamilton

E 95 59.6

118 57.3

130 56.1

6 112 57.9

122 56.9

106 58.5

W 87 60.4

6914

100

S of

Hamilton

48 64.3

69 62.2

78 61.3

70 62.1

70 62.1

66 62.5

48 64.3

1278 S = RR Right way on W

E 17 67.4

17 67.4

17 67.4

28 66.3

36 65.5

27 66.4

00 69.1

TP 1234 8012 136 67.78

Pages
60

5639
1275
6914
136
67.78
1234
8012

9061

225 S of Hamlet

W		85	81.1
		82	82.6
	= 2' NW Rail apex 710 = 2' E Rail	74	83.2
b		71	83.5
		64	84.2
		58	84.8
E		123	78.3
	230'		
W		36	87.0
	257' S = RR Right of way NE		
E		32	87.4
W		42	86.4
H		49	85.7
b		50	85.6
4		64	84.2
	75	71	83.6

9061

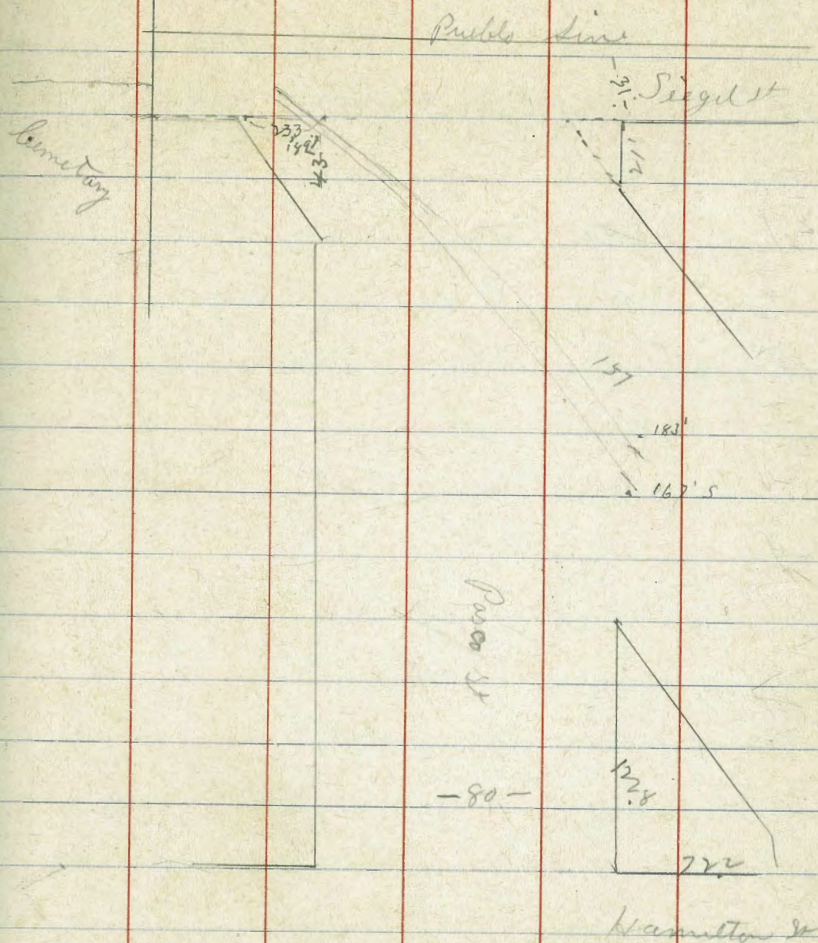
62

279' S = RR Right of way on W

E		26	88.0
		32	87.4
		36	87.0
		47	85.9
		54	85.2
	289' S = 2' NE Rail		
	SE Rail	21	88.5
	SE Rail	19	88.7
	SE	13	89.3
	300' S = 2' NE Sides of (31')		
E = 2' SW 6 Rail Apex		12	89.4
W		21	88.5
4		34	87.2
	74	52	87.4
TP	1200	9888	372
			8889
			240
			88 49 BM

949
225
98.899061
225
88.89
1200
98.89

	257'	S = Right of Way on E		
W			50	93.9
H			68	92.1
	279'	S = Right of Way on W		
W			34	95.5
H			45	94.4
Y	40'		60	92.9
			95	89.4
	300'	S = N d of Siegel St (61)		
W			25	96.4
H			38	95.1
Y			48	94.1
L			65	92.4



5663

75' n f Skipton

W 132

108

104

S 73

38

20

E 00

50' n f Skipton

E 30

53

63

S 69

109

156

W 160

5663

Hoffman

65

25' n f Skipton

W 206

184

154

S 125

109

95

E 79

15' n f Skipton

E 110

122

130

S 140

5663

N of Shofler at (80)

E	8.7
	10.0
	10.0
b	9.6
	9.3
	9.3
W	9.0

N of Shofler

W	5.0
	5.2
	6.8
b	7.0
	8.0
	7.6
E	6.6

5663

N of Shofler

E	36
	36
	29
b	22
	29
	25
W	33

Route of Shofler

W	416	5-9.48	53.32
W			56.0
			54.5
b			55.0
			36
			29
			52
E			38

Bm 1314

Hoffman

Shofler

58.32

416

59.48

66

5948

	S	14 f	Shaft	
E			31	56.4
			23	57.2
			25	57.0
b			33	56.2
			42	55.3
			46	54.9
W			49	54.6
	S	bb of	Shaft	
W			47	54.8
			44	55.1
			40	55.5
b			40	55.5
			38	55.7
			32	56.3
E			36	55.9

5948

Hoffma
27

	S	Line of	Shaft	S
			45	55.0
			43	55.2
			43	55.2
b			43	55.2
			44	55.1
			46	54.9
W			52	54.3
	25'	S-b	Shaft	
W			90	50.5
			66	52.9
			60	53.5
b			55	54.0
			60	53.5
			65	53.0
E			70	52.5

5944

	55	57	Shafter	
E			95	50.0
			100	49.5
			107	48.8
b			111	48.4
			120	47.5
			127	46.8
W			140	45.5
	75	57	Shafter	
W			182	41.3
			167	42.8
			160	43.5
b			150	44.5
			140	45.5
			136	45.9
E			126	46.9

5948

Hoffman

68

	100	57	Shafter		
E			103	49.2	
			113	48.2	
			137	46.2	
	125	57	Shafter		
E			60	53.5	
			65	53.0	
			82	51.3	
b			110	48.5	
	150	57	Shafter		
E			10	58.5	
			26	56.9	
			56	53.9	
b			93	50.5	
			127	46.8	
	70	1298	5948	1260	46.88

5944
1260
46.88
1298
59.86

5986

175'

S of

Shofte

E

+1.0 60.9

2.4 57.5

5.9 54.0

b

9.6 50.3

14.0 45.9

200'

S of

Shofte

E

0.2 59.70

4.4 55.5

8.0 51.9

b

12.0 47.9

4

16.8 43.7

225'

S of

Shofte

E

2.4 57.5

7.0 52.9

11.2 48.7

b

15.2 44.7

5986

Hoffman

250'

S of

Shofte

69

E

6.1 53.8

ll

11.8 48.1

4

15.3 44.6

275'

S of

Shofte

E

11.8 48.1

+10

14.5 45.4

285'

S of

Shofte

E

13.4 46.5

+4

14.4 45.5

142

4830

1298

4688

0.13

100'

S of

Shofte

20.2

9.6

6.5

5.1

b

3.5

125'

S of

Shofte

W

10.4

5.6

4

2.8

4830

	150	S of	Shofte		
W			13.6		
bl			74		
	168	S of	S. hofte = 2' 84' RR Rail		
W			13.0		
	El of Rail		1205		
	175	S of	Shofte		
W			120		
75'			130		
			110		
	190	S of =	2' 84' RR Rail		
W			123		
	200	S of	Shofte		
W			127	4830	
+4' = 2' W Rail			122	1171	
bl = 2' E Rail			130	56.59	
				1.97	
				38.56	
	225	S of	Shofte		
W			103		
bl			125		
+1' = 2' W Rail			124		
+11' = 2' E Rail			127		
+10'			131.4		
			11.6		
710	197	3856	1171	36.59	

3853

70

	250	S of	Shofte		70
W			78		
			45		
			11		
4 = 2' W Rail			19		
+105' = 2' E Rail			3.0		
b			3.6		
+120'			2.3		
	275	S of	Shofte		
W			89		
			64		
			42		
+12' = 2' W Rail			1.3		
b			2.9		
+10' = 2' E Rail			34		
			10		
	300	S = N of	6 Tom. J. Kins St (80)		
W			10.8		
			9.0		
			7.0		
b			4.2		
			2.3		
48' = 2' W Rail			1.3		
bl = 2' E Rail			2.7		
a			2.7		
bl Rail			1.2		

3856

	n	bl of	Temp	Hum
E			33	
	5' = 2'	E Rail	25	
	11' = 2'	W Rail	15	
			30	
b			54	
			84	
			102	
W			114	
	11' + 6' = 2'	E Rail	25	
	n	114 g	Temp	Hum
W			128	
			108	
			94	
b			74	
			45	
			28	
	4' = 2'	W Rail	15	
	11' + 8' = 2'	W Rail	15	

3857

Hoffman

72

	center to	Temp	Hum
E		22	
		34	
		60	
b		87	
		98	
		130	
W		134	
	S	114 g	Temp
W			132
			131
			124
b			95
			72
			36
E			25

3856

S of J Tompkins

E 241

61

86

121

128

131

W 136

S of J Tompkins

W 140

140

122

121

127

105

72

85

TP 383 31.09 11.30 2726

3856

11.30

27.26

3.83

31.09

3109

7' S of Tompkins

E 00

10' S of Tompkins

E 38

18' S = 2' n Rail on w L

E 49

45

42

b 39

38

38

W 36

El Rail w L 35

19' S n W } = 2' n of Rail

50' S n E } = 2'

W 36

36

36

b 36

36

36

E 26

Hoffman

73

3189
 28' S on W } - 2' S of Rail
 61' S on E }

3109

Heffner

74

E of Rail E 2	35
E 2	37
	37
	38
b	38
	39
	39
W	37
45' S of 700 ft line	37
W 2	37
50' S of 700 ft line	68
W	48
	48
b	44
	42
= 2' W of Rail	39
E = 2' S of Rail	36

75' S of 700 ft line	40
E	44
	52
b	66
	74
	77
W	82
100' S of 700 ft line	87
W	83
	79
b	72
	69
	50
E	48
100' S	
E 2 = 2' S of Rail (S)	48

125' Sef 7comp Rain

E	4,8
	4,9
	6,3
b	6,9
	7,0
	7,3
W	8,3

150' S B 7comp Rain

W	12,6
	9,2
	7,3
b	6,4
	6,3
	5,7
E	5,1

175' S B 7comp Rain

E	7,8
	5,9
	6,6
b	6,5
	9,6
	13,2
W	13,8

200' S B 7comp Rain

W	13,4
	13,3
	14,4
b	12,0
	8,9
	8,5
E	6,3

2109

225 S of Tomplin

E			71	
th			120	
TP	772	<u>2563</u>	1269	1841
y			80	
b			87	
			82	
			92	
W			92	
	250	S of	Tomplin	
W			112	
			82	
			93	
h			86	
			88	
			91	
E			66	

2563

275 S of Tomplin

E			98	
			92	
			92	
h			92	
			70	
			52	
W			43	
	300	SE of	Hamella	
W			45	
			50	
			68	
h			87	
			83	
			91	
E			101	

Huffman

76

25-63

25-63

Huffman

77

N 66 f Hamulton

center of Hamulta

E 105
93

E 110
91

79

84

S 86

S 80

70

77

48

48
47

W 45

W 47

N 44 f Hamulta

S 44 f Hamulta

W 44

W 45

48

48

72

624

1940 Bm

S 80

S 80

80

80

90

97

E 107

E 108

25-63

S lot of Hamilton

E 104
 95
 84
 b 72
 58
 49
 W 46

S lot of Hamilton

W 46
 49
 53
 b 55
 86
 98
 E 102

25-63

50 S of Hamilton

E 102
 102
 102
 b 97
 79
 58
 54
 W 50

100 S of Hamilton

W 52
 53
 57
 b 90
 106
 103
 E 104

TP 900 2428 1025 1538

Hoffman
3

25-63
 1025
 1538
 900
 2428

2438

	150	S of	Hamilton
E			88
			92
			103
L			91
			65
			46
W			41
	200	S of	Hamilton
W			43
			48
			100
L			110
			90
			87
E			84

2438

Hoffman

79

	250	S of	Hamilton
E			90
			82
			86
L			89
			105
			116
W			56
	300	S of	N L 1 Suezd (32)
W			98
			114
			102
L			88
			82
			90
			105
E			70

A line of stones Block is in
Bottom of the creek all the way

