

894

F.R. 894

LEVEL BOOK

373

KEUFFEL & ESSER CO.

DRAWING MATERIALS
AND
SURVEYING INSTRUMENTS.
NEW YORK.

CHICAGO. SAN FRANCISCO. ST. LOUIS.

TABLES FOR EXCAVATIONS AND EMBANKMENTS.

MICROFILMED
DISTANCES FROM CENTER OF ROADWAY FOR CROSS-SECTIONING.
ROADWAY 18 FEET WIDE. SIDE SLOPES 1 TO 1.
FOR SINGLE TRACK EXCAVATION.

DEC 16 1904

"Copyright, 1895, by Keuffel & Esser Co."

	0	.1	.2	.3	.4	.5	.6	.7	.8	.9	
0	9.0	9.1	9.2	9.3	9.4	9.5	9.6	9.7	9.8	9.9	0
1	10.0	10.1	10.2	10.3	10.4	10.5	10.6	10.7	10.8	10.9	1
2	11.0	11.1	11.2	11.3	11.4	11.5	11.6	11.7	11.8	11.9	2
3	12.0	12.1	12.2	12.3	12.4	12.5	12.6	12.7	12.8	12.9	3
4	13.0	13.1	13.2	13.3	13.4	13.5	13.6	13.7	13.8	13.9	4
5	14.0	14.1	14.2	14.3	14.4	14.5	14.6	14.7	14.8	14.9	5
6	15.0	15.1	15.2	15.3	15.4	15.5	15.6	15.7	15.8	15.9	6
7	16.0	16.1	16.2	16.3	16.4	16.5	16.6	16.7	16.8	16.9	7
8	17.0	17.1	17.2	17.3	17.4	17.5	17.6	17.7	17.8	17.9	8
9	18.0	18.1	18.2	18.3	18.4	18.5	18.6	18.7	18.8	18.9	9
10	19.0	19.1	19.2	19.3	19.4	19.5	19.6	19.7	19.8	19.9	10
11	20.0	20.1	20.2	20.3	20.4	20.5	20.6	20.7	20.8	20.9	11
12	21.0	21.1	21.2	21.3	21.4	21.5	21.6	21.7	21.8	21.9	12
13	22.0	22.1	22.2	22.3	22.4	22.5	22.6	22.7	22.8	22.9	13
14	23.0	23.1	23.2	23.3	23.4	23.5	23.6	23.7	23.8	23.9	14
15	24.0	24.1	24.2	24.3	24.4	24.5	24.6	24.7	24.8	24.9	15
16	25.0	25.1	25.2	25.3	25.4	25.5	25.6	25.7	25.8	25.9	16
17	26.0	26.1	26.2	26.3	26.4	26.5	26.6	26.7	26.8	26.9	17
18	27.0	27.1	27.2	27.3	27.4	27.5	27.6	27.7	27.8	27.9	18
19	28.0	28.1	28.2	28.3	28.4	28.5	28.6	28.7	28.8	28.9	19
20	29.0	29.1	29.2	29.3	29.4	29.5	29.6	29.7	29.8	29.9	20
21	30.0	30.1	30.2	30.3	30.4	30.5	30.6	30.7	30.8	30.9	21
22	31.0	31.1	31.2	31.3	31.4	31.5	31.6	31.7	31.8	31.9	22
23	32.0	32.1	32.2	32.3	32.4	32.5	32.6	32.7	32.8	32.9	23
24	33.0	33.1	33.2	33.3	33.4	33.5	33.6	33.7	33.8	33.9	24
25	34.0	34.1	34.2	34.3	34.4	34.5	34.6	34.7	34.8	34.9	25
26	35.0	35.1	35.2	35.3	35.4	35.5	35.6	35.7	35.8	35.9	26
27	36.0	36.1	36.2	36.3	36.4	36.5	36.6	36.7	36.8	36.9	27
28	37.0	37.1	37.2	37.3	37.4	37.5	37.6	37.7	37.8	37.9	28
29	38.0	38.1	38.2	38.3	38.4	38.5	38.6	38.7	38.8	38.9	29
30	39.0	39.1	39.2	39.3	39.4	39.5	39.6	39.7	39.8	39.9	30
31	40.0	40.1	40.2	40.3	40.4	40.5	40.6	40.7	40.8	40.9	31
32	41.0	41.1	41.2	41.3	41.4	41.5	41.6	41.7	41.8	41.9	32
33	42.0	42.1	42.2	42.3	42.4	42.5	42.6	42.7	42.8	42.9	33
34	43.0	43.1	43.2	43.3	43.4	43.5	43.6	43.7	43.8	43.9	34
35	44.0	44.1	44.2	44.3	44.4	44.5	44.6	44.7	44.8	44.9	35
36	45.0	45.1	45.2	45.3	45.4	45.5	45.6	45.7	45.8	45.9	36

Calculated by Julien A. Hall, M. Am. Soc. C. E.

Property of the
City of San Diego, Cal.
Return to City Hall.
Eng'r Dept.

Cross-Sections Shore Ave
 45' wide 10' walls 6.25' / 25'
 N2 Sea Ave. to 100' N of N.L. Marine Ave

May. 5 1913

2

Hub. NE Cor Bluff. 52.77

1.10 53.87

T.P. Top Stake Shore + Sea 12.20 41.67

2.43 44.10

N.L. Sea Avenue

EL. 4.8 39.3

C 5.6 38.5

1/4 6.6 37.5

+5 7.3 36.8

E 8.5 35.6

1/4 14.3 29.8

C 15.1 29.0

+5 7.5 36.6

WL 7.1 37.0

25' N

WL 6.1 38.0

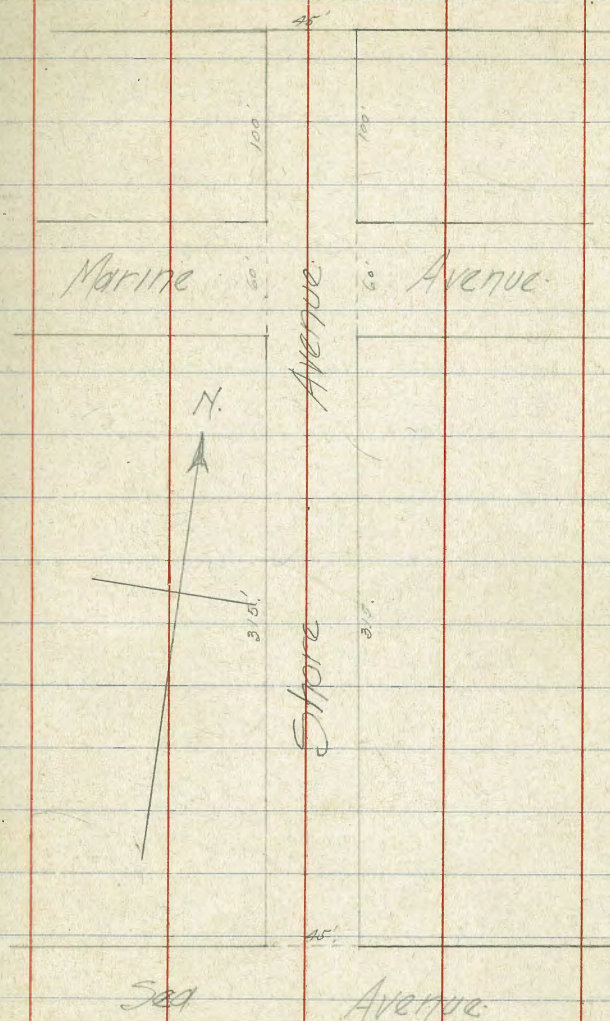
+4 6.5 37.6

C 17.5 26.6

1/4 14.2 29.9

E 10.8 33.3

West
 Evans
 Moore.



4410

1/4	72	36.9
C	65	37.6
FL	4.7	39.4

40' N

EL	52	38.9
C	61	38.0
1/4	69	37.2
+3	73	36.8
E	10.4	33.7
1/4	14.5	29.6
C	19.1	25.0
WL	21.6	22.5
+10	11.2	32.9

50' N

-20	25.6	18.6
-10	23.7	20.4
WL	10.1	34.0
C	7.7	36.4
+1	10.1	34.0
1/4	9.3	34.8
+3	6.8	37.3

4410

Shore Ave

3

E	66	37.5
1/4	65	37.6
C	61	38.0
FL	5.1	39.0

75' N

EL	5.9	38.2
C	6.8	37.3
1/4	7.3	36.8
E	8.0	36.1
1/4	8.7	35.4
C	9.2	34.9
WL	11.7	32.4
+10	11.8	32.3

100' N

-10	11.1	33.0
WL	10.5	33.6
C	9.5	34.6
1/4	9.1	35.0
E	8.5	35.6
1/4	8.2	35.9
C	7.5	36.6
FL	6.8	37.3

44.10

125' N

EL	6.9	37.2
C	7.9	36.2
1/4	8.2	35.9
ϕ	8.5	35.6
1/4	9.1	35.0
C	9.6	34.5
WL	9.5	34.6
+10	10.5	33.6

150' N

-10	10.7	33.4
WL	9.4	34.7
C	8.9	35.2
1/4	8.6	35.5
ϕ	8.2	35.9
1/4	7.8	36.3
C	7.7	36.4
EL	6.2	37.9

44.10

175' N

Shore Area

4

EL	6.8	37.3
C	8.2	35.9
1/4	8.4	35.7
ϕ	8.4	35.7
1/4	9.1	35.0
C	9.5	34.6
WL	10.7	33.4
+10	11.7	32.4

200' N

-10	11.6	32.5
WL	10.3	33.8
C	9.8	34.3
1/4	9.2	34.9
ϕ	8.7	35.4
1/4	8.7	35.4
C	8.3	35.8
EL	7.4	36.7

4410

225'N

EL.	8.2	35.9
C	8.5	35.6
1/4	9.1	35.1
ϕ	9.2	34.9
1/4	9.9	34.2
C	10.6	33.5
WL	11.4	32.7
+	12.0	32.1

250'N

-	14.2	29.9
WL	13.2	30.9
C	12.8	31.3
1/4	12.1	32.0
ϕ	11.6	32.5
1/4	11.1	33.0
C	10.3	33.8
EL.	9.0	35.1

4410

Shore Ave. 5

T.P.	12.29	37.81
------	-------	-------

1.33 33.14

275'N

EL	2.3	30.6
C	2.8	30.3
1/4	3.0	30.1
ϕ	3.1	30.0
1/4	3.7	29.4
C	4.6	28.5
WL	5.7	27.4
+10	6.4	26.7

300'N

-10	8.2	24.9
WL	7.3	25.8
C	6.4	26.7
1/4	5.8	27.3
ϕ	5.6	27.5
1/4	5.2	27.9
C	4.7	28.4
EL	4.2	28.9

3314

10' W
10' 1/4

315 N - S. L. Marine - 60' wide

EL	6.6	26.5
C	6.5	26.6
1/4	7.1	26.0
⊕	7.2	25.9
1/4	7.8	25.3
C	7.6	25.5
WL	8.1	25.0
+	8.3	24.8
BM Hub. SW. Cor. Marine	8.08	25.06
	3 Curb.	
-10	9.9	23.2
WL	9.3	23.8
C	8.8	24.3
1/4	8.4	24.7
⊕	8.1	25.0
1/4	7.7	25.4
C	7.8	25.3
EL	7.7	25.4

3314

5/4

Shore av
6

EL	8.6	24.5
C	8.6	24.5
1/4	8.7	24.4
⊕	8.9	24.2
1/4	9.1	24.0
C	9.6	23.5
WL	10.3	22.8
+10	10.4	22.7
⊕		
-	12.1	21.0
WL	11.9	21.2
C	11.2	21.9
1/4	10.1	23.0
⊕	9.6	23.5
1/4	9.5	23.6
C	9.5	23.6
EL	9.5	23.6

3314

A/4

EL	10.3	22.8
C	10.9	22.2
1/4	10.7	22.4
E	10.7	22.4
1/4	11.1	22.0
C	11.5	21.6
WL	12.7	20.4
+10	12.6	20.5
	N. Curb	
-	15.0	18.1
WL	14.2	18.9
C	13.3	19.8
1/4	13.0	20.1
E	12.6	20.5
1/4	12.3	20.8
C	11.9	21.2
EL	11.6	21.5

3314

Shore Ave

7

T.P.	12.29	20.85
2.08	22.93	
	N. L. Marine Ave.	
EL	2.3	20.6
C	3.3	19.6
1/4	3.6	19.3
E	3.3	19.6
1/4	3.7	19.2
C	3.8	19.1
WL	4.4	18.5
+10	9.5	13.4
+20	10.6	12.3
	15' N	
-7	12.4	10.5
-15	9.2	13.7
WL	8.2	14.7
C	7.9	15.0
1/4	7.4	15.5
E	7.2	15.7
1/4	6.7	16.2
C	6.4	16.5
EL	5.5	17.4

22.93

20'N.

EL.	6.1	16.8
C	6.7	16.2
1/4	7.0	15.9
1/2	7.5	15.4
3/4	9.4	13.5
C	9.2	13.6
WL.	8.8	14.1
+10	8.9	14.0
+15	9.1	13.8
+18	14.2	8.6

25'N.

-20	14.1	8.8
WL.	13.1	9.8
C	11.2	11.6
1/4	11.7	11.2
1/2	8.4	14.5
+2	7.4	15.5
3/4	7.0	15.9
C	6.8	16.1
EL.	6.3	16.6

22.93

30'N.

EL.	6.7	16.2
C	7.3	15.6
1/4	7.6	15.3
1/2	7.5	15.4
3/4	11.1	11.8
C	12.9	10.0
WL.	12.7	10.2
+20	14.1	8.8

35'N.

-20	12.1	10.8
-10	9.9	13.0
WL.	11.9	11.0
+5	10.5	12.4
+6	12.7	10.2
C	12.6	10.3
1/4	12.6	10.3
1/2	10.5	12.4
3/4	8.7	14.2
C	8.0	14.8
+15	7.8	15.1
EL.	7.6	13.0

Shore line

8

22.93

40' N. 10.0 12.9

-10 EL 10.4 12.5

C 11.7 11.2

1/4 11.1 11.8

E 12.4 10.5

1/4 10.8 12.1

C 11.0 11.9

+7 9.7 13.2

WL 12.1 10.8

+10 8.6 14.3

50' N.

-10 5.6 17.3

WL 9.3 13.6

+3 10.2 12.6

C 3.3 19.6

1/4 3.1 19.8

E 5.0 17.8

1/4 11.0 11.8

C 3.8 19.1

+4 1.9 21.0

+7 2.9 20.0

EL 6.3 14.6

+10 2.7 20.2

22.93

Phone Area

9

T.P. 0.22 22.71

10.30 33.01

-10 65' N. 5.0 25.0

-5 5.0 28.0

EL 7.8 25.2

C 8.3 24.7

1/4 9.4 23.6

E 14.8 18.2

1/4 14.9 18.1

C 12.2 20.8

WL 11.5 21.5

+10 7.5 25.5

75' N.

-10 1.4 31.6

WL 5.9 27.1

C 10.4 22.6

1/4 10.1 22.9

E 9.0 24.0

1/4 10.8 22.2

C 5.6 27.4

EL 4.9 28.4

+10 3.8 29.2

3301

85' N.

-10	26	30.4
EL	5.5	27.5
C	10.0	28.0
1/4	6.8	26.2
Φ	6.0	27.0
1/4	5.4	27.6
C	2.8	30.2
WL	1.3	31.7
+10	3.1	29.9

100' N.

-10	5.4	27.6
WL	4.5	28.5
C	2.8	30.2
1/4	1.9	31.1
Φ	1.0	32.0
1/4	0.2	32.8
C	1.5	31.5
EL	1.0	32.0
+	0.5	32.5

3301

Shows Ans
10

T.P.	0.00	33.01
	12.88	45.89
T.P.	0.86	45.03
	11.22	56.25
B.M. Hub. NE Cor. Bluff.	3.45	52.80
		52.77
		.03

OK

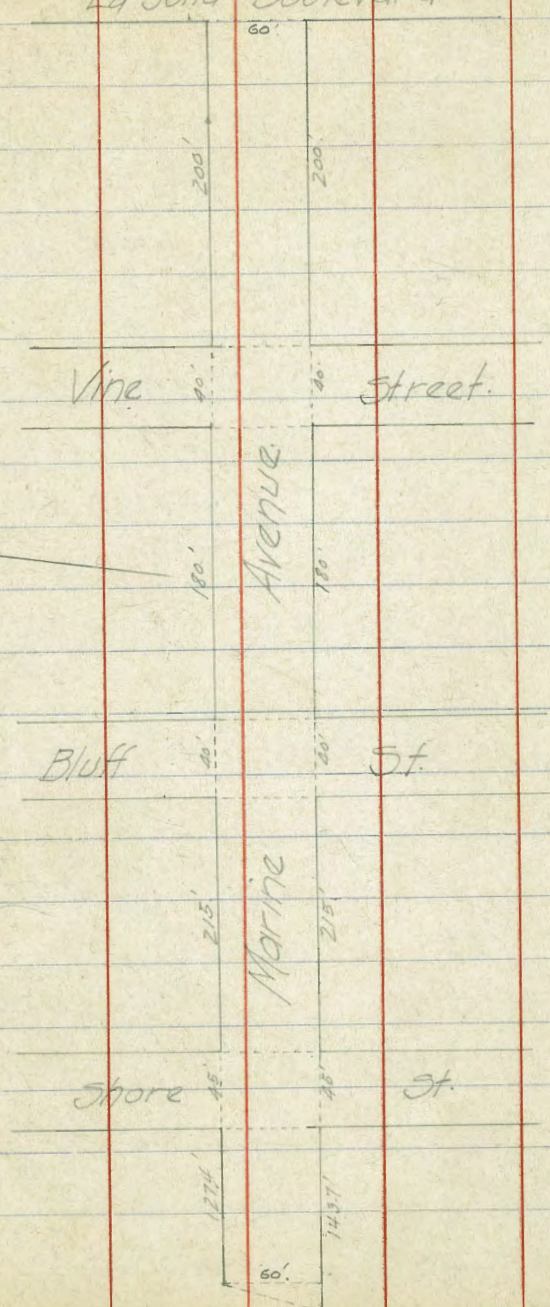
Cross-sections
 Marine Ave. 60' wide - 10' W, 10' E
 W.L. La Jolla Blvd. to Pac. Ocean.

May 6, 1913.
 West
 Moore
 Evdms.

La Jolla Boulevard.

11

Hub N.E. Cor. Bluff.		52.77	
	3.45	56.22	
T.P.		0.72	55.50
	12.05	67.55	
T.P.		1.57	65.98
	5.02	71.00	
W.L. Blvd.			
3L.		2.7	68.3
C		2.7	68.3
1/4	10.	2.8	68.2
E		2.8	68.2
1/4		2.9	68.1
C		2.5	68.5
NL.		2.6	68.4
50' W.			
NL.		5.0	66.0
C		4.9	66.1
1/4		4.7	66.3
E		4.7	66.3
1/4		4.8	66.2



25

71.00

C	4.6	66.4
SL	4.6	66.4
100' W.		
SL	6.5	64.5
C	6.7	64.3
1/4	6.7	64.3
E	6.7	64.3
1/4	6.8	64.2
C	6.8	64.2
NL	6.8	64.2
150' W.		
NL	8.6	62.4
C	8.7	62.3
1/4	8.8	62.2
E	8.9	62.1
1/4	9.0	62.0
C	8.9	62.1
SL	8.7	62.3

marine air

71.00
200' W = EL. Vire 40' wide 12

SL	10.3	60.7
C	10.5	60.5
1/4	10.8	60.2
E	10.7	60.3
1/4	11.0	60.0
C	11.0	60.0
NL	10.9	60.1
WL Vire		
NL	12.3	58.7
C	12.7	58.3
1/4	12.3	58.7
E	12.4	58.6
1/4	12.7	58.3
C	12.6	58.4
SL	12.6	58.4
J.P.	12.73	58.27
1.17	59.44	

5944

50' W.

SL	3.1	56.3
C	2.9	56.5
1/4	2.9	56.5
£	3.2	56.2
1/4	3.1	56.3
C	3.0	56.4
NL	3.2	56.2

100' W.

NL	5.5	53.9
C	5.5	53.9
1/4	5.2	54.2
£	5.3	54.1
1/4	5.2	54.2
C	5.1	54.3
SL	5.0	54.4

150' W.

SL	6.6	52.8
C	7.0	52.4
1/4	7.1	52.3

5944

Maine Ave

13

£	7.2	52.2
1/4	7.2	52.2
C	7.1	52.3
NL	7.0	52.4

180' W - EL. Bluff St. 40' wide

NL	8.1	51.3
C	8.2	51.2
1/4	8.0	51.4
£	7.7	51.7
1/4	7.1	51.4
C	7.8	51.4
SL	7.7	51.7

W L Bluff St.

SL	9.5	49.9
+5	16.2	43.2
C	9.4	50.0
1/4	9.1	50.3
£	9.2	50.2
1/4	9.3	50.1
C	9.6	49.8
NL	9.5	49.9

59.44				49.74		Mammal av	
						14	
T.P.		9.96	49.48	+5		8.3	41.3
	0.26	49.74		E		12.3	37.4
	25'W.			1/4		9.6	40.1
NL		0.6	49.1	C		6.7	43.0
C		0.7	49.0	NL		3.0	46.7
+5		5.0	44.7	+10		6.0	43.7
1/4		2.1	47.6	T.P.		12.74	37.00
E		0.8	48.9		0.26	37.26	
1/4		1.0	48.7		75'W.		
+6		0.8	48.9	NL		2.0	35.3
+8		4.8	44.9	+4		3.4	33.9
C		4.9	44.8	C		2.9	34.4
SL		9.1	40.6	1/4		3.3	34.0
+10		0.8	48.9	E		3.6	33.7
	50'W.			1/4		9.4	27.9
-2		8.7	40.0	+5		10.7	26.6
SL		15.2	34.5	C		4.7	32.6
C		13.5	36.2	SL		3.3	34.0
1/4		9.3	40.4	+10		4.4	32.9

3726

100' W.

-10	2.4	34.9
SL.	5.4	31.9
C	8.0	29.3
+5	15.0	22.3
1/4	16.0	21.3
+7	16.1	21.2
⊖	15.0	22.3
1/4	13.3	24.0
C	9.5	27.8
NL.	6.0	31.3
+10	3.0	34.3

125' W.

-10	10.5	26.8
NL.	7.5	29.8
C	10.5	26.8
1/4	14.5	22.8
+5	18.1	19.2
⊖	14.0	23.3
1/4	10.8	26.5
C	8.5	28.8
SL.	5.6	31.7

3726

150' W.

SL.	4.1	33.2
+5	5.5	31.8
C	9.1	28.2
+3	10.8	26.5
1/4	12.1	25.2
+7	12.7	24.6
⊖	15.2	22.1
+6	19.7	17.6
1/4	19.7	17.6
C	20.1	17.2
NL.	20.5	16.8
+10	22.0	15.3
T.P.	12.79	24.47 ^v

9.13 33.60

175' W.

-10	13.5	20.1
NL.	11.8	21.8
C	12.1	21.5
1/4	7.8	23.8

marine av

15

3260

£	9.5	24.1
1/4	9.2	24.4
1/4	7.9	25.7
C	5.6	28.0
SL	2.4	31.2

200' W.

SL	4.5	29.1
C	7.9	25.7
1/4	7.4	24.2
£	10.1	23.5
1/4	10.4	23.2
C	11.3	22.3
NL	12.5	21.1
H	15.0	18.6

215 W - EL. Shore St 45' wide

NL	13.0	20.6
C	12.1	21.5
1/4	10.8	22.8
£	10.2	23.4
1/4	9.3	24.3
C	8.5	25.1
SL	7.1	26.5

3360

marine av

16

W.L. Shore St.

SL	8.5	25.1
C	10.0	23.6
1/4	11.2	22.4
£	12.7	20.9
1/4	13.6	20.0
C	14.7	18.9
NL	15.9	17.7
T.P.	11.99	21.61

2.13 23.74

25' W

-10	14.5	9.2
NL	10.1	13.6
C	5.9	17.8
1/4	4.3	19.4
£	3.3	20.4
1/4	2.0	21.7
C	0.9	22.8
SL	0.3	23.4

23.74

50' W.

SL	1.2	22.5
C	2.2	21.5
1/4	3.2	20.5
E	4.5	19.2
1/4	6.0	17.7
C	9.3	14.4
NL	11.3	12.4
+12	16.1	7.6

75' W.

-10	17.2	6.4
-6	9.0	14.7
NL	7.7	16.0
C	5.0	18.7
1/4	4.0	19.7
E	3.6	20.1
1/4	3.1	20.6
C	2.5	21.2
SL	1.7	22.0

23.74

100' W.

SL	3.9	19.8
C	5.6	18.1
1/4	8.0	15.7
E	9.6	14.1
1/4	14.0	9.7
C	13.1	10.6
NL	13.0	10.7
+10	10.8	12.9

110' W.

-10	16.7	7.0
NL	16.4	7.3
C	15.7	8.0
1/4	13.6	10.1
E	12.1	11.6
1/4	9.1	14.6
C	6.5	17.2
SL	4.4	19.3

12.7

14.3

maine

17

23.74

115' W.

SL	14.5	9.2
C	15.2	8.5
1/4	15.4	8.3
1/2	15.6	8.1
3/4	15.8	7.9
C	16.1	7.6
NL	16.6	7.1

127.4 W = end of Marine on NL

NL	16.9	6.8
C	16.5	7.2
1/4	16.3	7.4
1/2	16.1	7.6
3/4	16.1	7.6
C	16.0	7.7
SL	16.0	7.7

23.74

143.7 W = end on S.L. + 127.4 on N. 18

SL	18.5	5.2
C	18.4	5.3
1/4	18.4	5.3
1/2	18.3	5.4
3/4	18.2	5.5
C	18.0	5.7
NL	16.9	6.8

T.P. 0.52 23.22 ✓

12.55 35.77 ✓

T.P. 0.21 35.56 ✓

12.43 47.99 ✓

T.P. 0.75 47.24 ✓

9.43 56.67 ✓

Hub. 3.89 52.78 52.77

52.77
OK.

Cross-Section Sea Avenue
 50' Wide, 10' Walks - 7 1/2' Quarters
 W.L. Boulevard to Pacific Ocean.

May 6-1913.
 West
 Frans.
 Moore.

La Jolla Boulevard.

B.M. Sea + Boul. 71.85

248 74.33

Sec A - W.L. Boul.

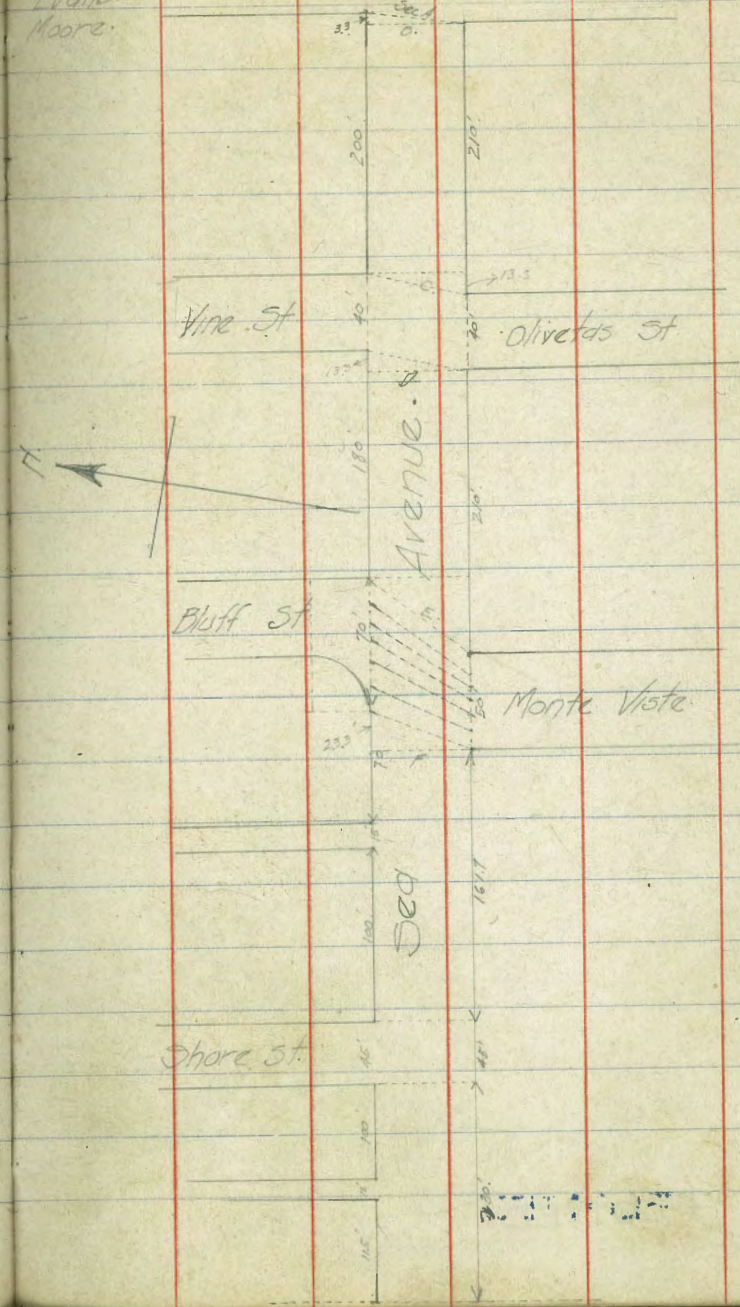
NL	4.7	69.6
C	4.9	69.4
1/4	5.0	69.3
E	5.0	69.3
1/4	4.8	69.5
C	5.0	69.3
SL	5.2	69.1

P.

Sec B. 3.3' W. on NL.

SL	5.2	69.1
C	5.0	69.3
1/4	4.9	69.4
E	5.0	69.3
1/4	5.1	69.2
C	5.0	69.3
NL	4.6	69.7

PLOTTED



PLOTTED

50' W of B
74.33

74.33

Sea level
20

NL	7.2	67.1	1/4	10.5	63.8
C	7.2	67.1	C	10.7	63.6
1/4	7.2	67.1	SL	10.4	63.9
E	6.8	67.5		196.7	W of B - EL Vine on NL.
1/4	6.6	67.7	SL	12.4	61.9
C	6.6	67.7	C	12.6	61.7
SL	6.9	67.4	1/4	12.4	61.9
			E	12.5	61.8
			1/4	12.8	61.5
SL	8.6	65.7	C	12.6	61.7
C	8.8	65.5		12.5	61.8
1/4	8.6	65.7	NL	12.42	61.91
E	8.7	65.6	T.P.	0.68	62.59
1/4	8.9	65.4		196.7 W of NL - 210' W of SL - Line between	
C	8.8	65.5		corners - EL of Vine & Olivetags.	
NL	9.0	65.3	NL	0.7	61.9
			C	0.9	61.7
			1/4	1.3	61.3
			E	1.0	61.6
			1/4	0.8	61.8
			C	1.0	61.6
			SL	1.1	61.5

PLOTTED

		62.57				62.57		Sea level	
								2.0	60.6
								2.0	60.6
SL		1.5	61.1					1.8	60.8
C		1.4	61.2					1.8	60.8
1/4		1.4	61.2						
Φ		1.4	61.2					2.0	60.6
1/4		1.5	61.1					2.0	60.6
C		1.3	61.3					2.2	60.4
NL		1.1	61.5					2.0	60.6
								2.1	60.5
NL		1.5	61.1					2.3	60.3
C		1.5	61.1					2.2	60.4
1/4		1.9	60.7						
Φ		1.7	60.9						
1/4		1.6	61.0						
C		1.5	61.1						
SL		1.6	61.0						
SL		1.9	60.7						
C		1.9	60.7						
1/4		1.9	60.7						

PLOTTED

6259

WL Vine + Olivetds.

NL	2.6	60.0
C	2.3	60.3
1/4	2.5	60.1
E	2.3	60.3
1/4	2.5	60.1
C	2.7	59.9
SL	3.0	59.6

Sec D. WL Olivetds produced = 13.3' W of NL.

SL	3.0	59.6
C	2.8	59.8
1/4	2.7	59.9
E	2.5	60.1
1/4	3.0	59.6
C	2.9	59.7
NL	3.0	59.6

50' S. of Sec D.

NL	5.3	57.3
C	5.1	57.5
1/4	5.0	57.6
E	5.1	57.5

PLOTTED

6259

Sea Anv

23

1/4	5.0	57.6
C	5.2	57.4
SL	5.2	57.4

100' W of Sec D.

SL	7.4	55.2
C	7.4	55.2
1/4	7.2	55.4
E	7.0	55.6

1/4	7.1	55.5
C	7.2	55.4
NL	7.3	55.3

150' W of Sec D.

NL	9.3	53.3
C	9.4	53.2
1/4	9.4	53.2
E	9.0	53.6

1/4	9.0	53.6
C	9.1	53.5
SL	9.4	53.2

PLOT

6259

166.7' W - Opposite EL Bluff St.

SL	9.9	52.7
C	9.8	52.8
1/4	9.8	52.8
⊕	9.8	52.8
1/4	9.8	52.8
C	9.8	52.8
NL	9.8	52.8
T.P. Hub. Cor. Bluff	9.82	52.77

0.50 53.27

Sec E - 166.7' W on NL - 210' W on SL =

- EL Bluff St + Monte Vista St.

NL	0.5	52.8
C	0.9	52.4
1/4	1.3	52.0
⊕	1.2	52.1
1/4	1.6	51.7
C	2.0	51.3
SL	2.2	51.1

Bluff = 70' Wide - 10 W 12.5'
Monte V. 50' 10 W 16.5'

PLOTTED

5327

Dea Ave

23

E. Curb

SL	2.6	50.7
C	2.3	51.0
1/4	1.9	51.4
⊕	1.6	51.7
1/4	1.3	52.0
C	1.2	52.1
NL	0.9	52.4

E 1/4

NL	1.3	52.0
C	1.7	51.6
1/4	2.2	51.1
⊕	2.3	51.0
1/4	2.5	50.8
C	2.7	50.6
SL	3.0	50.3
⊕	3.2	50.1
C	3.1	50.2
1/4	2.6	50.7

5327

£	22	51.1
1/4	23	51.0
C	22	51.1
NL	21	51.2
	W 1/4	
NL	24	50.9
C	25	50.8
1/4	27	50.6
£	29	50.4
1/4	33	50.0
C	34	49.9
SL	35	49.8
	W Corb	
SL	38	49.5
C	35	49.8
1/4	31	50.2
£	28	50.5
1/4	29	50.4
C	29	50.4
NL	27	50.6

PLOTTED

5327

Sea Ave.

W.L. Bluff + Monte Vista

24

NL	32	50.1
C	34	49.9
1/4	34	49.9
£	33	50.0
1/4	37	49.6
C	40	49.3
SL	39	49.4
	Opp - W.L. Monte Vista = 23.3 W. on NL	
	= 161.7 E of EL Shore St.	
SL	39	49.4
C	40	49.3
1/4	41	49.2
£	38	49.5
1/4	41	49.2
C	40	49.3
NL	41	49.2
	135' E of EL Shore	
NL	51	48.2
C	50	48.3
1/4	50	48.3
£	51	48.2

5327

1/4	5.2	48.1
C	5.2	48.1
SL	4.8	48.5
100' E EL Shore		
SL	6.8	46.5
C	7.3	46.0
1/4	7.2	46.1
E	7.3	46.0
1/4	7.3	46.0
C	7.0	46.3
NL	6.2	47.1
50' E EL Shore		
NL	10.1	43.2
C	10.8	42.5
1/4	11.1	42.2
E	11.0	42.3
1/4	11.2	42.1
C	11.4	41.9
SL	11.9	41.4
F10	12.5	40.8

PLOTTED

5327

25' E

Sea Arch

25

-10	13.2	40.1
SL	13.1	40.2
C	12.9	40.4
1/4	12.8	40.5
E	13.1	40.2
1/4	13.1	40.2
C	12.9	40.4
NL	12.6	40.7
T.P.	12.96	40.31

8.79

49.10

45' 10' W 64' 10' E
 EL Shore st 40' wide 10' W 5' 1/2"

NL	9.8	39.3
C	10.3	38.8
1/4	10.6	38.5
E	10.7	38.4
1/4	10.4	38.7
C	10.0	39.1
SL	7.3	41.8

4910

E. Carb

SL	5.5	43.6
C	9.0	40.1
1/4	10.6	38.5
E	10.9	38.2
+1	11.2	37.9
+2	11.8	37.3
1/4	14.0	35.1
+3	14.0	35.1
+4	11.0	38.1
C	10.5	38.6
NL	10.5	38.6
E 1/4		
NL	10.9	38.2
C	11.1	38.0
+3	11.3	37.8
+4	15.8	33.3
1/4	16.0	33.1
E	11.0	38.1
1/4	10.5	38.6
C	8.0	41.1
SL	4.0	45.1

PLOTTED

4910

E

SL	3.5	45.6
C	7.0	42.1
1/4	9.5	39.6
E	11.5	37.6
1/4	18.2	30.9
C	14.3	34.8
NL	11.9	37.2
-10	12.0	37.1
NL	19.0	30.1
C	20.0	29.1
1/4	17.5	31.6
E	14.0	35.1
1/4	10.5	38.6
C	7.2	41.9
SL	3.0	46.1

Dano

Shiffing

Sea ave

26

49.10

W. Curb.

SL	1.0	48.1
C	6.1	43.0
1/4	9.5	39.6
1/2	13.0	36.1
3/4	20.5	28.6
C	21.0	28.1
NL	22.0	27.1
+20	25.0	24.1
+30	26.0	23.1
	+5'	
+30	26.0	23.1
+10	10.0	39.1
NL	15.0	34.1
C	18.0	36.1
1/4	11.5	37.6
1/2	8.5	40.6
3/4	4.5	44.6
C	2.8	46.3
SL	2.0	47.1

PLOTTED

49.10

W.L. Store St.

Readings

27

SL	3.0	46.1
C	2.5	46.6
1/4	2.2	46.9
1/2	5.0	44.1
3/4	8.0	41.1
C	11.2	37.9
NL	12.1	37.0
	25' W.	
	17.0	32.1
NL	14.4	34.7
C	11.7	37.4
1/4	7.0	40.1
1/2	6.0	43.1
3/4	4.0	45.1
C	7.0	42.1
SL	8.0	41.1

Shifting Sands

	49.10		
T.P.		10.12	38.98
	009	39.07	
		50'W.	
SL		4.8	34.3
C		3.9	35.2
1/4		3.0	36.1
E		1.2	37.9
1/4		+1.0	40.1
C		+3.0	42.1
NL		+4.0	43.1
+15		7.0	32.1
		75'W	
-15		7.3	31.8
NL		3.0	36.1
C		5.1	34.0
1/4		6.7	32.4
E		7.2	31.9
1/4		7.2	31.9
C		7.6	31.5
SL		8.6	30.5

PLOTTED

	39.07		Reaver
		100'W	28
SL		10.9	28.2
C		12.2	26.9
1/4		12.8	26.3
E		12.6	26.5
1/4		12.3	26.8
C		11.6	27.5
NL		9.4	29.7
+10		7.2	31.9
T.P.		12.76	26.31
		27.06	
		125'W	
-10		1.6	25.5
NL		2.6	24.5
C		3.2	23.9
1/4		3.0	24.1
E		3.0	24.1
1/4		3.1	24.0
C		2.7	24.4
SL		1.6	25.5

Shifting Sands

2706

150' W

SL	4.9	22.2
C	5.9	21.2
1/4	6.9	20.2
£	6.8	20.3
1/4	6.6	20.5
C	6.5	20.6
NL	6.5	20.6
+10	6.4	20.7

175' W

NL	9.6	17.5
C	9.2	17.9
1/4	9.0	18.1
£	9.1	18.0
1/4	8.6	18.5
C	8.2	18.9
SL	7.6	19.5

200' W

SL	10.0	17.1
C	10.6	16.5
1/4	11.0	16.1

PLOTTED

2706

Pearson

29

£	11.3	25.8
1/4	11.8	25.3
C	12.0	25.1
NL	12.3	24.8

215' W

NL	14.9	22.2
C	15.0	22.1
1/4	14.7	22.4
£	14.6	22.5
1/4	14.9	22.2
C	14.7	22.4
SL	14.0	23.1

230' W = End

SL	17.0	20.1
C	17.2	19.9
1/4	17.4	19.7
£	17.5	19.6
1/4	17.9	19.2
C	18.1	19.0
NL	18.0	19.1

Sea Dr.

30

27.06

T.P.

0.75 26.31 ✓

12.56 38.87 ✓

T.P.

0.86 38.01 ✓

12.19 50.20 ✓

T.P.

1.74 48.46 ✓

7.21 55.67 ✓

Hub. NE Cor Bluff

2.90 52.77 ✓

52.77

52.77

00

OK.

PLOTTED

196.47
50'5

Hawley

32

182.71

EL

4.0

192.5

12.76 196.47

+7

5.9

190.6

S.L. Pennsylvania produced.

C

10.0

186.5

EL

.00 196.5

+1

11.2

185.3

C

2.3 194.2

1/4

12.3

184.2

+2

6.2 190.3

E

11.9

184.6

+8

9.9 186.6

+4

11.8

184.7

1/4

11.2 185.3

11/4

15.6

180.9

E

11.6 184.9

75'5

1/4

11.9 184.6

11/4

16.3

180.2

+3

12.1 184.4

+8

13.4

183.2

C

17.2 179.3

E

13.4

183.2

25'5

1/4

13.8

182.7

11/4

13.0 183.5

C

13.5

183.0

+3

11.3 185.2

+3

13.0

183.6

E

11.5 185.0

+4

9.9

186.6

1/4

11.6 184.9

EL

8.6

187.9

+3

11.4 185.1

+4

9.4 187.1

C

8.3 188.2

+3

2.3 194.2

EL

1.4 195.1

	196.47		
TP	1	12.89	184.18
-0.94	185.12		
J.L. Penn Produced			
WL		11.3	173.8
+20		16.0	169.1
	25'S		
W.Corb		8.2	176.7
WL		13.5	171.6
+20		18.0	167.1
	50'S		
W.Corb		10.0	175.1
WL		15.0	170.1
+20		20.0	165.1
	75'S		
W.Corb		7.2	177.9
WL		10.9	174.2
+20		17.0	168.1
	100'S		
-20		16.4	168.7
WL		12.3	172.8
C		10.1	175.0

	185.12		
Hawley 33			
	1/4	7.5	177.6
	+5	5.0	180.1
	⊖	4.6	180.5
	1/4	4.6	180.5
	C	3.8	181.3
	+2	0.8	184.3
	EL	+0.2	185.3
		125'S	
	EL	2.0	183.1
	+8	3.7	181.4
	C	7.4	177.7
	1/4	6.9	178.2
	⊖	6.7	178.4
	+5	8.3	176.8
	1/4	10.8	174.3
	C	13.0	172.1
	WL	15.1	170.0
	+20	19.0	166.1

185.12
150'S.

WL.	18.8	166.3
C	16.1	169.0
1/4	13.9	171.2
£	9.3	175.8
1/4	9.4	175.7
C	9.0	176.1
+1	6.4	178.7
EL.	3.0	182.1

175'S.

EL.	4.6	180.5
+9	8.1	177.0
C	11.0	174.1
1/4	11.3	173.8
+7	11.1	174.0
£	11.8	173.3
1/4	15.5	169.6
C	18.2	166.9

185.12

Hawley

34

200'S.

£	15.4	169.7
+3	13.1	172.0
1/4	13.2	171.9
C	13.4	171.7
+1	12.8	172.3
+2	8.7	176.4
EL.	6.2	178.9

225'S.

EL.	10.4	174.7
+4	11.2	173.9
+5	14.7	170.4
C	14.8	170.3
1/4	14.7	170.4
+3	14.9	170.2
T.P.	12.96	172.16

0.82 172.98

150'S.

20' W of WL.

10.1 162.9

172.98

175'S.

WL 98 163.2

+20 13.7 159.3

200'S.

W/A 74 165.6

C 103 162.7

WL 130 160.0

+20 16.4 156.6

225'S.

E 7.0 166.0

1/4 11.0 162.0

C 12.7 160.3

WL 16.0 157.0

+20 19.0 154.0

250'S.

WCorb. 16.2 156.8

1/4 13.8 159.2

+5 12.0 161.0

E 9.1 163.9

1/4 4.2 168.8

C 4.6 168.4

+7 4.5 168.5

EL 2.5 170.5

172.98

275'S.

Hawley

35

EL 5.8 167.2

C 6.2 166.8

1/4 5.7 167.3

E 13.1 159.9

Sec A = 293.89'S = 4 pt. on EL

E 13.3 159.7

+6 8.3 164.7

1/4 7.0 166.0

C 7.4 165.6

EL 6.9 166.1

Sec B = all's of top WL = 4 pt. on WL

EL 6.9 166.1

C 7.4 165.6

1/4 7.0 166.0

+2 7.4 165.6

E 13.7 159.3

Sec C = all's of bottom WL

E 13.5 159.5

+7 8.1 164.9

1/4 7.2 165.8

C 7.5 165.5

EL 6.9 166.1

172.98
 24.93'S of Sec B = S.L. Mission
 street on WL.

EL.	4.3	168.7
+5	6.2	166.1
+6	8.1	164.9
C	8.3	164.7
1/4	8.4	164.6
±	8.8	164.2
+4	9.5	163.5
1/4	15.3	157.7

25'S of Sec C.

1/4	13.4	159.6
+3	9.9	163.1
±	8.8	164.2
1/4	8.9	164.1
C	8.9	164.1
+3	8.0	165.0
+4	5.6	167.4
EL.	2.7	170.3
T.P. - low turn.	7.98	165.00
T.P. - high "	0.95	172.03

Hawley
 165.00 36

0.75 165.75
 250'S of Penn.

WL.	13.00	152.8
+30	11.3	154.5
	275'S	
W 1/4	9.9	155.9
W Corb	13.7	152.1
WL.	12.8	153.0
+20	12.4	153.4

Sec A-293.89'S.

W 1/4	13.8	152.0
C	13.9	151.9
+8	14.0	151.8
WL	13.0	152.8
+20	13.1	152.7

Sec B.

-20	13.1	152.7
WL	13.0	152.8
+3	13.0	152.8
+4	14.0	151.8

165.75

C.	14.0	151.8
1/4	13.7	152.1
Sec C.		
W/Corb.	13.8	152.0
WL.	13.5	152.3
+20	13.9	151.9

24.93' S of Sec B.

-20	15.0	150.8
WL.	15.3	150.5
C	13.6	152.2
+4	13.2	152.6
+5	10.7	155.1

25' S. of Sec C.

-20	15.0	150.8
WL.	15.0	150.8
C	13.6	152.2
+3	13.0	152.8
+4	11.6	154.2

165.75

50' S of C

Hawley

37

-20	12.3	153.5	
WL	Continued on	12.0	153.8
C	Page 40	9.0	156.8
1/4	4.0	161.8	
±	3.3	162.5	
1/4	3.4	162.4	
C	3.9	161.9	

+3

65' S.

C	4.5	161.3
1/4	4.9	160.9
±	4.3	161.5
1/4	4.2	161.6
C	5.2	160.6

WL	6.4	159.4
+20	11.3	154.5

75' S.

-20	13.0	152.8
WL.	7.8	158.0
C ⁺⁸	5.7	160.1
C	5.6	160.2

165.75

1/4	4.7	161.1
ϕ	4.9	160.9
1/4	5.4	160.4
C	5.8	160.0
+1	5.6	160.2
+2	2.4	163.4
+8	1.2	164.6

100.5

+1	3.9	161.9
+8	5.3	160.5
+9	7.5	158.3
C	7.6	158.2
1/4	7.0	158.8
ϕ	7.5	158.3
1/4	8.6	157.2
C	11.0	154.8
WL	13.1	152.7
+20	14.8	151.0

165.75

- Hawley

115.46.5 - NL. Ostego Jr. on 88

-20	15.4	150.4
WL	14.1	151.7
C	12.6	153.2
1/4	10.6	155.2
ϕ	9.2	156.6
1/4	8.1	157.7
C	8.3	157.5

+1	8.1	157.7
+2	6.6	159.2
+9	5.8	160.0
EL	0.8	165.0

125.5

EL	1.4	164.4
+1	6.2	159.6
C	7.4	158.4
+1	8.9	156.9
1/4	8.8	157.0
ϕ	9.2	156.6
1/4	11.1	154.7
C	11.8	154.0
WL	12.7	153.1
+20	13.6	152.2

165.75
140' S.

-20	138	152.0
WL	130	152.8
C	126	153.2
1/4	114	154.4
1/4	9.9	155.9
1/4	9.7	156.1
C	9.6	156.2
+1	8.3	157.5
+9	6.4	159.4
FL	2.7	163.1

150' S.

EL	3.1	162.7
+2	6.6	159.2
C	8.2	157.6
+1	9.8	156.0
1/4	10.0	155.8
1/4	10.3	155.5
1/4	12.0	153.8
C	13.1	152.7
WL	14.8	151.0
+20	19.0	146.8

165.75
156.33' S - S.L. Ostego Tr. on W 39

-20	190	146.8
WL	17.2	148.6
C	15.2	150.6
1/4 ⁺⁸	12.3	153.5
1/4	12.2	153.6
1/4	10.5	155.3
1/4	10.3	155.5
+8	10.3	155.5
C	8.4	157.4
+8	6.7	159.4
FL	2.5	163.3

175' S.

EL	+1.0	166.8
+2	6.5	159.3
C	8.0	157.8
+1	10.2	155.6
1/4	10.8	155.0
1/4	10.9	154.9
1/4	14.0	151.8
C	16.6	149.2
WL	19.0	146.8
+6	21.0	144.8
+20	19.0	146.8

165.75

200 0

-20	20.0	145.8
WL	21.4	144.4
C	18.2	147.6
1/4	12.9	152.9
+5	11.8	154.0
E	11.6	154.2
1/4	11.6	154.2
+6	11.0	154.8
+8	7.3	158.5
C	7.0	158.8
+8	6.0	159.8
EL	0.4	165.4
	225' 5.	
EL	3.0	162.8
+2	7.4	158.4
C	7.9	157.9
+2	8.0	157.8
+3	11.9	153.9
1/4	12.3	153.5
E	12.2	153.6

165.75

Hawley

40

1/4	13.2	152.6
+3	13.5	152.3
T.P.	13.00	152.75
T.P. high turn - Page 36		172.03
10.27	182.30	
C	50' 5 of Sec. C.	
+3.	15.4	166.9
+7	14.3	168.0
EL	4.1	178.2
	65' 5 of Sec C.	
EL	7.4	174.9
+4	16.7	165.6
+8	17.6	164.7
	75' 5 of C.	
EL	8.8	173.5
	100' 5.	
EL	13.6	168.7

T.P. Page 40.

152.75

3.34 156.09

225'5.

W Corb 6.1 150.0

WL 12.1 144.0

+4 11.0 145.1

+20 11.2 144.9

250'5.

-20 12.7 143.4

-10 12.4 143.7

+3 11.6 144.5

WL 9.9 146.2

+7 4.7 151.4

C 4.6 151.5

1/4 3.6 152.5

⊖ 3.1 153.0

1/4 3.2 152.9

+6 2.9 153.2

+8 1.3 154.8

C 1.3 154.8

+8 0.0 156.1

EL +8.9 160.0

156.09

275'5.

EL 28 153.3

C 38 152.3

1/4 38 152.3

⊖ 38 152.3

+8 7.1 149.0

~~1/4~~ 7.6 148.5

C 8.8 147.3

WL 10.6 145.5

+20 12.0 144.1

305.45 = 4pt. on WL = Sec U.

-20 13.1 143.0

WL 12.5 143.6

C 12.1 144.0

~~1/4~~ 7.3 148.8

+6 4.6 151.5

⊖ 4.4 151.7

1/4 4.5 151.6

C 4.6 151.5

EL 9.1 147.0

+20 9.6 146.5

Bottom of wall.

Hawley

41

15609

NH Brooks Sec E - 4 pt - 582' S of D.
"FL"

15609

Hawley

42

-20	98	146.3
FL	9.3	146.8
+2	9.0	147.1
C	4.9	151.2
1/4	4.5	151.6
E	4.5	151.6
+2	4.6	151.5
1/4	10.0	146.1
C	13.2	142.9
WL	12.5	143.6
+20	13.1	143.0

Sec F - 512' S of Sec E - opposite
"FL"

-20	13.1	143.0
WL	12.5	143.6
C	13.2	142.9
1/4	10.0	146.1
+8	4.6	151.5
E	4.5	151.6
1/4	4.6	151.5

C	4.8	151.3
FL	9.1	147.0
+20	8.1	148.0
24.18 S. Sec F = S L Brooks Ave on FL		
EL	7.3	148.8
C	5.3	150.8
1/4	4.9	151.2
E	5.0	151.1
1/4	11.0	145.1
C	13.0	143.1
WL	14.4	141.7

+3	bottom draw	16.5	139.6
+6		15.4	140.7
+20		13.8	142.3

50' S. of Sec F

-20	15.5	140.6	
-10	15.9	140.2	
-6	bottom draw	17.0	139.1
WL	15.2	140.9	

	15609		
C		12.9	143.2
1/4		10.8	145.3
⊖		6.0	150.1
+3		5.0	151.1
1/4		5.2	150.9
C		5.2	150.9
EL.		4.0	152.1
	75.5		
EL.		1.7	154.4
+7		2.1	154.0
+9		5.4	150.7
C		5.4	150.7
1/4		5.8	150.3
⊖		5.5	150.6
1/4		5.8	150.3
C		11.0	145.1
WL.		13.2	142.7
+15		16.3	137.8

	15609	Hawley	43
	100.5		
-20	bottom ditch	19.8	136.3
-15		17.2	138.9
WL.		13.0	143.1
C		11.8	144.3
1/4		8.3	147.8
⁺⁶ ⊖		6.4	149.7
⊖		6.2	149.9
1/4		6.3	149.8
C		5.8	150.3
+2		2.4	153.7
EL.		1.1	155.0
	125.5		
EL.		2.9	153.2
+7		3.7	152.4
+9		6.5	149.6
C		6.5	149.6
1/4		6.7	149.4
⊖		6.8	149.3
1/4		9.0	147.1
C		11.0	145.1
WL.		12.7	143.4
+7		14.0	142.1
+22 = bottom		21.0	135.1

15609

150'S

-20	156	140.5
WL	127	143.4
C	112	144.9
1/4	96	146.5
£	73	148.8
1/4	75	148.6
C	71	149.0
+3	43	151.8
EL	38	152.3

175'S

EL	43	151.8
+6	49	151.2
C	79	148.2
1/4	82	147.9
£	88	147.3
1/4	105	145.6
C	116	144.5
WL	126	143.5
+20	149	141.2

15609

200'S

-20	149	141.2
WL	127	143.2
C	113	144.8
1/4	106	145.5
£	88	147.3
1/4	87	147.4
C	86	147.5
+4	61	150.0
EL	49	151.2

225'S

EL	65	149.6
+5	70	149.1
C	93	146.8
1/4	92	146.9
£	95	146.6
1/4	112	144.9
C	122	143.9
WL	131	143.0
+	155	140.6

Hawley

44

15609
250'S.

-20	16.8	139.3
WL	14.0	142.1
C	12.5	143.6
1/4	11.4	144.7
±	9.9	146.2
1/4	9.5	146.6
C	9.5	146.6
EL	9.8	146.3

275'S.

EL	10.9	145.2
C	10.5	145.6
1/4	9.9	146.2
± ⁺⁵	10.0	146.1
	11.5	144.6
1/4	14.1	142.0
C	15.0	141.1
WL	16.5	139.6
+20	18.5	137.6

15609

Hawley

45

T.P.	12.90	143.19
704	150.23	
	300'S.	

-20	15.7	134.5
WL	13.0	137.2
C	13.1	137.1
1/4	10.7	139.5
+5	9.8	140.4
±	7.4	142.8
+7	4.2	146.0
1/4	4.2	146.0
C	4.4	145.8
EL	3.6	146.6

325'S.

EL	2.4	147.8
+5	3.5	146.7
+6	4.6	145.6
C	4.5	145.7
1/4	4.4	145.8
+5	4.4	145.8

150.23

EL		7.3	142.9
1/4		9.1	141.1
C		12.1	138.1
WL		14.2	136.0
+10		16.0	134.2
+18	bottom.	22.5	127.7
-20	350'5.	18.0	132.2
-16		23.0	127.2
WL		15.5	134.7
C		13.4	137.8
1/4		11.0	139.2
EL		7.6	142.6
+5		4.4	145.8
1/4		4.3	145.9
C		4.4	145.8
+5		4.4	145.8
+6		3.0	147.2
EL		1.5	148.7

150.23

Howley

46

375'5			
EL		1.2	149.0
+5		2.1	148.1
+6		4.0	146.2
C		4.4	145.8
1/4		4.5	145.7
+1		4.6	145.6
EL		5.8	144.4
1/4		10.8	139.4
C		13.4	136.8
WL		15.7	134.5
+2		20.0	130.2
+12		23.0	127.2
+14	bottom.	25.5	124.7
+20		25.0	125.2
+25		23.0	127.2
-25	bottom.	26.0	124.2
-20		22.5	127.7
-10		21.0	129.2
WL		14.1	135.5
+7		13.2	138.0
C		12.1	138.1
400'5			

150.23

+3		11.4	138.8
1/4		8.7	141.5'
±		4.6	145.6
1/4		4.4	145.8
C		4.1	146.1
+5		0.7	149.5
EL.		0.5	149.7

424.33' S of Sect. F = apt on WL = Sec G.

E. Corb.		3.8	146.4
1/4		4.6	145.6
±		4.1	146.1
1/4		5.7	144.5
C		8.5	141.7
WL		10.7	139.5
+12		19.5	130.7
+30	bo Hom.	26.3	123.9

150.23

Hawley

13.41' S of Sec G on EL = Sec H. 41

WL		10.7	139.5'
C		9.2	141.0
1/4		5.3	144.9
+8		2.8	147.4
±		4.3	145.9
1/4		4.4	145.8
EC		3.5	146.7

13.41' S of H = Sec I

E. Corb.		4.0	146.2
1/4		4.8	145.4
±		4.7	145.5
+2		2.8	147.4
1/4		4.8	145.4
C		8.3	141.9
WL		10.7	139.5

150.23

25' S of Sec I

-12	21.0	129.2
-30	23.0	127.2
-35	27.0	123.2
WL-	10.2	140.0
+8	10.0	140.2
C	8.6	141.6
1/4	6.3	143.9
Φ	4.4	145.8
+2	5.5	144.7
1/4	5.3	144.9
C	5.3	144.9
+5	1.6	148.6
EL.	1.4	148.8

50' S of Sec I

EL.	3.8	146.4
+6	4.1	146.1
+7	6.3	143.9
C	6.2	144.0

150.23

Hawley

48

1/4	6.1	144.1
Φ	6.6	143.6
1/4	8.1	142.1
C	10.1	140.1
WL	11.2	139.0
+20	14.7	135.5
	75' S.	
-20	15.1	135.1
WL	12.4	137.8
C	10.9	139.3
1/4	10.0	140.2
Φ	8.2	142.0
1/4	7.0	143.2
C	7.3	142.9
+3	6.3	143.9
EL	6.2	144.0

150.23

100'S

EL.	7.4	142.8
C	8.3	141.9
1/4	7.9	142.3
+5	7.7	142.5
£	9.7	140.5
+5	11.4	138.8
1/4	12.3	137.9
C	13.1	137.1
WL	14.1	136.1
-20	16.4	133.8

125'S

-20	17.5	132.7
WL	15.5	134.7
C	14.3	135.9
1/4	13.0	137.2
£	10.6	139.6
+5	9.0	141.2
1/4	8.8	141.4
C	9.2	141.0
EL.	8.5	141.7

150.23

150'S

EL	8.5	141.7
+6	9.1	141.1
+7	9.9	140.3
C	10.0	140.2
1/4	9.8	140.4
+5	9.7	140.5
£	11.6	138.6
1/4	13.7	136.5
C	14.9	135.3
WL	16.3	133.9
+20	18.5	131.7

175'S

-20	19.0	131.2
WL	15.6	134.6
C	14.6	135.6
1/4	13.5	136.7
£	11.7	138.5
1/4	10.7	139.5
C	10.7	139.5
+3	10.4	139.8
+4	8.3	141.9
EL.	7.7	142.5

Hawley

49

150.23

200' S

EL.	10.0	140.2
C	11.0	139.2
1/4	11.5	138.7
1/4	11.9	138.3
1/4	14.0	136.2
C	15.4	134.8
WL.	16.4	133.8
+ 20	18.7	131.5

215.72' S = Sec J = NL Walnut on F1.

- 20	20.0	130.2
WL.	16.5	133.7
C	15.3	134.9
1/4	14.8	135.4
1/4	12.3	137.9
1/4	11.8	138.4
C	11.3	138.9
EL.	9.7	140.5

150.23

Hawley

26.65' S. of J on WL = Sec K = NL Walnut on WL. 50

EL.	9.7	140.5
C	10.7	139.5
1/4	11.9	138.3
1/4	12.9	137.3
1/4	14.3	135.9
C	15.9	134.3
WL.	17.5	132.7
+ 20	20.6	129.6

T.P. 424 145.99

8.79 154.78

424.33' S of Sec F.

EL.	2.5	152.3
+ 1 W	3.6	151.2
+ 7 W	4.2	150.6
+ 8 W	8.1	146.7

Sec G. (?)

EL.	0.7	154.1
+ 3	2.3	152.5
+ 4	3.6	151.2
+ 9	4.7	150.1

	154.78		
	Sec H		
EL		3.1	151.7
+1		4.2	150.6
+7		5.0	149.8
+8		7.8	147.0
T.P.			145.99
	8.69	154.68	
T.P.		0.25	154.43
	12.77	167.20	
TP		0.65	166.55
	13.04	179.59	
TP		0.91	178.68
	11.45	190.13	
T.P.		2.47	187.66
	12.65	200.31	
TP		0.30	200.01
	12.28	212.29	
TP		0.59	211.70
	13.09	224.79	
TP		0.20	224.59
	11.85	236.44	

			236.44	Hawley	51
TP		0.18	236.26		
	12.88	249.14			
TP		0.27	248.87		
	11.79	260.66			
TP		0.71	259.95		
	9.17	269.12			
	BM. NE Cor. Albatross + Robinson		2.17	266.95	267.057
					266.95
					Error = .11

Cross Sections on
Hayes Ave 80' Wide, 14' W. 13' 1/4 s.
W.L. Johnson to W. end Hayes.

May 8 - 1913.
West
Moore
Evans.

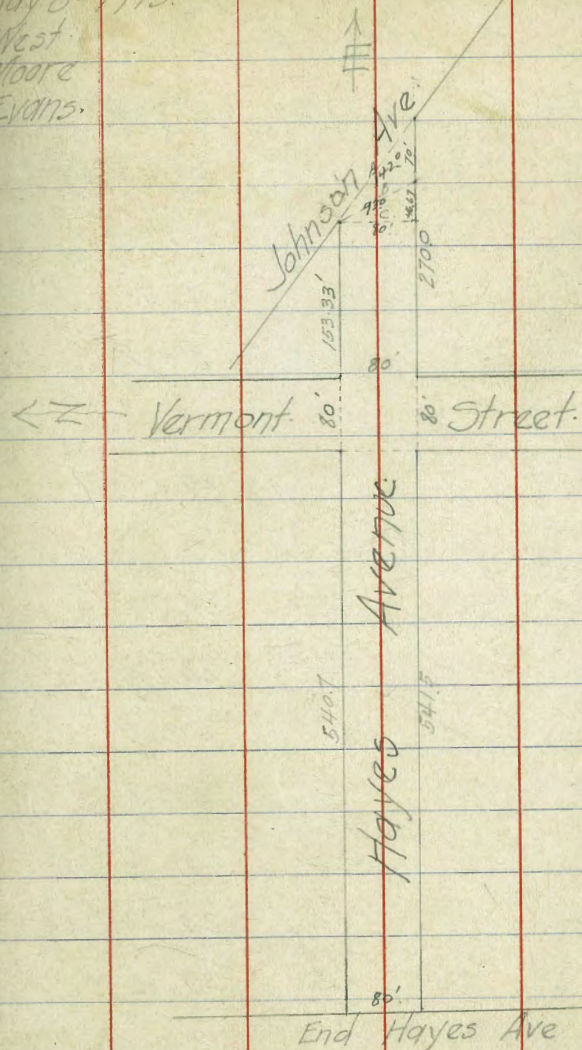
52

B.M. S.W. Cor Vermont & Lincoln 292.06

8.47 300.53

Sec A - W.L. Johnson 153.33' E of E.L. Vermont on NL
8 - 270' E " " " " SL

SL	54	295.1
C	46	295.9
1/4	44	296.1
E	45	296.0
1/4	42	296.3
C	39	296.6
NL	43	296.2
Sec B - 153.33' E on NL. 200' E on SL		
NL	43	296.2
C	3.9	296.6
1/4	3.9	296.6
E	3.9	296.6
1/4	3.8	296.7
C	3.8	296.7
SL	3.5	297.0



300.53

Sec C = 153.33 E. of EL Vermont.

SL	4.0	296.5
C	3.7	296.8
1/4	3.5	297.0
ϕ	3.5	297.0
1/4	3.7	296.8
C	3.9	296.6
NL	4.3	296.2
	100' E	
NL	3.6	296.9
C	3.5	297.0
1/4	3.6	296.9
ϕ	3.7	296.8
1/4	3.9	296.6
C	3.8	296.7
SL	4.2	296.3
	50' E	
SL	5.3	295.2
C	4.8	295.7
1/4	4.8	295.7

300.53

Hayes

53

ϕ	4.3	296.2
1/4	4.0	296.5
C	3.7	296.8
NL	3.8	296.7
	EL Vermont 80 W. 14 W - 13 1/4	
NL	4.5	296.0
C	4.9	295.6
1/4	5.2	295.3
ϕ	5.5	295.0
1/4	5.5	295.0
C	5.7	294.6
SL	5.8	294.7
	E. Curb	
SL	6.1	294.4
C	5.8	294.7
1/4	5.8	294.7
ϕ	5.7	294.8
1/4	5.5	295.0
C	5.0	295.5
NL	4.8	295.7

E 1/4

NL	4.5
C	4.3
1/4	4.7
Φ	5.9
1/4	5.8
C	5.9
SL	6.5

Φ Vermont

SL	6.1
C	6.3
1/4	6.1
Φ	5.5
1/4	4.5
C	4.2
NL	4.3

W 1/4

NL	4.5
C	5.1
1/4	5.3

Hayes

Φ	6.0
1/4	6.5
C	7.0
SL	7.2

W Curb.

SL	8.3
C	8.3
1/4	7.8
Φ	6.9
1/4	6.3
C	5.6
NL	5.1

W L Vermont.

NL	5.6	294.9
C	6.4	294.1
1/4	6.7	293.8
Φ	6.9	293.6
1/4	7.5	293.0
C	8.2	292.3
SL	8.2	292.3

30053
25' W. of WL Vermont.

SL	8.5	292.0
C	9.3	291.2
1/4	8.7	291.8
Φ	8.0	292.5
1/4	7.7	292.8
C	7.1	293.4
NL	6.7	293.8

50' W

NL	7.8	292.7
C	8.3	292.2
1/4	8.4	292.1
Φ	8.9	291.6
1/4	9.3	291.2
C	10.1	290.4
SL	9.7	290.8
T.P.	11.24	289.29

3.06 292.35

292.35

Hayes

55

75' W

SL	3.0	289.4
C	3.3	289.1
1/4	2.7	289.7
Φ	1.8	290.6
1/4	1.0	291.4
C	0.8	291.6
NL	0.5	291.9

100' W

NL	1.3	291.1
C	2.0	290.4
1/4	2.8	289.6
Φ	4.5	287.9
1/4	5.8	286.6
C	6.2	286.2
SL	4.5	287.9

292.35

110' W.

SL	12.1	280.3
C	12.7	279.7
1/4	10.0	282.4
E	7.5	284.9
1/4	5.2	287.2
C	3.0	289.4
NL	1.7	290.7

125' W.

NL	2.5	289.9
C	4.9	287.5
1/4	8.2	284.2
E	11.6	280.8
1/4	14.0	278.4
C	18.4	274.0
SL	13.1	279.3

150' W.

SL	12.0	280.4
{		
N/4	11.5	280.9
E	6.3	286.1
NL	3.5	288.9

292.35

175' W.

NL	9.7	282.7
C	10.7	281.7
1/4	14.4	278.0
SL	12.6	279.8
T.P.	12.62	279.73

1.13 280.86

150' W.

S. Curb	7.0	273.9
S 1/4 - bottom	9.6	271.3
E	4.6	276.3
S. Curb	7.3	273.6
S 1/4 bottom	13.3	267.6
E	8.1	272.8

200' W.

-15	11.1	269.8
-NL	8.8	272.1
C	7.9	273.0
1/4	10.7	270.2

Harpa

56

280.86

£		14.6	266.3
+11	bottom.	17.0	263.9
1/4		16.0	264.9
C		9.3	271.6
SL		2.3	278.6
+5		00	280.9

225' W.

-5		+2.9	^{283.8} 295.3
SL		0.9	280.0
C		7.1	273.8
1/4		14.3	266.6

250' W.

-5		1.5	279.4
SL		3.4	277.5
C		9.0	271.9
T.P.		12.88	267.98

1.96 269.94

Harpo

57

269.94

225' W.

£	bottom.	11.0	258.9
N/A		10.2	259.7
C		7.6	262.3
NL		3.5	266.4
+10		+1.0	^{270.9} 282.4

250' W.

N.Curb.		4.7	265.2
1/4		10.7	259.2
£	bottom.	15.0	254.9
1/4		6.6	263.3

275' W.

-5		2.4	267.5
SL		3.6	266.3
C		8.9	261.0
1/4		16.3	253.6
+3	bottom.	19.3	250.6
£		14.5	255.4
1/4		9.1	260.8
C		3.7	266.2

	269.94		
T.P. = high	0.85	269.99	
T.P. low	12.63	257.31	
12.57	281.66		
	250' W.		
-10	4.2	277.5	
NL	8.8	272.9	
	275' W.		
-10	0.7	281.0	
NL	6.0	275.7	
	300' W.		
-10	4.6	277.1	
NL	9.3	272.4	
C	16.2	265.4	
	325' W.		
-10	4.4	277.3	
NL	8.8	272.9	
C	13.1	268.6	
	350' W.		
N Corb.	2.0	279.7	

			Hayes
			58
Low T.P.		257.31	
0.13	257.44		
	300' W.		
	⊕	0.5	256.9
	3/4	5.3	252.1
	+10 bottom	9.4	248.0
	SCorb	8.3	249.1
	SL	4.2	253.2
	+5	3.5	253.9
	T.P. Neel Peak	8.53	248.91
		325' W.	
	-20	10.0	247.4
	-15	12.7	244.7
	-10 bottom	13.7	243.7
	SL	10.5	246.9
	C	5.4	252.0
	1/4	1.5	255.9
		350' W.	
	-32	14.8	242.6
	-15	6.8	250.6
	SL	4.2	253.2
	C	0.2	257.2

High T.P.			269.09
0.14	269.23		
	300' W.		
N 1/4		9.0	260.2
	325' W.		
±		8.6	260.6
N 1/4		5.1	264.1
	350' W.		
5/4		6.7	262.5
±		1.7	267.5
	375' W.		
-15		12.0	257.2
5L		6.3	262.9
C		2.9	266.3
High T.P.			269.09
12.45	281.54		
	350' W.		
N Corb.		0.8	280.7
N 1/4		6.7	274.8

		281.54	Haypo	59
	375' W.			
5/4		11.1	270.4	
±		6.1	275.4	
	400' W.			
-20		11.4	270.1	
5L		8.2	273.3	
C		3.9	277.6	
T.P.		19.7	279.57	
	10.98	290.55		
	350' W.			
NL		7.7	282.9	
	375' W.			
NL		2.4	288.2	
NC		3.9	286.7	
N 1/4		10.1	280.5	
	400' W.			
NL		2.9	287.7	
C		3.7	286.9	
1/4		4.1	286.5	
±		4.2	286.4	
1/4 +5		5.0	285.6	
1/4		7.6	283.0	

290.55

425' W.

-15	10.2	280.4
SL	6.2	284.4
C	4.9	285.7
1/4	4.3	286.3
E	4.0	286.6
1/4	3.8	286.8
C	3.6	287.0
NL	3.3	287.3

450' W.

NL	4.1	286.5
C	4.2	286.4
1/4	4.5	286.1
E	4.7	285.9
1/4	4.9	285.7
C	5.1	285.5
SL	5.8	284.8

290.55

475' W.

SL	8.6	282.0
C	7.5	283.1
1/4	7.1	283.4
E	7.0	283.6
1/4	6.7	283.9
C	6.3	284.3
NL	5.7	284.9

500' W.

-15	15.2	275.4
NL	12.6	278.0
C	12.1	278.5
1/4	12.5	278.1
E	13.2	277.4
1/4	14.2	276.4
C	15.1	275.5
SL	15.8	274.6
+15	16.6	274.0

Hayes

60

290.55

271.32

Hayes

61

T.P.		12.80	277.75
	0.97	276.72	
T.P.		12.91	265.91
	5.25	271.52	
-2.5			
-1.5		12.2	259.3
SL		11.2	260.3
C		7.2	264.3
1/4		4.2	267.3
±		2.1	269.4
1/4		1.7	269.8
C		6.7	264.8
+5		9.2	262.3
NL		5.5	266.0
-10	540.7 W on NL	54.5 W on SL	End.
NL		-1.5	273.0
		5.5	266.0
C		12.1	259.4
+8 bottom.		15.9	255.7
1/4 -		14.8	256.7
5' W off 1/2 - bottom.		16.7	254.8
13' " "		13.0	258.5
±		13.8	257.7
10' W - bottom		23.4	248.1
15' W -		17.5	254.0

3/4		17.6	253.9
Slope } 13' W - bottom		26.0	245.5
W } 25' W		17.0	254.5
5 C		19.5	262.0
Slope } 15' W - bottom		28.0	243.5
W } 25' W		19.5	252.0
SL		20.5	251.0
Slope } 20' W		33.0	238.5
W } 35' W		20.5	251.0
60' W			
+1.5		21.5	250.0
Slope } 25' W		35.0	236.5
W } 39' W		21.5	250.0
T.P.		0.10	271.42

12.29 283.71

T.P. 0.92 282.79

11.10 293.89

B.M. S.W. Cor.
Lincoln + Vermont.

18.4 292.05 292.062

292.05

Error .01

Hayes Ave
Culvert Location.

0+00 = Pt 300' W of W.L. Vermont & 15³/₄' N of S. Pl.

T.P. 00 = 248.91

4.13 252.94

+10 4.4

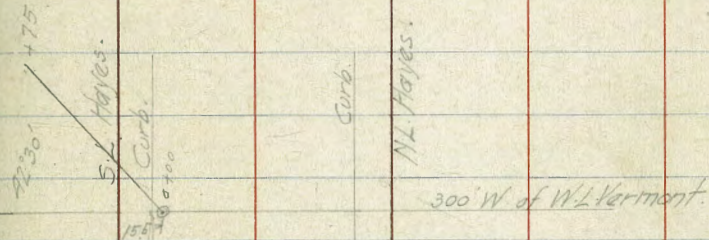
+25 7.7

+35 bottom. 8.4

+50 bottom. 10.2

+60 " 12.5

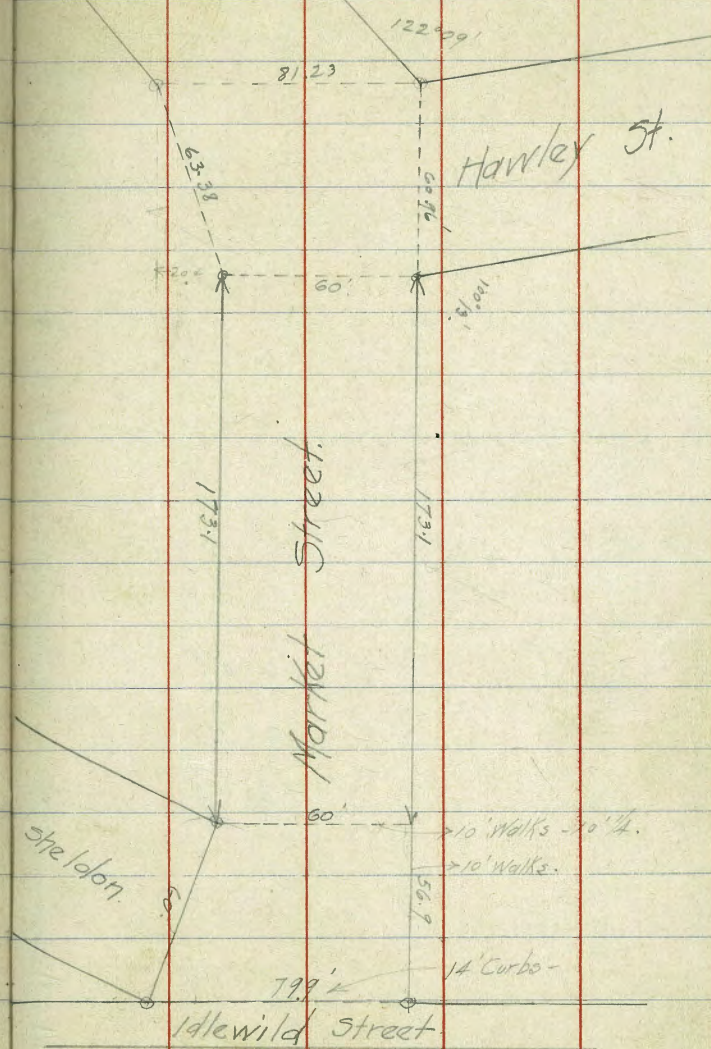
+75 13.0



Cross-Sections Market St.
 W.L. Idlewild westerly to Pueblo Lot Line
 60' wide, 10' Walks - 10' 1/4.

Nail in Pole.		183.71	
9.93	193.64		
T.P. S.W. Hub. Market + Hawley Sts.	3.10	190.54	
T.P.	0.18	193.46	
12.06	205.52		
T.P. Water Plug.	0.61	204.91	
12.00	216.91		
T.P. Keel'd Red. S.F. Shop.	1.32	215.59	
Top Water Plug		204.91	
12.79	217.70		
E.L. Sheldon. - W.L. Idlewild St. 79.9' wide 14' curb. 60' wide		13' 1/4.	
NL.	0.4	217.3	
C	6.0	211.7	
1/4	9.9	207.8	
1/2	14.0	203.7	
E. Curb Sheldon.			
1/2	13.3	204.4	
N/A	9.5	208.2	
NC.	5.4	212.3	
NL.	+1.8	219.5	

May 12 - 1913.
 West
 Evans
 Moore.



E/A.

NL	+1.9	219.6
C	4.8	212.9
1/4	9.4	208.3
E	13.1	204.6

E Sheldon.

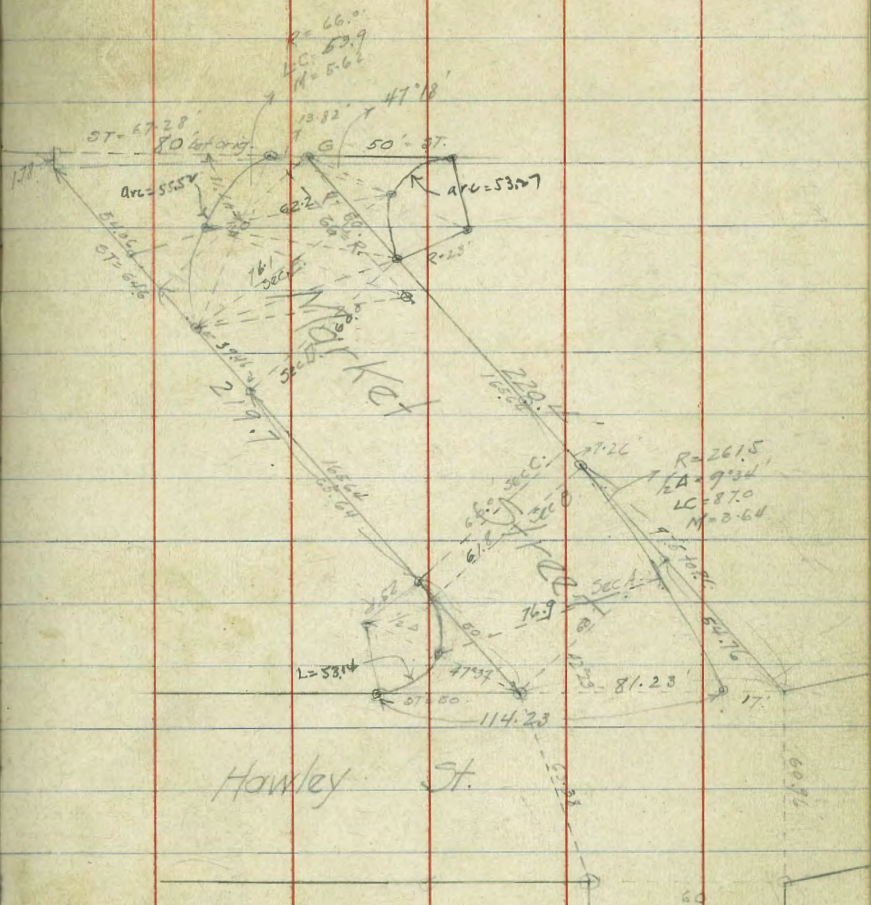
E	12.7	205.0
1/4	9.1	208.6
C	4.6	213.1
NL	+1.4	219.1

W/A

NL	+1.3	219.0
C	4.2	213.5
1/4	8.5	209.7
E	12.4	205.3

W. Corb.

E	11.6	206.1
1/4	7.9	209.8
C	3.5	214.2
NL	+1.0	218.7



217.70
W.L. = 173.1' E of EL Hawley St

NL	+0.8	218.5
C	3.0	214.7
1/4	7.3	210.4
⊕	12.5	205.2

150' E of EL Hawley

⊕	11.3	206.4
1/4	7.9	209.8
C	3.8	213.9
NL	0.5	217.2

125' E.

NL	2.1	215.6
C	5.2	212.5
1/4	8.8	208.9
+6	12.2	205.5
+7	14.0	203.7
⊕	14.6	203.1

100' E.

N 1/4	9.4	208.3
C	6.3	211.4
NL	3.7	214.0

217.70
75' E. maxima

65

NL	5.5	212.2
C	7.7	210.0
1/4	10.4	207.3

50' E.

1/4	12.4	205.3
C ⁺⁵	10.4	207.3
	9.3	208.4
NL	7.0	210.7

25' E.

NL	8.5	209.2
C	12.0	205.7
1/4	13.6	204.1
⊕	14.1	203.6

EL Hawley St.

NL	10.1	207.6
C	12.2	205.5
1/4	13.5	204.2
⊕	14.0	203.7

Top Water Plug 204.91

-003 204.94

E.L. Hawley

3/4 4.1 200.8

C 7.5 197.4

SL 10.3 194.6

+15 15.2 189.7

25'E.

-10 10.8 194.1

SL 10.8 194.1

+4 10.5 194.4

+5 9.2 195.7

C 7.1 197.8

1/4 3.6 201.3

50'E.

± 1.0 203.9

1/4 5.0 199.9

C 7.7 197.2

+6 10.0 194.9

+7 11.3 193.6

SL 11.9 193.0

+15 15.0 189.9

204.94 75'E. 66

-20 15.2 189.7

-10 11.2 193.7

SL 11.0 193.9

+1 10.9 194.0

+2 9.5 195.4

C 6.8 198.1

1/4 4.0 200.9

+7 1.0 203.9

± 0.6 204.3

+5 0.7 204.2

100'E.

-5 1.4 203.5

± 1.7 203.2

+6 2.1 202.8

5/4 4.3 200.6

C 8.4 196.5

+6 10.1 194.8

+7 11.5 193.4

SL 11.5 193.4

+5 = Sheq 11.8 193.1

	204.94		
	125' E.		
-15	16.0	188.9	
SL	12.0	192.9	
+4	11.3	193.6	
+5	10.3	194.6	
C	8.7	196.2	
+5	7.0	197.9	
1/4	3.9	201.0	
	150' E.		
-9	1.0	203.9	
S 1/4	3.8	201.1	
+4	4.0	200.9	
S.C.	6.6	198.3	
SL	10.7	194.0	
+15	14.6	190.3	
	173.1' E. = W/L She/dolt.		
	60' wide 15' W 10' 1/4.		
-15	13.6	191.3	
SL	9.9	195.0	
+4	8.5	196.4	
+5	7.6	197.3	
C	4.9	200.0	
1/4	4.4	200.5	
+5	2.9	202.0	

	204.94	market	67
	W. Corb.		
-7	0.6	204.3	
-5	3.3	201.6	
S 1/4	4.9	200.0	
C	5.2	199.7	
+5	6.3	198.6	
+6	7.7	197.2	
SL	8.4	196.5	
+15	11.4	193.5	
	W 1/4		
-15	10.1	194.8	
SL	6.6	198.3	
C	5.4	199.5	
1/4	4.3	200.6	
+5	1.7	203.2	
	E.		
	0.0		
1/4	3.3	201.6	
+3	4.2	200.7	
+4	5.7	199.2	
C	6.1	198.8	
SL	6.5	198.2	
+10	6.0	198.9	

204.94

E/4

-10	6.8	198.1
SL	6.9	198.0
C	5.6	199.3
1/4	3.5	201.4

E. Curb.

1/4	4.4	200.5
C	7.4	197.5
SL	8.0	196.9
+15	4.0	200.9

E.L. Sheldon - WL Idlevild.

SL	4.1	200.8
C	6.7	198.2
+5	7.0	197.9
1/4	4.7	200.7
T.P. Water Top	0.03	204.91

See sketch #64

marker

SW Cor Mkt + Hawley.

190.54

68

5.54 196.08

W.L. Hawley St. - 114.23' wide

-15	20.0	176.1
SL	16.3	179.8
+10	14.2	181.9
+25	10.8	185.3
+30	8.9	187.2
+40	8.5	187.6
+41	7.7	188.4
+50	5.6	190.5
+60	4.1	192.0
+70	2.6	193.5
+80	2.3	193.8
+90	1.1	195.0
+100	0.1	196.0
+114.23 = NL	+0.3	196.4

Sec A. 76.1' wide

+76.9 = NL	6.1	190.0
+60	7.2	188.9
+55	6.8	189.3

19608

19608

market

69

+45	7.7	188.4
+30	7.8	188.3
+20	8.8	187.3
+15	9.3	186.8
+10	10.8	185.3
SL	11.4	184.7
+15	15.9	180.2

same slope 20' further
then level.same of
-15

SL	13.1	183.0
+2	11.3	184.8
+10	11.2	184.9
+20	11.8	184.3
+30	11.9	184.2
+40	12.3	183.8
+50	12.5	183.6
+61.8 = NL	12.5	183.6

Sec B - Opposite P.C. on NL.

T.P.

12.86 183.22

2.49 185.71

10' C 10' W
60' wide

Sec C - Opposite P.C. on SL.

NL	2.4	183.3
C	3.3	182.4
1/4	3.4	182.3
+5	2.7	183.0
E	2.7	183.0
1/4	2.1	183.6
C	1.7	184.0
+9	2.1	183.6
SL	3.2	182.5
+10	3.1	182.6
+20	5.8	179.9
-20	9.9	175.8
-10	7.3	178.4
SL	6.1	179.6
+1	5.7	180.0
C	6.7	179.0

25' W of Sec C.

185.71

174.10

marker

70

1/4	6.4	179.3
E	6.5	179.2
1/4	6.9	178.8
C	7.9	177.8
NL	5.2	177.5

50' W. of Sec E.

NL	11.7	174.0
C	12.1	173.6
1/4	12.4	173.3
E	12.4	173.3
1/4	12.0	173.7
C	11.9	173.8
SL	11.8	173.9
+15	12.9	172.8

Sec D = 65.64 W. of Sec E.
= Sec Opp PC. on NL

T.P.	13.01	172.70
140	174.10	
-15	4.8	169.3
SL	3.8	170.3

C	3.4	170.7
1/4	3.7	170.4
E	3.3	170.8
1/4	4.1	170.0
C	4.6	169.5
NL	4.6	169.5
+10	3.8	170.3

Sec E = 76.1' wide = PC. on SL. to Cen. of
Curve on NL. See sketch. P. 64.

NL = +76.1	6.5	167.6
+60	7.0	167.1
+50	7.3	166.8
+40	7.3	166.8
+30	7.6	166.5
+20	7.8	166.3
+10	8.4	165.7
SL	8.6	165.5
+20	9.2	164.9

174.10

Sec F = 62.2' wide = Cen. Curve to Cen. Curve.

174.10

- 15	8.6	165.5
2L	8.5	165.6
+ 10	9.5	164.6
+ 15	8.6	165.5
+ 20	8.2	165.9
+ 30	7.8	166.3
+ 40	7.6	166.5
+ 50	7.0	167.1
+ 62.2 = NL.	6.5	167.6

T.P.

140 172.70

12.94 185.64

Nail in pole.

1.92 183.72

183.71

182.72

Fr. 01

Sec G = 63.82' wide = P.C. to P.C.

= E.L. Pueblo Lot 1122.

+ 63.82 = NL.	5.9	168.2
+ 50	6.4	167.7
+ 40	6.9	167.2
+ 30	7.9	166.2
+ 20	7.0	167.1
+ 10	7.0	167.1
5L.	6.5	167.6
+ 15	5.9	168.2

Cross Section of Sloane Ave.
 N.L. Idlewild to E.L. Hawley St.
 60' Wide, 10' Curbs - 10' / 4's

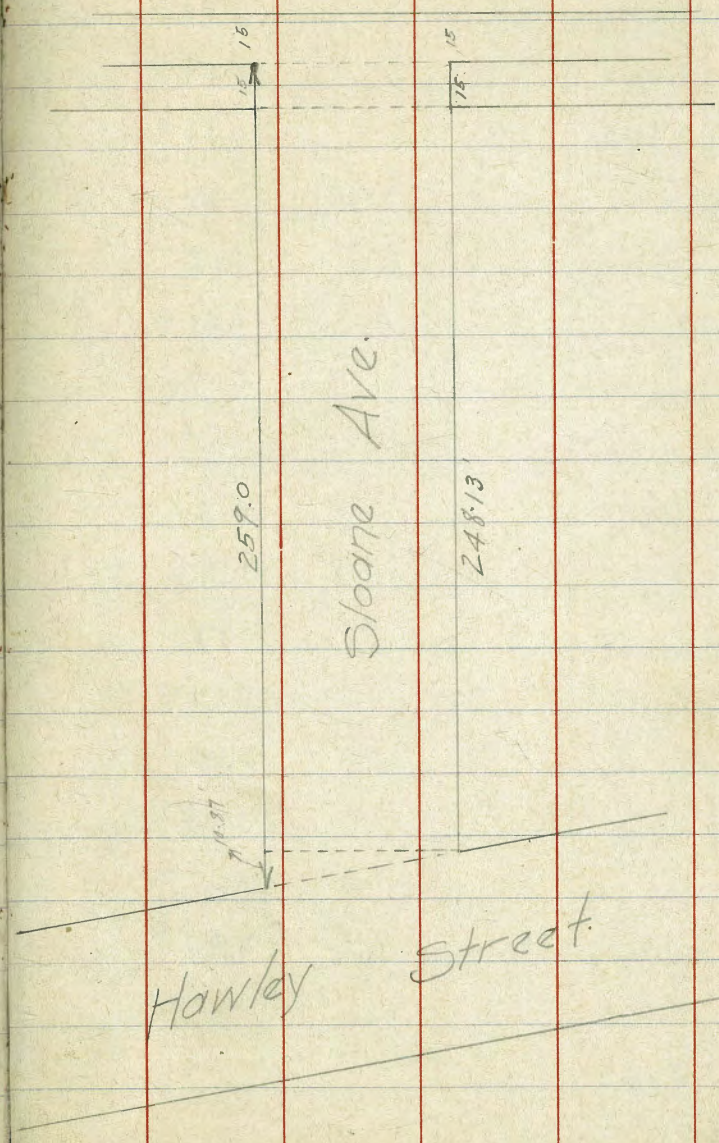
May 12 - 1913.
 West
 Moore
 Evans.

Rock SE Cor Sloan.			215.59
	12.59	228.18	
T.P.			0.21 227.97
1	12.79	240.76	
T.P.			0.44 240.32
	12.78	253.10	
T.P.			1.88 251.22
	7.73	258.95	

W.L. Idlewild for 15' St.

NL.			1.3 257.7
C			1.9 257.1
1/4			2.6 256.4
1/4			3.7 255.3
1/4			4.8 254.2
C			6.3 252.7
2L.			8.6 250.4
+15			14.0 246.0

RP.



258.95

15' W. of WL Idlevild.

-15	141	244.9
SL	10.6	248.4
C	7.8	251.2
1/4	6.1	252.9
£	5.0	254.0
1/4	3.9	255.1
C	3.1	255.9
NL	2.0	257.0

25' W. of WL Idlevild.

NL	2.4	256.6
C	3.4	257.6
1/4	5.8	253.2
£	7.1	251.9
1/4	8.9	250.1
C	10.6	248.4
SL	12.1	246.9
+15	14.2	244.8

258.95

50' W.

Blower

74

-15	19.8	239.2
SL	16.8	242.2
C	14.8	244.2
1/4	12.9	246.1
£	11.0	248.0
1/4	10.1	248.9
C	7.3	251.7
NL	5.3	253.7

75' W.

NL	8.1	250.9
C	10.6	248.4
+7	11.7	247.3
+8	12.8	246.2
1/4	13.1	245.9
TR	12.94	246.01
	1.37	247.38
£	2.4	245.0
1/4	3.9	243.5
C	5.8	241.6
SL	8.6	238.8
+15	12.3	235.1

24738

100' W.

-15	14.1	233.3
SL	11.2	236.2
C	9.3	238.1
1/4	6.6	240.8
£	5.7	241.7
1/4	4.8	242.6
+5	4.3	243.1
+6	2.9	244.5
C	2.5	244.9
NL	0.0	247.4

125' W.

NL	3.3	244.1
C	4.1	243.3
+6	5.2	242.2
+8	6.8	240.6
1/4	7.2	240.2
£	8.0	239.4
1/4	9.1	238.3
C	11.2	236.2
SL	13.4	234.0
+	16.3	231.1

24738

150' W.

-15	19.1	228.3
SL	15.6	231.8
C	13.8	233.6
1/4	11.9	235.5
£	11.1	236.3
1/4	10.4	237.0
+5	9.4	238.0
C	8.1	239.3
NL	6.8	240.6

175' W.

NL	10.4	237.0
C	11.7	235.7
+5	12.4	235.0
+6	13.6	233.8
T.P.	12.90	234.48
	0.31	234.79
1/4	1.4	233.4
£	2.0	232.8
1/4	3.0	231.8
C	5.0	229.8
SL	6.9	227.9
+15	9.8	225.0

Plane

75

234.79

200 W

-	12.8	222.0
SL	10.3	224.5
C	8.9	225.9
1/4	7.0	227.8
⊕	6.0	228.8
1/4	5.4	229.4
+5	4.8	230.0
+6	3.8	231.0
C	3.5	231.3
NL	2.1	232.7

225 W

NL	5.9	228.9
C	7.6	227.2
1/4	9.7	225.1
⊕	10.3	224.5
1/4	10.8	224.0
C	12.4	222.4
SL	13.8	221.0
+15	15.1	219.7

234.79

T.P.

11.91

sloane

222.88

76

3.50 226.38

248.13 W - EL Hawley on SL

-15	10.1	216.3
SL	8.5	217.9
C	7.6	218.8
1/4	6.6	219.8
⊕	6.2	220.2
1/4	5.1	221.3
+7	4.2	222.2
C	2.9	223.5
NL	1.5	224.9

259 W on NL

NL	1.9	224.5
+8	2.9	223.5
C	3.5	222.9
+5	5.5	220.9
1/4	6.1	220.3
⊕	6.7	219.7
1/4	7.5	218.9
C	7.3	219.1
SL	8.5	217.9
+	10.1	216.3

	276.38			
T.P.		11.95	214.43	
	0.48		214.91	
Top Water Top		10.03	204.88	
	0.44		205.32	
T.P.		11.67	193.65	
	0.65		194.30	
Nail in pole.		10.67	183.63	183.71
				183.63
				<u>Er. 08</u>

Culvert Location
Johnson & Hayes Intersection

B.M. S.W. Cor. Vermont & Lincoln 292.06

7.99 300.05

T.P. Hub. NW. Cor. Johnson & Hayes. 3.82 296.23

2.44 298.67

A line
0+00 - Int. Curbs produced. 4.8 293.9

+18 5.7 293.0

+25 6.7 292.0

+45 12.0 286.7

+50 13.3 285.4

B line

0+00 4.8

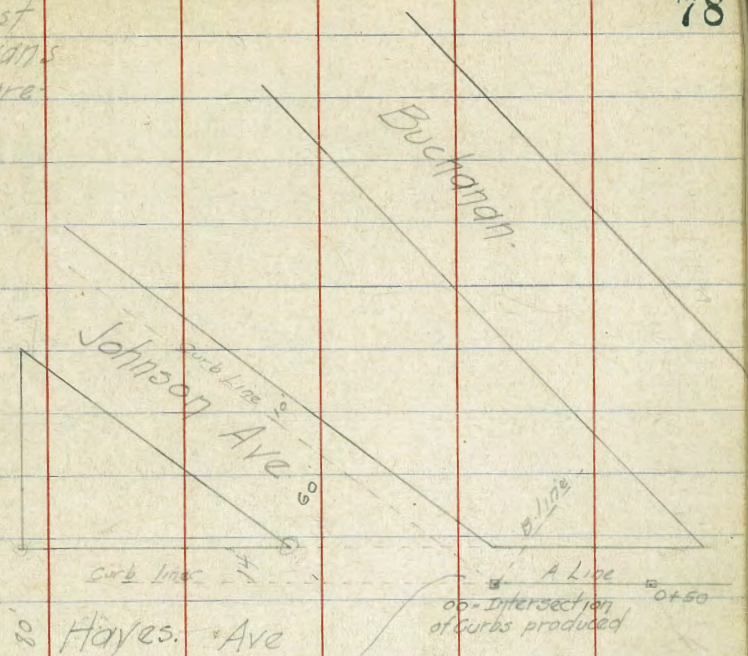
+10 5.5

+45 18.5

May 14 - 1913

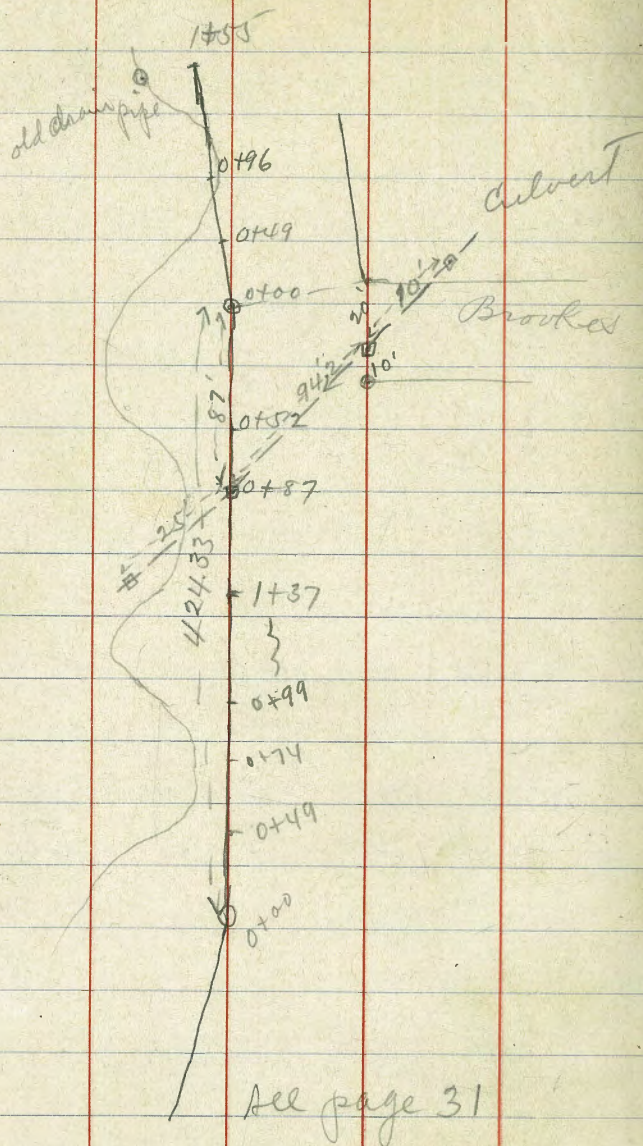
West
Evans
Moore

78



Note: - The most direct
location for pipe from 0+00 is at
rt angles to E.L. Johnson, directly
down canon, but line crosses private
property.

↑ N



See page 31

Levels. June 13/14 { Leuchs
Eller
Bunde 79

meas. - ang. point. near North line Brook			
South	H.I. 147.5		
	0+52		
White		6.6	140.9
+10 W.		8.1	139.4
	0+87		
White		4.3	143.2
	1+37		
White		4.2	143.3
+13 W.		6.5	141.0
	North		
	0+49		
White		← 0.5	148.0
+10 W.		3.7	143.8
	0+96		
White		3.3	144.2
+10 W.		2.0	145.5
	1+55		150.8
White		-3.3	150.8
+16 W		1.4	146.1

H.I.
1.3 140.8 139.5

meas - from angle point. So. Brooks
north.

0+49

wline	8.8	132.0
+16 w	14.4	126.4
+20 w	13.0	127.8

0+74

wline	6.3	134.5
+9' w.	13.5	127.3
+20' w.	11.5	129.3

0+99

wline	4.8	136.0
+17' w.	12.8	128.0
+26 w.	11.5	129.3

459.83

50.0 areanas

360.2

150.5 Fine Glen

