

897

F.B. 897

LEVEL BOOK

373

KEUFFEL & ESSER CO.

DRAWING MATERIALS

AND

SURVEYING INSTRUMENTS.

NEW YORK.

CHICAGO.

SAN FRANCISCO.

ST. LOUIS.

MICROFILMED

TABLES FOR EXCAVATIONS AND EMBANKMENTS.

DISTANCES FROM CENTER OF ROADWAY FOR CROSS-SECTIONING.
ROADWAY 18 FEET WIDE. SIDE SLOPES 1 TO 1.
FOR SINGLE TRACK EXCAVATION.

"Copyright, 1895, by Keuffel & Esser Co."

	0	.1	.2	.3	.4	.5	.6	.7	.8	.9	
0	9.0	9.1	9.2	9.3	9.4	9.5	9.6	9.7	9.8	9.9	0
1	10.0	10.1	10.2	10.3	10.4	10.5	10.6	10.7	10.8	10.9	1
2	11.0	11.1	11.2	11.3	11.4	11.5	11.6	11.7	11.8	11.9	2
3	12.0	12.1	12.2	12.3	12.4	12.5	12.6	12.7	12.8	12.9	3
4	13.0	13.1	13.2	13.3	13.4	13.5	13.6	13.7	13.8	13.9	4
5	14.0	14.1	14.2	14.3	14.4	14.5	14.6	14.7	14.8	14.9	5
6	15.0	15.1	15.2	15.3	15.4	15.5	15.6	15.7	15.8	15.9	6
7	16.0	16.1	16.2	16.3	16.4	16.5	16.6	16.7	16.8	16.9	7
8	17.0	17.1	17.2	17.3	17.4	17.5	17.6	17.7	17.8	17.9	8
9	18.0	18.1	18.2	18.3	18.4	18.5	18.6	18.7	18.8	18.9	9
10	19.0	19.1	19.2	19.3	19.4	19.5	19.6	19.7	19.8	19.9	10
11	20.0	20.1	20.2	20.3	20.4	20.5	20.6	20.7	20.8	20.9	11
12	21.0	21.1	21.2	21.3	21.4	21.5	21.6	21.7	21.8	21.9	12
13	22.0	22.1	22.2	22.3	22.4	22.5	22.6	22.7	22.8	22.9	13
14	23.0	23.1	23.2	23.3	23.4	23.5	23.6	23.7	23.8	23.9	14
15	24.0	24.1	24.2	24.3	24.4	24.5	24.6	24.7	24.8	24.9	15
16	25.0	25.1	25.2	25.3	25.4	25.5	25.6	25.7	25.8	25.9	16
17	26.0	26.1	26.2	26.3	26.4	26.5	26.6	26.7	26.8	26.9	17
18	27.0	27.1	27.2	27.3	27.4	27.5	27.6	27.7	27.8	27.9	18
19	28.0	28.1	28.2	28.3	28.4	28.5	28.6	28.7	28.8	28.9	19
20	29.0	29.1	29.2	29.3	29.4	29.5	29.6	29.7	29.8	29.9	20
21	30.0	30.1	30.2	30.3	30.4	30.5	30.6	30.7	30.8	30.9	21
22	31.0	31.1	31.2	31.3	31.4	31.5	31.6	31.7	31.8	31.9	22
23	32.0	32.1	32.2	32.3	32.4	32.5	32.6	32.7	32.8	32.9	23
24	33.0	33.1	33.2	33.3	33.4	33.5	33.6	33.7	33.8	33.9	24
25	34.0	34.1	34.2	34.3	34.4	34.5	34.6	34.7	34.8	34.9	25
26	35.0	35.1	35.2	35.3	35.4	35.5	35.6	35.7	35.8	35.9	26
27	36.0	36.1	36.2	36.3	36.4	36.5	36.6	36.7	36.8	36.9	27
28	37.0	37.1	37.2	37.3	37.4	37.5	37.6	37.7	37.8	37.9	28
29	38.0	38.1	38.2	38.3	38.4	38.5	38.6	38.7	38.8	38.9	29
30	39.0	39.1	39.2	39.3	39.4	39.5	39.6	39.7	39.8	39.9	30
31	40.0	40.1	40.2	40.3	40.4	40.5	40.6	40.7	40.8	40.9	31
32	41.0	41.1	41.2	41.3	41.4	41.5	41.6	41.7	41.8	41.9	32
33	42.0	42.1	42.2	42.3	42.4	42.5	42.6	42.7	42.8	42.9	33
34	43.0	43.1	43.2	43.3	43.4	43.5	43.6	43.7	43.8	43.9	34
35	44.0	44.1	44.2	44.3	44.4	44.5	44.6	44.7	44.8	44.9	35
36	45.0	45.1	45.2	45.3	45.4	45.5	45.6	45.7	45.8	45.9	36

Calculated by Julien A. Hall, M. Am. Soc. C. E.

/ 1

section Elm St Fern to 32nd
 " " 60 wide 10' taken off each side where
 St was 80 wide 10' 10' 10' 10' 10' 10' 10' 10'
 B.M. corner 30th & Elm.

91.5
 10' 10' 10' 10' 10' 10' 10' 10'
 Kern

B.M.	222	259.45		257.23
T.P.	0.49	247.20	12.24	246.71
		EL. Fern ST		
-15			9.0	238.9
N			12.3	234.9
cut			14.4	232.8
"			11.4	235.8
N			9.5	237.7
"			8.6	238.6
cut			7.5	239.7
S			6.0	241.2
		0+25 E		
-15			11.4	235.8
S			16.1	231.1
cut			17.6	229.6
"			22.1	225.1
"			18.7	228.5
"			14.5	232.7
cut			13.9	233.3
N			8.9	238.3
+15			3.0	244.2

ELM ST.

247.2

0+52

N		6.7	240.5
cut		8.3	238.9
"		9.9	237.3
"		14.3	232.9
"		20.1	227.1
cut		24.3	222.9
S		27.4	219.8
+25		29.1	217.1
		0+75	
-40		25.7	221.5
-30		30.5	216.7
S		12.3	233.9
cut		12.4	233.8
"		10.3	235.9
"		8.8	238.4
"		6.5	240.7
cut		6.0	241.2
N		5.0	242.2

22

24720

ELM ST.

140

N	2.5	2447
cb	4.2	2420
1/2	5.5	2417
M	6.8	2404
1/4	7.8	2394
cb	8.8	2384
3	11.1	2361
+20	13.7	233.5

1450

S	6.7	2405
cb	5.8	2414
1/2	6.2	2420
M	4.4	2428
1/4	3.8	2434
cb	3.2	2440
N	2.4	2448

2472

1775

3

N	2.8	2444
cb	3.4	2438
1/2	3.9	2432
M	4.4	2428
1/4	4.9	2422
cb	5.3	2419
S	6.1	2411

2+047 = N. L. Grove st on south side

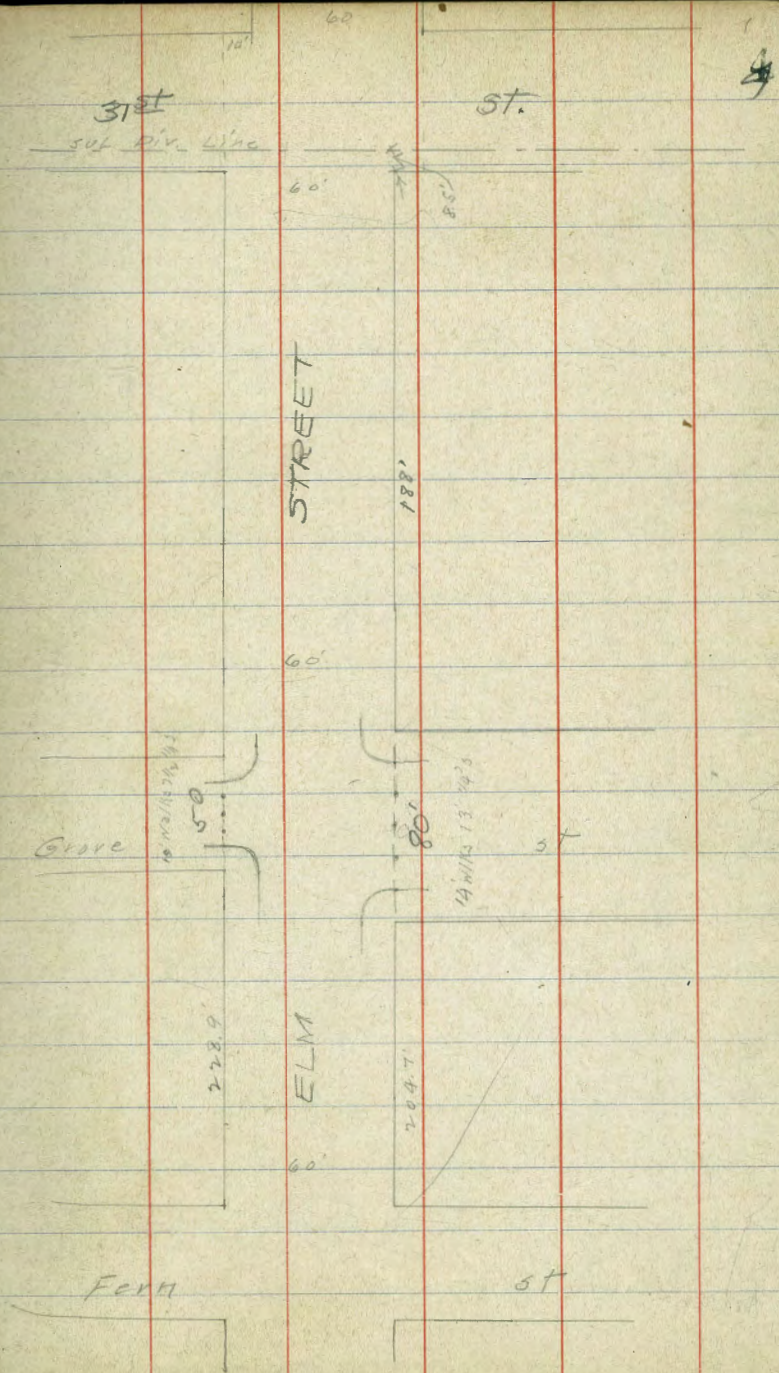
S	7.6	2396
cb	7.6	2396
1/2	7.5	2397
M	7.6	2396
1/4	7.8	2399
cb	7.4	2398
N	7.6	2396
T.P	2.48	237.63
	10.05	237.15

~~23763~~
 23763
 W. Curle Grove on S.

N	0.3	23779
cut	0.1	23775
1/4	0.0	23776
M	0.1	23775
1/4	0.8	23768
cut	0.7	23769
S	0.0	23776

W. H. Grove on N.

S	2.5	23751
cut	3.0	23746
1/4	2.9	23747
M	3.0	23746
1/4	2.7	23744
cut	2.8	23748
N	2.2	23754



237.63 ~~49~~ ELM ST.

N. 1/4 215

N	39	233.7
SW	41	233.5
1/4	36	234.0
M	40	233.6
1/4	36	234.0
SW	34	234.2
S	31	234.5

N. CURB ON N

S	5.7	231.9
SW	5.8	231.8
1/4	6.5	231.7
M	6.0	231.6
1/4	5.3	231.5
SW	6.7	230.9
N	7.9	229.7

237.6 ~~49~~

Center on south

5

N	11.0	226.0
SW	10.1	227.5
1/4	9.8	227.8
M	9.2	228.4
1/4	9.0	228.6
SW	8.4	229.2
S	8.1	229.5

N. CURB ON N

S	8.3	229.3
SW	9.0	228.6
1/4	9.5	228.1
M	10.0	227.6
1/4	10.2	227.4
SW	11.1	226.5
N	11.7	225.9

237.63

ELM ST.

Center on N

-20		15.7	221.9
N		15.3	222.3
cut		14.2	223.4
1/4		12.7	224.9
M		12.3	225.3
1/4		12.0	225.6
cut		11.5	226.1
S		10.7	226.9
+20		9.8	227.8
TIP	121	13.00	224.63
		E 1/4 on south	
-20		70.6	226.4
S		0.3	225.5
cut		1.5	224.3
1/4		1.9	223.9
M		2.0	223.8
1/4		2.6	223.2
cut		4.5	221.3
N		5.2	220.6
+20		4.8	221.0

225.8 HS.

E 1/4 on N

6

-20		6.6	219.2
N		6.9	218.9
cut		6.1	219.7
1/4		4.0	221.8
M		3.2	222.6
1/4		3.0	222.8
cut		2.4	223.4
S		2.0	223.8
+20		0.1	225.7
		E curve on north	
-20		3.5	222.3
S		5.2	220.6
cut		5.3	220.5
1/4		5.8	220.0
M		6.3	219.5
1/4		7.5	218.3
cut		8.4	216.4
N		10.4	215.4
+20		11.1	214.7

225.84

ELM ST.

F. curb on S

-20		11.8	214.0
N		11.0	214.8
W		10.0	215.8
"4		8.3	217.5
M		6.9	218.9
"4		6.5	219.3
W		6.2	219.6
S		6.1	219.7
+20		5.0	220.8
	F. curb N		
-20		7.4	218.4
S		9.3	216.5
W		9.5	216.3
"4	C	10.1	215.7
M		10.7	215.1
"4		13.7	212.1
W		15.4	210.4
N		15.4	210.6
+30		15.0	210.8

225.8

7

F. L. on South = 0+0

-30		17.5	208.3
N		17.6	208.2
W		19.5	206.3
"4		18.4	207.4
M		15.5	210.3
"4		12.5	213.3
W		12.2	213.6
S		12.4	213.4
+20		10.1	215.7
	T.P.	0.17	213.25
		12.76	213.08
	+25 E from F.L. Grove on S		
-30		8.6	204.6
S		9.6	203.6
W		10.0	203.2
"4		11.7	201.5
M		15.4	198.0
"4		15.8	197.4
W		15.8	197.4
N		15.7	197.5
+30		14.6	198.6

213.25

ELM ST.

0+50

-30	12.7	200.5
N	13.8	199.4
Wh	15.0	198.2
"4	16.9	196.3
M	17.1	196.1
"4	16.2	197.0
Wh	14.2	199.0
S	14.5	198.7
+30	15.1	198.4

0+75

-30	17.1	196.1
S	12.1	196.1
Wh	12.4	194.8
"4	13.6	194.6
M	16.2	197.0
"4	13.1	200.1
Wh	11.1	202.1
N	9.0	204.2
+30	6.9	206.8

213.25

8

1+0

-20	+5.2	218.4
N	+0.7	214.0
Wh	1.2	212.0
"4	3.1	210.1
M	6.0	207.2
"4	10.3	203.0
Wh	13.4	199.8
S	17.8	195.4
+30	19.6	193.6

1+25

-30	9.0	204.2
S	5.4	207.8
Wh	1.1	212.1
T.P. "4	11.07	223.57
"4	0.45	212.80
"4	7.8	216.1
M	4.8	219.1
"4	1.6	221.8
T.P. "4	11.21	235.03
Wh	0.05	223.82
"4	10.5	224.5
N	8.0	227.0

235.03

ELM ST.

407

235.0

1750

1488 = 60 W of E.L. 31st St or x-section 31st St

2560' 59

N		1.8	233.2
cb		2.7	232.3
1/4		4.2	230.8
M		5.4	229.6
1/4		6.5	228.5
cb		8.0	226.5
S		9.0	225.5
+	1775		
S		5.7	229.3
cb		4.6	230.4
1/4		3.9	231.1
M		2.6	232.4
1/4		1.6	233.4
cb		0.8	234.2
N		0.0	235.0

N		0.4	234.6
cb		1.0	234.0
1/4		1.8	233.2
M		2.4	232.6
1/4		3.2	231.8
cb		4.1	230.9
S		5.2	229.8
	N curb		
S		5.0	230.0
cb		4.4	230.6
1/4		3.7	231.3
M		2.9	232.1
1/4		2.0	233.0
cb		1.5	233.5
N		0.8	234.2

23503

N 1/4

ELM ST.

N	1.4	233.6
cut	1.8	233.2
"	2.6	232.9
M	3.2	231.8
"	4.1	230.9
cut	4.9	230.1
S	5.5	229.5

Center

S	6.0	229.0
cut	5.4	229.6
"	4.7	230.3
M	4.0	231.0
"	3.3	231.7
cut	2.5	232.5
N	1.9	233.1

2350

E 1/4

10

N	2.2	232.8
cut	2.9	232.1
"	3.8	231.2
M	4.5	230.5
"	5.2	229.8
cut	5.8	229.2
S	6.5	228.5

E cut

S	7.1	227.9
cut	6.6	228.4
"	6.0	229.0
M	5.3	229.7
"	4.7	230.3
cut	3.7	231.3
N	3.0	232.0

235.03
ELM ST.
EL 31st ST

N	3.9	231.1
chk	4.4	230.6
1/4	5.2	229.8
M	6.0	229.0
1/4	6.6	228.4
chk	7.3	227.7
5	7.9	227.1
0+50 F		
5	11.3	223.7
chk	10.5	224.5
1/4	9.8	225.2
M	8.9	226.1
1/4	8.2	226.8
chk	7.5	227.5
N	6.9	228.1

2350

0+75

11

N	11.0	229.0
chk	11.3	223.7
1/4	11.2	223.8
M	11.7	223.3
1/4	12.2	222.8
chk	12.8	222.2
5	13.4	221.6
T.P.	14.7	223.33
170		
5	5.9	217.4
chk	5.6	217.7
1/4	5.4	217.9
M	6.7	216.6
1/4	7.4	215.9
chk	8.8	214.5
N	9.2	214.1
+15	8.9	214.4

223.33

ELM ST.

223.33

12

1425

-30	18.5	204.8
N	20.1	203.2
elm	21.1	202.2
"4	18.8	204.5
M	17.8	205.5
"4	17.1	206.2
elm	16.5	206.8
S	16.1	207.2
+20	15.3	208.0

1440

-30	22.6	200.7
S	24.5	198.8
elm	22.8	199.5
"4	23.0	200.3
M	22.5	200.8
"4	20.7	202.6
elm	18.8	204.5
N	17.6	205.7
+20	16.0	207.5

1475

N	7.3	219.0
elm	5.6	217.7
"4	7.1	216.2
M	8.4	214.9
"4	10.1	213.2
elm	11.1	212.2
S	12.3	211.0
+15	14.5	208.8

240

S	8.6	214.7
elm	7.2	216.1
"4	6.1	217.2
M	4.8	218.5
"4	3.3	220.0
elm	2.3	221.0
N	1.7	221.6

223.33

ELM ST.

Edgemont

2+402 W.L. ~~1773~~ ST 60 wide 10 W/KS

N		0.0	223.3
wh		1.3	222.0
"A		2.5	220.8
M		3.5	219.8
"A		4.8	218.5
wh		5.8	217.5
S		6.9	216.4
T.P.	9.31	225.72	6.92 216.41
		W. CURV	
S		9.3	216.4
wh		8.2	
"A		7.2	
M		5.9	
"A		4.9	
wh		3.5	
✓		2.2	

225.7

13

W "A

N			
wh			3.3
"A			4.7
M			5.7
"A			7.0
wh			8.2
S			9.1
			9.0
S			216.7
wh			8.2
"A			6.9
M			5.2
"A			4.6
wh			3.2
N			1.8
			223.9

Edgemont

Street No. 10/5/16

Center

22572
E 1/4

ELM ST.

N	1.6	224.1
cb	2.2	222.9
1/4	4.2	221.5
1/4	5.6	220.1
1/4	6.7	219.0
cb	7.9	217.8
S	9.1	216.6
E Curve		
S	9.0	216.7
cb	8.0	217.7
1/4	6.8	218.9
1/4	5.8	219.9
1/4	4.2	221.5
cb	2.9	222.8
N	1.3	224.4

Now graded
 10/5/16

2257
Edgemont
E. 1/2 ST

14
14

N	0.9	224.8
cb	2.2	223.5
1/4	3.8	221.9
1/4	5.2	220.5
1/4	6.4	219.3
cb	7.5	218.2
S	8.7	217.0
0+25 E		
S	8.6	217.1
cb	6.6	219.1
1/4	5.7	220.0
1/4	4.6	221.1
1/4	3.7	222.0
cb	1.8	223.9
N	0.5	225.2

2257
0+50

ELM ST.

N	0.3	225.9
erb	1.7	224.0
"A	3.1	222.6
M	4.2	221.5
"A	5.3	220.4
erb	6.5	219.2
S	7.8	217.9

0+75

S	7.2	218.5
erb	6.2	219.5
"A	5.3	220.4
M	4.0	221.7
"A	3.1	222.6
erb	1.9	223.8
N	0.5	225.2

1+0

25
15

N	1.1	224.6
erb	2.2	223.5
"A	3.2	222.5
M	4.3	221.4
"A	5.3	220.4
erb	6.1	219.6
S	7.0	218.7

1+25

S	9.0	216.7
erb	8.2	217.5
"A	7.2	218.5
M	6.2	219.5
"A	5.1	220.6
erb	4.1	221.6
N	3.2	222.5

2257

ELM ST.

1750

N	8.4	217.3
Col	9.0	216.7
"	9.5	216.2
M	10.1	215.6
"	10.9	214.8
Col	11.5	214.2
S	12.1	213.6
+15	12.7	213.0
-20	15.6	210.1
S	13.4	212.3
Col	13.0	212.7
"	12.4	213.3
M	12.0	213.7
"	8.7	217.0
Col	12.8	212.9
N	11.3	214.4

1775

270

1616

N	5.8	219.9
Col	6.8	218.9
"	7.7	218.0
M	8.5	216.9
"	10.2	215.5
Col	12.9	212.8
S	15.0	210.7
+20	17.1	208.6
-15	12.2	213.5
S	10.6	215.1
Col	9.6	216.1
"	8.6	217.1
M	7.5	218.2
"	6.2	219.5
Col	4.8	220.9
N	3.6	222.1

2725

225.72 ELM ST.
2165-11132 ST

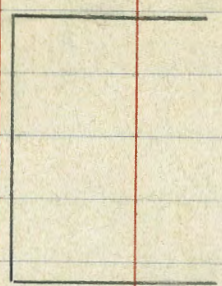
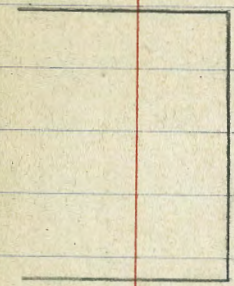
171

N	1.5	224.2
erb	2.1	222.6
1/4	2.5	221.2
M	5.9	219.8
1/8	7.2	218.5
erb	8.5	217.2
S	10.3	215.9
+15	12.4	213.3

8/19/13
Sugale
Shaw
Witzoutier

Broad way

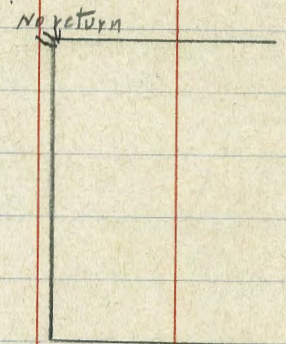
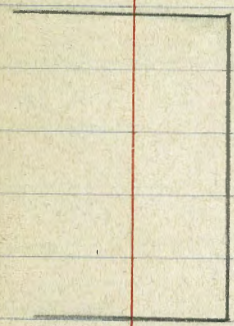
ST



ST

Lewis

ST



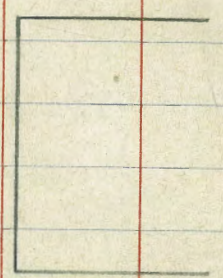
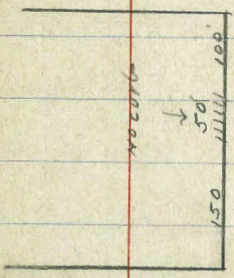
No return

Curb all in except where noted.

Location of points where there is no curb

Getti

ST



Eagle

Washington

ST



2 1/2 days
 35 1/2 days
 13 1/2 days
 X loc of Seamer Place (60)
 Center length
 N 45° 19' E
 19
 19

0.34 345.20 344.86
 1.34 333.44 1312 332.08
 0.13 320.85 1270 320.72
 0.20 308.22 1180 308.02
 1275 320.72 20 308.02
 1301 333.77 -003 320.73
 1303 172 332.08
 22 344.86

Ben Sp
 SW Meads
 Cleveland

Hub SE
 New Jersey
 Smith

Walk
 NE Seamer
 Arch
 1st State
 Seamer

1/3 m

(686)

8

C

W

W

b

E

294 305.22 302.34

S. Lin Arch St

S. L. Arch - W y 20
 31.5 yards - E

29 302.4

26 2.7

25 2.8

24 3.2

22 3.1

25 2.8

27 2.6

27 2.6

27 2.6

33 2.0

26 2.7

33 2.0

33 2.0

38 1.5

3m walk
 Seamer Arch

302.34

294

305.22

30522

50 S of W

E 46 300.7

48 300.5

45 300.8

b 41 301.2

44 300.9

43 1.0

W 42 1.1

100 S of Arch

W 53 300.0

54 399.9

59 99.4

b 52 300.1

55 99.8

59 99.4

E 53 300.0

PLOTTED

30532

150 S of Arch st

E 58 99.5

57 99.6

61 99.2

b 59 99.4

63 99.0

64 98.9

W 69 98.4

200 S of Arch

W 76 97.7

68 98.5

69 98.4

b 63 99.0

65 99.8

65 98.8

E 67 98.6

200 S of Arch 580 98.0

20

30522
53
299.2
1.1
301.2

v Ba

30155
301.6

250 S of Arch

E	31	985
	31	985
	32	984
b	29	987
	35	981
	33	983
W	38	978

300 S of Arch

W	37	979
	37	979
	36	980
b	33	983
	37	979
	37	979
E	36	980

PLOTTED

30155
301.6

350 S of Arch

E	49	977
	46	970
	43	973
b	38	978
	40	974
	44	972
W	42	974

400 S of Arch

W	41	975
	41	975
	42	974
b	40	974
	44	972
	41	975
E	44	972

Scan 21
21

450 S of Arch

E 38 297.8

35 98.1

40 97.4

6 38 97.7

40 97.4

34 98.2

W 35 98.1

470.86 S = End of Seam

W 41 97.5

40 97.4

45 99.1

1 43 97.3

43 97.3

41 97.5

E 420 97.4

PLOTTED

<i>2/28/31</i>	<i>Stoughton</i>	<i>X Dec</i>	<i>f Proctor Place (60')</i>	<i>Enter</i>	<i>length</i>		<i>30633</i>	<i>Proctor Pl</i>	<i>2323</i>
							50'		
		041	31456	31415			50' 59 00		
(12324)	W of		New Jersey St	(See P 25)		W		44	301.9
	W		66	308.0				41	302.2
			72	307.4				37	302.6
			75	307.1		L		38	303.1
	L		78	306.8				32	303.1
			80	306.6				32	303.1
			88	305.8		E		32	303.1
	E		95	305.1			100	S of	New Jersey
			W of New Jersey St - E of 107.15 S			E		47	302.1
	E		95	305.1				41	302.2
			95	305.9				41	302.2
			102	304.4		L		40	302.3
	L		101	304.5				44	301.9
			108	303.8				44	301.7
			110	303.6		W		50	301.3
	W		112	303.4					
	TP	242	30633	1065	30391				

PLOTTED

214.15
51.42
10.65
302.54
206.33

30633

	150	S of	New Jersey	
W			50	301.9
			49	301.4
			52	301.1
b			46	301.7
			48	301.5
			49	301.4
E			49	301.4
	200	S of	New Jersey	
E			51	301.2
			50	301.3
			50	301.3
b			47	301.6
			55	300.8
			55	300.8
W			58	300.5

PLOTTED

30633

Pmctr
2424

	150	S of	New Jersey	
W			64	299.9
			62	300.1
			55	300.8
b			54	300.9
			55	300.8
			53	300.1
E			52	301.1
	200	S of	New Jersey	
E			51	300.7
			51	300.7
			59	300.4
b			58	300.5
			64	299.9
			65	99.8
W			66	99.7
TP	581		671	299.6

316.23
5.77
299.6
3.81
303.4

30343

351

S of New Jersey

W

42 999.1

41 998

39 994

b

34 300.0

35 999

36 998

E

34 300.0

400 S of N.J.

E

37 997

39 995

41 999

b

36 998

40 994

47 98.7

W

49 98.5

PLOTTED

30342

450

S of New Jersey

W

39 999.5

38 994

40 994

b

34 300.0

37 997

34 300.0

E

36 998

482, 35' S = End of St

E

37 997

36 998

38 994

b

37 997

40 994

39 994

W

410 993

584 30693 238 20105

840 31436 097 20296

020 31416^{15V}Proctor
28
25

30343

238

301.05

584

306.93

02

303.96

8.90

314.36

020

314.16

on Hnd

end

bhd p 22

X sec of New Jersey St (60')

Made to 168m's

314.4

Bm P19

0.20

314.35

314.15

(63.7) S of Made (Legend)

E 0.2 314.2

2.0 12.4

2.0 12.4

b 2.2 12.3

3.1 11.3

4.1 10.3

W 4.6 9.8

(60) S of made on E }
20 S on W side

W 4.5 9.9

4.2 10.3

3.4 11.0

b 2.7 11.7

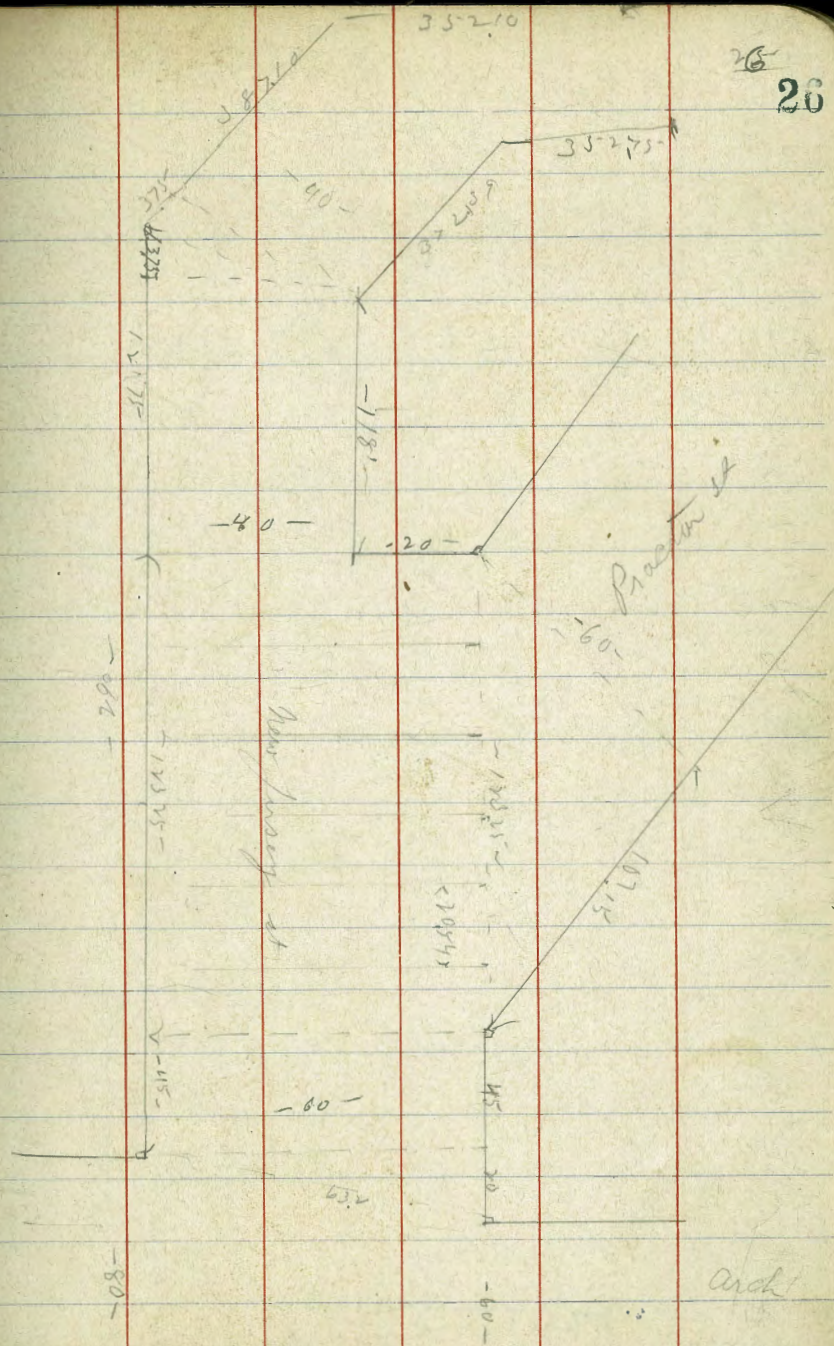
2.3 12.1

2.1 12.3

E 0.2 14.2

PLOTTED

26
26



314.4

45° 5 on E → Proctor S on W
65° 5 on W

E	27	11.7
	34	11.0
	46	9.8
b	45	9.9
	54	9.0
	60	8.4
W	62	8.3
	N Lab of Proctor	
W	71	7.1
	66	7.8
	60	8.4
b	54	9.0
	58	8.4
	40	10.4
E	34	11.0

PLOTTED

314.35
314.4

272.1

N 1/4 of Proctor

E	40	310.4
	46	9.8
	68	7.6
b	64	8.0
	64	8.0
	71	7.3
W	77	6.7
	Center of Proctor	
W	80	6.4
	75	6.9
	77	6.7
	78	6.6
	75	6.9
	74	7.0
	58	8.6
E	47	9.7

31435

S 1/4 f Proctor

E	63	308.1
	75	4.9
	80	4.4
b	83	4.1
	80	4.4
	81	4.3
W	84	4.0

S 1/4 f Proctor

W	87	4.7
	88	5.4
	88	5.6
+v	81	4.3
b	94	5.0
	92	5.2
	85	5.9
+v	70	7.4
E	64	8.0

PLOTTED

31435

25
28

S 2 f Proctor = 168.5 sec Proctor - E

E	76	306.8
+v	79	304.5
	103	304.1
	108	303.4
b	104	4.0
+v	93	5.1
	93	5.1
	91	5.3
W	92	5.2

New Jersey S 1/4 40' wide sec Proctor

(40') Same line as above

W	93	305.1
+v	93	5.1
10' E	103	4.1
20 b	104	3.6
30	103	3.6
34 (+v)	79	4.5
E	76	4.8

50' S of Proctor

E	100	4.4
+v	104	4.0
10 W	140	300.4
20	143	300.1
30	117	302.7
+v	117	303.2
4/2	113	303.1

31435

TP	080	30385	1130	30305
	100	S of	Proctor	
W			30	900.9
10 E			36	900.3
7.5			22	996.7
20			8.0	95.9
25			9.0	94.9
30			9.0	94.9
E-L			54	98.5
	118	S = angle on	W-L	
E			10.3	93.6
15 W			11.2	93.7
L			10.	93.9
30 W			5.0	98.9
W			4.0	99.9
	118 on	W } = angle on		
	21.75	W-E		
W			4.0	99.9
10 E			5.2	98.7
L			10.2	93.7
30 E			11.5	92.4
E			10.5	93.4

PLOTTED

30385

New Jersey
29 29118' on W = angle on W
375' S of angle on E

E			11.0	992.9
10 W			11.8	92.1
L			10.2	92.6
30 W			5.4	98.5
W			4.0	99.9
	50	S of	00	
W			6.4	92.5
10 E			11.5	92.4
15 W-E			12	91.9
TP	272	29351	1296	29187
20 E-L			5.0	88.6
30 E			8.5	85.1
E-L			7.8	85.8
	100	S of	angle	
E-L			15.6	78.0
10 W			14.6	79.0
L			7.0	84.4
30 W			3.2	90.4
W			0.0	93.6

31435
1130
30305
80
30385
1296
29087
272
29351

Rock

29361

150 S of angle

W		0.0	2936
15' E		36	90.0
b		75	84.1
30 E		132	80.4
E		205	73.1

TP 033 28333 10.64 28330 *Reck*

200' S of angle

E		173	64.0
10' W		162	67.1
b		11.0	72.3
30 W		65	78.8
W		14	81.9

250 S of angle

W		70	76.3
10' E		133	70.0
TP	228	22311	1250 22080
b		80	65.1
30 E		130	60.1
E		130	60.1

PLOTTED

2734

300 S of angle

E		1800	255.1
10' W		1800	55.1
b		107	62.4
30 W		56	67.5
W		0.2	72.9

350 S of angle

W		30	70.1
10' E		84	64.1
b		14.0	59.1
TP	697	2474	1267 26044
30 E		1600	51.4
W		188	48.6 E

3724 S = 2nd angle or W

W		250	42.4 E
10' W		14.1	48.3
b		92	58.2
30 W		38	63.4
E angle		0.0	67.4 W

330

29261

1600

28300

33

28333

1250

2508

22311

1267

250.44

192

26044

26723

2474

38710

3724

S of angle a E } 2nd angle

S of angle in W

0.0 267.4

W

100 S of

2nd angle

26723

1322

2708

141

251.56

1322

242.44

117

242.51

914

234.51

235.62

70 E

38 63.6

W

74 248.3

b

94 58.0

10 E

126 43.1

30 W

140 53.4

74

117

243.8

132 242.62

52

21.6 45.8

242.72

E

22.2 45.2

b

45 39.3

11'

S of angle a E } 2nd angle

S of angle in W

238 43.6

30 E

132 30.6

E

E

152 28.6

10 W

221 45.3

150 S of

2nd angle

12 W

138 53.6

E

203 23.5

b

92 58.3

30 W

38 63.6

10 W

202 23.6

W

0.0 67.4

b

148 29.0

52

S of 2nd angle

30 W

88 35.0

W

27 59.7

W

42 39.6

70

141

55.7

253.74

1308 25433

200

S of

2nd angle

10 E

23 53.4

W

74 34.4

b

66 49.1

70

111

55.8

238.80

910 234.8

21 E

151 40.6

10 E

70 228.8

E

19.9 35.8

b

124 23.4

30 E

189 16.9

E

199 15.9

PLOTTED

25274

245.7

2nd angle

3631

23580

235.8

250

57

2nd angle

W

20

62

229.5

10 E

127

23.6

TP

024

223.5
22349

12.57

22328

6

36

19.9

30 E

12.8

10.7

E

13.0

10.5

TP

113

212.05
21208

12.55

21092

300

57

2nd angle

E

9.0

203.1

10 W

72

204.9

6

63

205.8

30 W

77

204.4

W

79

204.3

320

S of angle

15.6

196.5

34710

S of angle

3527

S of angle

N & Buckhorn

W

169

195.2

10 E

168

95.3

6

170

95.1

30 E

166

95.5

E

14.8

97.3

PLOTTED

Mud jarney

32

32

21205

1202

22352

017

211.91

22352

11.26

22348

024

22369

1301

24835

010

23585

1200

24824

001

24824

1210

27224

050

26014

11.86

24810

000

27224

1310

29700

20

26390

1024

20683

051

28649

930

21536

057

30626

check

1.43

21413

22352

22348

22369

23585

24824

24824

26014

27224

26390

28649

27224

26390

28649

21413

21413

24826

24826

26026

26014

27224

27224

28410

28410

28390

29700

29700

29649

29649

30626

30626

31506

31506

Large X Sec Marietta St 60'
 Total Entire Length

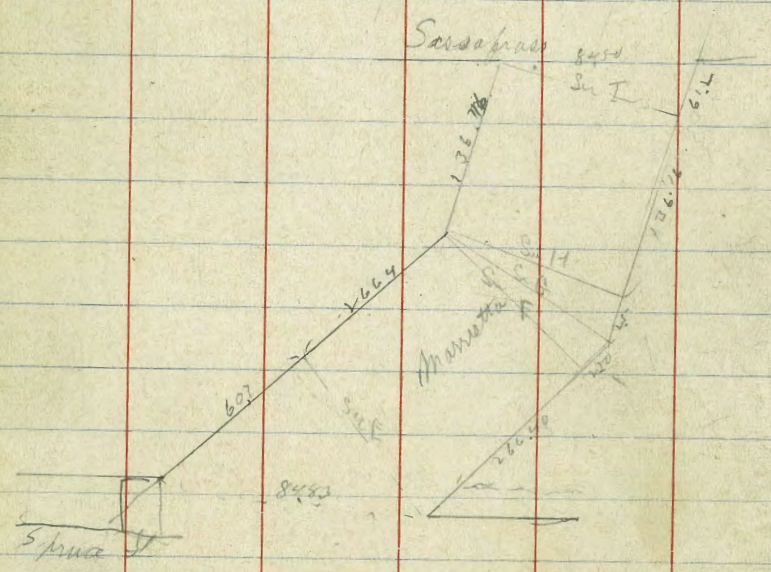
1245	98.87		8642	Bar Sama Linda
1267	11126	018	9869	
603	11732	007	11129	
157	10638	1257	10481	
810	10720	726	9912	H. S. W Marietta

8430 N 2 of Spina St

W	81	99.1
	89	98.3
	82	99.0
	84	98.8
	85	98.7
	90	98.7
	72	100.0

N 2 Spina on E }
 60.7 m on W } = 100

E	72	100.0
	81	99.1
	70	100.2
	66	100.5
	59	101.3
	56	101.6
	42	102.0
W	27	104.5



PLOTTED

10722

	50	n	Spencer	
W			12	106.0
			23	104.9
W			27	103.5
			31	103.4
b			43	102.9
			48	102.4
			44	102.9
E			36	103.4
TP	1276	118.1	1.70	105.30
	100	118.08		
		W	Spencer	
E			108	107.3
			115	104.4
			115	104.4
b			117	106.4
			118	106.3
48			115	104.4
			104	107.7
W			90	109.1

PLOTTED

11804

118.1

34
34

	150	n	Spencer	
W			78	110.3
			85	109.4
W			92	108.9
			84	109.7
b			78	110.3
			78	110.3
			78	110.3
E			67	111.4
	200	n	Spencer	
E			26	115.4
			32	114.9
			40	114.1
			40	114.1
b			38	114.3
			50	113.1
			55	112.4
W			55	112.6

11804
118.1

	250	n f	Spruce	
w			39	114.7
cb			31	15.0
14			21	14.0
0			14	16.7
w			11	17.0
+8			12	16.9
cb			7.02	118.3
E TP	369	121.49	0.28	117.80
E		121.49		
			2.3	118.2
	266.4'	n = angle w	w	
E			15	20.0
			3.0	18.5
+2			4.5	17.0
			4.5	17.0
b			4.5	17.0
			5.0	16.5
			6.1	15.4
w			6.3	15.2

26890 n n = E } = angle Same as above
26640 n n = w }

00 n n = angle w } = 00 Same as above
25 n n = E }

PLOTTED

12149

35
35

	50	n f	angle	
w			5.3	116.7
			5.5	14.0
			5.4	14.1
b			4.9	16.6
			5.5	16.0
			5.0	14.5
E			4.5	17.0
	100	n f	angle	
E			4.4	17.1
			4.8	14.7
			4.8	14.7
b			4.3	17.3
			4.9	16.6
+8			5.0	16.5
			3.4	18.1
w			3.1	18.4

12149

13612 n = Sassaparilla St on W

W	3.0	118.5
	3.0	18.5
TV	4.5	17.0
	4.2	17.3
b	3.9	17.6
	4.1	17.4
	4.1	17.4
E	3.5	18.0

(18451) 13612ⁿ on W
1969 n on E = S of Sassaparilla St

E	2.6	18.9
	2.9	18.6
	3.4	18.1
b	3.4	18.1
	3.8	17.7
	4.4	17.1
W	3.2	18.3

PLOTTED

36
36

	12149		
0.7	10976	1200	18949
		1067	9912
			13m Morrill
6.48	114.18	2.06	10770 ^B
-21	10142	1275	10143
2.82	9319	1107	9035
		672	9647 ✓ India

PLOTTED

X Sec of Sublett St (50)

	1122	27288		26666	mm 2m Burn Street	n		25	263.3
	685	27757	226	27072				40	41.8
	00	245.8 265.8	1174	26583				70	58.8
(87)				212.51' mm n 282.75' - S		b		88	57.0
8			1575	250.1				90	56.8
			130	52.8				93	52.0
			142 125	53.3		s		124	53.4
6			(22) (9.9)	55.9			200' n S		
			6.3	59.5		s		114	54.4
			5.2	40.6				92	56.6
2			25	43.3				85	57.6
	36'					b		80	57.8
S			132	52.4				79	57.9
70' n of S			104	55.4				39	61.9
25' n of S = P2			72	58.6		n		22	43.6
						TP	224	265.21	286
									262.97

26583
245.83

37 37

Harvesty = P2 in n

PLOTTED

26521
26521

150 w of Harasch

n	23	242.9
	50	40.2
	53	59.9
b	54	59.8
	70	58.2
	84	56.8
s	103	54.9

100 w of Harasch

s	91	56.1
	72	58.0
	53	59.9
b	49	40.3
	47	40.5
	47	40.5
n	30	42.2

PLOTTED

26521
26521

3838

75' w of Harasch

n	32	262.0
	47	40.5
	48	40.4
	49	40.3
	50	40.2
	52	40.0
s	80	57.2

50 w of Harasch

s	79	57.3
	66	58.6
	52	59.6
b	51	60.1
	49	40.3
	43	40.9
n	37	41.5

172

25653

1040 254.21

25653
25653

25 W of Anasity

W		5.2	251.3
		6.8	49.7
		7.7	48.8
b		7.2	49.3
		6.0	50.5
		6.0	50.5
S		5.8	50.7

W of Anasity (20)

TP	020	244.48	12.25	244.28
S		7.5	37.0	
		6.3	38.2	
		7.0	37.5	
b		8.1	34.4	
		8.2	34.3	
		6.5	38.0	

PLOTTED

n		3.10	41.4	
TP	062	233.18	11.22	232.52
TP	20	222.34	11.04	222.14

Intersect in B 891 P 40

22234

Sublett

3939

E of Anasity

n		0.2	222.1
		4.4	17.9
		7.2	15.1
b		9.4	13.9
		10.1	12.2
		10.4	11.9
S		9.5	12.8

25' E of Anasity

S		2.5	19.8	P. on Chngl
		6.5	15.8	
		9.4	12.9	
e		12.0	10.3	
TP	00	209.66	12.68	209.66
		3.0	204.7	
		5.9	203.8	
n		8.2	201.5	

PLOTTED

20946

636' E = Pd on n

S	176	192.1
	140	97.7
	65	203.1
b	47	205.0
	39	205.8
	25	207.3
n	0.0	9.7

640' 636' end
99.4' S = Pd end

n	0.0	209.7
	34	204.3
	52	204.5
b	67	203.0
	108	198.9
	140	95.7
S	215	88.3

PLOTTED

Sublett

40
40

X Sect. Columbia from Karasity
to Clark + from Henry to Wetherby

	North line Karasity		
A			
W line	H.I. 99.36	4.77	94.59
		3.8	95.4
		2.7	96.7
C		2.0	97.4
		0.8	98.6
		0.5	98.9
E line		0.2	99.2
	25' no.		
E line		4.1	95.3
		5.2	94.2
		5.8	93.4
C		6.2	93.2
		6.5	92.9
		7.2	92.2
W line		7.8	91.4

PLOTTED

To McKee + from Pringle
10' sidewalk 7 1/2' (H) Aug. 29/13

H.I.
99.36
Bunker

	35' no.		
W line		9.2	90.2
		8.3	91.1
		7.9	91.6
C		7.5	91.9
		7.1	92.3
		6.5	92.9
E line		5.9	93.5
	50' no.		
E line		8.6	90.8
		9.8	89.6
		10.2	89.2
C		10.8	88.5
		11.6	87.8
		12.3	87.1
W line		13.0	86.4

J.P. 109 ^{H.I.} 87.56 12.89 86.47

75' no.

White

8.7 78.9

9.0 78.4

8.8 78.8

C

8.3 79.3

7.9 79.7

7.3 80.3

Elvis

7.1 80.5

88' no.

Elvis

10.5 77.1

11.7 75.9

12.2 75.4

C

12.3 75.3

11.8 75.8

11.2 76.4

White

10.7 76.9

87.4

42
12

100' no.

White

12.2 75.4

15.4 72.2

15.0 72.4

C

13.5 74.1

13.8 73.8

13.9 73.7

Elvis

14.0 73.6

110' no.

Elvis

10.9 74.7

11.5 75.1

12.2 75.4

C

12.4 75.2

13.4 74.3

16.3 71.3

White

12.7 74.9

PLOTTED

876

118' no.

White	16.7	71.9
	14.4	73.2
	12.3	75.3
c	12.3	75.3
	11.6	74.0
	11.5	74.1
Elms	11.0	74.6

125' no.

Elms	10.5	77.1
	11.2	74.4
	11.5	74.1
c	12.2	75.4
	12.4	75.2
	13.0	74.6
White	14.6	73.0

PLOTTED

87,56

43

150' no.

White	13.5	74.1
	12.2	75.4
	11.2	74.4
c	10.1	77.5
	9.3	78.3
	8.5	79.1
Elms	7.3	80.3

175' no.

Elms	1.0	84.6
	3.0	84.6
	3.9	83.7
c	5.2	82.4
	6.3	81.3
	7.1	80.5
White	7.8	79.8

				44 44					
				H.I.					
J.P.	12.10	99.45	0.21	87.35	J.P.	12.71	123.51	0.59	110.80
	200' no.					250' no.			
White			11.9	87.6	E line			8.5	115.0
			11.1	88.4				8.9	14.6
			10.3	89.2				10.1	13.4
C			9.0	90.5	C			10.9	12.6
			7.5	92.0				11.5	12.0
			6.4	93.1				12.2	11.3
E line			4.7	94.8	White			13.0	10.5
	225' no.					275' no.			
wcb.			1.3	98.2	White			2.6	20.9
White			3.1	96.4				2.2	21.3
J.P.	12.85	H.I. 111.39	0.91	98.54				1.6	21.9
w 1/4			11.2	100.2	C			1.4	22.1
C			9.7	101.7				1.0	22.5
			8.4	103.0				0.5	23.0
			7.2	104.2	J.P.	10.46	H.I. 133.86	0.11	123.40
E line			6.8	104.6	E line			10.8	23.1

PLOTTED

138.86

300 no. (20, line M^c/Ked)

E line

2.1 131.8

3.1 30.8

4.1 29.8

C

4.8 29.1

4.6 29.3

5.2 28.7

W line

5.84 128.02

50 cb.

W line

4.7 29.2

3.4 30.5

2.2 31.7

C

1.1 32.8

0.7 33.9

0.1 33.8

J.P.
E line

4.91

138.65

0.12 133.74

4.4

138.65

20 1/4

E line

3.3 135.4

4.3 34.4

5.1 33.4

C

5.8 32.9

6.6 32.1

7.7 31.1

W line

9.2 29.5

Center

W line

9.1 29.6

7.8 30.9

6.4 32.3

C

5.9 32.8

5.2 33.5

4.5 34.2

E line

3.5 35.7

45
45

PLOTTED

13845

no. 14

E line	2.5	134.2
	3.8	34.9
	4.5	34.2
C	5.6	33.1
	6.3	32.4
	7.5	31.2
White	8.5	30.2

no. 16

White	8.3	30.4
	7.1	31.6
	5.9	32.8
C	4.9	33.8
	3.8	34.9
	2.5	36.2
E line	1.1	37.6

PLOTTED

13865

North line M^e Kee.

E line	0.9	137.8
	2.5	34.2
	3.8	34.9
C	4.7	34.0
	5.9	32.8
	6.9	31.8
White	8.2	30.5

46

46

		H.I.				137.5		47
J.P.	8.36	137.54	9.47	129.18		No. 44		
	North line triangle				White		9.2	128.3
W. line		8.36		129.18			7.7	29.8
			7.1	130.4			6.4	31.1
			5.4	32.1	C		5.2	32.3
C			4.2	33.3			4.0	33.5
			2.8	34.7			2.9	34.4
			1.6	35.9	E line		1.7	35.8
E line			0.3	37.2		Center		
	So. Cb.				E line		2.8	34.7
E line			0.7	34.8			4.2	33.3
			2.1	35.4			5.3	32.2
			3.5	34.0	C		6.2	31.3
C			4.9	32.4			7.6	29.9
			6.4	31.1			8.5	29.0
			7.7	29.8	White		9.7	27.8
White			9.0	28.5				

PLOTTED

137.5

no 24

White	10.2	127.3
	8.6	28.9
	7.6	29.9
c	6.7	30.8
	5.6	31.9
	4.5	33.0
E line	2.9	34.6

no 26

E line	3.3	34.2
	4.9	32.5
	6.5	31.0
c	7.5	30.0
	8.7	28.8
	9.6	27.9
White	11.0	26.5

PLOTTED

137.5

48

North line Pringle

White	11.6	125.9
	10.2	127.3
	9.1	128.4
c	7.7	129.8
	6.3	131.2
	5.4	132.1
E line	4.0	133.5

25' north

E line	6.5	131.0
	7.5	130.0
	8.7	128.8
c	9.7	127.8
	11.0	126.5
	12.0	125.5
White	13.1	124.4

137,54

50' no.

White			15.2	122.3
			13.9	23.6
			13.3	24.2
C			12.1	25.4
			11.3	26.2
			9.8	27.7
Elmo			8.8	28.7
J.P.	6.14	133.09	10.59	126.95
		75' no.		
Elmo			4.7	128.4
			6.6	26.6
			7.9	25.2
C			8.9	24.2
			10.2	22.9
			11.2	21.9
White			12.5	20.4

PLOTTED

13309

Sept. 2/13
Schulds
Atley
Bunker

100' no.

White			11.7	121.4
			9.7	23.4
			8.6	24.5
C			7.5	25.4
			6.3	26.8
			5.1	28.0
Elmo			2.4	30.7
		125' no.		
Elmo			2.0	31.1
			4.1	29.0
			5.1	28.0
C			6.3	26.8
			7.1	26.0
			8.1	25.0
White			9.9	23.2

133/

150' no.

White	8.8	1943
	7.5	256
	6.2	249
C	5.1	280
	4.2	289
	3.2	299
E line	2.0	31.1

175' no.

E line	1.6	315
	2.4	307
	3.4	297
C	4.2	289
	5.4	277
	6.9	242
White	8.8	243

PLOTTED

133/

50

200' no.

White	8.8	124.3
	7.0	24.1
	5.6	27.5
C	4.5	28.4
	3.6	29.5
	2.4	30.7
E line	1.3	31.8

225' no.

E line	3.0	30.1
	4.0	29.1
	5.0	28.1
C	6.2	24.9
	7.5	266
	8.7	244
White	10.4	22.7

133.09

250' no.

12046

51

300' no. (So. line of Rank)

White

16.0 117.1

C

13.4 107.1

14.2 18.9

12.9 107.4

12.9 20.2

11.9 108.4

C

11.7 21.4

E line

H.I.

10.1 110.4

10.5 22.6

J.P.

0.20 107.53 13.13 107.33

9.4 23.7

White

3.33 104.2

E line

8.5 24.5

W. cb.

1.6 105.9

J.P.

0.40 ^{H.I.} 120 46

13.03 120.06

W 1/4

1.0 106.5

275' no.

South cb.

E line

2.2 118.3

E line

- 0.4 107.9

3.1 17.4

1.2 106.3

4.7 15.8

2.0 105.5

C

5.8 14.7

C

2.9 104.5

6.7 13.8

3.6 103.9

7.9 12.4

4.0 103.5

White

9.3 11.2

White

5.4 102.1

PLOTTED

107.5

20 1/4

White	7.6	99.9
	6.4	101.1
	5.7	101.8
C	5.0	102.5
	4.3	103.2
	3.5	104.0
Elive	2.2	105.3
	Center	
Elive	5.4	102.1
	6.4	101.1
	6.7	100.8
C	7.0	100.5
	8.2	99.3
	9.0	98.5
White	9.9	97.4

PLOTTED

107.53

52

20 1/4

White	12.0	95.5
	10.6	96.9
	9.5	98.0
C	8.9	98.4
	8.4	99.1
	7.9	99.4
Elive	7.3	100.2
	No. 6.	
Elive	9.3	98.2
	9.5	98.0
	10.5	97.0
	11.4	94.1
	11.9	95.4
	12.9	94.4
White	14.1	93.4

J.P.	0.97	^{H.I.} 95.38	13.12	94.41		25' no.		
	North line Roark.				white		9.3	841
White			3.45	91.93			9.7	857
			2.8	92.4			10.5	849
			2.1	93.3	C		11.1	843
C			1.2	94.2			11.0	844
			0.3	95.1			9.7	85.7
			-0.4	95.8	E line		8.6	84.8
E line			0.1	95.3		29' no.		
		14' no.			E line		10.8	84.4
E line			3.8	91.6			11.2	84.2
			3.9	91.5			11.8	83.4
			4.0	91.4	C		11.7	83.7
C			4.3	91.1			10.8	84.6
			4.6	90.8			9.8	85.4
			5.8	89.6	white		9.7	85.7
White			6.4	89.0				

PLOTTED

95.38

50' no.

White

14.1 81.3

12.1 83.3

10.9 84.5

C

9.8 85.6

9.3 86.1

9.4 86.0

Eline

8.2 87.2

75' no.

Eline

4.3 91.1

4.4 91.0

4.1 91.3

C

4.1 91.3

4.9 90.5

5.7 89.7

White

7.1 88.3

J.P.

12.85

K.F.

108.17

0.06

95.32

100' no.

White

12.1 96.1

11.3 94.9

10.8 97.4

C

10.2 98.0

10.3 97.9

9.7 98.5

Eline

8.9 99.3

125' no.

Eline

3.3 104.9

3.3 104.9

3.5 104.7

C

3.1 105.1

3.5 104.7

4.8 103.4

White

5.0 103.2

PLOTTED

J.P. 12.92 ^{H.I.} 121.07 0.02 108.15

150' no.

White 9.7 111.4

9.5 111.6

9.4 111.7

C 9.4 111.7

9.7 111.4

10.4 110.7

E line 10.5 110.6

175' no.

E line 3.5 117.6

3.1 118.0

2.7 118.4

C 2.1 119.0

1.8 119.3

1.8 119.3

White 1.1 120.0

J.P. 12.75 ^{H.I.} 133.51 0.31 126.76

200' no.

White 8.6 124.9

8.6 124.9

8.4 125.1

C 8.3 125.2

8.6 124.9

8.6 124.9

E line 8.4 125.1

225' no.

E line 1.3 132.7

0.7 132.8

0.5 133.0

C 0.3 133.3

0.7 132.8

0.6 132.9

White 0.3 133.2

PLOTTED

J.P.	12.86	H.I. 146.22	0.15	133.36		300' no. (20' line Clark)		
		250' no.			white		10.4	148.4
white			6.3	139.9			9.0	49.8
			5.6	40.6			7.9	50.9
			5.8	40.4	C		7.1	51.7
C			5.9	40.3			6.2	52.6
			6.0	40.2			5.0	53.8
			6.1	40.1	E line		3.78	155.03
E line			6.5	39.7		20' cb		
J.P.	12.84	H.I. 158.81	0.25	145.99	E line		2.9	55.9
		275' no.					3.9	54.9
E line			10.6	48.3			5.0	53.8
			10.7	48.1	C		5.4	53.4
			10.9	47.9			6.8	52.0
C			11.2	47.5			7.5	51.3
			12.2	46.6	white		9.0	49.8
			12.4	46.4				
white			14.2	44.4				

PLOTTED

158.81

No. 41.

White

8.5 150.3

6.7 52.1

5.8 53.0

c

5.3 53.5

3.9 54.9

3.3 55.5

E line

2.5 56.3

center

E line

2.0 56.8

3.0 55.8

3.7 54.1

c

4.4 54.4

5.5 53.3

6.2 52.5

White

7.9 50.9

158.8

No. 44.

57

White

7.6 151.2

6.1 52.7

5.0 53.8

c

4.1 54.7

3.4 55.4

2.6 56.3

E line

1.6 57.2

No. 46.

E line

0.8 58.0

1.9 56.9

2.9 55.9

c

3.7 55.1

4.9 53.9

5.8 53.0

White

7.6 51.2

PLOTTED

Columbia Pt

158.8

North line Clark

white

7.1 1577

5.6 533

4.2 546

C

3.3 555

2.2 566

1.4 574

E line

0.0 588

J.P.

12.56

167.59

155.03

J.P.

13.10

180.62

0.07

167.52

North line Henry

E line

2.5 1781

4.0 766

4.4 762

C

5.0 756

5.6 750

6.5 741

white

7.7 729

Sept. 3/13

Childs
letter 58
Bunker

180.4

So. eb.

white

6.7 173.9

5.7 74.9

5.1 75.5

C

4.4 74.2

3.7 74.9

3.2 77.4

E line

2.0 78.6

So 1/4

E line

1.6 79.0

2.4 78.2

3.2 77.4

C

3.9 76.7

4.4 76.2

5.1 75.5

white

6.4 74.2

PLOTTED

Columbia St

180.4

Center of Henry

White

5.8 174.8

4.7 75.9

4.2 74.4

C

3.3 77.3

2.8 78.8

2.1 78.5

E line

1.2 79.4

no. 14

E line

0.7 79.9

1.7 78.9

2.3 78.3

C

3.1 77.6

3.9 74.8

4.4 74.7

White

5.3 75.3

PLOTTED

180.2

59

no. 16

White

4.8 175.8

3.9 74.7

3.5 77.1

C

2.7 77.9

1.8 78.8

1.2 79.4

E line

0.3 80.3

North line Henry

E line

0.2 180.4

0.7 79.9

1.2 79.4

C

1.6 79.0

2.4 78.2

3.0 77.5

White

3.73 176.89

180,62 Columbus St

25' no.

white		3.0	177.6
		1.8	78.8
		1.4	79.2
c		0.7	79.9
E 1/4		0.3	80.3
J.P.	12.37	H.F. 192.85	0.14 190.48
E ob		12.0	80.9
E line		10.9	82.0
	50' no.		
E line		9.2	80.7
		10.0	83.9
		10.9	82.0
c		11.9	81.0
		12.9	80.0
		13.9	79.0
white		14.7	78.3

192.9

60

75' no.

white		13.3	179.4
		11.9	81.0
		11.2	81.7
c		10.4	82.5
		9.9	83.0
		9.1	83.8
E line		7.9	85.0
	100' no.		
E line		6.8	184.1
		8.0	184.9
		8.8	184.1
		9.6	183.3
		10.4	182.5
		11.3	181.6
		12.3	180.4
white			

PLOTTED

Columbia Pt

1929

125' no.

White

10.6 1823

9.3 1836

8.5 1844

c

8.0 1849

7.5 1854

6.6 1843

Elise

5.6 1873

150' no.

Elise

3.6 1893

4.7 1882

5.6 1873

c

6.3 1846

7.4 1855

8.3 1846

White

9.7 1832

PLOTTED

1929

61

175' no.

White

8.9 1840

7.4 1855

6.4 1865

c

5.2 1877

4.3 1884

3.4 1895

Elise

2.2 1907

200' no.

Elise

1.1 1918

2.4 1905

3.5 1894

c

5.0 1879

6.4 1845

8.2 1847

White

9.7 1832

1929

235' no.

White	12.1	180.8
	9.3	183.6
	7.4	185.5
C	5.9	187.0
	4.1	188.8
	2.7	190.3
E line	0.7	192.0

240' no.

E line	2.7	190.3
	5.2	187.7
	7.1	185.8
C	8.9	184.0
	10.6	182.3
	12.5	180.4
White	15.0	177.9

PLOTTED

192,85

62

250' no.

C	11.9	181.0
1/4	10.3	182.6
Comb	8.2	184.7
E line	5.7	187.2
J.P.	0.40	H.I. 180.47
White	6.8	173.7
Comb	3.4	177.1
w 1/4	1.5	179.0

275' no.

E line	5.3	175.2
Comb	9.7	170.8
1/4	13.2	167.3
J.P.	0.76	H.I. 168.27
C	3.0	165.3
1/4	5.0	163.3
Comb	7.2	161.1
White	9.4	158.9

168,27

300⁺ no. (Aonthe line ^{damada?} nearby)

E cb.			12.1	156.2
E line			8.8	59.6
J.P.	0.29	H.I. 155.80	12.76	155.51
W line			12.4	434
			9.9	459
			7.2	485
C			4.7	57.1
E 1/4			2.1	53.7
E		So cb.		
E line			1.2	546
			4.8	510
			6.8	490
C			9.9	459
W 1/4			12.1	437
		So 1/4.		
C			13.5	424
			11.5	443
			9.0	468
E line			5.9	49.9

PLOTTED

155,80

63

Center

E line			94	144.4
E cb.			12.8	143.0
J.P.	0.15	H.I. 142.95	13.00	142.80
So. cb.				
wcb.			1.7	41.3
w line			5.3	37.7
			So 1/4	
w line			8.2	34.8
			5.7	37.3
			3.0	40.0
			Center	
E 1/4			2.1	40.9
C			4.2	38.8
			6.9	34.1
			9.2	33.8
			11.5	31.1

14295

64

	no 1/4			5P	572 ^{H.S.} 138.76	12.91	130.04
white		14.0	139.0		no. cb		
		12.0	131.0	wcb		7.9	137.9
		9.9	33.1	white		9.0	24.8
C		8.0	35.0		North line Kearney		
		5.8	37.7	white		10.3	25.5
		3.0	40.0			9.1	24.7
E line		0.4	42.4	w 1/4		7.8	28.0
	no. cb.				20' no.		
E line		3.3	39.7	E line		6.5	30.3
		6.3	34.7			6.6	29.3
		8.6	34.4			8.4	27.4
C		10.9	32.1	C		9.8	24.0
w 1/4		12.6	30.4			11.1	24.7
	no. line Kearney					12.8	23.0
C		13.4	29.6	white		15.7	20.1
		11.7	31.5				
		10.0	33.0				
E line	PLOTTED	7.7	35.3				

135.8

25' no.

white

13.2 122.6

w.cb.

0.8 135.0

14.1 21.7

2.4 33.4

11.6 24.2

C

3.4 32.4

C

10.6 25.2

4.1 31.7

8.7 27.1

5.9 29.9

7.9 27.9

E line

7.1 28.7

E line

6.2 29.6

J.P.

13.00 ^{H.I.} 148.60 0.16 135.60

41' no.

white

11.84 34.8

E line

12.0 23.8

75' no.

11.1 24.7

E line

5.9 42.7

10.1 25.7

5.4 43.2

C

9.2 26.6

4.3 44.3

7.8 28.0

C

3.2 45.4

5.6 30.2

2.3 44.3

white

3.2 32.6

w.cb.

1.5 47.1

J.P.

12.87 ^{H.I.} 161.28 0.19 148.41

white

11.2 50.1

PLOTTED

135.76

65

50' no.

.161.28

100' no.

w cb.

0.5 140.8

3.0 58.3

C

5.4 55.9

6.1 55.2

6.7 54.6

E line

7.3 54.8

J.P.

12.90 ^{H.I.} 173.88

0.80 160.98

w line

10.2 43.7

125' no.

E line

6.2 47.7

5.3 48.4

4.7 49.2

C

4.3 49.5

3.0 70.9

w cb.

1.3 72.6

J.P.

12.77 ^{H.I.} 186.51

0.14 173.74

w line

11.9 74.4

PLOTTED

186.51

60

150' no.

w cb.

1.2 185.3

2.3 84.2

C

3.2 83.3

3.6 82.9

4.6 81.9

E line

6.0 80.5

J.P.

12.34 ^{H.I.} 198.63

0.22 186.29

w line

9.7 88.9

175' no.

E line

6.4 192.2

4.8 93.8

3.8 94.8

C

2.9 95.7

1.7 96.9

w cb.

3.0 95.6

J.P.

12.46 ^{H.I.} 210.59

0.50 198.13

w line

10.8 199.8

210.59

200' no.

white

3.8 204.8

4.2 204.8

5.0 205.4

c

5.5 205.0

5.3 205.3

4.9 205.7

Elio

6.0 204.5

J.P.

11.76 221.44

0.91 209.68

225' no.

Elio

11.0 10.4

10.8 10.6

10.7 10.7

c

10.4 11.0

10.0 11.4

10.0 11.4

white

10.0 11.4

221.4

250' no.

white

7.8 213.5

7.5 13.9

7.0 14.4

c

6.3 15.1

6.0 15.4

5.6 15.8

Elio

5.6 15.8

275' no.

Elio

2.6 18.8

3.4 18.0

3.9 17.5

c

4.4 17.0

5.3 16.1

6.0 15.4

white

6.9 14.5

PLOTTED

221.44

300' no. (south line middle)

W line	7.5	213.93	W line
	6.2	15.2	
	5.2	14.2	
C	4.1	17.3	C
	3.1	18.3	
	2.4	19.0	
E line	1.4	20.0	E line
	1.1	20.3	
	2.1	19.3	
	3.2	18.2	
C	4.3	17.1	C
	5.3	14.1	
	6.3	15.1	
W line	8.3	15.1	W line

PLOTTED

221.4

Sept. 4/13

L. Childs
C. L. Allen
B. B. Allen

20.14

W line	8.5	212.9	W line
	6.7	14.7	
	5.4	14.0	
C	4.6	14.8	C
	3.3	18.1	
	2.0	19.4	
E line	0.9	20.5	E line
	0.8	20.6	
	2.1	19.3	
	3.4	18.0	
C	4.7	14.7	C
	5.5	15.9	
	7.4	14.0	
W line	8.7	12.7	W line

center

2214

No. 14

White

9.1 212.3

7.5 13.9

6.3 15.1

C

4.7 16.7

3.7 17.7

2.4 19.0

E line

0.7 20.7

no. 6.

E line

1.2 20.2

2.7 18.7

3.7 17.7

C

5.1 14.3

6.4 15.0

7.7 13.7

White

9.3 12.1

PLOTTED

2214

69

North line Miller

White

9.6 211.8

8.1 13.3

6.8 14.3

C

5.5 15.9

3.7 17.7

3.0 18.4

E line

1.9 19.5

25' north

E line

2.7 18.7

4.6 14.8

5.5 15.9

C

7.1 14.3

8.4 13.0

9.8 11.5

White

10.6 10.8

22144

50' no.

white

12.3 209.1

11.2 10.2

10.0 11.4

C

8.9 13.5

7.7 13.7

6.4 15.0

E line

4.6 14.8

75' no.

E line

7.7 13.7

9.2 13.3

10.5 10.9

C

11.5 9.9

W 1/4

12.5 8.9

100' no.

E 1/4

13.0 8.4

12.1 9.3

E line

10.6 10.8

PLOTTED

70

JP

0.30 ⁴² 208.61 13.13 208.31

75' no.

web

0.6 208.0

white

1.5 7.1

100' no.

C

1.0 8.5

2.2 6.4

3.8 4.8

5.2 3.4

white

125' no.

white

7.7 200.9

6.5 202.1

5.5 203.1

4.6 204.0

3.5 205.1

2.3 206.3

0.7 207.9

E line

2084

150' no.

Eline	4.2	2044
	5.3	2033
	6.1	2025
c	6.9	2017
	7.7	2009
	8.4	2002
White	9.3	1993
	11.3	975
White	10.8	978
	10.0	984
c	9.5	991
	8.8	998
	7.9	2007
Eline	6.9	2017

PLOTTED

20861

71

200' no.

Eline	11.5	197.1
Ecb.	12.4	96.7
J.P.	0.51	196.88
	1.5	95.4
c	2.3	194.6
	2.9	94.0
	3.3	93.6
White	4.1	92.8
	8.3	88.6
	7.4	89.4
	6.5	90.4
c	6.0	90.9
	5.8	91.1
	5.6	91.3
Eline	5.3	91.6

196.88

250' no.

Elise		9.3	187.6
		9.7	87.3
		10.2	86.7
C		10.7	86.3
		10.9	86.0
		11.4	85.5
White		11.9	85.0
J.P.	1.03	^{H.I.} 184.96	12.95 183.93
		275' no.	
White		3.5	81.5
		3.2	81.8
		2.7	82.3
C		2.3	82.7
		1.8	83.2
		1.9	83.1
Elise		1.2	83.8

PLOTTED

184.96

72

300' no. (North line Baudouin)

Elise		5.1	179.9
		5.6	79.4
		6.0	79.0
C		6.3	78.7
		6.6	78.4
		6.5	78.5
White		6.7	78.3
		(North line Baudouin)	
Elise		10.28	174.68
		11.2	73.8
		11.5	73.5
		12.3	72.7
		12.4	72.6
		12.9	72.1
	0.78	^{H.P.} 173.05	12.69 172.27
White		1.68	71.4

173.05

25' no.

W line	3.0	148.1
	3.8	49.3
	3.1	70.0
C	2.4	70.7
	1.9	71.2
	0.8	72.3
E line	-0.4	-173.4

50' no.

E line	2.0	71.1
	3.8	49.3
	4.8	48.3
C	5.7	47.4
	6.2	44.9
	7.0	44.1
W line	7.8	45.3

PLOTTED

173.1

3

75' no.

W line	10.5	142.6
	9.2	43.9
	8.4	44.7
C	7.6	65.5
	7.0	44.1
	6.2	44.9
E line	5.8	47.3

100' no.

E line	12.8	40.3
	11.5	41.4
	10.5	42.4
C	9.9	43.2
	9.8	43.3
	10.8	42.3
W line	11.9	41.2

T.P. ^{H.I.} 0.07 160.48 12.64 160.41
125' no.

white

5.3 155.9

4.7 55.8

4.8 55.7

C

5.4 55.1

6.1 54.4

6.6 53.9

Eline

7.1 53.4

140 no.

Eline

10.3 50.9

9.8 50.7

9.9 50.6

C

10.1 50.4

9.7 50.8

8.9 51.6

white

8.1 52.4

PLOTTED

160.48

150' no.

white

11.6 148.9

12.2 48.3

W 1/4

12.7 47.8

JP.

452 ^{H.I.} 152.32 12.68 147.80

C

4.6 47.7

4.5 47.8

4.8 47.5

Eline

6.6 45.7

159' no.

Eline

11.1 41.2

8.9 43.4

8.0 44.3

C

7.6 44.7

7.5 44.8

7.0 45.3

white

6.8 46.5

1523

175' no.

White

10.2 142.1

11.8 40.5

14.5 37.8

C

10.9 41.4

8.9 43.4

9.2 43.1

Eline

7.1 45.3

181' no.

Eline

4.7 47.6

7.0 45.3

8.3 44.0

C

10.0 43.3

14.4 37.9

15.0 37.5

White

11.5 40.8

PLOTTED

1523

190' no.

White

16.0 134.3

12.2 40.1

10.7 41.5

C

9.4 42.9

8.3 44.0

5.5 46.8

Eline

3.7 48.6

200' no.

Eline

3.3 49.0

5.9 46.4

7.8 44.5

C

8.6 43.7

9.9 42.4

11.4 40.9

White

14.2 38.1

157.3

225' no.

White	13.9	138.4
	11.6	40.7
	8.5	43.8
C	6.9	45.4
	5.8	46.5
	4.4	47.9
Elvis	1.4	50.9

250 no.

Elvis	0.8	51.5
	3.5	48.8
	4.7	47.4
C	5.9	44.4
	7.3	45.0
	8.3	44.0
White	10.4	41.9

PLOTTED

152.32

Columbia

76

275' no.

White	10.8	141.5
	8.5	43.8
	6.8	45.5
C	6.4	45.9
	6.6	45.7
	5.5	44.8
Elvis	3.2	49.1

300' no (Ac. line Cuts)

Elvis	7.15	45.17
	8.8	43.5
	10.0	42.3
C	10.1	42.2
	10.4	41.9
	11.3	41.0
White	13.3	39.0
J.P.	12.54	139.78

PLOTTED

J.P. 13' hnd 2.25 142.03 3.42 138.61

at Cuts Loman's Elev. area

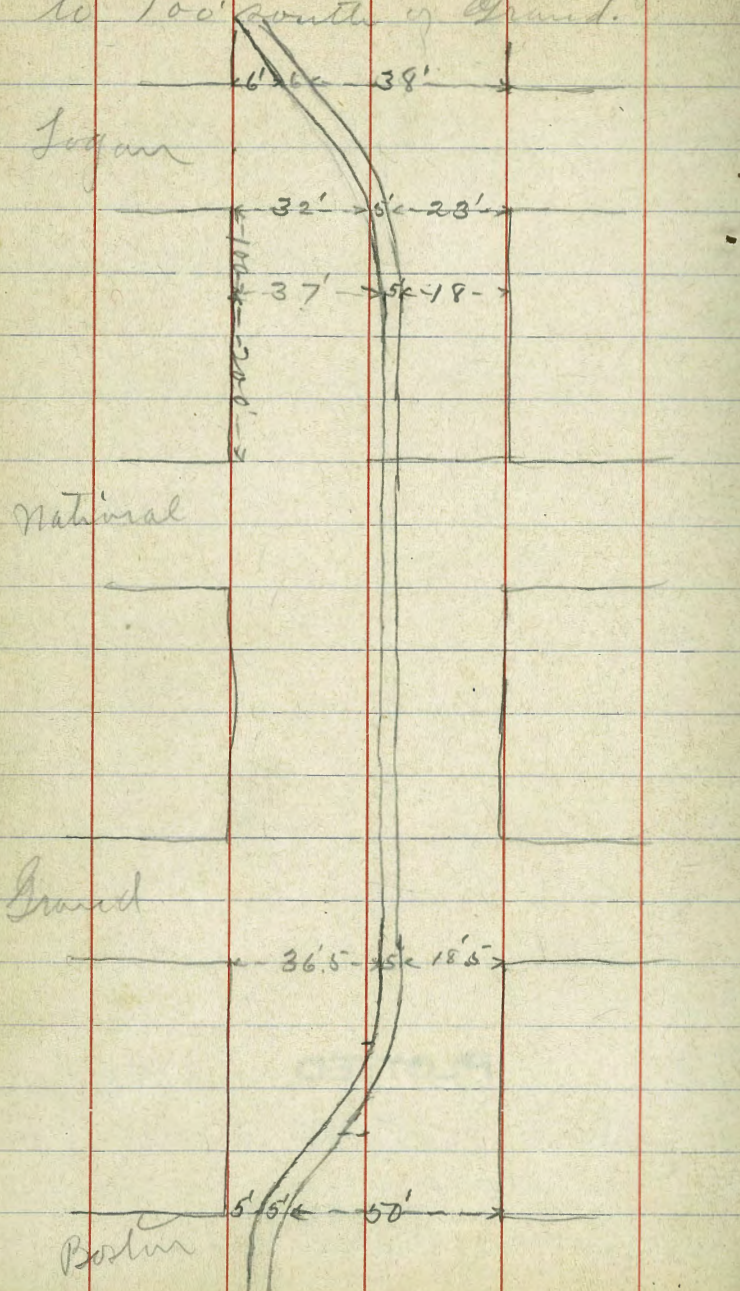
138.80 + he checked 0.11 high at

Layolla ave. see BOOK 903-P1"

Levels on 34th street from
to 100' south of Grand.

North line Logan

Sept. 2/13
Childs
Allen 77
Bunker



34th is 60' wide

		H.I.	Elev.			Aug. 30/13	Blind Allen Bunker	Elev.
J.P.	4.65	8.55	3.90			8.55		
North line Logans						100' 20,		
				White			5.5	3.0
E line		2.14	6.41	C			5.9	2.6
C		5.2	3.3	37'E	w rail		2.8	5.7
48' west E line		1.1	7.4	42'E	E rail		2.5	6.0
54' " w rail		1.6	6.9	E line			2.4	6.1
White		3.1	5.4			150' 20,		
South line Logans								
				E line			3.0	5.5
White		5.7	2.8	E rail			2.8	5.7
C		3.0	5.5	w rail			3.0	5.5
32' east w rail		2.0	6.5	C			5.2	3.3
37' " E rail		1.6	6.9	White			6.0	2.5
E line		3.7	4.8			200' 20.		
50' south Logans								
				White			6.1	2.4
E line		1.8	6.7	C			5.8	2.7
19.0 w E rail		2.0	6.5	w rail			3.3	5.2
24.0 w w rail		2.4	6.1	E rail			3.1	5.4
C		4.8	3.7	E line			3.5	5.0
White		5.8	2.7					

Sept. 2/13 ^{Hills} ^{alt. 79}
 Bunker

858 Elev.

855

250' so.

50' so.

Elev.

E line	3.9	4.6
E rail	3.5	5.0
w rail	3.5	5.0
c	6.7	1.8
white	6.6	1.9

white	7.5	1.0
c	6.5	2.0
w rail	4.5	4.0
E rail	4.5	4.0
E line	6.4	2.1

300' so. (north line natural)

100' so.

white	4.0	4.5
c	4.0	4.5
w rail	3.8	4.7
E rail	3.8	4.7
E line	3.9	4.6

E line	7.4	1.1
E rail	4.6	3.9
w rail	4.6	3.9
c	7.4	1.1
white	8.7	-0.2

South line natural.

150' so.

E line	4.6	3.9
E rail	4.4	4.2
w rail	4.4	4.2
c	4.4	4.2
white	4.4	4.2

white	7.8	0.7
c	6.5	2.0
w rail	4.7	3.8
E rail	4.7	3.8
E line	8.0	0.5

49
8.55

Elev.

200' 20.

Elms	8.4	0.1
Erail	4.9	3.6
Wrail	4.9	3.6
C	7.2	1.3
White	8.2	0.3

250' 20.

White	8.7	-0.2
C	6.8	1.7
Wrail	5.1	3.4
Erail	5.1	3.4
Elms	8.7	-0.2

300' 20. (north line Grand)

Elms	8.9	-0.4
Erail	5.1	3.4
Wrail	5.2	3.3
C	8.0	0.5
White	8.0	0.5

54
8.55

80

North line Grand

White	9.6	-1.0
C	8.4	-0.1
36.5E Wrail	5.3	3.2
41.5E Erail	5.2	3.3
Elms	9.6	1.1

50' 20.

Elms	9.6	1.1
19' W Erail	5.2	3.3
24' W Wrail	5.3	3.2
C	8.1	0.4
White	9.5	1.0

100' 20.

White	9.5	1.0
C	7.5	1.0
34' E Wrail	5.4	3.1
39' E Erail	5.2	3.3
Elms	9.7	1.2

8:55

200' 20.

E rail 5.5 3.0

W rail 5.5 3.0

300' 20. (north line Boston)

W line 7.6 0.9

5' E W rail 5.5 3.1

10' E E rail 5.6 3.0

680) 4700 17
4760

DISTANCES FROM CENTER OF ROADWAY FOR CROSS-SECTIONING.

ROADWAY 14 FEET WIDE. SIDE SLOPES 1½ TO 1.

FOR SINGLE TRACK EMBANKMENT.

	0	.1	.2	.3	.4	.5	.6	.7	.8	.9	
0	7.0	7.2	7.3	7.5	7.6	7.8	7.9	8.1	8.2	8.4	0
1	8.5	8.7	8.8	9.0	9.1	9.3	9.4	9.6	9.7	9.9	1
2	10.0	10.2	10.3	10.5	10.6	10.8	10.9	11.1	11.2	11.4	2
3	11.5	11.7	11.8	12.0	12.1	12.3	12.4	12.6	12.7	12.9	3
4	13.0	13.2	13.3	13.5	13.6	13.8	13.9	14.1	14.2	14.4	4
5	14.5	14.7	14.8	15.0	15.1	15.3	15.4	15.6	15.7	15.9	5
6	16.0	16.2	16.3	16.5	16.6	16.8	16.9	17.1	17.2	17.4	6
7	17.5	17.7	17.8	18.0	18.1	18.3	18.4	18.6	18.7	18.9	7
8	19.0	19.2	19.3	19.5	19.6	19.8	19.9	20.1	20.2	20.4	8
9	20.5	20.7	20.8	21.0	21.1	21.3	21.4	21.6	21.7	21.9	9
10	22.0	22.2	22.3	22.5	22.6	22.8	22.9	23.1	23.2	23.4	10
11	23.5	23.7	23.8	24.0	24.1	24.3	24.4	24.6	24.7	24.9	11
12	25.0	25.2	25.3	25.5	25.6	25.8	25.9	26.1	26.2	26.4	12
13	26.5	26.7	26.8	27.0	27.1	27.3	27.4	27.6	27.7	27.9	13
14	28.0	28.2	28.3	28.5	28.6	28.8	28.9	29.1	29.2	29.4	14
15	29.5	29.7	29.8	30.0	30.1	30.3	30.4	30.6	30.7	30.9	15
16	31.0	31.2	31.3	31.5	31.6	31.8	31.9	32.1	32.2	32.4	16
17	32.5	32.7	32.8	33.0	33.1	33.3	33.4	33.6	33.7	33.9	17
18	34.0	34.2	34.3	34.5	34.6	34.8	34.9	35.1	35.2	35.4	18
19	35.5	35.7	35.8	36.0	36.1	36.3	36.4	36.6	36.7	36.9	19
20	37.0	37.2	37.3	37.5	37.6	37.8	37.9	38.1	38.2	38.4	20
21	38.5	38.7	38.8	39.0	39.1	39.3	39.4	39.6	39.7	39.9	21
22	40.0	40.2	40.3	40.5	40.6	40.8	40.9	41.1	41.2	41.4	22
23	41.5	41.7	41.8	42.0	42.1	42.3	42.4	42.6	42.7	42.9	23
24	43.0	43.2	43.3	43.5	43.6	43.8	43.9	44.1	44.2	44.4	24
25	44.5	44.7	44.8	45.0	45.1	45.3	45.4	45.6	45.7	45.9	25
26	46.0	46.2	46.3	46.5	46.6	46.8	46.9	47.1	47.2	47.4	26
27	47.5	47.7	47.8	48.0	48.1	48.3	48.4	48.6	48.7	48.9	27
28	49.0	49.2	49.3	49.5	49.6	49.8	49.9	50.1	50.2	50.4	28
29	50.5	50.7	50.8	51.0	51.1	51.3	51.4	51.6	51.7	51.9	29
30	52.0	52.2	52.3	52.5	52.6	52.8	52.9	53.1	53.2	53.4	30
31	53.5	53.7	53.8	54.0	54.1	54.3	54.4	54.6	54.7	54.9	31
32	55.0	55.2	55.3	55.5	55.6	55.8	55.9	56.1	56.2	56.4	32
33	56.5	56.7	56.8	57.0	57.1	57.3	57.4	57.6	57.7	57.9	33
34	58.0	58.2	58.3	58.5	58.6	58.8	58.9	59.1	59.2	59.4	34
35	59.5	59.7	59.8	60.0	60.1	60.3	60.4	60.6	60.7	60.9	35
36	61.0	61.2	61.3	61.5	61.6	61.8	61.9	62.1	62.2	62.4	36

Calculated by Julien A. Hall, M. Am. Soc. C. E.

MADE IN GERMANY.