

898

F.B. 898

LEVEL BOOK

573

KEUFFEL & ESSER CO.

DRAWING MATERIALS

AND

SURVEYING INSTRUMENTS.

NEW YORK.

CHICAGO.

SAN FRANCISCO.

ST. LOUIS.

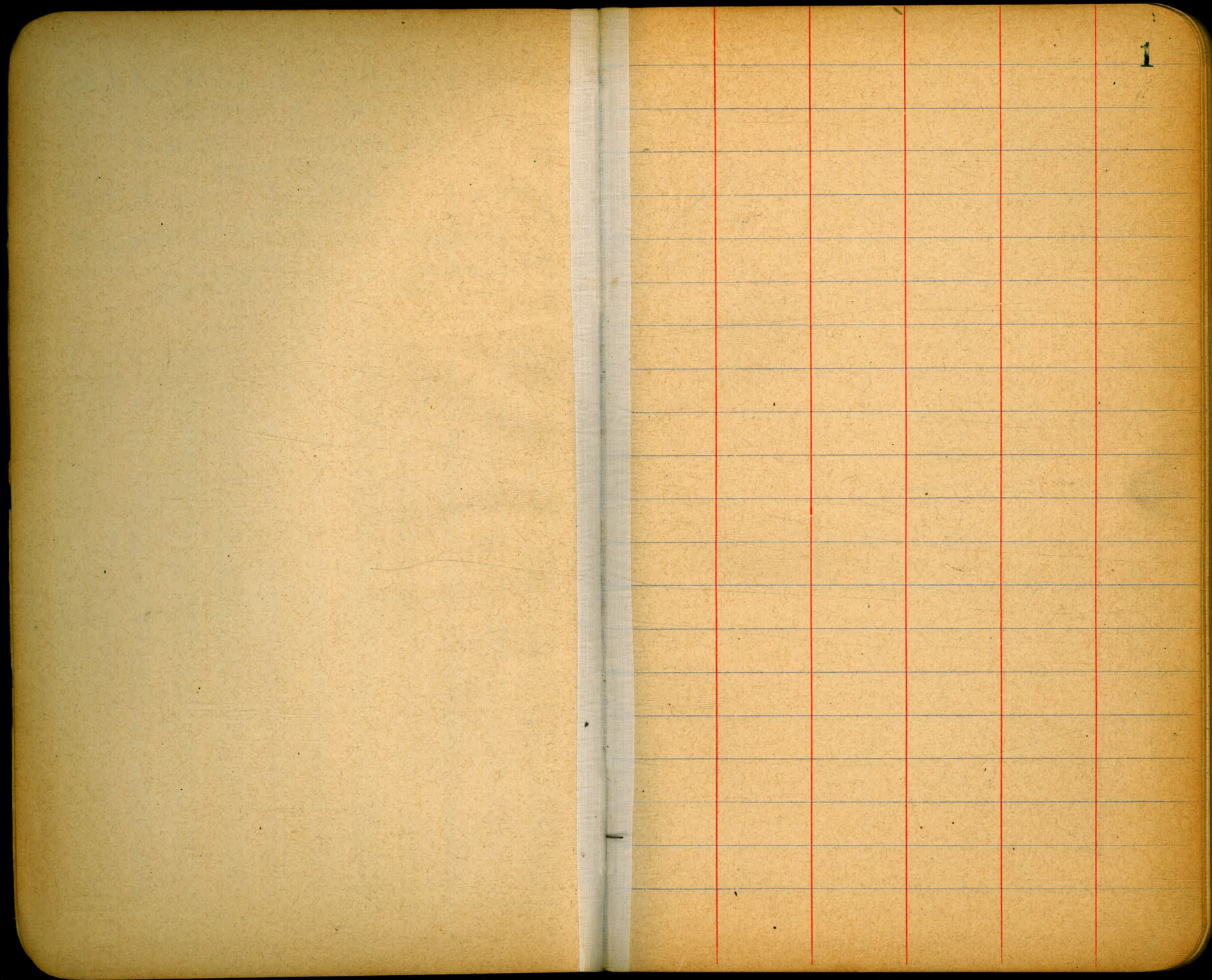
TABLES FOR EXCAVATIONS AND EMBANKMENTS.

DISTANCES FROM CENTER OF ROADWAY FOR CROSS-SECTIONING.
 ROADWAY 18 FEET WIDE. SIDE SLOPES 1 TO 1.
 FOR SINGLE TRACK EXCAVATION.

"Copyright, 1895, by Keuffel & Esser Co."

	0	.1	.2	.3	.4	.5	.6	.7	.8	.9	
0	9.0	9.1	9.2	9.3	9.4	9.5	9.6	9.7	9.8	9.9	0
1	10.0	10.1	10.2	10.3	10.4	10.5	10.6	10.7	10.8	10.9	1
2	11.0	11.1	11.2	11.3	11.4	11.5	11.6	11.7	11.8	11.9	2
3	12.0	12.1	12.2	12.3	12.4	12.5	12.6	12.7	12.8	12.9	3
4	13.0	13.1	13.2	13.3	13.4	13.5	13.6	13.7	13.8	13.9	4
5	14.0	14.1	14.2	14.3	14.4	14.5	14.6	14.7	14.8	14.9	5
6	15.0	15.1	15.2	15.3	15.4	15.5	15.6	15.7	15.8	15.9	6
7	16.0	16.1	16.2	16.3	16.4	16.5	16.6	16.7	16.8	16.9	7
8	17.0	17.1	17.2	17.3	17.4	17.5	17.6	17.7	17.8	17.9	8
9	18.0	18.1	18.2	18.3	18.4	18.5	18.6	18.7	18.8	18.9	9
10	19.0	19.1	19.2	19.3	19.4	19.5	19.6	19.7	19.8	19.9	10
11	20.0	20.1	20.2	20.3	20.4	20.5	20.6	20.7	20.8	20.9	11
12	21.0	21.1	21.2	21.3	21.4	21.5	21.6	21.7	21.8	21.9	12
13	22.0	22.1	22.2	22.3	22.4	22.5	22.6	22.7	22.8	22.9	13
14	23.0	23.1	23.2	23.3	23.4	23.5	23.6	23.7	23.8	23.9	14
15	24.0	24.1	24.2	24.3	24.4	24.5	24.6	24.7	24.8	24.9	15
16	25.0	25.1	25.2	25.3	25.4	25.5	25.6	25.7	25.8	25.9	16
17	26.0	26.1	26.2	26.3	26.4	26.5	26.6	26.7	26.8	26.9	17
18	27.0	27.1	27.2	27.3	27.4	27.5	27.6	27.7	27.8	27.9	18
19	28.0	28.1	28.2	28.3	28.4	28.5	28.6	28.7	28.8	28.9	19
20	29.0	29.1	29.2	29.3	29.4	29.5	29.6	29.7	29.8	29.9	20
21	30.0	30.1	30.2	30.3	30.4	30.5	30.6	30.7	30.8	30.9	21
22	31.0	31.1	31.2	31.3	31.4	31.5	31.6	31.7	31.8	31.9	22
23	32.0	32.1	32.2	32.3	32.4	32.5	32.6	32.7	32.8	32.9	23
24	33.0	33.1	33.2	33.3	33.4	33.5	33.6	33.7	33.8	33.9	24
25	34.0	34.1	34.2	34.3	34.4	34.5	34.6	34.7	34.8	34.9	25
26	35.0	35.1	35.2	35.3	35.4	35.5	35.6	35.7	35.8	35.9	26
27	36.0	36.1	36.2	36.3	36.4	36.5	36.6	36.7	36.8	36.9	27
28	37.0	37.1	37.2	37.3	37.4	37.5	37.6	37.7	37.8	37.9	28
29	38.0	38.1	38.2	38.3	38.4	38.5	38.6	38.7	38.8	38.9	29
30	39.0	39.1	39.2	39.3	39.4	39.5	39.6	39.7	39.8	39.9	30
31	40.0	40.1	40.2	40.3	40.4	40.5	40.6	40.7	40.8	40.9	31
32	41.0	41.1	41.2	41.3	41.4	41.5	41.6	41.7	41.8	41.9	32
33	42.0	42.1	42.2	42.3	42.4	42.5	42.6	42.7	42.8	42.9	33
34	43.0	43.1	43.2	43.3	43.4	43.5	43.6	43.7	43.8	43.9	34
35	44.0	44.1	44.2	44.3	44.4	44.5	44.6	44.7	44.8	44.9	35
36	45.0	45.1	45.2	45.3	45.4	45.5	45.6	45.7	45.8	45.9	36

Calculated by Julien A. Hall, M. Am. Soc. C. E.



X Sec Arista St.

S.M. NE Tris aft Stockton. Spk. 267.07

400 271.07

T.P. 12.67 258.40

T.P. 146 259.86 13.00 246.86

X Sec Goldfinch St

60' wide 10' walks

PM SW Hunter & Jackdaw T.P.	6.09	275.17		269.08
			7.53	267.64
T.P.	2.38	270.02	12.52	257.50
T.P.	0.88	258.38	11.96	246.42
	1.53	247.95		
Spk. NE Barr & Goldfinch			4.99	242.96
		NL Barr		
EL			5.2	242.8
C			4.6	243.4
1/4			4.1	243.9
1/4			3.8	244.2
1/4			4.4	243.6
C			5.1	242.9
WL			4.9	243.1
		25' N		
WL			7.6	240.4
C			7.9	240.1
1/4			7.8	240.2
1/4			7.6	240.4
1/4			7.1	240.9
C			6.9	241.1
EL			6.6	241.4

July 30 - 1913
West-Evans-Moore

Goldfinch 4

				247.95
				50' N
EL			8.5	239.5
C			9.4	238.6
1/4			9.5	238.5
1/4			10.2	237.8
1/4			10.9	237.1
C			11.0	237.0
WL			11.1	236.9
T.P.			12.33	235.62
			1.91	237.53
				75' N
WL			3.0	234.5
C			2.9	234.6
1/4			2.1	235.4
1/4			2.1	235.4
1/4			2.1	235.4
C			1.7	235.8
EL			1.1	236.4

237.53

Goldfinch

100' N.

EL	1.5	236.0
C	2.5	235.0
1/4	4.1	233.4
£	4.8	232.7
1/4	5.2	232.3
C	5.4	232.1
WL	5.2	232.3

125' N.

WL	8.1	229.4
C	8.9	228.6
1/4	8.9	228.6
+4	8.3	229.2
+5	7.5	230.0
£	7.6	229.9
1/4	6.3	229.2
C	1.7	235.8
EL	1.3	236.2

House 15.17 ST 5.4

150' N.

EL	4.4	233.1
+5	5.0	232.5
C	7.0	230.5
1/4	9.6	227.9
+9	9.9	227.6

237.53

Goldfinch 5

£	11.3	226.2
1/4	12.7	224.8
C	15.1	222.4
WL	14.6	222.9
T.P.	12.02	225.51

360 229.11

175' N.

WL	15.0	214.1
C	14.0	215.1
C	11.9	217.2
1/4	9.4	219.7
+5	7.0	222.1
£	7.2	221.9
+5	7.2	221.9
+6	5.0	224.1
1/4	4.5	224.6
+5	2.0	227.1
C	1.7	227.4
EL	0.4	228.7

229.11 Goldfinch

200'N

EL	4.0	225.1
C	5.5	223.6
1/4	7.3	221.8
+1	9.0	220.1
±	9.6	219.5
W. 1/4	14.7	214.4

225'N.

EL	7.6	221.5
C	9.2	219.9
+8	11.0	218.1
1/4	12.5	216.6
±	12.8	216.3

250'N.

EL	11.4	217.7
C	13.2	215.9
+4	13.9	215.2
+5	15.4	213.7
1/4	15.7	213.4
+5	15.6	213.5
±	17.2	211.9

229.11 Goldfinch 6

T.P.

0.10 217.31

200'N

W. Corb.	6.4	210.9
WL	9.3	208.0
+8	10.7	203.6
+15	11.4	205.9

225'N.

W. 1/4	5.8	211.5
C	10.0	207.3
WL	14.0	203.3
+15	22.0	195.3
+32	14.0	203.3

250'N.

W. 1/4	9.6	207.7
W.C	14.0	203.3

275'N.

EL	4.0	213.3
+8	6.0	211.3
C	7.6	209.7
1/4	7.9	209.5
±	13.0	204.3

Goldfinch
217.31

300' N.
EL. 10.4 206.9
C 10.8 206.5
E/4 14.0 203.3
T.P. 12.60 204.71

1.68 206.39

250' N.

WL. 10.3 196.1
+10 19.0 187.4
+25 6.7 199.7

275' N.

- 25 7.0 199.3
WL. 23.2 183.2
WC 13.2 193.2
W/4 4.4 200.0

300' N.

- 25 W. of WL. 5.7 200.7
E 7.1 199.3
W/4 12.7 193.7

206.39

Goldfinch

325' N.

25' W. of WL.

EL 8.5 197.9
EL 4.2 202.2
C 6.7 199.7
+9 8.3 198.1
E/4 9.5 196.9
E 13.1 193.3

350' N.

- 25' W. of WL.

11.0 195.4

380' S. N. of NL Barr.

- 25' W. of WL.

13.5 192.9

T.P.

13.09 193.30

2.42 195.72

300' N.

W. Curb.
+8
WL.

10.7 185.0
16.2 179.5
13.8 181.9

325' N.

W/4

9.8 185.9

350' N.

EL.

0.7 195.0

+5

6.0 189.7

C

8.3 187.4

1/4

12.3 185.4

X Sec Goldfinch

July 30-1913

8

West

176.08

35' N of first line for slopes

T.P.	195.72	11.84	183.88
0.68	184.56	1	
	325' N.		
W. Corb.	9.4		175.2
+5	11.7		172.9
WL.	8.0		176.6
	350' N.		
WL.	12.1		172.5
WC.	18.0		166.6
W. 1/4	9.2		175.4
±	3.8		180.8
	380.5' N on WL. 379.8' on EL.		
EL.	7.6		177.0
C.	12.8		171.8
T.P.	12.10		172.46
3.62	176.08		
	380.5' on WL. 379.8' on EL.		
E 1/4	10.3		165.8
±	14.6		161.5
+5	18.3		157.8
W 1/4	13.2		162.9
WC	8.5		167.6
WL.	2.8		163.3

WL.		3.2	172.9		
C		7.5	168.6		
1/4		12.6	163.5		
±		23.0	153.1		
+5		28.5	147.6		
1/4		21.5	154.6		
C.		20.0	156.1		
EL.		16.0	160.1		
T.P.		11.4	174.94		
T.P.	12.14	187.08	0.42	186.66	
T.P.	12.02	198.68	0.39	198.29	
T.P.	13.08	211.37	0.02	211.35	
T.P.	12.80	224.15	0.69	223.46	
T.P.	12.91	236.37	0.62	235.75	
T.P.	13.08	248.83	1.56	247.27	
T.P.	12.28	259.55	0.92	258.63	
T.P.	12.70	271.33	2.84	268.49	
B.M. Brass	6.87	275.36	6.28	269.08	269.08
Plug SW					
Iron dowel					
& fastener					
Checks OK					
West					

14.03

50

E of W line

S	51	8.9
	53	8.7
	53	8.7
b	55	8.5
	55	8.5
	57	8.8
n	59	9.0

100

E of W line

n	45	9.5
	48	9.2
	52	8.8
b	50	9.0
	51	8.9
	49	9.1
S	51	8.9

14.03

123

E of W line - Osborn st (60)

10

S	49	9.1
	47	9.3
	49	9.1
b	47	9.1
	50	9.0
	47	9.3
n	46	9.4

90 St of Osborn st

n	46	9.4
c	47	9.3
$\frac{1}{2}$	49	9.1
b	49	9.1
$\frac{1}{2}$	47	9.3
c	47	9.3
S	47	9.3

14.03

W. 1/4 of Astoria

S	46	9.4
	48	9.2
	47	9.3
L	49	9.1
	48	9.2
	45	9.5
N	47	9.3

Center of Astoria

N	46	9.4
	46	9.4
	48	9.2
L	48	9.2
	46	9.4
	47	9.3
S	47	9.3

14.02

E. 1/4 of Astoria

11

S	44	9.6
	42	9.4
	45	9.5
L	47	9.3
	48	9.2
	46	9.4
n	50	9.0

E. 1/4 of Astoria

n	46	9.4
	45	9.5
	46	9.4
L	46	9.4
	48	9.2
	45	9.5
S	44	9.6

12

14.03

E line of Ashburn st

S			42	9.8
			44	9.6
			42	9.9
			45	9.5
			46	9.4
			44	9.6
n			44	9.6

50 2 f Ashburn

n			42	9.8
			40	10.0
			43	9.7
b			40	10.0
			40	10.0
			42	9.8
S			40	10.0

TP 656

16.41

418 9.85

HSE

Ashburn

16.41

160' E of Ashburn

S			61	10.3
			60	10.1
			59	10.5
b			60	10.4
			60	10.4
			58	10.6
n			61	10.3

150 E of Ashburn

n			54	11.0
			51	11.3
			56	10.8
b			53	11.1
			52	11.2
			56	10.8
S			55	10.9

13

14.03

418

9.85

656

16.41

16.41

200'

E of

Osborn

S

47 11.7

54 11.0

53 11.1

b

48 11.6

53 11.1

52 11.2

n

51 11.3

250'

E of

Osborn

n

47 11.7

47 11.7

49 11.5

b

48 11.6

45 11.9

44 12.0

S

44 12.0

16.41

14

256'

E = W of Earl St (60')

S

43 12.1

44 12.0

44 12.0

b

48 11.6

48 11.6

44 12.0

n

46 11.8

W of Earl St

n

44 12.0

44 12.0

47 11.7

b

46 11.8

42 12.2

43 12.1

S

43 12.1

W

14 f

Earl

S

4.3 12.1

4.2 12.2

4.2 12.2

b

4.5 11.9

4.7 11.7

4.3 12.1

n

4.4 12.0

Center of

Earl

n

4.3 12.1

4.1 12.3

4.6 11.8

b

4.8 11.6

4.2 12.2

4.2 12.2

S

4.1 12.3

E

14 f

Earl

S

4.1 12.3

4.0 12.4

4.1 12.3

b

4.2 12.2

4.5 11.9

4.1 12.3

n

4.2 12.2

E

16 f

Earl

n

4.2 12.2

4.0 12.4

4.4 12.0

b

4.6 11.8

4.1 12.3

4.0 12.4

S

4.0 12.4

1641

E line of Earl st

S 39 12.5

39 12.5

40 12.4

b 42 12.2

45 11.9

38 12.6

n 40 12.4

50 E of Earl

n 35 12.9

34 13.0

41 12.3

b 36 12.8

37 12.7

38 12.6

S 36 12.8

1641

16

75 E of Earl

S 31 13.3

38 12.6

39 12.5

b 36 12.8

~~37~~

36 12.8

35 12.9

n 34 13.0

Bridge over creek
85 E of Earl

S 80 7.4

n 84 8.0

100 E of Earl

n 35 12.9

35 12.9

67 9.7

b 78 8.6

80 8.4

80 8.4

S 56 10.8

123.5 $\Sigma = \Sigma$ Bay View on 2nd Ave

S			38	12.6
			41	12.3
			43	12.1
b			44	12.0
			48	11.6
			70	9.4
15			9.4	7.0
n			6.3	10.1

20' $\Sigma =$ Pueblo Line

n			9.0	7.4
40'			9.6	6.8
			4.0	12.4
			4.1	12.3
1			4.1	12.3
			4.0	12.4
			3.7	12.7
S			3.5	12.9
7P			3.5	12.9
check	973	2184	320	12.71
	178	16.82	620	14.94
			3.62	12.20 ¹⁸

Continued on Page 43

H.S.D.
Pueblo
Line
Bm

1241
372
12.07
9.13
11.87
130
14.94
1.09
12.8
3.62
13.20

9
12
13
Height
Length
246

x Sec of Osborn at (60')

Entire length

1244 2468

1244

TP P

9

1

9

100

S of

Marine view

Bar

1088

3449

107

2361

Reg

2

100

S of

Marine view

36

30.9

S line of Marine view

42

30.3

48

29.7

W

77

26.5

13

44

30.1

78

26.7

6

43

30.2

77

26.8

79

43

30.2

47

29.8

b

78

26.7

39

30.6

80

26.5

8

33

31.2

Suite

85

26.0

150

S of

Osborn

75

27.0

70

27.5

8

45

30.0

E

55

29.4

50 S of Marine view

48

29.7

E

35

31.0

11

53

29.2

+9

37

30.5

50

29.5

46

29.9

6

49

29.6

46

29.9

77

50

29.5

b

46

29.9

53

29.2

50

29.5

W

41

30.4

50

50

29.5

42

30.3

W

73

30.2

(This block has been roughly graded)

3449

Osborn

18

1244
1088
2468
107
2361
1088
3449

3449

156' S = nd of Dullbergia on west l

W		51	29.4
		46	29.9
73		51	29.5
		51	29.4
		50	29.5
		52	29.3
		55	29.0
411		49	29.6
E		47	29.8

(775) 156' S in way = Dullbergia sl
203.55 on e

E		53	29.2
		57	28.8
		55	29.0
6		52	29.3
		54	29.1
		54	29.1
W		51	29.4

3449

S bluff Marine View (80')

W		112	23.3
		98	24.7
		93	25.2
6		92	25.3
		93	25.2
		92	25.3
E		91	25.4

S 149 Marine View

E		95	24.9
		102	24.3
		108	23.7
6		106	23.9
		109	23.6
		110	23.5
W		128	21.7

Lester

19

3449

Center of Marine view

W 148 19.7

132 21.3

128 21.7

b 125 22.0

122 22.3

120 22.5

E 114 23.1

Bm 123 2488 1088 2361

144 1088 2361

E 30 21.9

43 20.6

46 20.3

b 50 19.9

53 19.6

61 18.8

W 80 16.9

2488

n of Marine view

W 110 13.9

103 14.6

82 16.7

73 17.6

b 71 17.8

67 18.2

66 18.3

62 18.7

E 54 19.5

n of Marine view

E 87 16.2

82 16.7

91 15.8

92 15.7

96 15.3

97 15.2

W 126 12.3

128 12.1

TP 130 1399 1215

20

2361
1.25
2488
1215
12.69
1.20
1329

1399

	7'	n 7	Marine View	
W-L			31	10.9
	14'	n		
W			70	6.0
	24'	n	= End of 18' Pip. Culvert	
WS = Culvert Mouth			85	5.5
	50'	n 7	Marine View	
W			44	9.6
			44	9.8
			38	10.2
b			38	10.2
			35	10.5
			33	10.7
E			44	9.6
	70'	n	= E end of 18' Pip. Culvert	
E = E end Culvert			80	5.0
	85'	n		
E			36	10.4

1399

Culvert

21

	100'	n 7	Marine View	
			34	10.6
			36	10.4
			47	9.3
			47	9.5
			49	9.4
			50	9.0
			51	8.9
	150'	n 7	Marine View	
			50	9.0
			50	9.0
			49	9.1
			47	9.3
			47	9.3
			47	9.3
			44	9.6

Marine vein

E	200	n 6	46	9.4
			46	9.4
			48	9.2
6			48	9.2
			47	9.3
			48	9.2
W			49	9.1

250 n = S 4 of bottom vein (80)

25			49	9.1
			48	9.2
			46	9.4
			46	9.4
			47	9.6
			44	9.6
E			413	986

A 5 E

Bottom vein

This intersection is on Page 10

N 2 6 bottom vein

E			44	9.6
			46	9.4
			50	9.0
6			46	9.4
			48	9.2
			45	9.5
W			46	9.4

W

TP

837

1776

460

839

n w or

Bottom vein

50 n 6 bottom vein

W			86	9.2
			83	9.5
			87	9.1
6			84	9.4
			86	9.2
			84	9.4
E			82	9.6

1399
460
839
837
1776

1776

100 n f Cottonwood

E		76	10.2
		77	10.1
		79	9.9
b		80	9.8
		82	9.6
		80	9.8
W		82	9.6

130 n f Cottonwood

W		76	10.2
		76	10.2
		76	10.2
b		73	10.5
		73	10.5
		72	10.6
E		73	10.5

1776

200 n f Cottonwood

E		54	12.4
		58	12.0
		65	11.5
b		68	11.0
		72	10.1
		70	10.8
W		72	10.6

250 n f Cottonwood

W		41	13.7	
		40	13.8	
		34	14.4	
b		25	15.2	
		15	16.5	
TP	1235	2493	118	16.54
			112	17.7
E			92	19.7

25

 1776
 16.58
 12.35
 25.93

2893

301

n f

Bottom mud

E	54	23.5
	68	24.1
	78	21.1
b	86	20.3
	94	19.5
	100	18.9
W	100	18.9

350

n f

W	41	24.8
	42	24.7
	44	24.5
b	45	24.4
	43	24.4
	38	25.1
E	31	25.6

7P

1032

2878

047

2846

3878

400

n = Sd

Bucket (80)

E	74	31.4
	73	31.5
	73	31.5
b	78	31.0
	81	30.7
	83	30.5
W	90	29.8

S n f

Bucket

W	83	30.5
	74	31.4
	72	31.6
b	64	32.4
	58	33.0
	58	33.0
E	58	33.0

Estimate

24

2893
42
2846
1032
3878

S 1/4 6 Birch st

E	48	34.0
	48	34.0
	52	33.6
b	58	33.0
	67	32.1
	76	31.2
W	85	30.3

center of Birch st

W	86	30.2
	76	31.2
	68	32.0
b	58	33.0
	52	33.6
	47	34.1
E	44	34.4

N 1/4 6 Birch

E	43	34.5
	48	34.0
	54	33.4
b	61	32.7
	70	31.8
	77	31.1
W	84	30.4

N 1/4 6 Birch

W	77	31.1
	71	31.7
	65	32.3
b	60	32.8
	54	33.4
	49	33.9
E	44	34.4

N line Bird et

E	40	34.8	
	42	34.6	
	44	34.4	
b	48	34.0	
	49	33.9	$\frac{3878}{478}$ 34.68
	54	33.4	
W	58	33.0	
Bn-TP	410	34.68	$\frac{7417 \text{ lines}}{214} = 34.68$

9
12
13

X See

Marmie View (80)

B.M.

1140

3501

2261

100

E f

Osborn

2341

E line Osborn st

S

23 32.7

Increase on pag 11

S

+1

59 29.1

Sutta

33 31.7

21.3 27.7

41 30.9

96 25.4

38 31.2

101 24.9

b

40 31.0

b

119 23.1

44 31.6

132 22.8

n

48 30.2

153 19.7

n

60 29.0

n

188 16.2

150

E f

Osborn

50

E f

Osborn

n

19 33.1

n

172 17.5

20 33.0

101 24.9

18 33.2

81 26.9

b

16 33.4

b

28 27.7

12 33.8

74 27.6

14 33.6

Sutta

74 27.6

S

15 33.5

64 28.6

+12

52 29.5

70

1177

4527

151 33.50

S

42 30.8

transmit
21

2341

1120

3501

151

33.50

41.77

4527

4527

200

E of

Asbarn

S

97 35.6

99 35.4

92 36.1

b

92 36.1

90 36.3

97 35.6

n

92 36.1

250

E of

Asbarn

n

36 41.7

43 41.6

52 40.1

61 37.3

58 39.5

b

59 39.4

60 39.3

67 38.6

S

69 38.4

4527

300

E of Asbarn

S

30 42.3

24 42.9

36 41.7

31 42.2

b

29 42.4

29 42.4

27 42.6

n

13 44.0

350

E of

Asbarn

n

03 44.8

20 43.3

21 43.2

24 42.9

24 42.9

25 42.8

17 43.6

20 43.3

400

E of

Osborn

S	24	43.1
	27	42.6
	27	42.6
b	27	42.6
	26	42.7
	27	42.6
n	27	42.6

450

E of

Osborn

n	20	43.3
	19	43.4
	24	42.9
b	24	42.9
	27	42.6
	29	42.4
S	30	42.3

477.3

E =

Puffblower Ex. Nordica 4711

S	24	42.7
	30	42.3
	20	43.3
b	16	43.7
	19	43.4
	24	42.9
	16	42.7
n	12	44.1

TP

455

4854

128

4289

Bm

Bm

TP

Bm

TP

TP

TP

TP

455	4854	128	4289	SW Retun anther margin
1287	5600	525	4319	SW wall 40 dx TP wall
1248	6789	065	5341	SW Retun
238	6880	044	6245	41 dx
630	8721	1282	5701	SW wall margin angle
098	4284	1255	4426	
06	3149	1311	3172	
		783	24.06	
			70% of Post wall	

3123

318

258

20.06

4527

128

43.97

455

4854

451

4419

4854

505

43.19

1287

1206

65

55.67

1248

6789

6.69

6100

4289

4419

40 dx

TP wall

5341

6245

TP 315 2226 1278 1911

TP 945 2644 537 1688

TP 1140 3756 024 2616

951 44586 121 3635

1120 3466

4154 4853 4399

477.3 E m n }
4888 E m S } Angle

n 45 44.0

Butte 49 43.6
5.6 42.7

52 43.3

b 49 43.6

Butte 53 43.2
6.3 42.2

5.6 42.7

Sc 54 43.1

This Street has been graded
& the sidewalk is in on S side
no curbs except Returns
The walk continues around to Jensen¹²⁴

Py at
Creek

Py at
Creek

Top Post-
Py 6

Bm 4 n 2

S

b

Butte

n

n

But

b

But

S

Angle on 2nd
115 E on S

5.1 43.4

5.5 43.0

6.3 42.2

5.2 43.2

4.9 43.6

5.1 43.4

5.6 42.9

4.8 43.7

4.5 44.0

50 E of 00 angle

4.2 44.3

4.2 44.3

5.2 43.3

4.4 44.1

4.2 44.3

4.7 43.8

5.7 42.8

4.9 43.6

4.4 44.1

4399
451
4853

4853

100 E of angle

S		44	44.1
		45	44.0
cut		33	43.2
		44	44.1
b		37	44.8
		36	44.9
cut		46	43.7
		38	44.7
n		36	44.9

112 E = W of Conroy (H(60'))

n		35	45.0
		37	44.8
cut		45	44.0
		35	45.0
		37	44.8
		40	44.2
cut		54	43.1
on limb		434	44.19
S		41	44.4

Return is in with bank

4853

W bank of Conroy

S on bank		43	44.2
		50	43.5
		40	44.5
b		37	44.8
		37	44.5
cut		45	44.0
		37	44.8
n		34	45.1

W 14 of Path

n		33	45.2
		36	44.9
cut		45	44.0
		37	44.8
d		36	44.9
		38	44.7
		42	44.3
S		44	44.1

Marion
31

Center of Anthony lot

S 41 44.4

40 44.5

38 44.7

b 36 44.9

38 44.7

East 46 43.9

36 44.9

N 33 43.2

E 1/4 of Anthony

N 37 45.3

37 44.8

East 46 43.9

37 44.8

b 36 44.9

38 44.7

41 44.4

S 41 44.3

E East of Anthony

S on bank 43 44.2

50 43.5

41 44.4

b 36 44.9

38 44.7

East 46 43.9

36 44.9

N 34 45.1

E 1/4 of Anthony

N 35 45.0

38 45.7

East 42 43.8

38 44.7

b 36 44.9

42 44.3

50 43.5

East on bank 43 44.2

S 41 44.4

4853

50' E of Anthony E 3

S 4.4 44.1

Sut 4.7 43.8

5.5 43.0

4.5 44.0

6 4.0 44.5

Sut 4.1 42.4

5.0 43.5

4.2 44.3

n 4.0 44.5

100' E of Anthony

n 4.4 44.1

4.8 43.7

Sut 5.6 42.9

4.6 43.9

6 4.5 44.0

Sut 5.0 43.5

5.8 42.7

5.0 43.5

S 4.8 43.7

TP 335 4703 4.85 43.68

4703

Marine View

33

150' E of Anthony

S 3.6 43.4

5.6 43.4

4.6 42.4

3.8 43.2

6 3.3 43.7

3.5 43.5

4.3 42.7

3.5 43.5

n 3.3 43.7

200' E of Anthony

n 4.0 43.0

4.1 42.9

Sut 4.8 42.2

4.0 43.0

6 3.6 43.4

4.0 43.0

Sut 4.8 42.2

4.0 43.0

S 3.8 43.2

4853
485
43.68
3.35
47.03

2205 E = B6 on No 240 St

S on walk 38 43.2

42 42.7

Sat

48 42.2

41 42.9

6 37 43.3

42 42.8

Sat

51 41.9

48 42.7

2 42 42.8

Line A 220.5 E on n } B6 on No 240 St (60')

230.5 E on S }

2 42 42.8

43 43.7

Sat

51 41.9

43 42.7

40 43.0

41 42.7

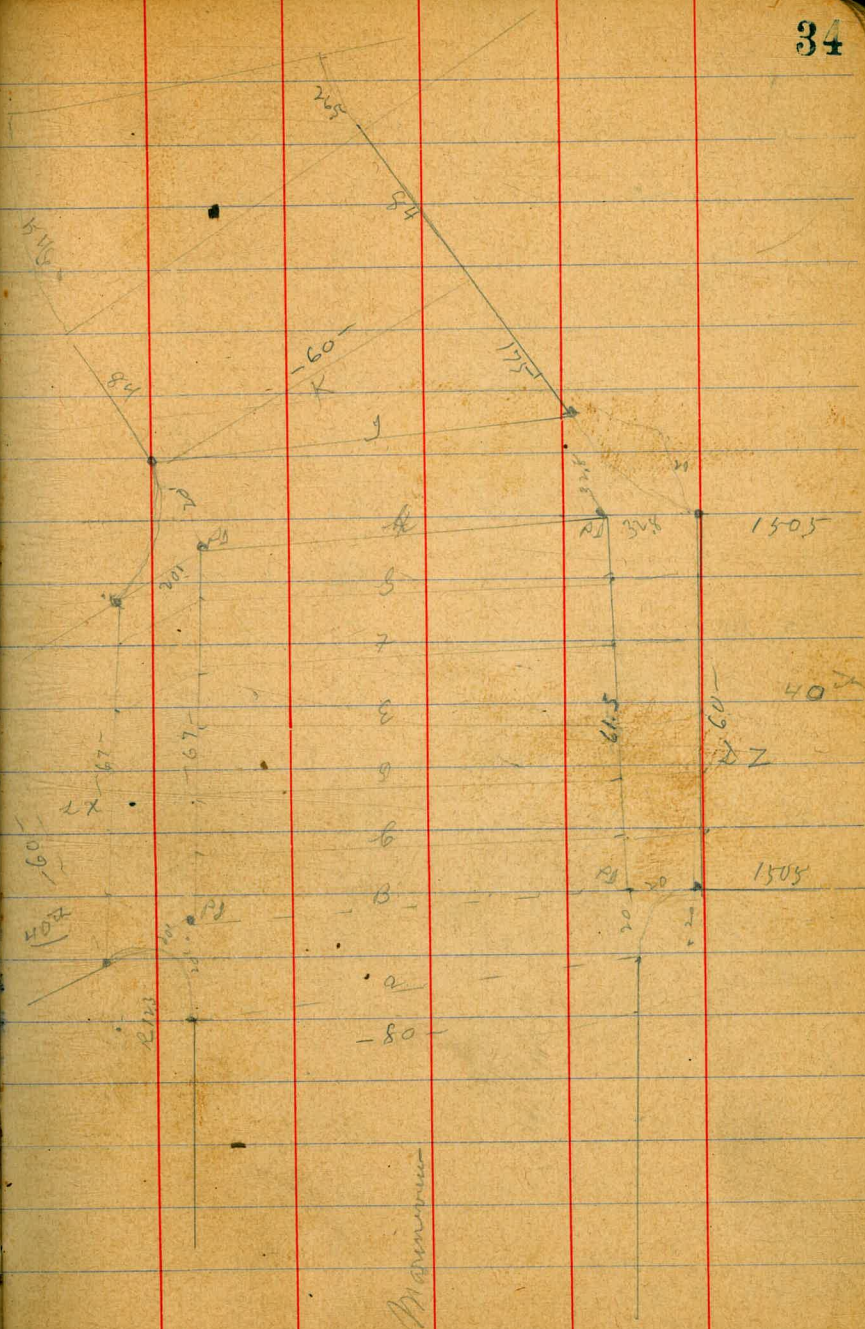
Sat

49 42.1

40 42.0

S 38 43.2

Bar 38 42.22



4703

(80+)	Line B is the Wd of 40000 (60)		
S 20 = E 6 (42)	37	43.3	
S 2 P1	39	43.1	
	49	42.1	
	47	42.3	
	44	42.6	
l	44	42.6	
	46	42.4	
	50	42.0	
M 2 P1	5.8	41.2	
20' = E 6 line X	6.0	41.0	
	Line B		
20' 20' X	7.0	40.0	
M 2	6.1	40.9	
	5.7	41.3	
	5.3	41.7	
l	5.1	41.9	
	5.0	42.0	
	4.8	42.2	
S 2	4.7	42.3	
20'S E 6 22	4.1	42.9	

4703

Line D

S 20 = E 6 line Z	38	43.2	
S 2	42	43.8	
	44	42.6	
	46	42.4	
l	48	42.2	
	50	42.0	
	54	41.6	
M 2	5.8	41.2	
20' = E 6 X	7.0	40.0	
	Line E		
20' = E 6 X	7.0	40.0	
M 2	6.0	41.0	
	5.3	41.7	
	5.0	42.0	
	4.8	42.2	
	4.5	42.5	
	4.2	42.8	
	4.0	43.0	
S 2	3.6	43.4	
S line Z			

35

5685

Line K = 00

S		105	46.4
		108	46.1
	cut	115	45.1
		115	45.4
b		117	45.2
		126	44.4
	cut	138	43.1
		131	43.9
n		132	43.7
	50' E of 00		
n		95	47.4
		94	47.5
	cut	104	46.5
		90	47.7
b		80	48.9
		79	49.0
		83	48.6
	cut	69	50.0
		7	
S		71	49.8

5685

84' E = B.L

S		42	52.7
		43	52.6
	cut	52	51.7
		50	51.9
		56	51.3
		68	50.1
	cut	76	49.8
		69	50.0
		71	49.8
	265' E = S L = End of burn (54.6 E on R)		
n		30	53.9
		31	53.8
	cut	35	53.0
		39	53.0
		33	53.6
		34	53.5
	cut	30	53.9
		20	54.9
		21	54.8
	TP 1018	142	55.43

Maine Nov

37

5685
1420
55.43
1018
65.61

65.61

50

E f

E b

S

66 59.0 ✓

70 58.6

Sut

8.0 57.6

7.6 58.0

b

7.3 58.3

7.8 57.8

Sut

8.7 56.9

7.9 57.7

n

7.8 57.8 ✓

844

E f

E b = W of 49 (60)

n

5.6 60.0

5.8 59.8

Sut

6.7 58.9

5.6 60.0

5.2 60.4

5.1 60.5

Sut

5.3 60.3 Bm

on bank

4.4 61.2 ✓

S

4.1 61.5

Returns

n

65.61

W

2 41 st

S on bank

43 61.3

45 61.1

45 61.1

b

45 61.1

50 60.6

Sut

59 59.7

b

59 60.5

n

50 60.6

n

147

41 st

n

47 60.9

45 61.1

Sut

53 60.3

44 61.2

b

49 61.6

40 61.6

42 61.4

S

39 61.7

Marine
38

65-61

Center of 410A

S	33	62.3
	35	62.1
	39	61.7
	34	62.2
	38	61.8
Sut	49	60.7
	40	61.6

n 39 61.7

E 1148 410A

n	33	62.5
	37	61.9
Sut	45	61.1
	34	62.2

b	30	62.0
	32	62.4
	35	62.1

S 32 62.4

65-61

E bb g 41

S on Return	27	62.9
	33	62.3
	30	62.6
b	26	63.0
	31	62.5
Sut	40	61.6
	32	62.4

n 30 62.6

E 2-1 412

n	25	63.1
	27	62.9
Sut	33	62.3
	26	63.0

b	22	63.4
	26	63.0
Sut	31	62.5
on Return	25	63.1

S 24 63.2

TP 835 7301 075 1466

Marvin

39

65-61
 85
 64.22
 8.35
 73.01

7301

50 E f 41

S 76 65.4 ✓

77 65.3

Sw 84 64.6

82 64.8

b 76 65.4

80 65.0

Sw 89 64.1

81 64.9

n 80 65.0 ✓

100 E g 41

n 63 66.7

62 66.8

Sw 69 66.1

62 66.8

b 58 67.2

62 66.8

Sw 65 66.5

58 67.2

S 56 67.4 ✓

7301

150 E f 41

S 45 68.5

45 68.5

Sw 53 67.7

53 67.7

b 50 68.0

52 67.8

55 67.5

n 60 67.0 ✓

200 E f 41.2

n 72 65.8 ✓

52 67.8

49 68.1

46 68.4

n 48 68.2

Sw 48 68.2

b 39 69.1

S 38 69.2

Marion's View

40

7301

210 E = B6 90° R

S		36	69.4
		38	69.2
SW		48	68.2
		47	68.3
l		47	68.3
		48	68.2
		52	67.8
n		74	65.6
	15.7' E or S } = Radial dir 62.8' E or n }	45°	X
n E		86	64.4
		50	68.0
		42	68.8
l		41	68.9
		43	68.7
Sat		45	68.5
		35	69.5
SW		84	69.6

7301

15.7' S or W } = E 6 of 90°
62.8' S or E }

W		30	70.0
		32	69.8
l		41	68.9
		44	68.9
l		38	69.2
		43	68.7
		60	67.0
E		96	63.4
TP	640	7577	364
	50	59	E 6
E		96	66.2
		69	68.9
		60	69.8
l		57	70.1
		58	70.0
Sat		60	69.8
		53	70.5
W		51	70.7

March 1911

41

7301

364

69.37

64.40

7577

357 Br 29

6937

64.40

7577

100 S of E 6

W		44	71.4
		43	71.5
		52	70.6
		50	70.8
E		49	70.9
		51	70.7
		56	70.2
E		66	69.21
	150 S of SE 6		
E		50	70.8
		47	71.1
		43	71.5
E		42	71.6
		43	71.5
	cut	45	71.3
		37	72.0
W		35	72.2

200 S of E 6

W		27	73.0
		29	72.9
	cut	35	72.3
		33	72.5
E		31	72.7
		36	72.2
		37	72.1
E		32	72.6

230 S = 71.5 Division W

E		27	73.1
		30	72.8
		30	72.8
		28	73.0
		28	73.0
	cut	35	72.6
		20	

W		20	73.8
BM		20.5	73.2

Sidewalk around to here on W side

in end return
Division

Edge of bottom wood at (50)

continued from P 17

(85) Pucly line on N 2 } angle Hub = 52
 21.15 E on S 2 } P 17

5	5.82	18.73	12.91	5
	4.4		14.3	
	5.4		13.3	
	5.8		12.9	6
6	5.9		12.8	
	6.3		12.4	
	6.4		12.3	
7	7.0		11.7	
	11.4		7.5	

Pid angle on N 2 } od
 21.15 E on S 2 }

m	7.10		11.4	7.5
	7.0		11.7	
	6.5		13.2	
	6.3		12.4	
6	5.9		12.8	
	3.5		15.2	
	5.3		14.4	
5	4.4		14.3	

18.73

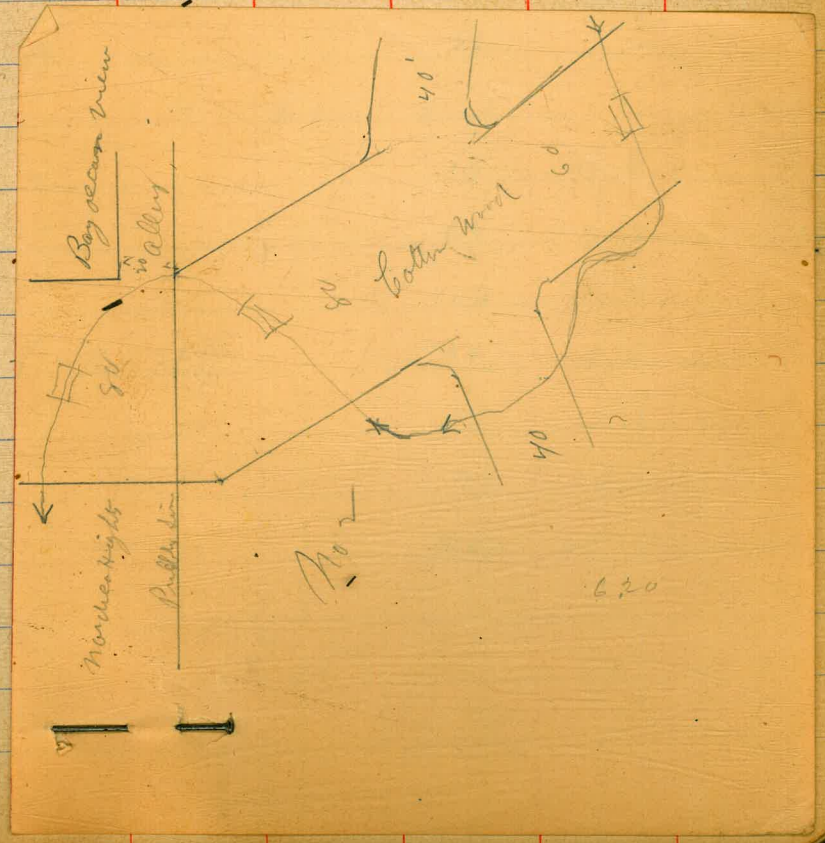
25' E of 50

bottom wood

43

12.91
 5.82
 18.73

13	17.4
44	14.3
51	13.6
58	12.9
59	12.8
67	12.0



Edge of bottom wood st (80)

continued from P 17

(85) Ruddy line on rd } angle
21.15° E on S 2 }
5.82 18.73 12.91 Hus = S 2
P 17

S 44 14.3

54 13.3

58 12.9

6 59 12.8

63 12.4

64 12.3

75 7.0 11.7

7 11.4 7.3

P 2 angle on rd }
21.15° E on S 2 }
n 11.4 7.3

7.0 11.7

6.5 13.2

6.3 12.4

5.9 12.8

5.5 13.2

5.3 14.4

S 44 14.3

18.73

25' E of

13 17.4

44 14.3

51 13.6

58 12.9

59 12.8

67 12.0

96 9.1

50' E of

angle 58 12.7

64 12.3

10.8 7.9

b (Barley line)

9.9 8.8

5.1 13.6

4.0 14.7

4.0 18.5

bottom wood
43

12.91
5.82
18.73

1873

(80)	11365	E =	Rb on n	
S			8.3	10.4
			5.8	12.7
			5.3	13.4
S			5.0	13.7
			4.7	14.0
			4.4	14.3
n			4.1	14.6

(85) line A	11365 1431	E on n S or S)	Rb on S	
n			4.1	14.6
			4.5	14.2
			4.6	14.1
S			4.7	14.0
			4.7	14.0
			4.9	13.8
S			5.1	13.6

1873

Bottom

45

(85) line B = W line of 40 ft at (80)

20S = E 6	4.8	13.9
52 PJ	4.7	14.0
	4.7	14.0
	4.4	14.3
b	4.2	14.5
	4.4	14.3
	4.2	14.5
22 PJ	4.1	14.6

20 n = E 6	4.6	14.1
line to W curb of 40 ft at		
20 n = 2 X	4.5	14.2
n 2	4.4	14.3
	4.1	14.6
	4.3	14.4
1	4.2	14.5
	4.2	14.5
	4.4	14.3
52	4.5	14.2
20S = 2 Z	5.0	13.7
	4.7	13.9

TP 587

1983

Bmt
SEE 6 41
19831873
4.77
13.96
3.87
19.83

1983

Line D	W	1/4 of	40 ft	at
20'S = LZ	7		6.0	13.5
SL			5.4	14.4
			5.3	14.5
			5.2	14.6
			5.2	14.6
			5.2	14.6
			5.2	14.6
n2			5.3	14.5
20'n = LZ	x		5.4	14.4
Line E	center	of	40 ft	at
20'n = LZ	x		5.3	14.5
n2			5.2	14.6
			5.2	14.6
			5.2	14.6
b			5.1	14.7
			5.2	14.6
			5.2	14.6
SL			5.3	14.5
20'S = LZ			5.8	14.0

1983

Line B	E	1/4 of	40 ft	at
20'S = LZ			5.5	14.3
SL			5.3	14.5
			5.1	14.7
			5.0	14.8
b			5.2	14.6
			5.2	14.6
			5.4	14.4
n2			5.2	14.6
20'n = LZ			5.5	14.3
Line G	E	center	of	40 ft
20'n = LZ			5.3	14.5
n2			5.7	14.1
			5.2	14.6
			5.1	14.7
b			5.0	14.8
			5.0	
			5.0	14.8
			5.0	14.8
SL			5.3	14.5
20'S = LZ			5.3	14.5

bottomwood

46

1983				2032				
Line #	ELB	40 ft	20'	32' E of N	ELB	40 ft	20'	
20	S = LZ ELB		5.2	14.5	S		5.2	15.1
	Sd = P3		5.2	14.6			5.4	14.9
			5.2	14.6			5.2	15.1
			5.0	14.8	b		5.2	15.1
b			5.0	14.8			5.0	15.3
			4.9	14.9			5.3	15.0
			5.1	14.7	n		5.3	15.0
	Sd = P3		5.3	14.5		50	E of 00	
	20' n		5.4	14.4	n		5.0	15.3
(68) Line 1	20' E = ELB		4.9	14.9			5.2	15.1
n			5.0	14.8			5.1	15.2
			4.8	15.0	b		5.0	15.3
			4.8	15.0			4.9	15.4
b			4.9	14.9			5.0	15.3
			4.9	14.9	S		5.0	15.3
			4.9	14.9				
S TP	5-20	20.32	4.71	15.12				

bottom

47

1983
5.2
15.1
5.20
20.32

2032

100

E J

CU

S 49 15.4

48 15.5

48 15.5

6 48 15.5

49 15.4

50 15.3

N 47 15.2

150

E J

CU

N 47 15.6

47 15.6

48 15.5

6 47 15.6

50 15.3

51 15.2

S 50 15.3

2032

48

200

E

S 53 15.0

51 15.2

45 15.8

6 43 16.0

43 16.0

42 16.1

N 41 16.2

220

E

N 41 16.2

42 15.6

47 15.6

6 64 13.9

87 11.4

85 11.8

S 88 11.5

Bridg over creek

2032

240 E

S	57	14.6
	55	14.5
	59	14.4
b	62	14.1
	100	10.3
	105	9.8
n	105	9.8

250 E

n	58	14.5
	52	15.1
	56	14.7
b	54	14.9
	52	15.1
	51	15.2
S	50	15.3

2032

300 E

S	48	15.5
	47	15.6
	46	15.7
b	40	15.7
	48	15.5
	48	15.5
n	48	15.5

350 E

n	40	16.0
	41	16.2
	34	16.9
b	29	17.2
	22	18.1
	22	18.1
S	10	19.3
TP	988	<u>27.35</u>
		285
		18.7

Gottenwind

49

2032
285
18.7
9.8
27.35

27.35

2/00

E

S	5.1	22.3
	6.3	21.1
	7.0	20.4
b	7.9	19.5
	8.6	18.8
	9.6	17.8
n	10.2	17.2

450

E

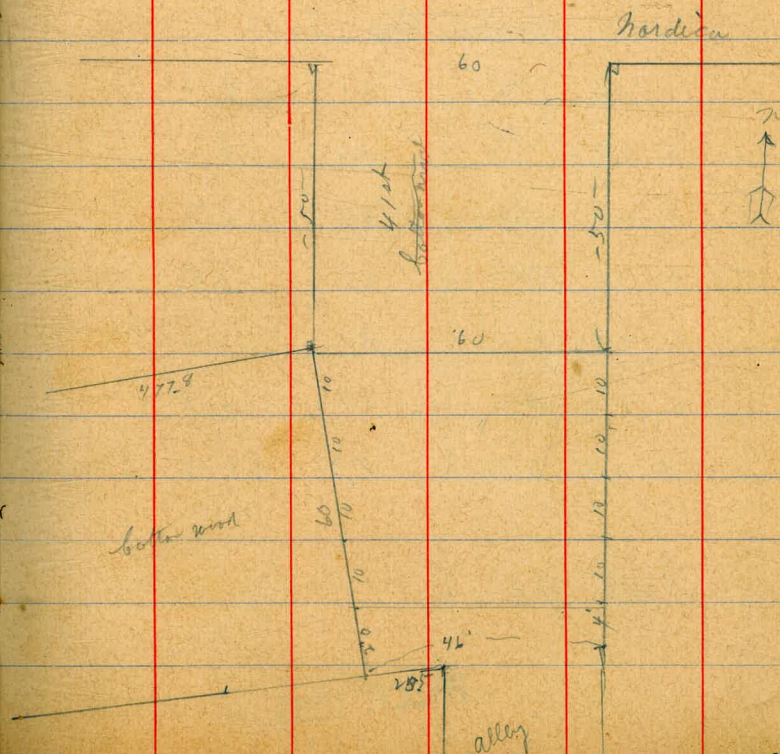
n	8.8	18.2
	8.2	19.2
	7.0	20.4
b	6.2	21.2
	5.0	22.4
	4.0	23.4
S	2.7	24.7

27.35

477.8 E = angle and

g	5.8	25.6
	2.4	25.0
	2.9	24.5
b	3.8	23.6
	4.7	22.7
	5.8	21.6
n	7.0	20.4

60 towards
50



27.35

S

S line of Hardica am

WL	920	18.15	W
	96	17.5	
	95	17.9	
b	95	17.9	b
	94	18.0	
	94	18.0	
E	94	18.0	E

25' S of Hardica

E	85	18.9	E
	86	18.8	
	85	18.9	
b	85	18.9	b
	87	18.7	
	89	18.5	
WL	92	18.2	W

North of Hardica on Page 66

PLOTTED

27.35

50 S = angle on W2

70	20.4
62	21.1
61	21.3
64	21.0
67	21.7
68	20.6
66	20.8

N 66 of Bottom

61	21.3
62	21.2
60	21.4
57	21.7
52	22.2
52	22.2
57	21.7

51

N 1/4 of bottom mud

W	47	22.7
	43	23.1
	45	22.9
b	50	21.4
	51	22.3
	49	22.5
E	48	22.6

Center of bottom mud

E	34	24.0
	37	23.7
	38	25.6
	39	23.5
	39	23.5
	38	23.6
W	38	23.6

PLOTTED

S 1/4 of bottom mud

W	28	24.6
	27	24.7
	27	24.7
	27	24.7
	28	24.6
	27	24.7
E	23	25.1

(46) { 5 1/4 + 4 5 J S & bottom mud
5 1/4 + 14 5

E	18	25.6
ll	14	26.0
y	11	26.3
20 E = Black box	09	26.5
	08	26.6
	08	26.6
	06	26.8
W	08	26.6
Black	330	24.05

Bm P-9
7 1/2 g. per

PLOTTED

X sec of Nordica St (60')

Enter length

20.63

Nordica

53

567 1963 1396

Bm
P45

100 E of 40 ft

260 2063 260 1703

n

47 15.9

E of 40 ft st

47 15.9

n

38 17.8

48 15.8

42 16.4

b

47 15.9

46 16.0

48 15.8

b

50 15.6

50 15.6

53 15.3

s

48 15.8

55 15.1

150 E of

40 ft

s

54 15.4

s

44 16.2

50 E of 40 ft st

45 16.1

s

49 15.7

45 16.1

51 15.5

b

44 16.2

46 16.0

44 16.2

b

45 16.1

42 16.4

45 16.1

n

39 16.7

43 16.3

n

36 16.0

PLOTTED

1396
567
1963
260
1703
360
2063

2063

200' E of 40th

n	37	16.9
	38	16.8
	37	16.9
b	37	16.9
	37	16.9
	37	16.9
S	33	17.1

250' E of 40th

S	32	17.4
	34	17.2
	34	17.2
b	33	17.3
	34	17.4
	33	17.3
n	31	17.5

PLOTTED

2063

Norden

54

300' E of 40th

n	40	16.6
	37	16.9
	38	16.8
b	37	16.9
	40	16.6
	41	16.5
S	41	16.5

TP 5.60

2249

2249

364 16.89

325' E of 40

S	40	11.5
	87	13.8
	67	15.8
b	66	15.9
	67	15.8
	66	15.9
n	65	16.0

16.89
364
2249

PLOTTED

2249

350' E of 40'

n	90	13.5
	10.8	11.7
	10.2	12.3
Ridge	6.6	15.9
	6.3	14.2
	6.5	14.0
S	6.6	15.9

355' E of 40'

n	10.8	11.7
bl	11.0	11.5

365' E of 40'

n	6.4	16.1
bl	6.3	16.2

PLOTTED

2249

400' E of 40'

n	4.9	17.6
	5.4	17.1
	5.0	17.8
6	4.8	17.7
	5.0	17.8
	5.3	17.3
S	5.5	16.9

450' E of 40'

S	5.0	17.5
	5.0	17.5
	4.8	17.7
l	4.5	18.0
	4.5	18.0
	5.1	17.4
n	4.3	18.2

Handwritten

55

2249

508

e = W.L

41

(60)

n

4.0

18.5

4.7

17.8

4.3

18.3

b

4.1

18.4

4.6

17.9

5.0

17.5

s

4.5

18.0

W sb f

41.01 01

s

4.8

17.7

4.8

17.7

4.5

18.0

b

4.2

18.3

4.7

18.3

4.6

17.9

n

3.9

18.6

PLOTTED

2249
2249

Mudica

56

W

1/4 f

41st

n

3.8

18.7

4.6

17.9

4.1

18.4

b

4.1

18.4

4.5

18.0

4.6

17.9

s

4.7

17.8

Pentia

s

4.7

17.8

4.6

17.9

4.7

17.8

b

4.0

18.5

4.1

18.4

4.7

17.8

n

3.6

18.9

2249
2249

E

48

41.0

n

35 19.0

45 18.0

41 18.4

b

40 18.5

46 17.9

47 17.8

S

46 17.9

E

48

41.0

S

47 17.8

46 17.9

44 18.1

b

40 18.5

41 18.4

45 18.0

n

35 19.0

PLOTTED

2249

Hardica

57

E Lauf

41.0

n

38 18.7

46 17.9

40 18.5

b

40 18.5

42 18.3

47 17.8

S

46 17.9

E

48

41.0

S

40 18.5

44 18.4

40 18.5

b

35 19.0

35 19.0

41 18.4

n

38 18.7

PLOTTED

22.49

25.15
25.15Hardy
58

	100	E f	41	
n			33	19.3
			40	18.5
			34	19.1
			32	19.3
			33	19.3
			37	18.8
S			37	18.8
70	606	2515	340	19.09
	150	E f	41	
S			61	19.1
			56	19.6
			55	19.7
b			54	19.8
			57	19.5
			60	19.2
n			54	19.8

PLOTTED

	200	E	f	41
n			52	20.0
			54	19.8
			54	19.8
b			52	20.0
			52	20.0
			54	19.8
S			63	18.9
750	E	f	41	
S			58	19.4
			53	19.9
			50	20.2
b			46	20.6
			50	20.2
			51	20.1
n			49	20.3
Bm			111	24.04

22.49
25.15
19.09
606
25.15

701 Post

25.15

300 E J 41 21.1

n 59 19.3

59 19.3

50 20.2

l 44 20.8

44 20.8

46 20.6

S 48 20.4

350 E J 41

S 40 21.2

44 20.8

47 20.5

l 46 20.6

50 20.2

52 20.0

n 48 21.0

PLOTTED

25.15

400 E J 41

n 33 21.9

40 21.2

40 21.2

l 40 21.2

42 21.0

47 20.5

S 44 20.8

450 E J 41

S 38 21.4

40 21.2

38 21.4

l 38 21.7

35 21.7

38 21.4

39 22.2

n 49 20.3

TP 428 26.1 26.2 26.3

Handica

59

25.15
26.2
26.3
26.4
26.5

2681

500

E 9

41.00

n

46

29.9

50

21.8

52

21.6

b

52

21.6

52

21.6

59

20.9

S

52

21.6

550

E 8

41

S

52

21.6

52

21.6

49

21.9

50

21.8

50

21.8

48

22.0

n

52

21.6

575

E

n

84

18.4

h

4

PLOTTED

2681

600

E =

W 2 f

42.60

n

53

21.5

76

19.7

92

17.6

b

41

22.7

45

22.3

48

22.0

S

50

21.8

W

66 f

42

S

50

21.8

46

22.7

44

22.4

42

22.5

95

17.3

59

20.9

n

53

21.5

Nordica

60

2681

	W	1/4 of	42 nd	
n			48	22.0
			50	21.8
			65	20.3
b			65	20.3
			42	22.6
			46	22.3
s			49	21.9
	Center			
s			47	22.1
			44	22.4
			44	22.4
b	Bridge		78	19.0
			51	21.7
			48	22.0
n			47	22.1

PLOTTED

2681

Audley

61

	E 1/4	of	42 nd	
n			45	22.3
			47	22.1
			47	22.1
b			80	18.8
			51	21.7
			42	22.5
s			46	22.3
	E 1/4		42 nd	
s			44	22.4
			42	22.6
			50	21.8
b			80	18.8
			50	21.8
			47	22.1
n			45	22.3

2681

Edin. f

42nd

n 114 224

49 21.9

46 22.2

b 77 19.1

66 20.2

40 22.8

s 43 22.5

TP 713 2963 431 2250

50 27 42nd

s 64 23.2

114 18.2

90 20.6

b 70 22.6

71 22.5

75 22.1

n 70 22.6

2963

Horwich

62

60' E 8 42

n 72 22.4

73 22.3

70 22.4

b 70 22.6

74 22.2

94 20.2

113 18.3

75' E 8 42nd

s 80 20.6

76 22.0

72 22.4

70 22.6

70 22.6

72 22.4

70 22.6

281
42
2250
713
2963

SE 4
42nd

PLOTTED

2963

	100	E 1	4.2 m	
n			57	23.9
			63	23.3
			61	23.5
b			64	23.7
			67	22.9
			69	22.7
s			75	22.4
	150	E	4.2	
S			50	24.6
			48	24.8
			38	25.8
b			35	26.1
			34	26.2
			35	26.1
1/2			29	26.7

PLOTTED

2963

Hardica
63

			1	
	200	E 1	4.2	
n			05	29.1
			10	28.4
			14	28.2
b			18	27.8
			22	27.4
			31	26.5
s			35	26.1
	TP	200	36.2	29.32
	250	E 1	4.2	
			86	27.7
s			75	28.8
			68	29.5
b			58	30.5
			53	31.0
			52	31.1
n			45	31.8

2963

01

2932

2944

3602

36.32

340 E 7 42

n	13	35.0
	16	34.7
	22	34.1
	22	34.1
	32	33.1
	44	31.9

S	55	30.8
---	----	------

350 E 7 42

S	82	28.1
	73	29.0
	56	30.7

b	42	32.1
	30	33.3
	14	34.9

n	04	35.9
---	----	------

PLOTTED

36.32

373 E = B-B hours to L

n	23	34.0
	37	32.6
	46	31.7
b	52	30.7
	66	29.7
	83	28.0

S	101	26.2
---	-----	------

47 E on m) = E 6
65.5 E = 5)

S	100	26.3
	95	26.8
	84	27.9

b	74	28.9
	68	29.5

	60	30.3
n	45	31.8

Arctic
64

	50	E 7	E 6	
n			5.5	30.8
			6.3	30.0
			7.3	29.0
b			7.8	28.4
			8.6	27.7
			9.1	27.2
S			9.7	26.6
	90°	E 8	E 6	
S			9.2	27.1
	100°	E 6	E 6	
S			11.3	25.0
75°			9.8	27.3
			9.0	27.3
			9.0	27.3
b			8.7	27.6
			8.5	27.8
			7.8	28.5
n			6.8	29.5

PLOTTED

	120°	E =		
			7.3	29.0
			7.7	28.4
			8.5	27.8
b			8.8	27.5
			9.0	27.3
			9.0	27.3
S			11.4	24.9
	140°	E =		
S			11.2	25.1
			10.2	26.1
			9.5	26.8
b			9.0	27.3
			8.5	27.8
			8.2	28.1
n			7.8	28.5
77	146	27.98	10.70	25.62
Bm			4.58	22.50
Seh			4.58	22.50

PLOTTED

4632
 23.20
 25.62
 1.40
 25.88
 4.58
 21.50

SE 442
 0.14
 24.02
 Top to

18
2
13

through
rough
July

X sec of 41 st st 60
Nordica st to Eta st
41st st 5 on page 51
-000 2400 24.01

24.00

41
66

N line of Nordica

W

55 18.5

54 18.4

53 18.7

E

51 18.9

50 19.0

50 19.0

E

53 18.7

50 N of Nordica

E

50 19.0

4.9 19.1

4.9 19.1

L

4.8 19.3

5.0 19.0

5.1 19.0

W

5.0 19.0

W

65 N of Nordica

55 18.5

53 18.7

54 18.6

L

58 18.7

80 16.0

106 13.4

E

115 12.5

90' N of Nordica

E

60 18.0

62 17.8

63 17.7

L

80 16.0

84 15.6

103 13.7

W

93 14.7

PLOTTED

	100	n f	Number	
W			89	18.7
			67	17.3
			57	18.3
			57	18.3
			56	18.4
			54	18.6
E			52	18.8
	110	n	Number	
W			54	18.6
W			54	18.6
	150	n f	Number	
E			38	20.7
			41	19.9
			44	19.6
b			46	19.4
			47	19.3
			48	19.2
W			50	19.0

PLOTTED

	200	n f	Number	
W			18	22.7
			17	22.3
			16	22.4
b			13	22.7
			19	23.1
			05	23.5
E			00	24.0
			32.13	
TP	863		32.3	23.50
	230	n =	5.2 f	Sta W
			1.9	30.7
E			1.7	30.4
			1.5	30.6
			1.2	30.9
			1.0	31.1
			1.2	30.9
W			1.3	30.8

2350
863
3213

Bal of 41st St
Page 73

X sec of 42nd St (60)

St S

470 2730

2250

13m 9E 14
Nardica 742

100'

2730

Nardica

42

68

N S Nardica

E

51 22.1

LV52
470
25.20

E

48 22.4

50 22.2

49 22.3

51 22.1

50 22.2

b

51 22.1

51 22.1

52 22.0

52 22.0

51 22.1

53 21.6

W

51 22.1

W

57 21.5

150'

2730

Nardica

50

n f

Nardica

W

44 22.8

W

53 21.9

43 22.9

52 22.0

43 22.9

49 22.3

b

43 22.9

b

51 22.1

46 22.6

51 22.1

47 22.5

52 22.0

E

47 22.5

E

52 22.0

PLOTTED

1720

	200	m f	hardica	
E			26	246
			30	242
			34	238
b			35	237
			33	239
			32	240
W			32	240
IP	640	$\frac{3128}{815}$	232	2488
W	250	m f =	52	25.9
			58	25.5
			54	25.9
b			52	26.1
			53	26.0
			44	26.9
E			30	28.3
E			30	

PLOTTED

42

69

3m S E W

hardica

	480	274 ²		2250
	52	hardica st		
E			48	235
			50	22.4
			52	22.9
b			55	21.9
			53	21.9
			56	21.8
W			56	21.8
	50	S	hardica	
			55	21.9
			54	22.0
			53	22.1
			51	22.3
			49	22.5
			48	22.6
E			47	22.7

2720

232

24.88

640

3128

2200

22

22

2742
2742

100

S of

Hardica

E 4.6 22.8

4.6 22.8

4.8 22.6

b 4.9 22.5

4.9 22.5

5.0 22.4

W 5.1 22.3

150

S of

Hardica

W 5.4 22.0

5.2 22.2

5.2 22.2

b 5.1 22.3

4.8 22.6

4.5 22.9

E 4.5 22.9

PLOTTED

2742
2742

200

S of

Hardica

E 4.6 22.8

4.7 22.7

5.0 22.4

b 5.0 22.4

5.0 22.4

5.0 22.4

W 4.9 22.5

250

S of

Hardica

W 5.2 22.2

5.2 22.2

5.1 22.3

b 4.9 22.5

4.8 22.6

4.8 22.6

E 4.7 22.7

42

70

2742

300 S of Harder

E			35	23.9
			30	24.4
			25	24.9
A			20	25.4
			14	26.0
			10	26.4
W			08	26.6
TP	1170	38.27	085	26.57
	3295	S = B6 to 6		
W			94	28.9
			100	28.3
			106	27.7
b			112	27.1
			118	26.5
			125	25.8
E			131	25.2

PLOTTED

3827
38.27

397 S - E
47 S - W

42

71

E			102	28.1
			97	28.6
			92	29.1
b			82	30.1
			72	31.1
			66	31.7
W			62	32.1
			E 6	
W			04	37.9
			15	36.8
			28	35.1
			37	34.6
			48	33.0
			57	32.6
E			67	31.6
TP	1324	44.27	200	31.27

2742
 $\frac{42}{21.57}$
 1170
 38.27
 $\frac{20}{31.67}$
 $\frac{15}{44.27}$
 42.86

4427

72

32' S-nd of Division St

E 85 36.0

70 37.3

57 38.6

b 44 39.9

31 41.3

19 42.4

W 041 43.86 NW 42

PLOTTED

10/25

Edge of 41st St 60'
Marine View to Division St

Street 41'
Marine View

490 6612 6120

S of Marine View

W 4.6 61.5

on Return 4.8 61.3
Sutter 5.6 60.5

4.4 61.7

b 3.8 62.3

3.8 62.3

4.6 61.5

Sutter or Return 3.2 62.9

E 2.8 63.3

50 S of Marine View

2 3.7 62.4

4.1 62.0

Sutter 4.8 61.3

4.4 61.7

b 4.5 61.6

5.2 60.9

Sutter 6.2 59.9

5.4 60.7

W 5.5 60.6

Street is graded + walks in

no ^{steps}
PLOTTED

6612

41

73

100 S of Marine View

W 6.4 59.7

Sutter 6.1 60.0

6.9 59.9

b 6.1 60.0

5.4 60.7

Sutter 5.4 60.7

5.7 60.4

4.7 61.4

E 4.6 61.5

150 S of Marine View

E 5.5 60.6

Sutter 5.7 60.4

6.5 59.6

b 6.0 60.1

6.1 60.0

Sutter 6.8 59.3

7.8 58.3

6.9 59.9

W 7.2 58.9

6612

	250	Sy	Marion	New
W			7.9	58.3
			7.6	58.1
		Gutter	8.3	57.8
			7.6	58.1
b			6.9	59.2
			6.8	59.3
		Gutter	7.2	58.9
			6.2	59.9
E			6.0	60.1

250 S = N of Division St

E			6.8	59.3
		on Return	7.1	59.0
		Gutter	7.6	58.1
			7.5	58.6
b			7.5	58.6
			8.2	57.9
		Gutter	8.8	57.3
		on Return	8.65	57.7
		Gutter		
W			8.6	57.1
TP			8.25	57.87

on Ret
250
Division

PLOTTED

74

6612
8.25
57.87

10
12/13

See Anthony Drive (60)

Marine View to Division St

286 4705 4419

S side of Marine View

W 26 44.5

on Return 285 442.0

Butte 3.5 43.6

3.0 44.1

6 2.6 44.5

2.8 44.3

Butte 3.6 43.5

on Return 285 442.0

E 2.6 44.5

50 S of Marine View

E 33 43.8

3.5 43.6

Butte 4.4 43.7

3.6 43.5

3.4 43.7

3.9 43.2

Butte 4.7 43.4

4.0 43.1

W 3.7 43.7

Street is Grade Walk in

no links

PLOTTED

4715

Anthony
75

100 S of Marine View

W 4.8 42.3

Butte 5.2 41.9

6 5.9 41.7

5.0 42.1

4.5 42.6

4.6 42.5

Butte 5.4 41.7

4.5 42.6

E 4.2 42.8

170.5 S of Division St

E 5.4 41.7

on Return 5.65 41.48

Butte 6.3 40.8

6.0 41.1

5.9 41.2

6.5 40.4

Butte 7.1 40.0

on Return 6.6 40.39

6.4 40.7

6.5 40.50

on Return
Anthony

PLOTTED

Location of water course through Nordica Heights.

Mar. 26/13 ^{Lehilds}
~~Altus~~
 Kern

Δ 1 lot line bet. 43 + 44 on south line of Nordica street. foresight west along Nordica.

Δ 2 East side of alley east of 42nd street + south side of Nordica foresight west along Nordica.

	angle	dist. <small>11.33</small>	H.T. <small>33.88</small>	Rod	Elev. <small>22.50 IP</small>	J.P.
1	60° 26' L	29'		8.8	25.1	1
2	73° 20' L	35'		12.6	21.3	2
3	85° 12' L	45'		10.4	23.5	3
4	80° 53' L	108'		9.6	24.3	4
5	77° 50' L	106'		12.9	21.0	5
6	72° 09' L	104'		10.7	23.2	6
7	54° 46' L	230.5		11.6	22.3	7
8	53° 50' L	227.5		13.6	20.8	8
9	51° 18' L	224.0		10.7	22.2	9
10	177° 02' L	105.0		8.5	25.4	10
11	174° 10' L	115.0		11.8	22.1	11
12	172° 21' L	123.0		10.0	23.9	12
13	191° 37' L	136.0		6.8	27.1	
14	187° 43' L	137.0		11.2	22.7	
15	185° 27' L	137.0		10.1	22.8	
16	185° 34' L	224.0	South end bridge 48		29.1	
17	188° 54' L	222.0		10.1	23.8	
18	193° 10' L	227.0	no. end	11.5	28.8	

	angle	dist. <small>5.53</small>	H.T. <small>28.98</small>	Rod	Elev. <small>23.45</small>
1	85° 12' L	174.0		6.4	22.6
2	88° 30' L	165.0		10.6	18.4
3	90° 05' L	162.0		6.6	22.4
4	103° 33' L	73.0		5.4	23.6
5	91° 58' L	73.0		10.2	18.8
6	84° 51' L	74.0		7.9	21.1
7	11° 40' R	100.0		6.6	22.4
8	6° 40' R	102.0		10.4	18.6
9	0° 42' R	106.0		5.8	23.2
10	11° 58' R	198.0		8.5	20.5
11	10° 12' R	200.0		10.6	18.4
12	8° 20' R	202.0		6.3	22.7

△ 3 Between lots 42 & 43 Blk. 6.
on north side Nordica street foresight
east on Nordica st.

J.P.	Angle	dist.	H.I.	Rod	Elev.
1	1° 10' L	85.0	25.65	3.8	21.9
2	7° 38' L	87.0		7.3	18.4
3	14° 06' L	89.0		3.6	22.1
4	90° 00' L	16.0		4.2	21.5
5	90° 00' L	4.0		7.8	17.9
6	90° 00' R	4.0		3.6	22.1
7	163° 07' L	90.0		4.3	21.4
8	158° 47' L	89.0		8.0	17.7
9	152° 35' L	89.0		4.8	20.9

△ 4 Between lots 6 & 7 Blk 6 on South line
of Eta street foresight east
along Eta street

J.P.	Angle	dist.	H.I.	Rod	Elev.
1	33° 42' R	116.0	25.65	6.9	18.8
2	36° 13' R	111.0		9.6	16.1
3	39° 38' R	106.0		5.6	20.1

△ 4 Cont.

77

	angle	dist.	H.I.	Rod	Elev.
4	9° 49' R	77.0	25.65	7.0	18.7
5	12° 08' R	73.0		9.1	16.6
6	17° 25' R	66.0		7.2	18.5
7	22° 26' L	59.0		3.4	22.3
8	8° 18' L	48.0		10.0	15.7
9	1° 11' L	44.0		6.7	19.0
10	229° 47' L	17.0		6.6	19.1
11	206° 00' L	27.0		9.9	15.8
12	195° 25' L	41.0		1.7	24.0
13	90° 00' R	144.0		5.9	19.8
14	93° 12' R	142.0		11.5	14.2
15	96° 55' R	140.0		8.1	17.6

J.P. NE cor Nordica & 41st

J.P. NE cor Nordica & 41st

△ 5 North line alley west line 41st street
bet. Nordica & Eta
foresight South along 41st st.

	angle	dist.	H.I.	Rod	Elev.
1	83° 32' L	109.0	20.34	1.0	19.3
2	79° 28' L	110.0		5.8	14.5
3	66° 50' L	120.0		1.6	18.7

△ 5 cont-

	angle	dist.	H.I.	Rod	Elev.
			20.34		
4	43°16'L	103.0		1.9	18.4
5	45°45'L	95.0		6.7	13.6
6	48°00'L	91.0		4.0	16.3
7	82°12'R	100.0		2.9	17.4
8	94°51'R	95.0		8.2	12.1
9	101°59'R	95.0		1.5	18.8
10	93°16'R	163.0		1.9	18.4
11	89°17'R	151.0		7.0	13.3
12	86°18'R	146.0		4.5	15.8

△ 6 Lot line bet. 14+15 Blk. 9 north line
Cottonwood foresight East.

	angle	dist.	H.I.	Rod	Elev.
			20.53		
S.P.		172			18.83
1	62°30'L	166.0		4.4	16.7
2	64°20'L	165.0		7.9	12.7
3	66°38'L	164.0		4.3	16.3
4	70°50'L	122.0		4.8	15.8
5	74°40'L	122.0		8.1	12.5
6	78°40'L	122.0		4.9	15.7

△ 6 cont-

	angle	dist.	H.I.	Rod	Elev.
			20.53		
7	130°37'R	124.0		5.4	15.2
8	135°03'R	126.0		10.3	10.3
9	141°26'R	128.0		6.4	14.2
△ 7	(SEC. lot 13) N.W. Cor. 940 th & Cottonwood foresight west to prebl. line.				
	angle	dist.	H.I.	Rod	Elev.
			20.53		
1	155°51'L	258.0		5.4	15.2
2	152°31'L	261.0		10.3	10.3
3	151°14'L	263.0		6.5	14.1
4	131°14'L	186.0		6.7	13.9
x 5	135°31'L	177.0		8.7	11.9
6	137°47'L	174.0		6.2	14.4
7	127°11'L	95.0		5.5	15.1
8	137°27'L	85.0		10.1	10.5
9	143°27'	81.0		6.0	14.6
10	77°29'L	59.0		7.9	12.7
x 11	77°29'L	73.0		11.6	9.0
12	77°29'L	84.0		8.0	12.6
x 13	101°53'L	136.0		11.2	9.4
x 14	114°16'L	159.0		5.9	14.7

△ 7 cont.

	angle	dist.	H.I.	Rod	Elev.
15	4°13'L	107.0	20.53	9.1	11.5
16	1°14'R	102.0		11.9	8.7
17	8°34'R	99.0		8.3	12.3

△ 8 Hub angle south line Cottonwood 21.13
East of pueblo line west of 40th
fore sight west.

	angle	dist	H.I.	Rod	Elev.
1	46°39'R	68.0	20.53	9.1	11.5
2	43°38'R	83.0		11.9	8.7
3	41°58'R	92.0		8.0	12.6
4	30°24'L	118.0		10.2	10.4
5	33°30'L	111.0		12.9	7.7
6	38°51'L	104.0		8.8	11.8
7	35°00'L	164.0		10.8	9.8
8	37°15'L	163.0		12.9	7.7
9	41°09'L	162.0		9.7	10.9

△ 9 Lot line bet. 8 + 9 Blk 2 south line
Cottonwood foresight East

	angle	dist	H.I.	Rod	Elev.
J.P.		1.86	14.35	8.06	12.49
1	50°14'R	117.0		2.8	11.6
2	47°05'R	107.0		7.1	7.3
3	41°30'R	99.0		3.1	11.3
4	120°41'R	148.0		4.0	10.4
5	123°25'R	140.0		7.7	6.7
6	126°05'R	136.0		4.9	9.5

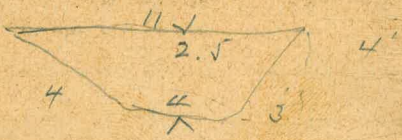
△ 10 Between lots 10 + 11 Blk. 1 west side
Osborne foresight south

	angle	dist	H.I.	Rod	Elev.
1	11°20'L	27.0	14.35	5.2	9.2
2	5°35'L	21.0		9.3 west end culvert at Osborne	5.1
3	19°20'R	14.0		5.8	8.6
4	72°18'R	321.0		3.0 north side RR trestle	11.4
5	69°20'R	311.0		10.4	4.0
6	67°35'R	305.0		2.3	12.1

note on page 78 old water
run from reading no. 5 to
14 to 13 & to 11
new ditch runs from no. 5
to 8 to 11

2250

8.2 6.3
 8.6 8.6
 2.3



0.4' fall in 50'

21.13
 23.75
 44.88
 169.88
 44.88
 125

24883
 5.58
 4295 10.5

DISTANCES FROM CENTER OF ROADWAY FOR CROSS-SECTIONING.

ROADWAY 14 FEET WIDE. SIDE SLOPES 1 1/2 TO 1.

FOR SINGLE TRACK EMBANKMENT.

	0	.1	.2	.3	.4	.5	.6	.7	.8	.9	
0	7.0	7.2	7.3	7.5	7.6	7.8	7.9	8.1	8.2	8.4	0
1	8.5	8.7	8.8	9.0	9.1	9.3	9.4	9.6	9.7	9.9	1
2	10.0	10.2	10.3	10.5	10.6	10.8	10.9	11.1	11.2	11.4	2
3	11.5	11.7	11.8	12.0	12.1	12.3	12.4	12.6	12.7	12.9	3
4	13.0	13.2	13.3	13.5	13.6	13.8	13.9	14.1	14.2	14.4	4
5	14.5	14.7	14.8	15.0	15.1	15.3	15.4	15.6	15.7	15.9	5
6	16.0	16.2	16.3	16.5	16.6	16.8	16.9	17.1	17.2	17.4	6
7	17.5	17.7	17.8	18.0	18.1	18.3	18.4	18.6	18.7	18.9	7
8	19.0	19.2	19.3	19.5	19.6	19.8	19.9	20.1	20.2	20.4	8
9	20.5	20.7	20.8	21.0	21.1	21.3	21.4	21.6	21.7	21.9	9
10	22.0	22.2	22.3	22.5	22.6	22.8	22.9	23.1	23.2	23.4	10
11	23.5	23.7	23.8	24.0	24.1	24.3	24.4	24.6	24.7	24.9	11
12	25.0	25.2	25.3	25.5	25.6	25.8	25.9	26.1	26.2	26.4	12
13	26.5	26.7	26.8	27.0	27.1	27.3	27.4	27.6	27.7	27.9	13
14	28.0	28.2	28.3	28.5	28.6	28.8	28.9	29.1	29.2	29.4	14
15	29.5	29.7	29.8	30.0	30.1	30.3	30.4	30.6	30.7	30.9	15
16	31.0	31.2	31.3	31.5	31.6	31.8	31.9	32.1	32.2	32.4	16
17	32.5	32.7	32.8	33.0	33.1	33.3	33.4	33.6	33.7	33.9	17
18	34.0	34.2	34.3	34.5	34.6	34.8	34.9	35.1	35.2	35.4	18
19	35.5	35.7	35.8	36.0	36.1	36.3	36.4	36.6	36.7	36.9	19
20	37.0	37.2	37.3	37.5	37.6	37.8	37.9	38.1	38.2	38.4	20
21	38.5	38.7	38.8	39.0	39.1	39.3	39.4	39.6	39.7	39.9	21
22	40.0	40.2	40.3	40.5	40.6	40.8	40.9	41.1	41.2	41.4	22
23	41.5	41.7	41.8	42.0	42.1	42.3	42.4	42.6	42.7	42.9	23
24	43.0	43.2	43.3	43.5	43.6	43.8	43.9	44.1	44.2	44.4	24
25	44.5	44.7	44.8	45.0	45.1	45.3	45.4	45.6	45.7	45.9	25
26	46.0	46.2	46.3	46.5	46.6	46.8	46.9	47.1	47.2	47.4	26
27	47.5	47.7	47.8	48.0	48.1	48.3	48.4	48.6	48.7	48.9	27
28	49.0	49.2	49.3	49.5	49.6	49.8	49.9	50.1	50.2	50.4	28
29	50.5	50.7	50.8	51.0	51.1	51.3	51.4	51.6	51.7	51.9	29
30	52.0	52.2	52.3	52.5	52.6	52.8	52.9	53.1	53.2	53.4	30
31	53.5	53.7	53.8	54.0	54.1	54.3	54.4	54.6	54.7	54.9	31
32	55.0	55.2	55.3	55.5	55.6	55.8	55.9	56.1	56.2	56.4	32
33	56.5	56.7	56.8	57.0	57.1	57.3	57.4	57.6	57.7	57.9	33
34	58.0	58.2	58.3	58.5	58.6	58.8	58.9	59.1	59.2	59.4	34
35	59.5	59.7	59.8	60.0	60.1	60.3	60.4	60.6	60.7	60.9	35
36	61.0	61.2	61.3	61.5	61.6	61.8	61.9	62.1	62.2	62.4	36

Calculated by Julien A. Hall, M. Am. Soc. C. E.

MADE IN GERMANY.