

900

F.B. 900

LEVEL BOOK

373

KEUFFEL & ESSER CO.

DRAWING MATERIALS
AND
SURVEYING INSTRUMENTS.

NEW YORK.

CHICAGO. ~~SAN FRANCISCO.~~ ST. LOUIS.

MICROFILMED

TABLES FOR EXCAVATIONS AND EMBANKMENTS.

DISTANCE FROM CENTER OF ROADWAY FOR CROSS-SECTIONING.

ROADWAY 18 FEET WIDE. SIDE SLOPES 1 TO 1.

FOR SINGLE TRACK EXCAVATION.

"Copyright, 1895, by Keuffel & Esser Co."

	0	.1	.2	.3	.4	.5	.6	.7	.8	.9	
0	9.0	9.1	9.2	9.3	9.4	9.5	9.6	9.7	9.8	9.9	0
1	10.0	10.1	10.2	10.3	10.4	10.5	10.6	10.7	10.8	10.9	1
2	11.0	11.1	11.2	11.3	11.4	11.5	11.6	11.7	11.8	11.9	2
3	12.0	12.1	12.2	12.3	12.4	12.5	12.6	12.7	12.8	12.9	3
4	13.0	13.1	13.2	13.3	13.4	13.5	13.6	13.7	13.8	13.9	4
5	14.0	14.1	14.2	14.3	14.4	14.5	14.6	14.7	14.8	14.9	5
6	15.0	15.1	15.2	15.3	15.4	15.5	15.6	15.7	15.8	15.9	6
7	16.0	16.1	16.2	16.3	16.4	16.5	16.6	16.7	16.8	16.9	7
8	17.0	17.1	17.2	17.3	17.4	17.5	17.6	17.7	17.8	17.9	8
9	18.0	18.1	18.2	18.3	18.4	18.5	18.6	18.7	18.8	18.9	9
10	19.0	19.1	19.2	19.3	19.4	19.5	19.6	19.7	19.8	19.9	10
11	20.0	20.1	20.2	20.3	20.4	20.5	20.6	20.7	20.8	20.9	11
12	21.0	21.1	21.2	21.3	21.4	21.5	21.6	21.7	21.8	21.9	12
13	22.0	22.1	22.2	22.3	22.4	22.5	22.6	22.7	22.8	22.9	13
14	23.0	23.1	23.2	23.3	23.4	23.5	23.6	23.7	23.8	23.9	14
15	24.0	24.1	24.2	24.3	24.4	24.5	24.6	24.7	24.8	24.9	15
16	25.0	25.1	25.2	25.3	25.4	25.5	25.6	25.7	25.8	25.9	16
17	26.0	26.1	26.2	26.3	26.4	26.5	26.6	26.7	26.8	26.9	17
18	27.0	27.1	27.2	27.3	27.4	27.5	27.6	27.7	27.8	27.9	18
19	28.0	28.1	28.2	28.3	28.4	28.5	28.6	28.7	28.8	28.9	19
20	29.0	29.1	29.2	29.3	29.4	29.5	29.6	29.7	29.8	29.9	20
21	30.0	30.1	30.2	30.3	30.4	30.5	30.6	30.7	30.8	30.9	21
22	31.0	31.1	31.2	31.3	31.4	31.5	31.6	31.7	31.8	31.9	22
23	32.0	32.1	32.2	32.3	32.4	32.5	32.6	32.7	32.8	32.9	23
24	33.0	33.1	33.2	33.3	33.4	33.5	33.6	33.7	33.8	33.9	24
25	34.0	34.1	34.2	34.3	34.4	34.5	34.6	34.7	34.8	34.9	25
26	35.0	35.1	35.2	35.3	35.4	35.5	35.6	35.7	35.8	35.9	26
27	36.0	36.1	36.2	36.3	36.4	36.5	36.6	36.7	36.8	36.9	27
28	37.0	37.1	37.2	37.3	37.4	37.5	37.6	37.7	37.8	37.9	28
29	38.0	38.1	38.2	38.3	38.4	38.5	38.6	38.7	38.8	38.9	29
30	39.0	39.1	39.2	39.3	39.4	39.5	39.6	39.7	39.8	39.9	30
31	40.0	40.1	40.2	40.3	40.4	40.5	40.6	40.7	40.8	40.9	31
32	41.0	41.1	41.2	41.3	41.4	41.5	41.6	41.7	41.8	41.9	32
33	42.0	42.1	42.2	42.3	42.4	42.5	42.6	42.7	42.8	42.9	33
34	43.0	43.1	43.2	43.3	43.4	43.5	43.6	43.7	43.8	43.9	34
35	44.0	44.1	44.2	44.3	44.4	44.5	44.6	44.7	44.8	44.9	35
36	45.0	45.1	45.2	45.3	45.4	45.5	45.6	45.7	45.8	45.9	36

Calculated by Julien A. Hall, M. Am. Soc. C. E.

255.30 72° 05'
277.67

210.9

59.78 from boundary corner to
10' line of this corner

7/255.30
63.8

193.44
38
155.44

96.166 / 108.7
96.166
3839.0
288498
248020
865497
98526

95.72 20' East corner tie for boundary of
La Jolla Ave.

72.08 South side SE corner by La Jolla

NE Cor B & C 174.66

Note - Wisconsin changed
to Bancroft north
of University

Washington changed to
Bancroft south of
University

Section of Wisconsin St 60' wide, from the North line of
University Ave to the South line of Lincoln Ave, 10' each
10' quarters. **BANCROFT** August 1913
SW Cor Iowa & University Ave (Private) 256.76 Donnan
H.I. Shemaker
Share.

	206	258.82		356.76
#	0.48	253.11	6.19	252.63 ^{SW Cor} _{Spa File NW Cor}
	0.80	240.67	12.74	240.87
0			1.23	239.44 ^{Spa File NW Cor} _{W 25'}
cc - North line of University Ave				
cc			1.7	239.0
01.2				
cb			2.8	237.9
1/4			3.1	237.6
c			3.2	237.5
1/4			4.5	236.2
cb			5.2	235.8
E.L.			4.6	236.1
Slope is East of Station c+8				
cc+8			10.1	230.6
E.L.			9.7	232.0
cb			7.1	233.6
1/4			5.9	234.8
c			5.2	235.5
1/4			4.7	236.0
cb			3.7	237.0
01.2			3.0	237.7

	+	H.I. 240.67	Discussion Vt (60' wide) BANCROFT	
0+25 off.			3.6	237.1 ✓
cl			4.4	236.3 ✓
1/2			5.5	235.2 ✓
c			6.2	234.5 ✓
1/2			7.0	233.7 ✓
cl			7.9	232.8 ✓
E.L.			9.4	231.3 ✓
Slope 8' East of Station	0+25		11.0	229.7 ✓
" 16' "	"		14.3	226.4 ✓
" 20' "	"	0+50	14.8	225.9 ✓
" 10' "	"	"	17.5	223.2 ✓
" 5' "	"	"	17.2	223.5 ✓
0+50 E.L.			14.3	226.4 ✓
cl			10.0	230.7 ✓
1/4			9.1	232.6 ✓
c			6.9	233.8 ✓
1/2			6.0	234.7 ✓
cl			5.5	235.2 ✓
off.			4.8	235.9 ✓
Slope 5' West of Station	0+50		4.2	236.5 ✓
" 10' "	"	0+75	4.6	236.1 ✓

	+	H.I. 240.67		
0+75 off.			5.2	235.5 ✓ 1
cl			5.9	234.8 ✓
1/2			7.1	233.6 ✓
c			9.1	232.6 ✓
1/2			10.5	230.2 ✓
cl			10.4	227.3 ✓
off.			17.0	223.7 ✓
E.L.			16.6	224.1 ✓
Slope 12' East of Station	0+75		11.7	229.0 ✓
" 12' "	"	1+00	9.3	231.4 ✓
1+00 E.L.			12.9	227.8 ✓
cl			15.8	224.9 ✓
1/4			12.5	228.2 ✓
c			8.6	232.2 ✓
1/2			7.8	232.9 ✓
cl			6.9	233.8 ✓
off.			6.1	234.6 ✓
Slope 10' West of Station	1+00		5.3	235.4 ✓
" 10' "	"	1+25	6.9	234.8 ✓

	H.I. 240.67		Whitman St (60' wide) BANCROFT
1425 OK.L.		6.5	234.2 ✓
cl		7.4	233.3 ✓
1/4		8.5	232.2 ✓
c		10.6	230.1 ✓
+5		14.6	226.1 ✓
1/2		14.5	226.2 ✓
cl		14.5	226.2 ✓
OK.L.		10.0	230.7 ✓
Slip 10' East of Station	1425	7.4	233.3 ✓
" 12' " " "	1450	6.1	234.6 ✓
1450 OK.L.		7.0	233.7 ✓
cl		10.0	230.7 ✓
1/2		13.8	226.9 ✓
c		13.9	226.8 ✓
1/2		11.3	229.4 ✓
cl		8.9	231.8 ✓
OK.L.		6.9	233.8 ✓
Slip 10' West of Station	1450	6.4	234.3 ✓
" 12' " " "	1475	7.0	233.7 ✓

	H.I. 240.67		
1475 OK.L.		9.7	231.0 ✓
cl		12.0	228.7 ✓
1/2		14.0	226.7 ✓
c		12.6	228.1 ✓
1/2		8.9	231.8 ✓
cl		6.0	234.7 ✓
OK.L.		5.5	235.2 ✓
Slip 10' East of Station	1475	5.0	235.7 ✓
" " " "	2400	4.1	236.6 ✓
2400 OK.L.		4.9	236.3 ✓
cl		4.9	235.8 ✓
1/2		5.4	235.3 ✓
c		6.4	234.3 ✓
1/2		9.3	231.4 ✓
cl		11.2	229.5 ✓
OK.L.		13.8	226.9 ✓
Slip 15' West of Station	2400	10.7	230.0 ✓
" 15' " " "	2410	13.2	227.5 ✓
" 12' " " "	2425	8.9	231.8 ✓

	H.I. 240.67		
2125 OK.L.		7.1	233.6 ✓
cb		5.6	235.7 ✓
1/4		5.1	235.6 ✓
c		4.5	236.2 ✓
1/4		4.3	236.4 ✓
cb		3.6	237.1 ✓
OK.L.		3.3	237.4 ✓
2450 OK.L.		2.8	237.9 ✓
cb		2.8	237.9 ✓
1/4		3.2	237.5 ✓
c		3.4	237.3 ✓
1/4		3.7	237.0 ✓
cb		4.2	236.5 ✓
OK.L.		4.3	236.4 ✓
Slope 10' West of Station 2450		4.7	236.0 ✓
3400 OK.L.		2.3	238.4 ✓
cb		2.1	238.6 ✓
1/4		1.7	239.0 ✓
c		1.6	239.1 ✓
1/4		1.3	239.4 ✓
cb		1.1	239.6 ✓

	H.I. 240.67		
OK.L.		1.0	239.7 ✓
#	7.98	247.80	0.85
3450 OK.L.		6.8	241.0 ✓
cb		6.5	241.0 ✓
1/4		7.1	240.7 ✓
c		7.4	240.4 ✓
1/4		7.4	240.4 ✓
cb		7.5	240.2 ✓
OK.L.		7.9	240.0 ✓
4400 OK.L.		6.3	241.5 ✓
cb		6.0	241.8 ✓
1/4		5.9	241.9 ✓
c		5.9	241.9 ✓
1/4		5.7	242.1 ✓
cb		5.7	242.1 ✓
OK.L.		5.6	242.2 ✓

H.I.
247.80

Wisconsin St (60 wide)
BANCROFT

4+65	4.6	243.2
cl	4.4	243.4
1/4	4.3	243.5
c	4.5	243.3
1/4	4.7	243.1
cl	4.8	243.0
OK. 1.	4.9	242.9

4+65^E = intersection of East line of Wisconsin St with
See Plat next Page.
the West line of Boundary St. (Appx.)

4+65 ^E		
OK. 1.	4.5	243.3
cl	4.6	243.2
1/4	4.3	243.5
c	4.2	243.6
1/4	4.2	243.6
cl	4.3	243.5
OK. 1.	4.3	243.5

from 4+65^E North one foot on the West = 1.04 on the East.
5+00 on West line.
East end of Wisconsin St = West line of Boundary St.

5+00		
cl	4.1	243.7
1/4	3.8	244.0
c	3.7	244.1

H.I.
247.80

1/4	3.3	244.5
cl	3.6	244.2
OK. 1	3.9	243.9
5+50 on West line		
OK. 1.	3.4	244.4
cl	3.4	244.4
1/4	3.6	244.2
c	3.8	244.0

4+5^E = West line of Boundary St
5+96^E on the West-South line of Lincoln Ave.

Center 7.8 = West line of Boundary St.		
5+96 ^E		
2.1 East of West 1/4	3.9	243.9
OK 1/4	3.7	244.1
cl	3.7	244.1
OK. 1.	3.4	244.4

#	7.40	251.02	4.19	243.62 10' NW & L
#	13.13	263.14	1.01	250.01
#			0.67	262.97 = 249.46 90 West the Hub for 13' point of Lincoln & Iowa

Wisconsin St (60 wide)
BANCROFT

Lincoln St. 80'

Hub
8 59.78
22.1

186.43 calc
11.04

(596.83 calc)
496.5' Apple.

Wisconsin St
BANCROFT
(465.63 calc.)

Boundary St

47.95'

Boundary St

60'

University Ave

80'
50'

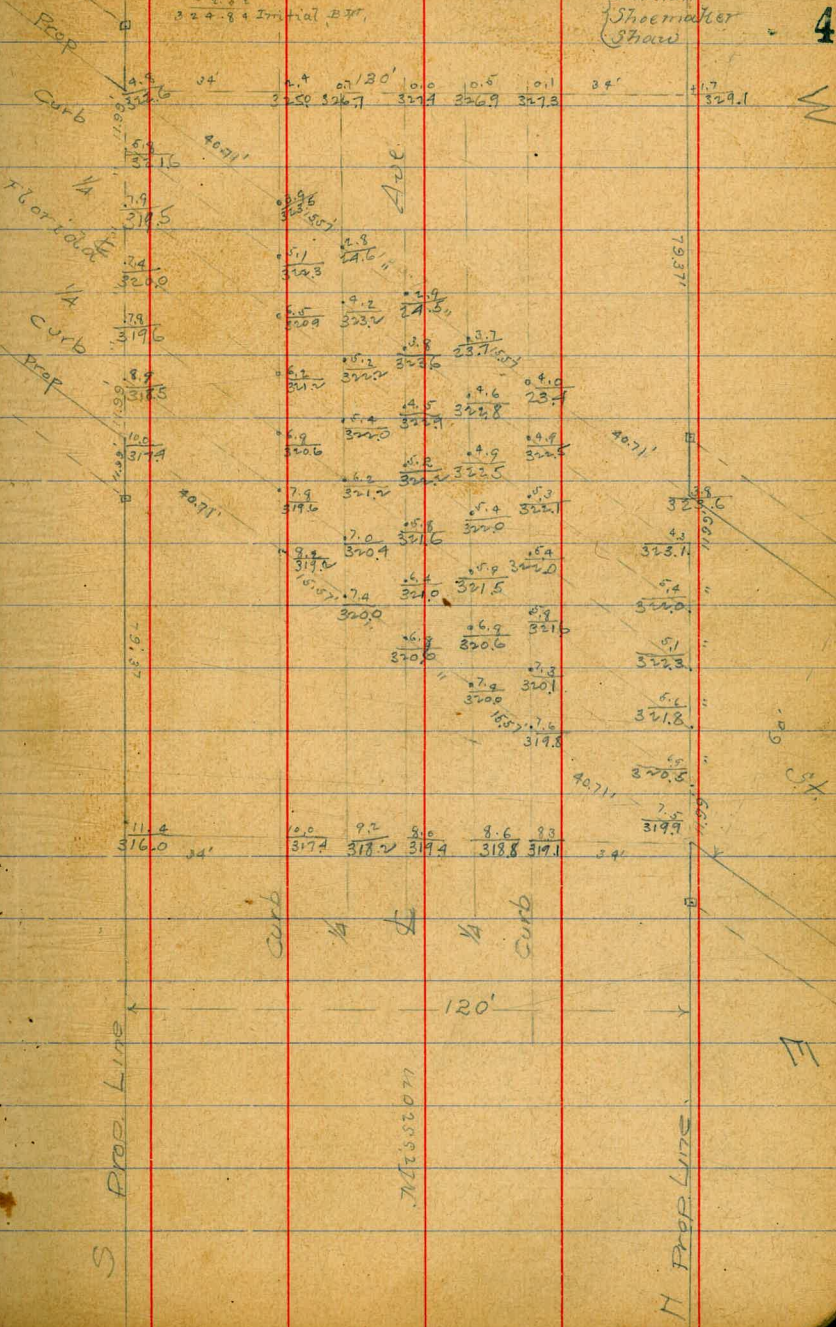
255.30'

Hub

BANK OF FLORIDA NW Cor Florida & Wisconsin Aug 7 - 1913
7.07
327.07 HI.
324.84 Initial B.M.

Thomas
Shoemaker
Survey

4



	H.I.	Cont. Mt (50' wide)	
H.I. 282.90	NE Cor. Ingleside Ave & Sunset Blvd.		
2.47	285.37		282.90
1.06	273.47	12.96	272.41
0.05	260.99	12.53	260.94

1+52th on the West 1+56th on the East - North line of Midstream

addition See sketch Page 5.

1+52th - 1+56th along Public line

E.L.		3.3	257.7
cl		3.3	257.7
1/2		3.5	257.5
c		3.4	257.6
1/2		3.5	257.5
cl		3.4	257.6
W.L.		3.6	257.4
1+52 th at right angles across Mt			
W.L.		3.6	257.4
cl		3.5	257.5
1/2		3.5	257.5
c		3.4	257.6
1/2		3.6	257.4
cl		3.4	257.6

PLOTTED

	H.I.		
	260.99		
E.L.		3.5	257.5
1+25			
E.L.		4.9	256.1
cl		4.7	256.3
1/2		4.7	256.3
c		4.7	256.3
1/2		4.7	256.3
cl		4.8	256.2
W.L.		5.0	256.0
1+50			
W.L.		6.9	254.1
cl		6.6	254.4
1/2		6.6	254.4
c		6.6	254.4
1/2		6.4	254.6
cl		6.3	254.7
E.L.		6.3	254.7
1+70			
E.L.		8.7	252.3
cl		8.8	252.2
1/2		8.8	252.2
c		9.1	251.9
1/2		9.3	251.7
cl		9.4	251.6

	H.I. 260.99	Center 1/4 (50 wide)	
OK L +50		9.1 251.9	
OK L		11.8 249.2	
cb		12.1 246.9	
1/4		12.2 248.8	
c		12.1 248.9	
1/4		11.8 249.1	
cb		11.4 249.6	
E.L. +25		11.1 248.9	
E.L.		10.1 247.9	
#	-0.01	248.18	12.80 248.18
cb		1.0 247.2	
1/4		1.4 246.8	
c		1.6 246.6	
1/4		1.6 246.6	
cb		1.7 246.5	
OK L		1.0 247.2	
oo - north line of Horton Ave (50 wide) 10' north 7/8 quarter			
OK L		3.4 244.8	
cb		3.7 244.5	
1/4		3.7 244.5	
c		3.3 244.9	

	H.I. 298.18		
1/4		3.0	245.2
cb		2.7	245.5
E.L.		2.4	245.8
north curb of Horton Ave			
E.L.		3.4	244.8
cb		3.6	244.6
1/4		3.8	244.3
c		3.8	244.4
1/4		4.2	244.0
cb		4.4	243.8
OK L		4.7	243.5
north 1/4 of Horton Ave			
OK L		5.6	242.6
cb		5.0	243.2
1/4		4.6	243.6
c		4.2	244.0
1/4		4.3	243.9
cb		4.3	243.9
E.L.		3.8	244.4

H.I.
248.18

Center of (50' wide)

Center of Horton Ave.

B.L.	4.2	243.0
cb	5.0	243.2
1/4	5.1	243.1
c	5.7	242.5
1/4	6.1	242.1
cb	6.5	241.7
OK L.	6.7	241.8

South 1/4 of Horton Ave.

OK L.	7.9	240.4
cb	7.4	240.8
1/4	7.2	241.0
c	6.9	241.3
1/4	6.2	241.0
cb	5.6	242.6
B.L.	5.0	242.2

South end of Horton Ave.

B.L.	5.6	242.6
cb	6.7	241.5
1/4	7.5	240.7
c	8.0	240.2

PLOTTED

H.I.
248.18

1/4	8.0	240.2	8
cb	8.1	240.1	
OK L.	8.6	239.6	
00 = South line of Horton Ave.			
OK L.	9.7	238.5	
cb	9.4	238.8	
1/4	9.0	239.2	
c	9.1	239.1	
1/4	9.5	239.7	
cb	8.1	240.1	
B.L.	7.2	241.0	
+25 B.L.	10.8	237.4	
cb	11.4	236.5	
1/4	11.3	236.9	
c	11.6	236.6	
1/4	12.0	236.2	
cb	12.1	236.1	
OK L.	11.7	236.5	

#	+	H.I. 248.18	Cont. H (50 wide)	
	0.28	235.87	12.69	235.49
+50 N.L.			1.1	234.8
cl			1.6	234.3
1/2			1.8	234.1
c			1.7	234.2
1/2			1.9	234.0
cl			1.4	234.5
E.L. +75			1.3	234.9
E.L.			4.1	231.1
cl			4.6	227.3
1/2			4.5	231.4
c			4.4	231.5
1/2			4.7	231.2
cl			5.0	230.9
Or. L.			4.7	231.2
1400 Or. L.			9.3	226.6
cl			9.1	226.8
1/2			9.1	226.8
c			8.8	227.1
1/2			8.8	227.1
E.L.			8.5	227.4

PLOTTED

#	+	H.I. 235.87		
	0.02	228.34	7.55	228.32 Flng Stone wall.
1425 E.L.			6.3	228.0
cl			7.2	221.1
1/2			8.2	220.1
c			8.5	219.8
1/2			8.8	219.5
cl			9.1	219.2
Or. L.			8.8	219.5
#	0.34	215.88	12.80	215.59
1450 Or. L.			4.2	211.7
cl			5.6	210.3
1/2			5.2	210.7
c			4.9	211.0
1/2			4.7	211.2
cl			3.3	212.6
E.L.			0.8	215.1

		H.I. 215.88	Center of Union St (50 wide)	
11.75	8.2		8.0	207.9
cb			11.8	204.1
1/4			14.6	201.3
c			14.8	201.1
1/4			16.5	199.4
cb			18.5	200.4
N.L.			11.7	204.2
#	0.04	202.99	12.93	202.95
2+00 = North line of Union St (50 wide) (6 center 3/4 quarter)				
2+00				
N.L.			6.1	196.9
cb			8.2	194.7
1/4			11.3	191.7
c			12.5	190.5
1/4			8.4	194.6
cb			4.5	198.5
E.L.			2.5	200.5
North curb of Union St.				
E.L.			5.6	197.4
cb			8.5	194.5
1/4			12.5	190.5
c			15.0	188.0

PLOTTED

		H.I. 202.99	10	
1/4			13.9	189.1
cb			11.1	191.9
N.L.			7.8	193.2
North 1/2 of Union St				
N.L.			13.0	190.0
cb			14.4	188.6
1/4			16.3	186.7
c			16.2	186.8
1/4			13.6	189.4
cb			11.1	191.9
E.L.			8.5	194.5
Center of Union St				
E.L.			11.0	192.0
#	0.72	190.68	10.03	189.96
cb			1.0	199.4
1/4			2.8	187.9
c			5.5	185.2
1/4			6.3	184.4
cb			4.9	185.8
N.L.			3.9	186.8

+ 71.1 190.68		- South St (50' wide)		+ 71.1 190.68		- 71.1 190.68	
North 1/2 of Mission St				1/2		10.0	180.7
N. 1.	6.5	184.2		cb		9.4	181.3
cb	7.7	183.6		E.L.		8.4	182.3
1/2	8.3	183.4		#	0.18	12.86	177.92
e	6.7	184.0		+20 E.L.		2.4	175.6
1/2	4.1	186.6		cb		3.0	175.0
cb	2.9	187.8		1/2		3.3	174.7
E.L.	0.7	190.0		e		3.5	175.5
South end of Mission St.				1/2		4.1	173.9
E.L.	4.2	186.5		cb		4.6	173.4
cb	5.5	185.2		N. 1. +50		5.4	172.6
1/2	7.0	183.7		N. 1.		10.7	167.3
e	8.4	182.3		cb		10.8	167.2
1/2	9.6	181.1		1/2		10.1	167.9
cb	9.5	181.2		e		9.6	168.4
N. 1.	9.2	181.5		1/2		9.0	169.0
cc = South line of Mission St.				cb		8.4	169.6
N. 1.	12.4	178.3		E.L.		7.8	170.2
cb	11.7	179.0		#	0.52	165.71	165.18 ⁷⁵
1/2	11.3	179.4					
e	11.0	179.7					

PLOTTED

	+	7.I. 165.71	Cont. W (50 m wide)
+70 E.L.			0.3 165.4
cb			0.8 164.9
1/4			1.5 164.2
c			2.0 163.7
1/4			2.1 163.6
cb			2.8 162.9
m. L. 1+00			4.3 161.4
m. L.			8.0 157.7
cb			6.7 159.0
1/4			6.5 159.2
c			6.4 159.3
1/4			6.0 159.7
cb			5.0 160.4
E.L. 1+20			4.6 161.1
E.L.			8.3 157.4
cb			8.7 157.0
1/4			9.2 156.5
c			10.0 155.7
1/4			10.3 155.4
cb			10.3 155.4
OK.L.			10.7 155.0

PLOTTED

	+	7.I. 165.71		
1450 OK.L.			14.5	151.2
cb			13.2	152.5
1/4			12.9	152.8
c			12.7	153.0
1/4			12.3	153.4
cb			12.1	153.6
E.L.			11.7	154.0
#	0.10	152.89	12.92	152.79
1475 E.L.			2.5	150.4
cb			3.2	149.7
1/4			3.8	149.1
c			3.7	149.2
1/4			4.8	148.1
			4.9	148.0
OK.L.			5.5	147.4
2400 = North line of Columbia 1/2 mile 10 cent 1/4 quarter				
OK.L.			8.9	144.1
cb			7.2	145.7
1/4			6.1	146.5
c			5.9	147.0
1/4			6.8	146.1

+
7.I.
152.89

cl	7.6	145.3
E.L.	7.6	145.3
North curb of Columbia St.		
E.L.	9.2	143.7
cl	9.8	143.1
1/4	9.4	143.5
c	9.0	143.9
1/4	9.0	143.9
cl	9.3	143.6
W.L.	10.2	142.7
North 1/2 of Columbia St.		
W.L.	11.0	141.6
cl	11.1	141.8
1/4	10.7	142.2
c	11.1	141.8
1/4	11.1	141.8
cl	11.0	141.9
E.L.	10.3	142.6
Center of Columbia St.		
E.L.	10.5	142.4

PLOTTED

+
7.I.
152.89

Center of Columbia St. (50' wide)

13

cl	12.0	140.9
1/2	12.5	140.4
c	12.4	140.5
1/2	12.4	140.5
cl	12.4	140.5
W.L.	11.9	141.0
North 1/2 of Columbia St.		
W.L.	12.7	140.2
cl	12.9	140.0
1/4	13.2	139.7
c	13.4	139.5
1/4	13.5	139.4
cl	13.2	139.7
E.L.	10.8	142.1
South curb of Columbia St.		
E.L.	11.7	141.2
#	0.40	140.38
cl	12.91	139.98
	1.4	139.0
1/4	2.1	138.3
c	2.0	138.4
1/4	1.5	128.9

	7.II 140.38		
cl		1.1	129.3
E.L.		1.0	129.4
cc = South line of Columbia Mt.			
cc			
Or. L.		3.2	127.2
cl		2.3	128.1
1/4		2.7	127.7
c		3.3	127.1
1/4		3.7	126.7
cl		3.3	127.1
E.L.		1.3	129.1
+25			
E.L.		7.3	125.1
cl		7.9	122.5
1/4		8.5	121.9
c		8.6	121.8
1/4		9.2	121.2
cl		9.8	120.6
Or. L.		10.0	120.4
+45			
Or. L.		12.7	122.7
cl		16.7	123.7
1/4		14.2	126.2
c		13.4	127.0

PLOTTED

	7.II 140.36	Cont. Mt (60 wide)	
1/4		12.5	127.9
cl		10.5	129.9
E.L.		10.9	129.5
+53			
E.L.		16.8	123.6
cl		17.6	122.8
1/4		18.3	122.1
c		17.5	122.9
1/4		19.3	121.1
cl		19.2	121.2
Or. L.		20.8	119.6
+65			
Or. L.		12.8	127.6
cl		11.1	129.3
1/4		13.6	126.8
c		12.6	127.8
1/4		11.1	129.3
cl		10.2	130.2
E.L.		11.4	129.0

	+	H.I. 140.09		
475 E.L.			6.5	133.9
cb			7.3	133.1
1/2			7.5	132.9
c			7.6	132.8
1/2			8.2	132.2
cb			8.9	131.5
Mr. L			10.0	130.4
1400 Mr. L			1.4	139.0
cb			+0.2	
0			1.58	138.9015 H-2C8C
#	11.61	151.59	0.40	139.98
1/2			11.1	140.5
c			11.0	140.6
1/2			9.9	141.8
cb			8.3	143.3
E.L.			6.0	145.6
1425 E.L.			0.4	151.2
cb			1.9	149.7
1/2			2.6	149.0
c			2.9	148.7
1/2			3.2	148.4

PLOTTED

	+	H.I. 151.59	Cont. 24 (40" wide)	
cb			4.5	147.1
Mr. L			6.0	145.6
#	12.91	164.40	0.00	151.59
1450 Mr. L			11.2	153.2
cb			10.3	154.1
1/2			9.6	154.8
c			9.1	155.3
1/2			8.9	156.0
cb			7.5	156.9
E.L.			6.3	158.1
1475 E.L.			+1.3	163.1
cb			+0.4	164.0
1/2			0.4	164.0
c			0.9	163.6
1/2			1.2	163.2
cb			1.8	163.6
Mr. L			2.9	161.5
#	10.80	174.98	0.22	164.14

15

H.I.
179.98
2100 = North line of Congress St. True width as sketched

OK L.	5.9	169.1
cb	5.0	170.0
1/2	4.6	169.4
a	4.5	170.5
1/2	4.5	170.5
cb	4.0	171.0
E.L.	3.5	171.5

North curb of Congress St. 10' curb

E.L.	2.3	172.7
cb	2.4	172.6
1/2	2.5	172.5
c	3.0	172.0
1/2	3.7	171.3
cb	3.7	171.3
OK L.	4.1	170.9

North 1/2 of Congress St 7 1/2' quarter

OK L.	2.0	172.0
cb	3.0	172.0
1/2	2.7	172.3
c	2.1	172.9

H.I.
174.98
Curb St (50' wide)

1/2	1.5	173.2
cb	2.0	173.0
E.L.	2.0	173.0
Center of Congress St 7 1/2'		
E.L.	1.2	173.3
cb	1.7	173.3
1/2	1.7	173.3
c	1.7	173.3
1/2	2.2	172.8
cb	2.5	172.5
OK L.	2.9	172.1
South 1/2 of Congress St 7 1/2'		
OK L.	2.9	172.1
cb	2.4	172.6
1/2	2.1	172.9
c	1.8	173.2
1/2	1.8	173.2
cb	1.8	173.2
cb + 5.25' = intersection South 1/2 with public line		
	2.0	173.0

X-section of Bandini St through Middletown Addition.
 50' wide 10' curbs - 7 1/2' quarters. Sep 1913
 Jernan Miller Spaw.

	+	H.I. 170.98	Cont St	50' wide
along public line on sketch for distances.				
E.L.			2.0	173.0
cb			1.9	173.1
1/2			1.9	173.1
c			1.9	173.1
1/2			2.2	172.7
cb			2.4	172.6
W.L.			3.1	171.9
0			1.81	173.17
±	0.40	163.13	12.25	162.73
#	0.01	150.12	13.02	150.11
#	0.14	137.17	13.09	137.03
#	0.07	124.25	12.99	124.18
#	0.03	111.57	12.71	111.54
#	2.09	101.61	12.05	99.52
			5.76	95.95 = 95.74 T.P. tie for Bandini St See La Jolla Ave grade Book.

				T.P. See page 7 of this book 248.19 H.I.
				9.24 257.93 248.19
				1475 ± to 1479 ± along public line (see sketch page 5 of this book)
				1475 ± to 1479 ±
				W.L. 2.6 254.8
				cb 2.6 248
				1/2 2.3 251
				c 2.1 253
				1/2 2.0 254
				cb 1.5 259
				E.L. 1.0 264
				1475 ± on West line = public line.
				1475 ± at right angles
				E.L. 1.4 260
				cb 1.9 255
				1/2 2.1 253
				c 2.3 257
				1/2 2.3 251
				cb 2.5 249
				W.L. 2.6 248

PLOTTED

PLOTTED

SW Cor 4000 ft & Wright, R.R. 25:29
 SW " " " Witherby Mon 10:54

+		HI. 257.43	Bandini Mt (50' wide)		+		HI. 257.43		
1350 OK L.			5.5	521.9	+75 E.L.			11.6	445.8
cb			5.1	523	cb			11.7	445.7
1/4			4.9	526	1/4			11.7	445.7
c			4.5	529	c			11.8	445.6
1/4			4.5	529	1/4			11.9	445.5
cb			4.3	531	cb			12.0	445.4
E.L.			4.1	533	OK L.			11.9	445.5
1425 E.L.			6.7	507	0			1.27,	256.16.7071E OK L
cb			7.3	501	#	0.06	244.52	12.77	244.96
1/4			7.6	498	+50				
c			7.7	497	OK L.			1.0	443.5
1/4			7.4	500	cb			1.0	443.5
cb			7.3	501	1/4			1.0	443.5
OK L.			8.0	494	c			1.0	443.5
1400 OK L.			10.0	474	1/4			1.0	443.5
cb			9.9	475	cb			0.8	443.7
1/4			9.6	478	E.L.			0.4	444.1
c			9.5	479					
1/4			9.7	477					
cb			9.4	480					
E.L.			9.7	47.7					

PLOTTED

		H.I. 244.52	Bandini St (50 wide)				H.I. 244.52		
425	E.L.		2.9	342.1	cb		10.3	334.7	
	cb		2.9	41.6	W.L.		10.9	33.6	
	1/2		3.0	41.5	North 1/2 of Horton Ave.				
	c		2.9	41.4	W.L.		12.5	32.0	
	1/2		3.2	41.3	cb		11.6	32.9	
	cb		3.5	41.0	1/2		11.0	33.5	
	W.L.		4.2	40.3	c		9.7	34.8	
cc = North line of Horton Ave (50 wide, 10 cwt, 7 1/2 quarter)									
00	W.L.		9.0	35.5	cb		7.5	37.0	
	cb		9.4	36.1	E.L.		6.6	37.9	
	1/2		8.0	36.5	Center of Horton Ave.				
	c		7.3	37.2	E.L.	1.	7.4	37.1	
	1/2		6.4	38.1	cb		8.2	36.3	
	cb		5.4	39.1	1/2		9.5	35.0	
	E.L.		4.4	40.1	c		10.7	33.8	
North end of Horton Ave.									
	E.L.		5.8	38.7	1/2		11.9	32.6	
	cb		6.8	37.7	+5		12.2	32.3	
	1/2		7.7	36.8	cb		15.3	29.9	
	c		8.7	35.8	W.L.		16.5	28.0	
	1/4		9.7	34.8					

PLOTTED

1210.9

HI.
244.52
+
Randall St (50 wide)

North 1/2 of Horton Ave.			
OK L.	22.3	222.3	
+ B	22.8	217	
- 4	18.3	26.3	
cb	16.3	28.3	
+ 2	14.0	30.5	
1/2	13.2	31.3	
c	11.9	32.6	
1/2	10.4	34.1	
cb	9.1	35.4	
g L.	8.1	36.4	
South east of Horton Ave.			
g L.	8.9	35.6	
cb	9.8	34.7	
1/2	11.5	33.0	
c	13.1	31.4	
1/2	14.3	30.3	
cb	16.1	28.4	
+ 5	23.3	21.3	
OK L.	25.4	19.1	

PLOTTED

HI.
244.52
+
20

00 = North line of Horton Ave.			
OK L.			27.8 216.7
cb			18.9 256
1/2			15.9 286
c			14.6 299
1/2			12.6 319
cb			11.6 329
g L.			10.5 340
H	e. 05	231.59	12.99 231.54
g L.			0.8 230.8
cb			2.9 287
1/2			3.6 280
c			9.0 226
1/2			14.2 174
cb			14.1 135
OK L.			24.4 207.9

PLOTTED

		H.I. 231.59	Bandini Vt (50' wide)				H.I. 219.90		
+50 OK L.			30.0	201.5	cb		24.9	194.1	21
+5			30.8	200.8	E.L. +25		17.2	201.7	
cb			29.9	202.7	E.L.		28.9	190.0	
1/2			25.1	204.1	cb		22.8	96.1	
c			28.0	209.1	1/2		17.0	201.9	
1/2			19.9	211.7	c		12.5	206.4	
cb			17.7	213.9	1/2		8.3	210.6	
E.L.			13.5	218.1	cb		5.5	213.4	
# +70	0.13	218.90	12.82	218.27	OK L. +50		3.2	215.7	
E.L.			10.4	208.1	OK L.		12.3	206.5	
cb			19.2	200.7	#	0.25	206.54	206.29	
1/2			22.7	196.9	cb		4.9	201.7	
c			19.1	99.8	1/2		7.8	198.7	
1/2			14.1	204.8	c		10.2	96.3	
cb			9.8	210.1	1/2		13.1	93.4	
OK L.			2.6	216.3	cb		19.8	86.7	
+100 OK L.			40.2	219.1	+5		20.3	84.7	
cb			6.0	212.9	E.L.		18.0	88.5	
1/2			10.9	208.0					
c			15.6	203.3					
1/2			19.9	199.0					

PLOTTED

	H.I. 206.54	Band in 1/4 (50' wide)	
1475 E.L.		9.2	197.3
cb		14.8	91.7
1/4		17.8	89.7
c		23.2	83.3
+5		24.2	82.3
1/4		23.3	83.3
cb		16.9	89.6
W.H. E.L.		11.0	95.1
H	2.27	12.93	12.99
100 = N.E. UNION ST 50' WIDE 10' CURBS			19.3.66 ^W
W.L.		1.6	92.3
cb		5.9	88.0
1/4		9.6	84.3
c		16.8	77.1
1/4		15.5	78.4
cb		9.9	84.0
E.L. No. CURB		5.2	88.7
E.L.		10.2	83.7
cb		14.1	78.8
1/4		18.3	75.6
c		11.6	82.3

PLOTTED

	193.93		22
1/4		7.4	186.5
cb		4.8	89.1
W.L.		1.5	92.4
NO. QUARTER			
W.L.		2.7	91.9
cb		5.5	88.4
1/4		7.8	86.1
c		11.1	82.8
+6		14.2	79.7
1/4		19.4	74.8
cb		16.6	77.3
E.L. CENTER		12.2	81.7
E.L.		12.7	81.2
cb		19.7	74.2
+3		20.7	73.2
1/4		14.3	79.6
c		12.1	81.8
1/4		9.0	84.9
cb		6.9	87.0
W.L.		4.5	89.4
SD. QUARTER			
W.L.		6.2	87.0

193.93

cb	9.5	184.4
1/4	11.4	83.5
C	13.8	80.1
1/4	16.6	77.3
cb	20.9	73.0
+2	16.1	77.8
E.L. So. CURB	12.3	81.6
E.L.	12.0	81.9
cb	16.8	77.1
+3	21.8	72.1
1/4	21.2	72.7
+2	17.7	75.2
C	16.1	77.8
1/4	13.8	80.1
cb	11.8	82.1
W.L. So. L. UNION ST	9.2	84.7
W.L.	11.5	82.4
cb	14.9	79.0
1/4	17.3	76.6
C	19.6	74.3

PLOTTED

193.93

+4		23.6	170.3	23
1/4		18.5	74.5	
cb		15.0	78.9	
E.L. 25' So.		11.0	82.9	
E.L.		11.1	82.8	
T.P.	0.02	181.15	18.80	181.13
cb		2.6	178.6	
1/4		5.9	75.3	
C		8.7	72.5	
+5		11.3	70.9	
1/4		13.0	68.2	
cb		9.9	71.3	
+2		6.3	73.9	
W.L. 50' So.		2.5	78.7	
W.L.		6.8	74.4	
cb		8.6	73.6	
1/4		10.4	70.8	
C		12.7	68.5	
+3		19.0	64.2	
1/4		16.4	64.8	

PLOTTED

171.15

cb			7.1	174.1
E.L.			2.4	78.8
75' 50				
E.L.			0.7	80.5
cb			5.7	75.5
1/4			10.3	70.9
C			12.6	68.6
1/4			19.3	61.9
cb			19.9	61.3
W.L.			21.0	60.2
+15			15.7	65.5
100' 50				
-25			20.2	61.0
-12			23.3	57.9
W.L.			16.7	64.5
cb			12.6	68.6
1/4			9.8	71.4
C			6.8	74.4
1/4			3.8	77.4
T.P.	9.22	188.00	2.37	178.77
cb			7.5	80.5
E.L.			3.8	84.7

PLOTTED

188.00

24

125' 50				
E.L.			3.7	184.3
cb			5.1	87.6
1/4			6.7	81.3
C			7.1	80.9
1/4			8.5	79.5
cb			9.9	78.1
W.L.			12.5	75.5
150' 50				
W.L.			8.8	79.7
cb			8.5	79.5
1/4			8.2	79.8
C			7.5	80.5
1/4			7.2	80.8
cb			6.6	81.4
E.L.			5.8	82.2
200' 50 = N.L. COLUMBIA ST 50' WIDE 10' WALKS				
E.L.			8.0	80.0
cb			9.3	78.7
1/4			10.2	77.9
C			10.8	77.2
1/4			12.0	74.0
cb			12.7	75.3

ATTO. 12

1890

W.L.			13.5	174.5
T.P. No. CURB	6.04	181.54	12.50	175.50
W.L.			7.7	738
cb			6.9	746
1/4			6.6	749
c			5.1	764
1/4			4.3	772
cb			3.4	781
E.L. No. QUARTER			2.2	793
E.L.			2.7	788
cb			3.7	778
1/4			4.7	768
c			5.7	758
1/4			6.5	750
cb			7.2	743
W.L. CENTER			8.1	734
W.L.			8.9	726
cb			8.0	725
1/4			7.1	714
c			6.3	75.3

PLOTTED

1894

1/2			5.3	176.3
cb			4.0	77.5
E.L. So. QUARTER			2.8	78.7
E.L.			3.1	78.4
cb			4.6	76.9
1/4			5.7	75.8
c			6.7	74.8
1/4			7.6	73.8
cb			8.5	73.0
W.L. So. CURB			9.0	72.5
W.L.			9.2	72.3
cb			8.6	72.9
1/4			8.0	73.5
c			6.8	74.7
1/4			5.8	75.7
cb			4.4	77.1
E.L. So. LINE COLUMBIA ST.			3.1	78.4
E.L.			3.1	78.4
cb			4.7	76.8
1/2			6.0	75.5

25

171.54

C		7.2	174.3	
1/4		8.5	73.0	
cb		9.2	72.3	
W.L.		10.0	71.5	
50' So.				
W.L.		12.5	49.0	
cb		11.2	70.3	
1/4		10.2	71.3	
C		9.1	72.4	
1/4		8.0	73.5	
cb		7.3	74.3	
E.L.		6.8	74.7	
100' So.				
E.L.		10.5	71.0	
cb		11.4	70.1	
1/4		11.9	49.6	
C		12.0	49.5	
1/4		12.4	49.1	
cb		12.9	48.6	
W.L.		13.6	47.9	
T.P.	1.67	171.36	11.85	162.69

PLOTTED

175' So

W.L.

cb

1/4

C

1/4

cb

E.L.

150' So.

E.L.

cb

1/4

C

1/4

cb

W.L.

175' So.

W.L.

cb

1/4

C

1/4

cb

171.36

7.2 164.2

7.0 64.4

6.6 64.8

6.0 65.4

5.8 65.6

5.6 65.8

5.2 66.2

9.9 61.5

10.0 61.4

9.8 61.6

9.5 61.9

9.4 62.0

9.3 62.1

9.1 62.3

9.1 62.3

9.7 61.7

10.1 61.3

10.5 60.9

11.1 60.3

11.6 59.8

26

171.36

27

E.L.			12.3	159.1
200' SO. E. NL. CONGRESS ST. SEE PAGE 5				
E.L.			12.1	59.3
cb			11.3	40.1
1/4			10.6	40.2
c			9.9	41.5
1/4			9.1	42.3
cb			8.6	42.8
W.L.			8.0	43.4
S.L. MIDDLETOWN ADD. SEE PAGE 5				
W.L.			5.6	45.8
cb			6.3	45.1
1/4			7.1	44.3
c			8.5	42.9
1/2			9.7	41.7
cb			11.0	60.4
E.L.			11.8	59.6
T.P.	13.03	184.11	0.28	171.08
T.P.	12.63	195.96	0.78	183.33
T.P.	12.69	207.58	0.77	195.19
T.P.	12.45	220.13	0.20	207.61
T.P.			6.10	214.03

SHOULD BE 214.06 P.M. SE
COL. MILLER

PLOTTER

4/ Blanche
3/ Taylor from Book 908
B/ July

X Sec of Pardee St (60) Continued
6498
30' S of Hamilton

W	51	59.9
	46	60.4
	40	61.0
S	33	61.7
	27	62.3
	21	62.9
E	13	63.7

37' S=2' N of Road

E	13	63.7
	19	63.1
	25	62.5
S	32	61.8
	38	61.2
	45	60.5
W	51	60.0

El of Pine

E	115	63.83
W	5.0	60.0

PLOTTED

64.98

46' S=2' S of Road

W	51	59.9
	45	60.5
	38	61.2
S	31	61.9
	26	62.4
	20	63.0
E	13	63.7

70' S=foot of Bank

E	21	62.9
	27	62.3
	33	61.7
S	40	61.0
	44	60.6
	48	60.2
W	53	59.5

70' 1234 7210 072 6476

Pardee

28

64.98
64.76
64.34
77.10

PLOTTED

7710

75' S of Hamlet

n	24	73.7
	31	74.0
	43	72.9
b	33	73.8
	35	73.6
	35	73.6
E	30	74.1

TP 11.84 8878 0.20 7690

85' S of = S 2 of R R Right of Way

W	122	76.6
	126	76.3
	125	76.3
b	11.9	76.9
	11.7	77.1
	11.0	77.8
E	10.3	78.5

PLOTTED

8878

100' S of Hamlet

E	53	83.5
	55	83.3
	58	83.0
b	64	82.4
	59	82.9
	61	82.7
W	71	81.7

150' S of Hamlet

W	40	84.8
	34	85.4
	32	85.4
b	31	85.7
	25	86.3
	17	87.1
E	0.9	87.9

Parade
297710
20
7690
11.84
88.78

8878

200

S of

Hamilton

E

21 84.7

30 85.8

38 85.0

S

45 84.3

48 84.0

53 83.5

W

58 83.0

TP

495

8975

398 84.80

250

S of

Hamilton

W

34 84.4

44 85.4

47 85.6

S

39 85.9

33 86.5

24 87.4

E

14 88.4

PLOTTED

8975

310

S = N of Sigel # (30')

E

14 88.4

20 87.8

24 87.4

S

32 86.6

45 85.3

50 84.8

W

52 84.6

W

1592

9267

595

84.66
84.70

783

105.28

017

9745

875

96.53

Parade

50

8878

2.88

84.80

4.95

89.75

5.01

84.70

12.92

97.62

8.82

98.45

3.83

105.28

8.75

96.53

9249

Mon 13' PA

S End Parade

Mon 36+

Sigel

11 change / X Sec of Paseo St (60')
 4 Taylor
 13. 7. 16 Home stead Union

36th St

	1125	10245	9120	364 Pass
				Bm 13' 4
				364 Pass
W				Home stead Union
				Shopton (L)
				+4.8
				103.3
				1.6
				100.9
				3.9
				98.6
b				6.9
				95.6
				9.8
				92.7
				12.5
				90.0
E				16.0
				86.5
	120	n f		Shopton
W				3.6
				98.9
				5.3
				97.3
				7.6
				94.9
L				10.0
				92.5
E 1/4				12.4
				90.1
	100	n f		Shopton
W				4.4
				98.1
				6.8
				95.7
				9.4
				93.1
b				11.4
				91.1
				13.3
				89.7

PLOTTED

				94.78			364
				94.78			
				12.62			
				89.85			
				120	n f		
				Shopton			
				11.6			
				83.3			
				8.0			
				87.8			
				100	n f		
				Shopton			
				12.7			
				82.1			
				8.8			
				86.0			
				50	n f		
				Shopton			
				12.2			
				82.6			
				9.7			
				85.1			
				8.0			
				87.8			
				6.0			
				88.8			
				4.7			
				90.1			
				3.0			
				91.9			
				1.2			
				93.6			

31

91.20
 11.25
 105.95
 12.62
 89.85
 4.95
 94.78

9478

N S of Shaft (60)

W		15	93.3
		20	92.8
		30	91.8
S		47	90.1
		72	87.6
		84	86.4
E		110	83.8

N W of Shaft

E		95	85.3
		72	87.6
		58	89.0
S		36	91.3
		24	92.4
		18	93.0
W		15	93.3

PLOTTED

9478

318

32

N W of Shaft

W		16	93.2
		20	92.8
		27	92.1
S		34	91.4
		46	90.2
		64	88.4
E		78	87.0

Center of Shaft

S		72	87.6
		59	88.9
		40	90.8
S		34	91.4
		32	91.6
		22	92.6
W		20	92.8

9478

S

14 of Shaft

W	30	91.8
	34	91.4
	35	91.3
b	38	91.0
	45	90.3
	60	88.8
E	83	84.5

S

66 of Shaft

E	78	87.0
	53	89.5
	43	90.5
b	40	90.9
	34	91.4
	33	91.5
W	34	91.4

PLOTTED

9478

S

2 of Shaft

W	35	91.3
	36	91.2
	36	91.3
b	39	90.9
	40	90.8
	48	90.0
E	71	87.7

S

5 of Shaft

E	101	84.7
	77	87.1
	64	88.4
b	56	89.3
	54	89.4
	50	89.8
W	49	89.9
TD	124	86.97
	905	85.73

36.02

33

9478
 905
 85.73
 124
 86.97

8697

	100	S of	Shoflo	
W			704	874
			04	866
			1.1	859
b			2.0	850
			27	843
			40	830
E			67	803

	150	S of	Shoflo	
E			103	767
			76	794
			58	813
b			46	824
			44	826
			45	825
W			38	833

PLOTTED

8697

	200	S of	Shoflo	
W			99	77.1
			102	76.8
			105	76.5
b			110	76.0
			122	74.8
TP	0.98	75.02	1288	74.09
			18	73.3
E			34	71.7

	250	S of	Shoflo	
E			58	69.3
			50	70.1
			43	70.8
b			40	71.1
			33	71.8
			30	72.1
W			29	72.3

34

56.97
12.88
74.09
98
75.07

7507

300

S

of Shofle

W

51 70.0

57 69.4

62 68.9

S

65 68.6

71 68.0

71 68.0

E

74 67.7

320

S = N of Tompkins St (60)

E

69 68.3

67 68.4

68 68.3

S

72 67.9

66 68.5

62 68.9

W

62 68.9

7507

N

668

Tompkins

SW

65 68.6

64 68.7

69 68.3

S

74 67.7

70 68.1

68 68.3

E

66 68.5

N

648

Tompkins

E

67 68.4

67 68.4

77 67.4

S

76 67.5

70 68.1

70 68.1

W

70 68.1

PLOTTED

35

7507

Centre of Tompkins

W 76 67.5

76 67.5

75 67.4

L 79 67.3

80 67.1

71 68.0

E 69 68.2

Black TP 150 6880 778 67.2²⁰

S 114 of Tompkins

E 0.8 68.0

16 67.3

21 66.7

L 17 67.1

13 67.5

15 67.3

W 17 67.1

PLOTTED

6880

36

36

S 66 of Tompkins

W 23 66.5

20 66.8

16 67.2

L 18 67.0

21 66.7

16 67.2

E 14 67.4

S line of Tompkins ✓

E 16 67.2

17 67.1

20 66.6

L 17 67.1

16 67.3

26 66.3

W 29 65.9

7505-
778
67.2
130
68.80

6880

50'

S

Temp Kin

W

7.0 61.8

7.0 61.8

6.9 61.9

6.4 62.4

5.0 63.8

4.3 64.5

E

4.4 64.4

75'

S

Temp Kin

E

7.4 61.4

8.0 60.8

8.8 60.0

L

10.0 58.8

11.3 57.5

12.6 56.3

W

14.0 54.8

TP

242

5830

1292

5584

PLOTTED

5830

100'

S

Temp Kin

W

8.2 50.1

5.7 52.6

5.8 54.5

L

3.0 55.3

2.1 56.3

0.6 57.7

E

4.0 59.3

135'

S

Temp Kin

E

4.6 53.7

5.6 53.7

7.0 51.3

L

8.9 49.4

10.6 47.7

12.8 45.5

W

14.4 43.9

TP

102

4527

1305

4525

762

87

1880

15.8

53.5

2.4

59.30

1305

45.25

424

442

2876

4527

150' S or W } = 2' N Rail
151' S or E }

W	35	41.8
	33	42.0
	20	42.3
b	29	42.4
	26	42.7
	23	43.0
E	22	43.1

El Rail

E	14	43.9
W	30	42.3

159' S or W } = 2' S Rail
160' S or E }

E	27	43.1
	24	42.9
	26	42.7
b	28	42.5
	32	42.1
	35	41.8
W	37	41.6

PLOTTED

4527
4527

362

38

	180	S or E	70mp/km	
W			44	40.9
			38	41.5
			34	41.9
b			30	42.3
			28	42.5
			25	42.8
E			20	43.3

200 S or E 70mp/km

E			30	42.3
			46	40.7
			57	39.6
b			69	38.4
			78	37.5
			86	36.7
W			89	36.4

4527

250 S 8 Temp/Kin

W 83 37.0

80 37.3

79 37.4

L 83 37.0

75 37.8

76 37.7

E 67 38.6

260 S 8 Temp/Kin

E 103 35.0

104 34.9

109 34.4

L 109 34.4

109 34.4

109 34.4

W 110 34.3

2

PLOTTED

4527362

39

270 S 8 Temp/Kin

W 84 36.9

81 37.2

80 37.3

L 81 37.2

81 37.2

73 38.0

E 68 38.0

300 S 8 Temp/Kin

E 65 38.8

62 38.4

74 37.9

L 75 37.8

76 37.7

75 37.8

W 76 37.7

4527

320

S = n S of Hamlet (60)

W

7.0 38.3

7.0 38.3

6.8 38.5

6.7 38.6

6.8 38.5

6.6 38.7

E

6.3 39.0

n S of Hamlet

E

6.2 39.1

6.5 38.8

6.4 38.9

6.4 38.9

6.7 38.6

6.7 38.6

W

6.8 38.5

TP

1254

5081

7.0 38.7

PLOTTED

5081
5081

260

40

n

1149

Hamlet

W

121 39.7

123 39.1

120 38.8

S

120 38.8

117 39.1

118 39.0

E

115 39.3

E of Hamlet

E

115 39.3

117 39.1

117 39.1

S

121 38.7

122 38.6

126 38.3

W

124 38.4

45.75
7
39.27
12.54
50.81

PLOTTED

S 1/4 of Hamilton

W 132 37.4

130 37.8

128 38.0

S 126 38.2

122 38.4

120 38.8

E 118 39.0

S 66 of Hamilton

E 138 37.0

140 34.8

142 36.6

S 148 36.0

146 34.2

146 34.2

W 147 36.1

PLOTTED

S 1/4 of Hamilton

W 127 38.1

127 38.1

125 38.3

S 124 37.4

130 37.8

127 38.1

E 131 37.7

25' S of Hamilton

E 114 39.4

112 39.5

109 39.9

S 103 40.5

104 40.4

105 40.3

W 104 40.4

PLOTTED

		5081	
	50	S of	Hamilton
W			1.8 49.0
			3.8 47.0
			5.8 45.0
b			6.4 44.4
			6.0 44.8
			5.1 45.7
E			4.3 46.5
TP	1306	6370	0.17 50.69
	75	S of	Hamilton
E			7.4 56.3
			9.5 54.2
			9.5 54.2
			10.0 53.7
b			10.5 53.2
			8.6 55.1
			7.0 56.7
W			6.5 57.2

PLOTTED

		6370		3600	
	100	S of	Hamilton		42
W			2.3 61.4	5081	
			4.1 59.6	50.64	
			3.1 60.6	12.06	
				6370	
				4.4	
				63.26	
				12.29	
				75.55	
b			2.7 61.0	75.55	
			4.2 59.5		
			4.7 59.0		
E			2.7 61.0		
TP	1229	7555	0.44 63.26		
	125	S of	Hamilton		
E			10.6 65.0		
			9.9 65.7		
			10.3 65.3		
b			11.1 64.5		
			11.9 63.7		
			11.5 64.1		
W			10.6 65.0		

7555

(on west) approximately N of RR Right of way

150' S of Hamble

W			64	69.7
			71	68.1
			75	68.1
b			70	68.6
			68	68.8
			65	69.1
E			62	69.4
	175'	S of	Hamble	
a			25	73.1
			25	73.1
			30	72.4
b			38	71.8
			30	72.6
ll			04	75.2
TP	1267	8728	094	74.61
W			75	79.8

PLOTTED

8728

36

43

200' S = 2' E of RR Rail on W
El Rail

W			62	81.1
			58	81.5
			57	81.6
b			10.0	77.3
			12.7	74.6
			12.7	74.6
E			12.4	74.9
	245'	S		
E			10.5	76.8
			6.0	81.3
			3.6	83.7
b			3.6	83.7
ll			4.2	83.0
			4.3	83.0
			4.6	82.7
			4.6	82.7
W			5.0	82.3
	212'	S = 2' W of		
W			5.6	81.7

7555
89
74.61
12.67
87.28

PLOTTED

8728

250' S of Hamulla

W 4.4 82.9

3.7 83.6

3.1 84.3

1/4" = 2' W of Rail

b = 2' E Rail

2.8 84.5

2.4 84.9

1.7 85.6

E 1.2 86.1

7P 1206 9814 1.20 86.08

270' S of Hamulla

W 6.2 91.9

+4 1.40 84.1

bl 1.40 84.1

289' S = 2' E Rail - E

E 10.8 87.3

302' S = 2' W Rail - E

at 300' E Rail 10.0 88.1

E 9.8 88.3

PLOTTED

9814

3620

44

310' S = 2' S of Siegel #30

E 9.3 88.8

10.3 87.8

11.3 86.8

L 6.0 92.1

4.6 93.5

3.2 94.9

W 2.7 95.4

Shuck 1.70 96.44

8728

1.20

86.08

1206

98.14

1.20

96.44

PLOTTED

$\frac{11}{10}$ $\frac{13}{7.5}$	blough Taylor 7.5	X Sec of 38 in St (60')	Woolman tw	on a line 39+ Woolman	100'	95.14 Sy	Woolman	38.4
		0.27	1115.4	1112.7				1112.7
7P		0.94	98.59	1289	98.65	E	4.2	90.8
		86.2	95.14	1307	86.52		4.9	90.2
	S	Lf	Woolman				5.3	89.8
E				87	86.4	b	5.7	89.4
				85	86.6		6.9	88.3
				87	86.4		6.9	88.7
b				85	86.6	W	7.3	87.8
				100	85.1			
				103	84.8	W		
W				104	84.9			
	50	S of	Woolman					
W				87	86.4	b	5.7	90.0
				84	86.7		5.7	89.4
				89	86.2		4.5	90.5
b				67	88.4	E	4.0	91.1
				63	88.9			
				61	89.0			
E				59	89.2			

1112.7
1112.7
1289
98.65
98.65
95.14
1307
86.52
86.52
86.52
95.14

PLOTTED

95.14

N 1/4 of Teak St

E	35	91.4
	40	91.1
	43	90.8
b	48	90.3
	59	89.7
	60	89.1
W	66	88.5

N 1/4 of Teak St

W	61	89.0
	55	89.6
	54	89.7
b	44	90.7
	39	91.2
	35	91.6
E	31	92.0

PLOTTED

95.14

38.02

46

Center of Teak St

E	31	92.0
	34	91.7
	36	91.5
b	43	90.8
	52	89.9
	55	89.9
W	60	89.1

S 1/4 of Teak St

W	50	90.1
	47	90.4
	51	90.0
b	45	90.6
	37	91.7
	32	91.9
E	30	91.8

9514

S bb of Teak #

E	3.0	92.1
	3.3	91.8
	3.5	91.6
	4.5	90.6
	4.4	90.7
	4.5	90.6
W	4.8	90.3

S S of Teak #

N	4.9	90.3
	4.5	90.6
	4.4	90.7
L	4.1	91.0
	3.4	91.7
	3.1	92.0
E	3.1	92.0

PLOTTED

9514

50 Sg Teak on W

E	4.5	90.6
	3.7	91.4
	3.7	91.4
b	3.8	91.3
	3.8	91.3
	4.0	91.1
W	3.8	91.3

Tp 4.58 9384 5.88 8926

104 S = N of Teak # (6.3) or E

W	2.0	91.8
	2.0	91.8
	1.7	92.1
L	3.5	90.3
	4.6	89.2
	4.8	89.0
E	5.2	88.6

382

47

9514
5.88
89.26
4.58
93.84

9384

	N	blf	Teak	a E
E			51	887
			49	889
			50	888
S			40	898
			17	921
			17	921
W			14	924
	S	14.1	Teak	a E
W			10	928
			13	925
			17	921
S			37	901
			50	888
			53	885
E			54	884

PLOTTED

9384

38

48

	Center of	Teak	st a E
E		56	882
		51	887
		46	892
S		36	902
		18	920
		11	927
W		12	926
	S	14.1	Teak
W		18	920
		15	923
		24	914
S		40	898
		46	892
		53	885
E		57	879

2384

	S	bl. f	Temp	in E
E			51	887
			52	886
			48	890
b			41	897
			35	903
			24	914
W			26	917

	S	line of	Temp	in E
W			33	905
			34	904
			43	895
b			43	895
			52	886
			52	886
E			55	883

PLOTTED

2384

9384

280

49

	50	S of	Temp	E
E			54	884
			54	884
			58	880
b			64	874
			78	860
			80	855
W			86	857

	75	S of	Temp	E
W			80	858
			79	857
			78	840
b			69	849
			57	881
			55	883
E			52	886

9384

100

S-N

S-N

ST (60)

r'

E

5.8

88.0

5.5

88.3

5.3

88.5

L

5.8

88.0

5.5

88.3

4.0

89.8

W

N

3.6

90.3

N

S-N

S-N

W

4.1

89.7

5.7

88.1

5.5

88.3

L

4.9

88.9

5.1

88.7

4.7

89.1

E

4.7

89.1

PLOTTED

9384

384

50

N

146

S-N

E

35

90.3

44

89.4

45

89.3

L

49

88.9

55

88.3

47

89.1

W

36

90.3

center of

S-N

W

44

89.4

44

89.4

42

89.6

L

40

89.8

40

89.8

37

89.9

E

33

90.5

35 37

9384

	S	1/4 f	S ₀₁	
E			36	90.7
			36	90.7
			37	90.1
b			30	90.8
			28	91.0
			30	90.8
w			35	90.3
	S	1/4 f	S ₀₁	
w			25	91.3
			20	91.8
			19	91.9
b			25	91.3
			32	90.6
			32	90.6
E			32	90.5

PLOTTED

9384

93.84

384

51

	S	1/4 f	S ₀₁	
E			20	91.8
			27	91.1
			27	91.1
b			21	91.7
			17	92.1
			15	92.3
w			14	92.6
	TR	7m	99.95	99.95
			111	92.2
			40	S of S = 2nd S ₀₁ on E
	w		61	93.9
			70	93.0
			70	93.0
b			69	93.1
			70	93.0
			69	93.1
E			66	93.4

9384

93.84

99.95

99.95

By SW in

9395

N bank of S at - E

E	6.7	93.3
	6.6	93.4
	6.6	93.4
L	6.6	93.4
	6.5	93.5
	6.6	93.4
W	5.6	94.4

N 1/4 of S at

W	5.6	94.4
	6.3	93.7
	6.4	93.6
L	6.5	93.5
	6.4	93.6
	6.4	93.6
E	6.4	93.6

PLOTTED

99.95

382

52

bank of S at - E

E	6.2	93.8
	6.2	93.8
	6.3	93.7
L	6.2	93.8
	6.1	93.9
	6.3	93.7
W	5.5	94.5

S 1/4 of S at

W	6.0	94.0
	6.3	93.7
	6.0	94.0
L	6.1	93.9
	6.2	93.8
	6.2	93.8
E	6.2	93.8

9995

	S	bb f	S	at
E			6.0	94.0
			6.1	93.9
			6.0	94.0
b			6.0	94.0
			5.8	94.3
			5.9	94.1
W			5.8	94.3

	S	line f	S	at
W			4.6	95.4
			5.9	94.1
			5.6	94.4
A			5.7	94.3
			5.8	94.3
			5.7	94.3
E			5.7	94.3

PLOTTED

9995

382

53

	50	S of	S at	- E
E			47	95.3
			45	95.5
			48	95.3
b			47	95.3
			50	95.0
			54	94.6
W			57	94.3
	100	S of	52	
W			56	94.4
			53	94.7
			49	95.1
A			51	94.9
			52	94.8
			50	95.0
E			51	94.9

99.85

150

S of

SW - E

E

53 94.7

56 94.4

60 94.0

N

60 94.0

62 93.7

62 93.8

W

TP

293

97.18

97.18

62 93.8

570

94.25

mean of 5 20 + 38

178

S = N of Total W (60)

W

46 92.5

44 92.8

40 93.3

L

36 93.6

36 93.6

32 94.0

E

33 93.9

PLOTTED

97.18

97.18

38.17

54

10

N of

Total

W W

E

32

94.0

32

94.0

37

93.5

L

39

93.3

45

92.7

47

92.5

W

51

92.1

N

146

Total

W

54

91.8

57

92.1

49

92.3

L

42

93.0

38

93.4

35

93.7

E

35

93.7

PLOTTED

95.84
52
94.125
252
97.18

200' S on E = N of T st on E (50)

E	35	93.7
H	35	93.7
Y	39	93.3
b	43	92.9

center of T st on W

N	54	91.8
H	52	92.0
Y	50	92.2
b	45	92.7

N bank of T st on E

E	40	93.3
H	40	93.3
Y	41	93.1
b	46	92.6

S 1/4 of T st on W

W	57	91.5
H	55	91.7
Y	52	92.0
b	51	92.1

PLOTTED

N 1/4 of T st on E

E	42	93.0
H	42	92.9
Y	45	92.7
b	50	92.3

S bank of T st on W

W	58	91.4
H	55	91.7
Y	54	91.8
b	54	91.8

center of T st on E

E	43	92.9
H	45	92.7
Y	48	92.4
b	53	91.9

S line of T st on W

W	57	91.5
H	57	91.5
H	52	91.6
b	55	91.7

9718

S 144 of T_{ST} or E

E	45	927
u	47	915
4	50	923
b	56	916

S bank of T_{ST} or E

E	45	927
	46	926
	52	920

b	55	917
	56	916
	56	916

N	56	916
---	----	-----

S line of T_{ST} or E
= 15' 50" S 28' T_{ST} or W

W	58	914
	59	913

	59	913
b	57	915

	50	923
	48	924
E	46	926

PLOTTED

9718

38 ft

50 S of T_{ST} or E

E	55	917
---	----	-----

	59	913
--	----	-----

	62	910
--	----	-----

b	63	909
---	----	-----

	65	907
--	----	-----

	62	910
--	----	-----

W	58	914
---	----	-----

	100	58	T _{ST}
--	-----	----	-----------------

W	69	903
---	----	-----

	67	905
--	----	-----

	61	911
--	----	-----

b	67	905
---	----	-----

	73	899
--	----	-----

	77	895
--	----	-----

E	77	895
---	----	-----

PLOTTED

9718

	150	Sy	Total	
E			85	887
			85	887
			86	886
b			84	890
			84	890
			87	885
W			90	883
T.D.	375	903	1070	8648
	200	Sy	Total	
W			43	859
			37	866
			37	865
b			37	865
			37	866
			34	868
E			30	872

PLOTTED

9023

384

57

	225	S	Total	
E			50	853
			59	843
			65	837
b			70	833
			72	830
			73	829
W			72	830
	253	S = N	Zinnwald (60) on W	
			76	826
			74	830
			70	837
b			65	837
			57	845
			36	866
			44	838
E				

9718
1020
8648
375
9023

PLOTTED

9013

N. Mt of Florence Sta W

E 4.9 85.3

5.1 85.1

5.8 84.4

6 5.4 84.8

6.0 84.2

6.8 83.4

W 7.0 83.2

265° S of T = N. Mt of Florence Sta 60° E

E 5.0 85.2

6 5.4 84.8

4 6.0 84.2

6 5.2 85.0

N. Mt of Florence Sta W

W 6.8 83.4

4 6.6 83.6

4 5.6 84.6

6 5.1 85.1

PLOTTED

9013

N. Mt of Florence Sta E

E 5.0 85.2

4 5.6 84.6

4 5.8 84.4

6 5.1 85.1

Center of Florence Sta W

W 7.2 82.9

4 6.8 83.4

4 5.6 84.6

6 5.0 85.2

N. Mt of Florence Sta E

E 4.9 85.3

4 5.6 84.6

4 6.4 83.8

4 6.0 84.2

S. Mt of Florence Sta W

W 7.4 82.8

4 7.2 83.0

4 6.4 83.8

6 6.1 84.1

58

58

9023

Center of Florence - E

E	49	85.3
W	63	83.9
U	65	83.7
L	68	83.4

S Bank of Florence - W

W	60	84.2
U	66	83.6
S	68	83.4
L	65	83.7

S 1/4 of Florence - E

E	46	85.6
W	59	84.3
U	62	84.0
L	65	83.7

S 1/4 of Florence - W

W	53	84.9
U	53	84.9
U	57	84.3
L	53	84.9

PLOTTED

9023

38

59

S Bank of Florence - E

E	43	85.9
U	51	85.1
U	53	84.9
L	53	84.9

S 1/2 of Florence - E
= 1/2 of S 1/4 of Florence - W

E	38	84.4
U	44	85.8
U	38	84.4
L	40	84.2
U	49	85.3
U	46	85.6
W	48	85.4

90.23

50 S of Florence - E

N			21	88.1
			15	88.7
			12	89.0
S			10	89.2
			11	89.1
			1.6	89.6
E			0.6	89.6
TP	675	<u>9643</u>	055	<u>8968</u>
	100	S of Florence		
E			5.2	91.2
			5.4	91.0
			5.7	90.7
S			5.6	90.8
			5.5	90.9
			6.3	90.1
W			7.0	89.4

PLOTTED

9643

9643

38.2

60

125 S of Florence - E

W			67	89.7
			64	90.0
			60	90.4
S			58	90.6
			53	91.1
			49	91.5
E			45	91.9
	140	S of Florence - PL		
E			46	91.8
			50	91.4
			54	91.0
S			55	90.9
			60	90.4
			66	89.8
W			61	89.8
TP	680	<u>9241</u>	482	<u>91.61</u>

mean 4/100

PLOTTED

	200	S of Florence		
E		14	910	
		16	908	
		23	901	
b		28	896	
		36	888	
		41	883	
W		48	876	
	250	S of Florence		
W		59	865	
		57	872	
		50	874	
b		49	875	
		41	883	
		36	888	
E		37	887	

PLOTTED

	275	S - 2 L U St (80)	Logan
E		45	87.9
		52	87.2
		60	86.4
b		67	85.7
		69	85.5
		74	85.0
W		78	84.6
	n 60 f U St		
W		87	83.7
		81	84.3
		75	84.9
b		73	85.1
		68	85.7
		60	86.4
E		48	87.6

9241

N 1/4 of Sect

E 60 84.4

68 85.6

72 85.2

6 75 84.9

77 84.5

86 83.8

W 92 83.2

Center of Sect

W 99 82.5

93 83.1

88 83.6

6 83 84.1

78 84.6

75 84.9

E 69 85.5

PLOTTED

9241
9241

9241

62

S 1/4 of Sect

E 76 84.8

81 84.3

82 84.2

6 70 83.4

94 83.0

100 82.4

W 102 82.2

S 66 of Sect

W 104 82.0

101 82.3

100 82.4

6 94 83.0

87 82.5

86 83.8

E 82 84.2

9241

S line of Cu st

E			86	83.8
			89	83.5
			92	83.7
b			100	83.4
			102	82.7
			107	81.7
W			110	81.4
TP	270	8423	1088	81.53
	50	Sy	Call	
n			41	80.1
			37	80.5
			34	80.8
b			26	81.6
			20	82.2
			17	82.5
E			13	82.9

PLOTTED

8423
8423

382

63

100

S 7

Call

E			17	82.5
			24	81.8
			29	81.3
b			35	80.7
			35	80.7
			31	81.1
W			32	81.0

150

S 7

Call

W			47	79.5
			45	79.7
			44	79.8
b			42	80.0
			33	80.9
			29	81.3
E			23	81.9

PLOTTED

9241
10.85
81.53
2.30
84.23

8423

200

S

7 1/2 W

E

34 80.8

39 80.3

43 79.9

b

47 79.5

52 79.0

58 78.4

W

66 77.6

250

S 1/2

W 1/2

W

76 75.6

71 77.1

61 78.1

b

57 78.5

50 79.3

47 79.5

E

44 79.8

PLOTTED

8423

3800

64

299

S

E

52 79.0

58 78.4

61 78.1

b

61 78.1

b

66 77.6

68 77.4

W

75 76.7

300

S 1/2

7 1/2 W National an

Gated
(80)

W

61 78.1

61 78.1

61 78.1

b

52 79.0

50 78.8

50 79.2

E

40 80.2

TP

068

80.24

420

80.02

mean h E
National

S line of National

E	26	78.1
	33	77.4
	37	77.0
b	36	77.1
	46	76.1
	52	75.5
W	47	74.0

1' S of National

W	59	74.8
b	56	75.1

50' S of National

W	66	74.1
	54	75.3
	50	75.7
b	51	75.6
	48	75.9
	43	76.4
E	38	76.9

PLOTTED

100' S of National

E	46	76.1
	57	75.0
	60	74.7
b	64	74.3
	74	73.3
	85	72.7
W	90	71.7

150' S of National

W	69	73.8
	72	73.5
	75	73.7
b	70	73.7
	62	74.5
	60	74.7
E	55	75.7

80.74

66

2005 - National

F 5.0 75.7

5.6 75.1

6.0 74.7

C 7.0 73.4

7.9 72.8

8.0 72.7

W 7.9 73.8

T.P. 5.1 75.59 Rock ES.

Continued in Book 912 - P. 1

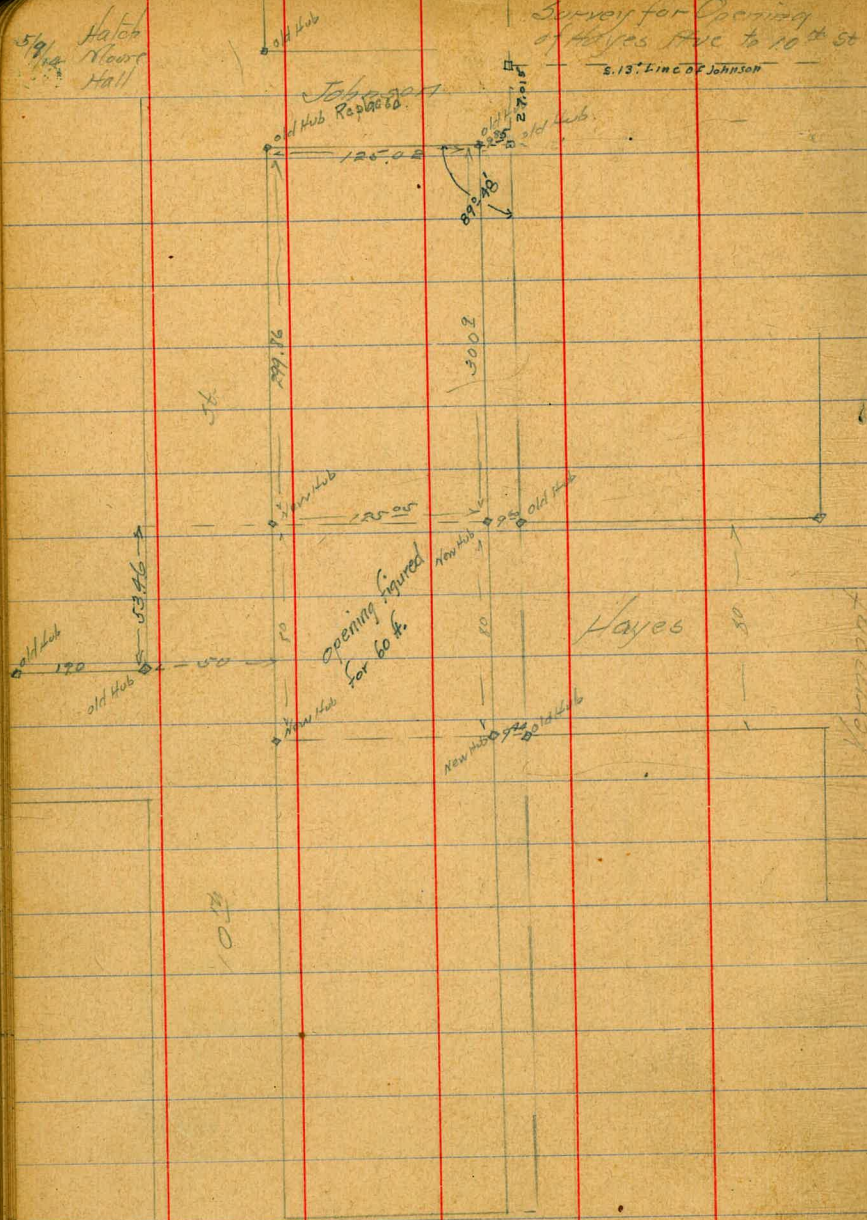
PLOTTED

100%

59
Hatch
Moore
Hall

Survey for Opening
of Hayes Ave to 10th St
E. 13° Line of Johnson

68



Boundary St Cross Sections
 5 L Upas to N L Redwood - 20ft wide

B.M. Iron Pipe at Thorne at P.C. N^o Kinley St. 313.50

Z 77 316.21

5 L Upas St on W.

EL	6.9	309.4
±	7.1	309.2
WL	7.1	309.2

5.81 South = 5 L Upas on EL

WL	7.4	308.9
±	7.2	309.1
EL	7.2	309.1

25' South

EL	7.7	308.6
±	7.6	308.7
WL	7.7	308.6

50' South

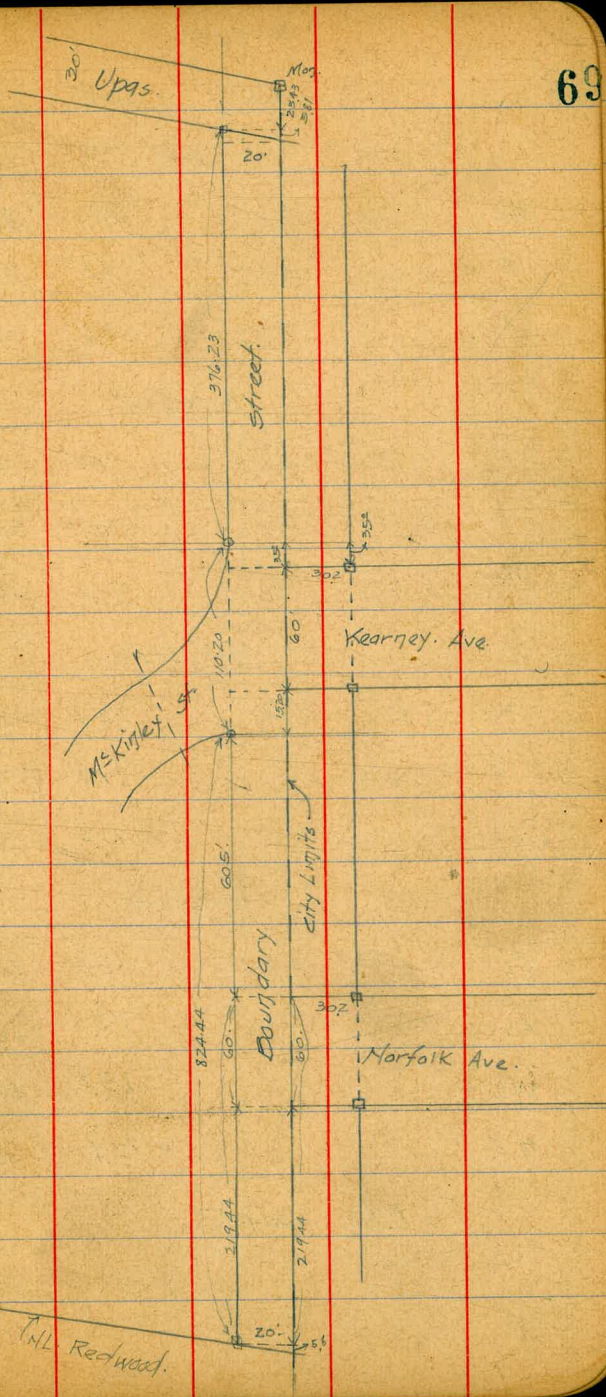
WL	8.4	307.9
±	8.2	308.1
EL	8.2	308.1

75 S.

EL	8.9	307.4
±	8.7	307.6
WL	9.0	307.3

West
 other
 more

3/25/16



Boundary.

316.27

100' South.

WL. 10.3 306.0

± 7.5 306.8

EL. 9.6 306.7

125' South.

EL. 10.4 305.9

± 10.7 305.6

WL. 11.2 305.1

150' South.

WL. 12.3 304.0

± 11.7 304.6

EL. 11.5 304.8

175' South.

EL. 12.5 303.8

± 12.7 303.6

WL. 13.3 303.0

T.P. 12.90 303.37

1.45 304.82

Boundary.

304.82

200' South.

WL. 2.9 301.9

± 2.4 302.4

EL. 2.1 302.7

225' South.

EL. 3.0 301.8

± 3.3 301.5

WL. 3.8 301.0

250' South.

WL. 5.0 299.8

± 4.2 300.6

EL. 4.2 300.6

275' South.

EL. 5.5 299.3

± 5.7 299.1

WL. 6.4 298.4

300' South.

WL. 8.4 296.4

± 7.1 297.7

EL. 7.1 297.7

Boundary

304.82

325' South

EL.	8.9	295.9
+3	8.7	296.1
+10 = E	11.9	292.9
WL.	14.0	290.8
+10 for slope.	16.0	288.8

350' South

-15 = bot drain	21.2	283.6
WL.	20.3	284.5
E	17.3	287.5
EL.	10.3	294.5
T.P.	12.85	291.97

157

293.54

376.23 S = Opp. P.C. WL. = Int. M^o Kinley.

EL.	2.7	290.8
E	10.3	283.2
WL.	10.2	283.3
+15	9.1	284.4

Boundary

293.54

400' South

-15	10.4	283.1
WL.	11.7	281.8
E	10.5	283.0
EL.	3.9	289.6

411² S. = NL. Kearney Ave 17 E San Diego 60' W-10' W.

-30 = EL of Flood St 17 E S.D.	0.6	292.9
-20	2.0	291.5
-4	2.5	291.0
EL	5.1	288.4
E	9.8	283.7
+5	11.2	282.3
WL.	11.5	282.0
+15	11.3	282.2

421² = N. Curb of Kearney.

-15	12.2	281.3
WL.	11.3	282.2
E	9.0	284.5
EL.	3.7	289.8

Boundary.

29354

431^z = N 1/4 Kearney.

EL.	3.7	289.8
±	8.5	285.0
WL.	10.8	282.7
+15	12.5	281.0

441^z = ± Kearney.

-15	8.6	284.9
WL.	5.5	288.0
±	4.0	289.5
EL.	4.0	289.5

451^z = 3/4 Kearney.

EL.	2.1	291.4
±	1.8	291.7
WL.	1.7	291.8

461^z = 5 Corn Kearney.

WL.	1.4	292.1
±	1.9	291.6
EL.	2.7	290.8

Boundary.

29354

471^z = 5L. Kearney.

-30 ^z = EL. Foote St 10 E 50.	3.7	289.8
EL.	5.0	288.5
±	6.4	287.1
WL.	6.8	286.7

480' South.

-10	7.0	286.5
WL.	10.6	282.9
±	12.5	281.0
EL.	7.2	286.3

486.43' South = Int. EL McKinley with WL. Boundary.

-10	8.4	285.1
EL.	13.0	280.5
±	13.0	280.5
WL.	12.7	280.8
+10	11.2	282.3

25' South of Int. McKinley on WL.

-10	10.5	283.0
WL.	13.2	280.3
±	13.5	280.0
EL.	11.1	282.4

72

Boundary.

29354

50' South.

-15 for slope

14.1 279.4

EL. 12.6 280.9

± 13.2 280.3

WL. 11.4 282.1

75' South.

WL. 9.1 284.4

+2 10.8 282.7

± 12.2 281.3

EL 14.0 279.5

+15 for slope 15.8 277.7

100' South.

-15 14.6 278.9

EL 14.4 279.1

+2 14.2 279.3

+6 12.0 281.5

± 11.9 281.6

+3 11.7 281.8

+5 10.4 283.1

WL 8.6 284.9

Boundary.

29354

125' South.

WL. 8.2 285.3

+4 9.6 283.9

+7 12.0 281.5

± 12.4 281.1

+4 12.6 280.9

+7 14.7 278.8

EL 15.0 278.5

+15 15.4 278.1

150' South.

-15 18.6 276.9

EL 15.5 278.0

+8 15.1 278.4

+7 13.0 280.5

± 12.9 280.6

+4 13.0 280.5

WL 10.0 283.5

175' South.

WL 10.7 282.8

+3 12.8 280.7

± 12.8 280.7

+2 12.9 280.6

+6 15.0 278.5

EL 15.3 278.2

+15 16.0 277.5

13

Boundary.

293.54

200' South

-13	14.7	278.8
EL	14.2	279.3
+2	14.0	279.5
+6	12.1	281.4
±	11.6	281.9
+4	11.4	282.1
WL	9.1	284.4

225' South

WL	5.7	287.8
+7	8.3	285.2
±	9.5	284.0
+5	9.5	284.0
EL	11.9	281.6
+13 for slope	12.0	281.5

250' South

-13 " "	12.0	281.5
EL	10.5	283.0
+5	8.9	284.6
±	8.5	285.0
+2	8.5	285.0
+3	7.5	286.0
WL	4.3	289.2

Boundary.

293.54

275' South

WL	3.5	290.0
+1	3.8	289.7
+3	5.2	288.3
+8	7.6	285.9
±	7.7	285.8
+6	8.1	285.4
EL	10.0	283.5
+13 for slope	10.6	282.9

300' South

-13 " "	10.4	283.1
EL	9.7	283.8
+3	7.8	285.7
±	7.3	286.2
+2	7.2	286.3
+3	6.2	287.3
+6	5.5	288.0
WL	3.1	290.4

74

Boundary

293.54

325' South

WL	30	290.5
+3	4.8	288.7
+7	6.3	287.2
±	6.9	286.6
+6	7.3	286.2
EL	9.2	284.3
+13 for slope	9.8	283.7

350' South

-13 " "	9.4	284.1
EL	8.9	284.6
+4	6.3	287.2
±	6.1	287.4
+2	5.9	287.6
+3	4.4	289.1
+8	3.0	290.5
WL	1.6	291.9

Boundary

293.54

375' South

WL	0.5	293.0
+1	1.8	291.7
+6	3.3	290.2
+7	4.6	288.9
±	4.9	288.6
+5	5.2	288.3
EL	8.2	285.3
+13 for slope	9.0	284.5

400' South

EL	8.2	285.3
+6	5.4	288.1
±	4.8	288.7
+3	4.4	289.1
+4	2.1	291.4
WL	0.7	292.8
T.P.	1.17	292.37

5.85 298.22

75

Boundary.

29822

425' South.

WL.	59	292.3
+5	75	290.7
+6	86	289.6
±	86	289.6
+4	91	289.1
EL.	122	286.0

450' South.

EL.	111	287.1
+6	7.8	290.4
±	74	290.8
+5	73	290.9
+6	5.9	292.3
WL.	4.9	293.3

475' South.

WL.	35	294.7
+6	48	293.4
+7	60	292.2
±	60	292.2
+4	58	292.4
EL.	89	289.3

Boundary.

29822

500' South.

EL.	84	289.8
+5	62	292.0
±	60	292.2
+3	5.9	292.3
+5	4.7	293.5
WL.	35	294.7

525' South.

WL.	29	295.3
+3	44	293.8
+7	5.1	293.1
+8	6.0	292.2
±	62	292.0
+5	6.7	291.5
+8	8.0	290.2
E8	8.2	290.0

550' South.

EL.	82	290.0
+3	81	290.1
+5	68	291.4
±	64	291.8
+3	6.2	292.0
+4	5.2	293.0
WL.	32	295.0

Boundary.

29822

575' South.

WL.	3.5	294.7
+3	5.0	293.2
+6	6.2	292.0
±	6.3	291.9
+4	6.4	291.8
+7	8.3	289.9
EL	8.3	289.9

600' South.

EL	8.4	289.8
+3	8.3	289.9
+5	6.6	291.6
±	6.3	291.9
+3	6.2	292.0
+4	5.4	292.8
+8	4.7	293.5
WL	3.3	294.9

605' South = NL. Norfolk on E-19 E San Diego.

60' wide - 10' WKS - 10' 1/4 S.

WL	3.0	295.2
+2	3.7	294.5
+3	4.7	293.5
+7	6.1	292.1
±	6.2	292.0
+5	6.6	291.6
+8	8.4	289.8
EL	8.5	289.7
+17	9.3	288.9
+30.2 = Hub. EL. Pueblo Ave. E.S.U.	14.2	284.0

Boundary.

29822

615' S = N Curb - Norfolk.

EL	8.6	289.6
+3	8.5	289.7
+5	6.6	291.6
±	6.3	291.9
+7	5.1	293.1
WL	3.2	295.0

625' S = N 1/4 Norfolk.

WL	3.2	295.0
+3	4.7	293.5
+7	6.2	292.0
±	6.5	291.7
+5	7.1	291.0
+7	8.4	289.8
EL	8.6	289.6

635' S = ± Norfolk.

EL	8.5	289.7
+3	8.5	289.7
+5	6.6	291.6
±	6.3	291.9
+7	4.7	293.5
WL	3.3	294.9

645' S = S 1/4 Norfolk.

WL	3.2	295.0
+3	4.7	293.5
±	6.3	291.9
+5	7.0	291.2
+7	8.5	289.7
EL	8.5	289.7

655' S = S Curb Norfolk.

EL	8.6	289.6
+3	8.4	289.8
+5	6.5	291.7
±	6.2	292.0
+7	4.9	293.3
WL	3.5	294.7

665' S = S/L Norfolk.

WL	3.6	294.6
+3	5.1	293.1
±	6.1	292.1
+5	6.3	291.9
+7	8.1	290.1
EL	8.5	289.7

Boundary.

29822

+ 17	94	288.8
+ 30 = Hub. EL Pueblo St E.S.D.	124	285.8

675' South.

EL.	86	289.6
+3	82	290.0
+5	63	291.9
±	63	291.9
+7	49	293.3
WL.	37	294.5

700' South.

WL.	33	294.9
+3	49	293.3
±	66	291.6
+5	68	291.9
+7	84	289.8
EL.	84	289.8

725' South.

EL	83	289.9
+3	81	290.1
+5	6.8	291.4
±	6.0	292.2
+7	53	292.9
WL	32	295.0

750' South.

WL.	32	295.0
+3	54	292.8
±	6.1	292.1
+5	6.9	291.3
+7	7.9	290.3
EL	8.0	290.2

Boundary.

29822

78

775' South

EL.	75	290.7
+3	74	290.8
+5	65	291.7
±	62	292.0
+7	56	292.4
WL.	38	294.4

800' South.

WL.	39	294.3
+3	56	292.6
±	64	291.8
EL	73	290.9

824⁴⁴ = Int WL with NL Redwood.

EL.	73	290.9
±	6.2	292.0
+7	52	293.0
WL	4.1	294.1

Int. EL Bound with NL Redwood produced = 5⁸ further of EL

WL	4.1	294.1
----	-----	-------

Boundary,

29822

+3 5.3 292.9

± 6.2 292.0

EL. 7.2 291.0

T.P. 0.63 297.59

T.P. 12.30 309.89 1.38 308.51

10.42 318.93

BM Iron Pipe 51' Turge - 100' E of Gregory 5.48 313.45 ^{OK.} 313.50

West

Offen.

Moore.

3/28/16.

148.51 120.11 71.32

115
8
106.52

22.2
40.7
102.9

185.74 186
15.3
140
273

379.84
mch
380
w
380

40.66
81.32

143.70
81.32
962.38
18.59

40.7
15.6
56.3
10.6
71.9
37.0
108.1
143.7

10.51
20.7
143.8

148.5
34.
0.74
930.5
12 1987.90 40.66
48
79
72
470

15996
0.70
96.62
12.84
177.16
0.14
177.196
12.76
165.20



143.70 3.2 20.22 268.14
106.10 102.02 11.99 0.67
11.99 6 23.74 4400.0
71.84 11.99 1+1.34 116.6
173.17 175.01 3.76
155
712

DISTANCES FROM CENTER OF ROADWAY FOR CROSS-SECTIONING.
ROADWAY 14 FEET WIDE. SIDE SLOPES 1 1/2 TO 1.
FOR SINGLE TRACK EMBANKMENT.

	0	.1	.2	.3	.4	.5	.6	.7	.8	.9	
0	7.0	7.2	7.3	7.5	7.6	7.8	7.9	8.1	8.2	8.4	0
1	8.5	8.7	8.8	9.0	9.1	9.3	9.4	9.6	9.7	9.9	1
2	10.0	10.2	10.3	10.5	10.6	10.8	10.9	11.1	11.2	11.4	2
3	11.5	11.7	11.8	12.0	12.1	12.3	12.4	12.6	12.7	12.9	3
4	13.0	13.2	13.3	13.5	13.6	13.8	13.9	14.1	14.2	14.4	4
5	14.5	14.7	14.8	15.0	15.1	15.3	15.4	15.6	15.7	15.9	5
6	16.0	16.2	16.3	16.5	16.6	16.8	16.9	17.1	17.2	17.4	6
7	17.5	17.7	17.8	18.0	18.1	18.3	18.4	18.6	18.7	18.9	7
8	19.0	19.2	19.3	19.5	19.6	19.8	19.9	20.1	20.2	20.4	8
9	20.5	20.7	20.8	21.0	21.1	21.3	21.4	21.6	21.7	21.9	9
10	22.0	22.2	22.3	22.5	22.6	22.8	22.9	23.1	23.2	23.4	10
11	23.5	23.7	23.8	24.0	24.1	24.3	24.4	24.6	24.7	24.9	11
12	25.0	25.2	25.3	25.5	25.6	25.8	25.9	26.1	26.2	26.4	12
13	26.5	26.7	26.8	27.0	27.1	27.3	27.4	27.6	27.7	27.9	13
14	28.0	28.2	28.3	28.5	28.6	28.8	28.9	29.1	29.2	29.4	14
15	29.5	29.7	29.8	30.0	30.1	30.3	30.4	30.6	30.7	30.9	15
16	31.0	31.2	31.3	31.5	31.6	31.8	31.9	32.1	32.2	32.4	16
17	32.5	32.7	32.8	33.0	33.1	33.3	33.4	33.6	33.7	33.9	17
18	34.0	34.2	34.3	34.5	34.6	34.8	34.9	35.1	35.2	35.4	18
19	35.5	35.7	35.8	36.0	36.1	36.3	36.4	36.6	36.7	36.9	19
20	37.0	37.2	37.3	37.5	37.6	37.8	37.9	38.1	38.2	38.4	20
21	38.5	38.7	38.8	39.0	39.1	39.3	39.4	39.6	39.7	39.9	21
22	40.0	40.2	40.3	40.5	40.6	40.8	40.9	41.1	41.2	41.4	22
23	41.5	41.7	41.8	42.0	42.1	42.3	42.4	42.6	42.7	42.9	23
24	43.0	43.2	43.3	43.5	43.6	43.8	43.9	44.1	44.2	44.4	24
25	44.5	44.7	44.8	45.0	45.1	45.3	45.4	45.6	45.7	45.9	25
26	46.0	46.2	46.3	46.5	46.6	46.8	46.9	47.1	47.2	47.4	26
27	47.5	47.7	47.8	48.0	48.1	48.3	48.4	48.6	48.7	48.9	27
28	49.0	49.2	49.3	49.5	49.6	49.8	49.9	50.1	50.2	50.4	28
29	50.5	50.7	50.8	51.0	51.1	51.3	51.4	51.6	51.7	51.9	29
30	52.0	52.2	52.3	52.5	52.6	52.8	52.9	53.1	53.2	53.4	30
31	53.5	53.7	53.8	54.0	54.1	54.3	54.4	54.6	54.7	54.9	31
32	55.0	55.2	55.3	55.5	55.6	55.8	55.9	56.1	56.2	56.4	32
33	56.5	56.7	56.8	57.0	57.1	57.3	57.4	57.6	57.7	57.9	33
34	58.0	58.2	58.3	58.5	58.6	58.8	58.9	59.1	59.2	59.4	34
35	59.5	59.7	59.8	60.0	60.1	60.3	60.4	60.6	60.7	60.9	35
36	61.0	61.2	61.3	61.5	61.6	61.8	61.9	62.1	62.2	62.4	36

Calculated by Julien A. Hall, M. Am. Soc. C. E.

MADE IN GERMANY.