

902

F.B..

LEVEL BOOK

No. 410 T

EUGENE DIETZGEN CO.

Drawing Materials and Surveying Instruments

NEW YORK.

CHICAGO.

SAN FRANCISCO.

TABLES FOR EXCAVATIONS AND EMBANKMENTS.

DISTANCES FROM CENTER OF ROADWAY FOR CROSS-SECTIONING.

ROADWAY 20 FEET WIDE. SIDE SLOPES 1 TO 1.

FOR SINGLE TRACK EXCAVATION.

DEC 15 1964

Copyright, 1902. No. 39340.

	0	.1	.2	.3	.4	.5	.6	.7	.8	.9	
0	10.0	10.1	10.2	10.3	10.4	10.5	10.6	10.7	10.8	10.9	0
1	11.0	11.1	11.2	11.3	11.4	11.5	11.6	11.7	11.8	11.9	1
2	12.0	12.1	12.2	12.3	12.4	12.5	12.6	12.7	12.8	12.9	2
3	13.0	13.1	13.2	13.3	13.4	13.5	13.6	13.7	13.8	13.9	3
4	14.0	14.1	14.2	14.3	14.4	14.5	14.6	14.7	14.8	14.9	4
5	15.0	15.1	15.2	15.3	15.4	15.5	15.6	15.7	15.8	15.9	5
6	16.0	16.1	16.2	16.3	16.4	16.5	16.6	16.7	16.8	16.9	6
7	17.0	17.1	17.2	17.3	17.4	17.5	17.6	17.7	17.8	17.9	7
8	18.0	18.1	18.2	18.3	18.4	18.5	18.6	18.7	18.8	18.9	8
9	19.0	19.1	19.2	19.3	19.4	19.5	19.6	19.7	19.8	19.9	9
10	20.0	20.1	20.2	20.3	20.4	20.5	20.6	20.7	20.8	20.9	10
11	21.0	21.1	21.2	21.3	21.4	21.5	21.6	21.7	21.8	21.9	11
12	22.0	22.1	22.2	22.3	22.4	22.5	22.6	22.7	22.8	22.9	12
13	23.0	23.1	23.2	23.3	23.4	23.5	23.6	23.7	23.8	23.9	13
14	24.0	24.1	24.2	24.3	24.4	24.5	24.6	24.7	24.8	24.9	14
15	25.0	25.1	25.2	25.3	25.4	25.5	25.6	25.7	25.8	25.9	15
16	26.0	26.1	26.2	26.3	26.4	26.5	26.6	26.7	26.8	26.9	16
17	27.0	27.1	27.2	27.3	27.4	27.5	27.6	27.7	27.8	27.9	17
18	28.0	28.1	28.2	28.3	28.4	28.5	28.6	28.7	28.8	28.9	18
19	29.0	29.1	29.2	29.3	29.4	29.5	29.6	29.7	29.8	29.9	19
20	30.0	30.1	30.2	30.3	30.4	30.5	30.6	30.7	30.8	30.9	20
21	31.0	31.1	31.2	31.3	31.4	31.5	31.6	31.7	31.8	31.9	21
22	32.0	32.1	32.2	32.3	32.4	32.5	32.6	32.7	32.8	32.9	22
23	33.0	33.1	33.2	33.3	33.4	33.5	33.6	33.7	33.8	33.9	23
24	34.0	34.1	34.2	34.3	34.4	34.5	34.6	34.7	34.8	34.9	24
25	35.0	35.1	35.2	35.3	35.4	35.5	35.6	35.7	35.8	35.9	25
26	36.0	36.1	36.2	36.3	36.4	36.5	36.6	36.7	36.8	36.9	26
27	37.0	37.1	37.2	37.3	37.4	37.5	37.6	37.7	37.8	37.9	27
28	38.0	38.1	38.2	38.3	38.4	38.5	38.6	38.7	38.8	38.9	28
29	39.0	39.1	39.2	39.3	39.4	39.5	39.6	39.7	39.8	39.9	29
30	40.0	40.1	40.2	40.3	40.4	40.5	40.6	40.7	40.8	40.9	30
31	41.0	41.1	41.2	41.3	41.4	41.5	41.6	41.7	41.8	41.9	31
32	42.0	42.1	42.2	42.3	42.4	42.5	42.6	42.7	42.8	42.9	32
33	43.0	43.1	43.2	43.3	43.4	43.5	43.6	43.7	43.8	43.9	33
34	44.0	44.1	44.2	44.3	44.4	44.5	44.6	44.7	44.8	44.9	34
35	45.0	45.1	45.2	45.3	45.4	45.5	45.6	45.7	45.8	45.9	35
36	46.0	46.1	46.2	46.3	46.4	46.5	46.6	46.7	46.8	46.9	36
37	47.0	47.1	47.2	47.3	47.4	47.5	47.6	47.7	47.8	47.9	37
38	48.0	48.1	48.2	48.3	48.4	48.5	48.6	48.7	48.8	48.9	38
39	49.0	49.1	49.2	49.3	49.4	49.5	49.6	49.7	49.8	49.9	39
40	50.0	50.1	50.2	50.3	50.4	50.5	50.6	50.7	50.8	50.9	40

Calculated by F. E. Paradis, C. E.

60
600

9/1/13
 Gregory
 Shoemaker
 Moore

CROSS SECTION OF
 MILLER ST. 50' WIDE
 10' WALKS
 IN MIDDLETOWN ADD.

B.M.	1.88	284.78	282.90	NE, Sunset + Ingle side
T.P.	0.94	273.03	12.69	272.09
T.P.	0.44	260.48	12.99	260.04
T.P.	0.94	249.40	12.02	248.46
T.P.	6.11	243.28	12.23	237.17 Hal

J. L. HORTON AVE (50' WIDE)

W		1.9	241.4
cb		3.3	40.0
1/4		4.2	39.1
c		4.9	38.4
1/4		5.8	37.5
cb		6.7	36.6
E		9.4	33.9

So. CURB

E		10.4	32.9
cb		7.3	42.0
1/4		5.9	37.4
c		5.0	38.3
1/4		4.2	39.1
cb		3.2	40.1

PLOTTED

243.3

i

W		1.8	241.5
So. QUARTER			
W		1.8	41.5
cb		3.2	40.1
1/4		4.2	39.1
c		5.0	38.3
1/4		6.3	37.0
cb		7.6	35.7
E		11.2	32.1
CENTER			
E		12.4	30.9
cb		8.0	35.3
1/4		6.5	36.5
c		5.2	38.1
1/4		4.2	39.1
cb		3.5	39.8
W		2.0	41.3
No. QUARTER			
W		2.4	40.9
cb		3.6	39.7

243.28

1/4	4.3	239.0
C	5.7	37.4
1/4	7.2	34.1
cb	8.8	34.5
E	13.0	30.3
No. CURB		
E	13.8	29.5
cb	8.7	34.6
1/4	7.2	34.1
C	5.9	37.4
1/4	4.7	38.6
cb	3.6	39.7
W	2.4	40.9
No. LINE HORTON		
W	2.8	40.5
cb	4.4	38.9
1/4	5.7	37.4
C	6.7	34.4
1/4	8.0	31.3
cb	10.8	32.5

PLOTTED

MILLER ST

2

243.3

E	15.2	228.1
same slope for 120'		
25' No.		
same slope for 125'		
E	23.7	19.4
cb	17.8	25.5
1/4	14.2	29.1
C	10.6	32.7
1/4	7.7	35.4
cb	6.3	37.0
W	4.3	39.0
50' No.		
W	5.6	37.7
cb	8.8	34.5
1/4	11.6	31.7
C	15.9	27.4
1/4	19.5	23.8
cb	23.0	20.3
E	30.8	12.5
same slope for 100'		
75' No		
same slope for 90'		
E	34.9	208.5
cb	29.1	14.2

1/4		24.2	219.1
c		20.6	22.7
1/4		16.2	27.1
cb		12.4	30.9
W		6.9	34.4
	100' No		
W		9.4	33.9
T.P.	0.18 230.44	13.02	230.26
cb		1.1	29.3
1/4		4.1	26.3
c		8.5	21.9
1/4		11.6	18.8
cb		16.3	14.4
E		22.3	208.1
	125' No	same slope for 100'	
E		23.8	204.6
cb		19.6	10.8
1/4		15.2	15.2
c		11.8	18.4
1/4		9.1	21.3

PLOTTED

cb		6.6	223.8
W		2.4	28.0
	150' No		
W		11.7	19.7
T.P.	0.65 218.10	12.99	217.45
cb		3.8	14.3
1/4		7.1	11.0
c		10.0	208.1
1/4		12.9	205.2
cb		16.0	202.1
E		19.7	198.4
	166' No	same slope for 90'	
		Level for 60'	
E		25.0	93.1
cb		21.5	96.6
1/4		18.8	99.3
c		16.0	202.1
1/4		12.3	205.8
cb		9.5	208.4
W		5.2	12.9

218.10

175' No.

W	7.2	210.9
cb	11.5	204.6
1/4	15.3	202.8
C	19.1	199.0
1/4	19.9	98.2
cb	21.5	94.6
E	21.3	94.8
200.24' ON EAST } = N. L. MIDDLE TOWN ADD 197.09' ON WEST }		
-20	8.8	208.3
-15	8.0	210.1
E	8.6	209.5
cb	9.3	208.8
1/4	8.4	209.7
C	8.9	209.2
1/4	8.6	209.5
cb	8.6	209.5
W	10.0	208.1
+25	0.0	18.1

MILLER ST CLOSED FROM HORTON

TO COLUMBIA

PLOTTED

MILLER ST

4

T.P.	0.60	237.77	237.17	HUB. SEC PA9C1
T.P.	0.68	226.91	11.54	226.23
T.P.	0.50	214.56	12.85	214.06 CHILD'S - 213.98
S. L. COLUMBIA ST. FOR NOTES ON INTERSECTION SEE X SEC OF COL. ST.				
E			0.5	214.1
cb			1.4	133
1/4			1.7	12.9
C			2.1	12.8
1/4			2.3	12.3
cb			2.5	12.1
W			2.7	11.9
50' So.				
W			9.9	203.7
cb			9.1	205.5
1/4			8.6	204.0
C			8.0	204.6
1/4			7.4	207.2
cb			7.1	207.5
E			6.8	207.8

214.56

75' SO.

E		10.2	204.4
cb		11.2	203.4
1/4		11.9	202.7
C		12.5	202.1
T.P.	0.28	202.48	12.96 201.60

1/4		1.4	201.1
-----	--	-----	-------

cb		2.0	200.5
----	--	-----	-------

W		3.4	199.1
---	--	-----	-------

100' SO.

W		10.5	93.0
---	--	------	------

cb		9.1	93.4
----	--	-----	------

1/4		8.0	94.5
-----	--	-----	------

C		7.0	95.5
---	--	-----	------

1/4		6.1	94.4
-----	--	-----	------

cb		5.1	97.4
----	--	-----	------

E		4.0	98.5
---	--	-----	------

150' SO.

T.P.	0.66	190.12	13.02 189.46
------	------	--------	--------------

E	PLOTTED	5.4	84.7
---	----------------	-----	------

19012 MILLER ST 5

cb		6.3	183.8
----	--	-----	-------

1/4		7.1	83.0
-----	--	-----	------

C		7.8	83.3
---	--	-----	------

1/4		8.2	81.9
-----	--	-----	------

cb		9.2	80.9
----	--	-----	------

W		10.2	79.9
---	--	------	------

184.10 ON WEST } = S. L. MIDDLETOWN AHD
180.4 ON EAST }

W		17.3	72.8
---	--	------	------

cb		16.0	74.1
----	--	------	------

1/4		15.5	74.4
-----	--	------	------

C		15.1	75.0
---	--	------	------

1/4		14.5	75.4
-----	--	------	------

cb		13.7	76.4
----	--	------	------

E		12.7	77.4
---	--	------	------

T.P.	13.07	202.89	0.30 189.82
------	-------	--------	-------------

T.P.	12.29	215.08	0.10 202.79
------	-------	--------	-------------

T.P.		1.02	214.06
------	--	------	--------

ON PIN
SE MILLER
+ COL

9/3/13
Bigory
St. Ignace
moon

X section of
MCKEE ST 50' WIDE
FROM CATHOLIC CEM.
TO COLUMBIA ST.

BM	8.09	277.27		269.18	NW cor CATH. CEM.
T.P.	2.25	278.73	0.79	276.48	
T.P.	0.30	266.34	12.19	266.54	
T.P.	2.23	257.74	11.33	255.51	

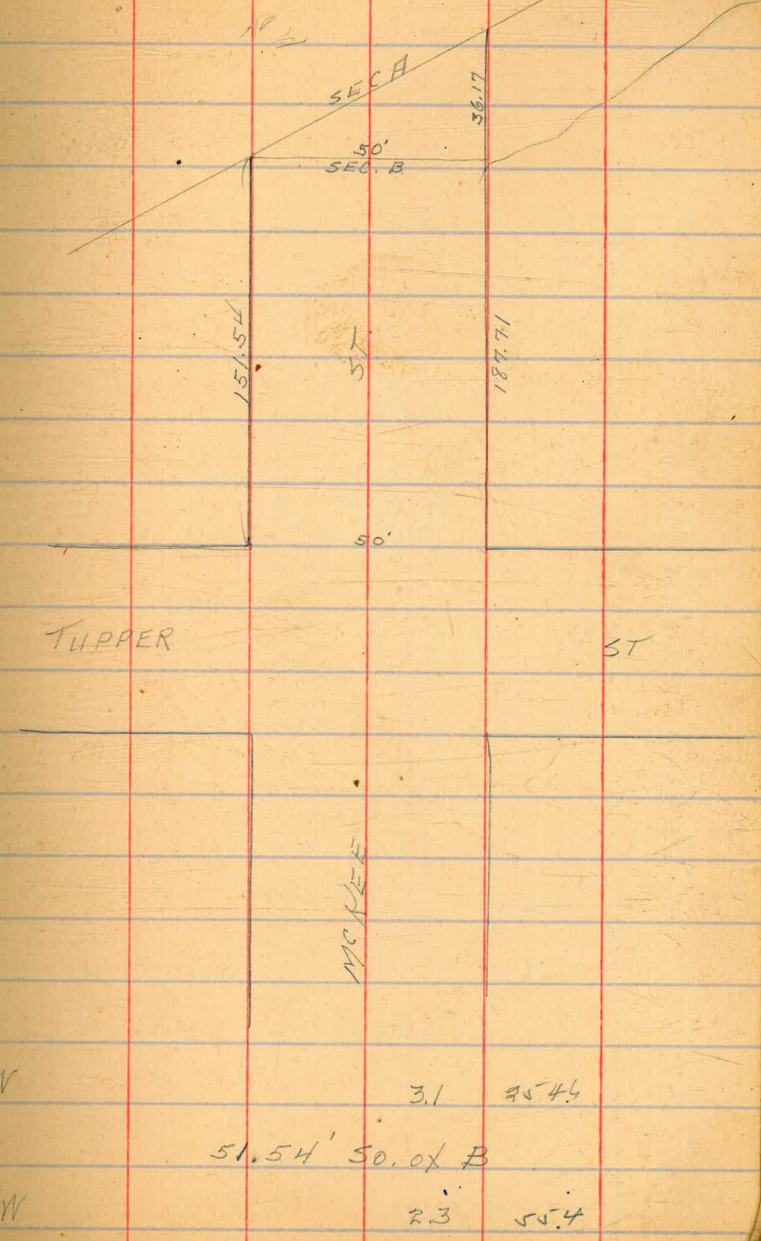
SEC A

W		3.1		254.4
cb		4.9		52.8
1/4		6.1		51.6
C		7.4		50.3
1/4		8.4		49.3
cb		8.9		48.8
E		8.7		49.0

SEC B

- 20		17.6		40.1
E		15.3		42.4
cb		9.7		48.0
1/4		8.3		49.4
C		8.3		49.4
1/4		8.3		49.4
cb		5.9		51.8

PLOTTED



W

3.1 254.4
51.54' 50.0 x B
W
2.3 55.4

25774

cb	7.8	249.9
1/4	7.6	50.1
C	7.7	50.0
1/4	11.3	46.4
cb	14.1	43.5
E	18.3	39.4

101.54' So. of B

E	16.8	40.9
cb	13.1	44.6
1/4	10.3	47.4
C	6.2	51.5
1/4	6.3	57.4
cb	5.0	52.7
W	1.5	56.3

151.54' So. of SEC. B = N.L. ^{50' WIDE} TUPPER ST

W	0.4	57.3
cb	4.1	53.6
1/4	4.0	53.7
C	4.1	53.4
1/4	6.9	50.8

PLOTTED

2577

8

cb	9.8	247.9
E	13.9	43.8

No. CURB

E	14.1	43.4
cb	10.7	47.0
1/5	6.9	50.8
C	4.3	53.4
1/4	3.9	53.8
cb	3.7	53.9
W	0.6	57.1

No. QUARTER

W	3.8	53.9
cb	3.7	54.0
1/4	3.8	53.9
C	6.2	51.5
1/4	8.3	49.4
cb	10.7	47.0
E	14.2	43.5

CENTER

E	14.2	43.5
---	------	------

257.74

cb	11.4	244.3
1/4	8.7	49.0
c	7.0	50.7
1/4	4.7	53.0
cb	3.6	54.1
W	3.1	54.3

SO. QUARTER

W	3.2	54.5
cb	4.5	53.2
1/4	6.6	57.1
c	8.5	49.2
1/4	10.4	47.3
cb	12.0	45.7
E	15.4	42.3

SO CURB

E	16.5	41.2
cb	13.6	44.1
1/4	11.3	46.4
c	9.6	48.1
1/4	7.9	49.8

PLOTTED

257.7

MCKEE ST

9

cb	6.3	251.4
W	4.6	53.1

SO. LINE TUPPER ST

W	7.2	50.5
cb	8.9	48.8
1/4	10.5	47.2
c	11.8	45.9

T.P.	0.25	245.36	12.63	245.11
------	------	--------	-------	--------

1/4	1.5	43.9
-----	-----	------

cb	3.3	42.1
----	-----	------

E	5.9	39.5
---	-----	------

50' SO.

E	15.2	30.2
---	------	------

cb	13.9	31.5
----	------	------

1/4	13.2	32.2
-----	------	------

c	12.1	33.0
---	------	------

1/4	11.6	33.8
-----	------	------

cb	11.2	34.2
----	------	------

W	10.4	35.0
---	------	------

T.P.	0.51	233.05	12.82	232.54
------	------	--------	-------	--------

233.05

T.P. 0.05 220.13 12.97 220.08

100' So.

W 1.4 218.7

cb 1.9 19.3

1/4 2.2 17.9

C 2.5 17.6

1/4 3.0 17.1

cb 3.6 14.5

E 4.2 15.9

125' So.

E 11.0 209.1

cb 11.4 208.7

1/4 12.1 208.0

C 12.2 207.9

1/4 11.6 208.5

cb 10.8 209.3

W 9.3 10.8

T.P. 0.40 207.60 12.93 207.20

PLOTTED

207.4

10

150' So.

W 6.5 201.1

cb 6.7 200.9

1/4 7.9 199.7

C 9.2 98.4

1/4 8.6 99.0

cb 8.5 99.1

E 7.2 200.4

T.P. 0.18 194.91 12.87 194.73

175' So.

E 3.7 91.2

cb 7.3 87.4

1/4 9.3 85.6

C 8.8 86.1

1/4 6.6 88.3

cb 6.8 89.1

W 8.8 86.1

200' So = N.L. BOONE ST

FOR INTER. SEE
X SECTION OF BOONE

W 21.7 73.3

cb 19.5 75.4

194.91

1/4	20.0	174.9
c	21.2	73.7
1/4	21.3	73.4
cb	18.0	74.9
E	13.8	81.1

SO. LINE BOONE ST

E	27.6	67.3
cb	22.8	72.1
1/4	19.2	75.7
c	16.7	78.2
1/4	14.0	80.9
cb	11.0	83.9
W	5.9	89.0
T.P.	10.50	205.26
	0.15	194.76

25' So.

W	8.3	197.0
cb	15.9	89.4
1/4	19.3	84.0
c	22.1	83.2
1/4	25.1	80.2

PLOTTED

205.3

11

cb	29.2	174.1
E	34.4	70.9

50' So.

E	23.3	82.0
cb	20.8	84.5
1/4	18.8	87.5
c	16.6	88.7
1/4	14.2	91.1
cb	11.1	94.2
W	4.8	200.5

75' So.

W	5.6	201.7
cb	4.4	200.9
1/4	6.0	199.3
c	8.4	96.9
1/4	10.6	94.7
cb	12.9	90.4
E	16.2	89.1

100' So.

E	13.4	91.9
---	------	------

205.26

cb	8.0	197.3
1/4	6.2	99.1
c	5.7	99.6
1/4	5.1	200.3
cb	4.8	200.5
+7	4.6	200.7
w	1.5	203.8
	150' So.	
w	1.9	203.4
+6	6.8	198.5
cb	6.6	98.7
1/4	6.8	98.5
c	7.2	98.1
1/4	7.7	97.4
cb	8.5	96.8
E	14.0	91.3
	200' So. = N.L. NEALE ST.	FOR INTER, SEE NEALE ST.
E	16.8	88.5
cb	14.4	90.9
1/4	12.4	92.9

PLOTTED

205.3

12

c	9.7	195.4
1/4	9.6	95.7
cb	9.5	95.8
w	5.0	200.3
	S. L. NEALE ST.	
w	8.8	94.5
cb	13.3	92.0
T.P.	0.23	193.40
1/4	12.09	193.17
1/4	1.5	91.9
c	1.6	91.8
1/4	2.8	90.4
cb	4.9	88.5
E	8.1	85.3
	50' So.	
E	12.6	80.8
cb	10.1	83.3
1/4	8.7	84.7
c	7.1	84.3
1/4	6.5	84.9
cb	6.3	87.1

2.15 ON T.P.

W		3.0	190.4
	180' So		
W		10.7	82.7
T.P.	0.15	181.18	12.37
+6		1.7	79.5
cb		1.5	79.7
1/4		1.4	79.8
c		1.6	79.6
1/4		2.9	78.3
cb		4.0	77.3
E		6.1	75.1
	150' So		
E		20.7	40.5
cb		14.7	44.5
1/4		10.2	71.0
c		7.5	73.7
1/4		7.4	73.8
cb		7.2	74.0
+5		7.5	73.7
W		3.2	78.0

PLOTTED

181.18

200' So. - N.L. TORRENCE ST 50' WIDE

W		9.2	172.0
T.P.	1.61	170.16	12.63
+6		2.5	47.4
cb		2.4	47.9
1/4		2.7	47.5
c		2.8	47.4
1/4		5.0	45.2
cb		7.2	43.0
E		11.4	58.8
	No CURB		
E		14.4	55.8
cb		9.9	40.3
1/4		6.9	43.3
c		4.3	45.9
1/4		4.2	44.0
cb		3.9	44.3
W		+1.0	71.2
	No QUARTER		
W		0.5	49.7

170.16

cb	4.9	145.3
1/4	5.1	45.1
C	5.3	44.9
1/4	9.7	40.5
cb	12.4	57.9
E	16.1	54.1
CENTER		
E	18.6	51.5
cb	13.2	57.0
1/4	9.4	40.8
C	5.9	44.3
1/4	6.0	44.3
cb	6.1	44.1
W	1.5	48.7
SO. QUARTER		
W	2.6	47.4
cb	7.3	42.9
1/4	7.2	43.0
C	7.1	43.1
1/4	10.8	59.4

PLOTTED

170.14

14

cb	13.0	157.7
E	19.2	51.0
So. CURB		
E	20.3	49.9
cb	14.1	56.1
1/4	11.3	58.9
C	8.5	42.1
1/4	8.2	42.0
cb	8.3	41.9
W	3.8	46.4
SO. LINE TORRENCE ST		
W	5.5	44.7
cb	10.1	40.1
1/4	9.9	40.3
C	10.0	40.3
T.P.	0.15	157.34
1/4	12.97	157.19
1/4	1.1	56.2
cb	3.3	54.0
E	8.3	49.0

157.34

50' So

E	16.2	141.1
cb	11.1	46.2
1/4	8.6	48.7
c	6.6	50.7
1/4	5.1	52.2
cb	5.1	52.2
W	5.0	52.3
+5	8.0	49.3
+20	6.0	51.3

75' So

-15	5.6	51.7
-5	11.1	46.2
W	8.2	49.1
cb	8.5	48.8
+5	8.8	48.5
1/4	10.7	46.6
c	17.6	39.7
1/4	21.3	34.0
cb	23.7	33.4

PLOTTED

157.3

15

E	23.0	134.3
+15	27.6	29.7

100' So

-25	36.0	21.3
E	32.2	25.1
cb	27.5	29.8
1/4	24.0	33.3
c	19.8	37.5
1/4	13.7	43.5
+3	11.2	44.1
cb	11.1	44.3
W	10.6	44.7
+5	10.6	44.7
+10	7.4	49.9

125' So

-10	7.3	50.0
W	12.4	44.9
cb	12.9	44.4
T.P.	11.4	145.57
1/4	12.91	144.43
1/4	1.7	43.9

145.57

C	6.6	139.0
1/4	8.6	37.0
cb	10.3	35.3
E	14.1	31.5

150' So.

E	14.1	31.2
cb	11.6	34.0
1/4	9.6	36.0
C	7.1	38.5
1/4	3.5	42.1
cb	3.1	42.5
+5	3.2	42.4
W	0.9	44.7

200' So. = N.L. PUTERBAUGH ST (50' WIDE)

W	0.7	44.9
cb	4.7	40.9
1/4	4.9	40.7
C	6.7	38.9
1/4	10.1	35.5
cb	11.8	33.8

PLOTTED

145.57

16

E	16.0	139.6
---	------	-------

No. CURB.

E	15.9	29.7
cb	11.9	33.7
1/4	9.3	36.3

C	6.0	39.6
---	-----	------

1/4	5.0	40.6
-----	-----	------

cb	4.7	40.9
----	-----	------

W	1.2	44.4
---	-----	------

No. QUARTER.

W	1.1	44.5
---	-----	------

cb	4.9	40.7
----	-----	------

1/4	5.0	40.6
-----	-----	------

C	6.3	39.3
---	-----	------

1/4	9.8	35.8
-----	-----	------

cb	12.4	33.3
----	------	------

E	15.8	29.8
---	------	------

CENTER

E	15.6	30.0
---	------	------

cb	12.2	33.4
----	------	------

145.57

1/4	9.7	135.9
C	6.2	39.4
1/4	5.0	40.6
cb	5.1	40.5
W	1.2	44.4

So. QUARTER

W	0.9	44.7
cb	5.1	40.5
1/4	5.0	40.6
C	6.0	39.6
1/4	9.7	35.9
cb	12.3	33.3
E	16.0	29.6

So. CURB

E	15.6	30.0
cb	12.5	33.1
1/4	10.6	35.2
C	6.7	38.9
1/4	4.9	40.7
cb	5.0	40.6

PLOTTED

145.6

17

W.	0.8	144.8
----	-----	-------

S. L. PUTERBAUGH ST

W	0.0	145.6
cb	4.7	40.9
1/4	4.7	40.9
C	5.8	39.8
1/4	9.5	34.1
cb	11.8	33.8
E	12.2	33.4

50' SO.

E	13.4	33.2
cb	10.4	35.2
1/4	8.3	36.3
C	4.9	40.7
1/4	4.7	40.9
+5	4.7	40.9
cb	3.4	42.2
W	40.5	44.1

100' SO.

W	1.5	44.1
---	-----	------

cb	5.6	140.0
1/4	5.6	40.0
c	6.1	39.5
1/4	10.0	35.4
cb	11.9	33.7
E	14.9	30.7

150' So.

E	16.3	29.3
cb	13.3	32.3
1/4	11.6	34.0
c	7.0	38.4
1/4	6.4	39.2
cb	6.3	39.3
W	2.5	43.1

200' So = N.A. HORTON AVE (50' WIDE)

W.	3.9	41.7
cb	6.6	39.0
1/4	7.0	38.4
c	7.5	38.1
1/4	10.1	35.3

PLOTTED

cb	13.2	132.4
E	17.0	28.5

No. CURB

E	16.7	28.9
cb	13.2	32.4
1/4	10.9	34.7
c	8.2	37.4
1/4	7.4	38.3
cb	6.8	38.8
W	3.7	41.9

No. QUARTER

W	4.1	41.5
cb	7.1	38.5
1/4	7.8	37.8
c	8.5	37.1
1/4	11.0	34.6
cb	13.5	32.1
E	16.5	29.1

CENTER

E	16.6	29.0
---	------	------

cb		13.1	132.5
1/4		11.5	34.1
C		8.8	34.8
1/2		8.2	37.4
cb		7.7	37.9
W		4.5	41.1
T.P.	0.45	139.72	6.30 139.27

SO QUARTER

W		+1.3	141.0
cb		2.5	37.7
1/2		2.8	34.9
C		3.2	34.5
1/4		5.2	34.5
cb		7.3	37.4
E		10.8	28.9

SO CURB

E		11.3	28.4
cb		7.5	32.2
1/4		5.7	34.0
C		3.5	34.2

PLOTTED

1/4		3.3	134.4
cb		2.8	34.9
W		+0.5	140.2

SO LINE HORTON AVE

W		0.0	39.7
cb		3.7	36.0
1/4		3.9	34.8
C		4.1	35.6
1/4		5.9	33.8
cb		8.0	31.7
E		11.5	28.2

50' SO.

E		15.5	24.7
cb		12.1	27.6
1/4		9.3	30.4
C		6.5	33.7
1/4		6.2	33.5
cb		4.9	34.8
W		0.5	39.7

139.72

100' So.

W	0.7	139.0
cb	5.5	134.2
1/4	7.1	132.6
C	7.5	132.2
1/4	10.6	129.1
cb	13.3	126.4
E	15.9	123.8

150' So.

E	15.6	126.1
cb	10.6	29.1
1/4	8.8	30.9
C	7.0	32.7
1/4	7.0	32.7
cb	4.8	34.9
W	0.6	39.1

200' So. = N.L. UNION ST.

W	1.7	38.0
cb	4.8	34.9
1/4	7.0	32.7

PLOTTED

139.7

20

C	6.9	132.8
1/4	7.5	32.2
cb	10.5	29.2
E	13.7	25.0

No. CURB.

E	13.8	25.9
cb	10.9	28.8
1/4	7.8	31.9

C	6.7	33.0
1/4	6.7	33.0
cb	4.7	35.0
W	2.2	37.5

No. QUARTER.

W	1.6	38.1
cb	4.6	35.1
1/4	6.3	33.4
C	6.5	33.2
1/4	7.3	32.4
cb	11.0	28.7
E	13.8	25.9

139.72

CENTER

E	13.6	174.1
cb	10.0	29.7
1/4	6.9	32.8
C	6.3	33.4
1/4	5.8	33.9
cb	3.5	34.3
W	0.8	38.9

So. QUARTER

W	1.0	38.7
cb	4.4	35.3
1/4	6.0	33.7
C	6.1	33.6
1/4	7.2	32.5
cb	10.6	29.1
E	13.4	26.3

So. CURB

E	13.0	26.7
cb	9.8	29.9
1/4	6.4	33.3

PLOTTER

139.7

21

C	6.0	133.7
1/4	5.7	34.0
cb	4.1	35.6
W	0.8	38.9

S. L. UNION ST

W	0.4	39.3
cb	4.0	35.7
1/4	6.0	33.7
C	5.8	33.9
1/4	6.2	33.5
cb	9.4	30.3
E	12.2	27.5

50' So.

E	9.7	30.0		
cb	7.0	32.7		
1/4	3.4	36.3		
C	3.4	34.3		
1/4	2.5	37.2		
T.P.	6.52	145.17	1.07	138.65
cb	5.8	39.4		

14517

W 2.2 143.0

100' 50

W 40.1 145.3

cb 2.9 42.3

1/4 5.4 39.8

C 6.8 38.4

1/4 6.8 38.4

cb 9.9 35.3

E 12.9 32.3

150' 50

E 12.1 33.1

cb 9.6 35.6

1/4 7.0 38.3

C 6.8 38.4

1/4 5.0 40.3

cb 2.9 42.3

W 1.9 43.3

200' 50 = N.L. COLUMBIA ST

W 7.7 37.5

cb 7.8 37.4

PLOTTED

1457

22

1/4 8.6 134.6

C 10.0 35.3

1/4 9.8 35.4

cb 10.4 34.8

E 13.2 32.0

T.P. 1.20 134.08 12.29 132.88

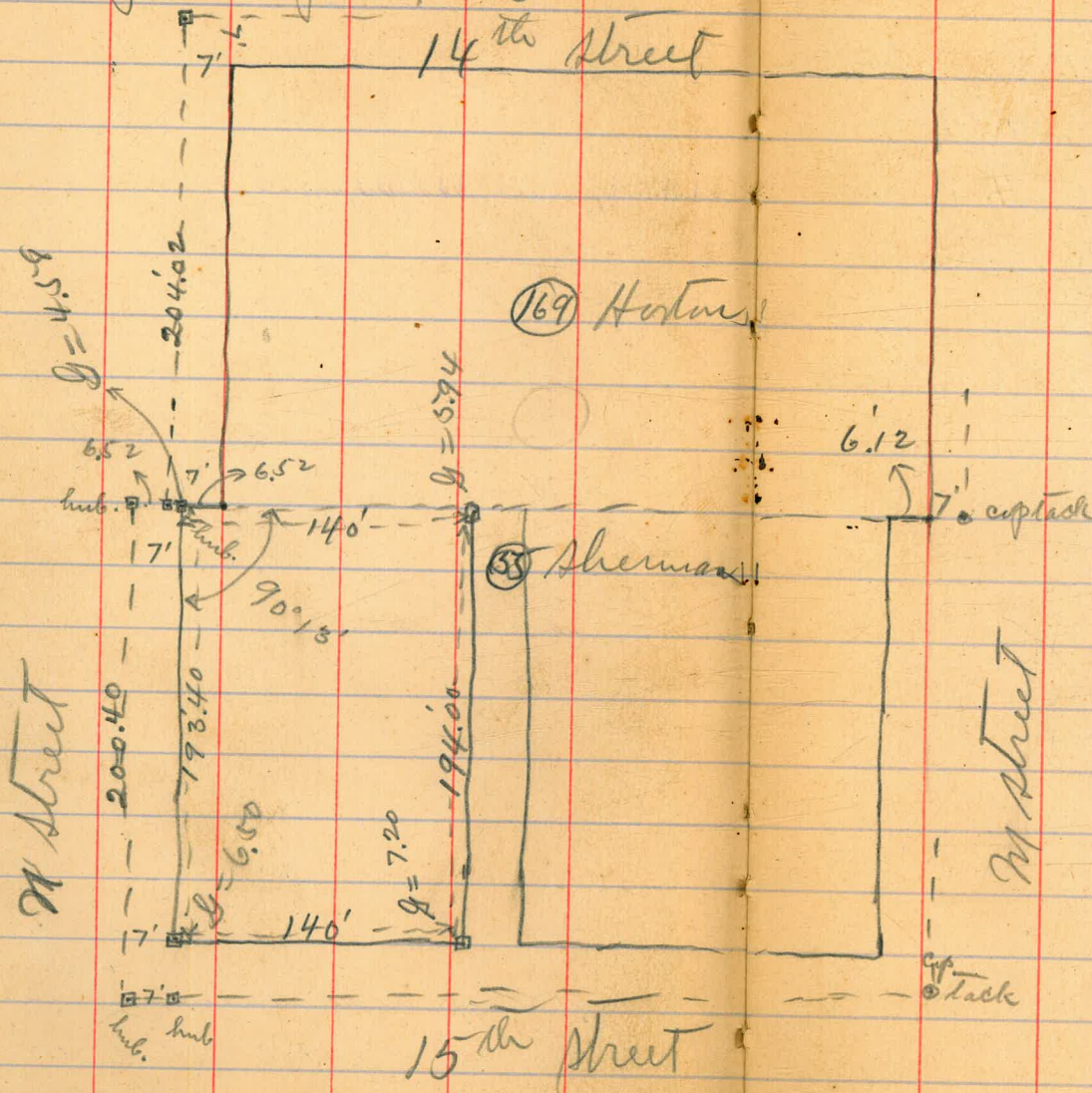
T.P. 6.07 128.01

CHILD'S T.P.
SHOULD BE
128.02

PLOTTED

Survey of lots 9-16 Blk. 55
 Sherman's addition
 Put in Sept. 25, 1913

Sept. 24+25
 13
 Childs
 Allen
 Brunlee



levels.

Sept. 24+25/3

Childs 24
Otter
Banker

	1.53	H.I. 10.01	8.46	B.M. NE. Cor. 15 th + M.
NE. cor lot.		7.2	Rod 2.81	7.2 Grade of
N.W. cor. "		5.94	4.07	5.94 "
SE " "		6.50	3.51	6.50 "
	1.56	H.I. 8.06		
S.W. cor. "		4.58	3.48	4.58

Survey of Los Angeles & Sept. 26/13
 S. D. Beach R.F. in Lytle
 all measurements are
 to center of North Rail.

Schmidt

Builds
 better
 Brunk

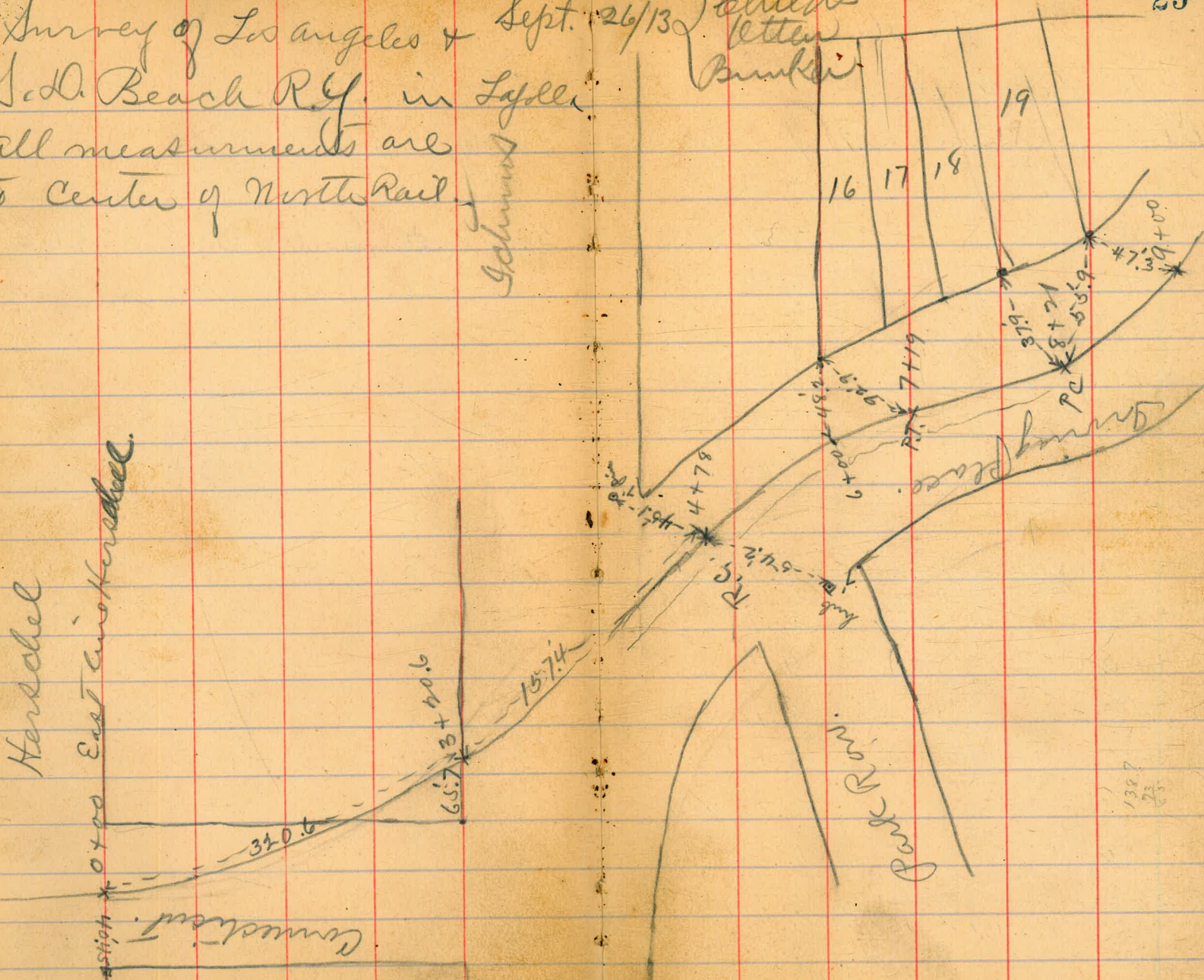
473

25

Hershel
 Station * 0 x 00 East into Hershel.

Hershel

Connecticut



Park Row

Gaming Place

R.F.

138.7
 25

Levels on North rail. from East line Herschel

To Sta. 9+00

H.I. 130.74 Sept. 26/13
L. Childs
Allen
Dunbar

Sta.	IP.	H.I.	123.11	BM	P.T.	5.1	125.6	
0+00	3.60	126.71						
+50			12.8	113.9	+50	5.0	125.7	
1+00			11.8	114.9	8+00	4.8	125.9	
+50			10.7	116.0	+21	PC	4.8	125.9
2+00			9.7	117.0	+50	4.5	126.2	
+50			8.8	117.9	9+00	5.1	125.6	
3+00			7.8	118.9				
+206 West line curves			6.7	120.0				
+50			6.3	120.4				
4+00			5.7	121.0				
+50			4.7	122.0				
+78 Reverse curve.			3.7	123.0				
5+00			3.1	123.6				
+50			2.7	124.0				
6+00			1.8	124.9				
+50	5.60	H.I. 130.74	15.7	128.14				
7+00			5.3	125.4				
			5.1	125.6				

CROSS SECTION OF HORTON AVE (50' WID)
FROM NEARNEY ST. TO WITHERBY ST

3.55

240.72

237.17

ON HUB
SEE PAGE 1

W. L. NEARNEY ST.

N 7.3 334

cb 8.7 320

1/4 9.5 312

c 10.3 304

1/4 11.1 296

cb 12.8 279

s 15.3 254

T.P. 1.41 229.33 12.83 227.89

50' W.

→ N 5.3 240

cb 7.2 221

1/4 8.9 204

c 11.6 177

T.P. 0.82 217.64 12.71 214.62

1/4 4.3 181

cb 7.2 10.2

s 207.1

PLOTTED

T.P.

1.51 206.10 12.85 204.59

1.36 194.60 12.86 193.24

100' WEST

s 11.5 83.1

cb 8.2 84.4

1/4 6.1 88.5

c 5.0 89.6

1/4 5.0 89.6

cb 4.3 90.3

N 0.8 93.8

T.P. 0.31 182.16 12.75 181.85

140' WEST

N 9.0 73.3

cb 11.0 71.3

1/4 12.7 69.5

c 14.2 68.0

T.P. 0.64 170.62 12.11 170.05

1/4 6.2 44.5

cb 7.8 43.9

s 11.4 45.3

170.69

175' W

S	1.9	48.8
cb	2.5	47.9
1/4	3.9	44.8
C	3.9	44.8
1/4	4.7	66.0
cb	5.6	65.1
N	5.2	65.5

T.P.	12.26	182.75	0.20	170.49
------	-------	--------	------	--------

200' W

N	6.4	74.4
cb	4.8	78.0
1/4	4.6	78.3
C	3.9	78.9
1/4	2.1	80.7
cb	0.9	81.9
S	0.5	82.3

T.P.	12.02	194.59	0.18	188.57
------	-------	--------	------	--------

T.P.	12.29	206.88	0.0	194.59
------	-------	--------	-----	--------

PLOTTED

206.88

29

250' W

S	0.0	206.9
cb	0.7	206.3
1/4	1.7	205.7
C	2.8	204.1
1/4	3.6	203.3
cb	4.1	202.8
N	4.6	202.3

T.P.	12.15	218.71	0.32	206.56
------	-------	--------	------	--------

T.P.	12.49	230.89	0.31	218.40
------	-------	--------	------	--------

T.P.	12.43	242.73	0.59	230.30
------	-------	--------	------	--------

FOR INTERSECTION

300' W = EL. MILLER ST. SEE PAGE 1

N	14.7	228.0
cb	13.1	229.6
1/4	12.5	30.7
C	11.9	30.8
1/4	10.7	32.0
cb	9.9	33.8
S	9.1	33.4

R4R.73

W. L. MILLER ST

S	1.4	2413
cb	1.3	41.4
1/4	1.3	41.4
C	1.4	41.3
1/4	1.8	40.9
cb	1.8	40.9
N	R.R.	40.5
T.P.	7.46	250.17
	0.02	R4R.71

50' W

N	48	454
cb	49	453
1/4	50	452
C	48	454
1/4	46	456
cb	51	451
S	51	446

PLOTTED

25017

30

100' W

S	48	2454
cb	44	458
1/4	40	44.8
C	3.6	47.6
1/4	3.4	46.8
cb	3.1	47.1
N	2.6	47.6

150' W

N	2.7	47.5
cb	3.2	47.0
1/4	3.5	46.7
C	4.0	46.2
1/4	4.4	45.8
cb	4.6	45.6
S	5.1	45.1

250.17

200' W

S		6.7	243.5
cb		6.6	43.1
1/4		6.5	43.7
C		6.1	44.1
1/4		5.8	44.8
cb		5.5	44.7
N		5.0	45.2
	250' W		
N		7.6	42.1
cb		8.4	41.8
1/4		8.9	41.3
C		9.3	40.9
1/4		9.9	40.3
cb		10.7	39.5
S		11.9	38.3
T.P.	1.49	239.58	11.75 238.39

PLOTTED

239.88

31

FOR INTERSECTION SEE
300' W = EL. BANDINI BANDINI ST.

S		5.6	234.3
cb		4.2	35.7
1/4		3.4	34.5
C		2.6	37.3
1/4		1.9	38.0
cb		1.2	38.7
N		0.3	240.2

W.L. BANDINI ST

N		4.2	35.7
cb		6.3	33.4
1/4		7.9	32.0
C		12.0	27.9
1/4		17.6	22.3
cb		20.8	19.1
S		23.0	14.9

PLOTTED

239.88

35' WEST

S	12.6	297.3
cb	10.9	290
1/4	9.6	303
C	8.5	314
1/4	7.2	327
cb	6.0	339
N	4.1	358
75' W.		
N	2.8	371
cb	4.5	354
1/4	5.5	344
C	7.1	328
1/4	12.2	277
cb	16.3	236
S	22.3	176
+10	15.6	243

PLOTTED

239.88

32

105' WEST

S	4.2	235.7
cb	5.2	34.7
1/4	9.5	30.4
+3	12.8	27.1
C	9.6	30.3
1/4	5.6	34.3
cb	11.9	38.0
T.P.	10.60	250.07
0.41		239.47
N	10.0	240.1
150' W		
N	7.4	42.7
cb	7.9	42.2
1/4	8.3	41.8
C	8.5	41.4
1/4	8.4	41.7
cb	8.2	41.9
S	7.5	42.6

250.07

200' W.

S	53	244.8
cb	53	44.8
1/4	5.5	44.6
C	5.5	44.6
1/2	5.7	44.4
cb	5.9	44.2
N	5.7	44.4

250' W.

N	3.4	46.4
cb	3.6	46.5
1/4	4.4	45.7
C	4.7	45.4
1/2	4.8	45.3
cb	5.0	45.4
S	5.3	44.9

PLOTTED

33

250.07

300' W = AL. COUTS ST. (FOR INTERSECTION)
SEE COUTS ST

S	9.1	241.0
cb	7.5	42.6
1/2	6.8	43.3
C	6.1	44.0
1/4	5.6	44.5
cb	5.3	44.8
N	4.4	45.7

W.L. COUTS ST

N	5.3	44.8
cb	6.6	43.5
1/4	7.4	42.7
C	8.6	41.5
1/2	9.7	40.4
cb	10.5	39.6
S	11.6	38.5

250.07

50' W

S	9.0	241.1
cb	8.4	41.7
1/4	8.0	42.1
C	7.1	43.0
1/4	6.8	43.3
cb	6.6	43.5
N	5.9	44.3

100' W

N	3.7	44.4
cb	3.7	44.4
1/4	3.6	44.5
C	3.7	44.4
1/4	3.9	44.3
cb	4.3	45.8
S	4.8	45.3

PLOTTED

250.07

34

150' W.

S	5.5	244.6
cb	4.3	45.8
1/4	4.1	46.0
C	3.4	46.7
1/4	3.2	46.9
cb	2.7	47.4
N	2.4	47.7

W = E. L. WITHERBY ST.

N	5.8	44.3
cb	6.4	43.7
1/4	7.1	43.0
C	8.2	41.9
1/4	8.8	41.3
cb	9.2	40.9
S	9.6	40.5

T.P. 7.09 256.31 0.85 249.22

T.P. 0.13 256.18 = 256.16

DOWMAN'S T.P.

= 256.16

PLOTTED

B.M	4.39	222.28		217.89	SW 30 th + B BP.
T.P.	1.39	213.30	10.37	211.91	

CROSS SECTION BRANT ST (50' WIDE)
 FROM WASHINGTON ST
 TO 450' NORTH

24508

37

B.M. 0.62 265.08 264.46 N. M. Dove + Wash.

No. LINE WASHINGTON.

50' No.

W.		6.2	259.9
cb		5.6	59.5
1/4		5.3	59.8
c		5.1	60.0
1/4		4.9	60.3
cb		4.9	60.2
E		4.3	60.8

W	15.4	249.7
cb	13.3	51.8
1/4	12.9	52.2
c	14.2	50.9
1/4	15.6	49.5
cb	16.9	48.2
E	12.3	52.8
+10	7.2	57.9

25' No.

75' No.

-10		6.9	58.2
E		12.9	52.2
cb		15.6	49.5
1/4		18.7	46.4
c		19.2	45.9
1/4		19.7	45.4
cb		20.8	44.3
W		21.9	43.2

E	9.2	55.9
cb	7.3	57.8
1/4	5.8	59.3
c	6.7	58.4
1/4	8.2	56.9
cb	10.2	54.9
W.	13.8	51.3

PLOTTED

26505

100' No

W	27.4	237.7
cb	22.7	42.4
1/4	18.4	44.7
C	16.2	48.9
1/4	12.2	52.9
cb	8.3	56.8
E	1.8	43.3

125' No.

E	5.6	59.5
cb	4.2	55.9
1/4	10.5	54.6
C	12.0	53.1
1/4	15.2	49.9
cb	15.9	49.2
W	17.0	48.1

150' No.

W	07	64.4
T.P.	13.00	278.07
cb	14.6	63.5
1/4	12.6	65.5

PLOTTED

27807

38

C	9.9	268.3
1/4	8.6	69.5
cb	7.2	70.9
E	6.2	71.9

175' No.

E	3.8	74.3
cb	3.9	74.3
1/4	5.2	72.9
C	6.2	71.9
1/4	7.1	71.0
cb	8.0	70.1
W	10.3	67.9

225' No.

W	5.9	72.2
cb	5.8	72.3
1/4	5.2	72.9
C	4.7	73.4
1/4	4.6	73.5
cb	4.2	73.9
E	2.8	75.3

278.07

275' No

E	1.8	776.0
cb	2.2	775.9
1/4	2.6	775.5
C	3.0	775.1
1/4	3.2	774.9
cb	3.7	774.4
W	4.6	773.5

325' No

W	3.8	774.3
cb	2.7	775.4
1/4	2.4	775.7
C	2.0	775.1
1/4	1.7	776.4
cb	1.0	777.1
E	0.4	777.7

375' No

E	+0.5	778.6
cb	0.1	778.0
1/4	0.9	777.3

PLOTTED

278.07

39

C	1.8	774.3
1/4	2.1	776.0
cb	3.0	775.1
W	3.6	774.5

400' No

W	4.1	774.0
cb	3.4	774.7
1/4	3.1	775.0
C	2.5	775.4
1/4	1.9	776.3
cb	1.3	774.8
E	0.9	777.3

425' No

E	2.4	775.7
cb	3.3	774.8
1/4	4.4	773.7
C	5.2	772.9
1/4	6.1	772.0
cb	6.8	771.3
W	8.3	769.8

278.07

40

450' No

W.	19.3	264.8
ct	11.3	46.8
1/4	10.9	47.3
c	10.3	47.8
1/4	9.2	48.9
ct	7.9	70.2
E	6.6	71.5

FOR BRANT ST FROM 450' No. OF
WASHINGTON TO LEWIS SEE PAGE 49

PLOTTED

79.47
1.12 109 113
25.6
271 280 279 275
21.15 27.37 27.40 27.40

LEVELS ON RAILS
AT EVERY INTERSEC-
TION ON FIFTH ST
From Ash to L Sts

5176
277 270 280
2.15 27.67 27.54
27.77
5180 516 510
27.27 27.45 27.25

5247 525 520 520
27.17 27.24 27.20

5207 526 513 511
27.27 27.38 27.31 27.23

ASH

ST.

ST
55.59
55.44

60.46 116 157 190 195
0.25 0.75 0.75 0.75 0.75
27.29 27.32 27.32 27.32 27.32

46.57 46.74 46.81 46.89 47.11
46.57 46.74 46.81 46.89 47.11
46.57 46.74 46.81 46.89 47.11

176 185 200 200
N 52.47 45.54 55.44
25.65

E 550 559 560 560
46.27 46.24

N 521 521 520 520
50.05 50.07

H

ST

ST
50.07
50.05

50.25 50.50 50.75 51.00
27.25 27.25 27.25 27.25
50.25 50.50 50.75 51.00
27.25 27.25 27.25 27.25

5.65 5.70
53.90 53.88

3.160 1.00
27.77

39.49 3.10
3.40 2.33
23.48

E 502 502 503 503 503
47.34 47.33 47.23

436 434 435 434
39.12 39.10 39.13 39.11

53.07
53.07

53.88 53.88

E

ST

B

53.90 ST 57.76

53.57 53.59 53.59 53.57

39.11 39.13 39.14 39.12

38.0
37.23
5
57.07 2 40 433
5.24
53.09
4.64
3.69

33.69

1.50
38.73

14.89
6.39
EOR
103.1
9.17
4.60 4.60
10.22



5 5.88 5.85 5.84 5.86
W 32.45 48 34

E 5.88 5.81 5.12 5.08
32.71 33.05 33.77 33.82

11.43
2.90
11.40
4.5
12.00

24.90 24.80 24.85 24.88

11.25 11.25
8.97 8.97
11.31 11.31
4.1

14.53 14.54 14.54 14.51

G

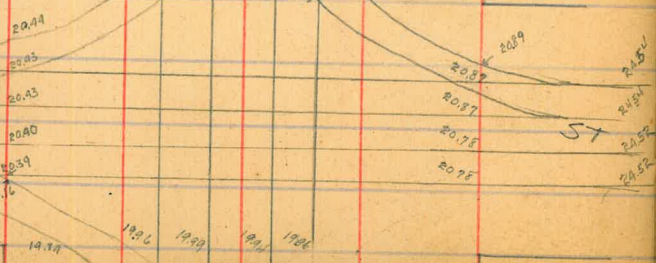
ST

ST

20.63
5.26
2.519

5.64 5.20
0.03 1.76
1.93 2.01
1.976 1.984

16.14
16.14
16.14
16.14



10.03
5.15 5.30 5.26 5.11
4.80 4.73 4.71 4.77
4.13 4.75 4.79 4.79 4.71
5.15 5.15 5.15 5.15

K

2.12
0.41 0.22
2.34 2.20

8.91 8.91 8.96 8.97

5.78 5.84 5.84 5.85

4.82 4.80 4.75 4.77

SLIDE TRACK



2.34 2.80 2.11 2.16

2.00 2.15 2.09

X sect. B. Street from
175' west of west line

	H.I.	
	1.56	198.91
Sta.	East line 29th	
So. line	9.8	189.1
	2.6	196.3
	2.1	196.8
C	2.0	196.9
	1.9	197.0
	1.6	197.3
no. line	1.1	197.8
E. cb.		
no line	1.8	197.1
	2.2	196.7
	2.2	196.7
C	2.3	196.6
	2.3	196.6
	2.8	196.1
cb + 8.1	4.5	194.4
no. line	8.0	190.9

East line 29th to alt 16/12 } ⁴⁵ ₄₅ ⁴⁵ ₄₅
 29th 80' street 14' sidewalk }
 13' quarters } ^{Bunker}

B.M.	E 1/4	
		198.91
So line	7.6	191.3
Prop. + 6'	4.6	194.3
cb	3.3	195.6
	5.1	193.8
C	5.1	193.8
	2.4	196.5
	2.3	196.6
no. line	2.4	196.5
		Center
no line	2.2	196.7
	2.4	196.5
	2.5	196.4
C	7.4	191.5
	7.4	191.5
	4.2	194.7
no line	5.0	193.9

		19891	
	W 1/4		
solus		5.2	193.7
		4.5	194.4
		6.4	192.5
c		6.4	192.5
		4.6	194.3
		2.5	196.4
no line		2.3	196.6
	W cb		
no line		2.3	196.6
		2.6	196.3
cb + 9'		3.4	195.5
1/4		7.9	191.0
c			
		9.2	189.7
1/4 + 7'		5.0	193.9
cb.		4.6	194.3
solus		5.3	193.6

		19891	
	West line 29 th		
solus		6.4	192.5
		4.7	194.2
cb + 6'		4.4	194.5
1/4		11.6	187.3
c		11.6	187.3
		10.5	188.4
	1/4 + 4'	6.4	192.5
	cb.	3.3	195.6
no line		3.1	195.8
	10' west		
no line		11.5	187.4
		11.4	187.5
cb + 11'		8.5	190.4
1/4		13.6	185.3
c		15.5	183.4
		12.5	186.4
cb		6.0	192.9
solus		13.7	185.2

19891

175' west 29th

No line

2.4 1966

2.7 1962

2.4 1965

C

2.5 1964

1.8 1971

2.5 1964

No line

2.4 1965

150' west.

No. line

8.9 190.0

Prop. + 10'
Cb.

4.7 194.2

9.2 189.7

8.0 190.9

C

9.0 189.9

8.8 190.1

1/4 + 9'
Cb

3.0 195.9

2.9 196.0

No line

6.2 192.7

19891

142' west.

No. line

9.5 189.4

10.9 188.0

9.3 189.6

C

11.8 187.1

10.1 188.8

14.6 184.3

No. line

11.9 187.0

141' west.

No. line

12.8 186.1

15.5 183.4

11.0 187.9

C

12.6 186.3

10.2 188.7

11.3 187.6

No line

15.8 183.1

J.P.

0.30 HI 186.33 12.88 186.03

186.33

125' west 29th

n. line

11.8 174.5

12.2 174.1

9.0 177.3

C

8.8 177.5

9.2 177.1

8.5 177.8

So. line

8.8 177.5

25' west 29th

n. line

7.0 179.3

7.6 178.7

9.4 176.9

C

10.6 175.7

11.1 175.2

9.9 176.4

So. line

10.4 175.9

S.P.

1.12 174.97 12.48 173.85

45' west

So. line

9.9 165.1

8.4 166.6

6.5 168.5

C

5.5 169.5

6.0 169.0

6.2 168.8

No. line

4.7 170.3

50' west

n. line

6.0 169.0

7.3 167.7

6.7 168.3

C

6.6 168.4

8.0 167.0

8.6 166.4

So. line

10.7 164.3

Oct. 21/13
H.I.
Blind 46
Atter
Bunker

17497

75' west

So. line

12.7 162.3

12.5 162.5

11.8 163.2

C

11.9 163.1

11.3 163.7

9.8 165.2

No. line

10.4 164.6

91' west

no line

11.9 163.1

11.5 163.5

cb + 8'

11.6 163.4

1/4

8.8 166.2

C

8.8 166.2

8.7 166.3

9.5 165.5

So. line

9.6 165.4

47

100' west.

So. line

7.6 167.4

8.4 166.6

6.9 168.1

C

6.7 168.3

7.7 167.3

8.8 166.2

No. line.

10.0 165.0

250.69

575' No

E		6.8	243.9
cb		9.2	241.8
1/4		11.0	239.7
C		12.4	238.3
1/4		14.1	236.6
cb		16.6	234.1
W		19.6	231.1

600' No

W		8.6	242.1	
cb		7.9	242.8	
1/4		7.4	243.3	
C		4.7	244.0	
1/4		2.3	248.4	
T.P.	12.44	263.07	0.06	250.63
cb		12.2	250.9	
E		8.8	254.3	
T.P.	10.68	273.31	0.44	262.63

PLOTTED

273.31

625' No

E		8.6	244.7
cb		13.5	259.8
1/4		15.8	257.5
C		17.8	255.5
1/4		17.0	256.3
cb		17.3	256.0
W		18.3	255.0

640' No. = S. L. LEWIS (60' WIDE)

W		9.7	263.6	
cb		9.3	264.0	
1/4		8.8	264.5	
C		9.5	263.8	
1/4		8.5	264.8	
cb		6.4	266.9	
E		3.5	269.8	
T.P.	10.31	271.91	1.71	271.60

50

281.91

SO. CURB

E	8.6	2733
cb	10.3	271.6
$\frac{1}{4}$	11.5	2704
c	12.9	2690
$\frac{1}{4}$	11.6	2703
cb	11.5	2704
W	13.8	2681

SO. QUARTER

W	11.4	2705
cb	8.7	2732
$\frac{1}{4}$	8.0	2739
c	7.8	2741
$\frac{1}{4}$	6.3	275.4
cb	5.2	274.7
E	3.6	278.3

CENTER

E	2.8	279.1
cb	3.3	278.4
$\frac{1}{4}$	4.2	277.7

PLOTTED

281.9

51

c	5.1	276.8
$\frac{1}{4}$	6.3	275.6
cb	7.2	274.7
W	9.0	272.9

NO. QUARTER

W	8.3	273.6
cb	7.1	274.8
$\frac{1}{4}$	6.0	275.9
c	4.9	277.0
$\frac{1}{4}$	4.2	277.7
cb	3.5	278.4
E	2.9	279.0

NO. CURB

E	2.8	279.1
cb	3.5	278.4
$\frac{1}{4}$	4.2	277.7
c	5.1	276.8
$\frac{1}{4}$	6.2	275.7
cb	7.2	274.7
W	8.4	273.5

281.91

52

W			9.7	2722	
cb			7.5	2744	
$\frac{1}{4}$			7.0	2749	
C			6.4	2751	
$\frac{1}{4}$			5.1	274.8	
cb			4.0	2779	
E			3.1	2788	
T.P.	0.23	274.72	7.42	27449	
T.P.			10.27	264.45	should be 264.46

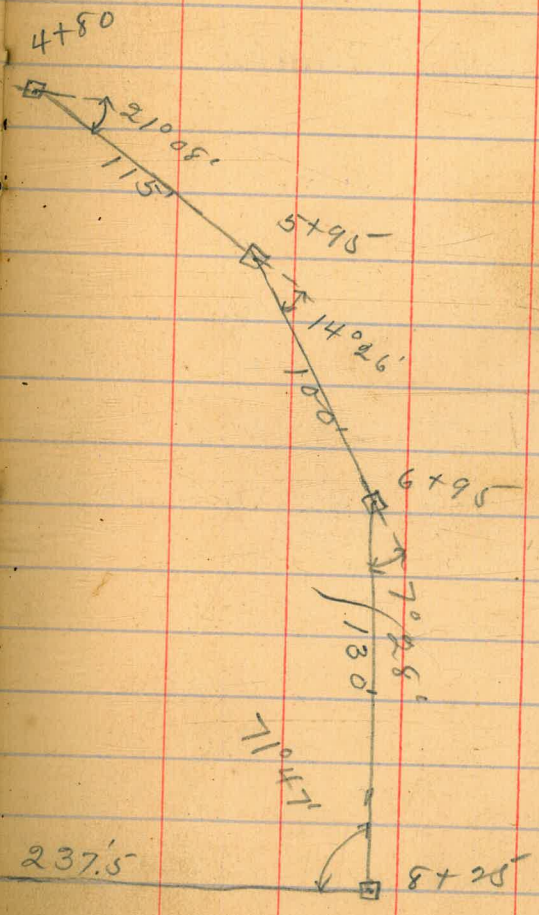
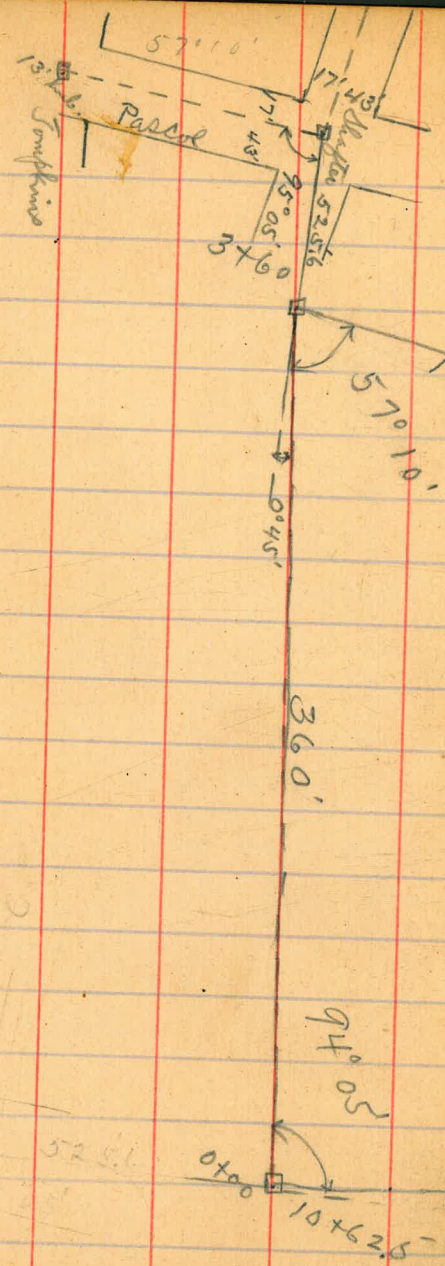
PLOTTED

Nov. 5/13

Childs 53
Letter
Bunker

Survey of portion of
Certificate for G.A.R.

Plan



X sect. Peak street from

38th to 40th
Nov. 5/13
92.80

Childs
letter 54
Bunker

1030 ^{H.I.} 111.57 111.27 BM

50' east

J.P.	1.13	99.73	12.97	98.60	solino	7.2	85.4
	East line		38 th			7.0	85.8
No. line			11.5	88.7		7.1	85.7
			11.1	88.6	c	8.1	84.7
			11.8	87.9		7.9	84.9
c			11.6	88.1		8.0	84.8
			11.3	88.4	no line	7.9	84.9
			11.0	88.7			
						75' E.	
no line	4.14	H.I.	11.07	88.66	no line	8.2	84.5
J.P.	4.14	92.80				9.2	83.6
	25' east						
No. line			5.4	87.4		9.3	83.1
			5.4	87.4	c	9.6	83.2
			5.5	87.3		9.5	83.3
c			5.9	86.9		9.4	83.4
			6.2	86.6	no line	9.8	83.0
			6.3	86.5			
No. line			6.3	86.5			

PLOTTED

9280

100' E.

Solino

11.3 81.5

11.6 81.7

11.6 81.7

C

10.7 82.1

10.7 82.1

10.7 82.1

no line

10.7 82.1

125' E

no line

11.2 81.6

11.5 81.3

11.7 81.1

C

11.8 81.0

12.5 80.3

12.2 80.6

Solino

12.4 80.4

PLOTTED

55

928

150' E.

Solino

12.7 80.1

12.6 80.3

12.8 80.0

C

11.1 81.7

11.2 81.6

11.3 81.5

no line

11.5 81.3

175' E

no line

9.6 83.7

9.7 83.1

9.6 83.7

C

9.6 83.7

10.5 82.3

10.9 81.9

Solino

11.1 81.7

92.8

200' E

No line

8.3 84.5

7.8 85.0

7.7 85.1

C

7.7 85.1

7.5 85.3

7.7 85.1

no line

7.4 85.4

225' E

no line

5.4 87.4

5.6 87.3

5.4 87.4

C

5.3 87.5

4.7 88.1

4.5 88.3

No line

4.6 88.2

PLOTTED

92.8

56

250' E

No line

3.6 89.3

2.1 90.7

2.1 90.7

C

3.6 89.3

3.7 89.1

3.6 89.3

no line

3.5 89.3

275' E

no line

3.6 89.3

4.0 88.8

3.8 89.0

C

3.7 89.1

2.2 90.4

1.8 91.0

No line

2.4 90.4

92.8

92.80

300' E

No line

4.5 883

4.3 885

4.4 884

C

5.5 873

5.6 872

5.4 874

no line

5.7 871

325' E

no line

7.8 850

7.7 851

7.0 858

C

6.9 859

7.8 850

9.5 833

No line

9.7 831

PLOTTED

92.8

57

350' E

No line

11.5 813

10.4 824

7.6 853

C

6.9 859

7.0 858

7.0 858

no line

5.9 869

375' E

no line

3.0 898

4.3 885

5.1 877

C

5.4 874

5.9 869

8.1 847

No line

9.3 835

92.80

400' E

solino

6.3 84.5

5.0 87.8

3.7 89.1

C

3.4 89.4

3.0 89.8

2.9 89.9

0.9 91.9

1/4 + 6'

no line

0.4 92.4

J.P.

2.55 95.09 0.26 92.54

425' E

no line

1.3 93.8

cb + 3'

1.4 93.7

4.2 90.9

4.4 90.7

C

4.6 90.5

4.8 90.3

5.6 89.5

E line

6.8 88.3

PLOTTED

58

95.09

450' E

solino

7.5 87.4

6.6 88.1

6.1 89.0

C

5.9 89.3

6.0 89.1

6.2 88.9

4.1 91.0

1/4 + 7'

no line

4.06 91.0

475' E

no line

9.1 86.0

8.9 86.3

9.3 85.8

9.3 85.8

9.5 85.6

10.1 85.0

10.6 84.5

	H.I.					
J.P.	4.69	87.13	12.65	82.44		
		500' E				
no line			7.0	80.1	no line	12.2 74.9
			6.7	80.4		11.6 75.5
			5.6	81.5		9.2 77.9
C			5.3	81.8	C	8.7 78.4
			5.1	82.0		8.3 78.8
			5.0	82.1		8.4 78.7
no line			4.69	82.4	no line	7.1 80.0
		525' E				
no line			7.2	79.9	no line	6.7 81.4
			7.6	79.5		7.1 80.0
			7.6	79.5		8.1 79.0
C			7.8	79.3	C	8.2 78.9
			8.1	79.0		8.4 78.7
			10.1	77.0		11.1 74.0
no line			10.2	74.9	no line	11.7 75.4

PLOTTED

87,13

598'E

no line

11.6 75.5

J.P.

6.64 ^{H.I.} 89.46

82.82

10.2 74.9

no line

13.0 74.5

7.6 79.5

11.4 78.1

c

7.3 79.8

10.3 79.2

7.0 80.1

c

9.3 80.3

5.5 81.4

8.8 80.7

no line

4.3 82.8

7.9 81.4

600'E (west line 39th)

no line

7.1 82.4

no line

4.31 82.82

w 1/4

5.8 81.3

no line

6.4 83.1

7.0 80.0

7.6 81.9

c

7.3 79.8

8.4 81.1

7.7 79.4

c

9.0 80.5

9.4 77.7

10.1 79.4

no line

10.4 74.7

11.2 78.3

no line

12.4 77.1

PLOTTED

Nov. 6/13 } Builds
atten 60
Bunker

8946

center

No line

12.2 77.3

10.9 78.6

9.7 79.8

c

8.9 80.6

8.4 81.1

7.4 82.1

No line

6.3 83.2

E 1/4

No line

6.2 83.3

7.4 82.1

8.4 81.1

c

8.7 80.8

9.7 79.8

10.8 78.7

No line

12.0 77.5

PLOTTED

61

8946

E 1/4

No line

12.3 77.2

11.0 78.5

9.6 79.9

c

8.6 80.9

8.2 81.3

7.4 82.1

No line

6.1 83.4

E line 39th

No line

6.2 83.3

7.5 82.0

8.2 81.3

c

8.5 81.0

8.9 80.6

10.2 79.3

No line

11.7 77.8

8946

2' east

Solus

12.7 76.8

11.0 78.5

8.9 80.4

C

8.5 81.0

8.3 81.7

7.5 82.0

cb + 8'
Solus

6.5 83.0

4.6 84.9

25' east

Solus
Prof + 2'

3.8 85.7

6.2 83.3

7.1 82.4

7.8 81.7

C

8.0 81.5

8.5 81.0

10.3 79.2

Solus

12.5 77.0

PLOTTED

8946

62

50' E

Solus

9.9 79.6

8.6 80.9

7.1 82.4

C

6.3 83.7

6.0 83.5

cb + 8'
Solus

5.1 84.4

4.1 85.4

2.8 86.7

75' E

Solus
Prof + 2'

0.5 89.0

1.4 88.1

2.8 86.7

3.8 85.7

C

3.9 85.6

4.6 84.9

5.8 83.7

7.6 81.9

89,46

100' E

Solino

5.1 844

3.4 841

2.1 874

C

1.5 880

1.0 885

no pb.

0.5 890

J.P.

10.42 99.32

0.56 88.90

cb + 8'
no line

8.8 90.5

7.4 91.9

125' E

no line

2.9 94.4

5.2 94.1

7.2 92.1

9.3 90.0

9.1 90.3

9.5 89.8

10.2 89.1

12.7 84.4

Solino

PLOTTED

99.32

63

150' E

Solino

11.0 88.3

8.1 91.3

7.3 92.0

C

7.3 92.0

c + 6'

7.1 92.3

4.6 94.7

3.3 96.3

no line

0.5 98.8

175' E

prop. + 4'

1.7 97.6

2.0 97.3

2.7 94.6

1/4 + 4'

5.0 94.3

5.3 94.0

5.4 93.9

6.0 93.3

no line

9.3 90.0

9932

200' E

Solino

8.9 904

5.4 93.9

4.7 94.6

C
C+6'

4.6 94.7

4.6 94.7

1.5 97.8

cb+5'
No line

0.7 98.4

0.2 99.1

225' E

No cb.

0.0 99.3

1/4 + 5'

1.8 97.5

4.4 94.9

4.5 94.8

5.0 94.3

6.1 93.7

10.1 89.2

No line

PLOTTED

64

99.3

250' E

Solino

8.8 90.5

5.7 93.6

4.8 94.5

C
C+4'

4.4 94.9

4.4 94.9

2.1 97.7

no cb.

0.0 99.3

275' E

no cb.

-0.5 99.8

1/4 + 4'
" + 7'

0.8 98.1

1.4 97.9

3.9 95.4

4.0 95.3

4.5 94.8

5.1 94.3

8.7 90.6

No line

9932

300'E

No line

8.7 904

5.2 94.1

4.5 94.8

C

C + 4'

" + 7'

4.5 94.8

4.2 95.1

1.5 97.8

0.9 98.4

no cb.

-0.3 99.6

325'E

no cb.

1.3 98.0

1/4 + 3'

~~1/4 + 6'~~

C

2.5 94.8

3.2 94.1

5.8 93.5

5.8 93.5

5.7 93.6

6.2 93.1

9.6 89.7

No line

PLOTTED

Nov. 7/13

9932

350'E

No line

11.8 87.5

8.6 90.7

8.4 90.9

C

C + 4'

C + 7'

8.4 90.9

8.4 90.9

6.3 93.0

5.6 93.7

cb + 5'

no line

4.5 94.8

4.1 95.2

1.4 97.9

375'E

no line

cb + 4'

3.9 95.4

6.5 92.8

7.0 92.3

1/4 + 6'

C

8.1 91.2

10.2 89.1

10.4 88.9

10.5 88.8

10.9 88.4

No line

13.9 85.4

} Childs 65
} Allen
} Bunker

9932

400' E

no line	16.8	87.5
	12.0	87.3
	11.4	87.9
c	11.2	88.1
	8.5	90.8
	7.4	91.9
cb + 8'	6.6	92.7
no line	4.7	94.6

425' E

no line	5.2	94.1
no line	6.9	92.4
	7.9	91.4
1/4 + 5'	9.2	90.1
c	11.1	88.2
	11.4	87.9
	11.7	87.6
no line	14.9	84.4

PLOTTED

9932

66

450' E

no line	14.0	85.3
	10.9	88.4
	10.6	88.7
c	10.2	89.1
	7.3	92.0
	6.0	93.3
no line	4.2	95.1

475' E

no line	5.4	93.9
	6.7	92.6
	8.0	91.3
c	9.6	89.7
	10.4	88.9
	10.8	88.5
no line	13.2	86.1

PLOTTED

99.32

500' E

No line

13.4 859

11.9 874

11.5 878

C

11.0 883

9.4 899

8.3 910

No line

7.1 923

525' E

No line

9.4 899

10.5 888

11.3 880

C

13.1 862

13.3 860

13.6 857

J.P.

1.33 ^{HI.} 88.40 12.25 87.07

No line

4.2 849

PLOTTED

0.88

67

88.40

550' E

No line

5.0 834

3.9 845

3.6 848

C

3.8 846

2.7 857

2.3 861

No line

1.3 871

575' E

No line

3.7 847

4.3 841

4.7 837

C

4.8 836

4.5 839

4.8 834

No line

5.1 833

884

600' E

No. line

5.3 83.1

5.2 83.3

5.2 83.3

C

5.6 82.8

5.4 83.0

5.2 83.3

No. line

4.6 83.8

625' E

No. line

5.8 83.4

6.2 82.7

6.4 82.0

C

6.3 82.1

5.9 82.5

6.1 82.3

No. line

6.5 81.9

PLOTTED

88,40

68

C

650' E (west line 40th st)

No. line

7.6 80.8

7.5 80.9

7.3 81.1

C

7.6 80.8

7.8 80.6

7.8 80.6

No. line

marked 7.44 80.96

J.P.	6.25	^{H.S.} <u>104.69</u>	0.88	98.44
	175' E	39 ^{ths}		
no line			4.2	100.5
	200' E			
no line			2.2	102.5
	225' E			
no line			1.6	103.1
prop + 5'			4.2	100.5
	250' E			
cb + 3'			4.7	100.0
no line			1.6	103.1
	275' E			
no line			1.6	103.1
prop + 7'			4.4	100.3
	300' E			
cb + 3'			4.2	100.5
no line			2.1	102.6
	325' E			
no. line		PLOTTED	4.4	100.3

PLOT TO

X sect. 39th street from
 South

Woolman

Nov. 7/13

Childs 70
 Utter
 Buckee

111.72

J.P.

0.45 ^{H.S.} 111.72 B.N.V. 111.27

50' 20.

South line Woolman

E line

1.4 110.3

E line

3.2 108.5

1.4 110.3

3.2 108.5

1.2 110.5

C

3.1 108.6

C

1.4 110.3

3.1 108.6

1.7 110.0

2.9 108.8

1.7 110.0

CB + 8'
 White

2.8 108.9

2.9 108.8

7.3 110.4

White

0.8 110.9

75' 20.

25' 20.

White
 2' east

2.0

White
 2' east

0.7 111.0

109.7

3.6 108.1

2.0 109.7

4.1 107.6

2.1 109.6

4.2 107.5

2.2 109.5

C

4.0 107.7

C

2.2 109.5

4.0 107.7

1.9 109.8

4.4 107.3

1.9 109.8

E line

4.8 106.9

E line

1.9 109.8

PLOTTED

111.72

100' 20.

E line

6.9 104.8

6.6 105.1

6.4 105.3

C

6.2 105.5

6.0 105.7

cb + 8'
white

6.0 105.7

5.7 106.0

4.0 107.7

125' 20.

white

9.3 102.4

9.4 102.3

9.5 102.3

C

9.6 102.1

9.9 101.8

10.2 101.5

E line

11.0 100.7

PLOTTED

JP.

138 ^{HI.} 100.50 12.60 99.12

150' 20.

E line

3.6 96.9

3.0 97.5

2.6 97.9

C

2.3 98.2

2.5 98.0

2.5 98.0

white

2.9 97.6

175' 20.

white

6.9 93.6

6.7 93.8

6.9 93.6

C

6.9 93.6

6.9 93.6

6.9 93.6

E line

7.8 92.7

100.50

200' 20.

Eline

9.8 90.7

9.8 90.7

10.0 90.5

C

10.0 90.5

10.1 90.4

10.2 90.3

White

10.8 89.7

J.P.

^{H.I.}
213 89.87 12.76 87.74

225' 20.

White

3.0 86.9

2.5 87.4

2.1 87.8

C

1.8 88.1

1.3 88.6

1.0 88.9

Eline

1.0 88.9

PLOTTED

89.87

72

250' 20.

Eline

2.9 87.0

3.0 86.9

3.2 86.7

C

3.5 86.4

3.8 86.1

4.3 85.6

White

4.8 85.1

275' 20.

White

6.4 83.5

6.2 83.7

5.8 84.1

C

5.6 84.3

5.4 84.5

5.5 84.4

Eline

5.3 84.6

89.87

285'20 (North line Teak)

E line

6.5 83.4

6.4 83.5

6.6 83.3

C

6.6 83.3

6.9 83.0

7.1 82.8

W line

7.07 82.80

J.P.

2 nails in
pole 1/2 in.
0.55 H.I.
77.49

12.93 76.94

South line Teak,

W line

0.7 76.8

0.9 74.6

0.5 77.0

C

0.3 77.2

0.1 77.4

0.5 77.0

E line

+0.2 77.7

PLOTTED

77.49

73

25'20.

E line

2.7 74.8

3.3 74.2

2.7 74.8

C

2.9 74.6

3.0 74.5

3.5 74.0

W line

3.6 73.9

50'20.

W line

4.6 72.9

5.1 72.4

4.8 72.7

C

4.6 72.9

4.5 73.0

4.9 72.6

E line

4.0 73.5

77.49

75' 20.

Eline

5.3 72.2

6.0 72.5

5.8 71.7

C

5.6 71.9

5.6 71.9

5.9 71.6

White

5.1 72.4

100' 20.

White

6.6 70.9

6.7 70.8

6.3 71.2

C

6.4 71.1

6.6 70.9

7.0 70.5

Eline

6.3 71.2

PLOTTED

77.49

74

125' 20.

Eline

7.0 70.5

7.8 69.7

7.3 70.2

C

7.1 70.4

7.2 70.3

7.5 70.0

White

6.9 70.6

150' 20.

White

7.2 70.3

7.8 69.7

7.7 69.8

C

7.8 69.7

8.0 69.5

8.7 68.8

Eline

7.9 69.6

77.49

175' RO.

Eline

8.9 48.6

9.4 48.1

8.8 48.7

c

8.4 49.1

8.3 49.2

8.5 49.0

white

7.8 49.7

200' RO.

white

8.0 49.5

8.8 48.6

8.9 48.6

c

9.2 48.3

9.6 47.9

10.3 47.2

Eline

10.2 47.3

PLOTTED

77.49

75

206.34 on east (Mo. line & street)

Eline

11.0 46.5

10.2 47.3

9.7 47.8

c

9.2 48.3

8.8 48.7

8.7 48.8

white

7.7 49.8

Mo. cb.

white

8.1 49.4

8.5 49.0

8.8 48.7

c

9.1 48.4

9.6 47.9

10.6 46.9

Eline

11.0 46.5

77.49

no 1/4

Eline

11.0 46.5

Eline

10.8 44.7

10.4 47.1

10.3 47.2

9.5 48.0

9.6 47.9

C

9.1 48.4

C

9.3 48.2

8.8 48.7

8.9 48.6

8.4 49.1

8.5 49.0

White

7.9 49.4

White

7.9 49.4

Center

No. 6.

White

7.8 49.7

White

7.9 49.6

8.5 49.0

8.5 49.0

8.9 48.6

8.9 48.6

C

9.2 48.3

C

9.4 48.1

9.7 47.8

9.7 47.8

10.4 47.1

10.5 47.0

Eline

10.8 46.7

Eline

10.9 46.6

PLOTTED

 Nov. 10/13
 77.49
 { Schilts
 Allen 76
 Bunker

77.49

South line S. street.

E line 10.3 67.2

10.2 67.3

9.5 68.0

C 9.1 68.4

8.8 68.7

8.1 69.4

white 7.6 69.9

25' RO.

white 6.9 70.5

7.9 69.5

7.7 69.8

C 8.1 69.4

8.5 69.0

9.4 68.1

E line 9.0 68.5

PLOTTED

77.49

77

50' RO.

E line 7.4 70.1

7.9 69.6

7.3 70.2

C 6.9 70.6

6.6 70.9

6.8 70.7

white 5.4 72.1

75' RO.

white 4.2 73.3

5.6 71.9

5.2 72.3

C 5.3 72.2

5.6 71.9

6.2 71.3

E line 5.8 71.7

7749

100' 20.

Eline

4.8 727

5.1 724

4.7 728

C

4.7 728

4.6 729

4.4 731

White

3.5 740

125' 20.

White

4.5 730

5.7 718

5.1 724

C

5.2 723

5.5 720

6.2 713

Eline

5.9 716

PLOTTED

7749

78

150' 20.

Eline

6.7 708

7.1 704

6.5 710

C

6.0 715

5.7 718

6.2 713

White

5.0 725

175' 20.

White

6.2 713

7.2 703

6.8 707

C

6.8 707

7.2 703

8.1 694

Eline

7.6 699

7749

200' 20.

Elms

8.4 491

8.9 484

8.1 494

c

7.6 499

7.6 499

7.8 497

white

6.5 710

206.34 at east (Northline T street)

white

6.6 709

7.9 494

7.9 496

c

8.0 495

8.4 491

9.3 489

Elms

8.8 487

PLOTTED

7749

79

no. 66.

Elms

10.1 474

9.6 479

9.1 484

c

8.6 489

8.3 492

8.0 495

white

7.4 701

no 14

white

7.5 700

8.0 495

8.6 489

c

9.1 484

9.4 681

9.9 476

Elms

10.4 471

250 E

SL 4.0
cl

209.3

200

4.4
208.9
108.4
3.9

77.489

Center

Elvis

10.5 47.0

10.0 47.5

9.6 47.9

C

9.2 48.3

8.7 48.8

8.2 49.3

Whio

7.8 49.7

10 1/4

Whio

7.9 69.4

8.5 49.0

8.9 48.4

C

9.3 48.7

9.8 47.7

10.2 47.3

Elvis

10.6 44.9

See Book 903 page 59

PLOTTED

284.9

206.34

205.76

846 NS on M + 15
 19340
 1940
 825
 2375
 10625
 63
 6133
 767
 73
 6210

147
 612
 153.12
 200 71
 34



DISTANCES FROM CENTER OF ROADWAY FOR CROSS-SECTIONING.

ROADWAY 16 FEET WIDE. SIDE SLOPES 1 1/2 TO 1.
 FOR SINGLE TRACK EMBANKMENT.

	0	.1	.2	.3	.4	.5	.6	.7	.8	.9	
0	8.0	8.2	8.3	8.5	8.6	8.8	8.9	9.1	9.2	9.4	0
1	9.5	9.7	9.8	10.0	10.1	10.3	10.4	10.6	10.7	10.9	1
2	11.0	11.2	11.3	11.5	11.6	11.8	11.9	12.1	12.2	12.4	2
3	12.5	12.7	12.8	13.0	13.1	13.3	13.4	13.6	13.7	13.9	3
4	14.0	14.2	14.3	14.5	14.6	14.8	14.9	15.1	15.2	15.4	4
5	15.5	15.7	15.8	16.0	16.1	16.3	16.4	16.6	16.7	16.9	5
6	17.0	17.2	17.3	17.5	17.6	17.8	17.9	18.1	18.2	18.4	6
7	18.5	18.7	18.8	19.0	19.1	19.3	19.4	19.6	19.7	19.9	7
8	20.0	20.2	20.3	20.5	20.6	20.8	20.9	21.1	21.2	21.4	8
9	21.5	21.7	21.8	22.0	22.1	22.3	22.4	22.6	22.7	22.9	9
10	23.0	23.2	23.3	23.5	23.6	23.8	23.9	24.1	24.2	24.4	10
11	24.5	24.7	24.8	25.0	25.1	25.3	25.4	25.6	25.7	25.9	11
12	26.0	26.2	26.3	26.5	26.6	26.8	26.9	27.1	27.2	27.4	12
13	27.5	27.7	27.8	28.0	28.1	28.3	28.4	28.6	28.7	28.9	13
14	29.0	29.2	29.3	29.5	29.6	29.8	29.9	30.1	30.2	30.4	14
15	30.5	30.7	30.8	31.0	31.1	31.3	31.4	31.6	31.7	31.9	15
16	32.0	32.2	32.3	32.5	32.6	32.8	32.9	33.1	33.2	33.4	16
17	33.5	33.7	33.8	34.0	34.1	34.3	34.4	34.6	34.7	34.9	17
18	35.0	35.2	35.3	35.5	35.6	35.8	35.9	36.1	36.2	36.4	18
19	36.5	36.7	36.8	37.0	37.1	37.3	37.4	37.6	37.7	37.9	19
20	38.0	38.2	38.3	38.5	38.6	38.8	38.9	39.1	39.2	39.4	20
21	39.5	39.7	39.8	40.0	40.1	40.3	40.4	40.6	40.7	40.9	21
22	41.0	41.2	41.3	41.5	41.6	41.8	41.9	42.1	42.2	42.4	22
23	42.5	42.7	42.8	43.0	43.1	43.3	43.4	43.6	43.7	43.9	23
24	44.0	44.2	44.3	44.5	44.6	44.8	44.9	45.1	45.2	45.4	24
25	45.5	45.7	45.8	46.0	46.1	46.3	46.4	46.6	46.7	46.9	25
26	47.0	47.2	47.3	47.5	47.6	47.8	47.9	48.1	48.2	48.4	26
27	48.5	48.7	48.8	49.0	49.1	49.3	49.4	49.6	49.7	49.9	27
28	50.0	50.2	50.3	50.5	50.6	50.8	50.9	51.1	51.2	51.4	28
29	51.5	51.7	51.8	52.0	52.1	52.3	52.4	52.6	52.7	52.9	29
30	53.0	53.2	53.3	53.5	53.6	53.8	53.9	54.1	54.2	54.4	30
31	54.5	54.7	54.8	55.0	55.1	55.3	55.4	55.6	55.7	55.9	31
32	56.0	56.2	56.3	56.5	56.6	56.8	56.9	57.1	57.2	57.4	32
33	57.5	57.7	57.8	58.0	58.1	58.3	58.4	58.6	58.7	58.9	33
34	59.0	59.2	59.3	59.5	59.6	59.8	59.9	60.1	60.2	60.4	34
35	60.5	60.7	60.8	61.0	61.1	61.3	61.4	61.6	61.7	61.9	35
36	62.0	62.2	62.3	62.5	62.6	62.8	62.9	63.1	63.2	63.4	36
37	63.5	63.7	63.8	64.0	64.1	64.3	64.4	64.6	64.7	64.9	37
38	65.0	65.2	65.3	65.5	65.6	65.8	65.9	66.1	66.2	66.4	38
39	66.5	66.7	66.8	67.0	67.1	67.3	67.4	67.6	67.7	67.9	39
40	68.0	68.2	68.3	68.5	68.6	68.8	68.9	69.1	69.2	69.4	40

Calculated by F. E. Paradis, C. E.

DISTANCES FROM CENTER OF ROADWAY FOR CROSS-SECTIONING.

ROADWAY 14 FEET WIDE. SIDE SLOPES 1 1/2 TO 1.
 FOR SINGLE TRACK EMBANKMENT.

	0	.1	.2	.3	.4	.5	.6	.7	.8	.9	
0	7.00	7.15	7.30	7.45	7.60	7.75	7.90	8.05	8.20	8.35	0
1	8.50	8.65	8.80	8.95	9.10	9.25	9.40	9.55	9.70	9.85	1
2	10.00	10.15	10.30	10.45	10.60	10.75	10.90	11.05	11.20	11.35	2
3	11.50	11.65	11.80	11.95	12.10	12.25	12.40	12.55	12.70	12.85	3
4	13.00	13.15	13.30	13.45	13.60	13.75	13.90	14.05	14.20	14.35	4
5	14.50	14.65	14.80	14.95	15.10	15.25	15.40	15.55	15.70	15.85	5
6	16.00	16.15	16.30	16.45	16.60	16.75	16.90	17.05	17.20	17.35	6
7	17.50	17.65	17.80	17.95	18.10	18.25	18.40	18.55	18.70	18.85	7
8	19.00	19.15	19.30	19.45	19.60	19.75	19.90	20.05	20.20	20.35	8
9	20.50	20.65	20.80	20.95	21.10	21.25	21.40	21.55	21.70	21.85	9
10	22.00	22.15	22.30	22.45	22.60	22.75	22.90	23.05	23.20	23.35	10
11	23.50	23.65	23.80	23.95	24.10	24.25	24.40	24.55	24.70	24.85	11
12	25.00	25.15	25.30	25.45	25.60	25.75	25.90	26.05	26.20	26.35	12
13	26.50	26.65	26.80	26.95	27.10	27.25	27.40	27.55	27.70	27.85	13
14	28.00	28.15	28.30	28.45	28.60	28.75	28.90	29.05	29.20	29.35	14
15	29.50	29.65	29.80	29.95	30.10	30.25	30.40	30.55	30.70	30.85	15
16	31.00	31.15	31.30	31.45	31.60	31.75	31.90	32.05	32.20	32.35	16
17	32.50	32.65	32.80	32.95	33.10	33.25	33.40	33.55	33.70	33.85	17
18	34.00	34.15	34.30	34.45	34.60	34.75	34.90	35.05	35.20	35.35	18
19	35.50	35.65	35.80	35.95	36.10	36.25	36.40	36.55	36.70	36.85	19
20	37.00	37.15	37.30	37.45	37.60	37.75	37.90	38.05	38.20	38.35	20
21	38.50	38.65	38.80	38.95	39.10	39.25	39.40	39.55	39.70	39.85	21
22	40.00	40.15	40.30	40.45	40.60	40.75	40.90	41.05	41.20	41.35	22
23	41.50	41.65	41.80	41.95	42.10	42.25	42.40	42.55	42.70	42.85	23
24	43.00	43.15	43.30	43.45	43.60	43.75	43.90	44.05	44.20	44.35	24
25	44.50	44.65	44.80	44.95	45.10	45.25	45.40	45.55	45.70	45.85	25
26	46.00	46.15	46.30	46.45	46.60	46.75	46.90	47.05	47.20	47.35	26
27	47.50	47.65	47.80	47.95	48.10	48.25	48.40	48.55	48.70	48.85	27
28	49.00	49.15	49.30	49.45	49.60	49.75	49.90	50.05	50.20	50.35	28
29	50.50	50.65	50.80	50.95	51.10	51.25	51.40	51.55	51.70	51.85	29
30	52.00	52.15	52.30	52.45	52.60	52.75	52.90	53.05	53.20	53.35	30
31	53.50	53.65	53.80	53.95	54.10	54.25	54.40	54.55	54.70	54.85	31
32	55.00	55.15	55.30	55.45	55.60	55.75	55.90	56.05	56.20	56.35	32
33	56.50	56.65	56.80	56.95	57.10	57.25	57.40	57.55	57.70	57.85	33
34	58.00	58.15	58.30	58.45	58.60	58.75	58.90	59.05	59.20	59.35	34
35	59.50	59.65	59.80	59.95	60.10	60.25	60.40	60.55	60.70	60.85	35
36	61.00	61.15	61.30	61.45	61.60	61.75	61.90	62.05	62.20	62.35	36
37	62.50	62.65	62.80	62.95	63.10	63.25	63.40	63.55	63.70	63.85	37
38	64.00	64.15	64.30	64.45	64.60	64.75	64.90	65.05	65.20	65.35	38
39	65.50	65.65	65.80	65.95	66.10	66.25	66.40	66.55	66.70	66.85	39
40	67.00	67.15	67.30	67.45	67.60	67.75	67.90	68.05	68.20	68.35	40

Calculated by F. E. Paradis, C. E.