

903

F.B.

LEWIS & CLARK

No. 410 F

EUGENE DIETZGEN CO.

Drawing Materials and Surveying Instruments
 NEW YORK. CHICAGO. SAN FRANCISCO.

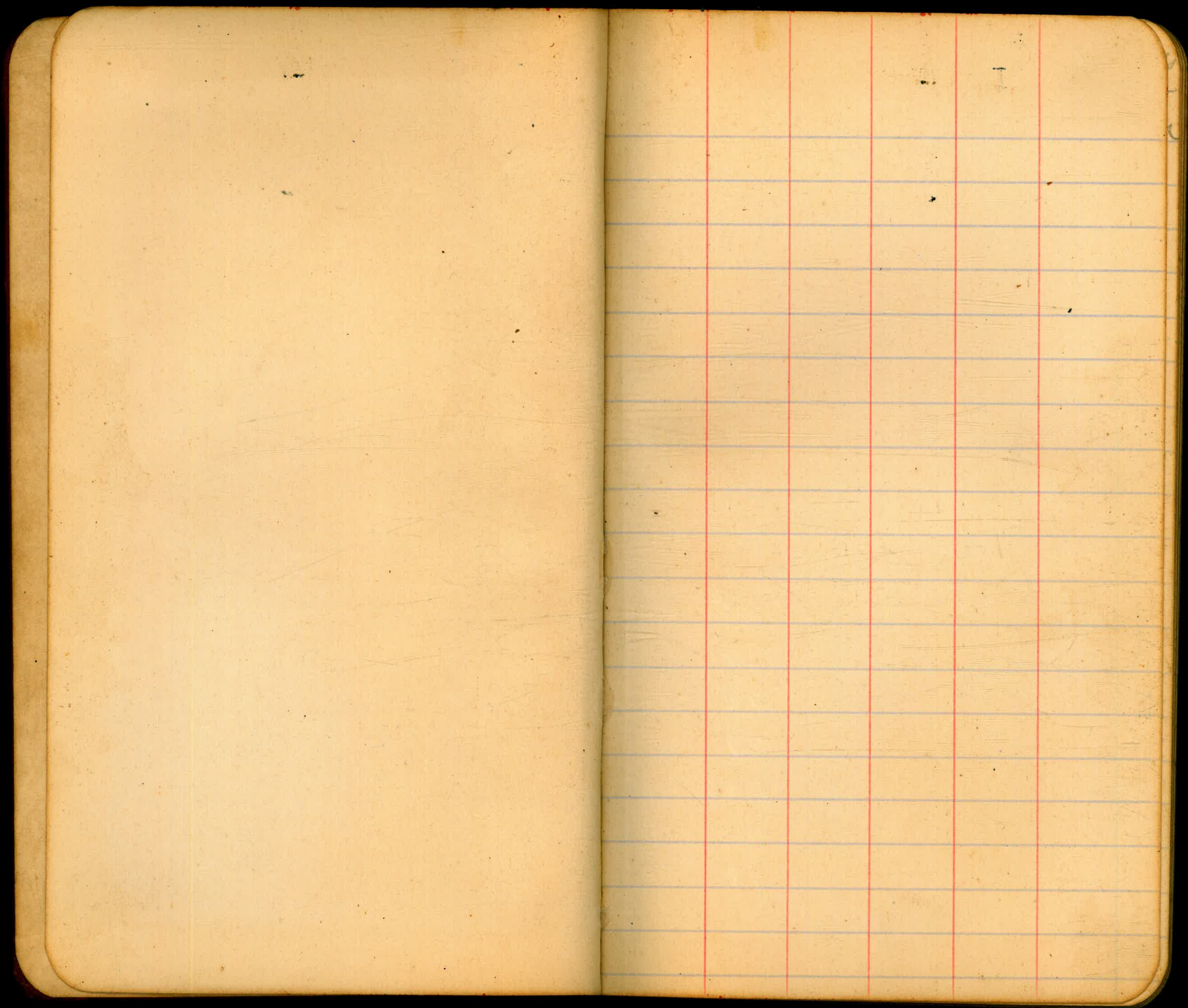
TABLES FOR EXCAVATIONS AND EMBANKMENTS.
 DISTANCES FROM CENTER OF ROADWAY FOR CROSS-SECTIONING
 ROADWAY 40 FEET WIDE. SIDE SLOPES 1 TO 1.
 FOR SINGLE TRACK EXCAVATION.

MICROFILMED
 DEC 16 1964
 Copyright, 1902. No. 39340.

	0	.1	.2	.3	.4	.5	.6	.7	.8	.9	
0	10.0	10.1	10.2	10.3	10.4	10.5	10.6	10.7	10.8	10.9	0
1	11.0	11.1	11.2	11.3	11.4	11.5	11.6	11.7	11.8	11.9	1
2	12.0	12.1	12.2	12.3	12.4	12.5	12.6	12.7	12.8	12.9	2
3	13.0	13.1	13.2	13.3	13.4	13.5	13.6	13.7	13.8	13.9	3
4	14.0	14.1	14.2	14.3	14.4	14.5	14.6	14.7	14.8	14.9	4
5	15.0	15.1	15.2	15.3	15.4	15.5	15.6	15.7	15.8	15.9	5
6	16.0	16.1	16.2	16.3	16.4	16.5	16.6	16.7	16.8	16.9	6
7	17.0	17.1	17.2	17.3	17.4	17.5	17.6	17.7	17.8	17.9	7
8	18.0	18.1	18.2	18.3	18.4	18.5	18.6	18.7	18.8	18.9	8
9	19.0	19.1	19.2	19.3	19.4	19.5	19.6	19.7	19.8	19.9	9
10	20.0	20.1	20.2	20.3	20.4	20.5	20.6	20.7	20.8	20.9	10
11	21.0	21.1	21.2	21.3	21.4	21.5	21.6	21.7	21.8	21.9	11
12	22.0	22.1	22.2	22.3	22.4	22.5	22.6	22.7	22.8	22.9	12
13	23.0	23.1	23.2	23.3	23.4	23.5	23.6	23.7	23.8	23.9	13
14	24.0	24.1	24.2	24.3	24.4	24.5	24.6	24.7	24.8	24.9	14
15	25.0	25.1	25.2	25.3	25.4	25.5	25.6	25.7	25.8	25.9	15
16	26.0	26.1	26.2	26.3	26.4	26.5	26.6	26.7	26.8	26.9	16
17	27.0	27.1	27.2	27.3	27.4	27.5	27.6	27.7	27.8	27.9	17
18	28.0	28.1	28.2	28.3	28.4	28.5	28.6	28.7	28.8	28.9	18
19	29.0	29.1	29.2	29.3	29.4	29.5	29.6	29.7	29.8	29.9	19
20	30.0	30.1	30.2	30.3	30.4	30.5	30.6	30.7	30.8	30.9	20
21	31.0	31.1	31.2	31.3	31.4	31.5	31.6	31.7	31.8	31.9	21
22	32.0	32.1	32.2	32.3	32.4	32.5	32.6	32.7	32.8	32.9	22
23	33.0	33.1	33.2	33.3	33.4	33.5	33.6	33.7	33.8	33.9	23
24	34.0	34.1	34.2	34.3	34.4	34.5	34.6	34.7	34.8	34.9	24
25	35.0	35.1	35.2	35.3	35.4	35.5	35.6	35.7	35.8	35.9	25
26	36.0	36.1	36.2	36.3	36.4	36.5	36.6	36.7	36.8	36.9	26
27	37.0	37.1	37.2	37.3	37.4	37.5	37.6	37.7	37.8	37.9	27
28	38.0	38.1	38.2	38.3	38.4	38.5	38.6	38.7	38.8	38.9	28
29	39.0	39.1	39.2	39.3	39.4	39.5	39.6	39.7	39.8	39.9	29
30	40.0	40.1	40.2	40.3	40.4	40.5	40.6	40.7	40.8	40.9	30
31	41.0	41.1	41.2	41.3	41.4	41.5	41.6	41.7	41.8	41.9	31
32	42.0	42.1	42.2	42.3	42.4	42.5	42.6	42.7	42.8	42.9	32
33	43.0	43.1	43.2	43.3	43.4	43.5	43.6	43.7	43.8	43.9	33
34	44.0	44.1	44.2	44.3	44.4	44.5	44.6	44.7	44.8	44.9	34
35	45.0	45.1	45.2	45.3	45.4	45.5	45.6	45.7	45.8	45.9	35
36	46.0	46.1	46.2	46.3	46.4	46.5	46.6	46.7	46.8	46.9	36
37	47.0	47.1	47.2	47.3	47.4	47.5	47.6	47.7	47.8	47.9	37
38	48.0	48.1	48.2	48.3	48.4	48.5	48.6	48.7	48.8	48.9	38
39	49.0	49.1	49.2	49.3	49.4	49.5	49.6	49.7	49.8	49.9	39
40	50.0	50.1	50.2	50.3	50.4	50.5	50.6	50.7	50.8	50.9	40

Calculated by F. E. Paradis, C. E.

60
6.00



X sect. Columbia Street

J.P. 5.57 ^{H.I.} 144.18 138.61

North line Cuts

E line 0.25 143.9

1.7 42.5

2.8 41.4

C 3.4 40.8

4.2 40.0

5.0 39.2

White 6.88 37.3

25' no.

White 9.5 34.7

8.0 34.3

7.0 37.3

C 5.7 38.5

4.8 39.4

4.0 40.3

E line 1.8 42.4

PLOTTED

See Book 897 page 76

144.7

Sept. 5/13

J. Childs
Allen
Bunker

50' no.

E line 5.0 139.2

6.5 37.7

8.8 35.4

C 10.9 33.3

13.8 30.4

15.0 29.2

White 14.5 29.7

J.P. 7.38 138.75 12.81 131.37

58' no.

White 13.7 25.1

8.9 29.9

7.7 31.1

C 7.0 31.8

5.8 33.0

3.8 35.0

E line 0.7 38.1

138.8

66' no.

E line	0.5	138.3
	2.2	34.4
	3.3	35.5
C	4.9	33.9
	5.8	33.0
	7.7	31.1
W line	10.0	28.8

75' no.

W line	8.9	29.9
	7.2	31.4
	5.4	33.4
C	4.2	34.6
	3.1	35.7
	2.3	36.5
E line	1.2	37.6

PLOTTED

Columbia

2

138.8

100' no.

E line	3.1	135.7
	4.4	34.4
	5.1	33.7
C	5.8	33.0
	6.5	32.3
	7.2	31.6
W line	8.2	30.6

120' no.

W line	11.4	27.4
	9.1	29.7
	8.6	30.2
C	8.1	30.7
	8.0	30.8
	6.9	31.9
E line	5.4	33.4

138,75

150' no.

E line	7.4	131.4
	9.1	29.7
	9.9	28.9
C	10.4	28.4
	10.4	28.4
	11.0	27.8
White	12.7	26.1

J.P.

4.81 ^{HI.} 130.44 13.12 125.63

175' no.

White	8.4	23.0
	8.7	21.7
	8.8	21.5
C	8.2	22.2
	6.6	23.8
	5.0	25.4
E line	2.0	28.4

PLOTTED

Columbia

1304

3

200' no. (South line witherby)

E line	0.91	129.5
	3.3	27.1
	7.0	23.4
C	10.4	20.0
	13.2	17.2
	15.0	15.4
White	18.3	12.1

PLOTTED

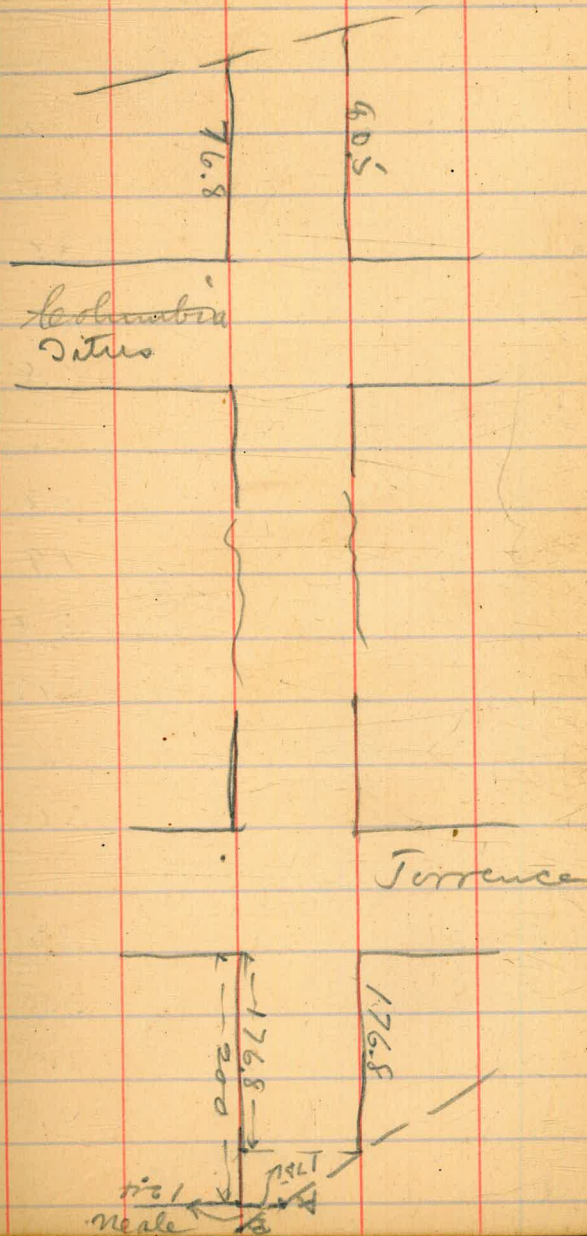
X sect. ^{10' sidewalks 7 1/2" printing} Road from Pueblo line
 west of Columbia to Pueblo line at Neale.

Sept. 5/13 } Blinded
 Allen
 Bunker

S.P. 5.47 ^{H.I.} 97.40 91.93
 Pueblo line west of col.
 See diagrams opposite page.

No. line	12.32	85.1
	11.1	86.3
	9.8	87.5
C	7.8	89.6
	5.8	91.6
	4.9	92.5
50 line	3.28	94.1
	50' west ^{Titus} Columbia.	
50 cb	1.5	95.9
	3.4	94.0
C	5.6	91.8
	7.2	90.2
	8.6	88.8
no line	9.9	87.5

PLOTTED



97.40

97.40

	Titus	
25' west Columbia		
No. line	7.9	89.5
	5.7	91.7
	3.0	94.4
C	1.8	95.6
So. 1/4	0.8	96.6
west line Columbia		
Center	-0.2	97.6
	1.9	95.5
	3.9	93.5
no line	5.47	91.9
East line Columbia		
no line	1.9	95.5
13' east		
no line	4.7	92.7
2' so of no. line	3.0	94.4
25' east		
no line	4.4	93.0
2' so of no. line	2.4	95.0

PLOTTED

	Titus	
50' east		
no. line	3.6	93.8
2' so of no. line	1.6	95.8
J.P.	12.86	109.86
	HI.	0.40
50' west Columbia		97.00
no. line	11.8	98.1
25' west Columbia		
no. line	9.7	100.2
so. cb.	11.8	98.1
west line Columbia		
so. 1/4	10.1	99.8
no. line	7.8	102.1
no. line	5.67	104.3
East line Columbia		
no. line	2.0	107.9
	4.5	105.4
C	7.7	102.3
	9.6	100.3
no. cb.	11.6	98.3

1099

13' east

no. cb.	11.5	984
	8.8	1011
C	6.1	1038
no. 1/4	3.4	1065

25' east

no. 1/4	2.0	1079
C	5.0	1049
	7.7	1022
no. cb.	11.3	985

50' east

no. cb.	8.5	1014
	5.9	1040
C	2.6	1073

7.5' east

no. 1/4	3.0	1069
	5.7	1042
no. line	10.1	998

PLOTTED

Roark

10986

6

100' east

13' no. slope.	13.5	964
no. line	8.4	1015
	4.5	1054
no. 1/4	0.4	1095

125' east

no. cb	2.4	1075
no. line	6.5	1034
15' no. slope.	16.5	934

150' east

20' no. slope.	12.7	972
no. line	3.8	1061

175' east

20' no. slope.	8.4	1015
----------------	-----	------

200' east (east line ^{removed} removed)

20' no. slope.	3.9	1060
----------------	-----	------

	HI	0.00	109.86		100' east	
J.P.	12.96	122.82				
	East line	Titus		So. cb.		3.7 119.1
So line		12.4	110.4			6.5 14.3
	13' east			c		9.6 13.3
So line		9.8	13.0		125' east	
So. cb.		12.8	10.0	no 1/4		11.8 11.0
	25' east			c		8.6 14.3
So. cb.		11.7	11.1			4.3 18.5
So line		8.2	14.6	So. cb.		1.6 21.3
	50' east				150' east	
So line		6.6	14.3	no 1/4		3.8 19.0
		10.5	12.3	c		7.2 15.5
no 1/4		12.6	10.2			10.0 13.8
	7.5' east			no cb.		12.1 10.7
c		12.5	10.3		175' east	
		9.1	13.7	no line		12.0 10.8
		8.0	14.8			8.2 14.6
So line		3.5	19.3			4.3 18.5
				c		1.2 21.4

PLOTTED.

122.82

122.82 Rocks

8

		Linwood		East line ^{Linwood} main	
	200' east (west line main)			20' no. slope.	11.1 111.7
No. 1/4		0.3	122.5	no line	1.4 21.4
		3.4	19.4		25' east
no line		8.37	114.45	15' no. slope.	10.0 128
	west cb.				50' east
no line		5.9	14.9	20' no. slope.	11.3 115
no cb.		1.4	21.4		75' east
	w 1/4			20' no. slope.	4.6 18.2
no cb.		0.6	22.2	S.P.	H.I. 12.90 135.72 0.00 122.82
no line		4.7	18.1		100' east ^{Titus} Columbia
	center			no line	12.9 22.8
no line		3.7	19.1		125' east
20' no. slope		10.3	12.5	no line	10.5 25.3
	E 1/4				
no line		2.1	20.7		150' east
	E. cb.			no cb.	12.1 23.1
no line		1.4	21.4	no line	7.0 28.7

PLOTTED

135.7

175' east.

solino	3.7	132.0	no 1/4
	8.7	27.0	C
no 1/4	11.9	238	
	200' east (W. line ^{linwood} union)		40. cb.
C	11.1	244	
	8.5	27.2	No. cb.
	5.5	30.2	
solino	1.34	34.4	C
	west. cb.		
solino	0.5	35.2	no. cb.
	4.5	31.3	
	8.0	27.7	no. cb.
C	10.2	25.5	
no 1/4	11.4	24.2	C

PLOTTED

Roanoke

135.7

9

W 1/4

	11.0	124.7	
	8.9	24.8	
	6.2	29.5	
	3.0	32.7	
	Center		
	2.6	33.1	
	5.1	30.4	
	7.7	28.0	
	10.4	25.3	
	12.9	22.8	
	E 1/4		
	12.0	23.7	
	8.8	25.9	
	5.7	30.0	
	3.7	22.0	
	0.8	34.9	
	No. cb.		

1357

E. cb.

no. cb.	0.3	135.4
C	3.5	32.2
C	5.8	29.9
	8.4	27.3
no. cb.	11.4	24.3

limb
E. line. ~~Alumina~~

no. cb.	10.5	25.2
	7.9	27.8
C	4.9	30.8
	2.6	33.1
no. cb.	0.0	35.7

25' east.

C	2.8	32.9
	6.4	29.3
	10.6	25.1
no. line	15.8	19.9

PLOTTED

1357

Sept. 6/13

Childs
at
Bunker

50' east

no. line	15.8	119.9
	11.0	24.7
	7.0	28.7
C	3.6	32.1

75' east

C	0.8	34.9
	3.7	32.0
	6.4	29.3
no. line	9.8	25.9

100' east.

20' no. slope	11.3	24.4
no. line	5.0	30.7
no. cb.	0.9	34.8

125' east.

20 no. slope.	4.9	30.8
---------------	-----	------

150' east

20' no. slope.	5.0	30.7
----------------	-----	------

135.72

175' east

20' no. slope. 2.4 1333

200' east (over line Horton)

20' no. slope. 3.3 374

Center Horton.

20' no. slope. 2.3 334

J.P.

12.80 ⁴⁵148.50 0.02 135.70

W 1/4 ^{Linwood} main street

20' no. slope. 12.2 363

Center

20' no. slope. 10.4 381

E 1/4

20' no. slope. 9.4 391

E. cb.

20' no. slope. 9.5 390

Line ^{Linwood} ~~Horton~~

20' no. slope. 8.8 397

PLOTTED

148.50

Roads

11

25' east

20' no. slope. 5.3 1437

8.9 396

20' 1/4 10.7 278

50' east

20' 1/4 11.5 370

6.1 474

20' no. slope. 1.4 47.1

75' east

20' cb. 3.8 347

20' 1/4 8.3 403

100' east

20' 1/4 9.4 391

C 5.6 479

2.7 458

20' cb. 0.7 47.8

148.5

148.5

125' east

W 1/4

20 C
 1.5 1470 no. line
 4.4 44.1 no. cb.
 20 no. line
 7.8 40.7
 11.3 37.3 no. cb.

7.0 141.5
 2.4 44.1

center

150' east

20 no. line
 8.6 39.9
 4.2 44.3 no. line
 20 no. 1/4
 1.8 44.7 no. cb.

2.2 44.3
 6.8 41.7

E 1/4

175' east

E. cb.

20 no. cb.
 3.2 45.3 no. cb.
 no. line
 8.5 40.0 no. line

1.6 44.9
 5.1 43.4

200' east (west line ^{Gully} ~~corner~~)

East line ^{Gully} ~~corner~~

A no. line
 8.05 40.5 20' no. slope.
 no. cb.
 3.2 45.3 no. line

10.8 37.7
 4.0 44.5

west cb.

25' east

A no. cb.
 2.8 45.7
 no. line
 7.4 41.1 20' no. slope.

6.5 43.0

PLOTTED

148.50

58' east.

20' no. slope. 4.4 144.1

7.5' east

20' no. slope. 4.7 43.8

J.P.

H.I. 12.79 16042 0.87 147.63

75' E. ^{lumber} Union

Solino 11.3 49.1

100' E

Solino 8.0 52.4

125' E.

Solino 4.7 55.7

8.3 52.1

No 1/4

11.0 49.4

150' E

C

9.6 50.8

7.0 53.4

5.0 55.4

Solino

1.8 58.6

PLOTTED

Room

140.4

13

175' E

Solino 0.2 140.3

3.2 57.3

4.4 56.0

6.8 53.4

no. 1/4. 10.8 49.6

200' E (west line ^{lumber} Holme)

no 1/4 11.1 49.3

C 8.1 52.3

5.5 54.9

no. cb. 2.1 58.3

west cb.

no. cb. 1.7 58.7

4.3 56.1

7.8 52.4

no 1/4 11.0 49.4

1404

W 1/4

no 1/4
C

11.1 149.3

8.3 52.1

4.2 56.2

no cb.

1.0 59.4

Center

no cb.

1.0 59.4

C

4.1 56.3

8.1 53.3

no 1/4

11.4 49.0

E 1/4

no 1/4

10.3 50.1

C

6.6 53.8

no 1/4

3.5 56.9

E cb.

no 1/4

2.4 58.0

C

6.1 54.3

no 1/4

9.6 50.8

PLOTTED

1404

Roost

14

E, line ^{gun} Norton

11.8 148.5

7.6 53.8

3.6 56.8

0.3 40.1

25' E

0.3 40.1

3.9 56.5

7.6 53.8

11.3 49.1

50' E

8.6 51.8

5.0 55.4

1.2 59.2

75' east.

3.2 57.3

8.0 52.4

160,42

100' E.

20' no. slope.	16.0	144.4	So line
no line	7.7	53.7	
No. cb.	2.8	57.4	So line

125' E

no line	3.5	54.9	So line
20' no. slope.	11.2	49.2	

150' E

20' no. slope	8.5	51.9	So. line
no line	1.1	59.3	So. cb.

175' E

20' no. slope.	5.4	55.0	So. cb.
			So line

200' E (west line puterban)

20' no. slope.	2.0	58.4	So line	
J.P.	13.11	173.30	So cb.	
	H.I.	0.23	160.19	

west line Horton

So line	11.2	62.1	So 1/4
---------	------	------	--------

PLOTTED

Row 15

1733

W, cb.

9.8 143.5

W 1/4

9.5 43.8

Center

9.0 44.3

E 1/4

8.4 44.9

13.2 40.1

E. cb.

12.9 40.4

7.6 45.7

E line Horton

6.5 44.8

11.0 43.3

25' E

9.7 43.4

7.5 45.8

3.6 49.7

1733

50' E

no. cb.

4.4 148.9

6.8 44.5

c

9.9 43.4

75' E

no 1/4

12.2 41.1

c

8.6 44.7

4.5 48.8

no. cb.

0.9 73.4

100' E

no. cb.

1.8 71.5

5.7 47.6

9.7 43.4

c

no 1/4

13.0 40.3

Rock 16

1733

125' E

no. cb.

14.2 159.1

11.2 43.1

c

7.6 45.7

no 1/4

3.9 49.4

150' E

2.3 71.0

5.5 47.8

8.6 44.7

12.1 41.3

no. cb.

175' E

10.4 43.9

7.7 45.6

6.1 47.3

3.7 49.4

no 1/4

1.5 71.8

PLOTTED

1733

Sept. 8/13

173.30

Bluffs
17
Altair
Bunker

	200' E (west line puterbaugh)			East line puterbaugh		
no 1/4	1.5	171.8	no line	3.08	170.2	
no line	4.1	49.2	20' no slope.	11.8	41.5	
no line	7.3	44.0		25' E		
W cb.			20' no. slope.	10.0	43.3	
no line	6.5	47.8	no line	1.5	71.8	
no cb.	2.2	71.1		50' E		
W 1/4			20' no. slope.	8.7	44.4	
no cb.	1.0	72.3		75' E		
no line	4.5	48.8	20' no. slope.	5.7	47.4	
Center				100' E		
20' no. slope.	13.2	40.1	20' no slope.	0.6	72.7	
no line	4.0	49.3	J.P.	12.94	186.15	0.09 173.21
E 1/4				50' E	Horton	
no line	3.5	49.8	no line	13.9	172.3	
20' no.				75' E		
no line	3.4	49.9	no line	10.4	75.8	
E cb.				100' E		
			no line	9.4	77.8	

PLOTTED

1843

125' E

so line

8.0 178.7

so. cb.

13.0 73.7

150' E

so. cb.

11.6 74.6

so. line

6.2 80.0

175' E

so line

8.0 78.7

so. cb.

11.8 74.4

A

200' E (west line puterbaugh)

C

12.2 74.0

9.9 74.3

7.2 79.0

so line

3.8 83.4

Roark

18

1843

w. cb.

2.5 183.7

5.5 80.7

8.4 77.8

10.5 75.7

12.3 75.9

w 1/4

11.1 75.1

9.2 77.0

7.1 79.4

4.5 81.7

1.8 84.4

so line

C

no 1/4

no 1/4

C

so line

PLOTTED

184.3

Center

So line

1.4 184.8

4.1 82.1

6.6 79.6

C

8.7 77.5

10.3 75.9

no. cb.

12.8 73.4

E 1/4

no. cb.

12.5 73.7

9.9 74.3

C

8.4 77.8

6.5 79.7

4.1 82.1

So line

0.9 85.3

184.2

Roark 19

E. cb.

0.0 184.2

3.6 82.4

6.9 79.3

9.0 77.2

10.4 75.8

no. cb.

12.7 73.5

E line puterbaughli

no. cb.

12.5 73.7

10.6 75.5

C

9.0 77.2

6.1 80.1

no. cb.

3.2 83.0

PLOTTED

1843

25' E

so. cb.	1.1	185.1
	4.0	823
c	7.4	788
	9.8	754
no. cb.	11.4	748

50' E

no line	11.8	744
	9.3	769
	6.6	796
c	4.6	816
no 1/4	2.3	839

75' E

c	2.1	841
c	4.5	817
	6.3	799
no. line	9.0	773

PLOTTED

1843

Roam 20

100' E

no line	5.7	180.5
	3.8	824
no 1/4	1.5	84.7

125' E

no 1/4	0.5	85.7
	2.7	83.5
no. line	4.8	81.4
20' no slope.	15.5	70.7

150' E

20 no. slope.	19.5	44.7
no line	8.5	77.7
no. cb.	3.5	82.7

175' E

no. 1/4	0.6	85.6
	4.6	81.6
no line	10.1	74.1
20' no slope.	18.0	48.3

184.7

200' E (west line Torrence)

20' no. slope. 15.0 171.2

no line 6.72 79.5

no. cb. 2.4 83.8

W. cb.

no. cb. 1.5 84.7

no line 6.7 79.5

W 1/4

no line 6.9 79.3

no. cb. 1.8 84.4

Center

no. cb. 2.1 84.1

no line 7.0 79.3

20' no. slope. 15.3 70.9

E 1/4

no line 7.2 79.0

no. cb. 2.8 83.4

PLOTTED

186,15

Roark

21

E. cb.

no. cb. 2.8 183.4

no line 6.6 79.4

E line Torrence

20' no. slope. 15.6 70.4

no line 6.6 79.5

no. cb. 2.9 83.3

25' E

no. line 4.6 81.4

20' no slope. 12.7 73.5

50' E

20' no. slope. 10.5 75.7

no. line 1.8 84.4

75' E

no. line 2.6 183.5

20 no. slope. 11.3 74.9

100' E

20' no. slope. 12.9 73.3

no. line 5.6 80.4

Rocks

1997

22

J.P.	^{H-I} 13.09/198.73	0.51	185.64		125'E		
So. line	E. line (Paterbaugh)			C		10.0	188.7
		11.5	187.2			6.8	92.9
	25'E			So. cb.		1.8	94.9
So. line		10.6	88.1		150'E		
	50'E			So. cb.		2.3	94.4
So. line		6.8	91.9			6.2	92.5
So. cb.		11.0	87.7	C		9.5	89.2
	75'E			no. 1/4		12.0	86.7
no. 1/4		11.0	87.7		175'E		
		7.2	91.5	C		9.5	89.2
So. line		3.5	95.2			7.0	91.7
	100'E			So. cb.		3.3	95.4
So. cb.		4.9	93.8		200'E (west line Torrence)		
		8.3	90.4	So. cb.		2.7	94.0
C		11.3	87.4	#		6.4	92.3
				C		8.6	90.1
				no. 1/4		11.3	87.4

PLOTTED

1987

w.cb.

no 1/4

c

9.6 1881

7.7 910

5.7 930

2.3 944

So.cb.

w 1/4

no.cb.

2.3 944

6.1 924

7.9 909

10.0 887

c

no 1/4

Center

no 1/4

c

10.4 883

8.0 907

6.0 927

2.3 944

So.cb.

Rocks

23

1987

E 1/4

3.1 1954

6.3 924

9.0 897

11.6 871

E.cb.

11.4 873

8.8 899

5.9 928

2.7 940

So.cb.

no. 1/4

no 1/4

c

So.cb.

So.cb.

c

no 1/4

E. line Torrence.

2.3 944

5.7 930

8.4 903

11.0 877

PLOTTED

1987

25' E

no. cb.

12.0 184.7

9.3 894

6.5 922

3.5 952

C

no. 1/4

no. 1/4

C

50' E

2.8 959

5.7 930

8.4 903

9.9 888

no. cb.

75' E

no. cb.

10.9 878

8.6 901

5.4 933

3.0 957

C

no. 1/4

PLOTTED

Roark 24

1987

100' E

no. cb.

1.5 197.2

4.2 945'

6.3 934

8.0 907

12.9 85.8

no. cb.

125' E

no. 1/4

12.2 84.5'

9.6 891

6.8 919

4.1 944

C

no. cb.

150' E

no. line

0.8 97.9

5.3 934

9.4 893

13.0 85.7

C

198,73

176.8 E

So 1/4

11.4 187.3

So. line

7.8 90.9

So line

4.5 94.3

So line

200'E

So line

3.4 95.3

So. line

7.5 91.2

So 1/4 + pueblo line

10.6 88.1

So. line

sect A.B. page 4.

So. 1/4 Sect.

10.6 88.1

So line

So. cb.

6.9 91.8

W. cb.

So line

1.1 97.4

So. line

S.P.

low turn

13.06 185.67

W 1/4

J.P.

12.69 211.41

0.01 198.72

So line

9.9 201.5'

Center

So line

9.9 201.5'

E 1/4

So line

10.4 201.0

PLOTTED

211,41

Route 25

100' E Interchange

14.6 194.8

135'E

11.7 99.7

150'E

10.1 201.3

175'E

10.8 200.4

200'E (W. line Torrence)

10.5 200.9

10.1 201.3

9.9 201.5'

9.9 201.5'

10.4 201.0

2114

E cb.

So. line

10.7 200.7

J.P.

H.I.
0.41/186.08

26

185.67

East line

Torrence

No. cb.

3.1

183.0

So. line

10.1 201.3

no. line

7.7

78.4

25' E

So. line

8.1 203.3

no. line

10.8

75.3

So. cb.

12.4 199.0

No. cb.

6.1

80.0

50' E

No. cb.

11.6 199.8

no. 1/4

3.2

82.9

So. line

6.3 205.1

C

176' 8" East Torrence

2.7

93.4

75' E

So. line

7.7 203.7

No. cb.

6.1

80.0

No. cb.

12.5 198.9

J.P.

H.I.
0.28/173.46

8.4

77.7

100' E

So. line

8.5 202.9

20' no. slope.

12.90

173.18

125' E

So. line

12.5 198.9

20' no. slope.

125' E Torrence

3.8

149.7

J.P.

0.11 211.30

150' E

6.2

47.3

PLOTTED

173,46

27

176.8 @ Torrence

20' no slope. 9.4 164.1

no. line 1.11 172.35

Check on Bench

J.P. 12.90 ^{H.I.} 224.20 211.30

J.P. 12.33 ^{H.I.} 236.01 0.52 223.68

J.P. 12.69 ^{H.I.} 248.62 0.08 235.93

J.P. 6.85 241.77

B.M. ME. Cor Torrence & fringe 241.71

PLOTTED

X. sect. Union Street
to Henry & from nearby to

	12.76	141.94		129.18
J.P. S.W. cor. Columbia	12.95	134.58	0.21	141.73
Pringle	12.41	166.97	0.02	154.56
J.P.	5.71	171.40	1.28	168.69

So. line Pringle

White

C

Elms

Elms

C

White

PLOTTED

6.5	144.9
5.5	45.9
4.7	44.7
4.0	47.4
3.1	48.3
2.3	49.1
0.8	70.4
1.2	70.2
3.0	48.4
3.7	47.7
4.5	46.9
5.4	46.0
6.2	45.2
7.5	43.9

from So. line Pringle
witherby

Sept. 27/13

171.40
20 1/4

White

C

Elms

Elms

White

Center

PLOTTED

7.9	163.5
6.3	45.1
5.7	45.7
4.8	46.4
3.6	47.8
2.7	48.7
1.4	70.0
1.7	49.7
2.9	48.5
4.1	47.3
5.2	46.7
6.1	45.3
7.0	44.4
8.0	43.4

Blind
at
Bunker

171.4

no 44

White

8.5 43.9

7.3 44.1

6.5 44.9

C

5.6 45.8

4.5 46.9

3.3 48.1

Eline

1.9 49.5

no. 66.

Eline

2.2 49.3

3.6 47.8

4.8 46.6

C

6.0 45.4

6.9 44.5

7.8 43.6

White

9.0 42.4

PLOTTED

171.4

Union

29

no. line Pringle.

White

9.74 41.7

8.2 43.3

7.0 44.4

C

6.2 45.7

5.3 46.1

3.8 47.4

Eline

2.8 48.4

25' no.

Eline

3.4 48.0

4.8 46.6

5.8 45.4

C

6.9 44.5

7.8 43.6

8.4 43.0

White

10.2 61.2

PLOTTED

17140

50' no.

White

11.2 160.2

9.4 142.0

8.3 133.1

C

7.5 123.9

6.3 115.1

5.0 106.6

E line

3.7 67.7

75' no.

E line

4.3 67.1

5.7 65.7

6.7 64.7

C

8.0 63.4

9.0 62.4

10.2 61.3

White

11.8 59.6

PLOTTED

17140

Union 30

100' no.

White

12.1 159.3

10.5 140.9

9.1 122.3

C

8.0 113.4

6.7 104.7

5.6 96.8

E line

4.5 64.9

125' no.

E line

4.6 66.8

6.1 65.3

7.3 64.1

C

8.6 62.8

9.7 61.7

11.0 60.4

White

12.5 58.9

17140

150' no.

White	12.3	159.1
	11.0	104
	9.9	41.5
C	8.6	42.8
	7.3	44.1
	6.0	45.4
Elvie	4.6	46.8
	5.8	45.6
	6.9	44.5
	8.3	43.1
C	9.5	41.9
	10.9	40.5
	12.0	59.4
White	13.3	58.1

175' no.

PLOTTED

Union

17140

31

200' no.

Wcb.	13.3	158.1
	11.9	59.5
C	10.5	40.9
	9.6	41.8
	8.6	42.8
Elvie	6.8	47.6

225' no.

Elvie	9.3	42.1
	10.5	40.9
	11.6	59.8
C	12.7	58.7

0.38 158.78 13.00 158.40

200' no.

White	2.1	54.7
-------	-----	------

225' no.

W 1/4	1.1	57.7
	2.2	56.6
White	3.6	55.2

158,78

250' no.

W line

7.9 150.9

6.8 152.0

5.8 153.0

C

5.0 153.8

4.4 154.4

3.7 155.1

E line

2.8 156.0

275' no.

E line

9.5 49.3

11.3 47.5

12.7 46.1

J.P.

0.15 146.02 12.91 145.87

C

0.4 45.6

0.7 45.3

1.6 44.4

W line

2.9 43.1

PLOTTED

Union

32

146,02

300' no. (No. line Roark)

W line

11.69 134.33

10.7 35.3

9.8 34.7

C

8.1 37.9

7.0 39.0

7.0 39.0

E line

6.4 39.6

J.P.

0.72 133.80 12.94 133.08

J.P.

0.80 122.33 12.27 121.53

~~0.4~~

North line Roark.

E line

0.9 121.4

1.0 21.3

2.1 20.7

C

3.6 18.7

4.3 18.0

5.5 16.8

W line

7.94 114.39

J.P.	2.67	112.07	12.93	109.40
	K.I.			
W line	25' no.			
	8.5	103.6		
	5.3	106.8		
	2.8	109.3		
C	1.2	110.9		
	0.6	111.5		
	1.7	110.4		
E line	2.8	109.3		
	40' no.			
E line 1' west cb.	15.5	96.6		
	9.8	102.3		
	7.1	105.0		
	7.2	104.9		
C	8.2	103.9		
	9.2	102.9		
	10.6	101.5		
W line	12.0	100.1		

PLOTTED

11207 Union 33

50' no.	13.2	98.7
	12.3	99.8
	11.6	100.5
	10.6	101.5
	10.4	101.7
	11.8	100.3
	15.6	96.5
69' no.	12.2	99.9
	13.1	99.0
	13.7	98.4
	17.0	95.1
	17.0	95.1
	15.3	96.8
	15.9	96.2

NOT PLOTTED

11207

75' no.

W line

18.2 939

18.0 941

16.6 955

C

14.3 978

13.6 985

12.8 993

E line

12.1 1000

100' no.

E line

8.6 1035

9.5 936

10.1 1020

C

11.6 1005

12.4 997

12.2 999

W line

10.5 1016

PLOTTED

112.07

Union

34

125' no.

W line

6.0 104.1

6.5 105.6

6.7 105.4

C

6.3 105.8

5.8 106.3

5.3 107.8

E line

5.2 106.9

T.P.

12.94 ^{H.F.} 124.79 0.22 ^{Sub.} 111.85

150' no.

E line

12.2 112.6

12.8 112.0

13.1 111.7

C

12.8 112.0

12.5 112.3

12.0 112.8

W line

10.5 114.3

124,79

175' no.

White

2.9 1319

3.1 1317

2.6 1323

c

2.9 1319

3.3 1215

3.6 1212

E. line

3.9 1209

J.P.

H.I.
1295 137.47 0.27 124.52

E. line

200' no.

9.8 1377

9.9 276

10.0 275

c

10.2 273

10.3 272

10.2 275

White

10.4 271

PLOTTED

Sept. 29/13

13747

Childs
Allen 35
Bunker

225' no.

White

3.6 133.9

3.7 33.8

4.0 33.5

c

4.4 33.1

4.8 32.7

5.1 32.4

E. line

4.8 32.7

J.P.

H.I.
12.70 149.95 0.22 137.25

250' no.

E. line

9.1 40.9

9.3 40.7

9.2 40.8

c

9.5 40.5

9.6 40.4

9.4 40.5

White

9.3 40.7

149.95

275' no.

White

0.9 149.1

0.9 49.1

1.2 48.8

C

1.7 48.3

2.0 48.0

2.1 47.9

E line

2.1 47.9

J.P.

H.I.
12.72 162.22 0.45 149.50

300' no (20-line blank)

E line

6.4 155.8

5.4 154.8

5.1 157.1

C

4.9 157.3

4.7 157.5

4.8 157.4

White

4.74 157.48

PLOTTED

162.22

Union 36

So. Cb.

White

1.9 140.3

1.7 140.5

1.6 140.6

C

1.3 140.9

1.5 140.7

1.9 140.3

E line

2.5 139.7

J.P.

H.I.
12.64 174.27 0.59 161.63

So. 1/4

E line

12.1 149.7

11.5 149.8

11.3 148.0

C

11.5 149.8

11.7 149.6

12.0 149.3

White

12.1 149.2

17427

Center

W line

9.7 1444

9.9 444

9.8 445

C

9.6 447

9.6 447

9.7 446

E line

10.1 442

No. 14

E line

7.8 465

7.6 467

7.1 472

C

7.2 471

7.2 471

7.1 472

W line

6.8 475

PLOTTED

17427

Union 37

No. 06.

W line

3.9 170.4

4.0 70.3

4.1 70.2

C

4.6 49.7

4.7 49.6

5.1 49.2

E line

5.4 48.9

North line black.

E line

2.18 172.09

1.7 72.5

1.6 72.7

C

1.2 73.1

0.9 73.4

0.8 73.5

W line

0.6 73.7

PLOTTED

199.51

Union 38

J.P.

^{H.I.}
 12.75 186.87 0.15 174.12

75' no.

25' no.

White

8.7 190.8

White

4.4 187.5

7.7 91.8

4.1 82.8

7.3 92.7

4.7 82.7

C

6.9 92.6

C

5.1 81.8

6.3 93.7

5.6 81.3

6.2 93.3

6.1 80.8

E line

6.1 93.4

E line

6.2 80.7

100' no.

J.P.

^{H.I.}
 12.63 199.51 -0.01 186.88

E line

2.6 96.9

50' no.

E line

11.2 88.3

3.1 96.4

11.0 88.5

C

3.5 96.0

10.9 88.6

3.8 95.7

C

11.5 88.0

4.5 95.0

11.9 87.6

White

4.9 94.6

White

12.3 87.2

6.5 93.0

12.3 87.2

PLOTTED

19957

125' no.

W line

4.5 1950

3.3 943

2.9 944

C

1.7 978

0.9 986

0.6 989

E line

-0.2 199.7

J.P.

12.20 ^{H.I.} 211.31 0.40 199.11

150' no.

E line

9.9 2014

10.3 2010

10.7 2006

C

11.3 2000

12.1 1992

12.8 985

W line

13.8 975

PLOTTED

211.3

Union 39

175' no.

W line

11.8 199.5

10.7 200.6

10.1 201.3

C

9.5 201.8

8.9 202.4

8.3 203.0

E line

7.4 203.9

200' no.

E line

5.9 205.4

6.5 204.8

7.3 204.0

C

8.1 203.2

8.9 202.4

9.7 201.6

W line

10.7 200.6

3500

211.3

225' no.

W line

10.2 201.1

9.0 202.3

8.2 203.1

C

7.4 203.9

6.6 204.7

5.4 205.9

E line

4.1 207.3

250' no.

E line

3.6 207.7

4.9 206.4

6.1 205.9

C

6.8 204.5

7.5 203.8

8.3 203.0

W line

9.9 201.4

PLOTTED

211.31

Union 40

275' no.

W line

9.0 202.3

7.7 203.6

6.8 204.5

C

5.9 205.4

5.3 206.0

4.3 207.0

E line

2.7 208.6

B.N. 209.92

J.P. man. S.E. cor Henry

1.49 209.82

Union

300' no. (Ro. line Henry)

E line

2.6 208.7

2.9 208.4

3.6 207.7

C

4.5 206.8

5.2 206.1

6.0 205.3

W line

7.3 204.0

PLOTTED

21131

No. 16.

White	6.3	2050
	5.4	2059
	4.5	2048
C	3.7	2076
	2.9	2084
	2.2	2091
E line	1.3	2100
	0.7	2106
	1.6	2097
	2.2	2091
C	3.1	2082
	4.0	2073
	4.9	2064
White	6.1	2052

PLOTTED

Union 41

21131

Center

White	6.4	2049
	5.0	2063
	3.7	2076
C	2.6	2087
	1.8	2096
	1.1	2102
E line	0.2	2111
	0.5	2118
	0.5	2108
	1.3	2100
C	2.1	2092
	3.9	2074
	5.2	2061
White	6.7	2044

21131

	No. cb.		
White		7.1	2042
		5.4	2059
		4.0	2073
C		2.2	2091
		0.9	2104
Ecb.		0.0	2113
E line	No. line Henry.		
Ecb.		-0.6	2119
		0.5	2108
C		2.5	2088
		4.3	2070
		5.8	2055
White		7.6	2037
B.M. mm at E. cor Henry.	947 H.I. 219.39		20992
	No. cb		
E line	PLOTTED	6.9	2125
	No. line Henry		
E line		6.3	2131

Union 42

219,39

	No. line Henry.		
E line		0.92	218.47
E line		1.6	17.8
		2.4	17.0
C		3.2	14.3
		4.4	15.0
		5.3	14.1
White		6.4	13.0
	No. cb.		
		8.2	11.2
		6.9	12.5
		6.2	13.2
C		5.2	14.2
		4.4	15.0
		3.5	15.9
E line		2.4	17.0

21939

No 1/4

E line

4.7 214.7

6.2 133

7.3 121

C

7.4 120

8.2 112

9.3 10.1

W line

10.0 209.4

Center

W line

13.0 204.4

12.2 207.2

12.5 206.9

C

11.0 208.4

9.0 210.4

8.1 211.3

E line

6.82 212.57

PLOTTED

21939

Union

43

No. 1/4

E line

9.4 210.0

11.6 207.8

E 1/4

13.2 204.2

J.P.

0.33 ^{H.I.} 206.80 12.92 206.47

C

2.3 204.5

5.0 201.8

5.3 201.5

W line

5.0 201.8

No. C6.

W line

9.3 197.5

10.0 94.8

8.2 98.6

C

6.2 200.4

4.8 202.0

3.5 203.3

E line

1.6 205.2

506.80

North line Kearney.

E line		7.7	199.1
		10.2	96.6
E 1/4.		13.0	938.
J.P.	H.I. 0.27	194.15	1292 193.88
C		2.2	920
		3.2	910
		3.9	903
Whire		3.4	908
	75' no.		
E.cb.		13.0	812
E line		11.1	831
J.P.	H.I. 0.21	181.28	13.08 181.07
E 1/4.		1.8	795
C		3.0	783
		4.4	749
		6.0	753.
Whire		6.6	747

PLOTTED

Union 44

J.P.	H.I. 1.10	169.74	1264	168.64
	50' no.			
Whire			11.1	1586
			9.8	589
			7.8	619
C			6.4	633
			5.3	644
			3.5	663
E line			1.9	678
J.P.	H.I. 0.34	157.50	12.58	157.16
	75' no.			
E line			2.7	1548
			3.6	53.9
			4.5	53.0
C			6.2	51.3
			7.7	49.8
			8.2	49.3
Whire			9.4	48.1

157.50

97' no.

White	14.0	435
	14.0	435
	13.7	438
C	14.1	434
	15.0	425
	14.2	433
E line	13.0	445

100' no.

E line	12.1	454
	13.5	440
	14.3	432
C	14.6	429
	13.9	436
	14.3	432
White	15.0	425

PLOTTED

157.50

Union

45

108' no.

White	18.1	1394
	17.2	403
	16.0	415
C	14.3	432
	13.0	445
	12.1	454
E line	10.6	469

125' no.

E line	5.8	517
	5.7	518
	6.4	511
C	7.6	499
	7.6	499
	8.6	489
White	7.3	502

J.P. ^{H.I.} 12.77 170.12 0.15 157.35
150' no.

White

4.9 1653

4.1 460

3.9 460

C

4.5 456

5.4 447

6.1 440

E line

5.8 443

J.P.

^{H.I.} 12.89 182.81 0.20 169.92

175' no.

E line

3.6 792

2.7 801

2.2 806

C

0.7 821

0.2 826

0.4 824

White

1.3 815

PLOTTED

J.P.

^{H.I.} 12.91 195.42 0.30 182.51

200' no.

w.cb.

0.8 194.6

1.1 94.3

C

1.8 93.6

2.1 93.3

2.8 92.6

E line

3.4 92.0

J.P.

^{H.I.} 12.62 207.86 0.18 195.24

200' no.

White

12.1 195.8

225' no.

E line

1.9 204.0

1.6 206.3

0.8 207.1

C

1.1 204.8

1.1 204.8

0.9 207.0

White

0.7 207.2

J.P. ^{H.I.} 12.92 220.27 0.51 207.35
 250' no.

White 1.9 218.4
 1.5 188
 W 1/4 0.7 196

J.P. ^{H.I.} 12.58 232.47 0.38 219.89

C 11.1 314
 11.0 315
 10.5 220
 E line 10.9 216

275' no.

E line 0.1 324
 0.6 319
 0.8 317
 C 1.2 313
 1.9 306
 2.3 302
 White 2.9 299

PLOTTED

J.P. ^{H.I.} 8.97 240.32 0.97 231.50
 300' no. (No. line miller)

White 7.3 233.0
 7.0 233.3
 6.6 33.7
 C 6.2 34.1
 5.8 34.1
 5.6 34.7
 E line 5.2 35.1

North line miller

E line 2.6 37.7
 3.0 37.3
 3.2 37.1
 C 3.6 36.7
 4.0 36.3
 4.4 35.9
 E line 4.9 35.4

PLOTTED

24033

25' no.

White

3.9 386.4

3.7 384

3.2 371

C

2.9 374

2.5 378

2.0 383

E line

1.6 387

50' no.

E line

1.2 391

1.7 386

2.1 383

C

2.4 379

2.8 375

3.3 370

White

4.0 363

PLOTTED

240.33

Union 48

75' no.

White

4.6 385.7

4.0 383

3.4 369

C

2.8 375

2.4 379

2.1 383

E line

1.6 387

100' no.

E line

2.9 374

3.3 370

3.7 366

C

4.3 360

4.7 356

5.2 351

White

5.8 345

240,32

Union 49

125' no.

White	6.8	233.5	C
	6.4	339	
	5.9	344	
C	5.5	348	Elise
	5.0	353	J.P.
	4.5	358	w 1/4
Elise	4.0	363	

150' no.

Elise	6.3	340	
	7.0	333	
	7.5	328	
C	8.0	323	
	8.6	317	
	9.4	309	
White	11.9	284	

PLOTTED

240,32

175' no.

	13.3	227.3	
	12.6	27.7	
	11.6	28.7	
	10.4	29.9	
	0.00	^{H.I.} 227.51	12.81 227.51
	1	1.4	24.1
		2.1	25.4
		3.0	24.5

200' no.

White	8.4	19.1	
	7.5	20.0	
	6.8	20.7	
	6.1	21.4	
	5.7	21.8	
	5.1	22.4	
Elise	3.8	23.7	

Missou

50

227.57

225' no.

E line

10.6 216.9

10.9 14.4

10.9 14.4

C

11.7 15.8

w 1/4

12.5 15.0

J.P.

0.77 ^{H.I.} 215.33 12.95 214.56

cb.

1.2 14.1

W line

2.1 13.2

250' no.

W line

9.2 206.1

8.9 206.4

7.9 207.4

C

7.1 208.2

6.5 208.8

6.3 209.0

E line

5.5 209.8

PLOTTED

J.P.

E line

C

W line

J.P.

W line

C

E line

^{H.I.} 0.17 302.60 12.90 202.43

275' no.

3.1 199.5

3.9 98.7

5.3 97.3

6.3 96.3

5.6 97.0

4.8 97.8

4.7 97.9

^{H.I.} 4.25 194.55 12.30 190.30

300' no. (Robbie Bandini)

11.7 82.9

12.8 81.8

13.0 81.4

15.2 79.4

12.7 81.9

10.9 83.7

^{H.I.} 5.9 88.7

20588

194.55

North line Bardin.

50' no.

check on Annan's B.M.	0.97	193.58		C	2.1	203.8
E line	2.32	192.23			3.9	202.0
	2.2	934			5.8	200.1
	3.3	913		White	9.1	196.8
C	5.2	894				
	7.6	870		white	6.3	199.6
	9.6	850		w.cb.	1.9	204.0
White	11.9	827				
	25' no.			White	3.4	202.5
W line	3.5	911		J.P.	9.72	214.97
w.cb.	0.6	940				
J.P.	1157	^{H.I.} 205.88	0.24	194.31	50' no.	
W 1/4	10.3	956		E line	4.3	210.7
C	8.6	973		E 1/4	6.6	208.4
	6.6	993			8.3	206.7
	4.1	2018				
E line	1.0	204.9				

PLOTTED

214,97

75' no.

w 1/4	9.3	205.7
C	6.8	208.2
	5.5	209.5
	3.8	211.2
E line	0.4	214.6

100' no.

E line	0.3	214.7
	3.3	211.7
	5.4	209.6
C	7.2	207.8
	8.9	206.1
w cb.	10.6	204.4

PLOTTED

21497

Union 52

125' no.

White	13.7	201.3
	11.0	204.0
	9.1	205.9
C	6.9	208.1
	5.4	209.6
	3.0	211.5
	0.4	214.6

150' no.

E line	0.6	214.4
	4.8	210.2
	6.5	208.5
	8.5	206.5
	10.4	204.6
	12.1	202.9
White	14.6	200.4

21497

Union 53

175' no.

W.C.B.

13.8 2013

E line

11.8 2033

C

10.1 2049

E 1/4

8.9 2061

E line

6.5 2085

E.C.B.

2.9 2121

E line

200' no.

E line

6.1 2089

J.P.

9.0 2040

white

11.0 2040

C

12.6 2024

white

225' no.

C

13.8 2013

W 1/4

12.3 2027

10.5 2045

W 1/4

7.8 2073

E line

PLOTTED

white

214,97

250' no.

8.4 2046

11.2 2038

13.1 2019

275' no.

14.0 2010

10.8 2047

0.39 ^{K.I.} 202.50 12.86 202.11

175' no.

3.7 1988

200' no.

5.6 969

3.2 993

1.7 2008

225' no.

3.5 990

5.0 975

7.5 950

207.50

100' no.

E line 8.0 194.5

E.cb. 11.3 91.2

125' no.

E.cb. 12.0 90.5

E line 9.2 93.3

150' no.

E line 10.4 92.1

E.cb. 13.3 89.2

175' no.

E.cb. 13.8 88.7

E line 11.1 91.4

200' no. (So. line witherby)

E line 11.33 191.17

E.cb. 14.2 88.3

J.P. 0.15 ^{H.I.} 190.03 1262 189.88

PLOTTED

Union

55

190.03

275' no. Bardin.

white 4.3 185.7

300' no. (So. line cuts.)

white 7.7 87.3

w.cb. 3.7 86.3

north line cuts.

white 11.83 178.20

8.7 81.3

5.9 84.1

3.2 86.8

25' no.

2.8 87.2

4.9 85.1

6.8 83.2

9.8 80.2

19003

white

50' no.

8.9 181.1

6.5 83.5

4.4 85.4

C

2.0 88.8

75' no.

C

2.7 87.3

4.6 85.4

6.4 83.6

white

8.9 81.1

100' no.

white

9.1 80.9

6.4 83.6

4.2 85.8

C

2.5 87.5

E 1/4

0.4 89.6

PLOTTED

19003

Union 56

125' no.

E 1/4

1.5 188.5

C

4.0 84.0

6.0 84.0

7.9 83.1

white

10.3 79.7

150' no.

white

11.0 79.0

8.4 81.6

6.3 83.7

C

4.8 85.3

E 1/4

2.6 87.4

175' no.

E 1/4

2.7 87.3

C

5.0 85.0

7.1 83.9

9.2 80.8

white

11.8 78.3

190.03

200' no. (20-line of witherby)

Wline	12.04	177.99
	9.5	80.5
	7.3	82.7
c	5.4	84.6
E 1/4	3.6	86.4

PLOTTED

Union St

57

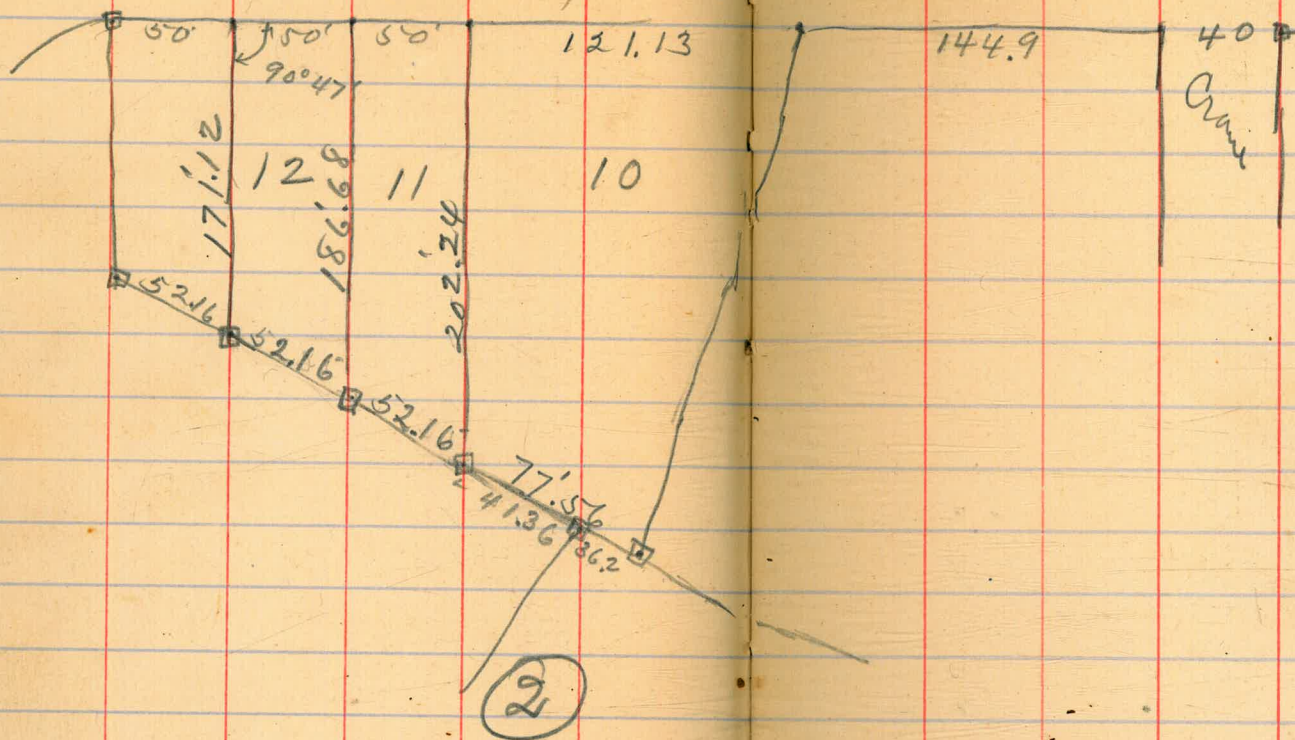
BITO...

Survey of lots 10, 11 & 12
Sutter street

Blk. 2. Marine View

Sept. 30/13

Childs
Ltr 58
Bunker



Xsect 39th cuts from

^{H.S.}
77.49

So. cb. J. Street

Elvise 10.6 44.9

10.2 47.3

10.0 47.5

C 9.0 48.5

8.7 48.8

8.3 49.2

White 8.2 49.3

South line J. Street

White 7.5 70.0

8.2 49.3

8.5 49.0

C 8.9 48.6

9.3 48.2

9.8 47.7

Elvise 10.1 47.4

Book 902 page 80

77.49 Nov. 10/13

25' 20.

Elvise 7.2 70.3

6.9 70.6

6.8 70.7

C 6.6 70.9

6.5 71.0

6.4 71.1

White 5.6 71.9

50' 20.

White 3.5 73.0

3.7 73.8

3.7 73.8

C 3.6 73.9

3.7 73.8

4.2 73.5

Elvise 5.0 72.5

Builds
59
Alter
Bunker

PLOTTED

77,49

75' 20.

Elvis

0.8 74.7

0.6 76.9

0.2 77.3

C

0.2 77.3

0.5 77.0

0.6 76.9

White

0.7 76.8

J.P.

11.84 ^{H.I.} 89.22

0.11 77.38

100' 20.

White

9.1 80.1

9.2 80.0

9.0 80.2

C

8.9 80.3

8.8 80.4

9.3 79.9

Elvis

8.4 80.8

PLOTTED

394

60

89.22

125' 20.

Elvis

6.6 82.6

6.3 82.9

6.1 83.1

C

6.0 83.7

6.1 83.1

6.2 83.0

White

6.0 83.7

150' 20.

White

3.8 85.4

3.8 85.4

3.8 85.4

C

3.9 85.3

4.4 84.8

4.5 84.7

Elvis

4.7 84.5

89.22

175' 20.

Elmo

3.1 86.1

2.7 86.5

2.2 87.0

C

2.0 87.3

1.7 87.6

1.5 87.7

White

1.5 87.7

S.P.

824 ^{HI.} 97.17 0.29 88.93

200' 20.

White

7.0 90.3

7.5 89.7

8.0 89.2

C

8.3 88.9

8.6 88.6

9.1 88.1

Elmo

9.4 87.8

PLOTTED

97.17

39.6

61

225' 20.

Elmo

8.0 89.3

7.7 89.5

7.4 89.8

C

7.0 90.3

6.5 90.7

6.0 91.3

White

5.5 91.7

250' 20.

White

4.1 93.1

4.8 92.4

5.5 91.7

C

5.8 91.4

6.2 91.0

6.6 90.6

Elmo

6.8 90.4

9717

265' 20. (North line Florence)

E line

6.8 904

6.3 909

5.7 915

C

5.3 919

4.7 925

4.2 930

W line

3.9 933

North sb.

W line

4.0 932

4.2 930

4.8 924

C

5.2 920

5.7 915

6.2 910

E line

6.6 906

9717

No 14

E line

6.5 907

6.0 912

5.6 916

C

5.1 921

4.6 926

4.1 931

W line

3.8 934

Center

W line

3.7 935

4.1 931

4.6 926

C

5.1 921

5.5 917

6.0 912

E line

6.4 908

39th

62

PLOTTED

9717

So. 1/4

E line	6.6	906
	5.9	913
	5.4	918
C	5.0	922
	4.5	907
	4.0	932
W line	3.6	936
	3.4	938
	3.8	934
	4.3	929
C	4.9	923
	5.3	919
	5.8	914
E line	6.5	907

PLOTTED

9717

39th

63

South line Florence

E line	6.4	908
	6.1	911
	5.5	917
C	5.0	922
	4.5	927
	3.6	936
W line	3.2	940
	2.4	948
	3.5	937
	4.8	924
C	5.4	918
	5.8	914
	6.4	908
E line	6.0	912

9717

50' 20.

Eline

5.8 914

6.3 90.9

5.9 91.3

c

5.5 91.7

5.1 92.1

3.6 93.6

White

3.1 94.1

75' 20.

White

3.6 93.6

3.9 93.3

5.2 92.0

c

5.7 91.5

6.0 91.2

6.4 90.8

Eline

5.6 91.6

PLOTTED

9717

100' 20.

Eline

5.8 91.4

6.5 90.7

6.2 91.0

c

5.8 91.4

5.6 91.6

4.3 92.9

White

4.2 93.0

125' 20.

White

5.2 92.0

5.1 92.1

6.2 91.0

c

6.1 91.1

6.5 90.7

6.8 90.4

Eline

6.10 91.2

39th

64

9717

150' 20.

Eline

6.5 90.7

7.2 90.0

6.7 90.5

C

6.3 90.9

6.2 91.0

6.4 90.8

White

6.4 90.8

175' 20.

White

7.1 90.1

6.8 90.4

6.4 90.8

C

6.5 90.7

6.9 90.3

7.6 89.6

Eline

6.8 90.4

PLOTTED

39th

65

9717

200' 20.

Eline

7.0 90.3

7.7 89.5

7.2 90.0

C

6.9 90.3

7.1 90.1

8.2 89.0

White

7.9 89.3

225' 20.

White

7.2 90.0

7.5 89.7

7.1 90.1

C

7.3 89.9

7.5 89.7

8.1 89.1

Eline

7.2 90.0

97.17

250' 20.

Eline	7.4	898
	8.3	889
	7.7	895
c	7.5	897
	6.8	904
	6.2	910
White	5.8	914
258.1 20. (North line Logan)		
White	6.22	90.95
	6.5	90.7
	7.0	90.2
c	7.6	896
	7.7	895
	8.3	889
Eline	8.5	887

J.P.

195

H.J.
9290

90.95

no. cl.

White

c

Eline

no 1/4

Eline
Prop + 9'

c

White

2.4	90.5
2.8	90.1
3.2	89.7
3.5	89.4
3.7	89.2
4.2	88.7
4.3	88.5

3.7	89.2
3.7	89.2
4.5	88.4
3.8	89.1
3.6	89.3
3.1	89.8
2.6	90.3
2.2	90.7

PLOTTED

92.90

Center

White	1.6	91.3
	2.1	90.8
	2.8	90.1
C	3.8	89.1
	4.0	88.9
	4.5	88.4
cb+1'	3.8	89.1
E line	3.8	89.1

SO 1/4

E line	4.0	88.9
prop+9'	3.9	89.0
	4.8	88.1
	4.1	88.8
C	3.9	89.0
C+8	3.2	89.7
	2.5	90.4
	1.7	91.3
White	1.3	91.6

PLOTTED

39th

Nov. 11/13

} Childs
} Allen 67
} Bunker

92.90

No. 66.

White	1.1	91.8
	1.6	91.3
	2.3	90.6
1/4+3'	3.8	89.1
	4.0	88.9
	4.3	88.6
	4.8	88.1
cb+1'	4.0	88.9
E line	4.0	88.9

South line Logan

E line	4.1	88.8
prop+9'	4.1	88.8
	5.0	87.9
	4.4	88.5
C	4.2	88.7
C+6	4.1	88.8
	2.0	90.9
	1.6	91.3
White	1.3	91.6

97.90

75' 20.

White	2.5	90.4
	2.3	90.6
	2.6	90.3
1/4 + 4'	4.3	88.6
C	4.5	88.4
	4.7	88.7
	5.3	87.6
CB + 1'	4.4	88.5
Elms	4.4	88.5

50' 20.

Elms	4.7	88.7
Prop + 9'	4.7	88.7
	5.8	87.1
	5.0	87.9
	4.8	88.1
C	4.8	88.1
C + 7'	3.2	89.7
	2.8	90.1
White	3.1	89.8

PLOTTED

39th 68

97.90

75' 20.

White	2.7	90.7
	2.5	90.4
	2.6	90.3
1/4 + 4'	5.3	87.6
C	5.1	87.8
	5.3	87.6
	6.1	86.8
	5.2	87.7
CB + 1'	5.1	87.8
Elms		

100' 20.

Elms	5.4	87.5
Prop + 9'	5.6	87.3
	6.5	86.4
	5.7	87.7
	5.5	87.4
C	5.4	87.5
C + 6'	3.0	89.9
	2.7	90.2
White	2.5	90.4

92.90

135' 20.

White

2.0 90.9

2.2 90.7

1/4 + 4'
C

3.4 89.5

5.9 87.0

5.9 87.0

6.1 84.8

cb + 1'
E line

6.8 84.1

6.0 84.9

5.8 87.1

150' 20.

E line
prop + 9'

6.3 86.6

6.3 86.6

7.2 85.7

6.5 84.4

C
C + 6'

6.2 84.7

6.0 84.9

3.3 89.4

2.3 90.6

White

2.0 90.9

PLOTTED

39th 69

92.90

175' 20.

White

2.7 90.2

3.0 89.9

1/4 + 4'
C

4.7 89.2

6.7 86.7

6.8 86.1

7.0 85.9

cb + 1'
E line

7.6 85.3

6.8 86.1

6.8 86.1

200' 20.

E line
prop + 9'

7.3 85.6

7.3 85.6

8.2 84.7

7.4 85.5

C
C + 7'

7.3 85.6

7.3 85.6

5.6 87.3

4.5 88.4

White

4.0 88.4

92.90

225' 20.

white	6.1	84.8
	6.1	84.8
cb+7'	6.2	84.7
	7.9	85.0
C	7.8	85.1
	7.9	85.0
cb+11'	8.6	84.3
E line	7.9	85.0
	7.8	85.1

250' 20.

E line prop+9'	8.3	84.6
	8.3	84.6
	9.0	83.9
	8.3	84.6
C	8.2	84.7
	8.1	84.8
	7.5	85.4
white	7.6	85.3

PLOTTED

92.90 39th 10

275' 20.

white	8.4	84.5
	8.2	84.7
	8.6	84.3
C	8.6	84.3
	8.8	84.1
1/4+9'	9.4	83.1
	8.7	84.3
E line	8.6	84.3

300' 20 (north line natural)

E line	8.9	84.0
	8.97	83.93
cb+1'	9.6	83.3
	9.1	83.8
C	9.0	83.9
	9.6	83.3
1/4+9'	9.8	83.1
	9.0	83.9
white	8.8	84.1

92.90

South line National

White	9.9	830
cb+1'	10.1	828
	10.8	821
	10.7	829
C	10.4	825
	10.6	823
1/4+9'	11.1	818
	10.10	82.80
E line	9.9	830
	25'20.	
E line	10.9	820
	11.2	817
	12.1	808
gutter	11.5	814
C	11.4	815
	11.1	818
	10.6	823
White	10.6	823

PLOTTED

92,90

39th

71

50'20.

White	11.7	813
	11.5	814
	11.4	815
1/4+5 1/4+7	11.4	815
	12.5	804
	12.6	803
gutter	13.1	798
	12.4	805
E line	12.1	808
	226	
	H.I. 82.09	
	13.07	79.83
	75'40.	
E line	2.5	794
gutter	2.7	794
	3.6	785
	3.0	791
	2.9	793
C 7.5' 1/4	2.7	794
	1.3	809
	1.4	807
	1.5	804
White	1.6	805

8209

100' 20.

White	2.6	79.5
	3.1	79.0
	3.4	78.7
$\frac{1}{4} + 5'$	3.6	78.6
$\frac{1}{2} + 7'$	4.3	77.8
	4.4	77.7
	4.5	77.6
gutter	5.2	76.9
	4.2	77.9
Elm	4.0	78.1

125' 20.

Elm	5.5	76.4
	5.8	76.3
gutter	6.7	75.4
	6.1	76.0
C	6.0	76.1
	5.1	77.0
	4.2	77.9
White	3.6	78.5

PLOTTED

39th

72

8209

150' 20.

White	4.1	78.0
	5.3	76.8
	6.0	76.1
$\frac{1}{4} + 5'$	6.4	75.7
$\frac{1}{2} + 6'$	7.4	74.7
	7.5	74.6
	7.7	74.4
gutter	8.4	73.7
	7.4	74.7
Elm	7.2	74.9

175' 20.

Elm	8.9	73.7
	9.1	73.0
gutter	9.9	72.7
	9.3	72.8
C	9.0	73.1
$\frac{1}{4} + 3'$	8.8	73.3
$\frac{1}{2} + 5'$	7.7	74.4
$\frac{1}{4}$	7.2	74.9
	6.4	75.7
White	5.5	76.6

PLOTTED

8209

500' 20.

White	6.2	759
	7.7	744
1/4 + 3/8' C	8.6	735
	9.0	731
	10.6	715
	10.7	714
gutter	11.0	711
	11.6	705
	10.9	712
E line	10.7	714

225' 20.

E line	12.4	497
gutter	12.5	496
	13.1	490
	12.6	495
C C+4'	12.4	497
	11.2	709
	10.3	718
White	9.2	729
	8.2	739

PLOTTED

39th 73

8209

250' 20.

White	9.7	724
	10.5	714
	11.5	706
1/4 + 4'	11.6	705
J.P. 1/4 + 7' C	0.08	69.64
	12.53	69.56
	1.9	47.7
gutter	2.3	47.3
	2.5	47.1
	3.0	44.6

24 47.2

2.2 47.4

275' 20.

E line	4.0	456
gutter	4.0	456
	4.6	450
	4.0	456
C C+4'	3.7	459
	2.0	476
White	1.1	485
	0.5	491
White	0.0	496

4944

300' SO. (North line W line)

Whio	to	1.3	48.3
		2.1	47.5
		2.5	47.1
1/4+6'		3.0	46.4
		5.2	44.4
		5.5	44.1
gutter		6.0	43.6
		6.5	44.1
Eline		5.6	44.0
	no. cb.		
Eline		6.6	43.0
		6.6	43.0
gutter		7.1	42.5
		6.5	43.1
		6.1	43.5
C C+3'		4.2	45.4
		3.2	44.4
		2.7	44.9
Whio		2.1	47.5

4944

39th 74

no 1/4

Whio		3.3	46.3
		4.2	45.4
		5.0	44.4
1/4+7'		5.7	43.9
		7.1	42.5
		7.3	42.3
gutter		8.0	41.6
		7.4	42.2
Eline		7.5	42.1
	Center		
Eline		8.4	41.2
		8.1	41.5
		8.8	40.8
		8.0	41.4
		7.9	41.7
C C+2'		6.6	43.0
		6.1	43.5
		5.5	44.1
Whio		4.9	44.7

PLOTTED

4.9.64

20.14

White

5.8 43.8

6.7 42.9

7.2 42.4

C
C+4

7.5 42.1

8.7 40.9

9.1 40.5

9.4 40.2

E line

10.2 59.4

20.06.

E line

10.8 58.8

10.2 59.4

1/4+4'

10.0 59.6

8.4 41.3

8.2 41.4

8.0 41.6

7.4 42.2

White

6.9 42.7

6.9.64

39th

75

southern W

White

7.8 41.8

8.4 41.2

8.6 41.0

C

8.9 40.7

9.6 40.0

1/4+1'

10.4 59.2

11.3 58.3

E line

11.5 58.1

25.20.

E line

12.7 57.9

prop+6'

12.3 57.3

11.2 58.4

11.3 58.3

C

11.1 58.5

11.0 58.4

10.8 58.8

White

10.7 58.9

PLOTTED

39th

Nov. 12/13

Chulds
Otter
Bunker

6361

J.P.	6.67	H.I. 63.61	12.70	56.94		100' 20.		
		50' 20.			White		7.1	57.5
White			7.2	57.4			5.9	57.7
			7.0	57.6			5.5	58.1
			6.8	57.8	C		5.0	58.5
C			6.7	57.9			5.2	58.4
			6.3	57.3			5.2	58.4
			6.1	57.5	Elvis		5.3	58.3
Elvis			6.1	57.5		125' 20.		
		75' 20.			Elvis		5.1	58.5
Elvis			5.6	58.0			4.7	58.9
			5.8	57.8			4.8	58.8
			6.2	57.4	C		5.0	58.5
C			6.7	57.9			5.0	58.6
			7.0	57.6			5.3	58.3
			7.8	55.8	White		5.8	57.8
White			8.8	54.8				

PLOTTED

6341

150' 20'

White

5.1 585

4.7 589

4.6 590

C

4.5 591

4.2 594

4.3 593

E line

4.8 588

175' 20'

E line

4.9 587

4.5 591

4.3 593

C

4.1 595

4.1 595

4.2 594

White

4.6 590

PLOTTED

6341

39th

7

200' 20'

White

5.5 581

5.1 585

4.7 589

C

4.8 588

4.5 591

4.8 588

E line

5.1 585

225' 20'

E line

5.3 583

5.1 585

5.0 586

C

5.2 584

5.2 584

5.6 580

White

5.8 578

6341

250' 20.

White

7.3 563

6.6 570

6.4 572

C

6.0 574

5.7 579

5.7 579

E line

5.8 578

275' 20.

E line

6.9 567

7.0 566

7.0 566

C

7.5 561

8.3 553

9.2 544

White

10.5 531

PLOTTED

63,61

39th

78

300' 20. (North line of)

White

14.7 48.9

12.5 51.1

11.1 52.5

C

9.9 53.7

8.5 55.1

8.1 55.5

E line

9.0 54.6

No. 6.

E line

11.1 52.5

9.6 54.0

10.6 53.0

C

12.4 51.2

No. 1/4

E 1/4

13.4 50.2

12.8 50.8

E line

13.8 50.8

51.36 ^{39th} 79

J.P.	H.I.	075	51.36	13.00	50.61
white	no. cb- y			6.3	457
				4.1	473
w 1/4				1.7	497
	no. 1/4				
c				3.0	484
				5.1	463
				7.5	439
white				9.8	416
	center				
white				13.5	379
				10.9	405
				8.2	433
c				6.0	454
				3.4	480
				2.9	485
Elvis				4.1	473

PLOTTED

	AO. 1/4				
Elvis				6.5	449
				5.1	443
				6.5	449
c				8.5	429
w 1/4				11.2	402
	so cb.				
c				11.9	395
				9.8	416
				8.7	427
Elvis				9.6	418
J.P.	3.10	42.34		12.12	39.24
	13' point	no.			
	so 1/4				
white				8.1	342
w. cb.				5.2	371
	so cb.				
w 1/4				4.8	375
				7.8	345
white				9.7	326

39th

4234

North line Y

Wline

12.3 300

10.0 323

8.5 338

c

6.0 363

4.2 381

3.8 385

Eline

4.4 379

J&

10.24 32.10

80

PLOTTED

DISTANCES FROM CENTER OF ROADWAY FOR CROSS-SECTIONING.

ROADWAY 16 FEET WIDE. SIDE SLOPES 1½ TO 1.
FOR SINGLE TRACK EMBANKMENT.

	0	.1	.2	.3	.4	.5	.6	.7	.8	.9	
0	8.0	8.2	8.3	8.5	8.6	8.8	8.9	9.1	9.2	9.4	0
1	9.5	9.7	9.8	10.0	10.1	10.3	10.4	10.6	10.7	10.9	1
2	11.0	11.2	11.3	11.5	11.6	11.8	11.9	12.1	12.2	12.4	2
3	12.5	12.7	12.8	13.0	13.1	13.3	13.4	13.6	13.7	13.9	3
4	14.0	14.2	14.3	14.5	14.6	14.8	14.9	15.1	15.2	15.4	4
5	15.5	15.7	15.8	16.0	16.1	16.3	16.4	16.6	16.7	16.9	5
6	17.0	17.2	17.3	17.5	17.6	17.8	17.9	18.1	18.2	18.4	6
7	18.5	18.7	18.8	19.0	19.1	19.3	19.4	19.6	19.7	19.9	7
8	20.0	20.2	20.3	20.5	20.6	20.8	20.9	21.1	21.2	21.4	8
9	21.5	21.7	21.8	22.0	22.1	22.3	22.4	22.6	22.7	22.9	9
10	23.0	23.2	23.3	23.5	23.6	23.8	23.9	24.1	24.2	24.4	10
11	24.5	24.7	24.8	25.0	25.1	25.3	25.4	25.6	25.7	25.9	11
12	26.0	26.2	26.3	26.5	26.6	26.8	26.9	27.1	27.2	27.4	12
13	27.5	27.7	27.8	28.0	28.1	28.3	28.4	28.6	28.7	28.9	13
14	29.0	29.2	29.3	29.5	29.6	29.8	29.9	30.1	30.2	30.4	14
15	30.5	30.7	30.8	31.0	31.1	31.3	31.4	31.6	31.7	31.9	15
16	32.0	32.2	32.3	32.5	32.6	32.8	32.9	33.1	33.2	33.4	16
17	33.5	33.7	33.8	34.0	34.1	34.3	34.4	34.6	34.7	34.9	17
18	35.0	35.2	35.3	35.5	35.6	35.8	35.9	36.1	36.2	36.4	18
19	36.5	36.7	36.8	37.0	37.1	37.3	37.4	37.6	37.7	37.9	19
20	38.0	38.2	38.3	38.5	38.6	38.8	38.9	39.1	39.2	39.4	20
21	39.5	39.7	39.8	40.0	40.1	40.3	40.4	40.6	40.7	40.9	21
22	41.0	41.2	41.3	41.5	41.6	41.8	41.9	42.1	42.2	42.4	22
23	42.5	42.7	42.8	43.0	43.1	43.3	43.4	43.6	43.7	43.9	23
24	44.0	44.2	44.3	44.5	44.6	44.8	44.9	45.1	45.2	45.4	24
25	45.5	45.7	45.8	46.0	46.1	46.3	46.4	46.6	46.7	46.9	25
26	47.0	47.2	47.3	47.5	47.6	47.8	47.9	48.1	48.2	48.4	26
27	48.5	48.7	48.8	49.0	49.1	49.3	49.4	49.6	49.7	49.9	27
28	50.0	50.2	50.3	50.5	50.6	50.8	50.9	51.1	51.2	51.4	28
29	51.5	51.7	51.8	52.0	52.1	52.3	52.4	52.6	52.7	52.9	29
30	53.0	53.2	53.3	53.5	53.6	53.8	53.9	54.1	54.2	54.4	30
31	54.5	54.7	54.8	55.0	55.1	55.3	55.4	55.6	55.7	55.9	31
32	56.0	56.2	56.3	56.5	56.6	56.8	56.9	57.1	57.2	57.4	32
33	57.5	57.7	57.8	58.0	58.1	58.3	58.4	58.6	58.7	58.9	33
34	59.0	59.2	59.3	59.5	59.6	59.8	59.9	60.1	60.2	60.4	34
35	60.5	60.7	60.8	61.0	61.1	61.3	61.4	61.6	61.7	61.9	35
36	62.0	62.2	62.3	62.5	62.6	62.8	62.9	63.1	63.2	63.4	36
37	63.5	63.7	63.8	64.0	64.1	64.3	64.4	64.6	64.7	64.9	37
38	65.0	65.2	65.3	65.5	65.6	65.8	65.9	66.1	66.2	66.4	38
39	66.5	66.7	66.8	67.0	67.1	67.3	67.4	67.6	67.7	67.9	39
40	68.0	68.2	68.3	68.5	68.6	68.8	68.9	69.1	69.2	69.4	40

Calculated by F. E. Paradis, C. E.



DISTANCES FROM CENTER OF ROADWAY FOR CROSS-SECTIONING.

ROADWAY 14 FEET WIDE. SIDE SLOPES 1½ TO 1.
FOR SINGLE TRACK EMBANKMENT.

	0	.1	.2	.3	.4	.5	.6	.7	.8	.9	
0	7.00	7.15	7.30	7.45	7.60	7.75	7.90	8.05	8.20	8.35	0
1	8.50	8.65	8.80	8.95	9.10	9.25	9.40	9.55	9.70	9.85	1
2	10.00	10.15	10.30	10.45	10.60	10.75	10.90	11.05	11.20	11.35	2
3	11.50	11.65	11.80	11.95	12.10	12.25	12.40	12.55	12.70	12.85	3
4	13.00	13.15	13.30	13.45	13.60	13.75	13.90	14.05	14.20	14.35	4
5	14.50	14.65	14.80	14.95	15.10	15.25	15.40	15.55	15.70	15.85	5
6	16.00	16.15	16.30	16.45	16.60	16.75	16.90	17.05	17.20	17.35	6
7	17.50	17.65	17.80	17.95	18.10	18.25	18.40	18.55	18.70	18.85	7
8	19.00	19.15	19.30	19.45	19.60	19.75	19.90	20.05	20.20	20.35	8
9	20.50	20.65	20.80	20.95	21.10	21.25	21.40	21.55	21.70	21.85	9
10	22.00	22.15	22.30	22.45	22.60	22.75	22.90	23.05	23.20	23.35	10
11	23.50	23.65	23.80	23.95	24.10	24.25	24.40	24.55	24.70	24.85	11
12	25.00	25.15	25.30	25.45	25.60	25.75	25.90	26.05	26.20	26.35	12
13	26.50	26.65	26.80	26.95	27.10	27.25	27.40	27.55	27.70	27.85	13
14	28.00	28.15	28.30	28.45	28.60	28.75	28.90	29.05	29.20	29.35	14
15	29.50	29.65	29.80	29.95	30.10	30.25	30.40	30.55	30.70	30.85	15
16	31.00	31.15	31.30	31.45	31.60	31.75	31.90	32.05	32.20	32.35	16
17	32.50	32.65	32.80	32.95	33.10	33.25	33.40	33.55	33.70	33.85	17
18	34.00	34.15	34.30	34.45	34.60	34.75	34.90	35.05	35.20	35.35	18
19	35.50	35.65	35.80	35.95	36.10	36.25	36.40	36.55	36.70	36.85	19
20	37.00	37.15	37.30	37.45	37.60	37.75	37.90	38.05	38.20	38.35	20
21	38.50	38.65	38.80	38.95	39.10	39.25	39.40	39.55	39.70	39.85	21
22	40.00	40.15	40.30	40.45	40.60	40.75	40.90	41.05	41.20	41.35	22
23	41.50	41.65	41.80	41.95	42.10	42.25	42.40	42.55	42.70	42.85	23
24	43.00	43.15	43.30	43.45	43.60	43.75	43.90	44.05	44.20	44.35	24
25	44.50	44.65	44.80	44.95	45.10	45.25	45.40	45.55	45.70	45.85	25
26	46.00	46.15	46.30	46.45	46.60	46.75	46.90	47.05	47.20	47.35	26
27	47.50	47.65	47.80	47.95	48.10	48.25	48.40	48.55	48.70	48.85	27
28	49.00	49.15	49.30	49.45	49.60	49.75	49.90	50.05	50.20	50.35	28
29	50.50	50.65	50.80	50.95	51.10	51.25	51.40	51.55	51.70	51.85	29
30	52.00	52.15	52.30	52.45	52.60	52.75	52.90	53.05	53.20	53.35	30
31	53.50	53.65	53.80	53.95	54.10	54.25	54.40	54.55	54.70	54.85	31
32	55.00	55.15	55.30	55.45	55.60	55.75	55.90	56.05	56.20	56.35	32
33	56.50	56.65	56.80	56.95	57.10	57.25	57.40	57.55	57.70	57.85	33
34	58.00	58.15	58.30	58.45	58.60	58.75	58.90	59.05	59.20	59.35	34
35	59.50	59.65	59.80	59.95	60.10	60.25	60.40	60.55	60.70	60.85	35
36	61.00	61.15	61.30	61.45	61.60	61.75	61.90	62.05	62.20	62.35	36
37	62.50	62.65	62.80	62.95	63.10	63.25	63.40	63.55	63.70	63.85	37
38	64.00	64.15	64.30	64.45	64.60	64.75	64.90	65.05	65.20	65.35	38
39	65.50	65.65	65.80	65.95	66.10	66.25	66.40	66.55	66.70	66.85	39
40	67.00	67.15	67.30	67.45	67.60	67.75	67.90	68.05	68.20	68.35	40

Calculated by F. E. Paradis, C. E.

1285
195.36
0.12
195.24
238.32