

904

F.B.



904

EUGENE DIETZGEN CO.

Drawing Materials and Surveying Instruments
NEW YORK. CHICAGO. SAN FRANCISCO.

MICROFILMED
TABLES FOR EXCAVATIONS AND EMBANKMENTS.
DISTANCES FROM CENTER OF ROADWAY FOR CROSS-SECTIONING
ROADWAY 30 FEET WIDE. SIDE SLOPES 1 TO 1.
FOR SINGLE TRACK EXCAVATION.

Copyright, 1902. No. 39340.

	0	.1	.2	.3	.4	.5	.6	.7	.8	.9	
0	10.0	10.1	10.2	10.3	10.4	10.5	10.6	10.7	10.8	10.9	0
1	11.0	11.1	11.2	11.3	11.4	11.5	11.6	11.7	11.8	11.9	1
2	12.0	12.1	12.2	12.3	12.4	12.5	12.6	12.7	12.8	12.9	2
3	13.0	13.1	13.2	13.3	13.4	13.5	13.6	13.7	13.8	13.9	3
4	14.0	14.1	14.2	14.3	14.4	14.5	14.6	14.7	14.8	14.9	4
5	15.0	15.1	15.2	15.3	15.4	15.5	15.6	15.7	15.8	15.9	5
6	16.0	16.1	16.2	16.3	16.4	16.5	16.6	16.7	16.8	16.9	6
7	17.0	17.1	17.2	17.3	17.4	17.5	17.6	17.7	17.8	17.9	7
8	18.0	18.1	18.2	18.3	18.4	18.5	18.6	18.7	18.8	18.9	8
9	19.0	19.1	19.2	19.3	19.4	19.5	19.6	19.7	19.8	19.9	9
10	20.0	20.1	20.2	20.3	20.4	20.5	20.6	20.7	20.8	20.9	10
11	21.0	21.1	21.2	21.3	21.4	21.5	21.6	21.7	21.8	21.9	11
12	22.0	22.1	22.2	22.3	22.4	22.5	22.6	22.7	22.8	22.9	12
13	23.0	23.1	23.2	23.3	23.4	23.5	23.6	23.7	23.8	23.9	13
14	24.0	24.1	24.2	24.3	24.4	24.5	24.6	24.7	24.8	24.9	14
15	25.0	25.1	25.2	25.3	25.4	25.5	25.6	25.7	25.8	25.9	15
16	26.0	26.1	26.2	26.3	26.4	26.5	26.6	26.7	26.8	26.9	16
17	27.0	27.1	27.2	27.3	27.4	27.5	27.6	27.7	27.8	27.9	17
18	28.0	28.1	28.2	28.3	28.4	28.5	28.6	28.7	28.8	28.9	18
19	29.0	29.1	29.2	29.3	29.4	29.5	29.6	29.7	29.8	29.9	19
20	30.0	30.1	30.2	30.3	30.4	30.5	30.6	30.7	30.8	30.9	20
21	31.0	31.1	31.2	31.3	31.4	31.5	31.6	31.7	31.8	31.9	21
22	32.0	32.1	32.2	32.3	32.4	32.5	32.6	32.7	32.8	32.9	22
23	33.0	33.1	33.2	33.3	33.4	33.5	33.6	33.7	33.8	33.9	23
24	34.0	34.1	34.2	34.3	34.4	34.5	34.6	34.7	34.8	34.9	24
25	35.0	35.1	35.2	35.3	35.4	35.5	35.6	35.7	35.8	35.9	25
26	36.0	36.1	36.2	36.3	36.4	36.5	36.6	36.7	36.8	36.9	26
27	37.0	37.1	37.2	37.3	37.4	37.5	37.6	37.7	37.8	37.9	27
28	38.0	38.1	38.2	38.3	38.4	38.5	38.6	38.7	38.8	38.9	28
29	39.0	39.1	39.2	39.3	39.4	39.5	39.6	39.7	39.8	39.9	29
30	40.0	40.1	40.2	40.3	40.4	40.5	40.6	40.7	40.8	40.9	30
31	41.0	41.1	41.2	41.3	41.4	41.5	41.6	41.7	41.8	41.9	31
32	42.0	42.1	42.2	42.3	42.4	42.5	42.6	42.7	42.8	42.9	32
33	43.0	43.1	43.2	43.3	43.4	43.5	43.6	43.7	43.8	43.9	33
34	44.0	44.1	44.2	44.3	44.4	44.5	44.6	44.7	44.8	44.9	34
35	45.0	45.1	45.2	45.3	45.4	45.5	45.6	45.7	45.8	45.9	35
36	46.0	46.1	46.2	46.3	46.4	46.5	46.6	46.7	46.8	46.9	36
37	47.0	47.1	47.2	47.3	47.4	47.5	47.6	47.7	47.8	47.9	37
38	48.0	48.1	48.2	48.3	48.4	48.5	48.6	48.7	48.8	48.9	38
39	49.0	49.1	49.2	49.3	49.4	49.5	49.6	49.7	49.8	49.9	39
40	50.0	50.1	50.2	50.3	50.4	50.5	50.6	50.7	50.8	50.9	40

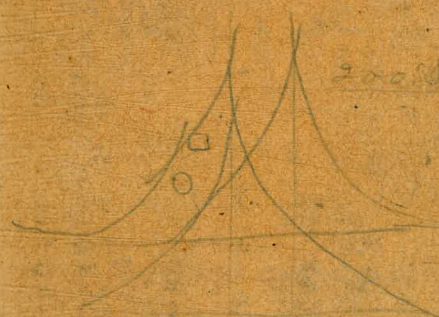
Calculated by F. M. Paradis, C. E.

F. St. MH. 1. N E Fst. 60
12'S of N Emb = location MH. of 6
not located in E St.

Back S.W. cor curb 210.04

Back " " 177.77

300' S.W. cor S.E. cor State 155.26



244.27

201
8.8.81
L.S.

4.5
2.8
2.7

X Sec Fay St. 80' wide - 14' wks. 13' 1/2' s.
 from 200' s. of S.L. Rushville to S.L. West
 bourne Ave.

8/27/13
 West
 Evans
 Devine

2

B.M. 10' W of S.W. Cor Fay + Center. Tie out. 144.8

T.P. Hub. 50's 9.39 153.87 3.63 150.24 OK
 Rushville

T.P. rock. 6.61 156.85

200' S. Rushville

EL. 154.3

C 154.0

1/4 153.4

1/2 153.5

3/4 152.9

C 153.0

WL. 153.3

225' S. Rushville

T.P. 5.93 150.92

5.73 156.65

EL. 5.3 51.3

C 7.5 49.1

1/4 9.3 47.3

1/2 10.2 46.4

3/4 12.2 44.4

C 13.1 43.4

WL. 15.0 41.4

+ 10 17.5

PLOTTED

156.65
250'S.

- 20	17.3	
WL	15.8	140.9
C	13.6	
1/4	12.1	
E	10.5	46.2
1/4	9.0	
C	7.2	
EL	5.6	511

275'S.

EL	2.8	53.9
C	5.2	
1/4	7.6	
E	10.9	45.8
1/4	13.1	
C	14.5	
WL	17.0	39.7
+ 20	18.4	

PLOTTED

156.65
300'S.

- 20	18.8	
WL	18.1	138.6
C	15.6	
1/4 ⁺³	14.0	
1/4 ⁺⁴	13.6	
1/4 ⁺⁵	13.2	
E	11.9	44.3
1/4	10.4	
C	7.2	
C	4.4	
EL	1.2	55.5

325'S.

EL	+1.5	58.2
C	1.8	
1/4	4.7	
E	7.3	49.4
1/4 ⁺¹⁰	9.7	
1/4 ⁺¹¹	11.6	
1/4	11.9	
C	12.4	
WL	16.0	40.7
+20	18.5	

156.65

350'S.

-	15.9	
WL	13.5	143.3
C	10.7	
$\frac{1}{4}$ ⁺¹²	9.6	
$\frac{1}{4}$	8.6	
$\frac{1}{4}$	5.7	51.0
$\frac{1}{4}$	2.7	
C	0.0	
EL	+2.0	58.7

375'S.

EL	+1.0	57.7
C	0.7	
$\frac{1}{4}$	2.4	
$\frac{1}{4}$	4.7	52.0
+8	5.8	
+9	7.0	
$\frac{1}{4}$	7.3	
C	8.6	
WL	11.2	45.5
+20	13.5	

PLOTTED

156.65

400'S.

-20	12.4	144.3
WL	10.2	44.5
C	8.4	
$\frac{1}{4}$	6.7	
$\frac{1}{4}$	5.0	51.7
$\frac{1}{4}$	2.9	
C	1.3	
EL	0.0	56.7

425'S.

EL	1.2	55.5
C	2.8	
$\frac{1}{4}$	4.0	
$\frac{1}{4}$	6.2	50.5
$\frac{1}{4}$	8.0	
C	10.0	
WL	12.2	44.5
+20	14.1	

450'S
15665

-20	170	
WL	150	141.7
C	13.3	
1/4	11.8	
£	9.8	44.9
1/4	7.9	
C	5.9	
EL	4.5	52.2

475'S

EL	6.6	50.1
C	7.1	
1/4	10.4	
£	11.9	44.8
1/4	13.1	
E	14.5	
WL	15.7	41.0
+20	17.2	

PLOTTED

15665

500'S

-20	16.2	
WL	15.5	141.2
C	14.5	
1/4	13.0	
£	10.3	44.4
1/4	8.4	
C	6.1	
EL	4.2	52.5

525'S

EL	5.9	50.8
C	7.7	
1/4	9.2	
£	10.5	44.3
1/4	11.8	
C	13.4	
WL	14.4	42.3
+20	14.8	

15665

550'S

-20'	14.0	
WL	13.0	43.7
C	12.8	
1/4	13.4	
£	13.0	43.7
1/4	11.1	
C	10.5	
EL	9.5	47.2

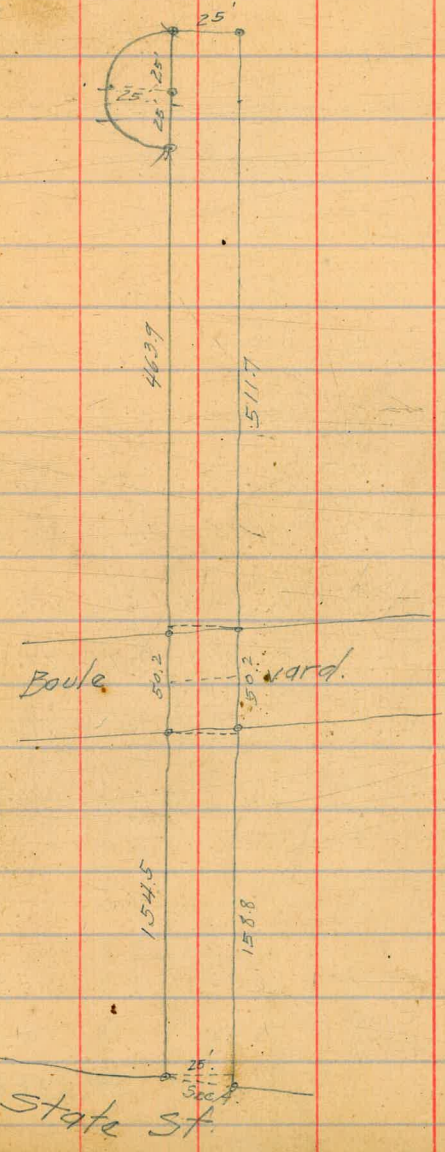
575'S

EL	9.5	47.2
C	10.0	
1/4	10.6	
£	11.3	45.4
1/4	11.9	
C	13.2	
WL	13.6	43.1

+20 PLOTTED 13.8

T.P. Hub. WL. Proj.
50'S Rushville

6.41 15024 N 25
OK.
Wm. J.



X Sec. Princess St.
 Treated as W/2 of 50' St.
 10' Walk. 1/2' / 45.

See preceding page for sketch

	+ HT	-	EL	
Curb. Cover Pros.	12.37	125.47		113.10
T.P. Curb.			0.59	124.88
T.P.	10.40	135.28	1.26	134.02
T.P.	12.13	146.15	0.20	145.95
Curb NE State + Prospect	6.65	152.60	3.70	148.90 149.00 ^{OK}
T.P.	3.77	152.77	10.27	142.50
T.P.	0.00	142.50	12.37	130.13
T.P.	0.29	130.42	12.10	118.32
T.P.	0.25	118.57	10.26	108.31
T.P.	0.01	108.32	12.65	95.67
T.P.	0.16	95.83	11.40	84.43
T.P. - Hub SL. Bool.	4.83	89.26	5.47	83.79
Nails in pole				82.85

Nails in Pole
 NL. East 30'E
 of E.L. Princess
 34 from gr.

T.P.	12.24	96.03	0.61	95.42
T.P.	12.71	108.13	5.34	102.79
	11.17	113.96		

PLOTTED

9/4/13
 West
 Evans
 Tenn.

115.174 = E.L. + Prospect N.E. cor. flunk
 walk near P.L. Brass Plug Man.
 149.00 = cut gr. at N.E. Cor. State + Prospect.

114.0

NL State St. = 70' S of N end of E.L.

-15	718			
WL	7.9			104.1
C	4.9			109.1
1/4	2.8			
±	0.2			113.8
	716			
±	0.8			113.7
1/4	3.0			
C	5.0			
WL	7.9			104.1
+15	100			
	700			
-15	15.2			
WL	13.0			101.0
+5	11.7			
C	9.8			
1/4	7.6			
±	5.6			108.4
	675			
±	10.2			103.8
1/4	11.5			
C	12.6			
WL	13.8			100.7
+15	15.7			

	11396		
TP		1252	101.44
	1.50	102.94	
		650'S.	
-15		72	
WL		38	99.1
C		30	
1/4		16	
£		08	102.1
		625'S.	
£		20	100.9
1/4		29	
£		39	
WL		53	97.4
+15		88	
		600'S.	
-15		176	
WL		160	86.9
C		11.8	
1/4		60	
£		57	97.2

PLOTTED

	102.94		
£		575'S.	
£		72	93.7
1/4		116	
C		18.7	
WL		16.3	86.4
+15		18.0	
TP		1277	90.17
	1.25	91.45	
		Hub. 22 Boul	7.69 83.76 83.79
		S.L Boul	
-15		76	
WL		76	83.9
C		74	
1/4		7.3	
£		7.0	84.4
		£ Boul	
£		7.1	84.3
1/4		7.2	
C		7.3	
WL		7.3	84.1

71.45

#10	NL Boul =		
WL	7.8	89	82.5
C		10.4	81.0
1/4		10.3	81.1
E		10.0	81.5
+10		12.2	79.7

500'S.

-10		15.2	
E		12.0	79.5
1/4		12.1	79.3
C		12.4	79.0
+5		12.2	79.7
WL		13.1	78.4
+15		14.1	77.3
T.P.		12.95	78.50

0.37 78.89

PLOTTER

475'S.

78.9

78.89

-15		9.8	
WL		7.8	71.1
C		3.1	75.8
1/4		2.9	76.0
E		3.1	75.8
+15		3.4	

450'S.

-15		7.8	
E		5.1	73.8
1/4		5.0	73.9
C		5.2	73.7
WL		7.7	
+15		11.1	71.3

425'S

-15		14.5	
WL		10.3	68.6
C		7.3	71.6
1/4		6.1	72.8
E		5.9	73.0

78.89

400'S.

±	5.8	73.1
1/4	5.8	73.1
C	6.3	72.6
WL	11.1	67.8
+15	16.4	

375'S.

-15	11.0	
WL	9.7	69.2
+5	6.0	
C	5.8	73.1
1/4	5.7	73.4
±	5.3	73.6

357'S.

±	5.8	73.1
1/4	6.2	72.7
C	6.3	72.6
+5	6.0	
WL	4.8	74.1
+15	10.6	74.1

PLOTTED

78.89

325'S.

-15	4.3	
WL	5.3	73.6
+2	5.4	
+3	6.8	
C	7.0	71.9
1/4	7.1	71.8
±	6.4	72.5

300'S.

±	8.0	70.9
1/4	8.6	70.3
C	8.4	70.5
WL	7.8	71.1
+15	6.2	

275'S.

-15	9.1	
WL	10.5	68.4
+5	9.6	69.3
C	9.7	69.2
1/4	9.8	69.1
±	18.1	68.8

		7889			
T.P.		0.39	78.50		
TP Hub SL	9.11	87.61	383	83.78	83.79-02
Bool.	1.72	85.50			
T.P.		12.72	72.78		
	0.30	73.08		73.1	
		250 's.			
£		4.2	68.9		
1/4		4.5	68.6		
C		4.6	68.5		
+5		5.3			
WL		8.4	64.7		
+5		10.8	62.3		
+6		8.2	64.9		
+10		8.0	65.1		
		225 's.			
-10		14.2			
WL		8.7	64.4		
C		4.7	68.4		
1/4		4.6	68.5		
£		4.6	68.5		

PLOTTED

		7308		731	
		200 's.			
£		4.5	68.6		
1/4		5.0	68.1		
C		5.5	67.6		
+5		5.6			
WL		7.6	65.5		
+15		9.7			
		175 's.			
-15		9.4			
WL		6.2	66.9		
£		5.8	67.3		
1/4		5.4	67.7		
£		4.8	68.3		
		150 's.			
£		5.3	67.8		
1/4		6.4	66.7		
C		6.6	66.5		
+8		6.8	66.3		
WL		6.2	66.9		
+15		8.5			

73.08

100'S.

-15	106	
WL	103	62.8
C	10.3	62.8
1/4	10.2	62.9
±	10.0	63.1
T.P.	11.06	62.02

3.05 65.07

50'S.

±	6.5	58.6
1/4	8.1	56.0
C	8.4	56.7
WL	8.8	56.3
+ 15	10.0	55.1

35'S.

±	7.7	57.4
7/2' W.C.	9.0	56.1
15' W.C.	9.5	55.6
25' W.L.	9.6	55.5
to arc circle	10.9	54.2
to arc for slope.	13.7	

PLOTTED

6507

5.1

60' W for slope.	16.0	
50' W of C. = Cent Curve.	13.1	52.0
40' W	11.0	54.1
25' W	10.1	55.0
15' W	9.3	55.8
12' W	8.8	56.3
7 1/2' W	7.4	
00 = ±	0.2	64.9

0 + 00 - Nord. Princess St.

±	0.9	64.3
1/4	3.4	61.7
C	7.8	57.3
WL	11.5	53.6
+ 15	12.0	
T.P.	0.77	64.30
T.P.	12.63	76.93
Hub St. Bnd	12.97	88.93
T.P.	6.87	82.06
T.P.	11.85	93.91
T.P.	12.91	106.44
T.P.	12.26	118.65
	1.29	117.36

PLOTTED

				117.86	
T.P.	12.94	130.30	0.10	130.20	
T.P.	12.39	142.59	1.41	141.18	
NE Curb. State & Prospect.	11.62	152.80	3.86	148.94	149.00 ^{OK} 148.94 -06 ft.

254.10			
082			
254.92	202.9	24.8	25.2
	6	21	15.2
	202.7	22.8	39.5

Slopes on Terrace St. Oct 28-1913

Tommas
Weller
Shard.

	Freemont St.	25'	25'	25'	
	250.25				
	50'				
	251.75				
	St.				
	250.25				50 24.0
	249.75	247.9			75
	248.25	247.25	245.8 St. 245.7		1.00
	248.75	246.75	241.0	221.9 St. 220.6	12.5
	248.25	246.75	243.1	207.7	214.4 20
	248.75	247.15	243.6	203.0	196.0
					190.1 189.4 18
	249.75	248.25	247.25	233.4	226
					208.8 101, 208.8
	249.75	248.75	246.0	230.8	
	250.25				
	251.75				
	253.25				
	Winder St.	25'	25'	25'	

B.M. 254.10 15' H. 7
+ 2.44 Terrace St.
254.24 H.I.
151.20
247.76
+ 2.54
248.110 H.I.
151.66
235.64
+ 2.85
231.39 H.I.
231.12
111.74
243.93 H.I.
- 2.10
243.77
+ 12.60
256.37 H.I.
- 2.10
254.110 Initial B.M.
247.5

X. Sect 3 2nd Street cont.
 Pages 28 to 81

See Book 907

John 14

Oct. 31/13
 244.58

Allen
 Builder

J.R.

^{H.I.}
 0.31 244.58 434 244.27

250' 20.

200' 20. Date

E line

0.6 244.0

E line

1.6 243.0

0.4 44.2

1.4 43.2

0.3 44.3

C

1.5 43.1

C

0.3 44.3

1.8 42.8

0.7 43.9

2.3 42.3

0.9 43.7

W line

3.2 41.4

W line

1.2 43.4

275' 20.

3.9 40.7

225' 20.

W line

5.7 38.9

W line

2.4 42.2

4.7 39.9

1.9 42.7

3.7 40.9

1.4 43.2

C

2.9 41.7

C

0.8 43.8

2.7 41.9

0.8 43.8

2.7 41.9

0.8 43.8

E line

2.8 41.8

E line

0.9 43.7

PLOTTED

24458

300' 20.

Elms

4.5 340.1

4.4 40.2

4.5 40.1

C

4.8 39.8

5.6 39.0

6.9 37.7

Whins

8.1 36.5

Northline Cedar

Whins

9.1 35.5

7.9 34.7

6.6 38.0

C

5.4 39.2

4.9 39.7

4.6 40.0

Elms

4.5 40.1

24458

15

Mo. Cb.

Elms

5.5 339.1

5.5 39.1

6.0 38.6

C

7.1 37.5

8.3 36.3

9.6 35.0

Whins

10.7 33.9

No 1/4

Whins

12.2 32.4

11.1 33.5

10.0 34.6

C

9.1 35.5

7.5 37.1

6.7 37.9

Elms

6.5 38.1

PLOTTED

24458

Center

E line		7.8	236.8
		8.7	35.9
		9.7	34.9
C		10.6	34.0
		11.7	32.9
w.cb.		13.1	31.5
	So 1/4		
C		12.6	32.0
		11.6	31.0
		10.2	34.4
E line		9.05	30.5
	So cb.		
E line		10.1	34.5
		11.4	33.2
E 1/4		13.5	31.1

PLOTTED

244,58

South line Cedar.

ccb		13.4	231.2
E line		11.9	32.7
J.P.	H.S. 10.06 231.74	12.90	231.68
	Center of Cedar		
w line		1.7	230.7
	So 1/4		
w line		4.2	27.5
		2.5	29.2
w 1/4		1.3	30.4
	So. cb.		
C		5.2	26.5
		7.9	23.8
		9.5	22.2
w line		12.8	18.9
	South line Cedar		
w 1/4		13.3	18.4
C		8.5	23.2
E 1/4		2.9	28.8

231.74

Sect. E. F.

E line	0.4	231.3
	1.8	29.9
	3.3	28.4
C	6.7	25.0
W 1/4.	12.76	19.0

25' 20. Sect. E. F.

W cb.	14.2	17.5
	9.8	21.9
C	7.7	24.0
	6.4	25.3
	4.8	27.2
E line	3.2	28.5

PLOTTED

231.74

17

50' 20.

E line	5.6	226.1
	7.0	24.7
	9.0	22.7
C	10.8	20.9
W 1/4	13.4	18.3

75' 20.

C	13.1	18.4
	11.1	20.6
	9.3	22.4
E line	7.8	23.9

100' 20.

E line	10.0	31.7
E cb.	11.8	19.9

125' 20.

E line	11.8	19.9
--------	------	------

	HI.		
J.P.	0.27	219.04	218.77
		So. hio Cedar.	
White	7.1		211.9
Wcb.	4.2		14.8
		sect. E.F.	
Wcb.	4.8		14.2
White	7.1		11.9
		25' So. sect E.F.	
White	9.6		209.4
		50' So.	
White	5.4		213.6
Wcb.	2.9		14.1
		7.5' So.	
W 1/4	3.0		14.0
	5.6		13.4
White	8.2		10.8

PLOTTED

		100' So.	
White	10.7		208.3
	8.4		10.4
	6.0		13.0
	3.6		15.4
	1.2		17.8
		125' So.	
	1.5		17.5
	3.7		15.3
	6.4		12.6
	8.8		10.2
	11.1		207.9
	13.5		205.5

219,04

150' SO.

W.cb. 13.7 205.3

11.1 207.9

C 8.2 210.8

5.6 134

3.1 15.9

E line 1.3 17.7

175' SO.

E line 4.2 14.8

6.7 12.3

9.4 209.6

C 12.0 207.0

200' SO.

E.cb. 12.1 206.9

E line 10.4 208.6

PLOTTED

T.P.

H.I.
0.08 206.01 13.11 205.93

150' SO. Rect E.F.

White 2.9 203.1

175' SO.

White 4.8 201.2

3.2 202.8

W 1/4 1.0 205.0

200' SO.

E 1/4 1.1 204.9

C 3.0 203.0

4.7 201.3

5.6 200.4

White 7.2 198.8

225' SO.

White 13.0 93.0

11.4 94.6

9.6 94.4

C 8.2 97.8

6.8 99.2

E line 5.5 200.1

3.9 202.1

206.01

250' A.O.

E line	10.3	195.7
	11.5	94.5
E 1/4	13.2	92.8
J.P.	-0.02 ^{H.I.} 193.28	12.7 193.30
C	2.1	91.2
	3.2	90.1
	4.7	88.4
W line	6.4	84.9
	275' A.O.	
W line	12.7	80.6
	11.3	82.0
	9.7	83.4
C	8.4	84.9
	6.6	86.7
	5.4	87.9
E line	4.0	89.3

PLOTTED

193.28

20

289' A.O.

E line	7.1	184.2
	8.7	84.6
	10.4	92.9
C	11.3	92.0
	North line Beech	
C	13.0	80.3
	11.5	81.8
	9.5	83.8
E line	7.1	84.2
	No. Cb.	
E line	10.2	83.1
E. Cb.	12.6	80.7
J.P.	0.12 ^{H.I.} 180.72	12.68 180.60
	289' A.O. Aect E.F.	
W line	3.0	77.7
	2.4	78.3
W 1/4	0.8	79.9

180.72

North line Beech

W 1/4		2.7	178.0
		4.5	76.3
W line		5.8	74.9
	No. cb.		
W line		7.6	73.1
		7.3	73.4
		6.2	74.5
C		4.2	76.5
E 1/4		3.0	77.7
	No 1/4		
E line		1.2	79.5
		4.0	74.5
		5.8	74.9
C		7.5	73.3
		8.8	71.9
		9.7	71.0
W line		10.7	70.0

PLOTTED

21

180.72

Center

W line		13.7	147.0
		12.4	48.3
		13.0	47.7
		11.7	69.0
		8.7	72.0
		6.5	74.3
		4.4	74.3
E line			
	AO 1/4		
E line		7.67	73.0
		9.6	71.1
		11.9	48.8
	So. cb.		
		10.0	70.7
	So. line Beech		
E line		11.99	68.7

J.P. 0.27 ^{H.I.} 168.09 12.90 167.82
 20.74 Beech
 C 1.7 144.4
 6.2 41.9
 4.7 43.4
 W line 4.8 63.3
 No. Cb.
 W line 12.5 55.5
 10.8 57.3
 8.6 59.5
 C 5.7 62.4
 5.5 62.4
 E. Cb. 1.7 66.4

PLOTTED

South line Beech.
 E. Cb. 2.6 145.5
 8.2 59.9
 C 12.5 55.6
 sect. G.H.
 C 11.4 56.7
 7.4 60.7
 3.3 64.8
 E line 1.1 67.0
 11' No. sect G.H.
 E line 2.3 65.8
 4.2 63.9
 6.7 61.4
 C 10.0 58.1
 25' No.
 C 10.4 57.7
 6.8 61.3
 5.5 62.6
 E line 4.3 63.8

168.09

50'20.

E line

6.9 161.2

8.5 59.6

9.9 58.2

C

11.9 56.2

75'20.

C

13.4 54.7

11.7 56.4

9.9 58.2

E line

9.0 59.1

100'20.

E line

10.5 57.6

11.4 56.7

E 1/4

13.1 55.0

125'20.

E.cb.

13.1 55.0

E line

11.8 56.3

J.P.

0.38 ^{14.1} 153.71 12.76 155.33

South line Beech.

W line

7.2 148.5

4.5 51.2

W 1/4

2.1 53.6

sect. G.H.

W 1/4

4.4 51.3

5.1 50.6

W line

7.2 48.5

11'20. sect G.H.

W line

10.2 45.5

8.3 47.4

W 1/4

2.9 52.8

225'20.

W 1/4

6.4 49.3

9.9 45.8

W line

10.0 45.7

PLOTTED

155.71

50' 20.

W line

10.3 145.4

10.3 45.4

W 1/4

6.2 49.5

75' 20.

W 1/4

3.3 52.4

6.1 49.6

W line

10.4 45.3

100' 20.

W line

10.3 45.4

8.5 47.3

5.4 50.3

C

2.9 52.8

125' 20.

E 1/4

1.9 53.8

C

4.5 51.2

8.6 47.1

10.4 45.3

W line

11.0 44.7

PLOTTED

155.71

24

150' 20.

W line

11.9 143.8

11.6 44.1

10.7 45.0

C

8.8 44.9

5.3 50.4

2.6 53.1

E line

1.1 54.6

175' 20.

E line

4.4 51.3

7.5 48.2

10.4 45.3

C

11.7 44.0

12.2 43.5

12.9 43.8

W line

13.2 42.5

15571

188' 20.

White

14.1 44.6

13.7 42.0

13.2 42.5

12.6 43.1

12.1 43.6

9.3 46.4

7.0 48.7

Eline

200' 20.

Eline

12.3 43.4

13.7 42.0

13.7 42.0

13.9 41.8

14.1 41.6

14.1 41.6

14.4 41.3

White

PLOTTED

15571

25

275' 20. net G.H.

White

11.2 144.5

2883' 20.

White

5.9 49.8

w cb.

12.1 43.6

North line ash

w cb.

10.3 45.4

White

5.0 50.7

no cb.

White

4.1 57.6

w 1/4

8.1 47.6

no 1/4

13.0 43.7

w 1/4

10.6 45.1

White

6.4 49.3

3.8 51.9

15571

Center

White

3.7 153.0

5.9 49.8

9.0 44.7

C

14.3 41.4

So 1/4

C

11.6 44.1

7.4 48.3

5.1 50.4

White

3.4 52.3

So. cb.

White

3.1 52.6

5.0 50.7

6.7 49.0

C

10.0 45.7

15571

26

South line ash

E 1/4

13.0 142.7

C

8.0 47.7

5.4 50.3

3.5 52.2

1.5 54.2

White

sect. 9.9.

White

1.5 54.2

3.6 52.1

5.3 50.4

7.5 48.2

10.5 45.2

C

E 1/4

PLOTTED

155,71

25' 20. 207 9.9.

E. cb.	12.5	143.7
	7.6	48.1
C	5.7	50.0
	3.5	52.2
W. cb.	1.4	54.3

50' 20.

W 1/4	2.4	53.3
C	6.9	48.8
E 1/4	11.4	44.3

75' 20.

E 1/4	12.2	43.5
C	7.9	47.8
W 1/4	3.0	52.7

100' 20.

W 1/4	1.2	54.5
C	5.8	49.9
E 1/4	10.5	45.2

PLOTTED

155,71

27

125' 20.

E 1/4	9.9	145.8
C	5.7	50.0
W 1/4	1.0	54.7

150' 20.

C	-0.3	156.0
	4.9	50.8
	9.4	46.3
E line	13.3	42.4

175' 20.

E line	10.2	45.5
	6.7	49.0
E 1/4	1.2	44.5

200' 20.

E 1/4	0.5	55.2
	4.8	50.9
E line	9.2	44.5

15571

225' 20.

E line	6.6	149.1
E cb.	3.3	52.4

250' 20'

E cb	4.7	51.0
E line	6.8	48.9

275' 20.

E line	7.1	48.6
E cb.	4.4	51.3

300' 20.

E cb.	2.7	53.0
E line	6.16	49.6
J.P. high time	0.05	155.66

PLOTTED

J.P.

^{HI}
 2.00 144.83 12.88 142.83

225' 20. rect g.H.

E line	4.2	140.6
--------	-----	-------

	4.2	40.6
--	-----	------

	4.2	40.6
--	-----	------

C	4.1	40.7
---	-----	------

	3.9	40.9
--	-----	------

	4.7	40.1
--	-----	------

Whio	5.3	39.5
------	-----	------

250' 20.

Whio	4.8	40.0
------	-----	------

	7.2	37.4
--	-----	------

	5.7	39.1
--	-----	------

C	5.2	39.4
---	-----	------

	5.2	39.4
--	-----	------

	5.4	39.4
--	-----	------

E line	5.2	39.4
--------	-----	------

144.83

275' 20.

Elms	6.3	138.5
	6.1	38.7
	6.2	38.4
C	7.6	37.7
	6.3	38.5
w cb.	3.9	40.9

2883' 20.

w 1/4	5.1	39.7
C	7.2	37.4
	8.3	34.5
	6.8	38.0
Elms	6.8	38.0

PLOTTED

144.83

29

North line ash

Elms	6.8	138.0
	6.8	38.0
	8.1	34.7
C	6.8	38.0
w 1/4	4.4	40.4
w 1/4		

no cb.

C	5.7	39.1
	7.5	37.3
	9.3	35.5
Elms	7.1	37.7

no 1/4

Elms	9.3	35.5
	7.6	37.7
	6.3	38.5
C	4.5	40.3

14483

Center

E 1/4 5.9 138.9

7.2 37.4

E line 8.1 34.7

20' 1/4

E line 7.90 34.9

6.8 38.0

E 1/4 6.0 38.8

20' 1/4

E 1/4 5.1 39.7

6.8 38.0

E line 7.4 37.4

20' line ash

E line 7.24 37.4

Ecb. 6.6 38.2

PLOTTED

14483

30

sect. 9g.

Ecb. 4.9 139.9

E line 7.6 37.2

25' 20. sect 9g.

E line 6.4 38.4

50' 20.

E line 7.2 37.4

Ecb. 5.2 39.4

75' 20.

Ecb. 6.4 38.4

E line 7.8 37.0

100' 20.

E line 7.4 37.4

Ecb. 5.7 39.1

125' 20.

Ecb. 3.5 41.3

E line 6.7 38.1

	K.I.	167.76	12.10	155.66
J.P.				
	25'20.	rect.	sq.	
White		10.7	157.1	
	50'20.			
White		8.4	59.4	
w.cb.		11.2	56.6	
	75'20.			
w.cb.		9.5	58.3	
White		6.1	41.7	
	100'20.			
White		4.3	43.5	
w.cb.		8.1	59.7	
	125'20.			
w.cb.		9.3	58.5	
White		5.0	42.8	
	150'20.			
White		1.8	64.0	
		5.2	42.4	
W.H.		7.7	60.1	

PLOTTED

	175'20.		
C.		8.9	158.9
		5.9	41.9
w.cb.		2.7	45.1
	200'20.		
w.cb.		0.8	47.0
		4.2	43.4
C		7.4	60.4
	225'20.		
E 1/4		11.2	56.6
C		7.6	60.2
		4.2	43.4
w.cb.		0.3	42.5
	250'20.		
w.cb.		0.6	47.3
		4.5	43.3
C		8.2	59.4
E 1/4		12.2	55.6

167.76

275' 20.

e 1/4
c

11.9 155.9

white

8.4 59.4

5.3 62.5

white

w.c.b.

1.6 66.3

300' 20.

white

w c b

0.8 67.0

J.P. Saw-cow ash +

3.9 63.9

J Bancroft

c

7.0 60.8

west G.P.

e 1/4

10.4 57.4

J.P.

H.I.
12.76 177.83 26.9 165.07

175' 20. Sect 39.

white

9.0 68.8

200' 20

white

7.4 70.4

225' 20

white

7.1 70.7

PLOTTED

177.83

32

250' 20.

7.7 170.1

275' 20.

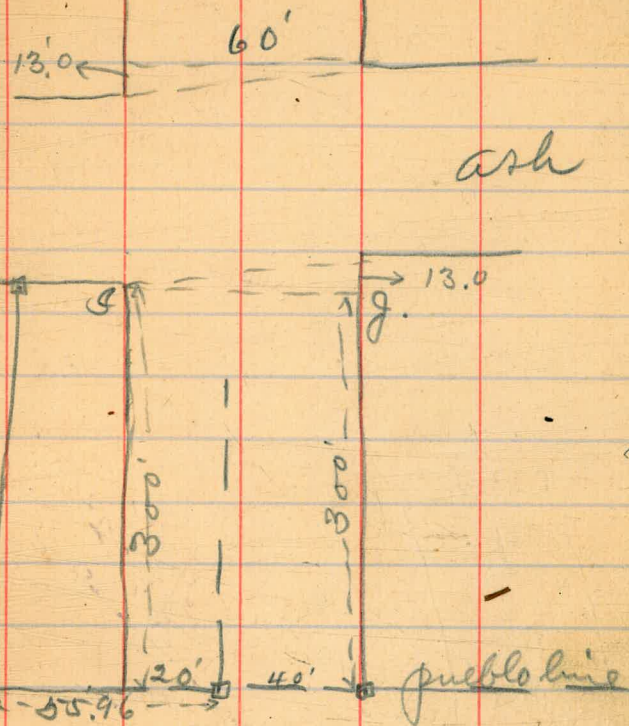
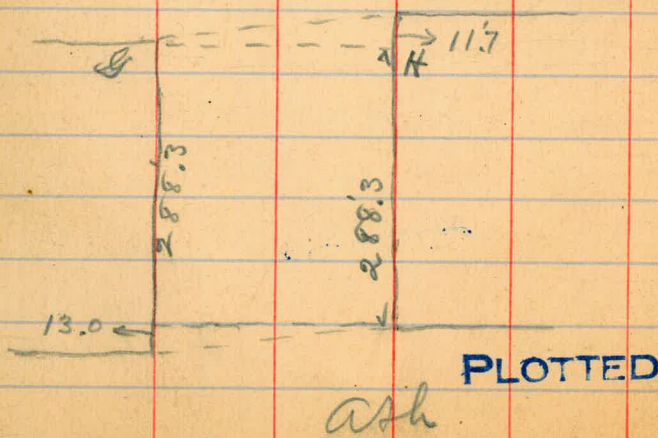
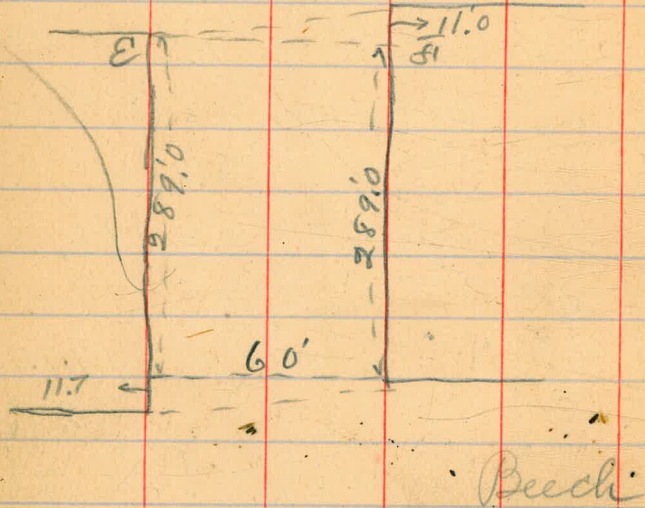
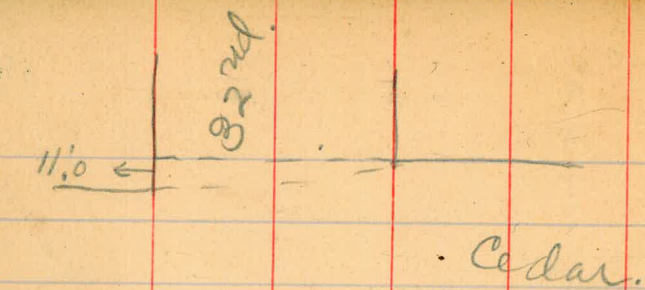
7.5 70.3

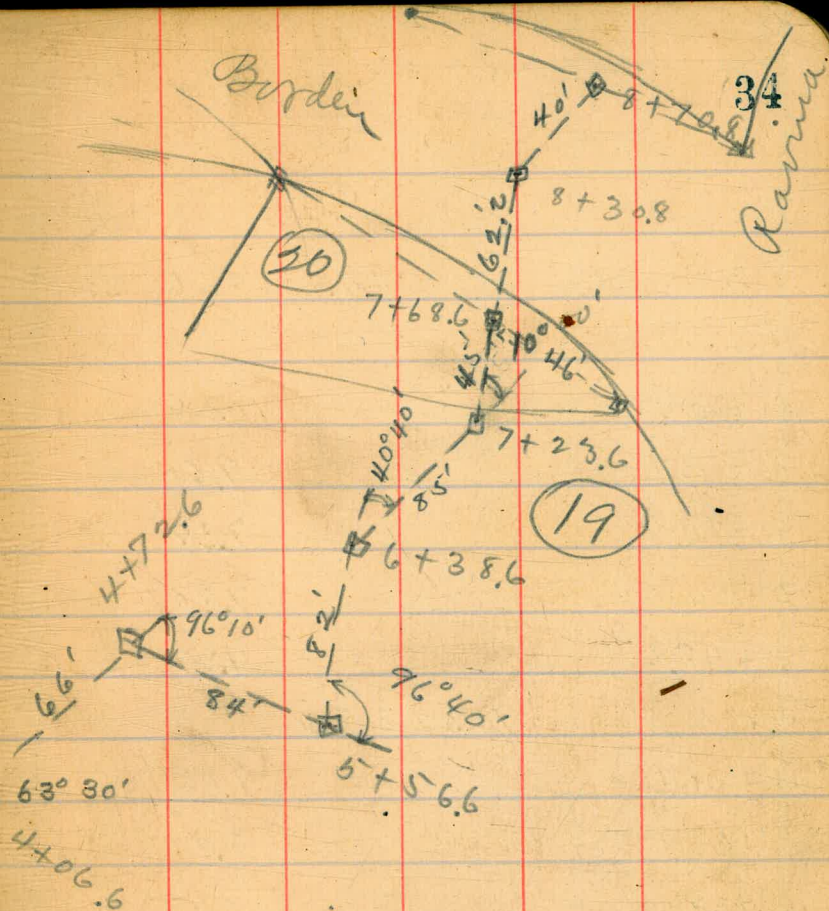
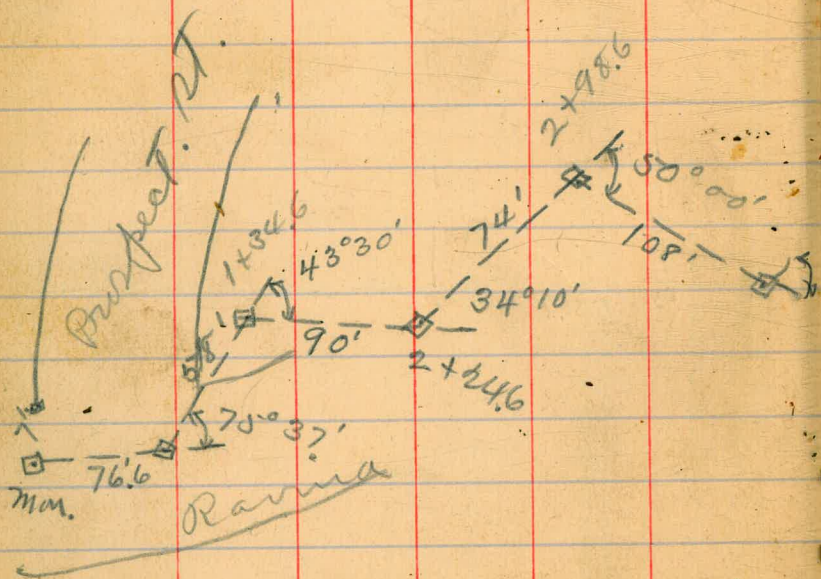
300' 20. (pueblo line)

6.9 70.9

0.24 177.59

177.77





Levels on canyon line

35

J.P.	0.10	^{H.I.} 34.20	34.10	J.P.	1.93	^{H.I.} 41.61	5.55	39.68
J.P.	5.86	^{H.I.} 27.40	12.66	21.54	7+23.6		5.23	36.4
Sta.				+68.6			4.20	37.4
0 + 00	max. 7' point on prospect		10.05	17.4	8 + 30.8		3.40	38.21
7 + 76.6			9.60	17.8	J.P. +70.8	4.81	^{H.I.} 43.02	3.54
1 + 34.6			8.38	19.0				
2 + 24.6			7.80	19.6				
2 + 98.6			4.37	23.03				
J.P.	12.27	^{H.I.} 35.30						
4 + 06.6			9.16	26.1				
+36.6			8.2	27.1				
+38.6			6.5	28.8				
+58.6			5.5	29.8				
+66.6			7.2	28.1				
+72.6			5.32	30.0				
+83.6			7.0	28.3				
J.P.	11.17	^{H.I.} 45.23	1.24	34.06				
5 + 56.6			13.87	31.3				
6 + 38.6			11.29	33.9				

Survey of lot

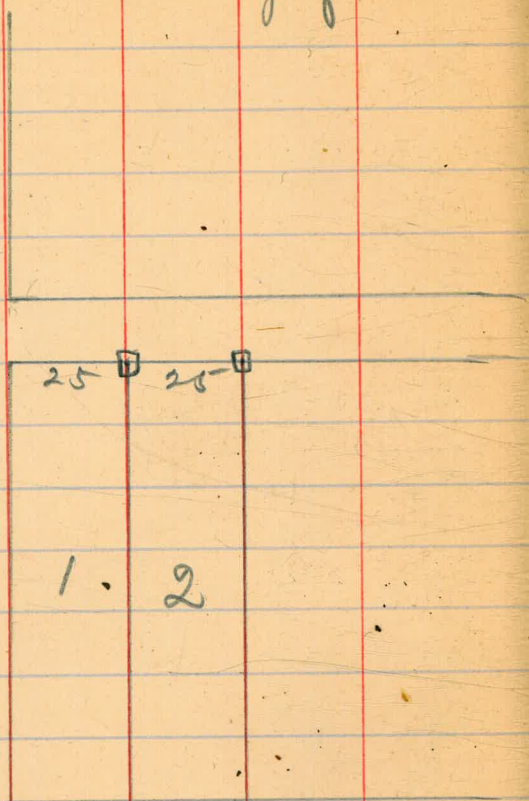
2 Blk 10 Lafolla Park.

36

Nov. 3/13

Childs
Otter
Bunker

Wall Street



10

Herschell

11/11/45 X See of Macaulay S (63.45)
 7/ Taylor Rd W of Roseville to E L Elmington
 13/ July (Street has been graded & finished)

	930	10895	99.65	
7P	1109	11908	95	10800
(63.45)	Pueblo Sim W of Roseville			
n			107	108.4
(10)			107	08.4
Gutter			113	07.6
			112	7.9
1			110	8.1
			110	8.1
Gutter			112	7.9
6			107	8.4
S			107	8.4
	50 W of Rd			
S			58	13.3
			59	13.2
Gutter			66	12.5
			65	12.6
6			65	12.6
			66	12.5
Gutter			68	12.3
			60	12.1
n			60	13.1

Bin NE H
 Macaulay
 Plann

11208

27

76' W-E 28 blow st (60')

n	37	115.4	99.65
	43	14.8	9.2
	40	15.1	108.75
	40	15.1	108.00
	40	15.1	1109
	40	15.1	11908
	40	15.1	
	40	15.1	
Gutter	42	14.9	
	35	15.6	
S	34	15.7	
	E gutter blow st		
	24	16.7	
	25	16.6	
Gutter	33	15.8	
	31	16.0	
	30	16.1	
	32	15.9	
	32	15.9	
n	35	15.6	

11914

12866

Macaulay
3811908
150
117.58
11.08
128.66

	E	1/4 f	blow	S
n			27	116.2
			24	16.7
			21	17.0
b			20	17.1
			19	17.2
Butte			2.8	16.3
			1.8	17.3
S			1.2	17.9
	center of blow			
S			0.3	18.8
			0.8	18.3
Butte			1.8	17.3
			1.1	18.0
b			1.1	18.0
			1.4	17.9
			1.7	17.4
n			1.7	17.4
TP	1108	12866	150	117.58

	W	1/4 f	blow	
n			108	117.9
			103	18.2
			98	18.9
b			96	19.1
			97	19.0
Butte			104	18.3
			94	19.3
S			88	19.9
	center of blow			
S			80	20.7
			83	20.2
Butte			86	19.1
			89	19.8
b			89	19.8
			90	19.7
			96	19.1
n			102	18.5

12866

W line of blow st

n 79 120.8

80 20.7

Butte 88 19.9

80 20.7

b 78 20.9

77 21.0

Butte 84 20.3

73 21.4

S 69 21.8

50' W of blow

S 21 26.6

22 26.5

Butte 33 25.4

33 25.4

b 26 26.1

30 25.7

Butte 32 25.5

27 26.0

n 26 26.1

1297 12959 204 12602

13959

100' W of blow

n 87 130.9

85 31.1

Butte 91 30.5

88 30.8

b 88 30.8

90 30.6

Butte 94 30.2

86 31.0

S 84 31.2

150' W of blow

S 38 35.8

36 36.0

Butte 44 35.2

41 35.5

b 40 35.6

40 35.6

Butte 45 35.1

37 35.9

n 39 35.7

TP 1043 14978 024 13955

Macaulay 39

12866
204
12662
1297
13959
24
157.35
1043
14978
24
147.44

14978

200 W of Glen St

n		93	140.5
		94	140.4
	South	104	39.4
		96	40.2
b		96	40.2
		96	40.2
	South	104	39.8
		89	40.9
s		85	41.3

255 W = E of Tusten St (60')

s		40	45.8
		42	45.6
	South	52	44.6
		49	44.9
b		50	44.8
		50	44.8
	South	57	44.1
		47	45.1
n		43	45.5

14979

Macaulay

40

E end Tusten

n		28	147.0
		42	145.6
		44	145.4
b		44	145.4
		44	145.4
		51	146.2
s		33	146.5
	E 1/4 of Tusten		
		27	147.1
s		29	146.9
		34	46.4
		35	46.3
b		36	46.2
		35	46.3
		20	47.8
n			

14978

Center of Tustin St

n		1.3	48.5
		2.5	47.3
		3.0	46.8
b		2.8	47.0
		2.9	46.9
		2.4	47.4
S		2.1	47.7
	W 1/4 of Tustin		
S		1.7	48.1
		1.9	47.9
	Center	2.9	46.9
		2.4	47.4
b		2.4	47.4
		2.6	47.2
		1.8	48.0
n		0.6	49.2

14978

Macaulay

41

W 1/4 of Tustin

n		0.0	49.8
		1.5	48.3
		2.2	47.6
b		2.0	47.8
		2.0	47.8
	Center	2.2	47.6
		1.3	48.5
S		1.2	48.6
	W line of Tustin		
S		1.7	48.7
		1.1	48.5
	Center	2.0	47.8
	1/4	1.8	48.0
c		1.8	48.0
		1.9	47.9
	1/4 Center	1.8	48.0
		1.1	48.7
n		0.8	49.0

14978

(50) 55 W = E of Glenartney

n 14 148.4

Suth

17 48.1

27 47.1

24 47.4

b

22 47.6

Suth

22 47.6

26 47.2

1.6 48.2

S

15 48.3

70

230 147.48

Super Pole

11
12
13May
July
July

X Sec of Macaulay St (60)

E of Glenartney to Chatsworth Blvd 12

354 129.36

12582 Bm ^{at} ^{middle}

E of Chatsworth Blvd

12582
354
129.36

S

34 126.0

42 25.2

51 24.3

b

53 24.1

58 23.6

54 24.0

n

57 23.7

50 E of Chatsworth

n

62 23.2

58 23.6

56 23.8

b

53 24.1

52 24.2

50 24.4

S

50 24.4

12936

	100	E of	Chato	w. mt.
S			52	24.2
			52	24.2
			52	24.2
L			55	23.9
			56	23.8
			59	23.5
R			54	24.0
	125	E of		
S			50	24.4
L			(44) 50	25.0 24.4
Y			50	24.4
	150	E of		
R			52	24.2
curb			52	24.2
1/2			55	23.9
C			53	24.1
1/2			54	24.0
L			(50) 40	24.4 25.4
S			40	25.4

12936

Mazatlan
43

	200	E of	Chato	w. mt.
S			40	125.4
			(37) 47	25.7 24.7
			47	24.7
L			49	24.5
			50	24.4
			52	24.2
R			49	24.5
	230.5	E = Return		same as S Mendota St
S			42	25.2
	235	E = W of		Mendota St (60')
R			53	24.1
			52	24.2
			51	24.3
L			50	24.4
			48	24.6
			(46) (38)	24.8 25.6
S			35	25.9

12936

W. 1/4 of Mendota

S 30 126.4

(35)
(45) 25.9
24.9

46 24.8

b 49 24.5

50 24.4

54 24.0

n 56 23.8

W 1/4 of Mendota

n 57 23.7

55 23.9

50 24.4

b 49 24.5

50 24.4

44
34 25.0
26.0

S 28 26.6

12936

Macaulay
44

Center of Mendota

S 29 126.5

(40)
(45) 25.4
24.9

45 24.9

b 49 24.5

50 24.4

54 24.0

n 57 23.7

E 1/4 of Mendota

n 56 23.8

54 24.0

50 24.4

b 48 24.6

49 24.5

45 24.9

S 32 26.2

12936

E blf Mendota

S 37 126.2

44 125.0

45 24.9

b 47 24.7

48 24.6

53 24.1

n 53 24.4

E S of Mendota

n 47 24.7

47 24.7

nc 47 24.7

c 47 24.7

nc 48 24.6

44 25.0

S 30 26.4

26' E of Mendota = End of Return ^{ms} _{course}

S 41 25.3

TP 9.18 13524 410 12524

13524

Massanley

45

50' E of Mendota

S 98 125.4

(96) 25.6
25.2

102 25.0

b 101 25.1

100 25.2

100 25.2

n 100 25.2

100 E

n 100 25.2

96 25.6

93 25.9

b 93 25.9

96 25.6

92 26.0

S 90 26.2

12936
4.00
125.26
9.98
135.24

13524

150 E of Mendota

S	85	126.7
	81	27.1
	81	27.1
b	81	27.1
	80	27.2
	81	27.1
n	80	27.2

200 E of Mendota

n	62	29.0
	63	28.9
	60	29.2
b	60	29.2
	61	29.1
	60	29.2
S	62	29.0

13524

Meadley
46

225 = w of Bopistano (60)

S	34	131.8
	(30) (49)	132.2 30.7
	47	30.5
b	45	30.7
	46	30.6
	49	30.3
n	51	30.1

W of Bopistano

n	44	30.8
	47	30.5
	40	31.2
b	39	31.3
	42	31.0
	(34) (42)	31.8 33.6
S	20	33.2

222' = w End of Return line Bopistano

S	40	131.2
---	----	-------

13524

W 1/4 of Capistrano

S 07 134.3

(86)
(228) 34.6
32.4

34 31.8

b 33 31.9

34 31.8

38 31.4

n 40 31.2

Center of Capistrano

n 30 32.2

34 31.8

28 32.4

b 26 32.6

29 32.3

TD 1258 1462 160 13364

(138)
(10.2) 33.2
36.2

S 105 36.7

14622

E 1/4 of Capistrano

S 98 136.4

(95) 37.0
33.7

127 32.5

b 127 32.5

130 33.2

127 32.5

n 134 32.6

E 1/4 of Capistrano

n 126 33.6

128 33.4

123 33.9

b 122 34.0

125 33.7

(117)
(84) 34.5
37.8

S 90 37.2

Macomber
47

13524
1460
135.64
12.58
148.22

14622

E of Bapustani

S	82	138.0
	(75)	38.7
	(71.0)	35.2
	11.2	35.0
b	114	34.8
	115	34.7
Subt	13.0	33.2
	12.0	34.2
n	12.0	34.2

50 E of Bapustani = E End of Return beam

n	77	38.5
Subt	77	38.5
	87	37.5
	77	38.5
b	77	38.5
Subt	87	37.5
	77	38.5
	(75)	39.0
	(71.5)	41.7
S = E b	47	41.5

14622

Macaulay
48

100 E of Bapustani

S	02	46.0
	04	45.8
	32	43.0
	38	42.4
Subt	49	41.3
b	41	42.1
	44	41.8
Subt	57	40.5
	39	42.3
n	29	42.3

TP 915 15520 011 14611

150 E of Bapustani

n	80	46.3
	86	45.7
Subt	107	44.3
	100	45.3
b	99	45.4
Subt	103	45.0
	98	45.5
	(90)	46.3
	(44)	50.9
S	44	50.9

14622
11
14611
915
15520
215
14871

(60) 200 E = 2 S Glnarney

S 08 1545

(6.6) 53.7
48.5

"C 68 48.5

Suth 76 47.7

C 73 48.0

"C 75 47.8

Suth 78 47.5

69 48.4

N 68 48.5

Well 7.65 147.65

This Street has been graded (30')

+ is 50' mid E of this line

Sauthern City Park

89°38'

225'

21
20' 20'

90°00'

300'

27th street

Tennis

440'

F

Basket Ball

300'

20' 20'

B.M. 215,48

A

40'

50'

Girls Playground

440'

Basket ball

K

30'

20'

20'

30'

20'

30'

20'

30'

110'

40'

30'

40'

30'

40'

30'

40'

30'

40'

30'

40'

30'

40'

30'

360'

L

440'

athletics

440'

440'

Foot ball

110'

H

50'

40'

15'

40'

15'

50'

40'

15'

40'

15'

50'

40'

15'

40'

15'

50'

40'

15'

40'

15'

50'

40'

15'

40'

15'

50'

40'

15'

40'

15'

50'

40'

15'

40'

15'

50'

40'

15'

40'

15'

Nov. 18, 1913

1913

Lehilds
Allen
Bunker

20'

30'

20'

30'

20'

30'

20'

30'

20'

30'

20'

30'

20'

30'

20'

30'

20'

30'

20'

30'

20'

30'

20'

30'

20'

30'

20'

30'

20'

30'

20'

30'

20'

30'

20'

30'

20'

30'

20'

30'

20'

30'

G

I

360'

M

40'

30'

40'

30'

40'

30'

40'

30'

40'

30'

40'

30'

40'

See diagram Page 50

223.8 Nov. 20/13 { Lehigh
 51
 Bunker

TP.	H.I.				
	12.81	223.82	211.01		
	Sect. AB			Point F	
Point A	6.38	218.44	50' no.	11.1	212.7
50' no.	4.3	219.5	100' no.	9.0	214.8
100' no.	3.7	220.1	150' no.	7.1	216.7
Point B	4.0	219.8	200' no.	5.1	218.7
			250' no.	4.3	219.5
	Sect C to E			3.6	220.2
Point E	2.38	221.44	300' no. G.	3.0	220.8
100' no. H.	2.4	221.4	50' no. G	2.5	221.3
50' " H.	3.0	220.8	100' no. G	1.6	222.2
Point H	3.92	219.90			
50' no. H.	4.8	219.0	50' E Sect F.G.H.	1.1	222.7
100' no. "	5.6	218.2	400' no. no. H.	2.2	221.6
150' no. "	6.4	217.4	350' no. "	2.4	221.4
200' no. "	8.0	215.8	300' no. H. "	2.8	221.0
250' no. "	10.1	213.7	250' no. " "	3.5	220.3
300' no. Point C	12.44	211.38	200' no. " "	4.5	219.3
			150' no. " "	5.9	217.9
			100' no. " "	8.0	215.8
			50' no. " "	9.9	213.9
			no. line		

223.8

100' E sect. F & H

10 line	8.6	215.2
50' no.	7.3	216.5
100' "	5.9	217.9
150' "	4.8	219.0
200' "	3.8	220.0
250' "	3.2	220.6
300' "	2.5	221.3
350' "	2.0	221.8
400' "	0.9	222.9

150' E sect. F & H

400' no. No. line	1.7	222.1
350' no. " "	1.5	222.3
300' no. " "	2.4	221.4
250' no. " "	3.5	220.3
200' no. " "	4.2	219.6
150' no. " "	5.2	218.6
100' no. " "	6.4	217.4
50' no. " "	6.2	217.6
No. line	6.7	217.1

223.8

52

200' E sect. F & H.

No. line	5.3	218.5
50' no.	4.5	219.3
100' "	5.6	218.2
150' "	5.8	218.0
200' "	4.8	219.0
250' "	4.0	219.8
300' "	3.1	220.7
350' "	3.1	220.7
400' "	3.0	220.8

250' E sect. F & H.

400' no. No. line	6.3	217.5
350' no. " "	5.8	218.0
300' no. " "	5.0	218.8
250' no. " "	5.5	218.3
200' no. " "	5.9	217.9
150' no. " "	5.3	218.5
100' no. " "	4.7	219.1
50' no. " "	4.2	219.6
No. line	4.7	219.1

223.82

300' E Sect. F. G. H.

So. line	5.5	218.3
50' no.	5.1	218.7
100' "	5.2	218.6
150' "	6.0	217.8
200' "	7.7	216.1
250' "	9.7	214.1
300' "	10.4	213.4
350' "	10.8	213.0
400' "	11.4	212.4

360' E Sect. F. G. H. = Sect. 9. K. L.

400' no. So. line	15.9	207.9
350' no. " "	16.2	207.6
300' no. " "	15.1	208.7
250' no. " "	14.1	209.7
200' no. " "	13.0	210.8
150' no. " "	11.2	212.6
100' no. " "	8.6	215.2
50' no. " "	8.9	214.9
So. line	8.1	215.7

53

390' E Sect. F. G. H. = Sect. 9. M. O.

J. P. O.	4.41	^{H.I} 215.91	12.32	211.50
point N			2.61	213.30
50' no.			3.4	212.5
100' no.			3.8	212.1
150' "			5.7	210.2
200' "			7.0	208.9
250' "			7.8	208.1
point O			9.00	206.91

231.5

Sect H.I.

10.03 231.47

221.44

J.P.			
point H	9.22	222.25	710 hind
400' So. point H	8.0	223.5	50' So.
350' " " "	7.5	224.0	100' So.
300' So. " "	7.1	224.4	150' So.
250' So. " "	7.0	224.5	200' "
200' So. " "	6.5	225.0	250' "
150' So. " "	5.9	225.6	300' "
100' So. " "	5.3	226.2	350' "
50' So. " "	4.3	227.2	400' So.
point G	4.35	227.14	440' So.

50' E. Sect. H.I.

3.6 227.9

4.0 227.5

4.1 227.4

4.7 226.8

5.4 226.1

6.1 225.4

6.6 224.9

7.1 224.4

8.0 223.5

8.6 222.9

100' E of Sect. H.S.

440' 20. of no line	8.5	223.0	no line
400' 40. " " "	7.7	223.8	50' 20.
350' 40. " " "	7.3	224.2	100' 20.
300' 40. " " "	6.9	224.6	150' "
250' 40. " " "	5.8	225.7	200' "
200' 40. " " "	5.8	225.7	250' "
150' 40. " " "	5.2	226.3	300' "
100' 40. " " "	4.5	227.0	350' "
50' 40. " " "	4.0	227.5	400' "
no line	3.7	227.8	440' "

150' E of Sect. H.I.

no line	5.3	226.2
50' 20.	5.6	225.9
100' 20.	6.3	225.2
150' "	6.7	224.8
200' "	7.0	224.5
250' "	7.3	224.2
300' "	7.6	223.9
350' "	8.2	223.3
400' "	8.6	222.9
440' "	9.0	222.5

200' E. of Sect. H.S.

440' So. of No. line	10.8	220.7	No. line
400' So. " "	10.7	220.8	60' Ro.
3350' So. " "	10.1	221.9	100' "
3300' So. " "	9.4	222.1	150' "
2750' So. " "	9.3	222.2	200' "
2200' So. " "	9.0	222.5	250' "
1150' So. " "	8.9	222.6	300' "
1100' So. " "	8.9	222.6	T.P.
550' So. " "	8.8	222.7	350' So
No. line	8.5	223.0	400' So.
			440' "

250' E of Sect. H.I.

			11.4	220.1
			11.9	219.6
			12.1	219.4
			12.0	219.5
			12.1	219.4
			12.6	218.9
			12.8	218.7
4.82	^{H.I.} 223.29	13.00		218.47
			5.8	217.5
			6.4	216.9
			5.8	217.5

223.29

300' E. of Sect. H.I.

440' So. of no. line.	10.6	212.7
400' So. " " "	10.6	212.7
350' So. " " "	9.4	213.9
300' So. " " "	8.3	215.0
250' So. " " "	7.7	215.6
200' So. " " "	7.0	216.3
150' So. " " "	6.5	216.8
100' So. " " "	6.7	216.6
50' So. " " "	5.4	217.9
No. line	4.4	218.9

223.3

57

360' E. of Sect. H.I. = Sect. L.M.

point M.	6.54	216.75
50' So.	7.3	216.0
100' So.	9.4	213.9
150' "	10.3	213.0
200' "	9.8	213.5
250' "	11.4	211.9
300' "	12.4	210.9
350' "	13.3	210.0
400' "	14.5	208.8
440' " point L.	15.4	207.9

Levels on Princess East

25' East of pueblo line, from

Sta.		3.59	HI 86.44		
J.P. 0+00	North line of Boulevard & 25' East of pueblo line.			4.4	82.85 82.0
+07				8.5	77.9
+26				10.2	76.2
+50				14.1	72.3
+59				7.1	79.3
+83				3.4	83.0
+90				0.8	85.6
1+00				1.6	84.8
+50				6.7	79.7
2+00				13.1	73.3
J.P. +16		1.38	HI 74.82	13.00	73.44
				4.5	70.3
+22				9.3	65.5
+33				4.9	69.9
+50				2.7	72.1
3+00				0.8	74.0
+50				0.5	74.3
+72				1.6	73.2
+93	So. edge road.			6.2	68.6

PLOTTED

line of 50' street sec. 11/13 } Childs
Allen 58
North line of Blvd. to ocean
Bunker

B.M. 3 nails in pole about 5' north of
East line

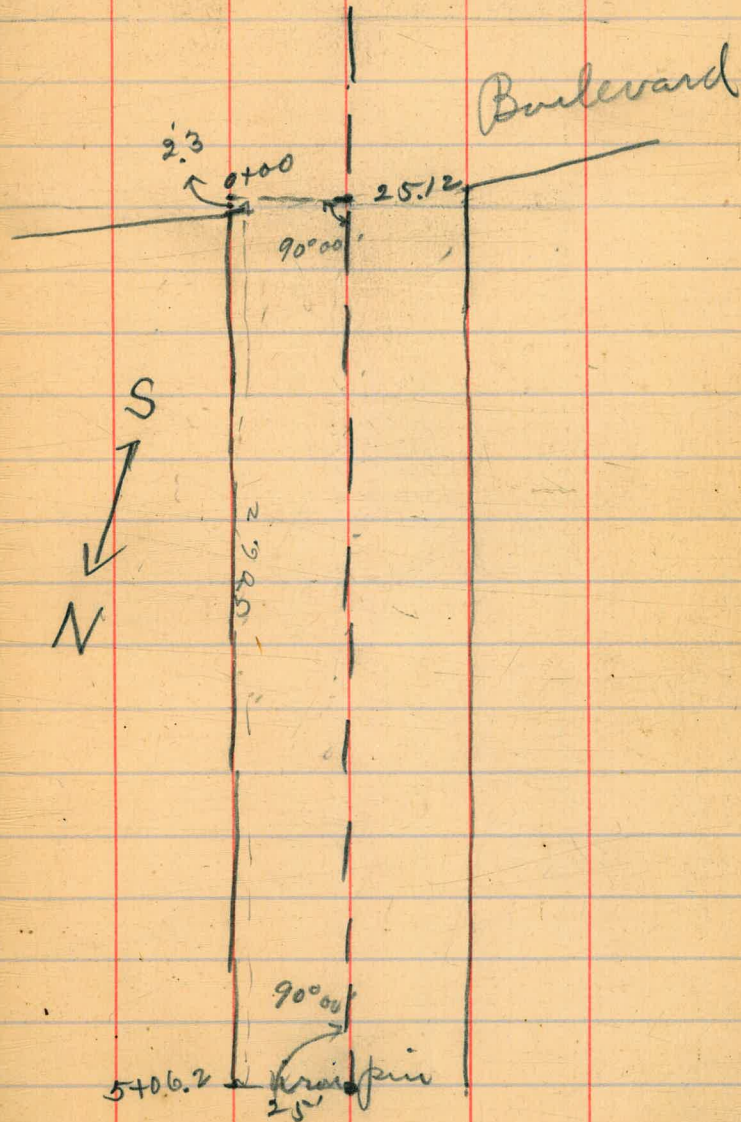
74,82

Cont. from page 58

sta.			
4+00		6.7	68.1
450	no. edge road.	6.3	68.5
5400		8.0	66.8
706.2	25' East of trap pin	8.4	66.4
J.R. hub.	5' north of pin.	10.61	64.21
	on pueblo line (west's elev)		64.2

PLOTTED

59



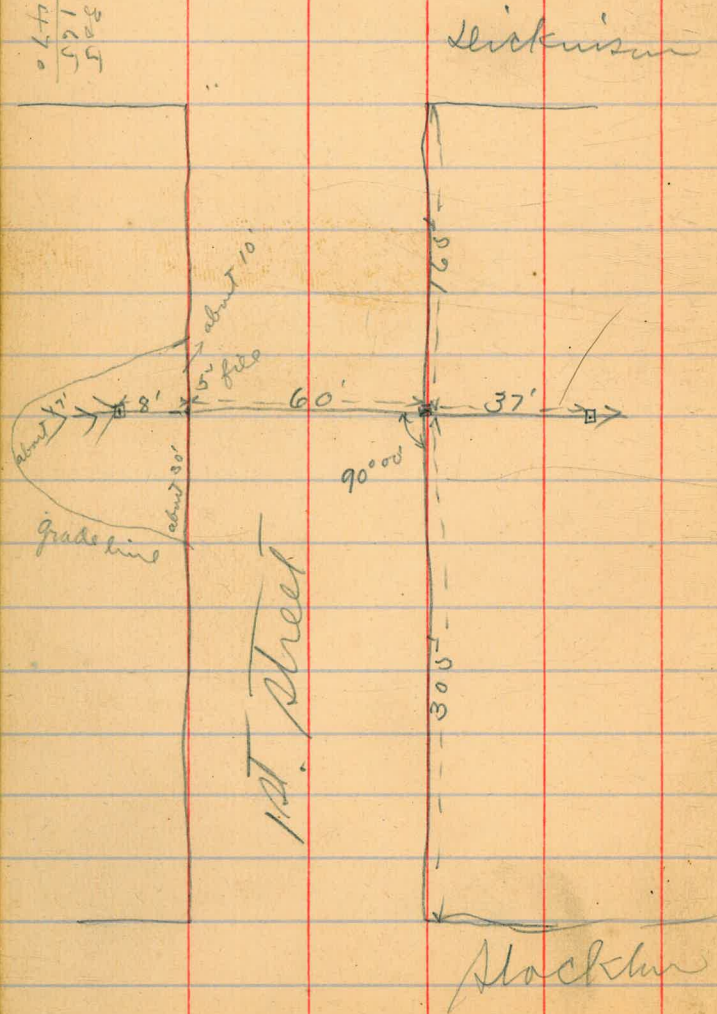
Survey for culvert on 1st

bet. Stockton & Dickinson

sec 3/13
7.4th

6th
Allen
Bunker

305
165
470

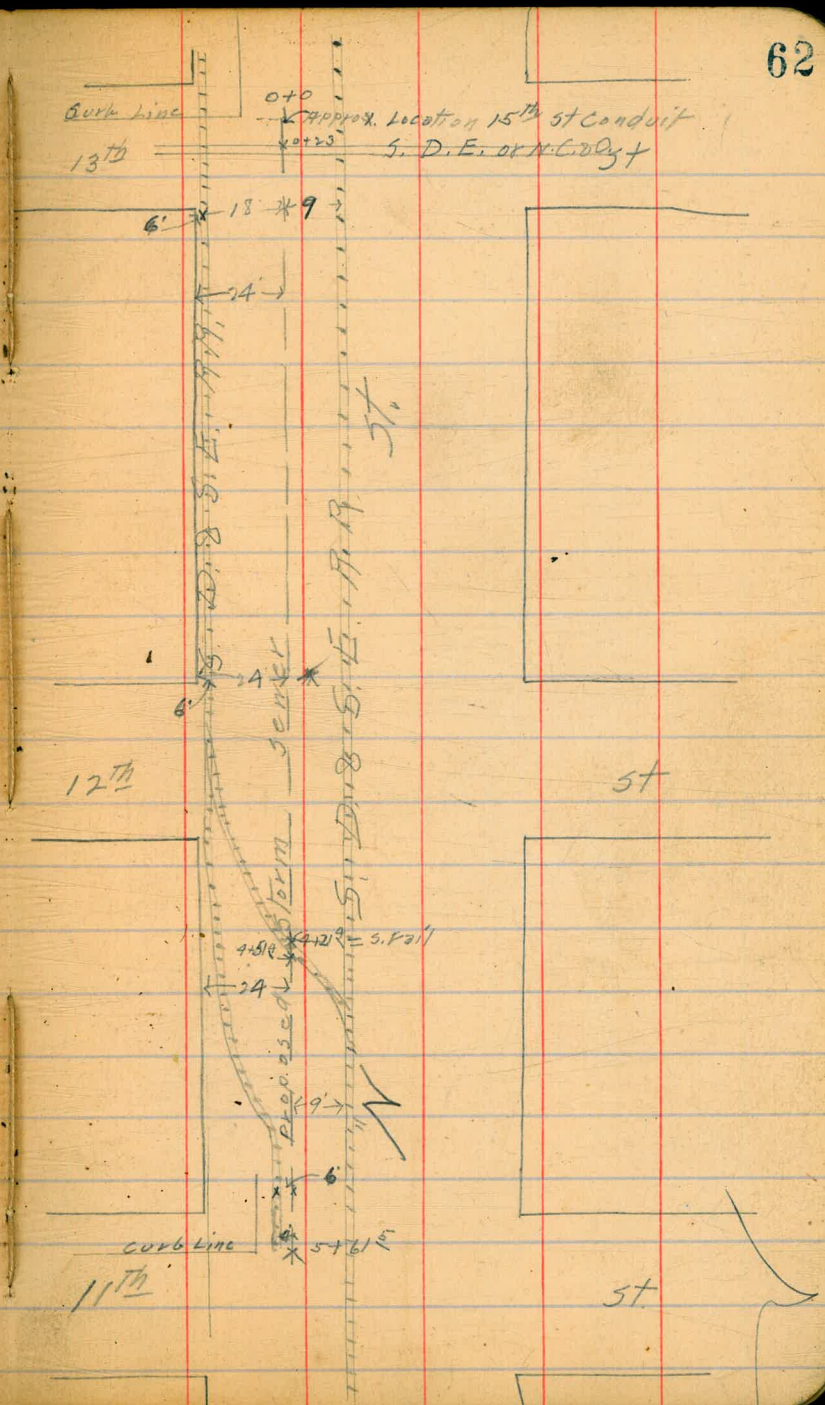


61

Survey for Culvert "X" St, 6.8
7.7
14.5

1/4 Dimple
1/4 A Shaw
Kerr.

B.M. Brass pla N.E. 13 th 8" M"	3.00
bottom 15 th St flume	14.5
B.M. 5.24 8.24	
0+02 E. curb line 13 th St	5.2
0+23 = E. rail N.C. 20.	4.5
+50	4.9
1+0	4.9
+50	5.1
2+0	5.3
+50	5.5
2+79.3 E. curb 12 th St	5.3
3+0	5.7
+50	5.9
4+0	5.2
+21.4 = S. rail cross over switch	4.6
+51.4 = N. " " " "	4.4
+5+0	4.1
+50	3.5
5+61.5 = E. curb line 11 th St	3.4



J.P. 7.46 ^{H.I.} 123.56 116.10

South line prospect

White	8.69	1149
30' 2' west track	9.1	1145
$\frac{1}{4}$	9.0	1146
41.5' 2' east track	9.0	1146
C	8.8	1148
	8.3	1153
	8.6	1159
	8.9	1127
Elvire	8.21	1154
Sect AB page 63		
E line	8.21	1154
+1'	5.8	117.8
	6.1	117.5
	6.6	117.0
C	6.6	117.0
+4.5' 2' east track	6.7	1169
cb.	7.1	116.5
+4.0 2' west track	7.6	116.0
White	7.2	116.4
	6.6	117.0

North line Ironing place

White	5.54	118.0
+9.5' 2' west track	6.1	117.5
cb. + 2' east of track	5.9	117.7
	5.6	118.0
C	6.0	117.6
	5.7	117.9
	5.6	118.0
Elvire	5.1	118.5
No cb.		
E line	4.1	119.5
	4.6	119.0
	4.7	118.9
C	5.0	118.6
	4.7	118.9
	5.2	118.4
+3.5' 2' east track	5.1	118.5
+16.5' " west "	5.2	118.4
White	5.1	118.5

13' So. of curb.

White (2' west of track)	4.8	118.8
+15' 2' east track	4.8	118.8
cb.	4.7	118.9
	4.2	119.4
C	4.6	119.0
	4.2	119.6
	4.4	119.7
E line	3.6	120.0
no. 14		
E line	3.7	119.9
	3.7	119.9
	3.8	119.8
C	4.2	119.6
	3.6	120.0
	4.2	119.6
+7 - 2' east track	3.9	119.7
White	4.1	119.5

center

White	2.9	120.7
+3.5' 2' east track	2.8	120.8
cb.	3.2	120.4
	2.8	120.8
C	3.2	120.6
	3.0	120.6
	2.6	121.0
E line	2.7	120.9
9' South of center		
E line	2.5	121.1
	2.4	121.2
	2.6	121.0
C	2.9	120.7
	2.5	121.1
	3.0	120.6
E line + 2' east of track	2.5	121.1

123.56

So. 1/4

White

2.0 121.6

1.9 121.7

1.5 122.1

C

1.5 122.1

1.3 122.3

1.5 122.1

Elm

1.6 122.0

So. Cb.

Elm

0.3 122.3

0.0 122.6

0.2 122.4

C

0.5 122.1

0.6 122.0

0.7 122.9

White

0.5 122.1

J.P.

8.63 ^{HB} 131.67 0.52 123.04

South line Irving place

White

7.52 124.7

7.6 124.1

7.2 124.5

C

7.0 124.7

7.3 124.4

Elm

7.6 124.1

7.3 124.4

25" So.

Elm

5.9 125.8

6.5 125.2

6.1 125.6

C

6.3 125.4

6.5 125.2

6.5 125.2

White

6.1 125.6

1717

50' 20.

White

5.1 126.6

5.5 126.2

5.4 126.3

c

5.0 126.7

5.0 126.7

4.9 126.8

Eline

4.7 127.0

75' 20.

Eline

3.5 128.2

3.7 128.0

3.9 127.8

c

3.9 127.8

4.2 127.5

4.3 127.4

White

4.0 127.7

131,67

68

100' 20.

White

2.5 129.2

2.8 128.9

2.5 129.2

c

2.4 129.3

2.5 129.2

2.3 129.4

Eline

2.7 129.0

125

Eline

0.6 131.1

0.9 130.8

0.7 131.0

c

1.0 130.7

1.1 130.6

1.3 130.4

White

0.7 131.0

	HT.		
J.P.	12.35	143.77	0.25 13142
	150'	20.	
White			10.9 1322.9
			11.7 1322.1
			11.6 1322.2
C			11.7 1322.1
			11.6 1322.2
			11.4 1322.4
Elms			11.4 1322.4
	175'	20.	
Elms			9.5 1324.3
			9.8 1324.0
			9.8 1324.0
C			10.0 1322.8
			10.1 1322.7
			10.1 1322.7
White			8.9 1324.9

	200'	20.
White		7.1 1326.7
		8.2 1325.6
		8.3 1325.5
C		8.3 1325.6
		7.9 1325.9
		7.9 1325.9
Elms		8.0 1325.8
	225'	20.
Elms		6.3 1327.5
		6.1 1327.7
		6.0 1327.8
C		6.5 1327.3
		6.5 1327.3
		6.5 1327.3
White		5.8 1328.0

250' 20.

White	4.3	1395
	5.2	138.6
	5.0	138.8
C	4.7	139.1
	4.7	139.1
	4.9	138.9
Elms	4.7	139.1
	2.8	1410
	2.9	1409
	2.9	1409
C	3.4	1405
	3.2	1406
	3.8	1400
White	2.9	1409

275' 20.

290.7 20. (sect C 10)

White	2.0	141.8
	2.6	141.2
	2.2	141.6
C	2.4	141.4
	1.8	1420
	1.4	142.4
Elms	1.6	142.2
	0.66	143.11
Elms	1.3	142.5
	1.6	142.2
C	2.1	141.7
	2.2	141.6
	2.4	141.4
White	2.0	141.8

No line Beach Run

JP.	1269	^{H.I.} 155.80	143.11		50' RO.		
	South line Beach Row.			White		3.7	152.1
West line			7.99	147.8		3.4	152.4
			8.2	147.6		3.4	152.4
			8.1	147.7	C	3.3	152.5
C			8.1	147.7		2.7	152.1
			7.7	148.1		3.1	152.7
			7.9	147.9	E line	2.9	152.9
E line			7.66	148.2			
	25' RO.						
E line			4.6	151.2	E line	1.8	152.0
			5.3	150.5		2.0	152.8
			5.0	150.8		1.7	152.1
C			5.4	150.4	C	1.9	152.9
			5.7	150.1		2.0	152.8
			5.7	150.1		2.2	152.6
White			5.7	150.1	White	2.6	152.2
			5.4	150.4			

153.80

100' 20.

White

1.8 1540

1.4 1546

1.2 1546

C

1.2 1546

1.1 1547

1.3 1545

E line

1.3 1545

125' 20.

E line

0.9 1549

0.5 1553

0.2 1556

C

0.1 1557

0.3 1555

0.5 1553

White

0.3 1555

72

H.I.

10.57 166.22 0.09 155.71

150' 20.

S.P.

White

9.4 156.8

10.1 156.1

9.8 156.4

C

9.5 156.7

9.8 156.4

9.9 156.3

E line

10.0 156.2

175' 20.

E line

8.1 158.1

8.3 157.9

8.0 158.2

C

8.1 158.1

8.3 157.9

8.7 157.5

White

8.4 157.8

1662

200 20.

White	6.3	159.9
	6.2	1600
	6.0	1602
C	5.9	1603
	5.5	1607
	5.7	1605
Elms	5.6	1606

225' 20.

Elms	3.7	162.5
	3.9	162.3
	4.0	162.2
C	4.3	161.9
	4.4	161.8
	4.6	161.6
White	5.3	160.9

1662

73

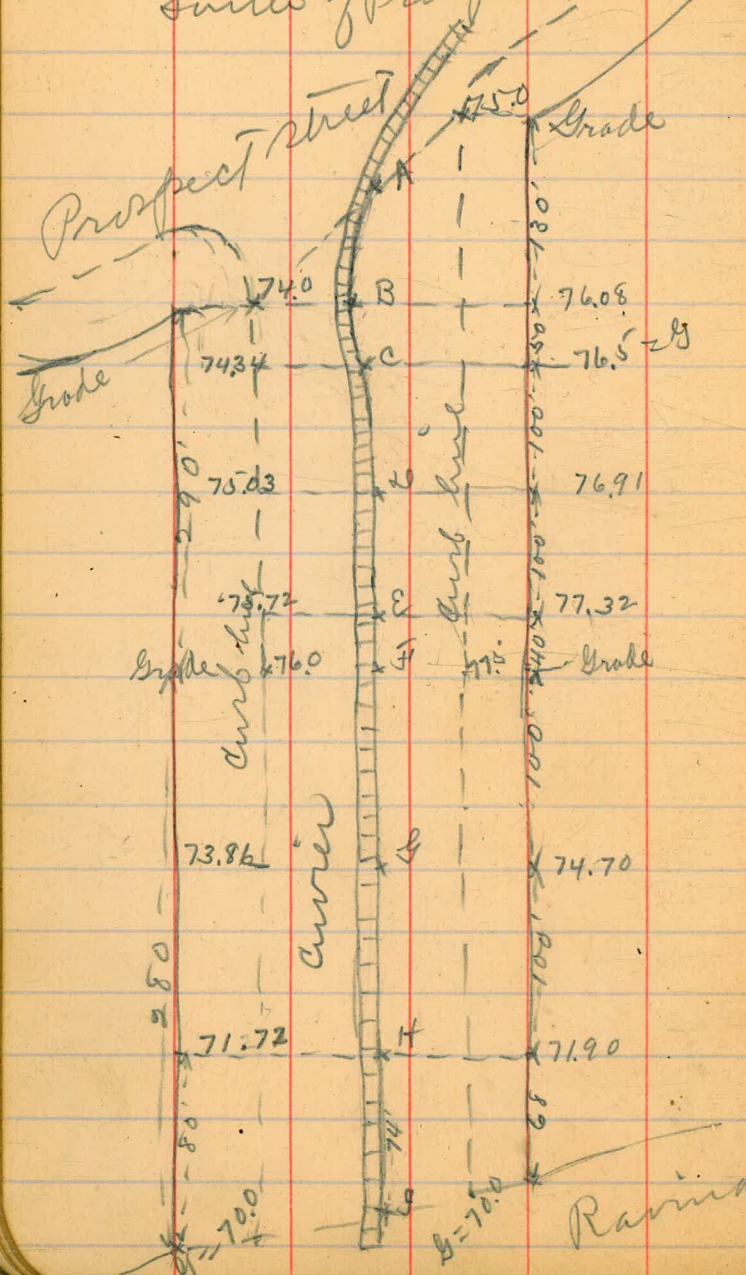
239' 5 20.

White	4.7	161.5
	3.7	162.5
	3.5	162.7
C	3.2	162.0
	3.1	162.1
	2.8	162.4
Elms	2.50	163.7

Northside State

Elms	2.50	163.7
	2.1	164.1
	2.1	164.1
C	2.2	164.0
	2.4	162.8
	2.9	162.3
White	3.71	162.5

Levels in Sapella
south of Prospect



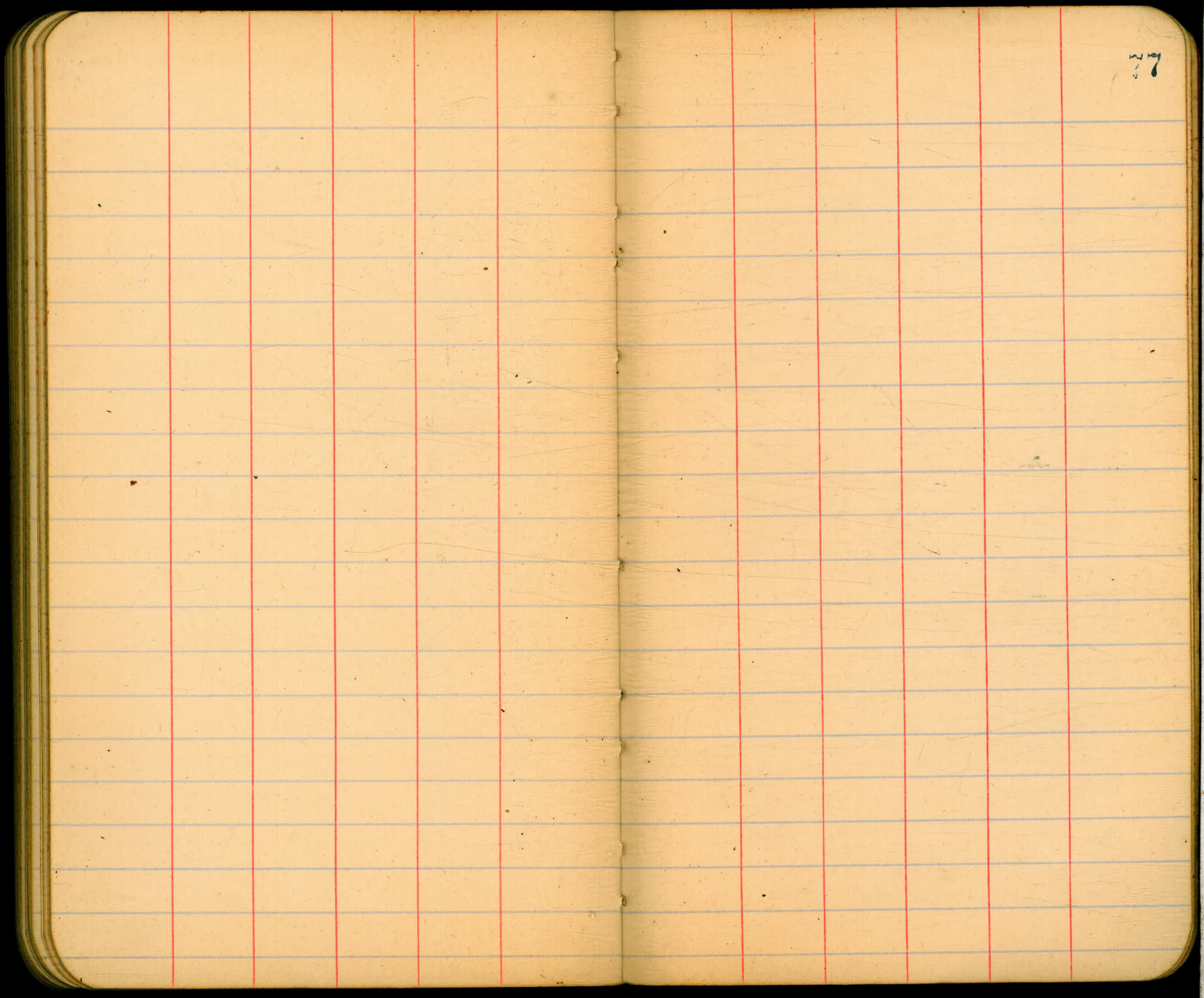
R.R. tracks on currier

June 15/17 { rebuilds 75
Evans
more

Sta.	H.I.	6.37	80.32	H.I.	track	73.95	R.M.
	80.32			Rod	Central	Street	grade
A				5.12	75.20	74.50	
B				5.13	75.19	74.90	
C				5.00	75.32	75.42	
D				4.48	75.84	75.97	
E				4.20	76.12	76.52	
F				4.18	76.14	76.75	
G				4.63	75.69	74.28	
H				5.03	75.29	71.81	
I				5.15	75.17	70.00	

Ravine closed

76



27

78

79

N. E.

S. E

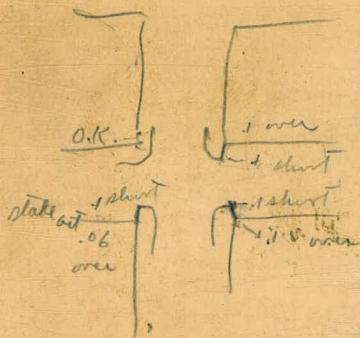
+

S. E Fern 2 July

19699 N.W. B + 27 th

21233 N.W.A + 27 ^{spk poli}

Muv:



84.83
 5.47
 90.30 K.1
 4.83
 85.47 = T.P.
 11.40
 96.87 = H.1
 0.16
 96.71 = T.P.
 12.65
 109.36 = H.1
 0.01
 109.35 = T.P.
 10.22
 119.64 = H.1
 0.25
 119.38 = T.P.
 12.10
 131.48 = H.1
 0.29
 131.19 = T.P.
 12.37
 143.54 = H.1
 0.00
 143.54 = T.P.
 10.27
 153.81 = H.1
 3.77
 150.04

116 R 175
 Sec 29 T16S R17E
 11 SE Holtville
 46
 3.1 511.2
 508.9
 513.5
 508.9

DISTANCES FROM CENTER OF ROADWAY FOR CROSS-SECTIONING.

ROADWAY 16 FEET WIDE. SIDE SLOPES 1½ TO 1.
FOR SINGLE TRACK EMBANKMENT.

	0	.1	.2	.3	.4	.5	.6	.7	.8	.9	
0	8.0	8.2	8.3	8.5	8.6	8.8	8.9	9.1	9.2	9.4	0
1	9.5	9.7	9.8	10.0	10.1	10.3	10.4	10.6	10.7	10.9	1
2	11.0	11.2	11.3	11.5	11.6	11.8	11.9	12.1	12.2	12.4	2
3	12.5	12.7	12.8	13.0	13.1	13.3	13.4	13.6	13.7	13.9	3
4	14.0	14.2	14.3	14.5	14.6	14.8	14.9	15.1	15.2	15.4	4
5	15.5	15.7	15.8	16.0	16.1	16.3	16.4	16.6	16.7	16.9	5
6	17.0	17.2	17.3	17.5	17.6	17.8	17.9	18.1	18.2	18.4	6
7	18.5	18.7	18.8	19.0	19.1	19.3	19.4	19.6	19.7	19.9	7
8	20.0	20.2	20.3	20.5	20.6	20.8	20.9	21.1	21.2	21.4	8
9	21.5	21.7	21.8	22.0	22.1	22.3	22.4	22.6	22.7	22.9	9
10	23.0	23.2	23.3	23.5	23.6	23.8	23.9	24.1	24.2	24.4	10
11	24.5	24.7	24.8	25.0	25.1	25.3	25.4	25.6	25.7	25.9	11
12	26.0	26.2	26.3	26.5	26.6	26.8	26.9	27.1	27.2	27.4	12
13	27.5	27.7	27.8	28.0	28.1	28.3	28.4	28.6	28.7	28.9	13
14	29.0	29.2	29.3	29.5	29.6	29.8	29.9	30.1	30.2	30.4	14
15	30.5	30.7	30.8	31.0	31.1	31.3	31.4	31.6	31.7	31.9	15
16	32.0	32.2	32.3	32.5	32.6	32.8	32.9	33.1	33.2	33.4	16
17	33.5	33.7	33.8	34.0	34.1	34.3	34.4	34.6	34.7	34.9	17
18	35.0	35.2	35.3	35.5	35.6	35.8	35.9	36.1	36.2	36.4	18
19	36.5	36.7	36.8	37.0	37.1	37.3	37.4	37.6	37.7	37.9	19
20	38.0	38.2	38.3	38.5	38.6	38.8	38.9	39.1	39.2	39.4	20
21	39.5	39.7	39.8	40.0	40.1	40.3	40.4	40.6	40.7	40.9	21
22	41.0	41.2	41.3	41.5	41.6	41.8	41.9	42.1	42.2	42.4	22
23	42.5	42.7	42.8	43.0	43.1	43.3	43.4	43.6	43.7	43.9	23
24	44.0	44.2	44.3	44.5	44.6	44.8	44.9	45.1	45.2	45.4	24
25	45.5	45.7	45.8	46.0	46.1	46.3	46.4	46.6	46.7	46.9	25
26	47.0	47.2	47.3	47.5	47.6	47.8	47.9	48.1	48.2	48.4	26
27	48.5	48.7	48.8	49.0	49.1	49.3	49.4	49.6	49.7	49.9	27
28	50.0	50.2	50.3	50.5	50.6	50.8	50.9	51.1	51.2	51.4	28
29	51.5	51.7	51.8	52.0	52.1	52.3	52.4	52.6	52.7	52.9	29
30	53.0	53.2	53.3	53.5	53.6	53.8	53.9	54.1	54.2	54.4	30
31	54.5	54.7	54.8	55.0	55.1	55.3	55.4	55.6	55.7	55.9	31
32	56.0	56.2	56.3	56.5	56.6	56.8	56.9	57.1	57.2	57.4	32
33	57.5	57.7	57.8	58.0	58.1	58.3	58.4	58.6	58.7	58.9	33
34	59.0	59.2	59.3	59.5	59.6	59.8	59.9	60.1	60.2	60.4	34
35	60.5	60.7	60.8	61.0	61.1	61.3	61.4	61.6	61.7	61.9	35
36	62.0	62.2	62.3	62.5	62.6	62.8	62.9	63.1	63.2	63.4	36
37	63.5	63.7	63.8	64.0	64.1	64.3	64.4	64.6	64.7	64.9	37
38	65.0	65.2	65.3	65.5	65.6	65.8	65.9	66.1	66.2	66.4	38
39	66.5	66.7	66.8	67.0	67.1	67.3	67.4	67.6	67.7	67.9	39
40	68.0	68.2	68.3	68.5	68.6	68.8	68.9	69.1	69.2	69.4	40

Calculated by F. E. Paradis, C. E.



DISTANCES FROM CENTER OF ROADWAY FOR CROSS-SECTIONING.

ROADWAY 14 FEET WIDE. SIDE SLOPES 1½ TO 1.
FOR SINGLE TRACK EMBANKMENT.

	0	.1	.2	.3	.4	.5	.6	.7	.8	.9	
0	7.00	7.15	7.30	7.45	7.60	7.75	7.90	8.05	8.20	8.35	0
1	8.50	8.65	8.80	8.95	9.10	9.25	9.40	9.55	9.70	9.85	1
2	10.00	10.15	10.30	10.45	10.60	10.75	10.90	11.05	11.20	11.35	2
3	11.50	11.65	11.80	11.95	12.10	12.25	12.40	12.55	12.70	12.85	3
4	13.00	13.15	13.30	13.45	13.60	13.75	13.90	14.05	14.20	14.35	4
5	14.50	14.65	14.80	14.95	15.10	15.25	15.40	15.55	15.70	15.85	5
6	16.00	16.15	16.30	16.45	16.60	16.75	16.90	17.05	17.20	17.35	6
7	17.50	17.65	17.80	17.95	18.10	18.25	18.40	18.55	18.70	18.85	7
8	19.00	19.15	19.30	19.45	19.60	19.75	19.90	20.05	20.20	20.35	8
9	20.50	20.65	20.80	20.95	21.10	21.25	21.40	21.55	21.70	21.85	9
10	22.00	22.15	22.30	22.45	22.60	22.75	22.90	23.05	23.20	23.35	10
11	23.50	23.65	23.80	23.95	24.10	24.25	24.40	24.55	24.70	24.85	11
12	25.00	25.15	25.30	25.45	25.60	25.75	25.90	26.05	26.20	26.35	12
13	26.50	26.65	26.80	26.95	27.10	27.25	27.40	27.55	27.70	27.85	13
14	28.00	28.15	28.30	28.45	28.60	28.75	28.90	29.05	29.20	29.35	14
15	29.50	29.65	29.80	29.95	30.10	30.25	30.40	30.55	30.70	30.85	15
16	31.00	31.15	31.30	31.45	31.60	31.75	31.90	32.05	32.20	32.35	16
17	32.50	32.65	32.80	32.95	33.10	33.25	33.40	33.55	33.70	33.85	17
18	34.00	34.15	34.30	34.45	34.60	34.75	34.90	35.05	35.20	35.35	18
19	35.50	35.65	35.80	35.95	36.10	36.25	36.40	36.55	36.70	36.85	19
20	37.00	37.15	37.30	37.45	37.60	37.75	37.90	38.05	38.20	38.35	20
21	38.50	38.65	38.80	38.95	39.10	39.25	39.40	39.55	39.70	39.85	21
22	40.00	40.15	40.30	40.45	40.60	40.75	40.90	41.05	41.20	41.35	22
23	41.50	41.65	41.80	41.95	42.10	42.25	42.40	42.55	42.70	42.85	23
24	43.00	43.15	43.30	43.45	43.60	43.75	43.90	44.05	44.20	44.35	24
25	44.50	44.65	44.80	44.95	45.10	45.25	45.40	45.55	45.70	45.85	25
26	46.00	46.15	46.30	46.45	46.60	46.75	46.90	47.05	47.20	47.35	26
27	47.50	47.65	47.80	47.95	48.10	48.25	48.40	48.55	48.70	48.85	27
28	49.00	49.15	49.30	49.45	49.60	49.75	49.90	50.05	50.20	50.35	28
29	50.50	50.65	50.80	50.95	51.10	51.25	51.40	51.55	51.70	51.85	29
30	52.00	52.15	52.30	52.45	52.60	52.75	52.90	53.05	53.20	53.35	30
31	53.50	53.65	53.80	53.95	54.10	54.25	54.40	54.55	54.70	54.85	31
32	55.00	55.15	55.30	55.45	55.60	55.75	55.90	56.05	56.20	56.35	32
33	56.50	56.65	56.80	56.95	57.10	57.25	57.40	57.55	57.70	57.85	33
34	58.00	58.15	58.30	58.45	58.60	58.75	58.90	59.05	59.20	59.35	34
35	59.50	59.65	59.80	59.95	60.10	60.25	60.40	60.55	60.70	60.85	35
36	61.00	61.15	61.30	61.45	61.60	61.75	61.90	62.05	62.20	62.35	36
37	62.50	62.65	62.80	62.95	63.10	63.25	63.40	63.55	63.70	63.85	37
38	64.00	64.15	64.30	64.45	64.60	64.75	64.90	65.05	65.20	65.35	38
39	65.50	65.65	65.80	65.95	66.10	66.25	66.40	66.55	66.70	66.85	39
40	67.00	67.15	67.30	67.45	67.60	67.75	67.90	68.05	68.20	68.35	40

Calculated by F. E. Paradis, C. E.