

905

F.B.



EUGENE DIETZGEN CO.

Drawing Materials and Surveying Instruments
 NEW YORK. CHICAGO. SAN FRANCISCO.

TABLES FOR EXCAVATIONS AND EMBANKMENTS.
 DISTANCES FROM CENTER OF ROADWAY FOR CROSS-SECTIONING
 ROADWAY 20 FEET WIDE. SIDE SLOPES 1 TO 1.
 FOR SINGLE TRACK EXCAVATION.

MICROFILMED
 DEC 16 1964

Copyright, 1902. No. 30340.

	0	.1	.2	.3	.4	.5	.6	.7	.8	.9	
0	10.0	10.1	10.2	10.3	10.4	10.5	10.6	10.7	10.8	10.9	0
1	11.0	11.1	11.2	11.3	11.4	11.5	11.6	11.7	11.8	11.9	1
2	12.0	12.1	12.2	12.3	12.4	12.5	12.6	12.7	12.8	12.9	2
3	13.0	13.1	13.2	13.3	13.4	13.5	13.6	13.7	13.8	13.9	3
4	14.0	14.1	14.2	14.3	14.4	14.5	14.6	14.7	14.8	14.9	4
5	15.0	15.1	15.2	15.3	15.4	15.5	15.6	15.7	15.8	15.9	5
6	16.0	16.1	16.2	16.3	16.4	16.5	16.6	16.7	16.8	16.9	6
7	17.0	17.1	17.2	17.3	17.4	17.5	17.6	17.7	17.8	17.9	7
8	18.0	18.1	18.2	18.3	18.4	18.5	18.6	18.7	18.8	18.9	8
9	19.0	19.1	19.2	19.3	19.4	19.5	19.6	19.7	19.8	19.9	9
10	20.0	20.1	20.2	20.3	20.4	20.5	20.6	20.7	20.8	20.9	10
11	21.0	21.1	21.2	21.3	21.4	21.5	21.6	21.7	21.8	21.9	11
12	22.0	22.1	22.2	22.3	22.4	22.5	22.6	22.7	22.8	22.9	12
13	23.0	23.1	23.2	23.3	23.4	23.5	23.6	23.7	23.8	23.9	13
14	24.0	24.1	24.2	24.3	24.4	24.5	24.6	24.7	24.8	24.9	14
15	25.0	25.1	25.2	25.3	25.4	25.5	25.6	25.7	25.8	25.9	15
16	26.0	26.1	26.2	26.3	26.4	26.5	26.6	26.7	26.8	26.9	16
17	27.0	27.1	27.2	27.3	27.4	27.5	27.6	27.7	27.8	27.9	17
18	28.0	28.1	28.2	28.3	28.4	28.5	28.6	28.7	28.8	28.9	18
19	29.0	29.1	29.2	29.3	29.4	29.5	29.6	29.7	29.8	29.9	19
20	30.0	30.1	30.2	30.3	30.4	30.5	30.6	30.7	30.8	30.9	20
21	31.0	31.1	31.2	31.3	31.4	31.5	31.6	31.7	31.8	31.9	21
22	32.0	32.1	32.2	32.3	32.4	32.5	32.6	32.7	32.8	32.9	22
23	33.0	33.1	33.2	33.3	33.4	33.5	33.6	33.7	33.8	33.9	23
24	34.0	34.1	34.2	34.3	34.4	34.5	34.6	34.7	34.8	34.9	24
25	35.0	35.1	35.2	35.3	35.4	35.5	35.6	35.7	35.8	35.9	25
26	36.0	36.1	36.2	36.3	36.4	36.5	36.6	36.7	36.8	36.9	26
27	37.0	37.1	37.2	37.3	37.4	37.5	37.6	37.7	37.8	37.9	27
28	38.0	38.1	38.2	38.3	38.4	38.5	38.6	38.7	38.8	38.9	28
29	39.0	39.1	39.2	39.3	39.4	39.5	39.6	39.7	39.8	39.9	29
30	40.0	40.1	40.2	40.3	40.4	40.5	40.6	40.7	40.8	40.9	30
31	41.0	41.1	41.2	41.3	41.4	41.5	41.6	41.7	41.8	41.9	31
32	42.0	42.1	42.2	42.3	42.4	42.5	42.6	42.7	42.8	42.9	32
33	43.0	43.1	43.2	43.3	43.4	43.5	43.6	43.7	43.8	43.9	33
34	44.0	44.1	44.2	44.3	44.4	44.5	44.6	44.7	44.8	44.9	34
35	45.0	45.1	45.2	45.3	45.4	45.5	45.6	45.7	45.8	45.9	35
36	46.0	46.1	46.2	46.3	46.4	46.5	46.6	46.7	46.8	46.9	36
37	47.0	47.1	47.2	47.3	47.4	47.5	47.6	47.7	47.8	47.9	37
38	48.0	48.1	48.2	48.3	48.4	48.5	48.6	48.7	48.8	48.9	38
39	49.0	49.1	49.2	49.3	49.4	49.5	49.6	49.7	49.8	49.9	39
40	50.0	50.1	50.2	50.3	50.4	50.5	50.6	50.7	50.8	50.9	40

Calculated by F. E. Paradis, C. E.

660
600

D
=
=
0
1
2
3
4
5
6
7
8
9
10
11
12
13
14
15
16
17
18
19
20
21
22
23
24
25
26
27
28
29
30
31
32
33
34
35
36
37
38
39
40

27 St + 8 - stakes.
60' wide D. to E. St.

BN Mon. NW 27+E. St. 168.98

TP 12.43 181.41 2.74 178.67
12.66 191.33

135+W. Tie Dr. 27+E. 9.13 182.20

191.33	191.33	191.33	191.33	191.33	191.33	191.33
6.42	6.38	7.02	6.65	6.85	5.30	1.08
184.91	184.95	184.31	185.68	185.48	186.03	170.25
181.25	182.75	184.25	185.75	187.25	188.75	170.25
C 5.66	C 2.20	C .06	F .007	F 1.77	F 2.72	0.0

191.33
0.91

190.72 - TP
5.91

196.63	196.63	196.63	196.63	196.63	196.63
4.73	4.63	2.63	2.43	2.20	5.40
191.90	192.00	194.00	194.20	194.43	191.23
182.25	185.25	186.75	188.25	189.75	191.25
C 9.65	C 6.75	C 7.25	C 5.95	4.68	2.03

196.63	196.63
14.00	12.43
182.63	184.13

182.63 184.13 → N.L. x St. as graded.
36' x St. as graded

182.20	193.03	193.15	193.15	193.23
10.83	23.3	5.23	15.83	5.13
193.53-11.7	192.75	187.80	177.20	194.90
	182.25	181.25	180.25	181.25
	C 10.48	C 6.55	F 8.05	C 8.65

PK 2.20
2.13
191.33 - HZ
1.74
184.57 - 60' Tie Out E. St.

Sept. 12 - 1913
West - Evans - Devine.

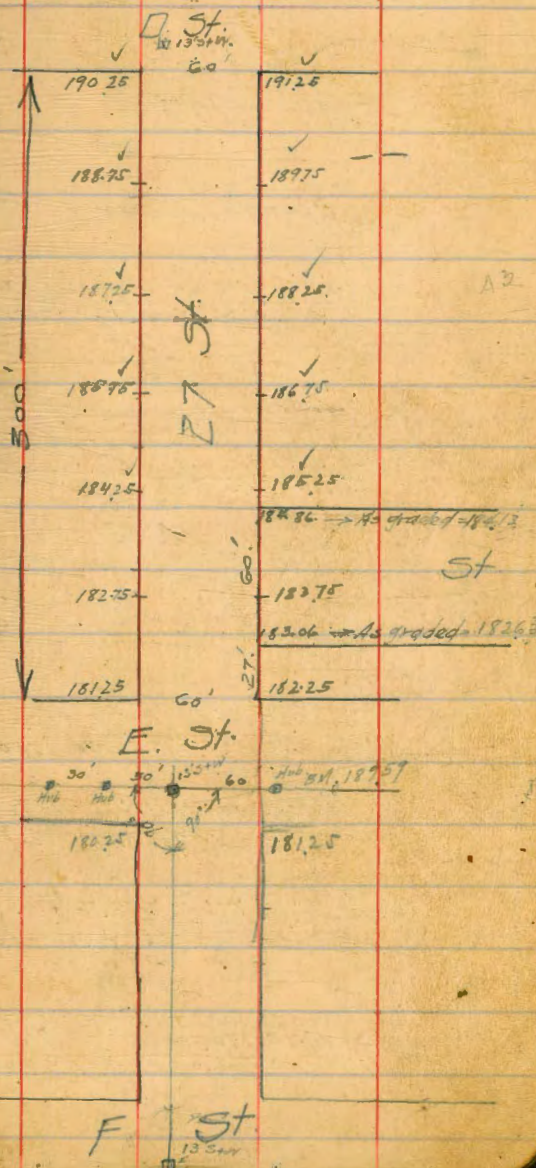
R.L. Finish stakes 1/2 Sta. unit.

83.20	8.87		
191.09	191.09	191.09	191.09
184.25	185.75	187.25	188.75
6.84	5.34	3.94	2.34

191.09	191.09	191.09
190.25	191.25	189.75
2.84	4.34	5.84



2



24 St A to City Park.

Sept 10 - 1913.
West-Events-Devine.

Curb S.W. 24+A. 5.53 180.53 175.00

" SE. " " " 3.47 180.47 177.00

Ave H.E. 180.50

180.50	180.50	180.50	180.50
3.20	5.10	5.53	2.20
177.30	175.40	174.97	178.30
177.25	175.25	174.82	176.39
C 0.5	C.15	C.15	C1.91

180.50	180.50	180.50	180.50
3.17	9.26	10.35	3.17
177.33	171.24	170.15	177.33
175.53	174.46	174.25	175.25
C 1.80	P. 3.16	F 4.10	C 2.08

179.58 - BA 24+B.
3.38

183.26
4.54

176.72 - Curb SE 24+A.
5.60

180.55

180.55	180.55	180.55	180.55
177.25	177.00	175.25	175.00
3.30	3.55	5.30	5.55

Finish Stakes 180.55 180.55 180.55 180.55
175.03 174.78 176.78 179.03

7/16/10 West 5.62 5.79 3.77 3.52

Events 180.55 180.55 180.55 180.55
Devine 176.81 176.56 174.56 174.81
3.74 3.77 5.99 5.74

180.55	180.55	180.55	180.55
174.75	174.50	176.50	176.75
5.80	6.05	4.05	3.80

S. Line 1400 A. City Park.

174.75 80. 176.75

174.80 176.81

175.03 177.03

175.25 80 177.25

A. St.

175.25 177.25

X Sec Fremont St

Entire Length

50' Wide, 10' Walks

All X Sts 50' Wide - 10' Walks

9/13
Went
Cross
Kevin

136.80

4

70.75' W of W.L. Union on NL
57.75 " " " " " " SL

W. End of Fremont

S.E. Indigo Col. 11.39 79.39 68.00

SW. & Chimes 13.26 79.26 66.00

NW. " 13.18 79.18 66.00

NE. " 11.38 79.38 68.00

T.P. 16.9 ~~88.08~~

12.34 90.04 77.70

T.P. 0.26 89.78

12.43 102.21

T.P. 0.49 101.72

12.34 114.06

T.P. 1.47 112.59

12.42 125.01

T.P. 0.90 124.11

12.69 136.80

-25

SL

SC

-25

SL

SC

-7' House

SL

+4

SC

-25

SL

T.P.

14.0 122.8

4.7 132.1

1.0 135.8

57.75' W. W.L. Union

14.0 122.8

4.7 132.1

1.3 135.5

25' W. W.L. Union

8.6 128.2

6.0 130.8

1.5 135.3

0.1 136.7

W.L. Union

11.2 125.6

2.9 133.9

0.16 136.64

12.22 148.86
Wend Vermont

S/4

E

N/4

C

NL

10.7 138.1

8.7 140.1

7.0 141.8

5.7 143.1

2.2 146.6

PLOTTED

14886

Fremont

57.75' W Union

S/A	11.5	137.3
£	8.7	140.1
N/A	6.8	142.0
NC	5.2	143.6
NL	1.8	147.0

25' W.

S/A	10.0	138.8
£	6.9	141.9
N/A	5.3	143.5
C	3.3	145.5
NL	0.0	149.9

W-L Union 50' wide.

N Curb.	2.2	146.6
1/4	4.3	144.5
£	6.7	142.1
1/4	9.0	139.8
S Curb.	10.6	139.2

PLOTTED

14886

5

W Curb.

-15	19.0	129.8
SL	12.7	136.1
C	10.7	138.1
1/4	8.6	140.2
£	5.9	142.9
1/4	3.3	145.5
NC	1.4	147.4

W 1/4

N Curb.	0.3	148.5
1/4	2.5	146.3
£	4.7	144.1
1/4	7.0	141.8
C	9.2	139.7
SL	12.7	136.1
+15	17.4	131.4
£	17.4	131.4
-15	11.5	137.3
SL		
C	8.1	140.7
1/4	6.1	142.7
£	4.0	144.8
1/4	1.4	147.4
C	7.0	148.2

14886

Fremont.

E/A

N/A	0.1	148.2
E	2.7	146.1
1/4	5.0	143.8
C	6.8	142.0
SL	10.7	138.1
7/5	16.5	142.3
-15	15.5	133.3
SL	9.5	139.2
C	5.6	143.2
1/4	4.0	144.8
E	1.5	147.3
1/4	+1.2	147.6
	E.L. Union	
E	+0.2	148.6
3/4	1.7	147.1
C	4.2	144.6
SL	8.0	140.8
+15	15.0	133.8

PLOTTED

14886

25'E. Union.

-15	12.1	136.7
SL	6.5	142.3
C	3.2	145.6
1/4	0.4	148.4

50'E.

-15	11.6	137.2
SL	5.4	143.4
C	2.1	146.7
1/4	+0.3	148.5

75'E.

-15	11.1	137.7
SL	4.2	144.6
C	1.2	147.6

100'E

-15	8.2	140.6
SL	1.9	146.9
T.P.	0.9	148.67

12.33 161.00

6

161.00

Fremont.

W.L. Union

NL. 11.0 150.0

W. Curb.

NL. 9.9 151.1

W 1/4

NL. 9.9 151.1

E

NL. 8.9 152.1

E 1/4

NL. 7.6 153.4

C 10.7 150.3

E. Curb.

NL. 5.5 155.5

Crb. 10.0 151.0

E.L. Union

NL 2.7 158.3

C 7.7 153.1

1/4 9.9 151.4

PLOTTED

161.00

7

25'E. Union

NL. 0.0 161.0

+5 3.9 157.1

C 4.8 156.2

+5 4.9 156.1

1/4 7.9 153.1

E 10.5 150.5

50'E.

E 8.8 152.2

N 1/4 5.7 155.3

Dist. 2.0 159.0

+5 1.3 159.7

75'E.

N.Crb. 4.2 160.8

+3 0.0 161.0

1/4 2.5 158.5

E 6.1 154.9

1/4 8.9 152.1

100'E.

S.C 7.0 152.0

1/4 6.2 154.8

E 3.3 157.7

N 1/4 4.4 160.6

161.00

Fremont.

125'E.

-15	16.2	154.8
SL	9.3	151.7
C	5.0	156.0
1/4	2.4	158.6
E	0.2	160.8

150'E.

-15	14.0	147.0
SL	7.1	153.9
C	2.7	158.3
1/4	70.2	160.8

175'E.

-15	15.2	145.8
SL	6.7	154.3
C	0.6	160.4
T.R	1.00	160.00

1214 172.14

PLOTTED

172.14

8

50'E-Union.

NL	95	162.6
75'E		
NL	7.2	164.9
+3	8.0	164.1
+5	10.2	161.9

100'E.

NL	65	165.6
C	9.4	162.7

125'E.

NL	39	168.2
+3	4.2	167.9
+5	6.0	166.1
C	6.3	165.8
1/4	8.9	163.1

150'E.

NL	0.9	171.2
+3	0.9	171.2
+6	1.8	170.3
C	2.2	169.9
1/4	4.3	167.7
E	8.0	164.1

172.14

Fremont

175'E.

N/A 1.3 170.8

E 4.3 167.8

S/A 8.0 163.1

200'E = W.L. Horton 50' Wide

SL 17.0 155.1

C 10.3 160.8

1/4 6.1 166.0

E 2.7 169.4

High T.P. 0.90 171.24

Low T.P. 10.47

9.51 180.75

175'E.

NL 5.7 175.0

H.G.B. 7.9 172.8

200'E = W.L. Horton 50' Wide

NL 4.1 176.6

C 6.3 174.4

N/A 8.7 172.0

PLOTTED

180.75

9

W. Gurb.

NL 3.3 177.4

C 6.2 174.5

1/4 8.8 171.9

E 14.0 166.7

W/A

NL 3.3 173.4

C 6.8 163.9

1/4 10.6 169.1

E 15.6 165.1

E

E 17.0 163.7

1/4 11.6 169.1

C 7.1 173.6

NL 2.9 177.8

E 1/4

NL 2.5 178.2

C 5.7 175.0

1/4 11.5 169.2

E 10.5 163.7

18075

Fremont

10

E Curb

£ 15.4 165.3

1/4 10.2 170.5

C 6.0 174.7

NL 2.0 178.7

E.L. Horton.

NL 2.1 178.6

C 7.5 173.2

1/4 11.8 168.9

£ 16.2 164.5

25'E. Horton.

NL 5.4 175.3

C 10.9 169.8

1/4 13.0 165.7

50'E.

NL 6.6 174.1

C 12.1 168.6

75'E.

NL 8.0 172.7

C 13.0 167.7

T.P. 12.84 167.91

PLOTTED

4.89 172.80

W. Curb. Horton.

S.C. 14.0 158.8

S/4 8.4 164.4

W/4

S.C. 18.5 154.3

S/4 14.8 158.0

£.

S/4 17.0 155.8

E/4

S/4 16.6 156.2

E. Curb.

S/4 17.0 155.8

E.L. Horton.

S/4 16.0 156.8

25'E. Horton.

S/4 17.4 155.4

£ 12.8 160.0

172.80

Fremont.

50' E. Horton.

E 12.3 160.5

S¹/₄ 16.8 156.0

75' E. Horton.

S¹/₄ 17.2 155.6

E 13.3 159.5

N¹/₄ 9.8 163.0

T.P. Keel Rock 0.43 172.37

2.34 174.71

50' E. Horton.

N¹/₄ 8.2 166.5

100' E. Horton.

NL 15 173.2

C 6.8 167.9

N¹/₄ 10.5 164.2

E 14.0 160.7

125' E. Horton.

E 10.1 164.6

N¹/₄ 7.7 167.0

C 4.4 170.3

NE 7.7 173.0

PLOTTED

174.71

11

150' E. Horton.

NL 10 173.7

C 3.1 171.6

N¹/₄ 5.6 169.1

E 7.3 167.4

S¹/₄ 10.0 164.7

SC 13.2 161.5

175' E. Horton.

-15 10.0 164.7

SL 10.2 164.5

C 13.3 161.7

N¹/₄ 14.9 159.8

E 14.3 160.4

N¹/₄ 11.4 163.3

C 8.8 165.9

NL 4.8 169.9

200' E - W.L. Peterborough. 50' W.

-10 7.8 164.9

NL 9.5 165.2

C 5.5 168.2

N¹/₄ 2.8 171.9

E 3.1 171.6

Fremont

174.71

5 1/4	4.8	169.9
C	5.1	169.6
SL	3.2	171.5
+10	3.4	171.3

W. Curb. Peterborough.

-10 SL	2.0	172.7
C	2.0	172.7
	3.8	170.9
1/4	2.0	172.7

D.C.	1.1	173.6
D.L	5.0	169.7
+15 = bottom draw.	7.7	167.0

T.P. high 1.9 173.52

T.P. low. 13.06 161.65

0.24 161.89

W.L. Horton.

30' of sl. 23.0 128.9

PLOTTED

16189

12

W. Curb. Horton.

SL	12.6	149.3
30'S	22.5	139.4

W/4 Horton

SL	14.2	147.7
-30	22.0	139.9

E Horton.

SCurb	9.5	152.4
-------	-----	-------

SL	15.0	146.9
30'S	21.8	140.1

E 1/4 Horton.

SCurb	9.3	152.6
SL	15.6	146.3
-30'S	21.5	140.4

E Curb Horton.

-30'S	20.9	141.0
SL	16.0	145.9
SCurb	10.3	151.6

16189

Fremont

E. L. Horton.

-30'S.	21.5	140.4
-15'S.	20.0	141.9
SL.	16.6	145.3
SCurb.	10.3	151.6

25'E of Horton.

S Curb.	10.9	151.0
SL	15.5	146.4
+15	17.3	147.6
+25'	17.4	144.5

50'E Horton.

-15	15.5	146.4
SL	14.9	147.0
SCurb.	9.6	152.3

75'E.

SCurb.	10.0	151.9
SL	13.3	148.6
-15	13.8	148.4
-20	12.0	149.9

PLOTTED

16189

13

100'E Horton.

-20	10.4	151.5
-15'S bot.	11.2	150.7
SL	11.7	150.2
SC	7.2	154.7
3/4	5.0	156.9

125'E.

5/4	1.3	160.6
C	2.8	159.1
SL	4.7	157.2
+8	9.2	152.7
+20	9.1	152.8
+25	8.0	153.9

150'E.

+25	7.0	154.9
-15	7.3	154.6
SL	7.4	154.5
J.P.	0.36	161.53

12.32 173.85

old High TP.

0.35 170.30

173.52
173.50
0.02

Fremont.

High TP

173.52

1230 185.82

10' walks

W. Corb Peterbaugh 50' wide

⊕ 107 175.1

N¹/₄ 9.8 176.0

W¹/₄ Peterbaugh

-15 18.5 167.8

NL 13.5 172.3

C 9.6 176.2

¹/₄ 6.6 179.2

⊕ 9.4 176.4

¹/₄ 13.9 182.8

C 12.9 172.9

SL 10.8 175.0

+10 11.2 174.6

⊕ Peterbaugh

-10 8.5 177.3

SL 8.6 177.2

C 10.1 175.7

¹/₄ 10.4 175.4

⊕ 6.5 179.3

¹/₄ 5.2 180.6

PLOTTED

18582

14

NC 5.7 180.1

NL 7.7 178.1

+15 12.4 173.4

⊗ E ¹/₄ Peterbaugh

-15 10.0 175.8

NL 6.7 179.1

C 4.4 181.4

¹/₄ 3.4 182.4

⊕ 6.1 179.7

¹/₄ 8.9 176.9

C 6.8 179.0

SL 5.4 180.4

+10 5.0 180.5

E. Corb

-10 4.0 181.8

SL 2.3 183.5

C 4.3 181.5

¹/₄ 6.0 179.8

⊕ 5.6 180.2

¹/₄ 4.0 181.8

C 4.0 181.8

NL 5.3 180.5

+15 7.0 179.8

Frempont.

15

18582

E.L. Peterbaugh

- 15	4.4	181.4
NL	3.5	182.3
C	1.6	184.2
1/4	1.8	184.0
±	2.9	182.9
1/4	2.7	183.1
C	1.4	184.4
3L	0.5	185.3
+ 10	1.5	184.3
T.P.	0.35	185.47

13.00 198.47

25'E. of Peterbaugh

-10	11.0	187.5
3L	9.7	188.8
C	8.9	189.6
1/4	8.8	189.7
±	9.8	188.7
1/4	9.8	188.7
C	7.7	191.1
NL	8.6	189.9
+	8.9	189.6

PLOTTED

19847

T.P.

084 197.63

1295 210.58

50'E. Peterbaugh

- 5	6.0	204.6
NL	9.6	201.0
C	13.4	197.2
1/4	14.9	195.7
±	18.5	197.1
1/4	12.4	198.2
C	12.0	198.6
5L	14.4	196.2
+ 1	15.4	195.2
+ 10	16.7	193.9

75'E.

- 10	9.4	201.2
- 1	7.4	203.2
3L	5.9	204.7
C	17.2	209.4
1/4	00	210.6

Fremont

210.58

E	18	208.8
N/A	4.9	205.7
C	8.6	202.0
NL	3.4	207.2
+5	0.6	210.0
T.P.	0.27	210.31

12.59 222.90
100'E.

-5	6.7	216.2
NL	8.2	214.7
C	8.7	214.2
1/4	6.7	216.2
E	4.0	218.9
1/4	2.4	218.5
C	5.2	217.7
SL	10.3	212.6
+10	12.8	210.4

PLOTTED

222.90

~~210.58~~

222.65

0.25 ~~210.33~~

12.59 235.24
7.2

125'E.

-10
-6
SL

C

1/4

E

1/4

C

+5

NL

+5

T.P.

12.45 247.46

150'E.

NL

C

1/4

9.0 226.2

10.4 224.8

9.0 226.2

3.8 231.4

3.0 232.2

4.6 230.6

4.7 230.5

8.4 226.8

9.2 226.0

8.1 227.1

6.7 228.5

0.23 235.01

5.7 241.8

6.0 241.5

4.2 243.3

Fremont.

247.46

259.35

£	3.4	244.1
1/4	3.1	244.4
C	2.8	244.7
SL	3.0	244.5
TP	0.69	246.77

1/4	6.5	252.9
C	6.0	253.4
SL	5.9	253.5

12.58 259.35
175'E.

W Curb Terrace.

SL	9.6	249.8
C	11.0	248.4
1/4	10.7	248.7
£	10.6	248.8
1/4	10.8	248.6
C	11.2	248.2
NL	11.6	247.8

SL	3.8	255.6
C	4.1	255.3
1/4	4.4	255.0
£	5.2	254.2
1/4	6.0	253.4
C	6.5	252.9
NL	7.0	252.4

W 1/4

10' Walks. NL Terrace 50' Wide.

NL	8.2	251.2
C	7.7	251.7
1/4	7.1	252.3
£	6.8	252.6

NL	5.8	253.6
C	5.1	254.3
1/4	4.6	254.8
£	4.3	255.1
1/4	4.0	255.4
C	3.8	255.6
SL	3.1	256.3

PLOTTED

Fremont.

18

259.35

~~E~~ Torrence

SL	2.4	257.0
C	2.9	256.5
1/4	3.3	256.1
E	3.7	255.7
1/4	4.0	255.4
C	4.4	255.0
NL	4.8	254.6

E 1/4

NL	4.5	254.9
C	3.7	255.7
1/4	3.2	256.2
E	2.9	256.5
1/4	2.8	256.6
C	2.6	256.8
SL	2.3	257.1

E. Curb

SL	2.1	257.3
	2.5	258.9
C	2.1	257.3
	1.0	258.4

PLOTTED

259.35

1/4	2.3	257.1
E	2.3	257.7
1/4	2.8	256.6
C	3.3	256.1
NL	3.9	255.5
E.L. Torrence		
NL	1.5	257.9
C	1.8	257.6
1/4	1.4	258.0
E	1.9	258.3
1/4	0.9	258.5
C	1.0	259.8
+0.4		259.8
SE	+0.8	260.2
T.P. rock.	0.68	258.67

12.81 271.48

25' E. of Torrence

SL	9.5	262.0
C	10.2	261.3
1/4	10.5	261.0

Fremont.

271.48

£	10.4	261.1
1/4	11.0	260.5
C	11.3	260.2
NL	11.7	259.8

50' E. of Torrance.

NL	10.0	261.5
C	9.4	262.1
1/4	8.9	262.6
£	8.5	263.0
1/4	8.5	263.0
C	8.2	263.3
SL	7.8	263.7

75' E

SL	5.2	261.3
C	5.8	265.7
1/4	6.2	264.3
£	6.1	264.4
1/4	6.7	264.8
C	7.3	263.2
NL	8.2	262.3

PLOTTED

271.48

100' E.

NL	6.4	265.1
C	5.5	266.0
1/4	5.0	266.5
£	4.3	267.2
1/4	4.1	267.4
+	4.7	266.8
C	4.0	267.5
SL	3.4	268.1

111.55' E = Fiebl line on S.

SL	2.7	268.8
C	3.3	268.2
+	3.8	267.7
1/4	3.4	268.1
£	3.6	267.9
1/4	4.2	267.3
C	4.7	266.8
NL	5.6	265.9

Fremont

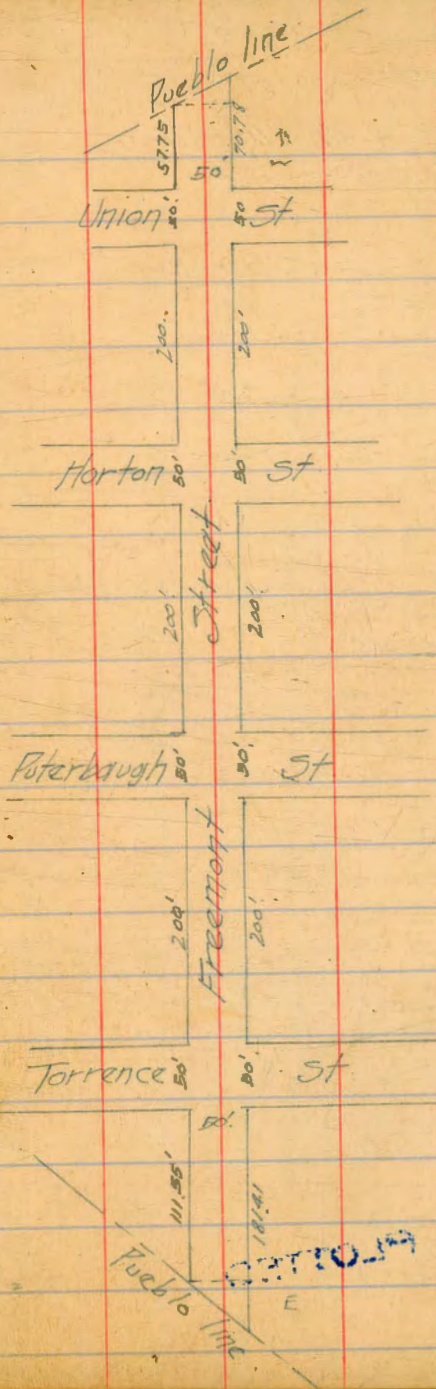
27148

18141 Eon NL 111st Eon St.
 = Pueblo Line - End Fremont

NL	1.4	270.1	
C	1.5	270.0	
1/4	1.6	269.9	
1/4	1.8	269.7	
1/4	2.3	269.2	
C	2.7	269.3	
St.	2.5	269.0	
T.P.Curb. NL Torrence St. Curb.	7.45	264.03	264.03 264.00 0.03

PLOTTED

20



X. Sec. Benson Street.
 Entire length.
 50' Wide, 10' Walks.
 All Cross Sts 50' Wide, 10' Walks.

9/26/13
 West.
 Train
 beam

T.P. Keel Rock 75'E Horton on Fremont. 172.37 ✓
 10.80 18.3.17

T.P. 9.20 173.97
 T.P. 8.00 181.97 12.68 169.29
 7.57 176.86

W end Benson 17.5' W of E.L. Horton on St.
 30.2 " " " " " " NL

NL. 15.1 160.8

C 13.9 163.0

1/4 13.1 163.8

E 12.3 164.6

1/4 11.9 165.0

C 12.0 164.9

SL 12.3 164.6

17.5' W. of E.L. Union

JL 12.3 164.6

C 11.9 165.0

1/4 11.3 165.6

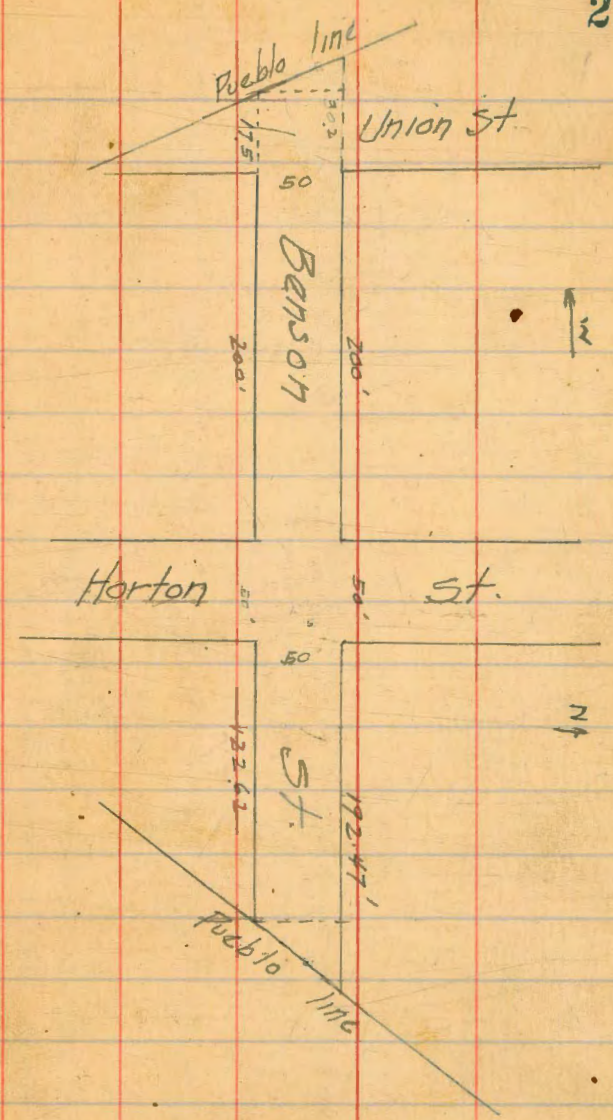
E 11.5 165.4

1/4 11.6 165.3

C 12.7 164.2

NL 13.1 163.8

PLOTTED



176.86

E.L. Union

NL.	10.7	166.2
C	10.2	166.7
+2	10.8	166.1
+4	10.3	166.6
$\frac{1}{4}$	9.5	167.4
ϕ	9.4	167.5
$\frac{1}{4}$	9.5	167.4
C	10.0	166.9
SL.	11.2	165.7

25'E. of E.L. Union

SL.	8.0	168.9
C	7.6	169.2
$\frac{1}{4}$	7.0	169.9
ϕ	6.6	170.3
$\frac{1}{4}$	6.7	170.2
C	7.0	169.9
NL.	7.0	169.9

PLOTTED

176.86

50'E.

NL.	3.8	173.1
C	3.5	173.4
$\frac{1}{4}$	3.6	173.3
ϕ	3.6	173.3
$\frac{1}{4}$	3.9	173.0
C	4.7	172.1
SL.	4.8	172.1

75'E.

SL.	1.0	175.9
C	1.1	175.8
$\frac{1}{4}$	0.1	176.8
ϕ	+0.6	176.5
$\frac{1}{4}$	+0.4	176.3
C	+0.2	176.1
NL.	+0.3	176.2

176.86

T.P. 0.65 176.21

12.86 189.07

100' E Union

NL	9.3	179.8
C	9.1	180.0
1/4	8.5	180.0
£	8.5	180.6
1/4	8.5	180.6
C ₊₂	9.5	179.6
SL	8.8	180.3
	8.9	180.2

125' E Union

SL	5.0	184.1
C	4.8	184.3
1/4	4.2	184.9
£	4.0	185.1
1/4	4.3	185.2
C	5.5	183.6
C ₊₂	4.7	184.4
NL	4.8	184.3

PLOTTED

23

189.07

150' E

NL	1.0	188.1
⁺⁸	0.8	188.3
C	1.3	187.8
1/4	0.5	188.6
£	0.3	188.8
1/4	0.4	188.7
C	1.0	188.1
SL	1.3	187.7
T.P.	0.88	188.19

12.66 200.85

175' E Union

SL	10.1	190.8
C	9.8	191.1
1/4	9.0	191.9
£	8.6	192.3
1/4	8.9	192.0
C	9.1	191.8
NL	8.9	192.0

20085

200'E = W.L. Horton ^{50' Wide} _{10' walk}

NL	5.1	195.8
C	5.6	195.3
1/4	5.2	195.7
E	5.8	195.1
1/4	5.7	195.2
C	7.8	193.1
SL	10.1	190.8
+10	12.9	188.0

W Curb Horton

-10	12.9	188.0
SL	9.9	191.0
C	7.2	193.7
1/4	4.6	196.3
E	3.9	197.0
1/4	3.7	197.2
C	3.3	197.6
NL	2.9	198.0

PLOTTED

20085

24

W 1/4 Horton

NL	15	199.4
C	2.1	198.8
1/4	2.5	198.4
E	3.1	197.8
1/4	3.9	197.0
C	6.4	194.9
SL	8.8	192.1
+10	12.3	188.6

E Horton

-10	11.4	189.5
SL	8.0	192.9
C	4.6	196.3
1/4	2.8	198.1
E	1.9	199.0
1/4	1.4	199.5
C	1.0	199.9
NL	0.8	200.1

PLOTTED

200.85

E. 1/4 Horton

NL.	00	200.9
C	0.1	200.8
1/4	0.1	200.8
E	0.5	200.4
1/4	1.6	199.3
C	3.9	197.0
SL	6.8	194.1
+10	9.9	191.0

E. Curb Horton

-10	9.0	191.9
SL	5.4	195.5
C	2.8	198.1
1/4	1.2	200.7
T.P.	0.46	200.39

12.67 213.06

E	11.2	201.9
1/4	11.0	202.1
C	10.8	202.3
NL.	10.5	203.0

PLOTTED

213.06

E.L. Horton.

25

NL.	8.3	204.8
C	9.2	203.9
1/4	9.2	203.9
E	9.7	203.4
1/4	10.9	202.2
C	13.4	199.7
SL	15.8	197.3
+10	18.3	194.8

25'E. Horton.

-10	15.8	197.3
SL	12.5	200.6
C	9.2	203.9
1/4	6.5	206.6
E	5.6	207.5
1/4	4.6	208.5
C	4.7	208.4
+3	4.0	209.1
NL.	3.4	209.7

213.06

T.P.	10.4	212.02
	12.41	224.43
	50'E	
NL	9.8	214.6
C	10.7	213.7
1/4	11.5	212.9
E	12.9	211.5
1/4	13.6	210.8
C	17.5	206.9
SL	21.0	203.4
+10 A	Apr 25.0	199.4

75'E

-10	17.0	207.4
SL	14.0	210.4
C	10.8	213.6
1/4	6.9	217.5
E	5.8	218.6
1/4	5.1	219.3
C	5.8	219.4
NL	4.4	220.0

PLOTTED

224.43

100'E

NL	+1.5	224.9
C	+1.0	224.4
1/4	+0.6	224.0
E	+0.4	224.8
1/4	0.1	223.3
C	2.0	222.4
SL	2.8	221.6
+10	4.3	220.1
T.P.	20.3	224.40

12.44 236.84

12262 E of Hartford

NL	6.0	230.8
C	6.0	230.8
1/4	6.1	230.7
E	5.6	231.2
1/4	5.4	231.4
C	5.5	231.3
SL	5.2	231.6
+14	5.8	231.0

236.84
 122.62' E of Horton on SL.
 192.47' " " " " NL.

SL.	5.2	231.6
C	2.4	234.4
1/4	+0.2	236.0
T.P.	0.46	236.38

10.83 247.21

E	8.9	238.3
1/4	7.6	239.6
C	6.8	240.4
NL.	5.2	242.0
T.P.	0.59	246.62

12.33 258.95

T.P.	1.04	257.91
------	------	--------

11.08 268.99

T.P. N. Corb.	5.00	263.99
Cor Torrance		
T.P.L.		

264.00
263.99
<u>.01</u>
- Error.

PLOTTED

Sept 26 - 1913.

Wet - Evans - Devine

28

30

X. Sec 32 St H to M. Sts.
60' wide, 10' Walks.

31 + M. SW Cor. Spk Pole grd.	76.536
32 + H. NE. " " " "	83.225
" + J. SE. " " " "	84.244

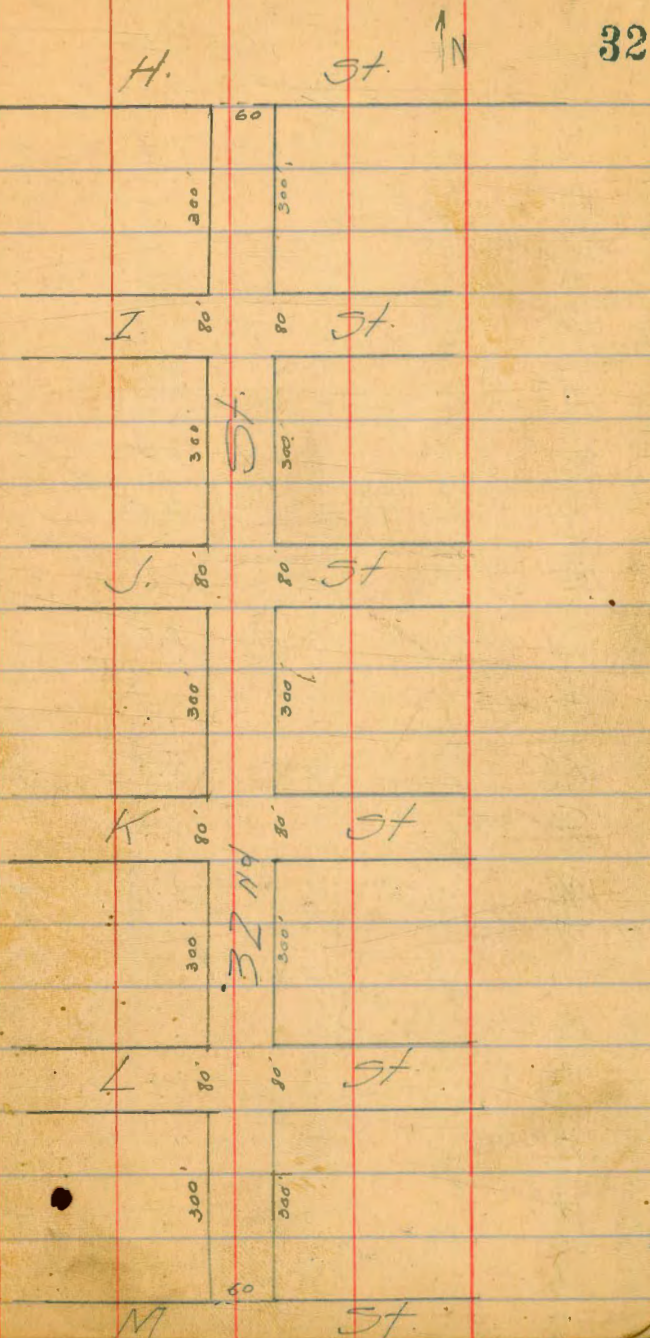
NW Corb. 32 + M.	11.53	78.62	67.09	67.00
------------------	-------	-------	-------	-------

NL. M. St.

WL.	10.8	67.8
+2	5.0	73.6
+5	4.6	74.0
+6	6.4	72.2
C	8.1	70.5
1/4	8.6	70.0
1/2	8.6	70.0
+3	8.4	70.2
+4	7.3	71.3
+9	5.4	73.2
1/4	4.0	74.6
42	2.8	75.8
C	3.2	75.4
EL.	4.2	74.4

PLOTTED

Sept 26 - 1913
West
Evans
Devine.



7862

5' N. of NL. M. St.

EL.	37	74.9
C	32	75.4
+9	28	75.8
1/4	35	75.1
+2	51	73.5
+8	66	72.0
+9	74	71.2
£	76	71.0
1/4	75	71.1
+6	75	71.1
+8	44	74.2
C	32	75.4
WL.	31	75.5

25' N.

WL.	33	75.3
C	32	75.4
+5	46	74.0
+6	51	73.5
1/4	47	74.9

PLOTTED

7863

33

£	52	73.4
+5	46	74.0
1/4	30	75.6
C	29	75.7
EL.	35	75.1

50' N.

EL.	80	70.6
+1	60	72.6
C	51	73.5
1/4	42	74.4
£	38	74.8
1/4	35	75.1
C	38	74.8
WL.	31	75.5

100' N.

WL.	29	75.7
C	34	75.4
+1	41	74.5
+2	35	75.1
1/4	34	75.2

7862

£	3.3	75.3
1/4	3.8	74.8
C	5.1	73.5
EL.	7.7	70.9
+10	8.1	70.5

125' N.

-10	7.4	71.2
EL.	6.7	71.9
C	4.6	74.0
1/4	3.7	74.9
£	3.5	75.1
1/4	3.5	75.1
+9	4.0	74.6
C	3.6	75.0
WL.	3.6	75.0

150' N.

WL.	3.1	75.5
C	3.5	75.1
+2	3.8	74.8
1/4	3.1	75.5

PLOTTED

7862

34

£	2.9	75.7
1/4	3.3	75.3
C	3.6	75.1
EL.	3.9	74.7

200' N.

EL.	1.7	76.9
C	1.8	76.8
+6	1.8	76.8
1/4	2.2	76.4
£	1.7	76.9
1/4	2.4	76.2
+5	3.1	75.5
+6	2.5	76.1
C	2.6	76.0
+8	2.3	76.4
WL.	1.5	77.1

250' N.

WL.	1.0	77.6
C	1.7	76.9
+4	1.7	76.9
+5	2.5	76.1
1/4	2.0	76.6

78.62

±	1.3	77.3
1/4	1.8	76.8
+2	2.0	76.6
+8	0.8	77.8
C	0.5	78.1
EL	0.1	78.5
T.P.	0.24	78.38

6.78 85.16

300' N - S. L. L. St. 80' Wide

14' Curbs
13' 1/4 S.

EL.	6.8	78.4
C	6.8	78.4
+3	6.6	78.6
1/4	8.0	77.2
±	7.6	77.6
1/4	8.2	77.0
+5	8.6	76.6
+7	7.9	77.3
C	8.0	77.2
WL.	7.9	77.3

PLOTTED

8516

35

S. Gurb. L. St.

WL.	8.1	77.1
C	8.1	77.1
1/4	8.2	77.0
±	7.5	77.7
1/4	7.9	77.3
C	6.6	78.6
EL.	7.0	78.2

S 1/4 L. St.

EL.	7.2	78.0
C	7.3	77.9
1/4	7.7	77.5
±	7.3	77.9
1/4	7.7	77.5
C	7.9	77.3
WL.	8.1	77.1

E. L. St.

WL.	7.7	77.5
C	7.7	77.5
1/4	7.6	77.6

8516

±	7.2	28.0
1/4	7.6	22.6
C	6.8	28.4
EL	6.7	28.5

N 1/4 L St.

EL	6.4	28.8
C	6.3	28.9
+5	6.6	28.6
+6	7.2	28.0
1/4	7.3	27.9
±	7.0	28.2
1/4	7.4	27.8
C	7.6	27.6
WL	8.1	27.1

N. Curb. L. St.

WL	7.8	27.4
C	7.7	27.5
1/4	7.5	27.7
±	6.8	28.4
1/4	7.4	27.8

PLOTTED

8516

83.69-SW
9132st.

36

+6	7.4	27.5
±	7.0	28.2
C	6.8	28.4
EL	6.7	28.5

N L L St

EL	6.7	28.5
C	6.7	28.5
+4	6.4	28.8
+6	7.6	27.6
1/4	7.4	27.8
±	6.7	28.5
1/4	7.4	27.8
+4	7.5	27.7
+5	7.1	28.1
C	7.5	27.2
WL	7.3	27.9

50' N of L St.

WL	6.7	28.5
C	7.0	28.2
+5	7.0	28.2
+6	7.6	27.6

8516

1/4	7.3	77.9
£	6.3	78.9
1/4	6.8	78.4
+5	7.0	78.2
+6	6.3	78.9
C	6.3	78.9
EL.	6.1	79.1

100' N of L. St.

EL.	5.5	79.7
C	5.3	79.9
+5	5.2	80.0
+6	6.5	78.2
1/4	6.2	79.0
£	5.7	79.5
1/4	6.6	78.6
+5	6.7	78.5
+6	6.2	79.0
C	6.3	78.9
WL.	6.4	78.8

PLOTTED

8516

37

125' N. of L.

WL.	4.8	80.4
+5	5.2	80.0
C	5.9	79.3
+5	6.0	79.2
+6	6.9	78.3
1/4	6.2	79.0
£	5.6	79.6
1/4	6.0	79.2
+4	6.4	78.8
+6	5.1	80.1
C	5.2	80.0
EL.	5.1	80.1

150' N.

EL.	4.8	80.4
C	5.0	80.2
+5	5.1	80.1
+6	5.8	79.4
1/4	5.7	79.5
£	5.2	80.0
1/4	6.0	79.2

85.10

+5	61	79.1
+6	56	79.6
c	57	79.5
WL.	58	79.4

200' N.

WL.	55	79.7
c	59	79.3
+5	57	79.5
+6	64	78.8
1/4	60	79.2
⊕	51	80.1
1/4	56	79.6
+4	56	79.6
+5	45	80.7
c	49	80.3
EL.	48	80.4

250' N.

EL.	47	80.5
c	48	80.4
+7	49	80.3
+8	57	79.5

PLOTTED

85.16

38

1/4	54	79.8
⊕	47	80.5
1/4	54	79.8
+3	53	79.9
+4	48	80.4
c	49	80.3
WL.	50	80.2
T.P. Curb SW. 32+K.	401	81.15

7.60 8875

300' N = S.L. K. 57 80' W. 14' Curbs 13' 1/4.

WL.	74	81.4
c	76	81.2
1/4	83	80.5
⊕	76	81.2
1/4	80	80.8
c	78	81.0
EL.	75	81.3

S-Curb.

EL.	78	81.0
c	82	80.6

88-75

1/4	7.8	81.0
E	7.5	81.3
1/4	8.1	80.7
C	8.4	80.4
WL.	8.4	80.4
S 1/4 K. St.		
WL.	8.2	80.6
C	8.2	80.6
1/4	7.9	80.9
E	7.4	81.4
1/4	7.6	81.2
C	8.0	80.8
EL.	7.6	81.2
E K. St.		
EL.	7.5	81.3
C	7.9	80.9
1/4	7.7	81.1
E	7.3	81.5
1/4	7.8	81.0
C	7.9	80.9
WL.	7.7	81.1

PLOTTED

88-75

39

N 1/4 K. St.

WL.	7.9	80.9
C	8.0	80.8
1/4	7.8	81.0
E	7.4	81.4
1/4	7.6	81.2
C	7.9	80.9
	7.6	81.2
E.L.	7.6	81.2
	8.4	80.4

N. Curb K.

EL.	7.2	81.6
C	7.9	80.9
1/4	7.6	81.6
E	7.4	81.4
1/4	7.9	80.9
C	8.1	80.7
	7.2	81.6
WL.	7.2	81.6
	8.1	80.7

N.L. K. St.

WL.	6.9	81.9
C	7.2	81.6
	7.6	81.2
1/4	7.8	81.0
	8.0	80.8

88.75

E	7.2	81.6
1/4	7.7	81.1
C	7.5	81.3
EL.	7.0	81.8

50' N of K. St.

EL.	6.3	82.5
+6	6.7	82.7
C	6.3	82.5
+5	6.5	82.3
+7	7.8	81.0
1/4	7.6	81.2
E	7.3	81.5
1/4	7.9	80.9
+5	6.9	81.9
C	6.9	81.9
WL.	6.5	82.3

100' N of K. St.

WL.	6.0	82.5
C	6.2	82.6
+7	6.2	82.6
1/4	6.8	82.0
+7	7.4	81.4
E	6.9	81.9

PLOTTED

88.75

40

1/4	7.0	81.8
+2	6.9	81.9
+4	6.4	82.4
C	6.5	82.3
+5	6.0	82.8
EL.	5.9	82.9

150' N of K. St.

EL.	5.8	83.0
C	5.8	83.0
+9	6.5	82.3
1/4	6.9	81.9
E	6.7	82.1
1/4	7.0	81.8
+3	5.8	83.0
C	5.4	83.4
WL.	5.5	83.3

200' N of K. St.

WL.	5.3	83.5
C	5.9	82.9
+5	5.5	83.3
+6	6.1	82.6
1/4	7.3	81.5

88.75

£	6.8	82.0
1/4	7.1	81.7
+ 5	4.4	84.4
C	4.9	83.9
EL.	4.9	83.9

250' N. of K.

EL.	5.3	83.5
C	5.2	83.7
+ 5	4.5	84.3
1/4	6.8	82.0
£	6.8	82.0
+ 9	7.0	81.8
1/4	6.1	82.7
+ 4	4.7	84.1
C	5.8	83.0
+ 7	5.8	83.0
WL	4.9	83.9

300' N = SL. J. St 80' Wide
14' Walks. 13' 45'

WL	6.0	82.8
C	5.5	83.3
+ 5	5.0	83.8
1/4	7.3	81.5

PLOTTED

88.75

41

£	6.7	82.1
1/4	6.9	81.9
+ 5	4.6	84.2
C	4.9	83.9
EL.	4.8	84.0

S. Curb J St.

EL.	4.8	84.0
C	5.0	83.8
+ 5	4.8	84.0
1/4	6.8	82.0
£	6.7	82.1
1/4	7.1	81.7
+ 5	5.8	83.0
C	5.7	83.1
WL.	6.0	82.8

S 1/4 J. St.

WL.	5.9	82.9
C	5.8	83.0
1/4	7.2	81.6
£	6.7	82.1

88-75

1/4	6.5	82.3
C	5.3	82.5
EL.	4.9	83.9
⊖	J. St.	
EL.	5.0	83.8
C.	5.1	83.7
+5	4.7	84.1
1/4	6.0	82.8
⊖ ⁺²	6.9	81.9
	6.9	81.9
1/4	7.2	81.6
+6	5.2	83.6
C	5.1	82.7
WL.	5.7	83.1
⊖	N 1/4 J. St.	
WL.	5.8	83.0
C	5.2	83.6
+4	5.2	83.6
1/4	7.0	81.8
⊖	7.0	81.8
	7.2	81.6
1/4 ⁺⁸	6.4	82.7

PLOTTED

88-75

42

+2	4.8	84.0
C	5.1	83.7
EL.	4.9	83.9
⊖	N Gurb. J. St.	
EL.	4.9	83.9
C	5.1	83.7
+8	4.7	84.1
1/4	6.1	82.7
+2	7.2	81.6
⊖	7.2	81.6
1/4	7.3	81.5
+6	5.1	83.7
C	5.3	83.5
WL.	6.0	82.8
⊖	N.L. J. St.	
WL.	6.1	82.7
C	5.6	83.2
+3	5.4	83.4
1/4	7.4	81.4
⊖	7.1	81.7

88.75

+8	7.5	81.3
1/4	6.1	82.7
+3	4.8	84.0
C	4.9	83.9
EL.	4.7	84.1
BM.S.W. J+32 - Spk. Pole.	5.06	83.69

4.19 87.88

50' N. of J.

EL.	4.0	83.9
C	4.3	83.6
+6	4.4	83.5
1/4 +9	5.1	82.8
1/4	6.5	81.4
E	6.2	81.7
1/4	6.4	81.5
+4	6.0	81.9
+5	4.9	83.0
C	5.0	82.9
WL.	5.9	82.0

PLOTTED

8788

43

100' N. of J.

WL.	6.7	81.2
C	6.2	81.7
+5	5.8	82.1
+6	7.0	80.9
1/4	6.7	81.2
E	6.5	81.4
1/4	6.8	81.1
+4	5.1	82.8
C	5.2	82.7
EL.	5.0	82.9

150' E.

EL.	5.6	82.3
C	5.5	82.4
1/4	6.5	81.4
E	6.3	81.4
1/4	6.5	81.4
+5	6.7	81.2
C	6.1	81.8
WL.	6.4	81.5

78

	87.88		
T.P.		6.24	81.64
	706	88.70	
		200' N.	
WL.		7.1	81.6
C		7.0	81.7
+5		6.8	81.9
+6		7.8	80.9
1/4		7.5	81.2
±		7.1	81.6
1/4		7.5	81.2
+3		6.2	82.5
C		6.0	82.7
EL.		6.1	82.6
		250' N.	
EL.		5.9	82.8
C		6.0	82.7
+6		6.0	82.7
+7		6.9	81.8
1/4		7.3	81.4

PLOTTED

±	88.70	6.8	81.9
1/4		7.5	81.2
+5		7.6	81.1
+6		6.5	82.2
C		6.5	82.2
WL		6.8	81.9
		300' N = 5L I. S. 80' N 14' W. 1/4s.	
WL.		6.0	82.7
C		6.2	82.5
+3		6.3	82.4
+5		7.2	81.5
1/4		7.1	81.6
±		6.8	81.9
1/4		7.4	81.3
+1		7.2	81.5
+2		5.8	82.9
C		5.8	82.9
EL.		5.8	82.9

8870

S-Carb. I. St

EL.	57	83.0
C.	59	82.8
+6	59	82.8
+7	71	81.6
1/4	74	81.3
£	68	82.0
1/4	70	81.7
C	64	82.3
WL.	61	82.6

5 1/4 I. St

WL.	63	82.4
C	67	82.0
1/4	72	81.5
£	67	82.0
1/4	72	81.5
C	63	82.4
VEL	59	82.8

PLOTTED

8970

£ I. St

45

EL.	58	82.7
C	58	82.7
1/4	72	81.5
£	68	81.9
1/4	70	81.7
+9	70	81.7
C	62	82.5
WL.	60	82.7

N 1/4 I. St

WL	60	82.7
C	64	82.3
+3	71	81.6
1/4	70	81.7
£	70	81.7
1/4	71	81.8
+2	64	82.3
C	57	82.0
EL.	57	83.0

8870

N. Curb. I. St.

EL.	57	83.0
C	58	82.9
+8	64	82.3
1/4	7.3	81.4
E	6.8	81.9
1/4	7.0	81.7
+9	6.8	81.9
C	6.1	82.6
WL.	6.7	82.0

N.L. I. St.

WL.	6.3	82.4
C	6.3	82.4
+2	6.5	82.2
+3	7.4	81.3
1/4	7.0	81.7
E	6.8	81.9
1/4	7.4	81.3
+3	6.5	82.2
+8	6.1	82.6
C	5.5	83.2
EL.	5.4	83.3

PLOTTED

8870

50' N. of I. St.

46

EL.	55	83.2
C	57	83.0
+5	6.1	82.6
1/4	7.2	81.5
E	6.6	82.1
1/4	7.1	81.6
+7	7.1	81.6
+8	6.2	82.5
C	6.2	82.5
WL.	6.3	82.4

100' N. of I. St.

WL.	6.4	82.3
C	6.3	82.4
+2	7.0	81.7
1/4	7.0	81.7
E	6.6	82.1
1/4	7.2	81.5
+5	7.4	81.3
+6	6.8	82.9
C	6.5	82.2
EL.	6.0	82.7

8870

150' N. of I St.

EL.	6.4	82.3
+7	6.4	82.3
C	7.3	81.4
1/4	7.3	81.4
±	6.4	82.3
1/4	6.6	82.1
C	6.4	82.3
WL	6.4	82.3

200' N. of I St.

WL	5.9	82.8
C	6.7	82.0
1/4	6.6	82.1
±	6.4	82.3
1/4	6.7	82.0
C	7.7	81.0
EL	7.8	80.9

250' N.

EL.	7.0	81.7
+7	6.3	82.4
C	6.4	82.3
1/4	6.5	82.2

PLOTTED

8870

47

±	6.3	82.4
1/4	6.4	82.3
+5	7.1	81.6
C	6.3	82.4
WL	6.1	82.6

300' N. - S.L.H. St.

WL	5.9	82.8
C	6.1	82.6
+2	6.6	82.1
1/4	6.3	82.4
±	6.1	82.6
1/4	6.2	82.5
C	5.5	83.2
EL	6.2	82.5
B.M. NE 32+H.	5.40	83.30
		83.26
		0.04 = Error

Sept 26-1913.

West
Evans.
Devine.

10/10/13

X. Sec Tupper St. Entire Lgth.
50' wide, 10' walks.

NW Boone & Stephens.
Nor. Plot near walk.

Catholic Cemetery. NW Cor.
Fence post. sp. or. grad.

→ 261.663
269.184
3.65 265.31

T.P. 3.72 261.59

T.P. 6.68 268.27 11.57 256.70

5.93 262.63

W. End Sec Tupper St P.L.
108.03' W. of McKee St on N.L.
72.19' " " " " " 52.

N.L. 02 249.4

#2 0.4 422

+3 1.5 411

+6 2.4 402

+7 5.1 575

C 5.3 573

1/4 6.1 565

£ 6.0 566

1/4 6.2 564

C 6.5 561

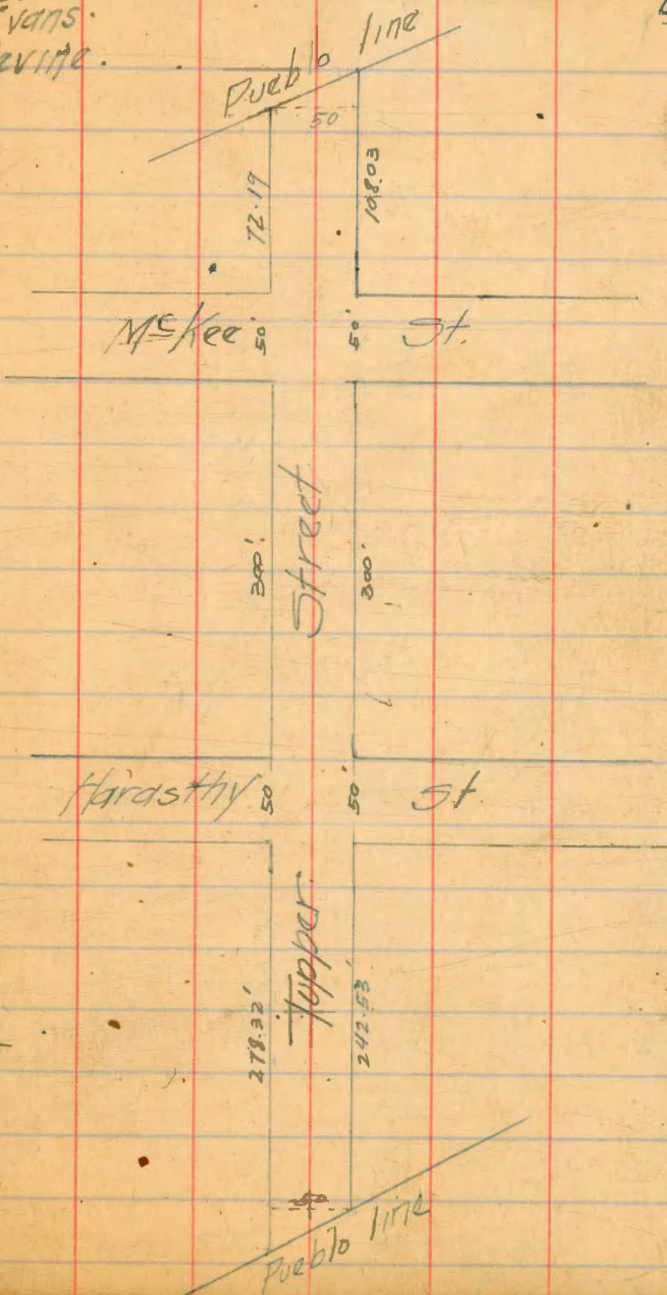
S.L. 7.1 555

PLOTTED

Sept 29-1913.

West.
Evans.
Devine.

48



Tupper

262.63

72.19' W. W.L. M^s Kee

SL.	7.0	555.6
C	8.7	559
1/4	6.5	561
+5	3.5	591
E	3.3	593
1/4	2.4	603
C	1.7	609
NL.	0.6	630

50' N. W.L. M^s Kee.

NL.	1.5	611
C	2.5	601
1/4	2.7	599
E	3.9	587
+1	4.1	585
1/4	7.1	555
C	7.0	554
SL.	6.8	558
+2	6.9	557
+10	9.6	530

PLOTTED

Tupper

262.63

25' W.

-10	12.0	550.6
SL	8.2	544
C	7.5	551
1/4	7.8	548
+3	7.7	549
E	5.8	548
+2	4.4	582
1/4	4.3	583
C	3.4	593
NL	3.0	596

W.L. M^s Kee St. 50' wide.
Intersection taken on M^s Kee St.

NL	5.1	575
+9	5.4	572
C	6.6	560
1/4	8.6	540
E	8.3	543
1/4	8.0	546
C	8.4	542
SL	12.0	526
+10	14.7	479

Tupper

26263

T.P.

1203 250.60 ^{OK} 250.61

0.76 251.36

EL. M^s Kee St.

-10	14.0	237.4
SL	11.8	39.4
C	10.2	41.2
1/4	9.1	42.3
E	8.3	43.1
1/4	7.7	43.7
C	7.5	43.9
NL	7.5	43.9
T.P.	13.00	238.36

0.18 238.54
25'E. of M^s Kee

-10	4.3	34.3
NL	3.7	34.8
C	3.4	35.1
1/4	3.5	35.0
E	3.8	34.7
1/4	4.2	34.3
1/4	4.6	33.9
SL	5.1	33.4
+10	5.6	33.9

PLOTTED

Tupper

50

23854

50'E. of M^s Kee

-10	13.8	224.7
SL	12.7	25.8
C	11.9	26.4
1/4	11.7	26.8
E	11.8	26.7
1/4	12.0	26.5
C	12.5	26.0
NL	12.6	25.9
+10	12.7	25.8
T.P.	11.76	226.78

0.50 227.28
75'E.

-15	10.1	216.5
NL	11.0	16.3
C	10.1	17.7
1/4	10.2	17.1
E	9.8	17.5
1/4	9.2	18.1
C	9.0	18.3
SL	9.0	18.3
+10	10.5	17.7

Tupper
St.

Tupper
51

22728

21443

T.P.

13.08 214.20

T.P.

1231 202.12

0.23 214.43

0.39 202.51

100' E. of M^s Kee.

150' E.

-15 5.1 2093
 SL 4.7 2027
 C 4.2 2102
 1/4 4.6 2098
 E 4.7 2097
 1/4 4.6 2098
 C 4.6 2098
 NL 4.4 2100
 +15 5.1 2093

-15 7.8 1947
 SL 7.8 947
 C 8.9 935
 1/4 9.7 928
 E 10.8 917
 1/4 11.4 911
 +2 13.0 895
 C 15.4 871
~~NL~~ 17.0 855

125' E.

-18 18.6 1958
 NL 13.4 2010
 C 12.9 2015
 1/4 12.8 2014
 E 12.0 2053
 1/4 12.1 2023
 C 12.0 2034
 SL 11.5 2029
 +15 11.1 2033

+6 17.4 851
 +10 16.0 845
 +20 11.9 906
 154' E.
 NL 19.2 833

PLOTTED

160'E. Tupper St.
202.51

-5	14.7	187.8
NL	17.2	85.3
C = bottom	21.4	81.1
1/4	20.6	81.9
E	16.8	85.7
1/4	15.1	87.4
C	15.0	87.5
SL	11.1	91.4
⊗	175'E.	←
-10	24.5	78.0
SL	25.0	77.5
C	25.5	77.0
1/4	24.9	77.4
E	24.2	78.3
1/4	22.0	80.5
C	18.6	81.9
NL	13.8	88.7
+10	8.3	94.2

PLOTTED

202.51

194.5

Tupper.

52

-10	4.6	197.9
NL	10.2	92.3
C	15.8	84.7
1/4	19.6	82.9
E	21.6	80.9
1/4	24.0	78.5
C	26.9	75.4
+3	29.0	73.5
SL	34.4	68.1
+20	37.0	65.5
* 185'E.		
-10	29.4	73.1
SL	31.4	71.1
+4	32.5	70.0
C	31.5	71.0
1/4	28.2	74.3
E	26.4	74.1
1/4	21.0	81.5
C	17.5	84.7
NL	12.4	90.1
+10	7.0	95.5

20251

Tupper.

200'E

-10	2.7	199.5
NL	5.8	96.7
C	10.7	91.9
1/4	14.3	88.2
E	17.1	85.4
1/4	19.4	83.1
C	23.3	79.2
+5	25.1	77.4
C	29.2	73.3
SL	33.2	69.3
+15	36.0	64.5
+25	32.0	70.5

225'E

-15	29.4	73.1
SL	22.0	80.5
C	15.7	84.8
1/4	11.7	90.8
E	8.9	93.6
1/4	6.9	95.5
C	5.0	97.5
NL	2.5	200.0
+10	0.0	202.5

PLOTTED

Tupper.

53

20251

250'E

NL	1.4	201.1
C	4.4	198.1
1/4	5.9	94.5
E	7.5	95.0
1/4	9.1	93.4
C	11.4	91.1
SL	15.3	87.2
+15	22.0	80.5
T.P.	12.74	189.77

11.13 200.90

275'E

-15	25.2	75.7
SL	18.6	82.3
C	14.2	86.7
1/4	11.0	89.9
E	8.8	93.1
1/4	7.1	93.8
C	5.0	95.9
NL	2.9	10.980

W.L. Harasthy St.
50' wide
Tupper.

200.90

NL	76	1933
C	10.9	90.0
1/4	13.1	87.8
C	16.0	84.9
1/4	18.1	82.8
C	21.4	79.5
SL	26.2	74.7
+15	34.5	66.4

E.L. Harasthy.

T.P.	11.15	189.75
------	-------	--------

0.35 190.10

NL	4.6	85.5
C	9.4	80.7
1/4	11.9	78.3
±	15.0	75.1
1/4	19.0	71.1
C	23.2	66.9
SL	27.1	63.0
+10	31.4	58.7

PLOTTED

Tupper.

54

190.10

T.P.	11.39	178.71
------	-------	--------

0.89 179.60

25'E Harasthy.

NL	3.0	174.5
C	6.5	73.1
1/4	9.0	70.4
±	12.4	67.2
1/4	16.1	63.5
C	18.9	60.7

SL	24.0	55.4
----	------	------

+15 bot.	31.0	48.6
----------	------	------

+25	30.0	49.6
-----	------	------

50'E.

-25	27.0	52.6
-10 bot.	30.5	49.1
SL	28.3	51.3
C	24.6	55.0
1/4	22.0	57.6
±	20.3	59.3
1/4	17.7	61.9
±	15.6	64.0
NL	12.1	67.5

Tupper St.

179.60

T.P.

11.85 167.75

0.32

168.07

75'E.

NL.	6.0	142.1
C	8.6	59.5
1/4	9.9	58.3
1/2	11.0	57.1
3/4	12.3	55.8
C	13.8	54.3
SL.	15.9	52.2
+10	16.8	51.3
+20	11.0	57.1
	100'E.	
-20.	8.2	59.9
-15	12.0	56.1
SL.	12.3	55.8
C	14.9	53.7
1/4	14.6	53.5
1/2	13.7	54.4
3/4	13.9	54.2
C	13.2	54.9
NL.	12.5	55.6

PLOTTED

16807

Tupper.

55

+10

10.7 157.4

110'E.

-10 bot

13.5 154.4

NL "

13.6 54.5

C "

13.7 54.4

1/4 "

13.9 54.3

1/2

12.7 55.4

3/4

11.4 56.7

C

11.1 57.0

SL.

11.2 56.9

125'E.

SL.

4.3 63.8

C

6.4 61.7

1/4

7.4 60.7

+2

7.6 60.5

+3.

8.7 59.4

1/2

8.6 59.5

3/4

8.5 59.6

C

8.4 59.7

NL ~~St.~~

9.1 59.0

+10

10.5 57.6

+20 bot.

13.1 55.0

Tupper
St

168.07

T.P. 127 166.80

12.32 179.12

150'E.

-10 11.8 147.3

NL. 11.0 48.1

C 9.8 49.3

1/4 10.5 48.6

E 11.2 47.9

1/4 11.1 48.0

C 9.8 49.3

SL 6.5 72.4

175'E.

SL +1.2 180.3

C 1.0 178.1

1/4 1.4 77.7

E 1.1 78.0

1/4 0.7 78.4

C 0.5 78.6

NL 0.4 78.7

+10 0.6 78.5

PLOTTED

Tupper
St

56

179.12

T.P. 0.89 178.23

12.83 191.06

200'E.

-10 1.4 189.7

NL 2.0 89.1

C 2.6 88.5

1/4 3.3 87.9

E 4.1 87.0

1/4 2.9 88.2

C 2.7 88.4

SL 10.4 191.5

T.P. 0.55 190.51

12.62 203.13

225'E.

SL 4.3 98.9

C 6.4 96.7

1/4 5.1 98.0

E 4.2 98.9

1/4 4.1 99.0

C 3.7 99.4

NL 3.3 99.8

+10 3.4 99.7

Tupper St

20313

T.P. 16.9 201.44

12.96 214.40

242.53' E. of Hardsthy
= P.L. on NL Tupper.

NL 5.0 209.4

C 6.6 207.8

1/4 7.5 206.9

E 8.4 206.0

1/4 10.2 204.2

C 11.3 203.1

SL 11.4 203.0

+10 7.7 204.7

242.53' E. on NL } = P.L. end St.
278.32' " " SL }

T.P. 2.41 211.99

9.01 221.00

SL 1.9 219.1

C 4.1 214.9

1/4 5.9 215.1

PLOTTED

Tupper St

57

221.00

E 6.4 214.6

1/4 7.7 213.3

C 10.1 210.9

NL 11.8 209.2

+5 12.9 208.1

+10 15.2 205.8

T.P. 0.03 220.97

T.P. 11.13 232.10 0.25 231.85

T.P. 12.04 243.89 0.37 243.52

T.P. 4.6 9.65 253.17 2.68 250.49

OK.
250.61
250.49
0.12

West Sept 29/1913.
Evdans
Devine

PLOTTED

12" Water Main on 30 St.
 National Ave to Main St.
 Trench 4'2" below St grade. Offset hubs 2' W & Ditch.

BM NE 30 + Main	12.00	53.40	12.00	41.40	40.70	St. Gr. 10' E	Bot. Tr. N.E. & E	Cuts.
6400 NL Main							36.54	4.36
0+50			9.08	44.32			37.70	6.62
1+00			7.15	46.25			38.87	7.38
+50			4.30	49.10			40.04	9.06
2+00			3.10	50.30			41.20	9.10
+50			1.62	51.78			42.37	7.44
3+00 = 2L Boston			3.12	50.28	47.70		43.54	6.74
+80 - NL "			10.52	42.88	48.70		44.54	F 1.66
4+30 T.P. Hub.	9.66	60.23	2.83	50.57			45.70	4.87
+80			8.58	51.65			46.87	4.78
5+30			6.96	53.27			48.04	5.23
+80			5.44	54.79			49.21	5.59
6+30			4.61	55.62			50.37	5.25
+80 = 3L Grand			4.27	55.96	55.70		51.54	4.42
7+60 = NL "			3.60	56.63	56.70		52.54	4.09
8+10 T.P. Hub.			3.66	56.57			53.70	2.87
+60	9.61	66.18	8.93	57.25			54.89	2.36
9+10			8.02	58.16			56.04	2.12
+60			6.46	59.72			57.21	2.52
10+10			4.90	61.28			58.37	2.91
+60 = 3L Natl Ave.			2.27	63.91	63.70		59.54	4.37
BM NW 30 + Natl.			1.23	64.95				

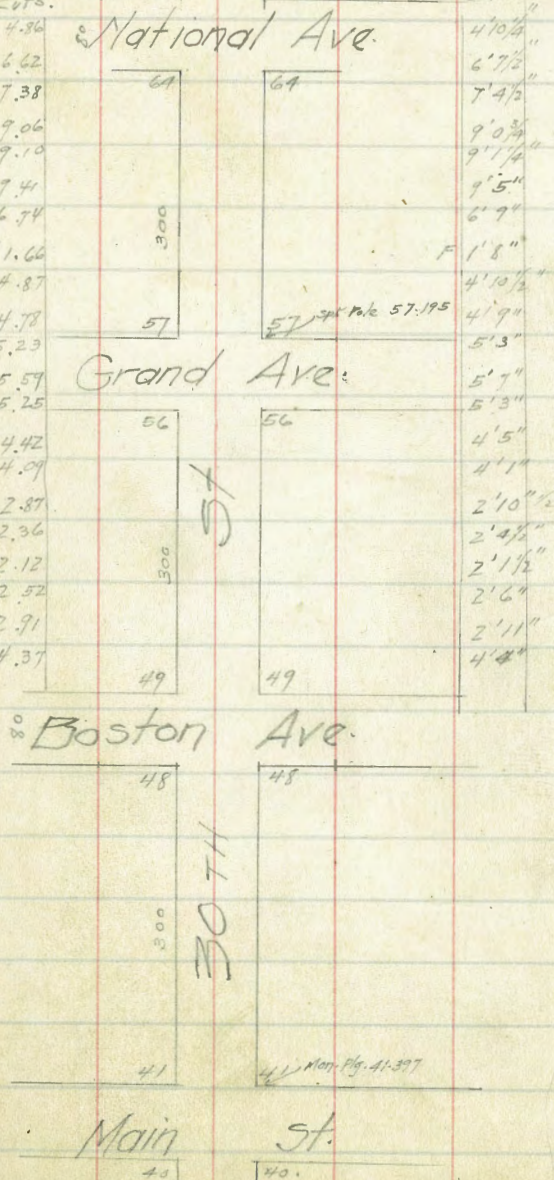
01 (OK)

Sept 30 1913.

West.
 Evans
 Devine

44-938
 Pkg. Ret.

4'2" Below St Gr.
 Bot. Tr. N.E. & E



X Sec 28 St. Nutmeg to Upas.
80' Wide, 14' Walks - 13' 1/4s

Sept 30 1913.
West
Evdms
Devine

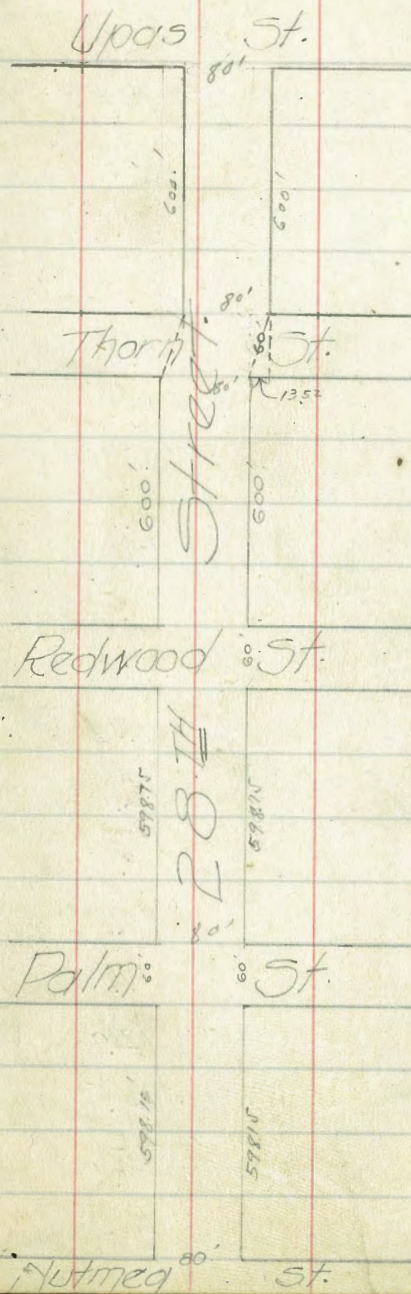
↑ N.

~~80~~
59

BM N-E Bridge +30 St.				280.75
T.P.	11.13	291.88	0.06	291.82
T.P.	12.90	304.72	1.17	303.55
T.P.	12.17	315.72	1.15	314.57
T.P.	1.87	316.44	11.81	304.63
T.P. Ret. 21.84	0.22	304.85	8.75	296.10
	-6.58	302.68		

N.L. Nutmeg St.

EL.	11.4	291.3
+10	11.6	291.1
+11	12.1	290.6
C	12.2	290.5
1/4	12.1	290.6
E	13.1	289.6
1/4	14.2	288.5
C	15.6	287.1
WL.	18.0	284.7
+10	19.6	283.1



30268

28 St.

50' N. Nutmeg.

-10	18.3	284.4
WL	16.5	286.2
C	14.6	288.1
1/4	13.3	289.4
£	11.8	290.9
1/4	11.2	291.5
C	11.6	291.1
+3	11.6	291.1
+4	10.8	291.9
EL.	10.5	292.2

100' N.

EL.	9.7	293.0
+10	9.8	292.7
+11	10.7	292.0
C	10.6	292.1
1/4	10.3	292.4
£	11.0	291.7
1/4	12.0	290.7
C	13.5	289.2
WL	15.6	287.1
+10	16.9	285.8

30268

28 St. 60

150' N.

-10	15.8	286.9
WL	14.1	287.6
C	12.3	290.4
1/4	10.9	291.8
£	9.9	292.8
1/4	9.4	293.3
C	9.6	293.1
+3	9.6	293.1
+4	9.0	293.7
EL.	8.8	293.9

200' N.

EL.	7.9	294.8
+10	8.2	294.5
+11	9.0	293.7
C	8.9	293.8
1/4	8.5	294.2
£	9.1	293.6
1/4	10.2	292.5
C	11.6	291.1
WL	13.4	289.3
+10	15.1	287.6

30268

28 St

250'N.

-10	14.6	288.1
WL	13.0	289.7
C	11.0	291.7
1/4	9.6	293.1
±	8.4	294.3
1/4	7.7	295.0
C	7.8	294.9
+3	8.0	294.7
+4	7.3	295.4
EL	7.0	295.7

300'N.

EL	6.2	296.5
+10	6.4	296.3
+11	7.1	295.6
C	7.0	295.7
1/4	6.8	295.9
±	7.8	294.9
1/4	9.2	293.5
C	10.8	291.9
WL	12.6	290.1
+10	14.3	288.4

30268

28 St.

350'N.

61

-10	14.0	288.7
WL	12.4	290.3
C	10.5	292.2
1/4	8.6	294.1
±	7.3	295.4
1/4	6.1	296.6
C	6.3	296.4
+3	6.4	296.3
+4	5.7	297.0
EL	5.3	297.1

400'N.

EL	4.4	298.3
+10	4.7	298.0
+11	5.6	297.1
C	5.5	297.2
1/4	5.2	297.5
± ⁺³	5.2	297.5
1/4	6.8	295.9
1/4	7.8	295.9
C	9.7	293.0
WL	11.6	291.1
+10	13.2	289.5

30268
450' N.

28 St.

-10	120	290.7
WL	10.5	292.2
C	8.7	294.0
1/4	7.1	295.6
±	6.0	296.7
1/4	5.6	297.1
C	5.8	296.9
+3	5.9	296.8
+4	5.2	297.5
EL	5.0	297.7

500' N.

EL	5.5	297.2
+10	5.7	297.0
+11	6.4	296.3
C	6.3	296.4
1/4	6.0	296.7
±	5.8	297.9
1/4	6.7	296.0
C	8.2	294.5
WL	9.8	292.9
+10	11.5	291.2

30268
550' N.

28 St. 62

-10	11.1	291.6
WL	9.8	292.9
C	8.4	294.3
1/4	6.9	295.8
±	6.0	296.7
1/4	6.5	296.2
C	6.8	295.9
+3	6.8	295.9
+4	6.2	296.5
+12	6.0	296.7
EL	5.6	297.1

598.15' N. SL Palm St. 60' Wide 10' W/G/KS
10' 1/4

EL	6.2	296.5
+10	6.4	296.3
+10	6.7	296.0
+10	7.3	295.4
C	7.4	295.3
1/4	7.1	295.6
±	7.8	294.9
1/4	9.0	293.7
C	10.6	291.1
WL	12.2	290.5
+10	14.3	288.4

28 St

28 St

63

T.P. Curb. 302.68 6.58 296.10

Z:12 298.22

S Curb Palm.

EL.	2.1	296.1
	2.6	295.6
C	3.0	295.2
1/4	2.9	295.3
E ⁺⁸	2.8	295.4
	4.3	293.9
1/4	5.3	292.9
C	6.8	291.4
WL.	9.0	289.2
+10 same slope down.	10.5	287.7
	5/4	
-10 same " "	11.8	286.4
WL.	10.1	288.1
C	8.1	290.1
1/4	6.2	292.0
E	4.1	294.1
1/4 ⁺⁵	2.9	295.3
	3.2	295.0
C	3.1	295.1
EL.	2.6	295.6

298.22

~~E~~ Palm

EL	2.6	295.6
C	3.0	295.2
1/4	3.2	295.0
E ⁺⁸	3.0	295.2
	6.1	292.1
1/4	7.3	290.9
C	9.1	289.1
WL.	11.2	287.0
+10 same st.	10.2	285.0
	N/4	
-10	14.3	283.9
WL.	13.1	285.1
C	11.0	287.2
1/4	8.9	289.3
E ⁺⁸	8.3	289.9
	6.0	291.2
1/4 ⁺⁷	3.0	295.2
	3.2	295.0
C	3.2	295.0
EL.	2.9	295.3

292.2

29822

28 St

N. Curb.

EL.	2.9	295.3
C	3.1	295.1
	4.15	294.1
1/4	3.3	294.9
E+4	3.5	294.7
	8.2	290.0
+5	10.2	288.0
1/4	11.1	287.1
C	12.6	285.6
WL.	14.6	283.6
+10 same slope.	16.3	281.9
	NL. Palm.	
-10	20.6	277.6
WL.	18.0	280.2
C	15.3	282.9
1/4	13.9	284.3
E+8	11.1	287.1
	8.5	289.7
1/4	3.6	294.6
C	3.1	295.1
EL.	3.2	295.0

29822

28 St

60

T.P.	1304	285.18
	1.83	287.01
	25' N of Palm.	
-10	2.0	285.0
-5	4.6	282.4
EL.	5.7	281.3
C	0.6	286.4
1/4 ¹¹⁰	1.2	285.8
1/4	3.2	283.8
E+5	8.6	278.4
	10.4	276.6
1/4	12.4	274.6
C	14.5	272.5
WL	16.7	270.3
+20 bot corr.	18.0	269.0
	35' N.	
-12	15.0	272.0
WL bot.	16.6	270.4
C	15.7	271.3
1/4	14.3	272.7
E	12.4	274.6

287.01

28 St.

1/4	9.0	278.0
C	6.4	280.6
EL.	7.4	279.6
+10	6.6	280.4

40' N. of Palm.

-20		
-10	bot	6.6 280.4
		8.5 278.5

EL.	"	10.1 276.9
-----	---	------------

C	"	11.3 275.7
---	---	------------

1/4	"	12.0 275.0
-----	---	------------

E	"	12.6 274.4
---	---	------------

1/4	"	14.0 273.0
-----	---	------------

C		15.6 271.4
---	--	------------

WL		16.0 271.0
----	--	------------

+20		13.0 274.0
-----	--	------------

50' N. of Palm.

-20		8.9 278.1
-----	--	-----------

WL		10.5 276.5
----	--	------------

C		9.7 277.3
---	--	-----------

1/4		10.4 276.6
-----	--	------------

287.01

28 St.

65

E	8.2	278.8
---	-----	-------

1/4	3.5	273.5
-----	-----	-------

C	5.1	281.9
	4.2	282.8

EL.	7.2	279.8
-----	-----	-------

+15	9.0	278.0
-----	-----	-------

+20	8.8	278.2
-----	-----	-------

60' N.

-10	4.5	282.5
-----	-----	-------

EL.	4.8	282.2
-----	-----	-------

+5	3.9	283.1
----	-----	-------

C	1.4	285.6
---	-----	-------

1/4	1.7	285.3
-----	-----	-------

E	5.6	281.4
---	-----	-------

1/4	6.7	280.3
-----	-----	-------

C	6.4	280.6
---	-----	-------

WL	6.2	280.8
----	-----	-------

+10	6.6	280.4
-----	-----	-------

28 St.

28701

T.P.

067 286.34

11.78 298.12

75'N.

-10	8.8	289.3
<u>EL.</u>	11.0	287.1
C	11.9	286.2
1/4	11.9	286.2
±	13.5	284.6
1/4	13.6	284.5
C	13.2	284.9
<u>WL</u>	13.3	284.8
+10	14.4	283.7

100'N.

-10	9.5	288.6
<u>WL.</u>	9.6	288.5
C	9.2	288.9
1/4	9.4	288.7
±	10.3	287.8
1/4	10.4	287.7

28 St

66

29812

C
+7
EL

9.8	288.3
9.7	288.4
6.6	291.5

12.5'N.

EL.	4.3	293.8
	5.4	292.7
+5 +6 C	6.7	291.4
	6.8	291.3
1/4	6.6	291.5
±	6.4	291.7
1/4	5.6	292.5
C	5.3	292.8
<u>WL.</u>	5.4	292.7

150'N.

<u>WL</u>	1.6	296.5
C	1.5	296.6
1/4	1.4	296.7
±	3.0	295.1
1/4	3.2	294.9
C	3.0	295.1
±8	3.2	294.9
+9	2.2	295.9
EL	1.8	296.3

28 St

298.12

T.P. 10.3 297.09

11.98 309.07

175' N.

EL. 10.7 298.4

+5 11.0 298.1

+6 11.7 297.4

C 11.7 297.4

1/4 11.8 297.3

E 10.9 298.2

1/4 10.2 298.9

C 10.3 298.8

WL. 11.0 298.1

+10 11.7 298.4

200' N.

-10 10.9 298.2

WL. 10.2 298.9

C 9.3 299.8

1/4 8.9 300.2

E 9.4 299.7

1/4 9.9 299.2

28 St 67

309.07

C 10.1 299.0

EL. 9.0 300.1

250' N.

EL. 6.6 302.5

C 7.9 301.2

1/4 8.3 300.8

E 7.8 301.3

1/4 7.6 301.5

C 8.1 301.0

WL. 9.1 300.0

+10 10.1 299.0

300' N of Palm.

-10 9.3 299.8

WL. 8.3 300.8

C 7.3 301.8

1/4 6.5 302.6

E 6.6 302.5

1/4 5.9 303.2

C 5.6 303.5

EL. 4.3 304.8

6
304.7

04

28

2

3 .7

.5

16

.8

16

5.1

6.1

6

7

6.9

5
0

2

4. 30

2

302

30

3.

0

0

0

2

6.7

0

3

2

7.5

314.78

28 St.

C	7.3	307.5
1/4	7.6	307.2
E	8.7	306.1
1/4	9.5	305.3
C	9.9	304.9
WL	10.7	304.1
+10	11.2	303.6

598.15 W = 2L Redwood.
60' Wide, 10' Walks 10' 1/4.

-10	10.1	304.7
WL	9.7	305.1
C	9.4	305.4
1/4	9.1	305.7
E	8.4	306.4
1/4	7.4	307.4
C	6.7	308.1
EL	5.8	309.0

314.78

28 St.

S. Curb Redwood.

EL	5.8	309.0
C	6.4	308.4
1/4	7.6	307.0
E	8.3	306.5
1/4	8.7	306.1
C	9.3	305.5
WL	10.2	304.6
+10	10.8	304.0

5 1/4

-10	10.4	304.4
WL	10.4	304.4
C	9.3	305.5
1/4	8.7	306.1
E	8.1	306.7
1/4	7.2	307.6
C	6.3	308.5
FL	5.6	309.2

£ 28 St

314.78

EL	55	309.3
C	63	308.5
1/4	7.1	307.7
£	7.7	307.1
1/4	8.2	306.6
C	8.9	305.9
WL	9.4	305.4
+10	9.8	305.0
	N 1/4	-
-10	9.7	305.1
WL	9.5	305.3
C	9.0	305.8
1/4	8.4	306.4
£	7.9	306.9
1/4	7.0	307.8
C	6.3	308.5
EL	5.6	309.2

N Curb 28 St 69

314.78

EL	52	309.6
C	6.4	308.4
1/4	7.1	307.7
£	7.3	307.5
1/4	7.5	307.3
C	8.4	306.4
WL	8.8	306.0
+10	9.2	305.6
	N.L. Redwood	-
-10	9.0	305.8
WL	8.9	305.9
C	7.9	306.9
1/4	6.9	307.9
£	7.0	307.8
1/4	6.8	308.0
C	6.1	308.7
EL	5.1	309.7

31478

28 St.

25' N. Redwood

EL	4.9	309.9
C	5.9	308.9
1/4	6.3	307.5
£	6.8	308.0
1/4	7.4	307.4
C	7.9	306.9
WL	8.7	306.1
+10	9.5	305.3

50' N.

-10	9.9	304.9
WL	9.3	305.5
C	8.3	306.5
1/4	7.4	307.4
£	6.6	308.2
1/4	5.9	308.9
C	5.1	309.7
EL	4.8	310.0

75' N.

EL	4.8	310.0
C	5.2	309.6

31478

28 St.

70

5.9	308.9
7.0	307.8
7.9	306.9
8.9	305.9
10.2	304.6
10.8	304.0

100' N.

13.8	301.0
13.1	301.7
11.3	303.5
10.1	304.7
8.2	306.6
7.0	307.8
6.0	308.8
4.7	310.1

125' N.

5.5	309.3
7.3	307.5
8.9	305.9
10.8	304.0

314.78

28 St

1/4	13.0	301.5	
C	15.3	299.5	
WL	18.0	296.8	
+25	22.4	292.4	

140'

-25	29.6	3000	290.0
WL	20.9	293.9	297.7
C	18.7	306.1	296.7
1/4	16.5	308.3	298.3
E	13.1	301.7	
1/4	11.0	303.8	
C	9.0	305.8	
EL	6.4	308.4	
T.P.	12.13	302.65	

2.10 304.75

150' N.

-25	20.3	284.5	
WL	15.5	299.3	
C	13.1	291.7	
1/4	11.7	293.1	

304.75

28 St

71

E	11.2	293.6	
1/4	7.4	297.4	
C	4.2	300.6	
EL	00	304.8	

165' N.

EL	4.4	300.4	
C	10.0	294.8	
T.P.	12.78	291.97	

4.33 296.30

1/4	5.5	290.8	
E	9.3	287.0	
1/4	13.8	282.5	lot.
C	14.2	282.1	"
WL	14.3	282.0	
+7	16.5	279.8	
+17	16.7	289.6	
+20	15.5	280.8	
+25	13.3	283.0	

285f.

296.30

175'N.

-20	9.0	287.3
WL	12.5	283.9
C	12.2	284.1
1/4	11.2	285.1
E bot.	12.9	283.4
1/4	9.1	287.2
C	3.6	292.7
EL	+2.0	298.3 29830
		294.3

200'N.

-10	2.1	294.2
EL	6.6	289.7
+8 bot.	9.7	284.6
C	8.2	288.1
1/4	4.6	292.7
E	1.9	294.4
1/4	0.7	295.6
T.P.	0.25	296.05

641 302.46

C	7.3	295.2
WL	6.4	296.1
+10	6.0	296.5

302.46

225'N.

-11'E of EL	8.4	294.1
-10 E "	11.3	291.2
EL bot.	12.2	290.3
C	6.3	296.2

250'N.

-10	11.2	291.3
-2	16.3	292.2
EL	8.7	293.8
T.P.	0.56	301.90

11.30 313.20

225'N.

WL	8.3	304.9
C	8.0	305.2
1/4	7.6	305.6
E	8.6	304.6
1/4	13.1	302.1

250'N.

E curb.	11.0	302.2
1/4	5.3	307.9
E	4.8	308.4

28 St.

72

37320

28 St

1/4	50	308.2
C	60	308.2
WL	7.5	305.7
+10	8.5	304.7

275'N.

-10	6.2	307.0
-----	-----	-------

WL	5.6	307.6
----	-----	-------

C	4.3	308.9
---	-----	-------

1/4	3.6	309.6
-----	-----	-------

E	3.1	310.1
---	-----	-------

1/4	3.1	310.1
-----	-----	-------

+7.5	3.9	309.3
------	-----	-------

C	7.1	306.1
---	-----	-------

EL	12.4	300.8
----	------	-------

+23	24.0	289.2
-----	------	-------

+30	19.0	294.2
-----	------	-------

300'N.

-35	16.3	296.9
-----	------	-------

-25	20.0	293.2
-----	------	-------

EL	7.0	306.2
----	-----	-------

C	2.1	311.1
---	-----	-------

1/4	2.3	310.9
-----	-----	-------

37320

28 St

73

E	2.5	310.7
---	-----	-------

1/4	2.7	310.5
-----	-----	-------

C	3.6	309.6
---	-----	-------

WL	4.8	308.4
----	-----	-------

+10	5.7	307.5
-----	-----	-------

325'N.

-10	5.2	308.0
-----	-----	-------

WL	4.4	308.8
----	-----	-------

C	2.9	310.3
---	-----	-------

1/4	1.7	311.5
-----	-----	-------

E	1.2	312.0
---	-----	-------

1/4	1.4	311.8
-----	-----	-------

C	1.2	312.0
---	-----	-------

TP	1.22	311.98
----	------	--------

+1233	324.31	
-------	--------	--

EL	13.4	310.9
----	------	-------

+10	18.0	306.3
-----	------	-------

350'N.

EL	11.2	313.1
----	------	-------

C	11.4	312.9
---	------	-------

1/4	11.3	313.0
-----	------	-------

324.31

28 St

±	11.8	312.5
1/4	12.3	312.0
C	13.0	311.3
WL	13.9	310.4
+10	14.6	309.7
400' N.		
-10	13.0	311.3
WL	12.5	311.8
C	11.6	312.7
1/4	10.6	313.7
±	10.5	313.8
1/4	9.8	314.5
C	9.8	314.5
EL	9.2	315.1
450' N.		
EL	7.3	317.0
C	7.4	316.9
1/4	7.7	316.6
±	8.4	315.9
1/4	9.1	315.2

324.31

28 St 74

C	9.4	314.9
WL	9.9	314.4
F10	10.0	314.3
500' N.		
-10	8.3	316.0
WL	7.7	316.6
C	7.3	317.0
1/4	7.4	316.9
±	6.9	317.4
1/4	6.5	317.8
C	6.3	318.0
EL	6.1	318.2
550' N.		
EL	4.4	319.9
±	5.0	319.3
1/4	4.9	319.4
±	5.3	319.0
1/4	6.1	318.2
C	6.3	318.0
WL	6.5	317.8

32431

28 St.

600' N-SL Thorn
60' Wide 10' Walks 10' 1/4

WL	5.1	319.2
C	4.9	319.4
1/4	4.7	319.6
£	4.6	319.7
1/4	4.3	320.0
C	4.2	320.1
EL	3.9	320.4

S Curb.

EL	3.0	321.3
C	3.8	320.5
1/4	4.0	320.3
£	4.4	319.9
1/4	4.7	319.6
C	4.9	319.4
WL	5.1	319.2

5/4

WL	4.7	319.6
C	4.4	319.9
1/4	4.5	319.8

32431

28 St

75

£	4.0	320.3
1/4	3.5	320.8
C	3.4	320.9
EL	3.0	321.3

£ Thorn

EL	2.8	321.5
C	3.2	321.2
1/4	3.2	321.1
£	3.2	321.1
1/4	3.4	320.9
C	3.7	320.6
WL	3.8	320.5

N 1/4

WL	3.3	321.0
C	3.4	320.9
1/4	2.7	321.6
£	2.8	321.5
1/4	2.8	321.5
C	2.8	321.5
EL	2.4	321.9

28st

T.P. 324.31 2.75 321.56

9.00 330.56

N Eurb.

EL 8.2 322.4

C 8.7 321.9

1/4 8.9 321.7

⊕ 9.0 321.6

1/4 8.6 322.0

C 9.4 321.2

WL 9.5 321.1

NL Thorn

WL 9.7 320.9

C 9.4 321.2

1/4 8.6 322.0

⊕ 8.7 321.9

1/4 8.7 321.9

C 8.4 321.2

EL 8.0 322.6

28st 76

330.56

50' N Thorn

EL 7.2 323.4

C 7.2 323.4

1/4 7.0 323.6

⊕ 7.7 322.9

1/4 8.0 322.6

C 7.9 322.7

WL 7.8 322.8

100' N

WL 6.8 323.8

C 6.6 324.0

1/4 6.2 324.4

⊕ 6.2 324.4

1/4 6.7 323.9

C 6.5 324.1

EL 6.3 324.3

150' N

EL 5.7 324.9

C 5.4 325.2

1/4 5.4 325.2

⊕ 5.3 325.3

33056

28st

1/4	58	325.3
C	50	325.6
WL.	54	325.2

200'N.

WL.	4.7	325.9
C	4.5	326.1
1/4	4.7	325.9
⊖	5.1	325.5
1/4	5.0	325.6
C	5.3	325.3
EL.	5.6	325.0

250'N.

EL	4.2	326.4
C	5.3	325.3
1/4	5.2	325.4
⊖	4.4	326.2
1/4	4.1	326.5
C	4.5	326.1
WL.	4.3	326.3

33056

28st
77

300'N.

WL	4.3	326.3
C	4.2	326.4
1/4	4.4	326.2
⊖	4.1	326.5
1/4	3.7	326.9
C	4.7	325.9
EL	5.8	324.9

350'N.

EL	4.3	326.3
10	5.2	325.4
1/4	4.5	326.1
⊖	4.9	325.7
1/4	4.8	325.8
C	4.8	325.8
WL	4.6	326.0

400'N.

WL	4.3	326.3
C	4.7	325.9
1/4	4.4	326.2
⊖	3.4	326.2

330.56

28 st

1/4	4.3	326.3
C	5.1	325.5
EL.	4.6	326.0

450' N.

EL	3.8	326.8
C	4.4	326.2
1/4	3.9	326.7
E	3.4	327.2
1/4	4.0	326.6
C	3.9	326.7
WL.	3.4	327.2
T.P.	3.41	327.15

7.75 334.90

500' N.

WL	7.6	327.3
C	7.4	327.5
1/4	6.7	328.2
E	7.2	327.7
A	7.3	327.6
C	7.2	327.7
EL	7.6	327.3

334.94

28 st
78

550' N.

EL	6.1	328.5
C	6.4	328.5
1/4	6.8	328.1
E	7.0	327.9
1/4	6.9	328.0
C	7.2	327.7
WL	6.6	328.3

575' N.

WL	6.3	328.6
C	6.2	328.7
1/4	6.3	328.6
E	5.7	329.2
1/4	6.2	328.7
C	6.0	328.9
EL	5.5	329.4

3849

28 St.

79

600' N - 5L. Upas

EL	58	329.1	
C	61	328.8	
1/4	63	328.6	
1/4	60	328.9	
1/4	52	329.7	
C	53	329.6	
P.L.	64	328.5	
B.M. Flag Pole	357	331.33	331.23 ^{OK}
		<u>331.23</u>	
		-.10	= Error

Oct 1st 1913.
West
Eyads.
Gevine.

Bot F.T. Stephens + Stackton 9.98

• Sewer Outlet 4" C.I. Pipe 8.20

at house 4714 Stephens

1.78

Fall in 140' down

3148 3148 3148 3148
28 3 5.00 10.00 10.00

S.E. 30 + T. 10 N. P. 19. No. 320-435
 N. E. Bridge. sidewalk cross P. 19. No. 280-747
 S.E. 30 + Kalmia Spr. P. 19. No. 289-955
 289.07 = 5th year Bank.



DISTANCES FROM CENTER OF ROADWAY FOR CROSS-SECTIONING.
 ROADWAY 16 FEET WIDE. SIDE SLOPES 1 1/2 TO 1.
 FOR SINGLE TRACK EMBANKMENT.

	0	.1	.2	.3	.4	.5	.6	.7	.8	.9	
0	8.0	8.2	8.3	8.5	8.6	8.8	8.9	9.1	9.2	9.4	0
1	9.5	9.7	9.8	10.0	10.1	10.3	10.4	10.6	10.7	10.9	1
2	11.0	11.2	11.3	11.5	11.6	11.8	11.9	12.1	12.2	12.4	2
3	12.5	12.7	12.8	13.0	13.1	13.3	13.4	13.6	13.7	13.9	3
4	14.0	14.2	14.3	14.5	14.6	14.8	14.9	15.1	15.2	15.4	4
5	15.5	15.7	15.8	16.0	16.1	16.3	16.4	16.6	16.7	16.9	5
6	17.0	17.2	17.3	17.5	17.6	17.8	17.9	18.1	18.2	18.4	6
7	18.5	18.7	18.8	19.0	19.1	19.3	19.4	19.6	19.7	19.9	7
8	20.0	20.2	20.3	20.5	20.6	20.8	20.9	21.1	21.2	21.4	8
9	21.5	21.7	21.8	22.0	22.1	22.3	22.4	22.6	22.7	22.9	9
10	23.0	23.2	23.3	23.5	23.6	23.8	23.9	24.1	24.2	24.4	10
11	24.5	24.7	24.8	25.0	25.1	25.3	25.4	25.6	25.7	25.9	11
12	26.0	26.2	26.3	26.5	26.6	26.8	26.9	27.1	27.2	27.4	12
13	27.5	27.7	27.8	28.0	28.1	28.3	28.4	28.6	28.7	28.9	13
14	29.0	29.2	29.3	29.5	29.6	29.8	29.9	30.1	30.2	30.4	14
15	30.5	30.7	30.8	31.0	31.1	31.3	31.4	31.6	31.7	31.9	15
16	32.0	32.2	32.3	32.5	32.6	32.8	32.9	33.1	33.2	33.4	16
17	33.5	33.7	33.8	34.0	34.1	34.3	34.4	34.6	34.7	34.9	17
18	35.0	35.2	35.3	35.5	35.6	35.8	35.9	36.1	36.2	36.4	18
19	36.5	36.7	36.8	37.0	37.1	37.3	37.4	37.6	37.7	37.9	19
20	38.0	38.2	38.3	38.5	38.6	38.8	38.9	39.1	39.2	39.4	20
21	39.5	39.7	39.8	40.0	40.1	40.3	40.4	40.6	40.7	40.9	21
22	41.0	41.2	41.3	41.5	41.6	41.8	41.9	42.1	42.2	42.4	22
23	42.5	42.7	42.8	43.0	43.1	43.3	43.4	43.6	43.7	43.9	23
24	44.0	44.2	44.3	44.5	44.6	44.8	44.9	45.1	45.2	45.4	24
25	45.5	45.7	45.8	46.0	46.1	46.3	46.4	46.6	46.7	46.9	25
26	47.0	47.2	47.3	47.5	47.6	47.8	47.9	48.1	48.2	48.4	26
27	48.5	48.7	48.8	49.0	49.1	49.3	49.4	49.6	49.7	49.9	27
28	50.0	50.2	50.3	50.5	50.6	50.8	50.9	51.1	51.2	51.4	28
29	51.5	51.7	51.8	52.0	52.1	52.3	52.4	52.6	52.7	52.9	29
30	53.0	53.2	53.3	53.5	53.6	53.8	53.9	54.1	54.2	54.4	30
31	54.5	54.7	54.8	55.0	55.1	55.3	55.4	55.6	55.7	55.9	31
32	56.0	56.2	56.3	56.5	56.6	56.8	56.9	57.1	57.2	57.4	32
33	57.5	57.7	57.8	58.0	58.1	58.3	58.4	58.6	58.7	58.9	33
34	59.0	59.2	59.3	59.5	59.6	59.8	59.9	60.1	60.2	60.4	34
35	60.5	60.7	60.8	61.0	61.1	61.3	61.4	61.6	61.7	61.9	35
36	62.0	62.2	62.3	62.5	62.6	62.8	62.9	63.1	63.2	63.4	36
37	63.5	63.7	63.8	64.0	64.1	64.3	64.4	64.6	64.7	64.9	37
38	65.0	65.2	65.3	65.5	65.6	65.8	65.9	66.1	66.2	66.4	38
39	66.5	66.7	66.8	67.0	67.1	67.3	67.4	67.6	67.7	67.9	39
40	68.0	68.2	68.3	68.5	68.6	68.8	68.9	69.1	69.2	69.4	40

Calculated by F. E. Paradis, C. E.

DISTANCES FROM CENTER OF ROADWAY FOR CROSS-SECTIONING.
 ROADWAY 14 FEET WIDE. SIDE SLOPES 1 1/2 TO 1.
 FOR SINGLE TRACK EMBANKMENT.

	0	.1	.2	.3	.4	.5	.6	.7	.8	.9	
0	7.00	7.15	7.30	7.45	7.60	7.75	7.90	8.05	8.20	8.35	0
1	8.50	8.65	8.80	8.95	9.10	9.25	9.40	9.55	9.70	9.85	1
2	10.00	10.15	10.30	10.45	10.60	10.75	10.90	11.05	11.20	11.35	2
3	11.50	11.65	11.80	11.95	12.10	12.25	12.40	12.55	12.70	12.85	3
4	13.00	13.15	13.30	13.45	13.60	13.75	13.90	14.05	14.20	14.35	4
5	14.50	14.65	14.80	14.95	15.10	15.25	15.40	15.55	15.70	15.85	5
6	16.00	16.15	16.30	16.45	16.60	16.75	16.90	17.05	17.20	17.35	6
7	17.50	17.65	17.80	17.95	18.10	18.25	18.40	18.55	18.70	18.85	7
8	19.00	19.15	19.30	19.45	19.60	19.75	19.90	20.05	20.20	20.35	8
9	20.50	20.65	20.80	20.95	21.10	21.25	21.40	21.55	21.70	21.85	9
10	22.00	22.15	22.30	22.45	22.60	22.75	22.90	23.05	23.20	23.35	10
11	23.50	23.65	23.80	23.95	24.10	24.25	24.40	24.55	24.70	24.85	11
12	25.00	25.15	25.30	25.45	25.60	25.75	25.90	26.05	26.20	26.35	12
13	26.50	26.65	26.80	26.95	27.10	27.25	27.40	27.55	27.70	27.85	13
14	28.00	28.15	28.30	28.45	28.60	28.75	28.90	29.05	29.20	29.35	14
15	29.50	29.65	29.80	29.95	30.10	30.25	30.40	30.55	30.70	30.85	15
16	31.00	31.15	31.30	31.45	31.60	31.75	31.90	32.05	32.20	32.35	16
17	32.50	32.65	32.80	32.95	33.10	33.25	33.40	33.55	33.70	33.85	17
18	34.00	34.15	34.30	34.45	34.60	34.75	34.90	35.05	35.20	35.35	18
19	35.50	35.65	35.80	35.95	36.10	36.25	36.40	36.55	36.70	36.85	19
20	37.00	37.15	37.30	37.45	37.60	37.75	37.90	38.05	38.20	38.35	20
21	38.50	38.65	38.80	38.95	39.10	39.25	39.40	39.55	39.70	39.85	21
22	40.00	40.15	40.30	40.45	40.60	40.75	40.90	41.05	41.20	41.35	22
23	41.50	41.65	41.80	41.95	42.10	42.25	42.40	42.55	42.70	42.85	23
24	43.00	43.15	43.30	43.45	43.60	43.75	43.90	44.05	44.20	44.35	24
25	44.50	44.65	44.80	44.95	45.10	45.25	45.40	45.55	45.70	45.85	25
26	46.00	46.15	46.30	46.45	46.60	46.75	46.90	47.05	47.20	47.35	26
27	47.50	47.65	47.80	47.95	48.10	48.25	48.40	48.55	48.70	48.85	27
28	49.00	49.15	49.30	49.45	49.60	49.75	49.90	50.05	50.20	50.35	28
29	50.50	50.65	50.80	50.95	51.10	51.25	51.40	51.55	51.70	51.85	29
30	52.00	52.15	52.30	52.45	52.60	52.75	52.90	53.05	53.20	53.35	30
31	53.50	53.65	53.80	53.95	54.10	54.25	54.40	54.55	54.70	54.85	31
32	55.00	55.15	55.30	55.45	55.60	55.75	55.90	56.05	56.20	56.35	32
33	56.50	56.65	56.80	56.95	57.10	57.25	57.40	57.55	57.70	57.85	33
34	58.00	58.15	58.30	58.45	58.60	58.75	58.90	59.05	59.20	59.35	34
35	59.50	59.65	59.80	59.95	60.10	60.25	60.40	60.55	60.70	60.85	35
36	61.00	61.15	61.30	61.45	61.60	61.75	61.90	62.05	62.20	62.35	36
37	62.50	62.65	62.80	62.95	63.10	63.25	63.40	63.55	63.70	63.85	37
38	64.00	64.15	64.30	64.45	64.60	64.75	64.90	65.05	65.20	65.35	38
39	65.50	65.65	65.80	65.95	66.10	66.25	66.40	66.55	66.70	66.85	39
40	67.00	67.15	67.30	67.45	67.60	67.75	67.90	68.05	68.20	68.35	40

Calculated by F. E. Paradis, C. E.