

807

907

F.B.

LEVEL BOOK

No. 410 T

907

EUGENE DIETZGEN CO.

Drawing Materials and Surveying Instruments
NEW YORK. CHICAGO. SAN FRANCISCO.

TABLES FOR EXCAVATIONS AND EMBANKMENTS.
DISTANCES FROM CENTER OF ROADWAY FOR CROSS-SECTIONING.
ROADWAY 20 FEET WIDE. SIDE SLOPES 1 TO 1.
FOR SINGLE TRACK EXCAVATION.

MICROFILMED

Copyright, 1902. No. 39340.

DEC 15 1964

	0	.1	.2	.3	.4	.5	.6	.7	.8	.9	
0	10.0	10.1	10.2	10.3	10.4	10.5	10.6	10.7	10.8	10.9	0
1	11.0	11.1	11.2	11.3	11.4	11.5	11.6	11.7	11.8	11.9	1
2	12.0	12.1	12.2	12.3	12.4	12.5	12.6	12.7	12.8	12.9	2
3	13.0	13.1	13.2	13.3	13.4	13.5	13.6	13.7	13.8	13.9	3
4	14.0	14.1	14.2	14.3	14.4	14.5	14.6	14.7	14.8	14.9	4
5	15.0	15.1	15.2	15.3	15.4	15.5	15.6	15.7	15.8	15.9	5
6	16.0	16.1	16.2	16.3	16.4	16.5	16.6	16.7	16.8	16.9	6
7	17.0	17.1	17.2	17.3	17.4	17.5	17.6	17.7	17.8	17.9	7
8	18.0	18.1	18.2	18.3	18.4	18.5	18.6	18.7	18.8	18.9	8
9	19.0	19.1	19.2	19.3	19.4	19.5	19.6	19.7	19.8	19.9	9
10	20.0	20.1	20.2	20.3	20.4	20.5	20.6	20.7	20.8	20.9	10
11	21.0	21.1	21.2	21.3	21.4	21.5	21.6	21.7	21.8	21.9	11
12	22.0	22.1	22.2	22.3	22.4	22.5	22.6	22.7	22.8	22.9	12
13	23.0	23.1	23.2	23.3	23.4	23.5	23.6	23.7	23.8	23.9	13
14	24.0	24.1	24.2	24.3	24.4	24.5	24.6	24.7	24.8	24.9	14
15	25.0	25.1	25.2	25.3	25.4	25.5	25.6	25.7	25.8	25.9	15
16	26.0	26.1	26.2	26.3	26.4	26.5	26.6	26.7	26.8	26.9	16
17	27.0	27.1	27.2	27.3	27.4	27.5	27.6	27.7	27.8	27.9	17
18	28.0	28.1	28.2	28.3	28.4	28.5	28.6	28.7	28.8	28.9	18
19	29.0	29.1	29.2	29.3	29.4	29.5	29.6	29.7	29.8	29.9	19
20	30.0	30.1	30.2	30.3	30.4	30.5	30.6	30.7	30.8	30.9	20
21	31.0	31.1	31.2	31.3	31.4	31.5	31.6	31.7	31.8	31.9	21
22	32.0	32.1	32.2	32.3	32.4	32.5	32.6	32.7	32.8	32.9	22
23	33.0	33.1	33.2	33.3	33.4	33.5	33.6	33.7	33.8	33.9	23
24	34.0	34.1	34.2	34.3	34.4	34.5	34.6	34.7	34.8	34.9	24
25	35.0	35.1	35.2	35.3	35.4	35.5	35.6	35.7	35.8	35.9	25
26	36.0	36.1	36.2	36.3	36.4	36.5	36.6	36.7	36.8	36.9	26
27	37.0	37.1	37.2	37.3	37.4	37.5	37.6	37.7	37.8	37.9	27
28	38.0	38.1	38.2	38.3	38.4	38.5	38.6	38.7	38.8	38.9	28
29	39.0	39.1	39.2	39.3	39.4	39.5	39.6	39.7	39.8	39.9	29
30	40.0	40.1	40.2	40.3	40.4	40.5	40.6	40.7	40.8	40.9	30
31	41.0	41.1	41.2	41.3	41.4	41.5	41.6	41.7	41.8	41.9	31
32	42.0	42.1	42.2	42.3	42.4	42.5	42.6	42.7	42.8	42.9	32
33	43.0	43.1	43.2	43.3	43.4	43.5	43.6	43.7	43.8	43.9	33
34	44.0	44.1	44.2	44.3	44.4	44.5	44.6	44.7	44.8	44.9	34
35	45.0	45.1	45.2	45.3	45.4	45.5	45.6	45.7	45.8	45.9	35
36	46.0	46.1	46.2	46.3	46.4	46.5	46.6	46.7	46.8	46.9	36
37	47.0	47.1	47.2	47.3	47.4	47.5	47.6	47.7	47.8	47.9	37
38	48.0	48.1	48.2	48.3	48.4	48.5	48.6	48.7	48.8	48.9	38
39	49.0	49.1	49.2	49.3	49.4	49.5	49.6	49.7	49.8	49.9	39
40	50.0	50.1	50.2	50.3	50.4	50.5	50.6	50.7	50.8	50.9	40

Calculated by F. E. Paradis, C. E.

47
3
141

60
600

CROSS SECTION OF
EAST HALF BLOCK 168
UNIVERSITY HIGHTS,
NE IDAHO
UNIV.

BM	3.45	350.82	347.37
T.P.	12.05	361.87	1.00 349.82
	5.13	366.39	0.91 360.96

No. LINE LINCOLN

W.L. IDAHO	5.2	361.2
35 WEST	5.9	60.5
70 WEST	6.6	59.8
105 ✓	7.5	58.9
140 ✓ = ALLEY	8.1	58.3

25' No.

E.L. ALLEY	7.2	" A
35 EAST	6.8	59.6
70 ✓	5.6	60.8
105 ✓	5.2	61.2
140 ✓ = IDAHO	5.1	61.3

50' No.

W.L. IDAHO	4.7	61.7
35 WEST	4.9	61.5
70 ✓	5.2	61.2
105 ✓	6.2	60.4
140 ✓ = ALLEY	6.7	59.7

75' No.

E.L. ALLEY	366.4	6.8	359.6
35 ✓		4.5	61.9
70 ✓		4.7	61.7
105 ✓		5.1	61.3
140 ✓ = IDAHO		4.3	62.1

100' No.

W.L. IDAHO		3.9	62.5
35 WEST		3.6	62.8
70 ✓		4.5	61.9
105 ✓		5.0	61.4
140 ✓ = ALLEY		6.2	60.2

125' No.

E.L. ALLEY		5.5	60.9
35 EAST		4.4	62.0
70 ✓		3.6	62.8
105 ✓		4.1	62.3
140 ✓		3.5	62.9

150' No

W.L. IDAHO	366.4	R.9	363.5
35' WEST		3.6	62.8
70' ✓		3.8	62.6
105' ✓		4.1	62.3
140' ✓ = ALLEY		4.3	62.1

175' No

E.L. ALLEY		4.1	62.3
35' EAST		3.6	62.8
70' ✓		2.8	63.6
105' ✓		2.5	63.9
140' ✓ = IDAHO		2.4	64.0

200' No

W.L. IDAHO		2.1	64.3
35' WEST		2.9	63.5
70' ✓		3.0	63.4
105' ✓		3.2	63.2
140' ✓ = ALLEY		3.5	62.9

225' No

E.L. ALLEY	366.39	3.0	363.4
35' EAST		2.7	63.7
70' ✓		2.7	63.7
105' ✓		2.6	63.8
140' ✓ = IDAHO		1.8	64.6

250' No

W.L. IDAHO		1.5	64.9
35' WEST		2.0	64.4
70' ✓		1.7	64.7
105' ✓		1.3	65.1
140' ✓ = ALLEY		1.2	65.2

T.P. 7.99 373.03 1.35 365.04

275' No

E.L. ALLEY		8.8	64.2
35' EAST		8.4	64.6
70' ✓		7.9	65.1
105' ✓		8.3	64.7
140' ✓ = IDAHO		7.9	65.1

300' No

W.L. IDAHO	373.03	7.6	365.4
35' WEST		8.2	64.8
70' ✓		7.9	65.1
105' ✓		8.6	64.4
140' ✓ = ALLEY		8.5	64.5

325' No

E.L. ALLEY		8.3	64.7
35' EAST		8.1	64.9
70' ✓		8.1	64.9
105' ✓		7.6	65.4
140' ✓ = IDAHO		7.2	65.8

350' No

W.L. IDAHO		6.7	66.3
35' WEST		7.4	65.6
70' ✓		7.8	65.2
105' ✓		7.8	65.2
140' ✓ = ALLEY		7.6	65.4

375' No

E.L. ALLEY	373.03	7.4	365.6
35' EAST		7.7	65.3
70' ✓		7.0	66.0
105' ✓		7.2	65.8
140' ✓ = IDAHO		6.3	66.7

400' No

W.L. IDAHO		5.9	67.1
35' WEST		6.9	66.1
70' ✓		7.1	65.9
105' ✓		6.9	66.1
140' ✓ = ALLEY		6.8	66.2

425' No

E.L. ALLEY		6.2	66.8
35' EAST		6.8	66.2
70' ✓		6.0	67.0
105' ✓		6.6	66.4
140' ✓ = IDAHO		5.6	67.4

450' No

W.L. TORHO	373.03	5.0	368.0
35' WEST		6.3	66.9
70' ✓		5.6	67.4
105' ✓		6.2	66.8
140' ✓ = ALLEY		6.2	66.8

475' No.

E. L. ALLEY		5.9	67.1
35' EAST		5.9	67.1
70' ✓		5.8	67.2
105' ✓		5.6	67.4
140' ✓ = TORHO		4.8	68.2

500' No.

W.L. TORHO		4.4	68.6
35' WEST		5.5	67.5
70' ✓		5.7	67.3
105' ✓		5.9	67.1
140' ✓ = ALLEY		5.7	67.3

525' No

E. L. ALLEY	373.03	5.4	367.6
35' EAST		5.0	68.0
70' ✓		4.8	68.2
105' ✓		4.9	68.1
140' ✓ = TORHO		4.2	68.8

550' No.

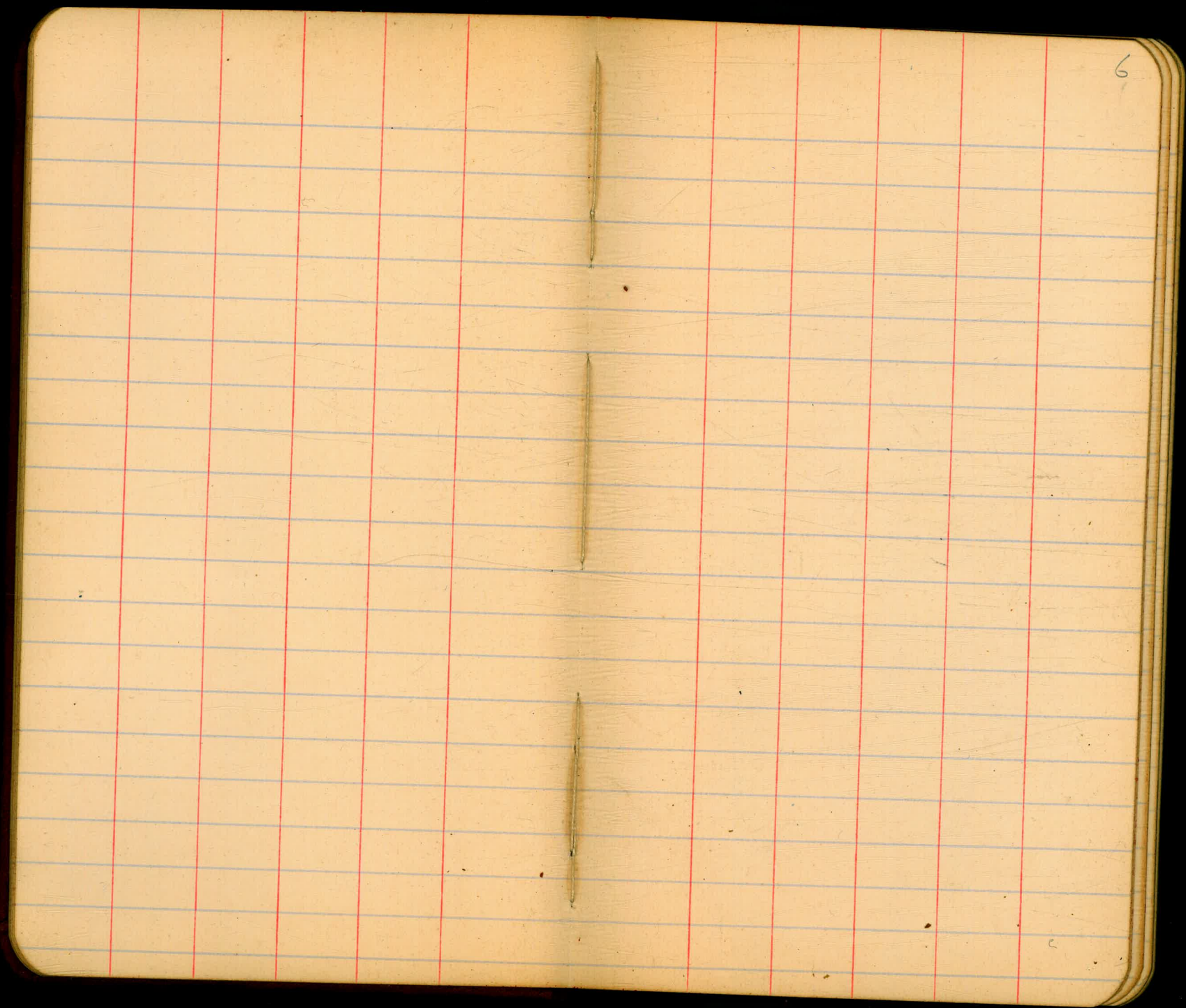
W.L. TORHO		3.7	69.3
35' WEST		4.9	68.1
70' ✓		5.0	68.0
105' ✓		5.1	67.9
140' ✓ = ALLEY		5.1	67.9

575' No.

E. L. ALLEY		4.3	68.7
35' EAST		5.0	68.0
70' ✓		4.7	68.3
105' ✓		3.8	69.2
140' ✓ = TORHO		3.4	69.6

600' No. = S.L. POLK ST

W.L. IDAHO	373.03	3.0	370.0
35' WEST		4.0	69.0
70' ✓		4.6	68.4
105' ✓		4.5	68.5
140' ✓ = HALLEY		3.8	69.2



6

CROSS SECTION OF
 UVADA PLACE
 (50' WIDE)
 ENTIRE LENGTH.

397.19

7

on B.M. 7.34 392.70 385.31

T.P. 7.15 397.19 2.66 390.04

N. L. COPLEY

W. 4.1 393.1

cb 4.2 93.0

+1 5.0 92.0

1/4 4.7 92.5

C 4.4 92.8

1/4 4.7 92.5

+6 5.0 92.2

cb 4.6 92.6

+1 4.2 93.0

E 3.9 93.3

50' No.

W 4.6 92.6

+9 4.9 92.3

cb 5.3 91.9

1/4 5.1 92.1

C 4.7 92.5

PLOTTED

1/4

+6.5

cb

E

W

cb

+1

1/4

C

1/4

cb

+1

E

W

cb

1/4

C

1/4

100' No.

5.0 392.2

5.6 91.6

4.7 92.5

4.5 92.7

5.4 91.8

5.5 91.7

6.1 91.1

5.6 91.6

5.1 92.1

5.5 91.7

5.5 91.7

5.1 92.1

4.7 92.5

150' No.

6.2 91.0

5.8 91.4

6.0 91.2

6.0 91.2

6.1 91.1

PLOTTED

397.19

8

cb 5.9 391.3

E 5.9 91.3

200' No.

W 7.3 89.9

cb 7.2 90.0

1/4 6.8 90.4

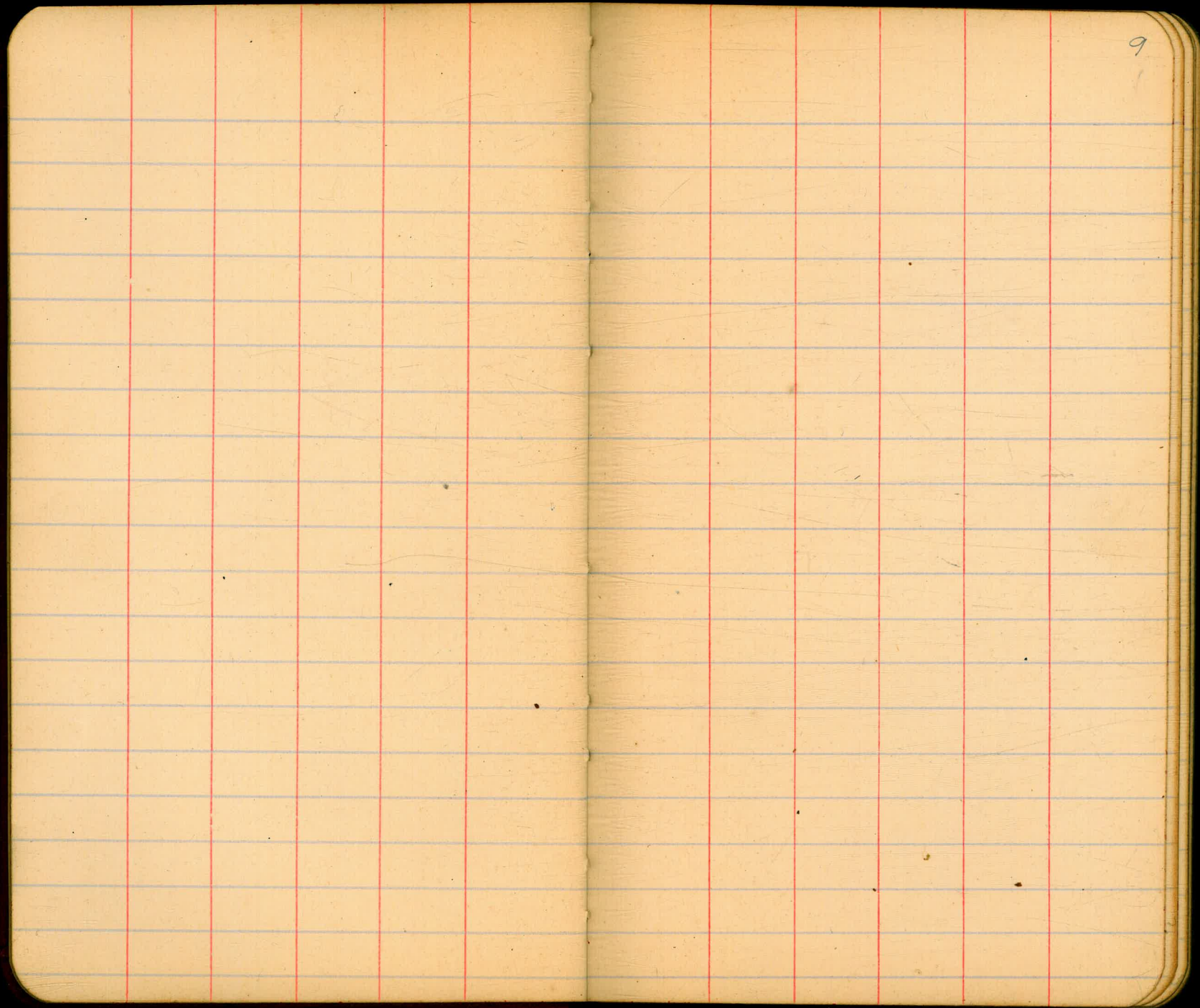
c 6.7 90.5

1/4 6.4 90.8

cb 6.1 91.1

E 6.1 91.1

PLOTTED



9

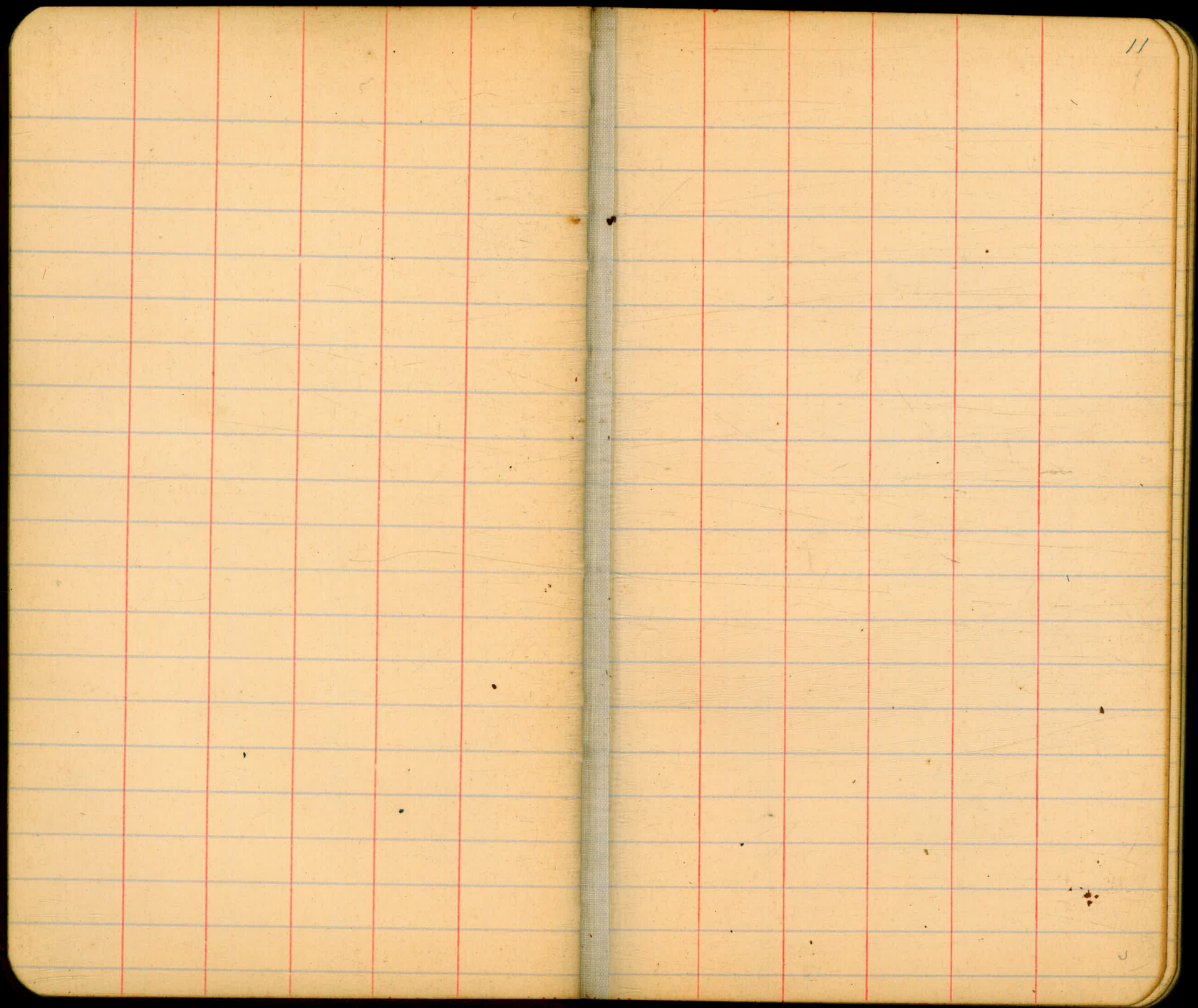
SEWER LEVELS IN ALLEY
 BET. LINCOLN + HAYES
 WEST OF VERMONT

10/10/13 Oregon
 Shoshone
 mine

33394

10

on BM	4.56	296.62	292.06	51.14 + line.	4+10 = BOTTOM OF CANYON	11.8	222.1
W.L. Vermont: 00			4.7	291.9			
+50			4.2	292.4			
1			4.4	292.2			
+50			6.1	290.5			
2			9.5	287.1			
+15			11.0	285.6			
T.P.	0.58	284.40	12.80	283.82			
+50			5.3	279.1			
+60			9.7	274.7			
+75			12.6	271.8			
T.P.	0.14	271.54	13.00	271.40			
+90			9.8	261.7			
3			10.4	261.1			
+20			14.2	257.3			
T.P.	0.08	258.69	12.93	258.61			
+50			11.4	247.3			
T.P.	0.77	246.37	13.09	245.60			
T.P.	0.02	233.94	12.45	233.92			
4			6.8	227.1			



//

CROSS SECTION OF
 32ND ST ^{50' WIDE}
 REDWOOD TO UPAS ^{10' WALKS}

ON BM. 1.30 339.06 336.76

T.P. 4.39 333.71 8.74 329.32

T.P. 1.74 327.05 8.40 325.31

S. L. UPAS

E 1.7

cb 1.9

1/4 2.1

C 2.2

1/4 2.4

cb 2.5

W 2.7

W 3.8

cb 3.5

1/4 3.5

C 3.3

1/4 3.1

cb 3.0

E 2.7

*Void page
see 50' 50.*

100' So.

F 4.0

cb 4.0

1/4 4.2

C 4.3

1/4 4.4

cb 4.4

W 4.7

150' So.

W 6.3

cb 6.1

1/4 5.9

C 5.6

1/4 5.4

cb 5.2

E 5.2

200' So.

E 6.4

cb 6.7

1/4 6.9

32705

C	7.2
1/4	7.3
cb	7.3
W	7.6
250' So.	
W	9.9
cb	9.6
1/4	9.4
C	9.2
1/4	9.0
cb	8.8
E	8.4
300' So.	
E	10.7
cb	11.1
1/4	11.6
C	11.8
1/4	11.7
cb	11.9
W	12.2

Vandal

13

T.P. 0.17 314.79 12.52 314.53

350' So.

W	2.3
cb	1.8
1/4	1.5
C	1.3
1/4	1.2
cb	0.9
E	0.6

375' So.

E	1.3
cb	2.2
1/4	2.5
C	2.8
1/4	3.6
cb	4.9
W	7.9

400' So.

-20	16.0
W	15.6

314.70

cb	12.7
1/4	10.1
c	6.7
1/2	3.7
cb	3.0
E	2.7

425' 50

E	3.7
cb	4.1
1/4	5.0
c	8.1
1/2	12.2
cb	15.3
W	18.3
+15	19.3
+25	15.8

450' 50

-30	16.2
-20	19.1
W	19.6

Yard

8.16

306.54

14

cb	14.5
1/4	10.4
c	6.5
1/2	5.7
cb	5.1
E	4.5

475' 50

E	6.1
cb	8.0
1/2	10.2
c	12.2
T.P.	12.77
1/4	301.93
cb	
W	

CROSS-SECTION OF
 32ND ST ^{52.5' WIDE}
 FROM UPAS TO REDWOOD ^{10 WALKS} 3.125' ^{1/4's}

3269

15

ONT. P.	1.64	32695	325.31	1/4	42	322.7
	SO. LINE UPAS.			C	43	322.6
E		1.6	325.3	1/4	43	322.6
cb		1.9	325.0	cb	44	322.5
1/4		2.1	324.8	W	47	322.2
C		2.2	324.7			
1/2		2.4	324.5	W	62	320.7
cb		2.6	324.3	cb	61	320.8
W		2.6	324.3	1/4	58	321.1
	50' So.			C	55	321.4
W		3.8	323.1	1/4	54	321.5
cb		3.5	323.4	cb	51	321.8
1/4		3.4	323.5	E	51	321.8
C		3.3	323.6			
1/4		3.1	323.8			
cb		2.9	324.0	E	63	320.6
E		2.6	324.3	cb	66	320.3
	100' So.			1/4	68	320.1
E		3.9	323.0	C	70	319.9
cb		4.0	322.9	1/4	71	319.8
				cb	73	319.6

150' So.

200' So

PLOTTED

326.95

W		7.7	319.2
	250' So.		
W		9.9	317.0
cb		9.6	317.3
1/4		9.3	317.6
C		9.1	317.8
1/4		8.9	318.0
cb		8.5	318.4
E		8.2	318.7
	300' So.		
E		10.6	316.3
cb		10.9	316.0
1/4		11.5	315.4
C		11.7	315.2
1/4		11.6	315.3
cb		11.9	315.0
W		12.2	314.7
T.P.	0.12 314.64	12.43	314.52

PLOTTED

314.64

16

	350' So.		
W		2.4	312.2
cb		1.8	312.8
1/4		1.4	313.2
C		1.2	313.4
1/4		1.0	313.6
cb		0.6	314.0
E		0.4	314.2
	375' So.		
E		1.2	313.4
cb		2.1	312.5
1/4		2.9	312.2
C		2.8	311.8
1/4		3.7	310.9
cb		5.1	309.5
W		8.6	306.0
	400' So.		
-15		16.2	298.4
W		15.7	298.9
cb		13.2	301.4

3146H

1/4	9.9	304.7
C	6.8	307.8
1/4	4.1	310.5
cb	3.0	311.6
E	2.6	312.0

425' So.

E	3.6	311.0
cb	3.9	310.7
1/4	4.9	309.7
C	7.9	306.7
1/4	12.3	302.3
cb	15.9	298.7
W	18.8	295.8
+10	18.6	296.0
+20	16.2	298.4

450' So.

-25	17.8	296.8
-15	19.8	294.8
W	20.0	294.6
cb	14.5	300.1

PLOTTED

3146W

17

1/4	10.4	304.2
C	6.5	308.1
1/4	5.5	309.1
cb	4.9	309.7
E	4.4	310.2

475' So.

E	5.9	308.7
cb	8.0	306.6
1/4	10.1	304.5
C	11.9	302.7
T.P.	1.81	303.73
1/4	12.72	301.92
1/4	2.6	301.1
cb	4.1	299.6
W	6.0	297.7

500' So.

W	10.7	293.0
cb	10.3	293.4
1/4	9.4	294.3
C	7.9	295.8
1/4	6.7	297.0

303.73

cb	4.9	298.8
E	2.1	301.6
525' So.		
-10	6.0	297.7
E	9.0	294.7
cb	11.8	291.9
1/4	12.3	291.4
C	14.0	289.7
1/4	13.0	290.7
cb	12.9	290.8
W	9.4	294.3
+5	6.0	297.7
550' So.		
W	2.1	301.6
cb	8.3	295.4
1/4	12.2	291.5
C	12.8	290.9
1/4	13.2	290.5
cb	13.8	289.9
E	15.4	288.3

PLOTTED

303.7

18

+10	11.2	292.5		
575' So.				
-10	11.6	292.1		
E	16.0	287.7		
cb	15.3	288.4		
1/4	14.2	289.5		
C	13.0	290.7		
1/4	12.8	290.9		
cb	7.4	296.3		
W	0.0	303.7		
598.57' So. = N.L. THORN ST. (60' WIDE)				
T.P.	12.72	314.64	1.81	301.92
T.P.	2.25	308.79	8.10	306.54 ON 13' HOB AT THORN
W	2.1	306.7		
cb	3.1	305.7		
1/4	3.6	305.0		
C	4.7	304.1		
1/4	5.0	303.8		
cb	4.8	304.0		
E	4.4	304.4		

308.79

NO. CURB

E	3.0	305.8
cb	2.8	306.0
1/4	2.4	306.4
C	2.2	306.6
1/4	2.0	306.8
cb	1.7	307.1
W	2.3	306.5

NO. QUARTER

W	2.6	306.2
cb	1.4	307.4
1/4	1.4	307.4
C	1.7	307.1
1/4	1.6	307.2
cb	2.7	306.1
E	3.0	305.8

CENTER

E	3.0	305.8
cb	2.1	306.7
1/4	2.0	306.8

PLOTTED

308.8

19

C	1.7	307.1
1/4	1.4	307.4
cb	0.9	307.9
W	2.5	306.3

SO. QUARTER

W	2.9	305.9
cb	0.9	307.9
1/4	1.0	307.8
C	1.8	307.0
1/4	2.1	306.7
cb	2.5	306.3
E	3.1	305.7

SO. CURB

E	3.3	305.5
cb	2.9	305.9
1/4	2.3	306.5
C	1.8	307.0
1/4	1.1	307.7
cb	1.0	307.8
W	2.7	306.1

308.79

SO. LINE THORN ST.

W	2.5	306.3
cb	1.2	307.6
1/4	1.2	307.6
C	1.8	307.0
1/4	2.2	306.6
cb	2.4	306.4
E	3.3	305.5

25' 50.

E	4.9	303.9
cb	2.9	305.9
1/4	2.5	306.3
C	2.1	306.7
1/4	2.0	306.8
cb	1.5	307.3
W	0.8	308.0

50' 50.

W	1.3	307.5
cb	2.1	306.7
1/4	2.0	306.8

PLOTTED

308.8

20

C	2.3	306.5
1/4	2.7	306.1
cb	4.3	304.5
E	7.8	301.0

75' 50.

E	12.1	296.7
cb	11.6	297.2
1/4	6.2	302.6
C	5.0	303.8
1/4	3.8	305.0
cb	3.2	305.6
W	2.2	306.6

100' 50.

W	3.3	305.5
cb	4.9	303.9
4.5	5.9	302.9
1/4	8.9	299.9
4.4	11.3	297.5
C	12.5	296.3
1/4	12.3	296.5

308.79

cb		12.1	296.7
E		13.3	295.5
	125' 50.		
E		17.2	291.6
cb		12.8	296.0
1/4		10.6	298.2
C		13.7	295.7
1/4		12.7	296.1
cb		9.8	299.0
W		5.1	303.7
	150' 50.		
W		12.2	296.6
cb		11.8	297.0
1/4		11.7	297.1
C		15.1	293.7
1/4		18.0	290.8
cb		21.0	287.8
E		23.5	285.3
+20		29.0	279.8
+45		38.2	278.6

PLOTTED

308.8

21

	175' 50		
-15		31.4	277.4
E		33.0	275.8
cb		26.0	282.8
1/4		23.0	285.8
C		19.7	289.1
1/4		16.7	292.1
cb		12.5	296.3
W		11.0	297.8
T.P.	0.18	295.86	13.11
	200' 50		
W		5.4	290.5
cb		7.8	288.1
1/4		9.7	286.2
C		13.0	282.9
T.P.	0.10	283.19	12.77
1/4		3.5	279.7
cb		6.7	276.5
E		6.8	276.4
+15		5.4	277.8

283.19

225' So.

- 25	1.4	281.8
- 12	6.4	276.8
E	6.8	276.4
cb	7.2	276.0
1/4	9.8	273.4
ctr	7.0	276.2
1/4	5.1	278.1
cb	3.5	279.7
W	0.8	282.4

250' So.

- 25	0.3	282.9
W	7.2	276.0
cb	8.1	275.1
1/4	10.3	272.9
C	8.5	274.7
1/4	7.7	275.5
cb	7.0	276.2
E	5.8	277.4
+15	2.3	280.9

PLOTTED

283.2

22

275' So.

E	2.8	280.4
cb	5.1	278.1
1/4	6.9	276.3
C	7.6	275.6
1/4	8.4	274.8
cb	8.7	274.5
W	9.6	273.6

300' So.

W	8.9	274.3
cb	7.6	275.6
1/4	6.3	276.9
C	5.2	278.0
1/4	3.8	279.4
cb	2.1	281.1
T.P.	10.51	292.23
E	1.47	281.72
E	8.0	284.2

325' So.

E	2.4	289.8
cb	5.1	287.1

32nd St

292.23

1/4		7.2	285.0
c		9.9	282.3
1/4		12.1	280.1
cb		14.6	277.6
W		17.3	274.9
+ 25		20.4	271.8

350' SO.

- 30		20.8	271.4
- 15		19.0	273.2
W		14.7	287.5
cb		9.2	282.8
1/4		6.1	286.1
c		3.3	288.9
1/4		0.5	291.7

T.P.	11.53	303.07	0.69	291.54
cb			9.7	293.4
E			7.5	295.6

375' SO.

E		3.3	299.8
cb		5.7	297.4

PLOTTED

303.1

23

1/4		7.3	295.8
c		9.2	293.9
1/4		11.1	292.0
cb		13.3	289.8
W		18.3	284.8

400' SO.

W		10.7	292.4
cb		9.5	293.6
1/4		8.2	294.9
c		6.4	296.7
1/4		4.7	298.4
cb		3.3	299.8
E		2.1	301.0

450' SO.

E		1.7	301.4
cb		2.4	300.7
1/4		3.0	300.1
c		4.1	299.0
1/4		5.3	297.8
cb		6.4	296.7

303.07

303.1

W	7.5	295.6
475' So.		
W	6.7	296.4
cb	5.1	298.0
1/4	3.7	299.4
C	3.1	299.0
1/4	2.5	300.6
cb	2.0	301.1
E	1.5	301.6
500' So.		
E	1.5	301.6
cb	2.1	301.0
1/4	2.4	300.7
C	3.2	299.9
1/4	4.1	299.0
cb	5.2	299.9
W	9.6	293.5
525' So.		
W	13.6	289.5
cb	10.3	292.8

PLOTTED

303.1

24

1/4	5.3	297.8
C	3.9	299.2
1/4	3.0	300.1
cb	2.0	301.1
E	1.1	302.0
550' So.		
E	2.3	300.8
cb	3.1	300.0
1/4	3.5	299.6
C	4.6	298.5
1/4	6.4	296.7
cb	10.5	292.6
W	14.9	288.2
575' So.		
W	13.3	289.8
cb	9.1	294.0
1/4	6.7	296.4
C	5.5	297.6
1/4	4.3	298.8
cb	3.2	299.9

303.07

303.1

E	2.4	300.7
598.5 = N.L. REDWOOD ST. (60' WIDE)		
E	2.7	300.4
cb	3.8	299.3
1/4	4.8	298.3
C	5.7	297.4
1/4	6.8	296.3
cb	9.1	294.0
W	12.0	291.1
No. CURB		
W	12.1	291.0
cb	9.2	293.9
1/4	7.1	296.0
C	6.0	297.1
1/4	5.1	298.0
cb	4.1	299.0
E	2.7	300.4
No. QUARTER		
E	2.5	300.3
cb	4.0	299.1

PLOTTED

303.1

25

1/4	5.0	298.1
C	6.1	297.0
1/4	7.2	295.9
cb	9.5	293.6
W	12.9	290.2
CENTER		
W	13.2	289.9
cb	9.2	293.9
1/4	7.2	295.9
C	6.0	297.1
1/4	4.7	298.4
cb	3.7	299.4
E	2.8	300.3
So QUARTER		
E	2.9	300.2
cb	3.8	299.3
1/4	4.8	298.3
C	6.1	297.0
1/4	8.0	295.1
cb	11.4	291.7

303.07
303.1

26

W 14.1 289.0

So. CURB

W 16.0 287.1

ct 12.6 290.5

1/2 9.6 293.5

c 6.7 296.4

1/4 4.9 298.2

ct 4.0 299.1

E 2.9 300.2

So. LINE REDWOOD

E 3.1 300.0

ct 4.1 299.0

1/2 5.0 298.1

c 6.9 296.2

1/4 10.9 292.2

ct 14.9 288.2

W 18.7 284.4

T.P. 8.93 309.71 2.29 300.78

T.P. 3.17 306.54

To 13' HUB
ON THORN

PLOTTED

LEVELS OVER $\frac{1}{2}$ OF
PROPOSED CULVERT.
ON 32ND ST.

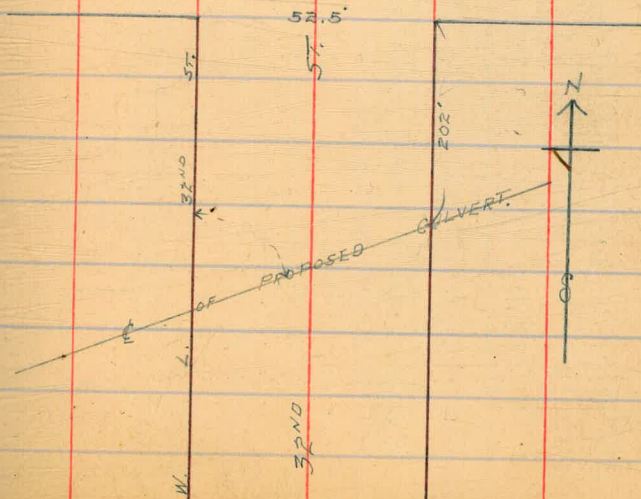
27

H.I.
283.19

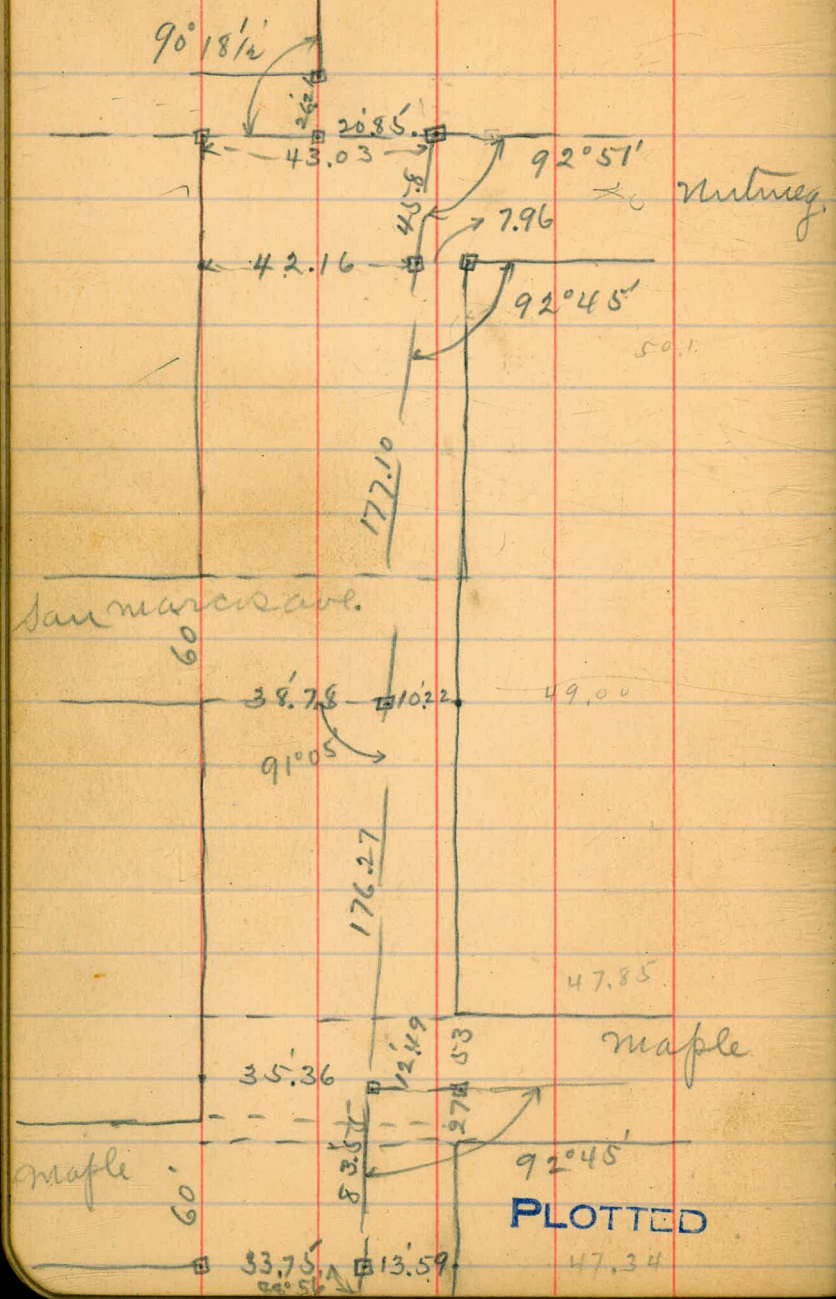
55' E. OF E.L.	5.6
36' E. OF E.L.	6.7
E.L.	6.7
12' W. OF E.L.	7.6
16' W. OF E.L.	8.7
W.L.	11.4
25' W. OF W.L.	11.7
45' W. OF W.L.	11.9

THORN

ST.

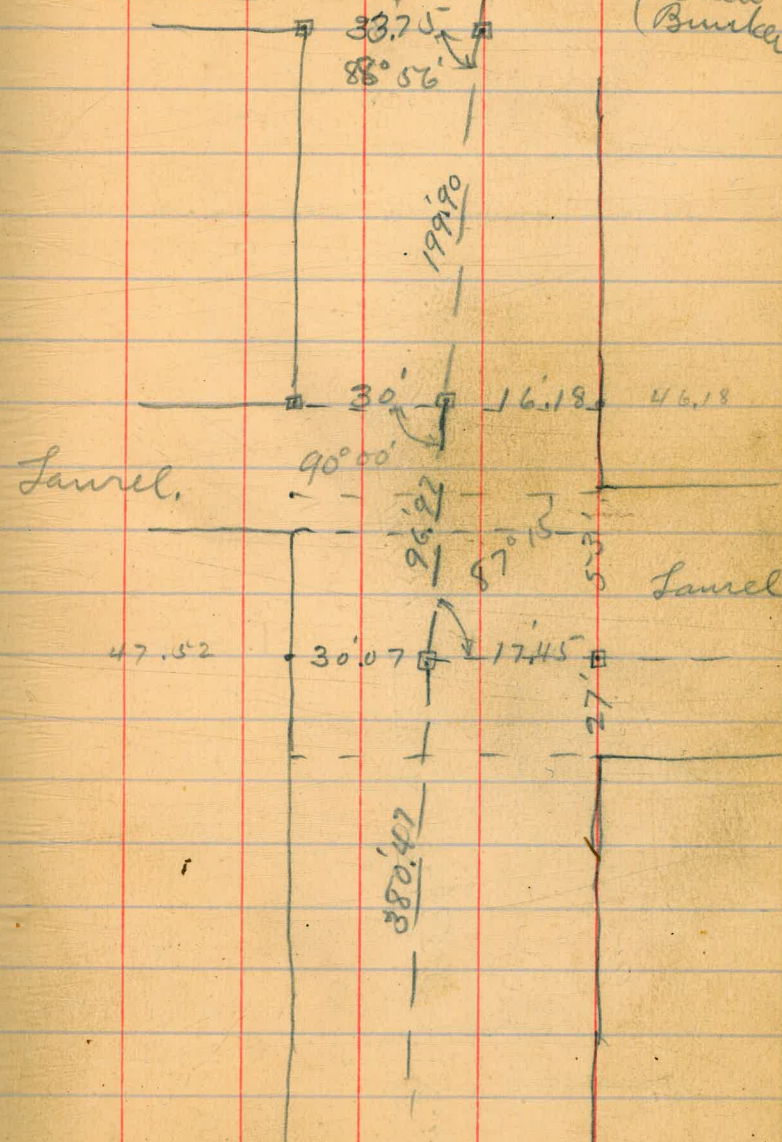


X sect. 32nd so. line

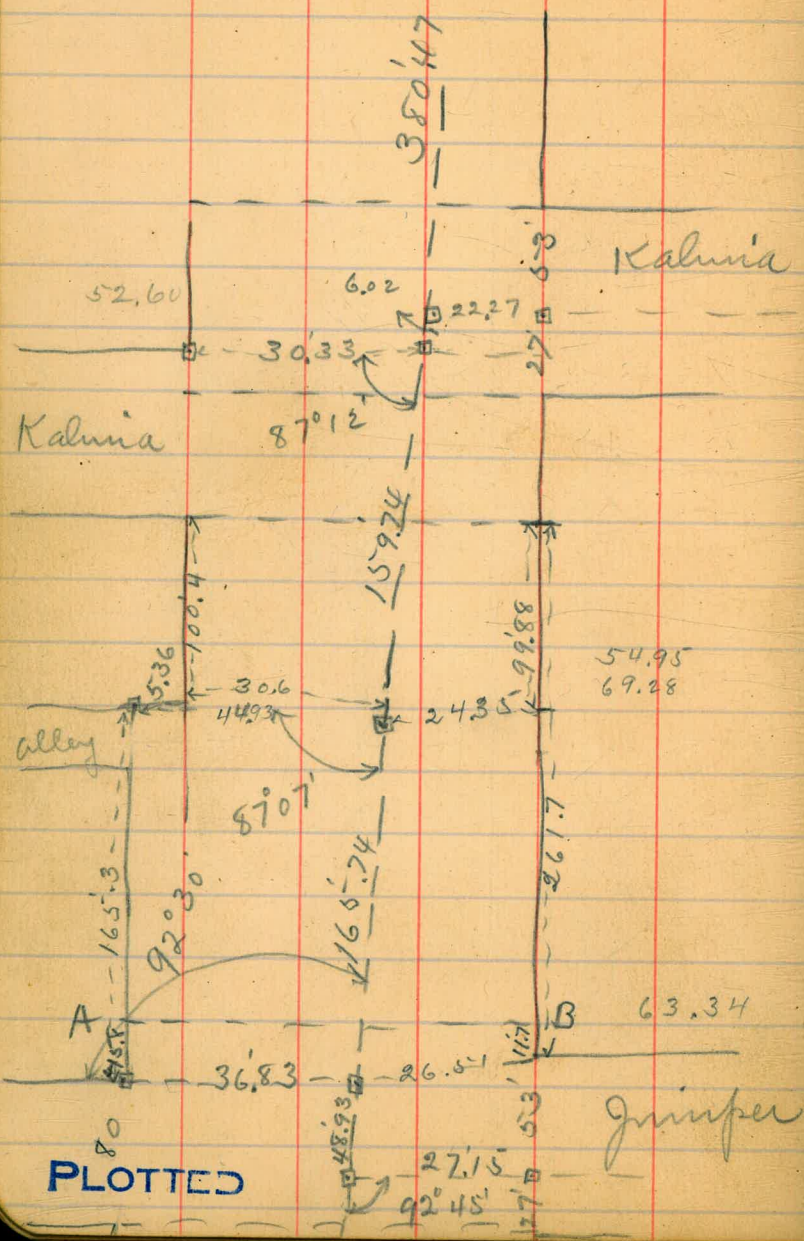


nutmeg Smith
10' sidewalks

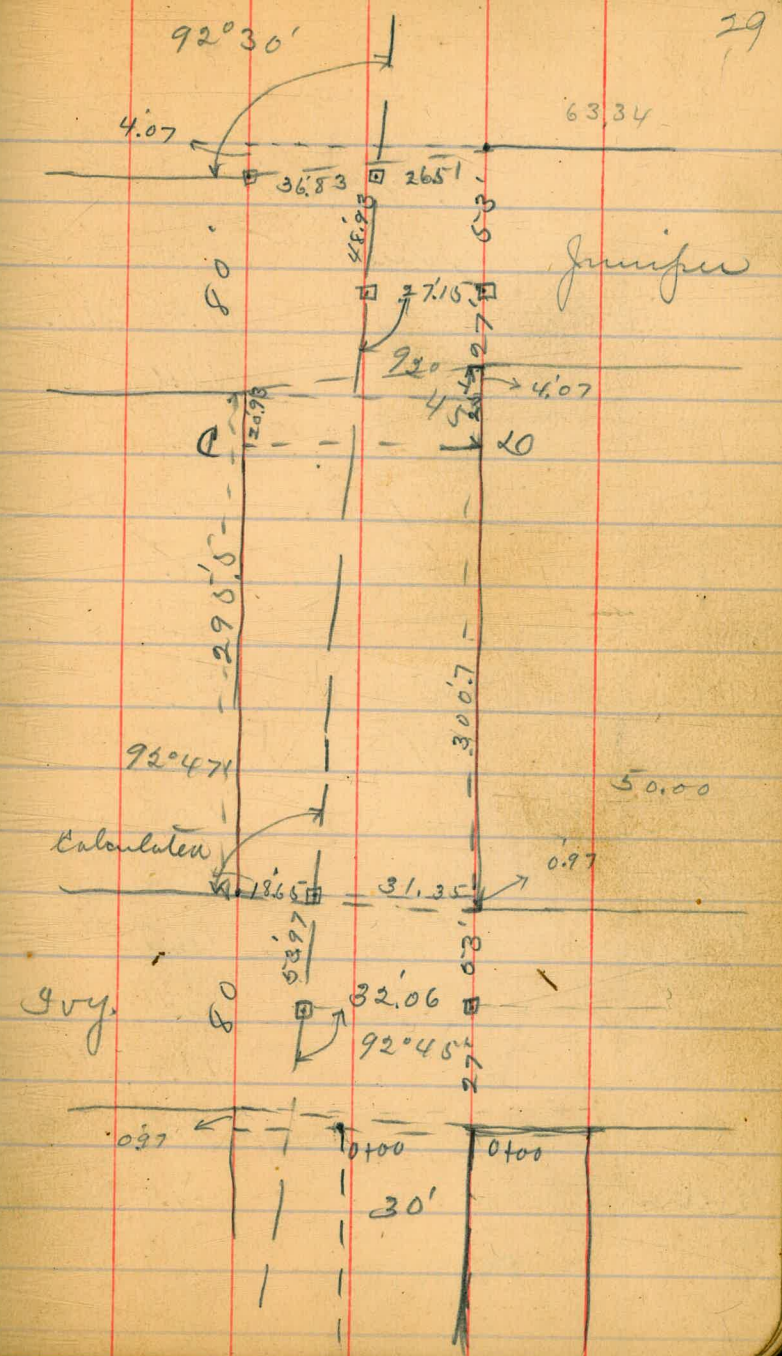
Oct. 24/13 28
Child
Ottor
Bunker



PLOTTED



80
PLOTTED



29

Calculated

Gvy.

X sect. 32nd cont.

Oct. 27/13
80.8
Childs 30
Otter
Fletcher

J.P.	H.I. Rod	Elev.				
	0.27	280.77	280.50		25' 20.	
	So. line N. line on East.			Elm		
		9.25	271.52			1.5 79.3
Elm		11.4	69.4			3.8 77.0
		13.0	47.8	C		5.2 75.6
C		16.0	44.8			5.0 75.8
		15.9	44.9			6.5 74.3
		17.0	63.8	White		8.6 72.3
White		16.5	64.3	J.P.	1241 292.91	11.0 69.8
	4' South				50' 40.	0.27 280.50
White		17.9	69.9	White		9.3 83.6
		17.2	63.6			9.1 83.8
		14.9	65.9			9.1 83.8
C		13.4	67.4	C		9.3 83.6
		11.3	69.5			10.4 82.5
		10.0	70.8			12.5 80.4
Elm		7.6	73.2	Elm		10.9 82.0

PLOTTED

292,91

75' 20.

Elvis

10.1 282.8

10.0 82.9

9.6 83.3

C

8.6 84.3

8.5 84.4

8.3 84.6

White

8.5 84.3

100' 20.

White

8.3 84.6

8.4 84.5

8.5 84.4

C

9.2 83.7

9.3 83.6

9.6 83.3

Elvis

9.6 83.3

PLOTTED

92.9

31

117.7 20. (north line San Marcos.)

Elvis

8.5 284.4

8.8 84.1

8.7 84.2

C

9.2 83.7

9.2 83.7

9.1 83.8

White

9.2 83.7

no. cb.

White

9.1 83.8

9.1 83.8

9.1 83.8

C

9.0 83.9

C+2'

7.7 85.3

7.8 85.1

7.9 85.0

Elvis

7.5 85.4

29291

710 1/4

Eline

6.4 286.5

7.1 85.8

1/4 + 5.5

6.9 86.0

6.4 86.5

8.3 84.6

8.8 84.1

8.7 84.7

White

8.7 84.7

center

White

8.0 84.9

8.5 84.4

8.2 84.7

c
c+3'

8.0 84.9

5.6 87.3

5.8 87.1

6.1 86.8

Eline

5.5 87.4

PLOTTED

2929

32

20 1/4

Eline

4.9 288.0

5.0 87.9

1/4 + 3'

4.7 88.7

4.7 88.2

7.6 85.3

8.1 84.8

8.2 84.7

White

7.8 85.1

No. 6.

White

7.2 85.7

8.0 84.9

7.6 85.3

c
c+5'

7.1 85.8

4.0 88.9

4.0 88.9

4.3 88.6

Eline

4.0 88.9

292.9

So. line San Marcos.

E line	3.4	289.5
	3.5	894
	3.6	893
1/4 + 4'	6.2	84.7
	6.8	84.1
	7.3	85.6
gutter	7.6	85.3
	7.0	85.9
white	6.8	84.1
	25' 40.	
white	4.7	88.2
	5.1	87.8
gutter	6.0	84.9
	5.7	87.2
	5.3	87.4
C	5.0	87.9
C + 5'	1.9	91.0
	1.9	91.0
E line	1.9	91.0

PLOTTED

292.91

33

50' 40.

E line	0.5	292.4
	0.4	92.5
	1.3	91.4
1/4 + 3'	3.2	89.7
	3.7	89.2
	3.9	89.0
gutter	4.1	88.8
	3.2	89.7
white	3.0	89.9
	75' 40.	
white	1.5	91.4
	1.3	91.4
gutter	2.3	90.6
	2.0	90.9
	1.9	91.0
C	1.2	91.7
1/4	13.08	304.85
J.P	1.14	291.77
1/4 + 2'	10.7	94.2
cb	10.4	94.5
E line	10.4	94.5

30485

100' A0.

E line	7.2	297.7
cb+4'	7.6	97.9
	8.0	96.9
	11.1	93.8
C	11.8	93.1
gutter	12.1	92.8
	12.2	92.7
	11.3	93.6
W line	11.4	93.5

123AD (north line maple
going east)

W line	9.6	95.3
gutter	9.6	95.3
	10.4	94.5
	10.2	94.7
C	9.8	95.1
C+5'	9.2	95.7
	7.4	97.5
1/4+4'	5.3	99.6
	4.8	300.1
E line	4.3	300.6

PLOTTED

30485

34

No. C6.

E line	2.9	302.0
cb+3'	3.4	301.5
	4.2	300.7
	7.7	97.2
C	8.7	96.2
gutter	9.1	95.8
	9.4	95.5
	8.4	96.5
W line	8.4	96.5

no 1/4

W line	7.4	97.5
gutter	7.5	97.4
	8.4	96.5
	7.9	97.0
C	7.7	97.2
1/4+5'	6.7	98.2
	2.8	302.1
	2.3	302.6
E line	1.9	303.0

304.85

Center

Elms	1.3	303.6
	1.7	303.2
cb+2'	1.9	303.0
	5.9	99.0
C	6.7	98.2
	7.2	97.7
gutter	7.6	97.3
	6.6	98.3
white	6.3	98.6
	5.4	99.5
white	5.6	99.3
	6.6	98.3
gutter	6.2	98.7
	5.8	99.1
C	5.2	99.7
	1.5	303.4
1/4+3	1.3	303.6
Elms	0.8	304.1

PLOTTED

304.85

35-

So. cb.

Elms	0.4	304.5
	0.6	304.3
cb+3'	0.9	304.0
	4.1	300.8
C	5.0	999.9
	5.3	99.6
gutter	5.5	99.4
	4.6	300.8
white	4.4	300.5
	3.6	301.3
white	3.8	301.1
	4.8	300.1
gutter	4.8	300.1
	4.4	300.5
C	4.4	300.5
	3.6	301.3
1/4+4'	0.5	304.4
	0.2	304.7
Elms	0.0	304.9

So. line maple going east.

304.85

North line maple going west.

E line	0.1	304.8
	0.2	304.7
cb + 2'	0.5	304.4
+ 5'	3.5	301.4
1/4	3.8	301.1
C	4.5	300.4
	4.8	300.1
gutter	5.0	299.9
	3.9	301.0
W line	3.7	301.3
	4.4	300.5
	4.7	300.2
	4.7	300.2
C	4.0	300.9
	3.4	301.5
1/4 + 3'	2.8	302.1
+ 5'	0.6	304.3
E. cb.	0.1	304.8

PLOTTED

304.85

36

no 1/4

E. cb	0.1	304.8
cb + 3'	0.5	304.4
+ 4'	2.7	302.2
	3.3	301.6
C	4.0	300.9
	4.5	300.4
	4.4	300.5
W line	4.0	300.9
	3.8	301.1
	4.3	300.6
	4.4	300.5
C	3.9	301.0
	3.3	301.6
1/4 + 2'	3.0	301.9
+ 5'	0.8	304.1
E. cb.	0.4	304.5

304.9

SO. 1/4

E.cb.	0.5	304.4
cb + 2'	1.0	303.9
+ 5'	3.3	301.6
	3.5	301.4
C	4.0	300.9
	4.6	300.3
	4.4	300.5
white	4.1	300.8
	4.6	300.3
	4.7	300.3
	4.6	300.3
C	4.7	300.8
	3.4	301.5
1/4 + 2'	3.2	301.7
+ 5'	0.7	304.2
E.cb.	0.6	304.3
E line	0.4	304.5

PLOTTED

304.85

37

SO. line of maple going west.

E line	0.5	304.4
	0.5	304.4
cb + 1'	0.7	304.2
+ 5'	3.3	301.6
by	3.5	301.4
C	4.1	300.8
	4.5	300.4
gutter	4.9	300.0
	3.7	301.2
white	3.60	301.25
	3.9	301.0
white	4.1	300.9
	4.9	300.0
gutter	4.5	300.4
C	4.0	300.9
	3.2	301.7
1/4 + 5'	1.0	303.9
	0.6	304.3
E line	0.6	304.3

25' SO.

30485

50' 20.

Eline	0.8	304.1
	0.9	304.0
cb+2'	1.2	303.7
+5'	3.2	301.7
1/4	3.6	301.3
C	4.2	300.7
	4.6	300.3
gutter	5.2	299.7
	4.3	300.6
White	4.2	300.7

75' 20.

White	4.3	300.6
	4.5	300.4
gutter	5.4	299.5
	5.0	299.9
C	4.4	300.5
	3.8	301.1
1/4+2'	3.6	301.3
+4'	1.4	303.5
	0.9	304.0
Eline	0.8	304.1

PLOTTED

30481

38

100' 20.

Eline	1.2	303.7
	1.0	303.9
cb+3'	1.5	303.4
+5'	3.6	301.3
	3.8	301.1
C	4.6	300.3
	5.2	299.7
gutter	5.7	299.2
	4.7	300.7
White	4.6	300.3

125' 20.

White	4.9	300.0
	5.0	299.9
gutter	5.8	299.1
	5.4	299.5
C	4.9	300.0
	4.6	300.3
1/4+3'	4.1	300.8
+4'	2.3	302.6
	2.2	302.7
Eline	2.1	302.8

304.85

150' 20.

E line	2.9	302.0
cb + 3'	2.9	302.0
+ 4'	3.1	307.8
by	4.4	300.5
C	4.9	300.0
	5.0	299.9
gutter	5.8	99.1
	6.1	98.8
	5.4	99.5
W line	5.3	99.4
W line	5.5	99.4
gutter	5.6	99.3
	6.3	98.3
	6.0	98.9
C	5.1	99.8
	5.0	99.8
1/4 + 3'	4.6	300.3
+ 4'	3.7	301.2
	3.4	301.5
E line	3.5	301.4

PLOTTED

175' 20.

200' 20. (north line Samuel going west)

E line	4.6	300.3
	4.1	300.8
	5.3	99.6
C	5.6	99.3
	6.2	98.7
gutter	6.6	98.3
	5.9	99.0
W line	5.7	99.2
J.P.	6.45	304.99
	6.31	298.54

North cb. of maple going west

E line	0.2	304.8
No 1/4	0.1	
E line	0.1	304.9
Center		
E line	0.3	304.7
No 1/4		
E line	0.3	304.7

39

304.85

304.99

No. 6. Laurel going west

White ~~th~~ 7.0 298.0

6.7 98.3

6.3 98.7

C 5.8 99.3

5.4 99.6

4.9 300.1

Eline 4.8 300.3

No 1/4

Eline 5.1 99.9

5.2 99.8

5.5 99.5

C 5.9 99.1

6.5 98.5

6.6 98.4

6.5 98.5

White

304.99

40

Center

6.4 298.6

6.7 98.3

6.5 98.5

5.9 99.1

5.6 99.4

5.3 99.7

5.4 99.6

No 1/4

5.4 99.6

5.4 99.6

5.6 99.4

6.0 99.0

6.6 98.4

6.9 98.1

6.7 98.3

White

PLOTTER

30499

So. Cb.

White	7.3	997.7
	7.2	997.8
	6.7	98.3
c	6.1	98.9
	5.6	99.4
	5.3	99.7
Elvis	5.4	99.6
So. line Laurel going west		
Elvis	5.5	99.5
	5.4	99.6
	5.7	99.3
c	6.2	98.8
	6.7	98.3
	7.2	97.8
	6.5	98.5
White	6.4	98.6

PLOTTED

30499

41

No. line Laurel going east

White	7.0	998.0
	7.1	997.9
	6.6	98.4
c	6.1	98.9
	5.6	99.4
	5.3	99.7
Elvis	5.3	99.7
No. Cb.		
Elvis	5.4	99.4
	5.4	99.6
	5.6	99.4
c	6.2	98.8
	6.8	98.7
	7.2	97.8
	6.5	98.5
White	6.4	98.6

30499

No. 1/4

White	6.4	998.4
gutter	6.4	986
	7.1	97.9
	6.7	98.3
C	6.1	98.9
	5.8	99.3
	5.4	99.4
Elms	5.4	99.6
	Center	
Elms	5.4	99.6
	5.4	99.4
	5.6	99.4
C	6.0	99.0
	6.5	98.5
gutter	7.2	97.8
	6.4	98.6
White	6.3	98.7

PLOTTED

30499

42

No. 1/4

White	6.3	998.7
gutter	6.3	98.7
	7.1	97.9
	6.6	98.4
C	6.1	98.9
	5.6	99.4
	5.4	99.4
Elms	5.85	299.14
	East 13' hub. So. Cb.	
Elms	5.6	99.4
	5.5	99.5
	5.7	99.3
C	6.2	98.8
	6.4	98.6
gutter	7.0	98.0
	6.2	98.8
White	6.3	98.7

30499

So. line Laurel going east.

White	6.2	998.8
	6.2	988
gutter	6.9	981
	6.4	986
C	6.0	990
	5.7	993
	5.6	994
E line	5.6	994
	25' 20.	
E line	5.6	994
	5.3	997
	5.6	994
C	5.9	991
	6.4	986
gutter	7.0	980
	6.0	990
White	6.0	990

PLOTTED

Oct. 28/13
304,99Builds 43
atten
Bunker

50' 20.

White	5.9	999.1
	5.9	991
gutter	6.7	983
	6.1	989
C	5.6	994
	5.4	996
	5.1	999
E line	5.3	997

75' 20.

E line	5.2	998
	4.9	300.1
	5.1	999
C	5.6	994
	6.0	990
gutter	6.6	984
	5.9	991
White	5.9	991

304.99

100' 20.

White	5.8	999.7
gutter	5.8	999.7
	6.6	984
	6.2	98.8
c	5.8	99.7
	5.2	99.8
	4.9	300.1
E line	5.1	99.7

125' 20.

E line	5.2	99.8
	4.9	300.1
	5.2	99.8
c	5.7	99.3
	6.1	98.9
	6.5	98.5
	5.7	99.3
gutter		
White	5.7	99.3

PLOTTED

304.99

44

150' 20.

White	5.5	999.5
gutter	5.6	99.4
	6.4	98.4
	6.1	98.9
c	5.6	99.4
	5.2	99.8
	4.9	300.1
E line	5.0	300.0

175' 20.

E line	5.0	300.0
	4.9	300.1
	5.1	99.1
c	5.5	99.5
	5.8	99.7
	6.1	98.9
	5.8	99.5
	5.5	99.5
gutter		
White		

304.99

200' 20.

White	5.6	999.4
	5.6	994
gutter	6.6	984
	6.5	985
C	5.7	993
	5.2	998
	5.0	3000
E line	5.2	998

225' 20.

E line	5.3	997
	5.2	998
	5.4	996
C	5.8	993
	6.2	988
gutter	6.7	983
	5.8	993
White	5.8	992

PLOTTED

304.99

45

250' 20.

White	5.9	999.1
	6.0	990
gutter	6.8	987
	6.3	987
C	6.0	990
	5.5	995
	5.3	997
E line	5.4	996

275' 20.

E line	5.4	996
	5.3	997
	5.5	995
C	6.2	988
	6.4	986
gutter	7.1	979
	6.2	988
White	6.1	989

30499

300.520. (No. line Kahuia going east)

White	6.4	986
gutter	6.4	986
	7.1	979
	6.6	984
C	6.3	987
	5.8	993
	5.5	995
E line	5.2	998
No. cb.		
E line	5.4	996
	5.6	994
	5.9	991
C	6.3	987
	6.6	984
gutter	7.4	974
	6.5	985
White	6.5	985

PLOTTED

304,99

46

No 1/4

White	6.8	982
gutter	6.7	983
	7.5	975
	6.8	982
C	6.4	984
	6.0	990
	5.9	991
E line	5.7	993
Center		
E line	6.1	989
	6.0	990
	6.1	989
C	6.6	984
gutter	6.9	981
	7.6	974
	6.8	983
White	6.8	982

30499

No. 16.

White

7.9 997.1

7.8 977

7.2 978

C

6.8 982

6.5 985

6.7 983

Eline

6.4 986

No. 14

Eline

6.7 983

6.9 981

6.8 982

C

7.1 979

7.3 977

7.8 977

White

7.6 974

PLOTTED

30499

48.

Center

White

7.6 997.4

7.9 971

7.9 971

C

7.2 978

6.9 981

7.2 978

Eline

6.9 981

No. 14

Eline

7.1 979

7.4 974

7.2 978

C

7.3 977

7.6 974

8.1 94.9

White

8.0 97.0

29947

50

	HI.				
J.P.	0.93	299.47	298.54		
				75' 20.	
E line		2.5	97.0	E line	3.2 296.3
		2.8	94.7		3.4 94.1
		2.5	97.0		3.2 96.3
C		2.4	97.1	C	3.3 94.2
		2.8	94.7	gutter	3.5 94.0
gutter		3.2	94.3		4.2 95.3
		2.5	97.0	W line	3.4 94.1
W line		2.4	97.1		3.2 94.3
				100' 20. (sect. for 55' sheet)	
	50' 20.			W line	3.6 95.9
W line		2.8	94.7		3.7 95.8
		3.0	94.5	gutter	4.3 95.2
gutter		3.7	95.8		3.8 95.7
		3.1	94.4	C	3.5 94.0
C		2.9	94.6		3.4 94.1
		2.8	94.7		3.7 95.8
		3.0	94.5	E line	3.5 94.0
E line		2.8	94.7		

PLOTTED

29947

100' No. (sect. for 69.3 street)

E line

3.5 94.0

3.7 95.8

3.5 94.0

C

3.6 95.9

3.8 95.7

3.5 94.0

White

3.8 95.7

125' No.

White

3.9 95.6

3.9 95.6

3.9 95.6

C

3.9 95.6

4.0 95.5

3.9 95.6

E line

3.7 95.8

29947

150' No.

E line

4.1 95.4

4.0 95.5

4.1 95.4

C

4.3 95.7

4.2 95.3

4.3 95.7

White

4.3 95.7

175' No.

White

4.7 94.8

4.7 94.8

4.6 94.9

C

4.7 94.8

4.4 95.1

4.3 95.7

E line

4.3 95.7

PLOTTED

29947

240' 20.

E line	4.4	945.1
	4.6	949
	4.7	948
C	4.8	947
	5.0	945
	5.1	944
White	5.0	945

225' 20.

White	5.5	940
	5.5	940
	5.3	943
C	5.3	943
	5.1	944
	4.9	944
E line	4.9	946

PLOTTED

29947

250' 20. (sect AB)

E line	5.3	944.7
	5.5	940
	5.6	939
C	5.6	939
	5.9	936
	6.0	935
White	6.0	935

1' north of north line juniper

White	6.2	933
	6.2	933
	6.1	934
C	5.9	936
	5.7	938
	5.6	939
E line	5.7	938

29947

North line Juniper

E line	5.7	93.8
	5.6	93.9
	5.7	93.8
C	5.9	93.6
	6.2	93.3
	6.2	93.3
White	9.24	90.7
no. cb.		
White	9.5	90.0
	7.7	91.8
	6.5	93.0
C	6.4	93.1
	6.1	93.4
	6.0	93.5
E line	6.0	93.5

PLOTTED

29947

no. 1/4

E line	6.1	93.4
	6.4	93.1
	6.6	92.9
C	6.7	92.8
	6.7	92.8
	8.2	91.3
White	10.1	89.4
Center		
White	10.2	89.3
	8.9	90.6
	7.3	92.2
C	6.9	92.6
	6.8	92.7
	6.8	92.7
E line	6.6	92.9

29947

20 1/4

E line	7.28	922
	7.1	924
	7.2	923
c	7.4	921
	7.6	919
	8.7	908
White	10.4	891

20 cb.

White	10.5	890
	8.8	907
	7.7	918
c	7.7	918
	7.5	920
	7.4	921
E line	7.2	923

PLOTTED

29947

Southern juniper

E line	7.6	919
	7.8	917
	7.8	917
c	8.1	914
	8.4	911
	9.2	903
White	10.3	892

1' 20. juniper

White	8.7	908
	8.7	908
	8.4	911
c	8.2	913
	7.9	914
	7.8	917
E line	7.6	919

29947

Sect. C 20 page 29

E line	8.3	991.3
	8.5	91.0
	8.6	90.9
c	8.8	90.7
	8.9	90.6
	9.1	90.4
White	9.4	90.1

25' AD. Sect. C 20

White	10.0	89.6
	10.0	89.5
	9.8	89.7
c	9.6	89.9
	9.4	90.1
	9.6	89.9
E line	9.2	90.3

PLOTTED

(56)

Oct. 29/13

29947

Childs
Allen
Bunker

50' AD.

E line	10.3	889.3
	10.6	88.9
	10.4	89.1
c	10.7	88.8
	10.9	88.4
	11.2	88.3
White	11.2	88.3

75' AD.

White	12.8	84.7
	12.7	84.8
	12.7	84.8
c	12.4	87.1
	12.0	87.5
	11.7	87.8
E line	11.4	88.1

28778

J.P.

HI.
0.81 287.28 13.00 286.47

100' 20.

E line

1.1 286.3

2.0 285.3

2.0 285.3

C

1.7 285.6

1.9 285.4

1.7 285.5

W line

1.9 285.4

125' 20.

W line

2.9 284.4

2.7 284.6

2.8 284.5

C

2.5 284.8

2.4 284.9

2.2 285.1

E line

2.2 285.1

PLOTTED

E line

2.9 284.4

3.4 283.9

3.4 283.9

C

3.3 284.0

3.5 283.8

3.6 283.7

W line

3.7 283.6

175' 20.

W line

4.5 282.8

4.4 282.9

4.3 283.0

C

4.0 283.3

4.1 283.2

3.7 283.6

E line

3.3 284.0

28728

200' 20.

E line	4.2	828.1
	4.6	827
	4.6	827
C	4.6	827
	4.9	824
	5.0	823
W line	5.2	82.1

225' 20.

W line	5.8	81.5
	5.7	81.4
	5.5	81.8
C	5.4	81.9
	5.2	82.1
	4.9	82.3
E line	4.8	82.5

PLOTTED

28728

250' 20.

E line	5.5	81.8
	5.7	81.4
	5.8	81.5
C	6.0	81.3
	6.1	81.2
	6.3	81.0
W line	6.5	80.8

275.7 20. (North line 80y)

West	7.46	79.8
	6.9	80.4
	6.7	80.4
C	6.5	80.8
	6.4	80.9
	6.0	81.3
E line	6.0	81.3

287.28

No. 6.

Eline	6.2	281.1
	6.5	808
	6.8	805
C	7.0	803
	7.0	803
	7.3	800
White	7.6	797
White	8.4	78.9
	8.0	793
	7.5	798
C	7.2	801
	7.0	803
	6.8	805
Eline	6.6	807

PLOTTED

287.28

Center

Eline	7.2	280.1
	7.2	801
	7.5	79.8
C	7.8	79.5
	8.0	79.3
	8.6	78.7
White	9.4	77.9
White	11.5	75.8
	9.2	78.1
	9.0	78.3
C	8.4	78.9
	8.1	79.2
	8.1	79.2
Eline	8.02	79.3

287.28

So. cb

E line

9.3 2780

9.7 744

10.0 773

C

10.2 771

12.2 751

W. cb.

12.9 744

W. line So. line Svy.

E cb.

13.3 740

E line

12.3 275.0

J.P.

0.24 ^{H.I.} 274.82 12.70 274.58

So cb. Svy.

W line

3.4 714

So line Svy.

W. line

9.3 455

7.9 469

5.6 493

C

3.9 70.9

E 1/4

1.9 72.9

PLOTTED

Levels. on ^{274.82} East line +
30' west of east line from
So line Svy. to So line Grape.
So. line Svy.

E line

-0.2 275.0

30' west

5.0 749.8

25' So.

E line

8.0 46.8

J.P.

1.19 ^{H.I.} 263.18 12.83 261.99

30' west

2.7 605

50' So.

30' west

14.0 49.2

E line

7.6 55.4

J.P.

^{75' So. H.I.} 0.35 250.53 13.00 250.18

E line

7.8 42.7

30' west

12.0 38.5

J.P.

4.04 ^{H.I.} 241.50 13.07 237.46

~~30' west~~

100' So.

30' west

10.8 30.7

E line

9.4 32.1

241.50

115' 20.

E line

13.5 2280

125' 20.

E line

9.5 320

30' west

1.9 39.6

150' 20.

E line

3.8 377

J.P.

12.11 ^{H.I.} 253.22 0.39 241.11

30' west

4.2 49.0

J.P.

10.91 ^{H.I.} 264.05 0.08 253.14

30' west

175' 20.

30' west

4.8 593

E line

13.7 504

200' 20.

E line

1.7 424

J.P.

12.31 ^{H.I.} 275.86 0.50 263.55

30' west

5.9 700

PLOTTED 210' 20.

E line

8.6 473

275,86

225' 20.

E line

6.5 2494

30' west

2.3 734

250' 20.

E line

4.6 713

275' 20.

E line

1.0 74.9

J.P.

11.30 ^{H.I.} 286.60 0.56 275.30

250' 20.

30' west

9.0 77.4

275' 20.

30' west

7.1 79.5

300' 20 (north line Hawthorn)

30' west

6.0 81.4

E line

7.9 78.7

B.M. East line 13' 20. center 5.92 280.68

South line Hawthorn

E line

4.9 81.7

30' west

4.6 82.0

286.60

50' 20.

30' west 4.7 281.9
 E line 4.4 822

100' 20.

E line 4.5 821
 30' west 4.8 818

150' 20.

30' west 4.9 817
 E line 4.8 818

200' 20.

E line 5.0 816
 30' west 5.4 813

250' 20.

30' west 5.5 811
 E line 5.1 815

300' 20 (north line Grape)

E line 6.1 805
 30' west 6.1 805

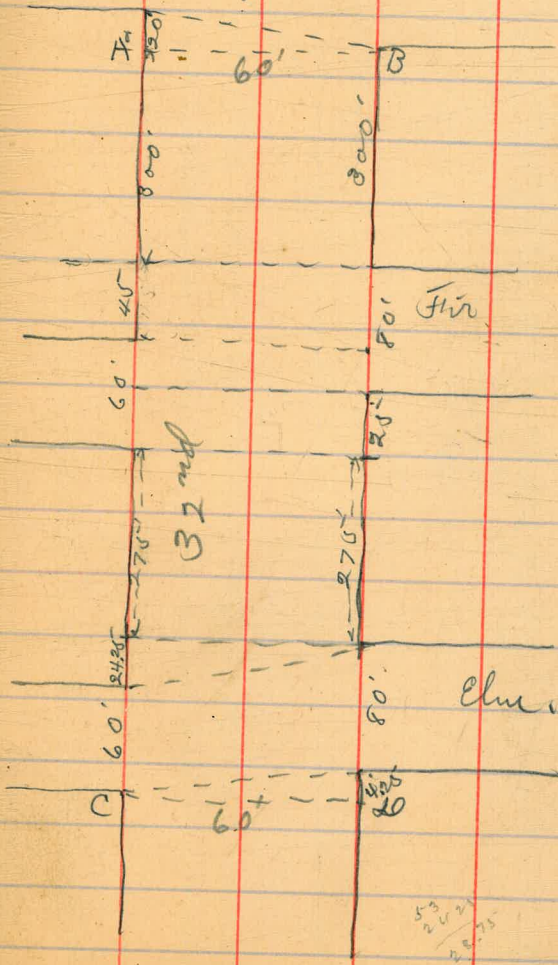
PLOTTED

62

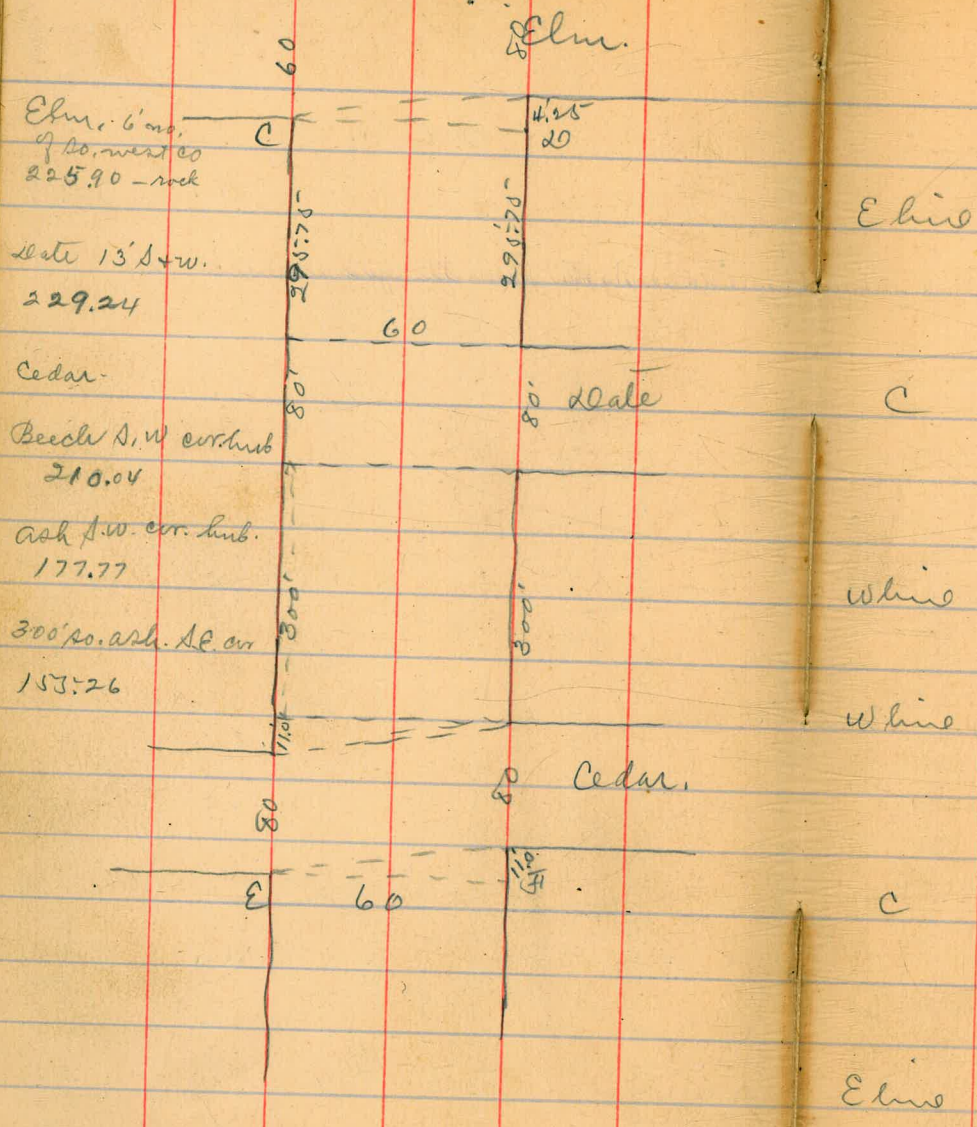
286.60

B.M. East line 32nd 10.13' line Grape.

Grape. 0.68 ^{H.I.} 279.87 741 279.19



279,87 63
 Street 60' wide 10' ch. 10' 1/4



So. line Grape.

Elm	1.30	784
	1.3	784
	1.2	787
C	0.9	79.0
	0.9	79.0
	0.8	79.1
White	0.9	79.0
White	1.1	78.8
	1.1	78.8
	1.1	78.8
	1.1	78.8
	1.3	78.4
	1.3	78.4
Elm	1.30	78.4

Sect. A B page 62

PLOTTED

27987

25' 20. Rect AB.

Elms	1.6	778.3
	1.7	78.7
	1.8	78.1
C	1.8	78.1
	1.6	78.3
	1.6	78.3
White	1.5	78.4
	2.2	77.7
White	2.3	77.6
	2.2	77.7
C	2.4	77.5
	2.5	77.4
	2.6	77.3
Elms	2.4	77.5

PLOTTED

27987

64

75' 20'

Elms	3.2	774.7
	3.3	74.4
	3.2	74.7
C	3.0	74.9
	2.7	77.2
	2.9	77.0
White	2.8	77.1
	3.8	74.1
White	3.8	74.1
	3.7	74.2
C	4.0	75.9
	4.1	75.8
	4.2	75.7
Elms	4.0	75.9

27987

135'20.

E line

5.0 74.9

5.1 74.8

5.2 74.7

c

5.0 74.9

4.7 75.2

4.6 75.3

White

4.4 75.5

150'20.

White

5.4 74.5

5.5 74.4

5.5 74.4

c

5.9 74.0

6.2 73.7

6.1 73.8

E line

6.0 73.9

PLOTTED

27987

65

175'20.

E line

6.7 73.7

7.1 72.8

7.2 72.7

c

6.7 73.2

6.2 73.7

6.3 73.6

White

6.3 73.6

200'20.

White

7.1 72.8

7.0 72.9

7.2 72.7

c

7.5 72.4

8.0 71.9

8.1 71.8

E line

7.6 72.3

27987

225' 20.

Elms	8.8	711
	9.0	709
	8.6	713
c	8.3	716
	7.6	723
	7.5	724
White	7.7	727

250' 20.

White	8.7	712
	8.6	713
	8.7	712
c	9.3	706
	9.5	704
	9.9	700
Elms	9.3	706

PLOTTED

27987

66

275' 20.

Elms	10.6	493
	10.8	491
	10.3	494
c	10.3	494
	10.0	499
	9.9	70.0
White	9.7	70.2

300' 20. (North line for going east)

White	10.7	492
	11.0	489
	11.2	487
c	11.6	483
	11.8	481
	11.7	482
Elms	11.6	483

279,87

no. cb.

E line

12.4 267.5

12.6 67.3

12.5 67.4

C

12.2 67.7

11.8 68.1

11.5 68.4

White

11.3 68.7

no. 1/4

White

11.9 68.0

12.2 67.7

12.7 67.3

C

13.1 66.8

J-P

0.00 ^{H.I.} 266.80 13.07 266.80

0.1 66.7

E line

0.2 66.6

E line

0.4 66.4

PLOTTED

67

266,80

Oct. 30/13

Lehilds
Atten
Bunker

Center

E line

1.1 265.7

0.9 65.9

0.9 65.9

C

0.9 65.9

0.3 66.5

0.0 66.8

White

-0.2 267.0

no 1/4

White

0.7 66.1

0.9 65.9

1.2 65.6

C

1.8 65.0

1.6 65.3

1.8 65.0

E line 13' hub. on East line

1.60 65.2

74480

No. cb.

E line	2.5	44.3
	2.5	44.3
	2.4	44.4
c	2.5	44.3
	2.1	44.7
	1.8	45.0
White	1.7	45.1
	No. line Fir going East	
White	2.8	44.0
	2.8	44.0
	3.0	43.8
c	3.4	43.4
	3.3	43.5
	3.3	43.5
E line	3.1	43.7

PLOTTED

74480

65

North line Fir going west

E line	1.4	45.4
	1.3	45.5
	1.2	45.6
c	1.1	45.7
	0.6	46.3
	0.4	46.4
White	0.3	46.5
	No. cb.	
White	0.9	45.9
	1.0	45.8
	1.4	45.4
c	2.0	44.8
	1.8	45.0
	1.9	44.9
E line	1.8	45.0

244.80

no. 14

Ehio

2.4 64.4

2.4 64.4

2.3 64.5

c

2.4 64.4

1.9 64.9

1.7 65.1

Whio

1.6 65.2

Center

Whio

2.4 64.4

2.4 64.4

2.7 64.1

c

3.1 63.7

3.1 63.7

3.1 63.7

Ehio

3.0 63.8

PLOTTED

244.8

69

no. 14

Ehio

3.4 63.4

3.6 63.2

3.6 63.2

c

3.6 63.2

3.3 63.5

3.2 63.6

Whio

3.2 63.6

Do. Eg.

Whio

3.8 63.0

3.8 63.0

4.0 62.8

c

4.4 62.4

4.4 62.4

4.2 62.6

Ehio

4.2 62.4

246.80

A0 line Fir going west.

E line	4.9	741.8
	4.9	619
	4.9	619
C	5.1	617
	4.7	627
	4.4	624
White	4.5	623

25'20.

White	6.1	607
	6.2	606
	6.3	605
C	6.7	601
	6.5	603
	6.8	600
E line	6.5	603

PLOTTED

246.80

70

50'20.

E line	8.3	58.5
	8.3	58.5
	8.3	58.5
C	8.4	58.4
	8.1	58.7
	7.9	58.9
White	7.8	59.0

75'20.

White	9.9	56.9
	9.9	56.9
	10.0	56.8
C	10.3	56.5
	10.2	56.6
	10.4	56.4
E line	10.3	56.5

266,80

100' 20.

E line	12.4	2544
	12.6	547
	12.4	544
C	12.3	545.6
	12.1	547
	12.3	545
White	12.5	543
J.P.	0.30	^{4.I.} 254.00
	12.10	253.70
	12 5' 20.	
White	3.6	504
	3.0	51.0
	2.6	51.4
C	2.1	51.9
	2.1	51.9
	2.1	51.9
E line	2.0	52.0

PLOTTED

71

254,00

150' 20.

E line	4.7	249.3
	4.9	49.1
	5.1	48.9
C	5.8	48.3
	6.2	47.8
	6.8	47.2
White	7.8	46.2
	175' 20.	
White	10.7	43.3
	10.2	43.8
	9.5	44.5
C	9.4	44.6
	8.9	45.1
	8.4	45.6
E line	8.0	46.0

254.00

200' 20.

24113

22

Elvis

12.2 241.8

Elvis

7.2 233.9

12.6 414

8.7 374

12.6 414

11.0 30.1

C

12.5 415

C

8.6 37.5

12.7 413

8.3 37.8

13.0 41.0

8.2 37.9

White

13.4 40.6

White

8.5 37.4

J.P.

HF
0.09 241.13 12.96 241.04

275' 20.

225' 20.

White

12.3 28.8

White

4.1 37.0

12.2 28.9

4.0 37.1

13.2 27.9

4.1 37.0

C

15.1 24.0

C

4.0 37.1

14.3 24.8

4.2 34.9

12.6 28.5

Elvis

3.5 37.4

Elvis

11.2 229.9

3.6 37.5

PLOTTED

J.P.	H.I. 0.32 228.45	13.00	228.13		no. 4		
	North line Elm.			Elm		1.8	225.7
Elm		-1.4	229.9			2.3	24.2
		0.4	28.1			3.6	24.9
		2.1	24.4	C		5.1	23.4
C		4.4	24.1			7.2	21.3
		4.0	24.5			7.7	20.8
		3.5	25.0	White		7.4	21.1
White		3.7	24.8		Center		
	no. 6.			White		9.5	19.0
White		5.3	23.2			9.0	19.5
		5.3	23.2			7.1	21.4
		5.7	22.8	C		5.6	22.9
C		4.4	24.1			4.4	24.1
		2.7	25.8			3.7	24.8
		1.3	27.2	Elm		3.1	25.4
Elm		0.6	27.9				

PLOTTED

22845

So 1/4

Elm	13' So. Center East Elm	4.41	2240
		4.6	239
		5.2	233
C		6.1	224
		7.3	212
		9.6	189
White		10.6	179
	So. Cb.		
White		11.3	172
		9.6	189
		7.9	204
C		6.9	214
		6.4	221
		6.0	225
Elm		5.6	229

PLOTTED

22845

24

South line Elm.

Elm		6.9	221.4
		7.2	213
		7.5	210
C		8.1	204
		8.8	197
		9.8	187
White		11.4	171
	Sect. C. 20		
White		11.4	171
		9.8	187
		8.9	194
C		8.4	201
		8.0	205
		7.8	207
Elm		7.5	210

25' 20. Sect. C 20

Elvis	10.0	218.5
	9.9	184
	10.0	185
C	10.3	183
	10.7	17.8
	11.3	17.3
Whio	11.9	14.4
	50' 20.	
Whio	13.2	15.3
	12.8	15.7
	12.3	14.3
C	12.0	14.5
	12.0	14.5
	12.1	14.7
Elvis	12.1	14.4

PLOTTED

250' 20. Sect. C 20.

Elvis	10.3	218.3
	10.8	17.7
	11.1	17.4
C	11.6	14.9
	12.3	14.3
	12.9	15.4
Whio	13.1	15.4
	275' 20.	
Whio	8.7	19.8
	8.4	20.1
	8.3	20.3
C	8.3	20.3
	8.1	20.4
	7.9	20.4
Elvis	7.8	20.7

228.45

(295.75) North line date (v)

Elvis	5.3	2237
cb	5.4	231
1/4	5.4	231
c	5.4	231
1/4	5.6	229
cb.	5.6	229
W. line	5.8	227

no. cb. (v)

White	4.1	244
	3.8	247
	3.9	246
c	3.6	249
	3.6	249
	3.6	249
Elvis	3.6	249

PLOTTED

76

228.45

no. 1/4 (3)

Elvis	2.1	2244
	2.0	24.5
	2.0	26.5
c	2.1	244
	2.2	26.3
	1.9	26.6
White	1.9	24.6

center (u)

White	see page 79 for 50/4	0.2	228.6
		-0.2	228.6
		-0.2	228.6
c		0.2	228.2
		0.5	280
		0.5	280
Elvis		0.6	27.9
T.P. high turn.		0.02	228.43

J.P.

^{HI.}
 0.48 216.13 12.80 215.65

75' 20. sect. C & D.

E line

2.4 213.7

2.6 135

2.7 134

2.2 13.9

2.0 14.1

2.0 14.1

2.1 14.0

W line

100' 20.

W line

5.7 10.4

6.6 9.5

7.3 8.8

7.9 8.9

7.9 8.9

6.9 9.2

6.0 10.1

E line

E line

10.6 20.55

9.1 7.0

8.6 7.5

9.4 4.7

9.2 6.9

9.0 7.1

8.4 7.7

W line

125' 20.

W line

10.6 5.5

10.4 5.7

10.4 5.7

10.4 5.7

10.7 5.4

10.8 5.3

E line

8.2 7.9

PLOTTED

21413

150' 20.

Eline

6.0 210.1

6.5 9.4

7.3 8.8

c

8.4 7.7

10.1 5.0

11.8 4.3

White

12.5 203.5

175' 20.

White

9.1 2070

8.8 2073

7.8 2083

c

7.0 2091

6.2 2089

5.3 210.8

Eline

4.7 211.4

PLOTTED

21413

78

200' 20.

Eline

2.8 213.3

3.7 12.4

4.3 11.8

c

4.9 11.2

5.6 10.5

6.2 209.9

White

6.5 209.6

225' 20.

White

4.3 211.8

3.7 212.4

2.9 13.7

c

2.2 13.9

1.3 14.8

0.9 15.2

Eline

0.5 15.6

241.23

29

J.P.	12.80	H.I. 241.23	228.43
	(3)	see page 26 for 20 1/4 of date	
Elms	13' 20 Center East	11.66	229.4
		11.1	30.1
		10.6	30.6
C		10.7	30.5
		10.6	30.6
		10.7	30.5
White		10.8	30.4
	Ac. cb.		
White		8.9	32.3
		9.0	32.2
		9.1	32.1
C		9.1	32.1
		9.1	32.1
		9.4	31.8
Elms		9.5	31.7

PLOTTED

20 line date

Elms	8.2	233.0
	7.8	33.4
	7.6	33.6
C	7.4	33.8
	7.6	33.6
	7.5	33.7
White	7.2	34.0
	25' 20.	
White	4.8	36.4
	4.9	36.3
	5.1	36.1
C	5.1	36.1
	5.4	35.8
	5.5	35.7
Elms	5.6	35.6

241.23

50' 20.

Elms	3.2	38.80
	2.7	38.5
	2.6	38.6
C	2.4	38.8
	2.1	39.1
	1.7	39.5
White	1.3	39.9

J.P. ^{H.I.} 7.74 248.61 0.36 240.87

on west side 13' hub at date! 12.14 2229.09
 2229.24
 75' 20.

White	6.3	42.3
	6.6	42.0
	6.9	41.7
C	7.2	41.4
	7.5	41.1
	7.8	40.8
Elms	8.3	40.3

PLOTTED

80

248.61

100' 20.

Elms	6.2	42.4
	6.0	42.4
	5.4	43.2
C	5.3	43.3
	5.5	43.1
	5.1	43.5
White	4.8	43.8

125' 20.

White	4.5	44.1
	4.4	44.2
	4.3	44.3
C	4.4	44.2
	4.6	44.0
	5.1	43.5
Elms	5.4	43.2

248.61

(81)

150' 20.

Elvis

4.6 2440

4.2 444

4.2 444

c

4.1 445

4.0 446

4.3 443

Whio

4.5 441

175' 20.

Whio

4.6 440

4.3 443

4.1 445

4.0 446

4.1 445

4.4 443

Elvis

4.5 441

J.P.

4.34 244.27

See Book 904 page 14

PLOTTED

202' So. of THORN ON E



222.9

380.42 : 4.96 : 283.45 : X

380.47
 96.97 222.9 : 4.25 : 45.8 : X
 477.44) 330000 (7
 334208

230
 176.27 222.9 / 194.650 (87
 83.55
 259.82 15.03 : 183.55 / 6330
 503 x

199.9 250.65 4303
 83.55 41775 87
 283.45 25982 420.2565 (1.6) 42.16
 96.97 25982 796
 380.42 160436 50.12
 155592
 45440

380.42 : 4.96 : 283.45 : X
 4.96
 50130
 75195
 33420
 380.42 4144080 (1.1) 1405.912 (3.6)
 38042 380.42 / 114126
 33988
 1249
 369
 16.18

283.45
 496
 170070
 255105
 113380
 264650
 229252
 363980

260
600
2607
240
13617

4.07
4.52

DISTANCES FROM CENTER OF ROADWAY FOR CROSS-SECTIONING.

ROADWAY 16 FEET WIDE. SIDE SLOPES 1½ TO 1.
FOR SINGLE TRACK EMBANKMENT.

	0	.1	.2	.3	.4	.5	.6	.7	.8	.9	
0	8.0	8.2	8.3	8.5	8.6	8.8	8.9	9.1	9.2	9.4	0
1	9.5	9.7	9.8	10.0	10.1	10.3	10.4	10.6	10.7	10.9	1
2	11.0	11.2	11.3	11.5	11.6	11.8	11.9	12.1	12.2	12.4	2
3	12.5	12.7	12.8	13.0	13.1	13.3	13.4	13.6	13.7	13.9	3
4	14.0	14.2	14.3	14.5	14.6	14.8	14.9	15.1	15.2	15.4	4
5	15.5	15.7	15.8	16.0	16.1	16.3	16.4	16.6	16.7	16.9	5
6	17.0	17.2	17.3	17.5	17.6	17.8	17.9	18.1	18.2	18.4	6
7	18.5	18.7	18.8	19.0	19.1	19.3	19.4	19.6	19.7	19.9	7
8	20.0	20.2	20.3	20.5	20.6	20.8	20.9	21.1	21.2	21.4	8
9	21.5	21.7	21.8	22.0	22.1	22.3	22.4	22.6	22.7	22.9	9
10	23.0	23.2	23.3	23.5	23.6	23.8	23.9	24.1	24.2	24.4	10
11	24.5	24.7	24.8	25.0	25.1	25.3	25.4	25.6	25.7	25.9	11
12	26.0	26.2	26.3	26.5	26.6	26.8	26.9	27.1	27.2	27.4	12
13	27.5	27.7	27.8	28.0	28.1	28.3	28.4	28.6	28.7	28.9	13
14	29.0	29.2	29.3	29.5	29.6	29.8	29.9	30.1	30.2	30.4	14
15	30.5	30.7	30.8	31.0	31.1	31.3	31.4	31.6	31.7	31.9	15
16	32.0	32.2	32.3	32.5	32.6	32.8	32.9	33.1	33.2	33.4	16
17	33.5	33.7	33.8	34.0	34.1	34.3	34.4	34.6	34.7	34.9	17
18	35.0	35.2	35.3	35.5	35.6	35.8	35.9	36.1	36.2	36.4	18
19	36.5	36.7	36.8	37.0	37.1	37.3	37.4	37.6	37.7	37.9	19
20	38.0	38.2	38.3	38.5	38.6	38.8	38.9	39.1	39.2	39.4	20
21	39.5	39.7	39.8	40.0	40.1	40.3	40.4	40.6	40.7	40.9	21
22	41.0	41.2	41.3	41.5	41.6	41.8	41.9	42.1	42.2	42.4	22
23	42.5	42.7	42.8	43.0	43.1	43.3	43.4	43.6	43.7	43.9	23
24	44.0	44.2	44.3	44.5	44.6	44.8	44.9	45.1	45.2	45.4	24
25	45.5	45.7	45.8	46.0	46.1	46.3	46.4	46.6	46.7	46.9	25
26	47.0	47.2	47.3	47.5	47.6	47.8	47.9	48.1	48.2	48.4	26
27	48.5	48.7	48.8	49.0	49.1	49.3	49.4	49.6	49.7	49.9	27
28	50.0	50.2	50.3	50.5	50.6	50.8	50.9	51.1	51.2	51.4	28
29	51.5	51.7	51.8	52.0	52.1	52.3	52.4	52.6	52.7	52.9	29
30	53.0	53.2	53.3	53.5	53.6	53.8	53.9	54.1	54.2	54.4	30
31	54.5	54.7	54.8	55.0	55.1	55.3	55.4	55.6	55.7	55.9	31
32	56.0	56.2	56.3	56.5	56.6	56.8	56.9	57.1	57.2	57.4	32
33	57.5	57.7	57.8	58.0	58.1	58.3	58.4	58.6	58.7	58.9	33
34	59.0	59.2	59.3	59.5	59.6	59.8	59.9	60.1	60.2	60.4	34
35	60.5	60.7	60.8	61.0	61.1	61.3	61.4	61.6	61.7	61.9	35
36	62.0	62.2	62.3	62.5	62.6	62.8	62.9	63.1	63.2	63.4	36
37	63.5	63.7	63.8	64.0	64.1	64.3	64.4	64.6	64.7	64.9	37
38	65.0	65.2	65.3	65.5	65.6	65.8	65.9	66.1	66.2	66.4	38
39	66.5	66.7	66.8	67.0	67.1	67.3	67.4	67.6	67.7	67.9	39
40	68.0	68.2	68.3	68.5	68.6	68.8	68.9	69.1	69.2	69.4	40

Calculated by F. E. Paradis, C. E.



2617

DISTANCES FROM CENTER OF ROADWAY FOR CROSS-SECTIONING.

ROADWAY 14 FEET WIDE. SIDE SLOPES 1½ TO 1.
FOR SINGLE TRACK EMBANKMENT.

	0	.1	.2	.3	.4	.5	.6	.7	.8	.9	
0	7.00	7.15	7.30	7.45	7.60	7.75	7.90	8.05	8.20	8.35	0
1	8.50	8.65	8.80	8.95	9.10	9.25	9.40	9.55	9.70	9.85	1
2	10.00	10.15	10.30	10.45	10.60	10.75	10.90	11.05	11.20	11.35	2
3	11.50	11.65	11.80	11.95	12.10	12.25	12.40	12.55	12.70	12.85	3
4	13.00	13.15	13.30	13.45	13.60	13.75	13.90	14.05	14.20	14.35	4
5	14.50	14.65	14.80	14.95	15.10	15.25	15.40	15.55	15.70	15.85	5
6	16.00	16.15	16.30	16.45	16.60	16.75	16.90	17.05	17.20	17.35	6
7	17.50	17.65	17.80	17.95	18.10	18.25	18.40	18.55	18.70	18.85	7
8	19.00	19.15	19.30	19.45	19.60	19.75	19.90	20.05	20.20	20.35	8
9	20.50	20.65	20.80	20.95	21.10	21.25	21.40	21.55	21.70	21.85	9
10	22.00	22.15	22.30	22.45	22.60	22.75	22.90	23.05	23.20	23.35	10
11	23.50	23.65	23.80	23.95	24.10	24.25	24.40	24.55	24.70	24.85	11
12	25.00	25.15	25.30	25.45	25.60	25.75	25.90	26.05	26.20	26.35	12
13	26.50	26.65	26.80	26.95	27.10	27.25	27.40	27.55	27.70	27.85	13
14	28.00	28.15	28.30	28.45	28.60	28.75	28.90	29.05	29.20	29.35	14
15	29.50	29.65	29.80	29.95	30.10	30.25	30.40	30.55	30.70	30.85	15
16	31.00	31.15	31.30	31.45	31.60	31.75	31.90	32.05	32.20	32.35	16
17	32.50	32.65	32.80	32.95	33.10	33.25	33.40	33.55	33.70	33.85	17
18	34.00	34.15	34.30	34.45	34.60	34.75	34.90	35.05	35.20	35.35	18
19	35.50	35.65	35.80	35.95	36.10	36.25	36.40	36.55	36.70	36.85	19
20	37.00	37.15	37.30	37.45	37.60	37.75	37.90	38.05	38.20	38.35	20
21	38.50	38.65	38.80	38.95	39.10	39.25	39.40	39.55	39.70	39.85	21
22	40.00	40.15	40.30	40.45	40.60	40.75	40.90	41.05	41.20	41.35	22
23	41.50	41.65	41.80	41.95	42.10	42.25	42.40	42.55	42.70	42.85	23
24	43.00	43.15	43.30	43.45	43.60	43.75	43.90	44.05	44.20	44.35	24
25	44.50	44.65	44.80	44.95	45.10	45.25	45.40	45.55	45.70	45.85	25
26	46.00	46.15	46.30	46.45	46.60	46.75	46.90	47.05	47.20	47.35	26
27	47.50	47.65	47.80	47.95	48.10	48.25	48.40	48.55	48.70	48.85	27
28	49.00	49.15	49.30	49.45	49.60	49.75	49.90	50.05	50.20	50.35	28
29	50.50	50.65	50.80	50.95	51.10	51.25	51.40	51.55	51.70	51.85	29
30	52.00	52.15	52.30	52.45	52.60	52.75	52.90	53.05	53.20	53.35	30
31	53.50	53.65	53.80	53.95	54.10	54.25	54.40	54.55	54.70	54.85	31
32	55.00	55.15	55.30	55.45	55.60	55.75	55.90	56.05	56.20	56.35	32
33	56.50	56.65	56.80	56.95	57.10	57.25	57.40	57.55	57.70	57.85	33
34	58.00	58.15	58.30	58.45	58.60	58.75	58.90	59.05	59.20	59.35	34
35	59.50	59.65	59.80	59.95	60.10	60.25	60.40	60.55	60.70	60.85	35
36	61.00	61.15	61.30	61.45	61.60	61.75	61.90	62.05	62.20	62.35	36
37	62.50	62.65	62.80	62.95	63.10	63.25	63.40	63.55	63.70	63.85	37
38	64.00	64.15	64.30	64.45	64.60	64.75	64.90	65.05	65.20	65.35	38
39	65.50	65.65	65.80	65.95	66.10	66.25	66.40	66.55	66.70	66.85	39
40	67.00	67.15	67.30	67.45	67.60	67.75	67.90	68.05	68.20	68.35	40

Calculated by F. E. Paradis, C. E.