

F.B. 910

LEVEL BOOK

373

KEUFFEL & ESSER CO.

DRAWING MATERIALS

AND

SURVEYING INSTRUMENTS.

NEW YORK.

CHICAGO.

SAN FRANCISCO.

ST. LOUIS.

TABLES FOR EXCAVATIONS AND EMBANKMENTS.

DISTANCES FROM CENTER OF ROADWAY FOR CROSS-SECTIONING.
ROADWAY 16 FEET WIDE. SIDE SLOPES 1 TO 1.
FOR SINGLE TRACK EXCAVATION.

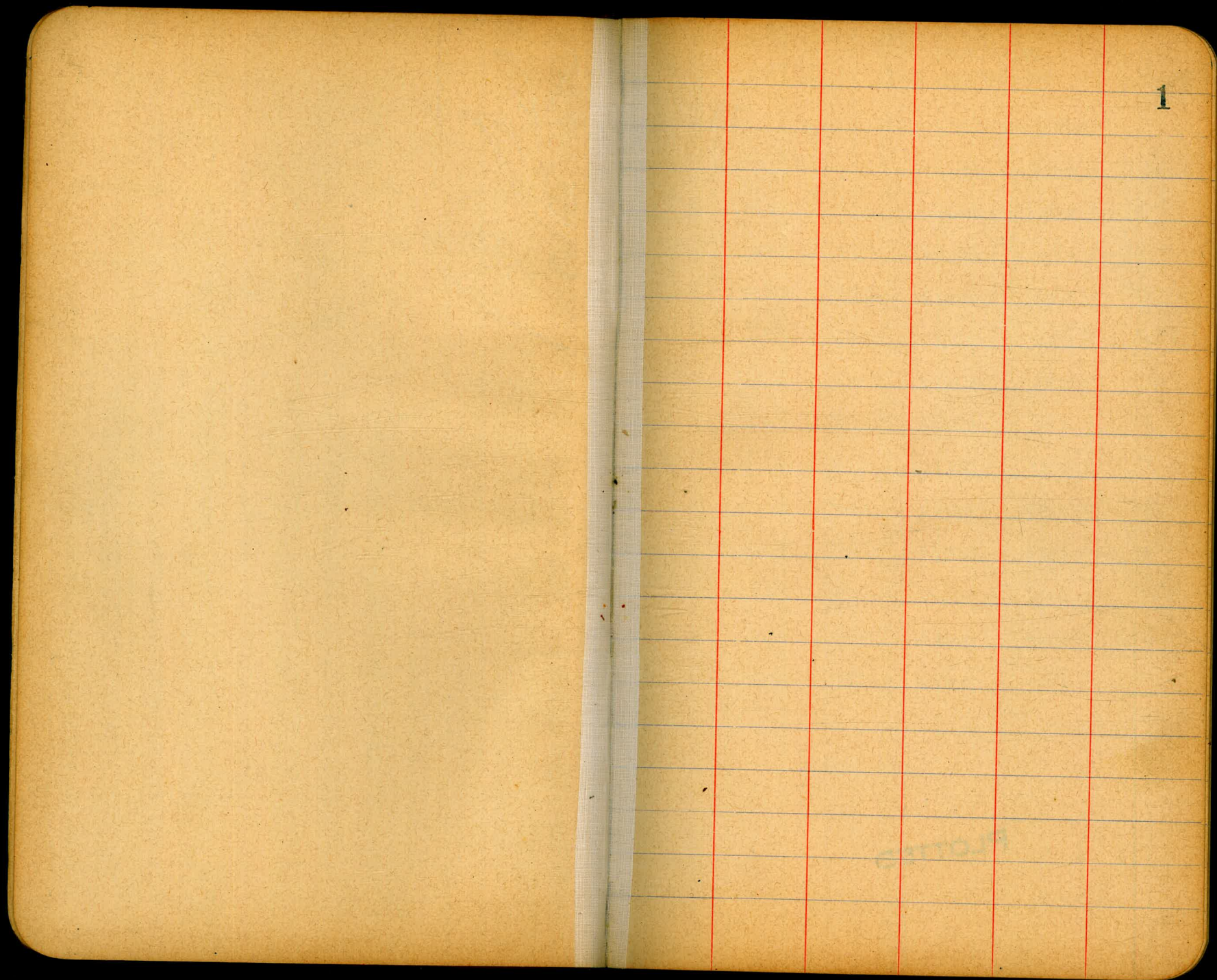
MICROFILMED
DEC 1 1964

Copyright, 1895, by Keuffel & Esser Co.

	0	.1	.2	.3	.4	.5	.6	.7	.8	.9	
0	9.0	9.1	9.2	9.3	9.4	9.5	9.6	9.7	9.8	9.9	0
1	10.0	10.1	10.2	10.3	10.4	10.5	10.6	10.7	10.8	10.9	1
2	11.0	11.1	11.2	11.3	11.4	11.5	11.6	11.7	11.8	11.9	2
3	12.0	12.1	12.2	12.3	12.4	12.5	12.6	12.7	12.8	12.9	3
4	13.0	13.1	13.2	13.3	13.4	13.5	13.6	13.7	13.8	13.9	4
5	14.0	14.1	14.2	14.3	14.4	14.5	14.6	14.7	14.8	14.9	5
6	15.0	15.1	15.2	15.3	15.4	15.5	15.6	15.7	15.8	15.9	6
7	16.0	16.1	16.2	16.3	16.4	16.5	16.6	16.7	16.8	16.9	7
8	17.0	17.1	17.2	17.3	17.4	17.5	17.6	17.7	17.8	17.9	8
9	18.0	18.1	18.2	18.3	18.4	18.5	18.6	18.7	18.8	18.9	9
10	19.0	19.1	19.2	19.3	19.4	19.5	19.6	19.7	19.8	19.9	10
11	20.0	20.1	20.2	20.3	20.4	20.5	20.6	20.7	20.8	20.9	11
12	21.0	21.1	21.2	21.3	21.4	21.5	21.6	21.7	21.8	21.9	12
13	22.0	22.1	22.2	22.3	22.4	22.5	22.6	22.7	22.8	22.9	13
14	23.0	23.1	23.2	23.3	23.4	23.5	23.6	23.7	23.8	23.9	14
15	24.0	24.1	24.2	24.3	24.4	24.5	24.6	24.7	24.8	24.9	15
16	25.0	25.1	25.2	25.3	25.4	25.5	25.6	25.7	25.8	25.9	16
17	26.0	26.1	26.2	26.3	26.4	26.5	26.6	26.7	26.8	26.9	17
18	27.0	27.1	27.2	27.3	27.4	27.5	27.6	27.7	27.8	27.9	18
19	28.0	28.1	28.2	28.3	28.4	28.5	28.6	28.7	28.8	28.9	19
20	29.0	29.1	29.2	29.3	29.4	29.5	29.6	29.7	29.8	29.9	20
21	30.0	30.1	30.2	30.3	30.4	30.5	30.6	30.7	30.8	30.9	21
22	31.0	31.1	31.2	31.3	31.4	31.5	31.6	31.7	31.8	31.9	22
23	32.0	32.1	32.2	32.3	32.4	32.5	32.6	32.7	32.8	32.9	23
24	33.0	33.1	33.2	33.3	33.4	33.5	33.6	33.7	33.8	33.9	24
25	34.0	34.1	34.2	34.3	34.4	34.5	34.6	34.7	34.8	34.9	25
26	35.0	35.1	35.2	35.3	35.4	35.5	35.6	35.7	35.8	35.9	26
27	36.0	36.1	36.2	36.3	36.4	36.5	36.6	36.7	36.8	36.9	27
28	37.0	37.1	37.2	37.3	37.4	37.5	37.6	37.7	37.8	37.9	28
29	38.0	38.1	38.2	38.3	38.4	38.5	38.6	38.7	38.8	38.9	29
30	39.0	39.1	39.2	39.3	39.4	39.5	39.6	39.7	39.8	39.9	30
31	40.0	40.1	40.2	40.3	40.4	40.5	40.6	40.7	40.8	40.9	31
32	41.0	41.1	41.2	41.3	41.4	41.5	41.6	41.7	41.8	41.9	32
33	42.0	42.1	42.2	42.3	42.4	42.5	42.6	42.7	42.8	42.9	33
34	43.0	43.1	43.2	43.3	43.4	43.5	43.6	43.7	43.8	43.9	34
35	44.0	44.1	44.2	44.3	44.4	44.5	44.6	44.7	44.8	44.9	35
36	45.0	45.1	45.2	45.3	45.4	45.5	45.6	45.7	45.8	45.9	36

Calculated by Julien A. Hall, M. Am. Soc. C. E.

60 60
215 12
215 05
600
60



1

CROSS-SECTION OF
BENESCH AVE. (SEE SKETCH)
FROM END TO END.

103.04
EAST LINE 33RD ST.

2

BM	3.05	220.24		217.89	546 30' 0" + B
T.P.	3.26	212.02	12.18	208.76	
T.P.	0.50	202.65	9.87	202.75	
T.P.	0.43	190.13	12.95	189.70	
T.P.	0.03	177.20	12.96	177.17	
T.P.	0.28	164.95	12.53	164.67	
T.P.	4.21	156.42	12.74	152.21	
T.P.	0.97	144.66	12.73	143.69	
T.P.	0.32	131.93	13.05	131.61	
T.P.	3.79	122.22	12.90	119.03	
T.P.	0.75	111.43	12.14	110.68	
T.P.	2.72	101.37	12.78	98.65	
T.P.	8.71	103.04	7.04	94.33	split in each SW 33' corner

S	8.8	94.3
10' db	9.6	94.4
10' 1/2	8.3	94.7
10' C	7.7	95.3
10' 1/2	7.6	95.4
10' db	7.2	95.8
10' N	6.5	96.5
50' EAST		
N	6.0	97.0
10' db	6.3	96.7
10' 1/2	6.5	96.5
10' C	6.9	96.1
10' 1/2	7.3	95.7
10' db	7.3	95.7
10' S	7.6	95.4
100' EAST		
S	6.1	96.9
10' db	5.8	97.2
10' 1/2	5.7	97.3

PLOTTED

103.04

	c	5.3	977
7	1/4	5.2	978
7	cb	5.5	975
10	N	5.1	979
		150' E	
	N	3.4	996
10	cb	3.6	994
7.12	1/4	3.5	995
7.13	c	3.5	995
7.13	1/4	3.9	991
7.12	cb	3.9	991
10	S	4.2	988
		200' E	
	S	2.8	1002
10	cb	2.4	1006
2.25	1/4	2.4	1006
2.25	c	1.9	1011
2.25	1/4	1.8	1012
2.25	cb	1.9	1011
10	N	1.6	1014

PLOTTED

150

103.04

3

			250' E	
	N	2.5	100.5	
10	cb	2.7	100.3	
7.32	1/4	2.6	100.4	
7.37	c	2.7	100.3	
7.37	1/4	3.1	999	
7.38	cb	3.2	998	
10	S	3.6	994	
			300' E	
	S	4.5	98.5	
10	cb	4.7	98.3	
7.5	1/4	4.2	98.8	
7.5	c	4.0	99.0	
7.5	1/4	4.0	99.0	
7.5	cb	3.6	99.4	
10	N	3.2	99.8	
			350' E	
	N	5.4	97.6	
10	cb	5.7	97.3	
7.63	1/4	6.6	96.4	
7.62				

		103.04			93.51	BENESCH AVE			
762	c		6.5	96.5		450' E	11.6	81.9	4
763	1/4		6.4	96.6			10.4	83.1	
763	cb		6.8	96.3			8.2	85.3	
764	S		6.6	96.4			7.6	85.9	
		400' E					7.4	86.1	
765	S		11.2	91.8			6.9	86.6	
765	cb		10.6	92.4			6.1	87.4	
765	1/4		10.0	93.0			5.3	88.2	
765	c		9.8	93.7		475' E			
765	1/4		9.0	94.0			6.3	87.2	
765	cb		8.6	95.0			7.8	85.8	
765	N		7.8	95.7			9.0	84.5	
T.P	0.18	93.51	9.71	93.33			9.5	84.0	
		425' E					9.6	83.9	
766	N		0.2	93.3			9.8	83.7	
766	cb		1.3	92.7			11.2	82.3	
766	1/4		2.9	90.6		500' E			
767	c		3.7	89.8			11.9	81.6	
767	1/4		4.8	88.7			11.0	82.5	
767	cb		5.4	88.1			10.6	82.9	
768	S		6.7	86.8					

PLOTTED

9351

10'

8147

BENESCH AVE

5

			10.1	83.4
10'			9.4	84.1
10'			8.6	84.9
10'			6.4	87.1
		550' E		
			10.8	82.7
10'			12.0	81.5
10'			12.7	80.8
10'			13.2	80.3
10'			14.1	79.4
10'			14.6	78.9
10'			15.0	78.5
	T.P.	1.02	81.62	12.91
			80.60	
		600' East-W.L. 34 th St (60' WIDE)		
			4.6	77.0
10'			3.8	77.8
10'			2.9	78.7
10'			2.3	79.3
10'			1.7	79.9
10'			0.9	80.7

PLOTTED

10'

N

WEST CURB

N

cb

1/4

c

1/4

cb

S

S

cb

1/4

c

1/4

cb

N

N

cb

0.2

814

0.3

813

1.4

80.3

2.1

79.5

2.7

78.9

3.6

78.0

4.1

77.5

4.8

76.8

WEST QUARTER

5.0

76.6

4.6

77.0

3.6

78.0

3.1

78.5

2.5

79.1

1.7

79.9

0.9

80.7

CENTER

1.8

79.8

2.6

79.0

81.62

3/4		3.2	78.4
C		3.9	77.7
3/4		4.6	77.0
cb		5.1	76.5
S		5.8	75.8
EAST QUARTER			
S		6.1	75.5
cb		5.6	76.0
1/4		5.1	76.5
C		4.3	77.3
1/4		3.5	78.1
cb		2.8	78.8
N		2.1	79.5
EAST CURB			
N		2.8	78.8
cb		3.5	78.1
1/4		4.2	77.4
C		4.7	76.9
1/4		5.3	76.3
cb		5.9	75.7

PLOTTED

816.2

BENESCH AVE.

6

S		6.3	75.3
EAST LINE 34TH ST.			
S		6.7	74.9
cb		6.3	75.3
1/4		5.8	75.8
C		5.1	76.5
1/4		4.4	77.2
cb		4.1	77.5
N		3.4	78.2
50' E			
N		5.9	75.7
cb		6.6	75.0
1/4		7.1	74.5
C		7.4	74.2
1/4		8.1	73.5
cb		8.5	73.1
S		9.0	72.6
100' E			
S		11.3	70.3
cb		10.6	71.0

81.6R

1/4			10.6	71.0
c			9.8	71.8
1/4			9.3	72.3
cb			9.3	72.3
N			8.5	73.1
150' E				
N			10.3	71.3
cb			10.9	70.7
1/4			11.2	70.4
c			11.3	70.3
1/4			12.1	69.5
cb			12.4	69.2
S			13.0	68.6
300' EAST				
T.P.	1.26	70.75	12.13	69.49
S			3.3	67.5
cb			3.1	67.7
1/4			2.3	68.5
c			1.8	69.0

PLOTTED

70.7' BENESCH AVE

1/4			1.8	69.0	7
cb			1.4	69.4	
N			0.6	70.3	
350' E					
N			1.6	69.2	
cb			2.1	68.7	
1/4			2.6	68.2	
c			2.8	68.0	
1/4			3.4	67.4	
cb			3.9	66.9	
S			4.2	66.6	
300' E					
S			4.9	65.9	
cb			4.7	66.1	
1/4			4.0	66.8	
c			3.5	67.3	
1/4			3.7	67.1	
cb			2.9	67.9	
N			2.6	68.2	

70.75	
350° E	
N	4.1
cb	4.4
1/4	4.8
c	4.7
1/4	5.1
cb	5.9
S	5.9
400° E	
S	6.8
cb	6.8
1/4	6.1
c	6.1
1/4	6.5
cb	5.8
N	5.7
450° E	
N	7.0
cb	7.0
1/4	7.3

PLOTTED

64.7
64.4
66.0
66.1
65.7
64.9
64.9
64.0
64.0
64.7
64.7
64.3
65.0
65.1
63.8
63.8
63.5

70.75	
C	
1/4	
cb	
S	
500° E	
S	
cb	
1/4	
c	
TP	
1/4	
cb	
N	
535° E	
N	
cb	
1/4	
c	
1/4	
cb	

0.4R 62.02

BENESCH AVE	
8	
7.5	
7.4	
7.7	
8.0	
9.4	
8.7	
8.6	
9.0	
9.15	
10.1	
0.0	
10.1	
2.1	
1.1	
1.2	
2.0	
1.6	
1.5	

63.3
63.4
63.1
63.8
61.4
62.1
62.2
61.8
61.60
62.1
62.0
62.1
59.9
60.9
60.8
60.0
60.4
60.5

68.02

S 2.1 59.9

560' E

S 4.0 58.0

cb 3.8 58.7

1/4 4.2 57.8

C 4.8 55.7

1/4 7.1 54.9

cb 7.7 54.3

N 7.8 54.7

575' E

N 8.3 53.7

cb 8.1 53.9

1/4 8.1 53.9

C 7.6 54.4

1/4 6.5 55.5

cb 5.8 56.7

S 6.3 55.7

600' E = W.L. 35th ST (60' WIDE)

S 9.2 52.8

cb 8.9 53.1

PLOTTED

6907

BENESCH AVE 9

1/4 8.9 53.1

C 9.0 53.0

1/4 9.0 53.0

cb 8.9 53.1

N 8.8 53.7

WEST CURB

N 9.0 53.0

cb 9.0 53.0

1/4 9.1 52.9

C 9.2 52.8

1/4 9.3 52.7

cb 9.3 52.7

S 9.4 52.6

WEST QUARTER

S 9.6 52.4

cb 9.6 52.4

1/4 9.5 52.5

C 9.5 52.5

1/4 9.5 52.5

cb 9.5 52.5

6202

N	9.5	525
CENTER		
N	9.2	528
cb	9.4	526
1/4	9.4	526
c	9.5	525
1/4	9.4	525
cb	9.4	526
S	9.6	524
EAST QUARTER		
S	9.9	521
cb	9.5	525
1/4	9.6	524
c	9.6	524
1/4	9.6	524
cb	9.6	524
N	9.6	524
EAST CURB		
N	9.3	527
cb	9.4	526

PLOTTED

6702

BENESCH AVE

1/4	9.4	526	10
c	9.5	525	
1/4	9.6	524	
cb	9.5	525	
S	10.2	518	
EAST LINE 35 TH ST.			
S	10.1	519	
cb	9.6	524	
1/4	9.6	524	
c	10.0	520	
1/4	9.6	524	
cb	9.6	524	
N	10.0	520	
50' E.			
N	10.4	516	
cb	10.6	514	
1/4	10.8	513	
c	10.8	513	
1/4	10.7	513	
cb	10.3	517	

6202

S		10.5	515
	100' E		
S		11.6	504
cb		10.9	511
1/4		10.8	512
C		11.1	509
1/4		10.7	513
cb		10.5	515
N		10.1	519
	150' E		
N		12.0	500
cb		12.2	498
1/4		12.3	497
C		12.3	497
1/4		12.4	496
cb		12.5	495
S		12.8	492
	175' E		
S		12.0	500
cb		11.3	507

PLOTTED

6202

BENESCH AVE

11

1/4		11.4	506
C		11.4	506
1/4		12.0	500
cb		12.7	493
N		12.8	492
T.P.	0.85	51.75	11.12
	190' E		
N		4.4	47.4
cb		4.7	47.1
1/4		5.7	46.1
C		6.9	44.9
1/4		7.4	44.4
cb		7.9	43.9
S		8.6	43.2
	215.13' E ON No. 7		
	215.05' E ON No. 50		
	} = P.L.		
S		6.8	45.0
cb		5.0	43.8
1/4		7.2	44.6
C		6.4	45.4
1/4		6.4	45.4

51.75

Li

6.5

45.3

N

5.9

45.9

T.P.

6.42

57.32

0.85

50.90

TOP of

T.P.

4.14

53.18

PIPE

12

PLOTTED

CROSS-SECTION OF
LEMON GROVE BOULEVARD
E^{OR} STREET (70' WIDE)
(10' WALKS)
(13.5' QUARTERS)

10/31/13
Lemon Grove
Moore

97.05
100' E

LEMON GROVE BLVD.
4.3 93.8
13

NE. 32RD
4 H STS. SPK

B.M.	420	87.43		83.23	S			4.1	93.0
T.P.	639	84.79	9.03	78.40	cb			4.2	92.9
T.P.	12.82	97.05	0.56	84.23	1/4			4.2	92.9
		E. L. 33 RD ST.			C			3.7	93.4
S			4.8	92.3	1/4			3.1	94.0
cb			4.5	92.6	cb			1.5	95.6
1/4			4.8	92.3	N			0.9	96.3
C			4.6	92.5	T.P.	2.55	98.29	1.31	95.74
1/4			5.0	92.1			150' E		
cb			4.5	92.6	N			0.7	97.6
N			4.6	92.5	cb			1.7	96.6
			50' E		45			1.9	96.4
N			3.2	93.9	47			4.6	93.7
cb			3.5	93.6	1/4			5.0	93.3
1/4			3.7	93.4	C			5.3	93.0
C			4.1	93.0	1/4			5.6	92.7
1/4			4.3	92.8	cb			5.6	92.7
cb			4.4	92.7	3			5.1	93.2

PLOTTED

9829

200' E

S	5.7	92.6
+4	5.7	92.4
	7.6	90.7
cb	7.7	90.6
1/4	7.8	91.1
C	7.3	91.0
1/4	7.0	91.3
+7	4.6	93.7
+9	2.5	95.8
cb	2.3	96.0
N	1.9	96.4
	250' E	
N	2.4	95.9
cb	2.8	95.5
+3	3.1	95.2
1/4	8.1	90.3
+4	10.6	87.7
C	10.4	87.9
1/4	10.3	88.0
cb	10.4	87.9

PLOTTED

9829

LEMON GROVE BLVD.

14

S

10.2

88.1

300' E

S	14.4	83.9
cb	14.2	84.1
1/4	14.2	84.1
C	13.8	84.5
1/4	13.7	84.6
+10	5.1	93.2
cb	4.8	93.5
N	4.4	93.9
	325' E	
N	6.8	91.0
cb	8.6	89.7
+8	11.1	87.2
T.P.	1.05	86.96
1/4	12.38	85.91
1/4	4.3	82.7
C	3.9	83.1
1/4	4.0	83.0
cb	4.0	83.0
S	4.5	82.5

86.96

350' E

LEVEL 50.

S	11.0	76.0
cb	5.7	81.3
1/4	5.6	81.4
C	5.5	81.5
1/4	5.5	81.5
cb	2.6	84.4
N	1.6	85.4

375' E

N	6.6	80.4
cb	7.4	79.6
1/4	7.8	79.2
C	7.2	79.8
1/4	7.4	79.6
+8	7.8	79.2
cb	10.9	76.1
S	14.1	72.9

400' E

S	16.0	71.0
+6	15.7	71.3

PLOTTED

86.96

LEMON GROVE BLYD

15

cb	13.1	73.9
+6	9.7	77.3
1/4	9.2	77.8
C	9.0	78.0
1/4	9.3	77.7
+6	11.9	75.1
cb	12.4	74.6
N	10.2	76.8
T.P.	2.55	76.68
	425' E:	12.83
A	3.6	73.1
cb	4.3	72.4
+10	4.1	72.7
1/4	2.2	74.5
+3	0.5	76.2
C	0.3	76.4
1/4	0.5	76.2
+5	0.6	76.1
cb	4.1	72.6
+4	6.3	70.4

76.68

S		6.6	70.1
	450' E		
S		7.5	69.2
cb		7.0	69.7
+7		2.9	73.8
1/4		2.6	74.1
C		2.1	74.6
+9		2.3	74.4
1/4		4.5	72.2
cb		5.7	71.0
N		4.9	71.8
	500' E		
N		6.6	70.1
cb		7.2	69.5
1/4		6.8	69.9
C		5.2	71.5
1/4		5.5	71.2
+5		5.8	70.9
cb		8.2	68.5
S		7.5	68.2

PLOTTED

76.68

LEMON GROVE BLYD. 16

	550' E		
S		9.4	67.3
cb		9.3	67.4
1/4		8.3	68.4
C		7.8	68.9
1/2		9.0	67.7
cb		8.9	67.8
N		8.5	68.2
	575' E		
N		9.8	66.9
cb		10.3	66.4
1/4		10.3	66.4
C		9.3	67.4
1/4		9.5	67.2
cb		10.5	66.2
S		10.3	66.4
T.P.	1.50	67.40	10.78
	600' E = W.L. 34 th ST		(60' WIDE)
S		5.7	61.7
cb		5.9	61.5

	67.50		
+10	1.8	65.6	
1/4	1.6	65.8	
C	1.4	66.0	
1/4	2.6	64.8	
cb	1.9	65.5	
N	1.7	65.7	
	W CURB		
N	2.3	65.1	
cb	2.8	64.6	
1/4	2.7	64.7	
C	1.8	65.6	
1/4	2.0	65.4	
+2.5	2.2	65.3	
cb	6.8	60.6	
S	8.3	59.1	
	W. QUARTER		
S	9.6	57.8	
cb	7.4	60.0	
+10	2.8	64.6	
1/4	2.5	64.9	

PLOTTED

	67.50	67.4	LEMON GROVE BLVD	17
C	2.1	65.3		
1/4	2.8	64.6		
cb	2.9	64.5		
S	2.2	65.3		
	CENTER			
N	3.0	64.4		
cb	3.4	64.0		
1/4	3.5	63.9		
C	2.4	65.0		
1/4	2.8	64.6		
+2.5	2.9	64.5		
cb	8.0	59.4		
S	9.9	57.5		
	E. QUARTER			
S	9.6	57.8		
cb	8.4	59.0		
+10	3.4	64.0		
1/4	3.2	64.3		
C	2.8	64.6		
1/4	4.5	62.9		

67.40

63.31

LEMON GROVE BLVD.

18

cb		4.2	63.7
N		3.0	64.4
	E CURB		
N		3.1	64.3
cb		4.8	67.6
1/4		4.8	67.6
C		3.1	64.3
1/4		3.4	64.0
+2.5		3.6	63.8
cb		7.9	59.5
S		8.7	58.7
	E LINE 34 TH ST		
S		8.4	59.0
cb		7.8	59.6
+10		4.0	63.4
1/4		3.9	63.5
C		3.5	63.9
1/6		5.1	62.3
cb		5.0	62.4
N		3.7	63.7
TP	2.36	63.31	60.95

PLOTTED

	50' E		
N		0.7	67.6
cb		1.6	61.7
1/4		2.1	61.3
C		1.3	62.0
1/4		1.6	61.7
+4		1.8	61.5
cb		5.2	58.1
S		6.7	57.6
	100' E		
S		6.5	57.5
cb		6.1	57.2
+6		3.6	59.7
1/4		3.2	60.1
C		3.2	60.1
1/4		4.0	59.3
cb		3.9	59.4
N		1.9	61.4
	150' E		
N		2.8	60.5

6331

6331 LEMON GROVE BLVD.

19

cb	5.0	58.3
1/4	5.4	57.9
C	4.4	58.9
1/4	4.5	58.8
cb	5.5	57.8
S	6.2	57.1

175' E

S	7.8	55.5
cb	6.8	56.5
1/4	5.2	58.1
C	5.0	58.3
1/4	5.8	57.5
cb	5.2	58.1
N	3.2	60.1

200' E

N	3.2	60.1
+6	5.4	57.9
cb	5.8	57.5
1/4	6.2	57.1
C	5.5	57.8
1/4	5.5	57.8

PLOTTED

cb	7.0	56.3
S	6.5	56.8
250' E		
S	6.9	56.4
cb	7.4	55.9
1/4	6.3	57.0

C	6.5	56.8
1/4	6.6	56.7
cb	6.2	57.1
+5	5.6	57.7
N	3.7	59.6

300' E

N	4.1	59.3
cb	8.3	55.0
1/4	9.2	54.1
C	7.9	55.4
1/4	8.0	55.3
cb	9.1	54.3
S	10.0	55.8

350' E

S	12.4	50.9
---	------	------

6331

cb			11.2	52.1
1/4			9.3	54.0
c			9.3	54.0
1/4			10.0	53.3
cb			8.8	54.5
N			7.8	55.5
	375' E			
N			8.7	54.6
cb			9.2	54.1
1/4			10.8	52.5
c			9.9	53.4
1/4			10.2	53.1
+6			10.8	52.5
cb			12.7	50.6
5			13.9	49.4
T.P.	4.70	55.62	12.39	50.92
	400' E			
5			6.7	48.9
cb			6.3	49.3
+6			3.5	52.1

PLOTTED

556.9 LEMON GROVE BLVD.

20

1/4			3.1	52.5
c			2.7	52.9
1/4			4.6	51.0
cb			4.5	51.1
N			3.9	51.7
	450' E			
N			4.6	51.0
cb			5.6	50.0
1/4			5.1	50.5
c			3.4	52.2
1/4			3.5	52.1
+4			4.1	51.5
cb			6.3	49.3
5			6.5	49.1
	500' E			
5			6.0	49.6
cb			6.0	49.6
+5			4.0	51.4
1/4			3.5	52.1
c			3.5	52.1

55.62

55.62 LEMON GROVE BLV 21

+6	4.0	57.6
1/4	5.9	49.7
cb	5.8	49.8
N	5.1	50.5

+3	3.2	57.4
1/4	5.8	49.8
cb	5.3	50.3
N	5.2	50.4

550' E

W CURB

N	4.8	50.8
cb	5.1	50.5
1/4	5.7	49.9
+4	4.0	57.6
C	3.2	52.4
1/4	3.1	52.5
+5	3.8	57.8
cb	5.4	50.2
S	5.6	50.0

N	5.1	50.5
cb	5.3	50.3
1/4	5.8	49.8
+5	5.3	50.3
+10	3.0	52.6
C	2.9	52.7
1/4	2.2	53.4
+6	2.9	52.7
cb	4.9	50.7
S	6.2	49.4

600' E = W.L. 35TH ST 60' WIDE

S	6.2	49.4
cb	5.5	50.1
+6	3.2	52.4
1/4	2.4	53.2
C	2.8	52.8

W. QUARTER

S	6.2	49.4
+6	6.1	49.5
cb	5.2	50.4
+5	3.0	52.4

PLOTTED

55.6R

1/4	2.2	534
C	2.6	530
1/4	5.7	499
cb	5.8	498
N	5.2	504

CENTER

N	5.0	506
cb	5.7	499
1/4	5.9	497
+3	5.9	497
C	2.7	529
1/4	2.0	536
+7	2.8	528
cb	4.8	508
+4	6.4	492
S	6.3	493

E QUARTER

S	6.5	491
+5	6.2	494
cb	5.3	503

PLOTTED

55.6R LEMON GROVE BLVD

22

+4	2.7	529
1/4	2.1	535
C	2.2	534
1/4	6.0	496
cb	5.8	498
N	5.4	503

E CORNER

N	5.5	501
cb	6.0	496
1/4	6.2	494
C	2.0	536
1/4	2.0	536
+6	2.6	530
cb	5.7	499
S	6.8	488

E LINE 35TH ST

S	7.0	486
+5	7.3	483
cb	6.0	496
+4	2.5	531

5562

1/4	1.8	538
C	2.0	534
1/4	6.3	493
cb	6.0	496
N	5.3	503

50' EAST.

N	5.9	497
cb	6.4	492
1/4	6.7	489
C	2.1	535
1/4	1.7	539
+4	2.3	533
cb	6.5	491
S	6.8	488

95' E = W.L. BRIDGE

S	7.0	486
cb	5.0	506
+7	1.0	546
1/4	1.4 = BRIDGE	542
C	1.4 = "	542

PLOTTED

5562 LEMON GROVE BLVD

1/4	6.1	495	23
+4	8.6	470	
cb	8.6	470	
N	6.8	488	

120' E

N	10.2	454
cb	10.6	450
1/4	10.8	448
C	11.1	445
1/4	11.1	445
cb	10.7	449
S	10.8	448

145' E

S	13.5	421
cb	13.3	423
1/4	13.6	420
C	13.2	424
1/4	12.9	427
cb	13.3	423
N	13.5	421

55.62

170' E

N	7.8	47.8
cb	8.0	47.4
1/4	8.0	47.4
C	8.9	46.7
1/2	9.8	45.8
cb	11.0	44.6
S	12.3	43.3

195' E

S	12.2	43.4
cb	10.1	45.5
1/4	12.2	43.4
C	12.6	43.0
1/4	12.5	43.1
cb	12.2	43.4
N	10.9	44.7

215'

= Pueblo line = EL. BRIDGE

N	8.7	46.9
cb	9.4	46.3
1/4	8.2	47.4

PLOTTED

V562

24

C	6.9	48.7
1/4	6.3	49.3
cb	7.3	48.3
S	8.3	47.3
T.P.	2.41	53.21

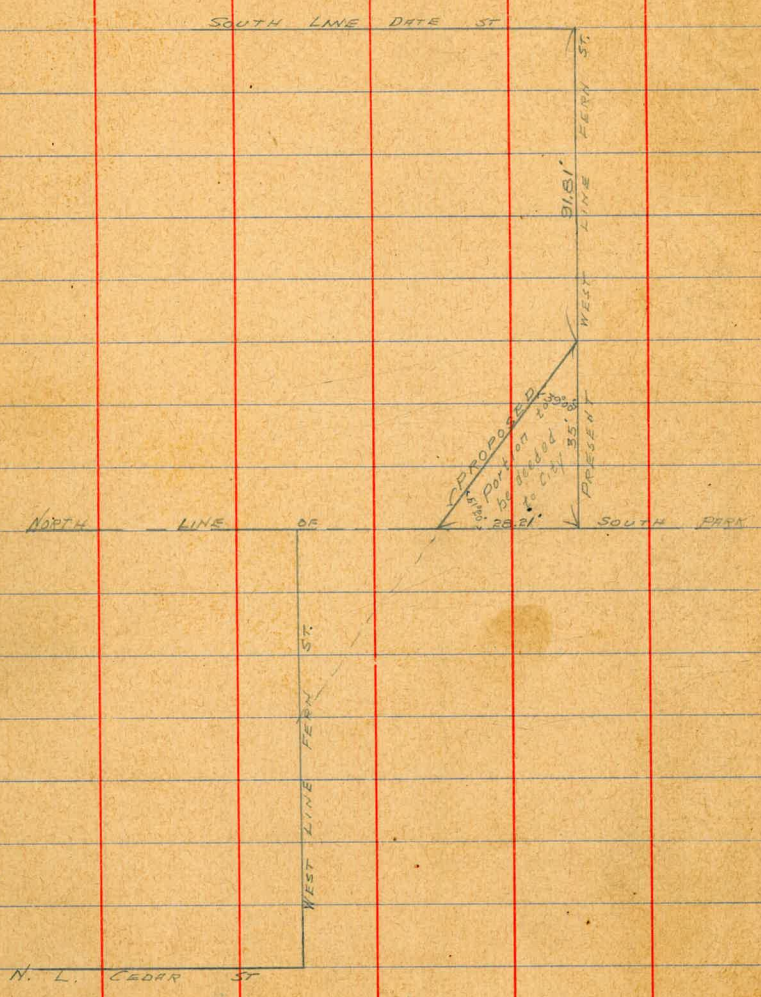
ON PIPE
11/135th

PLOTTED

Survey of Portion of Blk 10
J. P. Christensen's Addition
to be decided to City for St purposes
10/30/13
L. P. Christensen
Surveyor

39
51 20
7 00 10

20'



PLOTTED

11/3/13
 Gregory
 Schmidt
 Meers

CROSS-SECTION OF
 DATE ST (80 WIDE)
 FROM 32ND ST to E.L. PROPERTY UNION.

2344^{1/2}

28

B.M.	4.56	230.50		225.94	5 1/2" x 3 1/2" Cedar	S	2.8	231.7
T.P.	11.73	241.40	0.83	229.67		cb	3.6	30.9
T.P.	5.30	231.45	12.25	229.15	13' x 15' Oak + Bancroft	1/4	4.4	30.1
		E.L. 32 ND ST				C	5.3	29.2
S			1.4	233.1		1/4	6.0	28.8
cb			2.6	31.9		cb	6.9	27.6
1/4			4.9	29.6		N	7.8	26.7
C			6.5	28.0				
1/4			8.0	26.5		N	6.2	28.3
cb			9.5	25.0		cb	5.6	28.9
N			11.2	23.3		1/4	4.8	29.7
		50' E				C	4.3	30.2
N			10.0	24.5		1/4	3.7	30.8
cb			8.7	25.8		cb	3.1	31.4
1/4			7.4	27.1		S	2.4	32.1
C			6.1	28.4				
1/4			5.1	29.4		S	3.4	31.1
cb			3.8	30.7		cb	3.8	30.7
S			2.5	32.0		1/4	4.4	30.1

150' E

200' E = W.L. BANCROFT ST

PLOTTED

23445

23445

DATE ST.

29

100' E

C	4.6	279.9
1/4	4.7	279.8
cb	5.1	279.4
N	5.2	279.3

N	4.7	279.8
cb	4.6	279.9
1/4	4.3	30.7

E. L. BANCROFT ST.

N	8.2	26.3
cb	7.9	26.6
1/4	7.8	26.7
C	7.6	26.9

C	4.2	30.3
1/4	4.2	30.3
cb	4.1	30.4
S	3.9	30.6

150' E

1/4	7.2	27.3
cb	6.9	27.6
S	6.8	27.7

S	1.6	32.9
cb	1.6	32.9
1/4	1.5	33.0

50' E

S	5.5	29.0
cb	6.1	28.4
1/4	6.4	28.1
C	6.6	27.9
1/4	6.7	27.8

C	1.4	33.1
1/4	1.5	32.7
cb	1.7	32.8
N	2.0	32.5

T.P. 6.42 239.30 1.57 232.88

200' E = W.L. 33rd ST (50' WIDE)

cb	6.9	27.6
N	7.0	27.5

N	4.0	31.3
cb	3.7	31.6

PLOTTED

23930

23930

DATE ST

50

1/4		3.6	335.7	S		2.7	336.6
C		3.6	335.7		CENTER		
1/4		3.8	335.5	S		1.9	374
cb		4.0	335.3	cb		1.7	376
S		3.7	335.6	1/4		1.3	380
	W. CURB			C		1.3	380
S		3.1	36.2	1/4		1.4	37.9
cb		3.4	35.9	cb		1.6	37.7
1/4		3.0	36.3	N		2.1	37.2
C		2.8	36.5		E. QUARTER		
1/4		2.8	36.5	N		2.1	37.2
cb		3.1	36.2	cb		1.5	37.5
N		3.5	35.8	1/4		1.5	37.8
	W. QUARTER			C		1.3	380
N		2.9	36.4	1/4		1.4	37.9
cb		2.4	36.9	cb		1.6	37.7
1/4		2.3	37.0	S		1.5	37.5
C		2.3	37.0		E. CURB		
1/4		2.3	37.0	S		1.3	380
cb	PLOTTED	2.6	36.7	cb		1.4	37.9

239.30

1/4		1.2	338.1
C		1.3	380
1/4		1.3	380
ct		2.0	373
N		2.1	372
E.L. 33 RD ST.			
N		2.1	372
ct		1.9	374
1/4		1.3	380
C		1.1	382
1/4		0.9	384
ct		1.3	380
S		0.9	384
50' E.			
S		2.5	36.8
ct		3.2	36.1
1/4		3.1	36.2
C		3.4	35.9
1/4		4.0	35.3
ct		4.1	35.2

PLOTTED

239.3

DATE ST.

31

N		4.2	235.1	
100' E				
N		9.3	30.0	
ct		9.3	30.0	
1/4		9.0	30.3	
C		8.4	30.9	
1/4		8.1	31.2	
ct		8.2	31.1	
S		7.4	31.9	
155' E				
T.P.	0.05	226.32	13.03	226.27
S			1.2	25.1
ct			1.5	24.8
1/4			1.9	24.4
C			2.3	24.0
1/4			2.6	23.7
ct			2.7	23.6
N			2.9	23.4
180' E				
N			7.5	18.8
ct			6.9	19.4

226.32

1/4			67	2196
C			12.5	138
1/4			146	117
cb			15.5	10.8
S			12.7	136

200' E = W. L. FELTON ST (80' WIDE)

S			12.8	2135
T.P.	0.26	213.73	12.85	213.47
cb			8.9	204.8
+6			15.8	197.9
1/4			140	99.7
C			8.9	204.8
1/4			47	209.0
cb			1.5	212.2
N			1.5	212.2
N			8.4	205.3
cb			9.7	204.0
1/4			13.5	200.2
C			16.4	197.3

PLOTTED

HOB SW
FELTON
DATE

213.73

DATE ST

32

1/4			18.6	195.1
cb			9.8	203.9
S			4.9	208.8
S			12.8	200.9
cb			13.3	200.4

1/4 QUARTER

T.P.	0.10	200.79	13.04	200.69
1/4			6.1	194.7
C			11.1	89.7
1/4			7.0	93.8
cb			2.6	98.7
N			1.5	99.3

CENTER

N			7.3	93.0
cb			7.7	93.1
1/4			11.9	88.9
C			15.0	85.8
1/4			10.9	89.9
cb			7.2	93.6
S			7.5	98.3

200.79

	E. QUARTER		
S		12.8	188.0
cb		15.9	84.9
1/4		17.1	83.7
C		18.5	82.3
1/4		17.3	83.5
cb		14.8	84.0
N		13.8	87.0

E CURB

N		21.0	79.8
cb		21.6	79.2
1/4		21.3	79.5
C		20.1	80.7
1/4		16.6	84.2
cb		11.7	89.1
S		6.0	94.8

F. L. FELTON ST

S		0.7	200.1
cb		6.3	194.5
1/4		11.8	89.0

PLOTTED

200.79 DATE ST

33

C				16.9	183.9
1/4				21.7	179.1
cb				25.0	175.8
N				26.5	174.3
					186.9
			25' E		
N				26.1	74.7
cb				19.6	81.2
1/4				12.9	87.9
C				8.2	92.4
1/2				2.7	98.1
T.P.	11.48	211.51	0.76		200.03
cb				7.8	203.7
S				1.6	209.9
T.P.	12.36	223.46	0.41		211.10
			50' E		
S				5.5	18.0
cb				11.4	12.1
1/4				17.4	206.1
C				23.8	199.7
1/4				27.7	95.9

223.46

cb	32.5	191.0
H	39.7	193.8
75° E		
H	31.8	191.7
cb	26.1	97.4
1/4	21.0	202.5
C	15.6	207.9
1/4	10.8	13.0
cb	6.6	14.9
S	3.2	20.3
100° E		
S	0.7	22.8
cb	3.9	19.6
1/4	7.1	14.4
C	10.3	13.2
1/4	15.3	202.2
cb	20.3	203.2
H	26.0	197.5
125° E		
H	22.3	201.2

PLOTTED

223.46

DATE ST

34

cb	19.1	204.4
1/4	15.1	209.4
C	9.2	14.3
1/4	6.2	17.3
cb	3.3	20.2
S	0.6	22.9
T.P.	0.56	222.30
150° E		
S	0.6	21.7
cb	3.1	19.2
1/4	5.5	17.0
C	8.1	14.2
1/4	12.1	10.2
cb	16.3	206.0
H	21.6	200.7
200° E = W.L. GREGORY ST (20' WIDE)		
H	24.6	197.7
cb	17.7	204.4
1/4	12.6	209.7
C	9.5	13.8

222.30

222.3

DATE ST

35

CENTER

1/4		5.6	216.7				
cb		3.6	18.7	S		0.9	221.4
S		0.8	21.5	cb		3.5	18.8
	W CURB			1/4		6.2	16.1
S		1.2	31.1	C		9.2	13.1
cb		3.6	18.7	1/4		13.2	209.1
1/4		6.2	16.1	cb		17.2	205.1
C		8.8	13.5	N		23.5	198.8
1/4		12.5	209.8		E QUARTER		
cb		17.6	204.7	N		22.8	199.5
N		24.9	197.4	cb		17.2	205.1
	W. QUARTER			1/4		13.4	208.9
N		24.6	197.7	C		9.5	212.8
cb		17.8	204.5	1/4		6.2	15.9
1/4		13.2	209.1	cb		4.0	18.3
C		8.8	13.5	S		2.0	20.3
1/4		6.0	16.3		E CURB		
cb		3.2	19.1	S		2.4	19.9
S		0.7	21.6	N		4.6	17.7
				1/4		7.0	15.3

PLOTTED

222.30

C	10.3	212.0
1/4	13.8	208.5
cb	17.6	204.7
N	23.0	199.3

E.L. GREGORY ST

N	23.5	198.8
cb	18.2	204.1
1/4	14.3	208.0
C	11.1	211.2
1/4	7.8	214.5
cb	5.3	17.3
S	2.7	19.6

50' E

S	6.4	15.9
cb	9.2	13.1
1/4	11.2	11.1
C	14.3	208.0
1/4	19.8	204.5
cb	22.0	200.3

PLOTTED

27.7 207.2

194.6

222.30

DATE ST

75' E

36

N	31.6	203.3	190.7
cb	23.8	211.1	
1/4	19.3	203.0	

C	16.0	206.3
1/4	12.6	209.7
cb	10.0	12.3
S	6.8	15.5

100' E

S	8.1	14.3		
cb	11.2	11.1		
T.P.	ORW	210.10	12.44	209.86

1/4	2.1	208.0
C	5.5	204.4
1/4	9.1	201.0

cb	13.1	209.6	
N	20.7	202.0	189.4

125' E

N	20.3	189.8
cb	15.2	94.9

210.10

DATE ST

1/4			11.3	198.8	cb	202.52	3.9	198.6	37
C			7.3	203.8	S		1.3	201.2	
1/4			4.1	204.0		223.6' ON 1/4 225.1' ON 50.	E.L. PROPERTY UNION		
cb			1.7	208.4	S		10.3	92.2	
S			+1.5	211.6	cb		12.4	90.1	
	160' E				1/4		14.4	88.1	
S			3.7	206.4	C		15.4	87.1	
cb			6.9	203.7	1/4		17.4	85.1	
1/4			9.2	200.9	cb		20.1	82.4	
C			12.4	197.7	N		24.8	77.7	
T.P.	5.04	202.52	12.62	197.48	T.P.	10.91	213.42	0.01	202.51
1/4			8.2	94.3	T.P.	11.57	223.61	1.38	212.04
cb			11.9	90.4	T.P.	11.81	235.25	0.17	223.44
N			16.2	84.3	T.P.	4.31	239.56	0.0	235.25
	185' E				T.P.		10.42	229.14	13' Run to Ditch & Barometer
N			15.9	83.4					
cb			15.0	87.5					
1/4			11.6	90.9					
C			9.0	93.5					
1/4			6.8	94.3					

PLOTTED

PLOTTED

11/5/33 ^{Survey} CROSS SECTION OF
^{Shirahata} ELM ST (80' WIDE)
^{Moore} E.L. PROPERTY UNION

23474

ELM ST

39

E.L. 32ND ST.

B.M	511	234.26	229.15	B HUB DATE + BANCROFT
S		12.6	221.7	
cb		11.3	223.0	
1/4		10.2	224.1	
C		8.8	225.5	
1/4		7.6	226.7	
cb		6.3	228.0	
N		4.0	230.3	
	50' E			
N		2.2	232.1	
cb		4.6	229.7	
1/4		7.0	227.3	
C		8.4	225.9	
1/4		9.7	224.5	
cb		11.3	223.0	
S		12.7	221.6	
	100' E			
S		12.1	222.2	

PLOTTED

cb	10.4	233.9
1/4	8.6	225.7
C	6.9	227.4
1/4	4.7	229.6
cb	2.6	231.7
N	0.7	233.6
	150' E	
N	0.9	233.4
cb	2.8	231.5
1/4	4.2	230.1
C	5.8	228.8
1/4	7.6	226.7
cb	9.2	225.1
S	10.6	223.7
	200' E = W.L. BANCROFT ST	
S	9.1	225.2
cb	7.7	226.6
1/4	7.0	227.8
C	5.8	228.5
1/4	4.5	229.8

23426

db			3.3	231.0
N			1.5	228.8 [✓]
E. L. BANCROFT ST				
N			12.5	218.8 [✓]
db			13.2	21.1
1/2			13.5	20.8
C			14.2	20.1
1/2			14.1	20.3
db			14.2	20.1
S			13.9	20.4 [✓]
T.P.	0.06	221.43	12.89	221.37
50' E				
S			4.2	17.2 [✓]
db			5.0	16.4
1/2			5.1	16.3
C			5.3	16.1
1/2			5.5	15.9
db			5.7	15.7
N			5.1	14.3 [✓]

PLOTTED

22143

ELM

ST

40

			75' E	
N				7.4
db				7.7
1/2				10.5
C				9.1
1/2				8.4
db				7.5
S				6.1
100' E				
S				6.6
db				9.2
1/2				12.2
C				14.8
1/2				17.1
db				21.3
N				13.7
125' E				
N				19.4
db				25.8
1/2				27.0

214.0[✓]

14.7

10.9

17.3

13.0

13.9

15.3[✓]214.8[✓]

17.9

20.92

20.66

20.43

20.01

20.77[✓]20.20[✓]

19.56

19.44

		221.43		
1/4			24.7	194.7
C			19.7	201.7
1/4			15.6	205.8
cb			12.4	209.0
S			9.0	212.4
T.P.	0.06	208.41	13.08	208.35
		150' E		
S			1.5	206.9
cb			3.7	204.7
1/4			7.6	200.8
C			11.1	197.3
1/4			16.5	191.9
+6			18.5	89.9
cb			16.4	92.0
N			11.6	96.8
		175' E		
N			19.0	89.4
cb			22.4	84.0
1/4			20.3	88.1
C			16.5	91.9

PLOTTED

		308.41	EAM ST	
1/4			12.8	195.6
cb			8.0	200.4
S			3.8	204.6
		200' E = W.L.	33 RD ST (90' WIDE)	
S			11.5	196.9
T.P.	0.19	195.69	12.91	195.50
cb			3.3	92.4
1/4			7.2	88.5
C			10.7	85.6
1/4			12.5	83.2
cb			13.9	81.8
N			13.2	82.5
		1/4 CURB		
N			12.5	83.2
cb			14.6	81.1
1/4			15.5	80.3
C			15.0	80.7
1/4			11.7	84.6
cb			6.9	88.8
S			2.9	92.8

41

6

19569

W. QUARTER

S	7.7	188.0
cb	12.1	83.4
1/4	17.0	78.7
C	17.3	78.4
1/2	13.1	82.4
cb	10.8	84.9
N	7.4	88.3

CENTER

N	1.9	93.8
cb	4.2	91.5
1/4	9.4	86.3
C	14.0	81.7
1/2	17.8	77.9
cb	15.6	80.1
S	11.5	84.2

E. QUARTER

S	17.4	78.3
cb	19.3	76.4
1/4	17.2	78.5

PLOTTED

19569

ELM

ST

42

C			12.4	193.3
1/4			7.6	89.1
cb			1.3	94.4
T.P.	11.68	20649	0.88	194.81
N			6.5	99.7

E. CURB

N			2.6	203.9
cb			9.4	97.1
1/4			14.1	92.1
C			20.7	95.8
1/2			24.7	81.8
cb			28.6	77.9
S			30.7	75.8
FIR			31.2	75.3
+25			25.0	81.5

E. L. 33RD ST

-25			26.6	179.9
-18			32.0	74.5
S			31.0	75.5
cb			27.0	79.5

206.49

1/2			227	1838
C			18.5	88.0
1/2			14.5	92.0
cb			9.4	97.1
N			0.8	205.7
T.P.	11.19	217.35	0.33	206.16
		25' E		
N			7.8	209.4
cb			13.7	203.7
1/4			17.8	199.4
C			23.6	93.8
1/4			29.5	87.9
cb			36.1	81.3
S			43.3	74.1
+5			45.0	72.4
+20			44.7	72.7
+30			40.2	77.2
		35' E		
-35			39.3	78.1
-22			45.0	72.4

PLOTTED

21735

ELM ST.

43

-8			45.5	171.9
S			43.5	73.9
cb			36.9	80.5
1/4			30.6	84.8
C			25.2 27.2	92.2
1/4			18.2	99.2
cb			10.4	207.0
N			5.6	211.8
		50' E		
N			4.1	213.3
cb			7.9	209.5
1/4			10.6	204.9
C			16.5	200.9
1/4			23.6	193.8
cb			30.7	186.7
S			39.5	177.9
+15			46.3	71.1
+25			46.3	71.1
+35			41.6	75.8

	217.35 75' E		
-40	43.7	173.7	
-27	47.3	170.1	
-15	47.3	70.1	
S	38.2	79.2	
cb	30.8	86.4	
1/4	23.2	94.2	
C	18.5	99.9	
1/2	13.0	204.4	
cb	8.8	208.4	
N	4.1	213.3	
	100' E		
N	2.7	214.7	
cb	8.2	209.2	
1/4	14.1	203.3	
C	21.3	196.1	
1/2	27.2	190.2	
cb	32.5	184.9	
S	40.1	177.3	
+15	47.6	169.8	
+30	48.2	169.2	
+40	45.0	172.4	

PLOTTED

	125' E	ELM	ST.	
-40	217.35	47.2	170.2	44
-30		50.0	174.4	
-15		47.8	179.4	
S		42.8	174.4	
cb		38.1	179.3	
1/4		33.8	183.4	
C		29.0	189.4	
1/2		21.9	195.5	
cb		14.7	202.5	
N		8.4	209.0	
	150' E			
N		12.7	204.7	
cb		14.7	202.7	
1/4		16.2	201.2	
C		20.7	196.7	
1/2		24.6	192.2	
cb		30.3	187.1	
S		36.0	181.4	
+15		50.3	177.1	
+30		50.4	177.0	
+40				

217.35

175' E

216.52 ELM ST

W. CURB

45

-50			52.6	144.9	S	30.0	186.5
-38			52.4	145.0	cb	23.8	192.7
S			34.2	83.2	1/4	18.4	99.1
cb			27.0	90.4	C	12.2	204.3
1/4			21.7	95.7	1/4	6.3	210.7
C			15.9	201.5	cb	2.8	13.7
1/4			10.4	207.0	N	0.2	416.3
cb			4.7	212.7			
N			0.7	214.7	N		
						0.5	416.0
					cb	4.4	412.1
N			1.0	216.4	1/4	9.2	207.3
cb			4.4	213.0	C	14.4	202.1
1/4			9.0	208.4	1/4	19.1	197.4
T.P.	10.73	216.52	11.56	205.79	cb	23.8	92.7
C			14.3	202.2	S	28.2	188.3
1/4			19.6	194.9			
cb			25.2	191.3	S	31.5	185.0
S			31.8	184.7	cb	26.2	90.3
					1/4	21.8	94.7

W. QUARTER

CENTER

PLOTTED

216.52

3C	17.1	1994
1/4	12.2	2043
cb	6.5	210.0
N	1.8	214.7

E. QUARTER

N	2.3	214.2
+5	3.3	13.2
cb	8.5	208.0
1/4	15.6	200.9
C	20.4	94.1
1/4	26.0	90.5
cb	31.2	85.3
S	35.9	80.6

E CURB

S	40.8	75.7
cb	37.6	78.9
1/4	32.6	83.9
C	26.0	90.5
1/4	18.4	98.1
cb	10.1	206.4

PLOTTED

216.52

ELM ST

46

2.6	213.9
2.1	214.4

E. L. FELTON ST.

N	1.6	214.9
+6	2.6	213.9
cb	7.1	209.4
1/4	16.0	200.5
C	26.3	190.2
1/4	31.8	184.7
cb	33.3	183.2
S	33.3	183.2

25' E

S	18.9	197.6
cb	18.7	97.8
1/4	18.4	98.1
C	17.1	99.4
1/4	9.2	207.3
cb	2.6	13.9
N	1.5	215.0

216.52
50' E

N	0.7	215.8
cb	2.2	14.3
1/4	2.8	13.7
+7	3.2	13.3
c	5.6	10.9
1/2	8.5	208.0
cb	8.6	207.9
S	10.1	206.4

75' E

S	7.2	209.3
cb	5.4	211.1
1/2	3.1	13.4
c	1.4	15.1

T.P.	9.99	225.86	0.65	215.87
1/4			8.9	17.0
cb			7.3	18.6
N			5.3	20.6

100' E

N	2.1	23.8
cb	5.0	20.9

PLOTTED

225.86

ELM ST.

1/4	6.3	219.6	17
c	7.8	18.1	
1/4	9.8	16.1	
cb	12.5	13.4	
S	14.0	11.9	

150' E

S	12.5	213.4
cb	9.5	16.4
1/4	7.3	18.6
c	5.9	20.7
1/4	4.0	21.9
cb	2.7	23.7
N	0.3	225.6

200' E. = W.L. GREGORY ST. (80' WIDE)

N	1.4	224.5
cb	3.1	22.8
1/4	4.6	21.3
c	6.3	19.6
1/4	7.9	18.0
cb	9.8	16.1

22586

cb	12.7	213.2
W. CURB		
S	13.1	12.8
cb	10.0	15.9
1/4	7.9	18.0
C	6.8	19.1
1/4	5.6	20.3
cb	4.1	21.8
N	2.9	23.0
W. QUARTER		
N	3.2	22.7
cb	4.6	21.3
1/4	6.0	19.9
C	7.2	18.7
1/4	8.7	17.3
cb	10.5	15.4
S	14.4	11.5
CENTER		
S	15.3	10.4
cb	11.2	14.7

PLOTTED

22586

ELM ST.

1/4	9.3	216.4	48
C	7.6	18.3	
1/4	6.3	19.4	
cb	5.0	20.9	
N	3.6	22.3	
E. QUARTER			
N	4.2	21.7	
cb	5.6	20.3	
1/4	7.0	18.9	
C	8.5	17.4	
1/4	10.4	15.5	
cb	13.0	12.9	
S	16.0	209.9	
E. CURB			
S	19.4	208.5	
cb	14.2	11.7	
1/4	11.5	14.4	
C	9.3	14.6	
1/4	7.4	18.5	
cb	6.1	19.8	

		225.86		
N		4.7	291.2	
E. L. GREGORY ST				
N		4.8	211	
cb		6.8	191	
1/2		8.6	173	
C		10.5	154	
1/4		13.1	138	
cb		15.5	10.4	
S		18.1	207.9	
50' E				
S		21.6	204.3	
cb		19.1	206.8	
1/2		16.5	209.4	
C		14.1	11.5	
1/4		12.0	13.9	
cb		10.5	15.4	
N		8.9	17.0	
T.P.	0.40	213.72	12.54	213.32

PLOTTED

		180' E	ELM	ST	
N		213.79	2.4	211.3	49
cb			3.7	10.0	
1/2			5.1	208.6	
C			7.1	206.6	
1/4			9.0	204.7	
cb			11.5	202.2	
S			14.1	199.5	
T.P.	1.23	201.86	13.09	200.63	
150' E					
S			8.2	193.7	
cb			5.7	96.2	
1/2			4.1	97.8	
C			2.9	99.0	
1/4			1.4	200.5	
cb			0.5	201.4	
N			40.7	202.16	
190' E					
N			4.8	197.1	
cb			5.0	96.9	
1/2			5.8	96.1	

C.			6.9	1950	
1/4			8.5	934	
ct			9.8	92.1	
S			11.9	90.0	
	216.5' ON No	} = W.L. PROPERTY UNION			
	218.0' ON So.				
S			16.2	185.7	
ct			14.0	87.9	
1/4			12.7	89.2	
C			11.6	90.3	
1/4			10.8	91.1	
ct			10.4	91.5	
N			10.1	191.8	
T.P.	13.08	213.71	1.23	200.63	
T.P.	11.60	222.57	2.74	210.97	
T.P.			0.85	221.72	CHK T.P. ON Foot see page 24

PLOTTED

51

11/19/3
 Section of First St
 from E.L. 3rd St 80' wide
 to E.L. Property Union

268.97

FIR ST

52

100' E

SE 3rd
 Shape

B.M.	12.00	280.27		268.27	N		1.2	267.8
------	-------	--------	--	--------	---	--	-----	-------

T.P.	1.15	279.68	1.74	278.53	dr		2.4	646
------	------	--------	------	--------	----	--	-----	-----

T.P.	0.69	268.97	11.40	268.28	1/2		3.1	659
------	------	--------	-------	--------	-----	--	-----	-----

E.L. 3rd St

N			0.6	268.4	1/2		3.7	653
---	--	--	-----	-------	-----	--	-----	-----

dr			1.4	674	dr		4.4	646
----	--	--	-----	-----	----	--	-----	-----

1/2			2.5	645	S		5.2	636
-----	--	--	-----	-----	---	--	-----	-----

C			3.1	659			6.1	639
---	--	--	-----	-----	--	--	-----	-----

150' E

1/2			3.7	653	S		10.3	587
-----	--	--	-----	-----	---	--	------	-----

dr			4.5	645	dr		9.7	593
----	--	--	-----	-----	----	--	-----	-----

S			5.2	638	1/2		9.0	600
---	--	--	-----	-----	-----	--	-----	-----

50' E

S			5.4	636	1/2		8.2	608
---	--	--	-----	-----	-----	--	-----	-----

dr			4.8	643	dr		7.1	616
----	--	--	-----	-----	----	--	-----	-----

1/2			3.6	654	N		7.0	620
-----	--	--	-----	-----	---	--	-----	-----

C			2.8	663			5.7	633
---	--	--	-----	-----	--	--	-----	-----

200' E = W.L. BANCROFT ST

1/2			2.2	668	N		10.8	587
-----	--	--	-----	-----	---	--	------	-----

dr			1.4	676	dr		12.4	566
----	--	--	-----	-----	----	--	------	-----

N			0.4	686	T.P.	0.10	256.36	18.71	256.26
---	--	--	-----	-----	------	------	--------	-------	--------

PLOTTED

25636

1/4	0.6	255.8
C	1.5	54.9
1/4	2.5	53.9
cb	3.4	53.0
S	4.0	52.4

E.L. BANCROFT (For Intersection, see Bancroft St)

T.P.	0.18	243.56	12.48	243.38
S			3.5 } Top Wall 40.1	
			11.7 } Bottom ← 31.9	
cb			10.8	32.8
1/4			13.7	29.9
C			12.1	31.5
1/4			15.4	28.7
cb			14.1	29.2
N			12.3	31.3
T.P.	0.10	231.83	12.43	231.13
		25' E		
N			12.2	19.0
cb			14.1	17.1
1/4			15.0	16.2
C			13.7	17.5

PLOTTED

23123

F.R. ST

1/4	12.9	218.3	53	
cb	10.6	20.6		
S	11.4	19.8		
	50' E			
S	15.9	12.3		
cb	13.9	17.3		
1/4	10.5	20.7		
C	8.7	22.5		
1/4	6.3	24.9		
T.P.	12.42	243.34	0.31	230.92
cb	14.2	29.1		
N	12.5	30.8		
	75' E			
N	0.0	43.3		
cb	1.7	41.6		
1/4	4.7	38.6		
C	8.2	35.7		
1/4	12.2	31.1		
cb	17.3	24.0		
S	23.2	20.1		

243.34

251.91

54

+1			278	215.5
+10			293	140
	100' E			
S			18.4	24.9
cb			11.0	32.3
1/4			5.3	38.0
T.P.	12.31	251.91	3.74	339.60
C			8.2	43.7
1/4			5.6	46.3
cb			3.3	48.6
N			1.1	50.8
	125' E			
N			40.3	252.2
cb			2.4	49.5
1/4			4.6	47.3
C			7.0	44.9
1/4			13.8	38.1
cb			20.5	31.4
S			26.9	25.0
+10			28.0	23.9

PLOTTED

			150' E				
				3		14.9	237.0
				cb		12.8	39.1
				1/4		8.7	43.2
				C		5.7	46.2
				1/4		3.8	48.1
				cb		2.1	49.8
				N		0.0	51.9
					175' E		
				N		0.0	51.9
				cb		11.4	50.5
				1/4		8.1	48.8
				0		5.4	46.5
				1/4		7.1	44.8
				cb		12.8	39.1
				S		17.7	33.2
					200' E = W.L.	33° ST	100' WIDE
				S		14.5	37.4
				cb		9.5	42.1
				1/4		6.4	45.5

T.P. 10.29 255.08 7.12 244.79 13. HOB
53° 00' * FIR

C 7.7 247.4

1/4 6.2 48.9

cb 4.6 50.5

N 2.9 52.2

W. CURB

N 3.1 52.0

cb 4.8 50.3

1/4 6.0 49.1

C 7.3 47.8

1/4 10.5 44.6

cb 12.5 42.6

S 14.3 40.8

W. QUARTER

S 14.8 40.3

cb 12.6 42.5

1/4 10.3 44.8

C 7.3 47.8

1/4 6.0 49.1

cb 4.5 50.0

PLOTTED

25508 FIR ST 3.1 252.0 55

CENTER

N 3.1 52.0

cb 4.5 50.6

1/4 5.9 49.2

C 7.6 47.5

1/4 9.5 45.3

cb 12.2 42.9

S 14.6 40.5

E QUARTER

S 13.6 41.5

cb 11.0 44.1

1/4 9.0 46.1

C 7.0 48.1

1/4 5.4 49.7

cb 4.3 50.8

N 3.3 51.8

E. CURB

N 3.5 51.6

cb 4.9 50.2

CUTTING

255.08

1/2	6.0	249.1
C	6.9	48.3
1/4	8.6	46.5
cb	11.0	44.1
S	12.4	42.7
E.L. 33 rd ST		
S	11.7	43.4
cb	10.4	44.7
1/4	8.4	46.7
C	7.0	48.1
1/4	6.1	49.0
cb	5.3	49.8
N	3.9	51.3
50' E		
N	4.7	50.4
cb	5.4	49.7
1/4	6.4	48.7
C	7.5	47.6
1/4	8.7	46.4
cb	9.8	45.3

PLOTTED

255.08

FIR ST.

56

S	11.2	243.9
100' E		
S	11.8	43.3
cb	11.1	44.0
1/4	10.6	44.5
C	10.1	45.0
1/4	9.7	45.4
cb	9.2	45.9
N	8.6	46.5
150' E		
N	12.2	42.9
cb	12.8	42.3
T.P.	2.71	244.80
1/4	12.99	242.09
1/4	3.2	41.6
C	4.2	40.6
1/4	4.8	40.0
cb	5.0	39.8
S	5.2	39.6

24480

200' E = W.L. FELTON ST (80' WIDE)

S	10.0	234.8
cb	10.3	234.5
1/4	10.6	234.2
C	12.1	232.7
1/4	8.6	236.2
cb	7.1	237.7
N	5.4	239.4

W. CURB

N	6.4	38.4
cb	8.2	36.6
1/4	10.1	34.7
C	16.1	28.7
+6	20.4	24.4
1/4	14.5	30.3
cb	12.3	32.5
S	11.7	33.1

W. QUARTER

S	12.8	32.0
cb	16.4	28.4

PLOTTED

24480 FIR ST

25.2	219.4	57
18.2	24.6	
12.0	32.8	
9.5	30.3	
7.6	37.2	

CENTER

N	9.5	30.3		
cb	11.5	33.3		
T.P.	1.26	234.67	11.39	233.41
1/4	4.1	30.6		
C	11.0	23.7		
1/4	15.4	16.3		
cb	12.5	22.2		
S	4.3	30.4		

E. QUARTER

S	5.5	29.2
cb	11.9	22.2
1/4	22.0	12.7
C	17.3	17.4
1/4	9.8	24.9

23rd 67				FIR ST			
dt	3.0	231.7	TP	0.13	224.53	10.27	224.40
N	1.1	33.4			25' E		
E. CURB				N		5.6	218.9
N	3.2	31.5	dt			11.6	12.9
dt	8.2	36.5	1/4			17.5	207.0
1/4	15.2	19.5	C			22.2	207.3
C	21.5	13.2	+6			27.8	194.7
+10	26.3	208.4	1/4			22.4	202.1
1/4	24.0	10.7	dt			15.3	209.7
dt	13.4	21.3	S			6.2	18.3
S	7.6	27.1	TP	0.30	211.81	13.02	211.51
Felton ST							
E. L. 33rd ST						50' E	
S	10.3	224.4	S			1.9	209.9
dt	15.2	214.5	dt			6.0	205.8
1/4	24.6	210.1	1/4			9.3	202.5
+6	30.1	204.4	C			20.0	91.8
C	25.0	209.7	1/4			13.0	98.9
1/4	15.0	214.7	dt			6.2	205.5
dt	11.6	223.1	N			+0.6	212.4
N	6.6	228.1					

PLOTTED

58
H. S. G
F. S. G
F. S. G

211.81

75° E

N	7.3	204.5
cb	11.7	200.1
1/4	17.4	194.4
c	25.0	84.8
1/4	18.8	93.0
cb	12.7	99.1
S	7.0	204.5

100° E

S	8.8	208.0
cb	15.3	96.5
1/4	23.3	89.5
c	29.2	82.6
1/4	25.0	84.8
cb	20.5	91.3
N	14.8	97.0

125° E

N	23.1	89.7
cb	28.7	83.1
1/4	36.5	75.3

PLOTTED

211.81¹⁰

FIR ST.

59

c	27.0	184.8
1/4	19.4	92.4
cb	12.3	99.5
S	6.8	205.0

150° E

S	6.6	205.7
cb	11.9	199.9
1/4	18.0	93.8
c	26.0	85.8
1/4	34.6	77.2
+10	40.3	71.5
cb	38.1	73.7
N	31.9	79.9

175° E

N	37.2	74.6
+9	43.6	68.3
cb	40.0	71.8
1/4	34.4	77.4
c	28.0	83.8
1/4	21.5	90.3

	211.81			
cb		14.9	196.9	
S		8.0	203.8	
	200' E =	W.L. GREGORY ST (20' WIDE)		
S		10.1	201.7	
T.P.	0.11	199.29	12.63	199.18
cb		2.1	97.2	
1/4		7.8	91.8	
C		14.2	85.1	
1/4		20.5	78.8	
cb		27.0	72.3	
N		33.8	65.5	
+5		34.3	65.0	
+25		28.0	71.2	
	W CURB			
-25		32.0	67.3	
-8		36.6	62.7	
N		34.0	65.3	
cb		26.7	72.6	
1/4		22.0	77.3	
C		16.1	83.2	

PLOTTED

	199.39	FIR ST	
1/2		10.3	199.0
cb		5.9	93.4
S		1.6	97.7
	W QUARTER		
S		5.1	94.2
cb		9.4	89.9
1/4		13.2	86.1
C		17.9	81.4
1/4		23.2	76.1
cb		27.0	72.3
N		34.8	64.5
+15		38.6	60.7
+25		36.0	63.3
	CENTER		
-25		40.2	59.1
N		35.6	63.7
cb		30.1	69.2
1/4		25.8	73.5
C		22.2	77.1
1/4		18.1	81.2

60

19929

cb		14.0	185.3
S		9.5	89.8
E. QUARTER			
T.P.	0.21	186.89	18.61
S		1.3	85.6
cb		5.7	81.2
1/4		10.2	76.7
C		13.9	73.0
1/4		17.3	69.6
cb		20.9	66.0
N		25.0	61.9
+15		29.0	57.9
+30		30.0	56.9

E CORNER

-30		30.9	56.0
N		28.9	58.0
cb		24.8	62.1
1/4		21.7	65.2
C		18.0	68.9
1/4		15.0	71.9

PLOTTED

31
186.89

FIR ST

cb		11.1	175.8	61
S		6.2	80.7	
E. L. GREGORY ST				
S		10.5	76.4	
T.P.	0.46	175.26	12.09	174.80
cb		3.9	71.4	
1/4		7.0	68.3	
C		10.6	64.7	
1/4		14.0	61.3	
cb		16.6	58.7	
N		20.0	55.3	
+25		21.8	53.5	
25' E				
-25		19.8	55.8	
N		24.0	51.3	
cb		22.6	52.7	
1/4		21.1	54.2	
C		19.6	55.7	
1/4		16.7	58.6	
cb		12.6	62.7	

PLOTTED

		175.26		
S			6.7	148.6
		50' E		
S			11.4	43.9
T.P.	1.87	164.22	18.91	162.35
cb			6.8	57.4
1/4			13.3	50.9
C			15.3	48.9
1/4			15.0	49.2
cb			14.6	49.4
N			13.3	50.9
+15			8.0	56.2
		75' E		
N			8.4	55.8
cb			13.2	51.0
1/4			16.5	47.7
C			16.3	47.9
1/4			14.1	50.1
cb			10.0	54.2
S			5.9	58.3

PLOTTED

		164.22		
		100' E		62
S			13.1	51.1
cb			16.3	47.9
1/4			17.3	44.9
C			17.4	46.8
1/4			17.3	46.9
cb			18.8	51.4
N			7.9	56.3
		125' E		
N			3.9	60.3
cb			8.9	55.3
1/4			12.2	52.0
C			16.2	48.0
1/4			18.6	45.6
cb			20.4	43.8
S			19.7	44.5
+25			14.6	49.6
		150' E		
-35			14.0	50.2
-25			18.8	45.4
-15			22.8	41.4

PLOTTED

164.22

S			20.2	144.0
cb			16.5	47.7
1/4			12.3	51.9
C			7.7	56.5
1/4			4.1	60.1
cb			0.0	64.2
T.P.	12.50	176.36	0.36	163.86
N			8.5	67.9
	175'	E		
N			1.0	75.4
cb			5.7	70.7
1/4			10.1	66.3
C			15.1	61.3
1/4			20.6	55.9
cb			26.3	50.1
S			32.4	44.0
+ 15'			35.4	41.0
+ 30			31.5	44.9
- 50			33.0	43.4

211.0' E ON 50. }
 212.5' E ON No } = W. L. PROPERTY UNION

PLOTTED

174.34 FIR ST.

63

- 30			37.0	139.4
S			27.7	48.7
cb			22.3	54.1
1/4			17.6	58.8
C			12.6	63.8
1/4			7.8	68.6
cb			2.7	73.7
N			+ 3.5	179.9
T.P.			4.22	172.14

check T.P.
= 172.02

PLOTTED

XSECTION OF BUSH ST 60' WIDE
 FROM E.L. OF C.W. RICE'S ADD
 TO W.L. OF ...

274.5-3

BUSH ST

65

25 WEST

BM	12.83	276.53	269.70	SW Bush 12.6			
		E. L. C. W. RICE'S ADD			S	5.8	270.7
					cb	6.3	70.2
S		8.1	248.4	1/4		6.5	70.0
cb		8.9	47.4	C		7.3	69.2
1/4		8.7	47.8	1/4		7.3	69.2
C		8.8	47.7	+4		7.1	69.4
1/4		8.3	48.2	+5		6.0	70.5
cb		8.5	48.0	cb		5.7	70.8
N		8.3	48.2	+5		5.6	70.9
		2' WEST		+6		7.2	69.3
N		8.2	48.3	N		7.9	68.6
+5		8.0	48.5			50' WEST	
cb		59	70.4	N		7.6	68.9
		61	70.4				
+5		64	70.1	+4		7.4	69.1
1/4		80	48.5				
1/4		8.0	49.5	+6		5.3	71.2
C		8.5	49.0	cb		5.2	71.3
1/4		8.3	48.2	+6		5.4	71.1
cb		88	49.7	1/4		6.5	70.0
		73	49.2			6.7	69.9
S		7.3	49.2	C		6.7	69.8

PLOTTED

276.53

1/4	6.6	26.99
+2	5.6	70.9
cb	5.7	70.8
S	5.7	70.8

75 WEST

S	4.9	71.6
cb	5.4	71.1
+8	5.4	71.1
1/4	6.4	70.1
	6.4	70.1
C	6.5	70.0
1/4	6.3	70.2
+3	6.2	70.3
+5	5.3	71.2
cb	5.1	71.4
+5	5.3	71.2
+8	7.1	69.4
N	7.5	69.0

107' WEST = E. L. PIONEER PLACE (50' WIDE)

N	7.8	68.7
+4	7.5	69.0

PLOTTED

276.53 BUSH ST

66

+5	6.4	270.1
cb	5.8	70.7
1/4	6.5	70.0
C	6.6	69.9
1/4	6.4	70.1
cb	5.3	71.2
S	5.2	71.3

E. CORB.

S	6.0	70.5
cb	5.8	70.7
1/4	6.5	70.0
C	6.8	69.7
1/4	6.7	69.8
cb	6.1	70.4
N	7.7	68.8

E QUARTER

N	7.7	68.8
cb	6.5	70.0
1/4	6.7	69.8
C	6.9	69.6

216.53

1/2

6.6 2699

cb

6.3 702

S

6.0 705

CENTER

S

6.5 700

cb

6.4 701

1/4

6.8 497

C

6.9 496

1/4

6.6 499

cb

6.7 498

N

7.9 486

W. QUARTER

N

8.0 485

cb

6.7 498

1/4

6.9 496

C

7.0 495

1/4

6.9 496

cb

6.4 701

S

6.5 700

PLOTTED

276.53

BOSH ST

67

W. CURB

S

6.4 2701

cb

6.6 499

1/2

6.7 498

C

7.1 494

1/4

7.0 495

cb

6.4 701

N

8.4 481

W.L. PIONEER PLACE

N

8.5 480

cb

6.9 496

1/4

7.0 495

C

7.2 493

1/4

6.8 497

cb

6.8 497

S

6.3 702

25' WEST

S

7.1 494

cb

7.5 490

1/4

7.3 492

03

276.53

C

7.6 268.9

1/4

7.3 49.2

cb

7.9 48.6

N

9.2 47.3

50' WEST

N

9.4 47.1

cb

9.0 47.5

1/4

7.8 48.7

C

8.1 48.4

1/4

7.8 48.7

cb

8.5 48.0

S

7.5 49.0

75' WEST

S

8.0 48.5

cb

7.8 48.7

1/4

8.2 48.3

C

8.6 47.9

1/4

8.3 48.2

cb

8.9 47.6

N

9.9 46.6

PLOTTED

276.53

BUSH ST

107' WEST = W. L. C. W. RICE'S ADD

68

N

9.9 266.6

cb

10.0 46.5

1/4

10.2 44.3

C

9.7 46.8

1/4

9.6 46.9

cb

9.0 47.5

S

8.0 68.5

PLOTTED

PLOTTED

S

PLOTTED

X SECTION OF PIONEER PLACE
(50' WIDE)
ENTIRE LENGTH.

PIONEER PL.
274.53

70

	18.73	276.53	263.70			50' 50		
B.M				SIX BUSH & KITE	W		5.1	271.4 ✓
	S. LINE	BUSH ST			cb		6.2	70.3 ✓
W		6.3	270.2 ✓		1/4		5.9	70.6 ✓
cb		6.4	70.1 ✓		C		6.3	70.2 ✓
1/4		6.5	70.0 ✓		1/4		6.4	70.1 ✓
C		6.5	70.0 ✓		cb		6.1	70.4 ✓
1/4		6.0	70.5 ✓		E	IN CUT	5.9	70.4 ✓
cb		6.0	70.5 ✓			75' 50		
E		5.2	71.3 ✓		E	IN CUT	6.2	70.3 ✓
	25' 50.				cb		6.2	70.3 ✓
E		5.1	71.4 ✓		1/4		6.1	70.4 ✓
cb		5.8	70.7 ✓		C		6.3	70.2 ✓
1/4		6.0	70.5 ✓		1/4		6.2	70.3 ✓
C		5.8	70.7 ✓		cb		5.9	70.4 ✓
1/4		6.3	70.2 ✓		W		4.9	71.4 ✓
cb		6.4	70.1 ✓			100' 50		
+8		6.5	70.0 ✓		W		4.6	71.9 ✓
W		5.2	71.3 ✓		cb		6.0	70.5 ✓
					1/4		5.8	70.7 ✓

PLOTTED

276.53

C	5.9	270.4	✓
1/4	6.0	70.5	✓
cb	6.3	70.2	✓
E	6.1	70.4	✓
125' 30.			
E	5.3	71.2	✓
cb	5.7	70.8	✓
1/4	5.3	71.2	✓
C	5.3	71.2	✓
1/4	5.3	71.2	✓
cb	5.2	71.3	✓
W	4.9	71.4	✓
150' 30.			
W	4.6	71.9	✓
cb	4.6	71.9	✓
1/4	4.8	71.7	✓
C	4.8	71.7	✓
1/4	4.7	71.8	✓
cb	4.7	71.8	✓
E	4.6	71.9	✓

PLOTTED

PIONEER PL

T.P.	4.64	276.18	4.99	271.54	71
17.5' 50					
E			5.5	270.7	✓
cb			5.2	71.0	✓
1/4			5.0	71.2	✓
C			4.9	71.3	✓
1/4			4.6	71.4	✓
cb			4.8	71.4	✓
W			4.7	71.5	✓
200' 50					
W			5.2	71.0	✓
cb			5.3	70.9	✓
1/4			5.2	71.0	✓
C			5.5	70.7	✓
1/4			5.5	70.7	✓
cb			5.6	70.6	✓
E			5.7	70.5	✓
225' 50. = 50. END PIONEER PL.					
E			5.9	70.3	✓
cb			5.9	70.3	✓

276.18

4/4

6.0

70.2

✓

C

5.9

70.3

✓

1/4

5.6

70.6

✓

cb

5.5

70.7

✓

W

5.4

70.8

✓

PIONEER PL

72

PLOTTED

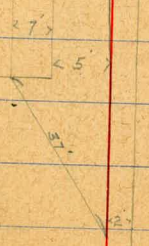
46.87 3W Juniper
+ 14d19

11/19/13
 Beggs
 Engineer
 Okla

LOCATION & LEVELS
 PROPOSED DRAIN ON
 ADAMS AVE BET. TEXAS ST & ARIZONA ST

B.M.	1.97	359.10		351.13
0+00			4.9	354.2
0+15 = INTAKE OF PRESENT DRAIN			6.9 4.7	352.8 354.4
0+33			5.4	353.7
T.P.	0.75	347.49	12.36	349.74 T.P.
0+58			9.2	338.3
T.P.	0.31	335.25	12.54	334.94 T.P.
0+83			12.8	322.5
T.P.	0.19	323.23	12.21	323.04 T.P.
0+93			9.7	313.5
T.P.	0.15	310.52	12.76	310.37
1+25			12.3	298.2
T.P.	0.05	297.99	12.58	297.94
T.P.	2.24	297.33	12.90	285.09
1+83 = Bottom			11.7	275.6

CURB LINE OF ADAMS AVE
 & of Proposed Drain
 North Side of Bridge
 North Side of Adams Ave at Bridge



10/18/21

Gregory
Moore
Miller
Shaw

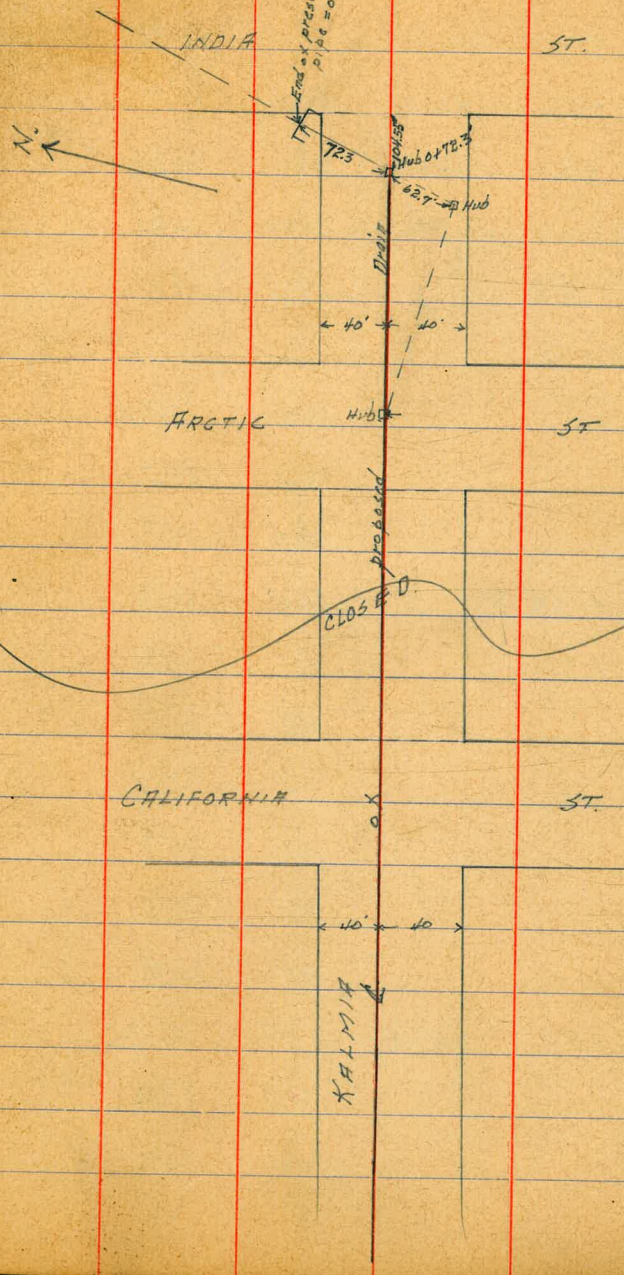
Survey for Drain
Kalmia St
from India to the bay

46.89
5th Jun 1921
+ India

VOID
NEXT
SEE
PAGE

75

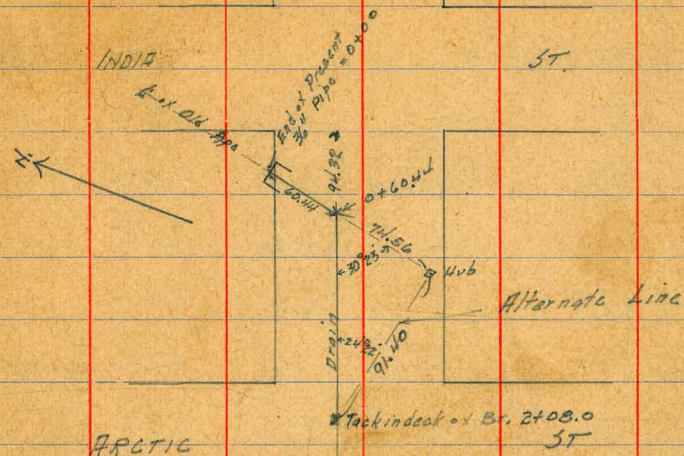
723
1156
627
7456



10/19/21

Gregory
Moore
Miller
ShawSurvey for Drain on
Kalmia St
from India St to the Bay185
208
76

	0.80	47.67	46.87	BPSW India & Juniper
	0.83	35.60	12.90	34.77
	6.31	30.63	11.28	24.32
0+00 =	Flow line of present 36" pipe	14.32	16.31	
0+04.0 =	Under Apron	14.4	16.2	
0+06.0 =	End of ✓			
0+08.0		17.4	13.2	
0+16.0		16.2	14.4	
0+30		16.3	14.3	
0+60.44	△ 30°23' R.	16.4	14.2	
0+71		15.7	14.9	
0+88		5.2	25.4	
1		1.5	29.1	
+15		0.8	29.8	
+25		3.5	27.1	
+32		9.7	20.9	
T.P.	639	25.45	11.57	19.06
+50		7.5	18.0	
+67		10.5	15.0	



ARCTIC

CALIFORNIA

34' x 6' x 40'

Proposed
Sewer
CLOSED

34' x 6' x 40'

	25.45								
1 + 72		13.6	11.9		+ 68.75 = N rail 274	17.72	10.47	14.98	77
+ 81.5 = M.H. 6' 5" at Line			13.6 = Elev. of Top		+ 78		4.7	13.0	
2		13.5	12.0		+ 84		0.4	17.3	
+ 08 = 2 + 26.4 on Alternate Line		13.5	12.0		5		2.8	14.9	
+ 25		10.0	15.5		+ 50		3.7	14.0	
+ 41		11.4	14.1		6		5.4	12.3	
+ 56		8.4	17.1		+ 50		7.1	10.6	
+ 72		11.7	13.8		7		7.7	10.0	
+ 93		6.0	19.5		+ 50		7.8	9.9	
3 + 15		11.5	14.0		8		8.0	9.7	
+ 30		12.3	13.2		+ 50		9.8	7.9	
+ 60		11.1	14.4		9		11.0	6.7	
+ 70		6.3	19.2		+ 50		12.1	5.6	
+ 81 = fence, N-5					+ 63 = M.H. 3.6 to right. Sewer running N-5		6.21 = Top of M.H.		
+ 90		6.0	19.5		10		12.0	5.7	
4 + 10		9.5	16.0		+ 18.5 = M.L. of St.		11.7	6.0	Bldg. is 9.1
+ 35		11.0	14.5		+ 50		11.2	6.5	No. of G.
+ 50		9.0	16.5		11		11.3	6.4	
+ 53		12.8	12.7		+ 50		11.4	6.3	
+ 63.75 = E rail of Santa Fe.		10.47	14.98		12		11.6	6.1	

		17.72			
+50			11.1	6.6	
13			11.6	6.1	
+50			14.3	3.4	
+63			17.0	0.7 = Bulkhead	
+64			23.5	- 5.8	
T.P.	7.00	22.25	2.47	15.25	
chk BM			1.72	20.53 = SE. Jct. of Col. 20.45	

Alternate Line Levels 78

		25.45			
0+60.44			11.3	14.2	
0+68.4 = M.H. 2.3' left.					
1			11.2	14.3	
+35 A			11.33	14.12	on hub
+50			12.3	13.2	
2			13.5	12.0	
+26.4 = 2+08.0 on Main Line			13.5	12.0	

3/5/23

Gregory
Moore
Miller
Shaw

Kalmia St Drain

6' N of E of Kalmia see sketch p 76

130.12

47	650
	42
	180
	18

10.12
4.5
5.6
1.6

18.28 34.59

16.31

Flow lined
20" pipe

Elev. Kettner at Kalmia

4.5

30.1

Flow Grade of pipe

stake set at Sta ⁴¹⁰ 1+35.12 ²⁴⁹⁷

1.38

20.87

11.61

+9.26 This stake set 5' E of Sta 1+35.12

✓ ✓ ✓ ✓ 1+82.12

0.92

24.05

10.96

+13.09

✓ ✓ ✓ 10' N

✓ ✓ ✓ ✓ 1+86.50

noil in Traffic stand

3.27

21.70

10.90

10.80

✓ ✓ ✓ ✓ 2+29.12

4.80

20.17

10.31

+9.86

✓ ✓ ✓ 10' ✓

✓ ✓ ✓ ✓ 2+73.12

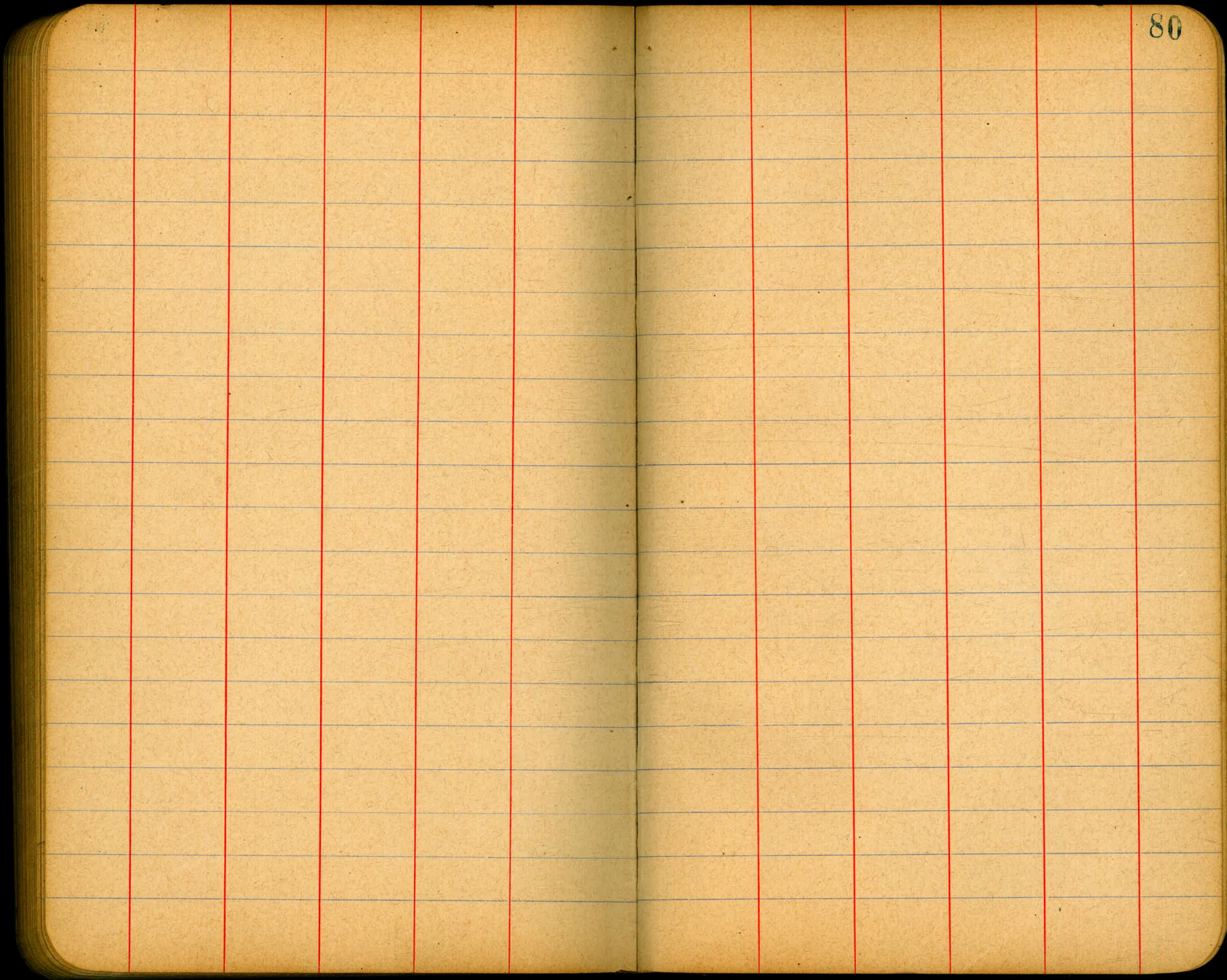
10.77

14.20

9.66

+4.54

✓ ✓ ✓ 5' W of Sta 2+73.12



1.42	96.93		95.51
4.35	89.60	11.68	85.25
5.96	88.52	7.04	82.56

$$\begin{array}{r} 137 \\ 21 \\ \hline 66 \end{array}$$

$$\begin{array}{r} 16612 \\ 29 \\ \hline 13712 \end{array}$$

$$\begin{array}{r} 619 \\ 8347 \\ \hline 5227 \end{array}$$

$$\begin{array}{r} 29 \\ 73 \\ 34 \\ \hline 135 \end{array}$$

$$\begin{array}{r} 01392 \\ 66 \\ \hline 8352 \\ 8352 \\ \hline 9187 \end{array}$$

$$\begin{array}{r} 1220 \\ 92 \\ \hline 1128 \end{array}$$

$$\begin{array}{r} 13112 \\ 135 \\ \hline 29312 \end{array}$$

$$\begin{array}{r} 2022 \\ 56 \\ \hline 2080 \end{array}$$

$$\begin{array}{r} 2100 \\ 560 \\ \hline 2660 \end{array}$$

$$\begin{array}{r} 4950 \\ 2600 \\ \hline 22900 \\ 22900 \\ \hline 16200 \\ 15960 \\ \hline 2400 \end{array}$$

$$\begin{array}{r} 01485 \\ 3800 \\ \hline 118800 \\ 4456 \\ \hline 364300 \end{array}$$

$$\begin{array}{r} 01485 \\ 460 \\ \hline 89100 \\ 5940 \\ \hline 683100 \\ 2022 \\ \hline 2092 \end{array}$$

$$\begin{array}{r} 1118 \\ 40 \\ \hline 1158 \end{array}$$

$$\begin{array}{r} 1250 \\ 132 \\ \hline 1118 \end{array}$$

$$\begin{array}{r} 4950 \\ 2600 \\ \hline 22900 \\ 22900 \\ \hline 16200 \\ 15960 \\ \hline 2400 \end{array}$$

$$\begin{array}{r} 01485 \\ 460 \\ \hline 89100 \\ 5940 \\ \hline 683100 \\ 2022 \\ \hline 2092 \end{array}$$

$$\begin{array}{r} 1118 \\ 40 \\ \hline 1158 \end{array}$$

$$\begin{array}{r} 301 \\ 116 \\ \hline 185 \\ 2925 \\ \hline 2735 \end{array}$$

$$\begin{array}{r} 01861 \\ 760 \\ \hline 111660 \\ 13027 \\ \hline 1246860 \\ 2022 \\ \hline 2165 \\ 2165 \\ \hline 11 \\ 2180 \\ 56 \\ \hline 2236 \\ 2251 \end{array}$$

$$\begin{array}{r} 01861 \\ 300 \\ \hline 558300 \end{array}$$

$$\begin{array}{r} 01861 \\ 760 \\ \hline 722880 \end{array}$$

$$\begin{array}{r} 01861 \\ 300 \\ \hline 558300 \end{array}$$

$$\begin{array}{r} 2022 \\ 2110 \\ \hline 301 \\ 92 \\ \hline 202 \\ 102 \\ \hline 300 \\ 1661 \\ \hline 71 \\ 951 \end{array}$$

$$\begin{array}{r} 111660 \\ 1444 \\ \hline 85606 \end{array}$$

$$\begin{array}{r} 2022 \\ 2110 \\ \hline 301 \\ 92 \\ \hline 202 \\ 102 \\ \hline 300 \\ 1661 \\ \hline 71 \\ 951 \end{array}$$

$$\begin{array}{r} 1157 \\ 03 \\ 01392 \\ 28 \\ \hline 11136 \\ 2784 \\ \hline 38976 \\ 01392 \\ \hline 4036 \end{array}$$

$$\begin{array}{r} 2180 \\ 56 \\ \hline 2236 \\ 2251 \end{array}$$

$$\begin{array}{r} 01861 \\ 300 \\ \hline 558300 \end{array}$$

$$\begin{array}{r} 01861 \\ 760 \\ \hline 722880 \end{array}$$

$$\begin{array}{r} 01861 \\ 300 \\ \hline 558300 \end{array}$$

$$\begin{array}{r} 111660 \\ 1444 \\ \hline 85606 \end{array}$$

$$\begin{array}{r} 2022 \\ 2110 \\ \hline 301 \\ 92 \\ \hline 202 \\ 102 \\ \hline 300 \\ 1661 \\ \hline 71 \\ 951 \end{array}$$

NI 2545 Alternate

0 + 6044
 0 + 68.4 = M.H. 2.3' Left to center 10.3 = Top.
 1 + 00
 1 + 35 Δ pt
 + 50
 2
 + 26.4 = 2+08 on Main Line

$$\begin{array}{r} 1250 \\ 720 \\ \hline 580 \\ 395 \\ \hline 1550 \\ 1185 \\ \hline 3650 \\ 3555 \\ \hline 950 \end{array}$$

$$\begin{array}{r} 01392 \\ 47 \\ \hline 9744 \\ 5868 \\ \hline 65424 \end{array}$$

229.40
13 31 W
Date of ...
Alternate

15 5.26
72.3
17
89.75

38.2
25
63.5
160
123.5

108.51
91.51
4687
130
48.17
370
4444
21001

1999 32.1
1281
3280
0.02
32.78
1140
4418
017
46.01
370
4471
138
4641
46

4464
1170
3324
3326
1221
2045

165
300
4950.0

387
25
62.7
63.7
161
161.0
240.7
214.7

62.0
1.6
203.0

560
20601
49.50
26.40
151.00
182.00
159.60
22.400

01868
460
71200
7476
8.59280

01868
1440
74720
7472
1868
2689920

251.9
26.40
225.0
14.2
210.8

18458

018988
407
132216
75752
77281

2609
49.50
4607
23430
10856
25740
12463
26790
20856
19180

DISTANCES FROM CENTER OF ROADWAY FOR CROSS-SECTIONING.

ROADWAY 14 FEET WIDE. SIDE SLOPES 1 1/2 TO 1.

FOR SINGLE TRACK EMBANKMENT.

	0	.1	.2	.3	.4	.5	.6	.7	.8	.9	
0	7.0	7.2	7.3	7.5	7.6	7.8	7.9	8.1	8.2	8.4	0
1	8.5	8.7	8.8	9.0	9.1	9.3	9.4	9.6	9.7	9.9	1
2	10.0	10.2	10.3	10.5	10.6	10.8	10.9	11.1	11.2	11.4	2
3	11.5	11.7	11.8	12.0	12.1	12.3	12.4	12.6	12.7	12.9	3
4	13.0	13.2	13.3	13.5	13.6	13.8	13.9	14.1	14.2	14.4	4
5	14.5	14.7	14.8	15.0	15.1	15.3	15.4	15.6	15.7	15.9	5
6	16.0	16.2	16.3	16.5	16.6	16.8	16.9	17.1	17.2	17.4	6
7	17.5	17.7	17.8	18.0	18.1	18.3	18.4	18.6	18.7	18.9	7
8	19.0	19.2	19.3	19.5	19.6	19.8	19.9	20.1	20.2	20.4	8
9	20.5	20.7	20.8	21.0	21.1	21.3	21.4	21.6	21.7	21.9	9
10	22.0	22.2	22.3	22.5	22.6	22.8	22.9	23.1	23.2	23.4	10
11	23.5	23.7	23.8	24.0	24.1	24.3	24.4	24.6	24.7	24.9	11
12	25.0	25.2	25.3	25.5	25.6	25.8	25.9	26.1	26.2	26.4	12
13	26.5	26.7	26.8	27.0	27.1	27.3	27.4	27.6	27.7	27.9	13
14	28.0	28.2	28.3	28.5	28.6	28.8	28.9	29.1	29.2	29.4	14
15	29.5	29.7	29.8	30.0	30.1	30.3	30.4	30.6	30.7	30.9	15
16	31.0	31.2	31.3	31.5	31.6	31.8	31.9	32.1	32.2	32.4	16
17	32.5	32.7	32.8	33.0	33.1	33.3	33.4	33.6	33.7	33.9	17
18	34.0	34.2	34.3	34.5	34.6	34.8	34.9	35.1	35.2	35.4	18
19	35.5	35.7	35.8	36.0	36.1	36.3	36.4	36.6	36.7	36.9	19
20	37.0	37.2	37.3	37.5	37.6	37.8	37.9	38.1	38.2	38.4	20
21	38.5	38.7	38.8	39.0	39.1	39.3	39.4	39.6	39.7	39.9	21
22	40.0	40.2	40.3	40.5	40.6	40.8	40.9	41.1	41.2	41.4	22
23	41.5	41.7	41.8	42.0	42.1	42.3	42.4	42.6	42.7	42.9	23
24	43.0	43.2	43.3	43.5	43.6	43.8	43.9	44.1	44.2	44.4	24
25	44.5	44.7	44.8	45.0	45.1	45.3	45.4	45.6	45.7	45.9	25
26	46.0	46.2	46.3	46.5	46.6	46.8	46.9	47.1	47.2	47.4	26
27	47.5	47.7	47.8	48.0	48.1	48.3	48.4	48.6	48.7	48.9	27
28	49.0	49.2	49.3	49.5	49.6	49.8	49.9	50.1	50.2	50.4	28
29	50.5	50.7	50.8	51.0	51.1	51.3	51.4	51.6	51.7	51.9	29
30	52.0	52.2	52.3	52.5	52.6	52.8	52.9	53.1	53.2	53.4	30
31	53.5	53.7	53.8	54.0	54.1	54.3	54.4	54.6	54.7	54.9	31
32	55.0	55.2	55.3	55.5	55.6	55.8	55.9	56.1	56.2	56.4	32
33	56.5	56.7	56.8	57.0	57.1	57.3	57.4	57.6	57.7	57.9	33
34	58.0	58.2	58.3	58.5	58.6	58.8	58.9	59.1	59.2	59.4	34
35	59.5	59.7	59.8	60.0	60.1	60.3	60.4	60.6	60.7	60.9	35
36	61.0	61.2	61.3	61.5	61.6	61.8	61.9	62.1	62.2	62.4	36

Calculated by Julien A. Hall, M. Am. Soc. C. E.

MADE IN GERMANY.