

F.B.
913

LEVEL BOOK

373

KEUFFEL & ESSER CO.

DRAWING MATERIALS

AND

SURVEYING INSTRUMENTS.

NEW YORK.

CHICAGO.

SAN FRANCISCO.

ST. LOUIS.

TABLES FOR EXCAVATIONS AND EMBANKMENTS.

DISTANCES FROM CENTER OF ROADWAY FOR CROSS-SECTIONING.

ROADWAY 18 FEET WIDE. SIDE SLOPES 1 TO 1.

FOR SINGLE TRACK EXCAVATION.

Copyright 1905, by Keuffel & Esser Co.

MICROFILMED
DEC 15 1964

| | 0 | .1 | .2 | .3 | .4 | .5 | .6 | .7 | .8 | .9 | |
|----|------|------|------|------|------|------|------|------|------|------|----|
| 0 | 9.0 | 9.1 | 9.2 | 9.3 | 9.4 | 9.5 | 9.6 | 9.7 | 9.8 | 9.9 | 0 |
| 1 | 10.0 | 10.1 | 10.2 | 10.3 | 10.4 | 10.5 | 10.6 | 10.7 | 10.8 | 10.9 | 1 |
| 2 | 11.0 | 11.1 | 11.2 | 11.3 | 11.4 | 11.5 | 11.6 | 11.7 | 11.8 | 11.9 | 2 |
| 3 | 12.0 | 12.1 | 12.2 | 12.3 | 12.4 | 12.5 | 12.6 | 12.7 | 12.8 | 12.9 | 3 |
| 4 | 13.0 | 13.1 | 13.2 | 13.3 | 13.4 | 13.5 | 13.6 | 13.7 | 13.8 | 13.9 | 4 |
| 5 | 14.0 | 14.1 | 14.2 | 14.3 | 14.4 | 14.5 | 14.6 | 14.7 | 14.8 | 14.9 | 5 |
| 6 | 15.0 | 15.1 | 15.2 | 15.3 | 15.4 | 15.5 | 15.6 | 15.7 | 15.8 | 15.9 | 6 |
| 7 | 16.0 | 16.1 | 16.2 | 16.3 | 16.4 | 16.5 | 16.6 | 16.7 | 16.8 | 16.9 | 7 |
| 8 | 17.0 | 17.1 | 17.2 | 17.3 | 17.4 | 17.5 | 17.6 | 17.7 | 17.8 | 17.9 | 8 |
| 9 | 18.0 | 18.1 | 18.2 | 18.3 | 18.4 | 18.5 | 18.6 | 18.7 | 18.8 | 18.9 | 9 |
| 10 | 19.0 | 19.1 | 19.2 | 19.3 | 19.4 | 19.5 | 19.6 | 19.7 | 19.8 | 19.9 | 10 |
| 11 | 20.0 | 20.1 | 20.2 | 20.3 | 20.4 | 20.5 | 20.6 | 20.7 | 20.8 | 20.9 | 11 |
| 12 | 21.0 | 21.1 | 21.2 | 21.3 | 21.4 | 21.5 | 21.6 | 21.7 | 21.8 | 21.9 | 12 |
| 13 | 22.0 | 22.1 | 22.2 | 22.3 | 22.4 | 22.5 | 22.6 | 22.7 | 22.8 | 22.9 | 13 |
| 14 | 23.0 | 23.1 | 23.2 | 23.3 | 23.4 | 23.5 | 23.6 | 23.7 | 23.8 | 23.9 | 14 |
| 15 | 24.0 | 24.1 | 24.2 | 24.3 | 24.4 | 24.5 | 24.6 | 24.7 | 24.8 | 24.9 | 15 |
| 16 | 25.0 | 25.1 | 25.2 | 25.3 | 25.4 | 25.5 | 25.6 | 25.7 | 25.8 | 25.9 | 16 |
| 17 | 26.0 | 26.1 | 26.2 | 26.3 | 26.4 | 26.5 | 26.6 | 26.7 | 26.8 | 26.9 | 17 |
| 18 | 27.0 | 27.1 | 27.2 | 27.3 | 27.4 | 27.5 | 27.6 | 27.7 | 27.8 | 27.9 | 18 |
| 19 | 28.0 | 28.1 | 28.2 | 28.3 | 28.4 | 28.5 | 28.6 | 28.7 | 28.8 | 28.9 | 19 |
| 20 | 29.0 | 29.1 | 29.2 | 29.3 | 29.4 | 29.5 | 29.6 | 29.7 | 29.8 | 29.9 | 20 |
| 21 | 30.0 | 30.1 | 30.2 | 30.3 | 30.4 | 30.5 | 30.6 | 30.7 | 30.8 | 30.9 | 21 |
| 22 | 31.0 | 31.1 | 31.2 | 31.3 | 31.4 | 31.5 | 31.6 | 31.7 | 31.8 | 31.9 | 22 |
| 23 | 32.0 | 32.1 | 32.2 | 32.3 | 32.4 | 32.5 | 32.6 | 32.7 | 32.8 | 32.9 | 23 |
| 24 | 33.0 | 33.1 | 33.2 | 33.3 | 33.4 | 33.5 | 33.6 | 33.7 | 33.8 | 33.9 | 24 |
| 25 | 34.0 | 34.1 | 34.2 | 34.3 | 34.4 | 34.5 | 34.6 | 34.7 | 34.8 | 34.9 | 25 |
| 26 | 35.0 | 35.1 | 35.2 | 35.3 | 35.4 | 35.5 | 35.6 | 35.7 | 35.8 | 35.9 | 26 |
| 27 | 36.0 | 36.1 | 36.2 | 36.3 | 36.4 | 36.5 | 36.6 | 36.7 | 36.8 | 36.9 | 27 |
| 28 | 37.0 | 37.1 | 37.2 | 37.3 | 37.4 | 37.5 | 37.6 | 37.7 | 37.8 | 37.9 | 28 |
| 29 | 38.0 | 38.1 | 38.2 | 38.3 | 38.4 | 38.5 | 38.6 | 38.7 | 38.8 | 38.9 | 29 |
| 30 | 39.0 | 39.1 | 39.2 | 39.3 | 39.4 | 39.5 | 39.6 | 39.7 | 39.8 | 39.9 | 30 |
| 31 | 40.0 | 40.1 | 40.2 | 40.3 | 40.4 | 40.5 | 40.6 | 40.7 | 40.8 | 40.9 | 31 |
| 32 | 41.0 | 41.1 | 41.2 | 41.3 | 41.4 | 41.5 | 41.6 | 41.7 | 41.8 | 41.9 | 32 |
| 33 | 42.0 | 42.1 | 42.2 | 42.3 | 42.4 | 42.5 | 42.6 | 42.7 | 42.8 | 42.9 | 33 |
| 34 | 43.0 | 43.1 | 43.2 | 43.3 | 43.4 | 43.5 | 43.6 | 43.7 | 43.8 | 43.9 | 34 |
| 35 | 44.0 | 44.1 | 44.2 | 44.3 | 44.4 | 44.5 | 44.6 | 44.7 | 44.8 | 44.9 | 35 |
| 36 | 45.0 | 45.1 | 45.2 | 45.3 | 45.4 | 45.5 | 45.6 | 45.7 | 45.8 | 45.9 | 36 |

Calculated by Julien A. Hall, M. Am. Soc. C. E.

10.32 $\frac{1}{4}$ post Clough.
22.06

39.24

806

69+70

| | | | |
|------------|----------------|-------------------------------|-------|
| X sect. 39 | to see | } builds atten 1 Bunker | |
| | Nov. 12/13 | | |
| Book 903 | page 80 | | |
| J.P. | 1.59 | HI. 33.69 | 82.10 |
| | 25' 20. | Y street | |
| Eline | | 2.0 | 31.7 |
| | | 0.0 | 33.7 |
| | | +0.5 | 34.2 |
| C | | 0.7 | 33.0 |
| | | 2.2 | 31.5 |
| | | 3.4 | 30.3 |
| cb+5' | | 4.5 | 29.2 |
| white | | 3.8 | 29.9 |
| | 50' 20. | | |
| White | | 5.8 | 27.9 |
| | PLOTTED | 4.1 | 29.6 |
| | | 3.3 | 30.4 |
| C | | 2.4 | 31.3 |
| | | 2.6 | 31.1 |
| | | 3.7 | 30.0 |
| Eline | | 6.5 | 27.2 |

60' street + 10' ¹/₄

3369

75' RO

Elio

11.1 224

8.4 253

6.0 277

C

4.4 293

5.0 287

5.4 283

cb + 5'
white

6.6 271

5.4 283

100' RO

white

6.9 248

7.2 245

6.6 271

C

7.5 263

9.7 244

12.2 215

J.P.

3.98

^{14.5}
27.64

10.03 23.66

Elio

8.9 18.7

80' cross streets 27.64

2

125' RO

Elio

8.7 189

8.4 193

7.9 197

C

6.9 207

8.0 196

1.5 241

white

1.4 242

150' RO

white

1.7 259

1.9 287

3.1 245

C

5.8 218

8.4 193

9.2 183

white

9.2 184

5

PLOTTED

2744

175' RO.

| | | |
|-------|------|------|
| Elms | 10.8 | 14.8 |
| | 10.3 | 17.3 |
| | 9.1 | 18.5 |
| C | 6.8 | 20.8 |
| | 3.6 | 24.0 |
| | 1.4 | 26.2 |
| White | 1.0 | 26.6 |

200' RO.

| | | |
|-------|------|------|
| White | 1.2 | 26.4 |
| | 1.2 | 26.4 |
| | 3.3 | 24.3 |
| C | 6.2 | 21.4 |
| | 9.1 | 18.5 |
| | 11.0 | 16.6 |
| Elms | 11.5 | 16.1 |

PLOTTED

2744

225' RO.

| | | |
|-------|------|------|
| Elms | 11.5 | 16.1 |
| | 10.4 | 17.3 |
| | 8.5 | 19.1 |
| C | 5.1 | 22.5 |
| | 2.3 | 25.3 |
| | 1.4 | 26.2 |
| White | 2.8 | 24.8 |

250' RO.

| | | |
|-------|------|------|
| White | 5.1 | 22.5 |
| | 4.0 | 23.5 |
| | 3.7 | 23.9 |
| C | 4.4 | 23.9 |
| | 6.3 | 21.3 |
| | 8.5 | 19.1 |
| Elms | 10.6 | 17.0 |

3

3764

275' 40.

Eline

7.5 20.1

6.5 21.1

6.3 21.3

c

6.6 21.0

6.8 20.8

7.1 20.5

Whine

7.1 20.5

300' 20' (north line of)

Whine

8.8 18.8

8.3 19.3

8.4 19.2

c

8.3 19.3

7.7 19.9

7.1 20.5

Eline

7.3 20.3

2764

4

no. cl.

Eline

7.8 19.8

8.3 19.3

8.8 18.8

c

8.9 18.7

8.8 18.8

8.9 18.7

Whine

9.8 17.9

no. 14

Whine

10.3 17.3

9.8 17.8

9.4 18.3

c

9.4 18.3

9.3 18.3

9.3 18.3

Eline

8.9 18.7

PLOTTED

2764

Center

Eline

10.2 17.4

10.0 17.4

10.1 17.5

C

10.1 17.5

10.5 17.1

12.0 15.6

white

9.4 18.3

SO 1/4

white

9.2 18.4

10.7 16.9

11.6 15.0

12.7 14.9

12.1 15.5

1/4 + 6'

11.2 15.4

10.7 16.9

Eline

10.6 17.0

2764

NO. 6.

5

Eline

11.9 15.7

13.1 14.5

13.0 14.5

C

11.3 16.3

10.6 17.0

10.0 17.6

white

8.7 18.9

South line of

white

9.1 18.5

10.3 17.3

10.9 16.7

C

11.1 16.5

12.2 15.4

13.0 14.6

Eline

14.1 13.5

PLOTTED

27.64

12' 20.

Elms

12.6 15.0

12.0 15.6

11.5 14.1

c

11.3 14.8

11.2 14.4

10.5 17.1

White

10.0 17.6

J.P.

3.32 ^{14.5} 18.22 12.74 14.90

25' 20.

White

6.0 12.7

5.9 12.3

5.5 12.7

c

5.2 13.0

4.8 13.4

4.7 13.5

Elms

5.8 12.4

PLOTTED

MON. 17/13
1877

50' 20.

Childs
Letter 6
Bunker

Elms

14.4 3.8

14.1 3.1

13.5 4.7

c

9.8 8.4

9.3 8.9

9.3 8.9

White

8.7 9.5

75' 20.

White

14.3 3.9

14.0 4.3

12.1 6.1

c

11.2 7.0

5.9 13.3

5.0 13.9

Elms

4.7 13.5

DATE

1877

91' 20.

Eline

4.5 13.7

4.8 13.4

5.0 13.2

C

5.3 12.9

5.6 12.6

5.8 12.4

White

5.9 12.3

100' 20.

White

1

5.8 12.4

5.7 12.5

5.6 12.6

C

5.2 13.0

5.0 13.2

4.5 13.7

Eline

4.3 13.9

1877

125' 20.

Eline

4.4 13.8

4.3 13.9

4.4 13.8

C

4.6 13.6

4.9 13.3

5.4 12.8

White

5.4 12.8

150' 20.

White

5.3 12.9

5.4 12.8

4.7 13.0

C

4.7 13.5

4.7 13.5

4.6 13.6

Eline

4.6 13.6

PLOTTED

1827

175' 20.

E line

4.3 13.9

4.5 13.7

4.5 13.7

C

4.2 14.0

4.0 14.2

3.9 14.3

W line

4.3 13.9

200' 20.

W line

3.2 15.0

3.1 15.1

3.1 15.1

C

3.1 15.1

3.1 15.1

2.7 15.5

E line

2.7 15.5

PLOTTED

1822

225' 20.

E line

3.1 15.7

3.2 15.0

3.1 15.1

C

3.3 14.9

3.4 14.8

3.2 15.0

W line

3.2 15.0

250' 20.

W line

3.6 14.4

3.7 14.5

3.5 14.7

C

3.3 14.9

3.2 15.0

3.2 15.0

E line

3.3 14.9

1872

275' 20.

Elvis

3.6 14.6

3.5 14.7

3.7 14.5

C

3.3 14.9

3.4 14.8

3.3 14.9

white

3.4 14.8

300' 20 (north line alpha)

white

3.1 15.1

3.2 15.0

3.1 15.1

C

3.1 15.1

3.1 15.1

3.1 15.1

Elvis

3.4 14.8

PLOTTED

1872

9

No. 6.

Elvis

4.0 14.7

3.8 14.4

3.9 14.3

C

3.7 14.5

3.8 14.4

3.8 14.4

white

3.9 14.3

no. 14

white

4.5 13.7

4.4 13.8

4.2 14.0

C

4.1 14.1

4.2 14.0

3.9 14.3

Elvis

3.8 14.4

1872

Center

| | | |
|-------|-----|------|
| Elmo | 4.0 | 14.2 |
| | 4.0 | 14.2 |
| | 4.1 | 14.1 |
| C | 4.1 | 14.1 |
| | 4.2 | 14.0 |
| | 4.2 | 14.0 |
| White | 4.3 | 13.9 |

So 1/4.

| | | |
|-------|-----|------|
| White | 4.2 | 14.0 |
| | 4.1 | 14.1 |
| | 4.1 | 14.1 |
| C | 4.1 | 14.1 |
| | 4.1 | 14.1 |
| | 4.0 | 14.2 |
| Elmo | 4.1 | 14.1 |

PLOTTED

1872

10

So. Cb.

| | | |
|-------|-----|------|
| Elmo | 4.5 | 13.7 |
| | 4.5 | 13.7 |
| | 4.5 | 13.7 |
| C | 4.7 | 13.5 |
| | 4.6 | 13.6 |
| | 4.7 | 13.5 |
| White | 4.7 | 13.5 |

South line alpha.

| | | |
|-------|-----|------|
| White | 3.8 | 14.4 |
| | 3.7 | 14.5 |
| | 3.4 | 14.8 |
| C | 3.3 | 14.9 |
| | 3.2 | 15.0 |
| | 3.4 | 14.8 |
| Elmo | 3.3 | 14.9 |

1832

25' 20.

Eline

3.3 14.9

3.1 15.1

3.4 14.8

c

3.3 14.9

3.1 15.1

3.3 14.9

white

3.3 14.9

50' 20.

white

3.7 14.5

3.9 14.3

3.6 14.6

c

3.6 14.6

3.4 14.8

3.6 14.6

Eline

3.5 14.7

1832

75' 20.

Eline

3.1 15.1

3.3 14.9

3.4 14.8

c

3.8 14.4

3.9 14.3

4.0 14.2

white

4.0 14.2

100' 20.

white

3.7 14.5

3.8 14.4

3.7 14.5

c

3.6 14.6

3.5 14.7

3.3 14.9

Eline

3.0 15.0

PLOTTED

1837

125' 20.

Elmo

3.2 15.0

3.4 14.8

3.4 14.8

c

3.7 14.5

3.7 14.5

3.6 14.6

White

3.8 14.4

150' 20.

White

3.6 14.6

3.5 14.7

3.5 14.7

c

3.2 15.0

3.2 15.0

3.2 15.0

Elmo

3.2 15.0

PLOTTED

1837

12

175' 20.

Elmo

3.6 14.6

3.7 14.5

3.6 14.5

c

3.7 14.5

3.5 14.7

3.8 14.4

White

3.8 14.4

200' 20.

White

4.3 13.9

4.3 13.9

4.2 14.0

c

4.2 14.0

3.9 14.3

3.9 14.3

Elmo

3.6 14.6

1877

225' So.

| | | |
|-------|----------|------|
| Elio | 3.8 | 14.4 |
| | 4.3 | 13.9 |
| | 4.3 | 13.9 |
| c | 4.3 | 13.9 |
| | 4.3 | 13.9 |
| | 4.6 | 13.6 |
| White | 4.8 | 13.4 |
| | 250' So. | |
| White | 4.4 | 13.8 |
| | 4.2 | 14.0 |
| | 4.2 | 14.0 |
| c | 4.3 | 13.9 |
| | 4.1 | 14.1 |
| | 4.0 | 14.2 |
| Elio | 3.8 | 14.4 |

PLOTTED

1877

13

275' So.

| | | |
|-------|---------------------------|------|
| Elio | 3.9 | 14.3 |
| | 4.3 | 13.9 |
| | 4.7 | 13.5 |
| c | 4.6 | 13.6 |
| | 4.7 | 13.5 |
| | 4.5 | 13.7 |
| White | 4.7 | 13.5 |
| | 300' So (north line Beta) | |
| White | 4.8 | 13.4 |
| | 4.7 | 13.5 |
| | 4.5 | 13.7 |
| c | 4.5 | 13.7 |
| | 4.2 | 14.0 |
| | 4.1 | 14.1 |
| Elio | 3.9 | 14.3 |

18.22

no. 26.

| | | |
|-------|-----|------|
| Elmo | 3.1 | 15.1 |
| | 3.6 | 14.6 |
| | 3.7 | 14.5 |
| C | 3.9 | 14.3 |
| | 3.9 | 14.3 |
| | 4.2 | 14.0 |
| white | 4.5 | 13.7 |
| | | |
| | | |
| white | 3.5 | 14.7 |
| | 3.6 | 14.6 |
| | 3.2 | 15.0 |
| C | 2.8 | 15.4 |
| | 2.7 | 15.5 |
| | 2.4 | 15.8 |
| Elmo | 2.0 | 16.2 |

PLOTTED

18.22

14

center

| | | |
|---------------|-------|-------|
| Elmo | 0.0 | 18.2 |
| | 0.2 | 18.0 |
| | 0.5 | 17.7 |
| C | 0.8 | 17.4 |
| | 1.2 | 17.0 |
| | 1.7 | 16.5 |
| white | 2.0 | 16.3 |
| J.P. | 12.98 | 31.02 |
| | | HI |
| | | 20.44 |
| white | 11.4 | 19.6 |
| | 11.3 | 19.7 |
| J.P. 13' man. | 11.27 | |
| | 10.6 | 20.4 |
| C | 9.8 | 21.2 |
| | 9.6 | 21.4 |
| | 9.2 | 21.8 |
| Elmo | 8.7 | 22.3 |

31,02

So. cb.

Eline

3.7 273

4.6 264

5.1 259

C

4.9 261

5.7 253

5.4 254

White

5.9 251

J.P.

12.63 ^{H.I.} 43.43 0.22 30.80

South line Beta Y

White

11.3 321

12.0 314

11.8 316

C

11.0 324

11.2 322

10.8 324

Eline

10.6 328

J.P.

12.99 ^{H.I.} 55.98 0.44 42.99

25' 20.

Eline

11.0 450

11.3 447

12.1 439

C

13.1 439

13.6 424

14.1 419

White

14.2 418

50' E

White

3.4 52.6

2.8 53.2

3.0 53.0

C

3.2 52.8

2.6 53.4

2.7 53.3

Eline

2.9 53.1

PLOTTED

| | | | | |
|-------|-----|-----------------------|------|-------|
| J.P. | 530 | ^{H.P.} 60.88 | 0.40 | 53.58 |
| | | 75' RO. | | |
| White | | | 4.5 | 56.4 |
| | | | 4.3 | 56.6 |
| | | | 4.0 | 56.9 |
| C | | | 4.1 | 56.8 |
| | | | 4.0 | 56.9 |
| | | | 3.8 | 57.1 |
| Elms | | | 3.8 | 57.1 |
| | | 100' RO. | | |
| Elms | | | 3.2 | 57.7 |
| | | | 3.2 | 57.7 |
| | | | 3.3 | 57.5 |
| C | | | 3.5 | 57.4 |
| | | | 3.8 | 57.1 |
| | | | 4.1 | 56.8 |
| White | | | 4.4 | 56.5 |

PLOTTED

White

5.1 55.8

4.7 56.2

4.4 56.5

4.2 57.7

4.1 57.8

4.0 57.9

4.0 57.9

Elms

150' RO.

Elms

4.2 56.7

4.6 56.3

5.2 55.7

5.0 55.9

5.2 55.7

5.5 55.4

White

5.6 55.3

6088

175' RD.

White

6.7 54.2

6.7 54.2

6.3 54.6

C

5.8 55.1

5.2 55.7

4.9 56.0

Eline

4.9 56.0

200' RD.

Eline

5.6 55.3

5.7 55.3

5.9 55.0

C

6.2 54.7

6.7 54.2

7.1 53.8

White

7.4 53.5

PLOTTED

6088

17

225' RD.

White

8.2 53.7

7.7 53.3

7.2 53.7

C

6.8 54.1

6.5 54.4

6.4 54.5

Eline

5.8 55.7

250' RD.

Eline

6.3 54.6

7.2 53.7

7.2 53.7

C

6.8 54.1

7.4 53.5

8.0 52.9

White

8.9 52.0

60.88

18

275' 20.

white

9.8 51.1

9.3 51.4

9.0 51.9

C

8.4 52.5

8.4 52.5

6.9 54.0

Elm

6.6 54.3

304' 20 (North line Gamma)

Elm

7.70 53.18

7.9 53.0

8.5 52.4

C

9.5 51.4

9.6 51.3

9.0 51.9

white

9.5 51.37

PLOTTED

X sect. Grape street from
east. 5 blocks.

32nd street

Nov. 13/13

282.0

Childs
Allen
(Bunker)

J.P.

2.81

H.I.
282.00

279.19

50'E

East line 32nd.

No line

3.42 278.58

No line
Prop. 8'

1.8 280.2

3.9 78.1

3.8 78.2

3.1 78.9

3.8 78.2

13' curb.

2.81 79.19

C.

3.3 78.7

C

2.7 79.3

3.4 78.6

1.8 80.2

2.7 79.3

1.1 80.9

No line

2.4 78.6

No line

1.3 80.7

75'E

25'E

No line

3.0 79.0

No line

1.8 80.2

3.3 78.7

2.2 79.8

3.6 78.4

3.0 79.0

C

4.0 78.0

C

3.1 78.9

4.2 77.8

3.2 78.8

4.3 77.7

3.5 78.5

No line

4.6 77.4

No line

3.6 78.4

PLOTTED

28200

100' E

| | | |
|---------|-----|-------|
| no line | 5.4 | 776.5 |
| | 5.1 | 774.9 |
| | 5.2 | 774.8 |
| C | 4.6 | 777.4 |
| | 4.5 | 777.5 |
| | 3.9 | 781 |
| no line | 4.0 | 780 |

125' E

| | | |
|---------|-----|-------|
| no line | 4.5 | 777.5 |
| | 5.5 | 774.5 |
| | 5.8 | 774.3 |
| C | 5.9 | 776.1 |
| | 6.1 | 775.9 |
| | 6.2 | 775.8 |
| no line | 6.4 | 775.6 |

PLOTTED

28200

150' E

| | | |
|---------|-----|-------|
| no line | 7.6 | 774.4 |
| | 7.3 | 774.7 |
| | 7.3 | 774.7 |
| C | 7.1 | 774.9 |
| | 6.8 | 775.3 |
| | 6.6 | 775.4 |
| no line | 5.5 | 776.5 |

175' E

| | | |
|---------|-----|-------|
| no line | 6.7 | 775.3 |
| | 7.8 | 774.3 |
| | 8.3 | 773.7 |
| C | 8.4 | 773.6 |
| | 8.7 | 773.3 |
| | 8.3 | 773.7 |
| no line | 8.3 | 773.7 |

21

28200

200' E (west line Bancroft)

| | | |
|---------|------|-------|
| no line | 10.2 | 727.8 |
| | 10.0 | 720 |
| | 10.2 | 718 |
| C | 9.5 | 725 |
| | 9.2 | 728 |
| | 8.3 | 737 |
| no line | 8.0 | 740 |

East line Bancroft.

| | | |
|---------|------|-----|
| no line | 7.0 | 750 |
| | 7.6 | 744 |
| | 8.5 | 735 |
| C | 9.1 | 729 |
| | 10.1 | 719 |
| | 11.6 | 704 |
| no line | 17.1 | 649 |

PLOTTED

28200

22

25' E

| | | |
|---------|------|-------|
| no line | 15.5 | 266.5 |
| | 10.8 | 712 |
| | 9.3 | 727 |
| C | 8.5 | 735 |
| | 7.7 | 743 |
| | 7.1 | 749 |
| no line | 6.8 | 752 |

50' E

| | | |
|---------|------|-----|
| no line | 6.7 | 753 |
| | 7.0 | 750 |
| | 7.4 | 746 |
| C | 8.0 | 740 |
| | 8.6 | 734 |
| | 9.5 | 725 |
| no line | 10.3 | 717 |

282.00

75' E

No line

9.3 772.7

8.6 734

7.8 742

C

7.6 744

7.3 747

7.0 750

No line

6.8 752

100' E

No line

7.4 746

7.3 747

7.3 747

C

7.5 748

7.8 749

8.3 737

No line

8.7 733

PLOTTED

282.00

125' E

No line

8.0 774.0

7.6 744

7.4 746

C

7.5 745

7.7 743

7.9 741

No line

8.3 737

150' E

No line

10.9 71.1

9.7 723

9.0 73.0

C

8.9 73.1

8.6 73.4

8.2 73.8

No line

8.2 73.8

28

282.00

175' E

soline

9.6 272.4

no line

10.2 71.8

10.9 71.1

C

11.7 70.3

C

no 1/4

13.0 69.0

no 1/4

200' E

so. cb.

12.6 69.4

no line

soline

10.74 71.26

so. cb.

T.P.

16.7 ^{H.I.} 270.94

12.73 269.27

soline

175' E

no. cb.

2.8 68.1

soline

3.8 67.1

C

soline

270.94

24

200 E (west line 33rd)

7.8 63.1

6.4 64.5

5.2 65.7

3.7 67.3

2.7 68.3

1.4 69.5

2.9 68.0

4.3 66.6

5.4 65.5

6.9 64.0

8.2 62.7

10.2 60.7

PLOTTED

270.94

W. 1/4

no line

12.3 258.6

10.6 403

8.5 424

7.1 63.8

13' hub.

5.43 265.51

4.2 66.7

2.3 68.6

no line

Center

no line

3.8 47.1

5.7 65.3

7.2 63.7

8.8 62.1

10.8 60.1

12.6 58.3

14.3 56.6

no line

PLOTTED

270.94

25

E 1/4

no cb.

13.6 257.3

12.2 58.7

10.4 60.5

8.3 62.6

6.6 64.3

5.0 65.9

no line

E cb.

no line

6.9 64.0

8.6 62.3

10.2 60.7

11.6 59.3

13.2 57.7

c

no 1/4

East line 33rd

no 1/4

13.9 57.0

c

12.3 58.6

11.2 59.7

10.0 60.9

no line

8.47 262.47

270,94

25' E

solino

11.3 259.6

no cb.

12.1 588

J.P.

0.59 ^{H.I.} 258.58 12.95 257.99

E 1/4

no line

3.7 54.9

E. cb.

no line

6.7 51.9

no cb.

2.6 56.0

East line 33rd

no cb.

5.0 53.6

no line

9.3 49.3

25' E

no line

15.6 43.0

9.2 49.4

6.2 52.4

C

3.4 55.3

no 1/4

1.6 57.0

PLOTTED

25858

26

24 50' E

solino

1.5 257.1

2.5 56.1

4.8 53.8

7.1 51.5

C

no 1/4

12.0 46.6

75' E

no 1/4

14.8 43.8

10.8 47.8

8.1 50.5

5.5 53.1

solino

3.7 54.9

100' E

solino

6.9 51.7

9.3 49.3

11.4 47.3

13.7 44.9

C

258.58

125' E

no cb.

13.2 245.4

no line

11.2 47.4

J.P.

0.13 ^{HI} 245.91

12.80 245.78 no line

50' E

no line

10.5 35.4

no cb.

5.2 40.7

75' E

no cb.

9.7 36.9

no line

15.8 30.1

100' E

no cb.

11.8 34.7

no 1/4

5.6 40.3

125' E

no 1/4

6.4 39.5

C

8.2 37.7

no 1/4

12.3 33.6

PLOTTED

245.91

27

135' E

C

12.5 233.4

9.7 36.3

3.3 42.6

-0.3 246.2

150' E

no line

2.2 43.7

9.0 36.9

15.0 30.9

175' E

no cb

14.0 31.9

no line

8.5 37.4

J.P.

0.36 ^{HI} 233.33 12.94 232.97

100' E

no line

6.8 26.5

125' E

no line

11.1 22.3

no cb

5.2 28.1

220.54

Center

So. cb. 16.6 203.9 C

So line 11.7 208.8

J.P. ^{H.I.} 0.22 207.87 12.89 207.65

West line Feltun So line

no line 14.3 193.6

no. cb. 7.7 200.2

W. cb.

no 1/4 4.8 203.1

no. cb. 9.3 98.6

W 1/4

no. cb. 14.4 93.5

8.2 99.7

C 4.3 203.6

Center

7

So 1/4 7.0 200.9

C 10.1 97.8

no. 1/4 13.1 94.8

PLOTTED

207.87

E 1/4

Angle

29

14.7 193.3

12.0 95.9

7.4 200.5

3.4 204.5

E. cb.

7.5 200.4

11.7 96.3

East line Feltun

12.79 195.08

^{H.I.} 1.29 196.37

W. cb. Feltun

6.1 190.3

W 1/4

9.4 87.0

Center

13.2 83.3

7.5 88.9

196,37

50

| | | | | | | | | |
|---------|-------------------|------|-------|---------|------|------------------------|----------|--------|
| | E 1/4 | | | J.P. | 1.13 | ^{H.I.} 184.58 | 12.92 | 183.45 |
| no 1/4 | | 8.8 | 187.6 | | | E.cb | Feltton. | |
| | | 11.9 | 84.5 | no line | | | 8.0 | 176.4 |
| no line | | 16.7 | 79.7 | no cb. | | | 4.9 | 79.7 |
| | E cb. | | | | | East line | Feltton | |
| no 1/4 | | 13.7 | 82.7 | no 1/4 | | | 6.5 | 78.1 |
| C | | 10.6 | 85.8 | | | | 9.0 | 75.6 |
| no 1/4 | | 6.2 | 90.3 | no line | | | 10.5 | 74.1 |
| | East line Feltton | | | | | | | |
| no cb. | | 6.9 | 89.5 | no line | | | 14.2 | 70.4 |
| | | 11.5 | 84.9 | | | | 14.6 | 70.0 |
| C | | 16.3 | 80.1 | | | | 13.8 | 70.8 |
| | 17' E | | | C | | | 10.1 | 74.5 |
| no cb | | 13.0 | 83.1 | no 1/4 | | | 4.8 | 79.8 |
| no line | | 8.7 | 87.7 | | | | | |
| | 25' E | | | | | | | |
| no line | | 11.9 | 84.5 | no cb | | | 4.4 | 80.3 |
| | | | | | | | 8.4 | 76.3 |
| | | | | C | | | 13.7 | 70.9 |
| | | | | C+5' | | | 15.8 | 68.8 |
| | | | | 1/4 | | | 14.6 | 70.0 |
| | | | | | | | 17.2 | 72.4 |
| | | | | no line | | | 11.8 | 72.8 |

PLOTTED

18458

50'E

no line

2.5 182.1

no 1/4

6.9 777

C

11.1 73.5

C

15.0 69.4

16.8 67.8

solino

11.3 73.3

solino

9.3 75.3

solino

75'E

solino

18.6 66.0

no 1/4

18.1 66.5

J.P.

14.6 70.0

J.P.

C

11.0 73.6

6.9 77.7

no.cb.

1.4 83.2

no line

PLOTTED

18458

100'E

1.2 183.4

5.4 79.3

8.1 76.5

11.3 73.3

14.0 70.6

135'E

5.0 79.6

2.2 82.4

-0.3 84.9

0.55 184.03

72.56 172.02

H.I.

12.57 196.54

75'E

8.2 188.3

100'E

1.4 95.1

7.3 89.7

31

| | | | | | | | | |
|---------|--------|------------------------|-------|---------|----------------------------|------------------------|-------|--------|
| | 196.54 | | | | | | | |
| | 125' E | | | J.P. | 12.89 | ^{H.I.} 222.06 | 0.01 | 209.17 |
| no 1/4 | | 3.4 | 193.1 | | 150' E | | | |
| C | | 7.2 | 893 | no line | | | 9.3 | 212.8 |
| | 150' E | | | | 175' E | | | |
| no 1/4 | | 0.9 | 956 | no cb. | | | 2.8 | 19.3 |
| | | 3.9 | 924 | | | | 7.0 | 15.1 |
| no line | | 7.4 | 891 | C | | | 10.0 | 12.1 |
| J.P. | 12.64 | ^{H.I.} 209.18 | 0.00 | 196.54 | 200' E (west line Gregory) | | | |
| | 125' E | | | | | | | |
| no cb. | | 11.8 | 974 | C | | | 1.4 | 20.7 |
| no line | | 6.2 | 2030 | | | | 4.5 | 17.4 |
| | 150' E | | | | | | 7.4 | 14.7 |
| no cb. | | 1.7 | 2075 | no line | | | 10.38 | 211.68 |
| | | 5.8 | 2034 | | | | | |
| C | | 10.0 | 992 | no line | | | 6.4 | 15.7 |
| | 175' E | | | | | | 3.4 | 18.7 |
| no 1/4 | | 1.0 | 2082 | no 1/4 | | | 1.2 | 20.9 |
| | | 3.7 | 2055 | | | | | |
| no line | | 8.1 | 2061 | | | | | |

PLOTTED

222,06

W 1/4

Ro.cb.

1.3 2208

Soline

4.2 17.9

Center

Soline

1.7 20.4

J.P.

12.87 ^{H.F.} 234.70

0.23 221.83

175' E

no line

11.8 22.9

West line Gregory

no line

6.0 28.7

no 1/4

8.4 26.3

11.2 23.5

w.cb.

C

11.2 23.5

8.2 26.5

5.6 29.1

no line

3.2 31.5

PLOTTED

234.70

33

W 1/4

no line

0.8 233.9

3.5 31.2

6.0 28.7

8.6 26.1

10.8 23.9

Center

Ro.cb.

11.0 23.7

8.5 26.2

C

6.1 28.6

no 1/4

3.5 31.2

E 1/4

no 1/4

1.8 32.9

C

4.4 30.3

6.3 28.4

8.5 26.2

Soline

11.6 23.1

234.70

E.cb.

no line

9.1 2254

no.cb.

6.7 280

no line

4.6 301

C

2.5 322

no line

East line Gregory

C

1.3 334

no 1/4

3.5 312

East line Gregory

5.6 291

no 1/4

no line

7.8 249

25' E

no line

no line

5.0 297

25' E

2.7 320

no line

no 1/4

0.6 341

J.P.

5.25 ^{H.I.} 239.73 0.22 234.48

Center of Gregory

C

no line

4.5 352

no.cb

6.8 329

PLOTTED

23973

34

E 1/4

5.3 2344

3.1 366

E.cb.

1.9 378

3.2 365

5.0 347

4.2 355

2.5 372

1.4 383

2.6 371

2.7 370

3.1 366

4.1 356

23973

50'E

no line

8.2 33.5

6.6 33.1

5.2 34.5

c

4.5 35.2

4.4 35.3

4.5 35.2

no line

5.0 34.7

75'E

no line

7.9 31.8

7.0 32.7

6.8 32.9

c

6.9 32.8

6.8 32.9

7.6 32.1

no line

8.5 31.2

PLOTTED

239,73

35

100'E

no line

9.8 229.9

9.2 30.5

8.8 30.9

c

9.1 30.4

9.8 29.9

10.9 28.8

no line

12.6 27.1

125'E

no line

11.3 28.4

10.8 28.9

11.0 28.7

c

12.5 27.2

13.7 26.0

14.6 25.1

no line

16.8 22.9

227.75

Grade

36

J.P.

0.60 ^{H.I.} 227.75 / 2.58 227.15

150' E

202.4' East (pueblo line)

Robin

11.8 214.0

no. cb

13.4 214.4

Robin

11.4 216.61

8.8 19.0

J.P.

0.12 ^{H.I.} 215.16 / 12.71 215.04

6.7 21.1

175' E. Gregory

C

5.2 22.6

Robin

7.3 207.9

3.7 24.1

202.4' East (pueblo line)

1.6 26.2

no 1/4

3.32 211.84

Robin

0.1 27.7

C

5.8 209.4

175' E

9.1 206.1

Robin

5.1 22.7

12.0 203.2

6.9 20.9

Robin

15.0 200.2

8.3 19.5

C

10.4 17.4

12.6 15.3

no. cb.

16.3 11.5

PLOTTED

PLOTTED

X sect. 9 by from East line 32nd to pueblo. line 284.34
 last of Gregory. 80' street 14' sidewalk cross. streets all 80' wide Nov. 17/13
 J.P. 13' hub. ^{5.0 E} or East ^{H.I.} 284.34 279.26
 line 32nd East line 32nd

Lehilds
 after 37
 Banker

| Left Side | Measure | Value | Right Side | Measure | Value |
|-----------|---------|-------|------------|---------|------------|
| No. line | 9.2 | 275.1 | No. line | 50' E | 14.3 270.0 |
| | 6.4 | 77.9 | | | 10.6 73.7 |
| | 5.08 | 79.3 | | | 8.0 74.3 |
| C | 4.2 | 80.1 | C | | 5.4 78.9 |
| | 3.6 | 80.7 | | | 4.3 80.0 |
| | 3.3 | 81.0 | | | 3.7 80.6 |
| No. line | 3.0 | 81.3 | No. line | | 3.1 81.3 |
| | | | | 60' E | |
| No. line | 2.5 | 81.8 | No. line | | 4.8 79.5 |
| | 3.0 | 81.3 | | | 5.9 78.4 |
| | 3.4 | 80.9 | | | 7.1 77.3 |
| C | 3.8 | 80.5 | C | | 9.8 74.5 |
| | 4.6 | 79.7 | No 1/4 | | 13.5 70.8 |
| | 5.3 | 79.0 | | 75' E | |
| No. line | 6.9 | 77.4 | No. line | | 11.3 73.0 |
| | | | No. cb. | | 13.3 71.0 |

PLOTTED

28434

125' E

| | | |
|---------|------|------|
| no line | 10.8 | 2735 |
| | 15.0 | 693 |
| | 13.8 | 705 |
| C | 13.3 | 710 |

150' E

| | | |
|---------|------|-----|
| so 1/4 | 11.6 | 727 |
| C | 9.5 | 748 |
| | 8.0 | 763 |
| | 7.4 | 769 |
| no line | 7.6 | 767 |

175' E

| | | |
|---------|------|-----|
| no line | 2.1 | 823 |
| | 4.2 | 801 |
| | 5.1 | 792 |
| C | 6.5 | 778 |
| | 8.1 | 762 |
| | 9.3 | 750 |
| so line | 10.9 | 734 |

PLOTTED

28434

38

200' E (no line Bancroft)

| | | |
|-----------|-------|------------------|
| no line | 9.0 | 2753 |
| | 6.1 | 782 |
| | 4.7 | 794 |
| C | 3.5 | 808 |
| | 2.7 | 814 |
| | 2.0 | 823 |
| no line | 0.6 | 837 |
| High turn | 0.00 | 28434 |
| J.P. | 0.44 | 272.12 |
| | 12.66 | 271.68 |
| | 60' E | 32 nd |

| | | |
|---------|-------|-----|
| so line | 6.7 | 654 |
| so. cb. | 5.2 | 669 |
| | 75' E | |
| no. 1/4 | 3.1 | 690 |
| C | 5.9 | 662 |
| | 10.2 | 619 |
| | 12.8 | 593 |
| so line | 16.3 | 558 |

272.12

100' E

no line

9.2 262.9

no 1/4

13.0 259.1

15.7 256.4

125' E

no 1/4

3.3 68.8

9.0 68.1

no line

14.7 57.4

150' E

no line

7.0 65.1

no cb.

1.8 70.3

J.P.

0.00 ^{H.I.} 259.75 12.37 259.75

100' E 32nd.

no line

16.0 43.8

10.9 48.9

6.2 53.6

C

2.8 57.0

PLOTTED

39

J.P.

0.28 ^{H.I.} 289.62

284.34

East line Bancroft.

no line

2.29 287.33

cb + 6'

2.6 87.0

+ 7'

3.0 84.6

1/4

4.2 85.4

C

4.1 85.5

4.0 85.6

4.9 84.7

5.3 84.3

no line

6.1 83.5

25' E

no line

6.6 83.0

4.9 84.7

3.9 85.7

3.3 86.3

3.7 85.9

3.7 85.9

2.6 87.0

2.4 87.7

no line

2.0 87.6

PLOTTED

98947

50' E

| | | |
|-----------|-----|------|
| no line | 1.7 | 87.9 |
| | 2.3 | 87.3 |
| cb + 5' | 2.5 | 87.1 |
| + 8' | 3.6 | 86.0 |
| | 3.4 | 86.3 |
| C | 2.6 | 87.0 |
| | 2.8 | 86.8 |
| | 3.8 | 85.8 |
| no line | 5.5 | 84.1 |
| | 3.7 | 85.9 |
| | 2.6 | 87.0 |
| | 2.2 | 87.4 |
| 1/4 + 11' | 1.8 | 87.8 |
| C | 2.8 | 86.8 |
| | 3.5 | 86.1 |
| 1/4 + 6' | 3.7 | 85.9 |
| + 8' | 2.6 | 87.0 |
| | 2.4 | 87.2 |
| no line | 2.0 | 87.6 |

PLOTTED

98947

40

100' E

| | | |
|-----------|-----|------|
| no line | 2.6 | 87.0 |
| | 3.1 | 86.5 |
| cb + 5' | 3.1 | 86.8 |
| + 8' | 4.0 | 85.6 |
| | 3.7 | 85.9 |
| 1/4 + 11' | 3.3 | 86.3 |
| C | 1.8 | 87.8 |
| | 2.2 | 87.4 |
| | 2.7 | 86.9 |
| no line | 3.5 | 86.1 |
| | 3.4 | 86.2 |
| | 3.2 | 86.4 |
| | 3.0 | 86.6 |
| 1/4 + 11' | 3.0 | 86.6 |
| C | 4.0 | 85.6 |
| | 4.7 | 84.9 |
| 1/4 + 6' | 5.0 | 84.6 |
| + 8' | 4.3 | 85.3 |
| | 4.0 | 85.6 |
| no line | 3.6 | 86.0 |

289.62

150' E

| | | |
|---------|-----|-------|
| no line | 5.3 | 824.3 |
| cb+5' | 5.8 | 838 |
| +7' | 5.8 | 838 |
| | 6.9 | 827 |
| | 6.3 | 833 |
| C | 5.9 | 837 |
| C+1' | 4.1 | 85.5 |
| | 4.0 | 85.6 |
| | 4.0 | 85.6 |
| no line | 4.2 | 85.4 |
| no line | 6.5 | 83.1 |
| | 6.7 | 82.9 |
| | 6.7 | 82.9 |
| 1/4+11' | 6.3 | 83.3 |
| C | 7.8 | 81.8 |
| | 8.3 | 81.3 |
| 1/4+5' | 8.9 | 80.7 |
| +7' | 8.3 | 81.3 |
| | 8.3 | 81.3 |
| no line | 7.9 | 81.7 |

PLOTTED

289.62

41

200' E (West line 33rd)

| | | |
|---------|------------------------------|--------|
| no line | 10.79 | 278.83 |
| | 10.6 | 79.0 |
| cb+6' | 10.7 | 78.9 |
| +7' | 11.1 | 78.8 |
| | 10.6 | 79.0 |
| C | 9.9 | 79.7 |
| C+3' | 8.7 | 80.9 |
| | 8.5 | 81.1 |
| | 8.6 | 81.0 |
| no line | 9.1 | 80.5 |
| J-P. | 0.83 | 277.46 |
| | 12.99 | 276.63 |
| | 11.25 | 278.35 |
| | 11.25 | 278.37 |
| | 13' hub. at 33 rd | |
| | East line 33 rd | |
| no line | 4.64 | 272.82 |
| | 5.1 | 72.4 |
| cb+5' | 5.5 | 72.0 |
| +8' | 6.6 | 70.9 |
| | 6.1 | 71.4 |
| C | 5.7 | 71.8 |
| | 6.3 | 71.7 |
| 1/4+5' | 6.7 | 70.8 |
| +7' | 6.0 | 71.5 |
| cb | 5.7 | 71.8 |
| no line | 5.6 | 71.9 |

277,46

25' E

No line

9.1 2684

No line

-0.1 265.1

cb+6'
+8'

9.1 484

9.3 482

10.1 474

cb+5'
+7'

2.0 43.0

0.6 44.4

1.3 43.7

9.7 478

0.8 44.3

C

9.3 482

C

0.4 44.6

10.0 475

10.3 472

9.3 482

1/4+6'
+7'

0.8 44.3

1.1 43.9

0.4 44.6

1/4+5'
+8'

8.9 486

0.4 44.6

No line

8.6 48.9

No line

0.4 44.6

J.P.

0.23 ^{H.T.} 264.98 12.71 264.75

No line

3.9 41.1

cb+6'
+7'

4.0 41.0

4.1 40.9

4.9 40.1

4.6 40.4

C

4.1 40.9

4.9 40.1

5.3 39.7

4.1 40.9

1/4+6'
+8'

4.1 40.9

4.0 41.0

No line

PLOTTED

264,98

42

50' E

75' E

26498

100' E

No. line

8.0 7570

cb +5'
+7'

8.0 578

8.2 578

9.2 558

8.6 574

C

7.9 571

1/4 +5'
+8'

8.5 575

8.9 561

7.5 575

7.5 578

Sol. line

7.5 575

125' E

Sol. line

10.8 542

cb +5'
+7'

11.0 540

11.1 539

12.6 534

12.3 527

C

11.9 531

1/4 +5'
+8'

12.8 522

13.4 516

12.3 527

12.2 528

12.2 528

no line

PLOTTED

43

J.P.

0.70 ^{H.I.} 252.69 1298 251.99

150' E

no. line

3.7 749.0

cb +6'
+8'

3.8 48.9

4.0 48.7

4.7 48.0

C

4.2 48.5

3.1 49.6

1/4 +6'
+8'

3.5 49.2

3.8 48.9

2.4 50.3

2.2 50.5

Sol. line

2.0 50.7

175' E

Sol. line

6.0 46.7

cb +5'
+7'

6.1 46.6

6.3 46.4

7.7 45.0

C

7.3 45.4

7.1 45.6

1/4 +6'
+8'

8.0 44.7

8.9 43.8

7.8 44.9

7.7 45.0

7.8 44.9

no line

25269

200' E (West line Feltus)

| | | |
|------------|------|-------|
| no line | 11.5 | 341.2 |
| | 11.6 | 41.1 |
| | 11.6 | 41.1 |
| C | 10.9 | 41.8 |
| | 10.9 | 41.8 |
| 1/4 + 6' | 11.0 | 41.7 |
| + 8' | 10.0 | 41.7 |
| | 9.6 | 43.1 |
| no line | 9.83 | 42.84 |
| west cb. | | |
| no line | 10.4 | 42.3 |
| Prop + 11' | 10.6 | 42.1 |
| cb. | 12.0 | 40.7 |
| | 12.3 | 40.4 |
| C | 12.7 | 40.0 |
| | 13.1 | 39.6 |
| 1/4 + 11' | 13.2 | 39.5 |
| cb | 12.6 | 40.1 |
| no line | 12.6 | 40.1 |

25269

44

3' east of west cb.

| | | |
|---------------------|------|--------|
| no line | 12.7 | 240.0 |
| Prop + 4' | 13.7 | 39.0 |
| cb. | 13.3 | 39.4 |
| | 13.2 | 39.7 |
| C | 13.1 | 39.6 |
| | 12.4 | 40.3 |
| | 12.4 | 40.3 |
| no line | 11.0 | 41.7 |
| 6' east of west cb. | | |
| no line | 12.2 | 40.5 |
| | 12.6 | 40.1 |
| | 12.7 | 40.0 |
| C | 13.1 | 39.6 |
| | 13.4 | 39.3 |
| | 13.5 | 39.2 |
| no line | 14.0 | 38.7 |
| J.P. | 0.55 | 240.30 |
| | H.F. | 12.94 |
| | | 239.75 |

240.30

West 1/4

no. line

1.5 2388

1.3 390

1.0 393

C

0.8 395

0.5 398

0.1 402

No. line

-0.2 240.5

Center

No. line

-0.5 240.8

-0.2 240.5

0.2 401

C

0.3 400

0.6 397

0.9 394

No. line

1.2 391

PLOTTED

240.30

45

E 1/4

no. line

12.6 227.7

11.5 288

10.9 294

C

10.0 303

9.3 310

9.2 311

9.3 310

No. line

0.38 ^{H.I.} 227.62 13.06 227.24

J.P.

E. of

No. line

6.1 215

4.4 232

3.9 237

C

5.3 223

6.5 211

7.7 199

No. line

9.4 192

227.62

East line Feltun

| | | |
|--------|------|-------|
| no 1/4 | 13.5 | 214.1 |
| C | 11.5 | 16.1 |
| | 10.2 | 17.4 |
| no. cl | 10.7 | 216.9 |

50'E

| | | |
|----------|------|------|
| no. line | 11.7 | 15.9 |
|----------|------|------|

75'E

| | | |
|----------|-----|------|
| no. line | 6.4 | 21.9 |
|----------|-----|------|

7.7 19.9

| | | |
|---------|------|------|
| no. 1/4 | 12.2 | 15.4 |
|---------|------|------|

100'E

| | | |
|---|------|------|
| C | 11.1 | 16.5 |
|---|------|------|

5.6 22.0

3.7 23.9

| | | |
|----------|-----|------|
| no. line | 1.5 | 26.1 |
|----------|-----|------|

PLOTTED

227.62

46

125'E

| | | |
|--------|-----|-------|
| no. cl | 2.6 | 225.0 |
|--------|-----|-------|

4.3 23.3

4.8 22.8

| | | |
|--------|------|------|
| no 1/4 | 11.1 | 16.5 |
|--------|------|------|

150'E

| | | |
|----------|------|------|
| no. line | 13.9 | 13.7 |
|----------|------|------|

8.1 19.5

5.0 22.5

2.8 24.8

3.3 24.3

175'E

| | | |
|---|-----|------|
| C | 3.5 | 24.1 |
|---|-----|------|

3.3 24.3

5.0 22.6

8.2 19.4

3.24 224.38

High turn.

J.P.

1.94 ^{H.S.} 216.56 13.00 214.62

135' E Feltan

So. line

9.3 207.3

No. line

8.5 208.1

No. cb.

4.6 120

No. cb.

4.2 12.4

So. line

3.6 13.0

100' E.

So. cb.

11.5 205.1

So. line

11.7 204.9

So. 1/4

6.0 10.6

4.9 11.7

C

75' E

2.9 13.7

C

6.2 10.4

C

5.4 11.2

No. 1/4

13.9 202.7

7.4 209.2

50' E.

No. 1/4

10.0 206.6

No. line

10.2 206.4

No. cb.

4.5 12.1

11.7 204.9

25' E

11.9

10' E

11.7

PLOTTED

21656

47

East line Feltan

10' E.

PLOTTED

216.56

25'E

no line

11.9 2047

no. cb.

10.0 196.7

14.7 2019

no line

13.7 93.0

16.3 2003

100'E

C

14.2 2024

no. line

8.9 97.8

10.5 206.1

J.P.

5.73 ^{H.T.} 230.11

224.38

12.3 2043

125'E Feltin

cb+7'

14.9 2017

no line

2.5 227.6

no line

9.7 206.9

4'20'

4.6 25.5

J.P.

2.73 ^{H.T.} 206.72 12.57 203.99

150'E

50'E

no. cb.

4.7 254

no line

5.1 2016

cb+9'

3.9 26.2

11.0 195.7

no. line

0.6 29.5

10.5 96.2

175'E

C

5.5 2012

no. line

2.2 27.9

+6'

5.5 246

cb.

5.7 244

cb+7'

5.7 244

+9'

6.9 23.2

no 1/4

6.5 23.4

PLOTTED

206.72

18

75'E

PLOTTED

230.11

193' E

No line

10.1 220.0

8.6 215

7.3 228

8.2 219

9.1 210

9.1 210

8.2 219

8.3 218

8.1 220

5.4 247

cb + 8'
no line

no line

west line Gregory

9.57 220.54

9.8 20.3

10.0 20.1

9.6 20.5

9.2 20.9

10.0 20.1

11.2 18.9

No line

PLOTTED

230.11

10

west cb.

No line

13.4 214.7

13.4 15.7

12.9 17.3

C

12.4 17.7

11.8 18.3

11.6 18.5

no line

11.0 19.1

w 1/4

no line

11.4 18.7

11.9 18.3

12.5 17.6

C

13.1 17.0

w 1/4 + 5'

C

13.1 17.0

13.0 17.1

12.8 17.3

no line

12.0 18.1

| | | | | | | | |
|-------------|------------|-----------------------|-------|--------|----------|-------|-----------------------|
| J.P. | 0.65 | ^{HI.} 217.88 | 12.88 | 217.23 | E. 1/4 | | |
| | W 1/4 | | | | No. line | 16.8 | 201.1 |
| No 1/4 | | | 3.3 | 214.6 | | 16.2 | 201.7 |
| | | | 4.2 | 137 | cb + 8' | 15.1 | 202.8 |
| No. line | | | 5.3 | 126 | | 11.0 | 202.9 |
| | W 1/4 + 5' | | | | 1/4 + 9' | 7.5 | 210.4 |
| | | | | | c | 7.0 | 210.9 |
| No. line | | | 7.2 | 107 | | 6.4 | 11.5 |
| | | | 6.5 | 114 | | 6.1 | 11.8 |
| No 1/4 | | | 6.1 | 11.8 | no. line | 5.8 | 12.1 |
| No 1/4 + 8' | | | 0.7 | 17.9 | | | |
| | Center | | | | | | |
| | | | | | no. line | 6.8 | 11.1 |
| no. line | | | 2.9 | 150 | | 8.7 | 209.2 |
| | | | 3.9 | 140 | | 10.0 | 207.9 |
| | | | 4.5 | 134 | C | 12.8 | 205.1 |
| C | | | 4.0 | 13.9 | J.P. | 0.30 | ^{HI.} 205.52 |
| | | | 6.5 | 114 | No 1/4 | 12.66 | 205.22 |
| | | | 10.0 | 207.9 | | 6.6 | 198.9 |
| No. line | | | 10.9 | 207.0 | No. line | 10.1 | 95.4 |
| | | | | | | 11.5 | 94.0 |

PLOTTED

205.52

East line Gregory

| | | | | |
|----------|------|------------------------|-------|----------|
| So. line | | 17.5 | 1888 | no 1/4 |
| | | 16.1 | 894 | |
| | | 13.6 | 919 | no. line |
| C | | 10.4 | 951 | J.P. |
| | | 7.3 | 989 | C |
| | | 5.1 | 2004 | |
| no. line | | 4.2 | 2013 | |
| J.P. | 0.42 | ^{H.I.} 192.99 | 12.95 | 192.57 |
| | | 25' E | | no. line |
| no. line | | 2.8 | 190.2 | no. line |
| | | 5.3 | 877 | |
| | | 6.6 | 864 | |
| C | | 8.8 | 84.2 | C |
| | | 11.2 | 818 | |
| | | 13.5 | 795 | |
| So. line | | 15.0 | 780 | no. line |

PLOTTED

192.99

51

50' E

| | | | |
|--|-----------------|-------|--------|
| | | 14.7 | 1883 |
| | | 12.3 | 807 |
| | | 11.0 | 820 |
| | ^{H.I.} | 3.71 | 183.83 |
| | | 12.87 | 180.12 |
| | | 7.8 | 74.0 |
| | | 13.4 | 70.4 |
| | | 13.6 | 70.2 |
| | | 14.7 | 69.1 |

56' E

| | | | |
|--|--|------|-------|
| | | 16.6 | 47.2 |
| | | 15.9 | 47.9 |
| | | 15.8 | 48.0 |
| | | 11.0 | 72.8 |
| | | 7.3 | 76.5 |
| | | 5.3 | 78.5 |
| | | 3.8 | 180.0 |

18383

75' E

no. line

7.4 171.4

9.4 74.4

11.3 79.5

C

13.5 70.3

draw.

14.9 68.9

13.9 69.9

no. line

13.8 70.0

100' E

no. line

12.2 71.6

draw.

14.1 69.7

13.3 70.5

C

12.7 71.1

11.3 72.5

10.8 73.0

no. line

10.3 73.5

18383

125' E

no. line

11.1 172.7

draw.

72.5 71.3

12.2 71.5

C

12.0 71.8

11.8 72.0

10.3 73.5

no. line

6.6 77.2

134' E

no. line

3.1 80.7

6.4 77.4

9.4 74.4

C

10.8 73.0

11.1 72.7

11.1 72.7

no. line draw.

12.2 71.6

52

PLOTTED

183.83

150' E

| | | | |
|----------|--------|------------------------|-------------|
| No. line | | 7.9 | 175.9 |
| | | 6.5 | 177.3 |
| Mo. 1/4 | | 5.5 | 78.0 |
| J.P. | 13.06 | ^{H.I.} 192.95 | 3.94 179.89 |
| C | | 13.1 | 79.9 |
| | | 10.5 | 82.5 |
| | | 8.8 | 84.3 |
| No. line | | 6.9 | 86.1 |
| J.P. | 8.98 | ^{H.I.} 201.66 | 0.27 192.68 |
| | 175' E | 6.5 | |
| No. line | | 6.5 | 95.3 |
| | | 8.0 | 93.7 |
| | | 8.6 | 93.1 |
| C | | 10.4 | 91.5 |
| | | 12.6 | 89.1 |
| | | 14.4 | 87.3 |
| No. line | | 14.6 | 87.1 |

PLOTTED

20144

53

190' E (on north of 191.2 on Smith)

| | | | |
|----------|---------------------------|-------|------------------------|
| No. line | | 9.0 | 192.7 |
| | | 8.5 | 93.2 |
| | | 6.9 | 94.8 |
| C | | 4.8 | 94.9 |
| | 13' hub. | 3.50 | 198.14 |
| | | 2.0 | 99.7 |
| | | 0.1 | 201.6 |
| No. line | | 12.86 | ^{H.I.} 214.46 |
| J.P. | | 0.06 | 201.60 |
| | slk. on Grape. within 01. | | |

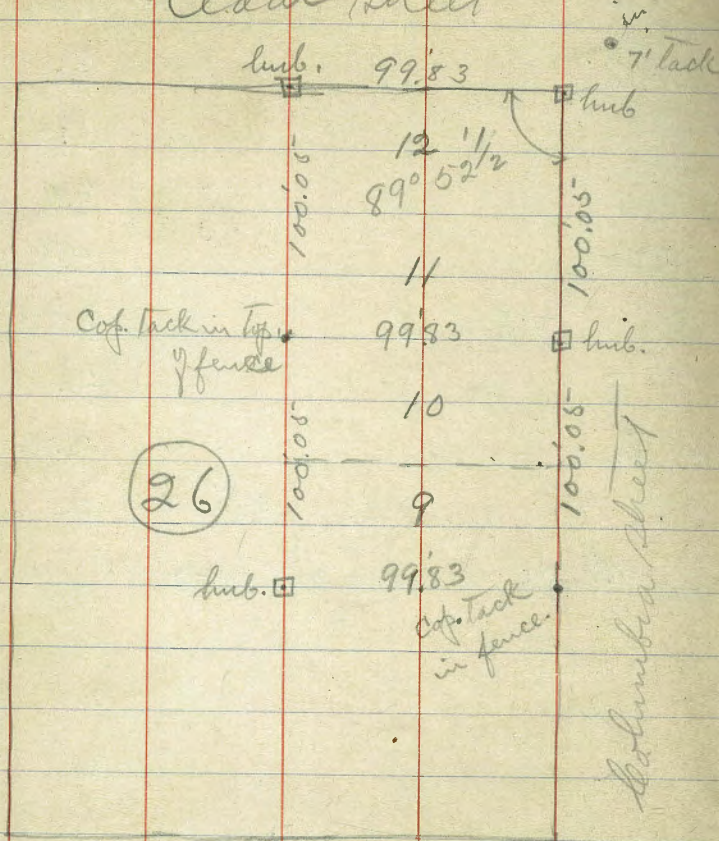
PLOTTED

Survey of lots 9-12 Blk. 26 Middletown add.
Cedar sheet

Dec. 27/13

Field 54
Allen
Bunker

India sheet



7' tack replaced.
Plotted 12/27
in TP book

99.83
99.83
14
213.56

Beech sheet

Columbia sheet



Jan 14/14 } Childs
 } letter 55
 } Bunker

X sect. 50° road from
 Horton south to arroyo
 drive.

| |
|--------|
| 8.94 |
| 117.4 |
| 126.34 |
| 16.2 |
| 110.32 |

4.53 ^{HJ} 75.76 71.23

sect. A B (117.4)

| | | |
|----------|------|------|
| E line | 8.14 | 67.6 |
| | 8.0 | 67.8 |
| | 8.1 | 67.7 |
| 1/4 + 6' | 4.6 | 71.2 |
| C | 4.6 | 71.2 |
| C + 17' | 2.4 | 73.4 |

sect. A C (83) approx

| | | |
|------------|------|------|
| Prop. + 4' | 4.8 | 71.0 |
| cb. | 5.1 | 70.7 |
| | 5.0 | 70.8 |
| C | 5.6 | 70.2 |
| C + 4' | 7.6 | 68.2 |
| cb. | 8.0 | 67.8 |
| | 8.1 | 67.7 |
| E line | 8.14 | 67.6 |

75.76

sect. A D (80) approx

| | | |
|--------|------|------|
| E line | 8.14 | 67.6 |
| | 8.2 | 67.6 |
| | 8.2 | 67.6 |
| | 7.4 | 68.4 |
| | 5.4 | 70.4 |
| | 5.2 | 70.6 |
| | 4.9 | 70.9 |
| | 5.4 | 70.4 |

sect. A E (50')

| | | |
|--------|------|------|
| | 8.5 | 67.3 |
| | 8.8 | 67.0 |
| | 8.6 | 67.2 |
| | 8.6 | 67.2 |
| | 8.5 | 67.3 |
| | 8.4 | 67.4 |
| E line | 8.14 | 67.6 |

7576

50' no. sect A.E. (50)

| | | |
|-------|---------|------|
| Elms | 8.5 | 67.3 |
| | 8.7 | 67.1 |
| | 8.9 | 66.9 |
| C | 8.9 | 66.9 |
| | 8.9 | 66.9 |
| | 9.1 | 66.7 |
| white | 9.2 | 66.6 |
| | 80' no. | (50) |
| white | 9.8 | 66.0 |
| | 9.7 | 66.1 |
| | 9.7 | 66.1 |
| C | 9.4 | 66.4 |
| | 9.1 | 66.7 |
| | 9.1 | 66.7 |
| Elms | 8.71 | 67.0 |

7576

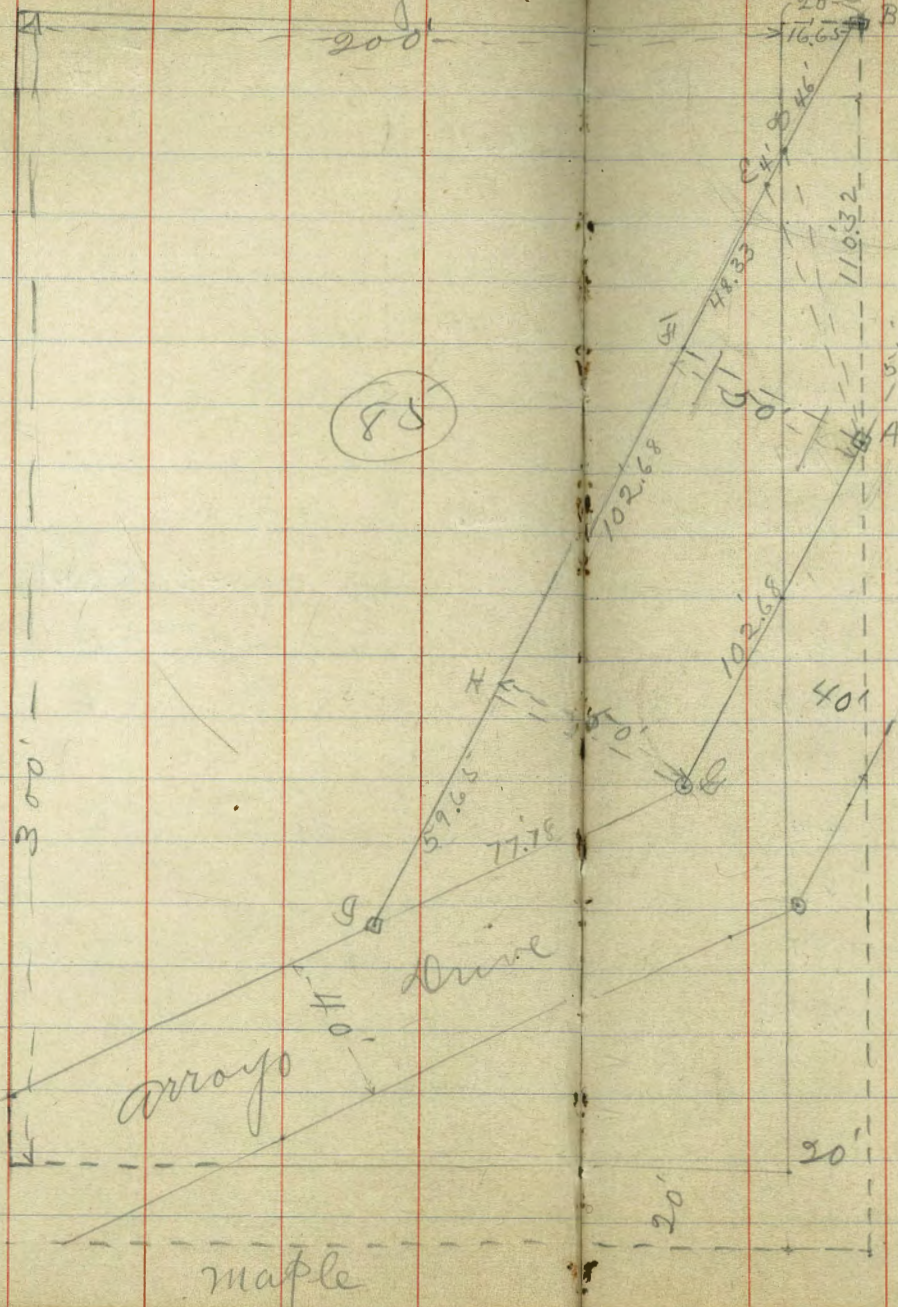
57

sect H.A. (77.78)

| | | |
|--------|------------------------|-------|
| elm | 8.71 | 67.0 |
| | 9.0 | 66.8 |
| | 9.2 | 66.6 |
| C | 9.5 | 66.3 |
| | 9.6 | 66.2 |
| | 9.7 | 66.1 |
| white | 9.63 | 66.1 |
| J.P. | 12.23 | 87.31 |
| | ^{H.E.} | 0.68 |
| | 75.08 | |
| | sect. A.B. (117.4) | |
| w/ly | 6.3 | 81.0 |
| w.c.b. | 1.9 | 85.4 |
| | sect. A.C. (83) approx | |
| white | 4.8 | 82.5 |
| J.P. | 4.22 | 90.53 |
| | ^{H.E.} | 1.00 |
| | 86.31 | |
| | sect A.C. (117.4) | |
| white | 2.09 | 88.4 |

Union

Nutmeg
200'



(85)

arroyo drive

maple

X sect. 50 drive west of
arroyo drive in Blk.
85 Middleton add. 8

Jan 16/14
L. Childs
C. L. Lott
B. B. Bunker

Hickory

H.I.
5.60 76.83

71.23

Sect-AB (110'32)

Elms

9.06 67.8

Elms

9.06 67.8

cb+9'

9.3 67.5

9.1 67.7

5.7 71.1

8.4 68.4

5.6 71.2

1/4+5'

6.0 70.8

C

5.0 71.8

6.4 70.4

C+5'

3.4 73.4

6.5 70.3

Sect A20 (73') approx

whit+8'

7.0 69.8

White

7.3 69.5

7.6 69.2

cb.

6.9 69.9

Sect A.F.

6.1 70.7

White

9.6 67.2

C

6.1 70.7

9.6 67.2

C+6'

6.0 70.8

9.4 67.4

8.4 68.4

C

9.5 67.3

9.1 67.7

9.5 67.3

Elms

9.06 67.8

Elms

9.3 67.5

9.06 67.8

76.83

70

7683

50' south sect. A.F.

| | | |
|-------|-------------------------|------|
| Elms | 9.8 | 67.0 |
| | 9.9 | 66.9 |
| | 10.0 | 66.8 |
| C | 10.1 | 66.7 |
| | 10.2 | 66.6 |
| | 10.3 | 66.5 |
| White | 10.3 | 66.5 |
| | sect. G.H. (102.68 Ad.) | |
| White | 11.0 | 65.8 |
| | 10.9 | 65.9 |
| | 10.8 | 66.0 |
| C | 10.7 | 66.1 |
| | 10.5 | 66.3 |
| | 10.2 | 66.3 |
| Elms | 10.02 | 66.8 |

7683

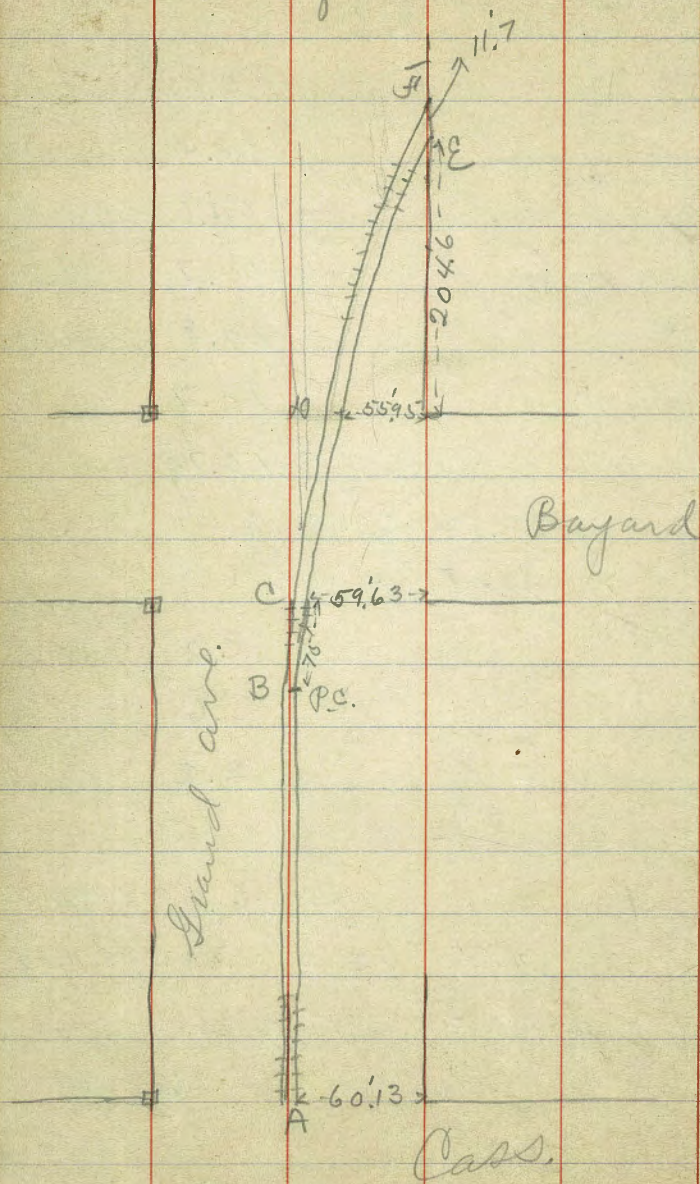
60

Sect G.F.

| | | |
|-------|-------------------|-------|
| Elms | 10.02 | 66.8 |
| | 10.4 | 66.4 |
| | 10.6 | 66.3 |
| C | 10.7 | 66.1 |
| | 10.8 | 66.0 |
| | 10.7 | 66.1 |
| White | 10.70 | 66.1 |
| | 12.52 | 88.88 |
| | H.I. | |
| | 0.47 | 76.36 |
| | sect. A.B. | |
| | 8.0 | 80.9 |
| | 5.6 | 83.3 |
| | 2.2 | 84.7 |
| | sect. A 10 | |
| | 6.1 | 82.8 |
| | 4.88 | 92.00 |
| | H.I. | |
| | 1.76 | 87.12 |
| | sect AB (point B) | |
| | 2.26 | 89.7 |
| | Point C | |
| | 2.56 | 89.4 |

Survey of Grand ave. Pacy is Beach showing location
of R.R. track and levels. Page 62

J. Schilf
Allen
May 5/14
Bunker



See diagram page 61,

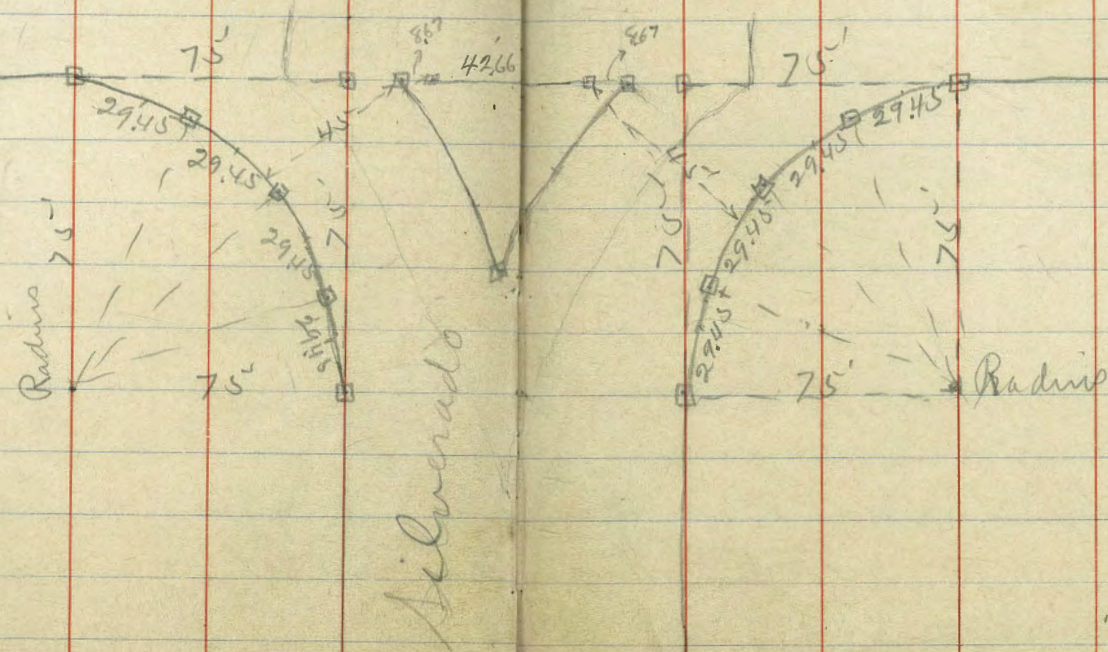
62

| J.P. | <u>Rod</u> No. rail | <u>H.I.</u> 18.75 | <u>Rod</u> So. rail | 17.80 | B.N.I. |
|---------|------------------------|----------------------|------------------------|-------|--------|
| Point A | 2.3 | 16.45 | 2.3 | 16.45 | |
| " B | 6.42 | 12.43 | 6.47 | 12.28 | |
| " C | 7.10 | 11.65 | 7.03 | 11.72 | |
| " D | 7.68 | 11.07 | 7.31 | 11.44 | |
| " E | 7.43 | 11.32 | 7.05 | 11.70 | |
| " F | 7.40 | 11.35 | 7.02 | 11.73 | |

Survey for cutting corners
 of Blocks opposite artesian well tract.

May 5/14 } Childs
 } Allen 53
 } Bunker

Herschel



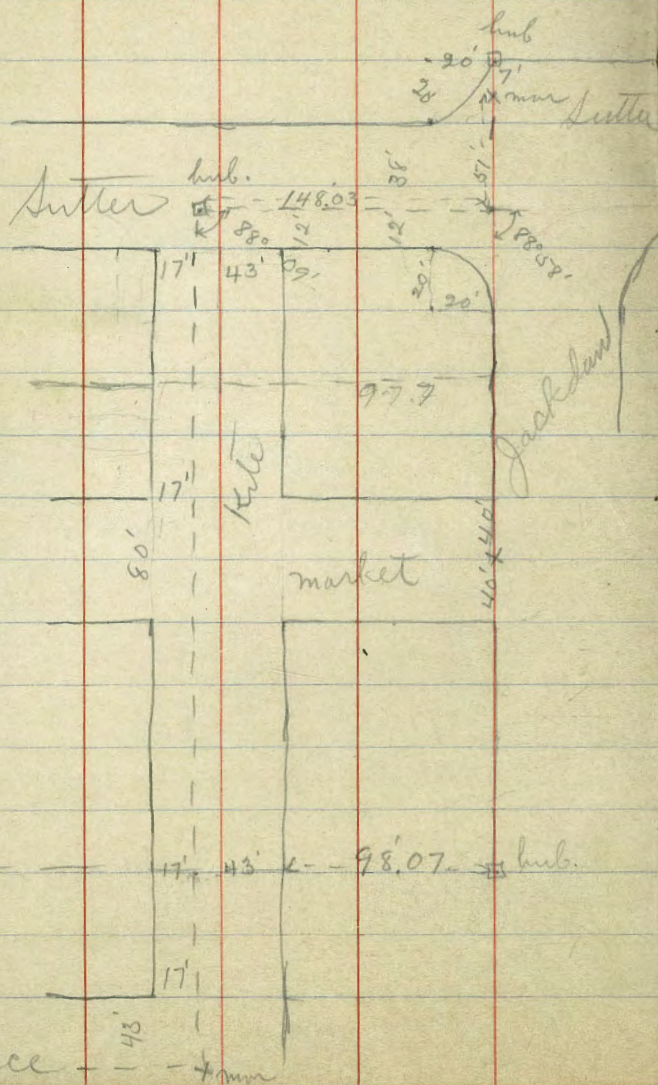
24007'
 8.67
 10.33

Survey for opening Kite St.

from Market to Sutter.

aug 7/14

Bliss
Allen



133.81'
0°49'

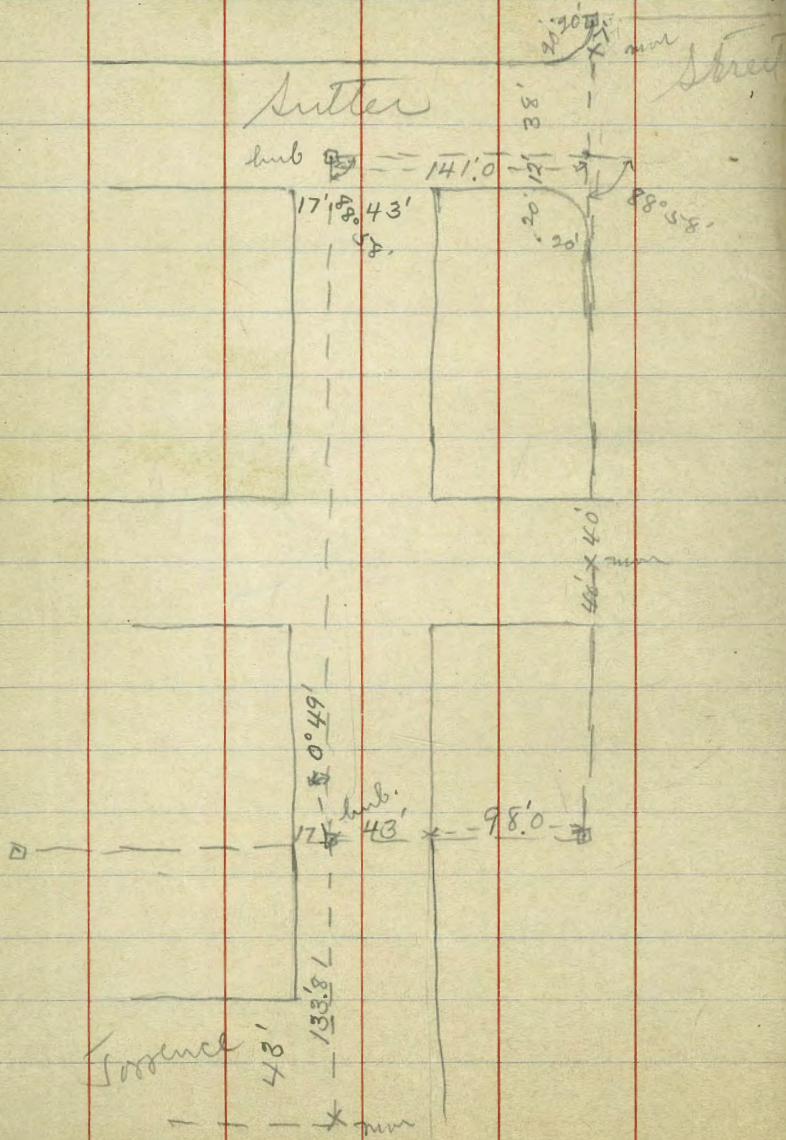
No good
See next page

Survey for opening

Kite street

Aug 8/14

Chiles⁸⁵
Allen



| | | | | | | | | | |
|------------|-------|-------|------|------|------|------|------|------|--|
| | 150 | | | | | | | | |
| | 90 | | | | | | | | |
| 13500 | | | | | | | | | |
| 7.73 | 7.20 | 7.20 | | | | | | | |
| 76.49 H.I. | 3.6 | 3.5 | | | | | | | |
| 84.22 | +3.6 | +3.7 | 7.20 | 7.95 | 8.70 | 9.45 | | | |
| | | | 3.1 | 4.85 | 6.20 | 7.95 | | | |
| | | | +4.1 | +3.1 | +2.8 | +1.5 | | | |
| | 7.20 | 7.95 | 8.70 | 7.20 | 8.55 | | | | |
| | 4.5 | 5.65 | 6.70 | 6.2 | 6.45 | 8.70 | | | |
| | +2.7 | +2.3 | +2.0 | +2.0 | +2.1 | 8.70 | | | |
| | 8.70 | | | | | 0.0 | | | |
| | 78.75 | 78.00 | 6.97 | 4.72 | 3.97 | 3.97 | | | |
| | 79.50 | 6.22 | 5.47 | 5.2 | 3.17 | 3.37 | | | |
| | 6.22 | 5.47 | 7.22 | 6.47 | -0.5 | +0.8 | 20.6 | | |
| | 7.92 | 6.87 | 4.72 | 3.97 | 4.72 | 6.47 | 6.22 | 6.22 | |
| 6.22 | -1.7 | -1.4 | 6.32 | 2.67 | 4.92 | 6.37 | 7.52 | 7.32 | |
| 7.62 | 6.22 | 6.22 | -0.6 | +1.3 | -0.2 | -0.9 | +6 | -1.1 | |
| -1.4 | 8.32 | 8.92 | | | | | | | |
| | -2.1 | -2.7 | | | | | | | |

150
60
9000

150
75
750
950
8250
75
16
600

Aug. 10/11/14
} Childs
} Otter '86
} Bunker

67

Survey for sidewalk

Oct 15/14 in Blk 1+7 Venice park

Lehigh
Allen
Bunker

S.W. cor. Sunset + Mission View Blvd.

15.81 B.M.

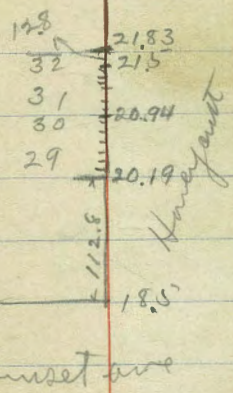
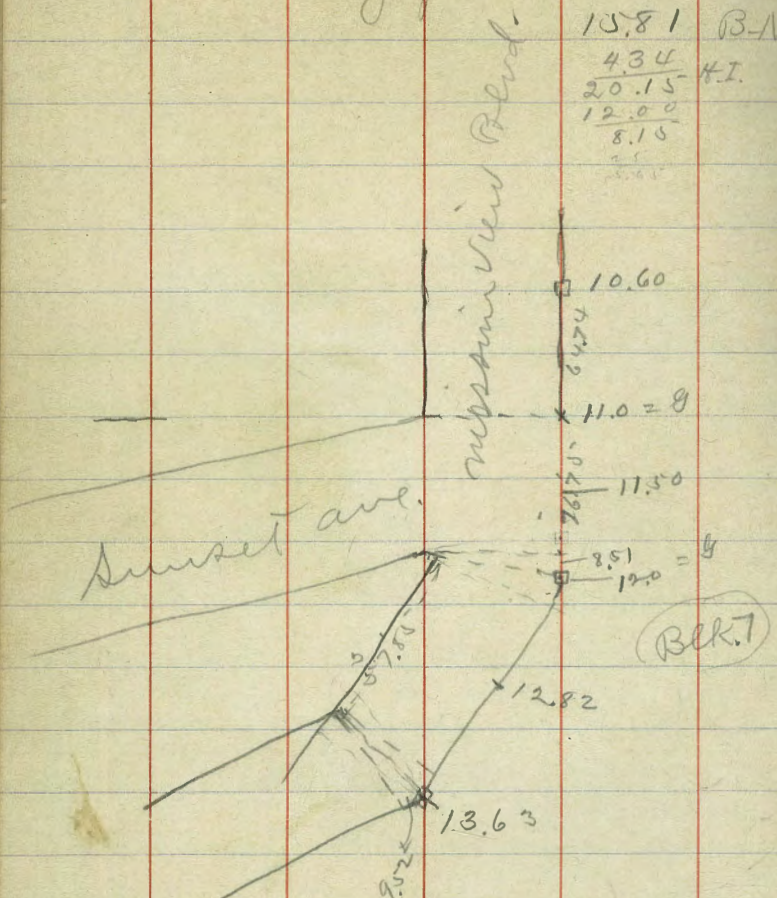
4.34
20.15
12.00
8.15
H.I.

12.82 13.63 11.53 4.00 10.60
7.33 6.52 8.62 9.75 9.55

B.M. 7111

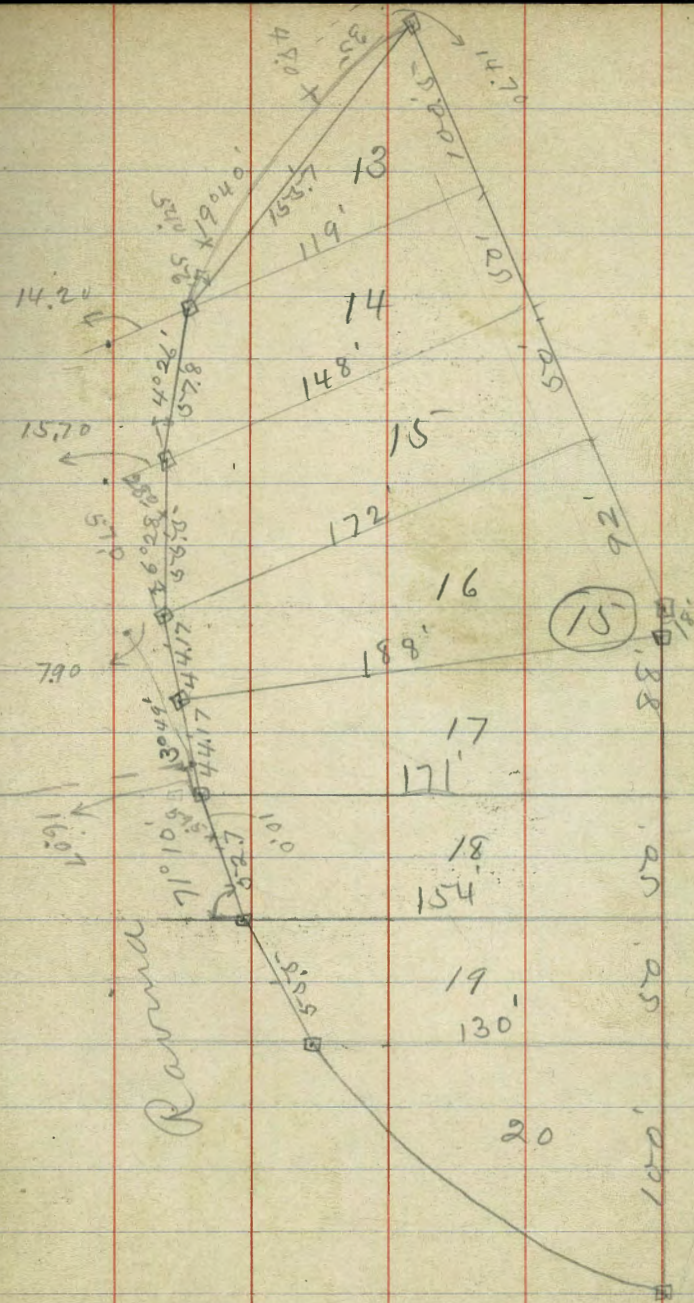
Jan 19.56

6.83
25.89
20.19
5.70 = 21.83
20.94 4.86
4.95
21.50
4.39



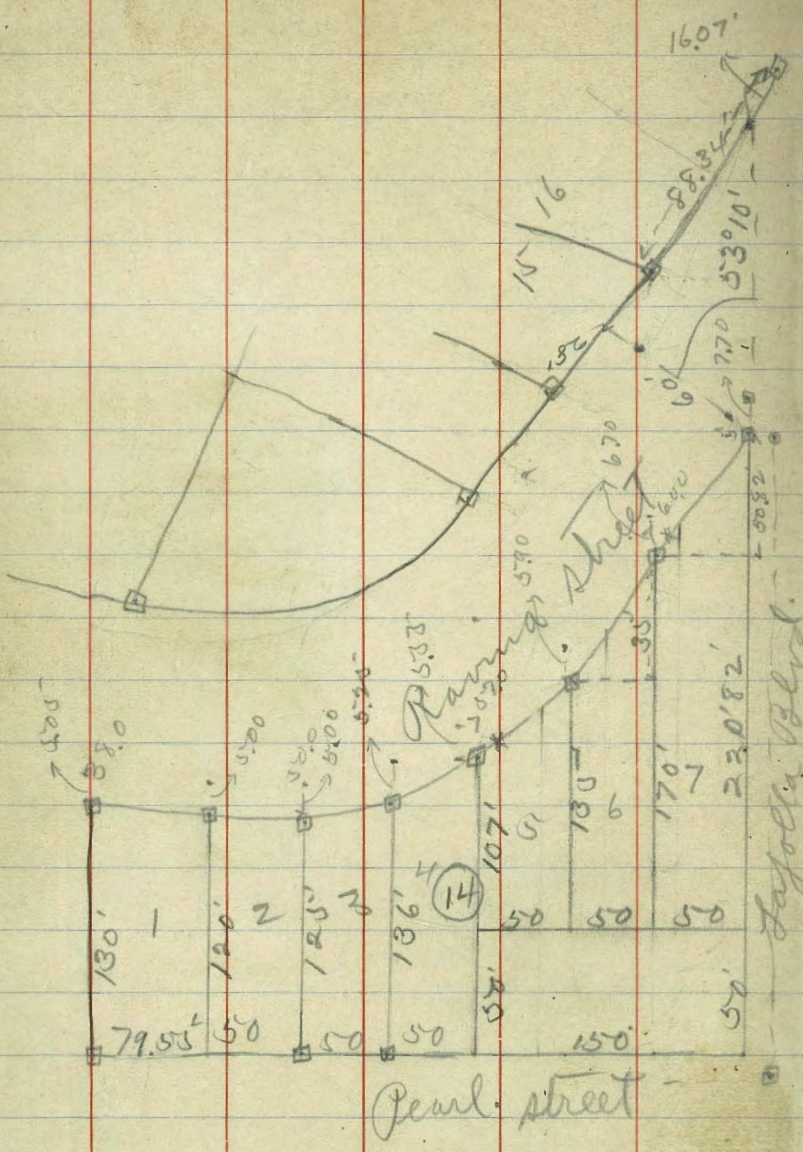
Survey of Lots 13 to 20
in Block 15 Lapolla Park

Oct. 26/14
Heinrichs
Otten
Bunker



Survey of Blk 14
Lafolla park

Sept. 24/15
Kehilds
Evans
Shaw



Tranjin

Lafolla Blvd.

Pearl Street

hub

79.18 HI apites / 16 (Eras / Shand) Helikids

see Book 995 page 71

118' east

| | | |
|---------------|------|-------|
| 35'20. | 13.3 | 65.9 |
| 35'20. | 11.4 | 67.8 |
| 19'20. | 7.8 | 71.4 |
| 16'20 | 10.7 | 68.5 |
| 14'20 | 4.5 | 74.7 |
| So. edge wall | 4.4 | 74.8 |
| Top wall | 3.26 | 75.92 |

120' east

| | | |
|----------------------------------|------|-------|
| Top of wall 120' east | 3.25 | 75.93 |
| So. edge wall | 4.3 | 74.9 |
| 14'20 | 3.8 | 75.4 |
| 25'20 | 11.0 | 68.2 |
| 35'20 | 13.5 | 65.7 |

127' east

72

| | | |
|---------------|------|-------|
| 34'20 | 12.9 | 66.3 |
| 28'20. | 11.9 | 67.3 |
| 25'20 | 10.0 | 69.2 |
| 14'20 | 4.0 | 75.2 |
| So. edge wall | 4.2 | 75.0 |
| Top wall | 3.25 | 75.93 |

128' east

| | | |
|---------------|------|-------|
| Top wall | 3.26 | 75.92 |
| So. edge wall | 4.2 | 75.0 |
| 15'20 | 4.2 | 75.0 |
| 16'20. | 10.5 | 68.7 |
| 19'20 | 10.1 | 69.1 |
| 20'20. | 7.4 | 71.8 |
| 26'20 | 11.0 | 67.2 |
| 29'20 | 12.3 | 66.9 |
| 34'20. | 12.6 | 66.6 |

144' east

| | | |
|--------------|------|-------|
| 34'20 | 11.5 | 67.7 |
| 15'20. | 10.4 | 68.8 |
| 14'20 | 4.1 | 75.1 |
| So edge wall | 4.2 | 75.0 |
| Top wall | 3.26 | 75.92 |
| 148' east | | |
| Top wall | 3.25 | 75.93 |
| So. edgewall | 4.1 | 75.1 |
| 10'20 | 4.1 | 75.1 |
| 11'20 | 8.2 | 71.0 |
| 13'20 | 11.1 | 68.1 |
| 22'20 | 8.3 | 70.9 |
| 28'20. | 11.2 | 68.0 |
| 35'20. | 11.9 | 67.3 |

161' east

| | | |
|--------------|------|-------|
| 34'20 | 11.9 | 67.3 |
| 26'20. | 11.9 | 67.3 |
| 21'20. | 9.0 | 70.2 |
| 19'20. | 4.7 | 74.5 |
| 17'20. | 8.6 | 70.6 |
| 10'20 | 7.5 | 71.7 |
| 9'20 | 4.0 | 75.2 |
| So. edgewall | 4.2 | 75.0 |
| Top wall | 3.23 | 75.95 |
| 177' east | | |
| Top wall | 3.23 | 75.95 |
| So edgewall | 4.1 | 75.1 |
| 11'20. | 4.4 | 74.8 |
| 13'20. | 8.8 | 70.4 |
| 18'20. | 7.7 | 71.5 |
| 20'20. | 5.7 | 74.1 |
| 26'20 | 11.1 | 68.1 |
| 35'20. | 11.6 | 67.6 |

170' east

223' east

| | | |
|--------------|------|-------|
| 35'20. | 11.8 | 67.4 |
| 15'20. | 10.4 | 68.8 |
| 13'20 | 14.1 | 75.1 |
| so. edgewall | 4.1 | 75.1 |
| top wall | 3.24 | 75.94 |

| | | |
|--------------|------|-------|
| top wall | 3.26 | 75.92 |
| so. edgewall | 4.0 | 75.2 |
| 12'20 | 4.2 | 75.0 |
| 13'20. | 9.8 | 69.4 |
| 35'20. | 7.9 | 67.3 |

196' east

239' east

| | | |
|--------------|------|-------|
| top wall | 3.23 | 75.95 |
| so. edgewall | 4.1 | 75.1 |
| 14'20. | 4.0 | 75.2 |
| 15'20 | 8.1 | 71.1 |
| 24'20 | 11.3 | 67.9 |
| 35'20 | 11.8 | 67.4 |

| | | |
|--------------|------|-------|
| 35'20 | 12.0 | 67.2 |
| 30'20. | 11.0 | 68.2 |
| 21'20. | 7.1 | 72.1 |
| 19'20. | 4.6 | 74.6 |
| so. edgewall | 3.9 | 75.3 |
| top wall | 3.25 | 75.93 |

200' east

265' east

| | | |
|---------------|------|-------|
| 35'20. | 11.9 | 67.3 |
| 13'20 | 10.8 | 68.4 |
| 11'20 | 4.2 | 75.0 |
| so. edge wall | 4.1 | 75.1 |
| top wall | 3.26 | 75.92 |

| | | |
|---------------|------|-------|
| top wall | 3.26 | 75.92 |
| so. edge wall | 4.0 | 75.2 |
| 17'20. | 3.8 | 75.4 |
| 27'20 | 9.9 | 69.3 |
| 35'20. | 11.4 | 67.8 |

271' east

| | | |
|---------------|------|-------|
| 35'20. | 11.2 | 68.0 |
| 17'20 | 12.4 | 66.8 |
| 13'20. | 4.4 | 74.8 |
| so. edge wall | 4.2 | 75.0 |
| top wall | 3.25 | 75.93 |

277' east

| | | |
|--------------|------|-------|
| Top wall | 3.27 | 75.91 |
| so edge wall | 4.2 | 75.0 |
| 18'20 | 4.1 | 75.1 |
| 28'20 | 10.2 | 69.0 |
| 35'20. | 10.8 | 68.4 |

300' east

| | | |
|--------------|------|-------|
| 35'20. | 10.7 | 68.5 |
| 25'20. | 9.2 | 70.0 |
| 17'20 | 4.2 | 75.0 |
| so edge wall | 4.0 | 75.2 |
| top wall | 3.25 | 75.93 |

325' east

| | | |
|--------------|------|-------|
| Top wall | 3.26 | 75.92 |
| so edge wall | 4.1 | 75.1 |
| 18'20. | 4.3 | 74.9 |
| 28'20. | 7.4 | 71.8 |
| 32'20 | 9.9 | 69.3 |
| 35'20 | 10.0 | 69.2 |

350' east

| | | |
|--------------|------|-------|
| 35'20. | 9.6 | 69.6 |
| 30'20. | 8.4 | 70.8 |
| 24'20. | 5.3 | 73.9 |
| so edge wall | 4.2 | 75.0 |
| top wall | 3.22 | 75.96 |

375' east

| | | |
|--------------|------|-------|
| Top wall | 3.21 | 75.97 |
| so edge wall | 4.3 | 74.9 |
| 26'20. | 6.0 | 73.2 |
| 35'20 | 10.3 | 68.9 |

79.18

78

400 east

| | | |
|--------------|------|-------|
| 35'20. | 9.2 | 70.0 |
| 30'20. | 9.0 | 70.2 |
| 26'20. | 5.0 | 74.2 |
| 20. edgewall | 4.2 | 75.0 |
| top wall | 3.25 | 75.93 |

425 east

| | | |
|-------------|------|-------|
| top wall | 3.27 | 75.91 |
| 00 edgewall | 4.4 | 74.8 |
| 30'20 | 5.3 | 73.9 |
| 32'20 | 8.1 | 71.1 |
| 35'20. | 8.2 | 71.0 |

450 east

| | | |
|--------------|------|-------|
| 35'20. | 6.6 | 72.6 |
| 29'20. | 5.0 | 74.2 |
| 20. edgewall | 4.2 | 75.0 |
| top wall | 3.28 | 75.90 |

475 east

| | | |
|-------------|------|-------|
| top wall | 3.26 | 75.92 |
| 20 edgewall | 4.2 | 75.0 |
| 24'20. | 4.8 | 74.4 |
| 31'20. | 8.9 | 70.3 |
| J.P. | 6.60 | 82.56 |
| | 3.22 | 75.96 |

481.8 east (east end dam)

| | | |
|--------------|------|-------|
| top wall | 6.60 | 75.96 |
| 20. edgewall | 7.7 | 74.9 |
| 14'20. | 8.6 | 74.0 |
| 15'20. | 13.3 | 69.3 |
| 26'20. | 12.1 | 70.5 |

13' east dam

| | | |
|-----------|------|------|
| 29'20 | 6.7 | 5.9 |
| 26'20. | 9.6 | 73.0 |
| 17'20 | 11.0 | 71.6 |
| 15'20 | 6.3 | 76.3 |
| 12'20. | 7.8 | 74.8 |
| 6'20. | 8.0 | 74.6 |
| 2'20. | 11.2 | 71.4 |
| line wall | 10.4 | 72.2 |
| 3'no. | 9.0 | 73.6 |
| 6'no | 11.1 | 71.5 |
| 11'no | 11.1 | 71.5 |
| 15'no | 7.0 | 75.6 |

17' east dam

| | | |
|-----------|------|------|
| 15'no. | 7.1 | 75.5 |
| 8'no | 10.9 | 77.7 |
| 3'no. | 8.8 | 73.8 |
| line wall | 8.4 | 74.2 |
| 5'20. | 7.5 | 75.1 |
| 13'20. | 8.4 | 74.2 |
| 14'20. | 10.1 | 72.5 |
| 19'20. | 9.2 | 73.4 |
| 20'20. | 6.5 | 76.1 |

28' east dam

| | | |
|-----------|-----|------|
| 11'20. | 5.8 | 76.8 |
| 8'20. | 7.8 | 74.8 |
| 5'20. | 8.1 | 74.5 |
| 4'20. | 6.4 | 76.2 |
| line wall | 5.3 | 77.3 |
| 4'no | 6.2 | 76.4 |
| 5'no | 8.0 | 74.6 |
| 8'no | 8.3 | 74.3 |
| 9'no | 7.0 | 75.6 |
| 11'no. | 6.2 | 76.4 |

34' east dam

| | | |
|-----------|-----|------|
| 11' no. | 5.0 | 77.6 |
| 8' no. | 7.6 | 75.0 |
| 6' no. | 7.8 | 74.8 |
| 3' no. | 5.6 | 77.0 |
| line wall | 7.0 | 75.6 |
| 3' so. | 7.7 | 74.9 |
| 6' so. | 5.8 | 76.8 |

37' east dam

| | | |
|-----------|-----|------|
| 6' so. | 5.2 | 77.4 |
| line wall | 5.3 | 77.3 |
| 5' no. | 7.4 | 75.2 |
| 9' no. | 7.6 | 75.0 |
| 12' no. | 5.4 | 77.2 |

63.13
85
148.03

279.19
97.7

202.4

277.76

265.49 13' hub

2000 = hub
0.22
2032 = H.S.

890.53'

2000
85
11.7 + 2

99.83 100.05

1.9
6.50
6.71
4.67
2.10
1.19

1.3
5.15
5.47
1.36
6.77 = H.S. corr.

0.25 = H.S.
6.77
0.25
6.52 = H.S. corr.

6.77
1.41
5.36 = H.S. corr.
4.3
1.06 = H.S. corr.
1.25
1.25 = H.S. corr.

536 = hub
1.46
12.82 = H.S.
2.68
10.14

11 = 5.3
105 = 5.7
10 = 6.1

7000 = hub
1.08
11.18 = H.S.
4.70 = H.S.
6.38 = H.S. corr.

350.8
100.3
250.5

11.08
3.98
7.10 = H.S. corr.
5.7
11.08
2.4 = H.S. corr.
2.4
9.68
12.98
3.30
6.40
7.7
71.0

80
49
129.0
111.8
117.8
71.0
429.6

5.13
60.5
111.8
49.6
61.2
7.0
117.8

DISTANCES FROM CENTER OF ROADWAY FOR CROSS-SECTIONING.

ROADWAY 14 FEET WIDE. SIDE SLOPES 1 1/2 TO 1.

FOR SINGLE TRACK EMBANKMENT.

2945

| | 0 | .1 | .2 | .3 | .4 | .5 | .6 | .7 | .8 | .9 | |
|----|------|------|------|------|------|------|------|------|------|------|----|
| 0 | 7.0 | 7.2 | 7.3 | 7.5 | 7.6 | 7.8 | 7.9 | 8.1 | 8.2 | 8.4 | 0 |
| 1 | 8.5 | 8.7 | 8.8 | 9.0 | 9.1 | 9.3 | 9.4 | 9.6 | 9.7 | 9.9 | 1 |
| 2 | 10.0 | 10.2 | 10.3 | 10.5 | 10.6 | 10.8 | 10.9 | 11.1 | 11.2 | 11.4 | 2 |
| 3 | 11.5 | 11.7 | 11.8 | 12.0 | 12.1 | 12.3 | 12.4 | 12.6 | 12.7 | 12.9 | 3 |
| 4 | 13.0 | 13.2 | 13.3 | 13.5 | 13.6 | 13.8 | 13.9 | 14.1 | 14.2 | 14.4 | 4 |
| 5 | 14.5 | 14.7 | 14.8 | 15.0 | 15.1 | 15.3 | 15.4 | 15.6 | 15.7 | 15.9 | 5 |
| 6 | 16.0 | 16.2 | 16.3 | 16.5 | 16.6 | 16.8 | 16.9 | 17.1 | 17.2 | 17.4 | 6 |
| 7 | 17.5 | 17.7 | 17.8 | 18.0 | 18.1 | 18.3 | 18.4 | 18.6 | 18.7 | 18.9 | 7 |
| 8 | 19.0 | 19.2 | 19.3 | 19.5 | 19.6 | 19.8 | 19.9 | 20.1 | 20.2 | 20.4 | 8 |
| 9 | 20.5 | 20.7 | 20.8 | 21.0 | 21.1 | 21.3 | 21.4 | 21.6 | 21.7 | 21.9 | 9 |
| 10 | 22.0 | 22.2 | 22.3 | 22.5 | 22.6 | 22.8 | 22.9 | 23.1 | 23.2 | 23.4 | 10 |
| 11 | 23.5 | 23.7 | 23.8 | 24.0 | 24.1 | 24.3 | 24.4 | 24.6 | 24.7 | 24.9 | 11 |
| 12 | 25.0 | 25.2 | 25.3 | 25.5 | 25.6 | 25.8 | 25.9 | 26.1 | 26.2 | 26.4 | 12 |
| 13 | 26.5 | 26.7 | 26.8 | 27.0 | 27.1 | 27.3 | 27.4 | 27.6 | 27.7 | 27.9 | 13 |
| 14 | 28.0 | 28.2 | 28.3 | 28.5 | 28.6 | 28.8 | 28.9 | 29.1 | 29.2 | 29.4 | 14 |
| 15 | 29.5 | 29.7 | 29.8 | 30.0 | 30.1 | 30.3 | 30.4 | 30.6 | 30.7 | 30.9 | 15 |
| 16 | 31.0 | 31.2 | 31.3 | 31.5 | 31.6 | 31.8 | 31.9 | 32.1 | 32.2 | 32.4 | 16 |
| 17 | 32.5 | 32.7 | 32.8 | 33.0 | 33.1 | 33.3 | 33.4 | 33.6 | 33.7 | 33.9 | 17 |
| 18 | 34.0 | 34.2 | 34.3 | 34.5 | 34.6 | 34.8 | 34.9 | 35.1 | 35.2 | 35.4 | 18 |
| 19 | 35.5 | 35.7 | 35.8 | 36.0 | 36.1 | 36.3 | 36.4 | 36.6 | 36.7 | 36.9 | 19 |
| 20 | 37.0 | 37.2 | 37.3 | 37.5 | 37.6 | 37.8 | 37.9 | 38.1 | 38.2 | 38.4 | 20 |
| 21 | 38.5 | 38.7 | 38.8 | 39.0 | 39.1 | 39.3 | 39.4 | 39.6 | 39.7 | 39.9 | 21 |
| 22 | 40.0 | 40.2 | 40.3 | 40.5 | 40.6 | 40.8 | 40.9 | 41.1 | 41.2 | 41.4 | 22 |
| 23 | 41.5 | 41.7 | 41.8 | 42.0 | 42.1 | 42.3 | 42.4 | 42.6 | 42.7 | 42.9 | 23 |
| 24 | 43.0 | 43.2 | 43.3 | 43.5 | 43.6 | 43.8 | 43.9 | 44.1 | 44.2 | 44.4 | 24 |
| 25 | 44.5 | 44.7 | 44.8 | 45.0 | 45.1 | 45.3 | 45.4 | 45.6 | 45.7 | 45.9 | 25 |
| 26 | 46.0 | 46.2 | 46.3 | 46.5 | 46.6 | 46.8 | 46.9 | 47.1 | 47.2 | 47.4 | 26 |
| 27 | 47.5 | 47.7 | 47.8 | 48.0 | 48.1 | 48.3 | 48.4 | 48.6 | 48.7 | 48.9 | 27 |
| 28 | 49.0 | 49.2 | 49.3 | 49.5 | 49.6 | 49.8 | 49.9 | 50.1 | 50.2 | 50.4 | 28 |
| 29 | 50.5 | 50.7 | 50.8 | 51.0 | 51.1 | 51.3 | 51.4 | 51.6 | 51.7 | 51.9 | 29 |
| 30 | 52.0 | 52.2 | 52.3 | 52.5 | 52.6 | 52.8 | 52.9 | 53.1 | 53.2 | 53.4 | 30 |
| 31 | 53.5 | 53.7 | 53.8 | 54.0 | 54.1 | 54.3 | 54.4 | 54.6 | 54.7 | 54.9 | 31 |
| 32 | 55.0 | 55.2 | 55.3 | 55.5 | 55.6 | 55.8 | 55.9 | 56.1 | 56.2 | 56.4 | 32 |
| 33 | 56.5 | 56.7 | 56.8 | 57.0 | 57.1 | 57.3 | 57.4 | 57.6 | 57.7 | 57.9 | 33 |
| 34 | 58.0 | 58.2 | 58.3 | 58.5 | 58.6 | 58.8 | 58.9 | 59.1 | 59.2 | 59.4 | 34 |
| 35 | 59.5 | 59.7 | 59.8 | 60.0 | 60.1 | 60.3 | 60.4 | 60.6 | 60.7 | 60.9 | 35 |
| 36 | 61.0 | 61.2 | 61.3 | 61.5 | 61.6 | 61.8 | 61.9 | 62.1 | 62.2 | 62.4 | 36 |

Calculated by Julien A. Hall, M. Am. Soc. C. E.

MADE IN GERMANY.