

914

F.B. 914

LEVEL BOOK

373

KEUFFEL & ESSER CO.

DRAWING MATERIALS
AND
SURVEYING INSTRUMENTS.

NEW YORK.

CHICAGO. SAN FRANCISCO. ST. LOUIS.

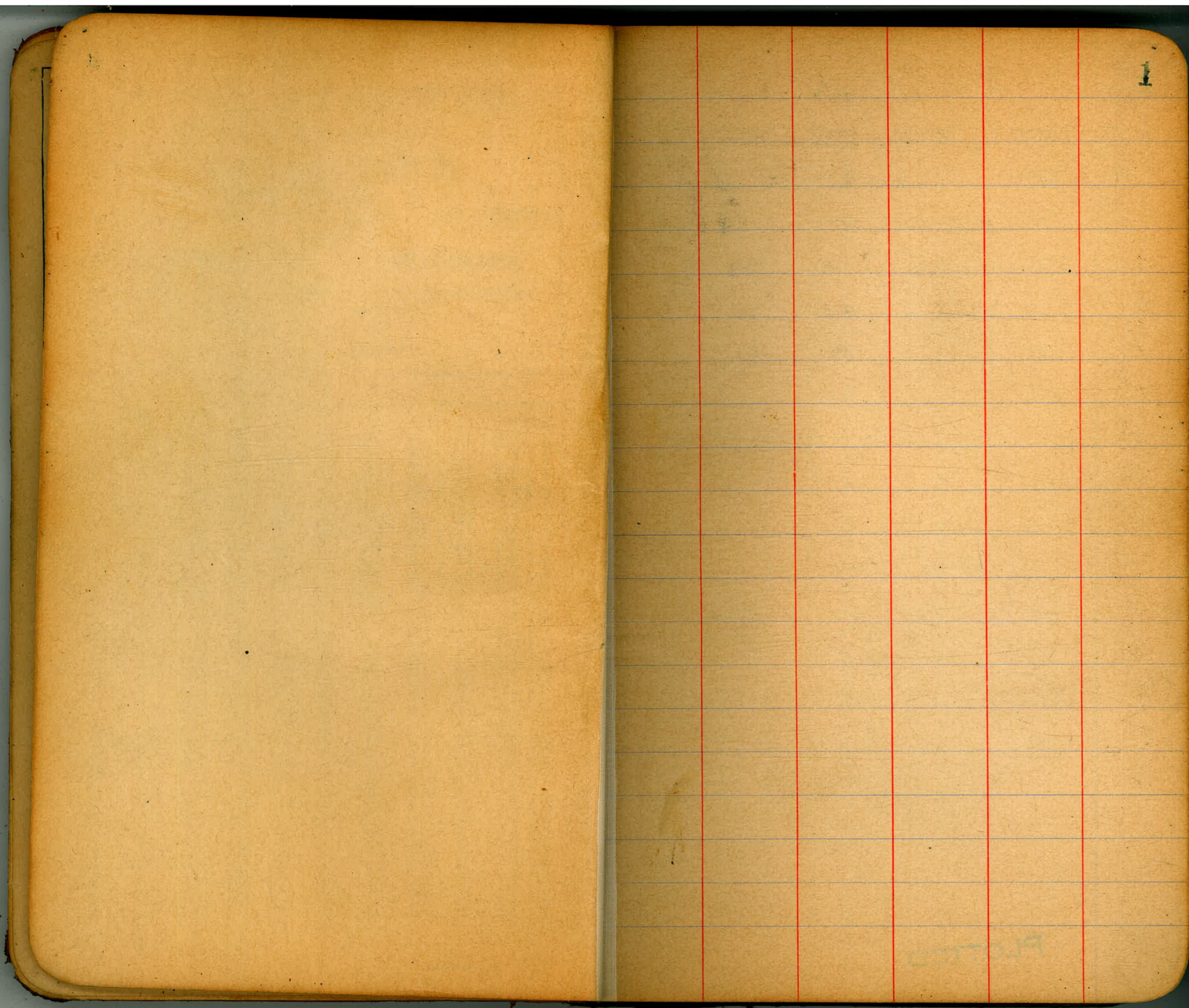
TABLES FOR EXCAVATIONS AND EMBANKMENTS.

DISTANCES FROM CENTER OF ROADWAY FOR CROSS-SECTIONING.
ROADWAY 48 FEET WIDE. SIDE SLOPES 1 TO 1.
FOR SINGLE TRACK EXCAVATION.

"Copyright, 1896, by Keuffel & Esser Co."

	0	.1	.2	.3	.4	.5	.6	.7	.8	.9	
0	9.0	9.1	9.2	9.3	9.4	9.5	9.6	9.7	9.8	9.9	0
1	10.0	10.1	10.2	10.3	10.4	10.5	10.6	10.7	10.8	10.9	1
2	11.0	11.1	11.2	11.3	11.4	11.5	11.6	11.7	11.8	11.9	2
3	12.0	12.1	12.2	12.3	12.4	12.5	12.6	12.7	12.8	12.9	3
4	13.0	13.1	13.2	13.3	13.4	13.5	13.6	13.7	13.8	13.9	4
5	14.0	14.1	14.2	14.3	14.4	14.5	14.6	14.7	14.8	14.9	5
6	15.0	15.1	15.2	15.3	15.4	15.5	15.6	15.7	15.8	15.9	6
7	16.0	16.1	16.2	16.3	16.4	16.5	16.6	16.7	16.8	16.9	7
8	17.0	17.1	17.2	17.3	17.4	17.5	17.6	17.7	17.8	17.9	8
9	18.0	18.1	18.2	18.3	18.4	18.5	18.6	18.7	18.8	18.9	9
10	19.0	19.1	19.2	19.3	19.4	19.5	19.6	19.7	19.8	19.9	10
11	20.0	20.1	20.2	20.3	20.4	20.5	20.6	20.7	20.8	20.9	11
12	21.0	21.1	21.2	21.3	21.4	21.5	21.6	21.7	21.8	21.9	12
13	22.0	22.1	22.2	22.3	22.4	22.5	22.6	22.7	22.8	22.9	13
14	23.0	23.1	23.2	23.3	23.4	23.5	23.6	23.7	23.8	23.9	14
15	24.0	24.1	24.2	24.3	24.4	24.5	24.6	24.7	24.8	24.9	15
16	25.0	25.1	25.2	25.3	25.4	25.5	25.6	25.7	25.8	25.9	16
17	26.0	26.1	26.2	26.3	26.4	26.5	26.6	26.7	26.8	26.9	17
18	27.0	27.1	27.2	27.3	27.4	27.5	27.6	27.7	27.8	27.9	18
19	28.0	28.1	28.2	28.3	28.4	28.5	28.6	28.7	28.8	28.9	19
20	29.0	29.1	29.2	29.3	29.4	29.5	29.6	29.7	29.8	29.9	20
21	30.0	30.1	30.2	30.3	30.4	30.5	30.6	30.7	30.8	30.9	21
22	31.0	31.1	31.2	31.3	31.4	31.5	31.6	31.7	31.8	31.9	22
23	32.0	32.1	32.2	32.3	32.4	32.5	32.6	32.7	32.8	32.9	23
24	33.0	33.1	33.2	33.3	33.4	33.5	33.6	33.7	33.8	33.9	24
25	34.0	34.1	34.2	34.3	34.4	34.5	34.6	34.7	34.8	34.9	25
26	35.0	35.1	35.2	35.3	35.4	35.5	35.6	35.7	35.8	35.9	26
27	36.0	36.1	36.2	36.3	36.4	36.5	36.6	36.7	36.8	36.9	27
28	37.0	37.1	37.2	37.3	37.4	37.5	37.6	37.7	37.8	37.9	28
29	38.0	38.1	38.2	38.3	38.4	38.5	38.6	38.7	38.8	38.9	29
30	39.0	39.1	39.2	39.3	39.4	39.5	39.6	39.7	39.8	39.9	30
31	40.0	40.1	40.2	40.3	40.4	40.5	40.6	40.7	40.8	40.9	31
32	41.0	41.1	41.2	41.3	41.4	41.5	41.6	41.7	41.8	41.9	32
33	42.0	42.1	42.2	42.3	42.4	42.5	42.6	42.7	42.8	42.9	33
34	43.0	43.1	43.2	43.3	43.4	43.5	43.6	43.7	43.8	43.9	34
35	44.0	44.1	44.2	44.3	44.4	44.5	44.6	44.7	44.8	44.9	35
36	45.0	45.1	45.2	45.3	45.4	45.5	45.6	45.7	45.8	45.9	36

Calculated by Julien A. Hall, M. Am. Soc. C. E.



12/3/13
Gregory
Shimshak
Moore

X SECTION OF
HAWTHORN ST 80' WIDE
From the East Line of 32nd St
To the East Line of Property Union

293.88

50' E

2

BM.	12.65	280.92	268.27	S.E. 31 st Grange	S	4.2	279.7
T.P.	3.57	293.88	280.31		db	5.9	780
		E. L. 32 nd St			1/2	7.3	766
S		2.0	281.9		C	9.2	749
db		2.3	814		1/2	10.3	735
1/4		2.8	811		db	11.5	724
C		2.9	810		N	13.5	704
1/4		3.0	809				
db		3.6	803				
N		5.1	788		N	15.8	681
		25' E					
N		9.4	745				
db		7.7	767				
1/4		6.5	774				
C		5.5	784				
1/4		3.8	801				
db		3.5	804				
S		2.9	810				
						75' E	
					N	11.7	697
					1/2	13.8	70.1
					C	12.4	715
					1/4	10.9	730
					db	8.4	755
					S	6.7	772
						100' E	
					S	10.8	73.1
					db	13.1	70.8
					T.P.	2.49	273.36
						12.95	270.93

PLOTTED

27336

24065 HAWTHORN ST.

3

1/4			3.7	2697	cb			16.4	244.3
c			5.0	484	N			21.4	39.3
1/4			7.1	663			175' E		
cb			9.8	636	N			31.0	29.7
N			14.0	594	cb			26.0	34.7
		125' E			1/4			24.0	36.7
N			25.1	483	c			21.0	39.7
cb			19.0	544	1/2			18.5	42.2
1/4			14.4	590	cb			14.9	45.8
c			11.0	624	S			11.0	49.7
1/4			7.0	664	T.P.	0.20	247.92	12.93	247.72
cb			5.4	680			200' E = W.L. BANCROFT ST.		
S			4.6	688	S			5.4	42.5
		150' E			cb			12.0	35.9
S			10.6	628	T.P.	0.18	235.36	12.74	235.18
T.P.	0.15	260.65	12.36	260.50	1/4			4.4	31.0
cb			3.6	571	c			7.6	27.8
1/4			6.3	547	1/4			10.1	25.3
c			9.1	516	cb			12.0	23.4
1/4			11.2	495	N			14.1	21.3

PLOTTED

23536

T.P. 0.18 222.71 1233 222.53

E.L. BANCROFT ST

N		5.6	217.1
cb		10.0	12.7
1/4		12.9	209.8
C		15.5	207.2
+8		18.3	204.4
1/4		16.9	205.8
cb		11.0	11.7
S		7.9	14.8

20' E

S		13.3	209.4
cb		14.3	208.4
+3		15.0	207.7
1/4		18.3	204.4
C		16.8	205.9
1/4		14.2	208.5
cb		11.0	11.7
N		7.7	15.0

T.P. 8.61 231.39 0.13 222.58

PLOTTED

23139 HAWTHORN ST

4

50' E

N		7.4	224.0
cb		11.5	19.9
1/4		14.2	17.3
C		18.1	13.3
1/4		23.5	207.9
cb		27.0	204.4
S		30.2	201.2
+5		30.8	202.4
+18		22.0	209.4

75' E

-30		24.4	207.0
-15		31.5	199.6
S		24.9	206.5
cb		21.6	209.9
1/4		17.3	14.1
C		11.2	20.3
1/4		4.4	27.0

T.P. 12.67 242.34 0.72 230.67
cb 10.4 32.9

24334

N	8.0	234.3
95° E		
N	+0.2	243.5
cb	6.1	237.2
1/4	13.3	30.0
C	19.8	23.5
1/2	26.6	16.7
cb	31.7	11.6
S	37.1	206.2
+20	45.0	198.3
+30	39.0	204.3
120° E		
-30	41.0	202.3
-4	47.3	196.0
S	43.3	200.0
cb	33.4	209.9
1/4	28.3	15.0
C	23.6	19.7
1/2	18.6	24.7
cb	13.7	29.6

PLOTTED

HAWTHORN ST

24334

N	7.2	236.1	5
145° E			
N	15.2	28.1	
cb	21.2	27.1	
1/4	24.0	19.3	
C	26.9	16.4	
1/2	30.3	13.0	
cb	33.6	209.7	
S	38.2	205.1	
+25	47.8	195.5	
+35	44.0	199.3	
175° E			
-50	38.0	205.3	
-35	48.9	194.4	
S	33.8	209.5	
cb	28.0	15.3	
1/4	22.8	20.5	
C	15.8	27.5	
1/2	12.0	31.3	
cb	8.2	35.1	

PLOTTED

243.34

260.19 HAWTHORN ST

N			4.8	238.5
T.P.	7.86	250.72	0.48	242.86
		188' E		
N			8.5	422
cb			12.8	37.9
1/4			17.7	33.0
C			23.1	27.6
1/2			29.2	21.0
cb			36.2	14.5
S			44.0	206.7
		200' E = W.L. 33 RD ST		
S			38.8	11.9
cb			37.1	13.6
1/4			39.5	17.2
C			26.0	24.7
1/4			20.4	30.3
cb			14.0	34.7
N			7.9	428
T.P.	11.99	262.64	0.07	250.65
T.P.	2.04	260.19	4.49	258.15

PLOTTED

					6
					E.L. 33 RD ST
N			2.0	258.3	
cb			6.2	540	
1/4			7.5	527	
C			9.1	511	
1/4			10.5	497	
cb			12.9	473	
S			16.2	44.0	
		25' E			
S			14.1	46.1	
cb			12.0	48.3	
1/4			10.7	49.5	
C			9.4	50.8	
1/4			8.3	51.9	
cb			6.5	53.7	
N			5.1	55.1	
		50' E.			
N			5.6	54.6	
cb			7.9	52.3	
1/4			9.5	50.7	

260.19

C	10.7	249.6
1/4	12.0	48.7
cb	13.5	46.7
S	15.0	45.3
15' E		
S	17.4	42.8
cb	15.7	44.5
1/4	14.3	45.9
C	12.6	47.6
1/4	11.4	48.8
cb	10.0	50.3
N	7.9	52.3
100' E		
N	12.0	48.2
cb	13.4	46.8
1/4	15.9	44.3
C	18.3	41.9
1/4	19.0	41.2
cb	20.5	39.7
S	23.0	37.3

PLOTTED

260.19

HAWTHORN ST

11

110' E		
S	28.6	231.6
cb	28.4	31.8
1/4	28.0	32.2
C	25.0	35.2
1/4	23.1	37.1
cb	19.1	41.1
N	16.1	44.1
T.P.	10.15	250.04
125' E		
N	9.5	248.7
cb	15.3	42.9
1/4	22.9	35.3
C	25.1	33.1
1/4	27.4	30.8
cb	32.0	26.2
S	36.6	21.6
150' E		
S	26.0	32.2
cb	20.0	38.2

258.16

258.16

HAWTHORN

ST 8

1/4 15.8 242.4 N

2.9 255.3

C 13.4 44.8 W. CURB.

1/4 10.3 47.9 N

2.5 255.7

cb 8.0 50.2 cb

3.5 254.7

N 6.5 51.7 1/4

5.2 253.0

175' E

C

7.1 251.1

N 4.4 53.8 1/4

8.9 249.3

cb 6.6 51.6 cb

10.3 247.9

1/4 8.7 49.5 S

12.8 245.4

C 10.5 47.7 W. QUARTER.

1/4 13.5 44.7 S

11.4 246.8

cb 17.5 40.7 cb

9.4 248.8

S 20.1 38.1 1/4

7.8 250.4

200' E. = W.L. FELTON ST (80' W. DE)

-B.M.

7.84 250.32

13' HUB

S 14.5 43.7 C

6.0 252.2

cb 12.0 46.2 1/4

4.1 254.1

1/4 10.0 48.2 cb

3.2 255.0

C 8.5 49.7 N

2.7 255.5

1/4 6.6 51.6

cb 4.6 53.6

PLOTTED

25816

CENTER

N	1.7	252.5
cb	2.3	55.9
1/4	3.2	55.0
C	5.2	53.0
1/4	7.0	51.3
cb	8.6	49.6
S	10.5	47.7

E. QUARTER

S	9.2	49.2
cb	7.4	50.8
1/4	5.8	52.4
C	4.0	54.2
1/4	2.5	55.7
cb	1.4	56.8
N	0.4	57.8

E. CURB

N	0.1	58.1
cb	0.9	57.3
1/4	1.9	56.3

PLOTTED

25814

HAWTHORN ST

9

C	3.4	254.8
1/4	5.2	53.0
cb	6.8	51.4
S	8.3	49.9

E. L. FELTON ST.

S	7.7	50.5
cb	6.0	52.2
1/4	4.4	53.8
C	2.8	55.4
1/4	1.6	56.6
cb	0.8	57.4
N	0.0	58.2

50' E

1/4	2.8	55.4
cb	2.6	55.6
1/4	2.3	55.9
C	2.2	56.0
1/4	2.1	55.8
cb	3.3	54.9
S	4.6	53.6

258.16

100' E

S	1.0	257.2
cb	1.6	56.6
1/4	2.7	55.5
C	4.1	54.1
1/4	5.7	52.5
cb	7.6	50.6
N	9.1	49.1

125' E

N	12.4	45.8
cb	10.9	47.3
1/4	9.2	49.0
C	7.4	50.8
1/4	5.3	52.9
cb	4.2	54.0
S	3.1	55.1

150' E

S	7.2	51.0
cb	8.5	49.7
1/4	9.7	48.5

PLOTTED

258.16

HAWTHORN

ST

10

C	11.3	244.9		
1/4	12.9	45.3		
cb	15.8	42.4		
N	18.1	40.1		
T.P.	0.30	245.40	13.06	245.10

200' E = W.L. GREGORY ST.

N	13.7	31.7		
cb	11.6	33.8		
1/4	10.0	35.4		
C	8.7	36.7		
1/4	7.7	37.7		
cb	6.5	38.9		
S	5.1	40.3		
T.P.	0.33	232.59	13.14	232.26
T.P.	0.16	219.96	12.79	219.80

13' HUB

E.L. GREGORY

S	4.0	14.0
cb	6.3	13.7
1/4	7.0	13.0
C	7.3	12.7

PLOTTED

211.86

HAWTHORN ST

181.82

11

1/4			7.7	212.3
cb			8.7	11.3
N			11.0	9.0
T.P.	0.70	208.63	12.03	207.93
T.P.	5.53	202.29	11.87	196.76

1/2			10.0	171.8
cb			12.1	69.7
N			19.2	68.6
T.P.	2.91	171.92	12.81	169.01
			125' E	

50' EAST

N			13.0	189.3
cb			12.1	90.3
1/4			11.0	91.3
C			11.0	91.3
1/4			10.7	91.4
cb			9.2	93.1
S			6.8	95.5
T.P.	0.0	189.56	12.73	189.56
T.P.	0.57	181.82	8.31	181.25

N			9.8	62.1
cb			8.8	43.1
1/4			8.3	63.4
C			7.6	64.3
1/4			6.6	65.3
cb			6.3	65.6
S			4.1	47.8

150' E

S			5.6	76.3
cb			6.4	75.4
1/4			8.1	73.7
C			9.2	72.4

S			10.8	61.1
cb			11.0	60.9
1/4			11.3	60.6
C			11.5	60.4
1/4			11.2	60.7
cb			10.9	61.0
N			10.0	61.9

PLOTTED

PLOTTED

171.92

T.P.

11.89

181.65

2.16

169.76

175 E

N

10.1

71.6

cb

11.8

69.9

1/4

15.1

66.6

C

16.7

65.0

1/4

18.1

63.6

cb

20.7

61.0

S

20.9

60.8

197.45 E on So. }
 196.13 - - No } = E.L. OF EASTERN ADD

S

17.4

64.3

cb

15.4

66.3

1/4

12.70

168.95

ON 13' H.D.B

C

10.0

71.7

1/4

7.4

74.3

cb

4.8

76.9

N

2.9

78.8

T.P.

10.94

192.12

0.47

181.18

T.P.

12.09

203.98

0.23

191.89

T.P.

6.41

210.74

0.15

203.83

PLOTTED

137

HAWTHORN ST.

T.P.

13.10

197.64

13' H.D.B
+ P.L.

12

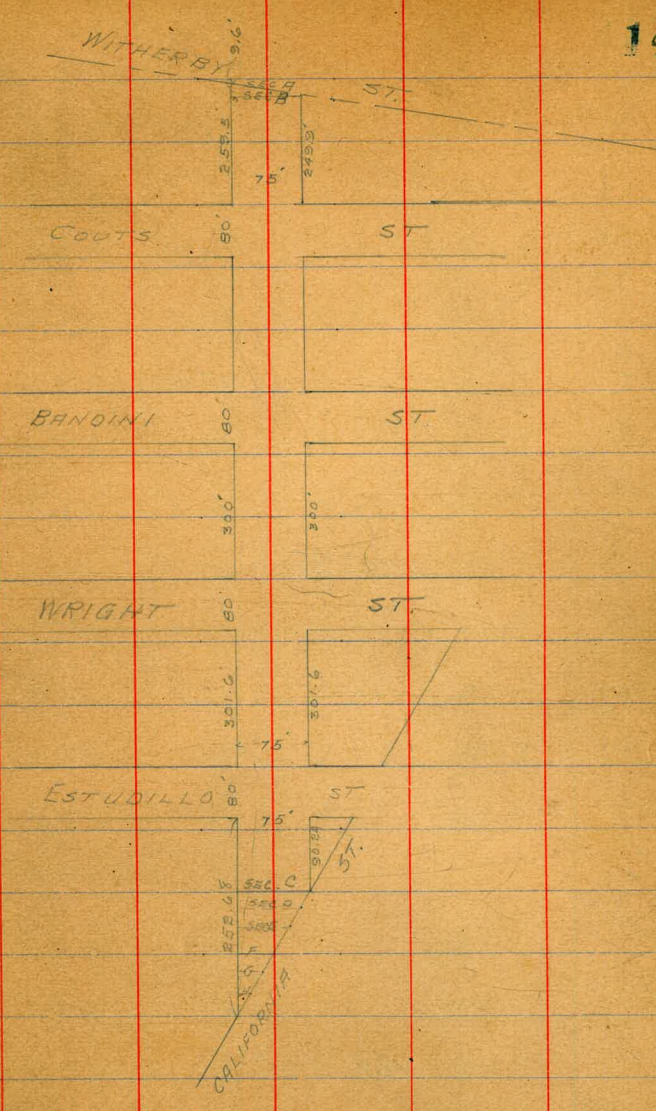
JUNIPER

11/26/3
 11/26/3
 County
 Stanislaus
 Town

CROSS-SECTION OF
 JEFFERSON ST
 75' WIDE 18' HILLS
 ENTIRE LENGTH

BM.	12.29	22.83		10.54	SW Cor. Mod.
T.P.	12.58	35.12	0.29	22.54	
T.P.	12.61	47.17	0.56	34.56	
T.P.	13.01	59.93	0.25	46.92	
T.P.	12.25	71.75	0.43	59.50	
T.P.	13.13	84.79	0.09	71.66	
T.P.	12.90	97.60	0.09	84.70	
T.P.	13.10	110.65	0.05	97.55	
T.P.	12.79	123.40	0.04	110.61	
T.P.	11.68	134.92	0.16	123.24	
EAST LINE WITHERBY ST = SECH					
S		9.8		125.1	
d		5.7		29.2	
1/4		1.9		33.0	
T.P.	12.21	146.87	0.26	134.66	
C		11.01		35.9	SW Cor. WITHERBY ST
1/4		7.6		39.3	
d		4.4		43.5	
N		1.4		45.5	

PLOTTED



PLOTTED

146.87

SEC. B.

N	1.4	145.5
cb	4.4	42.5
1/2	7.5	39.4
C	10.5	34.4
1/2	13.5	33.4
cb	17.5	29.4
S	21.2	26.7

49.9' EAST OF SEC. B.

S	19.9	27.0
cb	16.7	30.2
1/2	14.1	32.8
C	10.2	36.5
1/2	8.0	38.9
cb	3.9	43.0
N	0.8	46.1

99.9' EAST

T.P.	2.48	153.81	0.54	146.33
N			5.4	48.4
cb			8.1	45.7

PLOTTED

JEFFERSON ST.

15

15381

1/2	12.1	141.7
C	16.4	137.4
1/2	19.9	33.9
cb	23.6	30.2
S	26.9	24.9
	124.9 E	
S	26.1	27.7
cb	22.0	31.8
1/2	18.8	35.0
C	16.0	37.8
1/2	12.7	41.1
cb	8.7	45.1
N	5.6	48.3
	149.9' E	
N	5.7	48.1
cb	9.4	44.4
1/2	13.0	40.8
C	15.8	38.0
1/2	11.1	35.7
cb	20.7	33.1

153.81

S

23.7 130.1

199.9' E

S

21.7 32.1

cb

19.3 34.5

1/4

16.5 37.3

C

14.0 39.8

1/4

10.7 43.1

cb

7.9 45.9

N

5.0 48.8

249.9' E = W.L. Courts St (80' WIDE)

N

3.6 50.7

cb

6.5 47.3

1/4

9.1 44.4

C

12.2 41.6

1/4

15.2 38.6

cb

17.9 35.9

S

21.0 32.8

W CURB

S

20.6 33.2

cb

17.6 36.2

PLOTTED

JEFFERSON ST

153.81

14.5 139.3

16

11.4 142.4

9.1 44.7

6.1 47.7

3.4 50.4

W QUARTER

2.1 52.7

5.6 48.2

8.7 45.1

11.5 42.3

14.5 39.3

17.3 36.5

19.9 33.9

CENTER

19.7 34.1

16.8 37.0

15.8 40.0

11.3 42.5

7.8 46.0

4.8 49.0

15381

N	1.7	152.1
E. QUARTER		
N	1.2	52.6
cb	4.1	49.7
1/4	7.2	46.6
C	10.2	43.6
1/4	13.3	40.5
cb	16.3	37.5
S	19.2	34.6
E. CURB		
S	18.9	34.9
cb	15.8	38.0
1/4	13.1	40.7
C	10.0	43.8
1/4	6.7	47.1
cb	3.7	50.1
N	0.9	52.9
E. LINE CUTS ST		
N	0.3	53.5
cb	3.1	50.4

PLOTTED

15381

JEFFERSON ST

1/2	6.6	147.2	17
C	9.5	144.3	
1/4	12.5	41.3	
cb	15.4	38.4	
S	18.2	35.6	
50' E			
S	16.2	37.4	
cb	13.2	40.4	
1/4	10.6	43.2	
C	8.4	45.4	
1/2	6.0	47.8	
cb	3.2	50.6	
TR	2.29	154.49	1.61 152.20
N	0.9	53.6	
100' E			
N	1.6	52.9	
cb	4.4	50.1	
1/4	6.5	48.0	
C	8.9	45.6	
1/2	11.2	43.3	

154.49

cb	13.2	141.3
S	15.9	138.4

150' E

S	16.6	37.9
cb	14.2	40.3
1/4	11.5	43.0
C	9.1	45.4
1/4	7.2	47.3
cb	4.8	49.7
N	2.0	52.5

200' E

N	1.5	53.0
cb	4.2	50.3
1/4	6.8	47.7
C	9.4	45.1
1/4	11.9	42.6
cb	14.2	40.3
S	16.3	38.2

250' E

S	17.4	37.1
---	------	------

PLOTTED

154.49

JEFFERSON ST

18

cb	15.1	139.4
1/4	12.2	42.3
C	9.6	143.9
1/4	6.7	47.8
cb	4.1	50.4
N	1.6	52.9

275' E

N	1.1	53.4
cb	4.0	50.5
1/4	6.8	47.7
C	9.6	44.9
1/4	12.7	41.8
cb	15.9	38.6
S	18.2	36.3

300' E = W.L. BANDINI ST (20' WIDE)

S	19.9	34.6
cb	17.3	37.2
1/4	14.1	40.4
C	11.1	43.4
1/4	8.1	46.4

15449

cb	5.8	148.7
N	3.9	150.6
W. CURB		
N	5.7	48.8
B.M.	4.54	149.95
cb	7.3	47.2
1/4	9.9	44.6
C	12.4	42.1
1/4	15.3	39.2
cb	18.0	36.5
S	21.1	33.4
W. QUARTER		
S	23.3	31.2
cb	20.1	34.4
1/4	17.2	37.3
C	14.4	40.1
1/4	11.9	42.6
cb	9.7	44.8
N	8.1	44.4

PLOTTED

15449 JEFFERSON ST

19

CENTER

N	10.4	144.1
cb	12.3	42.2
1/4	14.0	40.5
C	17.2	37.3
1/4	19.7	34.8
cb	22.6	31.9
S	26.1	28.4
E QUARTER		
S	30.7	23.8
cb	25.4	29.1
1/4	22.3	32.2
C	19.1	35.4
1/4	16.3	38.2
cb	14.1	40.4
N	11.9	42.6
6' EAST		
N	12.6	41.9
cb	14.6	39.9
1/4	17.3	37.2

15449

C	20.4	134.1
1/4	24.6	129.9
cb	29.4	25.1
S	32.2	22.3

E. CURB

S	30.6	23.9
cb	27.9	26.6
1/4	25.0	29.5
C	22.0	32.5
1/4	18.8	35.7
cb	15.5	39.0
N	13.0	41.5

E. L. BANDINI St

N	11.8	42.7
cb	13.8	40.7
1/4	16.5	38.0
C	18.8	35.7
1/4	20.7	33.8
cb	22.5	32.0
S	25.0	29.5

PLOTTED
↓

15449 JEFFERSON St

20

25' E	21.5	133.0
S	18.3	36.2
1/4	15.7	38.8
C	14.2	40.3
1/4	12.4	42.1
cb	10.4	44.1
N	9.1	45.4

50' E

N	7.2	47.3
cb	8.4	46.1
1/4	10.1	44.4
C	12.3	42.2
1/4	15.1	39.4
cb	18.0	36.5
S	21.3	33.2
50' E	19.2	35.3
S	16.2	38.3
1/4	13.7	40.8

15449

C	11.1	143.4
1/2	9.2	45.3
cb	7.1	47.4
N	5.8	48.7

100' E

N	4.7	49.8
cb	5.4	49.1
1/2	7.3	47.2
C	8.3	46.2
1/4	10.8	44.7
cb	13.5	41.0
S	16.4	38.1

125' E

S	14.3	40.2
cb	12.2	42.3
1/2	9.6	44.9
C	7.6	46.9
1/4	5.3	49.2
cb	3.9	50.6
N	4.1	50.4

PLOTTED

15449 JEFFERSON ST

21

150' E

N	2.4	152.1
cb	2.7	51.8
1/2	2.6	51.9
C	5.1	49.4
1/4	7.8	46.7
cb	10.5	44.0
S	13.6	40.9

175' E

S	12.8	41.7
cb	9.8	44.7
1/4	6.2	48.3
C	3.1	51.4
1/2	1.4	53.1
cb	0.9	53.6
N	0.0	54.5

T.P. 12.66 166.97 0.18 154.31

200' E

N	9.9	57.1
cb	11.5	55.5

166 97

1/4		12.6	154.4
c		14.3	152.7
1/4		17.4	49.4
cb		22.0	45.0
S		25.4	41.6
	205' E		
S		25.3	41.7
cb		21.2	45.8
1/4		17.2	49.8
C		15.1	51.9
1/4		12.6	54.4
cb		9.7	57.3
N		7.3	59.7
	250' E		
N		5.8	61.3
cb		8.8	58.2
1/4		12.1	54.9
C		15.5	51.5
1/4		18.4	48.4
cb		20.6	46.4

PLOTTED

166 97 JEFFERSON ST

S	244	42.6	22
	275' E		
S	240	43.0	
cb	21.5	45.5	
1/4	18.5	48.5	
C	16.0	51.0	
1/4	12.5	54.5	
cb	8.8	58.3	
N	5.6	61.4	
	300' E = W.L. WRIGHT ST (30' WIDE)		
N	5.1	61.9	
cb	9.1	57.9	
1/4	12.4	54.6	
C	15.7	51.3	
1/4	18.5	48.5	
cb	22.0	45.0	
S	24.3	42.7	
	1/4 CURB		
S	25.8	41.3	
cb	21.4	45.6	

166.47

1/4	18.0	149.0
C	143	151.7
1/4	11.5	55.5
cb	7.1	59.9
N	36	63.4
W. QUARTER		
N	2.7	64.3
cb	6.4	60.6
1/4	10.1	56.9
C	14.4	52.6
1/4	17.7	49.3
cb	21.7	45.3
S	26.0	41.0
CENTER		
S	26.5	40.5
cb	21.6	45.4
1/4	18.0	49.0
C	15.3	51.7
1/4	9.8	57.3
cb	5.8	60.3

PLOTTED

166.97 JEFFERSON ST

23 ✓

N	2.5	164.5
E. QUARTER		
N	2.5	64.5
cb	5.7	61.3
1/4	9.0	58.0
C	14.5	53.5
1/4	18.6	48.4
cb	21.8	45.2
S	25.7	41.3
E. CURB		
S	25.7	41.3
cb	21.5	45.5
1/4	19.0	48.0
C	14.3	53.7
1/4	8.9	58.1
cb	5.8	61.3
N	1.8	65.3
E. L. WRIGHT ST		
N	0.4	166.6
cb	5.0	63.0

16697

3/4		9.4	157.4
C		14.2	152.8
1/4		19.4	47.4
cb		23.0	44.0
S		26.9	40.1
	25' E		
S		29.3	37.7
cb		25.0	42.0
1/4		20.5	46.5
C		15.3	51.7
1/4		10.5	56.5
cb		5.3	61.7
N		1.5	65.5
	50' E		
N		1.6	65.4
cb		6.8	60.2
1/4		11.8	55.2
C		16.1	50.9
1/4		21.0	46.0
cb		26.3	40.7

PLOTTED

16697 JEFFERSON ST

24

S		30.5	136.5
	75' E		
S		31.3	35.7
cb		27.6	39.4
1/4		23.2	43.8
C		19.1	47.9
1/4		14.2	52.8
cb		10.0	57.0
N		3.5	63.5
	100' E		
N		8.8	59.9
T.P.	0.39	154.42	12.94
cb		2.5	51.9
1/4		5.9	48.5
C		10.6	43.8
1/4		14.4	40.0
cb		17.7	36.7
S		21.6	32.8
	125' E		
S		25.0	29.4

15442

cb			21.4	133.0
1/4			18.7	35.7
C			15.4	139.0
1/4			12.3	42.1
cb			9.3	45.1
N			5.0	49.4
T.P.	0.39	141.81	13.00	141.42
		750 E		
N			0.9	40.9
cb			3.5	38.3
1/4			6.6	35.2
C			9.0	32.8
1/4			11.4	30.4
T.P.	1.08	129.95	12.94	128.87
cb			2.7	27.3
S			5.6	24.4
		175 E		
S			14.8	15.2
cb			11.8	18.2
1/4			9.2	20.8

PLOTTED

JEFFERSON ST

25

C		129.95		6.3	123.7
1/4				4.6	25.4
cb				4.9	25.1
N				3.0	27.0
T.P.	0.46	117.89	12.50	117.45	
		700 E			
N				3.8	14.1
cb				5.9	12.0
1/4				5.5	17.4
C				6.6	11.3
1/4				7.6	10.3
cb				9.6	8.3
S				11.9	106.0
T.P.	3.13	109.25	11.77	106.12	
		335 E			
S				10.8	98.5
cb				10.5	98.8
1/4				11.5	97.8
S				10.4	98.9
1/4				7.3	101.9

cb			6.1	103.2
N			5.1	104.2
N	340° E			
cb			7.7	101.6
1/4			8.7	100.6
1/4			10.1	99.2
C			10.0	99.3
1/4			11.5	97.8
cb			14.3	96.0
S			14.8	94.5
S	350° E			
cb			10.4	98.9
1/4			9.4	99.9
1/4			10.5	98.8
C			7.8	101.5
1/4			6.1	103.2
cb			4.1	105.2
N			2.7	106.6
T.P.	11.67	120.53	0.39	108.86

PLOTTED

				275° E			
N					1.7		118.8
cb					4.0		116.5
1/4					5.7		114.8
c					6.5		114.0
1/4					7.4		113.1
cb					9.5		111.0
S					11.2		109.3
S					5.8		114.7
cb					3.9		116.6
1/4					2.1		118.4
C					0.2		120.3
T.P.	12.48	133.00			0.01		120.52
1/4					11.1		119.9
cb					8.7		117.3
N					6.5		116.5
N					1.9		131.1
cb					3.8		129.2

W. CURB

133.00

1/4			6.2	174.8
C			8.2	174.8
1/4			10.7	223
cb			12.6	20.4
S			14.7	18.3
	W QUARTER			
S			13.0	20.0
cb			10.4	22.6
1/4			8.2	24.8
C			5.8	27.2
1/4			3.7	29.3
cb			1.7	31.3
T.P.	12.22	145.02	0.20	132.80
N			11.5	33.7
	CENTER			
N			9.5	35.5
cb			11.6	33.4
1/4			14.0	31.0
C			16.2	28.8
1/4			18.2	126.8

PLOTTED

143.02

JEFFERSON ST

27

cb			20.5	134.5
S			22.8	122.2
	E. QUARTER			
S			21.6	23.4
cb			19.1	25.9
1/4			17.0	28.0
C			14.9	30.1
1/4			12.8	32.2
cb			10.6	34.4
N			7.7	37.3
	E. CURB			
N			6.6	38.4
cb			9.4	35.6
1/4			11.9	33.1
C			14.3	30.7
1/4			16.9	28.1
1/4			18.7	26.3
S			21.0	24.0
	E. L. ESTUDILLO ST			
S			20.4	24.6

cb	18.4	134.6
1/4	16.1	28.9
C	13.5	131.5
1/2	11.3	33.7
cb	8.2	36.8
N	5.2	39.8
25' E		
N	3.8	41.3
cb	6.6	38.4
1/4	9.7	35.3
C	12.0	33.0
1/2	14.7	30.3
cb	16.7	28.3
S	19.0	26.0
45		
50' E		
S	17.5	27.5
cb	15.8	29.3
1/4	13.8	31.3
C	11.1	33.9
1/2	8.6	36.4

see page 75
for re X sections
from here.

PLOTTED

cb	5.9	139.1
N	2.9	142.1
TP	2.39	147.25
90		
90.24' E = SEC C		
N	0.4	46.9
cb	2.7	44.4
1/4	5.7	41.6
C	9.6	37.7
1/2	13.2	34.1
cb	16.2	31.1
S	19.5	27.8
116.24' E = SEC D		
S	17.0	30.2
cb	13.5	33.8
1/4	9.9	37.4
C	7.3	40.0
1/2	5.1	42.2
SL CAL. ST	2.5	44.8
143.85' E = SEC E		
1/2 SL CAL. ST	5.6	41.7

147.25

JEFFERSON ST.

29

C	78	139.5
1/4	10.2	37.1
cb	13.0	34.3
S	15.6	31.7

171.47 E = SEC F

S	14.8	32.5
cb	13.0	34.3
1/4	10.2	37.1
C = S.L. CAL. ST.	8.0	39.3

199.07 E = SEC G

1/4 = S.L. CAL. ST.	11.0	34.3
T.P.	0.45	135.03
cb	1.4	35.9
S	3.5	31.5

226.68 E = SEC H

S	4.3	30.7
cb = S.L. CAL. ST.	1.5	33.5

252.68 E = SO. LINE CAL. ST.

S	5.7	29.3
T.P.	0.76	122.76
		1303
		122.0

PLOTTED

T.P.	0.68	110.81	12.63	110.13
T.P.	0.10	97.86	13.05	97.76
T.P.	0.73	85.49	13.10	84.76
T.P.	1.42	74.18	12.73	72.76
T.P.			7.10	
T.P. CLK.			8.09	66.09

~~210 E 238~~

210 E

~~SEE SEC F~~SEE SE
STONE-LAND
= 66.25

PLOTTED

X sect. Montecito way from Stephens to Hermosa way. Dec. 2/13
 50' street 10' curbs. $\frac{1}{2}$ ' $\frac{1}{4}$ '
 Montecito way. H.I. Childs
 Cotten
 Bunker

J.P.	803	281.74	273.71	B.M. Chun's	275.17		
J.P.	1.69	275.17	8.26	273.48		50' av.	
		west line Stephens		So. line			4.3 270.9
So. line			1.9	273.3			4.2 71.0
			1.5	73.7			3.9 71.3
			1.3	73.9	c		3.7 71.5
C			0.8	74.4			3.5 71.7
			0.6	74.6			2.9 72.3
			0.3	74.9	No. line		3.1 72.1
No. line			-0.2	275.4		75' W.	
	25' W.				No. line		4.5 70.7
No. line			1.4	73.8			4.7 70.5
			2.0	73.2			4.8 70.4
			2.3	72.9	c		4.9 70.3
C			2.8	72.4			5.0 70.2
			2.9	72.3			5.0 70.2
			2.9	72.3	No. line		5.2 70.0
No. line			3.3	71.9			

PLOTTED

PLOTTED

27517

100' W.

No line

6.1 249.1

6.1 49.1

5.9 49.3

C

5.9 49.3

6.0 49.2

5.9 49.3

no. line

5.9 49.3

125' W.

no. line

1

6.9 48.3

6.7 48.5

7.0 48.2

C

6.7 48.5

6.5 48.7

6.7 48.5

No line

6.9 48.3

Stockton 50' street

10' curbs 7 1/2 1/4

31

150' W. (East line Stockton)

27517

No. line

7.7 247.5

7.4 47.8

7.5 47.7

C

7.5 47.7

7.7 47.5

7.8 47.4

no. line

8.0 47.2

E. Cb.

no. line

8.4 46.8

8.1 47.1

8.0 47.2

C

7.9 47.3

7.7 47.5

7.8 47.4

No line

7.8 47.4

PLOTTED

27577

E 1/4

sol. line

8.0 267.2

8.0 47.2

8.0 47.2

c

8.0 47.2

8.2 47.0

8.3 46.9

no. line

8.5 46.7

Center

no. line

8.7 46.5

8.5 46.7

8.3 46.9

c

8.2 47.0

8.3 46.9

8.3 46.9

sol. line

8.4 46.8

27517

W 1/4

sol. line

8.7 266.5

8.8 46.4

8.4 46.8

c

8.5 46.7

8.7 46.5

8.7 46.5

no. line

8.9 46.3

W. Cb.

no. line

9.2 46.0

8.9 46.3

8.8 46.4

c

8.7 46.5

8.9 46.3

9.2 46.0

no. line

9.3 45.9

PLOTTED

27517

West line Stockton

No line

9.7 265.5

No line

10.7 264.5

9.6 656

9.5 657

9.5 657

10.6 64.6

c

9.4 658

c

11.5 63.7

9.3 659

13.0 62.2

9.2 660

13.2 62.0

no line

9.3 659

no line

13.2 62.0

25' W.

no line

10.9 643

no line

16.0 59.2

10.8 644

10.7 64.5

10.8 644

10.2 65.0

c

10.7 645

c

9.6 65.6

10.7 645

10.1 65.1

11.1 641

10.1 65.1

No line

11.0 642

No line

10.1 65.1

PLOTTED

27517

33

50' W.

10.7 264.5

9.5 657

10.6 64.6

11.5 63.7

13.0 62.2

13.2 62.0

13.2 62.0

75' W.

16.0 59.2

10.7 64.5

10.2 65.0

9.6 65.6

10.1 65.1

10.1 65.1

10.1 65.1

27517

100' W.

So. line	9.8	265.4	So. line
	9.8	65.4	
	9.6	65.6	
C	9.2	66.0	C
	8.9	66.3	
	12.4	67.8	
no. line	18.9	56.3	no. line

125' W.

no. line	18.0	57.3	no. line
	10.0	65.7	
	8.5	66.7	
C	9.5	65.7	C
	9.7	65.5	
	9.6	65.6	
So. line	10.0	65.3	So. line

PLOTTED

27517

34

150' W.

So. line	8.9	266.3
	8.7	66.5
	8.7	66.5
C	8.8	66.4
	8.8	66.4
	9.3	65.9
no. line	13.7	61.5

175' W.

no. line	8.4	66.8
	8.0	67.2
	8.0	67.2
C	8.0	67.3
	7.6	67.4
	7.8	67.4
So. line	8.1	67.1

27517

200' W.

Solino

7.5 74.7

6.8 68.4

6.8 68.4

C

6.8 68.4

6.8 68.4

6.5 68.7

no. line

7.0 68.2

225' W.

no. line

5.8 69.4

5.5 69.7

5.5 69.7

C

5.5 69.7

5.0 70.2

4.7 70.5

no. line

5.5 69.7

PLOTTED

27517

35

250' W.

Solino

3.2 77.0

3.6 71.6

3.7 71.5

C

4.3 70.9

4.1 71.1

4.1 71.1

no. line

4.2 71.0

275' W.

no. line

2.9 72.3

3.0 72.2

2.4 72.8

C

2.4 72.8

2.4 72.8

1.6 73.6

no. line

1.4 73.8

PLOTTED

275-17

26

300' W (East line Kermesa Way)

So. line	1.2	7740
	1.4	738
	1.8	734
C	1.7	735
	2.3	729
	2.0	732
no. line	2.0	732

PLOTTED

CROSS-SECTION OF
JUNIPER ST (80' WIDE)
From East Line 32ND ST
To

(SEE APP 12)
13' HIGH JUNIPER
+ E.L.F.

T.P.	6.28	203.92	197.64		
		184.91 E. of Gregory on So			
		183.59	No. = E.L.		OF EASTERN P...
S		83	195.4		
cb		67	97.3		
1/4		63	97.6		
C		38	200.1		
+10		16	202.3		
1/4		1.0	207.9		
cb		3.1	200.8		
N		7.1	196.8		

150' EAST OF GREGORY ST

N		150	88.9		
cb		131	90.8		
1/4		7.5	96.4		
+4		46	99.3		
C		48	99.1		
1/4		11.5	92.4		
cb		18.9	85.0		
S		21.4	82.5		

PLOTTED

203.92 JUNIPER ST.

38

125' E. OF GREGORY

S		20.7	183.2		
+6		19.5	84.1		
cb		17.1	86.8		
1/4		10.2	93.7		
+7		5.9	98.0		
C		5.5	98.4		
+7		5.5	98.4		
1/4		10.3	93.6		
cb		17.2	86.7		
N		18.8	85.1		

100' E. OF GREGORY

N		17.7	85.2		
cb		15.2	85.7		
1/4		13.3	90.6		
C		7.4	96.5		
+2		4.6	99.3		
1/4		11.0	99.5		
+5		4.7	99.2		
cb		10.4	93.5		

2039R

3		15.7	188.2
+10		16.5	87.4
75' E OF GREGORY			
5		5.5	98.4
cb		2.5	2014
1/4		3.0	200.9
+7		3.5	2004
C		6.9	1970
1/4		12.2	91.7
cb		16.3	87.4
N		17.0	86.9

50' E. OF GREGORY

N		15.3	88.6
cb		12.6	91.3
1/4		7.7	96.2
C		4.3	99.6
+10		0.7	203.2
1/4		0.6	203.3
cb		0.0	203.9
T.P.	12.10	215.60	0.42
			203.50

PLOTTER

21560 JUNIPER ST.

39

5		11.1	204.5
25' E. OF GREGORY			
-20		6.0	209.6
5		6.8	208.8
+2		9.1	206.5
cb		9.5	206.1
1/4		9.7	205.9
C		14.0	201.5
1/4		18.7	196.9
cb		22.5	93.1
N		24.2	91.4

E. L. GREGORY ST.

N		23.5	92.1
cb		20.8	94.8
1/4		16.8	98.8
C		12.4	203.2
1/4		7.0	208.6
cb		7.0	208.6
+13		6.8	208.8
5		5.0	210.6

215.60

+1		3.4	212.2	
+15		2.0	13.6	
T.P.	12.5W	228.36	0.08	215.52

W. L. GREGORY ST

S	0.0	298.4
cb	7.4	21.0
1/4	8.8	19.4
1/4	8.4	20.0
1/4	8.4	20.0
C	14.8	13.4
1/4	20.7	207.7
d	25.5	202.9
N	29.5	198.9

25' W.

-35	28.3	200.1
-25	31.0	197.4
N	25.3	203.1
cb	20.3	208.1
1/4	15.1	13.3
C	9.1	19.3
+5	5.5	23.9

PLOTTED

13.3

JUNIPER ST

228.36

40

1/4	5.1	223.3
cb	5.6	22.8
+9	5.3	23.1
S	+2.2	230.6
	50' W	
S	+8.3	236.7
+9	+2.3	230.7
+10	3.2	25.2
cb	2.8	25.6
1/4	0.9	27.5
C	1.6	26.8
1/4	9.2	19.2
d	15.1	13.3
N	20.7	207.7
+25	29.6	99.8
+35	26.5	201.9
	75' W	
-35	27.5	200.9
N	16.5	11.9
cb	10.0	18.4

22836

JUNIPER ST

41

2 1/4	1288	241.04	2.4	228.16
T.P.			0.20	
+6			10.0	31.0
C			10.2	30.8
1/4			10.7	30.3
+4			10.6	30.4
cb			5.5	35.1
+8			0.0	41.0
S			0.5	40.5
	100' W			
S			+2.6	243.6
cb			+2.4	243.4
+12			3.3	37.7
1/4			7.8	33.2
C			7.1	33.9
+8			6.5	34.5
1/4			10.3	30.7
cb			16.9	24.1
N			22.5	18.5

PLOTTED

24104

125 W

N			17.6	323.4
cb			10.9	30.1
1/4			5.9	37.1
C			3.9	37.1
+3.5			4.1	36.9
+4			0.6	40.4
T.P.	1308	25394	0.18	240.86
1/4			10.2	43.7
+5			8.1	45.8
cb			8.5	44.4
AS			7.5	46.4
			1.7	42.7
	150' W			
AS			00	43.9
			5.5	48.4
cb			5.6	48.3
1/4			5.8	48.1
C			11.4	42.5
+1			13.7	40.2
1/4			13.6	40.3
+6			13.3	40.6

cb	17.4	236.5
N	24.7	29.2
175' WEST.		
N	18.3	35.6
cb	11.5	42.4
+3	9.6	44.3
1/4	10.2	43.7
+8	10.2	43.7
+10	7.4	46.5
C	7.1	44.8
1/4	3.4	50.5
cb	3.5	50.4
S	3.2	52.7
	+1.8	255.7 BANK
200' W = E.L. FELTON ST (80' WIDE)		
S	+3.6	-251.5 BANK
	0.9	53.0
cb	2.0	51.9
1/4	2.0	51.9
C	2.8	51.1
+9	6.4	47.5
1/4	6.6	47.3

PLOTTED

cb	6.1	247.8
N	13.5	40.4
E. CURB		
N	9.6	44.3
cb	4.7	49.2
1/4	4.9	49.0
+4	5.1	48.8
+6	2.2	57.7
C	1.6	52.3
1/4	1.2	53.7
cb	1.1	52.8
S	0.8	53.1
E QUARTER		
S	0.8	53.1
cb	0.7	53.2
1/4	0.5	53.4
C	0.8	53.1
1/4	3.4	50.5
cb	3.6	50.5
N	6.6	47.3

25394

CENTER

1				
N			3.8	250.1
cb			2.0	17.9
1/4			1.9	17.0
C			0.0	13.9

T.P.	10.47	264.29	0.12	253.82
------	-------	--------	------	--------

1/4			10.1	54.3
cb			10.2	54.1
S			10.5	53.8

W. QUARTER

S			10.2	54.1
cb			9.5	54.8
1/4			9.1	55.3
C			9.5	54.8
1/4			11.1	53.3
cb			11.4	52.9
N			12.9	51.4

W. CURB

N			12.1	52.3
cb			10.3	54.0

PLOTTED

26499 JUNIPER ST

43

1/4			9.9	254.4
C			8.4	15.9
1/4			8.4	15.9
cb			9.0	15.3
S			8.8	15.5

W. L. FELTON ST

S			8.4	15.9
cb			8.0	16.3
1/4			7.8	16.5
C			7.6	16.7
1/4			9.4	14.9
cb			9.8	14.5
N			11.4	12.9

25' W

N			12.1	12.3
cb			9.0	15.3
1/4			8.6	15.7
C			6.9	17.4
1/4			6.7	17.6
cb			6.8	17.5

264.89

S		6.4	257.9
	50' W		
S		4.7	59.6
cb		5.3	59.0
1/4		5.4	58.9
C		5.9	58.4
1/4		6.7	57.5
+10		7.6	56.7
cb		9.5	54.8
N		14.2	50.1

75' W

-35		22.9	41.4
-20		26.9	37.4
N		17.0	47.3
cb		11.2	53.1
1/4		5.9	59.0
C		4.2	60.1
1/4		3.9	60.4
cb		3.8	60.5
S		2.9	61.4

PLOTTED

JUNIPER ST

264.89

44

	100' W		
S		1.1	263.3
cb		1.9	63.4
1/4		2.4	61.9
C		2.9	61.4
1/4		4.1	60.2
cb		10.2	54.1
N		19.2	45.1
+10		23.0	41.3
+20		19.2	45.1

125' W

N		7.2	57.1	
cb		5.4	58.9	
1/4		1.2	63.1	
C		0.6	63.7	
1/4		0.6	63.7	
cb		0.3	64.0	
T.P.	12.03	276.13	0.19	264.10
S		11.4	64.7	

PLOTTED

276.13

150' W

S	9.7	266.4
cb	10.4	65.7
1/4	10.5	65.3
C	10.7	65.4
1/4	10.8	65.3
cb	11.0	65.1
N	13.1	68.0

175' W

N	9.5	66.5
cb	9.3	66.9
1/4	8.2	67.9
C	8.4	67.7
1/4	8.5	67.5
cb	8.4	67.7
S	8.0	68.1

200' W = E.L. 33RD ST

S	6.0	70.1
cb	6.3	69.8
1/4	6.2	69.9

PLOTTED

JUNIPER ST

274.13

45

C	6.0	270.1		
1/4	6.5	69.6		
cb	6.4	69.7		
N	6.3	69.8		
TP	12.56	288.57	0.12	276.01

S.W. Hub
33RDW.L. 33RD ST

N	11.3	77.3
cb	11.6	77.0
1/4	11.2	77.3
C	11.2	77.3
1/4	12.1	76.5
cb	12.7	75.9
S	12.6	76.0

50' W.

S	7.2	81.4
	8.2	80.4
cb	8.7	79.9
1/4	8.1	80.5
C	7.0	81.6
1/4	8.0	80.6
cb	8.0	80.6

288.57

JUNIPER ST

299.05

46

200' W = E.L. BANCROFT ST

N			7.3	281.3
	100' W			
H			2.6	84.0
cb			2.7	85.9
1/4			2.5	86.2
C			2.6	86.0
1/4			3.7	84.9
cb			4.1	84.1
S			3.4 } 0.4 }	85.2 88.2
T.P.	10.93	299.05	0.45	288.12
	150' W			
S			6.5 } 9.5 }	292.6 89.6
cb			9.9	89.2
1/4			9.6	89.5
C			7.3	90.8
+1			6.8	92.3
1/4			6.9	92.2
cb			7.1	92.0
H			7.6	91.5

PLOTTED

N			4.8	294.3
cb			4.5	94.4
1/4			4.5	94.4
C			5.4	93.7
1/4			6.0	93.1
cb			5.9	93.2
S			5.4	93.7
		W.L. BANCROFT ST		
S			4.3	94.8
cb			4.3	94.8
1/4			4.0	95.1
C			3.5	95.3
1/4			3.7	95.4
cb			3.4	95.7
N			3.3	95.8
		50' W		
H			3.4	95.7
cb			3.8	95.3
1/4			4.1	95.0

299.05

C	4.5	94.6
1/4	4.7	94.4
cb	4.9	94.2
S	5.3	93.8
100' W.		
S	6.1	93.0
cb	5.8	93.3
1/4	5.4	93.7
C	5.2	93.9
1/4	4.9	94.2
cb	4.6	94.5
N	4.2	94.9
150' W.		
N	4.6	94.5
cb	4.9	94.2
1/4	5.1	94.0
C	5.5	93.6
1/4	5.8	93.3
cb	6.2	92.9
S	6.4	92.7

PLOTTED

JUNIPER ST.

299.05

200' W = E.L. 32ND ST.

47

S	7.0	92.1			
cb	6.7	92.4			
1/4	6.5	92.6			
C	6.0	93.1			
1/4	5.4	93.7			
cb	5.4	93.7			
N	5.1	94.0			
T.P.	2.12	292.25	8.92	290.13	32 ND ROCK
T.P.	2.19	293.29	7.15	285.10	
B.M.			7.01	286.28	NE 30 th Aug. 286.24

PLOTTED

PLOTTED

PLOTTED

CROSS-SECTION OF
LAUREL ST 80' WIDE
32ND ST. EAST

17/10/13
LAUREL ST
32ND ST
EAST

LAUREL ST

49

TP 12.60 302.73 290.13 TP of Rock
SEE PAGE 47

TP 6.29 305.56 3.46 299.27 13' HUB
32ND + LAUREL ST

E.L. 32ND ST

S 6.1 299.5

cb 6.0 99.4

1/4 5.9 99.7

C 5.8 99.8

1/2 5.8 99.8

cb 5.9 99.7

N 5.7 99.9

50' E

N 5.2 300.4

cb 5.4 300.2

1/4 5.6 300.0

C 5.7 299.9

1/2 6.0 99.6

cb 6.3 99.3

S 6.3 99.3

PLOTTED

305.56
100' E

S

6.2 299.4

cb

6.0 99.4

1/4

5.6 300.0

C

5.8 300.4

1/4

5.1 300.5

cb

5.1 300.5

N

4.8 300.9

150' E

N

5.0 300.6

cb

5.3 300.3

1/4

5.6 300.0

C

5.9 299.7

1/4

6.2 99.4

cb

6.6 99.0

S

6.9 98.7

200' E = W.L. BANCROFT ST.

S

8.3 97.3

cb

8.0 97.4

1/4

7.5 98.1

305.56

296.30

LAUREL ST

50

C			7.2	298.4
1/4			6.6	99.0
cb			6.2	99.4
N			5.5	300.1

E. L. BANCROFT ST

N			8.4	97.2
cb			8.3	97.3
1/4			8.4	97.2
C			8.6	97.0
1/4			9.4	94.2
cb			10.0	95.6
S			10.7	94.9
T.P.	3.60	296.30	1286	292.70

50' E

S			5.8	90.5
cb			5.8	90.5
1/4			5.3	91.0
C			4.6	91.7
1/4			4.3	92.0
cb			3.9	92.4

PLOTTED

N			3.5	292.8
		100' E		
N			7.4	88.9
cb			7.8	88.5

1/4			8.1	88.2
C			8.6	87.7
1/4			9.2	87.1
cb			9.4	86.9
S			9.9	86.4

150' E

S			11.4	84.9
cb			10.7	85.5
1/4			10.1	86.2
2			9.8	86.5
1/4			9.5	86.8
cb			9.5	86.8
N			9.5	86.8

200' E = W.L. 33RD ST

N			11.9	84.4
cb			12.1	84.2

296.30

LAUREL ST

285.69

51

1/4			12.4	283.9	db	14.4	271.3
C			12.4	283.9	+6	17.8	67.9
1/4			12.6	283.7	S	14.4	71.3
db			12.8	283.5		50' E	
S			13.0	283	-25	13.0	72.7
T.P.	1.77	285.69	12.98	283.92	-15	15.0	70.7
		E. L 33 RD ST			S	20.5	45.2
S			9.8	75.9	+3	22.4	43.3
db			11.1	74.6	db	15.8	49.9
1/4			13.1	72.6	1/4	11.9	73.8
C			8.5	77.2	C	9.9	75.8
1/4			6.5	79.2	1/4	8.3	77.4
db			5.1	80.6	db	6.1	79.6
N			3.7	82.0	N	4.5	81.2
		25' E				75' E	
N			4.2	81.5	N	5.1	80.6
db			5.9	79.8	db	6.8	78.9
1/4			7.3	78.4	1/4	9.5	76.2
C			8.5	77.2	C	11.0	74.7
1/4			10.2	75.5	1/4	14.4	71.3

PLOTTED

285.69

cb		17.8	267.9
S		25.6	60.1
+20		18.4	67.3
	100' E		
-15		27.0	58.7
-8		30.0	55.7
S		26.5	59.2
cb		17.9	67.8
1/4		14.3	71.4
C		18.8	72.9
1/4		10.1	75.6
cb		8.0	77.7
H		6.4	79.3
	125' E		
N		8.1	77.6
cb		9.6	76.1
1/4		11.7	74.0
C		14.9	70.8
1/4		15.1	70.6
cb		19.0	66.7

PLOTTED

285.69 LAUREL ST

52

S		1	25.5	260.7
+15			33.3	52.4
+30			27.0	58.7
	150' E			
-40			28.0	57.7
-25			38.0	47.7
S			28.6	57.1
cb			23.6	62.1
1/4			19.5	66.2
C			17.2	68.5
1/4			13.8	71.9
cb			11.8	73.9
H			10.5	75.2
T.P.	0.09	272.28	12.90	272.29
		175' E		
N			1.6	271.3
cb			2.4	70.5
1/4			3.6	69.3
C			5.9	67.0
1/4			9.7	63.2

27288

cb	13.4	25.9
S	17.7	55.3
+ 25	29.1	43.8
+ 40	18.4	54.0

200' E = W.L. FELTON ST (80' WIDE)

- 53	20.6	52.3
- 30	33.6	39.3
S	20.6	52.3
cb	16.5	56.4
1/4	13.1	59.8
C	10.5	62.4
1/4	9.0	63.9
cb	7.9	65.0
N	7.1	65.8

W. CURB

N	10.1	62.8
cb	10.9	62.0
1/4	12.0	60.9
C	13.4	59.5
1/4	15.2	57.7

PLOTTED

27289 LAUREL ST

53

cb	18.2	25.7
S	23.4	49.5
+ 28	35.3	37.6
+ 40	24.0	48.9

N. QUARTER

- 40	31.0	41.9
- 30	37.0	35.9
S	25.8	47.1
cb	20.3	52.6
1/4	17.9	55.0
C	16.0	56.9
1/4	15.1	57.8
cb	13.3	59.6
N	12.5	60.4

TP

0.46 260.40 12.94 259.94

CENTER

N	2.2	258.2
cb	3.4	57.0
1/4	4.5	55.9
C	6.2	54.2

1/4	8.3	252.1
cb	11.2	49.2
S	16.3	44.1
+25	26.0	34.4
+35	22.4	38.0

E. QUARTER

-42	23.0	37.4
-27	27.4	33.0
S	18.5	41.9
cb	13.3	47.1
1/4	10.8	49.6
C	8.7	51.7
1/2	6.9	53.5
cb	5.7	54.7
N	4.0	56.4

E CURB

N	6.4	54.0
cb	7.8	52.6
1/4	9.0	51.4
C	10.2	50.2

PLOTTED

1/4	12.1	248.3
cb	14.8	45.4
S	20.0	40.4
+27	29.0	31.4
+42	23.5	36.9

E.L. FELTON ST

-47	25.2	34.2
-27	30.7	29.7
S	21.6	38.8
cb	17.4	43.0
1/4	14.2	46.2
C	12.6	47.8
1/2	11.5	48.9
cb	10.4	50.0
N	9.1	51.3

B.M.

T.P.	0.07	248.03	12.44	247.96
	25	E		
N			3.3	44.7
cb			4.4	43.6

NE. HUB
FELTON

248.03

1/4		5.1	242.9
C		5.8	42.2
1/4		7.0	41.0
cb		8.2	39.8
S		12.2	35.8
+20		19.7	28.2
+33		20.7	27.3
+45		18.3	29.7
	50' E		
-60		20.2	27.8
-37		25.3	22.7
-9		16.3	31.7
S		14.3	33.7
cb		12.7	25.3
1/4		11.9	34.1
C		11.1	34.9
1/4		11.0	37.0
cb		10.5	37.5
N		10.3	37.7
T.P.	2.01	235.07	12.97
		235.06	

PLOTTED

LAUREL ST

235.07

55

	15' E		
N		2.7	232.4
cb		2.7	32.4
1/4		3.1	32.0
C		4.2	30.9
1/4		4.6	30.5
cb		4.3	30.8
S		4.7	30.4
+15		6.2	28.9
+45		15.8	19.3
	100' E		
-40		13.5	21.6
-30		10.5	24.6
S		9.4	25.7
cb		10.4	24.7
1/4		11.2	23.9
C		11.7	23.4
1/4		12.3	22.8
cb		12.0	23.1
N		11.4	23.7

PLOTTED

	235.07			
T.P.	2.89	225.23	12.73	222.34
		120° E		
N			8.1	217.1
cb			8.7	16.5
1/4			9.6	15.6
C			9.7	15.5
+10			10.0	15.2
1/4			8.6	14.6
cb			5.6	19.6
S			4.7	20.5
+25			4.5	20.7
+40			5.9	19.3
		145° E		
-20			8.9	14.3
S			11.7	18.5
cb			7.0	18.2
1/4			5.1	20.1
C			2.4	23.8
1/4			0.8	24.4
T.P.	12.26	237.44	0.05	225.18

PLOTTED

	237.44	LAUREL ST		
cb			11.9	228.5
N			11.4	24.0
		175° E		
N			2.7	35.7
cb			4.2	33.2
1/4			5.2	32.2
C			6.7	30.7
1/4			8.5	28.9
cb			11.0	26.4
S			13.7	23.7
		200° E. = W.L. GREGORY ST		
S			3.9	33.5
cb			2.1	35.3
1/4			1.0	36.4
T.P.	12.13	249.56	0.01	237.43
C			11.7	37.9
1/4			9.4	40.2
cb			8.1	41.5
N			6.7	43.9
T.P.	11.67	261.18	0.11	249.45

56

261.12

E.L. GREGORY ST

N		2.0	259.1
cb		2.6	58.5
1/2		3.6	57.5
C		4.5	56.6
1/4		5.4	55.7
cb		6.2	54.9
S		7.2	53.9
	25' E		
S		3.2	57.9
cb		2.5	58.4
1/4		1.1	60.0
C		0.4	60.7
T.P.	12.87	273.93	0.06
1/4		12.2	61.7
cb		11.5	62.4
N		10.5	63.4
	50' E		
N		7.0	66.9
cb		7.7	66.2

PLOTTED

LAUREL ST

273.93

57

1/4		8.1	65.8
C		9.0	64.9
1/2		9.9	64.0
cb		11.0	62.9
S		12.2	61.7
	75' E.		
S		8.5	65.4
cb		7.7	66.2
1/4		7.0	66.9
C		6.3	67.6
1/2		5.6	68.3
cb		5.0	68.9
N		4.5	69.4
	100' E.		
N		2.7	71.2
cb		3.3	70.6
1/4		3.9	70.0
C		4.6	69.3
1/2		5.2	68.7
cb		5.9	68.0

PLOTTED

273.93

LAUREL ST

58

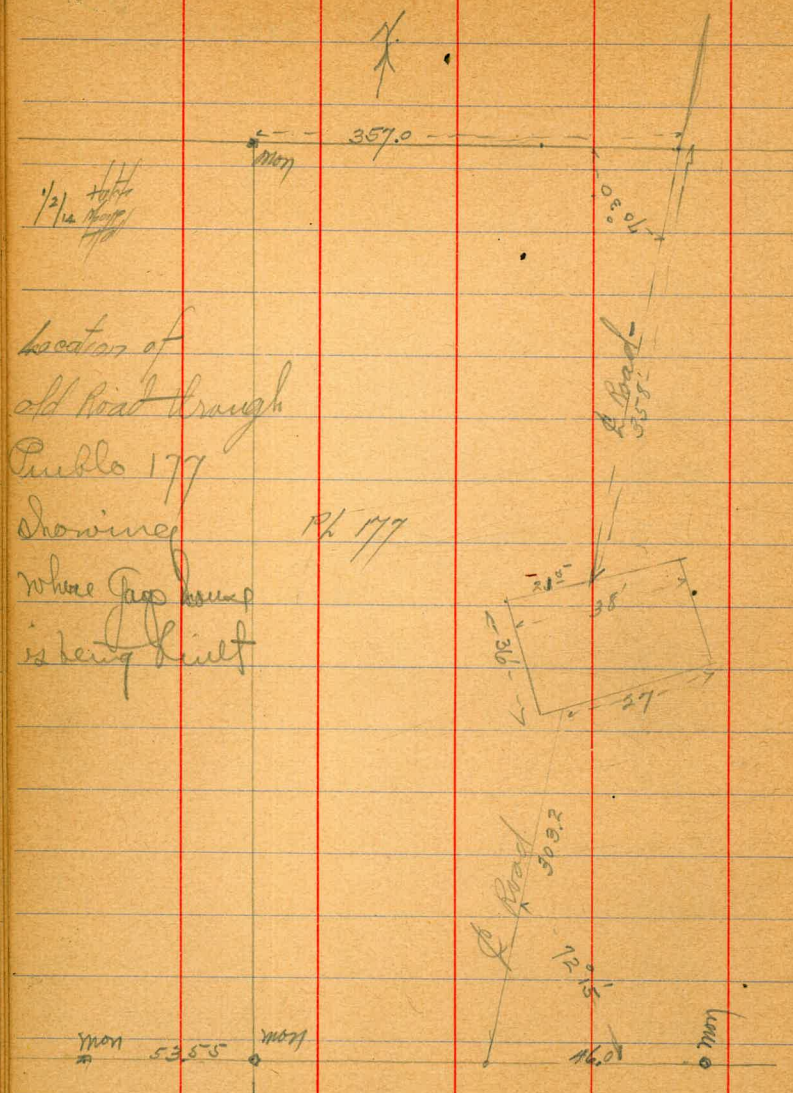
5.65 299.26 - 15' Hub 32nd
299.27

ON BM

150' E

S			6.7	267.7
S			4.3	69.4
cb			3.6	70.3
1/4			2.9	71.0
C			2.4	71.5
1/4			1.9	72.0
cb			1.4	72.5
N			0.8	73.1
171.05 ON No } EAST = PUEBLO LINE 172.37' ✓ 50 }				
N			0.8	73.1
cb			1.3	72.6
1/4			1.8	72.1
C			2.2	71.7
1/4			2.7	71.2
cb			3.3	70.4
S			3.8	70.1
T.P.	12.95	285.72	1.16	272.77
T.P.	11.11	226.79	0.04	285.68
T.P.	8.60	304.91	0.48	296.31

PLOTTED



X sect. 271.95
Helm Bee Book
75' no.

White 4.5 467.5

7.1

w 1/4

9.1

100' no.

w 1/4

9.5

7.0

White

5.2 266.8

125' no.

White

5.2 266.8

8.1

w 1/4

10.1

150' no.

w 1/4

10.2

8.1

White

5.4 266.6

927 page 81

April 11/14 ^{Helix 60}
letter 60
Kerr

175' no.

White

5.6 266.4

7.9

w 1/4

10.2

200' no.

w 1/4

9.4

7.2

White

4.5 267.5

225' no.

White

5.5 266.5

8.3

w 1/4

10.6

250' no.

w 1/4

13.4

11.4

White

8.5 263.5

271,95

275' no.

W line

13.4 258.6

J.P.

0.57 ^{HI.} 259.77 12.75 259.20

cb

4.0

C

6.5

E 1/4

8.7 251.1

300' no. (20. line maple)

W 1/4

11.2

12.4

W line

9.9

20. cb.

7.0 257.8

W line

12.8 247.0

W cb.

13.7

J.P.

2.14 ^{HI.} 249.28 12.63 247.14

250' no. Laurel

E line

1.0 248.3

249.3

61

275' no.

E line

6.3 243.0

E cb.

3.5

300' no. (20. line maple)

E line

12.0 237.3

C

10.1

9.7

6.3 243.0

20. cb.

W 1/4

5.6

C

8.2 241.1

6.8

6.8

E line

7.7 241.6

249.28

6' no. ob.

E line

5.8 243.5

4.0

4.0

C

5.3 244.0

6.5

6.9

White

5.7 243.6

120' 14

White

3.5 245.8

1.9

13' hub.

2.98 246.30

C

2.0 247.3

1.0

1.5

E line

3.7 245.6

62

13.03 ^{H.F.} 259.33

246.30

center

White

7.8 251.5

7.4

7.6

C

6.1 253.2

7.0

8.5

E line

10.7 248.6

120' 14

E line

9.4 249.9

7.5

5.4

C

3.9 255.4

3.0

2.2

White

2.2 257.1

259.33

no. cb.

w.cb.

-0.3 259.6

1.6

C

3.0 256.3

4.5

6.3

Eline

8.7 250.6

north line maple

Eline

8.5 250.8

5.4

3.9

C

1.4 257.9

25' no.

E 1/4

1.4

4.3

Eline

6.5 247.8

50' no.

Eline

4.9 244.4

E.cb.

1.3

63

JP.

12.60

HJ.

271.91

0.02

259.31

no. cb.

w.line

11.0 260.9

north line maple

w.line

8.6 263.3

9.6

W 1/4

11.0

25' no.

C

11.5 260.4

8.6

6.8

w.line

4.3 267.6

50' no.

w.line

1.6 270.3

3.6

6.8

C

9.3 262.6

E 1/4

10.8

571.9

75' no.

E. line 15.5 256.4

12.7

9.6

C 7.0 264.9

4.1

W. cb. 1.6

100' no.

C 5.4 266.5

8.9

11.7

E. line 16.2 255.7

125' no.

E. line 16.7 255.8

+6'

cb.

12.7

10.4

7.1

C 4.2 267.7

271.91

64

150' no.

3.0 268.9

7.4

10.1

14.0 257.9

175' no.

E. line 14.2 257.7

9.6

6.7

200' no.

E 1/4 6.8

10.8

E. line 13.3 258.6

225' no.

E. line 14.6 257.3

10.4

E. cb.

J.P. low 12.66 259.25

J.P. 9.66 ^{H.T.} 280.15 1.42 270.49

75' no.

White

6.8 273.4

100' no.

White

4.4 275.8

6.7

W 1/4

10.2

125' no.

W 1/4

9.2

6.0

White

4.1 276.1

150' no.

White

4.1 276.1

6.6

W 1/4

8.8

175' no.

C

12.3 267.9

9.3

6.5

White

4.5 275.7

200' no.

White

4.6 275.6

7.6

10.1

C

12.9 267.3

225' no.

E 1/4

14.8

C

13.3 266.9

11.1

7.9

White

5.0 275.2

280.2

250' no.

White

6.4 273.8

9.3

11.8

C

13.7 266.5

275' no.

C

16.1 264.1

C+4

14.5

1/4

12.4

10.4

White

7.5 272.7

300' no. (No. line Nutmeg)

White

8.4 271.8

Prop+6'
Cb.

8.8

11.8

66

J.P.

7.08

H.I.

266.33

259.25

250' no. Maple

E line

10.9 255.4

7.6

E 1/4

4.1

275' no.

E 1/4

7.2

10.0

E line

15.3 251.0

300' no. (No. line Nutmeg)

E line

6.4 259.9

prop+8'

7.5

Cb.

9.1

1/4

13.0

C

7.4 258.9

W 1/4 13' hub. J.P.

2.15 264.18

	7	H.I. 7.23	-	
4+45			4.1	3.1
4+95 = West side of 13 th St.			3.8	3.4
5+10			3.9	3.3
Center of Catch Basin No 4 - 23' North of Station			4.1	3.1
5+55 Above over the Switzer Canyon Conduit			4.0	3.2
On Cover of Catch Basin N.E. 13 th St.			5.8	1.4
#		4.04		
	4.18	7.33	3.19	4.04
			4.38	2.95 = B77 3.20 13471

X sect. State Street from
Laurel.

710.

4.90 H.I. 62.82 57.92

no. line maple.

W line

- 0.3 53.1

cb + 4'

4.4 58.4

" + 9'

4.9 57.9

8.0 54.8

1/4

8.2 54.6

C

8.1 54.7

8.3 54.5

8.8 54.0

E line

8.3 54.5

no cb

E line

8.8 54.0

8.6 54.2

8.7 54.1

C

8.3 54.5

8.1 54.7

cb + 5'
white

7.2 55.6

5.0 57.8

4.8 58.0

line maple to no. line 7
10' walks 75' street Oct. 6/14

62.82

no 1/4

fields
letters
Bund 69

white

5.7 57.1

7.2 55.6

8.1 54.7

C

8.6 54.2

8.9 53.9

8.9 53.9

E line

8.8 54.0

center

E line

9.1 53.7

9.0 53.8

9.1 53.7

general level 8.7 54.1

more 9.26 53.56

C

8.4 54.4

7.7 55.1

white

7.1 55.7

State St.

6282

20' 1/4

White

8.2 54.6

8.5 54.3

8.6 54.2

C

8.8 54.0

9.1 53.7

9.2 53.6

E line

9.2 53.6

20' 1/2

E line

9.3 53.5

9.3 53.5

9.2 53.6

C

8.8 54.0

9.2 53.6

8.9 53.9

White

8.9 53.9

6282

70

20' line maple.

White

9.2 53.6

9.2 53.6

9.3 53.5

C

9.3 53.5

9.2 53.6

9.3 53.5

E line

9.2 53.6

25' 20.

E line

8.8 54.0

9.3 53.5

9.6 53.2

C

9.7 53.1

10.1 52.7

10.1 52.7

White

10.1 52.7

State St.

6282

55' 20.

White			10.9	519
			11.0	518
			10.9	519
C			10.5	523
			10.5	523
			10.4	524
Elms			10.5	523
J.P.	256	145 52 95	12.43	50.39
		75' 20.		
Elms			12.9	40.0
			9.8	43.1
			8.6	44.3
C			4.2	48.7
C+7'			1.7	51.2
			1.3	51.6
			1.4	51.5
White			1.3	51.6

71

5295

85' 20.

White			1.4	51.5
			1.4	51.5
			2.6	50.3
C			9.3	43.6
E 1/4			12.3	40.6
				100' 20.
Elms			9.4	43.5
E sb.			12.0	40.9
W 1/4			8.7	44.2
			1.7	51.2
White			1.7	51.2
				125' 20.
White			2.3	50.6
			2.1	50.8
W 1/4			8.8	44.1
E sb.			9.6	43.3
Elms			3.3	49.6

52.95

State St.

72

156' RD.

E line	3.7	49.2
E.cb.	11.4	41.5
w 1/4	12.8	40.1
C	7.2	45.7
W line	25	50.4

182' RD.

W line	13.7	39.2
E 1/4	12.7	40.2
E.cb.	5.3	47.6

200' RD.

E 1/4	3.5	49.4
C	11.2	41.7

207' RD.

w 1/4	9.9	43.0
C	6.0	46.9

225' RD.

w.cb.	6.2	46.7
W line	11.6	41.3
J.P.	0.95	52.00

J.P.

3.63 ^{H.I.} 43.85 12.73 40.22

85' RD. maple?

E line	10.4	33.4
E.cb.	9.0	34.8

100' RD.

E 1/4	7.5	36.3
1/4+6'	10.4	33.4
C	11.1	32.7

125' RD.

C	9.6	34.2
C+6'	11.5	32.3
E 1/4	6.3	37.5

156' RD.

E 1/4	13.0	30.8
1/4+5'	7.8	36.0
C	6.8	37.0

182' RD.

w.cb.	9.2	34.6
C	12.8	31.3
C	8.7	35.1

4385

200' 20.

w 1/4	5.4	38.4
	9.0	34.8
white	12.6	31.2

207' 20.

white	8.0	35.8
w cb.	5.0	38.8
IP.	12.34	52.0

182' 20. maple

E line	11.0	53.3
--------	------	------

200' 20.

E line	1.2	63.1
E cb.	7.5	56.8

207' 20.

E line	0.0	64.3
	5.1	59.2
E 1/4	11.1	53.2

6434

73

225' 20.

w 1/4	8.4	55.9
c	5.5	58.8
	3.6	60.7
E cb.	2.6	61.7

250' 20

E 1/4	1.0	63.3
c	4.5	59.8

6.9 57.4

9.1 55.2

11.2 53.1

275' 20.

white	7.8	56.5
-------	-----	------

4.6 59.7

1.2 63.1

IP.	12.50	76.11	0.73	63.61
-----	-------	-------	------	-------

225' 20. maple.

E line	11.8	64.3
--------	------	------

76.11

250' RD.

E line	6.5	69.6
E.C.B.	9.1	69.0

275' RD.

C	10.6	65.5
	6.8	69.3
	2.8	73.3
E line	1.6	74.5

300' RD (no. line Tannel.)

E line	0.6	75.5
gutter	1.05	75.0
	1.8	74.3
	1.6	74.5
C	2.3	73.8
	3.0	73.1
gutter	3.7	72.4
	3.05	73.0
W line	3.4	72.7

8/18/24 Gregory Recross-section of a 75' St
 portion of Jackson St 12' obs
 see page 14 for sketch.

0.15
 on Co. 55 Cal. + Ferry, 151.7
 451.65 151.5

45' S. of Estudillo

- 15	6.9	124.5 ✓
E or N.	9.8	121.9 ✓
cb	12.6	139.1 ✓
1/4	15.6	136.1 ✓
C	18.3	133.1 ✓
1/4	20.6	131.1 ✓
cb	22.6	129.1 ✓
W or S	23.6	128.1 ✓
+ 25	26.3	125.1 ✓

70' S. of Estudillo

- 25	29.1	121.3 ✓
W S	24.2	127.5 ✓
cb	21.8	129.9 ✓
1/4	19.4	132.3 ✓
C	16.6	135.1 ✓
1/4	11.7	140.0 ✓
cb	5.7	146.0 ✓

+7

E. N

E N

cb

+2

1/4

C

1/4

cb

W S

+25

151.7

3.2

128.5 ✓

75

2.5

129.1 ✓

90.24' S or East. = Sec C page 14

1.0

130.7 ✓

2.0

129.7 ✓

2.0

129.7 ✓

6.6

125.1 ✓

12.9

138.8 ✓

15.8

135.9 ✓

20.8

130.9 ✓

23.1

128.3

29.0

121.7 ✓

116.24' E = Sec D

28.1

123.6 ✓

21.0

130.7 ✓

17.6

124.1 ✓

13.1

138.3 ✓

7.2

140.5 ✓

2.7

129.0 ✓

2.3

129.2 ✓

-25

W

cb

1/4

C

+8

1/4

cb = S.L. Cal.

E

143.85 S. or E. = Sec E

E 1/4 = S.L. Cal.

C

+8

1/2

cb

W of S

+25

-20

S

cb

+5

+8

1/2

C = S.L. Cal.

1512

1.6

150L ✓

3.5

148 ✓ ✓

3.9

147.8 ✓

5.9

145.8 ✓

8.1

143.6 ✓

16.6

135.1 ✓

20.1

131.6 ✓

24.2

127.5 ✓

171.47 E. = Sec F

21.1

130.6 ✓

18.7

123.0 ✓

17.0

136.7 ✓

16.4

135.3 ✓

7.8

143.9 ✓

9.7

142.0 ✓

7.6

144.1 ✓

Jackson

1512

199.07 E = Sec G

76

S 1/4 = S.L. Cal.

+6

T.P.

084

140.58

140.6

cb

+4

S or West

15 out

S

cb

cb

+6

S

+7

S.L. of Jackson

11.7

140.0 ✓

12.0

139.7 ✓

11.96

139.72 ✓

5.4

135.2 ✓

7.7

134.9 ✓

9.3

131.3 ✓

11.3

129.3 ✓

210' E or South

9.6

131.0 ✓

3.5

137.1 ✓

226.68 E = Sec H

3.7

136.9 ✓

4.7

135.9 ✓

8.4

134.1 ✓

11.6

129.0 ✓

252.68 = S. Line Cal.

8.2

134.2 ✓

8/20/21 Gregory Cross SECTION of 8' 5" SW 32nd
 Juniper St from 14' CBS
 33rd to Felton
 sidewalk only in on S. Side

on BM	096	29858	29762
T.P.	026	28652	1232 28626
T.P.	007	27432	1227 27425
		E. L. 33rd.	
S		4.2	270.1 ✓
+2 = S edge walk		4.26	270.06 ✓
+7.33 = N ✓ ✓		4.23	270.09 ✓
cb		4.5	270.9 ✓
+5		4.1	269.9 ✓
+6		5.2	269.1 ✓
1/4		4.7	269.6 ✓
C		4.4	269.9 ✓
1/4		4.4	269.9 ✓
cb		4.5	269.8 ✓
N		4.5	269.8 ✓
-10		11.0	263.3 ✓
N		10.6	263.7 ✓
+10		10.5	263.9 ✓
cb		8.7	265.6 ✓

226 Tap 4yd.
 27196

1/4		
C		
1/4		
1.7		
cb		
+6.67 = N edge walk		
+12.0 = S ✓ ✓		
5		
		70' E
5		
+2 = S edge walk		
+7.33 = N ✓ ✓		
cb		
+6		
1/4		
C		
1/4		
+2		
T.P.	1.19	26309
4.9		

2743 JUNIPER		77
8.8	2655 ✓	
8.7	2656 ✓	
8.9	2657 ✓	
9.5	2648 ✓	
8.1	2661 ✓	
7.87	2645 ✓	
7.79	2653 ✓	
8.2	2661 ✓	
10.2	2641 ✓	
9.77	2645 ✓	
9.88	2644 ✓	
10.3	2640 ✓	
11.8	2645 ✓	
11.2	2631 ✓	
11.1	2632 ✓	
11.1	2632 ✓	
11.4	2649 ✓	
12.42	26190	
3.6	259.5 ✓	

26309

2631

cb	3.9	√592 ✓
N	5.9	√572 ✓
+18	13.3	√498 ✓
+23	9.0	√541 ✓
100' E		
-15	18.8	√553 ✓
-10	20.7	√444 ✓
N	18.5	√426 ✓
cb	8.6	√545 ✓
1/4	4.0	√591 ✓
+3	2.3	√608 ✓
C	1.7	√614 ✓
1/4	1.7	√614 ✓
+7	2.4	√607 ✓
cb	0.8	√623 ✓
+6.67° N. edge walk	0.27	√6285
+12° = 3. edge walk	0.13	√6297
3	0.1	√630 ✓
140' E		
5	3.4	√597 ✓

JUNIPER 175

2631

+2.0 - 3. edge walk	2.85	√6625	78
+7.33 N ✓	2.98	√6011 ✓	
cb	3.7	√594 ✓	
+4	5.2	√579 ✓	
+8	4.1	√590 ✓	
1/4	3.9	√59 ✓	
C	4.2	√589 ✓	
1/4	4.8	√583 ✓	
+6	5.3	√578 ✓	
cb	9.8	√533 ✓	
N	15.2	√499 ✓	
+10	20.0	√431 ✓	
+32	30.5	√326 ✓	
+37	28.3	√348 ✓	
170' E			
-15	17.3	√458 ✓	
-5	13.0	√501 ✓	
N	11.4	√517 ✓	
cb	7.6	√555 ✓	
1/4	6.9	√56 ✓	

26309

~~163.1~~

+7	6.5	✓56.6	✓
C	5.6	✓57.5	✓
1/4	5.4	✓57.7	✓
+6	5.7	✓57.4	✓
+8	6.3	✓56.8	✓
+12	6.2	✓56.9	✓
cb	5.3	✓57.8	✓
+ 6.67 = N. edge walk	5.10	✓58.0	
+ 12.0 = S ✓ ✓	5.02	✓58.08	
5	5.4	✓57.7	
200' E = W.L. Felton St 80' wide			
5	7.0	✓56.1	✓
+2 = S. edge walk	6.94	✓56.15	✓
+7.33 = N ✓ ✓	7.0	✓56.1	✓
cb	7.0	✓56.1	✓
+1	7.6	✓55.5	✓
+4	7.6	✓55.5	✓
+7	7.0	✓56.1	✓
1/4	6.9	✓56.7	✓
C	6.6	✓56.5	✓

JUNIPER.

~~263.1~~

+2	6.7	✓56.1	✓79
+8	8.0	✓55.1	✓
1/4	8.2	✓56.7	✓
cb	8.5	✓56.6	✓
+7	8.5	✓56.6	✓
N	10.3	✓57.8	✓
+10	12.4	✓50.7	✓
W. Curb			
-10	12.4	✓50.7	✓
N	10.5	✓57.6	✓
+2	10.5	✓57.6	✓
+5	9.2	✓53.2	✓
cb	9.3	✓53.8	✓
1/4	9.2	✓53.9	✓
+5	8.9	✓54.7	✓
C	7.3	✓55.8	✓
1/4	7.6	✓55.5	✓
+12	8.1	✓55.0	✓
cb	7.6	✓55.5	✓
+ 6.67 = N. edge walk	7.30	✓55.8	✓
+12 = S ✓	7.33	✓55.8	✓
5	7.6	✓55.5	✓
walk end 2' east of this section			

26309

	W. Quarter			
S	263.1	8.9	✓512	✓
+5		8.4	✓507	✓
cb		8.4	✓507	✓
+2		8.9	✓541	✓
+5		8.5	✓566	✓
1/4		8.2	✓549	✓
C		8.3	✓548	✓
+10		10.6	✓525	✓
1/4		10.1	✓530	✓
cb		10.2	✓549	✓
+11		10.4	✓547	✓
+12		11.3	✓518	✓
N		11.3	✓518	✓
+10		13.2	✓499	✓
	Center			
-10		15.2	✓479	✓
N		13.1	✓500	✓
+5		11.7	✓514	✓
cb		11.4	✓517	✓

- JUNIPER

1/4	263.1	11.3	✓518	✓
+6		11.5	✓516	✓
+8		9.4	✓537	✓
C		9.0	✓541	✓
1/4		9.1	✓540	✓
cb		9.2	✓539	✓
S		9.2	✓539	✓
	E Quarter			
S		10.1	✓530	✓
cb		9.6	✓535	✓
1/4		9.6	✓535	✓
C		9.3	✓538	✓
+3		9.5	✓536	✓
+8		13.2	✓499	✓
T.P.	3.70	25487	11.92	25117
1/4		2549	4.5	✓502
cb		4.5	✓502	✓
+6		4.5	✓502	✓
N		6.3	✓481	✓
+10		9.2	✓52	✓

25/87

E. curb

		2549		
- 10		13.7	✓41 ✓	✓
N		9.2	✓452	✓
+ 8		5.9	✓490	✓
cb		5.9	✓490	✓
1/4		6.1	✓488	✓
+ 4		6.3	✓486	✓
+ 9		2.2	✓517	✓
c		1.3	✓536	✓
1/4		2.0	✓519	✓
cb		1.8	✓531	✓
+ 6.67	N. edge walk	1.65	✓537	
+ 12	- 5 - -	1.67	✓530	
5	walk end's 15' west of this section E. L. Felton	1.8	✓531	
5		1.7	✓530	✓
+ 2.0	sedge walk	1.64	✓5373	✓
+ 7.93	N - -	1.79	✓5308	✓
cb		2.2	✓547	✓
1/4		2.3	✓546	✓

	2549		
+ 9	1.9	✓303	✓
c	4.0	✓309	✓
+ 3	4.0	✓309	✓
+ 9	7.7	✓472	✓
1/4	7.9	✓479	✓
cb	7.4	✓475	✓
+ 2	7.6	✓473	✓
N	14.0	✓409	✓
+ 10	17.9	✓570	✓

240.6 = 50' E. of E.L. Felton on Lower Rd.

234.2 100' - - - - -

61
25548

July + 32 = 13 + 1 273.35
 N.E. Hawthorn + 33 + 1 mile
 258.02

273.71
 273.60

160
 1060
 10165
 6300
 6300
 1260
 174900

2024
 1749
 184.71
 132

680
 166
 3400
 1080
 620
 112200

278.41
 2.50

281.11
 71.01
 10.10
 76
 122

DISTANCES FROM CENTER OF ROADWAY FOR CROSS-SECTIONING.
 ROADWAY 14 FEET WIDE. SIDE SLOPES 1 1/2 TO 1.
 FOR SINGLE TRACK EMBANKMENT.

	0	.1	.2	.3	.4	.5	.6	.7	.8	.9	
0	7.0	7.2	7.3	7.5	7.6	7.8	7.9	8.1	8.2	8.4	0
1	8.5	8.7	8.8	9.0	9.1	9.3	9.4	9.6	9.7	9.9	1
2	10.0	10.2	10.3	10.5	10.6	10.8	10.9	11.1	11.2	11.4	2
3	11.5	11.7	11.8	12.0	12.1	12.3	12.4	12.6	12.7	12.9	3
4	13.0	13.2	13.3	13.5	13.6	13.8	13.9	14.1	14.2	14.4	4
5	14.5	14.7	14.8	15.0	15.1	15.3	15.4	15.6	15.7	15.9	5
6	16.0	16.2	16.3	16.5	16.6	16.8	16.9	17.1	17.2	17.4	6
7	17.5	17.7	17.8	18.0	18.1	18.3	18.4	18.6	18.7	18.9	7
8	19.0	19.2	19.3	19.5	19.6	19.8	19.9	20.1	20.2	20.4	8
9	20.5	20.7	20.8	21.0	21.1	21.3	21.4	21.6	21.7	21.9	9
10	22.0	22.2	22.3	22.5	22.6	22.8	22.9	23.1	23.2	23.4	10
11	23.5	23.7	23.8	24.0	24.1	24.3	24.4	24.6	24.7	24.9	11
12	25.0	25.2	25.3	25.5	25.6	25.8	25.9	26.1	26.2	26.4	12
13	26.5	26.7	26.8	27.0	27.1	27.3	27.4	27.6	27.7	27.9	13
14	28.0	28.2	28.3	28.5	28.6	28.8	28.9	29.1	29.2	29.4	14
15	29.5	29.7	29.8	30.0	30.1	30.3	30.4	30.6	30.7	30.9	15
16	31.0	31.2	31.3	31.5	31.6	31.8	31.9	32.1	32.2	32.4	16
17	32.5	32.7	32.8	33.0	33.1	33.3	33.4	33.6	33.7	33.9	17
18	34.0	34.2	34.3	34.5	34.6	34.8	34.9	35.1	35.2	35.4	18
19	35.5	35.7	35.8	36.0	36.1	36.3	36.4	36.6	36.7	36.9	19
20	37.0	37.2	37.3	37.5	37.6	37.8	37.9	38.1	38.2	38.4	20
21	38.5	38.7	38.8	39.0	39.1	39.3	39.4	39.6	39.7	39.9	21
22	40.0	40.2	40.3	40.5	40.6	40.8	40.9	41.1	41.2	41.4	22
23	41.5	41.7	41.8	42.0	42.1	42.3	42.4	42.6	42.7	42.9	23
24	43.0	43.2	43.3	43.5	43.6	43.8	43.9	44.1	44.2	44.4	24
25	44.5	44.7	44.8	45.0	45.1	45.3	45.4	45.6	45.7	45.9	25
26	46.0	46.2	46.3	46.5	46.6	46.8	46.9	47.1	47.2	47.4	26
27	47.5	47.7	47.8	48.0	48.1	48.3	48.4	48.6	48.7	48.9	27
28	49.0	49.2	49.3	49.5	49.6	49.8	49.9	50.1	50.2	50.4	28
29	50.5	50.7	50.8	51.0	51.1	51.3	51.4	51.6	51.7	51.9	29
30	52.0	52.2	52.3	52.5	52.6	52.8	52.9	53.1	53.2	53.4	30
31	53.5	53.7	53.8	54.0	54.1	54.3	54.4	54.6	54.7	54.9	31
32	55.0	55.2	55.3	55.5	55.6	55.8	55.9	56.1	56.2	56.4	32
33	56.5	56.7	56.8	57.0	57.1	57.3	57.4	57.6	57.7	57.9	33
34	58.0	58.2	58.3	58.5	58.6	58.8	58.9	59.1	59.2	59.4	34
35	59.5	59.7	59.8	60.0	60.1	60.3	60.4	60.6	60.7	60.9	35
36	61.0	61.2	61.3	61.5	61.6	61.8	61.9	62.1	62.2	62.4	36

Calculated by Julien A. Hall, M. Am. Soc. C. E.

MADE IN GERMANY.