

916

FB.916

---

---

LEVEL BOOK

373

---

---



# KEUFFEL & ESSER CO.

DRAWING MATERIALS  
AND  
SURVEYING INSTRUMENTS.  
NEW YORK.

CHICAGO. SAN FRANCISCO. ST. LOUIS.

## TABLES FOR EXCAVATIONS AND EMBANKMENTS.

DISTANCES FROM CENTER OF ROADWAY FOR CROSS-SECTIONING.  
ROADWAY 14 FT. WIDE. SIDE SLOPES 1 TO 1.  
FOR SINGLE TRACK EXCAVATION.

"Copyright, 1895, by Keuffel & Esser Co."

	0	.1	.2	.3	.4	.5	.6	.7	.8	.9	
0	9.0	9.1	9.2	9.3	9.4	9.5	9.6	9.7	9.8	9.9	0
1	10.0	10.1	10.2	10.3	10.4	10.5	10.6	10.7	10.8	10.9	1
2	11.0	11.1	11.2	11.3	11.4	11.5	11.6	11.7	11.8	11.9	2
3	12.0	12.1	12.2	12.3	12.4	12.5	12.6	12.7	12.8	12.9	3
4	13.0	13.1	13.2	13.3	13.4	13.5	13.6	13.7	13.8	13.9	4
5	14.0	14.1	14.2	14.3	14.4	14.5	14.6	14.7	14.8	14.9	5
6	15.0	15.1	15.2	15.3	15.4	15.5	15.6	15.7	15.8	15.9	6
7	16.0	16.1	16.2	16.3	16.4	16.5	16.6	16.7	16.8	16.9	7
8	17.0	17.1	17.2	17.3	17.4	17.5	17.6	17.7	17.8	17.9	8
9	18.0	18.1	18.2	18.3	18.4	18.5	18.6	18.7	18.8	18.9	9
10	19.0	19.1	19.2	19.3	19.4	19.5	19.6	19.7	19.8	19.9	10
11	20.0	20.1	20.2	20.3	20.4	20.5	20.6	20.7	20.8	20.9	11
12	21.0	21.1	21.2	21.3	21.4	21.5	21.6	21.7	21.8	21.9	12
13	22.0	22.1	22.2	22.3	22.4	22.5	22.6	22.7	22.8	22.9	13
14	23.0	23.1	23.2	23.3	23.4	23.5	23.6	23.7	23.8	23.9	14
15	24.0	24.1	24.2	24.3	24.4	24.5	24.6	24.7	24.8	24.9	15
16	25.0	25.1	25.2	25.3	25.4	25.5	25.6	25.7	25.8	25.9	16
17	26.0	26.1	26.2	26.3	26.4	26.5	26.6	26.7	26.8	26.9	17
18	27.0	27.1	27.2	27.3	27.4	27.5	27.6	27.7	27.8	27.9	18
19	28.0	28.1	28.2	28.3	28.4	28.5	28.6	28.7	28.8	28.9	19
20	29.0	29.1	29.2	29.3	29.4	29.5	29.6	29.7	29.8	29.9	20
21	30.0	30.1	30.2	30.3	30.4	30.5	30.6	30.7	30.8	30.9	21
22	31.0	31.1	31.2	31.3	31.4	31.5	31.6	31.7	31.8	31.9	22
23	32.0	32.1	32.2	32.3	32.4	32.5	32.6	32.7	32.8	32.9	23
24	33.0	33.1	33.2	33.3	33.4	33.5	33.6	33.7	33.8	33.9	24
25	34.0	34.1	34.2	34.3	34.4	34.5	34.6	34.7	34.8	34.9	25
26	35.0	35.1	35.2	35.3	35.4	35.5	35.6	35.7	35.8	35.9	26
27	36.0	36.1	36.2	36.3	36.4	36.5	36.6	36.7	36.8	36.9	27
28	37.0	37.1	37.2	37.3	37.4	37.5	37.6	37.7	37.8	37.9	28
29	38.0	38.1	38.2	38.3	38.4	38.5	38.6	38.7	38.8	38.9	29
30	39.0	39.1	39.2	39.3	39.4	39.5	39.6	39.7	39.8	39.9	30
31	40.0	40.1	40.2	40.3	40.4	40.5	40.6	40.7	40.8	40.9	31
32	41.0	41.1	41.2	41.3	41.4	41.5	41.6	41.7	41.8	41.9	32
33	42.0	42.1	42.2	42.3	42.4	42.5	42.6	42.7	42.8	42.9	33
34	43.0	43.1	43.2	43.3	43.4	43.5	43.6	43.7	43.8	43.9	34
35	44.0	44.1	44.2	44.3	44.4	44.5	44.6	44.7	44.8	44.9	35
36	45.0	45.1	45.2	45.3	45.4	45.5	45.6	45.7	45.8	45.9	36

Calculated by Julien A. Hall, M. Am. Soc. C. E.

6560  
L  
R  
S



Bm 44.33 Reservoir #  
 78's Census 22

718

161

Group	X size of	Reservoirs at 50	12 1/2 42 20 Culo	11-25-13
Taylor Fly				
	605	725		65.60
				but we Reservoir Perry
				65.60 66.0 72.1 12.38 59.86 3.22 63.10
W			05	71.7
1/4			30	69.2
1			56	66.6
1/4			85	63.7
E			11.3	60.9
	50	59	Perry	
E			132	59.0
1/4			106	61.6
6			81	64.1
1/4			51	67.1
W			24	69.8
	100	59	Perry	
W			53	66.9
1/4			80	64.2
1			107	61.5
1/4			132	59.0
E			156	56.6
TP	324	6310	1239	59.86



Sta	+	6310 Hgt.	-	Elev.		6310		Barograms	
	150	S of	Perry			300	S = N of Owens st 50		2
E			99	53.2	W		100	53.1	620
1/4			68	56.3	1/4		110	52.1	583
1/2			40	59.1	1/2		118	51.3	502
3/4			18	61.3	3/4		127	50.4	511
W			704	63.5	E		140	49.1	547
	200	S of	Perry		TO	120	54.47	1283	50.7
W			20	61.1	N		Out of Owens		
1/4			43	58.8	E		57	48.8	
1/2			72	55.9	1/2		43	50.2	
3/4			97	53.4	3/4		37	50.8	
E			119	51.2	W		25	52.0	
	250	N of	Perry		N		19	52.6	
E			143	48.8	N		1/4 of Owens		
1/4			133	49.8	W		30	51.5	
1/2			120	51.1	1/4		34	51.1	
3/4			100	53.1	1/2		40	50.5	
W			82	54.9	3/4		52	49.3	
					E		60	48.5	



## Center of Owens

E	70	47.5
	65	48.0
b	55	49.0
	50	49.5
W	42	50.3

## S 1/4 of Owens

W	79	47.5
	73	47.2
b	83	46.2
	92	45.3
E	104	44.1

## S 1/2 of Owens

E	132	41.3
	122	42.3
b	110	43.5
	95	45.0
W	82	46.3

## S 1/2 of Owens

W	60	48.5
	82	46.3
b	98	44.7
	99	44.6
E	111	43.1

## 3/4 of Owens

E	90	45.5
	78	46.7
b	75	47.0
	62	48.3
W	48	49.7

## 5/8 of Owens

W	34	51.1
	47	49.8
b	60	48.5
	73	47.2
E	93	45.2



5447

	100	S 7	Owens	
E			107	44.1
			99	44.6
S			84	46.1
			70	47.5
W			54	49.1

	150	S 6	Owens	
W			67	47.3
			82	46.3
S			92	45.3
			107	43.8
E			105	44.0

TP check 685 5118 1014 44.33

	200	S 7	Owens	
E			82	43.0
			80	43.4
S			67	44.5
			58	45.4
W			35	47.7

5118

	250	S 7	Owens	
W			43	46.9
			64	44.8
S			74	43.8
			88	42.4
E			93	41.9

	300	S-N 2	Michals	17 (10')
E			92	42.0
			88	42.4
S			74	43.8
			64	44.8
W			44	46.8

		N	cut of Michals	
W			48	46.1
			62	45.0
S			72	44.0
			85	42.7
E			88	42.4

Russians

4

5447  
1014  
44.33  
685  
5118



5118

N 1/4 Nichols

E 87 42.5

83 42.9

S 72 44.0

61 45.1

W 48 46.4

Center of Nichols

W 48 46.4

62 45.0

S 73 43.9

82 43.0

E 88 42.9

S 1/4 Nichols

E 89 42.3

83 42.9

S 72 44.0

67 44.5

W 48 46.4

5118

S Center Nichols

N 50 46.2

64 44.8

E 73 43.9

82 43.0

E 86 42.6

S 1/4 Nichols

E 83 42.9

84 42.8

S 74 43.8

67 44.5

W 50 46.2

50 S 1/4 Nichols

W 62 45.0

79 43.3

S 85 42.7

88 41.4

E 94 41.8

TP

250

4330

1038

4680

Russians

5

5118  
1635  
40.80  
250  
43.00



4330

100'

S of

Nichols

N 25 40.8

27 40.4

S 14 41.9

12 42.1

W 10.8 44.1

150'

S of

Nichols

W 06 42.7

22 41.1

24 40.9

42 39.1

E 38 39.5

200'

S of

Nichols

E 50 38.3

50 38.3

39 39.4

36 39.7

W 1.9 41.4

4330

250'

S of

Nichols

W 30 40.3

44 38.9

S 50 38.3

63 37.0

E 56 37.1

300'

S = A S McCall st

E 71 36.2

73 36.0

S 67 36.6

59 37.4

W 42 39.1

N

S of McCall

W 52 38.1

56 37.7

S 69 36.4

75 35.8

E 82 35.1

Reasons

6



4330

N 1/4 Mc ball

E	84	34.9
1/4	77	35.6
6	70	36.3
1/4	58	37.5
W	50	38.3

Center of Mc ball

W	48	38.5
1/4	60	37.3
6	69	36.4
1/4	75	35.8
E	82	35.1

S 1/4 Mc ball

E	87	34.6
1/4	79	35.4
6	72	36.1
1/4	61	37.2
W	50	38.3

4330

S Curt's Mc ball

N	60	37.3
1/4	67	36.6
6	74	35.9
1/4	80	35.3
E	89	34.4

S. Lin of Mc ball

6	88	34.5
1/4	85	34.8
6	75	35.8
1/4	67	36.6
W	55	37.8

S 1/4 58 Mc ball

W	60	37.3
1/4	75	35.8
C	80	35.3
1/4	84	34.9
E	86	34.7

TP

603

4058

875

3455

Pasadena

7

4330  
~~875~~  
~~34.55~~  
~~603~~  
~~4058~~



4058

	100	Sy	Mc Bell	
E			63	34.3
1/4			60	34.6
1/2			55	35.1
3/4			49	35.7
W			32	37.4

	150	Sy	Mc Bell	
W			34	37.2
1/4			50	35.6
1/2			57	34.9
3/4			65	34.1
E			69	33.7

	200	Sy	Mc Bell	
E			76	33.0
1/4			68	33.8
1/2			66	34.0
3/4			59	34.7
W			42	36.4

4058

Racoon

8

	250	Sy	Mc Bell	
W			42	36.4
1/4			58	34.8
1/2			67	33.9
3/4			72	33.4
E			78	33.2

	300	S=nd	Lawrence (50)	
E			70	33.6
1/4			64	34.2
1/2			54	35.2
3/4			47	35.9
W			32	37.4

		N	cut of Lawrence	
W			34	37.2
1/4			44	36.2
1/2			52	35.4
3/4			58	34.8
E			72	33.4



4058

N 1/4 of Lawrence

E	65	34.1
1/4	58	34.8
6	50	35.6
1/4	44	36.2
W	28	37.8

Center of Lawrence

W	28	37.8
1/4	40	36.6
6	47	35.9
1/4	58	34.8
E	64	34.2

S 1/4 of Lawrence

E	61	34.5
1/4	55	35.1
6	45	36.1
1/4	39	36.7
W	30	37.6

4058

S 1/4 of Lawrence

W	26	38.0
1/4	39	36.7
6	43	36.3
1/4	54	35.2
E	59	34.7

S line of Lawrence

E	53	35.8
1/4	55	35.1
6	44	36.2
1/4	40	36.6
W	24	38.2

S of Lawrence

W	28	37.8
1/4	43	36.3
6	48	35.8
1/4	62	34.4
E	67	34.4

TP 685 4095 648 34.10

Massachusetts

9

4058  
646  
34.10  
655  
4095



accidentally  
skipped



4095

100

S of

Lawrence

70 33.9

73 33.6

61 34.8

54 35.5

45 36.4

150

S of

Lawrence

49 36.0

45 34.4

70 33.9

82 32.7

80 32.9

200

S of

Lawrence

85 32.4

84 32.5

75 33.4

68 34.1

52 35.7

4095

250

S of

Lawrence

55 35.4

66 34.3

74 33.5

80 32.9

80 32.9

300

S = A L of Kellogg (50)

79 33.0

78 33.1

66 34.3

60 34.9

39 37.0

N of Kellogg

40 36.9

52 35.7

60 34.9

71 33.8

83 32.6

Russian  
10



40.95

N 1/4 of Kellym

E 7.8 33.1

6.6 34.3

S 5.9 35.0

4.8 36.1

W 3.6 37.3

Centre of Kellym

W 3.4 37.5

4.7 36.2

S 5.6 35.3

6.9 34.0

E 7.7 33.2

S 1/4 of Kellym

E 8.8 34.1

6.2 34.7

S 5.5 35.4

4.7 36.2

W 3.4 37.5

40.95

S Centre of Kellym

W 7.8 38.1

4.1 36.8

S 5.4 35.5

6.0 34.9

E 5.8 35.1

S Side of Kellym

E 6.0 31.9

5.4 35.5

S 5.1 35.8

4.5 36.4

W 2.6 38.3

S 1/4 of Kellym

W 1.8 39.1

4.1 36.8

4.5 36.4

4.6 36.3

E 4.4 36.5

TP 6.8 42.49 4.64 36.31

11

40.95  
4.64  
36.31  
6.78  
42.49



4279

	100	S of	Kellogg	
E			62	36.3
			65	36.0
b			64	36.1
			57	36.8
W			42	38.3

	150	S of	Kellogg	
W			49	37.6
			57	36.8
b			63	36.2
			64	36.1
E			68	35.7

	200	S of	Kellogg	
E			68	35.7
			65	36.0
b			62	36.3
			53	37.2
W			47	37.8

4249

Recounts

12

257' S on W } Government Line  
 246' S - E }

W			42	38.3
			47	37.6
			54	37.1
			63	36.2
E			74	35.1

0.41	2671	6.181'	36.31
------	------	--------	-------

1.10	2582	11.95'	24.76
------	------	--------	-------

Chok		11.40	14.50
------	--	-------	-------

36.31
36.77
11.95
24.76
1.10
25.86
4.46
26

Area  
 Same as  
 Kellogg







12 / 13 / 14  
 X sec 8 30th St 80  
 N of Woolman to S of N St  
 14 Wally

7323

30  
14

	223	20.23	91.00	100	n f	Woolman
		R dim	f Woolman am			27 90.5
W			10 92.2			36 89.6
			23 90.9			45 88.7
			39 89.3	b		54 87.8
b			49 88.3			54 87.8
			55 87.7			67 86.5
			57 87.5			67 86.5
E			63 86.9	150	n f	Woolman
	50	n f	Woolman			88 84.4
E			48 88.4			83 84.9
			38 89.4			79 85.3
			40 89.2			74 85.8
b			41 89.1			59 87.3
			22 91.0			52 88.0
			21 91.1	W		96 88.6
W			11 92.1			

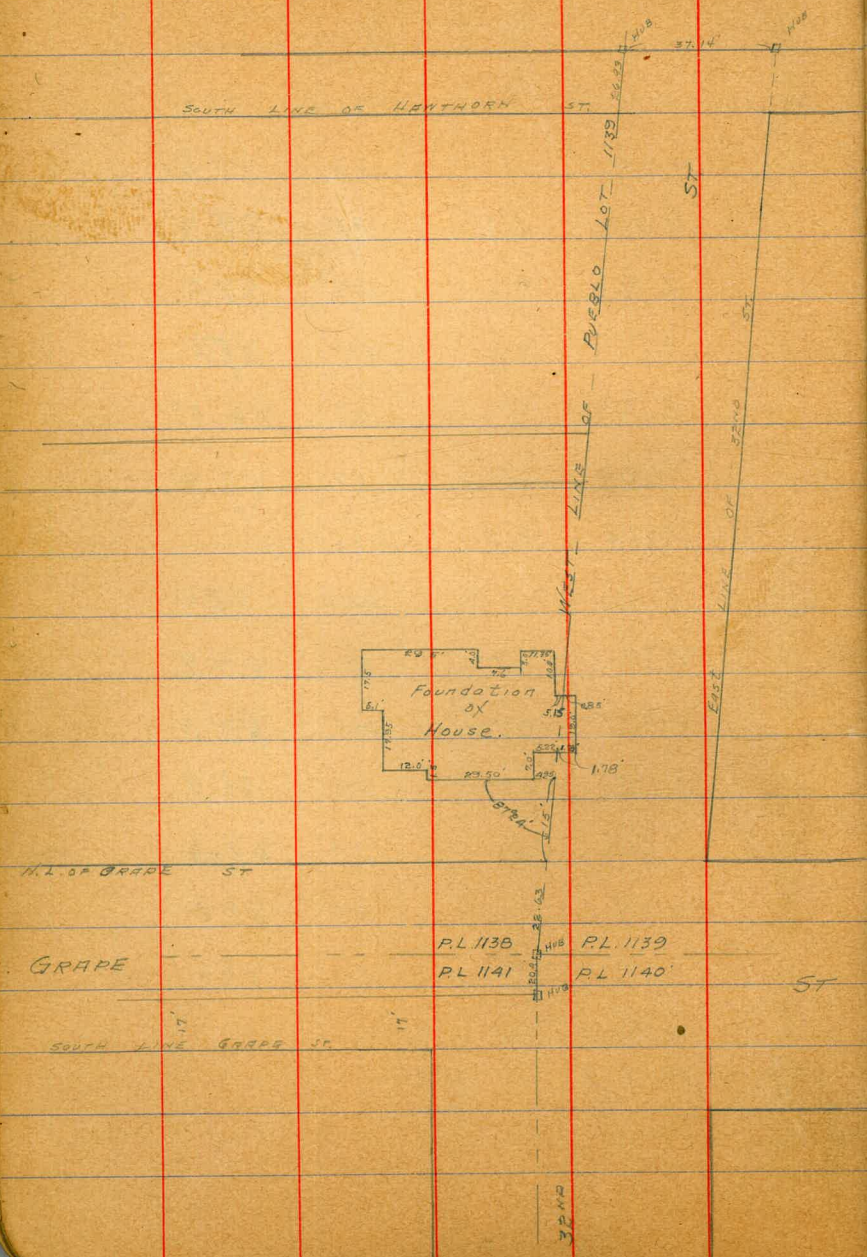
Continued on Page 16



12/19/13

Gregory  
Submarine  
Maps

SURVEY OF 32ND ST (WEST LINE)  
BETWEEN GRAPE ST & HANTHORN  
SHOWING LOCATION OF HOUSE ON  
NORTH SIDE OF GRAPE, WEST SIDE OF 32ND ST.





9323

30th ST.

200	n f	Woolman		
E		101	83.1	
		99	83.3	
		98	83.4	
b		91	84.1	
		83	84.9	
		70	86.2	
W		67	86.3	

250

n f

Woolman

W Under the House

b		70	86.2	
		94	83.8	
b		101	83.1	
		105	82.7	
		110	82.2	
E		113	81.9	

20

9323

30th

16

(Crown St) (80)

300	n =	S of Franklin St		
E		109	82.3	
		108	82.4	9323
		103	82.9	85.03
				202
				88.90
b		98	83.4	
		95	83.7	
Check TP	396	8899	821	85.00 Am
b		Ground (30)	(86.0)	
		Stone (50)	(84.0)	
W		Ground (6)	(87.4)	
		Stone (42)	(84.8)	
		W side of Franklin		
W		Ground (42)	(84.7)	
		Stone (20)	(87.0)	
		47	84.3	
		57	83.3	
		59	83.1	
		60	83.0	
		67	82.3	
E		68	82.2	



889930th ST.

50

n f

Franklin

E

78 81.2

62 82.8

54 83.6

b

48 84.2

48 84.2

38 85.2

W

23 86.7

100

n f

Franklin

W

23 86.7

45 84.5

45 84.5

b

54 83.6

73 81.7

82 80.8

E

91 79.9

8899

30th

17

150

n f

Franklin

E

121 76.9

111 77.9

101 78.9

b

90 80.0

77 81.3

58 83.2

W

38 85.2

200

n f

W

78 81.2

86 80.4

90 80.0

b

109 79.1

123 76.7

125 76.5

E

138 75.2

TP

275

8130

1044

7855

8899  
16.44  
78.75  
2.25  
87.30

n 54.2



8/30

30<sup>th</sup> ST.

	285	n of	Zank/ble	
E			72	74.1
			64	74.7
			60	75.3
b			52	76.1
			44	76.9
			32	78.1
W			19	79.4

250

n of

Zank/ble

W			17	79.6
			32	78.1
			45	76.8
b			53	76.0
			70	74.3
			72	74.1
E			76	73.7

8/30

30

118

299

n of

Zank/ble

E			76	73.7
			85	72.8
			80	73.3
b			72	74.1
			73	74.0
			66	74.7
W			62	75.1

300

n = S 2

blay at (50) - Graded

W			78	73.5
			82	73.1
			82	73.1
b			85	72.8
			85	72.8
			88	72.5
E			90	72.3



8130

30<sup>th</sup> ST.

N Line of clay st

E	9.2	72.1
	9.3	72.0
	9.3	72.0
b	8.7	72.6
	8.8	72.5
	8.8	73.0
W	7.9	73.4
	50	n of clay st
W	6.7	74.6
	7.2	74.1
	7.7	73.6
1	8.6	72.7
	9.1	72.2
	9.7	71.6
E	9.6	71.7

8130

30<sup>th</sup>

19

100 n of clay st

E	9.4	71.9
	9.0	72.3
	9.3	72.0
b	8.3	73.0
	7.2	74.1
	6.6	74.7
W	6.4	74.9
	TP	3.2
	77.2	6.50
	74.80	
	150	n of clay st
W	3.9	74.0
	4.0	73.9
	4.1	73.8
1	4.1	73.8
	4.2	73.7
	4.7	73.2
E	5.7	72.8

8130  
6.50  
74.80  
3.2  
77.2



779v

30<sup>th</sup> JT

200

n of

blay

E

52 72.7

50 72.9

48 73.1

b

46 73.3

45 73.4

41 73.8

W

40 73.9

250

n of

blay st

W

47 73.2

47 73.2

48 73.1

b

45 73.4

45 73.4

56 72.3

E

54 72.5

779v

30<sup>th</sup>

20

299

n of

blay

E

60 71.9

60 71.9

65 71.4

b

58 72.1

43 73.6

44 73.5

W

44 73.5

300

n = S

line of Webster st (60) Gravel

W

66 71.3

68 71.1

66 71.3

b

70 70.9

67 71.2

68 71.1

E

66 71.3

Shell

500 72.89

Bm



7792

30<sup>th</sup> ST.

N Line of Webster st

E	6.1	71.8 <sup>v</sup>
	6.3	71.6
	6.5	71.4
	6.7	71.2
	6.6	71.3
	6.6	71.3
W	6.6	71.3 <sup>v</sup>

1' n of Webster

W	6.2	71.7 <sup>v</sup>
	4.6	73.3
	4.8	73.1
b	6.3	71.6
	6.4	71.5
	5.8	72.1
E	5.6	72.3 <sup>v</sup>

7792

30<sup>th</sup>

21

50

n of

Webster

E	4.9	73.0 <sup>v</sup>
	5.0	72.9
	5.7	72.2
b	5.6	72.3
	5.5	72.4
	5.4	72.5
W	5.6	72.3 <sup>v</sup>

100

n of

Webster

W	5.4	72.5 <sup>v</sup>
	5.4	72.5
	5.5	72.4
b	5.5	72.4
	5.7	72.2
	5.5	72.4
E	4.5	73.4 <sup>v</sup>

TP

414

7720

486

7306

7792

486

7306

414

7720



7720

30th ST.

150

n 8

Webster

E	5.0	77.2
	4.7	77.5
	4.3	77.9
b	4.3	77.9
	4.6	77.6
	4.4	77.8
W	4.7	77.5

200

n 8

Webster

W	5.0	77.2
	4.8	77.4
	4.3	77.9
L	4.7	77.0
	4.4	77.8
	4.4	77.8
E	4.9	77.3

7720

30

22

250

n 8

Webster

E	5.4	71.8
	5.4	71.8
	4.8	77.4
	4.7	77.5
	4.9	77.3
	4.8	77.4
W	4.9	77.3

300

n = S 2 N St (100')

W	5.1	77.1
	5.2	77.0
	5.0	77.7
L	4.9	77.3
	4.8	77.4
	5.2	77.0
E	5.4	71.8

77.20  
 5.40  
 73.80  
 3.25  
 77.05

Cont  
on Page 28

328 77.04 340 75.80

30th St Continues (60')  
 in This Book Page 28







12  
27  
13

blow  
right  
July

X sec of Jackdaw St (50)  
Hunt to Police

men SW

Jackdaw  
Hunt

270.00  
269.08

R line of Hunter St

50

n b

Hunter

Jackdaw

24

269.15  
270.00

W

31 266.9

W

69 263.1

32 266.8

72 262.8

29 267.1

b

73 262.7

b

27 267.3

74 262.8

28 267.2

75 262.8

28 267.2

E

76 262.8

E

25 267.5

100

n b

Hunter

4

n f

Hunter St

E

105 59.5

E

46 265.4

108 59.2

47 265.8

107 59.3

37 266.3

b

106 59.4

b

34 266.6

106 59.4

38 266.2

108 59.2

36 266.4

W

107 59.8

W

35 266.5

PLOTTED



27000

	125'	mf	Hunter	
W			123	2577
			123	577
			123	577
b			122	578
			126	574
			131	569
E			136	564

TP 054 25766 1288 572

150 mf Hunter

E			50	537
			41	536
			33	544
b			28	549
			27	550
			25	552
W			22	555

PLOTTED

25766

Jackdaw

25

	200'	mf	Hunter	
W			100	2477
			108	46.9
			114	46.3
b			122	45.5
			126	45.1
			133	44.4
E			140	43.7

TP 00 24466 1300 24466

225 mf Hunter

E			64	37.9
			66	38.1
			64	38.3
b			63	38.4
			56	39.1
			43	40.4
W			38	40.9

27000  
 2288  
 257.12  
 124  
 257.66  
 1300  
 244.66



	250	n f	Hamite	
W			100	234.7
			115	33.2
			125	32.2
			136	31.1
TP	010	<u>232.20</u>	1256	<u>234.0</u>
			17	30.5
			18	30.4
E			32	29.0
TP	235	<u>224.18</u>	1040	<u>221.80</u>
	300	n =	P.L.	
E			118	12.4
			122	12.0
			117	12.5
L			92	15.0
			72	17.0
			47	19.5
W			17	22.8

PLOTTED

check	1290	23643	062	22350
	1245	24844	042	23601
	1246	26092	00	24846
	1080	27090	082	26010
check			178	26912

24466  
 1258  
 222.20  
 10.20  
 221.80  
 232  
 224.08  
 62  
 223.38  
 1522  
 236.43  
 42  
 236.01  
 1245  
 248.46  
 1246  
 260.92  
 62  
 260.92  
 62  
 260.92  
 1080  
 270.90  
 178  
 269.12



12/13/13  
12/13/13  
13/13  
X 200 f Hunter St (50)  
Jackdaw 100 West

1.78 270.86 269.08

W 2 f Jackdaw

S 1.80 269.1

Subt

2.0 68.9

2.9 68.0

3.1 67.8

b 3.3 67.6

4.0 66.9

3.7 67.2

W 4.0 66.9

50 W f Jackdaw

W 4.8 66.1

Subt

4.8 66.1

5.3 65.6

5.2 65.7

b 5.2 65.7

Subt

5.2 65.7

5.6 65.3

4.6 66.3

S 4.0 66.9

PLOTTED

270.86

27

me 50  
Jackdaw  
Hunt

100 W f Jackdaw

S 6.8 264.1

7.0 63.9

7.6 63.3

b 6.9 64.0

6.9 64.0

6.6 64.3

n 6.6 64.3

150 W f Jackdaw

n 9.3 61.6

9.2 61.7

9.4 61.5

b 9.5 61.4

9.7 61.2

Subt

10.0 60.9

9.2 61.6

S 8.8 62.1

1.75 W = Brook 40

S 11.8 59.1

b 12.4 58.5



X sec of 30<sup>th</sup> St continuation (60)  
 N to M St from page 22

7708

10 lbs	N line of	N St	
W		5.1	72.0
		5.1	72.0
		5.0	72.1
b		4.3	72.8
		4.5	72.6
		5.0	72.1
E		5.0	72.1
	5.0	n of	N St
E		4.4	72.7
		4.9	72.2
		4.2	72.9
		4.2	72.9
		4.2	72.9
		4.6	72.5
W		4.4	72.7

Big water main laid on 1/4" & not  
 Re-filled in as yet

7708

30

28

100	n of	N St	
		3.9	73.2
		4.1	73.0
		4.0	73.1
		3.7	73.4
		3.8	73.3
		4.4	72.7
		4.0	73.1
	15.0	n of	N St
		3.3	73.8
		3.0	74.1
		3.0	74.1
		3.0	74.1
		3.0	74.1
		3.0	74.1
		2.0	75.1



7708

200 n of R 11

W 22 74.9

25 74.6

23 74.8

b 22 74.9

22 74.9

TP 550 8040 218 74.90

59 74.5

E 55 74.9

250 n of R 11

E 47 75.7

54 75.0

54 75.0

50 75.4

51 75.3

on bank 57 74.7

W 54 75.0

8040

300 n = S of West Panel

W 53 75.1

on bank 54 75.0

52 74.8

53 75.1

52 75.2

on bank 49 75.5

E 48 75.6

black 543 74.97

300

29

7708  
218  
74.90  
550  
8040300 n of  
R 11 + 30



X Sec of Billmore St (58') 10' 66s  
36th St to 37

Mon 36

658 10307

9649 Sugar  
90E of 36th

50 E 1 36th

285 98th 270

9537 Billmore

n

61 92.1

E line of 36th St

61 92.1

n

28 954

60 92.2

28 954

b

55 92.7

24 958

50 93.2

b

22 960

44 93.8

22 960

S

29 95.3

20 968

75' E 1 36th

S

16 966

S

68 91.4

25' E 1 36th

73 90.9

S

11 971

76 90.6

16 966

b

78 90.4

22 960

82 90.0

b

30 95.2

75 90.7

35 94.7

n

72 91.0

40 94.2

n

40 94.2

PLOTTED

PLOTTED

Billmore St  
30

9649  
658  
10307  
270  
9537  
285  
98th



2822

2407

Hillmore

31

	100	E 8	36	
n			90	89.2
			94	88.4
			100	88.2
b			99	88.3
			100	88.2
			102	88.0
S			100	88.2
TP	207	2407	1322	85.4
	150	E 8	36.4	
S			118	82.3
			116	82.5
			113	82.8
b			108	83.3
			95	84.6
			89	85.2
n			88	85.3

PLOTTED

	175	E 8	36.7	
n			92	84.9
			96	84.5
			104	83.7
b			100	84.1
			107	83.4
			107	83.4
S			114	82.7
	1995	E-W 1	750	ms (50)
S			60	88.1
			57	88.4
			52	88.9
b			54	88.7
			53	88.8
			63	87.8
n			50	89.1

2822  
1322  
1500  
207  
2407



(No.)	W Surf	Fiske	W
n		33	90.8
		52	88.9
		51	89.0
b		42	89.9
		45	89.6
		50	89.1
s		55	88.6
	W 1/4	Fiske	W
s		54	88.7
		46	89.5
		42	89.9
b		39	90.2
		34	90.7
		48	89.3
n		36	90.5

(No.)	Center of	Fiske	W
n		34	90.7
		44	89.7
		37	90.4
b		30	91.1
		34	90.7
		40	90.1
s		48	89.3
	E 1/4	Fiske	W
s		41	90.0
		35	90.6
		33	90.8
b		28	91.3
		32	90.9
		40	90.1
n		36	90.5

PLOTTED



9407

E bank of Fiske II

n	30	91.1
	34	90.7
	28	91.3
b	24	91.7
	28	91.3
	35	90.6
S	36	90.8

E side of Fiske II

S	32	90.9
	26	91.5
	22	91.9
b	22	91.9
	20	92.1
	22	91.9
n	20	92.1

PLOTTED

9407

Hillmore

33

20.5 E = W of Fiske on n (60)

n	07	93.4
	06	93.5
	05	93.6
b	10	93.1
	12	92.9
	20	92.1
S	20	92.1

W bank of Fiske

S	17	92.4
	18	92.3
	11	93.0
b	06	93.5
	00	94.1
	04	93.7
n	05	93.6



9417

	W	1/4 y	Fork	
N			04	93.7
			02	93.9
			02	93.9
b			05	93.6
			10	93.1
			16	92.5
S			15	92.6
	center	b		
S			13	92.8
			16	92.5
			10	93.1
b			05	93.6
			02	93.9
			02	93.9
N			04	93.7

PLOTTED

9407

Dillmore

34

	E	1/4 b	Fork	
N			04	93.7
			04	93.7
			03	93.8
b			07	93.4
			10	93.1
			16	92.5
S			12	92.9
	E	center		
S			10	93.1
			15	92.6
			12	92.9
b			10	93.1
			05	93.6
			05	93.6
N			03	93.8



9407

E line of Fiske

N		0.3	93.8
		0.5	93.6
		0.8	93.3
S		1.0	93.1
		1.4	92.7
		1.9	92.2
S		1.1	93.0
	19.5	E of Fiske = 100' E of line S = 100' W of line and 20'	
S		1.8	92.3
		1.8	92.3
		2.3	91.8
S		2.0	92.1
		2.0	92.1
		1.6	92.5
N		1.3	92.8
TP	0.40	90.00	447 8960

PLOTTED

90.00

Bellmore

35

49.5' E = 50' W of Alvin Wood Terrace (50)

N		3.0	87.0
		3.0	87.0
		2.0	88.0
S		1.8	88.2
		1.5	88.5
		1.2	88.7
S		1.0	89.0
	11.95	200' E of Fiske = 5' W of line and 20' } = Alvin Wood Terrace (50)	
S		7.4	82.6
		8.0	82.0
		7.7	82.3
S		7.8	82.2
		7.0	83.0
		8.1	81.9
N		8.4	81.6

9407  
447  
89.60  
40  
90.00

200' Fiske to 37th on N = 26.85'



90.00

W. Blk of Alvin Wood Trench

n		98	80.3
		98	80.3
		82	81.8
b		87	81.3
		88	81.3
		92	80.8
S		94	80.6
	W. 1/4 of	Alvin wood	
S		98	80.3
		95	80.5
		93	80.7
b		94	80.6
		93	80.7
		101	79.9
n		103	79.7

PLOTTED

90.00

Gillmore Trench

36

Center of Alvin Wood Trench

n		110	79.0
		112	78.8
		96	80.4
b		100	80.0
		100	80.0
		100	80.0
S		100	80.0
	E. 1/4		
S		104	79.6
		105	79.5
		106	79.4
b		105	79.5
		98	80.3
		119	78.1
n		116	78.4



90.00

E 66 f Olive wood Terrain

n	119	78.1
	120	78.0
	106	79.4
b	112	78.8
	112	78.8
	114	78.6
S	114	78.6

E 50 f Olive wood Terrain

S	129	77.1
	129	77.1
	125	77.5
b	127	77.3
	128	77.2
	128	77.2
n	127	77.3

TP 055 78.11 1244 77.52

PLOTTED

78.11  
78.11

Olive wood Terrain  
37

10 E f Olive wood

n	06	77.5
	11	76.5
	19	76.2
b	27	75.4
	28	75.3
	30	75.1
S	34	74.7

50 E f Olive wood

S	55	72.6
	52	72.9
	45	73.6
b	42	73.9
	18	76.8
	08	77.3
n	00	78.1

90.00  
1244  
77.52  
78.11

PLOTTED



7811

Dillmore

38

			37th St		
	100	E = W	27th St 60		
N			0.20	77.9	2.22 H 27.4 Bl
			1.3	76.8	
			2.5	75.6	
S			4.1	74.0	
			5.8	72.3	
			6.4	71.7	78.11 12.67 65.44 1.10 66.08 17.26 8.82
	64	66.08	12.67	15.74	
Wind			8.82	57.26	32.22 W

PLOTTED











933v

## Center of Bruner

n		28	90.5
		31	90.2
s		35	89.8
		27	90.6
b		26	90.7
		29	90.4
		31	90.2
s		30	90.3
	W 14°		Bruner
s		34	89.9
		35	89.8
		32	90.1
b		30	90.3
		31	90.2
s		37	89.6
		34	89.9
n		32	90.1

PLOTTED

933v

Number

41

## W. End of Bruner

n		39	89.4
		37	89.6
s		47	88.6
		35	89.8
b		35	89.8
		39	89.4
		43	89.0
s		39	89.4
	W. End of		Bruner
s		43	89.0
		43	89.0
		50	88.3
		42	89.1
b		40	89.3
		42	89.1
		51	88.2
		42	89.1
n		44	88.9



93.32

50

Wf

Brunner

a		7.0	86.3
		7.2	86.1
3		7.9	85.4
		6.8	84.5
b		6.7	86.6
		6.8	86.5
4		7.7	85.5
		7.0	86.3
S		6.8	86.5

100

Wf

Brunner

S		10.2	83.1
		10.3	83.0
3		10.6	82.7
		10.2	83.0
		10.1	83.2
		10.4	82.9
3		11.5	81.8
		10.2	83.0
n		10.2	83.1

Tp

34

8069

1297

8035

PLOTTED

8069  
8069

W. H. Hester

12

150

Wf

Brunner

n		1.5	79.2
		1.4	79.3
3		3.0	77.7
		1.4	79.3
b		1.2	79.5
		1.3	79.4
		1.7	79.0
S		1.4	79.3

200

Wf

Brunner

S		6.3	74.4
		6.0	74.7
		5.7	75.0
b		5.7	75.0
		5.9	74.8
3		7.0	73.7
		6.0	74.7
n		5.8	74.9

93.32  
80.35  
34  
8069



8069

245

W-E of

35-d. H

(60) <sup>Graded</sup>

n

9.2

71.5

9.2

71.5

9.2

71.5

b

9.0

71.7

9.1

71.6

9.2

71.5

S

9.2

71.5

W 2 f

35-d. H

H

S

11.3

69.4

g

11.7

69.0

12.9

67.8

11.7

69.0

b

11.6

69.1

g

11.6

69.1

12.5

68.3

11.6

69.1

n

11.4

69.3

mm H  
35

063

6999

11.35

69.34

6997

50

W f

35-d. H

n

36

66.4

g

36

66.4

4.8

65.2

3.8

66.7

b

36

66.4

g

3.8

66.2

5.0

65.0

4.0

66.0

S

3.8

66.7

100

W f

35-d. H

S

7.8

67.7

g

7.8

67.5

8.1

61.9

7.2

62.8

b

7.0

63.0

g

7.4

62.6

8.4

61.6

7.4

62.6

n

7.1

62.9

Kilobars

43

8069

11.35

69.34

67.97

PLOTTED



6997

	150	Wf	35-ft	
N			108	59.2
			108	59.2
S			120	58.0
			106	59.4
b			104	59.6
			107	59.3
S			118	58.7
			109	59.1
S			111	58.9
TP	041	5738	130	56.97
	200	Wf	35-ft	
S			2.0	55.4
			2.0	55.4
S			2.6	54.8
			1.9	55.5
b			1.7	55.7
			1.8	55.6
S			2.8	54.6
			2.0	55.4
n			1.8	55.6

PLOTTED

5738

Webster

44

	250	Wf	35-ft	
N			53	57.1
			57	57.7
S			66	57.8
			60	57.4
b			60	57.4
			67	57.7
S			61	57.3
			60	57.4
	275'	W =	E L of Francis St (58')	
S			80	49.4
			84	49.0
S			89	48.5
			81	49.3
b			81	49.3
			81	49.3
S			88	48.6
			80	49.4
n			75	49.9

6997

56.97

41

57.38



E Center of Francis

N		84	49.0
		88	48.6
S		95	47.9
		90	48.4
b		88	48.6
		90	48.4
		96	47.8
S		90	48.4
	E	147	Francis
S		93	48.1
		10.0	47.4
		97	47.7
b		95	47.9
		97	47.7
	S	102	47.3
		93	48.1
N		89	48.5

PLOTTED

Center of Francis

N		98	47.6
		101	47.3
S		109	46.5
		103	47.1
b		101	47.3
		103	47.1
		108	46.6
S		97	47.7
	W	147	Francis
S		101	47.3
		110	46.4
		110	46.4
b		106	46.8
		109	46.5
		115	45.9
		108	46.6
		105	46.9



5738

W. L. of

Francis

n		111	46.3
		115	45.9
3		123	45.1
		116	45.8
b		113	46.1
		116	45.8
		122	45.2
S		110	46.4
	W	116	45.8
S		126	44.8
		123	45.1
b		121	45.3
		123	45.1
		130	44.4
		123	45.1
n		119	45.5
TP.	026	4452	1312
			4426

PLOTTED

4452

W. L. of

46

50

W. L. of

Francis

n		32	41.3
		33	41.2
g		42	40.3
		33	41.3
b		33	41.2
		40	40.5
		48	39.7
		40	40.5
S		42	40.3
	100	80	36.5
S		78	36.7
		83	36.2
		77	36.8
		72	37.3
		74	37.1
		78	36.7
		73	37.2
n		72	37.3

5738  
1312  
4452  
4452



445v

112'  
120'

N =

E of a 50' st (50')

N		78	36.7
		80	36.5
S		86	35.9
		78	36.7
S		80	36.5
		84	36.1
		88	35.7
		83	36.2
S		84	36.1
	150	W of	Funas
S		96	34.9
		130	31.5
		103	34.2
		104	34.1
		105	34.0
		130	31.5
N		110	33.5

Through End of the Grading

PLOTTED

445v

Walbert

17

162'

N =

W of a 50' st

N		140	30.5
		180	26.5
		114	33.1
S		114	33.1
		117	33.3
		170	27.5
S		105	34.0
	TP	90	32.21
		1231	32.21
	170'	W of	Funas
S		00	32.2
		01	32.1
		40	28.2
S		54	26.8
		64	25.8
		64	25.8
N		70	25.2

445v  
1231  
32.21



3221

200 Wf Francis

n 108 214

108 214

106 216

b 100 222

82 240

70 252

s 58 264

230 Wf Francis

s 77 245

100 222

118 204

b 132 190

138 184

130 192

n 130 192

TP 207 2210 1218 2003

PLOTTED

2210

250 Wf Francis

n 84 137

80 141

78 143

b 77 144

84 137

80 141

s 80 141

274 W = 92 34 1/2 68

s 89 137

92 129

92 129

b 92 129

92 129

89 137

n 82 139

TP 645 2420 365 1845

Whell 558 1935

Mish  
18

32.21  
1.18  
20.03  
2.92  
2.00  
2.61  
18.41  
6.05  
24.90  
5.57  
19.33

15.25

PLOTTED



1/14  
14/14  
H. Long  
T. J. L.  
Z. L.

X sec of Acacia St (80')  
Boston St to Pd

402 32.35 28.33

13' max  
Rigel &  
Acacia

E line of Rigel

S		56	26.8
		52	27.2
		47	27.7
b		39	28.5
		33	29.1
		32	29.2
n		32	29.2
	E	66	29.6
n		32	29.2
		29	29.5
		31	29.3
b		33	29.1
		37	28.7
		42	28.3
S		50	27.4

PLOTTED

3235

Acacia  
49

E	146	Rigel	
S		43	28.1
		36	28.8
		31	29.3
b		31	29.3
		30	29.4
		30	29.4
n		32	29.2
	center of	Rigel	
n		32	29.2
		31	29.3
		34	29.0
b		33	29.1
		33	29.1
		37	28.7
S		44	28.0



32.35

W 1/4 of Rigul

S	47	27.7
	40	28.4
	38	28.6
b	34	29.0
	35	28.9
	31	29.3
n	29	29.5

1/4 + 1' on n = ~~W 1/4~~ 35-42 st

n	29	29.5
---	----	------

W 1/4 of Rigul

n	25	29.9
	27	29.7
	33	29.1
b	38	28.6
	41	28.3
	45	27.9
S	48	27.6

PLOTTED

32.35

Acacia

50

W 1/4 of Rigul on S

S	49	27.5
	47	27.7
	45	27.9
	43	28.1
	34	28.8
	28	29.6
n	23	30.1

(A) 50' W of Rigul

S	49	27.5
b	38	28.6
n 80' of SL	35	28.9
SE Bush 35'	09	31.5

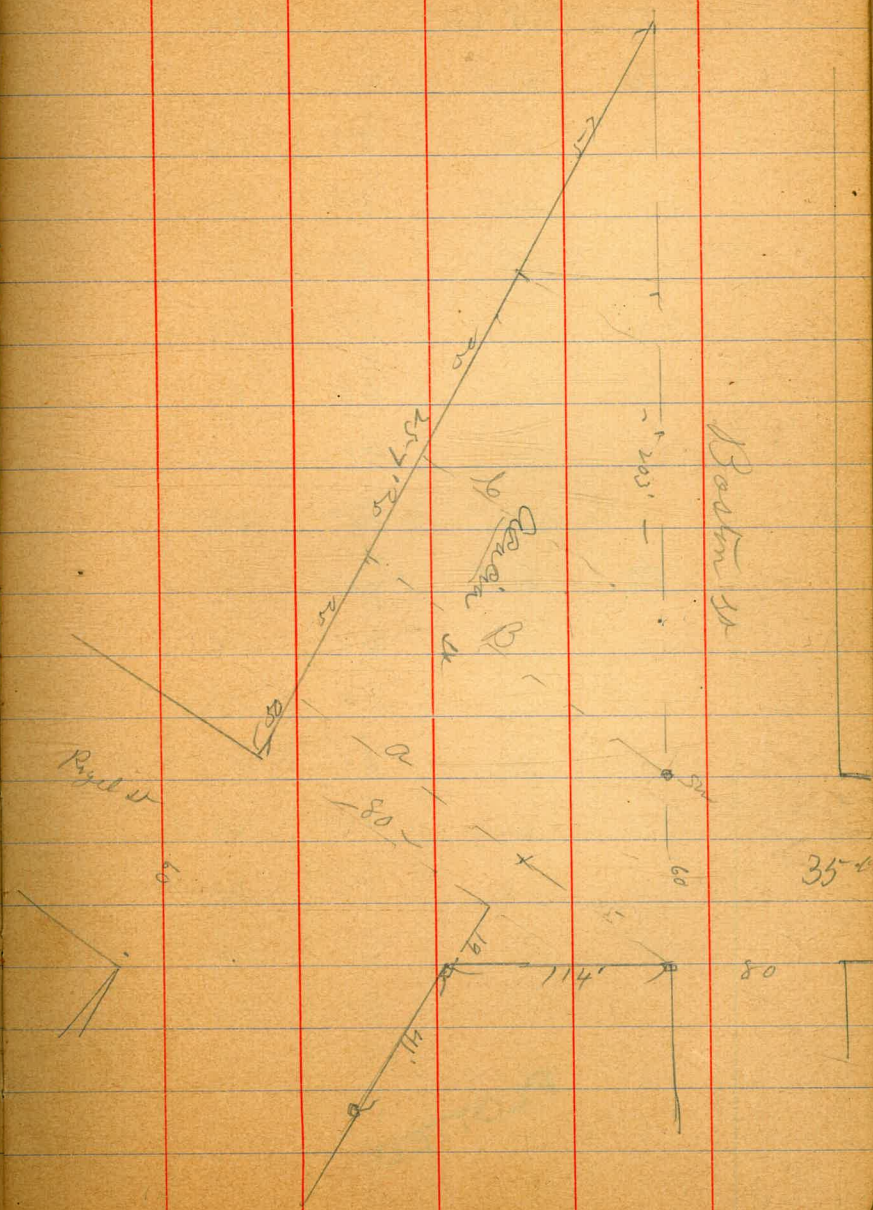
(B) 100' W of Rigul

SE Bush 35'	16	30.8
n 1/2 Acacia	37	28.7
b	43	28.1
SL	49	27.5



				25' min Royal 400
(6)	150	32.85	2833	
	150	W Royal		
S		5.0	279	
cut		4.6	283	
80 in		4.6	283	
50 W 35-2 W		3.3	296	
	100	W of	35	
N		3.5	274	
	200	W of Royal		
S		7.2	257	
b		6.7	262	
	150	W of	35	
N		7.5	254	
	257	W of Royal =	Boston Stn S	
SL		8.9	240	

PLOTTED





455 3288 2833  
 50 E of Regil  
 S 80 24.9  
 80 24.9  
 77 25.2  
 6 71 25.8  
 63 26.6  
 58 27.1  
 n 57 27.4  
 75' E of Regil  
 n 42 28.7  
 49 28.0  
 61 26.8  
 6 70 25.9  
 76 25.3  
 81 24.8  
 S 85 24.4

PLOTTED

15 min

3288  
 100 E of Regil  
 S 60 26.9  
 66 26.3  
 63 26.6  
 6 57 27.2  
 56 27.3  
 53 27.6  
 n 45 28.4  
 150 E of Regil  
 n 31 29.8  
 22 30.7  
 16 31.3  
 6 14 31.5  
 26 30.3  
 44 28.5  
 S 55 27.4

Acacia  
 52



3288

200

E

f

Rigid

S

5.6 27.3

4.6 28.3

3.8 29.1

L

2.9 30.0

2.3 30.6

2.0 30.9

N

1.8 31.1

(122)

249' E = N of Z in N

n

2.2 30.7

2.3 30.6

2.8 30.1

L

3.4 29.5

4.3 28.6

4.6 28.3

S

4.8 28.1

PLOTTED

3288

Acacia

53

(210)

W

Lentil

Z in

S

4.8 28.1

4.4 28.5

4.0 28.9

Br

4.34 28.54

13<sup>th</sup> mo

Z in

L

3.6 29.3

3.1 29.8

2.3 30.6

N

1.8 31.1

(20)

W

148

Z in

n

2.2 30.7

2.6 30.3

3.0 29.9

L

3.3 29.6

3.3 29.6

3.2 29.7

S

3.7 29.3



3288

Center of Z W

B

31 298

22 307

22 30.7

b

24 30.5

17 31.2

1.8 31.1

n

19 31.0

E. 1/4 of Z W

n

12 31.7

15 31.4

29 30.0

b

34 29.5

37 29.2

40 28.9

S

40 28.9

TP 334

327

343 29.45

PLOTTED

3279

E bank of Z W

S

29 29.9

33 29.5

37 29.1

b

35 29.3

33 29.1

29 29.9

n

27 30.1

E line of Z W = 371 E of Ridge

n

27 30.1

29 29.9

31 29.7

b

33 29.5

36 29.2

34 29.4

S

30 29.8

Acacia

54

3288

342

29.45

331

42.79



3279

29 E 72 = 400 E Right

S		43	285
		41	287
		38	290
b		35	293
		31	297
		31	297
n		29	299
	460 E 8		Right
n		46	283
		46	283
		45	283
b		44	284
		40	288
		37	291
S		38	290

PLOTTED

3279

Ocean  
55

500 E 1 Right

S		37	291
		45	283
		44	284
b		47	281
		49	279
		43	285
n		53	275
	550 E		
n		70	268
		70	268
		63	265
b		60	268
		57	271
		53	275
S		54	274



3279

602 E = Wdf Siva (60)

S	83	246
	82	246
	85	243
b	79	249
	63	265
	57	271
n	58	270
W	66	Siva
n	55	273
	59	269
	62	266
b	74	254
	85	243
	90	238
S	86	242

PLOTTED

3279

Dorcin

56

W 44 Siva

S	95	233
	93	235
	85	243
Bn	86	2414
b	72	255
	65	263
	61	267
n	55	273
		Siva
n	56	272
	62	266
	62	266
b	67	261
	81	247
	94	234
S	99	229

13' ma  
Siva



3279

E 1/47 Siva St

S 98 230

95 233

83 245

b 72 256

64 264

62 266

n 58 270

E bank of Siva

n 58 270

63 265

68 260

b 72 256

83 245

92 236

S 98 230

PLOTTED

3279

3279  
57

E line of Siva St

S 93 235

88 240

83 245

b 75 253

69 259

62 266

n 58 270

50 E of Siva St

n 67 261

70 258

76 253

b 78 250

82 245

82 246

S 81 247

TP 042 255 766 2513



79' E of Serra = W of 36<sup>m</sup> on rd.

S	17	239
	16	240
	14	243
b	12	244
	14	243
	12	244
n	09	247

100' E

S	23	233
	28	228
	33	223
b	38	218
	40	216
b = Pull down n	38	218

PLOTTED

(100')

153' E on S of Pull down  
13' E on n

S	131	126
b	87	16.9
n	23	23.3
TP	1310	1245

+ Rd on S L



200 1232 1032  
 232 1427 537 695

1/4 Post  
 384 Blk  
 13' high  
 ana + base

W line of Ana st

S		76	6.7
		74	6.9
		73	7.0
b		72	7.1
		72	7.1
		73	7.0
n		72	7.1
	50	n of Ana	
n		76	6.7
		77	6.6
		80	6.3
b		79	6.4
		80	6.3
		78	6.5
S		76	6.7

PLOTTED

1427

Acacia  
 59

150 W of Ana

S		84	5.9
		80	6.3
		82	6.1
b		81	6.2
		81	6.2
		82	6.1
n		84	5.9

160 W = Pueblo line on n

n		88	5.5
		88	5.5
		90	5.3
b		87	5.4
		90	5.3
		91	5.2
S		88	5.5



1427

	200	W of Anna		
S			92	5.1
			92	5.1
			90	5.3
B			93	5.0
+ = P.L.			93	5.0
	250	W = Partly line on S		
S			95	4.8
	W	East of Anna		
n			72	7.1
			71	7.3
			71	7.3
-b			72	7.1
			73	7.0
			73	7.0
S			76	6.7

PLOTTED

1427

Area  
60

	W	1/4 of Anna		
S			73	7.0
			73	7.0
			73	7.0
b			73	7.0
			74	7.1
			69	7.4
n			70	7.3
		Center of Anna		
n			67	7.6
			69	7.4
			74	7.1
b			72	7.1
			73	7.0
			74	7.1
S			67	7.6



1427

	E	1/4 of	Area	
S			54	8.9
			66	7.7
			70	7.3
b			7.0	7.3
			7.0	7.3
			7.0	7.3
n			6.6	7.7
	E	East of	Area	
n			6.8	7.5
			6.5	7.8
			6.5	7.8
l			6.7	7.6
			6.0	8.3
			5.2	9.1
S			3.6	10.7

PLOTTED

1427

Area  
61

	E	1/4 of	Area	
S			07	13.6
			36	10.7
			45	9.8
b			58	8.5
			61	8.2
			62	8.1
n			66	7.7
	25'	E of	Area	
n			38	10.5
			27	11.6
			05	13.8
TP	1246	2633	040	1287
b			11.6	14.7
			10.0	14.3
			8.6	17.7
S			7.0	19.3

1427  
40  
13.87  
12.96  
26.33



2633

	50	E of	Qma	
S			46	21.7
			45	21.8
			47	21.6
b			52	21.1
			58	20.5
			58	20.5
n			63	20.0

	100	E of	Qma	
n			34	22.9
			30	23.3
			34	22.9
b			34	22.9
			33	23.0
			34	22.9
S			35	22.8

PLOTTED

2633

Acacia  
F2

	150	E of	Qma	
S			29	23.4
			31	23.2
			28	23.5
b			29	23.4
			27	23.6
			23	23.0
n			31	23.2

	200	E of	Qma	
n			27	23.6
			27	23.6
			26	23.7
b			26	23.7
			28	23.5
			30	23.3
S			30	23.3



26.33

	250'	E 7	Area	
S			20	24.3
			21	24.2
			20	24.3
b			22	24.1
			21	24.2
			23	24.0
n			34	22.9
TP	714	31.45	232	24.01
	300	E 4	Area	
n			111	20.1
			104	20.8
			96	21.6
b			92	22.0
			88	22.4
			87	22.5
S			85	22.7

PLOTTED

31.45

63

	320'	E = W of 38th St (80)		
S			80	23.2
			87	22.5
			90	22.2
b			92	22.0
			100	21.2
			112	20.0
n			118	19.4
	W	cut of	38.25	
n			107	20.5
			108	20.4
			104	20.8
b			96	21.6
			86	22.6
			76	23.6
S			68	24.4

26.33  
 23.2  
 24.01  
 22.0  
 31.45



31.15

W 1/4 of 38A

S	58	204
	74	238
	86	226
b	93	219
	95	217
	101	211
n	104	208
	center of 38A	
n	95	217
	88	224
	86	226
b	85	227
	74	238
	70	242
S	63	249

PLOTTED

31.15

Acacia  
64

E 1/4 of 38A

S	54	258
	51	261
	60	252
b	64	248
	65	247
	67.1	245
n	65	247
	E back of 38A	
n	60	252
	60	252
	60	252
b	58	254
	50	262
	45	267
S	46	266



31.75

E

21

38.2

S

46 26.6

44 26.8

44 26.8

b

47 26.5

46 26.6

47 26.5

n

50 26.2

50

E 7

38.2

n

26 28.6

28 28.4

31 28.1

b

30 28.2

33 27.9

37 27.5

S

38 27.4

PLOTTED

31.75

Ocean

65

100

E 7

38.2

S

37 27.5

34 27.8

28 28.4

b

28 28.4

27 28.5

22 29.0

n

18 29.4

150

E 7

38.2

n

13 29.9

19 29.3

26 28.6

b

31 28.1

35 27.7

39 27.3

S

40 27.2



31.25

200

E = W side of Vista (60)

S

3.0 283

2.8 284

2.5 287

2.3 289

1.8 294

1.4 30.0

n

0.4 30.8

W bush Vista

n

0.1 311

1.1 301

1.7 295

b

2.1 291

2.4 288

2.6 286

S

2.6 286

70

283

36.08

2.00

~~28.25~~

SW A

Vista

36.08

Acacia

66

W

W side

Vista

S

7.2 288

7.1 290

6.9 292

b

6.9 292

6.1 300

5.7 304

n

5.0 31.1

W side of Vista

n

4.6 31.5

5.3 30.8

6.0 30.1

b

6.5 296

6.7 294

6.8 293

S

7.0 291

PLOTTED



36.08

E

Wf

Vesta

S

67 294

64 297

58 30.3

b

56 30.5

54 31.0

45 31.6

n

38 32.3

E  $\frac{1}{2} + b' =$  n d of Delta <sup>(220)</sup> on n

n

38 32.3

E bank of Vesta

n

33 32.8

40 32.1

47 31.4

b

57 31.0

58 30.3

64 29.9

S

65 29.6

PLOTTED

36.08

again

67

E Sin of Vesta

S

60 30.1

62 29.9

b

56 30.5

48 31.3

39 32.2

32 32.9

n

22 33.9

E d Vesta 18 = E bank of Delta 11

n

18 34.3

29 33.7

38 32.8

S

49 31.2

56 30.5

59 30.2

S

59 30.2



3608

(20)	E	1/4 of	Delta	Δ
S			55	30.6
			52	30.9
b			46	31.5
			40	32.1
			25	33.6
			18	34.3
n			08	35.5
		Center of Delta		
n			00	36.1
			13	34.8
			23	33.8
b			38	32.3
			45	31.6
			50	31.1
S			55	30.6

PLOTTED

3609

Delta  
68

	E	1/4 of	Delta	Δ
S			49	31.9
			48	31.3
b			38	32.3
			33	32.8
			40	32.1
			12	34.9
n			23	33.8
		Center of Delta		
n			06	35.5
			34	32.7
			17	34.4
b			29	33.2
			36	32.5
			40	32.1
S			42	31.9



36.06

E sin of Delta

S			37	33.4
			37	33.4
			34	32.7
b			26	33.5
			18	34.3
			10	35.1
n			00	36.1
TP	643	41.71	0.80	35.28
	50	41.71		
		E of Delta		
n			69	35.7
			67	35.0
			70	34.7
b			73	34.4
			73	34.4
			74	34.3
S			81	33.6

PLOTTED

41.71

41.71

41.71

69

100 E of Delta

S			81	33.6
			73	34.4
			63	35.4
b			60	35.7
			52	36.1
			54	36.3
n			50	36.7
	150	E of Delta		
n			45	37.2
			50	36.7
			55	36.2
b			57	36.0
			63	35.4
			65	35.2
S			73	34.4

36.18  
 35.38  
 1.92  
 41.81



1171

	row	E of	Delta	
S			65	35.3
			57	36.0
			35	36.9
b			55	36.9
			52	36.5
			49	36.8
n			43	37.4

	row	E of	Delta	
n			50	36.7
			54	36.3
			55	36.9
b			53	36.4
			57	36.0
			64	35.3
S			64	35.3

PLOTTED

1171  
41.71acacia  
70

	row	E of	Delta	
S			59	35.8
			56	36.1
			48	36.9
b			44	37.3
			44	37.3
			46	37.1
n			45	37.9

	row	E of	Delta	
n			31	38.6
			31	38.6
			31	38.6
b			37	38.0
			40	37.7
			38	37.9
S			41	37.6



4181

400 E of Delta

S	35	383
	28	389
	31	386
b	31	386
	30	387
	27	390
n	22	395

450

E of Delta

n	16	401
	25	392
	30	387
b	30	387
	35	383
	37	380
S	37	380

333

4409

095

4096

n w of  
Epsilon

PLOTTED

4409  
4409

71

470 E = n of Epsilon = n (100)

S	54	387
	53	388
	54	387
b	51	390
	50	391
	44	397
n	33	402

4181  
31  
4086  
333  
4419

490 = w of Epsilon at n  
E = W of 39th St = S (60)

n	32	409
	39	402
	44	397
b	46	395
	50	391
	50	391
S	57	384



4409

	W	Center of	39.2	41
S			5.6	38.5
			5.3	38.8
			5.2	38.9
L			4.7	39.4
			4.4	39.7
			3.7	40.4
n			3.1	41.0
	{ W	1/4 of	Epsilon	
	{ W	1/4 of	39	
n			2.8	41.3
			3.6	40.5
			4.1	40.0
L			4.1	40.0
			4.6	39.5
			4.8	39.3
S			5.2	38.9

PLOTTED

4409

4409  
72

	Center of	39.2	41
S		4.9	39.2
		4.6	39.5
		4.4	39.7
L		3.8	40.3
		3.5	40.6
		3.3	40.8
n		2.6	41.5
	{ Center of	Epsilon	
	{ 2 1/4 of	39.2	
n		2.4	41.7
		2.6	41.5
		3.0	41.1
L		3.3	40.8
		4.0	40.1
		4.6	39.5
S		4.7	39.4



44.09

E Comb f 39.2 n-

S 46 39.5

42 39.9

40 40.1

b 28 41.3

28 41.3

23 41.8

n 20 42.1

E	44.4	Epstein
	sin 8	39.4

n 17 42.4

22 41.9

26 41.5

b 25 41.6

37 40.4

40 40.1

S 44 39.7

PLOTTED

44.09

(20) E 44.4 Epstein

S 38 40.3

33 40.8

28 41.3

b 24 41.7

22 41.9

19 42.2

n 16 42.5

(42 E 38)	E	sin 6	Epstein
-----------	---	-------	---------

n 11 43.0

17 42.4

16 42.5

b 13 42.8

16 42.5

24 41.7

S 35 40.6

TP 8.66 47.79 496 39.13

Acacia  
73

44.09
496
39.13
8.66
47.79

13 min
394 Acacia



47.79  
47.79

50 E of Epsalou  
S 60 41.8  
51 42.7  
114 43.4  
b 41 43.7  
36 44.2  
33 44.5  
n 35 44.3

100 E of Epsalou  
n 35 44.3  
37 44.1  
42 43.6  
b 45 43.3  
43 43.5  
48 43.0  
S 51 42.7

PLOTTED

47.79

again  
74

150 E of Epsalou  
S 57 42.1  
51 42.7  
45 43.3  
b 47 43.1  
44 43.4  
42 43.6  
n 40 43.8

200 E of Epsalou  
n 45 43.3  
48 43.0  
50 42.8  
b 55 42.3  
59 41.9  
60 41.8  
S 63 41.5

PLOTTED



47.79

250 E of Epialon

S 65 41.3

61 41.7

59 41.9

b 55 42.3

54 42.4

51 42.7

n 50 42.8

TP 37 4685 425 4354

300 E of Epialon

n 40 42.9

41 42.8

42 42.7

b 45 42.4

48 42.1

46 42.3

S 44 42.5

**PLOTTED**

46.85

350 E of Epialon

S 54 41.5

49 42.0

48 42.1

b 45 42.4

43 42.6

40 42.9

n 33 43.6

374.5 E of Epialon = Pl on n

n 37 43.3

41 42.8

45 42.4

b 46 42.3

47 42.3

43 42.6

S 48 42.1

400 E

S 48 42.1

Acad's  
45

47.79  
43.54  
42.5  
331  
46.85



4685  
 106' { 374' E on N } - Pulls down  
 { 440' E on S }

S	51	41.8
	45	42.4
	40	42.9
b	43	42.6
	41	42.8
	41	42.8
n	37	43.2

12.17 34.68

PLOTTED

2204  
 x 200' of Mast  
 Book 994  
 Continued from 76

N line of Dalgryia II

N	19	20.1
	22	19.8
	27	19.3
b	29	19.1
	28	19.7
	33	18.7
E	34	18.4

2204  
 120  
 21.81  
 1.88  
 26.80  
 11.00  
 15.80

50' N of Dalgryia II

E	17	20.3
	12	20.7
	07	21.3
b	11	20.9
	14	20.6
	14	20.4
N	16	20.4
TP	123	20.8

588 2669

PLOTTED



2669

	100'	n of	Dalbergia	
W			56	211
			55	212
			54	213
S			56	211
			54	213
			60	207
E			61	206

	150'	n of	Dalbergia	
E			53	214
			47	220
			47	220
S			46	221
			46	221
			45	222
W			43	224

PLOTTED

2669

Una  
1917

	200'	n of	Dalbergia	
W			44	223
			52	215
			54	213
S			54	213
			49	218
			55	217
E			60	207

	250'	n of	Dalbergia	
E			77	190
			77	188
			76	191
S			66	201
			62	205
			58	209
W			58	209

PLOTTED



2689

3

300 n = S. of Ballinrud (80)

W	91	17.6	
C	96	17.1	
1/2	100	16.7	
C	103	16.4	
1/2	105	16.2	
C	108	15.9	
L	114	15.3	
TP	1170	15.29	SEA bottom

Continued in  
Book 926 Page 25

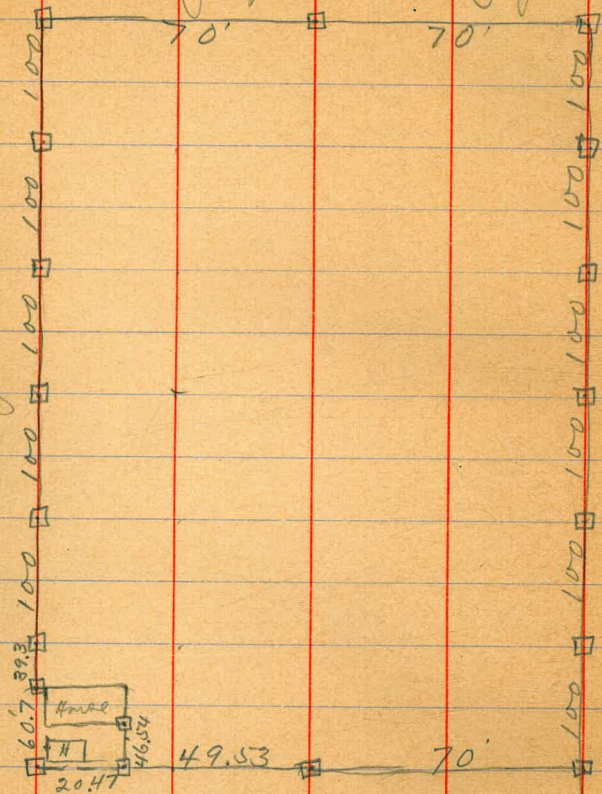
PLOTTED

LIF



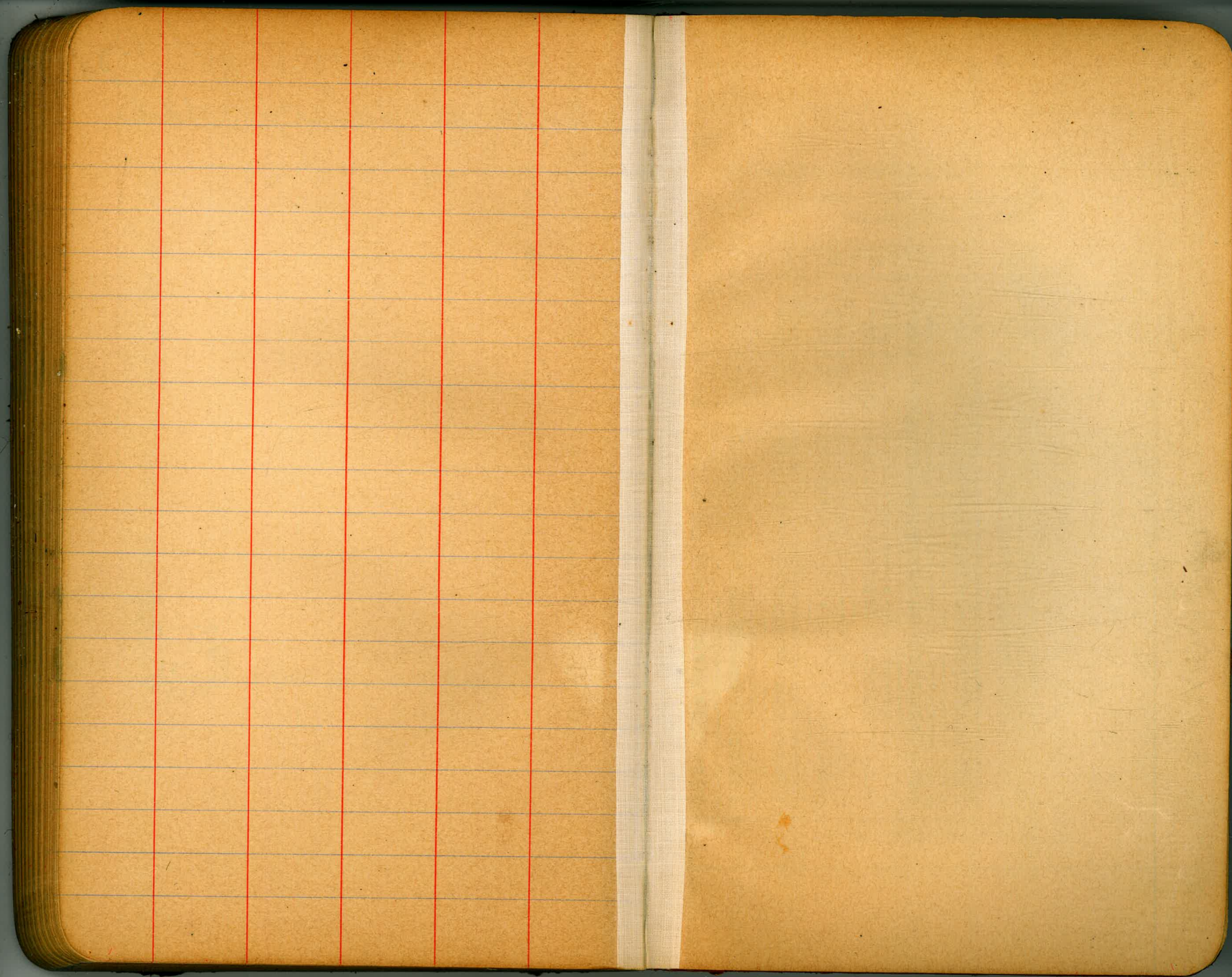
Survey for playground

alley



Feb 10/13  
H Childs  
atten  
Bunker  
fence at Lincoln & Idaho.







1503 13' bottom 4 Regel  
 1880 13' Buck & "  
 2833 13' Acacia & "  
 3467 Top Post Oak  
 2414 13' ma Acacia & Siva  
 1032 1/4 Post 38 + Bela & Siva

46.54

DISTANCES FROM CENTER OF ROADWAY FOR CROSS-SECTIONING.  
 ROADWAY 14 FEET WIDE. SIDE SLOPES 1 1/2 TO 1.  
 FOR SINGLE TRACK EMBANKMENT.

	0	.1	.2	.3	.4	.5	.6	.7	.8	.9	
0	7.0	7.2	7.3	7.5	7.6	7.8	7.9	8.1	8.2	8.4	0
1	8.5	8.7	8.8	9.0	9.1	9.3	9.4	9.6	9.7	9.9	1
2	10.0	10.2	10.3	10.5	10.6	10.8	10.9	11.1	11.2	11.4	2
3	11.5	11.7	11.8	12.0	12.1	12.3	12.4	12.6	12.7	12.9	3
4	13.0	13.2	13.3	13.5	13.6	13.8	13.9	14.1	14.2	14.4	4
5	14.5	14.7	14.8	15.0	15.1	15.3	15.4	15.6	15.7	15.9	5
6	16.0	16.2	16.3	16.5	16.6	16.8	16.9	17.1	17.2	17.4	6
7	17.5	17.7	17.8	18.0	18.1	18.3	18.4	18.6	18.7	18.9	7
8	19.0	19.2	19.3	19.5	19.6	19.8	19.9	20.1	20.2	20.4	8
9	20.5	20.7	20.8	21.0	21.1	21.3	21.4	21.6	21.7	21.9	9
10	22.0	22.2	22.3	22.5	22.6	22.8	22.9	23.1	23.2	23.4	10
11	23.5	23.7	23.8	24.0	24.1	24.3	24.4	24.6	24.7	24.9	11
12	25.0	25.2	25.3	25.5	25.6	25.8	25.9	26.1	26.2	26.4	12
13	26.5	26.7	26.8	27.0	27.1	27.3	27.4	27.6	27.7	27.9	13
14	28.0	28.2	28.3	28.5	28.6	28.8	28.9	29.1	29.2	29.4	14
15	29.5	29.7	29.8	30.0	30.1	30.3	30.4	30.6	30.7	30.9	15
16	31.0	31.2	31.3	31.5	31.6	31.8	31.9	32.1	32.2	32.4	16
17	32.5	32.7	32.8	33.0	33.1	33.3	33.4	33.6	33.7	33.9	17
18	34.0	34.2	34.3	34.5	34.6	34.8	34.9	35.1	35.2	35.4	18
19	35.5	35.7	35.8	36.0	36.1	36.3	36.4	36.6	36.7	36.9	19
20	37.0	37.2	37.3	37.5	37.6	37.8	37.9	38.1	38.2	38.4	20
21	38.5	38.7	38.8	39.0	39.1	39.3	39.4	39.6	39.7	39.9	21
22	40.0	40.2	40.3	40.5	40.6	40.8	40.9	41.1	41.2	41.4	22
23	41.5	41.7	41.8	42.0	42.1	42.3	42.4	42.6	42.7	42.9	23
24	43.0	43.2	43.3	43.5	43.6	43.8	43.9	44.1	44.2	44.4	24
25	44.5	44.7	44.8	45.0	45.1	45.3	45.4	45.6	45.7	45.9	25
26	46.0	46.2	46.3	46.5	46.6	46.8	46.9	47.1	47.2	47.4	26
27	47.5	47.7	47.8	48.0	48.1	48.3	48.4	48.6	48.7	48.9	27
28	49.0	49.2	49.3	49.5	49.6	49.8	49.9	50.1	50.2	50.4	28
29	50.5	50.7	50.8	51.0	51.1	51.3	51.4	51.6	51.7	51.9	29
30	52.0	52.2	52.3	52.5	52.6	52.8	52.9	53.1	53.2	53.4	30
31	53.5	53.7	53.8	54.0	54.1	54.3	54.4	54.6	54.7	54.9	31
32	55.0	55.2	55.3	55.5	55.6	55.8	55.9	56.1	56.2	56.4	32
33	56.5	56.7	56.8	57.0	57.1	57.3	57.4	57.6	57.7	57.9	33
34	58.0	58.2	58.3	58.5	58.6	58.8	58.9	59.1	59.2	59.4	34
35	59.5	59.7	59.8	60.0	60.1	60.3	60.4	60.6	60.7	60.9	35
36	61.0	61.2	61.3	61.5	61.6	61.8	61.9	62.1	62.2	62.4	36

Calculated by Julien A. Hall, M. Am. Soc. C. E.

MADE IN GERMANY.