

8

918

F.B.918

FIELD BOOK

KEUFFEL & ESSER CO.

DRAWING MATERIALS
AND
SURVEYING INSTRUMENTS.

NEW YORK.
CHICAGO. SAN FRANCISCO. ST. LOUIS.

TABLES FOR EXCAVATIONS AND EMBANKMENTS.

DISTANCES FROM CENTER OF ROADWAY FOR CROSS-SECTIONING.
ROADWAY 68 FEET WIDE. SIDE SLOPES 1 TO 1.
FOR SINGLE TRACK EXCAVATION.

"Copyright, 1895, by Keuffel & Esser Co."

	0	.1	.2	.3	.4	.5	.6	.7	.8	.9	
0	9.0	9.1	9.2	9.3	9.4	9.5	9.6	9.7	9.8	9.9	0
1	10.0	10.1	10.2	10.3	10.4	10.5	10.6	10.7	10.8	10.9	1
2	11.0	11.1	11.2	11.3	11.4	11.5	11.6	11.7	11.8	11.9	2
3	12.0	12.1	12.2	12.3	12.4	12.5	12.6	12.7	12.8	12.9	3
4	13.0	13.1	13.2	13.3	13.4	13.5	13.6	13.7	13.8	13.9	4
5	14.0	14.1	14.2	14.3	14.4	14.5	14.6	14.7	14.8	14.9	5
6	15.0	15.1	15.2	15.3	15.4	15.5	15.6	15.7	15.8	15.9	6
7	16.0	16.1	16.2	16.3	16.4	16.5	16.6	16.7	16.8	16.9	7
8	17.0	17.1	17.2	17.3	17.4	17.5	17.6	17.7	17.8	17.9	8
9	18.0	18.1	18.2	18.3	18.4	18.5	18.6	18.7	18.8	18.9	9
10	19.0	19.1	19.2	19.3	19.4	19.5	19.6	19.7	19.8	19.9	10
11	20.0	20.1	20.2	20.3	20.4	20.5	20.6	20.7	20.8	20.9	11
12	21.0	21.1	21.2	21.3	21.4	21.5	21.6	21.7	21.8	21.9	12
13	22.0	22.1	22.2	22.3	22.4	22.5	22.6	22.7	22.8	22.9	13
14	23.0	23.1	23.2	23.3	23.4	23.5	23.6	23.7	23.8	23.9	14
15	24.0	24.1	24.2	24.3	24.4	24.5	24.6	24.7	24.8	24.9	15
16	25.0	25.1	25.2	25.3	25.4	25.5	25.6	25.7	25.8	25.9	16
17	26.0	26.1	26.2	26.3	26.4	26.5	26.6	26.7	26.8	26.9	17
18	27.0	27.1	27.2	27.3	27.4	27.5	27.6	27.7	27.8	27.9	18
19	28.0	28.1	28.2	28.3	28.4	28.5	28.6	28.7	28.8	28.9	19
20	29.0	29.1	29.2	29.3	29.4	29.5	29.6	29.7	29.8	29.9	20
21	30.0	30.1	30.2	30.3	30.4	30.5	30.6	30.7	30.8	30.9	21
22	31.0	31.1	31.2	31.3	31.4	31.5	31.6	31.7	31.8	31.9	22
23	32.0	32.1	32.2	32.3	32.4	32.5	32.6	32.7	32.8	32.9	23
24	33.0	33.1	33.2	33.3	33.4	33.5	33.6	33.7	33.8	33.9	24
25	34.0	34.1	34.2	34.3	34.4	34.5	34.6	34.7	34.8	34.9	25
26	35.0	35.1	35.2	35.3	35.4	35.5	35.6	35.7	35.8	35.9	26
27	36.0	36.1	36.2	36.3	36.4	36.5	36.6	36.7	36.8	36.9	27
28	37.0	37.1	37.2	37.3	37.4	37.5	37.6	37.7	37.8	37.9	28
29	38.0	38.1	38.2	38.3	38.4	38.5	38.6	38.7	38.8	38.9	29
30	39.0	39.1	39.2	39.3	39.4	39.5	39.6	39.7	39.8	39.9	30
31	40.0	40.1	40.2	40.3	40.4	40.5	40.6	40.7	40.8	40.9	31
32	41.0	41.1	41.2	41.3	41.4	41.5	41.6	41.7	41.8	41.9	32
33	42.0	42.1	42.2	42.3	42.4	42.5	42.6	42.7	42.8	42.9	33
34	43.0	43.1	43.2	43.3	43.4	43.5	43.6	43.7	43.8	43.9	34
35	44.0	44.1	44.2	44.3	44.4	44.5	44.6	44.7	44.8	44.9	35
36	45.0	45.1	45.2	45.3	45.4	45.5	45.6	45.7	45.8	45.9	36

Calculated by Julien A. Hall, M. Am. Soc. C. E.

15:417 18m grand Magnolia

310.24

15 312.96

7.3 hours 3.2 7.5 cor house

14.5 cor house 0.9

40.35 0.7

49.25 fence 6.3

50.67 7.0

150.7 1.05

160.4 1.00

182.55 0.8

190.85 0.8

103.0 cor 2.6
21.5 2.6
230 5.0

147

3.5 40.7

25 49.75 150.21

50.67 100.02

100.42 50.29

70

81.2

25.0

40.58

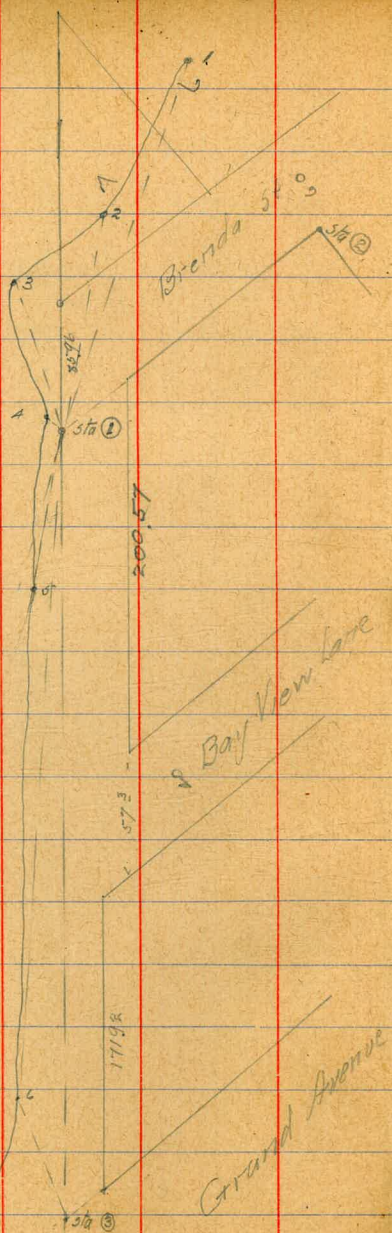
13.9 430

18
38
43

12/ Hatch Levels to Mean High Tide Line
 16/ Name
 13 Hall at Mission Bay Park

1

Brn Spire	2.26	17.68		15.417	Grand Pile Wagonia
	3.59	14.31	6.96	10.72	
	3.27	12.23	5.85	8.96	South
Pampala	2.93	7.88	5.88	6.95	East Point of Blk L
			11.88	-4.0	



12/13 Hatch Stadia Readings at Mean High Tide line (-4.)
 1/13 Moor at Mission Bay Park.

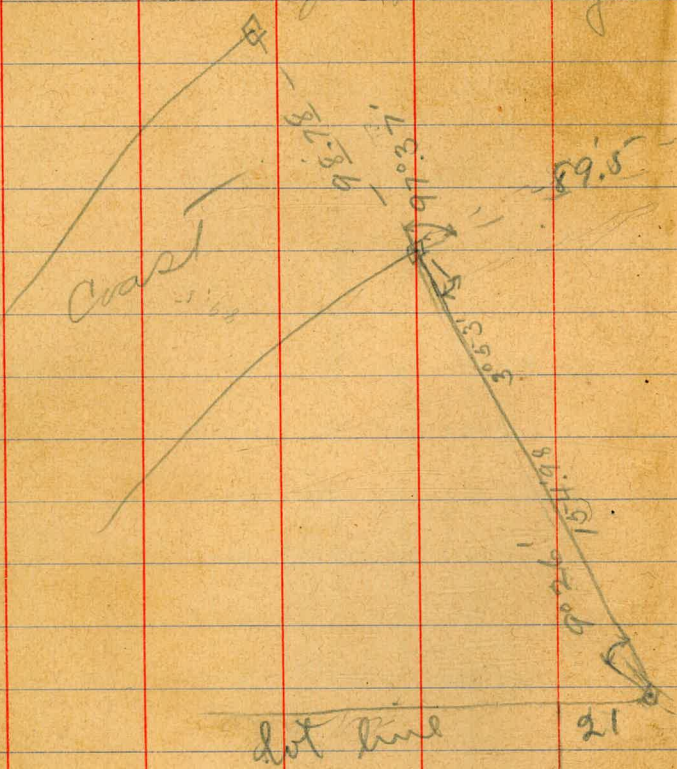
Inst at Sta ① Foresight - Sta ②
 Hor Angle Vert Angle Intercept

1	33°40' L	0°00'	6.30
2	38°45' W	0°00'	3.40
3	60°35' W	0°00'	1.36
4	81°50' W	0°00'	0.08
5	219°00' W	0°00'	1.86
6	211°00' L	0°00'	4.12

Inst at Sta ③ Foresight - Sta ①

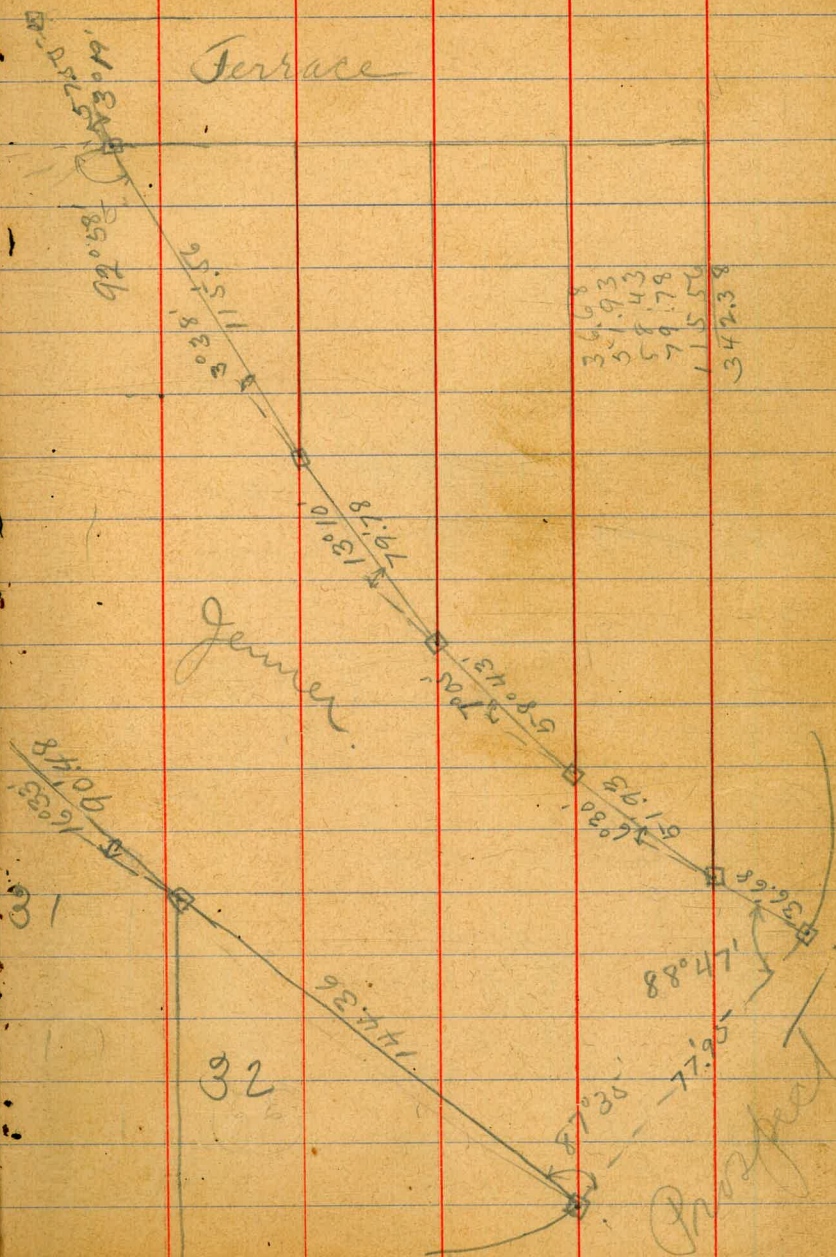
6	71°30'	0°00'	0.98
7	136°20' W	0°20'	3.95

Xsect. Geimer from
14' sidewalks (Quarters day)

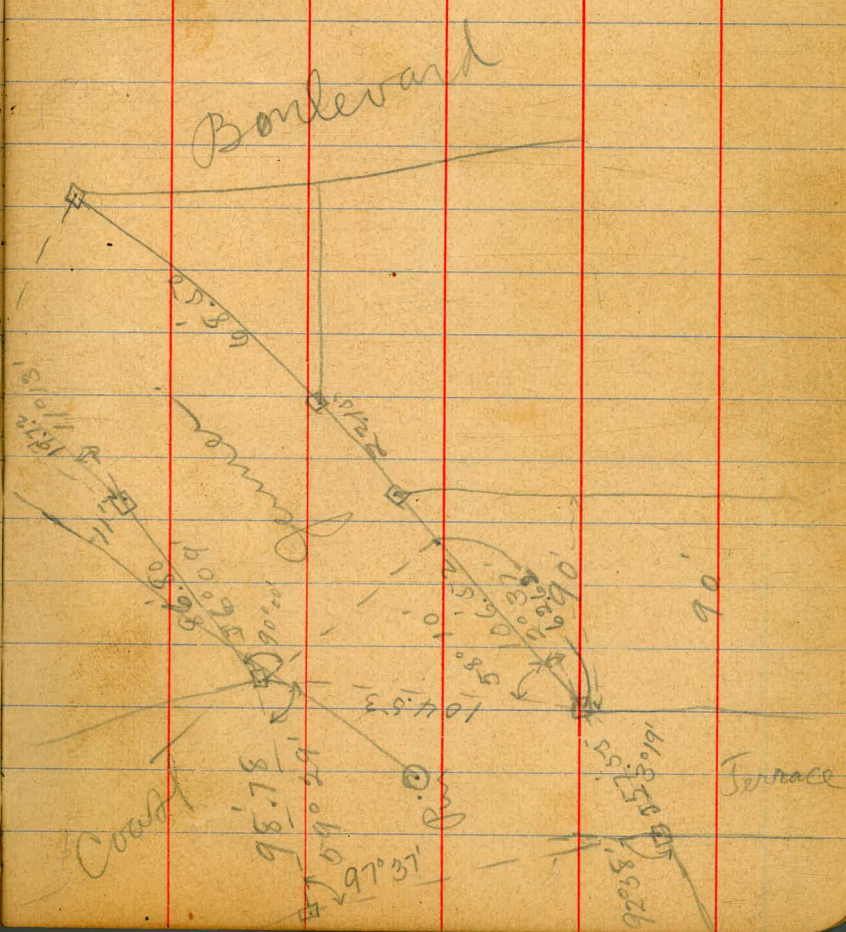


Prospect to Boulevard

Terrace



Lee Grade Look 90
Amphibian Look
Boulevard



68.5
106.17
197.11

90.65
130.55
43.0
8.55
41/26.00 31.5

86
191
155

Boulevard

Crest

Terrace

98.78
69° 29'
97° 37'

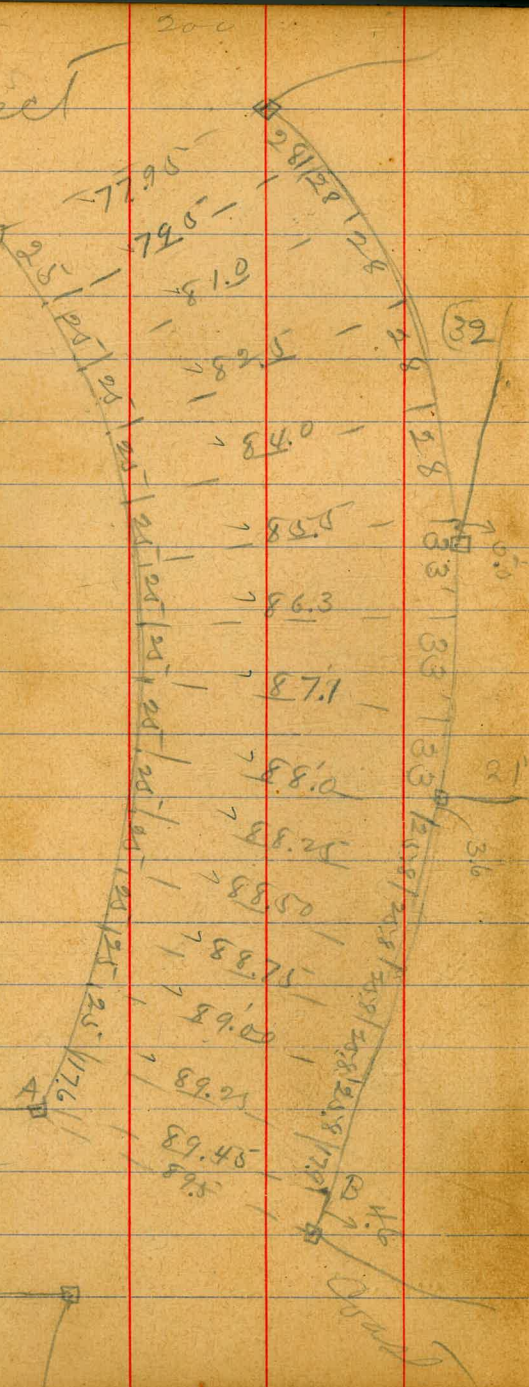
161.85
153.09
92.55

90°

Amphibian



Prospect



J.P.	090	RT 92.16	B.M. 91.26		50' W.		
	West line prospect						
No. line			1.0	91.2	No line		5.3 86.9
			1.0	91.2			5.9 86.3
			1.1	91.1			5.7 86.5
C			0.9	91.3	C		5.7 86.5
			1.0	91.2			4.9 87.3
			1.1	91.1			4.1 88.1
No line			0.7	91.5	No line		2.5 89.7
	25' W.					7.5' W.	
No line			1.1	91.1	No line		4.4 87.8
			2.0	90.1			6.2 86.0
			2.7	89.5			7.8 84.4
C			3.0	89.2	C		8.5 83.7
			3.0	89.2			8.8 83.4
			3.5	88.7			9.0 83.2
No. line			3.3	88.9	No line		7.7 84.5

92.16

100' W.

No line

11.4 80.8

12.0 80.2

11.9 80.3

C

11.2 81.0

11.1 81.1

8.4 83.8

No line

6.8 85.4

135' W.

No line

9.7 87.5

No. cb.

11.8 80.4

I.P.

0.70 ^{H.I.} 80.02 12.84 79.32

2.6 77.4

C

2.7 77.3

2.9 77.1

cb+9

3.1 76.9

No line

4.2 75.8

2.5 77.5

80.02

7

150' W.

No line

6.8 73.7

+5"

8.6 71.4

6.8 73.7

7.0 73.0

C

6.3 73.7

5.8 74.2

4.9 75.1

No line

3.5 76.5

175' W.

No line

6.5 73.5

8.0 72.0

8.4 71.6

C

9.2 70.8

9.8 70.2

10.1 69.9

10.2 69.8

cb+9
No line

12.9 67.1

80.02

200' W.

no line
+6'12.5 67.5
16.2 63.5
13.0 67.0

13.5 66.5

c

12.6 67.4

11.6 68.4

11.5 68.5

Robin

10.3 69.7

J.P.

H.I.
0.19 67.24 12.97 67.05

225' W.

Robin

1.3 65.9

1.9 65.3

2.5 64.7

c

2.8 64.4

3.5 63.7

06+4'
no line

3.2 64.0

5.8 61.4

3.1 64.1

67.24

8

250' W

no line
+10'6.0 61.7
7.8 59.4
6.3 60.9

6.4 60.8

c

6.3 60.9

5.5 61.7

5.3 61.9

Robin

4.9 62.3

275' W

Robin

8.4 58.5

8.7 58.5

8.6 58.6

c

9.0 58.2

9.3 57.9

9.4 57.8

10.4 56.8

9.1 58.1

06+2'
no line

6724
300' W

no line

11.7 55.5

12.2 55.0

12.2 55.0

C

12.0 55.2

11.4 55.8

11.6 55.6

no line

11.3 55.9

J.P.

H.I.
2.22 56.84 12.62 54.62

325' W.

no line

3.7 53.1

3.4 53.4

3.4 53.4

C

4.0 52.8

3.9 52.9

3.4 53.4

no line

3.8 53.0

5684

9

Sect. A.B. (342.6 W)

no line

5.53 51.3

5.8 51.0

5.4 51.4

C

5.3 51.5

5.2 51.6

5.2 51.6

no line

5.3 51.5

East line Terrace on North

∓ of Coast. on South.

no line

5.76 51.1

5.6 51.2

5.6 51.2

C

5.7 51.1

5.6 51.2

6.0 50.8

no line

5.53 51.31

J.P.	2.30	H.I. 53.61	51.31	Center			
	E. 1/4			Robin		4.7	48.9
Robin			3.5 50.1			5.1	47.5
			3.5 50.1			5.2	48.4
			3.3 50.3	C		5.6	48.0
C			3.8 49.8			5.9	47.7
			3.8 49.8			6.5	47.1
			4.2 49.4	Robin		6.7	46.9
Robin			3.9 49.7		W 1/4		
	E 1/4			Robin		8.0	45.6
Robin			5.6 47.0			7.4	46.7
			5.2 48.4			6.8	46.8
			5.0 48.6	C		6.5	47.1
C			4.7 48.9			6.3	47.3
			4.4 49.2			6.0	47.6
			4.3 49.3	Robin		5.3	48.3
Robin			4.3 49.3				

53.61

W. 66.

no line

6.1 47.5

no line

11.2 47.4

6.6 47.0

11.2 47.4

7.2 46.4

11.4 47.7

c

7.5 46.1

c

11.0 47.6

8.0 45.6

10.7 47.9

8.4 45.2

10.7 47.9

soline

9.2 44.4

soline

10.5 43.1

West line Coast on South

25 West sect C. 20

+ Terrace on north

soline

12.3 41.3

soline

10.5 43.1

12.5 41.1

9.8 43.8

12.3 41.3

9.2 44.4

c

12.7 40.9

c

8.5 45.1

13.0 40.6

8.1 45.5

13.2 40.4

7.7 45.9

no line

13.4 40.7

no line

6.96 46.7

J.P.

1.77 ^{14.5} 42.42 12.96 40.65

42.42

50' west

Robin

4.5 37.9

3.7 38.7

3.5 38.9

C

3.4 39.0

3.0 39.4

3.1 39.3

Robin

2.6 39.8

75' west

Robin

3.9 38.5

4.6 37.8

4.6 37.8

C

5.0 37.4

5.3 37.1

5.6 36.8

Robin

5.8 36.6

42.42

100' west

Robin

7.2 35.2

6.8 35.6

7.0 35.4

C

6.4 36.0

6.1 36.3

6.0 36.4

Robin

5.5 36.9

sect E (4)

Robin

5.9 36.5

6.7 35.7

6.2 36.2

C

6.8 35.6

7.4 35.0

7.3 35.1

Robin

7.78 34.6

13

42,42

sect. E. G.

No. line

7.78 34.6

7.8 34.6

7.9 34.5

C

7.6 34.8

7.7 34.7

8.0 34.4

No line

8.4 34.0

sect. E. H.

No line

10.2 32.2

9.7 32.7

9.2 33.7

C

8.8 33.6

8.4 34.0

8.1 34.3

No line

7.78 34.64

14

			3497		400 S of Elm		400 S of Elm		3498	
	035	3502		3497						3498
	054	2273	1210	2272	E		20	5.1	0.35	3502
	085	1143	1225	1048	ll		37	3.4	1310	2272
	563	707	999	144	on main but all banks gone	710			5.7	2272
N line of bedrock = 416 S of Elm					no				1225	1048
E			33	3.8	30		38	3.3	95	1143
H6	ll		37	3.4	40		72	-0.7	322	1143
+10			32	3.7	50		99	-2.8	1.75	263
+20			33	3.8		350' S of	Elm		7.07	
+30			35	3.6	E		35	3.6		
+40			59	1.7	ll		48	2.3		
+50			9,6	-2.5	+10		49	2.8		
ERAPE	150		4,6		+20		48	2.3		
			4,6		+30		56	1.5		
			4,6		+40		92	-2.1		
			4,6		+50		104	-3.3		

Atlantic is 100' wide at bedrock

+ 75' wide at Graupe

PLOTTED

PLOTTED

7.07

	300	Sy	Elm	
E			43	2.8
h			50	2.1
+10			55	1.6
+20			60	1.1
+30			77	-0.6
+40			101	-3.0
+50			110	-3.9

	250	Sy	Elm	
E			55	1.6
h			68	0.3
+10			68	0.3
+20			72	-0.1
+30			95	-2.4
+40			104	-3.3
+50			116	-4.5

PLOTTED

7.07

	200	Sy	Elm	
E			68	0.3
h			68	0.3
+10			83	-1.2
+20			93	-2.2
+30			105	-3.4
+40			108	-3.7
+50			117	-4.6

	150	Sy	Elm	
E			76	+0.5
h			84	-1.3
+10			86	-1.5
+20			89	-2.8
+30			107	-3.6
+40			112	-4.1
+50			120	-4.9

Atlantic

16

207

	100	S of	Elm	st
E			83	-1.7
H			9.0	+1.9
+10			9.5	+2.4
+20			10.0	-2.9
+30			10.5	-3.4
+40			11.3	-4.2
+50			12.0	-4.9

	65	S of	Elm	
E			85	-1.4
H			86	-1.5
T ₀₀			9.7	-2.6
+20			10.2	-3.1
+30			11.0	-3.7
+40			11.5	-4.4
+50			12.0	-4.9

TP 340 347 700 -0.1

PLOTTED

347

Atlantic

17

	50	S of	Elm	st
E			05	3.0
H			21	1.4
+10			41	-0.6
+20			64	-2.9
+30			66	-3.1
+40			73	+3.5
+50			79	+4.4

	25	S of	Elm	
E			00	3.5
H			03	3.7
+10			1.0	2.4
+20			1.4	2.1
+30			4.7	-1.2
+40			7.2	-3.7
+50			8.2	-4.7

347

S Line of Elm St (80')

E	00	3.5
bb	1.00	-6.5
+10	1.7	1.8
+20	5.8	-7.3
+30	6.9	-3.4
+40	7.5	-4.0
+50	8.1	-4.6

S curb

Elm

E	0.5	3.0
bb	1.0	7.5
+10	5.6	-7.1
+20	6.8	-3.3
+30	7.4	-3.9
+40	7.5	-3.9
+50	8.2	-4.6

PLOTTED

347

Atlantic

18

S 147 Elm

E	16	1.9
bb	5.4	-0.9
+10	6.2	-2.7
+20	7.0	-3.5
+30	7.0	-3.5
+40	7.7	-4.2
+50	8.2	-4.7

Center of

Elm St

E	4.0	+0.5
bb	5.8	-7.3
+10	6.6	-3.1
+20	6.9	-3.4
+30	7.0	+3.5
+40	7.5	-4.0
+50	8.2	-4.7

PLOT

347

	n	1/4 of	Elm	
E			45	-1.0
			³⁵ 55	-2.0
			³⁵ 62	-2.7
+20			68	-3.3
+30			³⁵ 74	-3.9
+40			³⁵ 78	-4.3
+50			80	-4.5

n

		Sum of	Elm	
E			50	-1.5
ll			55	-2.0
+10			61	-2.6
+20			69	-3.4
+30			73	-3.8
+40			81	-4.6
+50			81	-4.6

PLOTTED

347

Altimeter

19

	n	Sum of	Elm	
E			51	-1.6
ll			³⁵ 56	-2.1
+10			65	+3.0
+20			71	-3.6
+30			78	+4.3
+40			82	-4.7
+50			83	-4.8

70 420 389 328 -31

	n	Sum of	Elm	
E			55	-1.6
ll			58	-1.9
+10			64	-2.7
+20			72	-3.3
+30			81	-4.7
+40			87	-4.8
+50			90	-5.1

328
~~347~~
~~31~~
 430
~~31~~
 389

389

100

n

of Elm

E	46	-0.7
bl	50	-1.1
+10	56	-1.7
+20	67	-2.8
+30	70	-3.3
+40	82	-1.3
+50	88	-4.9

150

n of

Elm

E	40	-0.1
bl	44	-0.5
+10	58	-1.9
+20	66	-2.7
+30	75	-3.6
+40	84	-4.5
+50	91	-5.2

PLOTTED

389

200

n of

Elm

E	28	1.1
bl	37	0.2
+10	38	0.1
+20	66	-2.7
+30	76	-3.7
+40	84	-4.5
+50	92	-5.3

250

n of

Elm

E	15	2.4
bl	25	1.4
+10	29	1.0
+20	54	-1.5
+30	81	-4.2
+40	89	-5.0
+50	95	-5.6
TP	846	<u>285</u>
		450
		-1.39

Atlantic

20

389

210

-1.39

846

9.85

985

300

mf

Elm st

E	70	2.9
H	76	2.3
+10	83	1.6
+20	123 9.9	-2.4
+30	143 9.9	-4.4
+40	148 4.0	-4.9
+50	152 0.2	-5.3

350

mf

Elm st

E	61	3.8
H	64	3.5
+10	64	3.5
+20	126	-2.7
+30	140	-4.1
+40	148	-4.9
+50	156	-5.7

PLOTTED

985

400

mf

Elm st

E	54	4.5
H	54	4.5
+5	54	4.5
+10	124	-2.5
+20	135	-3.6
+30	150	-5.1
+40	154	-5.5
+50	156	-5.7

416

n

S26 Elm st

E	53	4.6
H	51	4.8
+5	52	4.7
+10	124	-2.5
+20	134	-3.5
+30	150	-5.1
+40	154	-5.5
+50	157	-5.8

1295	220	228	957
1214	2398	18	2184
1157	4535	20	3378
		10	4402

Atlanta

21

985
9.57
7.45
22.02
21.94
12.14
33.98
33.78
11.57
45.35

2
5
14
Blanch
Taylor
July

X reef Bermuda St (80') 20' marks
E of De Fu to Santa Barbara St

Bermuda
St
E of De Fu

	085	2486	2401	
	950	2955	480	20.00
	E of De Fu St		Graded	
S L		93	20.2	
to		95	20.0	
		94	20.1	
b		89	20.6	
		92	20.3	
		85	21.0	
n		83	21.2	
	S of De Fu St			
n		97	19.8	
		98	19.7	
		99	19.6	
b		98	19.7	
		99	19.6	
		99	19.6	
S		100	19.5	

2955

Bermuda
22

	50	E 9	De Fu St	
			98	19.7
			98	19.7
			98	19.7
			98	19.7
			97	19.8
			96	20.0
			91	20.4
	100	E 8	De Fu	
			81	21.4
			80	21.5
			80	21.5
			80	21.5
			80	21.5
			77	21.8
			78	21.7

2955

150

E ♂

De Jul

S	55	24.0
	55	24.0
	57	23.8
b	61	23.4
	63	23.2
	63	23.2
n	67	22.8

200

E ♂

De Jul

n	52	24.3
	49	25.1
	43	25.2
b	42	25.3
	38	25.7
	34	26.1
S	35	26.0

2955

250

E ♂

De Jul

S	18	27.7
	18	27.7
	24	27.1
b	26	26.9
	29	26.6
	32	26.3
n	34	26.1

TP

1223

300

4123

E ♂

De Jul

n	122	29.0
	122	29.0
	121	29.1
b	120	29.2
	118	29.4
	116	29.6
S	120	29.2

Bermuda

23

2955
 55
 2900
 1223
 4123

2900

2900

4123

350

E of

Dist

S

108

30.4

95

31.7

92

32.0

b

90

32.2

87

32.5

88

32.4

n

90

32.2

400

E of

Dist

n

73

33.9

69

34.3

66

34.6

b

69

34.3

73

33.9

75

33.7

S

82

33.0

4123

450

E of

Dist

S

59

35.3

50

36.2

50

36.2

b

50

36.2

53

35.9

52

35.6

n

57

35.5

500

E of

Dist

n

33

37.9

33

37.9

30

38.2

b

30

38.2

28

38.4

30

38.2

S

37

37.5

770

1045

5068

100

4023

Bermuda

24

4023
1045
5068

50.68

550

E-J

De Fur

S

11.0

39.7

9.8

40.9

9.8

40.9

b

9.7

41.0

10.0

40.7

9.7

41.0

n

10.0

40.7

600

E = W of Eber

W (60') 11' walls

n

7.0

43.7

6.6

44.1

6.8

43.9

b

7.4

43.3

7.6

43.1

7.7

43.0

S

8.5

42.2

50.68

Bermuda

25

W

land

Eber

S

8.2

42.5

7.2

43.5

7.0

43.7

b

7.1

43.6

6.4

44.3

6.2

44.5

n

6.3

44.4

W

14 f

Eber

n

5.7

45.0

5.6

45.1

6.0

44.7

b

6.8

43.9

6.7

44.0

7.0

43.7

S

8.1

42.6

50.68

Center of Eber

S 7.4 43.3

6.5 44.2

6.1 44.6

b 6.4 44.3

5.1 45.6

4.7 46.0

n 5.0 45.7

E 1/4 of Eber

n 4.6 46.1

4.4 46.3

4.8 45.9

b 6.2 44.5

5.9 44.8

6.0 44.7

S 6.7 44.0

50.68

E bank of Eber

S 6.6 44.1

5.5 45.2

5.4 45.3

b 5.6 45.1

4.3 46.4

4.0 46.7

n 3.8 46.9

E side of Eber

n 3.2 47.5

3.4 47.3

3.8 46.9

b 5.2 45.5

5.0 45.7

5.3 45.4

S 6.4 44.3

Bermuda

26

5068

	50	E of Ebn		
S		38	46.9	
		32	41.5	
		32	47.5	
b		30	47.7	
		25	48.2	
		24	48.3	
n		14	49.3	
TP	1255	61.88	135	49.3
	100	E of Ebn		
n		107	51.2	
		115	50.4	
		117	50.2	
b		118	50.1	
		117	50.2	
		119	50.0	
S		118	50.1	

61.88

Bermuda

27

	150	E of Ebn		
S		83	53.6	
		82	53.7	
		87	53.2	
b		92	52.7	
		88	53.1	
		86	53.3	
n		80	53.9	
	200	E of Ebn		
n		115	57.4	
		53	56.6	
		59	56.0	
b		56	56.3	
		54	56.5	
		52	56.7	
S		46	57.3	

5068
135
49.3
1255
61.88

6188

250

E J

Eben

S

16

60.3

20

59.9

25

59.4

L

26

59.3

25

59.4

25

59.4

n

21

59.8

7P

1233

7225

196

5992

300

E J

Eben

n

105

61.7

105

61.7

103

62.0

L

105

61.7

98

62.4

94

62.8

S

89

63.3

7225

350

E J

Eben

S

65

65.7

68

65.4

73

65.0

L

76

64.6

77

64.5

75

64.7

n

73

65.0

400

E J

Eben

n

45

67.7

43

68.0

41

68.1

L

46

67.6

42

68.0

40

68.2

S

37

68.5

Bermuda

28

6188
+196
59.92
1233
7225

72.25

	450	E of	Elev	
S			14	70.8
			14	70.8
			11	71.1
b			13	71.0
			0.9	71.3
			0.9	71.3
n			1.2	71.2
TP	1432	<u>8400</u>	0.37	<u>71.88</u>
	<u>500</u>	E of	Elev	
n			98	74.4
			98	74.4
			101	74.1
b			98	74.4
			100	74.2
			103	73.9
S			110	73.2

84.20

Bermuda
29

	550	E of	Elev	
S			85	75.7
			76	76.6
			73	76.9
b			70	77.2
			74	76.8
			68	77.4
n			63	77.9
	600	E = W of	Tran de St (60)	<u>10.20</u>
			32	81.0
			40	80.2
			44	79.8
			47	79.5
			51	79.1
			50	79.2
S			57	78.5

72.15

27

71.88

12.5

84.20

8420

W 1/2 of Trande W

S	30	79.2
	25	79.7
	47	79.5
L	42	80.0
	40	80.2
	31	81.1
R	25	81.7

W 1/2 of Trande

R	43	81.9
	31	81.1
	33	80.9
L	35	80.7
	40	80.2
	41	80.1
S	46	79.6

8420

Bernards

30

Center of Trande

S	40	80.2
	34	80.8
	32	81.0
L	30	81.2
	25	81.7
	23	81.9
n	17	82.5

E 1/2 of Trande

n	11	83.1
	16	82.6
	19	82.3
L	23	81.9
	23	81.9
	26	81.6
S	34	80.8

84.20

E curb of Froude

S	27	81.5
	18	82.4
	15	82.7
b	16	82.6
	13	82.9
	0.9	83.3
n	0.5	83.7

E side of Froude

n	+0.2	84.4
	0.0	84.2
	0.4	83.8
b	1.0	83.2
	1.0	83.2
	1.4	82.8
S	2.1	82.1

TP 1300

95.15

2.05 82.15

SE # Froude

95.15

50 E of Froude

S	99	85.2
	82	87.0
	82	87.0
b	84	86.7
	74	87.7
	72	88.0
n	69	88.2

100 E of Froude

n	32	92.0
	38	91.3
	44	90.7
b	53	89.8
	56	90.1
	57	89.4
S	67	88.4

Bermuda

31

84.20
~~20.0~~
~~82.15~~
~~1.0~~
 81.15

95.15

	150	E of	Tronch	
S			3.5	91.6
			2.5	92.6
			2.1	93.0
b			1.6	93.5
			1.0	94.1
TP	1267	<u>106.24</u>	1.58	<u>93.57</u>
			1.12	94.3
n			1.16	94.6
	200	E of	Tronch	
n			8.0	93.2
			8.9	97.3
			9.7	96.5
b			9.6	96.6
			10.7	95.5
			10.9	95.3
S			12.0	94.2

106.24

Bermuda

32

	250	E of	Tronch	
S			10.4	95.8
			8.4	97.8
			8.0	98.2
b			7.2	99.0
			6.7	99.5
			5.9	100.3
n			5.0	101.2
	300	E of	Tronch	
n			2.5	103.7
			3.8	102.4
			4.2	102.0
b			4.8	101.4
			5.7	100.5
			6.5	99.7
S			8.7	97.5

95.15
158
250
1267
106.24

319
320E on S
E on N

S-P.L.

10624

S

78 98.4

68 99.4

58 100.7

b

44 101.8

36 102.6

30 103.2

n

16 104.6

Bermuda offsets 4.3' to S of P.L.

Puebla Line

n

19 104.3

33 102.9

39 102.3

b

49 101.3

67 100.0

66 99.6

S

82 98.0

10624Bermuda
33

350 E f

Foude

S

68 100.0

50 101.2

46 101.6

b

40 102.2

34 102.8

28 103.4

n

18 104.7

TP 1290

117.68

146 104.78

1100 E f

Foude

n

64 111.3

80 109.7

87 109.0

b

97 108.0

102 107.5

102 107.5

S

123 105.4

106.24
1.46
104.78
12.24
117.68

11768

	450	E of	Trande	
S			6.5	111.2
			4.1	113.6
			2.7	115.0
b			3.0	114.7
			1.6	116.1
			0.8	116.9
TP	1298	12990	0.76	116.92
n			11.7	118.2
	500	E of	Trande	
n			4.2	125.7
			5.7	124.2
			7.3	122.6
b			7.4	122.5
			8.2	121.7
			9.6	120.3
			13.0	116.9
S	710		12.0	117.9

12990

Bermuda

34

	550	E of	Trande	
S			4.7	125.2
			5.2	124.7
			4.4	125.5
			2.8	127.1
b			1.5	128.4
			0.9	129.0
TP	1286	14195	0.81	129.09
			11.4	130.5
n			8.8	133.1
	600	E =	W 27	Longot (60)
n			3.9	138.0
			6.0	135.9
			7.4	134.5
b			7.8	134.1
			9.2	132.7
			11.5	130.4
S			11.5	130.4

11768

76

116.2

129.6

129.90

81

129.89

128.6

141.95

14.95

14.95

Bermuda

35

W
S
Curb of Gungot W
99 132.0

90 132.9

84 133.5

b
64 135.5

60 135.9

52 136.7

n
27 139.2

W
n
1/4 of Gungot
18 140.1

45 137.4

52 136.7

l
54 136.5

70 134.9

77 134.2

S
86 133.3

Center of Gungot
S
68 135.1

65 135.4

62 135.7

b
43 137.6

39 138.0

26 139.3

n
07 141.2

E
n
1/4 of Gungot
404 142.3

12 140.7

29 139.0

l
40 137.9

42 137.7

48 137.1

S
50 136.9

14195

E. Comb of Gungot

S	28	139.1
	34	138.5
	35	138.4
b	23	139.6
	17	140.2
	03	141.6

TP. 1275 15404 066 14129 SE A Gungot

n	116	140.4
---	-----	-------

E. Comb of Gungot

n	100	144.0
	119	142.1
	118	142.2
b	120	142.0
	132	140.8
	133	140.7
S	127	141.3

15404

57 E of Gungot

S	38	150.2
	34	150.6
	30	151.0
L	27	151.3
	26	151.4
	30	151.0
n	28	151.2

TP 1280 16423 211 15193

100 E of Gungot

n	50	159.2
	55	158.7
	55	158.7
b	66	157.6
	70	157.2
	79	156.3
S	90	155.2

Remains
36

141.95

66

141.29

1275

154.04

211

151.93

1230

164

16423

150

E of

Guzot

B

59

158.3

41

160.1

30

161.2

b

24

161.3

15

162.7

0.8

163.4

TP

1267

17581

109

163.4

n

108

165.0

200

E of

Guzot

n

72

168.6

91

166.7

104

165.4

b

114

164.4

120

163.8

128

163.0

S

146

161.2

17581

250

E of

Guzot

B

120

163.8

101

165.7

91

166.7

b

81

167.7

74

168.4

66

169.2

n

47

171.1

300

E of

Guzot

n

18

174.0

37

172.1

44

171.4

b

57

170.7

60

169.8

67

169.1

S

81

167.7

Bermuda

37

16423

102

163.14

12.47

175.81

17561

350 E of Gungot

S 44 171.4

3.0 172.8

2.3 173.5

b 1.6 174.2

TP 1267 15802 046 175.35

1.32 174.8

1 12.3 175.7

n 10.9 177.1

400 E of Gungot

n 64 181.6

70 181.0

84 179.6

b 85 179.5

89 179.1

93 178.7

S 113 176.7

18802

450 E of Gungot

S 47 183.3

30 185.0

24 185.6

16 186.4

b 14 186.6

0.9 187.1

TP 1275 19890 087 187.15

n 112 188.7

500 E of Gungot

n 60 193.9

68 193.1

71 192.8

b 71 192.8

74 192.5

76 192.3

S 92 190.7

Bermuda

38

17481
46
17531
22.62
18802
87
18889
15
19890

199.90

39

550

E of

Guyot

S

3.2

196.7

2.0

197.9

1.2

198.7

b

0.8

199.1

TP

1275

21245

0.20

198.70

138

192.6

136

198.8

n

12.0

200.4

600

E = N of

San Barbara

R

7.4

205.0

8.8

203.6

9.7

202.7

b

10.3

202.1

10.7

201.7

11.6

200.8

S

11.4

201.0

Chick

0.1

212.37

San Juan
Island

199.30
20
199.70
12.75
212.45

212.22

X sect. Columbia from
to north line Clark 50' street

J.P. 2.41 179.30 176.89

South line Henry

White 6.4 172.9

Curb 5.2 174.1

1/4 4.3 175.0

C 3.7 175.6

1/4 3.1 176.2

Curb 2.7 176.6

E line 1.2 178.1

25' 20.

E line 2.8 176.5

Curb 3.9 175.4

1/4 4.3 175.0

C 5.0 174.3

1/4 6.3 173.0

Curb 7.4 171.9

White 7.8 171.5

South line Henry
10' walks 7 1/2 quarters

179.30

50' 20.

White 9.6 169.7

Curb 8.9 170.4

1/4 7.6 171.7

C 6.6 172.7

1/4 5.2 174.1

Curb 4.3 175.0

E line 2.6 176.7

75' 20.

E line 3.9 175.4

Curb 5.5 173.8

1/4 6.4 172.9

C 8.4 170.9

1/4 9.1 170.2

Curb 10.4 168.9

White 10.7 168.6

April 9/14 J Childs
utter 40
Bunker

179,30

100' 201

White	12.8	166.5
Curb	11.2	168.1
1/4	10.1	169.2
C	9.5	169.8
1/4	8.1	171.2
Curb	7.5	171.8
E line	5.9	173.4

125' 20.

E line	7.7	171.6
Curb	9.3	170.0
1/4	10.1	169.2
C	11.5	167.8
W 1/4	12.6	166.7
J. J.	3.98	H.I. 170.21
Curb	13.07	166.23
	4.4	165.8
White	6.0	164.2

170.2

150' 20.

White	8.7	161.5
Curb	5.7	164.5
1/4	4.8	165.4
C	3.6	166.6
1/4	2.5	167.7
Curb	1.3	168.9
E line	0.0	170.2

175' 20.

E line	2.3	167.9
Curb	4.1	166.1
1/4	5.1	165.1
C	5.6	164.6
1/4	6.8	163.4
Curb	7.8	162.4
White	9.4	160.8

41

1702

200' 20.

White	11.2	159.0
Curb	9.9	160.3
1/4	8.8	161.4
C	7.7	162.5
1/4	7.0	163.2
Curb	6.0	164.2
E line	4.2	166.0

225' 20.

E line	5.9	164.3
Curb	7.4	162.8
1/4	8.3	161.9
C	9.4	160.8
1/4	10.7	159.5
Curb	11.8	158.4
White	13.8	156.4

1702

350' 20.

42

White	15.2	155.0
Curb	13.2	157.0
1/4	12.1	158.1
C	10.6	159.6
1/4	9.8	160.4
Curb	8.9	161.3
E line	7.7	162.5

275' 20.

E line	9.0	161.2
Curb	10.7	159.5
1/4	11.7	158.5
C	12.8	157.4
1/4	13.8	156.4
Curb	15.0	155.2
White	16.4	153.8

170.21

43

300's no. (no. line blank.)

White

18.5 151.7

17.0 153.2

15.6 154.6

c

14.7 155.5

13.6 156.6

12.8 157.4

Blue

11.4 158.8

286.51

450' no.

White	3.2	2893
C	3.3	2892
E line	2.9	2896

500' no.

E line	3.6	2899
C	4.3	2897
White	4.1	2897

525' no.

White	6.4	2801
C	6.4	2801
E line	5.5	2810

PLOTTED

550' no.

E line	8.4	2781
C	9.3	2772
White	9.2	2772

590' no.

White	12.8	2737
C	13.3	2732
E line	12.7	2738

600' no. (Smith line Brooks)

E line	13.9	2726
C	14.4	2721
White	14.7	2718

312.28

17

25' West sect A.B.

J.P.	2.28	H.I. 312.28	310.00				
	West line Cleveland.			No line		5.4	306.9
No line			2.8 309.5			4.6	307.7
			2.8 309.5			4.9	307.4
			2.8 309.5	C		5.4	306.9
C			2.8 309.5			5.5	306.8
			2.8 309.5	1/4+9'		5.8	306.5
						7.5	304.8
			3.4 308.9	No line		8.8	303.5
No line			2.4 309.9		50' w.		
	sect A.B.			No line		17.2	295.1
No line			2.4 309.9			14.0	298.3
			3.2 309.1			11.1	301.2
			3.1 309.2	C		8.9	303.4
C			2.9 309.4			8.2	304.1
			3.0 309.3			9.1	303.2
			3.4 308.9	No line		8.7	303.6
No line			3.7 308.6				

312.29

125' W.

No. line

11.0 301.3

150' W.

No. line

9.2 303.1

9.2 303.1

cb+6'

9.9 302.4

no 1/4

12.4 299.9

175' W.

c

11.5 300.8

10.6 301.7

10.3 302.0

No. line

10.1 302.2

312.28

18

200' W.

No. line

11.3 301.0

11.6 300.7

11.7 300.6

c

12.0 300.3

no 1/4

12.4 299.9

225' W.

No. line

13.2 299.1

12.4 299.9

13.0 299.3

c

13.0 299.3

12.8 299.5

12.6 299.7

No. line

11.7 300.6

312.28

250' W.

No line	11.3	301.0
+5	11.8	300.5
+6	12.6	299.7
cb	13.4	298.9
	14.1	298.2
C	14.2	298.1
	14.2	298.1
	14.1	298.2
No line	13.3	299.0

275' W.

No line	14.5	297.8
	14.8	297.5
	14.6	297.7
C	14.3	298.0
	14.3	298.0
	14.2	298.1
No line	13.6	298.7

312.29

19

294' W.

No line	14.8	297.5
	14.9	297.4
	15.0	297.3
C	15.0	297.3
	15.3	297.0
	15.3	297.0
No line	15.4	296.9

East line Maryland.

No line	15.4	296.9
	15.5	296.8
	15.3	297.0
C	15.1	297.2
	15.2	297.1
	15.1	297.2
No line	14.8	297.5

J.P.	0.85	^{H.I.} 300.01	13.13	299.16
		75' west sect	A.B.	
No. line bottom			12.0	288.0
		bottom	12.2	287.8
			9.0	291.0
C			6.7	293.3
			5.7	294.3
			4.1	295.9
No line			4.2	295.8
		100' W.		
No line			10.8	289.2
+2'			11.3	288.7
cb+3'			16.3	283.7
			14.6	285.4
			14.7	285.3
C			14.9	285.1
			15.4	284.6
			12.4	287.6
No line			9.9	290.1

300.01

50

125' W

No. cb.

1.9 298.1

6.5 293.5

C

10.2 289.8

150' W

No cb

12.1 287.9

9.0 291.0

C

5.2 294.8

175' W.

No 1/4

4.9 295.1

8.8 291.2

No line

12.7 287.3

200' W

No line

8.2 281.8

No. cb.

3.8 296.2

J.P.

3.11 ^{H.I.} 290.17 12.95 287.06

290.17

125' W. Sect. A.B.

Soline bottom 10.3 2799

7.4 2828

So. 1/4 4.0 286.2

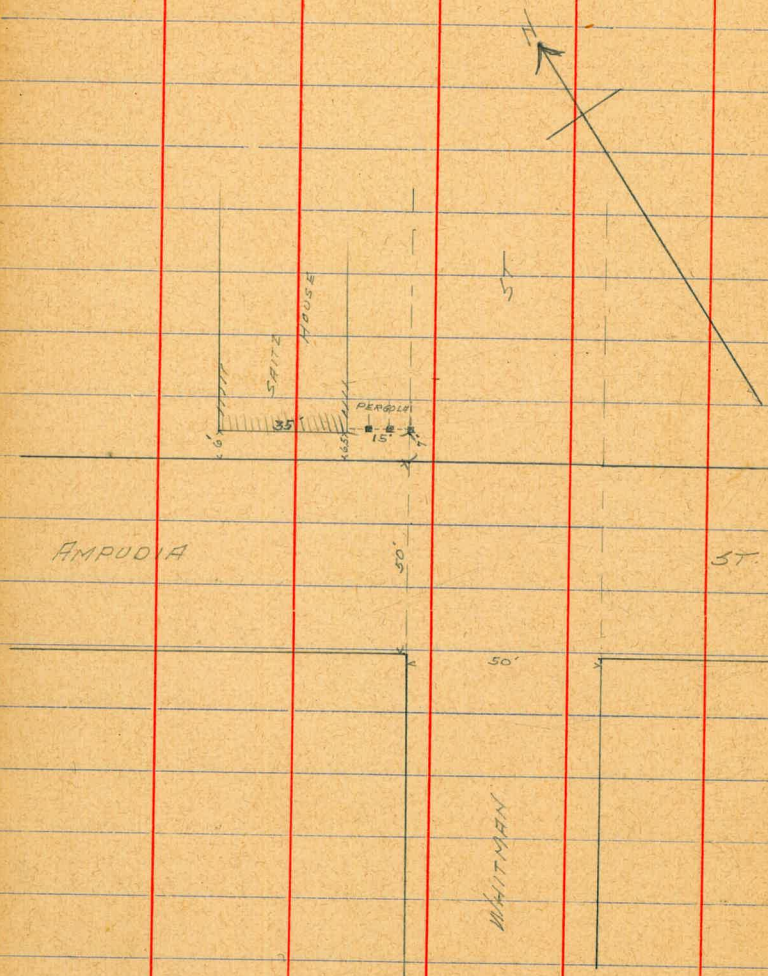
150' W.

Soline 6.9 2833

SURVEY SHOWING LOCATION OF
SPITZ HOUSE
ON AMPUDIA + WHITMAN STS

5/6/4
L. Deary
St. Louis
Mo.

53



54

CROSS SECTION OF
 AND EAST 90' OF LOTS 27 TO 30 BKS 62
 90' - 1970 22 - 63
 E.W. MORSE'S SUB

B.M. 12.57 209.53 196.96 SE 27th B

SEC. A

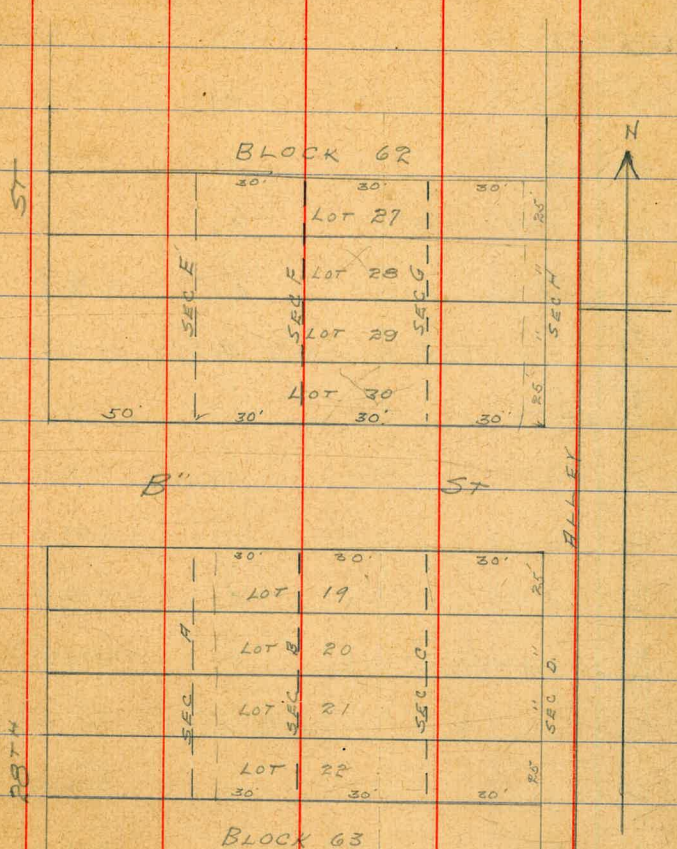
50' LINE B ST	12.4	197.1
25' 50'	11.9	197.6
50' ✓	12.1	197.4
75' ✓	11.9	197.6
100' ✓ = 50' LINE LOT 22	10.9	198.6

5' EAST OF SEC A

50' LINE LOT 22	10.9	198.6
25' No	9.3	200.2
50' ✓	8.7	200.8
75' ✓	8.5	201.0
100' ✓ = S.L. B ST	8.2	201.3

SEC B

S.L. B ST	6.7	202.8
25' 50'	7.2	202.3
50' ✓	8.1	201.4
75' ✓	7.1	202.4
100' ✓ = S.L. LOT 22	9.3	200.2



SEC C

5L Lot 22	85	201.0
25' No	81	201.4
50' ✓	76	201.9
75' ✓	70	202.5
100' ✓ = SL B ST	64	203.1

SEC D = NL ALLEY So. SIDE B

5L B ST	67	202.8
25' 30	72	202.3
50' ✓	79	201.6
75' ✓	86	200.9
100' ✓ = SL Lot 22	88	200.7

SEC H = NL ALLEY No SIDE B

NL B ST	51	204.4
25' No	48	204.7
50' ✓	46	204.9
75' ✓	45	205.0
100' ✓ = NL Lot 27	44	205.1

SEC 5' W of H (Interpolated)

NL of B ST = 204.5	75' W of B = 205.1
25' North = 204.7	100' " " = 205.1
50' " = 204.9	125' " " = 204.8

SEC G

NL Lot 27	43	205.2
25' 30	44	205.1
50' ✓	46	204.9
75' ✓	48	204.7
100' ✓ = NL B ST	50	204.5

SEC F

NL B ST	50	204.5
25' No	49	204.6
50' ✓	49	204.6
75' ✓	53	204.2
100' ✓ = NL Lot 27	56	203.9

SEC E

NL Lot 27	6.9	202.6
	8.1	201.4
25' 30	6.1	203.4
	8.2	201.3
50' ✓	5.9	203.6
	11.3	198.2
75' ✓	5.8	203.7
	11.2	198.3
100' ✓ = NL B ST	6.1	203.4
	11.6	197.7

For re-cross-section notes see
page 65.

X Sec's Bl. bet A & B of E of 28 St

BM SE 20 & B. Plug

19696

TP. 1293 209.89 465 205.24

5.39 210.63

100' Not B.St.

WL Alley.

5.5 205.1

25' W

5.5 205.1

50' W

6.2 204.4

75' W

7.5 203.1

100' W

{ 8.1 202.5
9.4 201.2

125' W

{ 9.7 200.9
7.9 202.7

140' W = EL. 28 St.

{ 9.4 201.2
7.10 200.6

125' N. of B.

140' W Alley = EL 28

8.5 202.1

125' W

7.5 203.1

100' W

7.3 203.3

75' "

7.1 203.5

50' "

6.5 204.1

25'

5.4 205.2

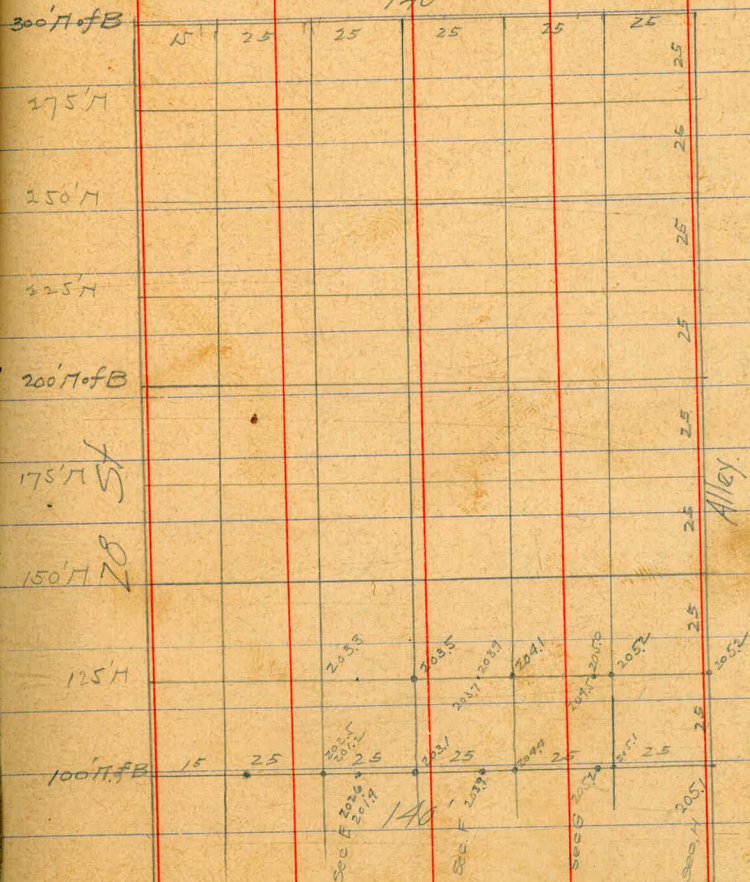
WL Alley.

5.4 205.2

6/20/14
Writ
Trans
Surrey

57

A St. 140'



210.63

150' N of B.

WL Alley	5.8	204.8
25' W.	5.9	204.7
50' W	6.6	204.0
75' W	7.2	203.4
100' W	7.6	203.0
125' W	8.1	202.5
140' W = EL 28.	8.9	201.7

175' N of B

140' W = EL 28	8.2	202.4
138' "	7.6	203.0
125' W of Alley	7.2	203.4
100' "	7.1	203.5
75' "	7.0	203.6
50' "	6.0	204.6
25' "	5.2	205.4
WL Alley	5.2	205.4

210.63

200' N of NL B

58

NL Alley	5.0	205.6
25' W	4.9	205.7
50' W	5.2	205.4
75' W	6.1	204.5
100' W	7.5	203.1
125' W	7.6	203.0
140' W = EL 28	8.0	202.6

225' N of NL B.

140' W = EL 28	7.2	203.4
137' W. of Alley	6.5	204.1
125' " " "	6.6	204.0
100' " " "	5.9	204.7
75' " " "	5.3	205.3
50' " " "	4.7	205.9
25' " " "	4.6	206.0
WL Alley	4.6	206.0

210.63

250' N of B.

WL Alley	4.2	206.4
25' W	4.3	206.3
50' W	4.1	206.5
75' W	4.3	206.3
100' W	4.6	206.0
125' W	5.1	205.5
139' W	5.4	205.2
140' W = EL 28 St	6.2	204.4

275' N of B

140' W of Alley = EL 28	5.1	205.5
138' W	4.1	206.5
125' W	3.8	206.8
100' W	3.6	207.0
75' W	3.5	207.1
50' W	3.5	207.1
25' W	3.6	207.0
WL Alley	4.0	206.6

210.63

300' N of B = 5L A St.

WL Alley

25' W

50' W

75' W

100' W

125' W

138' W

140' W = EL 28

T.P.

3.40

208.54

BM. SE 250 B Plug

11.58

196.96

59

{ 3.6	207.0
{ 6.3	204.3
{ 3.4	207.2
{ 6.0	204.6
{ 3.2	207.4
{ 6.0	204.6
{ 2.7	207.9
{ 5.7	204.9
{ 2.5	208.1
{ 5.0	205.6
{ 2.9	207.7
{ 5.0	205.6
{ 3.2	207.4
{ 4.8	205.8

5.2 205.4

5.49 205.14

Xsect. Mission View Blvd.

See Book 919 page 43

HI
16.39

sect SW

White

6.8 96

7.6 88

7.4 90

c

7.1 93

8.5 79

12.2 42

Elm

15.3 11

PLOTTED

100' 20. Sect. V W.

Elm

14.3 21

10.8 56

7.9 85

c

6.4 100

6.6 98

6.7 97

White

5.5 109

Pacific Beach 164

60

50' 20. Sect V W.

White

3.6 128

5.1 113

4.9 115

c

5.0 112

6.5 99

8.8 76

Elm

13.1 33

sect. V W.

Elm

12.3 41

7.9 85

6.0 102

c

5.2 112

4.8 116

5.0 112

White

3.11 133

sect V X

White

3.11 137

4.9 11.5

4.7 11.7

c

5.2 11.2

6.5 9.9

7.9 8.5

Elm

12.20 37

PLOTTED

Elm

9.9 6.5

7.5 8.9

6.2 10.7

c

5.1 11.3

4.6 11.8

4.6 11.8

White

3.11 133

300 So. Pacific ave.

White

2.4 12.0

3.6 12.8

3.9 12.5

c

4.6 11.8

5.2 11.2

6.0 10.4

Elm

7.0 9.4

250 20

Elm

6.3 10.1

4.3 12.1

3.4 12.0

c

3.1 12.3

3.1 12.3

3.3 12.1

White

2.7 12.7

J.P.

368

HE

1705

302

13.37

200' 20 Pacific ave.

white

2.1 15.0

4.0 17.1

4.1 17.0

4.1 17.0

4.2 17.9

4.9 17.7

5.9 17.7

Elmo

PLOTTED

150' 20

Elmo

8.7 8.4

6.9 10.7

5.6 11.5

5.4 11.7

5.2 11.9

5.3 11.8

white

3.3 12.8

17.1

62

100' 20

white

4.4 12.7

6.9 10.7

6.6 10.5

c

6.9 10.7

7.2 9.9

8.5 8.6

Elmo

10.8 6.3

50' 20.

Elmo

14.3 2.8

12.8 4.3

9.6 7.5

c

8.9 8.2

8.7 8.4

8.8 8.3

white

7.5 9.6

17.1

63

South line Pacific ave

White

8.8 8.2

9.5 7.6

9.8 7.2

@

PLOTTED

10.1 7.0

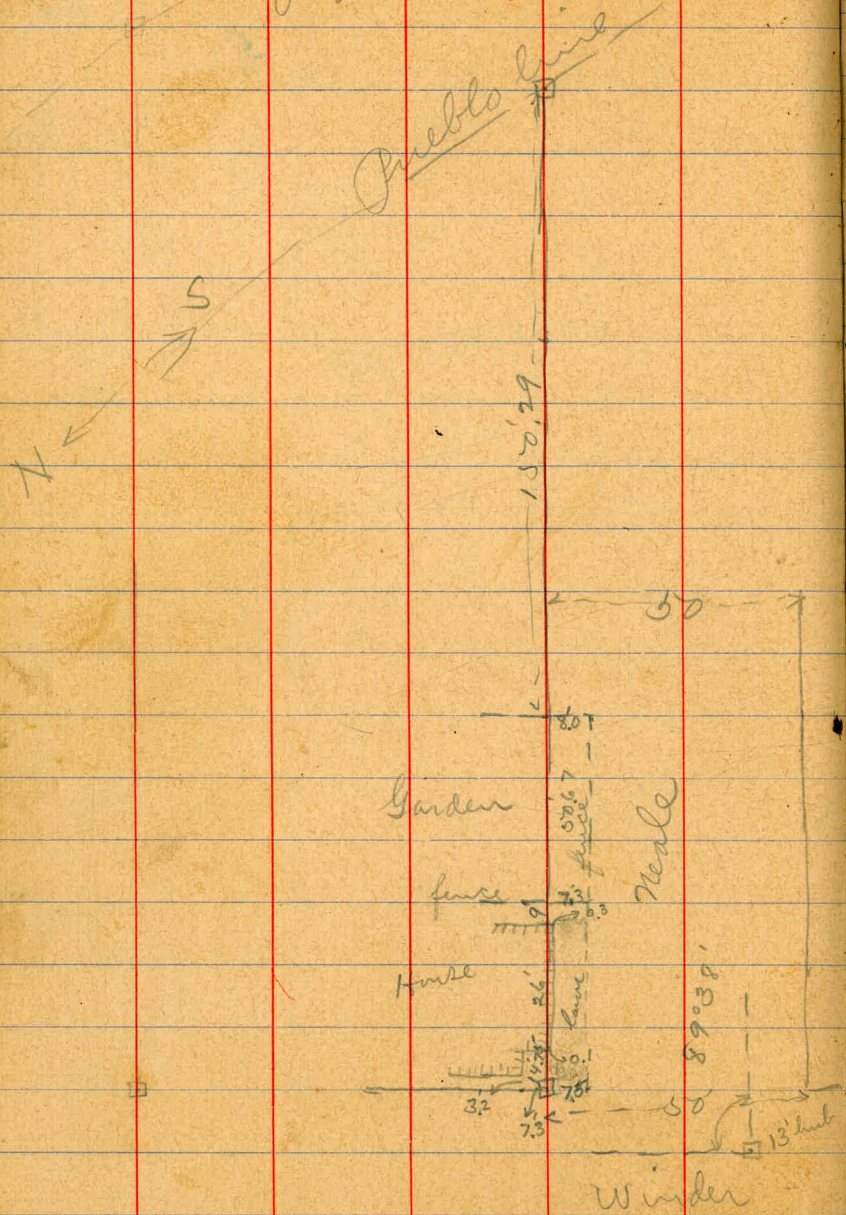
10.8 6.3

13.0 4.1

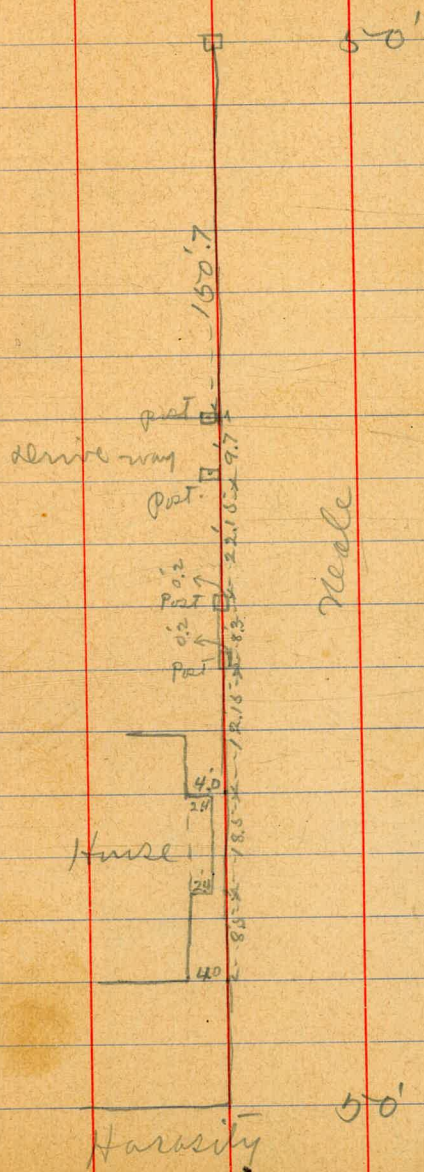
Blue

15.3 1.8

Survey of Neale Street

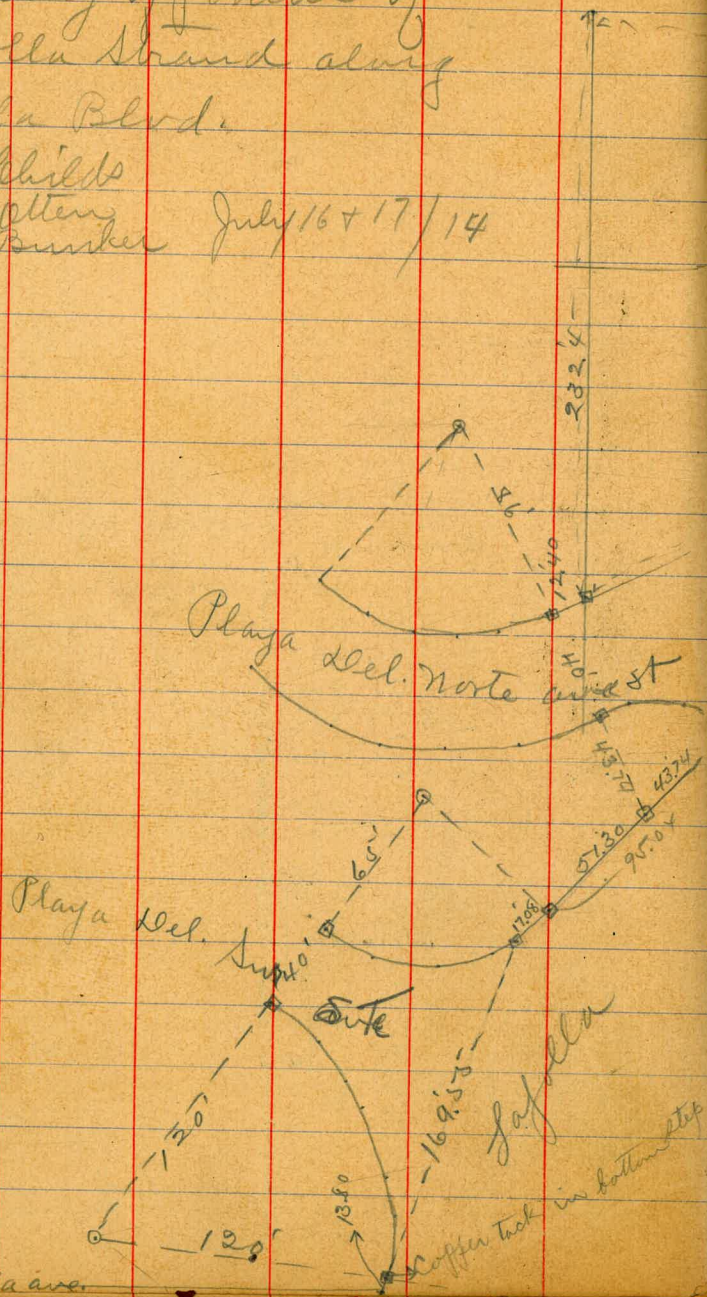


from Harasity to Pueblo line
July 8/14
Winder



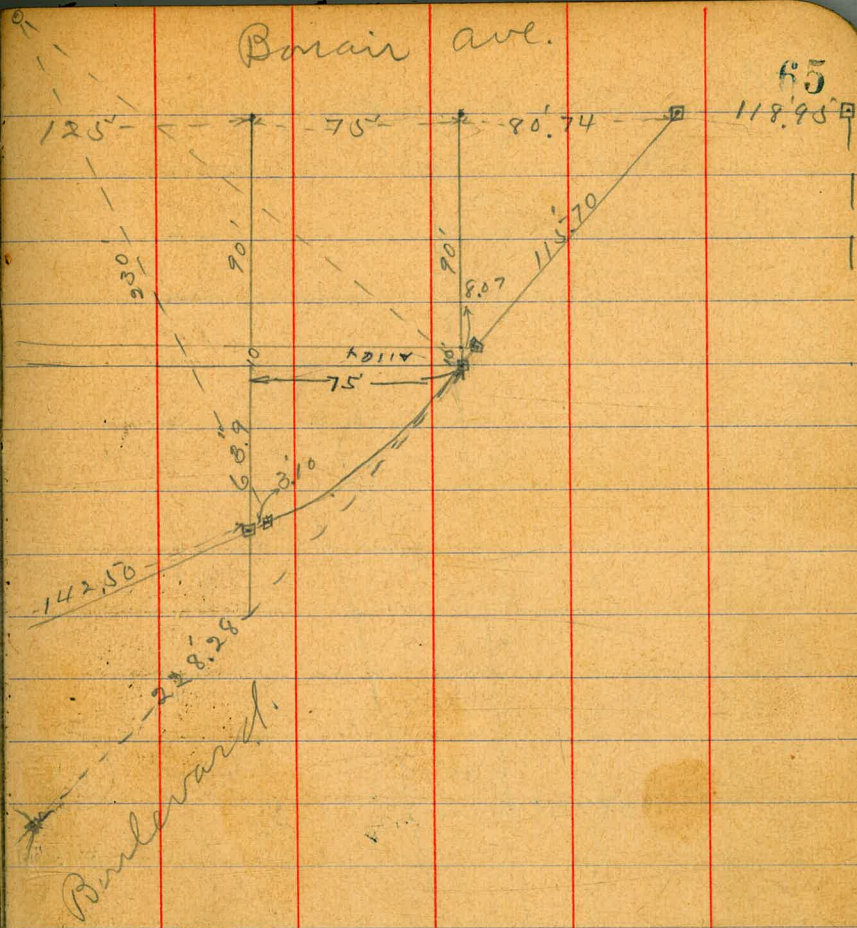
Survey of portion of
Lafolla Strand along
Lafolla Blvd.

Hchilds
Glen
Bunker July 16 + 17 / 14



Borain ave.

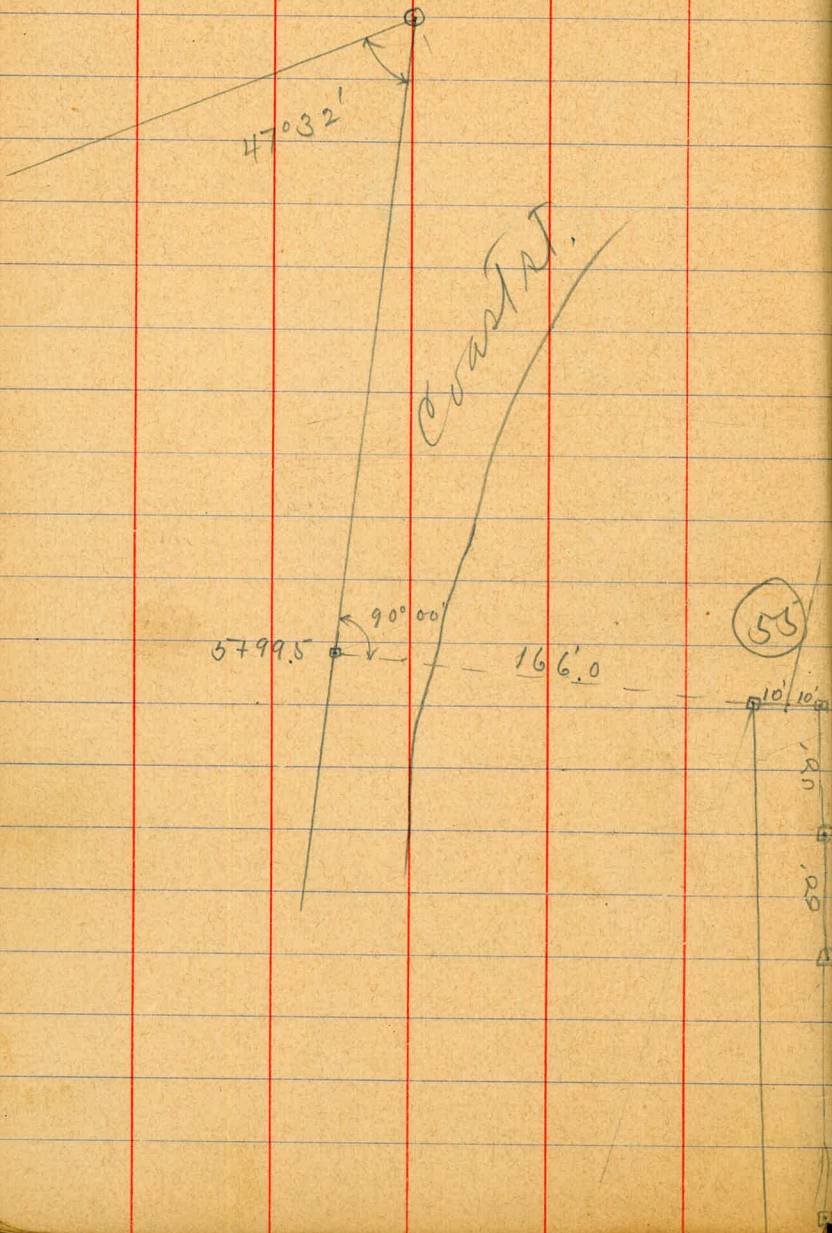
65



Survey of lot. 24
Blk. 55 Laguna park.
Heilds
Atten
Bunker

July 16/14

$14 + 55 = 3 + 39.5$



25

130.5

24

126'



67

7/19/14
Gregory &
Shoemaker
Moore

RE-CROSS SECTION OF
EAST 90' OF LOTS 27+30 BIRGE
90' 19-22 63
E. H. Morse's Subd.
To Show Amt. of Exc.

of B.M.

9.31

206.27

196.26

SE
25' + B

SEC "H" (see sketch Page 55)

N.L.B. ST.

7.3

199.0

25' N.

4.1

200.2

50' N

2.4

203.9

75' ✓

3.0

203.3

100' ✓

2.2

204.1

125' ✓

1.0

205.3

5' West of SEC "H"

125' No. of B

1.5

204.8

100' - - -

3.5

202.8

75' - - -

6.7

199.6

50' - - -

7.6

198.7

25' - - -

8.4

197.9

00' N.L.B.

8.1

198.2

SEC G

N.L.B.

8.2

198.1

25' No.

8.4

197.9

50'

8.0

198.3

206.27

75 No

7.6

198.7

68

95 ✓

6.9

199.4

100 -

4.7

201.6

110 ✓

2.3

204.0

125 ✓

1.8

204.5

SEC. F

125' No. of B

2.6

203.7

110 - - -

3.7

202.6

100 - - -

6.9

199.4

75 - - -

7.8

198.5

50 - - -

8.4

197.9

25 - - -

8.4

197.9

N.L.B.

8.2

198.1

SEC. F

N.L.B.

8.2

198.1

25' N

8.0

198.3

50 ✓

8.0

198.3

75 ✓

7.3

199.0

100 ✓

5.3

201.0

110 ✓

3.4

202.9

206.27

SEC A (see page 55)

S.L. B	9.2	197.1
25' So.	9.0	197.3
50' So.	8.9	197.4
75' So.	9.2	197.1
99' ✓	9.6	196.7
100' ✓	7.9	198.4

SEC B

100' S. of B	6.0	200.3
99' - - -	8.7	197.6
75' - - -	9.5	196.8
50' - - -	9.5	196.8
25' - - -	9.5	196.8
S.L. B	9.2	197.1

SEC C

S.L. B	9.5	196.8
25' So	9.8	196.5
50' -	9.6	196.7
75' ✓	9.6	196.7
99' ✓	8.4	197.9

206.27

100' So.

5.2

201.1

69

SEC D

100' S. of B	5.6	200.7
99' - - -	7.9	198.4
75' - - -	7.7	198.6
50' - - -	8.6	197.7
25' - - -	9.2	197.1
S.L. B	9.4	196.9

5' East of Sec. A (Interpolated)

S.L. of B St	197.1
25' So.	197.2
50' "	197.3
75' "	197.5
100' "	198.4

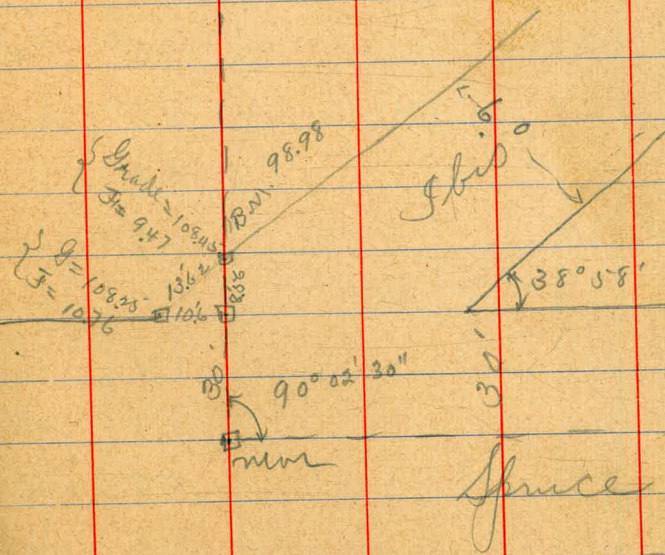
Total yardage as estimated on sheet of cross-section paper is 3416.7 c. y.

8-6-14

B.M. 85.98 plus and S.E. cor India
+ Spruce

12.82		13.62	
98.80	H.I.	15	
0.42		870	
98.38	S.P.	1362	
10.58		20430	
108.96	H.I.	10845	98.98
108.25		0.51	
0.71		9.98	
11.47		-9.47	
-10.76			

Survey for deed description
Sept. 30/14
at Spruce + Ibis
Shields 70
atten
Bunker



State

X sect. Goldfinch from
80' street 14' walks.

B.M. 256.99 ME cor. plug emb. Goldfinch
& Sutter

line Sutter to Penn. cut

258.5

Oct 1/14

Childs
Cohen
Bunker

25' 20.

J.P.	1.48	H.I. 25 8.47	256.99	Elise		0.1	258.4
		So. line Sutter				1.1	257.4
Elise			3.0 255.5			2.2	256.3
			3.4 255.1	1/4 + 7' C		2.4	256.1
			3.0 255.5			5.7	252.8
C			3.5 255.0			5.9	252.6
			3.7 254.8	white		5.9	252.6
			3.5 255.0			5.6	252.9
white			3.3 255.2		50' 20.		
	1' 20"			white		7.8	250.7
white			3.4 255.1	cb. + 2'		8.0	250.5
			3.7 254.8			10.4	248.1
			3.8 254.7	C		8.8	249.7
			3.3 255.2	C + 4'		7.4	251.1
			2.5 256.0			2.5	256.0
			0.5 258.0			2.0	256.5
Elise			0.2 258.3	Elise		1.3	257.2
						0.6	257.9

Notes reduced 10/2/14

TKB

258.5 H9.

75' 20.

E line

1.3 257.2

2.2 256.3

2.8 255.7

3.4 255.1

9.4 249.1

1/4+9'

11.2 247.3

11.4 247.1

10.4 248.1

1/4+11'

W line

10.1 248.4

100' 20.

W line

12.3 246.2

12.6 245.9

13.2 245.3

12.9 245.6

C
C+4'

10.7 247.8

4.2 254.3

3.1 255.4

2.5 256.0

E line

1.7 256.8

258.5

72

125' 20.

E line

1.9 256.6

2.9 255.6

3.9 254.6

4.6 253.9

13.3 245.2

1/4+9'

C

150' 20.

C

C+8

14.0 244.5

4.6 253.9

4.2 254.3

3.3 255.2

2.5 256.0

E line

163' 20.

E line

3.0 255.5

3.9 254.6

5.3 253.2

8.5 250.0

10.2 248.3

1/4+11'

C

W 1/4

13.6 244.9

258.5

175' 20

c

11.2 247.3

7.2 251.3

4.5 254.0

E line

3.2 255.3

200' 20.

E line

4.1 254.4

+4'

4.5 254.0

cb.

10.1 248.4

S 1/4

14.1 244.4

212' 20.

E line

6.2 252.3

E cb.

11.9 246.6

225' 20.

E line

7.8 250.7

250' 20.

E line

7.9 250.6

275' 20.

E line

7.9 250.6

258.47

73

H.I.

J.P.

0.20 245.72 12.95 245.52

125' 20. (butter)

white

1.8 243.9

ob+6'

2.4 243.3

w 1/4

3.8 241.9

2.2 243.5

150' 20.

w 1/4

4.0 241.7

3.8 241.9

white

3.7 242.0

163' 20.

white

4.1 241.6

w ob + 2'

3.2 242.5

5.9 239.8

175' 20.

w 1/4

3.1 242.6

1/4 + 5'

4.5 241.2

" + 11'

7.5 238.2

cb

5.7 240.0

cb+6'

4.6 241.1

white

10.8 234.9

245.7V

200' RO.

w.cb.	12.4	233.3
	9.7	236.0
C	5.2	240.5

212' RO.

E 1/4	4.2	241.5
C	8.7	237.0
w 1/4	12.7	233.0

225' RO.

C	11.8	233.9
	7.3	238.4
E.cb.	2.3	243.4

250' RO.

E.cb.	2.3	243.4
	7.7	238.0
C	13.1	232.6

245.7V

74

275' RO.

C	11.8	233.9
	6.1	239.6
E.cb.	0.9	244.8

300' RO. (north line from ave.)

E line	-0.8	246.5
	6.7	239.0
E 1/4	11.6	234.1
J.P.	0.20	233.33

200' RO. Sutter

w line	5.0	228.3
--------	-----	-------

212' RO.

w line	7.1	226.2
w.cb.	3.4	229.9

225' RO.

w 1/4	2.8	230.5
	6.0	227.3
	8.3	225.0
	13.5	219.8

cb+10'

w. line

	250' 20.			
W. cb.		12.0	221.3	
W 1/4		6.4	226.9	
	275' 20.			
W 1/4		4.7	228.6	
W. cb.		10.5	222.8	
	300' 20. (north line from ave.)			
W. cb.		11.0	222.3	
W 1/4		6.9	226.4	
C		4.31	229.02	
J.P.	0.41	^{H.I.} 220.80	12.94	220.39
W slope.	150' 20. (utter)			
W slope 50' out		2.7	218.1	
	163' 20			
W slope 35' out		3.4	217.4	
	175' 20.			
W slope 28' out		5.9	214.9	

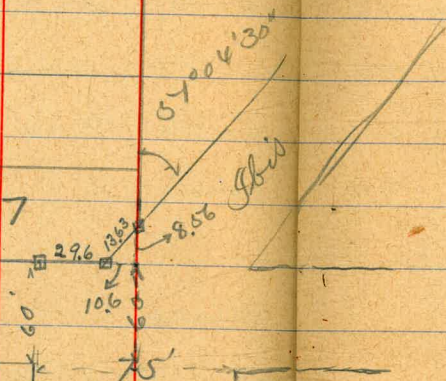
	200' 20.			
W slope 24' out		8.3	212.5	
	212' 20			
W slope 23' out		9.3	211.5	
	225' 20.			
W slope 21' out		10.1	210.7	
	250' 20.			
W slope 14' out		11.9	208.9	
W line		7.5	213.3	
	275' 20.			
W line		3.1	217.7	
W slope 15' out		13.4	207.4	
	300' 20. (no. line from ave)			
W slope 17' out		14.8	206.0	
W line		3.8	217.0	

128
Sassafras

(128)

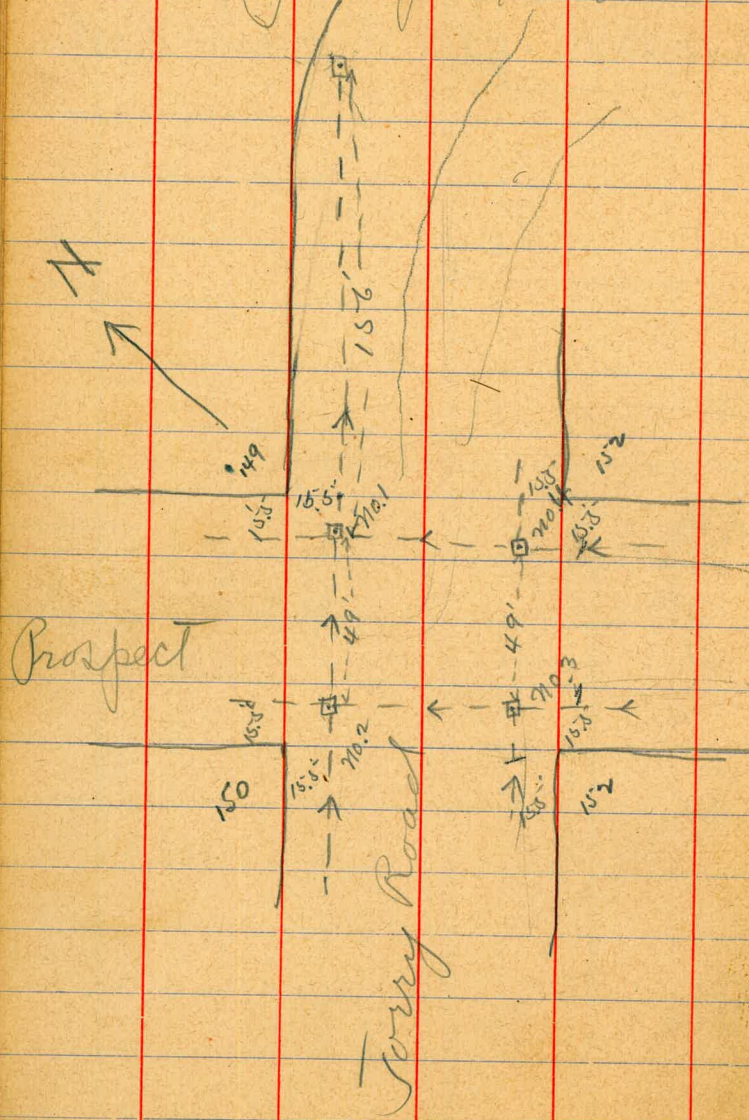
80'

Spence



Richardson
April 16/15 - Phelps
& Kerr
Survey of portion of lot
7 Blk. 128 of Richards Sub.

Survey for culvert at
and Prospect St.



Jerry Road

4135

H.I.
154.110

Dec 17/15

Childs
Evans
Blair

77

B.N.

149975

Catchbasin no. 2

4.8 1493

" " 710.3

2.5 151.6

" " " 4

3.2 150.9

" " 710.1

5.7 148.4

155' N.E. 710.1

5.9 148.2

50 " " 710.1

7.9 146.2

100 " " " "

11.0 143.1

J.P.

2.04

H.I.

143.97

10.18

143.93

150' N.E. 710.1

7.1 138.9

9.5 136.5

30th

Street

ct.

357.92'

250'

268.0'

225'

15' 10" 15' 10" 15' 10"

322

alley

29th

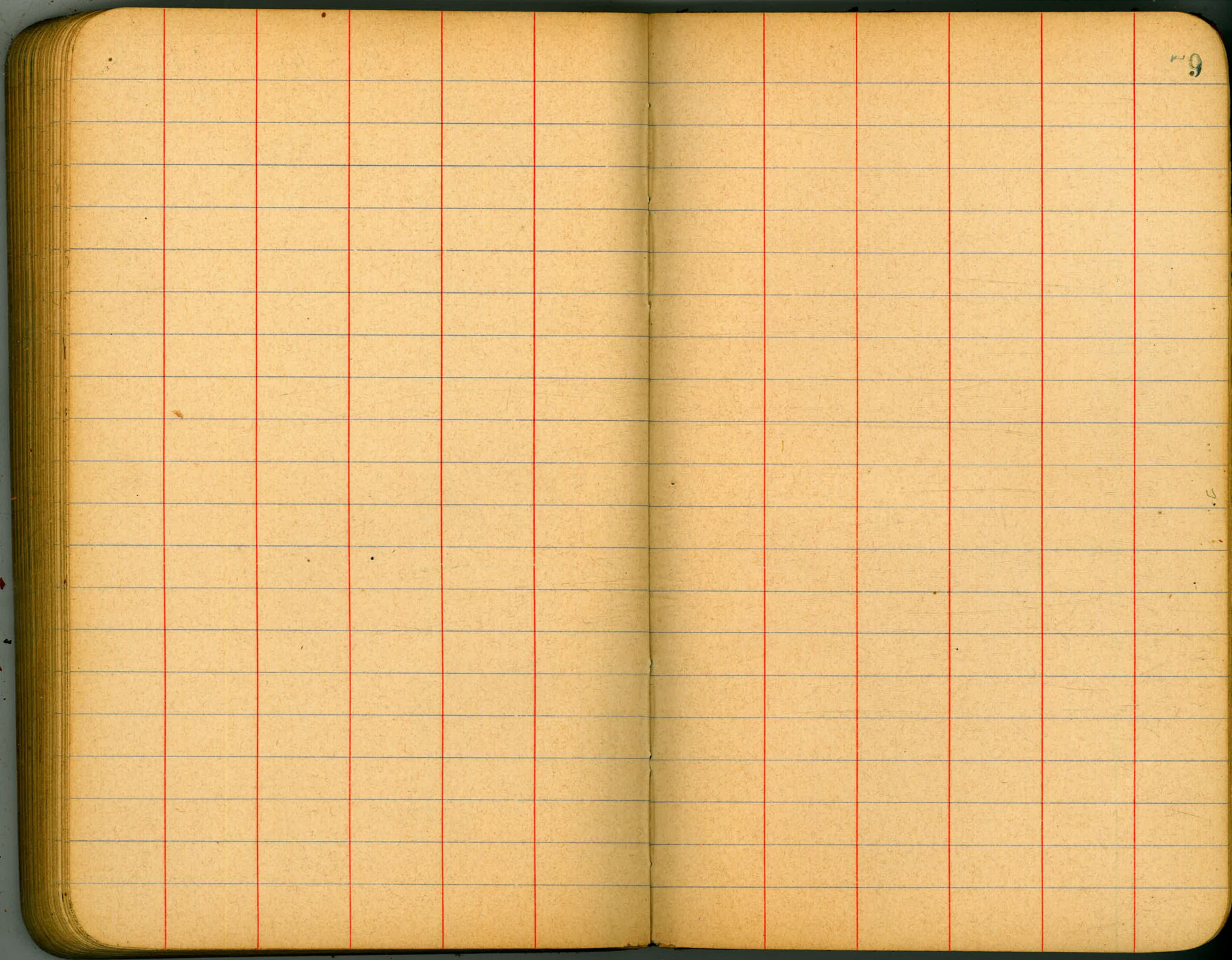
Street

mail. mail

268
267
266
265
264
263
262
261
260
259
258
257
256
255
254
253
252
251
250

Aug. 22/16

Childs
Evans
Shaw



9

So. line maple. no line

0 + 56

1 + 10

0 + 80

White run

0 + 16

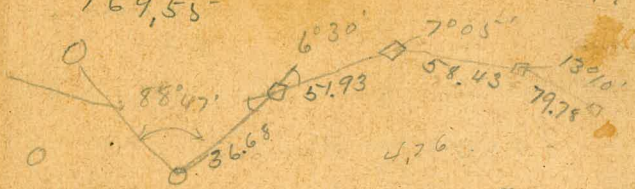
0 + 27

~~0 + 82~~

2 + 91

	275	/	530	(2	
			550		730	
	284.0V				360	
	284.05	✓				
1	284.10V				287.97	B.M.
	284.1V	✓			4.67	
2	283.9V				292.64	H.I.
	283.7V	✓			284.0	
3	283.4V	✓			28.64	
	283.0V	✓			4.74	4.50
4	282.1V	✓			+3.9	288.14
	281.1V	✓			4.87	284.10
+75	280.65V	✓			287.77	+4.0
					284.05	6.43
					+3.7	286.21
						284.1
					7.05	+2.1
	285.6					7.2
	283.7					285.44
	+1.9					283.9
	7.54					+1.5
	285.1				7.44	7.54
	283.4				285.2	285.1
	+1.7				283.0	282.1
					+2.2	+3.0
	834					
	284.3				8.74	
	281.1				283.9	
	+3.2				280.6	
					+3.3	

228.38
17.08
169.55



154.98
3.56
4.60
8.16
146.82
17.82
5) 12900 (25.8x
10
29
25
200.640
106.6
94.0
149.975

146.96
5.52
202.48
4.76
197.72
5.55
206.27

28.5
142.5
76
931

250.44
246
18
9) 228 (25.33
18
48
50
57.67
28.83

2401
81
2486
4750
7006

85.55
182.55
6/100
6.6
30.32

DISTANCES FROM CENTER OF ROADWAY FOR CROSS-SECTIONING.
ROADWAY 14 FEET WIDE. SIDE SLOPES 1 1/2 TO 1.
FOR SINGLE TRACK EMBANKMENT.

	0	.1	.2	.3	.4	.5	.6	.7	.8	.9	
0	7.0	7.2	7.3	7.5	7.6	7.8	7.9	8.1	8.2	8.4	0
1	8.5	8.7	8.8	9.0	9.1	9.3	9.4	9.6	9.7	9.9	1
2	10.0	10.2	10.3	10.5	10.6	10.8	10.9	11.1	11.2	11.4	2
3	11.5	11.7	11.8	12.0	12.1	12.3	12.4	12.6	12.7	12.9	3
4	13.0	13.2	13.3	13.5	13.6	13.8	13.9	14.1	14.2	14.4	4
5	14.5	14.7	14.8	15.0	15.1	15.3	15.4	15.6	15.7	15.9	5
6	16.0	16.2	16.3	16.5	16.6	16.8	16.9	17.1	17.2	17.4	6
7	17.5	17.7	17.8	18.0	18.1	18.3	18.4	18.6	18.7	18.9	7
8	19.0	19.2	19.3	19.5	19.6	19.8	19.9	20.1	20.2	20.4	8
9	20.5	20.7	20.8	21.0	21.1	21.3	21.4	21.6	21.7	21.9	9
10	22.0	22.2	22.3	22.5	22.6	22.8	22.9	23.1	23.2	23.4	10
11	23.5	23.7	23.8	24.0	24.1	24.3	24.4	24.6	24.7	24.9	11
12	25.0	25.2	25.3	25.5	25.6	25.8	25.9	26.1	26.2	26.4	12
13	26.5	26.7	26.8	27.0	27.1	27.3	27.4	27.6	27.7	27.9	13
14	28.0	28.2	28.3	28.5	28.6	28.8	28.9	29.1	29.2	29.4	14
15	29.5	29.7	29.8	30.0	30.1	30.3	30.4	30.6	30.7	30.9	15
16	31.0	31.2	31.3	31.5	31.6	31.8	31.9	32.1	32.2	32.4	16
17	32.5	32.7	32.8	33.0	33.1	33.3	33.4	33.6	33.7	33.9	17
18	34.0	34.2	34.3	34.5	34.6	34.8	34.9	35.1	35.2	35.4	18
19	35.5	35.7	35.8	36.0	36.1	36.3	36.4	36.6	36.7	36.9	19
20	37.0	37.2	37.3	37.5	37.6	37.8	37.9	38.1	38.2	38.4	20
21	38.5	38.7	38.8	39.0	39.1	39.3	39.4	39.6	39.7	39.9	21
22	40.0	40.2	40.3	40.5	40.6	40.8	40.9	41.1	41.2	41.4	22
23	41.5	41.7	41.8	42.0	42.1	42.3	42.4	42.6	42.7	42.9	23
24	43.0	43.2	43.3	43.5	43.6	43.8	43.9	44.1	44.2	44.4	24
25	44.5	44.7	44.8	45.0	45.1	45.3	45.4	45.6	45.7	45.9	25
26	46.0	46.2	46.3	46.5	46.6	46.8	46.9	47.1	47.2	47.4	26
27	47.5	47.7	47.8	48.0	48.1	48.3	48.4	48.6	48.7	48.9	27
28	49.0	49.2	49.3	49.5	49.6	49.8	49.9	50.1	50.2	50.4	28
29	50.5	50.7	50.8	51.0	51.1	51.3	51.4	51.6	51.7	51.9	29
30	52.0	52.2	52.3	52.5	52.6	52.8	52.9	53.1	53.2	53.4	30
31	53.5	53.7	53.8	54.0	54.1	54.3	54.4	54.6	54.7	54.9	31
32	55.0	55.2	55.3	55.5	55.6	55.8	55.9	56.1	56.2	56.4	32
33	56.5	56.7	56.8	57.0	57.1	57.3	57.4	57.6	57.7	57.9	33
34	58.0	58.2	58.3	58.5	58.6	58.8	58.9	59.1	59.2	59.4	34
35	59.5	59.7	59.8	60.0	60.1	60.3	60.4	60.6	60.7	60.9	35
36	61.0	61.2	61.3	61.5	61.6	61.8	61.9	62.1	62.2	62.4	36

Calculated by Julien A. Hall, M. Am. Soc. C. E.

MADE IN GERMANY.