

919

F.B. 919

LEVEL BOOK

373

# KEUFFEL & ESSER CO.

DRAWING MATERIALS

AND

SURVEYING INSTRUMENTS.

NEW YORK.

CHICAGO.

SAN FRANCISCO.

ST. LOUIS.

## TABLES FOR EXCAVATIONS AND EMBANKMENTS.

DISTANCES FROM CENTER OF ROADWAY FOR CROSS-SECTIONING.

ROADWAY 18 FEET WIDE. SIDE SLOPES 1 TO 1.

OR SINGLE TRACK EXCAVATION.

MICRO  
DEC 16 1964

Copyright, 1964, The Keuffel & Esser Co.

	0	.1	.2	.3	.4	.5	.6	.7	.8	.9	
0	9.0	9.1	9.2	9.3	9.4	9.5	9.6	9.7	9.8	9.9	0
1	10.0	10.1	10.2	10.3	10.4	10.5	10.6	10.7	10.8	10.9	1
2	11.0	11.1	11.2	11.3	11.4	11.5	11.6	11.7	11.8	11.9	2
3	12.0	12.1	12.2	12.3	12.4	12.5	12.6	12.7	12.8	12.9	3
4	13.0	13.1	13.2	13.3	13.4	13.5	13.6	13.7	13.8	13.9	4
5	14.0	14.1	14.2	14.3	14.4	14.5	14.6	14.7	14.8	14.9	5
6	15.0	15.1	15.2	15.3	15.4	15.5	15.6	15.7	15.8	15.9	6
7	16.0	16.1	16.2	16.3	16.4	16.5	16.6	16.7	16.8	16.9	7
8	17.0	17.1	17.2	17.3	17.4	17.5	17.6	17.7	17.8	17.9	8
9	18.0	18.1	18.2	18.3	18.4	18.5	18.6	18.7	18.8	18.9	9
10	19.0	19.1	19.2	19.3	19.4	19.5	19.6	19.7	19.8	19.9	10
11	20.0	20.1	20.2	20.3	20.4	20.5	20.6	20.7	20.8	20.9	11
12	21.0	21.1	21.2	21.3	21.4	21.5	21.6	21.7	21.8	21.9	12
13	22.0	22.1	22.2	22.3	22.4	22.5	22.6	22.7	22.8	22.9	13
14	23.0	23.1	23.2	23.3	23.4	23.5	23.6	23.7	23.8	23.9	14
15	24.0	24.1	24.2	24.3	24.4	24.5	24.6	24.7	24.8	24.9	15
16	25.0	25.1	25.2	25.3	25.4	25.5	25.6	25.7	25.8	25.9	16
17	26.0	26.1	26.2	26.3	26.4	26.5	26.6	26.7	26.8	26.9	17
18	27.0	27.1	27.2	27.3	27.4	27.5	27.6	27.7	27.8	27.9	18
19	28.0	28.1	28.2	28.3	28.4	28.5	28.6	28.7	28.8	28.9	19
20	29.0	29.1	29.2	29.3	29.4	29.5	29.6	29.7	29.8	29.9	20
21	30.0	30.1	30.2	30.3	30.4	30.5	30.6	30.7	30.8	30.9	21
22	31.0	31.1	31.2	31.3	31.4	31.5	31.6	31.7	31.8	31.9	22
23	32.0	32.1	32.2	32.3	32.4	32.5	32.6	32.7	32.8	32.9	23
24	33.0	33.1	33.2	33.3	33.4	33.5	33.6	33.7	33.8	33.9	24
25	34.0	34.1	34.2	34.3	34.4	34.5	34.6	34.7	34.8	34.9	25
26	35.0	35.1	35.2	35.3	35.4	35.5	35.6	35.7	35.8	35.9	26
27	36.0	36.1	36.2	36.3	36.4	36.5	36.6	36.7	36.8	36.9	27
28	37.0	37.1	37.2	37.3	37.4	37.5	37.6	37.7	37.8	37.9	28
29	38.0	38.1	38.2	38.3	38.4	38.5	38.6	38.7	38.8	38.9	29
30	39.0	39.1	39.2	39.3	39.4	39.5	39.6	39.7	39.8	39.9	30
31	40.0	40.1	40.2	40.3	40.4	40.5	40.6	40.7	40.8	40.9	31
32	41.0	41.1	41.2	41.3	41.4	41.5	41.6	41.7	41.8	41.9	32
33	42.0	42.1	42.2	42.3	42.4	42.5	42.6	42.7	42.8	42.9	33
34	43.0	43.1	43.2	43.3	43.4	43.5	43.6	43.7	43.8	43.9	34
35	44.0	44.1	44.2	44.3	44.4	44.5	44.6	44.7	44.8	44.9	35
36	45.0	45.1	45.2	45.3	45.4	45.5	45.6	45.7	45.8	45.9	36

Calculated by Julien A. Hall, M. Am. Soc. C. E.

01

475 from S. L. N. St to point & Water trench,  
10' S. of & N. St on line 10' S. of & Natl. Ave.

X Sec Cedar - 80' Wide  
32 St. to Felton.

248.73

2

BN 13.50 W 166 of Bancroft

229.29

50'E

TP	10.93	240.17	0.84	239.33
	9.40	248.73		
		EL 32 ST		
NL		8.5		240.2
C		9.5		239.2
1/4		10.5		238.9
±		12.3		236.4
1/4		13.4		235.3
C		14.9		233.8
SL		15.7		233.0

25'E

SL		13.2		235.5
C		11.7		237.0
1/4		10.9		237.8
±		10.2		238.5
1/4		9.3		239.4
<		8.4		240.3
NL		7.9		240.8

NL

6.7 242.0

C

7.3 241.4

1/4

8.2 240.5

±

9.1 239.6

1/4

9.8 238.9

C

10.5 238.2

SL

11.3 237.4

75'E

SL

9.5 239.2

C

8.6 240.1

1/4

7.8 240.9

±

7.2 241.5

1/4

6.3 242.4

C

5.8 242.9

NL

5.3 243.4

100'E

NL

4.0 244.7

C

4.5 244.2

1/4

5.2 243.5

24873

£	58	2429
1/4	64	2423
C	70	2417
SL	79	2408

125'E

SL	63	2424
C	58	2429
1/4	52	2435
£	46	2441
1/4	40	2447
C	37	2450
NL	35	2459

150'£

NL	34	2453
C	35	2452
1/4	37	2450
£	39	2448
1/4	43	2444
C	48	2439
SL	53	2434

24873

175'E

SL	49	2438
C	45	2442
1/4	43	2444
£	42	2445
1/4	41	2446
C	43	2444
NL	45	2447

200'E = WL Bancroft 80'W  
taken on " 57 X Sec 5

NL	62	2425
C	60	2427
1/4	59	2428
£	61	2426
1/4	58	2429
C	58	2429
SL-Hob	615	242.58

EL Bancroft

SL	105	238.2
C	105	238.2
1/4	105	238.2

3

24873

£	10.6	238.1
1/4	11.0	237.7
C	11.0	237.7
NL	11.8	236.9
T.P.	12.95	235.78

4.78

240.56

25'E

NL	4.9	235.7
C	4.2	236.4
1/4	3.7	236.9
£	3.3	237.3
1/4	3.0	237.6
C	2.7	237.9
SL	2.4	238.2

50'E

SL	3.7	236.9
C	4.2	236.4
1/4	4.5	236.1
£	4.7	235.9
1/4	4.8	235.8
£	5.1	235.5
NL	5.4	235.2

24056

75'E

4

NL	5.0	235.6
C	5.0	235.6
1/4	5.4	235.2
£	4.7	235.9
1/4	4.2	236.4
C	5.1	235.5
SL	5.3	235.3

100'E

SL	5.4	235.2
C	5.9	234.7
1/4	5.5	235.1
£	5.8	234.8
1/4	6.2	234.4
C	6.1	234.5
NL	6.1	234.5

125'E

NL	6.2	234.4
C	6.0	234.6
1/4	5.9	234.7

24056

£	6.3	234.7
1/4	6.4	234.7
C	6.6	234.0
SL	6.5	234.1

150'E

SL	7.1	237.5
C	6.5	234.1
1/4	6.6	234.0
£	6.3	234.7
1/4	6.2	234.4
C	6.2	234.4
NL	6.4	234.7

175'E

NL	5.9	234.7
C	6.0	234.6
1/4	5.9	234.7
£	6.1	234.5
1/4	6.4	234.7
C	6.5	234.1
SL	6.6	234.0

24056

200'E = WL 33 St 80' W.

5

Int Taken on 33 St X Secs

SL	6.2	234.4
C	6.0	234.6
1/4	5.9	234.7
£	5.7	234.9
1/4	5.6	235.0
C	5.4	235.2
NL	5.2	235.4

EL. 33 St

NL	4.5	236.1
C	4.9	235.7
1/4	5.8	234.8
1/4	5.4	235.7
£	5.3	235.7
1/4	5.8	234.8
C	6.2	234.4
SL	5.6	235.0
SL	5.8	234.8

25'E

SL	5.8	234.8
C	5.7	234.9
1/4	6.7	233.9

24056

1/4	6.0	234.6
£	5.2	235.4
1/4	5.5	235.1
+12	5.7	234.9
C	4.9	235.7
NL	4.7	235.9

50'E

NL	5.1	235.5
C	5.5	235.1
H	6.4	234.2
1/4	6.0	234.6
£	5.7	234.9
1/4	6.4	234.2
+12	7.0	233.6
C	6.0	234.6
SL	6.1	234.5

75'E

SL	6.1	234.5
C	6.1	234.5
H	7.9	232.7

24056

6

1/4	7.0	233.6
£	6.4	234.2
1/4	6.7	233.9
+12	7.2	233.4
C	6.0	234.6
NL	5.6	235.0

100'E

NL	6.4	234.2
C	6.8	233.8
+1	8.3	232.3
1/4	7.9	232.7
£	7.7	234.9
1/4	8.2	232.4
+12	9.0	231.6
C	7.4	233.2
SL	7.3	233.3

125'E

SL	8.5	232.1
C	8.3	232.3
H	9.9	230.7
1/4	9.4	231.2
£	9.0	231.6



24056

1/4	9.1	221.5
+12	9.0	221.6
c	7.5	222.1
NL	7.1	222.5

150'E

NL	9.4	221.1
c	10.2	220.4
+1	11.4	229.2
1/4	11.7	228.9
±	11.4	229.2
1/4	12.0	228.6
+12	12.8	228.8
c	11.8	228.8
SL	12.6	228.0
T.P.	12.72	227.84

A93

232.77

175'E

SL	9.2	222.6
c	8.3	224.5

232.77

1/4	8.0	224.8
±	7.5	225.3
1/4	7.1	225.7
+12	7.3	225.5
c	6.1	226.7
NL	5.5	227.3

200'E = NL Felton

NL	7.7	225.1
c	8.5	224.3
+1	9.4	223.4
1/4	9.6	223.2
±	10.5	222.3
1/4	11.2	221.6
c	12.0	220.8
SL	12.7	220.1
T.P.	1.92	230.85

9.67 240.52

EM 13' Pt Date &amp; Bancroft. 11.27 229.25 229.24

Int of Cedar A Ida.  
80' Wide - both ways.

222.88

8

BM 13' Hub	Date	A Bancroft	229.24
T.P.	11.57	240.81	0.18 240.63
T.P.	6.10	246.79	12.79 233.99
T.P.	0.11	234.05	12.48 221.57
	1.31	222.88	

£	12.2	210.7
1/4	9.2	213.7
C	5.5	217.2
NL	3.0	219.9

E Curb

E L Ida.

NL	1.4	221.5
C	3.4	219.5
1/4	6.7	216.2
£	10.5	212.5
1/4	13.9	209.0
C	19.8	203.1
SL	26.1	196.8
+25	35.4	187.5

NL	4.3	218.6
C	6.3	216.6
1/4 = Dr. N side approx	10.4	212.5
£		
1/4 Br. S "	17.4	205.5
C	23.3	199.6
SL	29.8	193.1
+25	41.0	181.9

E 1/4

9.8' W = End Bulk head

-25	39.8	183.1
SL	28.9	192.0
C	21.3	201.6
1/4	17.0	205.9

-25	43.0	179.9
SL	31.9	191.0
C	26.0	196.9
1/4	20.3	202.6
£ under Br.	16.1	206.8
1/4	13.4	209.5

222.88

9

C		10.7	210.2
NL		7.3	215.6

E Idd

NL		11.2	211.7
C		14.8	208.1
1/A		18.0	205.9
E	Under Br.	20.3	202.6
1/A		24.8	198.1
C		28.2	194.7
SL		34.0	188.9
+25		46.7	176.2

W 1/4

-25		47.7	175.2
SL		36.7	186.2
C		31.5	191.2
1/A		26.8	196.1
TP		1.31	221.57

TP	12.18	234.05	0.17	233.88
----	-------	--------	------	--------

TP	11.60	245.48	9.65	235.83
----	-------	--------	------	--------

	2.40	238.23		
--	------	--------	--	--

BM 13' Hbb.		9.03	229.20	229.24
-------------	--	------	--------	--------

X sect. Douglas st.  
to West line Hooker

from East line Ingalls' bluffs  
10' walks. 7 1/2 quarter Feb. 18/14

B.M. S.W. cor. Ingalls & Getto Spk. ripple

Cross streets 60' wide 10' walks.

J.P.	0.12	<sup>4.5</sup> 274.40	274.28
J.P.	0.27	<sup>4.5</sup> 261.75	261.48
J.P.	1.16	<sup>4.5</sup> 251.23	250.07

Center

East line Ingalls.

no line		3.1	248.1
		6.5	244.7
no 1/4		10.8	240.4
	E cb.		
no 1/4		8.3	242.9
		3.7	247.5
no line		1.4	249.8
	E 1/4		
no line		1.6	249.6
		2.5	248.7
		7.1	244.1
C		11.8	239.4

C		11.0	240.2
		5.8	245.4
		1.6	249.6
no line		0.5	250.7
	W 1/4		
no line		1.4	249.8
		1.9	249.3
		4.6	246.6
C		8.0	243.2
	no 1/4	10.7	240.5
	W cb.		
	no 1/4	10.2	241.0
	C	7.1	244.1
		4.4	246.8
		2.5	248.7
		1.16	250.07
no line			

Douglas

25123

11

West line Ingalls

100' West

No line  
+5'

0.7 250.5  
1.4 249.8  
5.4 245.8

No cb.

0.5 250.7

No line

2.7 248.5

8.6 242.6

TP

122 <sup>H.I.</sup> 239.50 12.95 238.28

C

10.5 240.7

East line Ingalls

25' west

No line

8.9 230.6

C

13.3 237.9

7.1 232.4

10.0 241.2

5.8 233.7

No cb

5.4 245.8

C

4.1 235.4

+6'

0.0 251.2

E. cb.

50' west

C

2.3 237.2

No cb.

2.8 248.4

4.4 235.1

7.7 243.5

5.5 234.2

C

10.7 240.5

No line

7.6 231.9

75' west

E 1/4

No cb

10.4 240.8

No line

6.1 233.4

7.3 243.9

3.6 235.9

C

4.2 247.0

No 1/4

2.1 237.4

No 1/4

1.0 250.2

Douglas

12

Center

50' west

So 1/4	0.8	238.7	no line	8.6	230.9
	2.3	237.2		5.3	234.2

So. line	4.4	235.1	no 1/4	2.8	236.7
----------	-----	-------	--------	-----	-------

W 1/4

75' west

So line	2.8	236.7	no line	2.3	237.2
---------	-----	-------	---------	-----	-------

So. cb.	0.9	238.6	J.P.	12.22	<sup>Hi.</sup> 262.29	250.07
---------	-----	-------	------	-------	-----------------------	--------

W. cb.

25' west Ingalls.

So cb.	0.9	238.6	no line	10.6	251.7
--------	-----	-------	---------	------	-------

So line	2.3	237.2		50' west	
---------	-----	-------	--	----------	--

west line

no line

So line	3.7	235.8	+ 4	8.9	253.4
---------	-----	-------	-----	-----	-------

	2.6	236.9		75' west	
--	-----	-------	--	----------	--

no 1/4	0.9	238.6	no line	5.3	257.0
--------	-----	-------	---------	-----	-------

25' west

no cb.

no 1/4	4.1	235.4		8.9	253.4
--------	-----	-------	--	-----	-------

	6.4	233.1			
--	-----	-------	--	--	--

no line	8.7	230.8			
---------	-----	-------	--	--	--

Douglas

100' west

no line  
 C  
 9.3 253.0  
 7.3 255.0  
 5.5 256.8  
 4.8 257.5  
 4.1 258.2

no line

no line

125' west

no line  
 C  
 3.6 258.7  
 4.5 257.8  
 5.0 257.3  
 5.5 256.8  
 7.3 255.0  
 8.9 253.4  
 11.7 250.6

no line

no line

C

no line

no line

150' West

11.1 251.2  
 8.9 253.4  
 7.3 255.0  
 5.7 256.6  
 5.1 257.2  
 4.3 258.0  
 3.0 259.3

175' west

1.2 261.1  
 4.0 258.3  
 4.8 257.5  
 5.2 257.1  
 6.5 255.8  
 7.3 255.0  
 8.8 253.5

262.29

200' west

No line

6.3 256.0

No line

6.9 260.8

4.2 258.1

6.7 261.0

3.8 258.5

6.2 261.5

C

3.6 258.7

C

5.6 262.1

3.0 259.3

5.3 262.4

2.4 259.9

4.8 262.9

+5'  
No line

0.3 262.0

No line

4.3 263.4

-0.1 262.4

J.P.

6.97 <sup>H.I.</sup> 267.69

1.57 260.72

E 1/4

230' W East line Hooker

No line

3.8 263.9

No line

5.0 262.7

4.1 263.6

5.8 261.9

4.2 263.5

6.6 261.1

C

4.5 263.2

C

7.3 260.4

4.9 262.8

7.8 259.9

5.5 262.2

8.1 259.6

No line

5.8 261.9

No line

8.9 258.8



	Center				w.Cb.		
Robin		4.8	262.9	Robin		3.8	263.9
		4.1	263.6			3.5	264.2
		3.9	263.8			3.6	264.1
C		3.9	263.8	C		3.6	264.1
		3.6	264.1			3.4	264.3
		3.5	264.2			3.2	264.5
Robin		3.5	264.2	Robin		3.0	264.7
	w 1/4				West line Hooker		
Robin		3.0	264.7	Robin		2.2	265.5
		3.3	264.4			2.5	265.2
		3.1	264.6			2.7	265.0
C		3.4	264.3	C		2.8	264.9
		3.3	264.4			3.1	264.6
		3.6	264.1			3.2	264.5
Robin		4.1	263.6	Robin		3.5	264.2

Xsect. Wpas from 6<sup>th</sup> to 7<sup>th</sup>



5.82'

W. cur. of city park  
6<sup>th</sup>  
33'

140'  
15'  
30'

300  
Wpas

140'  
15'  
7<sup>th</sup>  
66'

30'  
10'

4 7<sup>th</sup> from Wpas north  
687'

North  
Feb 20/14

Lehilds  
alter 16  
Bunker

W. cur. 5<sup>th</sup> & Wpas.  
B.M.  
284.91

7.43 292.34

B.M. Min. W. cur. City park. 3.75 288.59

7<sup>th</sup> street is 66 wide  
20' curbs 6 1/2 quarters

H.I.  
4.71 293.30 288.59

East line 6<sup>th</sup> street

North line	4.0	289.30
cb. +6	3.9	289.4
gutter +9	4.3	289.0
+15	4.5	288.8
+30 park line	4.1	289.2
+40	4.1	289.2

50' east.

+40	3.4	289.9
+30 park line	3.6	289.7
+15	4.1	289.2
+12 low point	4.1	289.2
+6 curb.	3.6	289.7
No. line	3.6	289.7

H.I.  
293.30  
100' east

No. line

+6 cement curb.	2.7	290.6
+7 gutter	3.0	290.3
+15	3.2	290.1
+30 park line	3.6	289.7
+35	3.5	289.8
+40	3.5	289.8
	2.9	290.4

150' east

+40	2.4	290.9
+35	4.5	288.8
+30 park line	4.5	288.8
+15	4.4	288.9
+7 gutter	4.6	288.7
+6 curb. cement	4.0	289.3
No. line	3.9	289.4

200' east

noline	4.9	288.4
+6 cement curb	5.1	288.2
+7 gutter	5.9	289.4
+15	5.8	289.5
+30 park line	5.9	289.4
+34	5.8	289.5
+40	2.6	290.7

250' east

+40	6.1	289.2
+33	8.1	285.2
+30 park line	8.2	285.1
+15	7.9	285.4
+7 gutter	8.4	284.9
+6 cement curb	7.5	285.8
noline	7.2	286.1

300' east (West line 7<sup>th</sup>)

noline	10.0	283.3
+6 cement curb	10.0	283.3
+7 gutter	10.6	282.7
+15	10.4	282.9
+30 park line	10.0	283.3
+33	10.2	283.1
+40	9.9	283.4

W. curb

+40	10.8	282.5
+30 park line	10.6	282.7
+15	10.5	282.8
+7 gutter	11.2	282.1
noline	11.3	282.0
gutter cement curb	10.7	282.6

293.30

Center

no. line	11.0	282.3
+15	11.1	282.2
+30 park line	11.1	282.2
+40	11.4	281.9

East curb.

+40	11.8	281.5
+30 park line	11.5	281.8
+15	11.8	281.5

no. line	curb	12.0	281.3
	gutter	12.4	280.9

East line 7th

no line	13.0	280.3
+15	13.0	280.3
+30 park line	12.9	280.4
+40	12.9	280.4

J.P.	1.80	H.I. 284.36	10.74	282.56
------	------	-------------	-------	--------

7th street

284.36

19

North line 7th

E line	4.1	280.3
curb.	3.1	281.3
gutter	3.5	280.9
C	2.1	282.3
gutter	2.4	282.0
cement curb.	1.8	282.6
W line	1.1	283.3

50' north

W line	1.4	283.0
cement curb.	2.3	282.1
gutter	3.0	281.4
C	2.9	281.5
gutter	4.1	280.3
	3.8	280.6
E line	4.4	280.0

284.30

100' no.

Elms	4.9	279.5
	4.2	280.2
gutter	4.7	279.7
C	3.4	281.0
gutter	3.6	280.8
concrete curb.	2.8	281.6
W. line	1.6	282.8

150' no.

white	2.0	282.4
	3.4	281.0
gutter	3.5	280.9
C	3.9	280.5
gutter	5.2	279.2
	4.8	279.6
Elms	5.3	279.1

284.36

20

200' no.

Elms	6.2	278.2
	5.6	278.8
gutter	6.2	278.2
C	4.9	279.5
gutter	4.8	279.6
19 from prop	3.9	280.5
white	2.6	281.8

250' no.

white	3.5	280.9
19 from prop	4.8	279.6
gutter	5.8	278.6
C	5.7	278.7
gutter	6.9	277.5
	6.5	277.9
Elms	7.1	277.3

J.P.	1.35	H.I. 279.30	6.41	277.95
	300'	no.		
White	-0.7	<sup>278.6</sup> 280.0		
19' from prop.	+0.7	<sup>280.6</sup> 280.0		
gutter	1.4	277.9		
C	1.3	278.0		
gutter	2.8	276.5		
	2.2	277.2		
E line	3.1	276.2		
	350'	no.		
E line	4.3	275.0		
	3.0	276.3		
gutter	2.9	276.4		
C	2.0	277.3		
gutter	2.3	277.0		
19' from prop.	1.9	277.4		
White	0.1	279.2		

		279.30		21
	400'	no.		
White			0.6	278.7
19' from prop.			2.2	277.1
gutter			2.9	276.4
C			2.7	276.6
gutter			3.5	275.8
			3.6	275.7
E line			4.6	274.7
	450'	no.		
E line			4.7	274.6
			4.2	275.1
gutter			4.2	275.1
C			3.6	275.7
gutter			3.5	275.8
19' from prop.			2.5	276.5
White			0.8	278.5

279.30

500' no.

White	0.7	278.6
19' framprop.	2.5	276.8
gutter	4.0	275.3
C	4.0	275.3
gutter	5.1	274.2
	4.6	274.7
Elme	5.1	274.2

550' no.

Elme	5.3	274.0
	5.0	274.3
gutter	5.5	273.8
C	4.3	275.0
gutter	4.6	274.7
19' framprop.	2.7	276.6
White	1.1	278.2

279.3

600' no.

White	1.5	277.8
19' framprop.	3.1	276.2
gutter	5.3	274.0
C	5.0	274.3
gutter	6.3	273.0
	5.5	273.8
Elme	5.6	273.7

635' no.

Elme	6.0	273.3
	6.0	273.3
gutter	6.8	272.5
C	5.6	273.7
gutter	5.7	273.6
19' framprop.	4.2	275.1
White	2.5	276.8

22



2793

650' no.

White	3.3	2260
12' from prop.	4.2	225.1
15' " "	5.4	223.9
20' " "	5.5	223.8
C	5.9	223.4
carb.	6.1	223.2
E line	6.2	223.1

658' no.

E line	6.1	223.2
carb.	6.0	223.3
C	5.9	223.4
carb.	5.8	223.5
10' from prop	5.5	223.8
9' " "	4.9	224.4
White	4.0	223.3

2793

687' no.

White	7.6	221.7
carb.	6.4	222.9
C	5.8	223.5
carb.	6.0	223.3
E line	10.5	268.8

23

Levels on 15' alley bet. 6<sup>th</sup>

& 7<sup>th</sup>

140' north of upas.

24

200' E

J.P. 5.74 <sup>H.I.</sup> 294.33 288.59

So. line

7.8 286.5

no. line

7.9 286.4

East line 6<sup>th</sup>

250' E

no. line

5.60 288.7

no. line

9.9 284.4

So. line

5.34 289.0

So. line

10.1 284.2

50' E.

300' E (West line 7<sup>th</sup>)

So. line

3.8 290.5

So. line

12.0 282.3

no. line

3.8 290.5

no. line

12.2 282.1

100' E

J.P.

<sup>H.I.</sup> 3.23 284.56 13.00 281.33

no. line

3.4 290.9

West curb. 7<sup>th</sup>.

So. line

3.5 290.8

So. line

cement curb. 3.39 281.17

150' E

So. line

4.0 290.3

no. line

4.6 289.7

160' E (east line north & south

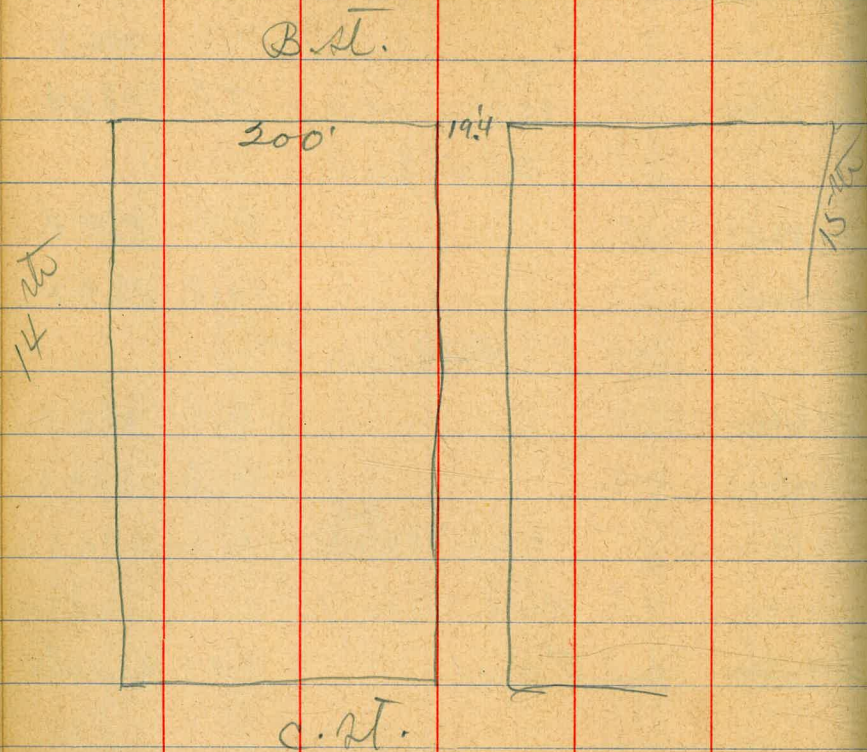
no. line

Top. cement floor of <sup>alley</sup> garage. 4.3 290.0

So. line

4.4 289.9

Profile of alley Blk 15



Gardener's add.

Feb. 24/14

Lehilds  
atten  
25

10.83 <sup>H.I.</sup> 118.25 1071 10742

So, line B. St.

cement walk. 3.27

" " 3.73

50' SO.

white  
E line

E line 2.3

C 2.7

white 2.3

100' SO.

white 5.5

C 6.2

E line 5.8

150' SO.

E line 11.7

C 11.7

white 11.1

J.P. <sup>H.F.</sup> 0.79 106.00 13.04 105.21

200' SO. (no. line alley)

White 4.6

C 5.2

E line 4.8

210' SO. (no. line alley)

E line top step. 5.5

C 6.3

White 5.6

250' SO.

White 10.1

C 11.4

E line 10.2

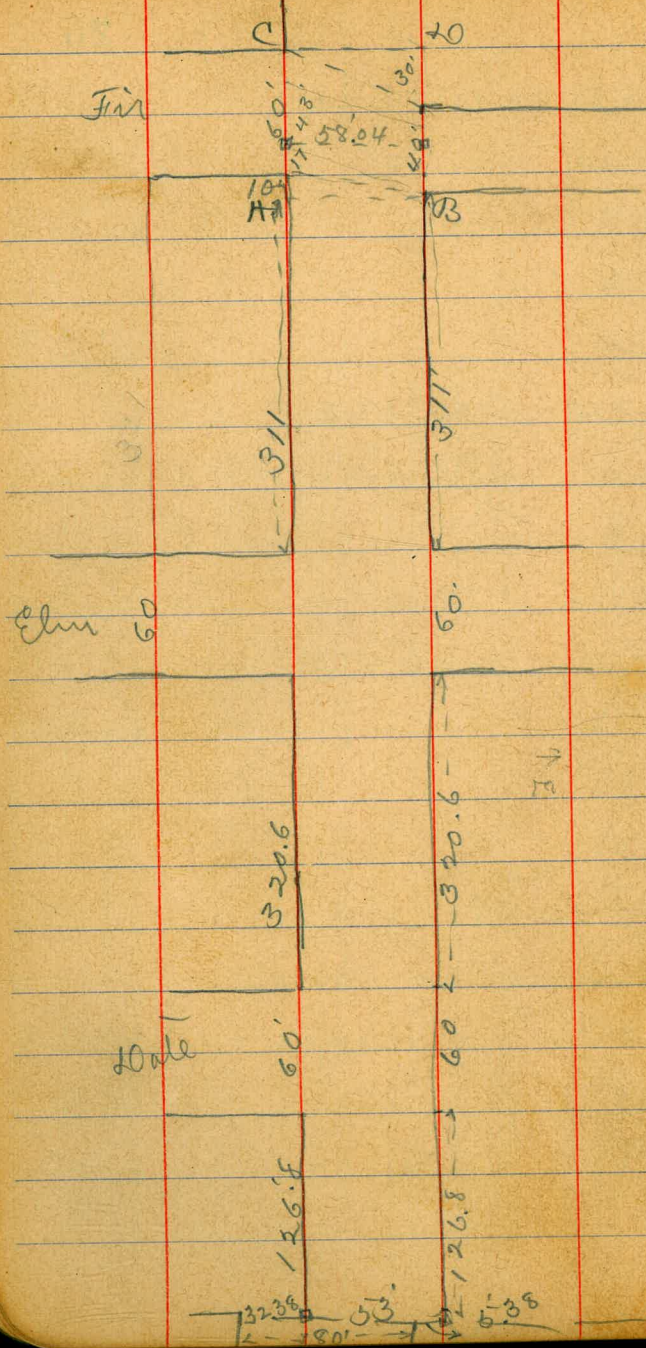
J.P. <sup>H.F.</sup> 0.90 94.41 12.49 93.51

300' SO. (no. line CAT)

E line on pavement 8.7

C " " 8.75

White " " 8.4



X sect Fern from no line 27  
 of south park to north line  
 Fir.

Feb. 20 / 14 } holds  
 } other  
 } number

8' sidewalks quarters vary  
 from 9' at south end to 10 1/2'  
 at north end.

Cross. streets have 10' walks + 10'  
 quarters except Fir on East  
 which is X sectioned for 10'  
 walk + 5' quarters.

J.P. 1.23 <sup>4.5</sup> 237.13 B.M. 235.90

n.w. cor. date 75' 20.

no. line 20, park 126.8 20.

Elm

of 20. line date.

Elm 8.3 228.8  
8.3 228.8

8.8 228.3

8.3 228.8

8.2 228.9

8.0 229.1

7.9 229.2

C 9.1 228.0

2

6.5 230.6

9.2 227.9

White

6.4 230.7

9.1 228.0

50' 20.

White 9.4 227.7

White

5.3 231.8

100' 20 date

5

5.4 231.7

7.6 229.5

6.5 230.6

7.6 229.5

8.3 228.8

C

6.7 230.4

8.5 228.0

8.6 228.5

7.5 229.6

8.9 228.2

7.6 229.5

8.3 228.8

Elm

8.0 229.1

7.8 229.3

7.7 229.4

White  
+5.5 cement curb.  
+6.0  
cb.  
14

C

Elm

737.1

25' 20.

E line 6.5 730.6

6.4 730.7

5.9 731.2

C 4.9 737.7

4.7 737.4

3.8 733.3

White 3.5 733.6

South line date

White 1.94 735.2

2.3 734.8

3.8 733.3

C 3.8 733.3

4.4 737.7

4.8 737.3

E line 4.8 737.3

737.1

20.06.

E line 4.7 737.4

4.6 737.5

3.5 733.6

C 3.1 734.0

3.1 734.0

3.4 733.7

White 2.5 734.6

20 1/4

White 2.4 734.7

2.4 734.7

2.7 734.7

C 2.6 734.5

3.1 734.0

4.1 733.0

E line 4.2 737.9

29

737.1

Center

E line	3.3	733.8
	3.4	733.7
	2.4	734.7
C	2.0	735.1
	2.1	735.0
	2.3	734.8
White	2.1	735.0
White	2.3	734.8
	2.3	734.8
	1.4	735.7
C	0.8	736.3
	1.8	735.3
	2.9	734.7
E line	2.7	734.4

No. 14

Feb 24/14

737.1

No. 6.

Lehilds  
atten 30

E line	2.3	734.8
	2.2	734.9
	0.9	736.7
C	0.2	736.9
	0.5	736.6
	1.7	735.4
White	1.2	735.9
	2.0	735.1
North line	Date	
	K.I.	
	11.02	246.92
J.P.	0.1	235.90
White	9.3	737.6
	8.5	738.4
	9.2	737.7
C	9.3	737.6
	10.4	736.5
	11.7	735.7
E line	11.7	735.7



746.9

5' no date

Elms	11.5	735.4
	11.4	735.5
	10.2	736.7
C	9.0	737.9
	8.8	738.1
	7.4	739.5
White	6.3	740.6

25' no.

White	4.9	741.0
	6.1	740.8
	7.6	739.3
C	7.8	739.1
	8.9	738.0
	10.6	736.3
Elms	10.8	736.1

746.9

50' no.

Elms	9.9	737.0
	9.6	737.3
	8.1	738.8
C	7.0	739.9
	6.4	740.5
	4.9	742.0
White	4.0	742.7

75' no.

White	2.8	744.1
	4.2	742.7
	6.0	740.9
C	6.3	740.6
	7.3	739.6
	9.0	737.9
Elms	9.0	737.9

31

346.9

100' no.

E line	8.6	238.3
	8.1	238.5
	6.4	240.5
C	5.6	241.3
	5.1	241.8
	3.6	243.3
White	2.1	244.8

125' no.

White	1.2	245.7
	2.1	244.8
	4.2	242.7
C	4.9	242.0
	5.7	241.7
	7.6	239.3
E line	7.7	239.2

346.9

32

150' no.

E line	7.1	239.8
	6.8	240.1
	5.3	241.6
C	3.9	243.0
	3.0	243.9
	1.6	245.3
White	0.5	246.4

175' no.

White	<del>0.7</del>	
web.	0.7	246.7
	2.2	244.7
C	2.9	244.0
	4.3	242.6
	5.3	241.6
E line	6.1	240.8

246.92

200' no.

Elvis	4.1	247.8
	3.5	243.4
	2.6	244.3
C	1.4	245.5
	1.4	245.5
W.cb.	0.1	246.8
J.P.	10.36	257.16

175' no.

white	9.7	247.5
	200' no.	
white	9.0	
	225' no.	
white	7.7	249.5
	8.9	248.3
	10.4	246.8
C	10.5	246.7
	11.7	245.5
	12.5	244.7
Elvis	13.1	244.1

257.2

250' no.

Elvis	12.4	244.8
	11.8	245.4
	10.7	246.5
C	9.7	247.5
	9.4	247.8
	7.8	249.4
white	6.7	250.5

275' no.

white	6.1	251.1
	7.7	249.5
	9.0	248.7
	9.3	247.9
	10.4	246.8
	12.1	245.1
Elvis	12.6	244.6

33

257.2

300' no.

Elm

14.3 242.9

E 1/4

12.6 244.6

C

10.8 246.4

C

9.5 247.7

9.4 247.8

W. line

8.1 249.1

White

6.0 251.2

white

320.6 no (20. line Elm)

White

6.9 250.3

8.3 248.9

C

9.5 247.7

E 1/4

C

9.5 247.7

E 1/4

10.7 246.5

E 1/4

C

C

White

252.2

20. Cb.

34

11.2 246.0

9.7 247.5

9.8 247.4

9.1 248.1

6.8 250.4

20 1/4

7.6 249.6

8.7 248.5

9.9 247.3

10.1 247.1

12.4 244.8

Center

12.2 245.0

10.2 247.0

9.8 247.4

9.1 248.1

7.5 249.7

257.2

no 1/4

White

7.6 249.6

E Eb.

9.7 247.5

10.3 246.9

C

10.4 246.8

E 1/4

12.8 244.4

no. Eb.

E 1/4

13.9 243.3

C

10.7 246.5

10.4 246.8

9.7 247.5

white

7.7 249.5

North line Ebur.

white

7.6 249.6

9.7 247.5

10.5 246.7

10.7 246.5

10.8 246.4

16.2 241.0

E 1/4

17.4 239.8

257.2

35

25' no.

12.4 244.8

10.3 246.9

10.2 247.0

10.4 246.8

9.4 247.8

7.0 250.4

35' no.

7.3 249.9

9.5 247.7

10.2 247.0

10.1 247.1

10.4 246.8

10.9 246.3

11.1 246.1

white

white

C

E line

257.2

50' no.

Elms	11.1	246.1
	10.6	246.6
	10.0	247.2
C	9.9	247.3
	10.0	247.2
	9.5	247.7
White	7.3	249.9

75' no.

White	7.0	250.2
	9.0	248.2
	9.7	247.5
C	9.3	247.9
	9.5	247.7
	10.2	247.0
Elms	11.0	246.2

257.2

36

100' no.

Elms	7.9	249.3
	8.3	248.9
	8.5	248.7
C	8.7	248.5
	9.1	248.1
	8.7	248.5
White	6.4	250.8

125' no.

White	5.8	251.4
	8.3	248.9
	8.4	248.8
C	8.2	249.0
	8.1	249.1
	7.3	249.9
Elms	6.6	250.6

257.16

150' no.

E line

6.6 250.6

7.0 250.7

6.9 250.3

C

6.9 250.3

7.7 249.5

7.7 249.5

W line

5.7 251.5

T.P. high turn.

4.79 252.37

T.P. low

11.98 245.18

0.97 246.75

No. line Elm.

E line

5.1 241.1

E cb.

3.4 242.8

No cb.

E cb.

4.8 241.4

E line

6.4 239.8

246.75

37

No 1/4

E line

8.1 238.1

E cb.

5.1 241.1

Center

E cb.

5.3 240.9

E line

9.2 237.0

No 1/4

E line

9.6 236.6

E cb.

5.4 240.8

No cb.

E cb.

6.4 239.8

E line

11.8 234.4

No. line Elm.

E line

10.1 236.1

E cb.

7.9 238.3

25' no.

E line

7.6 238.6

J.P., 10.95 <sup>H.I.</sup> 263.32 252.37

175' no. Elm White

White 10.9 252.4

12.8 250.5

13.2 250.1 C

C 12.0 251.3

11.9 251.4

12.2 251.1 Elm

12.1 251.2

Elm 250' no.

200' no. Elm

Elm 10.9 252.4

10.8 252.5

11.2 252.1 C

C 11.6 251.7

12.2 251.1

11.4 251.9 White

White 9.8 253.5

263.3 Feb. 27/14 Childs  
Herrick  
225' no.

7.5 255.8

9.1 254.4

10.4 252.9

10.4 252.9

10.0 253.3

10.3 253.0

9.9 253.4

8.8 254.5

9.2 254.1

8.8 254.5

8.9 254.4

8.8 254.5

7.4 255.9

6.2 252.1



863.3

275' no.

White	5.5	257.8
	6.7	256.6
	7.4	255.9
C	7.2	256.1
	7.5	255.8
	7.9	255.4
Elvis	7.2	256.1

300' no.

Elvis	6.4	256.9
	6.4	256.9
	5.9	257.4
C	5.8	257.5
	5.9	257.4
	5.4	257.9
White	4.4	258.9

763.3

311' no. (Rect A B)

White	3.7	259.6
	4.7	258.6
	5.3	258.0
C	5.2	258.1
	5.4	257.9
	5.5	257.8
Elvis	5.9	257.4

No-line Fin

Elvis	5.9	257.4
	5.5	257.8
	5.3	258.0
C	5.1	258.2
	5.2	258.1
	4.4	258.9
White	3.6	259.7

39

463.3

No. 06.

White

3.5 459.8

4.1 459.7

5.0 458.3

C

4.3 459.0

4.6 458.7

5.0 458.3

E line

5.3 458.0

No 1/4

E line

5.1 458.7

4.6 458.7

4.2 459.1

C

3.7 459.6

4.0 459.3

3.5 459.8

White

2.7 460.6

463.3

40

Center

White

2.3 461.0

3.3 460.0

3.5 459.8

C

3.2 460.1

3.8 459.5

4.2 459.1

E line

4.7 458.6

No 1/4

E line

4.5 458.8

3.8 459.5

3.5 459.8

C

3.0 460.3

3.0 460.3

3.2 460.1

White

2.2 461.1

463.3

Mo. cb.

White	1.9	761.4
	3.0	760.3
	2.5	760.8
C	2.6	760.7
	3.1	760.7
	3.9	759.4
Elms	4.3	759.0
	north line Fir	
Elms	3.9	759.4
	3.2	760.1
	2.9	760.4
C	2.3	761.0
	2.2	761.1
	2.3	761.0
White	1.37	761.9

263.32

41.

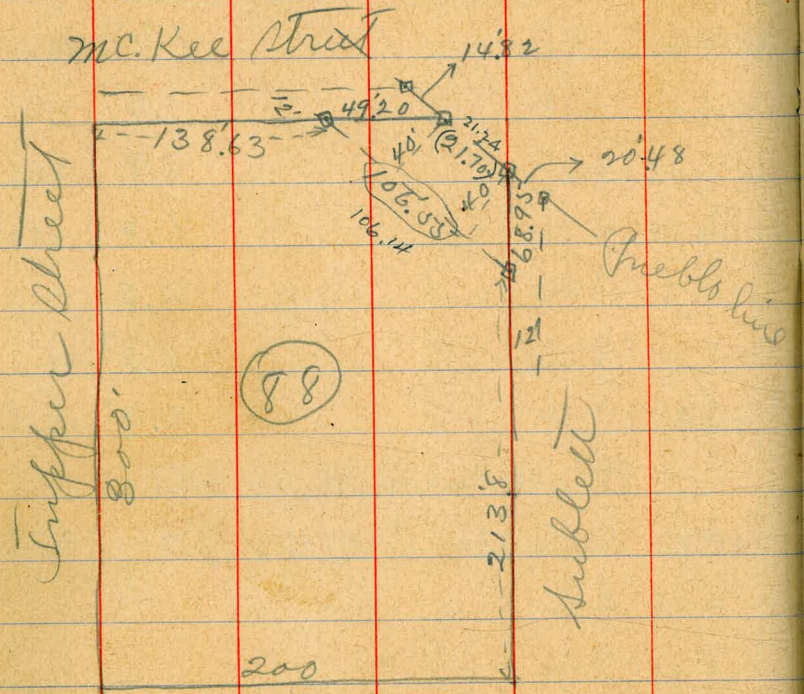
Sect C. 20

White	1.37	761.9
	1.5	761.8
	1.9	761.4
C	1.6	761.7
	2.2	761.1
	2.5	760.8
Elms	2.5	760.8
	check on B.M.	
B.M.	1.65	261.67
	- West's A.W. cor Fir 261.68	

Survey of Blk. 88 Middletown add. for 40' road

Feb. 27/14

Lehido  
Herrick



So. line Catholic cemetery

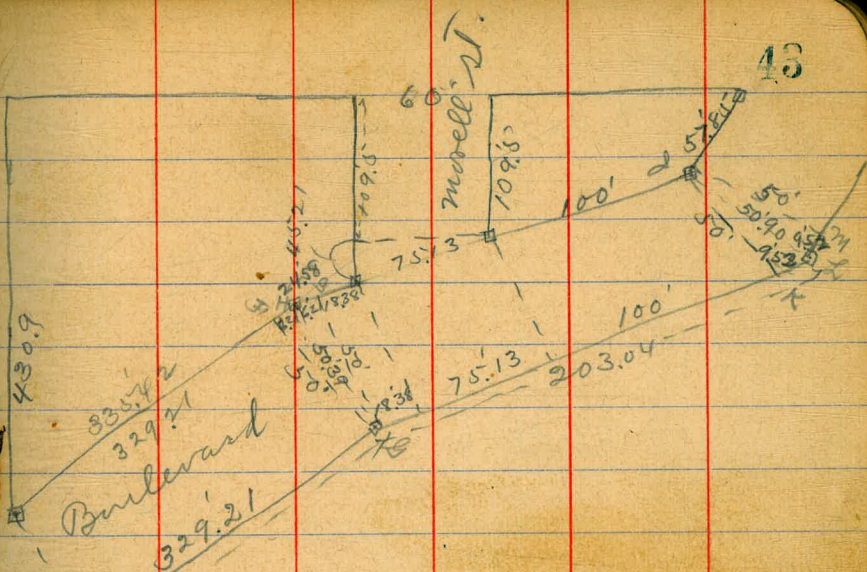
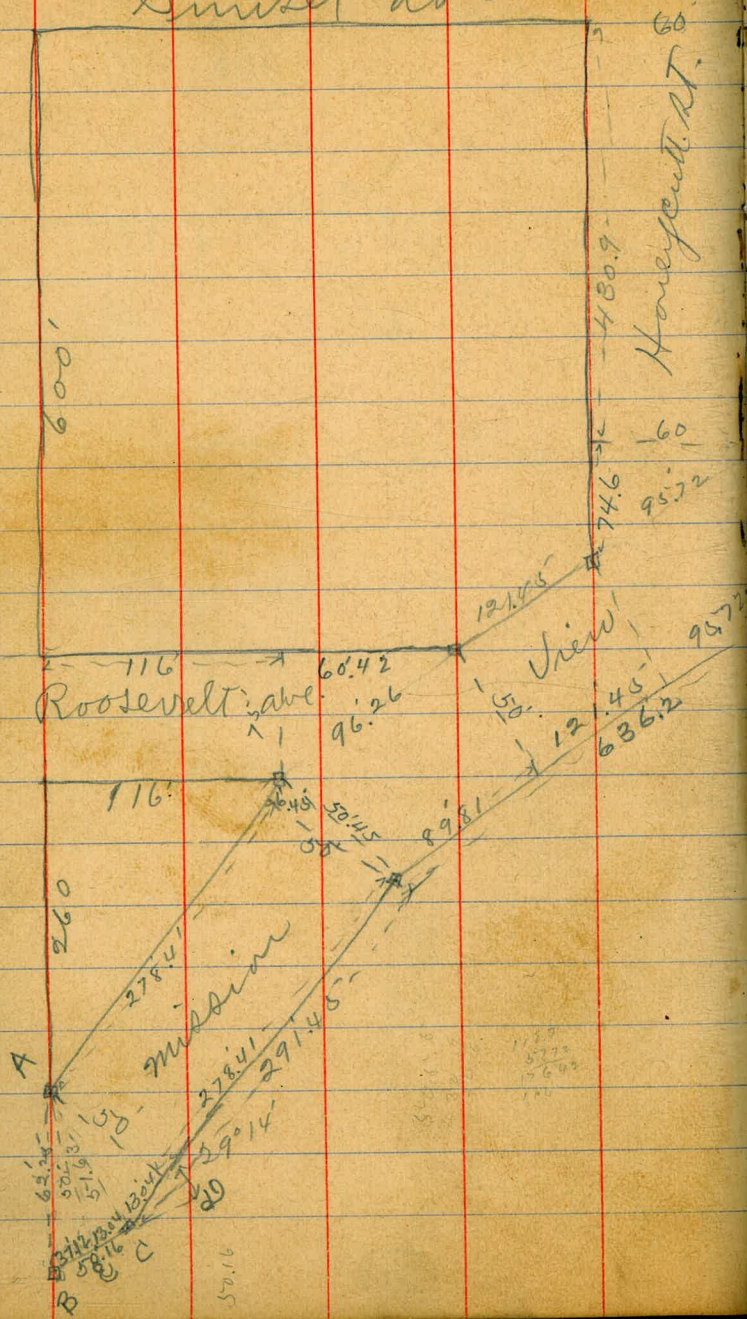
Tripper sheet

800'

Sunset ave

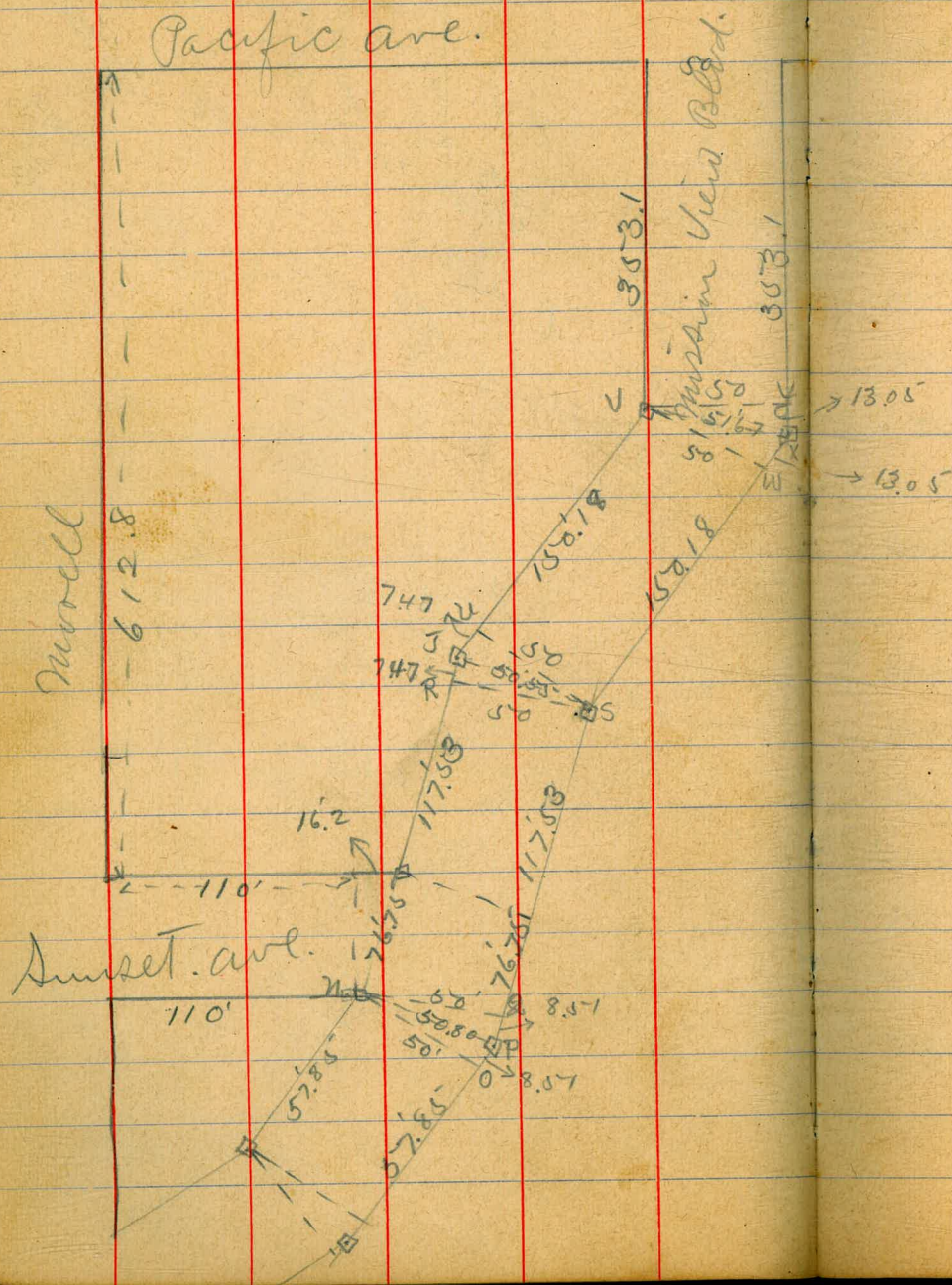
Sunset

43



June 22/14

Hehlds  
Allen  
Bunker



X Sect. Hareycutt St. So. line Pacific ave. to Mission Hill Blvd. 45

0.44 <sup>H.I.</sup> 33.05 nail in 32.61  
 South line Pacific ave. <sup>post. down</sup>

33.1  
 100' So.

White	0.86	3022	White
	0.9	3027	
	1.2	319	
C	1.0	321	C
	1.5	316	
	1.4	317	
Elms	1.6	315	Elms
	2.7	304	Elms
	2.6	305	
	2.9	307	
C	2.3	308	C
	2.6	305	
	2.1	310	
White	2.2	309	White

**PLOTTED**

50' So.

~~100' So.~~

150' So.

3.4	297
3.5	296
3.7	294
3.6	295
4.1	290
3.8	293
4.0	291
5.2	279
5.0	281
5.4	277
5.0	281
5.2	279
4.9	282
4.9	282

371

300' 20.

White	6.0	271
	6.0	271
	6.5	266
C	6.1	270
	6.2	269
	6.2	269
Elms	6.2	269

PLOTTED

300' 20.

Elms	7.1	260
	7.0	261
	7.5	256
C	7.1	260
	7.5	256
	6.9	264
White	7.1	260

371

300' 20.

White	8.8	247
	8.9	247
	9.0	241
C	8.7	244
	9.1	240
	9.0	241
Elms	9.2	239

350' 20.

Elms	10.5	226
	10.6	225
	10.6	225
C	9.9	228
	10.0	221
	9.9	222
White	10.0	221

46



33,00

400' RO.

White

11.2 219

11.3 218

11.6 215

C

11.2 219

11.8 213

11.6 215

E line

11.7 214

PLOTTED RO.

E line

11.6 215

11.5 216

12.0 211

C

11.7 214

12.6 205

11.7 214

White

11.5 216

S.P.

3.56

H.S.  
24 H6

12.15

20.90

500' RO.

White

3.5 21.0

3.4 21.1

3.9 20.6

C

3.5 21.0

4.1 20.4

4.1 20.4

E line

3.9 20.6

550' RO.

E line

4.4 20.1

4.3 20.2

4.6 19.9

C

4.3 20.2

4.6 19.9

4.0 20.5

White

4.0 20.5

mt 5

600' 20.

White	4.9	19.6
	4.9	19.6
	5.1	19.4
C	5.0	19.5
	5.4	19.1
	5.1	19.4
E line	5.0	19.5
E line	5.27	19.22
	5.2	19.3
	5.5	19.0
C	4.9	19.6
	5.1	19.4
	5.1	19.4
White	4.90	19.56

61294 (north line sunset ave)  
**PLOTTED**

mt 5

18

no. 06

White	4.8	19.7
	4.9	19.6
	5.5	19.0
C	4.9	19.6
	5.4	19.1
	5.2	19.2
E line	5.4	19.1
E line	5.5	19.0
	5.1	19.4
	5.5	19.0
C	5.3	19.2
	5.7	18.8
	5.0	19.5
White	5.1	19.4

no. 14

n45

Center

White	5.4	19.1
	5.5	19.0
	5.5	19.0
⊙	5.5	19.0
	5.7	18.8
	5.9	18.6
Elm	5.9	18.6
Elm	6.0	18.5
	5.9	18.6
	5.7	18.8
⊙	5.5	19.0
	5.7	18.8
	5.7	18.8
White	6.0	18.5

PLOTTED

20/4

n45

So. Cl.

19

White	5.6	18.9
	5.2	19.3
	5.7	18.8
⊙	5.5	19.0
	6.0	18.5
	6.1	18.4
Elm	6.4	18.1
Elm	6.90	17.6
	6.8	17.7
	6.5	18.0
⊙	5.6	18.9
	5.9	18.6
	5.5	19.0
White	5.6	18.9

South line Sunset Ave.

24.5

50' 20.

White	6.7	178
	6.6	179
	6.9	176
c	6.6	179
	7.5	170
	7.6	169
Elms	7.5	170

**PLOTTED**

100' 20.

Elms	6.8	177
	6.7	178
	6.6	179
c	6.7	178
	6.8	177
	6.7	178
White	6.8	177

24.5

50

150' 20.

White	6.1	184
	6.2	183
	6.6	179
c	6.1	184
	7.0	175
	7.2	173
Elms	7.0	175

200' 20.

Elms	6.0	185
	6.3	182
	6.2	183
c	6.0	185
	6.3	182
	5.4	19.1
White	4.8	19.7

245

250' 20.

White

4.6 199

4.2 203

4.8 197

C

4.8 197

4.8 197

4.0 205

4.1 204

E line

PLOTTED

300' 20.

E line

3.4 211

3.3 212

4.1 206

C

3.9 206

3.8 207

3.3 212

White

3.3 212

245

350' 20.

White

3.1 214

3.2 213

3.8 207

C

3.3 212

3.7 208

3.2 213

3.4 211

E line

400' 20.

E line

3.5 210

3.4 211

3.6 209

C

3.1 214

3.6 209

3.2 213

White

3.3 212

51

24.46

72

430' 9 20.

White

3.4 111

3.2 112

3.8 107

C

3.2 113

3.9 106

PLOTTED

3.5 110

Elms

3.53 109

West.  
Northline Mission View Blvd.

Elms

3.53 20.93

3.6 109

3.8 107

C

3.8 107

4.0 106

3.8 107

White

4.2 103

X sect. Sunset Blvd from  
to west line Mission View Blvd.

East line Laurel St.  
or 45

53

East line Laurel

100' E

So. line	HI 2146	5.3	19.2	So. line	5.4	19.1
		5.1	19.4		5.8	18.7
		5.0	19.5		5.6	18.9
C		4.9	19.6	C	5.2	19.3
		4.5	20.0		5.3	19.2
		4.0	20.5		4.9	19.6
No. line		3.9	20.6	No. line	4.8	19.7

50' East

150' E

No. line		4.1	20.4	No. line	4.3	20.5
		4.6	20.0		4.7	19.8
		4.9	20.6		5.2	19.3
C		4.9	20.6	C	4.8	19.7
		5.7	18.8		4.5	20.0
		5.3	19.2		4.7	19.8
No. line		4.2	20.3	No. line	4.9	19.6

PLOTTED

PLOTTED

225

300' E

No. line 5.3 19.2

5.3 19.2

5.2 19.3

C 5.1 19.4

4.7 19.8

4.5 20.0

No. line 4.3 20.2

(24704)

238' E (West line Honeycutt ST)

No. line 4.90 19.6

4.8 19.7

5.0 19.8

C 5.4 19.1

5.9 18.6

5.6 18.9

No. line 5.6 18.9

H.I.  
22.05

F4

East line Honeycutt

No. line 4.47 17.6

4.1 18.0

3.7 18.4

C 3.5 18.6

3.1 19.0

3.0 19.1

No. line 2.83 19.2

50' E

No. line 4.2 17.9

4.6 17.5

4.8 17.3

C 4.7 17.4

5.2 16.9

5.3 16.8

No. line 5.5 16.6



nr.1

100' E

no. line

5.5 166

5.6 165

5.2 169

C

4.8 173

4.9 175

4.3 178

4.0 181

no. line

**PLOTTED**

150' E

no. line

4.7 174

4.7 174

4.9 177

C

5.0 171

5.6 165

5.1 170

no. line

5.3 168

nr.1

200' E

no. line

5.2 169

4.5 176

5.1 170

C

5.1 170

5.3 168

5.1 170

no. line

5.0 171

230' E (West line murell)

no. line

5.45 166

5.4 167

5.5 166

C

5.2 169

4.7 174

4.6 175

no. line

4.73 174

55

Nov. 1

East line Murrell St.

No. line	5.01	17.1
	5.1	17.0
	5.2	16.9
C	6.7	15.4
	6.4	15.7
	6.4	15.7
No. line	6.63	15.5
No. line	8.4	13.7
	7.6	14.5
	7.3	14.8
C	7.1	15.0
	6.7	15.4
	6.5	15.6
No. line	6.0	16.1

**PLOTTED**  
50' E

Nov. 1

100' E

No. line	6.2	15.9
	7.2	14.9
	8.0	14.1
C	8.3	13.8
	9.1	13.0
	9.5	14.6
No. line	9.7	14.4
No. line	9.8	13.3
	9.6	14.5
	9.3	14.8
C	8.8	13.3
	8.4	13.7
	7.3	14.8
No. line	6.21	15.9

110' E

F6

2205

57

West line Mission View Blvd

Soil line

6.21 16.8

7.3 14.8

8.6 13.5

c

8.8 13.3

PLOTTED

9.3 14.8

9.7 14.4

NO. line

9.92 12.13

X sect. Murrell from SO.  
to Mission Valley Blvd.

Smith line Pacific @ 436

W. line	<del>31</del>	<sup>H.P.</sup> 27.76	3.40	2436
			3.9	2439
			4.6	2442
C			4.6	2437
			5.1	2447
			5.0	2448
E line			5.15	2446

50' SO.

E line			4.7	2431
			4.2	2436
			4.1	2437
C			3.4	2444
			3.6	2447
			3.8	2440
W line			2.4	2444

line Pacific ave

58

100' SO.

W line			2.8	2450
			3.2	2446
			3.3	2445
C			3.3	2445
			4.0	2448
			4.0	2448
E line			4.5	2443

150' SO.

E line			4.9	2449
			4.5	2437
			4.9	2429
C			4.2	2436
			4.2	2436
			4.0	2438
W line			3.6	2444

27.8

200' 20.

White	4.1	227
	4.4	224
	5.0	228
C	4.9	229
	5.3	225
	5.1	227
Elm	5.5	223

250' 20.

Elm	6.9	209
	6.8	210
	6.8	210
C	6.3	215
	6.5	213
	5.7	221
White	5.5	223

PLOTTED

27.8

300' 20.

White	6.8	210
	7.1	207
	7.7	201
C	7.8	200
	8.0	198
	7.7	201
Elm	8.2	196

350' 20.

Elm	10.3	175
	9.8	180
	9.6	182
C	9.2	186
	9.5	183
	8.4	194
White	8.0	198

59

2776

400' SO.

White

10.0 178

10.3 175

10.7 171

C

11.0 168

11.4 164

12.1 157

Elms

12.6 152

PLOTTED  
SO.

Elms

13.8 140

13.8 140

12.8 150

C

12.1 157

12.6 152

12.0 158

White

11.7 161

J.P.

White

Elms

Elms

C

White

6.30

H.I.

22.05

11.91

15.85

500' SO.

6.9 157

7.2 149

7.6 145

6.9 152

7.7 144

8.5 136

8.7 134

550' SO.

8.3 138

8.1 140

7.3 148

6.9 152

7.6 145

7.0 151

6.6 155

60

nr.1

600' 20.

White

5.8 163

6.0 161

6.7 154

c

6.5 156

7.0 151

7.3 148

Elm

7.2 149

**PLOTTED**  
612.8 po. (no line sunset arc)

Elm

6.63 155

6.8 153

6.7 152

c

6.4 157

6.3 158

5.6 165

White

5.45 166

nr.1

61

No. 06.

White

5.5 166

5.6 165

6.4 157

c

6.1 160

6.5 156

6.4 157

6.4 157

No. 14

Elm

6.2 159

Elm

6.1 160

6.4 157

c

5.9 162

5.8 163

5.3 168

White

5.2 165

#

221

Center

White	5.2	16.9
	5.4	16.7
	5.4	16.7
c	5.6	16.5
	6.0	16.1
	6.5	15.6
Eline	6.6	15.5

PLOTTED

Eline	5.2	16.9
	5.0	17.1
	5.7	16.4
c	5.5	16.6
	5.2	16.9
	4.2	17.9
White	4.6	17.8

221

62

So. 66.

White	4.6	17.5
	4.3	17.8
	5.2	16.9
c	5.1	17.0
	5.4	16.7
	5.1	17.0
Eline	5.3	16.8

South line sunset ave.

Eline	5.0	17.1
	4.9	17.2
	5.4	16.7
c	4.9	17.2
	5.2	16.9
	4.7	17.4
White	4.73	17.4



2201

50' 20.

White	4.1	18.0
	4.0	18.1
	4.6	17.5
C	3.7	18.4
	4.1	18.0
	3.5	18.6
E line	3.3	18.8
	PLOTTER 20.	
E line	2.8	19.3
	2.5	19.6
	3.1	19.0
C	2.9	19.2
	3.3	18.8
	3.0	19.1
White	3.2	18.9

2205

65

109.5' 20.

White	3.2	18.9
	3.0	19.1
	3.2	18.9
C	2.8	19.3
	3.3	18.8
	2.8	19.3
E line	2.94	19.1
	North West line Mission View Blvd.	
E line	2.94	19.1
	3.0	19.1
	3.4	18.7
C	3.0	19.1
	3.4	18.7
	3.2	18.9
White	3.09	18.96

X sect. Roosevelt Ave. from  
to west line Mission Viejo Blvd.

4.10 <sup>H.E.</sup> 25.03 20.93

East line Lamont

No. line

3.5 21.5

3.8 21.2

4.0 21.0

C

3.8 21.2

4.2 20.8

3.9 21.1

No. line

**PLOTTED**

4.7 20.3

50' E

No. line

4.7 20.3

4.4 20.6

5.1 19.9

C

4.1 20.9

4.2 20.8

4.2 20.8

No. line

4.1 20.9

East line Lamont

45.0

64

100' E

No. line

4.3 20.7

4.4 20.6

4.6 20.4

C

4.6 20.6

5.4 19.6

4.8 20.2

No. line

5.0 20.0

116' E

No. line

5.8 19.2

4.8 20.2

5.4 19.6

C

4.8 20.2

4.8 20.2

4.6 20.4

No. line

4.5 20.5

250

west line mission View Blvd.

No. line

4.6 20.4

4.8 20.2

5.3 19.7

c

**PLOTTED**

4.9 20.1

5.7 19.3

5.4 19.6

No. line

5.81 19.2

65

Xsect. Mission View Blvd. from  
So. line Pacific ave.

H.I.  
25.03

Sect A.B. East line Summit

No. line 10.3 147

8.0 170

8.4 166

C 8.1 169

8.7 163

7.6 174

No. line 7.45 176

**PLOTTED**

Sect A E

No. line 7.45 176

8.0 170

8.5 165

C 8.3 167

8.6 164

9.0 160

So. line 9.3 157

East line Summit to  
450

66

Sect. AC

E. line 8.8 167

8.8 167

8.2 168

C 8.2 168

8.5 165

8.3 167

W. line 7.45 175

~~PLOTTED~~  
Sect A 10

W. line 7.45 175

8.2 168

8.3 167

C 8.0 170

8.1 169

8.6 164

E. line 9.0 160

25.0

50' north sect A.D.

Elm

9.1 15.9

8.3 16.7

7.8 17.2

C

7.5 17.5

7.5 17.5

7.6 17.4

Wline

7.6 17.4

PLOTTED  
60' no.

Wline

7.5 17.5

7.5 17.5

7.4 17.6

C

7.3 17.7

7.6 17.4

8.3 16.7

Elm

9.4 15.6

25.0

100' no.

Elm

17.0 8.0

9.2 15.8

7.9 17.1

C

7.3 17.7

7.2 17.8

7.2 17.8

Wline

6.8 18.2

PLOTTED  
150' no.

Wline

6.5 18.5

5.9 19.1

6.6 18.4

C

7.0 18.0

7.2 17.8

7.9 17.1

11.2 15.8

Elm

22.0 3.0

57

250

200' no.

White

6.0 19.0

6.3 18.7

6.1 18.9

C

6.5 18.5

6.7 18.3

9.1 18.9

E line

16.2 8.8

PLOTTED  
234' no.

E line

15.7 9.3

9.7 15.3

7.2 17.8

C

6.7 18.3

6.0 19.0

6.1 18.9

White

6.0 19.0

68

238' no.

White

6.0 19.0

6.0 19.0

6.0 19.0

C

6.7 18.7

7.0 18.0

9.4 18.6

E line

18.0 7.0

PLOTTED  
250' no.

E line

15.1 9.9

9.1 18.9

6.3 18.7

C

6.2 18.8

5.9 19.1

5.8 19.2

White

5.9 19.1

15.0

27841 20.

White

5.6 194

5.4 196

5.6 194

C

5.7 193

6.1 189

6.3 187

Elvis

**PLOTTED**

11.86 131

So. line Roosevelt.

Elvis

11.86 131

6.0 190

6.1 189

C

5.6 194

5.6 194

5.5 195

White

5.81 192

15.0

69

So. cb.

White

5.4 196

5.7 193

5.3 197

C

5.5 195

5.9 191

6.3 187

Elvis

9.5 155

So 1/4

Elvis

11.9 131

6.7 183

6.0 190

C

5.4 196

5.2 198

5.5 195

White

5.8 192

25.0

center

White

5.0 100.0

5.3 19.7

5.3 19.7

C

5.3 19.7

5.5 19.5

6.9 18.1

E line

14.4 106

**PLOTTED**  
no. 14.

E line

14.9 101

7.8 17.7

5.4 19.6

C

5.2 19.8

5.1 19.9

5.3 19.7

White

5.3 19.7

25.0

20

no. 6.

White

4.8 100.7

5.0 100

4.8 100.7

C

5.3 19.7

5.5 19.5

7.3 17.7

E line

15.6 9.4

no. line Roosevelt.

E line

15.1 9.9

8.1 16.9

5.6 19.4

C

5.3 19.7

4.9 20.1

5.1 19.9

White

4.6 20.4



25.0

50' no.

White

4.7 203

4.9 201

4.5 205

C

4.8 202

5.0 200

6.4 186

Eline

PLOTTED

13.6 114

100' no.

Eline

11.5 135

5.3 197

4.5 205

C

4.6 204

4.3 207

4.9 201

White

4.6 204

25.0

71

12145 no. (No. line Hiney cut)

White

4.7 203

4.9 201

4.3 207

C

4.5 205

4.5 205

5.1 199

Eline

PLOT

11.6 134

20' cb.

Eline

10.1 149

4.9 201

4.6 204

C

4.3 207

4.6 204

4.9 201

White

4.5 205

250

20 1/4

White

4.8 2002

4.6 204

4.2 2008

C

4.4 206

4.3 207

4.7 203

Eline

PLOTTED

8.8 162

Center

Eline

9.6 154

4.8 201

4.7 203

C

4.3 207

4.3 207

4.4 206

White

4.3 207

250

20 1/4

White

4.5 205

4.4 206

4.0 210

C

4.3 207

4.6 204

5.0 200

Eline

9.4 156

no. 6.

Eline

9.5 155

5.0 200

4.6 204

C

4.2 208

4.1 209

4.6 204

White

4.2 208

72

no.

200' line Honeycutt

White	4.10	no. 9
	4.5	no. 5
	4.0	no. 10
C	4.3	no. 7
	4.5	no. 5
	5.4	19.6
E line	10.4	146

PLOTTED

50' no.

E line	12.7	17.3
	6.0	19.0
	4.9	no. 1
C	4.5	no. 5
	4.0	no. 10
	4.5	no. 5
White	4.1	no. 9

no.

100' no.

White	4.0	no. 10
	4.1	no. 9
	3.8	no. 12
C	4.3	no. 7
	4.6	no. 4
	5.8	19.7
E line	13.3	117

150' no.

E line	11.3	19.7
	5.6	19.4
	4.5	no. 5
C	4.4	no. 6
	4.1	no. 9
	4.6	no. 6
White	4.5	no. 5

2503  
200' no.

J.P.

435 <sup>H.I.</sup> 23.64 524 19.29  
300' no.

White

5.0 110.0

White

4.2 19.4

5.1 199

4.1 19.5

4.8 110.5

4.2 19.6

C

4.9 110.1

C

4.9 18.7

4.9 110.1

5.1 18.5

6.3 18.9

6.9 16.7

Elvise

**PLOTTED**

11.1 139

Elvise

12.5 11.1

250' no.

329' 21 no. Sect G F

Elvise

12.5 112.5

Elvise

10.68 112.9

7.4 176

5.9 17.7

5.5 19.5

5.3 18.3

C

5.2 19.8

C

4.6 19.0

4.7 110.3

4.3 19.3

5.1 199

4.3 19.3

White

5.1 199

White

4.4 19.2

23.64

sect. G.H.

White

4.48 191

4.3 193

4.4 192

C

4.7 189

5.0 186

6.5 171

E line

10.68 189

PLOTTED

sect. G.S.

E line

10.68 179

6.5 171

4.9 187

C

4.6 190

4.4 192

4.5 191

White

4.6 190

23.64

18'380 (So. line Morell)

White

4.73 18.91

4.7 18.9

4.5 19.1

C

4.8 18.8

5.0 18.6

5.7 17.9

E line

9.5 14.1

So. Cb.

E line

9.2 14.4

5.6 18.0

5.2 18.6

C

4.7 18.9

4.6 19.0

5.0 18.6

White

4.9 18.7

276

No. 1/4

White

5.1 18.5

4.8 18.8

4.5 19.1

C

4.7 18.9

5.0 18.6

5.4 18.7

Eline

8.9 14.7

PLOTTED

Center

Eline

9.6 14.0

5.8 17.8

5.2 18.4

C

4.6 19.0

4.5 19.1

4.9 18.7

White

4.7 18.9

276

No. 1/4

White

5.0 18.6

4.9 18.7

4.5 19.1

C

4.7 18.9

4.9 18.7

5.8 17.8

Eline

8.6 15.0

no. cl.

Eline

9.8 13.8

5.7 17.9

5.1 18.5

C

4.6 19.0

4.4 19.7

4.8 18.8

White

4.6 19.0

76

276

100' line Merrill.

White

4.58 190

4.8 188

4.3 193

C

4.6 190

4.7 189

5.9 187

Elm

PLOTTED

9.7 139

50' no.

Elm

6.3 173

5.0 186

5.2 184

C

4.9 187

5.0 186

5.5 181

White

5.1 185

276

100' no. Sect J.K.

White

6.24 174

6.1 175

5.8 178

C

5.9 177

6.1 175

6.4 172

Elm

6.6 170

Sect. J L

Elm

7.37 162

6.2 174

6.2 174

C

6.0 176

5.9 177

6.2 174

White

6.24 174

277

1776

Sect. 9.M.

White	6.24	17.4
	6.2	17.4
	6.0	17.6
c	6.0	17.6
	6.6	17.0
	6.6	17.0
Elms	7.3	16.3
	8.9	14.7
	8.4	15.9
	7.9	15.7
c	8.2	15.4
	8.3	15.3
	8.3	15.3
White	7.83	15.8

PLOTTED  
Sect 7.0.

1776

3

Sect. 7.P.

White	7.83	15.8
	8.4	15.7
	8.4	15.7
c	8.4	15.7
	8.4	15.7
	8.7	14.9
Elms	9.18	14.4
	9.7	13.9
	9.3	14.3
	9.0	14.6
c	8.7	14.9
	8.6	15.0
	8.4	15.7
White	7.83	15.81

Sect. 7.2. (Robin Sunset)



276

So. cb.

White	9.0	146
	9.3	143
	9.4	147
c	9.5	141
	9.5	141
	10.1	135
E line	10.5	131
PLOTTED		
E line	10.7	129
	10.5	131
	10.4	132
c	10.2	134
	10.2	134
	10.3	133
White	10.3	133

276

70

Center

White	10.5	131
	10.6	130
	10.5	131
c	10.6	130
	10.7	129
	10.9	127
E line	11.1	125
no. 14		
E line	11.3	123
	11.1	125
	10.9	127
c	10.8	128
	10.8	128
	11.1	125
White	11.0	126

23.64

no. 26

White

11.3 14.3

11.4 14.2

11.2 14.4

C

11.0 14.6

10.9 14.7

11.1 14.5

Elmer

11.4 14.2

not PLOTTED sunset ave.

Elmer

11.5 14.1

11.3 14.3

11.1 14.5

C

11.1 14.5

11.3 14.3

11.5 14.1

White

11.56 12.08

J.P.

426.

Hat.

16.39

80

12.13

50' North Sunset ave.

White

5.3 11.1

6.1 10.3

5.7 10.7

C

5.9 10.5

6.0 10.4

6.0 10.4

Elmer

6.5 9.9

67' no.

Elmer

8.2 8.2

7.1 9.3

6.6 9.8

C

6.3 10.1

6.2 10.2

White

6.4 10.0

5.5 10.9

164

85' no.

White	6.0	104
	6.8	9.6
	6.6	9.8
C	6.3	10.1
	8.9	7.5
	11.9	4.5
E line	13.0	7.4
PLOTTED 100' no.		
E line	12.7	7.7
	11.0	5.4
	8.5	7.9
C	6.6	9.8
	6.9	9.5
	6.9	9.5
White	6.4	10.0

164

117,5320. Sect. R.S.

White	6.8	9.6
	7.3	9.1
	7.3	9.1
C	7.1	9.3
	8.2	8.7
	11.8	5.6
E line	15.3	1.1

Sect. S.J.

E line	15.3	1.1
	12.1	4.7
	8.8	7.6
	7.0	9.4
C	7.4	9.0
PLOTTED		
	7.6	8.8
White	6.88	9.5

All Book 918 page 60

58 53 58  
 26 16 16  
 52 37 42  
 40 1/2 40 9/4 12.38

137.3  
 900  
 150  
 1217.8

136  
 38  
 75.4

Date - Nov. 23 5 90

From SW Angle 261.68

Grape SE 269.47

Dist 107.415 (126.8)

60 353.3  
 146 556  
 58.04 211.98  
 17665  
 17665  
 19643.48

126.8  
 320.6  
 321.3  
 120  
 17  
 905.7  
 353.3  
 1259.0 / 70000 1556  
 6295  
 7050  
 6295  
 7530

50 150 160 170 180 190 200 210 220 230 240 250 260 270 280 290 300 310 320 330 340 350 360

19 12  
 9 36

DISTANCES FROM CENTER OF ROADWAY FOR CROSS-SECTIONING.

ROADWAY 14 FEET WIDE. SIDE SLOPES 1 1/2 TO 1.

FOR SINGLE TRACK EMBANKMENT.

	0	.1	.2	.3	.4	.5	.6	.7	.8	.9	
0	7.0	7.2	7.3	7.5	7.6	7.8	7.9	8.1	8.2	8.4	0
1	8.5	8.7	8.8	9.0	9.1	9.3	9.4	9.6	9.7	9.9	1
2	10.0	10.2	10.3	10.5	10.6	10.8	10.9	11.1	11.2	11.4	2
3	11.5	11.7	11.8	12.0	12.1	12.3	12.4	12.6	12.7	12.9	3
4	13.0	13.2	13.3	13.5	13.6	13.8	13.9	14.1	14.2	14.4	4
5	14.5	14.7	14.8	15.0	15.1	15.3	15.4	15.6	15.7	15.9	5
6	16.0	16.2	16.3	16.5	16.6	16.8	16.9	17.1	17.2	17.4	6
7	17.5	17.7	17.8	18.0	18.1	18.3	18.4	18.6	18.7	18.9	7
8	19.0	19.2	19.3	19.5	19.6	19.8	19.9	20.1	20.2	20.4	8
9	20.5	20.7	20.8	21.0	21.1	21.3	21.4	21.6	21.7	21.9	9
10	22.0	22.2	22.3	22.5	22.6	22.8	22.9	23.1	23.2	23.4	10
11	23.5	23.7	23.8	24.0	24.1	24.3	24.4	24.6	24.7	24.9	11
12	25.0	25.2	25.3	25.5	25.6	25.8	25.9	26.1	26.2	26.4	12
13	26.5	26.7	26.8	27.0	27.1	27.3	27.4	27.6	27.7	27.9	13
14	28.0	28.2	28.3	28.5	28.6	28.8	28.9	29.1	29.2	29.4	14
15	29.5	29.7	29.8	30.0	30.1	30.3	30.4	30.6	30.7	30.9	15
16	31.0	31.2	31.3	31.5	31.6	31.8	31.9	32.1	32.2	32.4	16
17	32.5	32.7	32.8	33.0	33.1	33.3	33.4	33.6	33.7	33.9	17
18	34.0	34.2	34.3	34.5	34.6	34.8	34.9	35.1	35.2	35.4	18
19	35.5	35.7	35.8	36.0	36.1	36.3	36.4	36.6	36.7	36.9	19
20	37.0	37.2	37.3	37.5	37.6	37.8	37.9	38.1	38.2	38.4	20
21	38.5	38.7	38.8	39.0	39.1	39.3	39.4	39.6	39.7	39.9	21
22	40.0	40.2	40.3	40.5	40.6	40.8	40.9	41.1	41.2	41.4	22
23	41.5	41.7	41.8	42.0	42.1	42.3	42.4	42.6	42.7	42.9	23
24	43.0	43.2	43.3	43.5	43.6	43.8	43.9	44.1	44.2	44.4	24
25	44.5	44.7	44.8	45.0	45.1	45.3	45.4	45.6	45.7	45.9	25
26	46.0	46.2	46.3	46.5	46.6	46.8	46.9	47.1	47.2	47.4	26
27	47.5	47.7	47.8	48.0	48.1	48.3	48.4	48.6	48.7	48.9	27
28	49.0	49.2	49.3	49.5	49.6	49.8	49.9	50.1	50.2	50.4	28
29	50.5	50.7	50.8	51.0	51.1	51.3	51.4	51.6	51.7	51.9	29
30	52.0	52.2	52.3	52.5	52.6	52.8	52.9	53.1	53.2	53.4	30
31	53.5	53.7	53.8	54.0	54.1	54.3	54.4	54.6	54.7	54.9	31
32	55.0	55.2	55.3	55.5	55.6	55.8	55.9	56.1	56.2	56.4	32
33	56.5	56.7	56.8	57.0	57.1	57.3	57.4	57.6	57.7	57.9	33
34	58.0	58.2	58.3	58.5	58.6	58.8	58.9	59.1	59.2	59.4	34
35	59.5	59.7	59.8	60.0	60.1	60.3	60.4	60.6	60.7	60.9	35
36	61.0	61.2	61.3	61.5	61.6	61.8	61.9	62.1	62.2	62.4	36

Calculated by Julien A. Hall, M. Am. Soc. C. E.

MADE IN GERMANY.