

10

920

FB. 920

LEVEL BOOK

373

KEUFFEL & ESSER CO.

DRAWING MATERIALS

AND

SURVEYING INSTRUMENTS.

NEW YORK.

CHICAGO.

SAN FRANCISCO.

ST. LOUIS.

TABLES FOR EXCAVATIONS AND EMBANKMENTS.

DISTANCES FROM CENTER OF ROADWAY FOR CROSS-SECTIONING.

ROADWAY 36 FEET WIDE. SIDE SLOPES 1 TO 1.

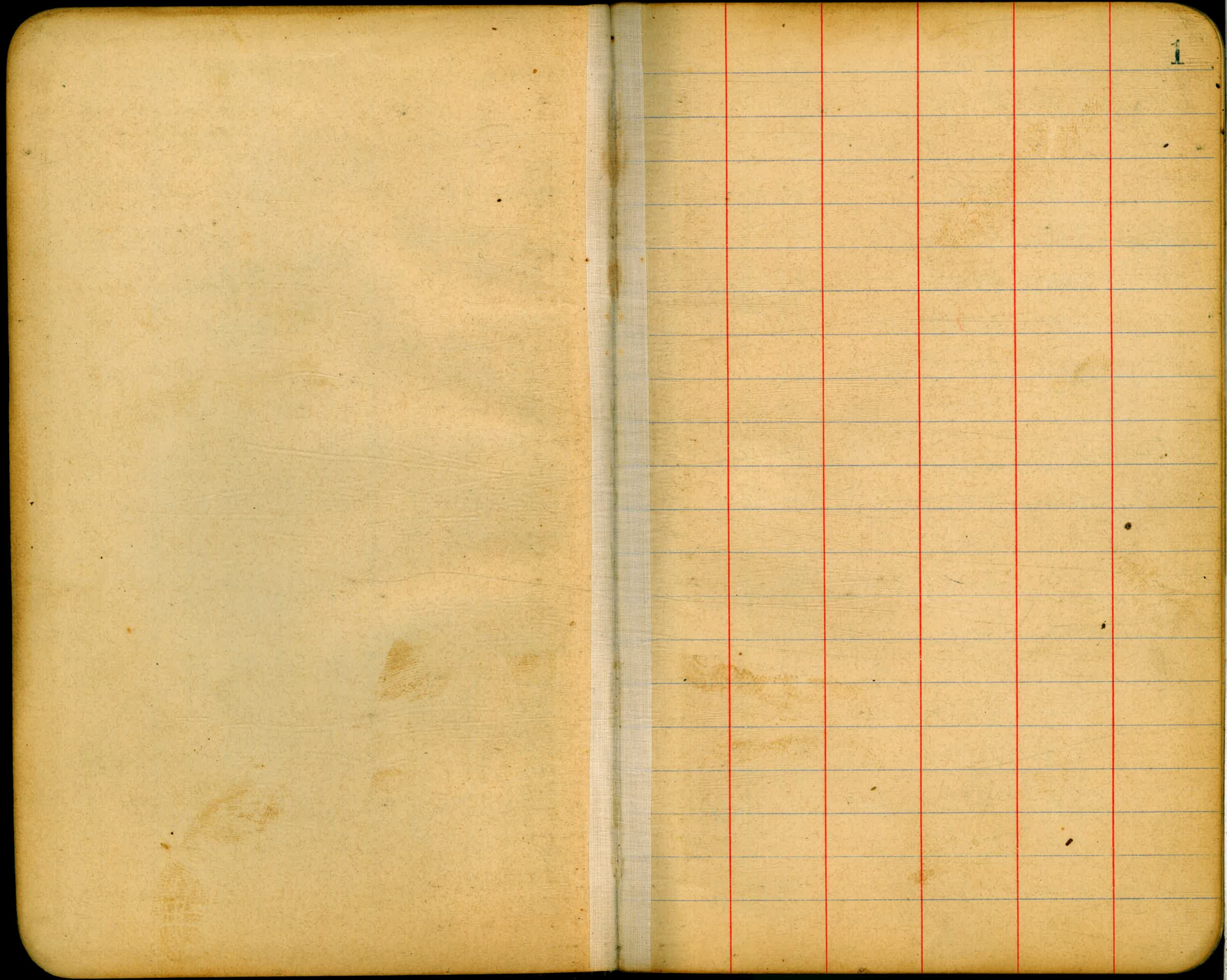
FOR SINGLE TRACK EXCAVATION.

"Copyright, 1898, 1964, Keuffel & Esser Co."

	0	.1	.2	.3	.4	.5	.6	.7	.8	.9	
0	9.0	9.1	9.2	9.3	9.4	9.5	9.6	9.7	9.8	9.9	0
1	10.0	10.1	10.2	10.3	10.4	10.5	10.6	10.7	10.8	10.9	1
2	11.0	11.1	11.2	11.3	11.4	11.5	11.6	11.7	11.8	11.9	2
3	12.0	12.1	12.2	12.3	12.4	12.5	12.6	12.7	12.8	12.9	3
4	13.0	13.1	13.2	13.3	13.4	13.5	13.6	13.7	13.8	13.9	4
5	14.0	14.1	14.2	14.3	14.4	14.5	14.6	14.7	14.8	14.9	5
6	15.0	15.1	15.2	15.3	15.4	15.5	15.6	15.7	15.8	15.9	6
7	16.0	16.1	16.2	16.3	16.4	16.5	16.6	16.7	16.8	16.9	7
8	17.0	17.1	17.2	17.3	17.4	17.5	17.6	17.7	17.8	17.9	8
9	18.0	18.1	18.2	18.3	18.4	18.5	18.6	18.7	18.8	18.9	9
10	19.0	19.1	19.2	19.3	19.4	19.5	19.6	19.7	19.8	19.9	10
11	20.0	20.1	20.2	20.3	20.4	20.5	20.6	20.7	20.8	20.9	11
12	21.0	21.1	21.2	21.3	21.4	21.5	21.6	21.7	21.8	21.9	12
13	22.0	22.1	22.2	22.3	22.4	22.5	22.6	22.7	22.8	22.9	13
14	23.0	23.1	23.2	23.3	23.4	23.5	23.6	23.7	23.8	23.9	14
15	24.0	24.1	24.2	24.3	24.4	24.5	24.6	24.7	24.8	24.9	15
16	25.0	25.1	25.2	25.3	25.4	25.5	25.6	25.7	25.8	25.9	16
17	26.0	26.1	26.2	26.3	26.4	26.5	26.6	26.7	26.8	26.9	17
18	27.0	27.1	27.2	27.3	27.4	27.5	27.6	27.7	27.8	27.9	18
19	28.0	28.1	28.2	28.3	28.4	28.5	28.6	28.7	28.8	28.9	19
20	29.0	29.1	29.2	29.3	29.4	29.5	29.6	29.7	29.8	29.9	20
21	30.0	30.1	30.2	30.3	30.4	30.5	30.6	30.7	30.8	30.9	21
22	31.0	31.1	31.2	31.3	31.4	31.5	31.6	31.7	31.8	31.9	22
23	32.0	32.1	32.2	32.3	32.4	32.5	32.6	32.7	32.8	32.9	23
24	33.0	33.1	33.2	33.3	33.4	33.5	33.6	33.7	33.8	33.9	24
25	34.0	34.1	34.2	34.3	34.4	34.5	34.6	34.7	34.8	34.9	25
26	35.0	35.1	35.2	35.3	35.4	35.5	35.6	35.7	35.8	35.9	26
27	36.0	36.1	36.2	36.3	36.4	36.5	36.6	36.7	36.8	36.9	27
28	37.0	37.1	37.2	37.3	37.4	37.5	37.6	37.7	37.8	37.9	28
29	38.0	38.1	38.2	38.3	38.4	38.5	38.6	38.7	38.8	38.9	29
30	39.0	39.1	39.2	39.3	39.4	39.5	39.6	39.7	39.8	39.9	30
31	40.0	40.1	40.2	40.3	40.4	40.5	40.6	40.7	40.8	40.9	31
32	41.0	41.1	41.2	41.3	41.4	41.5	41.6	41.7	41.8	41.9	32
33	42.0	42.1	42.2	42.3	42.4	42.5	42.6	42.7	42.8	42.9	33
34	43.0	43.1	43.2	43.3	43.4	43.5	43.6	43.7	43.8	43.9	34
35	44.0	44.1	44.2	44.3	44.4	44.5	44.6	44.7	44.8	44.9	35
36	45.0	45.1	45.2	45.3	45.4	45.5	45.6	45.7	45.8	45.9	36

Calculated by Julien A. Hall, M. Am. Soc. C. E.

Property of City Engr
City Hall



El Cajon B.M.		E1	
B.M. Brass Plug Curb Park Blvd and El Cajon W.L. St.		342.766 716 343.582	✓
T.P. 5.139	348.005	9.249	339.765
T.P. 1.122	340.887	11.576	329.311
T.P. 0.834	330.145	9.250	320.895
B.M. Spk. 1 above gr Pole ^{Georgia} W.L.	11.619	318.526	✓
T.P. 0.943	321.838	9.987	311.851
T.P. 0.616	312.467	9.130	303.337
	1.672	305.009	
B.M. Spk. Along Pole 3' above surface. SW Cor Florida	2.852	302.157	✓
T.P. 4.167		302.873	OK
	7.343	308.185	
B.M. Brass Plug E Curb Alabama 1' N of N.W.	2.342	305.843	✓
T.P. 1.175		307.010	506.573
T.P. 8.262	315.272	0.700	314.572
T.P. 9.254	323.826	0.478	323.348
	9.990	333.338	
B.M. Brass Plug E Curb Louisiana 2' N of N.E. El Cajon	8.069	325.269	✓
	4.480	329.749	325.985
B.M. SW Texas Plug Curb W.L. 2' S. S.L.	8.550	321.199	✓
T.P. 4.690		328.867	
	7.220	332.287	

12/4/13 West Evans - Service El Cajon B.M.		332.289		2
T.P.	0.016	332.273		
	8.294	340.567		
T.P. SE Arizona. Spk Pole Grd.	2.210	338.357	✓	
		716		339.073
				337.075
				Cont. P. 5.
T.P.	10.346	349.419	0.200	349.219
T.P.	10.016	359.235	0.014	359.221
T.P.	9.244	368.465	1.550	366.915
	7.835	374.750		
N.E. Cor Hamilton B.M. Plug E Curb 2' N.W. El Cajon	6.383	368.367		368.355
B.M. SE Hamilton Spk Pole	3.624	371.126		371.145
T.P.	2.400	372.350		
	7.780	380.135		
B.M. NE Oregon Plug Curb 2' N.W.	5.041	375.082		
B.M. SE Spk Pole Grd.		Not. 117		375.551
T.P.	4.508	375.627		
	3.729	379.356		
B.M. NE Idaho Curb 2' N.W.	4.345	375.011		
T.P.	6.410	372.946		
	2.961	375.907		

El Cajon BM[#]

375.907

BM SW Utah Spk Pole Grd. 3.544 372.363 372.606

T.P. 6.337 369.579

3.679 373.249

BM SW Kansas Spk Pole Grd. 4.703 368.546 368.522

T.P. 5.918 367.331

2.913 370.244

BM SW Nebr Plug Mon. 4.629 365.671 365.598

T.P. 6.102 364.142

5.943 370.085

BM NW Ohio Spk Pole Grd. 4.507 365.578 365.573

BM SE " Plug Curb 2' 5 SL. 6.961 363.124

T.P. 4.017 366.068

5.542 371.610

BM SE Illinois Plug Curb 2' 5 SL. 9.094 362.516

T.P. 1.599 369.711

11.162 370.873

BM SE Iowa Curb 2' 5 SL. 7.930 372.943

BM NW Boundary Spk Pole Grd. 2.283 378.590

T.P. 2.406 378.467

6.970 384.537

Boundary BM[#]

384.537

T.P. 2.958 381.579

5.585 387.164

BM NW Iowa & Meade 3.947 383.217

Curb 2' N of RL

T.P. 3.462 383.702

5.639 389.341

T.P. 4.098 385.243

T.P. 4.965 390.208 3.888 386.320

T.P. 6.450 392.770 3.972 388.798

6.056 394.854

BM NE Boundary & Madison 5.270 389.584

Spk Pole Grd.

T.P. 4.266 390.588

5.920 395.608

BM SE Adams & Boundary 4.690 390.718

Plug Curb 3' EEL.

T.P. 5.629 389.979

4.470 394.449

BM SE Ohio & Adams 4.160 390.289 390.399

Spk Pole Grd.

T.P. 5.828 388.626

3.538 392.159

Adams B.M. ^S				Adams B.M. ^S					
		392.159				368.243			
B.M. SE Nebraska & Adams		3.132	389.027	TR		10.023	358.220		
Plug Curb 3' S of S.L.									
TR		5.391	386.768		2.007	360.227			
	4.314	391.082		B.M. Spk Pole NE Cor Bridge		4.856	355.371		
B.M. SW Adams & Kansas		3.141	387.941	388.058	TR	6.400	353.827		
Plug Non									
TR		5.270	385.812		0.873	354.700			
TR	4.241	390.053	5.219	384.834	B.M. SW Louisiana Plug Max	3.666	351.034	351.130	
	4.714	389.548			TR	4.304	350.396		
B.M. SE Adams & Idaho		4.386	385.162	385.306		5.742	356.138		
Spk Pole									
TR B.M. SE " " " Plug Curb		4.657	384.891		B.M. SW Adams & Miss. Spk Pole	5.865	350.273	350.349	
	4.103	388.994			TR	8.778	347.360		
B.M. SW Adams & Oregon		4.949	384.045			0.586	347.946		
Plug Curb 2' S of S.L.					TR B.M. SW Adams & Alabama Spk	9.159	338.787	338.916	
TR		5.978	383.016			9.740	342.527		
	2.517	385.533			B.M. SE Adams & Florida Spk	3.090	339.437	339.530	
B.M. SE Adams & Hamilton Spk Pole		4.130	381.403	381.434					
B.M. SW " " " Plug Curb		5.516	380.017		TR	2.643	339.884		
TR		7.813	377.720		TR	8.140	348.024	0.134	347.890
TR	1.184	378.904	10.992	367.912		10.228	358.118		
	0.331	368.243			B.M. SW Adams & Georgia Spk	2.663	355.455	355.487	
B.M. SW Adams & Arizona Spk		1.471	366.772	366.910	TR	3.718	354.400		
						5.117	359.519		

Adams BM#

359.519

BM NE Adams & Park Boul Plug Mar. Out. 354.465

BM NE Plug Curb Univ & Adams 5.500 354.519

TP. 6177 353.342

2.837 356.179

BM NE Univ & Madison PR Spk. 4.502 351.677

TP. 6516 349.663

TP. 3.027 352.690 6244 346.446

3292 349.738

BM SE Univ & Monroe Plug-Curb 2's SL 4.810 344.928

TP. 5.871 343.867

4.024 347.891

BM NW Univ Meade Plug Curb 5.931 341.960

TP. 7.303 340.588

TP. 4.611 345.199 5.545 339.654

4.447 344.101

BM Plug Curb PR Blvd W Side 1.320 342.781 342.866

5322 348.103

BM Plg Curb W Univ near Walk. 4.577 343.526 343.582
536

6.15

El Cajon BM#

BM SE Arizona Pole

339.073

5

TP. 11.844 350.917 9.115 359.802

TP. 9.197 359.999 0.038 359.961

9.831 369.792

BM Hamilton 1.437 368.355 368.367

TP. 0.714 369.078

8.982 378.060

BM NE Oregon Plug 3.010 375.050 375.082

TP. 2.840 375.220

4.770 379.990

BM Idaho NE Plug 5.021 374.969 375.011

TP. 5.400 374.590

3.246 377.836

BM SW Utah Spk. 5.510 372.326 372.363

TP. 8.066 369.776

3.197 372.973

BM SW Kansas Spk. 4.463 368.510 368.546

TP. 6.370 366.603

3.599 370.202

BM SW Neb. Mar. Plug 4.603 365.599 365.624

365.578 WA

El Cajon BM^s

Boundary BM^s

	370.202			
T.P.	5.990	364.212		
5.846	370.058			
BM SW Ohio Spk	4.498	365.560	365.573 W ^h 365.578	
" " SE Plug	6.954	363.104	363.124	
T.P.	4.250	365.808		
6.932	372.740			
BM SE Ill. Plug Corb	10.252	362.418	362.516	
T.P.	1.595	371.145		
10.046	381.191			
BM SE Iowa Corb	8.264	372.927	372.943	
" NW Boundary	2.623	378.568	378.590	
T.P.	3.530	377.661		
T.P.	7.067	384.728	2.898	381.830
6.429	388.259			
BM NW Iowa & Meade Plug	5.038	383.221	383.217	
T.P.	3.950	384.309		
T.P.	5.860	390.169	4.360	385.809
7.616	393.425			
T.P. BM NE Mead & Boundary Spk	3.826	389.599	389.584	

			389.599	
T.P.	5.590	395.189	4.491	390.698
5.127	395.825			
BM SE Adams & Boundary Plug	4.870		390.955	390.918
T.P.			6.118	389.907
4.216	393.923			
BM SE Adams & Ohio Spk	3.599		390.324	390.399 W ^h 390.289
" SE & Neb. Plug	4.883		389.040	389.027
T.P.	5.890		388.033	
3.896	391.929			
BM SW Ad & Kas. Plug. Noy	3.968		387.961	387.741 388.058 W ^h
T.P.	4.786		387.143	
T.P.	3.952	391.095	4.950	386.145
3.638	389.783			
BM SW Utah Spk New File	3.648		386.135	
BM SE Idaho Spk	4.602		385.181	385.306 W ^h 385.162
" " " Plug	4.875		384.908	384.891
T.P.			4.515	385.268
3.559	388.827			

Adams BM^s

318.877

T.P.		5.075	383.752	
	2247	385.999		
BM SW Adams & Ore Plug.		1.935	384.064	384.045
" SE " " Ham. Spk		4.582	381.417	381.434 W. 381.423
" SW " " " Plug.		5.954	380.045	380.017
T.P.		7.202	378.797	
T.P.	0.927	379.724	11.741	367.983
	0.910	368.893		
BM SW Adams & Arizona Spk		2.090	366.803	366.910 W. 366.772
T.P.		9.115	359.778	
	1.220	360.998		
BM NE Cor Bridge Spk Pole		5.590	355.408	355.371
T.P.		7.193	353.805	
	0.861	354.666		
BM SW Louisiana Plug Mon.		3.573	351.073	351.130 W. 351.034
T.P.		4.929	350.637	
	5.236	355.873		
BM SW Ad & Miss. Spk.		5.550	350.323	350.349 W. 350.273
T.P.		9.073	346.800	
	0.331	347.131		

Adams BM^s

347.131

BM SW Adams & Ala Spk.	8.292	338.839	338.916 W. 338.787
T.P.	8.896	338.235	
	4.639	342.174	
BM SE Florida & Adams Spk	3.387	339.487	339.530 W. 339.437
T.P.	1.191	341.683	
T.P.	8.117	349.800	1.414 348.386
	9.425	357.811	
BM SW Georgia & Adams Spk.	7.293	355.518	355.487 W. 355.455
T.P.	3.445	354.366	
	4.379	358.745	
BM NE Adams & Park B. Plug.	4.166	354.579	354.519
T.P.	4.440	359.019	6.346 352.673
	2.803	355.476	
BM NE Madison & Park	3.730	351.746	351.677 W. 351.795 W.
T.P.	6.185	349.291	
T.P.	3.195	352.476	6.143 346.343
	3.250	349.593	
BM SE Park & North Plug.	4.616	344.977	344.928
T.P.	5.812	343.781	
	3.920	347.701	

Park Blvd BM²

	347.701			
T.P.		6.906	340.795	
	4.368	345.163		
BM NW Meade & Park Curb Plug			JJ	
		3.156	342.007	341.960
T.P.		5.414	339.749	
	7.804	347.553		
BM Drig El.		3.970	343.583	JJ
			343.582	

Georgia BM²

					319.242	✓	8
BM SW El Cajon & Georgia							
T.P.	4.483	323.725	2.496		321.229		
T.P.	9.112	330.341	0.328		330.013		
T.P.	11.523	341.536	1.642		339.894		
	7.740	347.634					
BM SE Georgia & Meade Plug Curb					✓		
				4.039	343.595		
T.P.				2.605	345.029		
	4.431	349.460					
BM SE Georgia & Mission Drive Plug Curb 3' S of SL				5.263	✓	344.197	
T.P.				3.289	346.171		
	6.080	352.251					
BM SE Georgia & Monroe Plug Curb 3' S of SL				5.242	✓	347.009	
T.P.				3.400	348.851		
	5.807	354.658					
BM SE Georgia & Madison Plug Curb 3' S of SL				3.640	✓	351.018	
T.P.				3.392	351.266		
T.P.	5.529	356.805	3.514		353.291		
	5.546	358.837					
BM SW Georgia & Adams Spk.				3.310	355.527	✓	
P					355.518	✓	
					007		

Florida St B.M.^s

12/10/13 West Evans Devine

Alabama St B.M.^s

BM SE Florida & Adams Spk.				339.487	✓✓
T.P.	5.453	344.940	4.252	340.688	
T.P.	2.917	343.605	9.990	333.615	
	0.063	333.678			
BM SE Florida & Madison Plug Curb			4.590	329.088	✓✓
T.P.			7.967	325.711	
	2.034	327.745			
BM SE Florida & Monroe Spk.			7.991	320.354	✓✓
T.P.			5.363	322.382	
T.P.	1.700	324.082	9.560	314.522	
T.P.	1.037	315.559	8.765	306.794	
T.P.	2.046	308.840	3.292	305.548	
	2.322	307.870			
BM Florida & El Cajon Spk SW			4.988	302.882	✓✓
				302.873	

BM NE El Cajon & Ala. Plug				306.573	✓✓
T.P.	7.330	313.903	0.750	313.153	
	9.560	322.713			
BM SE Alabama & Meade Plug Curb 3'5" of SL			3.844	318.869	✓✓
T.P.			2.322	320.391	
T.P.	5.431	325.822	3.251	322.571	
	5.741	328.312			
BM SE Alabama & Monroe Plug Curb 3'5" of SL			3.709	324.603	✓✓
T.P.			3.750	324.562	✓✓
T.P.	7.239	331.801	2.470	329.331	
	6.940	336.271			
BM SE Alabama & Madison Plug Curb 3'5" of SL			5.362	330.909	✓✓
T.P.			1.986	334.285	✓✓
T.P.	6.412	340.697	2.862	337.835	
	6.711	344.546			
BM SW Ala & Adams Spk.			5.717	338.829	✓✓
BM NE El Cajon & Alabama				306.573	
T.P.	9.517	316.090	0.036	316.054	
	10.300	326.354			
BM Spk Fence Post NE Cor. El Cajon & Miss			1.494	324.860	✓

✓✓ → Corrected ✓✓
 ✓✓ → Corrected ✓✓
 ✓✓ → Corrected ✓✓

Mississippi St B.M.

					✓	
BM SW Miss & Adams Spk.				350.323		
T.P.	4.945	355.268	6.820	348.448		
T.P.	1.970	350.418	7.682	342.736		
	1.360	344.096				
BM SE Miss & Madison Plug Curb 3'E of EL		4.036		340.060	✓	
T.P.		6.112		337.984		
T.P.	4.318	342.302	3.442	338.860		
T.P.	5.880	344.740	5.270	339.470		
T.P.	1.260	340.730	7.130	339.600		
	7.200	340.800				
BM NE Miss & Neade Spk.		4.630		336.170	✓	
T.P.	3.184	339.354	9.418	329.936		
	1.206	331.142				
BM NE El Cajon & Miss Spk. Cor fence post		6.285		324.857	ok ✓✓	
T.P.	8.500	333.360	0.644	332.716		
	4.388	337.104				
BM NE Louisiana & El Cajon Plug.		11.120		325.984	✓	
	2.444	329.429		325.983		
BM SW El Cajon & Texas Plug.		6.512		321.917	ok ✓	
				321.915		

12/1/2 West Evans - Beville,
Louisiana St B.M.

10

					✓	
BM SW Louis & Adams Mon.				351.073		
T.P.	1.932	353.005	7.748	345.257		
	1.902	347.159				
BM SE Louisiana & Madison Plug Curb 3'E of EL		4.848		342.311	✓	
T.P.		5.200		341.959		
T.P.	3.272	345.231	6.368	338.863		
	3.284	342.147				
BM SE Louisiana & Merroc Plug Curb 3'E of EL		4.797		337.350	✓✓	
T.P.		6.052		336.093		
	3.241	339.334				
BM SE Louisiana & Neade Plug Curb 3'E of EL		6.638		332.896	✓✓	
T.P.		5.884		333.450		
T.P.	2.335	335.785	6.769	329.016		
	3.555	332.571				
BM NE Louisiana & El Cajon Plug Curb 3'N of EL		6.588		325.983	ok ✓	325.985

Texas of B.M.^s

B.M. SW Texas & El Cajon Plug				321.915	OK
T.P.	1.315	329.290	2.532	326.758	
T.P.	6.930	333.688	2.180	331.508	
	6.804	338.312			
B.M. SE Texas & Meade Plug Curb 3'3" of 5L				331.412	OK
T.P.			2.396	335.916	
	7.024	342.940			
B.M. SE Texas & Monroe Plug Curb 3'3" of 5L				338.961	OK
T.P.			2.518	340.422	
T.P.	6.508	346.930	2.740	344.190	
	6.533	350.723			
B.M. SE Texas & Madison Plug Curb 3'3" of 5L				346.034	OK
T.P.			7.020	343.703	
T.P.	9.102	352.805	2.600	350.205	
	9.743	359.948			
B.M. NE Cor Bridge Spk Pole				355.409	OK
			4.587	355.408	

Arizona B.M.^s

11

Hamilton B.M. 8

				11			
BM SW Hamilton & Adams			380.045				
Plug Curb 3' 5" of SL							
T.P.	6.883	386.928	6.402	380.526			
	2.943	383.469					
				11			
BM SE Hamilton & Madison		4.481	378.988				
Plug Curb 3' 5" of SL							
T.P.		5.674	377.795				
T.P.	3.513	381.308	5.811	375.477			
	3.464	378.961					
				11			
BM SE Hamilton & Monroe		3.663	375.295				
Plug Curb 3' 5" of SL							
T.P.		5.778	372.983				
	3.241	376.224					
				11			
BM SE Hamilton & Meade		5.150	371.074				
Plug Curb 3' 5" of SL							
T.P.		6.312	369.912				
T.P.	3.180	373.792	5.725	368.057			
	5.129	373.186					
				11			
BM NE Hamilton & El Cajon		4.836	368.350	368.355			
Plug Curb 2' 11" of SL							

12/13 West
Evan
Devine

Oregon B.M. 2

12

							11
BM NE Oregon & El Cajon							375.050
Plug Curb 3' 11" N.							
T.P.	3.985	379.035	3.840	375.295			
	5.483	380.778					
				11			
BM SE Oregon & Meade		3.545	377.233				
Plug Curb 3' 5" of SL							
T.P.		4.352	376.426				
T.P.	5.430	381.856	3.969	377.887			
	6.240	384.127					
				11			
BM SE Oregon & Monroe		5.125	379.002				
Plug Curb 3' 5" of SL							
T.P.		4.047	380.080				
	5.428	385.508					
				11			
BM SE Oregon & Madison		4.455	381.053				
Plug Curb 3' 5" of SL							
T.P.		5.102	380.406				
T.P.	6.092	386.498	3.889	382.609			
	5.947	388.556					
				11			
BM SW Oregon & Adams		4.499	384.057	384.064			
Plug Curb							

Idaho St. B.M.^s

BM SE Idaho & Adams Plug ✓
384 908

T.P. 2702 387.610 6364 381.246

2620 383.876

BM SE Idaho & Madison. ✓
5028 378 848
Plug Curb 3' 5" of 54'

T.P. 5230 378.646

T.P. 3640 382.286 5671 376.615

4362 380.977

BM SE Idaho & Monroe ✓
5040 375.937
Plug Curb 3' 5" of 54'

T.P. 3902 377.075

T.P. 3955 381.030 4913 376.117

41 4982 381.099

BM SE Idaho & Meade ✓
5674 375.425
Plug Curb 3' 5" of 54'

T.P. 4699 376.401

4280 380.681

BM NE Idaho & El Cajon ✓
5708 374.973 374.869
Plug Curb 3' 7" of 54'

Utah St. B.M.^s

Kansas St. B.M.⁵

BM SW Kansas & Adams Mon.				387.761	JJ
T.P.	1645	389.606	1251	381.352	
	1048	382.400			
BM SW Kansas & Madison Jct.			4588	377.812	JJ
T.P.		6.568		375.832	
T.P.	3180	379.012	6246	372.766	
T.P.	2239	375.005	7.751	367.254	
T.P.	4220	371.474	5.177	366.297	
	5246	371.543			
BM SE Kansas & Meade Plug Curb 3' 5 of 5L			4.760	366.783	JJ
T.P.			4.370	367.793	
	5147	372.320			
BM SW Kansas & El Cajon			3.814	368.506	JJ
				268.510	

12/13/13 West
Evans
Devine

Nebraska St. B.M.⁵

14

BM SW Nebraska & El Cajon Mon.					JJ
T.P.	3503	369.102	4.608	364.494	
	5089	369.583			
BM SE Nebraska & Meade Plug Curb 3' 5 of 5L			3.940	365.643	JJ
T.P.			4.280	365.303	
T.P.	7747	373.050	1.546	371.504	
	7916	379.420			
BM SE Nebraska & Monroe Plug Curb 3' 5 of 5L			0.477	378.943	JJ 947
T.P.	6065	385.008	2.694	382.314	
	7069	389.383			JJ 6.004
BM SE Nebraska & Madison Plug Curb 3' 3 of 5L			3.385	385.998	
T.P.			3.790	385.573	
T.P.	5833	391.426	3.764	387.662	
	5287	392.949			
BM SE Nebraska & Adams Plug	35923		3.89	389.028	JJ 389.040

Ohio St. B.M.³

B.M. SE Ohio & Adams Spk.

390.374

✓

T.P. 4.180 394.504 5251 389.253

4.190 393.443

✓

B.M. SE Ohio & Madison
Plug Curb 3'5 of SL

4.514 388.929

T.P. 5.459 387.984

T.P. 3.765 391.749 5.816 385.933

2.524 388.457

B.M. SE Ohio & Monroe
Plug Curb 3'5 of SL

3.617 389.840

T.P. 8.287 380.170

T.P. 1.429 381.599 8.050 373.549

1.741 375.290

B.M. SE Ohio & Meade
Plug Curb 3'5 of SL

1.767 373.523

T.P. 8.098 367.192

1.987 369.179

B.M. SE Ohio & El Cajon
Plug Curb.

6.080 363.099 363.109

✓

12/12/12 West.
Evan's
Terrace.Boundary St B.M.³ & Iowa B.M.³
Bet El Cajon & Univ.

B.M. NW Boundary & El Cajon Spk.

378.568

✓

T.P. 2.668 381.236 9.280 371.956

T.P. 1.020 372.976 7.463 365.513

1.964 367.477

B.M. NE Boundary & Orange Spk.

4.261 363.216

✓

T.P. 8.176 359.301

T.P. 3.341 362.649 5.146 357.503

4.148 361.651

B.M. SE Iowa & Polk.
Plug 3'5 of SL Curb.

4.660 356.991

✓

T.P. 3.815 357.836

T.P. 5.956 363.792 3.164 360.628

5.625 366.253

B.M. SE Iowa & Lincoln
Plug Curb 3'5 of SL

5.276 360.977

✓

T.P. 5.940 360.313

T.P. 7.849 363.161 7.232 355.929

5.873 361.802

B.M. NW Iowa & Univ. Aug.

5.307 356.475 356.53

✓

" " Illinois " " 3.830 357.972 358.00

✓

T.P. 4.444 357.358

3.254 360.612

Univ Ave. E. M^o

360.612

||

BM. NW Univ & Ohio. Flag Curb

5.304 355.308 355.31

TP

5.187 355.425

4.710 360.135

||

BM. NW Univ & 30 Flag Curb

4.105 ^{356.026} 356.030 356.01

TP

4.897 355.238

3.515 358.753

BM. NE Univ & Kas. Spk

4.298 ^{354.650} 354.655 354.92

TP

6.670 352.083

3.314 355.397

BM. NW Univ & Utah. Spk

5.110 ^{350.272} 350.287 350.33

TP

6.831 348.566

2.715 351.281

BM. NE Univ & Utah. Spk

3.876 ^{347.376} 347.405 347.37

TP

7.553 343.728

0.920 344.648

NE BM. Univ & Oreg. Mon

5.775 ^{338.845} 338.873 338.80

TP

7.630 335.018

0.467 335.485

W. West
Evans
Dev 17c

Univ Ave. B. M^o

395.485

16

TP

7.490 375.995

0.544 326.579

SW
BM. Univ & W. Terrace Spk

5.919 320.669

||
322.640

TP

10.590 315.989

0.595 316.574

BM. NE Univ & Hart. Spk

5.076 311.498

||
311.267

311.51

TP

6.668 309.906

TP

0.694 310.600 8.940 302.560

3.621 306.181

BM. NW Univ & Arizona Spk

4.900 301.781

||
301.750

301.80

TP

4.300 301.881

TP

6.555 308.436 1.687 306.749

TP

7.363 314.412 2.006 312.106

4.171 316.284

BM. NW Univ & Texas Spk

3.340 312.944

||
312.715

312.97

TP

1.727 307.557

TP

0.120 307.677 1.716 299.891

4.787 299.678

BM. NW Univ & Louisiana Spk

2.565 297.113

||
297.091

297.14

UNIV Ave BMS

TP		299.678	76.50	290.028	
FR	0.082	290.110		21	
TP		6.594	283.516	283.15	283.492 Spk.
TP	0.650	284.166	9.290	274.876	
TP	0.220	275.096	8.558	266.538	
	3.623	270.161		21	
BM NE Univ & Alabama	Non	4.666	265.495	265.55	265.480
TP		2200	267.961		
TP	8.784	276.445	1.284	275.461	
TP	8.095	283.556	1.297	282.259	
	8.771	291.030			
BM NW Univ & Florida	Spk.	2.558	288.472		
TP		0.816	290.214		
TP	7.478	297.692	1.413	296.279	
TP	7.634	303.913	1.584	302.329	
TP	7.740	310.069	1.769	308.300	
TP	7.448	315.748	2.819	312.939	
TP	6.984	319.723	3.602	316.321	
	7.998	324.319			
BM NW Univ & Park Blvd.		8.444	315.825	315.86	83

12/13 West
Expts.
Barre

Park Blvd BMS

		324.319			17
TP		0.158	324.161		
TP	7.160	331.321	2.200	329.121	
	7.920	337.041			
BM NE Park & Lincoln	Spk	4.346	332.695	332.200	31.2
TP		3.045	333.996		
TP	6.776	340.772	2.533	338.239	
	6.650	344.889			
BM NE Park & Park	Spk	5.160	339.729	338.885	
TP		5.530	341.359		
TP	4.100	345.459	3.530	341.929	
	6.273	348.202			
BM Curran Univ Near Park Normal		4.630	343.572	342.582	

Georgia St BM^s12/6/13 West
Evans
DeVineFlorida St BM^s

18

BM SW Georgia & El Cajon Spk 319.242

3520 322.762

BM SW Georgia & El Cajon Flg. 3.817 318.945

T.P. 4.614 318.148

5.220 323.368

BM NW Georgia & Howard
Flg Curb - E N of ML 3.450 319.918

T.P. 4.354 319.014

T.P. 7.270 326.284 1.946 324.338

T.P. 7.461 331.799 2.077 329.722

T.P. 7.424 337.146 2.123 335.023

5.864 340.887

BM NW Georgia & Folk Spk. 3.451 337.436

T.P. 6.105 334.782

T.P. 2.366 337.148 6.620 330.528

T.P. 2.285 332.813 7.308 325.505

3.260 328.765

BM NW Georgia & Lincoln Spk. 3.040 325.723

T.P. 7.592 321.173

1.588 322.761

322.661

T.P. 10.992 311.767

T.P. 0.695 312.464 10.413 302.051

T.P. 1.232 303.283 11.126 292.157

T.P. 1.801 293.958 7.885 286.073

T.P. 2.190 288.263 3.785 284.478

4.445 288.923

BM NW Florida & Univ Spk. 0.474 288.449 288.472

5.345 280.578

0.525 281.123 7.626 273.277

1.828 275.097 7.750 267.347

3.016 270.363 1.790 265.473 265.475

Georgia St BM^o

BM SW Georgia & El Cajon				319242					
T.P.	2496	322 738	4619	318 419					
	5454	323 573							
BM NW Georgia & Howard Spk.			3654	319 719	319916				
T.P.			2440	321 133					
T.P.	1337	328 470	1873	326 595					
T.P.	7562	334 157	2072	332 085					
	7230	339 315							
BM NW Georgia & Folk Spk			1874	327 441	337436				
T.P.			2150	336 165					
	2376	338 541							
BM SE Georgia & Folk Plug			3567	334 974					
T.P.			8433	330 108					
T.P.	1140	331 248	6694	324 554					
	3444	327 998							
BM NW Georgia & Lincoln Spk			2260	325 738					
T.P.			7252	320 746					
T.P.	1960	322 706	11612	311 074					
	2202	313 296							

Florida St BM^o

T.P.				313,296	7632	305 664			19
T.P.	0825	306 489	8928	297 561					
T.P.	0074	297 635	7446	288 189					
T.P.	4615	292 804	10022	282 782					
	7179	289 961							
BM NW Florida & Univ Spk.			1500	288 461	288 472				

Alabama St. BM^s

BM NE Alabama & Univ. Mon.

265.475 ✓✓

T.P. 8788 274.283 0.577 273.706

T.P. 7453 281.159 3.680 277.479

T.P. 5512 282.991 2.177 280.814

8090 288.904

BM NW Alabama & Lincoln Spk. 2795 286.109 ✓✓

T.P. 2240 286.664

T.P. 1475 295.139 3.417 291.722

T.P. 4550 296.272 6.073 290.199

4.100 294.299

BM SE Alabama & Polk
N Not Fire Hydrant
with chiselled X.

1.348 292.951 ✓✓

T.P. 4.062 290.237

5.163 295.400

BM NE Alabama & Howard
Spk Pole 20' Not HL.

0.750 294.650 ✓✓

T.P. 0.765 294.635

T.P. 1674 303.309 1.345 301.964

5994 307.958 78

also + Ellington

1.372 306.586 306.573 ✓✓

12/17/13 West
Evans
TeylineMississippi St. BM^s

20

BM NE Miss & El Cajon Spk Fence Post. 324.160 ✓✓

T.P. 0.225 325.085 7.400 317.685

2.650 320.335

BM NE Miss & Howard Spk Spk Pole 0.320 320.015 ✓✓

T.P. 1.934 311.401

T.P. 3.182 314.583 6.480 308.103

2.250 310.353

BM SW Miss & Polk.

1.620 308.733 308.733 ✓✓

T.P.

9.804 300.549

T.P. 0.906 301.456 9.378 292.071

0.683 292.760

BM NW Miss & Lincoln Spk.

6.624 286.436 ~~286.121~~ ✓✓

T.P.

7.940 284.420

T.P. 3.540 288.360 5.627 282.733

T.P. 3.512 286.315 5.574 280.741

BM NE Miss & Univ Spk 4.941 285.682 2.170 283.512 ✓✓

283.512 ✓✓

OK.

Louisiana St. BM's

BM NW Louisiana & Univ. Spk				297 ⁰⁸⁸ ✓
T.P.	6.320	303.433	3.165	300.268
	4.920	305.188		
BM W Louisiana & Lincoln Spk		6.045	299.143	✓
T.P.		5.773	299.415	
T.P.	4.047	303.462	3.110	299.692
T.P.	5.340	305.032	3.741	301.291
	4.911	306.202		
BM SW Louisiana & Polk's Spk. Cor fence post.		4.185	302.017	✓
T.P.		2.909	301.992	
T.P.	9.407	312.700	0.117	312.583
T.P.	9.079	321.662	0.526	321.136
	10.390	331.525		
BM SW Louisiana & Howard Cor. fence post. Spk.		0.529	330.997	✓
T.P.	4.062	335.059	6.242	328.817
	3.893	332.710		
BM NE El Ceyo 01.		6.708	326.002	325.985
			✓	

14/13 West
Evans
Darine.

Texas St. BM's

BM NW Texas & Univ. Plug				312.944	925	21
T.P.	5.168	318.112	3.436	314.676		
	5.815	320.491				
BM SE Texas & Lincoln Plug Corb.				3.564	316.927	✓
T.P.				2.374	318.117	
T.P.	7.429	325.546	3.254	322.292		
	4.697	326.989				
BM SE Texas & Polk Plug Corb.			2.020	324.969		✓
T.P.			8.235	318.757		
	3.244	321.998				
BM SE Texas & Howard Plug Corb.			3.937	318.061		✓
T.P.			5.314	318.042	200K	
				316.684		
	7.214	323.898				
BM SW Texas & El Ceyon Plug			1.960	321.938	321.915	OK ✓
				321.919		

Texas St BM⁵

BM SW Texas & El Cajon Plug

321.915

TP 1.962 323.877 7.273 316.604
 5.103 321.707

BM SE Texas & Howard Plug

3.663

318 X4

OK X4

TP 3.703 318.004
 TP 6.297 324.301 1.898 322.403
 4.634 327.037

BM SE Texas & Paik

2.990

374 X7

OK X7

TP 6.384 320.733
 2.196 322.929

BM SE Texas & Lincoln Plug

6.012

310 X17

OK X17

TP 7.552 315.397
 TP 3.851 319.228 5.913 313.315
 4.779 317.494

BM NW Texas & Univ

4.553

312 X5

312 X44

12/14/10 West
Expos
DevineArizona St BM⁵

22

BM SE Arizona & El Cajon 5PK

339.073

TP 2.948 342.021 5070 336.951
 1.450 338.401

TP

7.251 331.150

4.160 335.310

BM SE Arizona & Howard Plug Corb

3.804

331.506

TP 5.125 330.185
 4.021 334.206

BM SE Arizona & Paik
Plug Corb

4.255

327.951

TP 6.493 328.013
 TP 2.060 330.073 8.535 321.538

0.896 322.434

BM NE Arizona & Lincoln
Plug Corb

2.345

370.287

TP 11.353 312.081
 TP 0.588 312.667 7.270 303.379

3.257 306.656

BM NW Arizona & Univ Sok

4.190

301.766

301.756
~~301.787~~

Hamilton St. B.M.²

BM NE Hamilton & Univ Spt.

12/13/12

Oregon St B.M.²

26

~~BM NE Oregon Univ. Mon.~~

~~338.873~~

~~4.450 343.323 1150 342.173~~

~~8952 351.125~~

~~BM SE Oregon & Lincoln Plug.~~

~~0.159 350.966~~

~~TP~~

~~0.705 350.420~~

~~TP~~

~~7.850 358.270 0.111 359.159~~

~~TP~~

~~9.059 367.218 2.880 364.338~~

~~8.670 373.008~~

~~BM SE Oregon & Falk Plug.~~

~~6.788 366.220~~

~~TP~~

~~3.071 369.917~~

~~5.060 374.977~~

~~BM SE Idaho & Falk Plug.~~

~~4.813 370.164~~

~~TP~~

~~4.185 370.792~~

~~TP~~

~~5.860 376.652 3.895 372.757~~

~~5.110 377.867~~

~~BM SE Idaho & Howard Plug.~~

~~4.662 373.205~~

~~TP~~

BM NE Idaho & El Cajon.

374.969

Idaho St BM⁵

NE Idaho & Univ Spk.				347.405
TP	3031	550.436	3530	346.906
TP	7415	354.321	2153	352.168
	9497	361.665		
BM SE Idaho & Lincoln Plug.				0.778 360.887
TP		0678		360.987
TP	6759	367.746	2490	365.256
	6912	372.168		
BM SE Idaho & Polk.				2172 369.996 370.169

12/17/13 West
Evarts
Irvine

Idaho St BM⁵

24

BM NE Idaho & El Cajon Plug				374.969
TP	5363	380.332	5988	374.344
	3193	377.537		
BM SE Idaho & Howard Plug				4528 373.009
TP			5537	372.000
TP	3705	375.705	5728	369.977
	3985	373.962		
BM SE Idaho & Polk Plug				4000 369.962
TP			7780	366.182
TP	1574	367.756	7555	360.201
	1905	362.106		
BM SE Idaho & Lincoln Plug				1270 360.836
TP			8560	353.546
TP	1894	355.440	7335	348.105
	2981	351.086		
BM NE Idaho & Univ Spk.				9725 347.361 347.378

BM NE Oregon & Univ. Mon.

338.845

T.P. 3.864 342.709 3210 339.477

T.P. 7530 347.029 2120 344.909

7.577 352.486

TP BM SE Oregon & Lincoln Plug 1.541 350.945

T.P. 7.414 358.359 0.340 358.019

T.P. 9.090 367.409 2.879 364.230

9.157 373.387

BM SE Oregon & Paik Plug Curb 7.345 366.042

BM SE Idaho & Paik Plug Curb 3.402 369.984

T.P. 1.970 371.955 7.580 364.375

2.115 366.490

BM SE Idaho & Lincoln Plug 5.618 360.872

T.P. 8.682 357.288

T.P. 0.070 357.958 7.330 350.628

T.P. 2.950 353.578 6.443 347.135

3.718 350.853 3

3.450 337.403

Idaho. St. BM

25

BM NE Idaho & Idaho Plug

347.371

T.P. 3.720 351.108 3.569 347.539

T.P. 7.917 354.856 1.986 352.870

9.860 362.730

BM SE Idaho & Lincoln Plug 1.880 360.850

T.P. 1.285 361.445

T.P. 6.760 368.205 2.400 365.805

6.784 372.589

BM SE Idaho & Paik Plug 2.628 369.961

T.P. 2.590 369.779

T.P. 4.807 374.906 3.836 370.970

T.P. 5.472 376.442 4.071 372.364

5.452 377.816

BM SE Idaho & Howard Plug 4.905 373.011

T.P. 3.591 374.225

6.115 380.340

BM NE Idaho & El Camp Plug 5.369 379.972 374.969

Oregon St. BM's

BM SE Idaho & Polk Plug				369.761	11
TP	3552	373.513	5720	367.773	
	1636	369.423			
BM SE Oregon & Polk Plug				366.008	11
TP		7764		361.659	.015
TP	0248	361.907	9458	352.449	
	1526	354.215			
BM SE Oregon & Lincoln Plug				351.919	11
TP		7090		345.185	930
TP	0371	345.556	7613	337.953	
	4326	342.279			
BM NE Oregon & Polk Plug				338.826	85

1923/5
Went
Evans
Tracy

Utah St. BM's

BM NW Utah & Univ Spk						350.272
TP	4464	354.736	7792			350.944
TP	7113	358.057	3021			355.036
	8605	363.641				
BM SE Utah & Lincoln Plug						0697
TP						0260
TP	5964	369.345	3707			365.638
TP	5765	371.403	3709			367.694
	6154	373.848				
BM SW Utah & Polk Spk Wooden Curb						6124
TP						4504
TP	6588	373.932	3447			372.485
TP	5210	377.695	4426			373.269
TP	4842	378.111	5445			372.666
	5128	377.794				
BM SW Utah & Polk Spk						5442
						377.352
						372.326

				372.326	
TP	5.110	377.766	5.147	372.619	
TP	5.410	378.029	5.018	373.011	
TP	4.659	377.670	5.250	372.420	
TP	3.400	375.826	6.443	369.372	
	4.271	373.648			
BM SW Utah & Falk - 2nd Wooded			5.962	367.686	
TP			6.001	367.647	
TP	3.763	371.410	5.779	365.631	
TP	3.994	369.625	6.273	363.352	
	0.230	363.582			
BM SE Utah & Lincoln Plug			0.680	362.902	
TP			8.370	355.212	
TP	2.740	357.952	7.008	350.944	
	3.471	354.415			
BM NW Utah & Utah Spk			4.188	350.227	350.272

Utah St. BM

					350.272	✓	27
BM NW Utah & Utah Spk					350.272		
TP	4.242	354.514	3.610	350.904			
TP	7.102	358.006	2.787	355.219			
TP	7.440	362.689	1.032	361.627			
	7.574	369.201					
BM SE Utah & Lincoln Plug				6.263	362.938	✓	
TP				3.737	363.467		
TP	5.666	371.130	3.862	367.268			
	6.200	373.468					
BM SW Utah & Falk 2nd Wooded Curb				5.762	367.706	✓	
TP				4.792	369.276		
TP	5.645	374.961	2.737	372.224			
TP	5.437	377.681	4.647	373.014			
TP	4.888	377.902	4.994	373.108			
	4.727	377.135					
BM SW Utah & Lincoln Spk				5.503	372.332	✓	372.322 006

Nebraska St BM's

28

BM SW Neb & El Cajon Mon

365.599 ✓

T.P. 5072 370.671 3.591 367.080

4810 371.890

BM SW Neb & Harvard Spk

4193

367.697 ✓

T.P. 4806 367.084

T.P. 3637 370.721 5.691 365.030

4848 367.878

BM SW Neb & Paik Spk

5.567

364.311 ✓

T.P. 4443 365.395

T.P. 5094 370.189 5.700 364.789

2817 367.506

BM SW Neb & Lincoln Spk

6.325

361.181 ✓

T.P. 5.722 361.784

T.P. 3.952 365.136 5.834 359.302

T.P. 3.578 365.080 5.312 357.768

4015 361.745

BM SW Neb & Univ Plou

5.753

356.030

356.076 ✓

Ohio St BM^s

BM NW Ohio & Univ Plug

355.308

T.P. 6468 361.776 2.70.1 359.075

6653 365.728

BM SE Ohio & Lincoln Plug

3281 362.447

T.P. 3270 362.458

T.P. 5527 367.985 3.961 364.024

T.P. 5382 369.406 4.288 365.118

5107 370.225

BM SE Ohio & Polk Plug

4258 365.967

T.P. 4251 365.974

T.P. 5120 371.094 5.762 365.332

645
3665 368.997

BM SE Ohio & Howard Plug

4499 364.498

T.P. 5310 363.687

4400 368.087

4954 363.133 363.104

12/24/13
West
Evans
Tenn.Ohio St BM^s

BM SE Ohio & El Cajon Plug

363.104 ✓

T.P. 4954 368.058 4.440 363.618

5348 368.966

BM SE Ohio & Howard Plug

4494 364.472 ✓

T.P. 3738 365.228

T.P. 5850 371.078 5.152 365.926

4303 370.229

BM SE Ohio & Polk Curb Plug

4271 365.958 ✓

T.P. 5183 365.046

T.P. 4208 369.254 5.306 363.948

4107 368.055

BM SE Ohio & Lincoln Plug

5613 362.442 ✓

T.P. 5698 362.357

T.P. 3334 365.691 6.723 358.968

3230 362.198

BM NW Ohio & Univ Plug

6896 355.302 355.308 ✓

Illinois St. BM^s

BM SE Ill. & El Cajon Plug.				362.488	✓
T.P.	3.166	365.654	5.202	360.446	
	5.252	365.678			
BM SE Ill. & Howard Plug.			4.689	361.009	✓
T.P.			4.409	361.294	
T.P.	5.390	366.684	2.413	364.281	
	7.183	371.464			
BM SE Ill. & Folk Plug.			4.990	366.474	✓
T.P.			5.712	365.752	
T.P.	3.742	369.494	5.532	363.962	
	3.786	367.748			
BM SE Ill. & Lincoln Plug.			4.825	362.923	✓
T.P.			5.587	362.161	
T.P.	3.394	365.555	5.752	359.803	
	3.540	363.343			
BM SW Ill. & Union Plug.			5.376	359.967	✓
				357.972	✓

1224/73
West
Evans
To 1122

Herman St. BM^s

30

BM NW Iowa & Union Plug.					356.495	✓
T.P.	1.417	357.912	7.600		350.312	
	3.120	353.432				
BM SE Herman & Wigham Plug.			4.543		348.889	✓
T.P.			5.900		347.532	
T.P.	3.586	351.118	6.926		345.092	
	3.392	348.484				
BM SE Herman & Landis Plug.			4.669		343.815	✓
T.P.			6.698		341.786	
T.P.	2.698	344.484	7.222		337.262	
	2.273	337.535				
BM NW Herman & Dwight Plug.			5.528		334.007	✓
T.P.			6.760		332.775	
T.P.	2.862	335.637	6.730		328.907	
	2.602	331.709				
BM SW Herman & Myrtle Spk.			5.684		326.025	✓
T.P.			6.650		325.559	
	2.660	328.219				
BM SW Herman & Upsas Spk.			5.760		322.259	✓
T.P.			6.580		321.639	
	8.775	330.414				

TP		330.414	0845	329.569	
TR	1848	331.417			✓
BM NW Upas & Hart. Spk.			1406	330.011	
TP			7.592	323.825	
	8139	331.964			✓
BM SW Upas & Grim. Plug.			6.929	325.035	
TP			3083	328.881	
	2761	331.642			✓
BM SW Upas & 30 St. Plug			4.760	326.882	✓
BM NE Upas & 30 St. Plug			5.721	325.921	✓
TP			5626	326.016	
TP	2551	328.567			✓
BM NE Upas & Kansas Plug.			3045	325.522	
			2550	326.017	
TP			3530	325.037	
TP	5813	330.850	3842	327.008	
	7303	334.311			✓
BM NW Upas & Granada Spk.			4.550	329.761	
TP			4245	330.066	
	4242	334.308			✓

12/26/13
West
Evans
Terrace

					334.308	
BM NE Upas & Utah. Plug.					3266	331.042
TP					5783	328.525
				5031	333.556	
BM Flag Pole Idaho St.					2364	331.192
TP					8710	324.846
TP	0.865	325.711	11.270	314.441		
TP	0.880	315.321	9.302	306.017		
TP	1.901	307.920	8.870	299.050		
	1.867	300.917				
BM NE Villa Terrace & Upas. Spk. fence post.					7.540	293.377
TP					6.773	294.744
TP	7.455	302.199	2.518	299.681		
TP	1.454	301.155	12.093	289.042		
TP	0.567	289.609	1.852	281.757		
	1.200	282.757				
BM NE Arnold & Myrtle Plug.					3.952	279.025
TP					5.875	277.082
	2.549	279.631				
BM SE Myrtle & Georgia Plug.					6.255	273.376

Louisiana St BME

11.11.12

N

BM NW: Louis & Univ Spk

277.088

TP 2573 299.661 8.385 291.276

2039 293.315

Louis

BM SE ~~11.11.12~~ & Wightman Plug.

2.403 289.912

TP 10.256 283.059

TP 0.127 283.186 6.872 276.314

TP 7.687 284.001 0.310 283.691

6.237 289.928

Louis

BM SE ~~11.11.12~~ & Landis Plug.

4.049 285.879

TP 5.750 284.178

TP 3.519 287.697 5.910 281.787

3.400 285.187

Louisiana

BM SE ~~11.11.12~~ & Wight Plug.

4.768 280.419 280.425

12/29/12
West
Evans
Texas

Texas St BME

33

BM Texas & Myrtle SE Plug

282.377

TP 6137 288.516 3.028 285.488

TP 6.705 292.193 3.184 289.009

6.839 295.848

BM SE Texas & Wight Plug

5.485 290.363

TP 1.748 294.100

TP 7.663 301.763 1.620 300.143

4.493 307.636

BM SE Texas & Landis Plug

4.765 302.871

TP 6.206 301.430

TP 2.765 304.195 6.830 297.365

TP 3.920 301.285 1.202 300.083

4.327 309.140

BM SE Texas & Wightman Plug

4.655 304.755

TP 2.559 306.851

7.802 314.653

BM NW Texas & Univ Plug.

1.723 312.930 312.925

Arizona St BM²

12/29/13
West
Expos
Veritas

Arnold St BM²

34

BM NW Arizona & Univ. Spk.

501.750 ✓

T.P. 1027 302.783 10583 292.200

0763 292.963

BM SE Arizona & Wightman Plug

3.162 289.801 ✓

T.P. 9483 283.480

T.P. 4516 287.996 3705 284.291

5578 289.869

BM SE Arizona & Landis Plug

4556 285.313 ✓

T.P. 5372 284.497

T.P. 4085 288.582 5861 282.721

3925 286.646

BM SE Arizona & Dwight Plug

5556 281.090 ✓

T.P. 6380 280.266

T.P. 3121 283.387 6538 276.849

3240 280.089

BM SE Arizona & Myrtle

6712 293.377 ✓
273376 ✓

BM NE Arnold & Myrtle Plug

279.005 ✓

T.P. 6291 285.396 3050 282.296

6414 288.660

BM SE Arnold & Dwight Plug

2.815 285.845 ✓

T.P. 3158 285.502

T.P. 6564 292.066 3646 288.420

T.P. 5962 294.382 3324 291.058

6029 297.087

BM SE Arnold & Landis Plug

5240 291.847 ✓

T.P. 3390 293.697

T.P. 5972 299.667 3392 296.215

6132 302.707

BM SE Arnold & Wightman Plug

5021 297.386 ✓

T.P. 0173 302.234

7076 311.250

~~BM NE Univ & Hartman Spk~~

311.449

~~SE Univ & Arnold Plug~~

4880 306.370

T.P. 1720 309.530

5545 315.075

BM NE Univ & Hartman Spk

3615 311.460

375 Wrong
See table
#38 BM's
8.14

OK
311.469
470 ✓

Villa Terrace BM^{NS}

BM SW Villa Terrace - Univ Spk

320.640

12/29/13
West
Everts
Levine

Oregon St BM^{NS}

35

NE Univ & Oregon - Mon.

338.845

TP 6.350 345.195 6.564 338.631

4.827 343.458

BM SW Oregon & Nighthawk - Plug.

5.445 338.013

TP 3.651 339.807

TP 5.428 345.235 5.471 339.744

3.340 343.084

BM SE Oregon & Landis & Plug.

4.684 338.400

TP 7.543 335.541

TP 1.513 337.054 8.351 328.703

1.490 330.193

BM SE Oregon & Dwight - Plug.

6.178 324.013

TP 6.408 323.785

TP 5.610 329.375 4.420 324.975

5.785 330.760

BM SW Oregon & Myrtle Spk 3.950 326.810 326.830

TP 4.113 326.577

TP 4.079 330.056 2.777 327.867

6.512 334.379 3.167 331.212

BM Flag Pole

331.172

Idaho St. BM's

NE. BM Univ. Idaho Spk.				347.378	✓
T.P.	2.378	349.756	5.303	344.453	
	4.287	348.740			✓
BM 10'E NE Cor Idaho & Wrightman Spk Pale			3.180	345.562	
T.P.			5.325	343.415	
	4.403	347.818			✓
BM 20'E NE Idaho & Gunn Spk. Tol Pale			4.216	343.602	
T.P.			5.757	342.061	
	3.892	345.953			✓
BM NE Idaho & Landis Plug			4.975	341.478	
T.P.			6.633	339.320	
	2.825	342.145			✓
BM 20'E NE Idaho & Dwight Spk			5.015	337.130	
T.P.			6.174	335.971	
	3.823	339.794			✓
BM 20'E NE Idaho & Capps Spk			4.494	335.300	
T.P.			5.320	334.474	
T.P.	3.885	338.459	5.458	333.001	
BM SW Idaho Idaho Spk	3.420	336.421	4.143	332.278	
T.P.			5.750	330.471	
	5.558	336.029	4.850	331.199	✓

2 50/16
West
Curtis
White

Utah St. BM's

BM NW Utah & Univ Spk.					350.172	✓
T.P.	1.916	352.188	6.224	345.927		
	3.095	349.049				✓
BM NE Utah & Wadsworth Spk Pale 2'E Curb.				3.740	345.309	
T.P.				5.549	343.500	
	3.923	347.423				✓
BM SW Utah & Gunn Plug				4.884	342.539	
T.P.				5.688	341.738	
	3.622	345.357				✓
BM SW Utah & Landis Spk Pale 2 1/2 of Curb.				4.870	340.487	
T.P.				5.926	339.431	
T.P.	5.530	342.961	6.178	336.783		
	4.143	340.926				✓
BM SE Utah & Dwight Plug				4.524	336.402	
T.P.				5.457	335.469	
	3.950	337.217				✓
BM SW Utah & Capps Spk Pale 2 1/2 of Curb.				3.572	335.647	
T.P.				5.315	333.904	
	4.107	338.011				✓
BM SW Utah & Melle Spk				4.834	333.177	
T.P.				5.870	332.141	
	5.640	335.781				✓
BM NE Utah & ... Plug				4.730	331.051	331.042

Granada JF B.M.F.

BM NW Granada & Upsas Spk			329.761	✓✓
TP	4228	333.989	2438	331.551
TP	5292	336.843	6080	330.763
	5135	335.898		
BM NW Granada & Myrtle Plug		4.935	330.963	✓ 966
TP		3617	332.281	
	5490	337.771		
BM SW Granada & Capps Plug		5265	332.506	✓ .511
TP		2962	334.809	
	5566	340.375		✓✓
BM SW Granada & Dwight Spk		4.605	335.770	✓ -778
TP		3783	336.592	✓✓
BM SW Gr & Landis Spk	5784	342.376	4169	338.207
TP		3204	339.072	✓✓ -216
BM SW Gr & Gunn Spk	5969	345.041	2.885	342.156 (342.1)
TP		3586	347.455	
TP	6227	347.682	2631	345.051
BM SW Gr & Myrtle Spk	6447	351.498	5.542	345.956 346.06
TP		2353	349.145	
	7320	356.465		
BM NE Granada & Upsas Spk		1.836	357.629	✓ -648 354.650

Kansas JF B.M.F.

BM NE Kansas & Upsas Spk	2.390	357.040	354.650	✓✓
BM NW " " Plug		4075	352.965	✓✓
BM SW " " " "		3856	353.184	✓✓
TP		7353	349.687	
BM SE Kansas & Myrtle Plug	2.566	352.153	5.376	346.871
TP		6512	345.941	✓✓ 875
BM SE Kansas & Gunn Plug	3348	349.289	6.962	347.777
TP		6416	342.873	
TP	3697	346.570	4.125	340.445
	3423	343.868		
BM SE Kansas & Landis Plug		3.911	339.357	✓✓ 950
TP		6332	337.536	
BM SE Kansas & Dwight Plug	2.886	340.422	4.520	335.702
TP		5632	334.740	✓✓ 894
BM SE Kansas & Capps Plug	3569	338.359	4.946	333.413
TP		5718	332.141	✓✓ 402
	2749	335.190		
BM SE Kansas & Myrtle Plug		6763	328.427	✓✓ 415
TP		6584	328.606	
	3224	331.830		
BM NE Kansas & Upsas Plug		6293	325.537	✓✓ 325.522

12/3/13
West
Eyrie
Dodge

1/2/14
West
Eyrie
Dodge

BM NE 30 & Univ. Plug	6.723	332.644	325.721	✓
TP		2170	330.474	
BM NE 30 & Middle Plug	6.470	336.944	5041	331.903
TP		2755	334.189	
BM SE 30 & Camp Well	5.989	340.178	3532	336.646
TP		4147	336.031	
BM NW 30 & Dwight Plug	4.960	340.991	3040	337.951
TP		4100	336.891	
BM SE 30 & Landis Plug	5.934	342.825	3838	338.987
TP		3090	339.735	
TP	6.459	346.194	2645	341.539
BM SW 30 & Gunn Plug	6.605	350.154	6228	343.926
TP		2313	347.841	
	6.705	354.546		
BM SW 30 & Nightman Plug		5112	349.434	
TP		2232	352.314	
	6.460	358.714		
BM NW 30 & Univ. Plug		2760	356.914	356.914

BM NW Ohio & Univ. Plug				355.327	✓
TP	3.125	358.433	6.150	352.283	
	3.212	355.495			
BM SE Ray & Wightman Plug		3.868		351.627	✓
TP		7.569		347.926	
TP	2.478	350.104	6.917	343.187	
	2.680	345.867			
BM SE Ray & Landis Plug		4.952		340.915	✓
TP		6.983		338.881	
TP	2.690	341.574	6.962	334.612	
	2.245	336.959			
BM NE Ray & Dwight Plug		4.384		332.472	✓
TP		5.728		331.127	
TP	4.894	336.023	3.102	332.921	
	4.120	337.041			
BM SW Ray & Middle Box		5.064		331.977	✓
TP		6.225		330.416	
	3.750	334.166			
BM SW 30 & Univ. Plug		7.253		326.913	✓
				326.882	

Grim St. BM's

BM SW. Grim & Upps. Plug				325.035	JJ
TP	5349	330.384	3942	326.442	
	5184	332.326			
BM NE Grim & Myrtle Plug			5442	326.884	JJ .886
TP			2712	329.614	
TP	6185	335.798	3128	332.671	
	6070	338.741			
BM NE Grim & Dwight Plug			4347	334.394	JJ .398
TP			3556	335.185	
TP	6216	341.401	3679	337.722	
	6018	343.740			
BM SE Grim & Landis Plug			4801	338.939	JJ .945
TP			2110	341.630	
TP	7062	348.672	2324	346.368	
	7215	353.583			
BM SE Grim & Wightman Plug			3297	350.286	JJ .297
TP			2032	351.551	
TP	6866	358.417	1904	356.513	
	5632	362.146			
BM NW III. ADDIV.			4194	357.952	JJ 357.972

1/2 in.
West
Evans
Devise

Hart St. BM's

BM NW III. & Uain. Plug					JJ	357.972
TP	4390	362.362	7632	354.730		
	2321	357.051				
BM NE Hart & Wightman Plug			4550	352.501	JJ	
TP			6630	350.421		
TP	2336	352.757	6760	345.797		
	2228	348.025				
BM SE Hart & Landis Plug			6148	341.877	JJ	
TP			6625	341.400		
TP	2001	343.401	6584	336.817		
	2403	339.220				
BM NE Hart & Dwight Plug			6699	332.521	JJ	
TP			6650	332.570		
TP	3111	335.681	5745	329.936		
TP	3572	333.508	5877	327.631		
	6967	334.498				
BM SW Hart & Myrtle Spk			6145	328.353	JJ 350	
TP			4286	330.212		
	3406	332.618				
BM NW Hart & Upps Spk			3577	330.019	JJ	330.011

Boundary St. B.M.

1/2 1/4
West
Evang.
Twp.

332.724

BM NW Univ & Iowa Plg.

325.50
356.495

T.P.

5.092 327.632

T.P. 3.305 359.800 6.256 353.544

3.798 331.430

~~T.P. 2.875 356.419~~

BM Tie Pt. Mort. Boundary

4.690 326.740

325x
BM SW Univ & Wash. Plg.

4519 351.900 351.911

& Dwight
T.P.

6.249 325.181

T.P. 8.953 341.466

T.P. 2.237 327.418 8.515 318.903

T.P. 0.914 348.380 8.171 340.209

2.140 321.043

T.P. 0.790 340.999 6.960 334.039

BM Spk. Cor. Post NW
Boundary & Myrtle

4.670 316.373

1.140 335.179

T.P. 4.780 316.263

BM NW Univ & Pueblo Plg.

1.735 333.444

T.P. 4.122 320.385

T.P. 12.750 322.429

BM Hub NW Myrtle & Franklin

4.913 315.472

T.P. 6.661 329.090 4.560 324.530

T.P. 4.608 315.777

T.P. 6.762 331.292 2.600 328.692

T.P. 10.707 326.484 0.794 325.690

~~T.P. 6.397 335.089~~

7.743 333.433

BM Spk. Pole W side Boundary
1st Pole S of house * 3785 Boundary.

1.150 333.939

BM SE Myrtle & Webster Spk.

6.253 327.180

T.P. 2.774 332.315

" SW " Wash. "

4.764 328.669

T.P. 4.154 336.469 5.838 330.631

T.P. 3.147 329.489

3.140 333.771

5.367 334.856

BM Tie Pt. Mort. for Boundary

3.021 330.750

BM SW Myrtle & Nash Spk.

5.025 329.831

& Landis

5.510 328.261

T.P. 5.290 329.566

4.463 332.724

1.532 331.098

BM SW Myrtle & Herman Spk.

6.045 325.053 326.025

See page 41

See page 41
for numbers

Nash St BM²

BM SW Nash & Univ. Plug. 351.900

T.P. 2535 354.435 7.299 347.136

2340 349.476

BM SW Nash & Wightman Plug. 3092 346.384

T.P. 6760 342.716

T.P. 2866 345.582 6610 338.972

3690 342.662

BM NW Nash & Landis Plug. 4221 338.441

T.P. 4636 338.026

T.P. 5238 343.264 5250 338.014

3470 341.484

BM NE Nash & Dwight Plug 17. 4126 337.358

Eucalyptus stump. T.P. 6029 335.455

T.P. 3475 338.930 5398 333.532

3380 336.912

BM SW Nash & Myrtle Spk. 6135 330.777 329.831

Du fag 42

Myrtle St BM²

1/2 1/4 West Evans Devise

BM SW Myrtle & Hermann Spk. pole. 326.025

T.P. 6059 332.084 1373 330.711

BM SW Myrtle 42-80 334.991 4.170 330.821

32st Spk TP 5.129 329.862

BM SW Myrtle Spk 3473 333.335 3673 329.662

32st Spk TP 6390 326.945

TP 0.359 327.304 11.061 316.243

BM NW Myrtle 4.520 320.763 4.291 316.472

33 TP 4.745 316.018

BM NW Myrtle & Grand Spk 8.311 324.329 6.954 317.375

Conjunct TP 1.022 323.307

TP 7.474 330.781 2.946 327.835

BM The Mon. Grand & Dwight 5.448 333.283 5.550 327.733

TP 4.415 328.868

TP 4.990 333.858 3.904 329.954

BM The Mon. Grand & Landis 6.359 336.313 4.584 331.727

TP 3.688 332.625

BM Spk. pole 5.400 338.025 3.990 334.935

W. Grand 1st & 2nd 5th & 6th 5785 boundary TP 7.770 330.255

2.135 332.390

BM The Mon. Grand & Wightman 8.389 324.002

TP	332390	7.880	324 510
TP	3.754	328.264	0.708 328.056
	8.461	336.517	
BM NW Boundary & Univ Plug	3075	333.442	333.444

1/4
West
Eva 90
Eva 100

~~North~~ St BM^s

32st

42

BM SW 1/4 & John Plug	32	351.911	✓✓
TP	2.765	354.676	7.222 347.454
	3.212	350.666	
BM SW 1/4 & Wightman Plug	32	4268	346.398
TP		6.889	343.777
TP	2.911	346.688	7.049 339.639
	3.530	343.169	
BM NW 1/4 & Glandie Plug	32	4.703	338.466
TP		4.189	338.980
TP	4.563	343.543	5.634 337.909
	4.050	341.959	
BM NW 1/4 Dwight Plug Stump Exc Tree	32	4.558	337.404
TP		6.149	335.810
TP	3.950	339.760	6.076 333.684
	3.427	337.111	
BM SW 1/4 & Myrtle Spk	32	6.300	330.811 330.821

Univ - Herbert

				315.825	✓
BM NW Univ & Park Blvd SpK				315.825	✓
T.P.	0.938	316.763	7.150	307.613	
	1.064	310.677			
T.P.					✓
BM NW Univ & Center Plug			6.795	303.882	✓
	3.994	307.776			
BM SW Univ & Herbert Plug			5.095	302.681	✓
T.P.			6.030	301.746	✓
	2.782	304.528			
BM NW Herbert & Essex Plug			5.912	298.666	✓
T.P.			6.995	297.533	✓
	2.897	300.430			
BM NE Herbert & Rob'son Plug			6.376	294.054	✓
	6.035	300.089			
BM SE Robinson & Center SpK			4.990	295.099	✓
T.P.			4.942	295.147	✓
T.P.	1.565	296.712	9.380	287.332	
T.P.	3.384	290.716	0.590	290.126	
T.P.	11.684	301.810	0.539	301.271	
	7.500	308.771			

1/31/4

Robinson - Georgia

43

				308.771	✓
BM NE Robinson & Park Blvd SpK				308.771	✓
T.P.					✓
			5.100	303.671	
T.P.	7.919	311.590	1.545	310.045	
	7.390	317.435			
BM SW Robinson & Georgia Plug					✓
	5.444	311.991			✓
T.P.			2.195	315.240	
T.P.	10.854	326.094	0.212	325.882	
T.P.	8.709	334.582	1.904	332.678	
T.P.	7.227	339.905	3.961	335.944	
	5.022	340.966			
BM SW Georgia & Univ Plug					✓
	4.542	336.424			✓
T.P.			6.680	334.286	
T.P.	2.030	336.316	11.077	324.939	
T.P.	8.390	325.329	8.539	316.790	
	3.283	320.073			
BM NW Univ & Park Blvd SpK					✓
	4.225	315.848			✓
					315.830

B.M. NW. Herman & Upas. Spk.

322.259

T.P. 2585 324.844 5.866 318.978

T.P. 4630 323.608 5.001 318.607

2.056 320.663

B.M. NW. Herman & Thorn. Spk.

1.307 319.356

T.P. 9392 311.271

T.P. 1323 312.594 7.965 304.629

3328 307.957

B.M. NW. Herman & Redwood.
Spk. Cor. Road fence.

6447 301.510

T.P. 2480 305.471

T.P. 4106 309.583 7.940 301.643

12.806 314.449

B.M. NW. Hart & Redwood Spk.

12.140 302.307

T.P. 0466 313.983

3380 317.363

B.M. 10W. NW. Redwood & Grim Spk.

5619 311.744

T.P. 7.002 310.361

T.P. 7.933 318.094 0.221 317.873

6.955 321.828

1/8/14
West
Evans
Trove

324.828

B.M. SE. Grim & Thorn. Plug.

3930 320.898

T.P. 3325 321.505

T.P. 6440 327.648 4.039 323.604

5690 329.294

B.M. SW. Grim & Upas. Plug.

4256 325.038 325.035

44

29 of BM's

BM NE Ups & Kansas Plug.

325.522

J

4.868 330.390

BM SE 29 & Ups - Plug

4.543

325.847

J

T.P.

5.138

325.252

T.P.

3.010

328.262

5.856

322.406

4.049

326.455

BM NE 29 & Thorg. Plug.

5.240

321.215

J

T.P.

1.301

325.154

T.P.

3.482

328.636

4.880

323.756

T.P.

3.473

327.229

6.046

321.183

2.078

323.261

BM SE 29 & Redwood Plug.

3.315

319.946

J

T.P.

5.668

317.593

3.470

321.063

BM NE 29 & Palm Plug.

6.159

314.904

314.915

J

T.P.

6.330

314.733

T.P.

3.493

318.226

6.720

311.506

T.P.

1.888

313.394

1.098

302.412

2.916

305.328

BM NW 29 & Nutmeg Plug.

6.365

298.963

J

1/4/14
West
Eads
Revised

305.328

46

T.P.

2.960

302.368

T.P.

11.001

313.369

1.928

311.441

6.748

318.189

BM NE Palm & 29 Plug.

3.278

314.911

314.915

J

30 St & Kalmia St BM^s

BM NE 308 Ivy Spk 286.241

TP 6.493 297.734

BM SE 30 & Juniper Plug 3.731 289.003

TP 4.460 288.274

2.413 290.687

BM NW 308 Juniper Plug 5.605 285.082

TP 6.071 284.616

TP 8.738 293.354 3.751 289.603

4.947 294.550

BM SE 30 & Kalmia Plug 4.842 289.708

TP 4.863 289.687

TP 4.440 294.121 4.327 289.800

5.903 295.703

BM SE Kalmia & 31 Plug 3.654 292.049

TP 3.277 292.426

TP 6.069 298.495 3.633 294.862

6.214 301.136

BM SW Kalmia & 32 Plug 3.520 297.616

TP 2.635 298.501

5.650 304.151

Holt
West
Evans
Devine32 St BM^s

304.151

TP 5.207 298.947

5.260 304.204

BM SW 32 & Laurel Plug 5.603 298.601

TP 3.479 300.725

4.993 305.718

BM SW 32 & Maple Plug 4.604 301.114

TP 8.138 297.680

TP 0.702 298.382 8.715 289.667

0.295 289.962

BM SW 32 & San Marcos Plug 4.167 285.795

TP 3.846 286.116

TP 5.690 291.886 3.879 287.927

T 5.618 293.543

BM SE San Marcos & Burlington Dr. 4.560 288.985

TP 3.340 290.205

TP 6.374 296.579 4.157 292.422

TP 4.917 297.339 5.435 291.904

2.159 294.763

BM SE San Marcos & Laurel Plug 5.980 288.783

3.754 292.537

17

30 St BM²

T.P.		292.537	4159	288.378	
T.P.	5639	294.017	4082	289.935	
	4500	294.435			
T.P.			4725	289.710	289.708 ✓
BM SE 30 & Kalmia Plug.					
T.P.	4234	293.944	8835	285.109	
	5862	290.971			
BM NW 30 & Juniper Plug.			5690	285.081	
T.P.			2686	288.285	
	4430	292.715			
BM SE 30 & Juniper Plug.			3709	289.006	
BM NE 30 & Ivy Spk.			6476	286.239	286.241 ✓

1/2 1/4
West
Evans
Terrace31 St BM²

						48
BM SE 31 & Kalmia Plug.						✓
		2.214	294.263			✓
BM NE 31 & Juniper Plug.				7.190	287.073	✓
T.P.				7.767	286.496	
T.P.	4227	290.723		7.160	283.563	
	3023	286.586				
BM NW 31 & Ivy Plug.				3.598	282.988	✓
T.P.				6.431	280.155	
T.P.	2119	282.274		8.360	273.914	
	0277	274.191				
BM NE 31 & Grape Plug.				5.643	268.548	✓
T.P.				3.948	270.243	
T.P.	7622	277.865		2.615	275.190	
	6.965	282.155				
BM SW Grape & 32 St Plug.				5.200	276.955	✓
T.P.				3.612	278.543	
	1.962	280.505				
BM SW Grape & Bancroft Spk.				7.260	273.245	✓
T.P.				1.973	278.532	
	3.295	281.827				

32 St & Bancroft St BM^s

TP.		281.827	9.619	272.208	
	0.444	272.652			
BM NE 32 & Fir. Plug.			4.570	268.082	✓
TP.			11.134	261.518	
TP.	0.592	262.110	10.307	251.803	
TP.	0.415	252.218	9.472	242.746	
TP.	0.235	242.981	9.500	233.481	
TP.	1.023	234.504	8.642	225.862	
	7.588	233.450			
BM SE 32 & Elm Spk.			9.971	223.479	✓✓
TP.			3.269	230.181	
	7.695	237.876			
BM SW Elm & Bancroft Spk.			10.490	227.386	✓
TP.			0.248	237.628	
TP.	10.113	247.741	1.062	246.679	
TP.	9.660	256.339	1.165	255.174	
	8.230	263.404			
BM NW Bancroft & Fir. Plug.			5.700	257.704	✓
TP.			0.732	252.672	
TP.	9.050	271.722	0.924	270.798	
	6.080	276.878			
BM SW Bancroft & Grape Spk.			3.634	273.244	✓✓
				273.245	

1/2 1/4
West
Evans
Devise

19

BM SW 32 & Grape. Plug.					276.955	✓
TP.	8.595	285.550	3.105	282.445		
	4.220	286.665				
BM NW 32 & Hawthorn. Plug.			4.604	282.061		✓
TP.			4.200	282.465		
TP.	4.087	286.552	6.600	279.952		
TP.	2.241	282.193	7.551	274.642		
TP.	1.367	276.009	1.2270	263.739		
TP.	1.332	265.971	2.192	262.879		
TP.	11.379	274.258	1.108	273.150		
	8.557	281.707				
BM NW Hawthorne & Fern. Plug.			4.664	277.043		✓
TP.			2.707	279.000		
	7.491	286.491				
BM NW Fern & Ivy. Plug.			2.485	284.006		✓
TP.			0.801	285.690		
	3.969	289.659				
BM NE 32 & Ivy. Spk.			3.431	286.228		✓✓
						286.241

Juniper St B.M.s

BM SW 32 & Kalmia Plug. 297.616

2490 300.106

BM NE 20 32 & Juniper Spk. 5.165 294.941

T.P. 5.945 294.161

5648 299.809

BM SE Juniper & Buxcroft Plug. 5.935 293.874

T.P. 7.867 292.742

T.P. 0.823 293.565 9.227 284.338

T.P. 0.223 284.561 8.880 275.681

0.473 276.154

BM SE Juniper & 33 Plug. 5.140 271.014

T.P. 10.103 266.051

T.P. 0.498 266.549 8.232 258.317

0.482 258.799

BM SE Juniper & Felton Plug. 5.800 252.999

T.P. 9.887 248.912

T.P. 0.290 249.202 9.135 240.067

5.174 245.241

BM NW Felton & Ivy Plug. 4.147 240.494

1/3 1/4
West
Everts
Denise

Hawthorne & Ivy B.M.s

50

T.P. 245.241 1.665 240.576

T.P. 7.266 247.842 1.611 246.231

T.P. 8.932 255.163 1.193 253.970

6.892 260.862

BM NW Felton & Hawthorn Plug. 5.509 255.353

T.P. 2.962 257.900

7.236 265.136

BM NE 33 & Hawthorne Plug. 6.978 258.158

T.P. 0.034 265.102

T.P. 9.959 275.061 2.220 272.841

10.795 283.636

BM SE 33 & Ivy Plug. 5.025 278.611

T.P. 1.914 281.722

9.421 291.143

BM SE Ivy & Buxcroft Plug. 4.199 286.944

T.P. 4.567 286.576

T.P. 9.065 295.641 2.696 292.945

T.P. 4.663 297.608 2.531 295.071

5.780 300.857

BM SW 32 & Kalmia Plug. 3.246 297.611 297.616

Date of B.M.^s1/2 1/4
West
Expts.
SewieDate & Cedar B.M.^s

51

BM SE. 308 Juniper Plug.			✓	289.003
4.593	293.596			
BM SE. Juniper & Oak Plug.	5.584	288.012	✓	
T.P.	5.835	287.761		
T.P.	2.627	290.388	6.322	284.066
	2.001	286.067		
BM SE. Oak & Ivy Plug.	2.998	283.069	✓	
T.P.	7.100	278.967		
	1.399	280.366		
BM SE. Oak & Hawthorn Plug.	4.325	276.041	✓	
T.P.	8.539	271.827		
	1.246	273.073		
BM SE. Oak & Grape Plug.	5.038	268.035	✓	
T.P.	9.379	263.694		
T.P.	0.415	264.109	8.888	255.221
	1.171	256.392		
BM NE. Oak & Fir Plug.	3.284	253.108	✓	
T.P.	6.068	250.324		
	2.443	252.767		
BM NE. Oak & Elm Plug.	5.790	246.977	✓	

T.P.	252.767	7.010	245.757
T.P.	0.905	246.662	8.783
	1.230	239.109	
BM NE. Oak & Oak Plug.	2.064	237.045	✓
T.P.	11.323	227.786	
T.P.	0.419	228.205	7.047
	0.955	222.113	
BM NE. Oak & Cedar Plug.	5.022	217.091	✓
T.P.	6.102	216.011	
	3.600	219.611	
BM NE. Oak & Beech Plug.	5.060	214.551	✓
BM NE. Oak & Cedar Plug.		217.091	✓
	2.261	219.352	
BM SE. Cedar & 29 Plug.	6.411	212.941	✓
T.P.	5.737	213.615	
	3.070	210.685	
BM NE. Cedar & Granddod	4.715	214.970	✓
T.P.	5.040	214.845	
	9.140	220.785	

Granada B-M^s

	220.785				
BM NE Cedar & 28 Plug.	1300	219.495	✓✓		
T.P.	9.140	214.45			
	5140	216.785	✓✓ ok 938		
BM NW Cedar & Granada Plug.	3829	212.956	212.960		
T.P.	7.173	209.612			
	5172	214.784			
BM SW Granada & Lata Plug.	6.843	207.941	207.950	✓✓ ok	
T.P.	1.210	213.574			
	7.540	221.114			
BM SW Granada & Elm Plug.	5.360	215.754	215.764	✓✓ ok	
T.P.	1.910	219.204			
	8.507	227.711			
BM NW Granada & Fir Spk.	1.608	226.103	226.117	✓✓ ok	
T.P.	0.210	227.501			
	7.500	235.001			
BM SE Granada & Grape Plug.	2.066	232.935	232.952	✓✓ ok	
T.P.	7.186	240.121	0.015	240.106	
T.P.	10.484	250.590	0.719	249.871	
	6.877	256.748			

Grape & Fern B-M^s

	256.748				52 ✓✓
BM NW Grape & 29 1/2 Plug.	5.845	250.903	250.923		
T.P.	0.255	256.493			
	9.197	265.690	0.748	264.942	
	8.285	273.227			
BM SE Grape & 16 1/2 Plug.	5.216	268.011	268.035	✓✓	
T.P.	1.207	273.231	42	1.207	272.094
	8.266	280.310			
BM SW 30 1/2 Grape Plug.	5.293	275.017		✓✓	
T.P.	9.084	271.226			
	2092	273.318			
BM SE Grape & Fern Plug.	3.851	269.467		✓	
T.P.	7.350	265.968			
	1808	267.776			
BM SW Fern & Fir Spk.	6.100	261.676		✓✓	
T.P.	8.415	259.361			
T.P.	0.448	259.809	8.971	250.838	
T.P.	1.865	252.703			
BM SW Fern & Elm Spk 16 1/2	1.960	250.723		✓✓	
T.P.	5.617	247.076			
	5.958	253.034			

✓ from here see
N. main. long
54 L. line

T.P. 253034 9892 243.736

1210 244.946

B.M. NW. Fern & Date Plug. 9043 235.903

T.P. 10260 234.686

T.P. .066 234.752 7015 227.737

3394 231.131

B.M. S.W. Fern & Cedar Plug. 5038 226.093

T.P. 3535 227.596

7203 234.799

T.P. 3124 231.075

5743 236.818

B.M. ^E Fern & Beech Plug. 4743 232.075

T.P. 3704 233.114

5234 238.348

B.M. Fern & Ash Plug. 5328 233.020

T.P. 4758 233.590

2475 236.065

T.P. 6681 227.384

2525 231.909

B.M. SE. 30 & A. Plug. 1.894 227.015

231.909

T.P. 5508 226.401

3710 230.111

B.M. SE. Curb of A. St. 1st line
with E. Curb of Grave produced S.
Brass Plug. 5447 224.664

4040 218.704

3158

B.M. SW. A & ~~Ida~~ Spk. 5076 223.628

T.P. 3325 225.379

7002 332.381

B.M. SW. A & Ida Plug. 5003 227.378

T.P. 0129 232.252

8408 240.660

B.M. SW. A & Ida Spk. Pole 2358 238.302

T.P. 2591 238.067

4578 242.647

B.M. NW. 3rd Grove Plug.

T.P. 7339 235.308

2860 238.168

B.M. NW. Ash & ^{31st} ~~Grave~~ Plug. 3124 235.044

T.P. 6770 231.398

4992 236.390

	236.390				
BM SE 31 Dale & Beach Plug	5815	230.575			
TP	5815	330.575			
TP	3798	232.592			
3.003	235.595				
BM SW Beach & Grove Plug	2540	232.055			
TP	7313	228.282			
1.107	229.389				
BM SW Grove & Cedar Plug	3.957	225.432			
TP	6.520	222.869			
3.563	226.432				
BM NW Grove & Dale Spk Pole	3184	223.248			
TP	3184 0.080	225.752			
11.064	236.816				
BM NW Dale & Fern Plug	0.938	235.878	235.903		
TP	6.002	241.905	4.210	237.695	
	2.099	239.794			
BM NE Dale & Dale	2.754	237.040			
TP		11.218	228.576		
TP	0.350	228.926	7.609	221.318	
BM NE Dale & Cedar	2.412	223.730	6.628	217.102	217.091

BM NE Dale & Beach Plug	2	214.551			
	4.834	219.381			
TP		2.363	217.018		
	3.474	220.492			
BM SE Dale & Ash Plug	5.483	215.009			
TP		6.636	213.856		
	2.450	216.306			
TP		8.333	207.773		
	2.529	210.502			
BM NW Dale & A Spk Pole	8.925	201.577			
		217.427			
TP		2.910	207.592		
	0.040	207.632			
BM NE B & SE of bridge	10.623	197.009			
TP		10.160	197.492		
	3.810	201.282			
TP		3.820	197.462		
	5.047	202.507			
BM SE B & 28 Plug	5.584	196.925			
	7.883	204.808			
TP		1.318	203.490		
	6.670	210.160			

237.695

196.963

	210.160		
BM NW Ash & Granada Plug.	4706	205.454	
T.P.	4801	205.359	
6.150 - 211.509			
T.P.	2460	209.049	
5.140 - 214.189			
BM NW Ash & Granada Plug.	3295	210.894	
T.P.	8636	205.553	
2.621 - 208.174			
BM NE Ash & 29 Plug.	4.198		
T.P.	4.010	204.164	
5.501 - 209.665			
T.P.	2.552	207.113	
8.736 - 215.849			
	1.330	214.519	

Date & 28	BM	55
	NE Dale & Bacch. Plug.	214.551
5.967 - 220.518		
T.P.	3525	216.693
1.782 - 218.475		
BM SE Dale & Ash - Plug.	3480	214.995
T.P.	6.220	212.255
1.015 - 213.270		
BM NW Dale & A Spk Pole	11.715	201.555
T.P.	4.839	208.431
3.789 - 212.220		
T.P.	12.662	199.558
2.141 - 201.699		
BM S Curb B St 50 E bridge Plug	4.378	197.321
T.P.	4.566	197.133
4.477 - 201.610		
T.P.	4.388	197.222
4.739 - 201.961		
T.P.	5.005	196.956
BM SE B & 78 Plug.		196.963
T.P.	7.883	204.839
T.P.	1.318	203.521
6.670 - 210.191		

Granada BM^s

210.191

BM NW A of Granada Plug

4.706

705.485

W w/club
205.497

TP

4.801

705.390

6.150 211.540

TP

2.460

709.080

5.140 214.720

BM NW Ash & Granada Plug

3.295

710.925

W .K
210.926

TP

8.636

705.584

2.621 208.205

BM NE Ash & 79 Plug

4.198

704.008

W

TP

4.010

704.195

5.501 209.696

TP

2.552

707.144

8.736 215.880

BM NE Dark & Beach Plug

1.330

714.550

W
214.551

BM SE A of 30 of Plug

227.015

56

0.872

TP
BM NE 30 of B Plug

Ferny B M^s

BM NW 1/4 Fern Plug			235.903	235.903	✓
TP	0958	236.861	8530	228.331	
	3033	231.364			
BM SW Fern & Cedar Plug			5272	226.092	226.092 ✓
TP			4206	227.158	
	7205	234.363			
TP			2785	231.578	
	5505	237.083			
BM SE Fern & Beech Plug			5028	232.055	232.065 ✓
TP			3720	233.363	
	4623	237.986			
BM NW Fern & Ash Plug			4988	232.998	233.010 ✓
TP			6898	231.088	
	2775	233.863			
BM SE 30 & A Plug			6870	226.993	227.015 ✓
TP			7622	226.241	
	3508	229.749			
BM S Curb & in line with E Curb of Grove			5101	224.648	224.650 ✓
TP			5745	224.004	
	4118	228.122			

Ast. Beach B M^s

					228.122	57
BM SW Ash 31st Spk				4498	223.624	223.625 ✓
TP				2422	225.700	
			6090	231.790		
BM SE Ash Ida Plug				4399	227.391	227.378 ✓
TP				1070	230.720	
TP	8394	239.114	1640	237.474		
	6910	243.484				
BM SW Ida & Ash Spk Pole				5175	238.309	238.302 ✓
TP				7610	235.874	
TP	2250	238.124	5445	232.679		
	3010	235.689				
BM SE 31 & Beech Plug				5116	230.573	229.575 ✓
TP				2860	232.829	
	3422	236.657				
BM SW Beech & Grove Plug				3588	233.063	233.055 ✓
TP				7231	229.420	
	2240	231.660				
TP BM SW Grove & Cedar Plug				6190	225.470	✓
	5103	230.573				

Fern BM³

230.573

TP		3650	226.923	
	4.151	231.074		
BM SW Cedar & Fern Plug		4.973	226.101	✓ 226.092
TP		0.766	230.308	
	7.981	238.289		
BM NW Fern & Date Plug		2.383	235.906	✓ 235.923

30 BM⁵

58

BM SE 30 A Plug			226.993	✓ 227.015
	0.872	227.865		
TP			7.749	220.116
BM NE 30 B Plug			2.380	222.496
TP			12.654	209.862
TP	0.522	210.384	8.800	201.584
TP	0.552	202.136	6.974	195.162
	3.559	198.721		
BM SW 30 C Plug			3.790	194.931
TP			5.521	193.200
	6.260	199.160		
BM SE 30 D Plug			4.132	195.878
TP			6.820	192.600
	0.990	193.130		
BM NE 30 E Plug			5.526	187.604
TP			8.255	184.895
TP	0.740	185.135	10.054	175.081
TP	0.158	175.239	7.703	167.536
	0.246	167.782		

Continued from
here
Book 937
Page 12

30 BM²

167.782

BM SE 30 G F Plug		0.810	166.972		
TP		8.456	159.326		
	3.326	162.652			
BM NW 30 G Plug		5.629	157.032		
TP		7.789	154.863		
TP	0.804	155.667	6.732	148.935	
	1.845	150.780			
BM SW 30 G H Spk. Pole		8.297	142.483		
TP		8.270	142.510		
TP	0.223	142.733	9.620	133.113	
TP	0.521	133.634	9.502	124.132	
TP	0.366	124.498	8.119	116.379	
	2.987	118.566			
BM SW 30 G Plug		4.762	113.804		
TP		12.868	105.698		
TP	1.120	106.818	8.476	98.342	
TP	0.536	99.878	9.446	89.432	
TP	0.187	89.619	8.641	80.978	
	0.580	81.558			

K 51 BM²

81.558

59

BM SW 30 S J Plug		4.575	76.983		
TP		6.024	75.534		
TP	3.525	79.059	6.070	72.989	
	4.466	77.455			
BM NW 30 K Plug		4.445	73.010		
TP		3.938	73.517		
	7.650	81.167			
BM SE K 829 Plug		1.714	79.453		
TP		1.390	79.777		
TP	7.245	87.022	3.028	83.994	
	5.810	89.804			
BM NE K 828 Plug		3.863	85.941		
TP		3.847	85.957		
TP	8.560	94.517	1.222	93.295	
TP	8.040	101.335	1.738	99.597	
	6.331	105.928			
BM NW K 827 Plug		2.940	102.988		
TP		5.472	100.456		
TP	3.720	104.176	7.285	94.891	
	0.373	95.264			

25 St BM^s

95.264

BM SWK 826-Plug.

8.409 86.855

old marker BX
86.879

T.P. 8.510 86.754

T.P. 1.049 87.803 7.998 79.805

T.P. 2.151 82.663 6.395 76.268

7.810 84.078

BM NWK 825-Plug.

7.141 76.937

wh 98. plug
76.937

T.P. 0.038 84.040

T.P. 9.220 93.260 0.289 92.971

86.94 101.665

BM SE-258 J-Plug.

1.794 99.871

T.P. 1.512 100.153

T.P. 7.066 107.219 0.025 107.194

T.P. 9.333 116.527 0.297 116.230

T.P. 9.075 125.305 0.509 124.796

8.763 133.559

BM NE 258 I-Plug.

2.880 130.679

old 116. P.M.
130.669

T.P. 8.142 138.821 0.651 138.170

T.P. 8.799 146.969 0.982 145.987

8.818 154.805

25 St BM^s

11

154.805

60

T.P. 0.746 154.059

7.838 161.897

BM NW 258 H-Plug.

4.922 156.975

wh 156.950

T.P. 0.432 161.465

T.P. 9.585 170.850 1.256 169.594

7.775 177.369

BM NW 258 G-Plug.

5.198 172.171

wh 172.135

T.P. 1.861 175.508

8.314 183.822

BM NW 258 F-Plug.

3.423 180.399

wh 180.357

T.P. 2.800 181.022

T.P. 6.180 187.202 3.610 183.592

6.732 190.324

BM NW 258 E-Plug.

5.795 184.529

wh 184.491

T.P. 3.509 186.816

6.170 192.986

BM SW 258 D-Plug.

5.937 187.049

wh

T.P. 3.694 189.292

6.544 195.836

BM SW 258 C-Plug.

4.850 190.986

wh 190.962

BST B.M.²

195.836

TP. 2.754 193.982

6.818 199.900

BM NW 25 B. Plug. 2.961 196.939 ^{wh} 196.920

TP. 0.748 199.152

TP. 8.742 207.894 5.073 202.821

1.702 204.523

BM SW B 26 Plug. 7.591 196.932 ^{wh} 196.925

TP. 7.438 197.085

TP. 4.764 201.849 5.120 196.729

TP. 4.684 201.413 4.953 196.460

4.619 201.099

BM NW B 27 Plug. 4.070 197.009 ^{wh} 196.973

TP. 4.516 196.564

TP. 5.277 201.841 4.906 196.935

4.496 201.431

BM SE B 28 Plug. 4.465 196.966 ^{wh} 196.963

TP. 4.690 196.741

TP. 4.261 201.002 3.766 197.236

4.510 201.746

BST

201.746

61

BM SL B 50 E bridge 4.405 197.341 197.321

TP. 0.240 200.706

TP. 1.448 209.154 1.438 207.716

TP. 1.565 216.301 1.315 214.986

7.086 222.072

BM NE 50 B Plug. 1.946 220.126 220.116

D-St B.M.^s

BM SE 300 D Plug

195.028

✓
No. 195.077

T.P. 1.894 196.922 10.669 186.253

T.P. 0.304 186.557 9.572 176.985

T.P. 0.216 177.201 8.708 168.493

T.P. 3.080 171.573 4.169 167.404

T.P. 6.197 173.601 0.968 172.633

T.P. 8.727 181.360 0.680 180.680

8.145 188.825

BM SE 1/2 879 Mon.

6.646 182.179

182.228

T.P. 2.269 186.556

T.P. 4.957 191.513 7.727 183.786

T.P. 0.875 184.661 8.773 175.888

T.P. 0.766 176.654 8.862 167.792

0.618 168.410

BM NE 1/2 878 Mon.

4.836 163.574

163.623

T.P. 7.684 160.726

T.P. 3.378 164.104 4.681 159.423

T.P. 8.825 168.248 0.744 167.504

T.P. 8.350 175.854 0.420 175.434

8.540 183.974

D-St B.M.^s

183.974

62

T.P. 0.316 183.658

T.P. 8.688 192.346 0.758 191.588

T.P. 6.445 198.033 4.810 193.223

4.070 197.293

BM SE 1/2 877 Mon.

5.840 191.453

191.502

T.P. 5.669 191.624

T.P. 2.954 194.578 8.078 186.500

T.P. 1.663 187.163 8.576 178.587

T.P. 0.851 179.438 7.552 171.886

T.P. 3.374 175.260 3.324 171.326

T.P. 7.010 178.336 0.860 177.476

T.P. 8.831 186.307 0.667 185.646

8.232 193.878

BM SW 1/2 876 Plug.

4.950 188.928

188.977
788.945

T.P. 4.317 189.561

T.P. 3.780 193.341 5.085 188.256

3.720 191.976

BM SW 1/2 875 Plug.

4.780 186.986

187.026

186.927
186.973

U.S.

BM SW 0825 - Plug

187.49

T.P. 4.990 192.039 3.760 188.279

5.192 193.471

BM SW 0826 - Plug

4.486 188.985

T.P. 3.901 189.563

T.P. 4.318 193.881 8.236 185.645

T.P. 0.619 186.264 9.002 177.262

T.P. 1.098 178.360 7.003 171.357

T.P. 3.894 175.251 3.381 171.870

T.P. 7.550 179.820 0.829 178.591

T.P. 8.745 187.336 0.849 186.487

BM SE 0827 8.190 194.677 2.556 191.521

T.P. 3.040 191.637

T.P. 6.279 197.916 6.338 191.578

T.P. 0.717 192.295 8.659 183.636

T.P. 0.513 184.149 8.714 176.435

T.P. 0.526 175.961 8.524 168.427

T.P. 0.619 168.046 8.580 169.466

T.P. 4.728 164.194

BM NE 28A D

0.560 169.634

U.S.

164.194

63

T.P. 3.460 160.734

T.P. 7.772 168.506 0.745 167.761

T.P. 8.975 176.736 0.852 175.884

T.P. 8.686 184.570 0.842 183.728

T.P. 7.918 191.646 5.105 186.541

2.365 188.906

BM SE 0829 Mon

6.692 182.214

T.P. 8.240 180.666

T.P. 8.712 181.378 8.766 192.612

T.P. 1.196 173.808 6.431 167.377

T.P. 4.304 171.681 3.214 168.467

T.P. 8.466 176.933 0.036 176.897

T.P. 9.758 186.655 0.403 186.252

10.980 197.232

BM SE 0830 Plug

2.160 195.072 195.028

1st BM^s

BM SW 36
& S. Plug.

10.071 87.054 76.983

T.P. 0.801 86.253

7.930 94.183

BM NE I 829 3891 90.292

T.P. 1193 92.990

T.P. 8.157 101.147 2042 99.105

T.P. 9.920 109.025 1824 107.201

T.P. 10.007 117.208 0.658 116.550

T.P. 5.390 121.940 8680 113.260

BM NE I 827
Mon

11.290 124.550 2257 122.293

T.P. 1.964 124.257 11.020 113.237

T.P. 0.415 113.712 7642 106.070

T.P. 0.909 106.979 18.068 96.911

T.P. 0.219 97.130 6.985 90.145

T.P. 1.610 91.755 1530 90.225

T.P. 7.111 97.336 0.123 97.213

9.428 106.641

BM SE I 828 Mon. 4005 102.636

T.P. 11.497 95.144

1st BM^s

45

95.144

T.P. 5.340 100.484 2.140 98.344

T.P. 5.210 103.554 0.391 103.163

T.P. 10.484 113.647 0.481 113.166

T.P. 10.917 124.083 0.343 123.740

T.P. 9.928 133.668 0.492 133.176

11.649 144.825

BM SE I 827 - Plug Curb. 2748 142.077

T.P. 3.004 141.821

T.P. 6.400 148.221 0.540 147.681

T.P. 10.168 157.849 0.020 157.829

T.P. 9.474 167.303 0.180 167.123

T.P. 10.282 177.405 1.597 175.808

T.P. 4.013 179.831 10.413 169.358

T.P. 0.513 169.931 12.782 157.149

T.P. 0.239 157.388 9.423 147.965

1.260 149.225

BM SW I 826 Sept. Plug 0.570 143.655

T.P. 9.410 139.915

0.025 139.840

64

25 ST

139840

T.P.			9.995	129.845	
T.P.	0.082	129.927	9.885	120.042	
T.P.	0.246	120.288	8.580	111.708	
T.P.	0.011	111.719	6.930	104.789	
T.P.	4.303	109.892	2.394	106.698	
T.P.	9.096	115.794	0.088	115.706	
T.P.	8.887	124.593	0.705	123.888	
	8.933	132.821			
BM NE I 825 Plug Eurb			2.202	130.619	130.619
"				130.619	
T.P.	1.588	132.267	11.077	121.190	
T.P.	0.357	121.547	9.351	112.193	
T.P.	0.161	112.354	9.448	102.906	
	0.875	103.781			
BM SE 250 J Plug			3.936	99.845	99.871
T.P.			12.014	91.767	
T.P.	0.790	92.557	8.620	83.937	
T.P.	10.15	84.952	7.759	77.193	
	5.680	82.873			

K 57

82.873

65

BM NW 258 K Plug		5.730	76.943	76.937	
T.P.		2.890	79.983		
T.P.	6.344	86.327	0.862	85.465	
	8.851	94.316			
BM SW K 26 Plug		7.473	86.843	86.855	
T.P.		0.941	93.375		
T.P.	9.565	102.940	2.244	100.696	
T.P.	5.633	106.329	3.784	102.545	
	2.998	105.543			
BM NW K 27 Plug		2.553	102.990	102.988	
T.P.		7.755	97.788		
T.P.	1.332	99.120	10.729	88.391	
	1.740	90.131			
BM NE K 28 Plug		4.205	85.926	85.941	
T.P.		5.685	84.446		
T.P.	3.250	87.696	6.649	81.047	
	1.590	82.637			
BM SE 29 K		3.172	79.465	79.453	
T.P.		8.373	74.264		
	3.604	77.868			

30 ST B N²

77.868

BM. NW. K & 30 Plug. 4840 73.028 73.010

T.P. 5524 72.344

T.P. 6.371 78.715 2.785 75.930

6.422 82.352

BM. SW. 30 & J. Plug. 5349 77.003 76.983

T.P. 0.064 82.288

T.P. 10.573 92.861 0.106 92.755

T.P. 9.251 102.006 0.038 101.968

T.P. 8.371 110.334 0.160 110.179

8.900 119.079

BM. SW. 30 & I. Plug. 5253 113.826 113.804

T.P. 2.114 116.965

T.P. 9.302 126.267 0.321 125.946

T.P. 9.324 135.270 0.201 135.069

11.585 146.654

BM. SW. 30 & H. Spk. 4168 142.486 142.483

T.P. 2629 144.025

T.P. 7.371 151.396 1.322 150.074

8.434 158.508

30 ST B N²

158.508

66

T.P. BM. NW. 30 & G. Plug. 1.434 157.074 157.032

T.P. 6.515 163.589 1.330 162.259

9.498 171.757

BM. SE. 30 & F. Plug. 4.772 166.985 166.972

T.P. 1.313 170.444

T.P. 9.885 180.329 0.246 180.083

9.227 189.310

BM. NW. 30 & E. Plug. 1.663 187.647 187.604

T.P. 1.460 187.850

10.253 198.103

BM. SE. 30 & D. Plug. 3.016 195.087 195.028

T.P. 2.930 198.017 3.870 194.147

5.625 199.772

BM. SW. 30 & C. Plug. 4.810 194.962 194.931

T.P. 1.184 199.588

T.P. 8.881 207.469 0.489 206.980

T.P. 8.722 215.702 0.828 214.874

9.257 224.191

BM. NE. 30 & B. Plug. 3.991 220.140 220.116

B St B M^s

		274131			
T.P.			3994	221.037	
	7.217	228.254			
BM SE 30 & A - Plug.			1.222	227.032	226.993
BM NE 30 & B. Plug.				220.116	
T.P.	0.651	220.767	7.841	212.926	
T.P.	1.096	214.022	8.012	206.010	
T.P.	0.894	206.904	8.018	198.886	
	2.545	201.431			
BM SL B - 50' E. bridge			4.106	197.325	
T.P.			4.327	197.104	
T.P.	4.703	201.807	4.826	196.981	
	4.881	201.862			
BM SE 28 & 28. Plug			4.900	196.962	116.95
T.P.	5.041	202.003	4.550	197.453	
T.P.	3.790	201.243	5.070	196.173	
	4.892	201.065			
BM NW 27 & 27 Plug			4.098	196.967	197.009
T.P.			4.428	196.637	
	4.883	201.520			

25 St B M^s

									67
T.P.						201.520	4.454	197.066	
						201.713			
BM SW 26 & 26 Plug.						4.830	196.883	196.932	
T.P.						2.905	198.808		
T.P.	8.743	207.551				3.484	204.067		
T.P.	2.251	206.318				7.175	199.143		
	1020	200.163							
BM NW 25 & 25 Plug							3.272	196.891	196.939
T.P.							6.330	193.833	
T.P.	3.998	197.831					6.290	191.541	
	3.202	194.745							
BM SW 25 & 25 Plug							3.788	190.957	190.986
T.P.							6.312	188.433	
	3.160	191.593							
BM SW 25 & 25 Plug							4.594	186.999	187.049
T.P.							6.015	185.578	
	2.786	188.364							
BM NW 25 & 25 Plug							3.883	184.481	184.529
T.P.							5.795	182.567	
	5.216	185.785							

25 St BM²

185.785

BM 25 & F. Plug 5.438 180.347 180.399

TP 6.725 179.050

1.310 180.360

BM NW 25 & G. Plug 8.233 172.127 172.171

TP 10.479 169.881

TP 0.680 170.561 11.782 158.779

0.930 159.709

BM NW 25 & H. Plug 2.777 156.932 156.975

TP 9.818 149.891

TP 1.006 150.897 8.420 142.477

0.253 142.730

BM NE 25 & I. Plug 12.083 130.647 130.679

J. St. BM²

68

100.
77.010

BM SW 30 & J. Plug 76.980

TP 8.268 85.248 1.112 84.136

7.021 71.157

~~BM NE 30 & J. Mon~~ ^{Schem} 0.871 90.286

90.316

TP 1.540 89.617

TP 8.136 97.753 0.274 97.479

TP 9.317 106.796 1.360 105.436

TP 10.821 116.264 1.151 115.113

11.867 126.980

BM NE 30 & Hoff. Mon 4.673 122.307

122.337

TP 8.103 118.877

TP 3.070 121.947 8.251 113.876

TP 1.226 114.922 7.849 109.073

TP 10.400 108.116 7.662 100.454

11.676 112.130

BM SW Hoff & I. Mon 6.105 106.025

106.055

TP 7.625 104.505

19.57 106.462

Mon SE Hoff 3.821 102.641

102.671

IST BMS

ZG St. BMS

TP		106.462	6.483	99.979	
TP	6.301	106.280	4.443	101.837	
TP	1.853	103.690	1.294	102.396	
TP	10.713	113.109	0.570	112.539	
TP	10.089	127.628	0.140	122.488	
TP	9.070	131.558	0.764	130.794	
	11.593	142.387	0		
BM SE I & 27 Plug			0.310	142.077	142.107
TP			0.992	141.395	
TP	8.604	149.999	0.759	149.240	
TP	11.740	160.980	0.162	160.818	
TP	9.105	169.923	0.602	169.321	
TP	10.985	180.306	7.696	172.610	
TP	0.851	173.461	8.086	165.375	
TP	0.829	166.204	10.272	155.932	
TP	0.127	156.059	9.672	146.387	
	1.832	148.219			
BM SW I & 26 Spk			4.548	143.671	143.701
TP			3.780	144.439	
TP	9.503	153.942	0.288	153.654	
	7.384	160.958			

					160.958	89
						153.581
					7.407	153.551
					1.145	159.813
					9.248	169.061
					8.631	177.592
						171.988
					5.634	171.958
					3.071	174.521
					6.178	180.699
					7.583	185.440
						175.122
					7.348	178.092
					1.512	183.928
					8.614	192.542
						188.016
					4.566	187.976
					1.607	190.935
					4.643	195.578
						188.977
					6.643	188.935
					4.934	190.644
						196.088
					7.615	198.259
					3.936	200.021
						196.999
					3.055	196.967
					3.140	196.884
						196.914

275st BMS

BM SE 274 I Plug

142.077

OK JJ
142.107

T.P. 3.416 145.493 12.902 132.592

T.P. 0.481 133.073 8.528 124.545

T.P. 1.827 126.372 9.418 116.954

T.P. 2.229 119.183 9.535 109.648

T.P. 4.856 114.504 1.113 113.391

T.P. 11.250 124.641 0.440 124.201

10273 134.474

BM NE 274 H. Mon

7.912 126.562

JJ
126.593

T.P. 0.649 133.825

T.P. 10.544 144.369 1.058 143.311

T.P. 12.026 155.337 0.482 154.855

12.428 167.283

BM NE 274 G. Mon

3.505 163.778

JJ
163.828

T.P. 5.664 161.619

10.818 172.437

BM NW 274 F. Mon

3.517 168.920

OK JJ
168.970

T.P. 0.450 171.987

10.280 182.267

T.P.

182.267

0.948

181.419

70

T.P.

8.547

189.966

0.172

189.794

5.337 195.131

BM SE 278 U. Mon

3.674

191.457

OK JJ
191.502
17.488285st BMS

BM NE 288 K. Plug

85.902

OK JJ
85.955

T.P. 1.319 187.221

3.409

83.812

T.P. 5.671 89.483

0.852

88.631

T.P. 6.031 96.662

0.319

96.343

11.064 107.407

BM SE 288 I. Mon

4.776

102.631

JJ
102.671
~~102.684~~

T.P.

4.296

103.211

6.039 109.350

BM SE 288 H. Mon

0.189

109.161

JJ
109.204

T.P.

3.746

105.604

T.P. 9.490 715.094

2.005

113.089

12.427 125.516

BM SE 288 G. Mon

1.781

123.735

JJ
123.788

T.P.

3.441

122.075

11.145 133.220

28 St BM^s

T.P.	133.220	2.423	130.477	
	8.343	138.820		
BM SE 28 & F. Mon		2.516	136.304	136.358 ✓
T.P.		5.028	133.792	
T.P.	11.089	144.881	1.923	142.958
T.P.	10.992	153.950	1.612	152.338
	8.468	160.806		
BM NW 28 & E Mon		3.505	157.301	157.358 ✓
T.P.		6.633	154.173	
	11.693	165.866		
BM NE 28 & D Mon		2.303	163.563	163.623 ✓

29 St BM^s

					71
					✓ 108 79.472
BM SE 29 & K Plug				79.472	
T.P.	6.264	85.705	0.273	85.432	
T.P.	6.523	91.955	0.387	91.568	
T.P.	7.473	99.041	0.319	98.722	
T.P.	10.717	109.439	0.259	109.180	
T.P.	10.375	119.555	0.229	119.326	
	8.770	128.096			
BM EL 29 Wall 50' N of S St Plug			2.706	125.390	125.421 ✓
T.P.			0.654	127.442	
T.P.	10.390	137.832	4.161	133.671	
T.P.	1.763	135.434	10.925	124.509	
T.P.	1.172	125.681	7.209	118.472	
T.P.	1.386	119.858	10.789	109.069	
T.P.	2.930	111.999	8.161	103.838	
	6.155	109.993			
BM SE 29 & H Mon			1.246	108.747	108.772 ✓
T.P.			1.363	108.630	
T.P.	7.863	116.493	1.099	115.394	
	9.280	124.674			

T.P.	124.674	0.345	124.329	
T.P.	9.848	134.177	0.292	133.885
T.P.	10.006	143.891	0.063	143.828
	11.139	154.967		
BM SW Point & H. Mon		6.650	148.317	148.344 JJ
T.P.		6.753	148.214	
T.P.	1.760	149.974	9.090	140.884
T.P.	0.839	141.723	8.273	133.450
T.P.	0.994	134.444	9.323	125.121
T.P.	0.801	125.922	9.484	116.438
	12.56	117.694		
BM SW Point & I Mon		11.653	106.041	106.025 JJ 106.055

G. 31 BM²

BM NW 27 & F Mon			168.930	168.970 JJ OK.
T.P.	5.159	174.089	1.263	172.825
T.P.	11.633	184.459	1.802	182.657
	6.542	189.199		
BM SE B & SE of 27 Mon and grade at			4.812	184.387 184.427 JJ
T.P.			5.499	183.700
	1.560	185.280		
BM SE B & SE of 27 Mon and from air produced			8.961	176.319 176.359 JJ
T.P.	2.808	179.127	11.223	167.904
	3.700	171.604		
BM SE G 27 Mon			7.816	163.788 163.828 JJ OK
BM SE D 27 Mon			182.206	182.228 JJ
	3.976	186.182		
BM NE E 27 Mon			10.895	175.287 175.309 JJ

B 57 BM^s

BM NE B & 30 718			220.116	JJ ok. 220.138
T.P.	4015	224.131	5321	218.810
T.P.	3433	222.243	5947	216.296
T.P.	1583	217.879	10613	207.266
T.P.	1480	208.746	3312	205.434
	6.810	212.244		

BM NW B & 31 Plug.			5528	JJ ok. 206.738
T.P.			2158	210.086
	6.520	216.606		

BM NE B & Ida Plug.			2.419	JJ ok. 213.487
T.P.			7.175	209.431
T.P.	1.572	211.003	8.818	202.185
	1.832	204.017		

BM NE C & Ida Plug.			4.450	JJ ok. 199.589
T.P.			6.225	197.792
T.P.	0.467	198.259	10.947	187.312
	0.078	187.390		

BM SW 32 & C Mon.			9.636	JJ ok. 177.776
T.P.			12.682	174.708
	0.635	175.343		

32 57 BM^s

					175.343			73 JJ ok. 164.446
BM NW 32 & D Mon.					10.969	164.424		
T.P.					10.500	164.843		
T.P.	0.021	164.864	12.977	151.887				
T.P.	0.251	152.138	11.403	140.735				
T.P.	0.112	140.847	10.058	130.789				
T.P.	0.011	130.800	9.298	121.502				

T.P.	0.003	121.505	8.745	112.760				
T.P.	0.310	113.070	8.401	104.669				
T.P.	0.203	104.872	11.926	92.946				
T.P.	8.663	101.609	9.073	92.536				
	2.912	95.448						

BM SW 32 & F Mon.					1.313	94.735		JJ ok. 94.157
T.P.					11.177	84.271		
	1.690	85.961						

BM NW 32 & G Mon.					5.220	80.741		JJ ok. 80.763
T.P.					5.458	80.803		
T.P.	6.763	87.566	4.760	82.806				
	3.920	86.726						

BM SW 32 & H Mon.					3.516	83.210		JJ ok. 83.232
-------------------	--	--	--	--	-------	--------	--	------------------

32 St BM²

86.726

T.P. 5.035 81.691

4.868 86.559

BM NW 32 & J Mon 4.324 82.235

JJ ok.
82.257

T.P. 4.874 81.685

4.761 86.446

BM SW 32 & J Mon 4.769 81.677

JJ ok.
81.699

T.P. 4.124 82.322

3.976 86.298

BM NW 32 & K Plug 4.799 81.499

JJ ok.
81.521

T.P. 3.640 85.139 5.667 79.472

4.104 83.576

BM NE 31 & 31 Plug T.P. 5.120 78.456

JJ ok.
78.478

T.P. 2.856 81.312 6.712 74.600

T.P. 3.098 77.698 6.612 71.086

4.770 75.856

BM NW 30 & K Plug 2.870 72.986

JJ
78.97
73.019

BM NE 31 & K Plug 78.456

3.447 81.903

BM SW 31 & J ~~Plug~~ Mon 5.625 76.278JJ
76.2995.430 ~~5.430~~
81.70831 St BM²

81.708

T.P. 3.635 78.073

5.812 83.885

BM SW 31 & J Mon 3.272 80.613

JJ ok.
80.635

T.P. 1.981 81.904

T.P. 9.613 91.517 0.327 91.190

T.P. 8.439 99.629 1.237 98.392

11.038 109.430

BM SW 31 & H Mon 6.810 102.620

JJ
102.642

T.P. 1.962 107.468

T.P. 5.295 112.763 2.474 110.289

T.P. 8.545 118.834 0.023 118.811

T.P. 9.746 128.557 0.436 128.121

~~FF~~ 11.799 139.920

BM NE 31 & G Spk Pole 1.727 138.193

JJ
138.215

T.P. 0.365 139.555

T.P. 11.076 150.631 1.134 149.497

T.P. 6.670 156.167 1.117 155.050

11.967 167.017

BM N Side Fst 60' W Cor.
Bolt in top retaining wall.

3.103 163.914

JJ
163.936

Continued on p 78

74

Main St. BM#

BM 32 & Main SW 167

38.635^W

T.P. 2.740 41.375 9.333 32.042

T.P. 0.044 32.086 7.445 22.641

T.P. 0.049 22.690 8.039 14.651

0.752 15.403

BM SE Main & 33 Spk

6.540 8.863^W

T.P. 8.163 7.240

2.742 9.982

BM Spk Plc NW Cor Bridge

10.042 -0.060

T.P. 5.417 4.565

T.P. 2.388 6.953 5.148 1.805

3.926 5.731

BM Spk Plc

4.874 0.857

T.P. 4.496 1.235

T.P. 4.379 5.614 3.888 1.726

T.P. 4.686 6.412 4.528 1.884

5.156 7.040

BM Spk Plc

5.574 1.466

T.P. 3.883 3.157

5.585 8.742

1/4
West
Evans
T81100

Main St. BM#

8.742

75

T.P.

2.805 5.937

6.338 12.275

BM Spk Plc

1.781 10.494

T.P.

2.966 9.309

T.P.

6.624 15.933 4.209 11.724

6.121 17.845

BM NW Ord & Main Spk

3.352 14.493 14.601

T.P.

4.900 12.945

T.P.

4.670 17.615 4.688 12.927

T.P.

5.222 18.149 4.112 14.037

5.220 19.257

BM Spk SE Main & Vest

2.545 16.712

T.P.

5.185 14.072

T.P.

3.575 17.647 6.251 11.396

3.165 14.561

BM Spk SE Main & 39 St

2.543 12.018

T.P.

6.743 7.818

T.P.

3.264 11.082 5.040 6.042

5.074 11.116

		11416			
BM. Spk Pole. SW Main & Yamd.		6.666	4.450		
TP.		5.133	5.983		
TP.	4.770	10.753	3.972	6.761	
	8.554	15.315			
BM. NW Main & City Lt. Mon		2.212	13.103	13.180	
TP.		8.603	6.712		
TP.	3.758	10.470	4.588	5.882	
TP.	4.834	10.716			
BM. Spk Pole.		6.287	4.429		
TP.		4.870	5.846		
TP.	5.388	11.234	2.902	8.332	
	6.566	14.898			
BM. Spk. Pole		2.902	11.996		
TP.		3.120	11.778		
TP.	5.978	17.756	3.343	14.413	
	4.743	19.156			
BM. Spk. Pole.		2.466	16.690		
TP.		5.341	13.815		
TP.	4.260	18.075	4.863	13.212	
	4.418	17.630			

		17630			76
BM Spk. Pole 1/100		3.148	14.482		
TP.		4.990	12.640		
TP.	3.822	16.462	5.596	10.866	
TP.	3.136	14.002	6.483	7.519	
	3.025	10.544			
BM. Spk		0.087	10.457		
TP.		6.627	3.917		
TP.	4.105	8.022	5.850	2.172	
	4.393	6.565			
BM. Spk		5.150	1.415		
TP.		4.688	1.877		
TP.	4.596	6.473	5.846	0.627	
	4.857	5.484			
BM. Spk		4.688	0.796		
TP.		4.430	1.054		
TP.	5.461	6.515	4.003	2.512	
	6.605	9.117			
BM. Spk. Pole		9.215	-0.078		
TP.		3.716	5.401		
	7.282	12.683			

Main St. BM⁷⁷

77

T.P. 12.683 11.43 11.540

T.P. 8.601 20.141 1.483 18.658

T.P. 9.499 28.157 0.467 27.690

11.527 39.217

0.630 38.587 38.635

BM SW Main & 32nd St Mon.

38.635

T.P. 0.760 39.395 11.278 28.117

T.P. 0.055 28.172 9.209 18.963

T.P. 1.336 20.299 8.719 11.580

T.P. 0.960 12.540 7.119 5.421

3.740 9.161

BM SpK R/c. NW Cor Bridge 9.217 -0.056

T.P. 6.474 2.687

T.P. 4.155 6.842 5.750 1.092

4.403 5.495

BM SpK SW Rigel & Main.

4.635 0.860

T.P. 4.628 0.867

T.P. 5.816 6.683 4.924 1.759

4.864 6.623

BM SpK SW Main & Five

5.159 1.464

T.P. 4.389 2.234

T.P. 5.818 8.052 4.165 3.887

6.653 10.540

BM SW Main & Thor SpK.

0.049 10.491

T.P. 3.472 7.068

7.106 14.174

Main St BM				
TP	14.174	3.116	11.058	
	5550	16.608		
BM Spk NW Main & Una		2.116	14.492	14.601
TP		3.841	12.767	
TP	5.038	17.805	4.710	13.095
TP	5.190	18.285	4.264	14.021
	5.127	19.348		
BM SW Main & Vesta Spk.		2.438	16.710	
TP		5.073	14.075	
TP	3.523	17.598	6.114	11.484
	3.170	14.654		
BM SW Main & 39 Spk		2.644	12.010	
TP		6.867	7.787	
TP	3.456	11.243	5.320	5.923
	5.100	11.023		
BM SE Main & Yama Spk.		6.569	4.454	
TP		4.911	6.112	
TP	4.666	10.778	4.057	6.721
	8.148	14.869		
BM Mon NW Main & City Limits		1.756	13.113	

31st BM Cont from P. 74.				
TP	167.017	1.783	165.234	78
TP	106.44	175.878	0.573	175.305
	9.275	184.580		
BM SW 31st & E Spk Cor fence post		4.083	188.497	180.526
TP		5.095	179.485	
TP	2.901	182.386	2.714	179.672
TP	11.010	190.682	4.905	185.777
TP	5.632	191.409	6.187	185.222
	4.936	190.158		
BM NW 30th & E Plug		2.578	189.580	187.630
TP TP	7.060	194.640	12.68	193.372
	5.760	199.132		
BM SE 30th & D Plug		4.117	195.015	
TP		6.071	193.061	
TP	4.862	197.923	4.111	193.812
	5.461	199.273		
BM SW 30th & C Plug		4.373	194.900	
TP		3.591	195.682	
TP	8.634	204.316	0.852	203.464
	9.162	212.626		

T.P.	212.626	0.852	211.774	
	11.155	222.929		
BM NE 30 & B Plug	2.857	220.072	220.116	
BM NE 31 & K Plug			78.456	
BM SW 32 & F Mon	P13		94.135	
T.P.	11.449	105.584	2.328	103.256
T.P.	9.916	113.172	0.463	142.709
T.P.	12.223	124.932	0.232	124.700
T.P.	10.228	134.928	3.692	131.236
T.P.	11.645	142.881	0.054	142.827
T.P.	12.930	155.757	1.921	154.036
	10.264	164.300		
BM N Side F Bolt Wall		0.396	163.904	162.914
House 50' W. 31st				
T.P.	2.927	166.843	1.221	165.622
T.P.	10.174	175.796	0.517	175.279
	9.601	184.880		
BM SW 31 & E Spk fence post		4.376	180.504	
T.P.		6.109	178.771	
	9.600	188.371	2	

				188.371
T.P.		2.823	185.548	
T.P.	6.470	192.018	6.473	185.845
	4.782	190.627	3	
BM NW 30 & E Plug		3.014	187.613	187.623
BM SW C A 32 Mon				177.754
T.P.	10.32	177.786	8.487	169.299
T.P.	12.38	170.537	6.959	163.578
T.P.	2.296	165.874	9.130	156.744
T.P.	0.869	157.613	11.945	145.668
T.P.	0.127	145.995	8.304	137.491
T.P.	0.178	137.668	10.330	127.338
T.P.	0.323	127.661	9.062	118.599
T.P.	0.456	119.055	9.995	109.060
T.P.	0.304	109.364	7.558	101.806
T.P.	0.049	101.855	5.226	96.629
T.P.	9.577	106.206	1.404	104.802
T.P.	7.453	114.255	5.202	109.053
T.P.	2.537	111.590	6.180	105.410
T.P.	1.694	106.104	6.140	99.964
BM NE 34 & D Mon	3.994	103.758	4.700	99.258
				99.212

			328.26	
275	340.51	11.00	329.42	
303	332.45	12.26	320.09	
484	320.93	11.47	309.44	
321	312.75	11.3	311.62	
11.53	323.15	0.73	322.42	
12.46	334.88	0.29	334.59	
11.91	346.50	3.62	342.88	327.87

177.35 Olay St E. S. Cont. (E of index)
 196.963 = SE. 28 + B. Plug
 196.973 = NW. 27 + B. Plug

255 - and
 A. NW - 201.954
 B. " 196.920
 C SW - 190.962
 E. NW. 184.491
 F " 180.357
 G NW - 172.135
 H. " 156.950
 I. SE. 130.669

B. SW NW
 26 - SW - 196.925
 27 - NW - 196.973
 28 - SE - 196.963
 29 - SW. SE. E. = 197.33

27 SE
 C - SW. SE. 201.125
 F. NW. NW. 168.980
 26
 D - SW. Olay - 188.945
 E NW " 187.992
 F SW. SE. 175.869
 H. SE " 156.167
 I. " " 146.09
 J SW. " 135.788

220.150	196.959
0.960	4.619
220.550	201.578
8.541	4.308
212.010	197.270
0.773	
212.783	
7.857	
204.926	197.321
0.950	
205.876	
8.513	
197.363	
321	
0.042	

32
 4 - SE. SE. 85.225
 7 SE " 82.806
 8 - SE " 84.244
 33 - none
 34 "
 35 - 36 - 37 - 38 - 39 - none

28
 B. E. Olay 196.963
 29
 none
 31.
 H - SW. SE. 103.867
 I - NE. SE. 82.757
 J - SW " 76.314
 K. SE " out.

4662-a
0430-b
4.233-a

a = 9.262
b = 9.180
4.232

S.E. quarter, 20 - NW. 1/4 - 85.774
SE Kalma 30 - off. 289,715
NE Dry 30 - off. 286,241

27688
481

272.07

Cor Walk
Barracks

375
350
380
390
400
410
420
430
440
450
460
470
480
490
500

27688
0.892
277,835
2724
220,111

Washington
Webster
Franklin

Blair
Regel
Dix
Thos
Uma
Vesta
Yama
City Limits
199 460
4242
185.218

DISTANCES FROM CENTER OF ROADWAY FOR CROSS-SECTIONING.

ROADWAY 14 FEET WIDE. SIDE SLOPES 1 1/2 TO 1.

FOR SINGLE TRACK EMBANKMENT.

	0	.1	.2	.3	.4	.5	.6	.7	.8	.9	
0	7.0	7.2	7.3	7.5	7.6	7.8	7.9	8.1	8.2	8.4	0
1	8.5	8.7	8.8	9.0	9.1	9.3	9.4	9.6	9.7	9.9	1
2	10.0	10.2	10.3	10.5	10.6	10.8	10.9	11.1	11.2	11.4	2
3	11.5	11.7	11.8	12.0	12.1	12.3	12.4	12.6	12.7	12.9	3
4	13.0	13.2	13.3	13.5	13.6	13.8	13.9	14.1	14.2	14.4	4
5	14.5	14.7	14.8	15.0	15.1	15.3	15.4	15.6	15.7	15.9	5
6	16.0	16.2	16.3	16.5	16.6	16.8	16.9	17.1	17.2	17.4	6
7	17.5	17.7	17.8	18.0	18.1	18.3	18.4	18.6	18.7	18.9	7
8	19.0	19.2	19.3	19.5	19.6	19.8	19.9	20.1	20.2	20.4	8
9	20.5	20.7	20.8	21.0	21.1	21.3	21.4	21.6	21.7	21.9	9
10	22.0	22.2	22.3	22.5	22.6	22.8	22.9	23.1	23.2	23.4	10
11	23.5	23.7	23.8	24.0	24.1	24.3	24.4	24.6	24.7	24.9	11
12	25.0	25.2	25.3	25.5	25.6	25.8	25.9	26.1	26.2	26.4	12
13	26.5	26.7	26.8	27.0	27.1	27.3	27.4	27.6	27.7	27.9	13
14	28.0	28.2	28.3	28.5	28.6	28.8	28.9	29.1	29.2	29.4	14
15	29.5	29.7	29.8	30.0	30.1	30.3	30.4	30.6	30.7	30.9	15
16	31.0	31.2	31.3	31.5	31.6	31.8	31.9	32.1	32.2	32.4	16
17	32.5	32.7	32.8	33.0	33.1	33.3	33.4	33.6	33.7	33.9	17
18	34.0	34.2	34.3	34.5	34.6	34.8	34.9	35.1	35.2	35.4	18
19	35.5	35.7	35.8	36.0	36.1	36.3	36.4	36.6	36.7	36.9	19
20	37.0	37.2	37.3	37.5	37.6	37.8	37.9	38.1	38.2	38.4	20
21	38.5	38.7	38.8	39.0	39.1	39.3	39.4	39.6	39.7	39.9	21
22	40.0	40.2	40.3	40.5	40.6	40.8	40.9	41.1	41.2	41.4	22
23	41.5	41.7	41.8	42.0	42.1	42.3	42.4	42.6	42.7	42.9	23
24	43.0	43.2	43.3	43.5	43.6	43.8	43.9	44.1	44.2	44.4	24
25	44.5	44.7	44.8	45.0	45.1	45.3	45.4	45.6	45.7	45.9	25
26	46.0	46.2	46.3	46.5	46.6	46.8	46.9	47.1	47.2	47.4	26
27	47.5	47.7	47.8	48.0	48.1	48.3	48.4	48.6	48.7	48.9	27
28	49.0	49.2	49.3	49.5	49.6	49.8	49.9	50.1	50.2	50.4	28
29	50.5	50.7	50.8	51.0	51.1	51.3	51.4	51.6	51.7	51.9	29
30	52.0	52.2	52.3	52.5	52.6	52.8	52.9	53.1	53.2	53.4	30
31	53.5	53.7	53.8	54.0	54.1	54.3	54.4	54.6	54.7	54.9	31
32	55.0	55.2	55.3	55.5	55.6	55.8	55.9	56.1	56.2	56.4	32
33	56.5	56.7	56.8	57.0	57.1	57.3	57.4	57.6	57.7	57.9	33
34	58.0	58.2	58.3	58.5	58.6	58.8	58.9	59.1	59.2	59.4	34
35	59.5	59.7	59.8	60.0	60.1	60.3	60.4	60.6	60.7	60.9	35
36	61.0	61.2	61.3	61.5	61.6	61.8	61.9	62.1	62.2	62.4	36

Calculated by Julien A. Hall, M. Am. Soc. C. E.

MADE IN GERMANY.