

921

F.B. 921

LEVEL BOOK

373

KEUFFEL & ESSER CO.

DRAWING MATERIALS

AND

SURVEYING INSTRUMENTS.

NEW YORK.

CHICAGO.

SAN FRANCISCO.

ST. LOUIS.

TABLES FOR EXCAVATIONS AND EMBANKMENTS.

DISTANCES FROM CENTER OF ROADWAY FOR CROSS-SECTIONING.

ROADWAY 18 FEET WIDE. SIDE SLOPES 1 TO 1.

FOR SINGLE TRACK EXCAVATION.

Copyright, 1895, by Keuffel & Esser Co.

MICROFILMED
DEC 15 1984

	.1	.2	.3	.4	.5	.6	.7	.8	.9		
0	9.0	9.1	9.2	9.3	9.4	9.5	9.6	9.7	9.8	9.9	0
1	10.0	10.1	10.2	10.3	10.4	10.5	10.6	10.7	10.8	10.9	1
2	11.0	11.1	11.2	11.3	11.4	11.5	11.6	11.7	11.8	11.9	2
3	12.0	12.1	12.2	12.3	12.4	12.5	12.6	12.7	12.8	12.9	3
4	13.0	13.1	13.2	13.3	13.4	13.5	13.6	13.7	13.8	13.9	4
5	14.0	14.1	14.2	14.3	14.4	14.5	14.6	14.7	14.8	14.9	5
6	15.0	15.1	15.2	15.3	15.4	15.5	15.6	15.7	15.8	15.9	6
7	16.0	16.1	16.2	16.3	16.4	16.5	16.6	16.7	16.8	16.9	7
8	17.0	17.1	17.2	17.3	17.4	17.5	17.6	17.7	17.8	17.9	8
9	18.0	18.1	18.2	18.3	18.4	18.5	18.6	18.7	18.8	18.9	9
10	19.0	19.1	19.2	19.3	19.4	19.5	19.6	19.7	19.8	19.9	10
11	20.0	20.1	20.2	20.3	20.4	20.5	20.6	20.7	20.8	20.9	11
12	21.0	21.1	21.2	21.3	21.4	21.5	21.6	21.7	21.8	21.9	12
13	22.0	22.1	22.2	22.3	22.4	22.5	22.6	22.7	22.8	22.9	13
14	23.0	23.1	23.2	23.3	23.4	23.5	23.6	23.7	23.8	23.9	14
15	24.0	24.1	24.2	24.3	24.4	24.5	24.6	24.7	24.8	24.9	15
16	25.0	25.1	25.2	25.3	25.4	25.5	25.6	25.7	25.8	25.9	16
17	26.0	26.1	26.2	26.3	26.4	26.5	26.6	26.7	26.8	26.9	17
18	27.0	27.1	27.2	27.3	27.4	27.5	27.6	27.7	27.8	27.9	18
19	28.0	28.1	28.2	28.3	28.4	28.5	28.6	28.7	28.8	28.9	19
20	29.0	29.1	29.2	29.3	29.4	29.5	29.6	29.7	29.8	29.9	20
21	30.0	30.1	30.2	30.3	30.4	30.5	30.6	30.7	30.8	30.9	21
22	31.0	31.1	31.2	31.3	31.4	31.5	31.6	31.7	31.8	31.9	22
23	32.0	32.1	32.2	32.3	32.4	32.5	32.6	32.7	32.8	32.9	23
24	33.0	33.1	33.2	33.3	33.4	33.5	33.6	33.7	33.8	33.9	24
25	34.0	34.1	34.2	34.3	34.4	34.5	34.6	34.7	34.8	34.9	25
26	35.0	35.1	35.2	35.3	35.4	35.5	35.6	35.7	35.8	35.9	26
27	36.0	36.1	36.2	36.3	36.4	36.5	36.6	36.7	36.8	36.9	27
28	37.0	37.1	37.2	37.3	37.4	37.5	37.6	37.7	37.8	37.9	28
29	38.0	38.1	38.2	38.3	38.4	38.5	38.6	38.7	38.8	38.9	29
30	39.0	39.1	39.2	39.3	39.4	39.5	39.6	39.7	39.8	39.9	30
31	40.0	40.1	40.2	40.3	40.4	40.5	40.6	40.7	40.8	40.9	31
32	41.0	41.1	41.2	41.3	41.4	41.5	41.6	41.7	41.8	41.9	32
33	42.0	42.1	42.2	42.3	42.4	42.5	42.6	42.7	42.8	42.9	33
34	43.0	43.1	43.2	43.3	43.4	43.5	43.6	43.7	43.8	43.9	34
35	44.0	44.1	44.2	44.3	44.4	44.5	44.6	44.7	44.8	44.9	35
36	45.0	45.1	45.2	45.3	45.4	45.5	45.6	45.7	45.8	45.9	36

Calculated by Julien A. Hall, M. Am. Soc. C. E.

SE 4th & ...
 S.W. Plug returns 4th 43.707.
 S.W. 3rd Plug net 39.451



12/26/13 Hatch Profile on change of line
 from of La Jolla Del Mar road survey
 Hall where WP Moore brushed out line

TR	0.68	360 79	360 11
		317+79	⁸⁸ BC 1000' R. Curve, left
13 E			5.9
cr			6.7
13 W			7.4
		318+00	
13 W			7.9
cr			7.2
13 E			6.6
		318+50	
13 E			7.8
cr			8.4
13 W			8.6
		319+00	
13 W			9.8
cr			9.1
13 E			8.7

360.79

319+50

13 E 10.2

cr 10.3

13 W 11.6

TP 1.60 350.57 12.32 348.97
320+00

13 W 3.1

cr 3.1

13 E 1.9

320+50

13 E 4.8

cr 5.6

13 W 5.7

321+00

13 W 7.9

cr 7.5

13 E 7.1

321+50

13 E 8.0

cr 8.1

13 W 8.5

350.57

322+00

13 W 9.1

cr 8.3

13 E 7.0

322+50

13 E 5.8

cr 7.0

13 W 5.1

323+00

13 W 7.9

cr 7.7

13 E 6.4

323+50

13 E 7.9

cr 8.2

13 W 8.7

324+00

13 W 7.8

cr 7.2

13 E 7.3

350.57

324+50

13 E 6.4

cr 6.8

13 W 6.9

325+00

13 W 6.8

cr 6.4

13 E 5.7

325+50

13 E 7.6

cr 7.2

13 W 7.1

326+00

13 W 8.0

cr 8.1

13 E 8.1

326+50

13 E 9.0

cr 9.0

13 W 8.7

350.57

327+00

13 W 8.7

cr 9.3

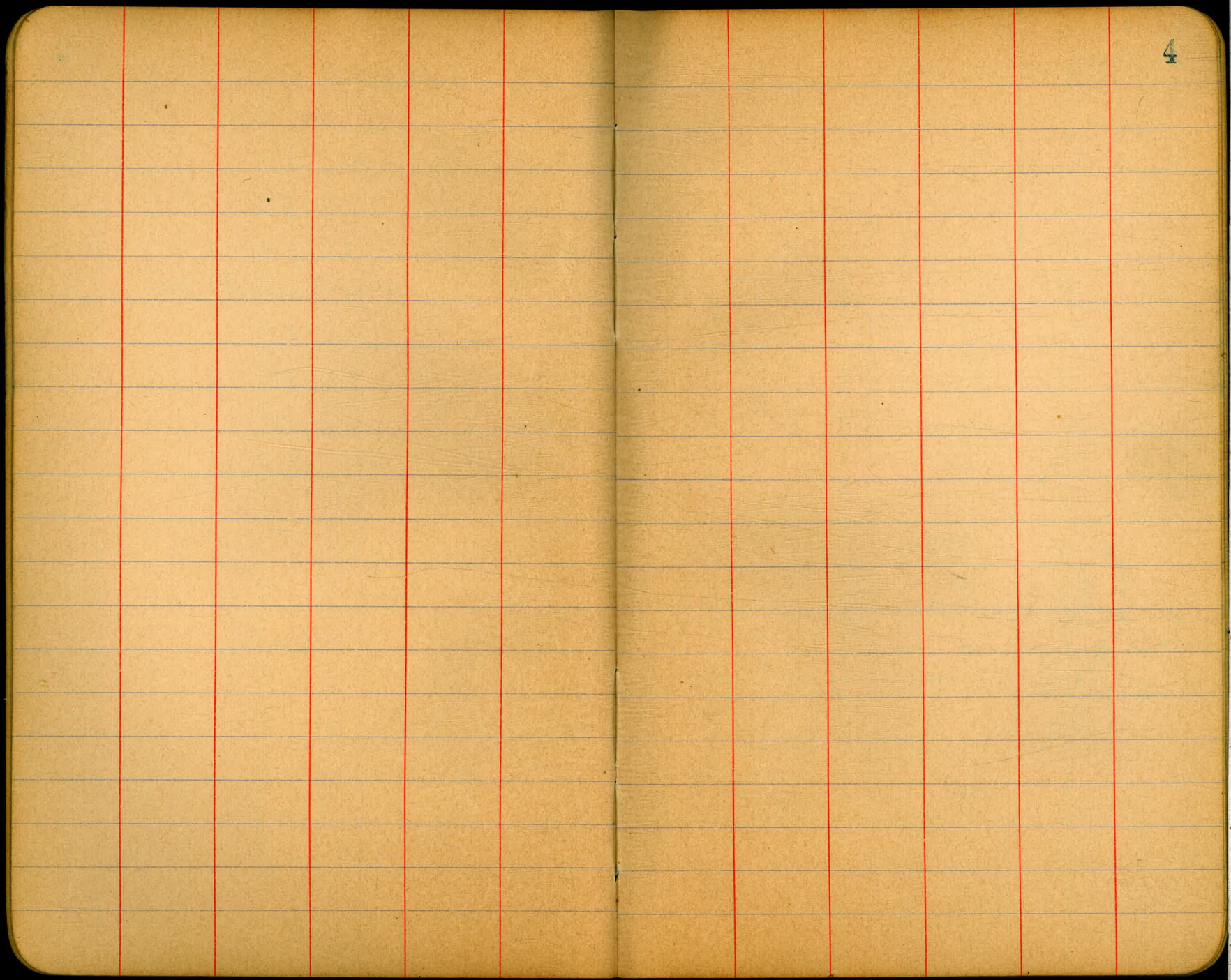
13 E 9.5

327+37¹⁵ = 328+02⁴⁰ EC

13 E 8.3

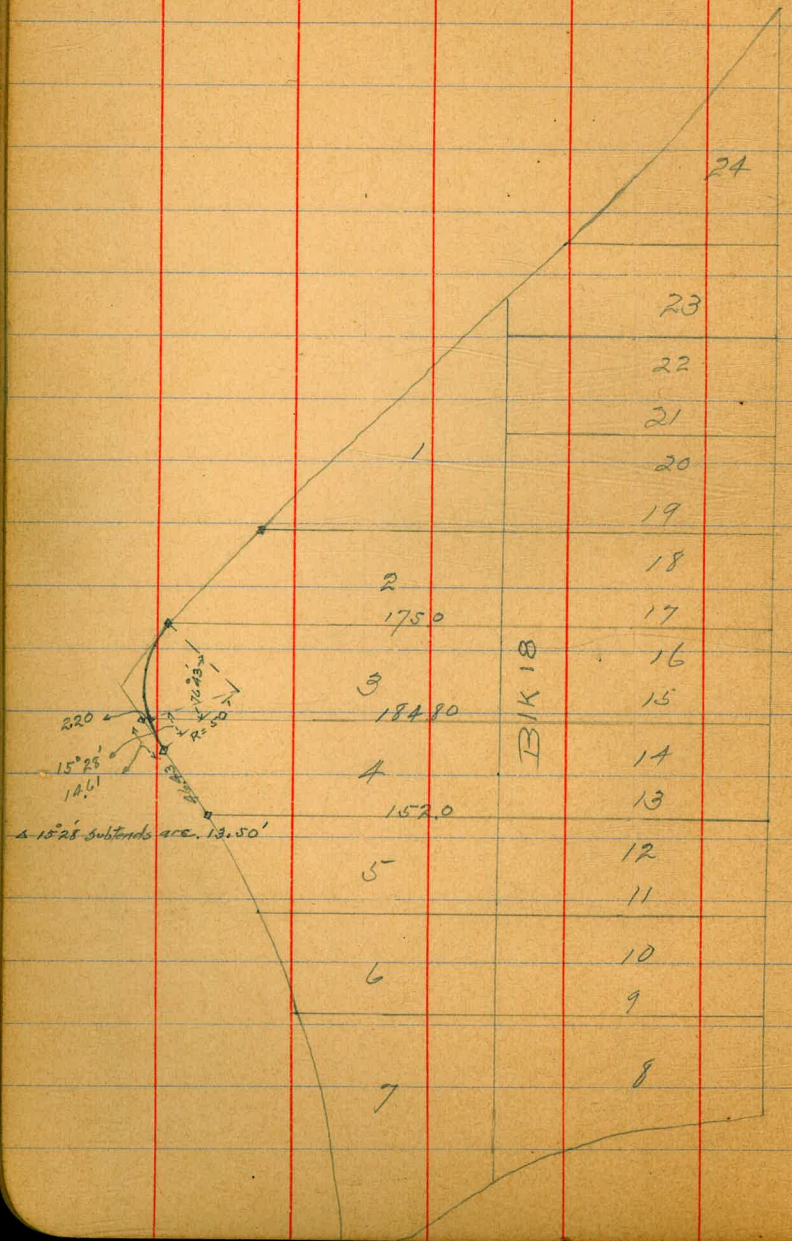
cr 8.1

13 W 7.9



12/31 Survey for Curve at Pt of BIK 18 La Jolla

13
Hatch
Mount
Hall



1
2
1750
3
18480
4
1520
5
6
7

BIK 18

24
23
22
21
20
19
18
17
16
15
14
13
12
11
10
9
8

X sect. Date Redwood to
Thom.

10' walk. on west 10' quar.
only 30' wide but level at 60' on E. ^{Lehilds} ^{letter} _{at} ^{at} _{Bundy}

50' no.

Mar. 6/14

J.P.	9.43	H.I. 321.25	311.82	White	7.2	314.1
	No. line Redwood			cut	6.8	314.5
White		7.96	313.3	1/4	6.5	314.8
cut		7.5	313.8	C	6.5	314.8
1/4		7.0	314.3	Elms	6.6	314.7
C		6.9	314.4			
30' E. line		6.7	314.6	Elms	6.3	315.0
	25' no.			C	5.7	315.6
E line		6.7	314.6	1/4	5.7	315.6
C		6.9	314.4	cut	6.0	315.3
1/4		7.0	314.3	White	6.4	314.9
cut		7.4	313.9			
White		7.6	313.7	White	6.2	315.1
				cut	5.9	315.4
				1/4	5.5	315.8
				C	5.7	315.6
				Elms	6.2	315.1

75' no.

100' no.

3213

125' no.

Elms	6.0	315.3	White
C	5.8	315.5	Curt
1/4	5.8	315.5	1/4
Curt	5.9	315.4	C
White	6.1	315.7	Elms

150' no.

White	5.4	315.9	Elms
Curt	5.3	316.0	C
1/4	5.4	315.9	1/4
C	5.2	316.1	Curt
Elms	5.8	315.5	White

175' no.

Elms	5.7	315.6	White
C	5.0	316.3	Curt
1/4	5.3	316.0	1/4
Curt	5.2	316.1	C
White	5.1	316.7	Elms

200' no.

4.9	316.4
4.9	316.4
5.1	316.7
5.0	316.3
5.6	315.7

225' no.

5.6	315.7
4.6	316.7
4.8	316.5
4.6	316.7
4.6	316.7

250' no.

4.4	316.9
4.7	316.6
4.9	316.4
4.8	316.5
5.7	315.6

Spruce 50' wide

closed 9' on ^{west} south + 1' on ^{east} north

8

²⁻²⁸⁷
 (279) no. (So. Pine Spruce.)

Center

Elm	6.0	315.3	White	5.4	315.9
C	5.2	316.1	Curt	4.6	316.7
1/4	5.0	316.3	1/4	5.0	316.3
Curt	4.8	316.5	C	5.8	315.8
White	4.5	316.8	Elm	6.1	315.8

So. cb.

no 1/4

White	5.3	316.0	Elm	6.1	315.7
Curt	5.1	316.7	C	5.5	315.8
1/4	5.1	316.7	1/4	5.4	315.9
C	5.3	316.0	Curt	5.0	316.3
Elm	6.2	315.1	White	5.8	315.5

no 1/4

no. cb.

Elm	6.2	315.1	White	5.3	316.0
C	5.4	315.9	Curt	5.1	316.7
1/4	5.0	316.3	1/4	5.5	315.8
Curt	4.9	316.4	C	5.7	315.6
White	5.7	315.6	Elm	6.2	315.1

Male

9

no. line spruce.

Elms	6.1	315.7
C	5.7	315.6
1/4	5.3	316.0
cut	4.9	316.4
White	4.9	316.4

25' no.

White	4.2	317.1
cut	5.2	316.1
1/4	5.4	315.9
C	5.6	315.7
Elms	6.5	314.8

50' no.

Elms	8.2	313.1
C	5.9	315.4
1/4	5.6	315.7
cut	5.1	316.7
White	4.3	317.0

75' no.

White	4.9	316.4
cut	5.3	316.0
1/4	5.8	315.5
C	6.3	315.0
Elms	13.2	308.1

100' no.

C	8.0	313.3
1/4	6.2	315.1
cut	5.9	315.4
White	5.6	315.7

125' no.

White	10.6	310.7
cut	11.1	310.7
1/4	12.7	308.6
C	15.4	305.9

321.3Date

175' no.

White	16.6	304.7
cut	14.8	306.5
1/4	15.0	306.3
C	17.4	303.9
E line	14.8	306.5

200' no.

E line	4.6	316.7
C	8.1	313.2
C+4'	5.8	315.5
1/4	6.1	315.2
cut	6.7	314.6
White	10.3	311.0

225' no.

White	6.4	314.9
cut	4.9	316.4
1/4	4.6	316.7
1/4+4'	4.5	316.8
	7.0	314.3
E line	4.5	316.8

321.25

10

250' no.

E line	3.7	317.6
C	4.9	316.4
1/4	3.6	317.7
cut	4.1	317.2
White	5.1	315.2

271' no. (No. line Thorn)

White	3.52	317.8
cut	4.0	317.3
1/4	3.6	317.7
C	3.9	317.4
E line	3.0	318.3

J.P.

1.10 ^{H.I.} 309.86 12.49 308.76

100' no. Spruce

E line	5.5	304.4
--------	-----	-------

125' no.

E line	8.8	301.5
--------	-----	-------

309.86

Wale

11

140' no.

E line	11.6	498.3
C	8.0	301.9
1/4	6.9	303.0
curl	6.6	303.3
White	5.2	304.7

150' no.

White	6.6	303.3
curl	8.1	301.8
1/4	8.5	301.4
C	8.9	301.0
E line	7.8	302.1

158' no.

E line	7.0	302.9
C	8.0	301.9
1/4	7.5	302.4
curl	7.7	302.7
White	8.2	301.7

12

10' walk on
So. Side

CROSS-SECTION OF
THE SOUTH 40' OF SPRUCE ST
From the East Line of India to the
West Line of State St.
(Spruce St. considered 80' wide bet. Columbia
& State)
+ SPRUCE

19831

18

BM.	1189	198.31	186.42	ctr	75' E	
					6.9	191.4
		E. L. INDIA		10' So.	6.8	191.5
S.L.		12.0	186.3	20' ✓	6.8	191.5
10' No.		12.1	186.2	30' ✓	5.9	192.4
20' ✓		12.1	186.2	40' ✓ = S.L.	6.0	192.3
30' ✓		12.0	186.3			
40' ✓ = ctr Spruce		11.9	186.4	S.L.	3.9	194.4
		25' E		10' No.	4.0	194.3
ctr Spruce		10.8	187.5	20' ✓	4.1	194.2
10' So.		11.0	187.3	30' ✓	4.2	194.1
20' ✓		10.8	187.5	40' ✓ = ctr	3.9	194.4
30' ✓		10.0	188.3			
40' ✓ = S.L.		9.7	188.6			
		50' E		ctr	1.2	197.1
				10' So.	1.0	197.3
S.L.		7.6	190.7	20' ✓	0.7	197.6
10' No.		8.2	190.1	30' ✓	1.7	196.6
20' ✓		9.0	189.3	40' ✓ = S.L.	2.0	196.3
30' ✓		9.4	188.9	T.P.	12.50	209.96
40' ✓ = ctr		9.4	188.9		0.85	197.46

209.96

210.0

150' E

S.L.	12.2	197.8
10' No.	11.7	198.3
20' ✓	9.6	200.4
30' ✓	9.8	200.2
40' ✓ = ctr	9.9	200.1

175' E

ctr	7.3	202.7
10' 50	7.3	202.7
20' ✓	7.3	202.7
22' ✓	10.0	200.0
30' ✓	10.6	199.4
40' ✓ = S.L.	10.8	199.2

200' E = W.L. COLUMBIA ST 75' WIDE

S.L.	9.7	200.3
10' No.	8.4	201.6
15' ✓	7.5	202.5
20' ✓	4.4	205.6
30' ✓	5.0	205.0
40' ✓ = ctr	4.5	205.5

W. CURB.

ctr	2.7	207.3
10' 50.	3.5	206.5
20' ✓	2.9	207.1
22' ✓	6.1	203.9
30' ✓	7.2	202.8
40' ✓ = S.L.	8.8	201.2

W. QUARTER

1-10	11.3	198.7
S.L.	7.4	202.6
10' No.	5.3	204.7
20' No.	3.2	206.8
22' ✓	1.2	208.8
30' ✓	1.4	208.6
40' ✓ = ctr	0.8	209.2

217.0 ✓
 221 216.97 0.20 209.76 ✓

CENTER.

ctr	6.2	210.8
10' 50.	6.5	210.5
20' ✓	8.5	208.5

14

216.97

(217.0)

30' So 10.3 206.7

40' ✓ = S.L. 14.2
same slope 202.8

E. QUARTER

S.L. 14.5 202.5

10' No. 9.9 207.1

20' ✓ 5.8 211.2

30' ✓ 4.2 212.8

40' ✓ = ctr 3.9 213.1

E. CURB

ctr 1.9 215.1

10' So. 1.9 215.1

20' ✓ 6.2 210.8

30' ✓ 11.0 206.0

40' ✓ = S.L. 15.6
same slope 201.4

E.L. COLUMBIA ST.

S.L. 15.7 201.3

10' No. 10.9 206.1

20' ✓ 6.8 210.2

30' ✓ 2.6 214.4

33' ✓ 0.5 216.5

217.0

40' No. = ctr 0.8 216.2

25' E

ctr 0.7 216.3

5' So. 1.0 216.0

10' ✓ 3.8 213.2

20' ✓ 8.4 208.6

30' ✓ 12.5 204.5

40' ✓ = S.L. 18.8 198.2

50' E

S.L. 21.4 195.6

10' No. 17.3 199.7

20' ✓ 11.8 205.2

30' ✓ 6.7 210.3

40' ✓ = ctr 1.9 215.1

75' E

ctr 5.4 211.6

T.P. 0.07 209.19 7.85 209.12 ✓

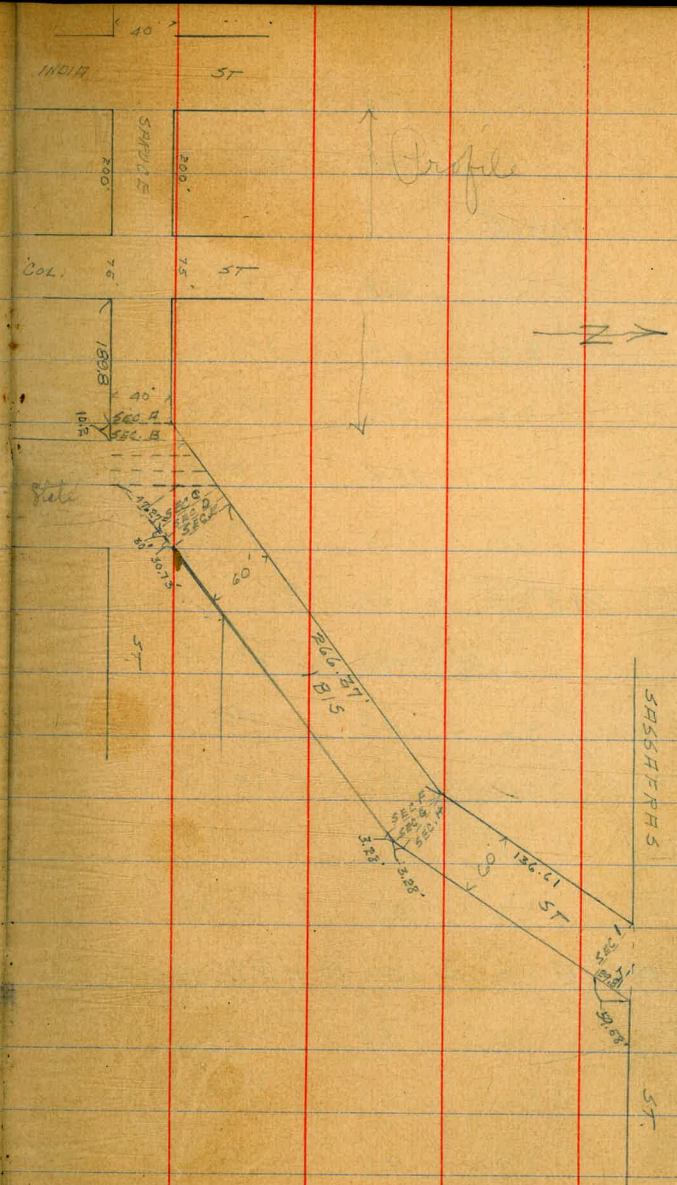
10' So. 2.2 207.0

20' ✓ 8.0 201.2

30' ✓ 12.0 197.2

15

	209.19		
40' 50" = S.L.	209.0	16.3	192.9
+ 15' 50"		19.6	189.6
	100' E		
- 15'		20.0	189.2
S.L.		16.7	192.5
10' No		14.6	194.6
20' ✓		10.5	198.7
30' ✓		6.9	202.3
40' ✓ = ctr		2.4	206.8
	125' E		
ctr.		6.3	202.9
10' 50"	203.0	10.2	199.0
T.P.	365 202.97	9.87	199.32
20' 50"		6.1	196.9
30' ✓		8.2	194.8
40' ✓		10.2	192.8
	150' E		
S.L.		10.5	192.5
10' No.		8.9	194.1
20' ✓		7.1	195.9



	202.97		
	203.0		
30' No.	5.7	197.3	
ctr	2.8	200.2	
	175' E		
ctr	5.3	197.7	
10' So.	6.9	196.1	
20' ✓	8.6	194.4	
30' ✓	10.2	192.8	
40' ✓ = S.L.	11.1	191.9	
	189.8' E = SEC. A.		
S.L.	12.2	190.8	
10' No.	10.8	192.2	
20' ✓	9.6	193.4	
30' ✓	8.1	194.9	
ctr.	6.9	196.1	
	200' E = SEC. B = W.L. STATE		
W.L. 1815 ST	6.2	196.8	
ctr Spruce	7.7	195.3	
10' So.	9.0	194.0	
20' So.	10.2	192.8	
30' ✓	11.8	191.2	

	203.0		
S.L.	12.7	190.3	17
	W. CURB		
S.L.	11.6	191.4	
10' No.	11.3	191.7	
20' ✓	10.8	192.2	
30' ✓	9.3	193.7	
ctr	8.2	194.8	
10' No.	6.8	196.2	
W.L. 1815	4.9	198.1	
	W. QUARTER		
W.L. 1815	5.3	197.7	
10' So.	5.8	197.2	
20' ✓	7.3	197.7	
ctr	8.8	194.2	
10' So of ✓	9.7	193.3	
20' ✓ ✓ ✓	10.1	192.9	
30' ✓ ✓ ✓	10.0	193.0	
40' ✓ ✓ ✓ S.L.	9.7	193.3	
	CENTER OF STATE		
S.L.	9.5	194.5	

203.0

10' No.	8.5	194.5
20' ✓	8.9	194.1
30' ✓	9.2	193.8
40' ✓ = ctr	9.1	193.9
50' ✓	7.3	195.7
60' ✓	6.0	197.0
70' ✓	5.2	197.8
77.58 ✓ = W.L. 1815	3.7	199.3

18

CROSS-SECTION OF
 1/815 ST (60' WIDE 10' WALKS)
 From the No. L. of SPRUCE ST
 To - 50' L. of SASSAFRAS ST

202.97 From page 17

SECTION C (see page 16)

W.L.	3.7	1993
cb	5.1	1979
1/4	5.7	1973
c	6.6	1962
1/4	7.8	1952
cb	6.8	1962
E	5.4	1976

SEC. D.

E	3.7	1993
cb	5.6	1972
1/4	5.0	1980
c	4.1	1989
1/4	3.3	1997
cb	2.0	2010
W	0.3	2027

T.P. 1294 214.06 1.85 201-12

214!
 SEC. E

19

W	9.6	2025
cb	11.8	2023
1/4	13.1	2010
c	13.4	2007
1/4	14.3	1998
cb	14.5	1996
E	13.9	1996

50' No.

E	10.6	2035
cb	11.3	2028
1/4	10.9	2032
c	11.3	2028
1/4	10.7	2032
cb	9.7	2022
W	8.2	2029

100' No.

W	5.1	2090
cb	6.6	2075
1/4	8.0	2061
c	8.0	2061

214.06

221.77

20

1/4	7.6	2106.5
cb	7.5	2106.6
E	6.9	2107.2

250' No

E	2.3	2118.9
cb	3.5	2117.7
1/4	4.4	2116.8
C	4.7	2116.5
1/4	5.4	2115.8
cb	6.4	2114.8
W	6.7	2114.5

150' No.

2.45 ON STEP OF HOUSE, 211.61

E	2.8	2111.7
cb	3.8	2110.7
1/4	4.0	2110.1
C	4.1	2110.0
1/4	4.5	2109.6
cb	4.7	2109.4
W	3.8	2102

266.37' No = SEC F.

W	6.2	2115.0
cb	5.9	2115.3
1/4	4.8	2116.4
C	4.4	2116.8
1/4	4.3	2116.9
cb	2.8	2118.4
E	1.0	2120.2

200' No.

W	1.7	2112.4
cb	1.7	2112.4
1/4	1.3	2112.8
C	0.2	2113.9
1/4	0.3	2113.8

SEC. G.

T.P.	9.44	221.21	2.29	211.77
cb			6.9	2114.3
E			5.9	2115.3

E	1.3	2119.9
cb	2.8	2118.4
1/4	4.3	2116.9

C	44	216.8
1/4	48	216.4
cb	59	216.3
W	62	215.0
SEC. H.		
W	62	215.0
cb	58	215.4
1/4	47	216.5
C	45	216.7
1/4	47	216.5
cb	29	218.3
E	16	219.6
50' No		
E	43	216.9
cb	48	216.4
1/4	52	216.0
C	47	216.5
1/4	52	216.0
cb	49	216.3
W	34	217.8

100' No		
W	29	218.3
cb	39	217.3
1/4	47	216.5
C	43	216.9
1/4	49	216.3
cb	45	216.7
E	40	217.7
136.1' No. = SEC. T		
E	32	218.0
cb	37	217.5
1/4	42	217.0
C	38	217.4
1/4	41	217.1
cb	39	217.3
W	29	218.3
29.8' No. = SEC. J		
C	34	217.8
1/4	35	217.7
cb	34	217.8

221.21

E 3.0 218.7

S. L. SASSAFRAS

E 2.4 218.8

T.P. 4.93 216.68 9.46 211.75

T.P. 1.04 206.46 11.26 205.42

T.P. 0.90 194.77 12.59 193.87

8.29 186.48

22

Profile E Altamira for Sierra
 Curb. NE 1/4 Vista & Altamira. 266.00

3/6/14 West
 Sierra
 Sierra

Una ruta = altamira R.M. No. cor. 277.113
 SW Sierra - Cochran - ofk - 273.716
 SW Highway Road shoulder - Mon. 262.683.

10.98	276.98	± Altamira	
0+00 = EL Valle Vista & ± Altamira	10.4	266.6	
+50	7.4	269.6	
1+00	4.0	273.0	
+50	1.8	275.2	
T.P.	103	275.95	

25 N. 65	270.5
" 4.2	272.8
" 1.6	275.4

7.78 283.73

25 N. 68	276.9
" 6.1	277.6

2+00 = WL Sierra Vista	6.7	277.0
+25 ± " "	6.1	277.6
+50 - EL " "	5.7	278.0
3+00	5.3	278.4
+50	4.8	278.9
4+00	4.4	279.3
+50	4.9	278.8
5+00	5.4	278.3
+50	6.0	277.7
6+00	6.6	277.1

50 N 6.2	277.5
" 6.3	277.4
" 6.5	277.2
" 7.2	276.5
" 7.3	276.4
" 7.9	275.8
" 8.6	275.1

+34.0 - WL Hermosa ± Altamira	6.9	276.8
+76.7 T. Hermosa top ring	7.5	276.2
175.2 " " bot. FT.	13.9	269.8

Curb. NE Her & Alt. 723 276.50

X Sect.	Treat	Street from	East	line 27 th to	West line	Apr. 6/14	Childs
28 th	10' sidewalks	8 1/2'	quarters	(54' street)	25' E	190.3	alter 24 Taylor
B.M. 27 th + Fr.	10.18	<u>HI.</u> 179.16	168.98				
	E line 27 th			No line			
No line		3.1	176.1			3.9	186.4
		3.1	176.1			3.7	186.6
		3.1	176.1			3.5	186.8
		2.8	176.4	C		3.2	187.1
C		2.2	177.0			3.0	187.3
		2.2	177.0			2.9	187.4
		1.9	177.3	No line		3.5	186.8
No line		1.2	178.0		50' E		
J.A	11.91	<u>HI.</u> 190.25	0.82 178.34	No line		1.4	188.9
	2' east					1.0	189.3
No line		3.8	186.5			0.8	189.5
		4.1	186.2	C		1.1	189.2
		4.4	185.9			1.9	188.4
C		4.8	185.5			2.1	188.2
		4.4	185.9	No line		2.2	188.1
		4.8	185.5				
No line		5.3	185.0				

190.3

75' E

no. line	2.0	188.3
	2.0	188.3
	2.0	188.3
C	2.2	188.1
	2.1	188.2
	2.0	188.3
no. line	2.1	188.2

100' E

no. line	2.6	187.7
	2.8	187.5
	3.0	187.3
C	3.0	187.3
	2.8	187.5
	2.7	187.6
no. line	2.6	187.7

190.3

25

125' E (west line Cerro Gorda)

no. line	4.0	186.3
	4.4	185.9
	4.5	185.8
C	4.7	185.6
	4.5	185.8
	4.2	186.1
no. line	4.4	185.9

west cb.

no. line	5.7	184.6
	5.5	184.8
	5.6	184.7
C	5.4	184.9
	5.1	185.2
	4.9	185.4
no. line	4.6	185.7

190.3

W 1/4

no. line	5.2	185.1
	5.4	184.9
	5.7	184.6
C	5.9	184.4
	5.9	184.4
	5.8	184.5
no. line	6.1	184.2
	Center	
no. line	6.3	184.0
	6.2	184.1
	6.2	184.1
C	6.4	183.9
	6.1	184.2
	5.9	184.4
no. line	5.8	184.5

190.3

E 1/4

26

no. line	6.4	183.9
	6.2	184.1
	6.8	183.5
C	6.9	183.4
	6.8	183.5
	7.0	183.3
no. line	7.0	183.3
	E. cb.	
no. line	7.5	182.8
	7.7	182.6
	7.8	182.5
C	7.8	182.5
	7.4	182.9
	7.2	183.1
no. line	7.0	183.3

175.01
190.25

East line Cerro Gorda St.

178.67

27

no line			7.7	182.6
			7.6	182.7
			8.3	182.0
C			8.6	181.7
			8.9	181.4
			8.9	181.4
no line			8.9	181.4

no line	15.7	0.8	177.9
		1.3	177.4
		2.3	176.4
C		2.7	176.0
		2.7	176.0
		2.5	176.2
no line		1.5	177.2

25' E

75' E

no line			11.0	179.3
			11.4	178.9
			11.4	178.9
C			11.1	179.2
			11.0	179.3
			10.8	179.5

no line		4.0	174.7
		4.9	173.6
		6.4	172.3
C		6.7	172.0
		6.0	172.7
		5.1	173.6

no line			9.9	180.4
J.P.	0.83	178.67	12.41	177.84

no line		3.8	174.9
---------	--	-----	-------

178,67

100' E

20. line

8.6 170.1

10.5 168.2

11.8 166.9

C

12.9 165.6

12.1 166.6

10.3 168.4

no. line

7.9 170.6

S.P.

0.21 ^{H.I.} 165.87 13.01 165.66

125' E 165.9

no. line

0.5 165.4

3.1 167.8

5.1 160.8

C

5.4 160.5

4.5 161.4

3.2 167.7

20. line

0.7 165.2

165,87

150' E

20. line

165.9

6.2 159.7

8.3 157.6

9.5 156.4

C

10.5 155.4

10.5 155.5

8.5 157.4

no. line

6.3 159.6

175' E

no. line

11.5 154.4

13.0 154.9

14.4 151.5

C

15.7 150.2

14.4 151.5

12.6 153.3

20. line

10.4 155.5

J.P.	0.35	^{H.I.} 153.21	13.01	152.86	J.P.	0.22	^{H.I.} 140.64	12.79	140.42
	200' E		^{153.2}			250' E		140.6	
No. line			2.3	150.9	No. line			0.1	140.5
			4.9	148.7				1.3	139.7
			6.4	146.8				1.7	138.9
C			8.0	145.7	C			2.5	138.1
			6.7	146.5				1.7	138.9
			5.8	147.4				0.7	139.9
no. line			4.6	148.6	no. line			0.0	140.6
	225' E					286.47' E (west line San Luis)			
no. line			8.9	144.3	no. line			5.4	135.2
			10.1	142.1				5.6	135.0
			11.2	142.0				5.9	134.7
C			11.7	141.5	C			6.7	133.9
			10.9	142.3				7.1	133.5
			9.8	143.4				7.2	133.4
No. line			8.0	145.2	No. line			7.13	133.51

$\frac{286}{352}$
 $\frac{360}{352}$
 36.47

140.6

w. cb.

no. line	8.9	131.7
-	8.5	134.1
	8.3	137.7
c	8.2	137.4
	7.5	137.1
	7.7	137.9
no. line	7.3	133.3
	w ¹ / ₄	
no. line	8.4	137.7
	8.6	137.0
	8.7	137.9
c	9.0	131.6
	9.4	131.7
	9.5	131.1
no. line	9.7	130.9

140.6

50

Center

no. line	10.5	130.1
-	10.0	130.6
	10.1	130.6
c	9.6	131.0
	9.4	131.7
	9.5	131.1
no. line	9.1	131.5
	e ¹ / ₄	
no. line	10.6	130.0
	10.6	130.0
	10.6	130.0
c	10.6	130.0
	11.0	129.6
	11.3	129.7
no. line	11.5	129.1

140.6

E. cb.

So. line	12.6	128.0
	12.4	128.4
	12.0	128.6
C	11.7	128.9
	11.6	129.0
	11.7	128.9
No. line	11.6	129.0

EAST line San Luis

No. line	12.3	128.3
	12.6	128.0
	12.9	127.7
C	13.2	127.4
	13.4	127.5
	13.3	127.7
No. line	13.5	127.1

140.64

75' E

31

So. line	11.1	129.5
	10.8	129.8
	10.5	130.1
C	10.5	130.1
	10.3	130.3
	10.2	130.6
No. line	10.0	130.6

100' E

No. line	4.6	136.0
	4.8	136.8
	4.6	136.0
C	4.6	136.0
	4.7	136.9
	4.5	136.1
No. line	4.4	136.7

J.P. 4.80 ^{H.I.} 143.86 1.58 139.06

118'.58 E (west line 28th)

No. line	2.3	141.6
	1.6	144.7
	2.0	141.9
C	2.3	141.6
	2.2	141.7
	2.1	141.8
No. line	2.4	141.5

J.P. 2.94 ^{H.I.} 131.11 12.47 128.17

25' E San Luis

No. line	6.1	145.0
	6.8	144.3
	7.7	143.6
C	8.5	142.6
	8.3	141.8
	8.0	142.1
No. line	5.8	145.3

131.1

32

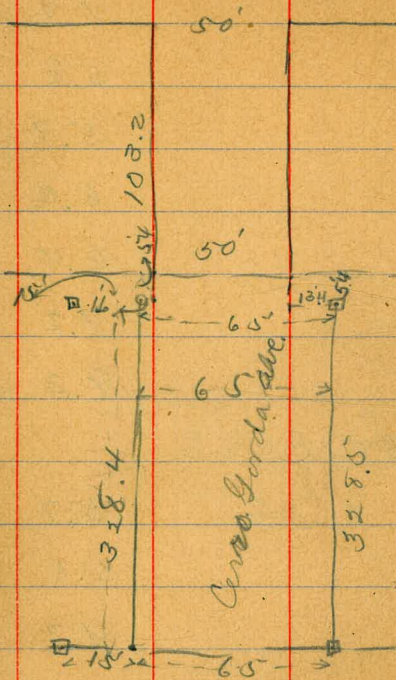
40' E

No. line	7.9	143.7
	5.8	145.3
	5.7	145.2
C	6.0	145.1
	6.4	144.7
	7.2	143.9
No. line	9.2	141.9

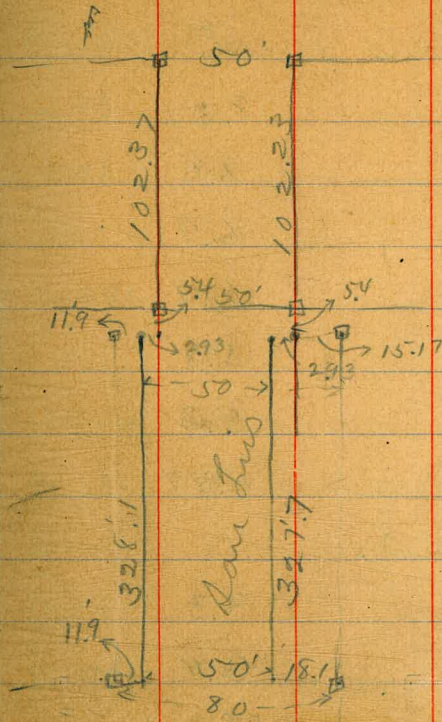
50' E

No. line	5.7	145.4
	5.1	146.0
	4.7	146.6
C	4.2	146.9
	4.0	147.1
	4.1	147.0
No. line	4.7	146.4

Treat street



Treat St



X sect. Cerro Gorda from
 to so. line Treat's add. ^{10' walks} 7 1/2' quarters & 10' walks
 H.T.

Treat St. South 50' Street
 1/4 mile
 N 1/4 quarters

84

J.P. 13.03 190.87 177.84

103'2 SO. (So. line Treat add)

So. line Treat. Street

E line

8.31 187.6

E line

3.9 187.0

7.6 187.3

3.5 187.4

6.9 184.0

C

3.1 187.8

C

6.4 184.5

3.1 187.8

5.8 185.1

3.5 187.6

5.2 185.7

W line

3.3 187.6

W line

4.57 186.9

108'6 SO. on W. for 50' Street

50' SO.

W line

3.3 187.6

W line

3.3 187.6

3.6 187.3

3.4 187.5

3.4 187.5

3.3 187.6

C

2.9 188.0

C

3.2 187.7

3.0 187.9

3.8 187.1

3.2 187.5

4.5 186.4

E line

3.6 187.3

E line

5.1 185.8

(Notes changed for 50' street)
W.D.S.

190.9

108.6 So. on W. for 65' Street

E line

4.17 ^{87.5} 186.7

3.9 ^{87.6} 187.0

3.2 ^{87.7} 187.7

C 2.9 ^{87.8} 188.0

3.3 187.6

3.6 187.3

W line

3.2 187.7

150' So. Street

W line

4.0 186.9

4.0 186.9

3.9 187.0

C 3.9 187.0

3.9 187.0

3.9 ^{87.0} 187.0

E line

4.4 ^{86.9} 186.5

190.9

35

200' So.

E line

5.5 ^{86.1} 185.4

5.1 ^{86.0} 185.8

4.7 ^{86.2} 186.7

C

4.6 186.3

5.0 185.9

5.1 185.8

W line

5.0 185.9

250' So.

W line

6.8 184.1

6.7 184.7

6.2 184.7

C

5.8 ^{85.0} 185.1

5.4 ^{85.2} 185.5

6.3 ^{84.8} 184.6

E line

6.9 ^{85.3} 184.0

190.9

300' 20.

Eline

7.6

^{83.6}
183.3

7.5

^{83.5}
183.4

7.2

^{83.6}
183.7

C

7.4

183.5

7.5

183.6

7.7

183.7

White

8.2

183.7

350' 20.

White

9.0

181.9

8.8

184.1

8.4

182.5

C

8.1

182.8

8.0

^{82.8}
182.9

8.0

^{82.8}
182.9

Eline

8.4

^{82.8}
182.5

190.9

400' 20.

Eline

8.6

^{82.3}
182.3

8.5

^{82.1}
182.4

8.6

^{82.0}
182.3

C

9.0

181.9

9.4

181.5

9.2

181.7

White

10.0

180.9

436.70' 20. Pueblo line

White

11.1

179.8

10.4

180.5

10.4

180.5

C

9.9

^{80.8}
181.0

9.8

^{81.0}
181.1

9.5

^{81.1}
181.6

Eline

9.34

^{81.2}
181.6

X sect. San Luis Street
 50' street 10' walks. 7 1/2'

from Treat South
 quarters

140.7

37

J.P. 6.68 ^{H.S.} 140.19 133.57

102.37 Ro. in W. (So. line Treats add.)

South line Treat

W line

1.78 138.4

W line 6.68 133.5

4.9 135.3

8.5 131.7

7.1 132.1

9.2 131.0

C

9.1 131.1

C 10.0 130.7

10.8 129.6

11.0 129.4

13.2 127.0

12.1 128.1

E line

14.9 125.3

E line 13.08 127.1

107.77 Ro. in W. 50' Street north

50' Ro.

E line

15.3 125.9

E line 14.5 125.7

12.9 127.3

13.3 126.9

10.8 129.6

12.0 128.4

C

9.1 131.1

C 10.2 130.0

6.8 132.6

8.3 131.9

4.9 135.7

6.6 132.6

Bo line

1.5 138.7

W line 3.8 136.4

1407

107.77 Ro. (50' street South)

White	0.6	139.6
	3.9	136.3
	6.2	136.0
C	8.4	131.8
	10.5	129.7
	12.5	127.7
Blue	14.7	125.5
150' Ro.		
Blue	13.6	126.6
	10.8	129.4
	9.1	127.1
C	7.1	133.1
	4.9	125.7
	3.1	127.1
White	0.1	140.1

1407

38

200' Ro.

White	0.9	139.3
	2.3	137.9
	4.5	135.7
C	7.7	132.5
	9.7	120.6
	11.5	128.7
Blue	13.5	126.7

250' Ro.

Blue	15.2	125.0
	13.0	127.7
	10.6	129.6
C	8.1	132.1
	6.2	124.0
	5.1	125.1
White	2.5	137.7

140.7

300' 20.

White	4.1	136.1
	6.9	132.9
	8.2	131.0
C	9.6	130.6
	10.9	129.3
	13.1	127.1
E line	15.9	124.3

350' 20.

E line	17.1	123.1
	14.9	125.3
	13.1	127.1
C	11.4	128.8
	9.2	131.0
	8.1	132.1
White	5.6	134.6

140.7

400' 20.

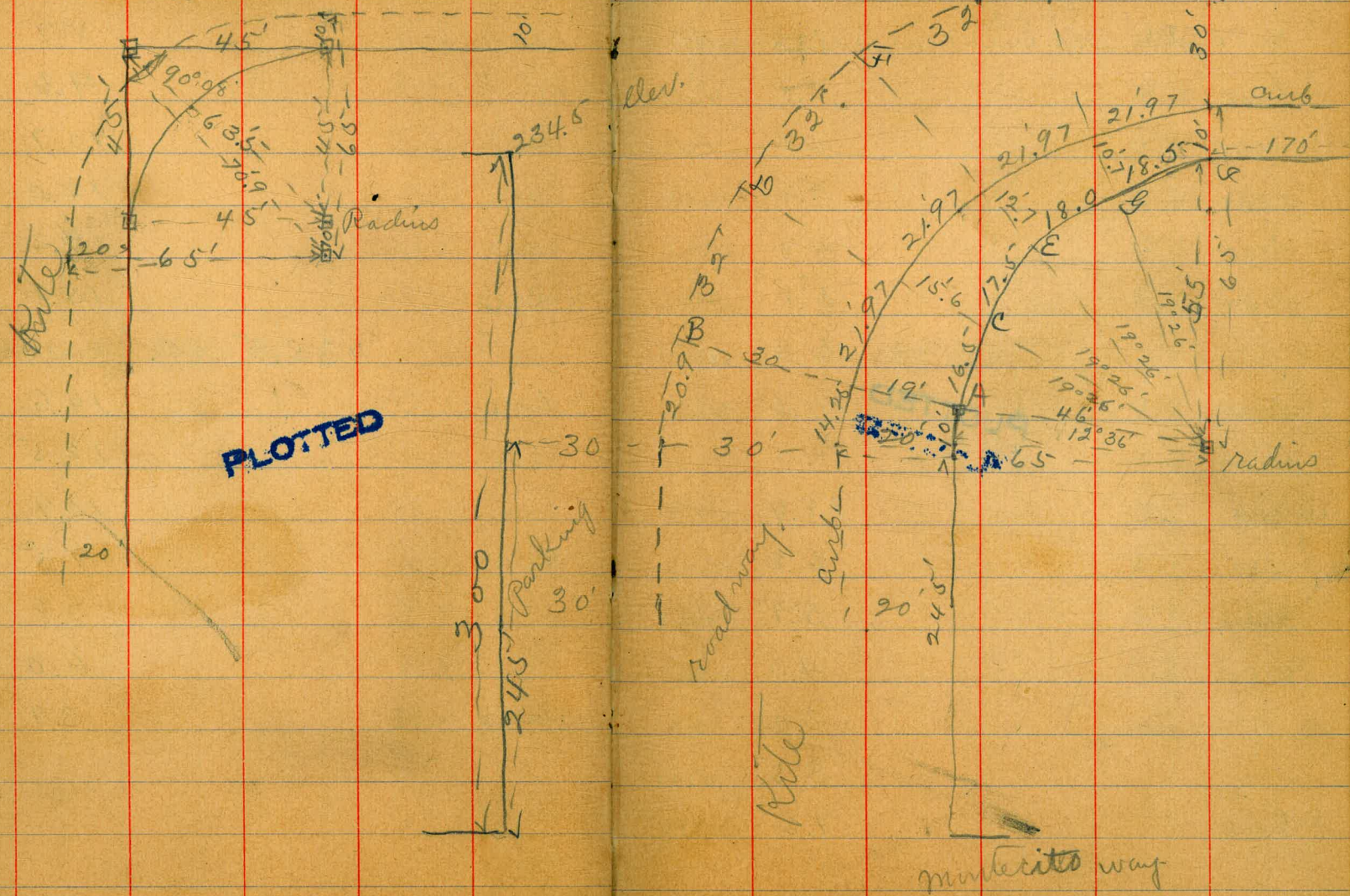
White	6.6	133.6
	8.7	131.5
	9.6	130.6
C	10.7	129.5
	12.0	128.2
	14.2	126.0
E line	15.8	124.4

435.5 20. put to line

E line	14.6	125.6
	12.5	127.7
	10.9	129.3
C	9.5	130.7
	7.8	132.4
	6.0	134.2
White	3.9	136.3

39

X section Kite + Stockton + survey Apr. 10/14 } builds
 for cutting of cur. at Stockton + Kite } after 40'
 Stockton } Bunker



X sect Kitt + Stockton, 1 kite
 7 1/2 quarters + 30' on west for parking

80' wide 20' sidewalk on east
 Stockton 50' street 10' walls 41
 7 1/2' quarters.

B.M. 4.43 ^{H.I.} 280.30 275.87
 J.P. 1.59 ^{H.I.} 273.09 8.80 271.50

75' no.
 277.1

25' no. line Montecito wall.

E line

E line

1.9 271.2

1.67 271.2

3.0 270.1

4.2 268.9

3.6 269.5

C

5.4 267.7

C

4.3 268.8

6.4 266.7

5.1 268.0

w.c.

7.5 265.6

6.3 266.8

100' no.

30' w line

PLOTTED
 50' no.

17.6 265.5

w.c.

8.7 264.4

9.9 263.2

w line
 30'

18.4 264.7

C

8.4 264.7

6.2 266.9

7.1 266.0

5.1 268.0

6.4 266.7

C

4.0 269.1

E line

5.3 268.8

3.0 270.1

2.3 270.8

2.5 270.6

E line

1.2 271.9

277.1

125' no.

E line	2.0	271.1
	6.0	267.1
	7.3	265.8
C	8.8	264.3
	9.8	263.3
w.cb.	13.6	259.5

150' no.

PLOTTED

w.cb.	15.6	257.5
	13.2	259.9
C	8.7	264.4
	7.3	266.8
	5.8	267.3
E line	2.5	270.6

277.1

42

175' no.

E line	3.1	270.0
	7.0	266.1
	9.3	263.8
C	11.1	261.0
w 1/4	14.0	259.1

200' no.

C

PLOTTED

	11.3	261.8
	10.1	263.0
	8.7	264.4
E line	3.25	269.8

225' no.

E line

C
w 1/4

	4.2	268.9
	7.3	265.8
	8.3	264.8
	10.1	263.0
	12.1	261.0

273.1

2 45' No.

W/4	13.2	2599
C	10.1	2620
	8.5	2646
	7.7	2654
E line	5.2	2679
no. line marker to way		
E line	3.2	2699
	3.5	2696
	3.6	2695
C	4.6	2685
	5.7	2674
	7.0	2661
W. line	11.3	2598

PLOTTED

273.1

45

Sect A B see page 40

E line	6.2	2669
	8.8	2643
	10.1	2630
C	12.8	2603

Sect C D

E line	7.9	2657
	10.2	2629
	13.0	2601

Sect. E F.

E 1/4	12.3	2608
	9.8	2633
E line	8.2	2649

Sect. G H.

E line	8.5	2646
	10.8	2623
E 1/4	14.7	2584

273,09

sect I J. = 170' west jackline.

no. line

9.0 2641 w.cb.

9.5 2626 w. 1/4

9.9 2622

C

10.7 2622 w.cb.

10.7 2622

10.5 2626 w.cb.

no. line

8.34 264.75

J.P.

1.97
PLOTTED

12.71 260.38 w.cb.

75' no. Monteito way w 1/4

w. line

7.5 2549

100' no.

C

w. line

15.1 2473

J.P.

2.98 ^{HI.} 263.36 260.38 w.cb.

175' no.

w.cb.

6.5 2569 w.cb.

C

27672

44

300' no.

5.8 2576

3.7 2597

225' no.

4.7 2587

245' no.

6.0 2574

sect. A-B.

7.7 2557

5.8 2576

sect C-D.

8.0 2554

10.8 2526

14.4 2490

sect. E-F.

16.1 2473

12.6 2508

9.4 2540

263,36

Sect. G.H.

J.P. #

11.45 ^{HI.} 276.20

45

26475

C		8.9	2645		140' west Jackdaw.		
		12.5	2609	No line		9.2	2670
w.cb.		14.8	2686			10.6	2656
J.P.	^{HI.} 3.05 253.86	12.55	250.81			10.8	2654
	125' no. mounted to way			C		10.7	2655
White		10.4	2635			11.1	2651
	PLOTTED					10.1	2661
White		11.1	2628	No line		9.3	2669
	175' no.				115' west		
White		10.3	2636	No line		8.6	2676
	100' no.					8.9	2673
White		8.6	2653			8.8	2674
	225' no.			C		8.8	2674
White		9.7	2647			8.7	2675
	245' no.					8.3	2679
White		10.5	2626	No line		7.2	2690
J.P.	^{HI.} 0.14 241.66	12.34	241.52				
	300' no. (No line)	Stock line					
White		7.2	234.5				

2762

90' west

No. line	5.6	2706
	6.2	2700
	6.5	2697
C	6.6	2696
	6.7	2695
	7.0	2692
No. line	6.8	2694

PLOTTED

65' west

No. line	5.0	2712
	4.9	2713
	5.0	2712
C	4.8	2716
	4.7	2715
	4.2	2720
No. line	3.4	2728

2762

46

40' west

No. line	2.1	2721
	2.7	2735
	2.8	2734
C	3.1	2731
	3.3	2729
	3.5	2727
No. line	3.9	2723

15' west

No. line	2.4	2738
	2.0	2742
	2.1	2741
C	1.8	2744
	1.6	2746
	1.6	2746
No. line	1.3	2749

7767

47

2' west

So. line	1.8	7744
	1.4	7748
	2.6	7736
C	2.8	7734
	3.2	7730
4+6'	3.3	7729
	1.9	7753
No. line	2.2	7740

PLOTTED

West line Jackdaw.

No. line	3.4	7728
	3.6	7726
	3.2	7730
C	3.0	7727
	3.3	7729
	3.2	7730
So. line	2.9	7733

LOTTED

CROSS SECTION OF
 1815 ST (60' WIDE)
 From the South Line (10' MARKS)
 of Washington St
 To the So. End of 1815 St

5/24/14
 GEORGE
 SPOONMAN
 MOORE

BP NEWASH
 + HAWK STS

19

ON B.M. 137 264.42 263.04

SO. LINE WASHINGTON ST.

E	4.8	259.6
cb	5.4	259.0
1/4	5.4	259.0
C	5.4	259.0
1/4	5.5	258.9
cb	5.8	258.6
W	5.3	259.1

10' PLOTTED

W	6.4	258.0
cb	5.7	258.7
1/4	5.8	258.6
C	5.6	258.8
1/4	4.6	258.8
cb	4.7	259.7
E	5.0	259.4
T.P.	1.08	252.57 12.93 251.49

50' 50.

E	7.8	254.8
cb	8.8	253.8
1/4	9.5	253.1
C	9.8	252.8
1/4	10.7	251.9
cb	10.4	252.7
W	11.0	251.6
T.P.	0.04	239.54 12.77 239.80

75' 50.

W	12.7	251.0
cb	6.5	252.3
1/4	6.7	252.7
C	5.4	254.0
1/4	5.3	254.5
cb	4.8	255.0
E	4.4	255.4
T.P.	3.83	232.02 11.65 228.19

110' 50.

E	7.2	254.8
---	-----	-------

cb			7.9	222.1
1/4			8.3	222.7
C			8.8	222.2
1/4			9.3	222.7
cb			9.7	222.3
W			10.8	221.9
T.P.	11.80	243.26	0.56	231.46
I		150' 50.		
W			8.7	232.6
cb			7.6	232.7
1/4			6.7	232.6
C			5.7	232.6
1/4			5.8	232.5
cb			6.5	232.8
E			7.5	232.8
T.P.	11.69	253.89	1.06	242.80
		175' 50.		
E			8.8	242.5
cb			7.5	242.4
1/4			6.2	242.7

PLOTTED

C			6.4	247.5
1/4			6.8	247.1
cb			8.3	245.6
W			8.8	245.1
T.P.	12.71	265.82	0.78	253.11
		200' 50		
W			11.5	254.3
cb			10.4	255.4
1/4			9.8	256.0
C			9.8	256.0
1/4			11.8	255.5
cb			11.8	254.0
E			12.5	253.3
		225' 50.		
E			8.5	257.3
cb			8.1	257.7
1/4			7.8	258.0
cb			7.6	258.2
1/4			7.3	258.5
cb			7.3	258.5

PLOTTED

W 7.5 2583

350' So

W 5.6 2602

cb 5.7 2601

1/4 6.0 2598

C 6.1 2597

1/4 6.2 2596

cb 6.6 2592

E 6.8 2590

300' So. = N.L. DOUGLAS ST (50' WIDE)

E 4.7 261.1

cb 4.7 261.1

1/4 4.3 261.7

C 4.6 261.8

1/4 4.0 261.8

cb 4.1 261.7

W 3.8 262.0

No. CORE

W 3.5 262.3

cb 3.7 262.1

1/4 3.4 262.4

C 3.6 262.2

1/4 3.8 262.0

cb 4.2 261.6

E 4.2 261.6

No. QUARTER

E 3.7 262.1

cb 3.8 262.0

1/4 3.1 262.7

C 3.5 262.3

1/4 3.3 262.3

cb 3.5 262.3

W 3.5 262.3

CENTER

W 3.1 262.7

cb 3.4 262.4

1/4 3.4 262.4

C 3.0 262.8

1/4 2.9 262.9

cb 3.2 262.6

E	3.4	2622	1/4			2.5	2623	52
SO. QUARTER			C			2.6	2622	
E	3.2	2626	1/4			2.5	2627	
cb	3.0	2628	cb			2.4	2622	
1/4	2.8	2630	W			2.3	2629	
C	2.7	2631			50' 50.			
1/4	3.0	2628	W			1.0	2628	
cb	3.1	2627	cb			0.9	2629	
W	2.9	2629	1/4			0.5	2627	
SO. CURB			C			0.5	2627	
W	2.8	2630	1/4			0.5	2627	
cb	2.9	2629	T.P.	685	272.43	0.22	265.58	
1/4	2.9	2629	cb			6.8	265.6	
C	2.8	2630	E			6.5	265.9	
1/4	2.8	2630			100' 50.			
cb	2.7	2631	E			4.3	268.1	
E	2.8	2630	cb			4.8	267.6	
SO. LINE DOUGLAS ST.			1/4			5.0	2672	
E	2.3	2625	C			5.2	2672	
cb	2.4	2622	1/4			5.9	266.5	

PLOTTED

dt 6.2 2662

W 6.3 2661

150' 50

W 5.0 2676

dt 4.4 2680

1/4 4.2 2684

C 3.6 2688

1/4 3.0 2696

dt 2.9 2695

E 2.7 2697

19909 EAST
197
50 = PUEBLO LINE

E 1.2 2712

dt 1.6 2708

1/4 2.0 2706

C 2.1 2703

1/4 2.3 2701

dt 2.7 2697

W 2.8 2696

OH B.M. 9.39 863.04 Check.

54

Location for Culvert
at the Intersection
of 31st + Redwood Sts

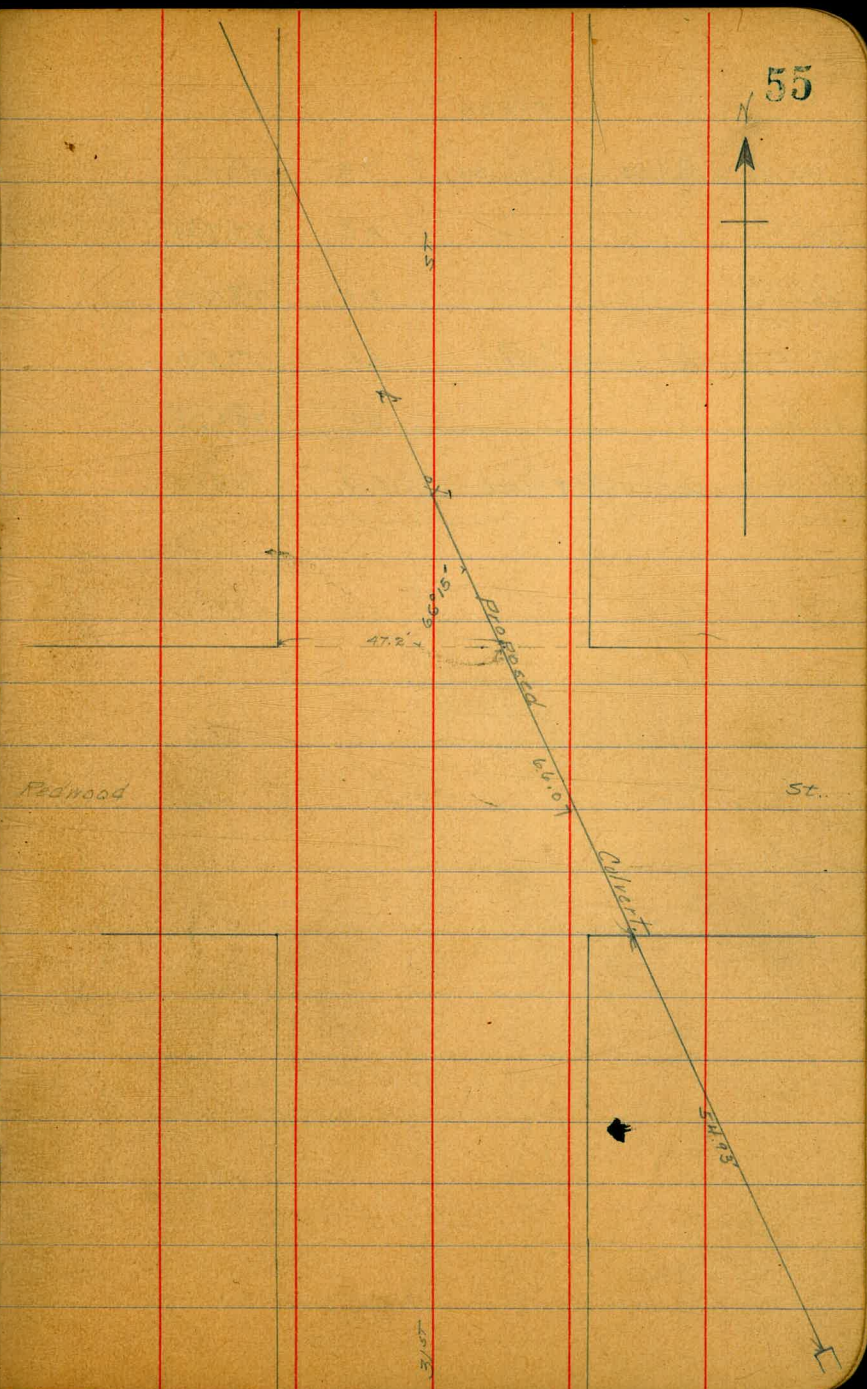
Gregory
Moore
Fletcher

B.M.	12.31	314.37		302.06	54.30 th Redwood
T.P.	1.59	303.77	12.18	302.19	
T.P.	0.64	292.86	11.56	292.22	Top Second Fence Post No. of Red. on St.
T.P.	1.09	281.08	12.07	279.27	
T.P.	3.09	276.89	7.28	273.50	

Levels on Center Line of Culvert

00 = N.L. Redwood.	5.6	271.3
35' 50.	7.2	269.7
55' 50	6.8	270.1
5 L. Redwood.	8.0	268.9
85' 50. of N.L.	9.7	267.2
125' 50 = Bottom Creek	12.2	264.7
121' 50. = Outlet.	10.9	266.0

00 = N.L. Redwood	5.6	271.3		
25' No.	4.1	272.8		
50' = Bottom Creek	4.6	272.3		
T.P.	7.02	282.20	1.71	276.18
90' No.	6.8	275.4		



3/1/07

28220

105 No. of Redwood = bottom Creek	7.3	774.9
120 ✓	4.8	777.4
145 ✓	2.0	780.2
165 ✓ = inlet = bottom Creek	3.8	778.4
190 No.	0.7	781.5
210 ✓ = inlet = bottom Creek	0.9	781.3

PLOTTER

1820 X Sect. Bayard St. from
to 100' South of Braeshear.

		H.T.	NE cor. Cass
J.P.	0.62	18.42	R.M. 1780
	2.27	H.T. 12.33	8.36 10.06
South line Grand ave.			
Elms		2.0	103
gutter		2.3	10.0
		3.1	9.7
		2.8	9.5
C		2.7	9.6
gutter		3.0	9.3
		3.4	8.9
		3.0	9.3
Whins		2.8	9.5
PLOTTED			
50' 20.			
Whins		3.4	8.9
gutter		3.6	8.7
		4.3	8.0
		3.8	8.5
C		3.4	8.9
gutter		3.5	8.8
		3.7	8.4
		3.0	9.3
Elms		2.9	9.4

South line Grand ave. Halibuts
Mar. 8/15 (after Kerr)

100' 20.			
Elms		1.77	3.3 9.0
gutter	Cement curbs all	3.6	8.7
		4.6	7.7
	in except as noted	4.3	8.0
C	below	4.1	8.2
gutter	145' 20. Grand ave	4.5	7.8
	on west side	4.9	7.4
	no cement curbs up	4.1	8.2
	to station 270	3.9	8.4
Whins			
150' 20.			
Whins		4.5	7.8
gutter		4.8	7.5
		5.4	6.9
		5.1	7.2
C		4.6	7.7
gutter		4.9	7.4
		5.3	7.0
		4.3	8.0
Elms		4.2	8.1

17.3

200' 20.

E line	4.9	7.4
gutter	5.0 5.9 5.5	7.3 6.4 6.8
C	5.2	7.1
gutter	5.7 6.0 5.3	6.6 6.7 7.0
White	5.0	7.7
White	5.5	6.8
gutter	5.8 6.5 6.1	6.5 5.8 6.7
C	5.7	6.6
gutter	5.8 6.4 5.7	6.5 5.9 6.6
E line	5.4	6.9

PLOTTED
50 RO.

17.3

58

270' 10. (Machine Thomas)

E line	5.8	6.5
gutter	6.0 6.6 5.9	6.7 5.7 6.4
C	5.8	6.5
gutter	6.4 6.7 6.2	5.9 5.6 6.1
White	5.8	6.5
White	6.5	5.8
gutter	6.9	5.6
C	6.7	5.6
C	6.2	6.1
gutter	6.2	6.1
gutter	6.3	6.0
E line	6.4	5.9

No. curb

123

no. 14

Ehrie	5.7	6.6
	6.0	6.3
	6.1	6.2
⊙	6.3	6.0
	6.7	5.6
	6.9	5.4
White	6.9	5.4
	PLOTTED center	
White	6.9	5.4
	7.1	5.7
	6.8	5.5
⊙	6.4	5.9
	6.4	5.9
	6.3	6.0
Ehrie	5.9	6.6

123

59

no. 14

Ehrie	6.1	6.2
	6.7	5.6
	6.6	5.7
⊙	6.4	5.9
	6.9	5.4
	7.0	5.3
White	6.7	5.6
	no. cb	
White	7.0	5.3
	7.3	5.0
	6.9	5.4
⊙	6.4	5.9
	6.7	5.6
	7.0	5.3
Ehrie	6.7	5.6

12.33

South line Thomas

E line	6.1	6.2
gutter	6.5	5.8
	7.3	5.0
	6.8	5.5
C	6.6	5.7
gutter	7.0	5.3
	7.3	5.0
	6.5	5.8
Whire	6.6	5.7

PLOTTED
50' 20.

Whire J.P.	4.42	H.I. 9.42	7.1	5.7
			7.33	5.00
gutter			3.8	5.6
			4.6	4.8
			4.4	5.0
C			4.0	5.4
gutter			4.0	5.6
			4.6	4.8
			3.8	5.6
E line			3.2	6.2

9.4

60

100' 20.

E line	3.4	6.0
gutter	3.9	5.5
	4.8	4.6
	4.3	5.1
C	4.2	5.7
gutter	4.4	5.0
	4.7	4.7
	3.9	5.5
Whire	4.2	5.2

150' 20.

Whire	4.4	5.0
gutter	4.1	5.3
	5.0	4.4
	4.6	4.8
C	4.3	5.1
gutter	4.4	5.0
	4.9	4.5
	4.1	5.3
E line	3.2	6.2

9.6

200' 20.

E line	3.6	5.8
gutter	4.2	5.2
	5.1	5.3
	4.7	5.7
c	4.4	5.0
gutter	4.9	5.5
	5.3	4.1
	4.3	5.1
White	4.6	5.8

PL 258 20.

White	4.8	5.6
gutter	4.5	5.9
	5.5	3.9
	5.0	5.6
c	4.8	5.6
gutter	4.9	5.5
	5.5	3.9
	4.5	5.9
E line	3.7	5.7

9.6

61

270' 20. (no. line Reed)

E line	3.9	5.5
gutter	4.6	5.8
	5.4	5.0
	5.0	5.6
c	4.9	5.5
gutter	5.1	5.3
	5.6	3.8
	4.6	5.8
White	4.7	5.7

no. cb.

White	5.6	3.8
gutter	5.6	3.8
	5.2	5.7
	4.8	5.6
c	5.0	5.4
gutter	5.4	5.0
	5.4	5.0
	5.1	5.3
E line	5.1	5.3

9.4

no 1/4

Eline

4.9 4.5

5.0 4.4

5.0 4.4

c

4.8 4.6

5.2 4.7

5.4 4.0

white

5.5 3.9

PLOTTED

Center

white

5.4 4.0

5.5 3.9

5.3 4.5

c

4.8 4.6

4.9 4.5

4.9 4.5

Eline

4.6 4.8

9.4

no 1/4

Eline

5.2 4.7

5.4 4.0

4.9 4.5

c

5.0 4.4

5.3 4.1

5.6 3.8

white

5.4 4.0

no. 1/4

white

5.5 3.9

5.7 3.7

5.4 4.0

c

5.7 4.3

5.1 4.3

5.6 3.8

Eline

5.3 4.1

62

96

South line Reed

E line	4.9	4.5
gutter	5.1	4.7
	5.8	7.6
	5.1	4.7
C	5.1	4.7
gutter	5.5	7.9
	5.7	7.7
	5.1	4.7
White	5.4	4.0
White	5.2	4.7
gutter	5.2	4.7
	5.9	7.5
	5.5	3.9
C	5.2	4.7
gutter	5.4	4.0
	6.0	7.4
	5.2	4.7
E line	4.4	5.0

PLOTTED
5'0" 20.

96

100' 20.

E line	5.3	4.1
gutter	5.3	4.1
	6.2	7.7
	5.3	4.1
C	5.2	4.7
gutter	5.5	7.9
	5.9	7.5
	5.3	4.1
White	5.2	4.7
White	5.3	4.1
gutter	5.4	4.0
	6.0	7.4
	5.7	7.7
C	5.2	4.7
gutter	5.5	7.9
	5.3	7.1
	5.4	4.0
E line	5.3	4.1

150' 20.

63

942

200' 20.

Elm	5.6	3.8
gutter	5.5 6.4 5.5	3.9 3.0 3.9
C	5.3	4.1
gutter	5.8 6.1 5.5	3.6 3.3 3.9
White	5.4	4.0
J.P.	8.98	7.35
	6.05	3.37

PLOTTED

H.I.

250' 20.

White	3.6	3.8
gutter	3.5 4.0 3.8	3.9 3.9 3.6
C	3.5	3.9
gutter	3.7 4.5 3.5	3.7 3.9 3.9
Elm	3.5	3.9

74

64

270' 20 (no. live Oliver)

Elm	3.6	3.8
gutter	3.5 4.4 3.7	3.9 3.0 3.7
C	3.5	3.9
gutter	4.0 4.5 3.5	3.6 3.9 3.9
White	3.6	3.8

no. cb.

White	4.1	3.7
	4.5	3.9
	4.2	3.7
C	3.7	3.7
	3.8	3.6
	4.2	3.7
Elm	4.0	3.6

7.4

200 1/4

Ehrie

4.0 7.4

4.3 7.1

3.8 7.6

C

3.7 7.7

4.2 7.2

4.4 7.0

White

3.9 7.5

PLOTTED
Center

White

3.8 7.5

4.4 7.0

4.1 7.7

C

3.6 7.8

3.8 7.6

4.0 7.4

Ehrie

3.9 7.5

7.4

65

200 1/4

Ehrie

3.9 7.5

4.2 7.2

3.8 7.6

C

3.7 7.7

4.1 7.7

4.3 7.1

White

3.9 7.5

200 cb.

White

4.1 7.7

4.5 7.9

4.1 7.7

C

3.8 7.6

3.9 7.5

4.4 7.0

Ehrie

4.2 7.7

7,35

20' line above

Elms	3.6	7.8
	R.M.	
	3.48	3.87
gutter	4.6	7.8
	4.1	7.7
C	3.9	7.5
	4.2	7.7
gutter	4.6	7.8
	3.5	7.9
White	3.7	7.7

PLOTTED

20' 20.

White	4.1	7.7
	4.0	7.6
gutter	5.0	7.6
	4.4	7.0
C	4.0	7.6
	4.2	7.7
gutter	5.1	7.7
	4.0	7.4
Elms	3.9	7.5

7.4

66

100' 20.

Elms	4.3	7.1
	4.3	7.1
gutter	5.4	7.0
	4.4	7.0
C	4.3	7.1
	4.6	7.8
gutter	5.3	7.1
	4.3	7.1
White	4.5	7.9

150' 20.

White	4.8	7.6
	4.8	7.6
gutter	5.7	1.7
	4.9	7.5
C	4.6	7.8
	4.8	7.6
gutter	5.8	1.6
	4.7	7.7
Elms	4.8	7.6

7.4

200' So.

E line	5.2	2.2
gutter	5.1	2.3
	6.0	1.4
	5.1	2.3
c	4.9	2.5
gutter	5.4	2.0
	6.2	1.2
	5.1	2.3
White	4.8	2.6

PLOTTED

250' So. (No. line Pacific ave)

White	5.2	2.2
gutter	5.5	1.9
	6.1	1.3
	5.6	1.8
c	5.3	2.1
gutter	5.6	1.8
	6.3	1.1
	5.5	1.9
E line	5.5	1.9

7.4

No. Cl.

E line	6.2	1.2
	6.0	1.4
	5.6	1.8
c	5.4	2.0
	5.8	1.6
	6.1	1.3
White	6.0	1.4

No. 1/4

White	5.6	1.8
	5.6	1.8
	5.4	2.0
c	5.3	2.1
	5.5	1.9
	5.9	1.5
E line	6.7	1.7

7.0

center

Elms	5.7	1.7
	5.8	1.6
	5.4	2.0
c	5.3	2.1
	5.5	1.9
	5.5	1.9
White	5.5	1.9
	5.5	1.9
White	5.8	1.6
	5.8	1.6
	5.5	1.9
c	5.4	2.0
	5.4	2.0
	5.7	1.7
Elms	5.8	1.6

PLOTTED

20 1/4

7,35

68

20 06.

Elms	6.4	1.0
	6.1	1.3
	5.6	1.8
c	5.4	2.0
	5.6	1.8
	6.1	1.3
White	6.3	1.1
	South line Pacific ave.	
White	5.0	2.4
	5.5	1.9
gutter	6.4	1.0
	5.7	1.7
c	5.5	1.9
	5.7	1.7
gutter	6.5	0.9
	B.M. 5.49	1.86
Elms	5.5	1.9

70

50' 20.

Eline	5.5	1.9
gutter	5.6 6.8 5.8	1.8 0.6 1.6
C	5.6	1.8
gutter	5.9 6.6 5.6	1.5 0.8 1.8
White	5.5	1.9
White	5.5	1.9
gutter	5.7 6.6 6.0	1.7 0.8 1.4
C	5.6	1.8
gutter	5.7 6.9 5.7	1.7 0.5 1.7
Eline	5.8	1.6

PLOTTED

100' 20.

7,35

89

150' 20.

Eline	5.9	1.5
gutter	5.8 6.8 5.8	1.6 0.6 1.6
C	5.7	1.7
gutter	5.9 6.8 5.8	1.5 0.6 1.6
White	5.8	1.6
J.P.	4.60 ² 6.05 ^{HI.}	5.90 1.45
White	4.6	1.5
gutter	4.5 5.7 4.9	1.6 0.4 1.7
C	4.6	1.5
gutter	4.8 5.4 4.6	1.7 0.7 1.5
Eline	4.4	1.7

200' 20.

61

250' 20.

Elm	4.5	1.6
	4.7	1.4
gutter	5.5	0.6
	4.9	1.2
C	4.7	1.4
	5.1	1.0
gutter	5.8	0.3
	4.6	1.5
White	4.8	1.3

PLOTTED

310' 20. (no Elm Boracua)

White	4.8	1.3
	4.7	1.4
gutter	5.7	0.4
	5.0	1.1
C	4.6	1.5
	5.0	1.1
gutter	5.5	0.6
	4.7	1.4
Elm	4.8	1.3

61

70

No. 26.

Elm	5.3	0.8
	5.4	0.7
	4.9	1.2
C	4.5	1.6
	5.0	1.1
gutter	5.6	0.5
	4.7	1.5
White	4.8	1.3

Center

White	4.7	1.4
	4.8	1.3
gutter	5.8	0.3
	5.0	1.1
C	4.5	1.6
	4.9	1.2
	5.6	0.5
Elm	5.1	1.0

6.05

So. cb.

Eline	5.7	1.0
	5.5	0.6
	4.9	1.2
c	4.5	1.6
	5.0	1.1
gutter	5.8	0.7
	4.8	1.3
Whine	4.7	1.4

PLOTTED

South line Braemar

Whine	4.6	1.5
	4.8	1.3
gutter	5.6	0.5
	4.9	1.2
c	4.6	1.5
	5.2	0.9
gutter	5.7	0.6
	B.M. 4.67	1.38
Eline	4.9	1.2

71

50' 20.

Eline	4.5	1.6
	4.8	1.3
gutter	5.7	0.4
	5.2	0.9
c	5.0	1.1
	5.3	0.8
gutter	5.7	0.6
	4.8	1.3
Whine	4.8	1.3

100' 20.

Whine	5.0	1.1
	5.2	0.9
	4.9	1.2
c	4.9	1.2
	4.9	1.2
gutter	5.6	0.5
	4.9	1.2
Eline	4.9	1.2

500

X sect. Oliver from East
West line East.6.27 ^{H.I.} 10.14 B.M. 3.87

East line Bayard

Solino cement curb 6.1 4.0

gutter north side 6.2 3.9

6.6 3.5

6.8 3.3

C 6.2 3.9

gutter 6.5 3.6

6.6 3.5

6.2 3.9

no. line 5.8 4.3

58' E

no. line 5.3 4.8

gutter 5.7 4.4

6.5 3.6

6.2 3.9

C 6.0 4.1

gutter 6.1 4.0

6.8 3.3

6.0 4.1

Solino 5.8 4.3

line Bayard to 10.1

72

100' E

Solino 5.5 4.6

gutter 5.8 4.7

6.6 3.5

5.9 4.2

C 5.6 4.5

gutter 6.0 4.1

6.2 3.9

5.2 4.9

no. line 4.6 5.5

150' E

no. line 4.7 5.4

gutter 5.0 5.1

5.6 4.5

5.5 4.6

C 5.3 4.8

gutter 5.8 4.7

6.1 4.0

5.3 4.8

Solino 5.1 5.0

101

200' E

Sabine	4.9	5.7
gutter	4.7	5.4
	5.7	4.4
	5.1	5.0
C	5.0	5.1
gutter	5.3	4.8
	5.3	4.8
	4.7	5.4
no. line	4.5	5.6

PLOTTED

250' E

no. line	3.8	6.7
gutter	4.3	5.8
	4.9	5.7
	4.8	5.7
C	4.7	5.4
gutter	5.0	5.1
	5.3	4.6
	4.5	5.6
no. line	4.4	5.7

73

300' E

Sabine	4.4	5.7
gutter	4.7	5.4
	5.6	4.5
	4.8	5.7
C	4.5	5.6
gutter	4.8	5.7
	5.1	5.0
	4.4	5.7
no. line	3.7	6.4

end current circ.

350' E

no. line	4.4	5.7
gutter	4.6	5.5
	5.3	4.8
	5.2	4.9
C	4.8	5.7
gutter	4.9	5.7
	5.6	4.5
	6.7	5.0
no. line	4.8	5.7

400' E

no. line	4.9	5.2
gutter	5.4	4.7
	6.1	4.0
	5.3	4.8
C	5.0	5.1
gutter	5.3	4.8
	5.7	4.4
	5.0	5.1
no. line	4.5	5.6

PLOTTED

450' E

no. line	4.6	5.5
gutter	5.5	4.6
	6.2	5.9
	6.0	4.1
C	5.7	4.5
gutter	5.7	4.4
	6.3	5.8
	5.7	4.2
no. line	5.0	5.1

500' E (west line Cass)

no. line	6.5	7.6
gutter	6.5	7.6
	6.7	7.4
	6.4	7.7
C	6.0	4.1
gutter	6.2	7.9
	6.4	7.7
	5.9	4.2
no. line	5.3	4.8

note-

Thomas, Reed, & Oliver & Bayard are
 80' streets with 20' sidewalks
 + 10' quarters
 Pacific ave. 60' street 12' sidewalks
 + 9' quarters east of Bayard
 13' sidewalk on south + 11' sidewalk on
 north + 9' quarters west of Bayard.
 Braemar 40' street 10' walks +
 5' quarters.

960 X sect. Pacific ave, from
west of Bayard

East line cross to 460' ^{plotted}
Mar. 9/15 ^{at} Kerr

T.P. 3.74 5.60 B.M. 186

100' E

East line Bayard

no line

5.6

3.8 1.8

no line Cement curb 3.4 2.2

gutter

4.6 1.0

gutter both sides 3.8 1.8

4.8 0.8

4.3 1.3

4.4 1.2

4.0 1.6

c

4.1 1.5

c

PLOTTED

4.0 1.6

gutter

4.6 1.0

gutter 4.3 1.3

4.6 1.0

4.4 1.2

4.1 1.5

3.7 1.9

no line

4.0 1.6

no line 3.4 2.2

100' E

50' E

no line

3.8 1.8

no line 3.6 2.0

gutter

4.1 1.5

gutter 3.8 1.8

4.8 0.8

4.7 0.9

4.4 1.2

4.3 1.3

c

4.2 1.4

c

4.0 1.6

gutter

4.4 1.2

gutter 4.3 1.3

3.0 0.6

4.5 1.1

4.4 1.2

4.2 1.4

no line

4.3 1.3

no line 3.5 2.1

5.6 °

200' E

no line	3.9	1.7
gutter	4.6	1.0
	5.0	0.6
	4.8	0.8
C	4.5	1.1
gutter	4.6	1.0
	4.9	0.7
	4.4	1.2
no line	4.3	1.3

PLOTTED

250' E

no line	4.7	0.9
gutter	4.8	0.8
	5.3	0.3
	5.0	0.6
C	4.8	0.8
gutter	4.9	0.7
	5.2	0.4
	4.6	1.0
no line	4.2	1.4

end cement curb.
both sides

5.6

300' E

no line	4.4	1.2
gutter	5.0	0.6
	5.3	0.3
	5.1	0.5
C	4.8	0.8
gutter	5.2	0.4
	5.5	0.1
	5.0	0.6
no line	5.0	0.6

350' E

no line	4.8	0.8
gutter	5.0	0.6
	5.7	-0.1
	5.2	0.4
C	5.0	0.6
gutter	5.4	0.3
	5.7	-0.1
	5.2	0.4
no line	4.6	1.0

76

5.6

400' E

no line	5.3	0.7
	5.4	0.7
gutter	6.0	-0.4
	5.4	0.7
C	5.1	0.7
	5.2	0.6
gutter	5.7	-0.1
	5.2	0.6
no line	5.1	0.5

PLOTTED

450' E

no line	5.8	-0.7
	5.9	-0.3
gutter	6.1	-0.5
	5.9	-0.3
C	5.4	0.7
	5.5	0.1
gutter	6.0	-0.6
	5.5	0.1
no line	5.3	0.7

5.6

77

495' E

no line	5.5	0.1
	5.5	0.1
gutter	6.2	-0.6
	5.7	-0.1
C	5.7	-0.1
	7.1	-1.5
gutter	7.3	-1.7
	7.3	-1.7
no line	6.3	-0.7

000' E (west line east)

no line	8.2	-2.6
	8.4	-2.8
gutter	8.4	-2.8
	7.1	-1.5
C	5.8	-0.7
	5.8	-0.7
gutter	6.4	-0.8
	5.5	0.1
no line	5.3	0.7

H.L.
560

West line Bayard

no line 3.4 2.2

quitter 3.8 1.8
4.4 1.2
4.1 1.5

c 3.8 1.8

quitter 4.0 1.6
4.6 1.0
3.7 1.9

no line 3.5 2.1

50' west

no line 4.3 1.3

quitter 4.2 1.4
5.2 0.4
4.6 1.0

c 4.4 1.2

quitter 4.5 1.1
5.3 0.3
4.3 1.3

no line 4.2 1.4

J.P.

2.87 H.L. 4.07 4.40 1.20

100' W.

no line 3.2 0.9

quitter 3.3 0.8
4.0 0.1
3.6 0.5

c 3.5 0.6

quitter 3.6 0.5
4.3 -0.2
3.3 0.8

no line 3.1 1.0

150' W.

no line 3.9 0.2

quitter 3.9 0.2
4.8 -0.7
4.4 -0.1

c 4.1 0.0

quitter 4.5 -0.6
4.7 -0.6
3.9 0.2

no line 3.8 0.3

78

41

200' W.

No. line	4.3	-0.2
gutter	4.4	-0.3
	5.2	-1.1
	5.0	-0.9
c	4.9	-0.8
gutter	4.9	-0.8
	5.5	-1.4
	4.4	-0.7
No. line	4.5	-0.4

PLOTTED. end of current comb.

No. line	5.0	-0.9
gutter	4.9	-0.8
	5.8	-1.7
	5.5	-1.4
c	5.3	-1.2
gutter	5.3	-1.2
	5.6	-1.5
	4.9	-0.8
No. line	4.8	-0.7

41

79

300' W

No. line	5.2	-1.1
gutter	5.4	-1.3
	5.9	-1.8
	6.0	-1.9
c	5.6	-1.5
gutter	5.9	-1.8
	6.2	-2.1
	5.4	-1.3
No. line	5.7	-1.6

350' W

No. line	5.7	-1.6
gutter	6.5	-2.4
	6.9	-2.8
	6.6	-2.5
c	6.2	-2.1
gutter	6.5	-2.4
	6.7	-2.6
	5.9	-1.8
No. line	5.9	-1.8

4.1

400' W.

No. line	6.6	-2.5
gutter	6.8	-2.7
	7.1	-3.0
	6.9	-2.8
C	6.9	-2.8
	7.2	-3.1
	7.5	-3.4
	6.8	-2.7
No. line	6.4	-2.7

PLOTTED

460' W.

No. line	6.9	-2.8
	7.3	-3.2
gutter	7.6	-3.5
	7.5	-3.4
C	7.4	-3.3
	7.5	-3.4
	7.5	-3.4
No. line	7.1	-3.0

J.P.

J

J.P.

H.I.

4.07 125

H.I.

6.89 9.71

H.I.

5.66 14.10

22. Car Grand ave.

+ Bayard.

80

2.82

1.27 8.44

4.03 10.07

B.N. = 10.06

1st

John

360

299

Redwood

466 - 1
358
108 358

534 4.11
41
123

594
479
115

wind

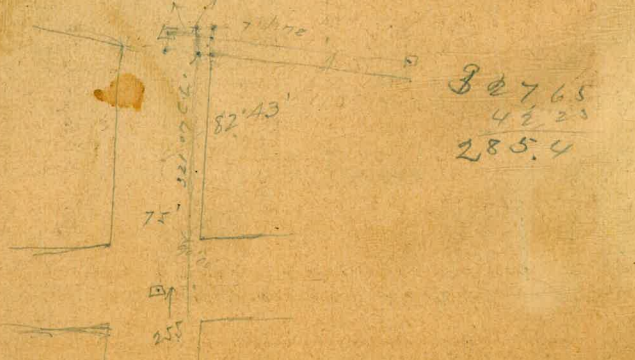
to both ways - 7' less width
 E. Cut of Mon 75' wide - 12' curb.

W. Starby ✓
 Cuts ✓
 Bandini ✓ 10.9
 Wright ✓
 Estradella ✓
 Hoell ✓

33
 10.5
 276.4
 328.67
 107.77
 435.94

Rathbun ✓
 Clayton ✓
 H. A. ✓
 E. Cut of Mon 75' wide
 12' curb as far as S.T.
 Winder

317.65
 4
 102.23
 107.63
 42.37
 42.23



102.23
 107.137
 107.77
 42.23
 117.33
 228.26
 114.13
 20' W
 60.2' E

DISTANCES FROM CENTER OF ROADWAY FOR CROSS-SECTIONING.
 ROADWAY 14 FEET WIDE. SIDE SLOPES 1½ TO 1.
 FOR SINGLE TRACK EMBANKMENT.

	0	.1	.2	.3	.4	.5	.6	.7	.8	.9	
0	7.0	7.2	7.3	7.5	7.6	7.8	7.9	8.1	8.2	8.4	0
1	8.5	8.7	8.8	9.0	9.1	9.3	9.4	9.6	9.7	9.9	1
2	10.0	10.2	10.3	10.5	10.6	10.8	10.9	11.1	11.2	11.4	2
3	11.5	11.7	11.8	12.0	12.1	12.3	12.4	12.6	12.7	12.9	3
4	13.0	13.2	13.3	13.5	13.6	13.8	13.9	14.1	14.2	14.4	4
5	14.5	14.7	14.8	15.0	15.1	15.3	15.4	15.6	15.7	15.9	5
6	16.0	16.2	16.3	16.5	16.6	16.8	16.9	17.1	17.2	17.4	6
7	17.5	17.7	17.8	18.0	18.1	18.3	18.4	18.6	18.7	18.9	7
8	19.0	19.2	19.3	19.5	19.6	19.8	19.9	20.1	20.2	20.4	8
9	20.5	20.7	20.8	21.0	21.1	21.3	21.4	21.6	21.7	21.9	9
10	22.0	22.2	22.3	22.5	22.6	22.8	22.9	23.1	23.2	23.4	10
11	23.5	23.7	23.8	24.0	24.1	24.3	24.4	24.6	24.7	24.9	11
12	25.0	25.2	25.3	25.5	25.6	25.8	25.9	26.1	26.2	26.4	12
13	26.5	26.7	26.8	27.0	27.1	27.3	27.4	27.6	27.7	27.9	13
14	28.0	28.2	28.3	28.5	28.6	28.8	28.9	29.1	29.2	29.4	14
15	29.5	29.7	29.8	30.0	30.1	30.3	30.4	30.6	30.7	30.9	15
16	31.0	31.2	31.3	31.5	31.6	31.8	31.9	32.1	32.2	32.4	16
17	32.5	32.7	32.8	33.0	33.1	33.3	33.4	33.6	33.7	33.9	17
18	34.0	34.2	34.3	34.5	34.6	34.8	34.9	35.1	35.2	35.4	18
19	35.5	35.7	35.8	36.0	36.1	36.3	36.4	36.6	36.7	36.9	19
20	37.0	37.2	37.3	37.5	37.6	37.8	37.9	38.1	38.2	38.4	20
21	38.5	38.7	38.8	39.0	39.1	39.3	39.4	39.6	39.7	39.9	21
22	40.0	40.2	40.3	40.5	40.6	40.8	40.9	41.1	41.2	41.4	22
23	41.5	41.7	41.8	42.0	42.1	42.3	42.4	42.6	42.7	42.9	23
24	43.0	43.2	43.3	43.5	43.6	43.8	43.9	44.1	44.2	44.4	24
25	44.5	44.7	44.8	45.0	45.1	45.3	45.4	45.6	45.7	45.9	25
26	46.0	46.2	46.3	46.5	46.6	46.8	46.9	47.1	47.2	47.4	26
27	47.5	47.7	47.8	48.0	48.1	48.3	48.4	48.6	48.7	48.9	27
28	49.0	49.2	49.3	49.5	49.6	49.8	49.9	50.1	50.2	50.4	28
29	50.5	50.7	50.8	51.0	51.1	51.3	51.4	51.6	51.7	51.9	29
30	52.0	52.2	52.3	52.5	52.6	52.8	52.9	53.1	53.2	53.4	30
31	53.5	53.7	53.8	54.0	54.1	54.3	54.4	54.6	54.7	54.9	31
32	55.0	55.2	55.3	55.5	55.6	55.8	55.9	56.1	56.2	56.4	32
33	56.5	56.7	56.8	57.0	57.1	57.3	57.4	57.6	57.7	57.9	33
34	58.0	58.2	58.3	58.5	58.6	58.8	58.9	59.1	59.2	59.4	34
35	59.5	59.7	59.8	60.0	60.1	60.3	60.4	60.6	60.7	60.9	35
36	61.0	61.2	61.3	61.5	61.6	61.8	61.9	62.1	62.2	62.4	36

Calculated by Julien A. Hall, M. Am. Soc. C. E.

MADE IN GERMANY.