

2

922

F.B. 922

LEVEL BOOK

373

KEUFFEL & ESSER CO.

DRAWING MATERIALS

AND

SURVEYING INSTRUMENTS.

NEW YORK.

CHICAGO.

SAN FRANCISCO.

ST. LOUIS.

TABLES FOR EXCAVATIONS AND EMBANKMENTS.

DISTANCES FROM CENTRE OF ROADWAY FOR CROSS-SECTIONING.

ROADWAY 18 FEET WIDE. SIDE SLOPES 1 TO 1.

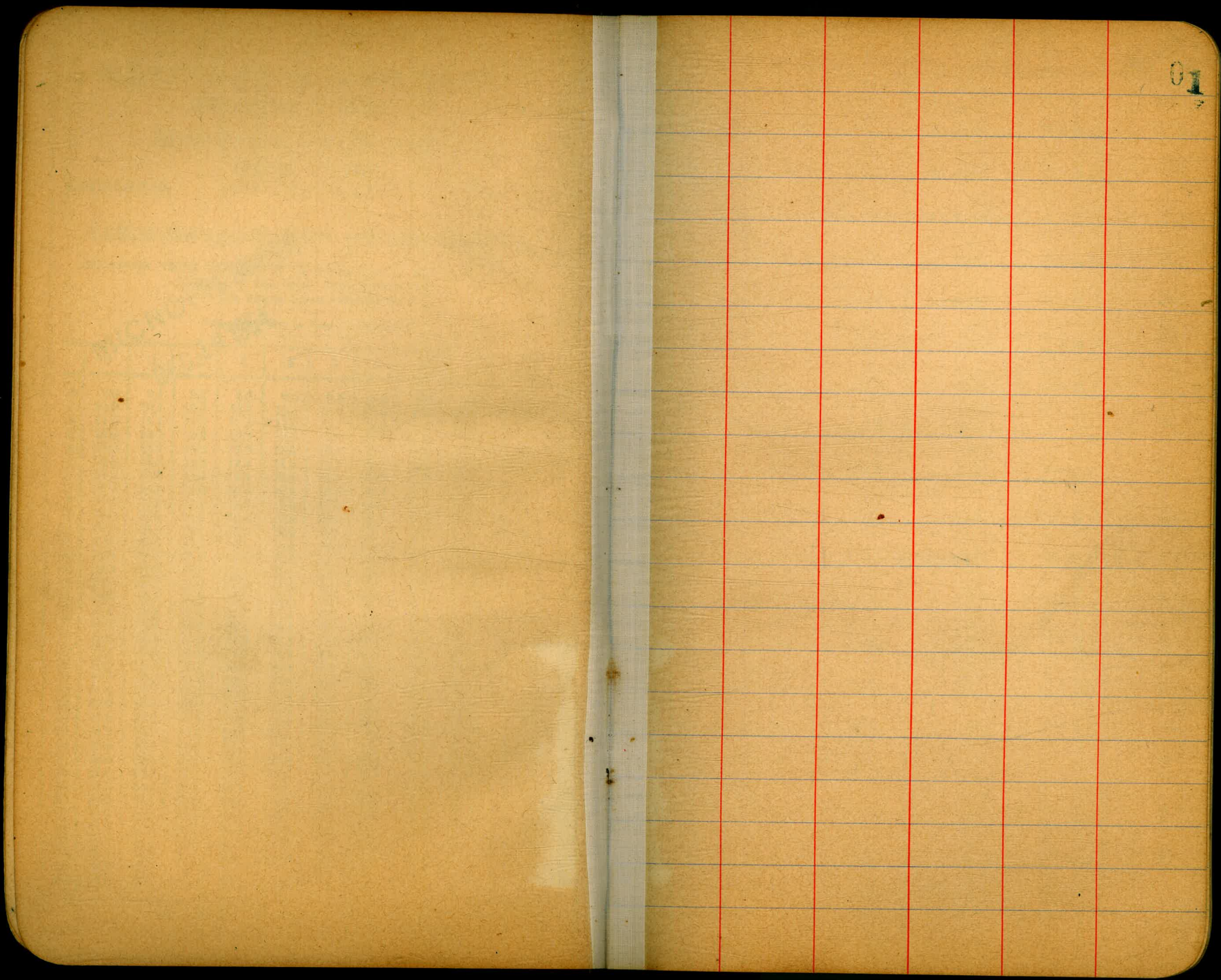
FOR SINGLE TRACK EXCAVATION.

"Copyright 1895, by Keuffel & Esser Co."

MICROFILMED
DEC 16 1964

	.1	.2	.3	.4	.5	.6	.7	.8	.9		
0	9.0	9.1	9.2	9.3	9.4	9.5	9.6	9.7	9.8	9.9	0
1	10.0	10.1	10.2	10.3	10.4	10.5	10.6	10.7	10.8	10.9	1
2	11.0	11.1	11.2	11.3	11.4	11.5	11.6	11.7	11.8	11.9	2
3	12.0	12.1	12.2	12.3	12.4	12.5	12.6	12.7	12.8	12.9	3
4	13.0	13.1	13.2	13.3	13.4	13.5	13.6	13.7	13.8	13.9	4
5	14.0	14.1	14.2	14.3	14.4	14.5	14.6	14.7	14.8	14.9	5
6	15.0	15.1	15.2	15.3	15.4	15.5	15.6	15.7	15.8	15.9	6
7	16.0	16.1	16.2	16.3	16.4	16.5	16.6	16.7	16.8	16.9	7
8	17.0	17.1	17.2	17.3	17.4	17.5	17.6	17.7	17.8	17.9	8
9	18.0	18.1	18.2	18.3	18.4	18.5	18.6	18.7	18.8	18.9	9
10	19.0	19.1	19.2	19.3	19.4	19.5	19.6	19.7	19.8	19.9	10
11	20.0	20.1	20.2	20.3	20.4	20.5	20.6	20.7	20.8	20.9	11
12	21.0	21.1	21.2	21.3	21.4	21.5	21.6	21.7	21.8	21.9	12
13	22.0	22.1	22.2	22.3	22.4	22.5	22.6	22.7	22.8	22.9	13
14	23.0	23.1	23.2	23.3	23.4	23.5	23.6	23.7	23.8	23.9	14
15	24.0	24.1	24.2	24.3	24.4	24.5	24.6	24.7	24.8	24.9	15
16	25.0	25.1	25.2	25.3	25.4	25.5	25.6	25.7	25.8	25.9	16
17	26.0	26.1	26.2	26.3	26.4	26.5	26.6	26.7	26.8	26.9	17
18	27.0	27.1	27.2	27.3	27.4	27.5	27.6	27.7	27.8	27.9	18
19	28.0	28.1	28.2	28.3	28.4	28.5	28.6	28.7	28.8	28.9	19
20	29.0	29.1	29.2	29.3	29.4	29.5	29.6	29.7	29.8	29.9	20
21	30.0	30.1	30.2	30.3	30.4	30.5	30.6	30.7	30.8	30.9	21
22	31.0	31.1	31.2	31.3	31.4	31.5	31.6	31.7	31.8	31.9	22
23	32.0	32.1	32.2	32.3	32.4	32.5	32.6	32.7	32.8	32.9	23
24	33.0	33.1	33.2	33.3	33.4	33.5	33.6	33.7	33.8	33.9	24
25	34.0	34.1	34.2	34.3	34.4	34.5	34.6	34.7	34.8	34.9	25
26	35.0	35.1	35.2	35.3	35.4	35.5	35.6	35.7	35.8	35.9	26
27	36.0	36.1	36.2	36.3	36.4	36.5	36.6	36.7	36.8	36.9	27
28	37.0	37.1	37.2	37.3	37.4	37.5	37.6	37.7	37.8	37.9	28
29	38.0	38.1	38.2	38.3	38.4	38.5	38.6	38.7	38.8	38.9	29
30	39.0	39.1	39.2	39.3	39.4	39.5	39.6	39.7	39.8	39.9	30
31	40.0	40.1	40.2	40.3	40.4	40.5	40.6	40.7	40.8	40.9	31
32	41.0	41.1	41.2	41.3	41.4	41.5	41.6	41.7	41.8	41.9	32
33	42.0	42.1	42.2	42.3	42.4	42.5	42.6	42.7	42.8	42.9	33
34	43.0	43.1	43.2	43.3	43.4	43.5	43.6	43.7	43.8	43.9	34
35	44.0	44.1	44.2	44.3	44.4	44.5	44.6	44.7	44.8	44.9	35
36	45.0	45.1	45.2	45.3	45.4	45.5	45.6	45.7	45.8	45.9	36

Calculated by Julien A. Hall, M. Am. Soc. C. E.



01

W
1/4

CROSS-SECTION OF
1815 ST. (80' WIDE)
From the south Line of
BROOKES ST
To the south Line of
WILLOW ST.

255.3
50' 50.

TOP WALL
NW SIDE + TERRACE

BM	0.25	267.10	266.85	W	6.3	749.0	
T.P	1.10	255.33	12.87	254.23	ch	6.3	749.0
		SO. LINE OF BROOKES		1/4	6.0	749.3	
W		8.6	746.7	C	6.3	749.0	
ch		8.7	746.6	1/4	6.5	748.8	
1/4		8.9	746.4	ch	6.6	748.7	
C		9.3	746.0	E	7.0	748.3	
1/4		9.4	745.9				
ch		9.5	745.8	E	9.4	745.9	
E		9.5	745.8	ch	9.3	746.0	
		1' SOUTH		1/4	8.9	746.4	
E		5.6	749.7	C	8.8	746.5	
ch		5.4	749.9	1/4	8.5	746.8	
1/4		5.4	749.9	1/4	8.1	747.2	
C		5.3	750.0	W	7.4	747.9	
1/4		5.3	750.0				
ch		8.7	746.6	W	8.3	747.0	
W		6.0	749.3	ch	9.3	746.0	
				1/4	9.7	745.6	

100' 50

150' 50

255.33

C	10.1	245.2
1/4	10.8	244.5
cb	11.2	244.1
E	12.9	242.4

300' So.

E	13.9	241.4
cb	12.8	242.5
1/4	11.9	243.4
C	11.0	244.3
1/4	10.1	245.2
cb	9.3	246.0
W	8.6	246.7

250' So.

W	8.1	247.2
cb	8.4	246.9
1/4	9.5	245.8
C	10.2	245.1
1/4	10.5	244.8
cb	11.5	243.8
E	12.1	243.2

255.33

1815 ST.

300' So. = N.L. WILLOW ST. (10' WIDE)

3

E	10.6	244.7
cb	9.9	245.4
1/4	9.4	245.9
C	8.9	246.4
1/4	8.4	246.9
cb	8.1	247.2
W	7.8	247.5

No. CURB

W	7.8	247.5
cb	8.2	246.1
1/4	8.5	246.8
C	8.9	246.4
1/4	9.2	246.1
cb	9.6	245.7
E	10.3	245.0

No. QUARTER

E	10.1	245.2
cb	9.6	245.7
1/4	9.2	246.1

25533

C	89	746.4
1/2	85	746.8
cb	82	747.1
W	78	747.5

CENTER

W	82	747.1
cb	83	747.0
1/4	87	746.6
C	90	746.3
1/2	92	746.1
cb	96	745.7
E	101	745.2

SO. QUARTER

E	102	745.1
cb	96	745.7
1/4	94	745.9
C	92	746.1
1/2	89	746.4
cb	88	746.5
W	86	746.7

25533

1815 ST.

SO. CURB

4

W	91	746.2
cb	91	746.2
1/2	92	746.1
C	94	745.9
1/4	95	745.8
cb	97	745.6
E	104	744.9

SO. LINE WILLOW ST

E	104	744.9
cb	100	745.3
1/2	101	745.2
C	98	745.5
1/4	95	745.8
cb	94	745.9
W	97	745.6

CROSS SECTION OF
WILLOW ST (80 WIDE)
FROM THE EAST LINE OF
1815 ST
TO THE EAST LINE OF

244.08
100' E

5

HAWK ST
HT.
255.33 (see page 2 for T.P.)

E. L. 1815 ST

S.	10.4	244.9
cb	10.3	245.0
1/4	10.1	245.2
C	10.1	245.2
1/4	10.0	245.3
cb	10.2	245.1
N	10.6	244.7
50' E		
N	12.4	242.9
cb	12.1	243.2
1/4	11.7	243.6
C	11.7	243.6
1/4	11.6	243.7
cb	11.6	243.7
S	11.9	243.4
T.P.	10.58	244.08
	11.83	243.50

S	1.9	243.2
cb	2.3	242.8
1/4	2.4	241.7
C	2.4	241.7
1/4	2.5	241.6
cb	2.3	241.8
N	3.0	241.1
150' E		
N	5.7	238.4
cb	4.4	239.7
1/4	4.6	239.5
C	4.5	239.6
1/4	3.8	240.3
cb	2.7	241.4
S	1.7	242.4
200' E - W.L. HAWK ST see sketch for width.		
S	3.5	240.6
cb	5.2	238.9
1/4	6.3	237.8

244.08

C	6.8	737.3
1/4	7.0	737.1
cl	7.7	736.4
N	9.0	735.1
W. CURB		
N	9.2	734.9
cl	8.4	735.7
1/4	7.7	736.4
C	7.4	736.7
1/4	7.0	737.1
cl	6.5	737.6
S	3.9	740.2
W. QUARTER		
S	3.8	740.3
+4	6.7	737.4
cl	7.0	737.1
1/4	7.4	736.7
C	8.0	736.1
1/4	8.9	735.2
cl	9.2	734.9

244.08

WILLOW ST.

N	7.9	734.2	6
CENTER			
N	10.8	733.3	
cl	10.4	733.7	
1/4	9.8	734.3	
C	8.9	735.2	
1/4	8.2	735.9	
cl	7.9	736.2	
S	7.3 } 3.8 }	736.8 740.3	
E QUARTER			
S	8.7	735.4	
cl	8.8	735.3	
1/4	9.2	734.9	
C	9.8	734.3	
1/4	10.8	733.3	
cl	11.7	732.4	
N	11.8	732.3	
E CURB			
N	12.6	731.5	
cl	12.9	731.2	

24408

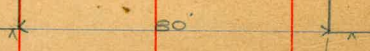
WILLOW ST.

7

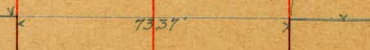
1/4	11.6	733.5
C	10.5	733.6
1/4	10.0	734.1
cb	9.7	734.4
S	9.2	734.9

E. L. HAWK ST

S	9.0	735.1
cb	9.7	734.4
1/4	9.8	734.3
C	10.5	733.6
1/4	12.2	731.9
cb	14.9	729.2
N	15.1	729.0



WILLOW



HAWK

24408

1/4		9.1	735.0
C		8.2 } 2.1 }	735.9 742.0
1/4		1.9	742.2
cb		2.3	741.8
W		2.4	741.7
	100' 50		
W		4.7	739.4
cb		4.0	740.1
1/4		3.1	740.7
C		3.3 } 8.4 }	740.8 735.7
1/4		9.4	734.7
cb		9.8	734.3
E		9.5	734.6
	125' 50		
E		9.6	734.5
cb		9.8	734.3
1/4		9.7	734.4
C		8.8 } 5.4 }	735.3 738.7
1/4		6.2	737.9
cb		6.7	737.4

24408

HAWK

ST

W		6.9	737.7	9
	150' 50			
W		9.9	734.7	
cb		8.7	735.4	
1/4		8.6	735.5	
C		8.7	735.4	
1/4		4.8	734.3	
cb		10.1	734.0	
E		9.8	734.3	
T.P.	2.96	236.99	10.05	234.03
	175' 50			
E		2.9	734.1	
cb		3.2	733.8	
1/4		3.1	733.9	
E		2.5	734.5	
1/4		2.7	734.3	
cb		3.2	733.6	
W		5.2	731.8	
	185' 50			
W		11.4	732.6	

236.99

ck	4.3	737.7
1/4	3.3	733.7
C	2.6	734.4
1/2	3.1	733.9
cb	3.3	733.7
E	3.1	733.9
200' So		
E	3.4	733.6
cb	3.4	733.6
1/6	3.3	733.7
C	2.9	734.1
1/4	3.5	733.5
cb	6.8	730.4
W	12.3	724.7
225' So		
-20	27.9	709.1
W	19.9	717.1
cb	12.0	725.0
1/2	7.5	729.5
C	3.4	733.6

236.99

HAWK ST

1/4	3.6	733.4	10
cb	3.6	733.4	
E	3.4	733.6	
250' So			
E	3.6	733.4	
cb	3.8	733.7	
1/4	3.9	733.1	
C	3.7	733.3	
1/2	9.9	727.1	
cb	20.4	716.6	
W	25.9	711.1	
1.5	30.7	706.7	
+30	38.9	198.1	
275' So			
-15	38.0	199.0	
-12	36.1	700.9	
W	30.5	706.5	
cb	23.3	713.7	
1/2	12.1	724.9	
C	4.6	737.4	

236.99

1/4		4.3	737.7
ct		4.3	737.7
E		3.8	733.7
	300' 50		
E		4.1	737.9
ct		4.2	737.8
1/4		4.3	737.7
C		4.8	737.5
1/4		11.7	775.3
ct		22.6	714.4
W		30.7	706.3
+15		38.7	198.3
+30		44.0	193.0

337.0 ONLY } = N.L. HORTON ADD
 337.5 ONE } 14' CURBS FROM HERE
 USE THIS SECTION TO FIGURE NORTH TOWARD WILLOW

-15		35.4	701.6
W		29.6	707.4
ct		22.1	714.9
1/4		12.2	724.8
C		4.4	737.6
1/4		4.5	737.5

236.99

11

ct		4.5	737.5
E		4.0	733.0
	N.L. HORTON ADD		
	USE THIS SECTION TO FIGURE SOUTH TOWARD UPAS		
W		31.7	705.3
ct		26.0	711.0
1/4		16.8	720.7
C		6.2	730.8
1/4		4.5	737.5
ct		4.5	737.5
E		4.0	733.0

25' 50.

E		4.2	737.8
ct		4.9	737.1
1/4		4.8	737.7
C		5.0	737.0
1/4		14.8	727.7
ct		22.4	714.6
			707.7
W		29.3	SAME SLOPE
	50' 50.		
W		28.1	708.9
			SAME SLOPE

236.99

dt	20.2	716.8
1/4	13.7	723.3
C	5.0	737.0
1/4	5.3	731.7
dt	5.1	731.9
E	4.5	737.5
83.53 ON WEST } = SEC A = N.L. UPAS ST (SEE SKETCH) 99.61 ← EAST		
E	5.1	731.9
dt	5.5	731.5
1/4	5.8	731.7
C	5.0	737.0
+5	5.1	731.9
1/4	11.9	775.1
dt	18.5	778.5
		711.6
W	25.4	SAME SLOPE
No. CORN		
		713.4
W	23.6	SAME
dt	17.0	719.0
1/4	12.3	774.7
C	5.2	731.8

736.99

HAWK ST

12

1/4	5.9	731.1
dt	6.0	731.0
E	5.3	731.7
No. QUARTER		
E	5.9	731.1
dt	6.0	731.0
1/4	5.8	731.7
C	5.3	731.7
1/4	12.2	774.8
dt	17.0	770.0
		713.3
W	23.7	SAME SLOPE
CENTER		
W	22.8	774.7
dt	16.1	770.9
1/4	12.5	774.7
C	5.5	731.5
1/4	6.0	731.0
dt	6.0	731.0
E	5.7	731.3

236.99

SO. QUARTER

E	5.8	731.7
df	6.1	730.9
1/4	6.1	730.9
C	6.2	730.8
1/4	12.9	724.1
df	15.9	721.1
W	22.6	714.4

SO. CORNER

W	21.0	716.0
df	15.8	721.7
1/4	12.8	724.7
C	7.1	723.9
+5	6.0	731.0
1/4	6.0	731.0
df	6.4	730.6
E	6.2	730.8

SEC B = SO. LINE OF UPAS

E	734.7	6.2 USE THIS FOR BACK SECTION
		2.3 USE THIS FOR FORWARD
+10	731.0	731.0
		6.0 BACK SECTION
		3.4 FORWARD
		732.6

236.99 HAWK

ST

18

df	5.8	731.7
1/4	5.7	731.3
+7	6.1	730.9
C	8.0	729.0
1/4	13.3	723.7
df	17.2	719.8
W	22.6	714.6

25' SO ON WEST } = SECTION B'
40' - - - - - EAST

W	23.2	713.8
df	17.5	719.5
1/4	14.3	722.7
C	10.5	726.5
1/4	6.2	730.8
4	5.5	731.5
+10	4.6	737.4
E	2.3	734.7

25' SO. OF SEC. B'

E	5.2	731.8
df	6.1	730.9
1/4	9.7	727.3
T.P.	0.36	227.43
	9.22	229.07

C	3.6	273.8
1/4	6.7	270.7
cb	9.8	277.6
W	14.1	273.3

75' SO. OF SEC B'

W	19.1	208.3
cb	14.1	213.3
1/4	11.2	216.2
C	8.1	219.3
1/4	5.2	222.2
cb	2.5	224.9
E	10.4	227.83

100' SO. OF B'

E	1.3	226.1
cb	4.5	222.9
1/4	8.0	219.4
C	10.6	216.8
1/4	12.8	214.6
cb	17.4	210.0
W	22.1	205.3
T.P.	037	225.41
		225.02

125' SO. OF B'		
W	21.0	204.4
1/4	16.8	208.6
cb	14.8	210.6
1/4	11.6	213.8
C	9.4	216.0
1/4	7.0	218.4
cb	4.1	221.3
E	1.2	224.2
150' SO. OF B'		
E	2.1	223.3
cb	4.8	220.6
1/4	8.1	217.3
C	10.2	215.2
1/4	12.3	213.1
cb	15.4	210.0
W	18.1	207.3
1/5	21.3	204.1
175' SO. OF B'		
1/5	24.7	200.7

225.W1

W	20.0	γ05.4
cb	16.4	γ09.0
1/4	13.6	γ11.8
C	10.7	γ14.7
1/4	8.5	γ16.9
cb	6.1	γ19.3
E	3.7	γ21.7
200' So. of B'		
E	4.6	γ20.8
cb	6.0	γ19.4
1/4	9.2	γ16.2
C	11.8	γ13.6
1/4	14.2	γ11.2
cb	16.0	γ09.4
W	18.7	γ06.7
+15	24.6	γ00.8
225' So. of B'		
-15	22.7	γ02.7
W	19.0	γ06.4
cb	15.2	γ09.6

225.41

HAWK

ST.

15

1/4	13.5	γ11.6
C	11.9	γ13.5
1/4	9.4	γ16.0
cb	7.3	γ18.1
E	5.9	γ19.5
275' So. of B' = N.L. THORN ST (50' WIDE)		
E	7.7	γ17.7
cb	9.6	γ15.8
1/4	10.2	γ14.2
C	12.1	γ13.3
1/4	13.1	γ12.3
cb	14.7	γ10.7
W	16.8	γ08.6
No. CURB		
W	16.8	γ08.6
cb	15.1	γ10.3
1/4	13.6	γ11.8
C	12.4	γ13.0
1/4	10.7	γ14.7
cb	9.9	γ15.5

RR541

E	9.1	γ16.3
No. QUARTER		
F	9.7	γ15.7
cb	10.3	γ14.1
1/4	11.6	γ13.8
C	12.8	γ12.6
1/4	14.7	γ10.7
cb	15.4	γ10.0
W	17.0	γ08.4

CENTER

W	17.3	γ08.1
cb	16.0	γ09.4
1/4	15.2	γ10.2
C	13.4	γ12.0
1/4	12.3	γ13.1
cb	11.3	γ14.1
F	10.6	γ14.8

So. QUARTER

E	12.1	γ13.3
cb	12.8	γ12.6

γ12.9 HAWK ST.

T.P.	0.1	212.86	13.02	212.39
1/4			0.9	γ12.0
C			2.1	γ10.8
1/4			3.3	γ09.6
cb			4.3	γ08.6
W			5.8	γ07.1

So. CORB.

W			6.5	γ06.4
cb			5.4	γ07.5
1/4			4.4	γ08.5
C			3.3	γ09.6
1/4			2.3	γ10.6
cb			1.7	γ11.2
F			1.0	γ11.9

So. LINE THORN ST

E			2.8	γ10.1
cb			3.5	γ09.4
1/4			4.2	γ08.7
C			4.6	γ08.3
1/4			5.8	γ07.1

16

212.86

cb			68	706.1
W			77	705.2
	50'	50		
W			116	701.3
cb			117	701.2
1/4			114	701.5
C			108	702.1
1/4			108	702.1
cb			106	702.3
E			102	702.7
T.P.	0.31	200.54	1263	200.23
		100'	50	
E			57	194.8
cb			51	195.4
1/4			42	196.3
C			37	196.7
1/4			40	196.5
cb			43	196.2
W			38	196.9

700.5 HAWK ST.

150' 50

17

W			67	193.8
cb			73	193.2
1/4			74	193.1
C			84	192.1
1/4			94	191.1
cb			109	189.6
E			123	188.2
		200'	50	
E			127	182.8
cb			156	184.9
1/4			145	186.0
C			122	188.3
1/4			109	189.6
cb			77	191.8
W			90	191.5
		250'	50	
W			94	191.1
cb			110	189.5
1/4			128	187.7

200.54

C	14.6	185.9
1/4	16.4	184.1
cb	18.3	182.2
E	21.5	179.0

300' So. = No. LINE SPRUCE ST. (80' WIDE)

E	21.2	179.3
cb	17.5	183.0
1/4	15.4	185.1
C	13.3	187.2
1/4	11.4	189.1
cb	9.3	191.2
W	8.6	191.9

No. CURB

W	7.6	192.9
cb	8.7	191.8
1/4	10.7	189.8
C	12.7	187.8
1/4	14.9	185.6
cb	16.7	183.5
E	20.7	179.8

200.5 HAWK ST

No. QUARTER

18

E	20.3	180.2
cb	16.7	183.8
1/4	14.6	185.9
C	12.4	188.1
1/4	10.4	190.1
cb	8.7	191.8
W	8.1	192.4

CENTER

W	8.6	191.9
cb	8.9	191.7
1/4	10.0	190.5
C	11.8	188.7
1/4	14.1	186.4
cb	16.2	184.3
E	19.6	180.9

So. QUARTER

E	18.2	182.3
cb	14.9	185.6
1/4	13.4	187.1

300.54

C	11.6	188.9
1/4	9.5	191.0
cb	8.8	191.7
W	9.0	191.5
So. CURB		
W	9.4	191.1
cb	8.7	191.8
1/4	9.0	191.5
C	11.2	189.3
1/4	13.1	187.4
cb	14.7	185.8
E	17.2	183.3
So. LINE SPRUCE ST.		
F	17.2	183.3
cb	15.0	185.5
1/4	12.9	187.6
C	10.8	189.7
1/4	9.0	191.5
cb	9.3	191.2
W	10.2	190.3

200.5

HAWK ST

25' So.

19

W	10.8	187.7		
cb	9.2	191.3		
1/4	9.1	191.4		
C	10.4	190.1		
1/4	12.6	187.9		
cb	14.9	185.6		
E	16.3	184.2		
63.86' So = SEC. C = N.E. LINE HORTON FIVE ON WEST				
E	15.6	184.9		
cb	14.3	186.2		
1/4	11.8	188.7		
C	9.7	190.8		
1/4	8.2	192.3		
cb	8.0	192.5		
W	6.8	193.7		
T.P.	7.54	201.55	6.53	194.01
54.89' So = SEC. F see page 8.				
C	8.0	193.5		
1/4	9.6	191.9		

201.55

di

11.4 190.1

E

13.6 187.9

54.89' 50" N.E. LINE HORTON ON E

E

6.5 195.0

HANK ST

20

CROSS-SECTION OF
HORTON AVE (75' WIDE) 12' CURBS
FROM W.L. HAWK ST PRODUCED
TO S.W. REDWOOD ST

H.I.
201.55

~~N.E.~~

W.L. HAWK ST PRODUCED

N.E.	7.8	193.7
cb	7.7	193.8
1/4	7.3	194.2
C	6.0	195.5
1/4	6.4	195.1
cb	6.5	195.0
S.W.	6.8	194.7

~~N~~

M. CURB PRODUCED

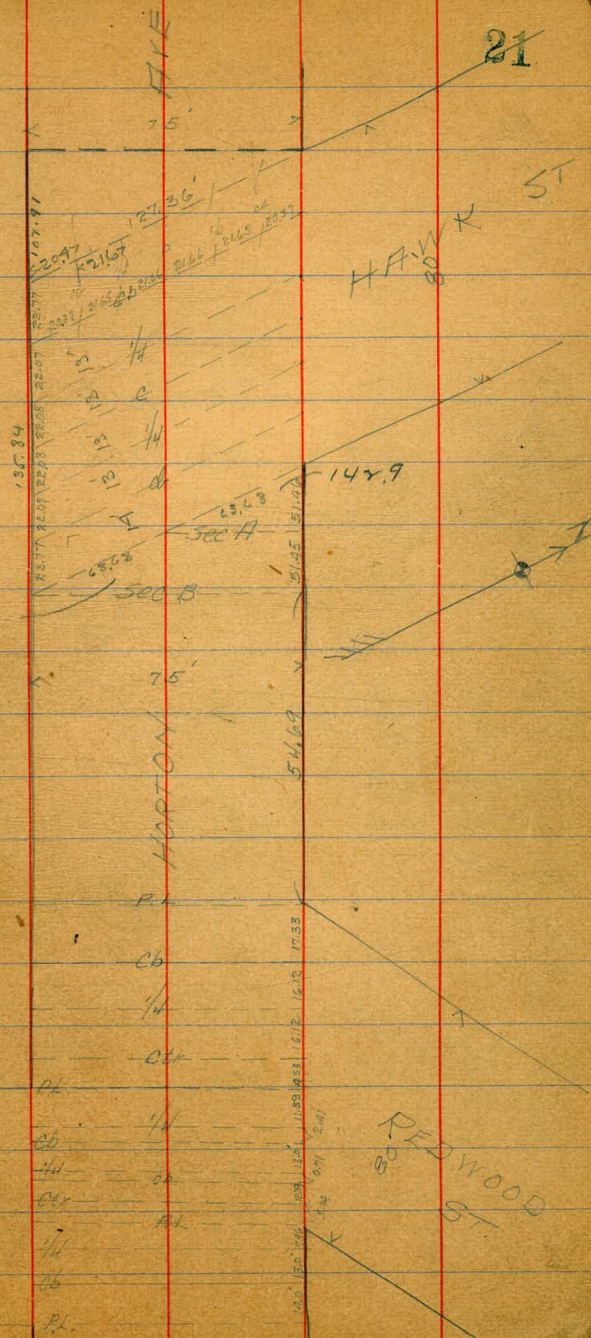
S.W.	4.5	197.0
cb	4.4	197.1
1/4	4.6	196.7
C	5.5	196.0
1/4	4.7	194.8
cb	4.7	195.8
N.E.	5.3	193.2

~~N~~

W 1/4 PRODUCED

N.E.	4.8	193.7
------	-----	-------

REDWOOD ST



20155

ct			7.1	194.4
1/4			5.9	195.6
C			4.6	196.9
1/4			3.5	198.0
ct			2.6	198.9
S. W			1.2	200.3
T.P.	870	20979	0.46	201.09
CENTER PRODUCED				
S. W			8.0	201.8
ct			8.8	201.0
1/4			10.3	199.5
C			11.7	198.1
1/4			12.7	197.1
ct			15.2	194.6
N. E			16.0	193.8
E. 1/4 PRODUCED				
N			16.5	193.3
ct			13.9	195.9
1/4			11.7	198.1
C			9.8	200.0

20979

HORTON AVE

1/4			8.7	201.1	22
ct			7.3	202.5	
S			5.6	204.2	
E. CURB PRODUCED					
S			3.4	206.4	
ct			5.1	207.7	
1/4			6.8	203.0	
C			8.4	201.4	
1/4			10.1	199.7	
ct			13.6	196.2	
N			15.3	194.5	
E. L. HAWK ST PRODUCED					
N			15.0	194.8	
ct			11.3	198.5	
1/4			8.4	201.4	
C			6.2	203.6	
1/4			4.7	205.1	
ct			3.1	206.7	
S			1.5	208.3	

209.79

SEC A

C	6.2	703.6
1/4	6.6	703.7
cb	7.9	701.9
N	10.1	199.7

SEC B

N	6.6	703.7
cb	4.6	705.7
1/4	3.5	706.3
C	2.6	707.7
1/4	2.2	707.6
cb	1.8	708.0
S	1.5	708.3

T.P.	10.96	219.41	1.34	208.45
------	-------	--------	------	--------

25' SO. OF SEC B

S	8.0	711.4
cb	8.7	710.7
1/2	9.5	709.9
C	11.1	708.3
1/4	12.3	707.1

219.4

HORTON FIVE

23

13.3 706.1

15.3 704.1

54.69' SO. N.L. OF EAST REDWOOD ST. (80' WIDE)

N 13.7 705.7

cb 11.8 707.6

1/4 10.9 708.5

C 9.1 710.3

1/2 7.1 712.3

cb 6.1 713.3

S 5.8 713.6

N. CURB. OF DITTO.

S 5.2 714.2

cb 5.5 713.9

1/2 6.5 712.9

C 7.9 711.5

1/4 9.7 709.7

cb 11.3 708.1

N 12.8 706.6

N. 1/4 OF DITTO

N 18.0 707.4

219.41

ct	10.1	209.3
1/4	8.8	210.6
C	7.3	212.1
1/4	5.8	213.6
ct	5.0	214.4
S	4.6	214.8

CENTER OF DITTO

S	4.3	215.1
ct	4.8	214.6
1/4	5.7	213.7
C	6.7	212.7
1/4	8.2	211.2
ct	9.5	209.9
N	11.1	208.3

4.53' S = N.L. OF WEST REDWOOD ST (30' WIDE)

N	10.9	208.5
ct	9.4	210.0
1/4	8.1	211.3
C	6.7	212.7
1/4	5.7	213.7

219.4

HORTON AVE

24

ct	4.8	214.6
S	4.3	215.1

SO. 1/4 OF EAST REDWOOD ST

S	4.1	215.3
ct	4.8	214.6
1/4	5.5	213.9
C	6.2	213.2

1/4	7.0	212.4
ct	8.3	211.1
N	10.0	209.4

No. CURB OF WEST REDWOOD ST

N	9.9	209.5
ct	8.2	211.2
1/4	6.9	212.5
C	6.1	213.3

1/4	5.2	214.0
ct	4.8	214.6
S	4.1	215.3

No. 1/4 OF DITTO

S	4.0	215.4
---	-----	-------

cb	46	714.8
1/4	5.2	714.2
C	5.6	713.8
1/4	6.4	713.0
cb	7.4	712.0
N	8.9	710.5

SO. CORB OF EAST REDWOOD ST

N	1.9	710.5
cb	7.4	712.0
1/4	6.4	713.0
cb	5.6	713.8
1/4	5.2	714.2
cb	4.6	714.8
S	4.0	715.4

CENTER OF WEST REDWOOD ST

S	3.9	715.5
cb	4.4	715.0
1/4	5.3	714.1
C	6.0	713.4
1/4	6.4	713.0

cb	7.5	711.9
N	8.4	711.0

SO. LINE OF EAST REDWOOD ST

N	8.3	711.1
cb	7.3	712.1
1/4	6.3	713.1
C	6.0	713.4
1/4	5.3	714.1
cb	4.4	715.0
S	3.9	715.5

SO. 1/4 OF WEST REDWOOD ST

S	3.9	715.5
cb	4.5	714.9
1/4	5.5	713.9
C	6.0	713.4
1/4	6.5	712.9
cb	7.5	711.9
N	8.3	711.1

SO. CORB OF DITTO

N	9.1	710.3
---	-----	-------

cb	7.7	211.7
1/4	7.1	212.3
c	6.2	213.7
1/4	5.6	213.8
cb	4.6	214.8
s	4.1	215.3

SO LINE OF WEST REDWOOD ST

s	4.3	215.1
cb	5.1	214.3
1/4	6.1	213.3
c	6.9	212.5
1/4	7.6	211.8
cb	7.9	211.5
N	8.8	210.6

At on Core

1227

207.14

on Core
SE. Red
207.0

986

28

10.44 ^{H.T.} 98.35 87.91

100' No. Conn.

	So. line prospect.			Elms	7.7	90.8
Elms		9.7	88.7		8.1	90.3
		10.5	87.9		8.4	90.0
		10.4	88.0	C	8.6	89.8
C		10.5	87.9		8.8	89.6
		10.8	87.6	gutter	9.6	88.8
gutter cb.		11.3	87.1		8.9	89.5
		10.4	88.0	White	8.8	89.6
White		10.1	88.3			

50' No. Conn.

	Sect. AB 155' no. Conn. ^{Sikorsky} connect			White	7.6	90.8
White		10.1	88.3		7.6	90.8
		10.4	88.0	gutter	8.2	90.7
gutter		11.1	87.3		7.8	90.6
		10.2	88.2	C	7.4	91.0
C		9.8	88.6		7.1	91.3
		9.7	88.7		6.7	91.7
		9.4	89.0	Elms	6.5	91.9
Elms		9.0	89.4			

984

(Deliberate)
north line connection

E line		5.5	92.9
		5.8	92.6
		6.0	92.6
C		6.1	92.7
		6.4	92.0
quiter		6.8	91.6
		6.3	92.1
White		6.4	92.0
	no-curb		
White	quiter	7.1	91.7
		6.4	92.0
		6.6	91.8
		6.3	92.1
C		6.0	92.6
		5.8	92.6
		5.3	92.1
E line		4.8	92.6

985

29

no. 1/4

E line		4.9	92.5
		5.1	92.7
		5.4	92.0
C		5.7	92.7
		6.0	92.6
		6.3	92.1
White		6.5	91.9
	center		
White		6.2	92.2
		5.9	92.5
		5.6	92.8
C		5.5	92.9
		5.3	92.1
		5.0	92.6
E line		4.8	92.6

984

1' So. center (2' no. track)

W line	6.2	922
	5.9	925
	5.6	928
C	5.5	929
	5.3	931
	5.0	936
E line	4.8	936

10' So. of center (2' no. track)

E line	4.8	936
	5.1	933
	5.3	931
C	5.5	929
	5.7	927
	5.9	925
W line	6.2	922

984

50

So 1/4

W line	6.1	922
	5.7	927
	5.5	929
C	5.3	931
	5.2	932
	5.2	932
E line	5.0	936

So. cb.

E line	4.2	942
	4.5	939
	4.8	936
C	4.9	935
	5.3	931
	5.4	930
W line	5.3	931

984

North line of Connecticut

White	5.3	93.1
	5.2	93.2
	4.9	93.5
C	4.5	93.9
	4.6	93.8
	4.1	94.3
Blue	4.0	94.6

50' 20.

Blue	3.2	95.2
	3.6	94.8
	3.7	94.7
C	3.6	94.8
	4.1	94.3
	4.2	94.2
White	4.4	94.0

984

31

100' 20.

White	3.4	95.0
	3.3	95.1
	3.0	95.4
C	2.6	95.8
	2.8	95.6
	2.5	95.9
Blue	2.3	96.1

150' 20.

Blue	1.7	96.7
	2.0	96.4
	2.4	96.0
C	2.1	96.3
	2.6	95.8
	2.9	95.5
White	3.0	95.4

98.4

200' 20.

White

3.1 957

2.7 957

3.4 960

C

2.0 964

2.1 963

1.8 966

Ehine

1.2 972

240' 20.

Ehine

1.2 972

1.7 967

1.9 965

C

1.9 965

2.3 961

2.5 959

2.5 959

White

98.4

32

290' 20.

White

2.6 958

2.5 959

1.9 965

C

1.6 968

1.6 968

1.3 971

Ehine

1.3 971

340' 20.

Ehine

1.6 968

1.9 965

1.9 965

C

1.6 968

2.3 961

2.5 959

2.9 955

White

984

400' RD.

White

3.8 946

4.1 943

3.8 946

3.2 952

3.5 949

3.7 947

3.4 950

E line

450' RD.

E line

5.0 934

5.2 932

5.1 933

4.7 937

5.3 921

5.9 925

5.7 927

White

Feb. 3/14

J Childs
alter 33
Bunkle

500' RD. (North line)

Kline)

984

7.5 909

7.2 912

6.8 916

6.4 920

6.9 915

6.7 917

6.6 918

White

C

E line

no. 26

E line

C

White

7.1 913

7.1 913

7.3 911

7.1 913

7.4 910

7.6 908

7.4 910

984

no. 114

White

8.1 903

8.0 904

7.8 906

C

7.5 909

7.3 911

7.7 907

Ebird

7.3 911

Center

Ebird

8.2 902

8.3 901

8.5 899

C

8.4 900

8.7 899

8.8 896

White

8.9 895

984

34

no. 114

White

9.0 894

8.9 895

8.8 896

C

8.7 897

8.7 897

8.9 895

Ebird

8.1 903

no. 114

Ebird

8.6 898

9.3 891

9.2 892

C

9.2 892

9.3 891

9.5 889

White

9.6 888

9835

South line Kluis

White	10.0	884
	10.2	882
	10.1	883
C	9.7	887
	9.9	885
	9.8	886
Elms	9.54	888

50' 40" Kluis

Elms	11.2	872
	11.8	866
	11.5	869
C	11.9	865
	12.5	859
	12.4	860
White	12.6	858

35

J.P.

1.40	H.J. 86.81	12.94	85.41
------	---------------	-------	-------

100' 20"

White	3.8	830
	3.4	834
	3.1	837
C	2.5	843
	2.4	844
	2.3	845
Elms	1.4	854
	125' 40"	
Elms	2.3	845
	2.9	839
	3.3	835
	3.7	831
	4.1	827
	4.4	824
White	4.8	820

868

150' 20.

white

5.6 817

5.2 816

5.1 817

C

4.2 826

4.2 826

3.8 820

E line

3.4 824

175' 20.

E line

4.1 827

5.4 810

6.2 806

C

6.2 806

7.1 797

7.3 795

white

7.6 792

868

36

200' 20.

white

9.3 775

8.7 781

7.9 789

C

7.5 797

6.9 799

6.1 801

E line

4.8 820

225' 20.

E line

5.2 816

6.1 807

6.6 802

C

7.3 795

7.8 790

8.5 783

white

9.8 770

86.8

250' 20.

W. line

8.7 78.1

6.8 80.0

6.1 80.7

C

5.1 81.7

4.8 82.0

4.6 82.2

E line

4.4 82.4

275' 20.

E line

3.6 82.2

4.0 82.8

4.9 81.9

C

6.0 80.8

6.9 79.9

8.4 78.4

9.8 77.0

W. line

86.8

37

North line Ravinia

11.59 75.2

10.9 75.9

9.3 77.5

8.3 78.5

7.5 79.3

8.5 78.3

8.57 78.2

no. cb.

10.2 76.6

10.0 76.8

9.7 77.1

9.7 77.1

10.8 76.0

11.5 75.3

11.7 75.1

W. line

C

E line

E line

C

W. line

86.8

210 1/4

White

13.7 731

12.0 748

11.6 750

C

11.0 758

10.8 760

13.5 733

13.8 730

Elms

Center

Elms

11.9 749

13.6 732

14.2 726

C

14.3 725

14.2 726

14.3 725

White

14.7 721

86.8

210 1/4

White

13.8 730

12.2 746

12.1 747

C

11.6 752

10.9 759

10.9 759

Elms

10.3 765

200

Elms

8.8 780

9.3 775

10.1 767

C

10.9 759

11.1 757

11.5 753

White

11.8 750

38

86.8

South line Rainia

White	11.75	750
	11.6	752
	11.6	752
C	11.2	756
	10.6	762
	9.9	769
E line	9.0	778
(sect C 10) 100' no. of Silver street		
E line	10.1	767
	11.3	758
	11.1	757
C	11.3	755
	11.6	752
	11.5	753
White	11.2	756

86.8

39

75' no.

White	9.6	772
	9.4	774
	9.8	770
C	9.0	778
	8.3	785
	7.8	790
E line	7.9	789

50' no.

E line	6.8	800
	7.3	795
	7.6	792
C	7.8	790
	8.0	788
	8.5	783
White	8.9	779

86.8

25' no.

white

7.9 789

7.8 790

7.8 790

C

7.4 790

7.1 797

6.7 801

E line

6.1 807

north line Silver Street

E line

6.5 807

6.9 799

7.0 798

C

7.6 797

7.7 791

7.2 796

white

6.10 807

86.8

40

no. 26.

white

6.0 808

7.1 797

7.4 794

C

7.2 796

7.1 797

7.0 798

E line

6.7 801

no. 14

E line

6.3 805

7.0 798

7.1 797

C

7.4 794

7.3 795

7.0 798

white

5.6 812

86.8

center

White		4.9	81.9
		6.1	80.7
		7.2	79.6
c		7.0	79.8
		7.1	79.7
		7.1	79.7
E line		6.9	79.9
	SO 1/4		
E line		7.0	79.8
		7.2	79.6
		7.0	79.8
c		7.2	79.6
		7.1	79.7
		5.4	80.4
White		4.6	82.2

86.8

41

SO. CB.

White		3.8	82.0
		4.3	82.5
		6.1	80.7
c		6.2	80.6
		5.7	81.1
		6.8	80.0
E line		6.9	79.9
	South line Silver street		
E line		6.2	80.6
		5.2	81.6
		4.1	82.7
c		5.1	81.7
		5.1	81.7
		3.9	82.9
White		3.89	82.9

86.81

25' 20. Silver Street

White	2.8	840
	2.5	843
	2.6	844
C	2.3	845
	2.3	845
	2.6	847
E line	3.0	848
	1.7	851
	1.3	856
	1.4	854
C	1.5	853
	1.7	851
	1.9	849
White	2.0	848

50' 20.

J.P.

White

C

E line

E line

C

White

42

13.00 ^{H.I.} 98.47 134 85.47

100' 20.

	11.2	873
	11.1	874
	11.1	874
	11.2	873
	11.1	874
	11.3	872
	11.9	866

150' 20.

	8.9	895
	8.5	90.0
	8.6	89.9
	8.8	89.7
	8.9	89.6
	9.1	89.4
	9.6	88.9

985

200' 20.

White	8.2	903
	7.9	906
	7.4	911
C	6.8	917
	6.5	920
	6.5	920
Elm	6.4	921

250' 20.

Elm	4.7	928
	5.1	934
	5.5	930
C	5.8	927
	6.2	927
	6.3	927
White	6.7	918

985

43

300' 20.

White	5.4	931
	4.9	936
	4.6	939
C	4.5	940
	4.3	942
	4.1	944
Elm	3.6	949

350' 20.

Elm	2.2	967
	2.6	959
	2.9	956
C	3.3	957
	3.6	949
	4.0	945
White	4.4	941

110.9

No. 1/4

White	12.3	986
	12.1	988
	11.6	993
c	11.7	997
	11.3	996
	11.1	998
E line	10.7	1007
center		
E line	10.3	1006
	10.7	1007
	11.2	997
c	11.5	996
	11.4	995
	11.5	994
White	11.7	997

110.9

No. 1/4

45

White	11.2	997
	11.0	999
	11.0	999
c	10.9	1000
	10.6	1003
	10.3	1006
E line	9.9	1010
No. 1/4		
E line	9.1	1018
	9.7	1017
	9.8	1011
c	10.1	1008
	10.5	1004
	10.7	1007
White	10.7	1007

110.9

South line Pearl Street.

White	10.39	1005
	10.3	1006
	9.7	1017
C	9.5	1016
	9.2	1017
	9.0	1019
Blue	8.58	1023
	50' RD.	
Blue	6.9	104.0
	7.5	103.0
	7.7	1027
C	8.0	1029
	8.7	1027
	8.9	102.0
White	8.9	102.0

Feb 4/14

Schilds
at 46
Bunker

100' RD.

White	110.9	7.4	107.5
		7.2	1077
		6.9	106.0
C		6.8	106.1
		6.6	1067
		6.2	1067
Blue		5.8	105.1

150' RD.

Blue	4.5	106.4
	4.4	106.5
	5.0	1059
C	5.4	105.5
	5.8	105.1
	5.6	1057
White	5.6	105.3

110.86

200' 20.

White

4.0 1069

3.6 1073

3.7 1077

C

3.6 1073

3.2 1077

2.9 1080

E line

2.5 1084

250' 20.

E line

0.7 1107

1.1 1098

1.5 1096

C

1.9 1090

1.9 1090

2.2 1087

White

2.3 1086

J.P.

White

C

E line

E line

C

White

12.93

H.I.
123.28

0.57

110.35

47

300' 20.

13.2 110.1

12.7 110.6

12.5 110.8

12.1 111.7

11.9 111.4

11.5 111.8

11.4 111.9

350' 20.

10.0 113.3

10.1 113.7

10.3 117.0

10.7 117.6

10.7 112.6

11.4 111.9

11.7 111.6

400' So. South line Lafayette Park.

Whine	127.3	10.5	112.8
		10.1	113.2
		9.8	113.5
C		9.4	113.9
		8.7	114.6
		8.6	114.7
Elms Top gas pipe.	8.36	114.9	
	450' So.		
Elms		6.7	116.6
		7.7	115.6
		7.6	115.7
C		7.9	115.6
C		8.4	114.9
		8.8	114.5
Whine		9.3	114.0

500' So.

Whine	127.7	8.1	115.2
		7.8	115.5
		7.3	116.0
C		6.7	116.6
		6.2	117.1
		6.3	117.0
Elms		5.7	117.6
	550' So.		
Elms		3.7	119.6
		4.8	118.5
		4.6	118.7
C		5.0	118.3
		5.6	117.7
		6.1	117.2
Whine		6.4	116.9

1277

600' No.

White	4.8	1185
	4.4	1189
	3.9	1194
C	3.2	1201
	2.8	1205
	2.6	1207
Elm	1.9	1214
650' No.		
Elm	0.4	1229
	1.2	1221
	1.2	1221
C	1.9	1214
	2.8	1205
	3.1	1207
White	3.6	1197

123,28

19

700' No.

White	3.0	1203
	2.5	1208
	1.9	1214
C	1.1	1222
	0.5	1228
	0.0	1237
Ecob.		
J.P.	12.95	135.85
Elm	11.6	1243
750' No.		
	11.1	1248
	11.3	1256
	12.1	1238
	12.7	1232
	13.4	1225
	14.1	1218
	14.5	1214
White		

1759

800' A0.

White	13.2	1227
	12.6	1233
	12.2	1237
C	11.4	1245
	11.2	1247
	10.3	1256
Elms	9.8	1261

850' A0.

Elms	9.2	1267
	9.7	1268
	10.2	1257
C	10.6	1253
	11.2	1257
	11.7	1262
White	12.0	1239

1759

50

900' A0.

White	11.0	1249
	10.4	1255
	9.9	1260
C	9.3	1266
	8.9	1270
	8.1	1278
Elms	7.5	1284

950' A0.

Elms	5.9	1300
	6.9	1290
	7.6	1283
C	7.8	1281
	8.2	1273
	8.6	1273
White	8.8	1271

135.9

1000' 20.

White	8.5	1276
	8.0	1279
	7.6	1283
c	6.8	1291
	6.6	1293
	6.1	1298
Elms	4.7	1312

1050' 20.

Elms	4.6	1313
	5.7	1302
	6.1	1298
c	6.6	1293
	7.3	1286
	7.7	1282
White	8.3	1276

135.9

51

1075' 20. (north line bent)

White	8.11	1278
	7.7	1282
	7.1	1288
c	6.4	1295
	6.0	1299
	5.5	1304
Elms	4.6	1313

no. cb.

Elms	4.3	1316
	5.3	1306
	5.8	1301
c	6.4	1295
	7.3	1286
	8.0	1279
White	8.5	1274

1359

No. 4

White

8.5 1274

7.6 1283

6.8 1291

C

6.3 1296

5.6 1303

4.9 1310

E line

4.1 1318

Center

E line

4.1 1318

4.8 1311

5.5 1304

C

6.2 1297

6.8 1291

7.4 1285

White

8.2 1277

1359

52

No. 4

White

8.2 1277

7.5 1284

7.0 1289

C

6.3 1296

5.6 1303

5.0 1309

E line

4.3 1316

No. 6

E line

4.0 1319

4.9 1310

5.7 1302

C

6.4 1295

7.0 1289

7.7 1282

White

8.1 1278

1359

South line Center

White 8.2 1277

7.2 1287

7.0 1289

C 6.0 1299

5.4 1305

4.6 1313

Elms 3.6 1323

50' 20.

Elms 2.9 1330

4.3 1316

4.9 1310

C 5.3 1306

6.1 1298

6.6 1293

White 7.1 1288

1359

100' 20.

White 6.6 1293

6.0 1299

5.4 1305

C 4.8 1311

4.1 1318

3.5 1324

Elms 2.9 1330

150' 20.

Elms 2.4 1335

3.0 1329

3.6 1323

C 4.2 1317

4.9 1310

5.4 1305

White 6.1 1298

53

1359

200' Ro.

White	5.4	1305
	4.9	1310
	4.4	1315
c	3.7	1322
	3.1	1328
	2.6	1333
Elm	1.9	1340

250' Ro.

Elm	1.2	1347
	2.0	1359
	2.5	1366
c	3.1	1378
	3.7	1387
	4.2	1397
White	5.0	1409

1359

300' Ro.

White	4.2	1317
	3.3	1326
	2.6	1333
c	2.1	1338
	1.6	1347
	1.1	1348
Elm	0.5	1356

350' Ro.

Elm	0.0	1359
	0.6	1359
	1.2	1347
c	1.6	1367
	2.2	1377
	2.8	1381
White	3.2	1387

54

135.85

400' SO.

W line		3.0	1379
		2.4	1375
		1.7	1367
C		1.3	1366
E 1/4		0.5	1354
J.P.	2.15	^{H.I.} 0.40	135.45
		1.8	1358
E line		1.2	1364
	450' SO.		
E line		1.4	1367
		1.9	1357
		2.6	1350
C		3.1	1345
		3.5	1361
		4.0	1376
W line		4.5	1371

1376

55

500' SO. (North line Rushville)

W line		6.1	1315
		5.3	1327
		4.7	1329
C		3.7	1339
		2.7	1349
		1.5	1361
		0.7	1369
	NO. CB.		
E line		1.2	1364
		1.6	1360
		2.7	1349
		3.8	1338
		4.9	1327
		5.5	1321
		6.1	1315

137.6

no. 1/4

W. line	6.0	1316
	5.3	1323
	4.5	1331
C	3.8	1338
	3.1	1345
	2.5	1351
E. line	2.2	1356
	Center	
E. line	1.8	1358
	2.3	1353
	2.9	1367
C	3.7	1339
	4.5	1331
	5.4	1322
W. line	6.4	1314

137.6

56

no. 1/4

W. line	6.5	1311
	5.5	1321
	4.3	1333
C	3.7	1339
	3.1	1345
	2.6	1350
E. line	2.3	1353
	no. 06	
E. line	3.2	1346
	3.3	1343
	3.5	1341
C	4.0	1336
	4.5	1331
	5.2	1326
W. line	6.2	1316

1376

South line Rushville

White	5.9	1317
	4.9	1357
	4.5	1371
C	4.7	1379
	4.5	1371
	4.5	1371
E line	4.2	1384
	50' 20.	
E line	8.4	1292
	8.5	1291
	8.6	1290
C	8.5	1291
	8.1	1295
	7.1	1305
White	6.4	1317

137.60

57

100' 20.

White	10.0	1276
	9.7	1279
	10.3	1273
C	11.0	1266
	11.2	1264
	11.9	1257
E line	12.1	1255
J.P.	3.12	^{14.5} 128.11
	150' 20.	12.61 124.99
E line	6.8	1213
	6.6	1215
	6.2	1219
C	4.7	1224
	3.4	1227
	2.5	1256
White	2.4	1257

128.11

58

} 209 .42 ME
{ 209.35 on W. (So. of Rushville)

White	8.5	119.6
	8.6	119.5
	8.4	119.7
d	8.2	119.9
	8.0	120.1
	7.7	120.4
Blue	6.2	121.9

check

13.32

H.I.
148.77 135.45

W. cor. Fay + Rushville curb. 0.69 \$148.05
1248.0

Levels S. side Northern of between
Fern & 31st

27
14
Surrey
Kerr

271.1

59

B.M. 59K S.E. Northern 30th

250.0

2+26

B.M. 2+25 282.35
T.P. 18.2 13.05 269.30
271.12

S. curb 11.6
+10 11.4
S.L. 13.5

2+0 E of E.L. Fern St

+5.7 = N. Cor building 18.0

S. curb 11.2 259.9

2+56

+11 10.9 260.2

S. curb 11.5 259.6

S.L. 11.6 259.5

+11 11.1 260.0

+2 11.9 259.2

S.L. 12.3 258.8

+8 10.6 260.5

+5.7 = N. Cor bldg 19.6 256.5

2+10 E

S. curb 11.4 259.7

S. curb 11.3 259.8

S.L. 11.0 260.1

+13 11.0 260.1

+5.7 = N. Cor bldg 11.0 260.1

S.L. 11.5 259.3

3+0

+5 14.5 256.6

S. curb 9.8 261.3

+15 12.1 259.0

S.L. 9.7 261.4

2+26 E

+5.7 = bldg 9.2 261.9

S. curb 11.6 259.5

3+25

+10 11.4 259.7

S. curb 8.4 262.7

S.L. 13.5 257.6

S.L. 8.2 262.9

+5.7 18.0 253.1

+3 6.3 264.8

+20 19.3 251.8

+5.7 5.9 265.2

S. curb 6.1 265.0

S.L. 5.3 265.3

+2 3.9 267.2

+5.7 = N.E. Cor bldg 3.7 267.4

60

251.66

25' No

W 8.70 243.0

E 9.20 242.5

50' No

E 10.80 240.9

W 10.70 241.0

75' No

W 12.60 239.1

E 13.10 238.6

T.P. 1.49 241.07 12.08 239.58

100' No

E 4.30 236.8

W 3.90 237.2

123' No = PL

125' No

W 6.0 235.1

E 6.30 234.8

150' No

E 8.5 232.6

W 8.0 233.1

241.07

175' No

W 10.10 231.0

E 10.8 230.3

200' No

E 12.8 228.3

W 12.10 229.0

T.P. 0.63 228.73 12.97 228.10

225' No

W 1.70 227.0 ON CURB

E 2.7 226.0

250' No

E 4.8 223.9

W 3.8 224.9 ON CURB

271.5' No = SEC C (SO END OF EAST CURB
11.35 227.16 12.92 215.81

T.P. W 4.1 223.1 ON CURB

E 4.7 222.5 ✓ ✓

25' No

E 6.9 220.3 ✓ ✓

W 6.3 220.9 ✓ ✓

62

227.16

50' No

W 8.4 218.8 ON CURB

E 9.2 218.0 ✓ ✓

75' No

E 11.5 215.7 ✓ ✓

W 10.5 216.7 ✓ ✓

92' No = 50' END OF RETURN ON CTWAY

W 11.8 215.4 ON CURB

E 13.0 214.2 ✓ ✓

T.P. 10.5' No. OF N.W. CTWAY = No. END OF RET.
1.86 217.67 11.35 215.81

E 7.6 210.1

W 5.8 211.9

41.8' No. OF CTWAY = SEC D.

W 8.0 209.7

E 9.9 207.8

X-sections on St. Pauling from A St North, for establishing grade of Street-car
rails, taken E East & West of tracks. March 18-1919.Dennan
Miller
Shard.

63

RTM 7.27 RT. ON. CR. 5.22 & 2.23.

HI

89.77

79.47

North line of Auto St.

OK.

12.43

77.34

E.

12.45

77.32

North curb line.

E.

12.00

77.77

OK.

11.98

77.78

Center of Auto.

OK.

11.17

78.60

E.

11.20

78.57

North curb line.

E.

10.83

79.44

OK.

10.27

79.50

North line of Auto St.

OK.

9.81

79.96

E.

9.81

79.96

E.

8.60

81.17

OK.

8.60

81.17

	H.I.			
000	99.77			
OK.		7.25	82.51	
£.		7.25	82.51	
+70°				
£		5.80	83.97	
OK.		5.80	83.93	
+100°				
OK.		4.46	85.31	
£.		4.48	85.29	
+120°				
£		3.13	86.64	
OK.		3.11	86.66	
+150°				
OK.		1.73	88.04	
£		1.69	88.08	
+175°				
£.		0.37	89.40	
OK.		0.37	89.40	
#	10.28	100.20	89.72	
+200°				
OK.		9.44	90.76	
£		9.48	90.72	
+225°				
£		8.15	92.05	
OK.		8.06	92.14	
+250°				
OK.		6.75	93.45	
£.		6.87	93.38	
+275°				
£		5.43	94.77	
OK.		5.39	94.81	

	H.I.			
	100.20			
000: South line of Beech Mt.				
000				
OK.		4.16	96.04	
£		4.12	96.08	
South end of Beech				
£.		3.69	96.51	
OK.		3.65	96.55	
Anticline:				
OK.		3.05	97.15	
£		3.03	97.12	
North end of Beech				
£.		2.06	97.84	
OK.		2.09	97.81	
#	12.18	110.20	98.02	98.02 = B.M. Beech 98.02
000: North line of Beech Mt.				
OK.		11.87	98.33	
£.		11.93	98.27	
+120°				
£		10.68	99.52	
OK.		10.65	99.65	
+150°				
OK.		9.09	101.11	
£		9.13	101.02	

		HI 110.20		
175	E		2.65	102.55
	OV		2.61	102.59
1700	OV		6.09	104.11
	E		6.14	104.06
1725	E		4.67	105.53
	OV		4.61	105.59
1750	OV		3.20	107.00
	E		3.22	106.98
1775	E		1.73	108.47
	OV		1.68	108.52
H	9.01	110.05	0.16	110.21
2100	OV		8.07	109.98
	E		9.13	109.92
2125	E		7.68	111.87
	OV		7.69	111.36
2150	OV		6.15	112.90
	E		6.19	112.87
2175	E		4.73	114.32
	OV		4.63	114.42

				HI 119.05	
					65
					0+00 = North line of Cedar St.
	OV			2.31	115.84
	E			2.31	115.74
					North curb line
	E			2.29	116.26
	OV			2.70	116.35
					Curb line
	OV			1.81	117.24
	E			1.89	117.16
					North curb
	E			1.08	117.97
	OV			1.03	118.02
	H	12.08	131.10	0.54	(118.57) = 119.02 - 3/4" Cedar
					00 = North line of Cedar St.
	OV			12.63	118.47
	E			12.70	118.40
+25	E			11.78	119.32
	OV			11.77	119.33
+50	OV			10.75	120.35
	E			10.90	120.30

	7.I 131.10		
75 E	131.10	9.95	121.25
OK		9.83	121.27
1+00 OK		9.86	121.24
E		8.93	122.17
1+25 E		7.99	123.11
OK		7.89	123.21
1+50 OK		6.94	124.16
E		7.00	124.10
1+75 E		6.04	125.06
OK		6.02	125.08
2+00 OK		5.03	126.07
E		5.11	125.99
2+25 E		4.15	126.95
OK		4.12	126.98
2+50 OK		3.22	127.88
E		3.24	127.86
2+75 E		2.25	128.85
OK		2.19	128.91
3+00 = month line of Date H. 3+00			
OK		1.39	129.71
E		1.40	129.70

	7.I 131.10		
V.C. E	131.10	1.10	130.00
OK		1.10	130.00
C. OK		0.71	130.39
E		0.64	130.46
#	9.68	140.68	0.10
month line of Date H.			
E		9.95	130.83
OK		9.82	130.86
month line of Date H.			
OK		9.57	131.11
E		9.56	131.12
1+25 E		8.93	131.75
OK		8.90	131.78
1+50 OK		8.13	132.55
E		8.17	132.51
1+75 E		7.40	133.28
OK		7.40	133.28
1+00 OK		6.62	134.06
E		6.64	134.04
1+25 E		5.84	134.84
OK		5.83	134.85

66

	+	7.5 140.68	-	
1400				
N.			5.05	135.63
E.			5.05	135.63
1425			4.27	136.41
N.			4.22	136.46
2100			2.39	137.29
E.			2.48	137.20
2125			2.67	138.01
N.			2.64	138.04
2150			1.90	138.78
N.			1.92	138.76
2175			1.16	139.52
E.			1.15	139.53
N.				
#	3.76	144.13	0.31	140.37
3100 = North line of Elm St.				
N.			3.81	140.32
E.			3.86	140.27
Hand. E.			3.48	140.65
N.			3.49	140.69
Center N.			2.92	141.21
E.			3.03	141.10

	+	7.5 144.13	-	
N. Curve E.			2.36	141.77
N.			2.36	141.77
#	11.07	152.96	2.24	141.89 = 277 19149 Elm.
3100 = North line of Elm St.				
N.			10.84	142.12
E.			10.98	141.98
+14			10.40	142.56
E.			10.95	142.51
+25			10.00	142.96
N.			10.00	142.96
E.			8.73	144.23
+50			8.76	144.20
E.			8.76	144.20
+75			7.95	145.51
N.			7.95	145.51
E.			6.22	146.74
1700			6.22	146.74
E.			4.97	147.99
+125			5.06	147.90
N.			3.84	149.12
E.			3.84	149.12
+150			3.32	149.14
N.				

67

		H.I. 1152.96		
1+75				
W.			2.65	150.31
E.			2.77	150.19
#	8.70	157.81	1.95	151.11
2+100				
E.			8.22	151.47
W.			8.22	151.49
2+25				
W.			7.10	152.71
E.			7.06	152.75
2+50				
E.			5.85	152.96
W.			5.90	152.91
2+75				
W.			4.65	155.16
E.			4.61	155.20
2+96				
E.			2.09	155.72
W.			4.13	155.68
W				
3+00 = Vanille line of Fair			2.54	156.27
E.			2.56	156.25
Vanil E.			3.21	156.60
W.			3.19	156.62
Culter, W.			2.77	157.04
E.			2.75	157.06

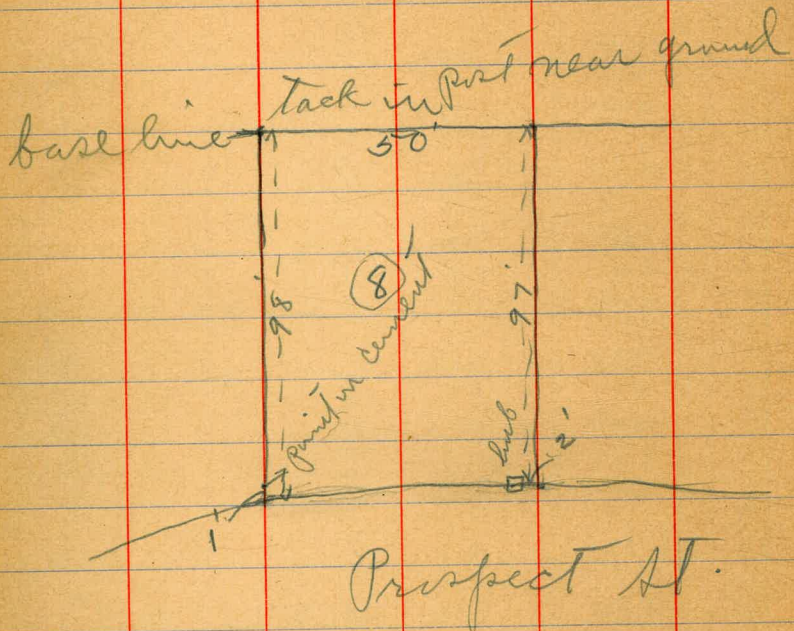
		H.I. 1579.81		
W. Culter E.			2.20	157.61
W.			2.21	157.60
#			1.82	157.99 = 158cc 227 For

Continued in Book 936 Page 1

Survey of lot 8 Blk.
48 Lapolla park.

May 18/14

Childs
letter
Bunder



Cross
Stations

Curb Elevations Hawk St.
From Barr Ave to N.W. Florence Heights

214.98
1.19
215.79

215.81
1.19

228.31
10.50
217.81

B.M.	H.I.			Mon. & W. Hunter rd
4.60	273.68		269.08	
T.P. (on curb)	0.05	268.53	5.20	268.48
T.P.	0.16	257.56	11.13	257.40
T.P.	0.62	248.70	9.48	248.08
S.W. Ardria Drive (East)			2.50	246.20 Ground Elevation
N.W. Ardria Drive (East)			4.80	243.9 Ground Elevation
T.P.	0.59	237.32	11.97	236.73
220' N. of N.W. Ardria				
T.P. Curb (West)	0.86	228.31	9.87	227.45 = south end of curb on west side St.
225' N. of west			1.34	226.97 O.K.
271.5' North of west side			5.29	223.02 O.K.
271.5' on East side			5.88	222.43 = south end of curb on East side st.
T.P.	1.52	216.98	12.85	215.46
92' North (East)			3.80	219.18 O.K. = South End return on Ct Way
92' North (West)			1.51	215.47 O.K. = 215.4
10.5' S. of N.W. Ct. Way				= North end return
East line			6.94	210.04 .06 O.K.
West line			5.12	211.86 .11 O.K.
41.8' North of Ct Way				
W.			7.38	209.60 .1 O.K.
E.			7.22	207.76 .04 O.K.

X sect. Chestnut from

Witherby west. Sept. 15/14 } Blinds
atten
Bunker

	HT.	Rod	Elev.			
	253.69	3.09	250.60	So. line	50' W	8.8 7449
						8.3 7454
So. line		3.09	250.60			7.8 7459
		2.9	7508	C		7.2 7465
		2.6	7511			6.8 7469
C		2.8	7509)		6.1 7476
		2.7	7510	No. line		5.2 7485
		2.4	7513		60' W	
No. line		1.65	7510	No. line		5.3 7484
						6.3 7475
No. line		3.9	7498			10.1 7436
		4.5	7497	C		10.6 7431
		4.8	7489			10.3 7434
C		5.1	7486			10.7 7430
		5.3	7484	So. line		10.9 7428
		5.4	7483			
So. line		5.8	7479			

253.69

75' W

Noline

7.5 r46.2

9.8 r43.9

no 1/4

14.0 r39.7

F.P.

25.0 243.58 12.61 241.08

C

C

8.6 r35.0

11.2 r32.6

10.5 r32.1

Noline

14.3 r49.3

Noline

115' W.

86' W

Noline

8.1 r35.6

16.9 r26.7

13.4 r20.2

C

C

10.0 r22.6

6.1 r27.5

2.8 r10.8

Noline

-0.3 243.9

Noline

r43.6

2

100' W.

Noline

3.5 r60.1

7.6 r76.0

10.6 r37.0

13.9 r29.7

20.1 r22.6

15.5 r48.1

9.8 r33.8

Noline

Clinton road *

10.71 r24.9

15.6 r28.0

22.4 r21.2

18.1 r25.5

13.6 r20.0

11.1 r22.5

7.6 r26.0

J.P.

0.62 231.20 13.00 230.58

146.85 W.

Wolms

8.5 1111.7

12.0 1191

14.3 1169

C

13.4 1178

9.9 1111.7

6.4 1148

Salmi

3.45 1111.7

X Sect Whitman from

Witherby west. Sept. 16/14

Labels to letters
marked

West line Witherby
18.I.

50' W

no line 252.08 0.55 251.53

no line

754.1 4.2 747.9

1.2 750.9

5.4 746.7

1.5 750.6

6.4 745.7

c 1.8 750.3

c

7.0 745.1

2.2 749.9

7.3 744.8

2.3 749.8

7.5 744.6

so line

PLOTTED

2.38 749.7

so line

7.2 744.9

25' W

75' W

so. line 4.7 747.6

so. line

10.1 747.0

4.5 747.6

10.4 741.7

4.4 747.7

10.4 741.7

c 4.5 747.6

c

9.8 742.2

4.2 747.9

7.9 746.7

3.6 748.5

6.2 745.9

no line 2.9 749.7

no line

4.9 747.7

252.08

100' W.

Moline

8.0 226.1

9.5 227.6

10.8 228.3

C

12.5 229.6

No 1/4

13.8 228.3

125' W.

Moline

13.3 228.8

Moline

11.1 221.0

J.P.

PLOTTED 3

13.05 239.03

100' W

So. cb.

2.1 227.6

So. line

2.7 227.0

125' W

Moline

8.5 221.7

+4'

11.5 228.7

cb

7.9 221.8

6.3 222.6

C

4.6 225.1

No. 1/4

2.8 226.9

239.73

75

150' tab

Moline entrance road *

2.68 227.0

5.3 224.4

7.6 227.1

10.9 228.8

14.7 225.0

181.35 W

Moline

Moline entrance road

6.8.6 227.9

9.7 220.0

12.5 227.7

No 1/4

J.P.

0.57 227.30

13.00 226.73

150 W.

So. line

13.4 217.9

So. cb.

7.8 219.5

181.35 W.

C

6.6 220.7

12.2 215.1

16.0 211.3

So. line

20.6 206.7

3/16/12
Gregory
Shog maker
Moore

SLOPE DISTANCES &
ELEVATIONS ON HAWK ST.
FROM 175' So. of WALNUT
T_o
(Distances all taken from W.L. of Hawk St.)

Station	Slope	Dist	Elev	Dist	Elev	Notes			
Top Wall Mellow Hawk	0.37	238.44	238.07	+79	11.0	179.1			
		175' So. of Walnut				25' So. (of Horton's Add)			
+8		6.6	231.8	+75	9.5	180.6			
		185' So.				50' So.			
+5		5.9	232.5	+75	12.0	178.1			
T.P.	0.31	225.79	12.96	225.48		83.53' So. = N.L. UPAS			
		200' So.		+70	8.0	182.1			
+78		4.8	221.0			No CURB			
T.P.	0.68	213.66	12.81	212.98	+70	8.0	182.1		
		225' So.				CENTER			
+41.6		10.5	203.2	+65	4.4	185.7			
T.P.	0.35	201.07	12.94	200.72		50' CURB			
		250' So.		+62	2.7	187.4			
+56.6		8.6	192.5	T.P.	11.91	201.06	0.95	189.15	
T.P.	0.82	190.10	11.79	189.28	T.P.	7.72	207.73	1.05	200.01
		275' So.				50' LINE UPAS			
+61.6		2.5	187.6	+58	18.5	189.2			
		300' So.				25' So.			
+66.6		6.1	184.0	+30	1.4	206.3			

43.
190.10

113
121
62

113
112
112

0

		207.73		
		50' 50		
+27			1.4	206.3
		75' 50		
+27			12.0	205.7
		100' 50		
+33			7.5	200.2
		125' 50		
+38			12.8	194.9
		150' 50		
+44			19.1	188.6
		175' 50		
+36			15.6	192.1
		200' 50		
+25			10.2	197.5
		225' 50		
+23			11.5	196.2
		250' 50		
+13			4.5	203.2
T.P.	1.08	213.18	2.63	205.10
CHK			4.87	202.31

80

7337
 24
 1903
 1123

Prop. S.E. Pole g 87.91
 Curve ~~84.26~~
 more curve 88.95

12663
 89
 1616

1066
 11

5.10
 25676

100
 72

3.000

25001

25
 10
 4
 76

190
 11
 1876

185
 36
 53.5
 71
 88

943
 44
 3
 132
 26.14

24
 3
 13545

44.10
 5.25
 41.83
 119.25
 50

DISTANCES FROM CENTER OF ROADWAY FOR CROSS-SECTIONING.
 ROADWAY 14 FEET WIDE. SIDE SLOPES 1½ TO 1.
 FOR SINGLE TRACK EMBANKMENT.

	0	.1	.2	.3	.4	.5	.6	.7	.8	.9	
0	7.0	7.2	7.3	7.5	7.6	7.8	7.9	8.1	8.2	8.4	0
1	8.5	8.7	8.8	9.0	9.1	9.3	9.4	9.6	9.7	9.9	1
2	10.0	10.2	10.3	10.5	10.6	10.8	10.9	11.1	11.2	11.4	2
3	11.5	11.7	11.8	12.0	12.1	12.3	12.4	12.6	12.7	12.9	3
4	13.0	13.2	13.3	13.5	13.6	13.8	13.9	14.1	14.2	14.4	4
5	14.5	14.7	14.8	15.0	15.1	15.3	15.4	15.6	15.7	15.9	5
6	16.0	16.2	16.3	16.5	16.6	16.8	16.9	17.1	17.2	17.4	6
7	17.5	17.7	17.8	18.0	18.1	18.3	18.4	18.6	18.7	18.9	7
8	19.0	19.2	19.3	19.5	19.6	19.8	19.9	20.1	20.2	20.4	8
9	20.5	20.7	20.8	21.0	21.1	21.3	21.4	21.6	21.7	21.9	9
10	22.0	22.2	22.3	22.5	22.6	22.8	22.9	23.1	23.2	23.4	10
11	23.5	23.7	23.8	24.0	24.1	24.3	24.4	24.6	24.7	24.9	11
12	25.0	25.2	25.3	25.5	25.6	25.8	25.9	26.1	26.2	26.4	12
13	26.5	26.7	26.8	27.0	27.1	27.3	27.4	27.6	27.7	27.9	13
14	28.0	28.2	28.3	28.5	28.6	28.8	28.9	29.1	29.2	29.4	14
15	29.5	29.7	29.8	30.0	30.1	30.3	30.4	30.6	30.7	30.9	15
16	31.0	31.2	31.3	31.5	31.6	31.8	31.9	32.1	32.2	32.4	16
17	32.5	32.7	32.8	33.0	33.1	33.3	33.4	33.6	33.7	33.9	17
18	34.0	34.2	34.3	34.5	34.6	34.8	34.9	35.1	35.2	35.4	18
19	35.5	35.7	35.8	36.0	36.1	36.3	36.4	36.6	36.7	36.9	19
20	37.0	37.2	37.3	37.5	37.6	37.8	37.9	38.1	38.2	38.4	20
21	38.5	38.7	38.8	39.0	39.1	39.3	39.4	39.6	39.7	39.9	21
22	40.0	40.2	40.3	40.5	40.6	40.8	40.9	41.1	41.2	41.4	22
23	41.5	41.7	41.8	42.0	42.1	42.3	42.4	42.6	42.7	42.9	23
24	43.0	43.2	43.3	43.5	43.6	43.8	43.9	44.1	44.2	44.4	24
25	44.5	44.7	44.8	45.0	45.1	45.3	45.4	45.6	45.7	45.9	25
26	46.0	46.2	46.3	46.5	46.6	46.8	46.9	47.1	47.2	47.4	26
27	47.5	47.7	47.8	48.0	48.1	48.3	48.4	48.6	48.7	48.9	27
28	49.0	49.2	49.3	49.5	49.6	49.8	49.9	50.1	50.2	50.4	28
29	50.5	50.7	50.8	51.0	51.1	51.3	51.4	51.6	51.7	51.9	29
30	52.0	52.2	52.3	52.5	52.6	52.8	52.9	53.1	53.2	53.4	30
31	53.5	53.7	53.8	54.0	54.1	54.3	54.4	54.6	54.7	54.9	31
32	55.0	55.2	55.3	55.5	55.6	55.8	55.9	56.1	56.2	56.4	32
33	56.5	56.7	56.8	57.0	57.1	57.3	57.4	57.6	57.7	57.9	33
34	58.0	58.2	58.3	58.5	58.6	58.8	58.9	59.1	59.2	59.4	34
35	59.5	59.7	59.8	60.0	60.1	60.3	60.4	60.6	60.7	60.9	35
36	61.0	61.2	61.3	61.5	61.6	61.8	61.9	62.1	62.2	62.4	36

Calculated by Julien A. Hall, M. Am. Soc. C. E.

MADE IN GERMANY.