

Book 923

**FB. 923**

400

LEVEL

Table showing the difference of latitude and departure in running 80 chains at any course from 1 to 60 minutes.

MINUTES	LKS.	MINUTES	LKS.	MINUTES	LKS.
1.....	2 $\frac{1}{3}$	21.....	49	41.....	95 $\frac{2}{3}$
2.....	4 $\frac{2}{3}$	22.....	51 $\frac{1}{3}$	42.....	98
3.....	7	23.....	53 $\frac{2}{3}$	43.....	100 $\frac{1}{3}$
4.....	9 $\frac{1}{3}$	24.....	56	44.....	102 $\frac{2}{3}$
5.....	11 $\frac{2}{3}$	25.....	58 $\frac{1}{3}$	45.....	105
6.....	14	26.....	60 $\frac{2}{3}$	46.....	107 $\frac{1}{3}$
7.....	16 $\frac{1}{3}$	27.....	63	47.....	109 $\frac{2}{3}$
8.....	18 $\frac{2}{3}$	28.....	65 $\frac{1}{3}$	48.....	112
9.....	21	29.....	67 $\frac{2}{3}$	49.....	114 $\frac{1}{3}$
10.....	23 $\frac{1}{3}$	30.....	70	50.....	116 $\frac{2}{3}$
11.....	25 $\frac{2}{3}$	31.....	72 $\frac{1}{3}$	51.....	119
12.....	28	32.....	74 $\frac{2}{3}$	52.....	121 $\frac{1}{3}$
13.....	30 $\frac{1}{3}$	33.....	77	53.....	123 $\frac{2}{3}$
14.....	32 $\frac{2}{3}$	34.....	79 $\frac{1}{3}$	54.....	126
15.....	35	35.....	81 $\frac{2}{3}$	55.....	128 $\frac{1}{3}$
16.....	37 $\frac{1}{3}$	36.....	84	56.....	130 $\frac{2}{3}$
17.....	39 $\frac{2}{3}$	37.....	86 $\frac{1}{3}$	57.....	133
18.....	42	38.....	88 $\frac{2}{3}$	58.....	135 $\frac{1}{3}$
19.....	44 $\frac{1}{3}$	39.....	91	59.....	137 $\frac{2}{3}$
20.....	46 $\frac{2}{3}$	40.....	93 $\frac{1}{3}$	60.....	140

### TABLE FOR RUNNING ON SLOPES.

In the following table the first column shows the angle, the second the number of links to be added to a chain on the slopes, to make one chain, horizontal measurement.

Angle	Cor. in Links	Angle	Cor. in Links	Angle	Cor. in Links	Angle	Cor. in Links
0		0		0		0	
4	0.24	11	1.88	18	5.14	25	10.54
5	0.38	12	2.24	19	5.76	26	11.26
6	0.55	13	2.63	20	6.42	27	12.24
7	0.76	14	3.06	21	7.11	28	13.37
8	0.98	15	3.53	22	7.85	29	14.34
9	1.24	16	4.02	23	8.64	30	15.47
10	1.55	17	4.56	24	9.47	35	22.07

Book 923  
 El Cajon City Limits  
 City Limits on Adams West  
 + Intermediate.

X Sec's Gregory Cont from West  
Book 911. P 80

1

22602

3L Grape St.

WL	15.5	210.5
C	10.5	155
$\frac{1}{4}$	8.2	178
$\frac{1}{2}$	5.7	203
$\frac{1}{4}$	3.0	220
C	0.3	227
EL	-0.8	226.8

25's of Grape.

-10	5.5	205
EL	6.7	193
C	9.2	178
$\frac{1}{4}$	12.0	140
$\frac{1}{2}$	13.2	128
TP rock.	12.50	213.52

003 213.55

21355

1/4	2.3	2113
c	5.4	208.7
WL	8.9	2047
+15	15.0	1986
50's		
-20	23.8	898
WL	18.0	95.6
c	14.6	99.0
1/4	12.5	2011
E	10.7	202.9
1/4	8.1	2055
c	6.3	2073
EL	3.5	10.1
75's		
EL	12.6	2010
J-Prock	12.59	200.76
0.15	201.11	

PLOTTED

2

20111

c	5.8	1953
1/4	7.9	93.2
E	9.2	91.9
1/4	11.4	89.7
c	14.7	86.4
WL	16.0	85.1
+20	20.6	80.5
100's		
-20	30.0	76.1
WL	27.4	73.7
c	25.6	75.5
1/4	23.2	77.9
E	21.3	79.8
1/4	19.1	82.0
c	14.0	87.1
EL	8.1	93.0

20111

T.P. rock.	12.84	188.27
0.29	188.56	
	125'5	
EL	1.4	187.2
c	7.0	81.6
1/4	12.0	75.6
±	16.6	72.0
1/8	19.8	58.8
1/4	20.2	58.4
c	21.5	67.1
WL	22.5	66.1
+55 bot Canon.	29.0	59.6
+70	24.0	64.6
up hill	150'5	
-20	27.7	60.7
WL bot Canon.	31.0	57.6
c	28.8	59.8
1/4	25.9	62.7
±	23.0	65.6

PLOTTED

18856

3

1/4	19.0	169.6
c	13.9	74.7
EL	7.9	80.7
T.P. rock.	12.44	176.12
0.59	176.71	
	175'5	
EL	4.6	72.1
c	10.0	66.7
1/4	13.9	63.8
±	17.7	59.0
1/4 bot Canon	21.0	55.7
c	18.7	58.0
WL	16.1	60.6
+10.	13.0	63.7
	200'5	
-10	7.1	69.6
WL	11.0	65.7
c	16.1	60.6

176.71

1/4	18.8	57.9
±	21.0	55.7
+5 bot. Cannon	21.9	54.8
1/4	19.5	57.2
C	16.7	60.0
EL	12.8	63.9
225' S.		
-15	13.0	63.7
EL	20.0	56.7
C bot. Cannon	23.7	53.0
+3	23.7	53.0
+4	23.0	53.7
1/4	21.8	54.9
±	19.5	57.2
1/4	16.9	60.7
C	10.6	66.1
WL	4.0	72.7
250' S.		
WL	1.9	75.8
C	6.8	69.9

PLOTTED

176.71

4

1/4	13.0	16.37
±	18.0	58.7
1/4	20.7	56.0
C	22.0	54.7
EL	24.2	53.5
+3 bottom	24.3	52.4
+20	17.3	59.4
275' S.		
-30	21.7	55.0
-20	23.5	53.2
-8 bottom	25.6	51.1
EL	23.8	52.9
C	21.2	55.5
1/4	19.4	57.3
±	18.2	58.5
1/4	15.0	61.7
C	10.1	66.6
WL	5.5	71.2

176.71

295'S.

-15	9.1	1676
WL bot. side Carron	12.3	1644
C " " "	15.0	1617
1/4	13.9	1628
±	15.1	1615
1/4	17.4	1593
C	19.8	1569
EL	23.0	1537
+18 bot. Carron.	26.0	1507
+35 " "	26.2	1505
+50	23.6	1531
300'S - NL. Fir 80'W - 14'Wxs.		
EL	22.0	1547
C	18.1	1586
1/4	14.7	1620
±	13.3	1634
1/4	12.6	1641

**PLOTTED**

176.71

5

C	11.4	145.3
WL	11.0	145.7
T.P. rock.	0.24	176.47
	11.64	188.11
13'5" W Hub	3.31	184.80
T.P. rock.	0.36	187.75
	11.31	199.6
T.P. rock.	1.18	197.88
	9.82	207.70
T.P. Hub SW Cor Fir + Gregory.	5.97	201.73
	1.22	202.95
	3 L. Fir.	
WL	5.3	197.7
C	8.9	194.1
1/4	13.3	189.7
±	17.0	186.0
T.P.	12.72	190.23
	0.59	190.82

19082

1/4	5.4	185.4
C	10.2	80.6
EL.	14.9	74.4

25' S. of Fir.

-20	10.4	80.4
EL.	5.8	85.0
C	1.3	89.5
T.P. rock.	0.09	190.73

12.94 203.67

1/4	10.6	93.1
£	5.6	98.1
1/4	1.8	201.9
T.P. rock.	0.60	203.07

12.25 215.32

C	9.5	205.8
WL	7.0	208.3

PLOTTED

21532

50'S

6

WL	2.5	217.8
----	-----	-------

C	5.1	10.2
---	-----	------

1/4	7.4	207.9
-----	-----	-------

£	10.7	204.6
---	------	-------

1/4	13.8	201.5
-----	------	-------

C	16.6	197.7
---	------	-------

EL	20.8	94.5
----	------	------

+20	24.9	90.4
-----	------	------

75'S

-20	16.2	99.1
-----	------	------

EL.	12.2	203.1
-----	------	-------

C	10.2	205.1
---	------	-------

1/4	8.0	207.3
-----	-----	-------

£	5.7	209.4
---	-----	-------

1/4	3.1	12.2
-----	-----	------

C	1.5	13.8
---	-----	------

WL	-0.8	216.1
----	------	-------



21532

T.P. 0.40 214.92

12.36 227.28

100's.

WL 7.8 219.5

C 10.3 17.0

1/4 11.9 15.4

E 13.6 13.7

1/4 15.0 12.3

C 17.0 10.3

EL 18.9 208.4

+20 21.9 205.4

125's

-20 17.5 209.8

EL 14.3 13.0

C 12.9 14.4

1/4 11.0 16.3

E 9.6 17.7

1/4 8.1 19.3

PLOTTED

22728

C 6.5 220.8

WL 4.5 22.8

150's

WL 2.4 24.9

C 9.2 23.1

1/4 5.1 22.2

E 6.2 21.1

1/4 7.9 19.6

C 9.3 18.0

EL 11.2 16.1

+10 12.4 14.9

175's

-10 8.9 18.4

EL 7.9 19.4

C 6.6 20.7

1/4 5.4 21.9

E 4.2 23.1

1/4 3.6 23.7

7

22728

C	32	224.1
+2	18	225.5
WL	08	226.5
T.Prock.	0.30	226.98

2.55 229.53

200's

WL	20	227.5
+12	29	226.6
C	44	225.1
1/4	48	224.7
E	52	224.3
1/4	61	223.4
C	74	222.1
+2	67	222.8
EL	77	221.8

225's

**PLOTTED**

EL	62	223.3
+12	55	224.0
C	61	223.4

22953

8

1/4	52	224.3
E	45	225.0
1/4	41	225.4
C	41	225.4
+1	3.9	225.6
+2	2.0	227.5
WL	1.0	228.5

250's

WL	12	228.3
+12	17	227.8
+13	40	225.0
C	42	225.3
1/4	42	225.3
E	45	225.0
1/4	50	224.5
C	55	224.0
+2	55	224.0
+3	48	224.7
EL	55	224.0

22953

275's

EL	62	2233
#12	57	238
+13	62	233
C	61	234
1/4	58	237
E	53	242
1/4	52	243
C	49	246
+5	27	268
WL	21	274

300's = N.L. Elm 80' W 14' Wks.  
Int taken on Elm x Secs.

WL	50	245
C	62	233
+1	67	228
1/4	68	227
E	73	222

PLOTTED

22953

9

1/4	79	2216
C	82	213
+1	77	218
EL	84	211
T.P. rock.	1269	216.84

082 217.6

3L Elm.

EL	96	2081
C	89	2088
1/4	75	102
E	64	113
1/4	55	122
C	49	128
WL	44	133

25's of Elm.

WL	10.3	2074
C	10.8	2069
1/4	11.0	2067

21766

£	11.7	2060
1/4	11.8	2059
C	12.9	2048
EL	14.5	2032
T.Rock.	13.02	204.64
	0.29	204.93
+10	3.3	2016
	50's	
-20	17.8	1971
EL	10.5	944
+10	6.5	78.4
C	6.0	98.9
1/4	4.5	2004
£	3.6	2013
1/4	3.5	2014
C	4.2	2007
WL	4.8	2001
T.Rock.	12.67	192.26
	3.86	196.12

PLOTTED

19612

10

	15's	
-10	8.0	1881
WL	5.8	1903
C	5.5	906
+10	8.5	876
1/4	7.6	885
£	7.1	890
1/4	7.9	883
C	9.1	871
EL	12.9	839
+20	17.1	791
T.Rock.	12.79	183.33
	0.61	183.94
	100's	
>20	17.8	661
EL	13.5	704
C	10.6	733
1/4	9.5	744
£	8.1	758
1/4	6.9	771

18374

C	5.8	178.1
WL	4.8	179.1
+10	4.1	
T.P. rock.	12.15	171.79
0.56	172.35	
	125.5	
-10	2.7	169.7
WL	5.6	166.8
C.	8.3	164.1
1/4	9.0	163.4
1/2	10.1	162.3
3/4	12.0	160.4
C	13.8	159.6
EL	15.1	157.3
+20	17.5	154.9
T.P. rock.	12.93	159.42
1.75	161.17	

PLOTTED

16117

11

	150.5	
-20	15.0	146.3
EL	13.2	148.0
C	13.4	147.8
1/4	13.2	148.0
1/2	12.0	149.3
3/4	10.2	151.0
C	8.5	152.7
WL	6.1	155.1
+10	4.9	156.3
T.P. rock.	12.83	148.31
1.85	150.19	
	167.5	
-10	0.4	149.8
WL	0.2	150.0
C	2.8	147.4
1/4	4.9	145.3
1/2	6.5	143.7
3/4	9.0	141.3

15019

C - bot Canon.	10.7	139.5
EL " "	11.0	39.9
+20.	8.0	43.3

175'S

-20 - bot Canon.	12.2	38.0
-10	9.8	40.4
EL - bot Canon.	10.5	39.7
C	7.3	42.9
1/4	7.4	42.8
1/5 - bot.	9.8	40.4
E	9.5	41.7
1/1	8.4	41.8
1/4	6.9	43.8
C	6.2	44.0
WL	9.8	45.4
+10	7.3	45.9

180'S

-20	12.3	39.8
EL	10.0	40.2
C	6.1	44.1
1/4	5.3	44.9

PLOTTED

15019

12

E	7.3	142.9
1/4 - bot Canon.	9.9	40.8
C " "	7.5	42.7
WL " "	7.1	43.1
+10 " "	6.8	43.4
T Track	0.84	149.35

11.97 161.32

200'S

-10	9.7	51.6
WL	10.4	50.9
C	10.6	50.7
1/4	10.0	51.3
E	9.6	51.7
1/4	9.2	52.1
C	9.4	51.9
EL	10.9	50.4
+20	11.1	49.9

16132

T.P. rock.	0.34	160.98
11.9.9	172.97	
	225's.	
-20	11.8	161.2
EL	10.4	162.5
c	9.8	163.2
1/4	8.9	164.1
±	9.4	163.6
1/4	10.6	162.4
<	11.3	161.7
WL	10.8	162.2
+10	10.8	162.2
T.P. rock.	0.45	172.52
1226	184.78	
	250's.	
-10	9.2	175.6
WL	9.0	175.8
c	8.9	175.9

PLOTTED

18478

13

1/4	8.5	176.3
±	7.7	177.1
1/4	7.6	177.2
c	7.9	174.9
EL	9.0	175.8
+15	9.6	175.2
T.P. rock.	0.43	184.35
	1253	196.88
	275's.	
-15	11.6	185.3
EL	10.1	186.8
c	9.8	187.1
1/4	10.1	186.8
±	10.7	186.3
1/4	10.5	186.4
<	11.1	185.8
WL	11.3	185.3
+10	11.4	185.5

196.88

T.P. rock. 0.40 196.48

12.50 208.98

300' S - NL Date 80' W 14' Wks.

Int. Taken on " X Secs.

~~10~~

WL. 113 197.7

C 114 97.6

1/4 11.0 98.0

E 10.1 98.9

1/4 9.5 99.5

C 9.6 99.4

EL 10.0 99.0

T.P. rock. 0.16 208.82

13.13 221.95

St. Date.

EL Hub. 2.13 219.82

C 2.0 200

1/4 1.5 20.5

PLOTTED

221.95

14

E 0.5 221.5

1/4 0.4 21.6

C 0.8 21.2

WL Hub SW. Cor. 0.30 221.65

7.03 228.68

25' S of Date.

WL 33 25.4

C 39 24.8

1/4 3.8 24.9

E 4.2 24.5

1/4 5.4 23.3

+12 6.6 22.1

C 6.0 22.7

EL 6.6 22.1

50' S

EL 5.7 23.0

C 4.9 23.8

E 4.9 23.8

1/4 5.5 23.2

1/4 4.6 24.1



22868

<del>EL</del>	3.3	225.4
<del>1/4</del>	2.8	25.9
c	2.7	26.0
+2	2.8	25.9
+3	1.8	26.9
WL	1.6	27.1
	75's	
WL	3.0	25.7
+10	3.6	25.7
+12	4.7	24.0
c	4.6	24.1
1/4	4.9	23.8
±	5.6	23.1
1/4	6.1	22.6
+12	6.7	22.0
c	6.1	22.6
EL	6.2	22.5

PLOTTED

22868

15

	100's	
EL	8.6	220.1
c	8.5	20.2
+1	8.7	20.0
+2	9.6	19.1
1/4	9.3	19.4
±	8.8	19.9
1/4	8.4	20.3
c	7.8	20.9
+2	7.9	20.8
+5	6.7	22.0
WL	5.9	22.8
	125's	
WL	9.1	19.6
+10	9.8	18.9
+12	11.0	17.7
c	11.1	17.6
1/4	11.7	17.0

21

22868

±	120	214.7
1/4	12.4	16.3
+12	12.7	16.0
+13	120	16.7
C	12.0	16.7
EL	12.0	16.7
	150's.	
EL	16.0	12.7
C	16.1	12.5
+3	16.8	11.9
1/4	16.2	12.5
±	15.6	13.1
1/4	15.1	13.6
C	14.4	14.3
+2	13.9	14.8
+4	13.3	15.4
WL	12.4	16.3

PLOTTED

22868

16

T.P. rock.	12.97	215.71
0.20	215.91	
	175's.	
WL	2.7	213.2
+2	4.3	11.6
C	5.2	10.7
1/4	5.5	10.4
±	6.3	9.6
1/4	7.0	8.9
C	6.8	9.1
EL	6.5	9.4
	200's.	
EL	10.9	205.0
C	10.6	205.3
1/4	9.8	206.1
±	9.9	206.5
1/4	9.2	206.7
C	8.3	207.6

21591

+3	7.5	2084
WL.	6.3	96
212'5.		
WL.	7.2	87
+13	8.5	2074
c	8.9	2070
1/4	10.1	2058
£	10.3	2056
1/4	11.0	2049
c	12.0	2039
EL	13.8	2021
225'5.		
-15	17.2	198.7
EL	22.0	93.9
c	21.5	94.4
1/4	20.0	95.9
£	19.6	201.3
1/4	11.9	204.0

PLOTTED

21591

17

c	11.2	204.7
+2	11.2	204.7
+3	10.6	205.3
WL.	8.4	207.5
T-Prock.	12.43	203.48
0.40 203.88		
250'5.		
WL	-0.5	204.4
+11	1.0	202.9
c	2.3	201.6
1/4	2.5	201.4
£	8.1	195.8
1/4	13.0	90.9
c	18.7	85.3
EL	21.2	83.7
EL	19.7	84.2
+15	13.2	90.7
↓		
up hill		

85

20388  
275'S.

-15	18.0	185.9
WL	2.1	901.8
+ 13	3.9	900.0
<del>2</del> c	5.1	988
1/4	5.4	985
£	8.7	953
1/4	14.5	99.4
300'S - NL Cedar 80'W. 14' WKS.		
WL	4.9	990
c	6.9	970
1/4	7.5	964
£	10.5	934
1/4	16.2	977
N. Curb.		
WL	6.8	971
c	7.6	963
1/4	9.3	946
£	11.6	923
1/4	15.2	88.7

PLOTTED

20388  
N/4

18

E/A	15.7	1882
£	12.5	91.4
1/4	10.9	93.0
c	8.7	95.3
WL	7.8	96.1
£ Cedar.		
WL	11.1	928
c	12.0	919
1/4	13.2	90.7
£	14.6	89.3
1/4	17.1	86.8
T.P. rock.	13.10	790.78
8.36 19.14		
275'S of Date		
-15	6.2	1849
EL	10.2	80.9
+6 bot Calif.	12.2	79.9
E Curb.	8.6	89.5

19114

300's of Note = NL Cedar

-20	10.9	180.7
-12	12.4	78.7
EL = bot.	14.9	76.3
E Curb.	10.2	80.9

N. Curb.

-25	12.7	78.4
-15	14.2	76.9
EL. bot. Cañon	15.4	75.7
E. Curb.	8.7	82.4

N/A

-40	11.2	79.9
-25	15.9	75.2
-10 = bot. Cañon	17.0	74.1
EL	13.4	77.7
E Curb.	7.6	83.5

± Cedar.

-35	14.8	76.3
-18 bot. Cañon.	19.2	71.9

PLOTTED

19114

19

EL	13.2	177.9
E Curb.	7.6	83.5

5/4

-35	15.0	76.1
-18 bot. Cañon.	21.7	69.4

EL.	13.6	77.5
+6	11.6	79.5
+9	9.2	81.9
C.	8.4	82.7

1/4	8.0	83.1
±	7.8	83.3

1/4	8.9	82.2
C	7.5	83.6

WL.	5.5	85.6
T. Prock.	12.72	178.4

0.47 178.87

S. Curb.

NL.	0.6	78.3
C	1.7	77.2

17889

1/4	2.5	1764
±	1.2	777
1/4	0.6	783
c	0.0	789
EL	3.2	757
+20 bot Canon.	10.5	784
+30	6.6	723

SL-Cedar.

+30	8.9	700
-20 bot Canon.	13.7	657
EL	6.0	729
c	5.0	739
1/4	6.2	727
±	7.1	718
1/4 bot Canon.	7.6	713
c " "	6.4	725
WL " "	4.9	740
+20	2.0	769

PLOTTED

17889

20

12'S. of Cedar.

-20 bot Canon	4.2	1747
WL " "	5.6	733
c " "	6.7	722
1/4	10.2	687
±	10.8	681
1/4	9.6	693
c	8.7	702
EL	9.6	693
+25 bot Canon.	18.6	603
+35	11.9	679

25'S.

-40	18.2	607
-30 bot Canon	20.7	587
EL	14.2	647
c	14.5	644
1/4	13.1	658
±	9.7	692

17889

1/4	6.3	177.6
C	4.2	74.7
WL	1.3	77.6
+10	0.4	78.5
30's.		
-40	19.0	59.9
-30 bottom. Carrn.	22.0	56.9
EL	16.3	62.6
C	15.0	63.9
1/4	10.8	68.1
±	7.1	71.8
1/4	5.2	73.7
C	2.9	76.5
WL	0.2	78.7
+10	-1.2	79.5

PLOTTED

17889

50's.

21

-15	12.2	166.7
EL	9.0	149.9
C	6.4	72.5
1/4	3.5	75.4
±	1.3	77.6
T.P. rock.	10.6	177.83
1200. 189.83		
1/4	9.1	80.7
C	6.3	83.5
WL	6.4	83.4
+10	2.2	87.6
60's.		
WL	-1.2	191.0
C	2.8	87.0
1/4	6.2	83.6
±	9.6	80.3
1/4	12.8	77.0
C	15.6	74.2

81

189.83

EL. 17.4 1724

+10 18.0 718

75's

-10 14.4 754

EL. 12.4 744

C 9.0 808

1/4 7.8 820

E 3.0 868

1/4 0.4 894

T.P.rock. 0.2 189.81

1068 20049

C 8.1 924

WL. 5.6 949

100's

WL 0.7 998

C 2.0 985

1/4 4.1 964

E 6.5 940

PLOTTED

20049

22

1/4 86 191.9

C 11.0 89.5

EL 13.7 86.9

+10 16.8 83.7

125's

-10 12.2 88.3

EL 9.8 90.7

C 6.8 93.7

1/4 4.2 96.3

E 2.1 98.4

1/4 0.2 200.3

T.P.rock. 0.2 200.47

1201 212.48

C 10.2 202.3

WL. 7.6 204.9

150's

WL 3.0 209.5

C 5.7 206.8



212A8

1/4	8.2	204.3
±	10.4	202.1
1/4	12.6	99.9
c	14.8	97.7
EL	17.6	94.9
+10	19.7	92.8
	175's	
-10	15.0	97.5
EL	13.6	99.9
c	11.4	201.1
1/4	9.5	203.0
±	7.1	205.4
1/4	4.7	207.8
c	2.2	103
WL	-0.3	212.8
T.P. rock	0.97	211.51

7.78 21929

PLOTTED

21929

23

200's

WL	5.0	214.3
c	7.0	12.3
1/4	8.4	10.9
±	10.8	8.5
1/4	12.6	206.7
c	14.7	204.6
EL	17.2	202.1
+10	19.0	200.3

225's

-10	15.2	204.1
EL	13.3	206.0
c	11.0	207.3
1/4	9.2	10.1
±	7.6	11.7
1/4	6.0	13.3
c	4.8	14.5
WL	3.3	14.0

21929

250's.

WL	24	216.9
c	34	15.9
1/4	40	15.3
±	50	14.3
1/4	63	13.0
c	79	11.4
EL	100	8.3
+10	118	207.5

275's.

-10	81	11.7
EL	70	13.3
c	57	13.6
1/4	43	15.0
±	30	16.3
1/4	24	16.9
c	20	17.3
WL	18	17.5

PLOTTED

21929

24

300's = N.L. Beach St 80' W 14' WKS.

WL	20	217.3
c	16	17.7
1/4	11	18.3
±	13	18.0
1/4	24	16.9
c	36	15.7
EL	53	14.0
T.P. Hub. NE Cor.	523	214.06

993 223.99

N Curb

EL	92	14.8
c	76	16.4
1/4	63	17.7
±	55	18.5
1/4	55	18.5
c	62	17.8
WL	70	17.0

22399

N/A

WL	7.0	217.0
c	5.9	18.1
1/4	5.4	18.6
£	5.1	18.9
1/4	5.9	18.1
c	7.3	16.7
EL	8.7	15.3

£ Beech.

EL	8.3	15.7
c	6.7	17.3
1/4	5.4	18.6
£	4.9	19.1
1/4	5.3	18.7
c	6.2	17.7
WL	7.0	17.0

PLOTTED

22399

5/4

25

WL	7.4	216.6
c	6.3	17.7
1/4	5.5	18.5
£	5.1	18.9
1/4	5.7	18.3
c	6.8	17.2
EL	8.2	15.8

J. Curb.

EL	9.0	15.0
c	7.3	16.7
1/4	6.2	17.8
£	5.6	18.4
1/4	6.0	18.0
c	7.0	17.0
WL	8.1	15.9

223.99

S.L. Beech

WL Hub. (FP)	842	215.57
C	74	16.6
1/4	6.7	17.3
E	6.5	17.5
1/4	7.0	17.0
C	84	15.6
+2	87	15.3
EL	81	15.9
	7.2	14.8
T.P. Hub.	842	215.57

9.91 225.48

SE Cor 33 + Beech

6.0 219.5 219.5  
checks O.K. Wed

1.08 216.65

25's of Beech

WL	2.9	13.8
C	2.0	14.7
1/4	1.2	15.5
E	1.6	15.1

PLOTTED

216.65

26

1/4	2.2	214.5
C	3.6	13.1
+1	3.0	13.7
EL	4.0	12.7
	50's	
EL	7.0	209.7
H3	6.1	10.6
C	6.8	9.9
1/4	5.1	11.6
E	4.7	12.0
1/4	4.5	12.2
C	5.1	11.6
+1	4.8	11.9
WL	5.6	11.1
	75's	
WL	10.8	205.9
+3	9.9	206.8
C	10.4	206.3

21665

1/4	9.5	2072
±	9.6	2071
1/4	9.9	2068
C	10.9	2058
+1	10.4	2063
EL	11.1	2056
T.P. rock.	12.54	204.11

024 20435

100's.

EL	4.1	2003
+13	3.2	2012
C	3.6	2008
1/4	2.6	2018
±	2.3	2021
1/4	2.7	2017
C	3.6	2008
+1	3.1	2013
WL	4.0	2004

PLOTTED

20435

27

125's

WL	7.8	196.6
C	8.5	95.9
1/4	8.0	96.4
±	8.0	96.4
1/4	8.1	96.0
+13	8.9	95.5
C	8.7	95.7
EL	9.4	96.0

150's

EL	13.4	96.0
C	13.4	96.0
1/4	13.3	96.1
±	13.3	96.1
1/4	13.1	96.3
C	13.0	96.4
WL	13.2	96.2

20435

T-Prack.

12.67 191.68

0.19 191.87

175's.

-10	10.1	181.8
WL	19.8	82.1
C	8.5	834
1/4	7.8	84.1
±	7.2	84.7
1/4	6.5	85.4
C	7.1	84.8
EL	6.3	85.2

200's.

-10	133	78.6
EL	136	78.3
C	150	76.9
1/4	15.8	76.1
±	16.0	75.9
1/4	16.8	75.1
C	16.8	75.1
WL	18.0	73.9
+10	19.0	72.9

PLOTTED

19187

28

T-Prack.

12.75 179.12

163 180.75

225's

-20	13.7	147.1
WL bot Canon.	16.1	64.7
C	15.4	65.4
1/4	14.7	66.1
±	14.6	66.2
1/4	14.3	66.5
C	13.0	67.8
EL	12.1	68.7
+10	11.5	69.3

250's

-15	21.4	59.4
EL	22.4	59.4
C bot Canon	22.6	58.2
1/4	21.6	59.2
±	17.9	63.9
1/4	14.3	66.5

180.75

C		118	169.0
WL		8.7	72.1
258'5			
-10	bot. Canon	280	52.8
EL	" "	252	56.6
C		210	59.8
1/4		174	63.4
±		150	65.8
1/4		9.5	71.3
C		7.8	73.0
WL		5.8	75.0

275'5

WL		-05	181.3
C		2.6	78.2
1/4		3.4	77.4
±		7.2	73.6
±		9.0	71.8
1/4		12.7	48.1
C		16.6	44.2

PLOTTED

18075

29

EL		20.5	160.3
+20		28.0	52.8
+30		26.0	54.8
+35		23.2	57.4

300'5 - NL Ash St. 80' W. 14' Wks. 13' 1/4 5

-15		19.5	61.3
EL		13.4	67.4
C		8.3	72.5
1/4		5.5	75.3
T.P. rock.		0.11	180.64

1145 192.09

±		14.0	78.1
1/4		10.2	81.9
C		8.3	83.8
WL		5.1	87.0

N Curb.

WL		2.4	89.7
C		5.2	86.9

19209

1/4	80	184.1
+5	85	836
+7	96	828
£	11.3	80.8
1/4	139	78.7
C	16.4	75.7
EL	20.1	73.0
+15	24.5	67.6
	N/4	
-15	22.4	49.7
EL	19.0	73.1
C	15.1	77.0
1/4	12.2	79.9
£	8.9	83.2
+10	6.0	86.1
1/4	5.5	86.6
C	3.3	88.8
WL	1.3	90.8

PLOTTED

19209

30

£ Ash St.

WL	0.0	92.1
C	1.7	90.4
1/4	3.9	88.2
£ <sup>+2</sup>	4.2	87.9
£	7.2	84.9
1/4	9.5	82.6
C	12.1	80.0
EL	15.5	76.6
+15	18.7	72.4
	S/4	
-15	16.1	76.0
EL	13.6	78.5
C	10.3	81.8
1/4	7.5	84.6
£	4.9	87.2
1/4	2.0	90.1
C	0.3	91.8



19209

T.P. Rock. 0.15 191.94

9.47 201.41

WL. 8.0 193.4

S. Corb.

WL 6.8 94.4

C 8.7 92.7

 $\frac{1}{4}$  10.9 91.0

E 12.6 88.8

 $\frac{1}{4}$  14.9 86.5

C 17.6 83.8

EL 21.0 80.4

+10 23.2 78.2

SL. Ash St.

-10 22.0 79.4

EL 19.2 82.2

C 16.3 85.1

 $\frac{1}{4}$  13.2 88.2

E 11.1 90.3

PLOTTED

20141

31

 $\frac{1}{4}$  9.0 192.4

C 7.5 93.9

+2 7.6 93.8

+3 6.7 94.7

WL 5.6 95.8

25'S of Ash.

WL 4.4 97.0

+12 5.6 95.8

+13 6.5 94.9

C 6.4 95.0

 $\frac{1}{4}$  7.4 94.0

E 7.4 93.0

 $\frac{1}{4}$  11.7 89.7

C 13.8 87.4

EL 16.8 84.4

+10 19.2 82.2

20141

50's

-10	18.0	183.4
EL	14.9	84.5
C	12.3	89.1
1/4	10.0	91.4
£	7.7	93.7
1/4	6.0	95.4
C	5.4	96.0
+1	4.6	96.8
WL	3.3	98.1

75's

WL	2.1	99.3
+13	3.8	97.6
C	4.4	97.0
1/4	5.5	95.9
£	7.0	94.4
1/4	8.8	93.6
<	11.1	92.3

PLOTTED

20141

32

EL	134	1880
+10	154	860

100's

-10	136	87.8
EL	12.1	89.3
C	9.7	91.7
1/4	7.5	93.9
£	6.0	95.4
1/4	4.8	96.6
C	3.4	98.0
+1	2.9	98.5

WL	2.0	99.4
----	-----	------

125's

WL	2.7	98.7
+13	3.2	98.2
C	3.6	97.8
1/4	4.2	97.3
£	6.1	95.3

20141

1/4	7.6	1938
C	9.3	921
EL	12.2	892
+10	13.8	876

150's.

-10	14.2	872
EL	12.3	891
C	9.2	923
1/4	8.3	931
±	6.6	948
1/4	5.0	964
C	4.5	969
WL	4.3	971

175's.

WL	6.1	953
+13	6.7	947
C	7.3	941
1/4	7.9	940

PLOTTED

20141

33

±	8.4	1930
1/4	9.7	917
C	10.6	908
EL	13.2	882
+10	14.8	866

200's.

-10	16.6	848
EL	15.1	863
C	14.0	874
1/4	12.4	890
±	10.6	908
1/4	9.9	915
C	9.7	917
+11	9.1	923
WL	8.9	925
T.Prock	10.11	191.30

068 191.98

19198

225'S.

WL	1.1	190.9
+13	2.5	89.5
c	3.0	89.0
1/4	3.8	88.9
±	5.1	86.9
1/4	6.8	85.7
c	7.6	84.4
EL	8.7	83.3
+10	9.6	82.4

250'S.

-10	12.2	79.8
EL	11.6	80.4
c	10.3	81.7
1/4	8.8	83.2
±	7.8	84.2
1/4	6.5	85.5
c	4.9	87.1
WL	2.6	89.4

PLOTTED

19198

275'S.

WL	6.0	184.0
c	7.7	84.3
1/4	8.1	83.6
1/4	9.1	82.9
±	10.3	81.7
1/4	11.7	80.3
1/4	11.7	80.3
c	13.0	79.0
EL	14.4	77.6
+10	15.5	76.6

288'S on WL. 287'S on EL = P.L.

-10	17.6	74.4
EL	15.7	76.3
c	14.6	77.4
1/4	13.9	78.6
±	11.9	80.1
1/4	10.6	81.4
c	9.3	82.7
WL	7.9	84.6

PLOTTED

34

191.98

T.P. rock.

1.18 190.80

5.30 196.10

T.P. rock.

12.11 183.99

0.95 184.94

T.P. rock.

12.35 172.59

0.94 173.53

Hub. WL. 335 ft. 300' S. of Ash.

8.48 165.05 164.95

164.95  
- 0.10 = Error

164.95

2  
10  
19  
July

along X sec of Utah St (80)  
Taylor Adams am to El Cazon

S. side of Adams am

(Grid)  
Blm SW  
Adams  
Utah

38850

Utah

36

229

38850

38611

50 57 Adams

48 3897

38611  
38736  
38735

W

28 3857

53 3892

28 3857

45 3860

31 3856

40 3865

b

27 3858

48 3897

31 3856

52 3892

29 3856

E

50 3895

E

27 3858

100 57 Adams

5's of Adams

E

57 3898

E

38 3867

56 3899

43 3852

54 3891

40 3865

b

57 3896

b

30 3855

53 3890

34 3851

57 3898

40 3865

W

55 3890

W

46 3899

38850

150 S of Adams

W	57	3826
	67	3818
	65	3820
b	61	3824
	66	3819
	65	3820
E	66	3819

175 S of Adams

E	70	3815
	70	3815
	70	3815
b	67	3818
	72	3813
	72	3813
W	72	3813

38850

What

37

200 S of Adams

W	58	3827
	73	3812
	76	3809
b	70	3815
	72	3813
	72	3813
E	74	3811

225 S of Adams

E	76	3809
	76	3809
	77	3808
b	73	3812
	78	3807
	69	3816
W	65	3820

38850

250' S of Adams

W	76	380.9
	83	380.7
	83	380.7
b	77	380.8
	83	380.7
	80	380.6
E	81	380.6

285' S of Adams

E	85	380.0
	85	380.0
	86	379.9
b	80	380.6
	82	380.3
	85	380.0
W	86	379.9

TP

341

38305

886

379.64

38305

300' S of Adams

W	24	378.07
	33	379.8
	33	379.8
b	28	380.3
	34	379.7
	33	379.8
E	33	379.8

350' S of Adams

E	38	379.3
	39	379.7
	39	379.7
b	34	379.7
	40	379.1
	44	378.7
W	44	378.7

Wich

38

38850

886

379.64

341

38305



38305

375' S of Adams

W	40	3791
	30	3801
	44	3787
L	38	3793
	43	3788
	42	3789
E	43	3788

400' S of Adams

E	46	3785
	44	3787
	45	3786
L	41	3790
	47	3784
	48	3783
W	50	3781

38305

450' S of Adams

W	49	3782
	46	3785
	49	3782
L	45	3786
	50	3781
	48	3783
E	48	3783

500' S of Adams

E	49	3782
	48	3783
	50	3781
L	68	3763
	50	3781
	48	3783
W	51	3780

39

38205

550 S of Adams

W 45 378.6

44 378.7

50 378.1

6 50 378.1

54 377.7

50 378.1

E 50 378.1

600 S = rd Madison (80)

E 55 377.6

55 377.6

57 377.4

6 54 377.7

52 377.9

50 378.1

W 50 378.1

38305

Utah

40

S line of Madison V-

W 51 378.0 38305

60 377.1 617

376.88

59 377.2 182

378.60

6 61 377.0

63 376.8

62 376.9

E 64 376.7

50 S of Madison

E 63 376.8

63 376.8

64 376.7

6 64 376.7

66 376.5

67 376.4

W 68 376.3

TP 182 378.60 67 376.88

37860

100 S of Madison

W	20	376.6
	22	376.4
	22	376.4
b	21	376.5
	1.8	376.8
	21	376.5
E	23	376.3

150 S of Madison

E	26	376.0
	24	376.2
	26	376.0
b	20	376.3
	24	376.2
	26	376.0
W	22	376.4

37860

W of

41

200 S of Madison

W	26	376.0
	27	375.9
	25	376.1
b	29	375.7
	25	376.1
	30	375.6
E	30	375.6

250 S of Madison

E	27	375.9
	28	375.8
	29	375.7
b	30	375.6
	32	375.4
	32	375.4
W	28	375.8

37860

300 S of Madison

W	32	375.4
	35	376.1
	40	374.6
b	35	375.1
	26	376.0
	34	375.2
E	41	374.5

350 S of Madison

E	39	374.7
	44	374.2
	42	374.4
b	43	374.3
	46	374.0
	40	374.6
W	25	375.1

37860

Utah

42

375' S of Madison

W	48	373.8
	50	373.6
	47	373.9
b	46	374.0
	36	375.0
	46	374.0
E	43	374.3

400 S of Madison

E	46	374.0
	49	373.7
	52	373.4
b	44	374.2
	40	374.6
	50	373.6
W	40	374.6

37860

425 S of Madison

W	56	373.0
	57	372.9
	55	372.1
b	54	372.7
	59	372.7
	55	372.1
E	56	372.0

450 S of Madison

E	43	374.3
	44	374.2
	59	372.7
b	57	372.9
	46	374.0
	50	375.0
W	52	372.4

37860

Walt

43

475 S of Madison

W	52	372.0
	56	372.0
	61	372.5
b	60	372.6
	59	372.7
	51	372.5
E	50	372.6

500 S of Madison

E	60	372.6
	60	372.6
	64	372.2
b	60	372.6
	56	373.0
	66	372.0
W	70	371.6

37860

	5-25	Sy	Median
W			49 372.7
			59 372.7
			67 371.9
b			67 371.9
			64 372.2
			66 372.0
E			67 371.9

	5-25	Sy	Median
E			66 372.0
			68 371.8
			69 371.7
b			63 372.3
			66 372.0
			60 372.6
W			64 372.2

37860

	5-75	Sy	Median
W			58 372.8
			70 371.6
			77 370.9
b			73 371.3
			66 372.0
			67 371.9
E			72 371.4

	6-00	S = 2nd of Monroe	(80)
E			72 371.4
			74 371.2
			80 370.6
b			77 370.9
			80 370.6
			83 370.3
W			80 370.6
	TRD ... 145	372.05	80 370.60

Total

44

37860  
 80  
 37060  
 145  
 37205

TRD  
 Monroe

37205

Intersections on Page 57  
S line of Monroe

W 25 369.6

25 369.6

24 369.7

L 1.8 370.7

24 369.7

22 369.8

E 20 370.1

50 S of Monroe

E 27 369.0

29 369.2

29 369.2

L 25 369.6

32 368.9

32 368.9

W 32 368.9

37205

What

45

100 S of Monroe

W 41 368.0

43 367.8

40 368.1

L 33 368.8

39 368.4

35 368.6

E 38 368.3

150 S of Monroe

E 39 368.2

43 367.8

48 367.3

L 39 368.2

42 367.8

45 367.6

W 43 367.8

37205

200 sf Monroe

W 45 367.6

45 367.6

50 367.1

b 45 367.6

52 366.9

47 367.4

E 51 367.0

250 sf Monroe

E 49 367.1

51 367.0

48 367.3

b 47 367.4

50 367.1

48 367.3

W 46 367.5

37205

Utah

46

300 sf Monroe

W 48 367.3

50 367.1

54 366.7

b 47 367.4

53 366.8

54 366.7

E 52 366.9

350 sf Monroe

E 55 366.6

55 366.6

54 366.7

b 48 367.3

53 366.8

49 367.2

W 47 367.4



37205

1100 S of Monroe

W		49	367.2
		48	367.3
		53	366.8
b		47	367.0
		55	366.6
		58	366.3
E		54	366.7

450 S of Monroe

E		54	366.7
		52	366.9
		54	366.7
b		48	367.3
		53	366.8
		49	367.2
W		47	367.0

T.P.

550 37372 383 368.22

37272

West

47

500 S of Monroe

W		62	367.5
		66	367.1
		68	366.9
b		64	367.3
		72	366.5
		74	366.3
E		74	366.3

550 S of Monroe

E		57	368.0
		68	366.9
		70	366.7
b		62	367.5
		67	367.0
		65	367.2
W		63	367.0

37205  
583  
368.22  
HW  
373.72

37372

31

600 S-n Sg Meade (80)

W	64	3673
	63	3674
	66	3671
b	65	3675
	70	3667
	66	3671
E	72	3665

S line of Meade

E	72	3665
	67	3670
	64	3673
b	58	3679
	55	3682
	53	3684
W	54	3683

37372

Mch  
48

50 Sg Meade

W	48	3689
	53	3684
	55	3682
b	57	3680
	60	3677
	61	3676
E	62	3671

100 Sg Meade

E	68	3669
	67	3675
	61	3676
b	60	3677
	56	3681
	53	3684
W	50	3687

37372

150' S of Meade

W	46	369.1
	54	368.3
	58	367.9
l	60	367.7
	61	367.6
	63	367.4
E	64	367.3

200' S of Meade

E	66	367.1
	64	367.3
	64	367.3
l	58	367.9
	53	368.4
	54	368.3
W	48	368.9

37372

Utah

49

150' S of Meade

W	45	369.2
	49	368.8
	50	368.7
l	54	368.3
	59	367.8
	65	367.8
E	62	367.5

TP 870 37694 544 368.28

300' S of Meade

E	92	367.8
	90	368.0
	87	368.3
l	85	368.5
	80	369.0
	74	369.6
W	73	369.7

37372

546

268.28

870

376.99

37698

350 S of Meade

W 69 370.1

73 369.7

76 369.4

S 80 369.0

80 369.0

84 368.6

E 87 368.3

400 S of Meade

E 80 369.0

79 369.1

72 369.8

S 69 370.1

67 370.3

65 370.5

W 63 370.7

37698

Utah

50

450 S of Meade

W 50 372.0

57 371.3

62 370.6

S 65 370.5

68 370.2

73 369.7

E 79 369.1

500 S of Meade

E 74 369.6

73 369.7

69 370.1

S 68 370.2

62 370.8

59 371.1

W 54 371.6

37698

330 S of Meade

W 51 371.9

50 372.0

59 371.1

b 62 370.8

64 370.6

70 370.0

E 73 369.7

600 S = N of El bayin \*50

E 64 370.6

62 370.8

57 371.3

-b 56 371.4

49 372.1

51 371.9

W 46 372.4

J-05 37333

870 318.28

490 348.43

pt SW  
from  
El bayin

51

37698  
530  
36928  
3150  
375.03  
490  
368.43

2/2/1901  
 10/14/1901  
 July  
 2/2/1901  
 Utah SA 80'  
 Adams to Berkeley St

628 39239

38611

15m SW  
 Water  
 Adams

N Line of Adams

W	60	3866
	62	3861
	63	3861
b	59	3865
	62	3862
	62	3862
E	55	3869
	50	3868
E	56	3868
	59	3865
	62	3862
b	63	3861
	64	3860
	64	3860
W	54	3870

39239

Utah

52

100' n of Adams

38611  
 628  
 39239

W	53	3871
	56	3868
	55	3869
b	57	3868
	56	3868
	55	3869
E	48	3876

150' n of Adams

E	43	3881
	48	3876
	48	3876
b	51	3873
	50	3876
	53	3871
W	50	3876

39239

200' N of Adams

W	41	288.3
	41	288.7
	41	288.7
L	40	288.4
	39	288.6
	37	288.7
E	34	289.0

250' N of Adams

E	24	290.0
	26	289.8
	28	289.6
L	27	289.7
	30	289.4
	30	289.4
W	24	290.0

235' N of Adams

W	15	290.9
---	----	-------

39239

300' N of Adams

W	27	289.7
	28	289.6
	28	289.6
L	22	290.7
	26	289.8
	24	290.0
E	23	290.1

350' N of Adams

E	21	290.3
	22	290.7
	24	290.0
L	19	290.5
	22	290.1
	23	290.1
W	23	290.1

Utah

53

39239

	400	n f	Adams	
W			16 3908	
			18 3906	
			18 3906	
b			14 3910	
			20 3904	
			19 3905	
E			19 3905	
TP	585	39749	075 39164	
	450	n f	Adams	
E			65 3910	
			61 3910	
			68 3907	
b			63 3912	
			69 3906	
			69 3906	
W			67 3908	

39749

Utah

54

	500	n f	Adams	39239
W			60 3915	75
			65 3910	391.69
			66 3909	585
b			60 3915	397.49
			66 3909	
			66 3909	
E			64 3911	
	550	n f	Adams	
E			62 3913	
			62 3913	
			64 3911	
b			57 3918	
			65 3910	
			61 3910	
W			60 3915	



39749

600 n = S 24 Ballin D (80)

W	58	291.7
	57	291.8
	61	291.4
b	54	292.1
	61	291.4
	59	291.6
E	58	291.7

N 2 of Ballin

E	54	292.1
	54	292.1
	56	291.9
b	51	292.4
	55	292.0
	50	292.5
W	50	292.5

39749

Utah

55

50 n of Ballin

W	46	292.9
	46	292.9
	50	292.5
b	47	292.8
	53	292.7
	50	292.5
E	50	292.5

100 n of Ballin

E	48	292.7
	48	292.7
	50	292.5
b	44	292.1
	50	292.5
	46	292.9
W	47	292.8

39749

150 n f Callie

W	44	3921
	45	3920
	48	3927
L	43	3927
	48	3927
	46	3929
E	46	3929

200 n f Callie

E	44	3921
	41	3922
	46	3929
L	44	3921
	46	3929
	44	3921
W	43	3927

39749

Latak

56

250 n f Callie

W	39	3926
	42	3927
	47	3928
L	43	3927
	49	3926
	46	3929
E	48	3927

300 n = S line of Berkeley st (80)

E	48	3927
	50	3925
	50	3925
L	44	3921
	49	3926
	50	3925
W	47	3928
	60	3917
	817	2811 (cm)

39749  
600  
391.47  
2811  
394.30

283 39421

2  
14  
14

Along road of Utah St go  
to intersection of Memorial

radius of Memorial St (80)

380 37440 37060

from NW to  
Memorial

N

N 1/4 of Memorial

46 3698

W

380 3706

44 3700

41 3703

38 3706

38 3706

S

41 3703

S

37 3702

42 3702

39 3705

40 3704

30 3712

E

40 3704

E

29 3715

Center of Memorial

N half of Memorial

E

33 3711

E

38 3706

36 3708

38 3706

37 3707

37 3707

S

37 3707

S

32 3712

38 3706

20 3724

40 3704

42 3702

W

40 3704

W

32 3712

374.40

Utah

57

37060  
280  
37440

37440

S 1/4 of Monroe

W	45	3699
	46	3698
	44	3700
b	43	3701
	42	3701
	40	3704
E	39	3705

S East of Monroe

E	39	3705
	37	3707
	45	3699
b	41	3703
	46	3698
	46	3698
W	47	3697

37440

Wat

58

S East of Monroe

W	49	3695
	49	3695
	46	3698
b	42	3702
	47	3697
	47	3697
E	43	3701

2/14/39  
 Clear  
 Top of Utah St 80  
 Top Intersection of Meade St  
 Feb N of Meade (80)

386      37208      36822      TPP 47

W		48	367.3
		46	367.5
		51	367.0
b		47	367.4
		55	366.6
		50	367.1
E		56	366.5
	N Cent of Meade		
E		57	366.4
		56	366.5
		54	366.7
b		46	367.5
		48	367.3
		46	367.5
W		44	367.7

37208      59

N 1/4 of Meade

W		43	367.8
		46	367.5
		57	366.4
b		58	366.3
		50	367.1
		54	366.7
E		59	366.7

Center of Meade

E		49	367.2
		47	367.4
		46	367.5
b		45	367.6
		42	367.9
		38	368.3
W		36	368.5

26822  
 388  
 37208

37208

S 1/4 of Meade

W 45 3676

47 3674

48 3673

b 52 3669

50 3668

52 3669

E 52 3669

S 1/4 of Meade

E 49 3672

48 3673

49 3672

b 45 3676

40 3681

40 3681

W 39 3682

37208

Utah

60

S 1/4 of Meade

W 38 3683

36 3685

38 3683

b 42 3679

48 3673

51 3670

e 56 3665

2/blank Xref Pennsylvania am (80)  
 15/ Turf Ed 6 Herbert St to Park Blvd  
 14/ 567

				Bm SE
295	30550		30255	Park Blvd
192	30207	535	30015	Cypress SW Penn
065	29030	1233	28974	
057	27821	1275	27764	
006	26574	1253	26568	

E of Herbert St (60')

n		150	2507
		140	2517
		152	2505
b		142	2515
		113	2544
		88	2569
s		34	2623

26574

Penn

61

50 E of Herbert

S		49	2608	30255
		104	2533	281
		80	2577	30250
		53	2604	192
		40	2617	30207
		38	2619	535
n		53	2604	30015
TP	688	06	26568	192

75 E of Herbert

n		20	2706
		20	2706
		40	2686
b		72	2654
		107	2619
		138	2588
s		130	2596

289.74  
 12.33  
 292.07  
 12.75  
 304.82  
 12.53  
 317.35

27254

100 E of Hubert

S 95 263.1

64 266.2

30 269.6

TP 10.30 281.45 141 271.15

b 77 273.8

35 278.0

10 280.5

n 28 278.7

125" E of Hubert

S 137 267.8

103 271.2

48 276.7

TP 11.50 291.09 228 279.25

b 105 280.6

47 286.4

40 287.1

n 65 284.6

29109

Perin

62

150 E of Hubert

n 14 289.7

04 290.7

08 290.3

b 40 287.1

86 284.5

123 278.8

S 160 275.1

775" E of Hubert

S 43 286.8

24 288.7

00 291.1

TP 9.40 299.55 094 290.15

b 77 291.9

72 292.4

72 292.4

n 80 291.6



297.55

200 E of Herbert

n  
 47 294.9  
 48 294.8  
 50 294.6  
 b  
 55 294.1  
 60 293.6  
 64 293.2  
 S  
 71 292.5

250 E of Herbert

S  
 42 295.4  
 36 296.0  
 36 296.0  
 b  
 28 296.8  
 27 296.9  
 29 296.7  
 n  
 28 296.8

297.85

300 E of Herbert

n  
 19 297.7  
 16 298.0  
 15 298.1  
 b  
 10 298.6  
 17 297.9  
 26 297.0  
 S  
 29 296.7

TP. 434 201.91

198 297.8

350 E of Herbert

S  
 34 298.5  
 33 298.6  
 37 298.2  
 b  
 43 297.6  
 40 297.9  
 40 297.9  
 n  
 49 297.0

Rem

63

298.85  
 198  
 297.81  
 434  
 302.21

30191

400 E of Hubert

n	52	2967
	53	2966
	50	2969
b	46	2973
	52	2967
	54	2965
s	48	2971

450 E of Hubert

s	35	2984
	38	2981
	40	2979
b	38	2981
	39	2980
	41	2978
n	42	2977

30191

475 E = W of Park Blvd on S

n	28	2991	3022
	29	2990	3005
	22	2997	
s	24	2995	
	22	2997	
	23	2996	
s	176	3005	SWH Park Blvd
(88)	475' E on S } = W of Park Blvd		
	512' E on S }		
s	17	3002	
	19	3000	
	21	2998	
b	20	2999	
	18	3001	
	20	2999	
n	10	3009	

Penn

64

Salmon Taylor Feb 19  
 Sec of Vista Place (38)  
 (Haskin Graded)

39525 Vista

50' n of Copely 65

82	39433	336	38611	Sw Water Adams	E	42	391.1
			390.97	Chase			
682	39779	336	28097	3860		43	391.0
				822	Sub	50	390.3
405	39525	659	391.20	39403		47	390.6
				390.97			
				682	b	42	391.1
E		41	391.2	397.79		45	390.8
				391.20	Sub	50	390.3
		40	391.3	4.45		44	390.9
				395.25			
		44	390.9		W	41	391.2
b		40	391.3				
		44	390.9				
		40	391.3		W	46	390.7
						47	390.6
W		39	391.4		Sub	54	389.9
oo	7' n of Copely on W	e				40	390.3
	nd Copely				b	45	390.8
W		35	391.8			50	390.3
		37	311.6		Sub	55	389.8
Sub		45	390.8			48	390.5
		42	391.1		E	45	390.8
Sub		40	391.3				
		42	391.1				
		46	390.7				
Sub		59	391.4				
Sub		48	391.2				

39525

150 n f bopelay

E	44	390.9
	50	390.3
Gut	57	389.6
	55	389.8
b	49	390.4
	53	390.0
Gut	56	389.7
	50	390.3
W	50	390.3

200 n f bopelay

W	50	390.3
	52	390.1
Gut	58	389.5
	54	389.9
b	50	390.3
	57	389.6
Gut	60	389.3
	53	390.0
E	49	390.4

39525

250 n f bopelay

E	48	390.5
	52	390.1
Gut	62	389.1
	59	389.4
b	52	390.1
	55	389.8
Gut	60	389.3
	53	390.0
W	51	390.2

300 n f bopelay

W	52	390.1
	54	389.9
Gut	62	389.1
	57	389.6
b	54	389.9
	58	389.5
Gut	63	389.0
	53	390.0
E	50	390.9

Vista

66

39525

350 n f Cofely

E 52 390.1

54 389.9

Sub 60 389.3

60 389.3

b 54 389.9

58 389.5

Sub 65 388.8

57 389.6

W 54 389.9

TP 466 39450 541 389.84

400 n f Cofely

W 47 389.8

49 389.6

Sub 55 389.0

52 389.3

b 47 389.8

57 389.4

Sub 58 389.0

46 389.9

E 42 390.3

39525  
541  
389.84  
394.50

39450

Nista

67

450 n f Cofely

E 43 390.0

49 389.6

Sub 55 389.0

54 389.1

b 49 389.6

54 389.1

Sub 57 388.8

49 389.6

W 47 389.8

500 n f Cofely

W 50 389.5

54 389.1

Sub 61 388.4

56 388.9

b 52 389.3

54 389.1

Sub 59 388.6

50 389.5

E 46 389.9

39450

550 n of bopely

E	48	3897
	52	389.3
Sub	60	388.5
	58	3887
L	54	3891
	60	388.5
Sub	63	388.2
	55	389.0
W	51	3894
600 n of bopely		
W	51	389.4
	57	388.8
Sub	64	388.1
	60	388.5
L	56	3889
	59	388.6
Sub	62	388.3
	53	389.2
E	48	389.7

39450

640 n of bopely

E	51	3894
	52	388.9
Sub	65	388.0
	66	387.9
L	64	387.9
	67	387.8
Sub	72	387.3
	63	388.2
W	61	3884
6527 n = End		
W	98	384.7
	82	386.3
	81	386.4
L	82	386.3
	78	386.7
	75	387.0
E	54	389.1

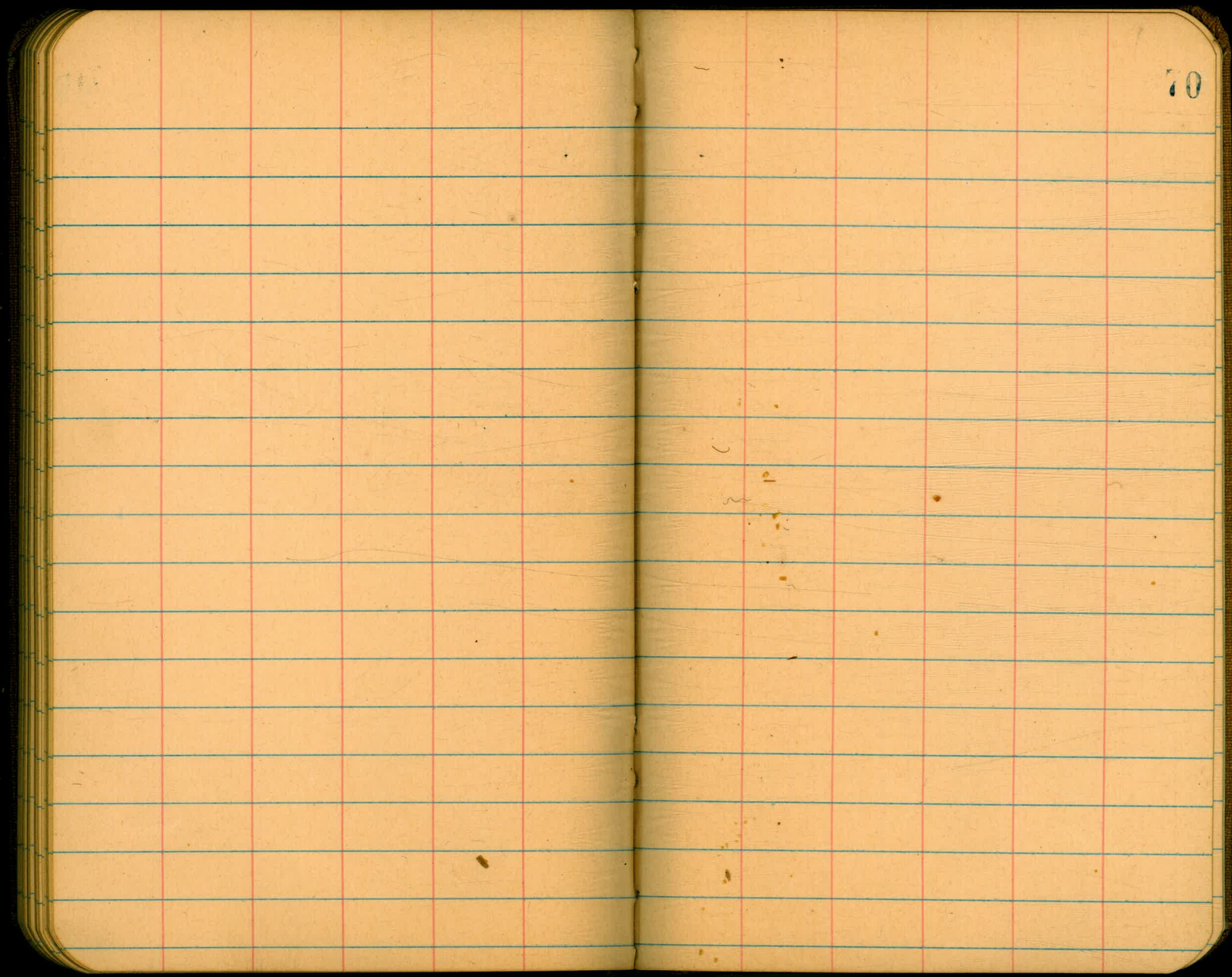
TP 565 39575

440 3890  
458 3915 ✓  
425 3914 ✓

Wish

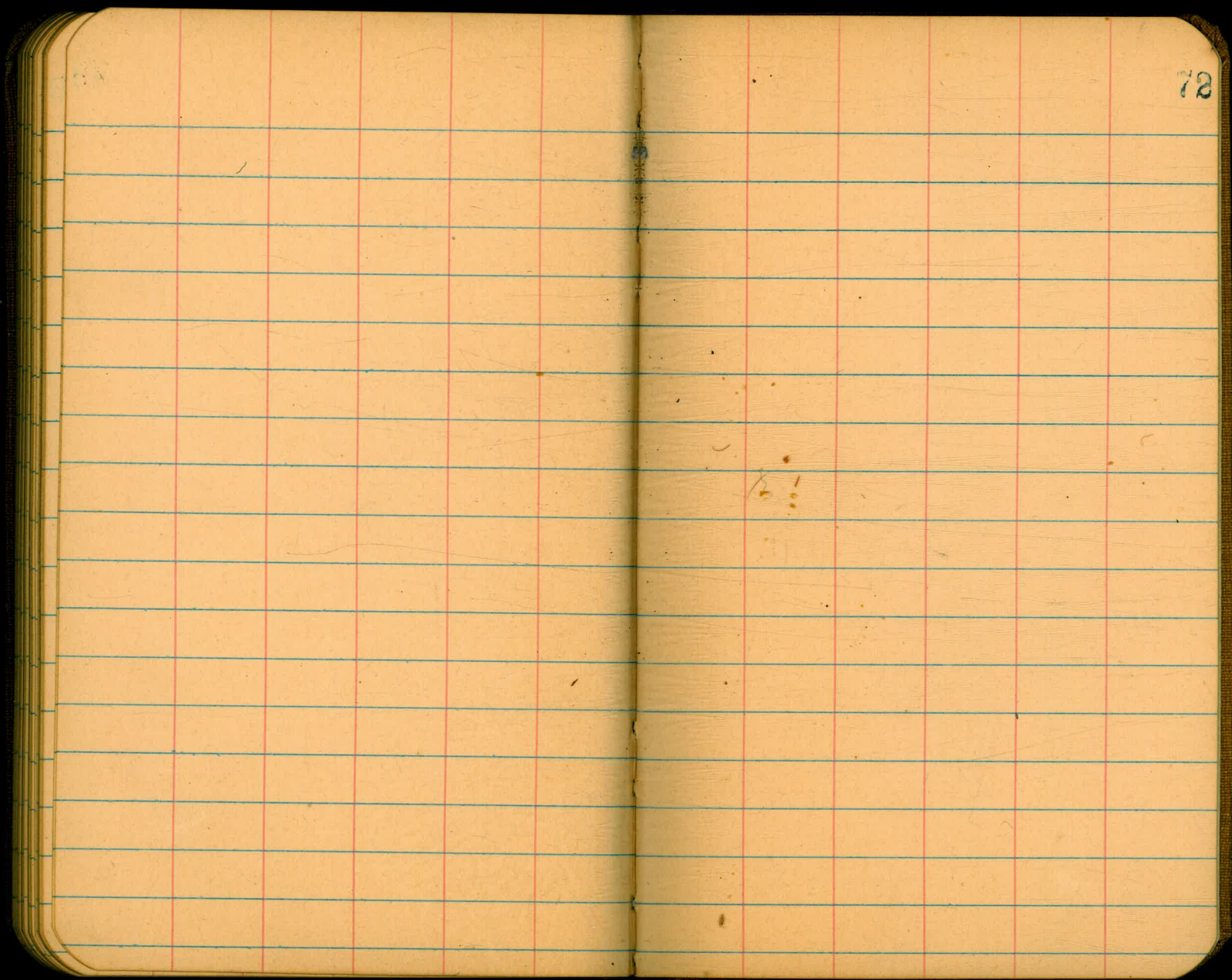
68

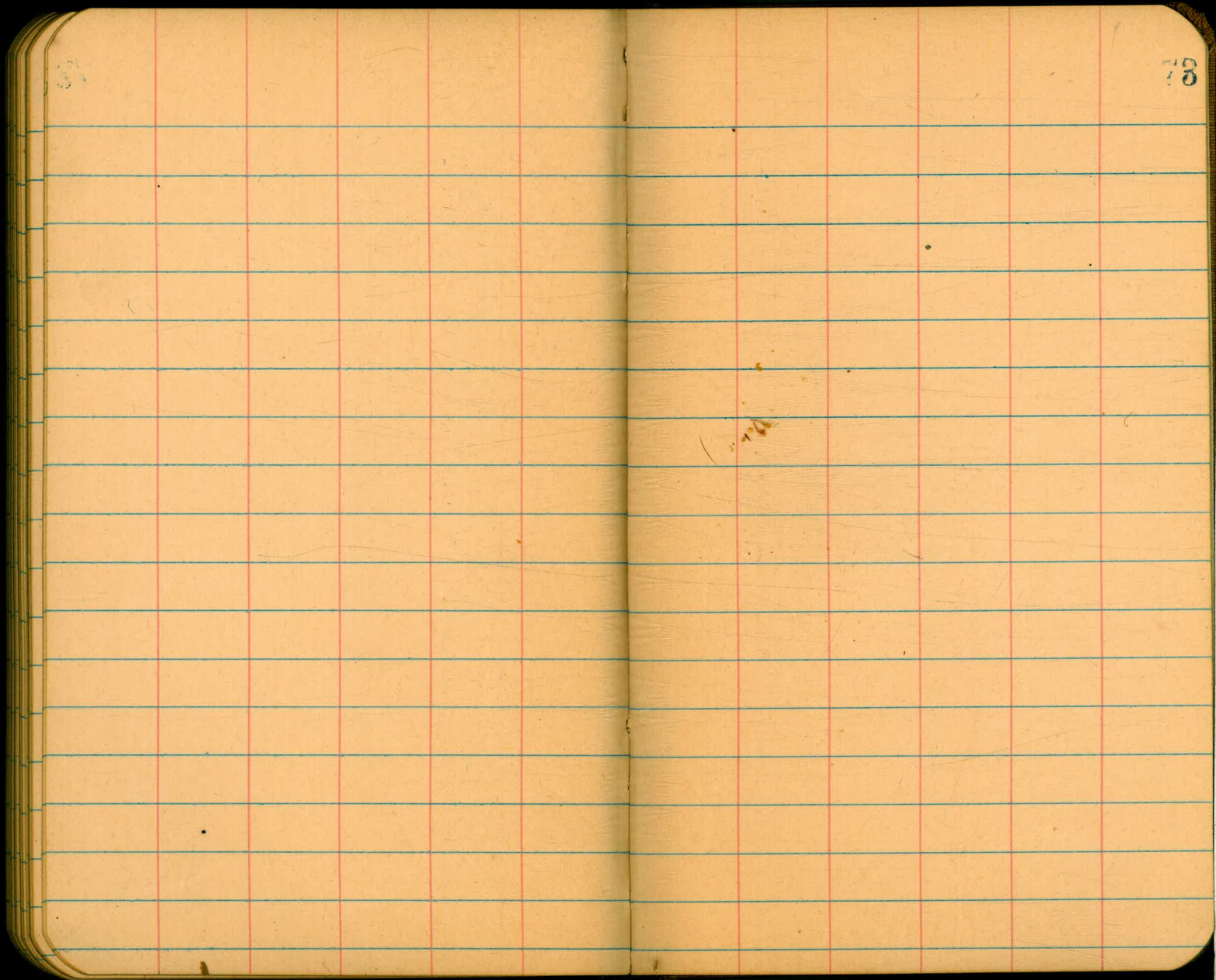
69



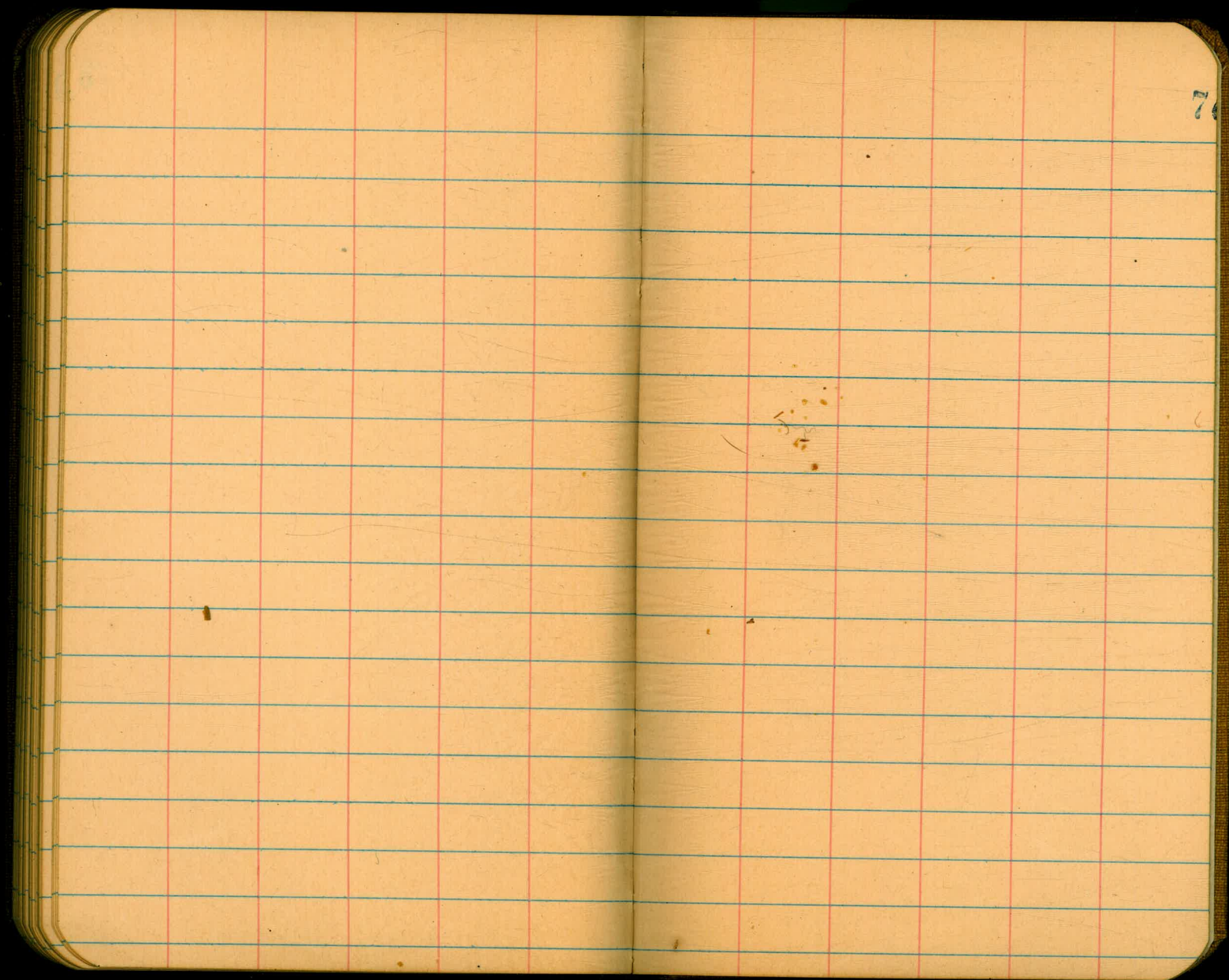






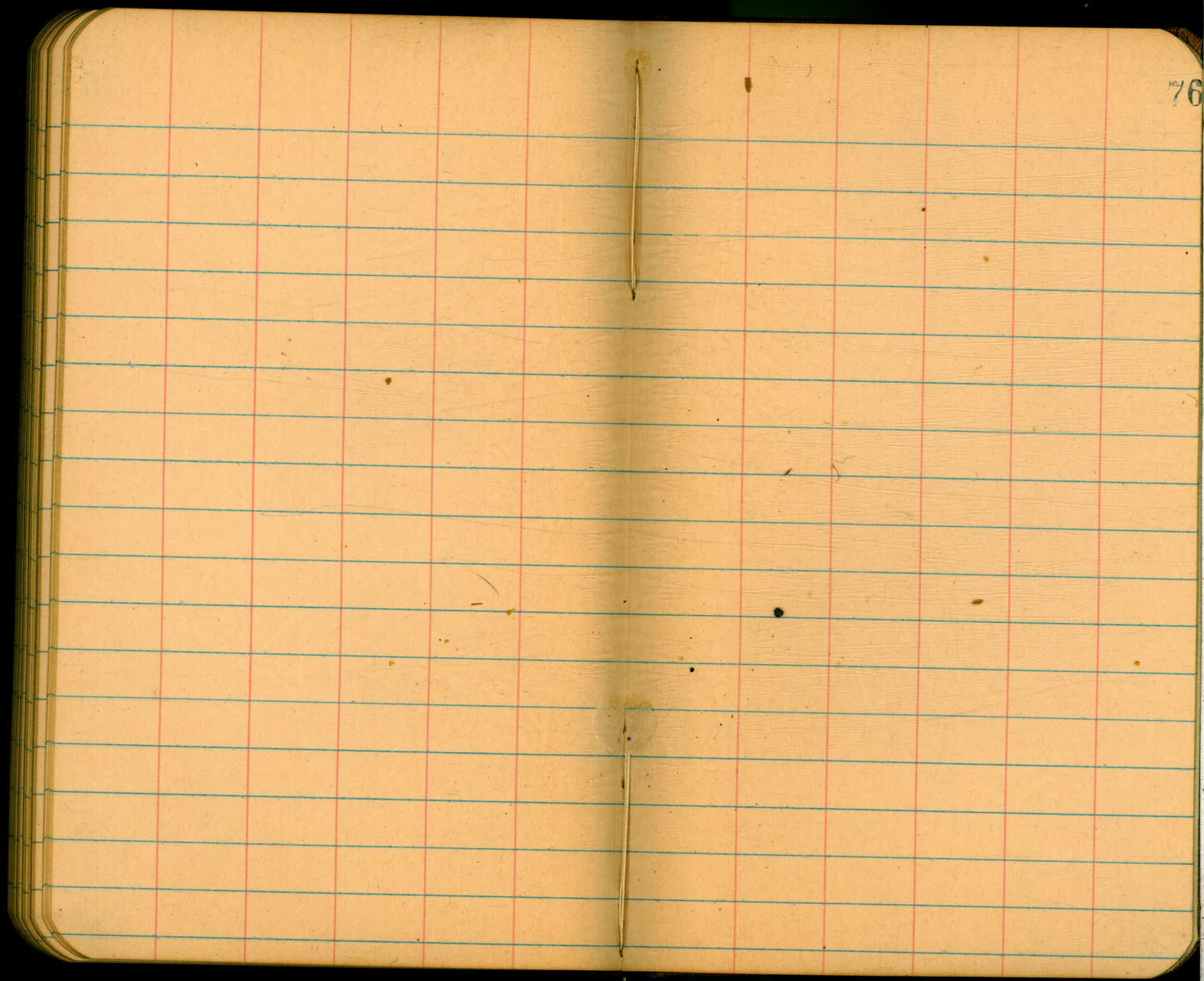


78

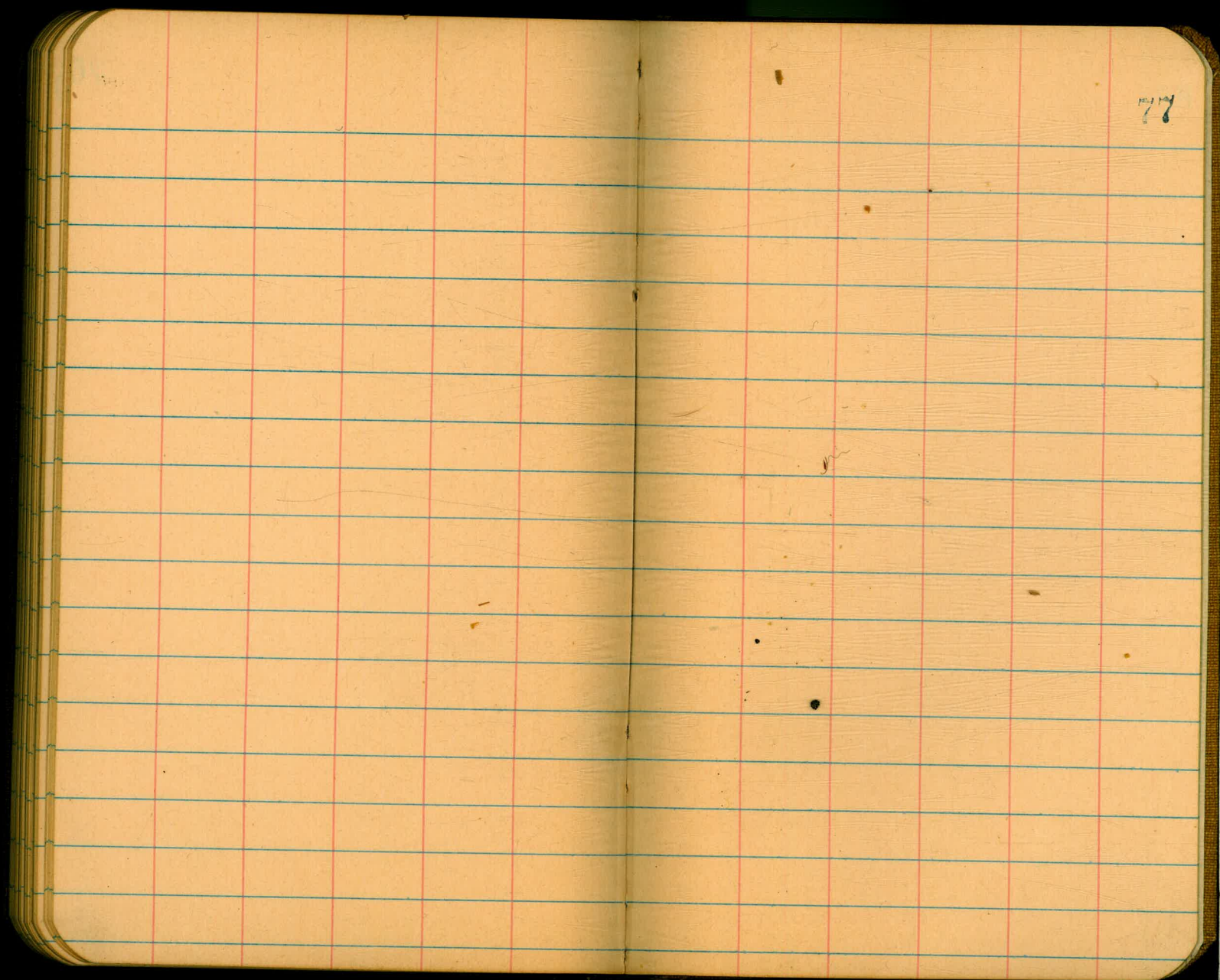


76

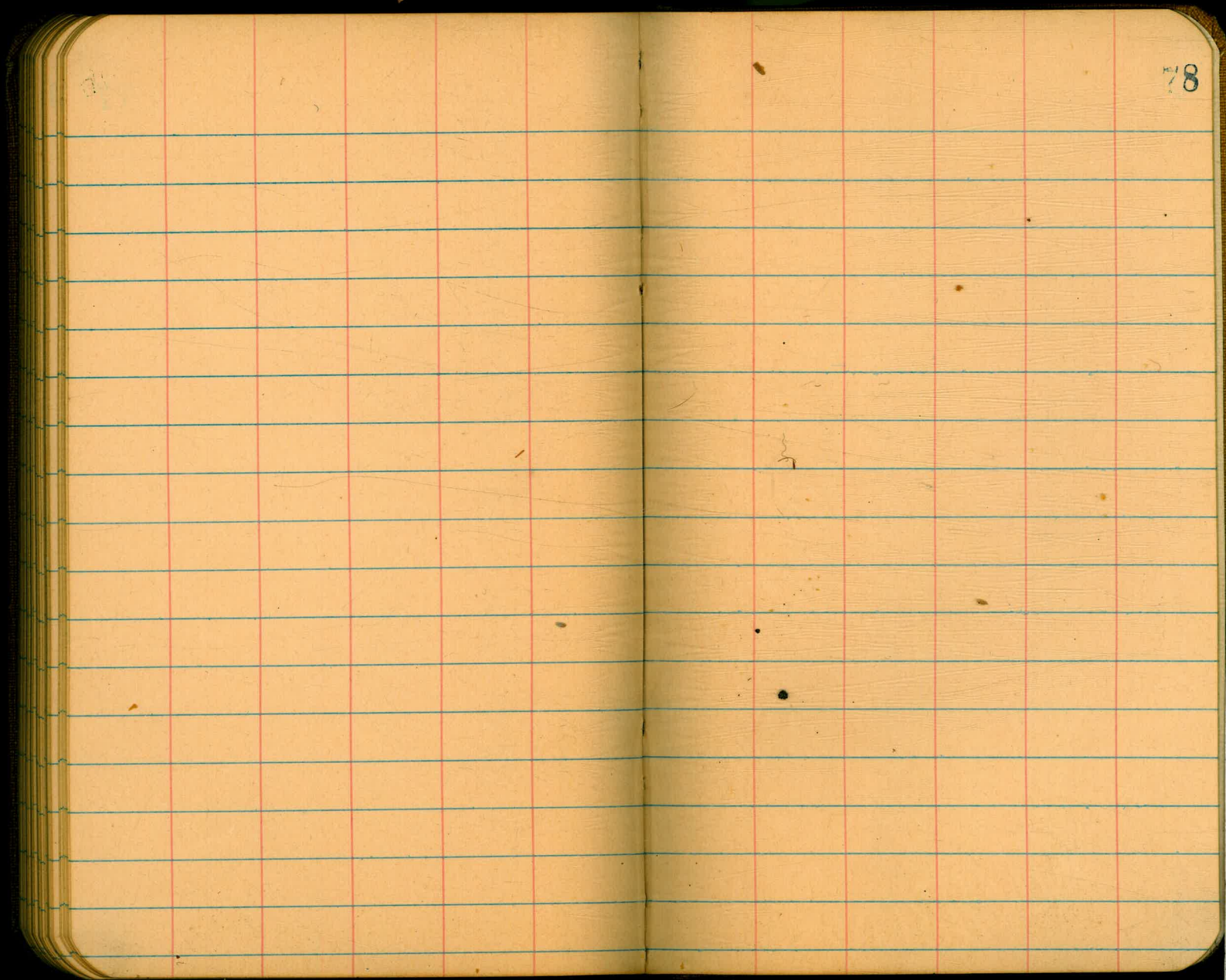




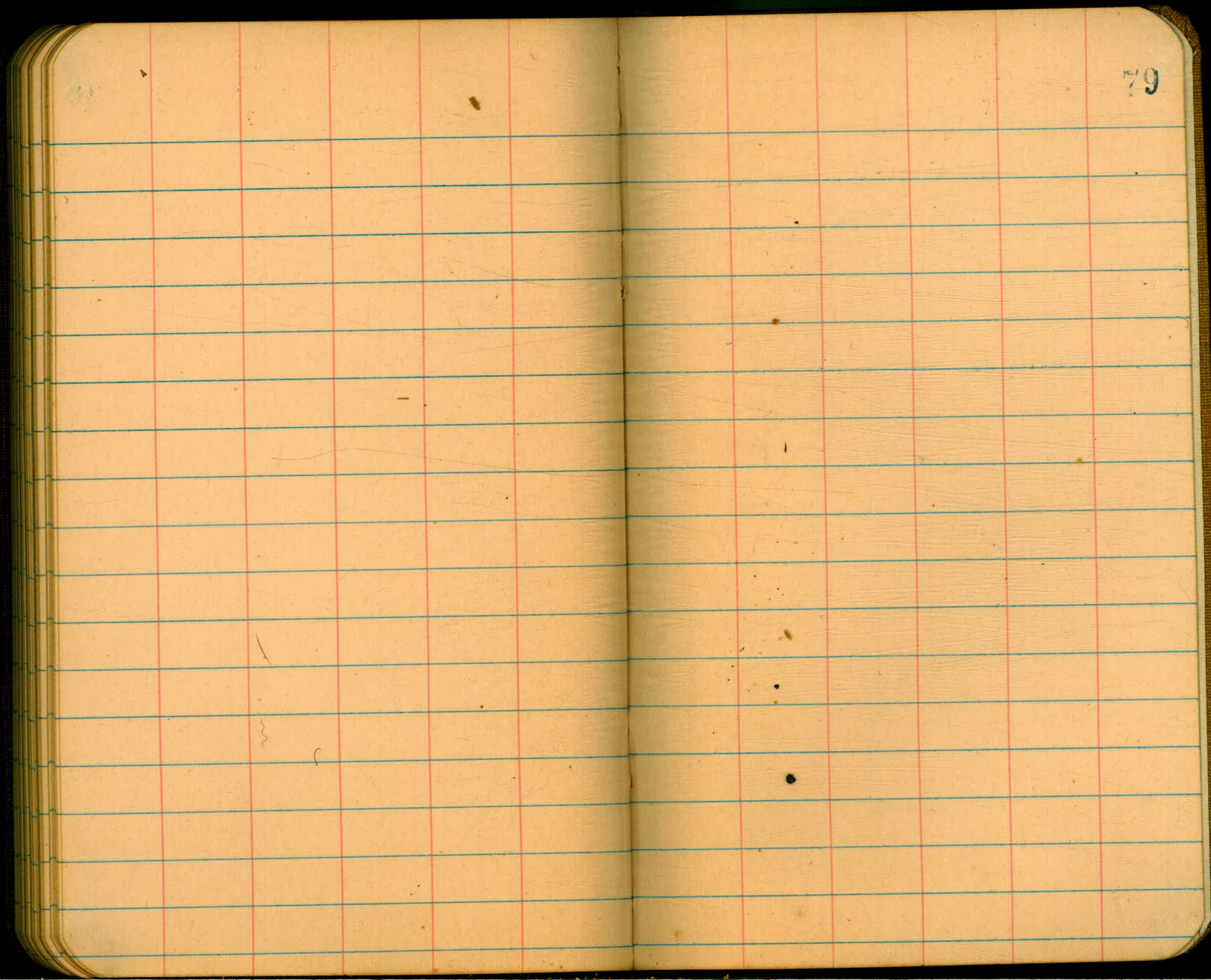
76

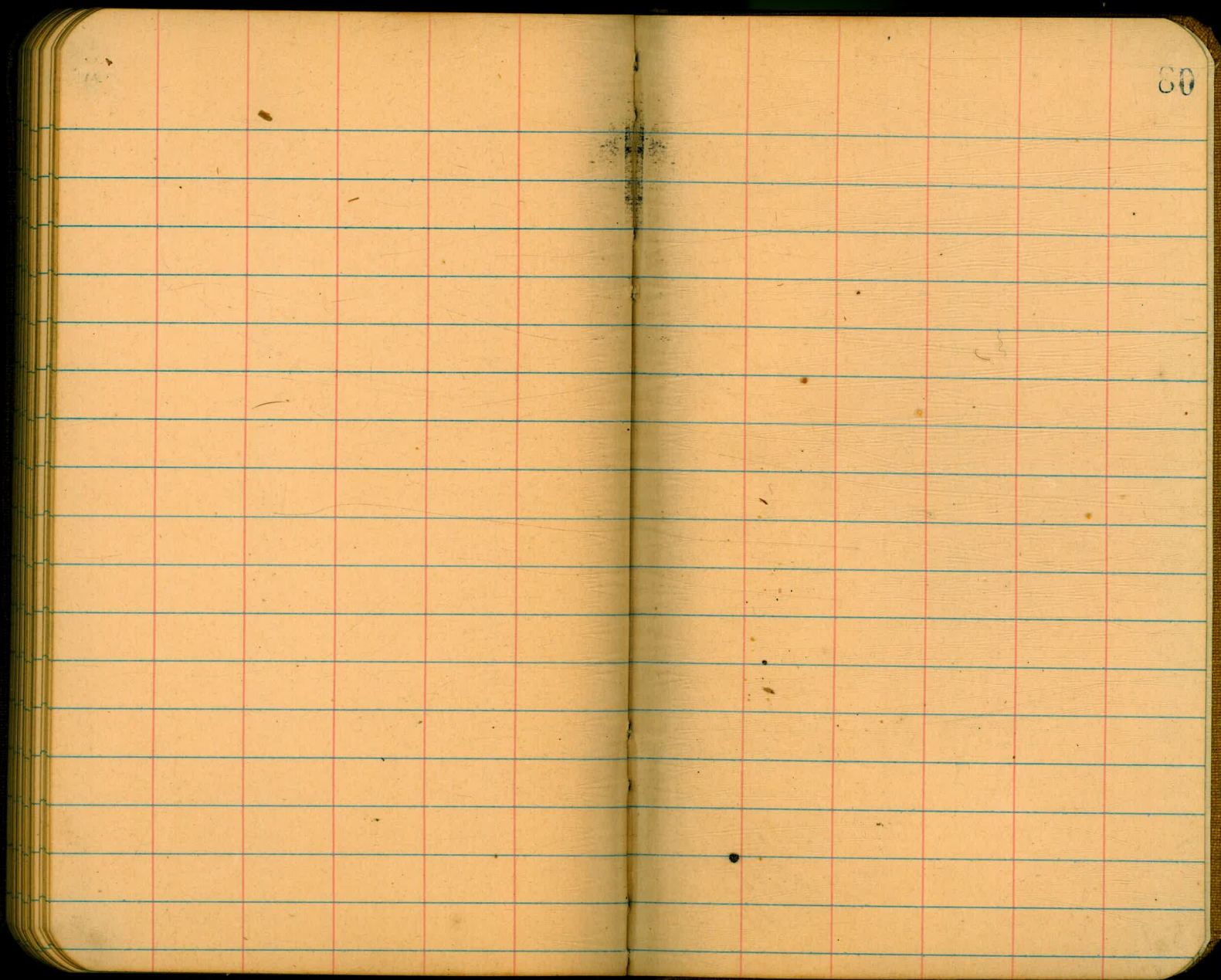


77









80

SE 30255 P.B + Express  
 SE 293.95 Herbert Express 372.61

66 1512  
 7 475



### TRAVERSE TABLE FOR TRANSIT BOOK.

From 1° to 90° for a distance of 100.

Degrees.	DEGREES.		¼ DEGREE.		½ DEGREE.		¾ DEGREE.		Degrees.
	Lat.	Dep.	Lat.	Dep.	Lat.	Dep.	Lat.	Dep.	
0			100.00	0.44	100.00	0.87	99.99	1.31	89
1	99.98	1.75	99.98	2.18	99.97	2.62	99.95	3.05	88
2	99.94	3.49	99.92	3.93	99.91	4.36	99.88	4.80	87
3	99.86	5.23	99.84	5.67	99.81	6.10	99.79	6.54	86
4	99.76	6.98	99.73	7.41	99.69	7.85	99.66	8.28	85
5	99.62	8.72	99.58	9.15	99.54	9.58	99.50	10.02	84
6	99.45	10.45	99.41	10.89	99.36	11.32	99.31	11.75	83
7	99.25	12.19	99.20	12.62	99.14	13.05	99.09	13.49	82
8	99.03	13.92	98.97	14.35	98.90	14.78	98.84	15.21	81
9	98.77	15.64	98.70	16.07	98.63	16.50	98.56	16.93	80
10	98.48	17.36	98.40	17.79	98.33	18.22	98.25	18.65	79
11	98.16	19.08	98.08	19.51	97.99	19.94	97.90	20.36	78
12	97.81	20.79	97.72	21.22	97.63	21.64	97.53	22.07	77
13	97.44	22.50	97.34	22.92	97.24	23.34	97.13	23.77	76
14	97.03	24.19	96.92	24.62	96.81	25.04	96.70	25.46	75
15	96.59	25.88	96.48	26.30	96.36	26.72	96.25	27.14	74
16	96.13	27.56	96.00	27.98	95.88	28.40	95.76	28.82	73
17	95.63	29.24	95.50	29.65	95.37	30.07	95.24	30.49	72
18	95.11	30.90	94.97	31.32	94.83	31.73	94.69	32.14	71
19	94.55	32.56	94.41	32.97	94.26	33.38	94.12	33.79	70
20	93.97	34.20	93.82	34.61	93.67	35.02	93.51	35.43	69
21	93.36	35.84	93.20	36.24	93.04	36.65	92.88	37.06	68
22	92.72	37.46	92.55	37.86	92.39	38.27	92.22	38.67	67
23	92.05	39.07	91.88	39.47	91.71	39.87	91.53	40.27	66
24	91.35	40.67	91.18	41.07	91.00	41.47	90.81	41.87	65
25	90.63	42.26	90.45	42.66	90.26	43.05	90.07	43.44	64
26	89.88	43.84	89.69	44.23	89.49	44.62	89.30	45.01	63
27	89.10	45.40	88.90	45.79	88.70	46.17	88.50	46.56	62
28	88.29	46.95	88.09	47.33	87.88	47.72	87.67	48.10	61
29	87.46	48.48	87.25	48.86	87.04	49.24	86.82	49.62	60
30	86.60	50.00	86.38	50.38	86.16	50.75	85.94	51.13	59
31	85.72	51.50	85.49	51.88	85.26	52.25	85.04	52.62	58
32	84.80	52.99	84.67	53.36	84.34	53.73	84.10	54.10	57
33	83.87	54.46	83.63	54.83	83.39	55.19	83.15	55.56	56
34	82.90	55.92	82.66	56.28	82.41	56.64	82.16	57.00	55
35	81.92	57.36	81.66	57.71	81.41	58.07	81.16	58.42	54
36	80.90	58.78	80.64	59.13	80.39	59.48	80.13	59.83	53
37	79.86	60.18	79.60	60.53	79.34	60.88	79.07	61.22	52
38	78.80	61.57	78.53	61.91	78.26	62.25	77.99	62.59	51
39	77.71	62.93	77.44	63.27	77.16	63.61	76.88	63.94	50
40	76.60	64.28	76.32	64.61	76.04	64.94	75.76	65.28	49
41	75.47	65.61	75.18	65.93	74.90	66.26	74.61	66.59	48
42	74.31	66.91	74.02	67.24	73.73	67.56	73.43	67.88	47
43	73.14	68.20	72.84	68.52	72.54	68.84	72.24	69.15	46
44	71.93	69.47	71.63	69.78	71.33	70.09	71.02	70.40	45
45	70.71	70.71							
Degrees.	Dep.	Lat.	Dep.	Lat.	Dep.	Lat.	Dep.	Lat.	Degrees.
	DEGREES.		¼ DEGREE.		½ DEGREE.		¾ DEGREE.		

Published by H. S. CROCKER COMPANY, Stationers, Drawing Materials, Mathematical Instruments, etc., San Francisco.