

927

F.B.

LEVEL BOOK.

No. 410

MICROFILMED

DEC 16 1964

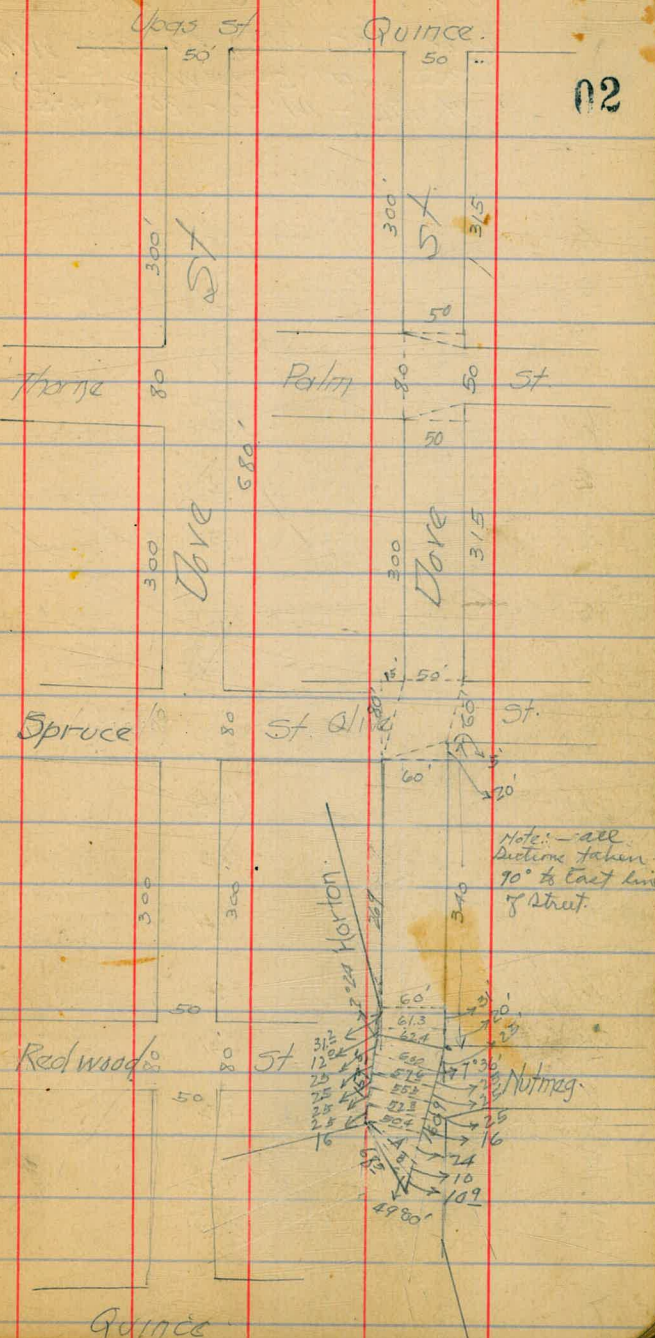
01

X Sec's Dove St. from
Upds to Connection with
Boult W. of Arroyo Drive
Widths ds shown in sketch

BM Word Sp St Br.		22945		
T.P.	1.90	231.35	1336	218.27
T.P.	0.58	218.87	1268	206.17
T.P.	0.65	206.84	1309	193.75
T.P. Culvert	0.34	194.07	1243	181.66
Tie Pt for thru Non	3.06	184.72	889	175.83
T.P.	0.83	176.66	1136	165.30
T.P.	1.19	166.49	1165	154.84
T.P.	0.78	155.62	1051	145.11
T.P.	0.53	145.64	1100	134.64
T.P.	0.31	134.95	773	127.22
T.P. for Upds Non	1.71	128.73	815	120.88
T.D. Culvert				19766
T.P.	0.78	182.44	1272	167.72
T.P.	0.17	170.69	1203	158.40
T.P.	0.20	157.66	1269	145.97
T.P.	7.66	153.63	911	140.53
Hub. Dept. for Quince	1.74	146.26		
BM Tie Non Palm		1095	135.31	

PLOTTED

1/23/14
West
Evans
Devrite



Note All walks 10' wide for
 Drove for both 50' & 60' widths.
 Cross walks - 10' wide for 50' + 60'
 widths - 14' for 80' x 50'.

Men Palm St

140.53

S.L. Palmst. - sec 4.

FL	2.8	137.7
C	4.4	36.1
1/4	5.2	35.3
E	6.2	34.3
1/4	7.3	33.2
C	8.8	31.7
WL	10.3	30.2
+20	13.2	27.3

15.5 of S.L. Palm. cont.

-20	13.2	27.3
WL	10.3	30.2
C	8.4	32.1
1/4	7.3	33.2
E	6.9	34.1
1/4	5.2	35.3
C	4.2	36.3
EL	2.7	37.8

PLOTTED

140.53

25.5 of S.L. Palm. on WL

FL	3A	137.1
C	5.0	35.5
1/4	6.0	34.5
E	7.1	33.4
1/4	8.4	32.1
C	9.5	31.0
WL	10.9	29.6
+20	13.2	27.3

50.5

-20	13.2	27.3
WL	10.8	29.7
C	9.3	31.2
1/4	8.5	32.0
E	7.5	33.0
1/4	5.8	34.7
C	4.6	35.9
EL	3.0	37.1

140.53

75'S

EL	2.7	137.8
c	4.2	36.3
1/4	5.8	34.7
1/2	7.2	33.3
3/4	8.1	32.4
c	9.1	31.4
WL	10.9	29.6
+20	14.2	26.3

100'S

-20	13.5	27.0
WL	10.5	30.0
c	8.6	31.9
1/4	7.4	33.1
1/2	6.1	34.4
3/4	5.1	35.4
c	4.0	36.5
EL	2.4	38.1

PLOTTED

140.53

125'S

4

EL	2.7	137.8
c	4.2	36.3
1/4	5.0	35.5
1/2	6.2	34.3
3/4	7.3	33.2
c	8.5	32.0
WL	10.1	30.4
+20	13.6	26.9

150'S

-20	13.7	26.8
WL	9.3	31.2
c	7.6	32.2
1/4	6.8	33.7
1/2	6.0	34.5
3/4	5.4	35.7
c	4.2	36.8
EL	3.3	37.2

140.53

175'5

EL	3.3	137.2
C	4.3	36.2
1/4	5.0	35.5
1/2	6.0	34.5
3/4	6.9	33.6
C	8.2	32.3
WL	10.9	29.6
+20	14.1	26.4

200'5

-20	14.6	25.9
WL	11.3	29.2
C	9.5	31.0
1/4	8.2	32.3
1/2	7.1	33.4
3/4	5.7	34.8
C	4.8	35.7
EL	4.0	36.5

PLOTTED

140.53

225'5

EL	4.3	136.2
C	5.5	35.0
1/4	6.7	33.8
1/2	7.6	32.9
3/4	9.2	31.3
C	10.3	30.2
WL	12.2	28.3
+20	15.9	24.6

250'5

-20	16.7	23.8
WL	13.7	26.8
C	11.2	29.3
1/4	9.9	30.6
1/2	9.0	31.5
3/4	7.9	32.6
C	7.0	33.5
EL	6.0	34.0

Note All sections of Cross Sts.
taken from actual $\frac{1}{4}$ to $\frac{1}{4}$ of ϕ to ϕ
regardless of different widths.

6

14053		275'5	
EL	6.8	133.9	
C	8.2	323	
$\frac{1}{4}$	9.3	313	
ϕ	10.0	30.5	
$\frac{1}{4}$	10.9	294	
C	12.5	280	
WL	13.9	265	
+20	17.2	233	
300'2 - N.L Olive 80'W on WL - 14' WKS.			
60'W on EL - 10' "			
-20	17.8	227	
WL	14.3	262	
C	13.0	275	
$\frac{1}{4}$	12.0	285	
ϕ	10.9	296	
$\frac{1}{4}$	9.9	306	
C	9.2	313	
EL	8.5	320	

PLOTTED

T.P.		14053		820		132.33	
0.82		133 15		N Curb of Olive			
EL	16	131.6					
C	22	31.0					
$\frac{1}{4}$	30	30.2					
ϕ	4.3	28.9					
$\frac{1}{4}$	4.8	28.4					
C	5.8	27.4					
WL	7.5	25.7					
+20	11.7	21.5					
		N $\frac{1}{4}$					
-20	12.7	20.5					
WL	8.3	24.7					
C	6.6	26.6					
$\frac{1}{4}$	4.9	28.3					
ϕ	3.0	29.3					
$\frac{1}{4}$	3.0	31.2					
C	2.4	30.8					
EL	1.7	31.5					

13315

± dive

EL	2.0	131.2
o	3.1	30.1
1/4	3.2	30.0
±	5.0	28.2
1/4	5.9	27.3
c	7.6	25.6
WL	9.1	24.1
+20	13.0	20.2
	2 1/4	
-20	13.7	19.5
WL	9.6	23.6
c	7.8	25.4
1/4	6.2	27.0
±	4.6	28.6
1/4	3.5	29.7
c	3.2	30.0
EL	2.6	30.6

PLOTTED

13315

5Curb.

EL	3.0	130.2
c	3.9	29.3
1/4	4.6	28.6
±	5.8	27.4
1/4	7.8	25.4
c	10.0	23.2
WL	11.8	21.4
+20	15.3	17.9

5L olive both sides

-20	16.0	17.2
WL	12.2	21.0
c	9.9	23.3
1/4	8.2	25.0
±	5.9	27.3
1/4	4.7	28.5
c	3.7	29.5
EL	3.0	30.2

13315

5' L olive on WL. 20' S on EL.
Olive = 60' wide 10' WKS.

EL	3.5	139.7
C	4.3	28.9
1/4	5.2	28.0
1/2	6.6	26.6
3/4	8.3	24.9
C	10.2	23.0
WL	12.2	21.0
+20	16.0	17.3

25' S of 5' L Olive on WL.

-20	16.2	17.0
WL	12.6	20.6
C	10.8	22.4
1/4	9.2	24.0
1/2	7.7	25.5
3/4	6.4	26.8
C	5.2	28.0
EL	4.4	28.8

PLOTTED

8

13315

50' S

EL	6.0	127.2
C	6.7	26.5
1/4	7.5	25.7
1/2	8.3	24.9
3/4	10.0	23.2
C	12.1	21.1
WL	13.8	19.4
+20	17.2	16.0

75' S

-20	18.0	15.3
WL	14.4	18.8
C	12.7	20.5
1/4	11.0	22.3
1/2	9.6	23.6
3/4	8.3	24.9
C	7.3	25.9
EL	7.3	25.9

133.5

100's.

EL	8.8	1244
C	8.9	24.3
1/4	9.4	238
1/4	10.7	225
1/4	11.7	215
S	13.1	20.1
WL	14.2	19.0
+20	18.2	15.0
	125's	
-20	19.0	14.3
WL	14.4	18.8
C	13.2	20.0
1/4	12.2	21.0
1/4	11.3	21.9
1/4	10.6	22.6
C	10.4	22.8
EL	10.6	22.6

PLOTTED

J.P.

133.5

10.48

122.67

0.76

123.43

1

150's

EL	1.5	121.9
C	1.9	21.5
1/4	1.8	21.6
1/4	2.6	20.8
1/4	3.5	19.9
C	4.8	18.6
WL	6.4	17.0
+20	11.3	12.1
	175's	
-20	12.4	11.0
WL	7.8	15.6
C	6.6	14.8
1/4	5.7	17.7
1/4	4.0	19.4
1/4	3.5	19.9
C	3.1	20.3
EL	3.6	19.8

123.43

200'5.

EL	5.1	118.3
C	4.8	18.6
1/4	4.5	18.9
+	5.5	17.9
1/4	6.5	16.9
C	7.3	16.1
WL	9.3	14.1
+ 20	14.1	9.3

225'5.

- 20	16.2	7.2
WL	11.0	12.4
C	9.0	14.4
1/4	7.7	15.7
+	7.4	16.0
1/4	6.7	16.7
C	7.0	16.4
EL	7.9	15.5

PLOTTED

123.43

250'5.

EL	11.0	112.4
C	10.0	13.4
1/4	9.5	13.9
+	10.4	13.0
1/4	10.3	13.1
C	11.3	12.1
WL	12.0	10.4
+ 20	16.4	7.0

269'5 - Ent Harbor & Cove on WL - L224'R.

T.P.	13.00	110.43
1.73	112.16	
- 20	6.8	10.4
WL	2.9	9.3
C	2.0	10.3
1/4	1.1	11.1
+	0.6	11.6
1/4	0.5	11.7
C	1.3	10.9
EL	2.6	9.6

10

11216

25' S rt 4 to EL.

11216
300' S.

EL	6.3	1059
C	5.2	70
1/4	4.4	7.8
£	4.0	83
1/4	4.5	7.7
C	5.4	6.8
WL	6.8	54
+20	9.6	102.5

320' S = rt 7 to EL. below station
2' 36" R.

-20	10.6	101.6
WL	8.2	40
C	6.6	56
1/4	5.9	64
£	6.4	58
1/4	6.8	54
C	7.8	44
EL	9.5	102.7
+15	13.2	99.0

PLOTTED

-15	18.3	939
EL	13.3	989
C	11.4	1008
1/4	10.2	1020
£	9.4	1038
1/4	9.1	1031
C	9.8	1034
WL	10.5	1017

+20
TP. 2.53 101.63
50' S rt 3 to EL.

-20	5.8	958
WL	3.2	984
C	2.5	991
1/4	1.9	997
£	2.5	991
1/4	3.7	979
C	5.0	966
EL	8.4	933
+10	11.6	900

10163

75'5 rt to EL

-10	15.5	86.1
EL	12.5	89.1
C	9.2	92.4
1/4	7.4	94.3
1/2	5.6	96.0
3/4	5.3	96.3
C	6.0	95.6
WL	6.1	95.5
+20	8.2	93.4

100's. rt to EL

WL	9.8	91.8
C	9.5	92.1
1/4	9.3	92.8
1/2	10.5	91.1
3/4	12.2	89.4
C	14.3	87.3
EL	17.0	84.6
+10	20.7	80.9

PLOTTED

T.P.

005

10163

11.99

89.64

89.69

12

116'5. 90' to EL = End on WL =
 Int. WL. done with B.L. Nutmeg.

-10	10.2	77.5
EL	8.0	81.7
C	6.0	83.7
1/4	4.8	84.9
1/2	2.0	87.7
3/4	1.3	88.4
C	0.1	89.5
WL	0.1	89.6

Sec A 27'50" EL (57' 1019)

WL	0.1	89.5 figure
3' E	0.6	89.1
17'	2.2	87.5
27'	4.6	85.1
37'	7.1	82.6
47'	9.6	80.1
57' = EL	12.3	77.4
4' E of EL	17.9	71.8
10' " "	18.0	71.7

8969

Figure

(63' long (approx))

Sec B. 10.5 of last Sec. On St.

- 10	18.2	71.5
EL	180	71.7
+2	17.8	71.9
5' W	12.1	77.6
18' "	9.8	79.9
30' "	6.4	83.3
40' "	3.3	84.4
50' "	1.3	88.4
63' = WL	0.1	89.6

Sec C. 68.5 long = end st.

WL	0.1	89.6
18' E	2.3	87.4
35' E	6.8	83.9
50' "	11.0	78.7
53	11.8	77.9
56	17.8	71.9
68.5 = Int. EL. With Arroyo Drive.	18.5	71.2

PLOTTED

T.P.

8969

		0.05	89.64	
T.P.	12.49	102.13	0.18	101.95
T.P.	12.75	114.70	0.05	114.65
T.P.	12.35	127.00	0.37	126.63
	11.84	138.47		
Bx. Tie Neg. Palm		3.16	135.31	135.31

Tie Mon Palm.

12.30 147.61

13531

SL Palm See P 3.

Palm 80' W on WL 50' W on EL.
14' WK 10' WK

3 Curb.

EL	9.4	138.3
C	11.0	366
1/4	12.1	355
±	13.4	343
1/4	14.6	330
C	15.6	320
WL	17.0	306
+20	19.6	280
WL	19.4	28.3
-20	16.4	31.3
C	15.3	323
1/4	14.1	335
±	12.8	348
1/4	11.6	360
C	10.5	371
EL	9.1	385

PLOTTED

14761

± Palm.

EL	8.7	1389
C	10.3	373
1/4	11.5	361
±	12.3	353
1/4	13.3	343
C	14.4	332
WL	15.7	319
+20	19.4	282
-20	19.0	286
WL	15.6	320
C	14.4	333
1/4	13.2	344
±	12.2	354
1/4	10.9	367
C	9.8	378
EL	8.2	394

N/A

14761

N. Curb.

-20	17.0	130.6
WL	14.6	30.3
C	13.0	34.6
1/4	12.0	35.6
E	11.2	36.4
1/4	10.5	37.1
C	9.2	38.4
EL	7.9	39.7

NL Palm.

EL	7.4	40.3
C	8.6	39.0
1/4	9.8	37.8
⁺² E	10.1	37.5
	10.7	36.9
	10.7	36.9
1/4	11.5	36.1
C	12.8	34.8
WL	14.0	33.6
+20	17.6	32.0

PLOTTED

14761

NL Palm on NL 15' Nap EL.

15

-20	17.6	130.0
WL	14.0	33.6
C	12.1	35.5
1/4	11.0	36.6
E ₁₆	10.2	37.4
	10.2	37.4
	9.5	38.1
1/4	9.1	38.5
C	8.0	39.6
EL	6.7	40.9

25' Nap NL Palm on W.

EL	5.4	42.2
C	6.6	41.0
1/4	8.0	39.6
+2	8.1	39.5
+3	9.0	38.6
E	9.1	38.5
1/4	10.2	37.4
C	11.2	36.4
WL	13.0	34.6
+20	16.1	31.5

14761

50' N.

-20	15.3	1323
WL	12.8	34.8
c	10.0	37.6
1/4	9.3	38.3
±	8.0	39.6
1/4 ⁺⁵	7.9	39.7
1/4 ⁺⁶	7.2	40.4
c	7.0	40.6
	5.8	41.8
EL	4.3	43.3

75' N.

EL	3.3	44.3
c	4.9	42.7
1/4	6.0	41.6
± ⁺²	6.5	41.7
± ⁺³	7.2	40.4
1/4	7.3	40.3
c	8.1	39.5
	9.4	38.3
WL	11.8	35.8
+20	14.2	33.4

PLOTTED

14761

100' N.

-20	14.0	1336
WL	11.3	36.3
c	9.1	38.5
1/4	7.7	39.9
±	6.9	40.7
+5	6.9	40.8
+6	5.8	41.8
1/4	5.6	42.0
c	3.9	43.7
EL	2.2	45.4

125' N.

EL	1.0	46.6
c	3.1	44.5
1/4	4.5	43.1
+2	5.0	42.6
+3	6.2	41.4
±	6.1	41.5
1/4	7.4	40.3
c	8.9	38.7
WL	10.1	37.5
+20	13.6	34.0

147.61

150' N.

-20	12.7	1349
WL	9.8	378
C	8.1	395
1/4	7.0	406
+2	5.5	421
±	5.4	422
+5	5.4	422
+6	4.1	435
1/4	3.5	431
C	2.0	456
EL	-0.5	148.1

175' N.

EL	-0.1	147.7
C	1.5	461
1/4	2.6	450
+2	2.8	448
+3	5.0	426
±	5.1	425
+3	5.3	423
+4	6.6	
1/4	7.0	406
C	8.0	396
WL	9.9	377
+20	12.9	348

PLOTTED

147.61

200' N.

-20	13.2	1344
WL	10.5	371
C	8.0	396
1/4	7.0	406
+3	6.1	415
+4	5.0	426
±	4.9	427
+5	5.0	426
+6	4.2	434
1/4	3.5	441
C	2.5	457
EL	0.0	476

225' N.

EL	-0.6	148.2
C	2.2	407
1/4	3.9	442
+3	4.0	436
+4	4.7	427
±	4.6	430
+3	4.7	428
+4	5.5	421
1/4	6.4	412
C	7.5	401

17

14761

WL	9.3	138.3
+20	12.3	35.3
T.P. Hub & Guinea	3.09	144.52
7.19	152.31	

250' N

-20	16.3	36.0
WL	13.4	38.9
C	11.1	41.2
1/4	9.2	43.1
±	8.5	43.8
	8.4	43.9
+5	8.1	44.2
+6	7.0	45.3
1/4	6.6	45.7
C	5.1	47.2
EL	4.1	48.2

275' N

EL	2.8	49.5
C	5.1	47.2
1/4	6.8	45.5
±	7.9	44.4

PLOTTED

15281

1/4	9.2	143.1
C	10.5	41.8
WL	12.3	40.0
+20	14.8	37.5

300' N = 5L. Guinea 80' W 14' NKS 13' 1/2 S

-20	14.3	38.5
WL	10.7	41.6
C	9.2	43.1
1/4	8.6	43.7
±	7.9	44.4
1/4	7.3	45.0
C	6.6	45.7
+6	5.7	46.6
+9	1.5	50.8
EL	1.1	51.2

S. Curb.

EL	1.0	51.3
+1	1.32	51.0
	7.05	45.3
C	7.4	44.9

15231

15231

1/4	75	448
±	79	444
1/4	84	439
C	88	435
WL	97	426
+20	142	381
3/4		
-20	138	385
WL	94	429
C	86	437
1/4	81	442
±	78	445
1/4	75	448
C	74	449
+9	67	456
	58	515
EL	05	518

PLOTTED

15231

19

± Quince

EL	-0.1	1524
+1.4	0.8	523
+2.0	6.8	455
C	7.2	457
1/4	7.3	450
±	7.7	446
1/4	8.0	443
C	8.3	440
WL	9.0	433
+20	13.5	388
N/4		
-20	14.2	381
WL	9.3	430
C	8.3	440
1/4	7.8	445
±	7.5	448
1/4	7.2	451
C	7.0	453
+9	6.3	1529
+8.6	-0.6	1531
EL	-0.8	

N. Curb.

15231

EL	-1.8	1541
+1.	-1.4	53.7
+1.6	6.4	45.9
C	6.7	45.6
1/4	6.9	45.4
E	7.3	45.0
1/4	7.6	44.7
C	8.5	44.3
WL	9.1	43.7
+ 20	13.4	38.9

N.L. Quince

-20	12.8	39.5
WL	8.6	43.7
C	7.8	44.5
1/4	7.4	44.9
E	6.9	45.4
1/4	6.6	45.7
C	6.5	45.8
+8	5.9	46.4
+8.6	-2.1	54.4
EL	-2.3	54.6

PLOTTED

15231

25' N.

EL	-2.2	1541
+1	-2.4	54.7
+1.4	5.1	47.3
C	5.6	46.7
1/4	5.9	46.4
E	6.3	46.0
1/4	6.6	45.7
C	7.2	45.1
WL	8.0	44.3
+20	11.6	40.7

50' N.

-20	10.3	42.0
WL	7.2	45.1
C	6.3	46.0
1/4	5.9	46.4
E	5.4	46.9
1/4	5.1	47.3
C	4.8	47.5
+8	4.6	47.7
+8.6	-1.9	54.3
EL	-2.0	54.3

15231

75' N

EL.	-3.2	1555
+9	-2.9	1553
+8	3.3	490
C	4.1	482
1/4	4.3	480
1/4	4.5	478
1/4	4.9	474
C	5.2	471
WL	5.7	466
+20	8.4	439

100' N

-20	7.0	453
+1/2 WL	4.5	478
C	5.1	472
C	4.4	479
1/4	4.0	483
1/4	3.8	485
1/4	3.7	486
C	3.5	488
+83	2.9	494
+88	-4.0	563
EL	-4.4	567

PLOTTED

73
29
44

78

3

76

22

40

15231

125' N

21

EL.	-4.7	1570
+1.2	-4.4	567
+1.6	3.1	492
C	3.5	488
1/4	3.6	487
1/4	3.6	487
1/4	3.7	486
C	4.2	481
+9	4.7	476
+12	3.0	493

150' N

WL	3.0	493
+2	4.6	477
C	4.4	479
1/4	4.0	483
1/4	3.8	485
1/4	3.7	486
C	3.6	487
+84	3.2	491
+90	-4.0	563
EL	-4.4	567

15231

175' N.

EL	-2.4	1547
+1	-2.0	54.6
	4.0	48.3
c	4.3	480
1/4	4.5	478
£	4.5	478
1/4	4.7	476
c	5.0	473
+8	5.1	473
+9	4.0	483
WL	4.1	483
-20		
WL	11.4	40.9
	7.8	44.5
c	6.7	45.6
1/4	6.2	46.1
£	6.0	46.3
1/4	5.9	46.4
c	5.8	46.5
+8.7	5.0	47.3
+9.0	-0.3	52.6
EL	-0.3	52.6

PLOTTED

15231

22

T.P.	702	145.29
	522	150.51
		225' N.
EL	3.3	447.3
+1.1	3.6	44.9
+1.3	5.3	45.3
c	6.1	44.4
1/4	6.2	44.3
£	6.6	43.9
1/4	6.9	43.6
c	8.0	42.9
+5	10.8	39.7
WL	11.9	38.6
+20	15.0	35.5
		250' N.
-20	22.0	32.5
WL	18.0	32.5
+7	16.0	34.5
<	15.0	35.5

15051

1/4	10.9	1396
ϕ	80	425
1/4	7.9	424
C	7.7	428
EL.	7.8	427
+10	7.0	435

275' N.

-15	13.7	368
EL	8.5	420
C	8.4	421
1/4	8.5	420
ϕ	8.5	420
1/4	13.4	371
C	20.0	305
WL.	26.0	245
+7	29.0	215
+15	19.0	315

PLOTTED

300' N = S-L Redwood - 80' W 14' Wks.

-30	37.8	1127
-15	36.3	142
WL	27.7	228
C	21.5	290
1/4	16.0	345
ϕ	12.5	380
1/4 ⁺⁵	8.2	423
1/4	8.2	423
C	8.2	423
EL	8.6	419
+20	23.2	273
+30	21.0	295

5 Corb.

-30	25.0	255
-20	24.3	263
EL.	8.1	224
C	7.9	426
1/4	7.8	427
+5	7.9	426
ϕ	10.1	404

23

15051

1/4	15.8	134.7
C	21.1	294
WL	28.0	228
+15	34.0	14.5
+25	35.0	15.5
	5/4	
-15	26.7	236
WL	25.0	25.5
C	19.5	31.0
1/4	14.8	35.7
£	10.0	40.5
+4	7.4	43.1
1/4	7.3	43.2
C	7.1	43.4
EL	7.5	43.0
+22	22.0	28.5
+32	23.0	27.5

PLOTTED

24

15051

£		
-50	14.3	136.2
-10	12.9	376
EL	6.2	44.3
C	6.1	44.4
1/4	6.3	44.2
+4	6.4	44.1
£	8.4	42.1
1/4	11.4	39.1
C	15.9	36.6
WL	16.5	34.0
+15	17.9	32.6
	N/4	
+10	8.2	42.3
WL	7.4	43.1
C	6.6	43.9
1/10	6.1	44.4
£	5.7	44.8
1/4	5.2	45.3
C	5.0	45.5

15051

EL	5.2	445.3
+10	9.4	441.1
N. Curb.		
-10	6.5	440
EL	4.6	445.9
c	5.0	445.5
1/4	5.3	445.2
±	5.8	444.7
1/4	6.4	444.1
c	7.0	443.5
WL	7.7	442.8
NL Redwood.		
WL	7.4	443.1
c	6.3	442
1/4	5.8	447
±	5.3	445.2
1/4	4.7	445.8
c	4.3	446.2
EL	3.9	446.6

PLOTTED

15051

T.P	248	448.03
11.79	159.82	
25' N. of Redwood		
EL	9.2	450.6
c	10.0	449.8
1/4	10.3	449.5
±	10.5	449.3
1/4	10.6	449.2
c	10.6	449.2
WL	10.2	449.6
50' N.		
WL ⁴⁶	6.8	530
c ⁴⁷	6.4	534
	7.2	536
	7.3	535
1/4	7.2	536
±	6.8	530
1/4	6.6	530
c	6.5	533
EL	5.9	539

159.82

75' N.

EL	2.0	157.8
+2	2.2	57.6
C	3.1	56.7
	3.5	56.8
1/4	4.0	55.8
±	3.8	56.0
1/4	3.9	55.9
C	3.8	56.0
+4	3.5	56.3
+5	3.0	56.8
WL	3.2	56.6
J.P.	2.83	156.99

12.39 169.38

100' N.

WL	9.1	60.3
+5	9.8	59.6
+6	10.8	58.6
C	10.8	58.6
1/4	10.9	58.5
±	10.8	58.6
1/4	11.0	58.4
C	10.5	58.9

PLOTTED

169.38

+8	10.1	159.3
+8.8	8.0	61.4
EL	7.8	61.6
	125' N.	
EL	3.4	66.0
+1	3.8	65.6
+1.4	7.1	62.3
C	7.5	61.9
1/4	8.0	67.4
±	8.0	61.4
1/4	8.1	61.3
C	8.2	61.3
+5	8.4	61.0
+6	6.6	62.8
WL	6.6	62.8

150' N.

WL	3.3	66.1
+3	3.7	65.7
+4	5.4	64.0
C	5.6	63.8
1/4	5.3	64.1
±	5.1	64.3

		16938	
1/4		5.1	164.3
C		5.0	644
+9		4.5	649
+9.2		0.5	68.9
EL		0.3	69.1
T.P.	175' N	140	167.98
EL	122A 180.22		
	175' N		
EL		6.4	738
+1		6.6	734
		12.0	683
C		12.6	676
1/4		12.9	673
±		13.1	671
1/4		13.2	670
C		13.8	664
+7		13.7	665
+8		12.8	674
WL		12.6	676
	200' N		
WL		10.3	699
+2		10.2	700
+3		11.5	687

PLOTTED

		18022	
		11.4	168.8
1/4		10.9	693
±		10.5	697
1/4		10.3	699
C		10.1	70.1
+9		7.8	70.4
		4.2	76.0
EL		4.1	76.1
	225' N		
EL		2.0	783
+0.6		2.2	78.0
+1.0		7.7	72.5
C		7.7	72.5
1/4		7.9	72.3
±		8.1	72.1
1/4		8.3	71.9
C		8.7	71.5
+8.4		9.3	70.9
+9.2		8.5	71.6
WL		8.4	71.8

180.22

250' N.

WL	6.7	173.5
C	6.2	74.0
1/4	5.6	74.6
£	5.4	74.8
1/4	5.4	74.8
C	5.2	75.2
+88	5.0	75.2
+92	0.7	79.5
EL.	0.5	79.7

275' N.

EL.	-1.7	81.9
+0.8	+1.4	81.6
+1.0	2.2	78.0
C	2.4	77.8
1/4	2.4	77.8
£	2.4	77.8
1/4	2.6	77.6
C	3.0	77.3
+8	3.8	76.4
WL.	4.5	75.7
+5	6.8	73.4

PLOTTED

180.22

F.P.

0.10 180.12

4.92 185.02

300' N = 5 L Spruce 80' W 14' Wx3

-20	14.5	170.5
-15	13.2	71.8
WL.	5.1	79.9
C	5.5	79.5
1/4	5.4	79.6
£	4.9	80.1
1/4	4.6	80.4
C	4.3	80.7
EL.	2.6	82.4
	5 Curb	
EL.	3.2	81.8
C	3.7	81.3
1/4	4.3	80.7
£	4.5	80.5
1/4	4.9	80.1
C	5.6	79.4

colvert	18502	337	18763	18166
WL		5.4	1796	
+15		14.1	709	
+20		15.6	694	
	3 1/4			
-20		15.6	694	
-15		14.3	707	
WL		6.4	786	
+3		5.4	796	
C		5.2	798	
1/4		4.7	803	
1/2		4.2	808	
1/4		4.0	810	
C		3.6	814	
EL		2.9	821	
	1/2 Spruce			
EL		3.1	819	
C		3.6	814	
1/4		4.1	809	
1/2		4.4	806	
1/4		4.8	802	

PLOTTED

	18502		
C		5.1	1799
WL		5.4	796
+20		15.4	696
+25		16.8	683
	1 1/4		
-25		17.0	680
-20		15.6	694
WL		5.6	794
C		5.3	797
1/4		4.8	803
1/2		4.4	806
1/4		4.1	809
C		3.7	813
EL		2.9	821
	N Curb		
EL		3.1	819
C		3.8	813
1/4		4.1	809
1/2		4.6	804

18502		
1/4	50	1800
<	{ 5.3	794
	{ 4.7	803
WL	{ 5.5	795
	{ 6.1	789
+ 15	14.5	705
+ 20	15.5	695

NL Spruce

-20	14.1	709
-15	12.8	727
WL	5.8	792
+1	5.3	797
<	5.3	797
1/4	5.0	800
E	4.6	804
1/4	4.0	810
<	3.6	814
EL	2.7	823

25' N. of Spruce

EL	-0.8	858
+1	{ 1.0	840
	{ 3.0	820
+3	5.0	800

PLOTTED

18502		
C	4.5	1805
1/4	4.6	804
E	5.2	798
1/4	5.3	797
C	5.6	794
WL	5.9	791
+15	11.5	735
50' N.		
-15	7.0	780
WL	6.6	784
C	6.0	790
1/4	5.9	791
E	5.8	792
1/4	5.6	794
C	5.2	798
+6	5.1	799
+9	3.3	817
+9.1	-3.6	886
EL	-3.8	888

18502

75' N.

EL	-6.6	191.6
+1	{ -6.4	91.4
	{ 3.4	81.6
+3.5	5.3	797
C	5.5	795
1/4	5.5	795
£	5.4	796
1/4	5.8	792
C	6.2	788
WL	6.6	784

100' N.

WL	6.5	785
C	6.1	789
1/4	6.0	790
£	5.8	793
1/4	5.9	791
C	5.5	795
+5	5.3	797
+8.5	{ 3.4	81.6
EL	{ -7.6	92.6
	{ -7.8	92.8

PLOTTED

18502

125' N.

EL	-7.8	192.8
+14	{ -7.6	92.6
	{ 4.2	80.8
+5	5.8	792
C	6.0	790
1/4	6.0	790
£	5.8	792
1/4	5.7	793
C	5.8	792
WL	5.9	791

150' N.

WL	5.7	793
C	5.6	794
1/4	5.7	793
£	5.8	793
1/4	5.8	792
C	6.0	790
+6	5.8	792
+9	{ 4.0	81.0
EL	{ -7.0	92.0
	{ -7.5	92.5

18502

175' N. Graded to here

EL	-6.5	191.5
+1	{ -6.2 4.2	{ 91.7 80.8
+4	5.9	79.1
C	6.1	78.9
1/4	6.0	79.0
E	5.6	79.4
1/4	5.8	79.3
C	6.1	78.9
WL	6.5	78.5

200' N.

WL	7.2	77.8
C	6.9	78.1
1/4	6.7	78.3
E	5.8	79.2
1/4	5.7	79.3
C	5.4	79.6
+6	5.0	80.0
+9	{ 3.3 3.2	{ 81.7 88.7
EL	-3.4	88.4

PLOTTED

18502

225' N.

EL	{ -2.2 1.1	{ 187.7 83.9
+6	3.8	81.7
C	3.3	81.7
1/4	4.1	80.9
E	6.6	78.4
1/4	7.1	77.9
C	7.6	77.4
WL	7.8	77.3
+10	13.5	71.5

250' N.

-30	25.5	57.5
-15	18.7	66.3
WL	9.5	75.5
C	8.3	76.7
1/4	7.4	77.6
E	7.3	77.7
1/4 ⁺¹³	2.4	82.6
1/4	1.8	83.3
C	1.2	83.8
+5	0.8	84.3
+7	-0.5	85.5
EL	-2.5	87.5

32

18502

275'N

EL	-2.7	1877
+14	-2.4	874
+L	-0.6	85.6
1/4	1.7	85.8
E	2.4	82.6
+1	5.9	79.1
1/4	8.4	76.6
C	8.4	76.6
WL	9.8	75.2
+15	10.5	74.5
+30	17.4	67.6
T.P.	24.5	60.5
	7.75	117.27

8.97 186.24

300'N = SL. Thorne 80'W - 14'WKS.

-30	28.2	58.0
-15	20.3	65.9
WL	14.7	71.5
C	11.3	74.9
1/4	10.4	75.8
+7	9.5	76.7
E	7.1	79.1
1/4	5.2	81.0

EL

186.24

38

C	34	183.8
+8	1.7	84.5
+9	0.2	84.0
EL	-0.5	86.7
S. Curb.		
EL	2.1	84.1
C	4.7	81.5
1/4	6.5	79.7
E	8.8	77.4
1/4	10.8	75.4
+2	10.2	76.0
C	11.1	75.7
WL	14.7	71.5
+25	26.0	60.0
+35	30.0	56.2
+40	31.0	55.2
5/4		
-45	34.2	53.0
-25	26.2	60.0
WL	15.4	70.8

18624

C	11.7	1745	
1/4	105	757	
±	89	773	
+2	76	786	
1/4	6.7	795	
C	5.5	807	
EL	3.3	829	
	± Thorpe		
EL	4.0	822	
C	6.0	803	
1/4	7.2	790	
± Mon	10.41	175.88	175.83 ✓
1/4	11.3	749	
C	13.4	738	
WL	17.2	690	
+25	28.2	580	
+45	37.0	492	

PLOTTED

18624

24

	N 1/4		
-45	38.4	1478	
-25	29.0	573	
WL	19.0	673	
C	14.2	720	
1/4	12.3	739	
±	10.4	758	
1/4	8.6	776	
C	6.6	796	
EL	4.8	814	
	N Corb		
EL	7.1	791	
C	8.7	775	
1/4	10.5	757	
±	12.8	734	
1/4	15.3	709	
C	17.0	693	
WL	23.0	633	
+25	32.0	543	
+45	41.5	447	

18624

NL Thorne

-A5	43.0	43.2
-25	35.4	50.8
WL	26.3	59.9
C	20.8	65.4
1/4	18.1	68.1
£	16.2	70.0
1/4	14.0	72.2
C	12.3	73.9
EL	10.1	76.1
T.P.	11.95	174.29

130 175.59

25' N of Thorne

EL	5.3	70.3
C	7.7	67.9
1/4	9.1	66.5
£	10.9	64.9
1/4	12.9	62.9
C	14.7	60.9

PLOTTED

25

17559

NL

+15	18.1	157.5
+25	24.0	57.6
+45	29.0	46.6
	38.4	37.2

50' N

-A5	40.6	35.0
-25	35.0	40.6
WL	23.9	51.7
C	21.4	54.2
1/4	20.0	55.6
£	18.6	57.0
£	16.6	59.0
C	14.8	60.8
EL	11.5	64.1

75' N

EL	10.4	65.2
C	15.2	60.4
1/4	17.7	57.9
£	20.8	54.8

17559

1/4	23.8	157.8
C	27.0	48.6
WL	31.6	44.0
+25	40.0	35.6
+45	46.0	29.6
100' N		
-45	45.8	29.8
-25	40.3	35.3
WL	32.6	43.0
C	28.2	47.4
1/4	24.3	51.3
E	21.4	54.2
1/4	17.9	57.7
C	15.0	60.4
EL	11.3	64.3
T.P.	11.70	163.89

1.41 165.30

PLOTTED

165.30

125' N

EL	1.9	163.4
C	5.1	60.2
1/4	7.9	57.4
E	10.5	54.8
1/4	13.2	52.1
C	17.2	48.1
WL	21.7	43.6
+20	30.0	35.3
+40	35.7	29.6
150' N		
+40	39.0	26.3
-20	31.5	33.8
WL	22.8	42.5
C	18.7	47.9
1/4	15.8	49.5
E	12.7	52.6
1/4	10.1	55.2
C	6.7	58.6
EL	4.1	61.2

165.30

175'N.

EL.	96	153.7
C	12.8	52.5
$\frac{1}{4}$	14.9	50.4
$\frac{1}{2}$	17.0	48.3
$\frac{1}{4}$	19.6	45.7
C	22.3	43.0
WL	26.5	39.8
+18	35.5	29.8
+30	41.0	24.3

200'N.

-40	44.0	21.3
-10	37.0	28.3
WL	34.0	31.3
C	32.0	33.3
$\frac{1}{4}$	29.0	36.3
$\frac{1}{2}$	26.6	38.7
$\frac{1}{4}$	25.0	40.3
C	22.0	43.3

PLOTTED

165.30

37

EL.		{ 21.0	144.3	
		{ 18.4	141.9	
T.P.		12.98	152.32	
T.P.	200	154.32	11.98	142.34
	233	144.67		

225'N.

EL.	6.8	137.9
C	9.8	34.9
$\frac{1}{4}$	10.5	34.2
$\frac{1}{2}$	11.1	33.6
+5	12.0	32.7
+7	13.2	31.5
+9	14.2	30.4

C	15.4	29.3
WL	17.4	27.3
+25	24.0	20.7

250'N.

-25	27.0	17.7
WL	21.1	23.6
C	19.0	25.7
$\frac{1}{4}$	17.2	27.5
$\frac{1}{2}$	15.9	28.8

14467

1/4	150	129.7
+3	145	30.2
C	118	32.9
+4	106	34.1
EL	10.2	34.5

260' N.

EL.	9.2	35.5
+4	10.2	34.5
C	13.9	30.8
1/4	15.2	29.5
±	16.0	28.7
1/4	17.3	27.4
C	19.1	25.6
WL	22.0	22.7
+25	27.1	17.6

275' N.

-25	28.4	14.3
WL	23.0	21.7
C	19.8	24.9

PLOTTED

14467

1/4	18.7	126.0
±	17.8	26.9
1/4	16.5	28.4
C	15.3	29.4
EL	12.9	31.8
T.P.	12.85	131.82

105 132.87

300' N. S. 1. Upd.

EL	3.0	29.9
C	4.3	28.6
1/4	5.6	27.3
±	6.6	26.3
1/4	8.1	24.8
C	9.9	23.0
WL	12.2	20.7
+20	15.4	17.5
T.P. Mon Upd.	12.04	120.83

121.88
120.83
105

Top Culvert			1816	1816.6	
T.P.	12.71	194.37	0.37	194.00	
T.P.	12.56	206.56	0.43	206.13	
T.P.	12.75	218.88	0.16	218.72	
	12.51	231.73			
B.M. Tack. pillar Spruce St. Bridge			1.78	229.45	229.45
					OK.

PLOTTED

Levels for Culvert
S. Cor of Peterborough & Henry

2/20/14
West
Evans
Devine

40

Curb N Cor. Peterborough & Henry. 218.75

T.P. 0.70 218.95 12.68 206.27

1.48 207.75

0+00 = & Return 1.0 206.8

0+08 5.3 202.5

+ 10 6.9 200.9

+ 20 9.7 198.1

T.P. +30 12.80 194.95

4.76 199.71

+38 = End pipe. 5.9 193.8

+45 4.3 192.4

219.0 = st Gr.

193.8 = +45

25.2

12.6

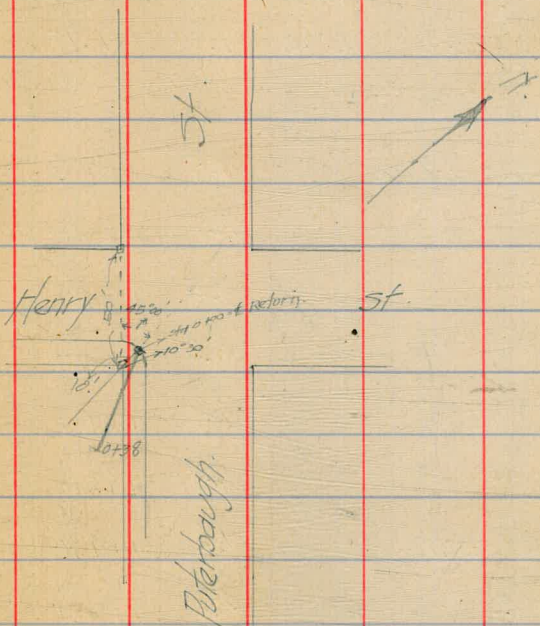
37.8 = Distance 1/2 tot slope.

T.P. 0.84 196.57

T.P. 11.61 210.48 4.37 210.11

11.8 221.29

Curb N Cor. P & H. 2.56 218.73 218.75



Profile WL 4 St Parts Are
 NL Date to St. Surper.

West.
 Expts. 2/25/44.
 Devote

164.16

41

BM. NW 58 Date Plug. 131.00

T.P. 12.16 143.16 1.99 141.17

13.05 154.22

0+00 = WL 6 St. NL. Date 12.7 151.5

+50 11.1 143.1

1+00 9.5 144.7

+50 8.3 145.9

2+00 6.9 147.3

+50 5.7 148.5

3+00 = 3L Elm 4.6 149.6

+40 = 4 " 3.1 151.1

+80 NL " 2.2 152.0

4+30 1.0 153.2

T.P. 1.22 153.00

11.16 164.16

4+80 9.6 154.6

5+30 7.8 156.4

+80 6.2 158.0

6+30 4.3 159.9

6+80 = 5L Fir.

6+94

7+20 4 " "

7+46

7+60 NL "

T.P.

12.29 176.20

8+10

+60

9+10

+60

T.P.

10.51 186.57

10+10

10+60 = 5L Grape

11+00 4 " "

11+40 NL "

T.P.

12.96 198.10

2.2 162.0

2.6 161.6

1.5 162.7

0.5 163.7

0.1 164.1

0.25 163.91

9.8 166.4

7.3 168.9

4.6 171.6

1.8 174.4

0.14 176.06

10.0 176.6

7.1 179.5

6.3 180.3

5.0 181.6

1.43 185.14

19810		106	187.5
11+90		130	
1'E			
5"			
19811			
12+40		68	191.3
1'E		11.4	186.7
12+60		49	193.7
1'E		8.1	190.9
5"		102	187.9
12+70		44	193.7
1'E		8.4	189.7
4"		9.5	188.6
12+80		43	193.8
1'E		7.3	190.8
4"		8.8	189.3
12+90		33	194.8
1'E		6.6	191.5
3"		8.3	189.8
13+15		1.6	196.5
1'E		5.4	192.7
3"		6.6	191.5
T.P.		0.80	197.31
11.87 209.18			
13+40		9.3	199.7
1'E		15.2	194.0
13+90		5.6	203.6
1'E		10.0	199.7
14+40 = 5L Hawthorne		4.4	204.8
T.P.		0.15	209.03
9.58 218.41			
14+81 = E Hawthorne		9.3	209.3
15+229 NL "		8.9	210.3
+729		6.0	217.6
16+229		3.6	215.0

Juniper	22+029
Ivy	19+029
	18+229
26'	15+229
Hawthorne	14+40
Grape	11+40
	10+60
Flr.	7+60
	6+80
Elm	3+80
	3+00
Date	0+00

21861

16+T29	14	217.5
T.P.	1.24	217.37
825	225.62	
17+229	7.0	218.6
+479	6.4	219.2
+729	5.7	219.9
18+229 - 5L Ivy.	38	221.8
+629 E.	3.2	222.4
19+029 NL "	3.0	222.6
+279	3.2	222.4
+529	2.3	223.3
T.P.	2.02	223.60

1142 235.02

20+029	7.7	227.3
+279	6.5	228.5
+529	5.8	229.7
+779	5.0	230.0
21+029	3.3	231.7
+279	2.1	232.9

235.02

T.P.	1.41	233.61
826	241.81	
21+529	7.5	234.3
+779	5.2	236.6
22+029 = 5L Juniper.	4.4	237.4
B.M. NW 58 Juniper Plug	11.93	229.94
		229.91

X sect. Fulton from

See Book 915 page 72

J.P. 7.52 ^{H.F.} 214.97 213.45

no. line date

white 2.78 212.2

9.9 205.1

w 1/4 15.6 199.4

25' no.

w 1/4 12.8 202.3

7.6 207.4

white 0.0 215.0

50' no.

white 1.0 214.0

4.2 210.8

9.8 205.2

C 15.4 199.6

N. line date to nutmeg } Childs
Mar. 4/14 } letter
Bunker

75' no.

C

16.4 198.6

12.9 202.1

9.6 205.4

white 4.9 210.1

100' no.

white 14.3 200.7

J.P. ^{H.F.} 0.42 202.34 13.05 201.92

no. line date

E 1/4 15.5

C

8.9 193.4

25' no.

C

7.0 195.3

E 1/4 13.2

50' no.

E 1/4

9.5

75' no.

E 1/4

10.1

202,34

100' no.

C

14.0 188.3

Ecb.

3.8 186.2

w.cb.

11.0

E line

10.0 1890

7.0

100' no.

125' no.

E line

14.1 175.9

White

9.3 193.0

9.6

w.cb.

14.3

E 1/4

6.1

J.P.

^{H.I.}
0.32 189.95 12.71 189.63

125' no.

no. his date

w 1/4

7.5

Ecb

10.1

C

12.1 177.9

E line

15.7 174.3

150' no.

25' no.

w 1/4

15.4

Ecb.

5.6

9.9

E line

13.5 177.5

White

4.7 185.3

50' no.

166' no.

E line

10.2 179.8

White

10.2 179.8

Ecb.

3.1 186.9

189,95

56

45

J.P.	0.17	^{H.I.} 177.14	12.98	176.97	200 No		
E line		125 No	10.6	166.5	W 1/4	16.3	
E 1/4			7.7		W line	12.5	
			4.4			8.5	168.6
		150 No			275 No		
le.			7.4	169.7	W line	8.3	173.8
			11.4			1.5	
E cb.			14.9			0.6	
		166 No			le.	1.5	175.6
E 1/4			14.7			5.5	
le.			10.7	166.4	1/4+6	6.3	
			7.		E cb.	2.2	
W cb.			3.				
		175 No			250 No		
W line			18	175.3	E cb.	3.8	
			5.7			10.	
			9.8		le.	9.8	167.3
le.			12.8	164.3		10.	
					W line	11.9	
						13.8	163.3

177.1

	240 - No.		
W. line		15.1	162.0
		14.3	
		12.0	
b		12.4	164.7
		10.4	
E. cb.		4.5	
	225 No.		
E. line		1.6	175.5
		6.7	
		10.5	
b		13.6	163.5
		14.5	
		15.5	
cb + 5'		16.0	
W. line		14.0	163.1
	200 No.		
B. cb.		11.7	
E. line		8.8	168.3

47

T.P.	H.T.		1.02	176.12
T.P.	L.T.	250	H.S. 167.30	12.30
		150	No. Date	164.80
E. line			7.9	159.4
		166	No.	
E. line			13.1	154.7
E. cb.			9.0	
		175	No.	
E. 1/4			8.3	
			11.6	
E. line			9.6	157.7
		200	N.	
E. 1/4			7.6	
b.			8.1	159.2

T.P.	11.50	H.F. 187.92	170.2
E line	240	No. Date	
		9.9	177.7
E line	250	No	
		8.2	179.4
E line	275	No	
		5.0	183.6
E line	300	No (E line E line)	
		4.02	183.6
		13.2	
		7.2	
		2.7	184.9
		-0.2	187.8
		0.9	
W line	2.95		184.6

Mar 5/14
48

J.P.	13.11	H.F. 227.98	0.10	214.87
W line			11.6	216.4
			11.6	
			12.0	
			13.4	214.6
			13.9	
			13.5	
E line			13.20	214.8
E line			11.5	216.5
			11.1	
			10.0	
			8.8	219.2
			7.9	
			7.7	
			7.0	221.0

228.0

227.98

50' no.

White

4.3 223.7

5.0

5.4

C

5.8 227.2

6.7

7.8

White

8.4 219.6

75' no.

White

4.5 223.5

4.4

3.7

C

3.5 224.5

2.2

1.6

White

0.3 227.7

240.7

49

J.P.

12.79 ^{H.I.} 240.69 0.08 227.90

100' no.

White + 10'

9.2 231.5

9.7 231.0

11.6 229.1

12.3

C

13.2 227.5

14.2

14.7

13.2

13.9 226.8

6+3' White

125' no.

White

12.0 228.7

12.3

11.6

C

10.7 230.0

10.1

10.0

6.8

5.4 235.3

6+3' White

240.7

150' no.

White
+11"3.0 237.7
4.7
8.6

8.7

C

9.3 231.4

10.1

10.5

Eline

10.3 230.4

175' no.

Eline

9.2 231.5

9.5

9.0

C

8.4 232.3

7.2

7.0

4.1

cb+3'
White

2.6 238.1

240.7

200' no.

White
+11"3.1 237.6
4.4
6.5

7.2

C

8.0 232.7

8.5

8.8

Eline

9.0 231.7

225' no.

Eline

9.7 231.0

8.7

8.0

C

7.5 233.2

7.1

6.2

4.9

cb+3'
White

3.9 236.8

250' no.

White

4.6 236.1

6.1

6.9

C

7.6 233.1

8.3

9.4

Elm

10.2 230.5

275' no.

Elm

12.9 227.8

10.9

9.0

C

7.8 232.9

7.0

6.5

White

5.2 234.5

300' no. (No. Elm Fir)

White

5.78 234.9

7.8

9.2

C

11.0 229.7

11.7

E. ob.

13.5

J. J.

9.69 ^{H.J.} 237.29 13.09 227.60

Elm

~~12.93~~ 12.93 224.36
Oregon turn 224.40

No Elm Fir

Elm

9.4 227.9

5.8

E 1/4

3.7

237.3

25' no.

E 1/4

1.4

4.2

E line

7.7 229.6

20'E

slope.

11.6

50' no.

20'E

slope

11.2

E line

7.7 229.6

5.3

E 1/4

2.7

75' no.

E 1/4

5.3

7.5

E line

10.1 226.2

20'E

slope.

13.5

237.9

52

100' no.

20'E

18.7

E line

14.4 222.9

10.8

7.8

C

5.2 232.1

125' no.

W 1/4

3.8

C

8.5 228.8

E 1/4

14.1

136' no.

E 1/4

16.0

C

9.9 227.4

W 1/4

6.3

237.3

12.89

237.29

58

150' no.

250' no.

W 1/4	4.0	
C	7.6	229.7
E 1/4	13.0	

W 1/4	9.1	
C	13.5	223.8

175' no.

275' no.

E.cb.	13.0	
	9.4	
C	6.1	231.2
W 1/4	2.3	

W 1/4	14.2	
W.cb.	9.0	

300' no (So. line Grape)

W. line	225.56	
W.cb.	219.4	

200' no.

J.P.	J. line	12.89	224.40
------	---------	-------	--------

C	6.3	231.0
	9.5	
E.cb.	13.4	

J.P.	K.I.	9.19	246.43	0.05	237.24
------	------	------	--------	------	--------

North line Fir

White	6.98	239.4
-------	------	-------

225' no.

E 1/4	12.4	
C	8.8	228.5
W 1/4	4.8	

	8.1	
	9.3	
C	11.2	235.2

46

246.4

25' no.

C

7.7 238.7

white

6.1

5.6

w 1/4

White

5.2 241.2

50' no.

White

5.0 241.4

w.cb

6.6

white

7.6

white

C

9.6 236.8

w.cb.

75' no.

C

13.0 233.4

w.cb.

10.6

white

7.4

White

5.5 240.9

white

w.cb.

246.4

54

100' no.

6.9 239.5

9.5

11.8

125' no.

9.5

6.6 239.8

136' no.

6.3 240.1

9.6

150' no.

9.0

5.8 240.6

175' no.

4.6 241.8

7.8

76

2464

	200' no.	
w 1/4	11.7	
	7.3	
w line	3.8	2426
	225' no.	
w line	5.5	2409
w.cb.	10.2	
	250' no.	
w.cb.	12.5	
w line	8.5	2379
	275' no.	
w line	12.6	2338

0.30

J.P.

20'E slope

E line

E.cb.

E.cb.

E line

E line

E.cb.

E line

20'E slope

20'E slope

E line

2247

55

030 ^{H.I.} 22470 22440

175' no.

19.6

15.5 209.2

7.5

136' no.

10.6

18.2 206.5

150' no.

12.3 212.4

6.3

175' no.

7.6 217.1

18.1

200' no.

16.1

6.6 218.1

224,70

225' no.

E line 12.0212.7
E.cb. 5.2

250' no.

e 1/4 5.6
E.cb. 11.0

275' no.

E.cb. 16.8 207.9
11.4
C 6.0 218.7

300' no. (No line Graph)

C 15.9 208.8
W 1/4 10.2 214.5
J.P. 0.07 ^{H.I.} 211.63 13.14 211.56

225' no.

20'E. slope. 8.1

211,63

56

250' no.

20'E. slope. 13.9
E line 5.0 206.6

275' no.

E line 9.7 201.9
20'E. slope. 18.4

300' no. (No line Graph)

E.cb. 11.2 200.4
e 1/4 7.1 204.5
J.P. 0.64 ^{H.I.} 199.93 12.34 199.29

E line 4.74 195.19
J.P. 2.92 ^{H.I.} 189.84 13.01 186.92

J.P. 7.48 ^{H.I.} 187.44 9.88 179.96

No line Graph.

E line 13.2 174.2

10.9.

7.9

C

4.4 183.0

187.4

10' no. Grape.

E W ^{1/4}	5.8	
C	8.4	179.0
	11.3	
	14.3	
E line	16.4	171.0
	25' no.	
E line	13.2	174.7
	12.4	
	12.9	
C	13.8	173.6
	9.4	
	6.3	
White	1.8	185.6

Mar. 13/14
187.4Helix
57
Parker

50' no.

White	8.4	179.0
	12.6	
	10.8	
C	8.8	178.6
	6.7	
	5.7	
E line	3.9	183.5
	67' no.	
E ^{1/4}	0.9	
C	3.8	183.6
	6.9	
	8.6	
White	11.1	176.3

187.44

75' no.

white

9.4 176.0

6.9

4.9

C

1.5 185.9

100' no.

E.Cb.

1.4

white

2.7 184.7

J.P.

13.14 ^{H.I.} 200.44 0.14 187.30

no. line Grape.

W 1/4

13.4

10.4

white

6.7 193.7

10' no. Grape.

white

10.6 189.8

W.Cb.

14.0

200.4

167' no.

E.Cb.

12.3

E line

10.0 190.4

'

75' no.

E line

7.0 193.4

9.3

E 1/4

11.4

100' no.

W 1/4

12.5

C

7.9 198.5

E 1/4

2.4

125' no.

W 1/4

2.2

3.6

white

5.5 194.9

J.P.

13.02 ^{H.I.} 213.15 0.31 200.13

213.15

100 no.

E line 6.8 206.4

E cb. 9.9

145' no.

C 12.0 201.2

8.7

White

E cb. 2.7

150' no.

E line 0.6 212.6

C 2.6

5.5

White 8.9 204.3

J.P. 13.14 ^{H.I.} 225.81 0.48 212.67

125' no.

E line 9.8 216.0

150' no.

E 1/4 11.6

8.2

E line 2.7 22.3.1

225.81

79

175' no.

E 1/4 0.3

C 2.1 223.7

4.4

8.6

14.0 211.8

200' no.

8.4 217.4

2.3

H.I.

12.91 238.71 0.61 225.80

175' no.

E line 9.3 219.4

E cb. 11.5

200' no.

W 1/4 9.9

C 7.8 230.9

6.6

5.5

3.7 235.0

238,71

225' no.

E.C.B.

0.6

3.3

C

4.0 234.7

5.9

8.3

White

13.7 225.0

250' no.

W line

6.6 232.1

3.9

W 1/4

1.3

J.P.

	H.T.		
12.80	250.91	0.60	238.11

225' no.

E line

11.9 239.0

250' no.

P.C.

11.7 239.7

10.2

9.2

E line

8.0 242.9

250,91

60

275' no.

E line

3.9 247.0

4.9

6.1

C

6.7 244.2

9.3

11.1

White

13.0 237.9

300' no. = (No-line Hawthorn)

White

7.3 243.6

5.8

4.3

C

3.3 247.6

2.0

1.1

E line

0.5 250.4

	H.T.		
9.92	260.22	0.61	250.30

J.P.

S+W 13 hub. at Hawthorn

260.22

16

North line Hanthorn

White	5.0	255.2
	4.6	
CB+5'	4.6	
" + 6'	5.1	
	4.9	
C	4.1	256.1
C+1'	3.1	
	2.4	
	2.2	
E line	2.1	258.1
25' no.		
E line	1.9	258.3
	1.4	
	1.3	
C	1.7	258.5
C+1'	3.3	
	4.4	
1/4+7'	4.6	
" + 8'	3.9	
	3.8	
White	3.3	256.9

260.2

61

50' no.

White	3.2	257.0
	3.8	
CB+5'	4.1	
" + 6'	4.9	
	4.7	
1/4+12'	3.2	
C	1.1	259.1
	1.9	
	2.0	
E line	3.4	256.8
75' no.		
E line	5.1	255.1
	4.0	
	3.5	
	1.7	
1/4+12'	3.8	256.4
C		
	5.1	
	5.2	
	4.4	
	4.1	
1/4+7'		
" + 8'		
White	3.6	256.6

260.2

100' no.

W line

4.5 255.7

cb + 5'

5.0

5.2

6.2

6.3

C

C+1'

5.0 255.2

3.5

4.8

6.0

E line

7.5 252.7

125' no.

E line

9.9 250.3

8.5

7.3

5.3

1/4 + 11'

C

6.6 253.6

7.7

7.8

6.7

6.3

1/4 + 7'

C

W line

5.6 254.6

260.7

150' no.

W line

7.5 252.7

7.9

cb + 5'

" + 6'

8.2

9.6

9.8

C

C+2'

8.9 251.3

7.9

10.1

11.3

E line

12.9 247.3

175' no.

E:cb.

14.6

12.9

C

11.2 249.0

12.0

11.9

10.1

9.9

W line

9.2 251.0

260.2

300' no.

White

11.2 249.0

cb + 5'
+ 6'

11.6

12.0
13.5
13.7

C

13.6 246.6

225' no.

White

12.6 247.6

White

200' no. Coy.

12.1 248.1

cb + 3'
+ 5'12.8
12.9
15.2
13.8

C

13.5 246.7

1/4 + 4'
+ 5'

14.4

cb.
cb + 13'14.6
13.6
13.3
13.0

E line

8.9 251.3

260.2

63

225' no.

E line
+ 2'

5.5 254.7

cb.
cb + 7'
+ 7'
1/4

11.4

11.6

11.6

12.5

12.2

C

11.4 248.8

1/4 + 3'

11.7

12.5

11.0

10.7

White

10.4 249.8

250' no.

White

7.6 252.6

cb + 3'
+ 6'

8.6

8.9

10.6

9.5

C

9.3 250.9

1/4 + 5'
+ 6'

10.6

10.9

10.0

9.9

9.7

E line

3.6 256.6

260,2

275' no.

E.liv
+5'

2.9 257.3

8.3

cb+7'
+8'

8.4

8.4

9.3

8.8

C

7.7 252.5

7.7

1/4+7'
+9'

8.4

7.1

6.7

White

6.0 254.2

298' no.

White

4.3 255.9

cb+4'
+6'

4.9

5.2

6.6

6.3

C

6.5 253.7

7.2

cb+13'

E.liv

7.1

7.0

3.7 256.5

260,22

64

300' no. (Ro. line juniper)

E.liv

7.16 253.06

7.2

7.2

C

6.5 253.7

6.4

1/4+7'
+9'

6.7

5.1

4.8

White

4.7 255.5

347.7

T.P.	0.45	^{HI} 247.67	13.00	247.22
E line		175' no.	Hawthorn	White
		4.0	243.7	
		200' no.		cb+4'
E 1/4		2.7		cb+6'
		4.4		C
E line		5.9	241.8	C+10'
		225' no.		
E line		9.5	238.2	E line
		7.4		
		5.3		E 1/4
1/4+8'		4.5		C
		2.6	245.1	
		3.0		1/4+7'
1/4+6'		2.7		
W.Cb.		1.2		White
		0.7		

347.7

65

250' no.

	1.6	246.1
	2.4	
	2.7	
	4.3	
	4.5	
	4.2	243.5
	8.3	
	9.2	
	10.7	
	14.0	233.7
	275' no.	
	13.0	
	5.2	242.5
	5.9	
	5.8	
	4.2	
	3.9	
	3.3	244.4

300' no. (So. line 90y)

White 4.71 242.96
 C+3' 5.4
 C+6' 5.6
 1/4 + 9' 6.9
 1/4 + 11' 6.9
 C 6.7 241.0

North line 90y

C 9.8 237.9
 C+3' 8.5
 1/4 + 9' 8.5
 1/4 + 11' 8.5
 7.6
 7.4

White 6.7 241.0

25' no.

White 7.3 240.4
 C 7.7
 C+2' 7.9
 " + 4' 9.0
 1/4 + 10' 8.9
 C 8.8
 11.2 236.5

37' no.

C 11.7 236.0
 C+3' 9.1
 C+6' 14.3
 1/4 9.2
 1/4 + 9' 9.3
 1/4 + 11' 8.9

White 7.4 240.3

50' no.

White 7.5 240.2
 8.0
 W 1/4 18.7
 1/4 + 10.8
 C 13.3 234.4

75' no.

C 14.2 233.5
 C+7' 8.6
 4 16.8
 1/4 + 4' 19.0
 C 17.9
 C+2' 13.2
 + 7' 12.0

White 7.2 240.5

76

247.7

100' no.

White

6.6 241.1

cb + 4'

7.1

" + 6'

7.2

1/4

8.2

1/4 + 11"

8.2

C

8.4

19.7 228.0

125' no.

E line

7.8 239.9

6.8

8.2

C

7.6 240.1

C + 2'

14.9

+ 8'

7.7

1/4

7.3

1/4 + 7'

7.2

cb.

6.0

5.9

White

5.8 241.9

247.67

67

150' no.

White

3.6 244.1

cb + 4'

4.2

1/4

4.6

7.5

5.7

C

5.3 242.4

5.6

1/4 + 5'

5.7

4.3

E line

4.3 243.4

175' no.

E line

0.4 247.3

+ 1'

2.1

cb + 7'

2.5

+ 2'

2.8

2.1

3.5

C

3.0 244.7

1/4 + 5'

3.6

cb

4.7

2.1

White

1.8 245.9

234.8

98

J.P.

0.20 ^{HT} 234.80 13.07 234.60

275' no. Hawthorn E line

8.9

E ob.

E line

11.7 223.1

E 1/4

300' no. (No. line Guy)

J.P.

100' no. ^{HT} -0.03 222.14 12.63 222.17

E ob.

13.9

No. line Guy.

E 1/4

4.3

E line

9.1 213.0

no. line Guy.

E 1/4

6.9

E line

14.0 208.1

25' no.

E ob.

3.8

E 1/4

9.0

25' no.

37' no.

E ob.

5.4

E 1/4

9.1

E line

13.4 208.7

50' no.

E 1/4

9.5

E line

12.6 209.5

75' no.

E ob.

6.4

E 1/4

9.2

1/4 + 3'

14.6

12.2

E line

7.4 217.4

234.80

100' no.

1.1 233.7

2.1

6.6

^{HT} -0.03 222.14 12.63 222.17

No. line Guy.

E line

9.1 213.0

no. line Guy

E line

14.0 208.1

E ob.

3.8

25' no.

E ob.

5.4

E line

13.4 208.7

37' no.

E line

12.6 209.5

E ob.

6.4

6.0

45

122.1

50' no.

E cb	6.0
cb + 2'	10.5
cb + 6'	5.7
E line	217.5 4.6

 Mar. 30/14 } Shields
 Otter
 Fletcher 69

J.P.	H.I.	253.06
	1.14 254.20	
	North line Juniper	
E line	13.9	240.3
	9.0	
	7.2	
C	4.3	249.9
	3.0	
	2.0	
W line	1.3	252.9
	20' no.	
W line	6.0	248.2
	6.3	
	7.4	
C	10.7	243.5
C/14	14.2	

254.20

25' no.

E 1/4
C

15.5

11.8 242.4

9.6

7.2

White

8.5 245.7

J.P.

2.45 ^{H.I.} 243.54

13.11 241.09

20' no.

E.cb.

6.8

E line

10.0 233.5

25' no.

E line

12.2 231.3

E.cb.

9.4

243.54

70

50' no.

White

9.5 234.0

8.6

9.2

C

11.9 231.6

E 1/4

16.0

J.P.

1.03 ^{H.I.} 231.55

13.02 230.52

E.cb.

7.0

E line

11.2 228.4

75' no.

White

9.6 222.0

9.3

9.7

C

12.0 219.6

E 1/4

15.0

231,55

88' no.

W. line

14.4 x 17.2

C

14.5

W 1/4

14.3

100' no.

White

12.1 x 19.5

E line

125' no.

White

12.5 x 19.1

E line

cb + 5'
1/4

17.9

20.5

16.9

C

C

14.0 x 17.6

12.5

w. cb.

10.7

E line

8.0 x 36

J.P. high turn

0.65 230.90

low J.P.

low

4.73

H.S.
223.30

12.98

218.57

223,30

71

88' no.

8.3 215.0

11.5

13.0

15.4 217.9

100' no.

12.0 211.6

11.8

12.6

13.7 219.6

12.5

8.7

8

273.3

150' no.

White	5.5	217.8
+11'	10.4	
cb.	9.4	
W 1/4	2.2	

165' no.

w.cb.	3.6	
White	9.1	214.2

175' no.

White	5.2	218.1
w.cb.	0.5	
J.P.	10.52	241.42

150' no.

Elise	6.5	234.9
	9.5	
	12.5	
C	16.2	225.2

241.42

72

165' no.

W 1/4	17.0
C	12.1
	29.3
	6.9
	2.4
Elise	0.2
	241.2

175' no.

E 1/4	3.5
C	9.1
W 1/4	14.1

200' no.

White	15.5	285.9
	12.1	
W 1/4	7.7	

225' no.

White	6.5	234.9
J.P.	13.12	254.53
	0.01	241.41

254.53

	175' no.	Juniper	
E.cb.		12.7	
Eline		10.7	243.8
	200' no.		
Eline		6.5	248.0
		8.3	
		11.2	
C		15.1	239.4
	225' no.		
W.cb.		15.5	
		12.4	
C		8.4	246.1
		6.0	248.5
		3.7	
Eline		1.9	252.6

254.5

	250' no.		
E 1/4		0.6	
C		1.7	252.8
		3.2	
		7.0	
		10.2	244.3
	H.I.		
	10.99	265.49	0.03 254.50
	250' no.		
		10.1	
		9.0	256.5
	275' no.		
		6.0	259.5
		6.3	
		7.0	
		7.7	257.8
		8.6	
		10.2	
White		12.4	253.1

265.49

300' no. (So. line Kalmia)

White

6.8 258.7

E line

9.2 263.6

5.4

8.4

4.7

8.2

C

4.2 261.3

C

8.1 264.7

3.9

13' hub

8.22

3.6

8.3

E line

3.7 261.8

White

9.0 263.8

J.P.

13' hub Kalmia

0.93 264.56

Center

So. cb.

White

7.2 265.6

White

11.5 261.3

6.9

10.8

6.9

10.2

C

7.0 265.8

C

9.8 263.0

7.2

9.8

7.8

9.5

E line

9.0 263.8

E line

10.0 262.8

Mar 31/14
272.8

1 builds
atten
Kerr

74

20 1/4

572.8

no. 14

Eline

8.9 263.9

7.3

6.3

C

5.9 266.9

5.8

5.9

White

6.0 266.8

no. C6.

White

4.1 268.7

4.1

4.4

C

5.1 267.7

5.9

7.2

Eline

8.8 264.0

272,78

75

North line Kalma

Eline

9.3 263.5

7.0

5.6

C

4.5 268.3

3.5

3.8

White

2.6 270.2

J.P.

6.12 ^{H.I.} 27686

2.04 270.74

2.5 no.

White

4.5 272.4

5.6

6.4

C

7.9 269.0

9.5

11.2

Eline

14.1 268.8

37

578.9

50' no.

Eline

15.1 257.8

12.1

9.7

C

7.4 265.5

5.6

4.3

white

3.5 269.4

75' no.

white

4.4 268.5

5.4

6.9

C

8.9 264.0

10.9

E.c.b.

13.3

36

572.9

100' no.

E.c.b.

14.5

12.6

C

10.9 262.0

9.2

7.9

white

6.3 266.6

125' no.

white

7.4 265.5

9.7

12.1

C

13.6 259.3

E 1/4

14.8

276,86

266.3

77

150' no.

125' no.

C

14.8 262.1

E line

9.3 256.9

12.7

E. cb.

6.2

10.9

150' no.

White

8.3 268.6

E line

12.3 253.9

175' no.

9.8

White

9.5 267.4

E 1/4

7.0

12.4

175' no.

W 1/4

15.2

C

7.4 258.8

200' no.

9.9

W. cb.

15.5

12.2

White

12.5 264.4

E line

15.0 251.3

J.P.

HI.
2.34 266.24 12.96 263.90

200' no.

75' no. Kabusa

E. cb.

14.3

E line

5.5 260.7

11.8

100' no.

C

9.8 256.4

E line

6.6 259.6

W 1/4

7.4

26624

225' no.

White

7.6 258.6

10.6

13.0

C

15.1 251.1

250' no.

White

13.5 252.7

J.P.

0.09 ^{H.S.} 253.30

13.03 253.21

200' no.

E line

4.5 248.8

225' no.

E line

9.2 244.1

6.5

E 1/4

4.1

253,30

78

250' no.

E line

17.8 235.5

13.2

10.1

C

7.0 246.3

4.1

W.cb.

2.2

300' no. (No. line Laurel)

White

1.2 252.1

3.9

6.4

C

9.2 244.1

11.2

13.0

E line

14.4 238.9

J.P.

lighter

0.64 252.66

J.P.	298	H.I. 244.01	12.17	241.13
E line	274	no. Kalunia	14.2	239.8
			12.7	
			10.7	
C			9.2	234.8
			8.0	
			6.3	
White			5.3	238.7
J.P.	1080	H.I. 263.46		252.66
w.cb.		North line Laurel.	0.8	262.7
			3.2	
C			5.3	258.7
			7.1	
			9.6	
E line			12.28	251.18

	25'	no.		
			11.5	252.0
			8.2	
			5.8	
			3.9	259.6
	50'	no.		
			3.5	260.0
			5.6	
			8.0	
			10.9	252.6
	75'	no.		
			10.7	252.8
			8.1	
			5.4	
			3.4	260.1

563.5

100' no.

C

3.5 260.0

6.0

8.9

E line

11.4 257.1

125' no.

E line

11.4 257.1

9.0

6.3

C

4.2 259.3

150' no.

C

3.7 259.8

6.8

9.6

E line

12.6 250.9

563.5

80

175' no.

E line

11.9 251.6

9.0

7.2

C

4.4 259.1

200' no.

C

4.2 259.3

7.0

9.0

E line

11.6 251.9

225' no.

E line

13.0 250.5

9.8

6.8

C

4.7 258.8

572.7

263.46

250' no.

C 8.2 255.3

11.0

E. ob. 12.8

J.P. low J. 12.9 250.54

J.P. H.J. 8.75 ^{H.E.} 271.95 0.26 263.20

North line Laurel

line 6.3 265.7

25' no.

W line 5.7 266.3

8.1

W 1/4 10.4

50' no.

W 1/4 9.8

6.9

W. line 4.9 267.1

See Book 914 page 60

17617
 " 30
 178762

17714
 12.30
 16480
 850
 16730

17714
 198
 17612

0+37

257.26 N.S. Lavelle + Pelton
 250.32 13' hub Hawthorn
 242.86 S.W. cor Guy.

0+20
 +86
 1+65

57 12/11
 Date 4. W. Hwy - 130.976 75
 Elm " " 141.890
 Fir " " 157.777
 Grape " " 178.514 26
 Juniper " " 227.775 155
 415

22440 S.E. Fair

213.45
 200.04 8-1-8 0.20

11	21	11	15	2	15
18	22	12	23	3	23
26	21	20	30	4	24
34	22	28	31	5	31
35	25	29			
3	1	3			
10	2	10			
10	2	19			
11	3	2			
13	4	2			
19	7	30			
2	7	2			
4	14	4			
5	15	12			
11	17	18			
18	19	25			
24	22	31			
25	30	32			
1	8	1			
2	9	9			
9	11	16			
18	11	25			
19	12	28			

