

928
F.B.

LEVEL BOOK.

No. 410

928

MICROFILMED

DEC 16 1964

X. Sec 31st. 65W. 10' N13.
 SL Redwood to NL. Quite.

BM. NW 31 & Redwood Spk. Pole 30231

1.92 304.23

SL Redwood

WL.	73	296.9 ✓
+8	76	296.6 ✓
C	9.3	294.9 ✓
1/4	20.8	283.4 ✓
+4	24.5	279.7 ✓
E	26.2	278.0 ✓
+4	26.8	277.4 ✓
+5	29.0	275.2 ✓
1/4	34.8	269.4 ✓
+5	37.2	267.0 ✓
C	36.1	268.1 ✓
EL	36.2	268.0 ✓
+5	36.1	268.1 ✓
+2.5	31.8	272.4 ✓

uphill same slope.

1914.
 West
 Evans
 Vermie

30423

15'5.

-35	34.0	270.2 ✓
-15	36.2	268.0 ✓
EL. bot canyon	38.1	266.1 ✓
C	38.0	266.2 ✓
1/4	32.0	272.2 ✓
+7	24.5	279.7 ✓
E	23.5	280.7 ✓
+3	22.5	281.7 ✓
+4	20.7	283.5 ✓
1/4	15.0	289.2 ✓
+8	7.3	296.9 ✓
C	7.3	296.9 ✓
+6	7.5	296.7 ✓
+7	7.2	297.0 ✓
WL.	3.9	300.3 ✓

25'5.

WL.	3.4	300.8 ✓
+4	4.4	299.8 ✓
+6	7.3	296.9 ✓
C	7.2	297.0 ✓

30423

+6	7.5	296.7	✓
+8	9.7	294.5	✓
1/4	12.6	291.6	✓
+8	19.0	285.2	✓
+10	21.0	283.2	✓
£	21.8	282.4	✓
+8	22.5	281.7	✓
+10	24.5	279.7	✓
1/4	26.0	278.2	✓
C	32.3	271.9	✓
EL	37.7	266.5	✓
+15 = bot	38.3	265.9	✓
+25 "	39.0	265.2	✓
+35	37.3	266.9	✓
uphill			
-65	50's		
-50 = bot	37.0	267.2	✓
	40.1	264.2	✓
EL	28.1	276.1	✓
C	21.2	283.0	✓
+7	16.6	287.6	✓
1/4	16.2	288.0	✓

30423

+5	16.0	288.2	✓
+6	13.4	290.8	✓
£	11.1	293.1	✓
+9	6.6	297.6	✓
1/4	6.2	298.0	✓
+8	5.6	298.6	✓
C	4.7	299.5	✓
WL	2.6	301.6	✓
	75's		
WL	4.8	302.4	✓
C	3.5	300.7	✓
1/4	4.6	299.6	✓
£	8.7	295.5	✓
+9	11.6	292.6	✓
1/4	13.2	291.0	✓
+9	16.1	288.1	✓
C	18.6	285.6	✓
EL	23.7	280.5	✓
+20	33.0	271.2	✓

30423

100's.

-20	30.3	271.9	✓
EL.	19.6	284.6	✓
+7	13.7	290.5	✓
C	12.4	291.8	✓
+5	11.3	297.9	✓
+6	9.7	294.5	✓
1/4	8.2	296.0	✓
£	5.1	299.1	✓
1/4	4.0	300.2	✓
C	3.1	301.1	✓
WL	1.3	307.9	✓

125's.

WL	1.8	302.4	✓
C	2.9	301.3	✓
1/4	3.3	300.9	✓
£	4.7	299.5	✓
1/4	6.9	297.3	✓
C	9.9	294.3	✓

30423

+6

EL.

+10

-10

EL.

C

1/4

£

1/4

C

WL

WL

C

1/4

£

1/4

C

EL.

102	294.0	✓
13.0	291.2	✓
17.5	286.7	✓

150's.

114	292.8	✓
9.1	295.1	✓
7.5	296.7	✓
5.7	298.5	✓
4.5	299.7	✓
3.5	300.7	✓
3.2	301.0	✓
2.7	301.5	✓

175's.

4.0	300.2	✓
4.5	299.7	✓
4.8	299.4	✓
5.1	299.1	✓
6.1	298.1	✓
6.6	297.6	✓
7.7	296.5	✓

30423

200'S.

EL	72	297.0 ✓
C	68	297.4 ✓
1/4	65	297.7 ✓
£	64	297.8 ✓
1/4	61	298.1 ✓
C	61	298.1 ✓
WL	62	298.0 ✓

225'S.

WL	84	295.8 ✓
C	82	296.0 ✓
1/4	76	296.6 ✓
£	76	296.6 ✓
1/4	76	296.6 ✓
C	77	296.5 ✓
EL	79	296.0 ✓

30423

250'S.

EL	95	294.7 ✓
C	93	294.9 ✓
1/4	92	295.0 ✓
£	92	295.0 ✓
1/4	97	294.5 ✓
C	99	294.3 ✓
WL	107	293.5 ✓
+10	116	294.2 ✓

270'S = NE Quince

-20	146	289.6 ✓
WL	128	291.4 ✓
C	121	294.1 ✓
1/4	115	294.7 ✓
£	112	293.0 ✓
1/4	110	293.2 ✓
C	109	293.3 ✓
EL	108	293.4 ✓

BM spk pole.

NW Redwood.

see page 78 for intersection of Quince

189 302.34 302.31

X sect. Palm street from West line 1st to 6th child's
 west line albatross 80' wide & 19' walls 13' quarters num. 26/14
 B.N. 1st & 2nd 142 ^{H.I.} 258.42 255.00
 S.P. 0.67 ^{H.I.} 247.62 9.47 246.95
 West line 1st C 100' W.

no. line		0.3	247.3		12.8	234.8
✓					12.4	235.7
✓	concrete curb.	0.7	246.9		12.1	235.5
		1.9	245.7			
✓	1/4 + 1'	1.8	245.8	no line	11.9	235.7
✓	C	7.8	240.1			
		9.8	237.8	J.P.		

PLOTTED
 50' W.

✓	C				1.06	235.67	13.01	234.61
✓	C + 5'	11.6	236.0	to 1/4				
✓		9.3	238.3		4.0	231.7		
✓		7.9	239.7		10.8	224.9		
✓	no. line	7.7	240.5	to line	17.4	218.3		
		6.7	240.9					

73' W.

50' W.

no. line		9.5	238.1	to line	19.0	216.7
		9.6	238.0	to 1/4	12.2	223.5
		9.3	238.3		6.0	230.7
C		13.7	233.9	to 1/4	6.5	229.7
					12.5	223.7
				to line	19.2	216.5

73' W.

735.7

100' W.

Soline

12.8 777.9

6.6 779.1

2.2 733.5

20 1/4

125' W.

Moline

2.5 733.7

PLOTTED

2.7 733.0

2.8 737.9

C

3.1 737.6

Moline

3.5 737.7

Moline

3.8 731.9

Soline

5.8 779.9

735.7

150' W.

Soline

6.4 779.3

6.2 779.5

5.9 779.8

5.3 730.4

5.1 730.6

5.0 730.7

4.9 730.6

200' W (East line front)

9.4 776.3

9.2 776.5

9.3 776.4

9.2 776.5

10.0 775.7

10.4 775.3

10.2 775.5

Soline

2857

East cb.

No. line

11.2 2245 No. line

11.3 2244

10.9 2248

C

10.4 2253 C

PLOTTED

10.3 2254

10.4 2253

No. line

10.6 2251 No. line

E 1/4

No. line

11.9 2238 No. line

11.4 2243

11.4 2243

C

11.4 2243 C

12.0 2237

12.3 2234

No. line

11.7 2240 No. line

28567

Center

12.5 2232

13.0 2227

12.9 2228

12.3 2234

12.3 2234

12.3 2234

12.6 2231

W 1/4

13.2 2225

13.1 2226

13.1 2226

13.2 2225

13.6 2221

13.7 2220

13.8 2219

473.0

473.0

J.P.

H.I.
0.29 222.96 13.00 222.67

50' W.

West, Cb.

No. line

No. line

4.8 218.2

2.0 221.0

4.2 218.8

1.9 221.1

4.0 219.0

1.8 221.2

C

3.5 219.5

PLOTTED

1.3 221.7

3.5 219.5

1.1 221.9

3.7 219.3

1.1 221.9

no. line

4.1 218.9

No. line

1.6 221.4

100' W.

West line Front

no. line

5.6 217.4

No. line

2.2 220.8

5.0 218.0

2.1 220.9

4.9 218.1

1.9 221.1

C

4.9 218.1

2.0 221.0

5.3 217.7

2.4 220.6

5.6 217.4

2.7 220.3

No. line

5.4 217.6

No. line

2.9 220.1

2230

150' W.

So. line
+3'

6.1 216.9 So. line
6.6 216.4
6.8 216.7

⊙

6.3 216.7
5.9 217.1 C

PLOTTED

6.0 217.0

6.4 216.6

7.0 216.0 No. line

No. line

200' W (East line at brass)

No. line

8.5 214.5 No. line

7.8 215.7

7.4 215.6

7.1 215.9 C

7.6 215.4

8.0 215.0

So. line

7.7 215.3 So. line

2230

10

222,96

E. cb.

7.9 215.1

8.1 213.9

7.8 214.7

7.4 214.6

7.9 214.1

8.0 215.0

8.5 214.5

E. 1/4

8.8 214.7

8.1 214.9

8.1 214.9

7.9 215.1

8.1 214.9

8.2 214.8

8.2 214.8

223.0

2230

22296

11

Center

So. line

8.4 214.6

8.3 214.7

8.3 214.7

8.28 214.68

8.6 214.4

9.1 213.9

9.3 213.7

PLOTTED

No. line

W 1/4

No. line

8.8 214.2

8.7 214.3

8.8 214.2

8.6 214.4

8.7 214.3

8.6 214.4

8.9 214.1

So. line

No. line

C

No. line

No. line

C

So. line

W. Cb.

9.4 213.6

9.4 213.6

9.3 213.7

9.2 213.8

8.9 214.1

9.0 214.0

10.9 212.1

West line Albatross

21.3 201.7

17.0 206.0

15.0 208.0

16.2 206.8

18.5 204.5

16.7 206.3

14.2 208.8

X Sect. albatross from

line of Olive St 80' Street

J.P.

1.58 - 2/6.23

214.68

South line Palm

White

7.4 208.8

2.6 213.6

2.1 214.1

C

1.6 214.6

1.4 214.8

PLOTTED

1.1 215.1

E line

0.9 215.3

5' 20.

E line

1.1 215.1

1.2 215.0

1.6 214.6

C

1.7 214.5

2.2 214.0

2.8 213.4

White

4.9 211.3

South line Palm to 20. ⁽¹²⁾

14' walks + 13' quarters 216.2

50' 20.

White

4.8 211.4

3.9 212.3

3.1 213.1

C

2.7 213.5

2.9 213.3

2.4 213.8

E line

2.3 213.9

100' 20.

E line

4.0 217.7

4.3 211.9

4.8 211.4

C

4.7 211.5

5.0 211.7

5.9 210.3

White

7.0 209.7

Σ 16.7

Σ 16.7

J

150' 20.

250' 20.

w White

10.1 706.1

White

9.1 707.1

9.1 707.1

8.5 707.7

8.4 707.8

9.0 707.7

C C

7.8 708.4

C

9.1 707.1

7.6 708.6

9.5 706.7

PLOTTED

6.8 709.4

PLOTTED

9.5 706.7

E. Eline

6.0 710.7

6.45

9.8 706.4

200' 20.

Eline

12.6 703.6

E. Eline

280' 20.

7.4 708.8

Eline

12.5 703.7

8.1 708.1

11.3 704.9

8.5 707.7

10.5 705.7

C C

8.7 707.5

C

10.2 706.0

8.9 707.3

10.0 706.4

w White

8.9 707.3

9.6 706.6

9.8 706.4

White

9.8 706.4

216.2

300' SO. (no line Olive)

White	10.5	205.7
	10.7	205.5
	10.7	205.5
C	11.5	204.7
	11.6	204.6
E.cb.	13.1	203.1
	no.cb.	
E 1/4	13.3	207.9
	12.7	204.1
	11.3	204.9
	11.0	205.2
White	10.9	205.3
	no 1/4	
White	11.3	204.9
	11.4	204.8
	12.0	204.2
C	13.5	207.7

PLOTTED

216,23

14

Center

W 1/4	13.0	203.2
	11.6	204.6
White	11.8	204.4
	no 1/4	
White	12.0	204.2
W.cb.	12.5	203.7
J.P.	1.17	204.42
	HI.	12.98
		203.25
	North line Olive	
E line	10.0	194.4
	no.cb.	
E line	12.3	194.1
	5.8	198.6
cb. + 9'	1.9	202.5
	no 1/4	
E 1/4	5.4	199.0
E.cb.	12.0	192.4

204.42

Center

J.P.

0.54 ^{H.I.} 192.03 12.93 191.49

E 1/4 9.0 195.4

No. 1/4

C 2.84 201.58

E line 4.9 187.1

No. 1/4

Center

W 1/4 2.1 407.3

E line 11.7 180.3

C 5.3 199.1

E.c.b. 5.6 186.4

PLOTTED

No. Cb

No. 1/4

C 9.0 195.4

E 1/4 6.5 185.5

3.2 201.2

E.c.b. 13.0 179.0

1.3 203.1

No. Cb

W line 0.6 203.8

E 1/4 10.2 181.8

South line Olive

South line Olive

W line 1.4 203.0

E 1/4 12.2 179.8

Cb + 9' 2.2 407.7
4.1 400.3
6.8 197.6

J.P. 0.43 ^{H.I.} 179.46 13.00 179.03

No. 1/4

C 15.7 188.7

E line 5.2 174.3

179,46

(16)

20.cb.

Elms 11.1 168.4

E.cb. 5.5 174.0

~~Re-plotted~~ **PLOTTED** Elm Olive

E.cb. 10.2 169.3

Elms 16.3 163.2

X sect. line from west line
Brant.

albatross to East line (17)

Mar. 27/14
206.4

17
Childs
Utter
Bunker

J.P. Mar. 4.82 ^{H.S.} 206.40 201.58

100' W.

West line albatross

No line

7.0 199.4

No. line

0.7 205.7

7.0 199.4

1.1 205.3

7.1 199.3

1.5 204.9

C

6.8 199.6

C

PLOTTED

2.0 204.4

7.1 199.3

2.2 204.2

7.2 199.2

2.6 203.8

No. line

7.6 198.8

No. line

3.4 203.0

117' W.

50' W

No. line

8.7 197.7

No. line

4.3 202.1

8.4 198.0

3.9 202.5

8.3 198.1

3.7 202.7

C

9.2 197.2

C

3.3 203.1

8.7 197.7

3.3 203.1

8.7 197.7

2.7 203.7

No. line

9.5 196.9

No. line

2.9 203.5

206,40

194.01

150' W.

175' W.

1/4 + 10'	11.9	194.5	No. cb.	12.8	181.7
C	11.9	194.5		10.4	183.6
C + 10'	12.5	193.9		5.8	188.7
	11.3	195.1	C	1.9	197.1
	10.9	195.5	C + 7'	2.3	191.7
No line	10.8	195.6	20. 1/4	2.1	191.9
			1/4 + 5'		

PLOTTED

200' W. (East line Brant)

No line	12.4	194.0	No line	2.0	197.0
No. cb.	12.8	193.6		3.6	190.4
Cb + 7'	13.3	193.1		4.1	189.9
J.P.	0.55 ^{H.I.} 194.01	12.94 193.46	C	10.0	184.0
150' West albatross			J.P.	5.27 ^{H.I.} 186.88	12.40 181.61

175' W. albatross

710. 1/4	4.1	189.9	No line	10.0	176.9
	7.1	186.9			
710. line	10.0	184.0			
175' W.					
No. cb.	12.8	181.7			
	10.4	183.6			
	5.8	188.7			

186.88

200' W. (East line Brant)

no. 6. 12.5 1744

no. 14 7.1 179.8

J.P.

PLOTTED

12.53 12.93 173.95

East line Brant.

no. line 4.1 170.4

X sect. Brant from No. line
line Nutmeg. ^{HI} 194.01

Center Olive

E line 10.0 184.0

E. cb 12.6 181.4

So 1/4

C 13.4 180.6

PLOTTED

11.4 182.6

7.1 186.9

E line 4.1 189.9

So. cb.

E line 3.6 190.4

6.1 187.9

6.6 187.4

1/4+8' 7.1 186.9

10.0 184.0

Alive to north

(20)

Mar. 27/14
194.0

blister
Allen
Bunker

South line Olive

11.4 182.6

7.2 186.8

7.1 186.9

7.0 187.0

4.7 189.3

4.0 190.0

PLOTTED

1' 20

E line 2.0 192.0

4.0 190.0

4.7 189.3

7.0 187.0

7.1 186.9

7.2 186.8

11.4 182.6

cb+5'
cb+6'
1/4

C

C+10

194.0

25' 20.

Eline	2.0	197.0
	3.3	190.7
	4.3	189.7
1/4+3'	7.6	186.4
	7.8	186.2
C+8'	8.0	186.0
w. 1/4	10.9	183.1

PLOTTED

50' 20.

w. cb.	11.9	187.1
cb+9'	12.1	181.9
w. 1/4	8.1	185.9
1C	7.7	186.3
C+6'	7.5	186.5
+8'	4.6	189.4
1/4	4.0	190.0
	3.0	191.0
E. line	2.0	197.0

21

194.0

75' 20.

Eline	2.3	191.7
	3.4	190.6
	4.3	189.7
1/4+4'	4.8	189.2
1/4+7'	7.4	186.6
C	7.7	186.3
	7.8	186.2
1/4+3'	10.9	183.1
w. cb.	10.4	183.6
	10.9	183.1
w. cb.	10.9	183.1
cb+3'	9.7	184.3
cb+11'	10.1	183.9
1/4	7.7	186.3
C	7.4	186.6
C+7'	7.1	186.9
C+9'	5.0	189.0
	4.8	189.2
	3.5	190.5
Eline	2.4	191.6

100' 20.

1940

125' 20.

E line	2.3	191.7
	3.5	190.5
	4.8	189.2
$\frac{1}{4} + 5'$	5.0	189.0
$\frac{1}{4} + 7'$	6.8	187.2
⊙	7.0	187.0
$\frac{1}{4}$	7.3	186.7
$\frac{1}{4} + 1'$	9.0	185.0
$\frac{1}{4} + 10'$	8.9	185.1
w.cb.	10.5	183.5

PLOTTED

150' 20.

White + 4'	12.6	181.4
w.cb.	9.9	184.1
	8.6	185.4
$\frac{1}{4} + 1'$	6.9	187.1
⊙	6.8	187.2
C + 5'	6.5	187.5
C + 6	5.1	188.9
$\frac{1}{4}$	4.2	189.8
	3.2	190.8
E line	2.6	191.4

1940

175' 20.

E line	2.9	191.1
	3.5	190.5
	4.5	189.5
⊙	6.7	187.3
	7.5	186.5
	8.3	185.7
⊙ + 10'	10.6	183.4
W line	12.6	181.4

200' 20.

W line	10.2	183.8
+ 4'	8.4	185.6
cb.	7.9	186.1
	7.1	186.9
⊙	6.8	187.2
	5.1	188.9
	4.1	189.9
E line	3.7	190.3

22

1940

225' 20.

E line 5.0 189.0

5.2 188.8

6.1 187.9

C 7.3 186.7

7.8 186.7

8.1 185.9

8.4 185.6

White

PLOTTED

250' 20.

White 8.8 185.2

8.5 185.5

8.3 185.7

C 7.9 186.1

7.4 186.6

6.8 187.2

E line 7.1 186.9

23

1940

300' 20. (north line Nutmeg)

E line 14.7 179.3

13.3 180.7

12.1 181.9

C 10.6 183.4

11.1 184.9

10.6 183.4

White 10.6 183.4

J.P. 5.27 ^{H.I.} 186.88 12.40 181.61No Cl. Olive ^{10.9}

E line 12.5 174.4

No 1/4 Olive

E line 7.1 179.8

10.8 176.1

E 1/4 12.4 174.5

186.9

186.9

Center

1' 20.

C near 10.91 176.0

w.cb. 8.9 178.0

E 1/4 7.0 177.9

10.1 176.8

20 1/4

1/4 + 2'

10.4 176.5

w.cb. + 4' 14.0 177.9

25' 20.

1/4 14.3 177.6

1/4 + 1'

6.5 180.4

1/4 + 9' 15.3 171.6

w.cb.

6.2 180.7

PLOTTED
20.cb.

cb + 12'

10.2 176.7

w.line

11.6 175.3

1' west

21.4 165.5

C + 4' 4.9 187.0

50' 20.

C + 6' 12.6 174.2

1' west

20.2 166.7

w 1/4 12.1 174.8

w.line

10.2 176.7

w.cb. 12.5 174.4

+ 3'

8.5 178.4

South line Olive

75' 20.

w.cb. 8.9 178.0

w.cb + 10'

7.4 179.5

10.1 176.8

w.line

9.7 177.2

1/4 + 2' 10.4 176.5

100' 20.

w.line

8.8 178.1

+ 4' East

6.4 180.5

186.88

174.5

125'20.

no 1/4

Wcb. +10'	6.3	180.6
white	8.6	178.3

3.3	171.2
3.6	170.9

150'20.

7.2 167.3

White	7.5	179.4
-------	-----	-------

White	13.0	161.5
-------	------	-------

J.P.	0.58	^{H.I.} 174.53	12.93	173.95
------	------	------------------------	-------	--------

Center

No. line Olive

E line	4.1	170.4
--------	-----	-------

White	5.9	168.6
-------	-----	-------

PLOTTED

7.7 166.8

w 1/4	2.8	171.2
-------	-----	-------

E 1/4	11.2	163.3
-------	------	-------

1/4 + 9'	3.1	170.4
----------	-----	-------

No. cb.

no 1/4

w 1/4	11.5	163.0
-------	------	-------

w.cb.	6.6	167.9
-------	-----	-------

C	8.7	165.8
---	-----	-------

White	7.3	167.2
-------	-----	-------

6.1 168.4

No. cb.

E.cb.	2.7	171.8
-------	-----	-------

White	9.0	165.5
-------	-----	-------

+10 East.	8.3	166.4
-----------	-----	-------

174.53

(26)

South line alive

W line 9.1 165.4

1' South

W line 3.0 171.5

1' west of prop. 9.2 165.3

J.P. 2.18 ^{H.I.} 163.74 12.97 161.56

No. line alive

W line

PLOTTED

11.7 152.0

9.2 154.5

6.3 157.4

3.2 160.5

No. cb

W. cb. 4.2 159.5

W. line 7.1 156.6

X sect. E street 26th

to 27th

Mar. 28/14

Childs
Allen
Bunker
quarters

80' wide 14 walks 13' quarters

B.M. N.W. Cor. 26th 4.24 192.23 187.99

25' E.

East line 26th - Soline

1.7 1905

Soline 3.9 1883

1.6 1906

cement curb 4.2 1880

1.2 1910

4.0 1882

1.9 1903

C 3.6 1886

2.1 1901

2.7 1896

1.8 1904

3.2 1890

no line

1.7 1905

no line 2.8 1894

50' E

2' East

no line

6.1 1861

no line 1.0 1912

6.1 1861

0.9 1913

5.1 1871

2.2 1900

C

3.9 1883

C 1.2 1910

4.2 1880

1.4 1908

4.0 1882

1.4 1908

Soline

3.6 1886

Soline 1.7 1904

192.23

75' E

No. line 8.9 1833

9.3 1829

9.1 1821

C 9.6 1826

10.3 1819

10.5 1817

No. line 11.0 1812

S.P. -0.02 ^{HI} 179.28 12.93 179.30

100' E.

No. line 4.1 1764

3.9 1764

4.0 1763

C 3.0 1763

2.6 1767

2.4 1769

No. line 2.7 1766

179.28

125' E

No. line 7.8 1715

7.9 1713

7.6 1712

C 7.7 1716

7.8 1715

7.7 1716

No. line 7.6 1717

150' E

No. line 13.3 1660

13.0 1663

12.6 1667

C 12.6 1667

12.5 1668

12.4 1669

No. line 12.1 1672

J.P. ^{H.I.}
 0.84 167.21 12.91 166.37
 175' E

No. line 5.3 1619

4.9 1622

4.7 1625

C 5.2 1620

5.6 1616

6.1 1611

No. line 6.5 1607

200' E

No. line 10.4 1568

10.7 1565

9.9 1577

9.3 1579

9.3 1579

9.4 1578

No. line 9.5 1577

J.P. ^{H.I.}
 0.61 154.95 12.87 154.34
 245' E

No. line 0.5 1545

0.8 1542

1.0 1540

1.1 1539

1.3 1537

1.7 1533

No. line 2.3 1527

250' E

No. line 5.1 1499

5.8 1497

5.5 1495

5.3 1497

5.0 1500

5.0 1500

No. line 5.0 1500

148.8

15495

275' E

no. line

9.0 1460

no. line

12.3 1365

9.6 1454

12.0 1368

10.0 1450

11.3 1375

C

10.6 1444

C

11.1 1377

10.0 1450

10.9 1379

9.5 1455

11.3 1375

no. line

9.9 1451

no. line

11.0 1378

J.P.

HI.
5.89 148.77 12.07 142.88

350' E

300' E

no. line

no. line

8.4 1406

11.4 1374

7.7 1411

11.7 1371

8.1 1406

C

11.8 1370

C

8.7 1401

12.1 1367

9.0 1398

12.3 1365

9.2 1396

no. line

13.0 1358

no. line

9.3 1395

13.5 1353

148.8

375' E

So. line	11.1	1377
	10.5	1383
	10.3	1385
C	9.8	1390
	8.7	1401
	8.1	1407
no. line	6.9	1419
400' E.		
no. line	3.5	1453
	4.1	1467
	4.7	1471
C	5.0	1438
	6.0	1428
	7.4	1412
So. line	7.8	1410

31

148.77

425' E

So. line	3.9	1469
	2.8	1460
	1.9	1469
C	0.9	1479
J.P.	12.46	160.66
	14.5	148.20
1/4	12.5	148.2
	11.2	149.6
no. line	9.6	151.2
450' E		
no. line	6.1	1547
	6.6	1542
	7.5	1532
C	8.8	1520
	9.8	1510
	10.4	1502
So. line	11.4	1492

160.66

475' E

No. line 6.4 1582

5.3 1555

4.8 1560

C 3.1 1577

1.4 1592

J.P. 12.39 ^{H.I.} 172.48 0.57 160.09

11.7 1608

No. line 11.1 1612

500' E

No. line 5.5 1670

6.3 1662

7.2 1653

C 8.3 1642

9.5 1630

10.9 1615

No. line 12.3 1602

172.48

525' E

No. line 7.5 165.0

6.1 166.2

5.1 167.0

C 3.9 168.6

2.5 1700

1.1 1712

No. line 0.2 1722

J.P. 12.19 ^{H.I.} 184.58 0.09 172.39

550' E

No. line 8.9 1757

9.9 1747

10.9 1737

C 11.7 1729

13.2 1712

14.5 1701

No. line 15.7 1689

1846

575' E

No. line 11.5 1771

9.9 1747

9.2 1764

C 7.7 1769

7.3 1773

6.3 1787

No. line 5.4 1797

600' E (west line 27th)

No. line 3.5 1811

3.7 1809

gutter 4.3 1807

4.1 1805

C 4.2 1806

4.8 1798

gutter 5.4 1797

4.5 1801

No. line 4.5 1801

33

34

C	7.9	368.8
1/4	8.3	368.4
cb	8.3	368.4
E	8.3	368.4

No. CURB

E	7.9	368.8
cb	7.9	368.8
1/4	8.2	368.5
C	8.1	368.6
1/4	8.0	368.7
cb	7.8	368.9
W	7.8	368.9

No. LINE POLK.

W	7.7	369.0
cb	8.1	368.6
1/4	7.7	369.0
C	7.5	369.2
1/4	8.1	368.6
cb	7.5	369.2
E	8.1	368.6

50' No.

E	7.5	369.2
cb	7.7	369.0
1/4	7.9	368.8
C	7.7	369.0
1/4	7.7	369.0
cb	7.7	369.0
W	7.7	369.0

75' No.

W	7.5	369.2
cb	7.5	369.2
1/4	7.7	369.0
C	7.4	369.3
1/4	7.8	368.9
cb	7.6	369.1
E	7.8	368.9

125' No.

E	7.7	369.0
cb	7.4	369.3
1/4	7.7	369.0

C	7.6	3691
1/4	7.8	3689
cb	7.4	3693
W	8.0	3687

150' No

W	8.0	3687
cb	7.2	3695
1/4	7.7	3690

C	7.7	3690
---	-----	------

1/4	7.3	3694
-----	-----	------

1/4	7.8	3689
-----	-----	------

E	7.8	3689
---	-----	------

200' No

E	6.1	3706
---	-----	------

cb	6.9	3698
----	-----	------

1/4	7.9	3688
-----	-----	------

C	7.5	3692
---	-----	------

1/4	7.1	3696
-----	-----	------

cb	7.5	3692
----	-----	------

W	7.7	3690
---	-----	------

250' No

W	6.9	3697
---	-----	------

cb	6.8	3699
----	-----	------

1/4	7.1	3696
-----	-----	------

C	6.9	3698
---	-----	------

1/4	7.2	3695
-----	-----	------

cb	6.2	3705
----	-----	------

E	6.2	3705
---	-----	------

300' No

E	6.0	3707
---	-----	------

cb	6.1	3706
----	-----	------

1/4	6.6	3701
-----	-----	------

C	6.1	3706
---	-----	------

1/4	6.4	3703
-----	-----	------

cb	5.9	3708
----	-----	------

W	5.9	3708
---	-----	------

350' No

W	4.9	371.8
---	-----	-------

cb	5.6	371.1
----	-----	-------

1/4	5.6	371.1
-----	-----	-------

C	5.0	3717
1/4	5.6	3711
cb	5.7	3710
E	5.4	3713

400' No

E	5.3	3714
cb	4.5	3722
1/4	5.1	3716
c	4.7	3720
1/4	5.0	3717
cb	5.2	3715
W	5.6	3711

450' No

W	3.7	3720
cb	4.4	3723
1/4	4.9	3718
C	4.3	3724
1/4	5.2	3715
cb	4.4	3723
E	4.8	3719

500' No

E	3.4	3722
cb	3.5	3729
1/4	4.6	3721
C	4.2	3725
1/4	4.5	3722
cb	4.5	3724
W	4.8	3719

550' No

W	4.3	3724
cb	4.1	3726
1/4	4.2	3725
C	3.7	3720
1/4	4.4	3723
cb	4.1	3726
E	3.9	3728

600' No. = ST HOWARD ST 80' WIDE

E	4.7	3720
cb	5.0	3717
1/4	4.6	3721

C	4.0	3727
1/4	4.1	3726
cb	3.4	3722
W	4.0	3727

So. CURB

W	4.4	3726
cb	3.3	3724
1/4	4.1	3726

C	3.8	3729
---	-----	------

1/4	4.5	3727
-----	-----	------

cb	4.9	3718
----	-----	------

E	4.6	3721
---	-----	------

So. QUARTER

E	4.6	3721
---	-----	------

cb	4.7	3720
----	-----	------

1/4	4.5	3727
-----	-----	------

C	3.9	3728
---	-----	------

1/4	4.0	3727
-----	-----	------

cb	4.1	3726
----	-----	------

W	4.0	3727
---	-----	------

CENTER

W	4.0	3727
---	-----	------

cb	4.0	3727
----	-----	------

1/4	4.2	3725
-----	-----	------

C	3.9	3729
---	-----	------

1/4	4.4	3723
-----	-----	------

cb	4.8	3719
----	-----	------

E	4.8	3719
---	-----	------

No. QUARTER

E	4.5	3727
---	-----	------

cb	4.7	3720
----	-----	------

1/4	4.4	3727
-----	-----	------

C	3.8	3729
---	-----	------

1/4	4.1	3726
-----	-----	------

cb	3.5	3722
----	-----	------

W	3.9	3728
---	-----	------

No. CURB

W	2.6	3741
---	-----	------

cb	4.0	3727
----	-----	------

1/4	4.1	3726
-----	-----	------

C	3.7	3720
1/4	4.3	3724
cb	3.8	3729
E	3.5	3722

NO. LINE HOWARD ST

E	3.1	3726
cb	4.3	3724
1/4	4.2	3725
C	3.8	3729
1/4	4.1	3726
cb	4.2	3725
W	2.5	3727

50' No

W	2.9	3728
cb	2.8	3729
1/4	4.1	3726
C	3.8	3729
1/4	4.2	3725
cb	4.5	3727
E	3.7	3720

100' No

E	4.1	3726
cb	3.4	3723
1/4	4.1	3726
C	3.7	3720
1/4	4.0	3727
cb	3.0	3727
W	3.0	3727

150' No

W	3.8	3729
cb	3.8	3729
1/4	3.7	3720
C	3.6	3721
1/4	4.2	3725
cb	4.5	3727
E	4.3	3726

T.P. 4.24 377.30 3.65 373.06

200' No

E	4.1	3727
cb	4.8	3725

1/4	48	3725	W	41	3732
C	43	3720	337.64 No. = S.L. EL. CAJON		
1/4	44	3729	W	45	3728
cf	44	3729	cf	46	3727
W	38	3725	1/4	47	3726
250' No.			C	44	3729
W	39	3724	1/4	49	3724
cf	31	3722	cf	59	3716
1/4	45	3728	E	55	3718
C	42	3721	BM.	507	372.23 = 372.33.
1/4	48	3725			
cf	55	3718			
E	57	3716			
300' No.					
E	51	3729			
cf	45	3728			
1/4	48	3725			
C	42	3721			
1/4	46	3727			
cf	46	3727			

SW CORNER
EL CAJON.

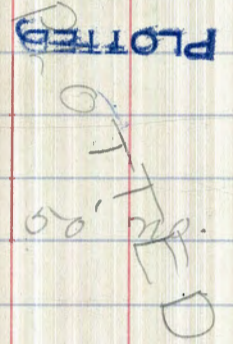
April 13/14

Childs
alter
Bunker

X sect. Front. from so.
To no. line of Olive

line Prince

J.P.	12.73	22741	214.68		100' no.	
	No. line palm			Eline	2.9	224.5
Eline		1.1	226.3		5.4	224.0
		2.4	225.0		6.4	222.0
		3.6	223.8	C	8.8	218.6
C		4.3	223.1		10.5	216.9
	PLOTTED	4.9	222.5		12.9	214.5
		6.1	221.3	W. line	14.9	212.5
White		6.6	220.8			
		6.9	220.8			
		9.0	218.4	C		
White		7.9	219.5		14.3	213.1
		6.7	220.7		11.8	215.6
		5.4	224.0	Eline	10.1	217.3
C		4.5	224.9		6.9	220.5
		3.3	224.1		4.4	223.0
Eline		2.3	225.1			



125' no.

22741

150' no.

E. line	6.8	γ10.6	White
	10.1	γ17.3	
E 1/4	13.0	γ14.4	

175' no.

E. cb.	13.6	γ13.8	
--------	------	-------	--

E. line	10.5	γ16.9	E 1/4
---------	------	-------	-------

PLOTTED

200' no.

E. line	10.1	γ17.3	
---------	------	-------	--

211' no.

E. line	11.2	γ16.7	
---------	------	-------	--

J.P.	0.10	214.75	12.76	214.65	W 1/4
------	------	--------	-------	--------	-------

125' no.

W. cb.	5.7	γ09.1	
--------	-----	-------	--

White	7.2	γ07.6	E. cb.
-------	-----	-------	--------

150' no.

12.1	γ07.2
------	-------

9.3	γ05.5
-----	-------

7.3	γ07.5
-----	-------

2.2	γ12.6
-----	-------

175' no.

3.5	211.3
-----	-------

6.1	γ08.7
-----	-------

9.7	γ05.1
-----	-------

13.3	γ01.5
------	-------

200' no.

14.6	γ00.7
------	-------

8.0	γ06.8
-----	-------

4.3	γ10.5
-----	-------

1.5	γ13.3
-----	-------

211' no.

4.0	γ10.8
-----	-------

9.9	γ04.9
-----	-------

14.2	γ00.6
------	-------

214.75

202.42

225' no.

235' no.

E 1/4

12.8 207.0

C

6.2 196.2

6.9 207.9

W 1/4

11.0 191.4

E line

3.11 211.7

250' no.

250' no.

C

14.2 188.2

E line

6.0 208.8

E 1/4

8.1 194.3

E.cb.

PLOTTED

13.0 201.8

275' no.

275' no.

E 1/4

17.4 191.0

E line

12.7 207.1

E.cb.

5.8 196.6

J.P.

0.18 ^{KI.} 202.42 12.57 202.24

300' no. (No line drawn)

175' no.

E line

8.5 193.9

W line

7.1 195.8

E.cb.

13.0 188.4

200' no.

J.P.

0.60 ^{KI.} 190.62 12.40 190.02

W line

13.3 189.1

211' no. palm

W.cb.

8.2 194.2

W line

5.6 185.0

211' no.

225' no.

W.cb.

13.8 188.6

W line

10.9 179.7

W 1/4

8.4 194.0

W.cb.

5.5 185.1

190.62

250' no.

W 1/4	7.5	183.1
w.cb.	13.2	177.4

275' no.

W 1/4	11.7	178.9
C	4.9	185.7

300' no. (No. line Quince)
PLOTTED

E 1/4	5.8	184.8
C	12.5	178.1
J.P.	0.30	178.29
	H.I.	12.63
		177.99

250' no. palm

White	6.8	171.5
-------	-----	-------

275' no.

White	15.8	162.5
w.cb.	6.4	171.9

300' no. (No. line Quince)

W 1/4	5.7	178.6
	14.6	163.7
White	18.7	159.6

227.41

South line palm.

E line	1.93	225.5
	3.0	224.4
	3.4	224.0
C	4.3	223.1
	5.5	221.9
	6.4	221.0
White	7.35	220.0
White	9.7	217.7
	9.5	217.9
	8.3	219.1
C	7.3	220.1
	6.4	221.0
	5.3	222.1
E line	4.7	223.7

5' 6" DOTTED

96

227.4

65' 20.

E line	7.6	219.8
	7.8	219.6
	9.2	218.7
C	10.9	216.5
W 1/4	14.3	213.1
	75' 20	
C + 7'	13.2	214.7
E 1/4	12.1	215.3
	11.5	215.9
E line	12.2	215.7
J.P.	0.25 ^{H.I.} 214.69	1297 214.44
	65' 20.	
w cb.	4.4	210.3
w line	6.5	208.7

214.69

75' AD.

White

12.1 204.6

10.4 204.3

7.1 207.6

C

4.1 210.6

100' AD.

E line

13.0 201.7

PLOTTED

11.0 203.7

10.6 204.1

C

13.0 201.7

J.P.

0.17 ^{H.I.} 201.94 12.92 201.77

5.1 196.8

9.0 192.9

White

12.2 189.7

201.94

125' AD.

E line

12.4 189.5

11.3 190.6

10.8 191.1

C

11.4 190.5

J.P.

0.17 ^{H.I.} 189.23 12.88 189.06

2.2 187.0

6.0 183.7

White

11.1 178.1

150' AD.

E line

12.2 177.0

11.7 177.5

11.6 177.6

C

11.6 177.6

W 1/4

13.1 176.1

J.P.

0.36 ^{H.I.} 176.69 12.90 176.33

4.1 172.6

White

6.3 170.4

176.69

175' 20

White

12.7 154.0

12.2 164.5

11.6 165.1

C

12.0 164.7

10.7 166.0

10.5 166.7

Eline

10.4 166.3

J.P.

0.35 164.02 12.92 163.77

200' 20

Eline

6.3 157.2

6.9 157.1

7.6 156.4

C

7.1 156.9

7.0 157.0

6.8 157.2

White

6.0 158.0

164.02

225' 20.

White

10.3 153.7

13.4 150.6

12.6 151.4

J.P.

0.32 151.46 12.88 151.14

C

2.0 149.5

1.9 149.6

3.9 148.4

Eline

4.0 147.5

250' 20.

Eline

10.5 141.0

9.0 142.5

7.8 143.7

C

6.5 145.0

6.5 145.0

8.0 143.5

5.0 146.5

White

1.7 149.8

PLOTTED

H.I.

151.46

275' No.

W line 7.0 144.5

10.0 141.5

15.4 136.1

C 11.5 140.0

11.6 139.9

12.3 139.3

E line 13.8 137.7

J.P. 12.92 138.52

PLOTTED
141.47

300' No. (No. line active)

E line 6.66 134.8

5.8 135.7

5.4 136.1

C 6.0 135.5

C+6' 7.0 134.5

11.5 130.0

8.3 133.2

W line 4.74 136.73

X sect. albatross

from

50
April 27/14

leilids
after
Bunker

No. line of palm to So.

line of Quince

50
27
27

315 21783

21468 ^{cut more} All about Palm

50 27 Palm St

21468

N of Palm St

E

95 7087

21783

1296

20487

201

20685

E

34 7144

88 7090

34 7144

78 7100

36 7147

b

70 7108

b

42 7136

65 7117

35 7147

64 7114

60 7118

W

148 7070

W

167 7011

75 N of Palm St

PLOTTED

25 N of Palm St

W

150 7038

W

176 7007

102 7076

80 7098

106 7077

42 7136

b

120 7058

b

50 7148

TP 201

20684

1296 70787

49 7149

25 7066

48 7130

87 7061

E

52 7146

E

42 7065

20688

90' n of Palm St

W	118	1951
bl	7	1979
7	8	
l	17	
	11	
	10	
100' n of Palm		
W	160	1909
	134	1935
	116	1953
b	94	1975
	84	1985
	82	1987
E	84	1985
TP	095	19491 19493 19384

PLOTTED

19470

125' n of Palm

E	20	1949
	45	1906
	76	1873
l	98	1851
	120	1879
	133	1816
W	170	1779
TP	360	18575
	1275	78215
150' n of Palm		
E	33	1875
bl	62	1696
4	92	1776
6	114	1744
4	138	1790
TP	195	17520
	1200	17325
bl	50	1702
W	67	1693

Albatross

51

20688
 1293
 193.95
 25
 194.90
 12.35
 182.55
 360
 185.75
 1275
 123.25
 1.25
 175.20

175.20

175' n of Palm

W	17.0	158.9
	14.2	161.0
	12.0	162.7
b	10.2	163.0
	8.2	167.0
	6.5	168.7
E	5.6	169.6

TP

064 162.57
PLOTTED
200

12.7 162.93

n of Palm

	5.6	158.0
	5.5	158.1
	6.7	156.9
b	9.5	154.1
q	12.0	151.6
TP	44.7	153.34
	12.70	150.87
h	6.0	149.7
W	7.0	148.3

155.34

225' n of Palm

W	15.3	140.0
	14.0	141.3
	12.7	142.6
b	11.0	144.7
	10.0	145.7
	9.1	146.7
E	7.8	147.5

TP

44.7 146.71 130.5 142.29

250' n of Palm

E	10.6	136.1
	12.0	132.7
	13.6	132.1
b	14.0	132.7
	15.0	131.7
	14.0	132.7
W	13.6	132.1

Albatross
52

175.20
152.9
102.73
143.57
12.70
150.87
7.8
155.34
13.05
142.29
14.42
146.71
2.06
144.65

14671

260 n 7 Palm

W	220	1467
	200	1467
	184	1483
b	172	1495
	156	1311
	140	1397
e	126	1361
	80	1387
	94	1397
	110	1357
b	120	1347
	140	1397
	190	1477
W	200	1467

275
PLOTTED

Palm

14671

300 n = S L Summit (80)

W	106	1361
	111	1356
	86	1381
b	60	1407
	45	1457
	33	1476
e	20	1447
TP	206	79465

Shilo S E on

Summit + Alluvia

Pillbarr
53

6 Change X see Palm St (80)
 4 Tangle W of Allatross to Ed Brant
 July

18.98

Palm St
 59

				TP	022	16946	1274	16924	
	091	21559	21468	TP	100	W of Palm St			21468
				S			95	1715	21559
S			70				120	1700	1280
			73				127	1693	20277
			89				120	1700	20359
			75				127	1693	1272
			72				127	1693	19087
			89				29	1544	1142
			14.5				63	151.0	18045
	TP	080	20359	1280	20279	TP	032	14542	1270
		100	17187	1272	19087		150	W of Palm St	14570
		150	18198	1142	18045		95	1359	15732
		50	SW of Palm St				83	137.1	133.61
			84				63	139.1	126.16
			57				54	140.0	
			26				45	1409	
			33				37	1417	
			43				20	1434	
			57						
			30			TP	071	13361	1273
									13269

PLOTTED

200

W - E. d. Brandt (80)

lent from Palm

+ Allotment

48 178.8

743 21611 2

21468

56 178.0

192 20797 1006

20605

21468

58 1778

501 20660 638

20157

21611

1006

20605

20797

501

20660

638

20157

PLOTTED

74 177.7

916 19480 4186

19474

20797

501

20660

638

20157

72 176.0

366 18544 1308

1818

20660

638

20157

85 175.1

723 18821 950

17598

19490

1205

1818

81 175.5

70 of Grand
7 E Brandt
Palm

18466

1818

1205

18466

745 12616

18466

18466

6/5/19
blwyd
Twp
Zeh

X sec of Clinch St (80)
End Albatross to W. Front St

17281

Clinch St

25' E of albatross

638 20797 20159

Cont map
Albatross
Stn

S/4

54 1672

20797

TP 056 19578 1266 19521

S/4

108 16220

175.51
175.51
195.87

E of Albatross St

S/4

19.0 152.3

11.68
194.19
194.57

n 16 1968

TP

275 16282 1269 16012

194.76
12.51
172.45

bb 43 1915

50' E of albatross

172.36
172.81
12.69

d 87 187.1

S

167 1462

160.12
275
162.87

TP 057 18476 1164 18419

110 1519

13.02
149.85

b 46 1802

PLOTTED

~~7.02~~ 155.9

150.48

h 108 1748

l

28 1601

bb 166 1697

50 1629

25' E of Albatross

h

+20 1649

n 44 1804

n2

+38 1667

53 1795

75' E of albatross

65 1783

17281
275
162.87

n2

50 1579

b 118 1730

96 1523

TP 036 17281 1231 17248

122 1507

E of albatross

TP

063 15048 1302 14988

S/4 990 1679

TP 874 16403

Small Albatross
SE Albatross

15048

75' E of Albatross

b	1.2	1493
	2.8	1477
	5.6	1449
SL	10.6	1399

100' E of Albatross

SL	16.0	1325
	13.0	1375
	10.7	1398
b	9.5	1410
	8.4	1421
	5.6	1449

PLOTTED

nd	1.0	1495
----	-----	------

125' E of Albatross

nd	6.0	1445
	9.2	1413
4	12.8	1377

TP	0.73	13835	1280	13762
----	------	-------	------	-------

13835

125' E of Albatross

Conte	4.8	1336
	6.2	1377
	7.0	1314
SL	9.6	1288

150' E of Albatross

nd	0.2	1387
	4.0	1324
	7.3	1321
b	9.4	1290
	13.0	1254

175' E of Albatross

nd	+1.8	1407
	2.6	1358
	7.1	1313
b	13.0	1254

200' E = W of Front St

nd	2.0	1366		
4	6.6	1318		
TP	1.92	12869	1158	12677

Alvin
57

15048
1286
13762
73
138133
1158
12677
192
12869
201
12364

150 Egg Albatross

S L 103 118.4

H 64 114.7

158 Egg Albatross

S L 130 116.7

H 110 117.7

4 120 116.7

PLOTTED

175 Egg Albatross

S L 52 117.6

H 84 110.3

177 110 117.7

200 Egg of White Tinted

S L 20 116.7

84 110.3

+ 6 115 117.7

86 110.1

6 50 117.7

4 11 117.6

cent low

70 505 123.4

1/11
1/14
1/14

X Sec of Albatross (80)
S of Olin to h & putting

4.45 20604 20159

S of Olin

W	3.1	19019
h	3.5	19005
"	8.0	19800
b	13.0	19100

25' S of Olin

PLOTTED

W	4.7	19018
h	6.0	19000
"	12.0	19010

50' S of Olin

W	6.0	19000
h	9.4	1966

75' S of Olin

W	9.1	1969
---	-----	------

TP on 193.49 1277 19321

19249

Albatross
59

S line of Olin

E 1/4	120	181.5	201.55
25' S of Olin			4.45
			206.04
			12.77
			193.27
Cent	9.0	186.5	193.49
			12.91
50' S of Olin			180.58
			14
			180.72
W 1/4	36	189.9	
	14.0	179.5	
75' S of Olin			
W h	5.0	188.5	
W 1/4	12.8	180.7	
100' S of Olin			
W 1/4	0.8	192.9	
h	11.0	182.5	
125' S of Olin			
W	8.4	185.1	
TP	8.14	180.72	1291
			180.58
S of Olin			
E 1/4	17.3	163.0	
h	10.8	169.9	

	25'	S of	Olin		
E 1/4			150	165.7	
E 1/4			5.0	175.7	
	50'	S of	Olin		
Cent			15	179.7	
E 1/4			9.0	171.7	
	75'	S of	Olin		
Cent			5.2	175.5	
E 1/4			10.0	170.7	
	100'	S of	Olin		
W 1/4			4.4	176.7	
			10.0	170.7	
	125'	S of	Olin		
W 1/4			3.5	177.7	
W 1/4			9.7	171.7	
Cent			15.0		
	150'	S of	Olin		
W 1/4			8.0	177.7	
W 1/4			12.0	168.7	
TP	0.5		12.5	168.07	

PLOTTED

	25'	S of	Olin		
E 1/4			12.0	156.6	
	50'	S of	Olin		
E 1/4			13.8	154.8	
E 1/4			6.0	162.6	
	75'	S of	Olin		
E 1/4			17.1	151.5	
1/4			10.5	158.1	
	100'	S of	Olin		
E 1/4			7.5	161.1	
Cent			0.0	168.6	
	125'	S of	Olin		
Cent			3.3	165.1	
E 1/4			11.0	157.6	
	150'	S of	Olin		
W 1/4			2.5	166.1	
Cent			7.0	161.6	
E 1/4			12.5	156.1	

1804

12.5

168.0

168.58

7.5

164.02

16858

	175'	S of	Olin	
WL			7.0	1616
bb			9.3	1593
1/4			11.0	1576
bent			132	1554
TP	017	15614	1259	15601

PLOTTED

Olin

EA			10.3	1469
ebb			30	1527

	125'	S of	Olin	
EA			14.1	1401
bb			7.0	1491

	150'	S of	Olin	
EA			16.8	1794
bb			8.5	1496

	170'	S of	Olin	
E 1/4			47	1515
ebb			106	1456

15618

	200'	S of	Olin	
WL			62	1500
R			84	1478
"			80	1487
bent			100	1467
E 1/4			127	1435

TP

059	14371	1315	14303
-----	-------	------	-------

	175'	S of	Olin	
EA			65	1377

	200'	S of	Olin	
EA			127	1310
ebb			53	1384

	225'	S of	Olin	
WL			51	1386

			60	1377
			66	1371

			80	1357
			96	1341

			138	
			146	
			90	1267

TP

277	13324
-----	-------

EA

Albatross

61

16858
1257
15601
17
15618
1315
14303
64
14371
1286
1307
49
13324

250 S of Clin

W2	4.6	128.6
H	4.4	128.8
4	4.0	129.2
6	6.0	129.2
4	8.4	129.8
H	8.0	129.2

PLOTTED

113.7

275 S of Clin

W2	9.3	127.9	
H	14.0	119.4	
377	124.24	127.7	120.7
4	5.8	118.6	
6	7.7	116.5	
4	9.2	116.0	
H	11.1	113.1	
EL	14.3	109.9	

250 S of Clin

EL	8.5	115.7
----	-----	-------

300 S = R of Putney St

EL	172	107.0	12324 1227 120.47 377 124.24 4.29 119.95 6.54 126.49 2.50 126.12 2.65 128.86 5.25
H	174	106.8	
	151	109.1	
6	138	110.6	
	100	114.2	
	5.8	113.6	
W2	4.1	125.3	
7P	6.52	119.95	Sell Bridge
265	528.80	30	126.01
check	522	123.64	Coment box

6/11/14
 xsec of Brant 57 (80)
 7 days
 n.d. Oliv to Sed Palom

1518
 Brant
 63

Station	Depth	Time	Temp	Notes	Station	Depth	Time	Temp	Notes
	0.77	176.77	176.00	Best man - Brant & Oliv					
	n.d.	of Oliv							
E		6.3	170.5				6.7	144.7	
		8.3	167.5				9.2	142.7	
4		1.30	163.8				12.0	139.9	
TP	0.88	165.52	121.3	164.64	TP	2.55	74.58	178.5	139.0
b			4.0	161.5				3.0	137.7
			7.2	158.3				8.7	132.9
			10.3	155.2					
W			12.3	152.2				+3.0	144.6
	2.5	n.d.	Oliv					1.0	140.6
E			5.9	159.6				5.2	136.4
			9.3	156.4				8.8	137.8
4			12.3	153.4				12.0	149.6
TP	3.20	152.7	11.60	153.92					
b			5.8	151.0				1.0	140.6
			7.7	149.5				10.0	131.6
			10.8	146.0					
W			13.6	143.6					
	6.95	137.66	15.26	141.91					

PLOTTED

139.00
 2.55
 141.05

14155

125' n of Oliv

E 4.6 1370

A 11.0 1306

T.P. 205 13110 1250 12935

75' n of Oliv

W2 13.6 117.5

bb 9.0 1277.1

PLOTTED

100' n of Oliv

W 15.2 115.5

N 14.0 117.1

E/4 10.0 1277.1

b 7.7 1230.0

E/4 3.0 1278.1

125' n of Oliv

W 14.0 117.1

10.0 1277.1

8.4 1277.7

b 7.2 1230.9

E/4 6.3 1244.8

13110

150' n of Oliv

E2 0.0 1311.1

1.5 1299.6

0.3 130.8

1.0 130.1

1.8 129.3

3.6 127.5

7.6 122.5

W2

T.P. 1057 14156 005 23105

175' n of Oliv

E2 3.4 1287.7

4.9 1267.7

6.0 1255.6

7.4 1244.7

8.8 1237.8

10.2 1231.4

W2 12.2 1229.3

Brent
6414155
129105
131.05
10.57
14154

14156

200 mg Olin

WA 119 1307

70 134.6

55 1361

6 42 1372

35 138.1

19 139.7

EA 00 1416

PLOTTED

225 mg Olin

EA 110 1476

15 140.1

7 138.7

6 5.2 1362

4 93 1373

4 120 1396

4 162 135.4

14156

250 mg Olin

EA 12 1406

63 135.3

96 1372.0

6 130 138.6

TP 444 1392 1308 1288

84 132.5

70 1309.1

W 165 116.2

275 mg Olin

EA 102 137.1

47 128.7

78 125.1

112 121.7

W 138 119.1

Biant

65

14152
 138.5
 138.48
 138.4
 138.7

300 $n = 52$ of Palm V

92

44 178.5

80 176.9

106 177.7

6

134 119.5

7P

100

1305

38 179.1

60 176.9

W1

PLOTTED

94 177.5

275

 n

W2

80 178.9

W3

55 177.4

W4

680 176.16

1288

13904

2616

176.16

1320

15014

210

13694

W5

546 174.68

13192

69

12572

131.24

13.01

118.87

12616

128

139.04

3.11

136.99

12.30

150.14

4.87

144.68

6 / Along X sec Antimony at (80)
 13 / 70th Ed of Brant to W of Albatross
 14 / 7th

E line of Brant

071 18537 18466
 NR 60 179.4
 95 175.9
 11.6 177.8
 14.6 170.8

25' E of Brant

NR 84 177.0
 bl 124 172.0

TP 039 17314 1262 17275

E of Brant

S 1/4 68 166.3
 S bl 11.0 162.1

25' E of Brant

N 1/4 27 170.4
 6 7.0 166.1
 S 1/4 14.0 159.1

50' E of Brant

nd 6.3 166.8
 bl 11.4 161.7
 TP 107 16153 1265 16089

Bombardier
 Brant + Antimony

16153

E of Brant

75 150.0
 25' E of Brant

S 2 138 147.7
 S bl 85 152.0

50' E of Brant

N 1/4 66 150.9
 6 106 150.9
 S 1/4 160 145.5

75' E of Brant

912 55 156.0
 bl 120 149.5
 TP 105 14970 1288 148.6

46 145.1

6 84 141.3
 S 1/4 11.2 138.5

S bl 144 135.3

50' E of Brant

S 2 105 139.2
 S bl 7.6 137.1

Antimony

67

18466
 18466
 1265
 17275
 17314
 1265
 16049
 149
 151.8
 1288
 148.6
 14970

14970

100 E of Brant

NL	04	149.7
NL	60	147.7
3/4	104	179.7
b	140	175.7

125' E of Brant

NL	54	146.7
NL	84	141.7

TD	270	<u>14034</u>	1706	1376.4
----	-----	--------------	------	--------

75' E of Brant

SL	90	131.7
----	----	-------

100 E of Brant

SL	150	175.7
SL	110	179.7
S 1/4	80	171.7

125' E of Brant

N 1/4	20	178.7
b	60	172.7
S 1/4	93	171.0
SL	128	177.5

14034

150 E of Brant

NL	710	141.7
	08	139.5
	33	177.0
b	73	177.0
	20	171.7

S 1/4

	118	178.5
--	-----	-------

175' E of Brant

NL	94	170.9
----	----	-------

	86	171.7
--	----	-------

	88	171.5
--	----	-------

b	104	179.9
---	-----	-------

	118	178.5
--	-----	-------

SL	140	176.7
----	-----	-------

TP	280	<u>13086</u>	1228	12806
----	-----	--------------	------	-------

125' E of Brant

SL	76	177.7
----	----	-------

150 E of Brant

SL	58	175.1
----	----	-------

Nutting

68

14970
1306
157.64
270
<u>14034</u>
1118
129106
280
<u>13086</u>

175 E of Brent

1 SL 72 11727

2 200 E = Wk of Allentown

3 ml 55 11754

51 11758

70 11779

90 11719

97 11717

118 11791

158 11751

52
Schick 1090 77996 ✓
See Box

59

6 Along X-axis of Brant 21 (80')
 15 70' S of Nutmeg to h L of Maple St
 14 July

-0.6 18460 18466 ^{from bar} well

Mean cont Brant + Nutmeg

Cont m 973

TP 196 17419 1737 17223

S of Nutmeg

W 47 169.5

PLOTTED

H 100 164.4

9 130 161.7

TP 193 16254 1284 16137

6 14 161.1

4 34 159.1

H 54 157.1

Ed 84 156.1

1

16254

Brant

70

25' S of Nutmeg

E 182 1207 18460

170 125.5 17223

154 127.1 17419

150 127.5 16254

140 128.5 14998

116 1509 15104

67 135.8 13809

TP 107 151.04 1257 14997

50' S of Nutmeg

W 78 123.7

H 110 120.0

TP 073 138.8 1295 13809

4 16 137.7

6 32 135.6

4 29 135.9

H 34 135.0

E 42 132.6

13882

75 S of Anthony

E 128 12160

128 12160

133 12155

b 134 12154

116 12170

92 12196

PLOTTED

W 44 12144

TP 283 12871 1294 12888

100 S of Anthony

W 37 11150

64 12173

94 11193

b 124 11163

124 11163

128 11159

E 142 11145

TP 150 11719 1305 11566

11719

125 S of Anthony

E 134 1038 13882

122 1050 12588

106 1066 12871

105 1067 1295

84 1088 1719

48 1176

60 1172

150 S of Anthony

W 102 1070

TP 226 10654 1291 10424

35 1020

50 1015

b 58 1007

61 1004

78 987

E 95 970

Brand

71

10654

175' S of Anthony

E 158 90.7

130 92.5

117 94.8

b 113 95.2

108 95.7

PLOTTED

108 95.7

W 84 98.1

TP 482 98.48 1288 93.66

200 S of Anthony

W 57 93.3

74 91.1

79 90.6

b 88 89.7

102 88.3

112 87.3

E 96 88.9

98.48

225' S of Anthony

E 46 92.9

75 91.0

110 87.5

b 120 86.5

130 85.5

120 86.5

W 107 87.8

250 S of Anthony

W 140 82.5

120 86.5

80 90.5

b 55 93.0

21 96.5

00 98.5

TP 11.90 107.78 060 97.88

E 66 103.2

Brant

72

10654

1288

93.66

482

98.48

200

93.66

109.78

275' S of Railway

E

+30 112.8

00 109.8

46 105.2 10978

b

88 101.0

10945

1074

120.13

12.6 97.2 114.23

PLOTTED

163 93.5 120.13

W

200 89.8 119.95

300 S = N E of Maple St

W

140 95.8

78 104.0

35 106.3

TP

1074

120.13

0.35 109.45

b

95 110.6

69 113.2

22 117.9

E

00 120.1

TP

1150

black

590 1199.5

See Brdgn

b
17
17

Bluff
Tangle
Felt

X sec 5 Nulmay st (80)
Wd Brant to E d Gerlew

18483

nutmeg
74

50 W of Brant

117

18483

18466

BM. barrow

n

20

187.8

18466

W d of Brant

28

187.0

18483

h

13

1835

38

181.0

172.23

114

173.27

21

1827

b

38

181.0

34

181.4

62

178.6

b

47

1801

84

176.4

80

176.8

S

105

174.3

110

172.8

75

W of Brant

S

154

169.5

S

138

171.0

25 W of Brant

99

174.9

S

124

172.4

120

177.8

80

176.8

b

78

177.0

68

178.0

72

177.6

b

48

1800

62

178.6

30

181.8

n

60

178.8

22

184.6

90

W of Brant

n

17

182.1

n

136

171.4

h

138

171.0

TP

124

173.37

1260

172.23

17337

100 W of Brant

n	67	1667
.	51	1683
c	33	170.1
b	50	1684
	64	1670
	70	1664
S	84	1650

125 W of Brant

S	138	1596
	133	1601
	136	1598
b	138	1596
	134	1600
	133	1601
n	138	1596

TP 125 16174 1288 16049

16174

150 W of Brant

n	127	149.0
	123	149.4
	120	149.7
b	120	149.7
	114	150.3
	116	150.1
S	94	152.3

TP 141 15241 1275 74900

175 W of Brant

S	80	149.4
	94	141.0
	91	141.3
b	96	140.8
	94	141.0
	104	140.0

n TP 175 14065 1188 13853

Nutmeay

75

200 W = End Carlow St

N			122	1785	
			124	1783	
			116	1791	
b			106	1701	
			96	1711	14065
					154
			102	1705	139.14
					12.60
S			92	1315	154.74
					1.32
					150.4
TP	1260	14174	151	13914	12.83
					163.22
	1283	16325	132	15042	1.51
					167.74
	1315	17489	151	16174	13.15
					174.89
	1062	18520	51	174.38	1.51
					174.38
Chud			37	18463	10.62
					10.62
					185.07
					2.2
	1226	22690		21468	21468
					1226
					226.94
					22
	1246	23868	072	226.22	226.22
					22.46
					238.68
					22
	1235	25083	020	23848	23848
					1235
					2458.3
	434	24726	271	24322	24322
					24322
					238.48
	1248	25739	285	24999	242.76
					242.76
					259.99
					12.48
Shell Oil			239	25500	25500
					25500

10/22/13

Grapt X section of 31st St
 from N.L. Quince to
 5th Quince
 31st is 65' wide

78

N. Quarter

2.39	304.45	302065 W 30 th + Pac.	E	12.8	291.7	✓
	N.L. Quince	60' wide 10' obs	T.P.	252	294.25	12.72 291.73
E	11.0	293.5 ✓	cb	2.5	291.7	✓
cb	11.2	293.3 ✓	1/4	2.5	291.7	✓
1/4	11.2	293.3 ✓	c	2.5	291.7	✓
c	11.5	293.0 ✓	1/4	3.3	290.9	✓
1/4	11.7	292.8 ✓	cb	4.4	289.8	✓
cb	12.3	292.2 ✓	W	5.0	289.2	✓
W	13.0	291.5 ✓	+10	5.9	288.3	✓
2.20	13.8	290.7 ✓				
	N. Curb		-15	9.7	284.5	✓
-10	15.2	289.3 ✓	-7	7.4	286.8	✓
W	13.8	290.7 ✓	W	6.7	287.5	✓
cb	13.1	291.4 ✓	cb	5.8	288.4	✓
1/4	12.1	292.4 ✓	1/4	4.8	289.4	✓
c	11.9	292.6 ✓	c	3.9	290.3	✓
1/4	11.8	292.7 ✓	1/4	3.7	290.5	✓
cb	11.8	292.7 ✓	cb	3.3	290.9	✓
E	11.8	292.7 ✓	E	3.3	290.9	✓

Center

29/25

5 Quarter

E	40	290.3	✓
cb	39	290.3	✓
1/4	43	290.0	✓
C	53	289.0	✓
1/4	67	287.6	✓
cb	79	286.4	✓
W	88	285.5	✓
+10	10.2	284.1	✓
+20	14.6	279.7	✓

5. Carb

-20	20.3	274.0	✓
W	11.9	282.5	✓
cb	97	284.6	✓
1/4	82	286.1	✓
C	70	287.3	✓
1/4	58	288.5	✓
cb	50	289.3	✓
E	44	289.9	✓

31st

5 L. Quince

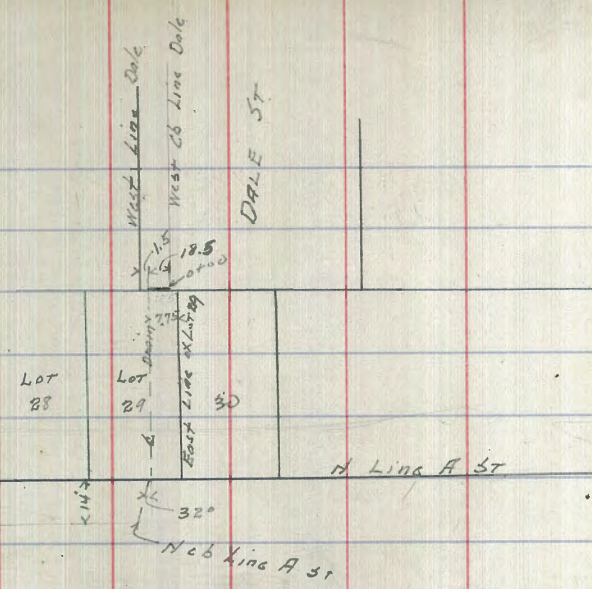
E	5.8	288.5	✓
cb	6.0	288.3	✓
1/4	67	288.6	✓
C	78	286.5	✓
1/4	9.8	284.5	✓
cb	13.8	280.5	✓
W	16.3	278.0	✓
+20	23.9	270.4	✓

20' 5

-10 W	26.8	267.5	✓
	25.3	269.0	✓
cb	23.5	270.8	✓
1/4	19.4	274.9	✓
C	15.5	278.8	✓
1/4	12.0	282.3	✓
+3	9.7	284.6	✓
cb	8.1	286.2	✓
E	7.3	287.0	✓

10/22/23 Gregory Levels on a Drain
 shown on opposite page.

	0.74	215.74	215.00	SE Date + Hsq
0+00 = Top of Curb	6.55	209.2		
+18.5	6.3	209.4		
T.P. Orr	6.40	209.34		
+50	1.5	208.1		
+75	31	206.5		
+94	50	204.6		
1+01.7 = N.L. A ST. = Δ 32° R.	6.5	203.1		
7+02	96	200.0		
+18.2 = N. curb Line	11.0	198.6		



Water Main on 4th St
a to bedon

62487
12
229948
62487
873

6044 Bm 2nd 44					
71.87	72.3	72.31	72.31	72.3	82.26
72.31	72.4	9.0	6.1	7.1	72.8
1.42	59.7	62.9	6.1	6.9	67.8
70.89	5.40	60.4	6.2	6.5	67.8
11.47	82.36	82.36	23.5	0.4	64.8
82.36	7.5	3.8	82.36	80.4	
1.82	75.3	78.4	1.7	91.78	91.78
80.58	3.6	78.4	80.6	8.0	1.6
11.30	65.3	6.0	74.5	82.8	85.2
91.78	91.78	91.78	6.1	7.8	7.8
1.54	4.5	89.8	101.50	101.50	101.50
90.24	87.4	89.8	9.3	7.0	5.1
11.25	85.4	89.8	8.7	9.4	9.6
101.49	65.4	65.3	65.3	89.8	89.8
1.30	101.50	110.21	110.20	5.0	5.0
100.19	98.5	9.8	7.6	6.5	106.8
7.0	93.6	100.1	102.6	6.3	103.5
110.20	6.6	96.5	88.7	6.3	101.1
	110.20	6.1	3.9	6.4	98.7
	104.3	110.2	110.20	6.4	96.3
	1.1	3.8	1.7	6.4	93.9
	6.4	106.4	108.5	6.5	91.5
	6.4	6.4	6.4	6.5	69.5
				6.5	87.0
				6.5	84.5
				6.5	82.0
				6.5	79.5
				6.5	77.0
				6.6	74.50
				6.6	72.50
				6.6	70.5
				6.6	70.0
				6.8	67.84
				6.8	65.08
				6.5	62.62
				6.8	60.66
				6.9	57.7

187.99 26th + E M.W.

255.0

14.2 H.I.

256.42

9.47

246.95 J.P.

21469 bent Albatross + Palm

17851 Cent in Red wood + cedar

8400 " " Olive + cedar

1373 n 2

12685 2 } Fruit + Olive

180

629

173

1742

47

1695

1848

16.7

1687



1848

16.94

15.4