

929

F.B. 929

---

LEVEL BOOK.

No. 410

---

IND.

11<sup>00</sup> for 1000<sup>0</sup> for year  
8<sup>55</sup> for 1/4 on 3000

929

MICROFILMED

DEC 16 1964

31 - Kalmia - SE. May 292.05  
32 - " - SW " 297.62  
32 - Laurel - " " 298.60  
32 - Maple - " " 301.11  
32 - San Marco " " 285.80  
San Marco Blvd SW SE. 288.99  
" " Laurel " 288.78

15347  
15  
68.67  
15  
108

Bok  
474

for Index

See

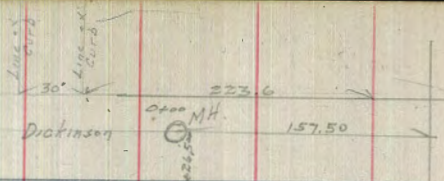
Pages 16 & 165

' This Book

7/8/23

bracket  
top part

Levels for Sewer  
to Dickenson from  
M.H. 157.50 W of G of  
Front St to 100' W.  
M.H. 15 11.5 N of G of Dickenson



M.H. 579 16 x 18.5 p.p. 1030  
505 296.8 289.6 Top of 1st Front St

= 0+00	8.77	286.07	Flow line sewer already into this M.H.
0+00	5.7	289.1	Ground on the West.
+50	5.5	289.3	
1	5.2	289.6	
+50	5.5	289.3	
2	5.9	288.9	
+50	6.6	288.2	
3	7.0	287.8	
+50	6.5	288.3	
4	5.3	289.5	
+50	3.2	291.6	
5	1.0	293.8	
+50	1.0	293.8	
6	1.8	293.0	
+50	3.9	290.9	
7	5.3	289.5	

12750  
261  
2236

Sewer & Alley bet Kansas & 30th  
 from M.H. & University North to M.H. &  
 Alley bet Howard & El Cajon

B.M. SPK N.E. Univ. Kansas 354.65

B.M. 5.89 360.54

+0 = M.H. & University 349.50

+50	5.5	355.0	349.73	5.8 ✓
+40	4.5	355.7	350.47	5.7 ✓
+30	4.6	355.9	351.20	4.7 ✓
+20	3.6	356.9	351.94	5.0 ✓
+150	3.5	357.0	352.17	4.3 ✓
+10	2.0	358.5	353.41	5.1 ✓
+10 = M.H. Park = 1	2.3	358.2	354.20	4.2 ✓ X
+48	7.37	366.87	1.04 359.50 354.08	5.4 ✓ X
+40	7.3	359.6	354.43	5.1 ✓
+50	6.3	360.6	354.95	5.7 ✓
+70	4.22	362.65	355.25	7.5 ✓
+50	5.6	361.3	355.37	5.6 ✓
+60	5.02	361.85	356.07	5.8 ✓
+50	4.6	362.3	356.56	5.8 ✓
+80 M.H. & Lincoln St Max #2	4.3	362.6	356.90	5.9 ✓
6+94 22" water Main bottom 0.3 below sewer grade Trap bulk in sewer				
+70	3.9	363.0	356.78	6.2 ✓

354.65	60.59	60.59	60.59	60.59	60.59	60.59
5.44	49.73	50.47	51.20	51.94	52.67	
360.5911	10.86	10.12	9.39	8.65	7.92	3
	↓	↓	↓			
	60.59	60.59	60.59			
	53.41	54.00	54.08			
	7.18	6.59	6.51			
361.85	65.87	65.87	65.87	65.87	65.87	65.87
4.02	54.48	54.88	55.28	55.67	56.07	56.44
365.8711	11.33	10.79	10.59	10.60	9.90	9.41
56.78						9.17
	9.09					
	7.15	68.16				
	1.94	2.25	56.78			
	2.2	9.40	11.38			

37233

16+0		5.50	366.83	360.35	6.5 ✓	
+50		5.1	367.2	360.55	6.6 ✓	
17+0	M.H. #5	5.5	366.8	360.75	6.0 ✓	
+50		5.1	367.2	360.95	6.2 ✓	
18+0	5.41	372.55	5.19	367.14	361.18	6.0 ✓
+50		5.2	367.4	361.32	6.0 ✓	
+75					✓	
19+0		4.99	367.56	361.55	6.0 ✓	
+50		4.8	367.8	361.78	6.0 ✓	
20+0		4.7	367.9	361.95	5.9 ✓	
20+37	M.H. & Howard #6	5.4	367.2	362.15	5.1 ✓	
+50		5.0	367.6	362.35	5.4 ✓	
21+0		4.93	367.62	362.38	5.3 ✓	
+50		3.9	368.7	362.58	6.1 ✓	
22+0		4.89	367.66	362.78	4.9 ✓	
+50		4.5	368.1	362.95	5.1 ✓	
+65	M.H. & Alex bet Howard & Cajon #7	3.02	369.53	363.00	6.53	

366.83	72.66	72.66	72.66	M.H.	72.66	22.66	72.66	5
5.83	60.32	60.32	60.32	20.58	60.32	21.18	61.38	
372.66	122.8	12.02	11.88	11.68	11.48	11.28		
367.56	72.36	72.36	72.36	M.H.	20.50	21.0	72.36	
9.80	61.58	1.78	1.98	72.36	72.36	72.36	72.36	
372.36	10.78	10.58	10.38	2.13	2.15	2.38		
	21.50	22.0	22.50	10.23	10.18	9.98		
	72.36	72.36	72.36	22.65				
	2.58	2.78	2.96	3.00				
	9.78	9.58	9.41	9.36				

Sewer, University Ave from Alley bet  
 30<sup>th</sup> Ohio to M.H. & Alley bet Ohio & Illinois  
 M.H. & Alley bet  
 Shaw  
 Kerr,

354.31	59.80	59.80	59.80	59.80
<del>4.52</del>	<del>50.41</del>	<del>50.62</del>	<del>50.83</del>	<del>51.04</del>
359.83				8.76
				8.16
				0.6
355.31	59.83	59.83	59.83	59.83
<del>4.52</del>	<del>50.41</del>	<del>50.62</del>	<del>50.83</del>	<del>51.04</del>
359.83	7.47	9.21	9.00	8.79
				8.58
				8.37
				8.16
				220
	59.83			
	1.82			
	8.03			

B.M. 4235 plg N.W. Ohio University 355.31  
 B.M. 706 362.37  
 0+0 M.H. & Alley bet 30<sup>th</sup> Ohio 350.20

+50 East	7.7	354.7	350.41	4.3 ✓
1+0	7.7	354.7	350.62	4.1 ✓
150	7.3	355.1	350.83	4.3 ✓
2+0	7.3	355.1	351.04	4.1 ✓
150	6.8	355.1	351.25	4.4 ✓
3+0	6.4	356.0	351.46	4.5 ✓
3+20				
150	6.0	356.4	351.67	4.7 ✓
3+80 M.H. & Alley bet Ohio & Illinois	5.8	356.6	351.80	4.8 ✓

Serranid Aley bet Ohio Illinois from N.W. of Campbell  
 & University to E.T. 25 S. of S.L. Polk.

of Campbell  
 of Shaw  
 of Kerr

76	59.83	51.70						
33	52.05	25						
	778	52.05						
228								
725	355.31	62.55	62.55	62.55	62.55	62.55	62.55	62.55
2508	7.24	218	256	294	3.33	3.71	4.09	4.59
	362.5574	1037	999	961	5.22	8.84	8.96	8.96

B.M. 4455 of Q.N. Ohio University	7.06	362.37	355.31		
240-M.H. & University	5.8	356.1	351.80	4.5	✓
150	4.8	357.6	352.18	5.4	✓
140	3.5	358.9	352.56	6.3	✓
150	4.5	357.9	352.94	5.0	✓
210	4.0	358.4	353.33	5.1	✓
150	3.8	358.6	353.71	4.9	✓
370	2.9	359.5	354.09	5.4	✓
240-M.H.	4.7	359.7	354.59	5.5	
150	2.6	359.8	354.98	5.3	✓
480	2.1	360.3	355.36	5.4	✓
150	1.3	361.1	355.74	5.9	✓
370	1.0	361.4	355.62	5.8	✓
150	8.10	370.02	361.42	356.00	5.4
485				356.27	✓
670	7.0	363.0	356.39	6.6	✓
150	7.7	362.3	356.77	5.5	✓
678-M.H. & Lincoln #3	7.4	362.6	357.00	5.6	✓
770	7.2	262.8	357.11	5.7	✓
150	7.9	262.1	357.35	4.7	✓

361.42	62.55	62.55	62.55	62.55	62.55	62.55	62.55
575.9	4.28	4.86	5.24	5.62	5.62	5.62	5.62
547.01	8.07	7.19	7.31	6.93	6.53	6.53	6.53
56.27							
10.74							
	M.H.						
364.64	67.83	67.83	67.83	67.83	67.83	67.83	67.83
3.19	6.39	6.77	7.00	7.11	7.35		
367.83	11.44	11.06	10.83	10.72	10.48		
						7.6	1.4
355.31	6.34	1.9				30.4	7.6
361.65		355.81				7.6	10.69
51.98							
9.67		361.65					
		351.91					
		9.74					



370.02

367.83	67.83	67.83	67.83	67.83	67.83	67.83	67.83
7.59	7.84	7.08	8.32	8.57	8.67	8.21	
10.24	9.99	7.75	9.51	9.26	9.16	9.02	

67.83	67.83	67.83	67.83	67.83
9.05	9.80	9.54	9.79	60.00
8.78	8.53	8.59	8.04	7.83

FT

7+0	5.38	364.64	357.59	7.1 ✓
7+50	6.3	365.7	357.84	5.9 ✓
9+0	5.90	364.12	358.08	6.0 ✓
100	5.9	364.1	358.32	5.8 ✓
10+0	5.6	364.4	358.57	5.8 ✓
120 = M.H.	5.6	364.4	358.67	5.7
+50	5.49	364.53	358.81	5.7 ✓
11+0	5.4	364.6	359.05	5.6 ✓
150	5.0	365.0	359.30	5.7 ✓
12+0	4.8	365.7	359.54	6.2
10+0	3.5	366.5	359.79	6.7 ✓
12+93 = FT. 25' S. of S.L. Polk, 3.5	3.5	366.5	360.00	6.5 ✓

364.53	9.69	69.22	69.22	69.22	69.22
369.2241	9.30	9.54	9.79	60.00	
364.53	9.83	69.36	69.36	69.36	
369.36	9.54	9.79	60.00		
	9.82	9.57	9.36		
	3.68				
	6.14				

366.4

Sewer & Alley between 30<sup>th</sup> & Ohio from N. L.  
University to Ft. 25' S of S. L. Howard.

357.95	60.64	60.64	60.64	60.64	60.64	60.64	60.64
<u>2.69</u>	50.40	50.72	51.04	51.36	51.68	52.00	9.
360.64	10.24	9.92	9.60	9.28	8.96	8.64	

Q

B.M. brass plg N. L. Ohio University	355.31				
B.M. 4.70 360.01					
0+00 N.L. University end of old sewer	4.5	355.5	350.40	5.1	
+50 York	4.7	355.3	350.72	4.6 ✓	
1+0	4.5	355.5	351.04	4.5 ✓	
1+50	4.1	355.9	351.36	4.5 ✓	
2+0	3.4	356.6	351.68	4.9 ✓	
2+50	2.7	357.3	352.00	5.3 ✓	
3+0 M.N.	2.5	357.5	352.33	5.2 ✓	
1+50	2.06	357.95	352.65	5.3 ✓	
2+0 10.06 368.66	1.41	358.60	352.97	5.6 ✓	
4+50	9.6	359.1	353.29	5.8 ✓	
5+0	8.7	360.0	353.61	6.4 ✓	
1+50	8.1	360.6	353.94	6.7 ✓	
6+0	6.2	362.5	354.26	8.2 ✓	
+38 M.A. & Lincoln	5.9	362.8	354.50	8.3 ✓	
1+50	6.01	362.65	354.55	8.1	
7+0	4.06	364.10	354.77	9.3 ✓	
1+50	5.4	363.3	355.00	8.9 ✓	
8+0	5.2	363.5	355.24	8.5 ✓	

357.95	63.98	63.98	63.98	63.98	63.98	63.98
<u>6.03</u>	2.65	2.97	3.29	3.61	3.94	4.26
363.98	11.33	11.65	11.97	12.29	12.61	12.93
	✓	✓	✓	✓	✓	✓

362.65	67.87	67.87	67.87	67.87
<u>5.22</u>	54.56	54.77	54.98	55.19
367.87	13.32	13.10	12.87	12.65
359.50	✓	✓	✓	✓
<u>13.37</u>				



372.48

16+50

6.60 365.88 359.10

6.8 ✓

17+0

4.8 367.7 359.41

8.1 ✓

+50

3.94 368.54 360.13

8.4 ✓

18+0

5.00 367.48 360.64

6.5 ✓

+50

4.2 368.3 361.16

7.1 ✓

19+0

4.8 367.7 361.67

6.0 ✓

19+32 F.T. 25' S of S.L. Howard <sup>3.1</sup>

369.4 362.00

7.4 ✓

367.4

371.80	71.80	71.80	71.80	71.80	71.80	71.80	117.95
<del>57.10</del>	<del>7.00</del>	<del>0.15</del>	<del>0.57</del>	<del>1.16</del>	<del>1.67</del>	<del>2.20</del>	2.42
12.70	12.19	11.67	11.16	10.64	10.13	9.80	2.42
368.54	71.93	71.93	71.93	71.93	71.93	71.93	71.93
<del>32.5</del>	59.61	60.13	60.64	61.16	61.67	62.00	62.00
371.93	123.2	118.0	112.9	107.7	102.6	99.0	9.90

Sender & Alley between Hart & Meridian Sts from  
M.H. & U.P. 25 to M.H. & Alley bet University & M.H. 1931

X

B.M. N.E. Brass P/g 3rd U.P. 25	325.37		
7.68 8.10	326	325.34	
320 = M.H. N.L. U.P. 25	333.44	318.30	
450	8.28	325.16	318.50
440	8.4	325.8	318.70
430	8.65	324.79	318.90
420	8.4	325.0	319.10
450	8.0	325.4	319.20
340	7.2	326.2	319.50
3130 M.H. & Myrtle	7.2	326.2	319.60
450	6.9	326.5	319.90
440	6.8	326.6	320.75
450	6.48	326.98	321.50
440	5.45	327.96	322.59
450	5.18	328.26	323.21
640	4.5	328.9	324.00
450	3.65	329.79	324.85
760 M.H.	3.6	329.8	325.00
740	3.09	330.35	325.36
450	2.1	331.3	325.81

32516 29.72 29.72 29.72  
2956 18.50 18.70 18.90  
329.724 11.22 11.02 10.82

12

M.H.,  
32516 29.87 29.87 29.87 29.87 29.87 29.87 29.87  
4.71 18.50 18.70 18.90 19.10 19.30 19.50 19.60  
329.574 11.37 11.17 10.97 10.77 10.57 10.37 10.27

29.87 29.87 29.87 29.87  
19.93 20.73 21.57 22.39  
4.94 9.12 8.30 7.48

29.87 29.87  
24.82 24.85  
5.84 5.02

329.79  
6.70 36.49 36.49 36.49 36.49 36.49  
336.494 29.85 25.00 5.86 5.81  
16.64 11.89 11.13 10.63

6.7 ✓

6.3 ✓

5.9 ✓

5.9 ✓

6.1 ✓

6.7 ✓

6.6

6.6 ✓

5.9 ✓

5.4 ✓

5.6 ✓

5.7 ✓

4.9 ✓

4.7 ✓

4.8 ✓

5.0 ✓

5.5 ✓

		333.44			
8+0			1.4	332.0	326.27
+50	8.26	341.40	0.10	333.34	326.72
9+0			7.8	333.6	327.15
+50			6.7	334.7	327.63
190-M.H. & Dwight			8.3	333.1	328.00
10+0			8.35	333.05	328.15
+50			7.75	333.65	328.90
11+0			6.70	334.70	329.66
+50			6.12	335.28	330.41
12+0			5.4	336.0	331.17
+50			4.45	336.77	331.93
13+0			3.4	338.0	332.68
+20 M.H.			2.4	339.0	333.00
+50	10.11	350.16	1.35	340.05	333.55
14+0			8.93	341.23	334.46
+50			7.96	342.20	335.37
15+0			6.8	343.4	336.28
+50			6.4	343.8	337.19
16+0			5.5	344.7	338.10
16+50-M.H. & Landis			7.2	345.0	339.00

36.49	36.49	36.49	333.05
6.27	6.72	7.18	6.98
10.23	9.77	9.3	340.034

13

			M.H.	6.32
40.03	40.03	40.03	40.03	40.03
28.90	28.66	30.41	31.17	31.93
11.13	10.37	9.62	8.86	8.70
			7.35	7.03
6.6	✓	40.03	40.03	340.05
		28.00	3.55	6.32
6.4	✓	12.03	6.48	346.37M
		6.41		11.91
		5.12	46.37	12.00
7.1	✓	3.28.00	328.00	38.17
5.11	✓	6.41	5.12	26.72
5.1	✓	337.1	333.12	27.19
			3.05	27.63
			11.45	10.99
			338.17M	10.54
4.9	✓	346.66	51.51	51.51
		4.85	38.10	39.00
4.8	✓	351.51M	13.41	12.51
				2.51
				4.0
5.0	✓			
4.9	✓			
4.8	✓			
5.0	✓			
5.3	✓			
6.0	✓			
6.5	✓			
6.8	✓			
6.8	✓			
7.1	✓			
6.8	✓			
6.6	✓			
4.00	cut 3M			



sewer Alley South of University Ave between  
Hart & Herman

B.M. = str at 2510 preceding page 354.67  
5.12 359.79

E.L. from E. N. S. Alley

0+0 = M.H. 5.8 354.0 347.50

+50 5.8 354.0 347.74

1+0 6.7 353.1 347.97

1+05 D.E. 6.76 353.03 348.00

M.L. from E. of N. S. Alley

0+0 = M.H. 5.7 354.0 347.50

+50 3.7 356.1 348.69

7+0 3.6 356.2 349.88

1+05 F.T. 3.7 356.7 350.00

357.60 H. 59.60 59.60 59.60 356.10  
47.74 47.97 48.90  
~~11.86 11.63 11.60~~

W  
59.60 59.69 59.60  
48.69 49.88 50.00  
10.91 11.72 9.60

E  
59.35 59.35 59.35  
47.74 47.97 48.00  
11.61 11.38 11.35  
59.35 59.35 59.35  
48.69 49.88 50.00  
10.66 9.47 9.35

15  
35-3.03  
6.32  
59.35  
54.67  
4.71  
59.38



Sewer Lines	4 <sup>th</sup> A to Cedar	71-74
" "	Monticito Way	73-(76)
" "	Stockton (Jackdaw Crescent Court.)	75-
" "	(Eagle & Penn.)	77-78

Genev @ 14th St from old D.E. 100' N of N.L.M. St to

D.E. 50' S of S.L. "L" St

ℓ

$\frac{2}{13}$  Sample,  
14 Shaw,  
Kerr.

B.M. Brass. 19 13<sup>th</sup> S.M.  
8.90 11.90

3.00 bottom gauge

0+0 = old D.E.

2.88

+25

2.98

+50

3.08

+75

3.18

+100

3.28

+125

3.38

+150 D.E.

3.48

11.90 M.  
2.88

11.90

11.90

11.90

11.90

11.90

11.90

11.90

17

2.98

3.08

3.18

3.28

3.38

3.48

8.72

8.82

8.92

9.02

9.12

9.22

18

center beginning at M.H. Union 150 S of Union  
 the 00 in Easterly direction as given below

Book 499 P 32

B.M.	2.54	72.91	70.37	
020 M.H.		10.5	62.4	43.00 57.00
+50		9.20	63.71	57.27
+10		7.15	65.76	57.55
+50		7.9	65.0	57.82
+10		6.2	66.9	58.10
+50		7.0	65.9	58.37
3		9.1	63.8	58.64
+50		9.1	63.8	58.91
Φ Horton 5675 S of E M.H. 40° 57' 2"		9.0	63.9	59.00
4		8.5	64.7	60.86
+50		7.6	65.3	63.59
T.P.	9.96	80.33	2.54	70.37
5		10.2	70.1	66.32
+49 <sup>5</sup> M.H. 7° 38' 2"		6.4	73.7	69.00
6+0		2.20	78.13	71.56
+50	13.12	92.60	0.85	79.88
7		10.1	82.5	76.64
+26 <sup>3</sup> G. 202 N		7.2	85.4	78.00
+50		5.5	87.1	78.52

Const. 1914

12.3

19

build drop on outside of M.H.

5.4	65.76	69.45	69.45	69.45	69.45	69.45	69.45
	3.63	57.27	57.55	57.82	58.10	58.37	58.64
	69.45 M.	12.38	12.15	11.90	11.63	11.35	11.08
			✓	✓	✓	✓	✓
		69.45	69.45				
		58.91	59.00				
		10.54	10.45				

		92.60				
870			6.27	86.33	79.61	6.7
+50			6.1	86.5	80.70	5.2
+63 <sup>2</sup> M.H.	3° 10' R	✓	6.4	86.2	81.50	5.2
910			4.61	87.99	83.00	5.0
T.P.	12.91	103.30	7.21	90.39		
+50			12.9	90.4	85.77	4.6
10			9.45	93.85	88.55	5.3
+50			6.5	96.8	91.32	5.3
11			4.5	98.8	94.10	4.7
+50	11.50	112.06	2.74	100.56	96.87	3.7
	573 51032 book 499 P 34					
+69 M.H.	44° 28' L		7.54	104.52	98.00	6.5
12			10.0	102.5	99.97	2.1
+50			5.8	106.3	103.15	2.2
+64 <sup>5</sup> angle	9° 38' R		5.32	106.74	104.07	2.7
13	11.72	121.99	11.79	110.07	106.34	3.9
+26 <sup>2</sup> break			10.1	111.9	108.00	3.9
+50			9.2	112.8	108.52	4.3
1410			7.96	114.03	109.60	4.4
+50			8.7	113.3	110.68	2.6
	573 101982 book 499 P 32					
+65 <sup>5</sup> M.H.			6.0	116.00	112.00	5.0
15			9.7	112.3	111.21	1.1

121.99

15 +50 break			8.7	113.3	111.50
T.P.	12.91	133.66	1.24	120.75	
16 +0			8.95	124.71	113.09
+50			7.11	126.55	114.68
17 +0			5.90	127.76	116.28
-50	13+87.8	641499-32			120.00
+54	11.4	290.2 L	9.4	124.3	118.00
T.P.	13.22	146.67	0.21	133.45	
18			10.3	136.4	130.72
T.P.	12.29	158.57	0.34	146.28	
150			11.9	146.7	142.37
T.P.	12.74	171.03	0.28	152.29	
19 break			11.7	159.3	154.00
T.P.	12.38	183.33	0.08	170.95	
250			2.2	181.1	177.50
T.P.	12.82	196.11	0.14	193.19	
T.P.	11.80	207.30	0.61	195.50	
2010			3.4	203.9	201.00

1755  
 1665  
 3

1.8
11.6
11.9
11.5
DROP
6.3
5.7
4.3
5.3
3.6
2.9

Sewer on (Fiske) St from D.E. 90 ft S. of S. 4  
 Southlook Ave.  
 Gilmore To M.H. Canyon Line

B.M.	3.57	91.63		88.06			
4+0 = D.E. 90' S. of S. 4, Gilmore			3.63	88.00	77.00		6.2 ✓
+50			12.12	79.51	73.80		5.7 ✓
	7.0124	81.15	12.12	79.51			
+10			5.1	76.0	70.59		5.4 ✓
+50			8.6	72.6	67.39		5.2 ✓
7+10 T.R.	0.20	69.28	12.07	69.08	64.18		4.9 ✓
+50			3.6	65.7	60.95		4.7 ✓
3+0			7.0	62.3	57.77		4.5 ✓
3+12 M.H.			7.7	61.6	57.00		4.6 ✓
+50			8.6	61.2	55.84		5.3
4+5			10.4	58.2	54.31		4.6
4+10 break			10.7	58.6	54.00		4.6
+50	0.96	57.74	12.50	56.78	51.29		5.5
4+77 P.C.			5.2	52.5	48.10		4.4
5+15			6.2	51.5	46.88		4.6
5+33 P.T.			7.5	50.2	45.66		4.5
+50			8.3	49.4	44.51		4.9
5+87 <sup>5</sup> M.H. Drop			8.8	48.4	42.00		6.9

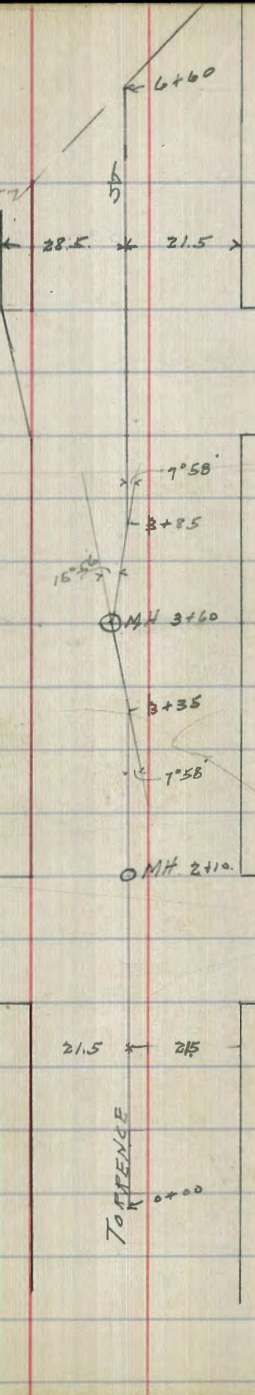
5/16/22  
 Sec 89-66

Gregory  
 Myers  
 Shaw

Construction Notes Sewer  
 in Torrence St  
 from 160' W. of W.L. Wellborn St  
 To Midd. Fdd Line

	Grade				
210' W. of W.L. Wellborn = 0+00 D.E	261.31	260.84	5.30	256.01	250.0
0+50			1.71	254.60	249.62
1			0.90	260.41	249.24
+50			2.28	259.03	248.86
2+10 = E.L. Wellborn M.H.			7.35	253.96	248.4
+60			10.92	250.39	244.51
T.P. 0.31	248.68	12.91		248.37	
3+00 break			0.92	247.76	241.39
+05 break			2.29	246.39	240.28
+10 break			3.85	246.83	237.76
0.86	236.66	12.88		235.80	
4+30 break			10.13	236.53	224.75
+35 Δ 7°58' L break			13.69	222.79	222.24
+40 break			14.92	221.76	221.30
10.50	243.80	3.66		233.00	
+60 Existing M.H. Drop Δ 15°56' R				220.5	
				226.0	
+70 -break			0.90	242.80	235.0
12.18	258.02	+2.04		245.94	
+75 break			11.64	246.38	232.45
+80 break			11.85	246.17	229.79
+85 Δ 7°58' E			11.90	246.14	240.08
4+10			11.83	246.59	241.52
+60			6.69	251.35	244.41
5+10			3.10	254.94	247.31

23.9  
 23.9  
 23.9  
 23.9



23  
 248.4  
 556  
 253.96  
 253  
 1.04

FREMONT ST.

ST

TORRENCE



25802

24

5+60 772 265.6 0.28 267.74 250.2 7.54

6+10 534 260.2 253.4 7.02

6+60 = DE. 190 263.56 256.0 7.56





Sewer & Brook's st from M.H. W.L. 5<sup>th</sup> st  
 To M.H. Q 6<sup>th</sup> st

B.M. Brass ply 5 <sup>th</sup> & Brook's			279.91		
v.B.M. constructed 3.80			283.71		
0+0 = M.H. S.L. 5 <sup>th</sup> st		3.9	279.8	274.70	5.1
0+28 Nail		4.5	279.46	274.42	5.0
+50 Nail		4.40	279.31	274.18	5.2
+75 Nail		4.75	278.96	273.95	5.0
1+0		3.9	279.8	273.70	6.1
+50		5.0	278.7	273.7	5.5
+60 break		4.7	279.0	273.1	5.9
T.P. 1.23	272.18				
T.P. 0.93	260.40				
+70 break		12.76	270.95		
		12.71	259.47		
		1.8	258.6	254.5	4.1
+25		11.1	249.8		
T.P. 0.63	248.68				
		12.35	248.05		
+50 break		7.4	241.3	237.0	4.3
+67		11.9	236.8	234.62	<del>2.2</del>
2+99 M.H. 6 <sup>th</sup> st		13.6	235.1	230.00	5.1

Not in  
 4-6-14

Seven Lot Line bet Horton & Union from <sup>2/3 Sample</sup>  
 M.H. Canyon Line W of Nerney East for 417 to <sup>14 ft</sup> ~~14 ft~~ <sup>Run</sup>  
 D.E. 45' W of W.L. Henry St.

B.M. L	17.10	166.10		149.00		
0+0 = M.H. Canyon Line				149.00		
0+16 1/2 break		14.2	151.9	150.00		1.9
+20		10.7	155.4			
+25		7.8	158.3			
T.P.	12.42	178.26	0.26	165.84		
+50 1/2 break		6.4	171.9	168.00		3.9
T.P.	11.80	189.30	0.76	177.50		
+75		3.3	186.0			
T.P.	11.42	201.07	0.15	189.15		
T.P. 1/2	12.28	213.14	0.21	200.86		
+100 1/2 break		11.5	201.6	197.00		4.6
T.P.	12.60	225.53	0.21	212.93		
+125 1/2 break		10.9	214.6	211.00		3.6
+150 1/2 break		3.2	222.3	216.00		6.3 ✓
T.P.	8.10	232.75	0.88	224.65	218.00	
+20			5.88	226.37	216.37	10.5 ✓
+25			3.41	229.34	216.56	12.8 ✓
+50			2.6	230.2	216.75	13.5 ✓
+75			3.5	229.3	217.12	12.2 ✓
+100			4.8	228.0	217.50	10.5 ✓
+140			7.62	225.13	217.87	7.2 ✓
+17 = D.E. 45' W of Henry St		8.6	224.2	218.00		6.2 ✓

cut

225.13					
7.25					
232.38	32.38	32.38	32.38	32.38	32.38
18.00	17.87	17.80	17.12	16.75	
14.38	14.51	14.88	15.26	15.63	
226.87					
1.38					
228.25	28.25	28.25			
16.00	16.00	16.37			
12.25	12.25	11.88			

162  
 251  
 419

sewer Levels for app page

1/2 Dunkle  
1/4 Shaw  
Hen.

sewer to be constructed marked thus - - - -

29

B.M. S.E. 3/4 Lewis & Fogalls 275.87

B.M. 6.43 282.30

0+0 = M.H. 4 Randolph 7.9 274.4 269.10 ✓ 5.3

0+30 7.4 274.9 269.48 ✓ 5.4

4.1 272.2

0+50 4.7 277.6 269.74 ✓ 7.9

1+0 6.2 276.1 270.38 ✓ 5.7

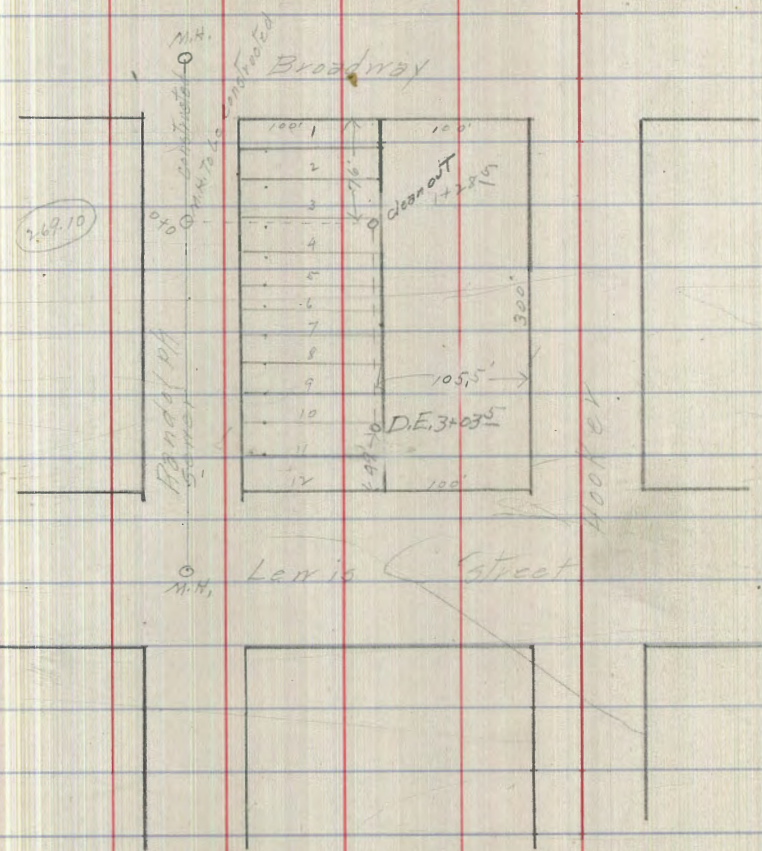
1+28 M.H. 6.9 275.4 270.74 ✓ 4.7

+50 6.5 275.3 271.02 ✓ 4.8

4+0 6.1 276.2 271.66 ✓ 4.5

+50 6.1 276.2 272.30 ✓ 3.9

3+0 D.E. 6.39 277.00 273.00 ✓ 4.0



277.00										
4.50										
281.60	51.60	81.60	81.60	81.60	81.60	81.60	81.60	81.60	81.60	81.60
73.00	2.32	1.26	1.22	0.78	0.32	7.74	9.23	6.910		
8.60	9.30	9.94	10.58	10.26	11.22	11.86	12.12	12.50		

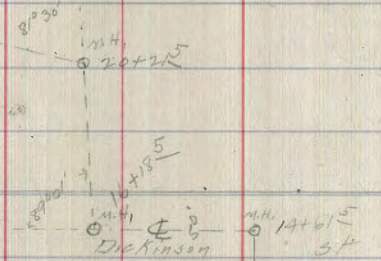
Survey Line - from F.T. & Alley bet First & Albatross north  
 To M.H. & Lewis. Thence according to sketch on opp page

Σ

B.M. brass dg 3d Lewis	1.83	293.82	291.99	
0+0-F.T.	7.12	286.8	279.50	7.5
0+48-M.H. & Lewis	7.4	286.4	279.70	6.7 ✓
1+0	6.25	287.57	279.90	7.7 ✓
1+50	6.01	287.81	280.10	7.7 ✓
2+0	6.2	287.6	280.30	7.3 ✓
2+41 <sup>5</sup> M.H.	5.6	288.2	280.46	7.7 ✓
4+50	5.6	288.2	280.50	7.7
3+0	5.07	288.75	280.70	7.0 ✓
4+50	4.99	288.83	280.90	7.9 ✓
4+0	4.7	289.1	281.10	8.0 ✓
4+50	4.4	289.4	281.30	8.1 ✓
5+0	5.39	288.43	281.50	6.9 ✓
4+50	5.6	288.2	281.70	6.5 ✓
194 <sup>5</sup> M.H. & Montecito	6.1	287.7	281.87	5.7 ✓
6+0	6.03	287.79	281.90	5.9 ✓
4+50	5.9	287.9	282.10	5.8 ✓
7+0	6.1	287.7	282.30	5.6 ✓
4+50	4.95	288.87	282.50	6.4 ✓

Connecticut County Hospital corner  
 M.H. 21+74<sup>5</sup>  
 8°30'

287.87	4.91	292.72 M.H.
140	1450	240
92.72	92.72	92.72
79.90	80.10	80.30
13.02	12.82	12.42
12.44		
240	445	445
92.72	92.72	92.72
80.70	80.90	81.10
12.02	11.82	11.42
5+49 <sup>5</sup>		
M.H. 288.83	73.51	93.51
92.72	4.68	31.12
81.87	293.51	12.41
10.85		
93.51	93.51	93.51
81.90	82.10	82.30
11.01	11.41	11.81



ARBOR DR.

ST

Montecito way - M.H. 5+94<sup>5</sup>

FRONT

M.H. 0+80 - M.H. 0+2+41<sup>5</sup>

Albatross

289.36  
4.27  
293.63

93.65 93.65 93.65 93.65 93.65  
84.90 85.10 85.30 85.50 85.70  
8.75 8.55 8.35 8.15 7.95

293.82

840		9.4	289.4	282.70	6.7 ✓
150		2.40	291.42	282.90	8.5 ✓
940	3.09	296.88	293.79	283.16	10.7 ✓
+ 41.5	M.H. & 5/20/10	2.2	294.7	283.26	11.4 ✓
450		1.3	295.6	283.30	12.3 ✓
1040		2.81	298.57	283.50	10.6 ✓
150		3.10	293.78	283.70	10.1 ✓
1140		3.4	293.5	283.90	9.6 ✓
150		5.79	291.09	284.10	7.0 ✓
11477		7.93	288.95	284.21	4.7 ✓
11489 M.H.		9.2	287.7	284.24	5.5 ✓
1240		12.22	284.06	284.30	-0.2
12495			284.60		
1340		13.4	283.5	284.70	-1.2
+ 50		10.33	286.55	284.90	1.7 ✓
1440		9.48	287.40	285.10	2.3 ✓
+ 50		8.1	282.8	285.30	3.5 ✓
+ 61.5	M.H. & Dickerson	7.9	289.0	285.34	3.7 ✓
1540		7.52	289.36	285.50	3.9 ✓

293.74  
3.27  
297.06

97.06 97.06 97.06 97.06 97.06 97.06  
83.12 83.76 83.30 83.52 83.70 83.92 84.10  
13.96 13.80 13.74 13.56 13.36 13.16 12.96

M.H.  
97.06 97.06  
84.28 84.24  
12.85 12.82

11.91 12.14 12.32 13.04 12.76  
84.26 84.35 84.42 84.72 84.60

289.06 285.38 285.38 285.38 285.38 285.38  
1.32 84.26 84.30 84.42 84.72 84.64  
285.38 1.12 1.03 0.96 0.66 0.72  
4.54 11.03 3.08 3.82 3.09  
3.51 10.07 2.42 2.58 2.58  
1.2 2.42 6.2 84.78  
0.60

285.34  
1.28  
286.52



216.58

15+50 7.20 -289.58 285.70

16+0 6.7 290.2 285.90

16+18<sup>5</sup> M.H. 89° 0' R 9.1 289.8 285.98

450 5.6 291.3 286.10

17+0 6.05 299.74 3.19 293.69 286.30

450 5.43 294.31 286.50

18+0 4.9 295.3 286.70

450 3.56 296.18 286.90

19+0 3.5 296.2 287.10

450 3.71 296.03 287.30

20+5 3.8 295.2 287.50

20+21<sup>5</sup> M.H. 81° 30' L 4.2 295.5 287.58

450 3.43 299.74 3.43 296.31 287.70

21+0 3.58 296.16 287.90

450 3.80 295.94 288.10

27+<sup>5</sup> M.H. Cor. City Hospital corner 4.2 295.5 -288.20

ad.  
TOP 11.2

11.9

289.58  
4.88  
294.46

94.40  
85.70  
8.70

94.40  
85.90  
8.50

M.H.  
94.40  
59.8  
84.2

94.40  
86.10  
8.30

32

296.31  
4.88  
301.19

1.66  
299.53

1301.19

11.70  
287.5

301.19

14.20  
287.0

M.H. 1<sup>st</sup> & Kenis 285.16

M.H. 1<sup>st</sup> & Broadway 287.25

M.H. 1<sup>st</sup> & Stockton 291.25

M.H. St 11+85 290.05

M.H. 1<sup>st</sup> & Dickenson 289.00

293.69  
1.90  
295.59

296.18  
3.94  
300.12

389.25  
12.54  
300.52

296.31  
3.82  
300.13

95.59  
86.80  
8.79

300.12  
86.90  
13.22

97.59  
86.50  
9.09

300.12  
87.10  
13.02

95.59  
86.70  
8.89

300.12  
87.30  
12.82

300.12  
87.50  
12.62

300.13  
27.74  
272.39

300.13  
27.40  
272.73

300.13  
28.10  
272.03

300.13  
28.40  
271.73

Sever & Peter Gaugh St from M.H. Canyon Line  
55' approx South of Winder North for 275 to D.E  
65'

B.M.	16.03	184.23	162.00	16
0+0 M.H.		11.3	172.7	162.00
0+13		11.60	172.43	168.70
+50		0.2	186.8	170.72
+75		3.6	180.4	172.089
+72 break		8.8	175.2	173.00
120		3.6	180.4	176.45
T.P.	13.09	196.77	0.35	183.68
T.P.	13.14	207.54	0.37	196.40
1450 break		7.9	201.7	193.00
T.P.	12.58	221.69	0.43	209.11
210 break		5.4	216.3	212.00
T.P.	10.48	231.98	0.19	221.50
2120 break		4.9	227.1	223.00
250		3.2	228.8	223.55
+75 D.E	5	5.2	226.8	224.00

3-5-14

4.7  
1.7  
6.03  
38

4.7

3.7

13.1

8.3

2.2

4.0

3.7

4.3

4.1

5.3

2.8

Sewer Elm St from Allegheny 1482 37°  
 to Mt. Bancroft

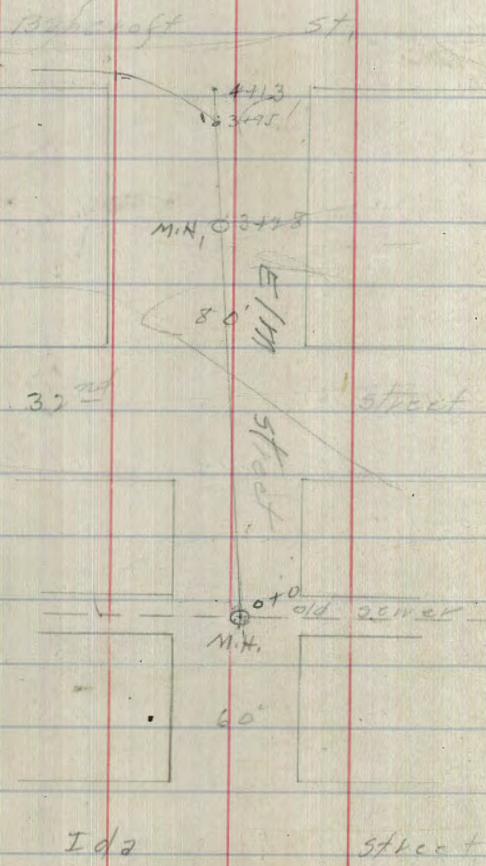
X

B.M.	9.68	223.68	219.00	
0+0 = M.H. constructed				
+50	13.24	210.5	215.25	
1+0	11.94	230.82	4.90 218.28	216.59
+50	10.8	220.0		217.81
T.P. 2	7.5	223.3		219.28
+50	6.6	224.2		220.55
3	4.5	226.3		221.62
+ 28 M.H. 35' W of Bancroft	4.7	226.1		222.33
+50	3.2	227.6		223.57
444 1470				224.00 224.16
1+13 = N.L. Bancroft	2.5	228.3		224.80

1482  
14  
Bancroft  
H.W.  
K.M.

224.16	222.67	226.50		
127	222.67	650		
222.67	222.67	233.12	222.67	
222.67	222.67	1.2	222.67	
214.00	1267	222.9	222.67	34
226.67	226.67	226.67	217.81	230.49
215.27	216.54	217.81	12.68	230.49
11.4	10.13	8.86	230.49	11.71
			10.14	8.81
230.49	230.49	230.49		
222.83	222.83	224.08		
8.16	160	6.19		

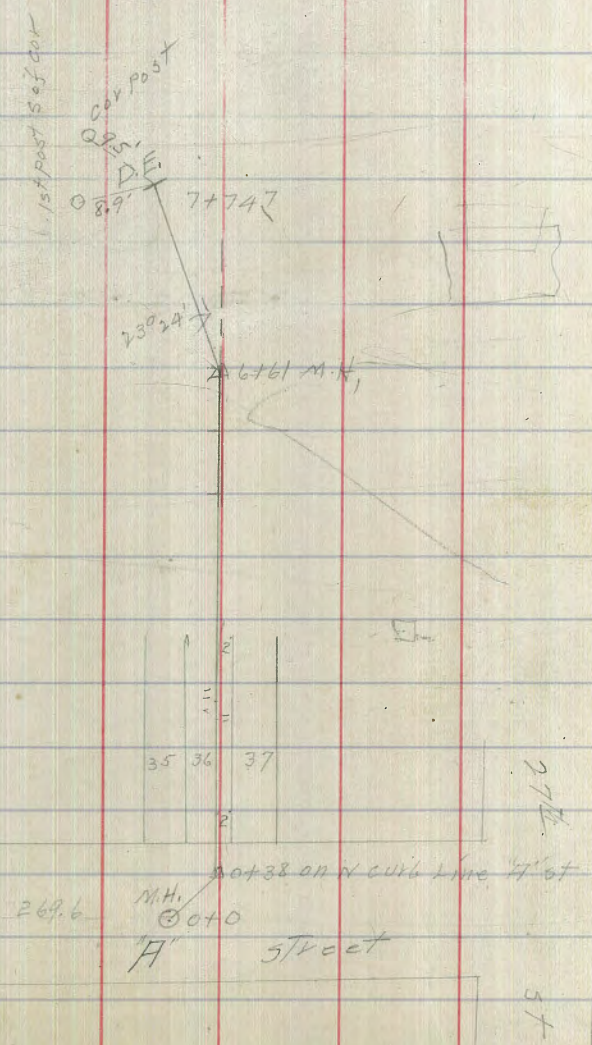
F 4.8



Ida street

Sewer for Municipal playgrounds Balboa  
Park N of H St between 26th & 27th St  
stakes set 1/2 ft of ditch

B.M. S.W. 61255 plg 26 <sup>th</sup> St	196.93			
9.54 206.47				
T.P. 6.61 212.26	0.82	205.65		
st+0 = M.H.	9.11	203.15	203.15	
+38	5.9	206.4	203.67	2.7
+50	4.8	207.5	203.84	3.7
+55	2.2	210.1		
1+0 5.86 215.99	2.13	210.13	204.53	5.6
+50	5.40	210.59	205.22	5.4
2	4.7	211.3	205.91	5.4
+50	3.2	212.8	206.80	6.2
3	2.08	213.91	207.30	6.6
+50 M.H. break	1.7	214.3	208.00	6.3
4 9.98 224.78	1.19	214.80	208.32	6.5
+50	9.2	215.6	208.64	7.0
5	8.9	215.9	208.96	6.9
+50	8.3	216.5	209.29	7.2
6	7.25	216.93	209.61	7.3
+50	7.3	217.5	209.93	7.6
+61 M.H. break	7.1	217.7	210.00	7.7 x 269.6
T.P. 5.62 222.55	7.85	216.93		



222.55

36

740	1.6	221.0	211.02	10.0
+40	2.1	220.5	212.07	8.4
+74 <sup>7</sup> D.E.	4.0	218.6	213.00	5.6

Senior & 3<sup>rd</sup> St. from M.H.S.L. Juniper Bunker  
North to D.E. for 180'

6/11/14  
Shaw  
Kerr,

216.56 9.16  
9.74 8.88  
206.82 974 2.50%

37

J  
B.M. N.W. Juniper 2<sup>nd</sup> 208.95  
7.61 216.56  
0+0 M.H. changed from E.T. 206.80  
750 5.05 211.50 207.68 3.8  
1+0 3.33 212.73 208.57 4.1  
+50 2.13 214.43 209.45 5.0  
+80 D.E. 1.08 215.48 210.00 5.5

Completed June 16<sup>th</sup> 1914

Sewer constructed according to sketch of sample  
 on opp. page  
 5 1/2' 3" w of ditch L  
 1/5' 1/4" Ker.

B.M. B.P.N.E. Washington & Goldfinch 267.02

6.46 273.48

T.P. 3.26 269.22 2.96 266.02

0+0 = 5' S. of present F.T. 3.03 266.20 266.25 5.0 ✓

+50 3.71 265.57 261.55 4.0 ✓

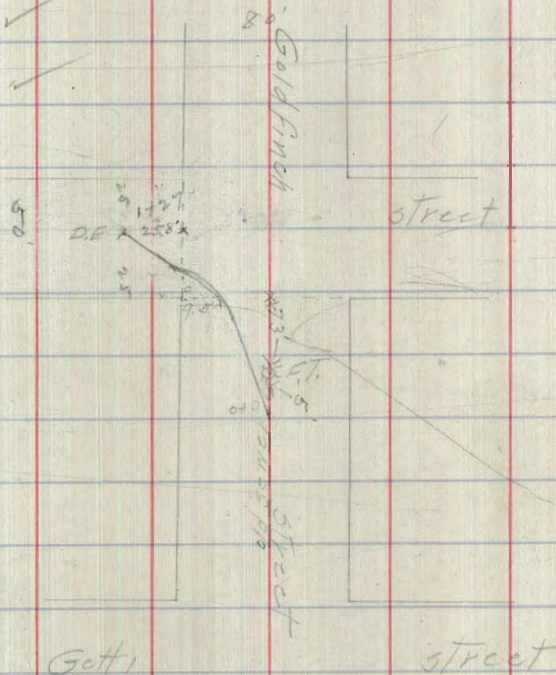
+100 3.43 265.85 261.85 4.0 ✓

+127 D.E. & Lewis St. 3.30 265.98 262.00 4.0 ✓

265.57	70.34	70.39	70.34	70.34
4.77	61.25	61.55	61.85	62.00
270.34	9.09	8.79	8.49	8.34
		8.56	8.50	

38

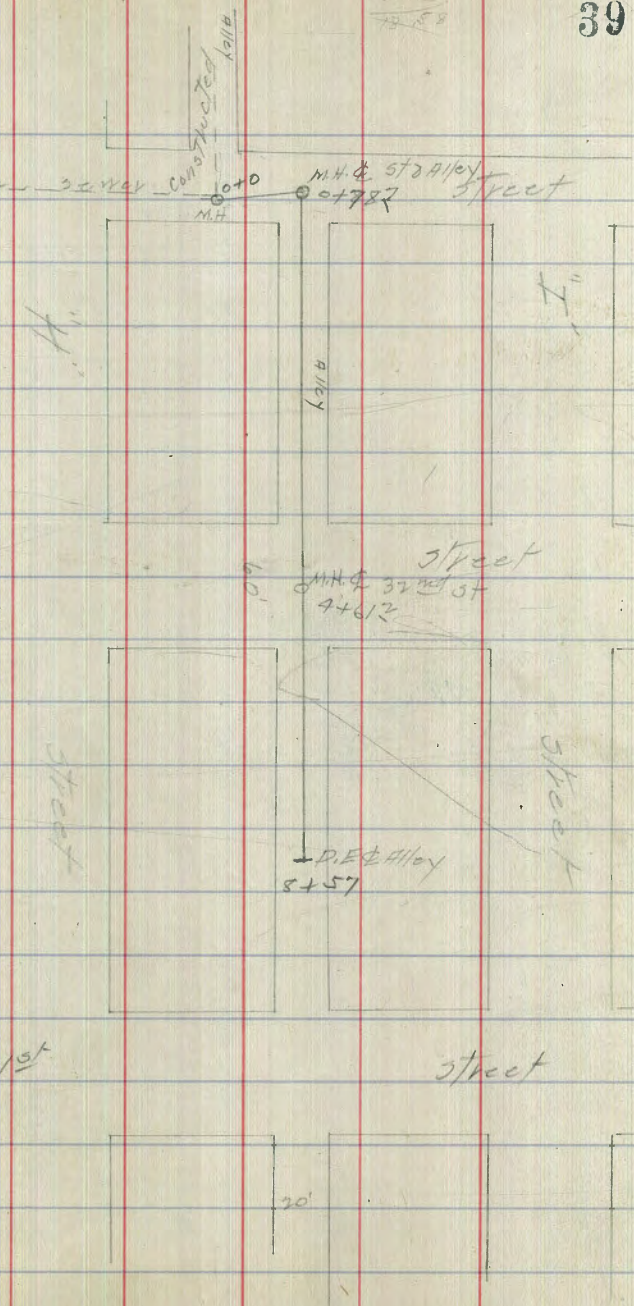
9.3  
 14.5  
 2.0  
 20.8



Sewer Line - see sketch opp Page 4  
 1/7 blank  
 14 mark

5.85  
 12.93  
 72.58

B.M.	18.58	61.52		43.00	
0+0		12.7	48.7	43.00 45.00	3.9
+50		7.73	53.85	48.80	5.1
+78.7 M.H. break		6.0	55.6	51.00	4.6
1+0		2.5	59.1	55.34	3.8
T.P.	12.96	73.97	65.7	61.01	
+50		3.9	70.1	65.67	4.4
T.P.	12.54	85.93	65.8	73.39	
+75		6.34	79.57	70.83	8.8
2 break		4.5	81.4	76.00	5.4
+50		4.00	81.23	76.19	5.7
3		3.8	82.1	76.39	5.7
+50		3.9	82.0	76.58	5.4
4		4.1	81.8	76.78	5.0
+50		4.8	81.1	76.97	4.1
break		4.2	81.7	77.00	4.7
+61.2 M.H. & 32' st		3.49	82.44	77.39	5.1
5	7.31	89.75	82.44	77.39	5.1
+50		7.1	82.7	77.89	4.3
6		6.59	83.16	78.40	4.3
+50		6.0	83.8	78.90	4.9
7		5.93	84.62	79.41	5.2





89.75

7+50

4.2

85.6

79.91 ✓

5.7 ✓

8

3.6

86.2

80.42 ✓

5.8 ✓

+50

2.7

87.1

80.92 ✓

6.2 ✓

+57 D.E

2.3

87.5

81.00 ✓

6.5 ✓

82.44

4.58

86.82

86.82

86.82

86.82

86.82

77.00

77.59

77.89

78.40

78.90

9.82 ✓

9.43 ✓

8.93 ✓

8.42 ✓

7.92 ✓

86.82

86.82

86.82

79.41

79.91

80.91

7.41 ✓

6.91

79.91 P.

11.03

90.94

70.94

80.42

81.00

10.52 ✓

9.94 ✓

Sewer Lot Line BIR B South Look Addition  
 from M.H. Sta 4+582 (2151e) 51 Line North  
 on Lot Line to D.E 145' S. of S.L. Gilmore St  
 for distance of 333'

B.M.	12.70	69.48		56.78	
0+0 M.H.			13.1	56.4	50.75
+18			12.9	56.6	
+30			11.5	58.0	
+33			8.1	61.4	
+50 STK			5.89	63.59	57.81
T.P.	12.32	81.27	0.53	68.95	
+70			11.6	69.7	64.87
+50			4.1	77.2	71.93
T.P.	11.39	92.50	0.16	81.16	
+2 break			3.6	83.9	79.00
+50			6.10	86.40	80.88
3			4.05	88.45	82.76
+33 D.E 145 S. of S.L. Gilmore		2.9	89.6	84.00	

6/1/14  
 double  
 of  
 from

41

Sewer & "E" st from D.E. 40' E of E. L. of 27th St  
 27th East for 6101 to M.H. Trunk Line  
 B.M. 12.26 177.00 164.80  
 T.P. 12.28 189.33 0.01 177.05

151.48  
 3.53  
 155.01 H.  
 55.01  
 44.48  
 105.3  
 0.49  
 10.05

164.80

70 = D.E. 40' E of 27th St	4.88	184.45	179.00	5.5 ✓	
+50	3.34	189.94	178.45	8.1 ✓	
+10		2.0	187.9	177.40	10.0 ✓
+50		4.4	185.5	177.35	8.1 ✓
+80 break		7.0	180.9	177.00	5.9 ✓
210		7.0	180.9	174.93	6.0 ✓
T.P.	0.73	177.72	12.95	176.99	
+50		2.3	175.4	169.75	5.7 ✓
+61 M.H. / E of E.L. Lot 12	3.7	174.0	168.61	5.4 ✓	
+90 break		7.6	170.1	165.60	4.5 ✓
3		8.8	168.9	164.27	4.6 ✓
T.P.	0.17	164.88	13.01	167.71	
+50		2.6	162.3	157.63	4.7 ✓
4		9.2	155.7	150.99	4.7 ✓
+30 break <sup>6.45</sup> V.C.	159.33	12.00	152.88	147.00	5.9 ✓
+50		8.06	151.27	146.67	4.6 ✓
5		10.24	149.09	145.84	3.3 ✓
+50		7.85	151.42	145.00	6.5 ✓
+81				144.48	
6		2.56	156.33	144.17	12.6
+10 M.H. Trunk Line	0.3	159.0	144.00	150.0	
			141.89		

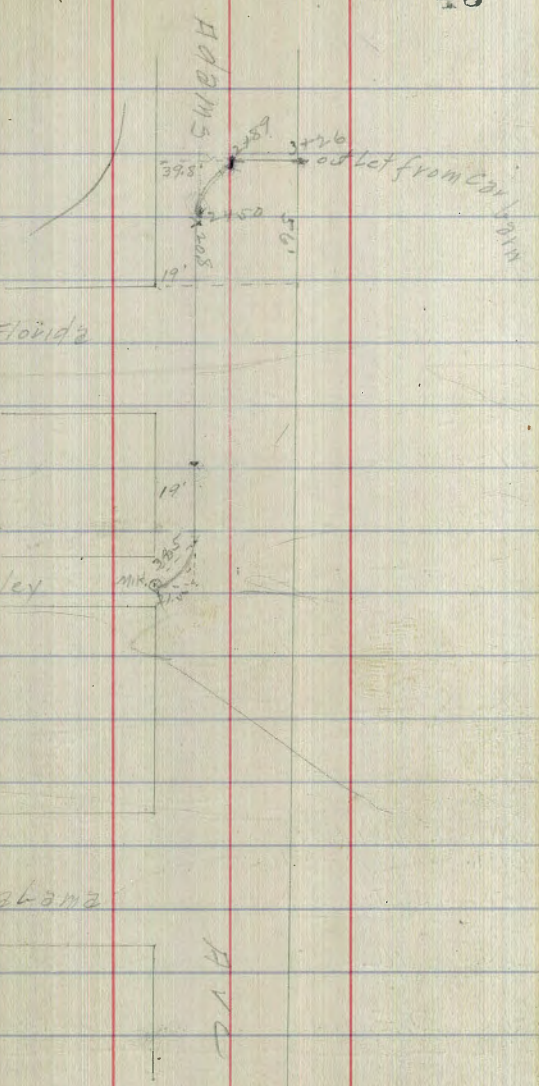
55.01 55.01 55.01 55.01  
 45.00 45.84 46.67 47.00  
 10.01 9.17 8.34 8.01  
 182.90  
 6.02 88.92 88.92  
 138.92 77.00 77.35  
 11.92 11.57  
 186.60  
 3.50  
 190.10 H.  
 90.10 90.10 90.10  
 77.90 77.95 77.00  
 122.0 116.5 111.0

sewer for Car barn Adams Ave

by Dinkler  
by Shaw  
14 June

B.M.	5.55	345.08	339.53		
0+0 M.H. P.C.		12.42	332.11		1.66
+36 P.T.		7.54	337.54	333.26	4.3
+50		7.36	337.72	333.49	4.2
+70		6.90	338.18	334.32	3.9
+50		6.77	338.31	335.15	3.2
+20 Break		6.15	338.93	336.00	2.9
+50 P.C.		5.03	340.05	337.62	2.4
+89 T.T.		3.24	341.84	338.88	3.0
bottom pipe 3426 Connection to Car barn		5.00		340.08	3.33

Installed by Julian





Sever & Alley bet Grim & 31st from 7, Gravel  
 M.H. N.L. UP25 st North To E.W. Alley 14, Shain  
 South of University 14 Fletcher

	M.E.				
B.M. Brass pig UP25 & 30th	8.17	334.09		325.92	
T.P.	8.99	333.26	9.82	324.27	
0+0 = M.H. N.L. UP25				327.20	
+50			6.35	326.91	321.90
1			5.22	328.04	321.60
+50			4.2	329.1	321.81
2			3.7	329.16	322.01
+50			2.9	330.4	322.22
3			6.39	326.87	322.42
+30 = M.H. & Myrtle			6.1	327.2	322.54
+50			5.9	327.4	322.62
4	4.52	336.34	1.44	331.82	322.22
+50			4.08	332.26	323.03
+50			4.8	331.5	323.23
+50			4.2	332.1	323.43
+60			4.9	331.4	323.63
+50	no stake				323.83
+60 M.H.			5.2	331.1	323.87
7			5.57	330.77	324.04

326.91	33.41	33.41	33.41	33.41	33.41	33.41	33.41
6.50	21.90	21.60	21.81	22.01	22.22	22.41	22.60
333.41	12.01	11.81	11.60	11.90	11.79	11.58	11.37
	✓	✓	✓	✓	✓	✓	✓
	33.41	33.41					
	22.22	22.12					
	10.57	10.77					

331.82	35.94	35.94	35.94	35.94	35.94	35.94	35.94
21.2	22.82	23.03	23.23	23.43	23.63	23.87	24.07
335.94	13.12	12.91	12.71	12.51	12.31	12.07	
	✓	✓	✓	✓	✓	✓	
	35.94	35.94					
	24.04						
	11.50						

5.5 ✓
6.4 ✓
7.3 ✓
7.6 ✓
8.2 ✓
9.4 ✓
1.7 ✓
4.8 ✓
9.0 ✓
9.2 ✓
8.3 ✓
8.7 ✓
7.8 ✓
7.2 ✓
6.7 ✓

336.34

7	150		5.7	330.6	324.24
8			5.62	330.72	324.14
+50			5.8	330.5	324.65
9			5.76	330.58	324.55
+50	6.78	337.68	5.44	330.90	325.05
+90	M.H. & Dwight bank		4.6	333.1	325.20
10			4.8	332.9	325.33
+50			6.03	331.65	325.99
11			5.54	332.14	326.66
+50			4.9	332.8	327.32
12			3.6	334.1	327.98
+50			2.87	334.81	328.65
13			1.9	335.8	329.31
+20	M.H. Drop break				331.00
	10.27	346.26	1.69	335.99	329.60
+50			9.5	336.8	331.36
14			8.6	337.7	331.97
+50			7.41	338.85	332.59
15			6.2	340.7	333.20
+50			5.4	340.9	333.70

335.94	35.94	35.94
<u>24.24</u>	<u>24.44</u>	<u>24.65</u>
11.70	11.50	11.29

46

6.4	✓	330.58 <u>6.84</u> 337.43	37.43 <u>24.85</u> 12.58	37.43 <u>25.05</u> 12.38	M.H. 37.43 <u>25.20</u> 12.23	37.43 <u>25.33</u> 12.10	37.43 <u>25.99</u> 11.44	37.43 <u>26.66</u> 10.77
6.3	✓		37.43 <u>27.32</u> 10.11		37.43 <u>27.88</u> 9.55			
5.9	✓							
5.7	✓	334.81 <u>4.43</u> 339.24	39.24 <u>27.75</u> 11.26	39.24 <u>28.65</u> 10.59	M.H. 39.24 <u>29.60</u> 9.64	39.24 <u>31.36</u> 7.88		
5.9	✓							
7.9	✓	338.85 <u>5.33</u> 344.18	44.18 <u>31.97</u> 12.21	44.18 <u>32.59</u> 11.59	M.H. 44.18 <u>33.70</u> 10.48	44.18 <u>33.80</u> 10.38	2.3	
7.6	✓							
5.7	✓							
5.5	✓							
5.5	✓							
6.1	✓							
6.2	✓							
6.5	✓							
5.0	✓							
6.4	✓							
5.4	✓							
5.7	✓							
6.3	✓							
6.9	✓							
7.1	✓							

346.26

44.18  
34.40  
9.78  
2.22  
9.50

341.50  
4.58  
346.08M  
33

46.08  
35.00  
11.08  
2.4  
10.84

12.0  
2.0  
3.20  
24.0  
27.60

44.18  
36.21  
7.97

47

16 476 341.50 339.40

7.1 ✓

343.12  
5.90

49.02

49.02 ✓

49.02

49.02

49.02

49.02

+50 M.H. & Land break 5.9 340.4 335.00

5.4 ✓

349.02M

36.21

37.42

38.63

39.84

41.05

42.26

17 3.14 343.12 336.21

7.1 ✓

49.02

49.00

5.02

+50 10.73 355.14 1.85 344.41 337.42

7.0 ✓

347.51

51.98

51.98

51.98

51.98

51.98

56.20

18 9.7 345.4 338.63

6.8 ✓

351.98

42.26

43.00

43.18

356.20

46.24

9.96

+50 9.2 345.9 339.84

6.1 ✓

9.72

8.98

8.80

46.00

10.20

5.00

19 8.2 346.9 341.05

5.9 ✓

352.98 = 23.00

2.47

+50 7.63 347.51 342.26

5.3 ✓

355.45

343.18

343.63

344.08

344.54

344.99

345.44

345.89

+80 M.H. break 7.1 348.0 343.00

5.0 ✓

12.21 ✓

11.82

11.54

10.91 ✓

10.46

10.01

9.55

20 + 0 6.7 348.4 343.18

5.2 ✓

355.45

345.72

346.50

347.12

347.76

348.39

9.73 ✓

8.96 ✓

8.32 ✓

7.69 ✓

+50 5.6 349.5 343.63

5.9 ✓

345.72

346.50

347.12

347.76

348.39

21 4.1 351.0 344.08

6.9 ✓

9.73 ✓

8.96 ✓

8.32 ✓

7.69 ✓

7.06 ✓

+50 2.9 352.2 344.54

7.7 ✓

345.72

346.50

347.12

347.76

348.39

22 2.13 352.8 344.99

7.8 ✓

+50 2.2 352.9 345.44

7.5 ✓

+80 345.72

23 4.4 350.7 345.90

4.8 ✓

+10 = M.H. & Nightman 4.0 351.1 346.00

5.1 ✓

+50 8.15 361.13 2.16 352.98 346.50

6.5 ✓

24 6.4 354.7 347.13

7.6 ✓



361.13

24150

6.01 355.12 347.76 ✓

7.4 ✓

23+50 = 35298

7.45

344.02

347.00

11.92 ✓

25

5.5 355.6 348.39 ✓

7.2 ✓

+47 = M.H. & E.B. M. Alley

5.2 355.9 349.00 ✓

6.9 ✓

Senior E8 W. Alley Bk 2 North Park  
 Add: from M.H. & N.S. Alley bet Grimhart,  
 West for 105' & East for 105'

36113

W. Line

OTO-M.H. Sta 25747 page 48	5.2	Drop 355.9	349.00 ✓ 349.50	6.4 ✓
+50 W	5.35	355.78	349.73 ✓	6.0 ✓
1405 D.E	5.7	355.4	350.00 ✓	5.4 ✓

36067 36067  
 349.73  
 -10.94 ✓

349.73

36118

36118 36118 36118  
 350.00 349.97 350.50  
 11.18 ✓ 11.21 ✓ 10.68 ✓

E. Line

OTO-M.H. Sta 25747 page 48	5.2	Drop 355.9	349.00 ✓ 349.50	6.4 ✓
+50	4.70	356.43	349.97 ✓	6.4 ✓
1405 D.E	3.8	357.3	350.50 ✓	6.8 ✓

5180

355.33

Survey in Alley BIK H Burlington from Bank to  
 M.H. No 2 to M.H. 3  
 5th set 2' N of 4 ditch  
 7/12 Shaw  
 1/12 Shoemaker

7/23/14 West-Evans-Devine

B.M. Brass plg S.E. 30 <sup>th</sup> Kalnia	289.71	grade	cut		
645 <sup>2</sup> 0+0 = M.H. No 2	6.57	296.28	6.5	289.8	278.70
+50			5.20	290.48	279.18
+70			6.2	290.1	279.66
+107 <sup>2</sup> 1+35 M.H. No 3			8.1	288.2	280.00
540 Marcus to E Laurel - E of Laurel FODE - 4+95					
3rd SE of Laurel St. from 540 Marcus to Calzura				288.75	282.00
0+00 M.H. No 3	10.38	299.16		288.7	282.58
+50			10.5	288.7	282.58
+15 = 0+00 M.H. No 18 E Laurel			9.8	289.4	283.00
0+50			9.1	290.1	283.82
+70			8.1	291.1	284.64
+50			7.3	271.8	285.46
2+00			6.1	293.1	286.28
+50			5.0	294.2	287.10
2+45 = 0+00 500 P.S. 3+05 = M.H. No 17 = 47 <sup>th</sup> L. E Laurel S Maple			3.4	295.8	288.00
+50			2.8	296.4	288.95
4+60			2.3	296.9	290.00
+50			1.7	297.5	291.05
+95 = DE.			1.2	297.9	292.00

292.15	292.15	292.15	
280.00	277.66	331	
12.15 ✓	12.49 ✓	288.78	OK
		288.78	
		4.8	
		9.6	
		3.4	
		38.4	
		2.88	
		32.64	
292.15	292.15	292.15	
282.58	283.00	282.92	
9.57 ✓	9.15 ✓	8.33	
288.75	288.75	287.10	
8.14		285.16	
296.92 - 43		164	
		328	
		220	
		160	
		280	
296.92	296.92	296.92	296.92
283.82	284.24	285.46	286.92
13.10 ✓	12.28 ✓	11.46 ✓	10.64 ✓
296.92	296.92	296.92	
287.10	288.00	287.61	
9.82 ✓	8.92 ✓	9.25 ✓	
296.92			
1.68			
295.24			
6.13			
301.37			
297.62	301.22	301.22	301.22
3.60	82.75	90.00	21.05
301.22	12.27	11.22	10.17
290.48	94.13		
3.65	72.70		
294.13	15.43		
79.42	33		
14.71	15.10		



Springame  
 Sever Laurel St from M.H. No 4 to M.H. 5  
 Theace south on Lot Line B.H.G. to D.E. Sta 340

B.M. B.P.S.E. 3428	Kalmia	289.71	7/14	Quake.	
657	296.28		1/4	Sharp the ground	grade
040 = M.H. No 4		8.1	288.2	780.60	7.6 ✓
217				280.9 ✓	
+50		8.2	288.1	781.50	6.6 ✓
1		8.08	288.20	782.40	5.8 ✓
+36 M.H. No 5		7.9	288.4	783.05	5.4 ✓
+50		8.2	288.1	783.30	4.8 ✓
763				283.53 ✓	
2		3.59	292.69	784.20	8.5 ✓
+50		3.4	292.9	785.10	7.8 ✓
340 D.E		3.9	292.4	786.00	6.4 ✓

note: the water draft.

1.50	18.00
7.20	15.00
1.00	2.00
3.00	2.00

52  
 54  
 8.60

288.20					
5.40					
293.63	293.63	293.63	293.63	293.63	
286.11	285.11	284.20	283.30	283.05	
7.65 ✓	8.53 ✓	9.43 ✓	10.33 ✓	10.38 ✓	
288.20					
4.94					7/28/14
293.14 M	293.14	293.14	293.14	293.14	West bank
280.91	282.99	281.50	280.60	283.53	Sum
12.23 ✓	10.74 ✓	11.64 ✓	12.54 ✓	9.61 ✓	

Line thru MH# 17-16-15 to Ft Maple St  
50' W. of 32 St.

7/23/14 West Evans Drive

Burlington

53

Maple St - Laurel to 32 St

297.16

3 to 5 = 00 = MH# 17 DMH

3.4 295.8 289.00 ✓

6.8 ✓

301.37

301.37

301.37

301.37

289.27

287.59

289.81

290.08

12.10 ✓

11.83 ✓

11.56

11.29 ✓

0+50

2.2 297.0 289.11 ✓  
289.27

7.7 ✓

301.22 ✓

301.22

301.22

87.81

11.41

1+00 TP

1.54 297.62 289.54 ✓

8.1 ✓

297.62

303.56

303.56

303.56

303.56

303.56

303.56

303.56

303.56

5.94

290.03

290.35

290.50

290.61

290.79

290.97

291.17

291.46

303.56

13.48

13.21

13.06

12.95

12.67

12.39

12.10

150

7.95

305.57

6.8 298.8 289.81 ✓

9.0

303.56

303.56

303.56

303.56

303.56

303.56

303.56

303.56

2+00

5.6 300.0 290.88 ✓

9.9 ✓

91.74

92.00

2.53

3.11

3.69

4.18

4.50

4.82

11.82

11.56

10.98

10.45

9.92

9.38

8.90

450

5.0 300.6 290.35 ✓

10.2 ✓

297.62

2.31

299.93

89.93

70.32

480 MH# 16 near 450' W. of  
Burlington Drive

4.9 300.7 290.50

10.2 ✓

3+00

4.8 300.8 290.61

10.2 ✓

450

5.5 300.1 290.89

9.2 ✓

4+00

6.0 299.6 291.47

8.4 ✓

450

6.4 299.2 291.46

7.7 ✓

5+00

6.8 298.8 291.74

7.1 ✓

445 MH# 15 near 465' W. of  
E Reno Ave

6.9 298.7 292.00

6.7 ✓

6+00

6.8 298.8 292.58

6.2 ✓

450

6.3 299.3 293.11

6.2 ✓

7+00

5.7 299.9 293.64

6.3 ✓

450

5.1 300.5 294.18

6.3 ✓

480 FT. W. of 32 St.

4.8 300.8 294.50

6.3 ✓

BN BRSC 224 Maple

4.7 301.10 301.11 ✓

21.50  
21.51 OK

Alley line B1 H

\* From MH \* 2 to MH \* 24.

6m SE Laurel & 307 Marcus

28878

560 294.38

Est Gr.

6+32<sup>2</sup> = MH \* 2 = Alley North of - 87° 11' R. 289.8 278.70

3' S of E Alley running E.

6+00 48 289.6 278.28

5+88 5+80 brk. 48 289.6 278.00

5+65 brk T.P. 12.12 282.26 277.00  
T.P. 135 283.61 12.85 270.76

5+40 brk 1.84 271.60 46 267.0 256.00

5+00 T.P. 1 0.47 259.34 12.73 258.87 3.10 256.24 252.75

4+50 5.4 253.9 248.69

4+17 - MH \* 1 = 25° 44' R. 5.5 263.8 246.00

4+00 T.P. Hub 1.37 250.49 10.22 249.12 243.40

3+50 T.P. Hub 2.83 241.75 11.57 238.92 235.76

3+00 T.P. Hub 1.23 231.78 11.28 230.45 228.12

2+60 brk 3.8 227.9 222.00

2+30 9.2 222.5 218.17

2+00 13.5 218.2 215.94

1+61 = MH \* 24 = End Contract. 12.6 219.1 212.00

9.11 221.11

1+00 9.63 211.88 205.95

T.P. 12.20 208.91

0+50 2.68 211.59 7.28 204.31 201.00

0+00 N.H. 12.136 199.20

7/22/14

West  
Elev.  
Sewer  
Cms

Burlingame

54

247.12  
300

252.15 252.15 252.15

12.50 246.00 243.40

239.65 6.15 8.75

2.03 241.68

11.19 235.76

230.49 5.92

229.27 231.27 231.27 231.27

12.20 229.12 222.00 218.97

218.77 3.15 9.27 123.00

3.04 222.01 222.01

222.01 215.94 212.00

6.07 18.01

212.00 288.78

7.11 294.80

221.11 278.11

16.69

#1

#8

Capitan Ave.  
 MH & Kalmia to near Laurel  
 Burlingame.

BM. Plug SE 31 & Kalmia 523 297.28	292.05		
0+0 = MH* 7 & Kalmia	6.52	290.76	284.00
0+50	6.67	291.21	284.37
1+00	5.56	291.72	284.74
1+50	5.1	292.2	285.11
2+00	4.9	292.4	285.48
2+50	4.6	292.7	285.86
+70 MH* 8	4.6	292.7	286.00
3+00	4.5	292.8	286.22
3+50	4.5	292.8	286.58
4+00	4.2	293.1	286.94
4+50	3.8	293.5	287.30
4+90 = FT.	3.3	294.0	287.60

1/20/14  
 West  
 Evans  
 Terrie

294.69 94.69 94.69  
 24.37 84.74  
 1032 9.95

291.72 4.61 296.33	M.H. 96.33 96.33 96.33 96.33 85.11 5.48 5.86 6.02 6.22 6.58 6.74 11.22 10.85 10.47 10.33 10.11 9.75 9.37
6.8 ✓	96.33 76.33 7.30 7.60 9.03 8.73



Kalmia St.

MH  $\frac{1}{2}$  San Marcos to  $\frac{1}{2}$  Capitán.

Burlington.

EM-Plug ST 318 Kalmia 292.05

0+00 523 297.28

MH <sup>(7)</sup>  $\frac{1}{2}$  Capitán 6.52 290.76 284.00 6.8 ✓

+50 6.88 290.40 283.62 6.8 ✓

1+00 5 7.18 290.10 283.24 6.9 ✓

+50 7.5 289.8 282.85 7.0 ✓

2+00 7.7 289.5 282.46 7.0 ✓

+61<sup>±</sup> MH <sup>81</sup>\*6  $\frac{1}{2}$  San Marcos. 289.2 282.00 7.2

7/30/14  
West.  
Evans.  
Ceville

290.10

4.59

294.69

94.69 94.69 94.69

94.69 94.69

32.46 32.46 33.24

33.62 34.00

12.23 11.84 11.45

11.07 10.69

56

Kalmia St

MH # 7 Capitan to MH # Pamo

Burlingame

BM Plug SE 31.9 Kalmia 292.05

523 297.28

0+50 = MH # 7 Capitan 6.52 290.76 284.00

+50 6.2 291.1 284.38

1+0 284.76  
~~1+05 MH # 6 31 St~~ 5.7 291.6 284.82

1+50 5.2 292.1 285.14

2+00 b 4.7 292.6 285.53

+50 285.92

+60 MH # 10 Capitan TR 4.17 293.11 286.00

9.42 302.53  
 3+00 9.1 293.4 286.31

+50 8.8 293.7 286.70

4+00 8.5 294.0 287.09

+50 8.3 294.2 287.48

5+00 7.8 294.7 287.86

+20 MH # 11 Capitan 7.6 294.9 288.00

1/30/14  
 West  
 Evans  
 Devine

296.33 M 96.33 96.33  
 4.38 4.76  
 11.95 11.57

292.05 96.36 96.36 96.36  
 4.31 85.14 85.53 86.00  
 296.36 11.22 10.83 10.36

6.8 ✓

292.05

6.7 ✓

286.00

6.8 ✓

11.97

297.97

7.0 ✓

287.26

7.1 ✓

10.59

298.75

97.97 97.97 97.97 97.97 97.97 97.97  
 86.81 86.70 87.62 87.43 87.86 88.00  
 11.66 11.27 10.88 10.49 10.11 9.97

287.26

10.59

298.75

88.75

10.75

Dulzura Ave.

MH 70 & Kalmia to FT near Laurel.  
Burlingame.

0+00 = MH*10 & Kalmia.		293.11	286.00	7.1 ✓
+50	9.0	293.5	286.65	6.8 ✓
1+00	8.5	294.0	287.30	6.7 ✓
+50	7.9	294.6	287.96	6.6 ✓
2+00	7.4	295.1	288.61	6.5
+50 MH*9	7.1	295.4	289.00	6.4 ✓
+50	6.8	295.7	289.26	6.4 ✓
3+00	6.4	296.1	289.92	6.2 ✓
+50	5.8	296.7	290.58	6.1 ✓
4+00	5.7	297.3	291.24	6.1 ✓
+56 FT.	4.4	298.1	292.00	6.1 ✓

7/30/14  
West  
Evans  
Devise.

296.36	96.36	96.36	96.36	96.36	96.36	96.36
1.53	86.65	87.30	87.96	89.00	89.00	89.00
297.83	97.71	97.06	87.96	89.00	89.00	89.00
4.30	✓	✓	✓	✓	✓	✓
299.13						

289.00	300.12	300.12	300.12	300.12	300.12	300.12
11.12	89.26	89.92	90.58	91.24	91.90	92.00
300.12	1086	10.20	9.54	8.88	8.12	8.12
	✓	✓	✓	✓	✓	✓

M.H. 79.13  
29.00  
10.13  
58

Pomo Ave  
 MH\*11 & Kalmia to MH\*13 & Laurel.  
 Burlingame.

West  
 Evans  
 Devine.

293.75 98.75 98.75 98.75 98.75 98.75  
 88.00 88.20 88.41 88.62 88.83  
 10.75 10.53 10.34 10.13

302.53

292.05 98.76 98.76 98.76 98.76 98.76  
 6.71 88.62 88.83 89.00 89.25 89.46  
 298.70 10.14 9.93 9.76 9.51 9.30  
 301.01 301.41 301.41 301.41  
 89.46 89.67 89.89 90.00  
 11.93 11.74 11.52 11.41

0+00 = MH*11 & Kalmia	7.6	294.9	288.00	6.9 ✓
+50	7.8	294.7	288.20	6.5 ✓
1+00	7.7	294.8	288.41	6.4 ✓
+50	7.5	295.0	288.62	6.4 ✓
2+00	7.3	295.2	288.83	6.4 ✓
+40 MH*12	7.1	295.4	289.00	6.4 ✓
3+00	6.8	295.7	289.25	6.4 ✓
+50	6.7	295.8	289.46	6.3 ✓
4+00	6.6	295.9	289.67	6.2
+50	6.1	296.4	289.89	6.5
+74 MH*13 & Laurel.	5.8	296.7	290.00	6.7

32nd St. 40' N. of M.L.  
 NH<sup>1</sup>/4 near & Laurel to ~~1~~ Kalmia  
 Burlington

B.M. 819 S.E. 31<sup>st</sup> Kalmia 292.05

0+00 NH<sup>1</sup>/4 near & Laurel. 299.39 291.00  
 4.68 304.07

+50 4.87 299.20 291.24

1+00 4.92 299.15 291.48

+50 4.5 299.6 291.72

2+00 5 4.7 299.4 291.96

+50 4.4 299.7 292.20

3+00 4.7 299.4 292.44

+50 5.0 299.7 292.68

4+00 5.2 298.9 292.93

5 40' N. of M.L. Kalmia  
 +15 = F.T. near Kalmia 5.3 298.8 293.00

303.81 NH

60

303.81	303.81	303.81	03.81	03.81
91.24	91.48	91.72	91.96	92.20
12.57	12.33	12.09	11.85	11.61

8.4 ✓ 292.20 04.57 04.57 04.57 04.57

12.37 92.44 92.68 92.93 93.00

8.0 ✓ 304.57 12.13 11.89 11.64 11.57

7.7 ✓

7.9 ✓

7.7 ✓

7.5 ✓

7.0 ✓

6.4 ✓

6.0 ✓

5.8 ✓

5.7

Laurel St.  
From 30'E of W.L. 32 St to near Dulzura Ave.  
Burlingame.

B.M. plg S.E. 31 <sup>st</sup> Kalmia	9.42	301.47	292.05	
T.P.	3.23	301.73	2.97	298.50
0+00 MH #4-30'E W.L. 32 St.	2.3-4	299.39	291.00	8.4 ✓
+50	3.22	298.51	290.82	7.7 ✓
1+00	3.71	298.02	290.63	7.4 ✓
+50	4.2	297.5	290.45	7.0 ✓
2+00	4.6	297.1	290.26	6.8 ✓
+50	5.6	296.1	290.08	6.0 ✓
+71 <sup>st</sup> MH #13-near Pampa.	5.1	296.6	290.00	6.6 ✓
3+00	5.1	296.6	290.24	6.2 ✓
+50	4.7	297.0	290.66	6.2 ✓
4+00	4.2	297.5	291.07	6.4 ✓
+50	3.7	298.0	291.49	6.5 ✓
5+00	3.1	298.6	291.91	6.7 ✓
+10 DE.	3.1	298.6	292.00	6.6 ✓

37

292.02  
3.39  
301.41

301.41  
90.08  
4.33  
11.28

301.41 301.41 301.41 301.41  
90.24 90.66 91.07 91.49  
11.17 10.75 10.34 9.92

301.41 301.41 301.41 301.41 301.41  
90.26 90.45 90.63 90.82 91.00  
11.15 10.96 10.78 10.59 10.41

298.51  
5.30  
303.81

303.81 303.81  
90.82 91.00  
12.99 12.81

61

301.41 301.41  
91.91 92.00  
9.50 9.41



San Marcos Arc.  
From M.H. 21 at Burlingame-Princ E. To F.T. 10/13 Shaw  
Sta 4+70  
By Dunkle  
Kerr

292.80

0+0 = M.H. 21	5.15	287.65	277.00 ✓	10.7 ✓
+50	5.0	287.8	277.21 ✓	10.6 ✓
1	4.97	287.83	277.42 ✓	10.4 ✓
+50	5.25	287.55	277.63 ✓	9.9 ✓
2	5.6	287.2	277.85 ✓	9.4 ✓
+20 M.H. 22 418° 37'	5.6	287.2	277.93 ✓	9.3 ✓
+50	6.2	286.6	278.06 ✓	8.5 ✓
3	6.4	286.4	278.27 ✓	8.1 ✓
+50	6.8	286.0	278.48 ✓	7.5 ✓
4	6.9	285.9	278.69 ✓	7.2 ✓
+50	7.4	285.4	278.90 ✓	6.5 ✓
+70 F.T.	7.5	285.3	279.00 ✓	6.3 ✓

291.01	291.01	291.01	291.01	291.01
277.60	277.21	277.42	277.63	277.85
14.01 ✓	13.80 ✓	13.59 ✓	13.38 ✓	13.16 ✓

291.02	291.02	291.02	291.02	291.02
277.93	278.06	278.27	278.48	278.69
13.09 ✓	12.96 ✓	12.75 ✓	12.54 ✓	12.33 ✓

291.02	291.02
278.77	279.00
12.25 ✓	12.02 ✓

6.4



Burlingame Drive  
 from D.E. 75 S of San Marcos to Main Line 4 Shallow  
 Run

214.63  
 72.87  
 3.74

293.05  
 86.97  
 6.08

6.01		303.63		287.22			
040-D.E. 75 S of San Marcos			7.31	286.32	290.00	6.3	✓
+50			10.58	283.05	286.97	6.1	✓
T.P.	2.05	292.80	12.98	290.75			
1			3.1	288.7	283.93	5.8	✓
					277.00	10.7	✓
+40 M.H. 21			5.15	287.65	281.50	6.2	
+50			5.2	287.6	276.63	11.0	✓
2			6.6	286.2	274.76	11.4	✓
+50			10.8	282.0	272.99	9.1	✓
T.P.	0.11	279.94	12.97	279.83			
3			3.2	276.7	271.02	5.7	✓
+27 M.H. 23 L 57959			5.0	274.9	270.00	4.9	✓
+50			7.4	272.5	267.73	4.8	✓
4	1.30	268.27	12.97	266.97	262.20	4.2	✓
+50			5.8	262.5	257.87	4.6	✓
5			10.1	258.2	252.94	5.3	✓
T.P.	0.44	256.19	12.52	255.75			
+40 Break			1.7	254.5	249.00	5.5	✓
+50			2.9	253.3	247.93	5.4	✓
6			7.8	248.4	242.53	5.9	✓
T.P.	1.33	244.61	12.91	243.28			
+50			1.9	242.7	237.16	5.5	✓
+89 M.H. constructed			6.3	238.3	233.00	5.3	

288.99 SE Cor/Dr of San Marcos.

202  
 291.91 H3

288.99  
 545  
 294.44  
 283.93  
 10.51

294.44  
 286.97  
 7.47  
 294.44  
 290.00  
 4.44

6.2

10.4

46

Sewer Levels	≠ Dickson	1-	Sewer Lines	E St.	42-
"	Alley bet. Kansas & 30 <sup>th</sup>	2-5	"	Adams Ave (Car Barn)	43
"	30 <sup>th</sup> and ≠ Urr Alley bet.	6	"	Blk 77 Arnold & Cheat Alley bet Grim & 31 <sup>st</sup>	44
"	Ohio & Illinois Alley bet.	7-8	"	at Upas	45-48
"	30 <sup>th</sup> & Ohio Alley bet.	9-11	"	Alley BIK 2 N. Park Add.	49
"	Hart & Herman	12-15	"	Alley BIK "H" Burlingame.	50
"	≠ 14 <sup>th</sup>	17	"	San Marcos St. Burlingame	51 (62) (63)
"	≠ Union	19-21	"	Laurel St. Burlingame	52 (61)
"	(Fisk St South Look Ave)	22	"	Maple St at 32 " "	53
"	Torrence St.	23-24	"	Alley BIK "H" Burlingame	54
"	Brooks - 5 <sup>th</sup> - 6 <sup>th</sup> Alley bet	27	"	Capitan Arc Burlingame	55
"	1 <sup>st</sup> & Albatross	30-32	"	Kalmia Burlingame	56-57
"	Peterbaugh	33	"	Dulgura Burlingame	58
"	Elm St.	34	"	Pam 8 Burlingame	59
"	(Balboa Park) Municipal Playgrounds	35-36	"	32 <sup>nd</sup> Burlingame	60
"	3 <sup>rd</sup> St	37	"	Burlingame Drv.	64
"	Goldfinch Alley bet H & I	38	"	6 <sup>th</sup> St. (Beach to Cedar)	66
"	at 31 <sup>st</sup>	39-40	"	Bancroft St to N Canyon line	67
"	BIK "B" South Look	41	"	Palm to Quince	68-69

See Page 16 for further Index

Change of line & grade of sewer 6" st  
 from M.H. & Beech st N to M.H. & Cedar st, Runkle  
Shaw  
Kerr  
 new sewer 10" Euf & 6" st  
 stakes set 3' offset to west,  
 B.M. S.W. B.P. 6" Cedar 124.11

3.61 127.72 117.20

+50 ~~I~~ 11.5 116.2 111.40 4.8

~~+80 break 10.5 117.2~~

1 break 9.9 117.8 111.60 6.2

+50 2.7 119.0 113.06 5.9

2 7.3 120.4 114.53 5.9

+50 break 6.0 121.7 116.00 5.7

3 4.5 123.2 117.92 5.3

~~4 3.2 124.5 119.84 4.7~~

+80 M.H. & Cedar 121.00

~~4 11.5 126.2 117.37~~

~~5 10.2 128.3 121.99 6.3~~

~~5 7.6 130.9 124.03 6.9~~

+50 5.1 133.4 126.07 7.3

6 2.7 135.8 128.11 7.7

+50 5.98 144.41 0.05 138.43 130.15 8.3

7 3.4 141.0 132.19 8.8

+20 F.T. 2.5 141.9 133.00 8.9

122.40	22.40	22.40	22.40	22.40	22.40
11.40	11.60	13.06	14.53	16.00	
11.00	10.80	9.34	7.87	6.40	
22.40	22.40	22.40			
17.92	17.84	21.00			
4.48	2.56	1.40			

66

133.03

server Bancroft St 15' E of W.L. from  
 server in 5' St 15' S. of N.L. 5' St N for 350'

I

	14.06	17.16		3.10	
at 2:00 PM 5' St			7.1	10.2	7.25
0+30 break				13.6	9.00
+50			1.4	15.8	15.07
1+0	12.57	29.40	0.33	16.83	
			6.5	22.9	16.25
+50			2.7	26.7	11.43
1.70 break			2.0	27.4	23.50
2			1.2	28.4	23.83
+50	4.90	33.88	0.42	28.98	
			4.4	29.5	24.88
3			3.5	30.4	24.93
+50			1.6	32.3	25.50

9.11  
 3.25  
 14.06

3.10  
 14.06  
 17.16

67

27.40				
4.62				
32.02	32.02	32.02	32.02	32.02
23.50	23.83	24.38	24.93	25.50
8.52	8.19	7.64	7.09	6.52

10.20  
 10.7  
 20.9  
 2.3  
 13.6

Sevier Canyon Line between Fair & Dulles  
 from M.H. & Brant E to M.H. & Habriss (Bull 499, 032)  
 Thence E according to Sketch & Notes Book 829 P 13

68

B.M. Bottom M.H.			105.00		
	20.90	125.90			
+0 = M.H. 5010 (Footed)			105.00		
+50 H		15.8	110.1	106.00	4.1
+75		14.8	111.1		
+90		9.5	116.4	109.79	6.6
+10 H		9.1	116.8	110.73	6.1
+15		10.7	115.2		
+45 <sup>7</sup> M.H. R 24° 16'		6.8	117.1	115.0	4.1
+50 H		5.3	120.6	115.73	4.9
T.P.	13.15	138.52	0.59	115.31	
2 H		10.1	128.4	123.0	5.4
+50 H		9.3	129.2	127.02	2.2
+87 <sup>7</sup> M.H. 1° 13' L		3.0	134.2	130.0	4.9
+10 H		2.5	135.0	130.92	5.1
T.P.	12.35	151.14	0.26	133.26	
+50 H		11.5	139.6	134.46	5.1
4 H		8.0	142.7	138.0	4.7
+20		3.6	147.5		
+50 H		2.2	147.9	144.08	4.8
T.P.					
+74 M.H. L 53° 57' L		0.4	150.7	147.0	3.7
T.P.	12.54	163.27	0.5	150.73	
+50 H.		9.0	154.3	150.75	3.6
+50 H		0.8	162.5	157.97	4.5
T.P.	11.44	173.87	0.84	162.43	
+64 <sup>3</sup> P.C.H.		10.5	163.4	160.0	3.4
+84 <sup>3</sup> H		5.6	168.3	165.0	3.3
T.P.	7.80	180.81	0.86	173.01	

134.81

+114 <sup>4</sup> H.			8.8	176.0	170.8	6.0
T.P.	12.68	196.73	0.176	184.05		
+39 <sup>4</sup> H.			12.9	185.2	181.0	4.8
+64 <sup>4</sup> H. FT.			11.7	195.0	192.2	3.0
T.P.	10.71	207.34	0.10	196.63		
T.P.	12.97	220.23	0.08	207.26		
+35				204.0	200.0	4.0
7 H.			11.8	228.4	226.4	2.0
+20				219.2	215.0	4.2
+32 iron pipe enters ground +0.7				220.6	217.0	3.6

South branch from M.H. Sts 4774 Page 68  
Notes Book 829 P 14

15114

010-M.H. Sts 4774 Page 68	0.4	150.7	149.0	3.7	
		184.81			
+50		9.6	175.2	171.0	4.2
T.P.	12.68	196.73	0.76	184.05	
+80 P.C.H.		5.9	190.8	187.0	3.8
T.P.	10.71	207.34	0.10	196.63	
+105 P.C.H.		4.2	203.1	199.0	4.1
T.P.	12.97	220.23	0.05	207.24	
+130 H.		11.8	228.3	205.0	3.3
+57 <sup>2</sup> H. P.T.		6.6	213.6	208.0	5.6
2	5	4.0	216.2	211.0	5.2
+50		0.7	219.5	214.33	5.2
+60 D.F. 40' X 4' P. 1/4 in		0.0	220.2	215.0	5.2

70

Senior 4th St from N.L. 'A' St to S.L. <sup>11/3/14</sup> <sub>14</sub> <sup>11/3/14</sup> <sub>14</sub> <sup>11/3/14</sup> <sub>14</sub>  
 Cedar  
 sth's set 40" to nest

704 1 bush - Plug Arch. 96.00  
 704 - Cedar " " 110.47  
 704 Ash " " 80.58

B.M. Brass Hg N.H. 4-8 A			60.44			
+40 N.H. 'A' St	10.82	71.26	10.96	60.30	55.2	5.1
+50			8.7	63.1	56.65	6.5
777 break					56.40	
1 break			5.10	66.16	57.57	8.6
+50 break			2.9	68.4	58.97	7.4 ✓
2	12.64	23.10	0.80	70.46	60.56	9.9 ✓
+50			9.9	73.2	62.5	11.7 ✓
3			2.30	74.80	63.70	11.1 ✓
+40 M.H. ♀ Ash			6.3	76.9	65.00	11.9 ✓
+50			6.1	77.0	65.47	11.5 ✓
+75			3.98	77.72	67.85	11.3 ✓
+50			2.1	81.0	70.1	10.8 ✓
5	12.04	95.10	0.29	83.26	72.07	10.5 ✓
+50			9.9	85.2	74.85	10.2 ✓
6			7.25	87.85	77.80	10.5 ✓
+50			4.3	90.5	79.69	11.1 ✓
7			2.7	92.4	82.00	10.3 ✓
+20 M.H. ♀ Beech St			2.0	93.1	83.00	10.1 ✓
+50	11.71	106.12	0.63	94.47	84.66	9.8 ✓

	75.02	73.20	
	23.74	1.82	
	11.28	75.02	
		42.15	
		22.87	
	94.00	87.85	
	21.00	12.37	
	98.00	100.22	100.22
	83.00	8.00	7.11
	15.00	92.22	93.11
		82.06	83.11
		10.16	2.191
			2.934
		74.80	
		5.53	
		80.33	80.33
		65.00	63.74 ✓
		15.33 ✓	16.59
	70.45		
	73.25		
	57.20		
	70.45		
	71.5		
	13.70	74.74	
	57.20	119.11	
	57.97		65.47
	70.45		1.13
	57.57		6.66
	12.85		4.74
	70.45		
	60.56	32.37	
	9.89	1.19	
	79.12	20.76	20.76
	1.64	67.34	66.60
	80.76	12.92	14.10
		1.19	
	79.12		84.52
	5.40	14.11	70.21
	84.52		72.58
			14.31
			71.94
	83.06	88.65	88.65
	5.59	74.95	77.32
	83.65	73.76	77.33
			11.33
	9.05		
	7.85	91.90	
	91.90	74.67	
		12.21	
			97.38
			84.66
			12.72 ✓



106-18

8+0	9.7	96.5	87.42	9.1	✓	
+50	7.82	98.36	90.19	8.2	✓	
9	5.45	100.73	92.95	7.7	✓	
+50	3.0	103.2	95.72	7.5	✓	
10	7.12	112.76	0.54 105.64	98.48	7.2	✓
+50	4.97	107.79	101.25	6.5	✓	
+55			101.52		✓	
+60-5.1 Cedar	4.4	108.4	101.80	6.6	✓	

$$\begin{array}{r} 10122 \\ 392 \\ 9650 \\ 870 \\ \hline 10874 \end{array}$$

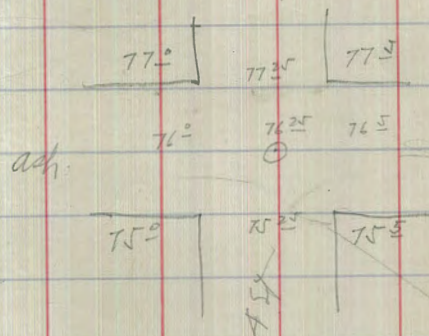
$$\begin{array}{r} 10022 \\ 182 \\ 9840 \\ 7010 \\ \hline 8252 \end{array}$$

$$\begin{array}{r} 10022 \\ 1062 \\ 929 \\ \hline 977 \end{array}$$

$$\begin{array}{r} 9650 \\ 770 \\ 1040049 \\ 035 \\ 103757P \\ 664 \\ \hline 1098413 \end{array}$$

10400	10400	10400	10400
8742	9019	9295	9572
1258	1381	1105	828

10984	10984	10984
9848	1080	10152
1136	804	832



$$\begin{array}{r} 960 \\ 210 \\ \hline 750 \end{array}$$

Seiver top line in marshy way + Jackland to

Const'd 1914 73

252' north of Stockton B.M. SW. cor. Jackland + Marsh to 276.50  
 B.M. SW. Mag. cor. Jackland Plug. 275.50 275.50

Sta.	Dist.	HT.	Red	Black	Grade	Drop	BM	BM	BM	BM	Notes
Sta. 437	279.87	HT.	Red	Black	Grade	Drop	275.50	275.50	266.04	276.50	Stockton
J.R.							261.2	263.00	272.47	273.47	4' 4" nail
0+00	M.H. center alley						267.00	266.40	267.00	268.00	
+50	+ marsh to way.	8 1/2	812	271.75	263.20	8.6	267.00	266.40	267.00	268.00	
1+00			5.75	274.12	263.40	10.7					
+83	M.H. center of	4.9	275.2	263.53	11.7						marsh to way
+50	Jackland.	4.74	275.13	263.60	11.5						13' 0"
2+00			5.05	274.82	263.80	11.0	275.50	276.48	276.48	276.48	
+50			5.35	274.52	264.00	10.5	276.48	263.20	263.20	263.53	
3+00			5.68	274.19	264.20	10.0	276.48	263.20	263.20	263.53	
+50			6.03	273.84	264.40	9.4	275.50	277.83	277.83	277.83	
4+00			6.50	273.37	264.60	8.8	277.83	265.80	264.20	264.40	
+50	TP.		6.85	273.02	264.80	8.2	277.83	264.80	264.93	277.83	
+82.80	M.H. center of	2.89	275.91	272.68	264.93	7.8	275.02	277.83	277.83	277.83	
5+00	Stockton		3.49	272.42	265.00	7.4	277.83	265.80	265.40	265.40	
+50			4.12	271.79	265.20	6.6	277.83	265.20	265.40	265.40	
6+00			4.64	271.27	265.40	5.9	277.83	265.20	265.40	265.40	
+50			5.29	270.62	265.60	5.0	277.83	265.20	265.40	265.40	
7+00			5.91	270.00	265.80	4.2	277.83	265.20	265.40	265.40	
+50			6.66	269.45	266.04	3.2	277.83	265.20	265.40	265.40	

Sewer Extension from  $\frac{1}{2}$  Alley.  
 N of Boston & 75' E of 28<sup>th</sup> St. South of 75' line  
 117'-ft. to JE.

$\frac{1}{2}$  22/4  
 West  
 Evans  
 Derrige  
 Cuts.

	+	H1	-	Surface	Grade	
SW 28 <sup>th</sup> Boston Curb.				39.00		
	11.73	50.73				
Top pipe $\frac{1}{2}$ Alley.		8.96		41.77		
T.P.		226		48.47		
0+10	1.73	50.20			41.15	
0+50		5.56		44.64	41.35	3.3
+65 DE		6.84		43.36	41.41	2.0
1+00		10.30		39.90		
+17		10.50		39.70		
+55 $\frac{1}{2}$ Sidewalk N.E. Corner		8.7		41.5		



10/5/00

George  
Miller  
ShawSewer line Montecito Way  
from M.H. & of Jackson +  
Montecito to a point  
180' West.

76

B.M. on Jackson + Mont. 1.65 272.15

275.50

Grade  
all grade 275.50

0+00 = M.H. (1+33 on 190.73)

263.70

263.75

0+50

1.65

275.50

264.00

+11.64

264.15

1+00

2.17

274.98

264.30

10.78

264.45

1+50

3.51

272.34

264.60

8.31

1+80

5.00

271.95

264.78

-7.32

This will give St. Legalle + Mont.

Cut

275.50

4.25

271.25

435

275.50

0.75

276.25

263.85

1.60

265.45

1.92

267.37

264

1.57

265.97

1.57

267.54

264.15

1.22

265.37

1.19

266.56

264.30

1.20

265.50

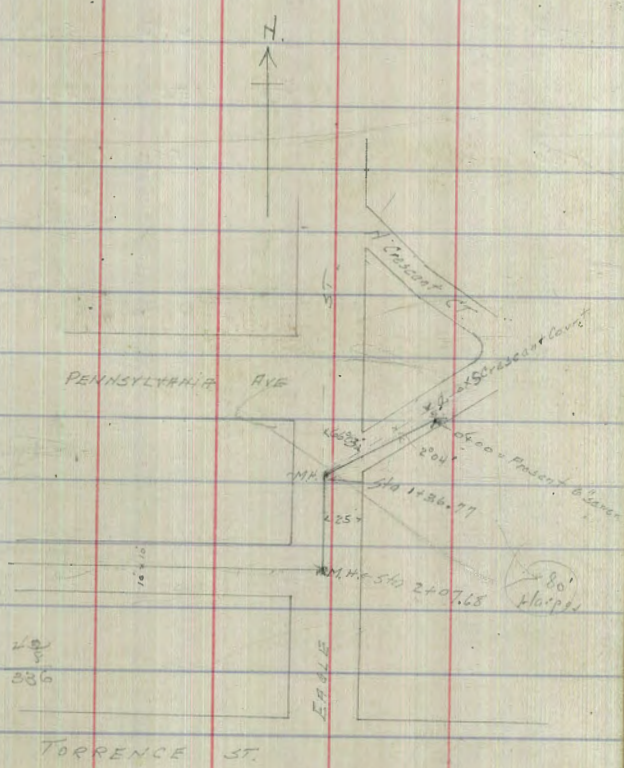
1.19

266.69

1/16/11 Gregory Senior from Present p. 66 to S. Crescent  
 Court N. to E. Eagle St thence to a 216.1  
 bet Pennsylvania & Torrence thence west

Station	Grade	1st	2nd	3rd	4th	5th
0+00	0.60	255.50	12.68	244.90		
	0.52	243.36	12.41	231.95		
	0.48	231.88	13.04	218.84		
	0.27	218.61				
0+05			10.7	208.1		
0+10			14.7	206.1		
0+40			7.9	210.9		
0+35		211.51	3.2	215.6	218.5	0.00
	12.04	231.22	6.51	218.30		
0+50		211.1	12.73	218.69	218.98	0.61
0+70			3.1	227.8		
	12.87	243.94	0.35	230.35		
			0.07			
T.P.		256.01	0.04	243.57		
1+05			3.76	258.21	236.07	-14.24
	6.77	261.67		244.90	251.90	
1+26.77 = M.H.			8.75	252.92	248.20	+4.62
1+71			8.04	253.63	248.65	+4.98
1+07.68 = M.H.			7.62	257.05	249.00	-7.05
1+22			2.1	252.0		
1+20.7			1.2	252.9		
1+34.9			0.6	255.5		
+ 37.0				258.4		
T.P.			1.81	254.19		
1+50		90 x 0.02	2.53	259.14	249.53	+9.61
1+00			2.17	259.50	249.73	+9.77
1+50			2.10	259.59	250.13	+9.44

0.486  
 $\frac{239.32}{242.22} = 0.987$   
 $\frac{80}{25363} = 0.00315$   
 $\frac{243}{498}$



461.67

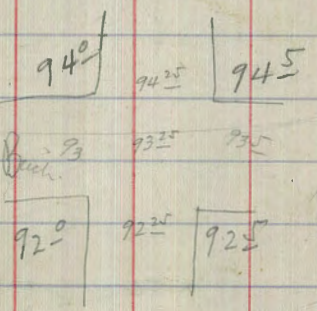
House 2.5

200  
200

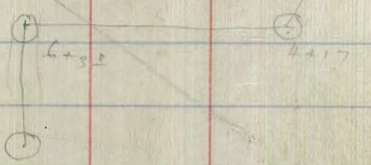
270 | 75.5 | 272.5  
270 | 75.5 | 272.5  
270 | 75.5 | 272.5

78

✓		4.04	252.62 ✓	250.53	+9.09
+25	M.H.	238	259.29	250.74	+8.55
+50		2.12	50.55 ✓	250.94	+8.61
5		285	58.82 ✓	251.34	+7.48
+50		3.73	51.94 ✓	251.74	+6.20
6		563	56.04	252.14	+3.90
+30.09		624	55.43	252.38	+3.05
+50				252.54	
+60.18 = DE.		730	254.35	252.62	+1.73
7			251.6		
+18			250.4	19.5 = 252.9	



120  
66  
114



324  
 39  
 2916  
 972  
 12636

176 | 408 | 324  
 378

300  
 152  
 480

597  
 595  
 596  
 631  
 576  
 644  
 135  
 300  
 4236

324  
 20  
 1944  
 648  
 8424

167 395  
 36 1275  
 1002 16.70

1272  
 16.70  
 111.00

2/167

2233  
 2635  
 360  
 34  
 2288  
 972  
 17928

324  
 2288  
 972  
 17928

33600  
 33266  
 21334  
 1.67

187 | 200 | 374  
 511  
 1390  
 1309  
 510

150  
 14  
 600  
 150  
 2100

200 | 30  
 150  
 36  
 900  
 450  
 5400

1.87

110  
 2640  
 2750

330.00

290.00 607  
 81.50 4  
 8.50 6.07 2428  
 340  
 1000 3.03

39' 1310  
 27 19  
 53  
 2772  
 56  
 2716 39

290 34  
 60  
 1740  
 34  
 1774 455

Jan 10.00  
 Feb 18.50  
 2-Mar 4.00  
 Apr 5.00  
 May 12.50  
 June 20.00  
 July 6.00  
 Aug 21.00  
 Sept 5.00  
 92.00

126  
 19  
 1134  
 126  
 394

1774 455  
 156  
 210 4550  
 420 70.35  
 35 70.35

167  
 31  
 501  
 5.177 40  
 10  
 24

140 = price for 67  
 50 220.45



226 825.6  
 321.00 237.0  
 28  
 234.62  
 17.5  
 1135

17  
 98  
 14  
 2.38

16128  
 1129  
 80153

1100 991  
 990  
 1010  
 990  
 110  
 1491  
 495

266  
 246  
 246  
 1176  
 934  
 112  
 60566  
 2868  
 67408

157  
 201  
 118  
 85  
 249  
 669  
 6787

157.50 157.0



267.02 N.E. Goldfinch 345.05  
 6.46 12.10  
 273.98 332.66  
 7.46 139.35  
 266.02 5.83  
 3.26 12.10  
 269.23 15.00  
 154.0 2.90  
 156.3  
 203.18

51.0  
 271.9  
 233.1  
 175.87  
 346  
 20.80  
 332.92  
 6.16  
 345.08

260.66 167  
 195 12  
 205.0 668  
 167  
 27 750 60338  
 742

324  
 270.8  
 97  
 198  
 187  
 511  
 1590  
 1309  
 810

150 200 30  
 150 150  
 600 36  
 150 900  
 21.00 480  
 5400

110 330.00  
 2640 70.00 607  
 2750 61.50 4  
 140 8.50 607 2428  
 340  
 1000 3.03

528 Parasols  
 687 5th st  
 465  
 707.1  
 95.2  
 74071  
 80 2.3,  
 24255  
 A end of pipe

76°00' 13.6  
 8702 5.0  
 12.7  
 760/3000  
 3040  
 71°39'  
 461 27473 3004

76°07'  
 2.247  
 3040  
 123 1500  
 67405  
 2.34  
 2.08  
 2.574

8 10 21 3.574  
 23326 23.3  
 226 8 2 5.6 17  
 321.00 237.0 14  
 28 2.32  
 234.62  
 17.5  
 245.

1100 99  
 799  
 1010  
 799  
 110  
 1491  
 845  
 157.50  
 157.50

266  
 246  
 246  
 1476  
 934  
 112  
 60516  
 6869  
 67405



267.02 N.E. Gold  
 6.46  
 273.48  
 7.46  
 266.02  
 3.26

269.25

512.0  
 271.9  
 232.7

175.87  
 3.46

211.67  
 200

324  
 2268  
 11988

150  
 60 E  
 150  
 2100

110  
 2640  
 2750

330.00  
 290.00  
 40.00  
 140  
 8.50  
 540  
 1000  
 3.0

13.23  
 182  
 11.87  
 70  
 9  
 720  
 150  
 370  
 300  
 1170  
 267.5  
 15  
 252.0  
 3268  
 28768

110  
 12300  
 100  
 984  
 160  
 12  
 370  
 81  
 325

79  
 813  
 3257  
 408  
 57  
 373  
 345  
 3831

381  
 48

6328  
 2658  
 522  
 416  
 1350  
 9050  
 112050  
 416  
 416  
 40  
 417  
 3/5  
 800  
 4170  
 161

299.74  
 3.35  
 196.3  
 80  
 84  
 372.532  
 8.3  
 2023  
 7  
 2000  
 15  
 1754  
 24  
 2439  
 26829

1553  
 2013  
 2007  
 1553  
 2013  
 2007  
 209.5  
 2139  
 380  
 37  
 7930  
 45  
 215.94  
 22  
 437.94

11.50  
 342.74  
 25.3  
 46  
 92  
 4.53  
 377  
 3599  
 1710  
 35994  
 3.0

54  
 105  
 372.48  
 5.63  
 366.50  
 1710  
 201  
 113  
 16128  
 74  
 1127  
 80753  
 1417

210  
 40  
 2005  
 40  
 2005  
 372.48  
 5.63  
 366.50  
 1710  
 201  
 113  
 16128  
 74  
 1127  
 80753  
 1417

110  
 990  
 1010  
 990  
 110  
 1491  
 495  
 157.50  
 157.50

266  
 246  
 246  
 1476  
 939  
 173  
 60516  
 1389  
 67905

