

933

F.B. 933

LEVEL BOOK.

No. 410

MICROFILMED
DEC 16 1964

36 + 40 = 76 - 69.27
35 + 41 = 76 - 76.55
37 + 41 = 78 - 57.26

1136
2501

63

8.7
5.3

14.0
11.5

2.5
1

16
60
960
975

.00020
60

.01740
775
8700
12180
15660

1696500

1

57.26 - BM. NE 27 & North St
387
61.15
615
56.00 - P.R.C. Fick St - W.L. St
2

61.15
2.52
58.63
10.34
68.97 68.97
3.71 4.86
65.26 64.11
6.550 64.50
low. 24 low. 39

5 = 0.698970
577 1.771427
8.921543

1.27 = 10
4.27
7.34 = 20
8.47
14.21 = 30
4.27
19.58 = 40
4.27
24.55 = 50
4.27
29.22 = 60
4.27
34.29 = 70
4.27
39.16 = 80

R=110 = E Curb
" = 140 = W "

1.37' = 25
1.37
2.12' = 50
1.37
4.51' = 75
1.37
6.28' = 100
1.27
8.05' = 125

12.5 = 1.096910

R = 442.34 = 2.445157
8.451153

12.5 1.096910
-160 2.667738
8.434152

1.33 = 25
1.34
3.07 = 50
1.33
4.40 = 75
1.34
6.74 = 100
1.33
7.47 = 125
1.34
9.21 = 150
1.33
10.54 = 175
1.34
12.28 = 200

12.5 = 1.096910
490 = 2.690196
8.406714

1.28' = 25
1.28
3.06 = 50
1.28
4.34 = 75
1.28
5.52 = 100
1.28
7.20 = 125
1.28
8.48 = 150
1.28
10.16 = 175
1.28
11.44 = 200
1.28
13.12 = 225
1.28
14.40 = 250
1.28
16.08 = 275
1.28
17.36 = 300

272.5 = 1.25' ch. =
M. J. Wood
C. L. Wood

277.5 = 1.25' ch. =
W.L. St
P.R.C. Fick St

5 = 0.698970
-140 = 2.146128
8.552842

5 = 0.698970
25 = 1

2.03' = 10
4.06 = 20
6.09 = 30
8.12 = 40
10.15 = 50
12.18 = 60
14.21 = 70
16.24 = 80
18.27 = 90
20.30 = 100

12.5 = 1.096910
240 = 2.386211

8.716677
2.57 = 25
5.58 = 50
8.57 = 75
11.56 = 100
14.55 = 125
17.54 = 150
20.53 = 175
23.52 = 200
26.51 = 225
29.50 = 250

12.5 = 1.096910
210 = 2.322719

8.772791
3.25 = 25
6.50 = 50
9.75 = 75
13.00 = 100
16.25 = 125
19.50 = 150
22.75 = 175
26.00 = 200
29.25 = 225
32.50 = 250
35.75 = 275
39.00 = 300

X Sec's Curlew St.
S.L. Palm to N.L. Redwood.

B.M. Wend Spruce St. Br. Tack in post 229.45

T.P. 3.59 233.04 15.09 222.95

0.86 223.81

N.L. Redwood 80 W.

EL. 12.9 210.9

C 13.4 210.4

1/4 14.0 209.8

± 15.3 208.9

1/4 15.6 208.4

C 16.2 207.6

WL 17.8 206.0

413 27.0 196.8

N. Curb.

+ 20 34.6 189.0

+ 13 32.5 191.3

WL 25.0 198.8

C 23.5 200.3

1/4 21.3 202.5

± 16.6 207.2

+ 5 13.0 210.8

3/6/14
West
Elevs.
Devise.

Note all walks considered 10' except Palm
St. intersection which is 10' on W.L. - 14' on
S.L. + sections taken are proportionate 3
distance bet. 10' + 14' for this intersection.

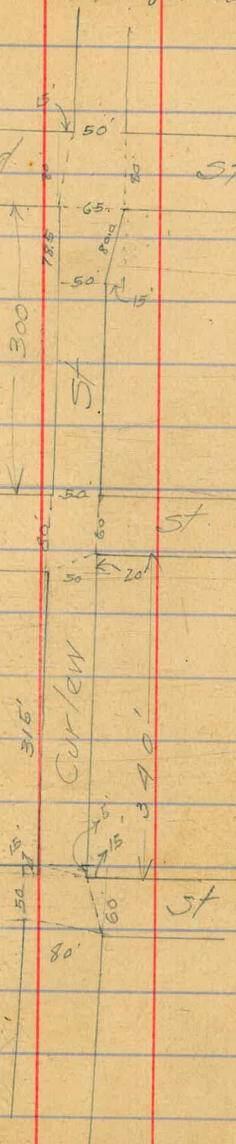
Redwood St

Intersection apparently
completed at Spruce St.
from here south only the
West half of street is graded.

Spruce St

Curlew St

This intersection Palm
is about 3/4 complete
on acct of dip from the
cut with ^{more} ~~less~~ ^{has} ~~been~~
wasted in this fill



22381

1/4	130	210.8
C	13.1	210.7
EL	12.3	211.5

N/A

EL	12.2	211.6
C	12.8	211.0
1/4	12.6	211.2
+3	12.6	211.2
±	17.6	206.2
1/4	24.4	199.4
C	27.0	196.8
WL	29.1	194.7
+20	34.2	189.6

±

-20	34.1	189.7
WL	28.0	195.8
C	26.0	197.8
1/4	22.2	201.6
±	17.0	206.8

22381

4

+5	13.7	209.9
1/4	12.9	210.9
C	12.6	211.2
EL	12.2	211.6

5/4

EL	12.1	211.7
C	12.7	211.1
1/4	13.2	210.6
+5	13.3	210.5
±	17.1	206.7
1/4	22.0	203.8
C	25.6	198.2
WL	28.0	195.8
+20	34.4	189.4

S.Curb

-20	33.5	190.3
WL	27.6	196.2
C	24.6	199.2
1/4	21.4	202.4
±	16.8	207.0

223.81

+5	135	210.3
1/4	137	210.6
C	126	211.2
EL	11.3	212.5

5' L. Redwood.

EL	7.6	216.2
+2	9.3	214.5
C	11.1	212.7
1/4	12.7	211.5
+5	13.6	210.2
±	16.6	209.2
1/4	20.6	209.2
<	24.7	198.9
WL	28.0	195.8
+20	33.0	190.8

25' S. Redwood

-20	30.4	193.4
WL	25.7	198.1
C	22.0	201.8

223.81

5

1/4	18.2	205.6
±	15.2	208.6
1/4	11.2	212.6
C	9.2	212.6
EL	5.9	217.9

50' S.

EL	4.6	219.2
C	7.8	216.0
1/4	9.6	212.2
±	13.2	210.6
1/4	16.7	207.1
+6	17.8	206.0
C	20.1	209.7
WL	22.5	201.3
+20	26.0	197.8

78.5' W. - 50' wide

-20	24.5	199.3
WL	17.4	206.4
±	15.2	208.6
C	13.2	210.6

22381

1/4	11.8	212.0
£	11.0	212.8
+3	8.8	215.0
1/4	7.4	216.4
C	4.9	218.9
EL	2.3	221.5

100'5

FL	2.2	221.6
C	6.0	217.8
1/4	8.6	215.2
£	10.2	213.6
1/4	12.0	211.8
C	13.8	210.0
+5	15.4	208.4
WL	15.8	208.0
+10	17.6	206.2

125'5

-10	19.0	204.8
WL	18.5	205.3

6

22381

C	19.2	200.6
1/4	18.6	205.2
£	17.7	206.1
1/4	15.8	208.0
C	14.2	209.6
EL	12.3	211.5
T.P.	12.93	210.88

047 211.35

150'5

EL	11.0	200.4
C	12.6	199.8
1/4	13.5	197.9
£	14.5	196.9
1/4	14.8	196.6
C	14.4	197.0
WL	13.0	198.4
FL	12.0	199.4

T.P. 21135 1350 198.25

614 204.39

175's.

WL	112	197.4
C	138	190.6
1/4	150	189.4
£	160	188.4
1/4	166	187.8
C	159	188.5
EL	154	189.0
+10	156	188.8

200's.

-20	260	178.4
EL	255	178.9
C	246	179.8
1/4	235	180.9
£	21.9	180.5
1/4	200	184.4
C	17.1	187.3
WL ¹⁵	15.2	189.2
	134	191.0

204.39

225's.

WL	13.7	190.7
C	17.6	186.8
1/4	20.7	183.7
£	29.0	181.4
1/4	25.6	178.8
C	27.0	177.4
EL	31.0	173.4
+25	34.6	169.8

250's.

-30	40.3	164.4
EL	32.8	171.6
C	30.0	174.4
1/4	27.6	176.8
£	25.3	178.1
1/4	21.6	180.8
C	18.0	186.4
⁺⁵ WL	14.2	190.2
	10.8	193.6

20439

275'S.

WL.	7.3	197.1
C	14.9	189.5
1/4	19.5	184.9
£	24.0	180.4
1/4	27.5	177.9
C	30.5	173.9
EL	33.8	170.6
+30	41.0	163.4

300'S = 17L Quince

-30	42.1	169.3
EL	33.8	170.6
C	29.4	175.0
1/4	26.2	178.2
£	22.3	182.1
1/4	18.6	185.8
C	14.1	190.3
WL.	6.3	198.1

20439

N. Curb.

8

WL.	5.3	199.1
C	11.6	194.8
1/4	18.2	186.2
£	22.4	182.0
1/4	26.0	178.4
C	29.1	175.3
EL	33.2	171.2
+25	43.0	161.4

17/4

-25	42.4	164.0
EL	32.6	171.8
C	27.7	176.7
1/4	24.4	180.0
£	22.0	182.4
1/4	16.8	187.6
C	9.1	195.3
WL.	4.4	200.0

20439

± Quince

WL	6.0	198.4
C	10.2	194.2
1/4	14.7	189.7
±	18.6	185.8
1/4	23.5	180.9
C	27.6	176.8
EL	32.2	172.2
+25	42.0	162.4

3/4

-25	42.5	161.9
EL	31.7	172.7
C	26.9	177.5
1/4	23.0	181.4
±	18.3	186.1
1/4	13.2	191.2
C	8.3	196.1
+5	6.9	197.9
WL	7.1	197.3

20439

S. Curb.

WL	8.9	195.5
C	8.9	195.5
1/4	10.5	193.9
±	16.5	187.9
1/4	21.0	183.4
C	25.6	178.8
EL	30.6	173.8
+25	42.2	162.2

SL. Quince

-25	41.6	162.8
EL	29.3	175.1
C	23.0	181.4
1/4	16.7	187.7
±	12.1	192.3
1/4	10.1	194.3
C	9.9	194.5
WL	10.7	193.7

T.P. 20439 10.89 193.50

113 19A 63

SL Quince on WL 20 S. on FL

WL

C 10 1936

1/4 15 1931

ϕ 17 1927

1/4 41 1906

C 55 1891

EL 100 1846

+20 230 1716

25' S. of 1st Section

-10 96 1850

EL 70 1876

C 53 1893

1/4 46 1900

ϕ 43 1903

1/4 42 1904

C 41 1906

WL 44 1908

19463

50's

WL 75 1871

C 71 1875

1/4 72 1874

ϕ 74 1872

1/4 79 1867

C 85 1861

EL 94 1852

+10 108 1838

75's

-10 149 1797

EL 129 1817

C 116 1830

1/4 107 1839

ϕ 107 1839

1/4 107 1829

C 107 1829

WL 114 1822

T.P. 194.63 1291 181.72

020 181.92

100's

WL	2.5	179.4
C	2.4	179.5
1/4	2.1	179.8
£	2.2	179.7
1/4	2.5	179.4
C	3.0	178.9
EL	4.1	177.8
+10	5.6	176.3

125's

-10	11.3	170.6
EL	9.8	172.1
C	9.0	172.9
1/4	8.4	172.5
£	7.7	174.2
1/4	7.1	174.8
C	6.7	175.2
WL	6.5	175.4

181.92

150's

WL	10.6	171.3
C	11.2	170.7
1/4	11.6	170.3
£	12.0	169.9
1/4	12.4	169.5
C	13.0	168.9
EL	13.5	168.4
+10	14.9	167.0
T.P.	12.41	169.51

204 171.55

175's

-10	8.8	162.8
EL	7.6	164.0
C	6.4	165.2
1/4	5.8	165.8
£	5.2	166.4
1/4	4.8	166.8
C	4.3	167.3
WL	3.7	167.9

171.55

200's

WL	6.9	160.7
C	7.5	160.1
1/4	8.3	163.3
1/2	8.9	162.7
3/4	9.6	162.0
C	10.3	161.3
EL	11.9	159.7
+10	13.7	157.9

225's

-10	17.2	150.0
EL	15.1	156.5
C	14.1	157.5
1/4	13.4	158.2
1/2	12.3	159.3
3/4	11.5	160.1
C	10.9	160.7
WL	10.1	161.5

T.P.

171.55 1236 159.17

094 160.13

250's

WL	1.2	158.9
C	1.9	158.2
1/4	2.5	157.6
1/2	4.0	156.1
3/4	5.1	155.0
C	6.0	154.1
EL	7.7	152.0
+10	10.1	150.0

275's

-10	14.8	145.3
EL	13.0	147.1
C	11.5	148.6
1/4	9.9	150.2
1/2	8.3	151.8
3/4	7.0	153.1
C	5.6	154.5
WL	3.8	156.3

12

16013

300'S.

WL	84	141.7
C	103	149.8
1/4	115	148.6
±	135	146.6
1/4	150	145.1
C	160	144.1
EL	172	142.9
+10	200	140.1

315'S - NL Palm on WL

-15	260	136.1
EL	220	138.1
C	200	140.1
1/4	17.8	142.3
±	15.9	144.2
1/4	14.5	144.6
C	13.4	146.7
WL	11.0	149.1

16013

315'S on WL 370'S on EL - NL Palm

WL	11.0	149.1
C	13.2	146.9
1/4	14.7	145.0
±	16.2	143.9
1/4	18.1	142.0
C	20.0	140.1
EL	23.0	137.1
+15	27.3	134.8

N. Curb.

-15	30.0	130.1
EL	26.2	133.9
C	23.0	137.1
1/4	20.5	139.6
±	18.1	142.0
1/4	16.0	144.1
C	14.5	145.6
WL	11.3	148.8

16013

N/A

WL	11.5	1286
C	14.5	1286
1/4	18.0	1291
£	21.0	1291
1/4	24.0	1361
C	26.0	1361
EL	28.7	131.4
+15	33.0	127.1
	£ Pp/m	
-15	33.7	126.4
EL	31.7	128.4
C	27.9	132.2
1/4	25.1	136.0
£	22.2	137.9
1/4	18.7	141.4
C	14.4	145.7
WL	11.6	128.5

14

16013

S/A

WL	11.9	128.2
C	15.1	125.0
1/4	18.4	121.7
£	22.6	137.5
1/4	26.0	136.1
C	30.2	129.9
EL	35.4	124.7
+15	40.2	119.9
	S Carb	
-15	45.2	114.9
EL	39.1	121.0
C	32.4	127.7
1/4	27.8	132.3
£	24.2	139.9
1/4	19.5	140.6
C	15.6	144.5
WL	11.9	128.2

16013

SL. Palm.

WL			12.3	147.8
C			18.5	141.6
1/4			23.0	137.1
1/4			26.1	136.0
1/4			29.7	130.4
C			35.1	126.0
EL			41.1	119.0
+10			46.8	113.3
T.P.			115.7	148.56
T.P.	0.44	149.00	12.23	136.77
	0.82	137.59		
BM. Mon. Palm & Dove			2.35	135.21

OK.

Sewer Stakes
 Altamira St. 9.5 of N Curb.
 stakes offset 2' N of E ditch

O/E Curb. Valle Vista & Altamira 266.00 Gr. Bot

12.08 278.08

-44.3 = Ft. foot bot. S 12.72 265.36 261.00

0+00 - MH & Valle Vista 9.5 N.C. 12.20 265.88 262.20 3.7 ✓

+50' 10.2 267.9 264.63 3.3 ✓

1+00 6.9 271.2 267.07 4.1 ✓

+50 break 4.4 273.7 269.50 4.2 ✓

2+00 TP 2.26 275.82 269.75 6.1 ✓

816 283.98

+50 6.8 277.2 270.00 7.2 ✓

3+00 MH 6.5 277.5 270.25 7.3 ✓

+50 5.7 278.3 270.50 7.8 ✓

4+00 5.4 278.6 270.75 7.8 ✓

+50 5.3 278.9 271.00 7.7 ✓

5+00 6.0 278.0 271.25 6.7 ✓

+50 6.4 277.6 271.50 6.1 ✓

6+10 DE 7.24 276.74 271.75 4.9 ✓

NW Curb Return 7.52 276.46 272.00

4/8/14

Went
 Exam
 Level

266.00	73.50	73.50	73.50	73.50
7.52	61.50	62.20	64.63	67.07
273.52	72.50	11.30	8.87	6.43
0.10				
273.40	80.99	80.99	80.99	80.99
7.59	69.52	7.75	70.00	70.25
280.99	11.49	11.24	10.99	10.74

Cuts

~~776.74~~

276.46

6.55
 283.01

83.01 83.01 83.01
 70.50 71.80

12.51 12.46 11.21

12.01 11.76 11.51

sewer line 1st. Laurel to 201' N.
Hubs. 2' W &:

BM NW 1/4 Laurel Hg.	632	228.32	227.00	190.	
0-55' = MH & Laurel - W. 1st.	13.25	12.62	215.07	215.70	bot floor.
0-10' PC.	5.70		222.62	216.16	Average floor.
0+10 = PC.	5.1		223.2	216.35	6.4
+50	4.8		223.5	216.75	6.8
1+00	4.3		224.0	217.25	6.7
+50	3.8		224.5	217.75	6.8
2+01 TR T.P.	3.35		224.97	218.26	6.7
	4.25	229.22			
50' W. off 2+01	7.4		221.8		
BM.	7.22	220.00			
	7.70	229.70			
Top Cover MH.	8.26		221.44		
Flow line MH.			215.07		
2+10 DE.	4.80		224.90	218.35	6.5

See Page 20

1x Laurel - NW. 1st. - ~~254.72~~ 222.00
1x Laurel - W. 1st. " " 211.51

201' N. NL. Laurel.

Cuts.

17

Levels taken on outfall sewer feet of H" at
 from angle in line to shore line. Levels
 taken on top of pipe at every joint

B.M.	3.27	6.49	3.20
T.P.	2.92	6.49	6.02
Joint at angle 10°	-3.10	3.27	6.37
Joint		3.23	6.33
"	2	3.51	6.61
"	3	3.41	6.51
"	4	3.41	6.51
"	5	3.37	6.47
"	6	3.40	6.50
"	7	3.37	6.47
"	8	3.41	6.51
"	9	3.37	6.47
"	10	3.37	6.47
"	11	3.36	6.46
"	12	3.30	6.40
"	13	3.30	6.40
"	14	3.31	6.41
"	15	3.25	6.35
"	16	3.22	6.32
"	17	3.21	6.31



18	-3.10	3.25	6.35
20		3.31	6.41
22		3.32	6.52
24		3.31	6.51
26		3.31	6.51
28		3.28	6.38
30		3.35	6.45
32		3.33	6.43
34		3.34	6.44
36		3.20	6.30
38		3.30	6.40
40		3.23	6.33
42		3.21	6.31
44		3.22	6.32
46		3.25	6.35
48		3.05	6.15
50		3.03	6.13
52		3.12	6.29
54		3.09	6.19
56		3.21	6.31
58		3.23	6.33
60		3.20	6.30
62		3.38	6.48
64		3.28	6.38
66		3.08	6.18
68		3.05	6.15
70		3.04	6.14
72		2.97	6.07
74		2.99	6.00
76		3.03	6.13
78		3.05	6.15
80		3.07	6.17
82		2.87	5.97
84		2.85	5.95
86		2.81	5.91
88		2.78	5.88
90		2.83	5.93
92		2.90	6.00

56	3.10	2.92	6.02
		2.87	5.97
57		2.97	5.97
		2.90	6.06
60		2.83	5.93
		2.78	5.88
62		2.75	5.85
		2.80	5.90
64		2.75	5.85
		2.72	5.82
66		2.80	5.90
		2.87	5.97
68		2.92	6.02
		3.00	6.10
70		3.00	6.10
		2.95	6.05
72		2.99	6.09
		2.93	6.03
74		2.93	6.03
		2.93	6.03
76		2.97	6.07
		2.94	6.04
78		2.90	6.00
		2.95	6.05
80		3.05	6.15
		3.00	6.10
82		3.01	6.11
Joint-Shore Line	83	3.00	6.11

83
 $\frac{12}{166}$
 $\frac{83}{996}$

Hor

1st St Sewer
From E 1st Laurel - to 210' N of NL Laurel.

X

B.M. NW. 1st St Laurel.		222.00	
	5.52	227.52	
Ave Floor Top Cover.	11.77 6.08		215.75.
0+00 M.H. E Laurel - Box.	12.45	221.44 215.07	
0+14.8 = P.C. R. 4776 0+41.6 = Mid. Curve.	5.3	222.2	215.90 ^v
0+68.4 = P.T. = NL Laurel.	5.3 4.34	222.2 223.18	216.17 ^v 216.43 ^v
1+08±	4.05	223.47	216.83 ^v
1+58±	3.55	223.97	217.33 ^v
2+08±	3.02	224.50	217.83 ^v
2+68± = 210' N of NL Laurel DE	2.62	224.90	218.43 ^v

West
Evans
Devine

20

222.00
6.75
228.75 HS

228.75	228.75	228.75	228.75
215.90	216.17	216.43	216.83
12.85 ^v	12.58 ^v	12.32 ^v	11.92 ^v

228.75	228.75	228.75	228.75
217.33	217.83	218.43	
11.42 ^v	10.92 ^v	10.32 ^v	

6.3^v

6.0^v

6.8^v

6.7^v

6.6^v

6.7

6.5

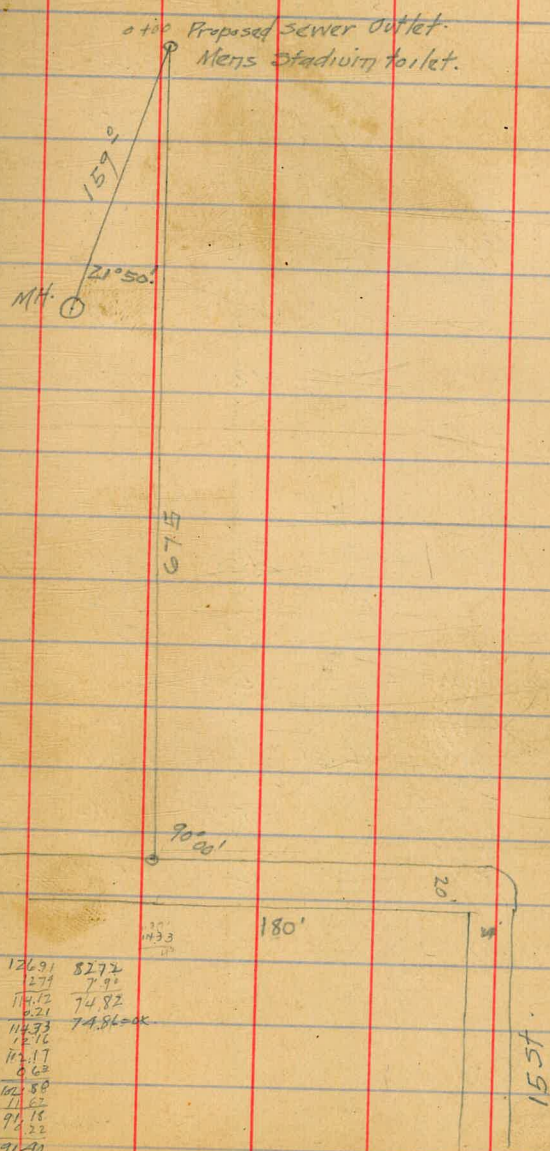
Levels for sewer Globe Flour Mills ^{9 1/2} Sample
 from M.H. Ash & Atlantic north for 195' ¹⁴ Show
 Line on E.L. of Atlantic to 195' hence East to 3+32 to
 where sewer leaves building
 B.M. Brass plg Ash & India 22.97
 0.43 23.40
 T.P. 2.74 13.42 12.72 10.68
 T.P. 4.38 6.92 10.38 2.54
 Top 5.4 1.5
 +0 - M.H. Atlantic & Ash bottom 9.6 - 2.7
 +50 4.00 + 2.9
 +40 4.1 2.8
 +50 4.9 2.0
 +95 R 75° 00' Approx 4.3 2.6
 T.P. 9.49 13.67 2.74 4.18
 2 10.7 3.0
 +18 9.9 3.8
 +35 6.5 2.2
 +50 6.9 6.8
 +67 7.4 6.3
 3 5.4 2.3
 +10 4.4 9.3
 + 32 where sewer leaves bldg 3.6 10.1
 + 35 bottom of sewer 12.6 1.1

Stadium Sewer Connection.

I

BM Plug SW.15 + C.			76.98	
T.P.	12.31	89.29	1.37	87.92
T.P.	11.33	99.25	1.02	98.23
T.P.	9.46	107.69	0.89	106.80
T.P.	12.29	119.09	0.66	118.43
T.P.	12.48	130.91	0.48	130.43
T.P.	12.61	143.04	1.04	142.00
	11.96	153.96		
Top Cover MH.	50' N. of St.	3.34		150.62
Bot Flow MH.	MT School Bldg. 88' E. of E.L. Bldg.	7.64		144.32
T.P.		8.73		153.23
	10.30	163.53		
Nat Ground.	180' W of HL-15st 675' N of S Cor. Ast.	2.5		161.0
Top Cover.				150.62
FE	12.23	162.85		
0+00 = proposed outlet.		1.8	161.0	155.00
+50		3.4	159.4	
+100		6.2	156.6	
+135		8.2	154.6	
+50		12.0	150.8	
+59 MH.		12.23	150.62	12

9/23/14
West
Deanna
Sketch



150.62	126.91	82.72
374	127	7.91
154.36	15.12	74.82
18.06	5.21	74.86
144.36	11.33	74.86
1.14	1.12	
145.30	12.17	
314	0.62	
137.36	12.50	
0.60	12.22	
137.96	11.70	
11.46	11.04	
126.36	50.34	
0.35	2.81	
126.91	82.72	

Atlantic St Sewer
 from Φ Ash to Connect Globe
 & Flour Mills. offsets 2' E & S. of Φ .

B.M. SW. Ash & India Plug. 22.97

TP 3.10 26.07 10.54 15.53

TP 1.08 16.61 10.37 6.24

1.18 7.42

MH Φ Ash. Top 5.9 1.5
 Bot. 10.02 -2.60

TP 4.11 3.31

5.08 8.39

0+00 -1.60

+50 5.36 3.03 -1.20

1+00 5.52 2.87 -0.80

1+50 6.21 2.18 -0.40

+75 PC. ST=21.40 and
 $\Delta=70'12"$
 TP R=30.46 5.63 2.96 -0.20

TP 4.12 3.77

2+02.77 8.31 12.28 8.61 3.67 +0.10

2+62.2 5.85 6.43 0.50

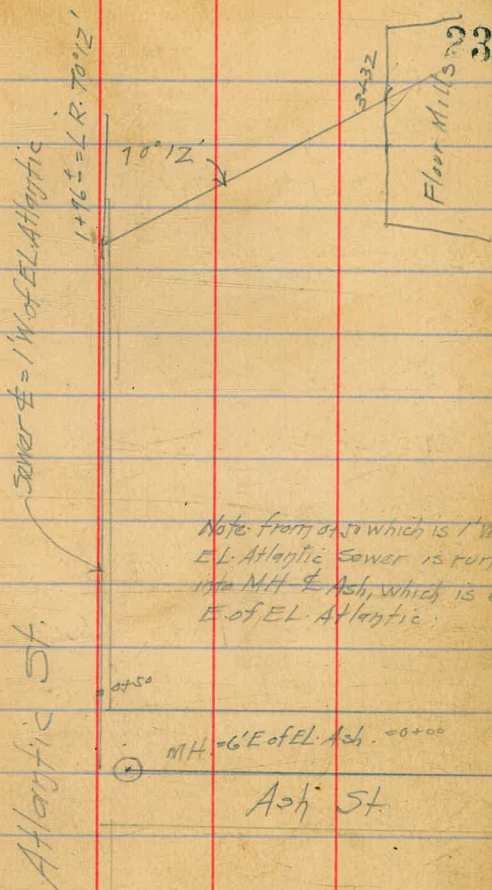
3+12.3 2.78 9.50 0.90

3+32 Bldg. 2.34 9.94 1.06

10/2/19

Well
 Coarse
 Brown

Cuts.



Note: From 0+50 which is 1' W. of
 EL Atlantic Sewer is run
 into MH Φ Ash, which is 6'
 E. of EL Atlantic.

MH = 6' E of EL Ash. = 0+00

Ash St.

Atlantic St MH Elevations

Σ

24

T.P.

3.31

4.38 7.69

MH & Ash. 6 F. FL Atlantic

4.08 3.61

T.P.

4.91 2.72

6.17 8.89

MH & A & Atlantic

4.79 4.10

T.P.

6.06 2.83

5.31 8.14

MH & B & Atlantic

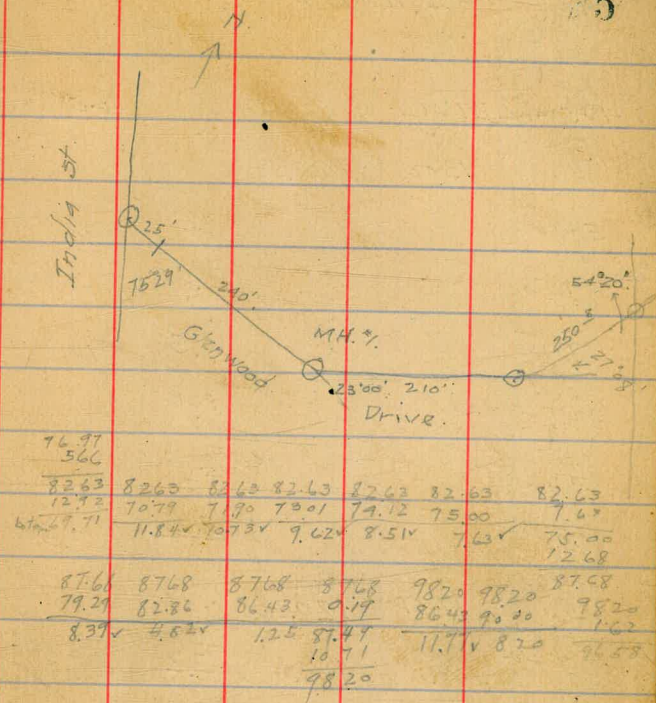
4.04 4.10

Glenwood Drive Sewer
 from MH S.W. of Corb of India
 to MH. 4+50.

10/14/14
 West
 Evans
 Device.

25

+	HI.	—	El.	Grade	Cuts.
BM SW Nag	Via India		81.065		
		bt. st.	17.8		
TP Top MH Ring	5.51 215° 29'	86.57	1000	76.57	69.0
	9.55 25° E. of MH.	86.12			
0+00 End pipe		9.15	76.97	69.68	7.3
+50		8.22	77.90	70.79	7.1
1+00		7.76	78.36	71.90	6.5
+50		7.15	78.97	73.01	6.0
2+00		6.15	79.97	74.12	5.8
+40 MH. L	230° L.	5.2	80.9	75.00	5.9
3+00 TP Hub.		1.92	84.20	79.29	4.9
	12.87	97.07			
+50		7.61	87.46	82.86	4.6
4+00		5.60	91.41	86.43	5.0
+50 DE.		8.50	96.57	90.00	6.6



12.87
 97.07
 1/2

Extension Glenwood Drive to
 point 50' S of S.L. Walnut & 1ft E. & Block
 152 Middle town.

4+50 = $\angle 27^{\circ} 09' L$ 96.57 90.00

1303 109.60

5+00 7.9 101.7

+50 2.3 107.3

+75 3.5 106.1

6+00 3.4 106.2

4+25 2.0 107.6

T.P. 2.22 107.38

12.94 120.32

+50 5.2 115.1

+58 3.7 116.6

T.P. 3.03 117.29

7.38 124.67

7+01 MH $\angle 126^{\circ} 40' R$ 4.30 120.37

Pt. 50' S of S.L. Walnut & 1 E. of Lot line

893 129.30

7+11 9.2 120.1

7+36 9.5 119.8

+56 9.1 120.2

+61 7.3 122.0

Note

129.30
T.P. 1.08 128.22

1203 140.25

7+86 7.9 132.4

T.P. 0.41 139.84

1245 152.29

8+11 9.5 142.8

+23 6.5 145.8

+36 2.0 150.3

T.P. 1.71 150.58

1287 163.45

+43 10.7 152.7

+61 6.6 156.8

+86 2.5 160.9

T.P. 0.34 163.11

1142 174.53

9+11 10.7 163.8 cut 1A

+36 8.8 165.7

+66 = NL. Vise 7.6 166.9

174.53

+91 = 4 Virgo	6.6	167.9	
10+16 = 5L Virgo	4.3	170.2	cut 9'
+61	2.1	172.4	
T.P.	11.0	173.43	

10.66 184.09

11+11	12.4	171.7	cut 11'
+36	13.3	170.8	
+61	11.0	173.1	
+86	8.3	175.8	
12+11	6.5	177.6	cut 14'
+61	4.4	179.7	
+86	2.1	182.0	
13+11	0.4	183.7	cut 14'
T.P.	17.6	182.33	

12.25 194.58

13+61 = NL. Upps	7.8	186.8	
+86 - 6 "	6.8	187.8	
14+11 = 5L "	{ 5.0	189.6	cut 11'
	{ 4.0	190.6	

28

		174.58			
T.P.	1.13		1.13	193.95	
	12.71	206.16			
14+61			9.9	196.3	
15+11			4.7	201.5	cut 8'
T.P.			2.73	203.43	
	8.36	211.79			
15+61			6.9	204.9	cut 8'
16+11			4.8	207.0	cut 6'
+61			7.1	204.7	cut 5'
17+11	NL Thorn.		10.7	201.1	
T.P.			10.56	201.23	
	12.17	213.40			
100' E. of State on NL Thorn.			12.2	201.2	197.5'
NW Cor. Union & Thorn.			3.6	209.8	246'
BM. SE. Corner of Walk			0.76	212.64	
T.P.	3.73	216.37	12.48	203.89	
T.P.	0.65	204.54	12.19	192.35	
T.P.	1.06	193.41	12.98	180.43	
T.P.	0.98	181.01	12.92	168.77	
T.P.	0.27	169.26	12.21	157.05	
T.P.	1.70	159.75	13.02	145.73	
T.P.	-0.53	145.70	13.11	132.59	
T.P.	0.87	133.46	12.91	120.56	

120.56

T.P.	0.02	120.58	13.10	107.48	
	0.38	107.86			
400' 4+5+DE.			11.29	76.57	96.57

Alley bet 32 & Herman
 Beginning MH. 23+175 Alley 31.11 Fray Hts.
 Thence 95 per 150 ft.

10/24/19 West
 Exam.
 Survey

30

23+175					
MH Alley bet. Quince & Palm Bl. Fray Hts.			238.50	210	
	1286	251.46		(actual) 238.26	
23+50			6.44	245.02	239.56
24+00			6.0	245.5	241.21
TP			3.04	248.42	
	9.88	258.30			
24+50			9.22	249.08	242.86
25+00			7.98	250.32	244.52
+50			8.15	250.15	246.18
26+00			5.73	252.57	247.84
26+35 = MH*1. < 21 37 1/2			3.97	254.33	249.00
	9.47	263.80			
27+00			8.10	255.70	250.03
+61 MH*2			7.17	256.63	251.00
28+00	10.46	266.84	8.96	257.88	252.87
+50			6.27	260.57	255.28
29+00 T.P. Hub			1.63	265.21	257.69
	8.30	273.51			
417 = MH 3 = 15' N of road. Alley 4.17				269.34	260.00

Cts

273.51	245.02			
8.97	6.01			
261.54	251.03	251.03	251.03	251.03
	239.56	241.21	242.86	244.52
	11.47	9.82	8.17	6.51

251.03	251.03	251.03	251.03
246.18	249.84	247.00	147
4.85	3.17	2.03	249.52 = P.
			11.28
			260.84

26.84	26.84
247.00	250.16
11.84	12.68

Note: M.H. 23+175 at 4' alley bet Palm & Quince is 20' lower than shown on profile; same on profile grade to 26+35 MH*1, 10' just after 24' end between MH*1 & *2.

257.88		262.04	262.04
4.6		2.19	265.28
262.04	262.04	262.04	6.76
252.87	251.00	267.85	
7.17	11.04		

7.03	265.21		
260.57	2.51		
267.60	267.60	267.60	267.60
257.69	260.70	267.60	6.24
9.91	7.00	261.96	12.59
		273.95	

9.4

200 yds from Hermann Rd
 TP 116 320.52 12.88 217.06 301.51
 TP 0.89 308.53 12.63 295.90 1785
 1.18 277.08
 17.85
 279.23 969 269.54 OK

15' of
 0+15 = Redwood & Alley bet.
 Herman & 32 St

+50 10.6 268.6 261.89 6.7 ✓

1+00 5.7 273.5 264.59 8.9 ✓

T.P. 3.55 275.68

+50 11.39 287.07 12.91 274.16 267.30 6.9 ✓

2+00 = Brk 11.88 275.19 270.00 5.2 ✓

+50 T.P. 2.19 284.88 277.69 7.2 ✓

12.73 297.61

3+00 6.3 291.3 285.38 5.9 ✓

TP 12.26 309.68 0.17 297.42

+30 - MH 4. 13.2 296.5 290.00 6.5 ✓

T.P. 11.39 298.29 291.14 7.2 ✓

4+00 7.05 302.63 294.00 8.6 ✓

+50 3.38 306.30 296.86 9.4 ✓

+70 break 2.65 307.03 298.00 9.0 ✓

5+00 T.P. 1.39 308.29 298.12 10.1 ✓

+50 10.04 318.33 8.27 310.06 298.31 11.8 ✓

306.30
 7.37
 313.67 313.67 313.67 313.67 313.67
 296.86 298.00 298.12 298.21 298.50

16.81 ✓ 15.47 ✓ 15.55 ✓ 15.36 ✓ 15.17 ✓
 2.97 2.8 30 28 26
 45 32

273.95 273.95 273.95 273.95 277.93 277.93
 261.89 267.30 264.59 264 264.59 267.30
 12.06 6.65 9.36 7.52 7.52 10.63 ✓

277.93 277.93
 270.00 2.48
 7.93 ✓ 275.45 TP 286.89 286.89
 11.44 277.69 2.01
 286.89 HJ 9.20 284.88 TP 7.79 293.98 HJ

293.98 293.78
 285.38 2.63
 8.60 ✓ 291.25 TP 301.87 301.87 301.87
 10.62 270.00 271.14 294.00
 301.87 HJ 11.87 ✓ 10.73 ✓ 7.87 ✓

294.00
 12.65
 306.63 HJ
 1.70
 304.93 TP 5.14
 310.07 276.86
 13.21 ✓

31833

6+00 +35		5.71	312.62	298.50 [✓]	14.1	
+60 = MH*5 & Thorn JP		6.70	311.63	298.73 [✓]	12.9 [✓]	
7+00	7.87	320.49	4.98	315.51	298.89 [✓]	16.6 [✓]
+50		4.24	316.25	299.08 [✓]	17.2 [✓]	
8+00		4.50	315.99	299.27 [✓]	16.7 [✓]	
+50		5.00	315.49	299.46 [✓]	16.0 [✓]	
9+00		5.29	315.20	299.66 [✓]	15.5 [✓]	
J.P. 1		12.70	307.79			
+50	7.93	315.72	7.72	306.00	299.85 [✓]	6.1 [✓]
+60				299.81 [✓]		
+90 = MH*6		10.42	305.30	300.00 [✓]	5.3 [✓]	
10+50		7.43	308.29	303.45 [✓]	4.8 [✓]	
J.P.		1.44	314.28			
	12.17	326.45				
11+00		10.74	315.71	306.33 [✓]	9.4 [✓]	
+50		8.23	318.22	309.20 [✓]	9.0 [✓]	
12+00		6.77	320.28	312.08 [✓]	8.2 [✓]	
+50		4.70	321.75	314.95 [✓]	6.8 [✓]	
13+00						
+03 = MH*7 & Upgo.		3.07	323.38 [✓]	318.00 [✓]	5.4 [✓]	
BK. NW Upgo. + Herman Spk		4.23	322.22	322.22 ^{OK}		

32

318.5	312.25	318.5	312.25	318.5	312.25
317.63	1.93	317.44	1.19	317.44	1.19
11.22		317.44	37.47	317.44	37.47
322.85 HI.	5.69	311.75		314.19	
317.30	2.84	314.19 HI		29.73	
				15.46	
				2.5%	
				18.39%	
315.51					
494					
320.45	320.45	320.45	320.45	320.45	320.45
298.89	299.08	299.27	299.46	299.66	299.85
10.24					
21.56	21.37	21.18	20.99	20.79	20.59
312.32	312.32	312.32	312.32	312.32	312.32
297.81	300.00	302.45	305.00	307.55	310.00
12.43	12.32	8.87	8.76	8.65	8.54
					308.29 = OK
308.29 TP					
12.30					
320.61	320.61	320.61	320.61	320.61	320.61
306.32	309.20	312.08			
14.28	11.41	8.53	302.30 TP		
			7.87		
			43.38.17	328.17	328.17
			314.75	318.00	
			13.22	10.17	
312.62					
5.14					
317.76	317.76				
298.50	298.63				
19.26	19.15				
308.27	311.52	311.52	311.52	311.52	311.52
3.20	99.89	300			303.43
311.52	11.63	11.52			8.07

13+13 = MH ⁷ - 40/175		323.42	318.00	✓
+50	8.24 331.66	7.77	323.89	318.82
14+00		6.60	325.06	319.69
+50		5.80	325.86	320.56
15+00		4.78	326.88	321.43
+50		4.24	327.42	322.30
16+00		3.01	328.65	323.16
+48 = MH ⁸ & MH ¹⁰ to		3.25	328.41	324.00
17+00	8.08 336.49	6.69	329.80	324.47
+50		6.22	330.27	324.92
18+00		5.58	330.91	325.37
+50		5.37	331.12	325.83
19+00		4.60	331.89	326.28
+50		3.76	332.73	326.74
+78 = MH ⁹		3.60	332.89	327.00
20+00		3.42	333.07	327.13
+50 TP		2.77	333.72	327.43
21+00	6.57 340.29	6.68	333.61	327.73

5.4	328.17 4.27 323.90	328.17 318.82 7.35	325.06 7.77 332.83	323.89 8.93 332.82
5.1	332.82	332.82	332.82	332.82
5.4	319.69 13.13	320.96 12.26	321.43 11.39	322.30 10.52
5.3	332.82	332.82	332.82	332.82
5.5	324.47 8.35	324.42 7.90	325.37 7.45	332.82 7.49 338.42
5.1	338.42	338.42	338.42	338.42
5.5	325.83 12.59	326.28 12.14	326.74 11.68	327.00 11.42
4.4	338.42 327.73	338.42	338.42	338.42
5.3	10.69			
5.3				
5.5				
5.3				
5.6				
6.0				
5.9				
6.0				
6.3				
5.9				

340.29

21+00 6.68 333.61 327.73 ✓

+50 5.74 334.55 328.03 ✓

22+00 5.72 334.57 328.34 ✓

+50 5.29 335.00 328.64 ✓

23+00 328.94 ✓

+09 = MH*10 ~~4~~ Wright 4.95 335.34 329.08

+50 4.43 335.86 329.62 ✓

24+00 3.92 336.37 330.38 ✓

25+50 TR 3.19 337.10 331.13 ✓

25+00 8.37 345.47 7.92 337.55 331.89 ✓

+50 7.17 338.30 332.65 ✓

26+00 6.30 339.17 333.41 ✓

+39 = MH*11 5.50 339.97 334.00 ✓

+50 5.31 340.16 334.05 ✓

27+00 4.53 340.94 334.29 ✓

+50 3.85 341.62 334.53 ✓

28+00 3.42 342.05 334.78 ✓

+50 3.06 342.41 335.02 ✓

29+00 2.9 342.6 335.26 ✓

+50 5.5 340.0 335.51 ✓

+682 MH*12 ~~2~~ 4.78 340.69 335.60 ✓

340.69
733
348.02
4.28
343.74

34382
34345
34377

5.9 ✓

6.5 ✓

6.2 ✓

6.4 ✓

335.86
6.71
342.5741

6.3 ✓

6.3 ✓

6.0 ✓

6.0 ✓

5.7 ✓

5.6 ✓

5.8 ✓

6.0 ✓

6.1 ✓

6.6 ✓

7.1 ✓

7.2 ✓

7.4 ✓

7.3 ✓

4.5 ✓

5.1 ✓

34516
315
342.01

338.42 338.42 338.42 338.42 338.42
328.03 328.34 328.64 328.94 329.01
10.39 ✓ 10.08 ✓ 9.78 ✓ 9.48 - 9.42

338.42
2.57
335.85423450

42.57 42.57 42.57 42.57 42.57 42.57 42.57 42.57
27.62 30.38 113 1.079 2.65 3.41 4.00 4.05
12.95 12.19 11.44 10.68 9.92 9.16 8.57 8.52

340.16
5.00

34516 34516 34516 34516 34516 34516 34516
334.29 334.53 334.78 335.02 335.26 335.60
11.11 ✓ 10.87 ✓ 10.63 ✓ 10.38 ✓ 10.14 ✓ 9.90 ✓ 9.50 ✓

34516
335.44
9.72 ✓

34516

29+68 ³	MH*12 = Laddis		340.77	335.60	✓
30+00	6.30	347.07	5.15	341.92	335.74 ✓
+50			5.32	341.75	335.95 ✓
31+00			5.04	342.03	336.16 ✓
+50			5.81	341.26	336.37 ✓
32+00			5.23	341.84	336.58 ✓
+50			4.82	342.25	336.80 ✓
+98 ³	MH*13		4.4	342.7	337.00 ✓
33+50			3.89	343.18	337.79 ✓
34+00			3.16	343.91	338.55 ✓
+50 TP			2.09	344.98	339.31 ✓
35+00	7.13	354.11	1.26	345.85	340.57 ✓
+50			7.13	346.98	340.82 ✓
36+00			6.15	347.96	341.58 ✓
+28 ³	MH*14 = Wrightman		6.55	347.56	342.00 ✓
+50			6.1	348.0	342.28 ✓
+55					342.48 ✓
37+00			5.01	349.10	342.91 ✓
+50			4.1	350.0	343.54 ✓
38+00			2.47	350.64	344.17 ✓
+50			2.9	351.2	344.80 ✓
+65 ³	MH*15 = Alley		7.13	351.38	345.00 ✓

	343.82 = BM. S. C. Laddis + Herman				
	1.50				
	345.32	1.19			
	345.32	345.32	345.32	345.32	1.50
	335.74	335.95	336.16	329	
	9.58 ✓	9.57 ✓	9.16 ✓	342.03	347.00
	342.03	347.98			
	5.95	336.16			
	347.98	347.98	347.98	347.98	347.98
	336.37	336.58	336.80	337.00	337.79
	11.61 ✓	11.40 ✓	11.19 ✓	10.98 ✓	10.79 ✓
	347.98	347.98	347.98	347.98	347.98
	338.55	337.31	340.97	340.82	341.58
	7.43 ✓	8.67 ✓	7.91 ✓	7.16	6.40
	347.98		352.35	352.35	352.35
	2.14		340.82	341.58	342.00
	345.84 = Hub.	351.00	11.53 ✓	10.79 ✓	10.35 ✓
	6.47				
	352.35	352.35			
	342.91	343.54	320	344.17	
	9.44 ✓	8.81 ✓	349.15 -	8.18 -	
		352.05	351.2		
		345.00	535		
	351.20	7.35 ✓	352.58		
	4.64				
	355.84				
	344.17	343.54			
	11.67 ✓	12.30 ✓			

Line Running E. from $\frac{1}{2}$ Alley.0+00 = 38+65² = $\frac{1}{2}$ Alley S. of Univ.
477 356.19

351.42 345.00 ✓

6.4 ✓

351.94

4.66

356.60

356.60

356.60

+ 50

5.14

351.05 345.35 ✓

5.7 ✓

347.00

345.80

344.17 ✓

9.60 ✓

11.60 ✓

12.43 ✓

1+00

345.70

+ 05 = DE

}

5.85

350.34 345.74 ✓

4.6

351.94

5.17

357.11

357.11

357.11

357.11

345.95

345.35

345.74

345.40

11.16 ✓

11.76 ✓

11.37 ✓

12.11

11.91

11.86

11.7

Line Running W. from $\frac{1}{2}$ Alley.0+00 = 38+65²

351.42 345.00 ✓

6.4 ✓

+ 50

4.25

351.94 345.95 ✓

6.0 ✓

1+05 = FT.

3.25

352.74 347.00 ✓

5.9 ✓

Arizona St Denver.
 From E Alley 145 N of El Cajon to
 FT 25' S of SL Meade.
 On E Arizona.

BM S E Texas & Meade Flag 331.41

1.94 343.35

1+45 = MH E Alley.	4.5	338.7	332.53	6.4	✓	
2+00	4.13	339.22	332.98	6.2	✓	
+50	3.8	339.6	333.38	6.2	✓	
3+00	3.55	339.80	333.78	6.0	✓	
+50	3.27	340.08	334.18	5.9	✓	
+75 MH #1	3.1	340.3	334.38	5.9	✓	
4+00	2.96	340.39	334.58	5.8	✓	
+50	2.8	340.6	334.98	5.6	✓	
5+00	2.5	340.9	335.38	5.5	✓	
+50	2.28	341.07	335.78	5.3	✓	
6+00 = SL Meade.	1.9	341.5	336.18	5.3	✓	
+40 = MH #2 & Meade	1.3	342.1	336.50	5.6	✓	
+80 = SL Meade	0.8	342.6	336.94	5.7	✓	
7+00 TP	0.65	342.70	337.16	5.5	✓	
+50	7.03 349.73	6.4	343.3	337.71	5.6	✓
8+00	6.0	343.7	338.27	5.4	✓	
	5.51	344.22				

11/7/4

West
 Evans
 Devise

Cuto.

339.22	45.18	45.18	45.18	45.18	M.H.	45.18	45.18	45.18
5.96	32.98	33.35	33.78	34.18	34.38	34.78	34.98	35.38
345.18 M	12.20	11.80	11.40	11.00	10.80	10.60	10.20	9.80
12.47								
338.26	45.18							
45.18	32.53	45.18	45.18	M.H.	45.18	45.18	45.18	
12.35	12.65	35.73	36.13	36.50	36.94	37.16	37.11	
12.83		7.40	7.00	6.68	6.24	8.02	7.97	
.57	45.18							
	32.27							
	6.97							
				11.87	11.4			

plotted

44.22	51.62	51.62	51.62	MH	51.62	51.62	51.62	51.62
7.20	38.82	9.38	9.94	10.50	1.77	3.04	9.32	
51.62	12.80	12.24	11.68	11.12	9.85	8.58	7.30	
	✓	✓	✓	✓	✓	✓	✓	
	51.62	51.62	350.92	55.21				
	5.60		9.29	47.00				
	6.02		355.21	8.21				

38 ✓

349.73

Cuts

8+50		551	344.22	338.82	5.4 ✓
9+00		502	344.71	339.38	5.4 ✓
+50		4.5	345.2	339.94	5.3 ✓
10+00	MH*3	3.8	345.9	340.50	5.4 ✓
+50		276	346.97	341.77	5.2 ✓
11+00		1.98	348.25	343.04	5.2 ✓
+50 TP		0.20	349.53	344.32	5.2 ✓
12+00	5.39 354.92	4.00	359.92	345.60	5.3 ✓
+55	FT. 25' S. of 3L. Monroe	25	352.4	347.00	5.4 ✓
T.P.		9.87	345.05		
	229 347.34				
BM SE Texas & Monroe Plog.		8.29	338.95	338.96	OK

Surface elevations $\frac{1}{2}$ Collier & Alley
 W. of Kansas to houses on E. side of
 Kansas, opposite Collier -

39

BM. SW. Kansas & Adams. Mar -

387.96

$\frac{1}{25}$ W.
 West
 Evans
 Dering

TP

5.66

393.62

4.13

389.49

4.96

394.45

0+00 = $\frac{1}{2}$ Collier & Alley W of Kas

4.0

390.5

✓

1+50 = W. Kas.

5.0

389.5

✓

2+20 EL "

4.5

390.0

✓

+90 - Low nat. ground
 bet. houses

5.3

389.2

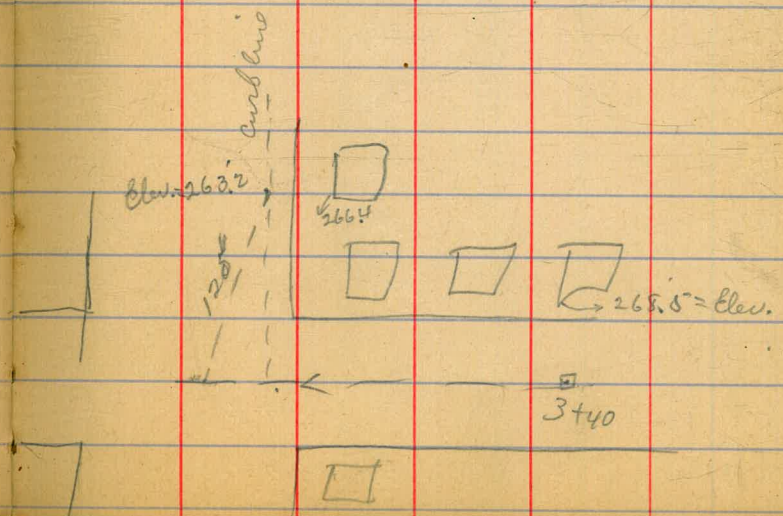
✓

Pre. sewer on Monticito from
 & Ibis to sta. 3+40 east of Ibis.

center alley bet. Jackdaw
 April 6/15

Rebuilds
 after
 Ker 50

Sta.	H.I.	Rod	Elev	Grade	
	5.68	278.71	278.03 (N)	SW. cor. Jackdaw & Stockton	
0+00		8.5	270.2	261.20	
+50		9.0	269.7		
1+00		8.9	269.8	261.60	
+08		10.6	268.1		
+50		11.2	267.5	261.80	
J.P.	4.96	271.99	11.68	267.03	
2+00		5.2	266.8	262.00	
+50		5.7	266.3		
3+00		6.2	265.8	262.40	
+40		6.68	265.31	262.56	2.7 3.2 higher at front of line on ground level.



Prelim Sewer Exty. from MH at \pm Ash
 & 6' E of EL Atlantic to \pm Cedar
 Levels taken 3ft W of EL Atlantic

West
 Offen.
 Moore
 5/22/15

Cedar & Dndiq - SW. plug 34.97.
 Date " " " " 42.47
 Fir " " " " 46.53

41

Bot MH. \pm Ash. & 6ft E of EL Atlantic. -2.60

+50	11.95	9.35	5.2	4.2
1+00			5.2	4.2
+50			5.2	4.2
2+00			5.6	3.8
+50			5.5	3.9
3+00			5.3	4.1
+42 ² = 7th line S. side Beach.			4.9	3.5
+22 ² = N.E. Beach.			5.6	3.8
+50			3.5	5.9
5+00			3.9	5.5
+50			3.7	5.7
6+00			3.3	6.1
+50			3.2	6.2
7+00			3.4	6.0
T.P.			3.7	5.88
	4.00	9.88		
+50			5.3	4.6
+63 = \pm Cedar.			5.3	4.6

T.P.			5.88	
8+03 ²⁸	N.L. Cedar	8.69	4.8	3.9
+50			3.4	5.3
9+00			4.0	4.7
+50			4.0	4.7
+80			4.0	4.7
+82			5.8	2.9
10+00			5.9	2.8
10+50			5.9	2.8
11+00			6.2	2.5
11+50			6.3	2.4
+61			6.5	2.2
+62			4.2	4.5
12+00	front Robbins shop.		4.5	4.2
+43			4.2	4.5
+44			6.8	1.9
12+50			7.6	1.1
13+00			7.0	1.7
+50			7.4	1.3
14+00			7.9	1.8
14+50			8.4	0.3

5/21/15
Wid
Wlen
Wren

43

T.P.		869	667	2.02	
	509	7.11			
15+00			64	0.7	
1+50			51	2.0	
+62			45	2.6	
+63			14	5.7	
16+00			14	5.7	
+30			12	5.9	
+31			38	3.3	
16+50			39	3.2	
17+00			27	4.4	
+21	Approx. Sh. ^{Gage}		30	4.1	
T.P.			162	5.49	
T.P.	12.79	18.28	0.31	17.77	
T.P.	12.95	30.92	0.42	30.50	
T.P.	12.90	43.40	0.13	43.27	
ON SH. ^{Station}	8.25	51.52	4.90	46.62	46.53 = ok. 42.47

Note: - Harbor Dept. will fill Atlantic St. to established grade from dredge, according to Capt Harris.
West 5/15.

Sewer & Alley Between Oregon & Idaho from
 N.H. & Adams North for 1000'

Station	Dist. from Adams	Dist. from Oregon	Elevation	Notes
B.M. R.R. SPK S.E. Idaho & Adams	385.31			
B.M.	7.81	393.12		
0+0 = N.H. & Adams	8.0		385.1	TOP of M.H.
+10			380.06	K
+50	7.86		385.26	
1	5.96		387.16	380.59
+50	6.18		386.24	380.88
2	6.14		386.98	381.18
+50	5.35		387.87	381.47
3	5.5		387.6	381.77
+40 M.H.	5.5		387.6	382.00
+50	5.5		387.6	382.06
4	5.03		388.09	382.35
+50	4.9		388.2	382.64
5	4.7		388.4	382.94
+50	6.95	396.67	389.72	383.23
6	6.6		390.1	383.53
+50	8.15		388.52	383.82
+80 M.H. & Collier	7.4		389.3	384.00
7	8.4		388.3	384.19
+50	6.00		390.65	384.66

385.26

92.25

387.16

5.09

392.25M

92.25

4.16

88.09

44

Drop
5.1

5.0 ✓

6.6 ✓

6.1 ✓

5.8 ✓

6.4 ✓

5.8 ✓

5.6 ✓

5.5 ✓

5.7 ✓

5.6 ✓

5.5 ✓

6.5 ✓

6.6 ✓

4.7 ✓

5.3 ✓

4.1 ✓

6.0 ✓

92.55	92.25	92.25	92.25	92.25	92.25	92.25	92.25
80.06	80.29	80.59	80.88	81.18	81.47	81.77	82.25
12.19	11.96	11.66	11.37	11.07	10.78	10.48	
92.25	92.25	92.25					
32.00	32.06	32.35					
10.25	10.19	9.90					
388.09	93.21	93.81	93.21	93.21	93.21	93.21	93.21
5.72	82.64	2.84	3.23	3.53	3.82	4.00	
393.81M	11.47	10.87	10.58	10.28	9.99	9.81	
390.65	96.61	96.61					
5.96	84.19	84.66					
396.61M	12.42	11.95					

396.67

8+0 4.7 392.0 385.13

+50 3.12 393.55 385.60

9 2.70 393.97 386.07

+50 3.00 393.67 386.54

10+0 F.T. 3.6 393.1 387.00

45

6.9 ✓ 396.61 H1, 96.61 96.61 96.61 96.61 96.61

85.13 85.60 86.07 86.54 87.00

11.98 11.01 10.54 10.07 9.61

7.9 ✓

7.9 ✓

7.1 ✓

6.1 ✓

Sewer & Adams St from M.H. Alley between Oregon
& Idaho to M.H. Alley bet Utah & Kansas

			385.81		
			516	390.47	
	B.M. P.R. Spk S.F. Idaho & Adams		385.81		
	0+0 - M.H. Alley bet Oregon & Idaho		385.81	379.40	
+50		5.2	385.3	379.60	5.7 ✓
1		5.0	385.5	379.80	5.7 ✓
+50		4.9	385.6	380.00	5.6 ✓
2	5	4.8	385.7	380.20	5.5 ✓
+50		4.8	385.7	380.40	5.3 ✓
3		4.6	385.9	380.60	5.3 ✓
+50		4.4	386.1	380.80	5.3 ✓
+80 M.H. Alley bet Idaho & Utah		4.53	385.94	380.90	5.0 ✓
4	4.92	390.86			
		4.6	386.3	381.00	5.3 ✓
+50		4.49	386.37	381.20	5.2 ✓
5		4.31	386.55	381.40	5.2 ✓
+50		4.2	386.7	381.60	5.1 ✓
6		4.2	386.7	381.80	4.9 ✓
+50		4.0	386.9	382.00	4.9 ✓
7		3.85	387.01	382.20	4.8 ✓
+50		3.75	387.11	382.40	4.7 ✓
+60 M.H. Alley bet Utah & Kansas		3.80	387.06	382.44	4.6 ✓

385.81
5.63
390.94 H, 90.94 90.94 90.94 90.94 90.94
79.60 9.30 20.00 20.20 20.40 16
11.34 11.14 10.94 10.74 10.54 10.34

385.31
6.04 91.35 91.35
391.35 H, 20.80 20.92
10.55 10.43

386.37
5.79
392.16 H, 92.16 92.16 92.16 92.16 92.16 92.16 92.16
21.00 1.20 1.40 1.60 1.80 2.00 2.20
11.16 10.96 10.76 10.56 10.36 10.16 9.96
92.16 92.16
2.40 2.24
9.76 9.72

Sewer & Alley between Idaho & Utah from
N.H. & Adams North for 1000' to F.T.

B.M.	7.36	393.30	385.94	
+20 M.H. & Adams	7.36	385.94	380.92	
+50	6.48	386.82	381.14	
1	6.57	386.73	381.36	
+50	6.2	387.1	381.58	
2	6.1	387.2	381.79	
+50	5.92	387.38	382.00	
3	5.09	388.21	382.22	
+40 M.H.	4.9	388.4	382.40	
+50	4.8	388.5	382.50	
4	4.08	389.22	383.03	
+50	2.5	390.8	383.56	
5	2.1	391.2	384.09	
+50	2.2	391.1	384.62	
6	6.94	398.54	395.15	
+50	9.0	389.5	385.68	
+30 M.H. & Collier	8.0	390.5	386.00	
7	8.5	390.0	386.12	
+50	5.84	392.70	386.43	

391.35 M.
91.35
81.14
10.21

386.73
5.35
392.08 M.

CUT

5.0 ✓

5.7 ✓

5.4 ✓

5.5 ✓

5.4 ✓

5.4 ✓

6.0 ✓

6.0 ✓

6.0 ✓

6.2 ✓

7.2 ✓

7.1 ✓

6.5 ✓

6.5 ✓

3.8 ✓

4.5 ✓

3.9 ✓

6.3 ✓

92.08 92.08 92.08 92.08 92.08 92.08
81.36 81.58 81.79 82.00 2.22 2.40
10.72 10.50 10.29 10.08 9.86 9.68

92.08 92.08 106 85.15
82.50 83.03 4.24 42
9.58 9.05 85.57

389.22

6.33

395.55 M.

95.55 95.55 95.55 95.55 95.55 95.55
83.56 84.09 84.62 85.15 85.68 85.57 86.00
11.99 11.46 10.93 10.40 9.98 9.55

95.55 95.55
86.12 86.43
7.43 7.12

6450 440' M.H.

47
M.H.

6.6

392.54

8.10	4.9	393.6	386.74
+50	5.19	393.35	387.05
9	5.02	393.52	387.37
+50	5.0	393.5	387.68
10.10 F.T.	4.9	393.6	388.00

393.35	98.26	98.26	98.26	98.26	98.26
4.91	86.74	87.05	87.37	87.68	88.00
393.2641	<u>11.52</u>	<u>11.21</u>	<u>10.89</u>	<u>10.58</u>	<u>10.26</u>
					12

16.9 ✓
6.3 ✓
6.2 ✓
5.8 ✓
5.6 ✓

5.4

1000
680
320

Somer & Alley between Utah & Kansas from
 M.H. & Adams north for 1000 to F.T. ^{6 Dunkle}
 14 Shaw
 15 Bunker,

B.M.	710	394.16		387.06		
0+0 = M.H. & Adams				382.50	4.6 ✓	
+50		6.00	388.16	382.90	5.5 ✓	
1		5.8	388.4	382.90	5.5 ✓	
+50		5.31	388.85	383.10	5.8 ✓	
2		4.77	389.39	383.30	6.1 ✓	
+22		2.5	391.7	383.39	8.3 ✓	
+50				383.50		
T.P.	5.54	395.61	4.09	390.07	7.7 ✓	
2+60			4.4	391.2	6.5 ✓	
3			5.39	390.22	6.5 ✓	
+40 M.H.		5.5	390.1	383.86	6.2 ✓	
+50		5.52	390.09	383.90	6.2 ✓	
4		5.0	390.6	384.10	6.5 ✓	
+50		5.2	390.4	384.30	6.1 ✓	
5		5.0	390.6	384.50	6.1 ✓	
+50		4.95	390.66	384.70	6.0 ✓	
6		4.72	390.89	384.90	6.0 ✓	
+50		6.0	389.6	385.10	4.5 ✓	
+80 M.H. & Collier		5.1	390.5	385.22	5.3 ✓	
7	6.82	396.84	5.59	390.02	385.30	4.7 ✓
+50		5.16	391.58	385.50	6.1 ✓	

392.16 H1,	72.16		
82.70	2.90		
9.46	9.26		
✓	✓		
388.85	93.79	93.79	93.79
4.94		83.10	83.39
393.79 H1,	10.69	10.49	10.40
✓	✓	✓	✓
390.22			
5.05			
395.27 H1,	95.27	95.27	95.27
	83.54	83.70	83.86
	83.90	84.10	84.30
	84.50		
	11.73	11.57	11.41
	✓	✓	✓
	11.37	11.17	10.97
	10.77		
	✓	✓	✓
95.27			
84.70	95.27	95.27	95.27
10.57	84.90	85.10	85.22
	85.30		
	10.37	10.17	10.05
	9.71		
	✓	✓	✓
391.58			
5.19			
396.77 H1,	96.77	96.11	96.19
	85.50		
	11.27		
	✓		

10

31

396.84

840	4.9	391.9	385.78	6.2 ✓
+50	4.86	391.98	385.90	6.1 ✓
9	4.8	392.0	386.10	5.9 ✓
+50	4.82	392.02	386.38	5.7 ✓
1040 F.T.	5.0	391.8	386.50	5.3 ✓

396.77 H7

96.77	96.77	96.77	96.77	96.77
55.70	85.90	86.10	86.30	86.50
11.07	10.87	10.67	10.47	10.27
✓	✓	✓	✓	✓

50

Sewer & Titus st from M.H. Canyon line 45'
 W. of M.L. Mission Hills Blvd East for 370 to
 D.E. 25 W. of W.L. Pringle

B.M. 2

84.70

11.32 96.02

0+0 = M.H. constructed

20.00

9.7

+30 break

4.98

91.04

84.60

6.4 ✓

+50

0.98

95.04

89.76

5.3 ✓

TIP

12.75

108.32

0.45

95.57

1

12.88

120.99

0.21

108.11

102.67

5.4 ✓

+40 break

13.07

133.57

0.49

120.50

113.00

7.5 ✓

+50

10.73

122.84

113.67

7.2

+75

5.95

127.62

115.33

11.3 ✓

2 break

4.59

128.98

117.00

12.0 ✓

+25

4.54

129.03

117.44

11.6 ✓

+50

5.63

127.94

117.88

10.1 ✓

+75

6.54

127.03

118.32

8.7 ✓

3

8.18

125.39

118.76

6.6 ✓

+50

7.83

125.74

119.65

6.1 ✓

+70 D.E.

5.37

128.20

120.00

8.2 ✓

61 bundle
 1291 Shaver
 15 Rumber

128.98

0.07

129.07

129.07

17.00

29.07

29.07

29.07

29.07

12.07

17.33

18.76

19.65

20.00

✓

✓

✓

✓

✓

29.07

18.32

10.75

✓

8/23/44
 Gregory
 Moore
 Ellis
 - 21414
 0+00 =
 M.H. 25 W of W.L. of Pringle 266 + 96.5

Sawyer & of Titus ST
 from Present M.H. 25' W of W.L. of
 Pringle to DE. 30' W. of W.L. of Keating

	1023	137.35	127.12	196' NW Titus + Pringle 120.0	
0+50 Drop M.H.		540	131.95	121.0	+ 10.95
				126.0	+ 5.95
1+00		2.62	134.73	126.42	+ 8.31
+50		0.20	137.15	126.85	+ 10.30
2		1.30	136.05	127.29	+ 8.78
+50		1.20	136.15	127.70	+ 8.45
3		1.60	135.75	128.12	+ 7.63
+ 4/5 = DE 30' W. of W.L. Keating		1.97	135.38	128.5	+ 6.88

247
 4234
 3388
 500

Sewer & 2nd St from pt 52' N of N.L. Fir North
 for 762'

11/ Dunkle
 12/ Shaw
 15 Bunker

B.M. 3. W. B. P. Grape & Second Sts 168.99

B.M. 0.51 169.50

0+0 = 52' N of N.L. Fir	10.28	159.22	153.77	5.5
+30			154.01 ✓	
+50			154.17	7.2 ✓
T.P. 7.51	172.01	5.00	164.50	
+1		8.7	163.3	157.57 ✓
+50		6.51	165.50	154.97 ✓
+92				
2		4.5	167.5	155.37 ✓
+15			155.49 ✓	
+50		2.8	169.2	155.77 ✓
2+88 M.H. & Grape	1.9	170.1	156.07	14.0 ✓
3		2.5	169.5	156.17 ✓
+18			156.31 ✓	
+50		4.1	167.9	156.57 ✓
4		2.34	164.67	156.97 ✓
+25		7.9	164.1	
+50		7.7	164.3	157.37 ✓
5		6.9	165.1	157.77 ✓
+50		6.0	166.0	158.17 ✓
6		4.4	167.6	158.57 ✓
+50		2.7	169.3	158.97 ✓
+68 M.H. & Hawthorne bottom	12.9	159.1	159.10	0.0

166.40
 5.20
 166.00

159.22
 7.32
 166.60 ✓

66.60
 54.01
 12.59 ✓

66.60
 4.17
 12.43 ✓

66.60
 4.57
 12.03 ✓

66.60
 4.97
 11.63 ✓

66.60
 5.37
 11.23 ✓

168.99
 4.02
 173.01 ✓

173.01
 55.42
 17.52 ✓

173.01
 55.77
 17.24 ✓

73.01
 73.01
 56.07
 16.94 ✓

73.01
 56.81
 16.70 ✓

COT

15
 120
 53
 18
 3
 144

note - bottom siks set 8" E of & from 0+0 to 2+15
 pipe to be put in center

164.67
 6.24
 170.91 ✓

70.91
 56.57
 14.34 ✓

164.67
 5.10
 169.77 ✓

69.77
 56.97
 12.80 ✓

69.77
 57.37
 12.40 ✓

69.77
 57.77
 12.00 ✓

69.77
 58.17
 11.60 ✓

69.77
 58.57
 11.20 ✓

69.77
 58.97
 10.80 ✓

~~69.77
 59.0
 11.57~~

11/12/15 bottom stakes
 Dunkle
 Shaw
 Bunker

172.01

54

7+0

5.55

177.15

0.91

171.60

161.14

10.5

428

4.2

173.0

162.93

10.1

462

1.2

176.0

bottom pipe 7+2

12.1

165.1

Sewer on Douglas from
Hawk west 190'

center of

1912?
April 26/16

J. Childs
Evans 55
Shaw

H.I.
4.30 267.79 263.49

Sta	Rod	Ground	Grade	cut
0+00	*		256.45	
+10	4.74	263.05	256.49	6.56
+50	5.03	262.76	256.65	6.11
1+00	5.22	262.57	256.85	5.72
+50	5.53	262.26	257.05	5.21
+90 dead end.	5.70	262.09	257.21	4.88

3/19/17
Gregory
Moore
Miller

CROSS-SECTION OF
INGALLS ST 80' wide 20' walks
from N.L. Lewis to 15' No. of Montezito

BM	342	280.45	277.03	St. Lark Lewis
				N.L. Lewis
W		4.0	276.5	
cb		4.4	276.1	
1/4		4.3	276.2	
C		4.4	276.1	
1/4		4.4	276.1	
cb		4.9	275.6	
+15		4.7	275.8	
E		3.8	276.7	
				5' No.
E		3.2	277.3	
+15		4.0	276.5	
cb		3.9	276.6	
1/4		3.9	276.6	
C		3.9	276.6	
1/4		4.0	276.5	
cb		3.9	276.6	
W		3.8	276.7	

57

				25' No.
W		4.0	276.5	
+18		3.5	277.0	
cb		4.1	276.4	
1/4		4.0	276.5	
C		4.0	276.5	
1/4		3.7	276.8	
cb		3.3	277.2	
+15		3.1	277.4	
E		2.6	277.9	
				50' No.
E		2.7	277.8	
+15		3.2	277.3	
cb		4.0	276.5	
1/4		4.1	276.4	
C		4.4	276.1	
1/4		4.6	275.9	
+7		4.4	276.1	
cb		3.8	276.7	
W		4.4	276.1	

280.45

75' No.

W	51	275.4
cb	42	276.3
+8	41	276.4
1/4	48	275.7
C	45	276.0
1/4	45	276.0
cb	43	276.2
+7	33	277.2
E	30	277.5

100' No.

E	33	277.2
+13	37	276.8
cb	43	276.2
1/4	46	275.9
C	44	276.1
1/4	44	276.1
cb	48	275.7
W	51	275.4

INGALLS

58

125' No.

W	56	274.9
cb	52	275.3
1/4	49	275.6
C	46	275.9
1/4	48	275.7
cb	42	276.3
E	37	276.8

150' No.

E	38	276.7
cb	44	276.1
1/4	50	275.3
C	50	275.5
1/4	53	275.2
cb	54	275.1
W	53	275.2

175' No.

W	59	274.6
cb	56	274.9
+5	54	275.1

180.45

+7	6.2	274.3
1/4	6.1	274.4
C	5.4	275.1
1/4	5.3	275.2
cl	4.9	275.6
F	4.2	276.3
200' No.		
E	4.8	275.7
cl	5.7	274.8
1/4	5.8	274.7
C	5.7	274.8
1/4	5.7	274.8
cl	5.7	274.8
W	6.0	274.5
225' No.		
W	6.2	274.3
cl	6.3	274.2
1/4	6.4	274.1
C	6.5	274.0
1/4	6.8	273.7

INGALLS

59

cl	6.4	274.1
E	6.2	274.3
250' No.		
F	7.0	273.5
+10	6.7	273.8
cl	7.1	273.4
1/4	7.7	272.8
C	7.6	272.9
1/4	7.7	272.8
cl	8.0	272.5
T.P.	2.40	274.85
800	272.45	
+15	2.2	272.7
W	1.4	273.5
275' No.		
W	3.4	271.5
+5	3.8	271.1
cl	3.9	271.2
1/4	3.2	271.7
C	2.9	272.0
1/4	3.1	271.8

274.85

cb 2.6 272.3

E 2.6 272.3

300' No. = St. Montecito Max / 50' wide
10' marks

E 3.2 271.7

cb 3.7 271.2

1/4 3.7 271.2

C 4.2 270.7

1/4 4.7 270.2

cb 5.1 269.8

+15 5.4 269.5

W 4.6 270.3

So. Cb

W 6.1 268.8

cb 5.2 269.7

1/4 4.9 270.0

C 4.8 270.1

1/4 4.7 270.2

cb 4.2 270.7

+15 4.4 270.5

E 4.0 270.3

INGALLS

60

So. Quarter

E 4.8 270.1

cb 5.3 269.6

1/4 5.6 269.3

C 5.6 269.3

1/4 6.1 268.8

cb 6.6 268.3

W 6.7 268.2

Center

W 6.8 268.1

cb 6.7 268.2

1/4 6.4 268.5

C 6.3 268.6

1/4 5.9 269.0

cb 5.7 269.2

E 4.9 270.0

No. Quarter

E 4.8 270.1

cb 5.6 269.3

1/4 6.0 268.9

274.85

c	6.6	268.3
1/4	7.1	267.8
cb	7.2	267.7
+10	7.5	267.4
W	8.6	266.3
No. Curb		
W	10.4	264.5
+10	8.9	266.0
cb	8.5	266.4
1/4	7.8	267.1
c	7.0	267.9
1/4	6.2	268.7
cb	5.6	269.3
E	4.8	270.1

No. L. Montecito May

E	4.8	270.1
cb	5.4	269.5
1/4	5.9	269.0
c	7.1	267.8
1/4	8.8	266.1

INGALLS

61

cb	10.2	264.7		
+10	11.3	263.6		
W	13.5	261.4	same slope	
15' No.				
W	19.0	255.9		
cb	12.3	262.6		
1/4	9.3	265.6		
c	6.9	268.0		
1/4	6.0	268.9		
cb	5.5	269.4		
E	4.3	270.6		
T.P.	889	281.44	1.80	273.05
abt BM		6.14	275.50	BP. SW Jackson Montecito

Sewer to be constructed according
to sketch on opp page

5/ Dunkle
2/ Shaw
17.

Curve	B.M. Brass	Height	Radius	Chord	Elev	Grade
		6.45	27.12		20.67	
	T.P.	12.60	38.78	0.94	26.18	
	T.P.	12.45	50.85	0.38	38.90	
	T.P.	8.83	59.35	0.33	50.52	
0+0 = end of present sewer bottom 12.70 46.65 46.65						
0+46 = M.H. 12' S of N.L. Talbot St 8.0 51.4 47.34 4.1						
+50 7.61 51.74 47.66 4.1						
1 2.65 56.70 51.63 5.1						
T.P. 12.64 71.40 0.69 58.76						
+50 11.40 60.00 55.60 4.4						
2 2.17 63.23 59.58 3.6						
+50 4.18 67.22 63.55 3.7						
+68 ² R 31° 40' 9.91 78.52 2.79 68.61 64.98 3.6						
3 7.14 71.38 67.52 3.9						
+36 ² = end of present pipe bottom 8.13 70.39 70.39						

9.3
6.0
15.3

370

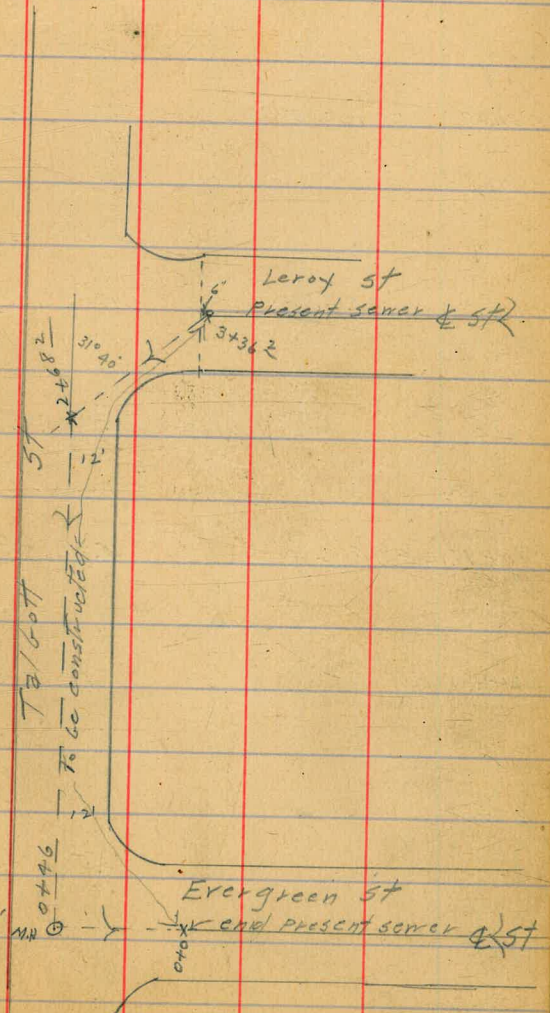
31° 40'

7.48
6.5
8.13

268.2
68.0
336.2

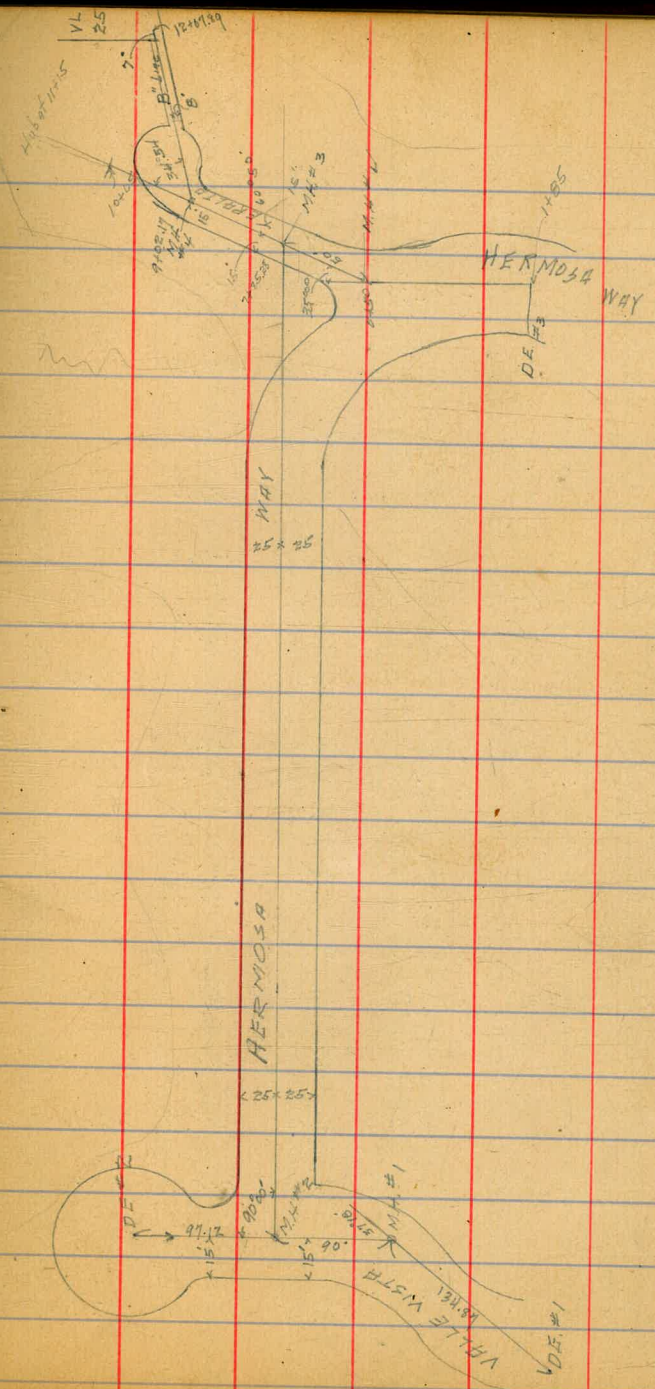
62

cut



9/15/20 *Gregory Miller Shaw* Prelim. Sewer Allen Terrace.

BM	2.49	268.70	B.P. NE of 1117	266.01
0+00 = D.E. #1	(Make at least 3' deep)	4.1	264.6	
0+50		5.9	262.8	
1+00		7.3	261.4	
1+34.87 = M.H. #1	$\Delta 37^{\circ}18' L$	7.7	261.0	
1+50		8.3	260.4	
2+00		10.2	258.5	
4+ with 87 M.H. #2	536 $\Delta 90^{\circ}$	11.74	257.56	
	Gutter 2' lower than this			
(D.E. #2)	(Make it 4' deep)	9.07	253.85	
0+50		7.2	255.7	
0+97.12 = M.H. #2		5.36	257.56	
2+50		5.1	257.8	
3+00		4.6	258.3	
3+50		3.9	259.0	
4+00		3.5	259.4	
4+50		3.6	259.3	
5+00		4.1	258.8	
5+50		4.4	258.5	



46292

6+00			4.8	258.1	
6+50			5.8	257.1	
T.P.	1.55	258.77 (256.77)	5.70	257.22 (255.22)	
6+58.6 = N. Curb Hermosa			gutter 2.0 2.6 1.3	256.8 257.5	
6+80			1.5	257.3	
7+00			7.2	251.6	
7+34			11.5	247.3	
7+50			6.2	252.6	
7+62			3.1	255.7	
7+85.28 = M.H. #3			4.33	(254.44) 254.44	
8+25			10.0	248.8	
T.P.	0.52	(246.46) 246.46	12.83	(243.94) 245.94	
8+50			6.9	239.6	
			W.L. of st is 5' lower than		
8+65			7.9	233.6	
T.P.	0.05	(231.52) 233.52	12.99	(231.47) 233.47	
9+00			9.2	224.3	
9+02.17 = M.H. #4					
T.P.	0.32	220.83 (218.83)	13.01	(218.51) 220.51	
			W.L. ST is 2' lower than		
9+50			6.1	214.7	
T.P.	1.06	208.86 (206.86)	6.03	(205.80) 207.80	
10+00			3.3	205.6	
10+40			11.0	197.9	
T.P.	1.24	198.05 (196.05)	13.05	(193.81) 195.81	
10+50			3.6	194.5	

(196.05)
198.05

64

10+65 = 3' E. of Proposed Tank	7.3	190.8
10+80	10.9	187.2
10+95	16.5	181.6
x Sect Proposed Tank Site		
15' E of 10+65	5.4	192.7
E	7.3	190.8
15' W of 10+65	11.2	186.9
15' W of 10+80	14.7	183.4
E	10.9	187.2
15' E of 10+80	8.8	189.3
15' W of 10+95	19.9	178.2
E	16.5	181.6
15' E of 10+95	13.8	184.3

Saver in Hermosa May.

	12.61	267.05 (265.05)	254.44 (252.44)
0400 = M.H. #3 page 64	12.6		254.45
0450 = v.v. #4	7.7		259.4
0470	6.6		260.5
1400	6.5		260.6
1450	1.9		265.2
1485 = DE #3	+1.6		268.65 (266.7)

9/21/20 Gregory Miller Shaw

Levels on 3" Line (Page 13 sketch)

	0.28	254.70		254.42	M.H. #3 Hub
T.P.	0.35	242.68	12.34	242.33	
	0.31	230.55	12.24	230.24	
Sta 9+02.17 = MH #4 A		340.54 R.	6.8	223.8	
BM			6.61	223.94	Hub Inside 5' R.
9+25			7.3	223.3	
9+70			13.0	217.6	
T.P.	0.50	217.88	13.07	214.81	
10+05			5.7	212.3	
10+15			7.5	209.5	
T.P.	0.27	205.22	13.25	204.93	
10+45			1.0	204.2	
10+75			9.3	195.9	
T.P.	0.60	192.83	12.34	192.23	
11+11			10.8	182.0	
T.P.	0.84	180.82	12.85	177.98	
11+37			12.5	168.3	
T.P.	0.76	168.69	12.84	167.93	
T.P.	0.28	156.14	12.83	155.86	
11+57			2.1	154.0	
T.P.	0.08	143.63	12.59	143.55	

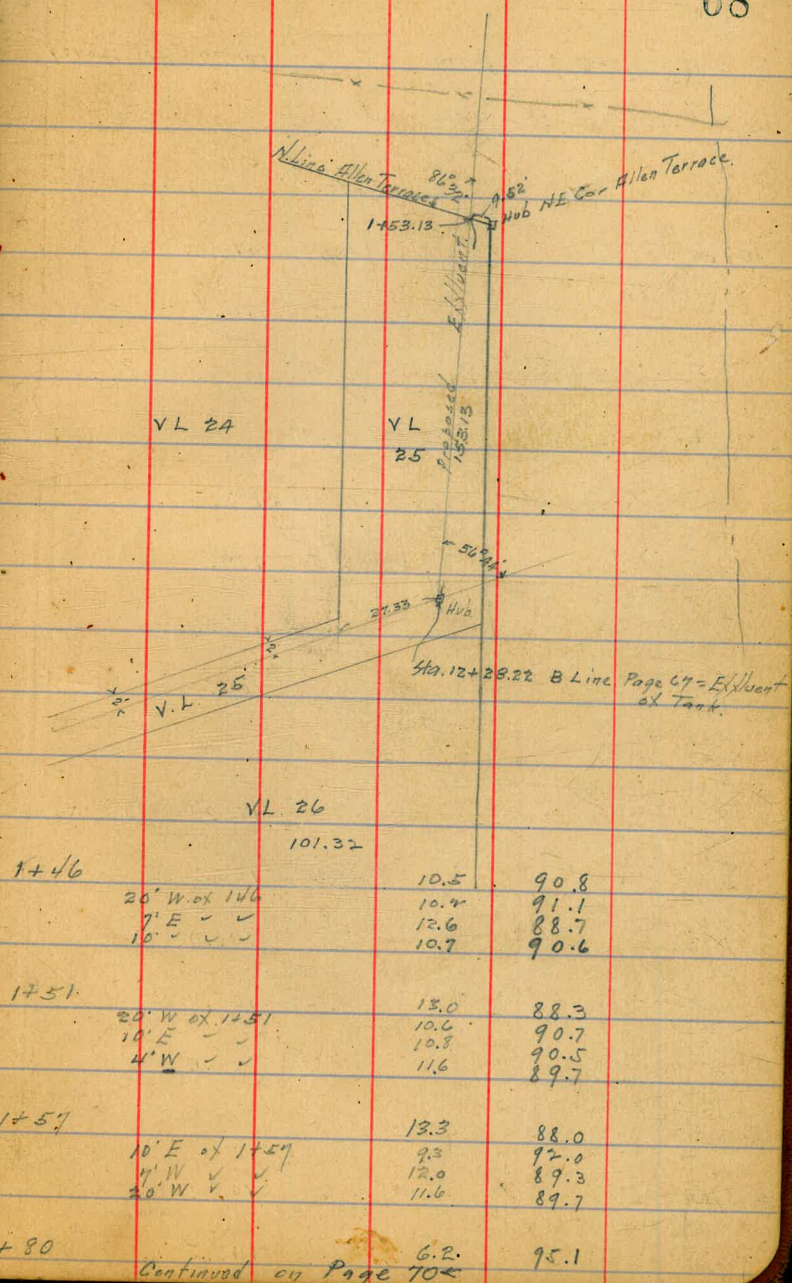
	143.63		
11+71		1.9	141.7
11+82		8.1	135.5
T.P.	0.39	131.09	12.93 130.70
11+93		2.1	129.0
12+01		7.1	124.0
12+07.89 = 11 End proposed Task		10.20	120.89
12+22.89		16.5	114.6
7' S. of 12+07.89		11.2	119.9
7' N. of 12+07.89		9.3	121.8
7' - - 12+22.89		14.8	116.3
7' S. of 12+22.89		17.9	113.2

10/26/20
Gregory Miller Show
Levels on Effluent Line
from Allen Terrace
Septic Tank.

T.P.	0.82	121.71	120.89	Hub Sta 12+07.88 Page 67
0+00 = 12+28.22 B Line		8.96	112.95	on Hub
T.P.	4.84	114.13	124.2	109.29
0+11		1.4	112.7	
0+50		6.1	108.0	
10' W of 0+50		2.2	111.9	
0+65		8.9	105.2	
10' W of 0+65		4.1	110.0	
6' " " "		6.6	107.5	
6' E " "		11.0	103.1	
15' " " "		12.7	101.4	
0+85		11.8	102.3	
10' W of 0+85		7.8	116.3	
T.P.	0.11	101.32	129.2	101.21
10' E of 0+85		2.0	99.3	
15' " " "		2.1	99.2	
1+10		4.6	96.7	
10' W of 1+10		3.1	98.2	
2' " " "		4.6	96.7	
15' E " "		4.5	96.8	

174.60
48.00
222.60

68



12/26/20

6
M
3

Levels N+3. of B Line produced
for contours

	0.82	121.71	120.89	Aug 12+0789
		0+00 = 124.8.22		
d		8.96	112.75	Aug 12+28.22
8' S		10.1	111.6	
15' N		5.3	116.4	
		14' E on B" Line produced		
T.P.	4.84	114.13	124.2	109.29
d		6.6	107.5	
15' N of d		4.5	109.6	
9' N - -		6.3	107.8	
8' S - -		7.4	106.7	
		22' E		
8' S of d		12.7	101.4	in creek
d		13.9	100.2	- -
6' N of d		13.1	101.0	
15' - - -		8.2	105.9	
20' - - -		7.5	106.6	
		25' E		
20' N of d		9.0	105.1	
15' - - -		10.6	103.5	

9' N of d	15.6	98.5	in creek
d	14.8	99.3	
8' S of d	13.7	100.4	in creek
		34' E	
d	10.6	103.5	
8' S of d	9.5	104.6	
12' N. - -	16.3	97.8	in creek
15' - - -	13.1	101.0	
25' - - -	9.8	104.3	

continued from Page 68

101.32

10' E of 1+90 2.4 98.9

10' W ✓ ✓ 10.1 91.2

20' ✓ ✓ ✓ 12.4 88.9

2+10 4.7 96.6

10' E of 2+10 3.2 98.1

10' W ✓ ✓ 6.2 95.1

20' ✓ ✓ ✓ 2.2 93.1

2+29.5 = fence

2+50 7.3 94.0

10' E of 2+50 6.6 94.7

10' W ✓ ✓ 8.0 93.3

2+80 10.4 90.9

10.88 90.44

466 N/E
Cor Allen Terrace

Allen Terrace

70

21.67

50

32

12.5

72

23.5

9

220.67

1/10/41 Gregory Allen Terrace Sewer
Parker Construction
3/20/41

"B" Line
267.85

Station	St.	Grade	Grade	Grade
0+00 = DE	14.0	253.85	249.5	+4.35
0+50	12.08	253.97	249.12	+4.85
0+97.12 = DMH #1	10.13	257.42	248.75	+8.67

"A" Line

284 267.85 266.01 NEPT. 1.4

Station	St.	Grade	Grade	Grade
0+00 = DE	3.32	266.53	259.5	+5.03
0+50	5.29	262.56	258.20	+4.36
1+00	6.56	261.29	256.91	+4.38
1+34.87 = MH Δ 37° 18'	7.00	260.85	256.0	+4.85
1+50	7.57	260.28	255.67	+4.61
2+00	9.48	258.37	254.56	+3.81
2+24.87 = Drop MH #1	10.13	259.42	254.0	+3.42
TF	5.12	262.97	257.55	
2+24.87	5.36	259.42	248.75	+8.67
2+50	5.30	257.67	249.60	+9.07
3+00	4.70	258.27	248.30	+9.97
3+50	3.99	258.98	248.01	+10.97
4+00	3.65	259.32	247.71	+11.61
4+50	3.84	259.13	247.42	+11.71
5+00	4.25	258.72	247.12	+11.60
5+20 = MH	4.37	258.60	247.0	+11.60

539
308
36

9077
47/ 780
679
710

71

0077
30
3550

135 3.20 62.59
290.05
80.75
67.5
1250

0259 1275
50 477
72920 906

90 7.20 07.22
15
1110
222
3330

520 1750 6059.5
275 1475
295 2800
1420 29750
1190

520
275
295

22487
29513

5+50	262.99	4.50	258.47	246.93	+11.64
6+00		4.83	258.14	246.55	+11.59
6+50		5.99	256.98	246.27	+10.71
7+00		12.69	250.28	245.98	+4.30
7+50		11.59	251.38	245.70	+5.68
7+85.28 Drop #2		8.63	254.34	245.5	+8.84

"C" Line

Drop #2 = 0+00		8.63	254.34	249.0	+5.34
0+50 = M.H. 10.88	270.66	3.39	259.58	254.0	+5.58
1+00		9.40	261.06	257.70	+3.36
1+50		5.26	265.20	261.41	+3.79
1+85		2.12	268.34	267.0	+1.34

"H" Line (continued)

	1.18	254.52	2	254.34		
7+85.28				245.5	+8.84	
8+00	0.47	252.56	3.43	262.09	242.54	+9.55
8+50			12.05	240.51	232.47	+8.04
9+02.17 M.H. 4	0.12 0.36 2	239.75 227.66	12.95 12.95	239.61 226.90		
			2.58	225.08	222.0	+3.08
9+50			7.28	220.38	215.00	+5.38
	0.39	215.37	12.78	214.88		
10+00			1.97	213.30	207.81	+5.49

7.85

7.65
11.64

500.00566
325
1750
1540
1200

00566
30
1698
1711

55
2500
1698
1711

1040
800
13763

72

135
1000
945
550
540
1000
259

57.407
5700

1169
2350
1489
1161
2338
1200
1169
3700

1001
20102
1457
140714
50408
20102
2464994

785.28
570
265.28

1001
57
20508
100510
1025

20102
147
140714
20408
2464994
20102
2464994

102.17
385.38
1168

10+40 Break	215.27	9.71	205.56	202.0	+3.56
10+50	0.65	203.08	12.84	202.43	
10+80 M.H.	0.19	190.32	9.10	192.98	191.0
11+10 Break	0.80	198.44	12.95	190.13	+2.98
11+40	0.65	166.77	8.21	182.11	180.0
11+70	0.52	154.41	12.68	177.64	+2.11
12+0.5 Drop M.H. #3	0.51	142.91	12.32	166.12	163.0
	0.47	130.42	12.88	153.89	+3.12
	0.20	121.65	12.00	140.0	+2.39
			118.0		+3.45
Elev Static Tank 119.0					
atlet. = 22+28.33		10.55	111.10	112.0	-0.90 Stake # E of A
12+50	1.35	110.00	9.74	111.91	108.86
13+0.0			5.16	104.84	101.63
13+32	2.17	99.77	12.40	97.60	97.0
13+44.5 = Pier #1			3.99	95.98	96.83
13+56.5 = - - #2			6.01	93.76	96.66
13+68.5 = - - #3			7.62	92.15	96.49
13+80.5 = - - #4			9.98	89.92	96.32
13+92.5 = - - #5			10.83	89.24	96.16
14+04.5 = - - #6			7.65	92.12	95.99
14+16.5 = - - #7			6.18	93.59	95.82

Handwritten calculations and notes on the right page of the notebook.

830
180.1

1146
300
312

10.45
102
138

no. 00
1.14 H

10.60
90.17
137.83

14.4
4.5
11.0
58.0
7.0

1.451

137.83

20000
12253
62170
55132
70380
6915
14650

12 2533
1 5313
138146

1451
21
4753
1853
160
1157
524
694033

215.06
207.81

12 07 50
12 40 9

12 17 0
0 56
122 27
870

130 12
965
120.74

130 12
965
120.74

100.17
177

22394
0.45
22419
12.40
211.79
211.00
13.00
198.44
0.70
197.74
13.02
184.69
0.55
185.64
12.69
173.96
11.37
185.33

140.5
467
253
1333
25

120.5
469
253
1333
25

1228.33

268
177.65

120.95
0.55
121.55

14.47
21.67
101.27
86.2
14.47
259.4
31352.49

1332
122533
103.67

15000
10367
46330
41668
4862
41468

114.57
273

715.20

01389
125
6945
2798
173623

108 1150 101289

108
108
420
334
360
264
760

16668

01389
733
6945
4167
2798
320415

14+49
165
37.6

99.77

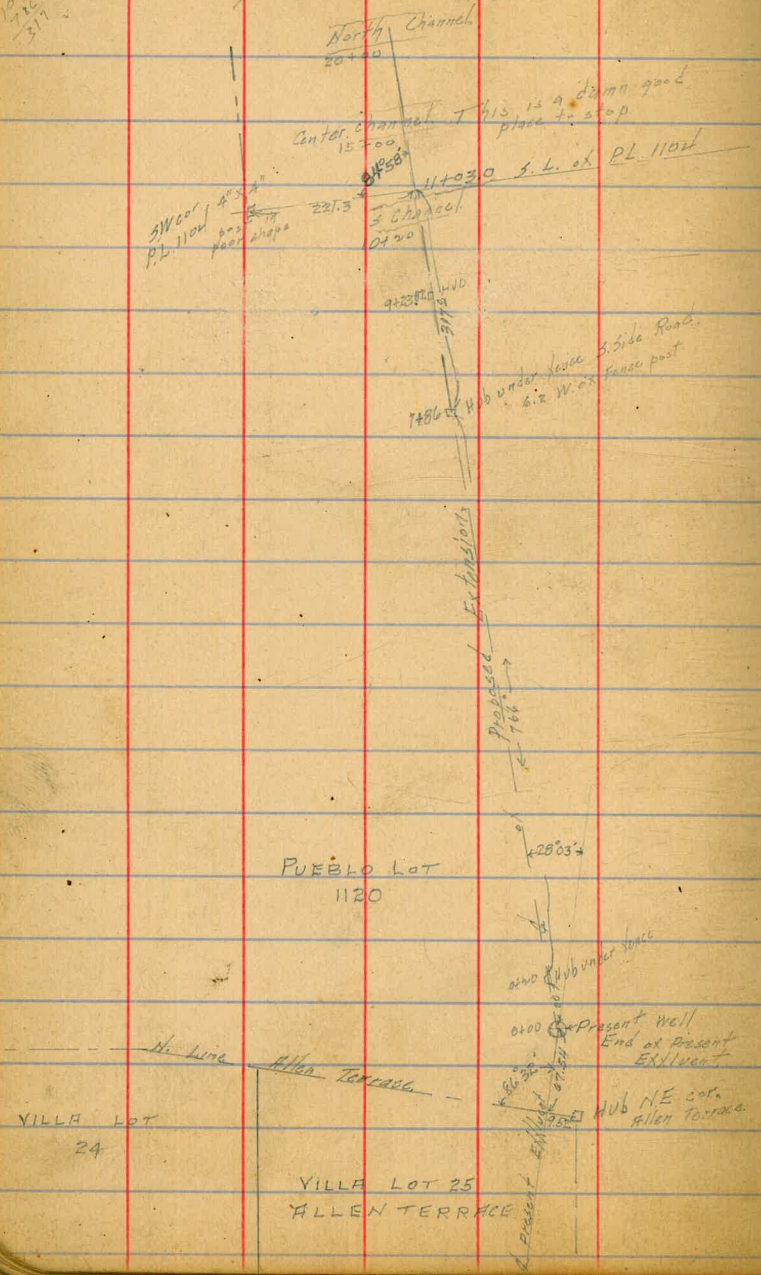
14+40 = & Diverting Box 3.45 96.32 95.5 +0.82 Holes in E+W. of G.X. Box

14+49 = Wall 94.5 ✓ W. of G.

435 95.42 97 = Top of Wall F. 1.58 To Top of Wall

5/10/21
1103
1102
377
Lorenson
Morgan
Miller
Shaw

Survey for Effluent
Line from Allen Terrace
Septic Tank to River



362.69

2+00			8.13		354.56
2+50			8.5		354.19
3+00			7.7		354.99
3+50			6.5		356.19
4+00			3.9		358.79
4+50			3.5		359.19
5+00			2.2		360.49
T.P.	10.54	369.17	4.06	358.63	
5+50			6.5		362.67
5+96 Top Bank			5.2		363.0
Top So. Curb Adams Av			11.65		357.52
Top No. Curb			11.15		358.02
P.L. Adams Ave			10.65		358.52
+35			10.2		358.97

77

78

Tally: ~~||||~~ ~~||||~~ ~~||||~~ ~~||||~~ ~~||||~~ ~~||||~~

10200 = $\frac{1}{2}$ Canyon Road & Rosecrans

16050 = $\frac{1}{2}$ Curve

16900 = $\frac{1}{2}$ W. P. Long Blvd & Canyon Rd.

31585 = total

$$\begin{array}{r} 5280 \int 31585.0 \left(5.974 \right. \\ \underline{26440} \\ 51450 \\ \underline{47520} \\ 39300 \\ \underline{36960} \\ 23400 \end{array}$$

10.84

10.48

60

11.08

10.84

24

8

3

.24

79

Water Dept. Stakes.
Dwight St. from Hart to 32.

	+	Ht.	-	El.	Gr.
BM. NE Dwight & Grim Plug				334.40	
	3.57	337.97			
0+00 = E.L. Hart			5.91	332.06	328.00
+66			5.15	332.82	328.37
1+66			4.97	333.00	328.94
2+66 = WL Hermap. T.P.			3.61	334.36	329.50
	6.10	341.46			
10'E & Hermap.			5.76	334.50	329.50
EL "			5.60	334.86	329.57
66'E "			5.24	335.22	329.75
166' " "			4.94	335.52	331.13
266' " " = WL 32			4.13	336.43	331.50
42'E of WL 32 = 10'E & Forest st.			³⁸³ 6.87	336.63	330.57
T.P.			6.87	333.59	
	4.36	337.95			
BM. NE Dwight & Grim Plug	3.55			334.40	334.40

OK.

37.14
West
Ewings
Device
Cuts

80

159.10
153.77
668 | 5.330 | 80
 5394

38
18
309
18
179

Water Ue

388.06	313.12	313.12	7
	6.88	306.24	10.50 cts
388.06	306.24		11 st
			6 st
			8 st
			9 st
			11 st
			15 st
			16 st
			20 st
			30 st
			10 st
			35 st
			45 st
			28.22

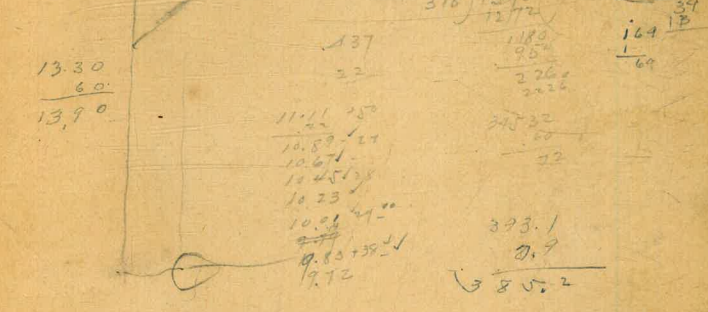
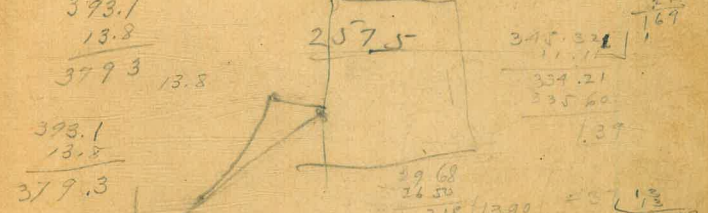
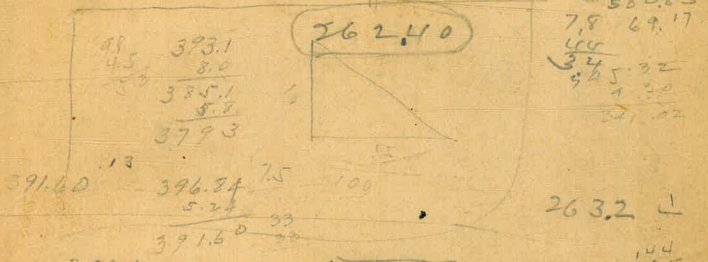
388.06	313.12	313.12	7
	6.88	306.24	10.50 cts
	306.24		11 st
			6 st
			8 st
			9 st
			11 st
			15 st
			16 st
			20 st
			30 st
			10 st
			35 st
			45 st
			28.22

388.06	313.12	313.12	7
	6.88	306.24	10.50 cts
	306.24		11 st
			6 st
			8 st
			9 st
			11 st
			15 st
			16 st
			20 st
			30 st
			10 st
			35 st
			45 st
			28.22

BM = Herman St.

SE Williams Plng - 348.87	343.82	1.50	345.32
" Tander "	343.82		16.48
NW Dinger "	334.91		3.22
SW Myrtle Spk. "	326.03		14.78
NW Ufae "	322.26		3.27
NW Ufae "	319.36		73.07
NW Redmont - pr. loc. "	301.51		3.22

396.67	8.26	388.41
388.41		320
320		1.8



393.1	7.9
380.0	5.2
13.1	13.7

1st + Thorn - NW. Plug Cut - 255.944
 2nd + Dennis NW. " " 263.025
 3rd + Redwood " " 265.532

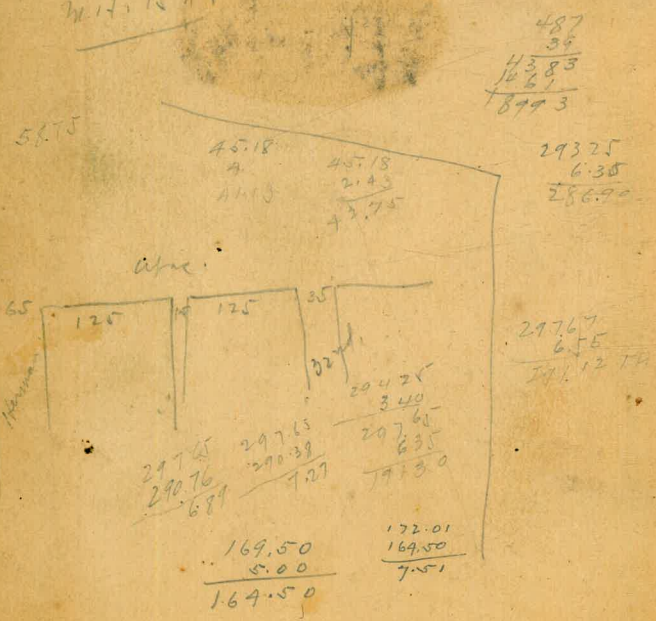
16.96
 2.39 = Top Cover Ring, 34
 19.34 = Cr. Floor N.H. 19.34
 20
 19.14
 7.08

17.00 = 00
 14.14
 12.06
 7.68
 13.74
 4.0
 13.34
 1.14
 12.20

22
 25
 26
 29
 34
 46
 54

1.25
 1.75
 2.50
 2.55
 16.25

187) 9.00 (487
 4.48
 1.520
 18.96
 x245
 2.44
 15.30
 10.710
 1.50
 1.00
 14.25 = Outlets



5-0.283770
 100 2.146128
 8.552872

19.2
 13
 2.22

2.03
 1.06
 2.03

2315
 2050
 137
 1867
 27477

812.000
 1015.500
 1218.000
 1421.000
 1624.000
 1827.000
 2030.000

5.22 = 10
 5.23
 10.45
 15.22
 16.57
 5.25
 21.80
 22.02

11.77
 6.08
 5.69
 .38

2.20
 1.15

57.5
 37
 27.61
 16.67
 29.44.7

100
 .35
 .50
 .75
 1.00

684
 301
 382

Mr. Gardner, Sec
 68411 First. Prec
 14.8

53.6
 26.8
 23 248.76
 250.
 481
 241 148
 35
 249.00
 23836
 784
 855
 1260

32.170
 3.22
 328

75.0
 214
 96.4
 208.76

185
 1000
 325
 750
 100

12875
 12875
 15
 27250

319.00
 470
 320
 140

324
 32
 648
 972
 10368

126
 31
 1478

1449
 1381.46
 66
 67.54

