

5

935

F.B. 935

LEVEL BOOK.

No. 410

MICROFILMED

DEC 16 1964

GARNET 1-27
2ND 28-34
MISSION Hill Bldg 35-60
I ST. 31-60

X Sect. Garnet from 1
pueblo line east of ~~Garnet~~
pendulum to west line
base. 80' street 20' walks
10' quarters.

B.M. Sw. cor. ^{5.69} ^{H.T.} ^{71.58} ^{Lamont & Janet.} 65.89
 brass plug

East line Lamont

So. line	5.5	66.1
gutter	5.7	65.9
	6.0	65.6
	5.6	66.0
C	5.1	66.5
gutter	5.0	66.6
	5.1	66.5
cement curb.	4.6	67.0
No. line	4.2	67.4
	50' E.	
No. line	3.9	67.7
gutter	4.8	66.8
	5.4	66.2
	5.2	66.4
C	5.1	66.5
gutter	5.6	66.0
	6.0	65.6
cement curb	5.4	66.2
So. line	5.2	66.4

Mar. 19/14
 7158

Colville
 letters
 Bunker

100' E.

So. line	5.0	66.6
gutter	5.1	66.5
	5.9	65.7
	5.4	66.2
C	4.9	66.7
gutter	5.1	66.5
	5.3	66.3
	4.5	67.1
No. line	3.8	67.8

150' E.

No. line	3.6	68.0
gutter	4.0	67.6
	4.8	66.8
	4.8	66.8
C	4.7	66.9
gutter	5.1	66.5
	5.7	65.9
cement curb.	4.9	66.7
So. line	4.7	66.9

7158

200' E

no line	4.5	67.1
gutter cement curb	4.7	66.9
	5.5	66.1
	4.8	66.8
c	4.6	67.1
gutter	4.7	66.9
	4.9	66.7
	4.3	67.3
no. line	3.4	68.2
220' E		
no line	3.6	68.0
gutter	4.0	67.6
	4.8	66.8
	4.6	67.0
c	4.4	67.2
gutter cement curb.	4.8	66.8
	5.5	66.1
	4.5	67.1
no. line	4.5	67.1

7158

2

250' E

no line	4.6	67.0
gutter cement curb	4.6	67.0
	5.6	66.0
	4.9	66.7
c	4.4	67.2
gutter	4.4	67.2
	4.4	67.2
	4.1	67.5
no. line	3.5	68.1
300' E		
no. line	3.9	67.7
gutter	4.6	67.0
	5.2	66.4
	4.9	66.7
	4.8	66.8
c	4.8	66.8
gutter cement curb.	5.2	66.4
	5.7	65.9
	4.8	66.8
no. line	4.8	66.8

71.58

350' E

20 line	4.9	66.7
amertcarb	5.0	66.6
gutter	5.7	65.9
	5.1	66.5
C	4.7	66.9
	5.1	66.5
gutter	5.3	66.3
	4.9	66.7
no line	4.0	67.6
	4.4	67.2
	5.1	66.5
gutter	5.8	65.8
	5.6	66.0
C	5.1	66.5
	5.5	66.1
gutter	6.1	65.5
	5.6	66.0
no line	5.0	66.6

400' E

no line	4.4	67.2
	5.1	66.5
gutter	5.8	65.8
	5.6	66.0
C	5.1	66.5
	5.5	66.1
gutter	6.1	65.5
	5.6	66.0
no line	5.0	66.6

71.58

450' E

20 line	5.2	66.1
	5.5	66.1
gutter	6.1	65.5
	5.8	65.8
C	5.6	66.0
	6.1	65.5
gutter	5.8	65.8
	5.3	66.3
no line	5.1	66.5
	5.5	66.1
no line	5.9	65.7
gutter	6.7	64.9
	6.3	65.3
C	6.1	65.5
	6.3	65.3
gutter	6.6	65.0
	5.9	65.7
no line	5.7	65.9

500' E (west line Morell)

71.58

center

no. line	6.8	64.8
	7.0	64.6
	6.8	64.8
C	6.6	65.0
	6.7	64.9
	6.8	64.8
no. line	5.9	65.7

E line mostly

no. line	6.5	65.1
	6.8	64.8
gutter	7.1	64.5
	7.1	64.5
C	7.3	64.3
	7.9	63.7
gutter	8.1	63.5
	7.6	64.0
no. line	7.4	64.2

71.58

50' E

no. line	7.6	64.0
	7.9	63.7
gutter	8.3	63.3
	8.0	63.6
C	7.5	64.1
	7.6	64.0
gutter	7.6	64.0
	7.0	64.6
no. line	6.7	64.9

100' E

no. line	7.3	64.3
	7.6	64.0
gutter	8.2	63.4
	8.0	63.6
C	7.8	63.8
	8.3	63.3
gutter	8.6	63.0
	8.1	63.5
no. line	8.0	63.6

71.58

150' E

Sol. line	8.3	63.3
	8.5	63.1
gutter	9.1	62.5
	8.6	63.0
C	8.2	63.4
	8.3	63.3
gutter	8.4	63.2
	7.9	63.7
no. line	7.3	64.3
	200' E	
no. line	7.9	63.7
	8.2	63.4
gutter	8.8	62.8
	8.7	62.9
C	8.5	63.1
	8.8	62.8
gutter	9.2	62.4
	8.6	63.0
Sol. line	8.4	63.2

71.58

5

250' E

Sol. line	8.7	62.9
	8.7	62.9
gutter	9.6	62.0
	8.9	62.7
C	8.7	62.9
	9.0	62.6
gutter	9.1	62.5
	8.6	63.0
no. line	8.1	63.5
	3.23	66.35
J.P.	8.46	63.12
	300' E	
no. line	3.0	63.4
	3.23	63.12
gutter	3.9	62.5
	3.9	62.5
C	3.6	62.8
	3.8	62.6
gutter	4.5	61.9
	3.6	62.8
Sol. line	3.6	62.8

66.35

350' E

Soline		3.5	62.9
		3.6	62.8
gutter		4.7	61.7
		4.2	62.2
C		3.9	62.5
		4.0	62.4
gutter		4.2	62.2
	cement curb.	3.5	62.9
Soline		3.3	63.1
	400' E		
Soline		3.6	62.8
	cement curb.	3.8	62.6
gutter		4.6	61.8
		4.3	62.1
C		4.1	62.3
		4.4	62.0
gutter		5.1	61.3
		3.9	62.5
Soline		3.8	62.6

66.35

450' E

Soline		3.9	62.5
		4.3	62.1
gutter		5.1	61.3
		4.7	61.7
C		4.2	62.2
		4.5	61.9
gutter		4.8	61.6
	cement curb.	4.2	62.2
Soline		4.0	62.4
	500' E (west line Nagas)		
Soline		4.1	62.3
	cement curb.	4.4	62.0
gutter		4.9	61.5
		5.0	61.4
C		4.6	61.8
		4.9	61.5
gutter		5.4	61.0
		4.7	61.7
Soline		4.1	62.3

66.35

Center

So. line		5.3	61.1
		5.7	60.7
		5.6	60.8
C		5.4	61.0
		5.7	60.7
		5.9	60.5
No. line		4.9	61.5
	East line notes.		
No. line		6.2	60.2
	cement curb	6.4	60.0
gutter		7.1	59.3
		6.9	59.5
C		6.6	59.8
		7.2	59.2
gutter		7.3	59.1
		6.7	59.7
So. line		6.2	60.2

66.35

50' E

So. line		8.5	57.9
		8.7	57.7
gutter		9.1	57.3
		8.8	57.6
C		8.5	57.9
		8.8	57.6
gutter		9.0	57.4
	cement curb.	8.1	58.3
No. line		8.0	58.4
	100' E		
No. line		9.5	56.9
		9.6	56.8
gutter	cement curb.	10.3	56.1
		10.5	55.9
C		10.3	56.1
		10.6	55.8
gutter		11.0	55.4
		10.5	55.9
So. line		10.1	56.3

6635

160' E

No line			12.3	54.1
			12.5	53.9
gutter			13.1	53.3
			12.6	53.8
C			12.3	54.1
			12.3	54.1
gutter			12.2	54.2
	cement curb.		11.5	54.9
No line			11.3	55.1
J.P.	H.I. / 1.67	55.33	12.69	53.66
	200' E			
No line			1.7	53.6
	cement curb.		1.67	53.66
gutter			2.4	52.9
			2.7	52.6
C			2.4	52.9
			2.8	52.5
gutter			3.1	52.2
			2.5	52.8
No line			2.7	52.6

5533

8

250' E

No line			3.9	51.4
			4.1	51.2
gutter			4.6	50.7
			4.4	50.9
C			3.9	51.4
			3.5	51.8
gutter			4.0	51.3
	cement curb.		3.7	51.6
No line			3.1	52.2
	300' E			
No line			4.3	51.0
	cement curb		4.6	50.7
gutter			5.4	49.9
			5.5	49.8
C			5.3	50.0
			5.9	49.4
gutter			6.3	49.0
			5.7	49.6
No line			5.5	49.8

55.33

350' E

Saline	7.1	48.2
	7.1	48.2
gutter	7.6	47.7
	7.3	48.0
C	7.0	48.3
	6.9	48.4
gutter	6.8	48.6
cement emb.	6.1	49.3
no line	5.7	49.7

400' E

no line	7.2	48.1
	7.8	47.5
gutter	8.3	47.0
	8.4	46.9
C	8.3	47.0
	8.7	46.6
gutter	8.9	46.4
	8.5	46.8
Saline	8.4	46.9

4941

9

55.33

450' E

Saline	9.5	45.8
	10.2	45.1
gutter	10.6	44.7
	10.0	45.3
C	9.7	45.6
	9.8	45.5
gutter	10.1	45.2
	9.1	46.2
no line	8.7	46.6

500' E (west line along)

no line	10.0	45.8
	10.6	44.7
gutter	11.2	44.1
	11.2	44.1
C	11.2	44.1
	11.4	43.9
gutter	12.1	43.2
	11.4	43.9
Saline	11.1	44.2

55,33

Center

So line

12.3 43.0

13.0 42.3

12.5 42.8

C

12.4 42.9

12.3 43.0

12.4 42.9

no. line

11.5 43.8

J.P.

2.48 ^{HI} 46.34 14.47 43.86

East line (blue)

no. line

3.2 43.1

3.6 42.7

gutter

4.1 42.2

4.1 42.2

C

4.1 42.2

4.3 42.0

gutter

4.7 41.6

4.6 41.7

So. line

4.5 41.8

4634

10

50' E.

So line

4.7 41.6

gutter

4.8 41.5

5.1 41.2

4.7 41.6

C

4.5 41.8

gutter

4.4 41.9

4.4 41.9

4.0 42.3

no. line

3.7 42.6

100' E.

no. line

3.9 42.4

gutter

4.3 42.0

4.8 41.5

4.6 41.7

C

4.6 41.7

gutter

5.1 41.2

5.6 40.7

5.2 41.1

So. line

5.1 41.2

46.34

150' E

Robin	5.5	40.8
	5.7	40.6
gutter	6.1	40.2
	5.4	40.9
C	4.8	41.5
	5.0	41.3
	5.0	41.3
	4.2	42.1
no. line	4.3	42.0
	200' E	
no. line	4.3	42.0
	4.6	41.7
gutter	5.1	41.2
	5.4	40.9
C	5.2	41.1
	5.8	40.5
gutter	6.5	39.8
	5.9	40.4
Robin	5.7	40.6

46.34

11

250' E

no. line	6.0	40.3
	6.3	40.0
gutter	7.6	38.7
	6.2	40.1
C	5.4	40.9
	5.5	40.8
gutter	5.7	40.6
	4.5	41.8
Robin	4.2	42.1
	280' E	
no. line	4.1	42.2
	4.7	41.6
gutter	6.0	40.3
	5.8	40.5
C	5.7	40.6
	6.5	39.8
gutter	7.6	38.7
	6.5	39.8
Robin	6.2	40.1

4634

300'E

Robin	6.7	39.6
	7.0	39.3
gutter	8.1	38.2
	6.8	39.5
C	5.9	40.4
	6.0	40.3
gutter	6.5	39.8
	5.1	40.2
no. line	4.4	41.9

350'E

Robin	5.6	40.7
	6.1	40.2
gutter	7.5	38.8
	7.0	39.3
C	7.0	39.3
	7.8	38.5
gutter	9.2	37.1
	8.0	38.3
Robin	7.8	38.5

4634

400'E

Robin	9.1	37.2
	9.2	37.1
gutter	10.3	36.0
	9.1	37.2
C	8.3	38.0
	8.3	38.0
gutter	8.1	38.2
	7.0	39.3
Robin	6.9	39.4

450'E

Robin	8.1	38.2
	8.3	38.0
gutter	9.5	36.8
	9.2	37.1
C	9.4	36.9
	10.2	36.1
gutter	11.1	35.2
	10.4	35.9
Robin	10.2	36.1

87

46.34

500' E (west line pendletan)

Bobino			11.4	34.9	13' no.c.
			11.0	35.3	C
gutter			11.4	34.9	
			10.9	35.4	13' no.c.
C			10.0	36.3	
			10.1	36.2	13' no.c.
gutter			10.1	36.2	C
			9.7	36.6	
no line			9.3	37.0	13' no.c.
J.P.	1.90	HI 39.62	8.62	37.72	

HI.

13

39.62

Center pendletan

					3.8	35.8
					3.6	36.0
					4.3	35.3

East line pendletan

					4.5	35.1
					3.9	35.7
					3.8	35.8

50' E

					4.3	35.3
					4.7	34.9
					5.0	34.6

100' E

					6.4	33.2
					6.0	33.6
					5.9	33.7

11

39,62

150' E

13' no. C	7.2	324
C	7.2	324
13' no. C	8.1	315

200' E

13' no. C	8.9	307
C	8.4	312
13' no. C	8.4	312

250' E

13' no. C	10.1	295
C	10.3	293
13' no. C	10.8	288

300' E

13' no. C	12.7	269
C	12.4	272
13' no. C	12.2	274

T.P.

248

H.E. ✓
29.80

1230

2732

29,80

14

350' E

13' no. C	5.0	24.8
C	5.3	24.5
13' no. C	5.9	23.9

366' E

13' no. C	west rail	6.5	23.3
	391' E		

C	west rail	7.0	22.8
---	-----------	-----	------

416' E

13' no. C	west rail	7.45	22.35
-----------	-----------	------	-------

6961

J.P. 3.72 ^{H.L. ✓} 69.61 65.89

150' west

Center Lamint

13' no.c.

4.1 65.5

13' no.c. 3.2 66.4 C

3.5 66.1

C 3.1 66.5 13' no.c.

3.7 65.9

13' no.c. 2.8 66.8

200' west

West line Lamint

13' no.c.

3.8 65.8

13' no.c. 3.7 65.9 C

3.6 66.0

C 3.2 66.4 13' no.c.

4.3 65.3

13' no.c. 3.8 65.8

250' west

50' west

13' no.c.

4.3 65.3

13' no.c. 3.8 65.8 C

3.7 65.9

C 3.2 66.4 13' no.c.

3.9 65.7

13' no.c. 3.2 66.4

300' west

100' west

13' no.c.

3.8 65.8

13' no.c. 3.3 66.3 C

3.8 65.8

C 3.5 66.1 13' no.c.

4.5 65.1

13' no.c. 4.0 65.6

31

6961

350' west

13'ROC	4.6	65.0
⊙	3.9	65.7
13'no.C	3.7	65.9

400' west

13'no.C	4.0	65.6
⊙	3.9	65.7
13'ROC	4.8	64.8

450' west

13'ROC	4.8	64.8
⊙	4.3	65.3
13'no.C	4.1	65.5

500' west (East line Kendall)

13'no.C	4.3	65.3
⊙	4.1	65.5
13'ROC	4.9	64.7

16

6961

center Kendall

13'ROC	4.2	65.4
⊙	3.9	65.7
13'no.C	3.7	65.9

West line Kendall

13'no.C	4.3	65.3
⊙	4.2	65.4
13'ROC	4.9	64.7

50' west

13'ROC	4.7	64.9
⊙	4.0	65.6
13'no.C	4.1	65.5

100' west

13'no.C	4.0	65.6
⊙	3.8	65.8
13'ROC	4.5	65.1

69.61

150' west

13' Ro.C.	4.4	652
C	3.6	660
13' no.C.	3.9	657

200' west

13' no.C.	3.6	660
C	3.4	662
13' Ro.C.	4.0	656
J.P.	7.26	73.32
	^{H.I.V.} 3.55	66.06

250' west

13' Ro.C.	7.5	65.8
C	6.8	66.5
13' no.C.	7.1	66.2

300' west

13' no.C.	6.7	66.6
C	6.4	66.9
13' Ro.C.	7.4	65.9

73.32

350' west

13' Ro.C.	7.2	66.1
C	6.4	66.9
13' no.C.	6.6	66.7

400' west

13' no.C.	6.4	66.9
C	6.2	67.1
13' Ro.C.	7.0	66.3

450' west

13' Ro.C.	6.7	66.6
C	6.1	67.2
13' no.C.	6.3	67.0

500' W. (East line Jewell)

13' no.C.	6.1	67.2
C	5.6	67.7
13' Ro.C.	6.3	67.0

73.3v

Center Jewell

13'20.C.	5.8	67.5	13'20.C.
C	5.3	68.0	C
13'mo.C.	5.7	67.6	13'mo.C.

west line Jewell

13'mo.C.	4.6	68.7	13'mo.C.
C	4.4	68.9	C
13'20.C.	4.6	68.7	13'20.C.

50' west

13'20.C.	4.5	68.8	13'20.C.
C	4.2	69.1	C
13'mo.C.	4.8	68.5	13'mo.C.

100' west

13'mo.C.	5.0	68.3	13'mo.C.
C	4.3	69.0	C
13'20.C.	4.7	68.6	13'20.C.

73.3v

150' west

13'20.C.	4.9	68.4	13'20.C.
C	4.7	68.6	C
13'mo.C.	5.2	68.1	13'mo.C.

200' west

13'mo.C.	5.6	67.7	13'mo.C.
C	5.0	68.3	C
13'20.C.	5.5	67.8	13'20.C.

240' west

13'20.C.	5.8	67.5	13'20.C.
C	5.3	68.0	C
13'mo.C.	6.2	67.1	13'mo.C.

300' west

13'mo.C.	7.2	66.1	13'mo.C.
C	6.1	67.2	C
13'20.C.	6.5	66.8	13'20.C.

350' west

13' a.o.c.	8.1	65.2
C	7.9	65.4
13' m.o.c.	8.8	64.5

400' west

13' m.o.c.	9.8	63.5
C	9.5	63.8
13' a.o.c.	9.8	63.5

450' west

13' a.o.c.	10.5	62.8
C	10.1	63.2
13' m.o.c.	10.5	62.8

500' west (East line Broadway)

13' m.o.c.	11.1	62.2
C	10.6	62.7
13' a.o.c.	11.1	62.2

(100' wide) center Broadway

13' a.o.c.	11.1	62.2
C	10.6	62.7
13' m.o.c.	10.9	62.4

west line Broadway

13' m.o.c.	11.1	62.2
C	10.6	62.7
13' a.o.c.	11.2	62.1

50' west

13' a.o.c.	10.7	62.6
C	10.2	63.1
13' m.o.c.	10.7	62.6

100' west

13' m.o.c.	10.0	63.3
C	9.7	63.6
13' a.o.c.	10.2	63.1

7332

J.P.	7.60	71.17	9.75	63.59
	150' west			
13' no.C.		7.7	63.5	
C		7.1	64.1	
13' no.C.		7.5	63.7	
	200' west			
13' no.C.		6.4	64.8	
C		6.2	65.0	
13' no.C.		6.9	64.3	
	250' west			
13' no.C.		5.8	65.4	
C		4.9	66.3	
13' no.C.		5.2	66.0	
	300' west			
13' no.C.		4.9	66.3	
C		4.5	66.7	
13' no.C.		5.2	66.0	

71.17

	350' west	
	5.0	66.2
13' no.C.	4.4	66.8
C	4.8	66.4
	400' west	
13' no.C.	4.7	66.5
C	4.3	66.9
13' no.C.	5.1	66.1
	450' west	
13' no.C.	4.8	66.4
C	4.2	67.0
13' no.C.	4.5	66.7
	500' w. (East line Haines)	
13' no.C.	3.9	67.3
C	3.5	67.7
13' no.C.	4.2	67.0
B.M. mm. A. & Haines	4.15	{ 67.02 67.04

20 1/2

Mar. 24/14

Shields
atten
Fletcher

71.07

J.P. 4.03 H.T. 71.07 67.04

150' W.

Center Hanes

13' no. C	3.1	68.0	
C	2.9	68.2	
13' 20 C	3.6	67.5	

13' no. C	5.5	65.6
C	5.2	65.9
13' 20 C	6.0	65.1

West line Hanes

13' 20 C	3.4	67.7	
C	2.7	68.4	
13' no. C	2.9	68.2	

13' 20 C	7.7	63.4
C	6.8	64.3
13' no. C	7.0	64.1

50' W.

13' no. C	3.1	68.0	
C	3.0	68.1	
13' 20 C	3.7	67.4	

13' no. C	8.8	62.3
C	8.5	62.6
13' 20 C	9.4	61.7

100' W

13' 20 C	4.6	66.5	
C	3.8	67.3	
13' no. C	4.0	67.1	

13' 20 C	11.3	59.8
C	10.5	60.6
13' no. C	11.0	60.1

71.07

350' W.

13' noc.

13.0

58.1

C

12.6

58.5

13' noc.

13.3

57.8

J.P.

0.14

H.I. ✓
58.29

12.92

58.15

400' W.

13' noc.

2.2

56.1

C

1.5

56.8

13' noc.

1.9

56.4

450' W.

13' noc.

3.3

55.0

C

2.9

55.4

13' noc.

3.6

54.7

500' W (East line Gresham)

13' noc.

4.8

53.5

C

4.1

54.2

13' noc.

4.6

53.7

58.29

21

Center

13' noc.

5.5

52.8

C

4.9

53.4

13' noc.

5.6

52.7

West line Gresham

13' noc.

7.0

51.3

C

6.1

52.2

13' noc.

6.7

51.6

50' W.

13' noc.

7.5

50.8

C

7.0

51.3

13' noc.

7.8

50.5

100' W.

13' noc.

8.3

50.0

C

7.4

50.9

13' noc.

8.0

50.3

58

58.29

150' W.

13' noC	8.3	500
C	7.8	50.5
13' noC	8.7	49.6

190' W
(310 E)

13' noC	9.1	49.2
C	8.2	50.1
13' noC	8.8	49.5

250' W
(210 E)

13' noC	9.4	48.9
C	8.8	49.5
13' noC	9.6	48.7

300' W.

13' noC	10.3	48.0
C	9.4	48.9
13' noC	10.2	48.1

58,29

22

350' W.

13' noC	10.8	47.5
C	10.2	48.1
13' noC	11.0	47.3

400' W.

13' noC	11.4	46.9
C	10.5	47.8
13' noC	11.2	47.1

450' W.

13' noC	11.5	46.8
C	11.0	47.3
13' noC	12.0	46.3

500' W (East line Faurel)

13' noC	12.6	45.7
C	11.6	46.7
13' noC	12.2	46.1

88

5829

J.P. ^{H.I.}
0.59 47.00 11.88 46.41

Center

13' no.C.

1.4 456

C

0.8 462

13' ro.C.

1.8 452

West line Flannel

13' ro.C.

2.2 448

C

1.2 458

13' no.C.

2.1 449

50' W.

13' no.C.

2.3 447

C

1.8 452

13' ro.C.

2.6 444

100' W.

13' ro.C.

2.9 441

C

2.1 449

13' no.C.

2.6 444

83

47.00/

150' W.

13' no.C.

3.1 43.9

C

2.4 44.6

13' ro.C.

3.3 43.7

200' W.

13' ro.C.

3.5 43.5

C

2.7 44.3

13' no.C.

3.2 43.8

250' W.

13' no.C.

3.5 43.5

C

3.2 43.8

13' ro.C.

3.7 43.3

300' W.

13' ro.C.

4.3 42.7

C

4.0 43.0

13' no.C.

4.3 42.7

	47.00			47.00		
	350' W.			Center		
13'noc.		4.9	42.1	13'noc.	7.3	39.7
C		4.7	42.3	C	7.2	39.8
13'roc.		5.3	41.7	13'roc.	7.6	39.4
	400' W.			West line Events		
13'roc.		5.7	41.3	13'roc.	8.4	38.6
C		5.2	41.8	C	7.6	39.4
13'noc.		5.4	41.6	13'noc.	8.0	39.0
	450' W.			50' W.		
13'roc.		6.2	40.8	13'roc.	8.7	38.3
C		5.9	41.1	C	8.5	38.5
13'roc.		6.5	40.5	13'roc.	9.4	37.6
	500' W. (East line Events)			100' W.		
13'roc.		7.2	39.8	13'roc.	10.0	37.0
C		6.5	40.5	C	9.1	37.9
13'noc.		7.0	40.0	13'noc.	9.5	37.5

47.00

25

	150' W.			J.P.	0.14 ^{H.I.} 35.78	11.36	35.64
13'mo.C		10.1	36.9		350' W.		
C		9.7	37.3	13'mo.C		1.0	34.8
13'no.C		10.5	36.5	C		0.7	35.1
	200' W.			13'no.C		1.3	34.5
13'no.C		11.0	36.0		400' W.		
C		10.1	36.9	13'no.C		1.8	34.0
13'mo.C		10.5	36.5	C		1.2	34.6
	250' W.			13'mo.C		1.7	34.1
13'mo.C		11.0	36.0		450' W.		
C		10.7	36.3	13'mo.C		2.2	33.6
13'no.C		11.3	35.7	C		1.9	33.9
	300' W.			13'no.C		2.5	33.3
13'no.C		11.8	35.2		500' W (East line Daves)		
C		11.3	35.7	13'no.C		3.2	32.6
13'mo.C		11.5	35.5	C		2.4	33.4
				13'mo.C		2.7	33.1

35

35.78

Center

13' no. C.	3.5	32.3
C	2.7	33.1
13' no. C.	3.6	32.2

West line claws.

13' no. C.	4.2	31.6
C	3.4	32.4
13' no. C.	3.9	31.9

50' W.

13' no. C.	4.5	31.3
C	3.9	31.9
13' no. C.	5.0	30.8

100' W.

13' no. C.	5.3	30.3
C	4.5	31.3
13' no. C.	5.0	30.8

26

35.78

150' W.

13' no. C.	5.4	30.4
C	5.0	30.8
13' no. C.	5.6	30.2

200' W.

13' no. C.	6.0	29.8
C	5.1	30.7
13' no. C.	5.6	30.2

250' W.

13' no. C.	6.0	29.8
C	5.5	30.3
13' no. C.	6.2	29.6

300' W.

13' no. C.	6.9	28.9
C	5.8	30.0
13' no. C.	6.4	29.4

35.78

350' W.

150

13' no.C	6.7	29.1
C	6.2	29.6
13' no.C	6.9	28.9

400' W.

100' E. of E.L. Cases

13' no.C	7.0	28.8
C	6.4	29.4
13' no.C	7.1	28.7

450' W.

13' no.C	7.5	28.3
C	7.1	28.7
13' no.C	6.9	28.9

500' W (Eastline base)

13' no.C	7.5	28.3
C	7.7	28.1
13' no.C	8.1	27.7

35.78

Center

13' no.C	7.9	27.9
C	8.0	27.8
13' no.C	8.5	27.3

West line base.

13' no.C	9.2	26.6
C	9.4	26.4
13' no.C	9.3	26.5
J.P.	1.65	28.10
		9.33

H.I.

12.70 } 15.40
 15.42

B.M. N.W. cor - Allison

4
11
14

X sec of 2 st (40')

39th to 40th st

11200

2 st
28

	053		111.27	mm NW 394 Weyman	150	E	9	39		
	825	11200	875	10305	111.27		19	110.1	✓	
S			1075	101.2	✓ 111.80		24	109.6		
410			112	100.8	875 103.05 885		29	109.1	✓	
b			110	101.0	112.00		33	108.7		
410			112	100.8			45	107.5	✓	
n			108	101.2		200	E	6	39	
	50	E	8	39				39	108.1	✓
n			20	110.0	✓			36	108.4	
			50	107.0				32	108.8	✓
b			54	106.6	✓			28	109.2	
			64	105.6				20	110.0	✓
S			78	104.2	✓	250	E	8	39	
	100	E	8	39				28	109.2	✓
S			63	105.7	✓			31	108.9	
			51	106.9				31	108.9	✓
L			40	108.0	✓			33	108.7	
			35	108.5				31	108.9	✓
n			20	110.0	✓					

D. J. ...

11200

49

300 E 8 39

S 16 110.4 ✓

15 110.5

b 14 110.6 ✓

16 110.4

n 19 110.1 ✓

TP 1,35 11210 125 11075

350 E 8 39

n 14 110.7 ✓

16 110.5

b 15 110.6 ✓

20 110.1

S 17 110.9 ✓

400 E 8 39

S 20 110.1 ✓

30 109.1

b 29 109.7 ✓

33 108.8

n 32 108.9 ✓

11200
125
11075
135
11210
150
10054
340
10394

11210

24

29

450 E 8 39

n 55 106.6 ✓

50 107.1

b 39 106.7 ✓

56 106.5

S 43 107.8 ✓

500 E 8 39

S 67 105.4 ✓

77 104.4

b 85 103.6 ✓

75 104.6

n 63 105.8 ✓

550 E 8 39

n 75 104.6 ✓

94 107.7

b 98 107.3 ✓

101 107.0

S 100 107.1 ✓

TP 340 10394 1150 10054

10394

600 E 8 39.7 ✓

S 50 98.9 ✓

46 99.3

b 31 100.8 ✓

32 100.7

n 12 102.7 ✓

6 48 E = Puerto San (40 St)

n 23 101.6 ✓ 10394

28 101.1 10268

32 100.7 ✓ 11344

53 98.6 10527

77 96.2 ✓ 107.8
480
10304

TP 1026 11344 126 10268

227 10784 287 10572

check 480 10304 ✓

10784

San 2 St (60)

39 to 384 St

2 St

50

W 2 of 39 St

S 72 100.6

75 100.3

79 99.9

b 80 99.8

80 99.8

88 100.3

n 72 100.6

10 W of 39 St

n 120 95.8

110 96.8

95 98.3

b 83 99.5

84 99.4

81 99.7

S 30 104.8

10394
11344
10784
10572
10304

10784

	50	W	8	39.2
S				34 104.4
				52 102.6
				57 102.1
b				82 99.6
				109 96.9
				133 94.5
n				154 92.4
	100	W	8	39
n				156 92.7
				142 93.6
				120 95.8
b				93 98.5
				64 101.4
				42 103.6
S				24 105.4

10784

2

01

	125	W	8	39
S				50 102.8
				93 98.5
				117 96.1
TP	0.45			<u>95.73</u> 1256 95.24
b				20 93.7
				36 92.1
				50 90.7
n				53 90.4
	150	W	8	39
n				110 84.7
				96 86.1
				77 88.0
b				53 90.4
				35 92.2
				31 92.6
S				22 93.5

10784

1256

95.73

95.73

9573

	200	W	8	39.7
S			81	87.6
			99	85.8
			109	84.8
b			114	84.3
			129	82.8
			127	83.0
n			116	84.1
	250	W	8	39
n			102	85.5
			130	82.7
			172	78.5
b			134	82.3
			120	83.7
			102	85.5
S			74	88.3

9573

QW

52

	300	W	8	39
S			93	86.4
			129	82.8
TP	470	<u>9278</u>	1265	83.08
			76	80.2
b			120	75.8
			74	80.4
			52	82.6
n			24	85.4
	350	W	8	39
n			00	87.8
			26	85.2
			52	82.6
			70	80.8
			92	78.6
			130	74.8
			95	78.3

9573
~~1265~~
 83.08
 470
 87.78

8th

8778

400

W

1

39

S

11.2 76.6

13.2 74.6

13.3 74.5

b

10.4 77.4

7.8 80.0

5.4 82.4

n

3.4 84.4

425

W

8

39

n

5.3 82.5

6.7 81.1

9.0 78.8

b

11.6 76.2

13.0 74.8

14.2 73.6

S

13.1 74.7

8778

24

33

450

W

8

39

S

13.2 74.6

14.3 73.5

16.3 71.5

b

14.0 73.8

13.6 74.2

12.5 75.3

n

12.3 75.5

475

W

9

39

n

5.5 82.3

8.3 79.5

10.6 77.2

TP

621

8409

10.00 77.78

b

8.8 75.3

10.5 73.6

14.0 70.1

S

11.9 72.2

77.78
6.31
84.09

8409

	500	W	g	39
S			150	69.1
			120	72.1
			107	73.4
b			80	76.1
			54	78.7
			34	80.7
n			12	84.9

	550	W	g	39
n			00	84.1
			25	81.6
			40	80.1
b			60	78.1
			80	76.1
			97	74.4
S			115	72.6

8409

	575	W	g	39
B			114	72.7
			97	74.4
			82	75.9
b			66	77.5
			45	79.6
			21	82.0
n			705	84.6

	600	W = E	g	38 + (60)
n			32	80.9
			46	79.5
			60	78.1
c			78	76.3
			87	75.4
			110	73.1
S			132	70.9

1161	9557	013	8396
1264	10671	150	9407
884	11520	360	10206
		061	11129

24
34

8409
72
80.9
1161
9557
110
9407
1264
10206
360
866
11129

mu 39 wool

6
23
14
July

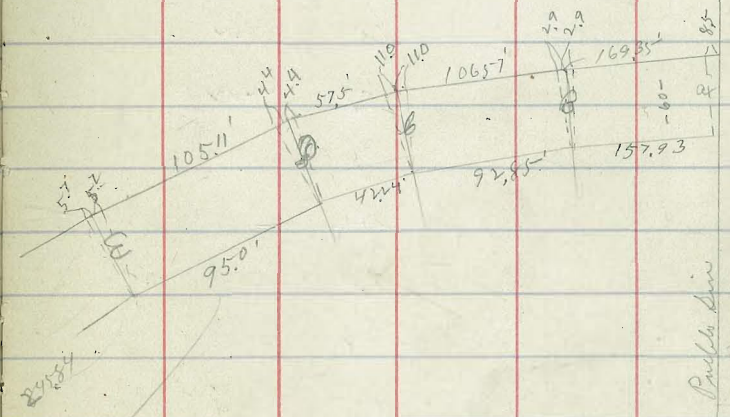
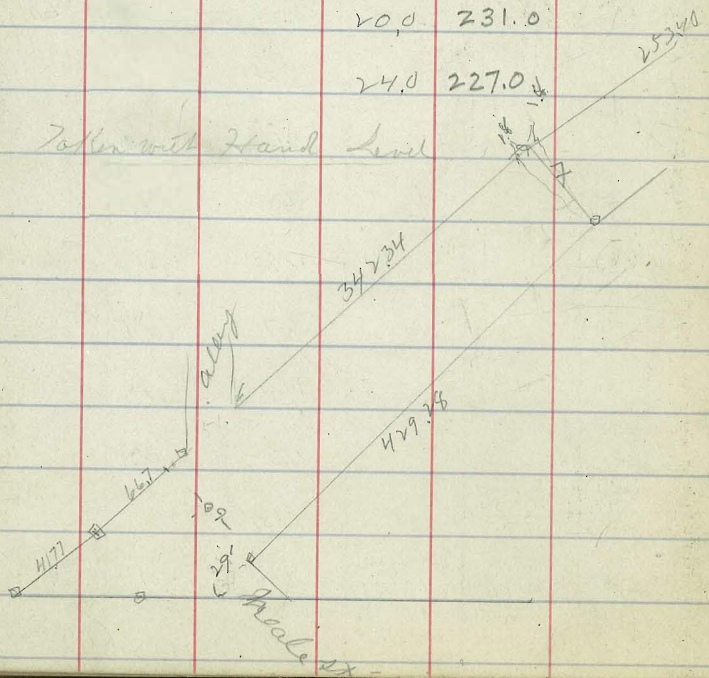
X Sec of Mission Hills Boulevard (60)
through Mission Hills

157 26323 21323 26166 +
Stewers
2166
157
26323
1220
25098
1220
25098
25098

Public line E of Mission Hills

S	36	247.4
	66	244.4
	98	241.2
b	127	238.3
	164	234.6
	200	231.0
n	240	227.0

Taken with Hand Level



PLOTTED

25098

35

(a) 85' W on n } = 0.0 (a)
 00 on S }

n		248	226.2
		205	230.5
		168	234.2
b		125	238.5
		100	241.0
		68	244.2
S		36	247.4
	25' W of da		
S		57	245.3
		82	242.8
		115	239.5
b		149	236.1
		170	232.0
		225	228.5
n		253	225.7

25098

Mission Blm

36

50 W of (a)

n		257	225.3	25078 747
		227	228.3	248.56
		204	230.6	245.72
b		163	234.7	
		128	238.2	
		101	240.9	
S		60	245.0	
	TP	226	245.27	747
		247	243.57	
	75' W of (a)			
S		13	244.5	
		54	240.4	
		90	236.8	
b		120	233.8	
		153	230.5	
		187	227.1	
n		220	223.8	

PLOTTED

24577

100

W

of

②

N

224 223.4

195 226.2

173 228.5

b

130 232.8

93 236.5

45 241.3

S

00 245.8

125

W of

②

S

1.7 244.1

5.3 240.5

9.0 236.8

b

13.2 232.6

1/4

17.4 228.4

20.8 225.0

N

24.9 220.9

24577

150

W of

②

N

260 219.8

21.7 224.1

17.8 228.0

b

140 231.8

7.8 236.0

6.0 239.8

S

3.1 242.7

15793 W of Rd on S = angle B on S

S

3.4 242.4

6.6 239.2

11.1 234.7

b

14.2 231.6

17.7 228.1

21.8 224.0

N

26.3 219.5

Missouri

07

PLOTTED

24577

160.85' W on N
15793' N - S

angle (B)

N

260 219.8

218 224.0

177 228.1

b

142 231.6

111 234.7

66 239.2

B

34 242.4

2.9 W on N
Angle (B) = Sin B 00

S

34 242.4

66 239.2

111 234.7

b

142 231.6

177 228.1

218 224.0

N

259 219.9

24577

25 W of Sin (B)

N

284 217.4

234 222.4

200 225.8

b

161 229.7

119 233.9

84 237.4

S

47 241.1

S

50' W of (B)

51 240.7

95 236.3

TP 207 23806

978 23599

56 232.5

81 230.0

102 226.9

160 222.1

N

212 216.9

58

24577
1978
235.99
207
238106

PLOTTED

23806

75'

W of

ⓑ

N

224 215.7

182 219.9

140 218.1

S

104 227.7

67 231.4

38 234.3

S

00 238.1

9285' W of angle ⓑ on S

S

00 238.1

52 232.9

94 228.7

S

130 225.1

155 222.6

207 217.4

N

251 213.0

23806

9285' W of S } = angle ⓑ
10385' W of N }

N

250 213.1

207 217.4

155 222.6

S

130 225.1

94 228.7

52 232.9

S

00 238.1

11' W of angle ⓑ on S } = ⓑ
angle ⓑ & S }

S

00 238.1

52 232.9

94 228.7

S

130 225.1

155 222.6

207 217.4

N

251 212.9

TP

127

23910

23

23283

PLOTTED

Mississ

89

23806
+3
23780
127
23910

23910

25' W of Cd b

S	24	236.7
	68	232.3
	102	228.9

b	142	224.9
	178	221.3
	209	218.2

n	260	213.1
---	-----	-------

4224' W of Lb = angle D or S

n	282	210.9
	228	216.3
	188	220.3

b	153	223.8
	110	228.1

	72	231.9
--	----	-------

S	27	236.4
---	----	-------

23910

Massie

20

4224' W } = Angle D
4654' W and }

S	27	236.4
	72	231.9
	110	228.1

b	153	223.8
	188	220.3
	228	216.3

n	282	210.9
---	-----	-------

angle D or S } = D
44' W of angle or n }

n	282	210.9
	228	216.3
	188	220.3

b	153	223.8
	110	228.1

	72	231.9
--	----	-------

S	27	236.4
---	----	-------

PIOTTED

23910

	25'	w of	D	
S			37	235.4
			82	230.9
			118	227.3
b			164	222.7
			213	217.8
			256	213.5
n			276	211.5
	50'	w of	D	
n			310	208.1
			270	212.1
			233	215.8
b			189	220.2
			143	224.8
			94	229.7
S			54	233.7

23910

Museum

41

	75'	w of	D	
S			60	233.1
			81	231.0
TR	25'	2200'	1260	226.50
			40	235.1
b			94	219.6
			138	225.3
			173	221.8
n			224	206.6
	95'	W to Angle E or S		
n			236	205.4
			174	209.6
			144	214.6
b			97	219.3
			48	224.2
			17	227.3
S			706	229.6

23910
1260
226.50
1260
219.02

PLOTTED

22902

95° W on S } angl. E
1007 W on N }

S

+0.6 229.6

17 227.3

48 224.2

b

97 219.3

144 214.6

194 209.6

N

238 205.3

angl. on S } = 2 E
5.7 W on N }

N

238 205.2

194 209.6

144 214.6

b

97 219.3

48 224.2

17 227.3

S

+0.6 229.6

22902

Museum

42

25° W of S E

S

13 227.7

44 224.6

79 221.1

b

126 216.4

174 211.6

205 208.5

N

231 205.9

50 W of S E

N

280 201.0

247 204.3

209 208.1

b

176 211.4

140 215.0

118 217.2

S

80 221.0

TP 821 224.19 1310 215.92

PLOTTED

S

22419

75 W of SE

S	110	213.2
	144	209.8
	178	206.4
b	209	203.3
	238	200.4
	142	210.0
n	227	194.5
	100 W of SE	
n	268	197.4
	243	199.9
	207	203.5
b	176	206.6
	143	209.9
	102	214.0
S	76	216.6

Mississ
43

22419

125 W of SE

S	39	220.3
	69	217.3
TP	776	2240
	949	214.0
	87	213.8
b	130	209.5
	163	206.2
	189	203.6
n	236	198.9
	150 W of SE	
n	239	198.6
	188	203.7
	161	206.4
b	117	210.8
	70	215.5
	24	220.1
S	704	222.9
TP	538	22505
	279	219.67

22419
549
214.70
27.2
22246
277
219.67
5.28
225105

PLOTTED

225.05

195' W of SE

S	20	223.1
	57	219.7
	83	216.8
b	148	210.3
	190	206.1
	223	202.8
n	270	198.1

200 W of SE

n	260	199.1
	217	203.4
	176	207.5
b	134	211.7
	94	215.7
	61	219.0
S	10	224.1

PLOTTED

225.05

225' W of SE

S	110	226.1
	36	221.5
	73	217.8
b	111	214.0
	130	210.1
	193	205.8
n	234	201.7

245.84' W = Angle 7 on S.L

n	229	202.2
	191	206.0
	158	209.3
b	120	213.1
	78	217.3
	44	220.7
S	0.0	225.1

PLOTTED

Mason
44

22505

24584' was }
26764' was } - Angl 7

S

00 225.1

44 220.7

78 217.3

b

120 213.1

158 209.3

191 206.0

N

230 202.1

angl a S }
1.8 w of angl a N } = 7

N

230 202.1

191 206.0

158 209.3

b

120 213.1

78 217.3

44 220.7

S

00 225.1

22505

Missouri

45

25' w of 7

S

30 222.1

70 218.1

120 213.1

b

154 209.7

190 206.1

223 202.8

N

257 199.4

50' w of 7

N

263 198.8

230 202.1

188 206.3

b

144 210.7

97 215.4

66 218.5

S

23 222.8

PLOTTED

PLOTTED

32

22505

75' w of L 7

S 18 223.3

65 218.6

109 214.2

b 153 209.8

191 206.0

228 202.3

n 270 198.1

100' n of L 7

n 288 196.3

247 200.4

211 204.0

b 174 207.7

140 211.1

106 214.5

S 65 218.6

TP 365 21924 946 215.59

22505
946
215.59
365
219.24

21924

Muslin

46

125' w of L 7

S 00 219.2

50 214.2

94 209.8

b 147 204.5

189 200.3

236 195.6

n 278 191.4

150' w of L 7

n 298 189.4

241 195.1

204 198.8

b 167 202.5

124 206.8

80 211.2

S 28 216.4

PLOTTED

SE

175	W of	Line 7	
S		47	215.0
		86	211.6
		140	205.2
b		185	200.7
		227	196.5
		270	192.2
n		320	187.2
	200	W of	Line 7
n		320	187.2
		270	192.2
		232	196.0
b		194	199.8
		150	204.2
		105	209.2
S		55	213.7

TP

0.53

21362

595 213.29

225 W of Line 7

S		10	212.6
		50	208.6
		100	203.6
b		148	198.8
		187	194.9
		221	191.5
n		252	187.4
	250	W of	Line 7
n		298	183.8
		241	189.5
		209	192.7
b		167	196.7
		137	200.4
		85	205.1
S		40	209.6

21924
 5.25
 213.09
 33
 213.42

PLOTTED

41362

	275	W	of	line 7
S				
			4.7	208.9
			100	203.6
			151	198.5
b			19.9	193.7
			21.7	191.9
			260	187.6
n			31.8	181.8
	300	W	of	line 7
n			32.4	181.2
			28.3	185.3
			23.6	190.0
b			18.7	194.9
			13.7	199.9
			9.2	204.4
S			30	210.6

21354

Museum

	325	W	of	line 7
S				
			2.9	210.7
			7.5	206.1
			12.2	201.4
b			16.9	196.7
			21.4	192.2
			25.2	188.4
n			30.3	183.3
	350	W	of	line 7
n			27.7	185.9
			23.4	190.2
			20.0	193.6
b			15.5	198.1
			11.3	202.3
			7.4	206.2
S			30	210.6
	TP	068	2101.4	4.16
				209.94

21354
 $\frac{4.16}{16}$
 $\frac{209.94}{16}$
 210.14

PLOTTED

21014

10
12

375 w of Line 7

S

10 2091

32 2069

70 2031

b

129 1972

164 1937

207 1894

n

2600 1841

400 w of L 7

n

260 1841

221 1880

182 1919

b

146 1955

96 2005

54 2047

26 2075

21014

Missou

49

429 w = Realty at a S

S

42 2059

68 2033

120 198.1

b

162 1938

202 1899

237 1864

n

283 1818

29' w of E of Realty at a S

n

310 179.1

270 183.1

244 185.7

b

193 1908

140 196.1

101 200.0

S

67 203.4

PLOTTED

(73.3) 4/77 W or ml } = Puellet's
 Pa or S 2

S 6.7 203.4

b 22.9 187.2

n 37.9 172.2 209.78

TP 11.73 220.12 1.39 208.39

TP 12.03 222.43 0.02 220.10

TP 11.53 243.28 0.39 231.75

TP 9.64 257.89 1.03 242.25

Leuck 10.18 241.71

251.89

PLOTTED

10 days
7 up
7.5

X sec of II st (80)
E of vent to N L 30"

12280

I st
51

E of vent st

75' E of vent

	1267	115.34	10267	Bm Mon 28 9		23
S			130	102.3		46
			11.2	114.1		63
			103	100.0		82
b			92	106.1		99
			77	107.6		116
			72		S	133
n			68			100
	50	E of vent st			S	28.5
S			80			119
			56			105
			30		b	90
b			16			69
			04			60
TP	839	12280	093	11441	n	43
			71			24
n			55			

12280

150

E of

282 st

n

15

42

64

b

80

93

112

s

133

200

E =

W of Hwy # 12 (80)

s

164

143

127

b

108

86

71

n

56

II st

12280

W

bank of Hwy #

n

57

70

96

b

122

TP

503

11551

1232

11048

69

84

s

109

W

1/4 of Hwy #

s

124

100

86

b

61

38

08

n

705

12280

1232

11048

503

11551

Center of Haytt

n 08

34

56

b 84

107

124

s 143

E 1/4 of Haytt

n 40

67

96

b 120

TP 469 10816 1204 10397

64

91

s 130

E Curl Haytt

s 140

130

103

b 68

45

24

n 00

E line of Haytt

n 24

42

65

b 90

125

145

s 133

11551
1209
10397
469
10816

10816

	50	E of Hoyt	
S			100
			109
			122
b			124
			114
			87
n			54
	100	E of Hoyt	
n			96
			106
			125
b			130
			120
			68
S			57

10816

II 11

	150	E of Hoyt	
S			14
			11
			46
b			74
			89
			126
n			108
	175	E of Hoyt	
n			100
h			20
	200	E = W of 29th N (50)	
n			60
			40
			20
	TP 1216	<u>11832</u>	200
			10616
I			110
			90
			50
S			25

10816
2
10616
1216
11832

11832

W Barb of 29 ft

S 1.5

3.2

6.3

b 8.0

9.9

11.4

n 12.2

W 1/4 29 ft

n 9.9

9.1

6.7

b 5.2

4.0

1.7

S 0.0

7.3

11832

Location of 29 ft

n 2.0

7.3

5.4

b 3.6

2.0

0.6

TP 1156 1290 082 11745

S 8.4

E 29

S 7.0

9.0

11.3

b 12.8

14.0

15.7

n 17.8

55

11832

87

11745

1156

12901

12901

E Carl of 29th

n	157
	136
	126
b	104
	90
	70
S	48

E Sim of 29th

S	27	126.3 ✓
	45	122.5 ✓
	65	122.5 ✓
b	76	121.4 ✓
	92	119.8 ✓
	110	118.0 ✓
n	134	115.6 ✓

12901

I v

50 E of 29th st

n	40	128.0 ✓	12901
	10	128.0 ✓	235
TP	1273	13939	126.66
	235	12666	1273
			137.39
	100	129.4 ✓	
b	97	129.7 ✓	
	80	121.4 ✓	
	65	122.9 ✓	
S	55	133.9 ✓	

100 E of 29th

S	30	136.4 ✓
	26	136.8 ✓
	23	137.1 ✓
b	30	136.4 ✓
	33	136.1 ✓
	40	135.4 ✓
n	57	133.7 ✓

	150	E	g	292	
n				29	136.5 ✓
				25	136.9 ✓
				26	136.8 ✓
l				29	136.5 ✓
				30	136.4 ✓
				37	135.7 ✓
S				44	135.0 ✓
	200	g =	nd of Dodson	(80)	
S				25	131.9 ✓
				60	133.4 ✓
				54	134.0 ✓
				42	135.2 ✓
				33	136.1 ✓
				28	136.6 ✓
n				23	137.1 ✓

TP 925 139.39 925 130.14
 mor Dodson
 se

W Camb of Dodson

n				21	137.3 ✓
				34	136.0 ✓
				39	135.5 ✓
l				43	136.1 ✓
				55	133.9 ✓
				60	133.4 ✓
S				74	134.0 ✓
				91	130.3 ✓
S				73	132.1 ✓
				65	132.9 ✓
l				53	133.9 ✓
				45	134.9 ✓
				38	136.1 ✓
n				20	137.4 ✓

W 1/4 f Dodson

139.39
 9.25
 130.14
 9.25
 139.39

139.39

Center of Dodson

n	18	137.6 ✓
	28	136.6 ✓
	40	135.4 ✓
b	57	134.2 ✓
	63	133.1 ✓
	76	131.8 ✓
s	93	130.1 ✓

E 1/4 of Dodson

s	89	130.5 ✓
	74	132.0 ✓
	57	133.7 ✓
b	56	133.8 ✓
	46	134.8 ✓
	36	135.8 ✓
n	18	137.6 ✓

139.39

I

E 1/4 of Dodson

n	18	137.6 ✓
	44	135.0 ✓
	59	133.5 ✓
b	67	132.7 ✓
	75	131.9 ✓
	74	132.0 ✓
s	92	130.2 ✓

E 1/4 of Dodson

s	92	130.2 ✓
	74	132.0 ✓
	78	131.6 ✓
b	73	132.1 ✓
	66	132.8 ✓
	50	134.4 ✓
n	18	137.6 ✓

13939

50 E of Dodson

n 27 136.7 ✓
 49 134.5 ✓
 62 133.2 ✓

b 80 131.4 ✓
 78 131.6 ✓
 80 131.4 ✓

S 90 130.4 ✓

100 E of Dodson

S 145 124.9 ✓
 122 127.2 ✓
 106 128.8 ✓

b 104 129.0 ✓
 82 131.2 ✓
 63 133.1 ✓

S 34 136.0 ✓

i

13939

I 2

150 E of Dodson

n 97 129.7 ✓
 129 126.5 ✓

TP 042 127.91 ✓
 1190 127.49

b 35 124.4 ✓
 57 122.2 ✓
 52 122.7 ✓
 87 119.2 ✓

S 115 116.4 ✓

175 E of Dodson

S 146 113.3 ✓
 122 115.7 ✓
 94 118.5 ✓
 105 117.4 ✓
 84 119.5 ✓
 57 122.2 ✓
 20 125.9 ✓

199 E

n 58 122.1 ✓
 bh 100 117.9 ✓

13939
 1190
 127.49
 42
 127.8

12791

TP 134 1200 928 118.63 ✓

200 E = 9.2 30th

n 20 118.0 ✓

33 116.7 ✓

46 115.4 ✓

50 115.0 ✓

56 114.4 ✓

58 114.2 ✓

S 59 114.1 ✓

check 615 11383 ✓ Bm

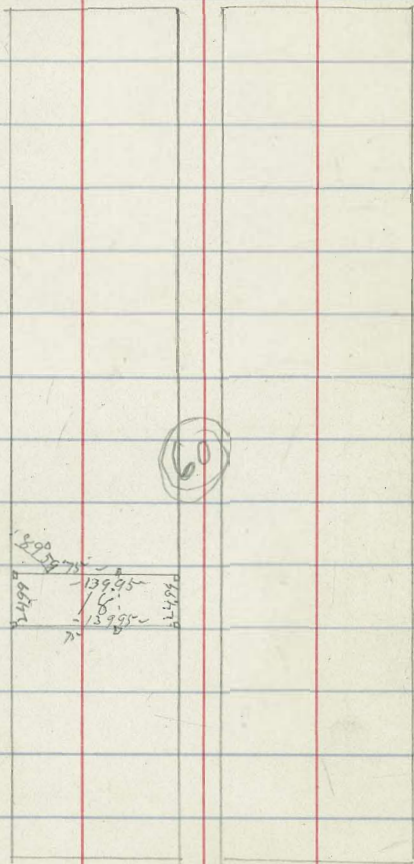
12791
928
118.63
100
119.59

7/ Blough
 27/ Taylor
 17/ July

Locate Lot 18 Block 60
 Ocean Beach

Bacon St

New point



Cable St

X Sec of Lot 18 Block 60
 Ocean Beach

748

1970

1227

San Mateo
 Ocean & Pacific

West Side of Lot 18

S. Front	52	14.5
10	37	16.0
20	37	16.5
30	30	16.7
40	30	16.7
50	30	16.7
60	30	16.7
70	33	16.4
75	32	16.4
80	32	16.5
90	32	16.5
100	33	16.4
110	33	16.4
120	33	16.4
130	34	16.3
140	37	16.0

Alley

1970

57

E Side of Sect 18

S Quarter	52	145
10	36	161
20	32	165
30	30	167
40	30	167
50	30	167
60	30	167
70	30	167
75	30	167
80	30	167
90	30	167
100	30	167
110	30	167
120	30	167
130	30	167
140 all	33	164
75' S. in N		
cut	32	165

62

X Sec of Ash St (80)
 31' at top
 20' benches
 Sand

24247

ash st

63

	780	238.27	230.57	SE Beach + 31	n	50	E 8	31' at st	
	746	242.47	235.07	230.57 7.60 238.17 3.30 234.87 7.40 242.27					41 238.11
									50 237.5
									52 237.3
n			70	235.5					53 237.2
(20')			74	235.4					58 236.7
(10')			67	235.8					60 236.5
l			65	236.0					66 235.9
			75	235.0					
			75	235.0					
S			73	235.2					
						100	E 8	31' at	
									60 236.5
									52 236.9
									52 237.3
			63	236.2					50 237.5
			50	236.5					45 238.0
			57	236.6					40 238.5
l			57	236.6					34 237.1
			60	236.5					
			50	237.5					
n			50	237.5					

Same line on top Bank

24247

150' E of 31.00

n 310 2394

350 2390

37 2388

s 40 2385

41 2384

45 2380

S 50 2375

200' E = W of Ida 11 (50')

S 48 2377

47 2378

45 2380

s 42 2383

38 2387

35 2390

n 36 2389

TP 214 24104 357 23890

Ida narrowed to 60'

X Sec See Page 68 this Book

nw + Ida ash

24104

X W 66 of Ida

n 24

27

28

s 27

30

33

S 37

W 14 of Ida

S 34

31

s 30

28

26

n 26

25

24247
350
23890
214
24104

24/04

Center of Ida II

n		26
		29
		32
e	X	30
		30
		31
s		33
	E 1/48	Ida
s		33
		31
	X	31
t		31
		32
		31
n		28

24/04

Est 65

E lb of Ida

n		36
		36
	X	36
b		34
		34
		34
s		35
	X	See Page 68
		E lb of Ida
s		36 237.4
		35 237.5
		36 237.4
b		38 237.2
		47 236.8
		43 237.7
n		45 236.5

38

241.04

50 E of Ida

n 84 232.6

80 233.0

76 233.4

b 74 233.6

70 234.0

70 234.0

S 66 234.4

1.66 229.72 1228 2286

100 E of Ida

S 33 226.4

44 225.3

50 224.7

b 50 224.7

56 224.1

66 223.1

n 86 221.1

TP 062 217.92 1242 217.30217.92

150 E of Ida

n 140 203.9

115 206.4

110 206.9

b 100 207.9

94 208.5

80 209.9

S 60 211.9

TP 012 204.88 1305 204.87

200 E of Ida

S 103 194.7

117 193.3

124 192.6

b 133 191.7

TP 043 192.70 1272 192.7

15 191.2

21 190.6

n 62 186.5

TP 164 187.74 1260 180.0ask

66

241.0412.30228.601.06229.2212.92217.3062217.921305204.871.10204.9912.72192.2743192.7012.60180.101.64181.74

181.74

250 E of Ida

n 90 172.7

78 173.9

78 173.9

L 74 174.3

70 174.7

65 175.2

S 56 176.1

TP 012 16992 1194 16980

2836 E = Wd of 32nd rd

S 60 163.9

82 161.7

87 161.2

L 98 160.1

102 159.7

107 159.2

n 112 158.7

TP 1302 18282 12 16980

1243 19494 631 18251

7 1274 20717 257 19443

1312 21970 0.58 20659

1192 23085 078 21892

1094 24094 0.85 23040

202 23892

check

256 23834

181.74

11.94

169.80

169.92

169.80

10.02

182.82

182.51

12.40

194.94

194.43

12.74

207.17

206.59

206.59

12.12

218.70

218.92

11.93

230.85

230.85

10.94

240.94

240.94

238.92

240.94

256

238.38

The Intersection Ida #60
ash (80)

	3:20	24280	23820	na # Ida + ash #64
	213.76	E of	312 = W of Ida	23890
n			41	238.7
10'			43	238.5
(10')			44	238.4
l			44	238.4
			47	238.1
			50	237.8
S			54	237.4
		W end of Ida		
S			50	237.8
			47	238.1
			47	238.1
l			44	238.4
			44	238.4
			44	238.4
n			40	238.8

	W	1/4 of	Ida
			43 238.5
			45 238.3
			47 238.1
			45 238.3
			45 238.3
			47 238.1
			50 237.8
		Center of Ida	
			49 237.9
			48 238.0
			47 238.1
			46 238.2
			49 237.9
			47 238.1
			45 238.3

24280

	E	1/4 of Ida	
n		45	238.3
		48	238.0
		49	237.9
b		48	238.0
		47	238.1
		48	238.0
s		50	237.8

	E	1/4 of Ida	
s		50	237.8
		50	237.8
		49	237.9
b		51	237.7
		53	237.5
		53	237.5
n		52	237.6

24280

	E	1/4 of Ida = 624' W of old line (P65)	
n		58	237.0
		57	237.1
		55	237.3
b		52	237.6
		51	237.7
		51	237.7
s		52	237.6

8 Clough
15 Taylor
74 Fitz

Elevations at Intersection of Gungah
+ Voltaire St
Voltaire St

	882	<u>7810</u>	6928	Bm SP 20' W Gungah + Voltaire
	E Side of Gungah			
S		56	72.5	69.25 78.10 77.47
N		60	72.1	13.11 90.72
R.R. Rail		56	72.5	89.97 9.46 99.92
N		55	72.6	
N		53	72.8	
	W Side Gungah			
N		82	69.9	
N		83	69.8	
R.R. Rail		85	69.6	
N		84	69.7	
S		80	70.1	
	712	1311	<u>9072</u>	049 77.61
	945	<u>9992</u>	075	89.97
	W Side Gungah + Long Branch			
N		985	89.57	H m W Long Branch
S		76	91.8	
S		50	96.4	
N		58	93.6	

9942
+ See Intersection of Brighton & Gungah
N side Brighton Brighton 60

2	712	1118	<u>10955</u>	107	9835.1	
	E side			14	108.1	89.62 1.07 98.55
	+10 = E side			14	108.1	11.18 109.55
	+20			53	104.2	
	6			50	104.5	
	5			52	104.3	
	4			50	103.5	
	W			70	102.5	
	N side Brighton					
	W			63	103.2	
				53	104.2	
				47	104.8	
				46	104.9	
				48	104.7	
				10	108.5	
				10	108.5	
	Brighton has Ben Graded Property					
	S 1/2 Gungah E Ground + a curb in					

18953

	N 1/4 of Brighton	
E	11	108.4
	20	107.5
	40	105.5
S	40	103.5
	43	105.2
	46	104.9
W	56	103.9

	Center of Brighton	
W	54	104.1
	45	105.0
	42	105.3
S	40	105.5
	36	105.9
	32	106.3
E	20	107.5

10953

71

	S 1/4 of Brighton	
E	25	107.0
	30	106.5
	35	106.0
S	36	105.9
	41	105.4
	45	105.0
W	52	104.3

	S - back of Brighton	
W	56	103.9
	45	105.0
	40	105.0
S	40	105.0
	33	106.2
	27	106.8
E	24	107.1

on end of back

25

10953

S sin of Brighton

E

17 107.8

10953

24 107.1

237

28 106.7

107.16

b

30 106.5

1276

33 106.2

119.92

37 105.8

131

W

48 104.7

118.6

TP 1276 1199 237 107.6

TP 1274 12125 131 118.61

1274

13135

sec of the Intersection of Guyot (60)
+ Cape May 72

8
13
14

N sin of Cape May (80)
13135

E

28 128.6

10 bulbs

22 129.2

1/4

38 127.6

1/6

46 126.8

1/4

57 125.7

1/6

60 125.4

W

67 124.7

(20)

N bulb of Cape May

W

66 124.8

58 125.6

52 126.2

b

44 127.0

40 127.4

32 128.1

E

28 128.6

End of N bulb 30 128.1

13135

	N	1/4 of Cape May	
E		34	128.0
		35	127.9
		37	127.7
b		43	127.1
		51	126.3
		58	125.6
W		62	125.2

center of Cape May

W		59	125.5
		54	126.0
		48	126.6
b		42	127.2
		38	127.6
		33	128.1
E		29	128.5

Cape May is grad. E of this

13135

73

	S	1/4 of Cape May	
E		30	128.4
		33	128.1
		36	127.8
b		40	127.4
		46	126.8
		49	126.5
W		55	125.9

S bank of Cape May

W		52	126.2
		45	126.9
		43	127.1
b		38	127.6
		36	127.8
		33	128.1
E		31	128.2

13135

S line of Cape May

E		30	128.4
		20	129.4
		0.0	131.4
b		0.0	131.4
		0.0	131.4
		1.0	130.4
W		2.6	128.8

13135

4.90

126.45

11.95

138.40

41.3

133.68

10.95

143.63

2.15

141.50

✓ men Gungo

+ Cape May

SW

TP

11.95

138.40

4.90

126.45

cut bank from old x dec

137.40

413

141.30

8.50

149.80

10.68

149.35

413

139.27

8.52

150.87

265

142.0

8 change X dec of
13
14

Intersection of Grizot (60)
+ Santa Monica St (80)

Santa Monica

74

N line of Santa Monica

2W		63	144.5
		50	145.8
		43	146.5
b		47	146.1
		35	147.3
		34	147.4
E		32	147.6

(20')

N bank of Santa Monica

E or Ch

		375	147.07	147.3
		44		146.4
		41		146.7
		41		146.7
		40		146.8
		47		146.1
W		63		144.5

15082

N 1/4 Santa Monica

W	63	144.5
	61	144.7
	57	145.1
6	53	145.5
	49	145.9
	44	146.4
E	36	147.2

Center of Santa Monica

E	30	147.8
	38	147.0
	44	146.4
6	47	146.1
	54	145.4
	61	144.7
W	64	144.4

15082

S 1/4 Santa Monica

W	63	144.5
	59	144.9
	55	145.3
6	50	145.8
	42	146.6
	37	147.1
E	29	147.9

S - lb of Santa Monica

E	265	148.2	SE curb
	42	148.17	148.35
	46	146.6	143.8
	46	146.2	147.17
6	52	145.6	
	57	145.1	
	60	144.8	
W	66	144.2	

~~14982~~
150.82

8
13
14
about

X see Gurot St (60)
Santa Monica St 50' north

76

S line of Santa Monica

N line of Santa Monica

W	6.8	144.2
	5.4	145.4
	5.3	145.5
L	5.1	145.7
	4.9	145.9
	4.4	146.4
E	3.3	147.5

W	6.5	148.5
	5.0	148.8
	4.3	148.5
L	4.7	148.1
	3.5	148.3
	3.4	148.4
E	3.2	148.6

cut back from old 2 in

25' of Santa Monica

E	2.1	148.7
	2.8	148.0
	3.4	148.4
L	4.4	148.4
	5.2	148.6
	6.0	148.8
W	6.6	148.2

14982
15082

50' n of Santa Monica

W

72

14 $\overset{3}{\times}$.6

64

14 $\overset{4}{\times}$.4

53

14 $\overset{5}{\times}$.5

S

48

14 $\overset{6}{\times}$.0

40

14 $\overset{6}{\times}$.8

32

14 $\overset{7}{\times}$.6

E

21

14 $\overset{8}{\times}$.7

75' n of Santa Monica

E

26

14 $\overset{8}{\times}$.2

36

14 $\overset{7}{\times}$.2

42

14 $\overset{6}{\times}$.6

S

60

14 $\overset{4}{\times}$.8

66

14 $\overset{4}{\times}$.2

72

14 $\overset{3}{\times}$.6

W

82

14 $\overset{2}{\times}$.6

77

78

Bacon St Drain

		Grade of Invert	
00 = 6 Bm		2.0	Valley + Bacon Bm South 10.81
+50	501	1.86	C 320
1	534	1.72	C 362
+50	550	1.57	C 393
2	556	1.43	C 413
+50 = angle	570	1.37	C 433
+28 = 60 ft Basin	560	1.35	C 425
+70 = rd by road	545	1.23	4.22
3	610	1.15	C 495
+50	610	1.00	C 510
4	665	0.86	C 558
+50		.79	
+55 = 52 ft Basin	685	0.72	C 613
5	70	0.62	C 640
		0.58	
+50	750	0.43	C 712
6	790	0.29	C 76
+50 on alley	830	0.15	C 815
7	860	0.0	C 860
+50 = 52 ft Basin	90	-0.14	C 914
8		-0.230	
+50 = 52 ft Basin		-0.370	C 9.0
+50		-1.30	
9		-57	

1081 St 9520 Bms

			79
			C 94
+50			C 95
10			C 96
+50			96
11 = 52 ft Basin			97
+50 = 72 ft			C 94
+50			C 92
12			C 89
+11			82
+40			C 81
+50			C 88
+11 = angle			C 83
13			C 83
+25			
+50			C 8.4
14			
+10			-2.03

79

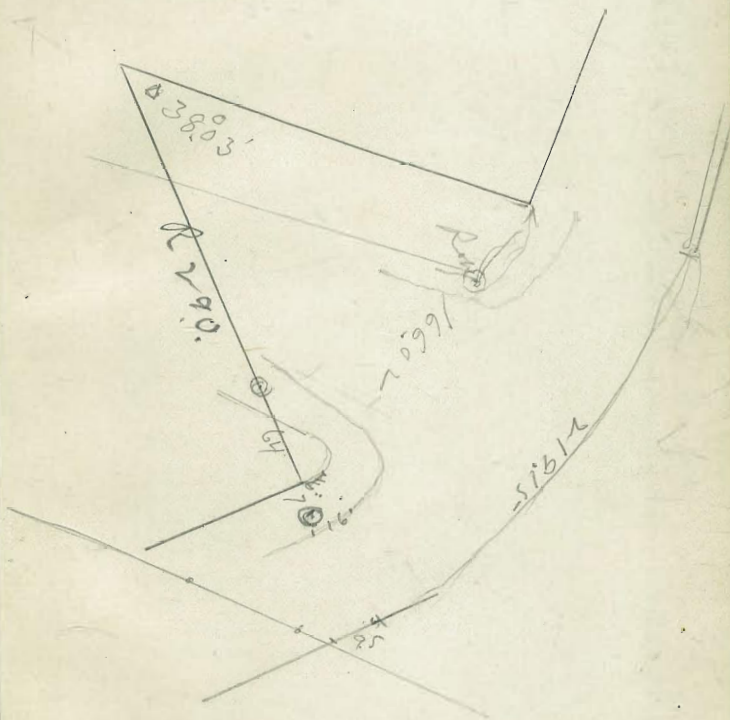
80

Sudas Baem St Dan

Brighton St	565	1215	El	450 Br
Gold Basin			150	500 635
750			1.38	500 636
100			1.22	52 640
150			1.07	54 643
200			.93	56 645
220 ang			.87	57 648
2 BB dry well			.87	54 646
EL along back			.78	54 47

Benchis

Brighton NW ⊙ 4.5-3
 Min SW ⊙ 7.00
 Valtun NE ⊙ 9.52



63.25 S.W. Hayes.

I + Houtt SW m 106.05

I 28 SE m 102.67

I 30 SW m 113.83

45-65 Bm

10
55.00
4999
1297
67.96
67.50
67.16
10.94
78.10
8.82
69.28 Bm

464-12-700

306 3-40

437 386

311

462

464

66

25

111
25
2428
40
2384

131.35
8.2
123.15
117.8
5.3
127
924
517.76

127
107
300 20 (66
1800
140
840
840
924.0

