

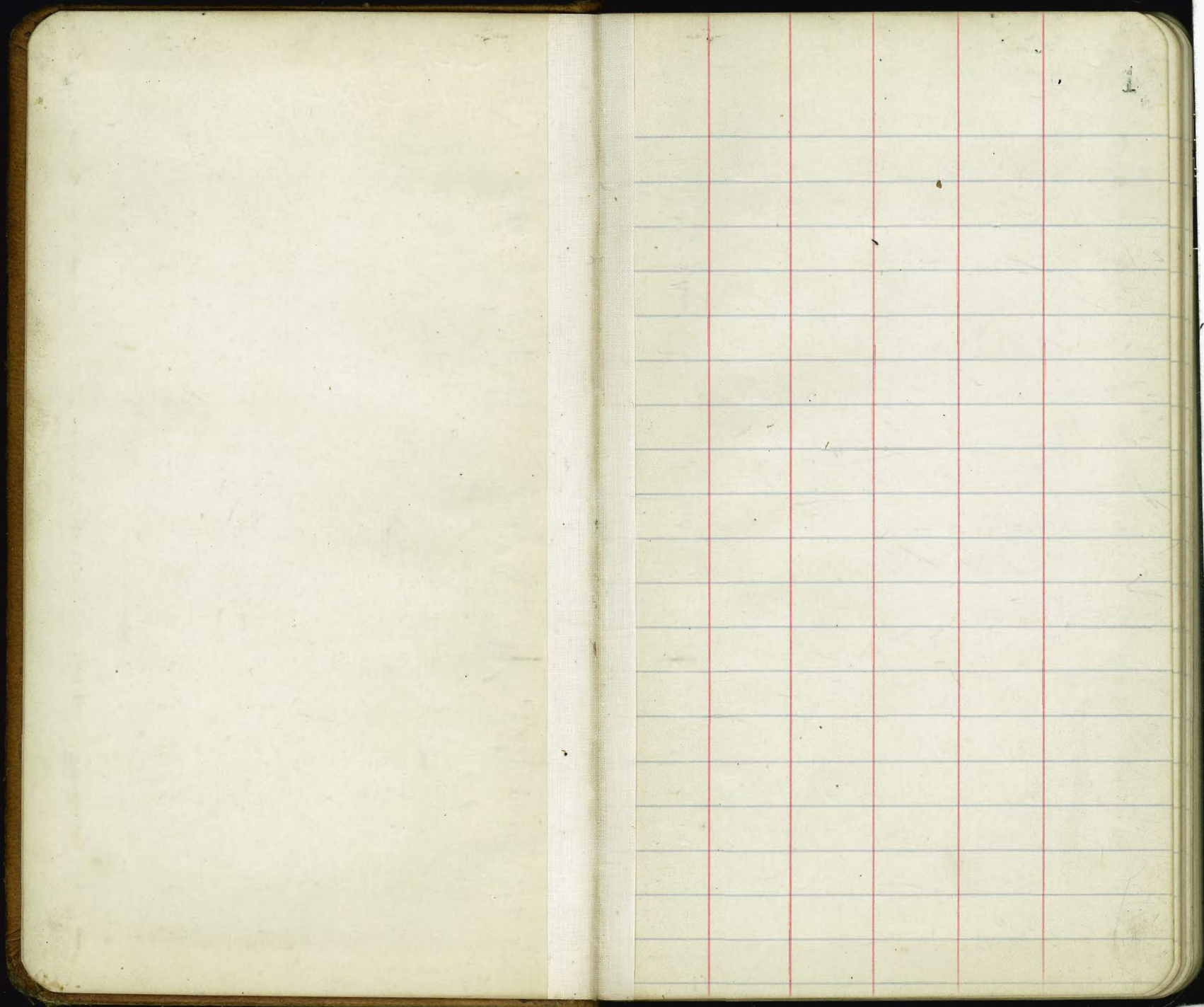
F.B. 937

LEVEL BOOK

NO. 419

MICROFILMED
DEC 16 1964

Return, Please
to City Engineer
City Hall
San Diego, California.



Bancroft B.M.s

					✓✓
B.M. SW Elm & Bancroft Spk				227.386	
T.P.	2.950	230.336	6.984	223.352	
T.P.	4.843	228.195	2.802	225.393	
T.P.	5.766	231.159	3.140	228.019	
	6.883	234.902			
B.M. SW Bancroft & Cedar	Date			231.521	✓✓
T.P.			16.88	233.214	
T.P.	6.103	239.317	0.995	238.322	
T.P.	10.535	248.857	3.942	244.915	
	4.013	248.928			
B.M. NE 32 & Cedar Mon.			86.71	240.257	✓✓
T.P.			4.121	244.807	
T.P.	1.859	246.666	7.086	239.580	
	4.870	244.450			
B.M. NE Ida & Date Mon			9.546	239.904	✓✓
T.P.			6.073	238.377	
T.P.	1.653	240.030	9.865	230.165	
	0.213	230.378			

Cedar B.M.s

				230.378	
T.P.			10.024	220.354	
			3.879	223.451	
				223.473	
B.M. N. Walk Cedar Bridge			7.528	215.923	✓
Plug in Concrete wall.			3.077	220.354	
T.P.			3.119	220.354	
T.P.	12.055	232.409	0.736	231.673	
T.P.	4.976	236.649	1.743	234.906	
T.P.			8.393	243.299	
B.M. NE 32 & Cedar Mon.			3.044	240.255	240.257
T.P.			0.652	242.647	
T.P.	3.608	246.255	8.599	237.656	
T.P.	1.126	238.782	3.571	235.211	
			3.328	238.539	
B.M. SE 33 & Cedar Mon			3.838	234.701	✓
T.P.			10.602	227.937	
			4.788	232.725	
B.M. NW Felton & Cedar Mon			7.333	225.392	✓✓
T.P.			5.726	226.799	
T.P.	1.875	228.874	3.729	225.145	
			0.472	225.617	

Date B.M.

225617

B.M. NW. Felton & Date Mon. 12.233 213.384 ^J 213.384 ^{JJ}

T.P. 0.472 225.145

T.P. 10.285 235.430 0.769 234.661

7.020 241.681

B.M. SE. 33 & Date Mon. 3.120 238.561 ^J 238.557 ^{JJ}

T.P. 10.368 231.313

T.P. 1.091 237.404 7.985 224.417

2.159 226.578

T.P. B.M. SW. Bancroft & ~~33~~ ⁵¹⁷¹ ^{1.866} 224.712 ^{JJ}→ 5.446 230.158 2.764 227.394 ^{ok} 227.386 ^{JJ}

Grape St & Felton B.M.

3

B.M. SW. Grape & Bancroft ^{ok} ^{JJ} 273.245

T.P. 4.547 277.794 3.880 273.714

2.550 276.464

B.M. SW. 33 & Grape Mon. 4.620 271.844 ^{ok} ^{JJ}

T.P. 12.707 263.757

T.P. 0.743 264.500 7.921 256.579

T.P. 0.500 257.079 9.487 247.592

T.P. 0.484 248.076 9.056 239.020

1.585 240.605

B.M. SW. Felton & Fir. Mon. 5.223 235.382 ^{JJ} ^{ok} 235.377

T.P. 6.986 233.619

T.P. 2.179 235.798 5.522 230.276

2.870 233.146

B.M. NW. Elm & Gregory Mon. 8.400 224.746 ^{JJ} ^{ok} 224.736

T.P. 12.058 221.088

0.488 221.576

B.M. NW. Felton & Date Mon. 8.174 213.402 ^{ok} ^{JJ} 213.384

Felton BM^s

33 St BM^s

193.391

BM. NW Felton & Cedar Mon.

275.392

T.P.

~~5564~~

0.840 192.551

T.P. 2.040 227.432 6.249 221.183

T.P.

8606 201.157 1.035 200.122

~~FR~~ 5.322 226.505

T.P.

9921 210.043 0.842 209.201

BM. NW Felton & Beech Mon. 4181 222.324

12.263 221.464

T.P.

5012 221.493

BM. SE. 33 & Beech Mon.

1.892 219.572

ok. 219.586

T.P. 0.570 222.063 8.424 213.639

T.P.

0.272 221.192

T.P. 2.106 215.745 9.250 206.495

T.P.

11.866 233.058 0.668 232.390

1.737 208.232

6.616 239.006

BM. SW Felton & ~~Beech~~ ^{Ash} Mon. 6.260 201.972

ok. 201.993

BM. SE. 33 & Cedar Mon.

4.222 234.684

ok. 234.701

T.P.

12.204 196.028

T.P. 0.625 196.053 8.185 188.468

T.P. 0.500 188.968 11.491 177.471

T.P. 0.152 177.629 8.601 169.028

1.914 170.942

BM. NE. 33 & A Mon.

8.533 162.409

ok. 162.427

1.9

177.477

T.P. 8.225 185.702 1.609 184.093

9.298 193.391

Mon. NE. 33 & Ash Mon.

0.564 192.827

ok. 192.845

Ash & C BM

BM SW. Feltor & Ash. Mon.	201.972	[✓] 201.993		
T.P.	0.932	202.904	6.824	196.080
T.P.	4.730	200.810	11.446	189.364
	2.104	191.468		
BM NW. Gregory & A Mon.	6.571	184.899	[✓] 184.911	
T.P.		5.596	185.872	
T.P.	4.878	190.750	2.744	188.006
T.P.	1.880	189.886	8.284	181.602
T.P.	1.390	182.992	11.762	171.230
T.P.	0.070	171.300	11.017	160.283
T.P.	0.023	160.306	8.935	151.371
T.P.	0.116	151.487	8.513	142.974
T.P.	0.316	143.290		
BM NE. 31 & C Mon.	5.453	137.837	[✓] 137.877	
T.P.		8.800	134.490	
T.P.	0.447	134.937	12.126	122.811
T.P.	0.078	122.889	8.349	114.540
T.P.	1.014	115.554	7.429	108.125
	0.001	108.126		

3451 & 33 BM^s

5

		108.126		
BM NE. 34 & D Mon.	8.914	99.212	[✓] 99.258	
T.P.	0.157	99.369	9.468	89.901
T.P.	0.750	90.651	9.027	81.624
T.P.	0.849	82.473	8.512	73.961
T.P.	0.858	74.819	7.612	67.207
	3.448	70.655		
BM NE. 34 & E Mon.	6.709	63.946	[✓] 63.996	
T.P.		1.230	69.425	
T.P.	8.203	77.628	1.106	76.522
T.P.	8.337	84.859	1.293	83.566
T.P.	7.742	91.308	1.318	89.990
T.P.	8.154	98.144		
BM SE. 33 & L G Blvd RR Spk.	5.460	92.684	[✓] 92.739	
T.P.	2.110	94.794	5.238	89.556
	2.412	91.968		
BM NE. 33 & F Mon.	2.451	89.517	[✓] 89.577	
T.P.		10.233	81.735	
T.P.	1.384	83.119	6.889	76.230
	2.944	81.174		

8117A

TP.		1274	79.900	
TP.	11682	91.582	0690	90.892
	4259	95.151		
BM SW 324 F. Mon		1066	94.085	99.157 ^{ok ✓}

Former Notes Corrected from
these levels.

6

BM NE 340 B. Mon				99.212
TP.	8834	108.096	0261	107.835
TP.	9606	117.441	0360	117.081
TP.	8810	125.891	0318	125.523
TP.	10612	136.325	0490	133.945
	6524	140.469		

BM NE 348 C. Mon 2629 137.840 137.507

BM SE Cedar A 33 Mon 234.701 ✓✓

TP. 2979 237.680 6.459 231.221

TP. 1883 233.104 11.554 221.550

TP. 0482 222.032 8.410 213.922

TP. 1044 214.966 9.874 205.092

2380 208.472

BM SW Ash A E Mon. Mon. 6.479 201.993 ✓✓

TP. 1820 203.813 6.661 197.152

TP. 3589 200.741 11.822 188.919 *

4686 193.605

BM NW Gregory A Mon. 8.694 184.911 ✓✓

→ 1776 190.315

34 & 35 BM^s

7

T.P.	190315	4.547	185.766
T.P.	5239	191.005	5.312 185.673
T.P.	0.775	186.468	7.953 178.515
T.P.	1236	179.751	8.975 170.776
T.P.	0.989	171.765	9.502 162.263
T.P.	0.692	162.955	8.426 159.529
T.P.	1.000	155.529	7.980 147.549
	0.386	147.935	

BM NE 34 GC No. 7

10058 137.877

BM NE 34 & D Mon

99.250

J OK.
77.258

T.P.	0.644	99.898	7.945 91.953
T.P.	0.955	92.908	8.222 84.686
T.P.	1.766	86.452	12.771 73.681
T.P.	1.148	74.829	12.026 62.803
T.P.	0.196	62.999	5.711 57.288
	3.168	60.456	

BM NW 35 & 35 Mon.

3.843 56.613

J OK.
56.617

T.P.	6.404	54.052	
T.P.	3.514	57.566	5.276 52.290
	3.353	55.643	

BM NW 35 & L.G. Blvd Mon.

4.550 51.093

J OK.
51.095

T.P.	3.746	51.897	
T.P.	4.828	56.725	3.135 53.590
T.P.	7.824	61.814	2.779 58.635
	7.469	66.104	

BM NE 34 ALG Blvd Mon.

2.105 63.999

J OK.
63.996

33 BM^s

BM SE 33 BL G Bnd Spk

72.732

OK
92.739

T.P. 3.410 96.142 4.013 92.129

~~TP~~ 6.846 98.915

BM NW 33 & 34 N + LG Bl. Mon

3.404 95.571

OK
95.579

T.P. 0.746 98.229

T.P. 11.006 109.235 3.111 106.124

~~TP~~ 7.270 113.394

BM NW 33 & D. Mon

6.855 106.539

OK
106.544

T.P. 2.275 111.119

T.P. 8.006 119.125 0.231 118.894

9.551 128.445

BM NE 33 & C Mon

11.55 127.290

OK
127.219

T.P. 5.218 132.508 8.819 123.689

T.P. 1.484 125.173 11.445 113.928

T.P. 1.555 115.283 11.227 104.056

T.P. 2.756 106.812 6.834 99.978

30.58 103.036

BM NE 33 & 34 Mon

3.790 99.246

OK
99.25833 BM^s

8

BM NE 33 & F Mon

89.566

OK
89.577

T.P. 0.479 90.045 9.371 80.674

T.P. 2.005 82.679 5.638 77.041

3.070 80.111

BM NW 33 & G Mon

5.547 74.564

OK
74.575

T.P. 10.925 69.186

T.P. 0.604 69.790 6.354 63.436

T.P. 0.454 63.890 11.982 51.908

1.001 52.909

BM EL 33 & Peckh Line Mon

3.986 48.973

OK
48.984

T.P. 6.070 46.839

T.P. 0.725 47.564 9.762 37.802

~~TP~~ 4.015 41.817

BM SE 33 & 34 Spk Pole

4.739 37.078

OK
37.089

T.P. 4.330 37.487

T.P. 4.964 42.451 3.584 38.867

T.P. 3.714 42.581 4.270 38.311

~~TP~~ 3.058 41.369

BM SW 34 & F Mon

4.420 36.949

OK
36.961

J. & I. B.M.^s

~~37~~ J. & I. B.M.^s

	41369			
T.P.	6.710	34.659		
	2.207	36.866		
B.M. SW. 34 & J. Mor.	4.367	32.499	32.511	✓✓
T.P.	5.967	30.899		
	4.811	35.710		✓✓
B.M. NW. 33 & J. Mor.	2.512	33.198	33.210	✓✓
T.P.	6.115	39.313	32.15	36.098
	6.431	42.529		
^{SE} B.M. 33 & I. Mor.	7.463	35.066	0.5.079	✓✓
T.P.	2.220	40.309		
T.P.	6.398	46.701	2.427	44.280
T.P.	8.236	52.516	4.898	51.618
T.P.	9.728	61.346	0.470	60.856
T.P.	10.195	71.051	3.640	67.411
	6.520	73.931		
B.M. SW. I. & ^{Manor} Mor.	3.523	70.418	0.5.10.10	✓✓
T.P.	0.770	71.178	4.505	66.673
T.P.	7.001	73.674	3.582	70.092
	6.929	77.021		

	77.021			
T.P.	4.584	72.437		
	10.206	82.643		✓✓
B.M. NW. 32 & J. Mor.	3.559	79.084	ok. 79.104	✓✓
T.P.	0.385	82.258		
	6.382	88.640		✓✓
B.M. SW. 32 & J. Mor.	6.963	81.677		ok. 81.699

32 St & M St. B.M. =

B.M.

NW 32 & K. Plug.

81.499

JJ
OK
81.521

2970 84.469

~~B.M. NE 32 & L Spk. Pole~~ 5.928

T.P.

6.143 78.326

3043 81.369

B.M. SW 32 & L Plug. Curb.

4.343 77.026

JJ
77.097

T.P.

6.103 75.266

1.846 77.112

B.M. NW M & 32 Plug

10.103 67.009

JJ
67.029

T.P.

2.494 69.503 9035 60.468

T.P.

1.213 61.681 8.625 53.056

T.P.

0.666 53.722 8.225 45.497

T.P.

0.617 46.114 7.782 38.332

T.P.

1.371 39.903 7.874 31.829

1.570 33.399

B.M. NE M & 33 Mon.

7.844 25.555

JJ
OK
25.575

T.P.

6.806 26.593

T.P.

4.846 31.439 4.707 26.732

6.143 32.875

33 St & 34 B.M. =

32875

T.P.

3.816 29.059

2.591 31.650

B.M. SE M & 34 Mon. inside fence

5.264 26.386

JJ
26.406

T.P.

4.575 27.075

T.P.

8136 35.211 6.501 28.910

T.P.

2.606 31.306 4.663 26.893

4.336 30.979

B.M. Mon. Int. N. L. K St &

2.072 28.907

JJ
28.927

5 L of Ry Rt. W.

T.P.

3.853 32.760

4.337 28.423

5.006 33.429

B.M. SE 33 & K Mon.

5.183 28.246

JJ
28.265

T.P.

5.903 27.726

3.405 31.131

B.M. SE 33 & L Mon.

5.335 25.796

JJ
25.814

T.P.

3.476 27.655

T.P.

5.945 33.600 4.200 29.400

T.P.

11.228 40.628 9.557 31.071

6.264 37.335

B.M. NW 33 & J Mon.

4.142 33.193

JJ
OK
33.210

L St BM^s

BM SW 3281 ^{Plug} 1107	5.316	82.342	77.026	77.047	ok JJ
T.P.			5.353	76.989	
	4.229	81.218			
BM SE L 831 Plug Curb	4.731	76.487	76.509		JJ
	3.504	79.991			
T.P.			5.618	74.373	
	4.020	78.393			
BM SE L 830 Plug Curb	4.499	73.959	73.978		JJ
	3.823	77.797			
T.P.			3.780	73.798	
T.P.	5.533	79.330	4.201	75.129	
	5.398	80.527			
BM SE L 879 Plug	3.629	76.898	76.923		JJ
	5.461	82.359			
T.P.			4.527	77.832	
	4.338	82.170			
BM NE L 828 RR Spk. Pole ^{whd. 800}	3.010	79.160	79.187		JJ
T.P.			5.934	76.236	

L St BM^s

11

	4.140	80.376		76.236	
BM SE L 8 Hensley Plug	4.390	75.986		76.015	JJ
	3.671	79.657			
T.P.			5.046	74.611	
	5.529	80.140			JJ
BM NE L 827 Plug	2.714	77.426		77.456	
	3.106	80.532			
T.P.			6.590	73.942	
	2.811	76.753			JJ
BM SE L 826 Plug	6.819	69.934		69.966	
	4.652	74.586			
T.P.			5.296	69.290	
	3.710	73.000			
BM NE L 875 Curb ^{whd. 800}	7.124	65.876		65.913	JJ ok
	7.406	73.282			
T.P.			1.515	71.767	
	7.507	79.274			
BM NW 25 th K Plug	2.384	76.890		76.932	ok JJ

Point Loma Ave

✓ De Fur SW Brass Plug	19.58
r Eber " " " "	33.95
✓ Frandi " " " "	64.77
	30
Georgetown " " " "	119.98
Santa Barbara	182.03
12 X 12 Post Car	
Spaulding Fine	212.37
	(Should)

Santa Barbara

✓ Cape May NW Plug	156.54
Santa Barbara	
✓ Santa Monica NW Plug	194.01
" " NW "	190.18
✓ Newport SW "	218.36
✓ Miramonte SW "	255.20
✓ Santa Cruz NW Full	252.00
✓ Lighthouse	

17.013 - 014, 015, 016, 017, 018, 019, 020, 021, 022, 023, 024, 025, 026, 027, 028, 029, 030, 031, 032, 033, 034, 035, 036, 037, 038, 039, 040, 041, 042, 043, 044, 045, 046, 047, 048, 049, 050, 051, 052, 053, 054, 055, 056, 057, 058, 059, 060, 061, 062, 063, 064, 065, 066, 067, 068, 069, 070, 071, 072, 073, 074, 075, 076, 077, 078, 079, 080, 081, 082, 083, 084, 085, 086, 087, 088, 089, 090, 091, 092, 093, 094, 095, 096, 097, 098, 099, 100, 101, 102, 103, 104, 105, 106, 107, 108, 109, 110, 111, 112, 113, 114, 115, 116, 117, 118, 119, 120, 121, 122, 123, 124, 125, 126, 127, 128, 129, 130, 131, 132, 133, 134, 135, 136, 137, 138, 139, 140, 141, 142, 143, 144, 145, 146, 147, 148, 149, 150, 151, 152, 153, 154, 155, 156, 157, 158, 159, 160, 161, 162, 163, 164, 165, 166, 167, 168, 169, 170, 171, 172, 173, 174, 175, 176, 177, 178, 179, 180, 181, 182, 183, 184, 185, 186, 187, 188, 189, 190, 191, 192, 193, 194, 195, 196, 197, 198, 199, 200, 201, 202, 203, 204, 205, 206, 207, 208, 209, 210, 211, 212, 213, 214, 215, 216, 217, 218, 219, 220, 221, 222, 223, 224, 225, 226, 227, 228, 229, 230, 231, 232, 233, 234, 235, 236, 237, 238, 239, 240, 241, 242, 243, 244, 245, 246, 247, 248, 249, 250, 251, 252, 253, 254, 255, 256, 257, 258, 259, 260, 261, 262, 263, 264, 265, 266, 267, 268, 269, 270, 271, 272, 273, 274, 275, 276, 277, 278, 279, 280, 281, 282, 283, 284, 285, 286, 287, 288, 289, 290, 291, 292, 293, 294, 295, 296, 297, 298, 299, 300

185-
110
370
48100

To the
OFFICE OF CITY ENGINEER
San Diego, Cal.

4.533
5820
19.353
34577
6.876
6.562
13.458
3.322
10.136

Date _____

I hereby make application for Inspector of work as called for in Permit

No. _____

work to commence _____ hour _____

(Contractor sign here)

166.098
7.562
126.735
2.935
179.071
12.541
142.526
5.120
151.656
6.477
145.186
11.9
174.215
175.366
165.771
166.098

14/20

30 St BM^s
 Notes corrected in ink

BM NE 308 B Plug.	220116	220.138	✓✓
TP	2536	222.652	11042 211.610
TP	1457	213.067	7.341 205.726
TP	0.835	206.561	9.096 197.465
	2184	199.649	
BM SW 308 C Plug.	4710	194.939	194.961 ✓✓
TP	3620	198.559	5.552 193.007
	4.826	197.833	
BM SE 308 D Plug.	2778	195.055	195.077 ✓
TP	3443	198.498	7.209 191.289
	2225	193.514	
BM NW 308 E Plug.	5906	187.628	187.630 ✓
TP	0.526	188.134	7.830 176.304
TP	0.855	179.159	8.680 170.477
	2.702	173.181	
BM SE 308 F Plug.	6208	166.973	166.995 ✓✓
TP	1284	168.257	8.274 159.983
	3.289	163.272	
BM NW 308 G Plug.	6230	157.042	157.064 ✓✓

30 St BM^s

			157.042
TP	0.921	157.963	8.050 149.913
TP	3.048	152.961	6.511 146.450
	2.943	149.393	
BM SW 308 H Spk.	6905	142.488	142.510 ✓✓
TP	1798	144.286	7.728 136.558
TP	1095	137.653	8.392 129.261
TP	1305	130.566	8.527 122.039
TP	13.83	123.422	7.746 115.676
	3.576	119.252	
BM SW 308 I Plug.	5444	113.808	113.830 ✓✓
TP	0.304	114.112	8.807 105.305
TP	0.631	105.936	9.013 96.923
TP	0.886	97.809	9.141 88.668
TP	1.104	89.772	7.530 82.242
	0.576	83.018	
BM SW 308 J Plug.	6130	76.988	77.010 ✓✓
TP	2.889	79.877	6.037 73.840
	4.269	78.109	
BM NW 308 K.	5112	72.997	73.019 ✓✓

K 57 BM^s

				72.997	
T.P.	4594	77.591	4.030	73.561	
T.P.	5.561	79.122	2.227	76.895	
	6.764	83.659			
BM-SE-K 329 Plug.		4.209	79.450	77.472	✓✓
T.P.	6.734	85.684	3.199	82.485	
T.P.	6.251	88.736	4.125	84.611	
	5.510	90.121			
BM-NE-K 428 Plug.		4.188	85.933	85.955	✓✓
T.P.	4.611	90.544	2.574	87.970	
T.P.	6.983	94.953	2.460	92.473	
T.P.	8.378	100.951	2.750	98.101	
T.P.	6.821	104.922	2.781	102.141	
	5.183	107.324			
BM-NW-K 427 Plug.		4.353	102.971	102.993	✓✓
T.P.		5.190	102.134		
T.P.	4.204	106.338	5.389	100.947	
T.P.	2.137	103.086	9.407	93.679	
	1.460	95.139			
BM-SW-K 426 Plug.		8.314	86.835	86.857	✓✓

2537 BM^s

13

					86.835
T.P.	1.509	88.344	8.026	80.318	
T.P.	3.183	83.501	5.678	77.823	
	4.045	81.868			
BM-NW-2537-K Plug.		4.961	76.907	76.929	✓✓
T.P.	7.564	84.471	0.600	83.871	
T.P.	8.668	92.537	1.107	91.432	
	9.751	100.683			
BM-SE-2537-J Plug.		0.831	99.852	99.874	✓✓
T.P.	6.463	106.315	0.135	106.180	
T.P.	9.426	115.606	0.443	115.163	
T.P.	9.447	124.610	0.825	123.785	
	9.584	133.369			
BM-NE-2537-I Plug.		2.707	130.662	130.684	✓✓
T.P.	6.577	137.257	0.876	136.383	
T.P.	9.850	146.333	0.866	145.367	
T.P.	9.255	154.622	1.430	153.192	
	7.611	160.803			
BM-NW-2537-I Plug.		3.843	156.960	156.982	✓✓
	9.553	166.513			

25.5+ BM^E

	166.513				
TP.		0.566	165.947		
	7.938	173.885	172.4	172.161	✓
BM NW 25 & G Plug		1.724	172.161	172.183	✓
TP.	7.107	179.268	2.297	176.971	
	6.868	183.839			✓
BM NW 25 & F Plug		3.459	180.380	180.316	✓
TP.	5.547	185.927	3.709	182.218	
	5.702	187.920			✓
BM NW 25 & E Plug		3.414	184.506	184.506	✓
TP.	5.339	189.845	3.818	186.027	
	5.301	191.328			✓
BM SW 25 & D Plug		4.302	187.026	187.026	✓
TP.	5.980	193.006	3.543	189.463	
	6.391	195.854			
BM SW 25 & C Plug		4.894	190.960	190.960	✓
TP.		3.033	192.821		
	7.121	199.942			
BM NW 25 & B Plug		3.030	196.912	196.912	✓
TP.		0.375	199.569		
	7.848	207.415			

B 5+ BM^E

14

	207.415				
TP.		3.283	204.132		
	2.825	206.957			
TP.		6.988	199.969		
	3.378	203.347			✓
BM SW 25 & Z6 Plug		6.433	196.914	196.914	✓
TP.	4.947	201.861	4.974	196.887	
TP.	4.522	201.409	5.097	196.312	
	4.717	201.029			✓
BM SW 25 & Z7 Plug		4.035	196.994	196.994	✓
TP.		4.577	196.452		
TP.	5.052	201.509	4.301	197.203	
	4.319	201.522			✓
BM SE 25 & B Plug		4.556	196.966	196.966	✓

Prospect B.M.s

BM Eads & Prospect Plug				87.906	✓✓
T.P.	2385	90.291	71.49	83.142	
	4976	88.118			
BM NE Prospect & Silverado ^{Plg}	3870	84.248		84.248	✓
T.P.	3280	87.528	6.420	81.108	
T.P.	1406	82.514	7.090	75.424	
	4114	79.538			
BM NW Corner & Prospect Plug	5586	73.952		73.952	✓✓
T.P.		4131	75.407		
T.P.	7105	82.512	1.457	81.055	
	6441	87.496			
BM NE Pt. & Silverado Plug	3248	84.248		84.248	✓
T.P.	5112	89.360	3.639	85.721	
	5630	91.351			
BM Eads & Prospect Plug	3447	87.904		87.906	

Prospect B.M.s

15

BM Eads & Pt SW Plug				87.916	✓✓
T.P.	4406	92.312	4.343	87.969	
T.P.	5310	93.279	4.076	89.203	
	5800	95.003			
BM SE Prospect & Fay Plug	2970	92.023		92.023	✓✓
T.P.	4414	96.437	4.083	92.354	
	5057	97.411			
BM SW Prospect & Girard Plug	3344	94.067		94.067	✓✓
" NW " " Jenner "	6178	91.233		91.233	✓✓
T.P.	5190	99.257	3.912	95.345	
	5890	101.235			
BM SE Prospect & Hershel Plug	2270	98.965		98.965	✓✓
T.P.	6120	105.085	3.144	101.981	
	6410	108.391			
BM SW Prospect & Warner Plug	3350	105.041		105.041	✓✓
T.P.	4284	109.325	4.342	104.983	
T.P.	4979	109.962	3.807	106.155	
T.P.	6257	112.412	3.227	109.185	
	6556	115.741			

State St BMS

	115741					
BM NW Prospect & Care Plug	2627	113.114				
TP	6486	119.600	2126	117.474		
TP	7746	125.220	1025	124.195		
TP	7521	131.716	2763	128.953		
	5290	134.243				
BM S Cor Prospect & Park Row Plug	2167	132.076				
TP	8779	140.855	0.306	140.547		
	9987	150.536				
BM NW Prospect & State ^{Janney Rd} Plug	0561	149.975				
TP	9421	159.396	2340	157.056		
TP	7883	164.939	2447	162.492		
	7241	169.733				
BM SW State ^{Janney Ex. PL} & RR Spk Pole	2670	167.063				
TP		5130	164.603			
TP	1318	165.921	7020	158.901		
TP	2852	161.753	6329	155.425		
	2275	157.700				
BM SW State ^{Janney} & Magnolia Spk Pole	6225	151.475	151.490			
TP		6902	150.798			

Kline St BMS

					150.798	
TP	1340	152.138	9948	142.190		
	0924	143.114				
BM NE State ^{Janney} & Exchange Non	9857	133.251	123.270			
TP	1354	134.611	7892	126.719		
TP	2348	129.067	10165	118.902		
	2081	120.983				
BM NW Kline & Herschel ^{RR} Spk Pole	6761	114.222	114.232			
TP	1334	115.556	6896	108.660		
	2889	111.549				
BM SW Kline & Girard Plug Co	7600	103.949	103.970			
TP	2672	106.621	7190	99.431		
	3046	102.477				
BM SE Kline & Fay Plug	6509	95.968	95.972			
TP	2720	98.688	6729	91.959		
	3173	95.132				
BM SE Kline & Eads Spk Pole	4910	90.222	90.249			
TP	3895	94.107	5607	88.500		
	4077	92.587				
BM NE Kline & Draper ^{RR}	4124	87.653	87.690			

92.587

TP 5628 86.959

TP 2663 89.622 6685 82.937

0640 83.577

BM NE Kluge & Cuvier Plug. 7.129 76.448 76.486 ¹¹

3038 79.486

BM NE Cuvier & Prospect Plug 5.573 73.913 73.952 ¹¹

Error.

Prospect St BME

17

BM SW Prospect & Fads Plug. 8/1906

TP 4616 97.522 4139 88.383

6077 94.460

BM SE Prospect & Fry Plug. 2.436 92.024

4652 96.676

BM NW R. & Jenner Plug. 5.439 91.237

5.738 96.975

BM SW R. & Girard Plug. 2.910 94.065

T.P. 5.435 99.500 3.544 95.956

5.525 101.481

BM SW R. & Herschel Plug. 2.508 98.973

7.901 106.874

BM SW R. & Ivanhoe Plug. 1.825 105.049

TP 4.428 109.477 4.113 105.364

TP 6.380 111.744 2.028 109.724

6.166 115.890

BM NW R. Kave Plug. 2.760 113.130

T.P. 5.978 119.108 3.764 115.844

9282 125.426

State St BMS

	125.126			
T.P.		0.919	124.147	
T.P.	7.662	131.809	2.879	128.930
	5.423	134.353		
BMSW RR & Park Rav. Plug.	2.250	132.103		
T.P.	8.192	140.295	0.486	139.809
	10.297	150.106		
BMSW RR & State Plug	0.097	150.009		
T.P.	10.708	160.717	3.325	157.392
T.P.	8.531	165.923	3.289	162.634
	7.512	170.146		
BMSW RR & State RR Spk.	3.043	167.103		
T.P.	0.550	167.653	7.247	160.406
T.P.	2.598	163.004	6.282	156.722
	1.995	158.715		
BMSW State & Naylor RR Spk. Pl.	7.190	151.525		
T.P.		7.788	150.727	
T.P.	10.76	152.003	11.013	141.990
	0.821	142.811		
BMSW State & Ivanhoe Man	9.506	133.325	133.270	

Klinge St. BMS

T.P.	1.512	134.317	7.072	127.245
T.P.	1.977	129.222	9.814	119.408
	1.800	121.208		
BMSW Klinge & Herschel Spk.	6.942	114.266		
T.P.	1.358	115.624	6.889	108.735
	2.178	110.913		
BMSW Klinge & Gerard Plug.	6.916	103.997		
T.P.	2.998	106.795	7.452	99.343
	3.134	102.477		
BMSW Klinge & Fay Plug.	6.477	96.000		
T.P.	2.989	98.989	6.902	92.087
	5.372	95.479		
BMSW Klinge & Fink Spk. Pl.	5.218	91.261		
T.P.	3.789	93.999	4.908	89.031
	3.656	92.687		
BMSW Klinge & Cooper Spk. Pl.	4.986	87.701		
T.P.	2.163	89.584	6.939	82.925
	0.852	83.777		
BMSW Klinge & Corcoran Plug.	7.291	76.486		
	5.780	77.863		

816
Du

OK
114.266

OK
103.997
103.997

OK
95.772

OK
90.261
90.261

OK
87.701
87.673

OK
76.486
73.952

Fay St BM^s

BM SE Prospect & Fay Plug 92.024 ✓✓

T.P. 5820 97.844 3.149 94.695

7547 102.242

BM NW Fay & Silverado Plug 2.723 99.519 ✓✓

T.P. 5097 104.616 5.347 99.269

T.P. 3976 103.245 5.347 97.898

3924 101.822

BM SE Fay & Mine Plug 5826 95.996 95.992 ✓✓

Girard BM^s

BM SW Klira & Girard 115.977 103.970 ✓✓

T.P. 6673 112.370 3261 107.307

4799 112.117

BM SW Girard & Silverado Plug 6.593 105.515 105.488 ✓✓

T.P. 4207 109.722 5247 104.475

T.P. 4742 109.217 5332 103.985

T.P. 3904 107.889 6961 101.578

1737 107.665

BM SW Prospect & Girard Plug 8570 91.895 94.069 ✓✓

Herschel BM^s

BM NW Klira & Herschel Spk 114.266 114.232 ✓✓

T.P. 5806 120.072 5365 114.707

T.P. 4498 119.205 4968 114.237

3963 118.200

BM NW Herschel & Silverado Spk 5.593 112.607 112.577 ✓✓

T.P. 5265 112.935

T.P. 5042 117.977 5721 112.253

T.P. 1061 113.314 6300 107.014

3930 110.944

BM SW Herschel & Wall Plug 5103 105.841 105.811 ✓✓

T.P. 4579 110.420 5364 105.056

3545 108.601

BM SW Herschel & Prospect Plug 9603 98.995 98.965 ✓✓

Ivanhoe BM^B

BM SW Ivanhoe & Prospect Plug	105.049	105.049	105.049	105.049	105.049	105.049
TP	5757	110.806	3.640	107.166		
	5077	112.243				
BM NE Ivanhoe & Cave Plug	3.775	108.468	108.468	108.468	108.468	108.468
TP	5044	113.512	4.518	108.994		
TP	6182	115.176	2.728	112.448		
TP	9542	121.990	0.046	121.944		
	7630	131.574				
BM SW Ivanhoe & Silverado Spk	4.563	127.011	127.002	127.002	127.002	127.002
TP	8240	135.251	3.788	131.463		
	4968	136.431				
BM NE State & Ivanhoe Mon	3.152	133.719	133.719	133.719	133.719	133.719

Fay St BM^B
S. of Kline

20

BM SE Fay & Kline Plug	95.992	95.992	95.992	95.992	95.992	95.992
TP	2289	98.281	6.972	91.309		
	2191	93.500				
BM NE Fay & Ravinia Plug	6.460	87.040	87.040	87.040	87.040	87.040
TP	5017	92.057	1.220	90.837		
TP	8179	99.016	1.072	97.944		
TP	7822	105.766	1.171	104.595		
	7571	112.166				
BM SE Fay & Pearl Spk F&E	0.583	111.583	111.583	111.583	111.583	111.583
TP		7.252	109.914			
TP	8823	118.737	0.888	117.849		
TP	8367	126.216	1.690	124.526		
TP	8130	132.576	1.746	130.830		
TP	7906	138.736	1.710	137.026		
	8999	146.025				
BM NW Fay & Center Spk	0.802	145.223	145.223	145.223	145.223	145.223
TP	2409	147.632	9.587	138.045		
	0419	138.464				
BM SW Center & Eagle Spk	10.165	128.299	128.299	128.299	128.299	128.299

Genter St & Blvd BM's

128299
 T.P. 0.323 128.622 8.706 119.916

0.240 120.156

BM SE Genter & Traper Spk. 10.038 110.418

T.P. 0.561 110.679 9.142 101.537

0.203 101.740

BM Spk Blk Genter & E.L. Ry. 11.947 90.795

T.P. 9.470 92.250

T.P. 0.253 92.823 9.173 83.350

T.P. 0.422 83.772 8.960 75.412

2.588 78.000

BM NE Blvd & Sea Lark Way 6.181 71.819

T.P. 3.381 75.200 5.020 70.180

T.P. 4.677 74.857 3.975 70.882

T.P. 4.817 75.599 5.566 70.133

T.P. 1.937 72.070 6.349 65.721

3.599 69.320

BM NE Borden & Blvd Spk Blk 3.070 66.250

T.P. 5.419 63.902

63.902

T.P. 4.800 68.702 6.721 61.981

T.P. 1.112 63.093 5.294 57.799

T.P. 9.979 67.778 1.401 66.377

7.601 73.978

BM NE ~~Genter & Blvd~~ Prospect Blvd Plug 4.975 69.103

T.P. 5.209 74.312 3.688 70.624

6.354 76.978

BM NE Kluge & Corvier Plug 0.477 76.501

✓_{ok}
69.093

✓₅₀₁
76.486
015 Error

✓
which
71.845

B.M. NW Cove & Prospect.				113.14 ^{ok}	
T.P.	5.329	118.443	12.154	106.289	
T.P.	0.855	107.144	8.170	98.974	
T.P.	0.052	99.026			
B.M. Bot. Fairway. Curb. Plog.			9.796	89.230 ^{ex}	
T.P.			12.173	86.853	
T.P.	0.004	86.857	9.153	77.704	
T.P.	0.621	78.325	8.939	69.386	
T.P.	1.580	70.966	10.411	60.555	
T.P.	1.119	61.674	8.568	53.106	
T.P.	0.690	53.796	8.831	44.965	
T.P.	1.330	46.795	8.585	37.710	
T.P.	1.620	39.330	7.500	31.830	
	1.608	33.438			
B.M. Plog. Walk. Ward. Returning			6.149	27.289	27.297 ^{ok}
Wall near Bath house Cove.			6.689	26.749	
T.P.					
T.P.	6.208	32.957	2.550	30.407	
T.P.	7.118	37.515	1.082	36.433	
	7.747	46.180			

				46.180	
B.M. NW Coast Blvd & Girard.	1.968	44.212			44.224 ^{ok}
T.P.	3.293	47.505	7.845	39.660	
T.P.	1.572	41.232	5.842	35.390	
T.P.	5.010	40.400	4.504	35.896	
T.P.	3.748	39.644	4.938	34.706	
T.P.	1.422	39.128	5.353	33.775	
T.P.	4.364	38.139	1.750	36.389	
	7.359	43.748			
B.M. Pole 100' N. from NW	5.791	37.957			37.969 ^{ok}
Cor Jenner & Coast Blvd.					
T.P.			2.963	40.785	
T.P.	4.610	45.395	5.130	40.265	
	6.856	47.121			
B.M. SE. Daisy Row & Coast St	3.209	43.912			43.925 ^{ok}
Spk. Plog.	2.863	46.775	4.957	41.818	
T.P.	4.747	46.565	3.703	42.862	
T.P.	5.876	48.738	1.154	47.584	
	8.097	55.675			
B.M. SE Coast Bl & Civier Plog.	5.189	50.486			50.510 ^{ok}

50.486

T.P. 8.256 58.742 0.985 57.751

TP 9.763 67.520 1.038 66.482

DM-NE Corner
& Prospect Plug 9.509 75.991 2.079 73.912 JJ ok. 73.952

BM Jenner & Prospect Plug 91.233 ok

TP 1.700 92.933 10.789 82.144

TP 0.615 82.839 8.592 74.247

TP 0.216 74.463 8.645 65.818

TP 0.305 66.123 9.628 56.495

0.543 57.038

BM SE Jenner & Coast B/S 2912 54.126 ok

TP 8.051 48.987

0.065 49.052

BM Jenner & Coast B/S pk 11.064 37.968 ok JJ 37.957

BM SW Prospect & Herschel. Plug 98.965 ✓

T.P. 0.113 99.080 9.293 89.787

TP 0.352 90.139 9.998 80.141

T.P. 0.255 80.396 9.114 71.282

T.P. 0.244 71.526 8.898 62.628

TP 0.075 62.703 9.352 53.351

0.006 53.357

BM NW Girard & Coast Plug 9.133 44.224 ok ✓ ✓ ~~44.212~~

BM Jenner + Coast Spk 37.968 ✓ ok

TP 5.434 43.402 2.092 41.310

TP 3.723 45.033 4.764 40.269

6.894 47.163

BM SE Coast & Davis Spk 3.213 43.920 ✓ ok. 43.925

TP 5.729 41.434

TP 5.400 46.834 3.333 43.501

11.459 54.960

BM SE Corner & Coast Plug 4.460 50.500 ✓ ok. 50.510

TP 8.402 58.702 0.270 58.632

9.232 67.864 0.523 67.341

8.572 76.213

2.280 73.933 ok JJ 73.952

BM NE Prospect ^{B/Vd} Q/Vd				69.093	✓✓
T.P.	2.838	71.931	11.585	61.346	
T.P.	1.576	62.922	9.554	53.368	
T.P.	0.680	54.048	9.046	45.002	
T.P.	1.021	46.023	8.291	37.732	
	7.748	38.880			
BM W Corp on Prospect	7.777	31.103	31.115		✓✓
50' N of Raving bridge					
T.P.	5.560	36.663	0.018	36.645	
T.P.	11.250	47.895	0.141	47.754	
T.P.	6.967	54.721	1.549	53.172	
T.P.	9.409	62.581	0.102	62.479	
	6.215	68.694			
BM NE Border ^{B/Vd} Spk 96c	2.466	66.228	66.250		✓✓

BM NE Sec Lane ^{B/Vd} Map				71.819	✓✓
T.P.	2.363	74.182	5.106	69.076	
T.P.	4.379	73.455	4.920	68.535	
T.P.	5.872	74.407	4.088	70.319	
T.P.	6.432	76.751	5.168	71.583	
	5.883	77.466			
BM NE Bond ^{B/Vd} Spk 11	1.854	75.612			✓✓
T.P.	6.387	81.999	3.048	78.951	
	5.538	84.489			
BM SE Bond ^{B/Vd} Spk	3.273	81.216			✓✓
T.P.	2.986	84.202	4.976	79.226	
T.P.	4.204	83.430	5.782	77.948	
	3.522	81.470			
BM EL Bond ^{B/Vd} Spk 10				76.640	✓✓
BM ^{B/Vd} Spk 12	5.542	75.928			
T.P.		8.124	73.346		
T.P.	1.317	74.663	7.586	67.077	
T.P.	1.514	68.591	6.567	62.024	
T.P.	5.011	67.035	2.185	64.850	
	5.822	70.672			

La Jolla Strand B.M.s

	70672					
BM NW Blvd & Graviola Ave	7816	67.856	68.856	100		
T.P.	1.705	69.561	8.266	61.275		
T.P.	1.078	62.373	9.389	52.984		
T.P.	1.153	54.137	11.247	42.890		
T.P.	0.924	43.814	8.219	35.595		
	0813	36.408				
BM NE Graviola & Anita Plg.	9.156	27.252	28.256	100		
T.P.	4.014	31.216	3.508	27.758		
	3736	31.474				
BM SE Anita & Kolmar Plg.	2.048	29.446	30.450	100		
T.P.	3.474	31.232	3.736	27.758		
	3.474	31.232				
BM NE Graviola & Anita Plg.	3.978	27.254	28.256	100		
T.P.	4.620	31.872	7.135	24.837		
	8342	33.179				
BM SE Anita & Playa del Sur	6.173	27.006	28.012	100		
T.P.		0.528	32.651			
T.P.	12029	44.690	8.226	44.464		
T.P.	9.550	54.014	0.150	53.864		

					53.864	
T.P.	9725	63.587	0.340	63.249		
	7602	70.851				
BM NW Blvd & Graviola Plg.	3.010	67.841	68.856	100		
T.P.	2.314	70.170	7.456	62.714		
T.P.	4.174	66.888	2.670	64.218		
T.P.	7.856	72.074	1.963	70.111		
	8019	78.130				
Spk Point			3.183	74.947		
BM N of 10' N of Water Plg.	2.173	75.657	76.657	100		
Es side Pool at E of road						
T.P.	6.547	82.204	4.046	78.158		
T.P.	5.339	83.497	4.319	79.178		
	4.625	83.803				
BM SE Anita & Graviola Blvd	3.568	80.235	81.235	100		

BM. NW. Prospect & Torrey Rd. Plug 149.975 ✓✓

T.P. 6.611 156.586 0.036 156.550

T.P. 11.306 167.856 0.277 167.579

T.P. 12.415 179.994 0.034 179.960

10.409 190.369

BM. NE. Prospect & College. Plug 2476 187.893 187.883 ✓✓

T.P. 12.957 177.412

T.P. 0.082 177.494 10.397 167.097

T.P. 0.378 167.475 9.981 158.094

1.583 159.677

BM. NW. Prospect - Torrey 9.683 149.994 ✓

" " " " 149.975 ✓✓

T.P. 3.164 153.137 8.925 144.314

T.P. 1.218 145.532 7.932 137.600

T.P. 1.220 138.820 8.409 130.411

T.P. 1.054 131.465 7.847 123.618

0.418 124.036

BM. Spk. Pole 4th Pole E of Prospect. 6.335 117.701 ✓
N. side Torrey Road.

124.036

T.P. 7.278 116.758

T.P. 1.026 117.784 8.897 108.887

1.920 110.807

BM. Spk. Pole N side Torrey Rd. 10.204 100.603 ✓

7th Pole E of Prospect.

T.P. 0.566 101.169 8.952 92.217

T.P. 0.641 92.858 7.845 85.013

T.P. 2.028 87.041 4.252 82.789

5.536 88.325

Hub. SL. Torrey. NW. Princess. 4.611 83.714 ✓✓

Pole
Spk. NE. Torrey. NW. Princess 4.920 83.405 ✓✓

BM SW Torrey & Ex Place Spk Pole. 167.063 ¹¹
 T.P. 5970 173.033 1599 171.434
 T.P. 7598 179.032 0.615 178.417
 7577 185.994

BM NW Ex Pl. & College Spk Blk #7018. ¹¹
 4.61 181.533

T.P. 8986 190.519 0.296 190.223

T.P. 9697 199.920 0.014 199.906

7652 207.558

BM Spk Light Blk. NW Ex Pl. & College ^{4.58} 703.400 ¹¹
^{11.7 Ave}

T.P. 7652 199.906

T.P. -0003 199.903 9200 190.703

1308 192.011

BM NW Ex Pl & College Spk. 10.478 181.533 ¹¹

T.P. 2976 184.509 9957 174.552

2305 176.857

BM SW Torrey & Ex Spk. 9794 167.063 167.063 ¹¹

BM SW Torrey & Ex Spk 167.063 ¹¹

T.P. 0.915 167.978 7.832 160.146

T.P. 1.993 162.139 7.420 154.719

4.610 159.329

BM SE Corb. Park Row & ¹¹
 Circular Park. Plug Ret. 4.383 154.946

T.P. 4.610 154.719

4.359 159.018

BM SW Torrey & Noyahia Spk. 7583 151.495 ¹¹ ^{11 OK} 151.490

Lewis & Ft. Stockton Dr. B.M.^s

					✓✓
B.M. SW Lewis & Calhoun Spk.	273.706				
6.238	279.944				
B.M. SE Lewis & Stephens Plug.	4164	275.780			✓✓
T.P.	3687	276.257			
T.P.	3.927	280.184	7.843	272.341	
	1.289	273.630			
B.M. SE Lewis & Ft. Stockton Plug.	8192	265.438			✓✓
T.P.	5.827	271.265	1.369	269.896	
T.P.	8063	277.959	6.621	271.338	
	2.472	273.810			
B.M. NE Ft. Stock & Storm Vista Plug.	6.871	266.939			✓✓
	1.756	268.695			
B.M. SE Ft. Stock & Horick Plug.	8.535	260.160			✓✓
T.P.	4.800	264.960	2.809	267.151	
	6.393	268.544			
B.M. SW Ft. Stock & Pine RR Spk. Plg.	4294	264.250			✓✓
T.P.		3.967	264.577		
	1.760	269.337			
B.M. SE Ft. Stock & Weatherby Plug.	6.860	262.477			✓✓

Trials & Hickory B.M.^s

28

					262.477
	3.900	266.377			✓✓
B.M. SE Ft. Stock & Henderson Plug.	5.849	260.528			
	8031	268.559			✓✓
B.M. NE Ft. Stock & Trials Plug.	1.498	267.061			
T.P.	2.445	269.506	6.999	262.507	
	4.011	266.518			
B.M. SE Trials & Hickory Spk.	4.740	261.778			✓✓
T.P.		6.995	259.523		
T.P.	1.870	261.393	9.452	251.941	
	2.170	254.111			
B.M. NE Hickory & Henderson Plug.	5.112	248.999			✓✓
T.P.	1.557	250.556	8.229	242.327	
T.P.	2.702	245.029	0.594	244.435	
	8.858	253.293			
B.M. NW Hickory & Weatherby Plug.	2.266	251.021			✓✓
T.P.	9.954	260.881	0.064	260.817	
T.P.	11.488	272.305	1.441	270.864	
	8.175	280.037			
B.M. SW Hickory & Magnolia Spk.	7.453	272.586			✓✓

Sunset Blvd. BM^s

	280.039			
T.P.	6.052	273.787		
	0.800	274.787		
BM. NW. Arguello & Sunset Plug.	6.345	268.442		
T.P.	0.845	269.287	5.859	263.428
	9.422	272.850		
BM. SW. Sunset Bl. & Alameda Plug.	4.571	268.279		
T.P.	7.665	275.944	2.546	273.398
T.P.	6.035	279.433	5.394	274.039
	2.570	276.609		
BM. SW. Sunset & Lynden Pl. Plug.	11.570	275.039		
T.P.	0.440	265.479	8.596	256.883
	6.937	263.820		
BM. NW. Sunset & Ft. Stock. Plug.	1.335	262.485		
	6.218	268.703		
BM. SE. Ft. Stock. & Lewis Plug.	3.266	265.437	265.438	

Fort Stockton BM^sGetti St. BM^s

29

BM. NW. Sunset & Ft. Stock. Plug.	262.485		262.485	
T.P.	5.453	267.938	3.672	264.266
	4.497	268.763		
BM. NW. Ft. Stock. & Stephens Plug.	2.713	266.050		266.050
T.P.	4.890	270.940	4.917	266.023
	6.904	272.927		
BM. NE. Ft. Stock. & Randolph Plug.	2.836	270.091		270.108
	5.497	275.588		
BM. SE. Ft. Stock. & Hacker Plug.	2.589	272.999		273.016
	5.995	278.994		
BM. SE. Ft. Stock. & Irwin Or. Kite Plug.	6.034	272.960		272.977
	2.986	275.946		
BM. NW. Ft. Stock. & Jackson Plug.	5.442	270.504		270.521
	5.265	275.769		
BM. NW. Ft. Stock. & Tibbs Plug.	4.765	271.004		271.021
	3.800	274.804		
BM. NW. Ft. Stock. & Hawk Plug.	5.880	268.924		268.941
	5.894	274.818		
BM. SW. Lewis & Hawk Plug.	6.866	267.952		267.969

Lewis St. B.M.s

			267.952	
	2.051	270.003		
B.M. NW Lewis & Ibis Plug.	4.005	265.998	266.015	JJ
	9.307	275.305		JJ
B.M. SW Lewis & Jackson Spk. Pole	16.30	275.675	275.692	JJ
	5.152	278.827		JJ
B.M. SE Lewis & Kite Spk. Pole	2.999	275.828	275.845	JJ
	4.758	280.586		JJ
B.M. SW Lewis & Hooker Plug.	3.573	277.013	277.030	JJ
	4.272	281.285		JJ
B.M. SW Lewis & Randolph Plug.	5.789	275.496	275.513	JJ
	3.161	278.657		JJ
B.M. SW Lewis & Callahan P.R. Spk.	4.968	273.689	273.706	JJ

Wash. St. B.M.s

30

									JJ
B.M. NE Ft. Stock & Randolph Plug.								270.188	
									JJ
T.P.	3.274	273.382	6.743	267.139					
									JJ
	7.709	274.848							JJ
B.M. NE Randolph & Wash. Spk.			1.846	273.002					JJ
									JJ
	3.923	276.925							JJ
									JJ
B.M. SE Wash & Hooker Plug.			6.983	269.942					JJ
									JJ
T.P.	1.490	271.432	8.442	262.990					JJ
									JJ
	2.942	265.932							JJ
B.M. NW Wash & Kite Plug.			4.712	261.020					JJ
									JJ
	2.557	263.577							JJ
B.M. SW Wash & Jackson Spk.			6.548	257.029	257.031				JJ
									JJ
	7.446	264.475							JJ
B.M. NE Wash & Ibis Plug.			3.939	260.536	260.540				JJ
									JJ
	5.842	266.378							JJ
B.M. NE Wash & Hawk Plug.			3.345	263.033	263.040				JJ
									JJ
	7.910	270.943							JJ
B.M. NW Hawk & Ft. Stock Plug.			2.010	268.933	268.941				JJ

Hawk, Bush & Kite BM's

BM NE Hawk & Wash Plug	1.950	264.990	263.040	265.937	✓
BM NE Hawk & Douglass Spk	1.286	263.704	263.704	265.937	✓
TP	6.729	270.433	4.669	265.764	✓
	4.256	270.020			
BM NW Hawk & Bush Plug	8.193	261.827	261.827	265.937	✓
	5.375	267.202			
BM SW Bush & Tbird Spk Pole	3.510	263.692	263.692	265.937	✓
TP	9.186	272.878	2.827	270.041	✓
	2.336	272.371			
BM SW Bush & Kite Spk Pole	5.700	266.677	266.677	265.937	✓
TP	9.036	275.713	2.777	272.936	✓
	4.087	277.023			
BM NE Kite & Zutter Spk Pole	7.077	269.946	269.946	265.937	✓
	3.600	273.546			
BM NE Kite & Penn RR Spk	6.317	267.729	267.729	265.937	✓
	5.369	272.598			
BM NE Kite & Torrence RR Spk	8.289	269.309	269.309	265.937	✓
	1.628	265.937			

Torrence Bush etc BM's

31

BM SW Kite & Paterbug RR Spk	5.471	260.466	260.466	265.937	✓
	7.814	268.280			
BM NW Pterb & Lark Spk	2.718	265.562	265.562	265.937	✓
	4.805	270.367			
BM NE Torrence APL Plug	6.334	264.033	264.033	265.937	✓
TP	7.513	271.546	1.302	270.244	✓
TP	3.432	273.676	12.036	261.640	✓
TP	5.655	267.295	12.59	266.036	✓
	9.531	275.567			
BM SW Winder & Nerle RR Spk	5.948	269.619	269.619	265.937	✓
TP	8.595	266.972			
TP	4.636	271.608	11.738	259.870	✓
	6.635	266.505			
BM SE Bush & Lark Plug	3.283	263.222	263.222	265.937	✓
TP	5.654	268.876	26.70	266.206	✓
	6.534	272.740			
BM SW Bush & Kite RR Spk Pole	6.065	266.675	266.675	265.937	✓
TP	2.636	270.104			
	2.570	272.694			

Bush - Goldfinch BM's

	272694			
BM SW Bush & Ibis	Apr. 9.002	763.692	JJ	
	3069	766.761		
BM NW Bush & Hawk Plug	4.931	761.829	JJ	
	3480	765.309		
BM NE Bush & Goldfinch Plug	5.313	759.996	259.998	JJ
T.P.	5.431	765.427	3.332	762.095
	7090	769.185		
BM NW Goldfinch & Douglas Plug	3.165	766.020	266.024	JJ
	4.938	770.958		
BM NE Goldfinch & Wash Plug	3.947	767.011	267.024	OK JJ
	3.916	770.777		
BM NE Wash & Hawk Plug	7.896	763.031	763.040	JJ OK

Jackdaw - Hunter BM's

32

BM NW Jackdaw & Lewis RR Plug		273.692	JJ	
	4.826	778.518		
BM SW Jackdaw & Meristo Plug	2023	775.495	JJ	
	3.659	779.154		
BM SW Jackdaw & Stockton Plug	6.122	773.032	JJ	
	2.816	775.848		
BM SW Jackdaw & Hunter Plug	6.930	769.018	JJ	
	5.562	774.580		
BM SE Hunter & Ibis Plug	3.961	770.599	JJ	
	3.351	773.950		
BM NW Hunter & Hawk Plug	5.455	768.495	JJ	
T.P.	1.270	769.765	12.743	757.022
T.P.	1.407	758.429	8.554	749.875
	3.860	753.735		
BM SW Hawk & Meristo		5.670	748.065	JJ
T.P.		3.860	749.875	
T.P.	7.831	757.706	2.631	757.075
	1.7366	769.441		
BM NW Hunter & Hawk Plug	1.945	768.496	OK JJ	768.496

Checking back to orig.

768.495

B	5665	274.160		
	Am. S. Hunt. & Lewis Plug		3561	270.599
BA	3937	274.536		
	Am. S. Hunt. & Lewis Plug		5520	269.016
BA	6788	275.804		
	Am. S. Hunt. & Lewis Plug		2767	273.037
		5581	278.611	
BA	Am. S. Hunt. & Lewis Plug		3118	275.500
		3891	276.391	
B	BM. SW. Goshaw Lewis Spk.		4695	273.696

ok
773.112

Randolph - Stackton BM's

33

								JJ
	BM. SW. Randolph Lewis Plug					4532	280.045	275.513
	BM. SE. Randolph & Antecito Spk					4974	275.071	JJ
						4691	279.762	
	BM. SW. Randolph & Stackton Spk					2685	277.077	JJ
						5215	282.292	
	BM. NE. Stackton & Calhoun Spk					3219	279.073	JJ
						3726	282.799	
	BM. SW. Stackton & Stephens Spk					4577	278.222	JJ
	TP					3341	281.563	8.104 273.459
						9142	282.601	
	BM. SE. Stephens Lewis Plug					6819	275.782	275.780 JJ

Valle Vista - Altamira BME

BM NE Ft Stock & Sierra Vista Plug	266.939	✓✓
T.P.	2.901 269.840 6.002 263.838	
	4.082 267.920	
BM NE Sierra V & Valle V Plug	3.852 264.068	✓✓
T.P.	4.840 268.908 4.243 264.665	
	5.072 269.737	
BM Valle V & Altamira NE Plug	3.723 266.014	✓✓
	11.904 277.918	
BM SW Altamira & Sierra V Plug	0.430 277.488	✓✓
	6.705 284.193	
BM NW Altamira & Hermosa Plug	7.710 276.483	✓✓
T.P.	5.054 281.537 1.307 272.230	
T.P.	1.234 273.464 5.355 268.107	
	2.939 271.048	
BM SW Hermosa & Altamira Plug	A202 266.846	✓✓
T.P.	5.143 271.989 1.452 270.037	
	5.958 275.995	
BM NW Hermosa & roadway Plug	2.974 273.021	✓✓
T.P.	3.428 276.417 1.381 269.068	
	2.430 272.498	
BM SE Lomas & Stockton Plug	6.062 265.454	✓✓

Lyndon Rd - Alameda BME

34

BM SW Lyndon & Sunset Plug	265.039	✓✓
T.P.	2.092 267.131 4.361 260.770	
	3.532 264.302	
BM SE Lyndon & Sheridone Rd Plug	3.860 260.442	✓✓
T.P.	6.031 266.473 7.244 259.229	
	0.810 260.039	
BM NE Lyndon & Convent Court Plug	8.793 251.246	✓✓
T.P.	0.296 251.542 9.457 242.085	
T.P.	5.443 247.528 4.040 247.488	
	7.507 254.995	
BM W Corb of ^{27 June} Lyndon Rd Plug	3.032 251.963	✓✓
	0.202 252.165	
BM SW Corb of ^{27 June} Lyndon Rd Plug	8.189 243.976	✓✓
	9.355 253.331	
BM SE Alameda Dr & Henry Plug	4.735 248.596	✓✓
	4.995 253.591	
BM NE Pottery & Nemoy Plug	10.280 243.311	✓✓
T.P.	3.210 250.321	
	7.835 258.156	

Alameda BM's

	258.156			
T.P.		0.912	257.244	
	5.922	263.166		
BM SE Alameda & Sheridan Plug	4.122	259.044	✓✓	
T.P.	4.766	263.810	0.713	263.107
	8.538	271.645		
BM SW Alameda & Sunset Plug	3.368	268.274	268.279	✓✓

Boone-Pringle BM's

25

					273002	✓✓
BM NE Wash & Rowlett Spk						
T.P.	0.570	273.512	7.334	266.238		
	4.225	270.463				
BM NW Boone & W Conventry	8.779	261.684				✓
	3.214	264.958				
BM Spk NW Boone & Portola Pl	5.551	259.401				✓
T.P.	6.911	266.318	3.353	262.965		
	7.101	269.966				
BM SE Boone & Pringle Spk	3.861	266.105				✓✓
T.P.	7.382	262.584				
	2.435	265.019				
BM NE Pringle & Portola Plug to Red Wall	4.842	260.177				✓✓
T.P.	9.171	269.348	4.123	265.225		
	2.123	267.348				
BM NW Penn & Orinda Pl	7.952	259.396				
	5.600	264.996				
BM NW Penn & Conventry	3.318	261.678				
T.P.	8.548	270.226	4.015	266.221		
	8.421	274.649				
BM NE Wash & Rowlett Pl	6.157	272.999				✓✓ 273002

Wash - Eagle - BM^s

BM NE Goldfinch & Wash - Plug.	4358	271.378	267.020	✓✓
BM NE Wash & Falcon - Plug.	5870	265.508	265.508	ok ✓✓
BM NE Wash & Eagle - Plug.	3131	268.639	263.061	✓✓
BM NW Eagle & Goldfinch - Plug.	4408	267.469	263.547	✓✓
BM NW Eagle & Goldfinch - Plug.	8090	271.637	269.017	✓✓
BM NW Eagle & Lewis - Plug.	1576	270.593	263.078	✓✓
BM SW Eagle & Montezito - Plug.	6115	269.193	263.006	✓✓
BM SW Montezito & Falcon - Plug.	3718	266.724	259.784	✓✓
BM NE Falcon & Lewis - Spk. Pole	7885	267.668	266.122	✓✓
BM NW Falcon & Goldfinch - Plug.	6050	272.172	268.618	✓✓
BM SW Goldfinch & Goldfinch - Plug.	3538	272.156	267.022	ok ✓✓
BM NE Goldfinch & Wash - Plug.	5134	267.022	267.020	ok ✓✓

Sutter - Market BM^s

36

BM NE Goldfinch & Bush - Plug.	2599	262.597	259.778	✓
BM NE Goldfinch & Sutter - Plug.	5611	256.986	258.252	✓✓
T.P.	7532	264.518	259.911	
T.P.	1659	259.911	254.898	✓✓
BM SW Eagle & Spk. Pole ^{Dem.}	5013	254.898	2692	259.724
T.P.	7518	262.416	4816	259.772
T.P.	4864	264.588	4228	264.000
BM NE Goldfinch & Sutter - Plug.	7017	256.983	256.986	ok ✓✓
"	6070	263.056		
BM NE Goldfinch & Bush - Plug.	3058	259.778	259.778	ok ✓✓

India St. BM^s

see 239

BM. NE India & Laurel	Map		56.326	11
T.P.		9.586	65.912	0.040 65.872
T.P.		11.597	77.469	0.369 77.100
		8.156	85.256	
BM. SE India & Maple	Plug.	7.387	77.869	
T.P.			0.198	85.058
		8.575	93.643	
BM. SE India & Nutmeg	Plug.	1.741	91.902	
T.P.		6.559	98.481	1.577 96.904
		6.901	103.805	
BM. SE India & Olive	Plug.	2.827	100.978	
		2.660	103.638	
BM. SE India & Palm	Plug.	3.680	99.958	
		8.082	108.040	
BM. SE India & Quince	Map	4.661	103.377	
		3.106	106.485	
BM. SE India & Redwood	Plug.	7.497	98.988	
T.P.		3.124	102.112	8.886 93.216
		1.980	95.196	

India St. BM^s

see 239

95.196

BM. SE India & Spruce	Plug.	9.204	85.992	
		2.576	88.568	
BM. SE India & Sassafras	Plug.	3.627	84.941	
		4.782	89.723	
BM. SE India & Thorn	Plug.	1.812	88.911	
		1.303	90.214	
BM. SE India & Uprass	Plug.	6.272	83.942	
		2.926	86.868	
BM. SW India & Vine	Map	5.790	81.078	
T.P.		3.235	84.313	7.992 76.321
		0.815	77.136	
BM. NW India & Willow	Plug.	7.054	70.082	
		1.821	74.903	
BM. SW India & Chalmers	Plug.	9.803	66.100	
T.P.		6.468	72.568	1.398 71.170
		9.543	80.713	
BM. SW India & Winder	Plug.	3.671	77.022	
		5.536	82.558	
BM. SW India & Harasthy	Plug.	4.535	78.023	

In the
 M. W. - check.

81.558

		780		78023	
TP	4299	82.372	11.893	70.429	
	0602	71.031			
BM SE Hardisty & Arctic Spk			5343	65.688	
TP			8023	63.008	
TP	0111	63.119	10071	53.048	
	5435	58.483			
BM NW California & More Spk			4526	53.957	
	7315	61.272			
BM NW Calif & Clayton Spk			0762	60.510	
					checking back
BM NW Calif & More Spk			7315	53.957	
TP	1607	58.564	5236	53.328	
TP	12187	65.515	0770	64.745	
	12318	77.063			
			11442	65.621	

BM NE Indiana & More Spk					56.326	✓
TP	9462	65.788	0.112	65.676		
TP	8936	74.612	0.819	73.793		
	7187	80.980				
BM SE Maple Plug				3106	77.874	✓
TP	7363	85.237	1.642	84.595		
	8913	93.498				✓
BM SE Nutmeg Plug				1597	91.901	✓
TP	7295	99.196	1724	97.472		
	6627	104.099				
BM SE Olive Plug				3138	100.961	✓
TP	5053	106.014	5.909	100.105		
	3400	103.505				✓
BM SE Palm Plug				3570	99.935	✓
TP	5930	105.865	2.484	103.381		
	5168	108.549				
BM SE Spruce Mon				5185	103.364	✓
	3139	106.503				
BM SE Redwood Plug				7527	98.976	✓

India BM^s

			98.975	
T.P.	2658	101.633	8.946	92.687
	2.002	94.689		
BM SE Spruce Plug.			8.708	85.981
	2.945	88.926		
BM SE Sassafras Plug.			4.101	84.925
	6.808	91.733		
BM SE Fir Plug			2.840	88.893
	3.490	92.383		
BM SE Fir - Plug.			8.457	83.926
	2.950	86.876		
BM SW Vine Wood.			5.811	81.065
T.P.	2.288	83.353	7.610	75.743
	1.299	77.042		
BM NW Willow - Plug.			6.914	70.058
	4.950	75.008		
BM SW Chalmers - Plug.			8.932	66.076
T.P.	6.616	72.692	14.88	71.204
	7.554	80.758		
BM SW Winder - Plug.			3.758	77.000

Harasthy BM^s

				77.000
	4.861	81.861		
BM SW Harasthy Plug.			3.859	78.002
T.P.	6.128	84.130	1.317	82.813
T.P.	11.582	94.395	0.048	94.347
T.P.	11.354	105.701	0.124	105.577
T.P.	11.439	117.016	0.189	116.827
T.P.	7.886	124.713	1.659	123.054
	11.355	134.409		
BM SW Harasthy Union Spk. 8/6.			5.598	128.811
			0.772	133.637
T.P.	9.978	143.615	0.403	143.212
T.P.	11.832	155.044	0.061	154.983
	10.894	165.877		
BM 13'S + W Hub - Har & Horton			0.505	165.372
				165.350
T.P.	9.411	174.783	0.041	174.742
T.P.	10.738	185.500	0.144	185.356
T.P.	11.074	196.430	1.680	194.750
	10.647	205.397		
BM 13'S + W Harasthy & Peterbaugh			3.939	201.458
				201.480

				261.458	
TP	10.366	211.824	0.039	211.785	
TP	9.319	221.104	1.804	220.300	
TP	12.276	232.576	0.618	231.958	
TP	11.526	243.484	0.799	242.685	
TP	10.767	253.392	0.520	252.872	
	11.741	264.613			
BM NE Torrence & Winder Flg.	3.719	260.894		260.840	
	9.153	270.047			
BM SW Winder & Neale spk	0.370	269.677		269.617	
TP	2.491	263.385	10.928	252.357	
TP	0.137	253.074	10.614	242.460	
TP	0.650	243.130	11.509	231.621	
TP	1.515	232.126	12.117	220.009	
TP	0.903	221.912	10.446	210.466	
	0.872	211.638			
BM 13' SW Winder + ^{sub} Winder	10.776	201.462			

BM SW Univ 4th Flg				282.091	
TP	2.103	284.194	6.572	277.622	
	6.972	284.594			
BM SE 100 Essex St Flg.	2.490			282.104	
	6.019	288.123		282.033	
BM NE 100 Robt Flg	6.038			282.085	
	7.207	289.292		282.014	
BM SW Robinson & W 1st Flg.	3.246			286.546	
	4.346	290.392		285.975	
BM NE Vermont & Penn Flg.	5.361			285.031	
	9.730	294.461		284.960	
BM SW Richmond & ¹⁰⁰ W 1st Flg.	1.720			292.441	
	4.189	296.930		292.570	
BM SW Richmond & ¹⁰⁰ W 1st spk.	2.467			294.463	
" " " " Flg.	2.880			294.352	
	6.207	300.757		294.050	
BM SW Rich & Essex Flg	5.176			295.081	
	5.583	300.664		295.010	
BM SW Rich & Univ Flg.	3.448			297.216	
				297.143	

Note: Check the BM^s in my book & conform to main circuit using Univ. Robert & Winder

Univ & Richmond SW Plug.

TP.	3028	300.244	6204	297.216	✓✓
				$\frac{.071}{297.145}$	✓✓

	2588	296.628			
--	------	---------	--	--	--

BM SW Univ & Vermont Plug.

6824	289.804	✓✓
	$\frac{.071}{289.733}$	✓✓

TP.	2718	292.582	7017	285.565	
-----	------	---------	------	---------	--

	2763	288.528			
--	------	---------	--	--	--

BM SW Univ & 10 Plug.

6440	282.088	✓✓
	$\frac{.071}{282.020}$	✓✓

BM SW Vermont & Univ Plug.

3377	287.804	✓✓
	$\frac{.071}{287.733}$	✓✓

	3377	293.163			
--	------	---------	--	--	--

BM SW Vermont & Essex Plug.

5135	288.048	✓✓
	$\frac{.071}{287.977}$	✓✓

	4554	292.602			
--	------	---------	--	--	--

BM SW Vermont & Robinson Plug.

6556	286.046	✓✓
	$\frac{.071}{285.975}$	✓✓

	286.046	✓✓
	$\frac{.071}{285.975}$	✓✓

BM SW Univ & Richmond Plug

TP.	6568	303.784	3040	297.216	✓✓
				$\frac{.071}{297.145}$	✓✓

	5732	306.476			
--	------	---------	--	--	--

BM SW Univ & Herbert Plug.

3724	302.681	✓✓
	$\frac{.071}{302.610}$	✓✓

	302.681	✓✓
	$\frac{.071}{302.610}$	✓✓

	312.681	✓✓
	$\frac{.071}{312.610}$	✓✓

BM SW Univ & 10 Plug.

TP.	5662	287.753	4038	282.091	✓✓
				$\frac{.071}{282.020}$	✓✓

	4840	288.555			
--	------	---------	--	--	--

BM NW Univ & 8 St Plug.

TP.	4382	288.830	5573	284.448	✓✓
				$\frac{.071}{284.377}$	✓✓

	5644	288.881			
--	------	---------	--	--	--

BM NW Univ & 6 St Plug.

4945	263.936	✓✓
	$\frac{.071}{263.865}$	✓✓

	263.936	✓✓
	$\frac{.071}{263.865}$	✓✓

	263.936	✓✓
	$\frac{.071}{263.865}$	✓✓

Bacon St B.M.^s
Ocean Beach

BM NE Bacon & Newport Non	12.270	✓✓
2.103 14.373		
BM NE Bacon & Newport Plug	3.328 11.045	✓✓
" SW " & Santa Monica Spk	3.610 10.763	
BM NW " " Plug	5.621 8.752	✓✓
3.733 12.486		
BM NE Bacon & Saratoga Plug	4.487 7.999	✓✓
3.871 11.870		
BM NE Bacon & Cape May Plug	5.112 6.758	✓✓
3.500 10.258		
BM NW Bacon & Brighton Plug	5.725 4.533	✓✓
6.070 10.623		
BM SW Bacon & Muir Plug	3.617 7.006	✓✓
5.699 12.705		
BM NE Bacon & Voltaire Plug	3.161 9.524	✓✓
T.P. 6.197 15.721 2.813 12.908		
6.838 19.746		
NW - Voltaire & Cable Spk. Pole	2.061 17.685	
BM SW Voltaire & Cable Plug	2.733 17.013	✓✓

Voltaire - Brighton - Defoe

13

	17.013	
T.P. 7.135 24.148 2.056 22.092		
6.414 28.503		
BM NW Voltaire & Defoe Spk	2.326 26.177	
BM SW Voltaire & Bacon Plug	2.910 25.593	OK ✓✓
T.P. 5.672 31.765 3.537 27.728		
5.938 33.666		
BM SW Voltaire & Defoe Plug	2.625 31.831	OK ✓✓
3.617 30.049	30.057	
5.521 35.570		
BM SW Cap Hub Floor & Muir	4.367 31.203	31.206 ✓✓
" " " " & Long Branch	5.618 36.821	32.619 ✓✓
BM NW Floor & Brighton Plug	2.345 34.476	34.474 ✓✓
T.P. 1.202 34.618 6.550 28.128		
3.468 31.596		
BM SE Brighton & Defoe Plug	6.055 25.541	25.558 ✓✓
3.380 28.921		
BM NW Defoe & Cape May Plug	4.931 23.990	24.007 ✓✓
5.026 29.016		
BM NW Defoe & Saratoga Plug	4.149 24.967	24.784 ✓✓

Defoc - Newport - B.M.^s

			24.767		
	4247	29.74			
B.M. SW Defoc & Santa Monica Pkg.	5201	24.013	24.530	✓	
	5093	29.106			
B.M. NW Defoc & Newport Plug.	4082	25.024	25.041	✓	
T.P.	2850	27.874	6.917	20.957	
	2304	23.261			
B.M. NE Newport & Cable - Plug.	7272	15.989	16.006	✓	
T.P.	3528	19.517	5.900	13.617	
	3615	17.232			
B.M. NE Newport & Broadway Map	4980	12.752	12.270	✓	

Cable B.M.^s

					44
					second run
B.M. NE Newport & Cable - Plug.	16.006	16.006	✓	✓	
	5142	21.148			
B.M. SE Cable & Santa M. Plug.	1161	16.987	16.992	✓	✓
	3240	20.227			
B.M. SW Cable & Santa Monica Plug	5184	15.043	15.059	✓	✓
	3776	18.817			
B.M. SW Cable & Cape May Plug.	5792	13.027	13.045	✓	✓
	4878	17.905			
B.M. SW Cable & Brighton Plug	3870	14.015	14.031	✓	✓
	5160	19.175			
B.M. SW Car Hub - Cable & Long Branch.	4200	14.975	14.993	✓	✓
	5251	20.226			
B.M. SW Cable & Minn Car Hub.	4001	16.225	16.248	✓	✓
	5744	21.961			
B.M. SW Cable & Voltaire Plug.	4979	16.790	17.015	✓	✓

Cable BM^s

	BM-NE Cable & Newport Plug	16.006	N
B	6931 22.951		
	BM-SE Cable & Niagara Plug	2799	19.938
B	6128 26.066		
	BM-SE Cable & Narragansett Plug	3000	23.166
	5744 28.810		
B	BM-SE Cable & Del Norte Plug	3704	25.100
	5085 30.191		
	BM-SE Cable & Santa Cruz Plug	3439	26.552
	5255 31.807		
	Coronado BM-SE Cable & Pacific Plug	3229	28.578
	7460 36.038		
	BM-SE Cable & Del Mar Plug	2921	33.117
	9433 42.550		
	orchard BM-NE Cable & La Jolla Plug	1516	41.044

Bacon BM^s

45

	BM-SE Cable & Del Mar Plug	33117	J✓
	T.P. 7367 40.504 1.107	39.397	
	9531 48.928		
	BM-SE Carb Del Mar at Keapfront Plug	9889	48.039
	T.P. 2850 50.889 10.159	40.730	
	8486 49.216		
	BM-NE Bacon & Del Norte ^{Coronado} Plug	3702	45.574
	T.P. 0130 45.644 7.526	36.118	
	0387 36.505		
	BM-NW Bacon & Santa Cruz Spk	7510	28.995
	" " " " " " Plug	7511	28.994
	2213 31.207		
	SE " " " " " " Plug	5450 25.777	25.17 enough
	7163 24.044		
	2061 26.105		
	NE " " " " " " Plug	6365 19.770	18.30 - enough
	7025 19.080		
	1228 20.308		
	BM-NW Bacon & Niagara Plug	7320	12.988
	3725 16.723		
	BM-NE Bacon & Newport Plug	4452	12.271
			12.270

Abbot St B.M.^s

BM NE Newport & Bacon - Plug	12.270	12.270	↓ ok
TP	2658	14.928	5.700
	3270	12.498	
BM NE Newport & Abbot Plug	5.996	6.502	ok ↓
	2.800	9.302	
BM NW Abbot & Santa Monica Plug	4.901	4.401	↓
	4.980	9.381	
BM NW Abbot & Saratoga Plug	4.337	5.044	↓
	6.634	11.678	
BM NW Abbot & Cape May - Plug	2.600	8.878	ok ↓
	5.352	14.230	
BM NW Abbot & Brighton Plug	4.110	10.120	↓
	1.380	11.500	
BM NE Abbot & Long Branch - Plug	8.132	3.368	↓
	3.822	7.190	
BM NW Abbot & Muir Plug	5.264	1.926	↓
	4.892	6.818	
BM SW Abbot & Voltaire Plug	4.364	2.454	↓
TP	5.623	8.577	3.330
	6.345	11.582	
BM NE Voltaire & Bacon Plug	2.188	9.504	ok ↓

Brighton B.M.^s
See Page 49

46

BM NW Brighton & Fair Plug	34.374	34.494	ok
TP	9.182	43.576	0.187
	7.781	51.170	0.448
	9.377	60.099	
BM NW Brighton & Fraude Plug	9.676	59.423	
TP	7.174	68.597	0.100
	9.963	78.460	0.250
TP	8.575	86.725	0.273
	9.307	95.759	0.414
TP	10.287	105.382	1.257
	6.317	110.442	
BM SE Brighton & Guild Plug	3.927	107.355	
TP	1.773	117.128	0.382
	9.510	126.258	1.090
TP	8.160	133.268	0.638
	8.590	141.220	0.727
	7.195	147.688	
BM SW Brighton & Venice Plug	2.569	145.119	
	12.487	157.606	

Santa Barbara BM^E
See P. 50

157.66

BM NW Santa Barbara & Cape May Plug 0.737 156.667 ^{Const.} 156.54

TP 6.137 162.806 0.092 167.714

TP 8.386 171.100 0.722 170.378

7.129 178.107

BM NW Santa Barbara & Santa Ana Plug 1.914 176.193

TP 5.713 181.906 1.009 180.897

TP 8.881 189.778 0.478 189.300

8.930 198.730

BM NW Santa Barbara & Santa Ana Plug 4.005 194.225 ^{Const.} 194.512

3.442 197.667

BM NW S.B. & Newport Plug 7.269 190.398 ^{Const.} 191.5

7.419 197.817

BM NW S.B. & Nagano Plug 0.574 197.243

TP 7.593 204.836 0.592 204.244

TP 8.204 212.448 0.812 211.636

10.162 221.798

BM SW S.B. & Narragansett Plug 3.124 218.674 ^{Const.} 218.36

TP 8.700 227.374 0.669 226.705

11.574 238.279

See P. 50

47

238.279

BM NE S.B. & Del Norte Plug 0.819 237.460

TP 7.900 244.860 0.894 243.966

TP 7.680 251.646 1.230 250.416

9.405 259.871

BM SW S.B. & Santa Cruz Plug 4.410 255.461 ^{Const.} 255.20

TP 10.69 256.530 9.530 247.000

4.744 251.744

BM SW S.B. & Pacific Plug 11.612 240.132

11.960 252.092

BM SW S.B. & Del Norte Plug 1.710 250.382

7.946 258.328

BM NW S.B. & La Jolla Plug 6.065 252.263 ^{Const.} 252.10

See P. 51

BM NE Cable & La Jolla Plug 41.047

T.P. 3048 44.092 1450 36.642

1.535 38.177

BM SW La Jolla & Defoe Mar. 9260 28.917

Cough
28.87

4.732 33.649

BM NW Defoe & Pascadero Plug. 5.600 28.049

1.723 29.772

BM NW Defoe & Berpuda Plug. 8.676 21.096

3.297 24.393

BM SW Defoe & Point Loma Plug. 4.781 19.613

Cough
19.58

T.P. 6.140 25.753 3.051 22.702

T.P. 7.458 32.160 0.117 32.143

8.865 40.908

BM SW Point Loma & Elber Plug. 6.914 33.974

Cough
33.95

T.P. 1.150 0.150 40.758

T.P. 9.559 50.317 0.582 49.735

T.P. 8.909 58.644 1.268 57.376

9.564 66.940

BM SW Point Loma & Froude Plug. 2.090 64.850

Cough
64.77

8.978 73.828

See P. 51

73.828

48

TR 0.411 73.417

T.P. 10.003 83.420 0.407 83.013

T.P. 10.027 93.040 0.352 92.688

T.P. 10.568 103.256 0.658 102.598

TR 10.419 113.007 0.727 112.280

10.090 122.30

BM SW Pt. Loma & Elber Plug. 3.278 119.092

Cough
119.91

T.P. 1.083 121.287

T.P. 10.034 131.321 0.349 130.972

T.P. 11.157 142.129 0.073 142.056

T.P. 10.589 152.645 0.128 152.517

T.P. 11.440 163.927 0.041 163.886

T.P. 11.085 174.971 0.264 174.707

10.400 185.157

BM SW Point Loma & San Bar Plug. 2.876 182.231

Cough
182.03

T.P. 10.538 192.769 0.769 192.000

T.P. 10.753 202.753 0.403 202.350

11.280 213.630

BM SW Pt. Loma & Froude Plug. 1.047 212.583

Cough
212.37

See P. 52

				212.583
T.P.	3.106	215.689	6.965	208.724
T.P.	3.305	212.829	0.182	211.847
T.P.	8.928	220.715	0.291	220.384
	9.693	230.077		
BM. SW. San Bar & Escadras		4.205	225.872	
Spike 6x6 Post at Hydrant.				
T.P.		2.082	227.995	
T.P.	8.913	236.988	0.679	236.309
T.P.	8.955	245.261	0.493	244.771
BM. NW. SB. 8 1/2 1/4				
Plg.	10.543	255.314	3.048	252.266

Brighton B.M.s

19

BM. NW. Brighton & Ebor Plg.				34.494	✓	
T.P.	9.022	43.516	5.370	43.146		
T.P.	10.111	53.257	2.175	53.082		
	8.375	61.457				
BM. NW. Brighton & Fraude Plg.				19.34	59.523	✓
T.P.	8.540	68.063	1.185	66.878		
T.P.	7.803	74.681	0.855	73.826		
T.P.	8.377	82.203	0.575	81.628		
T.P.	9.505	91.133	0.592	90.541		
T.P.	8.900	99.441	0.287	99.154		
	10.642	109.796				
BM. SE. Brighton & Guizot. Plg.				2.399	107.397	✓
T.P.	9.353	116.750	0.730	116.020		
T.P.	8.590	124.610	1.504	123.106		
T.P.	7.926	131.032	1.825	129.207		
T.P.	7.744	136.951	1.384	135.567		
T.P.	7.926	143.493	1.489	142.004		
	7.912	149.916				
BM. SW. Brighton & Alley				4.758	145.158	✓
W. of Terrace Plg.						

Santa Barbara BMS

	149.916			
T.P.		1634	148.282	
	11.541	159.823		
BM. NW. 5th Barbara & Cape May Plug.	3.104	156.719		✓
T.P.	56.32	162.351	1.314	161.037
T.P.	8.433	169.470	1.080	168.390
	8.778	177.168		
BM. NW. 5th & Saratoga Plug.	0.963	176.205		✓
T.P.	56.23	181.828	2.029	179.799
T.P.	9.080	188.879	0.913	187.966
	9.545	197.511		
BM. NW. 5th & Santa Monica Plug.	3.272	194.239		✓
	3.469	197.708		
BM. NW. 5th & Newport Plug.	7.291	190.417		✓
	7.518	197.935		
BM. NW. 5th & Niagara Plug.	0.686	197.247		✓
T.P.	5.846	203.095	1.870	201.225
T.P.	8.207	209.432	0.982	208.450
	11.609	220.058		
BM. SW. 5th & Narragansett Plug.	1.370	218.688		✓

Santa Barbara BMS

50

				218.688
T.P.	7.212	225.900	1.930	223.970
T.P.	7.727	231.697	1.511	230.186
	8.179	238.665		
BM. NE. 5th & Delmore Plug.	1.179	237.486		✓
T.P.	6.568	244.054	1.812	242.242
T.P.	8.392	250.634	1.928	248.706
	10.061	258.767		
BM. SW. 5th & Santa Cruz Plug.	3.270	255.497		✓
T.P.	2.406	257.903	7.487	250.416
	1.364	251.780		
BM. SW. 5th & Bar ^{Crossed} Plug.	11.610	240.170		✓
T.P.	6.104	246.774	1.320	244.954
	7.427	252.381		
BM. SW. 5th & Delmar Plug.	1.957	250.424		✓
	7.919	259.343		
BM. NW. 5th & Bar ^{Orchard} Plug.	6.030	252.313		✓
T.P.	1.908	254.221	12.141	242.080
T.P.	0.631	242.711	8.581	234.130
	0.863	234.993		

Point Loma Ave BM's

		234.973			231.320	W
BM NE " " "		Non				
BM SW SB & Recorder		9.052		225.941		
7 1/2" 2PK 6X6 Post Hydrant						
TP		8.025		226.968		
TP	2.588	229.556	9.898	219.658		
TP	0.698	220.356	8.162	212.194		
TP	1.121	213.315	8.569	204.746		
TP	2.100	206.846	9.214	197.632		
TP	0.707	198.339	8.300	190.039		
	1.085	191.124				
BM SW Point Loma & S.B. Plug		8.862		182.262		W
TP	0.189	182.451	10.343	172.108		
TP	0.340	172.448	9.609	162.809		
TP	0.205	163.014	9.546	153.468		
TP	0.686	154.154	9.118	145.036		
TP	0.402	145.438	9.976	135.462		
TP	1.276	136.738	8.680	128.058		
TP	0.200	128.258	9.213	119.045		
BM	0.749	119.794	9.916			
BM SW P.L. & Guizot Plug		0.664		119.130		W
TP		7.126		110.668		

Point Loma Ave BM's

						110.668
TP	0.158	110.826	9.608	101.218		
TP	0.395	101.613	9.086	92.527		
TP	0.583	93.110	9.849	83.261		
TP	0.628	83.889	8.158	75.731		
TP	1.614	77.345	8.211	69.134		
	2.555	71.689				
BM SW P.L. & Trade Plug		6.789		64.900		W
TP	0.062	64.962	10.521	54.441		
TP	0.504	54.945	10.453	44.492		
	0.487	44.979				
BM SW P.L. & Eber						W
TP	1.152	35.188	8.224	26.967		
TP	1.294	28.261	5.705	22.556		
	3.525	26.081				
BM SW P.L. & Totog Plug		6.438		19.643		W
TP	4.658	24.301	4.305	19.996		
	4.860	24.856				
BM NW Totog & Bermuda Plug		3.748		21.108		W
	6.875	27.983				

Defoe BM²

	27.983				
T.P.		2.712	25.071		
	6.373	31.444			
BM NW Defoe & Pescadero Plug	3.382	28.062	28.057	✓	
T.P.	5.173	33.235	4.400	28.835	
	5.083	33.918			✓
BM SW Defoe & Coronado ^{Orchard} Mar.	4.993	28.925	28.915		
T.P.	7.237	36.162	2.865	33.297	
T.P.	6.760	40.057	2.609	37.448	
BM NE Cable Pkg. Sdg. Plug	6.460	43.908	2.854	41.054	✓

Defoe BM²

BM SW Defoe & Mar. ^{Orchard}				28.918	✓
T.P.	6.807	35.725	2.928	32.797	
	6.806	39.603			
BM NW Defoe & Del Norte Plug	3.486	36.117			✓
T.P.	8.088	44.205	1.490	42.715	
	9.676	52.391			✓
BM NW Defoe & Mar. ^{Coronado} Plug	2.390	50.001			✓
T.P.	7.473	57.474	1.034	56.440	
	7.569	64.009			
BM SE Defoe & Santa Cruz Plug	9.823	54.186			✓
T.P.	2.373	56.559	9.635	46.924	
	0.129	47.053			
BM SE Defoe & Del Norte Plug	16.013	37.040			✓
T.P.	3.372	40.412	5.991	34.421	
	3.577	37.798			
BM SE Defoe & Yavapai Plug	5.946	32.052			✓
T.P.	3.045	35.097	5.819	29.278	
	2.990	32.768			
BM NW Defoe & Niggara Plug	6.281	25.987			✓

Voltaire BM^s

78

25.987

4.405 30.592

BM NW De foe & Newport Plug 5555 25.037 [↓] 25.041

BM SW Voltaire & Eber. Plug 30057 [✓]

T.P. 5852 35.909 3.430 32.479

T.P. 6582 39.061 1.755 37.306

8668 45.974

BM NW Voltaire & Froude Plug ^{NW} 1.430 ^{spk} 44.544 ^{4500cm³} ^{OK}

T.P. 5655 50.199 2.588 47.611

T.P. 7336 54.947 0.090 54.857

T.P. 9364 64.221 0.528 63.693

T.P. 9508 73.201

BM 25 W SW Voltaire & Guizot. spk Pde. 3829 69.372 69380 ^{OK}

12.775 82.147

BM NW Voltaire & ^{Soto} ~~Guizot~~ de Men 5900 76.247 76.254 ^{OK}

BM spk Pde SE & Vol. 0.746 81.401 7901 ^{OK}

T.P. 6.460 75.687

6.927 82.64

BM NW Guizot & Muir Men 6.365 76.247 ^{OK}

T.P. 11.043 87.292 0.906 86.386

T.P. 9.753 96.739 0.132 96.007

10.228 106.235

Guizot B.M.^s

See Page 59

106.235

T.P.		0.851	105.384		
	8996	114.380			
B.M. SE Guizot & Brighton Plog.	6.974	107.386	107.397	OK	
T.P.		1202	113.176		
T.P.	7.974	121.152	2.150	119.002	
	10.806	129.808			
B.M. SW Guizot & Cape May Xon	3.208	126.600			
T.P.	12.471	139.071	1.825	137.246	
	8.028	145.274			
B.M. SE Guizot & Saratoga Plog	3.714	141.500			
T.P.	7.707	149.207	3.843	145.364	
	7.876	153.240			
B.M. SE Guizot & Santa Maria Plog	4.910	148.330			
T.P.	6.407	154.737	0.193	154.544	
	12.554	167.098			
B.M. NE Guizot & Newport Plog.	7.601	164.497			
T.P.	6.409	170.906	0.336	170.570	
T.P.	12.560	183.130	0.434	182.696	
	9.660	192.356			

Guizot B.M.^s

See Page 59

192.356

54

B.M. NE Guizot & Niagara Plog.	4.710	187.946			
T.P.	7.534	195.480	0.828	194.652	
	11.044	205.476			
B.M. NE Guizot & Mackaysett Plog.	1.558	204.138			
T.P.	4.741	208.879	1.346	207.533	
	12.548	220.081			
B.M. SW Guizot & Telemonte Plog	2.112	217.969			
	9.184	227.153			
B.M. NE Guizot & Santa Cruz Plog	1.806	225.347			
T.P.	8.755	234.102	0.906	233.196	
T.P.	8.560	241.756	0.500	241.256	
T.P.	9.147	250.403	0.814	249.589	
	10.003	259.592			
B.M. SW Santa Cruz & Santa Barbara Plog.	4.151	255.441	255.497		

Eber BM^s

BM NW Eber & Brighton Pt.	34.494	34.494	✓
6.150 40.644			
BM NE Eber & Cape May Mon.	3289	37.355	✓
TP 5208 42.563	2258	40.305	
8.988 49.293			
BM SE Eber & Saratoga Mon.	1.420	47.873	✓
6.768 54.641			
BM SW Eber & Santa Monica Mon.	7.304	47.338	✓
6.895 54.233			
BM NW Eber & Newport Mon.	9.610	44.623	✓
TP 4.703 49.326	3.851	45.475	
TP 8.587 54.062			
BM NW Eber & Niggara Mon.	5.190	48.872	✓
TP 1.273 52.789		48.867	
11.523 64.312			
BM SW Eber & Narragansett Pt.	2.313	61.999	✓
TP 7.180 69.179	0.809	68.370	
8.047 76.417			
BM SW Eber & Del Monte.	4.809	71.608	✓
		71.600	

Eber BM^s

55

				71.608
TP 11.565	83.173	0.474	82.679	
TP 8.530	91.229	2.778	88.451	
11.496	99.947			
BM SW Eber & Santa Cruz Mon.	4.522	95.425	95.416	✓
TP 12.975	108.400	3.579	104.821	
7.050	111.871			
BM NW Eber & Pacific Mon.	6.419	105.452	105.442	✓
TP 5.832	111.284	10.928	100.356	
TP 0.635	100.991	9.322	91.669	
3.269	94.938			
BM NW Eber & Delmar Mon.	11.726	83.212	83.200	✓
TP 2.884	86.096	10.237	75.859	
3.182	79.041			
BM NE Eber & Archers Mon.	5.045	73.996	73.983	✓
TP 0.313	74.309	9.078	65.231	
4.192	69.423			
BM NE Eber & Pescadero Mon.	11.721	57.702	57.688	✓
TP 2.328	60.030	9.400	50.630	
2.693	53.323			

Eber B.M.^s

	53.323				
EM-NE Eber & Bermuda Plug ^{Mon}	5474	47.829	47.813		
TP.	1077	48.906	7.733	41.173	
	2187	43.360			
EM-SW Eber & Point Latta Plug	9.306	34.054	32.036		

Froude B.M.^s

56

BM-SW Froude & Point Latta Plug	64900				
TP.	9061	73.961	12.53	72.708	
	9340	82.048			
BM-SW Froude & Bermuda Mon.	3500	78.548			
TP.	9008	87.556	1.749	85.807	
TP.	9769	95.576	1		
BM-SW Froude & Pescadero Hub	1889	93.687			
TP.		1.771	93.805		
TP.	12239	106.044	0.443	105.601	
TP.	6216	111.817	0.130	111.687	
TP.	10808	122.475	0.887	121.608	
TP.	7060	128.668	0.035	128.633	
	8763	137.396			
BM-SE Froude ^{Orchard} Hub	5053	132.343			
TP.		1.532	136.864		
TP.	8177	145.041	0.140	144.901	
TP.	11306	156.207	1.389	154.818	
TP.	12114	166.932	0.934	166.978	
	9700	176.178			

Froude B.M.^s

	176.198				
BM. Hub. NE Froude & Delmar.	2.136	174.062			
T.P.	8099	182.161	0.854	181.307	
T.P.	7.560	188.867	2.465	186.402	
	7.663	194.065			
BM. SE. Froude & Fauche ^{Crown.} May	8085	185.980			
T.P.	3.168	189.148	7.627	179.521	
T.P.	0.830	180.351	12.055	168.296	
T.P.	2.985	171.281	11.287	159.994	
T.P.	0.499	160.493	8.233	152.260	
T.P.	3611	155.871	8.740	147.131	
	1.768	148.899			
BM. NE Froude & Dalmonite May	9.589	139.319			
T.P.	1.714	141.024	6.932	134.092	
T.P.	11.953	146.045	3.952	142.093	
	7.985	150.078			
BM. NW. Froude & Narrag. May	2.781	147.297			
T.P.	9230	156.527	0.401	156.126	
T.P.	4506	160.632	12.696	147.936	
	0.712	148.648			

Froude B.M.^s

	148.648				
BM. NE. Froude & Margaret May	5.893	142.750			
T.P.		12.202	136.446		
T.P.	10.38	137.484	7.701	129.783	
T.P.	0.846	130.629	8.908	121.721	
T.P.	0.926	122.647	7.128	115.519	
	0.838	116.357			
BM. NE. Froude & Newport May	7.975	108.382			
T.P.	0.727	109.109	11.502	97.607	
T.P.	6.113	103.720	7.078	96.642	
T.P.	3.718	100.360	7.610	92.750	
	8.307	101.057			
BM. SE Froude & Saratoga May	3043	98.014			
T.P.	3.369	101.383	11.508	90.075	
	1.260	91.335			
BM. SW. Froude & Cape May May	12.171	79.164			
T.P.	3.572	82.736	9.609	73.127	
T.P.	1.478	74.605	7.320	67.285	
	0.815	68.100			
BM. NW. Froude & Brighton Plug	8.576	59.524			
					59.523

Froude B.M.^s

				59.523	
T.P.	2.235	61.758	8.166	53.592	
	1.436	55.028			
B.M. SW. Froude & Long Br. Mtg.		3.965	51.063	51.060	JJ
T.P.		6.540	48.488	—	
T.P.	3.857	52.345	4.997	47.348	
	3.405	50.753			
B.M. NW. Froude & Voltaire Plug	6.217	44.536	44.544	536 1008	JJ

Guizot B.M.^s

58

B.M. SW. Guizot & 1/2 mile RR S&K Park	69.380				JJ
T.P.	5.051	74.431	1.881	72.550	
T.P.	8.686	81.236	0.720	80.516	
T.P.	8.342	88.858	0.692	88.166	
T.P.	8.241	96.407	0.922	95.485	
T.P.	8.159	103.644	0.896	102.748	
	7.057	109.305			
B.M. SE. Guizot & Brighton Plug	2.403	107.402			JJ 107.397
T.P.	6.422	113.824	2.976	110.848	
T.P.	9.723	120.571	2.114	120.457	
	8.990	129.447			
B.M. SW. Guizot & Cape May Mtg	2.828	126.619			JJ
T.P.	11.693	138.312	2.514	135.798	
	8.923	144.721			
B.M. SE. Guizot & Saratoga Plug	3.200	141.521			JJ
	11.074	152.595			
B.M. SE. Guizot & Santa Monica Plug	4.246	148.349			JJ
T.P.	12.640	160.989	2.535	158.454	
	7.973	166.427			

Guizot B.M.^s

	166.427					
BM NE Guizot & Newport Plug	1.912	164.515		164.517		
T.P.	7.095	171.610	0.901	170.709		
T.P.	8.972	179.681	1.002	178.679		
T.P.	12.120	190.799	1.992	188.807		
	4.870	193.577				
BM NE Guizot & Niagara Plug	5.703	187.974		187.976		
T.P.	7.790	195.761	0.919	194.845		
	10.901	205.746				
BM NE Guizot & Harrigansett Plug	1.576	204.170		204.135		
T.P.	4.892	208.972	1.362	207.610		
	12.983	220.590				
BM SW Guizot & Belmonte Plug	2.584	218.009		218.009		
T.P.	7.836	225.845	3.569	222.876		
	5.140	227.416				
BM NE Guizot & Santa Cruz Plug	2.025	225.391		225.347		
T.P.	10.870	236.261	2.030	234.231		
	7.131	241.362				
BM SE Guizot & Pacific Plug	8.401	232.961				
	8.775	240.756				

Crucero

Guizot B.M.^s

				240.756		
T.P.				10.866	229.890	
T.P.	7.301	231.191		9.238	221.953	
T.P.	0.173	222.426		10.543	211.583	
T.P.	-0.169	211.452		8.787	202.965	
T.P.	1.200	204.465		11.661	192.504	
T.P.	1.243	193.841		9.865	183.882	
T.P.	3.721	187.603		12.933	174.670	
	2.754	177.626				
BM SW Guizot & Richards Non				3.575	174.051	174.020
T.P.				11.135	166.491	166.4
	3.413	169.934				
BM NE Guizot & Pescadero Non				1.223	168.711	168.680
T.P.				12.048	157.886	
T.P.	0.870	159.456		10.743	148.913	
T.P.	0.532	148.545		12.380	138.465	
T.P.	3.852	140.917		11.493	128.524	
T.P.	9.190	137.414		1.801	135.913	
BM SW Guizot & Comuda Non	10.571	146.484		4.590	141.894	141.852
T.P.	2.100	143.994		12.220	131.774	
T.P.	2.170	133.944		10.871	123.973	
	0.898	123.971				
BM SW Guizot & Point Long Plug				4.777	117.474	117.130

					✓✓
BM SW Valhalla & Soto Mon.			76.254		
T.P.	3.492	79.746	6037	73.707	
	2.156	76.865			
T.P.		74.887	12.573	64.292	
BM SE Soto & Greege Mon.	10.595		11.543	63.374	✓✓
T.P.			1.556	73.331	
	3.482	76.813			
BM SW Greege & Mendocino Mon.			7.463	69.350	✓✓
T.P.	1.390	70.740	7.213	63.527	
T.P.	0.147	63.674	11.458	52.216	
T.P.	0.055	52.271	9.928	42.343	
T.P.	0.179	42.522	9.293	33.229	
T.P.	0.407	33.636	7.516	26.120	
	2.076	28.796			
BM SE Casco Avalon & Whittier Mon.			4.240	23.956	✓✓
T.P.			2.076	26.120	
T.P.	7.403	33.523	0.352	33.171	
T.P.	9.097	42.268	0.030	42.238	
T.P.	9.986	52.224	0.136	52.088	
	11.721	63.809			

Mendocino B.M.'s

T.P.		63.809	0.364	63.445	
	7373	70.818			
BM SW Greege & Mendocino Mon.	1.478	69.340		69.350	✓✓
Correcting T.P.		76.828	7.373	63.455	
T.P.	4.630	68.085	5.984	62.101	
T.P.	5.009	67.110	1.252	65.858	
T.P.	7.976	73.834	1.604	72.230	
	8.445	80.715			
BM NW Mendocino & Valhalla Mon.	17.11	79.004			✓✓
	8.262	87.266			
BM SW Park & Clear.		7.725		79.541	
T.P.		2.578		84.688	
T.P.	6.911	91.599	4.439	87.160	
T.P.	3.444	90.604	7.793	82.811	
	1.715	84.526			
BM NW Valhalla & Soto Mon.	8.276	76.250		76.254	✓✓

Green BM^s

BM SE. Soto & Green Mon

63344 ✓

T.P. 1313 64.657 7359 57.298

T.P. 1089 58.387 8075 50.312

T.P. 0703 51.015 8426 42.589

2.156 44.745

BM NW Green & Etowanda Mon 5.511 39.234 ✓

T.P. 5193 44.427 4520 39.907

4.555 44.462

BM SW Etowanda & Castellon Mon 7750 36.712 ✓

T.P. 4555 39.907

4.429 44.336

BM NW Green & Etowanda Mon 5102 39.234 ✓

T.P. 5485 44.719 4161 40.558

T.P. 6033 46.591 2708 43.883

T.P. 6090 49.973 1.628 48.345

2431 ⁵⁰ 48.776BM NW Veltre & Fraude Mon 6234 44.542 ✓
44544

Point Loma Ave.

61

BM SW Point Loma & Santa Barbara Plg 182262 ✓

T.P. 9074 191.336 4.119 187.217

T.P. 7529 194.746 0.107 194.639

T.P. 9594 204.238 0.222 204.011

T.P. 8556 212.567 0.939 211.628

T.P. 8845 220.473 1.140 219.333

T.P. 8919 228.252 0.684 227.568

T.P. 8451 236.019 0.304 235.715

T.P. 8569 244.284 0.771 243.513

T.P. 9140 252.653 0.575 252.078

T.P. 8431 260.509 1.092 259.417

T.P. 8625 268.042 1.457 266.583

8639 275.222

BM RR Spk 1770 x 10 Post W.L. Bond 4660 270.562 ✓

near Phillips Garage
T.P. 3900 271.322

T.P. 5169 276.491 4.123 272.366

5203 277.571

BM Spk 12 Geo Corp Post W.L. Bond 4103 273.468 ✓

150' S. of Phillips Drive
T.P. 3497 274.079

Point Loma

				274079
T.P.	6490	280.569	1.579	278.990
T.P.	7.808	286.798	2.230	284.568
T.P.	8.073	292.641	4.705	287.936
T.P.	3.540	291.476	6.997	284.479
T.P.	2.221	286.700	8.053	278.647
T.P.	1.884	280.531	8.155	272.376
T.P.	0.307	272.683	8.773	263.910
	0.702	264.612		
	PL Ave & W. PL Ave			
	B.M. Spk. Fork of Grass Roads		5.683	258.929 ✓
	to Ocean Beach, 3/4 Land Portal.			
T.P.			6.967	257.645
T.P.	4.918	262.563	4.012	258.551
	7.022	265.573		
	Mon. W. 2. Brul -		261.630.0E.	
	B.M. N. Bolthead Fire plug. W. side Road		1.770	263.803
	of Landscapes & PL Ave.			
T.P.			4.918	260.655
T.P.	1179	261.834	8.517	253.317
T.P.	2.074	255.396	7.327	248.067
T.P.	2.872	250.941	6.498	244.413
T.P.	4.742	249.185	3.490	245.675
T.P.	7.706	253.401	1.477	251.924

Point Loma Ave.

62

				251.924
T.P.	9.013	260.937	1.679	259.258
	6.230	265.488		
	B.M. Spk Gate post E.L. PL Ave.		4.081	261.407 ✓
	5'12" x 12" Post of Driveway. opp Main Ent.			
T.P.			2.587	262.901
T.P.	5.760	268.661	3.599	265.062
T.P.	6.748	271.810	2.366	269.444
T.P.	7.896	277.340	1.218	276.129
T.P.	8.086	284.215	0.960	283.255
T.P.	9.077	292.332	0.315	292.017
	7.160	299.177		
	T.P. Keel Cement found. S. End. Egypt. m. Dr.		3.471	295.706
	6.660	302.366		
	B.M. Spk in Bat. Bay of S. Found		6.411	295.955 ✓
	of Egypt in the Entrance Arch to			
	M. Fongers Place.			
T.P.			4.344	298.022
T.P.	4.726	302.748	4.512	298.236
	4.908	303.144		
	B.M. SE Hydrograph Post. PL of st. in. ent.		4.600	298.544 ✓
T.P.			4.103	299.041

Point Loma Ave

				299.041	
TP	5588	304.629	2889	301.740	
TP	6564	308.304	2348	305.956	
	7613	313.569			
BM Tie Pt. Non. E. PL Ave. & St. L. to Rosecroft Poultry Yks			7238	306.331	✓✓
TP			5778	312.791	
TP	8991	321.782	0.022	321.760	
TP	9127	330.887	0.449	330.438	
	8474	338.912			
BM. W. L. PL Ave. Spk 2' x 12' post pathway into Tingler grounds at S. End Cedar hedge. S. post of Gate.			3342	335.570	✓✓
TP			0.235	338.677	
TP	8447	347.124	0.668	346.456	
	8572	355.028			
BM. NE PL Ave & Post at Water. Mon. Spk <small>at N. of Wireless</small>			2770	352.258	✓✓
TP			0.678	354.400	
TP	8043	362.443	1.378	361.065	
TP	9199	370.264	2.092	368.172	
TP	6343	374.515	3.145	371.370	
	6569	377.939			

Point Loma Ave.

				377.939	
BM. NE PL Ave & Catalina Mon <small>-150' N of Water Tank.</small>	2.775	375.164			374.777 - school.
TP	2.720	377.884	6.540	377.344	
TP	3.215	374.559	6.430	368.129	
TP	2208	370.337	9.286	361.051	
TP	1432	362.483	8.145	354.338	
	1.030	355.368			
BM. Spk Post at 1st Hyd. N of Wireless at EL PL Ave	3.103	352.265			352.258
TP		8963	346.405		
TP	0950	347.355	8732	338.623	
TP	0A37	339.060	8662	330.398	
TP	0768	331.166	9427	321.739	
TP	0074	321.813	9089	312.724	
	0955	313.679			
BM. Tie Pt. Non. E. PL Ave	7.345	306.334			306.331
TP	7.154	305.925			
TP	2376	308.301	6.595	301.706	
TP	5029	304.735	5.744	298.991	
	4191	303.182			
BM. EL. Spk Hydrant Post.	4.637	298.545			298.544

Point Long Ave.

Catalina BMS

		313.112			
TP			5.007	298.175	
TP	4.681	302.856	4.145	298.011	
	4.429	302.440			
BM Spk. Egypt arch			6.488	295.952	295.955
TP	3.275	299.227	7.198	292.029	
TP	0.247	292.276	9.231	283.045	
TP	0.931	283.976	8.178	275.798	
TP	1.181	276.979	7.490	269.489	
TP	2.283	271.772	6.051	265.721	
TP	3.801	269.522	6.154	263.368	
	2.917	266.285			
BM 4 1/2" x 12" x 12" Wm. Gate & School			4.891	261.394	261.407
TP			6.796	259.489	
TP	1.547	261.036	8.500	252.536	
TP	1.812	253.548	7.323	246.225	
TP	2.726	248.951	4.861	244.090	
TP	6.400	250.520	2.252	248.268	
TP	6.570	254.838	1.587	253.249	
TP	7.698	260.947	1.306	259.641	

					259.641
			6.341	265.982	
			5.268	261.614	261.630 ^{OK}
			7.182	258.800	258.816 ^{OK}
			3.759	262.575	4.858 257.747
			5.045	262.762	
			3.840	258.922	258.929
			4.372	258.390	
			5.311	263.701	4.314 259.387
			3.825	263.212	5.842 257.370
			2.783	260.153	4.125
			6.135	254.018	253.253 ✓
			2.857	256.875	
			6.705	250.170	250.170 ✓
			1.247	251.417	7.544 243.823
			2.037	245.862	7.106 238.756
			2.577	241.355	
			5.892	235.463	235.463 ✓
			3.238	238.701	5.708 232.993

Point Long B.M.s

232.993
 T.P. 2476 235.467 6.867 228.602
 1723 230.325

B.M. FL. PL. Ave. Spk. Hydrant Post
 600' N. of last B.M.
 T.P. 4760 225.565 ✓
 9.452 220.873

T.P. 0.568 221.441 9.377 212.064
 0290 212.354

Chickworth - Cathlamet
 B.M. WL. PL. Ave. at Curve of Boul
 to Easterly - Spk. Light Pole
 T.P. 3.351 209.003 ✓
 6.946 205.408

T.P. 2.944 208.352 4.172 204.180

T.P. 3.113 207.293 6.006 201.287

T.P. 4.565 205.852 6.165 199.687
 7.532 207.219

B.M. SW. FL. produced N. R.R. Spk. Pole
 N. Pole of Substation 465100 Spk. Pole
 600' N. of last B.M.
 T.P. 3.022 204.177 ✓
 4.448 202.771

T.P. 4.107 206.878 6.025 200.953

T.P. 7.978 208.831 0.310 208.521

T.P. 9.423 217.944 0.303 217.641

T.P. 8.538 226.179 0.301 225.878

T.P. 8.972 234.850 0.511 234.339

234.339
 T.P. 9.044 243.383 0.603 242.780
 10.872 253.652

B.M. NW. Santa Bar. & La Bolla Plug
 1.338 257.314 257.314 ✓

B.M. WL. PL. Ave. Spk. Pole at Curve
 of Boul to Easterly
 T.P. 0.105 209.108 6.228 202.880

T.P. 0.368 203.248 11.829 191.419

T.P. 0.104 191.523 6.678 184.845

T.P. 5.980 190.825 1.757 189.068

T.P. 8.559 197.627 1.827 195.800

T.P. 8.720 204.520 10.54 203.466

T.P. 9.338 212.924 0.901 211.903

T.P. 7.882 217.785 1.848 217.937

7.450 225.387

Chickworth
 B.M. Spk. S. Side of RR - 1st Post
 200' W. of RR. Reformer.
 T.P. 5.370 220.017

T.P. 7.128 218.259

T.P. 1.219 219.478 7.112 212.366

T.P. 4.664 217.030 4.146 212.884

T.P. 5.570 218.454 6.390 212.064

				212.064	
TP	0.949	213.013	9.153	203.860	
TP	0.685	204.545	10.632	193.913	
TP	0.787	194.700	9.313	185.387	
TP	0.534	185.921	9.691	176.230	
	1.902	178.132			
BM NE Chatsworth & Jarvis Hwy.			7.922	170.200	
where Boul. Curves to Northward					
TP	2.419	172.619	7.400	165.219	
	2.298	167.519			
BM NW Chatsworth & Hwy			7.102	160.415	
TP	0.185	160.600	9.822	150.778	
TP	0.766	151.544	9.470	142.074	
	1.576	143.650			
BM NW Chatsworth & Hwy			10.418	132.232	
TP	0.750	133.982	9.128	124.954	
	1.528	126.482			
BM R.R. Spk. Braced Pile SE side			8.121	118.361	
Chatsworth - 75' W of Charlie Moores					
TP	1.053	119.414	8.704	110.710	
TP	0.250	110.960	8.991	102.069	
TP	0.699	102.768	9.074	93.694	

					93.694
TP	0.302	93.996	8.987	85.009	
TP	2.657	87.666	7.558	80.108	
TP	3.042	83.150	6.237	76.913	
	4.791	81.704			
BM Plug end Curb SE Chatsworth			4.542	77.162	
Just E of Car tracks					
TP			3.969	77.735	
TP	6.482	84.217	2.983	81.234	
TP	5.620	86.854	3.938	82.916	
TP	6.385	89.301	4.120	85.181	
	6.257	91.438			
BM NE Warrington & Fennysop Hwy			5.742	85.696	enough 85.55
TP	5.547	91.243	5.165	88.078	
TP	4.653	92.731	6.122	86.609	
TP	3.323	89.932	5.788	84.144	
	3.282	87.426			
BM Spk. Pile 4' E of F. Rail where			3.920	83.496	
road crosses R.R. 400' W of Huston					
TP			6.099	81.327	
TP	3.001	84.328	9.344	74.984	
TP	3.368	78.352	6.003	72.349	

Chatsworth B.M.^S

67

				72.349
4437	76.786			
BM. SE. Voltaire & San Clemente Spk	4315	72.471		
T.P.	3068	75.539	6.025	69.514
T.P.	1528	71.042	7.745	63.299
T.P.	3521	66.820	5.554	61.264
T.P.	5303	66.567	2.205	64.362
T.P.	7755	72.117	1.753	70.364
T.P.	8312	78.736	1.661	77.075
	6064	83.139		

BM. NW. Voltaire & Mendocino Ave 4434 79.085 79.004

ON. W. Pl. & Chatsworth RR Spk Bk.

209003 ✓

T.P.	0030	209.033	6.715	202.318
T.P.	0552	202.870	11.505	191.365
T.P.	0049	191.414	6.444	184.970
T.P.	6366	191.336	0.767	190.569
T.P.	9058	199.627	0.610	199.017
T.P.	8662	207.679	0.895	206.784
T.P.	8546	215.330	2.096	213.234
	9287	202.521		

BM. Spk Water Hyd Post 51 Chats - 2494 220.827 ✓

W. 70 E. of Post B.M.

T.P.	3104	223.131	8.027	215.104
T.P.	2292	217.396	5.330	212.066
T.P.	5613	217.679	4.178	213.501
T.P.	4024	217.525	9.100	208.425
T.P.	0716	209.411	9.213	200.198
T.P.	0426	200.524	11.955	189.569
T.P.	0602	190.171	7.568	180.603
T.P.	0829	181.433	7.564	173.868
	2518	175.946		

Chatsworth BMS

		175946			
BM NE Chatsworth ^{wildwood} of ^{Plug}	5762	170.184	✓✓		
TP	6.885	169.061			
	1698	170.759			
BM NW Chatsworth ^{of} ^{Bridge Road Plug}	10347	160.412	✓✓		
TP	0.573	160.985	9.111	151.874	
TP	0.347	152.221	9.394	142.827	
	1.051	143.878			
BM NE Chatsworth ^{of} ^{Alving} ^{Plug}	10651	133.227	✓✓		
TP	0.961	134.188	9.239	124.949	
	1.720	126.689			
BM Spk Blc 3 side Chatsworth ^{100' W of Charlie Moore's} ^{Thru Macaulay}	8338	118.351	✓✓		
TP	0.820	119.171	8.983	110.188	
TP	0.150	110.338	8.772	101.566	
TP	1.103	102.669	8.578	94.071	
TP	0.411	94.482	8.772	85.710	
TP	2.173	87.883	7.550	80.333	
TP	2.680	83.013	6.090	76.923	
	4785	81.708			

Chatsworth BMS

68

					81.708
BM End Kirk Plug ^{of} ^{Chatsworth}	4564	77.144	77.140	✓✓	
^{1st E of Carttracks}					
TP	6.202	83.346	2.938	80.408	
TP	6.139	86.547	3.233	83.314	
TP	5.563	88.876	3.640	85.236	
	6.561	91.797			
BM NE Venn ^{of} ^{Jenny's} ^{Plug}	6.125	85.672	85.670	✓✓	
TP	5.562	91.234	3.180	88.054	
TP	4.555	92.609	6.056	86.553	
	3.222	89.775			
BM RR Spk Blc AE of Rail ^{where road crosses carttracks}	6.508	83.467	83.460	✓✓	
TP	2.265	85.732	8.324	77.408	
TP	2.143	79.551	6.321	73.230	
	3.781	76.151			
BM SE Venn ^{of} ^{Summit} ^{Blc}	4.181	72.430	72.420	✓✓	
TP	2.968	75.398	6.043	69.350	
TP	1.793	71.143	7.568	63.575	
	3.545	67.120			
BM SE Venn ^{of} ^{Catharine} ^{Blc}	4.957	62.163	62.140	✓✓	
TP	5.092	62.028			

62028

TP	3844	65.872	2765	63.107
T.P.	7430	70.537	1521	69.016
T.P.	8062	77.078	1165	75.913
	7030	82.943		

BN NW Voltaire & Mendocino Plg 3.916 79.021 ^W 79.004

See Book 956 Page 7 69

BN Plg S side Chatsworth E tracks - Plg ^W 117.140

T.P.	8060	85.200	1074	84.126
T.P.	9193	93.319	8198	93.121
	6384	99.505		

BN SW Chatsworth & Jensen Plg 2.868 96.631 ^W

T.P.	5133	101.770	4289	97.481
T.P.	6031	103.512	1.984	101.528
T.P.	9136	110.664	0.180	110.484
T.P.	9404	119.888	0.048	119.840
T.P.	8778	128.618	0.739	127.879
T.P.	9358	137.237	0.038	137.199
T.P.	9485	146.684	0.761	145.923
T.P.	8443	154.366	1.470	152.896
T.P.	8313	161.209	1.750	159.459
T.P.	8004	167.463	4.151	163.312
	3831	167.143		

BN Plg Carb Chatsworth & 200th of Alcott St 5.575 161.568 ^W

3423 164.991

BN NW Chatsworth & Alcott Plg carb 5.648 159.343 ^W

				159.343	
T.P.	4598	163.941	7.568	156.373	
	1245	157.618			
B.M. SE. Chatsworth & Curtis Plg.	8777		148.841		LL
T.P.	1494	150.035	8885	141.150	
	2001	143.151			
B.M. SE. Curtis & ^{Curve} Plg.	8575		134.576		
	2455	137.431			
B.M. SW. Curtis & Plg.	119		5.720	131.311	
T.P.	2268	103.579	8311	125.268	
	1477	126.745			
B.M. SW. Curtis & Willow Plg.	7590		119.755	119.26	
T.P.	1392	120.547	12.622	107.925	
T.P.	0.717	108.642	9242	99.400	
T.P.	0.424	99.824	7440	92.381	
T.P.	1.060	93.444	10.771	82.673	
T.P.	1.503	82.676	7.551	75.125	
T.P.	0.339	75.464	8.289	67.255	
T.P.	0.344	67.599	12.661	54.938	
T.P.	0.337	55.275	11.703	44.172	

					44.172
	2147	46.319			
B.M. SW. Rosecrans & Curtis ^{Power Pole} Plg.	5761		40.558		
T.P.	2410	42.968	7.302	35.666	
T.P.	2.378	38.044	6.903	31.141	
T.P.	2407	33.548	6.420	27.118	
T.P.	3424	30.542	4.980	25.562	
	4.914	30.476			
B.M. SW. Rosecrans & Luch-Mort	6030		24.446	24.52	
T.P.			4.914	15.562	
T.P.	3436	28.998	5.880	23.118	
	2556	25.674			
B.M. NW. Rosecrans & Plg. ^{300 ft} Curb	7.675		17.999		
T.P.	1199	19.198	6.695	12.503	
T.P.	4447	16.950	4.190	12.765	
T.P.	5303	18.063	4.351	13.332	
T.P.	3666	16.998	7.060	9.938	
T.P.	1.985	11.923	7.260	4.663	
	3.724	7.887			
B.M. WL ^{Turn} - Rosecrans ⁵⁰⁰ Plg.	4.182		3.705		

				3705	
TP	3405	7.140	4317	2.823	
TP	5.890	8.713	3.818	4.895	
TP	4.801	9.696	4.340	5.356	
	4.757	10.113			
BM. NW. Rosecrans - 50k. 1st			4.897	5.216	
Hydrant Post W. of 1st stop Ed					
Roseville St. ^{near 879}	4.817	10.033	4.945	5.088	
TP	4.982	10.070	4.251	5.819	
TP	5.361	11.180	4.137	7.043	
TP	5.733	12.776	3.717	9.059	
	5.724	14.283			
manhole			5.121	9.163	12.25
BM. SE. Kellogg & Rosecrans R.R. apt			5.716	8.187	
	5.440	13.927			
BM. NW. Rosecrans & 7th - 4th			5.908	8.219	806 ³ ok
	8.801	16.820			
24 hyd. Dist. NE Rosecrans & 7th - 4th			6.151	10.669	1067 ¹ ✓
BM. SW. Lowell 1st			1.810	15.010	15059 ¹ ok
TP	6.903	21.913	2.205	19.708	
	7.889	27.597			
BM. SW. Lowell 2nd			2.359	25.238	25.246 ¹ ok
TP	7.393	32.631	0.022	32.607	

					32609
TP	10.025	42.634	0.167	42.467	
	12.449	54.616			
BM. NW. Lowell & Willow Plug.			2.418	52.198	8-258 ✓
TP	9.498	61.696	0.088	61.608	52-250 ✓
TP	10.162	71.770	0.044	71.726	
TP	10.096	81.822	0.027	81.795	
	7.094	88.889			
BM. NW. Lowell & Plum Plug.			1.716	87.173	87.223 ✓
TP	4.404	91.577	2.769	88.808	
TP	8.323	97.131	1.350	95.781	
	10.146	105.927			
manhole					
BM. NE. Plum & 1st E - 5th E 1/2			6.689	99.238	99.286 ✓
TP			0.145	105.782	
TP	9.957	115.737	0.067	115.672	
TP	3.996	119.668	5.453	114.215	
TP	7.640	121.855	4.814	117.041	
TP	2.985	120.026	10.149	109.877	
TP	1.475	111.352	8.843	102.509	
TP	3.813	106.322	10.267	96.055	

Lowell Rosecrans BMS

			25.296		
TP	1.728	27.024	8.371	18.653	
	3.702	21.855			
B.M. SW. Lowell & Locust - Plug	6.796	15.059			OK
	1.513	16.572			
B.M. SW. Lowell & Rosecrans Plug	8.509	8.063			OK
	5.725	13.788			
B.M. SF. Rosecrans & Car Tur. Sok. Pl.	5.250	8.535			OK
TP	5.744	14.281	5.538	8.743	
TP	3.837	12.580	5.680	6.900	
TP	4.272	11.172	5.429	5.743	
TP	4.406	10.149	5.108	5.041	
	4.982	10.023			
B.M. SW. Hyd. Post NL. Rosecrans - 1st Hyd. W. of Sta. E. of Roseville	4.774	5.249			OK
TP	4.954	10.203	4.748	5.455	
TP	4.935	9.770	4.943	4.877	
TP	3.882	8.727	6.060	2.667	
	4.730	7.399			
B.M. NL - Rosecrans - 1st Hyd. W. of Sta. E. of Roseville	3.665	3.734			OK
TP	6.430	10.164	1.382	8.782	

					8.782
TP	7.583	16.365	2.930	13.435	
TP	4.875	18.310	5.474	12.836	
TP	4.240	17.076	4.780	12.596	
	7.219	19.815			
B.M. SW. Rosecrans & 5th St. & Touch Pl.	1.888	18.007			OK ✓
TP	6.508	24.515	2.537	21.978	
TP	5.410	27.448	3.188	24.260	
	6.218	30.478			
B.M. SF. Rosecrans & Touch Pl.	6.030	24.448			OK ✓

See balance of circuit
in Book 956 p. 9.

TR.	2560	356.56	Bot Gr.	Cuts.
	11.65	367.71		
0+00 = op. EL Wagonch. NL Area	12.13	355.58	350.10	5.5
+25	11.11	356.60	350.72	5.9
+50	10.56	357.15	351.35	5.8
+75	10.07	357.64	351.97	5.7
1+00	9.55	358.16	352.60	5.6
+25	9.10	358.61	353.23	5.4
+50	8.53	359.18	353.85	5.3
+75	8.06	359.65	354.48	5.2
2+00	7.56	360.15	355.10	5.1
+25	7.11	360.60	355.72	4.9
+50	6.42	361.29	356.35	4.9
+75	5.63	362.08	356.97	5.1
3+00 = WL Scott.	4.88	362.83	357.60	5.2
+80 = EL "	2.52	365.19	358.40	6.8

				Bot. Gr.	Cuts.
		367.71			
0+00	EL Scott. TP Hub	252	365.19	358.40	6.8
+25	7.65 312.84	738	365.46	358.80	6.7
+50		656	366.28	359.20	7.1
+75		6.49	366.35	359.60	6.8
1+00		6.12	366.72	360.00	6.7
+25		6.25	366.59	360.40	6.2
+50		5.75	367.09	360.80	6.3
+75		5.66	367.18	361.20	6.0
2+00		5.05	367.79	361.60	6.2
+25		4.72	368.12	362.00	6.2
+50		4.37	368.47	362.40	6.1
+75		4.51	368.33	362.80	5.5
3+00	-WL. Swift.	4.21	368.63	363.20	5.4
+80=00	-EL. TP. Hub.	3.36	369.48	363.70	5.8

Willow BM^s

76

	Willow St.			
BM-SW Curtis & Willow			119.155 changed to	119.187 = 119.175 ✓
TP	9047	128.202	0053	128.149
	6428	134.577		
BM-SW Browning & Willow Plug	4694	129.883		129.915 ✓
TP	1252	121.135	7765	123.370
TP	1155	124.525	8304	116.221
	2018	118.239		
BM-SW Abbott & Willow Plug	5007	113.232		113.264 ✓
TP	8626	121.858	0227	121.631
TP	9860	131.491	0393	131.098
	10569	141.667		
BM-SW Touch & Willow Plug	3489	138.178		138.210 ✓
	3081	141.759		
BM-SW Young & Willow Plug	5935	135.324		135.356 ✓
TP	8614	143.938	0622	143.316
	12271	155.587		
BM-SW Zepheron & Willow Plug	1422	154.165		154.197 ✓
	12543	166.708		
BM-SW ^{with} Heeler & Willow Plug	0565	166.143		166.175 ✓

				166.143
				adjet.
	5770	171.913		
BM-SW ^{with} Vail & Willow Plug	2592	169.321		169.353 ✓
TP	8156	177.471	1031	177.446
	11625	189.071		
BM-SW ^{with} D. & Willow Plug	1942	187.129		187.161 ✓
	9992	197.121		
BM-SW Tennyson & Willow Plug	3251	193.870		193.902 ✓
TP	0723	194.603	10255	184.348
TP	0547	184.895	8748	176.147
	1707	177.854		
BM-SW ^{with} Stone & Willow Plug	5920	172.134		172.166 ✓
TP	0953	173.087	8820	164.267
	1461	165.728		
BM-SW Russell & Willow Plug	4429	161.299		161.331 ✓
TP	6790	168.089	1798	166.291
	9226	175.517		
BM-SW ^{with} D. & Willow Plug Curb	2348	173.169		173.201 ✓
	9253	182.422		
BM-SW ^{with} Poe & Willow Plug	4660	177.762		177.794 ✓

Quimby - Capistrano

				177.762	
TP	0.875	178.637	10.568	188.069	
TP	0.124	168.193	9.868	158.325	
	2080	160.405			
BM NW. 0.5 th Willow	Plug	7.625	152.780	152.812	↓
TP	3.417	156.197	12.728	143.469	
TP	0.907	144.376	12.625	131.751	
TP	2.006	133.757	12.130	121.627	
TP	1.818	123.445	12.537	110.908	
	4.694	115.602			
BM SW Plug	Curb	7.677	107.925	107.957	✓
of car 100					
TP	3.120	111.045	6.246	104.799	
TP	2.812	107.611	7.705	99.906	
TP	0.902	100.808	11.075	90.733	
TP	12.67	92.000	7.556	84.444	
	3.193	87.637			
BM SE Plug	Curb	6.465	81.172	81.210	✓
of car 100					
TP	1.516	82.688	8.274	74.414	
	2.550	76.964			
BM. Pt	Capistrano	5.310	71.654	71.702	ok.

Lowered Micks Cuts gshere sh⁷⁸

	349.34			Cuts
0100 - L. Pk. & Boundary.	438	344.96 340.47	340.40	✓ 4.6
+25	648	342.86	340.04	✓ 2.8
+50	712	342.22	337.68	✓ 2.5
+75	796	341.38	337.32	✓ 2.1
+100	814	341.20	338.97	✓ 2.2
+25	1010	337.24	338.61	✓ 0.6
+50	885	340.49	338.26	✓ 2.2
+75	775	341.59	337.91	✓ 3.7
+200	517	344.17	337.56	✓ 6.6
+25 - Int Bound & Hwy.	990	339.44	337.20	✓ 2.2

30" Water Main - Anna St.
 Boundary St - East
 E Pipe = 8.5' S. of E - Hubs - offset 4" N.
 Bottom trench = 4.7 below surface grade.
 or. Bot.

Cuts.

BM 13' Main	Palko	Pueblo	High.	345.23				
	4.11			349.34				
1+75	End Nicks	lim.		337.28				
2+25	= 0.000	int. Anna & Boundary	7.90	339.44	337.20	2.2		
0+21	^S		7.56	341.78	337.30	4.4		
+46	^S		5.70	343.64	337.70	5.9		
+71	^S		4.18	345.16	338.00	7.1		
+96	^S		3.80	345.34	338.82	6.7		
1+21	^S		3.26	346.08	339.63	6.4		
+46	^S		2.50	346.84	340.45	6.4		
+71	^S TP		1.15	359.00	1.49	347.85	341.26	6.6
+96	^S		9.75	349.25	342.08	7.2		
2+21	^S		8.73	350.27	342.90	7.4		
+46	^S		7.84	351.16	343.71	7.4		
+71	^S		7.16	351.84	344.53	7.3		
+96	^S		6.64	352.36	345.34	7.0		
3+21	^S		6.14	352.86	346.16	6.7		
+46	^S		5.65	353.35	346.98	6.4		
3+71	^S =	Missouri Opp W.L. Missouri on N.L. Anna	5.28	353.72	347.80	5.9		

	359.00		Bot. Gr.	Ests
0700 = opposite EL Missouri	457	354.43	348.60	5.8
07. N. LITE A1119	443	354.57	346.73	5.8
+25				
+50	416	354.84	348.85	6.0
+75	382	355.18	348.97	6.2
1400	360	355.40	349.10	6.3
+25	316	355.84	349.23	6.6
+50	304	355.96	349.35	6.6
+75	287	356.13	349.47	6.6
2400	293	356.07	349.60	6.5
+25	274	356.26	349.72	6.5
+50	300	356.00	349.85	6.4
+75	287	356.13	349.77	6.1
3400 = opposite WL Wabash	294	356.06	350.10	6.0

Cont P. 74.

NE Stake Distance				133.27
TP	0.852	134.122	121.55	121.967
B.M. NW. corner	0.117	122.094	7.959	114.234
TP	1.350	115.584	6.931	108.653
B.M. SW. yard	2.472	111.125	7.162	103.963
TP	2.837	106.800	6.832	99.968
B.M. SE. hay	2.748	102.716	6.728	95.988

263.803
 2056
 265.859
 4.229

261.630 = 7m SW. Lands for P.L. ave.

225 741

7.84

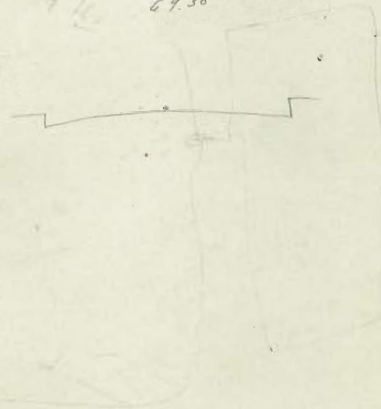
233.175

2.805

230.320

71970 Cap 16 69.50

69.10
 374
 5.4



Currier - Perfect - 4.00 on plug out. = 73.940
 Const. " " " " = 84.257
 Cade - 5E. " " " " = 87.906
~~4.00 on plug out~~ - 4.00 " " " " = 91.26
 Ex Pl. 7E. on. 7.00 = 115.174

75.18
 234.12
 112.914
 8.123
 6.115
 11.2407
 10.598
 6.217
 11.217
 16.23
 11.252
 114.552
 2.170
 12.042
 12.117
 134.117
 8.850
 133.269

40' N. bearing, 10' N. City Hgh. E. side of Main. 75.655
 2nd. on head of the fence East. Westman. 79.260

449.34
 6.48
 342.86
 32
 310.3675
 4.38
 15.0
 18.96
 4.5
 310.46
 258.343
 6.0
 252.340

349.50
 7.12
 342.38
 1.9
 340.33
 349.31
 7.96
 341.39
 1.3
 340.0825
 349.34
 6.12
 343.26
 1.37
 337.90
 349.34
 10.10
 339.24
 6.5
 332.74
 1.20

349.31
 8.05
 340.49
 0.4
 339.67
 349.31
 7.75
 341.57
 1.10
 337.47
 349.34
 5.17
 344.17
 4.5
 345.37

196.115
 14.02
 16.57
 13.744
 77.00
 79.00
 76.00
 77.514
 7.021
 55.761
 221.576
 213.384
 8.192
 514
 226
 88
 334
 2.8
 150.967
 172.170
 180.399
 180.534
 187.053
 190.998
 196.953
 196.135
 197.011
 196.905
 26.087
 75.986
 101
 89
 90.1
 994
 19.232
 16.907
 19

5248
 4252
 0.996
 112.015
 2.743
 109.262
 6.610
 81.447
 2.588
 17.16
 84.087
 114.226
 7.061
 77.026
 36.000
 992
 55.066
 42.574
 7.465
 32.000
 7.12
 73.940
 5147
 79.087
 17.944
 17.703
 3741
 761
 576
 5.5
 76.892
 103.09
 4.12
 95.70
 220.126
 196.966
 23.160
 23.154



196.892
 563
 574
 1833
 191.765
 220.116
 23.157
 776.757
 191.765
 220.116
 23.157
 776.757
 191.765
 220.116
 23.157
 776.757