

940

F.B. 940

LEVEL BOOK.

No. 410

MICROFILMED

DEC 16 1964

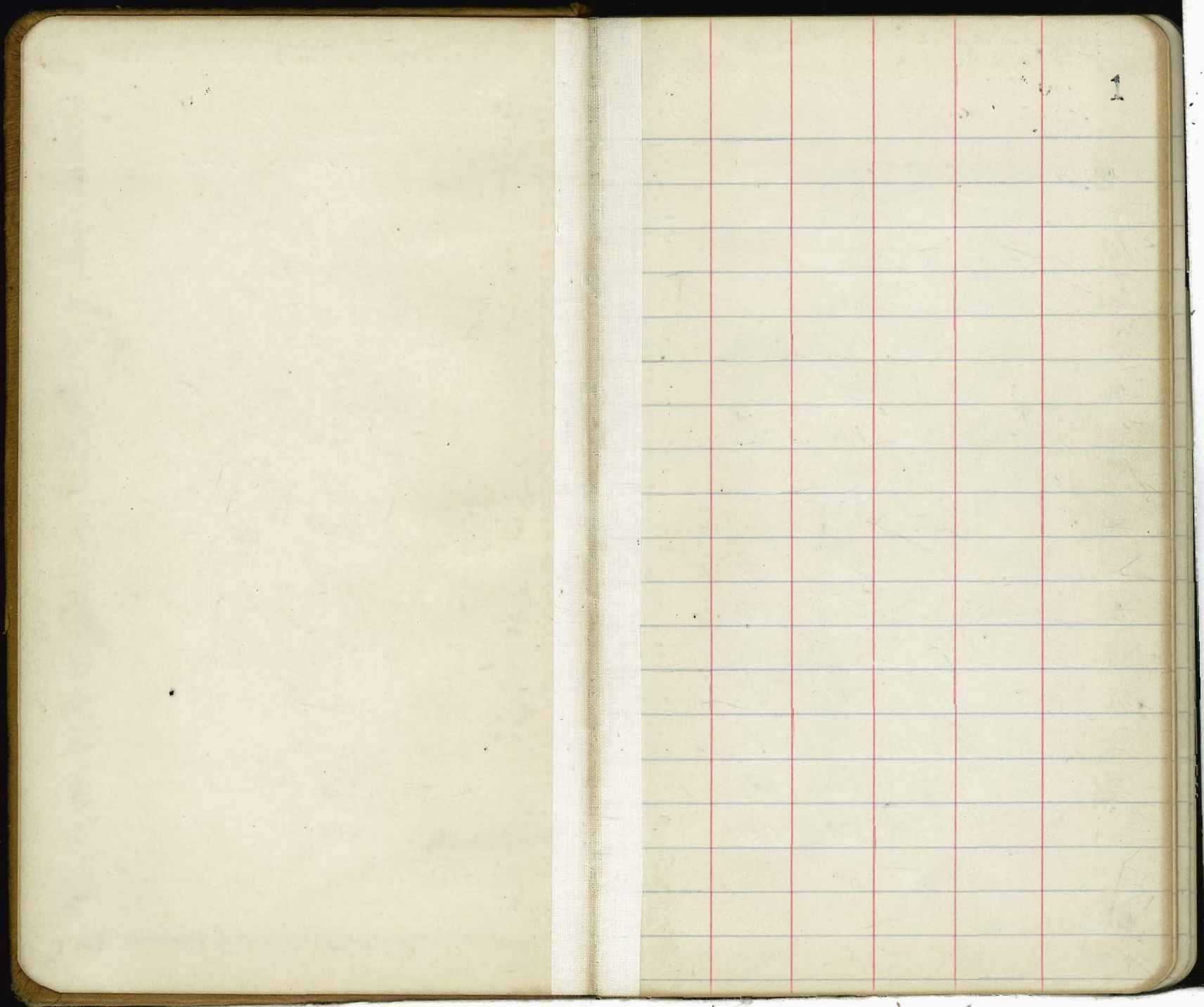
NE. Jökull + Kala Horn = 234.902

SE 32 5 km. off. = 223.48

SE Arctic + B. Plug = 10.502.

SW Columbia + B. Plug = 20.933

SW India + B. Plug = 16.441



Levels on Bancroft Alley
bet B & C. 19.65' wide.

B.M. SW IACC Plug 74.85

TP 11.36 86.21 0.29 85.92

11.08 97.00

NL-CST.

WL Top present Curb 10.9 86.1

± 11.0 86.0

EL Top " " 11.2 85.8

25' N

EL 5.5 91.5

± 6.8 90.2

WL 5.7 91.3

50' N

WL 1.1 95.9

± 2.4 94.6

EL 1.1 95.9

T.P. 1.60 95.40

11.99 107.39

West
Corner
Levels
4/3/14.

123 chontes Addn.

2

107.39

75' N

EL 8.9 98.5

± 9.6 97.8

WL 8.2 99.2

100' N

WL 6.1 101.3

± 6.5 100.9

EL 6.1 101.3

125' N

EL 3.2 104.2

± 3.5 103.9

+9.2 Wall { 3.1 104.3
2.1 105.3

WL 2.1 105.3

T.P. 15 147 105.72

1234 118 26

150' N

WL 10.4 107.9

+0.7 Wall { 10.4 107.9
11.7 107.2

± 11.7 106.6

EL 11.4 106.7

Bancroft Alley

118.26

175' N.

EL. 8.8 109.5
 ± 8.9 109.4
 WL. 8.0 110.3

200' N.

WL. 5.7 112.6
 ± 6.2 112.1
 EL 5.8 112.5

225' N.

EL 2.9 115.4
 ± 3.9 114.4
 +96 Wall. { 3.4 114.9
 2.4 115.9
 WL. 2.4 115.9

250' N.

WL 2.2 116.1
 ± 2.8 115.5
 EL 2.0 116.3

118.26

275' N.

FL. 2.0 116.3
 ± 2.5 115.8
 WL. 2.4 115.9

300' N. = 26.8.5f

WL 3.3 115.0
 ± 3.5 114.8
 EL 3.7 114.6

T.P. 3.77 114.49

3.93 118.42

BM. NW 14. AB Plug 10.77 107.45 107.42

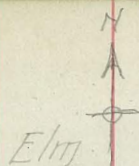
Plotted Apr 9-14

Preliminary Culvert location.

Ida St. bet Cedar & Elm.

Edgemont

4/4/14
West
Cannon
Shaw
Kerr.



BM NE Ida & Vato Mon 234.90

T.P. 1.75 736.65 12.73 223.92

T.P. 0.47 224.39 12.16 212.23

T.P. 0.76 212.99 11.89 201.10

0.43 201.53

A Line elev 10.9 190.6

+10 10.4 191.1

+20 10.2 191.3

+30 10.0 191.5

+41 9.6 191.9

+50 9.0 192.5

B Line elev 10.9 190.6

+10 11.0 190.5

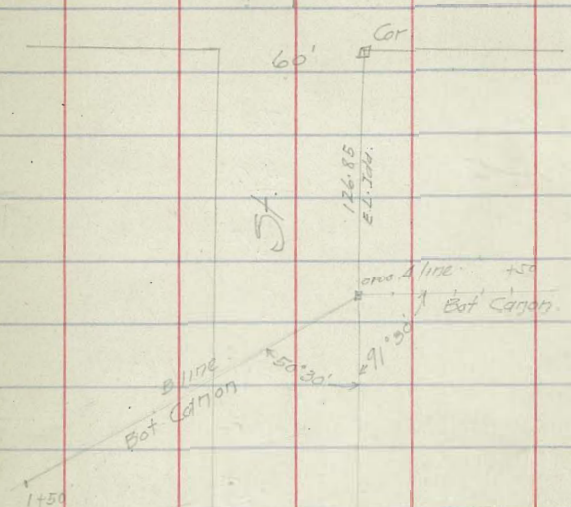
+20 11.5 190.0

+30 11.9 189.6

+40 12.2 189.3

T.P. 12.4 189.49

4.03 193.52



~~744~~
Edgemont.

19352

+50 48 188.7

+60 48 188.7

+70 49 188.6

+80 50 188.5

+90 53 188.2

+100 57 187.8

+110 60 187.5

+20 65 187.0

+30 67 186.8

+40 70 186.5

+50 74 186.1

T.P. 0.92 192.70

T.P. 11.30 204.02 - 0.68 203.34

T.P. 12.12 215.46 1.12 214.34

T.P. 11.52 226.16 1.05 225.11

11.70 236.81

ENGINE. Ida A White Mon 1.90 234.91 234.90

OK

X Sec 27 St. 60' - 10' Wks.
Bet. G & H Sts.

27 - 2 min 168.97
1/6/14
Wet
Crane
Down
16464

6

FM SEG 27 Mon.

163.83

+3

104

154.2

0.81 16464

1/4

9.3

155.3

M. G St. 80' W. 14' Wks.

±

8.7

155.9

EL

2.3

164.3

1/4

4.8

159.8

C

3.8

160.8

C

3.3

161.3

1/4

5.2

159.4

EL

2.2

162.4

±

8.4

156.3

1/4

1/4

9.1

155.5

EL

2.5

162.1

+5

10.1

154.5

C

3.8

160.8

C

9.0

155.6

1/4

4.6

160.0

+8

9.1

155.5

±

8.8

155.8

WL

10.2

156.4

1/4

9.2

155.4

+10

15.0

149.6

+5

9.6

155.0

N. Curb.

+6

11.0

154.6

-10

15.2

149.4

C

11.1

153.5

-5

14.4

150.2

+3

10.2

154.4

WL

11.1

153.5

+4

9.5

155.1

+3

9.0

155.6

+6

9.6

155.0

C

10.0

154.6

WL

12.4

152.2

+10

16.6

148.0

27th

16464

± GST.

-10	110	1466
WL	149	1497
+5	142	1504
+7	122	1524
WCorb	114	1532
1/4	99	1547
±	91	1555
+5	86	1560
+6	72	1574
1/4	66	1580
c	45	1601
EL	3.1	1614
	5 1/4	
EL	4.3	1603
c	6.1	1585
1/4	75	1571
+2	93	1553
±	96	1550

7

16464

1/4

+2

+5

c

+5

WL

+10

-10

WL

+5

+7

c

+5

1/4

±

1/4

+2

+3

EL

9.5

9.6

11.8

12.0

12.5

15.8

19.9

5 Corb.

20.0

15.4

13.4

13.7

12.1

10.3

10.2

10.1

10.2

10.0

8.7

7.6

6.1

155.1

155.0

152.8

153.6

152.1

148.8

144.7

144.6

149.2

151.2

150.9

152.2

154.3

154.4

154.5

154.4

154.6

155.7

157.0

158.5

27th

16464

3L.G. St.

EL			
EL.	8.6	1560	
C	10.4	1549	
1/4	10.6	1540	
E	11.1	1535	
1/4	11.2	1534	
C	11.5	1531	
+2	12.0	1526	
T.P.	12.15	15249	

2.98

154.97

WL.	7.0	1480	
+10	12.6	1474	

25' S of G. St.

WL.	7.3	1457	
C	4.2	1508	
1/4	3.3	1517	
E	2.6	1524	
1/4	1.4	1536	
C	0.9	1541	

15497

EL

1.3

1527

50' S

-5	5.5	1495	
EL.	3.0	1520	
C	2.5	1525	
1/4	2.8	1522	
E	2.7	1523	
1/4	2.9	1521	
C	5.5	1495	
WL	10.5	1445	

75' S

WL.	12.6	1474	
C	6.2	1488	
1/4	4.4	1506	
E	4.9	1501	
1/4	4.7	1503	
C	4.1	1509	
EL.	6.0	1490	
-10	11.4	1436	

8

27th

154.97

100's.

-15	17.0	138.0
¹⁰	14.5	140.5
EL.	9.4	145.6
C	8.2	146.8
1/4	8.7	146.3
±	9.8	146.0
1/4	9.5	146.5
C	10.6	146.4
WL.	15.8	139.2
T.P.	12.41	142.56

227 144.83

125's.

WL.	14.9	129.9
C	13.2	131.6
1/4	12.3	132.5
±	11.2	133.6
1/4	10.8	134.0
C	11.2	133.6
EL.	10.8	134.0

144.83

TP

12.70 132.73

102 133.15

135's.

EL.	0.3	132.9
C	2.7	130.6
1/4	3.8	129.4
±	3.7	129.5
1/4	4.4	128.8
C	5.4	127.8
WL.	5.2	128.0
+18 fce.	14.3	118.8

150's.

-13 fce.	15.5	117.7
WL.	9.0	124.2
C	9.1	124.1
+5	7.2	126.0
1/4	6.5	126.7
±	6.5	126.7
1/4	4.7	128.5
C	3.0	130.2
EL.	1.6	131.6

27th

133'15"

175'3"

EL.	2.0	131.2
C	4.3	128.9
1/4	6.2	127.0
±	7.7	125.5
1/4	9.0	124.2
<	11.7	121.5
WL	13.5	119.7
+10	15.0	118.2

200'5"

-15	17.7	115.5
WL	14.3	118.9
<	12.6	120.6
1/4	10.9	122.3
±	9.4	123.8
1/4	7.6	125.6
=	5.2	128.0
EL.	2.3	130.9

225'5"

133'15"

FL.	4.2	129.0
C	7.3	125.9
1/4	9.2	124.0
±	11.2	122.0
1/4	12.6	120.6
C	15.0	118.2
WL	16.9	116.3
+10	18.2	115.0

250'5"

EL	6.1	127.1
C	8.1	125.1
1/4	11.7	122.1
±	12.9	120.3
T.P.	12.86	120.29
	4.01	124.30
1/4	5.1	119.2
C	7.9	116.4
WL	10.0	114.3
+10	11.2	113.1

10

27th

12430

175' S.

-10	12.7	111.6
WL	11.7	112.6
C	9.8	112.5
1/4	8.0	116.3
1/2	6.3	118.0
3/4	4.2	120.1
C	1.7	122.6
EL	0.0	126.3
300' S = NL H St		
EL	1.9	122.4
C	4.5	119.8
1/4	6.3	118.0
1/2	8.5	115.8
3/4	10.5	113.8
C	12.4	111.9
WL	13.6	110.7
+10	14.8	109.5

11

12430

T.P.

308 121.22

12.10	133.32	
8 125' S. of G		
20' W. of WL = toe	13.1	120.2
100' S. of G.		
30' W. of WL = toe	10.7	122.6
75' S. of G.		
30' W. of WL = toe	9.2	125.1
50' S. of G.		
25' W. " " = toe	3.5	129.8
T.P.	0.40	132.92
10.93	143.85	
25' S. of SL.		
18' W. of WL = toe	8.2	125.7
T.P.	0.21	143.64
T.P.	11.13	154.77
	154	153.23
	11.34	164.57
B.M. NE. ZIRG. Nbr	8.74	163.83
		163.83

Work 5 Ave.

393.08

78.7 F.

SL	4.6	388.5
C	5.3	387.8
+1	5.8	387.3
1/4	5.1	388.0
±	4.7	388.4
1/4	5.3	387.8
+12	5.8	387.3
C	5.2	387.9
NL	4.9	388.2

148.9 E

NL	5.0	388.1
C	5.5	387.6
+1	6.0	387.1
1/4	5.5	387.6
±	4.9	388.2
1/4	5.3	387.8
+10	6.1	387.0
C	5.6	387.5
+1	5.0	388.1
SL	4.7	388.4

18

393.08

198.9 F.

SL	4.7	388.4
C	5.4	387.7
+1	6.0	387.1
1/4	5.4	387.7
±	4.9	388.2
1/4	5.5	387.6
+12	6.0	387.1
C	5.3	387.8
NL	5.2	387.9

218.9 E

NL	5.1	388.0
C	5.5	387.6
+1	6.3	386.8
1/4	5.4	387.7
±	5.0	388.1
1/4	5.4	387.7
C	5.9	387.2
+1	5.2	387.9
SL	4.8	388.3

Works Ave.

393.08

393.08

C. pt. NL Works.
16° 00' Left

→ 298.9' E = WL. Neb. 80' W. of RTG
83.4 on N. line

W 1/4

SL	48	388.3 ✓
C	56	387.5 ✓
+1	59	387.2 ✓
1/4	56	387.5 ✓
±	5.1	388.0 ✓
1/4	55	387.6 ✓
C	54	387.7 ✓
NL	54	387.7 ✓
	W Curb	-
NL	53	387.8 ✓
C	55	387.6 ✓
+2	6.1	387.0 ✓
1/4	54	387.7 ✓
±	5.2	387.9 ✓
1/4	55	387.6 ✓
C	59	387.2 ✓
+2	52	387.9 ✓
SL	50	388.1 ✓

SL	55	387.6 ✓
C	56	387.5 ✓
1/4	55	387.6 ✓
±	5.1	388.0 ✓
1/4	55	387.6 ✓
6.0	53	387.1 ✓
C	53	387.8 ✓
NL	5.1	388.0 ✓
	± Neb.	
NL	54	387.7 ✓
C	55	387.6 ✓
+2	6.3	386.8 ✓
1/4	54	387.7 ✓
±	5.1	388.0 ✓
1/4	54	387.7 ✓
C	5.7	387.4 ✓
SL	55	387.6 ✓

Works Ave.

393.08

E 1/4

SL

63

386.8 ✓

C

60

387.1 ✓

1/4

55

387.6 ✓

E

51

388.0 ✓

1/4

55

387.6 ✓

+11

61

387.0 ✓

C

54

387.7 ✓

NL

53

387.8 ✓

E. Curb

NL

54

387.7 ✓

C

55

387.6 ✓

+2

61

387.0 ✓

1/4

55

387.6 ✓

E

52

387.9 ✓

1/4

53

387.8 ✓

+11

61

387.0 ✓

C

58

387.3 ✓

SL

55

387.6 ✓

393.08

15

E.L. Neb. + produced to NL Works.

SL

52

387.9 ✓

C

56

387.5 ✓

+1

61

387.0 ✓

1/4

53

387.8 ✓

E

52

387.9 ✓

1/4

55

387.6 ✓

+11

61

387.0 ✓

C

54

387.7 ✓

NL

57

387.4 ✓

Sec A - EL. Neb. on NL Works - 2250 F at SL.

NL

57

387.4 ✓

C

54

387.7 ✓

+2

62

386.9 ✓

1/4

55

387.6 ✓

E

52

387.9 ✓

1/4

55

387.6 ✓

+11

60

387.1 ✓

+12

55

387.6 ✓

C

54

387.7 ✓

SL

51

388.0 ✓

Works Ave

393.08

393.08

50' E. of EL. Neb. of NL.

150' E.

SL	50	388.1 ^v
C	54	387.7 ^v
+2	56	387.5 ^v
+3	60	387.1 ^v
1/4	54	387.7 ^v
£	52	387.9 ^v
1/4	55	387.6 ^v
+11	62	386.9 ^v
C	55	387.6 ^v
NL	54	387.7 ^v

SL	45	388.6 ^v
C	53	387.8 ^v
+2	60	387.1 ^v
1/4	55	387.6 ^v
£	53	387.8 ^v
1/4	55	387.6 ^v
+11	61	387.0 ^v
C	54	387.7 ^v
NL	52	387.9 ^v

100' E.

200' E.

NL	52	387.9 ^v
C	54	387.7 ^v
+2	62	386.9 ^v
1/4	54	387.7 ^v
£	52	387.9 ^v
1/4	56	387.5 ^v
+10	62	386.9 ^v
+12	53	387.8 ^v
C	53	387.9 ^v
SL	50	388.1 ^v

NL	52	387.9 ^v
C	53	387.8 ^v
+1	56	387.5 ^v
1/4	61	387.0 ^v
£	52	387.9 ^v
1/4	52	387.9 ^v
C	52	387.9 ^v
SL	55	387.6 ^v
1/4	54	387.7 ^v
C	49	388.2 ^v

Works Ave.

39308

250' E

SL	46	388.5
C	50	388.1
+2	59	387.2
1/4	55	387.6
±	51	388.0
1/4	55	387.6
+11	61	387.0
C	54	387.7
NL	51	388.0

300' E

NL	51	388.0
C	55	387.6
+2	63	386.8
1/4	56	387.5
±	51	388.0
1/4	55	387.6
+11	60	387.1
C	50	388.1
SL	46	388.5

39308

350' E

SL	47	388.4
+11	48	388.3
C	54	387.7
+2	59	387.2
1/4	56	387.5
±	53	387.8
1/4	56	387.5
+11	64	386.7
C	57	387.4
NL	56	387.5

400' E

NL	57	387.4
C	62	386.9
+2	69	386.2
1/4	61	387.0
±	57	387.4
1/4	59	387.2
+10	64	386.7
C	54	387.7
SL	48	388.3

WORKS AVE.

39308 AB. 60' W - 10' WKS

403.1' E = Wl. Boundary St.
403.4' " of Sec A

SL	50	387.1 ✓
+10	52	387.9 ✓
C	6.1	387.0 ✓
1/4	6.2	386.9 ✓
±	5.8	387.3 ✓
1/4	6.3	386.8 ✓
+11	7.0	386.1 ✓
C	6.1	387.0 ✓
NL	5.9	387.2 ✓

W. Curb

NL	5.9	387.2 ✓
+12	6.1	387.0 ✓
C	6.7	386.4 ✓
+1	7.0	386.1 ✓
1/4	6.4	386.7 ✓
±	5.8	387.3 ✓
1/4	6.2	386.9 ✓
C	6.4	386.7 ✓
+5	5.2	387.9 ✓
SL	4.8	388.3 ✓

39308

W 1/4

SL	60	387.1 ✓
C	65	386.6 ✓
1/4	64	386.7 ✓
±	60	387.1 ✓
1/4	64	386.7 ✓
+11	70	386.1 ✓
C	62	386.9 ✓
NL	5.9	387.2 ✓

± Boundary St

NL	5.9	387.2 ✓
+12	6.2	386.9 ✓
C	70	386.1 ✓
1/4	6.3	386.8 ✓
±	5.9	387.2 ✓
1/4	6.5	386.6 ✓
C	6.2	386.9 ✓
SL	5.3	387.8 ✓

WORKS AVE.

39308

E 1/4

SL			
SL	5.8	387.3	✓
C	6.7	386.4	✓
1/4	6.6	386.5	✓
E	6.1	387.0	✓
1/4	6.3	386.8	✓
C	7.1	386.0	✓
+5	6.1	387.0	✓
NL	6.0	387.1	✓

E Curb

NL	6.0	387.1	✓
+9	6.2	386.9	✓
C	6.8	386.3	✓
1/4	6.5	386.6	✓
E	6.1	387.0	✓
1/4	6.7	386.4	✓
C	6.8	386.3	✓
SL	5.5	387.6	✓

393.1

19

39308

EL Boundary

SL	5.4	387.7	✓
C	6.2	386.9	✓
+1	6.8	386.3	✓
1/4	6.6	386.5	✓
E	6.1	387.0	✓
1/4	6.5	386.6	✓
C	6.8	386.3	✓
+2	6.2	386.9	✓
NL	6.0	387.1	✓

BM SE Adams Ave

104 389.04

Culvert Levels.
Foot B St Flume to Bulkhead

5/3/14
West
Cove
Dunn

20

BM SW of India Plug. 16.44

T.P. 1.95 18.39 1020 8.19

2.33 10.52

T.P. 7.67 2.85

2.46 5.31

South Line

0+00 = flush outside wall - 4.5 opening 866 -3.35

+10 9.9 -4.6

+50 9.4 -4.1

+100 9.7 -4.2

+50 10.1 -4.8

+60 10.2 -4.9

+64 9.5 -4.2

+200 9.6 -4.3

+50 9.6 -4.3

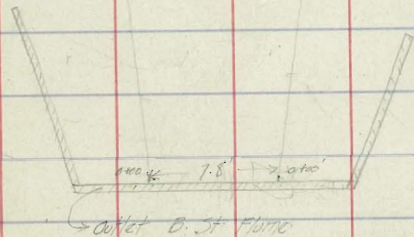
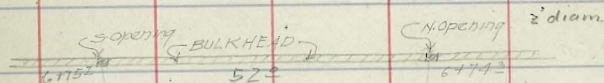
+300 9.5 -4.2

+50 9.3 -4.0

+400 9.1 -3.8

+50 8.9 -3.6

+500 8.6 -3.3



531

5+50			8.5	-3.2	
6+10			8.2	-2.9	
+50			7.7	-2.4	
6+75 ² bat outlet hole			9.37	-4.06	
T.P.			1.64	3.67	
T.P.	8.09	11.76	2.84	8.92	
	9.56	18.48			
BM SW of India - Flag			2.03	16.45	11.44 OK

21

531

N. Lutz

8+00 = N outlet			8.66	-3.35	
+10			10.0	-4.7	
+37			9.7	-4.1	
+45			7.3	-2.0	
1+00			9.2	-3.9	
+50			10.1	-4.8	
+66			10.3	-5.0	
+70			9.6	-4.3	
2+00			9.6	-4.3	
+50			9.7	-4.4	
3+00			9.7	-4.4	
+50			9.7	-4.4	
4+00			9.6	-4.3	
+50			9.3	-4.0	
5+00			9.1	-3.8	
+50			8.8	-3.5	
6+00			8.7	-3.4	
+50			8.3	-3.0	
6+74 ³ bat outlet hole			8.77	-3.46	

6/22/14
Hotel
11 floor
Hall

Profile of La Jolla Blvd.
from
South line of Forward St to
North line of Bird Rock City by the Sea

22

BM 7007 504 82.65 77.09
722 78.42 11.43 71.20

Calvary
Cemetery
C.R. Blvd

South line Forward St

E 1.6 76.8
13E 3.7 74.7
CV 3.5 74.9
13W 4.2 74.7
W 5.1 73.7

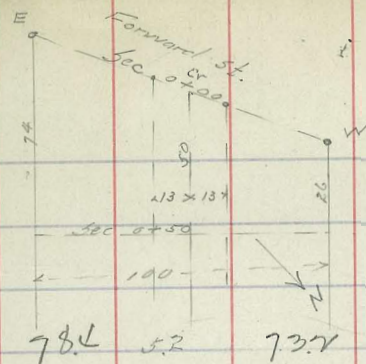
PLOTTED

CV. Forward St

W 5.0 75.4
13W 3.9 74.5
CV 3.5 74.9
13E 3.9 74.5
E 1.5 76.9

N. Forward St (Sec 0+00)

E 1.9 77.0
13E 2.7 74.7
CV 3.5 74.9
13W 4.0 74.4



W 78.4 5.2 73.7
CV 73.4
W 50 73.4
13W 38 74.6
CV 3.7 74.7
13E 3.7 74.7
E 1.7 76.7
1+00
E 2.4 76.0
13E 3.7 74.7
CV 3.8 74.6
13W 3.9 74.5
W 5.2 73.7
1+50
W 4.9 73.5
13W 4.0 74.4
CV 3.8 74.6

		78.42		
13E		3.4	75.0	
E		2.3	76.1	
T.P	797	82.62	3.77	74.65
		2+00		
E		6.4	76.7	
13E		7.5	75.1	
CV		7.8	74.8	
13W		8.1	75.5	
W		8.6	74.0	
		2+50		
W		8.0	74.6	
13W		7.6	75.0	
CV		7.2	75.4	
13E		7.7	74.9	
E		6.3	76.3	
		3+00		
E		5.9	76.7	
13E		6.9	76.7	
CV		6.7	75.9	

PLOTTED

		82.62		
13W		7.3	75.7	
W		9.8	77.8	
		3+50		
W		10.0	77.6	
13W		6.8	75.8	
CV		6.4	76.7	
13E		6.2	76.4	
E		6.1	76.5	
		3+90	14" Concrete pipe now in here	
E		6.4	76.7	
13E		6.3	76.3	
CV		6.3	76.3	
13W		6.8	75.8	
W		11.8	70.8	
		4+00		
W		9.4	77.7	
13W		6.8	75.8	
CV		6.3	76.3	
13E		6.3	76.3	

8262

F	6.3	76.7
	4+50	
E	5.9	76.7
13E	6.1	76.5
CV	6.2	76.4
13W	6.5	76.1
W	7.9	74.7

PLOTTED

5700

W	7.2	75.4
13W	6.2	76.4
CV	5.8	76.8
13E	5.7	76.9
E	5.5	77.1

5450

E	5.0	77.6
13E	5.4	77.7
CV	5.3	77.7
13W	5.4	77.7
W	6.5	76.1

8262

	6+00	
W	5.8	76.8
13W	5.2	76.4
CV	4.7	77.9
13E	4.7	77.9
E	4.4	78.7
	6+50	

E	4.0	78.6
13E	4.3	78.7
CV	4.2	78.4
13W	4.7	77.7
W	5.5	77.1

Station → 6+82⁵ 5th Bird Pack. AK

W	6.83 ^W 7.06 ^E	4.5	78.1
13W		4.0	78.6
CV		3.7	78.9
13E		3.8	78.8
E		3.8	78.8

8262

CV

ST

E	32	79.6
13E	32	79.6
CV	32	79.6
13W	36	79.0
W	26	80.0

STP **PLOTTED** Bird Rock Ave

W	19	80.7
13W	30	79.6
CV	26	80.0
13E	27	79.9
E	22	80.6

0+30

E	1.1	81.5
13E	1.9	80.7
CV	1.9	80.7
13W	2.0	80.1
W	1.5	81.1

TP

A02 8392 272 7990

8392

1+00

W	3.9	80.0
13W	3.7	80.1
CV	3.2	80.7
13E	3.2	80.7
E	1.9	82.0

1+50

E	2.4	81.5
13E	3.7	80.7
CV	3.9	80.0
13W	4.4	79.5
W	5.6	78.7

2+00

W	6.2	77.7
13W	4.7	79.7
CV	4.2	79.7
13E	4.1	79.8
E	2.5	81.4

8392

2+00

E	3.3	80.6
13E	4.4	79.5
CV	4.7	79.7
13W	5.2	78.7
W	6.0	77.9

PLOTTED

3+00

W	5.9	78.0
13W	5.3	78.6
CV	5.0	78.9
13E	4.9	79.0
E	3.4	80.5

3+50

E	3.9	80.0
13E	3.0	78.9
CV	5.0	78.9
13W	5.5	78.4
W	6.2	77.7

8392

4+00

W	6.3	77.6
13W	6.0	77.9
CV	5.6	78.3
13E	5.3	78.6
E	4.4	79.5

4+50

E	4.7	79.2
13E	6.0	77.9
CV	6.0	77.9
13W	4.6	77.3
W	6.9	77.0

5+00

W	7.3	76.6
13W	6.8	77.1
CV	6.4	77.5
13E	6.2	77.7
E	5.0	78.9

26

8392
5750

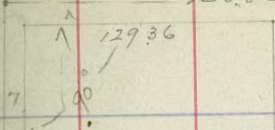
E	5.2	78.7
13E	6.5	77.4
cr	6.5	77.4
13W	7.2	76.7
W	6.9	77.0
PLUMED 6+00 = NW Bird Park City		
W	8.1	75.8
13W	7.4	76.5
cr	7.0	76.9
13E	6.8	77.1
E	5.2	78.7
BM check	1097	7295 7295

University Ave

138.86

(Note) See also Book 932
Page 64.

27



Base line 2.5' W of Cr. of Alley

6/27/12 sketch
George
Hall

Location of
Fences in Alley
between Croods
Villa track and
Herbert St.

Herbert St

400

6+00

90°

139.56

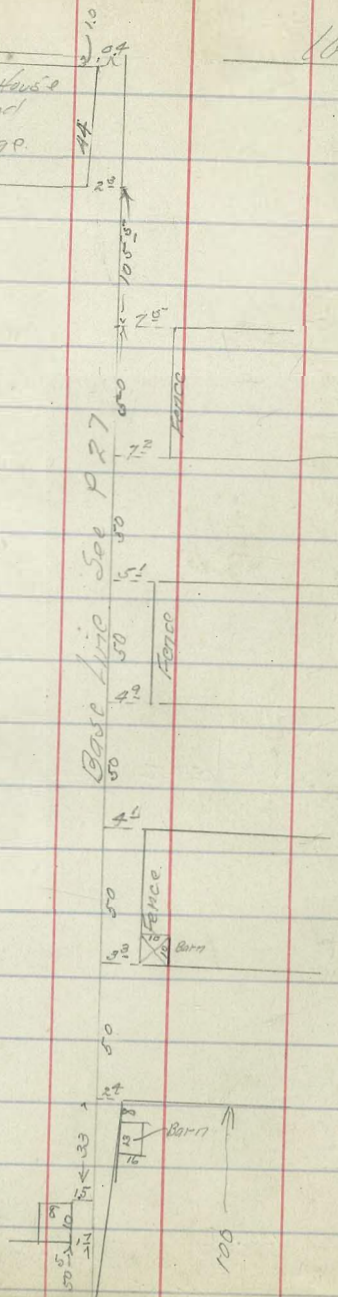
130.48

Robinson Ave
140.07

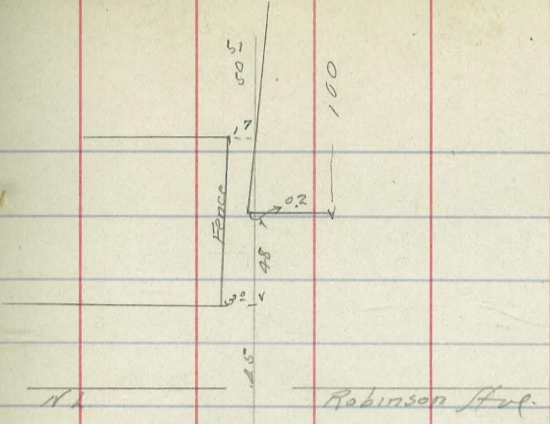
about
112.5 to Wk Centre

South Line

1st House and Garage



Univ Ave



Robinson St.

Base Line Site P 27

7/13 Hatch Elevation on Curbs at
 1/4 Moore Bond St and Grand Ave
 1/4 Hall

BM spike	4.70	15.62	10.92
in post E end of bridge			
Return	5.00	11.62	
Prof. line } West	5.02	10.60	
Return	5.04	10.58	
Prof. line } East	5.06	10.56	

7/13 Hatch X sec West End Street
 1/4 Moore from Hornblend Ave to
 1/4 Hall Grand Ave. { 60' street }
 Regular sections

29

Nail in Post on Grand-	2.66	24.72	22.06
		1/4 Hornblend	
W		9.9	14.8
cb		10.1	14.6
1/4		10.4	14.3
c		10.6	14.1
1/4		10.5	14.2
cb		10.8	13.9
E		10.7	14.0
	50'		
E		10.6	14.1
cb		10.4	14.3
1/4		10.2	14.5
c		10.1	14.6
1/4		9.9	14.8
cb		9.8	14.9
W		9.5	15.2

2472

100' N

W	9.1	15.6
cb	9.4	15.3
1/2c	9.5	15.2
c	10.0	14.7
1/2c	10.1	14.6
cb	10.2	14.5
E	10.3	14.4

150' N

E	11.5	14.2
cb	9.7	15.0
1/2c	9.4	15.3
c	9.1	15.6
1/2c	9.0	15.7
cb	8.9	15.8
W	8.5	16.2

2472

182' N

W	6.2	18.5
cb	7.4	17.3
1/2c	7.9	16.8
c	8.2	16.5
1/2c	8.6	16.1
cb	8.9	15.8
E	9.8	14.9

192.0' N = 31' Grand on W.

E	9.2	15.5
cb	8.2	16.5
1/2c	8.1	16.6
c	7.5	17.2
1/2c	7.5	17.2
cb	5.5	19.2
W	1.3	23.4

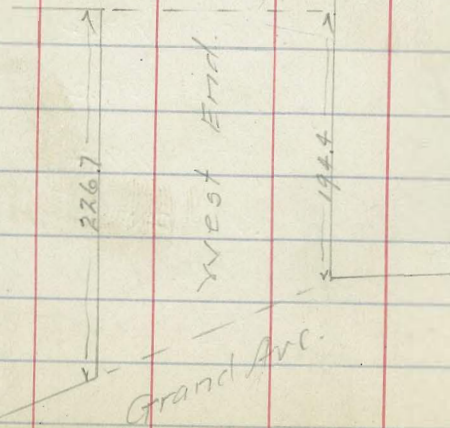
20

2472

Sh. Grand Ave. on Angle

W	1.9	23.4
cb	5.6	19.1
1/1	6.5	18.2
c	6.7	18.0
1/6	6.9	17.8
cb	6.7	18.0
F	7.0	17.7

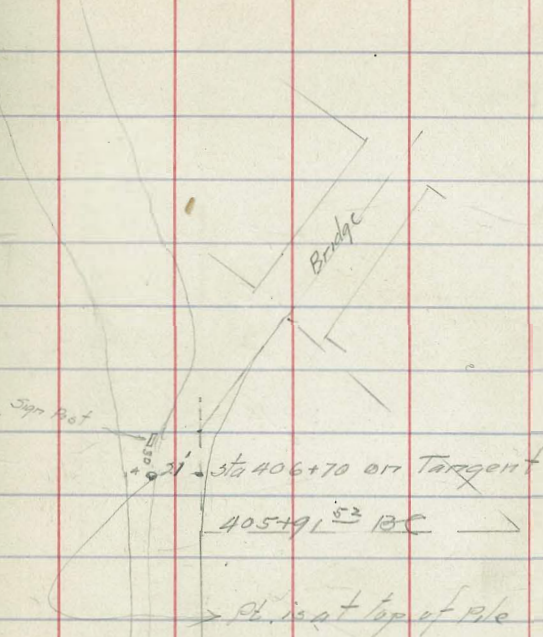
Horribland Ave.



7/3/14

Location of Southside Pt. of Grant to Cement Co.

31



77 1/2 Hatch Levels on Track on Grand Ave
 from Pennington to West End

	870	30.76	2206
NR			
Top Rail at West line Pennington on cuts		+0.1	30.9
SR		+0.2	31.0
57 E N		0.56	30.20
S		0.38	30.38
100 E N		1.14	29.62
S		1.0	29.8
150 E N		1.95	28.81
S		1.50	28.96
200 E N		2.77	27.99
S		2.61	28.15
250 E N		3.60	27.16
S		3.45	27.31
300 E N		4.42	26.34
S		4.30	26.46
350 E N		5.22	25.54
S		5.10	25.66
400 E N		6.02	24.74
S		5.92	24.84

	30.76		
416' E N = wh West End	6.28	24.48	
S	6.16	24.60	
100 E of N = Wedge of Xing	7.70	23.06	
S	7.60	23.06	

7/7 Hatch Xsec Bird Rock Ave from
 1/4 Moore Beulah to Dodge.
 Hall
 sections taken 11² to Oil Blvd.

33

TP See P. 25 520 85.10 7990

Ek Beulah

N	11.1	740
cb	11.1	740
1/4	11.0	740
c	10.7	744
1/4	11.3	738
d	11.2	739
S	11.2	739

PLOTTED

25' E

S	10.4	747
cb	10.3	748
1/4	10.3	748
a	9.7	75.6
1/4	10.0	751
cb	10.2	749
N	10.2	749

85.10

75' E

N	8.1	770
cb	8.8	763
1/4	8.6	765
c	8.5	766
1/4	8.9	762
b	8.9	767
S	9.1	760

125' E

S	7.8	773
cb	7.8	773
1/4	7.5	776
c	6.8	783
1/4	7.1	78.0
cb	7.0	78.1
N	7.1	78.0

8510

175' E

N	5.7	79.4
cb	5.9	79.5
1/2	5.9	79.4
c	6.2	78.9
1/2	6.5	78.6
cb	7.0	78.1
S	7.0	78.1

PLOTTED

225' E = W 1/2 Oil Blvd

S	6.9	78.7
cb	6.6	78.5
1/2	6.0	79.1
c	5.2	79.9
1/2	5.0	80.1
cb	4.9	80.2
N	4.9	81.1

8510

E 1/2 Oil Blvd.

N	4.7	80.4
cb	5.9	79.7
1/2	5.6	79.5
c	5.6	79.5
1/2	5.6	79.5
cb	6.0	79.1
S	6.3	78.8

25' E

S	5.6	79.5
cb	5.7	79.4
1/2	5.4	79.7
c	4.9	80.2
1/2	5.5	79.6
cb	5.3	79.8
N	4.8	80.2

8510

75' F

N	4.1	81.0
cb	4.1	81.0
1/c	4.2	80.9
c	4.0	81.1
1/2	4.4	80.7
cb	4.6	80.5
S	4.4	80.7

PLOTTED

125' F

S	3.2	81.9
cb	3.7	81.4
1/c	3.5	81.6
c	3.1	82.0
1/2	3.3	81.8
cb	3.3	81.8
N	3.2	81.9

8510

175' F

N	1.7	82.4
cb	1.7	82.4
1/c	1.6	82.5
c	1.4	83.7
1/2	1.7	82.4
cb	1.6	82.5
c	1.5	83.6

T.P.

12.50

9707,

083

84.27

228' F

= W.L.

Electric Ave.

S	11.5	85.6
cb	11.5	85.6
1/c	11.8	85.3
c	11.5	85.6
1/2	12.0	85.1
cb	12.3	84.8
N	12.1	85.0

9707

W Curb

N	11.8	853
cb	11.5	856
1/2	11.4	857
c	11.2	859
1/2	11.2	859
cb	11.0	861
S	11.1	860

PLOTTED

W 1/4

S	10.0	871
cb	9.7	874
1/2	9.7	874
c	9.9	877
1/2	9.8	873
d	10.4	867
N	10.9	867

CV

Top Rail	8.10	8897
N		
Top Rail	8.12	8895

9707

E 1/2

S	8.7	884
cb	8.6	885
1/2	8.2	889
c	8.2	889
1/2	9.1	88.0
cb	9.2	87.9
N	9.3	87.8

E cb.

N	9.1	88.0
cb	8.6	88.5
1/2	8.5	88.6
c	8.0	89.1
1/2	8.1	89.0
cb	8.2	88.9
S	8.5	88.6

9707

E.L. Electric Ave

S	8.1	89.0
cb	8.2	88.9
1/2	8.1	89.0
c	8.3	88.8
1/2	8.4	88.7
cb	8.6	88.5
N	8.6	88.5

PLOTTED

35° E

N	7.2	89.9
cb	7.2	89.9
1/2	7.1	90.0
c	6.4	90.7
1/2	6.7	90.4
cb	6.3	90.8
S	6.2	90.9

37

9707

85° E

S	4.2	92.9
cb	4.3	92.8
1/2	4.7	92.4
c	4.6	92.5
1/2	5.1	92.0
cb	5.1	92.0
N	5.2	91.9

135° E

N	3.0	94.1		
cb	2.7	94.4		
1/2	2.6	94.5		
c	2.3	94.8		
1/2	2.4	94.7		
cb	2.0	95.1		
S	1.7	95.4		
TP	8.28	104.38	0.97	96.10

7/14 Watch
11/19/99
Hall

Xsec Nautibus St. from Boulevard West

10438

185' E

S	6.2	98.7
cb	6.7	97.7
1/2	7.0	97.4
"	7.0	97.4
1/2	7.5	96.9
cb	7.3	97.1
N	7.7	96.7
	235' E = Wh Dodge	
N	4.0	100.0
cb	4.5	99.9
1/2	4.8	99.6
c	4.5	99.9
1/2	4.4	100.0
cb	4.0	100.0
S	3.3	101.1
curb stakes	3.10 3.15	

PLOTTED

R.M. Westbourne - Bld 470

5396

7926

West line of Boulevard

N	5.2	78.8
S	5.3	78.7
1/2	5.4	78.6
c	5.2	78.8
1/2	5.5	78.5
cb	5.8	78.7
S	5.8	78.7
	50 W	
S	7.4	76.6
cb	7.2	76.8
1/2	7.2	76.8
c	7.0	77.0
1/2	7.2	76.8
cb	7.1	76.9
N	6.8	77.7

8396
100' W

N	8.3	75.7
cb	8.5	75.5
1/2	8.6	75.4
c	8.4	75.6
1/2	8.5	75.5
cb	8.6	75.4
S	9.0	75.0

PLOTTED

150' W

S	10.4	73.6
cb	10.3	73.7
1/2	10.2	73.8
c	9.8	74.2
1/2	9.9	74.1
cb	10.0	74.0
N	10.1	73.9

8396
200' N

N	11.4	77.6
cb	11.5	77.5
1/2	11.6	77.4
c	11.2	77.8
1/2	11.4	77.1
cb	11.6	77.4
S	11.7	77.3

250' W

S	12.9	71.1
cb	12.8	71.2
1/2	12.9	71.1
c	12.6	71.4
1/2	12.6	71.4
cb	12.6	71.4
N	12.6	71.4
TP	-0.03	72.16
	11.77	72.19

72'6

300' W

N	19	703
cb	21	701
1/2	22	700
c	20	702
1/4	23	699
cb	22	700
S	24	698

PLOTTED

350' W

S	39	683
cb	38	684
1/2	38	684
c	34	688
1/4	34	688
cb	34	688
N	32	690

72'6

400' W

N	39	683
cb	38	684
1/2	42	680
c	41	681
1/4	45	677
cb	47	675
S	49	673

450' W

S	59	663
cb	58	664
1/2	57	665
c	55	667
1/4	56	666
cb	55	667
N	54	668

7216

500 W

N	6.5	657
cb	6.6	656
1/2	6.6	656
c	6.7	655
1/2	6.9	653
cb	6.8	654
S	6.9	653

PLOTTED

550 W

S	8.3	639
cb	8.1	641
1/2	7.8	644
c	7.1	651
1/2	7.6	646
cb	7.7	645
N	7.6	646

7216

600 W

N	8.9	633
cb	9.0	634
1/2	8.9	633
c	9.1	631
1/2	9.4	628
cb	9.4	628
c	9.5	627

650 W

S	10.3	619
cb	10.6	616
1/2	10.6	616
c	10.3	619
1/2	10.3	619
cb	10.2	620
N	10.0	621

50

7216

700 W

N		11.1	60.1
cb		11.3	60.9
1/4		11.5	60.7
c		11.7	60.5
1/4		12.0	60.7
cb	PLOTTED	12.0	60.7
s		12.1	60.1
TP	5.43	60.16	59.73
		750 W	
s		1.9	58.7
cb		1.9	58.7
1/4		1.9	58.3
c		1.8	58.4
1/4		1.6	58.6
cb		1.4	58.8
N		1.0	59.7

6016

800 W

N		2.2	58.0
cb		2.4	57.8
1/4		2.8	57.4
c		2.8	57.4
1/4		3.0	57.7
cb		3.3	57.0
s		3.0	57.7
		850 W	
s		3.8	56.4
cb		3.6	56.0
1/4		3.3	56.7
c		2.9	57.3
1/4		2.9	57.3
cb		2.7	57.5
N		2.1	58.1

6016

900 W

N	2.3	57.9
S	2.2	58.0
1/4	3.1	57.1
0	3.4	56.8
1/4	3.7	56.5
S	3.7	56.5
S	3.8	56.5

PLOTTED

950 W

S	4.2	56.0
S	4.1	56.1
1/4	3.8	56.4
0	3.7	56.5
1/4	3.8	56.4
S	3.2	57.0
N	3.0	57.2

6016

1000 W

N	4.5	55.7
S	4.6	55.6
1/4	4.8	55.4
0	4.8	55.4
1/4	5.1	55.1
S	5.4	54.8
S	5.3	54.9

1050 W

0	6.4	53.8
S	6.0	54.2
1/4	5.7	54.5
0	6.3	53.9
1/4	5.8	54.4
S	5.8	54.4
N	5.8	54.4

6016

1100 W

N	7.8	57.0
cb	8.2	57.0
1/4	8.6	51.6
c	8.7	51.5
1/2	8.7	51.5
cb	8.8	51.0
S	8.5	51.7

T.T

195

4845 12.66 47.50

1130 W

S	3.5	45.1
cb	3.2	45.3
1/2	3.2	45.3
c	3.4	45.1
1/4	3.4	45.1
cb	3.5	45.0
N	3.5	45.0

4845

1200 W

N	10.0	38.6
cb	10.2	38.3
1/4	10.5	38.0
c	10.5	38.0
1/2	10.4	38.1
cb	10.4	38.1
S	10.4	38.1

1245 W = End of block

S	14.0	34.5
cb	14.2	34.3
1/4	14.3	34.2
c	14.4	34.1
1/2	14.4	34.1
cb	14.6	33.9
N	14.7	33.8

7/1 Hatch Xsec. Arenas St. from -
 14 Moore Boulevard West
 Hall
 50' st. 10' obs

45

Apr. Sealace 2.77 74.61 71.825

W. L. Boulevard

N		5.9	68.7
cb		6.5	68.1
1/2		6.4	68.7
c		6.0	68.6
1/2	PLOTTED	5.8	68.8
cb		5.7	68.9
s		5.7	68.9
	25' W		
s		7.8	66.8
cb		7.8	66.8
1/2		7.9	66.7
c		8.2	66.4
1/2		8.2	66.4
cb		8.0	66.6
N		8.0	66.6

74.61

68' N

N		9.5	65.1	
cb		9.7	66.9	
1/2		11.8	67.8	
+3		9.8	66.8	
c		9.4	65.7	
1/2		9.6	65.0	
cb		9.5	65.1	
c		9.5	65.1	
	85' N			
s		10.7	63.9	
cb		10.8	63.8	
1/2		11.5	63.1	
c		11.3	63.3	
1/2		14.4	60.7	
cb		11.6	63.0	
N		12.1	67.8	
T.P.	060	62.17	13.06	61.57

A.

6217

110' W

N	1.5	607
cb	1.4	608
1/4	4.6	57.6
+3	5.2	570
c	2.2	600
+3	0.6	616
1/4	0.2	620
cb	0.0	622
S	10.4	626

PLOTTED

135' W

S	0.9	612
cb	1.2	610
1/4	1.6	606
c	1.9	603
1/4	2.6	596
+5	3.0	592
cb	7.0	552
N	7.0	552

16

6217

160' W

N	7.9	562
cb	7.1	551
1/4	4.1	581
c	3.0	592
1/4	2.4	598
S	2.0	602
c	2.0	602

180' W

S	3.0	592
cb	3.2	590
1/4	3.7	585
c	4.5	577
1/4	5.3	569
+3	6.0	562
cb	8.9	532
N	8.6	536

6217

210' W = E_L

58

N	99	573
+7	92	570
cb	68	564
1/2	56	566
c	49	573
1/4	47	575
cb	45	577
S	44	578

PLOTTED

210'

S	60	567
cb	62	560
1/2	64	568
c	67	565
1/4	72	560
cb	77	545
+5	58.3 100	579 572
N	10.5	517

6217

W_L

N	106	516
cb	107	515
+3	510.5 29.4	51.7 52.8
1/2	90	522
c	83	539
1/4	78	544
cb	76	546
S	73	549

35' W

S	99	573
cb	93	579
1/2	96	576
c	107	515
1/4	119	503
cb	110	517
N	10.5	517

6217

60° W

N	10.8	51.0
cb	11.5	50.7
1/4	13.4	48.8
c	5136 11.8	48.6 50.2
1/4	11.5	50.7
cb	11.1	51.1
S	11.5	50.7

PLOTTED

85° W

S	12.9	49.3
cb	12.9	49.3
1/4	12.7	49.4
c	12.6	49.6
1/4	13.4	48.8
cb	12.3	49.9
N	11.1	51.1

TP 192 53.85 1024 51.93

5385

110° W

N	2.6	51.3
cb	3.0	50.9
1/4	3.9	50.0
c	5.4	48.5
1/4	6.5	49.4
cb	6.9	49.0
S	7.3	46.6

135° W

S	7.9	46.0
cb	6.7	47.7
1/4	5.2	48.7
c	4.3	49.6
1/4	3.4	50.5
cb	3.2	50.7
N	2.9	51.0

3385

160' W

N	49	49.0
cb	5.2	48.7
1/4	5.6	48.3
c	6.1	47.8
1/4	6.6	47.3
cb	7.2	46.7
S	8.6	45.3

PLOTTED

185' W

S	11.5	42.5
cb	10.4	43.5
1/4	9.3	44.6
c	8.4	45.5
1/4	7.6	46.3
cb	7.3	46.6
N	7.4	46.5

5385

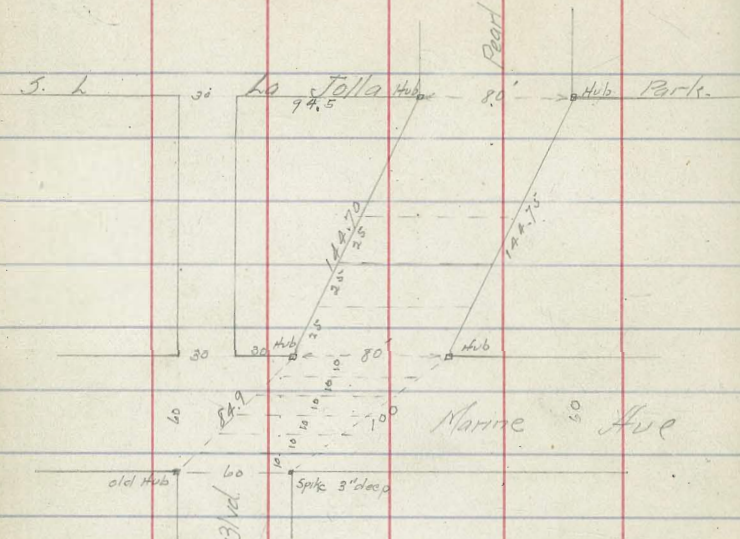
210' W = FL

SE

N	8.8	45.1
cb	9.2	44.7
1/4	9.2	44.7
c	10.2	43.7
1/4	11.6	42.3
cb	12.5	41.4
S	14.6	39.3

11/12
Hatch
Moore
Hall

Xsec of La Jolla Boulevard from
Marine Ave to South Line La Jolla Park



1371 Mon Sea level - 75.62 71.845

Sh. Marine Ave

E	5.8	69.8
b	5.5	70.1
1/2	5.6	70.0
c	6.2	69.4
1/2	7.0	68.6
cb	7.0	68.6
W	7.3	68.3
5cb.		
W	7.1	68.5
cb	6.9	68.7

		75.62			
H		6.3		69.3	
c		5.8		69.8	
1/2		5.4		70.2	
b		5.6		70.0	
E		4.8		70.8	
			5 1/2		
E		4.9		71.2	
cb		5.3		70.3	
1/2	10.	5.4		70.2	
c		5.4		70.2	
1/2		6.0		69.6	
b		6.2		69.4	
W		6.7		68.9	
			cr		
E		4.2		71.4	
cb		5.0		70.6	
1/2		5.1		70.5	
c		5.2		70.4	
1/2		5.7		69.9	

	7562		
cb		5.8	69.8
w		6.2	69.4
	N 1/4		
w		6.1	69.5
cb		5.6	70.0
1/4		5.2	70.4
c		5.0	70.6
1/4	P	4.8	70.8
d		4.2	71.4
E		3.9	71.7
	Ncb		
E		3.2	72.4
cb		3.8	71.8
1/4		4.6	70.0
c		4.7	70.9
1/4		5.1	70.5
cb		5.5	70.1
w		5.8	69.8

	7562		
			14. Marine Ave
w		4.9	70.7
d		4.8	70.8
1/4		4.8	70.8
c		4.5	71.1
1/4		4.2	71.4
d	P	3.6	72.0
E		2.7	72.9
	25' N		
E		2.7	73.4
cb		2.3	73.3
1/4		4.2	71.4
c		4.2	71.4
1/4		4.6	71.0
cb		4.7	70.9
w		4.8	70.8

7562

50' N

W		49	707
cb		49	707
1/2		47	709
c		41	715
1/2		39	717
cb		31	725
E	P	22	734

75' N

E		21	735
cb		29	727
1/2		34	722
c		39	717
1/2		45	711
cb		49	707
W		49	707

7562

100' N

W		52	704
cb		50	706
1/2		45	711
c		37	719
1/2		40	716
cb	P	25	731
E		22	734

135' N

E		21	735
cb		28	728
1/2		38	718
c		39	717
1/2		47	709
cb		50	706
W		51	705

7562

St. La Jolla Park

W		5.0	70.6
cb		4.8	70.8
1/4	P	4.2	71.4
c		3.8	71.8
1/4		3.7	71.9
cb		2.2	73.4
E		2.0	73.6

7/10/14 Hitch Moor Hall 1/2 sec Fern Glen from La Jolla Boulevard to East line F.T. Scripps Admt

58

311 Westbourne²⁴² Blvd. 81.65 79.26

Fl. Boulevard

o		11.5	70.2
cb		11.2	70.5
1/4		9.2	72.5
c		8.6	73.1
1/4		8.2	73.5
cb		8.1	73.6
N		8.0	73.7
	195 E		
N		7.1	74.6
cb		7.2	74.5
1/4		7.6	74.1
c		7.8	73.9
1/4		8.2	73.5
cb		9.6	72.1
S		11.6	70.1

8168

44⁵E

s	8.6	73.1 ✓
cb	7.0	74.7 ✓
1/2	6.1	75.6 ✓
c	6.0	75.7 ✓
1/2	6.0	75.7 ✓
d	6.3	75.4 ✓
N	8.0	73.7 ✓

69⁵E

		73.6
N	8.1	73.8 ✓
cb	8.0	73.7 ✓
1/2	5.8	75.9 ✓
c	5.2	76.5 ✓
1/2	5.3	76.4 ✓
d	5.8	75.9 ✓
s	6.7	75.0 ✓

8168

94⁵E

s		5.2	76.1 ✓	
cb		5.0	76.7 ✓	
1/2		5.0	76.7 ✓	
c		6.3	75.4 ✓	
1/2		6.2	75.5 ✓	
T.P.	2.59	88.55	3.02	78.66
cb		13.5		75.1 ✓
N		14.0		74.6 ✓

119⁵E

N		10.6	78.0 ✓
cb		11.4	77.2 ✓
1/2		11.9	76.7 ✓
c		12.2	76.4 ✓
1/2		11.3	77.3 ✓
cb		10.8	77.8 ✓
s		10.6	78.0 ✓

54

1855

169⁵ E

N	8.1	80.5
cb	8.6	80.0
1/2	9.3	79.3
0	10.2	78.4
1/2	10.6	78.0
cb	10.8	77.8
S	10.8	77.8

219⁵ Sec A

S	9.0	79.6
cb	8.2	80.4
1/2	8.0	80.6
c	7.5	81.1
1/2	6.8	81.8
cb	6.0	82.6
N	5.8	82.8

La. Tolla Blvd.

Fern Glen -

219⁵

Sec A

Sec B

Right of Way

Sec C

Sec D

1285

1285

1855

Sec B

N	5.4	83.2
cb	5.5	83.1
1/2	6.0	82.6
c	6.4	82.2
1/2	7.3	81.3
cb	8.1	80.5
S	9.0	79.6

Top of Rail

S	1.50	87.05
N	1.22	87.33

Sec C

N	2.7	85.9
cb	3.7	84.9
1/2	4.6	84.0
c	5.6	83.0
1/2	5.7	82.9
cb	6.0	82.6
S	6.1	82.5

8855

Sec D

S	5.8	82.8
cb	5.5	83.1
1/2	4.7	83.9
c	4.6	84.0
1/2	4.6	84.0
cb	3.7	84.9
N	2.7	85.9

50' E of Sec D

TP	1106	9861	100	87.55
N			10.1	88.5
cb			10.3	88.3
1/2			10.9	87.7
c			11.4	87.2
1/2			12.0	86.6
cb			13.1	85.5
S			13.7	84.9

9861

100' E

S	11.4	87.2
cb	10.4	88.2
1/2	9.9	88.7
c	8.9	89.7
1/2	8.4	90.2
cb	7.9	90.7
N	7.7	90.9

150' E

N	5.4	93.2
cb	5.1	92.9
1/2	6.5	92.1
c	7.0	91.6
1/2	7.6	91.0
cb	8.6	90.0
S	9.3	89.3

9861

200' E

s	8.4	90.2
cb	7.4	91.2
1/2	6.4	92.2
c	5.5	93.1
1/2	4.8	93.8
cb	4.2	94.4
N	3.5	95.1

200' E

N	3.9	94.7
cb	4.7	93.9
1/2	5.8	92.8
c	6.7	91.9
1/2	7.2	91.4
cb	7.4	91.2
s	7.1	91.5

9861

300' E

s	5.3	93.3
cb	5.5	93.1
1/2	6.0	92.6
c	5.7	92.9
1/2	6.1	92.5
cb	4.9	93.7
N	4.4	94.2

350' E

N	2.7	95.9
cb	3.8	94.8
1/2	4.0	94.6
c	4.1	94.5
1/2	4.2	94.4
cb	3.9	94.7
s	3.7	94.9

9861

400 F

S	1.8	96.8✓
cb	1.8	96.8✓
1/6	2.2	96.4✓
c	2.3	96.3✓
1/6	2.1	96.5✓
cb	2.0	96.6✓
N	1.9	96.7✓

439⁺ E = Wk Orange. ^{Drapery} 60" wide
10' obs
10' 1/2

N	0.2	98.4✓
cb	0.4	98.2✓
1/6	0.5	98.1✓
c	0.7	97.9✓
1/6	0.6	98.0✓
cb	0.8	97.8✓
S	0.5	98.1✓

TP	1306	11123	044	98.17✓
----	------	-------	-----	--------

11123

W cb

N	125	98.7✓
cb	128	98.4✓
1/6	129	98.3✓
c	128	98.4✓
1/6	126	98.6✓
cb	127	98.5✓
S	126	98.6✓

W 1/6

S	118	99.4✓
cb	126	98.6✓
1/6	126	98.6✓
c	126	98.6✓
1/6	126	98.6✓
cb	121	99.1✓
N	113	99.9✓

11123

CN

N	9.6	101.6✓
cb	10.9	100.3✓
1/c	11.9	99.3✓
c	12.0	99.2✓
1/c	11.8	99.4✓
cb	11.7	99.5✓
s	10.5	100.7✓

E 1/4

s	9.8	101.4✓
cb	10.4	100.8✓
1/c	11.1	100.1✓
c	11.1	100.1✓
1/c	10.9	100.3✓
cb	9.6	101.6✓
N	8.5	102.7✓

11123

Ecb

N	7.5	103.4✓
cb	9.0	102.2✓
1/c	10.3	100.9✓
c	10.2	101.0✓
1/c	10.0	101.2✓
cb	9.6	101.6✓
s	8.8	102.4✓

E h. Orange Draper

s	6.6	104.6✓
cb	8.8	102.4✓
1/c	9.6	101.6✓
c	9.8	101.4✓
1/c	9.6	101.6✓
cb	8.3	102.9✓
N	7.5	103.7✓

11/23
Drapet
50' E of Orange.

N	4.3	106.9	✓
cb	4.4	106.8	✓
1/2	5.1	106.1	✓
c	4.9	106.3	✓
1/2	4.4	106.8	✓
d	3.5	107.7	✓
s	2.4	108.8	✓

	12.26	123.14	100' E	
7.0		0.35	110.88	
S		11.3	111.8	✓
cb		12.5	110.6	✓
1/2		13.3	109.8	✓
c		14.0	109.1	✓
1/2		13.5	109.6	✓
cb		13.3	109.8	✓
N		13.5	109.6	✓

123.14
150' E

N	10.3	112.8	✓
cb	10.8	112.3	✓
1/2	10.8	112.3	✓
c	10.4	112.7	✓
1/2	10.0	113.1	✓
cb	8.9	114.2	✓
s	7.9	115.2	✓

		500' E	
S	4.8	118.3	✓
cb	5.6	117.5	✓
1/2	6.0	117.1	✓
c	6.3	116.8	✓
1/2	6.5	116.6	✓
cb	6.7	116.4	✓
N	6.7	116.4	✓

12314

250' E

N	2.8	120.3 ✓
cb	2.2	120.9 ✓
1/2	2.0	121.1 ✓
c	2.0	121.1 ✓
1/2	1.9	121.2 ✓
d	1.7	121.4 ✓
s	1.8	121.3 ✓
TP Nail in these pole	0.40	122.74 ✓

61

62

7/31/11
 Gregory
 Shoemaker
 Moore.

CROSS-SECTION OF
 PENNSYLVANIA AVE. (20' wide)
 from the East Line of Richmond St
 to the East Line of Hilbert St.

29734

63

100' E

B.M.	532	297.34	292.08	Tie hub 75' E. of 13. hub Penna. + Vt.	S	7.7	289.6
					cb	7.2	290.1
					1/4	6.7	290.9
					c	6.3	291.0
					1/4	6.0	291.3
					cb	5.1	292.2
					N	5.1	292.2
					T.P.	4.31	295.84

50' E

150' E

					N	4.2	291.6
					cb	4.5	291.3
					1/4	4.9	290.9
					c	5.3	290.5
					1/4	5.7	290.1
					cb	6.0	289.8
					S	6.1	289.7
					S	5.8	291.5

29584

200' E

S	51	290.7
cb	49	290.9
1/4	49	290.9
C	47	291.1
1/4	48	291.0
cb	48	291.0
N	47	291.1

225' E

N	54	290.4
cb	56	290.2
1/4	56	290.2
C	55	290.3
1/4	54	290.4
cb	54	290.4
S	53	290.5

250' E = W. L. ALBERT ST (20' WIDE)

S	74	288.4
cb	82	287.6
1/4	87	287.1
C	94	286.4

29584

PENNSYLVANIA AVE

64

1/4	97	286.1
cb	118	284.0
N	120	283.8
T.P.	0.23	283.23
	1284	283.00

WEST CURB

N	6.0	277.2
cb	3.9	279.3
1/4	2.1	280.8
C	1.7	281.5
1/4	7.5	281.7
cb	+0.3	283.5
S	+2.3	285.5

WEST QUARTER

S	3.5	279.7
cb	5.5	277.7
1/4	6.7	276.5
C	6.5	276.7
1/4	7.2	276.0
cb	9.4	273.8
N	11.4	271.8

273.23

CENTER

N	16.8	2664
cb	13.3	2699
1/4	11.2	2710
C	10.0	2732
1/4	9.8	2734
cb	9.1	274.1
S	7.7	275.5

T.P. 0.85 271.27 1231 270.42

E. QUARTER

S	1.9	2694
cb	3.0	268.3
1/4	3.7	267.6
C	4.8	266.5
1/4	6.3	265.0
cb	7.8	263.5
N	10.7	260.6

271.27

65

E. CORNER

N	16.2	255.1
cb	13.3	258.0
1/4	9.1	262.2
C	9.2	262.1
1/4	8.6	262.7
cb	6.5	264.8
S	5.8	265.5

E. LINE ALBERT ST

S	11.5	259.8	CHK.
cb	14.6	256.7	
1/4	16.1	255.2	
C	16.8	254.5	
1/4	16.5	254.8	
cb	19.8	251.5	
N	21.9	249.4	

65

66

9/2/11
 Gregory Shoemaker Moore
 CROSS-SECTION OF (60' ST. 14' WALKS)
 27TH ST. BET A POINT
 200' SO. OF F ST AND THE
 N.L. OF G ST. ALSO X-SECTION
 OF INTERSECTION OF 27TH
 ST WITH G ST
 (WEST HALF OF ST. IS GRADED)

ON B.M. 215

MON. NEXT 4G

200' So. of F St.

E	5.1
cb	5.7
1/4	6.4
C	6.6
1/4	7.3
cb	7.7
W	6.7
	6.4
205' So. of F	
W	6.7
cb	6.9
	7.9
1/4	7.4
C	6.9
1/4	3.7
cb	2.3
E	0.5

250' So. of F St.

E	1.8
cb	4.8
1/4	6.3
C	9.0
1/4	9.3
cb	10.0
	9.0
W	8.7

300' So. of F St = N.L. G ST (80' WIDE)

W	11.7
+4	10.5
cb	10.6
1/4	10.9
C	10.4
1/4	7.3
cb	5.9
E	3.3
No. CURB	
E	3.6
cb	5.3

1/4	7.1
C	10.2
1/4	10.6
cb	11.5
W	11.0
+ 8	17.2
No. QUARTER	
- 15	16.7
W	11.7
cb	11.6
1/2	10.5
C	10.1
1/2	7.8
cb	5.7
E	3.8
CENTER	
E	4.4
cb	7.0
1/4	8.4
C	10.4
1/4	10.6

cb	12.0
W	15.5
+ 15	20.6
So. QUARTER	
- 15	22.2
W	16.2
cb	13.2
1/4	10.8
C	11.0
1/2	10.7
cb	7.9
E	5.6
So. CURB	
E	7.5
cb	9.6
1/4	11.6
C	11.5
1/4	11.4
cb	12.8
W	15.7

+15 23.8

So. LINE 6 ST.

-15 26.3

W 18.2

+8 12.8

cb 12.9

1/4 12.7

c 12.4

1/4 11.9

cb 11.9

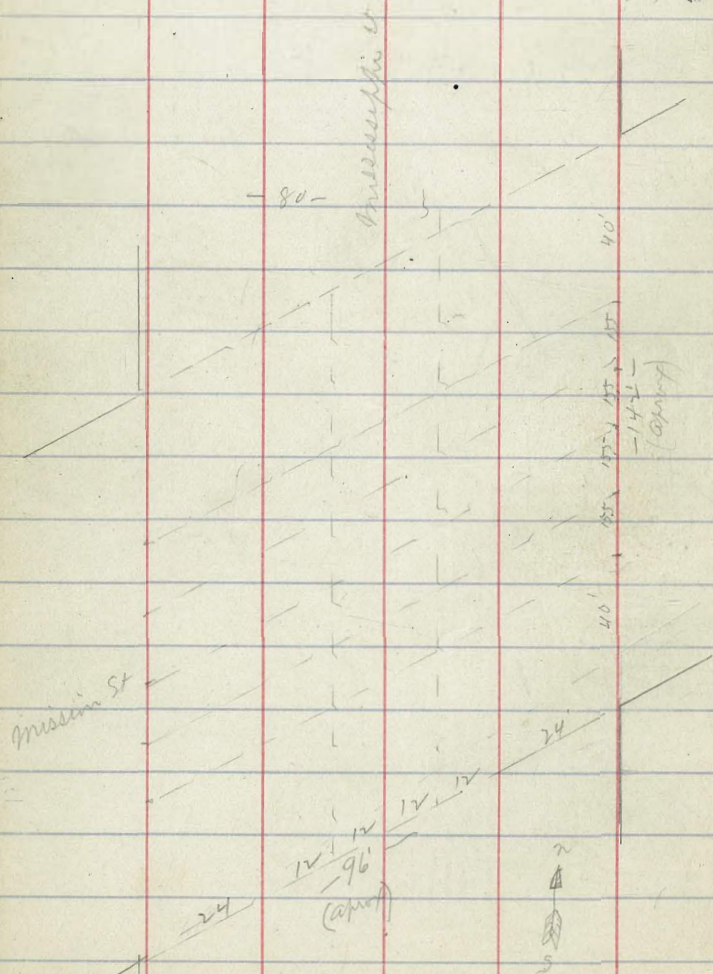
E 9.9

30
140

X Sec of the Intersection of
Mississippi St (80) + Mission Dr (20)

286 34292 34006

34006
286
34292



34292

70

(96' approx) N. Side of Mission

E 2	48	338.1	✓
	52	337.7	✓
	53	337.6	✓
	57	337.2	✓
	58	337.1	✓
	62	336.7	✓
W 2	67	336.2	✓

(40) N. bank of Mission

W 2	61	336.8	✓
	62	336.7	✓
	58	337.1	✓
	58	337.1	✓
	56	337.3	✓
	57	337.2	✓
E	52	337.7	✓

34292

N 1/4 of Mission

E	53	337.6	✓
	54	337.5	✓
	54	337.5	✓
S	57	337.2	✓
	59	337.0	✓
	60	336.9	✓
W	62	336.7	✓
	Center of Mission		
W	59	337.0	✓
	56	337.3	✓
	54	337.5	✓
S	53	337.6	✓
	52	337.7	✓
	50	337.9	✓
E	48	338.1	✓

34292

71

S 1/4 of Mission

E	53	337.6	✓
	55	337.4	✓
	57	337.2	✓
S	57	337.2	✓
	57	337.2	✓
	57	337.2	✓
W	62	336.7	✓
	S 1/4 of Mission		
W	58	337.1	✓
	54	337.5	✓
	52	337.7	✓
S	58	337.1	✓
	55	337.4	✓
	54	337.5	✓
E	54	337.5	✓

S. Linn of Missou

E	56	337.3	✓
	57	337.2	✓
	57	337.2	✓
b	50	337.9	✓
	49	338.0	✓
	50	337.9	✓
W	55	337.4	✓

1/2 Hlaugh
 9 Taylor
 14 Zely

Elevations for Grand Island on
 Rubeorans st

5-699

73

200 n = S L of Elliott st 70

755	4985	4200	7' min contig
1018	5699	304	4681
N of Dumas st			
95 w of bank = 700 line	88	49.19	4200 755 4985 304 4681 1018 5699 5187 740 5927
25.5 w "	85	48.49	
38.5 w "	72	49.79	
50 n of Dumas			
38.5 w "	50	51.99	
25.5 w "	63	51.69	
9.5 w "	80	48.99	
100 n of Dumas			
9.5 w "	71	49.89	
25.5 w "	42	52.79	
38.5 w "	40	52.99	
150 n of Dumas			
38.5 w "	34	53.59	
25.5 w "	37	53.99	
9.5 w "	63	50.69	

75 w = grand cross	60	50.99
25.5 w "	47	52.09
38.5 w "	33	53.69
700	740	5927
S L of Elliott st		
8.5 w of bank	81	51.17
25.5 w "	67	52.57
38.5 w "	56	53.67
50 n of Elliott		
38.5 w "	46	54.67
25.5 w "	50	54.27
9.5 w "	81	51.17
100 n of Elliott		
9.5 w "	82	51.07
25.5 w "	52	54.07
38.5 w "	45	54.77

5927

150 n of Elliott

385 W of curb	47	54.57
255 W "	54	53.87
95 W "	84	50.87

200 n = S L of Freeman St (70)

95 W "	21	50.17	5927
255 W "	27	51.57	851
385 W "	64	52.87	5076

TP 580 5656 857 5076

N line of Freeman St 100

385 W "	45	52.06
255 W "	60	50.56
95 W "	74	49.16

50 n of Freeman

95 W "	76	48.96
255 W "	43	52.76
385 W "	40	52.56

5656

100 n of Freeman

385 W of curb	47	52.36
255 "	46	51.96
95 "	80	48.56

150 n of Freeman

95 W "	84	48.16
255 W "	48	51.76
385 W "	43	52.76

200 n = S L of Goldfrench St

385 W 70 49.56

255 W 84 48.76

95 W = curb cl 92 47.36

best Possession 102 46.36

N L Goldfrench

best Possession 102 46.36

95 curb line 92 47.36

TP 481 5557 580 5076

142 5022 697 4860

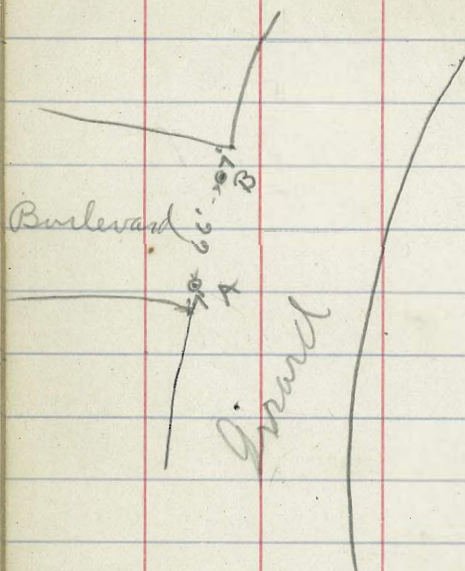
Chick 800 4700

74

Location of Fir trees at coast Boulevard & Girard

Dec. 23/14

Childs
Atter
75
Bedford



Sta A	dia. of tree	angle	dist.
1	6"	58°19'L	29'
2	2"	65°18'L	27'
3	7"	73°19'L	26'
4	7"	82°48'L	25'
5	8"	86°35'L	29'
6	12"	82°40'L	34'
7	4"	77°29'L	40'
8	10"	74°42'L	42'
9	16"	66°44'L	76'
10	12"	63°38'L	105'
11	16"	62°48'L	124'

3 / Aug 1 X sec 8 Long Branch (50)
 11 / 7 Aug E of Gungot 240.8 East
 15 / 7 Aug (10 weeks)

1255 8880 7625 min n n
 1305 10105 080 8800 min x Gungot

W of Gungot
 7625
 1255
 8880
 1305
 10105
 85
 100 20
 12 12
 115 20

E of Gungot
 48 96.2
 53 95.5

66 94.4
 64 94.6

70 94.0
 67 94.3

74 93.6

10105 Long Branch
 78

25' E of Gungot
 49 96.1

44 96.6
 48 96.7

6 44 96.6
 39 97.1

34 97.6
 48 96.2
 50 E of Gungot

5 26 98.4
 5 02 100.8

04 100.6
 14 99.6

6 17 99.3
 23 98.7

20 99.0
 25 98.5

n
 TP 1213 1120 085 10020

11233

75 E of Gurot

n 11.1 101.2

10.8 101.5

10.7 101.6

b 10.0 102.3

10.2 102.1

9.4 102.9

S 8.8 103.5

100 E of Gurot

S 6.0 106.3

6.2 106.1

7.4 104.9

b 7.3 105.0

7.7 104.6

7.6 104.7

n 8.4 103.9

11233

Long Ben et

79

125 E of Gurot

n 4.6 107.7

4.0 108.3

4.2 108.1

b 4.0 108.3

4.0 108.9

3.8 108.5

S 2.2 110.1

TP 12.43 124.09 057 111.5

150 E of Gurot

S 10.4 113.8

10.8 113.4

12.0 112.2

b 12.0 112.2

12.4 111.8

12.0 112.2

n 12.4 111.8

11233

57

111.74

124.09

124.09

(112.4.2.4)

12419
12421

175^c E of Gungit

n	88	115.4
	80	116.7
	88	115.4
b	83	115.9
	82	116.0
	75	116.7
S	71	117.1

200 E of Gungit

S	37	119.3
	43	119.9
	49	119.3
b	50	119.2
	55	118.7
	51	119.1
n	56	118.6

12419

12421 H
12521 H

Long Branch

80

225 E of Gungit

n	23	121.9
	21	122.1
	22	122.0
	15	122.7
	14	122.8
	14	122.8
S	07	123.5

TP 214 12583 050 12352

2408 E = End of st

S	08	125.0
	08	125.0
	12	124.6
	14	124.4
	17	124.1
	20	123.8
n	21	123.7

250 11563 1270 1370

Chalk 820 10740

Br Bunk
Bunk

12419
80
12209
210
12570
2270
113.03
115.52

$$\begin{array}{r} 2405 \\ 897 \overline{) 928} \\ \underline{897} \\ 31 \end{array}$$
 50
 50
 918
 C
 915
 Survey

$$\begin{array}{r} 108 \\ 109 \\ 10 \\ \hline 612.8 \end{array}$$

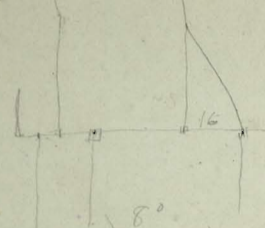
1295

$$\begin{array}{r} 71.50 \\ 38.25 \\ \hline 74.00 \end{array}$$

$$\begin{array}{r} 70 \\ 266.92 \\ \hline 3.08 \end{array}$$

675

$$\begin{array}{r} 600 \\ 600 \\ \hline 1200 \\ 60 \end{array}$$



Block 109
 alley 15

$$\begin{array}{r} 895.8507 \\ 150 \\ \hline 60.00 \end{array}$$

63.75

$$\begin{array}{r} 121.5 \\ 127.5 \\ \hline 159.00 \end{array}$$

$$\begin{array}{r} 684.20 \\ 370.40 \\ \hline 313.80 \end{array}$$

