

941  
F.B. 941

---

LEVEL BOOK.

No. 410

---

1461<sup>2</sup>  
5411<sup>2</sup>

7.6

59.6  
359.6  
7.6  
352.0 Alley East

272.2  
131.0  
291.2 Alley East

38.2  
291.2  
2950.4 Alley west

307.7 Alley west  
307

319.4  
7.0

326.4  
25.0  
302.4

MICROFILMED

DEC 16 1964

65.0  
66

City Engineers Office  
San Diego

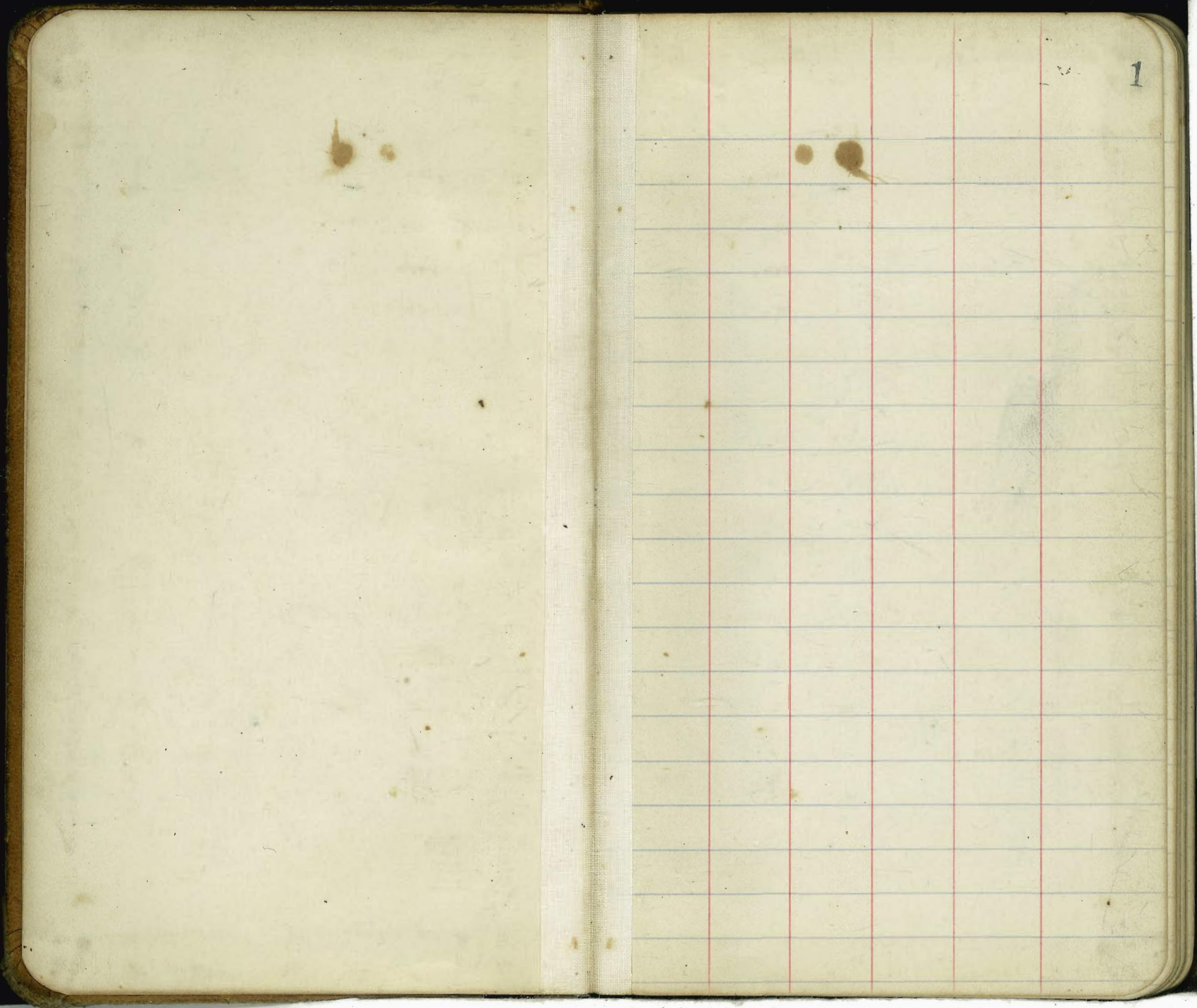
~~21.3~~ 106.3 #  
99.3  
~~120.6~~  
171.6

32.2  
43.4  
278.7

117  
8  
35  
160 To Alley

~~A.H. Kron st.~~

F.T. Kron st 4.5' deep.



Line "A" see sketch page 10 813

Preliminary Levels & Survey for Sewer beginning  
at of Rosecrans & McCauley thence N on McCauley  
for 755.9' thence random line to intersection Pt. Loma  
Ave. & West Pt. Loma Blvd. See Blue print for Pt. Loma  
Sewer system.

B.M.			10.53
B.M.	7+02	17.55	
0+02	♀ Rosecrans & McCauley	10.2	9.3
0+30	= 0+00 New stationing		
+50	8+18	0+20	9.6 10.0
1+0	0+70		8.7 10.9
450	1+20		7.7 11.9
2+0	1+70		6.3 13.3
150	2+20		5.1 14.5
3	2+70		4.0 15.6
+50	3+20		3.0 16.6
4	3+70		1.5 18.1
T.P.	1130	30.50	0.35 19.20
+50	4+20		10.7 17.8
5	4+70		9.3 21.2
+50	5+20		7.7 22.8
6	5+70		6.2 24.3
250	6+20		4.8 25.7
7	6+70		3.3 27.2
	7+25		
+55	6° 10' R	♀ Evergreen	1.8 28.7
8			0.5 30.0
	8+60	Δ R 21° 48' - 28"	
T.P.	9.98	40.19	0.31 30.19

line change

7+52 = 17 line McCauley

New B.  
10+65  $\frac{13}{\Delta} =$  Sta 17 Bobs line see Book 1116 pg 17  
 $\Delta = 182.15 - 32.17$

10+70	5.10	40.17	
+50			9.0 31.2
9			7.9 32.3
9+137	32° 02' R		7.5 32.7
+45			6.4 33.8
+50			5.2 32.0
+75			13.2 27.0
10+0			9.1 31.1
+50			8.2 32.0
11			9.2 31.0
100			7.8 32.4
12			5.8 34.4
+50			4.6 35.6
13			3.1 37.1
+50			2.2 38.0
14			2.9 37.3
T.P.	11.87	50.99	10.5 39.52
+50			13.9 37.1
15			12.7 38.3
+50			11.6 39.4
16			11.2 39.8

line change  
see 1116 page 17

2

5099

16+50		10.4	40.6	
16+98 <sup>27</sup> st. Line w.L. Plum		9.6	41.4	
17		9.6	41.4	
+50		9.2	41.8	
18		7.8	43.2	
+50		7.1	43.9	
19		6.2	44.8	
19+52 <sup>24</sup> PL		5.6	45.4	
20		5.2	45.8	
+50		2.5	48.5	
T.P.	864	59.60	1.03	49.76
21		11.4	48.2	
+50		10.9	48.7	
22		8.9	50.7	
22+14 <sup>9</sup>	10° 33' L	8.6	51.0	
+50		9.3	50.3	
+65		10.4	49.2	
+95		10.2	49.4	
23		7.0	50.6	
+40		9.0	50.6	
+50		7.7	51.9	
24		4.4	55.2	
+50		2.9	56.7	

1106 Change  
See 1116 Pg 17



59.60

89

25+0		4.4	55.2	
+25		5.8	53.8	
+50		3.7	55.9	
T.P.	12.05	71.47	0.13	59.42
26		13.1	58.4	
+50		10.4	61.1	
27		9.7	61.8	
+50		5.3	63.2	
+55		10.2	61.3	
+75		4.1	67.4	
28		4.1	67.4	
+40		3.2	68.3	
+50		1.5	70.0	
T.P.	8.00	79.34	0.13	71.24
29		7.4	71.9	
+50		7.5	71.8	
30		8.6	70.7	
+50		8.6	70.7	
30+65 <sup>24</sup> PL		8.6	70.7	
31		8.1	71.2	
+50		7.6	71.7	
31+75 = 31+54 <sup>12</sup> New L. Δ 4° 12' 57" RT.		8.2	71.1	
(31+75 10° 10' R)		7.5	71.8	
32		31+79 <sup>12</sup>	6.8	72.5
+50		32+29 <sup>12</sup>	7.2	72.1
+75		32+54 <sup>12</sup>	5.4	73.9
33		32+79 <sup>12</sup>		

1106 Change  
See 1116 Pg 17

1106 Change  
Computed from Map.

Profile sheet

1106 Change See Book 1116 Page 56

		79.34		
33+50	33+29 <sup>12</sup>		4.4	74.9
34	33+79 <sup>12</sup>		3.0	76.3
+50	34+29 <sup>12</sup>		2.4	76.9
	34+61 <sup>12</sup>	↳ Chatsworth P.O.T		
+82 <sup>6</sup>	↳ Chatsworth	34+86 <sup>76</sup> Δ 27° 27' 58" Lt	2.1	77.2
		For change from 34+82 <sup>6</sup> to 43+49 <sup>3</sup> See 775-20		
35			2.0	77.3
T.P.	10.28	88.94	0.48	78.86
+50			9.5	79.4
36			8.6	80.3
+50			5.6	80.3
37			7.7	81.2
+50			7.3	81.6
38			6.5	82.4
+50			5.6	83.3
39			5.1	83.8
+50			4.7	84.2
40			4.0	84.9
+50			3.5	85.4
41			3.0	85.9
+50			1.8	87.1
41+94	↳ Tennyson St		2.3	86.6
42			2.3	86.6

Profile sheet 1

Line Change  
See Book III  
Page 56

88.94

42+50			2.6	86.3
43			2.8	86.1
43+49 <sup>3</sup>	↳ Warrington cto "A"			See page 11-13
+50			3.0	85.9
T.P.	9.67	97.09	1.52	87.12
43+68 <sup>7</sup>			11.0	86.1
44			10.9	86.2
+50			10.8	86.3
45			9.6	87.5
+50			9.0	88.1
46			9.0	88.1
+50			8.5	88.6
47			9.2	87.9
+50			8.3	87.8
48			9.7	87.4
+04	N. 121' 3" E. line		9.1	89.0
+39			10.6	86.5
+39			9.3	87.8
+50			9.1	88.0
49			8.4	88.7
+50			7.3	89.8
+65	P.L.		6.8	90.3
50+40			6.5	90.6

97.09

50+50		6.2	90.9
+78 <sup>3</sup>	2 wells	6.7	90.4
51		6.8	90.3
+50		7.6	89.5
52		8.4	88.7
+50		8.9	88.2
53		8.7	88.4
+50		5.7	91.4
T.P.	10.25	5.41	91.68
54	101.73	9.8	91.9
+50		9.3	92.4
55		9.1	92.6
+50		9.2	92.5
56		8.7	93.0
+40 <sup>4</sup>	31° 24' L	9.7	92.0
+50		9.3	92.4
57		7.9	93.8
+50		6.8	94.9
58		7.9	93.8
+50		8.4	93.3
+83 <sup>5</sup>	23° 57' L	8.6	93.1

101.73

5

59		7.8	93.9
+50		4.5	97.2
60+6		6.9	94.8
T.P. & U.D. 6.05	103.91	3.87	97.86
+10 <sup>2</sup>	46° 59' L	9.9	94.0
+50		9.7	94.2
61		10.3	93.6
+50		8.6	95.3
62		8.0	95.9
+15		4.7	99.2
+750		6.7	97.2
63		8.8	95.1
+50		9.7	94.2
+77 <sup>6</sup>	42° 11' L	8.9	95.0
64	Cont'd 7/5-2 change in loc	8.2	95.7
+50	July 16 Page 19	6.9	97.0
65		4.5	99.4
+50		2.5	101.4
T.P.	12.58	2.88	101.03
66	113.61	11.0	102.6
+50		10.1	103.5
67		6.9	106.7

Bridle  
Sheet 2

		113.61			134.65		
67+50	cut 6'		4.1	109.5	75+25 <sup>4</sup>	26°19' R	9.3 125.3
+34.7	13°46' R		1.9	111.7	+50		10.5 127.1
68			3.1	110.5	76		10.9 123.7
+15			5.4	108.2			
+50			5.0	108.6	+50		10.8 123.8
T.P.	12.56	125.87	0.30	113.31	+90		9.4 125.2
+25			10.4	115.5	77		10.7 123.9
69			9.2	116.7	+50		9.2 125.4
+50			7.2	118.7	+53		7.3 127.3
70	cut 7'		4.2	121.7	78		5.7 128.9
+50			2.2	123.7	+50		3.3 131.3
T.P.	9.92	124.65	1.14	124.73	79		2.8 131.8
70+34.4	0°17' R		10.2	124.4	+50		2.1 132.5
71			9.9	124.7	80+10 <sup>4</sup>	5°16' R	0.7 133.9
+50	cut 7'		9.3	125.3	T.P.	3.00	0.68 133.97
72			9.3	125.3	+50	126.97	11.1 135.9
+50			10.7	123.9		147.0	
73	cut 7'		9.3	125.3	81		7.6 139.4
+50			8.0	126.6	+50		3.7 143.3
44			7.9	126.7	82		0.2 146.8
+50			9.6	125.0	T.P.	10.99	0.24 146.73
75			9.4	125.2	+50		9.3 148.4
					+98		8.1 149.6
					83		9.6 148.1
					+10		12.3 145.4
					+50		12.0 145.7
							8.1 149.6
					84		5.4 152.3
					+10		7.4 150.3
					+50		2.8 154.9

Circle values 2



		157.72		
8510			0.6	157.1
T.P.	9.99	166.96	0.75	156.97
+32.5 N.L. 6'		167.0	9.5	157.5
+50			9.4	157.6
86			9.9	157.1
+50			8.2	158.8
87			7.6	159.4
+50			7.9	159.1
88			8.7	158.3
+50			10.1	156.9
89			10.7	156.3
+50			10.5	156.5
+56.3 P.L.	11.015 L		10.0	157.0
90+0			7.4	159.6
+50			6.5	160.5
91	cut 7'		6.1	160.9
+50			6.2	160.8
92			6.6	160.4
+50	cut 6'		4.3	162.7
+96.2	6° 43' L		1.7	165.3
T.P.	12.11	177.41	1.66	165.30

Profile sheet 2



		177.41		
93		177.4	11.6	165.4
+50			9.4	168.0
94	cut 7'		9.4	168.0
+50			10.0	167.4
95			7.8	169.6
+50			4.7	172.7
96	cut 9'		3.5	173.9
+50			2.8	174.6
97	cut 8'		1.3	176.1
+50			0.7	176.7
98			2.3	175.1
T.P.	12.35	189.58	0.18	177.23
+50			9.6	180.0
+56.6	cut 7'		9.8	179.8
99			9.6	180.0
+50	cut 8'		4.2	185.4
100+0			3.5	186.1
+50			4.1	185.5
+57			4.4	185.2
+59			2.9	186.7
101			3.1	186.5

Profile sheet 5

		189.58		
101+30		2.7	186.9	
+35		4.4	185.2	
+50		4.2	185.4	
102+0		2.6	187.0	
T.P.	12.54	202.16	0.06	189.52
102+328		12.7	189.5	
+50	Cont from pages Book 965	11.6	190.6	
102+894 = Sta. 103+13	change = 105+09 <sup>39</sup>		193.06	
103	105+19 <sup>99</sup>	3.3	193.9	
+50	105+69 <sup>99</sup>	5.0	197.2	
104	106+19 <sup>99</sup>	4.2	198.0	
+50	106+69 <sup>99</sup>	3.5	198.7	
+67	106+86 <sup>99</sup>	3.9	198.3	
+70	106+89 <sup>99</sup>	6.3	195.9	
	106+99 <sup>99</sup>			
+80	Nrail st car line	6.0	196.2	
+92	107+11 <sup>99</sup>	6.6	195.2	
+95	107+14 <sup>99</sup>	2.5	199.7	
105	107+19 <sup>99</sup>	2.3	199.9	
+50	107+69 <sup>99</sup>	1.2	201.0	
106+0	108+19 <sup>99</sup>	0.3	201.9	
T.P. Men Sec	205.84	0.77	201.39	
+50	108+69 <sup>99</sup>	3.8	202.0	
107	109+19 <sup>99</sup>	4.6	201.2	
+50	109+69 <sup>99</sup>	6.9	198.9	

Cable sheet

	0.77			
	205.84			
108	110+19 <sup>99</sup>	5.0	200.8	
+50	110+69 <sup>99</sup>	5.3	200.5	
	111+0345	in Pascadero		
109	111+19 <sup>99</sup>	4.8	201.0	
+50	111+69 <sup>99</sup>	5.1	200.7	
110	112+19 <sup>99</sup>	4.4	201.4	
+50	112+69 <sup>99</sup>	3.6	202.2	
111	113+19 <sup>99</sup>	3.1	202.7	
+50	113+69 <sup>99</sup>	2.3	203.5	
112	114+19 <sup>99</sup>	2.9	202.9	
+50	114+69 <sup>99</sup>	2.7	203.1	
+92	115+12 <sup>64</sup>	Δ 72.55'R		
113	115+19 <sup>99</sup>	1.9	203.9	
+50	115+69 <sup>99</sup>	1.0	202.8	
114	116+19 <sup>99</sup>	0.0	205.8	
T.P.	116+21 <sup>47</sup>	Δ 72.55'L		
+50	116+69 <sup>99</sup>	10.6	207.7	
115	117+19 <sup>99</sup>	3.0	210.3	
+50	117+69 <sup>99</sup>	4.6	213.7	
116	118+19 <sup>99</sup>	1.0	217.3	
T.P.	12.59	230.60		
+50	118+69 <sup>99</sup>	99	220.7	
+91	118+91 <sup>59</sup>	9.0	221.6	

line change same levels used on offset 1/10

	230.60		
117+0	119+19 <sup>99</sup>	7.4	223.2
+50	119+69 <sup>99</sup>	5.5	225.1
118	120+19 <sup>99</sup>	3.9	226.7
+50	120+69 <sup>99</sup>	2.6	228.0
119	121+19 <sup>99</sup>	1.6	229.0
+35 <sup>28</sup>	121+65 <sup>58</sup> Δ 3205' Rt		
+50	121+79 <sup>80</sup>	0.4	230.2
T.P.	10.56 240.73	0.43	230.17
120	122+29 <sup>80</sup>	9.4	231.3
+50	122+79 <sup>80</sup>	8.6	232.1
121	123+29 <sup>80</sup>	7.9	232.8
+50	123+79 <sup>80</sup>	7.5	233.2
	124+18 <sup>10</sup> N.L. Palomar		
122	124+29 <sup>80</sup>	7.0	233.7
482	124+78 <sup>10</sup> S line La Paloma		
+49 = S.L. La Paloma st		6.5	234.2
123	125+29 <sup>80</sup>	5.8	234.9
+50	125+79 <sup>80</sup>	5.0	235.7
124	126+29 <sup>80</sup>	4.0	236.7
+50	126+79 <sup>80</sup>	2.8	237.9
125	127+29 <sup>80</sup>	1.7	239.0
+50	127+79 <sup>80</sup>	0.4	240.3
T.P.	12.84 253.10	0.47	240.26
126	128+29 <sup>80</sup>	11.5	241.6

Line change  
same levels used on  
new offset line

	253.10		
126+50	128+79 <sup>80</sup>	10.3	243.1
127	129+29 <sup>80</sup>	8.6	244.5
+50	129+79 <sup>80</sup>	7.0	246.1
128	130+29 <sup>80</sup>	5.6	247.5
	130+78 <sup>10</sup> N.L. Varona		
+50	130+79 <sup>80</sup>	4.3	248.8
129	131+29 <sup>80</sup>	2.9	250.2
+50	131+79 <sup>80</sup>	1.8	251.3
130	132+29 <sup>80</sup>	0.7	252.4
T.P.	10.88 263.88	0.10	253.00
+50	132+79 <sup>80</sup>	10.4	253.5
131	133+29 <sup>80</sup>	9.3	254.6
+50	133+79 <sup>80</sup>	8.5	255.4
132	134+29 <sup>80</sup>	7.7	256.2
+50	134+79 <sup>80</sup>	6.8	257.1
133	135+29 <sup>80</sup>	6.0	257.9
+50	135+79 <sup>80</sup>	5.4	258.5
134	136+29 <sup>80</sup>	4.6	259.3
+50	136+79 <sup>80</sup>	4.3	259.6
135	137+29 <sup>80</sup>	4.3	259.6
+50	137+79 <sup>80</sup>	4.6	259.3

	263.58		
136+0	138+29 <sup>80</sup>	5.0	258.9
450	138+79 <sup>80</sup>	5.4	258.5
137	139+29 <sup>80</sup>	5.5	258.4
450	139+79 <sup>80</sup>	5.6	258.3
138	140+29 <sup>80</sup>	6.0	257.9
12 B	140+41 <sup>98</sup> End A Line = P.L. line		
(+22) & West of Long Blvd	6.3	257.9	

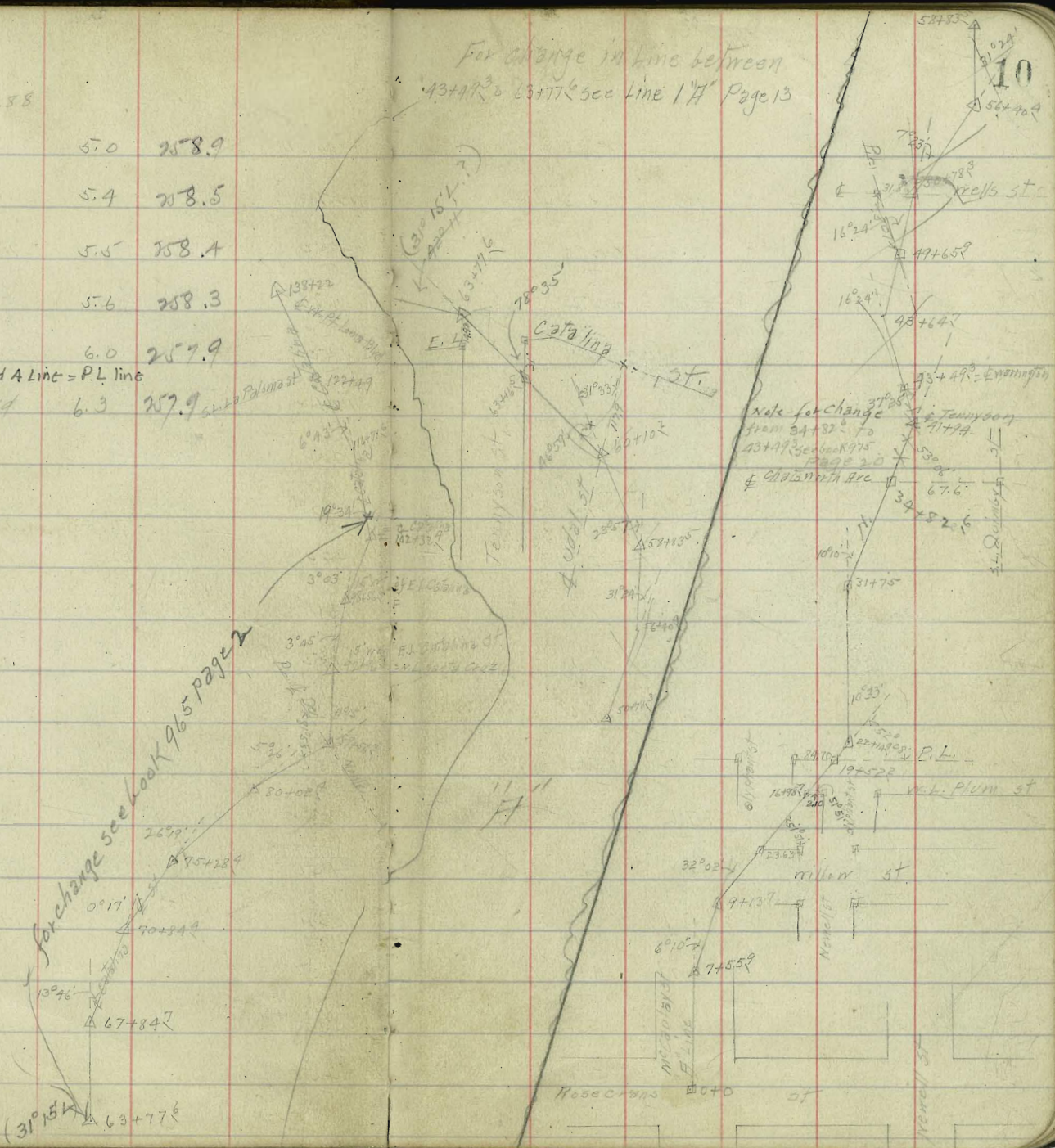
For change in line between  
 13+77<sup>30</sup> & 63+77<sup>6</sup> see Line 17A Page 13

57452  
 10  
 56440

Sheet m

for change see look 965 page 22

(31°15') 63+77<sup>6</sup>



B.M.			86.10
B.M.	4.12	90.22	
0+0-5.5	43+47	Line "A"	4.2 86.0
+50			5.8 84.4
1+0	✓		7.3 82.9
750			6.2 84.0
+68 <sup>±</sup> 90°L			6.6 83.6
2+0			6.3 83.9
+25			5.9 84.3
+50			7.9 82.3
3			9.1 81.1
+50			8.8 81.4
4			5.6 84.6
+30			4.8 85.4
+50			7.6 82.6
+80			7.8 82.4
+85			5.9 84.3
5			5.7 84.5
+50			4.8 85.4
6			4.8 85.4

Gopher sheet 2  
 Line Change  
 116-15

6+52			4.7 85.5
+52 4 track			4.0 86.2
+70	angle	42° 44' R	5.2 85.0
7			5.9 84.4
+50			6.8 83.4
8			7.5 82.7
+50			8.5 81.7
9			10.6 79.6
+50			12.1 78.1
+73	angle ml. walls at	35° 30'	12.8 77.4
10			12.1 78.1
+35			12.5 77.7
+50			10.9 79.3
+60			11.3 78.9
+65			11.9 78.8
11			10.2 80.0
+10			10.7 79.5
+15			10.7 79.5
+50			9.2 81.0
12			9.4 80.8
12			8.1 82.1
+50			6.0 84.2
T.P.	2.04	92.62	5.64 84.58
13			5.3 87.3
+50	Cont from 136 Pg 15		5.5 87.1
+92	angle = 56+05 99 P.O.T		
	45° 06'		3.8 88.8

see book 116-15 for revision

90.22

92.62

14+0	56+13 <sup>79</sup>	3.9	89.7
+ 42	56+55 <sup>79</sup>	6.4	86.2
+ 45	56+58 <sup>79</sup>	5.4	87.2
+ 50	56+63 <sup>79</sup>	5.6	87.0
+ 78	56+91 <sup>79</sup> $\Delta 58^{\circ} 18' L$	7.4	85.2
15	57+13 <sup>79</sup>	7.2	85.4
+ 50	57+63 <sup>79</sup>	6.9	85.7
16	58+13 <sup>79</sup>	7.3	85.3
+ 50	58+63 <sup>79</sup>	8.4	84.2
<hr/> 59+72 <sup>79</sup> $\Delta 32^{\circ} 13' L$ Beginning of line change			
17		9.4	83.2
+ 50		19.7	81.7
+ 74	$L 46^{\circ} 28'$	11.7	80.7
T.P.	11.20	92.12	80.92
18		12.3	79.8
+ 50		7.9	84.2
+ 60		6.1	86.0
+ 90		3.6	88.5
19		6.3	85.8
+ 03		7.7	84.4
+ 44	$L 6^{\circ} 54'$	5.7	86.4
+ 50		6.9	85.2
+ 02	$L 36^{\circ} 09'$	9.7	82.9

Line change

500 Book 11/6 page 19

92.12

20+10		8.3	83.8
T.P.	12.41	96.52	84.11
+ 50		16.2	86.3
21+0		9.0	87.5
+ 09		8.4	88.1
+ 15		5.6	90.9
+ 50		4.9	91.6
+ 62	lot line		
22+0		4.2	92.3
+ 10		2.9	93.6
+ 50		2.5	94.0
23+0		3.0	93.5
+ 50		1.9	94.6
23+62	63+77 <sup>6</sup> Line H	1.5	95.0

Sketch page 13

Line change

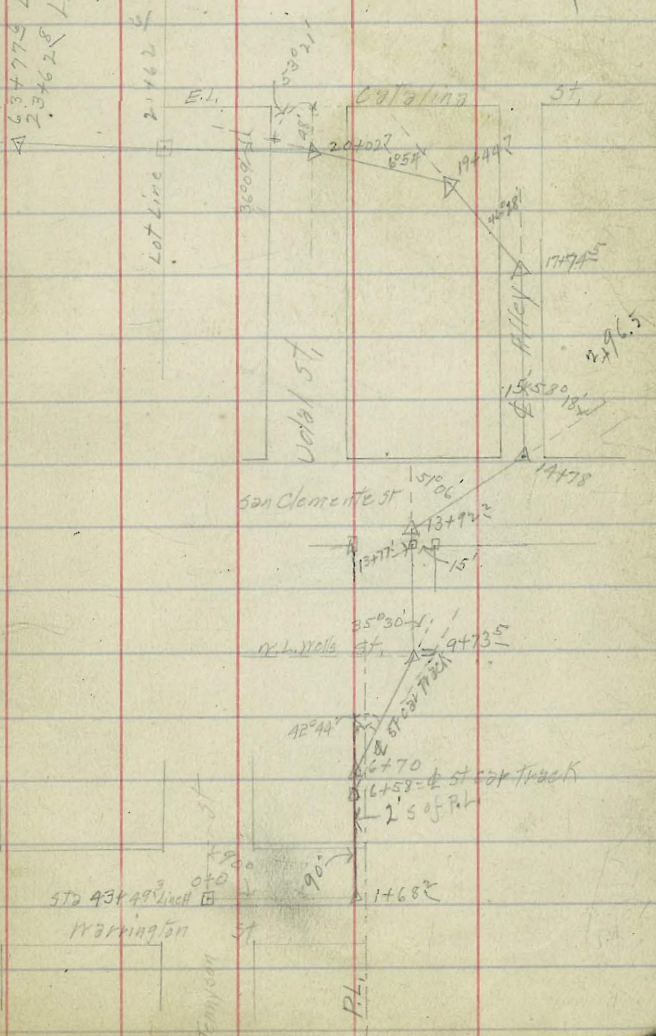
500 Book 11/6 page 19

1478  
15922  
853

13922  
9735  
4187

17745  
15975  
2965

53779 Line H  
23762 Line H



Washington St

Washington St

R.L.





Line "B"  
 Preliminary Survey Levels for Sewer beginning at  
 & New Main & Rosecrans thence west on & New Main for  
 768.9' thence random line to intersection of California St. & Duval St.  
 and U.S. Res Line - see Page 22  
 B.M. curb 3.11, New Main & Rosecrans

	9.83	30.21	20.38	✓	9127.8 = 22° 19' L	11.2	53.5 ✓	
0+0 = & Rosecrans			10.1	20.1 ✓	+50	10.2	54.5 ✓	
+50			8.6	21.6 ✓	10	8.2	56.5 ✓	
+10	see page 32 for Sewer on & New Main		7.8	22.4 ✓	+50	6.6	58.1 ✓	
+50	East of Rosecrans		6.6	23.6 ✓	11	5.3	59.4 ✓	
+10			4.9	25.3 ✓	+50	4.1	60.6 ✓	
+50			3.5	26.7 ✓	12	3.0	61.7 ✓	
3			2.1	28.1 ✓	+50	1.7	63.0 ✓	
+50			0.6	29.6 ✓	13	0.4	64.3 ✓	
T.P. A	10.98	40.17	0.42	29.79 ✓	T.P. 12.04	76.46	0.29	64.42 ✓
			9.6	31.2 ✓	+50	10.7	65.8 ✓	
+50			8.3	32.5 ✓	14	9.0	67.5 ✓	
5			6.7	34.1 ✓	+50	7.2	69.3 ✓	
+50			5.3	35.5 ✓	15	5.3	71.2 ✓	
6			3.3	37.5 ✓	+50	3.3	73.2 ✓	
+50			1.2	39.6 ✓	16	1.2	75.3 ✓	
T.P. 7	11.66	52.13	0.30	40.47 ✓	T.P. 11.50	87.87	0.09	76.37 ✓
+50			16.3	41.8 ✓	+50	10.7	77.2 ✓	
			7.2	44.9 ✓	17	8.9	79.0 ✓	
+ & Evergreen Approx			6.2	45.9 ✓	+50	7.3	80.6 ✓	
+68' = 23° 53' R			5.0	47.1 ✓	18	6.3	81.6 ✓	
+50			2.8	49.3 ✓	+16.3	5.8	82.1 ✓	
T.P. 9	12.59	64.71	0.01	52.12 ✓	R 21° 13'			
			12.3	52.4 ✓				

Sheet 4

Sheet 4

87.57

17+50			5.6	82.3
19			5.2	82.7
+50			4.5	83.4
20			3.7	84.2
+50			2.9	85.0
21			2.0	85.9
+50			0.9	87.0
22			0.1	87.8
T.P.	10.52	98.22	0.17	87.70
+50			9.5	88.7
23			7.9	90.3
+50			6.4	91.8
24			5.2	93.0
+50			3.8	94.4
25			2.5	95.7
+50			1.0	97.2
T.P.	11.73	109.74	0.21	98.01
26			11.3	98.4
+50			10.0	99.7
27			8.9	100.8
+50			7.5	102.2
28			6.0	103.7

Sheet 14

30+222 225' 211'

16

109.74

28+50			4.4	105.3
29			2.5	107.2
+50			0.9	108.8
T.P.	12.25	121.71	0.28	109.46
30			11.6	110.1
+22 <sup>7</sup>	L 25° 01'		10.9	110.8
+50			10.2	111.5
31			9.1	112.6
+50			8.1	113.6
32			7.0	114.7
+50			5.0	116.7
33			2.9	118.8
+50			1.0	120.7
T.P.	10.57	131.78	0.50	121.21
+8K	Delmar approx. L 37° 51'		9.6	122.2
34			9.2	122.6
+50			8.6	123.2
35			8.0	123.8
+50			6.8	125.0
36			5.1	126.7
+50			5.6	126.2
+97 <sup>6</sup>	= $\phi$ Pescadero = L 49° 49'		4.9	126.9

Sheet 15

42+118 29° 16' 2"  
46+90 P.L.  
51+618 R 14° 21'  
56+222 L 45° 12'  
57+878 R 21° 37'

		131.78			
37			5.0	126.8	
+50			3.7	128.1	
38			1.7	130.1	
+50			1.4	130.4	
39			0.9	130.9	
T.P.	13.10	144.78	0.10	131.68	
+50			12.7	132.2	
40			11.2	133.6	
+50			8.6	135.2	
41			5.2	136.6	
+50			6.5	138.3	
42			4.7	140.1	
+119 L 29° 16'			4.3	140.5	
+50			3.8	141.0	
43			2.7	142.1	
+50			1.6	143.2	
44			0.9	143.9	
T.P.	13.07	157.64	0.21	144.57	
+50			12.6	145.0	
45			11.9	145.7	
+50			10.7	146.9	
46+00 <sup>3</sup> = N.L.P.L. 190			9.7	147.9	

Sheet 4

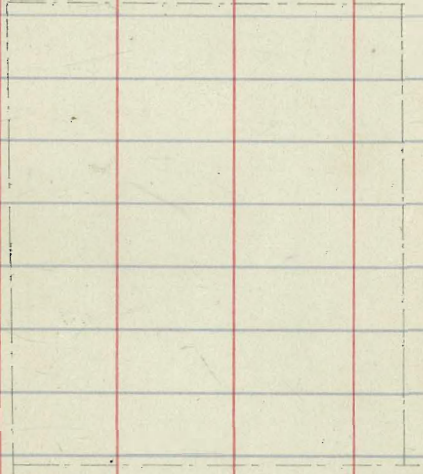
		157.64			
+50					8.5 149.1
47					7.4 150.2
+50					6.2 151.4
48					5.0 152.6
+50					2.8 154.8
49					0.7 156.9
T.P.	12.72	170.25			0.11 157.53
+50					11.0 159.2
50+0					8.6 161.6
+50					6.0 164.2
+90					4.5 165.7
51					5.5 164.7
+42					5.3 164.9
+42					10.6 159.6
+50					10.6 159.6
51+52					5.2 165.0
+615 R 14° 21'					4.3 165.9
T.P.	11.56	173.52			3.27 166.96
52+0					11.7 166.8
+50					9.5 169.0
53					8.2 170.3
+50					5.5 173.0
54					2.3 176.2
T.P.	12.20	188.38			4.34 176.18
+50					11.5 176.9
+67					12.0 176.4
+96					2.11 167.3

Sheet 4

Sheet 5

		188.38		
54+75			11.7	176.7
55			9.2	179.2
+50			6.8	181.6
56+02 <sup>2</sup>	L 45°12'		5.15	183.2
T.P.	12.67	195.90	5.15	183.23
+50			9.3	186.6
57			7.9	188.0
+50			6.5	189.4
187 <sup>2</sup>	R 61°37'		5.5	190.4
58			4.9	191.0
T.P.	12.14	202.90	5.14	190.76
+20			11.7	191.2
+25			13.1	189.8
+30			10.7	192.2
+50			8.5	194.4
+70			4.2	198.7
59+00			8.6	194.3
+40			7.3	195.6
+50			3.2	199.7
T.P.	13.43	215.00	1.33	201.57
+75			3.7	211.3
782 <sup>5</sup>			4.0	211.0
60			4.2	210.8
+50			3.7	211.3
61			2.8	212.2
+50			2.5	212.5
T.P.	11.74	226.24	0.50	214.50

Sheets



226.24

62+0			10.8	215.4
+50		226.2	7.8	218.4
+72 <sup>4</sup>	R 16° 30'		6.7	219.5
63			4.2	220
+50			5.1	221.1
64			5.1	221.1
+11 <sup>5</sup>	R 21° 56'		4.7	221.5
+50			3.4	224.8
T.P.	7.20	230.36	3.05	223.16
65			5.8	224.6
+50			4.2	226.1
+85 <sup>7</sup>	L 18° 03'		1.9	228.4
T.P.	9.39	237.88	1.87	228.49
66			9.3	228.6
+50			8.6	229.3
67			5.9	232.0
+28 <sup>8</sup>	R 14° 27'		5.3	232.6
+50			4.6	233.3
68			4.5	233.4
+50			4.1	233.8
+78 <sup>2</sup>	R 36° 31'		3.3	234.6
T.P.	4.87	239.50	3.25	234.63
69			5.2	234.3

Sheet 5

239.50

19

+50			4.4	235.1
70			3.6	235.9
+50			2.5	237.0
T.P.	7.23	244.62	2.11	237.39
71			6.8	237.8
+50			7.0	237.6
72			6.6	238.0
+50			5.2	239.4
+53			4.6	240.0
+65			1.7	241.9
73			0.4	242.2
T.P.	7.48	250.90	1.70	242.92
+098	L 89° 34'		6.1	244.3
+50			6.0	244.4
74			5.8	244.6
+50			5.2	245.2
75			✓ 4.0	246.4
+50			2.5	249.9
76			1.0	249.4
T.P.	12.85	263.13	0.12	250.28
+50			12.0	251.1
77			9.9	253.2
+50			7.8	255.3
78			6.0	257.1
+50			4.6	258.5

Sheet 5

263.13

79			3.2	259.9
+50			2.2	260.9
80			1.4	261.7
+50			0.6	262.5
T.P.	10.02	272.79	0.36	262.77
81			9.4	263.4
+50		272.8	8.8	264.0
82			7.9	264.9
+50			7.6	265.2
83			7.3	265.5
+50			6.3	266.5
84			5.3	267.5
+50			4.3	268.5
85			3.1	269.7
+50			1.4	271.4
T.P.	10.50	283.24	0.05	271.74
86			10.1	273.1
+50			8.3	274.9
87			6.4	276.8
+50	cut 5'		5.0	278.2
88	cut 6		3.2	280.0
+50	cut 6		1.2	282.0
T.P.	11.15	294.32	0.07	283.17

20

294.32

89			10.2	284.1
+50	cut 9'		7.9	286.4
90			5.7	288.6
+50			3.6	290.7
91	cut 13'		1.4	292.9
T.P.	9.02	303.12	0.22	294.10
+50			8.6	294.5
92			7.1	296.0
+50	cut 9'		6.1	297.0
93			5.6	297.5
+50			5.2	297.9
94	cut 8'		5.1	298.0
+50	cut 7'		4.9	298.2
95	cut 6'		4.8	298.3
+50	cut 5'		4.8	298.3
96			4.7	298.4
+50			4.6	298.5
97			4.5	298.6
+50			4.4	298.7
98			4.0	299.1
+50			3.7	299.4

303.12

99			3.4	299.7
+50			2.7	300.4
100+0			1.9	301.2
+50			0.8	302.3
T.P.	12.04	314.11	1.05	302.07
101			10.8	303.3
+50			9.9	304.2
102			8.8	305.3
+50			7.6	306.5
103			6.1	308.0
+50			4.4	309.7
104			2.3	311.8
+50			0.3	313.8
T.P.	12.92	326.94	0.09	314.02
105			10.8	316.1
+50			8.3	318.6
106			5.5	321.4
+50			2.5	324.4
T.P.	12.60	339.25	0.29	326.65
107			16.9	327.3
+50			8.9	330.3
108			6.1	333.1
+50				335.9
T.P.	12.38	351.61	3.3	339.23
			0.82	

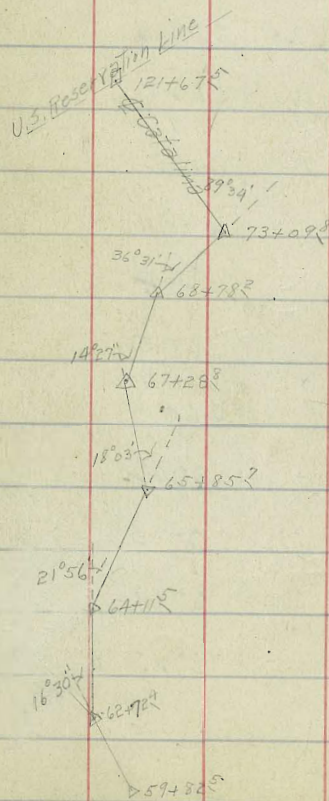
351.61

21

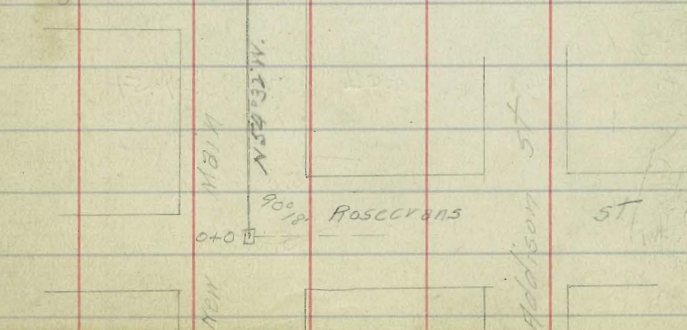
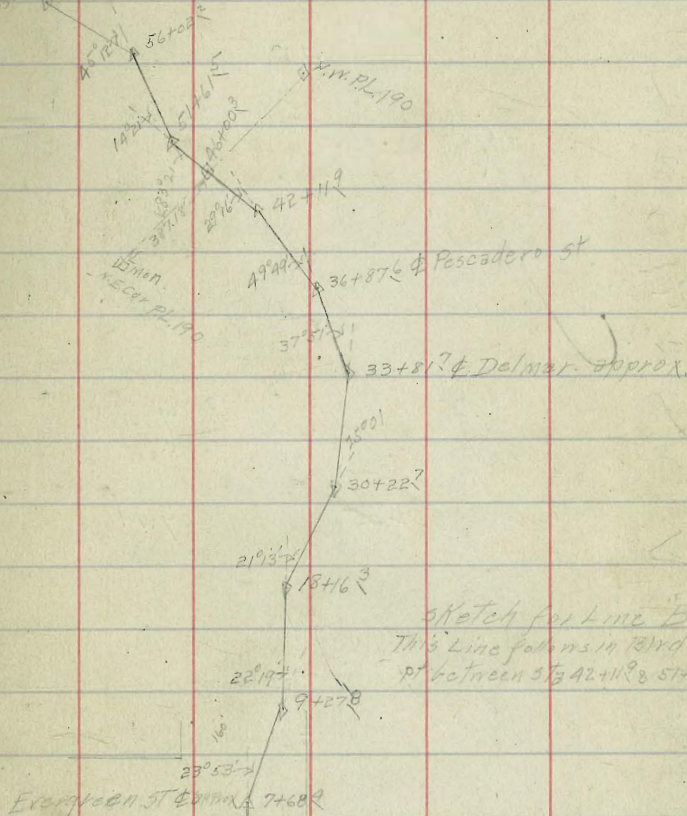
109			11.9	339.7
+50			8.9	342.7
110			5.9	345.7
+50			2.9	348.7
T.P.	11.75	363.09	0.27	351.34
111+0			11.3	351.8
+50			8.5	354.6
112			5.9	357.2
+50			3.5	359.6
113			1.1	362.0
T.P.	11.61	374.25	0.45	362.64
+50			10.0	364.2
114			8.1	366.1
+50			6.8	367.4
115			5.7	368.5
+50			4.8	369.4
116			4.0	370.2
+50			3.2	371.0
117			2.4	371.8
+50			1.5	372.7
118			0.6	373.6
T.P.	10.84	384.54	0.55	373.70
+50			9.8	374.7

389.7

119		8.5	375.7
+50	Sketch	7.6	376.6
120		6.6	377.6
+50		5.6	378.6
121		4.5	379.7
+50		2.6	381.6
+67 <sup>5</sup>	U.S. Res. Line	2.0	382.2



36+71.6	
3351.7	
3059	22
3381.7	3022.7
3022.7	1812.3
3590	12106.4

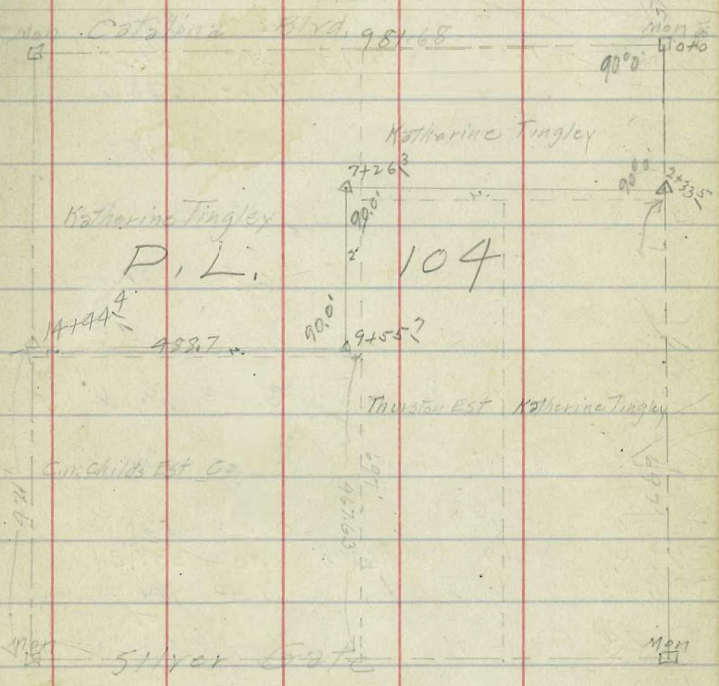




Line 'B' 7 sketch opp page

B.M.	3.68	310.18		306.50
0+0=572 102+47 B' Line			3.8	306.4
+50			4.6	305.6
1			5.0	305.2
+50			4.7	305.3
2			4.5	305.7
+33 <sup>5</sup> M.H.			4.7	305.5
+50			4.0	306.2
3			2.7	307.5
+50			1.2	309.0
T.P.	12.64	322.05	0.77	309.41
4			11.2	310.8
+50			9.1	312.9
5			7.2	314.8
+50			5.6	316.4
6			3.7	318.3
+50			1.6	320.4
T.P.	8.45	330.02	0.54	321.54
7			6.9	323.1
+26 <sup>3</sup> M.H.			5.0	325.0
+50			5.5	324.5

Sketch 7



810		330.02	5.9	324.1
+50			5.6	314.4
910			3.7	326.3
+55	MA		2.8	327.2
T.P.	11.90	339.14	2.78	327.24
10			10.8	328.3
+50			9.2	329.9
11			7.9	331.7
+50			6.8	332.3
12			4.8	334.3
+50			3.8	335.6
13	cut 6		2.2	336.9
+50	cut 7		0.8	338.3
T.P.	2.69	346.98	0.80	338.34
14	cut 8		7.0	340.0
+44	cut 9		4.9	342.1



Line C

Preliminary survey & levels for sewer beginning  
at Rosecrans Thence according to sketch on  
page 28 See 1000-27 for change L pt.

B.M. Men N.E. Talbot Rosecrans

B.M.	11.86	33.18	21.32	
0+0			10.7	22.5
+50			9.0	24.2
1+0			6.7	26.5
+50			3.9	29.3
2+0			1.4	31.8
T.P.	12.35	45.12	0.41	32.77
+50			10.7	34.4
3+0			8.0	37.1
+50			4.5	40.6
4+0			1.5	43.6
T.P.	12.35	57.47	0.00	45.12
+50			10.5	47.0
5			7.6	49.9
+50			2.7	54.8
T.P.	12.32	69.61	0.18	57.29
6			11.2	58.4
+28			9.0	60.6
+29			11.9	57.7
+50			11.0	58.6
+72			9.5	60.1
+74			5.7	63.9
7			3.8	65.8
T.P.	12.10	81.03	0.68	68.93
+50			11.2	69.8
8+0			7.0	74.0

Sketch

81.03

			+50	4.2	76.8
			9	1.9	79.1
	12.15	92.96	T.P.	0.22	80.81
		93.0	+50	10.9	82.1
			10	8.0	85.0
			+50	5.4	87.6
			11+0	2.6	90.4
	12.25	105.10	T.P.	0.31	92.65
			+50	12.3	92.8
			+77.2	9.4	95.7
			12	9.3	95.8
			+50	6.6	98.5
			13	3.3	101.8
	12.76	117.15	T.P.	0.71	109.39
			+50	11.0	106.1
			+61.9	11.2	105.9
			14	8.8	108.3
			+50	5.5	111.6
			15	3.4	113.7
	12.60	129.37	T.P.	0.38	116.77
			+50	11.9	117.5
			16	9.3	120.1
			+50	6.8	122.6
			17	3.9	125.5

Sketch

129.37

177.81

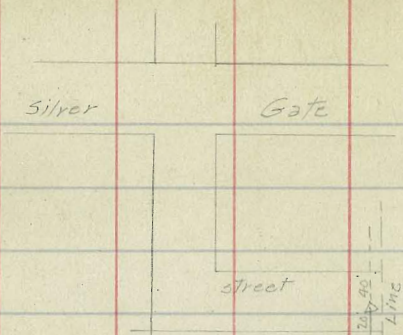
17+50			1.3	128.1
T.P.	12.31	141.40	0.28	129.09
18			11.0	130.4
+50			7.8	133.6
19			5.2	136.2
T.P.	13.02	154.21	0.21	141.19
+50			12.8	141.4
167 <sup>3</sup>	L 37° 59'		11.2	143.0
20			8.9	145.3
+20			7.4	146.8
+30			9.1	148.1
+50			8.6	145.6
+ 87			7.7	146.5
21			4.7	149.5
+ 15			1.8	152.4
T.P.	12.94	165.87	12.8	152.93
+50			11.1	154.8
22			8.4	157.5
+50			6.5	159.4
23			6.9	159.0
+50			3.8	162.1
+75			3.4	162.5
+76			11.0	154.9
+86			11.0	154.9
+87			2.9	163.0
24			1.7	164.2
T.P.	13.03	177.81	1.09	164.78

Sheet 7

2451 <sup>2</sup>	L 26° 14'		10.3	167.5
25			7.9	169.9
+50			4.1	173.7
T.P.	12.40	189.05	1.16	176.65
26			11.4	177.6
+50			7.0	182.0
27			2.8	186.2
+50			2.5	187.5
+50			7.3	179.7
+50			0.0	184.2
T.P.	11.62	199.81	0.86	188.19
281 <sup>2</sup>	L 23° 24'		9.1	190.7
28			7.4	192.4
+50			3.7	196.1
T.P.	12.29	209.19	2.91	196.90
29			3.8	200.4
+50			5.6	203.6
30			6.0	203.2
+50			3.9	205.3
T.P.	11.31	216.59	3.91	205.28
31			8.1	208.5
+50			7.5	209.1
+50			8.2	208.4
32			9.5	207.1
+51 <sup>7</sup>	L 35° 44'	cut 5'	9.6	207.0

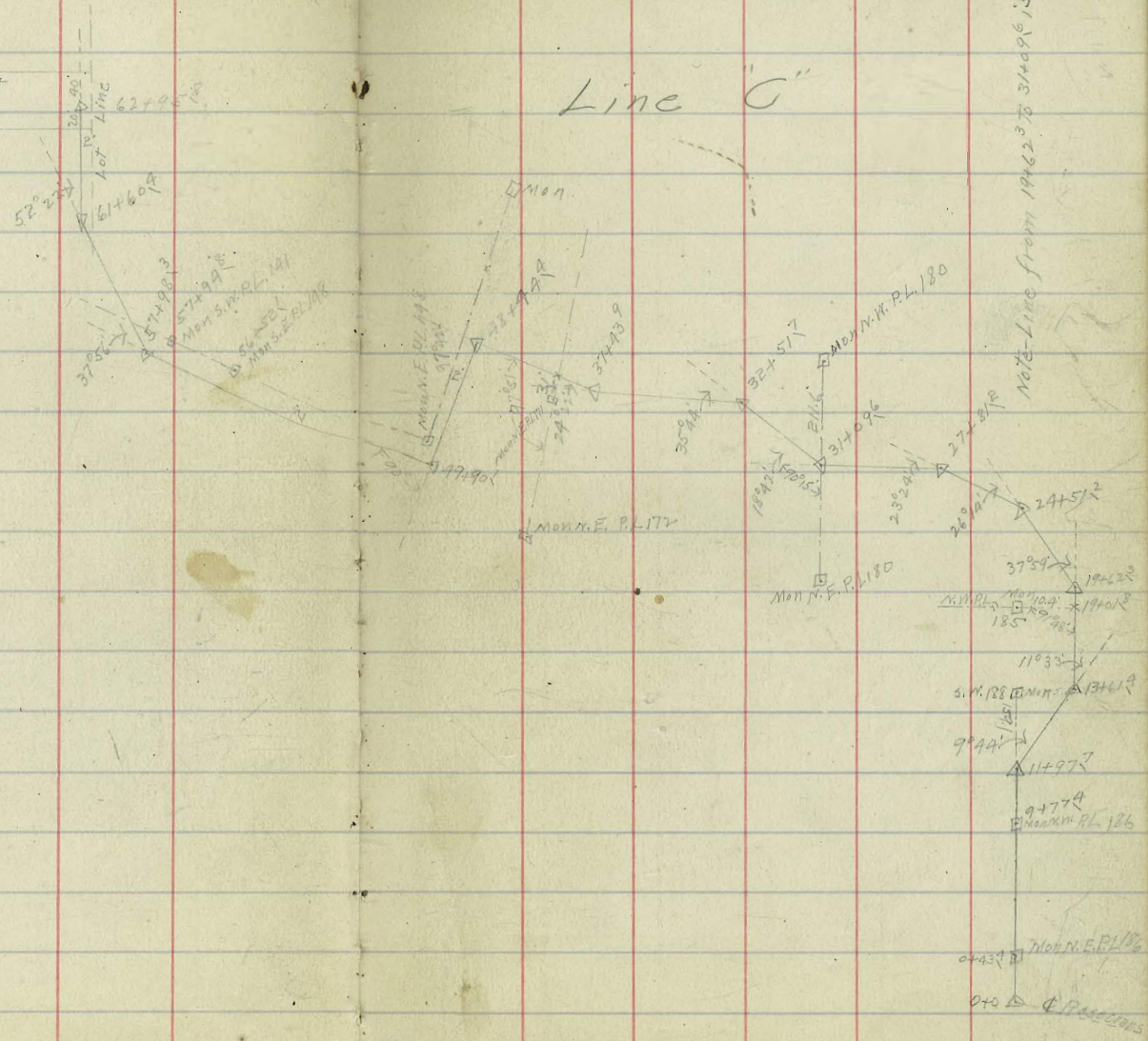
Sheet 7

Sheet 8



1402	1418	13614
13219	13228	11777
100	5100	1637
23514		
11723		
1259		

Line "C"



		216.59			
33+0			6.6	210.0	
+50			4.9	211.7	
34			2.7	213.9	
T.P.	13.04	227.76	1.87	214.72	
+50			10.8	217.0	
35			9.1	218.7	
+50			8.2	219.6	
36			7.9	219.9	
+50			6.7	221.1	
37			4.5	223.3	
+43 <sup>9</sup> R 24° 22'			4.6	223.2	
+50			4.5	223.3	
38			3.8	224.0	
+50			2.9	224.9	
T.P.	12.74	238.23	1.87	225.89	
39			12.5	226.5	
+50			8.4	229.4	
40			6.0	232.8	
+50			4.8	234.5	
41			1.9	236.9	
+50			1.0	237.8	
T.P.	13.03	250.71	1.15	237.68	

Sheet 8

		250.71			
			4.2		10.6
			+50		8.0
			4.3		3.0
	13.24	263.43	0.52	250.19	
			+50		14.3
			4.4		11.5
			+50		8.7
			4.5		6.6
			+50		4.5
	10.97	274.18	0.24	263.19	
			4.6		13.4
			+50		10.6
			4.7		8.0
			+50		6.4
			4.8		4.0
			+44 <sup>4</sup>	2.97° 42'	2.6
			+50		2.4
			4.9		2.6
			+50		5.4
			+90° R 90° 00'		6.2
			50+0		6.2
			+50		5.1

Sheet 9

274.18

510			0.4	273.8
T.P.	13.25	286.91	0.55	273.63
+50			11.0	275.9
52			9.3	277.6
+50			8.0	278.9
53			6.7	280.2
+35			6.7	280.2
+50			4.6	282.3
54			2.5	284.4
+50			1.2	285.7
T.P.	10.53	297.08	0.36	286.55
55			10.2	286.9
+50			8.6	288.5
56			7.4	289.7
+50			6.3	290.8
57			5.5	291.6
+50			4.7	292.4
+98° R	37° 56'		5.1	292.0
+50			5.0	292.1
59			3.0	294.1
T.P.	10.78	307.51	0.35	296.73
+50			11.9	295.6

307.51

30

60			11.5	296.0
+50			10.2	297.3
61			7.5	300.0
T.P.	12.50	319.45	0.56	306.95
+50			9.5	309.9
+60° R	52° 22'		8.6	310.8
62			5.3	313.6
+50			3.0	316.4
+95° S	50° Page 28		1.7	317.7

Sheet 8

Sheet 8



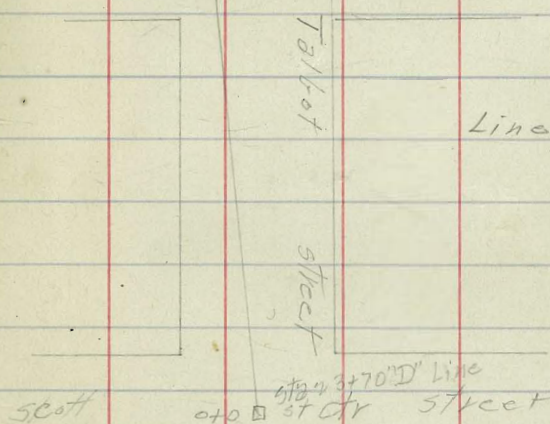
Line 1 "C"

See Book 1000 Page 27 for  
change L at Rosecrans

B.M.	10.31	19.42	9.11	
+0.4	scott's Talbot sts	9.8	9.6	
+50		9.0	10.4	
1		7.1	12.3	
+50		5.1	14.3	
2		3.3	16.7	
+50		1.4	18.0	
T.P.	7.65	25.69	1.3.8	18.04
3		5.6	20.1	
+50		3.9	21.8	
+70 <sup>3</sup>		3.2	22.5	

Sheet 8

Rosecrans 3+70<sup>3</sup> 49.8' \* to \* street  
 start to Line "C" page 28



scott 0+0 3+70 D Line street

462) Gregory  
M. W. L.  
Show

Levels for Sewer  
L. of Canon Rd  
from L. Rosecrans to  
The Bay

BM	1.15	21.53 ✓	20.38	SW Rosecrans	+50	8.9	1.0 ✓
0+00 = L. of Rosecrans		1.6	19.9 ✓		9	9.4	0.5 ✓
0+50		2.9	18.6 ✓		+50	9.7	0.2 ✓
1		4.1	17.4 ✓		T.P.	0.66	0.89
+50		5.4	16.1 ✓		+69	1.6	-0.7 ✓
2		6.8	14.7 ✓		+75	3.1	-2.2 ✓
+50		8.1	13.4 ✓		10	5.2	-4.3 ✓
3		9.2	12.3 ✓		+18	6.8	-5.9 ✓
+50		10.1	11.4 ✓		+50	7.7	-6.8 ✓
+85 = L. Scott St.		10.9	10.6 ✓		11	9.1	-8.2 ✓
4		11.0	10.5 ✓		+50	10.6	-9.7 ✓
+50		12.0	9.8 ✓		12	7.1	-3.8 ✓
T.P.	1.20	9.90 ✓	12.83	8.70	+50	8.1	-11.9 ✓
5		1.7	8.2 ✓		13	8.7	-12.5 ✓
+50		3.0	6.9 ✓		14	8.9	-12.7 ✓
6		4.4	5.5 ✓		15	10.2	-14.0 ✓
+50		5.7	4.2 ✓		16	10.9	-14.7 ✓
7		7.2	2.7 ✓				
+55 = L. Shafter St.		8.1	1.8 ✓				
8		8.4	1.5 ✓				

continued to Book 1000-30

	4.90						

Elev. of flow line of sewer  
where it leaves blog = 20.20  
Elev. floor of blog = +1.5  
Shafter St.  
Fish Cannery  
Sewer leaves blog here.

32

33



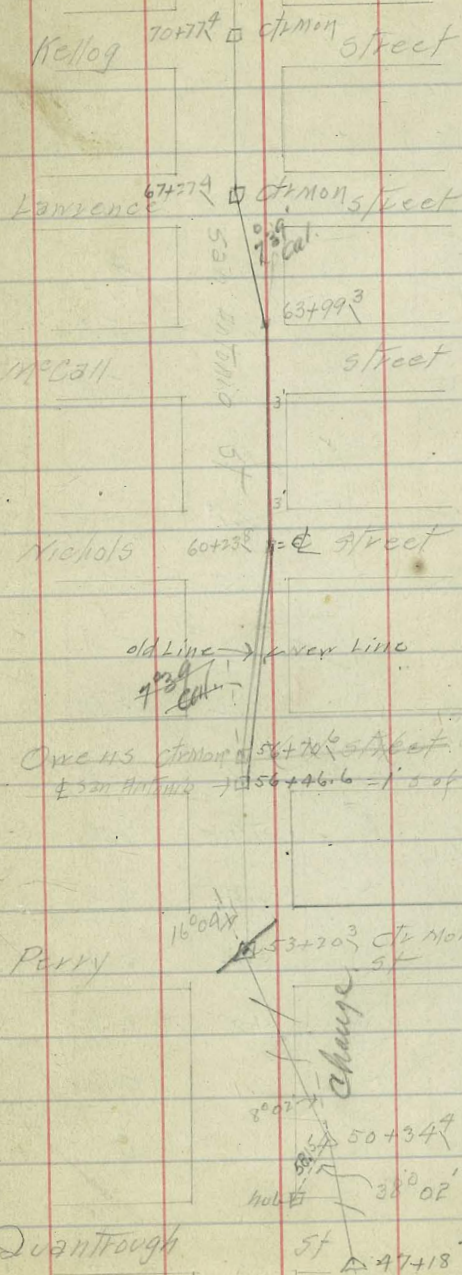
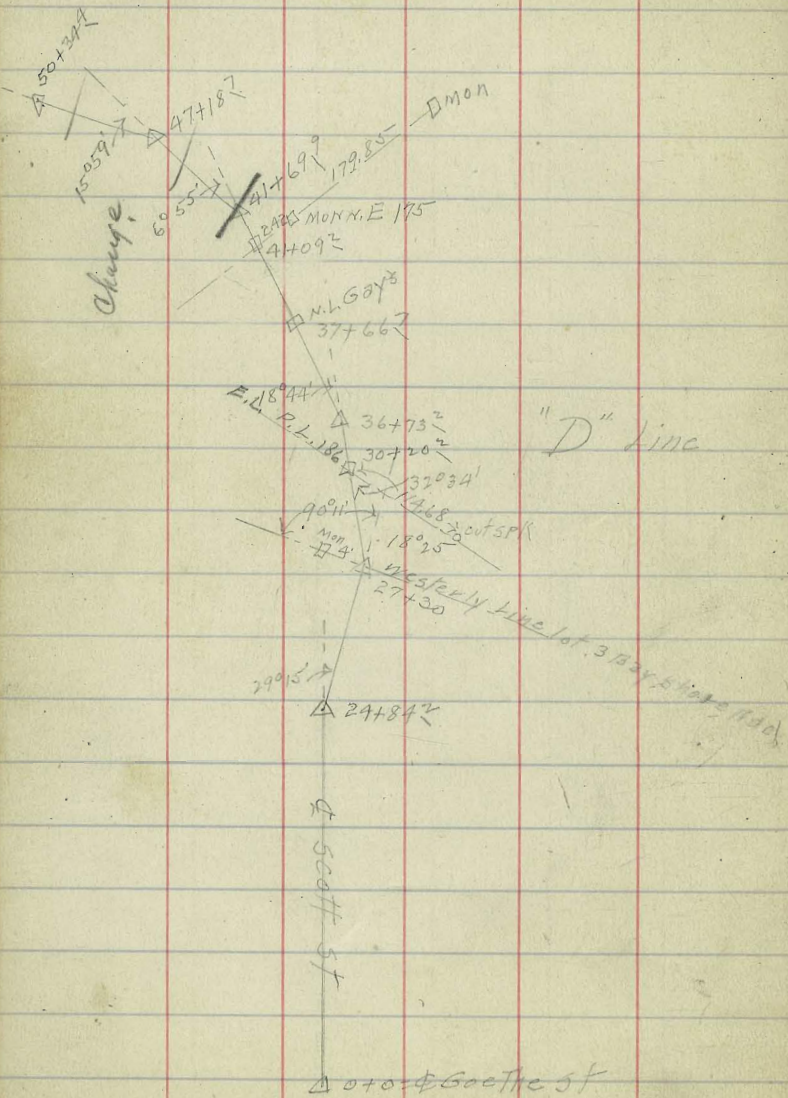
Line "D" & Scott St from <sup>Garman</sup> ~~Garman~~ South To  
N.L. Bay shore Add these random Line in southerly  
direction - See sketch Page 36

B.M.	0.49	11.15	10.67
T.P.	1.91	2.95	10.11
0+0 & Gothic St.		2.0	8.1
			-5.1
+50			7.9
			-4.9
+10			7.7
			-4.7
+150			7.3
			-4.3
2			6.9
			-3.9
+50			5.6
			-2.6
+70 & Fordson			5.3
			-2.3
3			5.4
			-2.4
+50			5.3
			-2.3
T.P.	8.96	7.15	4.76
4			3.8
			-1.81
			-1.7
+50			3.3
			-1.2
5			7.4
			-0.3
+40 & Emerson			6.7
			0.4
+50			6.6
			0.5
6			6.0
			1.1
+50			5.4
			1.7
7			4.6
			2.5
+50			4.2
			2.9
8-10			3.7
			3.4

Sheet 9

Sheet 10

Note - for change in line from station 41+61.2  
 to station 53+20.3 see page 41



7.15

16.70

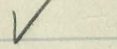
8+10-4 Dickens			3.5	3.6
+50			3.7	3.4
9			3.1	4.0
+50			2.3	4.8
T.P.	824	13.42	1.97	5.18
10			7.8	5.6
+50			7.5	5.9
+80 Φ Callahan			7.2	6.2
11+0			7.1	6.3
+50			6.5	6.9
12			6.3	7.1
+50			6.2	7.2
13			5.9	7.5
+50 Φ Byron			5.4	8.0
14			5.4	8.0
+50			5.2	8.2
15			4.8	8.6
+50			4.1	9.3
16			3.3	10.1
+20 Φ Addison			3.1	10.3
T.P.	6.42	16.70	31.4	10.28

checked

Sheet 10

+50			5.8	10.9
17			5.6	11.1
+50			5.5	11.2
18			6.4	10.3
+50 Φ New Main			5.7	11.0
+50			6.2	10.5
19			4.7	12.0
+50			4.4	12.3
20			4.3	12.4
+50			4.5	12.2
21+0 Φ UP Shore			4.8	11.9
+50			5.6	11.1
22			6.0	10.7
+50			6.4	10.3
23			6.7	10.0
+50			7.6	9.1
+70 Φ Talbot			7.1	9.6
24			7.3	9.4
+50			7.4	9.3
+84 Φ R 29°15'			7.6	9.1
T.P.	7.03	16.14	7.59	9.11

Sheet 10



1614

25			6.7	9.4
+50			5.7	10.4
26			5.0	11.1
+50			4.6	11.5
27			4.2	11.9
+30 L 18° 25'			4.6	11.5
+50			5.0	11.1
28			4.9	11.2
+50			4.4	11.7
29			5.1	11.0
+50			6.0	10.1
30			7.3	8.8
+50			8.8	7.3
31			9.7	6.4
T.P.	7.55	14.01	9.68	8.46
+50			8.8	5.2
32			9.6	4.4
+50			10.1	3.9
33			10.6	3.4
+50			10.6	3.4

Sheet 10

Sheet 10

34		14.0	10.4	3.6
+50			10.2	3.8
35			9.1	4.9
+50			8.0	6.0
36			6.1	7.9
+50			3.8	10.2
+73° L 15° 44'			3.8	10.2
37			4.1	9.9
+50			5.4	8.6
38			7.0	7.0
+50			7.4	6.6
39			6.5	7.5
+50			6.5	7.5
40			6.2	7.8
+50			6.6	7.4
41			7.1	6.9
+50			6.6	7.4
+69° L 16° 55'			6.4	7.6
T.P.	12.86	20.75	6.42	7.59
42			12.1	8.3

Sheet 10

Sheet 10



		20.45		
42+50			9.9	10.5
43			7.4	13.0
+50			7.2	13.2
44			6.8	13.6
+50			5.7	14.7
45			4.8	15.6
+50			5.2	15.2
46			6.6	13.8
+50			8.2	12.2
47			6.2	14.2
+187	L 15° 59'		3.1	17.3
+50			3.1	17.3
48			3.8	16.6
T.P.	1.69	19.73	2.41	18.04
+50			4.2	15.5
49			2.7	17.0
+50			6.1	13.6
50+D			3.9	15.8
+34.4	L 8° 02'		4.2	15.5
+50			5.5	14.2

Sheet 10

Level 2"

		19.73		
51			8.5	11.2
+50			9.8	9.9
52			13.3	6.4
T.P.	9.04	16.30	12.47	7.26
+50			11.6	4.7
53			12.3	4.0
+70 <sup>3</sup>	17 16° 04'		11.6	4.7
+50			10.1	6.2
54			7.6	8.7
+50			6.2	10.1
55			3.8	12.5
+50			2.5	13.8
56			1.0	15.3
T.P.	7.03	22.58	0.75	15.55
+50			5.7	16.9
+70 <sup>6</sup>	Offens st		5.9	16.7
+85			6.1	16.5
57			8.7	13.9
+25			12.2	10.4
+50			5.3	17.3
58			3.5	19.1
+50			3.9	18.7

Sheet 10

Level 2"

	22.58						
5910		4.8	17.8	+50	15.9	8.9	7.0
+50		5.6	17.0	66		10.1	5.8
6010		5.8	16.8	+50		8.9	7.0
+23 <sup>8</sup> \$ Nichols		4.5	18.1	67		7.8	8.1
+50		4.1	18.5	+27 <sup>4</sup> \$ Lawrence		7.8	8.1
+80		4.0	18.6	+50		8.0	7.9
+87		12.1	10.6	68		8.6	7.3
61		13.5	9.1	+50		8.1	7.8
+20		11.3	11.3	69		6.5	9.4
+40		12.0	10.6	+50		5.3	10.6
+60		13.7	8.9	70		5.0	10.9
+80		12.3	10.3	+50		4.1	11.8
62		14.9	7.7	+77 <sup>2</sup> \$ Kellogg		3.6	12.3
+20		18.7	3.9	71		3.0	12.9
+40		17.4	5.2	+50		3.5	12.4
+60		19.0	3.6	72		4.7	11.2
+80		15.2	7.4	+50		4.5	11.4
63		18.3	4.3	+67 <sup>8</sup> U.S. Gov. Res. Line		4.3	11.6
+20		20.1	2.5				
+40		19.3	3.3				
+60		19.4	3.2				
+74 <sup>3</sup> \$ McCall		19.7	2.9				
+99 <sup>3</sup> S.L. McCall							
64		15.8	6.8				
+25		20.1	2.5				
T.P.	4.80	15.91	11.47				
+50		5.8	10.1				
+90		12.1	3.8				
65		9.0	6.9				

Change of Line "D" (page 36) from sta 41+699  
to sta 53+203

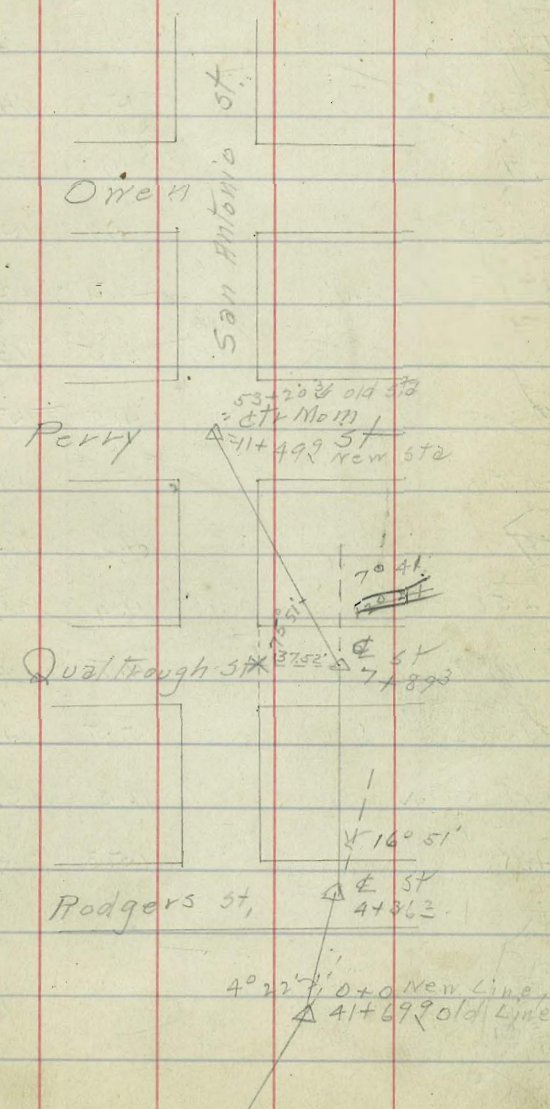
107  
114  
Dumble  
Shaw  
Murr

Page 36 for  
Continuation

41

B.M.	12.96	20.55	7.59
0+0 = Sta 41+699	4° 21' L	13.0	7.6
+50		11.7	8.9
1		8.7	11.9
+50		6.8	13.8
2		5.8	14.8
+50		4.5	16.1
3		3.4	17.2
+50		3.1	17.5
4		3.5	17.1
+363	L 16° 51'	3.8	16.5
+50		4.0	16.6
5		7.0	13.6
+50		8.2	12.4
+65		8.7	11.9
+75		10.9	9.7
+90		7.1	13.5
6		6.7	13.9
T.P.	6.19	20.02	6.72 13.83

Sheet 10



20.02

6407		6.3	13.7
+15		9.5	10.5
+26		7.3	12.7
+50		5.3	14.7
7		4.8	15.2
+50		4.7	15.3
+89 <sup>3</sup>	<del>14°41'</del> 7°41'	7.4	12.6
8+0		6.5	13.5
+20		4.8	15.2
+50		5.8	14.2
9		9.6	10.4
+50		11.4	8.6
10		11.8	8.2
+50		15.5	4.5
11		16.3	3.7
+49 <sup>9</sup>		15.3	4.7

Sewer Line Pescadero from Main Main  
to E Chatsworth Blvd  
see sketch page 44

170.62

B.M.	9.57	136.97		126.90
0+0			9.6	126.0
+50			8.6	127.9
1			6.1	130.4
2+0			5.8	130.7
2			3.2	133.3
+50			1.4	135.1
T.P.	11.93	147.74	0.66	135.81
3			10.7	137.0
+50			8.6	139.1
+57			8.3	139.4
+60			10.9	136.8
+68			8.1	139.6
4+0			7.2	140.5
2+50			4.1	143.6
5+0			0.7	147.0
T.P.	12.61	159.93	0.42	147.32
+50			11.4	148.5
6			7.7	152.2
+50			5.0	154.9
+75			5.2	154.7
+80			7.7	152.2
+83			4.5	155.4
7+0			3.00	156.9
T.P.	11.84	170.62	11.5	158.78
+50			11.2	159.4
8+0			9.3	161.3

E.L.M.

Ophie

8+45			7.4	163.2
+50			11.8	158.8
+75			10.7	159.9
+77			6.1	164.5
9+0			4.8	165.8
+50			2.4	168.2
T.P.	10.24	179.72	1.74	168.88
10			10.1	169.6
+50			9.2	170.5
11			7.3	172.4
+50			3.6	176.1
+58			2.4	177.3
T.P.	10.97	190.35	0.34	179.38
+73			5.9	184.4
12			6.0	184.3
+10 <sup>4</sup>			5.8	184.5

4/51 Note - Change in levels account of  
116 floods from sta 7+0 to sta 12+10<sup>4</sup> see  
page 70 this book

Prelim sewer Line Del Mar St from  
 Main St To E Chatsworth Blvd.

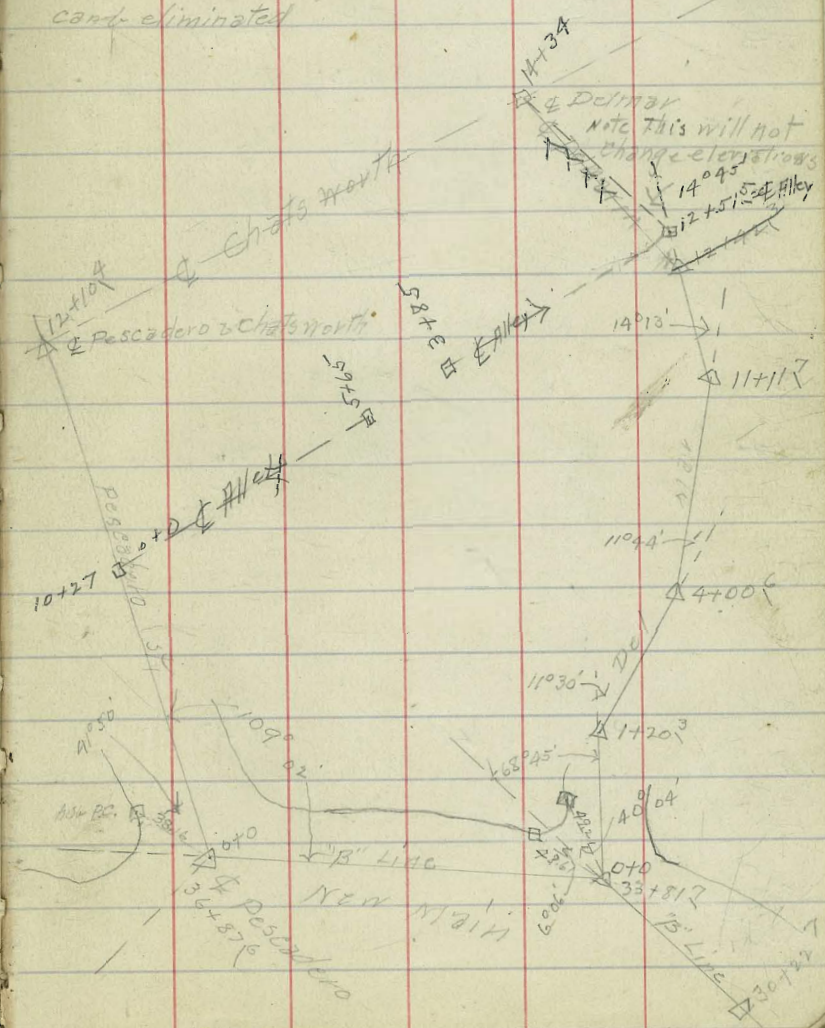
B.M	986	131.96	122.10
0+0			9.9 122.0
+05			10.2 121.7
+06			8.5 123.4
+50			10.1 121.8
1			8.2 123.7
1+70 <sup>3</sup> R	11°30'		6.5 125.4
+50			5.9 126.0
2			5.6 126.3
+50			3.2 128.7
T.P.	10.83	141.89	0.90 131.06
3			10.0 131.9
+50			7.7 134.2
4+00 <sup>6</sup> L	11°44'		3.5 138.4
T.P.	12.50	153.26	1.13 140.76
+50			10.9 142.4
5			8.6 144.7
+50			5.2 148.1
T.P.	12.12	164.66	0.72 152.54
6			13.4 151.3
+50			10.9 153.8
7			6.0 158.7
+50			4.0 160.7
T.P.	13.14	177.15	0.65 164.01

"F" Line

Sheet 11

14°45'

see Loma Park Map  
 note Del Mar Line from Sta 12+51.5 to Sta 14+34  
 cancelled



6

		177.15		
810			11.4	165.7
+50			5.9	171.2
910			3.6	173.5
450			1.2	175.9
T.P.	12.99	189.06	1.08	176.07
1010			7.8	181.3
+50			2.6	186.5
T.P.	12.61	201.20	0.97	188.59
11			12.9	188.3
1117	L 14° 13'		11.4	189.8
+50			6.1	195.1
12			1.5	199.7
T.P.	11.79	212.05	0.94	200.26
12+42°	L 14° 02'		7.9	202.6
12+51°	L 14° 45'		8.8	203.2
+50			9.0	203.0
13			7.3	204.7
+50			5.8	206.2
+90			3.7	208.3
T.P.	12.09	221.86	2.98	209.07
1410			9.1	212.1
+33°	Chatsworth		8.9	212.3

Sheet 11

Levels of Hwy bet Chatsworth & Gates  
from 515 12+515 Del Mar or "F" Line (see 45  
page 44) south for 385'

B.M.	11.24	214.54		202.60
810-515 12+515			11.3	203.2
+50			10.5	204.0
+75			8.1	206.4
1			6.3	208.2
+25			4.5	210.0
+50			2.6	211.9
+75			1.4	213.1
T.P.	12.72	226.02	1.24	213.30
2			11.4	214.6
+25			10.3	215.7
+50			9.2	216.8
3			7.5	218.5
+25			6.2	219.8
+50			5.1	220.9
+85			3.6	222.4

Sheet 14

Levels of Alley bet Chatsworth & Gates  
from Sta 10+27 Pescadero (see page 44)  
North for 565'

B.M.	13.04	169.97		156.93
T.P.	9.13	177.83	1.27	168.70
0+02 Sta 10+27				Pescadero line 12.07 165.76
+05			8.8	169.0
+14			7.2	170.6
+25			3.5	174.3
T.P.	10.95	187.48	1.30	176.53
+50			6.6	180.9
+53			6.0	181.5
1			3.4	184.1
T.P.	10.72	197.87	0.33	187.15
+50			8.9	189.0
+75			6.3	191.6
2			3.7	194.2
T.P.	11.34	208.85	0.36	197.51
+25			11.7	197.2
+50			10.3	198.6
3			7.1	201.8
+50			2.3	206.6
T.P.	11.72	219.89	0.65	208.17

Sheet 14

219.89

+40				8.0	211.9
+50				3.7	216.2
T.P.	8.57	227.64		0.82	219.07
5				8.1	219.5
+50				6.1	221.5
+65				5.7	221.9

5.07 222.57

46



Levels & Gates from sta 8438<sup>3</sup> Pescadero  
Line North for 500'

47

B.M.	9.59	172.61		163.02	31.0		11.5	193.1	
0+0 -& Pescadero	9.59		163.0		42.5		8.0	196.6	
+0.3		10.4	162.2		45.0		4.2	200.4	
+0.8		15.6	157.0		T.P.	10.42	214.58	0.44	204.16
+1.4		10.2	162.4		47.5		10.0	204.6	
+2.5		8.3	164.3		4		6.9	207.7	
+5.0		4.0	168.6		45.0		5.3	209.3	
+7.5		1.2	171.4		5		5.1	209.5	
T.P.	10.98	183.33	0.26	172.35					
1			7.9	175.4					
+2.5			4.6	178.7					
+5.0 cut 11'			0.9	182.4					
T.P.	9.57	192.37	0.53	182.80					
+8.6			9.0	183.4					
2			9.4	183.0					
+3.5			8.5	183.9					
+5.0			6.4	186.0					
+7.5			2.9	189.5					
T.P.	12.57	204.60	0.34	192.03					

Sheet 14

204.60

Levels for sewer from  $\Phi$  of <sup>Garrison</sup> ~~Scott~~ &  
 Scott thence N on  $\Phi$  Scott to  $\Phi$  Poe thence W on  
 $\Phi$  Poe to Pt 20 E of  $\Phi$  Rosecrans thence N on 20'  
 Line of Rosecrans to S.L. Dumas

B.M. 8.55 +3.40 -5.15

0+0 = $\Phi$ Goethe X	8.5	-5.1
+50	9.4	-6.0
1	9.4	-6.0
+50	9.1	-5.7
2	8.8	-5.4
+50	8.4	-5.0
+70 $\Phi$ Hugo	8.2	-4.8
3	7.8	-4.4
+50	6.1	-2.7
4	5.4	-2.0
+50	4.9	-1.5
5	4.1	-0.7
+40 $\Phi$ Ingelow	4.6	-1.2
+50	4.8	-1.4
6	4.6	-1.2
+50	4.8	-1.4
7	4.2	-0.8
+50	4.0	-0.6
8	3.4	-0.0

Sheet 9  
"G" Line

8+10 $\Phi$ Jarvis	3.4	0.0
T.P. 5.07	2.91	0.59
+50	5.7	-0.1
9	6.0	-0.3
+50	6.0	-0.3
10	6.0	-0.3
+50	5.9	-0.2
+80 $\Phi$ Keats	5.8	-0.1
11	5.6	0.1
+50	4.7	1.0
12	5.0	0.7
+50	5.0	0.7
13	4.9	0.8
+50 $\Phi$ Lowell	4.8	0.9
14	4.4	1.3
+50	4.4	1.3
15	3.9	1.8
T.P. 5.73	3.72	2.24
+50	8.0	2.2
16	5.7	2.3
+8	7.1	0.9
+20 $\Phi$ McCauley	5.0	3.0
+50	5.7	2.3

17		8.0	6.3	1.7	+50	8.4	-0.4
+50			6.8	1.2	26	7.8	0.2
18			6.7	1.3	+50	7.0	1.0
+50			7.1	0.9	27	6.2	1.8
+90 ♀ Newell			7.4	0.6	+50	4.0	4.0
19			7.3	0.7	T.P. 4.22 3.27 3.86	4.05	4.05
+50			7.0	1.0	+95 = 20 Eof ♀ Reservoirs	4.5	3.8
20			6.9	1.1	28	4.5	3.8
+50			6.8	1.2	+50	4.5	3.8
21			6.6	1.4	29	4.8	3.5
+50			6.3	1.7	+50	4.8	3.5
+60 ♀ Oly. Phant			6.2	1.8	30	4.7	3.6
22	6.28	7.91	6.9	1.1	+50	4.3	4.0
+50			6.34	1.63	+65 ♀ Quimby	4.5	3.8
23			7.0	0.9	31	4.5	3.8
+50			7.9	0.0	+50	4.6	3.7
24			8.7	-0.8	32	4.7	3.6
+30 ♀ Poe			9.5	-1.6	+50	5.0	3.3
+50			9.6	-1.7	33	5.0	3.3
25			9.4	-1.5	+35 ♀ Russell	5.2	3.1
			8.9	-1.0	+50	5.2	3.1

		8.27		
34+0			5.6	2.7
+50			6.0	2.3
35+0			6.4	1.9
+50			7.0	1.3
36			7.7	1.3
T.P.	9.41	9.94	7.74	0.53
+050	Stjerne		7.4	0.5
+50			7.6	0.3
37			7.5	0.4
+50			7.6	0.3
38			8.9	1.0
+50			8.3	1.6
+75	Φ Tennyson		8.0	1.9
39			7.7	2.2
+50			6.6	3.3
40			5.0	4.9
+50			3.5	6.4
41			2.0	7.9
+45	Φ Udal		0.5	9.4
+50			0.5	9.4
T.P.	6.45	15.92	0.47	9.47
42			5.1	10.8

		15.92		
+50			4.3	11.6
43			4.1	11.8
+50			4.0	11.9
44			4.3	11.6
+15	Φ Voltaire		4.3	11.6
+50			4.9	11.0
45			5.0	10.9
+50			5.3	10.6
46			5.5	10.4
+50			5.5	10.4
+75	Φ Whittier		4.8	11.1
47			4.5	11.4
+50			5.1	10.8
48			3.9	12.0
+50			2.5	13.4
49			1.0	14.9
T.P.	10.65	25.59	0.98	14.94
+50			9.4	16.2
+55	Φ Xenophon		9.3	16.3
50			8.2	17.4
50+50			6.9	18.7

51			6.1	19.5
+50			5.2	20.4
52			4.6	21.0
+25¢ Yonge			4.5	21.1
+50			4.3	21.3
53			3.7	21.9
+50			2.9	23.7
54			2.3	23.3
+50			1.7	23.9
+95¢ Zooch			1.7	23.9
T.P.	10.67	35.13	1.13	24.46
55			10.5	24.6
+50			10.3	24.8
56			9.8	25.3
+50			9.2	25.9
57			8.5	26.6
+50			7.6	27.5
+65¢ Street			7.3	27.8
58			6.5	28.6
+50			5.2	29.9
59			4.2	30.9

59+50			3.2	31.9
60			2.2	32.9
+35¢ Street			1.3	33.8
+50			0.7	34.4
T.P.	11.25	46.23	0.15	34.98
61			10.4	35.8
+50			9.4	36.8
62			8.0	38.2
+50			6.8	39.4
63			6.0	40.2
+05¢ Street			5.7	40.5
+50			4.9	41.3
64			3.9	42.3
+50			2.8	43.4
65			1.9	44.3
+40.5¢ L. Dumas			1.2	45.0

Levels & Gates from sta 10+52.7  
Delmar Line south for 3494' see page 44

B.M.	9.36	199.16	189.80
0+0 = sta 10+52.7		Delmar Line 12.5	186.7
+25		8.0	191.2
+50		4.1	195.1
+75		1.5	197.7
1		1.5	197.7
T.P.	12.75	211.46	0.45 198.71
+28		14.2	197.3
+41		13.1	198.4
+50		12.4	199.1
2		8.4	203.1
+50		7.0	204.5
3		4.7	206.8
+49.4		5.8	205.7

Sheet 14

Levels 2' North of Lot Line bet Bermuda and  
Gates from sta 8+44.2 Delmar Line (page 44) 52  
west for 535'

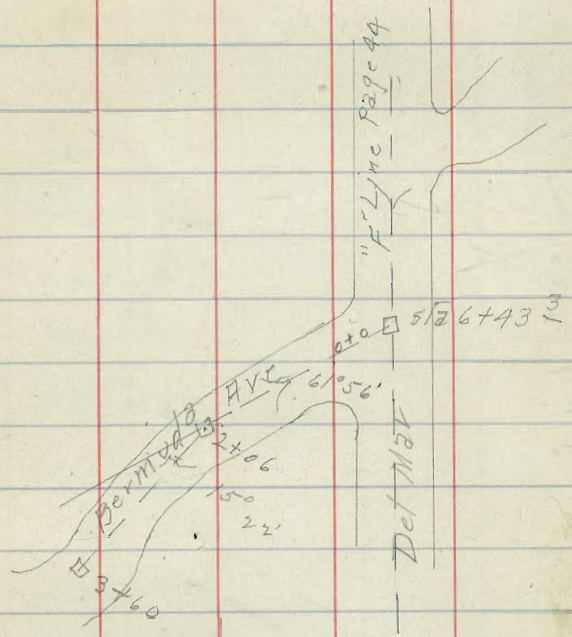
B.M.	0.88	187.54	186.66
T.P.	6.74	181.43	12.85 174.69
0+0 = sta 8+44.2		Del Mar or "F" Line 10.78	170.65
+25		7.9	173.5
+50		4.2	177.2
+75		1.5	179.9
T.P.	3.60	184.56	0.47 180.96
1		3.7	180.9
+50		6.7	177.9
2		5.3	179.3
+25		6.1	178.5
+50		7.1	177.5
3		8.9	175.7
+50		9.1	175.5
4		cut 3' O.K.	9.1 175.5
+50		8.2	176.4
+65		7.3	177.3
+75		4.7	179.9
T.P.	12.30	196.17	0.69 183.87
5		9.1	187.1
+25		5.0	191.2
+35		4.36	191.8

Sheet 14

Levels Bermuda Arc from sta 6+43<sup>3</sup> Del Mar  
 or "F" Line

B.M.	0.94	171.55	170.65
T.P.	5.53	165.13	11.95 159.60
0+0 = Sta 6+43 <sup>3</sup>		11.4	153.7
+25		9.0	156.1
+50		5.1	160.0
1		3.3	161.8
+50		3.4	161.7
2		3.4	161.7
+06 $\angle 15^\circ 22'$		3.3	161.8
+50		4.6	160.5
3		6.4	158.7
+50		6.7	158.4
+60		5.8	159.3

Sheet 14



Levels taken 29' S of S.L. BK 106 Loma  
 Park Add from sta 37+80.6 "B" Line (page 22)  
 west for 840' (Point Loma Ave)

188.42

54

B.M. 1463 138.53 126.90

0+0 = sta. 37+80.6 "B" Line 8.9 129.6

+05 8.4 130.1

+08 9.6 128.9

+12 6.7 131.8

+50 2.8 135.7

+75 0.2 138.3

T.P. 12.35 150.57 0.31 138.22

1 8.6 142.0

+25 5.9 144.7

+50 3.9 146.7

+75 2.0 148.6

2 0.2 150.4

T.P. 12.89 163.25 0.21 150.36

+25 10.3 153.0

+50 cut 7' 6.9 156.4

+75 2.1 161.2

T.P. 12.92 175.85 0.32 162.93

3 9.5 166.4

+08 cut 9' 7.4 168.5

+25 6.6 169.3

+50 5.7 170.2

+75 4.9 171.0

4 1.4 174.5

T.P. 12.84 188.42 0.27 175.58

Sheet 14

4+25

+31

+39

+50

+75

+80 cut 8'

5

+03

+10

T.P. 12.36 200.44

+25

+50

+75

6

+50

7

+50

8

+40

11.0 177.4

10.5 177.9

17.1 171.3

8.9 179.5

8.4 180.0

5.9 182.5

3.0 185.4

3.9 184.5

0.9 187.5

0.34 188.08

10.8 189.6

8.6 191.8

7.3 193.1

5.9 194.5

5.9 194.5

4.2 196.2

3.3 197.1

3.0 197.4

1.9 198.5

12.64 187.80



Line 8 Levels for Sewer <sup>DP</sup> see sketch page 56

55

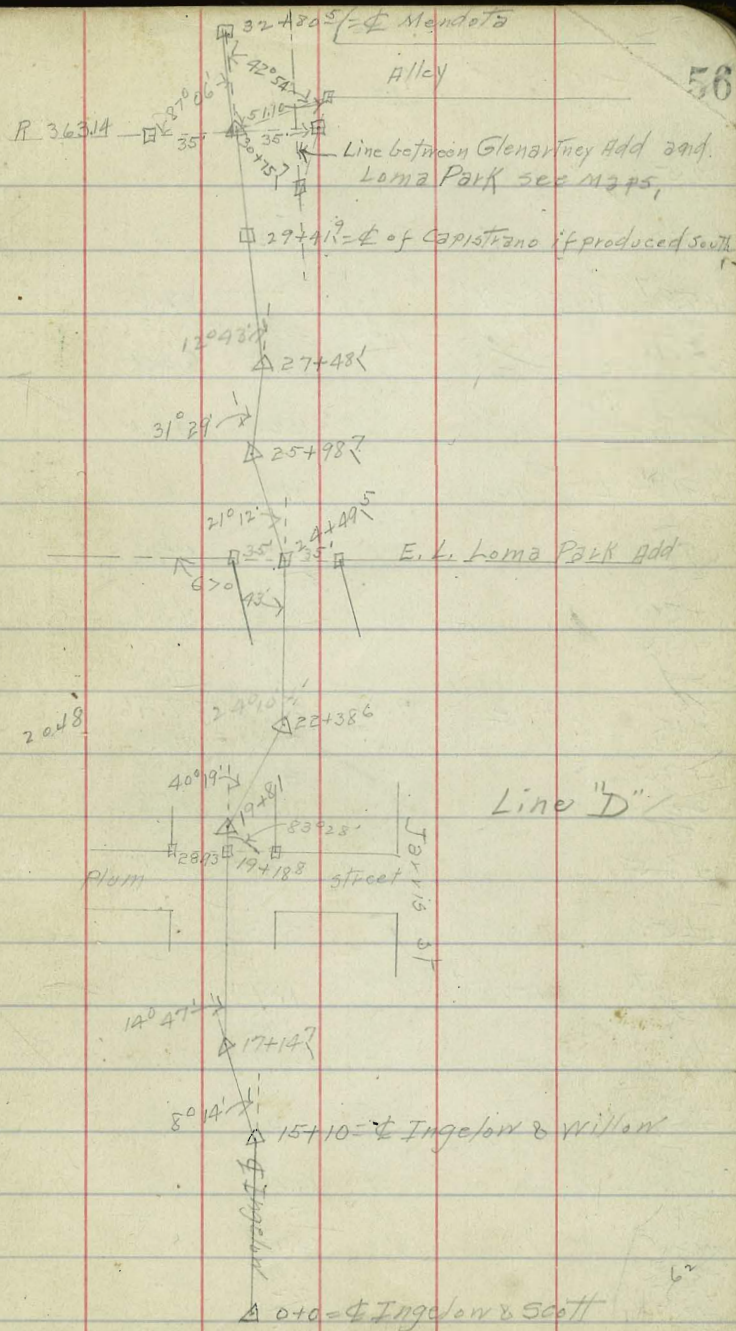
B.M.	0.62	11.29	19.67
T.P.	4.75	7.17 7.2	2.42
400 $\phi$ Scott St		8.4	-1.2
+50		7.5	-0.3
1		7.3	-0.1
+50		6.9	0.3
2		5.9	1.3
+50		5.6	1.6
3		4.5	2.7
+50		6.2	1.0
+85 $\phi$ Pascok 115		5.1	2.1
4		5.1	2.1
+50		2.9	4.3
5		3.3	3.9
+50		1.9	5.3
6		0.5	6.7
T.P.	10.27	17.61	0.53
+50		9.7	7.9
7		8.3	9.3
+50		7.0	10.6
+70 $\phi$ Locust		6.4	11.2

2-117  
"H" Line

Sheet 12

		17.61		
8+0			5.5	17.1
+50			3.8	13.8
9			0.7	16.9
T.P.	11.21	28.20	0.62	16.99
+50			9.5	18.7
10			7.8	20.4
+50			5.8	22.4
11			3.8	24.4
+40 $\phi$ Evergreen			1.6	26.6
+50			1.3	26.9
T.P.	11.47	38.39	1.22	26.92
+50			9.0	29.4
+50			6.8	31.6
13			4.7	33.7
+50			2.4	36.0
14			0.2	38.4
T.P.	10.25	49.07	0.17	38.22
+50			8.5	40.6
+75 $\phi$ E.L. Willow			6.7	42.1
note - Use est. Grade of Willow - being graded at present.				
+5+45 $\phi$ W.L. Willow			2.7	46.4
T.P.	11.52	59.10	1.89	47.18
+50			10.2	48.9
+50			7.8	51.3
17			4.0	55.1

		59.10		
17+147	R 14° 47'		3.8	55.3
T.P.	1157	70.52	0.45	52.65
+50			15.4	55.1
18			10.5	60.0
+35			7.4	63.1
+45			4.3	66.2
+50			5.8	64.7
19			7.5	63.0
+188			6.5	64.0
+50			5.3	65.2
				66.0
+81	R 40° 19'		4.5	64.8
20			3.6	66.9
T.P.	1160	78.82	3.30	67.22
+50			9.0	69.8
21			8.0	70.8
+50			5.7	73.1
22			4.6	74.2
T.P.	1279	87.13	4.48	74.34
+385	L 29° 10'		2.8	78.3
+50			2.7	78.7
+75			9.3	77.8
23			6.2	80.9
+50	cut 7'		3.4	83.7
24			2.7	84.4
T.P.	1240	98.68	0.85	86.28
+27	21° 12'		14.2	84.5



9865

Levels & Mendota from sta 32180<sup>s</sup> page 56 North  
for 485'

4/16 57  
Dunkle  
Shaw  
Bunker

25			8.6	90.1
+50			8.2	90.5
+98 <sup>7</sup> R	31° 29'		5.8	92.9
T.P.	9.87	107.63	0.92	97.76
+26+50			13.8	93.8
27			12.0	95.6
+98 <sup>1</sup> L	12° 43'		11.0	96.6
28			10.5	97.1
+50			8.8	98.8
+55			6.5	101.1
29			6.4	106.2
T.P.	12.43	119.89	0.17	107.96
+412 - 4	Capistrano		7.0	112.9
+50			4.6	115.3
+75			4.1	115.8
30			5.5	114.4
+25			3.3	116.6
+50			1.9	118.0
+95 <sup>7</sup> )	10 <sup>1</sup> 8'		1.89	118.00
T.P.	11.53	129.53		
+84			12.0	117.3
31			14.4	115.1
+06			15.9	113.6
+12			14.1	115.4
+25			11.8	117.7
+50			7.2	122.3
+75			4.8	124.7
32			2.5	127.0
T.P.	6.87	136.15	0.25	129.27
+50			5.9	130.3
+80 <sup>5</sup> - 6	Mendota		5.4	130.8

136.15

0+0-50 32180<sup>s</sup> 5.4 130.8

410 6.3 129.9 f

+13 8.2 127.4

+70 6.7 129.5

+50 6.7 129.5

1 5.3 130.9

+50 5.6 130.6

2 5.3 130.9

+50 6.1 130.1

3 6.9 129.3

+50 7.1 129.1

+87 6.6 129.6

+96 5.7 130.5

4 6.1 130.1

+08 6.7 129.5

+50 7.3 128.9

+85 7.8 128.4

Sheet 31

Levels of Capistrano from Sta 29+41<sup>9</sup> page  
 56 North for 585'

4 1/2 Dunkle  
 6 shaw  
 Bonker

145.55

70.8

58

B.M. 4.77 122.77 118.00

+75 9.1 136.5

0+0 = Sta 29+41<sup>9</sup> 10.8 112.0

4 cut 9' 7.1 138.5

+16 9.7 113.1

+50 4.6 141.0

+50 9.3 113.5

5 4.7 140.9

+63 8.8 114.0

+50 4.7 140.9

+70<sup>8</sup> = P.L. 7.8 115.0

+85 cut 6' 5.0 140.6

1 7.3 115.5

+30 6.2 116.6

+40 8.8 114.0

+50 5.4 117.4

2 1.2 121.6

T.P. 12.10 134.20 0.67 122.10

+50 9.3 124.9

+75 8.1 126.1

3 6.0 128.2

+25 cut 8' 3.5 130.7

T.P. 11.57 145.55 0.22 133.98

+38 13.8 131.8

+50 11.5 134.1

Sheet 31

Levels for sewer & Chats north Blvd from  
 3/2 34+82<sup>6</sup> Line "A" north to & Tennyson

59

B.M.	10.78	87.98		77.20
		88.0		
0+0 = 3/2 34+82 <sup>6</sup> Line "A"	10.8			77.2
+50			8.7	79.3
+97 <sup>6</sup> & Quimby			6.8	81.2
1			6.7	81.3
+150			4.6	83.4
2			1.7	86.3
T.P.	11.06	98.70	0.34	87.64
+150			9.2	89.5
3			6.3	92.4
+150			4.4	94.3
4			3.1	95.6
+132 <sup>8</sup> & Tennyson			2.4	96.3

J. L. Linn

Sheet 12

Levels for general Chart north Bird from  
 Sta 34+82<sup>6</sup> Line "H" south to to E Del Mar 87  
 Sta 34+19 Del Mar Line Page 44

60

B.M.	3.35	88.90	85.55	9.	9.0	98.8
T.P.	8.35	85.63	11.62	77.28	6.9	100.9
0+0=5/2 34+82 <sup>6</sup>			8.4	77.2	10	4.5
+50			7.1	76.5	+50	2.0
1			7.0	76.6	T.P. 12.99	0.26
+50			8.5	76.8	11	12.2
2			8.2	77.4	+50	9.3
+50			7.2	78.4	12	6.7
3			6.7	78.9	+50	4.0
+50			5.5	80.1	13	1.4
4			4.4	81.2	T.P. 12.00	0.20
+50			3.2	82.4	+50	10.6
5			2.0	83.6	14	7.8
+50			0.8	84.8	+50	5.0
T.P.	11.27	96.16	0.74	84.89	15	1.8
6			9.8	86.4	T.P. 12.17	0.03
+50			8.0	88.2	+50	11.5
7			6.1	90.1	16	10.7
+50			3.8	92.4	+50	8.7
8			1.8	94.4	17	5.9
T.P.	11.33	107.78	0.21	95.95	T.P. 12.82	0.45
+50			11.1	96.7	+50	10.2
					18	6.2

"H" Line

Sheet 13

107.78

9.0 98.8

6.9 100.9

4.5 103.3

2.0 105.8

0.26 107.52

12.2 108.3

9.3 107.2

6.7 113.8

4.0 116.5

1.4 119.1

0.20 120.31

10.6 121.8

7.8 124.6

5.0 127.4

1.8 130.6

0.03 132.38

11.5 132.8

10.7 133.7

8.7 135.9

5.9 138.7

1.9 142.7

0.45 144.10

10.2 146.7

6.2 150.7

		156.92		
18+50			1.8	155.1
T.P.	11.80	168.50	0.22	156.70
19			9.5	157.0
+50			6.3	162.2
20			4.1	164.4
+40 <sup>8</sup> R	36° 52'		3.3	165.2
T.P.	11.55	176.73	3.32	165.18
+50			11.0	165.7
21			9.5	167.2
+50			8.2	168.5
22			6.9	169.8
+50			5.3	171.4
23			3.8	172.9
+50			1.7	175.0
T.P.	12.16	188.83	0.06	176.67
24			10.5	178.0
+50			7.2	181.6
25			3.6	185.2
+50			0.1	188.7
T.P.	12.36	201.13	0.06	188.77
26			8.9	192.2
+50			5.8	195.3
27			2.9	198.2

34+197 211

201.13

27+50				0.5	200.6
T.P.	11.63	212.16		0.60	200.53
28				9.4	202.8
+50				6.9	205.3
29				5.0	207.2
+50				3.0	209.2
30				0.9	211.3
T.P.	7.01	218.39		0.78	211.38
+50				5.5	212.9
31				4.5	213.9
+50				4.8	213.6
32				5.1	213.3
+50				5.5	212.9
33				5.1	212.6
+50				6.2	212.2
34				6.2	212.2
+197.4 Delmar at st 1A+38 <sup>3</sup> Del Mar Line Page 44				6.1	212.3

Public sheet  
No. 13

The image shows an open notebook with two facing pages. Both pages are cream-colored and feature a grid of horizontal blue lines and vertical red lines. The left page is numbered '61' in the top left corner, and the right page is numbered '62' in the top right corner. The notebook is bound in a dark, possibly brown or black, cover that is visible at the edges. The pages are otherwise blank, with no handwriting or printed text.



Levels for outfall Pt Loma sewer  
system from  $\Phi$  Scott East in  $\Phi$  Carlton  
to San Diego Bay

B.M. 3.02 9.22 6.20

+00 =  $\Phi$  Scott St 3.0 6.2

+50 4.2 5.0

1 5.6 3.6

+50 6.5 2.4

2 8.3 0.9

+50 9.5 -0.3

3 10.9 -1.7

+50 11.9 -2.7

+70  $\Phi$  Sheffer 12.7 -3.5

4 12.6 -3.4

+50 12.1 -2.9

+71' H.V. 2'x3" 12.20 -2.98

F.P. 4.07 +1.09 12.20

5 5.6 -4.5

+25 6.9 -5.8

+50 8.2 -7.1

+75 8.4 -7.3

6 8.8 -7.7

+75 9.6 -8.5

+50 10.4 -9.3

1" line

June 9<sup>th</sup> 4:30 A.M.

+75 1.1 11.3 -10.2

+90 water edge at -1.3 tide 11.9 -10.8

7 12.3 -11.2

+75 12.7 -11.6

+50 13.1 -12.0

+75 12.8 -11.9

8 13.0 -11.9

+25 13.0 -11.9

+50 12.9 -11.8

+75 12.7 -11.6

9 12.3 -11.2

Profile Sheet 13

Levels of Jarvis from sta 24+49.5 Page 56  
 East for 407.6 or 25' APPX W of Plum St N Dunkle  
 Shaw  
 11/6 Bunker

117.99

B.M.	11.03	95.53	84.50	+50		3.6	114.1
0+0 = Sta 24+49.5		11.03	84.5	+75		1.7	116.3
+06		10.4	85.1	T.P.	6.65	123.09	1.55 116.44
+25		5.7	89.8	4		4.3	118.8
+50		1.9	93.6	+07.6 = 25' from Plum St		3.5	119.6
T.P.	11.37	106.75	0.15	95.38			
+75		8.2	98.6				
1		4.4	102.4				
+25		3.9	102.9				
+50		5.8	101.0				
+68		7.8	99.0				
+75		7.3	99.5				
2		4.9	101.9				
+25		2.4	104.4				
T.P.	11.62	117.99	0.38	106.37			
+50		11.0	107.0				
+75		8.9	109.1				
3		5.8	112.2				
+25		4.9	113.1				

Sheet 32

111.8  
113

Levels of Ermina from Sta 25498<sup>1</sup> page  
36 to of Ingelow

B.M.	11.01	103.91		92.90
0+0 = 5/2 25+98 <sup>1</sup>			11.0	92.9
+14			11.4	92.5
+45			7.9	96.0
+50			6.7	97.2
+75 cut 7'			1.4	102.5
T.P.	12.25	116.57	0.19	103.72
1			9.5	107.1
+25 cut 9'			5.6	111.0
+50			2.6	114.0
T.P.	11.98	129.25	0.30	116.27
+75 cut 8'			12.3	116.0
2			9.8	118.5
+25			4.9	123.4
+50			0.8	127.5
T.P.	11.78	139.72	0.31	127.94
+75			9.3	130.4
3			6.7	133.0
+25			4.1	135.6
+50			0.5	139.2
T.P.	12.24	151.68	0.28	139.44
+82' = of Ingelow			7.06	144.62

Sheet 32

Levels Ingelow from Sta 19481 page<sup>56</sup> West  
to of Ingelow Line bet Roseville & Loma Park Add  
Dist 373

B.M.	12.89	78.89		66.00
0+0 = 5/2 19+81			12.9	66.0
+25			11.0	67.9
+45			9.3	69.6
+50			7.8	71.1
T.P.	12.45	91.07	0.27	78.62
+75			10.3	80.8
T.P.	11.68	102.51	0.24	90.83
1			11.0	91.5
+13			7.2	95.3
+25			4.7	97.8
T.P.	12.61	114.84	0.28	102.23
+50			10.7	104.1
+75			5.3	109.5
T.P.	12.81	127.46	0.19	114.65
2			11.2	116.3
+25			4.9	122.6
+50			0.9	126.6
T.P.	12.16	139.08	0.54	126.92

Sheet 32

65

4/16 Dunkle  
shaw  
Bunker

		139.08		
2+75		9.3	129.8	
3		6.2	132.9	
+25		4.0	135.1	
T.P.	11.95	150.69	0.34	138.74
+50		11.1	139.6	
+73		7.6	143.1	
		0.20	150.39	

Levels of Inge low from E. Ermina in northerly 60  
direction for 280'

4/15 Dunkle  
shaw  
Bunker

B.M.	7.06	151.68		144.62
0+0 = E. Ermina			7.1	144.6
+36			6.3	145.4
+50 cut 9'			4.9	146.8
+75			2.1	149.6
T.P.	12.60	163.20	0.48	151.20
0+97			11.62	152.18
1			11.4	152.4
+25			8.6	155.2
+50 cut 10'			6.6	157.2
2			3.2	160.6
T.P.	8.40	170.02	2.16	161.62
+50 cut 11'			6.8	163.2
+80 cut 11'			4.6	165.4

Sheet 32

Levels of Ingelow from Ermina in southerly direction for 272.5' or to Black st

B.M.	10.20	155.52	144.62
0+0 = Ermina	10.9	144.6	
+50	7.5	148.0	
1 cut 9'	9.5	146.0	
+50 cut 7'	12.1	143.4	
2 cut 7'	9.9	145.6	
+19	8.4	147.1	
+25 cut 6'	7.5	148.0	
+50	3.0	152.5	
T.P.	9.27	162.96	1183 153.69
+72.5 = Black st	6.9	156.1	

Levels of Black st from st 2+72.5 Ingelow west for 135'

		162.96	
0+0	6.9	156.1	
+50	3.9	159.1	
1	6.6	156.4	
+35	6.3	156.7	

Levels on Berwick Ave from sta 0+97 Ingelow Line 110° 01' to Right for 260'

B.M.	12.21	164.39	152.18
0+0 = sta 0+97 Ingelow	12.2	152.2	
+25	10.7	153.7	
+50	10.6	153.8	
+82	8.4	156.0	
1	5.7	158.7	
+07	3.7	160.7	
+25	0.2	164.2	
T.P.	12.23	176.84	0.28 164.11
+50	7.8	169.0	
+75	4.1	172.7	
2	2.5	174.3	
+50	2.1	174.7	
+60	2.5	174.3	

1/7 Dunkle  
1/16 Shaw  
Bunker

Sheet 32

Sheet 32

Sheet 32

Levels of Culvert from Fenelon  
South for 314.7

B.M. old Hub 7.7116445		156.74
0+0 = Fenelon	8.2	156.3
+13	6.6	157.9
+50	5.8	158.7
1	8.1	156.4
+50	11.5	153.0
+75	13.2	151.3
2	12.9	151.6
+50	9.3	155.2
3	6.5	158.0
+14.7	5.90	159.05

13.02 172.07

Sheet 33

Levels for sewer beginning at Sta 6+90.7  
Pescadero Line thence left 56° 04' 30" in Bermuda Ave  
of Alley in 61K 104 Loma Park or Sta 2+02.5 68

B.M.	11.25	168.18		156.93
0+0 = Sta 6+90.7			13.4	154.8
+01			11.9	156.3
+36			10.3	157.9
+50			12.4	153.8
+58			9.2	159.0
1			7.2	161.0
+50			4.1	164.1
T.P.	12.34	180.18	0.34	167.84
2			12.2	168.0
+02.5 = Alley 61K 104			11.8	168.4

Sheet 14

2480

Levels & Alley BIK 104 Loma Park  
 South from sta 2+02<sup>S</sup> in Bermuda Arc (Page 68)  
 west for 280'

B.M.		180.18			
0+0 = 90+0 = 2+02 <sup>S</sup>	Bermuda	11.8	168.4		
+13	+9	13.2	167.0		
+50	+11	12.4	167.8		
1	+16	12.0	168.2		
+50	+21	14.6	165.6		
+75	+26	11.3	168.9		
2	+50	8.6	171.6		
+50	+75	4.3	175.9		
3	T.P.	12.73	192.75	0.16	180.02
+14 <sup>T</sup>	1		10.6	182.2	
	+25		5.6	187.2	
	+50		2.4	190.4	
	T.P.	6.74	198.26	1.23	191.52
	2		6.2	192.1	
	+50		6.6	191.7	
	+80		4.9	193.4	

Sheet 14

Levels Pescadero St from sta 12+104  
 (Page 44) or & Chatsworth west for 214.7'  
 to & Pescadero

B.M.	12+02	194.52	184.50
0+0 = & Chatsworth	10+02	184.5	
+26	10.6	183.9	
+27	9.8	184.7	
+42	9.2	185.3	
+50	12.3	182.2	
+55	13.1	181.4	
1	10.6	183.9	
+50	7.3	187.2	
2	2.9	191.6	
+14 <sup>T</sup>	1.5	193.0	

Sheet 11

New levels account of floods  
 from sta 740 to sta 12+10<sup>A</sup>  
 Pescadero line see page 43

41 Dunkle  
 157 Shaw  
 116 Bunker

168.25

70

B.M. 11.32 168.25 156.93

740 11.32 156.93

+07 10.9 157.4

+10 13.7 154.6

+15 10.5 157.8

+50 9.1 159.2

+77 7.7 160.6

+79 9.0 159.3

+93 8.2 160.1

+95 7.0 161.3

8 10.2 158.1

+08 11.4 156.9

+21 7.7 160.6

+30 7.2 161.1

+32 6.1 162.2

+38<sup>3</sup> & Gates 5.2 163.1

+44 5.1 163.2

+50 10.5 157.8

+63 9.0 159.3

Sheet 11

+65 7.5 160.8

+73 5.3 163.0

+77 9.4 158.9

+82 8.8 159.5

+84 3.4 164.9

+87 3.2 165.1

+89 8.5 159.8

+92 9.2 159.1

9 2.3 166.0

+09 1.7 166.6

+10 4.9 163.4

+16 5.0 163.3

+19 3.9 164.4

+50 3.2 165.1

10 2.6 165.7

+27 & Alley 2.5 165.8

+50 2.0 166.3

T.P. 12.55 180.46 0.34 167.91



	180.46			
10+54		14.0	166.5	
+55		12.6	167.9	
+73		10.9	169.6	
+75		8.6	171.9	
+90		9.4	171.1	
+92		10.6	169.9	
11		9.6	170.9	
+03		9.5	171.0	
+05		8.6	171.9	
+11		8.1	172.4	
+15		6.9	173.6	
+50		9.1	176.4	
+58		3.2	177.3	
T.P.	9.37	187.72	2.11	178.35
+73		3.3	184.4	
12		3.4	184.3	
+10 <sup>4</sup>	= <i>Chatsworth</i>	3.2	184.5	

Levels of Alley bet Charles & Dudley from  $\frac{1}{4}$  Catalina East for 760'

$\frac{1}{4}$  Dumble 71  
 $\frac{26}{16}$  Shaw  
 Bunker

B.M. RR. 3rd 10' x 10' gate post opp entrance to R.R. Homestead	261.41			
11.18	272.59			
0+0 = $\frac{1}{4}$ Catalina		5.62	266.97	
+29		6.4	266.2	
+30		5.4	267.2	
+50		4.1	268.5	
1		0.6	272.0	
T.P.	12.05	284.16	0.48	272.11
+50		7.6	276.6	
2		3.7	280.5	
T.P.	12.11	296.07	0.20	283.96
+50		12.4	283.7	
3		8.9	287.3	
+50		5.4	290.7	
4		2.1	294.0	
T.P.	12.08	307.95	0.17	295.90
+50		10.6	299.4	
5		7.5	300.5	
+50		4.5	303.5	
6		2.0	306.0	
T.P.	5.94	312.92	1.00	306.98
+50		5.8	307.1	
7		4.9	308.0	
+50		5.6	307.3	
+60		5.8	307.1	

Sheet 43

12.97

Levels of Alley bet. Dudley & Warner from  $\Phi$   
Catalina East for 660'

B.M.	13.02	279.29		266.97
0+0 = $\Phi$ Catalina			2.24	277.75
+30			2.4	277.6
T.P.	12.02	291.35	0.66	279.33
+31			11.1	280.3
+50			10.1	281.3
1			6.5	284.9
+50			2.7	288.7
T.P.	11.44	301.79	1.00	290.35
2			9.6	292.2
+50			6.0	295.8
3			2.7	299.1
T.P.	10.97	312.38	0.38	301.41
+50			10.2	302.2
4			2.0	304.4
+50			6.0	306.4
5			5.0	307.4
+50			4.2	308.2
6			3.9	308.5
+50			4.6	307.8
+60			4.8	307.6

Sheet 44

9.19

Levels of Alley bet Warner & Fort from  $\Phi$   
Catalina East for 560'

72

B.M.	12.24	290.59		277.75
T.P.	11.58	301.77	0.40	290.19
0+0 = $\Phi$ Catalina			9.61	292.16
+30			10.2	291.6
+31			7.8	294.0
+50			7.1	294.7
1			5.9	295.9
+50			4.4	297.4
2			2.6	299.2
T.P.	11.25	313.19	0.43	301.34
+50			11.8	301.4
3			9.4	303.8
+50			6.9	306.3
4			4.6	308.6
+50			3.2	310.0
5			3.1	310.1
+50			4.0	309.2
+60			4.2	309.0

Sheet 44

8.00

Levels of Alley bet Fort & Pio Pico from  
Catalina East for 555'

B.M.	12.72	304.88		292.16
0+0 = Catalina			6.96	297.2
+30			7.5	297.4
+31			5.4	299.5
+50			5.0	299.9
1			3.3	301.6
+50			1.2	303.7
T.P.	12.53	316.61	0.80	304.08
2			10.4	306.2
+50			8.2	308.4
3			5.9	310.7
+50			3.9	312.7
4			2.4	314.2
+50			1.5	315.1
T.P.	3.90	319.58	0.93	315.68
5			4.0	315.6
+55			4.3	315.3
			6.80	

Sheet 44

Levels of Dudley from STA 40+30.7 "C" Line (Page 28)  
west to Virginia

B.M.	11.77	234.77		223.20
0+0 = STA 40+30.7 "C" Line			1.0	234.0
+28			4.0	231.0
+40			2.1	232.9
+41			1.3	233.7
T.P.	12.44	246.95	0.46	234.51
+50			9.7	237.3
+65			4.8	242.2
+75			3.3	243.7
T.P.	12.71	259.28	0.38	246.57
1			9.5	249.8
+75			2.9	256.4
T.P.	12.02	271.03	0.27	259.01
+38			11.2	259.8
+50			9.8	261.2
+75			7.5	263.5
2			5.5	265.5
+50			1.9	269.1
T.P.	11.98	282.76	0.25	270.78
3			10.2	272.6
+50			6.5	276.3
+75 = Virginia St			4.6	278.2
	11.77	294.19	0.34	282.42
			0.29	292.90

Sheet 43

Levels of Virginia St from Dudley  
South for 200

	282.76		
0+0 = Dudley	4.6	278.2	
+50	5.2	277.6	
1	5.6	277.2	
+50	5.9	276.9	
2	6.1	276.7	

Sheet 43

Levels of Virginia from Dudley North for 200

	282.76		
0+0 = Dudley	4.6	278.2	
+50	4.5	278.3	
1	4.3	278.0	
+50	5.3	277.5	
2	6.1	276.7	

Sheet 43

Levels beginning at sta 48+44.2" C Line (page 28)  
thence west (2' N of P.L.) for 522.9' to Silver Gate 574

B.M.	10.28	281.88	271.60
0+0 = Sta 48+44.2"		10.3	271.6
+20		11.3	270.6
+50		11.3	270.6
+83		10.1	271.8
1		8.7	273.2
+50		5.2	276.1
2		3.6	278.3
+50		1.8	280.1
T.P.	12.36	293.97	0.27 281.61
3		12.4	281.6
+50		10.6	283.4
4		8.1	285.9
+50		5.9	288.1
5		4.0	290.0
+22.9 = Silver Gate		3.19	290.78

Sheet 44

Levels of Silver Gate St from Sta 5+22.9 (Page 74)  
South for 363.8 of Pio Pico St

Levels of Silver Gate St from Sta 5+22.9 (Page 74)  
North for 1008'

B.M.	6.92	297.70	290.78
0+0		6.92	290.78
+50		5.3	292.4
1		3.7	294.0
+50		1.8	295.9
<sup>8</sup> +88' = Alley	0.20	297.50	
	12.85	310.35	
2		12.4	298.0
+50		10.4	300.0
3		8.3	302.1
+50		6.1	304.3
+63' = Pio Pico		5.2	305.2

Sheet 44

Levels of Alley bet Dudley & Warner from  
of Silver Gate west for 185'

B.M.	11.88	304.97	293.09
0+0 = of Silver Gate		11.88	293.09
+18		11.9	293.1
+20		10.5	294.5
+50		8.9	296.1
1		6.2	298.8
+50		3.7	301.3
+85		1.91	303.06

Sheet 44

		297.70	
0+0		6.92	290.78
+50		7.7	290.0
1		7.8	289.9
+50		8.1	289.6
+61' = Alley bet Fort & Warner	8.21	289.49	
2		8.2	289.5
+50		8.2	289.5
3		7.7	290.0
+50		7.2	290.5
4		6.6	291.1
+50		5.6	292.1
5		4.8	292.9
+11' = Alley bet Warner & Dudley	4.61	293.09	
+50		4.1	293.6
6		3.0	294.7
+50		2.0	295.7
7		1.1	296.6
+50		0.5	297.2

Sheet 44

297.70

8+0	0.6	297.1
+50	1.1	296.6
9	1.9	295.8
+50	2.9	294.8
10	4.1	293.6
+0.8	4.6	293.1

Levels of Pio Pico from Sta 96+16 B Line  
East for 555'

B.M.	11.94	309.86	297.92	
0+0 = 3/2 96+16	11.5	298.4		
+15	11.6	298.3		
+20	12.1	297.8		
+50	10.3	299.6		
1	8.1	301.8		
+50	5.8	304.1		
2	3.4	306.5		
+50	0.8	309.1		
T.P.	12.95	322.60	0.21	309.65
3	10.5	312.1		
+50	8.0	314.6		
4	5.9	316.7		
+50	4.4	318.2		
5	3.9	318.7		
+5.5	3.6	319.0		

Sheet 44

Levels of Alley bet Warner & Fort from &  
Silver Gate west for 285'

41 Dunkle 76  
16 Shaw  
Bunker

B.M.	11.95	301.44	289.49	
0+0	11.95	289.49		
+20	12.0	289.4		
+21	10.9	290.5		
+50	9.3	292.1		
1	6.6	294.8		
+50	3.7	297.7		
2	1.2	300.2		
T.P.	7.33	308.26	0.51	300.93
+50	5.3	303.0		
+25	3.2	305.1		

Sheet 44

Levels of Alley bet Fort & Pio Pico from & Silver Gate west for 285'

B.M.	12.18	309.68	297.50	
0+0	12.2	297.5		
+16	12.3	297.4		
+50	9.6	300.1		
1	6.8	302.9		
+50	4.0	305.7		
2	1.2	308.5		
T.P.	7.27	315.96	0.79	308.69
+50	5.0	311.0		
+35	3.3	312.7		

Sheet 44

Levels Cortez St taken 2' west of East boundary  
 Line of Vista De Mexico from Sta  
 south for 700' or to Peru St

Page 23

B.M. Mon. N.E. Peru & Catalina		375.16		
1.70	376.86			
T.P.	0.75	364.78	12.83	364.03
T.P.	1.77	353.58	12.97	351.81
0+0			11.5	342.1
+50			10.1	343.5
1			8.4	345.2
+50			7.0	346.6
+80 = Alley bet AZTEC & Montezuma		6.33		347.25
2			5.6	348.0
+50			4.2	349.4
3			2.9	350.7
T.P.	11.99	364.75	0.82	352.76
+50			12.8	352.0
4			11.8	353.0
+50			9.3	355.5
5			7.2	357.6
+30 = Alley bet Montezuma & Peru		5.57		359.18
+50			4.8	360.0
6			2.0	362.8
T.P.	11.74	376.03	0.46	364.29
+50			11.2	364.8
740 = Peru			8.70	367.3

Sheet 7

Levels Peru from Sta 740 opp page west  
 for 220'

77

		376.03		
0+0			8.70	367.3
+50			6.5	369.5
1			5.0	371.0
+50			4.2	371.8
2			3.7	372.3
+20			3.48	372.55

Sheet 44

Levels Alley bet Peru & Montezuma from Sta  
 540 opp page west for 390'

B.M.	12.41	371.59		352.18
0+0			12.41	359.18
+50			9.5	362.1
1			6.6	365.0
+50			4.5	367.1
2			2.9	368.7
+50			1.9	369.7
3			1.4	370.2
+50			1.1	370.5
+90			0.7	370.9

Sheet 44

Levels of Alley bet Aztec & Montezuma from  
3/2 1480 (page 77) west for 390'

B.M.	12.78	360.03		347.25
0+0			12.78	347.3
+50			9.0	351.0
1			4.9	355.1
+50			1.2	358.8
T.P.	11.64	370.64	10.3	359.00
2			8.3	362.3
+50			5.9	364.7
3			4.4	366.2
+50			4.2	366.4
+90			4.2	366.4

Sheet 44

Levels of Pio Pico st from Silver Gate or  
3/2 3463<sup>2</sup> Page 75 West for 285'

0+0 = sta 3463 <sup>2</sup>			5.2	305.2
+12			4.3	306.1
+50			2.1	308.3
T.P.	11.12	321.06	0.41	309.94
1			10.4	310.7
+50			8.0	313.1
2			6.0	315.1
+50			4.2	316.9
+85			3.3	317.8

Sheet 44

grade 3.00

7.60 Top  
2.30  
119.0  
109.0  
1.00

78



304  
26  
112.8

117  
8  
35  
162.8  
160  
45  
205  
35

328.1  
25  
2) 353  
176.5

6399.3  
176.5  
6575.8  
977.4  
330.0  
6747.4

375.00  
143.43  
518.43  
25.00  
43.73

6727.4  
6399.3  
328.1

22  
152  
67  
1064  
912  
10.184

13.2  
1025  
1038.2

250.65  
75.00  
325.65  
330.00  
655.65

872.6  
18.6  
892.6  
911.2  
200.0  
611.2

878  
840  
38  
977.4  
330.0  
6747.4

263  
60  
325  
648

175  
350  
525  
350  
875  
175  
1050 Mem  
175  
1225  
175  
1400 MK M.W.  
175  
1575

6727.4  
175.0  
6902.4  
7077.4  
175.0  
7252.4

328 | 2200 | 67  
22.8  
2320  
1596

68  
350  
60  
350  
50  
878  
40  
838  
403  
15  
418  
60  
400  
878  
852  
26

1750 1242.3 850 49 49  
850 42.6 1251.5 92.6 842.6 158 51  
892.6 191.7  
75.0 1393.2  
847.6 1443.2

193.36  
4.51  
197.87  
13.30  
107

162.96  
12.60  
150.36  
10247.0  
8808.0  
9414.10

9441  
350  
9091  
350  
8741  
350  
8391

142  
147.5  
35.0  
182.5  
9.2  
191.7

118' Bow Arc to 070

2516.4  
109.6  
2626.0

150 00  
152 51  
21 09  
49  
700 11

120 00  
109 02  
70 58  
99 49  
1200 47

1226  
1768391  
1050  
8391  
1050  
9441  
805.9

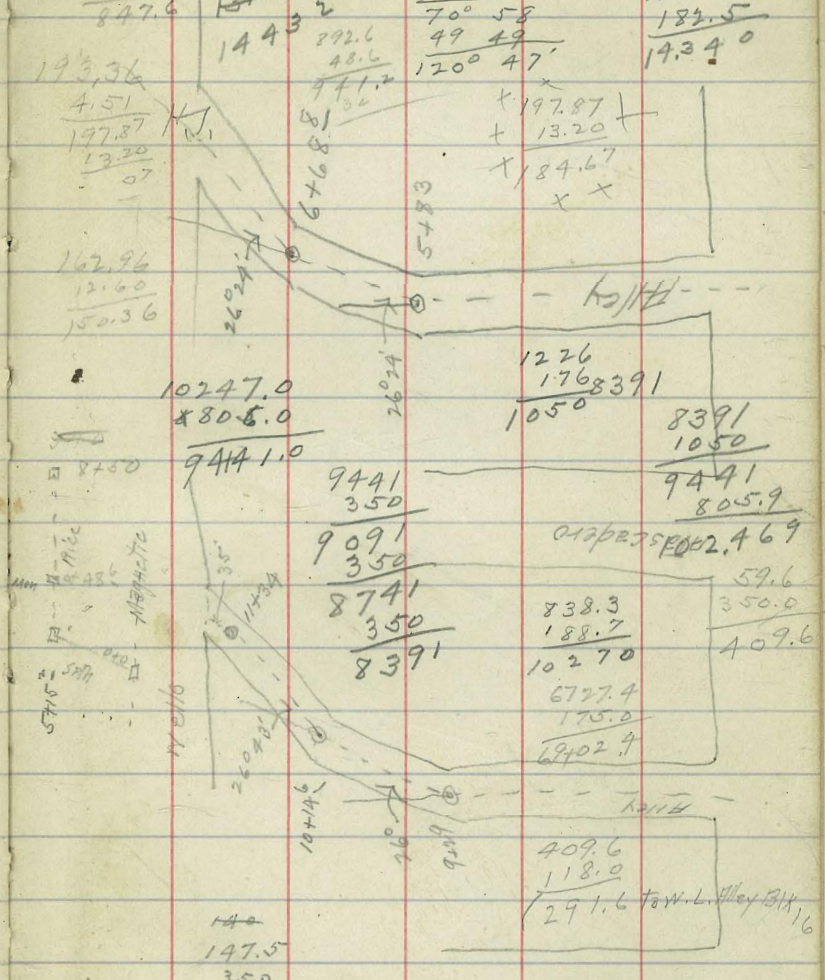
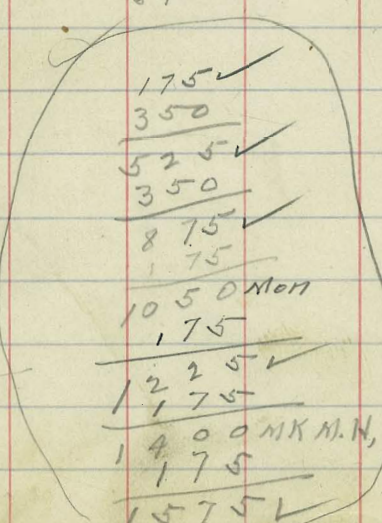
838.3  
188.7  
10270  
6727.4  
175.0  
6902.4

409.6  
118.0  
291.6 to W. L. Hwy B.H. 16

1321131

2626.0

79





201.39		212.30	211.36
3.95		10.08	10.08
205.32		222.38	221.44
12.76	210.49	12.50	12.50
192.56		207.58	207.64
2.19		12.17	12.17
194.75		210.75	207.81
111.84		140	12.30
182.91		4	197.01
0.64		560	15.2
183.55		2250.65	19853
12.95		125.32	12.25
170.60			186.22
1.78			4.04
172.38			196.32
13.02			18.66
159.36			183.7
1.77			
161.13	7.86	62.	5.50
12.36	9.13		2.96
148.77	1699		7.86
0.85			8.37
149.62	17	188.61	16.23
12.68		6.42	
136.94	9.13	182.19	
1.21			
137.15			
11.45			
570			
4.65		306.33	8.37
130.35		4.32	8.37
9.35		310.65	16.74
12.100		35.00	16.74
		16.74	16.74
		18.26	
		34608	
261.63			
1.84			
263.47			
12.43			
250.49			
2.16			
252.65			
8.39			
244.26			
	130.00	52° 27'	214.74
	75.24		12.75
	205.24		38.17
	1845		265.61
			223.69
	205.24		41.92
	41.92		

14061 - 68 Nov 1945 PM

82° 27'	12.46	141.24
247.16	319.45	141.24
86.42	307.29	282.44
333.58	12.13	282.44
	564.82	141.22
	319.42	564.82
	141.22	19943.0834
	196.00	19943.0834
	11.85	343.140
	333.91	19
	3.30	56
	327.61	196
	7.83	
	337.99	342.1
1200	143.88	342.1
315	299	280
15.15	141.39	315
	467.63	
43.54	335.26	7.20
	497.00	1.80
		28
		240
		224
		1600
		145
		17.50
		11.13
		6.37
		2.00
		140
		140
		140
		955.92
		955.9
		490.7
		56.4
		244
		50
		122.00
		24.46
		62.35
		147.62
		0.8
		146.8
		160.00
		4.70
		6.37
		15530
		4
		17.50
		244
		9.13
		4