

942

F.B. 942

LEVEL BOOK.

No. 410

IND

MICROFILMED

DEC 16 1964

80.81
0.7 L
3h. 01

250.71-E

286.50W

289.91 bet. 13' finto

289.71

262.71

26.0

611.13

A to 32nd

917
626

534.70 240.26
 0.48
 367 240.71 H.I.
 13.06 J.P.
 23465 227.65 J.P.
 0.29
 227.94 H.I.
 13.02
 214.92 J.P.
 0.18
 215.10 H.I.
 13.13
 201.97 J.P.
 0.20
 202.17 H.I.
 12.67
 189.50 J.P.
 0.33
 189.83 H.I.
 12.77
 177.06 J.P.
 0.84
 177.90 H.I.
 12.65
 165.29 J.P.
 0.77
 166.06 H.I.
 12.54
 153.22 J.P.
 0.42
 153.64 H.I.
 13.09
 140.55 J.P.
 11.27
 137.82 H.I.
 0.14
 151.68 J.P.
 10.94
 162.62 H.I.

144.60
 12.47
 132.13 J.P.
 9.60
 141.73
 0.20
 162.72 H.I.
 12.75
 149.97 J.P.

Preliminary Survey 1
 East of 32nd + North
 of a. May 16/14
 Allen
 Bunker

Bancroft Street from
Center A North to

Sta.		H.T.	Red Elev.
J.P.		<u>136.05</u>	
0+00	M.H. Center		7.91 128.1
	12.95	<u>148.86</u>	0.14 135.91
+50			12.5 136.4
+91.05	Public line		8.6 140.3
1+00			6.8 142.1
+28			3.1 145.8
+50			3.5 145.4
+71	break		5.4 143.5
J.P.	12.91	<u>161.71</u>	0.06 148.80
2+00			9.3 152.4
J.P.	13.09	<u>174.74</u>	0.06 161.65
+50			11.4 163.2
3+00			3.6 171.1
J.P.	12.70	<u>187.20</u>	0.24 174.50
+50			8.4 178.8
4+00			1.0 186.2
J.P.	12.94	<u>200.00</u>	0.14 187.06
+38.8	M.H. Center		9.78 190.2
+50	Ash.		8.8 191.2
5+00			4.8 195.2
+50			1.1 198.9
J.P.	12.94	<u>212.59</u>	0.35 199.65
6+00			10.6 202.0
+50			7.7 204.9

Sheet 1

C
39.7 ft. of Cedar.

2

Sta.		H.T.	Red Elev.
		<u>212.59</u>	
7+00			5.2 207.4
+50			2.7 209.9
J.P.	12.96	<u>223.29</u>	0.26 212.33
8+00			12.5 212.8
+18.8	about 6' deep M.H. Center of Beech.		11.54 213.8
+50			9.2 216.1
9+00			4.6 220.7
J.P.	12.56	<u>237.64</u>	0.21 225.08
+50			12.0 225.6
10+00			7.2 230.4
+50			2.6 235.0
J.P.	10.18	<u>246.88</u>	0.94 236.70
11+00			9.1 237.8
+20	J.P. 39.7 ft. of Cedar.		8.98 237.9

Lot line bet. 32nd &
from 300' so. of Ash to

Bancroft.
260.70. of Ash.

3

Sta		H.I.	Rod	Elev.	Sta.	H.I.	Rod	Elev.
		2.04	141.73	139.69	J.P.	10.11	0.63	178.06
0+00	dead end 300		7.0	134.77	5+50		9.2	179.0
+50	so. ash		10.7	131.0	6+00		4.7	183.5
+87	M.H. bottom		12.17	129.56	+40	J.S. 40' 25" SO	0.68	187.5
+98	river constructed break		14.5	127.2		Beech		
1+00			13.4	128.3				
+50			10.0	131.7				
2+00			6.3	136.4				
J.P.		13.00	153.65	1.08				
+50			7.5	146.2				
3+00			4.2	149.5				
+40	M.H. center		5.94	147.7				
+50	ash		5.6	148.1				
4+00			3.1	150.6				
+20	break		2.5	151.2				
J.P.		12.68	166.18	0.15				
+50				4.9				
J.P.		12.58	178.69	0.04				
+80	break		5.2	173.5				
5+00			3.0	175.7				

Sheet 1

200.25
66.2
200.95

32nd street line from
to 40.35 No. of Cedar.

300' So. of Ash on East Childs
May 20/14 ^{letter} _{Bunker} 4

Sta.		H.I.	Rod	Elev.	Sta.		H.I.	Rod	Elev.
0+00	F.S. 300' So.	162.62	2.79	159.8	6+73		166.06	11.1	155.0
+50	of Ash on East		2.6	160.0	7+00		177.94	12.0	165.9
1+00			3.7	158.9	+20.2	M.H. Center of		6.76	171.2
+20			4.4	158.2	+50	Beech	189.83	10.8	179.0
+50			10.7	151.9			202.17	10.6	191.6
2+00		151.82	4.0	147.8	8+00		215.10	11.7	203.4
+50			2.4	149.4	+50			4.3	210.5
3+00	So. line Ash		5.3	146.5	9+00		227.94	12.2	215.7
+50	on East.		11.7	140.1	+50			6.7	221.2
+90	break creek.		15.1	136.7	10+00			4.42	223.5
4+00			13.6	138.2	+20	F.S. 40.35 No.			
+15	M.H. on Sewer		12.13	139.69		of Cedar.			
+50	constructed	153.64	12.7	140.9					
5+00			9.0	144.6					
+50			1.7	151.9					
6+00		166.06	10.6	155.5					
+38	break 13' west ground 10' lower		10.9	155.2					
+50			7.2	158.7					

Sheet 1

Sewer line from M.H. (constructed) bottom of canyon
 East of 32nd + 4's north of center of A to M.H. center of A
 + Bancroft.

Sta.	H.T.	Rod	Elev.
	6.49	136.05	129.56
0+00 M.H. bottom of canyon constructed		13.5	122.6
+50		11.7	124.4
+60 break		10.5	125.6
+68.65 M.H. center + A + Bancroft.		7.91	128.1

Sheet 1

See page 16

6

cedar

10+20

11+20

11+20

11+10

7+20.2

30'

Beech

8+18.8

8+16.1

6+40

Pancroft

332d

Feltin

7+35

2+50

1+00

40'

Gregory

3+40
Ash

4+38.8

4+35.94

4+33.18

0+00
30'
Puble
line

0+00

115°31'

85°31'

M.H. construction

0+00 Sheet

0+00

0+94.9

0+98.7

0+00

2+80 0+00

3rd sheet
21+33
4+10
30'

10+20
30'

38+33

40'

Gregory

33rd street from center

of A to

36.08 So. of cedar

7

Sta.	H.I.	Rod	Elev.	Sta.	H.I.	Rod	Elev.
J.P. 0+00	0.73 150.70		149.97		200.95		
M.H. center of		5.58	145.7	5+00		8.1	192.9
+12 break		4.4	146.3	+50		3.9	197.1
+28 break	162.72	11.7	151.0	J.P. 6+00	12.97 213.78	0.14	200.81
+50		9.5	153.2	+50		12.2	201.6
+78 break		7.7	155.0	+50		7.5	206.3
+94.9 pueblo line		9.0	153.7	7+00	about 6' deep.	2.9	210.9
1+00		8.3	154.4	J.P. +50	12.80 226.18	0.40	213.38
+25 break		7.3	155.4	+50		11.2	215.0
+50		2.2	160.5	8+00		7.2	219.0
J.P. 2+00	12.92 175.34	10.0	165.3	+16.1	about 6' deep.	6.30	219.9
+50		4.5	170.8	+50	M.H. Center of Beech	4.3	221.9
J.P. 3+00	12.85 188.18	0.01	175.33	9+00		1.9	224.3
+50		11.8	176.4	J.P. +50	12.26 238.32	0.12	226.06
4+00		6.5	181.7	+50		11.5	226.8
J.P. +35.94	12.93 200.95	0.16	188.02	10+00		9.1	229.2
M.H. center of		12.02	188.7	+50		6.4	231.9
Ash		10.9	190.0	11+00		4.4	233.9
				+20	H.S. 3608 So. Cedar.	4.17	234.2

Sheet 2

Sewer from center 33rd +
center of alley bet. A + B

A on North to

8

Sta.	H.I.	Rod Elev.
0+00 M.H. center A	<u>150.70</u>	5.58 145.1
+08 ^{+33rd on North} break		7.6 143.1
+50		8.3 142.4
+65 break		8.5 142.2
+85 break		5.2 145.5
1+00		6.9 143.8
+50 S.P.	4.35 <u>143.72</u>	11.2 139.5 11.33 139.37
2+00		8.1 135.6
+06.95 M.H. center alley bet. A + B west of 33 rd on North.		9.08 134.6

Sheet 2

23' 07" E

Feltan Street from center of A
to 38'23 So Beech

Sta.		H.I.	Rod	Elev.	Sta.	H.I.	Rod	Elev.
0+00	M.H. center A	185.28	2.99	182.3	7+00	223.67	11.6	212.1
J.P.	Street	12.98	0.12	185.16				
+50			12.8	185.3	+35	J.P. 38,2340	10.63	213.0
0+98.7	gabbloline		9.6	188.5		Beech		
1+00	about 9' deep		9.6	188.5				
+50			6.4	191.7				
2+00			3.3	194.8				
+50	about 11' deep		0.4	197.7				
J.P.		12.86	210.80	0.20				
3+00			10.1	200.7				
+50			7.0	203.8				
4+00			4.3	206.5				
+33.8	about 10' deep		3.18	207.6				
	M.H. center of							
+50	Ash		4.2	206.6				
5+00			6.5	204.3				
+50			5.9	204.9				
6+00			2.3	208.5				
J.P.		12.88	223.67	0.01				
+50				13.0				210.7

Sheet 2

Feltton from 40'

North of Beech

10

to 120' No. of Cedar

Sta.		H.I.	Rod Elev.
0+00	dead end	223.67	5.0 218.7
+50	40' No. of Beech		5.7 218.0
1+00			7.3 216.4
+50	about 12' deep		8.5 215.2
2+00			9.8 213.9
+10	W.H. low point		9.92 213.8
+50			8.8 214.9
3+00			5.1 218.6
+40.04	No. line Cedar		1.6 222.1
+50			1.1 222.6
J.P.	3.66	227.26	0.07 223.60
4+00			2.1 225.2
+50			1.5 225.8
+60	hub. dead end. 120' No. Cedar.		1.52 225.74

Sheet 2

Lot line bet. Felton &
40' no. Ash to 40' 20. Beech

Gregory. from

11

Sta.	H.I.	Rod	Elev.
0+00 dead end	193.57	1.0	192.6
+35 40' No. Ash		8.3	185.3
+50		14.7	178.9
+56 break		16.0	177.6
+91 "		9.3	184.3
1+00 M.H. S.		11.24	182.3
+28 break		13.3	180.3
+50		10.9	182.7
+90 break	205.66	4.6	201.1
2+00		3.2	202.5
+20 dead end about 40' So. Beech		0.3	205.4

Sheet 2

Center A from Center
of Feltan.

Sta.		H.I.	Rod	Elev.
0+00	M.H. center 33 rd on north	<u>150.70</u>	5.58	145.1
+02	break		7.1	143.6
J.P.	11.93	<u>162.30</u>	0.33	150.37
+50			6.0	156.3
+75			0.7	161.6
J.P.	12.81	<u>174.76</u>	0.35	161.95
1+00			9.2	165.6
+46.5	East line 33 rd on south		2.0	172.8
+50			1.7	173.1
J.P.	10.86	<u>185.28</u>	0.34	174.42
2+00			11.4	173.9
+50			7.4	177.9
+80	M.H. center of Feltan		2.99	182.3

Sheet 2

33rd to Center

12

Gregory Street from
to bottom of canyon north

center of A.
of Ash

13

Sta.		H.I.	Rod	Elev.
J.P.	4.09	<u>179.28</u>		175.19
0+00	M.H. Center		9.21	170.07
+50	A. street		6.6	172.7
J.P.	1.57	<u>186.42</u>		184.91
1+00			7.1	179.3
+02.33	prebbo line		6.7	179.7
+50			1.6	184.8
	12.43	<u>197.34</u>		184.91
2+00			6.8	191.5
+50	hub dead end		2.3	195.0
3+00	dead end		2.3	195.0
+50			4.5	192.8
4+00			8.4	188.9
+30.63	center of Ash.		12.5	184.8
J.P.	10.28	<u>184.93</u>	12.69	184.65
+50			3.0	181.9
+85			10.6	174.3
J.P.	0.12	<u>172.36</u>	12.69	172.24
5+00			8.1	169.3
+31	break.		13.1	159.3
+35	M.H. bottom of canyon		11.54	160.8

Sheet 3

Lot line East of Gregory
North of A to 40.15 So. of

from 40' no. of Pueblo line
Beech

Sta.		H.I.	Rod	Elev.
	3.13	<u>173.20</u>		170.07
0+00	dead end		6.0	167.2
+50	40' no. of Pueblo line		4.8	168.4
1+00			8.9	164.3
+50			12.2	161.0
J.P.	0.27	<u>160.97</u>	12.50	160.70
2+00			8.0	153.0
J.P.	9.29	<u>157.99</u>	12.27	148.70
+50			13.6	144.4
+70	break		14.9	143.1
+88	M.H. bottom of camp near		12.32	145.7
3+00	no. line Ash		9.8	148.2
J.P.	12.10	<u>169.93</u>	0.16	157.83
+50			5.4	164.5
J.P.	12.97	<u>182.66</u>	0.24	169.69
4+00			3.0	179.7
J.P.	13.08	<u>195.74</u>	0.00	182.66
+50			8.2	187.5
5+00			2.3	193.4
J.P.	7.88	<u>202.91</u>	0.71	195.03
+50			4.4	198.5
+85	hill dead end 40.15 So. Beech		1.71	201.2

Sheet B

Gregory Street from
to 40.2 So. of Gate

Sta.		H.I.	Rod	Elev.
J.P.		9.83	219.57	209.74
0+00	F.S. 40' no. of Beech		4.69	214.9
+50			9.9	209.7
J.P.		0.27	207.29	207.02
1+00			4.1	203.2
+50			11.6	195.7
J.P.		0.57	194.71	194.20
+78	break		5.3	189.4
J.P.		0.25	181.88	181.63
2+00			1.2	180.7
+30	break		9.7	172.2
+44	"		15.5	166.4
+50	M.H. about		13.69	168.12
J.P.		12.59	194.33	0.14
3+00	10' 20" of Cedar bottom of canyon		5.3	189.0
+50			0.3	194.0
J.P.		12.63	206.76	0.20
+85	break		9.5	197.3
+94	"		12.7	194.1
4+00			10.5	196.3
+24	break		1.9	204.9
J.P.		12.94	219.53	0.15
+50			12.0	207.6
5+00			5.1	214.5

40' no. of Beech

14

Sta.		H.I.	Rod	Elev.
J.P.		7.29	226.67	0.17
5+50			5.4	221.3
6+00	F.S. 40.2 RO. Gate		1.31	225.4

6.95
219.72 hub lot line

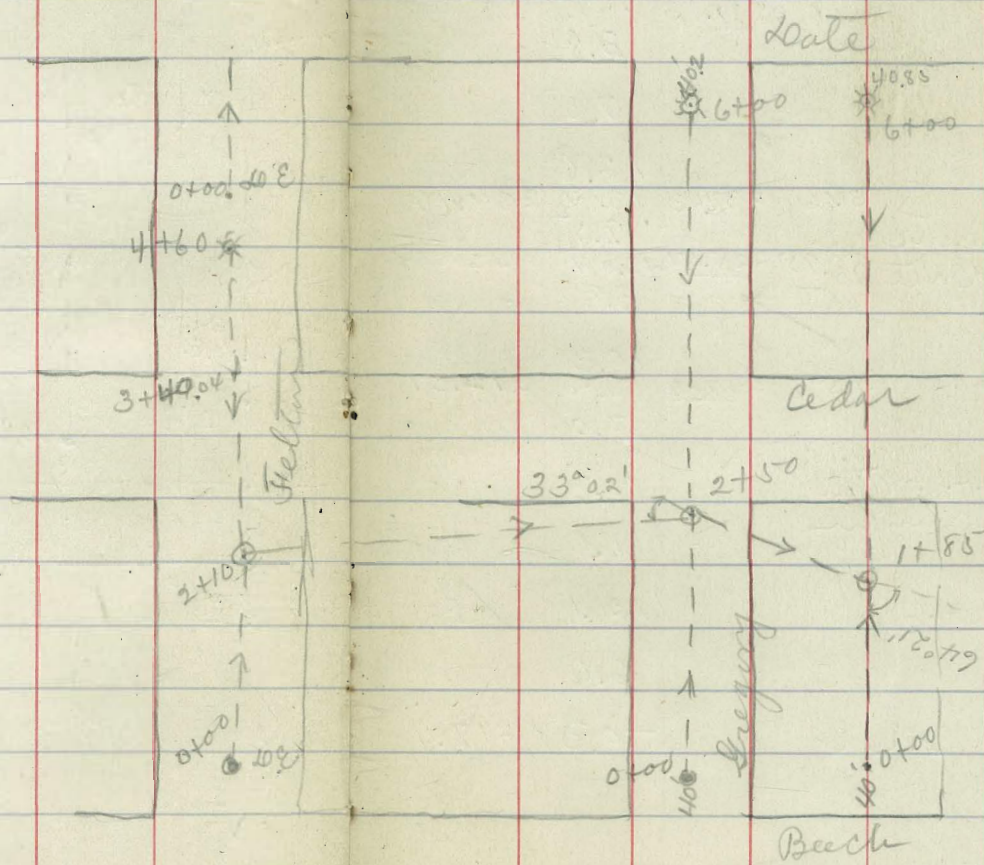
Lot line 100' East of
No. of Beech to 40.85 so.

Sta.		H.I.	Rod	Elev.
0+00	dead end 40'	202.91	7.2	195.7
J.P.	No. of Beech	190.28	12.78	190.13
+50			3.9	186.4
+63	break		5.8	184.5
J.P.	0.08	177.34	13.02	177.26
1+00			3.0	174.3
+27	break		10.9	166.4
J.P.	0.03	164.78	12.59	164.75
+50			7.9	156.9
J.P.	4.91	158.10	11.59	153.19
+67	break		8.7	149.4
+79	"		14.5	143.6
+85	M.H. Botting Camp		12.46	145.64
2+00			1.9	156.2
J.P.	13.04	170.94	0.20	157.90
+50	12.99	183.70	0.23	176.71
J.P.			1.8	181.9
	12.71	195.86	0.55	183.15
3+00			4.6	191.3
J.P.	12.74	208.51	0.09	195.77
+50			8.2	200.3
4+00			1.0	207.5
J.P.	12.36	220.76	0.11	208.40
+50			7.7	213.1
5+00			1.0	219.8

Sheet 4

Gregory from 40'
of water.

Sta.		H.I.	Rod	Elev.	
J.P.		5.69	225.47	0.98	219.78
5+50				3.3	222.2
6+00	J.S. 40.85 to water		5.77	219.7	



32nd Street from 40' no. of Cedar to about

18

40' So. of Elm.

Sta.		H.I.	Rod	Elev.
0+00	about 5' def. 7.25 10 E. 40' No. of Cedar Street	<u>247.51</u>	5.1	240.26 242.4
+50			3.4	244.1
1+00			2.8	244.7
+50			3.8	243.7
2+00			7.0	240.0
+50			12.6	231.9
J.P.	316	237.63	13.04	234.47
3+00.18	Center of		9.5	228.1
J.P.	10ate 0	<u>225.57</u>	13.07	224.56
+50			3.8	221.7
4+00			10.3	215.2
J.P.	4.58	<u>217.09</u>	13.00	212.57
+50			7.0	210.1
1+00	+95 M.H. bottom of canyon		10.20	206.9
5+00			11.1	206.0
1+96	+04 break		12.1	205.0
2+00	+50		6.0	211.1
6+00	10. E. end		-0.3	217.4

Sheet 3

Bancroft street from
to about 40' so. Elm.

40' no. of Cedar

19

Sta.		H.T.	Rod Elev.	
0+00	J.P. about 7' deep 40' no. Cedar	247.51	9.22	238.3
+50			11.5	236.0
1+00			12.2	235.3
J.P. +50	3.16	237.63	13.04	234.47
			4.9	232.7
2+00			7.2	230.4
+50			8.4	229.2
3+00	about 5' deep. m.H. water of date		9.86	227.8
+50			10.8	226.8
4+00			11.7	225.9
+50			12.6	225.0
J.P. 5+00	0.95	225.81	13.07	224.86
			5.7	219.8
+50			3.1	222.4
6+00	about 7' deep. m.H. about 40' so. Elm.		2.61	222.9

Sheet 3

Canyon line from Sta.
to Sta. 4+75.3 on alley West

Sta.		H.I.	Rod	Elev.
J.P.	095	225.57	13.07	224.56
0+00	M.H. Sta 6+00		2.61	222.7
+50	on Bancroft		4.1	221.4
1+00			6.3	219.2
+41	break		8.9	216.6
+50			11.1	214.4
+72	break		14.3	211.2
2+00			14.4	211.1
J.P.	4.58	217.09	13.00	212.51
+50			8.2	208.9
+88.48	19°40' R M.H. Sta 4+95		10.20	206.9
3+00	on 32nd St.		12.9	204.2
J.P.	2.39	206.40	13.08	204.01
+50			3.5	202.9
4+00			6.1	200.3
+50			8.8	197.6
+75.3	M.H. center alley West of 32nd St. 20.0 Elm.		8.8	197.6

Sheet 4

6+00 on Bancroft S. of Elm 20
of 32nd.

216.0

202.0

Lot. line bet. Bancroft
40' 20. Fir to Sta 2+12

+ 33rd firm
no. of Elm.

21

Sta.	H.T.	Red Elev.
0+00 dead end 40'	<u>216.50</u>	7.0 209.5
20. Fir.		
+13 M.H. bottom		11.20 205.30
+30 of Campen break		14.2 202.3
+50		13.8 202.7
+84 break		0.5 216.0
1+00		-0.2 216.7
+50		2.1 214.4
+93		1.0 215.5
2+00		1.7 214.8
+12 dead end. about 45' No. Elm.		1.9 214.6

Sheet 4

33rd from 40' no. of Cedar to about 40' 20.
of Grape.

22

Sta.	H.I.	Rod Elev.	Sta.	H.I.	Rod Elev.
J.P. about 5' deep. 6.70	241.40	234.70		192.73	
0+00 J.P. 40' no. of Cedar.		5.18 236.22	7+00 J.P.	11.96 204.37	0.32 192.41
+50		5.1 236.3	+50 J.P.	12.76 216.50	0.63 203.74
1+00		5.1 236.3	8+00		7.9 208.6
+50		4.8 236.6	+26 break		1.8 214.7
2+00		4.5 236.9	J.P.	9.67 224.69	1.48 215.02
+50		4.2 237.2	+50		6.5 218.2
3+00 about 8' deep. M.H. Center		3.38 238.02	+75 break		7.2 217.5
+50 Date		4.6 236.8	+94 "		9.8 214.9
4+00 about 6' deep.		6.7 234.7	9+00		11.7 213.0
+50		10.3 231.1	+11 break		15.0 209.7
J.P. 0.84 229.19		13.05 228.35	+50		10.0 214.7
5+00		4.0 225.2	+57 break		8.0 216.7
+20 break		6.7 222.5	J.P.	12.83 236.95	0.57 224.12
J.P. 1.02 217.11		13.10 216.09	+76 "		10.3 226.7
+50		5.8 211.3	10+00		6.5 230.5
J.P. 0.21 204.39		13.03 204.08	+06 break		5.8 231.2
6+00		7.8 196.6	J.P.	13.08 249.84	0.19 236.76
+17 break		12.5 191.9	+27 "		8.3 241.5
J.P. 1.13 192.73		12.79 191.60	+50		4.4 245.4
+50 M.H. bottom of Canyon		11.42 181.31	+60.38 Center of Fir.		2.5 247.3
+62 break		15.0 177.7			

cont. from page 22

Sta.		H.I.	Rod Elev.	
J.P.	13.00	<u>262.71</u>	0.13	249.71
11+00			10.8	251.9
+50	about 5.5 deep.		6.0	256.7
12+00	about 8' deep.		0.6	262.1
J.P.	12.63	<u>275.05</u>	0.29	262.42
+50			6.8	268.3
13+00	not less than 13' deep.		4.0	271.1
+50			4.3	270.8
+60	about 13' deep. S.S. about 405 So. Gravel.		4.75	270.3

3.19
271.86

Lot - fine bet 33rd x

40' No. Gate to Sta. 2+42

Belted from

24

bottom of Campfire North

Sta.		H.T.	Rod Elev.	
0+00	hub. dead end	241.40	12.15	229.25
J.P.	40' no. Gate	229.19	13.05	228.35
+50			4.3	224.9
1+00			11.3	217.9
J.P.	1.02	217.11	13.10	216.09
+10	break		1.5	215.6
J.P.	0.31	204.39	13.03	204.08
+50			10.0	194.4
J.P.	1.13	192.73	12.79	191.60
2+00		181.79	12.53	180.18
			5.0	176.8
+31	break		13.0	168.8
+42	M.H. bottom		12.32	169.47
	Campfire about			
	18' 20' Elev.			

12.15
229.25 SP

Sheet 4

Feltun street from 185' No. of Cedar to 40.5
So. of Fir

Sta.		H.I.	Rod	Elev.
J.P.	2.21	227.95		225.74
0+00	dead end 185'		4.3	223.7
+43	No. Cedar break		7.7	220.3
+50			11.1	216.9
J.P.	0.69	215.77	12.87	215.08
+91	break	0.18	8.7	194.4
1+00			8.2	194.9
+41	break		12.0	191.1
+50			16.2	186.9
+55	break		16.8	186.3
2+00			9.5	193.6
+50			3.6	199.5
+62	break		3.1	200.0
+82	"		9.5	193.6
J.P.	0.21	190.33	12.93	190.12
3+00			4.8	185.5
J.P.	0.15	177.38	13.10	177.23
+23			1.7	175.7
+50			8.8	168.6
J.P.	8.80	173.54	12.64	164.74
+80	m.H. bottom of		11.71	161.83
+95	camp for So. of Elm.		14.1	159.4

Sheet 5

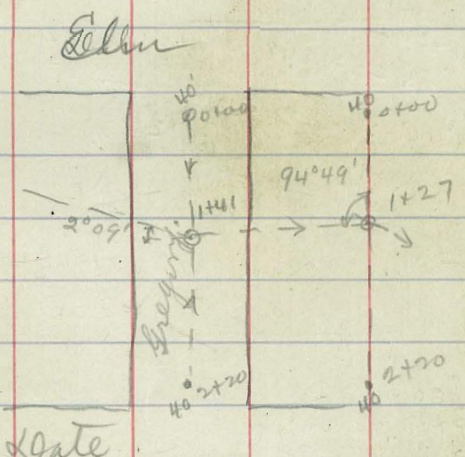
Sta.		H.I.	Rod	Elev.
		173.54		
4+00			13.2	160.3
+39	break		7.7	165.8
+50			4.1	169.4
J.P.	13.03	186.44	0.13	173.41
5+00			0.2	186.2
J.P.	13.09	199.45	0.08	186.36
+50	12.97	212.02	0.40	199.05
J.P.	12.82	224.54	0.80	211.72
+75	break		10.0	214.5
6+00			5.4	219.1
+50			0.1	224.4
J.P.	13.00	237.45	0.09	224.45
7+00			7.6	229.9
+50			6.3	232.2
8+00			4.4	233.1
+35	about 12' deep. J.S. 405 RO. of Fir.		4.38	233.1

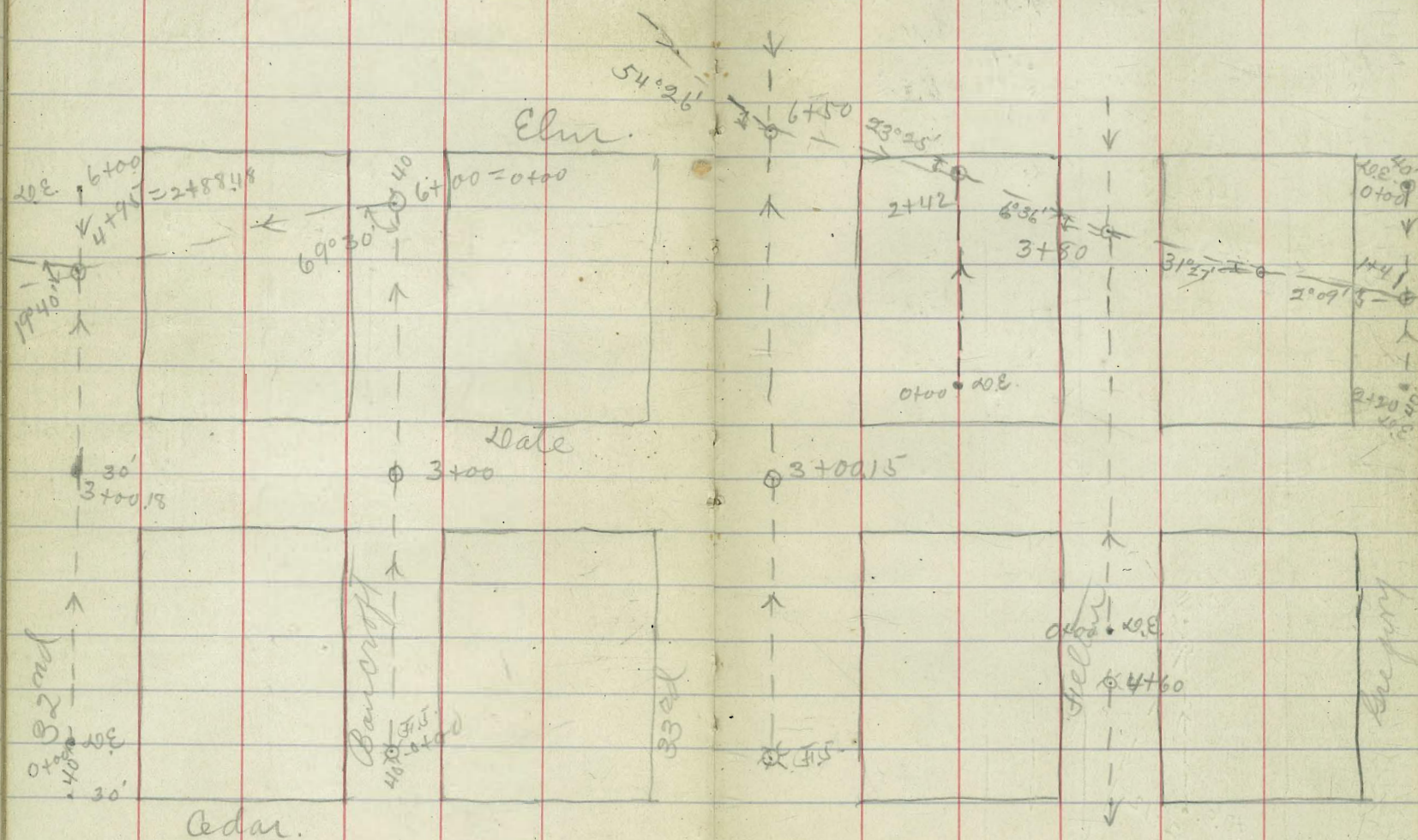
Gregory street from 40' So. of Elm to
about 40' No. of Gate.

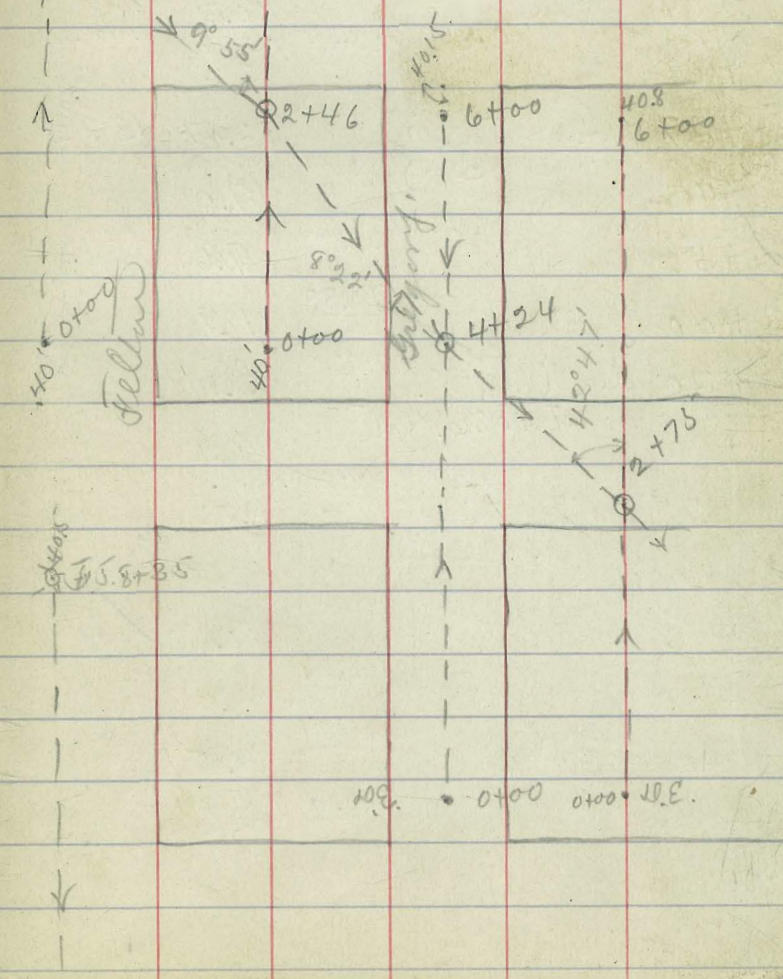
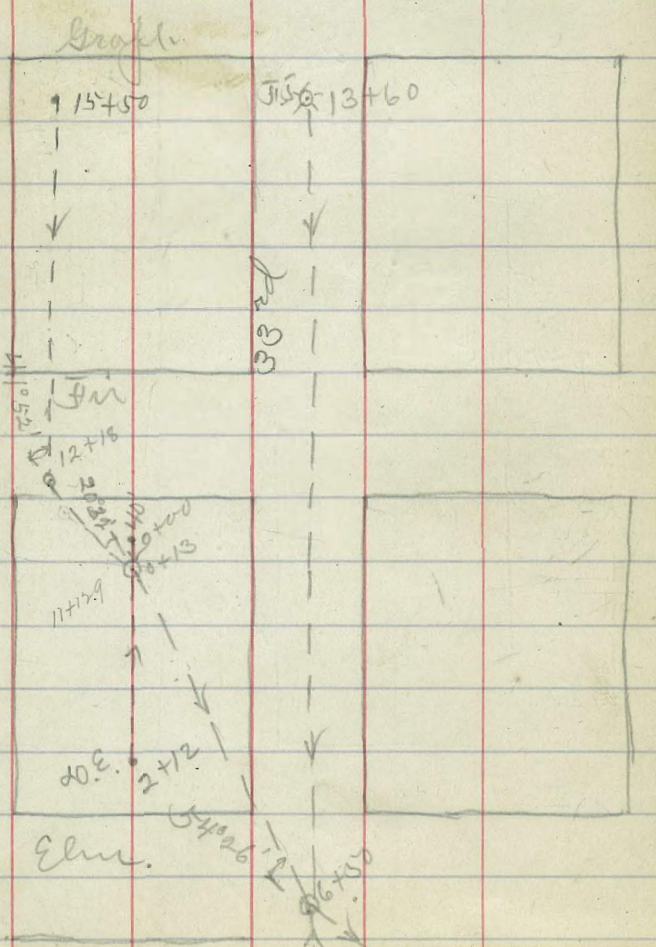
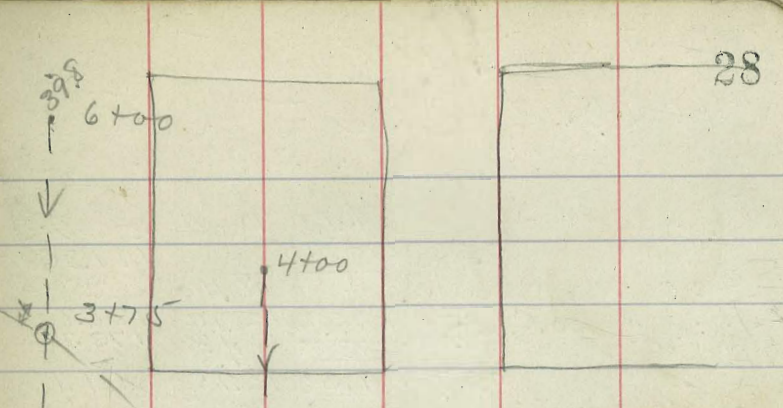
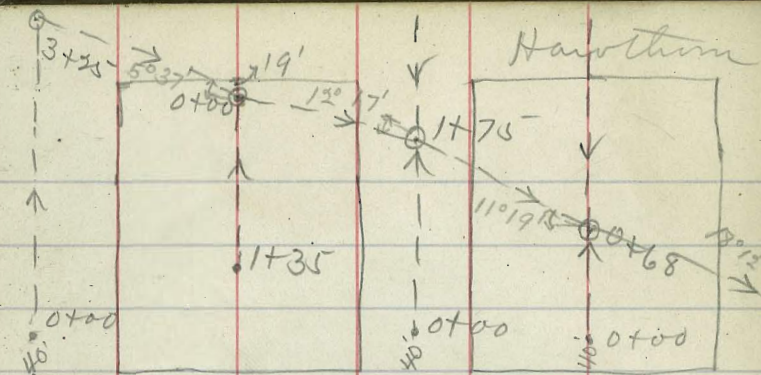
26

Sta.	H.I.	Rod	Elev.
J.P.	6.83	205.88	199.05
0+00 dead end 40'		3.1	202.8
+17 So. Elm.		7.3	198.6
J.P.	0.19	193.05	192.86
+50		12.4	180.7
J.P.	0.20	180.39	180.19
J.P.	0.45	168.38	167.93
J.P.	0.95	156.62	155.67
1+00		4.0	152.6
+18 break		11.2	145.4
J.P.	10.46	154.44	143.98
+36 "		14.3	140.1
+41 M.H. bottom of canyon		10.65	143.79
1+50		6.0	148.4
J.P.	12.31	165.72	153.41
J.P.	13.04	177.43	164.39
2+00		6.6	170.8
J.P.	9.89	187.03	177.14
2+20 dead end about 40' no. of Gate		7.5	179.5

Sheet 4







Bancroft

Elm.

37 0+00 0+00 0+00

Lot line 100' East of
40 No. of Elm to about

Gregory from
40 No. of Dale.

29

Sta.		H.I.	Rod	Elev.
J.P.	0.38	199.74		199.36
0700	dead end		8.4	191.3
J.P.	40' 20" Elm	0.10	186.90	12.94
+50		0.70	173.88	13.12
J.P.			6.3	167.6
+84	break	0.37	161.50	12.75
J.P.			10.3	151.2
1700		0.94	149.38	13.06
			3.2	146.2
+27	M.H. bottom of canyon		12.07	137.31
+40	break		17.0	132.4
+50			9.6	139.8
2700		173.88	11.9	162.0
+20	dead end. about 40 No. of Dale		2.1	171.8

Sheet 5

Set line 100' East Gregory from 40' no. Elise
to 40' 8 SO. Grape.

50

Sta.		H.I.	Rod	Elev.
0 + 00	hub dead end	224.97	12.49	212.48
J.P.	40' no. Elise	^{0.74} 213.22		
+ 50			3.8	209.4
1 + 00			12.5	200.7
J.P.	break	0.35 200.34	13.03	200.19
+ 22			4.7	195.8
+ 50			11.8	188.7
J.P.	break	0.65 188.21	12.99	187.56
+ 62			2.6	185.6
J.P.		0.43 175.96	12.68	175.53
2 + 00			6.8	169.2
+ 10	break		9.7	166.3
J.P.	"	0.87 163.81	13.02	162.94
+ 23			3.1	160.7
+ 50			10.0	153.8
J.P.		5.37 157.08	12.10	151.71
+ 75	M.H. bottom of camp		8.86	148.22
3 + 00			10.2	146.9
+ 10	break		11.5	145.6
+ 50		163.81	2.8	161.0
4 + 00		188.21	4.0	184.2
+ 50		200.54	5.0	195.5

Sheet 5

Sta.		H.I.	Rod	Elev.
5 + 00		213.22	8.0	205.2
+ 50		13.03 225.51	9.7	215.8
+ 80	break		5.1	220.4
6 + 00	hub. dead end 40' 8 SO. Grape		1.04	224.47

Gregory Street from 40'

40.15' 40' of Grape.

Sta.		H.I.	Rod	Elev.
J.P.	hub	2.99	<u>227.73</u>	224.74
0+00	dead end		2.92	224.81
+50	40' no. Elm.		3.1	224.6
1+00			5.7	222.0
+50			12.7	215.0
J.P.		0.65	<u>215.33</u>	13.05 214.68
2+00			8.0	207.3
J.P.		-0.02	<u>202.28</u>	13.03 202.30*
+50			9.0	193.3
J.P.		0.08	<u>189.24</u>	13.12 189.16
3+00			12.0	177.2
J.P.		0.21	<u>176.69</u>	12.76 176.48
+20	break		5.3	171.4
J.P.		1.27	<u>165.02</u>	12.94 163.75
+50			4.1	160.9
+62	break		6.0	159.0
4+00			6.0	159.0
+24	M.H. bottom		8.38	156.6
+46	of camper break		10.4	154.6
+50			9.2	155.8
			<u>176.69</u>	
5+00			9.0	167.7
+25	break		4.3	172.4
+50			<u>189.24</u>	5.3 183.9

Sheet 5

no. of Elm to.

Sta.		H.I.	Rod	Elev.
6+00	hub dead end	<u>215.33</u>	7.56	207.8
	40.15' 40' Grape			
			2.31	
			<u>227.12</u>	
			3.14	
			<u>223.98</u>	
				J.P. 13' hub. Grape.

Lot line bet. Feltan &
40' No. Fir to sta 4+00

Sta.		H.I.	Rod Elev.
J.P.	7.76	<u>210.06</u>	202.30
0+00	hub dead end		2.58 207.48
+42	40' No. Fir break		4.1 206.0
+50			5.8 204.3
J.P.	-0.01	<u>197.34</u>	12.71 197.35
+94	break		6.1 191.2
1+00			9.3 188.0
J.P.	1.33	<u>186.01</u>	12.66 184.68
+16	break		5.4 180.6
J.P.	2.01	<u>178.09</u>	12.93 173.08
+37	"		4.5 170.6
+50			3.8 171.3
+74	break		4.7 170.4
2+00			11.2 163.9
+11	break		11.9 163.2
+35			10.8 164.3
+46	in H. bottom of canyon		7.39 167.7
+50			6.0 169.1
+89.5	10.13' line	<u>186.01</u>	9.7 176.3
3+00	Grape angle		7.2 178.8
+50		<u>210.06</u>	11.1 199.0
J.P.	12.78	<u>220.26</u>	207.48
4+00	dead end		0.4 219.9

Sheet 6

Gregory from
no. of Grape.

Hellm Street from 40' no.
39.8 So. of Hawthorn

Sta.		H.I.	Rod Elev.
J.P. 0+00	730	<u>242.68</u>	235.38
	40' no. of Fir		5.42 237.26
+50			10.8 231.9
J.P. +98	4.58	<u>234.19</u>	13.07 229.61
	break		9.2 225.0
1+00			9.1 225.1
+50			4.4 229.8
2+00			9.5 224.7
J.P. +37	0.45	<u>221.62</u>	13.02 221.17
	break		7.2 214.4
+50			12.5 209.1
J.P. 3+00	0.46	<u>209.07</u>	13.01 208.61
	0.75	<u>196.76</u>	13.06 196.01
J.P. +50	1.65	<u>185.61</u>	2.6 183.96
			8.2 177.4
+65			12.2 173.4
+75			9.22 176.4
4+00			2.6 183.0
+50		<u>209.07</u>	11.1 198.0
+62			8.7 200.4
5+00		<u>221.62</u>	3.5 218.1
+13		<u>234.19</u>	8.9 225.3

Sheet 6

of Fir to

Sta	H.I.	Rod Elev.
5+26	<u>234.19</u>	7.2 227.0
+50	<u>242.68</u>	9.7 233.0
6+00		1.22 241.46

39.8 So. Hawthorn

Lot. line bet. Feltun &
40' no. of Grape. To 109.6

Sta.		H.I.	Rod	Elev.
J.P.		0.09	210.78	13.05 210.69
0+00	40' no. of Grape.		3.8	207.0
+19	dead end		11.5	199.3
J.P.	break	0.15	197.91	13.02 197.76
+50			11.4	186.5
+68	W.H. bottom of		13.85	184.06
+77	camp		14.9	183.0
+00	break		5.4	192.5
+37	break	210.78	1.0	209.8
+50		223.74	6.9	216.8
+82	break	236.08	8.4	227.7
2+00			6.4	229.7
+24	break		2.1	234.0
+40	"		4.6	231.5
+50			3.0	233.1
J.P.		248.32		
+70	break		10.3	238.0
+87.4	13' no. of center		8.7	239.6
3+00	of Hawthorn.		7.1	241.2
+27	break		2.1	246.2

Sheet 6

33rd from

no. of Hawthorn

Sta.		H.I.	Rod	Elev.
		262.75		
3+50			12.6	250.2
4+00			6.3	256.5
+50	hub. dead end.		1.19	261.56
	109.6 no. Hawthorn			

33rd street from 40'
to about 40.5 so. of

no. of Grape.
Ivy.

35

Sta.		H.I.	Rod	Elev.
J.P.		250.82		250.65
0+00	hub dead end		4.77	246.05
J.P.	40' no. of Grape.	237.95	13.07	237.75
+50			11.3	226.7
J.P.		225.06	13.03	224.92
+80	break		9.9	215.2
J.P.		213.07	18.83	212.73
+90	"		2.4	210.7
+100			4.2	208.9
J.P.		200.88	12.85	200.22
+37	break		2.4	198.5
+50			6.9	194.0
+69	break		11.0	189.9
+75	M.H. Bottom		9.17	191.7
2+00	of canyon	213.07		
		237.95	10.0	203.1
+50			12.7	225.3
+77	break		1.5	236.5
+87.45	13' so. center	250.82		
			12.2	238.6
3+00	of Hawthorn		10.8	240.0
+04	break		13.2	237.6
		263.59		
+50			7.3	256.3
		275.38		
4+00			11.6	263.8

Sta.		H.I.	Rod	Elev.
		275.38		
4+50			7.2	268.2
5+00			5.2	270.2
+50			2.8	272.6
6+00	hub dead end about 40.5 so. Ivy.		0.95	274.43

271.84
3.54
275.38 H.I.
12.84
262.54 J.P.
1.05
263.59 H.I.
12.94
250.65 J.P.

Sheet 6

Lot. line bet. 33rd
 from 19' S.W. of Hawthorn

Sta.	H.T.	Rod Elev.
	<u>210.34</u>	
0+00	M.H. bottom	10.79 199.55
	of canyon 19'	
	<u>228.06</u>	
+50	S.W. of Hawthorn	6.7 221.4
	<u>252.93</u>	
+100		8.1 244.8
	<u>265.74</u>	
+135	dead end.	9.4 256.3

Sheet 7

Bancroft
 to Sta 1+35 South

216.58
8.98
<u>207.60</u>
2.74
210.34

Bancroft Street from 40' No.
42.4 so. of Laurel

of Grape. to

37

Sta.		H.I.	Rod	Elev.	Sta.		H.I.	Rod	Elev.
0+00	hub. dead end	<u>278.61</u>	2.37	276.24	4+50		<u>265.74</u>	10.9	254.8
+50	40' No. Grape		2.9	275.7	+65	break		5.6	260.1
1+00			6.3	272.3	5+00		<u>278.61</u>	11.3	267.3
+31	break		10.8	267.8	+50		<u>284.21</u>	9.9	274.3
J.P.	D. 10	<u>265.74</u>	12.97	265.64	6+00			6.7	277.5
+50			4.9	260.8	+50			2.0	282.2
+71	break		12.4	253.3	J.P.	10.72	<u>294.41</u>	0.52	283.69
J.P.	0.10	<u>252.93</u>	12.91	252.83	+50			9.5	284.9
+88	"		6.8	246.1	7+00			7.2	287.2
2+00			10.4	242.5	+50			4.9	289.5
J.P.	0.06	<u>240.18</u>	12.81	240.12	8+00			3.0	291.4
+35	break		2.1	238.1	+50			2.0	292.4
+50			7.1	233.1	9+00			1.0	293.4
+68	break		13.5	226.7	+50			0.19	294.22
J.P.	0.76	<u>228.06</u>	12.88	227.30	10+00	6.53	<u>300.75</u>	6.9	293.9
+86			8.8	219.3	+50			6.4	294.4
J.P.	1.44	<u>216.58</u>	12.92	215.14	11+00			5.4	295.4
3+00			3.3	213.3	+50			5.1	295.7
+25	M.H. bottom of		6.58	210.0	12+00			5.4	295.4
+39	campus		8.4	208.2					
+50	break		7.4	209.2					
4+00		<u>240.18</u>	11.0	229.2					

Sheet 7

cont. from page 37

38

Sta.		H.T. Rod Elev.	
12+50		<u>300.75</u>	5.3 295.5
13+00	about 7' deep.		4.8 296.0
+50			5.1 295.7
14+00			6.1 294.7
J.P.			6.2 294.4
+28.5	So. 13' line of Kalmia	<u>306.27</u>	11.8 294.5
+50			11.9 294.4
15+00			12.5 293.8
+50			13.0 293.3
16+00	about 2' deep		13.3 293.0
+50			13.1 293.2
17+00			12.1 294.7
+40	J.P. about 42.4 So. Laurel		11.00 295.27

290.3
10.50

32nd street from 40' no. of
Sta. (13+60) 41.7 So. Kalunia

Grape on East. To
on East.

Sta.		H.I.	Rod	Elev.	Sta.	H.I.	Rod	Elev.	
J.P. 0+00	(5' deep) 9485 decided 40'	286.44		276.955		238.41			
+50	no. of Grape on East.		5.8	280.6	5+50		4.3	274.1	
1+00			5.0	281.4	6+00	262.09	8.0	254.1	
+50			4.6	281.8	+50	286.44	12.3	274.1	
+50			4.6	281.8	+58 break		8.9	277.5	
2+00	about 7.5 deep		4.2	282.2	7+00		6.3	280.1	
+50			4.2	282.2	+50		5.0	281.4	
3+00			4.7	281.7	8+00		3.7	282.7	
+50			5.5	280.9	+50		2.2	284.2	
+91 break			9.5	276.9	J.P. 9+00	294.41	8.9	285.5	
4+00			11.3	275.1	+50		5.2	289.2	
J.P. +41 break	0.84	274.96	12.32	274.12	10+00		3.5	290.9	
+50			9.9	265.1	+50		2.1	292.3	
J.P. +72 break	0.06	262.09	12.93	262.03	J.P. 11+00	6.53	300.75	0.19	294.22
J.P. 5+00	0.40	249.76	12.73	249.36	+50		7.0	293.8	
+18 break			6.6	243.2	12+00		6.2	294.6	
J.P. +25	0.76	238.41	12.11	237.65	+50		5.5	295.3	
+34	M.H. Bolton's camp		4.04	234.37	13+00		5.1	295.7	
	break		8.2	230.2			4.4	296.4	

Sheet 7

Cont. from page 39

Sta.

H.I. Rod Elev.

297.62

13 + 50

300.75

3.5 297.3

3.75

301.37 H.I.

+60 F.S. 41.7 No.

3.30 297.45

Kalmia on east

3.3

Lot line bet. Buircroft +

of Hawthorn to about 40'

Sta.	H.I.	Rod	Elev.
0+00 hub dead end	259.23	9.64	249.59
+50	246.56	8.9	237.7
+75 break	234.46	4.8	229.7
+83 "		8.8	225.7
1+00		13.3	221.2
+15 break		15.1	219.4
+21 m.H. bottom of		12.68	221.78
+47 ^{campus} break		6.2	228.3
+50		7.1	227.4
+54 break		7.7	226.8
+70 "		3.4	231.1
J.P. 2+00	12.56 246.56	0.46	234.00
		12.2	234.4
+20 break		10.4	236.2
+50		4.8	241.8
+65 break		2.1	244.5
J.P. 2+80	12.77 259.23	0.10	246.46
		9.2	250.0
3+00		2.9	256.3

Sheet 8

32nd from 40' north

41

So. of Juniper

Sta.	H.I.	Rod	Elev.
3+07 break	259.23	3.5	255.7
J.P.	12.77 271.30	0.70	258.53
+20 "		14.1	257.2
+50		3.9	267.4
J.P. +90 break	13.09 284.21	0.18	271.12
		9.6	274.6
4+00		7.0	277.2
J.P. +50	10.72 294.41	0.52	283.69
		10.7	283.7
5+00		6.5	287.9
+50		4.3	290.1
6+00 hub dead end: about 40' So. Juniper		2.50	291.9

Juniper

6+00

Soy

5725

4205

40 0+00

Hawthorn

3+75

82 22 21

40 0+00

Buckeye

40 0+00

Grape

40 0+00

1+35

475

40 0+00

33 34

40 0+00

6+00 354

3+75

Feltan

Gregory

40 0+00

40 0+00

40 6+00

40 0+00

4+50

1096

40 0+00

6+00

4+19

0+00

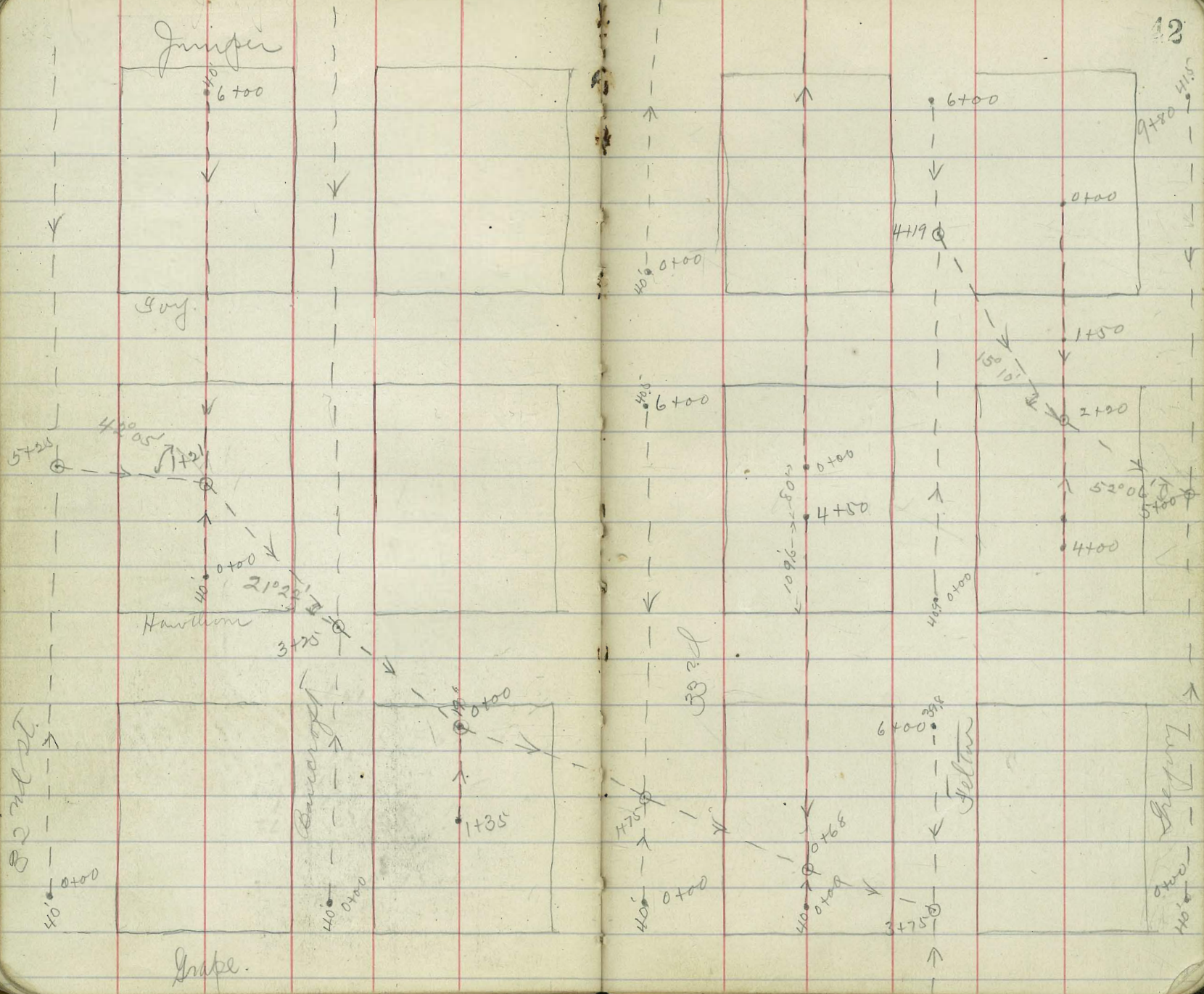
1+50

2+20

5200

4+00

9+80 415



32nd street from 40' no.
of canyon at entrance.

Sta.		H.I.	Rod	Elev.
J.P.		4.73	305.84	301.11
0+00	FF 40' N. of		6.61	299.7
+50	Lammel in East 37.90' N. of		6.1	299.7
1+00			5.5	300.3
+50			5.2	300.6
2+00			5.2	300.6
+50			5.0	300.8
3+00	center of maple?		7.6	298.2
+50			11.7	294.1
J.P.		0.94	293.80	292.86
4+00			3.5	290.3
+50			6.8	287.0
5+00			9.1	284.7
+35	break		10.7	283.1
+50			9.5	284.3
6+00			11.2	282.6
J.P.		0.53	281.43	280.90
+11	break		3.4	278.0
+13			6.5	274.9
J.P.		0.10	268.44	268.34
+39	95° 14' L M.H. bottom of canyon about 10' no. of entrance		0.87	267.57

Sheet 8

in East
of Lammel to bottom

Leaning line north of Burghier
West + north to main sewer

and from 32nd st.
Constructed.

45

Sta.		H.I.	Rod Elev.
0+00	95°14' L M.H. = 6+39	268.44	0.87 267.57
+25	on 32 nd st. break		5.4 263.0
+50			6.0 262.4
+78			5.4 263.0
1+00			7.7 260.7
+50			10.7 257.7
2+00			13.0 255.4
J.P.	0.65	256.06	13.03 255.41
+50			6.7 249.4
+61	break		6.8 249.3
+75	36°11' R M.H. angle		5.11 251.0
3+00			8.7 247.4
+05	break		9.4 246.7
+33	"		8.4 247.7
+50			10.3 245.8
+63	break		12.6 243.5
+75	"		12.8 243.3
4+00			10.5 245.6
J.P.	0.81	244.21	12.66 243.40
+45	break		4.5 239.7

Sheet 6

346.6 east to M.H.

Sta.		H.I.	Rod Elev.
4+50		244.21	4.8 239.4
+59	break		5.1 239.1
+66	"		4.2 240.0
5+00			6.9 237.3
+33	break		8.6 235.6
+50			7.6 236.6
+65	break		7.5 236.7
+87	"		9.0 235.2
6+00			12.5 231.7
+07	break		14.4 229.8
+80	"		14.7 229.5
+39	"		11.3 232.9
+50			10.0 234.2
+80	break		6.4 237.8
7+02			8.2 236.0
J.P.	0.83	233.12	11.92 232.29
+50			9.1 241.0
8+00			10.6 227.5
+29			11.0 222.1
+37	M.H. main line		9.33 223.8

Bancroft St. from 260'
 about 40' no. of Laurel

no. of maple to

Sta.		H.I.	Rod	Elev.
J.P.	12.56	298.36		295.80
0+00	dead end 260'		4.5	293.9
+50	no. of maple.		4.9	293.5
1+00			4.9	293.5
+50	M.H. long point		5.10	293.26
2+00			5.5	292.9
+50			5.2	293.2
3+00	center of		3.7	294.7
J.P.	maple 29.77	306.27	1.86	296.50
+50			8.6	297.7
4+00			7.3	299.0
+50			5.9	300.4
5+00			4.9	301.4
+50			4.6	301.7
6+00	G.S. about 40'		5.08	301.19
	no. Laurel.			

Sheet 8

Lot line between Bancroft
from 40' No. of Juniper to Sta.

Sta.	H.I.	Rod Elev.
0+00	293.79	9.0 284.8
+50		8.6 285.2
1+00		9.5 284.3
+50		12.4 281.4
J.P. 2+00	347 284.55	12.71 281.08
+50		5.2 279.4
+50		5.3 279.3
3+00		4.5 280.1
+50		4.4 280.2
4+00		6.9 277.7
+50		9.6 275.0
+94		10.5 274.1
5+00		13.9 270.7
+11		17.3 267.3
+31		12.47 272.08
+43		15.3 269.3
+50		11.3 273.3
+65		4.3 280.3

Sheet 8

9 33rd St.

47

8+30 No. of Laurel.

Sta.	H.I.	Rod Elev.
J.P. 6+00	11.88 296.30	0.13 284.42
+4.2		11.4 284.9
+50		10.0 286.3
+50		9.5 286.8
7+00		8.0 288.3
+50		6.6 289.7
8+00		6.0 290.3
+30		5.39 290.91

13.0
293.25 S.P.
0.54
293.79

Lot, line bet. Bancroft
from 1888 no. of Laurel

+ 33rd

48

To Sta. H+50 Do. of mtney.

Sta.		H.I.	Rod Elev.
0+00	end, 1888 no. of Laurel.	296.30	5.2 291.1
+50			5.9 290.4
1+00			6.4 289.9
+50			8.5 287.8
2+00			9.5 286.8
+35	M.H. bottom of		9.67 286.63
+50	campus		9.1 287.2
3+00			6.0 290.3
+50			2.3 294.0
J.P.	8.62	302.72	2.20 294.10
4+00			5.7 297.0
+50	hub dead end		3.46 299.26

Sheet 8

33rd Street from 260' 20. of Juniper to

Sta. 17+40 so. of nutmeg

Sta.		H.I.	Rod	Elev.
J.P.		0.44	281.35	280.87
0+00	hub dead end		5.86	275.49
+50	260' so. of Juniper		6.7	274.7
1+00			7.3	274.1
+50			7.8	273.6
2+00			8.0	273.4
+50			8.3	273.1
+75			9.4	272.0
3+00	center of Juniper		7.5	273.9
+50			7.7	273.7
4+00			8.7	272.7
+50			8.8	272.6
5+00			10.1	271.3
+50			12.6	268.8
J.P.		0.17	268.55	12.97
+92	break		3.5	265.1
6+00			7.7	260.9
+23	break		20.1	248.5
+50			8.0	260.6
+56	break		5.8	262.8

Sheet 9

Sta.		H.I.	Rod	Elev.
6+67.5	20' 13' line of Kalmia	268.55	5.5	243.1
7+00			8.0	260.6
J.P.		12.3	256.92	12.86
+17	break		0.2	256.7
+36	"		5.8	251.1
+50			10.6	246.3
+53	M.H. bottom of damper		12.30	244.62
+60	break		14.9	242.0
J.P.		12.56	269.23	0.25
8+00			11.8	257.4
+31	break		0.4	268.8
J.P.		13.00	281.69	0.54
+50			9.3	272.4
9+00			3.4	278.3
J.P.		12.50	293.80	0.39
+50			12.4	281.4
10+00	not less than 6' deep.		13.5	280.3
+50			13.4	280.4
+76	break		13.4	280.4
11+00			11.4	282.4
+50			7.2	286.6

cont. from page 49

Sta		H.I.	Rod	Elev.	
12+00		293.80	5.2	288.6	
+50	hub dead end		4.41	289.39	
13+00	dead end		4.6	289.2	
+50			5.2	288.6	
14+00			10.4	283.4	
		2.21	283.22	12.79	281.01
+28.4	13' so. center of maple.		3.0	280.2	+53.6
+50			5.2	278.0	+32
+69	break		7.8	275.4	3+13
J.P.		0.97	271.52	12.67	270.55
+83	M.H. bottom of canyon		2.84	268.68	+99
+88	break		5.4	266.1	+94
15+00		283.22	11.2	272.0	+82
+13	break		4.0	279.2	+69
+50		293.80	8.3	285.5	2+32
16+00			0.6	293.2	+82
J.P.		10.14	303.26	0.68	293.12
+50			6.5	296.8	1+32
17+00			4.3	299.0	+82
+40	hub dead end about 42' so. of mittee		3.36	299.90	0+42

Lot. line bet. 33rd & Feltm

Hawthorn to Sta 8+59 so.

Sta.	Sub. 506 no. of	1896 Hawthorn	H.I.	Rod	Elev.
0+00			266.02	3.10	261.56 262.7
+50				4.6	261.4
1+00				4.6	261.4
+09	break			4.9	261.1
+10	"			8.2	257.8
+50				9.0	259.0
+91	break			9.0	259.0
2+00				8.3	257.7
+50				9.8	256.2
3+00				11.0	255.0
+50	about 2' deep			12.7	253.3
4+00				11.8	254.2
+50				4.1	261.9
5+00				3.3	262.7
+07	break			5.0	261.0
+41	"			5.5	260.5
+50				9.1	256.9

Sheet 9

from 1896 no. of

of Kalma

Sta.	H.I.	Rod	Elev.
5+80		24.0	242.0
6+00		15.0	251.0
+50		9.6	256.4
7+00		12.3	253.7
J.P.	13.1	254.80	253.49
+50		7.9	246.9
J.P.	0.10	241.81	241.71
8+00		7.6	234.7
+14	break	12.3	229.5
J.P.	3.58	234.96	231.38
+29	"	11.1	223.9
+50		9.6	225.4
+59	M.H. bottom of comp. 12.7! So. Kalma	7.68	227.28

Hutton Street from about 40' no. Hawthorn to

Sta. 9+80 (40.2 so. Kalbarri)

Sta.	H.I.	Rod	Elev.
0+00	5.47 <u>258.96</u>	2.09	253.49
+50		3.8	255.2
1+00		7.4	251.6
+50		12.3	246.7
J.P.	0.03 <u>246.05</u>	12.94	246.02
2+00		2.4	243.7
+50		4.4	241.7
3+00		6.0	240.1
+50		8.5	237.6
+89 break		11.3	234.8
4+00		26.0	220.1
+03 break		27.0	219.1
+16 "		11.0	235.1
+19 m.H. canyon		10.59	235.46
+50		6.8	239.3
+63 break		14.0	232.1
+68		5.8	240.3
5+00		2.7	243.4

Sheet 10

Sta.	H.I.	Rod	Elev.
5+50	<u>258.96</u>	11.3	247.7
6+00		7.3	251.7
+50		5.0	254.0
+81 break		5.1	253.9
+89 "		7.4	251.6
7+00		7.1	251.9
+12		7.4	251.6
+31 break		11.8	247.2
J.P.	<u>244.05</u>	10.5	243.53
+50 dead end		4.0	240.1
+68 break		11.0	233.1
J.P.	0.21 <u>231.40</u>	12.86	231.19
8+00	1.52 <u>220.08</u>	12.84	218.56
+15		2.6	217.5
+20		9.03	211.05
+50		10.4	209.7
+50	<u>231.40</u>	12.7	218.7
9+00	<u>244.05</u>	10.5	233.6
+50	<u>256.57</u>	9.0	247.6
+80		2.0	254.6

40.2 so. Kalbarri

Feltton Street from 40' no.

Sta. 2+44 So. of Laurel.

Sta.		H.T.	Rod	Elev.
J.P.	40' no. 4 ⁰⁰ Kalum	272.36		267.76
0+00	hab. deadend		3.00	269.4
+50			5.3	267.1
+100			9.7	262.7
J.P.	0.99	260.29	13.06	259.30
+50			3.0	257.3
+200			12.7	247.6
J.P.	0.36	248.00	12.65	247.64
+28	break		10.2	237.8
+35	"		13.3	234.7
+44	M.H. bottom of canyon 16.8 So. Laurel		10.62	237.38

Sheet 9

Kalunia to

53

253.00	B.N.I. Jumper
3.50	of Feltton
256.50	
10.05	
246.45	
12.97	
243.53	1.38
13.04	255.19 J.P.
256.57	12.88
	268.07 H.T.
	0.31
	267.76

541

Felton Street from 40' no. of

So. of Nutmeg

Laurel to about 41'

54

Sta.		H.I.	Rod	Elev.
		<u>272.36</u>		
0+00	limb dead end		12.45	259.91
+50	40' no. of Laurel.		12.0	260.4
1+00			12.6	259.8
S.P.		2.11	<u>261.71</u>	12.76
+50			2.2	259.5
2+00			4.3	259.4
+35	break		11.2	250.5
S.P.		0.50	<u>249.85</u>	12.36
+50			3.7	246.2
+68	m.H. bottom of		8.45	241.40
+72	canopy break		9.3	240.6
+87.85	13' no. of center		2.9	247.0
3+00	of maple.	<u>261.71</u>	8.7	253.0
+50		<u>272.36</u>	13.6	258.8
4+00			9.2	263.2
+50			5.6	266.8
5+00			4.1	268.3
+50			5.4	267.0
6+00	about 4' deep		6.30	266.1
	dead end			
	about 41' no.			
	of Nutmeg			

Sheet 9

Lot. line bet. 33rd &

of canyon at maple to sta

Sta		H.I.	Rod Elev.
0+00	mt. bottom of	<u>264.30</u>	9.97 254.33
+24	canyon 21' no. of center	<u>271.52</u>	4.3 267.2
+50	of maple.	<u>283.22</u>	8.3 274.9
+85	dead end		1.5 281.7

Sheet 9

Helium from bottom

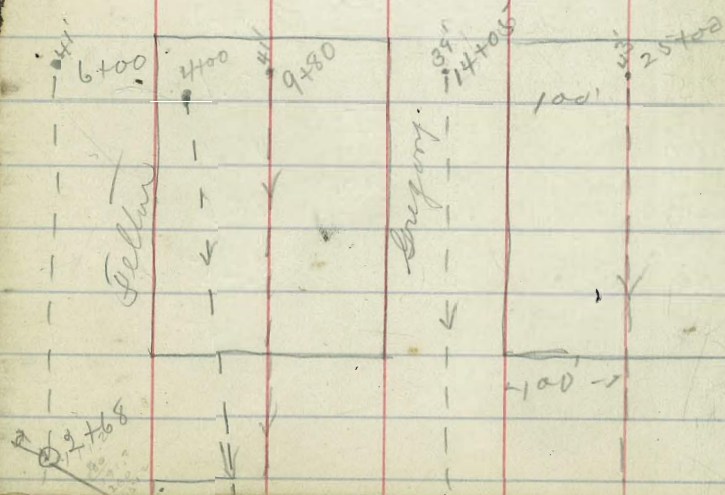
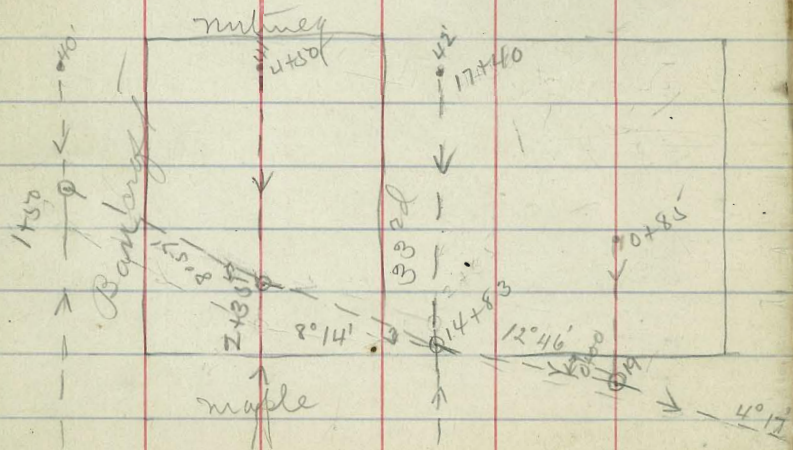
55

0+85 no. of maple.

124.8
259.09
5.21
264.30

main tower
 8137
 3466
 3466

95014
 6739 = 0+00
 nutmeg
 32nd
 maple



Lot line bet. Felton & Gregory
 from 150' no. of
 Sta. 4+00 So. of Guy.

center of Guy to

Sta.		H.I.	Rod	Elev.
		5.41	<u>240.87</u>	235.46
0+00	hub dead end		0.41	240.46
+50			6.0	234.9
1+00			12.0	228.9
J.P.		0.24	<u>228.18</u>	227.94
+40	break		6.3	221.9
+50	center Guy.		11.9	216.3
J.P.		0.25	<u>215.74</u>	215.49
+86	break	0.58	<u>203.48</u>	202.90
			12.69	199.8
2+00			9.6	193.9
+13	break		14.2	189.3
+20	M.H. bottom of		12.69	190.79
+50	damper		6.2	197.3
+77	break		9.0	206.7
+95	"		3.1	217.6
3+00			13.4	214.8
			<u>228.18</u>	
+50			12.1	228.8
4+00	hub dead end		3.25	237.62

Sheet 10

Lot. line bet. Feltton + Gregory from 38' no.
 of Juniper to Sta 2+2 2-39.2 So. of Kalina

Sta.		H.I.	Rod	Elev.
J.P.	1.66	<u>212.71</u>		211.05
0+00	M.H. bottoming camp 38'		8.71	204.00
+09	No. of Juniper		10.7	202.0
J.P.	12.98	<u>225.20</u>	0.49	212.22
+50			8.3	216.9
J.P.	12.66	<u>237.74</u>	0.12	225.88
+93	break		0.9	236.8
J.P.	12.71	<u>250.26</u>	0.19	237.55
1+00			11.2	239.1
+50			1.3	249.0
J.P.	8.66	<u>258.72</u>	0.20	250.06
2+00			7.1	251.6
+22	hub. dead end 39.2 So. Kalina		7.42	251.3

Sheet 10

Lot. line bet. Feltner + Gregory
to Sta. 9+80 (41' So of Nutmeg)

from 40' no. of Kalunia

Sta.		H.I.	Rod	Elev.
		246.17		
0+00	hub dead end		10.37	235.8
+50	40' no. of Kalunia	234.240	1.4	232.8
1+00			3.8	230.4
+50			9.5	224.7
J.P.		4.53	10.65	223.59
+97	break		12.7	215.8
2+00			11.6	216.9
+15	M.H. bottom of canyon		7.73	220.74
+50			2.3	226.2
+87.6	to 13' line Laurel		4.8	223.7
3+00			5.0	223.5
+50			4.9	223.6
+62	break		6.2	222.3
+68	"		3.9	224.6
4+00			2.9	225.6
+08	break		3.5	225.0
+19	"		7.0	221.5
+50			6.4	222.1

Sheet 10

Sta.		H.I.	Rod	Elev.
		228.47		
4+66	break		0.9	227.6
J.P.		11.07	0.86	227.61
+75	"		14.4	224.3
+94	"		13.5	225.2
5+00			9.4	229.3
+13	break		13.5	225.2
+50			8.7	230.0
+69	break		5.5	233.2
+82	M.H. bottom of canyon		7.85	230.93
6+00			5.5	233.2
J.P.		12.48	0.17	238.51
+50			6.3	244.7
+68	to 13' line maple		4.1	246.9
+91	break		1.4	249.6
J.P.		12.69	0.58	250.41
7+00			11.1	252.0
+50			7.1	256.0
8+00			4.0	259.1
+50			1.4	261.7

cont. from page 60

Sta	H.I.	Rod Elev.
J.P. 9+00	11.54 273.26	1.38 261.72
+50		8.6 264.7
+80		3.6 269.7
hub. dead end about 4/20. of McIntire		0.7 272.6

Gregory St. from 40' no. of
41.5 So. of Juniper

Grape to Sta. 9+80

02

Sta.	H.I.	Rod	Elev.	Sta.	H.I.	Rod	Elev.
J.P. 0+80	2.83 0.34	259.70 246.97	13.07 6.79	256.87 246.63	197.39	5.6	191.8
+50		40' no. of Grape	4.5	242.5	209.63	12.3	197.3
1+00			5.5	241.5		4.8	204.8
+50			8.5	238.5		2.3	207.3
2+00			11.4	235.6		1.1	208.5
J.P. +50	1.32	235.32	12.97	234.00	222.73	10.1	212.6
+50			3.0	232.3		9.0	213.7
3+00			8.3	227.0		6.4	216.3
J.P. +50	0.43	222.73	13.02	222.30		3.8	218.9
+50			2.6	220.1		13.7	221.6
+85			8.5	214.2	235.32	10.5	224.8
4+00			12.1	210.6		8.3	227.0
J.P. +41	0.00	209.63	13.10	209.63		8.34	226.98
break			9.7	199.9			
+50			13.0	196.6			
J.P. +88	0.43 0.47	197.39 185.47	12.67 2.6	196.96 182.9			
break							
5+00			7.50	177.97			
+05			8.3	177.2			
+50		197.39	8.6	188.8			

Sheet 11

hub dead end
41.5 So. Juniper

Gregory street from 3' SO. of no.

line of juniper to

1144

63

Sta 14+05 - SO. of Nutmeg.

Sta.	H.I.	Rod	Elev.	Sta.	H.I.	Rod	Elev.	
J.P.	0.46	204.46	204.00	J.P.	246.17			
0+00	M.H. 3' SO. of	9.58	194.88	7+00		1.8	244.4	
	No. line of juniper			J.P.	12.95	258.72	0.40	245.77
+11	break	10.9	193.6	+10.2	20.13' line	13.3	245.4	
J.P.	11.02	214.94	203.92		of Laurel.			
+50		9.7	205.2	+50		9.0	249.7	
J.P.	9.04	223.76	214.72					
+89	dead end	7.5	216.3	8+00		5.2	253.5	
1+40	hub. dead end	4.81	219.0	+50		2.0	256.7	
				J.P.	12.90	271.24	0.38	258.34
+50		4.6	219.2	9+00		10.6	260.6	
2+00		8.1	215.7	+50		6.8	264.4	
J.P.	2.54	213.86	211.32					
+50		4.7	209.2	10+00		3.1	268.1	
3+00		5.2	208.7	J.P.	12.80	283.92	0.12	271.12
				+50		12.2	271.7	
+43	M.H. bottom of	12.97	200.89	+90.8	20.13' line	9.3	274.6	
	campus				maple.			
+50		14.3	199.6	11+00		8.7	275.2	
4+00		13.2	210.6	+50		5.7	278.2	
+50		5.0	218.8	12+00		3.4	280.5	
5+00		2.4	221.4	J.P.	10.33	293.27	0.98	282.94
J.P.	12.68	234.24	221.58	+50		10.6	282.7	
+50		7.1	227.1	13+00		8.5	284.8	
6+00		1.6	237.6	+50		6.4	286.9	
J.P.	12.82	246.17	233.35	14+00		4.5	288.8	
+50		7.1	239.1					
				+05	hub. dead end	4.35	288.92	

Sheet 11

Lot. line 100' East of

No. of Grape. to about 43' 20..

Sta.		H.I.	Rod	Elev.
J.P.		2.18		240.18
0+00	hub dead end	p.20 229.51	13.05	229.31
J.P.			8.85	220.66
+50	40' no. of Grape	0.12	12.91	216.60
J.P.			6.9	209.8
1+00		0.21	13.01	203.71
			1.9	202.0
+50			12.3	191.6
J.P.		0.57	12.95	190.97
2+00			8.7	187.5
J.P.		0.68	12.87	178.37
+50			2.8	176.3
3+00			7.6	171.5
+15	break		8.7	170.4
+50			12.0	167.1
J.P.		10.79	13.00	166.05
+68	M.H. bottom of canyon	176.84	11.79	165.05
+75	break		13.8	163.0
4+00			13.2	163.6
+50			12.5	164.3
5+00			11.2	165.6
+31	M.H. for canyon		8.49	168.35
+50	wdet.		6.7	170.1
6+00			3.9	172.9
+50			5.6	171.2

Sheet 12

Gregory from 40'

64

returning

Sta.		H.I.	Rod	Elev.
6+55	break	176.84	6.3	170.5
7+00			4.1	172.7
+50			1.8	175.0
J.P.		12.12	14.8	175.36
8+00		187.48	11.5	176.0
+50			10.9	176.6
+67	break		10.4	177.1
9+00			8.2	179.3
+50			5.2	182.3
J.P.		13.07	0.38	187.10
10+00		200.17	12.1	188.1
+27	break		11.6	188.6
+46	"		1.0	199.2
+48	10' 13' line gwyer		0.8	197.4
+50			0.9	199.3
+59	break		1.0	199.2
+81	"		13.7	186.5
11+00	M.H. bottom of canyon		14.50	185.67
+35	break		14.6	185.6

cont: from page 64

Sta		H.I.	Rod Elev.	Sta	H.I.	Rod Elev.
11+50	draw.	200.17	15.7 184.5	19+50	284.05	9.6 274.5
12+00			4.7 195.5	20+00		8.3 275.8
J.P.	11.63	209.25	2.55 197.62	+50		7.1 277.0
+50			8.2 201.1			
13+00			3.4 205.9	21+00		5.8 278.3
J.P.	12.44	220.76	0.93 208.32	+50		4.2 279.9
+50			7.4 213.4			
14+00			0.8 220.0	189.9	10.13' line maple	2.5 281.6
J.P.	12.65	233.08	0.83 220.43			
+50			6.8 226.2	22+00		2.3 281.8
J.P.	12.73	245.59	0.22 232.86	J.P.	7.50	290.50
15+00			6.8 238.8	+50		1.05 283.00
J.P.	13.02	258.59	0.02 245.57			7.3 283.2
+50			12.1 246.5	23+00		6.0 284.5
16+00			7.8 250.8	+50		5.0 285.5
+50			2.6 256.0	24+00		4.7 285.8
J.P.	13.02	271.42	0.19 258.40			
17+00			9.8 261.6	+50		4.3 286.2
+50			6.0 265.4	25+00	4.5' about	4.95 285.55
18+00			3.3 268.1		43' so. - midway	
+09	10.13' line Laurel		3.0 268.4			
+50			0.8 270.6			
J.P.	12.78	284.05	0.15 271.27			
19+00			11.1 273.0			

Canyon line north of Juniper
 line 100' east of Gregory to Sta.

Sta.		H.I.	Rod	Elev.
0+00	87° 13' R M.H. Sta 11+00 on line 100' east of Gregory St.	196.37	10.70	185.67
+50			7.5	188.9
1+00			3.7	192.7
+40	17° 12' R M.H. Sta 0+00 on Gregory no. 9	204.75	1.49	194.88
J.P. +50	Juniper		9.4	195.4
2+00			7.0	197.8
+41	break		5.8	199.0
+50			4.7	200.1
+84.3	6° 00' R M.H. Sta 0+00 on J.P. lot line bet Gregory & Felton	214.81	0.75	204.00
3+00			10.4	204.4
+50			8.0	206.8
4+00			3.3	211.5
+33.8	33° 01' R M.H. Sta 8+15 J.P. on Felton St.	223.43	3.76	211.05
+50			12.5	210.9
+69	break draw		12.2	211.2
5+00			5.8	217.6
+50			3.1	220.3

Sheet 12

149 66

from Sta 11+00 on

5+31 on lot line bet 33rd + Bancroft

Sta		H.I.	Rod	Elev.
J.P. 5+80	13.11 break draw.	233.33	3.21	220.22
6+00			14.6	218.7
+50			12.7	220.6
+50			2.0	231.3
+67.7	12° 49' L M.H. Sta 8+59 on lot line bet Felton & 33 rd	240.20	6.04	227.29
7+00			10.2	230.0
+08			8.9	231.3
+32			9.4	230.8
+50			4.6	235.6
J.P. +69	12.06 251.88		0.38	239.82
8+00			11.1	240.8
+35			8.5	243.4
+51.4	6° 46' R M.H. Sta 7+53 on 33 rd St. line		10.2	241.7
+91			7.36	244.52
9+00			1.3	250.6
+08			2.5	249.4
+08			5.5	246.4
+29			3.1	248.8
J.P. +50	12.51 264.23		0.16	251.72
			9.4	254.8

264.23

67

Cont. from page 66.

Sta	H.I	Rod	Elev.	
9+73	<u>264.23</u>	11.3	252.9	
+89		6.4	257.8	
10+00		5.6	258.6	
+37		2.5	261.7	
S.P.	10.98	<u>274.72</u>	0.49	263.74
+50		6.3	268.4	
+58.8 M.H. Sta 5+31 on lot line bet. 33 rd & Bancroft		2.64	272.08	

Campfire line from Sta.
of Gregory to Sta.

Sta.	H.I.	Rod Elev.
0+00	22°36' L back sight down canyon M.H. Sta 1+00 on lot line east of Gregory.	198.11 12.44 185.67
+50		10.8 187.3
+62		13.0 185.1
+90		11.1 187.0
1+00		9.8 188.3
+50		8.6 189.5
2+00		2.1 196.0
+06		4.6 193.5
+43		3.7 194.4
+50		1.5 196.6
J.P. 3+00	10.49 208.03	0.57 197.54
		5.6 202.4
+60		6.4 201.6
+64.7	3°08' L M.H. Sta 3+43 on Gregory St.	7.12 200.91
+89		8.1 199.9
4+00		7.2 200.8
J.P. +50	12.47 218.17	2.33 205.70
		11.7 206.5
+87		14.4 203.8

Sheet 13

11+00 on lot line east US
on lot line bet. Gregory & Feltus

Sta.	H.I.	Rod Elev.
5+00	218.17	10.6 207.6
+50		4.2 214.0
6+00		2.2 216.0
+50		2.2 216.0
+62 break		3.9 214.3
J.P. +883	54°28' L 12.29 230.46 M.H. Sta 2+15 on lot line bet. Feltus & Gregory.	0.00 218.17 9.68 220.78 9.6 220.9
7+00		10.5 220.0
+19		5.4 225.1
+50		1.1 229.4
+84 J.P. 8+00	10.14 239.83	0.77 229.69 7.6 232.2
+897		2.45 237.38
		M.H. Sta 2+44 on center Feltus St.

Juniper

4/10

100'

Tray

52°06'

5400'

75°17'

5731

3468

33°22'

Hawthorn

40'
 ~~Juniper~~

100'

40'
 0100

Grape

maple

100'

Laurel

Kalmia

35°05'

3443

100'

17°12'

Juniper

87°13'

22°36'

11400

29

Campfire line from Sta. 5+82
to Sta 7+395 on Bancroft St.

on lot line bet. Gregory & Felton

10

Sta	H.I.	Rod	Elev.
0+00	66°26' L M.H. Sta 5+82 on lot line bet. Felton & Gregory	241.42 10.59	230.83
+19		12.6	228.8
+50		8.8	232.6
1+00		2.2	239.2
+20		3.2	238.2
J.P. 752.7	4°17' L 9.17 M.H. Sta. 2+68	250.38 0.21	241.21
+67	on Felton	9.02	241.36
+84		6.8	243.6
+84		7.7	242.7
2+00		6.6	243.8
J.P. +20	12.21	260.30	2.29
+20		11.5	248.09
+50		10.3	248.8
+76		10.3	250.0
		9.2	251.1
3+01.5	12°46' L M.H. = 0+00 on lot line bet 33rd & Felton	6.01	254.29
+09		6.4	253.9
+50		0.7	259.6
J.P. +72	12.38	272.56	0.12
			260.98
			9.9
			262.7

Sheet 13

Sta	H.I.	Rod	Elev.
4+00	272.56	9.4	263.2
+31		7.8	264.8
+42	8°14' R M.H. Sta. 14+83	3.93	268.63
J.P. +50	on 33rd & 15th 285.20	0.81	272.45
+50		14.4	270.8
+74		8.5	276.7
+97		9.7	275.5
5+00		8.4	276.8
+50		1.2	284.0
J.P. +86.7	8°57' R 10.48 M.H. Sta. 2+35	295.13 0.58	284.65
6+00	on lot line bet. 33rd & Bancroft	8.58	286.55
+50		7.7	287.4
+50		5.4	289.7
7+00		3.4	291.7
+39.5	M.H. Sta 1+50 on Bancroft St.	19.8	293.20

Levy line from sta.
to sta 4419 on Feltman

5731 on lot east of Gregory

1

Sta	H.I.	Rod	Elev.	Sta	H.I.	Rod	Elev.
0+00	75°17' R ^{7.05} 172.10 <u>172.10</u>	3.75	165.05 168.35	5700	<u>220.05</u>	7.3	2128
+12	line East of Gregory.	5.3	166.8	+19		0.0	220.1
+50		2.0	170.1	+27		4.0	216.1
J.P. 1+00	11.52 <u>183.60</u>	0.07	172.03	J.P. +51.5	18.27 11.27 <u>232.71</u> <u>243.89</u>	0.11 0.09 8.52	219.94 232.62 235.37
+44.7	52°06' R M.H. Sta. 5700 on Gregory Street	5.68	177.92	M.H. Sta 4+19 on Feltman St.			
+50		6.2	177.4				
J.P. 2+00	11.76 <u>194.45</u>	0.91	182.69				
+50		13.4	181.1				
+50		10.1	184.4				
3+00		6.7	187.8				
+20.5	15°10' R M.H. Sta. 2+20 on lot line bet. Feltman & Gregory.	3.82	190.63				
+26		5.1	189.4				
+50		2.2	192.3				
J.P. 4+00	12.83 <u>207.10</u>	0.18	194.27				
+17		7.1	200.0				
+17		5.5	201.6				
+37		6.4	200.7				
+50		3.3	203.8				
J.P. +95	12.99 <u>220.05</u>	0.04	207.06				
		9.7	210.4				

Sheet 13

Leauger line from Sta.
Gregory & Feltin to Sta 4+00

5+82 on lot line bet
So. of Midway.

Sta.	H.I.	Rod Elev.	Elev.
0+00	13° 53' L from lot line M.H. Sta 5+82 on lot line bet. Feltin & Gregory	241.42	10.59 230.83
+50			5.0 236.4
1+00			0.9 240.5
S.P.		10.59 251.80	0.21 241.21
+50			9.9 241.9
+84			14.7 237.1
2+00			12.2 239.6
+10			12.9 238.9
+41			9.0 242.8
+50			11.1 240.7
3+00			3.6 248.2
S.P.		13.10 264.72	0.18 251.62
+50			10.6 254.1
4+00	M.H.		11.16 253.56

Sheet 12

Survey line from Sta. 2+75 on lot line East of Gregory
to Sta 16+33.8 on 32nd St.

Sta.	H.I.	Rod	Elev.	Sta.	H.I.	Rod	Elev.
0+00	42°47' L foresight north M.H. = Sta 2+75 in 161.00	12.78	148.22	4+86	173.88	7.8	166.1
+42	lot line East of Gregory	14.3	146.7	5+00		6.1	167.8
+50		12.6	148.4	+17		6.1	167.8
+80		11.4	149.6	+50		2.4	171.5
+96		10.5	150.5	+67		4.1	169.8
1+00		9.6	151.4	J.P. 1260 185.79		0.69	173.19
+40		8.9	152.1	+93		12.0	173.8
+50		8.1	152.9	6+00		14.3	171.5
2+00		4.9	156.1	+36.8	18°12' L M.H. Sta. 3+75 Feltus St.	9.42	176.37
+06	8°22' R M.H. Sta 4+24 on Gregory St.	4.36	156.64	+50		9.6	176.7
+50		2.3	158.7	+77		11.5	174.3
+95		3.4	157.6	7+00		10.8	175.0
3+00		1.1	159.9	+41		7.1	178.7
J.P. 13.08 173.88		0.20	160.80	+50		3.2	182.6
+50		6.5	167.4	+50		3.9	181.9
4+00		5.8	168.1	+58		5.4	180.4
+50.5	9°55' L M.H. Sta. 2+46 lot line bet. Gregory + Feltus	6.18	167.70	+77		3.0	182.8

Sheet 14

cont. from page 73

74

Sta	H.I.	Rod Elev.	Sta	H.I.	Rod Elev.
7+88	<u>185.79</u>	3.6 182.2	12+50	<u>217.91</u>	10.1 207.8
J.P. +99.5		1.77 184.02	+73		11.6 206.3
8+27	<u>196.21</u>	12.6 183.6	+85.9		8.05 209.86
+50		9.4 186.8	13+00		6.8 211.1
9+00		5.1 191.1	+30		6.9 211.0
+50		2.3 193.9	+50		3.9 214.0
+72.7		4.60 191.61	+70		1.6 216.3
+81		5.7 190.5	14+00		3.6 214.3
10+00		3.6 192.6	J.P. +50	13.00 <u>229.69</u>	1.22 216.69
J.P. +50	11.05 <u>207.01</u>	0.25 193.96	+50		11.8 217.9
11+00		8.0 199.0	15+00		8.8 220.9
+25.6		4.4 202.6	+07.3		7.92 221.77
+29		7.57 199.44	+19		9.0 220.7
+50		8.9 198.1	15+31		6.7 223.0
J.P. +96	10.94 <u>217.91</u>	2.8 204.2	+42		7.6 222.1
12+00		0.04 206.97	+50		5.7 224.0
+08		16.3 201.6	J.P. +82	9.91 <u>238.95</u>	0.65 229.04
+22		14.9 203.0	+93		9.3 229.7
		13.1 204.8	16+00		11.4 227.6
		14.1 203.8	+18		10.6 228.4
			+24		5.7 233.3
			+33.8		6.4 232.6
			M.H. Sta 5+25 m 32 nd St.		4.60 234.35

Leaning line from Sta. 1+27

to Bear Bancroft Av. of Gracie.

on lot line East of Gregory

Sta.	H.I.	Rod	Elev.	Sta.	H.I.	Rod	Elev.
0+00	94° 49' L final pt. north M.H. Sta. 1+27 on 150.38	13.07	137.31	4+00	161.57	4.8	156.7
+50	lot line east of Gregory	15.6	134.8	+35		3.0	158.5
+66		15.0	135.4	J.P. +49.5	6° 36' R 1276 M.H. Sta. 3+80 on Field St.	0.38 12.08	161.13 161.81
+90		13.0	137.4	5+00		7.5	166.4
1+00		10.7	139.7	+50		5.2	168.7
+29		5.4	145.0	+87		6.8	167.1
(?) +506	2° 09' R M.H. Sta. 1+41 on Gregory St.	6.57	143.81	6+00		6.1	167.8
+70		7.5	142.9	+21.5	23° 25' L M.H. Sta. 2+42 on lot line bet. 33rd & Helton	4.46	169.43
2+00		4.8	145.6	+50		3.2	170.7
+28		5.6	144.8	J.P. +78	18.09	0.22 11.9	173.67 174.9
+50		3.4	147.0	7+00		14.1	172.7
J.P. +89	12.05	161.57	0.92 149.46	+50		10.1	176.7
+90.7	31° 27' R M.H. on lot line bet. Gregory & Field St.	11.39	150.12	+64	54° 26' R M.H. Sta. 6+50 on 33rd St.	5.76	181.00
3+00		12.5	149.0	+79		8.9	177.9
+50		10.0	151.5	8+00		7.8	179.0
+72		8.5	153.0	+14		5.5	181.3
+86		8.0	153.5	+50		3.5	183.3

Sheet 14

cont. from page 75

16

Sta		H.I.	Rod	Elev.	Sta		H.I.	Rod	Elev.
9+00		<u>186.76</u>	0.8	186.0	12+18	41°SR/R M.H.	<u>223.80</u>	8.14	215.66
J.P. +27	12.65	<u>199.30</u>	0.11	186.65	+50			7.6	216.2
+30			11.5	187.8	+77			6.8	217.0
+50			10.1	189.7	+92			3.8	220.0
+70			9.3	190.0	13+00			2.1	221.7
+81			7.2	192.1	J.P. +50	12.95	<u>235.49</u>	1.26	222.34
+82			3.0	196.3	+50			9.4	226.1
J.P. 10+00	12.70	<u>211.71</u>	1.3	198.0	14+00			2.6	232.9
+50			0.29	199.01	J.P. +50	12.30	<u>247.79</u>	0.00	235.49
+60			9.4	202.3	+50			9.3	238.5
11+00			11.9	199.8	+62			3.8	244.0
+12.9			12.7	199.0	+82			5.0	242.8
+40			8.5	203.2	J.P. 15+00	11.35	<u>259.10</u>	0.04	247.75
+50			6.41	205.30	+10			14.1	245.0
+90			4.7	207.0	+50			13.1	246.0
+92			2.4	209.3				0.83	258.27
12+00			0.30	211.41					
			9.9	213.9					
			12.3	211.5					
			11.8	212.0					

20°32' L
M.H. Sta 0+13 on
lat line bet. Bancroft
and 30th

dead end hole
just so. of Grapel.
& east of Bancroft

camp line from Sta 1+85
Gregory to Sta 2+10 on

on lot line East of
Heltun Pt.

Sta.		H.I.	Rod	Elev.
0+00	M.H. Sta 1+85 64° 21' from right to north.	158.53	12.89	145.64
+44	on lot line east of Gregory.		6.7	151.8
+50			7.5	151.0
+62			9.1	149.4
+69			5.8	152.7
+79			5.0	153.5
J.P. 1+00	12.57	170.16	0.58	157.65
+13			8.3	161.9
J.P. +50	9.75	179.43	0.46	169.70
+50			11.8	167.7
+53.5	M.H. Sta 2+50 33° 02' L		11.30	168.15
+64	on Gregory st.		12.0	167.5
2+00			5.1	174.4
+29			4.3	175.2
J.P. +50	13.05	192.44	0.06	179.39
+50			15.1	177.3
3+00	not less than 4' deep		6.8	185.6
J.P. +50	11.31	202.91	0.84	191.60
+50	about 6' deep or more		7.0	195.9
4+00			6.0	196.9

Sheet 13

Sta.		H.I.	Rod	Elev.
4+30	S.P. 12.93	215.70	0.14	202.77
+38.0	M.H. Sta 2+10 on Heltun		2.4	213.3
			1.94	213.76

1/10

banym line from Sta. 2+88
Gregory to Sta. 1+00 on lot line

on lot line 100' east of
bet. Gregory + Feltus

Sta.		H-I	Rod	Elev.
0+00	53° 28' L foresight north. M.H. Sta. 2+88 lot line east of Gregory.	158.41	12.74	145.67
+23			13.3	145.1
+50			9.2	149.2
1+00			5.7	152.7
J.P.	12.67	170.59	0.49	157.92
+50			12.5	158.1
+74.5	7° 31' L M.H. Sta. 5+35 on Gregory.		9.75	160.84
2+00			4.6	166.0
J.P.	11.96	181.64	0.91	169.68
+50			11.8	169.8
3+00			9.3	172.3
J.P.	8.10	187.19	2.55	179.09
+34.5	M.H. Sta. 1+00 on lot line bet. Feltus + Gregory.		4.81	182.38

Sheet 13

Sewers levels from
 d = Alley bet. A & B 5' W x W.L. of 33' 6"
 To d = - B & C 12' 0" " " " " " "
 see book 370-46 for location

12689

9

	202	136.75	134.73	Top of stub 5' x 70" book 370-25
		2.0	134.75	
+25		5.7	131.1	
+30 = bottom creek		8.9	127.9	
+34 = ✓		9.6	127.2	
+37		7.2	129.4	
+41		9.6	129.2	
+45 = bottom creek		10.4	126.4	
+57 = ✓		11.0	125.8	
+67		9.3	127.5	
+83 = bottom creek		12.1	124.7	
+92		9.0	127.8	
1		9.6	127.2	
+10		9.8	127.0	
+30		10.4	126.4	
+50		11.8	125.0	
+92		9.7	127.1	
2		10.1	126.7	
T.P.	251	126.89	127.37	124.38
+30		4.1	122.8	

+58	5.2	121.7
+75	8.5	118.4
3	6.7	120.2
+10	7.0	119.9
+30	10.5	116.4
T.P.	494	118.90
	1293	113.96
+60 bottom of creek	8.6	110.3
+70	8.2	110.7
+98.5 = d Alley bet B & C = 4+54 book 370-27	9.7	109.2

Gregory

A — 184.91
 Elm — 224.74

North Canyon 5/2 10/96 Fir 131.63

Main Canyon Beech 370

135.25
 3.22
 131.63

11.9 111.9 100.00

12.4 124.2 0.1 111.8

6.7 126.9 4.0 120.2

33rd

33rd # A 162.42 80

" " Ash 192.85 816.1

" " Beech 219.58 300
 114.20

" " Cedar 234.90 433.16
 300
 733

" " Grape 271.84 435.94 313
 33.18
 2.76

667
 53
 720 910
 260 260 7212
 160 930 1888
 300
 980

107.0
 95
 120
 190
 280
 150
 1300
 910
 160
 900
 1060

Feldman

Cedar — 225.39 1965

Fir — 235.38 18532

Date — 213.38

Beech — 222.32

Ash — 201.99

1869
 300
 2189
 313
 2502
 122.00
 85
 37

B.M.

Thirty 2nd

Kalmia - S.W. 297.62

Laurel - " 298.60

Maple - " 301.11

San Marcos - " 285.795

Fir # N.E. 268.08

Elm - S.E. 223.48

Grape - S.W. 276.955

Hawthorn W.W. - 282.06

Juniper 20 ft. 294.94

Cedar N.E. 240.26

Bancroft

Elm - S.W. 227.39

Fir - " 257.70

Grape - " 273.243

Wate - " 231.82

258.27	156	185
12.54 H.I.	120	619.5
270.81	94	65.5
6.49 S.P.	66	
270.33	28	
6.72		
277.05		
271.84		
5.21		

687	49	1200	
27	3	240	438.8
26	10	1440	380
1067	40	131350	879.8
867	81	1190.5	56
14	73	50	77.0
260	14	68.5	115
373	40	667	340
225.39	51	27	327
228.26	0.3	190	3806.1
12.76	89	6009	6.5
1385	90	260	125
304	57	375	287
66	143	375	53
238	4.432	260	70
340	8.752	1085	340
900	4.540	2.783	340
187	8.972	4.540	1173
14.27	27.83	4.487	2663
600	6.188	9.027	1369
1035	6.194	1000	1100
1427	13.02	11.23	175.19
53	197.67 H.I.	2.833	115
1400	0.39	98.7	300
70	197.28 S.P.	27	235.28
280	12.63 H.I.	71.	495
1740	209.91 H.I.	59	575
710	0.12	39.7	248.32
13	209.74 S.P.	27	12.82
703	224.74	53	235.50
683	0.23	342.5	0.58
80	224.97 H.I.	0.99	680
703	13.01	71	90
27	211.96 S.P.	247.33 S.P.	286.084
790	0.33	12.62	18.13
212.29 H.I.	259.95 H.I.	56	222.5670
12.93	525 S.P.	71	0.79
199.36 S.P.	254.70 S.P.	763	223.77 H.I.
683	1090	262.75	327
27	53	1090	1403
710	1143		
	260		

