

Hardy server

945

F.B. 945

LEVEL BOOK.

No. 410

IND

945

MICROFILMED
MICROFILMED
DEC 16 1964

945

9

$$\begin{array}{r} - 3.5 \\ \underline{3.15} \end{array}$$

$$\begin{array}{r} - 0.35 \\ \underline{4.77} \end{array}$$

$$+ 4.35$$

5-

$$- 0.35 \text{ H.I.}$$

$$\begin{array}{r} \underline{5.37} \end{array}$$

$$5.72$$

MICROF

MICROF

DEC 16

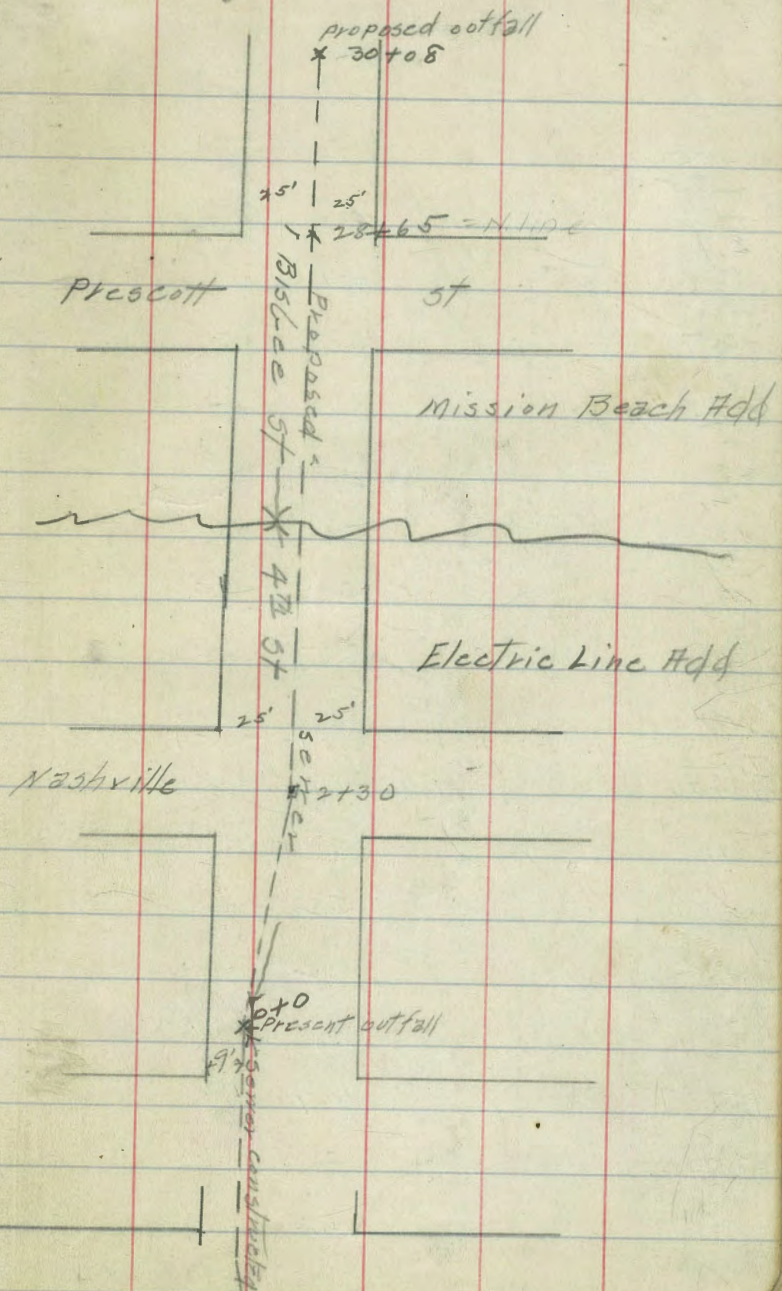
Preliminary line & levels for extension of
 sewer from Hardy's slaughter house from
 old out fall in westerly direction for 1917

B.M.	0.50	10.16	9.66	
T.P.	1.90	2.72	3.24	1.32
T.P.	5.60	6.05	8.27	0.45

10" pipe old out fall bottom of pipe		9.63	-3.58
+2'		10.8	-4.7
+30		10.7	-4.6
+36		5.0	1.0
150		5.0	1.0
140		6.0	0.0
+50		5.5	0.5
210		5.5	0.5
2130		5.4	0.6
150		5.5	0.5
3		5.3	0.7
150		5.6	0.4
4		5.4	0.6
T.P.	3.50	4.50	0.5
150		4.9	0.1
5		5.1	0.0
150		5.0	0.0

New Levels for This Line page 58
 Change in elevations Acct floods

See page 58



5.03

6			4.7	0.3
+45			5.4	-0.4
+55			9.1	-4.1
+92			10.9	-4.9
7+0			8.4	-3.4
7+5			4.6	0.4
+50			5.1	-0.1
8			5.4	-0.4
+50			5.5	-0.5
9			5.8	-0.8
-150			5.5	-0.5
10+0			5.8	-0.8
T.P	4.55	4.01	5.57	-0.54
+50			4.9	-0.9
11			5.0	-1.0
+50			5.2	-1.2
+35			6.2	-2.2
+87			8.8	-4.8
12+07			10.7	-6.7
12+14			5.1	-1.1
+50			4.8	-0.8

2

4.01

13			5.2	-1.2
+50			5.4	-1.4
14			5.5	-1.5
+50			5.8	-1.8
15			5.7	-1.7
+50			6.1	-2.1
T.P	3.95	2.27	5.72	-1.71
16			4.6	-2.3
+50			4.5	-2.2
17			4.4	-2.1
+50			4.4	-2.1
18			4.7	-2.4
+50			4.8	-2.5
19			4.7	-2.4
+50			4.8	-2.5
+70			5.1	-2.8
+73			7.0	-4.7
+80			8.0	-5.7
+85			7.1	-4.8
+90			5.4	-3.1
20+0			5.2	-2.9

		2.27						
20150		2.3	4.9	-2.6		1.37	4.6	-3.2
21			5.0	-2.7	25+29	1.4	4.8	-3.4
+50			4.9	-2.6	+50		4.8	-3.4
+85			5.2	-2.9	26		4.7	-3.3
+88			6.8	-4.5	+50		4.8	-3.4
+94			5.4	-3.1	27		4.7	-3.3
22			6.3	-4.0	+60		4.8	-3.4
+10			7.5	-5.2	28		4.9	-3.5
+15			7.2	-4.9	+50		4.9	-3.5
+16			5.8	-3.5	28+65 = N.L. Prescott		5.0	-3.6
+50			5.3	-3.0	29		5.2	-3.8
+80			5.7	-3.4	+50		5.0	-3.6
+85			7.8	-5.5	29+93		7.7	-5.3
23			5.1	-2.8	29+98		10.7	-9.3
+50			5.5	-3.2	30+08		7.7	-6.3
T.P.	4.28	1.37	5.13	-2.91	Water Level 3:30 PM May 27 th		4.1	-3.5
24		1.4	4.5	-3.1	4.75	1.25		
+50			4.6	-3.2	30+50		6.3	-5.1
25			4.7	-3.3	31+0		5.9	-4.7
+21			4.8	-3.4	32+0		6.4	-5.2
+25			7.0	-5.6				

Sheet 1

2

4.1

1.25

33+0

7.2 -6.0

34+0

7.2 -6.0

35+0

7.2 -6.0

36+0

7.3 -6.1

37+0

7.5 -6.3

37+25

7.5 -6.25

4.40 -1.85

38+0

4.9 -6.7

39+0

5.0 -6.8

40+0

5.4 -7.2

41+0

5.1 -6.9

42+0

5.5 -7.3

43+0

5.7 -7.5

44+0

6.0 -7.8

45+0

6.1 -7.95

H 5.7 -
4.7
3.15

4

Line # see blue print

4
1/4
14
Dunelle
Shaw
Kerr

5.03

5

B.M.	8.61	5.03	-3.58		8			4.9	0.1
	4.12 3/4 Nashville								
0+0	5/2 2+80 outfall line page 7	4.4	0.6		+15			6.5	-1.5
+50		4.3	0.7		+50			6.2	-1.2
					T.P.	3.08	2.30	5.31	-0.78
1+0		5.0	0.0		+65			4.1	-1.8
					+77			5.6	-3.3
+50		4.7	0.3		+80			6.3	-4.0
2		4.5	0.5		9			5.7	-3.4
+50		5.0	0.0		+10			3.7	-1.4
3		4.5	0.5		+50			4.1	-1.8
+50		4.5	0.5		+75			5.1	-2.8
4		4.4	0.6		+93			4.7	+0.6
+50	4 5 th Nashville	3.90	1.13		10			1.6	0.7
5		4.1	0.9		+40			4.0	1.3
+50		4.5	0.5		+50			2.1	0.2
6		3.9	1.1		+96	2 52° 04'		2.93	-0.63
+50		4.0	1.0		71			2.6	-0.3
7		3.7	1.3		+08	2 nd Woodlawn Ave = H.W. Int. E.L. S. FROM		2.03	0.27
+39	Lehigh 3 5 th	3.5	1.5		+50			2.3	0.0
+50		3.5	1.5		12			2.2	0.1
+75		3.5	1.5		T.P.	5.48	5.98	1.80	0.50
+87	37° 41'	4.54	0.49		+50			5.4	0.6
					13			5.3	0.7

578

13+50		5.2	0.8
+94 ⁸ & Linda Ave		5.0	1.0
14		5.0	1.0
+50		4.9	1.1
15		4.0	2.0
+50		3.4	2.6
16		3.0	3.0
+50		2.6	3.4
17		2.1	3.9
+05 ⁸ & Euclid Ave		1.95	4.00
+50		2.0	4.0
T.P.	8.47	12.39	2.08
18		7.5	4.9
+50		7.3	5.1
19		7.1	5.3
+50		6.9	5.5
+80		7.1	5.3
+92		8.5	3.9
20		7.6	4.8
+09		3.9	8.5
+21 ⁹ & La Jolla Blvd	as shown on Blvd Gardens Map,	3.6	8.8

12.09

6

+34		3.6	8.8
+42		7.1	5.3
+50		8.4	4.0
+53		8.7	3.7
+58		6.5	5.9
21		5.9	6.5
+50		6.0	6.4
+32 ³ & Alley bet. Yankee Blvd and Tanopah Ave. Corolla Map	15' wide L 90° approx.	5.4	7.0
22		6.3	6.1
+50		5.4	7.0
23		5.0	7.4
+22		5.1	7.3
+32 ¹ & Alley bet Woodlawn & Leigh		8.50	3.59
+50		8.9	3.5
24		8.7	3.7
+33		8.9	3.5
+35		7.0	5.4
+50		6.2	6.2
25		5.8	6.6
T.P.	2.58	9.57	5.40
			6.99

9.57

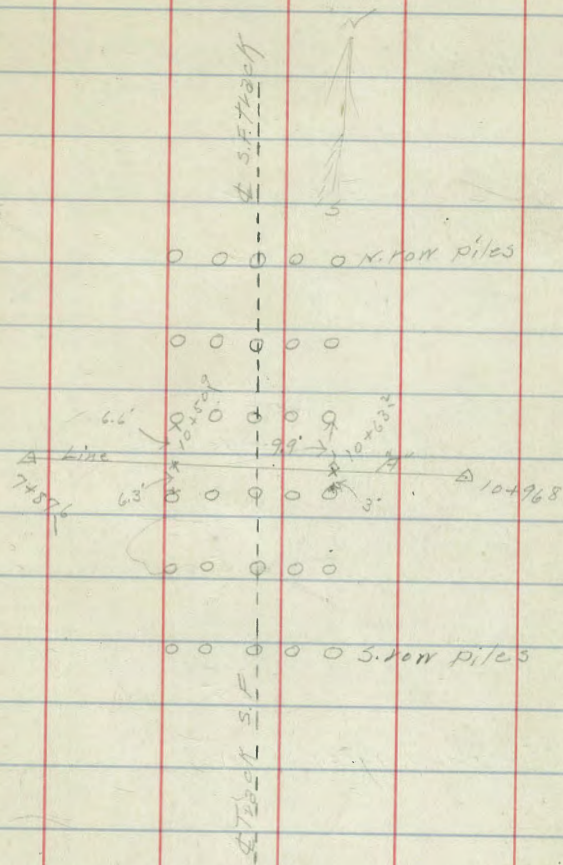
25+50	4.1	5.5
26	4.5	5.1
+22' @ Alley bet Lehigh & Nashville 446	5.11	
+50	4.6	5.0
27	4.9	4.7
+50	5.0	4.6
28	5.6	4.0
+50	5.5	4.1
29	5.7	3.9
+12' @ Alley bet Paul & Nashville 525	3.72	

Sheet 2

Levels for proposed sewer & Euclid from
Sta 17+05 Line "A" E for 800'

7

	4.00	
0+0 = Sta 17+05 Line "A" E	4.0	4.0
+50	4.9	3.1
1	5.0	3.0
+50	5.2	2.8
2	5.2	2.8
+50	5.6	2.4
3	5.3	2.7
+50	4.9	3.1
4	4.5	3.5
+50	3.1	4.9
5	2.8	7.2
T.P. 11.83	0.73	7.27
+50	9.2	9.9
6	7.2	11.9
+50	5.2	13.9
7	4.1	15.0
+50	3.3	15.8
8	1.9	17.2



Levels for sewer 3 E of Φ Alley 61K
1 Corella Tract from Alley N of
Venice Blvd N for 3725 or 35
S of S.L. Tonopah Ave

9

B.M.	7.68	11.27	3.59
0+0		7.7	3.6
+50		7.2	4.1
1+0		7.2	4.1
+50		6.9	4.4
2		6.8	4.5
+50		6.7	4.6
3		6.8	4.5
+10		6.5	4.8
+15		3.1	8.7
+50		2.5	8.8
+72 ⁵ = 35 S of S.L. Tonopah		2.4	8.9

Sheet 3

Levels for sewer & Alley 61K 2 Corella
Tract From Alley N of Venice N for 3725'

or 35 S. of S.L. Tonopah

401
11.27

10

070	6.2	5.1
+50	6.3	5.0
1	6.4	4.9
+50	6.2	5.1
2	6.0	5.3
+50	6.0	5.3
3	5.8	5.5
+50	5.3	6.0
+72 ⁵ = 35 S. of S.L. Tonopah	5.4	5.9

Sheet 37

Levels for sewer & Alley 61/13 Corolla
Tract from & Alley N of Venice Blvd
N for 377.5' or 35' S. of S.L. Tonopah

B.M.	924	1296	372
0+0		9.3	3.7
+50		9.1	3.9
1		8.8	4.2
+50		8.8	4.2
2		9.1	3.9
+50		8.9	4.1
3		8.3	4.7
+30		7.4	5.6
+50		4.7	8.3
+72.5 = 35' S. of S.L. Tonopah	2.1	10.9	

11

Levels for Sewer Wecks Ave from
 7 sta 10+196 2" A" Line E for 2204.6 to 40
 N.W. of W.L. Cushman Ave

12

B.M.	4.86	4.23	-0.63
0+0	sta 10+196 2" A" Line	4.9	-0.7
+50		4.5	-0.3
+93		4.7	-0.5
+1		4.8	-0.6
+50		4.4	-0.2
+2		4.7	-0.5
+3		4.9	-0.7
+3		4.9	-0.7
+50		4.9	-0.7
+7		5.1	-0.9
+50		5.0	-0.8
5		5.3	-1.1
+50		5.4	-1.2
6		5.7	-1.5
+15 T.P. 12.21.	-13.19	5.5	-1.3
+50		3.25	0.98
		11.0	2.2
7		3.7	9.5
+15		1.8	11.4
+50		1.5	11.7

E1

		13.19		
840			1.0	12.2
+50			1.1	12.1
T.P.	5.96	17.85	1.30	11.89
9			6.4	11.4
+50			6.8	11.0
10			7.8	10.0
+10			8.6	9.2
+50			15.2	2.6
+65			14.7	3.1
+90			8.2	9.6
11			7.7	10.1
+50			6.8	11.0
+12			6.4	11.4
+50			5.1	12.7
13			4.2	13.6
+13 ⁹	Golden plac. All. wide		3.6	14.2
+50			2.9	14.9
T.P.	11.39	29.10	0.14	17.71
1A			10.4	18.7

13

		29.10		
14+50			7.6	21.5
15			6.6	22.5
+50			6.4	22.7
16			6.4	22.7
+50			6.0	23.1
17			5.0	24.1 ✓
+50			0.9	28.2
T.P.	3.75	32.05	0.80	22.30
+64 ³	50 Feet		2.8	29.2
18			1.9	30.1
+50			3.5	28.5
19			5.5	26.5
+50			6.2	25.8
20			7.5	24.5
+50			9.3	22.7
21			10.8	21.2
+50			11.4	20.6
22			11.8	20.2
+04 ⁶	40 W Cushman		11.8	20.2

Sheet 3

Note: Continued in Book P 2

Levels for Proposed Sewer Linda Ave
 from Sta 13+94.8 Line "H" E for 2191 to 40
 W of W.L. Cushman St

14

Sheet 4

B.M.	7.64	2.64		1.00
0+0 = 13+94.8		7.6		1.0
+50		8.2		0.4
1+0		8.5		0.1
+50		8.3		0.3
2		7.7		0.9
+50		7.3		1.3
3		7.0		1.6
+25		6.8		1.8
+50		4.5		4.1
4+0		1.3		7.3
T.P.	11.42	19.27	0.79	7.85
+50		9.5		9.8
5		7.9		11.4
+50		6.6		12.7
6		4.8		14.5
+50		3.7		15.6
+55 @ Wilson		3.6		15.7
7		3.2		16.1

19.27

7+50			2.5	16.8
8			2.0	17.3
+50			1.0	18.3
9			1.1	18.2
+50			0.9	18.4
T.P.	2.91	21.30	0.88	18.39
10			3.4	17.9
+50			3.3	18.0
11			3.5	17.8
+50			4.0	17.3
12			4.8	16.5
+50			5.0	16.3
13			4.5	16.8
+10' M.H.I. at Linds-Eleanor	La Jolla's Garden Place		4.8	17.12
+50			3.9	17.4
14			3.6	17.7
+50			3.4	17.9
15			2.4	18.9
+50			1.3	20.0
T.P.	5.27	26.20	0.37	20.93

26.20

15

16+0			5.1	21.1
+50			4.1	22.1
17			3.7	22.5
+50			4.0	22.2
18			4.4	21.8
+50			4.7	21.5
19			4.9	21.3
+50			4.8	21.4
20			4.4	21.8
+50			4.0	22.2
21			2.9	23.3
+50			2.5	23.7
+91=40' w of Cushman			2.3	23.9

Sheet 4

Levels for proposed sewer La Jolla Blvd
 from Sta 13+10 Linda Ave line N for 668.5
 to 35' S. of S. L. Viola Ave

B.M.	4.18	21.30	17.12
0+0 = 13+10'		4.2	17.1
+50		4.3	17.0
1		4.3	17.0
+50		4.1	17.2
2		3.7	17.6
+50		3.3	18.0
3		3.0	18.3
+50		2.6	18.7
4		2.2	19.1
T.P.	5.33	24.26	2.37 18.73
+50		5.1	19.2
5		4.7	19.6
+50		4.3	19.9
6		4.2	20.1
+50		3.8	20.5
+68.5' = 35' S of Viola		3.5	20.5
Hub Int Viola to La Jolla		3.66	20.60

Sheet 4

Levels for "X" line see print page 8

16

B.M.	3.27	7.87	4.00
0+0 = 17+25' "H" Line		3.9	4.00
+50		4.1	3.8
1		4.2	3.7
+50		4.1	3.8
2+0		3.8	4.1
+50		3.9	4.0
3		4.0	3.9
+50		4.3	3.6
4		4.6	3.3
+50		3.7	4.2
5		4.0	3.9
+50		4.3	3.6
6		4.4	3.5
+50		5.0	2.9
7		4.9	3.0
+50		5.6	2.3
8		5.8	2.1
+15' = S.E.P.O.W.		5.2	2.7

Levels for proposed sewer Ellenor St
 from 13+10 Linda Ave line N to E Euclid
 & Ellenor as 25' street

B.M.	11.23	28.35	17.12
0+0-5/2 13+10 Linda Ave Line N			17.1
+50		11.4	16.9
+10		10.5	17.8
+50		9.6	18.7
+10		8.2	20.1
+50		6.1	22.2
3		4.2	24.1
+37 5'		2.48	25.87

Sheet A

Levels for "X" Line see print page 8

17

B.M.	3.87	7.87	4.00
0+0-5/2 13+94 "H" Line			6.9 +1.0
+50			6.6 1.3
1			6.4 1.5
+50			6.2 1.7
2			6.0 1.9
+50			6.1 1.8
3			5.2 2.7
+50			5.1 2.8
+90.6 = S.F.R.O.W.			4.9 3.0

Levels for proposed sewer Euclid Ave
 from Sta 3437^S Eleanor E for 9218^S = 40 w of mt. Cushman

18

B.M.	2.48	28.36	25.87
0+0 = Sta 3437 ^S Eleanor Ave	2.5	25.8	
+50		2.3	26.0
+70		0.9	27.4
+150		0.6	27.7
2		0.4	27.9
+50		0.6	27.7
3		0.6	27.7
T.P.	12.23	40.00	0.58 27.77
+50		12.3	27.7
4		12.3	27.7
+50		12.7	27.3
5+0		12.1	27.9
+50		11.6	28.4
6		9.8	30.2
+50		8.1	31.9
7		5.9	34.1
+50		4.3	35.7
8		3.3	36.7
+50		2.7	37.3

9+0	2.3	37.7
+21 ^S = 40 W of Cushman	2.4	37.6

Sheet 4

Levels for proposed sewer line 15' from
 Sta 3+37.2 on Eleanor of line to station 7+134
 Lillian St

B.M.	9.94	35.81		25.87
+50 = ϕ Eleanor & Euclid	9.9		25.9	
+50		8.0	27.8	
+97 ⁶ \angle 30°39'		5.5	30.3	
+40		5.5	30.3	
+50		4.5	31.3	
2		3.4	32.4	
+50		2.0	33.8	
3			0.2	35.6
T.P.	12.77	48.41	0.17	35.64
+50			11.3	37.1
4			9.2	39.2
+50			7.2	41.2
5			5.4	43.0
+16 ⁹ = ϕ Viola St \angle 67°37'			4.5	43.9
+50			0.9	47.5
T.P.	13.12	61.41	2.12	45.29
6			8.9	52.5
+26 ⁶ \angle 20°08'			6.5	54.9
+50			4.4	57.0
7			0.6	60.8
T.P.	11.45	72.81	0.08	61.33

72.81

19

7450			8.3	64.5
840			4.7	68.1
+50			0.9	71.9
T.P.	11.35	83.71	0.45	72.33
+90 ¹ ϕ Lillian St			8.59	75.12

Sheets

Proposed sewer Lillian St from 5/3 84902
Line 'B' E for 2531' = 40' W of Eleanor

B.M.	8.59	93.71		75.12
+0 = 5/2 84902			8.6	75.1
+150			7.8	75.9
1'			9.5	79.2
+T.P.	12.97	96.27	0.41	83.30
+150			12.5	83.8
2'			5.8	90.5
+35			0.7	95.6
+531' = 40' W of Eleanor			0.1	96.2

20

Proposed sewer Lillian st from 0/15
8.10 7 Linc 'B' west for 135'

B.M.	8.59	83.71	75.12
0+0		8.6	75.1
+50		6.0	77.7
1+0		2.8	80.9
+35		1.00	82.7

21

55

Prelim. Sewer levels.
 \$ Uprss & Alley bet Hermap & 32 - to \$ Uprss
 and Alley bet 32 & Bancroft.

B.M. SW Myrtle & Nash Spk 126. 331.82

1.00 331.82

- 3+30 = \$ Uprss & Alley bet Hermap 8.4 323.4

- 3+00 8.5 323.3

- 2+50 8.1 323.7

- 2+00 7.3 322.5

- 1+65 \$ 32. 7.0 324.8

- 1+50 6.4 325.4

- 1+00 6.3 325.5

- 0+50 6.7 325.1

0+00 = \$ Uprss & Alley E of 32 7.2 324.6

+ 15 N.L. Uprss. 6.4 325.4

+ 65 6.2 325.6

1+15 5.4 326.4

+ 65 4.6 327.2

2+15 3.7 328.1

+ 65 2.6 329.2

3+13
~~2+95~~ S.L. Myrtle 2.3 329.5

8/24/14
 West
 Evans
 Devine

22

20

T.P.		331.82	227	329.55
	11.08	340.63		
3+43	Myrtle		10.7	329.9
+73	NL		10.0	330.6
4+23			9.0	331.6
+73			8.3	332.3
5+23			7.5	333.1
+73			7.0	333.6
6+23			6.2	334.4
+73			5.8	334.8
7+23			5.6	335.0
+73			5.2	335.4
8+23			4.8	335.8
+73			4.6	336.0
9+23			4.5	336.1
+73	SL Dwight		4.6	336.0
T.P.			4.35	336.28
	4.03	340.31		
10+03	SL Dwight		4.2	336.1
10+33	NL "		4.2	336.1

23

34031

10+83	4.2	336.1
11+33	4.5	335.8
+83	5.0	335.3
12+33	5.2	335.1
+83	5.1	335.2
13+33	4.9	335.4
+83	4.9	335.4
14+33	4.8	335.5
+83	4.6	335.7
15+33	3.9	336.4
+83	3.1	337.2
16+ ³⁰⁷ SL Landis	2.7	337.6
T.P.	2.57	337.74
10.17 348.21		
16+60 ² ± Landis	10.0	338.2
+90 ² NL Landis	9.8	338.4
17+40 ²	9.1	339.1
+90 ²	8.3	339.9
18+40 ²	7.5	340.7

34821

18+90 ²	7.8	340.4
19+40 ²	6.6	341.6
+90 ²	5.8	342.4
20+40 ²	4.9	343.3
+90 ²	4.3	343.9
21+40 ²	3.8	344.4
+90 ²	3.3	345.9
22+40 ²	2.6	345.6
+90 ² off SL Wightman	2.2	346.0
+97 ² SL Wightman	2.1	346.1
T.P.	2.00	346.21
5.60 351.81		
EM SW Wightman & Nash Plug	5.44	346.37
7.18 354.18		346.40
23+20 ² ± Wightman 53' rode	7.9	346.3
23+50 ² = NL Wightman	6.8	347.4
24+00 ²	7.0	347.2
24+50 ²	6.3	347.9
25+00 ²	5.7	348.5
25+50 ²	5.0	349.2
26+00 ²	4.7	349.5
26+50 ²	4.5	349.7
+75 ² SL Viv	5.2	349.0
	8.1	348.2

Levels for proposed sewer Line 5" from
 ♀ Viola to La Jolla Blvd, E for 165' to E Scripps

25

P.M. 1	12.60	33.20	20.60
011 = ♀ Viola to La Jolla Blvd, 12.60			20.60
+50		10.1	23.1
140		7.0	26.2
+50		3.2	30.0
+65 = ♀ Viola to Gertrude		2.0	31.20
150			31.6
160			
170			
180			
190			
200			
210			
220			
230			
240			
250			
260			
270			
280			
290			
300			
310			
320			
330			
340			
350			
360			
370			
380			
390			
400			
410			
420			
430			
440			
450			
460			
470			
480			
490			
500			
510			
520			
530			
540			
550			
560			
570			
580			
590			
600			
610			
620			
630			
640			
650			
660			
670			
680			
690			
700			
710			
720			
730			
740			
750			
760			
770			
780			
790			
800			
810			
820			
830			
840			
850			
860			
870			
880			
890			
900			
910			
920			
930			
940			
950			
960			
970			
980			
990			
1000			

Levels for proposed sewer Gertrude
Ave from st 21465 Viola to st 7411

26

			44.99	
T.P.				
0 + 0 = 0	21465 Viola			31.20
T.P.			44.99	
+50			11.1	33.9
1			7.9	37.1
+50			4.8	40.2
T.P.				
2			1.2	43.8
T.P.	12.39	57.17	0.21	44.78
+50			8.3	48.9
3			4.4	52.8
+50			3.0	54.2
195	1935-0		3.3	53.9
4			3.0	54.2
+50			0.9	56.3
T.P.	12.68	69.73	0.14	57.05
5			12.2	57.5
+50			10.9	58.8
5 + 96 ²	Gertrude Lillian		11.3	58.4
6			11.3	58.4
+50			11.2	58.5
7			10.6	59.1
+11	135	11.6	10.5	59.2

Sheet 5

Levels for proposed sewer Chillian St
 from 51/2 5196³ Gertrude Ave E for 252.81

27

B.M.		69.73		
0+0 = 5196 ³ Gertrude Ave		11.3	58.4	
+5.0		6.1	63.6	
1+0		1.2	68.5	
T.P.	12.77	82.34	0.18	69.55
+5.0			9.3	73.0
2			4.9	77.4
+5.0			1.3	81.0
T.P.	2.44	84.74	0.09	82.30
+5.2			2.0	82.7

Sheet 5

Proposed sewer line from
 Sta 20 + 21.2 Line # 5004 for 818.7 to Viola
 Morena Blvd
 La Jolla Blvd from

410571

410571

28

B.M.	12.53	21.13	8.60
0+0 = Sta 20 + 21.2	12.5		8.6
+50		12.7	8.4
1+0		12.9	8.2
+50		13.1	8.0
2		12.9	8.2
+50		12.3	8.8
3		11.6	9.5
+50		10.5	10.6
4		8.7	12.4
+50		7.0	14.1
5		5.1	16.0
+50		3.2	17.9
6+0		1.5	19.6
T.M.	12.53	33.35	20.82
+42.5 A	410571	11.9	21.4
7		11.9	21.4
+50		11.6	20.7
8		12.6	20.7
+18.7		12.8	20.5

Levels for Line "D" from sta 6+42.5
 La Jolla River Line Page

29

Sum	12.53	33.35	20.82
9+0 = sta 6+42.5 Line D		11.8	21.4
+13		14.1	22.0
+32 = Lot Line N.B.W		8.6	24.7
+50		7.9	25.4
+70		7.5	25.8
+50		6.3	27.0
+20		4.3	29.0
+50		2.8	30.5
3		3.3	30.0
-13 = Angle		3.8	29.5
T.P. 12.92	44.33	19.5	31.70
+50		13.1	31.2
4		9.4	34.9
+50		4.6	39.7
5		1.5	42.8
+15 = 1.5N of N.L. Lot 9		2.2	42.1

Sheet 6

Prel. survey on Stockton + 1' west lot line bet. Jackdaws

30

+ 3' is from center Jackdaws

Sta		H.I.	Rod	Elev.
	2.12	275.15		273.03
0+00	M.H. center of Jackdaws + Stockton		2.47	272.68
+50			3.8	271.3
1+00			5.2	269.9
+41	M.H. 1' east		6.73	268.42
+50	lot line bet. 3' is + Jackdaws + center Stockton		6.6	268.5
2+00			6.5	268.6
J.P.	7.21	276.26	6.10	269.05
+50			6.6	269.7
3+00			4.6	271.7
+50			4.3	272.0
J.P.	7.59	276.64		269.05
4+00			4.5	272.1
+26	about 40' 20.4 Hunter		5.0	271.6

Prelim. Sewer bet C & D
from 15th West.

" SW 15th C 76.98
BM - NW 15th D Plug 57.61
76.98

0.06	77.04			
0+00 MH #15	10.01	67.03	62.0	5.0
0+26	10.5	66.5	63.56	3.0
+40	8.9	68.1	64.40	3.7
+50	7.26	69.78	65.00	4.8
+65	5.0	72.0	65.90	6.1
1+00 break.	4.38	72.66	68.0	4.7
+50	3.73	73.31	68.33	5.0
2+00	4.10	72.94	68.67	4.2
+50 DE.	3.77	73.27	69.0	4.3

7/3/14 West
Evans
Devine

31

72.74
4.18
77.42
4.15
73.27
4.15
77.42
68.67 68.33 68.00 65.70 65.00
8.42V 8.75V 7.09V 7.42V 11.52 12.42

67.76
2.88
72.66
10.50
72.16

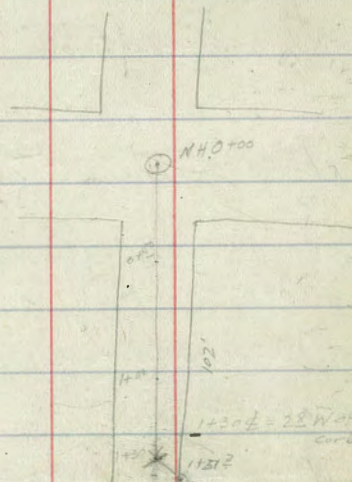
Curlew St. Sewer
 from MH \pm Spruce & Curlew.
 to East line Curlew 102' S. of S.L. Spruce.

		213.00		
SE Curb. Spruce & Curlew.		221.50	203.50	18.50
	1.24	222.74		
0+00. MH Top Cover.	2.58	220.16	206.09	4.2
		203.20	203.20	
0+50	3.48	219.26	203.90	15.9
			206.65	2.6
1+00	7.26	215.48	203.60	11.9
			207.35	8.7
+30 = B.C.	9.42	213.32	203.72	9.6
			207.91	5.6
+52. E. Curlew 102' S. of Spruce	7.58	213.16	203.81	9.4
				5.2

See Page 33.

West.	221.5	213.32		
Evans.	14.5	2.87		
Revised.	206.5	216.21	216.2	210.2
9/13/14.	203.22	8.3	7.7	7.4
	214.5	30.29	207.0	208.9

37



EE Curlew St. Sewer.
 from MH. & Spruce. southward.
 to E. Curb of Spruce.

West
 Evans 9/10/14
 Devine.

33

SE Curb at Spruce & Curlew.		223.00		
1.24	224.24			
0+00 MH. & Spruce & Curlew.	Top Cover. Floor MH.	2.58 19.54	221.66 204.70	204.70
0+50		3.48	220.76	204.92
1+00		7.26	216.98	205.10
1+30. PC. 2.8' W. of Curb.		9.42	214.82	205.22
1+52 = EL. Curlew, 102' S. of St. Spruce.		9.58		

5
 214.82

2.89 217.71

Low ground. at N.E. Redwood. 9.2 208.5 205.6
 205.6
 2.9

shows pipe would be covered 2.9
 on gutter line & sewer can be
 extended still further S. in next blk.
 as ground slopes up from here.

Prelim levels from \pm M.H. at \pm Alley
 West Ft Stockton & Hickory - westward across
 Trias St.

34

BN NE Trias. Ft Stock. Blig.			267.06	
	522	272.28		
0+00 = M.H.	Top Cover Bot. Flow/ice.	5.71 10.76	266.51 261.52	261.52
0+50		5.1	267.2	261.70
1+00		5.0	267.3	261.90
1+01 = EL. Trias.		5.2 7.8	267.1 264.5	
+26 \pm "		7.9	264.4	262.00
+51 WA "		7.7 5.9	264.6 266.4	262.10
2+00		5.9	266.4	262.30
+50		6.4	265.9	262.50
3+00		7.7	264.6	262.70
+50		10.8	261.5	

Plum St Sewer - 13' E of E
from E Dumps to DE. T*40

West
Ewins 9/16/14.
Dewire

475

35

Bot. MH. E Dumps - 13' E of E Plum.

106.00

0 + 00
Top Cover

110.75

4.8

1108 121.83

0 + 16

114 110.4

+ 17

110 110.8

+ 19

9.2 112.6

+ 25

6.90 114.93 107.76

7.2

+ 33

5.9 115.9

+ 38

1.5 120.3

+ 50 TP

0.29 121.54 109.52 12.0

1231 133.85

1 + 00

9.10 124.85 113.04 11.8

+ 50

5.67 128.18 116.56 11.6

2 + 00

4.00 129.85 120.98 9.8

+ 34

2.3 131.6

+ 35

3.5 130.4

+ 50

3.55 130.30 123.60 6.7

+ 70 = MH E Curtis St

3.65 130.20 125.00 5.2

133.45	133.45	133.45	133.45	133.45
123.60	3.17	120.58	116.56	8.57
9.85	130.28	13.37	16.89	124.86
				131

126.17	126.17	126.17		126.17
113.04	119.52	10.40		2.54
13.13	16.65	115.77		128.51
		2.34		
		118.11		

118.11	118.11			
107.76	7.40			
10.35	110.71			

10.04
11.19
21.23
10.81

133.85

2+70 = M.H. & Curtis 365 130.20 125.00 ✓ 5.2 130.00 = 177.

3+00 311 130.74 ✓ 125.56 ✓ 5.2

T.P. B.M. SW Curtis & Plum Plug 2.60 131.25

11.82 143.07

3+50 10.19 132.90 126.48 6.4

4+00 8.61 134.46 127.40 ✓ 7.1

+50 7.66 135.41 128.32 ✓ 7.1

5+00 6.05 137.02 129.25 ✓ 7.8

5+40 = M.H. & Brown St. 4.17 138.90 ✓ 130.00 ✓ 8.9

Bot. c. i. pipe at S.H. opp. 5+85 6.0 137.1

5+85 130.18

6+00 T.P. 2.15 140.92 130.24 10.7

6.72 147.64

+50 4.56 143.08 130.44

7+00 4.69 142.95 130.64

+40 = 5.20 142.44 130.80

Bot. c. i. pipe at S.H. opp. 7+00 10.5 137.0

8+00 = Alcat st. 8.6 139.0 131.40

135.00 = 177.

137.02
3.42
140.44
6.03
135.41
2.51
137.72
137.00
10.44 ✓
140.44
140.44
140.44
129.25
128.32
11.19 ✓
12.12 ✓
137.72
125.56
12.16 ✓
137.72
125.00
12.72
137.72
6.51
131.21 ✓
133.45
133.45
133.7

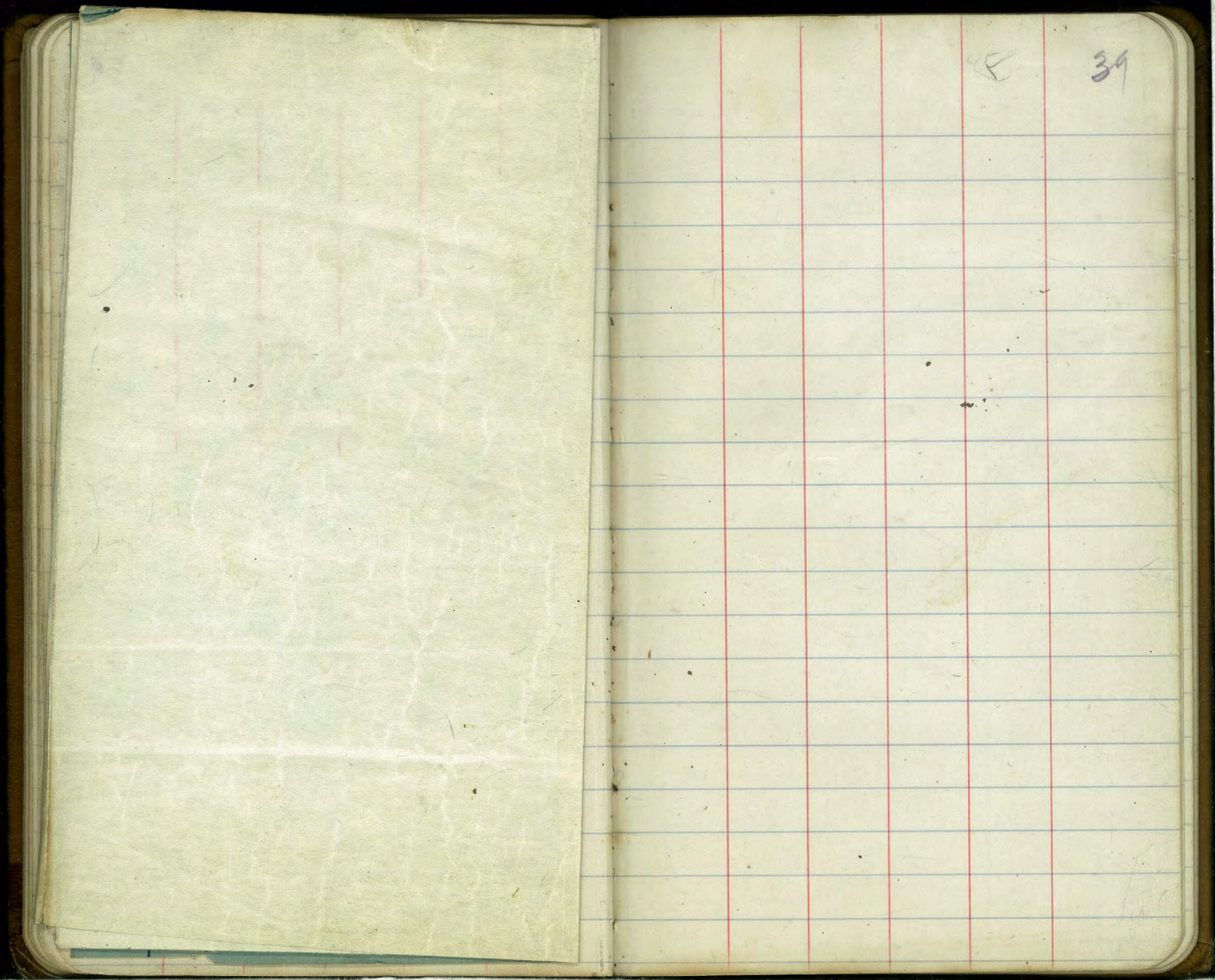
19

37

5+00			137.02		
5+40 = MH 342	140.44		138.9	130.00	8.9
6+06' E of MH & Browning = DC.	4.34	136.10	131.27		5.83
Top c.i. pipe Pl. School house.	6.90	133.54			

37

38



8

39



Levels for Line "A" see map Page 39 Dunkle
 10/ Shaw
 16/ Kerr

63.78

40

B.M	2.66	32.96	30.30	7+50	8.7	55.1
T.P.	12.40	39.90	5.96	8	3.6	60.2
1 +50		12.40	27.50	T.P.	12.66	75.98
				+50	76.0	0.46
		9.2	30.7		9.4	66.6
				+93.2	MM	3.62
1		4.8	35.1	9		3.5
T.P.	12.13	51.84	0.19	39.71		72.5
1+55	29°37' L	11.8	40.0	+50		3.1
2		8.6	43.2	10	cut 8'	0.8
+50		5.3	46.5	T.P.	12.39	88.01
				+50	cut 6'	0.36
2+97.8	60°21' L	3.4	48.4			7.2
	cut 9' A			11		0.0
3		3.4	48.4	T.P.	12.34	100.35
+50		3.1	48.7	+33.7	= 0+0 B' Line	0.00
4	cut 11'	3.7	48.1			6.28
+50		4.4	47.4	+50		3.9
5	cut 9'	4.7	47.1	+61		2.5
+50		4.9	46.9	T.P.	11.46	111.36
6	cut 8'	4.9	46.9	12		0.45
+50		5.5	46.3			4.5
+58	M.H.	5.70	46.14	+02		4.0
7		1.9	49.9	+17.2		4.6
T.P.	12.32	63.78	0.38	+50		4.9
			51.46			106.8
				13		4.6
				+50		3.5
				+83.2		2.7
						107.9
						106.5
						106.8
						107.9
						108.7

Sheet 1

111.36

161.08

14 ⁺ 0			3.1	108.3
+50			4.7	106.7
15			5.4	106.0
+50			5.3	106.1
16			3.6	107.8
+51 ⁸			0.1	111.3
T.P.	12.53	123.77	0.12	111.24
17			7.4	116.4
+50			0.9	122.9
T.P.	12.43	136.20	0.00	123.77
+99 ³			8.0	128.2
18+50			2.5	133.7
T.P.	12.40	148.57	0.03	136.17
19			10.8	137.8
+06 ⁸			10.27	138.30
+50			7.3	141.3
20			4.2	144.4
+50			1.1	147.5
T.P.	12.68	161.08	0.17	148.40
21			10.5	150.6
+50			7.7	153.4
22			5.5	155.6
+47 ⁷			3.71	157.37

23+0				1.2	159.9
T.P.	11.99	172.87	0.20		160.88
+50				10.4	162.5
+69 ¹				9.2	163.7
24				7.0	165.9
+50				2.5	170.4
T.P.	12.43	185.16	0.14		172.73
25				10.6	174.6
+50				6.5	178.7
26				3.1	182.1
T.P.	11.15	195.70	0.61		184.55
+50				10.2	185.5
27				7.3	188.4
+50				5.8	189.9
+73 ²				5.69	190.0
28				5.5	190.2
+50				3.7	192.0
29				1.5	194.2
T.P.	11.56	207.10	0.16		195.54
+50				10.4	196.7
30				7.6	199.5
+38 ⁷				6.12	200.98
+50				5.8	201.3
31				4.1	203.0
+50				2.6	204.5
+91 ⁸				1.6	205.5

= 70' S. of S.L. Freer view

Levels for "B" Line Page 39

42

180.80

B.M.	12.84	106.91		94.07
0+0 = Sta. 11+33 ² H Line			12.8	94.1
+50			4.8	102.1
+73			0.9	106.0
T.P.	12.68	119.22	0.37	106.54
+95			7.7	111.5
1			7.2	112.0
+50			0.0	119.2
T.P.	12.47	131.63	0.06	119.16
+89.7			4.5	127.1
2			2.9	128.7
T.P.	12.69	144.23	0.09	131.54
+50			8.8	135.4
3			3.8	140.4
T.P.	12.57	156.79	0.01	144.22
+50			11.3	145.5
4			6.0	150.8
+47.6			1.2	155.6
T.P.	12.19	168.95	0.03	156.76
5			7.9	161.0
+50			2.7	166.2
T.P.	12.08	180.80	0.23	168.72
6			8.2	172.6
+50			2.9	177.9
+98.8			1.4	179.4

7+50				2.3	178.5
8				3.9	176.9
+50				5.2	175.6
9				5.3	175.5
+50				3.4	177.4
10				0.7	180.1
T.P.	11.62	192.22	0.20	180.60	
+50				8.5	183.7
11				5.2	187.0
+50				2.2	190.0
+56.7				1.8	190.4
T.P.	7.51	199.12	0.61	191.61	
12				6.3	192.8
+50				4.2	194.9
13				3.0	196.1
+49.8 = 73.5 of S.L. Elevation				2.65	196.47

Sheet 8

Levels for "C" Line Page 39

42

B.M.	4.24	109.32		105.08
0+0 = Sta 2 + 85 "D" line			4.2	105.1
T.P.	12.73	121.87	0.18	109.14
+50			9.3	112.6
T.P.	12.60	134.29	0.18	121.69
1			11.3	123.0
+50			0.3	124.0
T.P.	12.60	146.52	0.37	133.92
2			5.5	141.0
+50			2.4	144.1
3			0.7	145.8
T.P.	12.54	158.79	0.27	146.25
+50			10.4	148.4
+71 ³			9.5	149.3
4			7.4	151.4
+50			1.6	159.2
T.P.	12.64	171.33	0.10	158.69
5			6.5	164.8
+03			6.2	165.1
+50			0.5	170.8
T.P.	12.25	183.34	0.24	171.09
6			7.9	178.4
+27 ⁸			6.1	177.2
+50			5.2	178.1
7			3.6	179.7

183.34

43

				77.50		1.9	181.5	
				8		0.8	182.5	
				+12 ⁸		0.8	182.5	
				T.P.	8.49	191.07	0.76	182.58
				+50		7.8	183.3	
				9		8.4	182.7	
				+50		10.7	180.4	
				10	cut 7'	11.6	179.5	
				+50		10.5	180.6	
				11		8.7	182.4	
				+10 ⁸		8.3	182.8	
				+50		5.7	185.4	
				12		1.2	189.9	
				+12 ⁸		0.4	190.7	
				T.P.	11.21	201.87	0.41	190.66
				+50		9.1	192.8	
				13		6.8	195.1	
				+50		5.6	196.3	
				14		4.8	197.1	
				+50		4.0	197.9	
				15		2.8	199.1	

Sheet 8

43

201.87

15+50			1.8	200.1
7.9	12.85	214.68	0.04	201.83
16			12.7	202.0
+50			9.4	205.3
17			6.4	208.3
+50			4.5	210.2
18			3.0	211.7
+50			1.3	213.4
19			0.6	214.2
+50			1.5	213.2
+80 ⁵			1.9	212.8

44

Levels for "D" Line Page 39

B.M.	12.62	89.98		72.36
		85.0		
0+0 = 8+95	4" H Line		12.6	72.4
+50			6.3	78.7
1			0.7	84.3
T.P.	12.78	97.34	0.42	84.56
+50			7.9	89.4
2			2.4	94.9
T.P.	12.29	109.32	0.31	97.03
+50			8.8	100.5
+85			4.24	105.1
3			2.2	107.1
T.P.	12.78	121.92	0.18	109.14
+50			8.5	113.4
4	cut 6'		1.7	120.7
T.P.	12.32	134.04	0.20	121.72
+50	cut 7'		8.5	125.5
5	cut 8'		3.4	130.6
T.P.	12.25	146.13	0.16	133.88
+50	cut 8'		9.8	136.3
6	cut 8'		2.0	144.1
T.P.	12.20	158.17	0.16	145.97
+50	cut 10'		6.5	151.7
7+03 ³	cut 8'		0.5	157.7
T.P.	12.38	170.04	0.51	157.6
+50			9.2	160.8
8			4.6	165.4
8+39 ⁷			0.7	169.3

40

Levels for "E" Line Page 39

B.M.	12.33	58.47		46.14
0+0			11.5	47.0
+50			7.9	50.6
1			4.0	54.5
+25			2.8	55.7
+50			0.0	58.5
T.P.	12.53	70.97	0.03	58.44
+75		71.0	8.0	63.0
2			4.6	66.4
+25			2.5	68.5
+50			0.4	70.6
T.P.	12.47	83.12	0.32	70.65
+75			11.4	72.7
3			9.9	73.2
+25			8.5	74.6
+50			6.9	76.2
+75			4.4	78.7
4			1.3	81.8
+25			0.3	82.8
+50			0.6	84.5
+75			2.1	81.0
+87			4.3	78.8

46

Sheet 9

Levels for "K" Line Page 39

12

47

B.M.	11.19	38.69		27.50
T.P.	12.79	50.62	0.86	37.83
0+0			12.8	37.8
+52.7	Pushman Ave.		13.1	37.5
1			10.1	40.5
+50			6.5	44.1
2			0.7	49.9
T.P.	12.49	63.01	0.10	50.52
+07.9			12.16	50.85
+50			6.3	56.7
+85			0.8	67.2

Sheet 9

Levels for "G" Line Page 29

48

B.M.	12.16	63.01		50.85
040			12.2	50.8
+50			9.2	53.8
1			6.3	56.7
+50			1.3	61.7
T.P.	12.67	74.92	0.76	62.25
2			8.2	66.7
+50			5.9	69.0
3			7.1	67.8
+09			7.6	67.3
+50			2.3	72.6
4			0.8	74.1
T.P.	8.49	82.66	0.75	74.17
+50			7.6	75.1
5			7.6	75.1
+25			7.0	75.7

Sheet 9

Levels Elsworth St from Sta 19+06⁸ 17" Line
in Westerly direction for 490'

49

148.57

0+0 = 19+06 ⁸		10.3	138.3
+50		8.7	139.9
1	cut 9'	8.4	140.7
+50	" 10'	7.8	140.8
2	" 10'	7.0	141.6
+51 ³	" 9'	6.7	141.9
3	" 8'	6.4	142.2
+50	" 7'	6.2	142.4
4	" 6'	6.3	142.3
+50		6.4	142.2
+90		6.4	142.2

142.2

Levels Crossed from Sta 22+47.7^{"A" line}
westerly direction for 265' ^{1 in}

172.87

0+0 = Sta 22+47.7	15.5	157.4
+50	13.2	159.7
1	11.3	161.6
+50 cut 6'	9.8	163.1
2 " 6'	8.3	164.6
+50 " 9'	6.9	166.0
+65 " 9'	6.5	166.4

Sheet 9

50

Levels Solar st from sta 27+73² "H" Line
in Easterly direction for 205'

	195.70	
0+0 = 27+73 ²	5.7	190.0
+50	10.9	184.8
1	15.9	179.8
+25	17.2	178.5
+50	17.1	178.6
2	15.3	180.4
2+05	15.1	180.6

Sheet 10

Levels Bronnell st from sta 30+38² "H" Line
in Easterly direction for 254'

51

	207.10	
0+0 = sta 30+38 ²	6.1	201.0
+50	6.5	200.6
1 cut 6'	6.6	200.5
+50	5.5	201.6
2	4.5	202.6
50	3.1	204.0
+54 cut 7'	2.9	204.2

Sheet 10

Levels Onstad st from sta 6+27⁸ "E" Line
in Easterly direction for 154.4'

	153.34	
0+0 = sta 6+27 ⁸	6.6	177.2
+50	4.1	179.2
1 cut 8'	3.4	179.9
+50	3.9	179.4
+54.4 cut 9'	4.0	179.3

Sheet 10

57

Levels for proposed sewer & Titus St from
 M.H. Canyon Line W of Park St E for 371' to 25 W of
 W.L. Pringle St

53

B.M. Bottom M.H. 80.00 1/15 Sample
Shaw
Bunker

B.M. 15.47 95.47

0+0 = M.H. 10.7 Top M.H. 84.8

+22 10.7 84.8

+28 4.9 90.6

+50 0.6 94.9

T.P. 11.43 106.40 0.50 94.97

+75 4.7 101.7

T.P. 12.52 118.61 0.31 106.09

110 10.7 107.9

+25 2.7 115.9

T.P. 12.10 130.40 0.31 118.30

1+50 7.8 122.6

+75 cut 10' 2.9 127.5

2 1.7 128.7

+50 2.6 127.8

3 5.4 125.0

+50 4.8 125.6

+71 = 25 W of W.L. Pringle 2.4 128.0

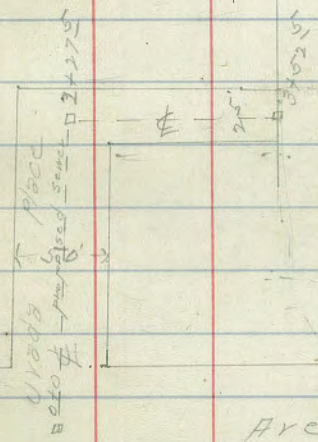
Levels for proposed sewer - sketch opp. Page

4/16/15
 Dimple
 Shaw
 Bunker

54

Blk.		398.12	393.52
+20	I		6.2 391.9
+26	↓		7.2 390.9
+40			6.1 392.0
+50			6.0 392.1
1			6.5 391.6
+50			6.7 391.4
2			7.1 391.0
+27 ⁵			7.3 390.8
+41			7.5 390.6
+45			6.7 391.4
+50			6.9 391.2
3			6.9 391.2
+52 ⁵ = Lot Line			6.8 391.3

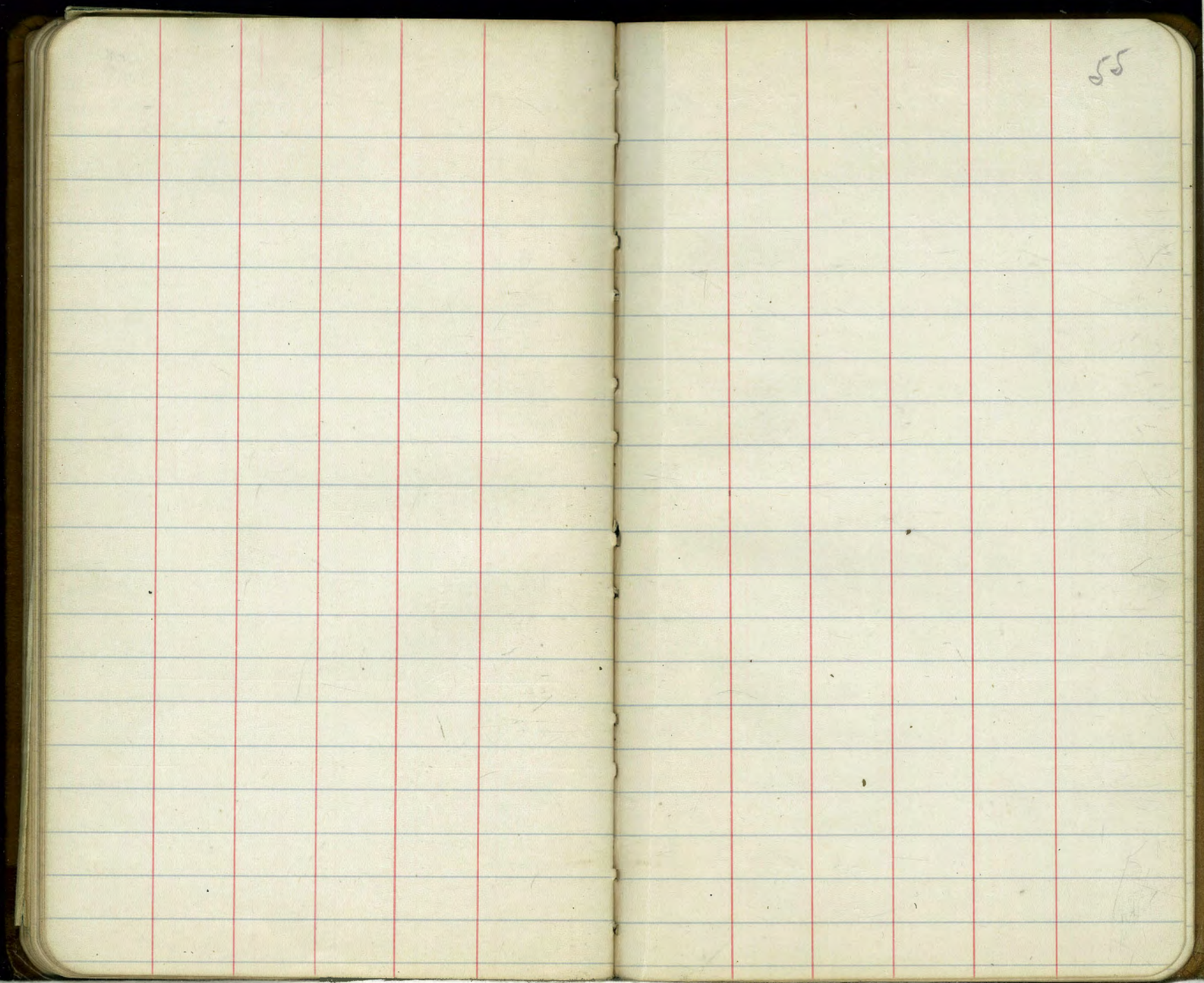
Sheet 37-A



Copley

Arc

Vista Blvd

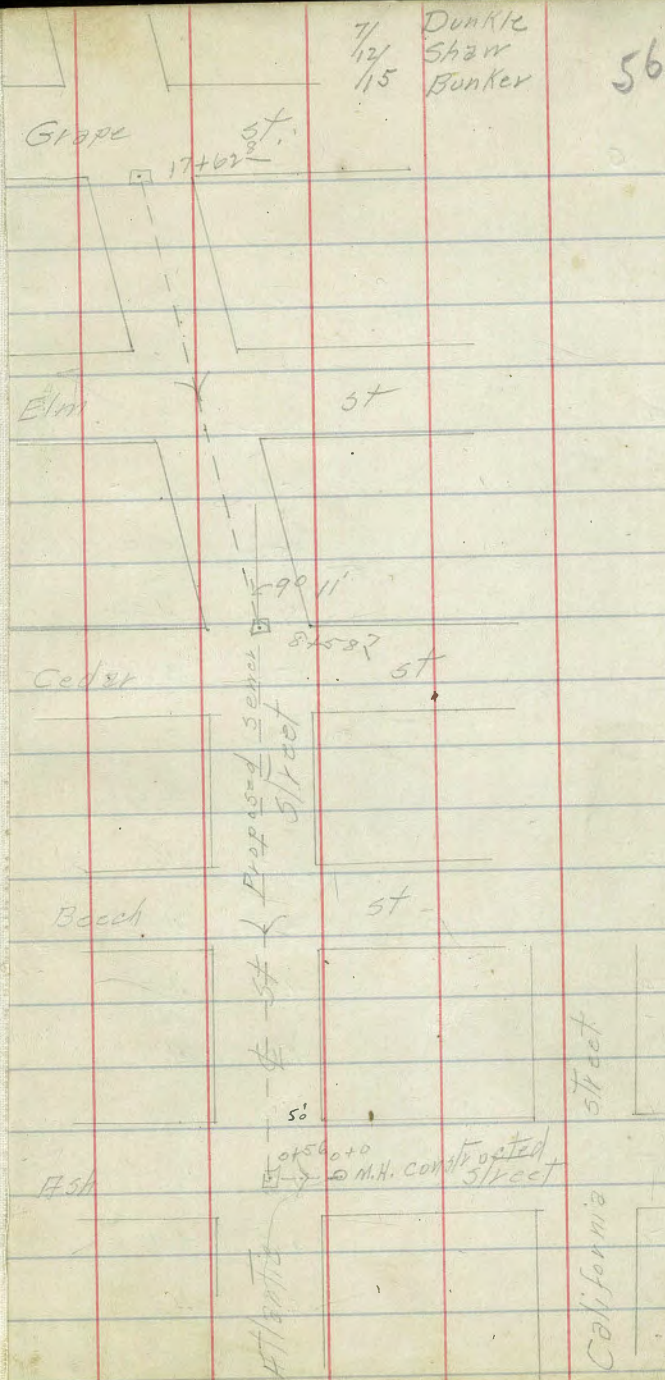


55

Levels for proposed sewer from M.H. of Ash
 8.6' E of E.L. Atlantic Thence west for 56'
 To E Atlantic Thence North to S.L. Grape

B.M. s.r. Ash India brass plg 22.97

B.M.	0.23	23.20		I
T.P.	1.78	12.75	12.23	10.97
			Ground	
+10 = M.H. of Ash 8.6' E of E.L. Atlantic		8.3		4.5
+56 = E Atlantic		8.2		4.6
1		8.2		4.6
T.P.	5.23	9.84	8.14	4.61
+50			5.3	4.5
2			5.4	4.4
+50			5.4	4.4
3			5.2	4.6
+50			5.4	4.4
4			5.4	4.4
+50			5.3	4.5
5			5.5	4.3
+50			5.5	4.3
6			5.0	4.8
+50			5.3	4.5
7			5.7	4.1



9.84

7+50			5.7	4.1
8			5.9	3.9
+58 ⁷ L 9° 11'			6.0	3.8
9			6.1	3.7
+50			6.2	3.6
T.P.	4.88	8.73	5.99	3.85
10			5.0	3.7
+50			4.4	4.3
11			5.3	3.4
+50			5.6	3.1
12			5.4	3.3
+50			4.7	4.0
13			3.8	4.9
+50			4.7	4.0
14			4.0	4.7
+50			4.4	4.3
15			4.3	4.4
+50			4.3	4.4
16			4.3	4.4

8.73

59

16+50			4.8	3.9
17			5.1	3.6
+62 ⁸ - SL Grape OT			4.7	4.0

Levels for extension of Hardy sewer according to sketch page 1

B.M. bottom of present 10" pipe - 3.58

B.M. 9.60 6.02

at end of present sewer 9.60 - 3.58

+23 9.1 - 3.1

+24 8.3 - 2.3

+30 6.6 - 0.6

+40 6.5 - 0.5

+42 5.5 + 0.5

+50 5.0 1.0

+63 4.8 1.2

+70 5.6 0.4

+85 5.7 0.3

+90 5.0 1.0

1 5.3 0.7

+50 5.4 0.6

2 5.2 0.8

Hub
+30 = ϕ of Bisbee & Nashville 5.17 0.85

+50 5.0 1.0

3 4.6 1.4

$\frac{4}{13}$ Dunkle
 $\frac{1}{16}$ Star
Bunker

3+10

+18

+50

4

+50

5 Hub.

T.P. 5.22

+50

6

+37

+45

+50

+58

+60

+68

+75

+76

+83

6+90

6.02

5.8 0.2

5.0 1.0

5.6 0.4

5.0 1.0

5.7 0.3

5.79 0.23

5.79 0.23

5.1 0.4

4.9 0.6

4.9 0.6

5.1 + 0.4

6.0 - 0.5

7.1 - 1.6

6.2 - 0.7

6.6 - 1.1

8.3 - 2.8

9.4 - 3.9

11.9 - 6.4

13.1 - 7.6

Note - Iron pipe should be used from sta 6+30 as line is close to edge of slough

58

		5.45		
6+97			9.9	-4.4
7+03			8.7	-3.2
+05			6.7	-1.2
+11			4.9	+0.6
+50			5.3	+0.2
8			5.5	0.0
+50			5.3	+0.2
T.P.	4.16	4.47	5.14	0.31
9			4.5	0.0
+20			5.4	-0.9
+24			4.2	+0.3
+50			4.2	+0.3
10 Hub			4.72	-0.25
+50			4.9	-0.4
11			4.9	-0.4
+50			4.8	-0.3
+83			5.3	-0.8
12			7.8	-3.3
+05			8.3	-3.8

		4.47					59
12+07					9.2	-4.7	
+10					6.9	-2.4	
+16					5.1	-0.6	
+50					5.2	-0.7	
13					5.4	-0.9	
+50					5.4	-0.9	
T.P.	3.69	3.00			5.16	-0.69	
14					3.8	-0.8	
+50					4.5	-1.5	
15 Hub					3.90	-0.9	
+50					4.8	-1.8	
16					4.7	-1.7	
+50					4.2	-1.2	
17					4.4	-1.4	
+50					4.8	-1.8	
18					5.2	-2.2	
T.P.	4.95	2.97			4.98	-1.98	
+50					5.1	-2.1	
19					4.8	-1.8	

	2.97			
19+50		4.7	-1.7	
+70		5.2	-2.2	
+83		6.7	-3.7	
+92		5.3	-2.3	
20+0 Hvb		4.89	-1.92	
+50		4.7	-1.7	
21		4.8	-1.8	
+50		4.8	-1.8	
+81		5.2	-2.2	
+87		6.1	-3.1	
22		6.2	-3.2	
+10		7.3	-4.3	
+16		8.2	-5.2	
+18		6.1	-3.1	
+50		5.0	-2.0	
T.P.	4.17	2.43	4.71	-1.74
+78		4.8	-2.4	
+88		6.4	-4.0	
23		4.8	-2.4	

	2.43			
23+50		4.8	-2.4	
24		4.7	-2.3	
+50		4.8	-2.4	
25 Hvb		4.96	-2.53	
+25		5.2	-2.8	
+30		7.4	-5.0	
+32		5.0	-2.6	
+50		4.9	-2.5	
26		4.8	-2.4	
+50		5.0	-2.6	
27		4.9	-2.5	
T.P.	4.60	2.40	4.63	-2.20
+50		5.0	-2.6	
28		4.3	-1.9	
+50		5.0	-2.6	
29		5.2	-2.8	
+19		5.9	-3.5	
+28		4.4	-2.0	
+50		4.6	-2.2	

60

2.40

29489 4.9 -2.5

+96 6.0 -3.6

+97 7.3 -4.9

30413 14.9 -12.5

Water Level 2:45 PM, June 13th 1916 8.9 -6.5

Levels for proposed dam Hardy Cutfall
sewer

B.M. 5.00 1.40 -3.60

"A" Line - S. L. Bisbee

0+0 = 29+76 page 61	5.0	-3.6
+17	13.9	-12.5
+27	14.6	-13.2
+30	14.4	-13.0
+40	12.1	-10.7
+48	9.8	-8.4
+57	8.0	-6.6
+79 = Top of bank	5.5	-4.1
+90	5.4	-4.0

"B" Line - S. L. Bisbee

0+0 = Sta 29+30	4.3	-2.9
+11 = Top of bank	4.6	-3.2
+15	6.6	-5.2
+22	8.2	-6.8
+31	13.2	-11.8
+37	13.9	-12.5
+41	14.3	-12.9
+48	12.3	-10.9
+59	10.4	-9.0
+67	9.6	-8.2
+74	8.2	-6.8
+84 = Top of bank	5.5	-4.1
+90	5.5	-4.1

- 6.9 = water level 4:30 P.M. July 15 1916

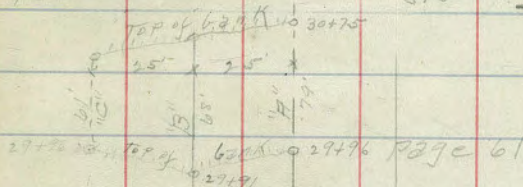
Dunkle
Shaw

62

1.40

"C" Line = 25' S. of S. L. Bisbee

0+0 = 29+85	4.1	-2.7
+11 = Top of bank	4.7	-3.3
+12	6.2	-4.8
+18	8.2	-6.8
+26	12.9	-11.5
+33	12.6	-11.2
+40	11.3	-9.9
+53	11.4	-10.0
+61	10.7	-9.5
+65	8.1	-6.7
+72 = Top of bank	5.6	-4.2
+80	5.5	-4.1



Prescott

Bisbee

Grades for Bisbee St. Sewer

Sta 0+00 to Sta 10+00

Sta	Rod	Ground	Grade	±
	5.29	^{4.1} 6.14		0.85 Hill of Bisbee & Nashville
0+00	Present pipe		-3.58	
+50	5.31	0.80	-3.71	+4.5 ✓
1	4.78	1.36	-3.85	+5.2 ✓
+50	5.87	0.27	-3.98	+4.3 ✓
2	5.35	0.79	-4.12	+4.9 ✓
M.H. 130	5.29	0.85	-4.20	+5.1 ✓
+50	4.85	1.29	-4.22	+5.5 ✓
3	5.17	0.97	-4.27	+5.2 ✓
+50	5.45	0.69	-4.32	+5.0 ✓
4	5.56	0.58	-4.37	+5.0 ✓
+50	5.54	0.60	-4.42	+5.0 ✓
5	5.95	0.19	-4.47	+4.7 ✓
T.P.	5.58	^{4.1} 5.81	5.91	0.23 Hill Sta 5+00
+50	5.48	0.33	-4.52	+4.8 ✓
6	4.65	1.16	-4.57	+5.7 ✓
+50	7.98	-2.17	-4.62	+2.4
7+05	6.84	-1.03	-4.69	+3.6

8, Doris
5, Hancock
16, Lizzio

Sta	Rod	Ground	Grade	±																																																																																										
7+50	5.47	0.24	-4.72	+5.1																																																																																										
8	5.59	0.22	-4.77	+5.0 ✓																																																																																										
M.H. +10	5.44	0.37	-4.78	+5.2																																																																																										
+50	5.69	0.12	-4.82	+4.9 ✓																																																																																										
9	5.86	-0.05	-4.87	+4.8 ✓																																																																																										
+50	5.38	-0.43	-4.92	+5.4 ✓																																																																																										
10	6.09	-0.28	-4.97	+4.7 ✓																																																																																										
T.P.			6.08	-0.27 ✓ -0.25 Hill Sta 10+00																																																																																										
<table border="0" style="width: 100%;"> <tr> <td>0.79</td><td>0.27</td><td>5.47</td><td>5.47</td><td>5.47</td><td>5.47</td><td>5.47</td><td>5.47</td><td>5.47</td><td>5.47</td></tr> <tr> <td>4.62</td><td>5.20</td><td>4.20</td><td>4.12</td><td>3.98</td><td>3.85</td><td>3.71</td><td></td><td></td><td></td></tr> <tr> <td>5.49</td><td>5.47</td><td>9.67</td><td>9.59</td><td>9.45</td><td>9.32</td><td>9.18</td><td></td><td></td><td></td></tr> <tr> <td>0.58</td><td>0.69</td><td>1.16</td><td>5.48</td><td>5.48</td><td>5.48</td><td>5.48</td><td>5.48</td><td>5.48</td><td>5.48</td></tr> <tr> <td>4.90</td><td>4.77</td><td>4.38</td><td>4.57</td><td>4.52</td><td>4.47</td><td>4.42</td><td>4.37</td><td>4.32</td><td>4.27</td></tr> <tr> <td>5.48</td><td>5.48</td><td>5.05</td><td>10.00</td><td>9.95</td><td>9.90</td><td>9.85</td><td>9.80</td><td>9.75</td><td>9.70</td></tr> <tr> <td>0.34</td><td>-0.25</td><td></td><td></td><td></td><td></td><td></td><td></td><td></td><td></td></tr> <tr> <td>4.70</td><td>5.29</td><td></td><td></td><td></td><td></td><td></td><td></td><td></td><td></td></tr> <tr> <td>5.04</td><td>5.04</td><td></td><td></td><td></td><td></td><td></td><td></td><td></td><td></td></tr> </table>					0.79	0.27	5.47	5.47	5.47	5.47	5.47	5.47	5.47	5.47	4.62	5.20	4.20	4.12	3.98	3.85	3.71				5.49	5.47	9.67	9.59	9.45	9.32	9.18				0.58	0.69	1.16	5.48	5.48	5.48	5.48	5.48	5.48	5.48	4.90	4.77	4.38	4.57	4.52	4.47	4.42	4.37	4.32	4.27	5.48	5.48	5.05	10.00	9.95	9.90	9.85	9.80	9.75	9.70	0.34	-0.25									4.70	5.29									5.04	5.04								
0.79	0.27	5.47	5.47	5.47	5.47	5.47	5.47	5.47	5.47																																																																																					
4.62	5.20	4.20	4.12	3.98	3.85	3.71																																																																																								
5.49	5.47	9.67	9.59	9.45	9.32	9.18																																																																																								
0.58	0.69	1.16	5.48	5.48	5.48	5.48	5.48	5.48	5.48																																																																																					
4.90	4.77	4.38	4.57	4.52	4.47	4.42	4.37	4.32	4.27																																																																																					
5.48	5.48	5.05	10.00	9.95	9.90	9.85	9.80	9.75	9.70																																																																																					
0.34	-0.25																																																																																													
4.70	5.29																																																																																													
5.04	5.04																																																																																													
	5.04		0.07	4.39 4.39 4.39																																																																																										
7+00	4.33	0.71	-4.68	5.39 4.77 4.52 4.87																																																																																										
+34	8.47	-3.43	-4.15	1.22 9.16 9.21 9.36																																																																																										
+46	5.21	-0.17	-4.64	4.47 4.39 4.39																																																																																										
+58	4.20	0.34	-4.63	5.47 4.92 4.97																																																																																										
+70	4.10	0.94	-4.62	5.56 9.31 9.36																																																																																										
+84	4.34	0.70	-4.60	5.30																																																																																										
	5.04		4.60																																																																																											
	4.62		5.04																																																																																											
	9.66		9.69																																																																																											

7.96
63

Grades for Bisbee St Sewer

64

Sta	Rod	Ground	Grade	±
	5.98	M. 3.45		-253 Hub Sta 25+00
25+00	6.04	-2.59	-6.47	$\frac{3.88}{+3.87}$
+25	6.38	-2.93	-6.50	+3.57 ✓
M.H. +50	6.09	-2.64	-6.52	+3.88
+75	6.11	-2.66	-6.55	+3.89 ✓
26	6.06	-2.61	-6.57	+3.96 ✓
+25	5.99	-2.54	-6.60	+4.06 ✓
+50	5.96	-2.49	-6.62	+4.13 ✓
+75	5.92	-2.47	-6.65	+4.18 ✓
27	5.96	-2.49	-6.67	+4.18 ✓
+25	5.78	-2.33	-6.70	+4.37
+50	6.06	-2.61	-6.72	+4.11
+75	5.64	-2.19	-6.75	+4.56
28	5.26	-1.79	-6.77	+4.98
+25	6.01	-2.56	-6.80	+4.24 ✓
+50	6.16	-2.71	-6.82	+4.11 ✓
+75	4.99	-1.54	-6.85	+5.31 ✓
29	6.06	-2.61	-6.87	+4.26 ✓
+25	6.16	-2.71	-6.90	+4.19 ✓

Sta	Rod	Ground	Grade	±
29+50	5.58	-2.13	-6.92	+4.79 ✓
M.H. +70	5.59	-2.14	-6.94	+4.80 ✓
+95	6.92	-3.47	-6.97	+3.50 ✓

$\frac{6.17}{3.88}$
 $\frac{2.59}{-3.47}$
 $\frac{6.97}{5.46}$
 $\frac{1.99}{1.99}$
 $\frac{8.96}{8.96}$

Sta	Rod	Ground	Grade	±
29+50	5.58	-2.13	-6.92	+4.79 ✓
M.H. +70	5.59	-2.14	-6.94	+4.80 ✓
+95	6.92	-3.47	-6.97	+3.50 ✓

2.53	5.33	2.82	2.82	2.82	2.82	2.82	2.82
5.57	5.57	6.82	6.72	6.70	6.87	6.85	6.82
3.04	5.73	9.78	9.74	9.72	9.69	9.67	9.62

2.14	2.13	2.76	2.74	2.72	2.69	2.67	2.64
4.96	4.95	5.76	5.74	5.72	5.69	5.67	5.62
3.52	2.74						

2.64	2.64	2.07	2.07	2.07	2.07	2.07	2.07
4.71	4.69	6.67	6.56	6.56	6.65	6.62	6.60
2.07	2.07	8.74	8.74	8.74	8.72	8.67	8.67

2.07	2.07	2.07	2.07	2.07	2.07	2.07	2.07
4.66	4.66	6.50	6.47	6.47	6.47	6.47	6.47
2.59	2.59	3.91	3.88	3.88	3.88	3.88	3.88

Grades for Bisbee St. Sewer from ⁸/₁₆ Dunkle
Sta 10+0 (page 63) to Sta 25+0 Page 64 Shew
Bunker

M.H.s to be built to Elev 0.0
4.39 4.39 4.39 4.39 4.39
4.97 5.02 5.07 5.12 5.14
9.36 9.41 9.46 9.51 9.53
10+0 +50 11 +50 +75

65

Sta	+R	H.I.	-R	Elev	Grade	cut
10+0	4.64	4.39	4.64	-0.25	-4.97	4.72 ✓
+25			4.68	-0.29	4.99	4.70
+50			4.96	-0.37	5.02	4.65 ✓
+75			4.65	-0.28	5.09	4.78
11+0			4.70	-0.31	5.07	4.66 ✓
+25			4.67	-0.28	5.09	4.81
+50			4.51	-0.12	5.12	5.00 ✓
+75	3.70	3.44	4.65	-0.26	5.14	4.88 ✓
12			6.90	-3.46	-5.17	1.71 ✓
+25			3.82	0.38	5.19	4.81 ✓
+50			4.09	0.65	5.22	4.57 ✓
+75			4.00	0.56	5.24	4.68 ✓
13			4.26	0.82	5.27	4.45 ✓
+25			4.31	0.87	5.29	4.42 ✓
+50			4.25	0.81	5.32	4.51 ✓
+75			4.52	1.08	5.34	4.26 ✓
+90 M.H. & Netic			4.24	0.80	5.36	4.56 ✓
14			4.45	1.01	5.37	4.36 ✓

3.93 3.93 3.93 3.93 3.93 3.93 3.93 3.93 3.93 3.93
5.37 5.34 5.32 5.27 5.27 5.24 5.22 5.19 5.17
9.30 9.27 9.25 9.22 9.20 9.17 9.15 9.12 9.10
3.93
5.14
9.07

			-A	Elev	Grade	cut
14+25	+A	3.44 H.I	4.81	-1.37	-5.40	4.03 ✓
+50			4.92	1.48	5.42	3.94 ✓
+75			5.10	1.66	5.45	3.79 ✓
15			4.81	1.37	5.47	4.10 ✓
+25			4.87	1.43	5.50	4.07 ✓
+50			5.28	1.84	5.52	3.58 ✓
+75			4.58	1.14	5.55	4.41 ✓
16+0			4.94	1.50	5.57	4.07 ✓
+25			5.52	2.08	5.60	3.52 ✓
+50			4.97	1.53	5.62	4.09 ✓
+75	3.90	2.35	4.99	-1.55	5.65	4.10 ✓
17+0			3.83	1.48	5.67	4.19 ✓
+25			3.97	1.62	5.70	4.08 ✓
+50			4.03	1.68	5.72	4.04 ✓
+75			4.43	2.08	5.75	3.67 ✓
18			4.23	-1.88	5.77	3.89 ✓
+25			4.61	2.26	5.80	3.54 ✓
+50			4.24	1.89	5.82	3.92 ✓
+75			4.23	1.88	5.85	3.97 ✓
19+0			4.10	1.75	5.87	4.12 ✓

1.88 4.82 2.94	2.94 2.94 2.94 2.94 2.94 2.94 2.94 2.94	66
5.75 5.72 5.70 5.67 5.65 5.62 5.60 5.57	8.69 8.66 8.64 8.61 8.59 8.56 8.54 8.51	
2.94 2.94 2.94 2.94 2.94	5.52 5.50 5.47 4.81	
5.55 8.49	8.46 8.44 8.41 1.37	
1.37 5.30 3.73	3.93 3.93 3.93 5.42 5.40	
	9.38 9.35 9.33	
1.88 4.70 2.82 5.77 2.82 8.59	2.82 2.82 2.82 2.82 2.82 2.82 2.82 2.82	
2.82 5.85 5.87	8.62 8.60 8.57 8.69	
5.77 8.59		
		2.82 2.82 5.08

	+R	H.I.	-R	Elev	grade	cut
19+25		2.35	4.09	1.74	5.90	4.16 ✓
+50			4.40	2.05	5.92	3.87 ✓
+60 M.H.			4.70	2.35	5.93	3.58
+75			5.53	3.18	5.95	2.77 ✓
20+0			4.37	2.02	5.98	3.96 ✓
+25			4.24	1.89	6.00	4.11 ✓
+50			3.98	1.63	6.03	4.40 ✓
+75			4.17	1.82	6.05	4.23 ✓
21+0			4.28	1.93	6.08	4.15 ✓
+25			4.54	2.19	6.10	3.91 ✓
+50		2.45	4.32	-1.87	6.13	4.26 ✓
+75			4.73	2.28	6.15	3.87 ✓
22+0			5.41	2.96	6.18	3.22 ✓
+25			5.27	2.82	6.20	3.38 ✓
+50			4.82	2.37	6.23	3.86 ✓
+75			4.87	2.42	6.25	3.83 ✓
23+0			4.84	2.39	6.27	3.88 ✓
+25			4.88	2.43	6.30	3.87 ✓
+50			4.84	-2.39	6.32	3.93 ✓

2.824
5.90
3.72
2.82 2.82
5.72 5.95
2.74 2.77
2.82 2.82
5.98 6.00
6.03 6.05
6.08 6.10
3.80 3.82
3.85 3.87
3.90 3.92

2.450
2.82
6.13
3.95
1.88

2.44
6.32
3.76
2.44 2.44
6.30 6.27
8.74 8.71
2.44 2.44
6.25 6.23
8.69 8.67
2.44 2.44
6.20 6.18
8.64 8.62
2.44 2.44
6.15 6.13
8.59 8.57

2.44
4.37
1.89

4.20 1.85

67

	-5.04	42, 45	-2.59	Grade
23475		4.77	2.32	6.35
2440		5.13	2.68	6.37
+25		4.78	2.33	6.40
+50		4.70	-2.25	6.42
+75		4.78	-2.33	6.45
2540		5.04	-2.59	6.47
+25				6.50
+50 M.H.		5.08	-2.63	-6.52
+75				

2.23	2.25
4.78	4.69
2.45	2.44
2.44	2.44
6.47	6.40
8.91	8.81
	8.79

68

8/24/16 Grades for overhead line
Dunkle-Shaw-Bunker

2.45	2.45	2.45	2.45	2.45
6.47	6.50	6.52	6.45	6.42
8.92	8.95	8.97	8.90	8.87
3.92				

2.45

5.08

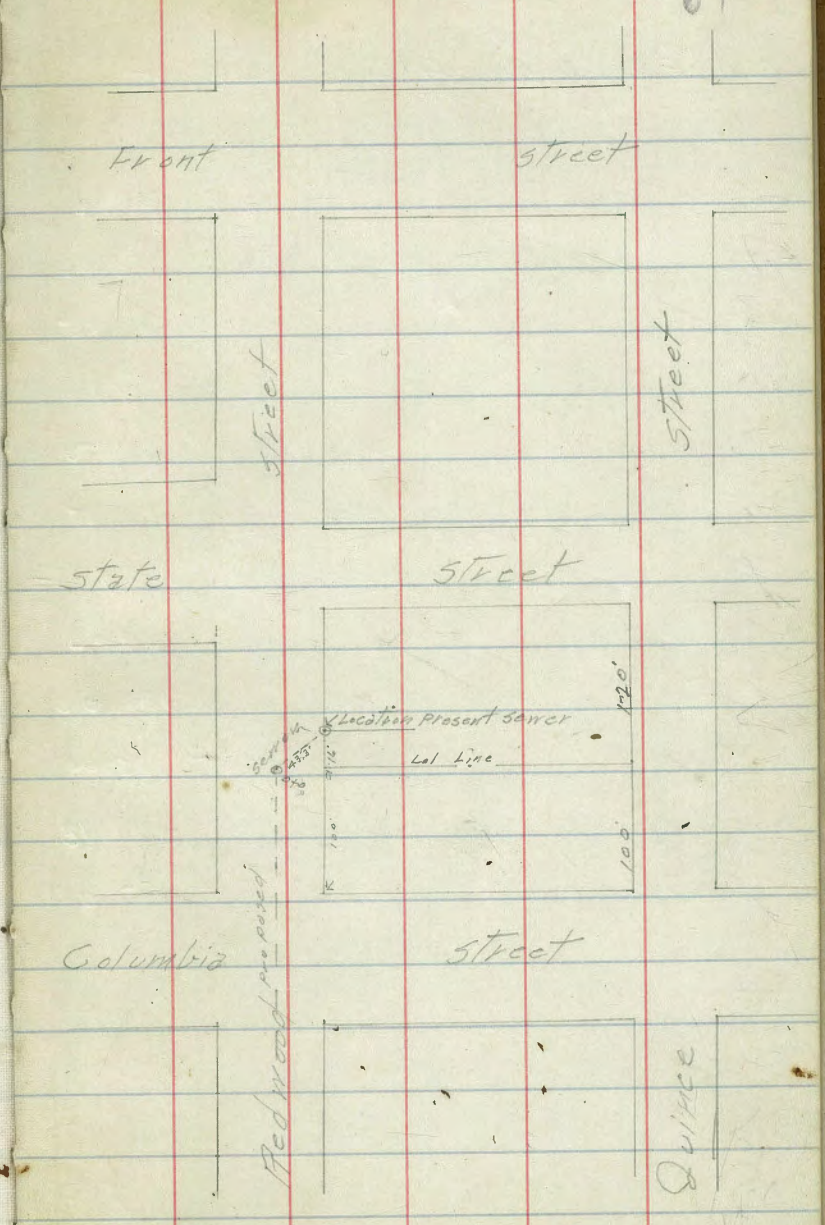
6.47
2.63
3.84

Levels for proposed sewer from ϕ of Redwood
 3100' N of N.L. Columbia To E.L. of Redwood, at point
 where present pipe enters street

B.M. Top fire Hydrant cor Front of Redwood		209.77		
	0.14	209.91		
T.P.	0.81	198.44	12.28	197.63
T.P.	0.57	186.35	12.66	185.78
T.P.	0.42	173.74	13.03	173.32
0+0 = ϕ Redwood & Lot Line			12.0	161.7
+43 ³ = bottom of 9" pipe bearing wall			7.8	165.9

1/30/11 Dunkle
 Shaw
 Bunker

69



Seven of Redwood from M.H. (constructed) 17 W
of E.L. India East for 372

143.35	44.75	44.75	44.75
1.40	37.00	36.00	37.00
144.75	10.75	8.75	6.75

70

B.M. S.E. Brass pig Redwood v India 98.97
11.42 110.39

040 = M.H. India SK			12.7	99.7	93.00	4.7
0420 Break			11.2	99.2	94.00	5.2 ✓
+50			5.32	105.03	99.85	5.2 ✓
T.P.	12.92	123.09	0.22	110.57		
1			7.6	115.5	109.60	5.9 ✓
+20 Break			3.37	119.72	113.50	6.2 ✓
T.P.	12.84	135.93	0.00	123.09		
+50			10.2	125.7	119.65	6.0 ✓
T.P.	12.68	148.46	0.15	135.78		
2			12.36	136.10	129.90	6.2
+20 Break			8.6	139.9	134.00	5.9 ✓
+54 ⁵ M.H. of Columbia			7.5	141.0	136.00	5.0 ✓
340 Break			5.11	143.35	138.00	5.3 ✓
T.P.	12.76	161.08	0.14	148.32		
+50			8.32	152.76	147.78	5.0 ✓
T.P.	3.47	164.54	0.01	161.97		
+92 D.F.			3.16	161.38	156.00	5.4 ✓

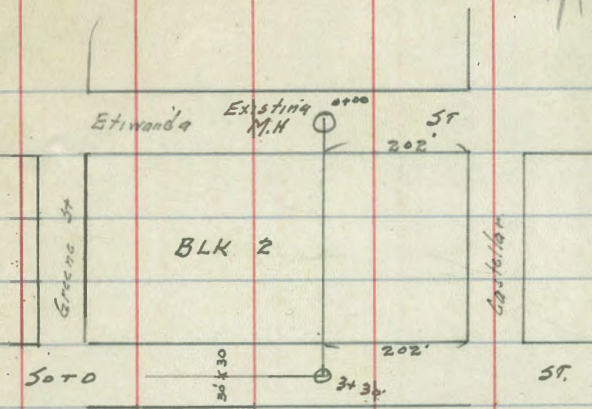
b

257.5
17
237.5

3/9/45 Gregory Sewer Construction
 thru Blk 2 Subd of
 NW 1/4 of NW 1/4 PL. 206

71

	M.H. & Etivanda	4v.26				
	= 0+00		1198	30.38	30.38	= Flow line
	+ 22		293	32.43	30.51	+ 8.92
	+ 40		327	32.09	30.62	+ 8.47
	+ 55		336	32.00	30.71	+ 8.29
1			426	32.10	30.98	+ 7.12
	+ 50		465	32.71	31.28	+ 6.43
2			532	32.01	31.58	+ 5.46
	+ 50		516	32.20	31.88	+ 5.32
3			498	32.38	32.18	+ 5.20
	+ 30 = Soto M.H. A		538	32.98	32.36	+ 4.62
	+ 50		457	32.79	32.46	+ 4.33
4			292	32.64	32.81	+ 2.73
	+ 50	14.80 54.97	0.19	42.19	38.96	+ 3.31
	+ 80		12.70	42.27	40.61	+ 3.31
5			9.8	43.92	43.6	
	+ 50		6.5	48.5		
6			3.7	51.3		
	+ 50		1.1	53.9	50.0	



72

73

74

75

76

27

McCall St
 OUTFALL
 See Book 1123-34

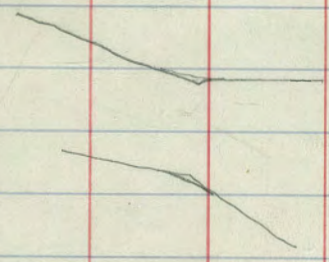
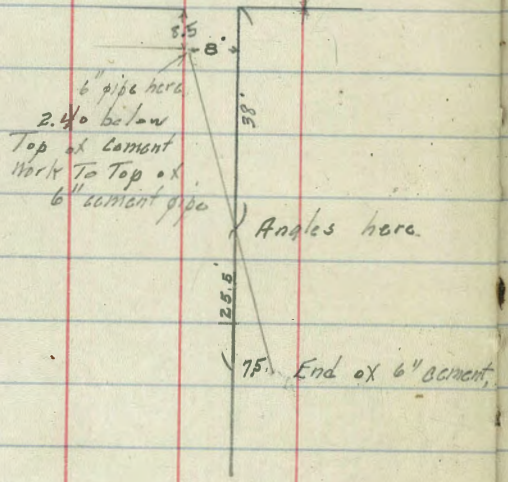
1330

78

SAN

ANTONIO ST

4.60	2.20		2.40
	2.40		
		4.60	
4.97	2.77		-2.20
5.32	3.42	4.67	1.90 5720
5.08	+4.41	4.09	-0.67
5.30	5.81	3.90	+0.51



38

63.5
 2.5

