

946

F.B. 946

LEVEL BOOK.

No. 410

MICROFILMED
DEC 16 1964

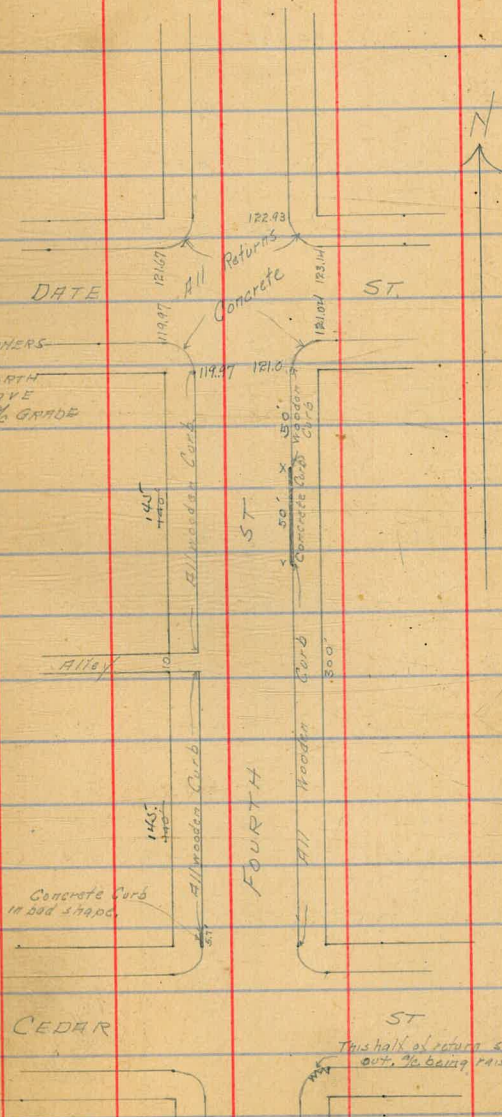
LEVELS ON CURB 5/24/14
 ON 4TH ST FROM Gregory
 N.L. Cedar St. to Shoemaker
 S.L. Ivy St. Moore

B.M.	3.29	13496	12167	NH. 34.52
				50' So. of DATE
East Side		5.62	119.34	✓
				75' So. of DATE
		6.44	118.52	
				100' So. of DATE
		7.28	117.68	✓
				Southwest Return Date St
DATE ST SIDE		4.99	119.97	120.00
4TH		4.99	119.97	
				South east Return Date St.
DATE ST SIDE		3.92	121.04	121.00
4TH		3.96	121.00	
				Northeast Return DATE ST
DATE ST SIDE		2.03	122.93	123.
4TH		1.82	123.14	
				Northwest Return DATE ST
DATE ST SIDE		3.29	121.67	122.
4TH		3.49	121.47	

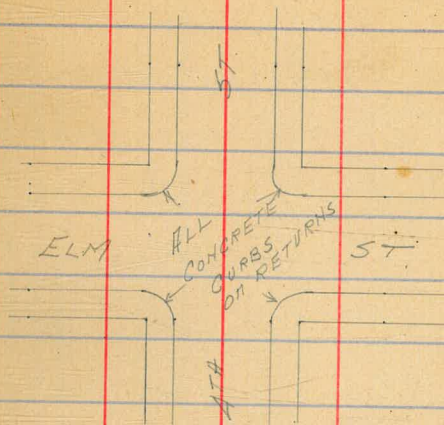
RETURN AT
 NORTHEAST COR
 DATE IS IN
 POOR SHAPE

RETURNS AT
 SOUTHEAST AND
 SOUTHWEST CORNERS
 ARE OK.

RETURN AT NORTH
 WEST WILL HAVE
 TO COME OUT 1/2 GRADE



BM.	444	142.38	137.94	NW 4TH & ELM
Northwest Return ELM ST				
4TH ST SIDE	444	137.94		
ELM ✓ ✓	4.54	137.84		
Southwest Return ELM ST				
4TH ST SIDE	7.51	137.81		
ELM ✓ ✓	7.57	137.81		
Southeast Return ELM ST				
4TH ST SIDE	7.49	137.89		
ELM ✓ ✓	7.59	137.79		
Northeast Return ELM ST				
4TH ST SIDE	4.46	137.92		
ELM ✓ ✓	4.50	137.88		



Curb between N.L. DATE ST and S.L. ELM ST
all wooden.

Returns at 4TH and ELM all in good condition.

B.M. 205 167.01 164.96 NW HTH & FIR 1

Northwest Return FIR St

FIR ST SIDE 2.07 164.94

HTH " " 2.05 164.96

Southwest Return FIR St

FIR ST SIDE 5.60 161.41

HTH " " 5.60 161.41

Southeast Return FIR St

FIR ST SIDE 5.53 161.48

HTH " " 5.60 161.41

Northeast Return FIR St

FIR ST SIDE 2.14 164.87

HTH " " 2.12 164.89

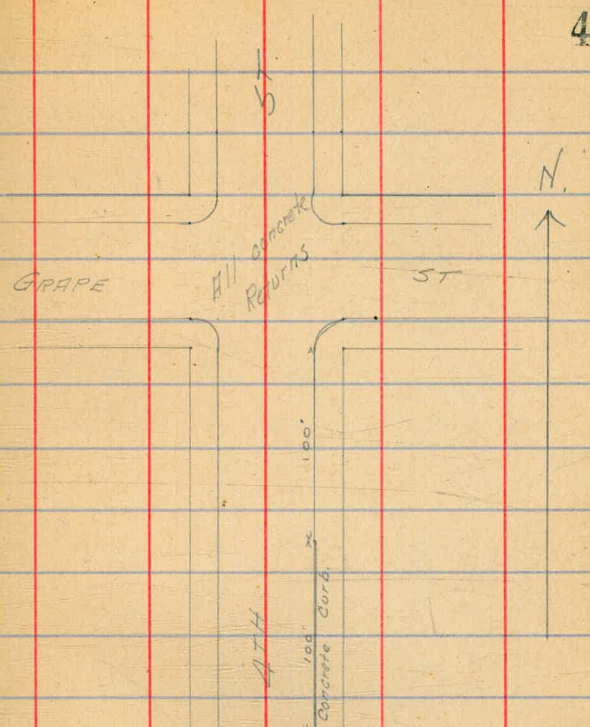
Returns at Fir St all concrete and
in good shape. All curb between Elm and Fir
is wooden.

BM	10.48	175.44	164.96	N.W. 4 th FIR
				100' So. of Grape St.
EAST SIDE	0.50	174.94	175.00	
				125' So. of Grape
- -	1.75	173.69		
				150' So.
- -	3.00	172.44	172.50	
				175' So.
- -	4.30	171.14		
				300' So.
- -	5.57	169.87	170.00	

All other curb between Firth and Grape wooden.

- Returns 4th and Grape are concrete. The return at the northeast 4th + Grape is in poor shape.

BM	9.84	192.80	182.96	N.W. 4 th Grape
				Northwest Return GRAPE ST
4 th ST SIDE	9.84	182.96		
GRAPE - -	9.86	182.94		



H.J.
19280

Southwest Return, GRAPE ST

1/4th ST SIDE 12.89 179.91

GRAPE - - 12.77 180.03

Southeast Return, GRAPE ST

1/4th ST SIDE 12.75 180.05

GRAPE - - 12.83 179.97

Northeast Return GRAPE ST

1/4th ST SIDE 9.95 182.95

GRAPE - - 9.95 182.85 *This side of return broken*

25' No. of GRAPE

WEST SIDE 8.91 183.89 183.96

50' No.

W SIDE 7.94 184.86 184.92

75' No.

W SIDE 6.99 185.81 185.76

100' No.

W SIDE 6.09 186.71 186.83

125' No.

W SIDE 5.05 187.75 187.79

HAWTHORN

Returns
All
Concrete

ST



GRAPE

ST

1/4th

700.36

6

192.80

South east Return Hawthorn St.

150' No. of GRAPE

4th St SIDE

5.93 194.43 194.5

WEST SIDE

4.05 188.75 ✓

HAW. ✓

5.93 194.43

175' No

Northeast Return

W SIDE

3.10 189.70 ✓

4th St SIDE

4.94 195.42 195.5

200' No

HAW. ✓

4.93 195.43

W SIDE

2.05 190.72 190.67

All curb on East Side between Hawthorn St and

225' No.

Ivy St is wooden

W SIDE

1.12 191.68 191.63

All curb on West Side between Hawthorn St. and

250' No

Ivy St is concrete

W SIDE

0.13 192.67 192.58

B.M. 493 200.36 195.43

25' No. of Hawthorn

B.M.

493 200.36

195.43 NW CORNER

WEST SIDE

414 196.22 196.24

Northwest Return Hawthorn St.

50' No.

4th St SIDE

4.93 195.43 195.5 ✓ ✓

3.37 196.99 197.08

HAW. ✓

4.98 195.38

75' No.

Southwest Return

✓ ✓

2.59 197.77 197.88

4th St SIDE

5.96 194.40 194.5

100' No.

HAW. ✓

5.95 194.41

✓ ✓

1.77 198.59 198.67

300.36

135' No. of Hawthorn

W SIDE

0.98 199.35 199.46

150' No.

✓ ✓

T. P.

7.16

207.35

0.17

200.19

200.75

0.17

200.19

175' No.

✓ ✓

6.34

201.01

201.04

200' No.

✓ ✓

5.58

201.77

201.83

235' No.

✓ ✓

4.88

202.47

202.63

250' No.

✓ ✓

4.00

203.35

203.44

275' No.

✓ ✓

3.23

204.12

204.21

300' No = SL / VV ST

✓ ✓

2.39

204.96

205.00

X Sec Brant St.
 SL Douglass to S.L. Palm Hts. Addn.
 50' wide - 10' walks - 7.5' /4's

5m - 7 E. Albatross + Albatross - Plug out - 267.06
 SW. Albatross + Wash. Mon - 277.50
 6/10/14
 West- Evans- Devise.

8

BM SW Wash & Albatross Mon. 277.50 = out

BM NW " " " Plug. 276.993

TP 2.23 279.22 / 76 666 272.56

398 276.54

T.P. Hub. SE Cor. Douglass & Brant. 8.22 268.32

0.65 268.97

SL Douglass.

EL 0.6

C 0.8

1/4 0.5

£ 0.5

1/4 0.5

C 0.6

WL 0.4

25' S.

WL 1.5

C 1.4

1/4 1.0

268.97

£ 0.8

1/4 1.1

C 1.1

EL 1.1

50' S

EL 1.3

C 1.6

1/4 1.5

£ 1.5

1/4 1.7

C 2.0

WL 2.0

75' S

WL 2.4

C 2.3

1/4 2.2

£ 2.1

1/4 2.0

C 2.4

EL 2.0

26897
100's.

EL.	23
C	26
1/4	25
£	24
1/4	25
C	27
WL.	26

125's.

WL.	28
C	32
1/4	30
£	31
1/4	30
C	30
EL.	26

150's.

EL	33
C	33
1/4	34

9

26897

£	33
1/4	34
C	34
WL.	30

175's.

WL.	33
C	36
1/4	36
£	37
1/4	38
C	41
EL.	37

200's.

EL	53
C	42
1/4	40
£	39
1/4	38
C	41
WL.	33

26897

216.8' S = NL Univ 63.40' Wide

10' Walks.

WL	3.9
C	7.5
1/4	4.2
£	4.2
1/4	5.6
C	7.0
EL	10.8

+ For slopes Univ int. See Univ X Secs.

N. Curb.

EL	17.0
C	13.2
1/4	10.3
+2	7.8
£	4.6
1/4	4.4
C	4.5
WL	4.3

26897

17/4.

10

WL	4.5
C	4.8
1/4	4.9
£	5.8
+6	5.9
1/4	6.8
C	11.5
EL	16.5

£ Univ.

EL	14.6
C	9.1
+3	7.3
1/4	7.1
+7	6.9
£	5.9
+2	5.1
1/4	5.2
C	5.3
WL	4.9

268.97

5/4

WL	5.1
C	5.5
1/4	5.5
X +6	5.9
±	7.2
+1	9.1
1/4	9.0
+5	8.8
C	10.4
EL	15.3

5 Curb.

EL	17.2
C	12.4
+4	10.0
1/4	10.6
±	11.4
+3	7.8
1/4	7.2
C	5.9
WL	5.5

268.97

5L UNIV

11

WL	5.5
C	9.5
1/4	11.9
+3	14.4
±	13.2
+6	12.6
1/4	12.7
C	15.5
+5	17.8
+5 +6	20.4
EL	21.0

25' S.

EL	26.2
C	24.9
1/4	23.6
±	22.6
X +4	22.1
+5	19.1
1/4	19.0

	26897		
+6		19.4	
C		16.4	
WL		9.4	House on EL. as no steps
T.P		12.89	256.08
	113	257.21	
		50'5.	
WL		3.1	
C		9.9	
+3		13.0	
1/4		13.0	
+5		13.1	
£		13.7	
+2		17.9	
1/4		18.5	
C		21.0	
EL		23.1	
+25		28.0	

	257.21		
		75'5.	
- 25		32.5	
EL		27.4	
C		25.3	
1/4		23.0	
+6		20.0	
£		19.9	
+6		19.6	
1/4		18.0	
C		13.8	
WL		8.8	
T.P		12.92	244.29
	156	245.85	
		100'5.	
WL		7.6	
C		10.8	
1/4		14.8	
+1		15.7	
£		15.6	
1/4		18.4	
C		20.4	

24585

EL			22.8	
+13			240	
+14			256	
+25			28.7	
		125.5		
-25			370	
EL			316	
X C			29.5	
1/4			27.5	
±			25.2	
1/4			22.1	
C			22.5	
+3			20.2	
WL			5.5	
T.P.			13.03	232.82
T.P.	0.90	233.72	1220	221.52
	0.63	222.15		

22215

13

150's

WL			5.2	
+5			4.7	
C			6.5	
1/4			9.0	
±			10.4	
1/4			10.7	
C			12.7	
EL			14.3	
+25 bot Creek			15.9	

175's

-25 bot			18.0	
EL "			19.2	
C			18.0	
1/4			15.2	
±			13.0	
1/4			12.2	
C			11.2	
WL			10.9	
+20			11.9	

	222.15	12.29	209.86
TR.			
	328	213.14	
		200's	
-20		7.6	
WL.		6.9	
+9		7.6	
C.		8.6	
1/4		8.7	
£		10.8	
+2 bot.		11.2	
1/4 "		11.5	
+2		10.6	
C		10.6	
EL.		9.3	
+10 of uphill		6.0	

	225's
EL.	4.4
C	7.9
1/4	8.9
+5	10.2

	213.14
£	12.3
1/4	11.4
C	11.5
WL.	11.2
+20	11.3
	240's
-20	13.5
WL = bot.	13.7
+7	12.7
C	11.2
1/4	10.3
£	7.7
1/4	4.2
C	0.8
EL.	

	250's
-20	11.7
WL.	11.4
C	9.4
+2	8.0
1/4	5.0

213.14

260'S.

-20	105
WL	{ 106
	{ 56
+7	{ 80
	{ 70
C	65
1/4	28
T.P.	0.47

212.67

11.05 223.72

E	11.4
1/4	7.7
C	1.6

250'S.

EL	3.1
C	6.7

243'S.

EL	7.2
C	9.7
1/4	11.2
E	14.7

22372

275'S

WL	7.3
C	8.1
1/4	6.6
E	5.6
1/4	3.0
T.P.	0.58

223.14

11.36 234.50

C	10.3
EL	7.2

260'S.

EL	10.4
----	------

296'S = fence line

EL	{ 2.0
	{ 0.6
C	{ 5.1
	{ 2.4
1/4	{ 6.8
	{ 4.0
E	{ 8.1
	{ 5.9
1/4	{ 8.3
	{ 5.8
C	{ 9.3
	{ 6.8
WL	7.4
	7.0

15

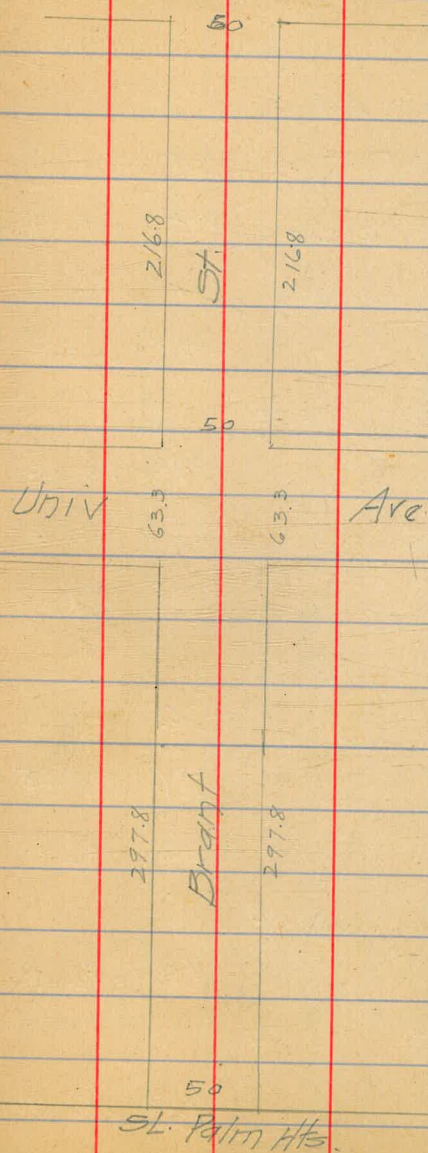
234.50

2978 = 3-L Palm Hts.

WL		6.9		
c		66		
1/4		5.7		
1/4		56		
1/4		40		
c		2.4		
EL		0.5		
T.P.		0.08	234.42	
	12:15	246.57		
T.P.		0.07	246.50	
	12:51	259.01		
T.P.		0.74	258.27	
	11:70	269.97		
T.P.		1.68	268.29	
	8:21	276.50		
T.P.		5.22	271.28	
	8:15	279.43		
BM NW Albatross & Wash		2.44	276.99	276.99
				OK
				West

16

Douglass



culverts on Cedar St.

			Est pipe	Cuts
5M. NE Cor Cedar Bridge - Flg		215.92		
	2.35 218.27			
0+00 = EL. Idg. N. Cor. Cedar.	1.18	217.09	214.14	3.0 ✓
+10.72 = E Pipe on E.C. Idg.	2.94	215.33	211.89	3.4 ✓
+35 = E Catch Basin for Idg.	9.95	208.32	206.8	1.5 ✓
T.P.	12.35	205.92		
	0.16 206.08			
0+60	4.82	201.26	200.00	1.3 ✓
0+76 Ground.	9.5	196.6		
T.P.	11.95	194.13		
1+00	0.38 194.51			
0+90	2.60	191.91	190.50	1.4 ✓
1+00	8.16	186.35	185.07	1.3 ✓
T.P.	12.39	182.12		
	0.90 183.02			
1+25 T.P.	10.38	172.64	171.50	1.1 ✓
	4.91 177.55			
1+50 = End Pipe	10.57	166.96	166.50	0.4 ✓

	177.55			Bot Pipe	Cuts
1+55 - End outlet pipe N. Curb from W.	1008	167.47	167.00	0.5	✓
1+85 Ground.	7.4	170.2			
1+25	4.60	172.95	172.00	1.0	✓
TP	0.24	177.31			
	1299	188.30			
1+00	4.63	183.67	183.00	0.7	✓
TP	1.04	187.26			
	1219	199.45			
0+80 - Gr. to filled in.	55	194.0			
0+75 TP	2.17	197.28	199.00	3.3	✓
TP	12.30	209.58	1.30	208.28	
	1140	219.68			
0+50	7.63	210.05	201.00	9.1	✓
0+25	6.60	213.08	208.00	5.1	✓
0+00 - W. 31 - N. Curb. & Pipe Curb.	4.60	215.08	214.14	0.9	✓
- End 12" Pipe					

	219.68				
0+00 - E Pipe opening -	1.91	218.77	216.14	2.6	✓
W. 31 - 30 Curb - Cedar	2.43	217.25	215.11	2.1	✓
0+10.72 End 12" pipes					
0+32.5	2.80	216.88	213.00	3.9	✓
0+45 Top 11.6	2.4	217.3			✓
0+49.25 ± 12" pipes - 0+45.2	5.92	213.76	207.83	5.9	✓
± 0+00 31 Curb 31.2	1.38	218.30			
TP	11.18	208.50			
	0.43	208.93			
0+65	4.45	204.48	203.00	1.5	✓
TP	11.39	196.94			
	1.52	198.46			
0+90	8.15	190.31	189.50	0.8	✓
TP	12.49	185.77			
1+00					
0+70	0.70	186.57			
1+15	7.00	179.67	178.50	1.2	✓
TP	12.70	173.97			
	1.56	175.53			
1+40	4.19	171.34	170.50	0.8	✓
1+65 - End Pipe	8.12	167.41	167.00	0.4	✓

219.68
1.72
217.72

0+00 - E. 12" pipe opening

	175.53				Cuts
1+30 - End pipe 3 side curb	9.52	166.01	165.80	0.2	✓
± Pipe for 3 Gutter 1/20					
1+30 - TP. Hub	0.59	174.94	173.50	1.4	✓
	11.69	186.63			
0+81 Ground	5.5	181.1			
0+75	2.79	183.84	182.50	1.3	✓
TP	0.61	186.02			
	12.16	198.18			
0+50	5.38	192.80	192.00	0.8	✓
0+35 T.P. = toe present fill	1.68	196.50	195.6	0.9	✓
	12.18	208.68			
0+25	7.91	200.77	198.00	2.8	✓
TP	0.29	208.39			
	7.91	218.30			
0+00 - ± End pipe 3 side curb	8.69	209.61	204.50	5.1	✓
5M. NE Cor Bridge Pkg.	2.47	215.83			

X Sec Idyllwild 30' W.
St. Robinson to N.L. Sloane.

EM NE A/strass & Robin

26706

1.96 269.02

St. Robinson

WL 57

± 54

EL 47

25'S

EL 52

± 56

WL 58

50'S

WL 61

± 60

EL 58

75'S

EL 60

± 64

WL 68

em. 79' Knaut + Weak. Ring cut - 258.78

" 79' Knaut + " " " 264.47

9/14/14
Went
to
Dennis

20

100'S

WL 71

± 70

EL 66

125'S

EL 74

± 77

WL 79

150'S

WL 87

± 84

EL 80

175'S

EL 89

± 95

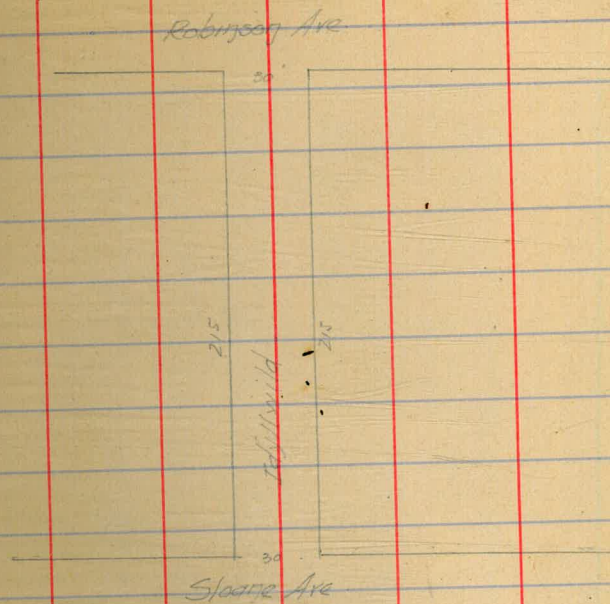
WL 98

Zoo's

WL	10.8
±	10.6
EL	9.7

ZIS's - NL Sloane

EL	10.8
±	11.3
WL	11.9



X Sec Johnson Avenue

Locality to N.L. Shriv Hts.

10' closed from each side of Original Survey

See grade Book to P. 1 -

BM. NE Locality Johnson Spk. 29852

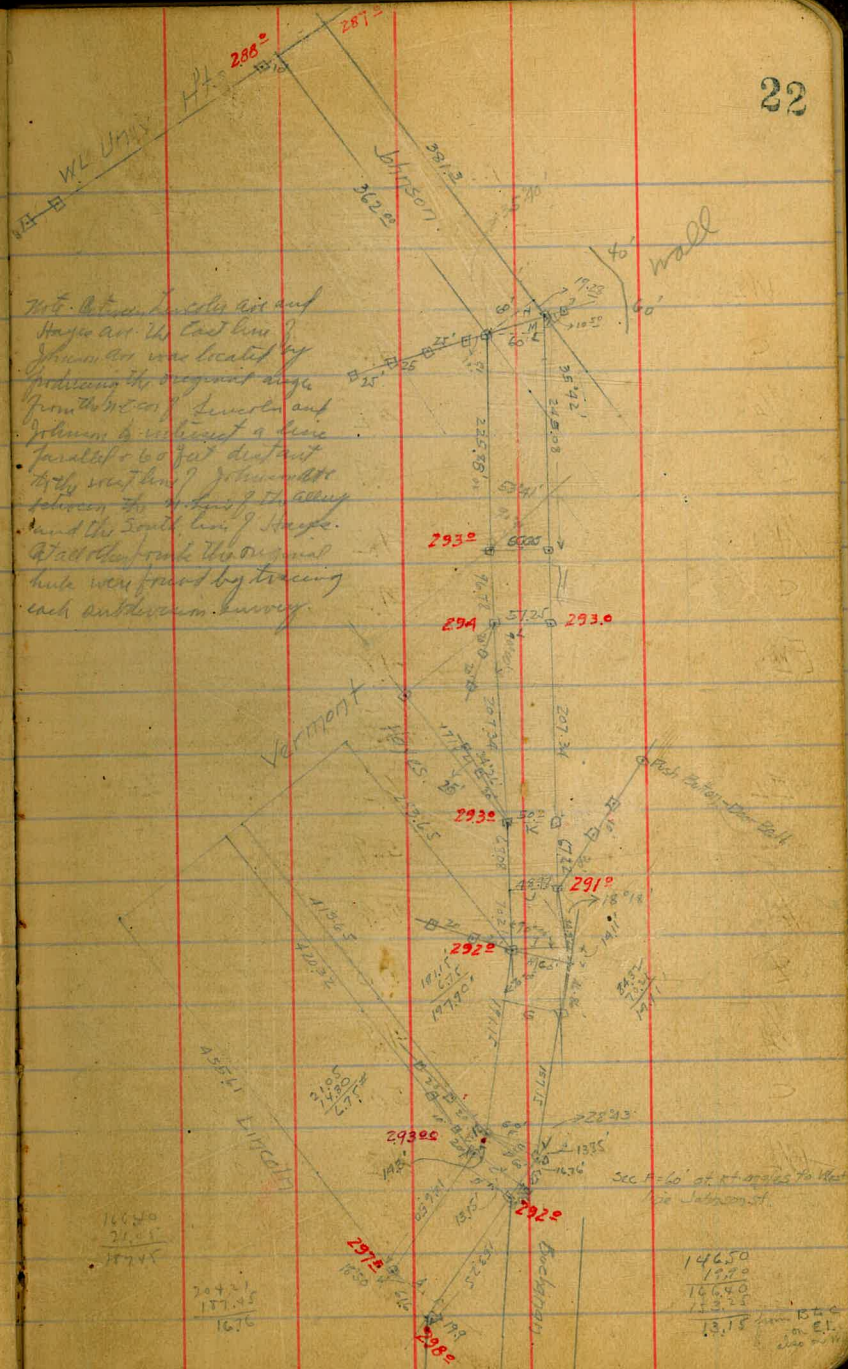
265. 301.17

N.L. Locality 41.6 wide

WL	3.6	297.6
c	3.8	297.4
1/4	3.9	297.3
E	3.9	297.3
1/4	3.9	297.3
C	3.8	297.4
FL	3.3	297.9

Sec A. 19.9 X on FL same pt WL

FL	3.3	297.9
c	3.8	297.4
1/4	3.8	297.4
E	3.9	297.3
1/4	3.8	297.4
C	3.7	297.5
WL	3.6	297.6



The actual boundary line and
 Haysan W. East line of
 Johnson Ave. was located by
 measuring the original angle
 from the N.E. corner and
 Johnson to a point a line
 parallel to 60 feet distant
 to the west line of Johnson
 between the original survey
 and the South line of Haysan.
 That the original
 hubs were found by tracing
 each subdivision survey.

14650
 17700
 16640

204.01
 177.05
 1676

14650
 17700
 16640
 15300
 13.18
 m. E.L.
 Sec 22

Johnson

301.17

50' N of ~~last pt.~~ ^{on WL 69.9' N on EL}

WL	37	297.5
C	4.0	297.2
1/4	4.2	297.0
1/2	3.9	297.3
3/4	4.2	297.0
C	4.2	297.0
EL	4.0	297.2

100' N. ^{192' on EL} ~~on WL~~ 58' wide approx.

EL	6.2	295.0
C	5.9	295.3
1/4	5.6	295.6
1/2	5.0	296.2
3/4	4.8	296.4
C	5.0	296.2
WL	4.2	297.0

301.17

153.25' N. on EL (2)

23

133.35' N of W.L. = pt. 26 opposite

107' EL Johnson with Buchanan.

Sec B

WL	4.6	296.6
C	5.2	296.0
1/4	5.2	296.0
1/2	5.4	295.8
3/4	5.5	295.7
C	6.1	295.1
EL	8.9	292.3
+10	12.6	288.6

Sec C 146.5 = 3 L. Alley on WL

-10	16.2	285.0
EL	12.4	288.8
C	8.7	290.5
1/4	6.2	295.0
1/2	6.0	295.2
3/4	5.6	295.6
C	5.4	295.8
WL	5.0	296.2

Johnson

301.17

167.55' N on WL
= NL Alley on W.L. Johnson.

Sec D

WL	5.3	295.9
C	5.9	295.3
1/4	6.1	295.1
Φ	6.3	294.9
1/4	7.0	294.2
C	11.0	290.2
EL	15.7	285.5
+15	21.6	279.6

Sec E 204.21' N on EL = L. pt. 28°43' L. =
~~60' from~~ to Same pt. NL Alley on WL.

-15	24.1	279.1
EL	17.4	283.8
C	14.0	287.2
1/4	9.7	291.5
Φ	6.4	294.8
1/4	6.2	295.0
C	5.9	295.3
WL	5.3	295.9

153.25
52.96
204.21

24

301.17

13.85' N of L. of EL Same pt WL
= 11.45' + 60' from NL Alley on WL. = Sec. F.

WL	5.3	295.9
C	5.9	295.3
1/4	6.1	295.1
Φ	6.6	294.6
1/4	7.1	294.1
C	11.2	290.0
EL	16.4	284.8
+20	25.7	275.5

411.5' N Sec F 60' wide = 150' S. of SL Hayes.

-20	26.5	274.7
EL	18.8	282.4
C	13.7	287.5
1/4	9.5	291.7
Φ	8.2	293.0
1/4	7.6	293.6
C	7.1	294.1
WL	6.1	295.1
WL	5.8	295.4

30117

Johnson

91.15' N =

WL	6.9	294.3
C	8.1	293.1
1/4	8.7	292.5
1/2	9.7	291.5
3/4	11.1	290.1
C	13.0	288.2
EL	16.0	285.2
+15	21.4	279.8

141.15' N. on WL 143.30' N. on EL =

-15		
EL	14.5	286.7
C	11.5	289.7
1/4	10.0	291.2
1/2	9.5	291.7
3/4	8.6	292.6
C	7.4	293.8
WL	6.9	294.3
T.P.	6.93	294.2A

506 299.30

157.14
13.85
143.29

25

299.30

191.15' N = 52 Hayes on WL = Sec H.
being at Staungles + 90' dist. to 54.00' of Hayes Johnson.

WL	4.6	294.7
C	4.8	294.5
1/4	5.3	294.0
1/2	5.5	293.8
3/4	5.7	293.6
C	6.1	293.2
EL	7.5	291.8
+10	9.7	289.6

Sec I = 142.20' from pt. on WL to EL Johnson = Sec I.

-10	8.7	290.6
EL	6.9	292.4
C	5.7	293.6
1/4	5.5	293.8
1/2	5.4	293.9
3/4	5.3	294.0
C	4.8	294.5
WL	4.6	294.7

Johnson

299.30

50' N. of Sec I.

WL	3.5	295.8
C	3.8	295.5
1/4	4.9	294.4
1/2	4.9	294.4
3/4	5.3	294.0
C	5.5	293.8
EL	6.3	293.0

70.21' N. of Sec I. = Cor. Hayes & Johnson.
on El. Johnson. - Sec J. = 48.98' wide

EL	5.7	293.6 ✓
C	5.5	293.8
1/4	5.4	293.9
1/2	5.0	294.3
3/4	4.8	294.5
C	3.7	295.6
WL	3.7	295.6 ✓

299.30

26

68.08' NW of last Sec. = Sec K. =
NW Cor. Johnson & Hays. - Sec taken at rt. 25.
to WL Johnson. 59.2' wide.

WL	3.2	296.1
C	3.7	295.6
1/4	4.1	295.2
1/2	4.4	294.9
3/4	4.5	294.8
C	4.9	294.4
EL	5.5	293.8

50' NW of NW Cor. Johnson & Hays.

EL	5.5	293.8 ✓
C	5.0	294.3
1/4	4.7	294.6
1/2	4.5	294.8
3/4	4.0	295.3
C	3.6	295.7
WL	3.1	296.2

Johnson

299.30

100' NW

WL	3.2	296.1
C	3.6	295.7
1/4	4.2	295.1
⊕	4.4	295.9
1/4	4.7	294.6
C	5.2	294.1
EL	5.7	293.6

150' NW

EL	5.7	293.6
C	5.4	293.9
1/4	5.0	294.3
⊕	4.6	294.1
1/4	3.9	295.4
C	3.4	295.9
WL	3.0	296.3

299.30

27

207.34' NW = SE. Cor. Vermont St

Johnson Secs. Rt 1/5 to SW side = 57.25'

WL	3.6	295.7
C	3.9	295.4
1/4	4.1	295.2
⊕	4.6	294.7
1/4	4.7	294.6
C	5.4	293.9
EL	6.6	292.7
T.P.	5.71	293.59

319 296.78

184 W of EL V#
= Vermont St.

NL	4.0	292.8
C	3.2	293.6
1/4	2.6	294.2
⊕	2.2	294.6
1/4	1.8	295.0
C	1.4	295.4
SL	1.1	295.7

296.78

Johnson

96.78 W. of FL Vermont

= WL Vermont on 2L Johnson

SL	60' wide + 60' h w L unis 1/6	295.2	146
C		2.0	294.8
1/4		2.4	294.4
1/2		2.8	294.0
3/4		3.2	293.6
C		3.6	293.2
NL		4.5	292.3

50' W. of WL Vermont. 60' wide

NL		8.0	288.8
C		6.0	290.8
1/4		4.6	292.2
1/2		3.8	293.0
3/4		3.2	293.6
C		2.9	293.9
2L		2.4	294.4

296.78

100' W.

28

SL	3	3.4	293.4
C		3.6	293.2
1/4		3.8	293.0
1/2		4.6	292.2
3/4		6.2	290.6
C		8.2	288.6
NL		{ 11.3 / 12.4	284.4
+10		21.0	275.8

150' W.

-15		25.2	271.6
NL		17.1	279.7
+3		16.3	280.5
+A		14.2	282.6
C		10.5	286.3
1/4		8.0	288.8
1/2		5.9	290.9
3/4		4.9	291.9
C		4.4	292.4
SL		3.7	293.1

296.78

Johnson

200' W.

SL	4.8	292.0
C	5.2	291.6
1/4	5.9	290.9
ϕ	7.3	289.5
1/4	9.9	286.9
C	12.1	284.7
+8	14.9	281.9
NL	17.5	279.3
+5	24.0	272.8
+10	27.0	269.8

225.8 W on SL = Lpt - Sec L

-10	27.0	269.8
+5	22.4	274.4
NL	16.3	280.5
+4	15.0	281.8
C	12.7	284.1
1/4	10.1	286.7
+5	8.6	288.0
ϕ	8.4	288.4
1/4 +5	6.6	290.0
1/4	6.0	290.8
C	5.1	291.7
SL	4.8	292.0

296.78

1928 = ST.

29

Samept SL - 245' W. on NL = Lpt on N. = Sec M

SL	4.8	292.0
C	5.2	291.6
1/4	5.2	291.6
ϕ	7.8	289.0
1/4	10.6	286.2
C	13.3	283.5
NL	18.0	278.8
+5	22.6	274.2
+10	24.0	272.8

1928 = ST.

Sec. N. = Samept. on SL - Rt L = 1928 further W. on NL

-10	17.0	279.8
NL	14.4	282.4
C	13.2	283.6
1/4	11.5	285.3
ϕ	8.2	288.6
1/4	6.0	290.8
C	5.5	291.3
SL	4.9	291.9

Johnson

296.78

TP		4.56	292.22
	4.10	296.32	
	50' W. of Sec X		
SL		3.9	292.4 ✓
C		4.3	292.0
1/4		4.4	291.9
E		4.8	291.5
1/4		5.6	290.7
C		6.3	290.0 ✓
NL		7.7	288.6 ✓
+10		9.9	286.4 ✓
	100' W.		
NL		5.5	290.8 ✓
C		5.3	291.0
1/4		5.0	291.3
E		4.9	291.4
1/4		4.7	291.6
C		4.6	291.7
SL		4.5	291.8

30

296.32

	150' W.		✓
SL	50	291.3	
C	54	290.9	
1/4	5.3	291.0	
E	5.3	291.0	
1/4	5.4	290.9	
C	5.6	290.7 ✓	
NL	5.7	291.6	
	200' W.		
NL	6.8	289.5	✓
C	6.4	289.9	
1/4	6.2	290.1	
E	5.6	290.7	
1/4	5.5	290.8	
C	5.4	290.9	
SL	5.2	291.1	✓

Johnson

296.32

250' W.

SL	5.1	291.2
c	5.1	291.2
1/4	5.2	291.1
£	5.3	291.0
1/4	5.6	290.7
c	5.9	290.4
NL	6.3	290.0

300' W.

NL	5.8	290.5
c	6.0	290.3
1/4	5.9	290.4
£	5.9	290.4
1/4	6.0	290.3
c	5.7	290.6
SL	5.6	290.7

296.32

31

350' W.

SL	7.6	288.7
c	7.5	288.8
1/4	7.7	288.6
£	7.4	288.9
1/4	7.0	289.3
c	6.5	289.8
NL	6.5	289.8

~~251.7~~ = P.L. on NL = Sec. 0

NL	6.9	289.4
c	7.1	289.2
1/4	7.4	288.9
£	7.7	288.6
1/4	7.9	288.4
c	7.7	288.6
SL	7.7	288.6

2

Johnson

29632

362 W- PL ~~75L~~ ~~Sec P.~~

SL

7.8 288.5 ✓

C

7.9 288.4

1/4

8.2 288.1

Φ

7.8 288.5

1/4

7.5 288.8

C

7.3 289.0

NL

6.9 289.4

T.P.

4.00 292.32

832 300.64

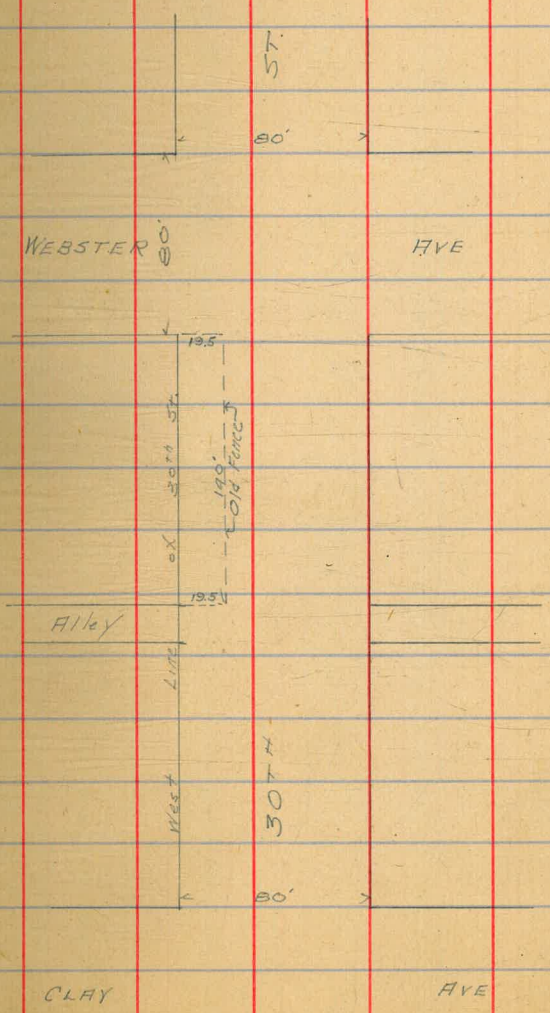
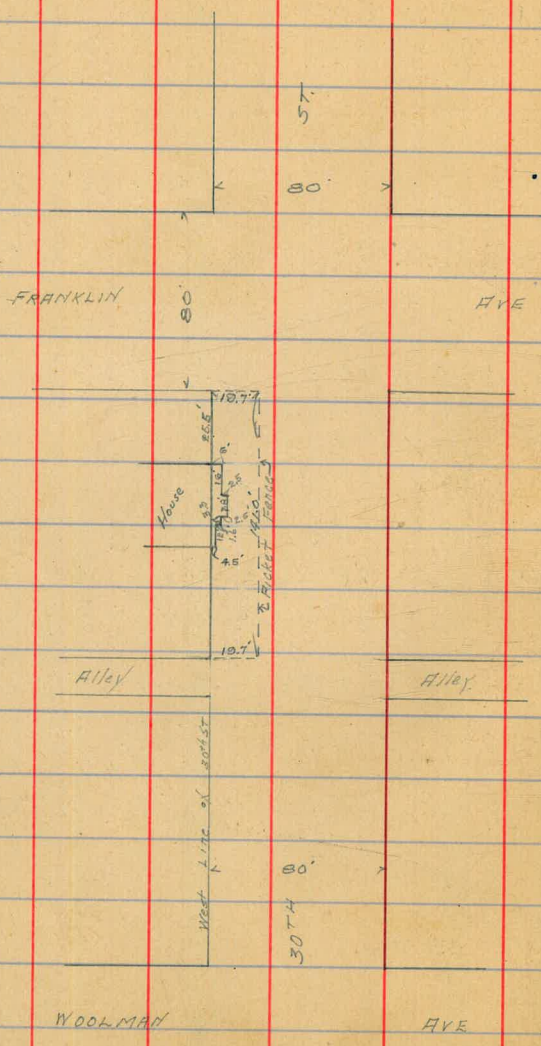
BM-25 Tie Ab. SE V⁴ of Hayes.

602 294.62 295.64

871.98.98 Phog curd. S.F. Cor Redwood, S. India

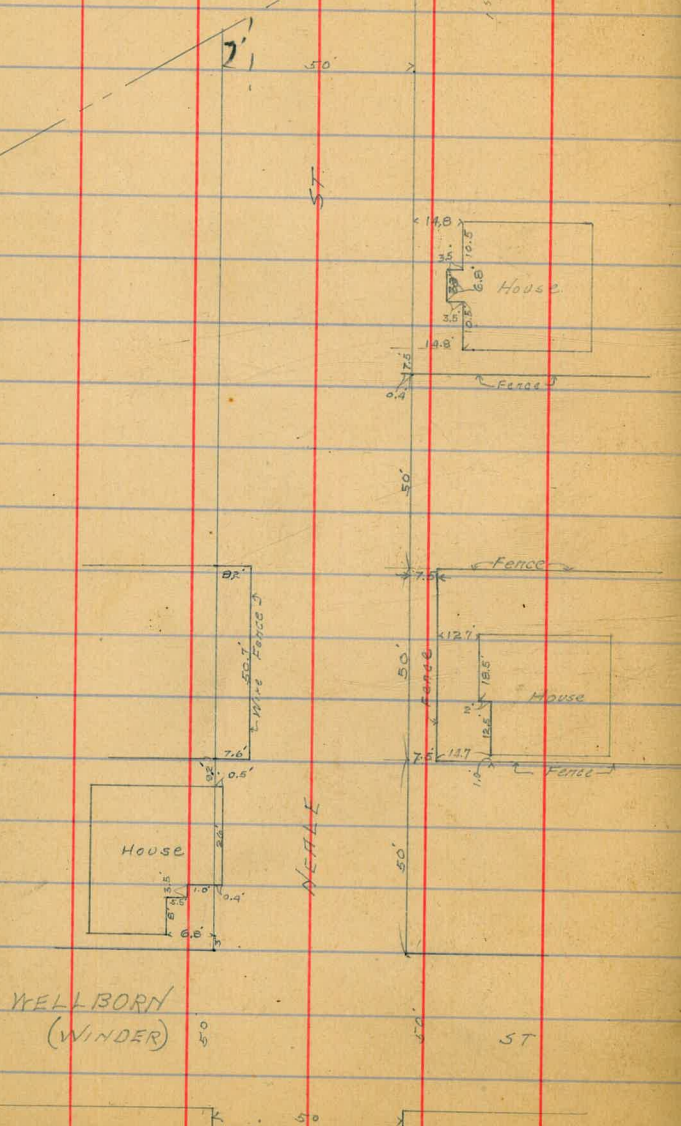
9/5/1
Gregory
Shoemaker
Moore

SURVEYS ON 30TH ST
Showing House and Fences
on Street.



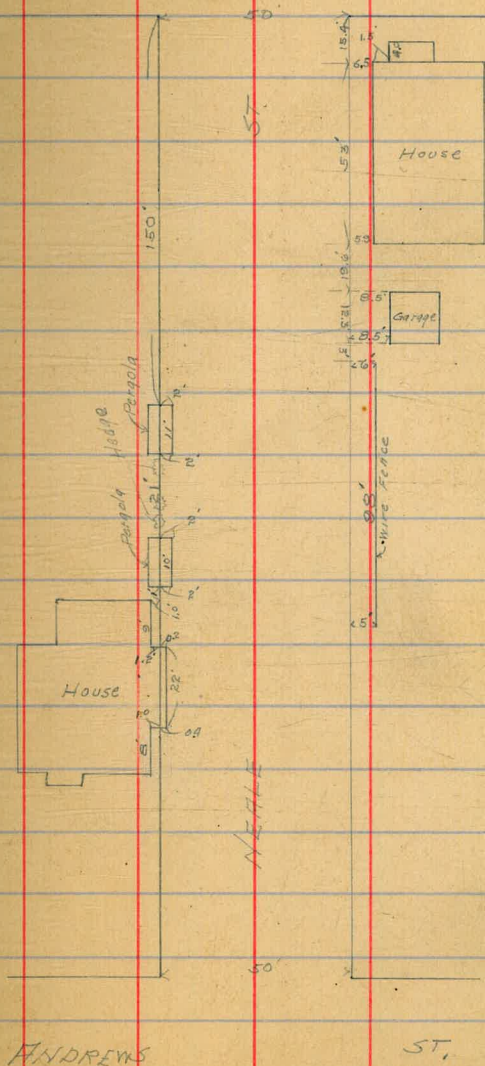
8/6/14
 Gregory
 Shoemaker
 Moore

SURVEY OF
 NEALE ST
 FROM THE N.E. END
 TO ANDREWS ST.



(WINDER)
 WELLBORN

36



Xsection of Columbia St 70' wide from the South line of Redwood St to the North line of Olive St - Various widths of sidewalk.
 Sep 25-1914

widths of
 Zonmati,
 Millet,
 Sharo.

RJH 98.95 Plug S.E. Cor India B. Redwood.

	+	7.I.	-	
12.02	111.00		98.98	
12.81	123.89	0.02	110.78	
12.67	136.38	0.28	123.61	
12.87	148.86	0.29	135.89	
22.5' sidewalk - 7 1/2' Quarters, oo = North line of Redwood St.				
OK L.		7.7	141.2	
cl.		7.1	141.8	
1/4		6.9	142.0	
c		6.7	142.2	
1/4		6.2	142.5	
cl.		6.4	142.5	
8 L.		4.9	144.0	
H	15.86	156.68	3.04	145.82
+02 8 L.		4.1	152.6	
cl		8.7	148.0	
1/4		10.2	146.5	
c		11.0	145.7	
1/4		13.7	143.0	
cl		14.7	142.0	

note - Interpolate for sidewalk from Redwood to Palm account of strip 16.5' wide being accepted

OK L.	16.5	140.2
+50		
OK L.	15.9	141.3
cl	11.3	145.4
1/4	10.5	146.2
c	9.3	147.4
1/4	7.8	148.9
cl	6.5	150.2
8 L.	1.5	155.2
+100 8 L.	0.8	155.9
cl	5.8	150.9
1/4	7.3	149.4
c	8.8	147.9
1/4	10.9	145.3
cl	11.2	145.5
OK L.	15.4	141.3
+150 OK L.	14.7	142.0
cl	10.7	146.0
1/4	9.5	147.2
c	7.8	148.9
1/4	6.2	150.5

	+	H.I. 156.68	-	
cb			4.8	151.9
E.L.			0.2	156.5
$\frac{2000}{E.L.}$			+1.3	161.0
cb			3.6	153.1
$\frac{1}{4}$			5.0	151.7
c			6.8	149.9
$\frac{1}{4}$			7.8	148.9
cb			9.7	147.0
W.L.			14.4	142.3
$\frac{2000}{W.L.}$			12.3	144.4
cb			8.5	148.2
$\frac{1}{4}$			6.9	149.8
c			6.7	150.0
$\frac{1}{4}$			4.4	152.3
cb			2.6	154.1
#	10.15	163.63	3.20	153.48
E.L.			3.3	160.3
R.R.'s sidewalk - 75' quarters:				
$3000 =$ North line of Quince Vt 80' wide				
E.L.			2.0	161.6
+20			7.1	156.5

	+	H.I. 163.63	-	Columbus Vt. (75' wide)	39
cb			8.6	155.0	
$\frac{1}{4}$			9.5	154.1	
c			11.1	152.5	
$\frac{1}{4}$			12.9	150.7	
cb			14.6	149.0	
W.L.			18.0	145.6	
North curb of Quince Vt 14' curb					
W.L.			19.2	145.4	
cb			14.2	149.4	
$\frac{1}{4}$			12.7	150.9	
c			11.0	152.6	
$\frac{1}{4}$			9.5	154.1	
cb			7.7	155.9	
E.L.			2.7	160.9	
North $\frac{1}{4}$ of Quince Vt 13' quarters					
E.L.			1.9	161.7	
cb			7.8	155.8	
$\frac{1}{4}$			9.7	153.9	
c			11.3	152.3	
$\frac{1}{4}$			12.6	151.0	

	+	7.I. 163.63	-
cb			14.3 149.3
OT. L.			18.9 144.7
Center line of Annice St.			
OT. L.			19.7 143.9
cb			14.6 149.0
1/4			12.8 150.8
c			11.5 152.1
1/4			9.8 153.8
C.L.			7.8 155.8
+11			4.3 159.3
E. L.			3.2 160.4
North 1/4 of Annice St.			
E. L.			2.0 161.6
cb			8.0 155.6
1/4			9.6 154.0
c			11.3 152.3
1/4			12.7 150.9
cb			14.4 149.2
OT. L.			19.5 144.1
South end of Annice St.			

	+	7.I. 163.63	-
So. curb			
OT. L.			19.3 144.3
cb			14.0 149.6
1/4			12.6 151.0
c			11.5 152.1
1/4			10.0 153.6
cb			8.3 155.3
E. L.			2.5 161.1
22.5' sidewalk - 7.5' quarters			
00 = North line of Annice St.			
E. L.			3.8 159.8
cb			8.9 154.7
1/4			10.5 153.1
c			12.0 151.6
1/4			13.3 150.3
cb			14.4 149.2
OT. L.			19.4 144.2
+25' OT. L.			19.8 143.8
cb			16.1 147.5
1/4			14.6 149.0
c			13.0 150.6
1/4			11.6 152.0

Columbia St.
(75' wide)

40

	+	H.I. 163.63	-	
cl			10.1	153.5
g.L.			6.1	157.5
+50 g.L.			8.2	155.4
cl			12.1	151.5
H. Cen. Mon. Quince & Columbia	2.68	154.77	11.54	147.09
1/2			4.5	150.3
c			6.0	148.8
1/2			7.3	147.5
cl			8.5	146.3
OK L.			12.2	142.6
+75 OK L.			13.5	141.0
cl			9.8	145.0
1/2			8.7	146.1
c			7.7	147.1
1/2			6.4	148.4
cl			5.9	148.9
g.L.			0.6	154.2
+100 g.L.			3.8	151.0
cl			8.6	146.2
1/2			9.1	145.7

	+	H.I. 154.77	-	Columbia Mt. (75' wide)
c			9.5	145.3
1/2			10.3	144.5
cl			11.6	143.2
OK L.			15.0	139.8
+25 OK L.			16.2	138.6
cl			13.8	141.0
1/2			12.8	142.0
c			12.0	142.8
1/2			11.3	143.5
cl			11.3	143.5
g.L.			7.8	147.0
g.L.			13.0	141.8
#	0.09	142.17	12.69	142.08
cl			2.2	140.0
1/2			2.5	139.7
c			3.1	139.1
1/2			3.6	138.6
cl			4.2	138.0
OK L.			6.5	135.7

	+	H.I. 142.17	-	
1475 Or. L.			11.3	130.9
cl			9.1	133.1
1/4			8.4	133.8
c			7.7	134.5
1/4			7.2	135.0
cl			7.2	135.0
8 L.			4.8	137.4
2400 8 L.			10.2	132.0
cl			11.2	131.0
1/4			12.0	130.2
c			12.4	129.8
1/4			10.4	128.8
cl			74.3	127.9
Or. L.			15.6	126.4
# 2420	2.71	135.56	2.82	132.85 night Reg.
Or. L.			14.0	121.6
cl			13.0	122.6
1/4			12.4	123.2
c			11.9	123.7
1/4			11.5	124.1

	+	H.I. 135.56	-	
				Columbia Vt (75' wide)
				42
cl			11.7	123.9
8 L.			11.5	124.1
# 2450	1.69	124.20	13.05	122.51
8 L.			6.0	118.2
cl			7.4	116.8
1/4			7.8	116.4
c			8.0	116.2
1/4			9.1	116.1
cl			8.6	115.6
Or. L.			8.6	115.6
2475 Or. L.			10.3	108.9
cl			15.1	109.1
1/4			14.9	109.3
c			14.6	109.6
1/4			14.1	110.1
cl			13.7	110.5
8 L.			11.8	112.4

75
14.20

(Note) See sketch, Page 44.

3000 = middle line of Palm St.

0+00

E.L.	11.6	112.6
cl	14.5	109.7
1/4	15.4	108.8
c	15.8	108.4
1/4	17.2	107.0
cl	17.6	106.6
OK. L.	20.7	103.5

North curb of Palm St. 14' curb - 13' quarters

OK. L.	17.9	106.3
cl	13.6	110.4
1/4	12.7	111.5
c	12.0	112.2
1/4	11.5	112.7
cl	9.8	114.4
E.L.	7.3	116.9

North 1/4 of Palm St.

E.L.	2.9	121.3
cl	4.1	120.1
1/4	6.2	118.0

75
18.70

Columbia St
(75' wide)

43

c	8.0	116.2
1/4	8.0	116.2
cl	8.0	116.2
OK. L.	12.0	112.0
Center of Palm St.		
OK. L.	8.7	115.5
cl	5.9	118.3
1/4	5.1	119.1
c	4.7	119.5

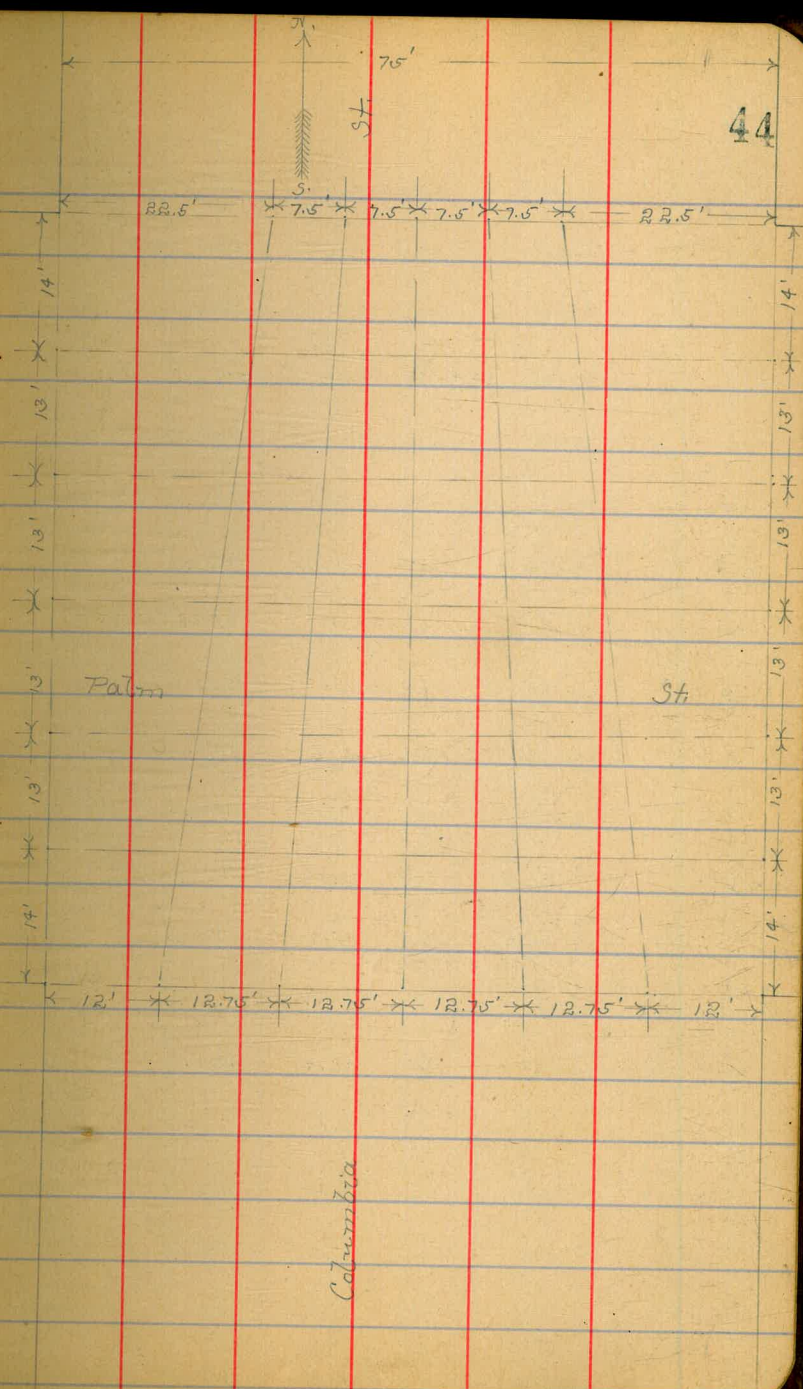
Turn on Len from Palm & Columbia		
#	12.63	13 2.13
	4.70	119.50
1/4	10.5	121.6
cl	8.8	123.8
E.L.	6.2	125.9

North 1/4 of Palm St.

E.L.	2.4	129.5
cl	4.6	127.5
1/4	6.6	125.5
c	8.2	123.9
1/4	9.6	122.5
cl	10.5	121.6

7. I.
19213

N. 2.	10.9	118.2
South curb of Palm St.		
N. 2.	10.0	122.1
cb	8.2	123.9
1/4	6.7	125.4
c	5.1	127.0
1/2	3.5	128.6
cb	2.0	130.1
E.L.	0.2	131.9
South +10		
E.L.	0.2	131.9
cb	2.0	130.1
1/4	3.4	128.7
c	5.2	126.9
1/2	7.1	125.0
cb	8.9	123.2
N. 2.	10.7	121.4
(Note)		
From Here to the N.L. of Olive 12.75' sidewalk - 12.75' quarters.		
00 = South line of Palm St. (INTERPOLATE)		
N. 2.	7.5	124.6
cb	5.5	126.6



7.I.
137-12

1/2			9.1	128.0
c			2.1	130.0
1/4			+0.1	132.2
#	13.15	144.90	2.39	131.75
ob			11.7	133.2
E.L.			11.3	133.6
+25				
E.L.			6.1	138.8
cb			7.8	137.1
1/4			9.4	135.5
c			10.9	134.0
1/4			11.7	133.2
cb			13.5	131.4
M.L.			15.3	129.6
+50				
M.L.			12.6	132.3
ob			10.9	134.0
1/4			9.0	135.9
c			7.8	137.1
1/4			5.2	139.7
ob			2.8	142.1
E.L.			1.0	143.9

7.I.
149-90

Columbia Vt
(75' wide)

45

+75				
E.L.			+0.6	148.5
ob			+1.1	146.0
1/4			1.0	143.9
c			8.0	141.9
1/4			5.7	139.2
cb			7.7	137.2
M.L.			9.6	135.4
+100				
M.L.			7.9	137.0
cb			5.5	139.4
1/4			2.9	142.0
c			1.0	143.9
#	10.52	155.31	0.11	144.79
1/4			3.8	146.5
cb			6.0	149.3
E.L.			3.3	152.0
+25				
E.L.			0.3	155.0
cb			3.8	151.5
1/4			6.8	148.5
c			9.9	145.4
1/4			12.4	142.9

	+	H.I. 155.31	-
cb			14.8 140.5
OK. L. <u>1+50</u>			16.8 138.5
OK. L.			16.0 139.3
cb			14.2 141.1
1/4			11.9 143.9
c			8.7 146.6
1/4			5.7 149.6
cb			3.5 151.8
E.L. <u>1+75</u> E.L.			0.2 155.1
			+ 7.3 156.6
+1			+ 0.2 155.5
cb			2.8 152.5
1/4			6.8 148.5
c			8.6 146.7
1/4			11.3 144.0
cb			13.7 141.6
OK. L. <u>2+00</u>			15.3 140.0
OK. L.			15.9 139.4
cb			14.2 141.1
+6			11.1 144.2

	+	H.I. 155.31	-	Columbia St. (75' wide)
1/4			10.4	144.9
c			9.1	146.2
1/4			6.5	148.8
cb			3.8	151.5
+11			1.1	154.2
E.L. <u>2+25</u> E.L.			+ 0.1	155.9
			1.4	153.9
+1			2.5	152.8
cb			5.5	149.8
1/4			8.0	147.3
c			9.5	145.8
1/4			9.6	145.7
cb			12.6	142.7
+6			15.6	139.7
OK. L.			17.0	138.3
# <u>2+50</u> OK. L.	2.71	149.12	8.90	146.41
			12.6	136.5
+5			11.6	137.5
cb			7.4	141.7
+10			3.2	145.9

HI.
149.12

1/2	3.1	146.0
c	2.9	146.2
1/2	2.3	146.5
cb	0.2	148.9
+11	+2.9	152.0
E.L.	+3.3	152.4
<u>2+75</u> E.L.	+3.3	152.4
+1	+2.0	151.1
cb	1.0	148.1
1/4	2.4	146.7
c	2.5	146.6
1/4	3.7	145.4
cb	8.0	141.1
+7	12.7	136.4
OK L.	13.0	136.1
OK L.	12.0	137.1
cb	10.0	139.1
1/4	7.1	142.0
c	5.9	143.2

3+07. RR Calculated from tie point map - North line Olive on the West, BAE.
See next page also tie point map - Computer please check these calculations.

OK. New

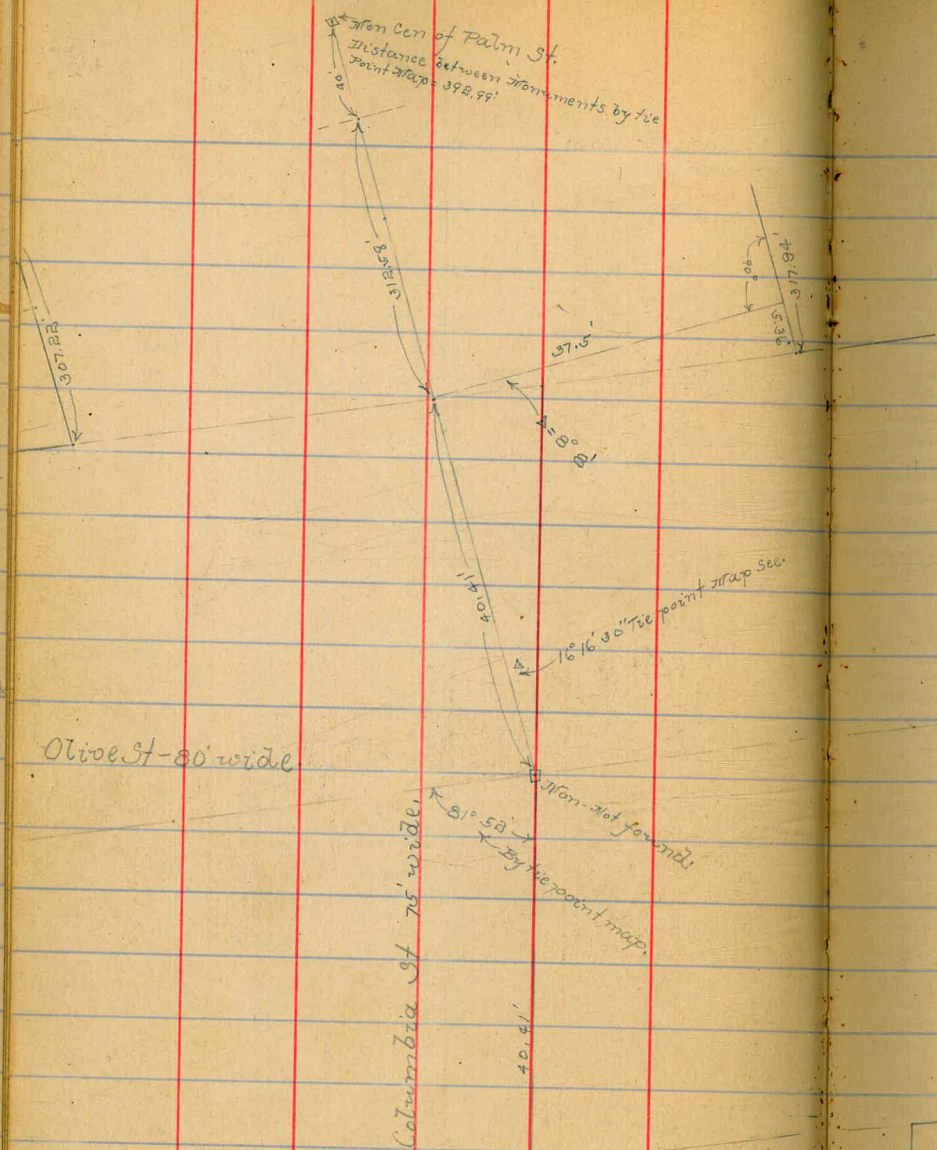
HI.
149.12

Columbia St
(75' wide)

47

1/2	4.2	144.9
cb	1.1	148.0
+11	+1.7	150.8
E.L.	+2.8	151.9
3+07. RR on W. } = North line of Olive St. 3+17.99 .. E		
E.L.	+2.9	152.0
+1	+1.9	151.0
+5	+0.8	149.9
+6	2.0	147.1
cb	4.3	144.8
1/2	5.1	144.0
1/2	5.5	143.6
c	8.8	140.3
+5	12.3	136.8
1/2	12.6	136.5
cb	13.2	136.1
OK L.	12.0	137.1
#	0.06	136.49
1/2	2.27	123.90
1/2	11.673	12.87
	10.76	100.97

100.97 = 100.96 E.M. S.E. Cor. Tie up S. Olive.



Xsection of Park Blvd from the South Line of University Ave
to the North line of Balboa Park. Oct 1914
100' Wide - 16' Curbs from University Ave to Robinson Ave.
20' Curbs from Robinson South.
For notes of Narrowing See Book 948 - Page 11.

RTW 20093 Spk Pole NW Cor Park Blvd & University Ave.

+	MI	-
321	319.74	315.83

Section on diagonal line from NW Cor of Park Blvd & Florida

NH 16' W.C. Cor of same Street. Section A see sketch. On Paving

Section A.
N.L.

	6.0	313.7
--	-----	-------

+ 20' Old gutter

	6.0	313.7
--	-----	-------

Appe 36.9' cl.

	5.1	314.6
--	-----	-------

and line produced

	4.9	314.8
--	-----	-------

1/4

	4.3	315.4
--	-----	-------

c

	4.0	315.7
--	-----	-------

1/4

	3.9	315.8
--	-----	-------

and produced

	4.1	315.6
--	-----	-------

cl.

	4.5	315.2
--	-----	-------

25.62' E.L.

	3.2	316.5
--	-----	-------

cc = South line of University Ave on East. On Paving. Sec B

E.L.

	3.2	316.5
--	-----	-------

30.49' cl.

	4.5	315.2
--	-----	-------

1/4

	4.2	315.5
--	-----	-------

c

	4.2	315.5
--	-----	-------

1/4

	4.6	315.1
--	-----	-------

#

2.75	313.06	+26	315.18
------	--------	-----	--------

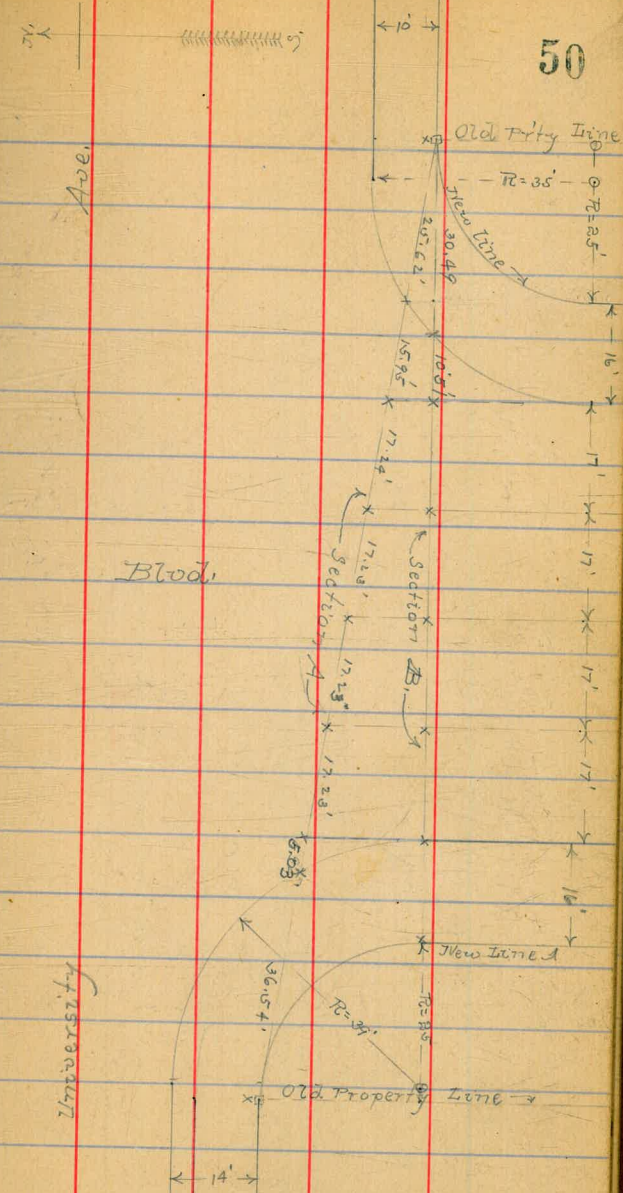
MI
312.06

49

cl	3.6	314.5
N.L.	4.4	313.7
+ 20'		
N.L.	7.4	310.7
cl	3.4	314.7
1/4	2.9	315.2
c	3.2	314.9
1/4	2.7	315.4
cl	2.9	315.2
E.L.	3.4	314.7
+ 50'		
E.L.	3.4	314.7
cl	3.3	314.8
1/4	3.2	314.9
c	4.2	313.9
1/4	3.7	314.4
cl	3.7	314.4
N.L.	5.8	312.3
+ 70'		
N.L.	7.7	310.4
cl	6.2	311.9
1/4	5.3	312.8
c	4.9	313.2

	HI 318.06		Park Blvd (100' wide)
1/4		3.5	314.6
cl		3.5	314.6
6 L. 1+00		3.5	314.6
8 L.		3.5	314.6
cl		3.7	314.4
1/4		3.8	314.3
c		5.0	313.1
1/4		6.9	311.2
cl		6.6	311.5
OK L. 1+25		6.4	311.7
OK L.		7.0	311.1
cl		5.8	312.3
1/4		3.3	314.8
c		4.6	313.5
1/4		4.1	314.0
cl		4.0	314.1
6 L. 1+50		3.6	314.5
6 L.		4.0	314.1
cl		4.1	314.0
1/4		4.2	313.9

Park Blvd



H.I.
313.06

c	4.5	313.6
1/4	5.4	312.7
cl	6.4	311.7
OK. L.	7.5	310.6
1+75		
OK. L.	8.3	309.8
cl	5.4	312.7
1/4	4.5	313.6
c	4.6	313.5
1/4	4.4	313.7
cl	4.2	313.9
G.S.	4.4	313.7
2+00		
G.L.	4.6	313.5
cl	4.4	313.7
1/4	4.7	312.4
c	5.0	313.1
1/4	6.1	312.0
cl	7.9	310.2
OK. L.	8.6	309.5
2+14 = North line of Essex Vt 56 wide 10' curb 7 1/2' diameter		
2+14		
OK. L.	9.6	309.5

+ H.I.
313.06

Dark Blood
(100' wide):

51

cl	9.3	309.8
1/4	6.8	311.3
c	5.3	312.8
1/4	4.9	312.2
cl	4.6	313.5
G.S.	4.8	313.3
North Curve of Essex Vt.		
G.S.	5.0	313.1
cl	4.7	313.4
1/4	5.0	313.1
c	5.7	312.4
1/4	7.3	310.8
cl	8.5	309.6
OK. L.	9.0	309.1
North 1/2 of Essex Vt.		
OK. L.	9.4	308.7
cl	8.9	309.3
1/4	7.5	310.6
c	6.1	312.0
1/4	5.2	312.9

H.I.
318.06

cl	4.9	313.3
E.L.	5.1	313.0
Center of Essex St.		
E.L.	5.2	313.1
cl	4.9	313.2
1/4	5.3	312.8
c	6.3	311.8
1/4	7.6	310.5
cl	9.0	309.1
N.L.	9.4	308.7
Vanilla 1/4 of Essex St.		
N.L.	9.7	308.4
cl	9.3	308.8
1/4	7.6	310.5
c	6.3	311.8
1/4	5.2	312.7
cl	5.0	313.1
E.L.	5.1	313.0
North curb of Essex St.		
E.L.	5.3	312.8

H.I.
318.06

Part B Blvd.
(100 wide)

52

cl	5.1	313.0
1/4	6.6	312.5
c	6.7	311.4
1/4	8.3	309.8
cl	9.5	308.6
E.L.	10.1	308.0
co = North line of Essex St.		
N.L.	10.3	307.8
cl	9.9	308.2
1/4	8.3	309.8
c	7.1	311.0
1/4	5.7	312.4
cl	5.3	312.8
E.L.	5.2	312.7
+50 E.L.	6.4	311.7
cl	6.1	312.0
1/4	6.5	311.6
c	7.8	310.3
1/4	10.0	308.1
cl	11.2	306.9

H.I.
318.06

OV. L. 1400	11.2	306.9
OV. L.	12.9	305.7
cl	12.3	305.8
1/4	11.0	307.1
c	9.7	302.4
+7	7.9	310.3
1/4	7.2	310.9
cl	6.9	311.2
B.L. 1450	6.9	311.2
B.L.	7.4	310.7
cl	7.7	310.4
1/4	7.9	310.3
+9	8.2	309.9
c	10.5	307.6
1/4	10.6	307.5
cl	13.0	305.1
OV. L. 2200	13.5	304.6
OV. L.	14.1	304.0
cl	15.4	304.7
1/4	11.1	307.0

H.I.
318.06

Pink Blvd.
(100' wide).

53

c	9.8	308.3
1/4	9.4	302.7
cl	9.1	309.0
+12	7.9	310.3
B.L.	6.9	311.2
H 2450	6.6	309.55
B.L.	+0.6	310.1
cl	1.8	308.2
1/4	3.5	307.0
c	3.9	306.6
1/4	3.4	306.1
cl	3.8	305.7
OV. L. 2475	5.0	304.5
OV. L.	4.7	304.8
cl	4.3	305.2
1/4	4.3	305.2
c	3.6	305.9
1/4	3.1	306.4
cl	1.3	308.2
B.L.	11.0	310.5

$3+04.5 =$ Tangent Point for N.E. Curve. See Section A. Station 304.5

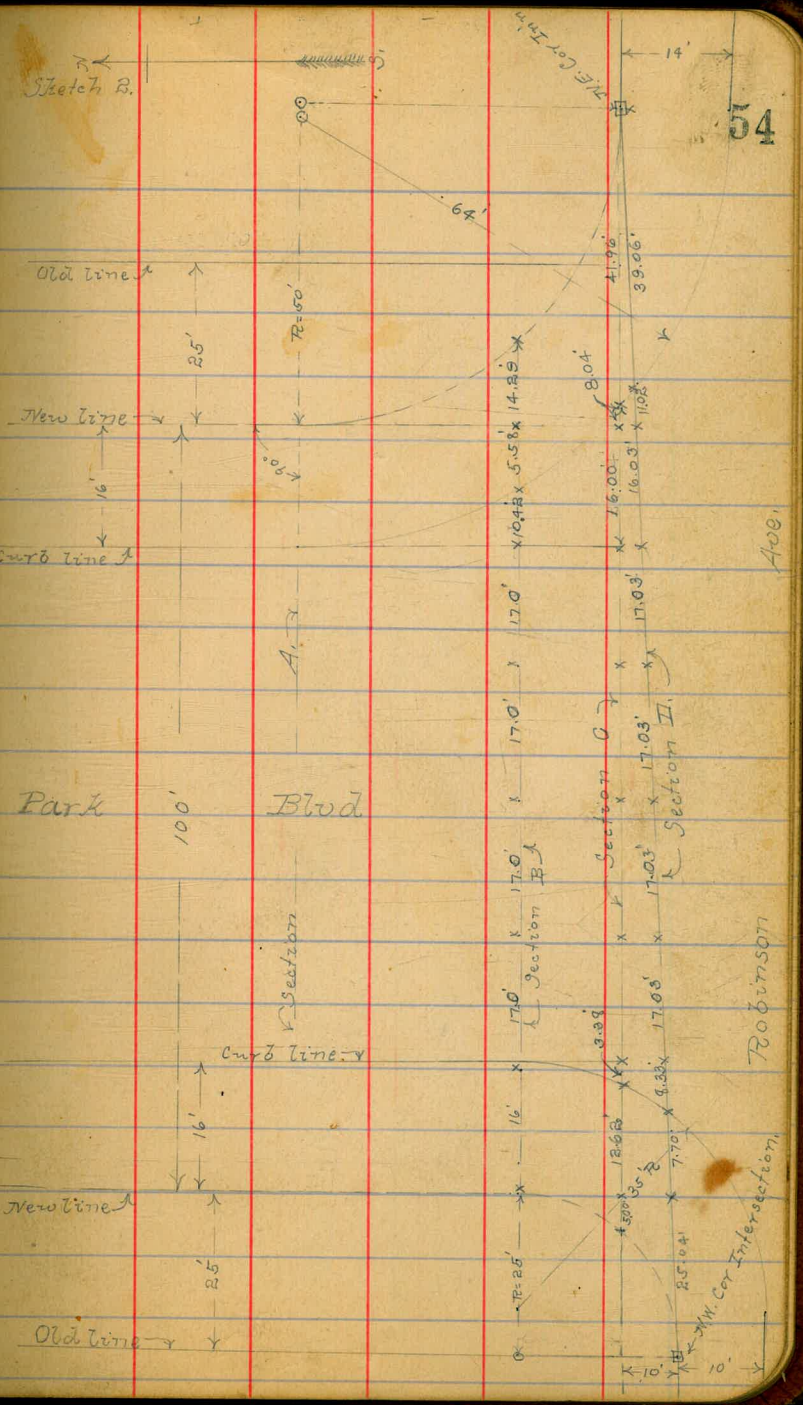
Ch.	1.9	307.6		
cb	3.1	306.4		
1/4	4.2	305.3		
c	4.3	305.2		
1/4	4.7	304.8		
cb	4.3	305.2		
Ch. L.	4.9	304.6		
H	0.20	309.11	0.61	309.92

$3+09.5 =$ Tangent point for N.W. Curve. See Section B. Station 309.5

Ch. L.	5.1	304.0
cb	4.7	304.4
1/4	4.6	304.5
c	4.6	304.5
1/4	4.4	304.7
curve produced	3.7	305.4
cb	2.8	305.3
Radialty line produced.	2.3	306.8
B.L.	1.2	307.9

Park Blvd.
(100' wide).

Sketch B.



34545 = North line of Robinson Ave on the East. Section C.

34545
 (note)
 E.L. taken at top of vertical end. +7.2 316.3

+21 +6.9 316.0

+19 1.4 307.7

c.b. 2.3 306.8

Property line produced. 3.4 v 305.7

curb line produced. 4.4 304.7

1/4 4.9 v 304.2

e 5.0 v 304.1

1/4 5.0 v 304.1

curb produced. 4.6 v 304.3

c.b. 4.9 v 304.2

property line produced. 5.4 v 303.7

OK L. 5.8 303.3

(South)
 north line of Robinson Ave. Section D.

OK L. 7.0 302.1

Property line produced. 5.6 303.5

c.b. 5.1 304.0

curb produced. 5.2 303.9

1/4 5.2 303.9

Park Blvd (100' wide)

56

e 5.1 304.0

1/4 5.0 304.1

curb line produced 4.7 304.4

property line produced 4.6 304.5

c.b. 4.5 304.6

(note)
 E.L. taken at bottom of vertical end. 3.9 305.2

North line of Robinson Ave. See sketch on Section A.

OK L. 8.8 300.3

c.b. 8.5 300.6

gutter line 7.9 301.2

1/4 7.1 302.0

e 6.7 302.4

1/4 6.4 302.7

gutter line. 6.5 302.6

E.L. 6.3 302.8

Section B.

Old corner of Robinson Ave & Park Blvd.

E.L. 7.0 302.1

New corner. 6.7 302.4

c.b. 6.8 302.3

71
309.12

1/4		6.9	302.3
c		7.4	301.7
1/4		7.9	301.3
curve produced		8.0	301.1
cl		8.1	301.0
OK L		8.8	300.3

cc = T.C.C. on West 94.29 South of New Cas on the East. Section C.
(Note) read at time from Here South.

OK L		8.9	300.2
cl		8.6	300.5
1/4		8.5	300.6
c		7.5	301.6
1/4		6.7	302.4
cl		6.9	302.2
OK L		6.5	302.6

R = 652.70 on West side.

A = 130° 06' " " "
L = 129.24 " " "

Def = 1' = 0.0429915

R = 758.70'
A = 16° 23' 25"
L = 215.40'

Def = 1' = 0.0390608

These stations = 25' chords on the short side of the curves.

#	0.91	305.71	4.32	304.50 = B.T. Sep 23.27
OK L			3.3	302.4
cl			4.4	301.3
1/4			4.0	301.7

71
305.71

Park Blvd.
(100' wide)

57

c		4.0	301.3
1/4		6.6	300.1
cl		6.2	299.5
OK L		6.0	299.7
OK L	W = 50	2.0	298.7
cl		6.6	299.1
1/4		6.1	299.6
c		4.9	300.8
1/4		4.7	301.0
cl		5.0	300.7
OK L		4.1	301.6
OK L	W = 70	4.7	301.0
cl		5.5	300.2
1/4		5.2	300.5
c		5.5	300.2
1/4		7.2	298.5
cl		7.3	298.4
OK L		7.5	298.2

H.I.
305.71

W=100 M.L.	8.5	297.2
cl	7.6	298.1
1/2	7.3	298.4
e	6.0	299.7
1/2	5.6	300.1
cl	5.9	299.8
E.L.	5.4	300.3
W=1+25 G.L.	6.3	299.4
cl	6.2	299.5
1/4	6.0	299.7
e	6.2	299.5
+5	7.8	297.9
1/2	8.8	296.9
cl	8.6	297.1
M.L.	9.5	296.2
1+49.24 on West B+15.20 " East } = P.R.C.		
M.L.	12.7	293.0
cl	10.5	295.2
1/2	9.4	296.3
+12	8.4	297.3

H.I.
305.71

Park Blvd.
(100' wide)
58

c	6.8	298.9
1/4	6.2	299.5
cl	6.1	299.6
G.L.	6.7	299.0
A=18°40' R=680' L=506.36' Defl'=0.02189°	East.	A=18°40' R=780' L=590.99' Defl'=0.036728° West.
Chords are on East B. 23.67° West. Radial lines for all sections.		
P.C. R+50 on E. G.L.	6.8	298.9
cl	6.1	299.6
1/2	6.2	299.5
+10	6.7	299.0
c	8.6	297.1
1/2	10.7	295.0
cl	13.4	292.3
M.L. E=410	15.4	290.3
M.L.	12.6	293.1
cl	10.9	294.8
1/2	9.6	296.1
c	7.3	298.4
1/2	6.2	299.5
cl	6.0	299.7

H.I.
30571

E.L. E=125'	6.7	299.0
E.L.	7.0	298.7
cl	6.0	299.7
1/4	6.1	299.6
c	7.0	298.7
1/4	8.3	297.4
cl	9.0	296.7
Or.L. E=150'	12.1	293.6
Or.L.	10.6	295.1
cl	9.1	296.6
1/4	8.4	297.3
c	7.1	298.6
1/4	6.0	299.7
cl	5.8	299.9
E.L. E=75'	6.6	299.1
E.L.	6.5	299.6
cl	5.6	300.1
1/4	5.7	300.0
c	6.9	298.8
1/4	8.0	297.7

H.I.
30571

Park Blvd.
(100' wide)

59

cl	8.0	297.7
Or.L. E=100'	9.3	297.4
Or.L.	5.6	300.1
cl	5.8	299.9
1/4	5.7	300.0
c	5.5	300.2
1/4	5.0	300.7
E.L. E=125'	6.2	299.5
E.L.	5.4	300.3
cl	4.4	301.3
1/4	4.7	301.0
c	5.2	300.5
1/4	5.3	300.4
cl	4.9	300.8
Or.L. E=150'	4.6	301.2
Or.L.	4.1	301.6
cl	4.1	301.6
1/4	4.2	301.5
c	4.0	301.7
1/4	3.8	301.9

H.I.
205.71

cl	3.9	301.8
E.L.	5.0	300.7
E.L.	4.7	301.0
cl	3.7	302.0
1/2	3.6	302.1
c	3.5	302.2
1/2	3.6	302.1
cl	4.2	301.5
N.L.	4.5	301.2
North end of Pennsylvania Ave.		
N.L.	4.9	300.8
N. Curve	4.8	300.9
cl	4.4	301.3
1/4	4.0	301.7
c	3.5	302.2
1/2	3.3	302.6
cl	3.5	302.2
E.L.	4.4	301.8

1400 34 on East
1484 20 " West } = North Line Pennsylvania Ave. (80' wide) See Sketch 4

Old Property Line

Chord = 93.00'
7.150 x 10.707
13.508 x 18.581
14.583 x 18.897
Chord = 77.37

E. Curve

East 1/4

Center

West 1/4 Blvd.

W. Curve

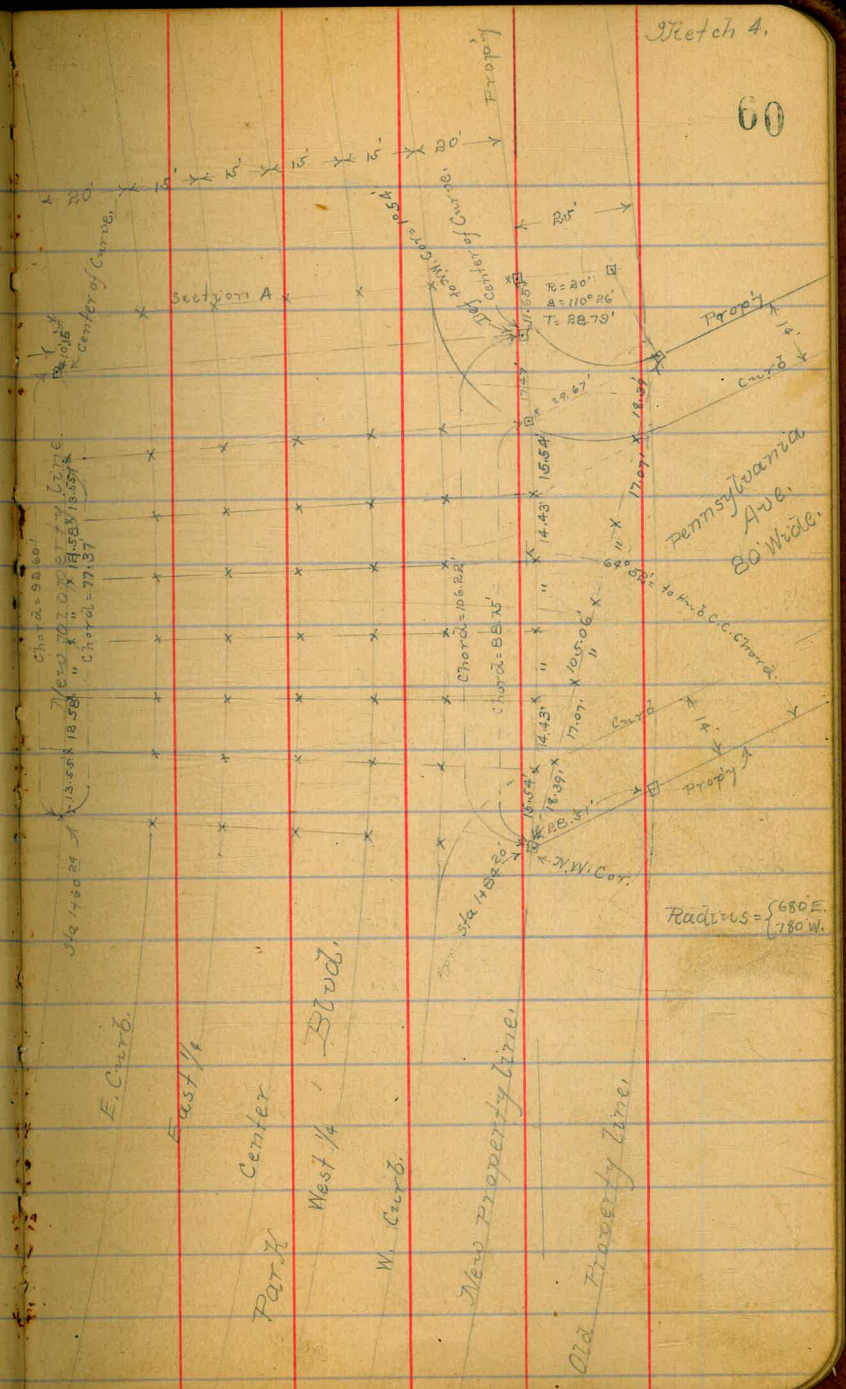
New Property Line

Old Property Line

Radius = { 650 E.
750 W.

Sketch 4.

60



711
30471

North 1/4 of Pennsylvania Ave

E.L.	4.2	301.5
cl	3.4	302.3
1/2	3.0	302.7
c	3.6	302.2
1/2	4.3	301.4
cl	4.3	301.4
West curve	5.0	300.7
W.L.	5.4	300.3

Center of Pennsylvania Ave

W.L.	5.4	300.3
West curve	5.2	300.5
cl	4.5	301.2
1/2	4.1	301.6
c	3.6	302.1
1/2	2.9	302.8
cl	3.2	302.5
E.L.	2.8	302.9

South 1/4 of Pennsylvania Ave

E.L.	2.6	303.4
------	-----	-------

711
30471

Dank Island
(100' wide)

61

cl	3.1	302.6
1/2	2.9	302.9
c	3.4	302.3
1/2	4.2	301.5
cl	4.4	301.3
West curve	5.0	300.7
W.L.	5.9	299.8

South end of Pennsylvania Ave

W.L.	5.9	299.9
West curve	4.9	300.8
cl	4.6	301.1
1/2	4.2	301.5
c	3.4	302.3
1/2	3.0	302.7
cl	3.2	302.5
E.L.	2.4	303.3

South line of Pennsylvania Ave

E.L.	2.6	303.1
cl	3.2	302.5
1/2	3.2	302.5

	+	7/1. 305.71	-	
c			3.7	302.0
1/4			4.2	301.5
cl			4.5	301.2
West Curve			5.6	300.1
N.L.		✓	5.6	300.1
#	2.98	303.19	5.00	300
F.C.C = 00. See is the tab 4 section A.				
N.L.			2.4	300.8
cl			2.0	301.7
1/4			2.3	300.9
c			1.3	301.9
1/4			0.9	302.4
cl			0.9	302.3
E.L. E=+25			0.4	302.8
E.L.			0.5	302.7
cl			1.1	302.1
1/4			1.1	302.1
c			2.1	301.1
1/4			2.4	300.8
cl			2.1	301.1
N.L.			3.1	300.1

	+	7/1. 303.19	-	Parke Blvd. (100' wide)
				62
	E=+50			
N.L.			3.7	299.5
cl			2.2	300.8
1/4			2.5	300.7
cc			2.4	300.8
1/4			1.4	301.8
cl			1.2	302.0
E.L. E=+75			1.4	301.8
E.L.			1.4	301.8
cl			1.4	301.8
1/4			1.6	301.6
c			2.6	300.6
1/4			2.8	300.4
cl			3.1	300.1
N.L. E=+100			4.3	298.9
N.L.			5.0	298.2
cl			3.6	299.6
1/4			3.6	299.6
c			3.3	299.9
1/4			2.0	301.2
cl			1.6	301.6

21 E. 37th St. Pa. State Univ. Car at
Parke Blvd. & Penna. Ave.

	71. 303.19	
g.l. E=1+25	1.9	301.4
g.l.	1.0	302.2
+8	2.2	301.0
cl	1.7	301.5
1/2	2.2	301.0
c	3.3	299.9
1/2	4.0	299.2
cl	4.5	298.7
OK. 2. E=1+50	5.1	298.1
OK. 2.	5.2	298.0
cl	4.9	298.3
1/2	4.4	298.8
c	3.5	299.7
1/2	2.5	300.7
cl	2.3	300.9
+8	2.7	300.5
g.l. E=1+75	1.8	301.4
g.l.	2.1	301.1
+8	2.5	300.3
cl	2.4	300.8

	71. 303.19	Part. Blvd. (100' wide) 63
1/2	2.6	300.6
c	3.8	299.4
1/2	2.6	298.6
cl	5.0	298.2
OK. 2. E=2+00	5.5	297.7
OK. 2.	5.5	297.7
cl	5.1	298.1
1/2	4.7	298.5
c	3.3	299.9
1/2	2.7	300.5
cl	2.7	300.5
+8	2.9	300.3
g.l.	1.5	301.7
E=2+25 g.l.	2.8	300.4
cl	3.0	300.2
1/2	2.5	300.7
c	3.6	299.6
1/2	4.8	298.4
cl	5.0	298.2
OK. 2.	5.4	297.8

H.I.
303.19

2778²² West
2743² Apple, E

}= E.L. = Old line on North of Cypress.

OK L.	5.6	297.6
cb	5.1	298.1
1/4	4.4	298.8
c	3.9	299.8
1/4	2.5	300.7
cb	3.0	300.7
E.L.	3.1	300.1

Cypress St originally 30' narrowed 10' on each side - 10' curbs - 10' quarters.
End curve 110' North line of Cypress St.

E.L.	2.5	300.7
cb	3.0	300.2
1/4	2.6	300.6
c	3.4	299.8
1/4	4.3	298.9
cb	5.0	298.2
OK L.	5.6	297.6

North curb of Cypress

OK L.	5.7	297.5
cb	4.7	298.5
1/4	4.8	299.0

H.I.
300.19

Park Blvd.
(100 wide)

64

c	3.3	299.9
1/4	2.8	300.4
cb	3.2	300.0
E.L.	2.1	301.1

North 1/4 of Cypress

E.L.	2.2	301.0
cb	3.4	299.8
1/4	2.9	300.4

c	3.4	299.8
---	-----	-------

1/4	4.0	299.2
-----	-----	-------

cb	4.5	298.7
----	-----	-------

OK L.	5.5	297.7
-------	-----	-------

Center of Cypress

OK L.	5.5	297.7
-------	-----	-------

cb	4.1	299.1
----	-----	-------

1/4	4.0	299.2
-----	-----	-------

c	3.3	299.9
---	-----	-------

1/4	2.9	300.3
-----	-----	-------

cb	3.3	299.9
----	-----	-------

710

3.2	300.0
-----	-------

HI.
303.19

E.L.	1.6	301.6
South 1/2 of Cypress Vt.		
E.L.	2.5	300.7
cl	3.1	300.1
1/4	2.7	300.5
c	3.1	300.1
1/4	3.4	299.4
cl	3.8	299.4
M.L.	5.2	298.0
South end of Cypress		
M.L.	5.5	297.7
cl	3.8	299.4
1/4	3.7	299.5
c	3.0	300.2
1/4	2.7	300.5
cl	3.1	300.1
E.L.	3.1	300.1
South line of Cypress Vt.		
E.L.	2.8	300.4
cl	3.1	300.1

HI.
303.19

Park Blvd.
(100' wide)

65

1/4	2.8	300.4
c	3.0	300.2
1/4	3.8	299.4
cl	4.0	299.2
E.L.	5.4	297.8
+60		
M.L.	5.1	298.1
cl	4.5	298.7
1/4	3.8	299.4
c	3.0	300.2
+10	2.2	301.0
1/4	3.0	300.2
cl	3.0	300.2
E.L.	2.3	300.9
#	6.13	304.125
+10	5.17	298.02
E.L.	3.3	300.9
cl	4.0	300.2
1/4	4.1	300.1
+5	3.4	300.8
c	3.8	300.4
1/4	4.7	299.5

298.02 at Point S of E. Side SW.
Cor of Park Blvd. & Cypress.

	+	712 309.15	
cb		5.7	298.5
Or. L.		6.1	298.1
+60 Or. L.		6.9	297.3
cb		6.3	297.9
1/4		5.3	298.9
c		4.1	300.1
+10		3.5	300.7
1/4		4.2	300.0
cb		4.1	300.1
E.L.		4.3	299.9
+10 E.L.		4.2	300.0
cb		4.5	299.7
1/4		4.3	299.9
+5		3.8	300.4
c		4.5	299.7
1/4		5.6	298.6
cb		6.8	297.4
Or. L.		7.0	297.2
+60 Or. L.		7.4	296.8
cb		6.4	297.8

	+	712 309.15	Barh Blod. (100' wide) 66
1/4		5.6	298.6
c		4.6	299.6
+9		4.0	300.2
1/4		4.6	299.6
cb		4.6	299.6
E.L.		3.8	300.4
3+20 = North line of Branch 60' wide - 10' curb - 10' quarter			
E.L.		4.0	300.2
cb		5.3	298.9
1/4		5.0	299.2
+6		4.5	299.7
c		5.0	299.2
1/4		6.1	298.1
cb		6.5	297.7
Or. L.		7.2	297.0
North end of Branch			
Or. L.		7.2	297.0
cb		6.9	297.8
1/4		6.3	297.9
c		5.2	299.0

H.I.
304.15

+10	4.6	299.6
1/4	4.9	299.3
cb	5.9	298.8
E.L.	4.7	299.5
North 1/4 of Brocks		
E.L.	4.7	299.5
cb	5.5	298.7
1/2	5.1	299.1
+5	4.8	299.4
c	5.4	298.8
1/c	6.4	297.8
cb	6.6	297.6
N.L.	6.6	297.6
Center of Brocks		
N.L.	7.0	297.2
cb	7.0	297.2
1/4	6.4	297.8
c	5.4	298.8
+10	4.5	299.7
1/4	5.1	299.1

H.I.
304.15

Park Blvd.
(100' wide)

67

cb	5.5	298.7
E.L.	4.9	299.4
South 1/4 of Brocks		
E.L.	5.0	299.2
cb	5.6	298.6
1/2	4.9	299.4
+5	4.6	299.6
c	5.4	298.8
1/4	6.4	297.8
cb	7.0	297.2
N.L.	7.5	296.7
South end of Brocks		
N.L.	7.2	297.0
cb	7.3	296.9
1/4	6.5	297.7
c	5.5	298.7
1/2	4.9	299.3
cb	5.8	298.4
E.L.	5.2	299.0

00 = South line of Brocks

	H.I.		
E.L.	304.15	5.3	298.9
cb		5.5	298.7
1/4		5.5	298.7
+5		4.8	299.4
c		5.5	298.7
1/4		6.6	297.6
cb		7.5	296.7
OK.L.		7.6	296.6
H	0.35	2.99	301.26
100	301.61		
OK.L.		6.0	295.6
cb		5.4	296.2
1/4		4.4	297.2
c		3.4	298.2
1/4		2.9	298.7
cb		3.5	298.1
E.L.		3.3	298.3
1400			
E.L.		2.9	298.7
cb		3.3	298.3
+10		4.0	297.6
1/4		3.3	298.3

301.26 for 3 3/4 fence
 Post on old street line 30' S. south
 of Brooks Ave.

	H.I.		
	301.61		
		3.5	298.1
1/4		4.5	297.1
cb		5.3	296.3
OK.L.		6.0	295.6
1400			
OK.L.		5.5	296.1
cb		5.7	295.9
1/4		4.5	297.1
c		3.5	298.1
1/4		3.4	298.2
+9		4.4	297.2
cb		4.3	297.3
E.L.		3.8	297.8
1400			
E.L.		5.0	296.6
cb		5.0	296.6
+5		5.0	296.6
1/4		3.5	298.1
c		3.6	298.0
1/4		4.5	297.1
+10		6.2	295.4
cb		6.2	295.4

Parl. Blvd.
 (100' wide)
 68

H.I.
30161

OK.L. 2450		6.5	295.1
OK.L.		5.6	296.0
cl		5.5	296.1
1/4		4.7	296.9
c		3.8	297.8
1/4		3.8	297.8
+10		5.3	296.3
cl		5.3	296.3
E.L. 3+00		4.3	297.3
E.L.		4.3	297.3
cl		4.9	296.7
1/4		4.1	297.5
c		3.6	298.0
1/4		4.6	297.0
cl		5.5	296.1
OK.L. 3+00		5.6	296.0
OK.L.			
#	6.34	302.01	5.94
3+10 = North line of Myrtle Ave			
OK.L.		6.1	295.9
cl		5.8	296.2

295.62 = Old Blk on
N.W. of Myrtle & Park Blvd.

H.I.
30161

Park Blvd.
(100' wide)

69

1/4		5.0	297.0
c		4.0	298.0
1/4		4.0	298.0
cl		5.1	296.9
E.L.		4.6	297.4
North end of Myrtle Ave. 10' curb - 10' quarters			
E.L.		4.9	297.1
cl		5.2	296.8
1/4		4.3	297.7
c		3.9	298.1
1/4		4.8	297.2
cl		5.7	296.3
OK.L.		5.9	296.1
North quarter of Myrtle Ave.			
OK.L.		5.8	296.2
cl		5.7	296.3
1/4		4.7	297.3
c		4.0	298.0
1/4		4.2	297.8
cl		5.2	296.8

	HI 302.01	
E.L.	5.0	297.0
Center of Myrtle Ave.		
E.L.	5.0	297.0
cl	5.1	296.9
1/4	3.9	298.1
c	4.0	298.0
1/4	4.7	297.3
cl	5.5	296.5
N.L.	6.1	295.9
South 1/2 of Myrtle Ave.		
N.L.	6.2	295.8
cl	5.4	296.6
1/4	4.6	297.4
c	4.0	298.0
1/4	3.8	298.2
+10	5.0	297.0
cl	4.8	297.2
E.L.	4.7	297.3
South end of Myrtle Ave.		
E.L.	4.8	297.2

	HI 302.01	Park Blvd. (100' wide)
ab	4.9	297.1
1/4	4.1	297.9
c	4.0	298.0
1/4	4.6	297.4
cl	5.7	296.3
N.L.	6.5	295.5
South line of Myrtle Ave.		
N.L.	6.4	295.6
cl	5.9	296.1
1/4	4.7	297.3
c	4.0	298.0
1/4	3.9	298.1
cl	5.2	296.8
+5	4.6	297.4
E.L.	4.7	297.3
+50 E.L.	4.5	297.5
cl	4.8	297.2
1/4	4.1	297.9
c	4.1	297.9
1/4	4.7	297.3

	+	HI. 302.01	-
cb			6.4 295.6
or. L.			6.8 295.2
1+00 or. L.			6.8 295.2
cb			6.6 295.4
1/4			5.2 296.8
c			4.5 297.5
1/2			4.3 297.7
cb			5.2 296.8
E.L. 1+50			5.0 297.0
E.L.			5.1 296.9
cb			5.1 296.9
1/4			4.5 297.5
c			4.7 297.3
1/4			5.3 296.7
cb			6.3 295.7
or. L. 2+00			6.6 295.4
or. L.			6.3 295.7
cb			6.1 295.9
1/4			5.4 296.6
c			4.5 297.5

	+	HI. 302.01	-
1/2			4.5 297.5
cb			5.0 297.0
E.L. 2+50			4.8 297.2
E.L.			5.1 296.9
cb			5.0 297.0
1/4			4.5 297.5
c			4.7 297.3
1/4			5.4 296.6
cb			5.7 296.3
or. L.			6.0 296.0
3+00 = north line of Alpar St., 14' walkway. See sketch 5			
or. L.			5.7 296.3
cb			5.9 296.1
1/4			5.5 296.5
c			5.0 297.0
1/4			4.9 297.1
cb			5.3 296.7
E.L.			5.9 296.1
North end of Alpar St.			

Park Blvd
(100' wide)
71

H.I.
302.01

E.L.	6.1	295.9
cb	5.3	296.7
1/4	5.0	297.0
c	5.2	296.8
1/2	5.6	296.6
cb	6.0	296.0
av. 2.	5.7	296.3
North 1/2 of Open St		
av. 2.	6.1	295.9
cb	6.0	296.0
1/4	5.7	296.3
c	5.3	296.7
+10	4.6	297.4
1/2	5.5	296.5
cb	5.4	296.6
E.L.	6.5	295.5
Center of Open St		
E.L.	6.6	295.4
cb	5.1	296.9
1/4	4.5	297.5

H.I.
302.01

Parli Blvd.
(100 wide)
72

c	5.2	296.8
1/4	5.7	296.3
cb	6.0	296.0
av. 2.	6.0	296.0
South 1/2 of Open St		
av. 2.	6.4	295.6
cb	6.2	295.8
1/4	5.7	296.3
c	5.1	296.9
1/4	4.9	297.1
cb	5.7	296.3
E.L.	6.8	295.2
South end of Open St		
E.L.	7.3	294.7
cb	6.1	295.9
1/4	5.4	296.6
c	5.5	296.5
1/4	5.9	296.1
cb	6.3	295.7
av. 2.	6.5	295.5

H.J.
302.01

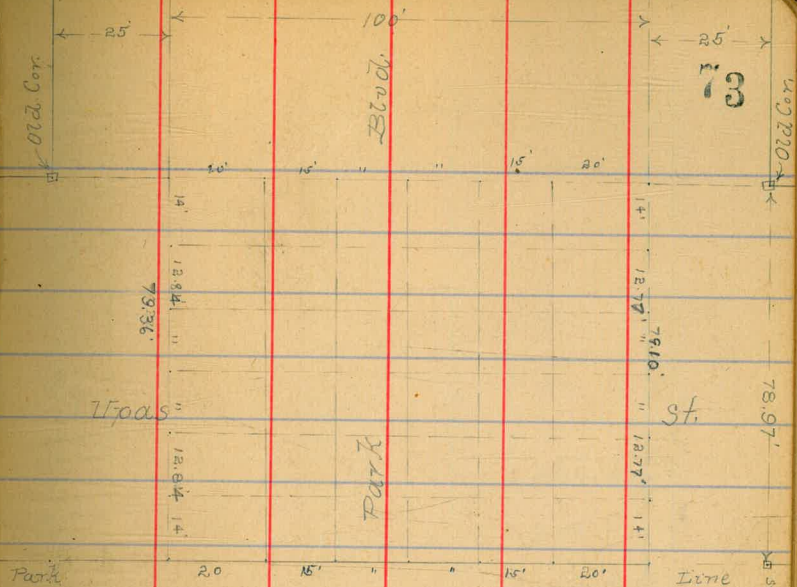
North line of (Map 44) North line of Balboa Park

OK. 4.	6.4	295.6
ab	6.4	295.6
1/2	6.0	296.0
c	5.6	296.4
1/2	5.5	296.5
cb	6.5	295.5
G. B.	7.8	294.2

(Note) See Check below. 6129 295.73 = B.M. Spk Pole NE. Cor Park Blvd & Upas.

76.21 = 30.5 on West } for 80 St.
 " = 90.30 " East }
 Old line of Park Blvd on the East = 78.97

B.M. 45.73 Upas.
 74.88
 305.10 HI.
 - 6.84
 298.26 B.M. Myrtle
 + 6.63
 304.89 HI.
 - 1.54
 303.35 B.M. Brooks.
 + 2.90
 306.25 HI.
 - 6.14
 300.11 B.M. Cypress
 + 7.20
 307.31 HI.
 - 5.10
 302.21 B.M. Perry.
 + 5.02
 307.23 HI.
 - 4.90
 302.33
 + 5.22
 307.55 HI.
 - 1.00
 306.55 = 304.30 West's B.M. Spk Pole NE. Cor Park Blvd & Robinson



Section of Cypress Ave 60' wide id curv. 10' radii, from the East line of Albert St to the West line of Florida St.

Oct 9 - 1914.

Donnan
Miller
Shard. 74

E. H. 288.08 Spk File SW Cor Cypress Ave & Park Blvd.
H.S.

1.00	297.38		298.02
0.63	295.59	2.42	294.96 NOT Spk File NE Cor Cypress Ave & Herbert St.
2.63	290.16	7.46	298.13 TP Reg

to East line of Albert St.

1/2	1.2	289.0
cb	1.9	288.4
1/2	2.4	287.8
c	5.6	284.6
1/2	8.5	281.7
cb	12.2	278.0
n. s.	15.2	275.0
+ 15		
n. s.	9.6	280.6
cb	6.7	283.5
1/2	3.2	286.9
c	2.3	287.9
1/2	1.7	288.5
cb	1.4	288.8
1/2	0.8	289.4

	+	H.I. 290.16	
+25 M.L.			0.3 289.4
cb			1.3 288.9
1/4			1.5 288.7
c			1.9 288.3
1/4			2.5 287.7
cb			3.5 286.7
M.L.			5.6 284.4
+50 M.L.			6.8 283.4
cb			5.7 284.5
1/4			4.1 286.1
c			3.5 286.7
1/4			2.7 287.5
cb			2.0 288.2
M.L.			1.3 288.9
+65 M.L.			2.9 287.3
cb			3.9 286.3
1/4			4.2 286.0
c			5.0 285.2
1/4			7.5 282.7
cb			9.4 280.8

	+	H.I. 290.16	Cypress Ave (60' wide)
M.L.			10.8 279.3
+75 M.L.			12.15 277.7
cb			10.9 279.3
1/4			10.1 280.1
c			7.9 282.3
1/4			5.4 284.8
cb			4.7 285.5
M.L.			4.1 286.1
+100 M.L.			7.3 282.9
cb			9.3 280.9
1/4			10.7 279.5
c			11.9 278.4
1/4			10.7 276.5
cb			17.0 273.2
M.L.			19.8 270.4
+125 M.L.			21.8 268.4
cb			19.5 270.7
1/4			16.6 273.6
c			14.7 275.5
1/4			12.9 277.3

5

	H.S. 290.16		
cb		11.2	279.0
V.L. 1450		8.4	281.8
V.L.		6.6	283.6
cb		7.7	282.5
1/2		8.6	281.6
c		8.6	281.6
1/4		9.6	280.6
cb		11.0	279.2
m.l. 1470		13.0	277.2
m.l.		4.1	286.1
cb		3.7	286.5
1/4		3.2	287.0
c		3.1	287.1
1/4		3.0	287.2
cb		3.3	286.9
V.L.		3.4	286.8
2+10 = West line of Herbert H. - 60' wide - 10' curb - 10' quarters.			
#	279	297.2	2103
2+10			29113 T.B. Fog see page 74
V.L.		7.5	290.4
cb		8.3	289.6

	H.S. 297.92		Cypress Ave (60' wide)
			76
1/4		7.7	290.2
c		7.7	290.2
1/4		7.6	290.3
cb		7.2	290.7
n.l.		7.8	290.1
West of Herbert H.			
m.l.		7.3	290.6
cb		6.8	291.1
1/4		6.8	291.1
c		6.9	291.0
1/4		7.0	290.9
cb		7.5	290.4
V.L.		6.9	291.0
West 1/2 of Herbert H.			
V.L.		6.1	291.8
cb		7.0	290.9
1/4		6.6	291.3
c		6.4	291.5
1/4		6.5	291.4
cb		6.8	291.1

	H.I. 297.92	
M.L.	6.9	291.0
Center of Herbert St.		
M.L.	6.2	291.7
cb	6.3	291.6
1/4	6.7	291.2
c	6.7	291.2
1/4	6.4	291.5
cb	6.4	291.5
M.L.	5.8	292.1
East 1/2 of Herbert St.		
M.L.	5.8	292.1
cb	5.7	292.2
1/4	5.9	292.0
c	5.7	292.2
1/4	5.0	292.9
cb	5.4	292.5
M.L.	5.6	292.3
East end of Herbert St.		
M.L.	4.3	293.6
cb	4.7	293.2

	H.I. 297.92	
1/4	4.2	293.7
c	4.0	293.5
1/4	5.5	292.4
cb	5.3	292.6
M.L.	5.3	292.6
cc East line of Herbert St.		
M.L.	4.6	293.3
cb	4.9	293.1
1/4	4.8	293.1
c	4.5	293.4
1/4	4.3	293.6
cb	4.1	293.8
M.L.	3.2	294.7
M.L.	3.7	294.2
cb	3.6	294.3
1/4	3.3	294.6
c	4.1	293.8
1/4	4.0	293.9
cb	4.1	293.8
M.L.	4.1	293.8

Cypress Ave.
(60 wide) 77

	+	HI. 297.92	-
1450 d.L.			3.4 294.5
cb			3.5 294.4
1/4			3.5 294.4
c			3.8 294.1
1/4			3.4 294.5
cb			3.1 294.8
m.L.			3.1 294.8
1450 m.L.			2.5 295.4
cb			3.0 294.9
1/4			3.3 294.1
c			4.4 293.5
1/4			4.4 293.5
cb			4.5 293.4
d.L.			4.7 293.2
1420 d.L.			4.0 293.9
cb			4.1 293.8
1/4			4.5 293.4
c			4.5 293.4
1/4			4.3 293.6
cb			4.3 293.6

	+	HI. 297.92	-	Cypress Ave. (60' wide)
m.L.			4.1	293.7
1450 m.L.			3.9	294.1
cb			4.2	293.7
1/4			4.5	293.4
c			4.2	293.7
1/4			4.4	293.5
cb			4.7	293.2
d.L.			4.6	293.3
1400 d.L.			3.4	294.5
cb			4.0	293.9
1/4			4.7	293.2
c			4.8	293.1
1/4			4.8	293.1
cb			4.6	293.4
m.L.			4.9	293.0
1400 m.L.			4.4	293.5
cb			3.6	294.3
1/4			3.6	294.3
c			3.3	294.6
1/4			3.2	294.7

	HI			
	297.92			
cb		2.8	295.1	
N.L.		2.4	295.5	
3+00				
N.L.		1.5	296.4	
cb		2.0	295.9	
1/4		2.4	295.5	
c		3.0	294.9	
1/4		3.5	294.4	
cb		4.0	293.9	
N.L.		4.2	293.7	
#	5.46	299.87	3.57	294.35
3+50				
N.L.		5.3	294.5	
cb		5.5	294.3	
1/4		5.6	294.2	
c		5.5	294.3	
1/4		5.4	294.4	
cb		5.3	294.5	
N.L.		5.3	294.5	
3+00				
N.L.		2.5	297.3	
cb		2.5	297.3	
1/4		2.9	296.9	

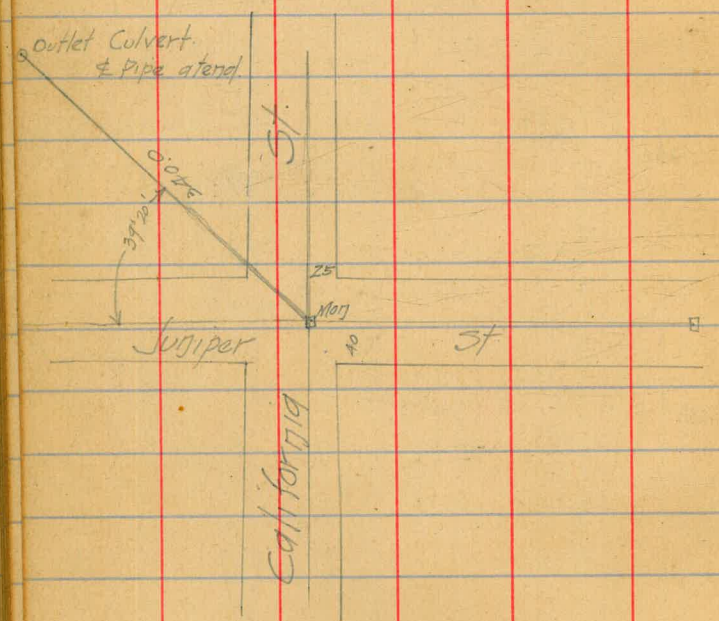
	HI			
	299.91			
		3.2	296.6	
1/4		3.5	296.3	
cb		3.0	296.8	
N.L.		3.0	296.8	
+ + 42 = Old line of Park Blvd (100' wide)				
N.L.		2.2	297.6	
cb		2.3	297.5	
1/4		2.1	297.7	
c		2.2	297.6	
1/4		1.8	298.0	
cb		2.1	297.7	
N.L.		2.0	297.8	
#	1.79			299.02 = Initial B.M. See Page 74.

Continued on Page 51 - Book 93B

Cypress Ave.
(60' wide)
13

1017

10' 40



239 from U. Sanct

22 } Bl 62.
 28 }
 30 }

19 } 63.
 20 }
 21 }
 22 }

160.24
 12.60
 252.84

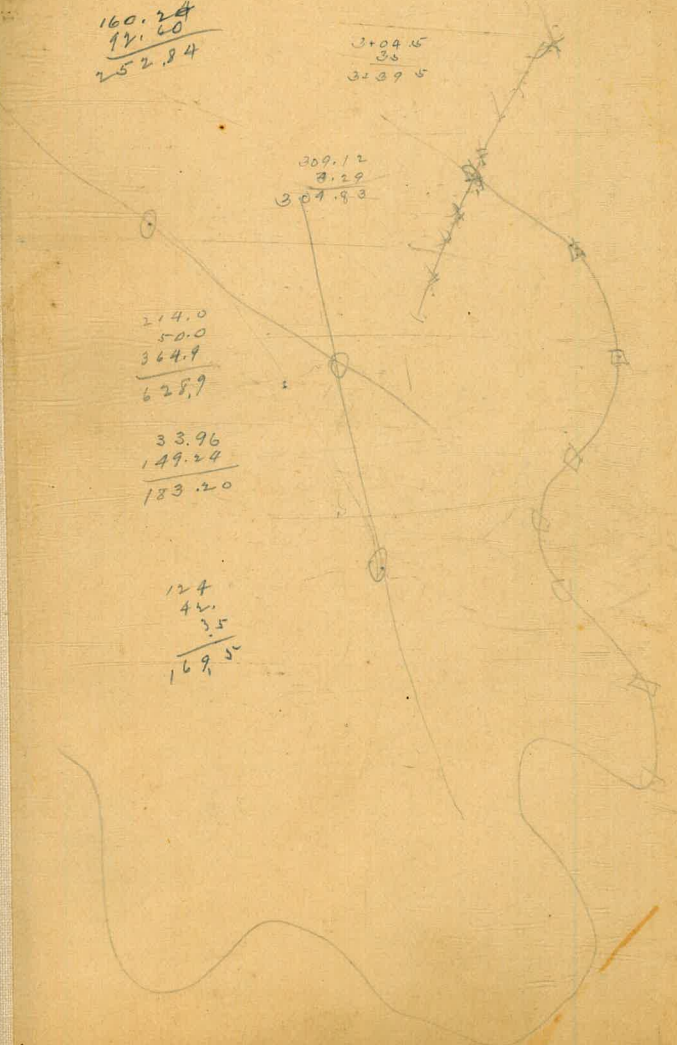
3+04.5
 36
 3+09.5

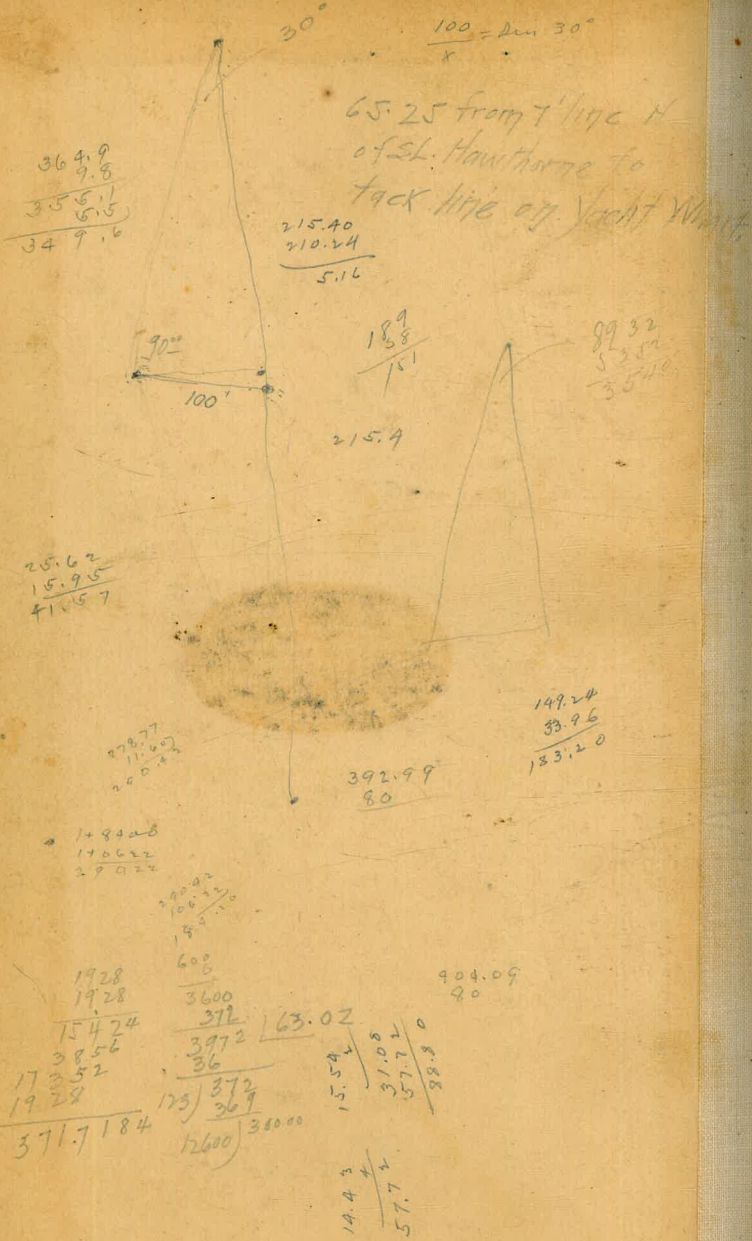
309.12
 8.22
 304.93

214.0
 50.0
 364.9
 628.9

33.96
 149.24
 183.20

124
 42.
 35
 169.5





276 - 1000 Ed Boat 1.2 543
218.1 1.44
180 1.86

35.40
216.74

190.50
17.10
173.40 543

120.03
10.76
109.97

210.10
23.20
233.30

277.92
1.96
279.98

210.10
23.20
233.30

214.10
2.15
216.25

214.10
2.15
216.25

29.11
11.60
40.71

17.46

28.45
7.6
36.05

37.15
46.00
83.15

42.15
75.0
117.15

36.50
5.03
41.57

17.23
58.80

17.23

36.50 x Cos 16° 16' 1/2 = 36.00
36.00 x Tan " = 10.51

3.26
7.23
10.49

17.48

17.47
116.5
133.97

27.12

95993
37.5
97226
71951
287979
5997375

210.24
44.28
165.96 506.38
253.19

129194.
85.02
129279.

2333552
97582
2431134

11097.5

392.99
892.99
11.90
4040.8
48.00
381.89

