

19

949

F.B. 949

LEVEL BOOK.

No. 410

949

MICROFILMED

DEC 16 1964

D

6/25/11
 Gregory
 Moore
 Fletcher

CROSS SECTION OF
 "A" ST
 From the East Line of
 32ND ST
 To the West Line of
 34TH ST

ON B.M.	2.46	229.85		227.39	BP SIX 104 + A STS
T.P.	0.48	217.31	1302	216.83	
T.P.	0.67	205.62	12.36	204.95	
T.P.	0.38	193.74	12.26	193.36	
T.P.	0.17	180.87	13.04	180.70	
T.P.	1.58	170.94	11.51	169.36	
T.P.	6.11	170.94	6.11	164.83	Moil on 32 ND
T.P.	1.50	169.12	12.92	158.62	

E.L. 32ND ST

S			33	156.8	✓ -
cb			45	153.6	
1/4			50	155.1	
C			60	154.1	✓ -
1/4			73	152.8	
cb			89	151.2	
N			10.1	150.0	✓
T.P.	0.60	147.62	13.10	147.02	

"A" ST 1
 PLOTTED

50' EAST
 147.62

N					7.1	140.5	✓ -
cb					7.4	140.2	
1/4					7.4	140.2	
C					7.5	140.1	✓ -
1/4					7.0	140.6	
cb					6.4	141.2	
S					5.9	141.7	✓
T.P.	0.20	135.99	13.03	134.59			

100' E

S					2.7	132.7	✓
cb					3.1	132.3	
1/4					2.4	133.0	
C					2.2	133.2	✓ -
1/4					1.6	133.8	
cb					1.2	134.2	
N					0.7	134.7	✓ -

125' E

N					7.5	127.9	✓
cb					6.6	128.8	

135.39
 PLOTTED

			7.6	127.8	
C			8.0	127.4	
1/4			8.6	126.8	
cb			8.9	126.5	
S			9.4	126.0	✓
T.P.	8.02	131.64	11.77	123.62	
		153' E			
S			10.5	121.1	✓
cb			9.0	122.6	
1/4			8.1	123.5	
C			7.5	124.1	✓
1/4			7.1	124.5	
cb			7.2	124.4	
N			6.7	124.9	✓
		200' E			
N			5.4	126.2	✓
cb			6.5	125.1	
1/4			7.3	124.3	
C			7.7	123.9	✓
1/4			8.4	123.2	

H. ST

2

131.64
 PLOTTED

cb			8.7	122.9	
S			9.1	122.5	✓
		325' E			
S			6.1	125.5	✓
cb			6.5	125.1	
1/4			6.5	125.1	
C			6.1	125.5	✓
1/4			4.9	126.7	
cb			3.5	128.1	
N			1.0	130.6	✓
T.P.	12.12	143.68	0.08	131.56	
		250' E			
N			1.3	142.9	✓
cb			3.0	140.7	
1/4			5.6	138.1	
C			7.1	136.6	✓
1/4			6.0	136.9	
cb			6.8	136.9	
S			6.7	137.0	✓
T.P.	11.63	155.09	0.22	143.46	

155.09

DISTANCE

275' E

S		13.4	141.7	✓	↓
cb		10.7	144.4		
1/4		9.2	145.9		
C		6.6	148.5	✓	-
1/4		4.8	150.3		
cb		3.5	151.6		
N		2.8	152.3	✓	
T.P.	12.29	166.45	0.93	154.16	

300' E

N		9.0	157.5	✓	
cb		10.4	156.2		
1/4		11.7	154.8		
C		12.9	153.6	✓	
1/4		14.4	152.1		
cb		15.8	150.7		
S		16.7	149.8	✓	↓

325' E

S		10.9	155.6	✓	↓
cb		10.5	156.0		

A. S. T.

166.45

PLOTTED³

1/4		10.0	156.5		
C		9.3	157.2	✓	-
1/4		8.0	158.5		
cb		6.9	159.6		
N		5.9	160.6	✓	

375' E

N		1.6	164.9	✓	
cb		2.9	163.6		
1/4		4.2	162.3		
C		4.9	161.6	✓	-
1/4		5.8	160.7		
cb		6.8	159.7		
S		7.7	158.8	✓	↓

425' E

S		8.1	159.4	✓	↓
cb		7.0	159.5		
1/4		6.3	160.2		
C		5.8	160.7	✓	-
1/4		4.7	161.8		
cb		3.8	162.7		

16645

N 2.3 164.2 ✓

450 E

N 3.8 162.7 ✓

cb 5.1 161.4

1/4 6.3 160.2

C 7.3 159.2 ✓ -

1/4 8.2 158.3

cb 9.3 157.2

S 10.4 156.1 ✓ ↓

475 E

S 13.5 153.0 ✓ ↓

cb 12.9 154.2

1/4 12.2 154.3

C 12.2 154.3 ✓ -

1/4 11.8 154.7

cb 9.9 156.6

N 7.6 158.9 ✓

500 E

N 11.2 155.3 ✓

cb 13.5 153.0

16643

A ST.

4
PLOTTED

170 149.3

183 148.2 ✓ -

177 148.8

171 149.4

174 149.1 ✓ ↓

525 E

244 142.1 ✓ ↓

222 144.3

213 145.2

208 145.7 ✓ -

216 144.9

187 147.8

175 149.0 ✓

550 E

152 151.3 ✓

138 152.7

12.5 154.0

136 152.9 ✓ -

154 151.1

17.0 149.5

166.45

370
S

184

1481

✓

↓

575 E

S

133

1332

✓

↓

cb

11.6

1/4

9.8

C

7.5

159.0

✓

1/2

5.0

cb

3.6

N

3.5

163.0

✓

T.P.

1234

178.45

0.04

166.41

600' E = N L 33RD ST (60' WIDE)

N

10.7

168.0

✓

cb

12.2

1/4

13.6

C

15.9

163.5

✓

1/4

17.2

cb

19.4

S

21.8

157.0

✓

↓

178.75

A ST

5

PLOTTED

W CURB

S

20.1

158.7

↓

cb

17.7

1/4

15.4

C

13.5

165.3

-

1/2

11.5

cb

10.0

N

9.0

169.8

W QUARTER

N

6.8

172.0

cb

1.3

1/4

9.5

C

11.8

167.0

-

1/4

13.7

cb

15.9

S

18.3

160.5

↓

CENTER

S

17.3

161.5

↓

cb

13.9

1/4

12.2

178.75

178.75

A ST.

6

PLOTTED

7311

C	9.9	168.9	✓	-	E. LINE 33 RD ST.	0.9	177.9	✓
1/4	8.3							
ct	6.8					2.0		
N	4.9	173.9	✓			3.5		
	E. QUARTER							
N	2.8	176.0	✓			8.3		
ct	4.3					10.3		
1/4	6.5							
C	9.0	169.8	✓	-	25' E			
1/4	11.0					13.2	165.6	✓
ct	12.8					8.3		
S	15.6	163.2	✓	✓		6.0		
	E. CURB							
S	14.6	164.2	✓	✓		3.8	175.0	✓
ct	11.4					2.3		
1/4	9.2							
C	6.9	171.9	✓	-	T.P. 10.66 178.54	0.87	177.88	
1/4	5.0					9.7	178.8	✓
ct	2.9				50' E			
N	1.9	176.9	✓			10.3	178.2	✓
						11.6		

188.54

3.5
1/4

13.0

S

C

14.1

174.4

✓ -

1/4

16.3

S

cb.

18.8

cb.

S

23.1

165.4

✓ ↓

1/4

75' E

C

S

20.4

148.1

✓

1/4

cb.

18.9

cb.

1/4

16.9

N

C

14.4

174.1

✓ -

1/4

12.0

N

cb.

10.7

cb.

N

9.2

179.3

✓

1/4

100' E

C

N

7.8

180.7

✓

1/4

cb.

5.7

cb.

1/4

10.0

S

C

10.9

177.6

✓ -

T.P.

10.18

194.3

438

184.16

1/4

12.0

cb.

13.3

188.54

A 57

7

PLOTTED

14.9

173.6

✓ ↓

125' E

9.9

178.6

✓ ↓

8.8

7.7

7.1

181.4

✓ -

6.2

5.2

4.5

184.0

✓

150' E

2.5

186.0

✓

3.0

3.4

3.8

184.7

✓ -

4.7

6.0

7.2

181.3

✓ ↓

19434

1111

200' E

S

8.4

185.9

✓

cb

7.6

1/4

6.8

C

6.2

188.1

✓

1/4

5.5

cb

4.7

N

4.2

190.1

✓

250' E

N

2.7

191.6

✓

cb

3.3

1/4

3.6

C

4.0

190.3

✓

1/4

4.4

cb

4.6

S

5.2

189.1

✓

300' E

S

7.8

186.5

✓

cb

7.9

1/4

8.2

A 5T

8

PLOTTED

81

186.2

✓

C

1/4

7.8

cb

7.3

N

6.9

197.9

✓

T.P.

1.41

R3.R5

1250

181.84

350' E

N

2.4

180.9

✓

cb

3.2

1/4

3.8

C

4.0

179.3

✓

1/4

3.9

cb

3.5

S

2.5

180.8

400' E

S

7.7

175.6

✓

cb

8.6

1/4

9.8

C

40.6

172.7

✓

1/4

10.9

cb

10.8

183.25

N

9.4 173.9

+ 6

26.0

425' E

cb

22.6

N

13.9 169.4 ✓

1/4

19.7

cb

14.9

c

11.3

161.5 ✓ -

1/4

15.5

1/4

7.4

c

15.4 167.9 ✓ -

cb

4.0

1/4

13.6

s

0.4

172.4 ✓ ↓

cb

12.0

500' E

s

9.8 173.5 ✓ ↓

s

1.0

171.8 ✓ ↓

450' E

cb

4.5

s

11.7 171.6 ✓ ↓

1/4

8.1

T.P.

2.36

172.83

12.78

170.47

c

12.3

160.5 ✓ -

cb

3.3

1/4

16.6

1/4

6.3

cb

24.1

c

8.4 164.4 ✓ -

N

27.3

145.5 ✓

1/4

12.3

+ 20

21.9

cb

14.9

550' E

N

11.1 161.7 ✓

- 20

29.3

475' E

- 5

36.0

N

22.3 150.5 ✓

N

34.0

138.8 ✓

A ST. S

9

PLOTTED

172.23

10

PLOTTED

cb 30.0

1/4 24.4

c 15.5 157.3 ✓

1/6 10.7

cb 7.3

s 3.4 119.4 ✓ ↓

600' E - W.L. 34TH ST.s 6.54 166.29 ON HUB
BACK OF PAGE
-18-

cb 10.3

1/4 14.1

c 19.4 153.4 ✓

1/4 25.1

cb 30.4

N 36.0 136.8 ✓

+5 39.0

+25 33.0

6/27/14
Gregory
Moore
Plotter

CROSS-SECTION OF
ASH ST (80' WIDE)
From the East Line of
32ND ST
To the PubbLine East of
Gregory St

B.M.	0.58	165.41	164.83	Not T.P. see page 2
T.P.	1.97	154.52	1226	152.55
E. LINE 32 ND ST				
S			16.9	137.6 ✓
cl			17.2	
1/4			17.5	
C			18.2	136.3 ✓
1/4			18.3	
cl			16.7	
N			16.3	138.2 ✓
35' E				
N			13.2	141.3 ✓
cl			13.9	
1/4			15.2	
C			16.6	137.9 ✓
1/4			17.6	
cl			18.3	
S			19.8	139.7 ✓

154.52

PLOTTED
12

75' E.

ES			14.3	140.2 ✓
cl			13.8	
1/4			13.1	
C			12.6	141.9 ✓
1/4			12.0	
cl			11.1	
N			9.7	144.8 ✓

100' E.

N			5.0	149.3 ✓
cl			5.2	
1/4			6.1	
C			6.7	147.8 ✓
1/4			6.2	
cl			5.4	
S			5.1	149.4 ✓

T.P. 12.45 166.58 0.39 154.13

125' E.

S			7.5	159.1 ✓
cl			6.8	

166.58

1/4			8.2		
C			7.0	159.6	✓
1/4			6.2		
cb			5.0		
N			3.9	162.7	✓
T.P.	11.85	178.21	0.22	166.36	
		150' E			
N			4.4	173.8	
cb			4.8		
1/4			6.7		
C			8.4	169.8	✓
1/4			10.7		
cb			11.7		
S			12.7	165.5	✓
		175' E			
S			6.9	171.3	✓
cb			4.6		
1/4			3.2		
C			1.0	177.2	✓
1/4			0.4		

HSH ST.

18

PLOTTER

T.P.	12.45	190.49	0.17	178.04	
cb			11.5	179.0	
N			9.6	180.9	-
		200' E = W.L. BANCROFT ST.			
N			5.0	185.5	-
cb			6.3		
1/4			7.7		
C			8.1	182.4	J
1/4			9.1		
cb			10.6		
S			12.78	177.71	on top SW.
T.P.	9.39	199.10	0.78	189.71	Rock on top
		E.L. BANCROFT ST.			
S			7.2	191.9	✓
cb			6.1		
1/4			5.7		
C			5.0	194.1	✓
1/4			4.4		
cb			3.0		
N			2.0	197.1	✓

199.10

50' E

N

1.1 198.0

cb

2.4

1/4

3.5

C

4.2 194.9

1/4

4.9

cb

5.3

S

6.6 192.5

100' E

S

6.9 192.2

cb

6.4

1/4

6.1

C

5.3 193.8

1/4

4.5

cb

3.7

N

2.2 196.9

150' E

N

3.0 196.1

cb

4.4

1/4

5.6

199.10

A54 ST

14

PLOTTED

C

6.3 192.8

1/4

7.1

cb

7.2

S

7.6 191.5

200' E = 14.1 33RD ST

S

9.8 189.3

cb

9.1

1/4

9.6

C

8.9 190.2

1/4

8.1

cb

7.0

N

5.2 193.9

E.L. 33RD ST

N

6.9 192.2

cb

9.0

1/4

9.6

C

10.4 188.7

1/4

11.0

cb

12.1

S

13.5 185.6

199.10

50' E.

S

9.8

1893

✓

cb

9.0

1/4

7.7

C

6.3

1928

✓

1/4

5.5

cb

4.5

N

2.9

1962

✓

T.P.

12.02

209.95

1.17

197.93

100' E.

N

9.4

200.5

✓

cb

11.7

1/4

12.3

C

13.2

196.7

✓

1/2

14.8

cb

16.3

S

17.0

192.9

✓

150' E

S

11.6

198.3

✓

cb

11.4

209.93

ASH ST. 15

PLOTTED

1/4

10.4

199.5

C

9.4

200.5

✓

1/4

8.7

cb

8.2

N

6.7

203.2

✓

200' E = W.L. FELTON ST.

N

4.4

205.5

✓

cb

5.4

1/4

5.8

C

5.9

204.0

✓

1/4

6.4

cb

7.2

S

7.5

202.4

✓

T.P.

2.77

212.31

0.41

209.54

E.L. FELTON ST

S

1.5

210.8

✓

cb

1.8

1/4

2.1

C

2.9

209.4

✓

1/4

4.6

212.31

TOP

cb	6.4			
N	8.0	204.3	✓	
	25' E			
N	8.9	203.4	✓	
cb	7.2			
1/4	5.4			
c	3.6	208.7	✓	
1/4	2.3			
cb	1.9			
s	1.0	211.3	✓	
	50' E			
s	1.8	210.5	✓	
cb	3.3			
1/4	4.2			
c	5.4	206.9	✓	
1/4	7.1			
cb	8.5			
N	10.1	202.2	✓	

212.31

ASH ST 16

PLOTTED

	100' E			
N	13.8	198.5	✓	
cb	11.8			
1/4	10.3			
c	9.0	203.3	✓	
1/4	8.1			
cb	7.4			
s	5.1	207.2	✓	
	150' E			
s	10.5	201.8	✓	
cb	12.2			
T.P.	1.46	200.80		
1/4	1.5			
c	2.9	197.9	✓	
1/4	4.1			
cb	5.4			
N	6.4	194.4	✓	
	200' E = W.L. GREGORY ST.			
N	14.0	186.8	✓	
cb	11.3			

20080

17594

ASH ST. 17

PLOTTED

1/4			10.0	
C			8.7	192.1 ✓
1/4			7.5	
ch			6.3	
S			5.0	195.8 ✓
ON B.M.			4.65	196.15 ✓
T.P.	1.87	190.66	12.01	188.99
	E. L. GREGORY ST.			
S			8.7	182.0 ✓
ch			10.7	
1/4			12.3	
T.P.	1.13	179.12	12.66	178.30
C			3.1	176.0 ✓
1/4			5.2	
ch			7.5	
N			11.7	167.4 ✓
T.P.	8.56	174.24	11.75	167.38
	25' E			
N			17.7	158.2 ✓
ch			13.6	

SH. GREGORY
ASHFOR SLOPES
SEE GREGORY ST
DIP SECTION

1/4			10.1	
C			6.7	169.2 ✓
1/4			4.1	
ch			0.9	
S			0.0	175.9 ✓
	50' E			
S			6.8	169.1 ✓
ch			8.2	
1/4			11.5	
T.P.	0.33	163.73	12.54	163.40
C			2.8	160.9 ✓
1/4			5.0	
ch			8.2	
N			12.2	151.5 ✓
+5			16.0	
+20			10.1	
	75' E			
-20			2.3	
N			13.9	149.8 ✓
+5			17.1	

163.73

ct		17.8		
1/4		14.9		
C		13.2	150.5	✓
1/4		10.8		
ct		7.0		
S		6.2	157.5	✓
	112.5' E			
- 40		20.1		
- 30		23.0		
S		22.5	171.2	✓
ct		20.7		
1/4		18.9		
C		15.4	148.3	✓
1/4		12.2		
ct		9.4		
N		5.4	158.3	✓
T.P.	12.03	172.77	2.99	160.74
	150' E			
N		3.6	169.2	✓
ct		3.8		

172.77

ASH ST 18

PLOTTE

1/4		10.8		
C		15.7	157.1	✓
1/4		17.4		
ct		21.6		
S		24.4	148.4	✓
	175' E			
S		18.0	154.8	✓
ct		14.7		
1/4		10.8		
CHK T.P.		6.47	166.30	HUB SW. 34 ^{1/2} + H.
C		6.8	166.0	✓
T.P.	12.45	184.62	0.60	172.17
1/4		15.7		
ct		13.4		
N		9.1	175.5	✓
	200' E			
N		5.4	179.2	✓
ct		7.6		
1/4		9.2		
C		17.5	172.1	✓

184.62

1/4		15.0		
cb		19.9		
S		22.6	162.0	✓

225' E

S		13.2	171.4	✓
cb		9.4		
1/4		7.5		
C		4.0	180.6	✓
1/4		2.6		
cb		0.6		
N		0.9	183.7	✓

T.P.	12.71	196.61	0.72	183.90
------	-------	--------	------	--------

245' FROM N }
242.0' - S } = PUEBLO LINE

N		8.6	188.0	✓
cb		9.9		
1/4		10.9		
C		12.4	184.2	✓
1/4		15.8		
cb		17.5		
S		20.6	176.0	✓

ASH

ST. 19

PLOTTED

T.P.

280 193.81

7/3/49
Gregory
Shoemaker
Moore

CROSS SECTION OF
BEECH ST (90' WIDE)
From the East Line of
32ND ST.
To the Pueblo Line
East of Gregory St.

On T.P.	10.17	187.88	177.71	HUB SW F&M BENCH MARK
		E. L. 32 ND ST.		
N		1.8	186.1	
cl		4.8		
1/4		8.4		
C		11.5	176.4	✓
1/4		14.7		
cl		17.3		
S		19.0	168.9	✓
		50' E		
S		2.4	181.5	✓
cl		3.7		
1/4		2.0		
T.P.	10.39	197.95	0.82	187.06
C		10.3	187.6	✓
1/4		8.2		
cl		5.7		
N		3.0	194.9	✓
T.P.	12.48	210.02	0.41	197.54

210.12

BEECH ST 21

See F.B. 1797 7/20/49
67
100' E

PLOTTED

H		3.3	206.7	✓
cl		5.9		
1/4		R.H.		
C		10.8	199.2	✓
1/4		13.1		
cl		15.7		
S		18.4	191.6	✓
		125' E		
S		12.4	197.6	✓
cl		9.7		
1/4		7.5		
C		5.3	204.7	✓
1/4		2.9		
cl		0.9		
T.P.	12.68	222.58	0.12	209.90
N		18.0	210.6	✓
		150' E		
N		9.8	212.4	✓
cl		11.1		

222.58

1/2	18.3		
C	13.4	209.2	✓
1/2	15.1		
cb	16.8		
S	19.2	203.4	✓

200' E = W.L. BANCROFT ST.

S	12.7	209.9	✓
cb	11.9		
1/4	11.2		
C	10.3	212.3	✓
1/4	9.1		
cb	8.4		
N	7.6	215.0	✓

E.L. BANCROFT ST.

N	4.4	218.2	✓
cb	5.3		
1/4	6.1		
C	7.0	216.6	✓
1/4	7.8		
cb	8.8		

222.58

BEECH ST

22

PLOTTED

S	9.6	213.0	✓
50' E			
S	7.9	214.7	✓
cb	7.4		
1/2	6.1		

C	5.5	217.1	✓
1/2	4.8		
cb	4.0		
N	2.9	219.7	✓

100' E			
N	2.8	219.8	✓
cb	3.7		
1/4	4.6		

C	5.4	217.2	✓
1/4	5.9		
cb	6.9		
S	7.7	219.9	✓

150' E			
S	9.7	212.9	✓
cb	8.4		

222.58

1/4		6.7		
C		5.6	217.0	✓
1/4		4.8		
cb		4.1		
N		3.0	219.6	✓
	200' E = W.L.	33 RD ST.		
N		3.0	219.6	✓
cb		4.1		
1/4		4.7		
C		5.4	217.2	✓
1/4		6.1		
cb		7.2		
S		8.4	214.2	
T.P.	E.L.	33 RD ST.		
S		2.9	219.7	✓
cb		2.4		
1/4		1.3		
C		0.5	222.1	✓
T.P.	72 ^W	229 ^{HW}	0.38	222.00
1/4		6.3		

229.44

BEECH 5²³

PLOTTED

cb		5.8		
N		5.0	224.4	
	50' E			
N		2.4	227.0	✓
cb		3.7		
1/4		4.8		
C		5.8	223.6	✓
1/4		6.8		
cb		7.7		
S		8.3	221.1	✓
	100' E			
S		8.4	221.0	✓
cb		7.2		
1/4		7.9		
C		4.8	224.6	✓
1/4		4.0		
cb		3.4		
N		2.3	227.1	✓

229.44

150' E

N	3.1	226.3	✓
cb	3.7		
1/4	4.2		
C	4.8	224.6	✓
1/4	5.9		
cb	7.6		
S	8.9	220.5	✓

200' E = V.L. FELTON ST.

S	12.1	217.3	✓
cb	11.6		
1/4	10.7		
C	9.5	217.9	✓
1/4	8.6		
cb	8.3		
N	9.5	221.9	✓

E.L. FELTON ST.

N	12.7	216.7	✓	
T.P.	5.12	221.58	18.98	216.46
cb	5.8			

221.58

BEECH

ST. 24

PLOTTED

1/4

C

1/4

cb

S

S

cb

1/4

C

1/4

cb

N

N

cb

1/4

C

1/4

cb

5.9

6.2

7.0

8.2

8.4

11.2

10.5

9.2

8.3

7.6

7.1

6.0

6.9

8.0

8.3

8.8

9.8

10.9

215.4

213.2

210.4

213.5

215.6

214.7

212.9

221.58

S		11.9	209.7	✓
	150' E			
S		9.7	211.9	✓
cb		9.4		
1/4		8.8		
C		8.2	213.4	✓
1/4		7.6		
cb		7.5		
N		6.6	215.0	✓
	200' E = W. GREGORY ST			
N		4.5	217.1	✓
cb		4.9		
1/4		4.8		
C		4.8	216.8	✓
1/4		5.2		
cb		5.7		
S		6.1	215.5	✓
	E. GREGORY ST			
S		6.9	214.7	✓
cb		6.4		

221.58

BEECH ST

25

PLOTTED

1/4		6.0		
C		6.0	215.6	✓
1/4		6.4		
cb		7.2		
N		7.6	214.0	✓
T.P.	1.97	211.56	11.99	209.59
	50' E			
N		4.1	207.5	✓
cb		2.9		
1/4		1.8		
C		1.1	210.5	✓
1/4		0.9		
cb		1.4		
S		1.6	210.0	✓
	100' E			
S		9.0	202.6	✓
cb		9.0		
1/4		9.5		
C		9.5	202.1	✓
1/4		10.2		

211.56

188.04

BEECH ST

26

PLOTTED

cb			11.0			N	4.0	184.0	✓
N			12.2	199.4	✓				
T.P.	0.02	198.80	12.78	198.78		H	10.3	177.7	✓
		150' E				cb	9.3		
N			8.9	189.9	✓	1/4	6.8		
cb			7.3			c	5.3	182.7	✓
1/4			5.8			1/4	4.3		
c			4.8	194.0	✓	cb	3.0		
1/4			4.1			s	1.9	186.1	✓
cb			3.8						
s			3.0	195.8	✓				
chk T.P.			5.00	193.80 = 193.81 T.P.	chk.				
		175' E							
s			8.0	190.8	✓		9.6	178.9	
cb			8.8			cb	10.7		
1/4			9.4			1/4	12.3		
c			10.2	188.6	✓	c	14.1	173.9	✓
1/4			11.4			1/4	16.5		
cb			13.0			cb	19.1		
T.P.	2.07	188.04	12.93	185.97		H	23.4	164.6	✓

239' ON S }
 237' ON N } E = PUEBLO LINE

Penn Ave - 4" Water Main
 Vermont to Richmond - stakes offset 2' N of
 E Ditch which is 10' S of E.
 Bot trench = 7.6' below surface Gr.

Sta 7 1/8/4 West Lane - 3rd Ave

			El. Hdw.	Bot. Gr.	Cuts	
BM. SE Vermont RR Sta. Spk.			287.78			
TPCurb	2.90	290.68	5.67	285.09		
	9.13	294.14				
0+00 = EL Vermont		9.52	284.62	282.03	2.6	
+50		8.14	286.00	282.28	3.7	
1+00		6.87	287.27	282.56	4.7	
+50		6.30	287.84	282.84	5.0	
2+00		5.62	288.52	283.13	5.4	
+50		5.44	288.70	283.41	5.3	
3+00		5.00	289.14	283.69	5.4	
+50		5.20	288.94	283.98	5.0	
4+00	TP 511	288.52	14.73 7.80	283.41 279.72	284.26	Fill 5.6
+50			8.70	279.82	284.55	Fill 4.7
5+00		7.80	286.34	284.83	1.5	
+50		4.80	289.34	285.12	4.2	
6+00 = WL Richmond		4.00	290.14	285.00	4.7	

Side line levels from R₁ at
Mission Bay Park to West End
40' Street

North taken as direction of Pacific
Beach -

	456	1548	
R ₁ Spike in Pole at bridge in Mission Bay Park.		1092	
	0400 = 3.718	s. of Bond St	
W	3.6	11.9	
E	3.3	12.2	
	350' S		
E	3.2	12.3	
W	4.2	11.3	
	R 300' S		
W	4.7	10.8	
E	4.0	11.5	
	250' S		
E	4.0	11.5	
W	4.9	10.6	
	200' S		
W	4.7	10.8	
E	4.2	11.3	
	150' S		
E	4.5	11.0	
W	4.6	10.9	

	1548	
	150' S	
W	4.7	10.8
E	4.7	10.8
	50' S	
E	4.8	10.7
W	4.9	10.6
	St. Bond St	
wcb.	4.92	10.56
W	4.8	10.7
E	5.0	10.5
	cr Bond St	
E	5.0	10.5
W	5.1	10.4
	Nh Bond St	
wcb.	4.87	10.61
W	5.0	10.5
E	5.0	10.5
	50' N of Bond St	
E	4.8	10.7
W	5.2	10.3

430? = End of Bridge 29

1548

100' N

W 4.8 10.7
E 5.3 10.2

150' N

E 5.6 9.9
W 4.6 10.9

200' N

W P 4.8 10.7
E 6.8 8.7

250' N

E 6.6 8.9
W 5.3 10.2

300' N

W 4.7 10.8
E 5.9 9.6

350' N

E 6.5 9.0
W 3.9 11.6

1548

400' N

W 4.2 11.3
E 10.3 5.2

TP

434. 18.32 15.0 139.8

510' N

W 8.3 10.0
E 7.1 11.2

P

556²⁶ N = S. End of Curve

E 7.6 10.7
W 8.3 10.0

50' N (on Cr. line)

W 8.2 10.1
E 7.2 11.1

100' N

E 6.6 11.7
W 7.8 10.5

150' N

W 7.5 10.8
E 6.5 11.8

1832

200' N

E	5.9	12.4
W	7.2	11.1

250' N

W	7.4	10.9
E	6.2	12.1

300' N

E	P	5.8	12.5
W		7.7	10.6

350' N

W	8.2	10.1
E	6.2	12.1

400' N

E	6.2	12.1
W	8.1	10.2

450' N

W	8.1	10.2
E	7.0	11.3

1832

300' N

E	6.6	11.7
W	8.4	9.9

350' N

W	8.6	9.7
E	6.6	11.7

400' N

E	P	4.8	12.5
W		8.3	10.0

450' N

W	8.3	10.0
E	6.6	11.7

T.P.	6.84	18.13	7.03	11.29
------	------	-------	------	-------

500' N

E	7.2	10.9
W	8.7	9.4

550' N

W	8.7	9.4
E	6.6	11.5

1813

800' N

E 6.2 11.9

W 8.1 10.0

850' N

W 7.7 10.4

E 6.0 12.1

900' N

E R. 6.8 11.3

W 7.5 10.6

950' N

W 7.6 10.5

E 6.5 11.6

1000' N

E 6.3 11.8

W 7.0 11.1

1050' N

W 7.0 11.1

E 6.6 11.5

1813

1100' N

E 6.5 12.6

W 6.5 11.6

1150' N

W 6.0 12.1

E 3.7 14.4

1200' N

E P 2.9 15.2

W 3.0 13.1

1250' N

W 4.3 13.8

E 0.4 17.7

TP 9.83 27.80 0.16 17.97

1300' N

E 8.2 19.6

W 13.0 14.8

1350' N

W 12.7 15.1

E 6.9 20.9

2780

1400' N

E 5.3 22.5

W 12.8 15.0

1450' N

W 12.2 15.6

E 5.5 22.3

on Cr. line measurement
1490 = Sh. West End

E P 7.2 20.6

W 10.1 17.7

cr.

W 10.0 17.8

cr 7.8 20.0

E 6.4 21.4

Nh. West end

E 5.5 22.3

cr 6.8 21.5

W 4.4 23.4

TP. on Pale 5.77 22.03 22.06

Sectis on West End taken on line
with west end.

7/17/20 note Profile of Blvd from Sh.
Moore Bird Rock to Glendal (100' wide)
Hall

0+00 = Sh. Bird Rock on West
East line = 0+58 about 32

BMI Colma St. ²⁰² 796 7759

Sh. Bird Rock (on West)

W 7.2 72.4

58' S = Sh. BR (on East)

W 8.5 71.1

E 5.7 73.9

100' S

F 6.4 73.2

W 8.9 70.7

150' S

W 9.5 70.1

E 7.1 72.5

200' S

E 7.8 71.8

W 10.3 69.3

250' S

W 11.0 68.6

E 8.5 71.1

796'

300'S

E 9.4 70.2

W 11.9 67.7

350'S

W 12.4 67.2

E 10.5 69.1

400'S

E 10.6 69.0

W 13.0 66.6

TP. 708 74.39/230 67.91

450'S

W 8.0 66.4

E 4.6 69.8

500'S

E 3.5 70.9

W 7.5 66.9

550'S

W 7.5 66.9

E 2.1 71.3

7439

600'S

E 2.9 71.5

W 7.6 66.8

650'S

W 7.2 67.2

E 3.3 71.1

700'S

E 3.0 71.4

W 7.4 67.0

750'S

W 7.3 67.1

E 3.1 71.3

800'S

E 3.6 70.8

W 7.6 66.8

850'S

W 7.8 66.6

E 3.8 70.6

7439
900's

E 3.7 70.7
W 7.7 66.7

950's

W 7.8 66.6
E 3.7 70.7

1000's

E 3.2 71.2
W 7.6 66.8

1050's

W 6.9 67.5
E 3.4 71.0

1100's

E 2.9 71.5
W 6.5 67.8

1150's

W 6.1 68.3
E 2.0 72.4

7439
1200's

E 1.7 72.7
W 5.3 69.1

1250's

W 4.8 69.6
E 1.3 73.1

1300's

E 1.1 73.3
W 4.5 69.9

1350's

W 4.2 70.2
E 0.7 73.7

B711 950 82.75 11.8 73.21 73.25

14+18.5 = Nord of Curve

E 8.5 74.0
W 11.5 71.3

Stationing from N. end of
curve to P. of W is on ϕ

	8275		
		N	
		50	S of end of curve
W		108	720
E		83	745
	100		
E		75	753
W		97	731
	150		
W		50	748
E		46	762
	200		
E		53	775
W		61	767
	245 ²		end of curve
W		60	778
E		35	793
	300		
E		18	810
W		25	793

8275

350 S

W			17	811
E			27	821
W	595	81.90	180	81.95
		400	S	
E			45	834
W			55	821
			No taken on line	
			463 S = Ref W line	
W			26	853
E			32	847

7/18 (A) Levels La Jolla Stream South
 12/14 (A) to Bird Rock.
 & measurements

36

at end of curve near strand.

B21 594 8917 83.23 950 N

3d La Jolla Strand 124.3 N. of end of Curve W

W Ch. 13.5 75.7 E 129 76.3

E Ch. 10.8 78.4 900 N

1200 N

E 11.6 77.6 E 9.4 79.8

W 13.5 75.4 W 12.2 77.0

1150 N

W 13.8 75.4 W 11.8 77.4

E 11.8 77.4 E 8.4 80.8

1100 N

E 11.5 77.7 E 7.2 82.0

W 13.8 75.4 W 9.7 79.5

1050 N

W 13.6 75.6 W 8.4 80.8

E 11.3 77.9 E 6.0 83.2

1000 N

E 10.5 78.7 E 5.1 84.1

N 13.7 75.5 W 7.3 81.9

	89.17		
	650		
W		6.6	82.6
E		2.3	84.9
	600		
E		3.7	85.5
W		6.2	83.0
	550		
W		6.6	82.6
E	P	3.9	85.3
	500		
E		4.2	85.0
W		6.5	82.7
	450		
W		7.0	82.2
E		4.8	84.4
	400		
E		5.7	83.5
W		7.5	81.7

	89.17		
	350		
W		8.3	80.9
E		6.1	83.1
	300		
E		7.0	82.2
W		8.9	80.3
	250		
W		9.3	79.9
E	P	7.1	82.1
	200		
E		7.0	82.2
W		9.5	79.7
	150		
W		9.5	79.7
E		7.0	82.2
	100		
E		7.1	82.1
W		7.1	82.1

89.17

30' N

W 10.0 79.2

E 7.3 81.9

End of Curve = 2684⁵ N of B.R.

E 7.5 81.7

W 10.3 78.9

TP 396 84.21 89.2 80.25

2650 N

W 5.4 78.8

E P 2.6 81.6

2600

E 2.8 81.4

W 5.4 78.8

2550

W 5.6 78.6

E 2.9 81.3

2500

E 3.1 81.1

W 5.7 78.5

84.21

2450

W 6.1 78.1

E 3.2 81.0

2400

E 3.7 80.5

W 6.4 77.8

2350

W 6.7 77.5

E 4.2 80.0

2300

E P 4.5 79.7

W 6.8 77.4

2250

W 6.8 77.4

E 5.0 79.2

2200

E 5.2 79.0

W 6.9 77.3

84.21

2150

W	6.7	77.5
F	4.8	79.4

2100

E	5.1	79.1
W	6.7	77.5

2050

W	6.6	77.6
E	4.9	79.3

2000

E	4.9	79.3
W	6.4	77.8

1950

W	6.2	78.0
E	4.5	79.7

1900

E	4.5	79.7
W	6.0	78.2

84.21

1850

W	6.1	78.1
E	4.6	79.6

1800

E	4.5	79.7
W	5.7	78.5

1750

W	5.8	78.4
E	4.4	79.8

1700

E	4.9	79.3
W	6.4	77.8

1650

W	6.3	77.9
E	4.7	79.5

1600

E	5.3	78.9
W	6.9	77.3

84.21

1550

W 76 76.6

E 56 78.6

1500

E 5.7 78.5

W 7.9 76.3

1450

W 8.3 75.9

E 3.9 78.3

1400

E 6.1 78.1

W 8.7 75.5

TP 126 78.37 7.10 77.11

1350

W 3.5 74.9

E 0.4 78.0

1300

E 0.6 77.8

W 3.7 74.7

78.37

1250

W 3.9 74.5

E 0.2 78.2

1200

E 0.4 78.0

W 4.3 74.1

1150

W 4.5 73.9

E 4.4 78.8

1100

E 4.6 79.0

W 4.9 73.5

1050

W 5.0 73.4

E 4.2 78.6

1000

E 4.4 78.8

W 4.5 73.9

	78.37		
	950		
W		4.6	73.8
E		8.0	78.4
	900		
F		+0.2	78.6
W		4.6	73.8
	850		
W		4.8	73.6
E		0.7	77.7
	800		
E		0.7	77.7
W		5.6	72.8
	750		
W		5.8	72.6
E		1.2	77.2
	700		
E		1.4	77.0
W		7.1	71.3

	78.37		
	680		
E		130	65.4
	660		
E		165	61.9
	650		
E		40	74.4
W		9.3	69.1
	640		
W		11.1	67.3
	625		
W		220	56.4
	600		
W		80	70.4
E		39	74.5
	550		
E		39	74.5
W		85	69.9

78.37

500

W 12.1 66.3

E 4.3 74.1

450

E 4.8 73.6

W 8.8 69.6

400

W P 8.9 69.5

E 4.9 73.5

350

E 7.3 71.1

W 11.2 67.2

300

W 15.5 62.9

E 7.6 70.8

BM on pole 5.43 72.94 72.95

250

E 4.5 73.9

W 8.1 70.3

78.37

200

W 7.1 71.3

E 3.8 74.6

150

E 3.1 75.3

W 6.0 72.4

100

W P 4.7 73.7

E 1.7 76.7

50

E 1.0 77.4

W 3.3 75.1

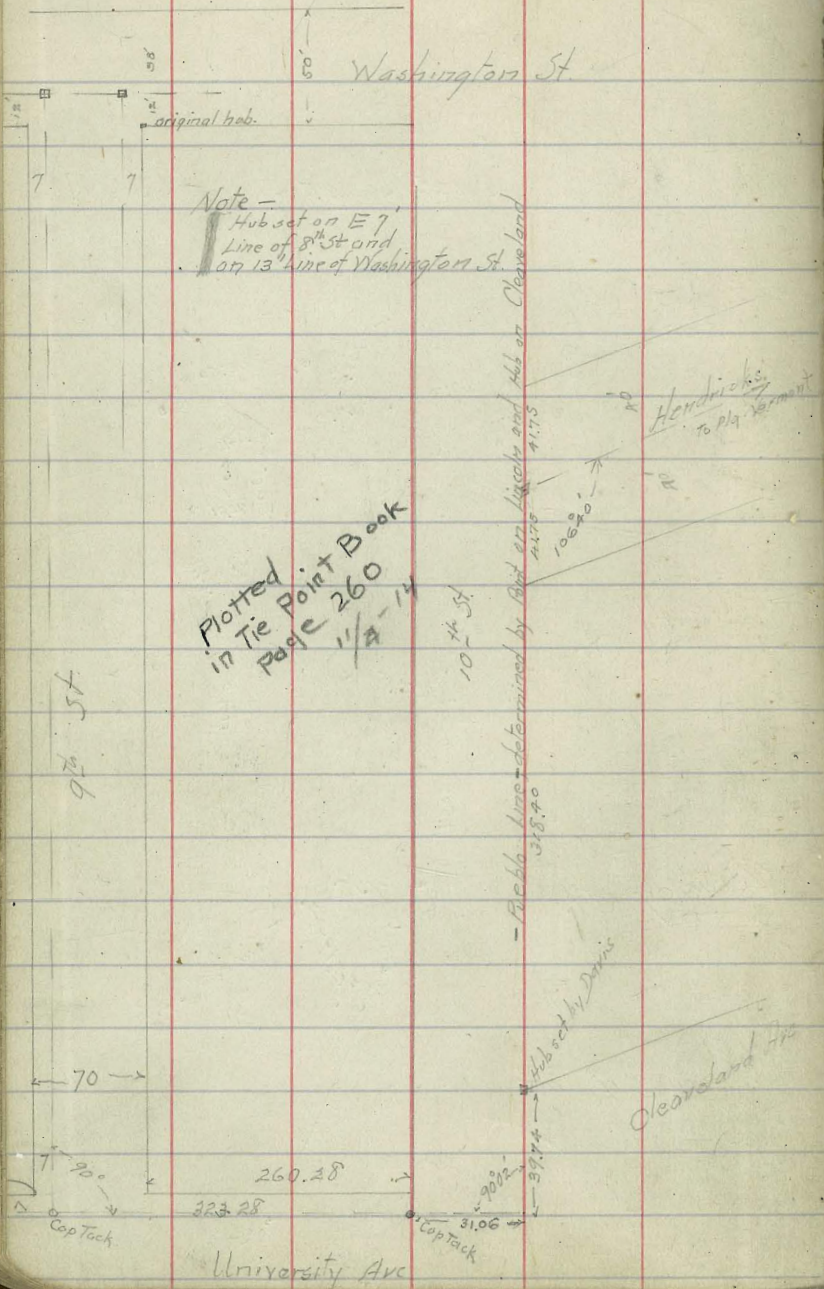
N. Bird Rock

W 2.6 75.8

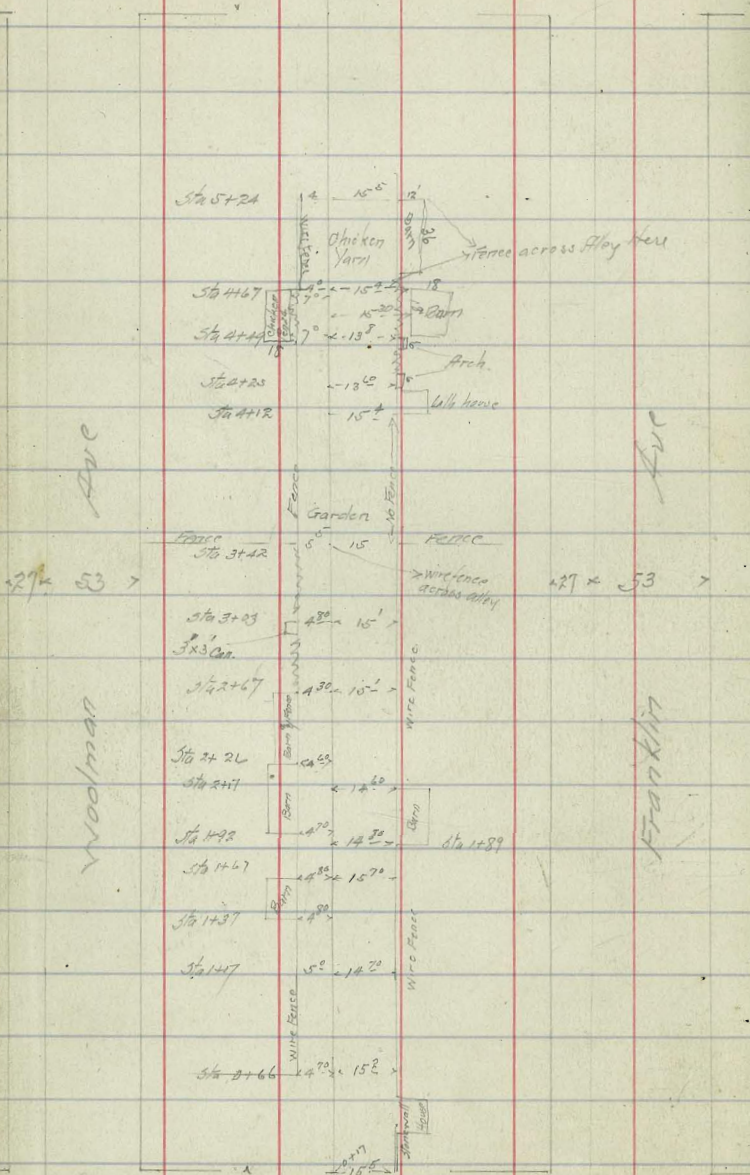
E 4.2 about 78.6

11/2/14
 Action
 1/2/14
 Motion
 Hall

Survey of 10th St
 North of University



Sub 198.28 \nearrow 380.46 \nearrow Sta 6+60 \nearrow Man
 31st St. St.



Sub 198.07 \nearrow 380.14 \nearrow Sta 6+07 \nearrow Man
 32nd St. St.

11/3/4 Hatch
 Moore
 Hall

Location of Fences and Bldgs in Alley between
 31st - 32nd - Woodman - Franklin

N. St. Water Main Cuts. 6" Pipe.
 Pipe not uncovered El. on S. Rail.

BM NE 17 5/8 ft	132	37.32	11.22	36.00	
TP	0.57	26.67	8.13	26.10	
				18.54	
	2.35	20.89			
0+10 = EL. 16 St			8.73	12.16	8.30
+50			6.98	13.91	9.52
1+00			5.18	15.71	10.74
+50			3.52	17.37	11.96
2+00 = WL 17 St			2.08	18.81	13.19
TP			1.13	19.76	
EL. 17 St	9.55	29.31	8.37	20.94	14.69
+50			7.17	22.14	15.18
1+00			6.16	23.15	17.07
+50			5.15	24.16	18.25
2+00 = WL 18 St			4.24	25.97	19.44
EL. 18 St			2.83	26.48	20.54
+50 T.P.			1.85	27.46	21.49
1+00	8.28	35.74	7.34	28.40	22.43
+50			6.44	29.30	23.38
2+00 = WL 19 St			5.52	30.22	24.32
EL. 19 St			4.61	31.68	25.69
TP			6.14	35.70	
TP	11.97	47.67	6.23	47.44	
BM NE 19 2/3 ft	11.41	58.45	1.48	56.97	56.97 OK

BM NE 17 5/8 ft - 36.00
 " " 19 1/4 " 56.97
 1/2 ft.
 West
 Events
 Curve

28.50	80	28.50	28.55
	19 St		26.67
28.50		27.00	24.88
			26.67
			24.32 = cut pipe
2.00		2.00	
2.50		2.50	
	18 St		22.40
			22.40
			20.89 = cut pipe
24.00	8	22.00	22.00
			19.44 cut
2.00		2.00	
35.00		17.50	17.90
18.00		17.50	26.41
17.50		17.50	4.65
	17 St		22.15
33.00		16.00	17.90
2.00		13.17 cut	22.15
17.00			26.44
80			17.90
10.00		10.00	24.00
			24.00
			26.44
			17.90
			24.00
			26.44
			17.90
			24.00
			26.44
			17.90
			24.00
			26.44

23.54 Keams

Street

N St

Pipe Here to 17.90 s. of E.

Cross Sections Hawk St
 60' wide, 10' walks - 10' / 2s.
 between N.L. PL. 1122 & 275' N. of Douglas.

(264.219)

B.M. NE Wash. & Hawk Plug 26394

113 26417

275' N of Douglas - End Paving.

EL	28	261.4
+4	22	262.0
	29	261.3
C	28	261.4
1/4	26	261.6
±	26	261.6
1/4	28	261.4
C	32	261.0
+6	34	260.8
	30	261.2
WL	35	260.7

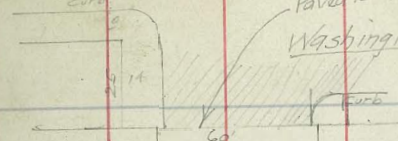
265' N of Douglas

WL	38	260.4
C	39	260.3
1/4	35	260.7
±	30	261.2
1/4	31	261.1
C	33	260.9
EL	34	260.8

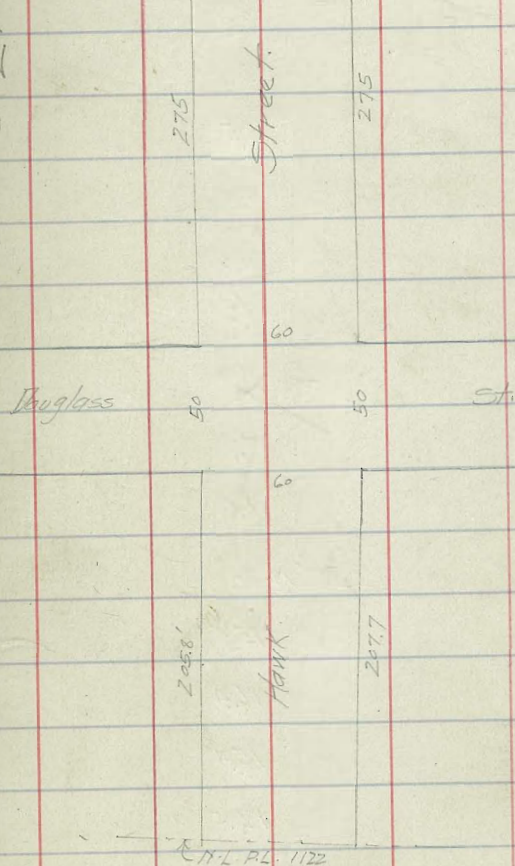
B.M. NE Hawk Wash. Plug 263.04

B.M. NE. 1/2 mi. S. of 344. 263.70

1/2 mi
West
Evans
Farm



Paved to this line - 52' curb
 12' walks.



Hawk.

264.239

26417

250' N of Douglas.

EL	38	2604
C	40	2602
1/4	39	2603
£	35	2607
1/4	40	2602
+5	46	2596
C	76	2566
+5	98	2544
WL	99	2543
+10	90	2552

225' N.

-15	155	2487
WL	164	2478
C	154	2488
1/4	125	2517
£	93	2549
1/4	41	2601
C	45	2597
EL	40	2602

Hawk.

264.239

26417

200' N.

EL	46	259.6
C	45	259.7
1/4	51	259.1
£	93	254.9
1/4	132	251.0

185' N.

EL	50	259.2
C	48	259.4
1/4	59	258.3
+3	70	257.2
+5	99	254.3
£	115	252.7
1/4	133	250.9

175' N.

-2	14.6	249.6
-11	138	250.4
WL	132	251.0
C	105	253.7
1/4	78	256.4

48

Hawk

264.2 H9

264.17

±		4.4	259.8
¼		4.1	260.1
c		4.7	259.5
EL		4.9	259.3
T.P. Low one		11.7	252.60
High T.P.		3.45	260.72
	0.70	253.30	
	200' N. of Douglass		
-7E		3.8	249.5
-5E		6.9	246.4
W.Corb.		8.5	244.8
WL		10.7	242.6
+30		13.5	239.8
+40		15.0	238.3

185' N. of Douglass

-30		8.7	244.6
WL		6.4	246.9
W.Corb.		6.2	247.1

Hawk

270.6 H9

49

High T.P.

260.72

	9.93	270.65	
	150' N. of Douglass		
EL		11.2	259.4
c		11.0	259.6
¼		10.5	260.1
±		10.4	260.2
¼		10.3	260.3
c		11.1	259.5
WL		12.2	258.4
	125' N		
WL		9.6	261.0
c		9.3	261.1
¼		9.0	261.6
±		9.3	261.3
¼		9.5	261.1
c		9.9	260.7
EL		10.4	260.2

Hawk.

270.65 N9

100' N of Douglas.

EL	95	261.1
C	86	262.0
1/4	87	262.0
Φ	84	262.2
1/4	84	262.2
C	85	262.1
WL	83	262.3

75' N of Douglas.

WL	78	262.8
C	81	262.5
1/4	80	262.6
Φ	78	262.8
1/4	79	262.7
C	80	262.6
EL	83	262.3

Hawk.

50

270.65

50' N of Douglas.

FL	82	262.4
C	78	262.8
1/4	74	263.2
Φ	71	263.5
1/4	74	263.2
C	72	263.4
WL	70	263.6

25' N of Douglas.

WL	62	264.4
C	64	264.2
1/4	68	263.8
Φ	74	263.2
1/4	78	262.8
C	80	262.6
EL	81	262.5

HAWK

270.65

NL Douglass 50' Wide 10' Wks - 7/2 1/4

EL	7.8	262.8
C	7.6	263.0
1/4	7.4	263.2
ϕ	6.9	263.7
1/4	6.6	264.0
C	6.3	264.3
WL	6.1	264.5

N Curb Douglass

WL	5.9	264.7
C	6.1	264.5
1/4	6.2	264.4
ϕ	6.5	264.1
1/4	7.3	263.3
C	7.5	263.1
EL	7.7	263.0

HAWK

270.65

N 1/4 Douglass

EL	7.2	263.4
C	7.3	263.3
1/4	7.1	263.5
ϕ	6.5	264.1
1/4	6.1	264.5
C	5.9	264.7
WL	5.7	265.0

ϕ Douglass

WL	5.1	265.5
C	5.5	265.1
1/4	5.6	265.0
ϕ	6.1	264.5
1/4	7.1	263.5
C	7.3	263.3
EL	7.2	263.4

51

HAWK

27065

3 1/4 Douglass

EL	6.7	264.0
C	7.2	263.4
1/4	6.9	263.7
ϕ	5.9	264.7
1/4	5.1	265.5
C	5.2	265.4
WL	5.5	265.1

S Curb.

WL	5.2	265.4
C	5.1	265.5
1/4	5.1	265.5
ϕ	6.0	264.6
1/4	6.9	263.7
C	7.1	263.5
EL	6.8	263.8

HAWK

52

27065

5L Douglass

EL	6.4	264.2
C	6.8	263.8
1/4	6.7	264.0
ϕ	6.3	264.3
1/4	5.4	265.1
C	5.0	265.6
WL	5.0	265.6

Z5'S

WL	5.4	265.2
C	5.9	264.7
1/4	6.1	264.5
ϕ	6.2	264.4
1/4	6.5	264.1
C	6.3	264.3
EL	5.6	265.0

HAWK.

270.65

50'S.

EL	5.3	265.3
C	5.5	265.1
1/4	5.8	264.8
1/2	5.8	264.8
1/4	5.8	264.8
C	5.7	265.0
WL	5.4	265.2

75'S.

WL	5.4	265.2
C	5.6	265.0
1/4	5.6	265.0
1/2	5.2	265.4
1/4	5.4	265.2
C	5.3	265.3
EL	5.2	265.4

HAWK.

53

270.65

100'S.

EL	5.0	265.6
C	4.9	265.7
1/4	5.0	265.6
1/2	5.2	265.4
1/4	5.1	265.5
C	5.3	265.3
WL	5.1	265.5

125'S.

WL	4.7	266.0
C	4.9	265.7
1/4	4.8	265.8
1/2	4.7	266.0
1/4	4.9	265.7
C	4.9	265.7
EL	5.1	265.5

HAWK.

27465 (D)

150'S.

EL.	5.1	265.5
C.	5.0	265.6
1/4	4.8	265.8
£	4.6	266.0
1/4	4.6	266.0
C	4.4	266.2
WL.	4.4	266.2

175'S.

WL.	4.2	266.4
C	4.9	266.2
1/4	4.5	266.1
£	4.6	266.0
1/4	4.7	266.0
C	4.8	265.8
EL.	4.9	265.7

HAWK.

54

27065

 NL PL 1122 = ^{2058.5 on WL} 2077.0 on EL.

EL.	4.8	265.8
C	5.4	265.2
1/4	5.3	265.3
£	5.1	265.5
1/4	5.7	264.9
C	5.5	265.1
WL.	4.4	266.2

See Douglass X Secs. P. 55.

Douglass St Cross Sections.

WL: Goldfinch to EL: Ibis
50' Wide - 10' Walks - 1/2' 1/4's.

27065

WL: Goldfinch = 210' E of EL: Hawk

SL	{ 4.8 5.3	265.8 265.3
c	{ 4.8 5.3	265.8 265.3
1/4	4.8	265.8
E	4.6	266.0
1/4	4.6	266.0
c	{ 4.4 3.8	266.2 266.8
NL	4.1	266.5

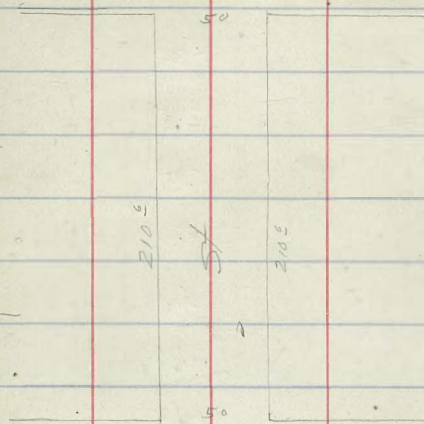
200' E.

NL	3.9	266.7
c	3.9	266.7
1/4	4.1	266.5
E	4.4	266.2
1/4	4.6	266.0
c	4.2	266.4
SL	4.8	265.8

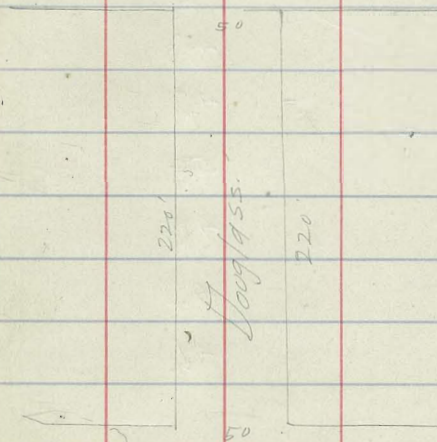
1/2/15
West.
Evans
Davine

55

Goldfinch St



Hawk St



Ibis

Douglass

(27065528)

175'E

SL	50	265.6
C	46	266.0
1/4	44	266.2
1/4	44	266.2
1/4	44	266.2
C	46	266.0
NL	43	266.3

150'E

NL	45	266.1
C	48	265.8
1/4	47	266.0
1/4	50	265.6
1/4	49	265.7
C	47	266.0
SL	46	266.0

Douglass

58

(27065528)

125'E

SL	46	266.0
C	44	266.2
1/4	41	266.5
1/4	42	266.4
1/4	45	266.1
C	52	265.4
NL	49	265.7

100'E

NL	58	264.8
C	55	265.1
C	49	265.7
1/4	48	265.8
1/4	45	266.1
1/4	45	266.1
C	43	266.3
SL	43	266.3

Douglass.

270.65 ~~89~~

75'E

SL	45	266.2
C	49	265.7
1/4	51	265.5
⊘	50	265.6
1/4	51	265.5
C	53	265.3
+1	57	265.0
NL	60	264.6

50'E

NL	66	264.0
+9	59	264.7
C	54	265.2
1/4	50	265.6
⊘	52	265.4
1/4	50	265.6
C	47	266.0
SL	43	266.3

Douglass.

57

270.65 ~~89~~

25'E of Hawk.

SL	47	266.0
+3	53	265.3
C	53	265.3
1/4	56	265.0
⊘	59	264.7
1/4	62	264.4
C	67	264.0
NL	70	263.6

EL. Hawk.

NL	78	262.8
C	77	263.0
1/4	73	263.3
⊘	72	263.4
1/4	66	264.0
C	68	263.8
SL	64	264.2

Int taken on Hawk.

Douglass.

270.65 ~~AS~~

NL Hawk.

SL	5.1	265.5
C	5.2	265.4
1/4	5.4	265.2
♀	5.1	265.5
1/4	5.7	265.0
C	5.9	264.7
NL	6.0	264.6

25' W of Hawk.

NL	5.4	265.2
C	5.2	265.4
1/4	5.0	265.6
♀	4.6	266.0
1/4	4.9	265.7
C	4.8	265.8
SL	4.5	266.1

Douglass.

58

270.65 ~~AS~~

50' W.

SL	4.3	266.3
C	4.7	266.0
1/4	4.8	265.8
♀	4.8	265.8
1/4	5.1	265.5
C	5.4	265.2
NL	5.9	264.7

75' W.

NL	6.5	264.1
C	5.9	264.7
1/4	5.6	265.0
♀	5.3	265.3
1/4	5.1	265.5
C	4.9	265.7
SL	4.6	266.0

Douglas

270.65

100' W.

SL	5.1	265.5
c	5.4	265.2
1/4	5.5	265.1
1/4	5.7	265.0
1/4	6.1	264.5
c	6.7	264.0
NL	7.4	263.2

125' W.

NL	8.0	262.6
c	7.5	263.1
1/4	6.8	263.8
1/4	6.5	264.1
1/4	6.1	264.5
c	5.3	265.3
SL	5.3	265.3

Douglas

59

270.65

150' W.

SL	5.7	265.0
c	6.4	264.2
1/4	6.8	263.8
1/4	7.3	263.3
1/4	7.6	263.0
c	8.2	262.4
NL	8.8	261.8

175' W.

NL	8.2	262.4
c	8.5	262.1
1/4	8.2	262.4
1/4	7.6	263.0
1/4	6.7	264.0
c	6.3	264.3
SL	5.6	265.0

Douglas

60

27065

200' W

SL	6.5	264.1
<	7.3	263.3
1/4	7.9	262.7
⊕	8.3	262.3
1/4	8.4	262.2
<	8.5	262.1
NL	8.9	261.7

270 W - EL Ibis

NL	8.5	262.1
<	8.7	262.0
1/4	9.0	261.6
⊕	8.9	261.7
1/4	8.6	262.0
<	8.2	262.4
SL	7.9	262.7

BM NE Douglas & Hawk Spk. 6.95 263.70 263.71

Brook's Ave Cross Sections
 W.L. Park Blvd to E.L. Richmond
 60' Wide, 10' Walks, 10' 1/4's

B.M. SW. Albert Brooks Map. 287.19

9.99 296.68

W.L. Park Blvd.

NL	0.0	296.7
C	0.1	296.6
1/4	0.1	296.8
1/4	0.1	296.8
1/4	0.3	296.4
C	0.4	296.3
SL	0.6	296.1
25' W.		
SL	0.7	296.0
C	0.9	295.8
1/4	0.6	296.1
1/4	0.4	296.3
1/4	0.8	295.9
C	1.1	295.6
NL	0.9	295.8

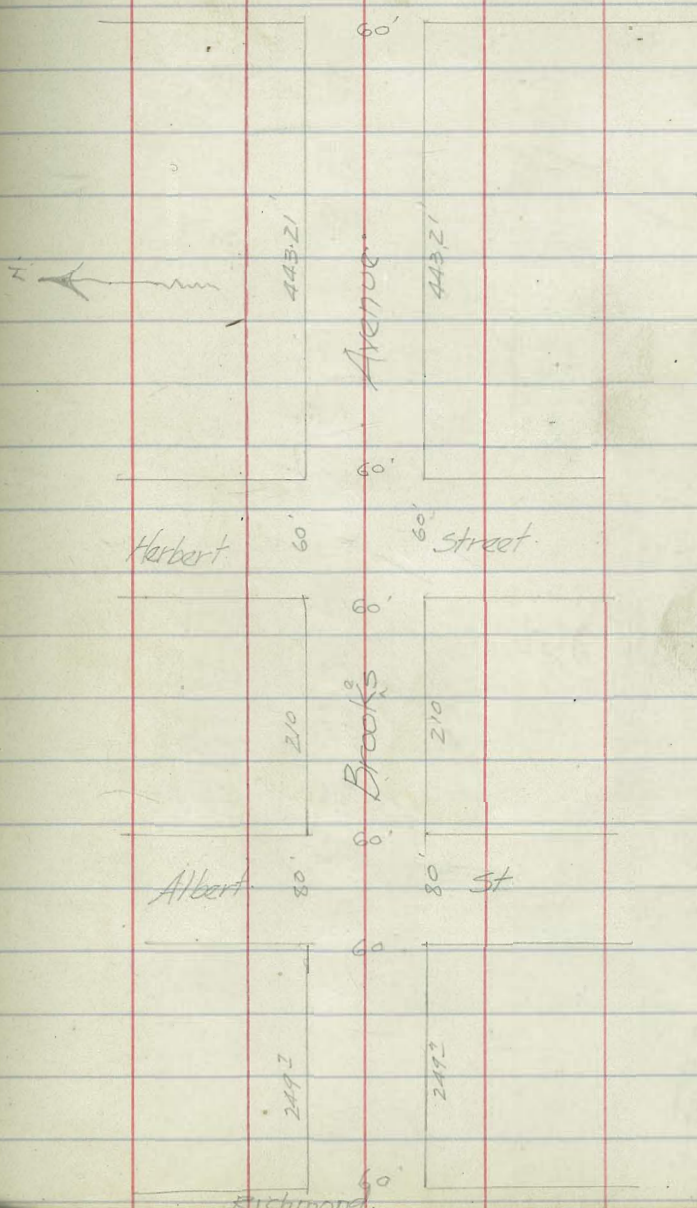
km. SW Albert Brooks map. 287.19

1/11/15
 West
 Evans
 Devine.

61

Park

Boulevard



Brooks

296.7 HS.

296.68

50' W.

NL	1.4	295.3
C	1.2	295.5
1/4	1.3	295.4
£	1.0	295.7
1/4	0.8	295.9
C	0.9	295.8
SL	1.5	295.2

75' W.

SL	1.3	295.4
C	1.2	295.5
1/4	0.8	295.9
£	0.9	295.8
1/4	1.0	295.7
C	1.2	295.5
NL	1.6	295.1

Brooks

296.7 HS.

296.68

100' W.

NL	1.9	294.8
C	1.6	295.1
1/4	1.3	295.4
£	1.2	295.5
1/4	1.4	295.3
C	1.6	295.1
SL	2.0	294.7

125' W.

SL	2.3	294.4
C	2.5	294.2
1/4	2.5	294.2
£	2.2	294.5
1/4	2.3	294.4
C	2.2	294.5
NL	2.4	294.3

Brooks

296.749

29668

150'W.

NL	2.7	294.0
C	2.8	293.9
1/4	3.0	293.7
£	2.9	293.8
1/4	3.0	293.7
C	3.3	293.4
SL	3.2	293.5

175'W.

SL	3.2	293.5
C	2.9	293.8
1/4	2.5	294.2
£	2.3	294.4
1/4	2.1	294.6
C	2.2	294.5
NL	2.6	294.1

Brooks

296.749

29668

200'W.

NL	3.4	293.3
C	3.6	293.1
1/4	3.6	293.1
£	4.0	292.7
1/4	4.4	292.3
C	4.1	292.6
SL	4.0	292.7

225'W.

SL	5.6	291.1
C	6.4	290.3
1/4	5.7	291.0
£	5.0	291.7
1/4	4.6	292.1
C	4.6	292.1
NL	4.4	292.3

63

Brooks.

296.7 1919.

29668

250'W

NL	6.8	289.9
C	7.0	289.7
1/4	7.6	289.1
1/2	8.4	288.3
1/4	8.9	287.8
C	9.1	287.6
SL	9.9	286.8
+15	11.0	285.7

2.75'W

SL	7.0	289.7
C	6.6	290.1
1/4	6.4	290.3
1/2	6.1	290.6
1/4	6.0	290.7
C	6.0	290.7
NL	5.6	291.1

Brooks.

296.7 1919.

29668

300'W

NL	3.7	293.0
C	4.2	292.5
1/4	4.0	292.7
1/2	3.7	293.0
1/4	3.5	293.2
C	3.4	293.3
SL	3.2	293.5

325'W

SL	2.9	293.8
C	3.4	293.3
1/4	3.7	293.0
1/2	3.7	293.0
1/4	3.7	293.0
C	3.7	293.0
NL	3.6	293.1

64

Brooks

296.7 Hg.

296.68

350' W.

NL	4.2	292.5
C	4.5	292.2
1/4	4.6	292.1
£	4.4	292.3
1/4	4.3	292.4
C	4.3	292.4
SL	4.6	292.1

375' W.

SL	5.8	290.9
C	5.4	291.3
1/4	5.3	291.4
£	5.3	291.4
1/4	5.1	291.6
C	5.3	291.4
NL	4.9	291.8

Brookes

296.7 Hg.

296.68

400' W.

NL	5.2	291.5
C	5.9	290.8
1/4	6.0	290.7
£	6.3	290.4
1/4	6.3	290.4
C	6.2	290.5
SL	6.1	290.6

425' W.

SL	7.5	289.2
C	6.9	289.8
1/4	6.8	289.9
£	6.6	290.1
1/4	6.4	290.3
C	6.6	290.1
NL	5.8	290.9

65

Brookes

296.7 AS

296.68

443.2 W = EL Herbert 60 W } 90% 1/4
10% 1/4

NL	6.6	290.1
C	6.8	289.9
1/4	7.0	289.7
♀	7.2	289.5
1/4	7.1	289.6
C	7.1	289.6
SL	7.8	288.9

E. Cord.

SL	7.8	288.9
C	7.5	289.2
1/4	7.3	289.4
♀	7.3	289.4
1/4	7.1	289.6
C	6.8	289.9
NL	6.7	290.0

Brookes

296.7 AS

296.68

E 1/4 of Herbert

NL	6.7	290.2
C	6.9	290.0
1/4	7.0	289.9
♀	7.2	289.7
1/4	7.3	289.6
C	7.3	289.6
SL	7.7	289.2

♀ Herbert

SL	6.9	290.0
C	6.9	290.0
1/4	6.9	290.0
♀	6.5	290.4
1/4	6.7	290.2
C	6.1	290.8
NL	6.4	290.5

66

Brookes.

296.719

296.68

W/A Herbert

NL	62	290.5
C	58	290.9
1/4	61	290.6
£	57	291.0
1/4	60	290.7
C	63	290.4
SL	65	290.2

W. Curb.

SL	5.8	290.9
C	6.0	290.7
1/4	5.8	290.9
£	5.7	291.0
1/4	5.6	291.1
C	5.4	291.3
NL	5.9	290.8

Brookes.

296.719

296.68

W/L Herbert

NL	55	291.2
C	53	291.4
1/4	53	291.4
£	52	291.5
1/4	55	291.2
C	56	291.1
SL	54	291.3

25' W.

SL	49	291.8
C	52	291.5
1/4	50	291.7
£	50	291.7
1/4	4.8	291.9
C	4.4	292.3
NL	5.0	291.7

Brookes -

296.7 HS

296.68

50'W.

NL	50	291.7
C	5.1	291.6
1/4	5.3	291.4
1/4	5.3	291.4
1/4	5.3	291.4
C	5.5	291.2
SL	5.6	291.1

75'W.

SL	6.1	290.6
C	6.0	290.7
1/4	6.2	290.5
1/4	6.3	290.4
1/4	5.9	290.8
C	5.4	291.3
NL	5.2	291.5

Brookes

68

296.7 HS

296.68

100'W.

NL	6.0	290.7
C	6.2	290.5
1/4	6.1	290.6
1/4	6.1	290.6
1/4	6.2	290.5
C	6.8	289.9
SL	7.3	289.4

125'W.

SL	7.9	288.8
C	7.7	289.0
1/4	7.2	289.5
1/4	7.0	289.7
1/4	6.9	289.8
C	6.8	289.9
NL	6.3	290.4

Brookes

296.7 HS

296.68

150'W

NL	6.8	289.9
C	7.4	289.3
1/4	7.8	288.9
1/4	7.8	288.9
1/4	8.2	288.5
C	8.4	288.3
SL	8.7	288.0

175'W

SL	9.2	287.5
C	8.8	287.9
1/4	8.5	288.2
1/4	8.5	288.2
1/4	8.6	288.1
C	8.5	288.2
NL	8.8	287.9

Brookes

69

296.7 HS

296.68

200'W

NL	7.5	289.2
C	7.9	288.8
1/4	8.3	288.4
1/4	8.2	288.5
1/4	8.6	288.1
C	8.8	287.9
SL	9.0	287.7

210'W = EL Albert 80'W { 14' Wks
13' 1/2 s.

SL	8.8	287.9
C	8.6	288.1
1/4	8.4	288.3
1/4	8.1	288.6
1/4	8.1	288.6
C	7.7	289.0
NL	7.4	289.3

Brooks296.7 HS

296.68

E Curb Albert

NL	7.3	289.4
C	7.5	289.2
1/4	7.8	288.9
£	7.9	288.8
1/4	8.0	288.7
C	8.2	288.5
SL	8.4	288.3

E 1/4

SL	8.3	288.4
C	8.1	288.6
1/4	8.1	288.6
£	7.6	289.1
1/4	7.7	289.0
C	7.3	289.4
NL	7.2	289.5

Brookes296.7 HS

296.68

£ Albert

NL	7.0	289.7
C	7.4	289.3
1/4	7.7	289.0
£	7.7	289.0
1/4	8.1	288.6
C	8.2	288.5
SL	8.4	288.3

W 1/4

SL	8.4	288.3
C	8.3	288.4
1/4	8.2	288.5
£	8.0	288.7
1/4	7.8	288.9
C	7.5	289.2
NL	7.1	289.6

70

Brookes

296.723

296.68

W. Corb.

NL	7.6	289.1
C	7.9	288.8
1/4	8.2	288.5
£	8.1	288.6
1/4	8.4	288.3
C	8.7	288.0
SL	8.9	287.8

NW. Albert.

SL	9.5	287.2
C	9.3	287.4
1/4	9.0	287.7
£	8.7	288.0
1/4	8.6	288.1
C	8.2	288.5
NL	8.0	288.7

Brookes

296.68

T.P. BN.

9.49

287.19

287.19

354

290.73

25' W. of Albert

NL	2.8	287.9
C	3.2	287.5
1/4	3.4	287.3
£	3.7	287.0
1/4	4.0	286.7
C	4.3	286.4
SL	4.6	286.1
	50' W.	
SL	5.9	284.8
C	5.2	285.5
1/4	4.8	285.9
£	4.5	286.2
1/4	4.0	286.7
C	3.8	286.9
NL	3.3	287.4

71

Brookes.

29073

75'W.

NL	4.1	286.6
C	4.5	286.2
1/4	4.5	286.2
£	4.8	285.9
1/4	5.0	285.7
C	5.5	285.2
SL	6.2	284.5

100'W.

SL	6.3	284.4
C	5.6	285.1
1/4	5.2	285.5
£	4.9	285.8
1/4	4.7	286.0
C	4.5	286.2
NL	4.3	286.4

Brookes.

72

29073

125'W.

NL	4.4	286.3
C	4.4	286.3
1/4	4.5	286.2
£	5.1	285.6
1/4	5.5	285.2
C	6.0	284.7
SL	6.5	284.2

150'W.

SL	7.0	283.7
C	6.4	284.3
1/4	5.9	285.0
£	5.3	285.4
1/4	5.0	285.7
C	4.9	285.8
NL	4.6	286.1

Brookes

290.73

175'W.

NL	5.2	285.5
C	5.6	285.1
1/4	6.1	284.6
£	6.3	284.4
1/4	6.4	284.3
C	7.3	283.4
SL	8.1	282.6

183'W.

-10	10.6	280.1
SL	9.2	281.5
C	7.8	282.9
1/4	7.0	283.7
£	6.7	284.0
1/4	6.3	284.4
C	6.0	284.7
NL	5.5	285.2

Brookes

73

290.73

200'W.

NL	6.1	284.6
C	6.5	284.2
1/4	6.9	283.8
£	7.6	283.1
1/4	8.9	281.8
SC	12.0	278.7

225'W.

3-Corb.	13.9	276.8
1/4	12.1	278.6
£	10.4	280.3
£	8.1	282.6
1/4	7.2	283.5
C	6.7	284.0
NL	6.4	284.3

249^J - EL. Richmond

NL	6.8	283.9
C	7.0	283.7
1/4	7.4	283.3
£	7.9	282.8
1/4	8.7	282.0
C	10.3	280.4

Brookes

74

290.73

TP. 12.89 277.84

3.48 281.32

200' W.

SL 4.9 276.4

+15s 9.2 272.1

225' W.

SL 7.6 273.7

+15s 13.6 267.7

+25s 19.0 262.3

2495 = EL Rich

SL 4.4 276.9

+15s 10.0 271.3

+25s 13.7 267.6

Douglas St Cross Sections

E.L. Eagle to WL Dove

50' Wide 10' walks = 7 1/2' 1/4's

2/1/15
West
Evans
Derrin

75

PM. NW. Face & Wash. Plug.

264.47

" NE. Eagle " "

263.06

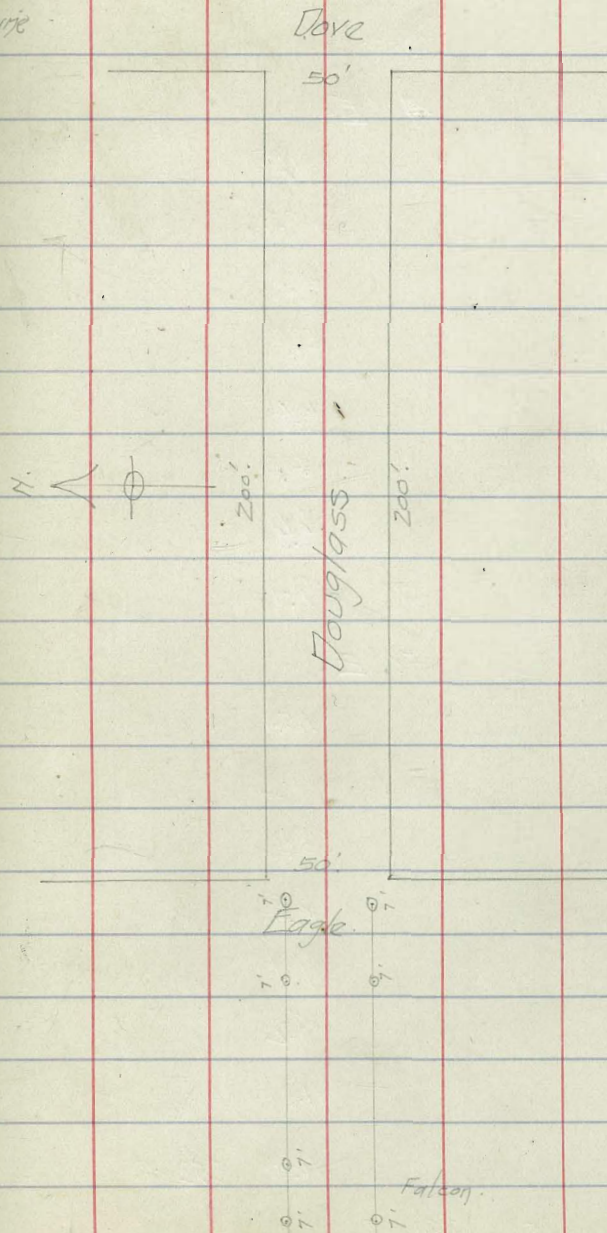
0.44 263.50

E.L. Eagle St

NL	5.1	2584
C	5.5	2580
1/4	5.0	2585
±	5.1	2584
1/4	5.5	2580
C	5.6	2579
2L	5.3	2582

25' E

2L	6.3	2572
C	6.1	2574
1/4	5.9	2576
±	5.5	2580
1/4	5.6	2579
C	5.8	2577
NL	7.2	2563
+10	12.4	2509



Douglass

263.50

40'E.

-10	150	v48.5
NL	8.8	v54.7
C	6.4	v57.1
1/4	5.9	v57.6
£	6.0	v57.5
1/4	6.3	v57.2
C	6.6	v56.9
SL	7.4	v56.1

50'E.

-10	15.4	v48.1
SL	11.2	v52.3
C	8.1	v55.4
1/4	6.8	v56.7
£	7.1	v56.5
1/4	8.2	v55.3
C	11.1	v54.6
T.P.	10.69	252.81

158 254.39

Douglass

254.39

50'E

NL	7.6	v46.8
+25 N.	14.5	v39.9
T.P.	11.91	242.48
	249	244.97
		75'E.

-40	12.4	v37.6
NL	11.1	v33.9
C	8.5	v36.5
1/4	6.6	v38.4
£	5.7	v39.3
1/4	5.7	v39.3
C	5.9	v39.1
SL	7.0	v38.0
+40	12.1	v32.9
T.P.	12.79	232.18
	5.49	237.67

76

Douglass

23767

100' E.

-40	11.8	2259
-20	10.2	2275
SL	10.0	2277
C	10.0	2277
1/4	9.9	2278
±	10.6	2271
1/4	10.6	2271
C	10.8	2269
NL	10.0	2277
+30	3.4	2243

115' E.

-		
NL	5.6	2271
C	7.7	2200
1/4	8.7	2290
±	10.4	2277
1/4	12.2	2255

Douglass

23767

C bot. canon.	142	2275
SL " "	147	2270
+30 " "	16.6	2211

125' E.

+36 bot canon.	17.6	2201
SL	13.2	2205
C	10.0	2277
1/4	8.4	2297
±	7.2	2205
1/4	6.4	2217
C	5.1	2276
NL	2.7	2250
+15	0.0	2277
TP	0.61	22706

11.78 248 84

150' E.

-15	9.2	2206
NL	7.9	2214
C	9.1	2298

77

Douglas

248.84

1/4	102	v778.6
£	11.3	v777.5
1/4	13.5	v775.7
C	14.2	v736.6
BL	16.4	v777.6
+25	19.1	v779.7
175'E		
-25	9.7	v779.1
SL	8.6	v740.7
C	7.1	v761.7
1/4	4.8	v744.0
£	3.3	v745.5
1/4	1.9	v766.9
<	0.3	v768.5
TP	0.15	248.69

12.67 261.36

175'E

NL	11.4	v500
+10	10.0	v514

Douglas

261.36

100'E = NL Dove St.

NL	2.6	v588.8
<	3.9	v575
1/4	4.4	v57.0
£	6.4	v55.0
1/4	7.7	v57.7
<	9.2	v57.7
SL	10.8	v50.6
+20	11.0	v50.6
TP	0.39	260.97

8.99 269.96

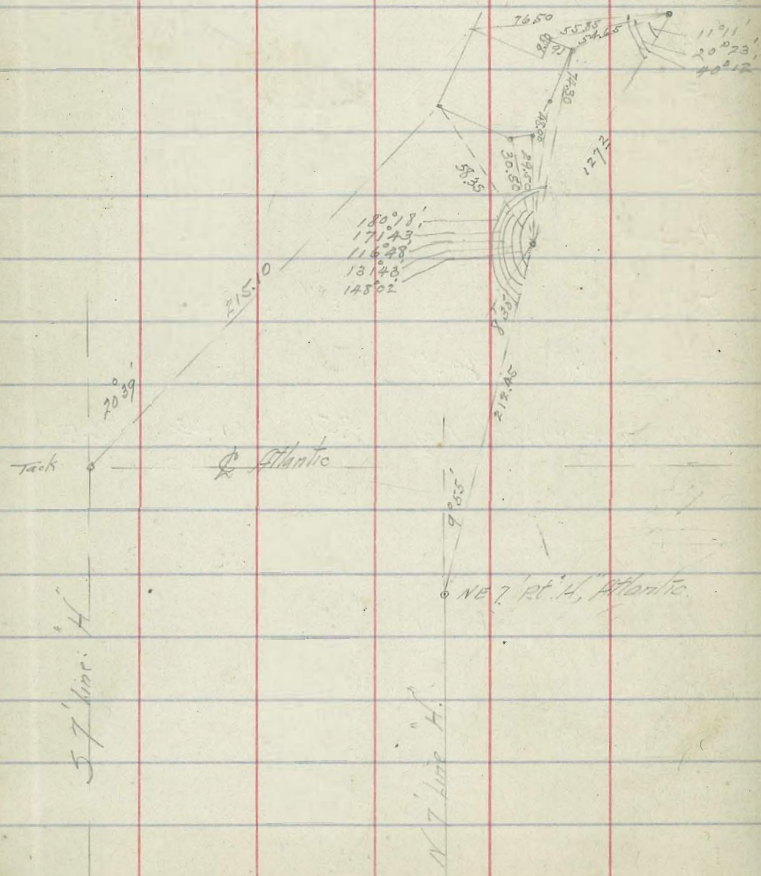
BM. NW Dove & Wash Plug 5.51 264.45 264.47
OK: west

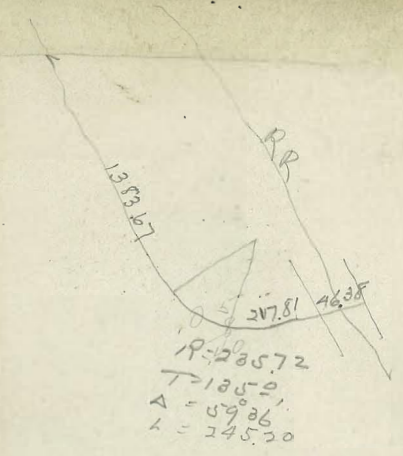
78

3/11/15
H. H. H.

Location of "Cozy Cottage"
for lease description

79





217.8
 135
 352.8
 23.2
 376.0

360.15
 41.35
 318.80

Racetrack
 L. Q. 653 18

strand
 BR to PC 2684.68
 curve A 27.25
 R 3424.95
 T 740.91
 L 1459.83
 def per 10 = 0°25'

0°18' R - 58.85 63°12'
 30.5 48.77
 27.5 31.58
 28.0 8.17
 11°11' R 52.65
 20°23' R 65.85
 10°12' R 76.50

217.8
 243.2
 463.0
 503
 317
 786.0

2270
 27.10
 27.10
 42.00
 12.90
 150
 317
 171.43
 450
 58.12
 116.48
 170
 417
 131.75
 315.8
 147.02

13.17
 530
 2489
 122
 1744
 166.9
 2.75
 7.17
 24.32
 20.64
 3.58
 .89
 2415
 20.14
 213.75
 75



101.33
 7.17