

951

F.B. ^{IN} 951

LEVEL BOOK.

No. 410 T

E
 Drawn
MIN
 NEW
 TABLES
 DISTANCES

2183
2037

	0	.1
0	10.0	10.1
1	11.0	11.1
2	12.0	12.1
3	13.0	13.1
4	14.0	14.1
5	15.0	15.1
6	16.0	16.1
7	17.0	17.1
8	18.0	18.1
9	19.0	19.1
10	20.0	20.1
11	21.0	21.1
12	22.0	22.1
13	23.0	23.1
14	24.0	24.1
15	25.0	25.1
16	26.0	26.1
17	27.0	27.1
18	28.0	28.1
19	29.0	29.1
20	30.0	30.1
21	31.0	31.1
22	32.0	32.1
23	33.0	33.1
24	34.0	34.1
25	35.0	35.1
26	36.0	36.1
27	37.0	37.1
28	38.0	38.1
29	39.0	39.1
30	40.0	40.1
31	41.0	41.1
32	42.0	42.1
33	43.0	43.1
34	44.0	44.1
35	45.0	45.1
36	46.0	46.1
37	47.0	47.1
38	48.0	48.1
39	49.0	49.1
40	50.0	50.1

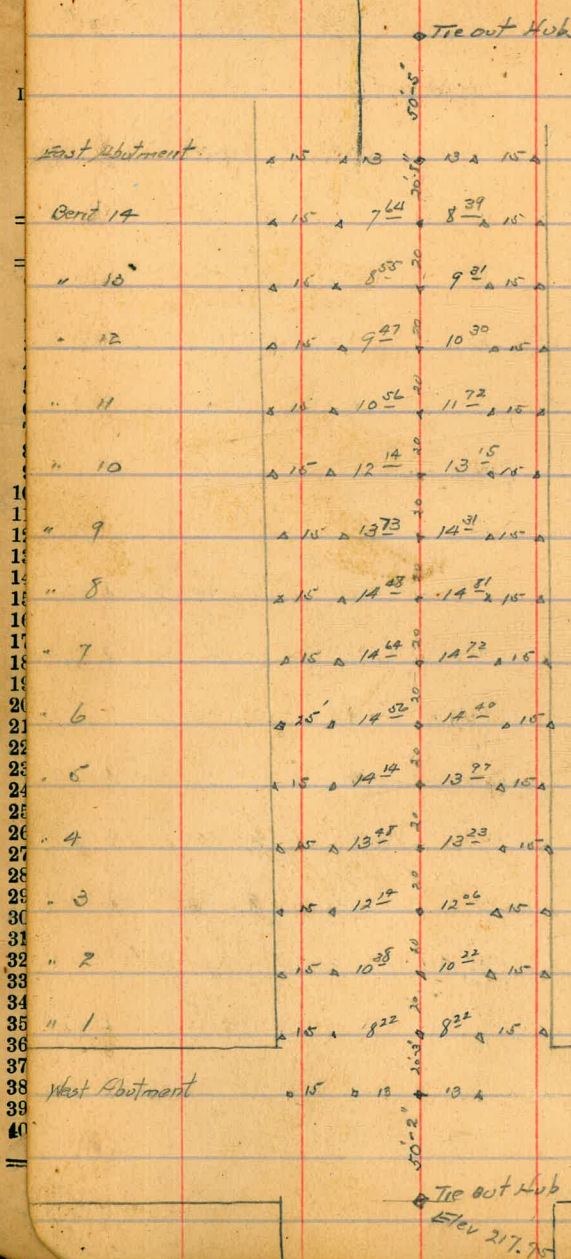
Calcu

20670 about

205⁸ on stake
west of monument

→ N

20358 on stake



10/20/13 Hates
Hill
Cedar St Bridge between
31st and Ida 1

B1M	7.64	231.71	224.07	Cedar-30'
	5.30	229.91	7.60	224.61
	0.25	218.00	12.16	217.75 Tie out Hub
	1.07	206.20	12.87	205.13 a point
B1N	Elev	205°	7.35	198.87 - 6.13
CV		208°	6.52	199.65 - 3.32
S		205°	5.86	200.34 - 4.66
TP	21.5	195.78	12.37	193.83
B2N		192°	7.71	188.27 - 3.33
CV		190°	7.20	188.75 - 1.72
S		193°	6.58	189.10 - 3.90
TP	22.7	185.96	12.79	183.19
B3N		181°	6.14	179.32 - 2.18
CV		181°	5.91	179.55 - 1.95
S		182°	5.30	180.16 - 1.84
TP	0.14	173.37	12.23	173.23
B4N		173°	1.73	171.64 - 1.86
CV		174°	1.06	172.31 - 2.19
S		175°	0.14	173.23 - 1.77

3/19/14.

5

		262.66	ground Elev.	Footing Height		245.17	ground Elev.	Footing Height
			Bent #7 271.13 Cap		16.2 E	19.7	284.5	237.0
3.5 E		11.0	251.7	252.7	3.5 W	7.6	237.6	238.6
13.3 E		9.25	253.4	254.4	15.5 W	6.0	239.2	240.6
T.P.	0.75	251.89	11.52	251.14	T.P.	9.72	253.14	17.5 243.42
3.5 W		2.8	249.1	250.1			Bent #3 270.53 Cap.	
14.7 W		6.9	245.0	246.0	3.5 E	7.8	245.3	246.3
			Bent #6 270.98 Cap		14.9 E	11.2	242.9	244.5
3.5 E		8.5	243.4	244.5	3.5 W	7.1	246.0	247.0
14.7 E		6.9	245.0	246.0	14.3 W	6.4	246.7	247.7
3.5 W		9.7	242.2	243.2	T.P.	10.31	262.92	0.53 252.61
15.5 W		12.7	239.2	241.0			Bent #2 270.37 Cap	
T.P.	5.12	245.17	11.84	240.05	3.5 E	9.1	253.8	255.0
			Bent #5 270.83 Cap		13.2 E	10.5	252.4	253.6
3.5 E		9.1	236.1	237.0	3.5 W	9.1	253.8	255.0
16 E		8.7	236.5	237.7	13.0 W	8.6	254.3	255.3
3.5 W		9.2	236.0	236.8			Bent #1 270.22	
16.5 W	in wash.	10.5	234.7	236.2	3.5 E	2.3	260.6	262.0
			Bent #4 270.68 cap.		12.0 E	2.8	260.1	261.5
3.5 E		8.8	236.4	237.9	T.P.	10.55	272.10	1.37 261.55

251.96

BENT #6

ROD

TOP
ELEV

EAST BATTER POST 15.96 ✓ 2460

✓ PLUMB ✓ 7.46 ✓ 2445

WEST ✓ ✓ 8.78 ✓ 2432

✓ BATTER ✓ 10.96 ✓ 2410

T.P. 7.79 247.49 12.27 239.67

BENT #5

EAST BATTER POST 9.78 ✓ 2377

✓ PLUMB ✓ 10.48 ✓ 2370

WEST ✓ ✓ 10.68 ✓ 2368

✓ BATTER ✓ 11.28 ✓ 2362

BENT #4

EAST BATTER POST 10.48 ✓ 2370

✓ PLUMB ✓ 9.58 ✓ 2379

WEST ✓ ✓ 8.88 ✓ 2386

✓ BATTER ✓ 6.88 ✓ 240.6

BENT #3

EAST BATTER POST 2.9 ✓ 2445

✓ PLUMB ✓ 1.18 ✓ 2463

T.P. 11.29 257.59 11.18 246.3

257.59

WEST PLUMB POST 10.59 ✓ 2470

✓ BATTER ✓ 9.59 ✓ 2477

BENT #2

EAST BATTER POST 3.99 ✓ 2536

✓ PLUMB ✓ 2.59 ✓ 2550

WEST ✓ ✓ 2.59 ✓ 2550

✓ BATTER ✓ 2.29 ✓ 2553

T.P. 10.99 266.98 1.60 255.99

BENT #1

EAST BATTER POST 5.48 ✓ 2615

✓ PLUMB ✓ 4.98 ✓ 2620

WEST ✓ ✓ 3.98 ✓ 2630

✓ BATTER ✓ 3.48 ✓ 2635

T.P. 11.47 276.26 2.49 264.49

So. ABUTMENT

2.19 274.07

T.P. 9.05 222.43 2.88 213.38

Check BM. 2.52 279.91

Cross Sections Lincoln Ave.
 EL. Oregon to Boundary line.
 80' Wide, 14' Walks - 13' 1/4s.

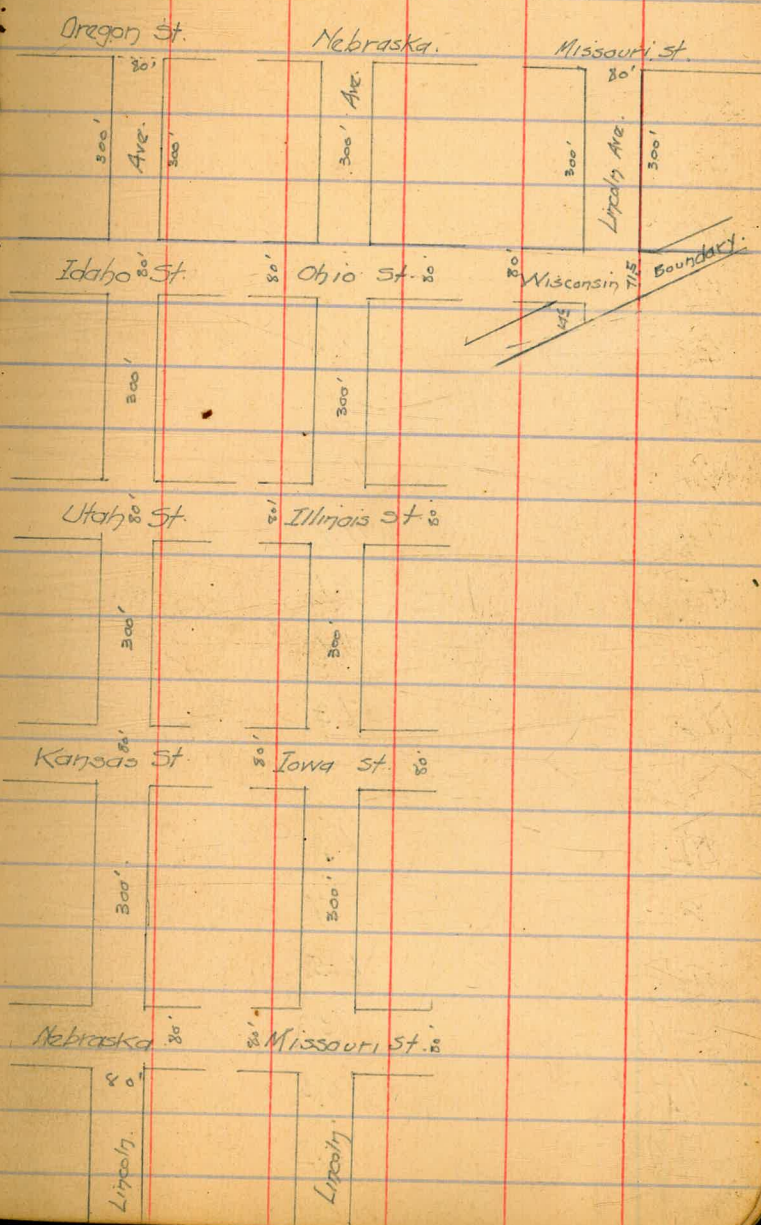
BE. King Oregon + Kentucky 350.93
 SE. 10 " " " " " " 362.44
 1/2 1/4 West
 Evans
 Devise

BM. SE. Oreg. & Lincoln 350.93

11.60 362.53

EL. Oregon

SL	11.3	351.2
C	{ 11.5	351.0
1/4	{ 12.0	350.5
1/4	11.8	350.7
E	11.2	351.3
1/4	11.1	351.6
C	10.4	352.1
NL	10.1	352.6
25'E.		
NL	8.5	354.0
C	9.0	353.5
+8	8.8	353.7
1/4	11.5	351.0
+4	12.5	350.0
E	14.2	348.3
+8	13.6	348.9
1/4	11.5	351.0
+1	10.2	354.3
3L	10.6	351.9
	10.3	352.2



Lincoln

362.53

50'E

SL.	9.1	353.4
C	9.2	353.3
+12	8.0	354.5
1/4	10.6	351.9
E	14.2	348.7
+8	11.0	351.5
1/4	11.5	351.0
+4	11.3	351.7
+5	8.1	354.4
C	7.8	354.7
NL	7.3	355.7
75'E		
NL	6.3	356.7
C	6.7	356.8
+7	6.5	356.0
+8	9.0	353.5
1/4	10.3	354.2
+8	10.2	354.3
E	12.6	349.9

Lincoln Ave.

362.53

9

1/4	9.8	354.7
+5	8.8	353.7
C	8.7	353.8
SL	8.1	354.4
100'E		
SL	7.3	355.7
+10	7.2	355.7
+12	8.4	354.1
C	8.7	353.8
1/4	8.5	354.0
+5	11.3	351.7
E	11.6	350.9
+8	9.9	354.6
1/4	7.2	355.3
+7	5.5	357.0
C	5.3	357.2
NL	5.0	357.5

Lincoln Ave

36253

125' E.

NL	4.5	358.0
C	5.0	357.5
+6	5.4	357.1
+8	6.2	356.3
1/4	6.7	355.8
£	7.0	355.5
+5	7.7	354.8
1/4	8.4	354.1
C	7.6	354.9
+7	6.3	356.2
SL	6.5	356.0

150' E.

SL	5.9	356.6
+8	5.9	356.6
C	6.9	355.6
1/4	7.2	355.3
+12	7.1	355.4
£	6.2	356.3

Lincoln Ave

36253

10

+5	4.3	358.2
1/4	7.0	355.5
C	5.5	357.0
NL	4.6	357.9

175' E.

NL	3.7	358.8
C	3.8	358.7
1/4	4.7	357.8
£	5.9	356.6
1/4	6.6	355.9
C	6.5	356.0
+9	5.2	357.3
SL	5.6	356.9

200' E.

SL	5.0	357.5
+5	4.5	358.0
C	5.7	356.8
1/4	6.2	356.3
£	5.5	357.0

Lincoln Ave.

362.53

1/4 C	4.1	358.4
	3.2	359.3
NL	3.0	359.5

225'E.

NL	2.5	360.0
C	2.6	359.9
1/4	4.8	357.7
E	7.1	355.4
1/4	5.7	356.8
C	4.6	357.9
SL	4.7	357.8

250'E.

SL	4.3	358.7
C	4.6	357.9
1/4	3.8	358.7
E	3.5	359.0
1/4	2.8	359.7
E	2.1	360.4
NL	2.0	360.6

Lincoln Ave.

362.53

275'E.

NL	1.5	361.0
C	1.5	361.0
1/4	2.6	359.9
E	2.9	359.6
1/4	3.2	359.3
C	3.5	359.0
SL	3.4	359.1

300'E = WL. Idaho. 80' Wide.

SL	2.3	360.7
C	{ 2.6 3.0	{ 359.9 359.5
1/4	2.7	359.8
E	2.2	360.7
1/4	2.0	360.5
C	{ 2.2 1.5	{ 360.7 361.0
NL	1.3	361.7

TR. BM. SE Idaho. 169 360.84

6.63 367.47

Idaho St Graded.

Lincoln Ave

36747

E.L. Idaho

SL	6.2	361.3
C	6.7	360.8
1/4	6.4	361.1
£	6.3	361.2
1/4	6.0	361.5
C	5.8	361.7
NL	5.3	362.2

25'E

NL	5.4	362.1
C	5.5	362.0
1/4	6.0	361.5
£	6.9	360.6
1/4	6.4	361.1
C	6.2	361.3
SL	6.5	361.0

Lincoln Ave

12

36747

35'E

SL	6.7	360.8
C	6.3	361.2
1/4	6.3	361.2
1/4	7.7	359.8
£	11.0	361.5
+8	9.1	358.4
1/4	6.0	361.5
C	5.2	362.3
NL	5.4	362.1

50'E

NL	5.2	362.3
C	5.3	362.2
1/4	5.9	361.6
£	10.5	359.0
+7	10.2	357.3
1/4	7.5	360.0
+5	6.1	361.4
C	6.2	361.3
SL	6.3	361.2

Lincoln Ave.

36747

75' E.

SL.	66	7609
C	6.1	761.4
+11	5.9	761.6
1/4	6.4	761.1
£	10.0	757.5
1/4	5.8	761.7
+3	5.1	762.4
C	4.9	762.6
NL.	5.3	762.2

100' E.

NL.	4.9	762.6
C	5.1	762.4
1/4	5.6	761.9
£	9.0	758.5
+7	8.5	759.0
1/4	5.6	761.9
C	5.5	762.0
SL.	6.4	761.1

Lincoln Ave.

36747

125' E.

SL.	6.4	761.1
C	5.3	762.2
1/4	5.8	761.7
£	7.9	759.6
1/4	5.2	762.2
C	4.6	762.9
NL.	5.0	762.5

150' E.

NL.	4.3	762.2
C	4.4	762.1
1/4	5.0	762.5
£	5.5	762.0
1/4	5.3	762.2
C	5.2	762.2
SL.	6.0	761.5

Lincoln Ave.

36747

175'E.

SL	5.9	761.6
<	5.2	762.7
1/4	5.0	762.9
±	5.4	762.1
1/4	4.5	762.0
<	4.1	762.4
NL	3.7	762.8

200'E.

NL	3.5	764.0
<	4.3	762.7
1/4	4.4	762.1
±	6.2	761.3
+5	8.2	759.3
+10	5.3	762.2
1/4	4.7	762.8
<	4.5	762.0
SL	5.8	761.7

Lincoln Ave.

14

36747

225'E.

SL	5.4	762.1
<	4.8	762.7
1/4	4.2	762.3
+5	5.3	762.5
±	4.7	762.8
1/4	3.9	762.6
<	3.6	762.9
NL	3.2	764.3

250'E.

NL	2.9	764.6
<	3.3	764.2
1/4	3.8	762.7
±	4.3	762.2
1/4	4.1	762.4
<	5.4	762.1
SL	6.3	761.2

Lincoln Ave.

36747

275' E.

SL	62	361.3
C	57	361.8
1/4	44	362.1
E	42	362.2
1/4	38	362.7
C	34	362.1
NL	32	362.3

300' E. = NL Utah. Graded 80' W.

NL	33	362.2
C	39	362.6
1/4	41	362.4
E	45	362.0
1/4	46	362.9
C	46	362.9
SL	49	362.6
TP. Curb. SE. Plug.	464	362.83

6.29 369.22

Lincoln Ave.

15

36922

EL. Utah.

SL	63	362.9
C	63	362.9
1/4	61	362.1
E	61	362.1
1/4	58	362.4
C	53	362.9
NL	50	362.2

75' 50' E.

NL	48	362.4
C	50	362.2
1/4	53	362.9
E	57	362.8
1/4	55	362.7
C	61	362.1
SL	62	

Lincoln Ave.

369.22

100' E.

SL.	58	367.4
C	55	367.7
1/4	52	364.0
±	55	367.7
1/4	50	364.7
C	47	364.5
NL	46	364.6

150' E.

NL	43	364.9
C	48	364.0
1/4	52	364.0
±	57	367.5
1/4	55	367.7
C	58	367.4
SL.	62	367.0

Lincoln Ave.

16

369.22

200' E.

SL	65	367.7
C	58	367.4
1/4	47	364.5
+6	56	367.6
+7	63	367.9
±	62	367.0
1/4	53	367.9
C	49	364.3

NL	43	364.9
----	----	-------

250' E.

NL	45	364.9
C	52	364.0
1/4	57	367.5
±	62	367.0
1/4	56	367.6
C	62	367.0
SL.	67	367.5

Lincoln Ave.

36922

300' E = WL Kansas 00' W. 14' Corbs.

SL	68	7672
C	62	7670
1/4	56	7676
E	62	7670
1/4	58	7674
C	51	7641
NL	49	7643

W. Corb.

NL	54	7678
C	58	7672
1/4	57	7673
E	62	7670
1/4	66	7676
C	70	7674
SL	73	7679

Lincoln Ave.

17

36922

W. 1/4.

SL	78	7614
C	76	7616
1/4	73	7619
E	65	7677
1/4	60	7673
C	55	7677
NL	52	7640

E Kansas.

NL	48	7644
C	53	7639
1/4	59	7673
E	63	7679
1/4	69	7673
C	74	7618
SL	77	7615

Lincoln Ave.

36922

E 1/4

SL	80	36122
C	74	36118
1/4	60	36322
±	62	36320
1/4	61	36321
C	62	36320
NL	63	36329

E Curb.

NL	65	36327
C	62	36320
1/4	62	36320
±	64	36328
1/4	65	36327
C	71	36321
SL	80	36122

Lincoln Ave.

18

36922

EL. Kansas

SL	72	36320
C	71	36321
1/4	67	36325
±	64	36328
1/4	60	36322
C	58	36324
NL	58	36324
T.P.	618	36304

410 367.14

25' E

NL	42	36329
C	38	36323
1/4	39	36322
±	44	36327
1/4	49	36322
C	45	36326
SL	37	36324

Lincoln Ave.

36714

50'E

SL	30	36741
C	38	36777
1/4	47	36724
£	45	36726
1/4	42	36729
C	44	36727
NL	42	36729

75'E

NL	35	36726
C	39	36727
1/4	40	36721
£	45	36726
1/4	44	36727
C	46	36725
SL	48	36727

Lincoln Ave.

19

36714

100'E

SL	38	36777
C	49	36727
1/4	38	36727
£	45	36726
1/4	43	36728
C	44	36727
NL	44	36727

125'E

NL	41	36720
C	40	36721
1/4	46	36725
£	47	36724
1/4	42	36729
C	51	36720
SL	53	36728

Lincoln Ave.

367.14

150'E

SL	4.8	7622
C	4.4	7627
1/4	4.8	7623
E	4.6	7625
1/4	4.2	7629
C	4.3	7628
NL	4.4	7627

175'E

NL	4.6	7625
C	4.6	7625
1/4	4.8	7623
E	4.7	7624
1/4	4.7	7624
C	4.4	7627
SL	6.0	7611

Lincoln Ave.

20

367.14

200'E

SL	5.7	7614
C	5.6	7615
1/4	5.6	7615
E	4.7	7624
1/4	4.8	7623
C	4.9	7622
NL	4.5	7626

225'E

NL	4.1	7630
C	4.6	7625
1/4	4.8	7623
E	4.8	7623
1/4	5.8	7613
C	5.9	7622
SL	6.2	7609

Lincoln Ave

36714

250' E.

SL	63	3608
a	60	3611
1/4	40	3631
E	47	3622
1/4	49	3622
C	44	3627
NL	44	3627

275' E.

NL	39	3632
C	45	3626
1/4	53	3618
E	51	3620
1/4	45	3626
C	47	3622
SL	56	3615

Lincoln Ave.

21

36714

300' E = WL Nebr - 80' W. Graded

SL	62	3609
C	65	3606
1/4	66	3605
E	61	3610
1/4	66	3605
C	60	3611
NL	52	3629
T.P.	604	36110

576 366.86

E.L. Nebraska.

NL	58	3611
C	62	3607
1/4	63	3606
E	62	3607
1/4	65	3606
C	66	3603
SL	63	3606

Lincoln Ave.

36686

25'E.

SL	5.9	761.0
C	5.1	761.8
1/4	4.7	762.2
E	5.4	761.5
1/4	5.3	761.6
S	4.7	762.2
NL	4.5	762.4

50'E.

NL	4.4	762.5
C	4.6	762.2
1/4	5.4	761.5
E	5.1	761.8
1/4	5.4	761.5
C	5.6	761.2
SL	6.3	760.6

Lincoln Ave.

22

36686

75'E.

SL	5.2	761.7
C	5.8	761.1
1/4	5.8	761.8
E	5.6	761.3
1/4	5.4	761.5
C	4.9	762.0
NL	4.3	762.6

100'E.

NL	4.1	762.8
C	4.9	762.0
1/4	4.7	762.2
E	5.3	761.6
1/4	5.6	761.3
C	4.9	762.0
SL	5.5	761.4

Lincoln Ave

36686

125'E.

SL	6.0	7609
C	4.8	7621
1/4	5.5	7614
±	4.3	7626
1/4	4.7	7622
C	4.6	7622
NL	4.4	7625

150'E.

NL	3.5	7626
C	3.6	7622
1/4	4.0	7629
±	4.4	7625
1/4	5.0	7619
C	4.6	7622
SL	3.9	7620

Lincoln Ave

28

36686

175'E.

SL	5.3	7616
C	5.5	7614
1/4	5.3	7616
±	4.3	7626
1/4	4.6	7622
C	4.6	7622
NL	4.9	7620

200'E.

NL	4.1	7628
C	3.7	7622
1/4	3.9	7620
±	4.1	7628
1/4	4.7	7622
C	4.2	7622
SL	5.4	7615

Lincoln Ave

366.86

225'E.

SL	5.1	361.8
C	5.0	361.9
1/4	4.9	362.0
1/4	4.3	362.6
1/4	4.0	362.9
C	4.0	362.9
NL	4.5	362.6

250'E.

NL	3.1	362.8
C	4.2	362.7
1/4	4.6	362.7
1/4	4.4	362.5
1/4	4.8	362.1
C	4.8	362.1
SL	4.7	362.2

Lincoln Ave

24

366.86

215'E.

SL	4.4	362.5
C	4.3	362.6
1/4	4.4	362.5
1/4	4.3	362.6
1/4	4.5	362.6
C	4.0	362.9
NL	3.8	362.1

300'E = WK Ohio 80'W Graded

NL	3.8	362.1
C	{4.0 4.8	{362.9 362.1
1/4	4.4	362.5
1/4	4.3	362.6
1/4	4.7	362.2
C	{5.2 4.5	{361.7 362.2
SL	4.2	362.7

TR BX SE Ohio Plug

BRI 5.69 368.13

4.48

362.38

362.44

Lincoln Ave

36813

E.L. Ohio

SL	53	767.8
C	{ 56 63	{ 767.5 761.8
1/4	60	767.1
±	5.6	767.5
1/4	5.5	767.6
C	{ 56 5.1	{ 767.5 767.0
NL	4.8	767.7

25'E.

NL	3.9	767.7
C	4.7	767.4
1/4	5.0	767.1
±	4.9	767.7
1/4	5.4	767.7
C	5.7	767.4
SL	4.9	767.7

Lincoln Ave.

25

36813

50'E.

SL	40	767.1
C	4.7	767.4
1/4	5.5	767.6
±	5.3	767.8
1/4	4.7	767.4
C	4.1	767.0
NL	4.1	767.0

75'E.

NL	4.3	767.8
C	4.6	767.5
1/4	5.1	767.0
±	5.5	767.6
1/4	5.7	767.4
C	5.8	767.3
SL	5.7	767.4

Lincoln Ave.

36813

100'E.

SL	50	7671
C	45	7676
1/4	56	7675
£	54	7677
1/4	50	7671
C	51	7670
NL	47	7674

125'E.

NL	52	7679
C	46	7675
1/4	45	7676
£	55	7676
1/4	58	7673
C	59	7672
SL	59	7672

Lincoln Ave.

26

36813

150'E.

SL	52	7679
C	55	7676
1/4	52	7679
£	54	7677
1/4	48	7673
C	47	7672
NL	41	7670

175'E.

NL	46	7675
C	53	7678
1/4	55	7676
£	55	7676
1/4	53	7678
C	56	7675
SL	58	7677

Lincoln Ave.

36813

200'E.

SL	57	7620
C	50	7621
1/4	56	7625
±	54	7627
1/4	57	7620
C	52	7629
NL	52	7629

225'E.

NL	53	7628
C	53	7628
1/4	52	7629
±	52	7629
1/4	53	7628
C	58	7627
SL	58	7627

Lincoln Ave.

27

36813

250'E.

SL	43	7628
C	55	7626
1/4	54	7627
±	53	7628
1/4	54	7627
C	50	7621
NL	50	7621

275'E.

NL	50	7621
C	52	7629
1/4	52	7629
±	53	7628
1/4	56	7625
C	53	7628
SL	55	7626

Lincoln Ave

368.13

300' E = WL. Ill. 80' W Graded.

SL	50	367.1
C	{ 52	367.9
	{ 58	367.3
1/4	53	367.8
E	5.0	367.1
1/4	52	367.9
C	{ 56	367.5
	{ 46	367.5
NL	4.4	367.7
T.P.	5.15	362.98

4.80 367.78

EL. Illinois

NL	42	367.6
C	{ 43	367.5
	{ 51	367.7
1/4	4.8	367.0
E	4.6	367.7
1/4	5.0	367.8
C	{ 55	367.3
	{ 48	367.0
SL	4.5	367.3

Lincoln Ave

28

367.78

25' E

SL	56	367.7
C	55	367.3
1/4	4.9	367.9
E	5.0	367.8
1/4	4.7	367.1
C	4.7	367.1
NL	4.5	367.7

50' E

NL	51	367.7
C	5.0	367.8
1/4	5.4	367.2
E	5.1	367.7
1/4	5.4	367.2
C	5.4	367.2
SL	5.2	367.6

Lincoln Ave

367.78

75'E

SL	53	7626
C	51	7627
1/4	53	7626
£	54	7626
1/4	56	7622
C	53	7624
NL	48	7620

100'E

NL	48	7620
C	50	7628
1/4	55	7623
£	47	7621
1/4	54	7626
C	55	7623
SL	54	7626

Lincoln Ave

29

367.78

125'E

SL	51	7627
C	56	7627
1/4	47	7621
£	44	7626
1/4	53	7624
C	50	7628
NL	50	7628

150'E

NL	48	7620
C	50	7628
1/4	54	7626
£	50	7628
1/4	46	7624
C	53	7626
SL	55	7623

Lincoln Ave.

36778

175'E

SL	53	7625
C	56	7622
1/4	50	7628
£	51	7627
1/4	52	7626
C	50	7628
NL	52	7626

200'E

NL	49	7629
C	50	7628
1/4	52	7626
£	50	7628
1/4	47	7621
C	53	7625
SL	52	7626

Lincoln Ave.

30

36778

225'E

SL	53	7625
C	55	7623
1/4	46	7622
£	48	7620
1/4	50	7628
C	46	7622
NL	51	7627

250'E

NL	49	7629
C	49	7629
1/4	49	7629
£	51	7627
1/4	53	7625
C	53	7625
SL	49	7629

Lincoln Ave.

367.78

275' E

SL	5.3	367.6
C	5.2	367.6
1/4	5.2	367.6
±	5.0	367.8
1/4	5.4	367.4
C	5.2	367.6
NL	5.1	367.7

300' E = WL Iowa 80' W Graded.

NL	5.4	367.4
C	{ 5.8 6.4	{ 367.0 361.4
1/4	6.0	361.8
±	5.9	361.9
1/4	6.1	361.7
C	{ 6.6 5.8	{ 361.7 362.0
SL	5.5	362.7

T.P. SE Curb Plug.

6.74 361.04

322

36A-26

Lincoln Ave.

36426

~~25' E~~ FL Iowa.

SL	3.0	361.7
C	{ 3.2 3.9	{ 361.1 360.4
1/4	3.5	360.8
±	3.4	360.9
1/4	3.2	361.1
C	{ 3.8 3.2	{ 360.8 361.1
NL	2.9	361.4

4' E.

NL	2.6	361.7
C	2.3	367.0
1/4	3.0	361.7
±	3.4	360.9
1/4	3.2	361.1
C	2.9	361.4
SL	0.5 2.3	367.8 362.0

Lincoln Ave.

364.26

10'E.

SL	2.9	261.0
C	2.4	261.9
+2	3.1	261.7
1/4	3.1	261.7
±	3.0	261.7
1/4	2.7	261.6
C	2.4	261.9
NL	2.5	261.8

25'E

NL	2.9	261.4
C	2.6	261.7
1/4	2.7	261.6
±	2.9	261.4
1/4	2.8	261.5
<	2.5	261.8
SL	2.8	261.5

Lincoln Ave.

32

364.26

50'E

SL	3.8	260.9
C	3.6	260.7
1/4	3.4	260.9
±	3.3	261.0
1/4	3.2	261.1
C	3.4	260.9
NL	3.2	261.1

75'E

NL	3.7	260.6
<	3.5	260.8
1/4	3.7	260.6
±	3.7	260.6
1/4	3.4	260.9
C	4.0	260.3
SL	3.7	260.6

Lincoln Ave.

36426

100' E

SL	4.4	2599
C	4.4	2599
1/4	4.1	2602
E	4.3	2600
1/4	4.8	2595
C	4.6	2597
NL	4.5	2598

125' E

NL	5.4	2589
C	5.2	2591
1/4	5.6	2587
E	6.2	2581
1/4	5.1	2592
C	4.9	2594
SL	5.0	2593

Lincoln Ave.

33

36426

150' E

SL	5.7	2586
C	6.1	2582
1/4	6.4	2579
+5	8.1	2562
E	7.6	2567
1/4	7.3	2570
C	6.9	2574
NL	7.4	2569

175' E

NL	9.5	2548
C	9.2	2541
1/4	9.2	2541
E	9.1	2542
1/4	8.1	2562
C	7.9	2564
SL	7.8	2565

Lincoln Ave

36426

200'E.

SL	8.9	355.4
C	9.3	355.0
1/4	9.9	354.4
1/2	9.8	354.5
1/4	10.7	353.6
C	10.9	353.4
NL	11.2	353.1

225'E.

NL	13.0	351.3
C	12.8	351.5
1/4	12.2	352.1
1/2	10.7	353.6
1/4	11.6	352.7
C	11.4	352.9
SL	11.0	353.3
T.P.	11.80	352.46

2.90 35536

Lincoln Ave.

34

35536

250'E.

SL	4.1	351.3
C	4.2	351.2
1/4	5.6	349.8
1/2	2.9	352.5
+5	3.2	352.2
1/4	6.2	349.2
C	5.7	349.7
NL	6.1	349.3

275'E.

NL	8.0	347.4
+4	8.3	347.1
1/2	9.6	345.8
C	10.3	345.1
1/4	10.2	345.2
+10	4.6	350.8
1/2	4.4	351.0
+4	4.7	350.7
1/4	8.8	346.6
C	8.2	347.2
SL	6.8	348.6

Lincoln Ave.

35536

293'E.

OL	8.9	3465
C	10.1	3467
1/4	11.1	3467
+3	{ 9.0	3464
	{ 10.9	3465
±	{ 5.8	349.6
	{ 11.2	3467
+5	{ 7.8	347.6
	{ 11.2	3467
1/4	12.0	3466
C	12.3	347.1
	10.8	3466
	9.5	3459
	9.0	3464

~~200'E.~~ 298'E.

NL	9.7	3457
+7	11.0	3464
C	11.4	3460
1/4	11.8	3466
±	11.6	3478
1/4	11.3	3461
C	10.8	3466
SL	9.9	3455

Lincoln Ave

35536

300'E = WL. Missouri St. 80'W. ^{Graded.}

NL	9.7	3457
+7	10.2	3467
C	10.5	3469
1/4	10.6	3468
±	10.5	3469
1/4	10.6	3468
C	{ 10.3	3461
	{ 10.8	3466
SL	10.1	3457
TR	11.20	344.16

6.12 350.28

FL. Missouri St

SL	6.2	3461
C	6.6	3477
1/4	6.4	3479
±	6.0	3467
1/4	6.3	3460
C	6.5	3478
NL	6.1	3467

Lincoln Ave

350.28

25'E

NL	54	7449
C	61	7447
1/4	63	7440
£	63	7440
1/4	62	7441
C	63	7440
SL	70	7477

50'E

SL	68	7474
C	69	7474
1/4	69	7474
£	64	7479
1/4	60	7447
C	58	7444
NL	53	7440

Lincoln Ave.

36

350.28

75'E

NL	46	7447
C	50	7447
1/4	54	7449
£	59	7444
1/4	65	7478
C	68	7474
SL	71	7477

100'E

SL	66	7477
C	63	7440
1/4	57	7446
£	55	7448
1/4	49	7444
C	50	7443
NL	42	7441

Lincoln Ave.

350.28

125'E

NL	4.0	7263
c	4.6	7267
1/4	4.7	7266
£	5.0	7267
1/4	5.7	7266
c	5.8	7265
SL	6.1	7267

150'E

SL	5.8	7265
c	5.6	7267
1/4	5.2	7261
£	3.8	7265
1/4	4.3	7260
c	4.3	7260
NL	4.0	7263

Lincoln Ave

37

350.28

175'E

NL	3.8	7265
c	3.9	7264
1/4	4.1	7267
£	4.0	7263
1/4	5.0	7267
c	5.2	7261
SL	5.4	7269

200'E

SL	5.0	7263
c	4.8	7265
1/4	4.6	7267
£	4.2	7261
1/4	4.4	7269
c	3.8	7265
NL	3.9	7264

Lincoln Ave

350.28

250'E.

NL	4.3	726.0
C	4.3	726.0
1/4	4.6	725.7
E	5.0	725.7
1/4	4.5	725.8
C	4.6	725.7
SL	4.8	725.5

275'E.

SL	5.0	725.7
C	4.9	725.8
1/4	4.8	725.5
E	5.6	725.7
1/4	5.2	725.1
C	5.0	725.7
NL	5.0	725.7

Lincoln Ave.

38

350.28

300'E = WL Wisconsin - 80'W.

NL	6.4	727.9
C	6.1	726.7
1/4	6.0	725.7
E	6.2	726.1
1/4	5.6	725.7
C	5.5	724.8
SL	5.6	724.7

35.7 E.

SL	6.4	727.9
C	6.7	727.6
1/4	7.2	727.1
E	7.2	727.1
1/4	7.7	727.6
C	8.2	727.1
NL	8.5	724.8

Lincoln Ave.

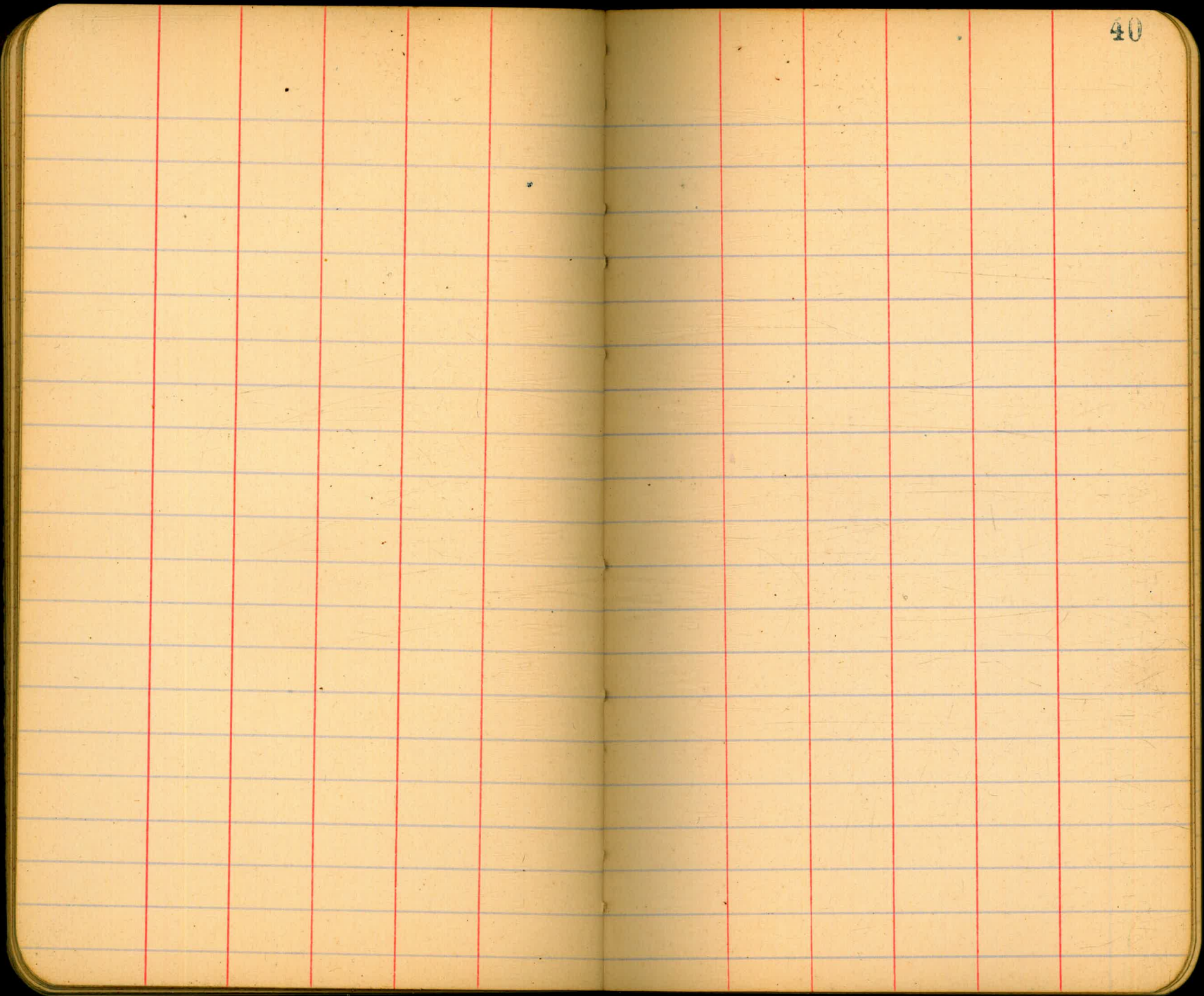
35028

7145' E = Bound L. of NL.

NL	12.2	3778.1
C	10.6	3779.9
1/4	11.3	3779.0
+3	9.5	3740.8
E	8.5	3741.8
1/4	8.9	3741.4
<	8.3	3744.0
SL	8.7	3741.9

7145' E of NL - 9460' E of SL = Bound Line.

SL	9.3	3741.0
C	9.4	3740.9
1/4	10.1	3740.4
E	8.6	3741.7
+7	9.9	3740.4
+8	11.5	3778.8
1/4	11.8	3778.6
<	11.3	3779.0
NL	12.2	3778.1
Carl Stone, SE, Missouri & Lincoln	6.27	3744.01



10/24/14
Greasy
Shoemaker
Moore.

CROSS-SECTION OF
FORT STOCKTON DRIVE (50' WIDE)
FROM W.L. AMPUDIA TO THE (10' WALKS)
E.L. ARISTA ST.

B.M.	1.68	263.97	262.29
	W.L. AMPUDIA		
N.		8.3	255.7
cb		7.7	256.7
1/4		7.1	256.9
C		6.6	257.4
1/4		6.0	258.0
A		5.6	258.4
S		5.6	258.4
	50' W		
S		8.9	255.1
cb		9.3	254.7
1/4		9.5	254.5
C		9.8	254.4
1/4		10.2	253.8
cb		10.5	253.5
N		11.2	253.3
T.P.	247	255.66	10.78 253.19
	100' W		
N		4.7	251.0

NE Ampudia
+ Ft Stock.

cb		4.1	251.6
1/4		3.7	252.0
C		3.6	252.1
1/4		3.5	252.2
cb		3.4	252.3
S		3.3	252.4
	150' W		
S		5.7	250.0
cb		5.9	249.8
1/4		6.1	249.6
C		6.3	249.4
1/4		6.5	249.2
cb		6.6	249.1
N		6.7	249.0
T.P.	255	251.20	7.01
	200' W		
N		3.4	247.8
cb		3.5	247.7
1/4		3.5	247.7
C		3.4	247.8

255.7

41

1/4	33	7479
cb	36	7476
S	36	7476
250' W.		
S	51	7461
cb	50	7467
1/4	51	7461
C	50	7467
1/4	52	7460
cb	53	7459
N	55	7457
300' W. = E.L. ARISTA (50' WIDE)		
N	82	7430
cb	81	7431
1/4	82	7430
C	80	7432
1/4	78	7432
cb	77	7435
S	76	7436

E CURB

S	80	7472
cb	81	7471
1/4	82	7470
C	85	7477
1/4	87	7475
cb	87	7475
N	87	7475

E QUARTER

N	91	7471
cb	92	7470
1/4	93	7419
C	91	7471
1/4	88	7472
cb	87	7475
S	87	7475

CENTER

S	94	7418
cb	93	7419
1/4	95	7407

c	9.9	2413
1/4	9.9	2413
cb	9.9	2413
N	10.1	2411

W QUARTER

N	10.8	2402
cb	11.2	2400
1/4	10.7	2405
c	10.5	2402
1/4	10.4	2408
cb	10.2	2410
S	10.2	2410

W CURB

S	10.9	2403
cb	11.1	2401
1/4	11.3	2299
c	11.7	2295
1/4	12.2	2290
cb	12.2	2290
N	12.2	2290

W. L. ARISTA

N	14.4	2268
cb	14.1	2271
1/4	13.6	2276
c	13.8	2279
1/4	13.0	2282
cb	12.5	2287
S	12.4	2288

X. Sec's Golden Gate Drive.

40' Wide 10' W. 5' / 4's

From WL Campus to WL Cleveland.

BM No Adams & Park Blvd.

354.58

T.P. 5.06 359.64 4.49 355.15

T.P. 2.97 358.12 6.93 351.19

2.87 354.06

WL Campus St

NL 40 350.1 ✓

C 38 350.3

1/4 39 350.2

± { 38 350.3 ✓
30 351.1 ✓

1/4 { 37 350.4
27 351.4

C { 36 350.5
26 351.5

SL { 37 350.4 ✓
26 351.5 ✓

25' W

SL 27 351.4 ✓

C 25 351.6

1/4 25 351.6

± 23 351.8 ✓

1/4 24 351.7

C 25 351.6

NL 30 351.1 ✓

12/14
West
E-ONS
Denz

Hub

40'

50'

25'

10'

10'

10'

10'

10'

10'

10'

10'

10'

10'

10'

10'

10'

10'

10'

10'

10'

10'

Drive

Golden Gate

Golden Gate

Campus St.

Hub

40'

10'

10'

10'

10'

10'

10'

10'

10'

10'

10'

10'

10'

10'

10'

10'

10'

10'

10'

10'

10'

10'

10'

10'

10'

10'

10'

10'

10'

10'

10'

10'

350-285
Campus & 4. 4. 5
Blugent.

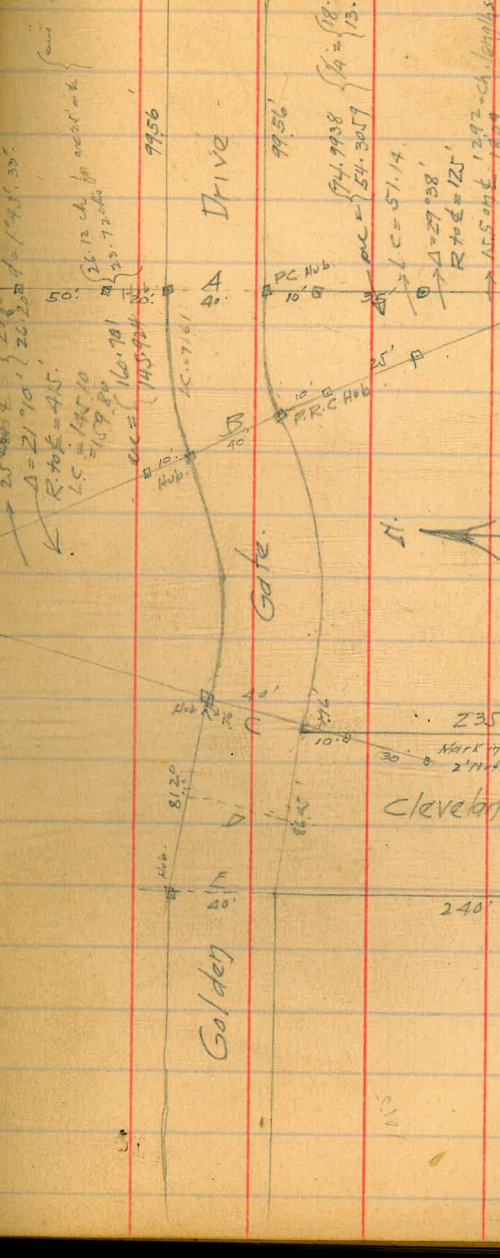


235.
Mark in cem. walk to house.
2' into edge with 3' of edge of EL Cleveland.

Cleveland.

240'

80'



Golden Gate Drive

35406

50' W.

NL	28	351.3	✓
C	25	351.6	
1/4	25	351.6	
±	25	351.6	✓
1/4	25	351.6	
C	26	351.5	
SL	27	351.4	✓

75' W.

SL	32	350.9	✓
C	30	351.1	
1/4	30	351.1	
±	29	351.2	✓
1/4	30	351.1	
C	30	351.1	
NL	32	350.9	✓

Golden Gate Drive

45

35406

99.56 W = P.C. = Sec A.

NL	38	350.3	✓
C	36	350.5	
1/4	35	350.6	
±	32	350.9	✓
1/4	30	351.1	
C	33	350.8	
SL	34	350.7	✓

1/4 total 1/4. 15.5 W. of A. on ± = Chords { NL - 12.92'
SL 18.09'

SL	35	350.6	X
C	34	350.7	
1/4	34	350.7	
±	34	350.7	X
1/4	37	350.4	
C	39	350.2	
NL ^{+J}	37	350.4	
	44	349.7	X

35406

 $\frac{1}{2} \Delta = 15.5$ W. of last sec.

NL	4.8	349.3	X
C	4.1	350.0	
$\frac{1}{4}$	3.4	350.7	
$\frac{1}{2}$	3.3	350.8	X
$\frac{1}{4}$	3.6	350.5	
C	3.5	350.6	
SL	3.6	350.5	X

 $\frac{3}{4} \Delta = 15.5$ W. of last sec. on $\frac{1}{2}$.

SL	4.1	350.0	X
C	4.2	349.9	
$\frac{1}{4}$	4.5	349.6	
$\frac{1}{2}$	4.6	349.5	X
$\frac{1}{4}$	4.8	349.3	
C	5.0	349.1	
NL	5.2	348.9	X

Golden Gate Drive 46

35406

Sec B =

15.5 W. of last Sec. on $\frac{1}{2}$ P.C.C.

NL	5.0	349.1	X
C	5.0	349.1	
$\frac{1}{4}$	4.8	349.3	
$\frac{1}{2}$	4.8	349.3	X
$\frac{1}{4}$	4.6	349.5	
C	4.3	349.8	
SL	4.2	349.9	X

25' W. of Sec B on $\frac{1}{2}$ chds. $\left\{ \begin{array}{l} 23.80 \text{ d. } 1945 \\ 26.20 \text{ d. } 1945 \end{array} \right.$

SL	4.6	349.5	X
C	4.8	349.3	
$\frac{1}{4}$	4.9	349.2	
$\frac{1}{2}$	5.1	349.0	X
$\frac{1}{4}$	5.3	348.8	
C	5.3	348.8	
NL	5.7	348.4	X

35406

45' W. on ϕ

NL	6.7	347.4	X
ϕ	5.7	348.4	
$\frac{1}{4}$	5.5	348.6	
ϕ	5.4	348.7	X
$\frac{1}{4}$	5.2	348.9	
C	5.0	349.1	
SL	4.7	349.4	X

50' W. on ϕ

- 10	14.4	339.7	
NL	10.3	343.8	X
C	5.4	348.7	
$\frac{1}{4}$	5.5	348.6	
ϕ	5.4	348.7	X
$\frac{1}{4}$	5.2	348.9	
C	5.0	349.1	
SL	4.8	349.3	X

Golden Gate Drive

47

35406

58' W. on ϕ

- 10	19.0	335.1	
NL	12.2	341.9	X
+6	7.8	346.3	
+8	5.7	348.4	
C	5.6	348.5	
$\frac{1}{4}$	5.5	348.6	
ϕ	5.4	348.7	X
$\frac{1}{4}$	5.3	348.8	
C	5.2	348.9	
SL	5.0	349.1	X

65' W.

SL	5.0	349.1	X
C	5.0	349.1	
$\frac{1}{4}$	5.2	348.9	
ϕ	5.3	348.8	X
$\frac{1}{4}$	5.6	348.5	
C	5.9	348.2	
NL	9.6	344.5	X

35406

75' W.

NL	86	345.5	X
C	57	348.4	
1/4	52	348.9	
E	52	348.9	X
1/4	51	349.0	
C	4.8	349.3	
SL	4.8	349.3	X

100' W. on E.

SL	50	349.1	X
C	53	348.8	
1/4	56	348.5	
E	56	348.5	X
1/4	57	348.4	
C	65	347.6	
NL	72	346.9	
+10	93	344.8	X

Golden Gate Drive 48

35406

125' W. on E.

NL	7.0	347.1	X
C	66	347.5	
1/4	57	348.2	
E	59	348.2	X
1/4	59	348.2	
C	57	348.4	
SL	55	348.6	X

150' W. on E.

SL	56	348.5	X
C	61	348.0	
1/4	62	347.9	
E	63	347.8	X
1/4	62	347.9	
C	64	347.7	
+5	65	347.6	
NL	75	346.6	X

342 W. of first sec. on NL = Sec C - P.T. = 76' East
 391 " " " " " SL of EL Cleveland on SL.

NL	75	346.6	X
+5	65	347.6	
C	64	347.7	

35406

1/4	"	62	347.9	
±		63	347.8	X
1/4		62	347.9	
c		6.1	348.0	
SL		56	348.5	X

0.76 W. of last sec = EL. Cleveland on SL

Levels same as previous section

43.22' W. on SL }
 41.60' W. on NL } = Sec D.

SL		5.9	348.2	X
c		5.9	348.2	
1/4		6.4	347.7	
±		6.7	347.4	✓
1/4		7.1	347.0	
c		7.2	346.9	
NL		7.3	346.8	✓

Golden Gate Drive 49

35406

Sec E = WL Campus St

NL		64	347.7	X
c		64	347.7	
1/4		6.2	347.9	
±		6.1	348.0	X
1/4		6.1	348.0	
c		6.3	347.8	
±		5.9	348.2	
SL		5.8	348.3	4

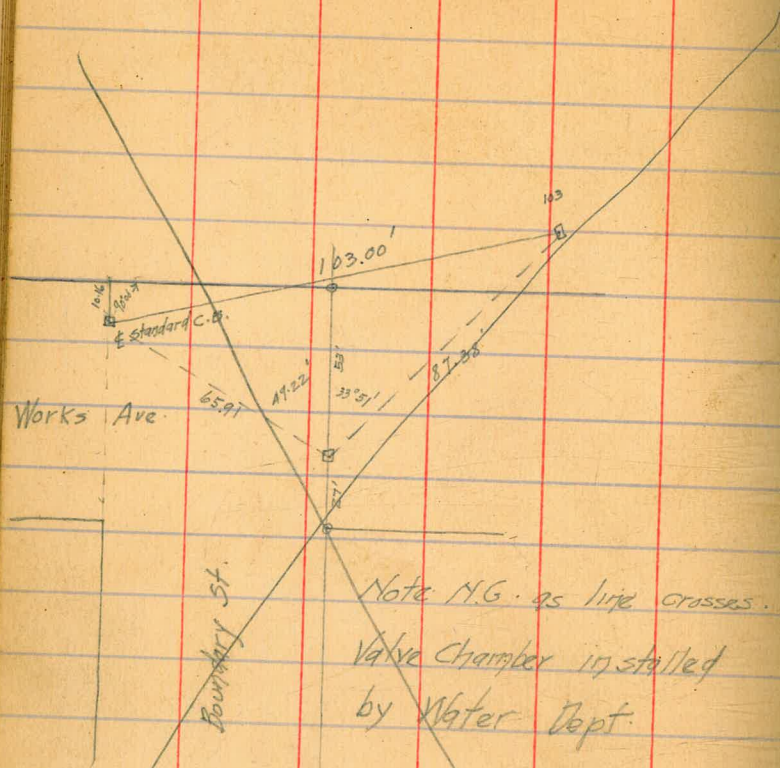
T.R. 2.88 351.18

T.P. 7.56 358.74 3.23 355.51

4.61 360.12

BM NE Adams St. Blvd. Plg. 5.56 359.56 354.58-OK

Check OK. West



387.50 = Curb SE. Neb & Works.

5.33
392.88
5.88

387.00 = NE Curb Works & Boundary.

4.55

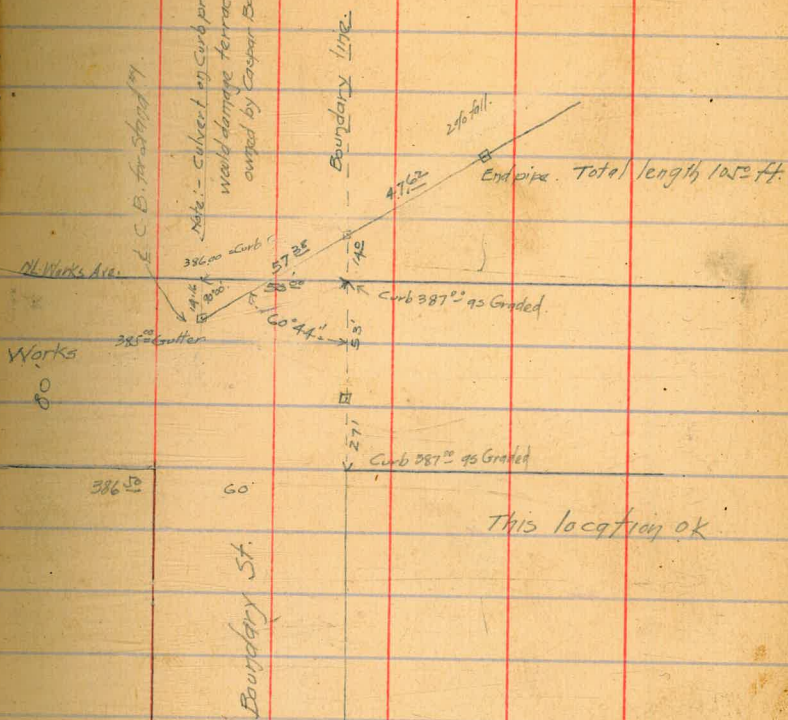
391.55 391.55 391.50 391.55 391.55

4.32 4.39

1/24/14
West
Evang.
Devise

Note: - Culvert on curb produced North
would damage terraced lots.
owned by Caspar Becker.

Works Ave. Culvert location 50



This location OK

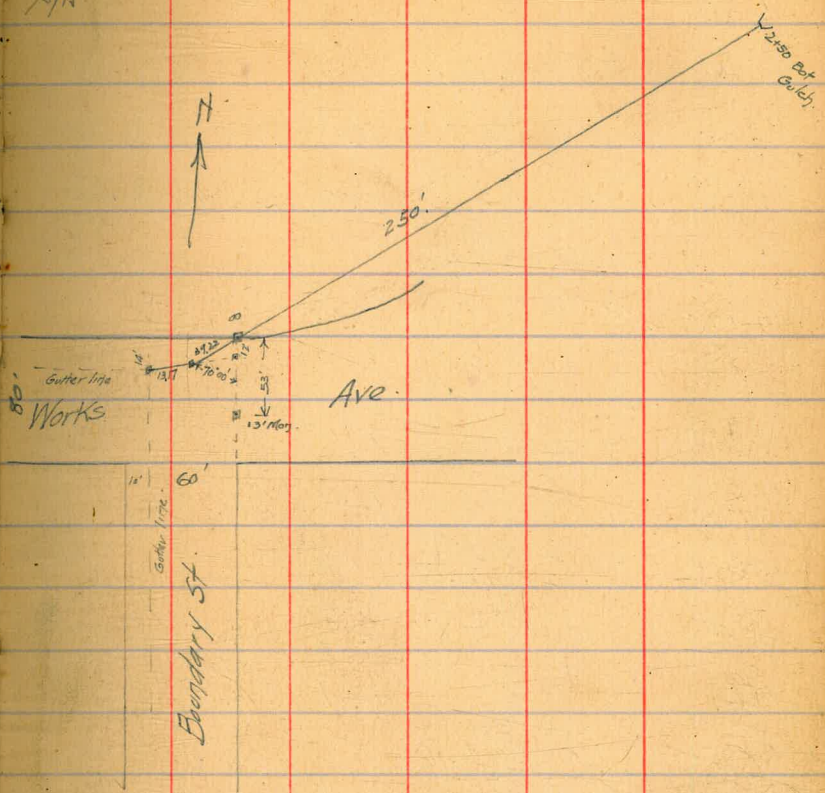
387.00	"	+2'	+57.25	+75'		105'
4.51						
391.5189	391.51	391.51	391.51	391.51	391.51	391.51
	4.95	4.34	4.83	6.04	8.21	9.22
	387.56	387.17	386.68	386.19	385.70	385.21
	387.50	384.00	382.48	380.96	379.45	377.93
	< 2.06	< 3.11	< 2.23	< 2.41	< 2.56	< 2.71

Culvert Location
Works Ave.

West
Elevate
Deringe
1/5/15

51

NE Curb Works & Board		387.00	
1.54	388.54 387.54		
NW Gutter Board & Works	2.00	386.54	386.0 = curb grade
13.17 E of Gutter = L	1.91	386.64	
39.22 E of Angle = 00. NE Cr Board & Works	1.52	387.02	
0+25	3.1	385.5	
0+50	6.74	381.80	
TP	12.85	375.69 374.69	
0.77	376.46 375.46		
0+75	5.15	371.31 370.31	
0+13 TP	11.73	364.73 363.73	
0.50	365.23 364.23		
0+94	4.2	361.0	
1+00	8.15	357.08	
TP	12.32	352.91 351.91	
0.80	353.71 352.71		
+15	5.4	348.3	
+25	9.57	344.14	
TP	12.46	341.28 340.25	



				341.75 340.25
	1.85	343.10 342.10		
1+50			10.4	332.7
T.P.			13.00	330.10 329.10
	0.02	330.17 329.12		
1+75			6.97	323.15
+87			10.1	320.0
+89			11.6	318.5
T.P.			12.73	317.39 316.39
	4.65	318.04 317.04		
2+00			3.89	314.15
T.P.			12.97	305.07 304.07
	1.09	306.16 305.16		
2+25			2.97	303.19
+35			6.9	299.3
+48			12.17	293.99
+59 Bot. draw.			12.70	293.46

Cent. of water main is approx. 4.3' below
 curb at n.e. Cor Works & Boundary
 water mains 16"

Levels in H St. from
for 30' roadway or center of 50'

BM. hub. S.W. corner. ^{0.52} H.I. 141.21 140.69

West line pasave

15' A.O. 3.4 137.8
C 5.1 136.1
15' no. 6.1 135.1

E line pasave

15' no. 10.5 130.7
C 8.8 132.4
15' A.O. 6.8 134.4

PLOTTED

30' E

15' A.O. 10.3 130.9
C 12.5 128.7
J.P. 1.23 ^{H.I.} 129.44 13.00 128.21

15' no. 2.9 126.5

50' E

15' no. 5.3 124.1
C 3.3 126.1
15' A.O. 0.8 128.6

pasave to City Limits
street from no. line H.

129.44
75' E

Blair's
atten.
Kerr

Feb. 9, 13 + 15/15

15' A.O. 4.4 125.0
C 5.4 124.0
15' no. 8.3 121.1

100' E

15' no. 11.4 118.0
C 9.9 119.5
15' A.O. 8.0 121.4

128' E

15' A.O. 12.0 117.4
J.P. 0.10 ^{H.I.} 116.56 12.98 116.46
C 0.8 115.8

15' no. 1.5 115.1

150' E

15' no. 4.7 111.9
C 4.5 112.1
15' A.O. 3.2 113.4

116,56

H 5T

175' E

15' 20.

C

15' no.

10.2 106.4

10.2 106.4

10.5 106.1

250' E

15' no.

C

15' 20.

PLOTTED

275' E

15' 20.

C

15' no.

6.3 110.3

6.0 110.6

4.7 111.9

300' E

15' no.

C

15' 20.

3.8 112.8

3.7 112.9

3.5 113.1

116,56

55

325' E

15' 20.

C

15' no.

4.3 112.3

4.3 112.3

4.0 112.6

350' E

15' no.

C

15' 20.

3.9 112.7

4.8 111.8

4.9 111.7

375' E

15' 20.

C

15' no.

5.1 111.5

5.2 111.4

5.0 111.6

400' E

15' no.

C

15' 20.

5.2 111.4

5.7 110.9

5.9 110.7

116.56

425' E

1 15' no.

C

15' no.

450' E

1 15' no.

C

15' no. PLOTTED

475' E

15' no.

C

15' no.

500' E

15' no.

C

15' no.

J.P.

6.9 109.7

5.9 110.7

5.6 111.0

5.9 110.7

7.0 109.6

8.2 108.4

11.1 105.5

10.2 106.4

9.3 107.3

11.0 105.6

11.9 104.7

12.7 103.9

12.31 104.25

J.P.

15' no.

C

15' no.

15' no.

C

15' no.

15' no.

C

15' no.

15' no.

C

15' no.

3.16 ^{H.I.} 107.39 12.33 104.23

200' E pascoe

5.4 102.0

5.9 101.5

5.3 102.1

206' E

6.3 101.1

6.8 100.6

8.7 98.7

211' E

5.7 101.7

10.0 97.4

10.3 97.1

220' E

6.9 100.5

6.0 101.4

4.6 102.8

J.P.	11.18 ^{H.I.} 115.43	104.25
	525' E <i>passive</i>	
15' no.		13.6 101.8
C		12.1 103.3
15' no.		10.6 104.8
	550' E	
15' no.	PLOTTED	9.9 105.5
C		11.3 104.1
15' no.		12.0 103.4
	575' E	
15' no.		10.3 105.1
C		9.2 106.2
15' no.		8.1 107.3
	600' E	
15' no.		6.1 109.3
C		7.0 108.4
15' no.		8.3 107.1

115.43

625' E

15' no.		6.9 108.5
C		6.0 109.4
15' no.		4.8 110.6
	650' E	
15' no.		4.7 110.7
C		5.7 109.7
15' no.		7.0 108.4
	675' E	
15' no.		10.2 105.2
C		8.7 106.7
15' no.		7.5 107.9
	700' E	
15' no.		12.4 103.0
J.P.	1.45 <u>103.80</u>	13.03 102.40
C		2.8 101.0
15' no.		4.0 99.8

103.85

H. ST.

730'E

15' no.

10.7 93.1

C

8.4 95.4

15' no.

6.9 96.9

732'E

15' no.

7.2 96.6

C

9.0 94.8

15' no.

13.3 90.5

PLOTTED

735'E

15' no.

10.3 93.5

C

9.4 94.4

15' no.

7.7 96.1

750'E

15' no.

9.1 94.7

C

8.5 95.3

15' no.

7.8 96.0

58

103.85

760'E

15' no.

6.8 97.0

C

6.9 96.9

15' no.

7.6 96.2

775'E

15' no.

3.6 100.2

C

3.2 100.6

15' no.

2.3 101.5

11543

800' E pascoe

15' no. 9.8 105.6

C 9.6 105.8

15' 20. 10.1 105.3

825' E

15' 20. 5.5 109.9

C 4.7 110.7

15' no. **PLOTTED** 5.3 110.1

850' E

15' no. 1.7 113.7

C 2.3 113.1

15' 20. 3.9 111.5

875' E

15' 20. 3.6 111.8

C 1.5 113.9

15' no. 0.7 114.7

115,43

900' E

15' no. 1.2 114.2

C 3.6 111.8

15' 20. 5.5 109.9

925' E

15' 20. 7.6 107.8

C 5.1 110.3

15' no. 2.7 112.7

950' E

15' no. 4.8 110.6

C 7.0 108.4

15' 20. 9.0 106.4

966' E

15' 20. 11.3 104.1

C 9.8 105.6

15' no. 7.6 107.8

115.43

HST.

975' E

75' no.	8.9	106.5
C	10.5	104.9
15' no.	17.2	98.2

987' E

15' no.	11.2	104.2
C	10.2	105.2
15' no.	9.1	106.3

PLOTTED

1000' E

15' no.	8.6	106.8
C	8.7	106.7
15' no.	9.0	106.4

1025' E

15' no.	6.5	108.9
C	5.5	109.9
15' no.	4.4	111.0

60

115.43

1050' E

15' no.	0.0	115.4
C	1.5	113.9
15' no.	3.0	112.4

J.P.

12.51	H.I. 127.94	0.00	115.43
-------	----------------	------	--------

1075' E

15' no.	7.0	120.9
C	8.3	119.6
15' no.	10.4	117.5

1100' E

15' no.	4.4	123.5
C	2.2	125.7
15' no.	1.9	126.0

J.P.

12.44	H.I. 140.18	0.20	127.74
-------	----------------	------	--------

1125' E

15' no.	11.5	128.7
C	11.8	128.4
15' no.	12.3	127.9

H ST.

150.55

61

140.18

1150' E

15' 20.

6.6 133.6

@

7.3 132.9

15' no.

8.2 132.0

1175' E

15' no.

4.6 135.6

@ PLOTTED

3.7 136.5

15' 20.

3.4 136.8

1200' E

15' 20.

1.4 138.8

C

1.2 139.0

15' no.

1.7 138.5

J.P.

10.87 ^{HI} 150.55 0.50 139.68

1225' E

15' no.

10.0 140.5

C

8.6 141.9

15' 20.

8.6 141.9

1250' E

15' 20.

8.5 142.0

C

8.1 142.4

15' no.

8.2 142.3

1275' E

15' no.

6.7 143.8

C

6.9 143.6

15' 20.

7.7 142.8

1300' E

15' 20.

7.1 143.4

C

6.1 144.4

15' no.

5.7 144.8

1325' E

15' no.

5.7 144.8

C

6.1 144.4

15' 20.

6.4 144.1

150,55

H 5T.

150,55

62

1350' E

15' RO.

5.5 145.0

15' RO.

4.8 145.7

C

4.8 145.7

C

4.2 146.3

15' MO.

5.1 145.4

15' MO.

3.8 146.7

1375' E

15' MO.

4.4 146.1

15' MO.

3.9 146.6

C

4.9 145.6

C

3.8 146.7

15' RO.

PLOTTED

4.7 145.8

15' RO.

4.8 145.7

1400' E

15' RO.

5.0 145.5

15' RO.

4.8 145.7

C

4.9 145.6

C

3.5 147.0

15' MO.

3.5 147.0

15' MO.

4.1 146.4

1425' E

15' MO.

4.6 145.9

15' MO.

3.9 146.6

C

4.9 145.6

C

4.3 146.2

15' RO.

5.1 145.4

15' RO.

4.7 145.8

1500' E

15' MO.

4.8 145.7

15' MO.

3.5 147.0

15' MO.

4.1 146.4

15' MO.

3.9 146.6

15' MO.

4.3 146.2

15' MO.

4.7 145.8

15055 HST.

1550'E

15' A.D.	4.5	146.0
C	4.1	146.4
15' no.	4.2	146.3

1575'E

15' no.	3.6	146.9
C	3.5	147.0
15' A.D.	4.7	145.8

PLOTTED

1600'E

15' A.D.	4.2	146.3
C	4.2	146.3
15' no.	3.6	146.9

1625'E

15' No.	3.5	147.0
C	4.1	146.4
15' A.D.	3.5	147.0

15055

63

1650'E

15' A.D.	3.8	146.7
C	3.8	146.7
15' no.	3.4	147.1

1675'E

15' no.	3.2	147.3
C	3.6	146.9
15' A.D.	3.5	147.0

1700'E

15' A.D.	3.2	147.3
C	3.7	146.8
15' no.	3.5	147.0

1725'E

15' no.	3.5	147.0
C	3.2	147.3
15' A.D.	3.5	147.0

150,53

H ST.

1750'E

15'AO.

3.6 146.9

C

3.2 147.3

15'no.

3.7 146.8

1775'E

15'no.

4.1 146.4

C

3.9 146.6

PLOTTED

15'AO.

4.0 146.5

1800'E

15'AO.

5.7 144.8

C

4.6 145.9

15'no.

5.3 145.2

1825'E

15'no.

7.1 143.4

C

6.9 143.6

15'AO.

6.9 143.6

64

150,53

1850'E

15'AO.

8.6 141.9

C

8.3 142.2

15'no.

8.9 141.6

164.5 E on no. + 173.8 E on no. (City limits)

15'no.

10.2 140.3

C

11.0 139.5

15'AO.

10.8 139.7

J.P. hub no. line H +
City limits.

9.99 140.56

X section Lark from Smith
100' south of Douglass. 60' street

J.P. ^{H.I.} 732 280.34 273.02

South line Ft. Stockton

Eline	7.0	273.3
gutter	7.3	273.0
	7.9	272.4
	8.1	272.2
c	7.9	272.4
gutter	8.3	272.0
	8.8	271.5
	8.3	272.0
White	8.1	272.2
White	7.5	272.8
gutter	7.8	272.5
	8.2	271.1
	7.2	273.1
c	6.9	273.4
	7.0	273.3
	6.6	273.7
Eline	6.0	274.3

50' 20.

line Fort Stockton to

65

10' walks 10' quarters
Douglass 50' st. 10' walks 7 1/2' quarters

#1 2803

75' 20.

Eline	5.4	274.9
	5.5	274.8
	6.1	274.2
c	6.4	273.9
	6.8	273.5
	7.0	273.3
White	6.4	273.9
White	6.4	273.9
	6.1	274.2
	6.1	273.2
	6.1	274.2
	6.1	273.2
c	5.5	274.8
	5.7	275.2
	5.1	275.2
Eline	5.3	275.0

100' 20.

Lark

#1 280.3

125' 20.

Eline

5.2 r75.1 ✓

Eline
+4'

4.8 r75.5 ✓

5.1 r75.2 ✓

3.6 r76.7 ✓

3.9 r76.4 ✓

5.0 r75.3 ✓

3.7 r76.6 ✓

C

4.6 r75.7 ✓

C
+3'
+7'

3.3 r77.0 ✓

2.0 r78.3 ✓

2.4 r77.9 ✓

5.5 r74.9 ✓

3.2 r77.1 ✓

5.3 r75.0 ✓

3.9 r76.4 ✓

White

5.8 r74.5 ✓

White

3.8 r76.5 ✓

150' 20.

White

5.1 r75.2 ✓

White

3.4 r76.9 ✓

4.5 r75.8 ✓

3.2 r77.1 ✓

4.0 r76.3 ✓

2.7 r77.6 ✓

C

3.4 r76.9 ✓

C

1.9 r78.4 ✓

C
+3'
+5'

3.2 r77.1 ✓

C
+4'

1.6 r78.7 ✓

4.1 r76.2 ✓

2.7 r77.6 ✓

4.2 r76.1 ✓

3.0 r77.3 ✓

Eline

4.2 r76.1 ✓

C
+6'
Eline

3.2 r77.1 ✓

4.5 r75.9 ✓

3.5 r76.8 ✓

4.7 r75.6 ✓

#1 280.3

175' 20.

LarkH₁ 280.3

225' 20.

Elm

4.8 275.5 ✓

3.7 276.6 ✓

2.5 277.8 ✓

2.0 278.3 ✓

2.7 277.6 ✓

2.7 277.6 ✓

White

3.0 277.3 ✓

250' 20.

White

2.9 277.4 ✓

3.2 277.1 ✓

3.7 276.6 ✓

c

4.1 276.2 ✓

4.1 276.2 ✓

4.4 275.9 ✓

Elm

5.4 274.9 ✓

67

285' 20.

H₁ 280.3

Elm

+2'
+4'

6.9 273.4 ✓

6.8 273.5 ✓

8.2 272.1 ✓

8.5 271.8 ✓

8.6 271.7 ✓

7.3 273.0 ✓

8.0 272.3 ✓

9.7 270.6 ✓

6.4 273.9 ✓

1/4 +3'

White

5.2 275.1 ✓

289' 20.

White

5.7 274.6 ✓

10.5 269.8 ✓

10.1 270.2 ✓

8.8 271.5 ✓

+6'

c

8.3 272.0 ✓

8.7 271.6 ✓

9.6 270.7 ✓

10.1 270.2 ✓

7.0 273.3 ✓

6 +6'

Elm

Lane

HI 280.3

297' 20.

Eline
+3'

7.6 r77.7 ✓
10.4 r69.9 ✓
10.5 r69.8 ✓

C

10.3 r70.0 ✓
9.4 r70.9 ✓

cb + 6"
White

9.6 r70.7 ✓
10.4 r69.9 ✓
10.1 r70.2 ✓
5.7 r74.6 ✓

300' 20. north line Washington

White

9.5 r70.8 ✓
10.3 r70.0 ✓

C

10.1 r70.2 ✓
9.8 r70.5 ✓

Eline

10.3 r70.0 ✓
10.6 r69.7 ✓
9.9 r70.4 ✓

68

IP.

HI
4.77 274.71

B.M.
269.94

South line Washington

Eline

4.3 r70.4 ✓
4.5 r70.2 ✓

C

4.7 r70.0 ✓
4.2 r70.5 ✓

White

4.6 r70.1 ✓
4.6 r70.1 ✓

50' 20.

4.1 r70.6 ✓

White

3.0 r71.7 ✓
3.1 r71.6 ✓

C

3.1 r71.6 ✓
2.9 r71.8 ✓

Eline

3.1 r71.6 ✓
3.3 r71.4 ✓

3.3 r71.4 ✓

274.71 Lark

H.1 274.7

100' Ro.

Elms

3.4 271.3 ✓

3.4 271.3 ✓

3.3 271.4 ✓

C

3.1 271.6 ✓

3.6 271.1 ✓

3.5 271.2 ✓

White

3.6 271.1 ✓

150' Ro.

White

4.7 270.0 ✓

4.9 269.8 ✓

5.0 269.7 ✓

C

4.9 269.8 ✓

5.0 269.7 ✓

5.2 269.5 ✓

Elms

5.3 269.4 ✓

2

69

H.1 274.7

200' Ro.

Elms

8.1 266.6 ✓

7.8 266.9 ✓

7.3 267.4 ✓

C

7.2 267.5 ✓

6.9 267.8 ✓

6.7 268.0 ✓

White

6.3 268.4 ✓

250' Ro.

White

8.3 266.4 ✓

8.6 266.1 ✓

8.6 266.1 ✓

C

9.2 265.5 ✓

9.5 265.2 ✓

9.7 265.0 ✓

Elms

10.0 264.7 ✓

274,71

Lark

300' so. (North line Douglas)

Elms	12.2	r62.5
	11.4	r63.3
	10.9	r63.8
C	10.6	264.1
	10.1	r64.6
	10.0	r64.7
White	9.3	r65.4
	no. cb	
White	9.6	r65.1
	10.3	r64.4
	10.3	r64.4
C	10.6	r64.1
	11.1	r63.6
	12.0	r62.7
Elms	12.8	r61.9

J.P.

Elms

C

White

White

~~Elms~~

C

Elms

10

265.4

H.I.

3.57 265.40 12.88 261.83

no 1/4

4.6 r60.8

3.1 r67.3

2.0 r63.4

1.3 r64.1

0.8 r64.6

1.1 r64.3

0.4 ^{265.0} r64.0

center

0.9 264.5

1.3 ^{264.1} r63.1

1.1 r64.3

1.6 263.8

2.5 r67.9

3.6 r61.8

5.1 260.3

Lark

H.I. 265.4

20. 1/4

Elms

5.6 259.8 ✓

4.1 261.3 ✓

2.7 262.7 ✓

C

1.8 263.6 ✓

1.1 264.3 ✓

1.4 264.0 ✓

White

0.8 264.6 ✓

20. 1/2

White

1.0 264.4 ✓

1.1 264.3 ✓

1.4 264.0 ✓

C

2.0 263.4 ✓

3.3 262.1 ✓

4.7 260.7 ✓

Elms

5.7 259.7 ✓

71

H.I. 265.4

South line Douglass

Elms

6.7 258.7 ✓

4.6 260.8 ✓

3.6 261.8 ✓

C

2.6 262.8 ✓

1.9 263.5 ✓

1.6 263.8 ✓

White

1.2 264.2 ✓

50' 20.

White

2.3 263.1 ✓

2.7 262.7 ✓

3.0 262.4 ✓

C

4.5 260.9 ✓

5.8 259.6 ✓

7.1 258.3 ✓

Elms

8.7 256.7 ✓

+15

11.5 253.9 ✓

Sark

H: 265.4

72

100' 20.

-15	14.6	vs 0.8
Elms	12.1	vs 3.3
	9.1	vs 6.3
	7.9	vs 7.5
c	7.7	vs 7.7
	6.9	vs 8.5
	6.1	vs 9.3
white	6.1	vs 9.3

See Book 919 page 10
for notes on binoculars
from Kite to Sark. old stuff
see Book 919

Location of drainage South of N.

Culverts & Sewers.

April 8 + 9/15
Chilids
attas
Kerr

Δ 1 N.E. 7' point at 24th + N. backright
north on 24th

	angle	dist.	H.I.	Rod	Elev.	
		6.69	<u>53.92</u>		47.23	
1	71°22'L	290.0		3.7	50.2	floor level
2	70°22'L	304.0		11.1	42.8	center bridge at East end at Harrison ave.
3	69°22'L	319.0		3.2	50.6	floor level.
4	51°12'L	203.0		4.5	49.4	floor level
5	51°22'L	187.0		11.6	42.3	center bridge at west end at Harrison ave.
6	51°31'L	172.0		4.9	49.0	floor level.
7	17°00'L	206.0		11.0	42.9	
8	19°22'L	166.0		13.7	40.2	
9	34°48'L	89.0		10.4	43.5	
10	59°55'R	233.0		9.5	44.4	
11	57°42'R	233.0		16.3	37.6	
12	41°06'R	232.0		15.3	38.6	
13	42°28'R	285.0		12.5	41.4	
14	41°06'R	283.0		18.6	35.3	center Culvert flow line Eastside Irving
15	39°26'R	286.0		12.5	41.4	
16	41°06'R	275.0		14.7	39.2	center main sewer pipe flow line

Sta	angle	dist.	back sight	next to	on 22 nd	line	to	117.24	South of so. line of N.
1	75°22'L	212.5	6.43	47.72	12.63	41.29			
2	76°20'L	201.5							Center culvert west side Irving flowline
3	77°53'L	192.5							
4	9°40'L	93.0							
5	14°02'L	87.0							Center end of culvert east side 22 nd
6	18°10'L	81.0							
7	18°20'L	90.0							Center sewer pipe flowline (lateral)
8	51°08'R	88.0							
9	53°58'R	77.0							center culvert west side 22 nd flowline
10	57°46'R	67.0							

St. No.	Angle	Dist.	H.I.	Rod	Elev.	Description
Δ 3	Center	21 st St.	35° 20' 00" of Pueblo	line	160.6	So. of So. line of N.
	backsight	North	on 21 st St.			
1	65° 43' L	77.0	37.71	12.34	35.38	
2	68° 05' L	66.0		5.1	32.6	
3	71° 44' L	56.0		11.0	26.7	center culvert east side Julian flowline
4	49° 22' R	76.0		5.3	32.4	
5	55° 37' R	76.0		5.2	32.5	center culvert west side Julian flowline
6	62° 48' R	78.0		11.7	26.0	
7	89° 06' R	167.0		7.4	30.3	
8	91° 18' R	161.0		10.0	27.7	
9	101° 00' R	148.0		13.4	24.3	
10	102° 05' R	188.0		10.2	27.5	
				12.6	25.1	center ^{main} sewer pipe flow line

Δ 4. Center 20th South line N St. backsight north on 20th.

	angle	dist.	H.I.	Rod	Elev.
1	34°39'L	84.0	37.71	11.2	26.5
2	51°35'L	59.0		14.6	23.1
3	53°20'L	57.0		11.3	26.4
J.P.		2.95	27.60	13.06	24.65
4	96°24'R	117.0		3.6	24.0
5	77°36'R	118.0		6.6	21.0
6	67°16'R	127.0		4.5	23.1
7	74°25'R	248.0		2.7	24.9
8	71°51'R	248.0		8.2	19.4
9	69°37'R	247.0		4.0	23.6

center culvert east side 19th street flowline

Δ 5. South + west 13' line of Sigbee +
backsight East on Kearney

Kearney.

	angle	dist.	H.I.	Rod	Elev.
1	49°15'L	39.0	27.60	5.7	21.9
2	39°15'L	47.0		10.7	16.9
3	32°33'L	53.0		6.0	21.6
4	77°24'L	174.0		3.0	24.6
5	71°50'L	165.0		13.2	14.4
6	67°52'L	163.0		11.5	16.1

center culvert west side Kearney flowline

Δ 6 West 7' line of 18th 195' South of north 7' line of N.
fore-sight north on 18th
angle dist H.I. Rod Elev.

	angle	dist	H.I.	Rod	Elev.
1	86°35'L	119.0	27.60	12.5	15.1
2	90°05'L	119.0		16.5	11.1
3	93°33'L	121.0		14.2	13.4
4	91°37'L	123.0		14.5	13.1

center man hole of main sewer.

Δ 7 East 7' line of Logan 494' North of north line of Sigsbee
fore-sight South along Logan
angle dist H.I. Rod Elev.

J.P.	angle	dist	H.I.	Rod	Elev.
1	14°26'L	28.0	18.27	12.40	15.20
2	24°38'L	27.0		6.1	12.2
3	36°25'L	26.0		10.1	8.2
				6.2	12.1

center culvert East side Logan flow line

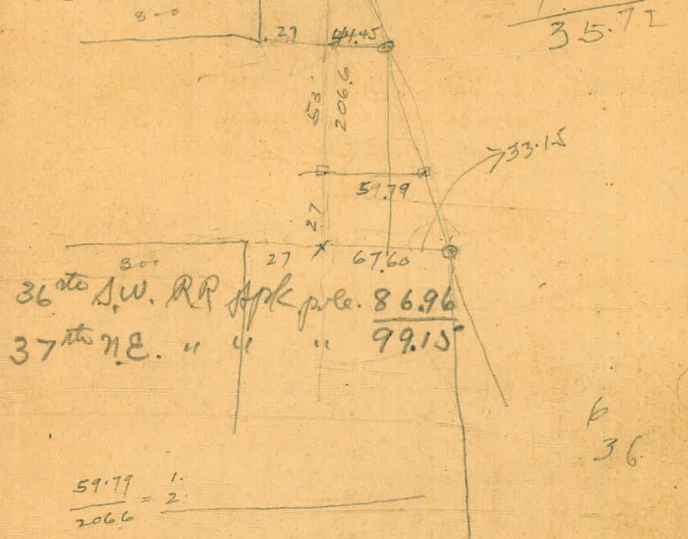
J.P. 11.18 30.115 5.80 { 12.47
 12.47 } 12.52 BM 16th + 71

n.

220	30
730	206
732	211
735	760
760	
966	
987	

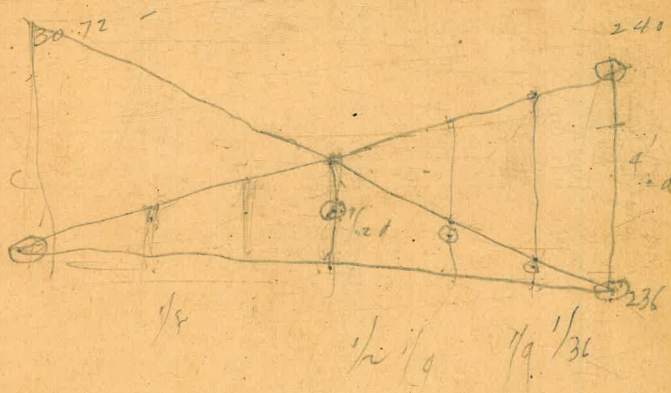
SE cor 2 73.02 FT Stockton + Fair
 SE " 269.94 Washington "

1873.8
 30
 760



36 to S.W. RR fork pole. 86.96
 37th NE. " " " 99.15

$\frac{59.77}{206.6} = 2$



Oregon Ill
 Iowa Iowa
 Utah Missouri
 Kansas Boundary
 Neb
 Ariz

2nd altation 267.06
 20th + N.W. Cor. 34.96
 18th " " " 26.57
 16th " " " 12.52

DISTANCES FROM CENTER OF ROADWAY FOR CROSS-SECTIONING.
 ROADWAY 16 FEET WIDE. SIDE SLOPES 1½ TO 1.
 FOR SINGLE TRACK EMBANKMENT.

	0	.1	.2	.3	.4	.5	.6	.7	.8	.9	
0	8.0	8.2	8.3	8.5	8.6	8.8	8.9	9.1	9.2	9.4	0
1	9.5	9.7	9.8	10.0	10.1	10.3	10.4	10.6	10.7	10.9	1
2	11.0	11.2	11.3	11.5	11.6	11.8	11.9	12.1	12.2	12.4	2
3	12.5	12.7	12.8	13.0	13.1	13.3	13.4	13.6	13.7	13.9	3
4	14.0	14.2	14.3	14.5	14.6	14.8	14.9	15.1	15.2	15.4	4
5	15.5	15.7	15.8	16.0	16.1	16.3	16.4	16.6	16.7	16.9	5
6	17.0	17.2	17.3	17.5	17.6	17.8	17.9	18.1	18.2	18.4	6
7	18.5	18.7	18.8	19.0	19.1	19.3	19.4	19.6	19.7	19.9	7
8	20.0	20.2	20.3	20.5	20.6	20.8	20.9	21.1	21.2	21.4	8
9	21.5	21.7	21.8	22.0	22.1	22.3	22.4	22.6	22.7	22.9	9
10	23.0	23.2	23.3	23.5	23.6	23.8	23.9	24.1	24.2	24.4	10
11	24.5	24.7	24.8	25.0	25.1	25.3	25.4	25.6	25.7	25.9	11
12	26.0	26.2	26.3	26.5	26.6	26.8	26.9	27.1	27.2	27.4	12
13	27.5	27.7	27.8	28.0	28.1	28.3	28.4	28.6	28.7	28.9	13
14	29.0	29.2	29.3	29.5	29.6	29.8	29.9	30.1	30.2	30.4	14
15	30.5	30.7	30.8	31.0	31.1	31.3	31.4	31.6	31.7	31.9	15
16	32.0	32.2	32.3	32.5	32.6	32.8	32.9	33.1	33.2	33.4	16
17	33.5	33.7	33.8	34.0	34.1	34.3	34.4	34.6	34.7	34.9	17
18	35.0	35.2	35.3	35.5	35.6	35.8	35.9	36.1	36.2	36.4	18
19	36.5	36.7	36.8	37.0	37.1	37.3	37.4	37.6	37.7	37.9	19
20	38.0	38.2	38.3	38.5	38.6	38.8	38.9	39.1	39.2	39.4	20
21	39.5	39.7	39.8	40.0	40.1	40.3	40.4	40.6	40.7	40.9	21
22	41.0	41.2	41.3	41.5	41.6	41.8	41.9	42.1	42.2	42.4	22
23	42.5	42.7	42.8	43.0	43.1	43.3	43.4	43.6	43.7	43.9	23
24	44.0	44.2	44.3	44.5	44.6	44.8	44.9	45.1	45.2	45.4	24
25	45.5	45.7	45.8	46.0	46.1	46.3	46.4	46.6	46.7	46.9	25
26	47.0	47.2	47.3	47.5	47.6	47.8	47.9	48.1	48.2	48.4	26
27	48.5	48.7	48.8	49.0	49.1	49.3	49.4	49.6	49.7	49.9	27
28	50.0	50.2	50.3	50.5	50.6	50.8	50.9	51.1	51.2	51.4	28
29	51.5	51.7	51.8	52.0	52.1	52.3	52.4	52.6	52.7	52.9	29
30	53.0	53.2	53.3	53.5	53.6	53.8	53.9	54.1	54.2	54.4	30
31	54.5	54.7	54.8	55.0	55.1	55.3	55.4	55.6	55.7	55.9	31
32	56.0	56.2	56.3	56.5	56.6	56.8	56.9	57.1	57.2	57.4	32
33	57.5	57.7	57.8	58.0	58.1	58.3	58.4	58.6	58.7	58.9	33
34	59.0	59.2	59.3	59.5	59.6	59.8	59.9	60.1	60.2	60.4	34
35	60.5	60.7	60.8	61.0	61.1	61.3	61.4	61.6	61.7	61.9	35
36	62.0	62.2	62.3	62.5	62.6	62.8	62.9	63.1	63.2	63.4	36
37	63.5	63.7	63.8	64.0	64.1	64.3	64.4	64.6	64.7	64.9	37
38	65.0	65.2	65.3	65.5	65.6	65.8	65.9	66.1	66.2	66.4	38
39	66.5	66.7	66.8	67.0	67.1	67.3	67.4	67.6	67.7	67.9	39
40	68.0	68.2	68.3	68.5	68.6	68.8	68.9	69.1	69.2	69.4	40

Calculated by F. E. Paradis, C. E.

Call. M. 4474
 Sunday

3 last 2. line
 335
 41.5
 85.0



DISTANCES FROM CENTER OF ROADWAY FOR CROSS-SECTIONING.
 ROADWAY 14 FEET WIDE. SIDE SLOPES 1½ TO 1.
 FOR SINGLE TRACK EMBANKMENT.

	0	.1	.2	.3	.4	.5	.6	.7	.8	.9	
0	7.00	7.15	7.30	7.45	7.60	7.75	7.90	8.05	8.20	8.35	0
1	8.50	8.65	8.80	8.95	9.10	9.25	9.40	9.55	9.70	9.85	1
2	10.00	10.15	10.30	10.45	10.60	10.75	10.90	11.05	11.20	11.35	2
3	11.50	11.65	11.80	11.95	12.10	12.25	12.40	12.55	12.70	12.85	3
4	13.00	13.15	13.30	13.45	13.60	13.75	13.90	14.05	14.20	14.35	4
5	14.50	14.65	14.80	14.95	15.10	15.25	15.40	15.55	15.70	15.85	5
6	16.00	16.15	16.30	16.45	16.60	16.75	16.90	17.05	17.20	17.35	6
7	17.50	17.65	17.80	17.95	18.10	18.25	18.40	18.55	18.70	18.85	7
8	19.00	19.15	19.30	19.45	19.60	19.75	19.90	20.05	20.20	20.35	8
9	20.50	20.65	20.80	20.95	21.10	21.25	21.40	21.55	21.70	21.85	9
10	22.00	22.15	22.30	22.45	22.60	22.75	22.90	23.05	23.20	23.35	10
11	23.50	23.65	23.80	23.95	24.10	24.25	24.40	24.55	24.70	24.85	11
12	25.00	25.15	25.30	25.45	25.60	25.75	25.90	26.05	26.20	26.35	12
13	26.50	26.65	26.80	26.95	27.10	27.25	27.40	27.55	27.70	27.85	13
14	28.00	28.15	28.30	28.45	28.60	28.75	28.90	29.05	29.20	29.35	14
15	29.50	29.65	29.80	29.95	30.10	30.25	30.40	30.55	30.70	30.85	15
16	31.00	31.15	31.30	31.45	31.60	31.75	31.90	32.05	32.20	32.35	16
17	32.50	32.65	32.80	32.95	33.10	33.25	33.40	33.55	33.70	33.85	17
18	34.00	34.15	34.30	34.45	34.60	34.75	34.90	35.05	35.20	35.35	18
19	35.50	35.65	35.80	35.95	36.10	36.25	36.40	36.55	36.70	36.85	19
20	37.00	37.15	37.30	37.45	37.60	37.75	37.90	38.05	38.20	38.35	20
21	38.50	38.65	38.80	38.95	39.10	39.25	39.40	39.55	39.70	39.85	21
22	40.00	40.15	40.30	40.45	40.60	40.75	40.90	41.05	41.20	41.35	22
23	41.50	41.65	41.80	41.95	42.10	42.25	42.40	42.55	42.70	42.85	23
24	43.00	43.15	43.30	43.45	43.60	43.75	43.90	44.05	44.20	44.35	24
25	44.50	44.65	44.80	44.95	45.10	45.25	45.40	45.55	45.70	45.85	25
26	46.00	46.15	46.30	46.45	46.60	46.75	46.90	47.05	47.20	47.35	26
27	47.50	47.65	47.80	47.95	48.10	48.25	48.40	48.55	48.70	48.85	27
28	49.00	49.15	49.30	49.45	49.60	49.75	49.90	50.05	50.20	50.35	28
29	50.50	50.65	50.80	50.95	51.10	51.25	51.40	51.55	51.70	51.85	29
30	52.00	52.15	52.30	52.45	52.60	52.75	52.90	53.05	53.20	53.35	30
31	53.50	53.65	53.80	53.95	54.10	54.25	54.40	54.55	54.70	54.85	31
32	55.00	55.15	55.30	55.45	55.60	55.75	55.90	56.05	56.20	56.35	32
33	56.50	56.65	56.80	56.95	57.10	57.25	57.40	57.55	57.70	57.85	33
34	58.00	58.15	58.30	58.45	58.60	58.75	58.90	59.05	59.20	59.35	34
35	59.50	59.65	59.80	59.95	60.10	60.25	60.40	60.55	60.70	60.85	35
36	61.00	61.15	61.30	61.45	61.60	61.75	61.90	62.05	62.20	62.35	36
37	62.50	62.65	62.80	62.95	63.10	63.25	63.40	63.55	63.70	63.85	37
38	64.00	64.15	64.30	64.45	64.60	64.75	64.90	65.05	65.20	65.35	38
39	65.50	65.65	65.80	65.95	66.10	66.25	66.40	66.55	66.70	66.85	39
40	67.00	67.15	67.30	67.45	67.60	67.75	67.90	68.05	68.20	68.35	40

Calculated by F. E. Paradis, C. E.