

955

F.B. 955

LEVEL BOOK

373

IND

KEUFFEL & ESSER CO.

DRAWING MATERIALS
AND
SURVEYING INSTRUMENTS.

NEW YORK.

CHICAGO. SAN FRANCISCO. ST. LOUIS.

TABLES FOR EXCAVATIONS AND EMBANKMENTS.

DISTANCES FROM CENTER OF ROADWAY FOR CROSS-SECTIONING.

ROADWAY 16 FEET WIDE. SIDE SLOPES 1 TO 1.
FOR SINGLE TRACK EXCAVATION.

"Copyright, 1895, by Keuffel & Esser Co."

	0	.1	.2	.3	.4	.5	.6	.7	.8	.9	
0	9.0	9.1	9.2	9.3	9.4	9.5	9.6	9.7	9.8	9.9	0
1	10.0	10.1	10.2	10.3	10.4	10.5	10.6	10.7	10.8	10.9	1
2	11.0	11.1	11.2	11.3	11.4	11.5	11.6	11.7	11.8	11.9	2
3	12.0	12.1	12.2	12.3	12.4	12.5	12.6	12.7	12.8	12.9	3
4	13.0	13.1	13.2	13.3	13.4	13.5	13.6	13.7	13.8	13.9	4
5	14.0	14.1	14.2	14.3	14.4	14.5	14.6	14.7	14.8	14.9	5
6	15.0	15.1	15.2	15.3	15.4	15.5	15.6	15.7	15.8	15.9	6
7	16.0	16.1	16.2	16.3	16.4	16.5	16.6	16.7	16.8	16.9	7
8	17.0	17.1	17.2	17.3	17.4	17.5	17.6	17.7	17.8	17.9	8
9	18.0	18.1	18.2	18.3	18.4	18.5	18.6	18.7	18.8	18.9	9
10	19.0	19.1	19.2	19.3	19.4	19.5	19.6	19.7	19.8	19.9	10
11	20.0	20.1	20.2	20.3	20.4	20.5	20.6	20.7	20.8	20.9	11
12	21.0	21.1	21.2	21.3	21.4	21.5	21.6	21.7	21.8	21.9	12
13	22.0	22.1	22.2	22.3	22.4	22.5	22.6	22.7	22.8	22.9	13
14	23.0	23.1	23.2	23.3	23.4	23.5	23.6	23.7	23.8	23.9	14
15	24.0	24.1	24.2	24.3	24.4	24.5	24.6	24.7	24.8	24.9	15
16	25.0	25.1	25.2	25.3	25.4	25.5	25.6	25.7	25.8	25.9	16
17	26.0	26.1	26.2	26.3	26.4	26.5	26.6	26.7	26.8	26.9	17
18	27.0	27.1	27.2	27.3	27.4	27.5	27.6	27.7	27.8	27.9	18
19	28.0	28.1	28.2	28.3	28.4	28.5	28.6	28.7	28.8	28.9	19
20	29.0	29.1	29.2	29.3	29.4	29.5	29.6	29.7	29.8	29.9	20
21	30.0	30.1	30.2	30.3	30.4	30.5	30.6	30.7	30.8	30.9	21
22	31.0	31.1	31.2	31.3	31.4	31.5	31.6	31.7	31.8	31.9	22
23	32.0	32.1	32.2	32.3	32.4	32.5	32.6	32.7	32.8	32.9	23
24	33.0	33.1	33.2	33.3	33.4	33.5	33.6	33.7	33.8	33.9	24
25	34.0	34.1	34.2	34.3	34.4	34.5	34.6	34.7	34.8	34.9	25
26	35.0	35.1	35.2	35.3	35.4	35.5	35.6	35.7	35.8	35.9	26
27	36.0	36.1	36.2	36.3	36.4	36.5	36.6	36.7	36.8	36.9	27
28	37.0	37.1	37.2	37.3	37.4	37.5	37.6	37.7	37.8	37.9	28
29	38.0	38.1	38.2	38.3	38.4	38.5	38.6	38.7	38.8	38.9	29
30	39.0	39.1	39.2	39.3	39.4	39.5	39.6	39.7	39.8	39.9	30
31	40.0	40.1	40.2	40.3	40.4	40.5	40.6	40.7	40.8	40.9	31
32	41.0	41.1	41.2	41.3	41.4	41.5	41.6	41.7	41.8	41.9	32
33	42.0	42.1	42.2	42.3	42.4	42.5	42.6	42.7	42.8	42.9	33
34	43.0	43.1	43.2	43.3	43.4	43.5	43.6	43.7	43.8	43.9	34
35	44.0	44.1	44.2	44.3	44.4	44.5	44.6	44.7	44.8	44.9	35
36	45.0	45.1	45.2	45.3	45.4	45.5	45.6	45.7	45.8	45.9	36

Calculated by Julien A. Hall, M. Am. Soc. C. E.

7.89

7.52
90
7.92

SEWER FOR DINGEMAN
 FROM M.H. ON 32ND bet. ASH + BEECH
 TO CTR. OF 32ND + BEECH.

B.M.	421	220.13		215.92		Plug on East Etc 81476
T.P.	0.19	207.60	12.72	207.41		
T.P.	0.59	195.29	12.90	194.70		
T.P.	0.05	183.13	12.21	183.58		
T.P.	1.49	172.31	12.31	170.82		
						GRADE
Ctr. of Beech + 32 ND = 0.0			1.1	171.2	167.7	+ 3.4
0+25.			8.4	163.9	159.41	+ 8.6
T.P.	0.33	159.97	12.67	159.64		
0+50			6.6	153.4	149.12	+ 3.8
0+65			5.0	155.0	145.16	+ 8.5
0+95			12.7	147.3	143.72	+ 2.6
1+15			6.6	153.4	142.76	+ 9.0
1+50			10.4	149.6	141.09	+ 9.5
T.P.	0.78	145.99	11.77	142.20		
1+75			3.0	146.0	139.90	+ 5.8
2+0			4.5	144.5	138.71	+ 5.8
2+50 = M.H. bet ASH + BEECH		12.68		141.4 = Top		
				136.30 = bottom		

8/18/14
 CUT STAKES FOR
 SEWER IN BLK. BET.
 FT. STOCKTON & FINE
 FROM M.H. 25' E of
 TRIAS TO 150' W of
 ST

Top stakes reset on E of 4' right of way which is E of
 BLK 525 1/2 ft Dunkle - 3/2 ft - Perry

B.M.	6.93	273.99	267.06		
B.M.	4.48	272.98	268.50		
			GROUND	GRHOSE	
00 = M.H.		5.5	268.5	263.6	+4.9
0125 = EL TRIAS.		4.35	268.63		5.0
		5.49	268.50	263.65	+4.9
0175 = WL		3.61	269.37		5.6
		5.19	268.8	263.76	+5.0
1+25		3.96	269.02		5.2
		4.91	269.05	263.86	+5.2
1+75		4.73	268.25		4.3
		5.66	268.33	263.97	+4.4
2+25 =		5.24	267.74		3.7
		6.77	267.72	264.07	+3.7

267.06
 5.82
 272.98 HB
 263.65 263.76 263.76 263.77 264.07
 9.33 7.23 9.15 9.01 8.91

Bottom Stakes for Gregory Moore

Sewer Extension across N 5' of
530' of lot & Bl Florence Hts to connect
with Stephens St. Sewer

7/28/14

West
Evans
Devise

3

BM. SW Stockton & Stephens Spk 278.22

3.95 282.17

0 too = bot pipe Stephens	7.82		274.35	2.6
+18	5.3	277.0	274.53	2.4
+68	4.2	278.0	275.03	3.0
1+18	3.73	278.44	275.53	2.9

4.54 282.98

Ground N. house (hole filled 1.0')

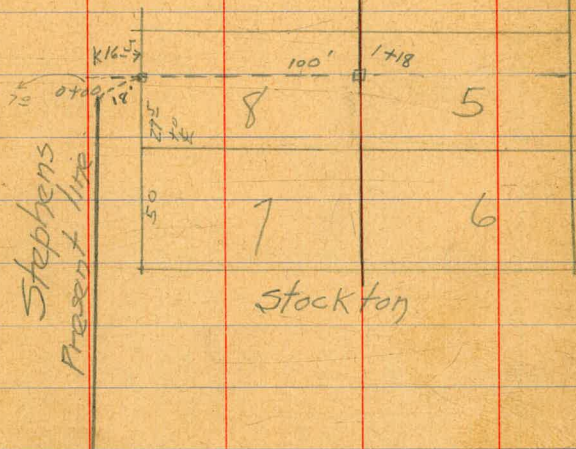
6.68 276.30

Bot pipe Middle house.

5.88 277.10

5

Cuts.



Somer & Horton Arc from N. H. Canyon
 Line Maple St. South for 186' to point 100'
 N. of N. L. Laurel Thence West for 37.5' to m.k. Horton
 to Sta 2+23.5

101 Sample
 124 Spaw
 14 Rev.

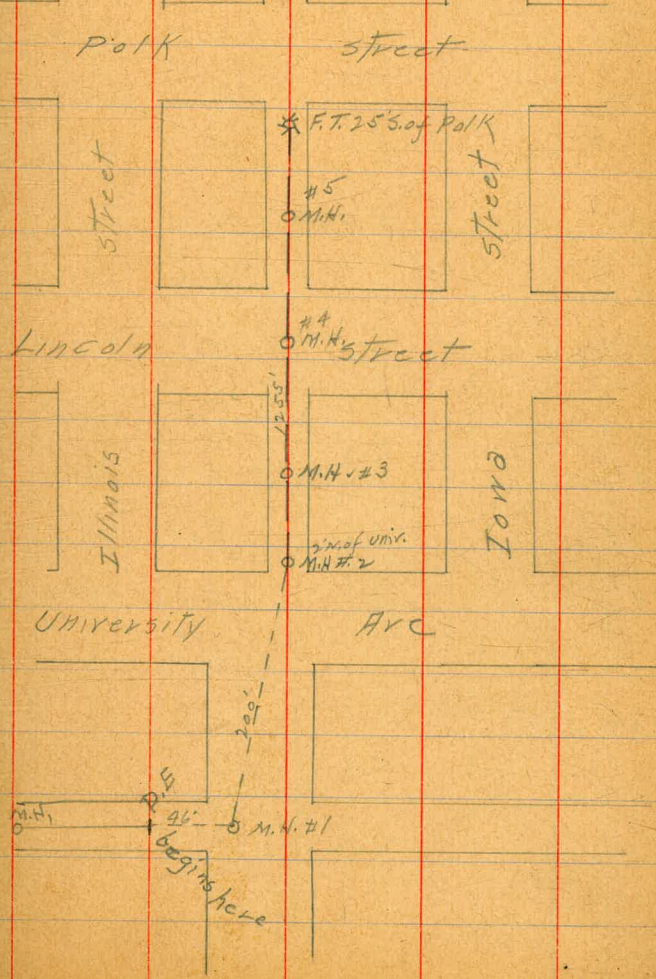
4

↓	18.83	77.83		59.00		
0+0=N.H.				69.4 -	59.00	
+15			8.8	69.0		
+25 H			4.2	73.6 -	69.5	4.1
T.P.	12.24	90.04	0.03	77.80		
+38			9.4	80.6		
+47			8.7	81.3		
+50 H			5.9	84.1 -	80.00	4.1
T.P.	11.85	101.50	0.39	89.65		
+75 H			4.0	97.5	93.5	4.0
T.P.	12.85	114.32	0.23	101.47		
+80			11.6	102.7		
1+0 H			1.3	113.0	109.00	4.0
T.P.	13.15	127.47	0.00	114.32		
1+25 H			3.0	124.5	120.50	4.0
T.P.	12.38	139.73	0.12	127.35		
1+50			4.4	135.3	130.25	5.0
T.P.	9.82	148.55	0.00	139.73		
+75 H			4.2	144.4	139.00	5.4
+86+90°00' R			2.5	146.1	139.23	6.9
2 H		5	3.7	144.9	139.52	5.4
+23.5 H			5.4	143.2	140.00	3.2

Survey constructed according to sketch opp. page

BM Brass plg N.W. Illinois University	4.99	362.97	357.98	1/2 1/2	1/2 1/2
0+0 = old D.E.R.	5.5	357.5	350.50	7.0	
+46 M.H. #1	8.0	355.0	350.79	4.2	✓
+50	8.0	355.0	350.81	4.2	
1	6.9	356.1	351.12	5.0	✓
+50	6.2	356.8	351.43	5.4	✓
2	5.6	357.4	351.74	5.7	
+46 M.H. #2	5.1	357.9	352.03	5.9	✓
+50	5.0	358.0	352.05	5.9	
3	4.5	358.5	352.36	6.1	✓
+50	4.1	358.9	352.67	6.2	✓
4	4.4	358.6	352.96	5.6	✓
+50	3.4	359.6	353.30	6.3	✓
5	3.1	359.9	353.61	6.3	✓
+46 M.H. #3	2.4	360.6	353.90	6.7	✓
+50	2.4	360.6	353.92	6.7	
6	5.78	367.02	354.23	7.0	✓
+50	5.4	361.6	354.54	7.1	✓
7	5.4	361.6	354.85	6.8	✓
+50	5.09	361.93	355.16	6.8	

62.49	357.98	62.49	62.49	62.49	62.49	62.49	62.49	62.49	62.49
11.20	4.51	50.50	50.74	50.91	51.12	51.43	52.03	52.36	61.49
362.99 M.	11.99	11.70	11.68	11.37	11.06	10.76	10.13	10.13	5
62.49	52.67	63.64	63.64	63.64	63.64	63.64	63.64	63.64	62.49
9.82	5.66	52.95	53.30	53.61	53.92	54.23	54.54	54.85	357.98
357.98	363.64	10.66	10.34	10.03	9.74	9.44	9.14	8.84	423
361.24	4.74	65.98	65.98	65.98	65.98	65.98	65.98	65.98	357.98
365.98 M.	11.75	11.44	11.13	10.82	10.51	10.20	9.89	9.58	62.49



367.02

365.987
65.98
55.47
10.51

810.			4.3	362.7	355.47	7.2	✓
+50			4.8	362.2	355.79	6.4	✓
+84 M.H. Lincoln			4.5	362.5	356.00	6.5	✓
9.			4.66	362.36	356.06	6.3	✓
+50			3.9	363.1	356.26	6.8	✓
10.			3.8	363.2	356.46	6.7	✓
+50			3.71	363.31	356.66	6.7	✓
11			3.4	363.6	356.87	6.7	✓
+50	535	369.57	2.80	364.22	357.07	7.2	✓
12			5.4	364.2	357.27	6.9	✓
+24 M.H.			5.7	363.9	357.37	6.5	
+50			5.5	364.1	357.47	6.6	✓
13			5.2	364.4	357.67	6.7	✓
+50			5.02	364.55	357.87	6.7	✓
14			5.41	364.16	358.08	6.1	✓
+50			5.3	364.3	358.28	6.0	✓
15401 F.T.			5.7	363.9	358.50	5.4	

362.36	✓	57.92	11.22						
5.76									
368.12		368.12	368.12	368.12	368.12	368.12	368.12	368.12	368.12
4.24		258.79	386.00	356.06	356.26	356.46	356.66	356.87	356.66
363.18		12.33	12.12	12.06	11.86	11.66	11.46	11.26	11.06
368.12		568.42		68.49		57.07			
356.87		357.07		11.42					
11.25		11.25							
364.22		68.49	68.49	68.49	68.49	68.49	68.49	68.49	68.49
4.27		57.27	57.47	57.67	57.87	58.08	58.28	58.50	58.50
363.49		11.22	11.02	10.82	10.62	10.41	10.21	9.99	4.69
		✓	✓	✓	✓	✓	✓	✓	5.3

Elevations of sewer laterals - Vermont St
 South of Lincoln - Elev. on top of pipe $\frac{1}{4}$ Dunk
 $\frac{1}{4}$ Shaw
 $\frac{1}{4}$ Kerr

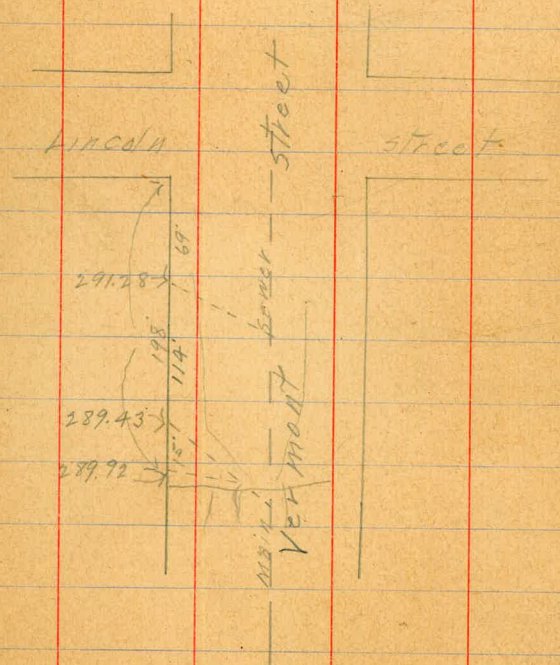
B.M. ~~XX~~ 308 S.W. Vermont & Lincoln 292.06

B.M. 392 295.98

5-69 δ 4.70 291.28

1+83 6.55 289.43

1+98 6.66 289.92



4

Sewer in Alley W. of Bancroft
from Upas to Univ

B.M. SW. Myrtle #32	330.82		
246	333.28		
0+00 & MH & Alley & Upas	318.00		
+30	323.38	318.23	
1+00	324.11	318.45	
+50	324.33	318.68	
2+00	325.34	318.90	
+50	325.48	319.13	
3+00	324.93	319.35	
+31 & Upas & Alley W. of Bancroft	324.42	319.50	
+50	325.38	319.75	
4+00	325.83	320.40	
+50	326.52	321.05	
5+00	327.20	321.70	
+50	328.21	322.35	
6+00	329.08	323.00	
+50	329.58	323.65	
+75 ⁶ MH*2 & Myrtle	330.03	324.00	
7+00 T.P. Hub	330.42	324.23	
995	340.17		

2/18/15 West
Evans
Devine

SW 22 + Myrtle #4 . 330.82
18" Wright stand. 337.40
24" Landie Olney. 338.47
24" Uhlman " 346.40
24" Unit " 351.91

8

Cuts	324.83 4.50 328.83	324.71 2.73 328.84	328.84 218.23 10.61	328.84 316.45 10.39	328.84 318.68 10.16	328.84 316.90 7.94
	312.11 4.86 316.97	328.84 319.13 9.71	328.84 319.35 9.49	328.84 319.50 9.34	328.84 319.75 9.09	328.84 320.40 8.44
5.2	328.97 1.67 328.97	325.38 7.12 325.50	322.50 319.75 12.75	322.50 320.40 12.10	322.50 321.05 11.45	322.50 321.70 10.80
5.6	318.93 11.94 325.83 6.65 332.48	322.35 322.35	322.50 323.00 10.15	322.50 323.00 9.50	322.50 324.00 8.85	322.50 324.23 8.50
5.7	332.50 2.07 330.42	335.07 324.23 10.84				
6.4	4.65 335.07					
6.3						
5.6						
4.9						
5.6						
5.4						
5.5						
5.5						
5.9						
6.1						
5.9						
6.0						
6.2						

340-17

9

7+50	8.77	331.40	324.68	6.7	335.07 324.68 10.39	335.07 325.14 9.93	335.07 326.59 9.48	332.97 5.70 338.67 325.57 13.08	339.66 5.22 338.68 4.22 337.61
8+00	7.85	332.52	325.14	7.2	338.67 326.04 12.63	338.67 326.90 12.77	338.67 327.00 11.67	338.67 327.19 11.48	338.67 327.40 11.27
+50	7.20	332.97	325.59	7.4	335.96 3.76				
9+00	6.51	333.66	326.04	7.6	339.92 327.61 12.31	339.92 327.82 12.10	339.92 328.03 11.89	339.92 328.41 11.52	
+50	5.91	334.26	326.50	7.8	336.31 3.93	335.78 4.46			
10+05 ⁵ M4*3	5.39	334.78	327.00	7.8	340.24 328.47 11.77	340.24 328.71 11.53	340.24 328.95 11.29	340.24 329.17 11.05	340.24 329.43 10.81
+50	5.12	335.05	327.19	7.9					10.56
11+00	4.70	335.47	327.40	8.1	340.24 329.92 10.32	340.24 330.00 10.24			
+50	4.21	335.96	327.61	8.4					
12+00	4.22	335.95	327.82	8.1					
+40									
+50	3.75	336.42	328.03	8.4					
+40									
13+00	3.95	336.22	328.24	8.0					
+35 ⁵ M4*4 Dwyght TR	4.00	336.17	328.40	7.8					
+50	4.48	340.65		7.8					
14+00	4.34	336.31	328.47	7.8					
+50	4.54	336.11	328.71	7.4					
	4.87	335.78	328.95	6.8					
15+00	5.27	335.38	329.19	6.2					
+50	5.67	334.98	329.43	5.6					
16+00	5.72	334.93	329.68	5.3					
+50	5.32	335.33	329.92	5.4					
+65 ⁵ M4*5	5.26	335.39	330.00	5.4					

16+6.5 MH*5	340.65	526	335.39 [✓]	330.00 [✓]	5.4 [✓]	340.24 230.00	340.24 [✓]	340.24	340.24	10
1.7400		510	335.55	330.21	5.3 [✓]	10.24	330.21	330.51	330.81	
+50		518	335.47 [✓]	330.51 [✓]	5.0 [✓]	340.24 4.76 335.48TP	341.65	341.65	341.65	341.65
18+00		505	335.60	330.81 [✓]	4.8 [✓]	6.17 341.65H	330.81	331.12	331.42	341.65
+50		457	336.08 [✓]	331.12 [✓]	5.0 [✓]	6.05 335.60-18 [✓]	10.84 [✓]	10.53 [✓]	10.23 [✓]	331.42
19+00		384	336.81 [✓]	331.42 [✓]	5.4 [✓]	337.48 7.16	344.70	344.70	344.70	344.70
+50		317	337.48 [✓]	331.73 [✓]	5.7 [✓]	344.64H	331.73	332.00	332.07	332.80
+95 ³ MH*6 & Landis		245	338.20 [✓]	332.00 [✓]	6.2 [✓]	338.17 6.57 344.74	344.70	344.70	344.70	344.70
20+00 TR Hub		248	338.17 [✓]	332.07 [✓]	6.1 [✓]	338.67 6.03 344.70	344.70	344.70	344.70	344.70
+50	9.72	347.89	338.67 [✓]	332.80 [✓]	5.9 [✓]	339.51 5.77 344.70H	344.70	344.70	344.70	344.70
21+00		838	339.51 [✓]	333.52 [✓]	6.0 [✓]	342.70 6.72 349.42H	344.70	344.70	344.70	344.70
+50		751	340.38 [✓]	334.25 [✓]	6.1 [✓]	345.39 4.03 349.42	344.70	344.70	344.70	344.70
22+00		762	340.27 [✓]	334.97 [✓]	5.3 [✓]	349.42	349.42	349.42	349.42	349.42
+50		703	340.86 [✓]	335.70 [✓]	5.2 [✓]	337.52	338.00	338.48	349.42	349.42
23+00		592	341.77 [✓]	336.42 [✓]	5.6 [✓]	11.90 [✓]	11.42 [✓]	10.94 [✓]		
+25 ³ MH*7		534	342.55 [✓]	336.80 [✓]	5.8 [✓]					
+50		520	342.69 [✓]	337.04 [✓]	5.7 [✓]					
24+00		432	343.57 [✓]	337.52 [✓]	6.1 [✓]					
+50		348	344.41 [✓]	338.00 [✓]	6.4 [✓]					
25+00		312	344.77 [✓]	338.48 [✓]	6.3 [✓]					

347.89

Z5+50			Z50	345.39	338.96	✓
Z6+00			1.84	346.05	339.44	✓
+50			1.60	346.29	339.92	✓
+58 ⁶	MH ⁸ & Wightman TP		1.70	346.19	340.00	✓
Z7+00	5.47	351.66	4.60	347.06	340.52	✓
+50			4.27	347.39	341.13	✓
Z8+00			3.62	348.04	341.74	✓
+50			2.96	348.70	342.35	✓
Z9+00			2.42	349.24	342.96	✓
+50			1.96	349.70	343.58	✓
+84 FT.			2.02	349.64	344.00	✓
TP.			2.28	349.38		
	6.75	356.13				
BM. SW. 32 & Univ. Pl. 9			4.22	351.91	351.91	OK

2/18/15 West
Evans
Devine

6.4	349.42	349.42	349.42	349.42	
	338.96	339.44	339.92	340.00	
	10.46	9.98	9.50	9.42	
	349.42	349.42	349.42		
	340.52	341.13	2.04		
	8.90	8.29	347.38	347.42	
	347.39	348.04			
	6.06	5.41			
	353.45	353.45	353.45	353.45	353.45
	341.74	342.35	342.96	343.58	344.00
	11.71	11.10	10.49	9.87	9.45

3/18/15 West-Evans Devine

$$\begin{array}{r} 48.6 \\ +3.6 \\ \hline 52.2 \end{array}$$

Senior 8' North of S.L. Alley between Penn 2
 Sutter from ♀ Kite 5' west for 475'

B.M. SPR N.E. KITE 2 Penn			267.23		
7.21	274.44				
0+0-M.H. ♀ KITE		7.7	266.7	258.75	8.0
+50		4.02	270.42	261.87	8.5 ✓
1 break		2.5	271.9	265.00	6.9 ✓
+50		0.48	273.96	265.40	8.6 ✓
2	8.09	282.05			
		5.7	276.4	265.80	10.6 ✓
+50		4.65	277.40	266.20	11.2 ✓
3		3.85	278.20	266.60	11.6 ✓
+50		3.27	278.18	267.00	11.2 ✓
4		5.14	276.91	267.40	9.5 ✓
+50		8.56	273.49	267.80	5.7 ✓
+75		9.65	272.40	268.00	4.4 ✓

270.42
 6.36
 276.78M
 285.00
 11.78

76.78
 65.40
 11.38

277.40
 4.43

281.83M, 81.83 81.83 81.83
 65.80 66.20 66.60
 16.03 15.63 15.23

276.91
 3.14
 280.05M

280.05 280.05 280.05
 67.40 67.30 68.00
 12.65 12.55 12.05

81.83
 67.00
 14.83

2/11/16 bottom strk Dunkle
 shaw
 Bunker

Sewer & Atlantic St from S.L. Ash to 2nd Quibble
 S.L. Grape - 5th set 2nd of 4 Shaw
 B.M. Brass on S.W. India St Ash 22.97 1/6 Center

T.P.	2.02	13.77	12.19	11.25	
T.P.	4.62	9.18	9.21	4.56	
Drop 0.6					
+50					
1					
+50					
2					
+50					
3					
+50					
4					
+19 ³ = M.H. & Beach					
+50					
5					
+50					
6					
+50					
7					
+50					
8					
T.P. SPK	2.57	8.89	2.88	6.30	

SEE PAGE 17

	6.30	9.41	9.41		
	3.11	1.47	1.36		
	9.41				
	5.48	10.88	10.77		
	3.93	3.88	3.77		
	9.41	7.0	7.00		
	5.00	9.41			
	4.41	4.23			
		4.48			
	6.30	9.69	9.69	9.69	9.69
	3.39	1.36	1.42	1.57	1.42
	9.69				
	11.05	10.16	10.26	10.26	10.26
	7.00	7.00	7.00	7.00	7.00
	4.05	4.16	4.26		
					11.82
					9.75
					7.07
	9.69	9.69	9.69	9.69	9.69
	1.26	1.15	1.05	0.94	0.84
	10.95	10.84	10.74	10.63	10.53
	6.00	6.00	6.00	6.00	6.00
	4.95	4.84	4.74	4.63	4.53
					4.42
					9
	6.30	9.41	9.41	9.41	9.41
	3.11	2.81	2.51	2.20	2.10
	9.41				
	5.06	11.82	11.72	11.61	11.51
	4.35	8.00	8.00	8.00	8.00
		3.82	3.72	3.61	3.51
					3.40
					9.52
					12.32
					-2.80
					7.52
					-3.00
					12.52
					5.02
					7.50
					1.40
					6.1
	6.30	2	+50	3: 1.50	
	3.24	9.54	9.54	9.54	9.54
	9.54	1.99	1.89	1.79	1.68
	3.87	11.53	11.43	11.32	11.22
	5.67	7.00	7.00	7.00	7.00
	4.67	4.53	4.43	4.32	4.22
		4			
		9.54	9.54		
		1.57			
		11.11	2.41		
		7.00			
		4.11	11.95		

8.37

8435⁵ M.H. N.L. Cedar

5.3 3.6 -0.67 4.3 ✓

+50 4.9 4.0 -0.63 4.6 ✓

9 5.0 3.7 -0.52 4.4 ✓

+50 5.1 3.8 -0.42 4.2 ✓

10 5.0 3.9 -0.31 4.2 ✓

+50 4.3 4.6 -0.21 4.8 ✓

11 5.4 3.5 -0.10 3.6 ✓

+50 5.5 3.4 0.0 3.4 ✓

12 5.9 3.0 +0.11 2.9 ✓

+50 4.2 4.7 +0.21 4.5 ✓

+93 M.H. Elm st

3.8 5.1 +0.30 4.8 ✓

13 3.6 5.3 0.32 5.0 ✓

+50 4.5 4.4 0.45 4.0 ✓

14 7.26 9.05 4.08 4.79 0.57 4.2 ✓

+50 4.8 4.3 0.69 3.6 ✓

15 4.7 4.4 0.82 3.6 ✓

+50 4.4 4.7 0.94 3.8 ✓

16 4.86 4.19 1.07 3.1 ✓

+50 5.1 4.0 1.20 2.8 ✓

17 5.3 3.8 1.32 2.5 ✓

+41⁸ M.H. S.L. Grape

5.3 3.8 1.42 2.4 ✓

Galv iron SPK Polk SE. Grape Atlantic

3.75 5.00

Cut

6.30	2.67	8.67	8.67	8.67	
4.37	0.67	0.63	0.52	0.42	
8.67 M	9.34	9.30	9.19	9.09	
6.30	+50	9	+50	10	10
2.40	8.70	8.70	8.70	8.70	8.70
8.70 M	0.67	0.63	0.52	0.42	0.31
	9.37	9.33	9.22	9.12	9.01
	5.00	5	5	5	5
	4.33	4.22	4.12	4.01	3.91
					3.80

Side sills set for 5' overhead grade from 245 to 1150

8.90 M	8.70	8.70		
5.50	3.20			
3.20	5.50			

M.H.

6.30	8.30	8.30	8.30	8.30	8.30	8.30
2.00	0.00	0.11	0.21	0.30	0.32	
8.30 M	8.30	8.19	8.09	8.00	7.98	
3.41		4.00	5.00		5.00	
4.89	8.30	7.19	3.09		2.78	
4.32	5.50					
9.21 M	2.00	9.21	9.21	9.21		
2.45	Top M.H.	0.44	0.57	0.69		
4.76		2.77	3.64	3.52		
		5	5	5		
		3.77	3.64	3.52		

4450

8.36	8.36	8.36	8.36	8.36	8.36	8.36	8.36
0.69	0.22	0.94	1.27	1.20	1.32	1.42	
2.17	8.24	7.92	7.79	7.66	7.54	7.44	

8.36

3.57

5.29

S.E.

S.W.

3.40

3.75

3.70

3.57

14

Sever & Third St from pt 180 N of S.L. of Dunkle
 Juniper north for 490' or 90' south Saffaurell 6 Bunker

B.M. Brass 19 N.W. Kalmia 8 4 1/2			224.95		
2.71	227.66				
+40 = 180' N of S.L. Juniper	12.08	215.58	210.00	5.6	
+50	10.57	217.09	211.46	5.6 ✓	
1	8.77	218.89	212.92	6.0 ✓	
+50	7.05	220.61	214.38	6.2 ✓	
2	5.68	221.98	215.84	6.1 ✓	
+40 = M.H. of Kalmia	4.6	223.1	217.00	6.1 ✓	
+50	4.4	223.3	217.40	5.9 ✓	
3	2.85	224.21	219.40	5.4 ✓	
+50 8.83	235.40	1.09	226.57	221.40	5.2 ✓
4	6.34	229.06	223.40	5.7 ✓	
+50	4.29	231.11	225.40	5.7 ✓	
+90 F.T.	2.8	232.6	227.00	5.6 ✓	

217.09
 6.23
 223.3241
 223.32 223.32
 211.46 212.92
 11.86 10.40

15

220.61
 5.66
 226.2741
 226.27 226.27 226.27 26.27
 214.38 215.84 217.00 17.40
 11.89 10.43 9.27 8.87

224.81
 6.07
 230.8841
 30.88 30.88 30.88
 19.40 21.40 23.40
 11.48 9.48 7.48

231.11 229.06
 6.53
 235.5941
 35.59 35.59
 25.40 27.00
 10.19 8.59

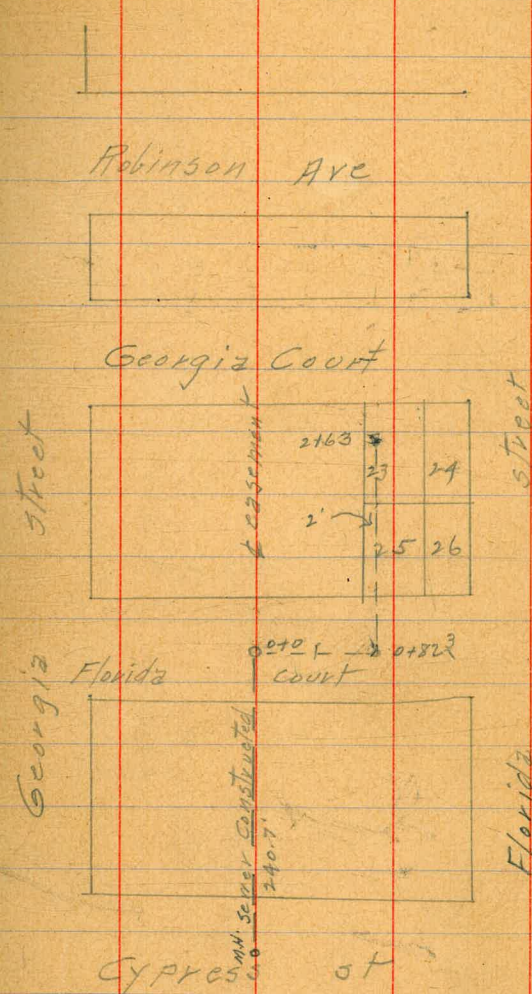
Sewer Virginia Square Ad from Pt & N 25. Easement
 8' Florida Court or 240.7 N of Cypress St - East
 17' Florida Court for 80.2 Thence North 2' approx East of
 W.L. Lots 23826 to 572 2+63
 82.317

B.M.	6.14	261.35	255.21	
0+0		6.4	255.00	248.34
+50		10.52	250.83	248.56
+82 ³		11.9	249.5	248.70
1		10.6	250.8	249.81
+50		5.27	256.08	252.94
N	5.43	265.88	0.90	260.45 256.06
+50		3.05	262.83	259.18
+63		2.3	263.16	260.00

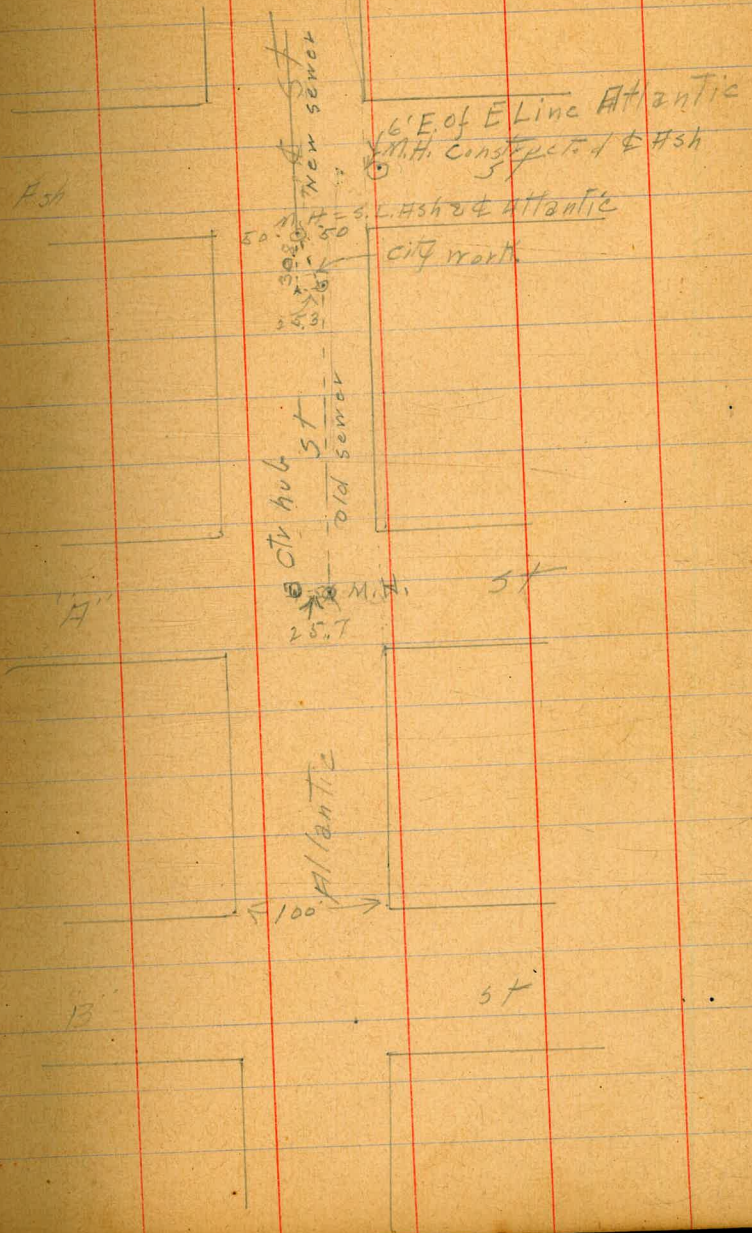
Sewer in Florida Court bet Lots 26827
 Lowered 6" & encased in Contract
 Ref. 3852-13-
 5-18-50 MW

1/2 Dunkle
 1/4 Shaw
 1/6 Bunter

16



3/11 Dunkle 32.5
straw 17^s
16 Bunker



18

Levels ^{for} sewer line see sketch opp page

B.M. N.W. of Illinois Univ 357.98

B.M. 2.99 360.97

T.P. 7.34 363.11 5.20 355.77

0+0 = 4 Alley & Lincoln 6.19 356.92

+0.7 6.7 356.4

+1.1 5.2 357.9

+5.0 4.5 358.6

1 cut 9' 4.5 358.6

+5.0 cut 7' 4.8 358.3

2 " 6' 5.0 358.1

+5.0 5.3 357.8

3 5.3 357.8

+5.0 5.4 357.7

4 6.2 356.9

+5.0 6.7 356.4

5 7.5 355.6

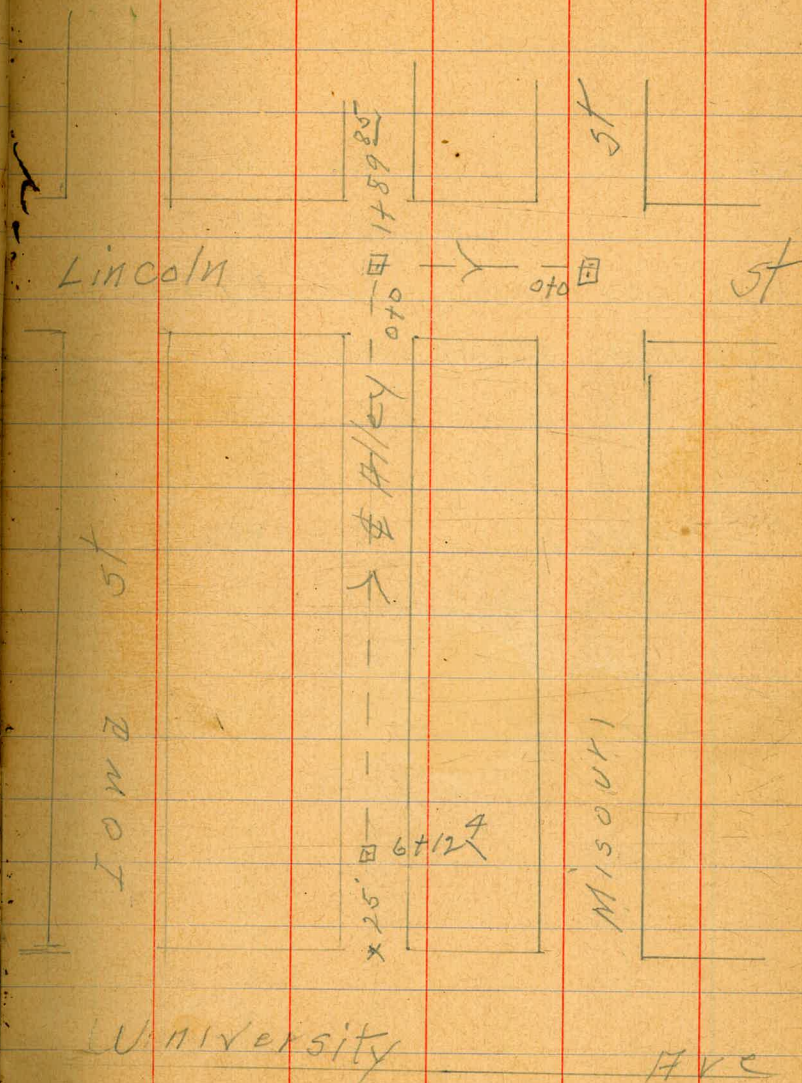
+5.6 8.2 354.9

6 9.1 354.0

+12 ⁴ or 25' N. of Univ. 9.4 353.9

3.02 355.09 11.06 352.05

3/14/16 Dunkle
Shaw 19
Bunker



sewer levels = see Ketch Page 19

355.07

070 = Φ Misouki	10.8	344.3
+40	10.3	344.8
+47	10.8	344.3
+50	9.8	345.3
+58	4.6	350.5
1	2.4	352.7
T.P 6.92	361.07	0.92 354.15
+50	6.3	354.8
+80	5.5	355.6
+89 ⁸⁵ = Φ Alley	4.2	356.9

Levels for proposed sewer Φ Lincoln St from

Φ Bancroft to Φ 32 nd St					
B.M.	1.47	358.39		356.92	
T.P	5.68	351.24	12.83	345.56	
070 = Φ Bancroft			8.43	342.81	
+50			7.0	344.2	
1			6.0	345.2	
+50			5.0	346.2	
+90 = Φ Alley			4.9	346.3	
2			5.5	345.7	
+05			6.0	345.2	
+50			6.9	344.3	
3			7.7	343.5	
+50			7.3	343.9	
+60			7.6	343.6	
+80 = Φ 32 nd St			6.9	344.3	

70

6/ Dunkle
37 Shaw
16 Bunker

Levels & Alley bet 32nd & Bancroft from Dunkle
 & Lincoln south for 600' or 37' N of University Stew
 Banker

351.24

351.24

21

0+0 = & Lincoln	4.9	346.3
+03	5.0	346.2
+10	6.3	344.9
+50	6.8	344.4
1	7.9	343.3
+50	9.3	341.9
+71	10.0	341.2
+72	11.6	339.6
2	12.8	338.4
+06	12.6	338.6
+07	10.4	340.8
+33	11.6	339.6
+50	14.1	337.1
+76	14.5	336.7
+80	15.5	335.7
+90	14.7	336.5
3	13.3	337.9
+25	12.8	338.4
+30	12.0	339.2

+50	16.1	340.1
+63	10.1	341.1
4	8.8	342.4
+50	7.2	344.0
5	5.7	345.5
+50	4.3	346.9
6 = 37' N of University	2.6	348.6

Center of Collier from N.H. & Alley between Oregon
& Hamilton west for

$\frac{1}{4}$ Simple
 $\frac{1}{16}$ Shaver
Bunker

B.M. bottom N.H. Elev assumed

100.00

7.20 107.20

Gate

cut

0+0 = N.H. constructed

100.00

0+50

3.06

104.14

100.20

3.9

1

3.25

103.95

100.40

3.6

150

3.56

103.64

100.60

3.0

2

4.12

103.03

100.80

2.3

125

4.47

102.73

100.90

1.8

See Book 47A

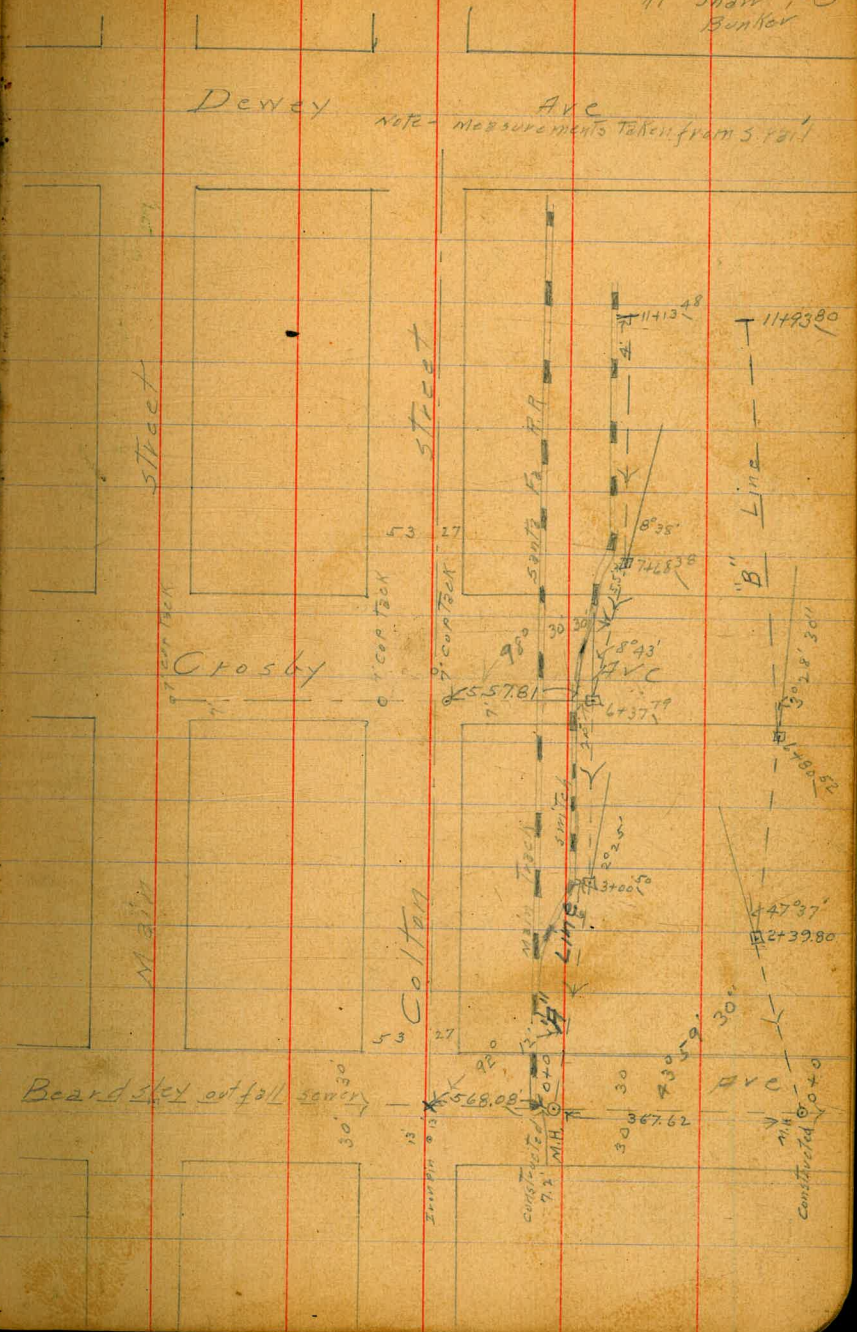
P
77

22

Levels for "A" Line opp page

B.M. S.W. Cor Crosby & Newton Brass Plg.	28.93		
0.79	29.72		
T.P.	1.25	18.99	12.06
T.P.	3.12	9.85	12.18
T.P.	4.41	9.13	5.13
0+0 M.H. bottom of pipe		10.8	- 1.7
" " " floor level		10.0	- 0.9
" " " top		5.4	3.7
+17		5.8	3.3
+21		6.9	2.2
+50		6.8	2.3
+54		6.1	3.0
1		6.2	2.9
+50		5.7	3.4
2		5.7	3.4
+50		5.3	3.8
3+00	L 2° 25'	5.13	4.00
+50		5.3	3.8
floor level lower Colly Fisheries Co 4.7		4.4	
4		5.0	4.1
+50		4.8	4.3

Proposed sewer lines for fish canning Co. 7/6/17 Dunkle
Shaw, 23
Bunker



	9.13		
540		4.8	4.3
+50		4.6	4.5
6		4.3	4.8
+37 ⁷⁹ R 8°43'	4.72	9.42	4.43
+50		4.4	5.0
Bunks in rear		6.8	2.6
Floor Level Premier Packing Co front		7.2	2.2
7		4.9	4.5
+50		4.8	4.6
+68 ³⁸ L 8°38'	4.62	9.57	4.47
8		4.5	5.1
+50		4.6	5.0
9		4.6	5.0
+50		5.6	4.0
10		5.2	4.4
Bunks in rear		5.7	3.9
Floor Level Pacific Tuna Canning Co		3.9	5.7
+50		5.2	4.4
Floor Level Wheeler Chase Fisheries Co		6.5	3.1
11		4.9	4.7
+13 ⁹⁸		4.8	4.8
Floor Level Normandy Sea Food Co		7.9	6.9

Levels for B Line Page 23

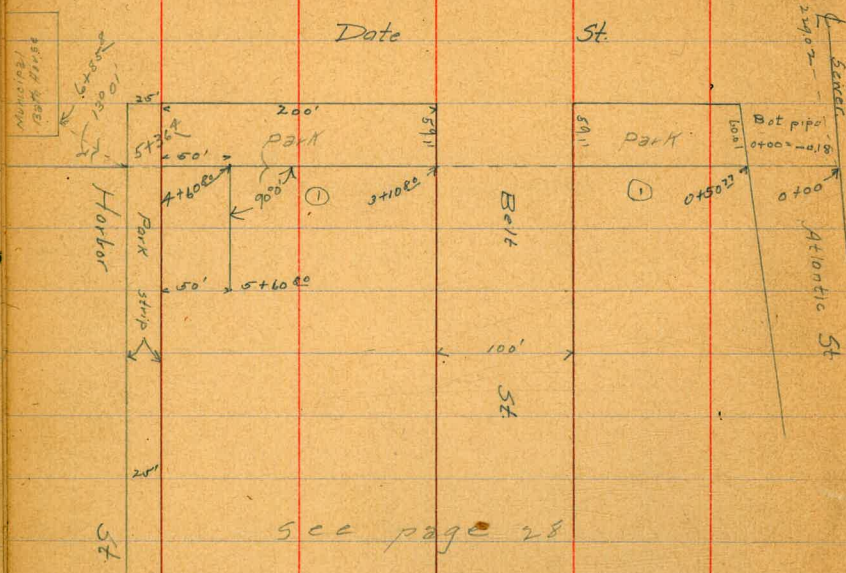
	1.69	1.19	-0.51	24
B.M.				
0 to = M.H. } bottom of pipe			6.1	-4.9 ✓
floor level			4.7	-3.5
ground.			9.3	-2.1
+50			8.7	-7.5
1			8.2	-7.0
+50			7.8	-6.6
2			7.2	-6.0
+39 ⁸⁰ R 47°37'			6.6	-5.4
+50			6.6	-5.4
3			6.6	-5.4
+50			6.6	-5.4
4			6.5	-5.3
T.P.	5.37	+0.17	6.39	-5.20
ground			5.5	-5.3
+0 = M.L. Lower Calif Fisheries Bldg			bottom of floor joist	+3.2
NOTE - joist 3"x12" - 16" from ctr. to ctr				+3.4
+50			5.5	-5.3
+79 = EL " " " "				
5			ground	5.4
192 = M.L. Building			Stringers	-5.2
5			bottom floor	+2.6
Stringers				+2.8
5			3x6"x12" - 7'4" from ctr to ctr	5.4
+20 = EL " "				-5.2
+50			5.5	-5.3

6+0	+0.17		5.2	-5.0
+50			5.2	-5.0
+80 ⁵²	L 3°28' 30"		5.2	-5.0
7			5.2	-5.0
		ground	5.3	-5.1
+13 = W.L. Premier Packing Co bottom floor joice +1.1 +1.3				
West 60' of Bldg's joice are 2"x8" & 16" from ctr to ctr				
+50			5.2	-5.0
East 80' of Bldg's joice 2"x6" & 24" from ctr to ctr				
			5.4	-5.2
+50			5.8	-5.6
+53 = E.L. " " " "				
9			5.8	-5.6
T.P.	4.14	-1.43	5.74	-5.57
+50			4.3	-5.7
		ground		-4.1
10+0 = W.L. Pac. Tuna Canning Co Bldg bottom floor joice +6.1 +4.7				
Joice 4"x12" & 20" from ctr to ctr				
+50			4.3	
+60 = E.L. " " " " " "				
11			4.2	-5.6
		ground	4.2	-5.6
+15 = W.L. Wheeler Chase Fisheries Co Bldg bottom floor joice +3.4 +2.0				
Joice 2"x8" & 16" from ctr to ctr				
+50			4.2	-5.6
+64 = E.L. " " " " " "				
		ground	4.3	-5.7
+67 = W.L. Normandy Sea Food Co Bldg bottom floor joice +1.3 +1.3				
Stringers 7"x12" from ctr to ctr of five joice -11.70				
+90			4.4	-5.8
from ctr to ctr of 12' x 6"				

Location of proposed Sewer along No. line Lot 1 BIK's 8 & 9 Tideland's

Levels over proposed Sewer along Lot 1 BIK's 8 & 9 Tideland's

26
12 (Paris)
7 (Hanscock)
17 (Barthony)



See page 28

See Drawing 724-L

Station	Elev.	Notes
0+00	6.6	3.9
+50 ⁷²	6.4	4.1
+60	5.5	5.0
+70	6.3	4.2
1+00	6.2	4.3
+50	5.4	5.1
+75	5.7	4.8
+90	4.9	5.6
2+00	5.3	5.2
+20	6.1	4.4
+50	5.9	4.6
+80	5.0	5.5
3+00	5.7	4.8
+45	5.7	4.8
+50	5.4	5.1
4+00	5.7	4.8
+50	6.1	4.4
+60 ⁸⁰	6.2	4.3
5+00	6.3	4.2
+50	5.8	4.7
+60 ⁸⁰	5.3	5.2

1000

12
11
17

Levels over proposed sewer along Lot 1 BIKs 8 & 9 Tidelands produced west to BIK lot

	MS	Flor	6.30 B.M. Spr. help to S.H. Cedar
	3.65	9.95	
T.P.	4.25	9.21	4.99 4.96
4+60 ²⁰ Ang pt P. 26			4.9 4.3
5+00			5.0 4.2
+50			5.1 4.1
6			5.1 3.6
+12			5.6 3.6
+15			6.2 2.8
+25			4.6 4.6
+35			6.1 3.1
+50			5.5 3.7
+75			6.3 2.9
+77			8.0 1.2
+85 ⁴			5.6 3.6
+85 ⁴ = Top concrete bullhead			4.96 4.25

Sewer on north line of Lot 1 Blk 889 Municipal tide 171 Dimple
 Lands subdivision tract } from sewer of Atlantic to E.L. if 164 Shan
 Harbor st thence R13° 01' To municipal bath house 171 Bunker

X see sketch page 26

B.M.	S.P.K. pole S.E. Cedar & Atlantic	Elev	grade	cut,	
	2.63 8.93	6.30			
0+0=NAH.		5.0	3.9	0.100	3.9
+50		4.80	4.13	0.20	3.9 ✓
1		4.45	4.38	0.40	4.1 ✓
+50		3.66	5.27	0.60	4.7 ✓
2		3.64	5.29	0.80	4.5 ✓
+50		4.26	4.67	1.00	3.7 ✓
3	4.09 8.89	4.13	4.80	1.20	3.6 ✓
+50		4.00	4.89	1.40	3.5 ✓
4		4.04	4.85	1.60	3.3 ✓
+50		4.30	4.59	1.80	2.8 ✓
5		4.48	4.41	2.00	2.4 ✓
+369 = E.L. Harbor st	4.90 8.97	4.82	4.07	2.14	1.9 ✓
+50		4.82	4.15	2.20	2.0 ✓
6		5.08	3.89	2.40	1.5 ✓
+50		5.32	3.65	2.60	1.1 ✓
+85 = Bath House		4.73	4.24	2.75	1.5 ✓
		5.35	3.62		2.7

4.13	9.18	9.18	1.50	2	1.50	3	1.50	28
5.05	0.20	0.40	9.96	9.96	9.96	9.96	9.96	
9.1841	8.98	8.78	0.60	0.30	1.00	1.20	1.40	
			9.36	9.16	8.96	8.76	8.56	
5.27	4	1.50	4	1.50	5	1.50	6	1.50
4.69	9.96	9.76	9.96	9.96	9.76	9.96	9.96	9.96
9.96011	1.60	1.80	2.00	2.14	2.20	2.40	2.60	2.75
	8.36	8.16	7.96	7.82	7.76	7.56	7.36	7.21

Note - stakes set 3' south of E

Elevations - Bottom of Man Holes

12/ Dunkle
49/ Shaw
17/ Bunker

29

L

Ash street

B.M. brass plg s.w. Ash & India	22.97		
2.93 25.90			
M.H. Φ Ash & W.L. India	9.50	17.40	
B.M. 11.52 34.49	22.97		
M.H. Φ Ash & W.L. Columbia	9.41	25.08	
T.P. 9.17 40.62 3.04	31.45		
M.H. Φ Ash & W.L. State	8.81	31.81	

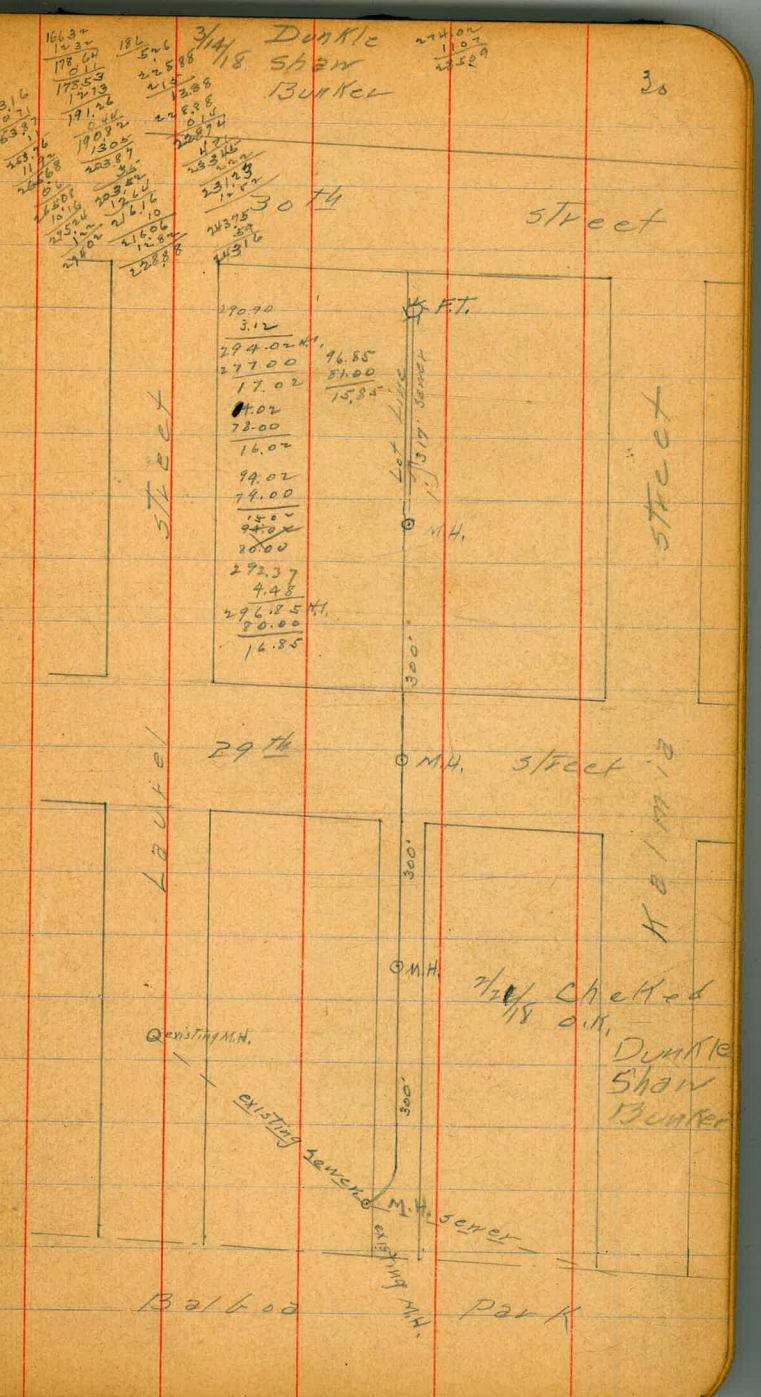
'B' street

B.M. s.w. brass plg India & 'B'	16.77		
3.53 19.97			
M.H. Φ 'B' & 4th of India	13.72	6.25	
M.H. " " " & Artie	16.66	3.57	

'K' street.

B.M. brass plg. s.w. 3rd & J	1.48		
7.68 9.16			
T.P. 8.15 10.09	7.22	1.94	
			bottom
M.H. Φ 'K' & 18th E of W.L. 5th	12.00	-1.91	
" " " " 35th W of W.L. 6th	11.54	-1.45	

sewer between Kalmia & Laurel St according to					
Sketch opp page	H.I	I.R	elev	grade	cut
B.M. 13.20	179.52		166.32		
0+0 = existing M.H.				166.00	
0+20 angle		5.6	173.92	170.00	3.9
0+50 TP 12.19	191.40	0.26	179.26	176.00	3.3
1+0 break TP 13.02	204.42	0.6	190.80	186.00	4.8
1+0 break TP 12.69	216.92	0.19	204.23	199.00	5.2
+50 TP 12.77	229.42	0.27	216.65		
+80 break TP 12.52	241.72	0.22	229.20	215.00	5.9
2+20 break TP 12.03	253.26	0.49	238.2	235.00	3.2
+50 TP 12.57	265.44	0.92	244.06	240.25	3.8
3+0 M.H. break		11.43	254.01	249.00	5.0
+50 TP 13.00	278.12	1.01	264.43	258.00	6.4
4+0 break TP 11.58	289.08	0.62	277.50	267.00	5.2
+50		10.24	278.84	272.00	6.8
+80 break		7.73	281.35	275.00	6.4
5		6.30	282.78	275.33	7.5
+50 10.34	299.17	2.25	286.83	276.16	10.7 ✓
6+0 M.H. break & 29th St		8.2	289.0	277.00	12.0 ✓
+50		6.27	290.90	278.00	12.9 ✓
7		5.37	291.80	279.00	12.8 ✓
+50		4.80	292.37	280.00	12.4 ✓
8		4.37	292.80	281.00	11.8 ✓



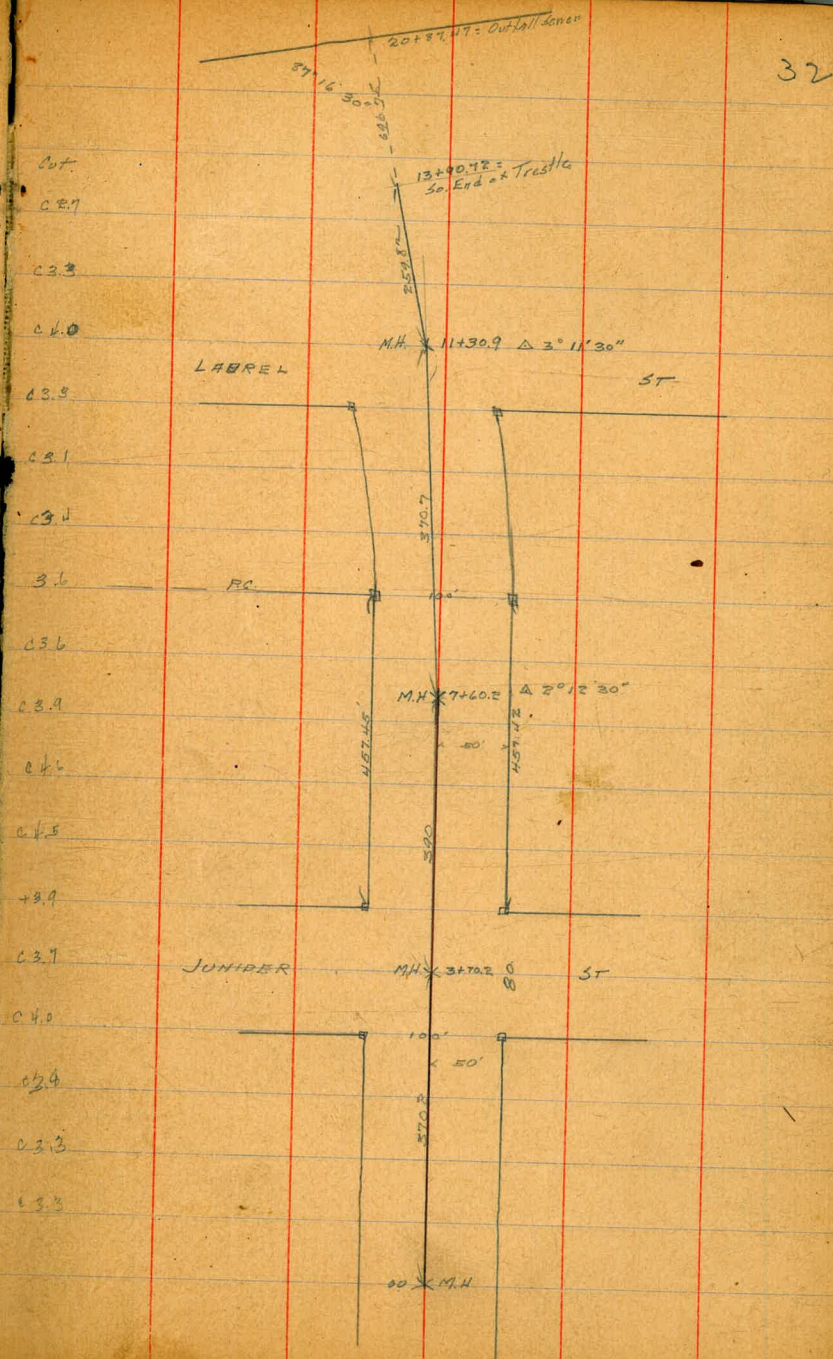
	297.17				
8+50		3.97	293.20	282.00	11.2 ✓
+94				282.88	
9 to M.H. break	build dot of M.H. on line going east from M.H.	4.07	293.10	283.00	10.1
	4.45 297.55				
+50		4.71	292.84	283.23	9.6
10		4.90	292.65	283.47	9.2
+50		4.90	292.65	283.70	9.0
11		6.34	291.21	283.94	7.3
+50		7.42	290.13	284.17	6.0
12		7.73	289.82	284.41	5.4
+17 (F.T.) M.H.		7.70	289.85	284.50	5.3

296.85 M.H.		
282.00		
14.85		
289.82	283.47	284.41
5.77	12.12	11.18
295.59	283.70	284.30
983.00	11.89	11.09
12.59	283.94	
283.26	11.65	
12.33	284.17	
	11.42	

47
6
272 (31)

5/18 Gregory Moore Miller
Sewer in Belt St
from 330.2' to of SL of
Juniper St to
Outfall Sewer at Olive
STAKES ON 4' offset to East.

BM	1.91	10.91	8.80 Rod Stake	Top Hydrant Atlantic + 14' Grade
0+00 = 330.2' SL Juniper			5.51	5.20 + 2.50 ✓
0+50			4.97	5.74 2.39 ✓
1+00			4.40	6.31 2.22 ✓
1+50			5.23	5.48 2.16 ✓
2+00		h	5.56	5.15 2.05 ✓
2+50			5.38	5.33 1.93 ✓
3+00			5.33	5.38 1.81 ✓
3+30.2' SL Juniper			5.38	5.33 1.74 ✓
3+70.2' M.H. at Juniper			4.93 M.H.	5.73 1.65 ✓
4+10.2' NL Juniper			4.55	6.16 1.56 ✓
4+50			4.70	6.01 1.46 ✓
5+00			5.49	5.22 1.34 ✓
5+50			5.75	4.96 1.23 ✓
6+00			5.60	5.11 1.11 ✓
6+50			5.89	6.22 0.99 ✓
7+00			6.53	4.12 0.88 ✓
7+60.2' M.H. Δ 2° 12' 30"			6.58 M.H.	4.16 0.74 ✓
TP	1.15	5.40	6.66	4.05



		5.20	STICK	Grade	cut
1	8+00		1.70	3.50	0.64 ✓ 0.29
0+	8+50		2.82	2.82	0.53 ✓ 0.19
0+	9+00		2.90	2.3	0.41 ✓ 0.19
1+	9+50		3.50	1.7	0.30 ✓ 0.4
1+	10+00		3.82	1.38	0.18 ✓ 0.18
2+	10+50		4.24	0.96	+ 0.06 ✓ 0.9
2+	11+00		4.64	0.94	4.65 H. L. 1.04 0.01 ✓ 0.06
3+	11+30.9 N.H. Δ 3°11'30" L		4.79	0.93	0.01 ✓ - 0.12 ✓ 0.05
3+	11+50		4.80	0.90	- 0.17 ✓ 0.06
3+	12+00		4.95	+ 0.25	- 0.28 ✓ 0.05
4+	12+40		5.27	- 0.07	- 0.40 ✓ 0.03
4+	13+00		5.64	- 0.44	- 0.52 ✓ 0.01
5	13+50		5.83	- 0.63	- 0.64 ✓ 0.0
5	13+99.72 = End Trestle		6.20	- 1.00	- 0.73 ✓ 0.03
6	14+50		8.73	- 3.53	- 0.37 ✓ 0.27
6	14+ "	3.28	down	0.94	
7	14+37.72				Red on cut off 5.06
7	14+49.92				- 0.37 ✓ 5.09
	14+62.02				- 40 ✓ 5.12

8.80 B.M.	2.89	2.28	2.16	2.05	1.93	1.81	1.74	33
1.42	7.88	7.94	8.06	8.17	8.29	8.41	8.48	
10.22 H.I.	1.65	1.56	1.46	1.24	1.23	1.11	0.99	0.88
2.40	8.57	8.66	8.76	8.88	8.99	9.11	9.23	9.34
7.72	0.74	2.01					0.30	0.18
	9.48	6.09 H.I.	0.53	0.41	0.30	0.18	5.79	5.71
		0.64	5.56	5.68				
		5.45						
		0.06	- 0.05	- 0.12	- 0.17			
		6.03	6.14	6.21	6.26			
		- 0.28	- 0.40	- 0.52	- 0.64	- 0.73		
		6.37	6.49	6.61	6.73	6.82		

	2.04	2.22	7.87	-3.45		
	2.1	-0.51		-0.95	-0.98	5.14
14+74.12						
0 14+86.02				-0.96	50	0.44 ✓
0 14+97.92				-0.98		0.47 ✓
1 15+09.92				-1.01		0.50 ✓
1 15+21.92				-1.03		0.52 ✓
2 15+34.02				-1.06		0.55 ✓
2 15+46.02				-1.09	45	0.58 ✓
3 15+58.22				-1.11		0.60 ✓
3 15+70.22				-1.14		0.63 ✓
3 15+82.22				-1.17		0.66 ✓
4 15+94.22				-1.20		0.69 ✓
4 16+06.22				-1.22		0.71 ✓
5 16+18.02				-1.25		0.74 ✓
3 16+30.12				-1.28		0.77 ✓
4 16+42.02				-1.30		0.79 ✓
6 +54.12				-1.33		0.82 ✓
7 +66.12				-1.36	35	0.85 ✓
7 +78.12				-1.39		0.88 ✓
1 +90.12				-1.42	33	0.91 ✓

17+0.12

-145

0.94✓

17+14.12

-147

0.96✓

17+26.12

-150

30

0.99✓

17+38.12

-153

1.02✓

17+50.12

-156

1.05✓

17+62.12

-159

1.08✓

17+74.12

-162

1.11✓

17+86.12

-165

20

1.14✓

17+98.12

-168

1.17✓

18+10.12

-170

1.19✓

18+22.12

-173

1.22✓

18+34.12

-176

1.25✓

18+46.12

-179

40

1.28✓

18+58.12

-182

1.31✓

18+70.12

-185

1.34✓

18+82.12

-188

1.37✓

18+94.12

-191

1.40✓

19+06.12

-193

1.43✓

19+18.12

-196

50

1.46✓

Trestle grades

-0.51

Flow

Rod

36

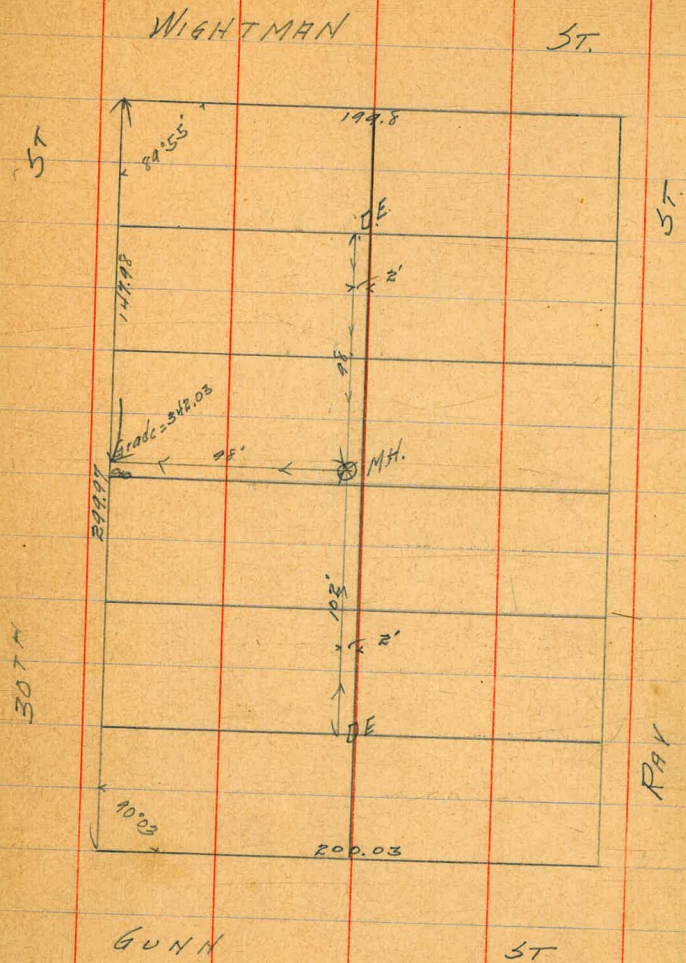
19+30.2~	-1.98	1.47✓
+42.3~	-2.01	1.50✓
+54.3~	-2.04	1.53✓
+66.5~	-2.07	1.56✓
+78.47	-2.10	1.59✓
+90.5~	-2.13	1.6~✓
20+02.5~	-2.15	1.6~✓
+14.3~	-2.18	1.67✓
+26.3~	-2.21	1.70✓
+38.3~	-2.24	1.73✓
+50.2~	-2.26	1.75✓
+62.5~	-2.29	1.78✓
+74.5~	-2.32	1.81✓
20+86.5~ = 18" pipe	-2.34	1.85

12/7/18
Gregory

Sewer in Blk 10 West End

1 B.M.	235	351.78	349.13	B.P. 511 30" 4 W. Wightman
0.0		9.75	342.03	Grade 342.03 = Pipe cut
+50		3.85	347.93	342.78 5.15
1+00 M.H.		3.32	348.46	343.53 4.93
50' No. of M.H.		2.24	347.54	345.02 4.61
100' - - - = DE		1.01	350.77	346.53 4.24
50' So. of M.H.		4.30	347.48	344.18 3.00
100' - - - = DE		5.35	346.13	345.43 1.00

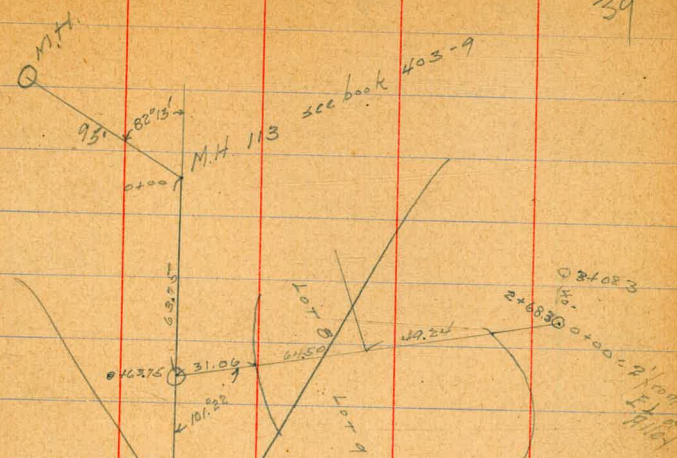
38



Janer Bk 56 La Jolla

8.32	31.82	23.5	311 ft.
0+00		8.73	= Top M.H. 113
0+00		13.61	18.21 = flow line
0+20		8.6	
0+25		9.6	
0+63.75	M.H.	8.7	
0+80		9.3	
0+84		9.2	
0+94.81		7.6	
1+00		6.6	
1+32		5.2	
1+50		5.1	
2+00		3.3	
2+50		1.8	
2+68.30	M.H.	1.4	
3+08.30	DE or FT.		

N.G. see next page



2+68.30 = 0+00	1.4
0+50	1.8
1+00	2.0
1+50	1.9
2+00	1.3
2+50	0.7
2+78 = DE or FT.	0.0

94.00
 55.2
 139

7/6/20

Gregory
Harris
Miller
Shaw

Sewer in Blk 56
La Jolla
SE 310E SUBDIVISION

	10.65	34.27 4 LINE	23.67 511.57	Grade	OUTS
0+00	10.77		23.5	23.51	20.5
0+18	11.0		23.3		
0+36.7	9.4		24.9		
0+50	7.7		26.6	26.38	22.25
0+85	7.4		26.9		
1+00	6.6		27.7	27.61	23.78
1+50	5.5		28.8	28.76	25.30
1+63.6	4.9		29.4		
1+78.74	4.32		29.95	29.95	26.20
1+90	4.2		30.1	30.26	26.65
1+50	3.6		30.7	30.74	27.10
2+84	2.3		32.0	31.10	27.55
				32.0	28.0

35.15 HJ

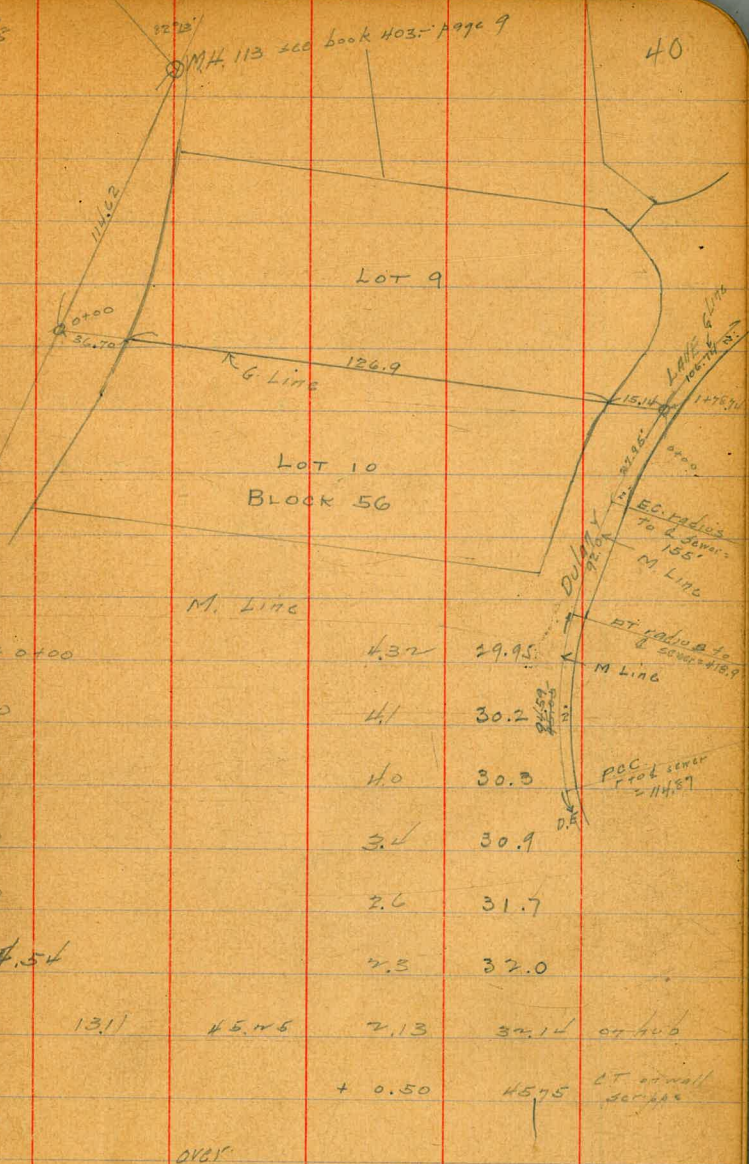
439	441	404	299
3026	3074	3111	3272

639	454	877	1114
2876	2741	2638	2351

23.5
11.65
35.15

M.H. 113 see book 403-1990 9

40



2+14.54

T.P.	1311	45.46	2.13	32.14	07.40
			+ 0.50	45.95	ET at wall for 2.00

0185

M. Line

Ground Grade Cut

0+00	30.04	26.20	3.84
0+27.45 EC.	29.91	26.44	3.47
0+50	30.43	26.62	3.81
0+90	30.22	26.96	3.26
1+19.95 PC.	30.47	27.21	3.26
	31.00	27.47	3.53
	31.28	27.74	3.54
2+14.54	32.16	28.00	4.16

3515

224
3216

387
3128

415
3100

468
3047

483
3032

472
3043

524
19.91

511
3004

41

9/30
Gregory
Miller
Shaw

Sewer Line on TRIAS St
from 4 1/2 ft bet pipe & Ft
Stockton to 250 ft of pipe
see page 5 this book.

2658

	7.49	274.55	267.06	NE Trias & Ft Stockton Grade
0+50 on Page 4 20100		5.9	268.1	263.70
0+50		5.4	269.2	
1+00		4.9	269.7	
1+47 = St. Pipe		4.3	270.3	
1+97 = H.L. "		4.0	270.6	
2+50		4.9	269.7	
3+00		5.8	268.8	
3+50		7.2	267.4	
4+00		8.8	265.8	
4+50		10.5	264.1	
5+00		12.1	262.5	
T.P.	6.13	269.98	10.70	263.85
Floor of House No. E of 4+20		5.30	264.68	

6/14/11
Gregory
Moore
Miller
Shaw

Sewer in Alley bet. Dale + 30th
beginning at 50' S of Thornst
running to M.H. 3+40
back 510-17

This grade is
laid according
to Burwell's idea
& put the office
or middle.

H. B

13

	4.63	323.02		318.39	NW Dale + Thorn	
0+00 = 50 S. of Thorn				316.70		6.32
+50				315.78		7.24
1+00				314.86		8.16
+25			break	314.4		8.62
+70			break	312.7		10.32
T.P.	-0.02	309.89	13.11	309.91		
2+15				break	306.4	3.49
4+55				break	302.2	7.69
4+75				break	298.2	11.69
3+16 = M.H. 3+40 Book 510-17					282.0	

7/2/17
 G. W. V.
 6800
 17th Mar
 Shaw

Construction Notes
 Sewer in Filbert St
 from M.H. E of 32nd to E.L. 32nd
 see book 887-52 for preliminary notes

	1.07	39.66	12.93	38.59	38 nd + 11/17	
	0.35	27.08	12.61	26.73		
	0.77	14.74		14.47		
0+00 = Existing M.H.					-3.14 =	Drop to -4.14
+50	12.61	49.08	4.74	10.00	4.00	+6.00
1			0.27	14.67		
			11.00	16.07	11.14	+4.94
+20 break			7.86	19.24	14.0	5.24
+50			5.06	24.04	15.63	6.39
2			3.35	23.73	18.34	5.39
+30.63 = D.E. F.L. 32 nd			2.29	24.79	20.0	4.79

2/27/27
 Gregory
 George
 M. L. Main
 Saw

Construction Notes
 from M.H. 2 x 32
 NW thru 61K3
 see book 889-46 for details

	1.30	26.09		24.79	Leaving	
	0.94	14.23	14.80	13.39	Grade	
0+00				-	-4.4	Depth -4.85 present M.H.
+50	5.58	7.61	2.96	11.27	-4.2	+15.47
			12.20	2.03		
1			10.40	-2.79	-4.0	+1.21
+50.99	A 24° 38' L		5.90	1.71	-3.8	+5.51
	M.H.					
2			8.40	-0.79	-3.6	+2.81
+50			8.84	-1.23	-3.4	+2.17
3			7.97	-0.36	-3.2	+2.84
+50			6.58	1.03	-3.0	+4.03
+66.80	B 18° 22' L		4.90	3.31	-2.93	+6.24
	M.H.					
	9.24	12.55				
4			10.87	1.68	-2.79	+4.47
+50			11.73	.84	-2.59	+3.41
5			9.40	3.15	-2.39	+5.54
+49.54	A 29° 15' R		8.67	2.88	-2.2	+6.08
	M.H.					
6			2.90	9.65	-2.0	+11.65
	7.24	16.89				
+27.59			2.78	14.11	-1.89	+15.90

		16.89				
6+85			3.0	13.85	-1.65	+1.50
7+29 ²²	$\Delta 27^{\circ} 01' 14''$ MH		10.90	5.99	-1.48	+7.47
7+50			8.80	8.09	-1.70	+9.49
8			12.73	4.16	-1.20	+5.36
TP	10.10	14.26	12.73	4.16		
8+50			12.41	1.85	-1.0	+2.85
9			12.10	2.16	-0.8	+2.96
+14.50	$\Delta 18^{\circ} 33' 30''$ MH		13.54	0.72	-0.74	+1.46
	6.70	7.42				
+50			3.73	3.69	-0.6	+4.29
10+10	Conv. Pier		6.20	1.22	-0.36	+1.58
+84			4.81	2.61	-0.02	+2.63
+99.6	$\Delta 29^{\circ} 00' 30''$ MH		5.29	2.13	0.0	+2.13
11+50			2.45	4.97	0.25	+4.72
12			3.17	4.25	0.50	+3.75
+54.85	$\Delta 18^{\circ} 49' 30''$ MH	10.85	1.88	5.54	0.78	+4.76
13			9.29	7.10	1.00	+6.10
+50			8.94	7.45	1.25	+6.20
14			8.10	8.29	1.50	+6.79
+53.08	$\Delta 12^{\circ} 31' 30''$ MH		10.18	6.21	1.77	+4.44

				Grade		
15		16.39	13.42	2.97	2.00	0.97
+50			7.71	8.68	2.25	6.43
16			6.85	9.54	2.50	7.04
+33.15	12.26 R 98°46' M.H.	16.72	11.91	4.48	4.69	+ 1.81
+60			1.27	15.47	2.80	12.67
17			3.94	12.80	3.00	9.80
+50			7.21	9.53	3.25	6.28
+81.15	DL 6°32'30" M.H.		8.58	8.16	3.41	4.75
18			10.06	6.68	3.50	3.18
+50			9.36	7.39	3.75	3.64
19						
+04.77	-6 filled bet Main & Colton		8.42	8.32	4.02	+4.30

3/13/22

Gregory Miller Moore

Construction Notes
Sewer & Alley bet. Main + Colton
from 19+04.77 (last page) to 91.4'E
Or 62' W. of 13' Line 30th St (see book 887-50)

19+04.77 on preceding page
= 0+00

3.80

3409

30.29 TP
propose

Grade
4.02

0+45 = B.V.C.

7.05

2704

21.10

594

0+50

5.72

2837

22.55

582

0+55 = E.V.C.

4.42

2967

23.12

655

0+91.4 D.E.

3.70

3039

24.0

639

chk.

379

3030

3796
13780

3796
15980
14186
17982

75
20
20
24
22
8712

Mason Miller Shaw

Construction Notes for Sewer in Alley. BIK 32 + 33

1426

9+14 ⁵⁰ 0+00	A M.H.	13.54	0.71	- 0.74	+ 1.46
0+30 ⁶⁴	90° R4 M.H.	0.89	13.37	5.0	+ 8.37
	9.33	22.70			
+50		11.63	11.07	5.9	+ 5.17
1		10.98	11.72	8.22	+ 3.50
+60	M.H.	0.56	22.14	11.00	+ 11.14
T.P.	11.37	33.51	0.56	22.14	
2		8.18	25.33	16.77	+ 8.56
+50		12.33	21.18	17.11	+ 4.07
3		14.26	19.25	17.45	+ 1.80
+50		12.44	21.07	17.79	+ 3.28
+80	M.H.	8.03	25.48	18.00	+ 7.48
4		5.0	28.51	23.64	+ 4.87
+50		0.63	32.48	24.00	+ 8.48
5		0.58	32.93	24.36	+ 8.57
+50		0.85	32.66	24.71	+ 7.95
6		0.57	32.94	25.07	+ 7.87
+50		1.49	32.04	25.42	+ 6.62

33.51

7			1.47	32.04	25.78	+6.26
+30	D.E.		1.50	32.01	26.00	+6.01

Sub. Main thru BIK 33 & 34

2.13 Ely 10+99^bMain
3/2

12.56 14.69

0+00 = 10+99^b Δ R476°33' MH

1.0

+50			3.43	11.26	2.43	+8.83
1			3.20	11.49	3.86	+7.63
+50			6.31	8.38	5.29	+3.09
2+10	Break		3.90	10.79	7.0	+3.79
TD	10.83	21.62	3.90	10.79		
+50			9.0	12.62	9.42	+3.20
3			3.56	18.06	12.44	+5.62
+75.63A	Alley MH		0.65	20.97	14.0	+6.97

Moore
3/12/22

Construction notes on
Sub-sewer along Alley 314 32 + 35

51

	12.55	33.52		20.97		
0+00 = 3+25.63					16.0	
+50 Break		12.73	21.09	18.0		+3.09
1		2.78	30.74	25.75		+4.96
TP	11.70	44.41	0.80	32.71		
1+40 Break		7.41	37.00	32.0		+5.0
+75		4.80	39.61	32.97		+6.64
2+12.50 M.H.		4.67	39.74	34.00		+5.74
2+12.50 = 14+51.9						
15		4.03	40.38	34.64		+5.74
+50		3.09	41.32	35.29		+6.03
16		2.03	42.38	35.95		+6.43
+50		1.15	43.26	36.60		+6.66
TP	6.82	50.08	1.15	43.26		
16+80 M.H.		6.6	43.48	37.00		6.48
17		6.7	43.38	37.35		6.03
+50		6.0	44.08	38.22		5.86
18		4.78	45.30	39.09		6.21
+50		3.17	46.91	39.96		6.95
19+10	DEND	3.57	46.51	41.0		5.51

EN 3+42.03

11.77

37.74

20.97

0100=3+75.43 MH

16.0

+50

9.1

23.64

19.33

+4.31

1

7.0

25.74

22.66

+3.08

+50

2.14

30.60

25.99

+4.61

TP

10.10

42.06

0.78

31.96

+80

MH

7.28

34.78

28.00

+6.78

2

5.76

36.30

28.15

+8.15

+50

3.97

38.09

28.52

+9.57

3

4.14

37.92

28.89

+9.03

+50

4.73

37.33

29.26

+8.07

3+82.40

DE

5.48

36.58

29.50

+7.08

3/13/27
Gregory
Miller
Moore

Construction Notes on Sewer
at Alley bet Main & Colton
from 19+04.77 (page 47) to 10+43.60
see book 887-51

				West Grade	Cut
19+04.77 (page 47) =					
0+00	12.00	20.22		8.32	4.02
+30 = B.Y.C.			13.89	6.43	4.38
+40			12.29	8.03	4.53
+50 = E.Y.C.			9.60	11.12	8.00
	12.03	32.16	0.19	20.13	3.72
+80 = M.H. drop.			8.36	23.30	18.5
					5.30
1			1.86	30.30	18.6
T.P.	4.74	36.56	0.34	31.82	11.7
+50			2.53	34.03	18.85
					15.18
2			0.87	35.69	19.09
					16.60
+50			4.44	32.12	19.35
					12.77
3			10.87	25.69	19.58
					6.11
+50			11.55	25.02	19.85
					5.16
4			10.05	26.51	20.08
					6.43
+40 M.H.			9.04	27.52	20.18
					7.34
+50			6.41	30.15	20.33
					9.82
5			4.31	32.45	20.57
					11.68
+50	4.09	34.15	4.50	32.06	20.92
					11.24
6			2.36	31.79	21.06
					10.73
+50			2.40	31.75	21.31
					10.46
7			2.11	32.04	21.56
					10.48

35.30
105.0

12.25
6.19
4.1
18.69
8.32

493
20
7860
2165
246
1479
53
40

34/15

Grade

+50	1.51	3264	21.81	1083
+90 M.H.	5.61	28.54	22.0	6.54
8+16 = E. End CI pipe	11.64	22.51	22.13	+0.38
+58	17.42	17.73	22.33	-4.60
9 = W. End CI pipe	11.09	23.06	22.54	+0.52
+50	1.81	32.34	22.78	9.56
10	2.70	31.45	23.03	8.42
+50	5.35	28.80	23.27	5.53
+93.60 DE 35 E of EL 28	9.00	25.15	23.5	1.65

$$\begin{array}{r} 493.0 \\ 197.20 \\ \hline \end{array}$$

$$\begin{array}{r} 493 \\ 26 \\ \hline 2958 \\ 986 \\ \hline 12818 \end{array}$$

$$\begin{array}{r} 52/ \\ 493 \\ 26 \\ \hline 1972 \\ 986 \\ \hline 41412 \end{array}$$

Construction Notes on Sewer
 2' H. of 2' of Alley bet Main +
 Cotton running from M.H. Sta
 0+80 (page 53) to 145' H. of M.H.
 32.16 from page 53

0+80 page 53					
= 0+00 M.H. Drop		8.04	24.12	20.0	4.12
0+10 BYC		4.71	27.45	24.0	3.45
0+20		1.87	30.29	28.04	3.25
0+30 E.V.C. 474	36.56	0.94	31.82	28.16	3.66
0+70		4.12	34.44	28.80	5.64
1+20		0.53	36.03	29.60	6.43
+45 DE		4.12	34.44	30.0	4.44

16
 20
 640

25

22.08
 20
 1908
 271

54

4/26/24
Gregory
Morse
Miller
ShawLevels on E of
Ingliside from E of alley in Blk 7 M. H.
(prob. N.E. to E of Ingliside) N 150°

Mon NE 33.	1.45	284.35		282.90	
0+00 = E of Ingliside & E of alley Blk 7 prob. N.E.		17.5		271.9	st. has been grabb'd since former notes were taken.
T.P.	4.96	276.71	17.60	271.75	
50' N.			8.7		
100' ✓			13.1		
150' ✓			17.5	259.7	

Station	Notes	Dist	1st Line	2nd Line	3rd Line	4th Line	5th Line		
0	0100 DE 50 3rd Orizaba		273.74	275.04	272.74	266.0	+ 6.74		
+50					4.45	269.29	262.58	+ 6.71	
1					8.30	265.44	259.16	+ 6.28	
+50					11.88	261.86	255.76	+ 6.12	
T.P.	0.68	264.42	13.00	260.74	5.95	258.47	252.32	+ 6.15	
2					9.50	254.92	248.90	+ 6.02	
+50		252.46			1.65	250.81	245.0	+ 5.81	
3	3+09 Drop Δ 15° 50' R				3.81	48.62	240.89	+ 7.73	
+50					7.49	44.97	239.60	+ 5.37	
4					8.95	43.51	238.29	+ 5.22	
+50					9.52	42.94	237.0	+ 5.94	
5	5+00 M.H.				10.29	42.17	235.27	+ 6.50	
+50					11.37	41.09	234.34	+ 6.75	
6	T.P.	0.53	40.03	12.96	39.50	0.70	39.33	233.00	+ 6.33
+50					1.73	38.30	232.33	+ 5.97	
+75					2.39	37.64	231.5	+ 6.14	
7	7+06.17 M.H. Δ 11° 40' R				3.19	36.84	230.36	+ 6.48	
+50					4.13	35.90	229.05	+ 6.85	
8					5.12	34.91	228.0	+ 6.91	
+40 break					6.61	33.42	226.89	+ 7.53	
+75									

242 5
 654
 57
 1788
 3470
 3898
 259
 43
 797
 1036
 11137
 267
 312
 534
 267
 801
 83304
 262
 43
 986
 1048
 114
 57
 260
 258
 10
 774
 1082
 11094
 25081
 340
 25421
 242
 12.21

240.03

9		840	231.63	224.39	+7.24
+50	0.45	228.30	227.85	221.38	+6.47
10		5.13	223.17	218.38	+4.79
+22.9	M.H Δ 38041 R	6.77	221.53	217.0	+4.53
+50		668	221.62	206.43	+5.19
11		7.31	220.99	215.38	+5.61
+41.56	Drop M.H	12.16	216.14	214.5	+1.64

601
23
1503
1202
13125

210
416
1260
210
840
37560

601
51
2005
1503
210

210
1770
445
64

1023
822
183

11.00
1008

58

693
37

11.48

Gregory
Moore
Ellis
Shaw

11
F line

Sewer Construction
to of Arden Way from
DE 50 S. of Dr. 304 to
Drop M.H. & at Miller

see book 481-
W Line for
prelim.
Grade

238

207

107

43
321
428
361

230
35
1790
8380

207
318
1626
207
621
5126
120
6526
43

DE 50 S. of Dr. 304	4.01	264.42	260.43	260.43	st 16 0+00
+0+00					
+50			4.02	260.40	254.0 +6.40
1			5.16	259.26	252.80 +6.46
+50			6.32	258.10	251.61 +6.49
+75			7.55	256.84	250.42 +6.42
			8.20	56.22	249.83 +6.39
2+09.95 M.H. Δ 31°58' R.			8.87	55.55	249.0 +6.55
+50			9.78	54.64	248.17 +6.47
+75			10.32	54.10	247.66 +6.44
3+06.75 M.H. Δ 45°22' R.			10.86	53.56	247.0 +6.56
+50			11.40	53.02	246.54 +6.48
4			12.00	52.42	246.0 +6.42
+50	Out	52.46	12.20	52.22	245.46 +6.76
+93.24 Drop M.H. = 3+07 page 59			1.65	50.81	245.0 +5.81

Gregory
Moore
Elliott
Shaw

#1 line

Same Construction
d. of Witherby, Guy, View Point Drive
and T. + Ds Sta.
see book #81-67 A line prelim.

+46.92
252.99

6440
2017
59187

20074.59
5921
1318
191.1

1325.55
47
351
70
73.1

211
39
359
1053
13687
917
36
562
2201

60
917
36
5502
2761

0200 - d. Witherby 229 ft. of Juan St. DE	12.96	264.71	+0.05	264.76	257.0	+7.76
+50			137	263.34	255.25	+8.09
1 break			399	260.72	253.5	+7.22
+50			765	25703.9	250.2	+6.83
2			11.24	253.47	246.91	+6.56
+29 Drop M.H. & Juan St.	12.96	251.75		245.0	242.0	+6.75
+50			449	24850	241.36	+7.22
3			863	24436.9	239.51	+4.85
+50			1183	241.16	237.75	+3.41
+75			1255	24044	236.88	+3.56
4 + 14.14 M.H. & Guy St 90° 24' L	13.55	239.14		235.5		+3.64
+50	492	24672	1099	2420	235.17	6.83
5			1.63	24509.9	234.71	+10.38
+50			2.07	24465	234.25	+10.10
6			4.13	24259	233.79	+8.80
+25			4.59	24213	233.56	+8.57
+64.14 M.H. & Courts	5.36	24136		233.21		+8.15
7			2.68	24404	232.87	+11.17
+50			1.71	24501.8	232.41	+12.60

		246.72				
8			261	244.11	231.95	+12.16
+50			572	241.00	231.50	+9.50
	019	236.93		236.74		
+76	End Cast / Iron Pier #1		594	230.99	231.27	-0.28
+88	Pier #2		1048	226.45	231.16	-4.71
9	#3		1172	225.21	231.06	-5.84
+12	End C.I.					
+62	C.I. begins					
+74	Joint					
		236.93				
+86	Pier #4		11.03	225.90	230.26	-4.36
+98	#5		9.15	224.76	230.16	-2.37
10+10	C.I. Ends	H.S. from page 63 235.43				
+14.14	Drop M.H. A 54°32' R.		1.26	234.17	230.0	+4.17
+50			238	235.06	229.50	+3.55
11			346	231.97	228.84	+3.13
+50			467	230.76	228.16	+2.60
12			530	230.13	227.48	+2.65
+50			474	230.69	226.80	+3.89
13			409	230.34	226.12	+4.22
+46.07	M.H. A 21°40' R		455	230.88	225.5	+5.38
+75			516	230.27	224.52	+5.75

917
 26
 550.2
 1034

106
 814
 54
 6256

9126
 5502
 2336
 7886

8.76
 6.62
 2.12
 974
 1984
 212
 1908
 1944.04

61
 917
 12
 1534
 917
 11004
 917
 25
 7336
 1534
 65

735.48

14+20	break		7.55	227.88	223.0	+4.88
+50			10.06	225.37	220.71	+4.66
T.P.	133	223.98	12.83	222.60		
15			284	221.09	216.90	+4.19
+25	M.H. Δ 49°17' L		6.14	217.49	215.0	+2.79
+50			5.46	215.47	214.40	+4.07
16			570	218.28	213.19	+5.09
+49.13	M.H. Δ 26°53' L	Drop.	12.16	216.14	212.0	+4.14
17			11.95	216.35	210.32	+6.03
+40	break	0.12	12.19	216.11		
+65			3.02	213.21	209.0	+4.21
+90	break	111	8.73	207.50	203.0	+4.50
T.P.	0.53	192.31	12.85	203.38		
18+20			2.63	201.86	197.0	+4.86
18+50			12.71	191.78		
18+80	break	0.86	6.30	186.01	181.33	+4.68
19+10	✓	0.08	12.49	179.82		
+35	✓	0.55	10.74	169.94	165.67	+4.27
+56.8	Existing M.H.	0.58	12.97	167.71	155.00	+4.14
			1.27	155.00	150.0	+4.14
			13.07	142.94		
			1.47	141.42	137.0	+4.42
			12.77	130.12		
			6.17	126.95	122.0	+4.75
			8.58	126.34	120.33	

3442
16.67

2000
1780

30
168

30
168

124

762
30
22860

528
12634

126.38

62

252
142
242

124

300
242
520
496
246

12/11/22

Gregory
Moberg
Elliott
Shaw

Sewer Construction "D" Line on plans
& Guy St
from DE. 215 E of Bandini to MH
& of Bandini
see G Line book 481-72 for preliminary
24759

DE 215 E of Bandini
= 0+00

326
1.
16.50
326
169°

+ 50

227 245.32 239.0 +6.32

1

247 245.12 237.37 +7.75

+ 50

497 242.62 235.74 +6.88

2

841 239.18 234.11 +5.07

J.P.

00~

235.48

10.58

237.01

232.48

+4.53

+15:

M.H. = 10+14.14 Drop.
page 61

12.15

235.41

1.26

234.17

232.0

+2.17

12/1/11

Gregory
Moore
Ellis
394W

Sewer Construction

Box Bandini St. from DE.
50' S. of SL. Orizaba to M.H. & Guv. St.
sec. B¹ Line back 481-71 for preliminary
271.59

C¹ Line on
plans

23662

577
42
166
2220
2385

2775

818
51
88
4090
4178

21-51
23670

818
57
64
5726
4-70
5662

DE. 50' S. of SL. Orizaba
= 0400

250

3.51 268.08 261.5 + 6.58

+50

6.31 265.28 258.71 + 6.57

1

9.12 262.47 255.94 + 6.53

+50

11.83 259.76 253.16 + 6.60

T.P.

150

260.01

13.08 258.51

2

307 256.94 250.39 + 6.55

+43.15 M.H. A 36° 08' L.

527 254.74 248.0 + 6.74

3

T.R.

0.21

247.59

10.81 249.20 243.35 + 5.85

12.64 247.37

+50

259 245.0 239.26 + 5.74

4

T.P.

Drop

0.02

235.43

749 240.10 235.17 + 4.93

12.18 235.41

+51 = M.H. Sta 10+14.14 page 61.

126 234.17 231.0 + 3.17

2/15/23

Gregory
Maas
Miller

Construction of Sewer
at Elm St
from EL of 5th St
to DE 73 E of EL 5th

L

5.74 147.63 141.89

at 00 = present 4" pipe at EL 5th 9.24 138.39 = flow line

+ 36.5 437 143.26 138.77 + 4.49

+ 73 = DE 1.98 145.65 139.16 + 6.50

11/16/20
 Gregory
 mbarb
 Miller
 Sewer Construction
 from Addison
 & Evergreen to
 Willow
 B.P. SW
 Evergreen
 47.51

Grade

M.H. & Evergreen	5.17	34.68				
= 0+00					36.50	
0+50			9.34	45.34	39.59	+5.75
1			6.20	48.48	42.68	+5.80
+25 = 6 ft pier			13.61	41.07	44.23	-3.16
+39 = 6 ft v			6.56	48.12	44.97	+3.15
+49 = 6 ft v			7.32	47.36	45.71	+1.65
+70 break			3.74	50.94	47.00	+3.94
T.P.	12.67	67.08	0.27	54.41		
2			11.16	55.92	49.85	+6.07
+50			4.25	62.83	54.60	+8.23
T.P.	9.17	74.13	4.12	64.96		
3			5.25	68.88	59.35	+9.53
+50			1.98	72.15	64.10	+8.05
+70 = M.H. & Willow			1.53	72.60	66.00	+6.60

9.5
 30
 28.10
 18538
 06176
 2
 6176
 12352
 1296
 1.90
 .06176
 12
 12352
 6176
 74112
 67

4/27/13

Gregory
Proctor
Miller
Starr
1070Sewer Construction
to Alabama from 10.5' N. of Landis
to 35' N. of Dwight 245.5 ~ BP. SE Landis
255.8 ~

- 42 = Existing M.H.

M.H. Landis 60+00

+ 50

1

+ 50

2

+ 50

3

+ 50

4

+ 53.37 = M.H. & Cypress

5

+ 50

+ 95 DE 35' N. of Dwight

			238.5	
10.55	245.27	239.0	+6.07	
9.95	245.87	239.33	+6.54	
8.55	247.27	239.66	+7.61	
7.09	248.73	240.0	+8.73	
6.14	249.68	240.33	+9.35	
6.46	249.36	240.66	+8.70	
7.53	248.29	241.00	+7.29	
8.75	247.07	241.33	+5.74	
9.91	245.91	241.66	+4.25	
10.07	245.75	242.0	+3.75	
8.83	246.99	243.66	+3.31	
5.70	250.12	245.43	+4.69	
2.73	253.09	247.0	+6.09	

$$\begin{array}{r} 289 \\ 5563 \\ \hline \end{array}$$

$$\begin{array}{r} 45437 \\ 14263 \\ \hline 59500 \end{array}$$

$$\begin{array}{r} 52 \\ 643 \\ \hline 7326 \\ 2215 \\ \hline 324 \end{array}$$

68

1026

2452

$$\begin{array}{r} .031 \\ 450 \\ \hline 140 \end{array}$$

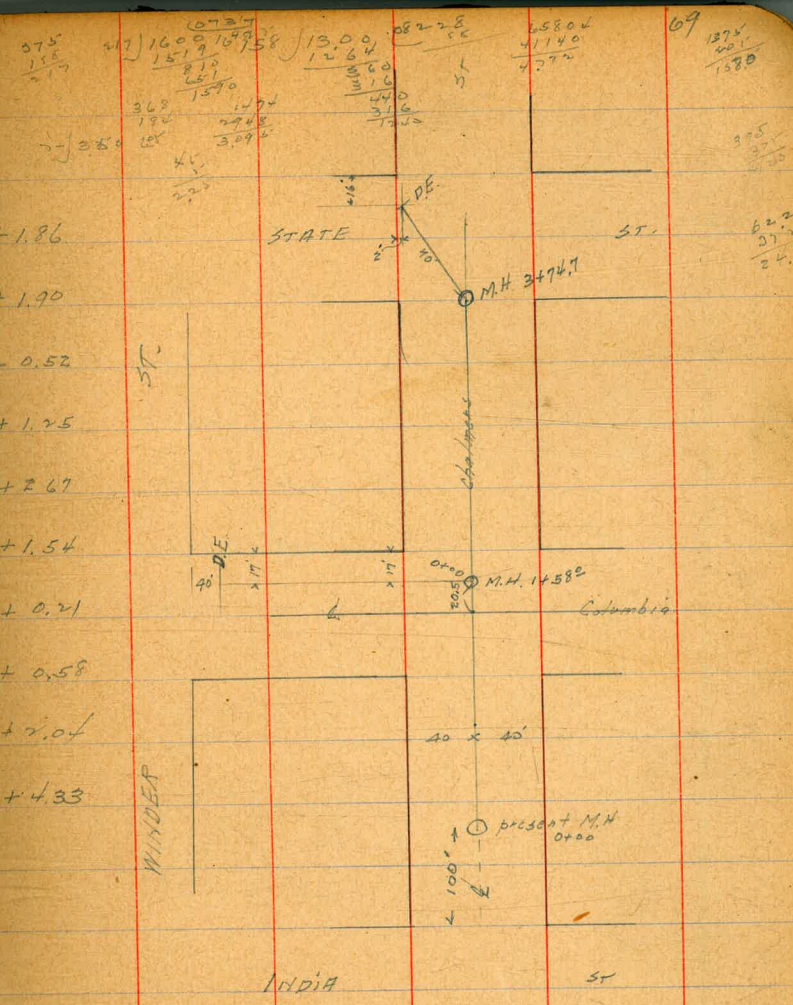
$$\begin{array}{r} 51 \\ 42 \\ 176 \\ 316 \\ 3320 \\ 171 \\ \hline 1.57 \end{array}$$

6/11/23

Gregory

Sewer Construction to of
Chalmers St from present
M.H. 100' E of EL. of India
to a point in intersection of State + Chalmers
B.P. 3747
India

Present M.H. of EL. India = 0+00	100' E 12.37 12.60	78.45 90.52	0.53	66.08 77.92	74.00	
0+50			10.55	77.97	78.11	+1.86
1+00			6.39	84.13	84.23	+1.90
1+58 = M.H. 17' W of EL. Columbia 12.88			4.04	86.48	87.00	-0.52
2			1.39	89.13		
2			10.66	91.35	90.10	+1.25
+50			5.55	96.46	93.77	+2.67
3			3.00	99.01	97.47	+1.54
+50	13.17	114.54	0.64	101.34	101.16	+0.21
+74.7 = M.H. A			10.96	103.58	103.0	+0.58
H			8.25	106.29	104.25	+2.04
+44.7 = D.E.			3.71	110.83	106.5	+4.33



575
155
217

1600
1519
810
871
1590

368
180
288

10724
10498
224
2448
3092

13,000
1264
360
316
440
316
1200

08228
56

45804
41140
4724

69
1274
201
1580

3747
158
3127

6/11/23 Gregory.

Sewer Construction 104 17
West of E. Columbia St.
from & ex Chalmers to 40' S
ex 5 L. of Winder St. see page 69
at 102.01

Drop M.H. Sta 1+58 page 69

10+00

1553 86.48 91.0 - 4.52

+50

1352 11338 2.15 99.86 94.33 + 5.53

1

493 108.45 97.67 + 10.78

+50 break

1.74 111.64 101.0 + 10.64

2

0.10 113.28 101.67 + 11.61

+50

250 110.88 102.33 + 8.55

3 = DE 40' S. x 5 L. Winder

398 109.40 103.0 + 6.40

chk

7.20 106.18 ^{OTC Man} Winder x Col.

1287
93

Cross Section Winona Ave
University Ave to Polk

N.W. corner Univ Ave + Winona St
 BM 5.00 335.15 330.15 5.14 x 5.14

0+00	7.14	328.01	UNIV. CORN
0+03.2	7.01	328.14	
0+09.7	6.89	328.26	
0+15.7	6.84	328.31	
0+21.7	6.84	328.31	WINONA CORN

N.E. Return Univ Ave + Winona St

0+00 = UNIV end

0+00	5.04	330.11	
0+06	5.11	330.04	
0+12	5.12	330.02	
0+18.4	5.12	330.02	WINONA CORN

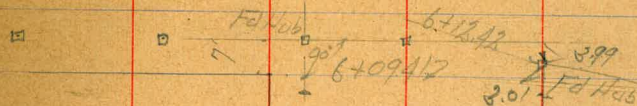
Indexed
LM

April 21-41
Siden
Hockgang
W Moor

71

6+49.112

Polk Ave



4+0

0.4 Conc Wall

2+37

30 x 30

University Ave

Winona

0+05.2

0+09

4.89

5.31

Franklin Corp

Cross Section No 070
University Ave to Polk Ave

60 pdc
12 CBS

0+25

0+05.7 Nly Pav 199 on 2 Taken on 1990

0+0 = H.L. Clav From East

0-469 = N.Cb Univ From West

0-10 = N.Cb Univ From East

BM

468

334.83

330.15

JX BP
University
+ 50711

Lt. M

2

Rt. 1

72

28°	28°	287	298	288	292	297	299	302	308
6.8	6.4	6.1	5.0	6.0	5.6	5.1	4.9	4.4	4.0
35	30	25	18	17	9		9	18	30

282	2829	2769	2891	2912	2928	2926	305
6.6	6.54	7.19	6.42	5.91	5.55	5.56	4.3
307	184.03	184	92		92	184	30.7

281	2829	2760	2890	2927	3003	304
6.7	6.54	7.22	5.93	5.56	4.80	4.4
30	194.03	194		18	18.06	30

2891	2790	2772	2879	2932	3004	304
6.81	7.43	7.11	6.04	5.51	4.79	4.4
30.03	30	18		194	194.03	30

2759	2785	2871	2923	2998	3011
7.44	6.98	6.12	5.60	5.55	4.78
30	18		18	30	30-03 Top

334.83

2+30

2+04 = 7.5 Conc Drive

2+0

TP 998 343.05 176 333.07

1+50

1+0

0+94 19.5 Pt of 2 = 1/4 Anchor Pole

0+50

334.83

4+

2+

R+

73

33.9	34.0	32.8	33.8	33.5	33.9	34.1	34.9	35.4
9.2	9.1	10.3	9.3	9.5	9.7	9.0	8.2	7.7
40	30	18	9		9	18	21	30

3486

819
30

23.0	28.0	32.0	33.5	33.1	33.1	33.0	33.5	34.9
20.1	15.1	11.1	9.5	10.0	10.0	10.1	9.6	8.2
20	30	26	18	9		9	18	30

343.05

30.5	30.9	31.9	32.3	31.2	32.2	32.4	32.4	33.0
4.2	3.9	2.9	2.5	3.1	2.6	2.4	2.4	1.8
3.5	30	18	9	8		9	18	30

30.8	31.0	31.8	31.1	30.5	31.4	31.5	31.5	32.3
4.0	3.8	3.0	2.9	4.3	3.4	3.2	3.3	2.5
3.5	30	18	12	9		9	18	30

27.6	28.2	29.3	30.4	29.4	29.9	30.3	30.3	30.7	31.3
7.2	6.6	5.5	4.4	5.4	4.9	4.5	4.5	4.1	3.5
3.5	30	18	12	14	9	15	15	18	30

334.83

4+0

3+71

3+53

3+15

3+0

2+57

34305

44

45

R1

74

368	380	375	377	383	387	40.09	40.2
1.3	5.1	5.5	5.4	4.9	4.4	3.01	3.0
30	18	9		9	18	29.09	30

39.12
893
291-24 Cornwall

358	383	369	357	359	362	367	377	389
1.3	1.8	6.2	7.4	7.7	7.1	6.4	5.28	4.58
35	30	18	9		9	18	27	30.37

30.37
30.37
R1
Cornwall

36.28
6.77
305-27 Cornwall
DINE

349	346	348	345	346	347	359
8.2	8.5	8.3	8.6	8.5	8.4	7.1
30	18	9		19	18	30

340	336	340	339	339	341	3533
9.1	9.5	9.1	9.2	9.2	9.0	7.7
30	18	9		9	18	30

34305

5750

570

TP

9.66

35166

1.05

342.00

Hall 19
Floor Post
N 4+55

4+50

4+28

4+25

41

2

PH

75

482

8.5
30

433

8.4
18

435

8.2
9

439

7.8

439

7.8
9

439

7.8
18

456

6.1
18

457

6.0
30

419

9.8
30

420

9.7
18

418

9.9
9

424

9.3

423

9.4
9

428

8.9
18

429

7.8
30

35166

401

3.0
30

399

3.2
18

399

3.2
9

402

3.1

402

3.1
9

405

2.5
18

419

1.2
30

3994

3.1

299-240-741
Hall

412

1.6

296-243-241
Hall

BM

6.13

330.19

SWBP
University
450 1/2 St
330 N

TP

5.47

336.27

9.31

330.80

TP

0.50

340.11

12.05

339.61

6+49.41 = N2 Polk From West

476	472	472	478	472	482	482
47	40	43	39	40	37	34
30	18	9		9	18	30

6+29.41 = 2

467	472	472	472	472	472	472
50	47	46	44	44	41	38
30	18	9		9	18	30

6+09.41 = S2 Polk From W

461	459	462	462	462	462	472	472
56	58	55	51	51	52	41	41
30	18	9		9	12	18	30

6+0

457	455	457	462	462	472	472
60	61	60	55	55	46	44
30	18	9		9	18	30

351.66

Levels Reduced. 2.23.21

351.66

21

A

RT

76

13007
1027
13407
14497
3907
7130
4200

8602
434
152292

6222
24
160622

164812
12
49512

177402
2420
78622

7032
1120
8222

6652
1176
7847

8252
12
7452

13407
9530
28622

8602
5602
8602
45
3402
8602
542
7022

8222
477
3512

7402
7402
7402
7402
7402
7402
7402

7032
7032
7032
7032
7032
7032
7032

6652
6652
6652
6652
6652
6652
6652

8252
8252
8252
8252
8252
8252
8252

8252
8252
8252
8252
8252
8252
8252

220
12
466
250
102776

4620
233
28560
19240
221460

4620
233
28560
19240
221460

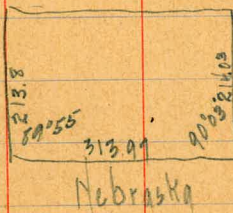
4620
233
28560
19240
221460

4620
233
28560
19240
221460

4620
233
28560
19240
221460

4620
233
28560
19240
221460

4620
233
28560
19240
221460



187032
132072
4796
002833
14588
10388
4358
9572
1189068

7.76
8.90
16.66

~~B.M. S. E. from Crosby & M. 219~~

B.M. S.W. Plg Crosby & Newton 28.93

T.P. 0.79 29.72 12.06 17.66

Bottom M.M. & Alley bet Colton & R.R. Sts W.L. Crosby 16.1 2.8

T.P. 3.96 10.69 12.18 6.73

Bottom M.M. & Beardsley west of R.R. St 12.4 -1.7

Floor Level Premier Paving Co. 8.5 2.2

11 11 Kenner Calif. Fish Co 6.1 4.6

B.M.'s

Ash

India's S.W. Brass Plg 22.97

Calif. N.E. ~~SPK~~ Ste Fe pole 11.89

v. 36	102.35	100	6W Weight
	9.75	92.60	92.6
50	3.85	98.50	93.85 5.15
100	3.32	99.03	94.10 +4.93
50' No.	2.22	100.11	95.6 4.51
100' No.	1.01	101.34	97.00 4.34
50' 60	1.30	98.05	95.05 3.00
100' 20	5.35	97.00	96.00 1.0

Hub & Yama Alley bet Cottonwood & Dalberg's

6.70

10.6 17.30

18' pipe on Osburn E of Cottonwood

10.0 7.30

M.H. 255.00

S.W. Keel work 12.94

249.02

236.08

T.P.

12.57

260.99

0.60

248.42

1.33

23

399

266

30.59

4.70

256.29

7.00

253.99

South Hub

5.78

255.21

Q Beech & Atlantic

5.25 N

4.87 S = 5.064

S.L. Ash & Atlantic

3.87

7.20

~~107.20~~

100.00

5.50

101.70

S.W. B.P. Oregon & Adams

384.06

7.59

391.65

3.49

391.22

3.92

387.73

8.58

382.64

60 Thomas N

0.450

4.42

386.80

313.97

81

50.0
25.7

24.3

118 | 2400 |
 236

 40

289.71 S.E. 1/4 1/2

15.3
21.3

7.0

5.25
4.87

10.12
5.06

289.75
5.36

295.21
5.59

289.62

28.50
25.73

2.77

31.50
28.50

3.04
2.77

5.81



