

F.B. 956

956

TRAVEL BOOK

373

KEUFFEL & ESSER CO.

DRAWING MATERIALS
AND
SURVEYING INSTRUMENTS.

NEW YORK.
CHICAGO. SAN FRANCISCO. ST. LOUIS.

TABLES FOR EXCAVATIONS AND EMBANKMENTS.

DISTANCES FROM CENTER OF ROADWAY FOR CROSS-SECTIONING.
ROADWAY 18 FEET WIDE. SIDE SLOPES 1 TO 1.
FOR SINGLE TRACK EXCAVATION

"Copyright, 1885, by Keuffel & Esser Co."

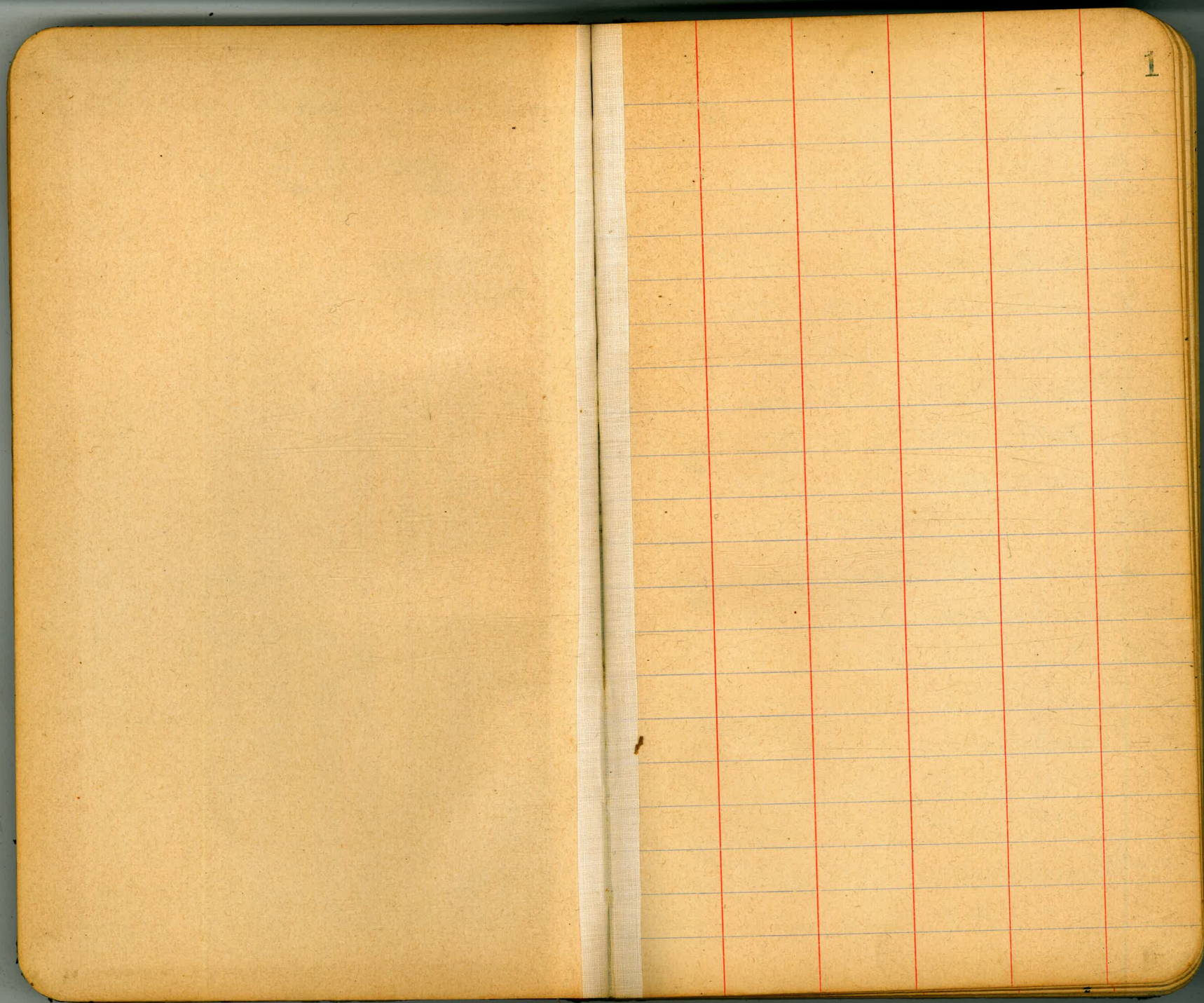
	0	.1	.2	.3	.4	.5	.6	.7	.8	.9	
0	9.0	9.1	9.2	9.3	9.4	9.5	9.6	9.7	9.8	9.9	0
1	10.0	10.1	10.2	10.3	10.4	10.5	10.6	10.7	10.8	10.9	1
2	11.0	11.1	11.2	11.3	11.4	11.5	11.6	11.7	11.8	11.9	2
3	12.0	12.1	12.2	12.3	12.4	12.5	12.6	12.7	12.8	12.9	3
4	13.0	13.1	13.2	13.3	13.4	13.5	13.6	13.7	13.8	13.9	4
5	14.0	14.1	14.2	14.3	14.4	14.5	14.6	14.7	14.8	14.9	5
6	15.0	15.1	15.2	15.3	15.4	15.5	15.6	15.7	15.8	15.9	6
7	16.0	16.1	16.2	16.3	16.4	16.5	16.6	16.7	16.8	16.9	7
8	17.0	17.1	17.2	17.3	17.4	17.5	17.6	17.7	17.8	17.9	8
9	18.0	18.1	18.2	18.3	18.4	18.5	18.6	18.7	18.8	18.9	9
10	19.0	19.1	19.2	19.3	19.4	19.5	19.6	19.7	19.8	19.9	10
11	20.0	20.1	20.2	20.3	20.4	20.5	20.6	20.7	20.8	20.9	11
12	21.0	21.1	21.2	21.3	21.4	21.5	21.6	21.7	21.8	21.9	12
13	22.0	22.1	22.2	22.3	22.4	22.5	22.6	22.7	22.8	22.9	13
14	23.0	23.1	23.2	23.3	23.4	23.5	23.6	23.7	23.8	23.9	14
15	24.0	24.1	24.2	24.3	24.4	24.5	24.6	24.7	24.8	24.9	15
16	25.0	25.1	25.2	25.3	25.4	25.5	25.6	25.7	25.8	25.9	16
17	26.0	26.1	26.2	26.3	26.4	26.5	26.6	26.7	26.8	26.9	17
18	27.0	27.1	27.2	27.3	27.4	27.5	27.6	27.7	27.8	27.9	18
19	28.0	28.1	28.2	28.3	28.4	28.5	28.6	28.7	28.8	28.9	19
20	29.0	29.1	29.2	29.3	29.4	29.5	29.6	29.7	29.8	29.9	20
21	30.0	30.1	30.2	30.3	30.4	30.5	30.6	30.7	30.8	30.9	21
22	31.0	31.1	31.2	31.3	31.4	31.5	31.6	31.7	31.8	31.9	22
23	32.0	32.1	32.2	32.3	32.4	32.5	32.6	32.7	32.8	32.9	23
24	33.0	33.1	33.2	33.3	33.4	33.5	33.6	33.7	33.8	33.9	24
25	34.0	34.1	34.2	34.3	34.4	34.5	34.6	34.7	34.8	34.9	25
26	35.0	35.1	35.2	35.3	35.4	35.5	35.6	35.7	35.8	35.9	26
27	36.0	36.1	36.2	36.3	36.4	36.5	36.6	36.7	36.8	36.9	27
28	37.0	37.1	37.2	37.3	37.4	37.5	37.6	37.7	37.8	37.9	28
29	38.0	38.1	38.2	38.3	38.4	38.5	38.6	38.7	38.8	38.9	29
30	39.0	39.1	39.2	39.3	39.4	39.5	39.6	39.7	39.8	39.9	30
31	40.0	40.1	40.2	40.3	40.4	40.5	40.6	40.7	40.8	40.9	31
32	41.0	41.1	41.2	41.3	41.4	41.5	41.6	41.7	41.8	41.9	32
33	42.0	42.1	42.2	42.3	42.4	42.5	42.6	42.7	42.8	42.9	33
34	43.0	43.1	43.2	43.3	43.4	43.5	43.6	43.7	43.8	43.9	34
35	44.0	44.1	44.2	44.3	44.4	44.5	44.6	44.7	44.8	44.9	35
36	45.0	45.1	45.2	45.3	45.4	45.5	45.6	45.7	45.8	45.9	36

Calculated by Julien A. Hall, M. Am. Soc. C. E.

*Keuffel
Esser
Lans
James
Ington
Hess
Geller
Hamilton
Conason
Duckman
Carterton
Byron
Arthur
Amos
Walter*

Book 956

21.32 17E Mon
14.50 Kellogg on autumn Mon
41.13



Rosecrans B.M.

B.M. SW Rosecrans & Lowell Plug ✓

TP 4635 12.698 6.201 6.977

3764 10.461

B.M. SW Rosecrans & Jarvis^{rk} Spk ✓

5818 4.643

TP 3390 8.033 5.403 2.630

4324 6.954

B.M. SW Rosecrans & Hugo RR Spk ✓

4.791 2.163

4351 6.514

B.M. SW Rosecrans & Goette Plug ✓

5.369 1.145

TP 5.701 6.846 4.085 2.761

5.820 8.581

B.M. SW Rosecrans & Emerson^{rk} Spk ✓

2.840 5.741

TP 6.878 12.619 2.472 10.147

7232 17.379

B.M. SW Rosecrans & Carleton Plug ✓

2.827 14.552

TP 7231 21.783 2.900 18.883

5.451 24.334

B.M. SW Rosecrans & Madison RR Spk ✓

3.956 20.378

4578 24.956

B.M. SW R & Carey Plug ✓

4.286 20.670

Rosecrans B.M.

20670

2

TP 3716 24.376 4.523 19.853

7154 27.007

B.M. NE Rosecrans & Magrath Mon. ✓

5.624 21.383 2132

TP 3.821 23.186

TP 5.987 29.173 3382 25.791

5.962 31.753

B.M. NW R & Bessinger Plug ✓

3702 28.051

TP 8.330 36.381 0.275 36.106

TP 8.871 44.977 0.862 44.115

9.296 53.411

B.M. NW 2nd St Rosecrans & W. Corb. Plug ✓

NL PL 177

1.898 51.513

TP 5.958 57.471 6096 51.375

TP 0.218 51.593 8696 42.897

6.004 48.901

B.M. Mon 23rd St W of 2nd R St ✓

NL PL 175

7.656 41.245

TP 5.127 46.372 1.173 45.199

7.998 52.697

B.M. NE Rosecrans & Rogers Plug ✓

7.562 45.135

TP 6.924 51.959 2.000 49.959

TP 8.607 58.566 0.979 57.587

Rosecrans B.M.^s

57.587

T.704 65.291

B.M. SE Rosecrans & Quattrough Plug 3.217 62.074

6.413 68.487

B.M. NE Rosecrans & Perry Plug 4.333 64.154

T.P. 2.429 66.573 10.033 56.540

0.012 56.552

B.M. SE Rosecrans & Owens Plug 8.483 48.069

1.930 49.999

B.M. NE Rosecrans & Nichols Plug 8.374 41.625

3.048 44.673

B.M. NW Rosecrans & McCall Plug 6.538 38.135

2.218 40.353

B.M. NE Rosecrans & Lawrence Plug 5.261 35.092

4.536 39.628

B.M. NE Rosecrans & Kellog Plug 6.032 33.596

5.428 39.024

B.M. E. Corb. Rosecrans & Reservat. Plug 3.973 35.051

3.3596

0.689 31.285 7.033 25.252

0.391 25.643

B.M. NW. Dwy. Antonio & Kellog. Mon 11.087 14.556

Recheck - Rosecrans B.M.^s

35051

3

4209 39.260

B.M. NE Kellog Plug 5.663 33.597

6.882 40.477

B.M. NE Lawrence Plug 5.394 35.085

5.264 40.349

B.M. NE McCall Plug 2.225 38.124

6.490 44.614

B.M. NE Nichols Plug 2.995 41.619

8.163 50.082

B.M. SE Owens Plug 2.025 41.057

T.P. 7.482 55.539 0.140 55.399

11.242 66.741

B.M. NE Perry Plug 2.601 64.140

4.685 68.825

B.M. SE Quattrough Plug 6.768 62.057

T.P. 0.954 63.011 7.750 53.031

1.697 54.728

B.M. NE Rogers Plug 9.597 45.131

T.P. 3.640 48.771 3.757 45.014

3.395 48.409

B.M. Mon. W. side St. PL 175 7.173 41.236

Recheck.

				41.226	
TP	7691	48.927	5.406	43.521	
TP	8587	52.108	1.177	50.931	
	6391	57.322			
BM W NW Curb N. Pl. 177 Plug		5819	51.503		
TP	1623	53.128	9.432	43.696	
TP	0488	44.184	9.231	34.953	
	0738	35.691			
BY NW Rosecrans & Bassemmer Plug		7645	28.046	21.151	
TP	3974	32.020	5.535	26.485	
TP	3725	30.210	5.772	24.438	
	3640	28.078			
BM NE Rosec. & Magnetic Map		6685	21.393	21.213	
TP	3668	25.061	5.947	19.114	
	4690	23.804			
BM SW R & Canyon. Plug Curb.		3137	20.667	20.670	
TP	3943	24.610	4.817	19.793	
	4592	24.385			
BM SW R & Addison. RR Spk.		4012	20.373	20.378	
TP		4.635	19.750		
	2676	22.426			

Rosecrans

					22.476			4
BM SW R & Carleton. Plug		7.868	14.558	14.552				
TP	2772	17.330	7.016	10.314				
	2190	12.504						
BM SW R & Emerson. RR Spk.		6.763	5.741	5.741				
TP	2848	8.589	4.878	3.711				
	3105	6.816						
BM SW R & Gothic. Plug		5.671	1.145	1.145				
	5338	6.4780						
BM SW R & Hugo R. RR Spk. Pole		4.320	2.158	2.158				
TP	4836	6.994	4.022	2.972				
	4970	7.962						
BM SW R & Jarvis. RR Spk. Pole		3.372	4.640	4.640				
TP	5815	10.455	3.907	6.548				
	6145	12.693						
BM SW R & Lowell. Plug		4.637	8.056	8.056				

Willow St. BM^s

BM. SW. Lowell & Willow Plug.	52.250	52.258			
T.P.	1.078	53.328	7.909	45.419	
	0.195	45.614			
BM. SW. Willow & Jarvis - Plug.	8.375	37.239	37.247		
T.P.	7.090	44.329	2.444	41.885	
	5.437	47.322			
BM. SW. Willow & Hugo - Plug.	2.972	44.350	44.358		
T.P.	9.125	53.475	0		
BM. SW. Willow & Goethe - Plug.	2.032	51.443	51.451		
T.P.	3.372	54.815	3.305	51.510	
	7.768	59.278			
BM. SW. Willow & Emerson - Plug.	1.664	57.614	57.622		
T.P.	8.202	65.816	0.810	65.006	
T.P.	11.901	76.907	1.470	75.437	
	11.175	86.612			
BM. SW. Willow & Carleton - Plug.	0.222	86.390	86.398		
	10.770	97.160			
BM. SW. Willow & Byron - Plug.	2.663	94.477	94.505		
T.P.	0.654	95.151	8.877	86.274	

Willow. BM^s

					86.274	5
T.P.	0.578	86.852	8.915	77.937		
T.P.	0.170	78.107	7.818	70.289		
	0.727	71.016				
BM. NW. Willow & Canon Rd. Plug.	9.751	61.265			61.280	
	0.944	62.209				
BM. SW. Canon Rd. & ^{Evergreen} Willow Plug.	12.720	49.489			49.510	
T.P.	0.877	50.366	10.993	39.373		
T.P.	0.630	40.003	7.549	32.454		
T.P.	1.712	34.166	7.505	26.661		
	1.640	28.301				
BM. SW. Canon Rd. & Rosacraggs - Plug.	7.657	20.644			20.670	

Goethe BM^s

BM SW Rosecrans & Goethe Flg.			1.145	OK
TP	7217	8.362	16.01	6.761
	8033	14.794		
BM SW Goethe & Locust Flg. P.C.			2.288	OK
TP	9.720	22.226	0.402	22.124
	7.838	31.962		
BM SW Goethe & Evergreen Flg.			1.866	OK
TP	9.796	39.892	0.213	39.679
	12.737	52.416		
BM SW Goethe & Willow Flg. & Res			0.962	51.454
				51.451

Re-Check Willow to Chatsworth

BM SW Willow & Lower Flg.			52.758	OK
TP	10078	62.336	0.257	62.079
TP	10289	72.368	0.302	72.066
TP	10.016	82.082	0.118	81.964
	6.948	88.912		
BM SW Lower 1/8 Plum Flg.			1.679	OK
TP	6.948	6.948	81.964	87.233
TP	9.151	91.115	1.051	90.064
	12.009	102.073		
BM NW Plum & Macaulay Spk Pole			2.774	OK
TP			0.082	99.299
				99.289
	12.200	114.191		
BM NE Macaulay ^{Close} Flg. RR Spk.			0.250	OK
TP			2.096	113.941
				113.930
TP	6.359	118.454	8.975	112.095
TP	1.137	110.616	7.904	109.479
TP	0.032	102.744	11.490	102.712
TP	0.522	91.776	12.804	91.254
TP	1.637	80.609	12.957	78.972
TP	1.280	68.932		67.652

68932

T.P. 12.622 56.310

T.P. 7.150 63.460 2.109 61.351

T.P. 7.151 58.502 1.572 66.930

T.P. 4.679 71.609 4.284 67.315

T.P. 6.878 74.193 5.835 68.358

T.P. 7.365 75.723 4.580 71.143

7.409 78.552

P.M. M. S. Chatsworth
Pig. Curt. E. of Gr. line

1.393 77.159

¹⁰⁰
77.140

Re-Check Willow St.

N.Y. Run with transit

169.292

8

BM. SW. Willow & Curtis - Plug.

119.155

T.P.

8.816

178.108

1.078

177.030

11.723 130.878

12.572

189.602

187.129

BM. SW. Willow & Browning - Plug.

0.998

129.880

129.883

BM. SW. Willow & Udal - Plug.

2.502

187.100

T.P. 1.640

131.520

9.433

122.087

10.234

197.434

T.P.

1.155

123.242

8.779

114.463

BM. SW. Willow & Tennyson - Plug.

3.572

193.842

193.870

3.767

118.230

T.P.

1.660

195.502

11.473

184.029

BM. SW. Willow & A. Cat - Plug.

5.020

113.210

113.232 orig.

T.P.

0.515

184.544

10.000

174.544

T.P.

9.192

122.402

0.080

122.322

3.591

178.135

T.P.

11.088

133.410

0.292

133.118

BM. SW. Sterne + Willow Plug.

6.032

172.103

172.134

9.068

142.186

T.P.

1.123

173.826

8.548

165.278

BM. SW. Willow & Touch - Plug.

4.030

138.156

138.178 orig.

0.784

166.062

3.346

141.502

BM. SW. Willow & Russell - Plug.

4.800

161.262

161.291

BM. SW. Willow & Young - Plug.

6.206

135.296

135.318 orig.

T.P.

1.385

168.647

23.98

166.249

T.P.

8.504

143.800

0.701

143.099

9.840

176.089

12.523

155.622

BM. SW. Willow & Sundry - Plug.

2.959

173.130

173.169

BM. SW. Willow & Xerox - Plug.

1.486

154.136

154.165 orig.

9.752

182.882

12.838

166.974

BM. SW. Willow & Pad - Plug.

5.164

177.718

177.762

BM. SW. Willow & Whittier - Plug.

0.855

166.119

166.143 orig.

T.P.

0.930

178.648

10.546

168.102

6.260

172.379

T.P.

0.120

168.222

12.017

156.205

BM. SW. Willow & Voltaire - Plug.

3.087

169.292

169.321 orig.

2.643

158.848

BM. NW. Willow & Olympian - Plug.

6.106

152.742

152.780

Re-check Chatsworth N of Ry.

9

				152.742	
TP	2.896	155.638	12.071	143.567	
TP	0.305	143.872	12.761	131.111	
TP	2.060	133.171	12.187	120.984	
TP	0.868	121.852	9.217	112.635	
	2.193	114.828			
BM SW Rec & PL Plug			6.933	107.893	111.125
TP	2.312	110.207	5.382	104.825	
TP	3.000	107.825	7.938	99.887	
TP	1.175	101.062	10.416	90.646	
	0.672	91.268			
BM SE Gumbo & Capistrano Plug			10.130	81.138	91.172
	1.587	82.725			
BM NW Rec & Capistrano Plug			11.105	71.620	71.107
TP	4.534	76.154			
BM			5.019	71.135	71.216
	6.915	78.050			
Chatsworth N of Car tracks Plug Curv			0.985	77.865	77.140

BM F Curb Chatsworth Plug Curb N of Car tracks				77.140	JJ
TP	7.993	85.133	0.960	84.173	
	12.814	96.987			
BM SE Chatsworth & Terryson Plug	0.337	96.650		96.637	JJ
TP	5.150	101.800	4.264	97.536	
TP	5.948	103.484	2.076	101.408	
TP	9.220	110.628	0.038	110.590	
TP	10.020	120.610	0.100	120.510	
TP	8.927	129.437	1.142	128.295	
TP	9.272	137.567	0.244	137.323	
TP	10.130	147.453	0.030	147.423	
TP	8.907	156.330	1.070	155.260	
TP	9.925	165.185	2.138	163.047	
	3.632	166.679			
BM W Curb Chatsworth & 200's of Alcott			5.098	161.581	161.568
	3.343	164.924			
BM SW Chatsworth & Alcott Plug	5.563	159.361		159.30	JJ
TP	4.436	163.777	7.564	156.233	
	1.310	157.543			
BM SE Chatsworth & Curtis	8.686	148.857		148.841	JJ

Re-check Curtis

				148.857	✓
T.P.	1405	150.262	7.174	141.088	
	1415	142.503			
BM. SE Curtis & Clove	Plug	7.907	134.596	134.576	✓
T.P.	3098	137.694	5.675	132.019	
	4.164	136.183			
BM. SW Curtis & Plum	Plug	4.844	131.339	131.311	✓
T.P.	2164	133.503	8.355	125.148	
	1707	126.855			
BM. SW Curtis & Willow	Plug	7.680	119.175	119.155	✓
T.P.	1384	120.559	11.824	108.735	
T.P.	0.197	108.932	12.943	105.989	
	0.624	96.613			
BM. SW Curtis & Evergreen	Plug	1.205	95.408	95.408	✓
T.P.		11.970	84.643		
T.P.	0.590	85.233	8.897	76.336	
	1.015	77.351			
BM. SW Curtis & Locust	Plug	8.023	69.328	69.325	✓
T.P.	1.132	70.460	10.977	59.483	
T.P.	0.820	60.303	8.890	51.413	

Curtis BM²

					51.413	10
	1507	52.920				
BM. SW Curtis & Rosecrans	8.577	44.343			14.933	OK ✓
	2.213	46.556				
BM. SW Curtis & Rosecrans	10.5	40.591			40.583	OK ✓
T.P.	2.260	42.851	7.324		35.527	
T.P.	2.468	37.995	7.016		30.979	
T.P.	2.365	33.344	6.588		26.756	
	3.145	29.901				
BM. Map Touch	5.437	24.464			24.476	OK ✓

Adams - Madison BME

BM-NE Adams & Park Blvd. Plug	354.51	✓✓
5-162 359.739		
BM-SE Adams & North Ave. Plug. 3774	355.965	✓✓
4-126 360.091		
BM- ^{Plug} N-Curb Adams-SW Cor. McC. Garden	6-854 353.237	✓✓
02-652 355.889		
BM-SW Plug Curb Guller Gate Drive + Campus St.	5-604 350.285	✓✓
4-471 354.756		
BM-SE G.G. Dr. & Cleveland Plug	6-788 347.968	✓✓
5-019 352.987		
BM-SE G.G. Dr. & Maryland Plug	6-254 346.733	✓✓
5-194 351.927		
BM-SW Maryland & Madison Plug	4-949 346.978	✓✓
3-480 350.458		
BM-SW Madison & Delaware Plug	7-014 343.444	✓✓
3-595 347.039		
BM-SW Madison & New York Plug	6-530 340.509	✓✓
3-625 344.134		
BM-SW Madison & R.I. Mon.	4-275 339.859	✓✓ xib. 339.876

Maryland & Meade BME

	0259 340.118	339.859	11
BM-NE Madison & Mass Plug.	7-084 333.034	✓✓	
BM-SW Madison & Maryland Plug	3198 350.176	346.978	✓✓
BM-SW Maryland & ^{Delaware} St. S Plug.	11-493 338.683	✓✓	
TP	6-078 344.761	3800 340.961	
	5-821 346.782		
BM-SW Maryland & Newark Plug.	4-736 342.046	✓✓	
TP	3-724 345.770	4-935 340.835	
	3-425 344.260		
BM-NW Maryland & Meade Plug.	10-195 334.065	✓✓	
TP	6-131 340.196	1-378 338.818	
	8-733 347.551		
BM-SE Meade & Cleveland Plug.	1-831 345.720	✓✓	
	6-088 351.808		
BM-NE Meade & Campus Plug	3-804 348.504	✓✓	
	2-599 350.603		
BM-NW Meade & North Ave Plug.	5-612 344.991	✓✓	
TP	4-527 349.518	4-235 345.283	
	5-407 350.690		

350.690
 BM SW North & Monroe Plug 3.907 346.783^{ok} U
 T.P. 4.815 351.598 2.850 348.748
 5.805 354.553
 BM SW North & Madison Plug 3.157 351.396 JJ^{ok} 351.402
 T.P. 5.382 356.778 4.000 352.778
 6.548 359.326
 BM SE North & Adams Plug 3.378 353.948 JJ^{ok} 355.765
 3.736 359.184
 BM NE Adams & Park Bl. Plug 4.627 354.555 JJ^{ok} 354.577

350.287 JJ
 BM SW Campus & G. Dr. Plug 6.911 357.196
 BM SE Campus & Madison Plug 4.714 352.482 JJ^{ok} 352.536
 T.P. 3.290 355.772 4.963 350.809
 3.385 354.194
 BM NW Campus & Monroe Plug 5.181 349.013 JJ
 T.P. 5.703 354.216 5.045 349.171
 4.883 354.034
 BM NE Campus & Meade 6.053 348.001 JJ^{ok} 348.007
 BM SE Cleveland & Meade Plug 345.920 JJ
 T.P. 4.543 350.263 3.961 346.302
 5.506 351.808
 BM SE Cleveland & Monroe Plug 3.908 347.900 JJ
 T.P. 4.729 352.629 3.288 349.341
 T.P. 4.885 354.226 4.857 349.369
 4.036 353.405
 BM SE Cleveland & G. Dr. Plug 5.433 347.972 JJ^{ok} 347.968

La Jolla Ave BM³

BM. SW Harasthy & India Plug			78002	JJ
TP	3117	81.119	10396	70.723
	0354	71.077		
BM. NE Harasthy & Arctic R.R. Spk	5413	65.664	JJ	
TP	0700	66.364	9.536	56.828
	3242	60.070		
BM. NW Moore & Calif R.R. Spk Pole	6081	53.989	JJ	
	9339	63.328		
BM. NW Cal. & Clayton R.R. Spk Pole	2798	60.530	JJ	
TP	7463	67.993	2888	65.105
	5574	70.679		
BM. NE Stone & La Jolla Ave R.R. Spk	2005	67.674	JJ	
TP	6283	73.957	2.633	71.324
	6235	77.559		
BM. NE La Jolla & St. Noel & Stone Spk	2870	74.689	JJ	
	5698	80.387		
BM. SE. N. Estab. 116 R.R. Spk	2988	77.399	JJ	
TP	5615	83.014	3.867	79.147
	6294	85.441		
BM. NE. La Jolla & Wright R.R. Spk Pole	2825	82.616	JJ	

La Jolla Ave

			82.616	12
	5789	88.405		
BM. SE La Jolla Ave & Bardin R.R. Spk	2748	85.657	JJ	
TP	5372	91.029	4.386	86.643
	1526	88.169		
BM. NE La Jolla & Cants R.R. Spk Pole	7767	80.402	JJ	
TP	0767	81.169	8.414	72.755
	2060	74.815		
BM. NE La Jolla & Weatherby R.R. Spk	4285	70.530	JJ	
TP	2158	72.688	4.735	67.953
	2368	70.321		
BM. NW Hartensia & Jefferson Spk	5941	64.380	JJ	
TP	1369	65.749	7.806	57.943
	2003	59.946		
BM. NW Tr. 145 & L.J. Ave R.R. Spk Pole	7291	52.635	JJ	
TP	2891	55.546	7.531	48.015
	0911	48.926		
BM. NW Congress & Arroyo del Rio R.R. Spk	5841	43.085	JJ	
TP	0394	43.479	8.345	35.134
	1022	36.156	8.503	27.653
TP	2112	29.765	8.106	21.659

Congress BM^s

21.659

2234 23.893 -

BM NE. Congress & Conde. R.R. Spk. ⁴²⁴⁰ 19.653 ^{JJ}

BM NW. Congress & Appodig R.R. Spk. 43.085

4307 41.392

BM SW. Appodig R.L. Ave Mon ^{JJ} 2.963 44.429 ^{Whole 44461}

BM NE. Congress & Conde R.R. Spk. ^N 19.653

5415 25.128

BM NW. Congress & Harney 80th Spk ^{JJ} 2059 23.069

TP 3949 27.018 5446 21.572

TP 4464 26.036 5657 20.379

4026 24.405

BM NE. Congress & Masony 80th Spk ^{JJ} 5.888 18.517

TP 3.789 22.306 0349 21.957

2583 24.540

BM SW. Masony & San Diego R.R. Spk ^{JJ} 1.941 22.599

BM Spk. 86. NE. Cor. Kammer's home ^{JJ} 1210 23.330

21.957

TP 7608 29.565 2269 27.296

6.487 33.783

BM SW. S.D. Ave & Twiggs R.R. Spk ^{JJ} 3047 30.736

San Diego Ave BM^s

14

5044 35.780

30.736

BM NE. S.D. Ave & Harney Mon ^{JJ} 2580 33.200 ^{Whole 33.265}

TP 2610 35.810 6.566 29.244

TP 3329 32.573 4.593 27.980

TP 5.545 33.525 2.578 30.947

TP 5.887 36.834 4.031 32.803

TP 5.721 38.524 2.326 36.198

9.519 45.717

BM SW. Appodig R.L. Ave Mon ^{JJ} 1.281 44.436 ^{Whole 44.421}

Crosby BM^S

Note: Corrected elevs marked ok are from second closing run.

BM NW 25 & L Plug			65.913 ^{ok}	↓
BM NE 25 & M ¹⁹¹¹	67.824	8.886	58.938 ^{ok}	↓
	1962	60.900		
BM NW 25 & N Plug		66.15	54.285 ^{ok}	↓
	3217	57.502	54.318 ^{whale}	↓
BM SW Crosby & Harrison Plug	4.980	52.522	52.518 ^{ok}	↓
	5872	58.394		↓
BM SE Crosby & Irving Plug	3.868	54.526	54.522 ^{ok}	↓
	3218	57.744		↓
BM SE Crosby & Julian Plug	4.731	53.013	53.009 ^{ok}	↓
	1.810	54.823		↓
BM SE Crosby & Kearney Plug	6.825	47.998	47.994 ^{ok}	↓
	2.257	50.255	43.440 ^{ok}	↓
BM NW Crosby & Logan Plug	6.812	43.443	43.457 ^{whale}	↓
	1.773	45.216	38.002 ^{ok}	↓
BM NE Crosby & Natl Plug	7.210	38.106	38.051 ^{whale}	↓
	0.117	38.123		↓
BM SW Crosby & Newton Plug	7.191	28.932	28.928 ^{ok}	↓
	0.945	29.877	22.178 ^{ok}	↓
BM SE Crosby & Main Mon	7.695	22.182	22.257 ^{whale}	↓

12/30/14
West
Evans
Dewey

Main St BM^S
Sicard St BM^S

22.182

15

TR	5.414	27.596	4.062	23.534	
	5.329	28.863			↓
BM NW Main & Dewey Plug	3.904	24.959		24.955 ^{ok}	↓
TR	5.268	30.727	3.651	26.576	
	5.196	31.772			↓
BM NW Main & Evans Plug	4.213	27.529		27.525 ^{ok}	↓
TR	5.366	32.895	3.856	29.039	
	5.236	34.275			↓
BM NW Main & Sampson Plug	4.285	29.990		29.986 ^{ok}	↓
TR	4.537	34.527	4.973	29.554	
	3.136	32.690			↓
BM SE Main & Sicard Plug	5.206	27.484		27.484 ^{ok}	↓
	8.830	36.314			↓
BM SW Sicard & Newton Plug	1.300	35.014		35.018 ^{ok}	↓
TR	7.122	42.136	0.793	41.343	
TR	9.148	50.491	1.920	48.571	
	9.200	51.771			↓
BM SW Sicard & National Plug	8.768	49.003		48.996 ^{ok}	↓
TR	0.822	56.949			↓
	7.216	64.165			↓
BM NE 26 & Logan Plug	3.357	60.908		60.794 ^{ok}	↓

Sicard BM²/₁₆Woolman BM²/₁₆

60.808

81.970

16

TP	5.922	66.730	2.992	63.738	
	4.111	67.849			
BM NW Sicard & Kearney Plug	0.725	67.124		67.111 ^{ok}	✓✓
TP	7.609	74.733	1.982	72.751	
	6.995	79.746			
BM SW Sicard & Julia Plug	6.720	73.076		73.005 ^{ok}	✓✓
BM NW Sicard & Irving Plug	2.162	77.584		77.583 ^{ok}	✓✓
	10.138	87.722			
BM NW Sicard & Harrison Plug	0.645	87.877		87.053 ^{ok}	✓✓
	6.050	93.127			
BM NE Woolman & 20 St. Plug	2.051	91.076		91.054 ^{ok}	✓✓
TP	3.756	94.832	4.117	90.715	
	4.710	95.425			
BM NW Woolman & Simpson Plug	4.454	90.971		90.999 ^{ok}	✓✓
TP	6.024	96.995	3.165	93.830	
	4.696	98.526			
BM NE Woolman & Evans Plug	3.526	95.000		94.976 ^{ok}	✓✓
				94.988	
TP	1.796	96.996	8.526	88.470	
	0.246	88.716			
BM NW Woolman & Dewey Plug	6.746	81.970		81.940 ^{ok}	✓✓

TP	0.922	82.892	10.446	72.446	
TP	0.684	73.130	8.226	64.904	
TP	0.390	65.294	8.905	56.389	
	1.826	58.215			
BM NW 25 & N Plug		3.900		54.315	54.315 ^{ok}
BM NW 25 & N Plug				54.285 ^{ok}	✓✓
BM NW 25 & N Plug				54.285 ^{ok}	✓✓
TP	4.074	58.359	0.070	58.289	
TP	9.075	67.364	0.405	66.959	
TP	9.034	75.993	0.118	75.875	
	8.970	84.845			
BM NW Woolman & Dewey Plug		2.905		81.940 ^{ok}	✓✓
TP	6.272	88.212	1.242	86.970	
	9.397	96.367			
BM NE Woolman & Evans Plug		1.391		94.976 ^{ok}	✓✓
TP	3.192	98.168	5.603	92.565	
	4.388	96.953			
BM NW Woolman & Simpson Plug		6.004		90.949 ^{ok}	✓✓
TP	4.423	95.372	4.596	90.776	
	4.075	94.851			
BM NE 28 & Woolman Plug		3.797		91.054 ^{ok}	✓✓

Sampson BM^S

				91.054	
	1.975	93.029			
BM NW Sicard & Harrison Plug.	5.976		87.033	OK JJ	
T.P.	2.712	89.765	7.835	81.930	
	1.768	83.698			
BM NW Sicard & Irving Plug	6.135		77.563	OK JJ	
	2.052	79.615			
BM SW Sicard & Julian Plug	6.610		73.005	OK JJ	
	1.266	74.271			
BM NW Sicard & Kearney Plug	7.160		67.111	OK JJ	
T.P.	0.741	67.852	4.150	63.702	
	3.011	66.713			
BM NE Zeb & Logan Plug	5.919		60.794	OK JJ	
T.P.	2.113	62.907	8.611	54.296	
	1.763	56.059			
BM SW Sicard & National Plug.	7.063		48.996	OK JJ	
T.P.	0.678	49.674	10.118	39.556	
	1.648	41.204			
BM SW Sicard & Newton Plug.	6.186		35.018	OK JJ	
	0.519	35.537			
BM SE Sicard & Main Plug.	8.052		27.485	OK JJ	

BM NW Sampson & Main Plug.	7.647	37.633		27.986	OK JJ
BM SW Sampson & Newton Plug	0.659	36.974		37.025	OK JJ
T.P.	6.440	43.414	0.093	43.321	
	11.650	54.971			
BM NE Sampson & National Plug.	0.953	54.018		54.045	OK JJ
T.P.	7.579	61.597	0.765	60.832	
	7.457	68.289			
BM NW Sampson & Logan Plug	3.782	64.507		64.486	OK JJ
	8.322	72.829			
BM NW Sampson & Kearney Plug	7.297	71.532		71.533	OK JJ
	10.121	81.153			
BM NW Sampson & Julian Plug	1.093	80.560		80.569	OK JJ
	8.453	89.013			
BM NW Sampson & Irving Plug.	1.470	87.543		87.538	OK JJ
	7.833	95.376			
BM NW Sampson & Harrison Plug.	1.365	94.011		94.006	OK JJ
	3.114	97.125			
BM NW Sampson & Woodman Plug.	6.170	90.955		90.949	OK JJ

Evans BM³

BM-NE Evans & Woodman Plug.				94.976 ^{ok} JJ
TR	3423	98.379	7469	90.910
	2080	92.990		
BM-NW Evans & Harrison Plug				6.484 ^{ok} JJ
				86.516 76.532 ^{ok}
	3512	90.018		
BM-NW Evans & Irving Plug				7.085 ^{ok} JJ
				82.933 83.001 ^{ok}
	5077	88.010		
BM-NW Evans & Julian Plug				6.028 ^{ok} JJ
				81.982 82.006 ^{ok}
	1.068	83.050		
BM-NW Evans & Kearney Plug				11.069 ^{ok} JJ
				71.981 71.976 ^{ok}
	0260	72.241		
BM-NW Evans & Logan Plug				9.248 ^{ok} JJ
				62.993 63.024 ^{ok}
	0092	63.085		
BM-NE Evans & National Plug				11.118 ^{ok} JJ
				51.967 52.002 ^{ok}
TR	2321	54.288	9.012	45.276
	0056	45.332		
BM-SW Evans & Newton Plug				7.932 ^{ok} JJ
				37.404 ^{ok} 37.400 37.450 ^{ok}
TR	1969	39.369	6.886	32.483
	1994	34.479		
BM-NW Evans & Main Plug				6.959
				27.518 27.567 ^{ok} 27.525 ^{ok}

12/31/14
West
Evans
DeweyDewey BM³

BM-NW Dewey & Main Plug				24.955 ^{ok} JJ
				8.232 33.187
BM-NW Dewey & Newton Plug				1.235 31.952 ^{ok} JJ
				8.987 40.939
BM-NE Dewey & National Plug				0.560 40.379 ^{ok} JJ
				9.498 49.877
BM-NW Dewey & Logan Plug				0.998 48.879 ^{ok} JJ
				7.602 56.481
BM-NE Dewey & Kearney Plug				1.990 54.471 ^{ok} JJ
				8.352 62.843
BM-NW Dewey & Julian Plug				0.906 61.937 ^{ok} JJ
				9.287 71.224
BM-NW Dewey & Irving Plug				3.299 67.925 ^{ok} JJ
				5.898 73.823
BM-NW Dewey & Harrison Plug				2.801 71.022 ^{ok} JJ
TR	7.478	78.500	1.520	76.980
	8.653	85.633		
BM-NW Dewey & Woodman Plug				3.689 81.944 ^{ok} JJ
				81.940 ^{ok}

18

Sigsbee BM^s

BM SE Julian & Crosby Plug			53.009	ok	
TP	2510	55.519	5.974	49.545	
	2279	51.824			
BM NE Julian & Beardsley Plug	6.926		44.888	ok	
	5091	49.989			
BM SE Beardsley & Kearney Plug	3.951		46.038	ok	
TP	2085	48.123	8.160	39.963	
TP	0570	40.533	9.830	30.703	
	0639	31.342			
BM NE Kearney & Sigsbee Plug	7.838		23.504	ok	
	7081	30.585			
BM NW Sigsbee & Logan Plug	2.237		28.348	ok	28.415
TP	2903	31.251	7.936	23.915	
	1110	25.025			24.007
BM NE Sigsbee & National Plug	1.088		23.937	ok	
BM SW Sigsbee & Newton Plug	10.113		14.912	ok	
	2893	17.805			
BM SE Sigsbee & Main N Bolt Fire Plug	3.084		14.721	ok	
TP	4.400	19.121	2.259	16.862	
	7.222	24.084			
BM SW Main & Beardsley R.R. spt pole	3.744		20.140	ok	20.261

Beardsley BM^s

					20.140	ok	19
	6190	26.330					
BM SE Crosby & Main N Bolt	4.150		22.180	ok	22.178	ok	
BM SW Beardsley & Main R.R. spt pole	9.020		29.160		20.140	ok	
	9.020	29.160					
BM NW Beardsley & Newton Plug	1.275		27.885	ok			
	9.319	37.204					
BM SW Beardsley & National Plug	1.290		35.914	ok			
	7.342	43.256					
BM NW Beardsley & Logan Plug	1.849		41.407	ok	41.412	ok	
TP	4.790	46.197	3.745	42.452			
	6.352	48.804					
BM SE Beardsley & Kearney Plug	2.774		46.030	ok	46.038	ok	
BM NE Sigsbee & National Plug			23.937	ok			
TP	0525	24.462	9.520	14.942			
TP	1149	16.091	7.883	8.208			
	2309	10.517					
BM NW 16 & Natl Plug	6.720		3.797	ok			
BM NW 16 & Newton Plug	2.918		6.715	4.897	1.818	ok	
TP	6.882	8.800	1.042	7.758			
	8.863	16.621					
BM SW Sigsbee & Newton Plug	1.716		14.905	ok	14.912	ok	

Main BM^{III}

32 St BM^S

BM SE Main & Sicard Plug

① 1308 31.793 4868
 TP. 1.370 31.850 4716
 4414 31.419
 4498 31.632

27.485^{OK}

26.725^{OK}
 27.134

II

BM NE Main & 26 St N put fire hyd.

① 0.323 28.432 5648
 TP. 0.198 28.292 5.194
 2617 26.403
 4.086 27.184

3.310 28.109^{OK}
 3.538 28.094

22.784^{OK}
 23.098

BM NE Main & 27 St Mor.

① 4.927 27.660 2.782
 TP. 4.874 27.594 2.714
 ① 6.377 31.255
 4.923 29.803

out

3.670 22.733^{OK}

22.720

24.878^{OK}
 24.880

BM NW Main & 28 St Plug.

① 4.617 34.138 1.903
 TP. 5.161 33.434 2.049
 ① 7.183 40.238
 9.144 40.529

3.764 27.491^{OK}
 2.330 27.473

32.755
 31.385

II

BM SW Main & 29 St Plug.

① 5.902 43.878 3.905
 TP. 5.639 43.618 3.896
 ① 4.693 44.686
 4.750 44.472

2.242 37.796^{OK}
 2.550 37.977

37.972
 39.422

II

BM NE Main & 30 St Mor.

① 5.670 47.006 3.420
 TP. 5.621 46.953 3.661
 ① 5.550 47.136
 5.015 48.307

3.950 41.336^{OK}
 3.140 41.332

41.397
 43.586
 43.292

II

BM NE Main & 31 Spk
 BM NW " " Plug.

4.882 45.084
 3.253 45.054^{OK}

41.962
 out

TP.

3.578 48.632 5.102 43.530
 2.660 46.190

45.054

BM SW Main & 32 Mor.

TP. 3.206 41.796 4.281 37.515
 7.970 45.485

7.600

38.590^{OK} 38.625

BM NE 32 St & Boston R.R Spk pole 20'
 N of NL East 707.

TP. 4.771 49.555 2.863 46.692
 8.672 55.364

0.701

44.784^{OK}

BM NE 32 St & New York R.R Spk pole

TP. 2.218 53.746
 5.641 58.787

2.218

53.746 changed X NW on back plug

Grand
 BM NW 32 St & New York Plug.

TP. 8.572 63.934

3.425

55.362^{OK}

BM NW 32 St & Natl. Plug.

TP. 6.348 67.363 7.154 60.209
 1.020 61.229

2.919

61.015^{OK}

BM NW 32 St & Logan Plug.

TP. 5.183 55.246
 TP. 7.984 63.230 0.354 62.876
 TP. 7.788 70.664 11.78 69.486
 7.362 76.848

10.162

51.067^{OK}

BM NW Logan & 31 St.

TP. 2.903 73.945

2.903

73.945 73.967

Logan Ave BM

				73.945	
TP.	7.508	81.453	4.764	76.689	
	0.790	77.479			
BM NW Logan & 30 St Plug.		6.586	70.893	71.113	
TP.	3.714	74.607	5.236	69.371	
	3.918	73.279			
BM NW Logan & 29 St Plug		4.860	68.419	68.451	
TP.	3.905	72.324	5.499	66.825	
	4.116	70.941			
BM NW Logan & 28 St Plug.		4.943	65.995	66.017	
TP.	2.890	68.888	5.772	63.116	
	3.704	66.820			
BM NW Logan & 27 St Plug.		4.925	61.995	62.014	
TP.	3.624	65.619	5.196	60.423	
	3.864	64.287			
BM NE Logan & 26 St Plug		3.491	60.796	60.809	
				60.794	

BM SW Sicard & Natl Plug.					48.996
	4.491	53.487			
BM NE 26 St & Natl Plug.		3.530			49.957
					49.980
TP.		4.905			48.582
TP.	1.363	49.945	7.010		42.935
	1.508	44.443			
BM SE 26 & Newton Plug.		7.423			37.020
" NE " " "					
	1.511	38.531			
SH RR spk pole to N of NE Cor.		7.983			30.518
	2.670	33.218			
BM SE 26 & Boston RR spk pole.		4.274			28.944
					29.033
BM NE 26 & Main N. Bilt Fire Hyd.		5.106			28.112
					28.109
	5.106	30.200			28.071
TP.		2.544			30.656
BM SE 26 & Newton Plug.	7.830	38.486	1.485		37.001
TP.	8.391	45.292	0.278		44.914
	8.788	53.702			
BM NE 26 & Natl Plug					
BM SW Natl & Sicard Plug		4.726			48.976

31st BM

BM NW 31st & Main Plug				45.054 ^{JK} OK
8530	53.584			
" SW " " "	2600			50.784 ^{JK} ^{50.784} ^{JK} ^{50.784}
BM NE 31st & Boston Plug	2.108			51.476 ^{OK}
10.106	61.582			
BM NE 31st & Grand Plug	1.597			59.985 ^{JK} ^{60.018} ^{JK} ^{60.018}
T.P.	7750	67.735	1.385	66.350
8304	74.654			
BM NW 31st & National Plug	3.190			71.467 ^{OK} ^{JK} ^{71.467} ^{JK} ^{71.467}
10.357	81.821			
BM NW 31st & Logan Plug	7.873			73.948 ^{JK} ^{73.948} ^{JK} ^{73.948}

30st BM

BM NW 30st & Logan Plug				70.893 ^{JK} OK
2560	73.453			
T.P.		8241	65.212	
BM NW 30st & Nat'l Plug				64.738 ^{JK} ^{64.738} ^{JK} ^{64.738}
2100	67.312			
BM NW 30 & Nat'l Plug	2.402	2.402		64.910 ^{OK} ^{JK} ^{64.938} ^{JK} ^{64.938}
T.P.		7.970	59.342	
2.708	62.050			
BM SW 30 & Grand Plug	6.700			55.950 ^{OK} ^{JK} ^{55.950} ^{JK} ^{55.950}
T.P.	1.138	57.088	5.993	51.095
1.849	52.944			
BM NE 30st & Main Mon.	11.602			41.342 ^{JK} ^{41.336} ^{OK} ^{JK} ^{41.336}

29st BM

22

BM SW 29st & Main Plug				37.996 ^{OK}
8245	46.741			
BM SE 29st & Boston Plug T/Culvert	0.757			45.484
South line of Boston				
9.234	54.718			
BM NW 29st & Grand Plug	0.820			53.898
9.991	63.089			
BM NW 29st & Nat'l Plug	11.37			61.952 ^{JK} ^{61.978} ^{JK} ^{61.978}
7.977	69.929			
BM NW 29st & Logan Plug	1.490			68.439 ^{JK} ^{68.419} ^{JK} ^{68.419}
BM NW 29st & Logan Plug				68.419 ^{JK} ^{68.419} ^{JK} ^{68.419}
1.492	69.911			
BM NW 29st & Nat'l Plug	7.972			61.939 ^{OK}
1.047	62.986			
BM NW 29st & Grand Plug	9.105			53.881 ^{OK}
0.826	54.707			
BM SE 29st & Boston Plug Culvert	9.233			45.474 ^{OK}
0.898	46.372			
BM SW 29st & Main Plug	8.379			37.993 ^{JK} ^{37.976} ^{OK} ^{JK} ^{37.976}

Woolman Ave B.M.^s

B.M. NE Woolman & 28 St. Flag 91.454 (OK)

T.P. 6.830 97.884 1.381 96.503

8.406 104.909

B.M. NW Woolman & 29 St. Flag 6.882 98.021

T.P. 2.900 100.927 5.491 95.436

1.945 97.381

B.M. NW Woolman & 30 St. Flag 6.360 91.021 71004

T.P. 0.132 91.153 8.597 82.556

T.P. 0.415 82.971 9.114 73.857

T.P. 0.239 74.096 8.760 65.336

T.P. 0.350 65.686 8.093 57.593

0.756 58.349

B.M. NW Woolman & 31 St. Flag 7.189 48.560

T.P. 5.312 53.872 2.305 51.567

T.P. 4.839 56.406 2.189 54.217

6.712 60.929

B.M. SW Woolman & 32 Top Fire Hyd. 0.532 60.397

T.P. 0.959 61.356 11.226 50.130

T.P. 0.857 50.987 8.943 42.044

0.592 42.636

1/2 W. West
Evans
RouteWoolman B.M.^s

42.636

~~42.636~~

B.M. SW Woolman & Bancroft Top Fire Hyd. 6.504 36.132

T.P. 0.045 36.177 7.717 28.460

T.P. 0.028 28.488 9.203 19.285

0.900 20.185

B.M. SE Woolman & 33 St. Top Fire Hyd. 2.931 17.254

T.P. 3.863 21.117 3.505 17.612

5.847 23.459

B.M. SE Woolman & 34 St. Top Fire Hyd. 1.087 22.372 22.359 OK

T.P. 7.378 29.750 0.055 29.695

T.P. 9.428 39.123 0.169 38.954

T.P. 10.429 49.383 0.449 48.934

T.P. 8.121 57.055 0.659 56.396

T.P. 8.503 64.899 0.855 64.044

6.467 70.511

B.M. SE Woolman & 35 Top Fire Hyd. 2.709 68.402 68.326 OK

T.P. 1.971 70.373 5.838 64.535

3.932 68.465

B.M. SE Woolman & 36 Top Fire Hyd. 4.220 64.245 64.164 OK

T.P. 0.554 64.799 6.729 58.070

Woolman Ave. BM₁₁39 St BM₁₂

25

				58.010									
TP	2.110	60.180	7.582	52.598			BM SE 39 Woolman Top fire hyd		112.281		112.191 ^{OK}		
	1029	53.627					TP	2.457	114.738	8.082	106.656		
BM SE Woolman & 37 Top fire ply			3.764	50.363	50.280 ^{OK}			1.950	108.606				
TP	6.290	56.653	0.035	56.618			BM SW 39 RR spk pole		7.390	101.216	101.126 ^{OK}		
	7.814	64.432						5.854	107.070				
BM SE Woolman & 37 Top fire hyd			0.964	63.468	63.380 ^{OK}		BM SW 39 RR spk pole		3.017	104.053	103.763 ^{OK}		
TP	7.838	71.306	0.077	71.229			TP	6.450	110.503	2.129	108.374		
TP	10.323	81.552	0.042	81.510				7.627	116.001				
	8.308	89.818					BM SW 39 RR spk pole		1.620	114.381	114.271 ^{OK}		
BM SE Woolman & 38 Top Fire Hyd			6.203	83.615	83.525 ^{OK}			6.232	120.613				
TP			0.628	89.190			BM SW 39 RR spk pole		0.640	119.973	119.883 ^{OK}		
TP	8.373	99.563	1.006	96.557			TP	4.101	124.074	11.018	113.056		
TP	8.555	105.112	0.825	104.287			TP	2.000	115.056	7.904	107.152		
	10.097	114.384					TP	1.282	108.434	9.923	98.511		
Group of 25 Woolman 39			3.795	110.569				3.114	101.625				
BM SE Woolman & 39 Top fire hyd			2.103	112.281	112.191 ^{OK}		BM NE Sigel & 38 RR spk pole		5.429	96.196	96.106 ^{OK}		
TP	0.855	113.136	6.811	106.325			TP	5.729	101.925	3.830	98.095		
TP	0.975	107.300	9.251	98.043				5.182	103.277				
	0.244	98.287					BM NE Sigel & 37 RR spk pole		4.125	99.152	99.062 ^{OK}		
BM SW Woolman & 40 Top fire hyd			10.723	87.564	87.474 ^{OK}			4.086	103.238				

TP		103.708	5018	98.220	
TP	5.028	103.248	8683	94.565	
	3.007	97.572			
BM SW 3rd 1/2 Sec 36 RR Spk Blk with trolley wire braces			10.613	86.959	86.866 ^{ok}
TP	1.266	88.225	8428	79.797	
TP	0.578	80.375	9496	70.879	
TP	0.858	71.737	8699	63.038	
TP	0.516	63.554	9125	54.429	
	0.915	55.344			
BM Spk Pole N of Tracks			7.290	47.954	47.860 ^{ok}
TP	0.578	48.532	7970	40.562	
TP	0.430	40.992	8509	32.483	
TP	1.420	33.903	5357	28.546	
	3.476	32.022			
BM N of SE 3/4 of N of Inside fence			5.517	26.505	26.406 ^{ok}
TP	6.118	32.623	4.820	27.803	
TP	3.987	31.790	4.882	26.908	
	4.919	31.827			
BM NE 3/4 of N of			6.154	25.673	25.571 ^{ok}

BM NE 28 & Woolman Plug					91.054
TP	6.899	97.953	0.955	96.998	
	6.580	103.578			
BM NW Woolman 4 27 St Plug			5.543	98.035	98.027 ^{orig}
TP	2.545	100.580	6.018	94.562	
	1.190	95.752			
BM NW Woolman 4 30 St Plug			4.740	91.012	91.021 ^{orig}
TP	0.079	91.029	10.892	80.137	
TP	0.962	81.099	8.114	72.985	
TP	0.780	73.765	7.938	65.827	
TP	1.190	67.017	8.190	58.827	
TP	0.922	59.749	8.639	51.090	
	2.493	53.583			
BM NW Woolman 4 31 Plug			5.028	48.555	48.560 ^{orig}
TP	6.008	54.563	1.344	53.219	
	7.755	60.974			
BM SW Woolman 4 32 1/2 Plug			0.581	60.393	60.397 ^{orig}
TP	0.827	61.220	10.993	50.227	
TP	1.086	51.313	7.262	42.051	
	0.907	42.958			

47958			
<i>Barncroft</i>			
BM. SW. Washman & 33 - Top fire hyd.	6.828	36.130	^{orig} 36.130
TP	0.194	36.324	7.739 28.585
TP	0.468	29.053	9.003 20.050
	0.470	20.520	
BM. SE. Washman & 33 Top fire hyd.	3.270	17.250	^{orig} 17.250
TP	4.186	21.436	3.634 17.802
	5.819	23.621	
BM. SE. Washman & 34 Top fire hyd.	1.262	22.359	^{orig} 22.359
	^{6.816} 6.829	^{29.175} 29.188	^{0.092} 0.053 ^{29.083} 29.135
TP	^{9.945} 9.944	^{39.028} 39.029	^{0.028} 0.027 ^{39.000} 39.002
TP	^{10.520} 10.517	^{49.520} 49.519	^{0.740} 0.740 ^{48.780} 48.322
TP	^{9.182} 9.677	^{57.762} 57.999	^{0.995} 1.025 ^{56.967} 56.974
	^{12.217} 12.482	^{69.186} 69.456	
BM. SE. Washman & 35 Top fire hyd.	^{0.858} 1.130	^{48.328} 68.326	^{orig} 68.326
TP	8.197	70.123	5.447 64.676
	3.800	68.476	
BM. SE. Washman & 36 Top fire hyd.	4.312	64.164	^{orig} 64.245 ¹⁶⁴ ^{0.071 lens}

N St. BM ²			
BM. NW. M & 32 Plug			67.029
TP	8.107	75.136	1.130 74.006
	5.987	79.993	
BM. NE. M & 31 St. Plug.		2.508	77.485
TP	3.602	81.087	4.875 76.212
	4.381	80.593	
BM. NW. M & 30 St. Plug		5.670	74.923 ^{check} 74.970
TP	3.355	78.278	5.019 73.259
	2.653	75.912	
BM. SW. M & 29 St. Plug.		3.902	72.010
TP	7.395	79.405	5.167 74.238
	3.260	77.498	
BM. NW. M & 28 Hersey Plug		6.777	70.721
	2.870	73.591	
BM. NW. M & 27 Plug		6.156	67.435
TP	2.938	70.373	5.267 65.106
	3.020	68.126	
BM. NW. M & 26 Plug		4.240	63.886 ^{check} 63.923
TP	2.610	66.496	5.894 60.602
	3.654	64.256	
BM. NE. M & 25 Plug		5.358	58.908 ^{58.938 ok}

11/9/44 Cross Section of IDYLLWILD 30 wide
 Moore from Sk. of Penn. Ave to 309.72' S

246.82

75' S

28

Filthross +

BM Robinson

2.30

269.36 ✓

267.06

NEPP

W

4.9

241.9 ✓

T.P.

1.24

258.60 ✓

12.00

257.36 ✓

+15

4.8

242.0 ✓

T.P.

0.41

246.82 ✓

12.19

246.41 ✓

E

4.4

242.4 ✓

SL of Penn.

100' S

E

5.62

241.20 ✓ on R.W. cut

E

4.7

242.1 ✓

+15

6.4

240.4 ✓

+15

4.7

242.1 ✓

+20

6.9

239.9 ✓

+28

4.7

242.1 ✓

W

8.4

237.9 ✓

W

3.2

243.6 ✓

+5

9.6

237.2 ✓

+1

1.6

245.2 ✓

25' S

125' S

-5

7.8

239.0 ✓

-3

2.5

244.8 ✓

W

7.3

239.5 ✓

W

4.4

242.4 ✓

+5

6.6

240.2 ✓

+1

5.3

241.5 ✓

+15

5.9

240.9 ✓

+15

5.6

241.2 ✓

E

5.3

241.5 ✓

+28

5.8

241.0 ✓

50' S

E

4.9

241.9 ✓

E

5.1

241.7 ✓

150' S

+15

5.2

241.6 ✓

E

5.6

241.2 ✓

W

6.2

240.6 ✓

+2

7.6

239.2 ✓

246.82

+15	7.2	239.6 ✓
+28	6.6	240.2 ✓
W	4.2	242.6 ✓
157.3' S on W side of Garage	6.70	240.1 ✓ <small>part floor 1.0' in street</small>

175' S

W	8.0	238.8 ✓
+2	8.8	238.0 ✓
+15	10.3	236.5 ✓
+28	10.4	236.4 ✓
E	8.5	238.3 ✓

185' S

E	9.6	237.2 ✓
+2	12.1	234.7 ✓
+15	12.0	234.8 ✓
+17	12.1	234.7 ✓
+18	11.7	235.1 ✓
W	10.3	236.5 ✓
T.P.	0.36	234.65 ✓
	12.53	234.29 ✓

200' S

W	0.0	234.7
---	-----	-------

234.65

IDYLLWILD

29

+1	1.4	233.3 ✓
+15	2.3	232.4 ✓
+28	2.4	232.3 ✓
E	0.5	234.2 ✓

225' S

-5	7.0	227.7 ✓
E	6.8	227.9 ✓
+15	6.6	228.1 ✓
+28	6.9	227.8 ✓
W	5.6	229.1 ✓

250' S

W	11.2	228.5 ✓
+15	11.4	228.3 ✓
E	11.2	228.5 ✓
+10	12.5	222.2 ✓

253' S

-10	13.4	221.3 ✓
E	12.1	222.6 ✓
+15	11.9	222.8 ✓
W	12.0	222.7 ✓ <small>\$ of walk to residence</small>
+5	12.2	222.5 ✓

T.P. 0.35 221.73 13.27 221.38

275'S

-5 3.9 217.8 ✓

W 3.6 218.1 ✓

+15 3.9 217.8 ✓

E 3.9 217.8 ✓

+10 5.1 216.6 ✓

300'S

-17 16.3 205.4 ✓

-9 14.1 207.6 ✓

E 9.3 212.4 ✓

+7 8.6 213.1 ✓

+15 8.2 213.3 ✓

W 8.2 213.5 ✓

+5 E of Auto Drive 8.6 213.1 ✓

309.7'S

-5 10.6 211.1 ✓

W 10.8 210.9 ✓

+8 10.3 211.4 ✓

+11 9.4 212.3 ✓

22173

IDYLLWILD

10.3 211.4 ✓ 30

10.4 211.3 ✓

11.9 209.8 ✓

17.2 204.5 ✓

20.4 201.3 ✓

21.4 200.3 ✓

319.7'S

-25 24.8 196.9 ✓

-9 23.0 198.7 ✓

E 17.4 204.3 ✓

+6 12.5 209.2 ✓

+15 12.6 209.1 ✓

W 13.5 208.2 ✓

+5 13.0 208.7 ✓

329.7'S

-5 14.8 106.9 ✓

W 14.3 107.4 ✓

+11 14.8 106.9 ✓

+13 16.3 105.4 ✓

+22 19.4 102.3 ✓

22173

31

E			24.0	197.7 ✓
+IV			28.6	193.1 ✓
+25			28.0	193.7 ✓
TP	699	✓1719	11.53	210.20 ✓

Moore 11/2/24
 Cross Section of Godsall Lane 15' wide
 from SL of Penn to pt 309.72 S

H.L. from page 1	217.19		
	329.72 S of SL of Penn Ave		
E	14.2	202.8	
C	15.9	201.3	
W	16.6	200.6	
+S	16.9	200.3	
	309.72 S of Penn		
-S	13.1	204.1	
W	12.7	204.5	
C on RW Hub	12.32	204.9	
E	11.9	205.3	
	300' S of Penn		
E	9.9	207.3	
C	10.6	206.6	
W	11.2	206.0	
+S	11.6	205.6	
	275 S		
-S	7.0	210.2	
W	6.1	211.1	
C	5.5	211.7	

Godsall Lane
 32

E		5.2	212.0
T.P.	11.21	228.26	0.14
		250' S of Penn	217.05
E		10.8	217.5
C		11.1	217.2
W		12.4	215.9
+S		13.1	215.2
		225' S	
-S		8.3	220.0
W		7.4	220.8
C		6.7	221.6
E		6.3	222.0
		200' S	
E	foot of conc. retaining wall SEND	2.8	225.5 on line
C		3.4	224.9
W		3.4	224.9
+S		4.1	224.2 in yard
		175' S	
-S		1.4	226.9 on Lane
W		1.5	226.8

22826

Godsal Lane

33

C		1.3	227.0	
E foot of same wall		1.1	227.2	25' valley
157.7' S of Penn on wide of walk	to residence	1.18	227.1	1.2' w of wall
	148.3' S of Penn			
E foot of retaining wall	Wend	1.5	226.8	E valley
+1		2.0	226.3	
C		2.1	226.2	
W		1.9	226.4	
+5		4.2	224.1	

130' S

-15		15.8	212.5	
W		7.3	221.0	
+4		4.2	224.1	
C		4.0	224.3	
E		3.6	224.7	

100' S

E		6.4	221.9	
C		6.7	221.6	
+3		7.3	221.0	
W		11.6	216.7	

22826

+20

29.3 205.0

+26

25.8 202.5

Rear end of house facing on Curlew

75' S

-26

27.0 201.3

-1

14.3 214.0

W

13.2 215.1

+5

8.4 219.9

C

8.4 219.9

E

8.1 220.2

50' S

E

9.5 218.8

C

9.8 218.5

+3

10.2 218.1

W

12.6 215.7

+7

16.1 212.2

+20

21.0 207.3

25' S

-10

15.0 213.3

W

11.8 216.5

+3

10.4 217.9

22826

C 9.7 218.6

E 9.5 218.8

010 = Slo + Penn

E 8.3 220.0

C 8.6 219.7

W 9.5 218.8

+S 9.7 218.6

T.P. 13.25 241.51 0.0 228.26

TP 12.60 253.80 0.31 241.20

241.20
Checked BM
SE Penn + Dyer

TP 12.51 265.06 1.25 252.55

TP 6.92 271.14 0.84 264.22

B.M. N.E.

Checked Robinson + Albatross 4.11 267.03 267.06

CROSS SECTION of DRAPER ST
 NL FT. SCRIPPS ADD to ROSEMONT ST

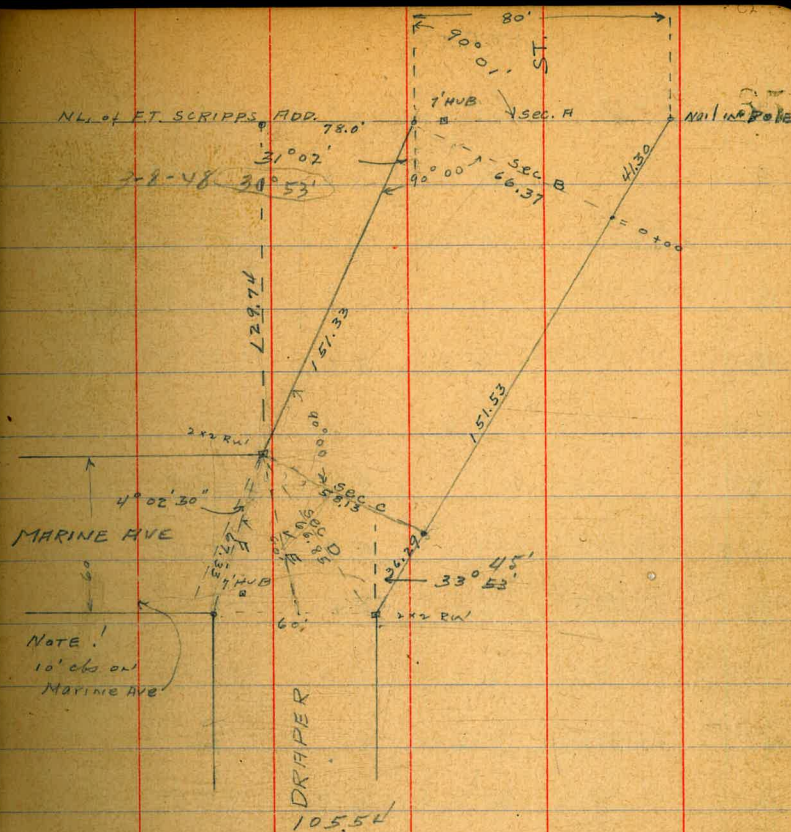
NE Mon'	12.53	84.39	71.86	SEMI LANE 1 LA JOLLA 33
TP	11.63	95.36	0.66	83.73
TP	105.1	105.54	0.33	95.03

Sec. A = 14' ch 13' 1/2"

w/	5.4	100.1	✓
cb	5.2	100.3	✓
+v	5.6	99.9	✓
1/4	5.4	100.1	✓
c	4.4	101.1	✓
1/4	4.1	101.4	✓
cb	4.1	101.4	✓
E	3.4	102.1	✓

Sec. B = 0+00 = 10' ch

E	2.7	102.8	✓
cb	3.2	102.3	✓
1/4	3.6	101.9	✓
c	4.2	101.3	✓
1/4	5.0	100.5	✓
+3	5.2	100.3	✓
+6	4.7	100.8	✓



NOTE!
 10' offset on
 MARINE AVE

cb	4.7	100.8	✓
v/	5.4	100.1	✓
0+50 = 10' ch - 63.62' wide			
w/	5.5	100.0	✓
cb	4.9	100.6	✓
1/4	4.8	100.7	✓
c	4.4	101.1	✓
1/4	3.5	102.0	✓

105.5V

cb	2.9	102.6V
e	2.5	103.0V
1+00	10' cbs	-60.87' wide
E	2.7	102.8V
cb	3.1	102.4V
1/4	3.6	101.9V
e	4.4	101.1V
1/4	4.9	100.6V
cb	4.9	100.6V
w	5.3	100.2V

Sec C = 1+51.33 = WL 1+51.53 = EV - 10' cbs

w	5.7	99.8V
cb	5.7	99.8V
1/4	5.2	100.3V
e	4.6	100.9V
1/4	4.2	101.3V
cb	3.5	102.0V
E	3.2	102.3V

Sec D 68.85' wide - 11.2' cbs on W, 11.6' cbs on E, 11' 1/2

E	3.6	101.9V
---	-----	--------

105.5V

DRAPER

36

cb	4.1	101.4V
1/4	4.6	100.9V
e	4.9	100.6V
1/4	5.2	100.3V
cb	5.6	99.9V
w	5.7	99.8V
w	5.7	99.8V
cb	6.0	99.5V
1/4	5.5	100.0V
e	5.2	100.1V
1/4	5.2	100.1V
cb	5.3	100.2V

Sec E 60' wide - 10' cbs on W.

E = E Draper on sk Marine 5.2 100.3V

Sec F 67.33' wide - 11.2' cbs - 11.2' 1/4 S

e = SW cor	6.2	99.3V
cb	6.3	99.2V
1/4	6.2	99.3V
e	6.1	99.4V
1/4	6.2	99.3V

105.54

dt	6.2	99.3 ✓
N = NW cor	5.7	99.8 ✓
SL Marine = 0 to 0		
W	6.2	99.3 ✓ 10' 1/4
ds	5.4	100.1 ✓
1/4	5.4	100.1 ✓
e	5.3	100.2 ✓
1/4	4.8	100.7 ✓
ds	4.0	101.5 ✓
E	3.6	101.9 ✓
+ 50		
E	3.0	102.5 ✓
ds	3.2	102.3 ✓
1/4	3.9	101.6 ✓
e	4.7	100.8 ✓
1/4	5.0	100.5 ✓
G	5.2	100.3 ✓
W	5.2	100.1 ✓
100 S		
W	4.7	100.8 ✓

105.54

DRAPER

37

ds	4.4	101.1 ✓
1/4	4.4	101.1 ✓
e	3.9	101.6 ✓
1/4	3.3	102.2 ✓
ds	2.7	102.8 ✓
E	2.2	103.3 ✓
150 S		
E	2.3	103.2 ✓
ds	2.7	102.8 ✓
1/4	3.6	102.1 ✓
e	3.9	101.6 ✓
1/4	4.5	101.0 ✓
ds	4.6	100.9 ✓
W	5.0	100.5 ✓
200 S		
W	4.4	101.1 ✓
ds	4.2	101.3 ✓
1/4	4.0	101.5 ✓
e	3.4	102.1 ✓
1/4	3.1	102.4 ✓

1055 ✓

d	2.4	103.1 ✓
E	1.9	103.6 ✓
250'S		
E	1.9	103.6 ✓
d	2.3	103.2 ✓
1/4	2.8	102.7 ✓
c	3.2	102.3 ✓
1/4	3.5	102.0 ✓
cb	3.7	101.8 ✓
W	4.0	101.5 ✓
285'S		
W	3.8	101.7 ✓
cb	3.5	102.0 ✓
1/4	3.1	102.4 ✓
c	2.8	102.7 ✓
1/4	2.6	102.9 ✓
d	1.9	103.6 ✓
E	1.4	104.1 ✓
315'S = N of SEALANE		
E	1.0	104.5 ✓

1055 ✓

DRAPER

28

cb	1.4	104.1 ✓
1/4	2.2	103.3 ✓
c	2.4	103.1 ✓
1/4	3.0	102.5 ✓
cb	3.2	102.3 ✓
W	3.5	102.0 ✓
320'S		
W on beach	3.7	102.17 ✓
330'S = E SEALANE		
W	3.2	102.3 ✓
cb	2.9	102.6 ✓
1/4	2.6	102.9 ✓
c	2.2	103.3 ✓
1/4	2.1	103.4 ✓
cb	1.6	103.9 ✓
E	0.8	104.7 ✓
340'S = S of SEALANE		
W on beach	2.9	102.63 ✓
345'S = SE SEALANE		
E	0.3	105.2 ✓

10554

cb	1.2	104.3 ✓
1/4	1.7	103.8 ✓
c	2.1	103.4 ✓
1/4	2.5	103.0 ✓
cb	2.6	102.9 ✓
w	2.8	102.7 ✓

400'S

w	0.9	104.6 ✓
cb	0.6	104.9 ✓
1/4	0.6	104.9 ✓
c	0.1	105.4 ✓

T.P. 92 ✓ 114.61 0.7 105.37 ✓

1/4	8.9	105.7 ✓
cb	8.4	106.2 ✓
E	7.5	107.1 ✓

4+50

E	6.2	108.4 ✓
cb	7.0	107.6 ✓
1/4	7.8	106.8 ✓
c	8.1	106.5 ✓

114.61

DRAPER

1/4	8.5	106.1 ✓	30
cb	8.6	106.0 ✓	
w	8.7	105.9 ✓	

H85'S = W/L CENTER 60' wide

w	8.5	106.1 ✓	10' do
cb	8.3	106.3 ✓	10' 1/4

1/4 7.9 106.7 ✓

c 7.5 107.1 ✓

1/4 7.2 107.4 ✓

cb 6.5 108.1 ✓

E 6.0 108.6 ✓

1' do ✓

E 6.0 108.6 ✓

cb 6.0 108.0 ✓

1/4 7.0 107.6 ✓

c 7.2 107.4 ✓

1/4 7.6 107.0 ✓

cb 8.3 106.3 ✓

w on cem do 8.55 106.06 ✓ good for 400E

114.61

N 1/4

w	8.4	106.2✓
cb	7.7	106.9✓
1/4	7.3	107.3✓
c	6.8	107.8✓
1/4	6.5	108.1✓
cb	6.0	108.6✓
E	5.6	109.0✓
Φ		
E	5.1	109.5✓
cb	5.5	109.1✓
1/4	6.0	108.6✓
c	6.5	108.1✓
1/4	6.9	107.7✓
cb	7.5	107.1✓
w	8.1	106.5✓
S 1/4		
w	8.4	106.2✓
cb	7.6	107.0✓
1/4	7.0	107.6✓

114.61

DRAPER

40

a	6.5	108.1✓
1/4	6.1	108.5✓
cb	5.8	108.8✓
E	5.4	109.2✓
S cb		
E	5.1	109.5✓
cb	5.6	109.0✓
1/4	6.2	108.4✓
c	6.6	108.0✓
1/4	7.0	107.6✓
cb	7.7	106.9✓
w on com cb	8.10	106.51✓
SL CENTER - 0+00		
w	9.7	106.9✓
cb	7.1	107.5✓
1/4	7.0	107.6✓
c	6.7	107.9✓
1/4	5.9	108.7✓
cb	5.1	109.5✓
b	4.8	109.8✓

114.61

50'S

E	4.1	110.5 ✓
cb	4.5	110.1 ✓
1/4	5.3	109.3 ✓
c	6.0	108.6 ✓
1/4	6.1	108.5 ✓
cb	6.9	107.7 ✓
w	7.3	107.6 ✓

100'S

1/4	6.4	108.2 ✓
cb	6.0	108.6 ✓
1/4	5.9	108.7 ✓
c	5.5	109.1 ✓
1/4	5.0	109.6 ✓
cb	4.1	110.5 ✓
E	3.5	111.1 ✓

150'S

E	3.1	111.5 ✓
cb	3.6	111.0 ✓
1/4	4.3	110.3 ✓

114.61

DRAPER

e	4.7	109.9 ✓
1/4	5.4	109.2 ✓
cb	5.5	109.1 ✓
w	6.0	108.6 ✓

200'S

w	5.5	109.1 ✓
cb	5.2	109.4 ✓
1/4	4.9	109.7 ✓
c	4.4	110.2 ✓
1/4	3.7	110.9 ✓
cb	3.1	111.5 ✓
E	2.5	112.1 ✓

250'S

E	2.6	112.0 ✓
cb	3.4	111.2 ✓
1/4	3.9	110.7 ✓
c	4.5	110.1 ✓
1/4	5.2	109.4 ✓
cb	5.5	109.1 ✓
w	5.7	108.9 ✓

114.61

300'S - NL - NL HRENAS FIVE

w/		5.5	109.1 ✓	60' wide
cb		5.3	109.3 ✓	10' db
1/4		5.2	109.4 ✓	10' 1/4s
c		4.9	109.7 ✓	
1/4		4.0	110.6 ✓	
cb		3.5	111.1 ✓	
E		3.1	111.5 ✓	
	N db			
E		3.2	111.4 ✓	
cb		3.5	111.1 ✓	
1/4		4.1	110.5 ✓	
e		4.9	109.7 ✓	
1/4		5.1	109.2 ✓	
cb		5.5	109.1 ✓	
w/		5.8	108.8 ✓	
	N 1/4			
w/		6.1	108.5 ✓	
cb		5.1	109.2 ✓	
1/4		5.3	109.3 ✓	

114.61

DRAPER

c		5.0	109.6 ✓	
1/4		4.1	110.5 ✓	
cb		3.4	111.2 ✓	
E		3.0	111.6 ✓	
	⊕			
E		3.0	111.6 ✓	
cb		3.6	111.0 ✓	
1/4		4.1	110.5 ✓	
c		5.0	109.6 ✓	
1/4		5.4	109.2 ✓	
cb		5.4	109.2 ✓	
w		6.3	108.3 ✓	
	S 1/4			
w		6.1	108.2 ✓	
cb		5.5	109.1 ✓	
1/4		5.5	109.1 ✓	
c		4.8	109.8 ✓	
1/4		4.1	110.5 ✓	
cb		3.6	111.0 ✓	
E		3.3	111.3 ✓	

11461

S ab

E		3.1	111.5✓
cb		3.4	111.2✓
1/4		4.1	110.5✓
e		5.0	109.6✓
1/4		5.5	109.1✓
cb		5.3	109.3✓
W		6.1	108.2✓

SL FRENCHS - 0+00

W	on Hub	6.35	108.26✓
cb		5.6	109.0✓
1/4		5.5	109.1✓
e		5.0	109.6✓
1/4		3.8	110.8✓
cb		3.3	111.3✓
E		3.1	111.5✓
T.P.	5.18	113.44	635 · 108.26✓
	50'S		
E		1.8	111.6✓
cb		2.5	110.9✓

113.44

DRAPER

1/4		3.2	110.2✓	43
c		3.7	109.7✓	
1/4		4.3	109.1✓	
cb		4.2	109.2✓	
W		5.1	108.3✓	
	75'S			
W		5.0	108.4✓	
cb		4.1	109.3✓	
1/4		4.1	109.3✓	
c		3.6	109.8✓	
1/4		3.1	110.3✓	
cb		2.6	110.8✓	
E		1.8	111.6✓	
	100'S			
E		2.4	111.0✓	
cb		3.1	110.3✓	
1/4		3.3	110.1✓	
c		3.6	109.8✓	
1/4		4.1	109.3✓	
cb		4.0	109.4✓	
W		4.9	108.5✓	

113.44

120'S

w	5.2	108.2 ✓
cb	4.2	109.2 ✓
1/4	4.3	109.1 ✓
c	4.1	109.3 ✓
1/4	4.2	109.2 ✓
cb	4.2	109.2 ✓
E	3.7	109.7 ✓
140'S = N.W. Rushville = 40' wide 520' closed check this		
E	4.8	108.6 ✓
cb	5.2	108.2 ✓
1/4	5.3	108.1 ✓
c	5.2	108.2 ✓
1/4	5.5	107.9 ✓
cb	5.5	107.9 ✓
w	6.0	107.4 ✓
1760 = N.W. Rushville - 20' wide		
w	7.3	106.1 ✓
cb	6.7	106.7 ✓
1/4	6.4	107.0 ✓

113.44

DRIFTER

44

c	6.3	107.1 ✓
1/4	6.3	107.1 ✓
cb	6.4	107.0 ✓
E	6.4	107.0 ✓
1780 = S.W. Rushville = 0 + 00		
E	7.8	105.6 ✓
cb	8.0	105.4 ✓
1/4	7.8	105.6 ✓
c	7.5	105.9 ✓
1/4	7.5	105.9 ✓
cb	7.6	105.8 ✓
w	8.0	105.4 ✓
38' S		
w	9.8	103.6 ✓
cb	10.4	103.0 ✓
1/4	10.7	103.7 ✓
c	10.4	103.0 ✓
1/4	10.3	103.1 ✓
cb	10.4	103.0 ✓
E	10.1	103.3 ✓

11344

46 S

-5	10.5	102.9 ✓
E	10.6	103.0 ✓
+5	10.6	102.8 ✓
Q	10.6	102.8 ✓
1/4	10.8	102.6 ✓
e	10.9	102.5 ✓
1/4	11.2	102.2 ✓
cb	10.8	102.6 ✓
W	11.8	101.6 ✓
+5	12.9	100.5 ✓

75 S

-5	13.5	99.9 ✓
W	12.8	100.6 ✓
cb	12.6	100.8 ✓
1/4	12.5	100.9 ✓
e	12.2	101.2 ✓
1/4	12.0	101.4 ✓
cb	11.8	101.6 ✓
E	11.6	101.8 ✓
+5	11.4	102.0 ✓

DRAPER

45

T.P.

E 56

107.37

11.63

101.81

S L

RUSHVILLE

DRAPER

Culvert ?

0.96

ST

FERN GLEN

LEVELS for Culvert

-10 = 100

4.9 102.5 ✓

+10 = 8V

5.3 102.1 ✓

+53

6.9 100.5 ✓

+96.8 = W.L. Approval.

8.0 99.4 ✓

+10

8.5 98.9 ✓

100 S

-5

5.0 102.4 ✓

E

5.3 102.1 ✓

cb

6.3 101.1 ✓

10737

1/4	6.8	100.6 ✓
e	6.7	100.7 ✓
1/4	7.0	100.4 ✓
cb	7.2	100.2 ✓
w	7.3	100.1 ✓
+5	7.3	100.1 ✓

136'S

-5	8.4	99.0 ✓
w	7.9	99.5 ✓
cb	7.7	99.7 ✓
1/4	7.3	100.1 ✓
+8	7.3	100.1 ✓
e	6.6	100.8 ✓
1/4	5.8	101.6 ✓
cb	5.2	102.2 ✓
E	4.4	103.0 ✓
+5	4.1	103.3 ✓

159'S

E	3.0	104.4 ✓
cb	3.1	104.3 ✓
1/4	3.9	103.5 ✓

10737

DRAPER

e	5.0	102.4 ✓	27
+3	7.0	100.4 ✓	
1/4	7.4	100.0 ✓	
cb	7.9	99.5 ✓	
w	8.5	98.9 ✓	
+5	8.5	98.9 ✓	

169.20'S = NW FERN GLEN 60' wide

-5	8.6	98.8 ✓	10' cb
w	8.5	99.0 ✓	10' 1/4's
cb	8.0	99.4 ✓	
1/4	7.4	100.0 ✓	
+8	7.2	100.2 ✓	
e	5.7	101.7 ✓	
1/4	4.9	102.5 ✓	
cb	4.1	103.3 ✓	
E	3.6	103.8 ✓	

N cb

E	5.1	102.3 ✓
cb	5.8	101.6 ✓
1/4	6.4	101.0 ✓

107.37

0		7.5	99.9✓
1/4		7.6	99.8✓
cb		8.1	99.3✓
w		8.6	98.8✓
+5		8.9	98.5✓
	N 1/4		
-5		9.3	98.1✓
w		9.4	98.2✓
cb		8.4	99.2✓
1/4		7.6	99.8✓
e		7.4	100.0✓
1/4		7.2	100.2✓
cb		6.6	100.8✓
E		5.8	101.6✓
	E		
E		5.5	101.9✓
cb		6.3	101.1✓
1/4		7.3	100.1✓
c		7.5	99.9✓
1/2		7.7	99.7✓

107.37

DRAPER

cb		8.0	99.4✓	PM
+5		8.3	99.1✓	
w		9.2	98.2✓	
+5		9.6	97.8✓	
	S 1/4			
-5		9.4	98.0✓	
w		9.3	98.1✓	
cb		8.0	99.4✓	
1/4		7.8	99.6✓	
e		7.7	99.7✓	
1/4		6.9	100.5✓	
cb		5.7	101.7✓	
E		5.6	101.8✓	
	S cb			
E		5.0	102.4✓	
cb		5.5	101.9✓	
1/4		6.1	101.3✓	
C		7.4	100.0✓	
1/4		7.7	99.7✓	
cb		8.0	99.4✓	

10737

W	9.2	98.2✓
+5	9.3	98.1✓
SL FERN CHEN 20400		
-5	9.1	98.3✓
W	9.0	98.4✓
cb	7.9	99.5✓
1/4	7.7	99.7✓
c	6.8	100.6✓
1/4	5.9	101.5✓
cb	5.0	102.4✓
E	2.7	104.7✓
15'S		
E	2.5	104.9✓
cb	3.6	103.8✓
1/4	5.0	102.4✓
c	6.3	101.1✓
1/4	7.0	100.4✓
cb	7.1	100.3✓
W	7.9	99.5✓
+5	8.2	99.2✓

107.37

DRHPER

48

50'S	W	5.7	101.7✓
	cb	5.8	101.6✓
	1/4	5.9	101.5✓
	c	5.6	101.8✓
	+4	5.4	102.0✓
	+6	4.7	102.7✓
	1/4	4.4	103.0✓
	cb	3.5	103.9✓
	E	2.8	104.6✓
75'S	E	3.7	103.7✓
	cb	4.7	102.7✓
	+3	4.6	102.8✓
	+5	4.7	102.7✓
	1/2	5.3	102.1✓
	c	5.5	101.9✓
	1/4	5.6	101.8✓
	cb	5.0	102.4✓
	W	5.8	101.6✓

107.37

100'S

W	5.7	101.7✓
cb	5.6	101.8✓
1/4	5.6	101.8✓
C	5.5	101.9✓
1/4	4.9	102.5✓
cb	4.7	102.7✓
F	4.1	103.3✓

125'S

F	4.1	103.3✓
cb	4.6	102.8✓
1/4	4.9	102.5✓
C	5.2	102.0✓
1/4	5.6	101.8✓
cb	5.2	102.0✓
W	5.8	101.6✓

see BOARD at
Edge. plans for
playground to be built
100'S - E Alley

Culvert Location

(considerable
water here in
winter)

-10	7.4	100.0✓
-1	6.6	100.8✓
W	5.4	102.0✓

10737

DRIFTER

49

cb	5.6	101.8✓
1/4	5.6	101.8✓
C	5.5	101.9✓
1/4	5.0	102.4✓
cb	4.7	102.7✓
F	4.5	102.9✓
+10	4.1	103.3✓

200'S

E	4.0	103.4✓
cb	4.2	103.2✓
1/4	4.8	102.6✓
C	5.4	102.0✓
1/4	5.8	101.6✓
cb	5.2	101.8✓
W	5.6	101.8✓
T.P.	782	110.87
	4.32	103.05✓

250'S

W	8.6	102.3✓
cb	8.5	102.4✓
1/4	8.2	102.7✓

110.87

c	8.0	102.9✓
1/4	8.2	102.7✓
cb	7.4	103.5✓
E	7.2	103.7✓

300'S

E	6.3	104.6✓
cb	7.0	103.9✓
1/4	6.9	104.0✓
C	7.2	103.7✓
1/4	7.5	103.4✓
cr	7.7	103.2✓
W	8.6	102.3✓

332'S = N L WERTSBOWNS 60' wide

W	8.6	102.3✓ 12' also
cb	7.8	103.1✓
1/4	7.5	103.4✓
C	7.2	103.7✓
1/4	6.6	104.3✓
cb	6.7	104.2✓
E	6.1	104.8✓

110.87

DRAPER

50

N cb

E	6.2	104.6✓
cb	6.9	104.0✓
1/4	7.0	103.9✓
C	7.3	103.6✓
1/4	7.6	103.3✓
cb	8.1	102.8✓
W	8.5	102.4✓

N 1/4

W	8.6	102.3✓
cb	8.1	102.8✓
1/4	7.8	103.1✓
C	7.4	103.5✓
1/4	6.9	104.0✓
cb	7.0	103.9✓
E	7.0	103.9✓

E

E	6.8	104.1✓
cb	7.0	103.9✓
1/4	6.9	104.0✓

110.87

c		71	103.84
1/4		7.6	103.31
cb		8.1	102.81
w/		8.3	102.61
	S 1/4		
w		8.5	102.41
cb		7.8	103.11
1/2		7.5	103.41
e		6.7	104.21
1/2		6.6	104.31
cb		6.8	104.11
E		6.7	104.21
	S cb		
E		6.4	104.51
cb		6.5	104.41
1/2		6.1	104.81
e		6.8	104.11
1/2		7.4	103.51
cb		7.8	103.11
w		8.4	102.51
w on cem cb		7.67	103.20

110.87

DRAPER

51

	cb +7		
w		7.6	103.31
cb		7.2	103.71
1/4		6.9	104.01
e		6.4	104.51
1/2		6.2	104.71
cb		6.0	104.91
E		6.0	104.91
	cb +9		
E		4.6	106.31
cb		5.2	105.71
1/2		5.3	105.61
e		5.8	105.11
1/4		6.4	104.51
cb		6.8	104.11
w/		7.0	103.91
	S L Westbourne = 0.000		
w/		6.7	104.21
cb		6.3	104.61
1/4		5.8	105.11

110.87

C	5.5	105.4 ✓
1/4	4.6	106.3 ✓
cl	4.2	106.7 ✓
E	3.5	107.4 ✓
25'S		
E	3.1	107.8 ✓
cl	3.9	107.0 ✓
1/4	4.6	106.3 ✓
C	5.4	105.5 ✓
1/4	5.5	105.4 ✓
cl	5.7	105.2 ✓
W	6.1	104.8 ✓
35'S		
W	6.4	104.5 ✓
cl	6.0	104.9 ✓
1/4	5.7	105.2 ✓
C	5.2	105.7 ✓
1/4	4.4	106.5 ✓
cl	3.7	107.2 ✓
E	2.4	108.5 ✓

110.87

DRAPER

52

70'S	E	3.0	107.9 ✓
	cl	3.8	107.1 ✓
	1/4	4.6	106.3 ✓
	C	5.3	105.6 ✓
	1/4	5.5	105.4 ✓
	cl	6.0	104.9 ✓
	W	5.7	105.2 ✓
100'S			
	W	5.5	105.4 ✓
	cl	5.6	105.3 ✓
	1/4	4.8	106.1 ✓
	C	4.8	106.1 ✓
	1/4	4.3	106.6 ✓
	cl	3.2	107.7 ✓
	E	2.7	108.2 ✓
150'S			
	E	2.2	108.7 ✓
	cl	2.6	108.3 ✓
	1/4	3.2	107.7 ✓

110.87

c	3.9	107.0✓
1/4	4.2	106.7✓
cb	4.7	106.2✓
w	5.0	105.9✓

200'S

w	4.4	106.5✓
cb	5.0	105.9✓
1/4	3.6	107.3✓
c	3.4	107.5✓
1/4	3.0	107.9✓
cb	2.6	108.3✓
E	1.5	109.4✓

250'S

E	0.7	110.2✓
cb	2.0	108.9✓
1/4	2.8	108.1✓
c	3.9	107.0✓
1/4	4.2	106.7✓
cb	4.4	106.5✓
w	4.4	106.5✓

110.87

DRAPER

53

200'S

w	3.9	107.0✓
cb	3.5	107.4✓
1/4	2.9	108.0✓
c	3.0	107.9✓
1/4	2.5	108.4✓
cb	1.7	109.2✓
E	0.2	110.7✓

346.9'S = N L NUTTILUS 60' inside

E	0.9	110.0✓	12' db
cb	1.3	109.6✓	
1/4	2.0	108.9✓	
c	2.5	108.4✓	
1/4	2.9	108.0✓	
cb	3.7	107.2✓	
w	3.9	107.0✓	
T.P	6.50	112.77	4.60 106.27 nw db
	+1		
w	6.2	106.6✓	
cb	6.1	106.7✓	

11277

1/4	6.2	106.6 ✓
c	6.0	106.8 ✓
1/4	5.8	107.0 ✓
d	5.6	107.2 ✓
E	5.4	107.4 ✓
N of		
E on cem of	5.93	106.84 ✓
d	6.1	106.7 ✓
1/4	6.4	106.4 ✓
c	6.7	106.1 ✓
1/4	6.6	106.2 ✓
d	7.1	105.7 ✓
w/ on cem of	6.50	106.27 ✓
+1		
w/	7.7	105.1 ✓
d	7.7	105.1 ✓
1/4	7.5	105.3 ✓
c	7.2	105.6 ✓
1/4	6.9	105.9 ✓
w/	6.4	106.4 ✓
E	6.1	106.7 ✓

11277

DRAPER

54

N 1/4	6.2	106.6 ✓
d	6.5	106.3 ✓
1/4	6.8	106.0 ✓
c	7.1	105.7 ✓
1/4	7.2	105.6 ✓
d	7.4	105.4 ✓
w/	7.7	105.1 ✓
E		
w/	7.5	105.3 ✓
d	7.3	105.5 ✓
1/4	7.0	105.8 ✓
c	6.7	106.1 ✓
1/4	6.4	106.4 ✓
d	6.3	106.5 ✓
E	6.0	106.8 ✓
S 1/4		
E	6.2	106.6 ✓
d	6.6	106.2 ✓
1/4	6.7	106.1 ✓

112.77

c	6.8	106.0 ✓
1/4	7.2	105.6 ✓
cb	7.5	105.3 ✓
w	8.0	104.8 ✓
f 8		
w	8.0	104.8 ✓
cb	7.7	105.1 ✓
1/4	7.4	105.4 ✓
c	7.2	105.6 ✓
1/4	6.8	106.0 ✓
cb	6.5	106.3 ✓
E	6.1	106.7 ✓
S cb		
E on Cons cb	5.86	106.91 ✓
cb	6.3	106.5 ✓
1/2	6.5	106.3 ✓
c	6.4	106.4 ✓
1/2	6.6	106.2 ✓
cb	6.7	106.1 ✓
w on Cons cb	7.00	105.77 ✓

112.77

DRAPE R

55

+ 11

w	6.6	106.2 ✓
cb	6.1	106.7 ✓
1/4	6.0	106.8 ✓
c	6.0	106.8 ✓
1/4	5.7	107.1 ✓
cb	5.5	107.3 ✓
E	5.5	107.3 ✓
SE HAUTILUS	0.00	
E	3.1	109.7 ✓
cb	3.2	109.4 ✓
1/4	3.8	109.0 ✓
c	4.3	108.5 ✓
1/4	5.5	107.3 ✓
cb	5.7	107.1 ✓
w	6.2	106.6 ✓
20 S		
w	4.6	108.2 ✓
cb	4.1	108.7 ✓
1/2	4.1	108.7 ✓

112.77

e		3.8	109.0 ✓
1/4		3.4	109.4 ✓
cb		2.8	110.0 ✓
E		2.8	110.3 ✓
	50' S		
E		2.6	110.2 ✓
cb		3.1	109.7 ✓
1/4		3.5	109.3 ✓
C		3.8	109.0 ✓
1/4		4.0	108.8 ✓
cb		4.3	108.5 ✓
w		4.4	108.2 ✓
	80' S		
w		7.1	105.7 ✓
cb		6.9	105.9 ✓
1/4		6.3	106.5 ✓
c		5.9	106.9 ✓
1/4		5.2	107.6 ✓
cb		4.9	107.9 ✓
E		4.1	108.7 ✓

112.77

DRAPER

56

	100' S		
F		4.0	108.8 ✓
cb		4.6	108.2 ✓
1/4		5.0	107.8 ✓
c		5.8	107.0 ✓
1/4		6.2	106.6 ✓
cb		6.6	106.2 ✓
w		7.1	105.7 ✓
	150' S		
w		7.7	105.1 ✓
cb		7.1	105.7 ✓
1/4		6.7	106.1 ✓
c		6.7	106.1 ✓
1/4		5.7	107.1 ✓
cb		4.6	108.2 ✓
E		4.2	108.6 ✓
	200' S		
E		3.8	109.0 ✓
cb		4.4	108.4 ✓
1/4		5.2	107.6 ✓

11277

e	5.7	107.1 ✓
1/4	6.4	106.4 ✓
cl	6.8	106.0 ✓
w	7.4	105.4 ✓
250'S		
w	6.5	106.3 ✓
cl	5.8	107.0 ✓
1/4	5.4	107.4 ✓
c	5.0	107.8 ✓
1/4	4.0	108.8 ✓
cl	3.6	109.2 ✓
E	3.2	109.6 ✓
300'S		
E	2.8	110.0 ✓
cl	3.4	109.4 ✓
1/4	3.8	109.0 ✓
C	4.4	108.4 ✓
1/4	4.9	107.9 ✓
cl	5.3	107.5 ✓
w	5.8	107.0 ✓

11277

DRAPER

57

310'S		
L5	9.7	103.1 ✓
w	9.2	103.6 ✓
cl	8.6	104.2 ✓
1/4	7.6	105.2 ✓
e	5.3	107.5 ✓
+5	4.1	108.7 ✓
1/4	3.7	109.1 ✓
cl	3.1	109.7 ✓
E	2.7	110.1 ✓
330'S		
E	4.1	108.7 ✓
cl	5.2	107.5 ✓
1/4	6.1	106.7 ✓
c	7.8	105.0 ✓
1/4	9.1	103.7 ✓
cl	8.5	104.3 ✓
w	9.2	103.6 ✓
+10	10.1	102.7 ✓

11277

343 S

-10		10.9	101.9✓	
w		9.0	103.8✓	
cb		9.3	103.5✓	
+7		10.0	102.8✓	
1/4		9.3	103.5✓	
C		8.8	104.0✓	
1/4		8.1	104.7✓	
cb		6.5	106.3✓	
E		5.8	107.0✓	
T.P.	6.73	113.13	6.37	106.46✓

354 S

-10		6.3	106.8✓
E		6.8	106.3✓
cb		7.9	105.2✓
1/4		8.6	104.5✓
+2		9.6	103.5✓
C		9.9	103.2✓
+4		9.5	103.6✓
1/4		7.4	105.7✓

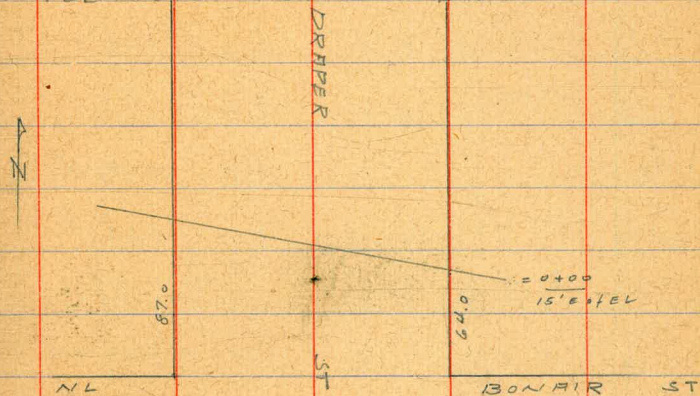
11313

DRAPER

58

cb		8.2	104.9✓
w		8.3	104.8✓
+6		10.0	103.1✓
+10		10.6	102.5✓

LEVEL NOTES FOR CUIVART



0400		8.6	104.5✓
+15	EL	8.8	104.3✓
+39		10.0	103.1✓
+60		10.5	102.6✓
+67		10.1	103.8✓
+74.2	w	9.4	103.7✓
+94.6		11.1	102.0✓

113.13

365'S

w	7.8	105.3	✓
cb	7.6	105.5	✓
1/4	7.2	105.9	✓
+5	6.3	106.8	✓
e	7.0	106.1	✓
1/4	8.0	105.1	✓
cb	9.4	103.7	✓
E	8.7	104.4	✓
+10	7.2	105.9	✓

372'S

-10	7.9	105.2	✓
E	8.9	104.2	✓
+5	9.2	103.9	✓
cb	8.1	105.0	✓
1/4	5.7	107.4	✓
C	5.5	107.6	✓
1/4	7.1	106.0	✓
cb	7.9	105.2	✓
w	7.9	105.2	✓

113.13

DRAPER

379'S

w	8.0	105.1	✓
cb	7.5	105.6	✓
1/4	6.7	106.4	✓
e	5.5	107.6	✓
1/4	4.8	108.3	✓
cb	4.2	108.9	✓
E	4.0	109.1	✓

400'S

E	3.2	109.9	✓
cb	4.2	108.9	✓
1/4	5.1	108.0	✓
e	5.8	107.3	✓
1/4	6.5	106.6	✓
cb	7.2	105.9	✓
w	7.8	105.3	✓

429'S

w	7.5	105.6	✓
cb	7.2	105.9	✓
1/4	6.7	106.4	✓

11313

c	5.5	107.6 ✓	
1/4	4.5	108.6 ✓	
cb	3.9	109.2 ✓	
E	3.4	109.7 ✓	
H 30' S = NL BONAIR 60' wide			
E	4.5	108.6 ✓	12' db
cb	5.3	107.8 ✓	
1/4	6.0	107.1 ✓	
c	6.2	106.7 ✓	
1/4	7.0	106.1 ✓	
cb	7.5	105.6 ✓	
w	7.6	105.5 ✓	
N db			
w on cent db	7.70	105.43 ✓	
cb	7.8	105.3 ✓	
1/4	7.4	105.7 ✓	
c	7.1	106.0 ✓	
1/4	6.8	106.3 ✓	
cb	6.2	106.9 ✓	
E	5.1	108.0 ✓	

11313

DRAPER

60

N 1/4		
E	6.0	107.1 ✓
cb	6.7	106.4 ✓
1/4	7.0	106.1 ✓
c	7.4	105.7 ✓
1/4	7.6	105.5 ✓
cb	8.1	105.0 ✓
w	8.2	104.9 ✓
E		
w	8.2	104.9 ✓
cb	8.0	105.1 ✓
1/4	7.5	105.6 ✓
c	7.2	105.9 ✓
1/4	6.9	106.2 ✓
cb	6.2	106.7 ✓
E	5.8	107.3 ✓
S 1/4		
E	6.0	107.1 ✓
cb	6.6	106.5 ✓
1/4	7.0	106.1 ✓

113.13

E		7.4	105.7 ✓
1/4		7.5	105.6 ✓
cb		8.0	105.1 ✓
W		8.1	105.0 ✓
	S cb		
W	on cens cb	7.0	105.93 ✓
W	for yardage	7.9	105.2 ✓
cb		7.7	105.4 ✓
1/4		7.3	105.8 ✓
c		6.9	106.2 ✓
1/4		6.4	106.7 ✓
cb		6.0	107.1 ✓
E		5.1	108.0 ✓
	cb + 11		
E		4.7	108.4 ✓
cb		5.2	107.9 ✓
1/4		5.8	107.3 ✓
c		6.3	106.8 ✓
1/4		6.6	106.5 ✓
cb		7.2	105.9 ✓
W		7.2	105.9 ✓

113.13

DRAPER

61

SL BONAIR - 0+00

W		7.2	105.9 ✓
cb		7.0	106.1 ✓
1/4		5.9	107.2 ✓
c		5.5	107.6 ✓
1/4		4.9	108.2 ✓
cb		4.2	108.9 ✓
E		3.3	109.8 ✓
	25'S		
E		0.2	112.9 ✓
cb		1.5	111.6 ✓
1/4		2.3	110.8 ✓
c		3.5	109.6 ✓
1/4		4.3	108.8 ✓
cb		5.3	107.8 ✓
W		5.6	107.5 ✓
	50'S		
W		5.0	108.1 ✓
cb		4.3	108.8 ✓
1/4		3.3	109.8 ✓

113.13

C		2.1	111.0 ✓
T.P.	9.57	1.61	111.5 ✓
1/4		8.8	112.3 ✓
6		7.5	113.6 ✓
E		6.3	114.8 ✓
	75'S		
E		5.8	115.3 ✓
d		7.0	114.1 ✓
1/4		8.1	113.0 ✓
C		9.2	111.8 ✓
1/4		10.2	110.9 ✓
6		11.2	109.9 ✓
W		12.3	108.8 ✓
	100'S		
W		11.9	109.2 ✓
6		10.8	110.3 ✓
1/4		9.2	111.8 ✓
C		8.3	112.8 ✓
1/4		7.5	113.6 ✓
6		6.6	114.5 ✓
E		5.3	115.8 ✓

121.09

DRAPER

115'S

E		5.8	115.3 ✓ 62
6		7.0	114.1 ✓
1/4		8.2	112.9 ✓
e		9.3	111.8 ✓
1/4		9.9	111.2 ✓
6		10.8	110.3 ✓
W		11.4	109.7 ✓
	125'S		
W		11.0	110.1 ✓
6		10.3	110.8 ✓
1/4		9.2	111.9 ✓
C		8.6	112.5 ✓
1/4		7.8	113.3 ✓
6		6.3	114.8 ✓
E		5.5	115.6 ✓
	150'S		
E		5.0	116.1 ✓
6		5.9	115.2 ✓
1/4		6.8	114.3 ✓
C		7.4	113.7 ✓

121.09

1/4		7.8	113.3 ✓
cb		8.9	112.2 ✓
1/4		9.9	111.2 ✓
	205'S		
1/4	on NL Alley	10.25	110.84 ✓ on com. cb
1/4	for yardage	9.5	111.6 ✓
cb		8.5	112.6 ✓
1/4		7.1	114.0 ✓
c		6.3	114.8 ✓
1/4		5.6	115.5 ✓
cb		5.0	116.1 ✓
E		4.3	116.8 ✓
	225'S = SL Alley		
E		3.5	117.6 ✓
cb		4.5	116.6 ✓
1/4		5.4	115.7 ✓
c		6.3	114.8 ✓
1/4		7.8	113.3 ✓
cb		8.7	112.4 ✓
1/4	on com. cb	10.30	110.79 ✓

121.09

DRAPER

63

250'S

1/4		9.2	111.9 ✓
cb		8.4	112.7 ✓
1/4		7.7	113.4 ✓
c		6.4	114.7 ✓
1/4		5.1	116.0 ✓
cb		4.0	117.1 ✓
E		3.7	117.4 ✓

275'S

E		3.9	117.2 ✓
cb		4.7	116.4 ✓
1/4		5.5	115.6 ✓
c		6.6	114.5 ✓
1/4		7.3	113.8 ✓
cb		8.2	112.9 ✓
1/4		8.9	112.2 ✓

300'S

1/4		8.8	112.3 ✓
cb		8.1	113.0 ✓
1/4		7.4	113.7 ✓

121.09

c	6.6	114.5 ✓
1/4	5.8	115.3 ✓
cb	5.1	116.0 ✓
E	4.6	116.5 ✓
325'S		
E	5.2	115.9 ✓
cb	6.0	115.1 ✓
1/4	6.5	114.6 ✓
c	7.1	114.0 ✓
1/4	8.0	113.1 ✓
cb	8.5	112.6 ✓
w	9.1	112.0 ✓
350'S		
w	9.4	111.7 ✓
cb	8.7	112.4 ✓
1/4	8.4	112.7 ✓
c	8.0	113.1 ✓
1/4	7.6	113.5 ✓
cb	7.1	114.0 ✓
E	6.7	114.4 ✓

121.09

DRAPER
64

375'S

E	7.8	113.3 ✓
cb	8.3	112.8 ✓
1/4	8.4	112.7 ✓
e	8.7	112.4 ✓
1/4	8.8	112.3 ✓
cb	9.5	111.6 ✓
w	10.1	111.0 ✓

400'S

w	11.7	109.4 ✓
cb	11.0	110.1 ✓
1/4	10.4	110.7 ✓
e	9.5	111.6 ✓
1/4	8.9	112.2 ✓
cb	8.0	113.1 ✓
E	8.2	112.9 ✓

415'S

E	10.1	111.0 ✓
cb	10.5	110.6 ✓
1/4	10.6	110.5 ✓

121.09

c		11.2	109.9 ✓	
1/4		11.9	109.2 ✓	
cb		11.9	109.2 ✓	
w		12.7	108.4 ✓	
T.P.	597	114.81	12.25	108.84 ✓
	430'S	NIL	60' width	
w		9.1	105.7 ✓	15' db
cb		8.5	106.3 ✓	15 1/2'
1/4		7.9	106.9 ✓	
c		7.2	107.6 ✓	
1/4		6.7	108.1 ✓	
cb		6.2	108.4 ✓	
E		5.6	109.2 ✓	
	1' db			
E		6.3	108.5 ✓	
cb		7.1	107.7 ✓	
1/4		7.8	107.0 ✓	
c		8.2	106.3 ✓	
1/4		8.9	105.9 ✓	
cb		9.5	105.3 ✓	

114.81

DRAPER

65

w	on corr. db	9.82	104.99 ✓
	N 1/4		
w		10.2	104.6 ✓
cb		9.5	105.3 ✓
1/4		9.0	105.8 ✓
c		8.5	106.3 ✓
1/4		7.9	106.9 ✓
cb		7.2	107.6 ✓
E		6.5	108.3 ✓
	e		
		6.5	108.3 ✓
cb		7.4	107.4 ✓
1/4		8.0	106.8 ✓
c		8.7	106.1 ✓
1/4		9.1	105.7 ✓
cb		9.9	104.9 ✓
w		10.2	104.6 ✓
	S 1/4		
w		10.2	104.6 ✓
cb		9.7	105.1 ✓

11481

1/4	9.3	105.5✓
C	8.8	106.0✓
1/4	8.1	106.7✓
cb	7.3	107.5✓
E	6.4	108.4✓
S cb		
E	6.6	108.2✓
cb	7.7	107.1✓
1/4	8.3	106.5✓
C	9.0	105.8✓
1/2	9.6	105.2✓
cb	10.1	104.7✓
1/4	10.5	104.3✓
W on corn cb	9.86	104.95✓
SL = 0+00		
W	10.1	104.7✓
cb	9.7	105.1✓
1/4	9.2	105.6✓
C	8.7	106.1✓
1/4	8.1	106.7✓

11481

DRAPER

66

cb	7.3	107.5✓
E	6.5	108.3✓
E'S		
E	5.8	109.0✓
cb	6.4	108.4✓
1/4	7.4	107.4✓
C	8.3	106.5✓
1/4	9.2	105.6✓
cb	9.5	105.3✓
W	10.2	104.6✓
50'S		
W	10.7	104.1✓
cb	10.0	104.8✓
1/4	9.2	105.6✓
C	8.5	106.3✓
1/4	8.0	106.8✓
cb	7.2	107.5✓
E	6.6	108.2✓
100'S		
E	7.5	107.3✓

11481

cb	8.7	106.1 ✓
1/4	9.5	105.3 ✓
c	10.0	104.8 ✓
1/4	10.4	104.4 ✓
cb	11.0	103.8 ✓
W	11.3	103.5 ✓
+5	11.5	103.3 ✓

125'S

-5	12.2	102.6 ✓
W	11.8	103.0 ✓
cb	11.3	103.5 ✓
1/4	10.9	103.9 ✓
e	10.2	104.6 ✓
1/4	9.2	105.6 ✓
cb	7.2	107.6 ✓
E	5.6	109.2 ✓

175'S

E	4.6	110.2 ✓
cb	6.5	108.3 ✓
1/4	8.3	106.5 ✓

11481

DRAPER

87

c	9.5	105.3 ✓
1/4	10.6	104.2 ✓
cb	11.5	103.3 ✓
✓	12.2	102.6 ✓
+5	12.7	102.1 ✓

225'S

-5	12.2	102.6 ✓
W	11.7	103.1 ✓
d	11.0	103.8 ✓
1/4	10.1	104.7 ✓
c	8.8	106.0 ✓
1/4	7.3	107.5 ✓
cb	5.4	109.2 ✓
E	3.9	110.9 ✓

275'S

E	3.2	111.6 ✓
d	5.3	109.5 ✓
1/4	6.6	108.2 ✓
c	7.6	107.2 ✓
1/4	8.8	106.0 ✓

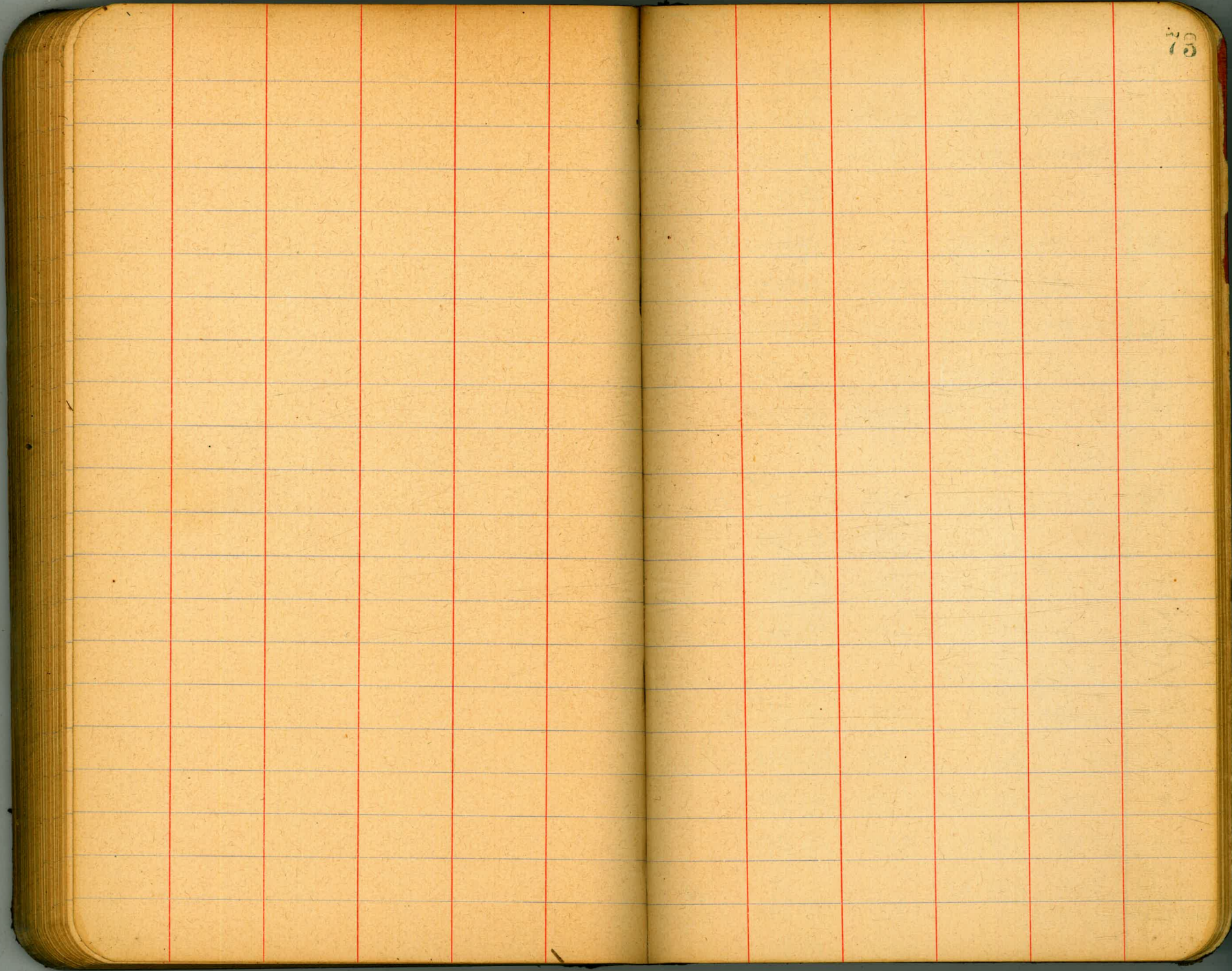
114.81

ct			9.6	105.2 ✓
w			10.3	104.5 ✓
+5			10.8	104.0 ✓
	315'S			
-5			9.6	105.2 ✓
w			9.1	105.7 ✓
ct			8.4	106.4 ✓
1/4			7.6	107.2 ✓
c			6.5	108.3 ✓
1/2			5.6	109.2 ✓
ct			4.0	110.8 ✓
T.P.	120.7	126.68	0.20	114.61 ✓
E			9.4	117.3 ✓
	355'S			
E			1.2	125.5 ✓
ct			6.7	120.0 ✓
1/4			13.8	112.9 ✓
+5			15.9	110.8 ✓
	5'S of +5 outlet of w"		15.6	111.1 ✓
				LH JOLLA RR culvert
c			16.3	110.4 ✓

68

1/4			17.0	109.7 ✓
ct			18.2	108.5 ✓
w			18.8	107.9 ✓
+5			19.3	107.4 ✓
	373'S = intersection of w Rail of L. JOLLA RR			
-5			17.7	109.0 ✓
w			17.2	109.5 ✓
ct			16.3	110.4 ✓
1/4			15.4	111.3 ✓
+5			15.1	111.6 ✓
c			13.2	113.5 ✓
1/4			8.5	118.4 ✓
ct			2.7	124.0 ✓
+2			1.4	125.3 ✓
E on w Rail			0.25	126.43 ✓
	126	110.10		1088 ✓
T.P.	01 ✓	97.69	12.55	97.55
T.P.	0:00	85.3 ✓	12.35	85.34
T.P.	3.65	77.85	11.5	74.19
	check to BMT		8.90	68.95
				68.86

LH JOLLA + GRAVILL



Re Check Florida B.M. N-NE / Cajon

329096 74

BM NE El Cajon & Ala. Flag. JJ 306.573 OK orig

TP. 2.457 309.030 6.700 302.330
2.756 305.086

BM SW El Cajon & Florida Flag. 4.434 JJ 300.652 OK

TP. 5.486 306.138 3.818 302.320

TP. 5.870 308.190 3.860 304.330

TP. 6.192 310.522 3.730 306.792

TP. 7.912 314.704 4.457 310.247

7.886 320.133

BM 80' Tie Hub W for Meade. JJ 2.296 317.837 OK

TP. 7.886 310.247

TP. 8.734 318.981 2.413 316.568

TP. 7.137 323.705 0.838 322.867

4.821 327.688

BM NW Mission & Fl. Mon. 2.928 JJ 324.760 OK 72984

" SE. Nagro " " Spk. 7.340 JJ 320.348 OK orig 320.354

TP. 5.890 326.238 2.729 323.509

TP. 5.528 329.037 3.344 325.693

6.670 332.363

BM SE Madison & Fl. Flag. 3.267 JJ 329.096 OK orig 329.038

TP. 8.543 337.939 1.782 336.157

TP. 7.340 343.497 2.946 340.551

4.784 345.335

BM SW Adair & Fl. Flag. 5.235 JJ 340.100 OK

TP. 3.734 343.834 5.439 338.395

BM SW Adair & Alabama Spk. 4.332 JJ 342.727 3.888 338.837 OK

Note. B.M. in Alabama changed in cross check - see
Book 920. Page 9.

Univ Ave - Re-check BM₇

NE Mon - alt.		265.470			
TP	6.362	271.852	2467	269.685	
	13006	282.691			
BM SE Univ & Miss Plug.		0.701	281.990	291.988	
TP	9.540	291.530	0017	291.513	
	6.780	298.293			
BM NW La Spk.		1.206	297.087	297.088	
" SW " Plug.		3.351	294.942	0193°	
TP	9.588	304.530	0.333	304.197	
	9.784	313.981			
BM NW Texas & Univ Plug.		1.066	312.915	312.925	
TP	4.737	317.654	9.727	307.927	
TP	1.486	309.413	7.148	302.265	
	2.812	305.077			
BM NW Ariz & Univ Spk.		3.320	301.757	301.756	
TP		2.761	302.316		
	6.951	309.267			
BM SE Arnold & Univ - Plug.		2.866	306.401		
	7.376	313.777			
BM NE Hamilton & Univ.		2.310	311.467	311.467	
TP		0.492	313.285		

4/27/14
West
Evan
Evan

313.285 75

8.940 322.725

BM SW Villa Terrace & Univ Spk 1.594 320.631 320.640

TP 8.878 329.509 0.560 328.949

10.911 339.860

BM NE Oregon & Univ Mon. 1.016 338.844 338.845

note BM tampered with so re-set as shown
294.930.

Re Check Florida BM^s

BM SW Spv of Florida Plug. 265.490 JJ

TP. 6.094 271.584 10.094 261.490

TP. 1.389 262.879 10.224 252.655

TP. 0.778 253.433 9.983 243.450

TP. 1.124 244.574 11.353 233.221

TP. 6.649 239.870 0.812 239.058

6.037 245.095

BM SW Lincoln of Florida Spk. 86. 2404 242.691 JJ

27.593
264.284

264.29
OK

TP. 2.885 268.169 2.763 265.406

TP. 7.831 273.237 1.190 272.047

TP. 7.730 279.777 4.853 274.924

9.433 284.351

BM SW Fl & Polk Spk Pole. 2.785 280.572 JJ

TP. 5.285 286.857 3.880 282.977

TP. 8.475 291.452 1.963 289.489

7.086 298.575

BM SE Fl & Howard Spk. 86c. 7.323 290.252 JJ

TP. 7.654 298.906 3.556 295.350

290.252
OK

295.350

76

9.273 304.623

BM SW Florida of El Cajon Plug. 3.005 300.618 JJ

TP. 4.019 305.639 3.333 302.304

7.197 309.501

BM NE El Cajon of Ala. Plug. 1.960 306.541 JJ

BM SW El Cajon of Florida - Plug. 300.618

TP. 5.600 306.218 4.060 302.158

TP. 7.166 309.324 2.596 306.728

TP. 4.111 310.839 2.104 308.735

TP. 5.716 314.451 1.533 312.918

8.232 321.150

BM 80' Tie Hub Water Meads. 3.354 317.796

TP. 8.232 312.918

TP. 7.152 320.070 2.273 317.797

TP. 8.710 326.507 3.387 323.120

7.655 330.775

BM NW Mission of Florida Man. 6.063 324.712

2.251 326.963

BM SE Morice of Florida Spk. 6.670 320.293

whaler.

320.354

Re-Check Miss & La B M^s

BM SE Univ & Miss Plug.			281.788	ok ✓✓
2720	284.708			
BM SE Miss & Wightman Plug.	5.832	278.876	278.872	ok ✓✓
TP	2.114	280.990	7675 273.315	
TP	1.580	274.895	7.827 267.068	
6.034	273.102			
BM SE Miss & Landis Plug.	1.592	271.510	271.513	ok ✓✓
TP	5031	276.541	3652 272.889	
TP	4.766	277.655	3.374 274.281	
5.236	279.517			
BM SE Miss & Dwight Plug.	4.050	275.467	275.491	ok ✓✓
7.522	282.989			
BM SE La & Dwight Plug.	2.546	280.443	280.438	ok ✓✓
TP	3691	284.134	5.378 278.756	
TP	4.040	282.796	5.328 277.468	
4.144	281.612			
BM NE La & Myrtle Plug.	5.110	276.502	276.541	ok ✓✓

Re-Check - Louisiana B.M^s

BM SE La & Dwight Plug.			280.443	ok ✓✓
TP	4.987	285.430	3.707 281.693	
TP	5.660	287.353	3.967 283.386	
5.781	289.167			
BM SE La & Landis Plug.	3.783	285.884	285.879	ok ✓✓
TP	3.000	288.884	8.844 280.040	
TP	1.149	281.189	3.812 277.377	
TP	9.173	286.550	0.090 286.460	
7.536	293.996			
BM SE La & Wightman Plug.	4.117	289.879		
2.075	291.921			
TP	5.974	297.895	1.386 296.509	
5.092	301.681			
BM SE La & Univ Plug.	6.675	294.906		ok ✓✓
BM SE La & Landis Plug.			285.884	285.879 out
TP	3.775	288.659	7.204 279.455	
TP	2.032	281.487	4.562 276.925	
TP	8.018	284.943	0.659 284.284	
7.515	291.799			
BM SE Wightman & La Plug.	1.892	289.909	289.912	ok ✓✓
TP	6.213	296.122	2.402 293.720	
6.719	300.439			
BM SW Univ & La Plug.	5.509	294.930	294.922	ok ✓✓
This plug has been tampered with & checked back with emb 294.93 in letter.				

Florida BM's

BM NE Univ & Alabama Mon 265.490

TP 5368 270.858 0040 270.818

TP 9961 280.779 0122 280.657

9065 289.722

BM NW Univ & Florida 1.275 288.447 288.472

BM SW Univ & Florida Plug 2639 287.083

TP 7.961 295.044 3.360 291.684

TP 10.121 301.805 8.143 293.662

TP 2.494 296.156 12.000 284.156

4638 288.794

BM Tie Hub. 90' W. 13' Pt. Robinson 6.935 281.859

" " " 40' " " 12.850 275.944

TP 12.825 275.969

TP 1.052 277.021 12.060 264.961

TP 1.481 266.442 8.672 257.770

TP 0.604 258.374 8.794 249.580

TP 1.438 251.018 12.735 238.283

5.199 243.482 *

BM 40' W. 13' Tie Pt. Hub. Cypress 5.205 238.277

" 90' " " " " " 0.891 242.591

Florida BM's

78

TP 243.482 10.190 233.292

TP 2.773 236.065 12.828 223.237

TP 2.615 225.852 11.394 214.458

TP 3.830 218.288 12.143 206.145

2.925 209.070

BM 40' W Tie Hub. Mirtle 7.933 201.137

TP 2.737 203.974 6.305 197.669

4.170 201.839

BM 90' E Tie Out. Upco 6.803 195.036

Alabama B.M.s

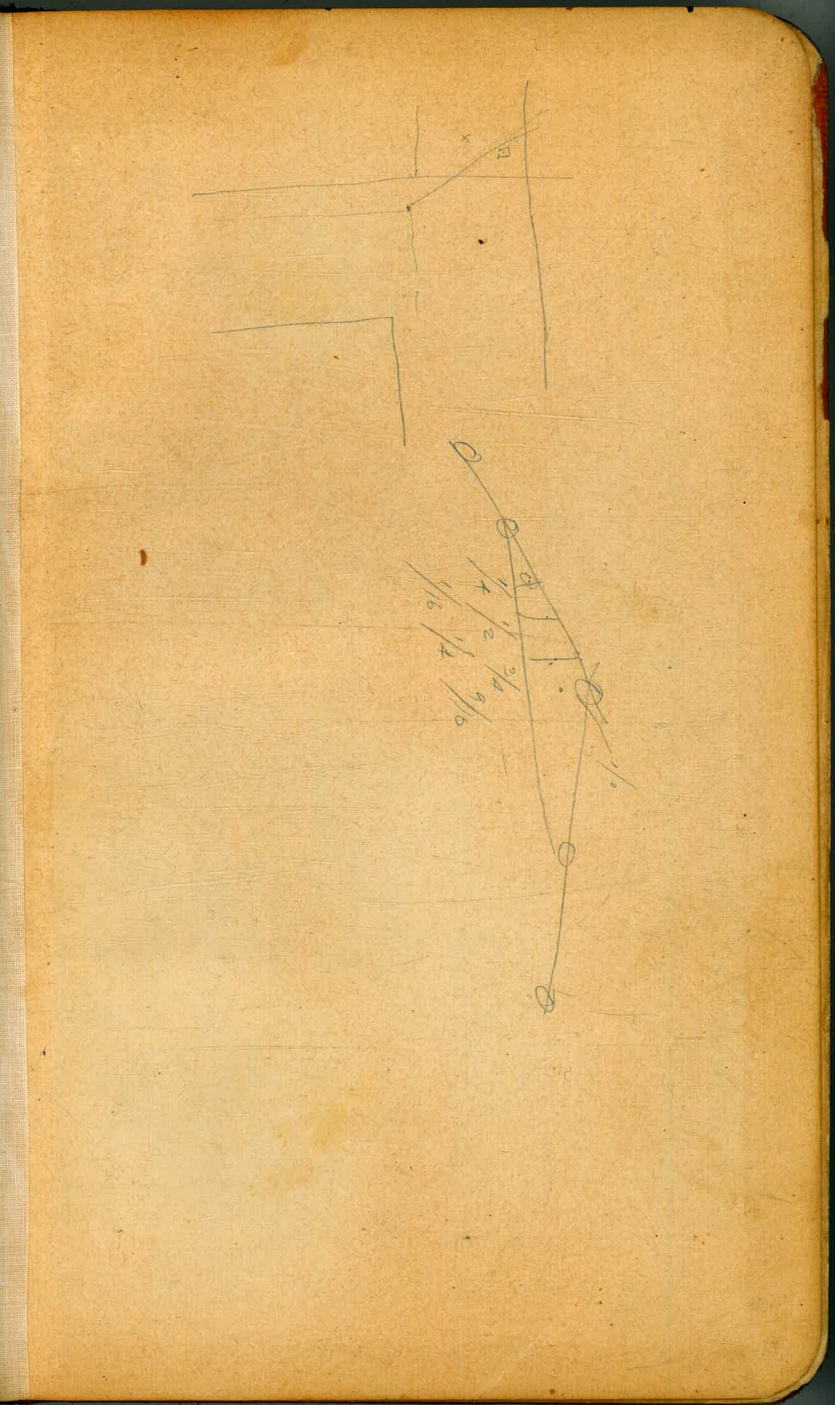
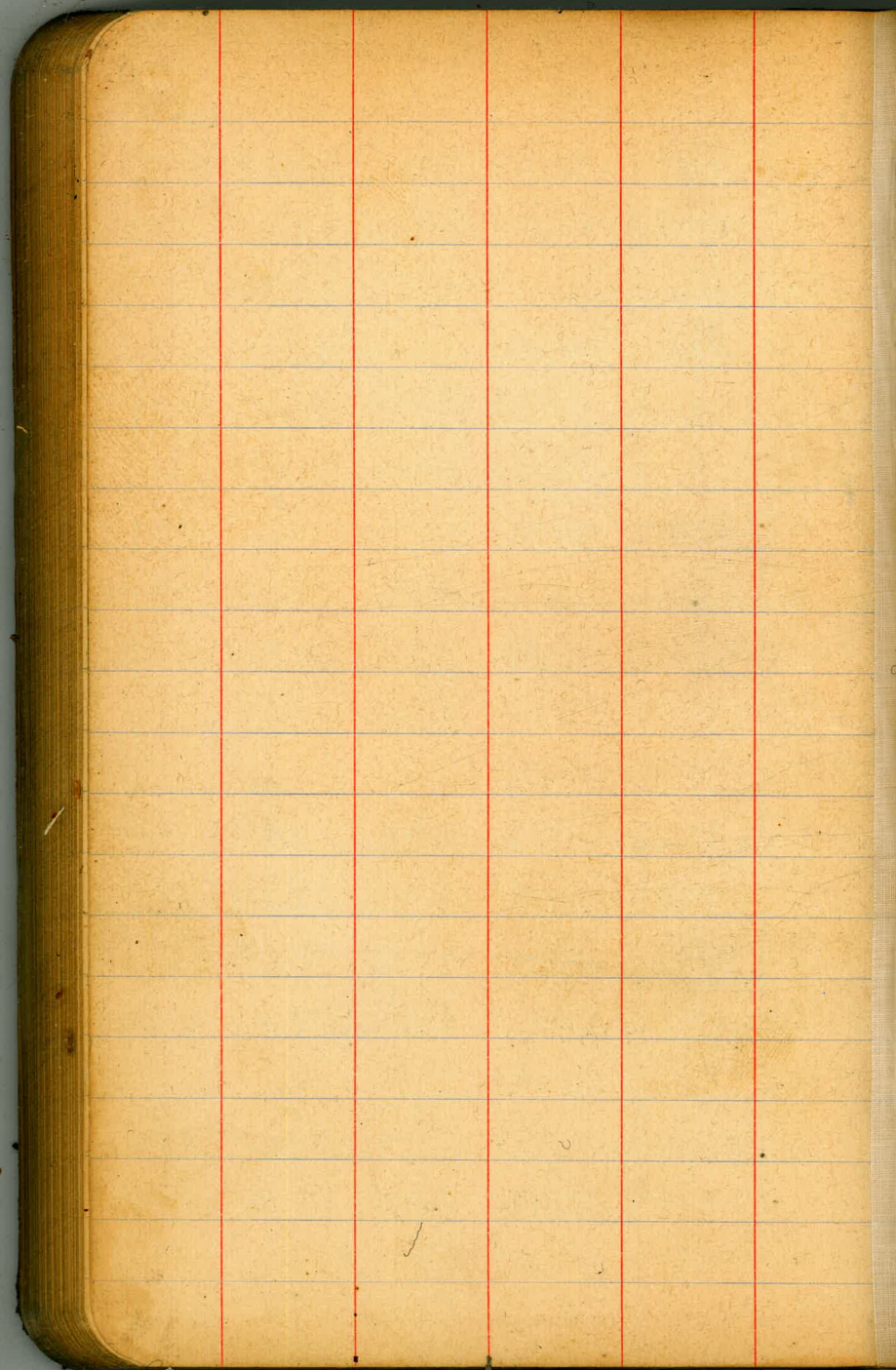
BM. Mon NE Univ. of Alab.			265.490	✓✓
TP	3611	269.101	7679	261.422
	1421	262.843		
BM. SE Alabama & Wigham Plug	7.314		255.529	OK
	5960	261.489		
BM. NW Alab. & Robinson Plug	3.482		258.007	OK
TP	3948	261.955	9988	251.967
	105A	253.021		
BM. SE Alab. & Landa Plug	7.505		245.516	OK
	9040	254.556		
BM. NW. Alabama & Cypress Plug	9.576		244.980	OK
	11.703	256.683		
BM. NE. Alab. & Dwight Plug	0.721		255.962	OK
TP	3674	259.636	5868	253.768
	3853	257.621		
BM. NW. Alab. & Myrtle Plug	6.117		251.504	OK
TP	4095	255.599	1550	254.049
	7183	262.032		
BM. NW. Alabama & Uvas Plug	2.529		259.503	OK

TP	1600	261.103	11.914	249.189	259.503	79
TP	0348	249.537	11.219	238.318		
TP	0487	238.805	10.830	227.975		
TP	0686	228.671	11.374	217.297		
TP	0926	218.223	12.712	205.511		
	1056	206.567				
BM. 90° E Tie out for Florida & Uvas			11.609	194.958	195.036	OK 194.961 ✓
BM. NE. Alab. & Dwight Plug				255.962		
TP	11651	267.613	0.152	267.461		
	12244	279.705				
BM. SE. Alab. & Dwight Plug			4.225	275.480	275.136	
70° - lat. - long. - Obj. - B.M.				251.504	275.036	✓✓
TP	3988	255.492	1.474	254.018		
BM. NW Uvas & 41.31	8.104	262.122	2619	259.503		
TP	2265	261.78	11.625	250.143		
TP	0303	250.446	10.362	240.084		
TP	0990	241.074	12.926	228.648		
TP	0132	229.580	10.955	218.825		
TP	0964	219.787	12.670	209.017		
BM. 90° E. Tie out for Florida	0086	207.705	12.244	194.961	OK	

Florida Pine South 80

90'E Tie out to upper Florida			194.961	OK	
T.P.	6.978	201.939	1205	700.734	
	3.916	204.650			
BM 40' W. Tie out Myrtle			3.489	201.761	201.137
T.P.	10.038	211.199	5.280	205.919	
T.P.	12.734	218.653	1.056	217.597	
T.P.	12.731	230.328	0.622	229.706	
	11.410	241.116			
BM 40' W. Tie out ^{Cypress} Hub			2.813	238.303	238.277
T.P.	9.939	248.242	1.450	247.792	
T.P.	12.867	260.659	1.584	259.075	
T.P.	10.253	269.328	2.537	266.791	
T.P.	9.398	276.169	3.205	272.964	
	12.525	285.489			
BM 40' Tie out W. for Robt Hub.			9.532	275.957	275.944
" 90' " " " " "			3.617	281.872	281.859
T.P.			0.868	284.621	
T.P.	10.630	295.251	1.767	293.484	
T.P.	3.796	297.280	12.392	284.998	
	9.049	293.947			
BM SW of Albiv Plug			6.854	287.093	287.083

BM NE Alabama & Univ Mon.			765.470		80
T.P.	6.331	771.821	1.927	769.894	
	12.306	782.200			
BM SE Miss & Univ Plug			0.212	781.988	
	2.159	784.147			
BM NE of Univ & Miss			1.042	283.105	283.516
" " " " " "			0.647	283.500	
	2.744	284.732			
BM SE Miss & Wightman Plug			5.860	278.872	278.850
T.P.	0.563	279.435	7.075	270.360	
T.P.	1.571	271.937	3.713	268.224	
	6.598	274.822			
BM SE Miss & Landis Plug			3.309	271.513	271.461
T.P.	5.877	277.390	3.637	273.753	
	5.516	279.277			
BM SE Miss & Dwight Plug			3.778	275.491	275.436
	7.530	283.021			
BM SE Dwight & Louisiana Plug			2.543	280.478	280.472
T.P.	3.128	283.606	5.642	277.964	
	3.722	281.686			
BM NE Louisiana & Myrtle			5.145	276.341	276.50



720.54
 2080
 322.384
 3616
 318.768
 7.899
 326.667
 2.038
 324.629
 3296.00
 617
 3296.00

335.837
 3388
 1614
 4359
 60.05
 342.727
 1.4322
 338.395
 5439
 343.854
 3.705
 340.079
 3084
 340.750
 3.471
 344.221
 6489
 337.733
 1.222
 338.225
 326.639
 327.079

365.000
 122.500

329.079
 335.837
 3388
 337.733
 1.222
 338.225
 326.639
 327.079
 330.777
 330.909
 335.837

430
 322
 8

6886

170
 143
 333

54.318
 6.592
 169.20
 1.56
 33.20
 6426
 77.26
 15
 94.26
 30758
 1275
 346.59
 Cadsal Lane

DISTANCES FROM CENTER OF ROADWAY FOR CROSS-SECTIONING.
 ROADWAY 14 FEET WIDE. SIDE SLOPES 1 1/2 TO 1.
 FOR SINGLE TRACK EMBANKMENT.

	0	.1	.2	.3	.4	.5	.6	.7	.8	.9	
0	7.0	7.2	7.3	7.5	7.6	7.8	7.9	8.1	8.2	8.4	0
1	8.5	8.7	8.8	9.0	9.1	9.3	9.4	9.6	9.7	9.9	1
2	10.0	10.2	10.3	10.5	10.6	10.8	10.9	11.1	11.2	11.4	2
3	11.5	11.7	11.8	12.0	12.1	12.3	12.4	12.6	12.7	12.9	3
4	13.0	13.2	13.3	13.5	13.6	13.8	13.9	14.1	14.2	14.4	4
5	14.5	14.7	14.8	15.0	15.1	15.3	15.4	15.6	15.7	15.9	5
6	16.0	16.2	16.3	16.5	16.6	16.8	16.9	17.1	17.2	17.4	6
7	17.5	17.7	17.8	18.0	18.1	18.3	18.4	18.6	18.7	18.9	7
8	19.0	19.2	19.3	19.5	19.6	19.8	19.9	20.1	20.2	20.4	8
9	20.5	20.7	20.8	21.0	21.1	21.3	21.4	21.6	21.7	21.9	9
10	22.0	22.2	22.3	22.5	22.6	22.8	22.9	23.1	23.2	23.4	10
11	23.5	23.7	23.8	24.0	24.1	24.3	24.4	24.6	24.7	24.9	11
12	25.0	25.2	25.3	25.5	25.6	25.8	25.9	26.1	26.2	26.4	12
13	26.5	26.7	26.8	27.0	27.1	27.3	27.4	27.6	27.7	27.9	13
14	28.0	28.2	28.3	28.5	28.6	28.8	28.9	29.1	29.2	29.4	14
15	29.5	29.7	29.8	30.0	30.1	30.3	30.4	30.6	30.7	30.9	15
16	31.0	31.2	31.3	31.5	31.6	31.8	31.9	32.1	32.2	32.4	16
17	32.5	32.7	32.8	33.0	33.1	33.3	33.4	33.6	33.7	33.9	17
18	34.0	34.2	34.3	34.5	34.6	34.8	34.9	35.1	35.2	35.4	18
19	35.5	35.7	35.8	36.0	36.1	36.3	36.4	36.6	36.7	36.9	19
20	37.0	37.2	37.3	37.5	37.6	37.8	37.9	38.1	38.2	38.4	20
21	38.5	38.7	38.8	39.0	39.1	39.3	39.4	39.6	39.7	39.9	21
22	40.0	40.2	40.3	40.5	40.6	40.8	40.9	41.1	41.2	41.4	22
23	41.5	41.7	41.8	42.0	42.1	42.3	42.4	42.6	42.7	42.9	23
24	43.0	43.2	43.3	43.5	43.6	43.8	43.9	44.1	44.2	44.4	24
25	44.5	44.7	44.8	45.0	45.1	45.3	45.4	45.6	45.7	45.9	25
26	46.0	46.2	46.3	46.5	46.6	46.8	46.9	47.1	47.2	47.4	26
27	47.5	47.7	47.8	48.0	48.1	48.3	48.4	48.6	48.7	48.9	27
28	49.0	49.2	49.3	49.5	49.6	49.8	49.9	50.1	50.2	50.4	28
29	50.5	50.7	50.8	51.0	51.1	51.3	51.4	51.6	51.7	51.9	29
30	52.0	52.2	52.3	52.5	52.6	52.8	52.9	53.1	53.2	53.4	30
31	53.5	53.7	53.8	54.0	54.1	54.3	54.4	54.6	54.7	54.9	31
32	55.0	55.2	55.3	55.5	55.6	55.8	55.9	56.1	56.2	56.4	32
33	56.5	56.7	56.8	57.0	57.1	57.3	57.4	57.6	57.7	57.9	33
34	58.0	58.2	58.3	58.5	58.6	58.8	58.9	59.1	59.2	59.4	34
35	59.5	59.7	59.8	60.0	60.1	60.3	60.4	60.6	60.7	60.9	35
36	61.0	61.2	61.3	61.5	61.6	61.8	61.9	62.1	62.2	62.4	36

Calculated by Julien A. Hall, M. Am. Soc. C. E.

MADE IN GERMANY.