

958

F.B. 958

LEVEL BOOK

373

KEUFFEL & ESSER CO.

DRAWING MATERIALS

AND

SURVEYING INSTRUMENTS.

NEW YORK.

CHICAGO.

SAN FRANCISCO.

ST. LOUIS.

TABLES FOR EXCAVATIONS AND EMBANKMENTS.

DISTANCES FROM CENTER OF ROADWAY FOR CROSS-SECTIONING.

ROADWAY 18 FEET WIDE. SIDE SLOPES 1 TO 1.

FOR SINGLE TRACK EXCAVATION.

"Copyright, 1895, by Keuffel & Esser Co."

958

	0	.1	.2	.3	.4	.5	.6	.7	.8	.9	
0	9.0	9.1	9.2	9.3	9.4	9.5	9.6	9.7	9.8	9.9	0
1	10.0	10.1	10.2	10.3	10.4	10.5	10.6	10.7	10.8	10.9	1
2	11.0	11.1	11.2	11.3	11.4	11.5	11.6	11.7	11.8	11.9	2
3	12.0	12.1	12.2	12.3	12.4	12.5	12.6	12.7	12.8	12.9	3
4	13.0	13.1	13.2	13.3	13.4	13.5	13.6	13.7	13.8	13.9	4
5	14.0	14.1	14.2	14.3	14.4	14.5	14.6	14.7	14.8	14.9	5
6	15.0	15.1	15.2	15.3	15.4	15.5	15.6	15.7	15.8	15.9	6
7	16.0	16.1	16.2	16.3	16.4	16.5	16.6	16.7	16.8	16.9	7
8	17.0	17.1	17.2	17.3	17.4	17.5	17.6	17.7	17.8	17.9	8
9	18.0	18.1	18.2	18.3	18.4	18.5	18.6	18.7	18.8	18.9	9
10	19.0	19.1	19.2	19.3	19.4	19.5	19.6	19.7	19.8	19.9	10
11	20.0	20.1	20.2	20.3	20.4	20.5	20.6	20.7	20.8	20.9	11
12	21.0	21.1	21.2	21.3	21.4	21.5	21.6	21.7	21.8	21.9	12
13	22.0	22.1	22.2	22.3	22.4	22.5	22.6	22.7	22.8	22.9	13
14	23.0	23.1	23.2	23.3	23.4	23.5	23.6	23.7	23.8	23.9	14
15	24.0	24.1	24.2	24.3	24.4	24.5	24.6	24.7	24.8	24.9	15
16	25.0	25.1	25.2	25.3	25.4	25.5	25.6	25.7	25.8	25.9	16
17	26.0	26.1	26.2	26.3	26.4	26.5	26.6	26.7	26.8	26.9	17
18	27.0	27.1	27.2	27.3	27.4	27.5	27.6	27.7	27.8	27.9	18
19	28.0	28.1	28.2	28.3	28.4	28.5	28.6	28.7	28.8	28.9	19
20	29.0	29.1	29.2	29.3	29.4	29.5	29.6	29.7	29.8	29.9	20
21	30.0	30.1	30.2	30.3	30.4	30.5	30.6	30.7	30.8	30.9	21
22	31.0	31.1	31.2	31.3	31.4	31.5	31.6	31.7	31.8	31.9	22
23	32.0	32.1	32.2	32.3	32.4	32.5	32.6	32.7	32.8	32.9	23
24	33.0	33.1	33.2	33.3	33.4	33.5	33.6	33.7	33.8	33.9	24
25	34.0	34.1	34.2	34.3	34.4	34.5	34.6	34.7	34.8	34.9	25
26	35.0	35.1	35.2	35.3	35.4	35.5	35.6	35.7	35.8	35.9	26
27	36.0	36.1	36.2	36.3	36.4	36.5	36.6	36.7	36.8	36.9	27
28	37.0	37.1	37.2	37.3	37.4	37.5	37.6	37.7	37.8	37.9	28
29	38.0	38.1	38.2	38.3	38.4	38.5	38.6	38.7	38.8	38.9	29
30	39.0	39.1	39.2	39.3	39.4	39.5	39.6	39.7	39.8	39.9	30
31	40.0	40.1	40.2	40.3	40.4	40.5	40.6	40.7	40.8	40.9	31
32	41.0	41.1	41.2	41.3	41.4	41.5	41.6	41.7	41.8	41.9	32
33	42.0	42.1	42.2	42.3	42.4	42.5	42.6	42.7	42.8	42.9	33
34	43.0	43.1	43.2	43.3	43.4	43.5	43.6	43.7	43.8	43.9	34
35	44.0	44.1	44.2	44.3	44.4	44.5	44.6	44.7	44.8	44.9	35
36	45.0	45.1	45.2	45.3	45.4	45.5	45.6	45.7	45.8	45.9	36

Calculated by Julien A. Hall, M. Am. Soc. C. E.

11/19/16

Gregory
Shoemaker
MooreCROSS SECTION OF (50' WIDE)
PALM ST
from the East Line of India St
to West Union St

112.65

B.M.

12.64

112.55

99.91

SE Palm
& India

E. L. INDIA ST.

S

11.7

100.9

cb

12.0

100.6

1/4

12.2

100.4

c

12.3

100.3

1/4

12.5

100.1

cb

12.7

99.9

N

12.7

99.9

15' E

- 20

22.0

90.6

- 12

24.0

88.6

= bottom of
Pipe Inlets

N

19.4

93.2

cb

15.8

96.8

1/4

14.3

98.3

c

11.2

101.4

1/4

10.9

101.7

cb

10.9

101.7

112.6

PALM ST.

①

10.8

101.8

50' E

S

6.5

106.1

+ 5

8.2

104.4

cb

8.3

104.3

1/4

8.1

104.5

c

11.5

101.1

1/4

14.7

97.9

cb

16.3

96.3

N

20.0

92.6

+ 15

23.0

89.6

+ 30

19.5

93.1

100' E

- 40

13.7

98.9

- 25

17.8

94.8

- 12

17.8

94.8

N

14.0

98.6

cb

10.3

102.3

1/4

7.3

105.3

c

3.3

109.3

	112.55			
	(1126)			
+3		1.7	110.9	
1/4		1.8	110.8	
cb		2.2	110.9	
+6		2.4	110.2	
S		0.5	112.1	
T.P.	12.36	124.78	0.13	112.42
		150' E		
S		9.1	115.7	
cb		8.6	116.2	
1/4		8.6	116.2	
C		10.7	114.1	
1/4		13.5	111.3	
cb		16.8	108.0	
N		21.1	103.7	
+20		25.3	199.5	
+50		20.8	104.0	
		200' E = W. L. COLUMBIA ST. (75' WIDE)		
-50		17.6	107.2	
-35		21.1	103.7	
-25		21.5	103.3	

	(124.8)	PALM ST	2
N		11.2	113.6
cb		9.0	115.8
1/4		7.9	116.9
C		5.4	119.4
1/4		2.7	122.1
cb		2.7	122.1
+7		3.5	121.3
+8		0.8	124.0
S		0.3	124.5
T.P.	12.33	136.18	123.85
		123.95	111.62
		0.93	
		W. CURB	
S		9.7	126.5
+2		10.2	126.0
+3		13.2	123.0
cb		12.5	123.7
1/4		12.3	123.9
C		14.5	121.7
1/4		17.2	119.0
cb		18.4	117.8
N		20.0	116.2

#2395
136.18

+ 29	23.8	112.4
+ 38	23.6	112.6
+ 50	20.6	115.6

W. QUARTER

- 50	23.9	112.3
- 38	26.3	109.9
- 33	26.6	109.6

N	19.3	116.9
cb	17.4	118.8
1/4	15.5	120.7
C	12.5	123.7
1/4	11.1	125.1
cb	11.3	124.9
+ 6	11.6	124.6
S	8.3	127.9

CENTER

S	6.4	129.8
+ 4	9.7	126.5
cb	9.5	126.7
1/4	9.4	126.8

136.18 + 3. PALM ST 3

C	11.0	125.2
1/4	13.6	122.6
cb	16.3	119.9
N	18.6	117.6
+ 40	29.4	106.8
+ 50	26.6	109.6

E. QUARTER

- 50	25.7	110.5
- 40	28.6	107.6
N	16.0	120.2
cb	13.4	122.8
1/4	11.4	124.8
C	9.3	126.9
1/4	7.6	128.6
cb	7.5	128.5
+ 6	7.6	128.6
S	4.1	132.1

E CURB

S	3.1	133.1
+ 2	6.0	130.2

183.75
136.1875

cb	5.9	130.3
1/4	5.8	130.4
C	7.7	128.5
3/4	10.5	125.7
cb	12.1	124.1
N	15.1	121.1
+ 48	27.8	108.4
+ 53	24.7	111.5

E.L. COLUMBIA ST

- 55	23.8	112.4
- 45	27.0	109.2
N	13.8	122.4
cb	10.3	125.9
1/4	7.8	128.4
C	6.3	129.9
1/4	4.3	131.9
cb	4.3	131.9
+ 8	4.6	131.6
S	2.6	133.6
T.P.	1.15	135.03
18.63	135.43	132.80

147.6675 PALM ST 14

25' E		
S	10.3	137.4
+ 2	12.8	134.9
cb	12.5	135.2
1/4	12.2	135.5
C	12.8	134.9
1/4	15.4	132.3
cb	18.1	129.6
N	20.8	126.9
+ 50	36.0	111.7
+ 65	32.0	115.7
50' E		
- 75	29.5	118.2
- 60	33.7	114.0
N	18.2	129.5
cb	15.4	132.3
1/4	13.3	134.4
C	11.9	135.8
1/4	9.6	138.1
cb	9.3	138.4

~~135.43~~
147.66

TP		9.2	138.5
S		7.1	140.6
	75' E		
S		4.8	142.9
TI		5.9	141.8
cb		6.0	141.7
1/4		6.4	141.3
C		9.3	138.4
1/4		10.4	137.3
cb		12.6	135.1
N		14.6	133.1
	100' E		
N		12.1	135.6
cb		9.6	138.1
1/4		8.0	139.7
C		6.7	141.0
1/4		2.6	145.1
cb		2.9	144.8
S		1.4	146.3
T.P.	12.49	0.39	147.27
			147.53 135.84

159.76

PALM

135 5

	125' E		
S		10.1	149.7
cb		11.7	148.1
1/4		11.3	148.5
C		11.0	148.8
1/4		16.0	143.8
cb		17.2	142.6
N		19.5	140.3
	150' E		
N		12.8	147.0
cb		10.7	149.1
1/4		7.3	152.5
C		7.8	152.0
1/4		8.3	151.5
cb		8.4	151.4
S		7.4	152.4
	175' E		
S		2.6	157.2
cb		3.3	156.5
1/4		3.8	156.0

147.53
159.76

a	3.8	156.0
1/4	3.8	156.0
cb	3.7	156.1
+5	3.3	156.5
N	4.5	155.3
+30	6.7	153.1

200' E = W. L. STATE ST (75' WIDE)

-30	0.7	159.1
TP	12.88	172.53 160.30
	0.11	159.65 147.48
N	12.5	160.0
cb	12.8	159.7
1/4	12.9	159.6
C	12.6	159.9
1/4	12.2	160.3
cb	11.3	161.2
S	10.2	162.3

W. CURB

S	8.9	163.6
cb	9.7	162.8
1/4	9.4	163.1

172.53 179 PALM ST 6

C	8.5	164.0
1/4	7.8	164.7
cb	8.8	163.7
N	9.3	163.2

W. QUARTER

N	8.5	166.0
cb	5.4	167.1
1/4	4.4	168.1
C	4.0	168.5
1/4	3.7	168.8
cb	3.4	169.1
S	3.0	169.5

CENTER

S	0.0	172.5
cb	0.4	172.1
1/4	0.8	171.7
C	1.0	171.5
1/4	1.3	171.2
cb	1.7	170.8
N	3.6	168.9

172.53 2/3
 T.P. 12.84 184.50 171.66
~~172.27~~ 0.87 ~~159.43~~

E. QUARTER

N 12.6 171.9
 cb 11.1 173.4
 1/4 10.5 174.0
 C 9.9 174.6
 1/4 9.4 175.1
 cb 9.4 175.1
 S 9.0 175.5

E CURB

S 5.8 178.7
 cb 7.0 177.5
 1/4 7.3 177.2
 C 7.4 177.1
 1/4 7.6 176.9
 cb 8.2 176.3
 N 8.9 175.6

E. L. STATE ST

N 6.2 178.3
 cb 4.3 180.2

184.50 2/3 PALM ST 7

1/4 3.8 180.7
 C 3.7 180.8
 1/4 3.6 180.9
 cb 3.5 181.0
 S 3.7 180.8

T.P. 12.84 195.25 182.41
~~183.02~~ 2.09 ~~170.18~~

25' E

S 10.0 185.2
 cb 10.4 184.8
 1/4 10.5 184.7
 C 10.8 184.4
 1/4 10.8 184.4
 cb 11.3 184.0
 N 12.4 182.8

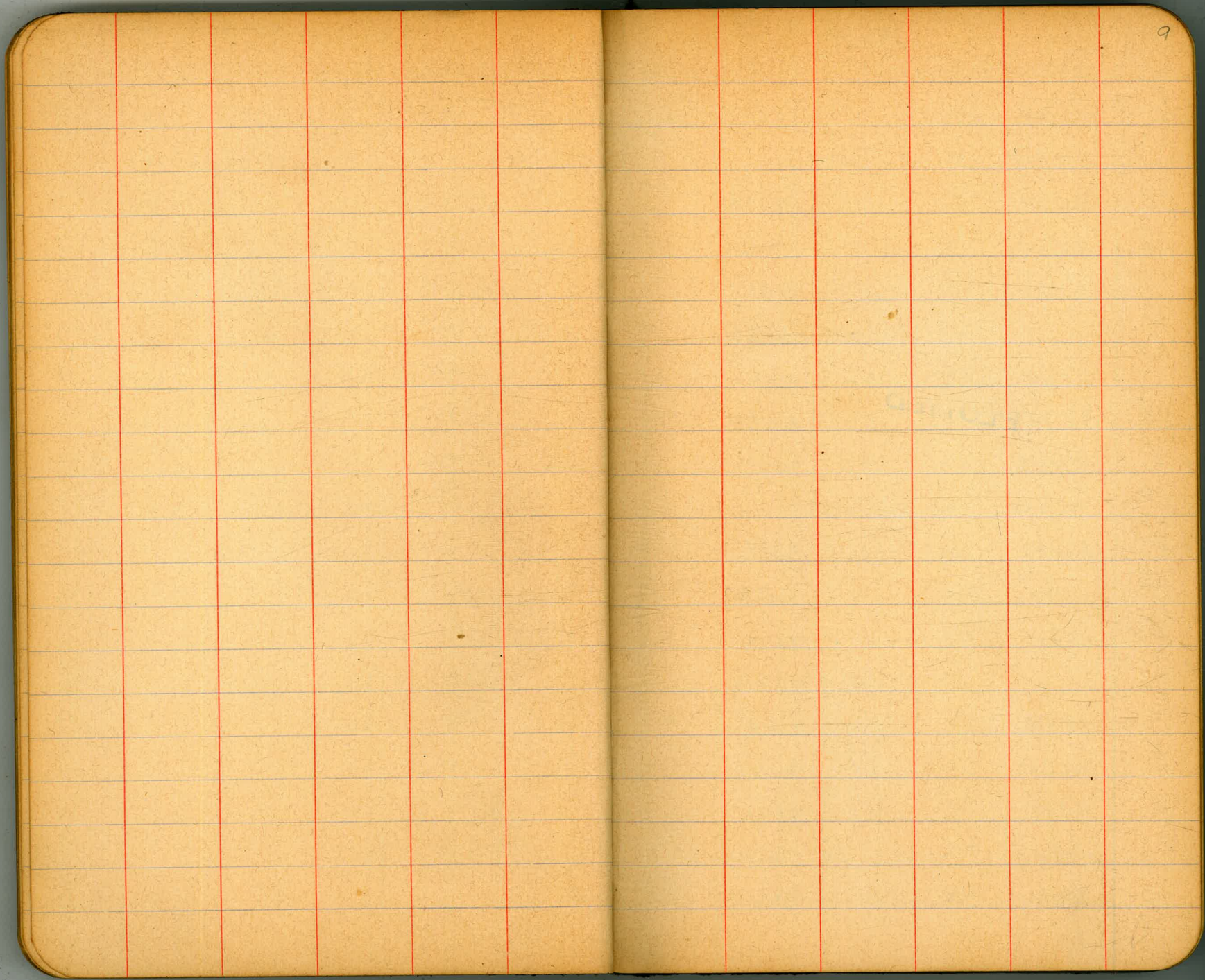
50' E

N 9.0 186.2
 cb 8.2 187.0
 1/4 8.0 187.2
 C 7.7 187.5
 1/4 7.6 187.6

		183.08 195.25		
cb			7.3	188.0
S			7.1	188.1
		100' E		
S			1.9	193.3
cb			2.1	193.1
1/4			1.8	193.4
C			1.8	193.4
1/4			2.1	193.1
cb			2.5	192.7
N			3.2	192.0
T.P.	6.40	200.69 188.46	0.96	194.29 182.06
		150' E		
N			6.0	194.7
cb			5.9	194.8
1/4			4.8	195.9
C			3.8	196.7
1/4			3.5	197.2
cb			3.5	197.2
S			3.4	197.3

		200.69	PALM ST	8
		200	E = W.L. UNION ST	
S			2.4	198.3
cb			2.0	198.7
1/4			1.9	198.8
C			1.9	198.8
1/4			2.2	198.5
+2			4.2	196.5
cb			5.0	195.7
N			5.1	195.6
CHK.			4.60	196.09 183.86

Finish State
N.Y. Cor. of
Union + Palm



9

11/19/14 Gregory
Shoemaker
Moore

CROSS SECTION OF
WELLBORN ST. (50' WIDE)
From 70' So. of Torrence St
To the E.L. of Middletown Add.

260.9

WELLBORN 10

B.M. 0.03 260.87 260.54 ^{N.W.} Torrence & Wellborn

70' So. of Torrence.

W	13.1	267.8
cb	14.6	266.7
1/4	15.2	265.7
C	15.3	265.6
1/4	15.8	265.1
cb	17.1	263.8
E	18.2	262.7

PLOTTED

50' So. of Torrence

E	15.3	265.6
cb	14.7	266.2
1/4	13.3	267.6
C	12.6	268.7
1/4	12.5	268.4
cb	11.9	269.0
W	10.7	270.2

S.L. TORRENCE ST (50' WIDE)

W	4.5	286.5
---	-----	-------

cb
1/4
C
1/4
cb
E
E
cb
1/4
C
1/4
cb
W
W
cb
1/4
C
1/4

SO. CURB

SO. QUARTER

5.9	285.0
6.7	286.2
7.0	287.9
7.5	287.4
8.9	287.0
9.8	287.1
8.2	287.7
7.7	287.8
6.2	286.7
5.9	285.0
5.1	285.8
4.3	286.6
3.3	287.6
2.6	288.3
3.5	287.4
4.0	286.9
5.0	285.9
5.5	285.4

360.87

cb	6.4	4565
E	7.4	4575

CENTER

E	7.0	4579
cb	5.7	4587
1/4	5.0	4589
C	4.3	4566
1/4	3.4	4575

PLOTTED

cb	2.5	4584
W	2.1	4588

No. QUARTER

W	1.3	4596
cb	2.3	4586
1/4	2.6	4587
C	3.3	4576
1/4	4.0	4569
cb	5.2	4587
E	6.6	4547

No. CURB

E	5.6	4557
---	-----	------

460.9

WELLBORN

11

cb	4.3	4566		
1/4	3.3	4576		
C	2.7	4587		
1/4	2.3	4586		
cb	1.3	4596		
W	0.4	4605		
T.P	11.85	272.69	0.03	360.84

N.L. Torrence St.

W	11.2	4615
cb	12.5	4607
1/4	13.2	4595
C	13.7	4590
1/4	14.1	4586
cb	15.6	4571
E	15.9	4568

50 No.

E	13.3	4594
cb	12.2	4605
1/4	10.4	4627
C	10.1	4626

27269

1/4		9.6	267.1
cb		9.1	267.6
W		8.0	264.7
	100' No.		
W		6.4	266.3
cb		7.1	265.6
1/4		7.7	265.0
C		7.9	264.8
1/4		8.3	264.4
cb	PLOTTED	9.6	263.1
E		10.6	262.1
	150' No.		
E		6.8	265.9
cb		6.3	266.4
1/4		5.4	267.3
C		5.0	267.7
1/4		5.2	267.5
cb		4.4	268.3
W		3.8	268.9

2727

WELLBORN

12

200' No. = S.L. = NEALE ST. 50' WIDE

W		2.3	270.4
cb		2.5	270.2
1/4		2.7	270.0
C		2.7	270.0
1/4		2.9	269.8
cb	8	3.6	269.1
E		4.0	268.7
	So. CURB		
E		3.7	269.0
cb		3.1	269.6
1/4		2.6	270.1
C		2.4	270.3
1/4		2.2	270.5
cb		2.3	270.4
W		2.5	270.2
	So. QUARTER		
W		2.3	270.4
cb		1.9	270.8
1/4		1.9	270.8

272.69

C	2.2	270.5
1/4	2.3	270.6
cb	2.6	270.1
E	3.2	269.5

CENTER

E	3.2	269.5
cb	2.6	270.1
1/4	2.2	270.5
C	2.0	270.7

PLOTTED

1/4	1.8	270.9
cb	1.8	270.9
W	2.1	270.6

NO. QUARTER

W	1.8	270.9
cb	1.8	270.9
1/4	1.6	271.1
C	1.8	270.9
1/4	2.1	270.6
cb	2.8	269.9
E	3.3	269.4

272.7

WELLBORN

13

NO. CURB

E	2.9	270.0
cb	2.5	270.2
1/4	1.8	270.9
C	1.6	271.1
1/4	1.5	271.2
cb	1.5	271.2
W	1.3	271.4

NO. LINE NEALE ST.

W	1.7	271.0
cb	1.5	271.2
1/4	1.4	271.3
C	1.4	271.3
1/2	1.6	271.1
cb	2.5	270.2
E	2.6	270.1

50' NO

E	2.6	270.1
cb	2.6	270.1
1/4	2.4	270.2

272.69

C	2.4	770.3
1/4	2.8	769.9
cb	2.6	770.1
W	2.7	770.0
100' No.		
W	5.2	767.5
cb	5.2	767.5
1/4	5.4	767.7
C	5.0	767.7
1/4	4.8	767.9
cb	4.0	768.7
E	3.7	769.0
150' No.		
E	5.5	767.2
cb	6.2	766.5
1/4	7.7	765.0
C	8.0	764.7
1/4	8.3	764.4
cb	8.6	764.1
W	9.5	763.7

PLOTTED

WELLBORN

14

T.P. 3.72 26718 9.23 26346

200' No. = S.L. SUTTER ST (50' WIDE)

W	6.2	761.0
cb	5.5	761.7
1/4	4.7	762.5
C	3.9	762.3
1/4	3.4	762.8
cb	3.3	763.9
E	2.1	765.1

50' CURB

E	2.7	764.5
cb	3.2	764.0
1/4	3.7	763.5
C	4.2	763.0
1/4	5.0	762.7
cb	5.4	761.8
W	6.1	760.8

50' QUARTER

W	6.3	760.9
cb	5.4	761.8

267.18.

1/4	47	267.5
C	43	267.9
1/8	39	267.7
cb	32	266.0
E	23	264.9

CENTER.

E	28	264.4
cb	36	263.6
1/4	41	262.1
C	45	262.7
1/4	50	262.2
cb	57	261.5
W	65	260.7

PLOTTED

NO. QUARTER.

W	68	260.4
cb	60	261.2
1/4	51	262.1
C	45	262.7
1/4	44	262.8
cb	42	262.0

267.2

WELLBORN

15

E	3.1	264.1
NO. CURB		
E	2.9	264.3
cb	4.2	263.0
1/4	4.5	262.7
C	4.5	262.7
1/4	5.1	262.1
cb	5.9	261.3
W	6.6	260.6

N. L. JUTTER ST.

W	7.0	260.2
cb	6.1	261.1
1/4	5.3	261.9
C	4.7	262.6
1/4	4.7	262.5
cb	4.1	262.1
E	3.0	264.2

50' NO

E	3.7	262.5
cb	5.0	262.7

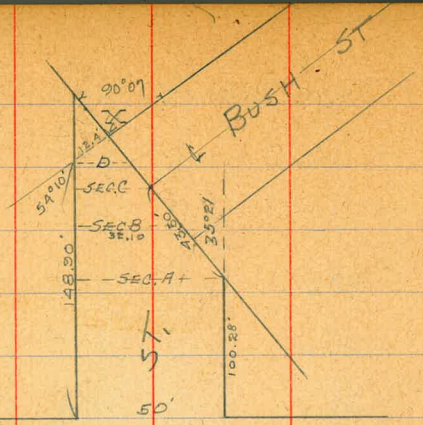
367.18

1/4	5.7	761.5
C	61	761.1
1/4	6.6	760.6
cb	7.6	759.6
W	87	758.5
100.28' No. = SECTION A.		
W	130	756.7
cb	10.4	756.8
1/4	87	758.5
C	75	759.7
1/4	73	759.9
cb	64	760.8
E	47	767.5
125.28' No. = SECTION B		
	7.4	759.8
EAST 1/4	7.6	759.6
C	77	759.5
1/4	10.9	756.7
cb	13.0	756.7
W.	16.0	751.7

PLOTTED

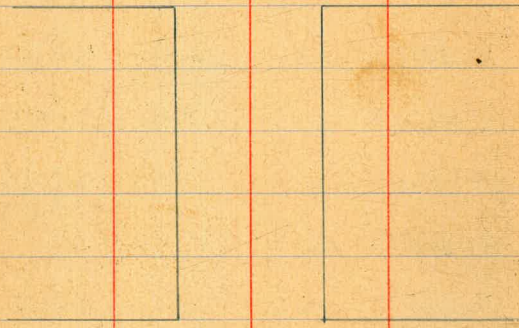
WELL BORN ST 16

T.P.	1.34	255.49	13.03	254.15
+ 15			9.1	746.2
+ 25			15.9	779.6
135.28' No. = SECTION C				
- 25			18.4	737.1
- 15			12.6	744.9
W			6.8	748.7
cb.			2.7	757.8
1/4			0.6	754.9
C			+ 3.0	758.5
			+ 4.0	759.5
148.90' No. = SECTION D				
			9.1	746.2
cb			10.3	745.7
W			14.2	741.3
+ 35			27.6	727.9
Point X			13.7	741.8
T.P.	10.84	264.99	1.34	254.15
CHK.			9.97	End of 261.02 Corb on 261.04 Bust



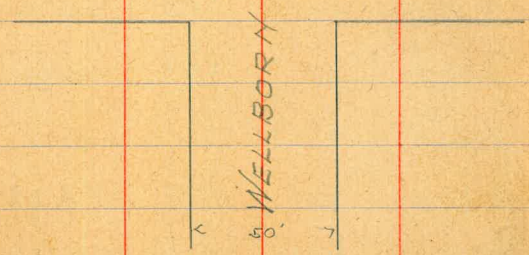
SUTTER

ST



NEALE

ST



11/21/16
Gregory/
Shoemaker
Moore

CROSS-SECTION OF
ROBINSON AVE + CURLEW ST
From W.L. Albatross ST. To the
S.W. of Pennsylvania Ave (see sketch)

267.2

ROBINSON

18

130' W = E.L.

10' WILD ST

30' WIDE
5' C&S
5' H.

B.M. 0.10 267.16 267.06 NE Robin + Albatross

N

2.6 264.6

W.L. Albatross

cl

3.2 264.0

So. Cb. 1.5 } 265.7
1.9 } 265.3

1/4

3.0 264.2

1/4 1.5 265.7

C

2.9 264.7

C 1.4 265.8

1/4

3.3 263.9

1/4 1.6 265.6

cl

3.2 264.0

No. Cb. 1.6 } 265.6
0.9 } 266.3

S

2.9 264.7

50' W

E. CURB

No. Cb. 1.6 } 265.6
2.3 } 264.9

S

3.4 263.8

1/4 2.2 265.0

cl

3.7 263.5

C 2.0 265.7

1/4

3.3 263.9

1/4 2.2 265.0

C

3.0 264.7

So. Cb. 2.7 } 264.5
2.3 } 264.9

1/4

3.2 264.0

100' W

cl

3.2 264.0

So. Cb. 2.6 } 264.6
3.1 } 264.1

N

2.6 264.6

1/4 2.6 264.6

E QUARTER

C 2.4 264.8

N

2.6 264.6

1/4 2.8 264.4

cl

3.5 263.7

No. Cb. 3.2 } 264.0
2.4 } 264.8

1/4

3.3 263.9

267.16

C	3.1	464.1
1/4	3.4	467.8
cb	3.7	467.5
S	3.5	467.7

CENTER

S	3.5	467.7
cb	3.8	467.4
1/4	3.5	467.7
C	3.2	464.0
1/4	3.4	467.8
cb	3.4	467.8
N	2.8	464.4

W. QUARTER

N	2.8	464.4
cb	3.5	467.7
1/4	3.5	467.7
C	3.3	467.9
1/4	3.6	467.6
cb	3.8	467.4
S	3.6	467.6

467.7

ROBINSON

19-

W CURB

S	3.7	467.5
cb	4.0	467.7
1/4	3.6	467.6
C	3.4	467.8
1/4	3.7	467.5
cb	3.7	467.5
N	2.8	464.4

W. L. DOLLWILD

N	2.9	464.3
cb	3.7	467.5
1/4	3.7	467.5
C	3.5	467.7
1/4	3.7	467.5
cb	4.1	467.1
S	3.8	467.4
50' W		
S	4.6	467.6
cb	4.7	467.5
1/4	4.5	467.7

267.16

C	4.2	267.0
1/4	4.3	267.9
cb	4.4	267.8
	3.7	267.5
85' W		
No. cb	4.1	267.1
	4.8	267.4
1/4	4.6	267.6
C	4.6	267.6
1/4	5.0	267.7
cb	5.0	267.7
S	5.0	267.7
105' W		
S	5.4	261.8
cb	5.3	261.9
1/4	5.5	261.7
C	4.6	267.6
1/4	5.2	267.0
cb	4.5	267.7
N	4.2	267.0
110' W		
N	4.2	267.0

267.7

ROBINSON

20

cb	4.5	267.7
1/4	5.3	261.9
C	4.7	267.5
1/4	5.6	261.6
cb	5.3	261.9
S	5.6	261.6
135' W		
S	5.7	261.5
cb	5.5	261.7
1/4	6.0	261.7
C	5.1	267.1
1/4	5.6	261.6
cb	4.7	267.5
N	4.5	267.7
160' W		
N	4.7	267.5
cb	5.0	267.7
1/4	5.9	261.3
C	5.5	261.7
1/4	6.4	260.8

267.16

dt			5.8	761.0
S			6.2	761.0
		185' W		
S			7.2	760.0
dt			6.8	760.0
1/4			6.9	760.3
C			6.3	760.9
1/4			6.6	760.6
dt			5.5	761.7
N			5.2	762.0
T.P.	0.92	259.34	8.74	258.42
		220' W		
N			0.2	759.1
dt			0.4	758.9
1/4			1.3	758.0
C			1.1	758.7
1/4			2.1	757.7
dt			1.5	757.8
S			2.1	757.7

7593

ROBINSON

21

235' W = SECT. A

S			5.0	754.3
dt			4.5	754.8
1/4			4.0	755.3
C			4.0	755.3
1/4			3.2	756.1
dt			2.2	757.1
N			2.3	757.0

SECT. B

N			9.5	749.8
dt			9.2	750.1
1/4			8.8	750.5
C			8.7	750.6
1/4			9.0	750.3
dt			8.1	751.2
S			7.9	751.0

SECT. C

S			11.3	748.0
dt			12.4	746.9
T.P.	0.20	246.69	12.85	246.49

1/4			2.5	724.7
C			2.2	726.5
1/4			2.9	723.8
cb			4.3	724.2
N or W.			6.0	720.7
		SECT D		
		HOUSE		
W			12.1	727.6
cb			10.8	729.9
1/4			8.3	728.4
C			7.5	729.2
1/4			7.0	729.7
cb			5.8	720.9
E			2.8	723.9
		SECT E		
E			5.5	721.2
cb			9.0	727.7
1/4			11.6	729.1
C			12.4	724.3
T.P.	1.12	235.18	12.63	234.06
1/4			1.9	723.3

725.2			4.4	721.8
			6.2	729.0
		50' So. of SECT E		
			12.6	722.6
			10.5	724.7
			7.6	727.6
			7.2	728.0
			6.5	728.7
			3.3	731.9
			0.3	734.9
		75' 50		
			3.6	731.6
			5.5	729.7
			8.7	726.5
			8.8	726.2
			10.2	725.0
			13.2	724.0
			16.0	719.2
		100' 50		
			17.1	718.1

235.18

cb	148	220.4
1/4	11.5	223.7
C	10.6	224.6
1/4	9.9	225.3
cb	6.7	228.5
E	4.8	230.4

150' So

E	8.6	226.6
cb	10.2	225.0
1/4	14.2	221.0
C	14.4	220.8
1/4	14.7	220.5
cb	15.8	219.6
W	17.9	217.3

170.5' So. = N.L. SLOANE AVE.

W	18.3	216.9
cb	17.2	218.0
1/4	16.4	219.8
C	15.7	219.5
1/4	15.3	219.9

235.2

ROBINSON

23

cb	12.9	224.3
E	10.6	224.6
No. CURB	11.8	223.6
E	11.8	223.6
TP	0.23	222.31
	13.10	222.08

cb	1.6	220.7
1/4	3.8	218.5
C	4.1	218.2
1/4	4.2	218.1
cb	4.7	218.6
W	6.2	216.1

No. QUARTER

W	7.4	216.9
cb	5.6	216.7
1/4	4.9	217.4
C	5.3	217.0
1/4	4.5	217.8
cb	3.6	218.7
E	1.7	220.6

CENTER

E	2.6	2197
cb	3.9	2180
1/4	5.8	2165
C	5.9	2160
1/4	6.0	2163
cb	6.6	2157
W	7.5	2148

So. QUARTER

W	7.7	2106
cb	7.6	2107
1/4	7.3	2150
C	7.0	2153
1/4	7.3	2150
cb	5.6	2167
E	3.5	2188

So. CURB

E	3.3	2190
cb	6.4	2159
1/4	7.9	2140

CURLEW R ST

22231	82	2141
	86	2137
	8.9	2130
	9.1	2127

S. L. SLOANE AVE

W	10.7	211.6
cb	10.1	212.7
1/4	9.6	214.7
C	9.1	213.2
1/4	8.7	213.6
cb	6.7	215.6
E	4.4	217.9

25' So

E	6.6	215.7
cb	8.9	213.0
1/4	11.0	211.3
C	11.5	210.8
1/4	11.6	210.7
cb	14.0	208.3
W	13.8	208.5

2.00 211.43 18.88 209.43

211.43

65' 50.

W	10.4	2010
cb	8.7	2027
1/4	4.5	2069
C	4.3	2071
1/4	3.9	2075
cb	1.1	2103
E	40.2	2116

40.83 So. = SECT F

E	1.1	2103
cb	3.9	2075
1/4	6.3	2051
C	7.3	2041
1/4	7.9	2075
cb	11.2	2002
W	13.3	1981

SECT G = N.L. PENNSY.

W	13.3	1981
cb	11.2	2000
1/4	8.8	2026

211.6

CURLEW

25

C	8.1	2023
1/4	7.2	2022
cb	4.9	2065
E	2.7	2087

NO. CURB

E	5.5	2059
cb	7.1	2043
1/4	7.7	2037
C	9.5	2019

1/4	10.5	2009
cb	12.4	1990
W	14.9	1965

NO. QUARTER

W	15.5	1959
cb	13.8	1976
1/4	12.5	1989
C	11.3	2001
1/4	10.0	2010
cb	8.1	2022
E	7.3	2021

E	8.0	1907.4
cb	9.2	1907.7
1/4	10.3	1901.1
C	12.2	199.7
1/4	14.3	197.1
cb	15.1	196.3
W	16.1	195.7

So. QUARTER

W	17.9	193.4
cb	16.4	195.0
1/4	16.0	195.4
C	15.0	196.4
1/4	12.6	198.8
cb	11.5	199.9
E	10.5	1900.9

So. CURB

E	13.9	197.5
cb	13.7	197.7
1/4	14.3	197.1
C	16.2	195.7

1/4	17.5	193.9
cb	17.3	194.1
W	19.6	191.8

So. LINE PENNSYLA.

W	20.8	190.6
cb	20.1	191.3
1/4	20.3	191.1
C	19.4	192.0
1/4	17.8	193.6
cb	17.0	194.4
E	16.8	194.6

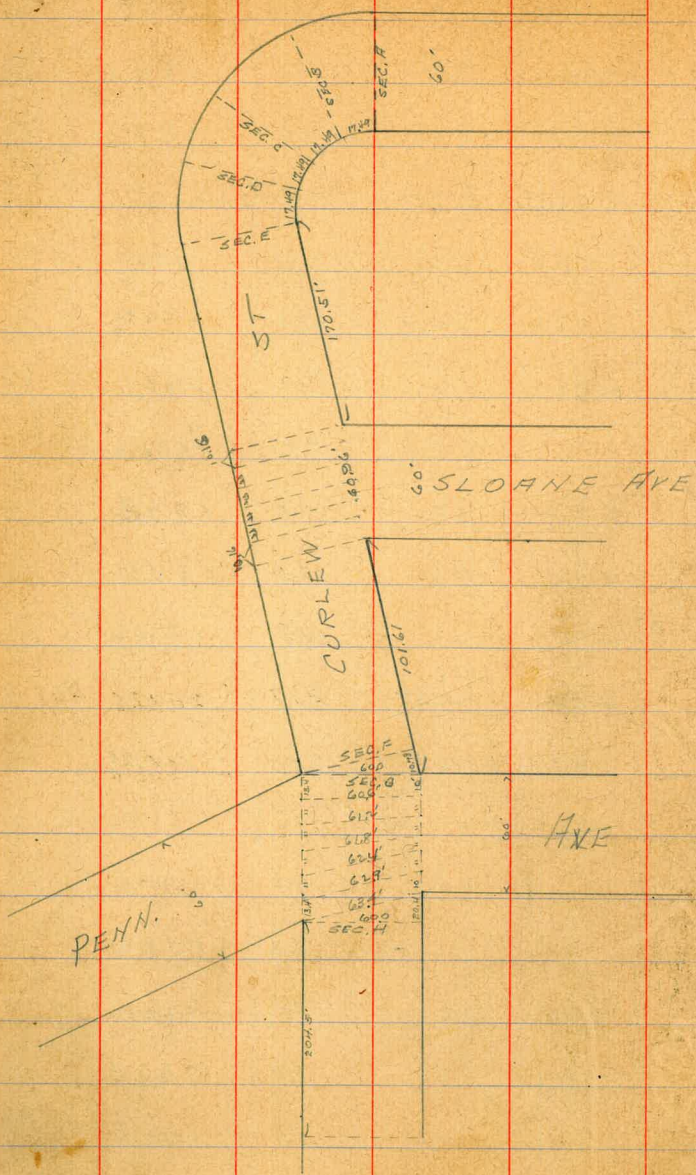
T.P.	0.01	209.27	2.17	209.26	END OF WALL
------	------	--------	------	--------	-------------

T.P.	0.03	196.75	12.55	196.72
------	------	--------	-------	--------

20.4 on East } = SECT H.
 00 - West }

(N.B)

W.	6.2	190.6
cb	6.6	190.7
1/4	6.8	190.0
C	6.4	190.4
1/4	6.7	190.1
cb	7.9	188.9



196.75

CURLEW

27

E			8.1	188.7
		15' 50.		
E			12.9	183.9
cb			12.1	184.7
1/4			11.5	185.3
C			10.2	186.6
1/4			9.7	187.1
cb			10.0	186.8
W			9.4	187.4
T.P.	148	185.84	12.39	184.36
		50' 50.		
W			2.4	183.4
cb			1.6	184.5
1/4			1.3	184.5
C.			4.2	181.6
1/4			6.1	179.7
cb			7.6	178.2
E			7.1	178.7
		65' 50.		
E			9.3	178.5

~~18584~~
18584

cb	9.2	176.6
1/6	9.7	176.1
C	8.9	176.9
1/4	3.9	181.9
cb	4.0	181.8
+ 5	4.4	181.4
W	10.1	175.7
+ 15	12.0	173.8

100' So.

- 15	14.9	170.9
- 5	14.3	171.5
W	11.9	173.9
cb	4.6	181.2
1/4	4.3	181.5
C	3.9	182.9
1/6	2.6	183.2
T.P.	1249	197.78
		208.69
	0.55	185.29
		196.30
d	9.8	188.0
E	6.9	190.9

~~19778~~
19778

CURLEW

28

195' So.

E	1.7	196.1
cb	4.7	193.1
1/6	10.5	187.3
C	14.6	183.2
1/4	15.0	184.8
cb	15.8	182.0
W	19.7	178.1

170' So.

- 25	31.3	176.5
W	22.3	175.5
cb	18.1	179.7
+ 7	14.7	183.1
1/4	14.8	182.0
C	14.2	183.6
1/6	11.1	186.7
cb	5.3	192.5
E	2.0	195.8

204.5' So. = S.L. PENN. PRODUCED

E	1.0	196.8
cb	3.4	196.4

~~197.78~~
197.78

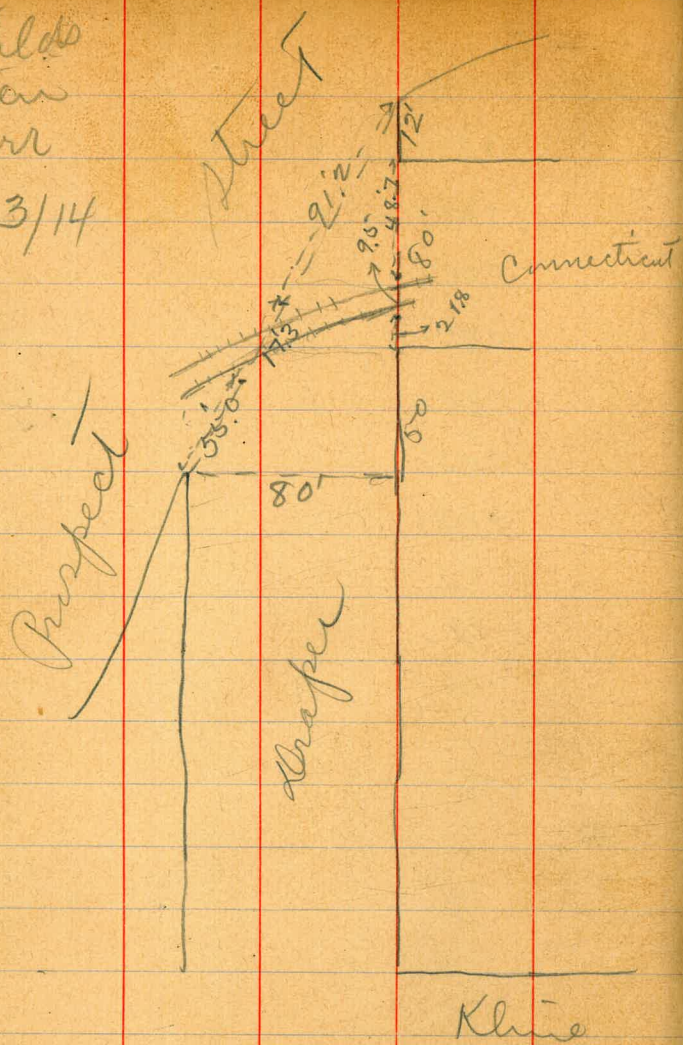
+ 2	81	189.7
1/4	12.4	185.4
c	13.1	180.7
1/4	13.1	184.7
d	18.5	179.3
W	24.1	173.7
+ 25	34.0	167.8
+ 35	34.6	163.2

~~32~~
~~36~~
~~30~~

29

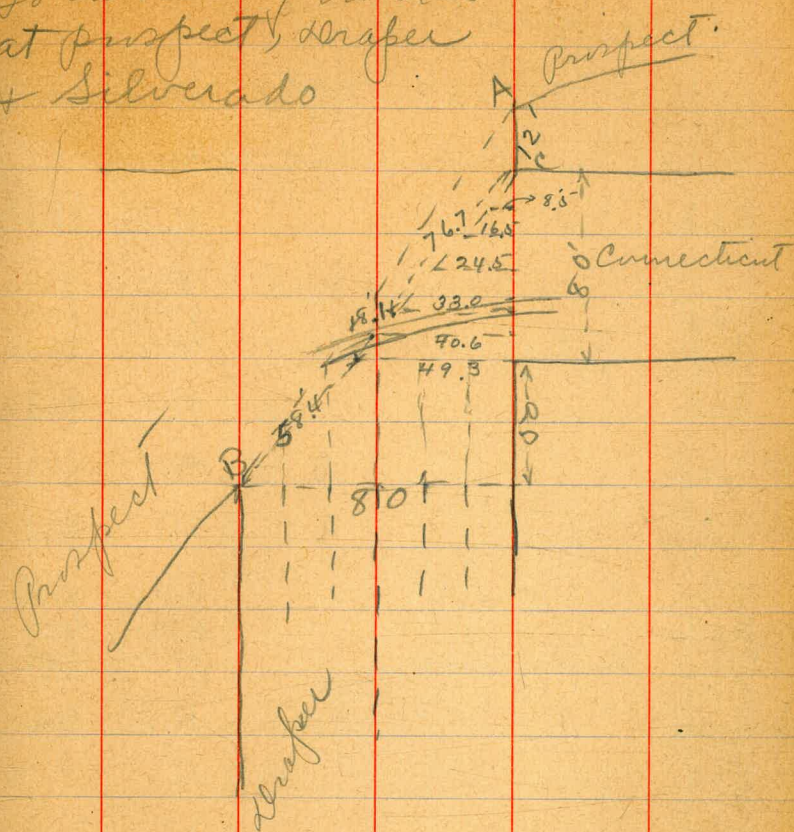
Childs
Kerr

Dec. 3/14



Location of tracks
at prospect, drafter
& Silverado

(30)



X sect. Draper from so. line
Tajolla park. H.I.

499 89.24

84.25

So line prospect.

E line		4.7	845
	cement curb.	5.0	847
		5.8	836
gutter		5.3	839
1/4			
C		5.4	838
2' no. track		5.4	838
2' no. "		5.8	836
1/4		5.8	836
gutter		6.5	827
	cement curb.	5.7	835
w line		5.6	836

make Est.

Prospect to so. line of

31

B.M.

89774

No. line connection

E line		4.7	845
	no. cb.		
E line	cement curb.	4.8	844
	gutter	5.4	838
8'5 west		5.7	835
	no. 1/4		
E line		4.9	843
cb.		5.3	839
16.5 west		5.3	839
	center		
E line		4.7	845
cb.		5.1	841
24.5 west.		5.3	839
	2' no. of track		
E line		4.4	848
cb.		4.7	845
1/4		5.0	847
C	+ on line B C	5.3	839
so line prospect sect AB		5.4	838

2' so. of track

E line		4.5	847
cb.		4.9	847
1/4		5.2	840
C		5.5	837
sect BC + C		5.8	836
40 line prospect + 1/4		5.8	836
	curb		
E line	cement curb	3.7	855
	gutter	4.5	847
cb.		4.7	845
2' so. track		5.1	841
	So. line cement curb		
E line		3.4	85.8
	cement curb.	3.7	855
	gutter	4.8	844
		5.1	841
C		5.5	837
2' so. track		5.8	836

450' No. Khine

E line		3.3	859
		3.4	858
	gutter	4.5	847
		4.0	85.7
C		4.3	849
		5.5	837
	gutter	6.6	826
		5.8	834
White		5.6	83.6

400' No.

White		5.3	839
		5.3	839
	gutter	6.2	830
		4.9	843
C		4.1	85.1
		3.9	853
	gutter	4.1	85.1
		3.1	86.1
E line		3.0	86.7

8924

350' no.

E line

2.7 865

gutter 3.0 867
3.8 854
3.6 856

C

3.9 853

gutter 4.8 844
5.8 834
4.9 843

W line

4.9 843

300' no.

W line

4.5 847

gutter 4.5 847
5.3 839
4.5 847

C

3.7 855

gutter 3.4 858
3.5 857
2.5 867

E line

2.3 869

33

8924

250' no.

E line

2.0 872

cement curb. 2.2 870
gutter 3.2 860
3.3 859

C

3.6 856

gutter 4.4 848
5.0 842
4.1 851

W line

4.0 852

200' no.

W line

3.8 854

gutter 3.7 855
4.7 845
3.5 857

C

2.8 864

2.8 864

3.0 862

E line

2.3 869

89.24

150' no.

E line	1.5	877
	1.8	874
	2.3	869
C	2.2	870
	2.8	864
	4.1	85.1
	3.3	859
White	3.3	859

100' no.

White	2.8	864
	2.9	863
	3.7	855
	2.4	868
C	1.8	874
	2.0	872
	1.5	877
E line	1.2	880

cement emb.
gritter

89.24

80' no.

E line	1.1	881
	1.7	875
	2.0	872
C	2.0	872
	2.4	868
	3.1	861
White	3.3	859

50' no.

White	3.3	859
	2.8	864
	2.5	867
C	2.2	870
	2.3	869
	2.1	871
E line	1.5	877

34

89.24

North line Kline

E line			2.3	869
			2.5	867
			2.7	865
C			2.7	865
			3.1	861
			3.5	857
White			3.8	854
J.P.	3.78	H.I. 89.42	3.60	85.64
		No cl.		
White			4.2	852
			4.0	854
			3.4	860
C			2.9	865
			3.2	862
			3.0	864
E line			2.4	870

8942

35

710 1/4

E line			2.7	867
			2.9	865
			3.1	863
C			3.3	861
			3.7	857
			3.9	855
White			4.8	846
		Center		
White			4.6	848
			4.1	853
			3.9	855
			3.6	858
C			3.6	858
			3.4	860
E line			3.1	863

20 1/4

Eline	3.2	86.7
	3.5	85.9
	3.5	85.9
C	3.8	85.6
	4.0	85.4
	4.2	85.7
White	4.6	84.8
White	4.5	84.9
	4.2	85.7
	4.0	85.6
C	4.1	85.3
	3.8	85.6
	3.6	85.8
Eline	3.4	86.0

20 Cb.

South line Kline

Eline	3.7	85.7
	3.9	85.5
	4.0	85.4
C	4.3	85.1
	4.3	85.1
	4.3	85.1
White	4.7	84.7

50' 20. Kline

White	5.3	84.1
	5.2	84.7
	5.1	84.3
C	4.9	84.5
	5.0	84.4
	4.7	84.7
Eline	4.6	84.8

89.42

100' RD.

E line

6.5 879

E line

13.7 757

7.1 873

13.0 760

6.7 877

12.6 768

C

6.4 870

C

12.2 772

6.4 870

9.9 795

6.3 871

8.6 808

W line

6.3 871

W line

8.1 813

150' RD.

W line

7.3 871

W line

9.4 800

7.6 818

10.3 791

8.6 808

11.8 776

C

9.9 795

C

13.1 767

11.3 781

225' RD.

11.6 778

W. C. G.

13.2 762

E line

11.2 782

W line

11.4 780

37

89.42

175' RD.

J.P. 0.54 ^{HI} 77.02 12.94 76.48

200' 20.

E 1/4

0.6 76.4

White

2.6 74.1

2.5 76.5

7.8 69.2

E line

3.6 73.0

1/4 + 4'
C

12.4 62.6

18.8 58.2

18.8 58.2

225' 20.

E line

4.4 72.6

cb + 9'

15.0 62.0

12.1 62.9

11.5 65.5

cb + 4'

11.6 65.0

E line

8.9 68.1

13.9 67.1

9.9 67.1

J.P.

^{HI} 4.03 70.63 10.42 66.60

C

2.7 ~~64.1~~
74.1

277.74 20.

W 1/4

1.7 ~~65.3~~
65.3

E line

6.2 62.0

3.9 66.7

4.2 66.6

C

5.3 65.3

7.0 63.6

cb + 7'
W. line

11.8 58.8

13.8 56.8

9.5 61.1

7063

No. line of Ravine

White

14.5 561

7.7 679

5.8 648

C

5.1 655

4.1 665

3.8 668

Eline

6.2 644

No. 66

Eline

8.0 676

5.0 656

3.4 677

C

4.3 663

5.3 653

6.6 640

White

8.8 618

7063

39

No 14

White
+2

11.6 590

9.0 616

5.3 653

14+10

4.0 666

2.8 678

5.3 653

8.1 625

8.8 618

Eline

5.6 650

center

Eline

5.3 653

6.3 643

7.2 674

C

7.4 677

C+5

2.0 686

2.4 687

3.7 669

White

5.8 648

7063

SO 1/4.

White

3.9 667

2.6 680

1.6 690

C
C+7'

0.8 698

6.6 660

7.2 674

7.0 676

E line

6.9 677

3' 20 of 20 1/4

E line

7.3 677

7.2 676

1/4 + 6'

7.0 676

6.0 666

0.6 700

1.1 695

2.4 682

White

3.6 670

70,63

40

SO CB.

White

2.0 686

1.3 693

0.2 702

C

0.0 706

C+6

0.0 706

2.4 682

CB
CB+8'

3.5 67.1

1.2 69.4

E line

1.6 69.0

J.P.

9.49 ^{HI} 79.51 0.61 70.02

South line Ramia

White

9.49 70.02

9.3 70.2

8.6 70.9

7.9 71.6

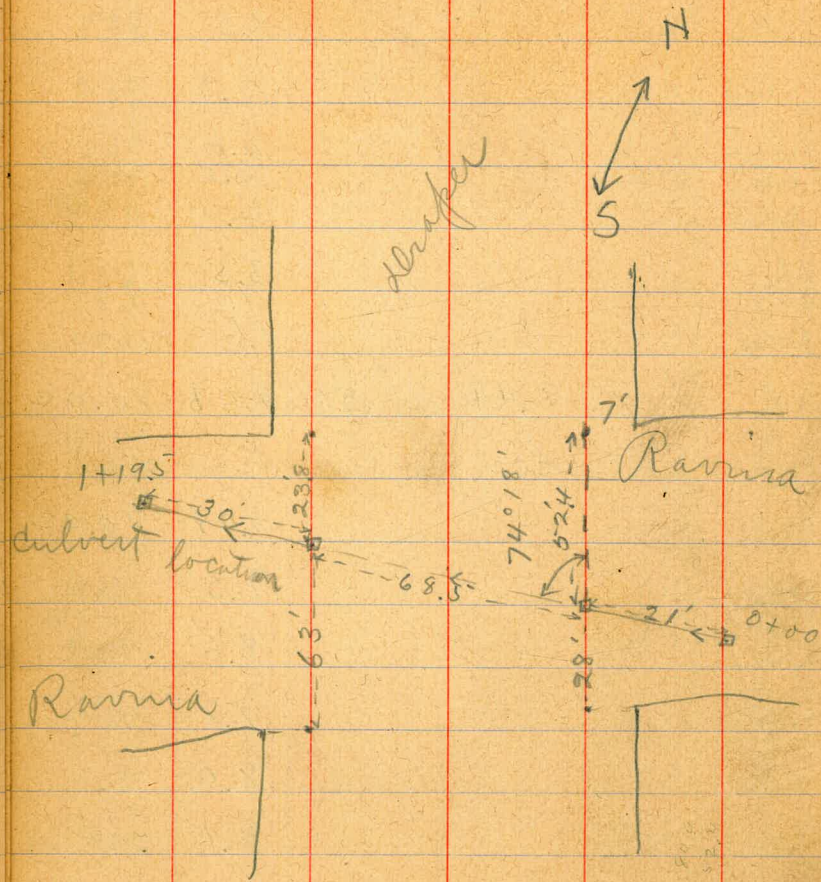
8.0 71.5

8.1 71.4

E line

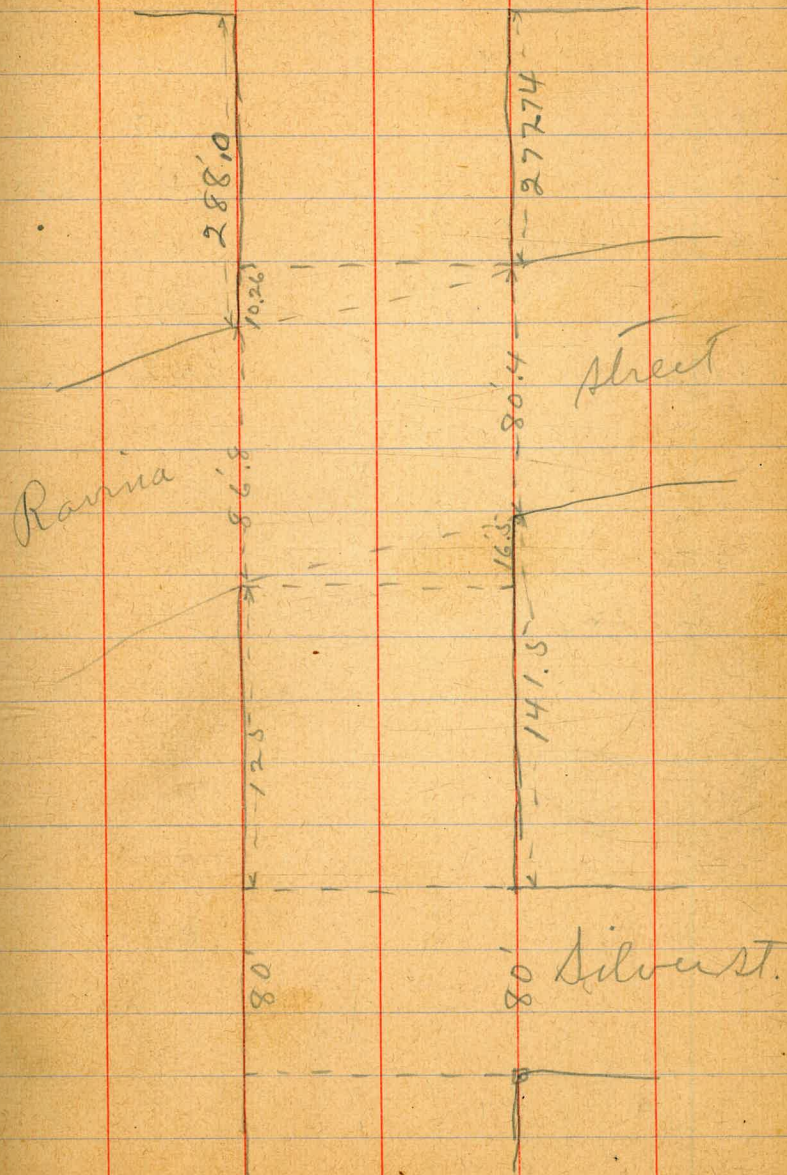
8.0 71.5

Culvert location at Scripps
& Ravina



(41)

Kline St.



Levels for Culvert line.

Sta.		H.I.	Rod	Elev.
0+00	1.13	<u>71.13</u>	7.0	70.00 64.1
+10			7.7	67.4
0+67			8.9	67.2
+76			5.0	66.1
1+02			9.4	61.7
1+19.5			14.8	56.3

102
76
67

51
655
1795

42

7951

125' no. of Silver St.

E line

7.4 721

7.6 719

7.6 719

C

8.0 715

8.7 708

9.2 703

White

9.49 700

100' no.

White

8.9 706

8.0 715

7.8 717

C

7.6 719

7.3 722

7.3 722

E line

6.9 726

7951

43

50' no.

E line

5.4 741

5.5 740

5.6 739

C

5.4 741

6.3 732

7.7 718

White

9.0 705

North line Silver Street

White

8.5 710

7.9 716

7.4 721

C

6.4 731

5.5 740

3.9 756

E line

2.7 768

7951

no cb.

E line

2.6 769

3.1 764

4.9 766

c

6.1 774

6.9 776

7.5 770

White

7.8 777

no 1/4

White

6.5 770

6.6 779

6.0 775

c

4.9 766

3.9 756

3.2 767

E line

2.3 772

7951

44

Center

E line

2.0 775

2.4 771

2.9 766

c

Topman Hole.

3.3 762

4.9 766

5.2 747

White

5.2 747

no 1/4

White

4.1 754

4.2 757

3.6 759

c

2.9 766

2.0 775

1.6 779

E line

1.3 782

79.51

20.06.

E line	0.7	78.8
	0.8	78.7
	1.2	78.3
C	2.0	77.5
	2.5	77.0
	2.8	76.7
White	3.0	76.5
South line Silver Street		
White	2.3	77.2
	2.0	77.5
	1.8	77.7
C	1.4	78.1
	1.0	78.5
	0.6	78.9
E line	0.63	78.88

45

J.P.

10.42

H.I.

89.30

78.88

50' So. Silver Street

E line	8.8	80.5
	9.0	80.7
	9.5	79.8
C	9.7	79.6
	10.2	79.1
	10.3	79.0
White	10.7	78.6
100' So.		
White	9.8	79.5
	9.4	79.9
	9.4	79.9
C	9.2	80.1
	8.6	80.7
	8.5	80.8
E line	8.1	81.2

89.7

150' 20.

Eline

7.1 87.7

7.5 81.8

7.6 81.7

C

8.0 81.7

8.3 81.0

8.4 80.9

White

8.8 80.5

200' 20.

White

8.0 81.7

7.9 81.6

7.5 81.8

C

7.1 87.7

6.8 87.5

6.2 87.1

Eline

6.1 87.7

89.7

46

250' 20.

Eline

5.1 84.7

5.4 87.9

6.0 87.7

C

6.3 87.0

6.8 87.5

6.9 87.6

White

7.3 87.0

300' 20.

White

5.9 87.4

5.5 87.8

5.4 87.9

C

5.2 85.1

4.6 84.7

4.0 85.7

Eline

3.9 85.6

893

350' 20.

E line	3.1	86.7
	3.4	85.9
	3.7	85.4
C	4.4	84.9
	4.6	84.7
	5.1	84.7
W line	5.3	84.0
	4.2	85.1
W line	3.9	85.4
	3.5	85.8
C	3.1	86.7
	2.5	86.8
	2.1	87.7
E line	1.7	87.6

400' 20.

W line	4.2	85.1
	3.9	85.4
	3.5	85.8
C	3.1	86.7
	2.5	86.8
	2.1	87.7
E line	1.7	87.6

8930

47

450' 20.

E line	0.7	88.6
	1.1	88.7
	1.6	87.7
C	1.8	87.5
	2.0	87.7
	2.4	86.9
W line	2.9	86.4
	1.7	87.6
W line	1.3	88.0
	0.8	88.5
C	0.5	88.8
J.P.	12.46	^{14.1} 100.67
	1.09	88.21
	11.6	89.1
	11.0	89.7
E line	10.31	90.4

500' 20. (no. line Pearl St.)

1007

no. 6.

Elvire	10.3	904
	10.9	893
	11.3	894
C	11.6	891
	12.1	886
	12.6	881
White	12.7	880

no. 14

White	12.5	882
	12.2	885
	11.8	889
C	11.4	893
	11.0	897
	10.5	902
Elvire	10.1	906

1007

48

Center

Elvire	10.1	906
	10.4	903
	10.9	898
d	11.4	897
	11.7	890
	11.8	889
White	12.5	882

no. 14

White	12.0	887
	11.6	891
	11.4	897
C	10.7	900
	10.0	907
	10.0	907
Elvire	9.6	911

1007

So. cb.

E line	9.5	912
	9.9	908
	10.1	906
C	10.3	904
	11.1	896
	11.6	891
W line	12.0	887

South line Pearl.

W line	11.2	895
	10.9	898
	10.7	900
C	10.0	907
	9.4	913
	9.3	914
E line	8.5	922

1007

49

50' So. Pearl.

E line	7.5	922
	8.1	926
	8.4	927
C	8.7	920
	9.1	916
	9.7	910
W line	10.1	906

100' So.

W line	8.5	922
	8.4	923
	7.6	921
C	7.2	928
	6.9	928
	6.6	941
E line	6.0	927

1007

150' 20.

E line

5.1 956

5.6 951

5.9 948

c

6.8 979

6.4 943

6.8 979

White

7.7 970

200' 20.

White

6.3 944

5.7 950

5.4 953

c

5.2 955

4.5 967

4.1 966

E line

3.7 970

1009

50

250' 20.

E line

2.3 984

2.5 985

2.9 978

c

3.6 971

4.0 967

4.3 964

White

5.1 956

300' 20.

White

3.9 968

3.4 973

3.1 976

c

2.7 980

2.2 985

1.8 989

E line

1.0 997

100.67

350' 20.

E line

0.1 100.6

0.8 99.9

1.1 99.6

C

1.0 99.7

1.6 99.1

1.7 99.0

W line

2.3 98.4

400' 20. (so. line of fall ap_{200'})

W line

0.80 99.87

J.P.

477

H.I.
104.64

4.5 100.1

"

4.0 100.6

C

3.5 101.1

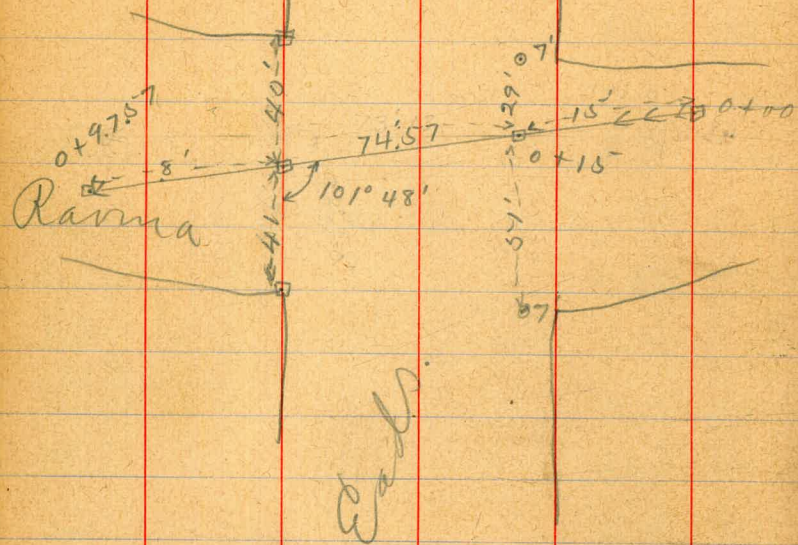
3.2 101.6

2.7 101.9

E line

2.64 102.0

Location of culvert at
Khine and Eads



Ravina

Dec. 8/14

Childs
Lester
Kerr

5-2

Levels.

8.98 79.00

H.I.

70.02

Sta.

0+00

5.90

+15 East 7' line Eads.

5.60

+30

4.1

+63

4.5

+89.57 West line Eads.

6.85

+97.57

7.13

X sect. Cypress from East line
 10' walls 10' quarters. 60' street X streets

H.I.
 5.49 292.68 287.19
 East line Albert

no line

3.8 288.9

4.3 288.4

5.2 287.5

c

7.8 284.9

10.9 281.8

14.5 278.2

no line

17.7 275.0

25' east

no line

8.4 284.3

6.2 286.5

5.1 287.6

c

4.5 288.2

4.1 288.6

3.9 288.8

no line

3.4 289.3

Albert to west line Florida

(292.7)

Feb. 5/15

Calhoun
 Kerr

all 60' except Indiana 80' park Blvd. 100'
 B.M. Sw. cor. Albert + Brooks man
 50' East

53

no line

3.8 288.9

4.6 288.1

5.4 287.3

c

6.1 286.6

6.7 286.0

7.7 285.0

no line

9.4 283.3

75' East

no line

15.2 277.5

13.4 279.3

12.7 280.0

c

10.8 281.9

8.0 284.7

7.2 285.5

no line

6.8 285.9

Cypress
2927

100' East

solino 9.9 282.8
so. cl. 12.6 280.1

125' E

so. cl. ~~13.8~~ 278.9 C
solino 11.0 281.7

150' E

solino 9.2 283.5
10.2 282.5
11.1 281.6
C 11.1 281.6
11.9 280.8
13.6 279.1 C
solino 15.4 277.3

29268

54

175' E

no. line 6.6 286.1
6.3 286.4
5.8 286.9
C 5.7 287.0
5.7 287.0
5.9 286.8
solino 5.9 286.8
210' E (west line Herbert)
no. line 2.2 290.5
3.1 289.6
2.5 290.2
C 2.5 290.2
2.2 290.5
1.8 290.9
no. line 2.5 290.2
J.P. M.W. on bank for 80' at. 2.82 289.86
at Herbert

Cypress

J.P.

0.64 28 042 12.90 279.78

100' E. of Albert

do 1/4

1.3 279.1

no line

C

2.4 278.0

4.4 276.0

7.6 272.8

C

no line

10.1 270.3

125' E

no line

13.2 267.2

no line

10.6 269.8

400' west park Blvd.

7.6 272.8

no line

C

5.4 275.0

do 1/4

3.5 276.9

C

6.4 294.1

6.1 294.4

5.9 294.6

no line

5.8 294.7

H.I.

10.65 300.57

289.86

(428.65)

East line Herbert 242.65 west
park Blvd.

5.8 294.7

(2)

6.7 293.8

6.9 293.6

7.1 293.4

7.4 293.1

7.5 293.0

7.2 293.3

6.2 294.3

6.1 294.4

6.1 294.4

6.4 294.1

6.1 294.4

5.9 294.6

5.8 294.7

Cypress

300.51 48.

350' W.

Noline

4.7 295.8

5.4 295.1

6.4 294.1

C

6.8 293.7

6.8 293.7

7.0 293.5

Noline

7.3 293.2

300' W.

Noline

7.0 293.5

7.2 293.3

7.0 293.5

C

6.6 293.9

6.9 293.6

6.6 293.9

Noline

6.4 294.1

300.51

250' W.

Noline

7.3 293.2

7.2 293.3

7.3 293.2

C

7.3 293.2

7.2 293.3

6.9 293.6

Noline

6.6 293.9

200' W.

Noline

5.3 295.2

5.5 295.0

6.0 294.5

C

6.1 294.4

6.5 294.0

6.7 293.8

Noline

7.3 293.2

Cypress

300.51 18

150' W.

no. line

6.4 294.1

6.5 294.0

6.1 294.4

c

5.5 295.0

5.0 295.5

4.6 295.9

so. line

4.3 296.2

100' W.

so. line

5.7 294.8

6.1 294.4

6.1 294.4

c

6.2 294.3

6.4 294.1

6.6 293.9

no. line

6.4 294.1

300.5 18

57

57

75' W

no. line

5.4 295.1

5.6 294.9

5.7 294.8

c

5.3 295.2

5.4 295.1

5.8 294.7

so. line

5.7 294.8

50' W.

so. line

3.3 297.2

3.5 297.0

3.7 296.8

c

4.3 296.2

4.3 296.2

3.9 296.6

no. line

3.9 296.6

300.51 Cypress

25' W.

no line

2.8 297.7

3.3 297.2

3.1 297.4

c

2.5 298.0

2.9 297.6

3.1 297.4

no line

2.9 297.6

West line park Boulevard no line

no line

2.7 297.8

2.8 297.7

2.6 297.9

c

2.9 297.6

2.8 297.7

3.0 297.5

no line

2.9 297.6

300.51 215

58

sw corner park Blvd. H.I.

J.P. 10.06 308.08 2.49 298.02

East line park Blvd. 325' west Indiana

no line 7.7 300.4

8.0 300.1

7.4 300.7

c 6.5 301.6

7.0 301.1

7.0 301.1

7.4 300.7

2.5' east

no line 6.3 301.8

6.3 301.8

6.2 301.9

c 6.6 301.5

6.6 301.5

6.9 301.2

no line 5.2 302.9

Cypress
308.1

50' E.

soline	6.0	302.1
	6.2	301.9
	6.0	302.1
C	5.9	302.2
	5.7	302.4
	5.4	302.7
no. line	5.3	302.8

75' E

no. line	4.2	303.9
	4.8	303.3
	5.0	305.1
C	4.0	304.1
	3.9	304.2
	4.8	303.3
soline	4.8	303.3

308.1

59

125' E.

soline	4.1	304.0
	3.8	304.3
	3.6	304.5
C	3.6	304.5
	3.5	304.6
	3.3	304.8
no. line	3.1	305.0

175' E

no. line	3.0	305.1
	3.9	304.2
	3.7	304.4
C	2.5	305.6
	2.3	305.8
	2.6	305.5
soline	3.2	304.9

Cypress
308.1 HI.

225' E

No. line

5.0 303.1

No. line

6.1 302.0

5.1 303.0

6.5 301.6

5.1 303.0

6.9 301.2

c

5.1 303.0

c

7.2 300.9

5.0 303.1

7.1 301.0

5.0 303.1

5.8 302.3

No. line

5.0 303.1

No. line

5.6 302.5

275' E

No. line

4.4 303.7

No. line

7.1 301.0

4.6 303.5

7.5 300.6

5.7 302.4

7.5 300.6

c

5.9 302.2

c

7.4 300.7

6.0 302.1

7.3 300.8

5.9 302.2

7.5 300.6

No. line

6.0 302.1

No. line

7.4 300.7

308.1 HI

60

323' E

325' E (west line Indiana)

Cypress
308.1X3

East line Indiana

no. line	7.3	300.8
	7.5	300.6
	7.5	300.6
C	7.4	300.7
	6.7	301.4
	7.5	300.6
no. line	7.1	301.0

2' E

no. line	4.0	304.1
	4.2	303.9
	5.6	302.5
C	4.2	303.9
	4.0	304.1
	3.9	304.2
no. line	3.5	304.6

308.1X3

61

25' E

no. line	2.6	305.5
	3.3	304.8
	3.0	305.1
C	3.2	304.9
	3.5	304.6
	3.4	304.7
no. line	1.8	306.3

50' E

no. line	2.0	306.1
	2.3	305.8
	2.5	305.6
C	2.7	305.4
	2.6	305.5
	2.6	305.5
no. line	1.8	306.3

308,08 Cypress

75'E

sol. line	0.7	307.4
	1.6	306.5
	1.7	306.4
C	1.7	306.4
	2.0	306.1
	1.9	306.2
no. line	1.3	306.8
no. line	0.0	308.1
	0.4	307.7
	0.7	307.4
C	0.9	307.2
	0.6	307.5
	0.4	307.7
no. line	0.3	307.8

100'E

308.08

62

H.I.

3.30

311.07

0.31

307.77

125'E

J.P.				
no. line	2.7	308.4		
	2.6	308.5		
	2.4	308.7		
C	2.2	308.9		
	2.0	309.1		
	2.0	309.1		
no. line	1.8	309.3		
			150'E	
no. line	1.7	309.4		
	2.1	309.0		
	2.1	309.0		
C	2.0	309.1		
	2.1	309.0		
	2.2	308.9		
no. line	2.4	308.7		

Cypress

311.1 49

175' E

No. line	3.2	307.9
	3.1	308.0
	2.9	308.2
c	2.9	308.2
	3.0	308.1
	3.3	307.8
No. line	3.3	307.8

200' E

No. line	5.1	306.0
	4.6	306.5
	5.1	306.0
c	5.2	305.9
	5.0	306.1
	5.0	306.1
No. line	5.1	306.0

311.07

63

225' E

No. line	8.7	302.4
	8.6	302.5
	8.9	302.2
c	8.8	302.3
	8.9	302.2
	8.5	302.6
No. line	8.8	302.3

250' E

No. line	12.3	298.8
	12.1	299.0
	13.0	298.1
c	13.2	297.9
	13.0	298.1
	12.3	298.8
No. line	11.6	299.5

Cypress
311.07 #9

J.P. 0.96 ^{HI.} 299.00 13.03 298.04

275' E

No. line

3.4 295.6

4.5 294.5

5.3 293.7

C

6.0 293.0

6.5 292.5

5.4 293.6

No. line

5.3 293.7

308' E

No. line

12.2 286.8

12.1 286.9

12.9 286.1

C

11.6 287.4

10.6 288.4

9.9 289.1

No. line

10.5 288.5

⁶⁴
3.53
283.04 B.M. n.w. cor Georgia
299.90

HI.

J.P. 0.64 286.57 13.07 285.93

310' E (west line Georgia)

1.7 284.9

1.8 284.8

1.9 284.7

2.0 284.6

2.2 284.4

2.2 284.4

2.0 284.6

No. line

C

No. line

East line Georgia

5.1 281.5

5.0 281.6

3.9 282.7

3.9 282.7

3.4 283.2

3.3 283.3

3.0 283.6

No. line

C

No. line

Cypress
28.6.57

20' E

so. line

11.9 274.7

13.2 273.4

13.3 273.3

C

13.4 273.2

13.4 273.2

13.8 272.8

no. line

15.6 271.0

J.P.

0.44 274.24 12.77 273.80

50' E

no. line

7.4 266.8

6.7 267.5

6.2 268.0

C

5.4 268.8

4.9 269.3

4.2 270.0

so. line

3.6 270.6

274.24

65

75' E

so. line

6.8 267.4

6.8 267.4

7.9 266.3

C

8.8 265.4

9.6 264.6

11.2 263.0

no. line

13.0 261.2

100' E

C

13.8 260.4

12.3 261.9

11.1 263.1

so. line

10.4 263.8

J.P.

0.15 HI. 261.50 12.89 261.35

no. 1/4

2.1 259.4

no. 1/2

3.7 257.8

no. line

4.9 256.6

Cypress

261.50 ~~18~~

125' E

No. line	9.6	251.9
	8.2	253.3
	6.8	254.7
C	5.5	256.0
	4.5	257.0
	3.2	258.3
No. line	1.8	259.7

150' E

No. line	5.8	255.7
	7.5	254.0
	9.2	254.3
C	10.2	251.3
	10.6	250.9
	10.6	250.9
No. line	12.0	249.5

66

261.50

175' E

No. 14	13.2	248.3
C	12.7	248.8
	11.3	250.2
	10.3	251.2
No. line	9.2	252.3
J.P.	0.65	249.08
No. cb.	13.07	248.43
	2.2	246.9
No. line	3.2	245.9

200' E

No. line	5.7	243.4
	5.0	244.1
	3.9	245.2
C	3.5	245.6
	3.0	246.1
	2.0	247.1
No. line	0.9	248.2

Cypress
249.1 HS

249.08

67

225' E

no. line	3.4	245.7
	4.3	244.8
	4.7	244.4
C	5.6	243.5
	7.2	241.9
	8.5	240.6
no. line	8.3	240.8

250' E

no. line	12.8	236.3
	11.1	238.0
	10.1	239.0
C	8.4	240.7
	7.2	241.9
	6.0	243.1
no. line	5.3	243.8

275' E

no. line	7.1	242.0
	8.2	240.9
	9.4	239.7
C	10.9	238.2
no. 1/4	11.9	237.2
J.P.	3.65	^{H.I.} 240.36
no. ob.	12.37	236.71
	4.9	235.5
no. line	6.9	233.5

300' E

no. line	11.9	228.5
	7.9	232.5
	6.8	233.6
C	4.8	235.6
	2.6	237.8
	1.8	238.6
no. line	0.9	239.5

240,36

Cypress

317'E

soline

1.9 238.5

3.8 236.6

4.4 236.0

C

4.6 235.8

4.6 235.8

4.1 236.3

no line

4.4 236.0

320'E (west line Florida)

no line

3.1 237.3

3.6 236.8

4.0 236.4

C

4.1 236.3

4.5 235.9

4.2 236.2

soline

4.1 236.3

68

296

237.4 w.p.m.k.

Cross Section of Douglas St from
 E Line Lark to E Line Ingalls

50' St. 10' Sidewalks - 75' quarters

	+	N1	-	E10'
	4.98	274.92		269.94 B.P. S.E. Lark Wash
TP	261	264.45	13.08	261.84
		E Line Lark		
No			1.8	462.7
Cl			2.5	62.0
$\frac{1}{2}$			3.6	60.9
C			4.1	60.4
$\frac{3}{4}$			4.6	59.9
cl			5.0	59.5
So			5.8	58.7
		25' E Lark		
10' So. 50' line		10.2		54.3
So		9.0		255.5
cl		7.0		57.5
$\frac{1}{4}$		6.2		58.3
C		6.1		58.4
$\frac{3}{4}$		5.6		58.9
cl		5.1		59.4
15		2.9		61.6
No		2.4		62.1

264.45
 50' E Lark

69

No	38	260.7
Cl	6.4	58.1
$\frac{1}{2}$	7.2	57.3
C	7.6	56.9
$\frac{3}{4}$	8.6	55.9
cl	10.0	54.5
So	11.2	53.3
10' So	13.2	51.3
	75' E Lark	
15' So	14.0	48.5
So	13.3	51.2
cl	11.2	53.3
No	9.5	55.0
C	7.9	56.6
$\frac{1}{4}$	7.3	57.2
cl	6.6	57.9
No	5.7	58.8

NH
204.45

DOUGLAS ST.

100' E Lock

No	5.8	58.7
ck	6.6	57.9
4	7.1	57.4
0	7.7	56.8
4	9.4	55.1
4	11.2	53.3
So	14.3	50.2
15' So	18.7	45.8

125' F Lock

25' So	22.7	41.8
So	16.3	48.2
ck	14.6	49.9
4	12.3	52.2
0	10.8	53.7
4	8.1	56.4
ck	7.0	57.5
No	6.4	58.1
T.P.	100	254.98

H1. ✓
255.98

256.0 JH

253.98

150' E

70

No	10.6	56.6
17	0.7	55.3
ck	2.4	53.6
4	7.2	48.8
C	10.1	45.9

175' E

No	3.3	52.7
13	3.5	52.5
ck	8.4	47.6

200' E

No	5.0	51.0
4	5.4	50.6
ck	10.6	45.4

221.4° E. W.L. Ingalls

No	5.8	50.2
15	6.0	50.0
ck	8.6	47.4
4	13.1	42.9

W. ck Ingalls

No	6.1	49.9
17	5.6	50.4
ck	6.3	49.7
4	9.1	46.9
0	14.3	43.7

N1
255.98
W^{1/4} Ingalls 2560

Ctr	12.9	443.1 ✓
1/4	9.6	46.4 ✓
ct	6.3	49.7 ✓
No	58	50.2 ✓

Ctr Ingalls

No	52	50.8 ✓
ct	6.3	49.7 ✓
1/4	10.5	45.5 ✓

E^{1/4} Ingalls

No ^{1/2}	116	44.4 ✓
ct	6.9	49.1 ✓
1/2	5.9	50.1 ✓
No	6.2	49.8 ✓

E Ck Ingalls

No	6.2	49.8 ✓
ct	8.4	47.6 ✓
1/4	13.0	43.0 ✓

E Ck + 7

No	59	50.1 ✓
1/4	7.8	48.2 ✓
ct	9.6	46.4 ✓

255.98

71

E Line Ingalls

No	75	448.5 ✓
ct	11.3	44.7 ✓
TP	0.43	44.1 ✓ 243.77
	12.64	243.34

150' E Lark

So ^{1/4}	16	42.2 ✓
ct	4.4	39.4 ✓
So	8.6	35.2 ✓
26'So	13.0	30.8 ✓
50'So	19.9	23.9 ✓

175' E

No ^{1/4}	1.3	42.5 ✓
C	4.9	38.9 ✓
1/4	7.5	36.3 ✓
ct	9.9	33.9 ✓
So	12.2	30.6 ✓
30'So	21.8	22.0 ✓
50'So	26.0	17.8 ✓

147
243.77

200' E Lock

No 4	3.2	N 40.6 ✓
C	6.3	37.5 ✓
4	8.6	35.2 ✓
Cl	10.2	33.6 ✓
So	12.6	31.2 ✓
36'S.	19.6	N 24.2 ✓
50'S.	22.8	21.0 ✓

221 40' E-W.L. Ingalls

ctr	3.2	N 40.6 ✓
4	5.2	38.6 ✓
Cl	6.7	37.1 ✓
So	8.1	35.7 ✓
25'S.	11.5	32.3 ✓

W. Ch. Ingalls

50 4	3.0	N 40.8 ✓
Cl	5.0	38.8 ✓
So	6.7	37.1 ✓
25'S.	11.4	32.4 ✓

243.8

72

W 4 Ingalls

50 4	3.4	N 40.4 ✓
Cl	5.1	38.7 ✓
So	7.1	36.7 ✓
25'S.	12.0	31.5 ✓

ctr Ingalls

ctr	3.3	N 40.5 ✓
4	5.2	38.6 ✓
Cl	6.5	37.3 ✓
So	8.7	35.1 ✓
30'S.	14.3	29.5 ✓

E 4 Ingalls

ctr	4.2	N 39.6 ✓
4	6.2	37.6 ✓
Cl	7.9	35.9 ✓
So	10.5	33.3 ✓
36'S.	14.6	27.2 ✓

141
243.77

E. Ch. Ingalls

ctr	6.1	439.7	✓
4	8.0	35.8	✓
Ch.	9.8	34.0	✓
So	12.0	31.8	✓
40'So	18.7	25.1	✓

E. Line Ingalls

No. 4	3.5	40.3	✓
C	7.5	36.3	✓
4	9.9	33.9	✓
Ch.	11.2	31.6	✓
So	13.2	30.6	✓
T.P.	1.46	236.24	✓
40'So	12.3	23.9	✓

2.5'E Ingalls

No	3.0	33.2	✓
Ch.	4.5	31.7	✓
4	4.9	31.3	✓
C	5.9	30.8	✓
4	7.1	29.1	✓
Ch	8.0	28.2	✓
So	9.1	27.1	✓
4.5 So	16.3	19.4	✓

2362

73

50'E Ingalls

ctr	11.6	24.6	✓
4	12.2	24.0	✓
Ch.	13.1	23.1	✓
So	13.9	22.3	✓
25'S	16.8	19.4	✓
50'S	20.8	15.4	✓

Moore Cross Section of Alley
 Earle BIK 143 S.D. Land & Town Co.
 Preston 11/20/04 10.77 62.74 51.97

20' wide

NEBP
 Evans + Natl.

62.74

74

E. EVANS: 00

S on Cement Return West 5.85 56.89

C 5.7 57.0

N 5.5 57.2

N East 5.21 57.5

17' E

N = E of double Garage 4.90 57.8

Wood floor

N 5.2 57.5

C 5.3 57.4

S 5.1 57.6

40' E

E 5.1 57.6

C 4.6 58.1

+ 1 & M.H. Rim 4.02 58.72

✓ ✓ ✓ Flush Tank 8.1 54.6

Bottom

N 4.5 58.2

65' E

N 5.0 57.7

C 5.6 57.1

S 5.7 57.0

73' E

S 6.1 56.6

C 6.4 56.3

N 6.2 56.5

+ 5 & Garage dirt floor 6.0 56.7

106' E

N 6.2 56.5

C 6.5 56.2

S & of Garage Dirt floor 6.5 56.2

↓ in Alley

156' E

- 1.5 & Garage Dirt floor 6.6 56.1

S 6.6 56.1

C 6.5 56.2

N 6.7 56.0

175' E

N 6.4 56.3

C 6.6 56.1

S 6.7 56.0

188' E

N in 1/2 NL Garage 6.3 56.4

Dirt floor

	6274			
	191' E			
S	Garage wood floor	6.3	56.4	on line
✓	✓	5.9	56.8	(3's of 56)
	200' E			wood floor
S		5.7	57.0	in Alley
C		6.3	56.4	Fence 5
N		5.8	56.9	
	225' E			
N		4.7	58.0	
C		5.1	57.6	
S		4.8	57.9	✓ ✓ ✓
	250' E			
S		3.2	59.5	✓ ✓ ✓
C		3.6	59.1	
N		3.2	59.5	
T.P.	635	6592	3.7	59.57
	275' E			
N		5.9	60.0	
C		6.1	59.8	
S		6.1	59.8	✓ ✓ ✓

	6592			75
	300' E			
S		5.9	60.0	6 in Alley
C		5.8	60.1	Implements
N		5.7	60.2	
	336' E			
N		5.6	60.3	
C		6.2	59.7	
S	Double Garage dirt floor	6.1	59.8	5 in Alley
	362' E			
S		5.5	60.4	
E		5.4	60.5	
N	✓ ✓ ✓	4.9	61.0	
	400' E			
N		4.1	61.8	
C		4.9	61.0	
S	Ek. of Dwelling 6 in Alley	5.3	60.6	30' W row. 2 in Alley
	437' E			
S	Ek. of Garage dirt floor	5.1	60.8	4 in Alley
C		4.8	61.1	
N		4.3	61.6	

659^v

467'E

N $\frac{1}{2}$ of Garage 4.5 61.4 Dirt floor

480 E

N 4.6 61.3

E 5.4 60.5

S 5.5 60.4

500'E

S 4.8 61.1

C 4.9 61.0

N 4.4 61.5

518'E

N $\frac{1}{2}$ of Garage Dirt floor 3.9 62.0 on line

E 4.7 61.2

S 4.5 61.4

565'E

S 3.4 62.5

C 3.5 62.4

+3 3.3 62.6

N $\frac{1}{2}$ of Swallows' Garage 2.0 63.9

T.P. 328 65.59 361 62.31

65.59

585'E

76

N 2.5 63.1

+6 4.2 61.4

E 5.1 60.5

+5 5.0 60.6

S 3.2 62.4

596'E

S 5.4 60.2

+5 6.2 59.4

C 6.2 59.4

+4 5.9 59.7

N 3.8 61.8

600'E = w.L. of Sampson

N Cem. Alley Return 6.08 59.51

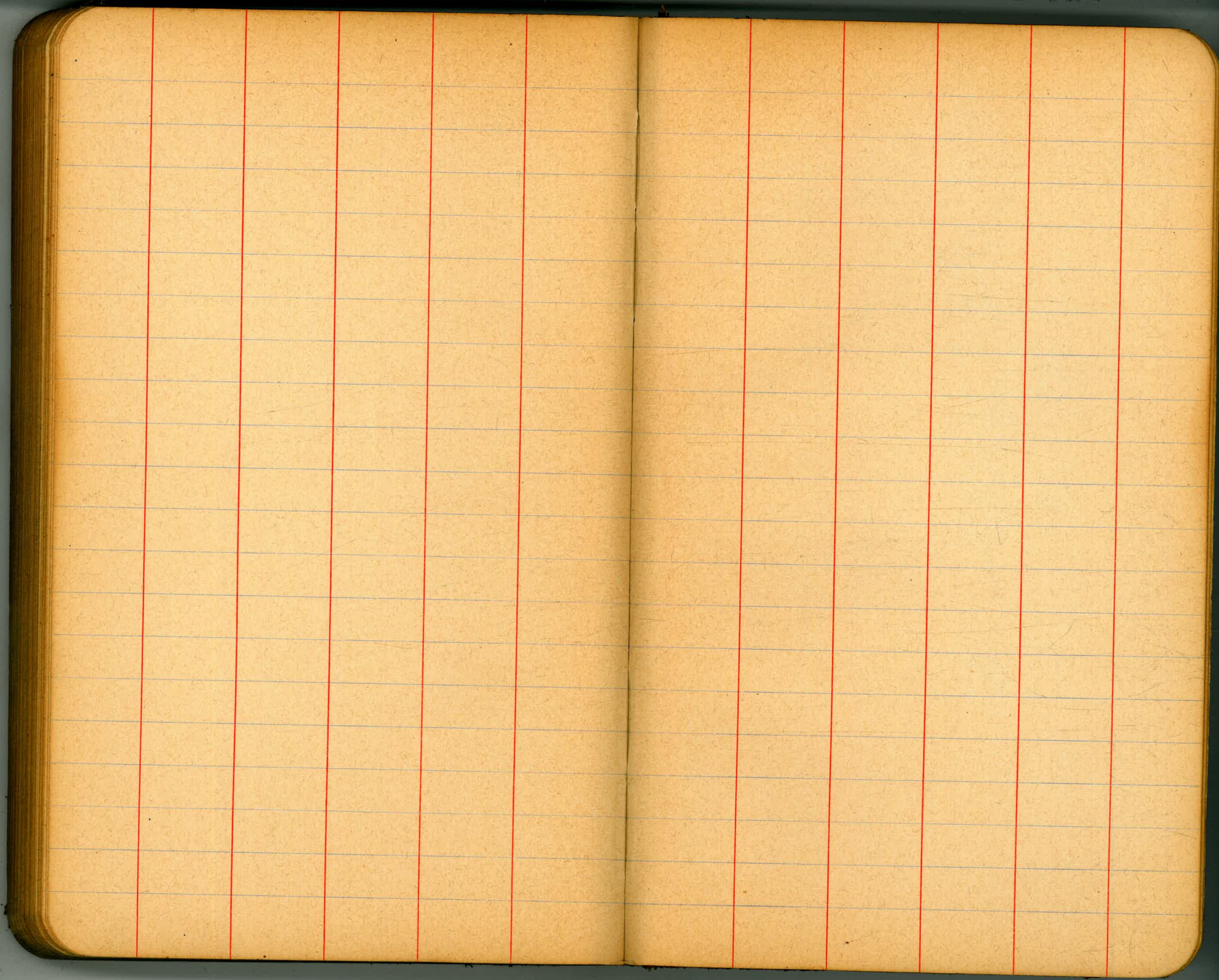
C on cement 6.71 58.88

S Cem Alley Return 6.80 58.79

checked BM N.E. Nail + Sampson 11.58 54.01 54.02

Note: - Alley paved full width with concrete

from w. of line of Sampson to w.L. of Sampson

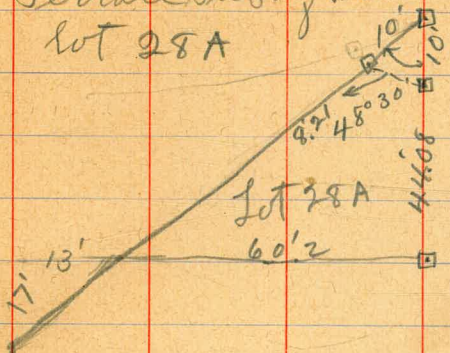


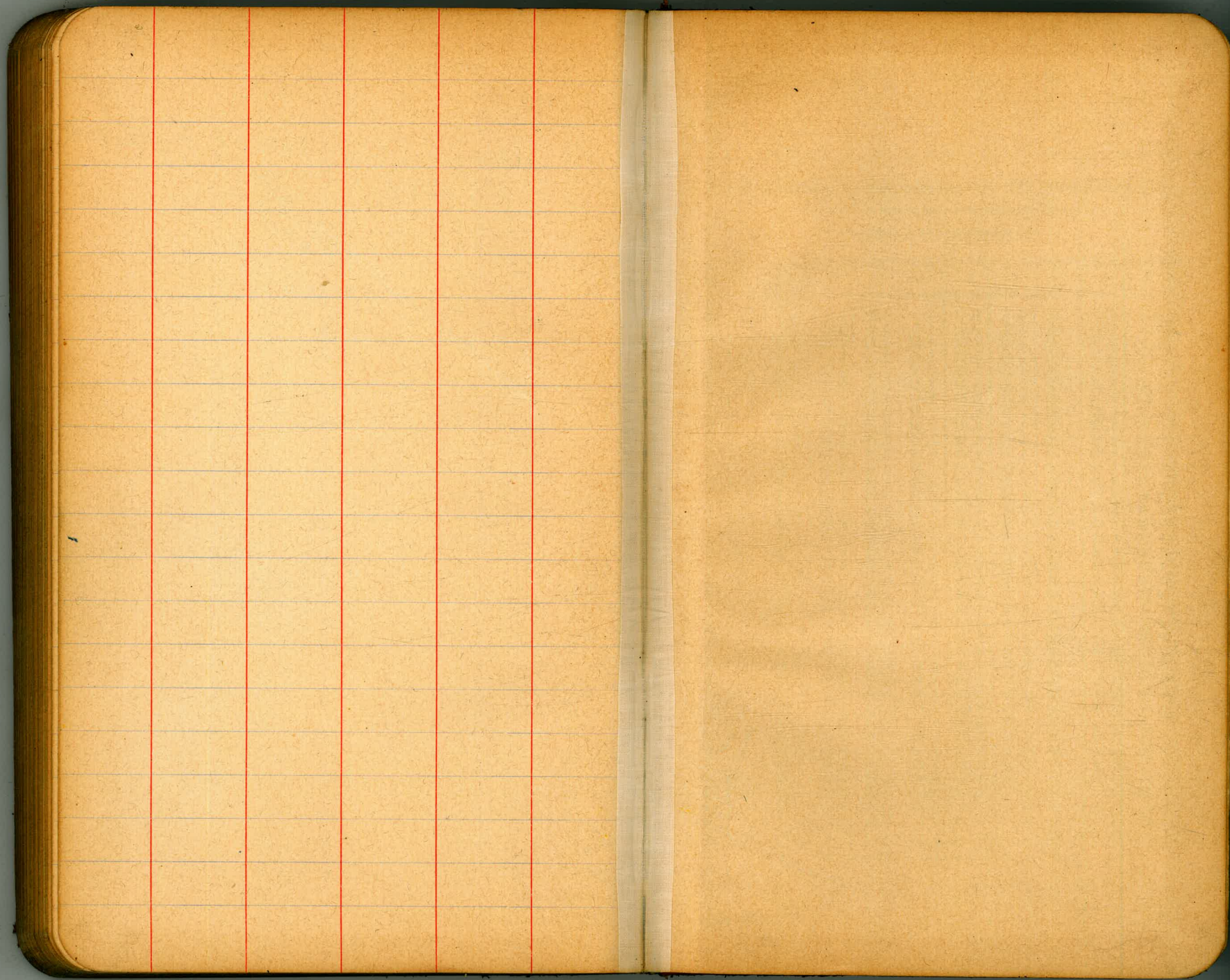
Dec. 4/14

belvids
atten
Kerr

79

Terrace Sub. of Blk 57 Lafayette Park
lot 28A





220.9
304.5
80.4

181
60
1649
2249

177.4 179.5 172.35 180
179

8314
804
2.74

North Evans NE 5197
Sampson NE 5402

75.15
536
79.51

DISTANCES FROM CENTER OF ROADWAY FOR CROSS-SECTIONING.

ROADWAY 14 FEET WIDE. SIDE SLOPES 1 1/2 TO 1.

FOR SINGLE TRACK EMBANKMENT.

	0	.1	.2	.3	.4	.5	.6	.7	.8	.9	
0	7.0	7.2	7.3	7.5	7.6	7.8	7.9	8.1	8.2	8.4	0
1	8.5	8.7	8.8	9.0	9.1	9.3	9.4	9.6	9.7	9.9	1
2	10.0	10.2	10.3	10.5	10.6	10.8	10.9	11.1	11.2	11.4	2
3	11.5	11.7	11.8	12.0	12.1	12.3	12.4	12.6	12.7	12.9	3
4	13.0	13.2	13.3	13.5	13.6	13.8	13.9	14.1	14.2	14.4	4
5	14.5	14.7	14.8	15.0	15.1	15.3	15.4	15.6	15.7	15.9	5
6	16.0	16.2	16.3	16.5	16.6	16.8	16.9	17.1	17.2	17.4	6
7	17.5	17.7	17.8	18.0	18.1	18.3	18.4	18.6	18.7	18.9	7
8	19.0	19.2	19.3	19.5	19.6	19.8	19.9	20.1	20.2	20.4	8
9	20.5	20.7	20.8	21.0	21.1	21.3	21.4	21.6	21.7	21.9	9
10	22.0	22.2	22.3	22.5	22.6	22.8	22.9	23.1	23.2	23.4	10
11	23.5	23.7	23.8	24.0	24.1	24.3	24.4	24.6	24.7	24.9	11
12	25.0	25.2	25.3	25.5	25.6	25.8	25.9	26.1	26.2	26.4	12
13	26.5	26.7	26.8	27.0	27.1	27.3	27.4	27.6	27.7	27.9	13
14	28.0	28.2	28.3	28.5	28.6	28.8	28.9	29.1	29.2	29.4	14
15	29.5	29.7	29.8	30.0	30.1	30.3	30.4	30.6	30.7	30.9	15
16	31.0	31.2	31.3	31.5	31.6	31.8	31.9	32.1	32.2	32.4	16
17	32.5	32.7	32.8	33.0	33.1	33.3	33.4	33.6	33.7	33.9	17
18	34.0	34.2	34.3	34.5	34.6	34.8	34.9	35.1	35.2	35.4	18
19	35.5	35.7	35.8	36.0	36.1	36.3	36.4	36.6	36.7	36.9	19
20	37.0	37.2	37.3	37.5	37.6	37.8	37.9	38.1	38.2	38.4	20
21	38.5	38.7	38.8	39.0	39.1	39.3	39.4	39.6	39.7	39.9	21
22	40.0	40.2	40.3	40.5	40.6	40.8	40.9	41.1	41.2	41.4	22
23	41.5	41.7	41.8	42.0	42.1	42.3	42.4	42.6	42.7	42.9	23
24	43.0	43.2	43.3	43.5	43.6	43.8	43.9	44.1	44.2	44.4	24
25	44.5	44.7	44.8	45.0	45.1	45.3	45.4	45.6	45.7	45.9	25
26	46.0	46.2	46.3	46.5	46.6	46.8	46.9	47.1	47.2	47.4	26
27	47.5	47.7	47.8	48.0	48.1	48.3	48.4	48.6	48.7	48.9	27
28	49.0	49.2	49.3	49.5	49.6	49.8	49.9	50.1	50.2	50.4	28
29	50.5	50.7	50.8	51.0	51.1	51.3	51.4	51.6	51.7	51.9	29
30	52.0	52.2	52.3	52.5	52.6	52.8	52.9	53.1	53.2	53.4	30
31	53.5	53.7	53.8	54.0	54.1	54.3	54.4	54.6	54.7	54.9	31
32	55.0	55.2	55.3	55.5	55.6	55.8	55.9	56.1	56.2	56.4	32
33	56.5	56.7	56.8	57.0	57.1	57.3	57.4	57.6	57.7	57.9	33
34	58.0	58.2	58.3	58.5	58.6	58.8	58.9	59.1	59.2	59.4	34
35	59.5	59.7	59.8	60.0	60.1	60.3	60.4	60.6	60.7	60.9	35
36	61.0	61.2	61.3	61.5	61.6	61.8	61.9	62.1	62.2	62.4	36

Calculated by Julien A. Hall, M. Am. Soc. C. E.

MADE IN GERMANY.