

MICROFILMED

DEC 16 1964

1

1

3/15/15

Geo. B. GORR  
SHREVEPORT  
1770 ORC

CROSS-SECTION OF  
CHERRY ST 50' WIDE 10' WALK  
FROM W.L. TRIAS ST to 7 1/2' 1/4 S  
E.L. ARISTH ST

26942

100' WEST

BM	7.88	274.94	267.06	NE Trias 4 Ft. Stock
T.P.	5.07	269.42	10.59	264.35

W.L. TRIAS ST.

S		5.6	263.8	
cb		6.2	263.2	
1/4		6.6	262.8	
C		6.8	262.6	
1/4		7.0	262.4	
cb		7.2	262.2	
N		7.6	261.8	

50' WEST

N		4.9	264.5	
cb		4.9	264.5	
1/4		4.6	264.8	
C		4.4	265.0	
1/4		4.2	265.2	
cb		3.9	265.5	
S		3.7	265.7	

150' W

S	3.0	266.4
cb	2.8	266.6
1/4	2.9	266.5
C	3.1	266.3
1/4	3.4	266.0
cb	3.5	265.9
N	3.8	265.6

N	4.8	264.6
cb	4.5	264.9
1/4	4.3	265.1
C	4.2	265.2
1/4	3.7	265.7
cb	3.2	266.2
S	2.8	266.6

300' W

S	6.7	262.7
cb	7.7	261.7
1/4	1.2	261.2

269.42

C	8.8	260.6
1/4	9.2	260.2
cb	9.5	259.9
N	9.8	259.6

250' W

N	15.1	254.3
cb	14.6	254.8
1/4	14.2	255.2
C	13.8	255.6
1/4	13.2	256.2
cb	12.7	256.7
S	11.9	257.5

T.P.	2.02	258.31	13.13	256.29
------	------	--------	-------	--------

300' W = E. L. AMPUDIA ST (50' WIDE)

S	7.2	251.1
cb	8.1	250.2
1/4	8.9	249.4
C	9.8	248.5
1/4	10.6	247.7
cb	11.1	247.2

25831

CHERRY ST

N	11.8	246.5
E CURB	3	
N	13.2	245.1
cb	12.1	246.2

1/4	12.0	246.3
-----	------	-------

C	11.5	246.8
1/4	10.7	247.6
cb	9.7	248.6
S	8.7	249.6

E. QUARTER

S	9.7	248.6
cb	11.0	247.3
1/4	11.9	246.6

C	12.6	245.7
---	------	-------

T.P.	3.70	249.26	12.75	245.56
1/4			4.2	245.1
cb			6.7	242.6
N			12.4	236.9
+20			14.4	234.8

249.26

CENTER

-20	22.5	226.8
N	20.0	229.3
cb	13.2	236.1
1/4	10.4	238.9
C	9.0	240.3
+4	4.8	244.5
1/2	4.0	245.3
cb	2.8	246.5
S	2.0	247.3

W. QUARTER

S	2.7	246.6
cb	3.1	246.2
+5	4.0	245.3
1/4	6.0	243.3
C	11.6	237.7
1/4	18.2	231.1
cb	21.9	227.4
N	25.4	223.9
+30	32.0	217.3
+45	31.0	218.3

249.26

CHERRY ST

249.26

W CURB

-35	40.0	209.3
-35	42.0	207.3
N	32.5	216.8
cb	27.5	221.8
1/4	23.4	225.9
C	17.3	232.0
1/4	10.9	238.4
+2	7.0	242.3
cb	4.1	245.2
S	2.9	246.4

W. LINE AMPUDIA ST

S	3.8	245.5
cb	8.1	241.2
+4	8.5	240.8
1/4	11.4	237.9
C	18.8	230.5
1/4	24.9	224.4
cb	31.4	217.9
N	36.5	212.8
+30	45.0	204.3

		249.26		26	
+40			51.0	198.3	
+55			46.5	202.8	
T.P.			3.70	245.56	This T.P. OUT.
B.M.	0.60	266.97		266.37	MON. Ctr. Pines + AMP
T.P.	0.01	254.00	12.98	253.99	
T.P.	0.41	241.66	12.75	241.25	
		30' W			
N.B. S			4.8	236.9	
cb			9.8	231.9	
T.P.	0.90	229.53	13.03	228.63	
1/4			2.9	226.6	
C			8.4	221.1	
1/4			12.8	216.7	
cb			22.0	207.5	
N			26.5	203.0	
+45			47.7	181.8	
+75			47.0	182.5	
		15' W			
-90			60.9	168.6	
-55			60.3	169.2	

					229.53	
				-15	34.1	195.4
				N	27.6	201.9
				cb	21.6	207.9
				1/4	18.3	211.2
				C	14.0	215.5
				1/4	10.8	218.7
				cb	8.4	221.1
				S	7.9	221.6
				T.P.	0.29	216.69
				T.P.	0.10	204.23
					75' W	
				-35	+10.0	214.2
				-25	0.0	204.2
				S	10.1	194.1
				cb	11.3	192.9
				1/4	9.9	194.3
				C	9.6	194.6
				1/4	12.6	191.6
				cb	17.0	187.2
				N	25.0	179.2
				+45	30.5	173.7

204.23

+65	42.4	161.8
+80	54.5	149.7
+100 same beyond.	60.6	143.6
90' W.		
-100	54.0	150.2
-65	50.5	153.7
N	34.0	170.2
cb	32.5	171.7
1/4	29.7	174.5
c	24.6	176.6
1/4	14.3	186.9
cb	9.7	194.5
S	4.8	199.4
+75	4.5.0	209.2
100' W.		
-30	18.8	213.0
S	11.2	193.0
cb	17.0	187.2
1/4	20.6	183.6
c	19.1	185.1

204.23

6

1/4	20.7	183.5
cb	23.6	180.6
N	22.8	181.4
+30	23.5	180.7
+55	39.3	164.9
+80	37.3	166.9
+100	42.3	161.9
150' W.		
-60	5.4	198.8
-35	3.4	200.8
T.P.	12.71	216.59
T.P.	12.50	228.85
N	9.5	219.4
cb	8.4	220.5
1/4	7.5	221.4
C	3.4	225.5
T.P.	12.34	241.10
1/4	12.3	228.8
cb	8.5	232.6
S	2.5	238.6

241.10

T.P.

12.02

251.88

1.24

239.86

175' W.

S

8.4

243.5

cb

9.5

242.4

1/4

10.5

241.4

C

10.9

241.0

1/4

11.9

240.0

cb

13.0

238.9

N

13.5

238.4

225' W.

N

5.0

246.9

cb

3.9

248.0

1/4

3.2

248.7

C

2.8

249.1

1/4

2.2

249.7

cb

1.9

250.0

S

1.3

250.6

T.P.

11.69

262.82

0.75

251.13

262.82

CHERRY ST.

275' W

S

3.1

259.7

cb

4.0

258.8

1/4

4.7

258.1

C

5.7

257.1

1/4

6.9

255.9

cb

8.6

254.2

N

9.9

252.9

300' W = E.A. ARISTH ST

N

10.2

252.6

cb

7.6

255.2

1/4

5.7

257.1

C

4.5

258.3

1/4

3.1

259.4

cb

2.5

260.3

S

1.7

261.1

T.P.

4.95

266.88

0.89

261.93

CHK.

0.4

0.49

266.39

266.27

.02

OK

Mon City 940  
4 AMP 2019



12/20  
Gregory  
Miller  
Shaw

CROSS SECTION OF  
TORRENCE ST 43' wide  
from N.L. Wellborn 12' cbs on N  
To 450' W. 8' ✓  
5.75' 1/4 ✓

on BM 2.49 26333

26084 at Torrence  
Wellborn.

75' W

N.L. Wellborn

Station	Distance	Elevation	Notes	Distance	Elevation
			N		1.2 262.1
N	2.7	260.6	+7	1.5	261.8
+6	3.3	260.0	cb	2.5	260.8
cb	4.1	258.9	1/4	2.7	260.6
1/4	4.9	258.4	c	3.0	260.3
c	4.9	258.4	1/4	3.3	260.0
1/4	5.0	258.3	cb	4.0	259.3
cb	6.1	256.9	s	4.6	258.7
s	7.0	256.3			
	40' W		s	5.1	257.9
s	5.0	258.3	cb	4.4	258.9
cb	4.0	259.3	1/4	4.0	259.3
1/4	3.6	259.7	c	3.4	259.9
c	3.3	260.0	1/4	3.0	260.3
1/4	2.8	260.5	cb	2.7	260.6
cb	2.5	260.8	N	1.8	261.5
+4	1.6	261.7			
N	1.0	262.3			
			cb	4.4	259.1

100' W

125' W

26333

1/2	46	258.7
c	48	258.5
1/4	51	258.2
cb	53	257.8
s	7.0	256.3

150' W

s	77	255.6
cb	73	256.0
1/2	69	256.4
c	66	256.7
1/4	65	256.8
cb	64	256.9
N	5.0	258.3

151' W

N	60	257.3
cb	65	256.8

175' W

N	7.8	255.5
cb	8.5	254.8
1/4	8.8	254.5

Torrence

9

c	86	254.7
1/4	90	254.3
cb	94	253.9
s	10.7	253.2

200' W

s	13.2	250.1
cb	12.2	250.9
1/4	12.1	251.2
c	11.7	251.6
1/4	11.7	251.6
cb	11.6	251.7
46	9.2	254.1
N	8.9	254.4

207' W

N	11.7	251.6
cb	13.1	250.2
T.P.	1.42	252.03
1/4	1.472	250.61
1/4	1.5	250.5
c	1.5	250.5
1/4	1.6	250.4

W54.03

08

cb	r.v	249.8
3	r.v	249.4
r40' W		
3	68	245.2
cb	64	245.6
1/4	61	245.9
c	58	246.2
1/4	59	246.1
cb	59	246.1
N	56	246.4

W50' W

-10	87	243.3
N	86	243.4
cb	90	243.0
1/4	89	243.1
c	84	243.6
1/4	85	243.5
cb	82	243.8
3	82	243.8
+10	96	242.4

Torrence

10

r65' W

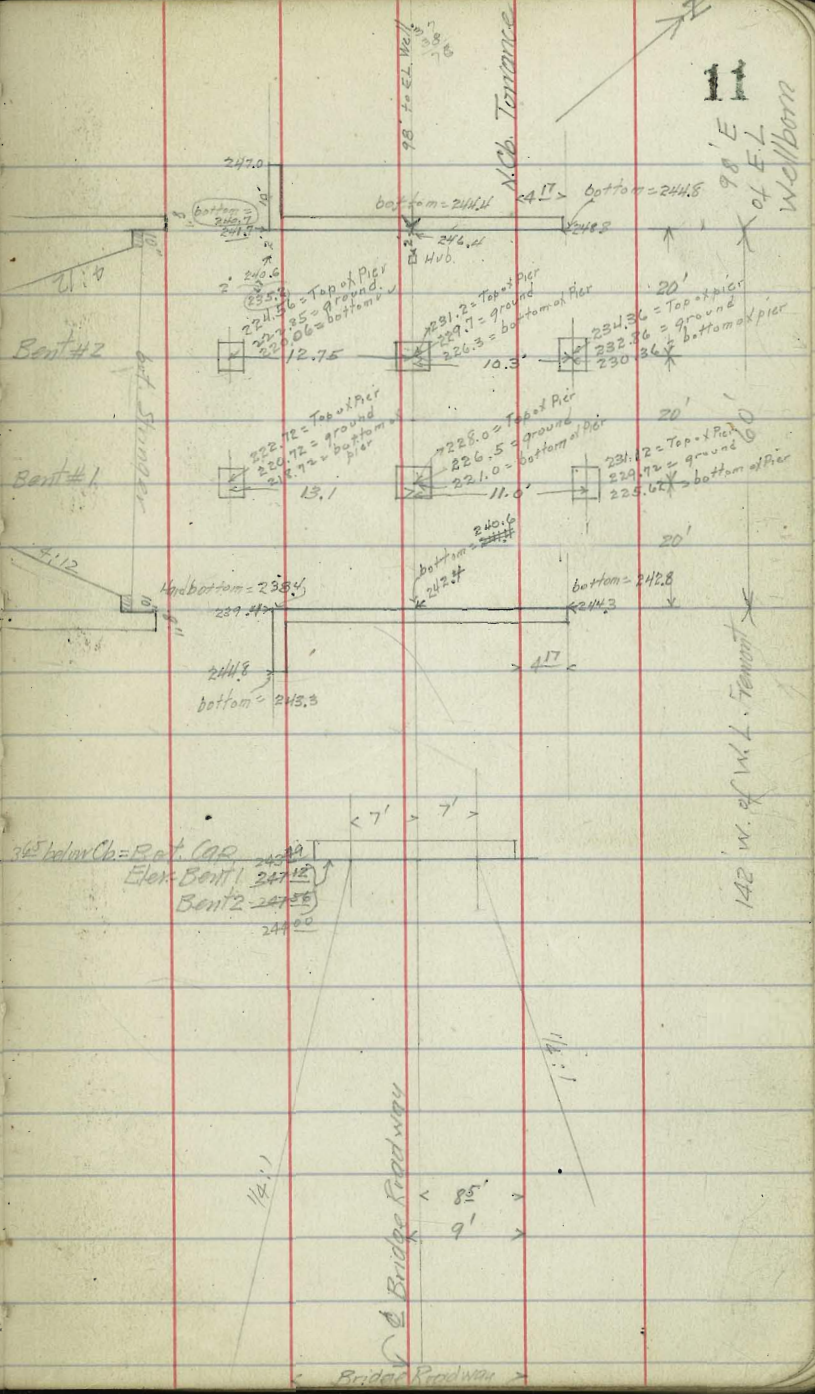
3	12.6	239.4
cb	13.9	238.1
1/4	15.0	237.0
c	16.1	235.9
1/4	16.3	235.7
cb	15.7	236.3
N	13.8	238.2

1/2 1/0  
 Greeny  
 Comly  
 Miller  
 Shaw

Data on Bridge  
 Torrence St.

26084  
 0.29

0.29	261.13	260.84	5 ft. N. W. Torrence	Wellborn
1.22	250.01	14.34	248.79	
0.42	237.47	10.96	237.05	
2.13	227.05	12.55	224.92	
0.56	249.35		248.79	
	154' E. of Wellborn			
	Elev. of solid bottom at	15.6	233.8	
	155' E	11.0	238.4	
1.79	250.78		248.79	
OUTSIDE COR. OF E. ABUT.	14.0	237.8	SOLID GRD.	
4' W. of ✓	✓	14.9	237.9	NAT. GRD
7.0 ✓	✓	41.3	229.5	✓ ✓
center of E. ABUT.	10.2	240.6	SOLID GRD.	
N. cb line and ✓	✓	10.0	240.8	✓ ✓
N. cor of ✓	✓	13.1	237.7	✓ ✓
Elev of Driveway	3.63	241.13		



11  
 98' E  
 of EL  
 Wellborn

142' W. of W.L. Torrence

Bridge Roadway  
 Bridle Roadway

12

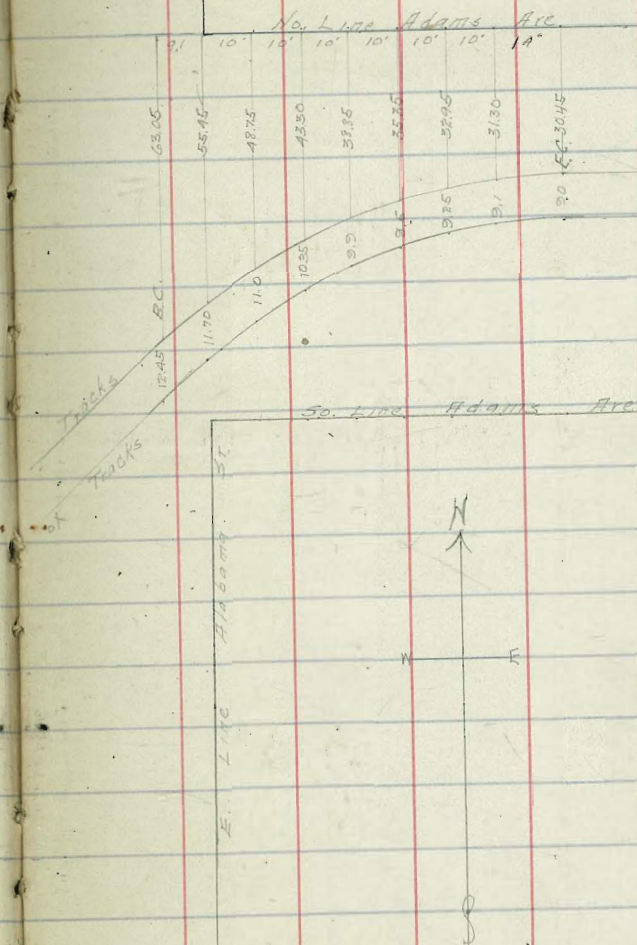
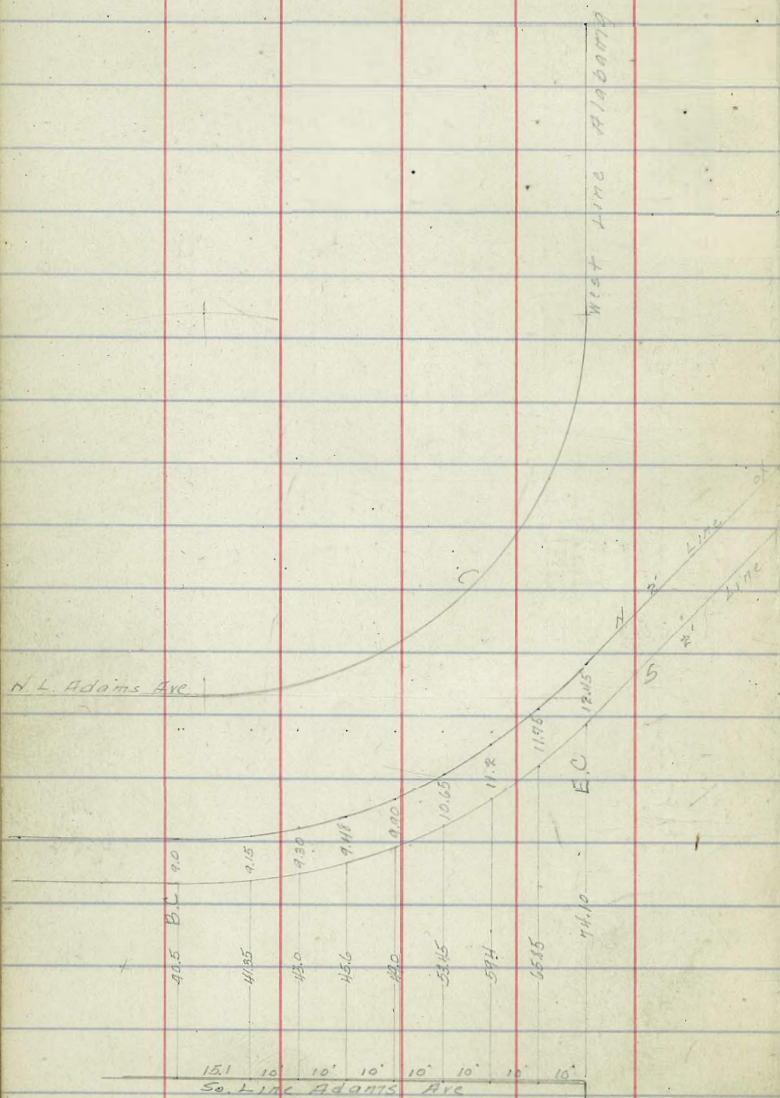
12

14

15

3/10/15  
Gregory  
Ephraim  
Moore

Location of  
Car tracks at Adams  
Ave. Alabama.



13

14



3/15  
 1/2 5/8  
 1/2 5/8  
 Moore

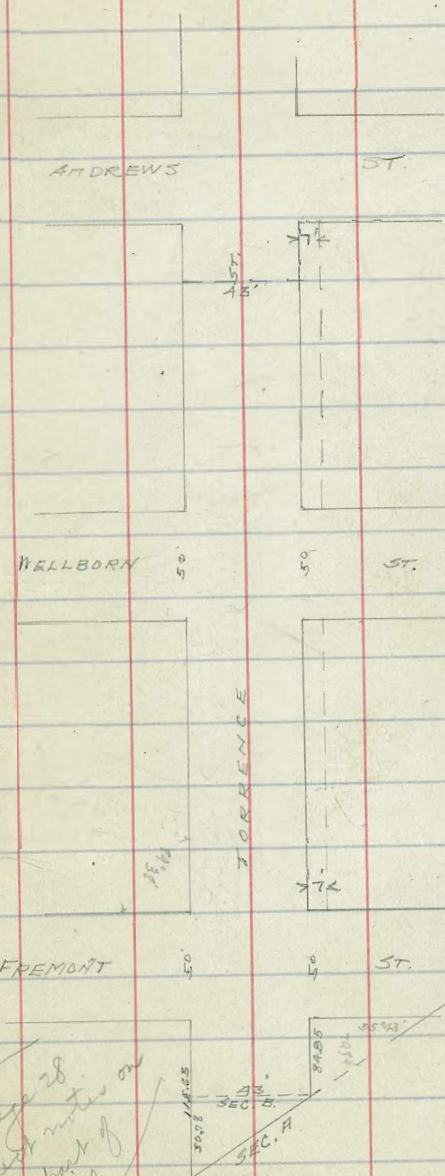
CROSS-SECTION OF  
 TORRENCE ST. 43' WIDE 8' WALKS  
 From E.L. Middletown Addn 6.75' 1/4's  
 To 250' West of Wellborn St.

		265.1	
B.M.	1.04	265.07	264.03
			NE. cor E.L. Middletown Addn & TORRENCE
		SEC. A = E.L. Middletown Add.	
N		0.5	264.6 ✓
cb		1.0	264.1 ✓
1/2		1.4	263.7 ✓
C		1.4	263.7 ✓
1/4		1.4	263.7 ✓
cb		1.6	263.5 ✓
S		2.2	262.9 ✓
		SEC. B	
S		3.4	261.7 ✓
cb		2.8	262.3 ✓
1/4		2.5	262.6 ✓
C		2.1	263.0 ✓
1/4		2.1	263.0 ✓
cb		1.5	263.6 ✓
N		0.5	264.6 ✓

SEE PAGE 28  
 this book.

30.78 0150 }  
 00 - No } = SEC. B

Old Grades in Part C 81



See page 28  
 for correct notes on  
 this part of  
 the job

265.07

14

34.85' W OF SEC B

N	1.8	263.3	✓
cb	3.0	262.1	✓
+3	3.1	262.0	✓
1/4	4.7	260.9	✓
C	5.0	260.1	✓
1/4	5.5	259.6	✓
cb	5.6	259.5	✓
S	5.8	259.3	✓
84.85' W = E. L. FREMONT ST (50' WIDE)			
S	9.5	255.6	✓
cb	8.8	256.3	✓
1/4	8.1	257.0	✓
C	7.6	257.5	✓
1/4	7.8	257.3	✓
+3	6.3	258.8	✓
cb	6.1	259.0	✓
N	5.2	259.9	✓
E. CURB			
N	5.9	259.2	✓
cb	6.9	258.2	✓

see page 25  
this book

265.1

TORRENCE ST

17

1/4	7.8	257.3	✓
C	8.1	257.0	✓
1/4	8.6	256.5	✓
cb	9.5	255.6	✓
S	9.8	255.3	✓
E. QUARTER			
S	10.4	254.7	✓
cb	10.0	255.1	✓
1/4	9.2	255.9	✓
C	8.5	256.7	✓
1/4	8.0	257.1	✓
cb	7.3	257.8	✓
N	6.7	258.7	✓
CENTER			
N	6.6	258.5	✓
cb	7.7	257.4	✓
1/4	8.2	256.9	✓
C	8.7	256.4	✓
1/4	9.2	255.9	✓
cb	10.1	255.0	✓

S	11.1	254.0 ✓
W. QUARTER		
S	11.5	253.6 ✓
cb	10.5	254.6 ✓
1/4	9.6	255.5 ✓
C	9.1	256.0 ✓
1/4	8.6	256.5 ✓
cb	7.9	257.7 ✓
N	7.1	258.0 ✓
W. CURB		
N	7.2	257.9 ✓
cb	8.3	256.8 ✓
1/4	9.2	255.9 ✓
C	9.7	255.4 ✓
1/4	10.1	255.0 ✓
cb	11.0	254.1 ✓
S	12.3	252.8 ✓
N. L. FREMONT ST		
S	12.8	252.3 ✓
cb	11.6	253.5 ✓

1/4	10.7	254.4 ✓
C	10.5	254.6 ✓
1/4	9.8	255.3 ✓
cb	9.4	256.7 ✓
N	7.4	257.7 ✓
50' WEST		
N	12.2	252.9 ✓
T.P.	0.21	<u>252.60</u> 12.68 252.39 ✓
cb	0.4	252.2 ✓
1/4	1.5	251.1 ✓
C	1.6	251.0 ✓
1/4	1.6	251.0 ✓
cb	2.3	250.3 ✓
S	3.6	249.0 ✓
100' W		
S	6.7	245.9 ✓
cb	6.3	246.3 ✓
1/4	6.2	246.4 ✓
C	6.1	246.5 ✓
1/4	5.0	247.6 ✓

252.60

21

cb		4.5	248.1 ✓
N		3.3	249.3 ✓
	115° W		
N		4.1	248.2 ✓
cb		5.3	247.3 ✓
1/4		6.2	246.4 ✓
c		6.3	246.3 ✓
1/4		6.5	246.1 ✓
cb		6.9	245.7 ✓
S		7.8	244.8 ✓
+5		14.0	238.6 ✓
+50		36.6	216.0 ✓
	125° W		
-50		36.7	215.9 ✓
-10		27.0	225.6 ✓
S		15.7	236.9 ✓
+1.0		11.6	241.0 ✓
cb		8.3	244.3 ✓
1/4		6.9	245.7 ✓
c		6.5	246.2 ✓
1/4		6.1	246.5 ✓

TORRENCE ST.

252.6

19

cb		5.5	247.1 ✓
N		4.9	247.7 ✓
	140° W		
N		4.9	247.7 ✓
cb		7.9	244.7 ✓
1/4		7.5	245.1 ✓
c		9.5	243.1 ✓
1/4		12.2	240.4 ✓
T.P.	1.00	(240.62)	239.62 ✓
cb		5.0	235.6 ✓
S		10.0	230.6 ✓
+20		24.6	216.0 ✓
+50		25.5	215.1 ✓
	150° W		
-70.0		34.7	205.9 ✓
-50		38.7	201.9 ✓
-25		37.0	203.6 ✓
S		17.6	223.0 ✓
cb		11.4	229.2 ✓
1/4		9.8	230.8 ✓
c		9.1	231.5 ✓
1/4		9.0	231.6 ✓

	240.62		
db		7.0	233.6 ✓
N		4.6	236.0 ✓
+15		0.0	240.6 ✓
T.P.	2.01	<u>236.33</u>	6.30 234.32 ✓
	165	WEST	241.9 ✓
-20		+5.6	<del>230.7</del> ✓
-10		0.0	236.3 ✓
N		4.7	231.6 ✓
db		8.6	227.7 ✓
1/4		11.8	224.5 ✓
C		14.0	222.3 ✓
1/4		15.6	220.7 ✓
db		20.0	216.3 ✓
S		22.9	213.4 ✓
+50		40.3	196.0 ✓
+75		36.0	200.3 ✓
	175	W	
-90		41.1	195.2 ✓
-75		46.6	189.7 ✓
-50		40.0	196.3 ✓
-15		28.0	209.3 ✓

	236.3		20
S		21.3	215.0 ✓
db		18.5	217.8 ✓
1/4		15.6	220.7 ✓
C		12.1	224.2 ✓
1/4		9.2	227.1 ✓
db		5.6	230.7 ✓
N		3.6	232.7 ✓
+8		0.0	236.3 ✓
+14		+5.0	241.3 ✓ <del>237.3</del>
	185	W	
-20		+7.0	243.3 ✓
-15		+4.0	240.3 ✓ <del>232.3</del>
N		0.5	235.8 ✓
db		2.1	234.2 ✓
1/4		2.7	233.6 ✓
C		7.9	228.4 ✓
1/4		10.1	226.2 ✓
db		12.8	223.5 ✓
S		12.8	223.5 ✓
+25		25.0	211.3 ✓
+85		42.0	187.3 ✓
+100		48.0	188.3 ✓

236.33

200' W

-60	27.4	208.9
-55	31.4	204.9
-50	27.4	208.9
S	1.4	234.9

T.P.	11.33	<u>247.35</u>	0.31	236.02
------	-------	---------------	------	--------

cb	9.5	237.8
1/4	5.7	241.6
C	2.5	244.8

T.P.	12.13	<u>259.08</u>	0.40	246.95
------	-------	---------------	------	--------

1/4	12.6	246.5
cb	11.5	247.6
N	9.8	249.3

225' W

N	8.4	250.7
cb	9.4	249.7
1/4	10.1	249.0
C	10.2	248.9
1/4	10.5	248.6
cb	11.2	247.9
S	11.6	247.5

259.1

TORRENCE ST

21

250' W

S	11.2	247.9
cb	10.1	249.0
1/4	9.2	249.9
C	8.8	250.3
1/4	8.7	250.4
cb	7.7	251.4
N	7.0	252.1

300' W = E.L. WELLS BORN ST (50' WIDE)

N	3.0	256.1
cb	4.3	254.8
1/4	5.0	254.1
C	5.2	253.9
1/4	5.6	253.5
cb	6.4	252.7
S	7.9	251.2

E CURB

S	7.0	252.1
cb	5.5	253.6
1/4	4.7	254.4
C	4.1	255.0

see book 868 for  
this intersection

58

259.08

1/4 3.7 255.4 ✓

cb 3.0 256.1 ✓

N 2.1 257.0 ✓

E. QUARTER

N 1.0 258.1 ✓

cb 2.0 257.1 ✓

1/4 2.7 256.4 ✓

C 3.4 255.7 ✓

1/4 3.9 255.2 ✓

cb 4.5 254.6 ✓

S 5.6 253.5 ✓

CENTER

S 5.4 253.7 ✓

cb 4.5 254.6 ✓

1/4 3.5 255.6 ✓

C 3.1 256.0 ✓

1/4 2.0 257.1 ✓

cb 1.2 257.9 ✓

N 0.4 258.7 ✓

T.P. 4.86 263.58 0.36 258.72 ✓

271

263.6

TORRENCE ST

22

W. QUARTER

N 4.7 258.9 ✓

cb 5.2 258.4 ✓

1/4 5.7 257.9 ✓

C 6.3 257.3 ✓

1/4 7.1 256.5 ✓

cb 7.9 255.7 ✓

S 9.4 254.2 ✓

W. CURB

S 8.2 255.4 ✓

cb 7.1 256.5 ✓

1/4 6.5 257.1 ✓

C 5.6 258.0 ✓

1/4 5.4 258.2 ✓

cb 4.9 258.7 ✓

N 3.8 259.8 ✓

W. L. WEL-BORN ST.

N 2.9 260.7 ✓

cb 3.6 260.0 ✓

1/4 4.8 258.8 ✓

see book 868  
for this intersection

263.58

28

C		258.4	✓
1/4		258.2	✓
cb	68	256.8	✓
S	7.1	256.5	✓
	50' WEST		
S	4.9	258.7	✓
cb	4.2	259.4	✓
1/4	3.5	260.1	✓
C	3.2	260.4	✓
1/4	2.9	260.7	✓
cb	1.7	261.9	✓
N	1.0	262.6	✓
	75' WEST		
N	1.5	262.1	✓
cb	2.0	261.6	✓
1/4	2.8	260.8	✓
C	3.2	260.4	✓
1/4	3.3	260.3	✓
cb	4.1	259.5	✓
S	4.8	258.8	✓

SEE PAGES  
THIS BOOK  
FOR CORRECT  
NOTES  
OF WELLBORN

TORRENCE

263.6

28

		100' WEST	
S	5.3	258.3	✓
cb	4.5	259.1	✓
1/4	3.9	259.7	✓
C	3.7	259.9	✓
1/4	3.4	260.2	✓
cb	2.7	260.9	✓
N	2.0	261.6	✓
	262.0		
T.P.	3.03	261.99	4.62
		258.96	✓
		125' WEST	
N	1.6	260.4	✓
cb	2.2	259.8	✓
1/4	3.2	258.8	✓
C	3.1	258.9	✓
1/4	3.6	258.4	✓
cb	4.1	257.9	✓
+6	4.5	257.3	✓
S	5.7	256.3	✓
		150' WEST	
S	6.3	255.7	✓
cb	5.9	256.2	✓



23

36199

2620

1/4

5.3 256.7 ✓

C

5.1 256.9 ✓

1/4

5.1 256.9 ✓

cb

4.7 257.3 ✓

N

4.3 257.7 ✓

200' WEST

N

7.7 254.3 ✓

cb

8.8 253.2 ✓

1/4

10.7 251.3 ✓

C

10.5 251.5 ✓

1/4

10.7 251.3 ✓

cb

11.4 250.6 ✓

S

11.6 250.4 ✓

T.P.

305

253.08

11.96 250.03

250' WEST

S

9.0 244.1 ✓

cb

9.3 243.8 ✓

1/4

9.2 243.9 ✓

C

9.8 243.3 ✓

1/4

10.2 242.9 ✓

SEE PAGE 8  
THIS BOOK

TORRENCE

253.1

24

cb

10.3 242.8 ✓

N

10.0 243.1 ✓

265' WEST (TO BE USED IN FIGURING  
END OF BANK IF  
NECESSARY)

S

13.5 239.6 ✓

C

16.9 236.2 ✓

N

15.3 237.8 ✓

275' WEST

C

22.5 230.6 ✓

T.P.

10.98

263.20

0.86 252.22 ✓

Check on BM.

2.35 260.85 ✓

NW Torrence  
+ Wallborn  
260.84

+	-	264.03
1.04	12.65	2 17
0.51	12.45	260.85 ✓
1.00	6.30	
2.01	0.31	
11.33	0.40	
12.13	8.36	
4.86	4.62	
3.03	11.96	
3.25	0.86	
10.28	2.35	
49.64	52.12	
	49.64	
	3.18	

24

25

Measurement of Paving & Curb  
ON BROADWAY WEST OF ATLANTIC.

Begins 15' west of Atlantic. 52' wide

No. side 405.0 to Track

405	311	563
310	403	613
402.5	40.2	117.6
21,060	19.7	58.8
2.6	151.3	17.4
18.2	10.4	23.5
13.7	385.32	41.2
	22.2	47.7
20.7	19.1	1023.12
10.35	22.2	678
2.2	199.8	613
20.5	22	129.1
20.5	424.02	64.5
22.770	9.2	21.7
12.7	22.2	451.5
23.1	22.2	64.5
32.8	31.4	19.35
18.4	15.7	2044.65
34	17.7	70.7
73.6	102.7	67.8
55	10.99	138.5
64.2	15.7	69.7
23.1	277.59	25.9
8.2	17.7	62.73
55.1	45.2	348.5
46	1.97	139.4
16.6	5.50	180.23
10.4	4.5	71.4
144.6	2.2	70.7
32	8.60	142.1
84	45.50	71.4
116	25.0	34.6
58	113.50	406.6
31.1	56.3	25.44
5.8	48.2	14.2
17.4	10.4	1749.06
1803.8	2.2	29.0
84.3	21.5	81
5.3	261.0	2.94
42.5	42.5	235.2
42.5	104.8	2381.4
4267.5	1122.30	85.54
20.0	3.1216	
300	405	
	374.16	
	85.84	

Curb

47.2  
405.0  
405.0  
101  
10.8  
27.5  
85.0  
14.0  
84.4

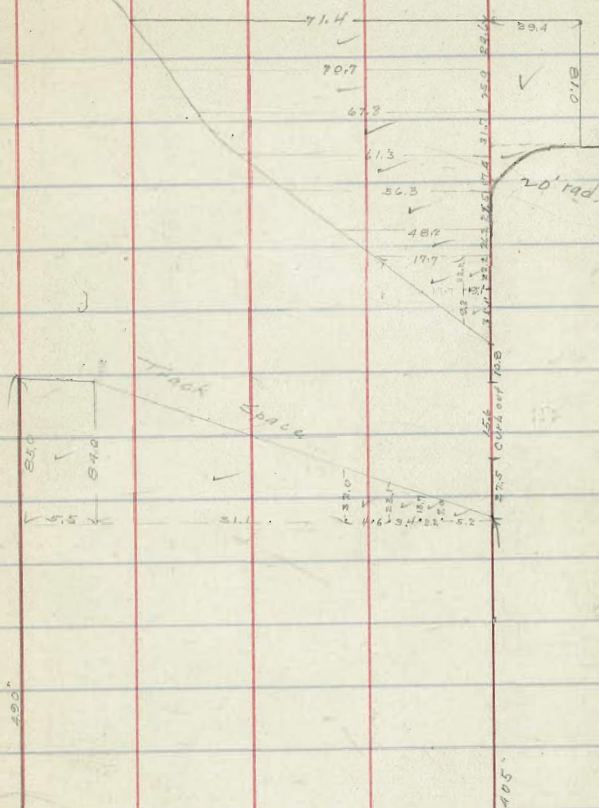
Total 1182.9 lin ft  
Curb

Paving  
21,060

78.2  
22.77  
62.56  
124.66  
1803.8  
464.75  
365.82  
424.02  
277.89  
1113.50  
1122.30  
1023.12  
2044.65  
1805.23  
1749.06  
2381.4  
85.54

Total 35969.57 sq ft

54  
309  
51  
28



26

27

9/8/15 Gregory Miller

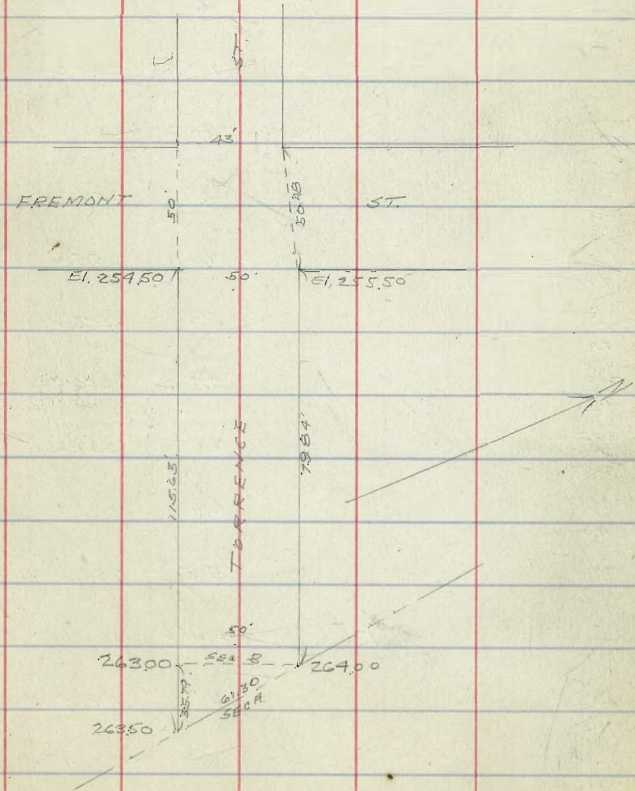
88

CROSS-SECTION OF  
TORRENCE ST (see sketch)  
From the East Line of FREMONT ST  
To MIDDLETOWN AVE

28

B.M.	Dist	Elev	Notes
		264.03	BP in Curb Torrence Middle Aged Line
W. L. FREMONT = 1/2 wide section			
S	12.3	252.3	
S			
CB	11.0	253.6	
1/4	10.3	254.3	
6.75			
ctr	9.9	254.7	
6.75			
1/4	9.3	255.3	
6.75			
CB	8.0	256.6	
S			
N	6.8	257.8	
W. CURB = 1/4 wide section			
N			
8.4	6.6	258.0	
CB			
6.9	7.5	257.1	
1/4			
6.9	8.7	255.9	
C			
6.9	9.1	255.5	
1/4			
6.9	9.6	255.0	
CB			
8.4	10.4	254.2	
S			
11.8	11.8	252.8	
W. QUARTER = 1/4 wide section			
S			
11.0	11.0	253.6	

8.7			
CB	9.9	254.7	
7.01			
1/4	9.1	255.5	
7.01			
C	8.4	256.2	
7.01			
1/4	8.0	256.6	
7.01			
CB	7.2	257.4	
8.7			
N	6.2	258.4	



Journe Mh

CENTER = 46.50 wide

N 4.0	5.8	258.8
cb 7.13	6.6	259.0
1/4	7.5	257.1
7.12	8.0	256.6
C	8.6	256.0
7.12	9.4	255.2
cb	10.6	254.0
9.0		
S		

E QUARTER = (47.56 wide)

S	9.9	254.7
9.3	9.1	255.5
cb	8.2	256.4
7.24	7.7	256.9
1/4	7.4	257.2
7.24	6.4	258.2
cb	5.5	259.1
9.3		
N		

E CURB = 48.6 wide

N	4.7	259.9
9.6	5.7	258.9
cb	7.3	257.3
7.34		
1/4		

7.35	7.3	257.3
C	7.9	256.7
7.35	8.7	255.9
1/4	9.3	255.3
7.35		
cb		
9.6		
S		

E. LINE FREMONT = (50 wide)

S	9.0	255.6
10	7.8	256.8
cb	7.1	257.5
7.5	7.2	257.4
1/4	7.2	257.4
7.5	5.7	258.9
cb	4.5	260.1
10.0	3.8	260.8
H		

25' E. = 54.84' W. of Sec B

N	2.1	262.5
cb	3.2	261.4
1/4	3.9	260.7
+ 4	5.9	258.7
C	6.1	258.5
1/4	6.5	258.1
cb	6.6	258.0

## Inverness St.

S 7.0 257.6 ✓

50' E = 2984' W of Sec. B

S 5.3 259.3 ✓

cb 5.0 259.6 ✓

1/4 4.9 259.7 ✓

C 4.2 260.4 ✓

+ 1/2 4.2 260.4 ✓

1/4 2.5 262.1 ✓

cb 1.8 262.8 ✓

N 0.9 263.7 ✓

2984' E = SEC. B

N +0.7 265.3 ✓

cb 0.6 264.0 ✓

1/4 1.6 263.0 ✓

C 2.3 262.3 ✓

1/4 2.6 262.0 ✓

cb 2.7 261.9 ✓

S 3.1 261.5 ✓

SEC. A

S 1.5 263.1 ✓

cb 1.1 263.5 ✓

1/4 0.9 263.7 ✓

C 0.9 263.7 ✓

1/4 1.1 263.5 ✓

cb 0.2 264.4 ✓

N +0.7 265.3 ✓

18

31



9/8/15. Gregg Miller

CROSS-SECTION OF  
WELLBORN ST (50' WIDE)  
(10' WALKS)  
From 70' SW of Torrence St (7.5' W/S)  
To the N.E. End.

255.2

62

BM	00	260.84	260.84	NW Torrence & Wellborn
T.P.	7.42	(255.2)	13.05	247.79
70' SW of Torrence St.				
E			12.2	243.0 ✓
cb			11.0	244.2 ✓
1/4			10.0	245.1 ✓
C			9.4	245.8 ✓
1/4			9.3	245.9 ✓
cb			9.0	246.2 ✓
W			7.4	247.3 ✓

500 book 768-74

50' SW of Torrence

W			4.9	250.3 ✓
cb			6.3	248.9 ✓
1/4			6.9	248.3 ✓
C			7.0	248.2 ✓
1/4			7.8	247.4 ✓
cb			9.0	246.2 ✓
E			9.4	245.8 ✓

25' SW of Torrence

E			6.9	248.3 ✓
cb			6.0	249.2 ✓
1/4			5.0	250.2 ✓
C			4.2	251.0 ✓
1/4			4.1	251.1 ✓
cb			3.4	251.8 ✓
W			1.7	253.5 ✓
T.P.	8.71	(261.79)	2.13	253.08

S(W) Line of Torrence St. 43' wide  
8' walks  
8.75' W/S

W			5.5	256.3 ✓
cb			7.0	254.8 ✓
1/4			7.7	254.1 ✓
C			7.8	254.0 ✓
1/4			8.6	253.2 ✓
cb			9.9	251.9 ✓
E			10.7	251.4 ✓

S CURB

E			9.4	252.4 ✓
cb			8.3	253.5 ✓

261.79

Wellborn St.

1/4	7.5	254.3 ✓
c	7.0	254.8 ✓
1/4	6.4	255.4 ✓
cb	5.5	256.3 ✓
W	4.8	257.0 ✓
S QUARTER		
W	3.8	258.0 ✓
cb	4.9	256.9 ✓
1/4	5.3	256.5 ✓
c	6.3	255.5 ✓
1/4	6.8	255.0 ✓
cb	7.6	254.2 ✓
E	8.5	253.3 ✓
CENTER		
E	8.0	253.8 ✓
cb	6.9	254.9 ✓
1/4	6.3	255.5 ✓
c	5.7	256.1 ✓
1/4	4.7	257.1 ✓
cb	4.0	257.8 ✓

261.8

23

W	3.4	258.4 ✓
No. QUARTER		
W	3.1	258.7 ✓
cb	3.6	258.2 ✓
1/4	4.0	257.8 ✓
c	4.9	256.9 ✓
1/4	5.6	256.2 ✓
cb	6.6	255.2 ✓
E	7.8	254.0 ✓
No. CORN		
E	7.1	254.7 ✓
cb	5.9	255.9 ✓
1/4	4.8	257.0 ✓
c	4.0	257.8 ✓
1/4	3.6	258.2 ✓
cb	3.1	258.7 ✓
W	1.9	259.9 ✓
No. LINE TORRENCE		
W	1.1	260.7 ✓
cb	2.1	259.7 ✓

261.77

## Wellton Pt.

1/4			2.9	258.9 ✓
C			3.2	258.6 ✓
1/4			3.8	258.0 ✓
cb			4.9	256.9 ✓
E			5.9	255.9 ✓
		25' No.		
J.P.	9.45	270.29 <sup>3</sup>	0.95	260.8 ✓
E			12.6	257.7 ✓
cb			12.0	258.3 ✓
1/4			10.1	260.2 ✓
C			9.8	260.5 ✓
1/4			9.3	261.0 ✓
cb			8.6	261.7 ✓
W			7.3	263.0 ✓
		50' No.		
W			5.8	264.5 ✓
cb			7.0	263.3 ✓
1/4			7.6	262.7 ✓
C			8.1	262.2 ✓
1/4			8.5	261.8 ✓

2703

44

cb			10.1	260.2 ✓
E			11.1	259.2 ✓
		25' No.		
E			9.7	260.6 ✓
cb			8.8	261.5 ✓
1/4			7.2	263.1 ✓
C			6.8	263.5 ✓
1/4			6.7	263.6 ✓
cb			6.3	264.0 ✓
W			5.0	265.3 ✓
		100' No.		
W.			4.3	266.0 ✓
+7			4.9	265.4 ✓
cb			5.6	264.7 ✓
1/4			5.7	264.6 ✓
C			5.8	264.5 ✓
1/4			6.3	264.0 ✓
cb			7.2	263.1 ✓
E			8.3	262.0 ✓

270.29

Wellbore #4

125' No.

E	6.1	264.2	✓
cb	5.6	264.7	✓
1/4	4.7	265.6	✓
C	4.4	265.9	✓
1/4	4.4	265.9	✓
cb	4.2	266.1	✓
+3	3.3	267.0	✓
W.	3.0	267.3	✓
150' No.			
W	1.7	268.6	✓
+8	2.0	268.3	✓
cb	2.6	267.7	✓
+2	2.9	267.4	✓
1/4	3.2	267.1	✓
C	3.1	267.2	✓
1/4	3.3	267.0	✓
cb	4.2	266.1	✓
E	4.7	265.6	✓

270.3

125' No.

E	3.1	267.2	✓		
cb	2.9	267.4	✓		
1/4	1.7	268.6	✓		
C	1.5	268.8	✓		
1/4	1.6	268.7	✓		
cb	1.3	269.0	✓		
+3	0.6	269.7	✓		
W	0.4	269.9	✓		
T.P.	486	274.51	0.64	269.66	✓
207' No. = S.L. NEALE ST (43' wide, 8' deep, 6.75' dia)					
W	4.1	270.4	✓		
cb	4.5	270.0	✓		
1/4	4.5	270.0	✓		
C	4.6	269.9	✓		
1/4	4.8	269.7	✓		
cb	5.4	269.1	✓		
E	5.7	268.8	✓		

274.51

Wellborn St.

So. Curb

E	5.7	268.8	✓
cb	5.1	269.4	✓
1/4	4.6	269.9	✓
c	4.3	270.2	✓
1/4	4.2	270.3	✓
cb	4.3	270.2	✓
W	4.3	270.2	✓

So. QUARTER

W	4.3	270.2	✓
cb	3.9	270.6	✓
1/4	3.8	270.7	✓
c	4.1	270.4	✓
1/4	4.3	270.2	✓
cb	4.6	269.9	✓
E	5.1	269.4	✓

CENTER

E	4.9	269.6	✓
cb	4.4	270.1	✓
1/4	4.0	270.5	✓

274.5

c	3.9	270.6	✓
1/4	3.6	270.9	✓
cb	3.8	270.6	✓
W	4.1	270.4	✓

No. QUARTER

W	3.8	270.7	✓
cb	3.6	270.9	✓
1/4	3.6	270.9	✓
c	3.8	270.7	✓
1/4	4.1	270.4	✓
cb	4.6	269.9	✓
E	5.3	269.2	✓

No. CURB

E	4.8	269.7	✓
cb	4.6	269.9	✓
1/4	3.8	270.7	✓
c	3.5	271.0	✓
1/4	3.5	271.0	✓
cb	3.5	271.0	✓
W	3.1	271.4	✓

No. LINE NEEDLE ST.

W		33	271.2	✓
cb		32	271.3	✓
1/4		33	271.2	✓
C		34	271.1	✓
1/4		37	270.8	✓
cb		43	270.2	✓
+5		48	269.7	✓
E		44	270.1	✓
	25' No.			
E		44	270.1	✓
+8		45	270.0	✓
cb		40	270.5	✓
1/4		39	270.6	✓
C		36	270.9	✓
1/4		37	270.8	✓
cb		34	271.1	✓
W		36	270.9	✓
	50' No.			
W		43	270.4	✓
cb		40	270.5	✓

see book  
868  
Needle  
from 70's Torrance  
70

1/4		40	270.1	✓
C		39	270.6	✓
1/4		41	270.4	✓
cb		40	270.1	✓
F		45	270.0	✓
	75' No.			
E		47	269.8	✓
cb		47	269.8	✓
1/4		47	269.8	✓
C		49	269.6	✓
1/4		54	269.1	✓
cb		52	269.3	✓
W		53	269.2	✓
	100' No.			
W		67	267.8	✓
cb		68	267.7	✓
1/4		68	267.7	✓
C		65	268.0	✓
1/4		62	268.3	✓
cb		59	268.8	✓

E 5.2 269.3 ✓

125' No.

E 6.2 269.3 ✓

cb 6.8 267.7 ✓

1/4 7.5 267.0 ✓

C 7.7 266.8 ✓

1/4 8.3 266.2 ✓

cb 8.6 265.9 ✓

W 8.5 266.0 ✓

150' No.

W 10.8 268.7 ✓

cb 10.3 264.2 ✓

1/4 10.2 264.3 ✓

C 9.5 265.0 ✓

1/4 9.2 265.3 ✓

cb 8.0 266.5 ✓

E 6.9 267.6 ✓

175' No.

E 8.5 266.0 ✓

cb 9.5 265.0 ✓

1/4 9.9 264.6 ✓

C 10.2 264.3 ✓

1/4 10.5 264.0 ✓

cb 11.6 262.9 ✓

W 12.4 262.1 ✓

T.P. 2.25 265.95 10.81 263.70 ✓

207' No. = S.L. SUTTER ST

50' wide  
10' curbs  
7.5' 1/4s

W 4.9 261.0 ✓

cb 4.2 261.7 ✓

1/4 3.4 262.5 ✓

C 2.7 263.2 ✓

1/4 2.2 263.7 ✓

cb 2.0 263.9 ✓

E 10.9 265.0 ✓

1/4 11.6 264.3 ✓

S. CURB

E 1.5 264.4 ✓

cb 2.0 263.9 ✓

1/4 2.5 263.4 ✓

C 3.0 262.9 ✓

1/4 3.5 262.4 ✓

use this for back sec.  
forward

88

cb	41	261.8 ✓
W	51	260.8 ✓
So. QUARTER.		
W	51	260.8 ✓
cb	42	261.7 ✓
1/4	36	262.3 ✓
C	31	262.8 ✓
1/4	27	263.2 ✓
cb	21	263.8 ✓
E	12	264.7 ✓
CENTER.		
E	17	264.2 ✓
cb	25	263.4 ✓
1/4	29	263.0 ✓
C	33	262.6 ✓
1/4	38	262.1 ✓
cb	44	261.5 ✓
W	53	260.6 ✓

89

No. QUARTER.

W	56	260.3 ✓
cb	49	261.0 ✓
1/4	38	262.1 ✓
C	33	262.6 ✓
1/4	31	262.8 ✓
cb	30	262.9 ✓
E	18	264.1 ✓
No. CURB		
E	17	264.2 ✓
cb	29	263.0 ✓
1/4	33	262.6 ✓
C	34	262.5 ✓
1/4	38	262.1 ✓
cb	49	261.0 ✓
W	54	260.5 ✓
No. LINE <sup>JUTTER</sup> <del>NEALE</del>		
W	58	260.1 ✓
cb	51	260.8 ✓
1/4	40	261.9 ✓



26595

06

C	3.6	262.3	✓
1/4	3.5	262.4	✓
cb	3.0	262.9	✓
E	1.8	264.1	✓
	25' No.		
E	2.3	263.6	✓
+7	2.8	263.1	✓
cb	3.6	262.3	✓
1/4	4.0	261.9	✓
C	4.1	261.8	✓
1/4	4.4	261.5	✓
cb	5.3	260.4	✓
W	6.4	259.5	✓
	50' No.		
-15	10.0	255.3	✓
W	9.5	256.4	✓
	7.6	258.3	✓
cb	6.5	259.4	✓
1/4	5.3	260.6	✓
C	4.8	261.1	✓
1/4	4.6	261.3	✓
cb	3.5	262.4	✓

2659

40

E	2.5	263.5	✓
	75' No.		
E	2.9	263.0	✓
cb	4.1	261.8	✓
1/4	5.0	260.9	✓
C	5.2	260.7	✓
1/4	6.1	259.8	✓
cb	7.6	258.3	✓
W	9.9	256.0	✓
+10	11.3	254.6	✓
	100, 28' No. = SECTION H.		
-20	17.8	248.1	✓
-10	15.6	250.3	✓
W	12.1	253.0	✓
cb	9.1	256.8	✓
+3	8.3	257.6	✓
1/4	6.0	259.9	✓
C	6.0	259.9	✓
1/4	5.9	260.0	✓
cb	4.9	261.0	✓
E	3.5	262.4	✓

265.95

11485 No. = SECTION B.

E. Cb = Midd. Add Line	6.0	259.9	✓
1/4	6.3	259.6	✓
C	6.2	259.7	✓
1/4	6.9	259.0	✓
cb	10.2	255.7	✓
W	14.7	251.2	✓
+12	16.7	249.2	✓
+15	24.4	241.5	✓
+38	28.9	237.0	✓
124.73 No. = SEC. C.			
-50.	41.8	224.1	✓
-37.5	32.4	233.5	✓
-12.5	17.0	248.9	✓
W	15.0	250.9	✓
cb	11.4	254.5	✓
+5.5	10.4	255.5	✓
1/4	8.8	257.1	✓
C	6.1	259.8	✓
1/4 = Midd. Add Line	6.2	259.7	✓

265.9

41

135.20 No. = SEC. D

ctr. = Midd. Add. Line	7.7	258.2	✓
1/4	11.0	254.9	✓
cb	12.6	253.3	✓
W	17.2	248.7	✓
+13	22.0	243.9	✓
+37.5	35.6	230.3	✓
+51.0	40.3	225.6	✓

145.68 No. = SEC. E

-75	55.4	210.5	✓
-30	42.4	223.5	✓
-38	38.0	227.9	✓
-13	26.3	239.6	✓
W	22.6	243.3	✓
cb	18.8	247.1	✓
1/4 = Midd. Add Line	16.5	249.4	✓

148.90 No. = SEC. F

Midd. Add Line	19.1	246.8	✓
+5.2 = cb	20.5	245.4	✓
+15.2 = W.	24.5	241.4	✓
+38	39.4	226.5	✓

31

26595

+50	436	222.3	✓
+75	556	210.3	✓
X	243	241.6	✓

Elevations on W Line Produced to figure

slope.

12.5' No. of F	332	232.7	✓
30' ✓ ✓ ✓	390	226.9	✓
48' ✓ ✓ ✓	351	230.8	✓
Chk	498	260.97 = 261.0' ± T.O	end of Curve on Bush

Elev. on F-G for slopes

+32	455	220.4	
+40	520	207.8	

Elev on F-H for slopes

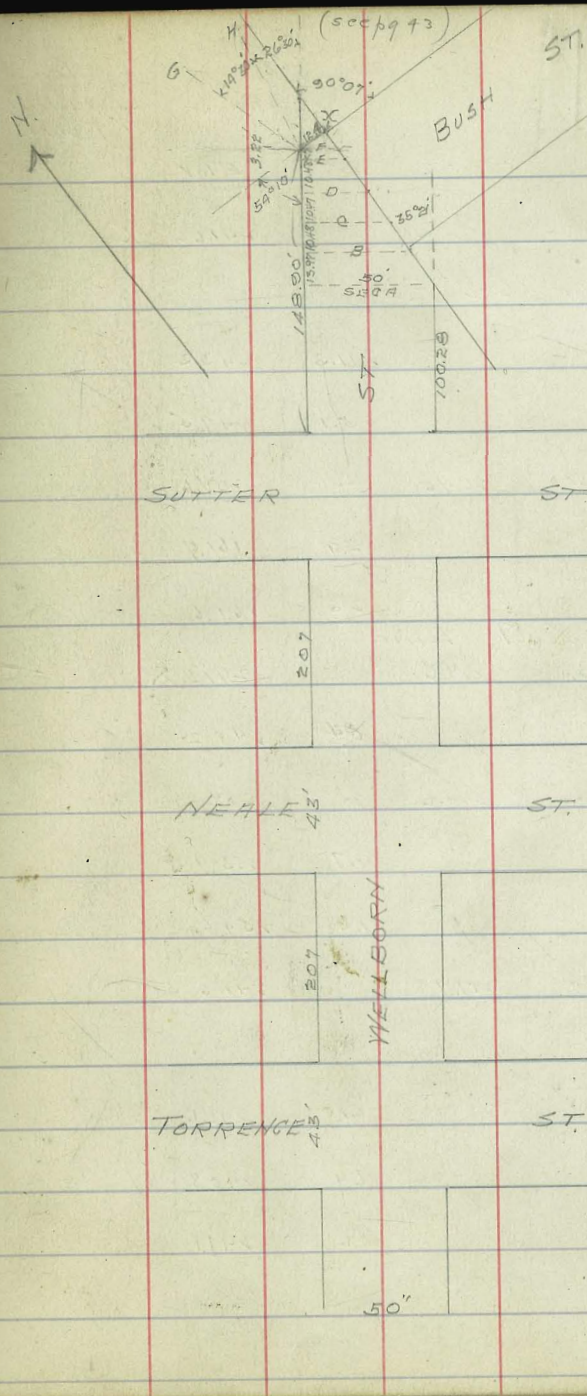
+30	430	222.9	
+50	477	218.2	

For Slope X Sections See next page

Elev on F-J for slopes

0	25341	11.9	41.5
+15		192	34.2
+43		183	35.1
+54		137	40.2

42

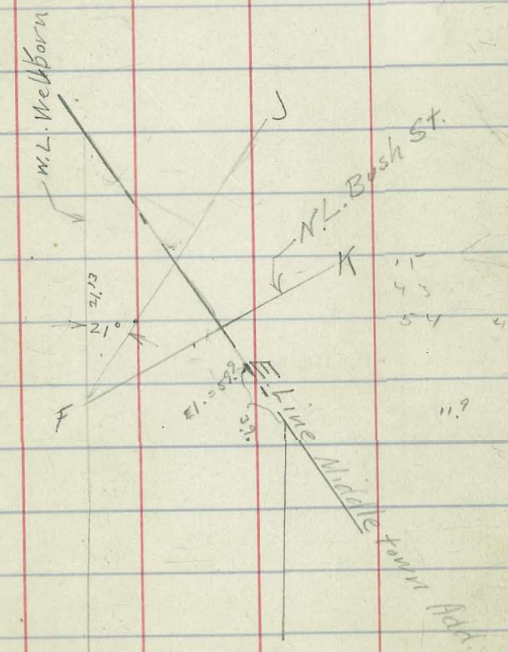


9 (Doris  
23 Hampik  
11 Doris

		147		El. 61
	130	254.6		241.6 X
		500 F		
K.L.			11.3	243.3
P.L.			5.1	249.5
T.P.	800	264.6	00	254.6
18'E			2.9	261.7
21'E			3.0	261.6
		X A Line		
	13.0	254.6		241.6 X
19' EX			6.4	248.2
T.P.	6.0	260.6	00	254.6
34' EX			2.7	253.9
44' EX			1.0	259.6
	610	247.7		241.6
		X B = 45° Line		
X			6.0	241.6
+ 15			6.9	240.8
+ 35 House			0.6	247.1
		N.L. Bush = F.K.		
		253.41		
+ 20			11.2	242.2
+ 40			8.0	245.7
+ 47			4.5	248.9

XL = Ob. line Winder Produced

X		6.1		241.6
+ 10			13.5	234.2
+ 25			14.7	233.0
+ 33			16.4	231.3
+ 50			9.2	238.5



	195	265.17		263.22
			2.7	62.5
39 N. of EL. Well			5.3	57.9
T.P.	0.33	253.41	5.1	60.1
			12.09	253.08

32 St Cross-Sections

SL-Upas to SL Redwood.  
see sketch for widths.

10' walks.

B.M. NW Upas & Herman Spk. 322.26

7.48 329.74

S.E. 32 & Upas  
Hub

4.73 325.01

1.34 326.35

S.L. Upas St. 53.10 wide here.

FL 1.3 325.0

C 1.5 324.8

+2 2.2 324.1

1/4 1.7 324.6

1/4 1.7 324.6

1/4 2.5 323.8

+6.. 2.5 323.8

C 2.0 324.3

WL 2.0 324.3

50' S. of Upas.

WL 3.2 323.1

C 3.1 323.2

+2 3.9 322.4

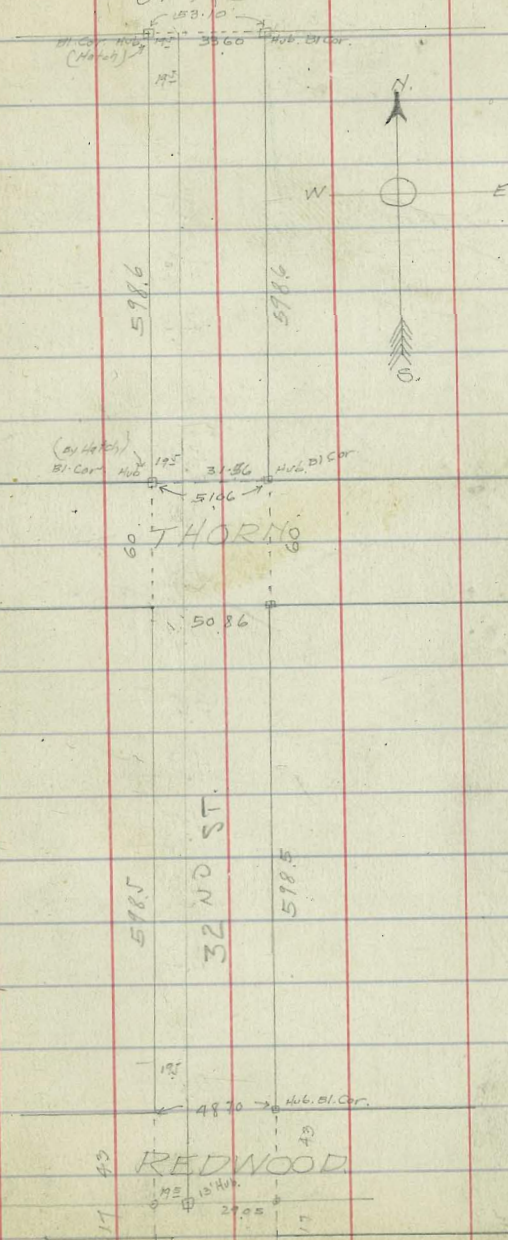
1/4 3.3 323.0

B.M. NW Upas & Herman - Spk. 322.26  
" " Thorny " " 319.36  
" " Redwood " " fence. 301.51

44

UPAS

West  
May 12/15  
Moore



32 St.

84

326.35

£	28	323.5
1/4	3.0	323.3
+6 <sup>5</sup>	3.5	322.8
C	2.6	323.7
EL.	2.3	324.0

100' S. of Upps.

EL.	3.6	322.7
C	3.6	322.7
+2	4.7	321.6
1/4	4.1	322.2
£	3.8	322.5
1/4	4.3	322.0
+6	4.9	321.4
C	4.0	322.3
WL.	4.2	322.1

150' S.

WL.	5.6	320.7
C	5.6	320.7
+2	6.8	319.5

32 St.

45

326.35

1/4	6.1	320.2
£	5.4	321.0
1/4	5.7	320.6
+5 <sup>5</sup>	6.3	320.0
C	4.9	321.4
+9	4.9	321.4
EL.	4.6	321.7

200' S. of Upps.

EL.	5.7	320.6
+1	6.4	320.0
C	6.5	319.8
+3	8.0	318.3
1/4	7.3	319.0
£	7.3	319.0
1/4	7.8	318.5
+6	8.0	318.3
C	6.9	319.4
WL.	7.2	319.1

32<sup>nd</sup> St. X Sec's.

326.35

250' S. of Upps.

WL.	9.4	317.0
C	9.2	317.1
+25	9.9	316.4
1/4	9.5	316.8
£	9.2	317.1
1/4	9.4	317.0
+6	9.9	316.4
C	8.6	317.7
+9	8.4	318.0
EL.	7.7	318.6

300' S. of Upps.

EL.	10.0	316.3
+1	10.8	315.5
C	10.7	315.6
+2	12.3	314.0
1/4	11.9	314.4
£	11.7	314.6
1/4	12.2	314.1

32<sup>nd</sup> St.

46

326.35

+5	12.5	313.8
C	11.7	314.6
WL.	11.7	314.6
T.P.	12.86	313.49

1.40 314.89

350' S. of Upps.

WL.	2.7	312.2
+2	2.4	312.5
C	2.3	312.6
+2	3.4	311.5
1/4	2.8	312.1
£	2.2	312.7
1/4	2.3	312.6
+6	2.9	312.0
C	1.6	313.3
+9	1.5	313.4
EL.	1.2	313.7

32<sup>nd</sup> St. X Sects.314.89

375'S. of Upas.

EL.	2.3	312.6
+2	3.2	311.7
C	3.2	311.7
+1	3.9	311.0
1/4	3.5	311.4
£	3.6	311.3
1/4	4.1	310.8
C	4.3	310.6
+1	4.3	310.6
WL.	9.2	305.7
+10	12.1	302.8

400'S.

-15.	16.6	298.3
-5	15.6	299.3
WL.	14.1	300.8
C	9.7	305.2
1/4	5.8	309.1
£	5.4	309.5
1/4	5.0	309.9

32<sup>nd</sup> St.314.89

+7	5.4	309.5
C	5.0	309.9
EL	5.1	309.8

425'S.

EL	5.9	309.0
+	6.6	308.3
C	6.4	308.5
+1	7.2	307.7
1/4	7.0	307.9
£	7.1	307.8
+3	7.1	307.8
1/4	10.1	304.8
C	14.2	300.7
WL.	17.7	297.2
+10	19.0	295.9
+20	17.0	297.9



3279 St

314.89

443' S. of Upgs.

-20

19.0 295.9

WL

20.4 294.5

C

15.9 299.0

1/4

10.6 304.3

+6

7.8 307.1

E

8.0 306.9

1/4

8.0 306.9

+7

8.3 306.6

C

7.5 307.4

EL.

7.5 307.4

450' South

EL.

7.1 307.8

+1

7.8 307.1

C

7.9 307.0

+1

8.6 306.3

1/4

8.3 306.6

E

8.4 306.5

+5

8.3 306.6

3279 St.

314.89

48

1/4

10.2 304.7

C

15.6 299.3

WL

19.7 295.2

+4 Bot.

20.8 294.1

+20

20.1 294.8

46.5' South

-19 Bot.

21.1 293.8

WL

16.3 298.6

C

13.6 301.3

1/4

11.2 303.7

+4

9.7 305.2

E

9.5 305.4

1/4

9.6 305.3

+7

9.8 305.1

C

9.0 305.9

+9

8.9 306.0

EL

8.5 306.4

T.P.

9.37 305.52

322 308.74

32nd St.

308.74

475'S

EL.		3.3	305.4
+1		3.8	304.9
C		3.9	304.8
+2		4.6	304.1
1/4		4.4	304.3
E		4.3	304.4
+5		4.4	304.3
1/4		6.7	302.0
+3		8.4	300.3
C		9.7	299.0
WL.		11.6	297.1
+ 18	Bot.	15.5	293.2
		492'S	
-13	Bot.	16.0	292.7
WL.		15.8	292.9
C		14.6	294.1
1/4		11.5	297.2
E		6.6	302.1

32nd St.

308.74

49

+1		6.2	302.5
1/4		6.0	302.7
+7		6.1	302.6
C		5.4	303.3
+9		5.2	303.5
EL.		4.7	304.0
		500' South	
EL.		5.2	303.5
+1		5.8	302.9
C		5.9	302.8
+1		6.8	301.9
1/4		6.6	302.1
+6		6.8	301.9
E		7.5	301.2
1/4		12.0	296.7
C		15.1	293.6
WL.		16.1	292.6
+9	Bot.	16.2	292.5

3279 South

308.74

519' South

- 5	13.5	295.2
WL	15.6	293.1
+2	16.4	292.3
C	16.8	291.9
+5	16.0	292.7
1/4	15.0	293.7
£	9.5	299.2
+2	8.6	300.1
1/4	8.4	300.3
+6	8.5	300.2
C	7.0	301.7
+9	6.8	301.9
EL	6.1	302.6
550' South		
EL	6.9	301.8
+1	7.7	301.0
C	7.8	300.9
+1	9.0	299.7

3279 St.

308.74

50

1/4	9.1	299.6
+6	8.4	300.3
£	8.7	300.0
1/4	15.6	293.1
C	14.0	294.7
WL	8.2	300.5
575' South		
WL	6.0	302.7
C	12.0	296.7
1/4	11.2	297.5
+6	11.0	297.7
£	9.1	299.6
+3	8.0	300.7
1/4	7.9	300.8
+6	8.3	300.4
C	7.0	301.7
+9	6.8	301.9
EL	6.3	302.4

308.74

598.65 = NL Thorne 60' wide  
10' Wks - 10' Wks

EL Hub.	4.76	303.98
C	5.0	303.7
+1	6.2	302.5
1/4	6.5	302.2
+5	6.0	302.7
£	4.8	303.9
1/4	4.0	304.7
C	3.6	305.1
WL Hub. TP.	2.98	305.76
2.41	308.17	
	N. Curb. Thorne	
WL	{ 2.1	306.1
	{ 3.3 gutter	304.9
C	{ 3.1 gutter	305.1
	{ 2.5	305.7
1/4	2.8	305.4
	3.8 gutter	304.4
£	{ 4.6 gutter	303.6
	{ 3.2	305.0
1/4	5.0	303.2
C	4.6 gutter	303.6
	3.9	304.3
	3.9	304.3
EL	4.6 gutter	303.7

308.17

N. 1/4 of Thorne

EL	3.9	304.9
C	3.9	304.3
1/4	3.7	304.5
£	3.5	304.7
1/4	3.3	304.9
C	2.8	305.4
WL	2.2	306.0
	£ Thorne	
WL	1.8	306.4
C	2.2	306.0
1/4	2.4	305.8
£	2.6	305.6
1/4	2.8	305.4
C	3.0	305.2
EL	3.3	304.9
	S 1/4 Thorne	
EL	3.6	304.6
C	3.1	305.2
1/4	3.0	305.2

32nd St.

30817

£	27	305.5
1/4	24	305.8
C	23	305.9
WL	21	306.1

S. Curb. Thorne

WL	{ 2.8 Gut. 305.4 1.8 306.4
C	{ 24 305.8 3.1 Gut. 305.1
1/4	{ 3.3 Gut. 304.9 26 305.6
£	{ 28 305.4 3.5 Gut. 304.7
1/4	3.5 304.7
C	{ 3.7 Gut. 304.5 29 305.3
EL	{ 32 305.0 4.0 Gut. 304.2

S. L. Thorne

EL	32	305.0
C	32	305.0
+1	40	304.2
1/4	38	304.4
£	39	304.3
+2	28	305.4

32nd St.

30817

1/4	27	305.5
C	23	305.9
WL	{ 1.7 306.5 0.1 308.1	
	25'S	

WL	05	307.7
+2	25	305.7
C	29	305.3
1/4	35	304.7
+6	39	304.3
£	52	303.0
1/4	50	303.2
+5	52	303.0
C	43	303.9
EL	45	303.7

50'S

EL	62	302.0
C	62	302.0
+2	72	301.0
1/4	68	301.4

95

32nd St.

308-17

£	7.5	300.7
+1	4.9	303.3
1/4	4.1	304.1
C	3.2	305.0
+8	2.6	305.6
WL	1.2	307.0
	75' South	
WL	2.0	306.2
+5	4.4	303.8
C	5.1	303.1
1/4	6.5	301.7
+6.5	7.0	301.2
£	9.6	298.6
1/4	9.2	299.0
+6	9.8	298.4
C	8.5	299.7
EL	8.8	299.4

32nd St.

308-17

100' South

EL	12.5	295.7
+3	11.1	297.1
C	10.8	297.4
+1	12.0	296.2
1/4	11.4	296.8
+6	11.7	296.5
£	10.4	297.8
1/4	9.8	298.4
C	8.4	299.8
+2	7.9	300.3
+7	3.9	304.3
WL	3.4	304.8
	125' South	
WL	5.9	302.3
+7	11.0	297.2
C	11.7	296.5
1/4	12.0	296.2
+4	12.1	296.1
£	14.2	294.0

58

32nd St

308.17

1/4	136	294.6
+6	142	294.0
C	133	294.9
+5	133	294.9
EL.	16.0	292.2
+15 for slope	232	285.0
150' South		
-N	28.0	280.2
EL.	222	286.0
+8	172	291.0
C	174	290.8
1/4	17.0	291.2
£	173	290.9
+1	154	292.8
1/4	14.1	294.1
C	126	295.6
WL.	116	296.6
T.P.	11.78	296.39

0.85 297.24

32nd St.

297.24

175' South		
WL.	16	295.6
C	5.8	291.4
1/4	8.0	289.2
+6	8.8	288.4
£	9.9	287.3
1/4	9.5	287.7
C	9.9	287.3
EL.	16.6	280.6
+15 bot.	21.2	276.0
200' South		
<sup>1/4</sup> -15	19.7	277.5
-5	20.1	277.1
EL.	18.1	279.1
C	12.5	284.7
1/4	12.4	284.8
£	12.8	284.4
1/4	13.2	284.0
C	11.8	285.4
WL.	7.5	289.7

54

32nd St.

297.24

T.P.

4.86

288.99

225' S.

(289.0)

WL.

C

1/4

⊖

1/4

C

+7

EL.

+15 for slope

<sup>up</sup>  
-5

EL.

+4

C

1/4

⊖

13.11 284.13

7.1 281.9

9.9 279.1

9.2 279.8

6.7 282.3

6.0 283.0

6.5 282.5

11.1 277.9

11.3 277.7

11.3 277.7

250' S.

10.5 278.5

10.5 278.5

10.6 278.4

7.3 281.7

7.2 281.8

7.5 281.5

32nd St.

(289.0)

288.99

1/4

+4

C

WL.

+10 slope

WL. bot.

C

1/4

⊖

+3

1/4

C

EL.

+10

12.4 276.6

13.6 275.4

13.6 275.4

13.2 275.8

11.3 277.7

275' S.

-15 for slope 15.1 273.9

16.1 272.9

13.5 275.5

12.1 276.9

7.9 281.1

6.8 282.2

6.8 282.2

7.0 282.0

8.7 280.3

6.1 282.9



32nd St.

289.0

288.99

300' S.

UP.			
EL.	4.9	284.1	

C	5.5	283.5	
---	-----	-------	--

1/4	5.2	283.8	
-----	-----	-------	--

±	5.9	283.1	
---	-----	-------	--

1/4	11.0	278.0	
-----	------	-------	--

+3	12.4	276.6	
----	------	-------	--

C	13.0	276.0	
---	------	-------	--

WL	14.7	274.3	
----	------	-------	--

+N	15.6	273.4	
----	------	-------	--

325' South.

-15	15.7	273.3	
-----	------	-------	--

WL	14.0	275.0	
----	------	-------	--

C	11.0	278.0	
---	------	-------	--

+2	10.5	278.5	
----	------	-------	--

1/4	6.9	282.1	
-----	-----	-------	--

±	2.9	286.1	
---	-----	-------	--

1/4	2.1	286.9	
-----	-----	-------	--

C	2.5	286.5	
---	-----	-------	--

32nd St.

288.99

+1	1.4	287.6	
----	-----	-------	--

EL	1.2	287.8	✓
----	-----	-------	---

T.P.	0.70	288.29	✓
------	------	--------	---

11.04 299.33 ✓

350' South.

EL.	5.4	293.9	
-----	-----	-------	--

+1	7.9	291.4	
----	-----	-------	--

E	8.1	291.2	
---	-----	-------	--

+1	9.8	289.5	
----	-----	-------	--

1/4	9.0	290.3	
-----	-----	-------	--

±	9.1	290.2	
---	-----	-------	--

1/4	12.7	286.6	
-----	------	-------	--

C	16.6	292.7	
---	------	-------	--

+3	18.4	280.9	
----	------	-------	--

WL	19.3	280.0	
----	------	-------	--

+15 for slope.	26.3	273.0	
----------------	------	-------	--

56

55

32nd St

29933

375' South

-15 for slope	180	281.3
WL	139	285.4
C	95	289.8
1/4	70	292.3
+2	62	293.1
±	65	292.8
1/4	59	293.4
+4	63	293.0
+5	49	294.4
C	48	294.5
+9	41	295.2
EL	0.3	299.0

393' South

EL	-1.5	300.8
+1	25	296.8
C	30	296.3
+3	49	294.4
1/4	44	294.9

32nd St

29933

57

±	4.7	294.6
1/4	4.7	294.6
C	61	293.2
WL	82	291.1
+15 for slope	11.7	287.6
400' South		
WL	7.4	291.9
C	5.4	293.9
1/4	4.2	295.1
±	3.9	295.4
1/4	3.7	295.6
+4	4.0	295.3
C	22	297.1
+9	2.1	297.2
EL	-1.6	300.9

86

327d St.

299.33

425 S.

EL	-1.6	300.9
+1	1.1	298.2
C	1.3	298.0
+3	2.6	296.7
1/4	2.3	297.0
⊖	2.5	296.8
1/4	2.9	296.4
C	3.7	295.6
WL	4.7	294.6

450 S.

WL	3.4	295.9
C	2.7	296.6
1/4	2.0	297.3
⊖	1.9	297.4
1/4	1.6	297.7
+4	1.9	297.4
C	1.0	298.3
+9	0.7	298.6
EL	-2.1	301.4

327d St.

58

299.33

T.P.	0.69	298.64
	4.81	303.45
	475 S.	
EL	2.0	301.3
+1.5	2.0	301.5
+2	4.4	299.1
C	4.7	298.8
+2	5.8	297.7
1/4	5.7	297.8
⊖	5.8	297.7
1/4	5.8	297.7
C	6.0	297.5
WL	6.8	296.7

500 S.

-15 for slope	15.9	287.6
WL	8.2	295.3
+5	5.9	297.6
C	5.7	297.8
1/4	5.9	297.6
⊖	5.5	298.0

32nd St.

303.45

1/4	55	298.0
+5	54	298.1
C	45	299.0
+8	43	299.2
+8.5	{ 43	299.2
	{ 21	301.4
EL.	21	301.4

525'S

EL.	1.7	301.8
+2	{ 1.7	301.8
	{ 40	299.5
C	43	299.2
+3	52	298.3
1/4	49	298.6
±	52	298.3
1/4	54	298.1
C	78	295.7
WL	129	290.6
+15 for slope	200	183.5

32nd St.

303.45  
550'S

-15 for slope	21.0	282.5
WL.	14.2	289.3
C	9.7	293.8
1/4	6.5	297.0
±	5.0	298.5
1/4	4.7	298.8
+5	4.9	298.6
C	4.1	299.4
+8	3.9	299.6
EL.	2.9	300.6

575 South

EL.	3.5	300.0
C	4.2	299.3
+2	4.8	298.7
1/4	4.8	298.7
±	5.1	298.4
1/4	6.8	296.7
C	9.1	294.4
WL	12.9	290.6
+15	22.0	281.5

303.45

598.5 South = NL Redwood  
60' wide - 10' W/S - 10' 1/4 S

-15	Slope	16.9	286.6
WL		12.0	291.5
C		7.1	294.4
1/4		7.0	296.5
⊕		5.2	298.3
1/4		4.8	298.7
+6		4.7	298.8
C		4.1	299.4
EL	Hub. NE Cor.	3.65	299.80
	N. Curb Redwood		
EL		3.1	300.4
C		4.0	299.5
1/4		4.5	299.0
⊕		5.0	298.5
+3		5.3	298.2
1/4		6.7	296.8
C		9.1	294.4
WL		12.3	291.2
+15		17.0	286.5

303.45

N. 1/4 Redwood

-10		16.1	287.4
WL		12.7	290.8
C		9.5	294.0
1/4		7.1	299.4
⊕		5.0	298.5
1/4		4.5	299.0
C		3.9	299.6
EL		3.0	300.5
	⊕ Redwood		
EL		3.1	300.4
C		4.0	299.5
1/4		4.4	299.1
⊕		5.1	298.4
1/4		6.4	297.1
C		9.1	294.4
WL		13.6	289.9
+10	for slope	18.0	285.5

32nd St.

	303.45 S. 1/4		
- 10 for slope.	19.7	283.8	
WL.	15.2	288.3	
C	11.8	291.7	
1/4	9.4	294.1	
±	5.8	297.7	
1/4	5.2	298.3	
C	4.4	299.1	
EL	3.4	300.1	

S. Curb. Redwood.

EL	3.6	299.9	
C	4.7	298.8	
1/4	5.2	298.3	
±	7.0	296.5	
1/4	11.0	292.5	
C	13.7	289.8	
WL.	17.1	286.4	
+ 15	23.1	280.4	

West.  
Otter. 12/31/15.  
Moore

32nd St.

61

303.45

	S.L. Redwood.		
- 15 for slope	25.5	278.0	
WL.	19.3	284.2	
C	15.9	287.6	
1/4	12.9	290.6	
±	8.0	295.5	
± <sup>+2</sup>	7.0	296.5	
1/4	5.9	297.6	
C	4.6	298.9	
EL	3.6	299.9	

~~BM Hub NE Redwood~~

TP 3.12 299.73

9.60 309.33

BM Hub NW.

3.56 305.77<sup>OK.</sup> 305.76

Thorne St. X Sec's  
 60' wide - 10' Wks - 10' 1/4's  
 E.L. 32nd St. to City Limits

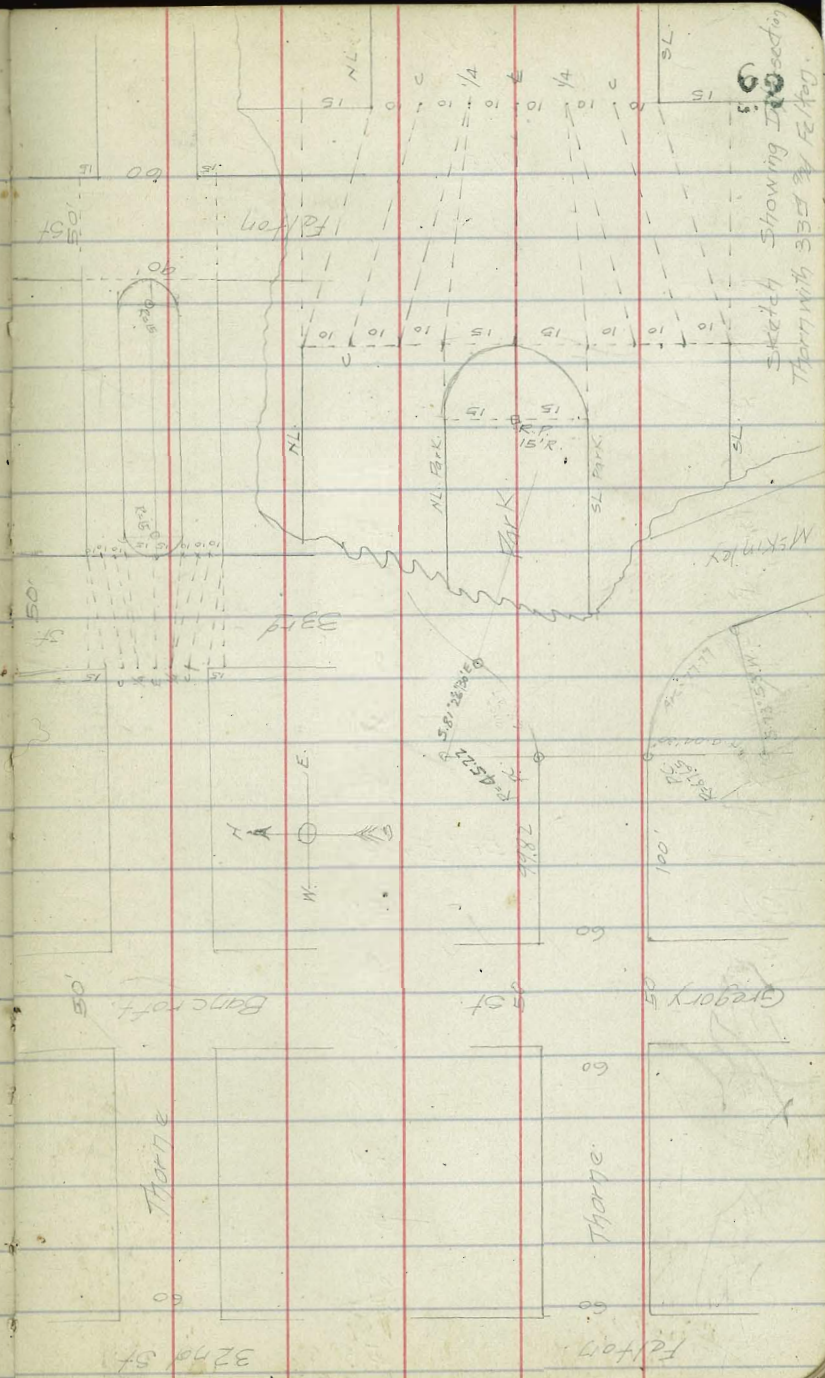
West  
 Otter  
 Moore  
 1/3/16.

B.M. Hub. NW 32nd & Thorne 305.76

347 309.73

E.L. 32nd St.

NL	57	304.0
C	49	304.3
	56.64	303.6
1/4	51	304.1
E	43	304.9
1/4	46	304.6
C	50.64	304.2
	43	304.9
SL	43	304.9
50' East.		
SL	57	303.5
C	56	303.6
1/4	43	302.9
1/4	59	303.3
E	54	303.8
1/4	59	303.3
1/4	65	302.7
C	58	303.4
NL	59	303.5



Thorne X Sees

68

309.23

100' East

NL	5.8	303.4
c	6.0	303.2
+1	6.9	302.3
1/4	6.2	303.0
£	5.7	303.5
1/4	6.2	303.0
+9	6.7	302.5
c	6.1	303.1
SL	6.2	303.0

150' East

SL	5.9	303.3
c	5.8	303.4
+1	6.2	303.0
1/4	5.9	303.3
£	5.4	303.8
1/4	5.9	303.3
+9	6.4	302.8
c	5.5	303.5
NL	5.3	303.9

Thorne X Sees

69

309.23

200' East

NL	4.7	304.5
c	4.8	304.4
+1	5.8	303.4
1/4	5.2	304.0
£	4.7	304.5
1/4	5.1	304.1
+9	5.7	303.5
c	4.9	304.3
SL	5.0	304.2

250' East - WL Baxcroft 50' Wide - 10' WKS. 7 1/2

SL	3.2	306.0
c	3.4	305.8
+1 <sup>s</sup>	4.3	304.9
1/4	4.1	305.1
£	3.7	305.5
1/4	4.1	305.1
+8	4.4	304.8
c	3.4	305.8
NL	3.3	305.9



Thorne x Sec's

309.23

W. Cur. Bancroft.

NL.	{ 3.1	306.1
	{ 4.0 Gut.	305.2
C	{ 4.2 Gut	305.0
	{ 3.3	305.9
1/4	3.9	305.3
£	3.5	305.7
1/4	3.8	305.4
+8	4.1	305.1
C	{ 4.1 Gut.	305.1
	{ 3.0	306.2
SL.	{ 2.8	306.4
	{ 3.5 Gut	305.7

W 1/4 Bancroft

SL.	3.4	305.8
C	3.6	305.6
1/4	3.5	305.7
£	3.3	305.9
1/4	3.7	305.5
+4	4.0	305.2
C	3.6	305.6
NL.	3.5	305.7

Thorne x Sec's

309.23

£ Bancroft

NL.	3.1	306.1
C	3.4	305.8
1/4	3.4	305.8
£	3.2	306.0
1/4	3.4	305.8
C	3.3	305.9
SL.	3.0	306.2

E 1/2 Bancroft.

SL.	3.2	306.0
C	3.3	305.9
1/4	3.1	306.1
£	3.1	306.1
1/4	3.2	306.0
C	3.4	305.8
NL.	3.3	305.9

84

## Thorne x Sec's

309.23

## E. Curb Bancroft.

NL.	{ 3.2 Gut.	306.0
	{ 2.4	306.8
C	{ 2.4	306.8
	{ 3.2 Gut.	306.0
1/4	3.0	306.2
£	2.7	306.5
1/4	3.0	306.2
C	{ 3.1	306.1
	{ 1.9 Gut.	307.3
SL.	{ 2.0	307.2
	{ 3.0 Gut.	306.2

## E.L. Bancroft

SL.	1.6	307.6
C	1.8	307.4
+1 <sup>5</sup>	2.8	306.4
1/4	2.7	306.5
£	2.4	306.8
1/4	2.6	306.6
+9	2.9	306.3
C	2.0	307.2
NL.	2.0	307.2

## Thorne x Sec's

T.P. Hill NE.

309.23

1.74

307.99

11.05

318.54

## 50' E. of Bancroft.

NL.	8.9	309.6
C	9.2	309.3
+1	10.6	307.9
1/4	9.8	308.7
£	9.6	308.9
1/4	10.1	308.4
+9	10.7	307.8
C	9.3	309.2
+9	9.1	309.4
SL.	7.7	310.8

## 100' E. of Bancroft.

SL.	6.3	312.2
+1	7.3	311.2
C	7.6	310.9
+1	8.6	309.9
1/4	7.8	310.7
£	7.5	311.2

88

Thorne x Sec's.

318.54

1/4	7.5	311.0
+9	8.6	309.9
C	7.3	311.2
NL	7.2	311.3

150' East.

NL	6.1	312.4
C	5.9	312.6
+1	7.0	311.5
1/4	6.2	312.3
E	6.0	312.5
1/4	6.4	312.1
+9	7.2	311.3
C	5.8	312.7
SL	5.6	312.9

200' East.

SL	4.9	313.6
C	4.8	313.7
+1	5.9	312.6
1/4	5.1	313.4

Thorne x Sec's

318.54

E	4.7	313.8
1/4	5.0	313.5
+9	6.0	312.5
C	4.7	313.8
NL	4.6	313.9

750' East. = NL 33° 50' W. 10' MB. 7 1/2' S.

NL	3.6	314.9
C	3.8	314.7
+1	4.6	313.9
1/4	4.2	314.3
E	3.6	314.9
1/4	4.3	314.2
+9	4.8	313.7
C	3.9	314.6
SL	3.9	314.6

Intersection taken on 33 St.

T.P. NE 33rd &amp; Thorne. 2.41 316.13

C 8.90 325.03

4.6

66

78

Thorne x Secs

32503El. 33<sup>rd</sup> St + 90' W. - 10' Wks.30' Park 14<sup>th</sup>

NL.	8.9	316.1
+10C	9.0	316.0
+11	9.8	315.2
+20 $\pm$ N. Roadway.	9.5	315.5
+30 = NL. Park.	10.0	315.0
+45 $\pm$ Park.	9.5 Gt. 8.8	315.5 316.2
+60 SL "	10.0	315.0
+70 $\pm$ South Roadway.	9.7	315.3
+79 = Gutter	10.1	314.9
+80 = S. Curb.	9.6	315.4
+90 = SL	9.7	315.3

50' East of 33<sup>rd</sup> St.

SL.	8.9	316.1
+11 = Curb.	8.8	316.2
+11 Gutter	9.4	315.6
+20 $\pm$ S. Roadway.	8.7	316.3
+29 Gutter.	9.1	315.9
+30 SL Park.	8.0	317.0

Thorne x Secs

32503

67

+45 $\pm$ Park.	8.1	316.9
+60 = NL "	8.0	317.0
+61 = Gutter	8.8	316.2
+70 = $\pm$ N. Roadway.	8.3	316.7
+79 = Gutter	8.8	316.2
+80 = N. Curb.	8.0	317.0
+90 = NL	7.9	317.1

100' East of 33<sup>rd</sup>

NL.	6.6	318.4
+10 = Curb.	6.5	318.5
+11 = Gutter	7.4	317.6
+20 = $\pm$ N. Roadway.	6.7	318.3
+29 = Gutter	7.7	317.3
+30 = NL Park.	6.6	318.4
+45 $\pm$ "	6.7	318.3
+60 = SL "	6.8	318.2
+61 Gutter	7.9	317.1
+70 $\pm$ S. Roadway	7.2	317.8
+79 = Gutter	8.1	317.0

37  
Thorne x Sec's.

32503

+80 = S. Curb.	72	317.8
+90 = SL	74	317.6
150' East		
SL	65	318.5
+10 = Curb.	63	318.7
+11 = Gutter	70	318.0
+20 = $\phi$ S. Road.	63	318.7
+29 = Gutter.	68	318.2
+30 = S.L. Park.	60	319.0
+45 $\phi$ "	57	319.3
+60 NL "	55	319.5
+61 = Gutter	65	318.5
+70 = $\phi$ N. Road	57	319.3
+79 = Gutter	64	318.6
+80 = N. Curb.	56	319.4
+90 = NL.	55	319.5
200' East.		
NL.	49	320.1
+10 = N. Curb.	50	320.0

Thorne x Sec's

32503

68

+11 = Gutter.	59	319.1
+20 = $\phi$ N. Road.	51	319.9
+29 = Gutter.	58	319.2
+30 = NL. Park.	50	320.0
+45 = $\phi$ "	51	319.9
+60 = SL "	51	319.9
+61 = Gutter	58	319.2
+70 = $\phi$ S. Road.	54	319.6
+79 = S. Gutter	60	319.0
+80 = S. Curb.	55	319.5
+90 = SL.	54	319.6
75' East		
250' East = WL. Felton. 50' Wide. 10' WKS.		
SL	55	319.5
+10 = Curb.	54	319.6
+11 = Gutter	60	319.0
+20 = $\phi$ S. Road.	55	319.5
+29 = Gutter.	57	319.3
+30 SL. Park.	56 Gut.	319.4
	48	320.2
+45 $\phi$ "	57	319.3
+60 NL "	57	319.3

Thorne St.

32503

+70 = $\Phi$ N Road.	53	319.7
+79 = N Gutter	58	319.2
+80 = N. Curb.	50	320.0
+90 = NL-Thorne	51	319.9

Intersection taken on Felton.

EL. Felton <sup>6" wide</sup> 10' Wks. - 10'  $\frac{1}{4}$ s.

NL	52	319.8
C	52	319.8
+1	61	318.9
$\frac{1}{4}$	54	319.6
$\Phi$	50	320.0
$\frac{1}{4}$	54	319.6
+9	62	318.8
C	55	319.5
SL. Hub. SE Cor	559	319.44

50' E of Felton.

SL	58	319.2
C	57	319.3
+1	65	318.5

Thorne x Secs.

32503

$\frac{1}{4}$	59	319.1
$\Phi$	54	319.6
$\frac{1}{4}$	57	319.3
+9	62	318.8
C	54	319.6
NL	54	319.6

100' East =

NL	59	319.1
C	58	319.2
+1	66	318.4
$\frac{1}{4}$	61	318.9
$\Phi$	59	319.1
$\frac{1}{4}$	63	318.7
+9	69	318.1
C	61	318.9
SL	61	318.9
T.P.	605	318.98 ✓

2.99 321.97 ✓

## Thorne X Sects.

322.0

321.97

150' E. of Faltoy.

SL	35	318.5
C	34	318.6
+1	43	317.7
1/4	35	318.5
£	30	319.0
1/4	32	318.8
+9	37	318.3
C	29	319.1
NL	27	319.3

200' E. of Faltoy.

NL	30	319.0
C	31	318.9
+1	41	317.9
1/4	35	318.5
£	32	318.8
1/4	36	318.4
+9	43	317.7
C	36	318.4
SL	37	318.3

## Thorne X Sects

322.0

321.97

20

250' E. = W.L. Gregory 50' Wide 10' Wks 75 1/4's.

SL	42	317.8
C	41	317.9
+1	46	317.4
1/4	42	317.8
£	39	318.1
1/4	40	318.0
+9	45	317.5
C	36	318.4
NL	36	318.4

W. Corb Gregory.

NL	{ 40	318.0
	{ 49 Gut	317.1
C	{ 47 Gut	317.3
	{ 38	318.2
1/4	41	317.9
£	40	318.0
1/4	42	317.8
C	{ 47 Gut	317.3
	{ 40	318.0
SL	{ 41	317.9
	{ 50 Gut	317.0

Thorne x Sec's

322.0

321.97

W 1/4 Gregory

SL	4.5	317.5
C	4.7	317.3
1/4	4.2	317.8
£	4.0	318.0
1/4	4.2	317.8
C	4.5	317.5
NL	4.3	317.7

£ Gregory

NL	4.2	317.8
C	4.4	317.6
C	4.7	317.3
1/4	4.3	317.7
£	4.0	318.0
1/4	4.3	317.7
C	5.0	317.0
SL	4.5	317.5

Thorne x Sec's

322.0

321.97

E 1/4 Gregory

SL	4.9	317.1
C	5.1	316.9
1/4	4.6	317.4
£	4.3	317.7
1/4	4.5	317.5
C	4.8	317.2
NL	4.8	317.2

E Curb Gregory

NL	{ 5.2 Gut	316.8
	{ 4.5	317.5
C	{ 4.5	317.5
	{ 5.5 Gut	316.5
1/4	4.9	317.1
£	4.5	317.5
1/4	4.8	317.2
C	{ 5.7 Gut	316.3
	{ 5.1	316.9
SL	{ 5.3 Gut	316.7
	{ 4.9	317.1

74



Thorne x Sec's

322.0

321.97

E.L. Gregory.

SL.	53	316.7
C	54	316.6
+1 <sup>S</sup>	65	315.5
1/4	52	316.8
±	49	317.1
1/4	53	316.7
+8 <sup>S</sup>	61	315.9
C	49	317.1
N.L. Hub NE. Cor.	477	317.20

50' E. of E.L. Gregory.

N.L.	67	315.3
C	66	315.4
+2	82	313.8
1/4	78	314.2
±	77	314.3
1/4	80	314.0
+8	86	313.4
C	70	315.0
SL.	70	315.0

Thorne x Sec's

322.0

321.97

72

100' E. = P.C. see sketch P. 62

SL.	93	312.7
C	97	312.3
+2	111	310.9
1/4	110	311.0
±	110	311.0
1/4	110	311.0
+8	117	310.3
C	101	311.9
N.L.	99	312.1

T.P. Iron Pipe P.C. S.L. Thorne.

847 313.50

5787  
11/8/16

McKinley x Secs.  
 NL Redwood to EL. Alfordsg.  
 50' Wide - 15 Curbs - 1/2' x 1/2'

West-  
 Otter-  
 Moore  
 1/13/16.

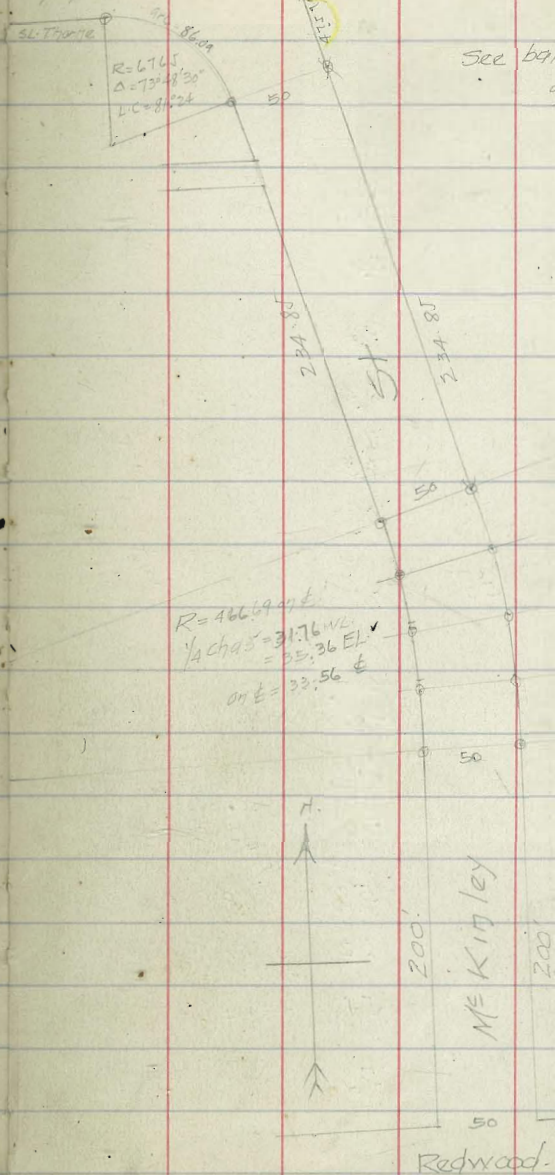
BM. Iron Pig - EL. Thence 100' E of Gregory 313.50  
 1.30 314.80

N.L. Redwood St.

NL	61	308.7
C	66	308.2
+1	71	307.7
1/4	68	308.0
±	68	308.0
1/4	72	307.6
+65	78	307.0
C	69	307.9
EL	72	307.6

50' North.

EL	66	308.2
C	65	308.3
71	72	307.6
1/4	67	308.1
±	61	308.7
1/4	63	308.5
+65	68	308.0
C	60	308.8
NL	60	308.8



Ms Kingley x Sec's

31480

100' North

WL	56	309.2
C	57	309.1
+1	66	308.2
1/4	61	308.7
±	59	308.9
1/4	64	308.4
+65	70	307.8
C	63	308.5
EL	65	308.3

150' North

EL	62	308.6
C	61	308.7
+1	66	308.2
1/4	61	308.7
±	56	309.2
1/4	58	309.0
+65	62	308.6
C	54	309.4
WL	53	309.5

Ms Kingley x Sec's

31480

200' N = Pt Curie - 1/4 Chds = { 3174 WL  
3132 EL  
3256 WL

WL	51	309.7
C	52	309.6
+1	59	308.9
1/4	55	309.3
±	54	309.4
1/4	57	309.1
+65	64	308.4
C	57	309.1
EL	60	308.8

1/4 Arc on E = 233.56N of Redwood on L

EL	57	309.1
C	55	309.3
+1	61	308.7
1/4	57	309.1
±	52	309.6
1/4	55	309.3
+65	58	309.0
C	50	309.8
WL	50	309.8

74  
~~84~~

68

M<sup>s</sup> Kingley x Secs

314.80

2.67.12 N. on E = 1/2 700

WL	43	310.5
+2	48	310.0
C	49	309.9
+1	49	309.9
+3	56	309.2
1/4	55	309.3
E	54	309.4
1/4	57	309.1
+A5	6.0	308.8
+55	54	309.4
C	54	309.4
+9	58	309.0
EL	67	308.1
EL	70	307.8
+1	62	308.6
C	57	309.1
+1	62	308.6
1/4	57	309.1
E	55	309.3
1/4	56	309.2
+55	57	309.1
C	50	309.8
+9	48	310.0
WL	42	310.6

30088 = 3/4 110. 17 E.

M<sup>s</sup> Kingley x Secs

314.80

334.24 N = P.T.

WL	51	309.7
C	52	309.6
+1	59	308.9
1/4	56	309.2
E	55	309.3
1/4	60	308.8
+65	66	308.2
C	61	308.7
EL	67	308.1
350 N		
EL	70	307.8
C	64	308.4
+1	67	308.1
1/4	61	308.7
E	57	309.1
1/4	57	309.1
+65	60	308.8
C	53	309.5
WL	51	309.7

75

~~85~~

M<sup>c</sup> Kinley x Secs

314.80

400' N.

WL	5.7	309.1
C	5.8	309.0
+1	6.4	308.4
1/4	6.2	308.6
±	6.2	308.6
1/4	6.8	308.0
+6.5	7.2	307.6
C	6.5	308.3
EL	7.2	307.6

450' N.

EL	7.3	307.5
C	6.9	307.9
+1	7.4	307.4
1/4	6.9	307.9
±	6.4	308.4
1/4	6.7	308.1
+6.5	6.7	308.1
C	6.2	308.6
WL	6.1	308.7

M<sup>c</sup> Kinley x Secs

314.80

500' N.

WL	5.8	309.0
C	6.0	308.8
+1	7.0	307.8
1/4	6.9	307.9
±	6.7	308.1
1/4	7.0	307.8
+6.5	7.1	307.4
C	6.8	308.0
EL	7.6	307.2

569.09<sup>N</sup> = PC on W = Int 3.1 There on WL

EL	6.8	308.0
C	6.4	308.4
+1	7.2	307.6
1/4	6.9	307.9
±	6.7	308.1
1/4	7.1	307.7
7.0	307.8	
+6.5	5.6	309.2
C		
WL Hub TP	5.36	309.44

3.13 312.57

76

~~76~~

M<sup>c</sup> Kingley x Secs

58

31257

\*

611.66 ft

WL	26	310.0
+2	27	309.9
+5	43	308.3
C	45	308.1
1/4	46	308.0
E	46	308.0
1/4	48	307.8
C	52	307.4
+2	42	308.4
EL	46	308.0
EL	46	308.0
+8	44	308.2
C	54	307.2
1/4	49	307.7
E	46	308.0
1/4	45	308.1
C	43	308.3
WL	41	308.5
WL	40	308.6
C	44	308.2
1/4	45	308.1
E	48	307.8

616.66 FCR =  $\frac{1884}{2384}$  x Chds =  $\frac{200}{2566}$  and = 2284

1/4 arc = 639.50 and

M<sup>c</sup> Kingley x Secs

77

~~58~~

31257

1/4	50	307.6
C	54	307.2
+3	47	307.9
EL	51	307.5
EL	59	306.7
+7	50	307.6
C	61	306.5
1/4	58	306.8
E	58	306.8
1/4	53	307.3
C	52	307.4
WL	48	307.8

1/2 arc = 662.34 and

20' of arc of WL from last point - Radially across

WL	64	306.2
C	65	306.1
1/4	66	306.0
E	66	306.0
1/4	66	306.0
C	70	305.6
+2	57	306.9
EL	66	306.0

566 of arc of WL = 1/4 of arc both sides = 685.18 ft

EL	70	305.6
+8	59	306.7
C	76	305.0
1/4	70	305.6
E	70	305.6
1/4	70	305.6
C	71	305.5
+5	73	305.3
48	52	307.4
WL	50	307.6

McKingley x Sec's.

31257

avg. hgt pt.

16' on arc on WL - Radially across.

WL	6.2	306.4
C	7.2	305.4
+2	8.3	304.3
1/4	8.1	304.5
1/2	8.1	304.5
3/4	8.2	304.4
C	8.1	304.5
+2	8.4	304.2
+4	7.5	305.1
EL	9.2	303.4

708.02 on E =

9.66 on WL on base P.C. on WL = Int with NL

Therite St.

Ch = 60.525  
" = 76.19 W  
L = 88.59 1/2 = 34.27 E

EL	10.3	302.3
+5	8.1	304.5
+7	7.0	303.6
C	8.6	304.0
1/4	8.8	303.8
1/2	8.8	303.8
3/4	8.8	303.8
+3	9.0	303.6
+4	8.1	304.5
C	7.8	304.8
+7	6.9	305.7
+8	4.9	307.7
WL	4.4	308.2

742.24 = 1/2 arc to P.C.

WL	7.2	305.4
+5	8.5	304.1
+7	10.4	302.2
C	10.7	301.9
+5	11.1	301.5
1/4	12.6	300.0
1/2	12.3	300.3
3/4	12.0	300.6

McKingley x Sec's.

31257

C	11.6	301.0
+5	12.2	300.4
EL	15.0	297.6

776.51 on E = Pt Comp Curve changing

from R=2884 to R=2885  
to { 130.35 on EL  
180.35 on WL

tot. Chgs  
35.83 EL  
49.52 WL  
124.65 E

-10	21.6	291.4
EL	20.3	292.2
C	15.6	297.0
+3	14.9	297.7
1/4	14.6	298.0
1/2	15.1	297.5
3/4	15.3	297.3

+5	15.7	296.9
C	14.8	297.8
+6	14.5	298.1

Hub WL P.C.C. TP.

12.25 300.32

061 300.93

797.91 on E

1/2 arc to P.C. on West - Radially across.

WL	5.1	295.8
+3	6.8	294.1
C	5.2	295.7
1/4	5.0	295.9
1/2	4.9	296.0
3/4	5.0	295.9
+3	5.2	295.7
C	7.8	293.1
+7	12.0	288.9
EL	12.6	288.3
+10 for slope	13.9	287.0

M<sup>c</sup> Kinley x Secs.

30093

819<sup>25</sup> N of Redwood on  $\frac{1}{4}$  = P.R.C.

on WL changing to R=86.76

-15 for slope.

	18.5	282.4
EL.	18.0	282.9
C	12.8	288.1
$\frac{1}{4}$	7.3	293.6
$\frac{1}{2}$	6.7	294.2
$\frac{3}{4}$	6.6	294.3
C	7.6	293.3
WL	13.0	287.9
+10 up.	9.4	291.5

Same pt. WL - 19.28 Ch. N. on EL from last pt.  
= Intersection with WL Boundary St.

WL.	13.0	287.9
C	8.6	292.3
+4	7.3	293.6
$\frac{1}{4}$	7.1	293.8
$\frac{1}{2}$	7.2	293.7
+5	7.8	293.1
$\frac{3}{4}$	9.2	291.7
C	16.4	284.5
EL	20.3	280.6
-15 for slope. bot canyon.	21.4	279.5

West-  
Offer-  
Moore  
1/3/16.

M<sup>c</sup> Kinley x Secs

30093

79

~~80~~

On WL: R=88.76  
 $\Delta = 58^{\circ} 57' 30''$   
Arc = 91.36  
 $\frac{1}{4}'' = 22.84$

P.R.C.	13.0	287.9
$\frac{1}{4}$ arc.	17.6	283.3
$\frac{1}{2}$ "	19.8	281.1
$\frac{3}{4}$ "	19.6	281.3
Pt Tang. = 376.23' S. of SL. Ups.	17.4	283.5

Line across end M<sup>c</sup> Kinley St. - WL Boundary  
St both sides = 110.20 across.

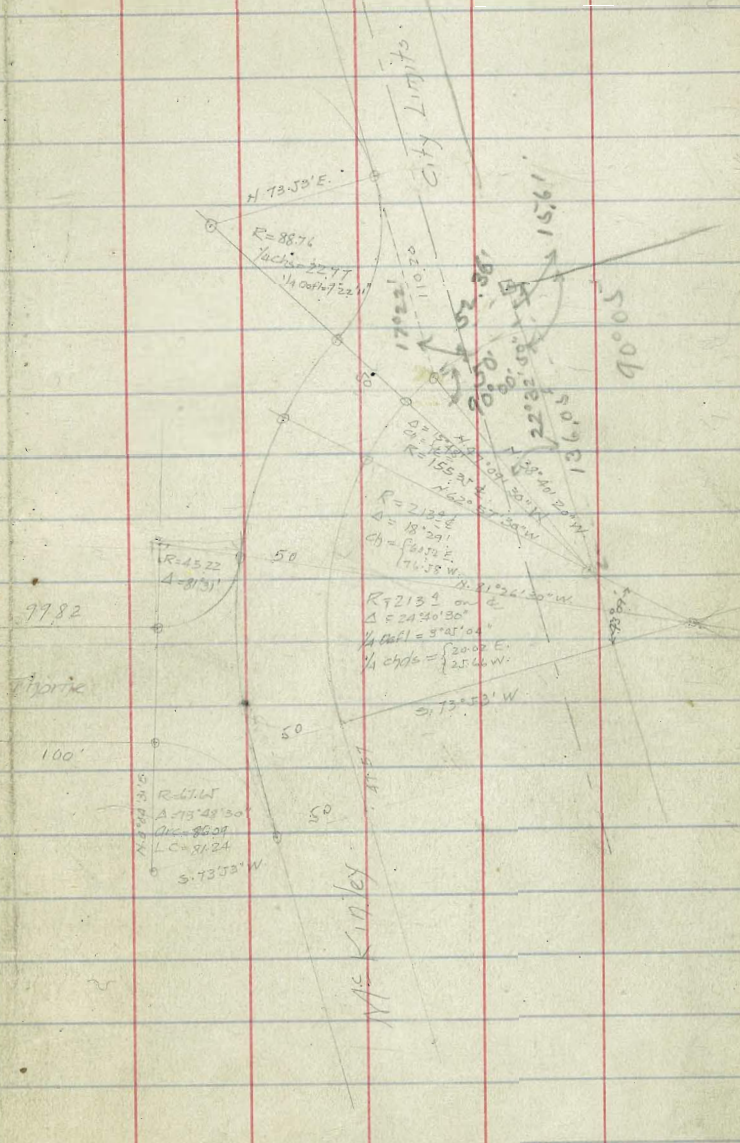
WL M <sup>c</sup> Kinley	17.4	283.5
+20	19.4	281.5
+40	19.2	281.7
+55	18.2	282.7
+70	9.7	291.2
+88	8.8	292.1
+92	10.7	290.2
+94	14.2	286.7
+110 <sup>2</sup> = EL M <sup>c</sup>	20.3	280.6
T.P.	0.61	300.32

See Sketch Page 90

T.P.	10.70	311.02	169	309.33
Iron Pin	10.93	320.26	6.77	313.49 OK. 313.50
NE. Co. Gregory & Tamm 4/6			3.07	317.19 OK. 317.20



~~77~~



3/1

$\frac{3}{16}$

$\frac{290}{275}$   
 $\frac{565}{565}$

81

~~81~~

2297

$\frac{276}{2297}$

$\frac{112}{226.27}$

No. side { 282.5 W of A/b. to } 31.5' east of this  
 40 2.5 - - - - - } piece is low  
 but is not necessary  
 to replace

No. side { W.L. Brant st to  
 120' West.

47.12  
 37.47  
 9.65  
 7.45  
 17.10  
 11.50  
 3.90

36  
 36  
 216  
 108  
 1296  
 1296  
 1296  
 108000  
 9000

247.56  
 227.07  
 20.51

77.5  
 77

77.5  
 77.5  
 17.00

77.5  
 229.72

247.56  
 237.47  
 10.09  
 41.47  
 3.7

423  
 5.7

247.12  
 20.07  
 6.53  
 26.6

633  
 168  
 412.6

461  
 286

247.56  
 24.4  
 223.16

247.12  
 13.2  
 234.36

high

633  
 200.72

247.12  
 23.0  
 224.56

420  
 22.88  
 171

10.  
 17.7  
 25.5  
 33.2

2312  
 51  
 22562

