

965

Preliminary Sewers

Pt. Loma

965

LEVEL BOOK

373

F.B. 965

KEUFFEL & ESSER CO.

DRAWING MATERIALS
AND
SURVEYING INSTRUMENTS.
NEW YORK.

CHICAGO. SAN FRANCISCO. ST. LOUIS.

TABLES FOR EXCAVATIONS AND EMBANKMENTS.

DISTANCES FROM CENTER OF ROADWAY FOR CROSS-SECTIONING.
ROADWAY 18 FEET WIDE. SIDE SLOPES 1 TO 1.
FOR SINGLE TRACK EXCAVATION

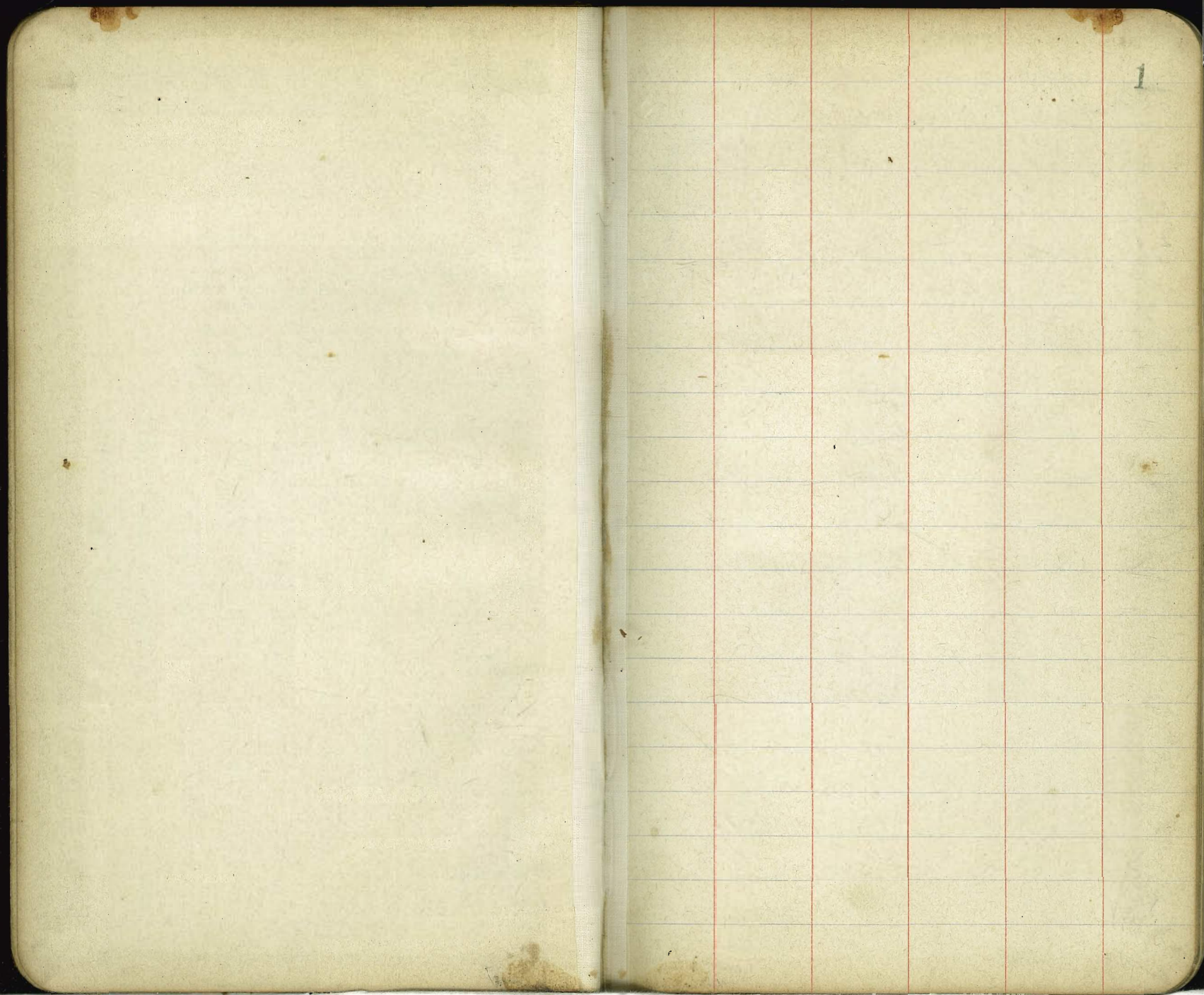
"Copyright, 1895, by Keuffel & Esser Co."

	0	.1	.2	.3	.4	.5	.6	.7	.8	.9	
0	9.0	9.1	9.2	9.3	9.4	9.5	9.6	9.7	9.8	9.9	0
1	10.0	10.1	10.2	10.3	10.4	10.5	10.6	10.7	10.8	10.9	1
2	11.0	11.1	11.2	11.3	11.4	11.5	11.6	11.7	11.8	11.9	2
3	12.0	12.1	12.2	12.3	12.4	12.5	12.6	12.7	12.8	12.9	3
4	13.0	13.1	13.2	13.3	13.4	13.5	13.6	13.7	13.8	13.9	4
5	14.0	14.1	14.2	14.3	14.4	14.5	14.6	14.7	14.8	14.9	5
6	15.0	15.1	15.2	15.3	15.4	15.5	15.6	15.7	15.8	15.9	6
7	16.0	16.1	16.2	16.3	16.4	16.5	16.6	16.7	16.8	16.9	7
8	17.0	17.1	17.2	17.3	17.4	17.5	17.6	17.7	17.8	17.9	8
9	18.0	18.1	18.2	18.3	18.4	18.5	18.6	18.7	18.8	18.9	9
10	19.0	19.1	19.2	19.3	19.4	19.5	19.6	19.7	19.8	19.9	10
11	20.0	20.1	20.2	20.3	20.4	20.5	20.6	20.7	20.8	20.9	11
12	21.0	21.1	21.2	21.3	21.4	21.5	21.6	21.7	21.8	21.9	12
13	22.0	22.1	22.2	22.3	22.4	22.5	22.6	22.7	22.8	22.9	13
14	23.0	23.1	23.2	23.3	23.4	23.5	23.6	23.7	23.8	23.9	14
15	24.0	24.1	24.2	24.3	24.4	24.5	24.6	24.7	24.8	24.9	15
16	25.0	25.1	25.2	25.3	25.4	25.5	25.6	25.7	25.8	25.9	16
17	26.0	26.1	26.2	26.3	26.4	26.5	26.6	26.7	26.8	26.9	17
18	27.0	27.1	27.2	27.3	27.4	27.5	27.6	27.7	27.8	27.9	18
19	28.0	28.1	28.2	28.3	28.4	28.5	28.6	28.7	28.8	28.9	19
20	29.0	29.1	29.2	29.3	29.4	29.5	29.6	29.7	29.8	29.9	20
21	30.0	30.1	30.2	30.3	30.4	30.5	30.6	30.7	30.8	30.9	21
22	31.0	31.1	31.2	31.3	31.4	31.5	31.6	31.7	31.8	31.9	22
23	32.0	32.1	32.2	32.3	32.4	32.5	32.6	32.7	32.8	32.9	23
24	33.0	33.1	33.2	33.3	33.4	33.5	33.6	33.7	33.8	33.9	24
25	34.0	34.1	34.2	34.3	34.4	34.5	34.6	34.7	34.8	34.9	25
26	35.0	35.1	35.2	35.3	35.4	35.5	35.6	35.7	35.8	35.9	26
27	36.0	36.1	36.2	36.3	36.4	36.5	36.6	36.7	36.8	36.9	27
28	37.0	37.1	37.2	37.3	37.4	37.5	37.6	37.7	37.8	37.9	28
29	38.0	38.1	38.2	38.3	38.4	38.5	38.6	38.7	38.8	38.9	29
30	39.0	39.1	39.2	39.3	39.4	39.5	39.6	39.7	39.8	39.9	30
31	40.0	40.1	40.2	40.3	40.4	40.5	40.6	40.7	40.8	40.9	31
32	41.0	41.1	41.2	41.3	41.4	41.5	41.6	41.7	41.8	41.9	32
33	42.0	42.1	42.2	42.3	42.4	42.5	42.6	42.7	42.8	42.9	33
34	43.0	43.1	43.2	43.3	43.4	43.5	43.6	43.7	43.8	43.9	34
35	44.0	44.1	44.2	44.3	44.4	44.5	44.6	44.7	44.8	44.9	35
36	45.0	45.1	45.2	45.3	45.4	45.5	45.6	45.7	45.8	45.9	36

Calculated by Julien A. Hall, M. Am. Soc. C. E.

71
51
400
50
15
587

510
71
521



Levels for change in "A" Line from Sta 63+77.2
to Sta 103+13 or Sta 102+89 old line see book 941
Pages 102-13 for old line 2 Blue print for New Line

B.M.	12.49	94.89	82.40	
T.P.	11.41	105.53	0.77	94.12
63+77.2			10.6	95.0
64			10.8	94.9
+51.2	L 54° 42'	= 66+47.39	10.74	94.79
65			8.1	97.4
+50			4.6	100.9
+61.3	R 25° 57'	67+57.79	3.93	101.60
66	cut 6'	67+96.39	2.9	102.6
+50			2.7	102.8
67			0.2	105.3
T.P.	12.49	117.88	0.14	105.39
+50			9.6	108.3
+51.3	L 60° 20'	69+50.69	9.45	108.43
68			7.6	110.3
+10			7.2	110.7
+30			9.5	108.4
+50			9.6	108.3
+69			9.4	108.5

Line change
see Book
1116 page 19

Sheet 2

Quincy, March 1915

68+92	70+88.39	3.2	114.7
69	70+96.39	2.3	115.6
T.P.	11.97	129.46	0.39
+38.7	R 3° 45'	71+35.09	11.95
+50		71+46.39	11.6
70	cut 8'	71+96.39	8.9
+50		72+46.39	6.5
71	cut 8'	72+96.39	5.2
+50		73+19.03	3.8
72	cut 8'	73+46.39	3.9
+50		74+46.39	5.1
73	cut 7'	74+96.39	4.9
+66.5	L 6° 20'	75+02.89	4.61
+50		75+46.39	2.6
74		75+96.39	1.4
T.P.	7.58	135.79	1.25
+50		76+46.39	8.8
+75+02.89	R 32° 55'	76+98.39	8.33
+50		77+46.39	9.9
76		77+96.39	11.9

Atascadero

2

		135.79		
76+50	78+46 ³⁹		11.9	123.9
77	78+96 ³⁹		11.2	124.6
+30	79+26 ³⁹		9.8	126.0
+50	79+46 ³⁹		11.0	124.8
+35	79+81 ³⁹		10.0	125.8
78	79+96 ³⁹		7.5	128.3
+50	80+46 ³⁹		5.5	130.3
79	80+96 ³⁹		4.4	131.4
+50	81+46 ³⁹		4.0	131.8
80+96 ³⁹	McCaughey St, R 5 ⁰ 34 ³⁹	81+98 ⁷⁹	2.65	133.14
+50	82+46 ³⁹		1.2	134.6
T.P	12.21	147.52	0.48	135.31
81	82+96 ³⁹		10.0	137.5
+50	83+46 ³⁹		6.0	141.5
+54 = \$	83+86 ³⁹ Milley E		3.97	143.55
82	83+96 ³⁹		2.6	144.9
T.P	12.65	159.92	0.25	147.27
+40	84+36 ³⁹		12.1	147.8
+50	84+46 ³⁹		12.3	147.6
83	84+96 ³⁹		10.3	149.6

		159.92		
83+25	85+21 ³⁹		10.3	149.6
+35	85+31 ³⁹		14.6	145.3
+50	85+46 ³⁹		13.7	146.2
+65	85+61 ³⁹		14.2	145.7
+72	85+68 ³⁹		10.7	149.2
84	85+96 ³⁹		9.6	150.3
+77	86+23 ³⁹		7.6	152.3
+40	86+36 ³⁹		9.3	150.6
+50	86+46 ³⁹		8.4	151.5
+75	86+71 ³⁹		5.2	154.7
85	86+96 ³⁹		3.7	156.2
+50	87+46 ³⁹		2.6	157.3
+99 = \$	87+95 ⁷⁹ Karragansett		2.51	157.41
86+50	88+46 ³⁹		2.2	157.7
T.P	8.38	168.01	0.29	159.63
87	88+96 ³⁹		8.9	159.1
+48	89+44 ³⁹		8.7	159.3
+50	89+46 ³⁹		10.9	157.1
+57	89+53 ³⁹		11.7	156.3
+60	89+56 ³⁹		8.3	159.7

		168.01		
87+91	♀ Alley E bet Narraga Del Monte	9.00	159.01	
88	87+87 ³⁹ ♀ Alley			
	89+96 ³⁹	10.3	157.7	
+45	90+41 ³⁹	11.4	156.6	
+50	90+46 ³⁹	9.9	158.1	
+75	90+71 ³⁹	12.1	155.9	
89	90+96 ³⁹	12.6	155.4	
+50	91+46 ³⁹	12.8	155.2	
+82	7 ♀ Del Monte L 10° 52' ✓ 91+79 ⁰⁹	11.05	156.96	
90	91+96 ³⁹	10.1	157.9	
+50	cut 6' 92+46 ³⁹	7.5	160.5	
91	92+96 ³⁹	7.6	160.4	
+50	cut 6' 93+46 ³⁹	6.5	161.5	
	93+69 ²⁹			
+77	♀ Alley bet Del Monte Vera Cruz	7.24	160.77	
92	93+96 ³⁹	6.9	161.1	
+50	94+46 ³⁹	6.8	161.2	
93	94+96 ³⁹	3.8	164.2	
T.P.	11.63 177.57	2.07	165.74	
+50	95+46 ³⁹	10.3	167.3	
+63	♀ Vera Cruz st R 30° 22' ✓ 95+69 ³⁹	9.85	167.7	
94	95+96 ³⁹	9.3	168.3	

Sheet 3

			177.57	
94+50	96+46 ³⁹ cut 7'	9.6	168.0	
95	96+96 ³⁹	10.3	167.3	
	97+49 ³⁹			
+53	♀ Alley bet Vera Cruz Coronado	6.15	171.42	
	97+96 ³⁹			
96	cut 10'	4.0	173.6	
+50	98+46 ³⁹	3.7	173.9	
	98+96 ³⁹			
97	cut 10'	2.2	175.4	
	99+39 ³⁹			
+43	♀ Coronado st T.P. 11.90 182.19	11.28	176.29	
+50	99+46 ³⁹	11.8	176.4	
98	99+96 ³⁹	12.9	175.3	
+20	100+26 ³⁹	12.9	175.3	
+50	100+46 ³⁹	9.3	178.9	
	100+96 ³⁹			
99	cut 8'	9.0	179.2	
+33	♀ Alley bet Coronado Del Mar R 0° 33' 101+29 ³⁹	8.04	180.15	
+50	101+46 ³⁹	5.5	182.7	
	101+96 ³⁹			
100+0	cut 12'	2.7	185.5	
+50	102+46 ³⁹	2.7	185.5	
+77	102+74 ³⁹	3.2	185.0	
+70	102+78 ³⁹	1.8	186.4	
101	102+96 ³⁹	2.0	186.2	
	103+19 ³⁹			
+23	♀ Del Mar st	1.83	186.36	

188.19

101+50	103+46 ³⁹		1.4	186.8
+65	103+61 ³⁹		1.5	186.7
+68	103+64 ³⁹		3.2	185.0
T.P.	11.39	199.00	0.58	187.61
102+10	103+96 ³⁹		12.8	186.2
+50	104+46 ³⁹		9.7	189.3
103	104+96 ³⁹		6.7	192.3
+13	17°05' 105+09 ³⁹		5.94	193.06

103+13 = 107+894 " Book 9+1 Page 8

Levels of Alley BIK 63 Pt Loma Hgts from
Sta 64+51.7' Line West for 109.2' to E N 85 Alley Thence
South of Alley for 175'

B.M.	12.45	107.24	94.79
0+0 = Sta 64+51.7' Line	12.45		94.79
+25	12.4		94.8
+32	12.5		88.7
+40	18.7		88.5
+43	13.1		94.1
+50	13.3		93.9
1	13.4		93.8
+09.2 = E N 85 Alley	13.6		93.6
N 85 South Alley			
0+0 = 1+09.2' E N 85 Alley	13.6		93.6
+50	8.9		98.3
1	5.1		102.1
+50	1.7		105.5
T.P.	5.73	111.59	1.38 105.86
+75	4.4		107.2

Sheet 17

Levels of Quimby St from Sta 67+54.3' H' Line
to E Mendocino St

B.M.	8.19	116.62	108.43
0+0 = Sta 67+54.3' H' Line	8.2		108.4
+32	11.0		105.6
+33	14.3		101.8
+40	11.8		104.8
+50	10.5		106.1
1	7.7		108.9
+50	3.9		112.7
2	0.5		116.1
T.P.	12.54	122.80	0.36 116.26
+50	8.3		120.5
3	3.6		125.2
T.P.	12.43	140.87	0.36 128.44
+54.3 = E Mendocino	6.95		133.92

Sheet 17

Levels of Mendocino from Quimby South
for 925'

B.M.	6.95	140.87		133.92	4+50		12.1	165.2	
0+0 = Quimby			6.95	133.9	5		6.7	170.6	
+50			7.3	133.6	450		5.2	172.1	
+92			5.1	135.8	6		2.2	175.1	
1 cut 8'			3.4	137.5	T.P.	1472	188.24	0.74	176.52
+40			3.0	137.9	+50		12.0	176.2	
+50			3.6	137.3	+65		12.0	176.2	
2 cut 7'			2.0	138.9	+77		16.5	171.7	
+11			4.9	136.0	+86		17.3	170.9	
+26			0.2	140.7	+94		14.9	173.3	
T.P.	11.92	152.46	0.33	140.54	7		14.2	174.0	
+38			10.4	142.1	+15		12.5	175.7	
+50 cut 7'			12.0	140.5	+41		6.3	181.9	
3			13.0	139.5	+50		4.8	183.4	
+50			11.7	140.8	T.P.	12.10	199.93	0.41	187.83
+57			10.5	142.0	8		11.1	188.8	
+92			9.7	142.8	+50		7.5	192.4	
4			5.9	146.6	9		5.6	194.3	
T.P.	12.47	169.93	0.00	152.46	+25		5.6	194.3	
+25			6.4	158.5					
T.P.	12.56	177.26	0.23	164.70					

Sheet 17

Levels of Mendocino from ϕ Quincy to ϕ of Cape May

B.M. 9.89 143.81 133.92

0+0 = ϕ Quincy St 9.89 133.9

+10 12.3 131.5

+50 \checkmark 14.6 129.2

+88 14.2 129.6

1 12.4 131.4

+08 10.8 133.0

+28 12.2 131.6

+40 13.8 130.0

+50 12.9 130.9

+80 13.1 130.7

+95 9.2 134.6

+97 4.0 139.8

2 3.9 139.9

+50 8.0 135.8

+74 9.5 134.3

+88 11.4 132.4

3 10.7 133.1

+18² ϕ Cape May 11.9 131.9

Sheet 17

Levels of Cape May from ϕ Mendocino To ϕ Venice 8

143.81

0+0 = ϕ Mendocino 11.9 131.9

+50 \checkmark 6.1 137.7

+75 2.7 141.1

T.P. 12.61 156.35 0.07 143.74

1 11.0 145.4

+25 6.7 149.7

+50 3.1 153.3

+75 1.1 155.3

T.P. 10.25 166.43 0.17 156.18

2 \checkmark 9.5 156.9

+50 8.0 158.4

3 7.3 159.1

+37 6.9 159.5

+50 2.4 158.0

+63 11.1 155.3

+96⁴ = ϕ Venice 10.88 155.55

Sheet 17

Levels of Venice from Cape May South For

201.85

B.M.	10.28	166.43		155.55
+50			10.28	
			9.8	156.6
1		√	7.1	159.3
+50			3.4	163.0
2			+0.2	166.6
T.P.	12.17	178.20	0.40	166.80
+50			2.2	170.0
3			4.5	173.7
+50			1.5	176.7
T.P.	12.34	187.23	0.71	177.47
4			11.3	178.5
+50			9.8	180.0
5			7.1	182.7
+50			4.0	185.8
6			0.9	188.9
T.P.	12.43	201.85	0.35	189.45
+50			9.9	192.0
7			7.0	194.9
+50			4.0	197.9

Sheet 17

810			2.0	199.9
150			1.1	200.8
+65			0.4	201.5
T.P.	12.72	214.21	0.39	201.49
9			10.1	204.1
+50			5.9	208.3
10			1.6	212.6
T.P.	12.83	226.92	0.62	213.59
+50			9.4	217.0
11			5.0	221.4
+50			0.8	225.6
T.P.	9.13	234.84	0.71	225.71
+80			6.9	227.9

Levels of Alley between Narragansett & Del Monte
from Catalina west for 860'

13.11	11.64	170.65		159.01
+50 = Catalina 0.871917" Line 11.64				
+50		9.2		161.5
1		5.8		164.9
+50		3.7		167.0
2		0.7		170.0
T.P.	11.55	181.56	0.64	170.01
+50		8.3		173.3
+25		6.2		175.4
3		2.3		179.3
T.P.	12.10	193.32	0.34	181.22
+25		9.6		183.7
+50		2.9		190.4
T.P.	12.90	205.79	0.43	192.89
+75		11.2		194.6
4		8.5		197.3
+50	cut 7'	5.3		200.5
5		1.6		204.2
T.P.	12.54	217.96	0.37	205.42
+50	cut 7'	9.1		208.9

Sheet 17

217.96

6+0	cut 7'	5.7		212.3
+50		2.5		215.5
T.P.	11.85	229.62	0.19	217.77
7		11.2		218.4
+50		8.5		221.1
8		5.3		224.3
+50		2.5		227.1
+60		2.2		227.4

10

Levels & Alley bet Del Monte & Santa Cruz from sta
 91+72.9 "A" Line West for 1154' or 35 E of Santa Barbara
 B.M. 12.81 173.58 160.77 4+50

211.33

11

0+0=sta 91+72.9 "A" Line	12.81			T.P.	11.64	222.66	0.31	211.02	
+25		8.8	164.8	5			12.1	210.6	
+50		5.0	168.6	+50			9.7	213.0	
+75		1.6	172.0	6			7.4	215.3	
T.P.	13.05	186.37	0.26	173.32	+50		5.2	217.5	
1 cut 8'			8.7	177.7	7		3.1	219.6	
+50			3.1	183.3	+50		0.6	222.1	
T.P.	12.69	198.79	0.27	186.10	T.P.	12.81	235.25	0.22	222.44
2 cut 7'			10.4	188.4	8		10.3	225.0	
+41			7.6	191.2	+50		6.8	228.5	
+44			5.3	193.5	9		3.2	232.1	
+50			4.8	194.0	T.P.	12.79	247.03	1.01	234.24
3			0.2	198.6	+50		11.1	235.9	
T.P.	12.69	211.33	0.15	198.64	10		7.2	239.8	
+16			10.6	200.7	+50		3.4	243.6	
120			9.3	202.0	T.P.	7.42	253.38	1.07	245.96
+50			6.7	204.6	11		5.7	247.7	
+70			3.9	207.4	+54=35 E of E.L. Santa Barbara		3.2	250.2	
4			3.5	207.8					

Sheet 16

Levels & Alley bet Santa Cruz & Coronado from
 Sta 95+53 West for 1165 or 35' E of Santa Barbara St

Ben. 12.61 184.03 171.42

0+0 = Sta 95+53 "A" Line

+50 5.6 178.1

T.P. 12.38 196.08 0.33 183.70

1 12.1 184.0

+30 8.1 188.0

+50 3.2 192.9

T.P. 11.48 207.34 0.22 195.86

2 9.2 198.1

+50 5.7 201.6

3 0.4 206.9

T.P. 11.87 218.85 0.36 206.98

+50 7.6 211.3

4 4.5 214.4

+50 1.6 217.3

T.P. 12.42 230.99 0.28 218.57

5 10.8 220.2

+50 8.3 222.7

6 5.7 225.3

+50 3.7 227.3

Sheet 16

230.99

12

7+0 2.3 228.7

+50 1.1 229.9

T.P. 12.06 242.59 0.46 230.53

8 11.6 231.0

+50 10.1 232.5

9 8.1 234.5

+50 5.7 236.9

10 2.6 240.0

+50 cut 7' 0.3 242.3

T.P. 12.07 254.57 0.11 242.48

11 cut 7' 10.3 244.3

+50 cut 7' 2.5 246.1

+65 = 35' E. of Santa Barbara 7.6 247.0

Levels of Alley bet Coronado & Del Mar from Sta

99433 H" Line W. for 1575'

B.M. 1304 193.19 180.15

0+0 = Sta 99433 H" Line 13.04

+2.5 ↓ 7.5 185.7

+5.0 3.6 189.6

T.P. 11.02 203.95 0.26 192.93

1 10.6 193.4

+5.0 7.3 196.7

2 4.0 200.0

T.P. 12.40 216.21 0.14 205.81

+5.0 12.3 203.9

3 cut 6' 6.9 209.3

+5.0 1.0 215.2

T.P. 12.28 228.33 0.11 216.10

4 9.4 218.9

+5.0 6.0 222.3

5 3.5 224.8

+5.0 1.0 229.3

T.P. 9.32 237.49 0.16 228.17

6 7.8 229.7

+5.0 6.0 231.5

7 5.0 232.5

Sheet 16

237.49

4.6 232.9

4.8 232.7

4.8 232.7

4.6 232.9

4.2 233.3

3.3 234.2

4.6 235.9

T.P. 12.06 249.27 0.28 237.21

11 11.2 238.1

+5.0 9.0 240.3

12 6.6 242.7

+5.0 6.7 242.6

+1.0 7.5 241.8

+3.0 = 6 Santa Barbara 6.6 242.7

+5.0 6.4 242.9

+6.0 5.3 244.0

+6.1 3.0 246.3

T.P. 12.08 260.90 0.95 248.82

13 11.6 249.3

+5.0 7.7 253.2

18

260.90

1440	cut 7'	4.5	256.4
T.P.	5.04	2.93	257.77
+50		4.7	256.7
1.5		4.5	256.4
+50		6.4	254.5
+75		6.8	254.1

Levels & Alley bet Del Mar & Orchard from
 Sta 103+13 "A" Line west for 1321 or 65 W of Santa Barbara
 B.M. 10.21 203.27 193.06 6+50 227.20

Sheet 16

0+0 = Sta 103+13 "A" Line	10.21		T.P.	11.29	237.90	0.59	224.7	
150	✓	12.7	190.6	7		10.6	227.3	
+75		14.3	189.0	+50		8.8	229.1	
+90		13.9	189.4	8		6.7	231.2	
1		12.8	190.5	+50		4.2	233.7	
+25		8.4	194.9	T.P.	12.60	250.08	0.42	237.48
+50		6.2	197.1	9		13.6	236.5	
2		2.6	200.7	+50		10.5	239.6	
+50		1.2	202.1	10		6.3	243.3	
T.P.	12.30	215.51	0.56	202.71	+50		3.8	246.3
3		11.8	203.7	T.P.	13.03	263.05	0.06	250.02
+50		9.3	206.2	11		13.3	249.8	
4		5.7	209.8	+50		9.7	253.4	
+50		11.0	214.5	+94		7.3	255.8	
T.P.	12.47	227.20	0.78	214.73	+96		9.6	253.5
5		10.6	216.6	12		9.8	253.3	
+50 cut 6		8.7	218.5	+03		10.0	253.1	
+95		6.6	220.6	+06		11.0	252.1	
6		5.0	222.2	+45		9.8	253.3	

263.05

72+50

9.1

254.0

+ 56

8.7

254.4

+ 57

3.2

259.9

+ 79

1.7

261.4

13

4.4

258.7

+ 21 = 65' n of Santa Barbara

6.8

256.3

19365

16

Levels of Lot Line bet Udal & Tennyson from sta
21462⁶ A' line (see Book 941 Page 13) East for 165'
B.M. 94.79

	2.15	102.94		
21462 ⁶ A' line			11.05	91.89
+50		✓	6.4	96.5
1			1.5	101.4
T.P.	11.36	114.24	0.06	102.88
+50			4.7	109.3
+65			2.2	112.0

Sheet 18

Levels of Alley bet Tennyson & Quincy, ^{at Alicia} from sta 65+614
"H" Line East for 335'

B.M.	11.78	113.38		101.60
0+0 = sta 69+38	?		11.78	101.60
+50	✓		7.4	106.0
+80			5.6	107.8
1			5.9	107.5
+50			1.6	111.8
T.P.	12.69	125.83	0.24	113.14
2			8.4	117.4
+50			2.5	123.3
T.P.	10.28	135.84	0.57	125.56
+72			9.8	126.0
+80			7.4	128.4
3			6.2	129.6
+35 cut 7'			1.7	134.1

Sheet 18

Levels of Alley bet Alicia & Atascadero from Sta

69+38.7 4' Line East for 408'

10.11				117.51
12.10		129.61		
69+38.7	69+38.7 4' Line		12.10	
+50	cut 9'	√	8.8	120.8
1	cut 9'		5.6	124.0
+50	cut 8'		2.8	126.8
T.P.	12.78	142.09	0.30	129.31
2	cut 7'		10.8	131.3
+37			7.5	134.6
+45			10.0	137.1
+50			9.8	132.3
+67			8.0	134.1
+70			1.3	140.8
T.P.	12.81	154.55	0.35	141.74
3			10.4	144.2
+37			6.9	147.7
+45			9.2	145.4
+48	W. Rail Pt. Loma Ry.		8.3	146.3
+61			8.1	146.5
+66			3.6	151.0
+75			2.3	152.3
T.P.	5.30	158.32	1.53	153.02

Sheet 18

158.32

+39		5.0	153.3
4+08	cut 8'	4.6	153.7

19

Levels of Alleybet Atascedero & Bernice from sta
73+06.5 E for 455'

B.M.	12.80	137.65	124.85
0+0-5 ⁵ Sta 73+06.5 A Line	12.80	124.9	
+50		8.0	129.7
1		1.5	136.2
+17 cut 6'		0.9	136.8
T.P.	11.97	149.43	0.19 137.46
+32		7.0	142.4
+40		5.4	144.0
+50		5.5	143.9
+78 cut 6'		5.9	143.5
2		3.7	145.7
T.P.	11.95	161.21	0.17 149.26
+29		11.3	149.9
+50		10.3	150.9
+60		9.7	151.5
+71		11.3	149.9
+74 w. rail 19 Loma RV		10.5	150.7
+90		9.2	152.0
+93		6.1	155.1
3		4.1	157.1

Sheet 18

161.21

3+12		2.1	159.1
+15		0.7	160.5
T.P.	12.49	173.62	0.08 161.13
+25		11.3	162.3
+50		9.3	164.3
4 cut 8'		6.2	167.4
+55 cut 8'		2.5	171.1

50

Levels of Bernice from sta 75+02 "A" Line East
 fan 488'

175.50

21

B.M.	12.69	140.15		127.46	440	4.4	171.1
0+0 = sta 75+02 "A" line			12.69		+18	4.4	171.1
+50		✓	8.2	133.0	+30	3.3	172.2
1			2.1	138.1	+50	2.5	173.0
T.P.	11.37	151.11	0.41	139.74	+88	2.3	173.2
+50			9.6	141.5			
+80			8.2	142.9			
2			4.5	146.6			
+04			3.8	147.3			
+09			1.4	149.7			
+13 ⁵ = W. Hill Pitonary			0.5	150.6			
+25			1.5	149.6			
+32			3.2	147.9			
+50			1.9	149.2			
T.P.	12.50	162.60	7.01	150.10			
3			8.4	154.2			
+50			2.7	159.9			
+67			0.0	162.6			
T.P.	13.01	175.50	0.11	162.49			
+91			3.9	171.6			

Sheet 18

Levels of Narragansett from Φ Catalina or stn
85+999 "A" Line to Φ Redondo st.

B.M.	10.67	168.02	157.41
0+0 = Φ Catalina		10.67	157.41
+08		11.7	156.4
+10		13.7	154.4
+15		11.6	156.5
+40		11.2	156.9
+50		2.5	159.6
1		5.7	162.4
+25		4.4	163.7
+32 M. Rail Pt. Lema T.V.		3.6	164.5
+42		4.7	163.4
+45		2.7	165.4
+50		2.2	165.9
T.P.	11.87	179.82	0.13
2		10.3	169.5
+50		6.0	173.8
+75		0.5	179.3
T.P.	12.24	192.02	0.04
3		6.0	186.0
+11 ⁷ = Φ Redondo		3.57	182.45

Sheet 15

Levels Redondo st from Φ Narragansett
North for 403.6

B.M.	3.57	192.02	188.45
0+0 = Φ Narragansett st	3.57		188.5
+50		2.0	184.0
1 cut 9'		2.1	184.9
+50 cut 10'		1.5	190.5
+60 R 35° 15'		0.29	191.73
11.98	203.71		
2 cut 8'		6.7	197.0
+23		6.1	197.6
+50		0.7	203.0
T.P.	5.76	209.17	0.30
3+00 ⁸ R 19° 54'		3.0	206.2
+50		6.2	203.0
4		10.2	199.0
+03 ⁶		10.6	198.6

Sheet 15

Levels of Redondo St from E Narragansett south for 400'

B.M.	3.59	192.04	188.45	
0+0 = E Narragansett		3.59	188.5	
+50		6.6	185.4	
1 cut 8'		8.0	184.0	
+50		8.8	183.2	
2 cut 6'		9.0	183.0	
+15		7.4	184.6	
+50		6.6	185.4	
+92		5.0	187.0	
3		2.7	189.3	
T.P.	7.13	198.96	0.21	191.83
+10		7.2	191.8	
+50 cut 9'		6.4	192.6	
4 cut 10'		3.7	195.3	

Sheet 15

Levels of Redondo from E Del Mar south for 380' to E Orchard

B.M. Man. S.W. Orchard & Catalina		201.39		
B.M.	0.49	201.88		
T.P.	4.60	193.50	12.92	188.90
0+0 = E Del Mar		7.76	185.74	
+50		6.0	187.5	
+70		6.5	187.0	
1		7.4	186.1	
+50		9.1	184.4	
+90 Alley East		8.35	185.15	
2		7.9	185.6	
+50		5.7	187.8	
3		3.0	190.5	
+15		2.3	191.2	
T.P.	12.94	198.09	8.35	185.15
+50		5.3	192.8	
+80		4.34	193.8	

Sheet 15

(315) changed
23

Levels of Redondo from 4 Del Mar N for 1070

194.66

24

Bank	7.76	193.50	185.74	6+50	11.1	183.6
0+0 = 4 Del Mar			7.76 185.74	+65 ✓	12.2	182.5
+35		✓	7.4 186.1	7	10.8	183.9
+40			6.1 187.4	+50 ✓	12.1	182.6
+50			5.8 187.9	+65 ✓	12.7	182.0
1			5.6 187.9	8	11.2	183.5
+50			5.7 187.8	+20	8.1	186.6
+90 4 Hiley East			7.78 186.32	+50 cut 6	7.0	187.7
2			2.6 184.9	9	6.5	188.2
+12			9.0 184.5	+50	4.1	190.6
+50			7.1 186.4	6 cut 7'		
3			4.6 188.9	198 4 Wildwood Road	0.79	193.87
+50 cut 6'			3.7 189.8	8.68 202.55		
Pacific			3.58 189.92	10+50	7.6	195.0
+80 4 Coronado			5.2 189.5	+67 cut 9'	7.5	195.1
4			6.1 188.6	+70	8.5	194.1
+50			6.5 188.7			
5			6.9 187.8			
+50			8.7 186.0			
+80			8.0 186.7			
6						

Sheet 15

4.74 194.66

Levels of Wildwood Road from the Redondo St East for 487'

B.M.	8.68	202.55		193.87
0+0 = the Redondo St.		8.68		
+50		✓	5.0	197.6
T.P.	1226	214.20	0.61	201.94
1			11.3	202.9
+50			5.4	208.8
T.P.	1211	225.88	0.43	213.77
2			11.5	214.4
+50			6.7	219.2
3			2.6	223.3
T.P.	807	233.67	0.28	225.60
+50			7.0	226.7
4			4.7	229.0
+50			3.2	230.5
+87			2.55	231.1

Sheet 15

Levels of Del Mar from 5 1/2 101+23'H Line (P. 4) To the Redondo

B.M.	5.84	191.58		185.74	25
0+0 = 5 1/2 101+23'H Line		5.2		186.38	
+50		✓	5.9	185.7	
1			6.6	185.0	
+50			6.8	184.8	
2			7.0	184.6	
+50			7.1	184.5	
3			6.6	185.0	
+41' = the Redondo St		5.84		185.74	

Sheet 15

Levels of Orchard from the Redondo West for 181'

		193.09		
0+0 = the Redondo		4.34		193.8
+50		✓	4.1	194.0
1			3.0	195.1
+50			2.0	196.1
+81			1.2	196.9

Sheet 15

Levels of Alley between Coronado & Del Mar
 from Φ Redondo St to W.L. Chatsworth

B.M.	10.23	196.55	186.32	15
0+0 = Φ Redondo St		10.23		
+50		7.8	188.8	
1		5.9	190.7	
+50		4.6	192.0	
2		2.1	194.5	
T.P.	11.67	207.72	0.50	196.05
+50		10.9	196.8	
3		4.2	203.5	
+50		0.5	207.2	
T.P.	11.26	218.90	0.08	207.64
4		9.4	209.5	
+50		6.7	212.2	
5		3.9	215.0	
+50		2.5	216.4	
T.P.	4.18	220.65	2.43	216.47
6		4.8	215.9	
+50		5.9	214.8	
7		6.7	214.0	
+50		6.5	214.2	

Sheet 15

220.65

8+0	7.5	213.2
+31 = W.L. Chatsworth	7.7	213.0

Levels of Orchard from Φ Redondo East for 290'

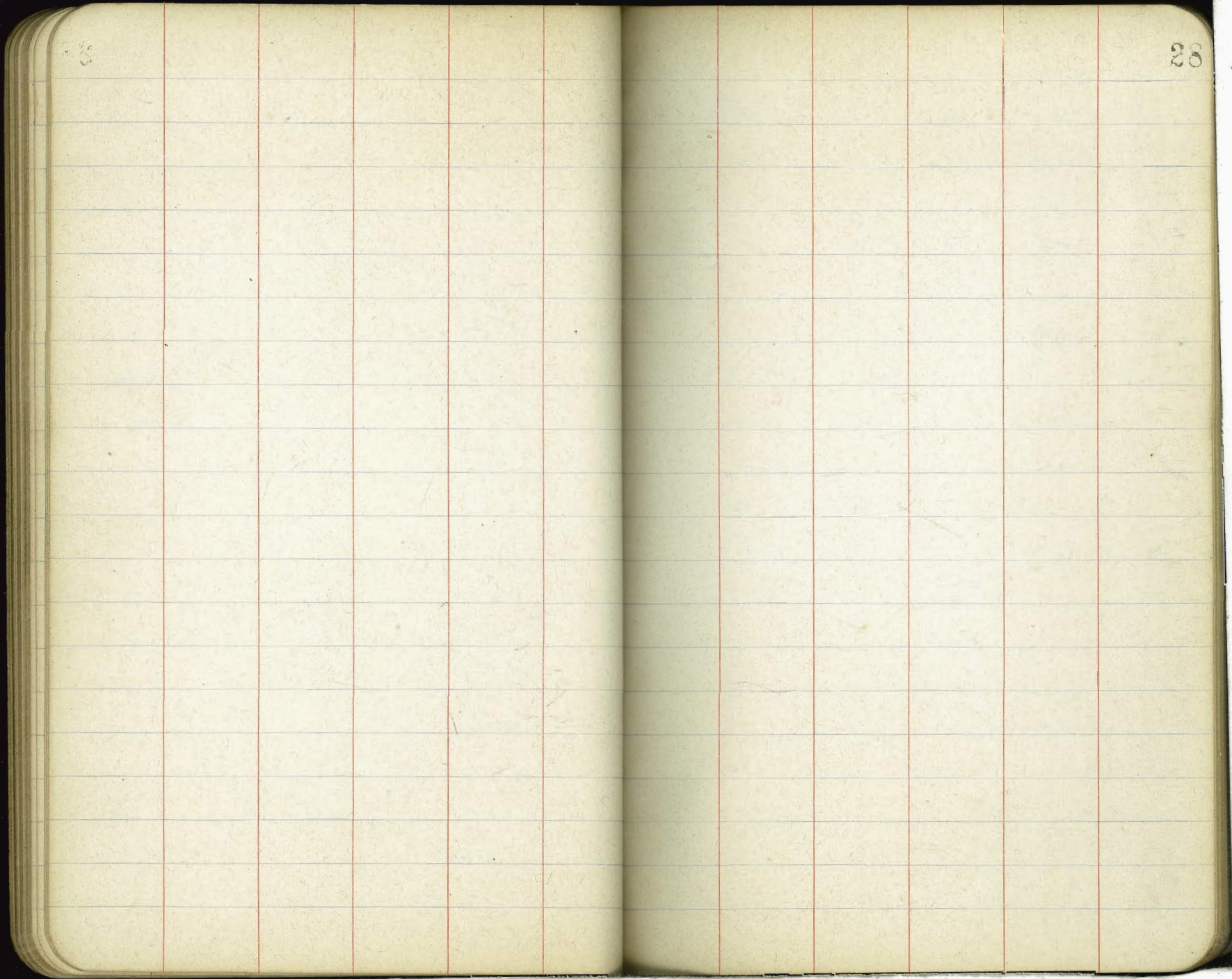
0+0 = Φ Redondo	198.09	4.34	193.8	
+50		2.7	195.4	
T.P.	10.20	207.72	0.57	197.52
1		9.5	198.2	
+50		7.5	200.2	
2		4.5	203.2	
+50		3.8	203.9	
+90		2.13	205.39	

Sheet 15

Levels & Alley between Del Mar & Orchard ⁹ ₅₀ ¹⁵ _{Beville}
 from Φ Redondo to M.L. Chatsworth.

B.M.	13.03	198.18		185.15
0+0 = Φ Redondo		13.03		
+50		↓	8.5	189.7
1			5.7	192.5
+50			2.9	195.3
T.P.	11.92	209.03	1.07	197.11
2			11.2	197.8
+50			7.0	202.0
3			1.4	207.6
T.P.	11.03	218.89	1.17	207.86
+50			6.0	212.9
4			5.4	213.5
+50			4.1	214.8
5			1.1	217.8
T.P.	5.55	223.56	0.88	218.01
+38			3.4	220.2
+40 ⁷ = M.L. Chatsworth			4.0	219.6

Sheet 15



Levels for proposed sewer @ Curtis from pt.
 20' E of @ Rosecrans to 25' E of E.L. Chatsworth
 B.M. Brass ply s.w. Rosecrans & Curtis 44.33
 B.M. 10.12 54.45

Note - Curtis 5' Graded.

0+0=20' E of @ Rosecrans			13.6	40.9
+50			12.1	42.4
1			9.2	45.3
+50			5.6	48.9
2			1.7	52.8
T.P.	12.20	66.37	0.25	54.17
+50			9.9	56.5
3			5.9	60.5
+50			2.1	64.3
4			0.3	66.1
T.P.	11.52	77.65	0.24	66.13
+50			9.7	68.0
+62			9.1	68.6
5			6.1	71.6
+50			1.8	75.9
T.P.	12.59	90.24	0.00	77.65
6			10.1	80.1
+50			6.0	84.2
7			1.9	88.3
T.P.	11.98	102.04	0.18	90.06

Sheet 21

7+30			11.3	90.7
+50			10.3	91.7
8			9.0	93.0
+07			8.8	93.2
+50			6.1	95.9
9			1.9	100.1
T.P.	12.45	114.16	0.33	101.71
+50			9.7	104.5
10			5.7	108.5
+50			1.5	112.7
T.P.	12.25	125.99	0.42	113.74
11			9.2	116.8
+15			8.5	117.5
+50			7.8	118.2
+17			7.8	118.2
12			6.5	119.5
+50			4.7	121.3
13			3.0	123.0
+50			1.0	125.0
T.P.	10.66	136.30	0.35	125.64

		136.30		
14+0			9.6	126.7
+50			7.7	128.6
15			6.2	130.1
+50			5.5	130.8
16			5.1	131.2
+50			4.6	131.7
17			4.3	132.0
+50			3.7	132.6
18			3.2	133.1
+50			2.5	133.8
19			2.1	134.2
T.P.	12.04	148.00	0.34	135.96
+50			11.6	136.4
20			10.4	137.6
+50			8.7	139.3
21			6.9	141.1
+50			5.2	142.8
22			3.3	144.7
+46=25' E of Chats north			1.7	146.3
T.P.	2.81	150.70	0.11	147.89
B.M.			1.84	148.85

Levels for proposed sewer & Browning st. from 20' E of & Pascorans to 25' E of E.L. Chatsworth

B.M. brass plg 514 Pascorans & Curtis 44.33 ^{5/15} 20
Shaw
Bunker

B.M.	116	45.49		
0+0=20' E of & Pascorans			11.63	33.86
+09			10.5	35.0
+43			10.0	35.5
+50			10.5	35.0
+70			5.0	40.5
T.P.	12.51	56.88	11.2	44.37
1			14.7	42.2
+34			8.7	48.2
+50			5.5	51.4
2			1.4	55.5
T.P.	12.11	68.94	0.45	56.83
+50			9.0	59.9
3			4.9	64.0
T.P.	12.55	81.42	0.07	68.87
+50			12.9	68.5
4			7.3	74.1
+50			2.6	78.8
T.P.	12.42	93.43	0.41	81.01

Sheet 21

		93.43		
54.0			10.2	83.2
+50			5.0	88.4
T.P.	12.45	105.68	0.20	93.28
6			12.4	93.3
+50			6.4	99.3
T.P.	12.44	117.62	0.20	105.42
7			12.0	105.6
+50	cut 7'		8.2	109.4
8			6.2	111.4
+50	cut 6'		3.9	113.7
T.P.	12.24	129.82	0.04	117.58
9			12.3	117.5
+50	cut 6'		7.9	121.9
10	cut 7'		2.8	127.0
T.P.	9.14	138.09	0.87	128.95
+50			6.9	131.2
11			6.2	131.9
+08			6.2	131.9
+10			8.7	129.4
+50			8.3	129.8

		138.09		
11+30			7.6	130.5
+85			6.4	131.7
12			6.0	132.1
+50			5.4	132.7
13			4.6	133.5
+50			4.0	134.1
14			2.2	135.9
+50			1.6	136.5
T.P.	12.04	149.95	0.18	137.91
15			10.6	139.4
+50			11.6	138.4
16			8.4	141.6
+50			4.8	145.2
T.P.	11.36	160.73	0.58	149.37
17			11.8	148.9
+50	cut 7'		6.7	154.0
18			5.0	155.7
+50	cut 8'		2.7	158.0
+75			2.5	158.2
19			4.9	155.8

160.73		
194 20	6.6	154.1
+50	7.3	153.4
20	7.6	153.1
+50	8.6	152.1
+75	9.0	151.7
21	7.8	152.9
+32	6.9	153.8
+50	7.4	153.3
22	6.3	154.4
+47 ⁶ -25 E of Chatsworth	4.3	156.4

Levels for proposed sewer Φ Alcott st from 20' E. of Φ Rosecrans west for 720

Bill - exists over Downing st line		33.86		
Bill	3.75	37.61		
010-20' E of E. L. Rosecrans		8.93	28.68	
+42		8.3	29.3	
+50		8.8	28.8	
+53		8.8	28.8	
+55		7.4	30.2	
+70		6.2	31.4	
+73		1.7	35.9	
T.P.	12.61	50.13	0.09	37.52
1			11.9	38.2
+50			6.8	43.3
2			8.2	41.9
+12			8.4	41.7
+25			9.9	40.2
+35			12.5	37.6
+50			10.0	40.1
3	cut 7'		2.6	47.5
T.P.	12.11	61.92	0.82	49.81
+50			12.3	49.6
+70=0 to Canyon Line			11.15	50.77

Sheet 21

		61.92		
4+0			7.6	54.3
+50			2.5	59.4
T.P.	12.11	73.60	0.43	61.97
5			8.6	65.0
+25			1.5	72.1
T.P.	12.23	84.27	0.96	72.64
+32			10.9	74.0
+50			2.9	76.0
6			5.7	79.2
+50			1.4	83.5
T.P.	9.36	93.31	0.92	83.95
+80			7.2	86.1
7			9.6	83.7
+10			11.2	82.1
+20 End			10.1	83.2

Levels for Proposed Sewer Canyon Line from Sta 3+70
 to Alcott St in westerly direction for 509' to Pt & Alcott
 50.89' W of N.L. Evergreen see blue print

38

B.M.	9.16	59.93		50.77
0+0 = Pt Alcott & E. L. Locust			9.16	50.7
R 14° 47'				
+50			9.1	50.8
1	cut 7'	✓	8.4	51.5
+50	cut 7'		6.3	53.6
2			7.8	52.1
+50			6.0	53.9
+67 ³	L 31° 06'		3.3	56.6
3			4.6	55.3
T.P.	10.29	69.19	1.03	58.70
+50			11.0	58.2
4			9.7	59.4
+03			8.2	61.0
+13			7.7	61.5
+25			9.2	60.0
+50			7.0	62.2
+57			7.4	61.8
5			2.2	67.0
+09 = Pt Alcott's S. side of W.L. Evergreen			1.50	67.69

Sheet 21

Levels for proposed sewer & Alcott from pt 50.59 w
 of M.L. Evergreen ^{or sta 509 Canyon line} west for 275 or 215 w of M.L. Clove St

101.5 Sample
 Shaw
 34

B.M.	11.58	79.27	67.69
0+0 = 50.59 w of M.L. Evergreen	11.58	67.69	
+43		10.1	69.2
+50		11.8	67.5
+60		9.6	69.7
+25		5.8	73.5
1 cut 6'		4.5	74.8
+30		5.7	73.6
T.P.	12.15	91.34	0.08
+50		11.1	80.2
2		5.1	86.2
+20		2.3	89.0
T.P.	12.19	103.31	0.22
T.P.	12.68	115.53	0.46
+50		3.4	112.1
3		2.5	113.0
+20		2.6	112.9
+30		6.6	108.9
+50		3.9	111.6
T.P.	12.05	127.18	0.40
			115.13

Sheet 21

		127.18	
4+0		9.4	117.8
+50		5.0	122.2
T.P.	11.80	138.65	0.33
5	cut 8'	11.0	127.7
+50		6.1	132.6
6	cut 7'	2.5	136.2
T.P.	11.21	149.34	0.52
+50		10.2	139.1
7		8.3	141.0
+50		7.3	142.0
8		5.7	143.6
+11		5.0	144.3
+20		3.4	145.9
T.P.	9.64	156.13	2.85
+50		9.2	146.9
9		8.0	148.1
450		6.4	149.7
10		5.5	150.6
+50	cut 6'	6.3	149.8
11	cut 6'	5.4	150.7
+50		4.8	151.3
T.P.	10.09	164.96	1.26
12		10.0	155.0
+50		5.6	159.4
5=215 w of M.L. Clove St		4.3	160.7

Levels for proposed sewer & Touch St from point
 20' E of E Rosecrans St west for 2135' to 215' W of
 W. Clove St

Station	137.11	219	36.87	28.68	6+0	110.55	2.10	108.5	5 1/2 15 Bunker 35
0+0-20 E of E Rosecrans			12.36	24.51	T.P.	12.16	122.62	0.09	110.46
+50		✓	11.4	25.5	+50		9.4	113.2	
+70			10.4	26.5	7		4.8	117.8	
1			3.0	33.9	T.P.	12.39	134.66	0.35	122.27
T.P.	12.48	49.00	0.35	36.52	+50		12.5	122.2	
+50			9.1	39.9	8		8.3	126.4	
2			0.3	48.7	+50		4.6	130.1	
T.P.	12.22	61.05	0.17	48.83	9		1.7	133.0	
+50			5.7	55.4	T.P.	11.50	145.99	0.17	134.49
T.P.	12.38	73.28	0.15	60.90	+50		10.1	135.9	
3			11.7	61.6	10		7.8	138.2	
+50			2.8	70.5	+50		5.9	140.1	
T.P.	12.53	85.75	0.06	73.22	11		4.7	141.3	
4			5.5	80.3	+10		4.8	141.2	
T.P.	12.49	98.24	0.00	85.75	+10		9.7	136.3	
+50			9.8	88.5	+50		8.8	137.2	
5			2.5	95.7	+85		8.8	137.2	
T.P.	12.42	110.55	0.11	98.13	+91		2.5	143.5	
+50			8.0	102.6	12		1.9	144.1	
					+50		2.3	143.7	
					13		1.5	144.5	
					T.P.	5.95	150.69	1.25	144.74

Sheet 22

	150.69		
13+50		8.1	142.6
14		9.2	141.5
+50		10.1	140.6
15 cut 7'		11.3	139.4
+50		9.7	141.0
16		6.2	144.5
+50 cut 8'		6.5	144.2
17		7.4	143.3
+50		9.6	141.1
18		6.9	143.8
+50		11.5	149.2
T.P.	965	15888	11.46
			149.23
19		9.7	149.2
+50		9.3	149.6
20		7.1	151.8
+50		5.3	153.6
21		3.8	155.1
+35		2.7	156.2

150.69

Levels for proposed sewer & Yorge St from
 Point 20' E of Φ Roscrans west for 2135' or 215'
 W. of W. Clove St

13.11	9.36	33.87	24.51	
D+0=20' E of Φ Roscrans		12.73	21.14	
+09		✓ 11.7	22.2	
+38		10.9	23.0	
+50		11.8	22.1	
+53		11.1	22.8	
+70		9.7	24.2	
+72		7.1	26.8	
1		5.0	28.9	
T.P.	12.91	46.48	0.30	33.57
+50		13.9	32.6	
2		10.1	36.4	
+38		6.0	40.5	
+50		2.6	43.9	
T.P.	12.36	58.20	0.64	45.84
3		8.1	50.1	
+50		5.3	52.9	
4		5.3	52.9	
+41		7.3	50.9	

Sheet 22

		58.20		
+450			8.6	49.6
+97			7.4	50.8
5			5.2	53.0
T.P.	12.66	69.72	1.14	57.06
+50			10.2	59.5
+65			7.2	62.5
+72			8.0	61.7
6			8.0	61.7
T.P.	12.26	81.44	0.54	69.18
+50			12.3	69.1
7			5.6	75.8
T.P.	12.44	93.71	0.17	81.27
+50			10.9	82.8
+65			11.2	82.5
+89			8.1	85.6
8			4.7	89.0
T.P.	12.08	105.64	0.15	93.56
+50			10.8	94.8
9			8.9	96.7
+13			4.6	101.0
T.P.	12.44	117.23	0.85	104.79

		117.23		
9750			10.4	106.8
10			3.4	113.8
T.P.	12.50	129.40	0.33	116.90
+50			9.3	120.1
+93			5.5	123.9
T.P.	12.27	141.44	0.23	129.17
11+10			7.2	134.2
+50			6.2	135.2
+63			6.6	134.8
12			9.8	136.6
+50			3.6	137.8
13			2.8	138.6
T.P.	11.63	152.99	0.05	141.36
+25			13.0	140.0
+50			8.4	144.6
+73			5.3	147.7
14			3.6	149.4
T.P.	11.47	163.82	0.64	152.35
+50			10.4	153.4
15			7.3	156.5

		163.82		
15+50			5.0	158.8
16			3.0	160.8
T.P.	6.37	167.27	2.92	160.90
+50			5.2	162.1
17			5.1	162.2
+50			4.2	163.1
18			4.9	162.4
+25			5.0	162.3
+50			6.7	160.6
19			7.4	159.9
+50			6.9	160.4
20			5.2	162.1
+50			3.6	163.7
21			1.8	165.5
+35			1.2	166.1

Levels for Proposed sewer & Xenophon st from point
20' E. of & Rosecrans west for 2135' or 215' west of
of W. of Clare st

B.M. 6.99 28.13 21.14

0 to 20' E. of & Rosecrans 11.23 16.30

+10 ✓ 10.5 17.6

+45 10.2 17.9

+50 11.3 16.8

+52 10.4 17.7

+70 8.9 19.2

1 4.7 23.4

T.P. 12.30 39.95 0.48 27.65

+50 11.1 28.9

2 5.4 34.6

+25 1.4 38.6

T.P. 12.46 52.11 0.30 39.65

+50 8.1 44.0

+75 1.7 50.4

T.P. 12.54 64.39 0.26 51.85

3 8.7 55.7

+25 3.8 60.6

T.P. 12.44 76.82 0.01 64.38

3+50

+75

4

T.P.

+25

+50

T.P.

+75

5

T.P.

+25

+50

+75

T.P.

6

+25

+50

T.P.

+75

7

76.82

11.4

6.0

0.1

0.08

6.9

1.6

0.33

8.5

3.5

0.01

10.1

5.6

1.8

0.41

10.0

6.3

3.1

0.55

11.9

8.7

18.01

57

11

65.4

70.8

76.7

76.74

82.6

87.9

89.19

93.3

98.3

101.77

104.2

108.7

112.5

113.87

116.5

120.2

123.4

125.92

126.5

129.7

Double
Shank
5 Bump

Sheet 33

		138.44		
7+25			5.9	132.5
+50			3.1	135.3
T.P.	12.46	150.54	0.36	138.08
8			10.4	140.1
+50			6.1	144.4
9			2.2	148.3
T.P.	11.41	161.21	0.14	150.40
+50			10.7	151.1
10			8.4	153.4
+50 cut 7'			7.3	154.5
11			6.2	155.6
+10			5.9	155.9
+10			9.5	152.3
+50			8.7	153.1
+80			8.7	153.1
+80			5.1	156.7
12			4.2	157.6
T.P.	7.09	167.07	1.33	159.98
+50			6.6	160.5
13			4.7	162.4

		167.07		
13+50			5.1	162.0
14			6.5	160.6
+25			7.1	160.0
+50 cut 6'			5.9	161.2
15			6.5	160.6
+50			5.0	162.1
16			4.1	163.0
+50			2.4	164.7
T.P.	12.17	177.03	2.16	164.71
17			11.6	165.5
+50			10.2	166.9
18			7.9	169.2
+50			4.7	172.4
T.P.	11.23	177.92	1.19	175.89
19			10.6	177.1
+50			6.6	181.1
20			3.9	183.8
+50			4.1	183.6
21			6.2	181.5
+35			7.7	180.0

Levels of Whittier for proposed sewer from point
 20' E of & Roscreans west for 1830 or 20' E of L. Cleve St
 B.M. 0.90 17.20 16.30

0+0 = 20' E of & Roscreans 5.13 12.07
 +15 5.4 11.8
 +37 4.3 12.9
 +50 5.6 11.6
 +53 5.0 12.2
 +70 3.8 13.4
 +72 3.0 14.2
 1 1.8 15.4
 T.P. 12.35 29.36 0.19 17.01
 +50 9.1 20.3
 +75 5.9 23.5
 2 0.7 28.7
 T.P. 12.39 41.24 0.51 28.85
 +25 8.3 32.9
 +50 2.6 38.6
 T.P. 12.48 53.67 0.05 41.19
 75 9.2 44.5
 3 4.0 49.7
 T.P. 12.54 65.83 0.38 53.29

Sheet 23

65.83
 3+25 10.1 55.7
 +50 0.9 64.9
 T.P. 12.52 78.03 0.27 65.56
 +75 4.2 73.9
 T.P. 12.69 90.39 0.38 77.70
 4 8.9 81.5
 +25 1.1 89.3
 T.P. 12.52 102.97 0.00 90.39
 +50 5.1 97.9
 T.P. 12.61 115.54 0.04 102.93
 +75 10.5 105.0
 5 3.8 111.7
 T.P. 12.34 127.75 0.13 115.41
 +25 11.1 116.7
 +50 7.3 120.5
 +75 4.1 123.7
 6 0.9 126.9
 T.P. 12.44 139.78 0.41 127.34
 +50 6.7 133.1
 7 1.0 138.8
 T.P. 12.49 151.68 0.59 139.19

9
 11/15
 Double
 the
 number 41

		151.68		
7.50			7.0	144.7
8			1.6	150.1
T.P.	12.45	164.05	0.08	151.60
+50			9.2	154.9
9			4.7	159.2
+50			1.6	162.5
T.P.	11.61	174.80	0.86	163.19
10			10.4	164.4
+50			8.6	166.2
11			7.9	166.9
+10			7.9	166.9
+10			10.0	164.8
+28			10.3	164.5
+50			9.5	165.3
+80			9.2	165.6
+80			5.0	169.8
12			4.5	170.3
+50			1.0	173.8
T.P.	10.20	184.42	0.58	174.22
13			3.5	175.9

		184.42		
13.50			7.2	177.2
14			8.0	176.4
+50			6.9	177.5
15			3.7	180.7
+50			0.7	183.7
T.P.	4.35	188.76	0.51	183.91
16			6.1	182.7
+50			5.8	183.0
17			4.6	184.2
+50			4.6	184.2
+77			5.9	182.9
18			5.4	183.4
+30			4.4	184.4
		361.50		

Levels for proposed sewer @ Yaltaire St from point
 20' E of E Rosecrans West for 1830' or 20' E of E.L. Clark St
 B.M. 11.35 23.42 12.27

72.97

5/11/15
 Dwyll
 Shaw
 Bunker 43

3+25					6.3	66.7	
0+0 = 20' E of E Rosecrans	11.27	11.55		T.P.	12.56	85.01	0.52 72.45
+07		11.0	12.4	+50			11.0 74.0
+34		10.1	13.3	+75			6.2 78.8
+50		10.3	13.1	4			7.0 84.0
+70		9.9	13.5	T.P.	12.39	96.96	0.44 84.57
+92		5.5	17.9	+25			8.5 88.5
1		2.7	20.7	+50			6.1 90.9
T.P.	12.72	35.82	0.32 23.10	5			3.7 93.3
+50			9.1 26.7	+25			5.5 91.5
2			5.1 30.7	+50			9.3 87.7
+25			1.3 34.5	6			7.8 89.2
T.P.	12.74	48.36	0.20 35.62	T.P.	12.86	103.53	0.47 96.47
+50			6.3 42.1	+50			10.7 97.8
T.P.	12.50	60.66	0.20 48.16	7			6.4 102.1
+75			9.5 51.2	+50			3.7 104.8
+82			6.0 54.7	T.P.	12.98	120.45	1.06 107.7
+92			4.4 56.3	+75			10.9 109.6
T.P.	12.61	72.97	0.30 60.36	8			12.7 106.8
3			12.3 60.7	+10			14.3 106.2

Sheet 24

		120.45		
8+23			10.5	110.0
+50			7.4	113.1
+75			8.6	111.9
9			12.6	107.9
+05			14.4	106.1
+13			11.8	108.7
+25			5.4	115.1
T.P.	11.20	131.28	0.97	119.48
+50			9.0	122.3
+65			5.8	125.5
+75			10.7	120.6
+82			3.5	127.8
T.P.	12.48	143.32	0.44	130.84
10			8.9	134.4
T.P.	12.45	155.32	0.45	142.87
+50			10.1	145.2
+85			2.1	153.2
T.P.	12.26	167.20	0.38	154.94
11			6.3	160.9
+10			4.4	162.8
T.P.	11.61	178.76	0.05	167.15

		178.76		
11+13			11.6	167.2
+50			10.5	168.3
+78			10.5	168.3
12			9.6	169.2
+25			7.5	171.3
+50			7.2	171.6
13	cut 7'		4.3	174.5
+50			3.2	175.6
14			0.9	177.9
T.P.	11.64	189.66	0.74	178.02
+50			10.2	179.5
15			10.0	179.7
+20			7.7	181.0
+50			7.0	182.7
16			5.7	184.0
+50			2.1	187.6
T.P.	9.63	197.59	1.71	187.95
17			7.0	190.6
+50			3.6	194.0
+80			3.6	194.0
18			5.0	192.6
+30			8.4	189.2

Levels for proposed sewer & Udal St from point
 20' E of Rosecrans West for 1460 or 280' W of Willow
 B.M. 9.42 20.97 11.55

95.06

45

0+0=20' E of Rosecrans St	11.57	9.40		
+0.5	11.1	9.9		
+30	10.3	10.7		
+50	11.0	10.0		
1	5.0	16.0		
T.P.	12.65	33.50	0.12	20.35
+50		11.1		22.4
2		4.8		28.7
T.P.	12.46	45.64	0.32	33.18
+25		12.0		33.6
+50		5.4		40.2
T.P.	12.48	57.96	0.16	45.48
+75		6.9		51.1
T.P.	12.64	70.37	0.23	57.73
3		7.8		62.6
T.P.	12.44	82.77	0.04	70.83
+25		9.3		73.5
T.P.	12.62	95.06	0.33	82.44
+50		11.7		83.4

Sheet 24

3+75		2.0		92.1
T.P.	12.77	107.69	0.14	94.92
4		5.6		102.1
T.P.	12.70	120.22	0.17	107.52
+25		10.1		110.1
+50		3.8		116.4
T.P.	12.64	132.57	0.29	119.93
+75		10.7		121.9
5		6.2		126.4
+25		1.7		130.9
T.P.	12.62	145.03	0.16	132.41
+50		9.6		135.4
+75		4.6		140.4
T.P.	12.65	157.23	0.45	144.58
6		11.8		145.4
+25		6.7		150.5
+50		2.5		154.7
T.P.	12.80	169.81	0.22	157.01
+75		10.6		159.2
7		5.9		163.9

		169.81		
7+25			2.1	167.7
T.P.	12.57	181.96	0.42	169.39
+50			10.6	171.4
+75			7.7	174.3
8			4.7	177.3
+38			2.6	179.4
+50			1.1	180.9
T.P.	12.15	193.86	0.25	181.71
9	cut 7'		12.5	181.4
+50			10.2	183.7
+71			7.8	186.1
10			7.6	186.3
+50	cut 8'		5.9	188.0
+75			5.9	188.0
11			4.1	189.8
+10			3.8	190.1
+10			2.5	185.4
+28			3.3	185.6
+50			7.6	186.3
+62			7.9	186.0

		193.86		
11+80			7.4	186.5
+80			2.4	191.5
12			3.4	190.5
+50			1.9	192.0
T.P.	7.00	199.68	1.18	192.68
13			6.3	193.4
+50			5.0	194.7
14			4.2	195.5
+50			5.4	194.3
+60			5.4	194.3

Levels for Proposed Sewer & Tennyson St from point
20' E. of & Rosecrans street for 1085' or 25' E. of E. Willow St

B.M.	5.21	14.61		9.40
+0 = 20' E. of & Rosecrans		12.42	2.19	
+0.5		11.6	3.0	
+32		10.5	4.1	
+50		10.7	3.9	
+66		11.3	3.3	
+70		8.7	5.9	
1		6.1	8.5	
+17		3.2	11.4	
T.P.	12.55	26.67	0.49	14.12
+50		12.3	14.4	
2		6.8	19.9	
T.P.	12.58	39.18	0.07	26.60
+50		12.7	26.5	
3		4.3	34.9	
T.P.	12.82	51.68	0.32	38.86
+25		11.4	40.3	
+50		4.6	47.1	
T.P.	12.45	64.10	0.03	51.65
+75		7.1	57.0	
T.P.	12.59	76.59	0.10	64.00

Sheet 25

		76.59		
4+0			8.1	68.5
T.P.	12.50	88.48	0.61	75.98
+25			7.7	80.8
T.P.	12.80	101.13	0.15	88.33
+50			8.8	92.3
T.P.	12.81	113.93	0.01	101.12
+75			10.5	103.4
T.P.	12.75	126.08	0.60	113.33
5			11.6	114.5
+25			1.4	124.7
T.P.	12.51	138.09	0.50	125.58
+50			5.2	132.9
T.P.	12.49	150.23	0.35	137.74
+75			8.0	141.4
6			1.0	149.2
T.P.	12.84	163.06	0.01	150.22
+25			7.4	155.7
+50			1.4	161.7
T.P.	12.62	175.42	0.26	162.80
+75			8.4	167.0

Levels for Proposed Sewer & Storm St from point 2.0
East of & Rosecrans St West for 935'

B.M.	8.87	11.06	2.19	
0+0.20 E of & Rosecrans		10.49	0.57	
+10		9.1	2.0	
+34		8.2	2.9	
+50		9.4	1.7	
+55		8.6	2.5	
+70		7.9	3.2	
+72		5.7	5.4	
1		4.3	6.8	
+50		1.2	9.9	
T.P.	12.70	23.67	0.09	10.97
2			8.7	15.0
+50			3.5	20.2
T.P.	12.58	36.14	0.41	23.56
+80			11.5	24.6
3			7.4	28.7
T.P.	12.68	48.61	0.21	35.93
+50			12.7	35.9
+75			8.6	40.0
4			2.5	46.1
T.P.	12.65	61.15	0.11	48.50

Sheet 26

		61.15		
	$\frac{1.90}{145}$			
	4+25		8.4	52.8
	+50		2.0	59.2
	T.P.	12.76	73.64	0.27
	+75		6.3	67.3
	T.P.	12.77	86.13	0.28
	5		11.9	74.2
	+25		2.8	83.3
	T.P.	12.77	98.64	0.26
	+50		7.2	91.4
	T.P.	12.64	110.85	0.43
	+75		12.4	98.5
	6		4.8	106.1
	T.P.	12.78	123.34	0.29
	+25		4.7	118.6
	T.P.	12.75	136.07	0.02
	+50		5.8	130.3
	T.P.	12.82	148.71	0.18
	+75		7.5	141.2
	T.P.	12.78	161.26	0.23
	7		10.5	150.8

		161.26		
+75			2.8	158.5
T.P.	12.82	173.78	0.30	160.96
+50			7.8	167.0
+75			2.3	171.5
T.P.	12.46	186.02	0.22	173.56
8			10.8	175.2
+25			7.4	178.6
+50			2.7	183.3
T.P.	12.29	197.54	0.77	185.25
+75			10.6	186.9
9			8.0	189.5
+35			5.6	191.9

9+95
144
790
1460

Levels for proposed sewer & Russell St from point
20' E of & Rosecrans west for 1455' or 25' E of Plum St 50

B.M.	12.68	13.25		0.57
0+0 = 20' E of & Rosecrans			10.14	3.11
+10			9.1	4.2
+32			8.2	5.1
+50			8.7	4.6
+64			8.1	5.2
+82			5.0	8.3
1			3.4	9.9
T.P.	12.50	25.50	0.25	13.00
+50			11.9	13.6
2			7.1	18.4
+50			2.1	23.4
T.P.	12.34	37.33	0.51	24.99
3			9.0	28.3
+50			3.8	33.5
T.P.	12.24	49.52	0.05	37.28
4			10.8	38.5
+50			5.5	44.0
T.P.	12.50	61.57	0.45	49.07
5			11.1	50.5

Sheet 26

		61.57			
5+25			7.3	54.3	
+50			3.6	58.0	
T.P.	12.70	74.07	0.20	61.37	
+75			10.3	63.8	
6			3.1	71.0	
T.P.	12.80	86.43	0.44	73.63	
+25			6.3	80.1	
+50			0.1	86.3	
T.P.	9.68	95.96	0.15	86.28	
+67			7.1	88.9	
+75			6.6	89.4	
7			7.4	88.6	
+19			11.0	85.0	
+25			13.5	82.5	
+33			9.2	86.8	
+50			5.9	90.1	
T.P.	12.78	108.29	0.45	95.51	
+75			11.6	96.7	
8			3.1	105.2	
T.P.	12.80	120.76	0.33	107.96	

		120.76			
7+25				9.6	111.2
+50				6.0	114.8
+75				1.4	119.4
T.P.	12.73	133.42	0.07	120.69	
9				9.3	124.1
+25				4.5	128.9
T.P.	12.47	145.67	0.22	133.20	
+50				10.6	135.1
+75				4.8	140.9
T.P.	12.60	157.95	0.32	145.35	
10				10.8	147.2
+25				6.2	151.8
+50				2.5	155.5
T.P.	10.56	167.95	0.56	157.39	
+75				9.5	158.5
11				8.1	159.9
+09				6.7	161.3
+10				7.7	160.3
+50				7.4	160.6
+62				7.6	160.4

		167.95		
11+79			7.8	160.2
+80			6.8	161.2
12			6.9	161.1
+50			5.7	162.3
13			3.6	164.4
T.P.	11.43	175.78	3.60	164.35
+50			9.7	166.1
14			7.9	167.9
+55			4.3	171.5

1025 Quimby

7.0

Levels for proposed sewer @ Quimby St from Point 20' East of @ Rosserans St West for 1085' or 25' East of E.L. Willow St.

B.M.	1116	14.77		3.11
+0+20	Ref @ Rosserans		10.43	3.84
+09			9.8	4.5
+28	✓		8.9	5.4
+50			9.4	4.9
+70			8.9	5.4
+71			8.0	6.3
1			6.1	8.2
+50			3.3	11.0
T.P.	12.57	26.64	0.20	14.07
2			11.8	14.8
+50			7.9	18.7
3			4.2	22.4
+50			0.5	26.1
T.P.	45.22	35.51	0.35	26.29
4			9.1	29.4
+50			5.1	33.4
5			1.1	37.4
T.P.	12.55	50.41	0.65	37.86
+50			9.4	41.0

Sheet 27

Levels for proposed sewer Φ Post from point 20 East of Φ Rosecrans West for 1085 or 25 E. of E.L. Millan

48.26

54

B.M.	8.42	12.26	3.84	6+0	11.6	36.7
0+0 = Point 20 E. of Φ Rosecrans		8.35	3.71	+25	4.8	43.5
+17		8.2	4.1	T.P.	12.73	60.73
+32	✓	7.1	5.2	+50	11.3	49.4
+50		7.9	4.4	+75	2.2	58.5
+70		6.9	5.4	T.P.	12.60	73.30
1		6.0	6.3	7	4.1	69.2
+50	Sheet 28	4.7	7.6	T.P.	12.45	85.59
2		3.5	8.8	+25	5.6	80.0
+50		2.2	10.1	T.P.	12.57	98.09
T.P.		1168	23.72	0.52	11.74	+50
3		11.6	11.8	+75	1.1	97.0
+50		10.0	13.4	T.P.	12.74	110.71
4		8.6	14.7	8	4.4	106.3
+50		7.2	16.2	T.P.	12.60	123.27
5		4.5	18.9	+25	11.0	112.3
+50		0.4	23.0	+50	5.2	118.1
T.P.	1278	35.88	0.32	23.10	T.P.	12.58
+75		5.5	30.4	+75	12.0	123.8
T.P.	12.64	48.26	0.26	35.62	9	6.2
				T.P.	12.70	148.39
					0.10	135.69

		148.39		
9+25			11.1	137.3
+50			0.0	148.4
T.P.	12.70	160.26	0.23	148.16
+75			4.4	156.5
T.P.	12.54	173.35	0.05	160.81
10			10.0	163.4
+25			3.7	169.7
T.P.	12.53	185.53	0.35	173.00
+50			10.2	175.3
+75			4.4	181.1
+85			2.6	182.9

Levels for proposed sewer & Olyphant st from E Scott west
for 1450' or 25' E of E.L. Willow

55

B.M.	4.79	8.70	3.91	
0+0 = E Scott Street		8.69	0.01	
+50		7.6	1.1	
1	✓	6.7	2.0	
+50		6.2	2.5	
2		5.4	3.3	
+50		4.7	4.0	
3		4.1	4.6	
+50		4.6	4.1	
+70		4.3	4.4	
+76		3.4	5.3	
4		2.5	6.2	
+15		3.1	5.6	
+29		2.2	6.1	
+50		1.0	7.7	
T.P.	9.81	18.06	0.45	8.25
5		10.0	8.1	
+50		8.0	10.1	
6		7.7	10.4	
+50		7.0	11.1	

Sheet 29

		18.06		
7+0			5.8	12.3
+50			4.6	13.5
8			3.4	14.7
+50			1.9	16.2
T.P.	12.51	30.18	0.39	17.67
9			11.7	18.5
+50			6.4	23.8
+75			0.2	30.0
T.P.	12.60	42.69	0.09	30.09
10			6.0	36.7
T.P.	12.73	55.24	0.18	42.51
+25			10.7	44.5
+50			3.2	52.0
T.P.	12.64	67.73	0.15	55.09
+75			9.2	58.5
11			1.1	66.6
T.P.	12.61	80.18	0.16	67.57
+25			5.2	75.0
T.P.	12.91	92.72	0.37	79.81
+50			10.0	82.7

		92.72		
11+75			4.2	88.5
12			0.3	92.4
T.P.	12.89	105.61	0.00	92.72
+25			3.1	102.5
T.P.	12.56	117.69	0.48	105.13
+50			7.3	110.4
T.P.	12.57	129.78	0.48	117.21
+75			12.0	117.8
13			4.5	125.3
T.P.	12.77	142.21	0.34	129.44
+25			10.0	132.2
+50			3.9	138.3
T.P.	12.19	153.69	0.71	141.50
+75			10.3	143.4
14			6.7	147.0
+50			2.7	151.0

Levels for proposed sewer & Newell St from & Scott St West for 1450' or 25' Edge of E.L. Willow

9 Double
19 Shaw
15 Bank

B.M.	10.12	10.13	0.01
0+0 = & Scott street		8.95	1.18
+12		9.5	0.6
+50		8.1	2.0
1		7.4	2.4
+50		6.7	3.4
2		5.7	4.4
+50		4.7	5.4
3		3.7	6.4
+50		3.9	6.2
+58		4.2	5.9
+68		2.6	7.5
4		1.8	8.3
+07		2.0	8.1
+12		3.1	7.0
+16		2.2	7.9
+50		1.0	9.1
T.P.	8.73	18.21	0.65 9.48
5		9.2	9.0
+50		8.7	9.5
6		7.4	10.8

Sheet 30

	6+50		6.5	11.7
	7		4.9	13.3
	+50		3.2	15.0
	8		0.9	17.3
T.P.	12.03	29.37	0.87	17.34
+50			9.4	20.0
9			7.2	22.2
+50			5.8	23.6
10			3.3	26.1
T.P.	12.48	41.02	0.83	28.54
+50			11.8	29.2
+25			9.9	31.1
11			6.4	34.6
+25			2.3	38.7
T.P.	12.53	53.49	0.06	40.96
+50			10.6	42.9
+75			4.5	49.0
T.P.	12.57	65.63	0.37	53.12
12			10.8	54.8
+25 cut 9'			5.4	60.2
T.P.	11.73	76.99	0.37	65.26

18.21

57

		76.99		
12+50	cut 13'		11.1	65.9
+75			6.7	70.3
13	cut 15'		4.3	72.7
+50			2.2	74.8
14	cut 15'		5.0	72.0
+50			12.2	64.8

Levels for proposed sewer & Lowell St from & Seett St
 most for 2090 or 175' W of N.L. Plum St

58

B.M. s.m. p/g Projections Lowell 8.06
 B.M. 3.45 12.01

0+0				10.70	1.3
+13				11.5	0.5
+50				10.1	1.9
1				9.0	3.0
+50				7.8	4.2
2				6.7	5.3
+50				5.5	6.5
3				4.2	7.8
+50				4.7	7.3
4				3.3	8.7
+50				2.9	9.1
5				1.8	10.2
+50				0.6	11.4
T.P.		10.24	22.39	0.46	11.55
6				9.7	12.7
+50				8.5	13.9
7				7.2	15.2
+50				6.2	16.2
8				5.2	17.2

Sheet 31

2/20/16
 11/16

		22.39		
8750			4.1	18.3
9			2.6	19.8
+50			1.1	21.3
T.P.	12.17	34.44	0.12	22.27
10			11.6	22.8
+50			10.1	24.3
11			8.6	25.8
+50			7.2	27.2
+77			6.5	27.9
12			5.2	29.2
+50			1.4	33.0
T.P.	12.11.0	46.27	0.28	34.16
13			9.1	37.2
+50			5.1	41.2
14			1.0	45.3
T.P.	12.16	58.35	0.08	46.19
+50			9.0	49.4
+77			6.7	51.7
15			6.2	52.2
+45			5.3	53.1
+50			4.9	53.5

		58.35		
16+0			0.5	57.9
T.P.	12.30	70.47	0.18	58.17
+50			7.5	63.0
17			2.5	68.0
T.P.	12.29	82.65	0.11	70.36
+50			9.8	72.9
18			4.8	77.9
+32			1.6	81.1
+50			0.2	82.5
T.P.	12.13	94.68	0.10	82.55
19			10.4	84.3
+18			9.5	85.2
+50			5.9	88.8
T.P.	12.27	106.89	0.06	94.62
20			11.3	95.6
+50			4.3	102.6
T.P.	7.25	114.16	0.58	106.31
+90			6.0	108.2
3.11			1.87	

Levels for proposed sewer & Keats St from & Scott
 Street West for 2090' or 175' N of W. L. Plum St

B.M. 3, m. brass plug Lowell & Rosecrans
 2.25 10.31

		8.06	
0+0 = & Scott		10.36	-0.05
+50		9.3	1.0
1		8.7	1.6
+50		8.1	2.2
2		6.8	3.5
+50		5.4	4.9
3		4.9	5.4
+50		5.0	5.3
+62		5.2	5.1
4		3.6	6.7
+12		4.2	6.1
+16		4.6	5.7
+19		3.5	6.8
+46		3.0	7.3
+50		2.4	7.9
T.P.	7.82	17.81	0.32
+70		8.4	9.4
+85		10.0	7.8
5		9.0	8.8

Sheet 31

17.81

60

5+50		8.0	9.8
6		7.1	10.7
+50		6.8	11.0
7		6.3	11.5
+50		5.2	12.6
8		4.3	13.5
+50		3.9	13.9
9		2.7	15.1
+50		1.5	16.3
T.P.	11.63	28.56	0.88
10		9.9	18.7
+50		8.1	20.5
11		7.0	21.6
+50		5.2	23.4
12		0.6	28.0
T.P.	12.03	40.10	0.49
+50		9.0	31.1
13		7.3	32.8
+50		5.7	34.4
14		3.4	36.7

		40.10		
14+50			0.6	39.5
T.P.	11.01	51.02	0.09	40.01
+66			6.0	45.0
15			5.3	45.7
+41			4.4	46.6
T.P.	12.49	62.44	1.07	49.95
+50			7.6	54.8
16			1.2	61.2
T.P.	12.44	74.64	0.24	62.20
+25			9.9	64.7
+50			6.0	68.6
+75			2.2	72.4
T.P.	12.50	87.14	0.00	74.64
17			9.3	77.8
+25			2.1	85.0
T.P.	12.56	95.78	0.92	86.22
+50	cut 8'		5.7	93.1
T.P.	12.03	110.72	0.07	93.69
+75			11.6	99.1
18	cut 8'		7.6	103.1
+50	cut 8'		5.6	105.1
+19			3.5	107.2
+50			0.8	109.9
T.P.	11.91	121.91	0.72	110.00
20			9.3	112.6
+50			6.0	115.9
+90			2.5	119.4

Levels for Proposed sewer McCauley St. from
 Sta 9+13.7 H Line (see book 941 page 10) thence to E of McCauley
 and Miller St thence on E McCauley west to Sta 8+46 or 227 Crest
 of Plum St

B.M.	12.30	45.00		32.70
0+0 = Sta 9+13.7	H Line book 841 P 10	12.30		32.7
+24	✓		11.8	33.2
+35			12.5	32.5
+40			13.7	31.3
+50			13.9	31.1
+87			11.5	33.5
1			7.3	37.7
+25			0.7	44.3
T.P.	12.58	57.50	0.08	44.92
+50			8.7	48.8
+75			1.9	55.6
T.P.	12.37	69.47	0.40	57.10
+92			9.7	59.8
2			8.7	60.8
+42			3.6	65.9
T.P.	12.62	81.83	0.26	69.21
+46			10.4	71.4
+50			9.0	72.8

Sheet 31

		81.83		
2+75			5.0	76.8
3			2.4	79.4
T.P.	12.42	93.90	0.35	81.75
+75			11.1	82.8
+50			7.5	86.4
4			5.3	88.6
+50 cut 8'			1.9	92.0
T.P.	10.31	104.12	0.09	93.91
5			8.2	95.9
+50			6.7	97.4
+70			6.8	97.3
+90			8.3	95.8
6			8.1	96.0
+50			6.7	97.4
7			3.9	100.2
+50			1.3	100.8
T.P.	10.42	114.37	0.17	103.95
8			8.0	106.4
+46			3.7	110.7

53011

Levels for proposed sewer & Jarvis St from & Scott St
West for 1820' or 25' E. of E. L. Plum St

B.M.	2.82	10.88	8.06	62
0+0 = & Scott,			10.9	0.0
+13			11.6	-0.7
+50			10.2	0.7
1			9.5	1.4
+50			8.5	2.4
2			7.5	3.4
+50			6.4	4.5
3			4.9	6.0
+10			4.9	6.0
+50			7.6	3.3
+60			7.6	3.3
4			6.1	4.8
+19			7.3	3.6
+50			4.6	6.3
5			5.2	5.7
+10			4.6	6.3
+50			4.9	6.0
6			3.7	7.2
+50			3.0	7.9
T.P.	9.94	17.83	2.99	7.39

Sheet 32

17.83

740			9.0	8.8
+50			7.9	9.9
8			6.8	11.0
+50			5.4	12.4
9			4.1	13.7
+50			2.6	15.2
10			1.5	16.3
T.P.	12.49	30.13	0.19	17.64
+50			12.3	17.8
+71			10.8	19.3
+80			9.2	20.9
11			7.9	22.2
+50			5.9	24.2
12			3.5	26.6
+50			1.6	28.5
T.P.	11.78	41.26	0.65	29.48
13			10.9	30.4
+50			9.2	32.1
14			7.8	33.6
+18			7.4	33.9
+35			5.4	35.9
+50			4.9	36.5

41.26

15			4.5	36.8
+46			3.8	37.5
+50			2.1	39.2
T.P.	12.81	53.89	0.18	41.08
+84			12.2	41.7
16			9.0	44.9
+25			3.5	50.4
T.P.	12.76	66.60	0.05	53.84
+50			10.6	56.0
+75			4.3	62.3
T.P.	12.72	79.23	0.09	66.51
17			7.0	72.2
T.P.	12.61	91.40	0.44	73.79
+25			9.5	81.9
+50			0.2	91.2
T.P.	12.72	104.02	0.10	91.30
+75			4.3	99.7
T.P.	12.61	116.35	0.23	103.74
18			9.4	109.0
+20			4.6	111.8

63

Levels for Proposed Corner of Hugo St from E Scott St
 west for 2352'

B.M. Brass N. of S. M. Goetz & Rosecrans 1.15
 4.35 5.50

0+0 = E Scott Street	10.6	-5.1
+18	9.1	-3.6
+20	6.6	-1.1
+50	6.3	-0.8
1	6.7	-1.2
+50	6.5	-1.0
2	6.4	-0.9
+50	5.9	-0.4
3	5.1	+0.4
+50	5.1	0.4
+58	5.4	0.1
4	3.6	1.9
+35	3.7	1.8
+38	2.9	2.6
50	1.9	3.6
+80	0.7	4.8
+85	1.7	3.8
5	1.7	3.8
T.P.	12.24	17.44
	0.30	5.20

Sheet 33

		17.44		
5+50			12.1	5.3
6			10.8	6.6
+50			9.2	8.2
7			7.8	9.6
+50			6.6	10.8
8			5.2	12.2
+50			1.8	15.6
T.P.	11.95	28.97	0.42	17.02
9			11.4	17.6
+50			9.4	19.6
10			7.7	21.3
+50			5.7	23.3
11			3.8	25.2
+50			1.7	27.3
T.P.	12.04	40.33	0.68	28.29
12			11.2	29.1
+50			9.6	30.7
13			7.6	32.7
+50			5.7	34.6
14			3.5	36.8
+33			1.7	38.6
T.P.	12.20	52.19	0.34	39.99

64

52.19

17+45			10.7	41.5
+50			10.5	41.7
15			9.2	43.0
+13			8.4	43.8
+79			8.6	43.6
+50			7.8	44.4
+75			1.4	50.8
T.P.	12.72	64.63	0.28	51.91
16			2.3	62.3
T.P.	12.70	77.17	0.76	64.47
+25			6.3	70.9
+45			2.5	74.7
T.P.	12.70	89.79	0.08	77.09
+50			10.5	79.3
+63			5.0	84.8
+75			2.9	86.9
T.P.	12.72	102.37	0.14	89.65
17			7.5	94.9
+13			3.9	98.5
+25			2.1	100.3
T.P.	12.84	114.97	0.24	102.13

114.97

65

17+50			10.5	104.5
+75			7.5	107.5
18			5.8	109.2
+50			3.2	111.8
19			2.3	112.7
+50			2.7	112.3
+73			4.2	110.8
20			4.1	110.9
+50			3.5	111.5
T.P.	12.91	127.26	0.62	114.35
21			12.8	114.5
+50			7.3	120.0
22			1.1	126.2
T.P.	12.70	139.72	0.24	127.02
+16			11.1	128.6
+23			8.5	131.2
+50			6.8	132.9
23			1.9	137.8
T.P.	7.42	146.25	0.89	138.83
+52			4.1	142.2

Levels for Proposed Sewer $\frac{1}{2}$ Goethe St from $\frac{1}{2}$ Scott St
West for

66

	B.M. Brass Peg S.W. Goethe	Rosecrans		
	3.24	4.39	1.15	
0+0 = $\frac{1}{2}$ Scott St			9.5	-5.1
+50			9.1	-4.7
+97			8.0	-3.6
+98			7.0	-2.6
1			6.9	-2.5
+50			6.0	-1.6
2			5.6	-1.2
+50			5.5	-1.1
3			4.5	-0.1
+50			4.1	0.3
4			3.0	1.4
+15			3.6	0.8
+50			2.3	2.1
5			1.1	3.3
T.P.	11.18	15.19	0.38	4.01
+50			10.4	4.8
6			9.2	6.0
+50			7.6	7.6

Sheet 34

		15.19		
7+0			6.2	9.0
+50			4.8	10.4
8			3.5	11.7
+50			1.5	13.7
T.P.	12.59	27.70	0.08	15.11
9			11.2	16.5
+50			8.5	19.2
10			5.9	21.8
+50			3.3	24.4
11			0.8	26.9
T.P.	11.87	39.09	0.48	27.22
+50			10.8	28.3
+82			9.7	29.4
12			8.6	30.5
+50			5.4	33.7
13			1.6	37.5
T.P.	12.34	51.24	0.19	38.90
+50			10.1	41.1
14			6.4	44.8
+50			2.8	48.4

		51.24		
14+74			1.4	49.8
15			0.7	50.5
T.P.	12.23	62.94	0.53	50.71
+40			11.5	51.4
+50			10.8	52.1
16			5.3	57.6
T.P.	12.63	75.25	0.32	62.62
+50			11.9	63.4
17			6.1	69.2
+50			0.4	74.9
T.P.	12.65	87.37	0.53	74.72
18			6.5	80.9
+32			3.3	84.1
+50			2.0	85.4
T.P.	12.37	99.29	0.45	86.92
19			11.8	87.5
+18			11.3	88.0
+50			8.1	91.2
20			1.9	97.4
T.P.	12.76	112.03	0.02	99.27

		112.03		
20450			2.2	103.8
21			1.8	110.2
T.P.	12.45	124.11	0.37	111.66
+50			7.7	116.4
22			1.7	122.4
+18			0.0	124.1
T.P.	12.24	136.09	0.26	123.85
+50			10.4	125.7
+78			9.6	126.5
23			8.3	127.8
+50			3.0	133.1
+55			2.3	133.8
T.P.	12.71	148.35	0.45	135.64
+75			9.8	138.6
24			9.6	143.8
+25			0.7	148.0
T.P.	12.49	160.74	0.10	148.25
+50			11.0	149.7
+75			7.9	152.8
2570			4.7	156.0
T.P.	3.76	163.28	1.22	159.52

		163.28		
25450			3.2	160.1
25471	7.31	168.64	1.95	161.33
26			6.4	162.2
+50			6.8	161.8
+985	L 5° 58'		8.4	160.2
27			8.4	160.2
+18			9.3	159.3
+50			8.5	160.1
28			11.0	157.6
+421	R 41° 17'		12.5	156.1
+50			12.1	156.5
+68			10.9	157.7
29			7.5	161.1
+50			6.3	162.3
+84			4.4	164.2
30			5.2	163.4
+474	R 21° 31'		2.7	165.9
+50			2.5	166.1
T.P.	11.10	179.51	0.23	168.41
31			8.3	171.2

		179.51		
31+27			3.4	176.1
T.P.	10.47	189.62	0.36	179.15
+50			9.7	179.9
480			6.0	183.6
32			5.3	184.3
+50			4.1	185.5
33			4.4	185.2
+22			4.5	185.1
+50			6.5	183.1
34			7.1	182.5
+18			6.4	183.2
+25			5.3	184.3
+50			4.5	185.1
35			1.4	188.7
+50			2.9	186.7
+19	L 15° 31'		4.9	184.7
T.P.	5.27	189.96	4.93	184.69
36			5.3	184.7
+50			5.6	184.4
37			5.9	184.1
+50			6.9	183.1
+85			8.0	182.0

Levels for proposed sewer Fenelon St from ϕ Scott St west for 2870.5

B.M. sm brass pig	Goethe & Roscerans	1.15		
4.70	5.85			
0402 ϕ Scott St,		8.4	-2.5	
+50		8.2	-2.3	
1		7.3	-1.4	
+50		6.9	-1.0	
2		6.6	-0.7	
+50		6.1	-0.2	
3		4.9	+1.0	
+50		4.9	1.0	
4		3.9	2.0	
+17		4.5	1.4	
+50		3.5	2.4	
5		2.0	3.9	
+50		0.4	5.5	
T.P.	11.37	16.93	0.29	15.56
6		10.0	6.9	
+50		8.5	8.4	
7		6.9	10.0	
+50		5.5	11.4	

Sheet 33

		16.93		
8+0			4.2	12.7
+50			2.9	14.0
9			0.8	16.1
T.P.	11.98	28.48	0.43	16.50
+50			10.4	18.1
10			8.2	20.3
+50			6.1	22.4
11			4.2	24.3
+50			2.8	25.7
12			0.9	27.6
T.P.	12.46	40.45	0.49	27.99
+50			9.1	31.4
13			5.0	35.5
+50			1.1	39.4
T.P.	12.42	52.48	0.39	40.06
14			9.1	43.4
+50			5.0	47.5
+85			2.7	49.8
15			2.3	50.2
+38			1.5	51.0
+50			0.4	52.1
T.P.	12.79	65.16	0.11	52.37

10

		65.16	"		
1640			6.2	59.0	
T.P.	12.29	77.56	0.39	64.77	
+50			10.6	67.0	
17			2.8	74.8	
T.P.	12.67	89.89	0.34	77.22	
+50			7.2	82.7	
T.P.	12.67	102.43	0.13	89.76	
18			11.9	90.5	
+37			6.5	95.9	
+50			5.4	97.0	
19			4.2	98.2	
+06			4.0	98.4	
T.P.	12.63	114.86	0.20	102.23	
+50			11.6	103.3	
20			5.3	109.6	
T.P.	12.59	126.94	0.51	114.35	
+50			11.1	115.2	
21			4.8	122.1	
T.P.	12.52	138.81	0.65	126.29	
+50			10.3	128.5	

		138.81			
12270			4.3	134.5	71
+14			3.0	135.8	
+50			1.6	137.2	
T.P.	12.71	151.47	0.05	138.76	
23			12.0	139.5	
+50			7.4	144.1	
+55			7.1	144.4	
+57			4.9	146.6	
+67			0.4	151.1	
T.P.	9.73	161.15	0.07	151.40	
24			2.6	153.5	
+44.7 = 4 Cole 600			4.9	156.2	
+50 Hub 10.58			4.39	156.74	
25			9.0	152.1	
+15			9.4	151.7	
+50			3.9	152.2	
26			10.0	151.1	
+50			10.9	150.7	
+62			9.1	152.0	
27			8.6	152.5	
+32.4 R 36° 22			9.5	151.6	
+50			13.8	147.3	
+75			16.3	144.8	
+87			15.4	145.7	
28			13.0	148.1	
+50			7.5	153.6	
+70.5			6.1	155.0	

Levels for Proposed sewer & Emerson from & Scott st next for 1510 to & Willow

B.M. S.W. RR. SPX Emerson & Rosecrans 574
 3.97 9.71

0+0 = & Scott st	8492 ¹³	9.1	0.6
+15	9107 ✓	9.8	-0.1
+16	9108	9.1	0.6
+50	9102	8.2	1.5
1	9192	7.6	2.1
+50	10142	7.0	2.7
2	10192	7.1	2.6
+50	11102	6.5	3.2
3	11192	5.0	4.7
+50	12102	6.4	3.3
+63	12155	6.4	3.3
4	12192	5.1	4.6
+13	13105	6.0	3.7
+19	13111	5.2	4.5
+50	13142	3.9	5.8
5	13192	3.4	6.3
+50	14102	2.9	6.8
6		1.6	8.1
T.P.	9.22	18.36	0.57 9.14

Sheet 72

18.36

72

6+50		8.9	9.5
7		7.7	10.7
+50		7.6	10.8
8		5.9	12.5
+50		5.0	13.4
9		4.5	13.9
+50		3.3	15.1
10		1.8	16.6
T.P.	12.19	3.0.15	0.40 17.96
+50		12.3	17.9
11		10.7	19.5
+50		9.1	21.1
12		7.4	22.8
+50		4.9	25.3
13		2.0	28.2
T.P.	12.65	42.15	0.65 29.50
+50		10.9	31.3
+82		8.7	33.5
14		2.9	39.3
T.P.	12.74	54.64	0.25 41.90
+25		8.7	45.9
+36		5.7	48.9
+50		4.0	50.6
+63		3.2	51.4
T.P.	12.36	66.39	0.11 54.53

66.89

14475

12.1

54.8

15

11.1

55.8

+10 = \$ miller

10.75

56.14

73

Levels for proposed sewer & Dickens St from & Scott St West for 2444A to & Culbra

B.M. R.P. S.P.K.S.M. Emerg. & Rose crans

8.42

14.16

5.74

0+0 = & Scott St

+13

✓

+14

+50

1

+50

2

+50

+55

3

+50

+52

4

+16

+18

+33

+50

5

+50

10.6 3.6

11.3 2.9

10.6 3.6

9.7 4.5

9.0 5.2

8.0 6.2

7.2 7.0

6.3 7.9

5.3 8.9

4.4 9.8

6.7 7.5

7.1 7.1

5.0 9.2

6.0 8.2

5.3 8.9

4.8 9.4

3.1 11.1

3.6 10.6

2.9 11.3

6+0

+50

T.P.

7

+50

8

+50

9

+50

10

+50

11

+50

T.P.

+50

13

+50

+68

+80

14

+25

T.P.

8.50

22.49

8.50

12.04

12.19

12.49

12.66

14.16

22.49

33.56

45.54

57.75

69.97

2.2

0.8

0.17

8.3

7.2

6.1

5.5

4.7

5.0

4.9

4.3

2.9

1.5

9.7

6.2

2.0

10.0

7.7

3.7

8.6

0.44

12.0

13.4

13.99

14.2

15.3

16.4

17.0

17.8

17.5

17.6

18.2

19.6

21.0

23.9

27.4

31.6

35.5

37.8

41.8

48.2

55.1

59.31

4

Sheet 35

		69.97		
14+50			9.8	60.2
T.P.	12.74	82.42	0.29	69.68
+70			9.6	72.8
15			8.6	73.8
+45			7.9	74.5
T.P.	12.68	94.81	0.29	82.13
+46			11.3	83.5
+50			11.1	83.7
+61			9.6	85.2
+65			7.6	87.2
+75			5.8	89.0
16			2.2	92.6
T.P.	12.19	106.76	0.24	94.57
+25 cut 10'			10.9	95.9
+50			6.1	100.7
+75			3.1	103.7
T.P.	11.80	118.48	0.08	106.68
17			12.9	105.6
+20			11.0	107.5
+50 cut 10'			11.9	106.6
18			10.9	107.6
+50			7.4	111.1

		118.48		
18+75			1.8	116.7
T.P.	12.20	130.65	0.23	118.25
19			9.9	120.8
+25			5.6	125.1
+31			4.4	126.3
T.P.	12.23	142.87	0.01	130.64
+43			10.2	132.7
+50			9.9	133.0
+65			10.2	132.7
+75			8.8	134.1
20			5.7	137.2
+25			2.7	140.2
+50			0.1	142.8
T.P.	12.52	155.30	0.09	142.78
21			7.8	147.5
+50			4.0	151.3
T.P.	12.14	165.95	1.49	153.81
22			12.0	154.0
+50			10.8	155.2
23			9.6	156.4
+50			7.2	158.8
24			4.5	161.5
+44 ⁴ = Colebra			1.21	164.74

Levels for Proposed Sewer & Byren St from
& Scott St west for 1990.

B.M. S.M. brass plg. Conleton & Rosecrans
7.44 21.99

0+00 & Scott	14.1	7.9
+50	12.4	9.6
1	11.0	11.0
+50	9.9	12.1
2	8.6	13.4
+50	7.2	14.8
+20	5.8	16.2
+92	4.5	17.5
3	4.6	17.4
+25	4.2	17.8
+50	5.5	16.5
+55	5.6	16.4
4	4.0	18.0
+15	5.0	17.0
+50	2.5	19.5
5	0.8	21.2
T.P.	11.38	33.37
+50	11.1	22.4
6	10.0	23.4
+50	8.8	24.6
7	7.4	26.0
+50	6.3	27.1
8	5.3	28.1
+50	4.1	29.3

Sheet 37

33.37

70

9+0	3.4	30.0
+50	2.6	30.8
10	1.5	31.9
+50	0.9	32.5
T.P.	10.59	43.86
11	9.8	34.1
+17	10.0	33.9
+19	13.8	30.1
+30	13.7	30.2
+32	9.9	34.0
+50	9.4	34.5
12	8.8	35.1
+25	6.3	37.6
+50	0.8	43.1
T.P.	12.57	56.34
+75	4.5	52.8
T.P.	12.44	68.48
13	11.1	57.4
+25	6.2	62.3
+50	0.6	67.9
T.P.	12.52	80.82
+75	7.1	73.7
14	1.9	78.9
T.P.	12.56	93.32
+25	8.0	85.3
+50	2.9	90.4
T.P.	11.96	105.07
	0.21	93.11

105.07

14+71			10.0	95.1
+75			11.4	93.7
15+0			10.6	94.5
145			10.1	95.0
T.P.	12.19	117.12	0.14	104.93
+46			9.8	107.3
+50			9.6	107.5
16			4.2	112.9
+50			0.8	116.3
T.P.	12.07	128.62	0.57	116.55
17			10.4	118.2
+50 cut 8'			9.0	119.6
18			5.0	123.6
+50			1.2	127.4
T.P.	6.89	134.52	0.99	127.63
19			4.2	130.3
+50 cut 9'			3.4	131.1
+90			3.4	131.1

77

Levels for proposed sewer & Carleton Street
from & Scott to & Culbreth st 2444.4'

B.M. S.W. Brass p/g Carleton & Rosecrans 14.55
3.61 18.16

0+0 & Scott St. 12.0 6.2

+50 11.2 7.0

1 10.2 8.0

+50 9.2 9.0

2 8.0 10.2

+50 6.8 11.4

3 5.7 12.5

+35 4.9 13.3

+50 5.8 12.4

+54 5.9 12.3

4 4.1 14.1

+17 5.4 12.8

+22 4.7 13.5

+50 3.5 14.7

5 2.6 15.6

+50 1.5 16.7

6 0.4 17.8

T.P. 10.73 28.43 0.46 17.70

+50 9.6 18.8

7 8.5 19.9

Sheet 36

28.43

78

7+50 7.4 21.0

8 6.8 21.6

+50 6.3 22.1

9 5.5 22.9

+50 4.7 23.7

10 4.5 23.9

+50 4.5 23.9

11 3.6 24.8

+50 2.8 25.6

+75 1.5 26.9

T.P. 12.60 40.72 0.31 28.12

12 10.4 30.3

+50 0.6 40.1

T.P. 12.54 53.18 0.13 40.59

13 3.2 50.0

T.P. 12.57 65.60 0.15 53.03

+50 5.5 60.1

T.P. 12.43 77.56 0.47 65.13

14 7.6 70.0

T.P. 12.63 89.91 0.28 77.28

+50 10.1 79.8

+77 5.0 84.9

15 4.7 85.2

+43 3.8 86.1

+50 3.0 86.9

T.P. 12.52 101.95 0.48 89.43

		101.95		
16+0			7.6	94.4
T.P.	12.55	114.39	0.11	101.34
+50			12.1	102.3
17			4.1	110.3
T.P.	12.59	126.60	0.33	114.01
+50			8.5	118.1
18			0.4	126.2
T.P.	12.52	139.02	0.10	126.50
+45			5.7	133.3
+50			5.4	133.6
19			4.7	134.3
+25			3.9	135.1
+50			2.9	136.1
20			0.3	138.7
T.P.	12.56	151.44	0.14	138.38
+50			10.1	141.3
21			7.5	143.9
+50			4.9	146.5
22			2.4	149.0
+50			0.9	150.5
T.P.	12.24	163.48	0.20	151.24
23			11.6	151.9
+50			9.4	154.1
+63			8.5	155.0
+80			6.0	157.5
24			5.6	157.9
+44.4 =	☉ Golebra st		4.42	159.06

Levels for Proposed sewer & Addison st from
& Scott street for 2190

B.M. S.M. P.P. 3PK Addison & Rosecrans 20.38
2.95 23.33

225 & Scott, 13.0 10.3

+50 11.8 11.5

1 10.6 12.7

+50 9.0 14.3

2 7.5 15.8

+50 5.9 17.4

+70 5.2 18.1

3 2.2 21.1

+16 2.5 20.8

+50 5.0 18.3

4 3.7 19.6

+50 2.4 20.9

5 0.6 22.7

T.P. 11.75 34.97 0.11 23.22

+50 10.9 24.1

6 9.3 25.7

+50 7.5 27.5

7 6.3 28.7

+50 5.0 30.0

8 3.5 31.5

+50 2.5 32.5

9 1.0 34.0

T.P. 12.48 47.31 0.14 34.33

Sheet 36

47.31

9+50			11.6	35.7
10			9.7	37.6
+50			7.4	39.9
11			5.0	42.3
+50			3.5	43.8
12			1.8	45.5
+30			0.6	46.7
T.P.	11.73	58.93	0.11	47.20
+42			10.3	48.6
+50			10.0	48.9
+55			10.6	48.3
+58			21.1	37.8
+34			17.7	41.2
+36			9.4	49.5
+90			8.6	50.3
13+0			10.0	48.9
+50			2.1	56.8
T.P.	12.40	71.21	0.12	58.21
+75			11.0	60.2
14			4.2	67.0
+03			3.3	67.9
+50			6.3	69.9
T.P.	12.25	83.39	0.07	71.14
+73			11.6	71.8
15			11.1	72.3
+45			10.3	73.1
+46			7.9	75.5
+50			7.8	75.6
16			7.6	75.8
+50			7.8	75.6

73.39

17				7.4	76.0
+20				7.1	76.3
+50				4.7	78.7
T.P.	12.67	95.46	0.60	82.79	
+75				11.3	84.2
18				5.1	90.4
T.P.	12.43	107.46	0.43	95.03	
+75				12.3	95.2
+50				7.9	99.6
+80				2.8	104.7
19				0.3	107.2
T.P.	12.32	119.69	0.09	107.37	
+50				5.7	114.0
T.P.	12.55	132.01	0.23	119.46	
20				11.7	120.3
+50				5.8	126.2
21				1.4	130.6
T.P.	6.21	136.97	1.25	130.76	
+50				4.2	132.8
+90				5.3	131.7

00

72782

7.52
7.18
34

6.09
9.09
7.05
210
319.00
133

75) 200 L 66
150
500
450
500

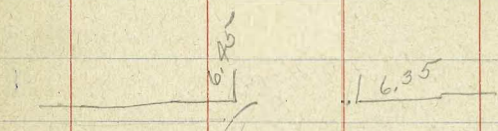
9.09
7.05
1.83
8.38

14.55
2.21
16.76
11.01
5.75

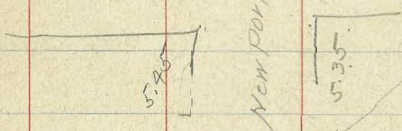
5.74

13201
5.09
123.92

105.185
103.13
105
205.5



Abbott,



163.08
4.92
159.06

165.25
7.16
178

134.52
7.58
126.94
123.92
204.0

10289.4
205.5
10494.9

2467° L 31° 06' 121.91
7.62
13.22
112.29

164.46
8.92
156.16 = 21.75 2000

12.66
0.15
12.51

361.50
18.30
14.60
10.75
9.35
14.60
158.5
177.1
117

110.72 116.35 414.60
5.60 105.12 17.55
105.12 11.23 10.75
116.35 14.50
108.10 14.50
1325 2090
1110 2090
200 8.26

34.62
23.10
11.50

30150

910 lot line 53011
25
935
50
985

139.72
14.1
125.6

1110
175
935

194.3

1170
275
1455

197.54
5.18
192.36

12.00
2.80
17.5
4.35
20.85

509.83
10.5
499.3

335
435
300

735
1110
370
1.75
2090

1085
30
33.55

300
70
300
70
27.5

167.8

1450
15.147
7.37

1450

174.09

184.53
171.95
12.58

164.51
3

5280) 72782 L 14
5280

19980
20920

153.69
0.32
153.37
11.14
164.51

169.7
64.5
5.2

148.35
4.22
144.13 Fancher St
B.M.

