

966A  
F.B.  
966A

---

LEVEL BOOK.

No. 410 T

---

IND

IND



966A

602  
11-20-64  
11-15-64  
11-10-64

MICROFILMED

DEC 16 1964

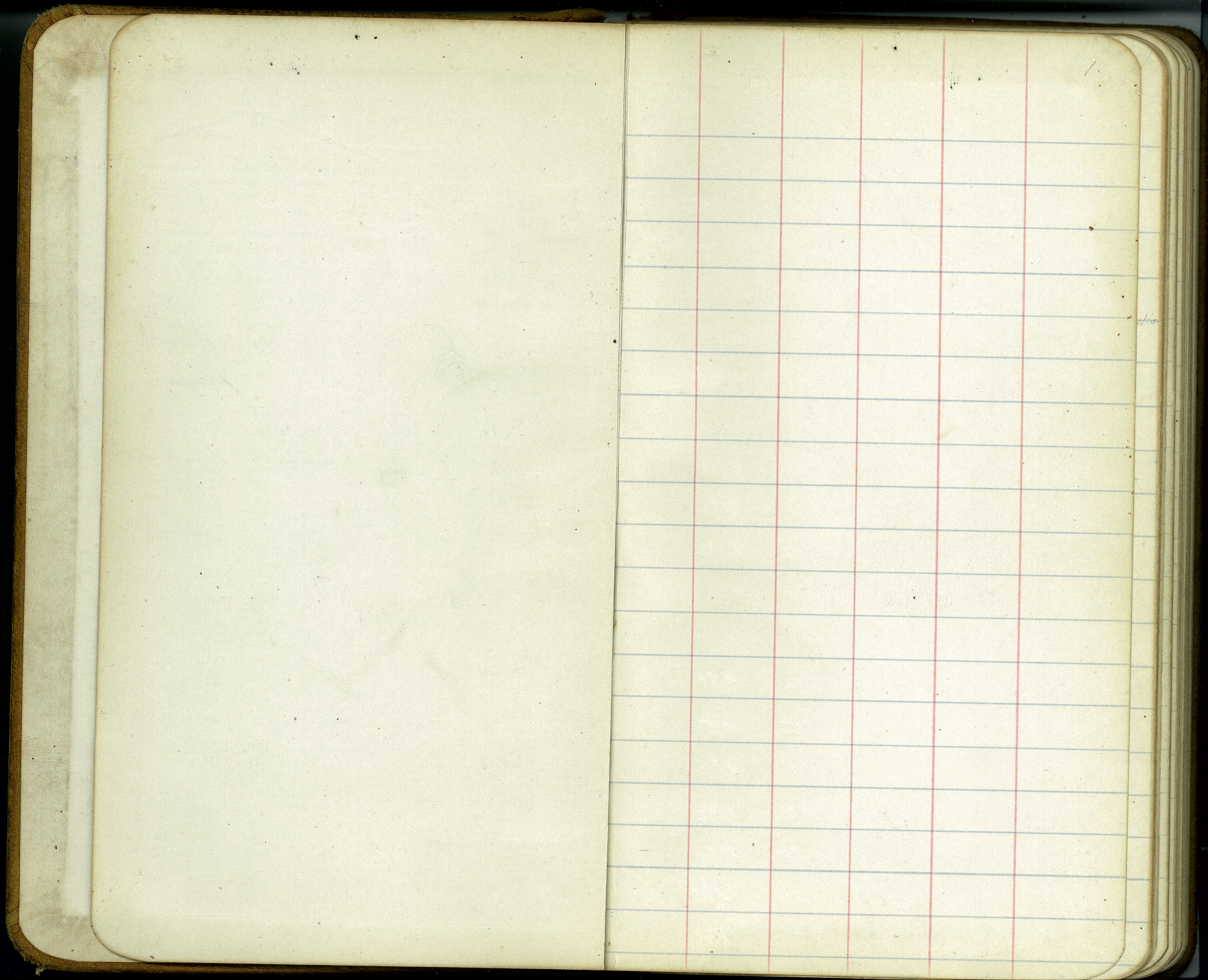
EUGENE DIETZGEN CO.,  
Drawing Materials and Surveying Instruments.  
NEW YORK. CHICAGO. SAN FRANCISCO.

TABLES FOR EXCAVATIONS AND EMBANKMENTS.  
DISTANCES FROM CENTER OF ROADWAY FOR CROSS-SECTIONING  
ROADWAY 20 FEET WIDE. SIDE SLOPES 1 TO 1.  
FOR SINGLE TRACK EXCAVATION.

Copyright, 1902. No. 30340.

	0	.1	.2	.3	.4	.5	.6	.7	.8	.9	
0	10.0	10.1	10.2	10.3	10.4	10.5	10.6	10.7	10.8	10.9	0
1	11.0	11.1	11.2	11.3	11.4	11.5	11.6	11.7	11.8	11.9	1
2	12.0	12.1	12.2	12.3	12.4	12.5	12.6	12.7	12.8	12.9	2
3	13.0	13.1	13.2	13.3	13.4	13.5	13.6	13.7	13.8	13.9	3
4	14.0	14.1	14.2	14.3	14.4	14.5	14.6	14.7	14.8	14.9	4
5	15.0	15.1	15.2	15.3	15.4	15.5	15.6	15.7	15.8	15.9	5
6	16.0	16.1	16.2	16.3	16.4	16.5	16.6	16.7	16.8	16.9	6
7	17.0	17.1	17.2	17.3	17.4	17.5	17.6	17.7	17.8	17.9	7
8	18.0	18.1	18.2	18.3	18.4	18.5	18.6	18.7	18.8	18.9	8
9	19.0	19.1	19.2	19.3	19.4	19.5	19.6	19.7	19.8	19.9	9
10	20.0	20.1	20.2	20.3	20.4	20.5	20.6	20.7	20.8	20.9	10
11	21.0	21.1	21.2	21.3	21.4	21.5	21.6	21.7	21.8	21.9	11
12	22.0	22.1	22.2	22.3	22.4	22.5	22.6	22.7	22.8	22.9	12
13	23.0	23.1	23.2	23.3	23.4	23.5	23.6	23.7	23.8	23.9	13
14	24.0	24.1	24.2	24.3	24.4	24.5	24.6	24.7	24.8	24.9	14
15	25.0	25.1	25.2	25.3	25.4	25.5	25.6	25.7	25.8	25.9	15
16	26.0	26.1	26.2	26.3	26.4	26.5	26.6	26.7	26.8	26.9	16
17	27.0	27.1	27.2	27.3	27.4	27.5	27.6	27.7	27.8	27.9	17
18	28.0	28.1	28.2	28.3	28.4	28.5	28.6	28.7	28.8	28.9	18
19	29.0	29.1	29.2	29.3	29.4	29.5	29.6	29.7	29.8	29.9	19
20	30.0	30.1	30.2	30.3	30.4	30.5	30.6	30.7	30.8	30.9	20
21	31.0	31.1	31.2	31.3	31.4	31.5	31.6	31.7	31.8	31.9	21
22	32.0	32.1	32.2	32.3	32.4	32.5	32.6	32.7	32.8	32.9	22
23	33.0	33.1	33.2	33.3	33.4	33.5	33.6	33.7	33.8	33.9	23
24	34.0	34.1	34.2	34.3	34.4	34.5	34.6	34.7	34.8	34.9	24
25	35.0	35.1	35.2	35.3	35.4	35.5	35.6	35.7	35.8	35.9	25
26	36.0	36.1	36.2	36.3	36.4	36.5	36.6	36.7	36.8	36.9	26
27	37.0	37.1	37.2	37.3	37.4	37.5	37.6	37.7	37.8	37.9	27
28	38.0	38.1	38.2	38.3	38.4	38.5	38.6	38.7	38.8	38.9	28
29	39.0	39.1	39.2	39.3	39.4	39.5	39.6	39.7	39.8	39.9	29
30	40.0	40.1	40.2	40.3	40.4	40.5	40.6	40.7	40.8	40.9	30
31	41.0	41.1	41.2	41.3	41.4	41.5	41.6	41.7	41.8	41.9	31
32	42.0	42.1	42.2	42.3	42.4	42.5	42.6	42.7	42.8	42.9	32
33	43.0	43.1	43.2	43.3	43.4	43.5	43.6	43.7	43.8	43.9	33
34	44.0	44.1	44.2	44.3	44.4	44.5	44.6	44.7	44.8	44.9	34
35	45.0	45.1	45.2	45.3	45.4	45.5	45.6	45.7	45.8	45.9	35
36	46.0	46.1	46.2	46.3	46.4	46.5	46.6	46.7	46.8	46.9	36
37	47.0	47.1	47.2	47.3	47.4	47.5	47.6	47.7	47.8	47.9	37
38	48.0	48.1	48.2	48.3	48.4	48.5	48.6	48.7	48.8	48.9	38
39	49.0	49.1	49.2	49.3	49.4	49.5	49.6	49.7	49.8	49.9	39
40	50.0	50.1	50.2	50.3	50.4	50.5	50.6	50.7	50.8	50.9	40

Calculated by F. E. Paradis, C. E.



Water Main - Atlantic Street  
 & Hubs from NL Ast to St. Juniper.  
 Cuts or fills marked to & St. Grade.

West  
 Otter  
 No. 16

2

	+	HT	-	EL.	-	& Grade	Cuts or Fills
BM. SW. India & A. Flag.				18.99			
T.P.	1.44	20.43	10.17	10.26			
T.P.	1.89	12.15	6.56	5.59			
	4.33	9.92					
00 = NL. Ast.			5.50	4.12	3.50	0.9c	
+50			5.36	4.56	3.56	1.0c	
1+00			5.30	4.62	3.61	1.0c	
+50			5.18	4.74	3.67	1.1c	
2+00			5.20	4.72	3.72	1.0c	
+50			5.12	4.82	3.78	1.0c	
3+99 <sup>s</sup> = St. Ash.			5.61	4.31	3.83	0.5	
3+79 <sup>s</sup> = NL. Ash.			5.02	4.90	4.25	0.7c	
4+29 <sup>s</sup>			5.35	4.57	4.04	0.7c	
+79 <sup>s</sup> T.P. Hub.			5.37	4.55	4.43	0.1c	
5+29 <sup>s</sup>	4.87	9.42	4.52	4.92	4.53	0.4c	
+79 <sup>s</sup>			4.52	4.92	4.62	0.3c	
6+29 <sup>s</sup>			4.80	4.62	4.72	0.1f	
6+79 <sup>c</sup> = St. Beech			5.02	4.40	4.12	0.4f	

8.98 H3  
 0.53  
 8.65 TP  
 10.43  
 17.08 H3  
 1.21  
 17.87 TP  
 10.68  
 7.85 H3  
 5.69  
 22.91

22.91 = BM. SW. Ash & India

4.90 = Hub. NL. Ash - E Atlantic  
 4.45  
 8.78 H3  
 3.75 = Cut Gr. - SE Ash.  
 5.23 = Grade

	41 9.42	El.	± Grade
7+59 <sup>6</sup> = NL. Beech.	522	4.20	525 1.1 F
8+09 <sup>6</sup>	4.74	4.68	5.54 0.86 F
+59 <sup>6</sup>	4.90	4.52	5.83 1.3 F
9+09 <sup>6</sup>	5.25	4.17	6.12 1.95 F
+59 <sup>6</sup>	4.75	4.67	5.96 1.3 F
10+09 <sup>6</sup>	522	4.20	5.79 1.6 F
10+59 <sup>9</sup> = Sl. Cedar.	512	4.30	5.62 1.3 F
T.P. Top M.H. Near NL Cedar.	2.97	7.05	
	1.98	9.03	
11+39 <sup>9</sup> = NL Cedar - Lpt.	4.75	4.28	525 1.0 F
+89 <sup>9</sup>	4.92	4.11	5.07 1.0 F
12+39 <sup>9</sup>	525	3.78	4.89 1.1 F
+89 <sup>9</sup>	532	3.71	4.71 1.0 F
13+39 <sup>9</sup>	4.16	4.81	4.52 0.3 C
+89 <sup>9</sup>	572	3.31	4.34 1.0 F
14+39 <sup>9</sup>	580	3.23	4.16 0.9 F
+89 <sup>9</sup>	6.02	3.01	3.98 1.0 F
15+39 <sup>9</sup>	570	3.33	3.80 0.5 F
15+51 <sup>9</sup> = Sl. Elm.	4.73	4.30	3.75 0.6 C

4.20 Hdb Sl. Beech, & Atlantic  
 5.40  
 7.20 H3  
 4.75 = Gr. SE Beech.  
 5.05  
 5.47  
 0.40 Fill to Curb Gr. SE Beech.

9.80 H3  
 5.00  
 4.80  
 5.20  
 0.40 Fill to NE Curb Beach.

1.05 M.H. Top NL Cedar & Atlantic  
 2.74  
 9.79 H3  
 5.50 = Gr. SE Cedar.  
 4.29  
 5.49  
 1.20 Fill to Curb Gr. SE Cedar.

9.79 H3  
 5.00 Curb Gr. NE Cedar.  
 4.79  
 5.39  
 0.60 Fill to Curb Gr. NE Cedar.

TP. MH Cover & Elm.	9.03	3.52	5.51				
	3.67 9.18			± St Grade	+ or -		
16+31 <sup>3</sup> = NL. Elm.		5.30	3.88	3.75	0.10C		5.51 = MH Cover & Elm. 4.50 9.87 H. 3.50 = Carb Gr. SE Elm.
+81 <sup>2</sup>		4.50	4.68	3.91	0.8C		2.37 5.97 0.40 cut to Carb Gr. SE Elm.
17+31 <sup>3</sup>		4.92	4.26	4.07	0.2C		9.27 H. 0.50 = Carb Gr. NE Elm.
+81 <sup>2</sup>		4.84	4.34	4.23	0.1C		6.37 V. 2' E. of Carb face to grade NE Elm.
18+31 <sup>3</sup>		4.70	4.48	4.39	0.1C		
+37 <sup>2</sup> ± Block Brk. grade.				4.41			
+81 <sup>2</sup>		4.82	4.36	4.35	0.0		
19+31 <sup>3</sup>		5.30	3.88	4.28	0.4F		
+81 <sup>2</sup>		4.00	5.18	4.21	1.0C		5.50 = MH Cover 31 Grape 6.68 10.26 H. 4.50 = Carb Gr. NE Grape
20+31 <sup>3</sup>		5.00	4.18	4.14	0.0		2.76 5.36 0.40 cut to Carb Gr. NE Grape
+41 <sup>3</sup> = 3L. Grape St.		5.50	3.68		0.4F		3.58 MH Cover. 31 Grape. 5.59
TP. MH Cover & Grape		5.60	3.58	4.12			11.77 H. 4.50 = Carb Gr. SE Grape
	6.57 10.15						4.67 4.27 20.90 to Carb Gr. SE Grape SIX 2' E. of Carb.
21+21 <sup>3</sup> = NL. Grape St.		6.00	4.15	4.25	0.1F		
+71 <sup>2</sup>		6.46	3.67	4.46	0.8F		
22+21 <sup>3</sup>		5.92	4.23	4.69	0.4F		
22+71 <sup>3</sup>		5.22	4.93	4.88	0.0		
23+21 <sup>3</sup>		5.28	4.87	5.09	0.2F		
+71 <sup>2</sup>		5.88	4.27	5.30	1.0F		
24+22 <sup>3</sup> = 5L. Hawthorne.		4.61	5.46	5.50	0.0		

West  
 ottw. 4/26/16.  
 Moore

Stakes for fire hydrants & gates.  
 put up N. & S. lines of mill streets  
 & 2ft E. of curb face - for 16ft curb.

	10.15			± 5t. Gr.	+ 0t. -
25+02 <sup>z</sup>	TP. = NL Hawthorne	4.50	5.65	5.62	00
+52 <sup>z</sup>	5.17 10.82	5.62	5.20	5.80	0.6 F
26+02 <sup>z</sup>		5.10	5.72	5.99	0.3 F
+52 <sup>z</sup>	brk.	5.54	5.28	6.18	0.9 F
27+02 <sup>z</sup>		5.24	5.58	6.20	0.6 F
+52 <sup>z</sup>		5.25	5.57	6.22	0.6 F
28+02 <sup>z</sup>	= SL Ivy.	6.00	4.82	6.25	1.4 F
28+82	= NL Ivy. TP	6.50	4.32	6.25	1.9 F
39+32	5.76 10.08	5.93	4.15	6.08	1.9 F
39+82		4.85	5.23	5.91	0.7 F
30+32		5.45	4.63	5.74	1.1 F
+82		5.15	4.33	5.57	1.2 F
37+32		5.12	4.16	5.71	1.2 F
+82	SL Juniper	5.73	4.35	5.25	0.9 F
32+62	NL Juniper	5.88	4.20	4.75	0.6 F

5.46 = Hub SL Hawthorne & Atlantic 5.  
 4.16  
 4.62 4.96  
 6.00 6.00  
 3.62 3.62  
 5.92 4.72  
 F. 7.70 0.60 Fill to curb Gr. NE Cor Hawthorne.  
 SE Cor for curb  
 Gr. 10.

4.82 = Hub & Atlantic SL Ivy.  
 5.20  
 10.02 4.9  
 6.00 = curb Gr. 1/2 SE & NE Cor's Ivy.  
 4.02 4.02  
 4.52 6.02  
 0.50 2.00 Fill for curb NE Ivy.  
 F for curb SE Cor Ivy.

4.25  
 5.46  
 4.81 4.9  
 5.00 = curb Gr. SE Juniper  
 4.81  
 5.71  
 7.70 Fill to curb Gr.

TP.			1.74	6.34
TP.	12.41	20.75	0.45	20.30
TP.	12.70	33.03	0.28	32.75
TP.	12.41	45.16	1.48	43.68
	7.47	51.15		

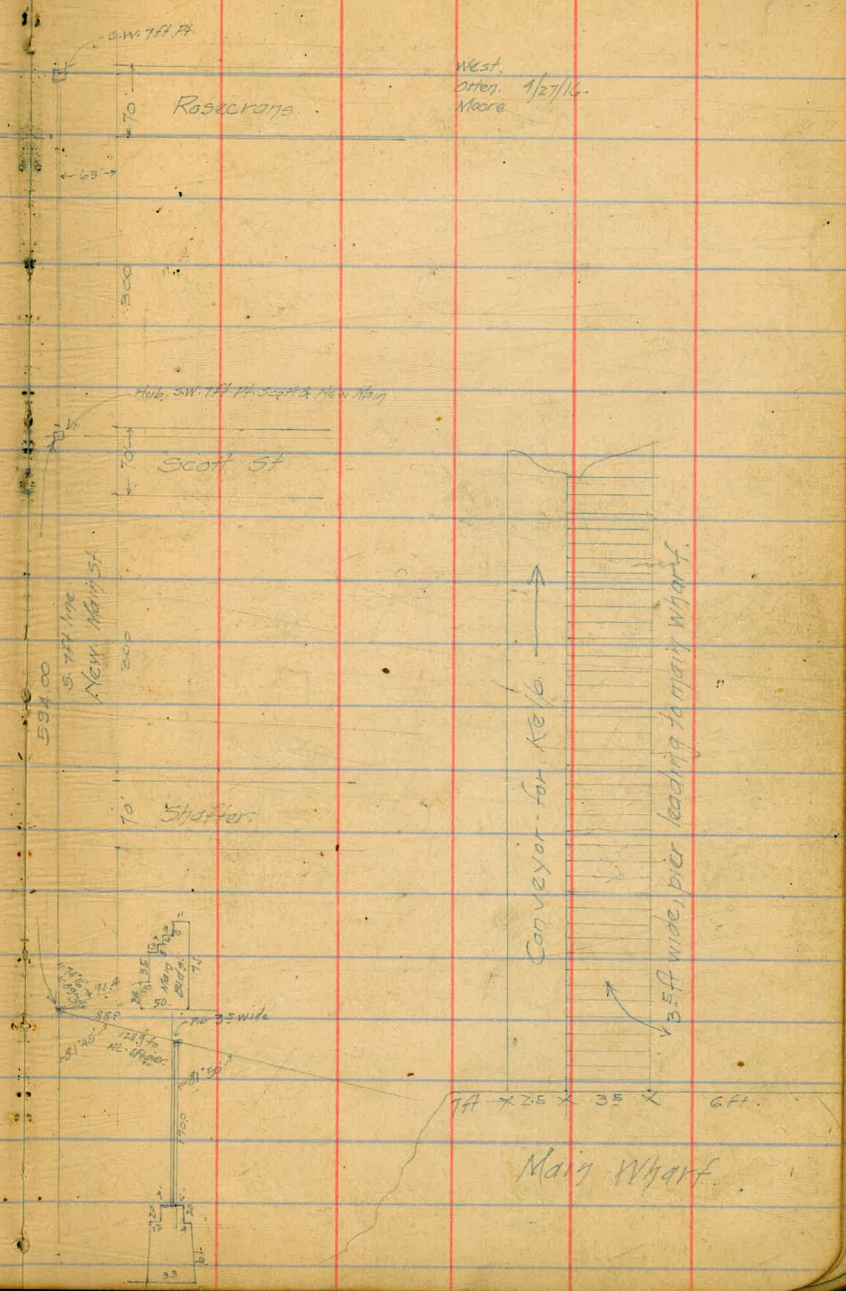
BN-SIP 3/24/16 Juniper

4.84 46.81 46.81-α

Continued, page 7.

Survey for Plant & Wharf of Swift & Co.  
Near foot of New Main St. Roseville.

6





Juniper St. Water Pipe - Connecting.  
 10' E. of Atlantic with main at EL  
 Arctic & 10' S. of E.

West  
 other 4/5/16  
 None

7

	H.I.	EL.	± St. Gr.	Cuts & Falls
31+82 = EL Juniper Hub. 10.73 15.14		4.41	5.25	F 0.8
32+22 = E "			5.00	
+72 = EL Atlantic	11.41	3.73	4.75	F 1.0
33+22	10.14	5.00	7.31	F 2.3
+72 =	8.12	7.02	9.87	F 2.8
34+22	7.53	7.61	12.43	F 4.8
+72 = WL Calif T.P. Hub. 11.74 25.23	1.65	13.49	15.00	F 1.5
35+47 = old WL Calif for 75 ft of inverts			16.00	
35+72 = EL Calif	7.38	17.85	17.62	C 0.2
36+22	4.38	20.85	20.87	0.0
36+72 T.P. Hub.	1.16	24.07	24.12	0.0
37+22 11.57 35.64	8.42	27.22	27.37	F 0.2
37+47 = WL Arctic	6.99	28.65	29.00	F 0.3
38+22 = EL Arctic	4.32	31.32	31.00	C 0.3
T.P.	0.35	35.29		
12.84 48.13				
B.M. Plug SW India & Juniper	1.29	46.84	46.87 <sup>OK</sup>	

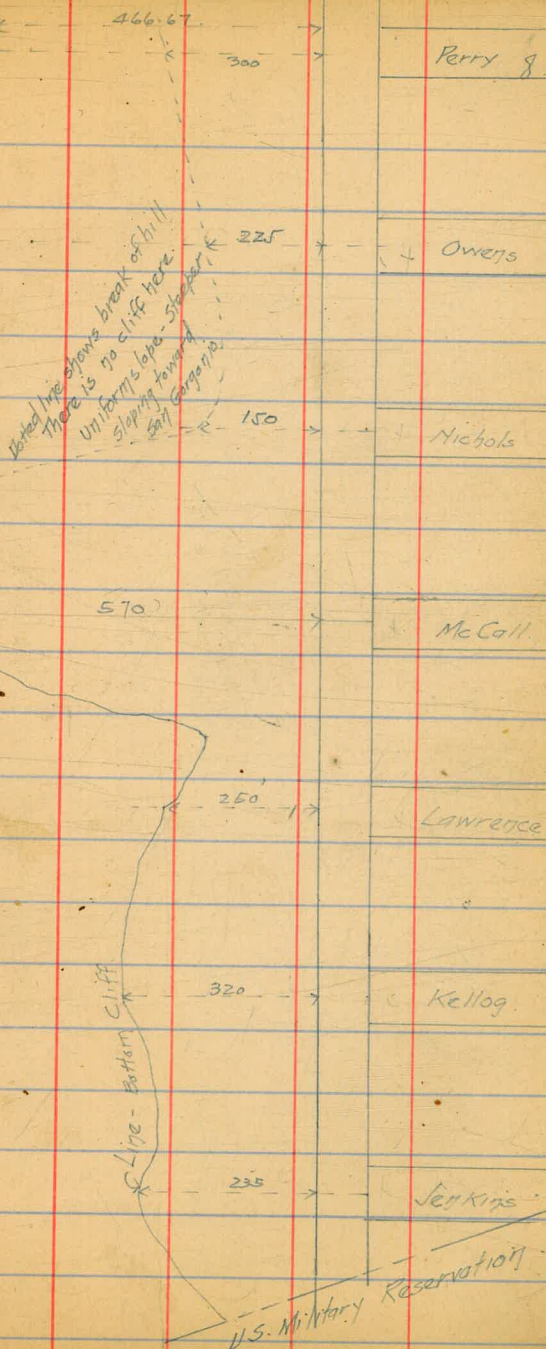
Survey showing Approximate  
 measurements from W.L. San Geronimo  
 to foot of cliffs for use in  
 Assessment District.

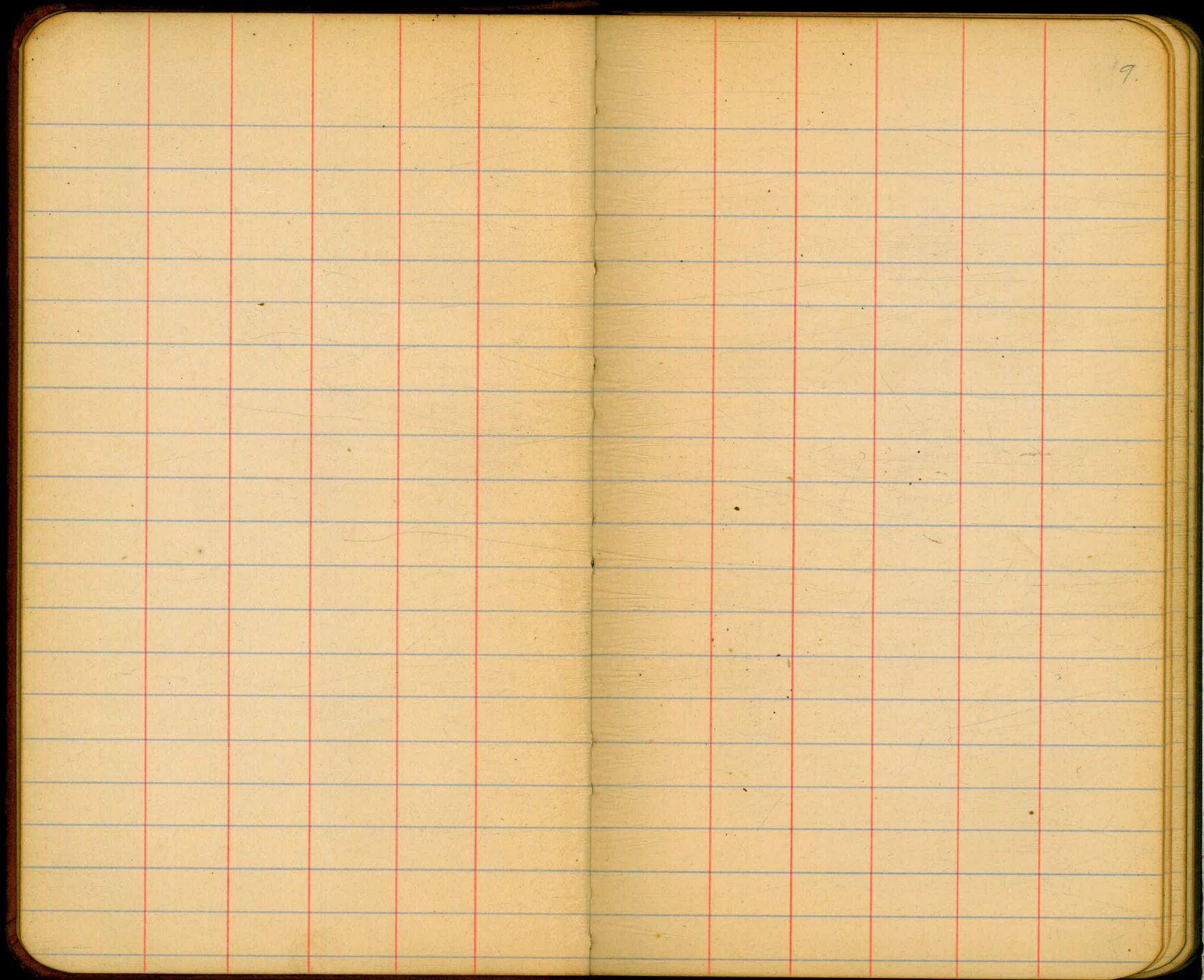
West  
 Offer. 5/5/16.  
 Moore

Note: - From McCall St & Perry Street - there is no general cliff line. Dotted line shows approximate  
 break in slope of hill, dipping more steeply from the line toward San Geronimo Street.

C. Pebb Line

Cliff - Bottom Cliff



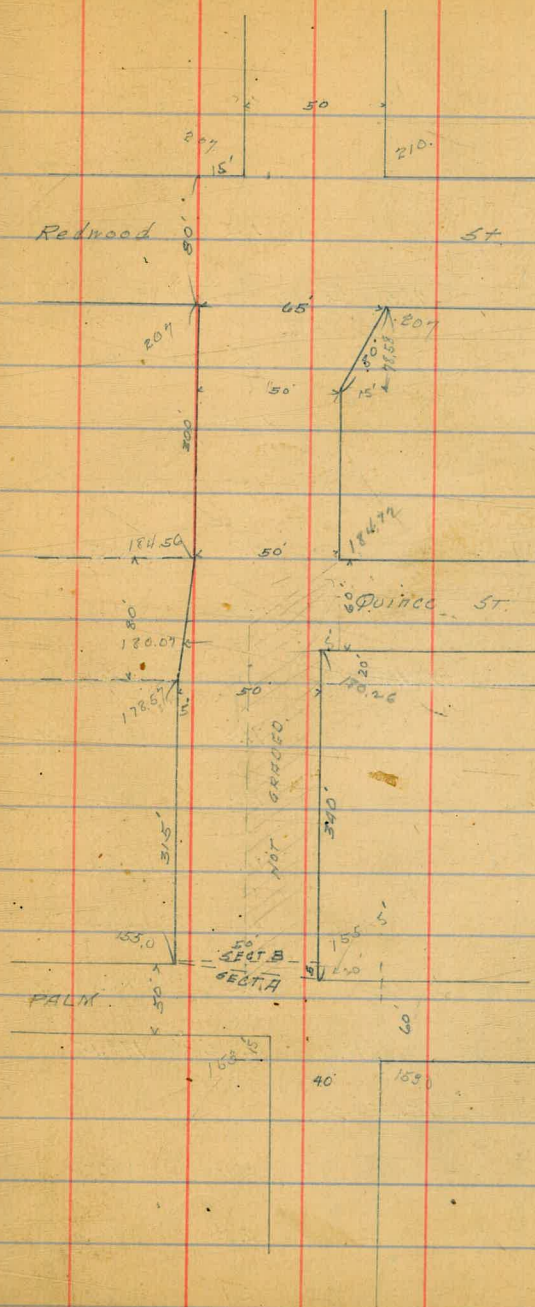


9.

6/7/16

Gregory  
Miller
 LEVELS ON  
 CURLEW ST  
 From S.L. Palm St  
 to N.L. Redwood St  
 for use in establishing grades

B.M.	285	245.25		242.40	Mag. str Voss + Brant
T.P.	0.95	234.74	11.46	233.79	
T.P.	0.43	222.34	12.83	221.91	
T.P.	1.35	211.10	12.59	209.75	
N.L. Redwood					
W		1.30		209.8	
cb		1.2		209.7	
C		1.8		209.3	
cb		1.1		210.0	
E		0.8		210.3	
S.L. Redwood					
E		3.9		207.2	
cb		4.1		207.0	
C		4.5		206.6	
cb		4.0		207.1	
W		3.9		207.2	
	50	50			
W		7.2		203.9	
cb		7.3		203.8	



211.10

Curlew St.

198.7

11.

C	7.9	203.2
cb	8.1	203.0
E	7.5	203.6

cb	3.1	195.6
W	2.9	195.8 = finish stake
	301.5	

98.58 30' of Redwood

E	9.8	201.3
cb	10.2	200.9
C	10.3	200.8
cb	9.7	201.4
W	9.6	201.5

W	6.7	192.0 = finish stake
cb	7.0	191.7
C	7.3	191.4
cb	7.4	191.3
E	7.1	191.6 = ground
	7.3	191.4 = finish stake
	251.5	

101.5 30'

W	11.5	199.6 on finish stake X1037
cb	11.4	199.7
C	11.9	199.2
cb	11.9	199.2
E	11.5	199.6 on finish stake X1037
T.P.	0.52	198.67 12.95 198.15

E	10.8	187.9 = finish stake
cb	11.0	187.7
C	10.8	187.9
cb	10.9	187.8
W	10.8	187.9 = finish stake
T.P.	0.99	187.10 12.56 186.11
	301.5 = N.L.	Quince St.

151.5 30'

E	2.40	196.3 on finish stake
cb	3.3	195.4
C	3.1	195.6

W	2.75	184.35 = finish stake
cb	2.80	184.3
C	2.4	184.7
cb	2.7	184.4

187.10

## Curlew Mt.

E 2.6 184.5

C Quince st = 40' So of H.L.

E 4.7 182.2

C 4.9 182.2

cb 5.4 181.7

W 5.4 181.7

S. L. QUINCE  
THE E. 1/2 CURLEW NOT GRADED FROM QUINCE TO PALM

W 7.85 179.25 = finish stake

cb 8.0 179.1

C 7.6 179.5

50' So.

C 11.1 176.0

cb 11.7 175.4

W 11.4 175.7

T.P. 0.30 174.66 12.74 174.36

100' So.

W 2.7 172.0

cb 3.1 171.6

C 2.6 172.1

174.7

89  
155.2  
12.

115' So.

W 4.10 170.56 on finish stake

165' So.

W 7.9 166.8 = finish stake

cb 8.2 166.5

C 7.9 166.8

215' So.

C 11.9 162.8

cb 11.9 162.8

W 11.75 162.91 = finish stake

T.P. 1.93 164.14 12.45 162.21

250' So.

W 4.1 160.0

cb 4.3 159.8

C 4.1 160.0

315' So. = H.L. Palm on West

C 7.9 156.2

cb 8.8 155.3

W 8.7 155.4

So Line Palm

11

10.2

22141 TH on Curb

207	2078	2023	2025	2026	2027	2028	2029	2030	2031	2032	2033	2034	2035
336	311	7.0	6.9	7.1	6.8	7.0	7.2	7.4	7.6	7.8	8.0	8.2	8.4
192.72	192.51	182.22	182.01	172.72	172.51	162.22	162.01	152.72	152.51	142.22	142.01	132.72	132.51
1082	1032	982	932	882	832	782	732	682	632	582	532	482	432
182.36	182.15	172.86	172.65	162.36	162.15	152.86	152.65	142.36	142.15	132.86	132.65	122.36	122.15
1001	951	901	851	801	751	701	651	601	551	501	451	401	351
178.07	177.86	168.57	168.36	158.07	157.86	148.57	148.36	138.07	137.86	128.57	128.36	118.07	117.86
818	768	718	668	618	568	518	468	418	368	318	268	218	168
167.33	167.12	157.83	157.62	147.33	147.12	137.83	137.62	127.33	127.12	117.83	117.62	107.33	107.12
622	572	522	472	422	372	322	272	222	172	122	72	22	-28
		152.26	142.05										
		12.57	12.36										
		12.57	12.36										

Curb Progs 1/5 ac / Gregor  
Miller

207.70	207.49	172.57	172.36	172.57	172.36	172.57	172.36	172.57	172.36	172.57	172.36	172.57	172.36
207.70	207.49	7.1	6.9	6.9	6.7	6.7	6.5	6.5	6.3	6.3	6.1	6.1	5.9
192.56	192.35	179.32	179.11	179.32	179.11	179.32	179.11	179.32	179.11	179.32	179.11	179.32	179.11
192.56	192.35	5.37	5.16	5.37	5.16	5.37	5.16	5.37	5.16	5.37	5.16	5.37	5.16
182.27	182.06			152.26	142.05								
182.27	182.06			12.57	12.36								

St. Redwood	W. Prop	Curb	Curb	E Prop
207	207.85	207.0	207.0	207.85
250	203.5	203.27	203.30	203.55
278.56			201.18	201.43
1400	192.79	192.64	192.60	192.85
1450 + high	196.07	195.34	195.40	196.15
2400 mh	192.34	192.19	192.20	192.35
2450	188.61	188.36	188.50	188.75
S. on the Dunes	184.81	184.56	184.72	184.97
St. Quince on East		180.07	180.26	180.51
St. on West	178.82	178.57	178.67	178.77
250	175.07	174.82	174.94	175.06
1400	171.33	171.08	171.21	171.34
1450	167.59	167.34	167.48	167.63
2700	163.85	163.60	163.76	163.91
2750	160.11	159.86	160.02	160.20
2700	156.37	156.12	156.30	156.48
N. L. Palm				
3415	152.25	152.0	152.0	152.25

155.25

156.5

10/11/16

Gregory

Grades on Palm St.  
Curlew to Dove

M.L. Curlew	155.25	155.0		153.0	155.0
25 W		153.0		153.0	153.25
EL Conning Way					
85 W	148.5	148.2		147.5	147.75
M.L. Conning	145.25	145.0		145.5	
50 W	141.25	141.0	.3h	141.00	.2h
EL Dove					
100 W	137.25	137.0		136.50	

1563.24

113.5

145.00 TD

146.27

13.5

1.82

10

5.07

154

2.32

137

9.27

153

3.22

141.25

5.07

148.2

8.12

145

7.15

147.5

7.57

147.5

3.82

14

changed this to drain



6/7/16

Gregory  
Miller

LEVELS ON  
BANDINI ST.  
from S.L. ORIZABA AVE  
To N.L. Middletown Add.

BM	13.11	281.55		268.44	N.W. Arquette & Sunset Blvd
T.P.	4.25	285.78	0.02	281.53	
S.L. ORIZABA AVE.					
East end of <sup>East</sup> Curve			12.6	273.2	

T.P.	1.20	274.29	12.69	273.09	
West end of West Curve			4.9	269.4	
So. - - - -			4.3	270.0	
- - - East -			1.4	272.9	= natural grd. 3' east
- - - - -			2.3	272.0	= graded ✓

200' No. of SEC. A.

3' E of E.L.			3.7	270.6	= nat. grd.
E.L.			4.7	269.6	graded ✓
W.L.			7.4	266.9	filled ✓

150' No. of SEC. A.

W.L.			10.7	263.6	filled ground
E.L.			8.9	265.4	graded ✓
2' E of E.L.			7.0	267.3	nat. ✓

2793

15

100' No. of SEC. A.

2' E of E.L.			10.2	264.1	= nat. ground
E.L.			11.2	263.1	= graded down
W.L.			13.6	260.7	= filled
T.P.	1.27	262.66	12.90	261.39	

50' No. of SEC. A.

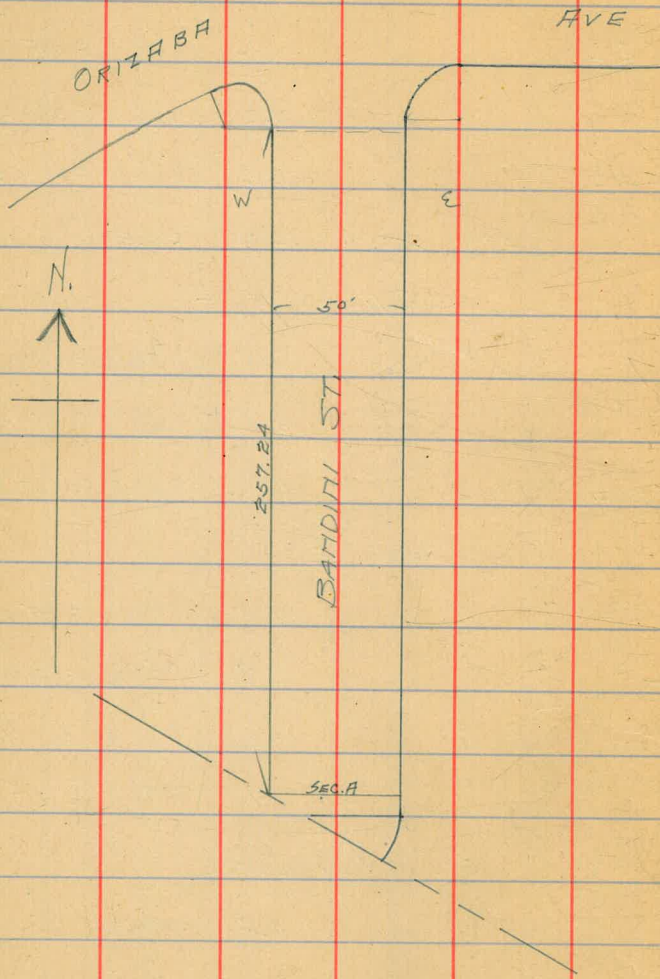
W.L.			4.4	258.3	= filled
E.L.			3.1	259.6	= graded down
3' E of E.L.			1.4	261.3	= nat. ground

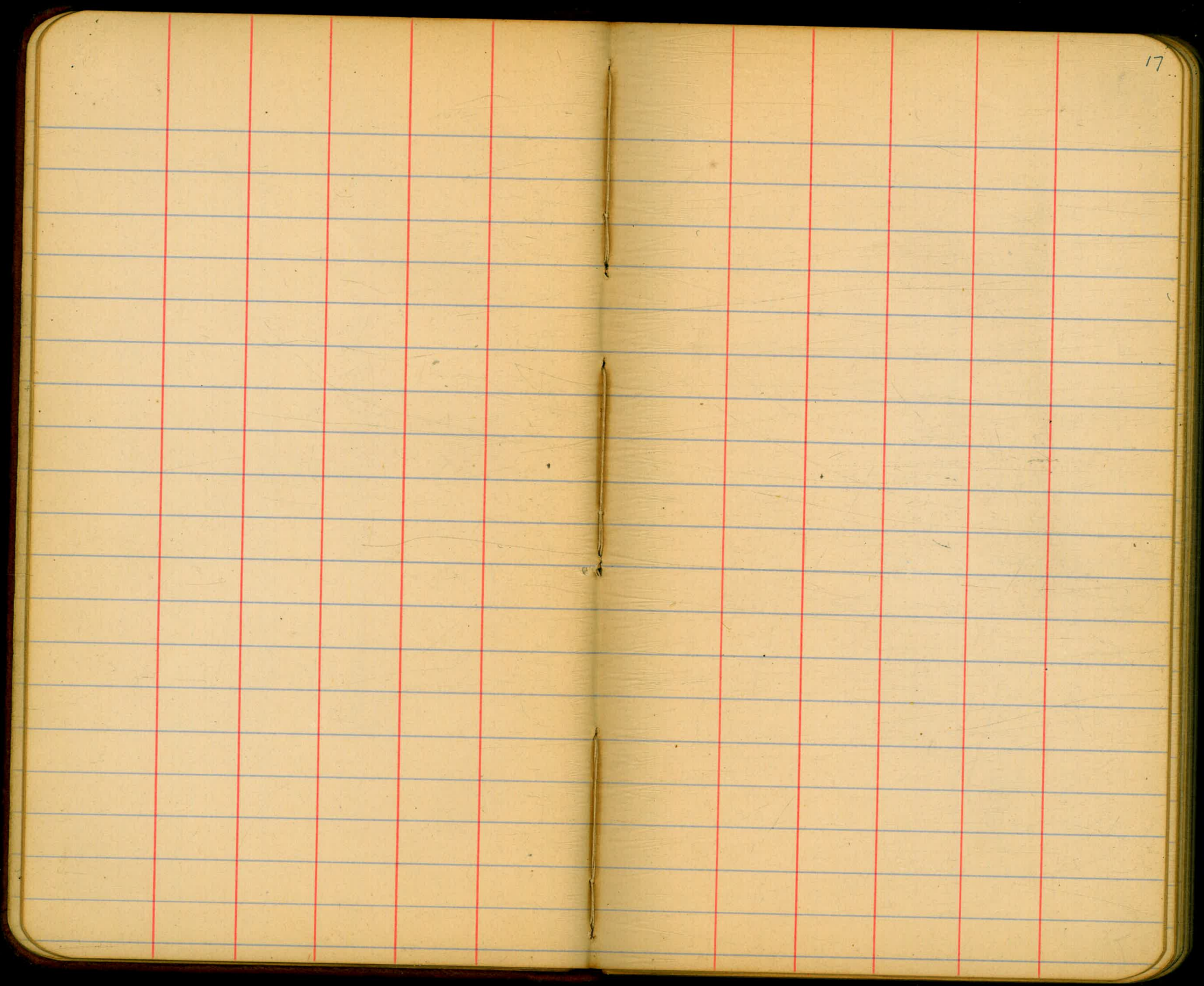
SEC. A.

2' E of E.L.			4.4	258.3	= nat. ground
E.L.			5.4	256.8	= graded down
W.L.			7.3	255.4	= filled
W.L.			8.1	254.6	= nat. ground

So. end of Curve

E.L.			6.4	256.3	
T.P.			6.57	256.09	Not.





10/7/16  
Gregory  
Moore  
Miller

Cross-SECTION OF  
MONROE AVE  
from E.L. Oregon St  
to W.L. Idaho St.

MONROE is 30' wide  
12' walks  
Curb + sidewalk already in  
on South Side

383.1 H3

18

B.M.	4.09	383.09	379.0	SE Oregon & Monroe	C	4.7	378.4
		E.L. Oregon St			1/4	4.7	378.4
So. curb		4.0	379.1	concrete	cb	4.4	378.7
gutter		4.6	378.5		N	4.2	378.9
1/4		4.7	378.4				
C		4.3	378.8		N		
1/4		4.6	378.5		cb	4.6	378.5
cb		4.8	378.3		1/4	4.4	378.7
cb		4.1	379.0	end of storm on concrete	1/4	4.9	378.2
N		3.9	379.2		C	4.7	378.4
		5' East			1/4	4.6	378.5
					cb	4.6	378.5 gutter
N		4.4	378.7				
cb		4.8	378.3				
1/4		4.8	378.3		cb +3 1/4	4.7	378.4 gutter
					1/4	4.2	378.9
						4.6	378.5
C		4.4	378.7		C	4.8	378.3
1/4		4.7	378.4		1/4	5.0	378.1
cb		4.5	378.6	gutter	cb	5.0	378.1
		25' E			N	4.7	378.4
cb		4.5	378.6	gutter			
1/4		4.7	378.4				

383.09

80' E

N	3.5	379.6	
cb	4.3	378.8	
1/4	5.1	378.0	
C	5.0	378.1	
1/4	4.6	378.5	
+8	4.5	378.6	
cb	5.0	378.1	= gutter

100' E

cb	5.0	378.1	= gutter
+5	4.6	378.6	
1/4	4.4	378.7	
C	4.2	378.9	
1/4	4.2	378.7	
cb	4.6	378.5	
N	4.2	378.9	

115' E

N	3.4	379.7	
cb	3.6	379.5	
1/4	4.4	378.7	

MONROE AVE.

19

383.1

C	4.0	379.1	
1/4	4.6	378.5	
cb	5.1	378.0	= gutter

125' E

cb	5.0	378.1	= gutter
1/4	4.8	378.3	
C	4.6	378.5	
1/4	4.3	378.8	
cb	3.3	379.8	
N	3.5	379.6	

150' E

N	4.5	378.6	
cb	4.2	378.9	
1/4	4.7	378.4	
C	5.0	378.1	
1/4	5.3	377.8	
cb	5.4	377.7	= gutter

175' E

cb	5.5	377.6	= gutter
1/4	5.6	377.5	

353.09

c	5.7	377.4
1/4	5.4	377.7
cb	5.4	377.7
+12	5.4	377.7
N	3.9	379.2
200' E		
N	3.6	379.5
+1.0	5.4	377.7
cb	5.7	377.4
1/4	5.9	377.2
c	6.1	377.0
1/4	5.7	377.4
cb	5.7	377.4 = gutter
335' E		
cb	5.9	377.2 = gutter
1/4	5.8	377.3
c	6.2	376.9
1/4	5.8	377.3
cb	5.7	377.4
+13	5.4	377.7

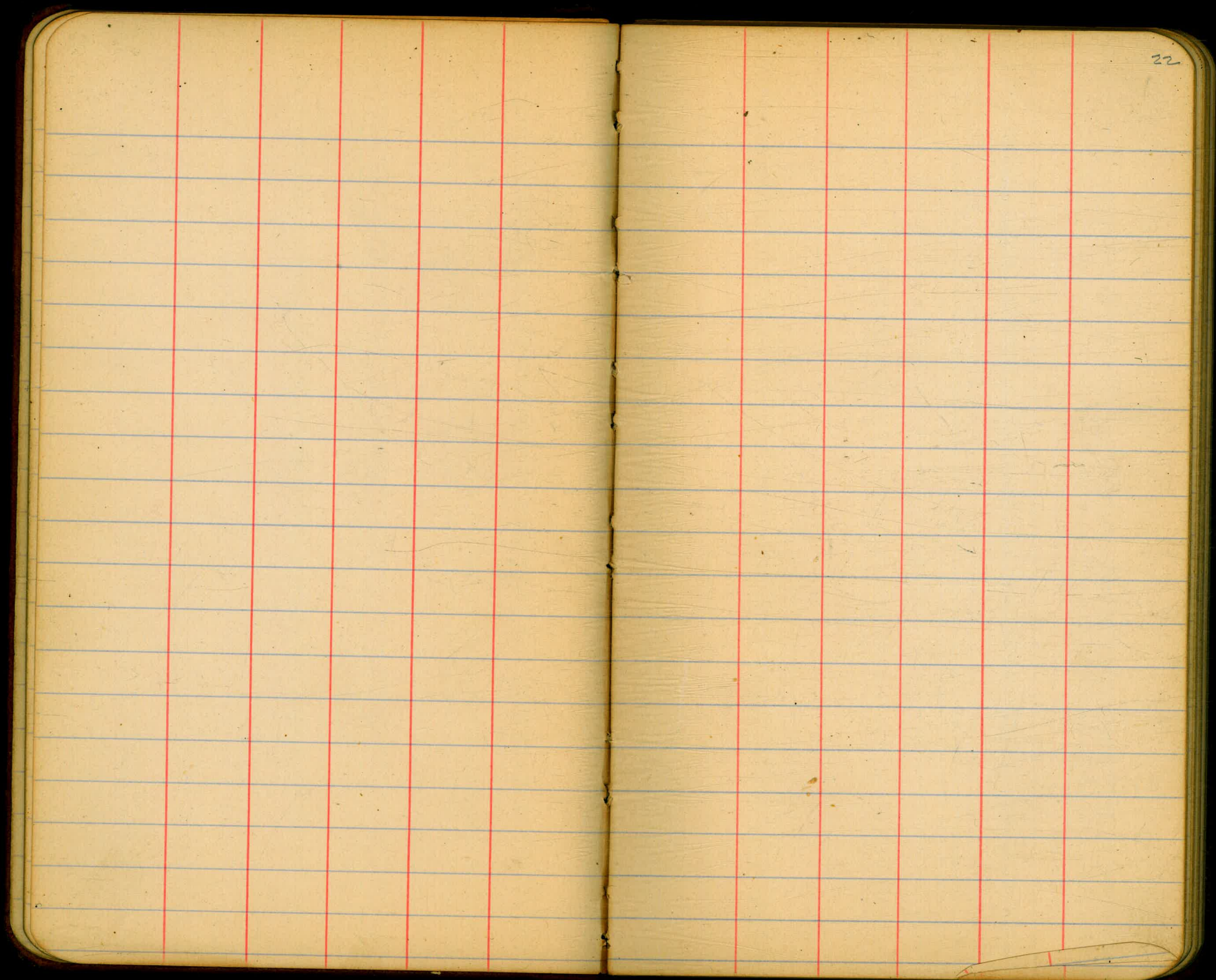
MONROE

20

383.1

N	4.7	378.4
250' E		
N	5.0	378.1
cb	5.9	377.2
1/4	6.1	377.0
c	6.3	376.8
1/4	6.2	376.9
cb	6.3	376.8 = gutter
275' E		
cb	6.7	376.4 = gutter
1/4	6.5	376.6
c	6.2	376.9
1/4	6.4	376.7
cb	6.5	376.6
+6	5.6	377.5
N	5.8	377.3
300' E = N.L. / DAHO		
N	6.2	376.9
cb	7.0	376.1
1/4	6.7	376.4

C	6.8	376.3	
1/4	6.7	376.4	
df	7.2	375.9	= gutter
B.M.	7.14	375.95	SE. Idaho -94



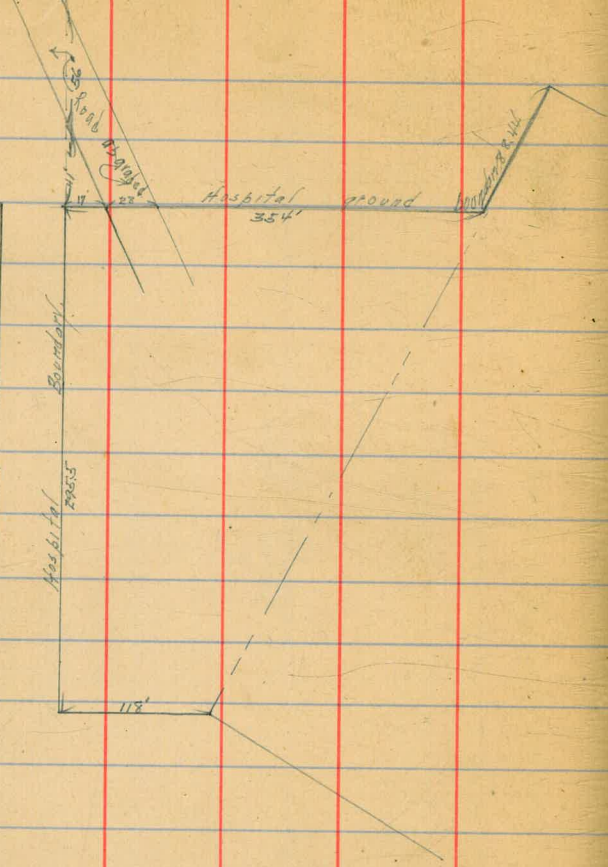
22

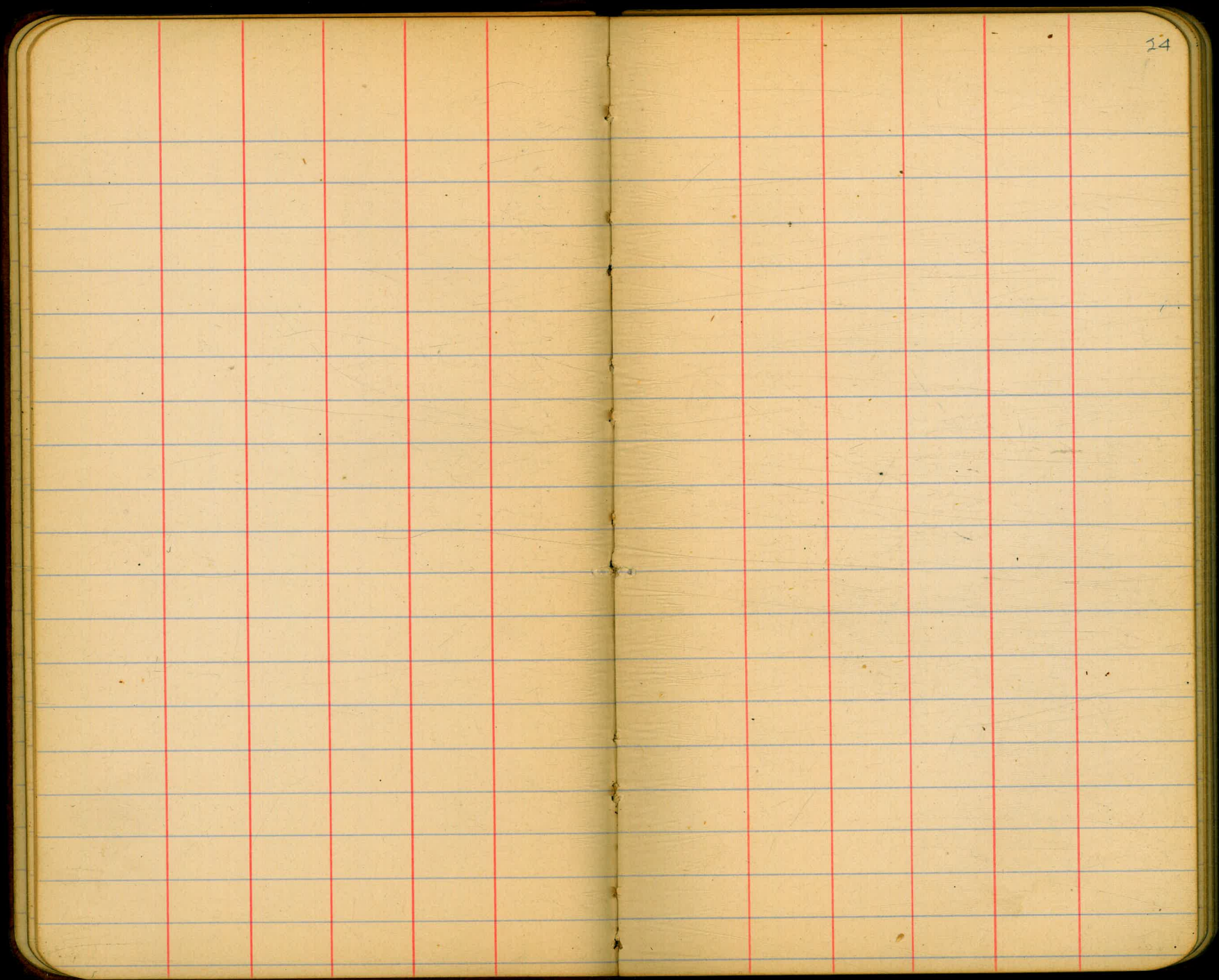


10/16/16  
Gregory  
Moore  
Miller

Survey showing Location of  
Road to Isolation Hospital  
Grounds

distance of road  
to road 45





10/16/16

Gregory  
in base  
millar

Levels on Cuning Way 40' wide  
Entire Length

(These notes taken on curbs as  
graded in order to establish grades  
to "fit")

Sta.	108	148.58	147.5
50' Line Palm St.			
East Curb	1.3		147.3
West ✓	3.0		145.6
20' So.			
West Curb	3.0		145.6
East -	2.0		146.6
40' So.			
E Cb.	2.5		146.1
W ✓	3.5		145.1
60' So.			
W Cb.	4.1		144.5
E -	3.1		145.5
80' So.			
E Cb.	3.9		144.7
W -	4.8		143.8
100' So.			
W Cb.	5.7		142.9
E ✓	4.9		143.7

Curb elevations and property 25

(148.6) distances

120' So	E Cb	5.5	142.8
	W -	6.5	142.1
140' So	W Cb	7.1	141.2
	E -	6.9	141.7
160' So	E Cb	7.9	140.7
	W -	8.3	140.3
180' So	W Cb	9.2	139.4
	E Cb	8.8	139.8
200' So	E Cb	10.0	138.6
	W -	10.2	138.2
220' So	W Cb	11.1	137.2
	E -	11.2	137.4

148.58

240' So.

E Cb 12.5 136.1

W ✓ 12.5 136.1

T.P. 1.23 137.70 12.11 136.47

260' So.

W. Cb 3.0 134.7

E ✓ 2.8 134.9

284' So on W } = Angle Pt.  
293' - - E

E Cb 4.5 133.2

W ✓ 4.8 132.9

59.04' on E } = Section A  
50' on W

W Cb 7.8 129.9

E - 7.6 130.1

50' So. of SECTION A

E Cb 10.2 127.5

W Cb 10.5 127.2

100' So. of Sect. A

W Cb 13.0 124.7

E. Cb 12.8 124.9

T.P. 2.85 127.99 12.56 125.14

1280

26

138.5650 of "H" = P.C. #1

E Cb 5.2 122.8

W ✓ 5.2 122.8

Point on Curve Shown as Point "O" on sketch

W or N Cb. 5.6 122.4

E.C. #3 see sketch

E side of Dove on Cb 5.2 122.8

P.R.C.

East Curb of Cunningham Way 6.1 121.9

P.T. #1

E Curb P.C. #2 7.7 120.3  
8.0 120.0

Point on Curve shown as Point "P"

E Curb 9.9 118.1

P.T. #2 on Dove

E Cb 11.8 116.2

T.P. on Last point sub. 11.16 116.83

→ see sketch on next page ←

PALM

ST.

40'

W.F.V

284.0

293.0



ST.

DOVE

CUNNING

138.56

139.56

SEC. 'A'

99.41



Point O

16.03

ERC

35.75

Point 'P'

24.26

24.27

10.15

10.15

ST. #1

P.T. #2

Grades on Dove St - 50' wide  
10' walks

SL Quince 144.25 144.0 144.50 144.75

50 142.89 143.31

100 141.78 142.12

150 140.66 140.93

200 139.55 139.74

250 138.44 138.55

315 = N.L. Palm 137.0 137.00

SL Palm 136.0 136.50

50 134.75 135.06 135.37

100 133.50 133.87 134.25

150 132.25 132.69 133.12

200 131.0 break 132.0

250 129.48 129.87 130.37

315 = N.L. Olive 127.5 128.25

SE Olive 124.5 125.25

551 = PC. 122.8

122.4 = half way around curve

Roadway on this block high including gutters

6' low on level ref.

This block high as shown

1/2 to Ctr Mon Heart + Ups

24.44	23.92	23.70	23.57	23.19	22.82	22.58	22.37	22.18	21.99	21.80	21.61	21.42	21.23	21.04	20.85	20.66	20.47	20.28	20.09	19.90	19.71	19.52	19.33	19.14	18.95	18.76	18.57	18.38	18.19	18.00	17.81	17.62	17.43	17.24	17.05	16.86	16.67	16.48	16.29	16.10	15.91	15.72	15.53	15.34	15.15	14.96	14.77	14.58	14.39	14.20	14.01	13.82	13.63	13.44	13.25	13.06	12.87	12.68	12.49	12.30	12.11	11.92	11.73	11.54	11.35	11.16	10.97	10.78	10.59	10.40	10.21	10.02	9.83	9.64	9.45	9.26	9.07	8.88	8.69	8.50	8.31	8.12	7.93	7.74	7.55	7.36	7.17	6.98	6.79	6.60	6.41	6.22	6.03	5.84	5.65	5.46	5.27	5.08	4.89	4.70	4.51	4.32	4.13	3.94	3.75	3.56	3.37	3.18	2.99	2.80	2.61	2.42	2.23	2.04	1.85	1.66	1.47	1.28	1.09	0.90	0.71	0.52	0.33	0.14	-0.05	-0.24	-0.43	-0.62	-0.81	-1.00	-1.19	-1.38	-1.57	-1.76	-1.95	-2.14	-2.33	-2.52	-2.71	-2.90	-3.09	-3.28	-3.47	-3.66	-3.85	-4.04	-4.23	-4.42	-4.61	-4.80	-4.99	-5.18	-5.37	-5.56	-5.75	-5.94	-6.13	-6.32	-6.51	-6.70	-6.89	-7.08	-7.27	-7.46	-7.65	-7.84	-8.03	-8.22	-8.41	-8.60	-8.79	-8.98	-9.17	-9.36	-9.55	-9.74	-9.93	-10.12	-10.31	-10.50	-10.69	-10.88	-11.07	-11.26	-11.45	-11.64	-11.83	-12.02	-12.21	-12.40	-12.59	-12.78	-12.97	-13.16	-13.35	-13.54	-13.73	-13.92	-14.11	-14.30	-14.49	-14.68	-14.87	-15.06	-15.25	-15.44	-15.63	-15.82	-16.01	-16.20	-16.39	-16.58	-16.77	-16.96	-17.15	-17.34	-17.53	-17.72	-17.91	-18.10	-18.29	-18.48	-18.67	-18.86	-19.05	-19.24	-19.43	-19.62	-19.81	-20.00	-20.19	-20.38	-20.57	-20.76	-20.95	-21.14	-21.33	-21.52	-21.71	-21.90	-22.09	-22.28	-22.47	-22.66	-22.85	-23.04	-23.23	-23.42	-23.61	-23.80	-23.99	-24.18	-24.37	-24.56	-24.75	-24.94	-25.13	-25.32	-25.51	-25.70	-25.89	-26.08	-26.27	-26.46	-26.65	-26.84	-27.03	-27.22	-27.41	-27.60	-27.79	-27.98	-28.17	-28.36	-28.55	-28.74	-28.93	-29.12	-29.31	-29.50	-29.69	-29.88	-30.07	-30.26	-30.45	-30.64	-30.83	-31.02	-31.21	-31.40	-31.59	-31.78	-31.97	-32.16	-32.35	-32.54	-32.73	-32.92	-33.11	-33.30	-33.49	-33.68	-33.87	-34.06	-34.25	-34.44	-34.63	-34.82	-35.01	-35.20	-35.39	-35.58	-35.77	-35.96	-36.15	-36.34	-36.53	-36.72	-36.91	-37.10	-37.29	-37.48	-37.67	-37.86	-38.05	-38.24	-38.43	-38.62	-38.81	-39.00	-39.19	-39.38	-39.57	-39.76	-39.95	-40.14	-40.33	-40.52	-40.71	-40.90	-41.09	-41.28	-41.47	-41.66	-41.85	-42.04	-42.23	-42.42	-42.61	-42.80	-42.99	-43.18	-43.37	-43.56	-43.75	-43.94	-44.13	-44.32	-44.51	-44.70	-44.89	-45.08	-45.27	-45.46	-45.65	-45.84	-46.03	-46.22	-46.41	-46.60	-46.79	-46.98	-47.17	-47.36	-47.55	-47.74	-47.93	-48.12	-48.31	-48.50	-48.69	-48.88	-49.07	-49.26	-49.45	-49.64	-49.83	-50.02	-50.21	-50.40	-50.59	-50.78	-50.97	-51.16	-51.35	-51.54	-51.73	-51.92	-52.11	-52.30	-52.49	-52.68	-52.87	-53.06	-53.25	-53.44	-53.63	-53.82	-54.01	-54.20	-54.39	-54.58	-54.77	-54.96	-55.15	-55.34	-55.53	-55.72	-55.91	-56.10	-56.29	-56.48	-56.67	-56.86	-57.05	-57.24	-57.43	-57.62	-57.81	-58.00	-58.19	-58.38	-58.57	-58.76	-58.95	-59.14	-59.33	-59.52	-59.71	-59.90	-60.09	-60.28	-60.47	-60.66	-60.85	-61.04	-61.23	-61.42	-61.61	-61.80	-61.99	-62.18	-62.37	-62.56	-62.75	-62.94	-63.13	-63.32	-63.51	-63.70	-63.89	-64.08	-64.27	-64.46	-64.65	-64.84	-65.03	-65.22	-65.41	-65.60	-65.79	-65.98	-66.17	-66.36	-66.55	-66.74	-66.93	-67.12	-67.31	-67.50	-67.69	-67.88	-68.07	-68.26	-68.45	-68.64	-68.83	-69.02	-69.21	-69.40	-69.59	-69.78	-69.97	-70.16	-70.35	-70.54	-70.73	-70.92	-71.11	-71.30	-71.49	-71.68	-71.87	-72.06	-72.25	-72.44	-72.63	-72.82	-73.01	-73.20	-73.39	-73.58	-73.77	-73.96	-74.15	-74.34	-74.53	-74.72	-74.91	-75.10	-75.29	-75.48	-75.67	-75.86	-76.05	-76.24	-76.43	-76.62	-76.81	-77.00	-77.19	-77.38	-77.57	-77.76	-77.95	-78.14	-78.33	-78.52	-78.71	-78.90	-79.09	-79.28	-79.47	-79.66	-79.85	-80.04	-80.23	-80.42	-80.61	-80.80	-80.99	-81.18	-81.37	-81.56	-81.75	-81.94	-82.13	-82.32	-82.51	-82.70	-82.89	-83.08	-83.27	-83.46	-83.65	-83.84	-84.03	-84.22	-84.41	-84.60	-84.79	-84.98	-85.17	-85.36	-85.55	-85.74	-85.93	-86.12	-86.31	-86.50	-86.69	-86.88	-87.07	-87.26	-87.45	-87.64	-87.83	-88.02	-88.21	-88.40	-88.59	-88.78	-88.97	-89.16	-89.35	-89.54	-89.73	-89.92	-90.11	-90.30	-90.49	-90.68	-90.87	-91.06	-91.25	-91.44	-91.63	-91.82	-92.01	-92.20	-92.39	-92.58	-92.77	-92.96	-93.15	-93.34	-93.53	-93.72	-93.91	-94.10	-94.29	-94.48	-94.67	-94.86	-95.05	-95.24	-95.43	-95.62	-95.81	-96.00	-96.19	-96.38	-96.57	-96.76	-96.95	-97.14	-97.33	-97.52	-97.71	-97.90	-98.09	-98.28	-98.47	-98.66	-98.85	-99.04	-99.23	-99.42	-99.61	-99.80	-100.00
-------	-------	-------	-------	-------	-------	-------	-------	-------	-------	-------	-------	-------	-------	-------	-------	-------	-------	-------	-------	-------	-------	-------	-------	-------	-------	-------	-------	-------	-------	-------	-------	-------	-------	-------	-------	-------	-------	-------	-------	-------	-------	-------	-------	-------	-------	-------	-------	-------	-------	-------	-------	-------	-------	-------	-------	-------	-------	-------	-------	-------	-------	-------	-------	-------	-------	-------	-------	-------	-------	-------	-------	-------	------	------	------	------	------	------	------	------	------	------	------	------	------	------	------	------	------	------	------	------	------	------	------	------	------	------	------	------	------	------	------	------	------	------	------	------	------	------	------	------	------	------	------	------	------	------	------	------	------	------	------	------	-------	-------	-------	-------	-------	-------	-------	-------	-------	-------	-------	-------	-------	-------	-------	-------	-------	-------	-------	-------	-------	-------	-------	-------	-------	-------	-------	-------	-------	-------	-------	-------	-------	-------	-------	-------	-------	-------	-------	-------	-------	-------	-------	-------	-------	-------	-------	-------	-------	-------	-------	-------	-------	--------	--------	--------	--------	--------	--------	--------	--------	--------	--------	--------	--------	--------	--------	--------	--------	--------	--------	--------	--------	--------	--------	--------	--------	--------	--------	--------	--------	--------	--------	--------	--------	--------	--------	--------	--------	--------	--------	--------	--------	--------	--------	--------	--------	--------	--------	--------	--------	--------	--------	--------	--------	--------	--------	--------	--------	--------	--------	--------	--------	--------	--------	--------	--------	--------	--------	--------	--------	--------	--------	--------	--------	--------	--------	--------	--------	--------	--------	--------	--------	--------	--------	--------	--------	--------	--------	--------	--------	--------	--------	--------	--------	--------	--------	--------	--------	--------	--------	--------	--------	--------	--------	--------	--------	--------	--------	--------	--------	--------	--------	--------	--------	--------	--------	--------	--------	--------	--------	--------	--------	--------	--------	--------	--------	--------	--------	--------	--------	--------	--------	--------	--------	--------	--------	--------	--------	--------	--------	--------	--------	--------	--------	--------	--------	--------	--------	--------	--------	--------	--------	--------	--------	--------	--------	--------	--------	--------	--------	--------	--------	--------	--------	--------	--------	--------	--------	--------	--------	--------	--------	--------	--------	--------	--------	--------	--------	--------	--------	--------	--------	--------	--------	--------	--------	--------	--------	--------	--------	--------	--------	--------	--------	--------	--------	--------	--------	--------	--------	--------	--------	--------	--------	--------	--------	--------	--------	--------	--------	--------	--------	--------	--------	--------	--------	--------	--------	--------	--------	--------	--------	--------	--------	--------	--------	--------	--------	--------	--------	--------	--------	--------	--------	--------	--------	--------	--------	--------	--------	--------	--------	--------	--------	--------	--------	--------	--------	--------	--------	--------	--------	--------	--------	--------	--------	--------	--------	--------	--------	--------	--------	--------	--------	--------	--------	--------	--------	--------	--------	--------	--------	--------	--------	--------	--------	--------	--------	--------	--------	--------	--------	--------	--------	--------	--------	--------	--------	--------	--------	--------	--------	--------	--------	--------	--------	--------	--------	--------	--------	--------	--------	--------	--------	--------	--------	--------	--------	--------	--------	--------	--------	--------	--------	--------	--------	--------	--------	--------	--------	--------	--------	--------	--------	--------	--------	--------	--------	--------	--------	--------	--------	--------	--------	--------	--------	--------	--------	--------	--------	--------	--------	--------	--------	--------	--------	--------	--------	--------	--------	--------	--------	--------	--------	--------	--------	--------	--------	--------	--------	--------	--------	--------	--------	--------	--------	--------	--------	--------	--------	--------	--------	--------	--------	--------	--------	--------	--------	--------	--------	--------	--------	--------	--------	--------	--------	--------	--------	--------	--------	--------	--------	--------	--------	--------	--------	--------	--------	--------	--------	--------	--------	--------	--------	--------	--------	--------	--------	--------	--------	--------	--------	--------	--------	--------	--------	--------	--------	--------	--------	--------	--------	--------	--------	--------	--------	--------	--------	--------	--------	--------	--------	--------	--------	--------	--------	--------	--------	--------	--------	--------	--------	--------	--------	--------	--------	--------	--------	--------	--------	--------	--------	--------	--------	--------	--------	--------	--------	--------	--------	--------	--------	--------	--------	--------	--------	--------	--------	--------	--------	--------	--------	--------	--------	--------	---------

11690 = 1/2 SE CUMMINS DORE

135.16 Mon St Palm Dove

124.50 120 120.97 121.04 122.37 127.91 7.91 6.94 5.97 5.54



10/2/16  
Gregory  
Moore  
Miller

Levels on the graded  
portion of Dove St from a  
point south of Olive to a  
point south of Nutmeg.  
H.D. from preceding page  
125.14

50' wide  
10' walks

	25' So. of SECT. A	SEE SKETCH	W Cb	7.8	105.1
West curb.	4.0	121.1	E -	7.6	105.3
50' ✓ ✓ -					
✓ ✓	5.5	119.6	E Cb	13.0	99.9
75 - - -			W -	13.0	99.9
✓ ✓	7.1	118.0	T.P.	0.70	100.70
	108.6' So. of Sect A = SECT B			12.92	100.00
✓ -	9.8	115.3	W Cb	6.3	94.4
East -	8.9	116.2	E ✓	6.3	94.4
	25' So of B				
E. Cb	11.1	114.0	E Cb	12.0	88.7
W ✓	11.9	113.2	W ✓	12.0	88.7
T.P.	0.71	112.92	T.P.	2.81	91.49
	50' So.	12.93	112.21	12.02	88.68
W Cb	1.7	111.2	W Cb	5.8	85.7
E -	1.2	111.7	E ✓	5.3	86.2
	75' So				
E Cb	4.1	108.8	T.P.	9.25	82.24
W ✓	4.3	108.6			on plank of ret. wall

108.3 = Sect C

Sect D = Angle pt. apparently a 10°  
L to the west.

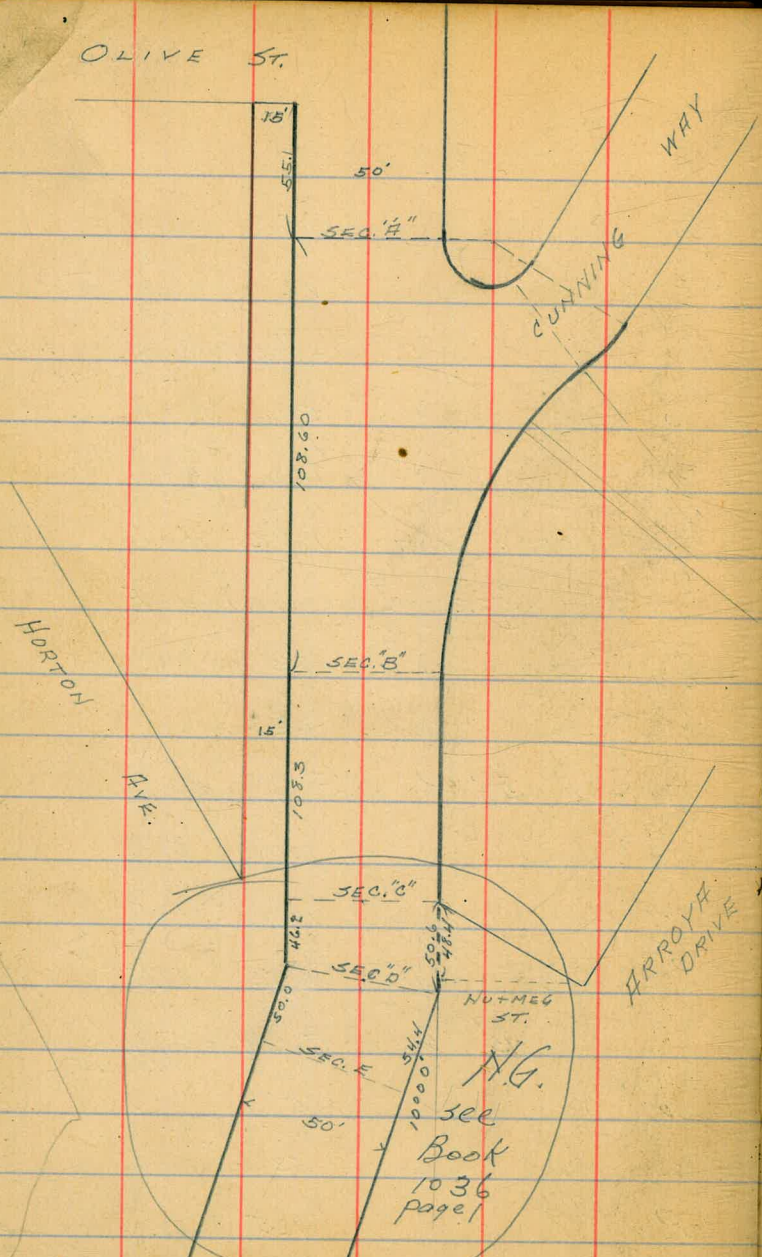
54.4 on E }  
52.2 on E } 50' of D = E  
50.0 on W }

50' So. of E

75' So of E where st. angles again to  
the east.



OLIVE ST.



$$\begin{array}{r} 108.6 \\ 55.86 \\ 55.36 \\ \hline 219.82 \end{array}$$

$$\begin{array}{r} 55.1 \\ 108.6 \\ 108.3 \\ \hline 320.4 \\ 300.2 \end{array}$$

HEAVY LINES SHOW GRADED PORTION  
 LIGHT LINES SHOW PRESENT STREET.



Gregory  
Moore  
Miller

CROSS-SECTION OF  
ALBATROSS ST. 70' wide  
10' walls  
from N.L. Robinson Ave 12.5' No.  
to a point 275' No.

272.0

32

on B.M.

4.12

271.98

267.06

N.E. Robinson  
+ Albatross

N.L. Robinson

1/4

42

267.8 ✓

C

44

267.6 ✓

1/4

46

267.4 ✓

cb

45

267.5 ✓

W

45

267.5 ✓

1/4

75' No

W

41

267.9 ✓ on lower

cb

39

268.1 ✓

1/4

43

267.7 ✓

C

39

268.1 ✓

1/4

37

268.3 ✓

cb

31

268.9 ✓

E

34

268.6 ✓

1/4

100' No

E

26

269.4 ✓ on lower

cb

26

269.4 ✓

1/4

36

268.4 ✓

C

39

268.1 ✓

1/4

40

268.0 ✓

cb

41

267.9 ✓

E

47

267.3 ✓

cb

48

267.2 ✓

1/4

51

266.9 ✓

C

51

266.9 ✓

1/4

54

266.6 ✓

cb

58

266.2 ✓

W

56

266.4 ✓

25' No

W

50

267.0 ✓

cb

50

267.0 ✓

1/4

48

267.2 ✓

C

48

267.2 ✓

1/4

46

267.4 ✓

cb

43

267.7 ✓

E

44

267.6 ✓

50' No

E

36

268.4 ✓

cb

36

268.4 ✓

271.98

2720

W	37	268.3	on lawn
	105.5' No. to ctr. of 4' walk to house walk 15 1.9' in st. house 10' back on life		
W	35	268.5	on walk to house
	125' No.		
W	36	268.4	on lawn
cb	39	268.1	
1/4	42	267.8	
C	38	268.2	
1/4	35	268.5	
cb	28	269.2	
E	22	269.8	on lawn
	150' No. = ctr. of 4' walk to house, walk 15 5.4 in street, house 10' back on East		
E	1.8	270.2	on walk
cb	2.7	269.3	
1/4	3.5	268.5	
C	3.8	268.2	
1/4	4.3	267.7	
cb	4.2	267.8	
W	3.8	268.2	on lawn

ALBATROSS

2720

33

	160' to ctr. of 3' walk to house, walk sticks 1.6 10' st. house 10' back.		
W	3.8	268.2	on walk
	175' No.		
W	4.2	267.6	on lawn
cb	4.1	267.6	
+6	5.0	267.0	
1/4	4.7	267.3	
C	4.1	267.9	
1/4	3.9	268.1	
cb	3.8	268.2	
E	1.7	270.3	on lawn
	200' No.		
E	2.9	269.1	
cb	3.0	269.0	
1/4	4.5	267.5	
C	4.9	267.1	
1/4	5.3	266.7	
+5	5.6	266.9	
cb	5.1	266.9	
W	4.9	267.1	on walk

271.95

272.0

22' walk on west, 1.8' in st.  
201.0 = ctr of (3.7' - East 0.2' - House 10' back)

W	4.9	267.1	✓ on walk
E	2.2	269.8	✓
225' No.			
W	6.3	265.7	✓ on lawn in front of house 2' west
cb	6.1	265.9	✓
+3	6.1	265.9	✓
+6	7.2	264.8	✓
1/4	6.6	265.4	✓
C	5.9	266.1	✓
1/4	5.0	267.0	✓
cb	4.0	268.0	✓
E	3.0	269.0	✓

226' No. fast of 2.5' walk which strikes 31' st.  
this runs back between houses

E	3.0	269.0	✓ on walk
---	-----	-------	-----------

230' No.

E	2.1	268.9	✓
cb	4.5	267.5	✓
1/4	5.2	266.8	✓
C	5.9	266.1	✓

ALBATROSS

272.0

34

1/4	6.8	265.2	✓
+5	8.0	264.0	✓
cb	7.8	264.2	✓
W	10.8	261.2	✓
+10	11.7	260.3	✓ at walk of house
250' No.			
-15	15.2	256.8	✓
W	13.4	258.6	✓
cb	11.9	260.1	✓
+7	10.7	261.3	✓
1/4	8.9	263.1	✓
+7	5.7	266.3	✓
C	5.7	266.3	✓
1/4	5.6	266.4	✓
cb	5.3	266.7	✓
E	3.7	268.3	✓ on lawn
231.5 to ctr of 5' walk, strikes 41' st. house 10' back			
E	3.6	268.4	✓ on walk

271.98

272.0

275' No

E	4.7	267.3 ✓ on lawn
cb	6.0	266.0 ✓
1/4	8.4	263.6 ✓
C	10.2	261.8 ✓
1/4	14.0	258.0 ✓
+4	14.8	257.2 ✓
cb	16.1	255.9 ✓
+5	16.5	255.5 ✓
W	17.5	254.5 ✓
+20	19.4	252.6 ✓

290' No.

-20	24.4	247.6 ✓
-15	21.6	250.4 ✓
W	19.1	252.9 ✓
cb	18.7	253.3 ✓
1/4	16.0	256.0 ✓
C	13.0	259.0 ✓
1/4	9.9	262.1 ✓
cb	6.9	265.1 ✓

ALBATROSS

35

59

266.1 ✓ on lawn

36

11/16  
Gregory  
Moore  
Miller

CROSS-SECTION OF 60' wide  
SCHLEY ST  
from the west line of 26<sup>th</sup> St  
to the south - Colton Ave.

3072

SCHLEY

37

on B.M. 0.03 39.06 39.03 NE Nanten  
+ 26<sup>th</sup> BP

T.P. 1.69 30.72 10.03 29.03

W. L. 26<sup>th</sup> St

N.W. 2.0 28.7

cb 2.2 28.5

1/4 3.0 27.7

c 2.9 27.8

1/4 2.9 27.8

cb 3.3 27.4

s 3.5 27.2

SECTION A

c 2.9 27.8

NW 1/4 3.1 27.6

NW cb 2.5 28.2

NW 2.2 28.5

SECTION B

N 1.8 28.9

cb 2.6 28.1

+3 3.5 27.2

1/4

c

+2

1/4

cb

S.E.

S.E.

cb

1/4

c

1/4

cb

+5

N.W.

N.W.

cb

1/4

c

3.6 27.1

3.5 27.2

2.7 28.0

2.8 27.9

3.2 27.5

3.5 27.2

11.86' So. of "B" = N.L. Main St (Graded)

3.6 27.1

3.7 27.0

3.5 27.2

3.6 27.1

3.9 26.8

3.5 27.2

2.6 28.1

3.0 27.7

SW. L. Main St.

4.1 26.6

4.4 26.3

4.3 26.4

4.2 26.5



30.72

1/4	44	26.3
cb	43	26.4
S.E.	41	26.6
	25' SW.	
SE	43	26.4
cb	42	26.5
+5	38	26.9
1/4	44	26.3
+5	46	26.1
C	41	26.6
1/4	40	26.7
cb	46	26.1
N.W.	42	26.5
	50' SW.	
N.W.	42	26.5
cb	48	25.9
1/4	42	26.5
C	47	26.0
+4	48	25.9
1/4	40	26.7

SCHLEY

30.72

58

cb	46	26.1
S.E.	47	26.0
	75' SW.	
SE	51	25.6
cb	46	26.1
1/4	42	26.5
+7	42	26.5
C	50	25.7
1/4	45	26.2
cb	49	25.8
+5	50	25.7
N.W.	42	26.5
	100' SW.	
N.W.	44	26.3
+7	57	25.0
cb	53	25.4
1/4	53	25.4
+8	55	25.2
C	46	26.1
1/4	45	26.2

30.72

cb	4.4	26.3
S.E.	4.8	25.9
	125' SW.	
S.E.	5.0	25.7
cb	5.0	25.7
1/4	5.2	25.5
C	5.6	25.1
+4	6.2	24.5
1/2	6.1	24.6
cb	6.0	24.7
+4	6.4	24.3
N.W.	4.6	26.1
	150' SW	
N.W.	6.6	24.1
cb	6.9	23.8
1/4	7.1	23.6
+3	7.1	23.6
C	6.7	24.6
1/4	5.4	25.3
cb	5.8	24.9

on March 6

30.72

SCHLEY

39

S.E.	5.8	24.9
	175' SW.	
S.E.	5.7	25.0
cb	6.2	24.5
1/4	6.2	24.5
C	5.8	24.9
+7	8.1	22.6
1/2	8.2	22.5
cb	8.1	22.6
N.W.	7.7	23.0
	181' SW	
N.W.	7.9	22.8
cb	8.3	22.4
1/4	8.4	22.3
+3	8.3	22.4
+5	6.3	22.4
C	5.7	25.0
1/4	7.1	23.6
cb	7.5	23.2
S.E.	10.6	20.1

30.72

185' SW

SE	10.7	20.0	
cb	10.7	20.0	
1/4	10.6	20.1	
C	10.7	20.0	
+6	10.3	20.4	
1/4	8.7	22.0	
cb	8.4	22.3	
N.W.	8.4	22.3	
	197.56 on NW		
	189.09 on SE	SW = 2' NE of NE rail	
NW	9.1	21.8	8.9 = rail
	9.1	21.6	
cb	8.9	21.8	
1/4	8.9	21.8	
C	9.4	21.3	
1/4	9.7	21.0	
cb	9.5	21.2	
SE	9.5	21.2	
✓	9.13	21.59	= rail of Track #1

3072

SCHLEY

40

SE	9.03	21.69	= rail of Track 2
NW	8.77	21.95	= " " " 2
NW	8.73	21.99	= " " " 3
SE	8.23	22.49	= " " " 3
SE	8.43	22.29	= " " " 4
NW	8.71	22.01	= " " " 4
	252.4 on NW		
	256.98 on SE	SW = 2' SW of SW rail	
SE	8.6	22.1	
cb	8.6	22.1	
1/4	8.7	22.0	
C	8.7	22.0	
1/4	8.7	22.0	
cb	8.7	22.0	
NW	9.0	21.7	
	22.6 on NW SW of last section		
	18.07 on SW	SW = 2' SW of Main	
NW	9.1	21.6	
cb	9.2	21.5	
1/4	9.0	21.7	
C	8.9	21.8	
1/4	8.8	21.9	

30.72

cb	89	21.8
S.E.	89	21.8
308.2 SW = NE Line of Colton Ave 20' wide		
S.E.	92	21.5
cb	93	21.4
1/4	90	21.7
C	92	21.5
1/4	95	21.2
cb	97	21.0
N.W.	97	21.0
NE. Curb		
N.W.	99	20.8
cb	98	20.9
1/4	96	21.1
C	94	21.3
1/4	93	21.4
cb	94	21.3
S.E.	95	21.2

30.72

SCHLEY

41

NE. Quarter

S.E.	97	21.0
cb	98	20.9
1/4	98	21.2
C	95	21.2
1/4	97	21.0
cb	98	20.9
N.W.	99	20.8

Center

N.W.	10.1	20.6	on paving
cb	10.1	20.6	
1/4	10.3	20.4	
C	10.0	20.7	
1/4	10.2	20.5	
cb	10.3	20.4	
S.E.	10.5	20.2	

S.W. Quarter

S.E.	10.8	19.9
cb	10.8	19.9
1/4	10.4	20.3

30.72

C	10.5	20.2	
1/4	10.5	20.2	
cb	10.2	20.5	
N.W.	10.35	20.37	on paving

## S.W. Curb

N.W.	10.9	19.8	on paving
cb	10.8	19.9	
1/4	11.0	19.7	
C	11.1	19.6	
1/4	11.1	19.6	
cb	10.9	19.8	
SE	11.0	19.7	

## S.W. Line of Colton

SE	11.0	19.7	
cb	11.0	19.7	
1/4	11.2	19.5	
C	11.1	19.6	
1/4	11.0	19.7	
cb	10.7	20.0	
N.W.	10.9	19.8	

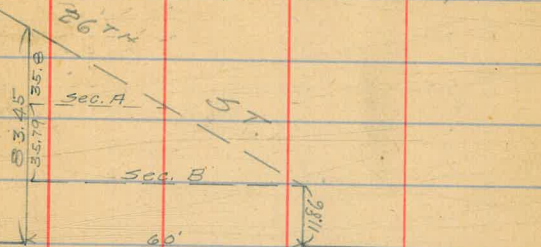
SCHLEY

42

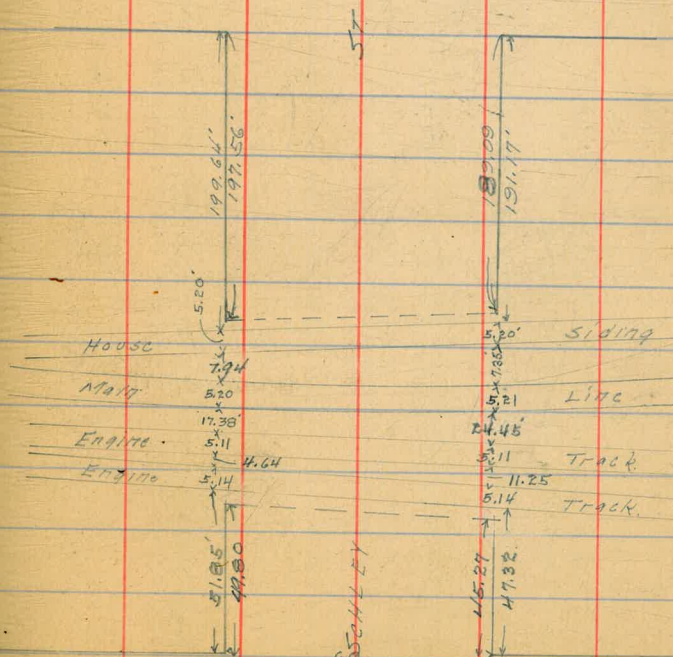
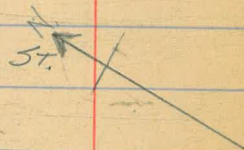
N.W.

103 20.1 on paving

Elevation of Curb St. Alley bet Nat 1/4 &amp; Newton 49.64



Main



COLTON

AVE

43

11/9/16  
Gregory  
Moore  
Miller

LEVELS ON DETROIT ST  
from RY Tracks to  
516.86' No. of AKIN ST.  
walk + curb laid for 33' No. of AKIN on  
East + 47' No. on west, Curb  
7' from P.L.

B.M. 3.89 173.58 169.69 <sup>151+00.8</sup>  
Dunkles sewer  
100 ft. Detroit + Akina

No. 2' Line RY Tracks

W 1.95 171.63 on No. rail  
W 2.1 171.5  
C 2.1 171.5  
E 1.9 171.7  
E 1.35 172.23 on No. rail

20' No. (taken parallel to Track)

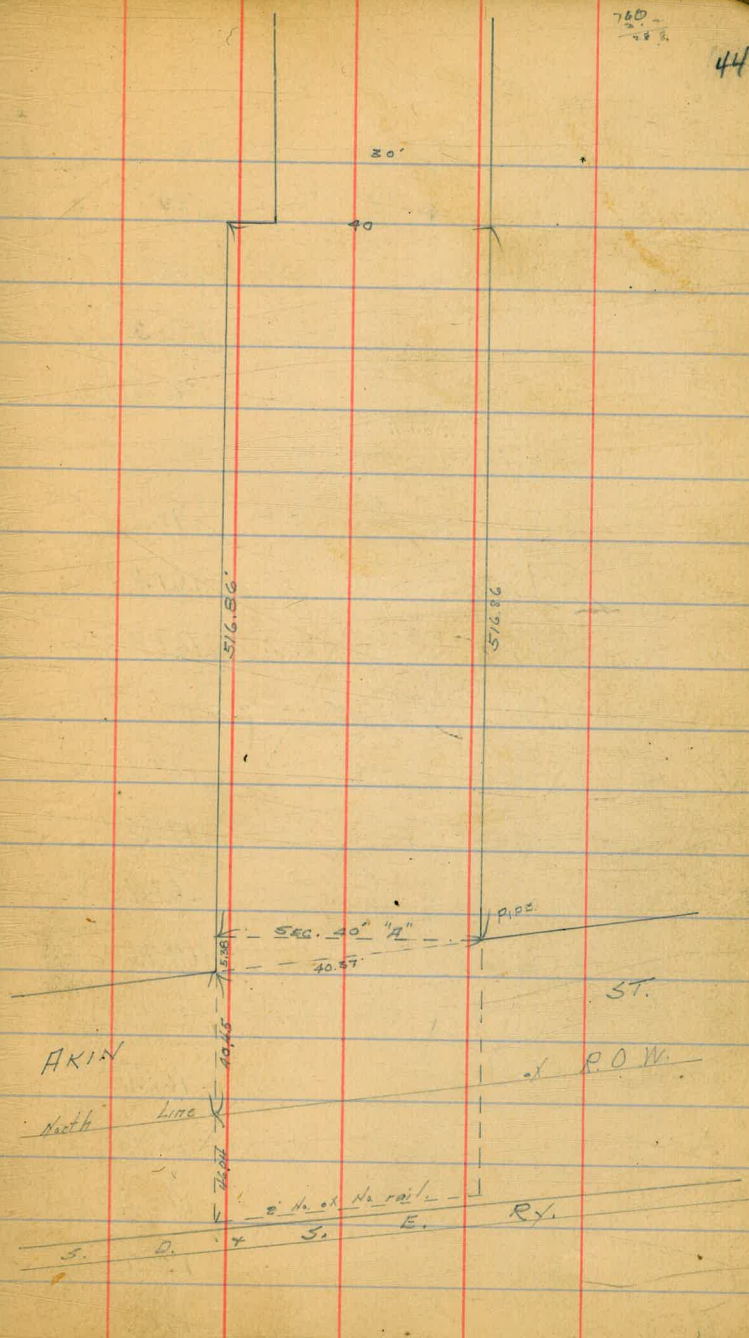
E 3.1 170.5  
C 2.9 170.7  
W 4.1 169.5

46.04' No. of 2' Line = S.L. AKIN ST.

W 5.0 168.6  
C 3.5 170.1  
E 3.6 170.0

Center AKIN ST.

E 3.5 170.1  
C 3.9 169.7  
W 4.7 168.9



N. L. AXIN ST.

W	173.58	4.45	169.13	= curb at NW corner
W		4.2	169.4	
C		3.8	169.8	
E		3.3	170.3	
E		3.52	170.06	= curb at NE corner
5.38 N. on W } = SECT. A. 00 - E				
E		3.3	170.3	
C		3.8	169.8	
W		4.2	169.4	on walk
40' No. of SECT. A.				
W		3.8	169.8	on walk
C		3.1	170.5	
E		3.9	169.7	
		3.62	169.96	= end of E. Curb
47' No. { 7' Corbs 6.5' Quarters }				
E		6.5	167.1	
cb		5.0	168.6	
1/4		3.4	170.2	
C		2.9	170.7	
1/4		3.0	170.6	

curb is lower than 175.26 on walk

DETROIT

28

cb		4.3	169.3	
cb		4.0	169.6	on end of Curb
W		3.8	169.8	
55' No.				
W		5.8	167.8	
cb		5.4	168.2	
1/3		4.9	168.7	
1/4		3.1	170.5	
C		2.9	170.7	
1/4		2.9	170.7	
cb		5.3	168.3	
E		6.2	167.4	
71' No.				
E		6.5	167.1	
cb		6.3	167.3	
1/4		2.6	171.0	
C		2.4	171.2	
1/4		2.6	171.0	
cb		6.2	167.4	
		7.4	166.2	
W		8.5	165.4	



74 No  
173.58

W	8.9	164.7
cb	8.2	165.4
+3	7.8	165.8
1/4	5.6	168.0
	2.6	171.0
C	2.3	171.3
1/4	2.4	171.2
cb	5.7	167.9
E	6.3	167.3

80 No

E	6.5	167.1
cb	6.3	167.3
1/4	2.2	171.4
	2.1	171.5
C	6.4	167.2
	7.7	165.9
+3	8.8	164.8
cb	8.9	164.7
W	9.8	163.8

88 No

W	9.7	163.9
cb	10.0	163.6
1/4	9.1	164.5
C	8.6	165.0
+4	7.6	167.0
1/4	2.1	171.5
cb	5.7	167.9
E	6.9	166.7

97 No

E	6.7	166.9
cb	5.3	168.3
+2	8.9	164.7
1/4	9.5	164.1
C	9.0	164.6
1/4	9.6	164.0
cb	9.4	164.2
W	8.7	164.9

173.58

110' No.

W	7.5	166.1
cb	8.2	165.4
+3	9.4	164.2
$\frac{1}{4}$	8.9	164.7
C	8.0	165.6
$\frac{1}{4}$	8.4	165.2
cb	9.2	164.4
E	9.4	164.2

120' No.

E	8.6	165.0
cb	8.6	165.0
$\frac{1}{4}$	7.7	165.9
C	7.4	166.2
$\frac{1}{4}$	9.0	164.6
+4	9.1	164.5
cb	7.2	166.4
W	7.3	166.3

DETROIT.

49

130' No.

W	7.3	166.3
cb	6.9	166.7
$\frac{1}{4}$	8.1	165.5
+3	8.6	165.0
C	8.5	165.1
$\frac{1}{4}$	7.0	166.6
cb	7.9	165.7
E	8.0	165.6

140' No.

E	7.6	166.0
cb	7.5	166.1
$\frac{1}{4}$	7.3	166.3
+2	7.9	165.7
C	7.8	165.8
$\frac{1}{4}$	7.3	166.3
cb	7.5	166.1
W	7.5	166.1

173.58

150' No.

W.	6.8	166.8
cb	7.3	166.3
1/4	7.4	166.2
C	7.6	166.0
1/4	7.4	166.2
cb	7.4	166.2
E	7.3	166.3

160' No.

E	7.8	165.8
cb	7.5	166.1
1/4	7.2	166.4
C	6.9	166.7
1/4	6.3	167.3
cb	6.3	167.3
W	6.5	167.1

169' No.

W	6.7	166.9
cb	6.4	167.2
1/4	6.8	167.4

C	5.9	167.7
1/4	6.4	167.2
cb	6.7	166.9
E	8.2	165.4

170' No.

E	8.2	165.4
cb	6.7	166.9
1/4	6.4	167.2
C	5.9	167.7
1/4	6.2	167.4
cb	6.4	167.2
+5	6.1 } 3.8 }	167.5 169.8
W	3.7	169.9

176' No.

W	3.3	170.3
cb	3.3	170.3
T.P.	11.98	184.77
1/4	0.79	172.79
C	10.9	173.9
C	10.7	174.1

173.59

\*

1/4	10.7	174.1
cb	146	170.2
E	147	170.1

200' No.

E	141	170.7
cb	138	171.0
1/4	10.5	174.3

+1.5	93	175.5
------	----	-------

C	96	175.2
---	----	-------

1/4	89	175.9
-----	----	-------

cb	113	173.5
----	-----	-------

W	126	172.2
---	-----	-------

210' No.

W	103	174.5
---	-----	-------

C	83	176.5
---	----	-------

E	137	171.1
---	-----	-------

225' No.

E	11.3	173.5
---	------	-------

C	6.9	177.9
---	-----	-------

W	3.9	180.9
---	-----	-------

240' No.

W	+2.3	187.1
---	------	-------

C	5.0	179.8
---	-----	-------

E	6.6	178.2
---	-----	-------

250' No.

E	4.8	180.0
---	-----	-------

C	3.9	180.9
---	-----	-------

W	+1.3	186.1
---	------	-------

275' No.

W	+1.1'	185.9
---	-------	-------

C	1.0	183.8
---	-----	-------

E	5.2	179.6
---	-----	-------

300' No.

E	5.4	179.4
---	-----	-------

T.P.	11.20	195.74	0.23	184.54
------	-------	--------	------	--------

C	10.3	185.4
---	------	-------

W	9.0	186.7
---	-----	-------

325' No.

W	8.0	187.7
---	-----	-------

C	7.7	188.0
---	-----	-------

E	159	179.8
---	-----	-------

350' No.

E	11.1	184.6
---	------	-------

C	7.1	188.6
---	-----	-------

W	7.4	188.3
---	-----	-------

378' No.

W	6.6	188.1
---	-----	-------

C	6.2	189.5
---	-----	-------

E	6.0	189.7
---	-----	-------

400' No.

E	5.6	190.1
---	-----	-------

C	5.7	190.0
---	-----	-------

W	6.3	189.4
---	-----	-------

450' No.

W	5.0	190.7
---	-----	-------

C	5.2	190.5
---	-----	-------

E	4.9	190.8
---	-----	-------

500' No.

E	4.1	191.6
---	-----	-------

C	4.1	191.6
---	-----	-------

W	38	191.9
---	----	-------

51686' No. = Log in St.

W	27	193.0
---	----	-------

C	37	192.0
---	----	-------

E	3.6	192.1
---	-----	-------

BM

375	191.99	hub on East Line at this station
-----	--------	--

DETROIT ST BRIDGE

Gramwell  
Hayler  
Suess

3-28-17

51

2.80 172.49

169.69

Dunkle's sewer hub center of Detroit + Akins Sts

2.88 169.61

End of Curb on W Side Detroit St

0.43 172.06

" " Fill  $\frac{1}{2}$  Top of Stake

Make South End of Bridge 170.5 Top of Floor

Give

1/9/16  
Gregory  
Moore  
Miller

Peg Levels on H St  
Extension

5.55	40.63		35.08
10.14	49.27	1.50	34.13
12.62	61.57	0.32	43.95
12.58	73.63	0.52	61.05
13.03	86.05	0.61	73.02
12.25	97.70	0.60	85.45
12.48	110.01	0.17	97.53
		6.38	103.63
12.45	121.92	0.54	109.47
8.86	130.13	0.65	121.27
		6.92	123.21
5.65	124.09	11.69	118.44
12.79	136.64	0.23	123.86
11.86	148.37	0.13	136.51
2.43	144.80	6.00	142.37
2.18	136.16	10.82	133.98
9.37	137.06	8.47	127.69
2.14	133.31	5.89	131.17
6.04	128.05	11.30	122.01
11.62	138.47	1.20	126.85

Mon SE 33rd  
+ J

B.M.

B.M.

B.M.

tick hub 15'  
so. of Merritt

B.M.

1st TP east  
of Pascoe.

B.M.

B.M.

Mon on Old  
City Line

B.M.

B.M.

rail in post  
so. of 12+40

B.M.

132.47

52

9.19	139.28	8.38	130.09
		12.05	127.23
11.96	149.06	2.18	137.10
11.95	160.76	0.25	148.81
3.40	162.93	1.23	159.53
		2.07	160.86
0.66	150.79	12.80	150.13
0.26	141.96	9.60	141.10
11.19	146.37	6.98	135.18
12.97	157.21	1.43	144.94
12.88	162.59	1.20	156.71
0.63	157.21	13.01	156.58
1.55	145.94	12.82	144.39
		4.61	141.33
1.06	134.03	12.97	132.97
4.77	125.94	12.86	121.17
		7.45	118.49
2.08	115.05	12.97	112.97
3.60	112.43	6.22	108.83
		0.05	112.38

rail in post so  
DX Sta 26

peg no. of line

10' No. of St  
67+60

on hub Sta  
71+75.30

on Beverly road

388 106.75 9.56 102.87

11.80 94.95 Double BM

10.87 117.37 0.25 106.50

9.71 126.51 0.57 116.80

B.M.

12.57 113.24 on rock

B.M.

5.08 121.43 on pole 300ft  
Sta 99+30

13.05 139.24 0.32 126.19

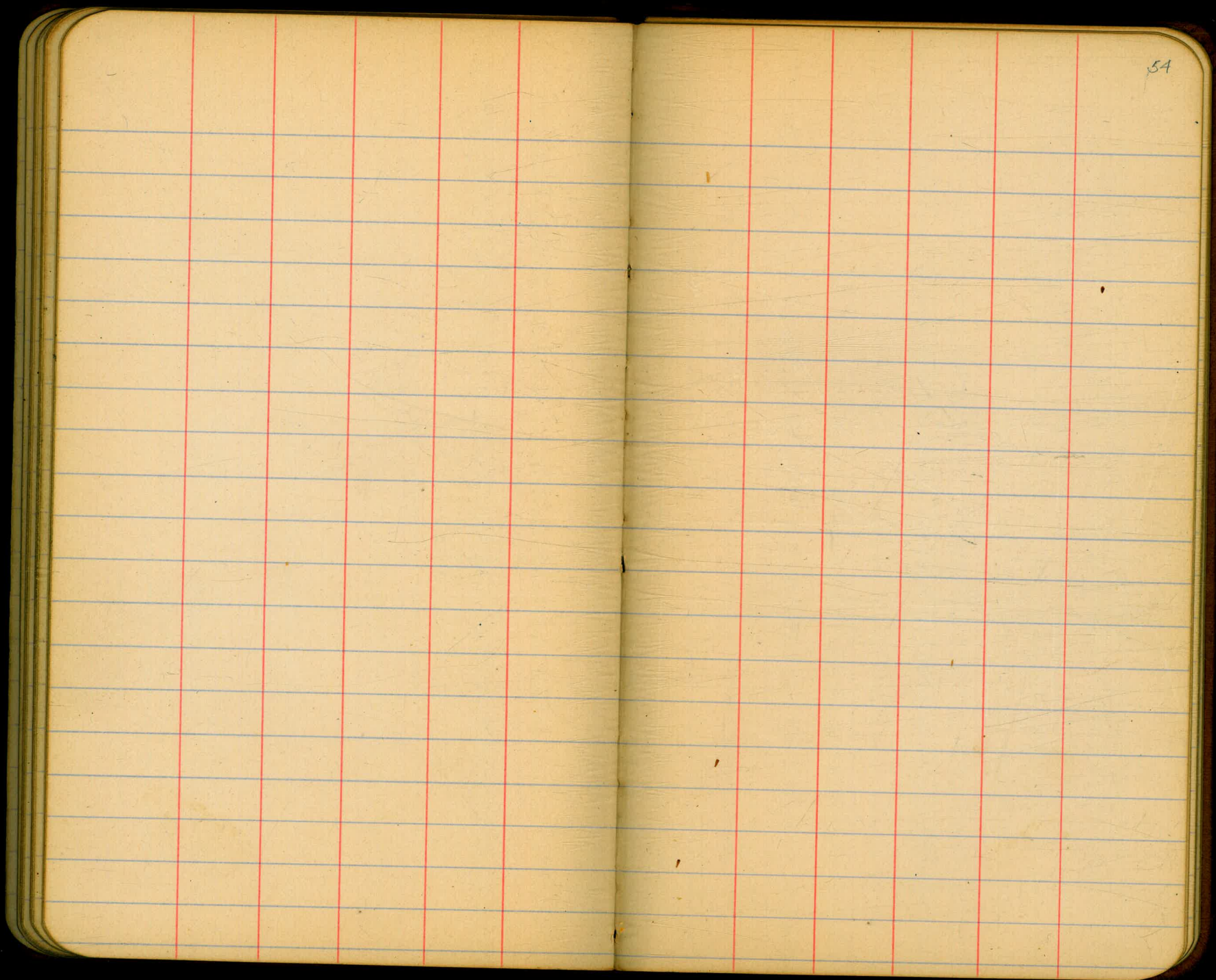
12.64 150.49 1.39 137.85

10.59 159.78 1.30 149.19

7.50 166.65 0.63 159.15

2.67 163.98 Gas pipe  
SW. Cor. West  
Holly road





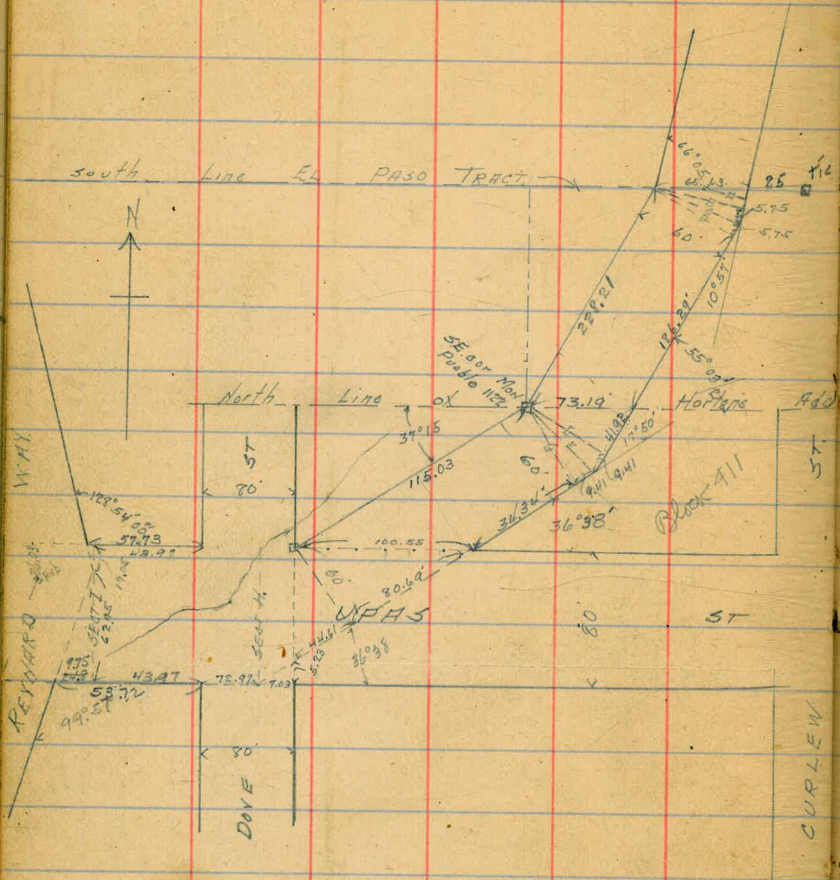
54

1/30/19

Gregory  
Maas  
Miller

Survey of Extension of  
Curlew St  
from the South Line of the  
EL PASO TRACT  
To the North Line of  
Upas St.

55



186.27  
57.5  
192.04

41.97  
241  
57.33

3434  
241  
43.95

4161  
80.69  
125.30

1/30/17  
Gregory  
Miller

CROSS SECTION OF  
EXTENSION OF CURLEW ST 60' wide  
From S.L. El Paso Tract  
To Upas St

	9.68	151.99	142.31	Tie hub 25' E of Curlew St. El Paso Tract.
S.L. EL PASO TRACT				
E	(152.0)	13.4	138.6	
cb		14.1	137.9	
1/2		14.2	137.8	
C		14.6	137.4	
1/4		15.5	136.5	
cb		16.1	135.9	
W		15.0	137.0	

SECT. A. (see sketch on preceding page)

C		14.6	137.4
E 1/4		14.4	137.6
Ecb		12.4	139.6
E		7.2	144.8

SECT. B

E		5.8	146.2
cb		8.5	143.5
1/4		11.3	130.7
+4		12.4	139.6
+5		14.7	

(152.0)

56

C	15.1	136.9
1/4	15.7	136.3
cb	16.3	135.7
W	15.0	137.0

SECT. C

W	15.0	137.0
cb	16.1	135.9
1/4	15.7	136.3
C	15.1	136.9

+2	14.9	137.1
+4	12.7	139.3
1/4	11.0	141.0
cb	8.1	143.9
E	5.4	146.6

SECT. D

E	5.2	146.8
cb	8.3	143.7
1/4	11.1	140.9
+6	13.0	139.0
T.P.	2.56	147.70
	12.85	139.14

147.70

c	108	136.9
1/4	118	135.9
cb	117	136.0
W	150	132.7

6' 30. of SECT D

-10	159	131.8
W	137	134.0
cb	121	135.6
1/4	121	135.6
+8	112	136.5
c	102	137.5
1/4	69	140.8
cb	41	143.6
E	08	146.9

25' 30 of D

E	22	145.5
cb	49	142.8
1/4	78	139.9
c	101	137.6
1/4	123	135.4

147.7

CURLEW

57

+5	136	134.1
cb	139	133.8
W	147	133.0
+10	163	131.4

50' 30

-10	164	131.3
W	158	131.9
+6	153	132.4
+6	146	133.6
cb	133	134.4
1/4	120	135.7
c	99	137.8
1/4	82	139.5
cb	58	141.9
E	32	144.5

75' 30

E	47	143.0
cb	67	141.0
1/4	87	139.0
c	106	137.1

14770

1/2			
cb		12.1	135.6
W		13.8	133.9
+2		15.2	132.5
+10		16.2	131.5
		17.8	129.9

100' 50

-10			
W		18.3	129.4
cb		16.5	131.2
1/2		16.8	132.9
C		13.1	134.6
1/2		11.2	136.3
cb		9.6	138.1
E		7.2	140.3
		5.5	142.2

125' 50

E			
cb		7.0	140.7
1/4		9.0	138.7
		11.2	136.5
T.P.	5.79	140.13	13.06
C			134.64
		6.3	134.1

1404

CURLEW.

58

1/2			
cb		7.7	132.7
W		9.1	131.3
+10		10.8	129.6
		12.0	128.4

150' 50

-15			
W		14.1	126.3
cb		12.2	128.2
1/2		11.1	129.3
C		9.3	131.1
1/2		7.8	132.6
cb		6.1	134.3
E		3.3	137.1
		0.5	139.9

175' 50

E			
cb		2.3	138.1
1/4		4.9	135.5
		8.0	132.4
C		9.6	130.8
1/4		11.2	129.2
cb		12.5	127.9

140.43

W	14.1	126.3
+15	17.0	123.4
	199' So.	
-10	16.9	123.5
W	15.5	124.9
cb	13.3	127.1
1/4	11.6	128.8
C	10.6	129.8
1/4	8.2	132.2
cb	5.4	135.0
E	3.4	137.0
	200' So.	
E	6.1	134.3
cb	5.5	134.9
1/4	8.2	132.2
C	10.7	129.7
1/4	11.6	128.8
cb	13.3	127.1
W	15.5	124.9
+10	16.9	123.5

140HCURLEW

59

	207' So.	
-10	17.0	123.4
W	15.8	124.6
cb	13.9	126.5
1/4	11.8	128.6
C	10.0	130.4
+4	10.2	130.2
1/4	8.2	132.2
cb	5.6	134.8
+1	7.1	133.3
E	7.6	132.8
	215' So.	
E	7.6	132.8
cb	7.7	132.7
1/4	9.0	131.4
C	9.7	130.7
1/4	12.1	128.3
cb	13.5	126.9
W	15.9	124.5
+10	17.3	123.1

140.43

T.P. 7.90 135.48 1295 127.58

288.81 So. = SECT E

-10 12.1 123.4

W 11.2 124.3

cb 9.7 125.8

1/4 8.0 127.5

C 5.6 129.9

+3 4.4 131.1

1/4 4.2 131.3

cb 3.2 132.3

E 2.8 132.7

SECT F

E 2.4 133.1

cb 3.5 132.0

1/4 4.0 131.5

+5 4.4 131.1

C 5.7 129.8

1/4 8.0 127.5

cb 9.5 126.0

W 11.2 124.3

135.5

CURLEW

60

+10 12.1 123.4

SECT G

-10 12.1 123.4

W 11.2 124.3

cb 10.1 125.4

1/4 8.1 127.4

C 6.7 128.8

1/4 4.5 131.0

cb 4.0 131.5

F 2.8 132.7

341.34 So. = N.L. UPAS ON F

E 3.3 132.2

cb 4.6 130.9

1/4 7.4 128.1

C 8.5 127.0

1/4 9.3 126.2

+4 10.4 125.1

cb 11.7 123.8

W 13.0 122.5

+10 14.0 121.5

135.48

75' 50.

-29	20.5	115.0	= bottom creek
-10	17.6	117.9	
W	16.4	119.1	
cb.	13.7	121.8	
+5	11.5	124.0	
1/4	10.8	124.7	
C	9.5	126.0	
+5	6.4	129.1	
1/4	5.0	130.5	
cb	4.2	131.3	
+5	3.4	132.1	
+6	1.7	133.8	
E	0.3	135.2	

100' 50.

E	+0.2	135.7	
cb	2.4	133.1	
cb	4.5	131.0	
1/4	5.3	130.2	
+3	5.4	130.1	

E. 50  
19

135.5

CORLEW

61

C	7.2	128.3	
1/4	9.4	126.1	
1/4	10.2	125.3	
cb	14.5	121.0	
+3	16.5	119.0	
W	18.2	117.3	
+15	20.4	115.1	= creek
	115.03' 50. = E. L. Dove		NL Upas } 07 W.
-13	21.0	114.5	= creek
W	18.7	116.8	
cb	16.9	118.6	
1/4	10.5	125.0	
C	8.8	126.7	
+2	6.9	128.6	
1/4	5.7	129.8	
+5	4.9	130.6	
cb	2.9	132.6	
E	0.3	135.2	N.B.
	44.61 W } from last Sect. = 00 W } E. L. Dove.		from here on St is coincident with Upas + is 80' wide
	21.4	133.1	



9 cb	2.9	132.6	
18 1/4	4.6	130.9	
+3	5.0	130.5	
+7	7.2	128.1	
C	7.8	127.7	
+3	7.3	128.2	
1/4	9.5	126.0	
+3	9.8	125.7	
cb	15.3	120.2	
N	18.7	116.8	
+13	21.0	114.5 = creek	
7.03' W = SECT. 4 (80' wide)			
-20	18.6	116.9	
-10	20.8	114.7 = creek	
N	19.3	116.2	
cb	17.5	118.0	
1/4	9.8	125.7	
C	7.9	127.6	
+7	8.0	127.5	
1/4	5.6	129.9	

cb	4.0	131.5	
So	4.3	131.2	
T.P.	0.07	130.19	536 130.12
E. Co. of DOVE ST.			
So	0.2	130.0	
cb	+0.2	130.4	
+10	0.7	129.5	
1/4	2.5	127.7	
C	3.4	126.8	
+5	4.0	126.2	
1/4	7.0	123.2	
cb	11.9	118.3	
+5	14.0	116.2	
N	14.9	115.3	
+6	15.9	114.3 = creek	
+11	15.1	115.1	
E Quarter			
-5	13.4	116.8	
N	15.8	114.4	
+14	16.0	114.2 = creek	

130.19

130.2

UP45

63

cb	15.0	115.2
+6	14.3	115.9
1/4	10.9	119.3
C	5.0	125.2
+3	4.0	126.2
+7	3.9	126.3
1/4	6.0	124.2
+3	6.1	124.1
+6	3.6	126.6
cb	3.0	127.2
So.	1.7	128.5
Quarter +9		
So.	3.3	126.9
cb	4.1	126.1
+6	6.2	124.0
+9	7.7	122.5
+10	6.5	123.7
1/4	6.3	123.9
+2	4.7	125.5
+7	4.7	125.5

C		7.7	122.5	
1/4		12.3	117.9	
T.P.	5.65	126.52	9.32	120.87
+7		12.2	114.3	
cb		12.5	114.0	
+3		12.6	113.9	creek
+6		12.4	114.1	
+7		11.5	115.0	
No.		9.1	117.4	
+3		4.2	122.3	
Center				
No.		4.2	122.3	
+3		10.4	116.1	
+10		11.6	114.9	
+11		12.5	114.0	
cb		12.7	113.8	=creek
+7		12.6	113.9	
1/4		11.0	115.5	
0		5.7	120.8	
+7		2.0	124.5	

1/4	1.8	124.7	
+1	3.1	123.4	
+3.9	3.3	123.2	
+4.0	4.7	121.8	
cb	2.1	124.4	
+5	0.3	126.2	
So.	0.2	126.3	
	W. Quarter		
So	2.7	123.8	
+10	4.1	122.4	
cb.	5.0	121.5	
+6	4.9	121.6	
+9	3.1	123.4	
1/4	3.6	122.9	
+8	6.1	120.4	
C	7.2	119.3	
+1	9.9	116.6	
+10	13.3	113.2 = creek	
1/4	13.2	113.3	
+2.88	13.0	113.5	

+3	11.7	114.8	
cb	11.6	114.9	
+3	10.3	116.2	
No.	8.1	118.4	
	5.9	120.6	
	8' W. of W. Quarter		
No.	9.1	117.4	
+10	9.3	117.2	
cb	10.2	116.3	
	11.4	115.1	
+7	12.3	114.2	
1/4	13.3	113.2	
+5	13.5	113.0 creek	
+10	10.3	116.2	
C	8.0	118.5	
	7.6	118.9	
+7	6.1	120.4	
1/4	5.3	121.2	
+8	5.0	121.5	
cb	6.0	120.5	
So.	5.0	121.5	
	W. CURB		
So.	5.9	120.7	

126.52

cb		6.6	119.9
+3		5.4	121.1
1/4		6.3	120.2
c		8.3	118.2
+5		9.4	117.1
		11.7	114.8
T.P.	6.28	120.52	122.2
			114.24
+8		8.3	112.2 creek
1/4		7.4	113.1
+2		7.6	112.9
+5		6.4	114.1
cb		5.7	114.8
+2		3.6	116.9
+5		3.7	116.8
No.		1.7	118.8
W.L. DOVE ST.			
No.		1.9	118.6
+3		0.1	120.4
cb		4.8	115.7
+2		6.1	114.4
+10		8.5	112.0 No. side creek

120.5

UPAS

65

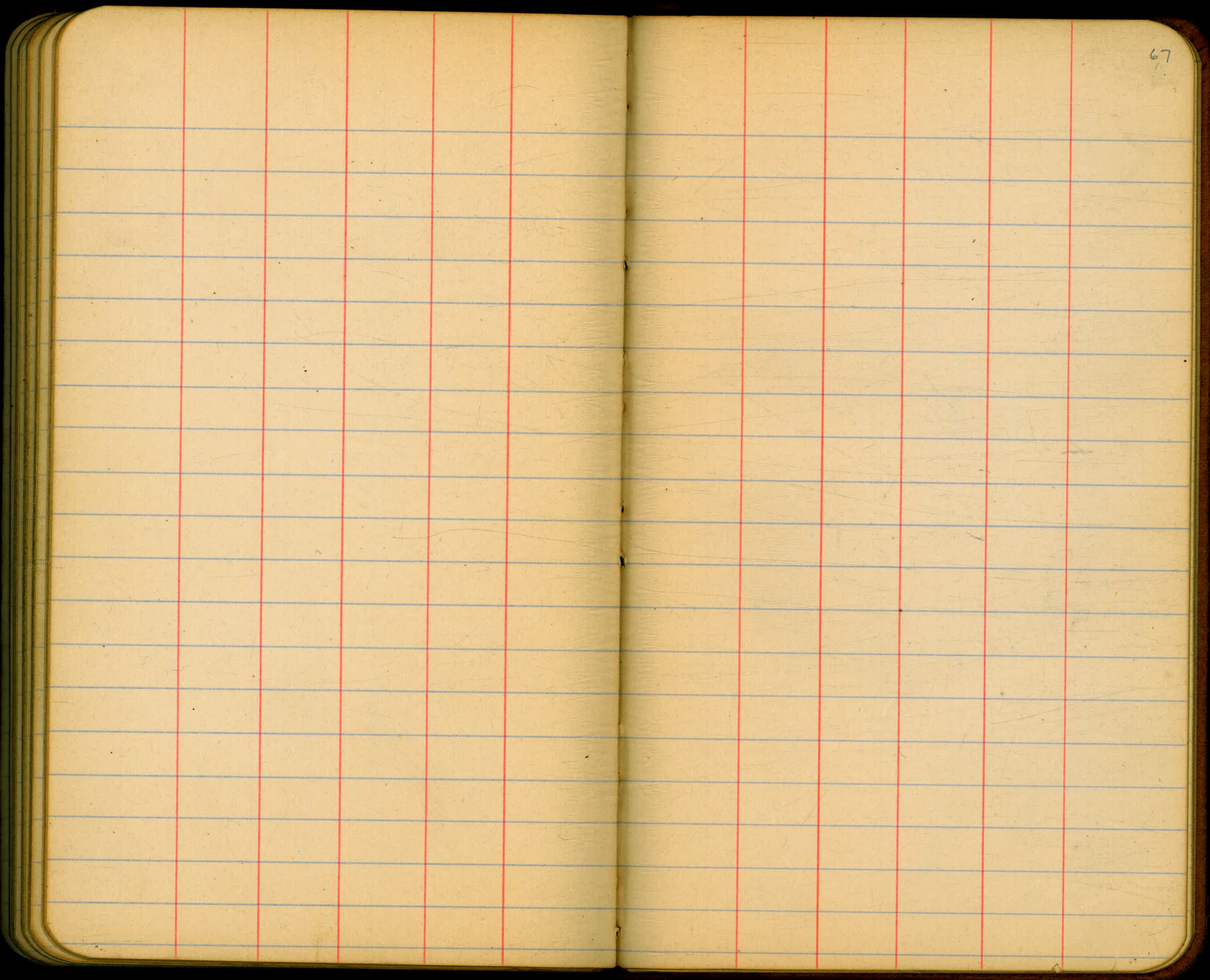
1/4		8.8	111.7 So. Side Creek
+1		6.6	113.9
+8		4.3	116.2
c		4.0	116.5
1/4		2.3	118.2
cb		1.9	118.6
30		2.6	117.9
20' W			
30		5.2	115.3
cb		5.4	115.1
1/4		5.9	114.6
c		6.7	113.8
		7.5	113.0
+6		7.8	112.7
		8.7	111.8 = So. side creek
1/4		8.8	111.7
		7.9	112.6 No. -
cb		7.0	113.5
+4		6.6	113.9
+7		5.0	115.5
		1.9	118.6
No.		2.9	117.6
43.97' W = SECT I.			
No.		3.6	116.9

120.52

UPAS

66

+7	39 } 5.3 }	116.6 115.2
cb.	6.3	114.2
+305	6.6	113.9
1/4	6.7	113.8
C	7.2	113.3
1/4	7.4	113.1
+3	8.5	112.0 No. 5th creek
+12	8.8	111.7 So - -
cb	7.2	113.3
S	6.9	113.6
S.E. cor REYNARD WAY + UPAS		
S	8.7	111.8
N.E. cor REYNARD WAY + UPAS		
N	4.8	115.7
chk B.M.	2.80	117.72 = Tie hub Upas 117.59 + Reynard



3/17  
Gregory Miller  
CROSS-SECTION OF  
Everett Ave 80' wide  
from W.L. 28th St to Evans St.

BM 562 77.00 71.38 50' NE Webster + 28th

W.L. 28th St.

So. 3.3 73.7

cb 3.9 73.1

1/4 4.1 72.9

c 4.1 72.9

1/4 3.9 73.1

cb 4.2 72.8

No. 4.5 72.5

SECT A. SEE SKETCH

c 4.1 72.9

1/4 4.3 72.7

cb 3.9 73.1

So. 3.2 73.8

SECT B

So. 4.1 72.9

cb 4.4 72.6

1/4 4.6 72.4

c 4.6 72.4

14' obs.  
13' 1/4 S

EVERETT.

1/4 4.3 72.7

cb 4.7 72.3

N 4.5 72.5

13.5' W. of B

N 4.57 72.43 = ctr of 4' walk to house

50' W. of B

N 4.9 72.1

cb 5.2 71.8

1/4 5.1 71.9

c 5.1 71.9

1/4 5.0 72.

cb 5.0 72.

S- 4.2 72.8

100' W. of B

S 4.8 72.2

cb 5.5 71.5

1/4 5.2 71.8

c 5.6 71.4

1/4 5.1 71.9

cb 5.5 71.5

77.00

No.		5.4	71.6
No.	100.5 W. of B	5.5	71.5
No.	118"	5.6	71.4
	150' W. of B"		ctr. of 9' door to 247490
No.		6.0	71.
ct		5.7	71.3
1/2		6.1	70.9
c		6.1	70.9
1/2		6.0	71.
ct		6.3	70.7
So.		5.3	71.7
	185' W. of B"		
So.		5.7	71.3
ct		6.5	70.5
1/2		6.4	70.6
c		6.6	70.4
1/2		6.8	70.2
ct		6.8	70.2
No.		6.0	71.
	200' W. of B"		
No.		7.0	70.
ct		7.0	70.

EVERETT.

1/2		6.8	70.2
c		6.9	70.1
1/2		6.9	70.1
ct		6.8	70.2
So.		6.1	70.9
	225' W. of B"		
So.		6.2	70.8
+4		6.9	70.1
ct		7.0	70.
1/2		7.0	70.
c		7.0	70.
1/2		7.0	70.
ct		7.0	70.
No.		7.1	69.9
	250' W. of B		
No.		7.9	69.1
ct		6.1	70.9
+5		5.8	71.2
1/2		6.0	71.
c		6.6	70.4



7700

+7		
1/4	7.7	69.3
cb	7.4	69.6
	7.5	69.5
+11		
So	7.4	67.6
	6.8	70.2
265' W oX "B"		
So	7.6	69.4
cb	7.8	69.2
1/4	7.6	69.4
c	7.7	69.3
1/4	7.2	69.8
cb	7.9	69.1
No.	8.2	68.8
300' W oX B		
No.	7.8	69.2
cb	7.9	69.1
1/4	7.8	69.2
c	7.5	69.5
1/4	7.6	69.4
cb	7.6	69.4

EVERETT

So		
	7.7	69.3
T.P.	4.29	73.86
	7.43	69.57
325' W oX "B"		
So	3.9	69.96
cb	4.0	69.86
1/4	4.3	69.56
c	4.4	69.46
1/4	4.0	69.86
cb	3.4	70.46
No.	4.4	69.46
350' W oX "B"		
No.	4.7	69.76
cb	4.1	69.76
1/4	4.1	69.76
c	4.3	69.56
1/4	4.3	69.56
cb	4.4	69.46
So	3.8	70.06

400' W. of B.

So.	4.5	69.36
cb	5.0	68.86
1/4	4.5	69.36
c	4.2	69.66
1/4	4.5	69.36
cb	4.8	69.09
No.	4.5	69.36

450' W. of B"

No.	5.1	68.76
cb	5.2	68.66
1/4	5.2	68.66
c	5.0	68.86
1/4	5.2	68.66
cb	5.7	68.16
So.	5.3	68.56

499.50' W. of B" = SECT. C

So.	6.1	67.76
cb	6.1	67.76
1/4	6.2	67.66

c	6.1	67.76
1/4	6.1	67.76
cb	5.6	68.26
N	5.4	68.46

23.94' W. of C" = SECT. D

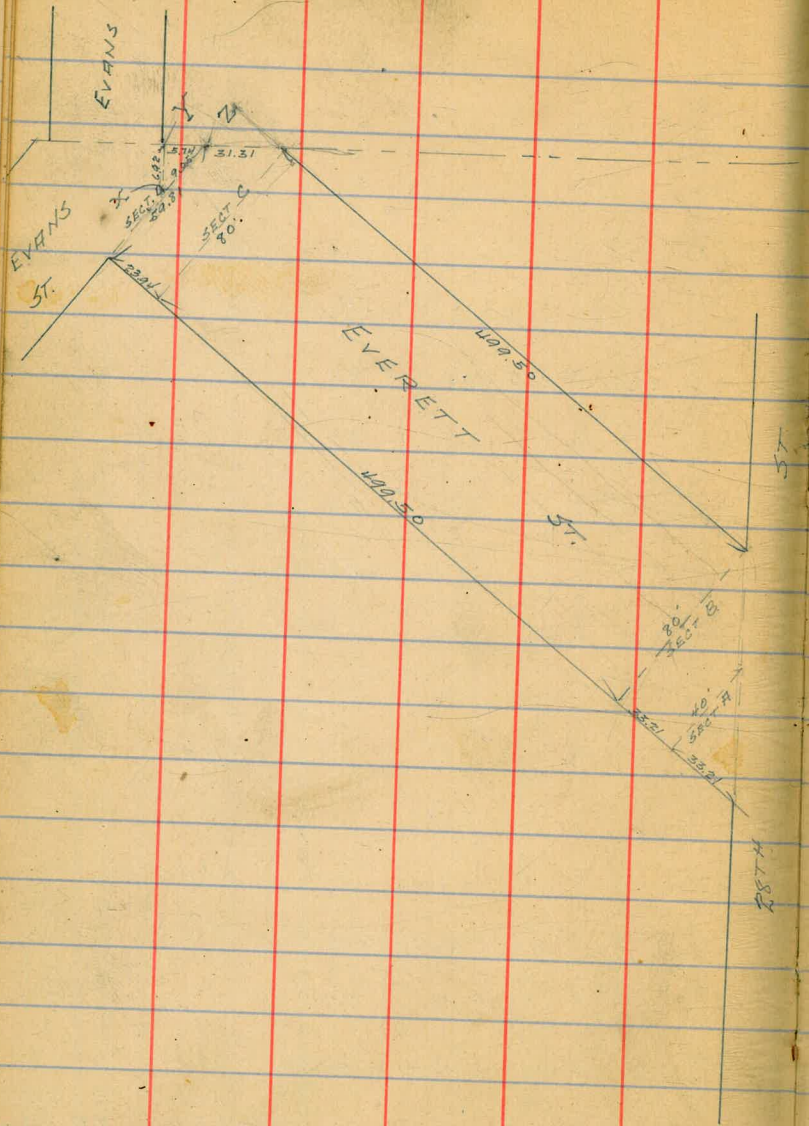
No. <sup>produced</sup> Line + 20.19 = Pueblo Line	6.1	67.76 = Point Z
1/4	7.0	66.86
1/4 + 2.24 = Point X	7.0	66.86
c	7.3	66.56
1/4	7.2	66.66
cb	7.2	66.66
+7	6.6	67.26
So.	6.6	67.26

Point Y

No.	6.9	66.96
on Curb East Side Evans + Pueblo Line	7.27	66.59

T.P.	3.69	70.51	7.04	66.82
on B.M.	6.37	71.38	5.47	65.04 = 65.01
on B.M.			0.0	71.38

B.P. SE EVANS  
+ N STSCorrect Elev  
of 50' at B.M.  
+ Webster



5/11/17  
Gregory  
Moore  
Miller

CROSS SECTION OF  
THE EAST HALF OF CURLEW ST = 50' ST 10' WALK  
From the Center Line of Palm St  
To Quince St  
see sketch page 10

1584

or BM.	1327	14843	135.16	Mon Ctr Dove & Palm
T.P.	10.53	158.41	0.55	147.88
		Center of Palm St. (East of Curlew) = 60' ST		
ctr		3.6	154.8	
1/4		2.1	155.0	
cb		3.2	155.2	
+5		4.7	153.7	
E		9.1	149.3	
+35		35.2	123.2	
+50		41.5	116.9	
+60		45.6	112.8	
		No. Quarter of Palm (Ditto)		
-60		42.9	115.5	
-35		34.4	124.0	
E		7.5	150.9	
+5		4.0	154.4	
cb		2.7	155.7	
1/4		2.7	155.7	
ctr		2.8	155.6	

No. Curb of Palm (Ditto)

ctr	3.2	155.2
1/4	2.3	156.1
cb	2.2	156.2
+5	3.5	154.9
E	6.4	152.0
+30	30.3	128.1
+60	39.0	119.4
		No. Line of Palm (East of Curlew)
-60	36.8	121.6
-27	25.4	133.0
E	5.7	152.7
+6	2.9	155.5
cb	1.6	156.8
1/4	2.0	156.4
ctr	3.1	155.3
		No. Line of Palm (or on a line joining N/L Palm on the East and N/L Palm on West) Section "A"
ctr	3.1	155.3
1/4	1.8	156.6
cb	1.4	157.0

158.41

+4 2.9 155.5

E 5.7 152.7

No. Line Palm (West of Curlew) SECTION B

-50 31.8 126.6

-27 24.4 134.0

-3 7.0 151.4

E 5.4 153.0

cb 1.2 157.2

1/2 1.6 156.8

ctr 3.0 155.4

10' No.

ctr 2.5 155.9

1/2 1.2 157.2

+3 1.0 157.4

cb 3.7 154.7

+5 6.7 151.7

E 8.3 150.1

+8 8.8 149.6

+20 20.5 137.9

+40 26.0 132.4

158.4

E 1/2 CURLEW

20' No.

-40 23.6 134.8

-13 16.2 142.2

E 11.2 147.2

+7 8.8 149.6

cb 6.7 151.7

1/4 0.9 157.5

ctr 1.7 156.7

32' No.

ctr 0.7 157.7

+5 0.6 157.8

1/4 1.8 156.6

cb 7.5 150.9

+5 10.1 148.3

E 11.9 146.5

+13 14.1 144.3

+30 18.3 140.1

45' No.

-20 12.9 145.5

E 9.4 149.0

cb 4.7 153.7

158.41166.6 E 1/2 CURLEW

1/4		0.3	158.1
T.P.	8.69	166.59	0.51 157.90
+3		7.7	158.9
ctr		80	158.6
	60' No.		
ctr		6.9	159.7
+1		6.7	159.9
1/2		7.2	159.4
cb		20	157.6
+5		10.5	156.1
E		130	153.6
+8		16.3	150.3
+15		17.7	148.9
	100' No.		
-10		9.9	156.7
E		2.3	158.3
cb		7.0	159.6
+4		61	160.5
1/4		48	161.8
+5		37	162.9

ctr		4.0	162.6
	130' No.		
ctr		1.6	165.0
1/4		1.9	164.7
cb		2.7	163.9
E		3.8	162.8
+5		4.5	162.1
T.P.	12.23	178.12	0.70 165.89
	150' No.		
E		11.6	166.5
cb		11.3	166.8
1/4		10.7	167.4
+3		10.4	167.7
ctr		11.6	166.5
	175' No.		
ctr		9.9	168.2
+2		6.6	171.5
1/4		2.0	171.1
cb		2.4	170.7
E		2.8	170.3

178.12

300' No.

E		3.3	174.8	
cb		2.8	175.3	
1/4		2.1	176.0	
+4		1.8	176.3	
ctr		8.1	170.0	
T.P.	460	186.68	1.02	177.08

215' No.

ctr		15.4	171.3
+2		8.7	178.0
+4		7.5	179.2
1/4		7.4	179.3
cb		8.1	178.6
+7		8.6	178.1
E		9.8	176.9

225' No.

E		10.2	176.5
+3		8.7	178.0
cb		6.9	179.8
1/4		5.8	180.9

186.7

E 1/2 Curlew

+1		5.2	181.5
+4		5.4	181.3
+6.5		7.4	179.3
ctr		14.7	172.0

235' No.

ctr		14.0	172.7
+1.5		6.0	180.7
+4		3.8	182.9

1/4		4.0	182.7
-----	--	-----	-------

+1		5.3	181.4
----	--	-----	-------

+5		7.8	178.9
----	--	-----	-------

cb		8.1	178.6
----	--	-----	-------

E		10.5	176.2
---	--	------	-------

245' No.

E		10.8	175.9
---	--	------	-------

+7		10.1	176.6
----	--	------	-------

cb		8.9	177.8
----	--	-----	-------

+1		8.4	178.3
----	--	-----	-------

+7		6.6	180.1
----	--	-----	-------

1/4		3.3	183.4
-----	--	-----	-------

186.68

+2			2.2	184.5
+5			2.3	184.4
+6.5			4.5	182.2
ctr			13.2	173.5
T.P.	6.21	190.83	2.06	184.62
		275' No.		
ctr.			15.0	175.8
+1.5			4.5	186.3
+3.5			2.6	188.2
+6.5			2.5	188.3
1/4			3.5	187.3
cb			12.9	177.9
+2			15.0	175.8
E			14.9	175.9
		300' No.		
E			11.9	178.9
+2			14.3	176.5
cb			14.2	176.6
1/4			5.3	185.5
+1.5			11.0	189.8

190.8

E 1/2 Curlew

+2			0.2	190.4
+5.5			4.3	186.5
ctr.			13.3	177.5
		302' No.		
ctr			13.1	177.7
+1.5			6.0	184.8
+4.5			4.8	186.0
1/4			4.5	186.3
cb			14.0	176.8
+8			14.1	176.7
E			11.9	178.9
		315' No.		
E			10.2	180.6
+5			11.2	179.4
+6			13.3	177.5
cb			13.3	177.5
+5			12.9	177.9
1/4			9.6	181.2
+2			7.8	183.0
+6			8.9	181.9



190.83

+7 12.1 178.7

ctr 12.1 178.7

325' No

ctr 11.0 179.8

+4 10.5 180.3

1/4 11.7 179.1

cb 12.2 178.6

+2 8.7 182.1

E 8.9 181.9

335.6' No. = S.L. Quince St. 60' WIDE

E 8.4 182.4

+8 8.0 182.8

cb 10.1 180.1

+2 10.6 180.2

1/4 10.5 180.3

ctr 10.4 180.4

So. Curb

ctr 9.7 181.1

1/4 9.5 181.3

cb 9.4 181.4

190.83

E 1/2 CURLEW

+2 7.5 183.3

+8 7.4 183.4

E 8.7 182.1

So Quarter.

E 7.9 182.9

+2 6.9 183.9

cb 8.0 182.8

+2 9.4 181.4

1/4 9.1 181.7

ctr 9.0 181.8

Center Quince

ctr 8.3 182.5

1/4 8.6 182.2

+5 8.7 182.1

cb 7.3 183.5

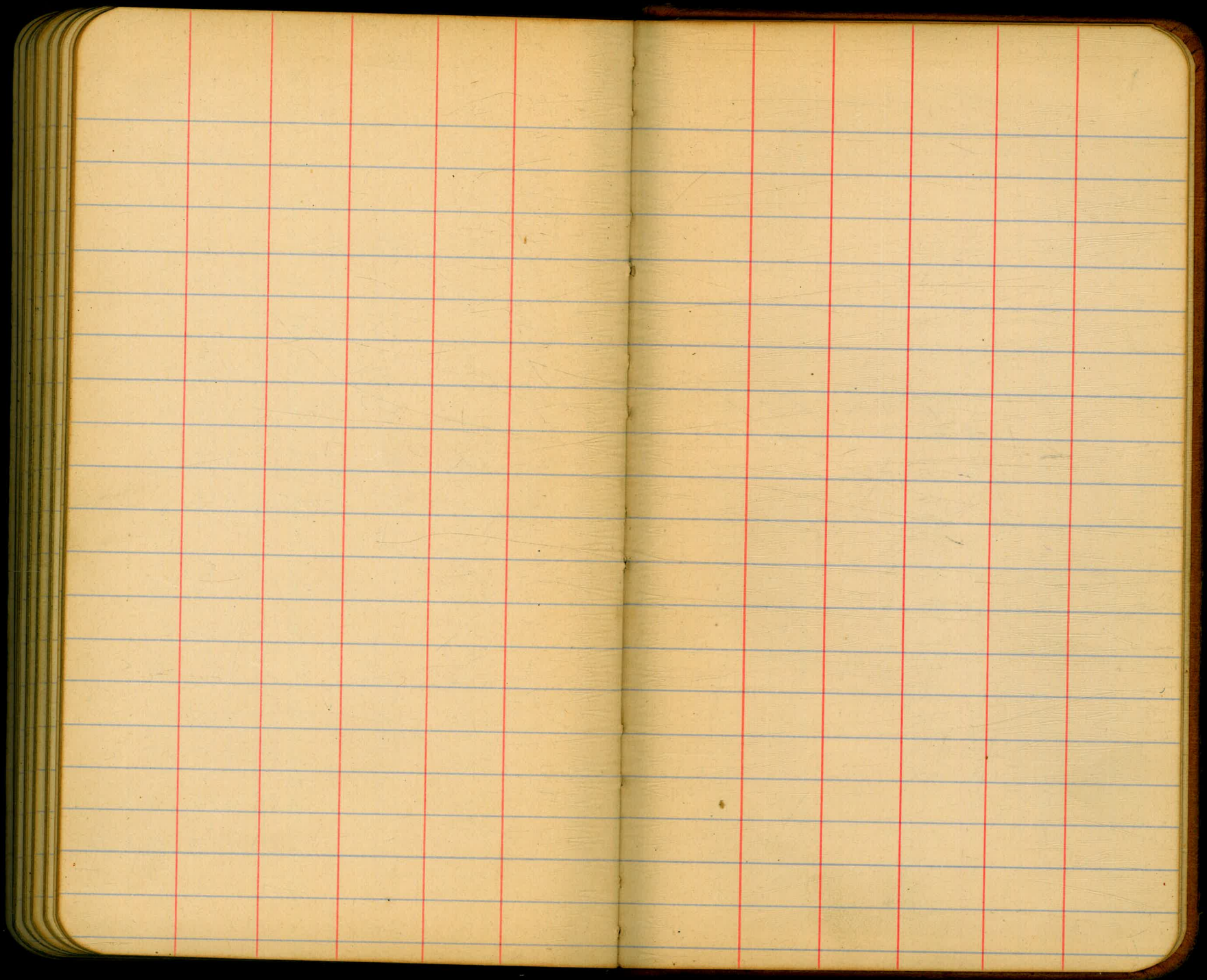
+3 6.4 184.4

E 6.3 184.5

11.96 178.87 <sup>stk SW PL.</sup>  
<sub>= 178.82</sub>

12.35 178.48 <sup>cb = 178.57</sup>

87.00 178.17





5/16/17  
62000  
10000  
10000

5510  
40  
108.6  
5536  
314.4

5510  
40  
108.6  
5536  
314.4

38096  
2037  
177.26  
5308

40  
55  
108.6  
108.6  
454  
360.4

STANCES FROM CENTER OF ROADWAY FOR CROSS-SECTIONING  
ROADWAY 14 FEET WIDE. SIDE SLOPES 1½ TO 1.  
FOR SINGLE TRACK EMBANKMENT.

	0	.1	.2	.3	.4	.5	.6	.7	.8	.9	
7.00	7.15	7.30	7.45	7.60	7.75	7.90	8.05	8.20	8.35	0	
8.50	8.65	8.80	8.95	9.10	9.25	9.40	9.55	9.70	9.85	1	
10.00	10.15	10.30	10.45	10.60	10.75	10.90	11.05	11.20	11.35	2	
11.50	11.65	11.80	11.95	12.10	12.25	12.40	12.55	12.70	12.85	3	
13.00	13.15	13.30	13.45	13.60	13.75	13.90	14.05	14.20	14.35	4	
14.50	14.65	14.80	14.95	15.10	15.25	15.40	15.55	15.70	15.85	5	
16.00	16.15	16.30	16.45	16.60	16.75	16.90	17.05	17.20	17.35	6	
17.50	17.65	17.80	17.95	18.10	18.25	18.40	18.55	18.70	18.85	7	
19.00	19.15	19.30	19.45	19.60	19.75	19.90	20.05	20.20	20.35	8	
20.50	20.65	20.80	20.95	21.10	21.25	21.40	21.55	21.70	21.85	9	
22.00	22.15	22.30	22.45	22.60	22.75	22.90	23.05	23.20	23.35	10	
23.50	23.65	23.80	23.95	24.10	24.25	24.40	24.55	24.70	24.85	11	
25.00	25.15	25.30	25.45	25.60	25.75	25.90	26.05	26.20	26.35	12	
26.50	26.65	26.80	26.95	27.10	27.25	27.40	27.55	27.70	27.85	13	
28.00	28.15	28.30	28.45	28.60	28.75	28.90	29.05	29.20	29.35	14	
29.50	29.65	29.80	29.95	30.10	30.25	30.40	30.55	30.70	30.85	15	
31.00	31.15	31.30	31.45	31.60	31.75	31.90	32.05	32.20	32.35	16	
32.50	32.65	32.80	32.95	33.10	33.25	33.40	33.55	33.70	33.85	17	
34.00	34.15	34.30	34.45	34.60	34.75	34.90	35.05	35.20	35.35	18	
35.50	35.65	35.80	35.95	36.10	36.25	36.40	36.55	36.70	36.85	19	
37.00	37.15	37.30	37.45	37.60	37.75	37.90	38.05	38.20	38.35	20	
38.50	38.65	38.80	38.95	39.10	39.25	39.40	39.55	39.70	39.85	21	
40.00	40.15	40.30	40.45	40.60	40.75	40.90	41.05	41.20	41.35	22	
41.50	41.65	41.80	41.95	42.10	42.25	42.40	42.55	42.70	42.85	23	
43.00	43.15	43.30	43.45	43.60	43.75	43.90	44.05	44.20	44.35	24	
44.50	44.65	44.80	44.95	45.10	45.25	45.40	45.55	45.70	45.85	25	
46.00	46.15	46.30	46.45	46.60	46.75	46.90	47.05	47.20	47.35	26	
47.50	47.65	47.80	47.95	48.10	48.25	48.40	48.55	48.70	48.85	27	
49.00	49.15	49.30	49.45	49.60	49.75	49.90	50.05	50.20	50.35	28	
50.50	50.65	50.80	50.95	51.10	51.25	51.40	51.55	51.70	51.85	29	
52.00	52.15	52.30	52.45	52.60	52.75	52.90	53.05	53.20	53.35	30	
53.50	53.65	53.80	53.95	54.10	54.25	54.40	54.55	54.70	54.85	31	
55.00	55.15	55.30	55.45	55.60	55.75	55.90	56.05	56.20	56.35	32	
56.50	56.65	56.80	56.95	57.10	57.25	57.40	57.55	57.70	57.85	33	
58.00	58.15	58.30	58.45	58.60	58.75	58.90	59.05	59.20	59.35	34	
59.50	59.65	59.80	59.95	60.10	60.25	60.40	60.55	60.70	60.85	35	
61.00	61.15	61.30	61.45	61.60	61.75	61.90	62.05	62.20	62.35	36	
62.50	62.65	62.80	62.95	63.10	63.25	63.40	63.55	63.70	63.85	37	
64.00	64.15	64.30	64.45	64.60	64.75	64.90	65.05	65.20	65.35	38	
65.50	65.65	65.80	65.95	66.10	66.25	66.40	66.55	66.70	66.85	39	
67.00	67.15	67.30	67.45	67.60	67.75	67.90	68.05	68.20	68.35	40	

Calculated by F. W. Paradis, C. F.

DISTANCES FROM CENTER OF ROADWAY FOR CROSS-SECTIONING  
 ROADWAY 16 FEET WIDE. SIDE SLOPES 1 1/2 TO 1.  
 FOR SINGLE TRACK EMBANKMENT.

	0	.1	.2	.3	.4	.5	.6	.7	.8	.9
0	8.0	8.2	8.3	8.5	8.6	8.8	8.9	9.1	9.2	9.4
1	9.5	9.7	9.8	10.0	10.1	10.3	10.4	10.6	10.7	10.9
2	11.0	11.2	11.3	11.5	11.6	11.8	11.9	12.1	12.2	12.4
3	12.5	12.7	12.8	13.0	13.1	13.3	13.4	13.6	13.7	13.9
4	14.0	14.2	14.3	14.5	14.6	14.8	14.9	15.1	15.2	15.4
5	15.5	15.7	15.8	16.0	16.1	16.3	16.4	16.6	16.7	16.9
6	17.0	17.2	17.3	17.5	17.6	17.8	17.9	18.1	18.2	18.4
7	18.5	18.7	18.8	19.0	19.1	19.3	19.4	19.6	19.7	19.9
8	20.0	20.2	20.3	20.5	20.6	20.8	20.9	21.1	21.2	21.4
9	21.5	21.7	21.8	22.0	22.1	22.3	22.4	22.6	22.7	22.9
10	23.0	23.2	23.3	23.5	23.6	23.8	23.9	24.1	24.2	24.4
11	24.5	24.7	24.8	25.0	25.1	25.3	25.4	25.6	25.7	25.9
12	26.0	26.2	26.3	26.5	26.6	26.8	26.9	27.1	27.2	27.4
13	27.5	27.7	27.8	28.0	28.1	28.3	28.4	28.6	28.7	28.9
14	29.0	29.2	29.3	29.5	29.6	29.8	29.9	30.1	30.2	30.4
15	30.5	30.7	30.8	31.0	31.1	31.3	31.4	31.6	31.7	31.9
16	32.0	32.2	32.3	32.5	32.6	32.8	32.9	33.1	33.2	33.4
17	33.5	33.7	33.8	34.0	34.1	34.3	34.4	34.6	34.7	34.9
18	35.0	35.2	35.3	35.5	35.6	35.8	35.9	36.1	36.2	36.4
19	36.5	36.7	36.8	37.0	37.1	37.3	37.4	37.6	37.7	37.9
20	38.0	38.2	38.3	38.5	38.6	38.8	38.9	39.1	39.2	39.4
21	39.5	39.7	39.8	40.0	40.1	40.3	40.4	40.6	40.7	40.9
22	41.0	41.2	41.3	41.5	41.6	41.8	41.9	42.1	42.2	42.4
23	42.5	42.7	42.8	43.0	43.1	43.3	43.4	43.6	43.7	43.9
24	44.0	44.2	44.3	44.5	44.6	44.8	44.9	45.1	45.2	45.4
25	45.5	45.7	45.8	46.0	46.1	46.3	46.4	46.6	46.7	46.9
26	47.0	47.2	47.3	47.5	47.6	47.8	47.9	48.1	48.2	48.4
27	48.5	48.7	48.8	49.0	49.1	49.3	49.4	49.6	49.7	49.9
28	50.0	50.2	50.3	50.5	50.6	50.8	50.9	51.1	51.2	51.4
29	51.5	51.7	51.8	52.0	52.1	52.3	52.4	52.6	52.7	52.9
30	53.0	53.2	53.3	53.5	53.6	53.8	53.9	54.1	54.2	54.4
31	54.5	54.7	54.8	55.0	55.1	55.3	55.4	55.6	55.7	55.9
32	56.0	56.2	56.3	56.5	56.6	56.8	56.9	57.1	57.2	57.4
33	57.5	57.7	57.8	58.0	58.1	58.3	58.4	58.6	58.7	58.9
34	59.0	59.2	59.3	59.5	59.6	59.8	59.9	60.1	60.2	60.4
35	60.5	60.7	60.8	61.0	61.1	61.3	61.4	61.6	61.7	61.9
36	62.0	62.2	62.3	62.5	62.6	62.8	62.9	63.1	63.2	63.4
37	63.5	63.7	63.8	64.0	64.1	64.3	64.4	64.6	64.7	64.9
38	65.0	65.2	65.3	65.5	65.6	65.8	65.9	66.1	66.2	66.4
39	66.5	66.7	66.8	67.0	67.1	67.3	67.4	67.6	67.7	67.9
40	68.0	68.2	68.3	68.5	68.6	68.8	68.9	69.1	69.2	69.4

Calculated by F. E. Paradis, C. E.

Handwritten notes and diagrams on the right page of the notebook. The notes include various measurements and calculations, such as "100' -15 200' break", "100' W 15.2", "100' W 16.5", "100' W 14.5", "E. of Dove", "338.5", "146.3", "41", "55.0", "179.50", "51.01", "20", "128.50", "100.3 W to d", "36.03", "532.3", "407.3", "80", "407.3", "502.3", "37.6", "6/128.7", "2.5", "21.4", "5", "148.70", "30.73", "28.1", "5", "58.08", "30.79", "28", "30.79".