

*Preliminary Sewers*

**F. B.**

**971**

---

**LEVEL BOOK.**

**No. 410**

---

**IND**



971

MICROFILMED

DEC 16 1964

61.02 NW 32 Nat

0.19  
61.21  
12.82  
48.39  
0.35  
48.74  
12.85  
35.89  
0.14  
36.03  
12.77  
23.26  
0.53  
23.79 23.79  
12.24  
11.55  
+ 0.55  
12.10 12.10  
0.24 5.24  
11.76 4.82  
+ 12.13  
23.89  
- 0.41  
23.48  
+ 12.60  
36.08  
- 0.25  
35.83  
+ 12.78  
48.61 48.61  
- 0.29 4.46  
48.32 44.15  
1.02  
50.34  
- 12.86  
37.48  
0.15  
37.83  
1.17  
36.66

2+55 75  
3+00 8.9 12.5 40.5  
3+15 7.57 9.5 55  
3+40 10.5  
3+60 11.4  
3+90 11.7  
4+15 - 14.1  
4+40 - 14.3

1948.33  
1713.2  
2057.13

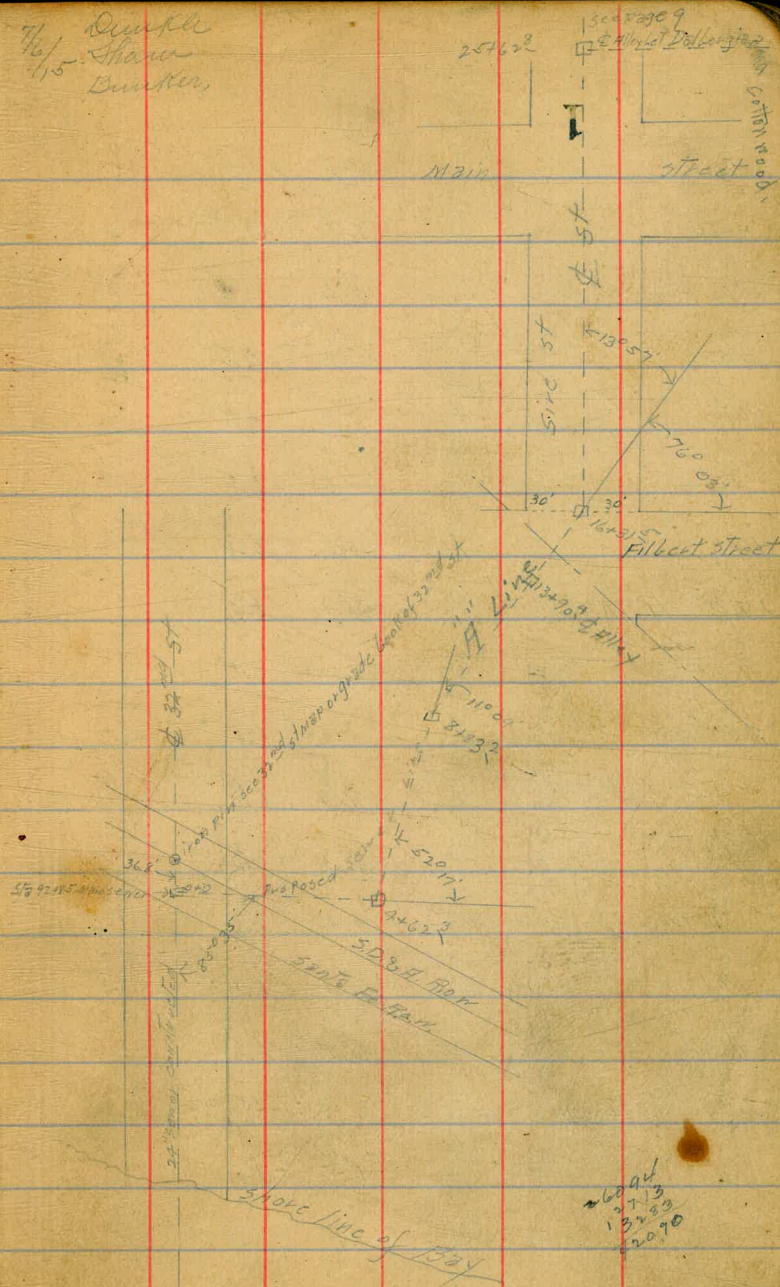


Levels for south Chollas Valley sewer beginning at Pt. in  
 E of 32<sup>nd</sup> St 36.8' south of iron pin in E of 32<sup>nd</sup> St & P.O. W.  
 Line of Santa Fe S.D.R. P.R. or Sta 92+85 main sewer  
 Thence in North Easterly direction to Sta 106+85 or see the Tank  
 Located in Lot T BIK 3 Sierra Park Add. See sketches on  
 Pages 1-9 & 10

B.M.	1.81	9.71	7.90
040	↓	2.3	7.4
+50		3.8	5.9
1		3.4	6.3
+12		3.6	6.1
+17		6.4	3.3
+50		5.9	3.8
2		6.3	3.4
+50		7.4	2.3
3		8.0	1.7
+50		8.4	1.3
4		8.6	1.1
+50		7.9	1.8
+62.3	52°17' 3.97	6.12	7.56 2.15
5			3.6 7.5
+47			5.1 1.0
+43			6.0 0.1
+48			6.3 -0.2

Sheets 1 and 2

7/15  
 Dimple  
 Shaw  
 Dinkler





	6.12			
640		7.7	-1.6	
+50		7.8	-1.7	
7		7.4	-1.3	
+50		6.6	-0.5	
8		5.2	0.9	
+50		4.6	1.5	
+71		3.8	2.3	
+83 <sup>2</sup>	R 11° 09'	5.4	0.7	
9		6.0	0.1	
+35		6.0	0.1	
+50		7.9	-1.8	
10		9.3	-3.2	
+50		9.1	-3.0	
11		8.5	-2.4	
+50		8.6	-2.5	
T.P.	6.61	4.62	8.11	-1.99
12		6.5	-1.9	
+50		6.4	-1.8	
13		6.0	-1.4	

	4.62			2
13+50		6.4	-1.8	
14		6.9	-2.3	
+50		6.5	-1.9	
15		5.3	-0.7	
+10		6.8	-2.2	
+34		5.6	-1.0	
+50		6.0	-1.4	
+84		6.2	-1.6	
+91		2.1	2.5	
16		2.1	2.5	
+03		2.6	-2.0	
113		5.0	-0.4	
+315	13° 57'	5.1	-0.5	
+50		5.3	-0.7	
17		5.2	-0.6	
+50		5.2	-0.6	
18		5.0	-0.4	
+50		5.2	-0.6	
19		4.9	-0.3	
T.P.	3.79	5.30	3.11	1.51



5.30

19+50	3.3	2.0
+93	2.8	2.5
20	5.2	0.1
+04	6.4	-1.1
+50	6.3	-1.0
21	6.0	-0.7
+50	5.7	-0.4
+62 <sup>8</sup> = Alley bet M and Ostberg's	5.7	-0.4
22	5.7	-0.4
+50	5.5	-0.2
23	5.6	-0.3
+40	5.2	-0.1
+44	6.7	-1.4
+50	5.8	-0.5
+55	3.4	1.9
+70	3.1	2.2
+78	6.7	-1.4
+87	4.8	0.5
24	4.4	0.9
+50	4.2	1.1

Levels Changed  
See page 64

T.P. 4.73 6.41 3.62 1.68

6.41

2  
3

25+0	3.1	1.3
+33	6.2	0.2
+41	8.0	-1.6
+50	7.7	-1.3
+55	5.1	1.3
+62 <sup>8</sup> = Alley bet M and Ostberg's	4.99	1.42
26	6.7	1.5
+50	5.3	1.9
+70	6.0	1.7
+80	8.8	-1.1
+95	8.6	-0.9
27	7.2	0.5
+05	6.2	1.5
+49	5.9	1.8
+50	8.1	-0.4
+85	7.9	-0.2
28	6.9	0.8
+30	7.8	-0.1
+35	5.7	2.0

Cottonwood  
6.23 7.70



7.70

28450	6.5	1.7
+63	8.5	-0.5
+74	7.9	-0.2
+80	5.9	1.8
+95	5.8	1.9
29	4.9	2.8
+10	4.1	3.6
+20	5.1	2.6
+30	4.3	3.4
+50	4.9	2.8
3040	5.6	2.1
+50	6.0	1.7
31	6.0	1.7
+50	5.4	2.3
+78	4.3	3.4
32	2.5	5.2
+07	2.5	5.2
+10	3.1	4.6
+22 <sup>2</sup> = 4 Thor st	2.6	5.1
+50	3.6	4.1

7.70

3310	5.4	2.3
450	5.9	1.8
34	5.9	1.8
+50	5.6	2.1
35	5.5	2.2
+50	5.3	2.4
36	5.2	2.5
T.P.	6.08	8.61
+50	5.9	2.7
37	5.8	2.8
+50	5.4	3.2
38	5.0	3.6
+29 <sup>6</sup> = 4 Thor so P. Line	4.9	3.7
+50	5.0	3.6
39	5.1	3.5
+50	4.7	3.7
40	5.0	3.6
+50	5.0	3.6
41	4.6	4.0

2  
4



see page 8664  
Levels changed

41+50 4.1 4.5  
 42 3.8 4.8  
 +50 3.8 4.8  
 43 3.9 4.9  
 +42 = P. Line 230m at E.L. 37.50 3.5 5.1  
 +50 3.8 4.8  
 44 2.7 5.9  
 +50 2.6 6.0  
 45 2.2 6.4  
 +50 2.0 6.6  
 46 2.0 6.6  
 T.P. 2.00 13.69 1.92 6.69  
 +50 6.7 7.0  
 47 6.1 7.6  
 +0.5 = 1/2 Maybank Bator #1 p. 2.50 6.2 7.5  
 +1.5 6.3 7.4  
 +1.7 6.7 8.0  
 +5.0 5.5 8.2  
 48 5.8 7.9  
 +50 5.7 8.0  
 49 5.5 8.2

13.69

49+50 5.0 8.7  
 50+0 5.1 8.6  
 +50 4.5 9.2  
 51 4.6 9.1  
 +50 4.6 9.1  
 52 4.1 9.6  
 +50 4.1 9.6  
 53 3.5 10.2  
 +50 3.6 10.1  
 54 3.3 10.4  
 +50 2.9 10.8  
 55 2.6 11.1  
 T.P. 2.24 12.88 2.65 11.04  
 +50 2.3 11.6  
 56 6.4 12.5  
 +50 6.0 12.9  
 57 6.0 12.9  
 +50 5.6 13.3  
 58 5.0 13.9



1888

58+50	4.8	14.3
59	4.6	14.3
+50	4.1	14.8
60	3.5	15.4
+25 <sup>4</sup> = 4 of Alley 239 <sup>th</sup> St	3.23	15.65
+50	3.5	15.4
61	3.5	15.4
+50	3.1	15.8
+78	3.0	15.9
+80	3.8	15.1
+88	3.8	15.1
+90	4.5	14.4
62	3.8	15.1
+50	3.3	15.6
63	3.0	15.9
+50	2.9	16.0
64	4.6	14.3
+05 <sup>4</sup> = 4 39 <sup>th</sup> St to Alley N of Alpha St 7.40      21.72	4.56	14.33
+50	6.6	15.1

21.72

64+63	7.7	14.0
65+0	8.5	13.2
+50	8.8	12.9
66	6.9	14.8
+50	6.4	15.3
67	6.0	15.7
+50	5.4	16.3
+88	4.7	17.0
68	5.5	16.2
+14	6.0	15.7
+50	5.8	15.9
+58	5.8	15.9
+60	5.1	16.6
69	4.9	16.8
+50	5.3	16.4
+70	5.5	16.2
70+0	4.1	17.6
+50	2.4	19.3
+68 <sup>9</sup> = 30 m of E. 40 <sup>th</sup> St according to Jennings 7.81      26.86	2.67	19.05



26.86

71+0		7.1	19.8
+50		7.3	19.6
+75		9.3	17.6
72		9.0	17.9
+50		8.2	18.7
+58 - 4 <sup>7</sup> Z street		8.0	18.9
73		8.1	18.8
+50		7.4	19.5
74		5.6	21.3
+50		5.2	21.7
75		5.3	21.6
+50		4.9	22.0
76		5.2	21.7
+50		4.3	22.6
77		4.5	22.4
+50		3.8	23.1
78		4.0	22.9
T.P	5.74	28.78	3.82 23.04
+50		5.7	23.1

Page 12

28.78

79+0		5.0	23.8
+15 <sup>2</sup> - 30 <sup>6</sup> E of W. 41 <sup>st</sup> Street		4.5	24.3
+50		5.3	23.5
80+0		5.0	23.8
+50		4.9	23.9
81		4.8	24.0
+50		4.9	23.9
82		5.5	23.3
+30		5.6	23.2
+34		12.8	16.0
+45		13.7	15.1
+50		12.7	16.1
+58		9.6	19.2
+78		8.6	20.2
83+0		5.8	23.0
+50		5.5	23.3
T.P	6.96	29.80	5.94 22.84
84		6.6	23.2
+50		5.7	24.1
85		4.7	25.1

Page 12



		29.80		
85+50			4.2	25.6
86			4.1	25.9
+50			3.9	25.9
+76			4.2	25.6
87			4.2	25.6
+13			4.4	25.4
+16			5.2	24.6
+24			4.7	25.1
+26			4.0	25.8
+50			3.9	25.9
+92			3.2	26.6
88			3.9	25.9
+50			3.6	26.2
89			3.5	26.3
T.P.	5.45	31.89	3.36	26.44
+50			5.4	26.5
90			5.2	26.7
+50			4.9	27.0
+68	30' Edm. L. 4 <sup>th</sup> St National Assoc.		4.9	27.0

		31.89		
90+85			3.5	28.4
T.P.	5.36	35.48	1.77	30.12
91+0			4.3	31.2
+10			2.3	33.2
+22			1.9	33.6
+50			6.6	28.9
+85			7.4	28.1
92			7.3	28.2
+125	L 39° 10'		7.6	27.9
+50			6.9	28.6
T.P.	11.30	40.23	6.55	28.93
93			11.3	28.9
+50			11.3	28.9
94			10.6	29.6
+28			10.9	29.3
+50			9.5	30.7
95			8.1	32.1
+35			8.9	31.3
+50			7.5	32.7

4  
8



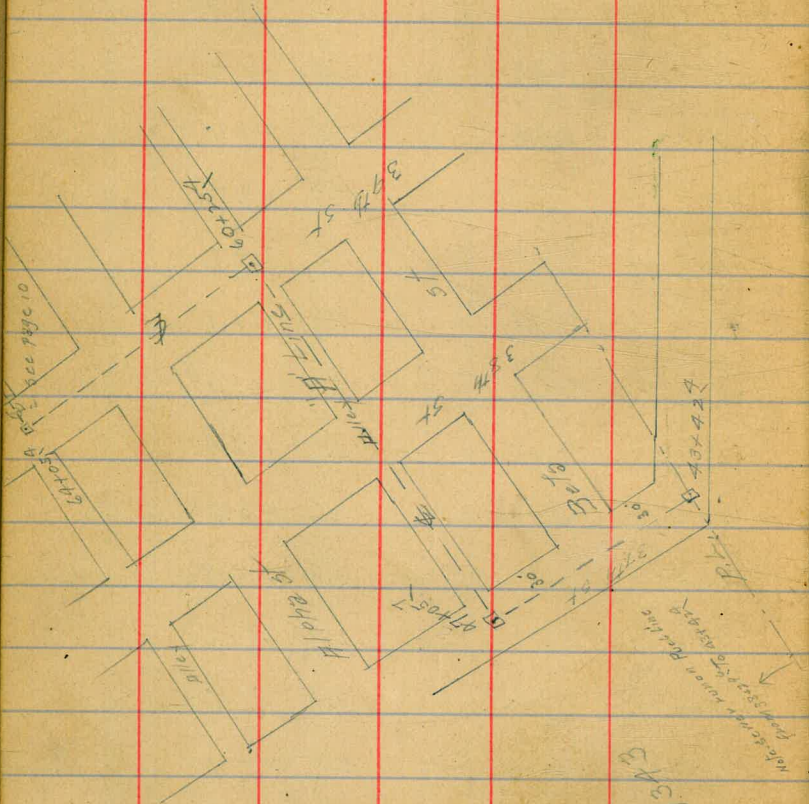
95767	40.23	5.5	34.7
+82		5.4	34.8
+90		6.7	33.5
+93		8.1	32.1
9640		8.0	32.2
+05		7.2	33.0
+50		4.7	35.5
+89 <sup>7</sup> = P.L.		3.4	36.8
9710		3.3	36.9
+28		4.2	36.0
+35		5.6	34.6
+50 <sup>6</sup> R 30°37'	46.61	3.61	36.62
9840		7.0	39.6
+35		6.4	40.2
+48		7.8	38.8
+50		8.5	38.1
+55		9.7	36.9
+67		8.6	38.0
+95		7.5	39.1

9940	46.61	8.4	38.2	
+10		9.2	37.4	
+18		8.2	38.4	
+50		6.4	40.2	
100400		5.0	41.6	
+06		5.7	40.9	
+11		7.5	39.1	
+27		5.5	41.1	
+27 L 46°14'		5.5	41.1	
+45		3.7	42.9	
+50		3.6	43.0	
+65		3.8	42.8	
10140		2.0	44.6	
+10		3.1	43.5	
+42		2.5	44.1	
+50		1.5	45.1	
T.P.	10.67	56.05	1.23	45.38
10240		10.0	46.0	
+15		9.0	47.0	

Continued page 11



1705.7  
4342.4  
363.3



P.L. 1343

384225 Birch St

WATER MAIN RAILROAD

P.L. 1161

Cottonwood

H. Line St

SIRC

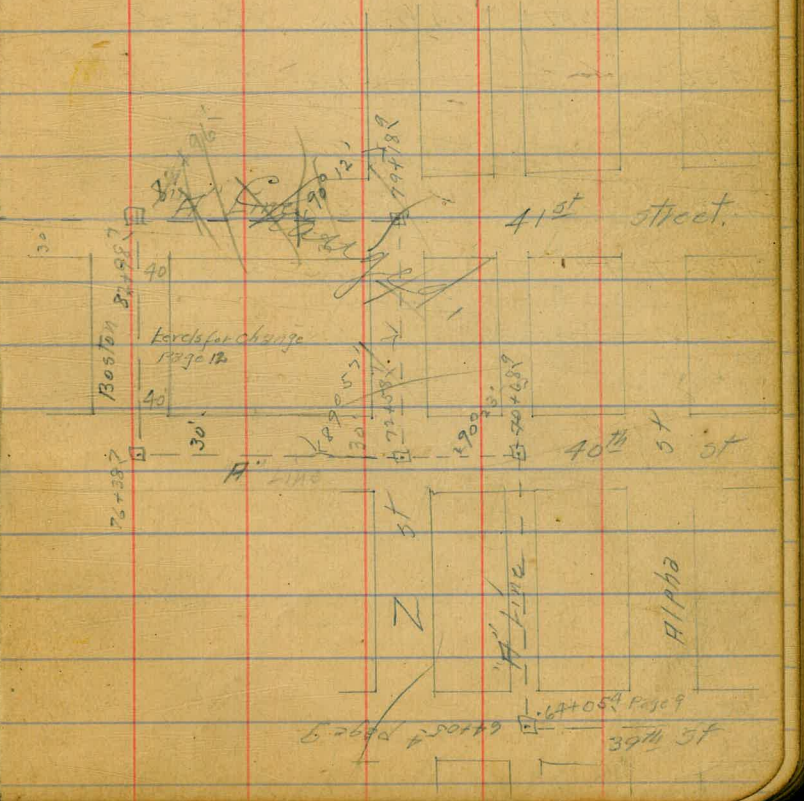
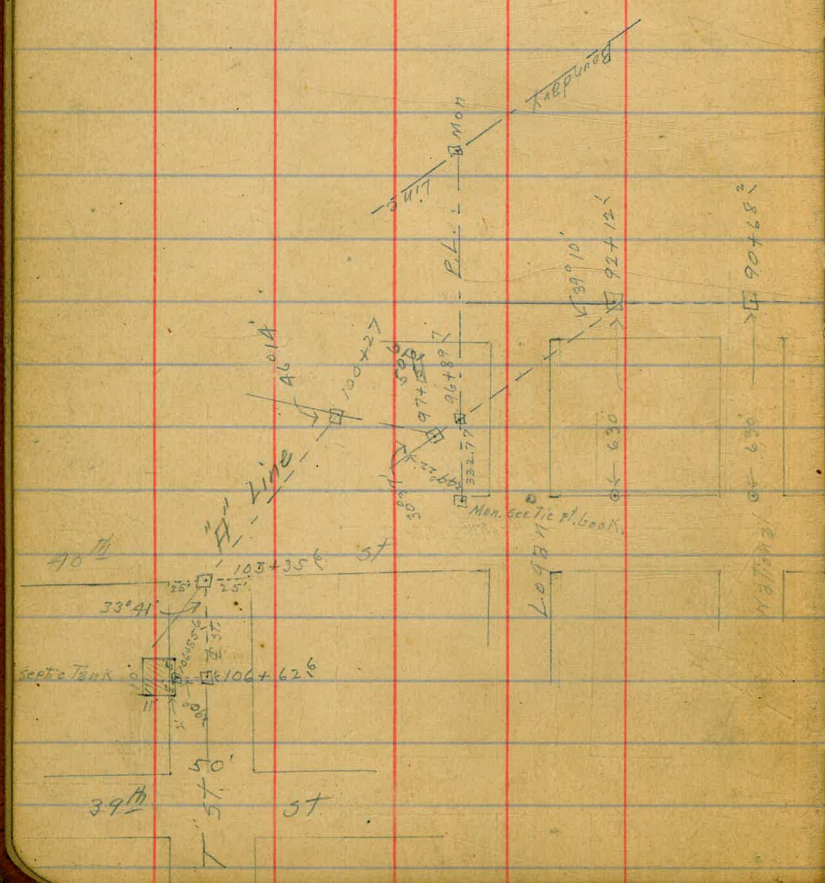
34424

5462 5221 47144

Dalbergia

Thor





9068.2  
18.0  
9055.2  
61.0  
9116.2

7918.1  
7116.2 T.P.  
95.7

82.987  
7638.7  
7238.7  
380.0  
9068.2  
8298.7  
769.5  
190.0  
579.5  
380.0

8298.7  
7918.9  
7253.7  
665.2

8298.7  
7918.9  
579.5



3

A

56.05

102+50

8.1 48.0

103+0

7.0 49.0

+35<sup>6</sup> = M.L. 40<sup>th</sup> ST  
L. 33° 41'

5.9 50.1

+50

5.7 50.3

104+0

4.4 51.6

+50

3.3 52.7

105+0

1.2 54.8

T.P.

9.87

64.79

1.13 54.92

+50

7.8 57.0

106

2.7 57.1

+50

6.9 57.9

+62<sup>6</sup> R 90°

6.5 58.3

+85<sup>6</sup> = S.L. Septic Tank

6.5 58.3

Levels for Change "H" line from sta 72+52 to sta 82+19.6

B.M.	6.03	24.98	18.20
72+52			6.1 18.9
73+0			5.7 19.3
750			5.2 19.8
74			5.0 20.0
+40			6.6 18.4
+427			8.5 16.5
+53			9.0 16.0
+65			9.6 15.4
+67			8.5 16.5
+78			9.7 15.6
+80			11.4 13.9
+85			13.0 12.0
+87			14.5 10.5
+93			16.7 8.3
75+0			15.3 9.7
+03			15.0 10.0
+05			12.1 12.9
+16			12.1 12.9
+21			9.5 16.5
+37			8.6 16.4
+44			11.0 14.0
+50			8.5 16.5
+60			5.7 19.3
76+0			5.3 19.7
+97			5.4 19.6
+50			5.5 19.5
77+0			5.4 19.6
+50			5.3 19.7
78+0			3.5 21.5
+50			3.8 22.2
79+0			2.6 22.4
+50			2.5 22.5
80+0			2.4 22.6
+50			2.3 22.7
81+0			4.2 20.8
+35			2.5 22.5
+50			2.0 23.0
82+0			1.4 23.6
+50			2.1 22.9
+90			2.6 22.4

Sheet 2.

12



Levels for proposed sewer & Alley between Filbert  
& Main from & Sire in westerly direction for 155'

BM	SPK Sire	B Main	1.51	
	3.89	5.40		
0+0 = & Sire		5.81	-0.4	
+16	✓	6.5	-1.1	
+17		6.0	-0.6	
+50		6.4	-1.0	
1		6.6	-1.2	
+50	Sheet B	7.2	-1.8	
+55	Sheet	7.2	-1.8	

Levels for proposed sewer & Alley between Filbert  
& Main from & Sire in south easterly direction  
for 1265' or 25' from Union St

13

BM	3.89	5.40	1.51	
0+0 = & Sire	✓	5.81	-0.4	
+16		6.0	-0.6	
+17		5.9	0.0	
+50		5.3	0.1	
+63		6.2	-0.8	
+75		5.6	-0.2	
1	Sheet B	6.8	-1.4	
+50		5.1	0.3	
2		5.0	0.4	
+50		5.3	0.1	
3		5.5	-0.1	
+50		5.5	-0.1	
+35		4.9	0.5	
4		3.6	1.8	
+50		0.8	4.6	
T.P.	11.66	16.45	0.61	4.79
5		10.3	6.2	
+50		10.7	5.8	



Levels for proposed sewer & Alley between Main  
 & Dalbergia from & Sire in South Easterly  
 direction for 1265' or 25' from Una St.

13  
14

	16.45		
640		9.7	6.8
+43		8.0	8.5
+45		8.8	7.7
+50		8.5	8.0
+75		8.3	8.2
+76		7.1	9.4
+90		7.4	9.1
7		6.1	10.4
+50		4.9	11.6
8		4.7	11.8
+50		3.9	12.6
9		3.7	12.8
+50		2.4	14.1
T.P.	614	20.73	14.59
10		5.9	14.8
+50		4.6	16.1
11		5.1	15.6
+50		5.7	15.0
12		6.8	13.9
+50		7.0	13.7
+65		7.0	13.7

B.M.	2.77	4.28	1.51
010 = & Sire			4.55 -0.3
+50			4.3 0.0
1			4.1 0.2
+50			3.1 1.2
70			3.1 1.2
72			2.5 1.8
2			2.6 1.7
+50			2.3 2.0
+65			2.5 1.8
+90			4.3 0.0
3			3.3 1.0
+50			2.8 1.5
4			2.8 1.5
+30			2.9 1.4
+50			1.8 2.5
T.P.	12.48	15.85	0.91 3.37
5			10.2 5.7
+50			8.5 7.4

Sheet 3



15.85

6+0		6.4	9.5	
+43		6.5	9.4	
+45		7.8	8.1	
+50		7.4	8.5	
+76		7.4	8.5	
+77		6.0	9.9	
7		5.7	10.2	
+50		4.6	11.3	
8		4.6	11.3	
+50		3.9	12.0	
+90		3.9	12.0	
9		3.2	12.9	
+25		1.0	14.9	
T.P.	6.95	21.83	0.97	14.88
+50		6.9	14.9	
10		5.9	15.9	
+50		4.9	16.9	
11		3.9	17.9	
+50		3.6	18.2	
12		4.5	17.3	
+50		4.9	16.9	
+65		5.2	16.6	

Levels for proposed sewer & Alley between Dalbergia  
& Cottonwood from (A Line see page 9) & Thor in  
south Eastern direction for 6.95 or 25 from U13 st

B.M.		5.10	15	
0+0	12.43	17.53	12.4	
+13	✓		12.7	4.8
+15			11.6	5.9
+50			10.3	7.2
1			7.7	9.8
+50			4.4	13.1
2			1.1	16.4
T.P.	12.14	27.18	0.49	17.04
+50			9.0	20.2
3			5.4	23.8
+50			3.1	26.1
4			2.7	26.5
+50			3.5	25.7
5			4.8	24.4
+50			6.2	23.0
6			6.6	22.6
+50			6.5	22.7

Sheet 3



Levels for proposed sewer  $\Phi$  Alley between Cottonwood & Birch from  $\Phi$  Thor in S. Easterly direction for 245'

Levels for "B" Line see blue print

16

B.M.	11.28	14.98	3.70	
0+0			12.4	2.6
<del>+50</del>			<del>12.6</del>	<del>2.4</del>
<del>+80</del>			<del>12.8</del>	<del>2.2</del>
<del>1</del>			<del>11.3</del>	<del>3.7</del>
+20			9.2	5.8
+50			2.6	12.4
T.P.	12.64	27.42	0.20	14.78
+75			7.5	19.9
2			1.6	25.8
T.P.	7.50	33.92	1.50	25.92
+25			5.2	28.2
+45			4.21	29.2

Sheet 3

Levels changed  
see page 67

B.M.	5.46	9.16	3.70	
0+0 = $\Phi$ Thor			5.8	3.4
+50			5.8	3.4
1			5.7	3.5
+50			5.4	3.8
2			5.2	4.0
+50			5.0	4.2
3			5.0	4.2
+10 <sup>5</sup> R 34° 33'			5.0	4.2
+50			5.0	4.2
+93			5.0	4.2
4			5.8	3.4
+50			6.2	3.0
5			6.3	2.9
+50			6.9	2.3
6			6.6	2.6
+46 <sup>5</sup> $\Phi$ Alley bet Cottonwood & Birch			6.31	2.85

Sheet 3

Levels changed  
see page 66



Levels for proposed sewer in Alley between Cottonwood  
 & Birch from sta 6+46.5 "B" Line in westerly direction  
 for 295'

B.M.	12.91	15.76		2.85
0+0 = sta 6+46.5 "B" Line			12.9	
+40		✓	12.8	8.0
+50			12.1	3.9
1			6.7	9.1
+50			1.7	14.1
T.P.	11.94	27.05	0.65	15.11
2			6.7	20.4
+20			5.4	21.9
+50			1.2	25.9
T.P.	5.50	32.17	0.38	26.67
+70			4.2	28.0
+95			3.3	28.9

Sheet 3

Levels for proposed sewer in Alley between Cottonwood  
 & Birch from sta 6+46.5 "B" Line 5 Feet for ~~1755~~ 1755

B.M.	10.40	13.25		2.85
0+0 = sta 6+46.5 "B" Line			10.4	2.9
+35		✓	10.0	3.3
+50			8.3	5.0
1			7.2	6.1
+06			5.6	7.7
+50			2.4	10.9
T.P.	10.03	22.76	0.52	12.73
2			7.9	14.9
+15			8.5	14.3
+50			7.1	15.9
3			5.3	17.5
+13			4.5	18.3
+50			7.0	15.8
4			10.2	12.6
+35			10.2	12.6
+50			8.4	14.4
+75			7.5	15.3
5			9.1	18.7

Sheet 8

17



22.76.

5+50			3.6	19.2
+60			2.9	19.9
6			4.5	18.3
+50			2.6	20.2
7			1.7	21.1
+50			1.8	21.0
8			0.5	22.3
T.P.	6.79	29.25	0.30	22.46
+50			7.0	22.3
9			6.7	22.6
+50			5.7	23.6
10			5.0	24.3
+50			4.7	24.6
11			5.1	24.2
+50			5.1	24.2
12			4.8	24.5
+50			4.6	24.7
13			3.9	25.4
+50			2.7	26.6

29.25

18

13+78			2.3	27.0
+80			3.2	26.1
14+0			2.2	27.1
+50			3.1	26.2
15			3.9	25.4
T.P.	9.55	34.89	3.91	25.34
+50			8.8	26.1
16			6.7	28.2
+50			5.4	29.5
17 cut 9'			3.9	31.0
+50			4.1	30.8
+55 cut 9'			4.2	30.7



Levels for proposed sewer & Alley between  
 Birch & Beaulieu from "A" (20+73.3) in South Easterly  
 direction for 2015'

26.25

19

B.M.	11.45	16.55	5.10	6+0	6.4	19.9	
0+0		✓	12.8	3.8	+50	6.1 20.2	
+50			12.6	4.0	7	4.9 21.4	
1			12.0	4.6	+50	4.5 21.8	
150			11.8	4.8	8	3.8 22.5	
2			11.6	5.0	+50	4.1 22.2	
+50			11.4	5.2	9	3.2 23.1	
3			10.9	5.7	+50	2.4 23.9	
+50			9.9	6.7	10	2.6 23.7	
+59			8.6	8.0	T.P., 12.21	35.92 2.54 23.71	
+75	cut 11'		3.3	13.3	+50	11.5 24.4	
T.P.	9.86	26.25	0.16	16.39	11	10.0 25.9	
4			9.7	16.6	+13	8.8 27.1	
+47			7.2	19.1	+30.4 = 4 Years	+46	9.1 26.8
+50			8.7	17.6	+50	3.2 27.7	
+86			8.2	18.1	+90	8.4 27.5	
+87			6.7	19.6	12+0	7.3 28.6	
5			6.9	19.4	+12	6.1 29.8	
+50			6.7	19.6	+35	7.0 28.9	

Sheet 4



35.92

12+50		6.5	29.4
13		3.9	32.0
+30		4.9	31.0
+50		4.2	31.7
14		3.4	32.5
+50		3.2	32.7
15		2.5	33.4
+50		1.7	34.2
T.P.	796	42.29	1.59 34.33
16		2.2	34.1
+50		2.8	34.5
+59		2.7	34.6
+70		6.7	35.6
17		7.3	35.0
+50		6.7	35.6
18		5.6	36.7
+50		5.3	37.0
19		5.4	36.9
+50		5.4	36.9
20		5.3	37.0
+15		5.5	36.8

Levels for proposed sewer beginning at Sta  
 43+42.8 (Peg 9) thence east on P.L. for 368' to E  
 Alley in BIK 'D' thence in E Alley BIK 'D' to Ego 11504  
 or E 39' D St

B.M.	716	12.27	5.10
0+0 = Sta 43+42.8	Line	7.1	
+50		6.9	5.4
1		6.4	5.9
+50		6.0	6.3
2		5.8	6.5
+50		5.5	6.8
3		5.3	7.0
+50		4.9	7.4
+68.7	R 38° 49'	4.87	7.90
4		4.8	7.5
+50		4.7	7.6
5		4.1	8.2
+50		4.1	8.2
6		3.9	8.4
+50		3.4	8.9
+92.2	E Alley on N.L. 38° Street	2.2	10.1
T.P.	12.69	22.80	2.16 10.11
7+0		12.6	10.2

Sheet 4



15

22.80

7+36			11.0	11.8
+37			10.0	12.8
+50			5.9	16.9
T.P.	12.76	35.41	0.15	22.65
+75			10.1	25.3
+79			8.4	27.0
+90			7.0	28.4
7+92 <sup>2</sup>	- $\phi$ Alley 8 EL 38 <sup>2</sup> Street		5.4	30.0
8			4.8	30.6
+50			2.6	32.8
T.P.	12.55	47.58	0.38	35.03
9			12.3	35.3
+36 <sup>3</sup>	angle $\phi$ Alley		9.8	37.8
+50			8.8	38.8
10			5.9	41.7
+50			4.8	42.8
11			3.8	43.8
+50			2.8	44.8
12			2.1	45.5
T.P.	8.67	55.29	0.96	46.62

55.29

11  
21

12+50				8.7	46.6
13				8.1	47.2
+50				7.7	47.6
14				7.2	48.1
+50				6.6	48.7
15				6.1	49.2
+0.4 <sup>7</sup>	= $\phi$ 39 <sup>4</sup> St				49.4



Levels for proposed sewer beginning at Sta  
 113+68.7 (Page 19) Thence East to  $\phi$  Alley &  
 13' line of 38<sup>th</sup> St, thence East in  $\phi$  Alley to  
 Sta 8+96 or 25' from 39<sup>th</sup> St

B.M.	7.25	15.35	7.10	
0+0 = Sta 3+68.7			8.0	
+50		✓	7.7	7.7
1			7.4	8.0
+50			6.5	8.9
2			6.1	9.3
+50			5.1	10.3
+79			5.6	9.8
3			4.9	10.5
+50			5.0	10.4
4			4.9	10.5
+50			4.7	10.9
5			4.0	11.4
T.P.	12.24	24.09	3.50	11.85
+50			12.3	11.8
6			12.2	11.9
+50			10.4	13.7
7			3.2	20.9
T.P.	12.91	36.96	0.04	24.05

Sheet 4

				36.96		
7+25			8.8	28.2		
+50			2.8	34.2		
T.P.	12.80	49.63	0.13	36.83		
+75			10.1	39.5		
8			4.1	45.5		
T.P.	11.26	10.58	0.31	49.32		
+22			10.1	50.5		
+23			9.4	51.2		
+50			7.3	53.3		
+96 = 25' from 39 <sup>th</sup> St			4.1	56.5		

21  
22



Levels for proposed sewer  $\frac{1}{2}$  between Alpha  
 & Z' from @ 39<sup>th</sup> St west for 12439' @ 25' East  
 of 37<sup>th</sup> St

B.M. 2.39 16.71 14.32

+0 = @ 39<sup>th</sup> St

+50 3.4 13.3

+90 3.7 12.8

1 5.7 11.0

+25 7.3 9.4

+50 7.9 6.8

+57 8.8 7.9

+75 8.6 8.1

2 11.0 5.7

+25 11.6 5.1

+50 11.5 5.2

+75 11.3 5.4

3 11.2 5.5

+25 10.0 6.7

+50 8.5 8.2

+75 4.5 12.2

T.P. 9.2 24.08 1.84 14.87

4 9.1 15.0

Sheet 5

24.08

+450

5

+50

6

+50

7

+50

8

+50

+75

T.P.

+87

+90

9

+50

10

+50

11

+50

+63

7.83 28.61 3.35 20.73

+25 cut 7'

+50

12

+50

+63

9.6 14.5

9.7 14.4

9.2 14.9

9.5 14.6

10.1 14.0

11.1 13.0

11.3 12.8

11.4 12.7

8.5 15.6

3.7 20.4

6.9 21.7

5.8 22.8

4.8 23.8

1.6 27.0

3.4 25.2

7.8 20.8

11.9 16.7

12.6 16.0

10.6 18.0

8.3 20.3

8.1 20.5

7.9 20.7

22  
23



Levels for proposed sewer & Alley between Beta  
 318 Alpha from Sta 47+05.7 "A" Line (page 9) west  
 to Intersection of Alley BIK 304 Boone Bros Add or to  
 Sta 7+10<sup>3</sup>

B.M.	3.58	11.08	7.50
0+0		✓	3.6
+18			3.8
+19			3.0
+50			3.3
1			4.3
+50			4.6
2			4.9
+50			4.9
3			5.1
+50			5.0
+60 <sup>47</sup>			5.25
4			5.3
+50			4.9
5			5.0
+50			4.9
6			4.8
+18			5.2
+45			9.4

Sheet 5

11.08

6+50	9.4	1.5
+70	11.4	-0.3
+88	10.2	0.9
+92	8.6	2.5
7	7.5	3.6
+10 <sup>3</sup>	6.35	4.73

see page 66



Levels for proposed <sup>strip</sup> Alley between Acacia  
 & Birch from sta 7+00<sup>3</sup> (page 23) to sta  
 8+11+50 bet Rigel & Boston

27.55

25

B.M.	12.26	16.99	4.73	6+50	6.6	21.0	
0+0		12.3	4.7	7	7.3	20.3	
+33	✓	11.7	5.3	+50	5.5	22.1	
+50		7.8	9.2	T.P.	6.61	28.93	
+68		4.8	12.2	+78	8.4	20.5	
1		3.3	13.7	8	9.6	19.3	
T.P.	10.96	27.55	0.40	16.59	+50	8.1	20.8
+50 cut 10'		11.1	16.5	9	6.0	22.9	
2		9.4	18.2	+50	5.2	23.7	
+25		12.0	15.6	10	5.1	23.8	
+35		12.3	15.3	+50	5.2	23.7	
+50		11.6	16.0	11	4.2	24.7	
3		7.8	19.8	+50	4.3	24.6	
+50		6.0	21.6				
4		5.0	22.6				
+50		4.5	23.1				
5		4.0	23.6				
+50		3.7	23.9				
6		5.1	22.5				

Sheet 5



Levels for proposed sewer & direct from  
 Alley bet Acacia & Birch to Acacia

B.M.	11.89	30.28	18.37
0+0		✓ 11.9	18.4
+50	Sheet 5	9.4	20.9
1		7.7	22.6
+50		7.3	23.0
+65		6.8	23.5
+90' of Acacia		4.3	26.0

Levels for sewer & Acacia from 5/12  
 1+90' in North westerly direction for

		30.28	
0+0	Sheet 5	✓ 4.3	26.0
+50		5.2	25.1
1		3.1	27.2
T.P.	5.88	34.58	1.58 28.70
+50		6.1	28.5
2		5.8	28.8
+30		5.5	29.1

Levels of Acacia from sta 1+90' in South Easterly  
 direction for 90'

		30.28	
0+0		✓ 4.3	26.0
+50		5.2	25.1
+90		5.3	25.0

Sheet 5

Levels of Rigel from the Alley bet Acacia &  
 Birch to intersection of the Alley with 9th Acacia St: 1+93'

B.M.	12.22	35.27	23.68
0+0		✓ 12.3	23.7
+30		11.1	24.9
+50		9.8	26.2
1		7.1	26.9
+50		8.0	28.0
+93'		6.8	29.2

Sheet 5



Levels of Alley BIK 9 Lands Town South  
 Shallow Add from Alpha East for 589.7' or  
 25' W. of n.L. 36<sup>th</sup> St

	35.97			
0+0	✓	6.8	29.2	
+50		7.1	28.9	
1		7.3	28.7	
+75		5.0	31.0	
+50		5.3	30.7	
2		4.3	31.7	
+15		2.9	33.1	
+30		3.3	32.7	
+50		3.3	32.7	
+68		1.6	34.4	
+78		2.8	33.2	
3		2.5	33.5	
+13		2.3	33.7	
+26		1.0	35.0	
+50		0.8	35.2	
T.P.	5.37	40.68	0.66	35.31
410			5.7	35.0
+50			4.6	36.1
5			5.0	35.7
+50			3.8	36.9
+89.7			2.7	38.0

Sheet 5

Levels for "C" line beginning at sta  
 3+60<sup>41</sup> Alley line bet Alpha Beta

B.M.	5.24	11.27	6.03	
0+0 = Sta 3+60 <sup>42</sup>				5.2 6.07
+50				5.1 6.2
+88				4.8 6.5
1				5.9 5.4
+50				6.8 4.5
+63				10.1 1.2
+71				10.1 1.2
+90				6.7 4.6
2				7.0 4.3
+25				6.3 5.0
+50				4.2 7.1
3				5.2 6.1
+50				5.6 5.7
4				5.7 5.6
+207 - 6' Alley bet Alpha & Z				5.31 5.96
+50				5.1 6.2
5				4.8 6.5
+50				4.5 6.8

Sheet 6  
 Levels changed  
 see page 67

14  
27



	11.27			
6+0			3.8	7.5
+50			2.9	8.4
7			2.9	8.4
T.P.	12.40	21.07	2.60	8.67
+50			12.2	8.9
+53	L 60° 07'		12.18	8.89
	= $\phi$ Alley Lot 7 B Boston			
8			11.7	9.4
+50			10.6	10.5
9			9.6	11.5
+50			8.8	12.3
10			7.0	14.1
+50			6.2	14.9
11			5.5	15.6
+44	R 90° 52'	25.33	4.84	16.23
	9.20			
+50			9.3	16.1
12			8.6	16.8
+50			8.2	17.2
13			7.8	17.6
+37			6.2	19.2
+50			7.4	18.0
14			7.0	18.4
+14			6.5	18.9
+19			4.7	20.7
+39			4.5	20.9

14+50			5.4	20.0
15			4.4	21.0
+06			4.0	21.4
+08			2.4	23.0
+20	L 90° 35'		1.98	23.45
	11.78	35.23		
+50			11.3	23.9
+85			10.2	25.0
16			6.1	29.1
T.P.	2.77	43.65	2.37	34.86
+16			2.6	37.1
+50			6.0	37.9
+87			5.6	38.1
+87			6.6	37.1
17			5.7	38.0
17+13	R 80° 23'		5.09	38.56
	= $\phi$ National Arc		5.0	38.7
+50			4.5	39.2
18+0			3.1	40.6
+50			1.5	42.2
19				
+18	L 90°		1.01	42.64
	4.17	46.33		
+44			4.7	42.1
+44			3.7	43.1
+50			4.6	42.7
+62			4.2	42.6
+84			10.7	36.1
20+0			10.5	36.3
+50			10.6	36.2
21			8.6	38.2
+08	= $\phi$ Alley Lot National Arc		8.21	38.62



Levels of Alley bet Alpha & Z from sta 4220?  
 C Line East for 295<sup>8</sup>

B.M.	12.81	18.77	5.96
610-0739+20 <sup>8</sup> C Line	12.8		
+50	✓	12.4	6.4
1		5.8	13.0
+50		1.0	19.8
T.P.	6.67	24.47	0.97 17.20
2		4.9	19.6
+50		3.8	20.7
+95 <sup>8</sup>		3.2	21.3

Sheet 6

Levels for same Alley bet Boston & Z  
 from sta 7458<sup>8</sup> C Line East for 977.8<sup>8</sup>

7<sup>8</sup>  
384  
29

B.M.	12.52	21.97	8.89
610-0739+58 <sup>8</sup> C Line	12.6		
+19		12.3	9.2
+32	✓	11.0	10.5
+50		8.3	13.2
+80		3.6	17.9
1		3.2	18.3
+50		3.4	18.1
+67		3.1	18.4
T.P.	12.27	33.58	0.26 21.21
2		10.6	23.0
+50		6.2	27.4
+75		4.7	28.9
3		6.4	27.2
+50		9.1	24.5
4		8.0	25.6
+50		6.5	27.1
5		3.0	30.6
+50		1.0	32.6
T.P.	12.79	45.66	0.71 32.87

Sheet 6



31

45.66

6+0		9.8	35.9	
+50		4.8	40.9	
7		0.5	45.2	
T.P.	12.44	57.96	0.14	45.52
+50		9.9	48.1	
8		7.3	50.7	
8+50	cut 11'	3.5	54.5	
T.P.	10.03	67.57	0.42	57.54
9		9.3	58.3	
+50		5.6	62.0	
+77 <sup>9</sup>	cut 16'	3.3	64.3	

Levels & Alley bet Boston & Newton  
from Sta 11+44 "C" Line East for 1044.3 or  
75' from 38<sup>th</sup> St

30

13.11	10.12	26.35	16.23	
0+0=Sta 11+44	"C" Line	10.1		
+35	✓	9.4	17.0	
+50		7.0	19.4	
+80		3.1	23.3	
1	cut 7'	2.5	23.9	
+50		0.5	25.9	
T.P.	10.13	36.08	0.39	25.95
✓		9.7	26.4	
+50		10.6	25.5	
+67		9.7	26.2	
3		5.4	30.7	
T.P.	10.64	46.77	0.25	35.83
+50		8.3	38.2	
4		7.9	38.6	
+50		6.6	39.9	
5		5.0	41.5	
+37		3.4	43.1	
+50		1.7	44.8	
T.P.	12.39	57.12	7.74	44.73
6+0		9.2	47.9	

Sheet 6



57.12

6+50			10.6	46.5
+75 cut 6'			10.6	46.5
7			8.3	48.8
+50			5.3	51.8
8			0.6	56.5
T.P.	12.61	69.58	0.15	56.97
+15			9.9	59.7
+50			7.3	62.3
+65			6.4	63.2
9			2.1	67.5
T.P.	8.82	78.13	0.27	69.31
+50			7.4	70.7
10			5.0	73.1
+44 <sup>3</sup> = 25' from 38 <sup>th</sup> st			4.2	73.9

Levels of Alley bet Newton & National from Sta 15+20 "C" Line East for 1044.7 or 25' from 38<sup>th</sup> st

B.M.	11.78	35.23		23.45
0+0 = Sta 15+20 "C" Line			11.8	
+05		✓	11.9	23.3
+38			3.7	31.5
+50			2.2	33.0
+58			1.9	33.3
1 cut 9'			3.5	31.7
+40			5.1	30.1
+50			4.5	30.7
+61 cut 8'			2.4	32.8
2			1.5	33.7
+50			1.6	33.6
3			1.4	33.8
T.P.	11.68	45.62	1.29	33.94
+50			10.2	35.4
+69			9.0	36.6
+82			5.7	39.9
4			4.4	41.2
+10			2.0	43.6
T.P.	11.67	57.13	0.16	45.46

Sheet 7



81

5713

+35			12.3	44.8
+50 cut 8'			9.7	47.4
5			8.6	48.5
+50			7.4	49.7
6			5.5	51.6
+50			5.2	51.9
7			2.5	54.6
T.P.	12.63	69.12	0.64	56.47
+50			10.0	59.1
8			4.4	64.9
+50			0.7	68.4
T.P.	9.70	78.58	0.29	68.88
9			7.3	71.3
+50			7.5	71.1
+75			8.1	70.5
10			7.3	71.3
+25			5.2	73.4
+44.7 = 2.5' from 38 <sup>th</sup> st			5.0	73.6

Levels of Alley bet National & Logan from sta 21108<sup>s</sup>

"C" Line west for 95'

16

32

B.M.	11.39	50.01		38.62
0+0 = sta 21108 <sup>s</sup>			11.4	38.6
+50			5.4	44.6
+63			3.3	46.7
+95 cut 8'			2.2	47.8

Levels of Alley bet National & Logan from  $\Phi$  36<sup>th</sup> st East for 305'

B.M.	7.22	47.52		40.30
0+0 = $\Phi$ 36 <sup>th</sup> st			7.2	40.3
+35			9.1	38.4
+50			8.6	38.9
+67			6.4	41.1
+10			1.8	45.7
+15			1.4	46.1
+50			3.6	43.9
+85			6.4	41.1
2			6.3	41.2
+18			6.2	41.3
+35			7.2	40.3
+50			6.8	40.7
+65			6.2	41.3
3 cut 7'			3.1	44.4
+05			2.6	44.9

Sheet 8



Levels of National from sta 17+13<sup>2</sup> line  
west to # 36<sup>th</sup> st.

B.M.	4.65	43.21	38.56
0+0		✓ 4.6	
+50		4.7	38.5
1		5.1	38.1
+50		5.6	37.6
2		5.9	37.3
+51 <sup>83</sup>		4.84	38.37

Sheet 6

Levels of 36<sup>th</sup> st from # National  
north to # Alley North of Logan

B.M.	4.34	43.21	38.37
0+0		✓ 4.8	
+26		5.3	37.9
+40		4.4	38.8
+50		4.4	38.8
+75		3.5	39.7
1		4.5	38.7
+25		4.7	38.5
+50		3.5	39.7
+90 @ Alley		2.91	40.30
2		1.80	41.4
+15		1.5	41.7
+25		2.2	41.0
+50		2.0	41.2
T.P.	11.90	54.25	0.66 42.55
3		10.7	43.6
+50		8.9	45.4
4		5.3	49.0
+50		3.8	50.5
+25		0.9	53.4
T.P.	9.19	62.91	0.53 53.72

Sheet 6

17  
33



62.91

510	9.1	53.8
+50	8.5	54.4
1691 <sup>3</sup> = Alley N. of Logan	8.2	54.7

Levels of Alley North of Logan from  $\phi$  36<sup>th</sup>  
 st west for 210'

	62.91	
0+0	✓	8.2 54.7
150		7.5 55.4
1		5.8 57.1
+30		4.3 58.6
+50		2.6 60.3
+75		0.3 62.6
T.P.	11.49 74.02	0.38 62.53
2+0		10.1 63.9
+20		8.6 65.4

Sheet 6

Levels of Alley North of Logan from  
 $\phi$  36<sup>th</sup> st East for 1264.3' or 25' from 38<sup>th</sup> st

34

62.91

0+0	✓	8.2 54.7
+20		6.8 56.1
+50		7.3 55.6
1		6.7 56.2
+50		6.0 56.9
2		6.8 56.1
+50		8.4 54.5
+90		8.5 54.4
3		7.2 55.7
+50		6.5 56.4
4		6.3 56.6
+50		4.4 58.5
+50		3.5 59.4
5		2.2 60.7
+50 cut 8'		0.4 62.5
T.P.	11.49 74.02	0.38 62.53
6		10.4 63.6
+50		10.1 63.9
+59.7 = $\phi$ 37 <sup>th</sup> st		9.56 64.46

Sheet 7



81		74.02		
740			7.5	66.5
+50 cut 10'			4.8	69.2
+91			2.5	71.5
8			2.6	71.4
+20			2.3	71.7
T.P.	10.11	83.93	0.20	73.82
+50			9.6	74.3
+65			8.5	75.4
+90			8.6	75.3
9			9.5	74.4
+50			13.3	70.6
+68			14.6	69.3
+75 cut 2'			16.3	67.6
+83			14.5	69.4
10			11.6	72.3
+35			5.6	78.3
+50			4.9	79.0
11 cut 7'			4.3	79.6
+50			3.3	80.6
12			1.8	82.1
T.P.	7.63	91.24	0.32	83.61

	91.24		
12+50		4.3	86.9
+64 <sup>3</sup> = 25' from 38 <sup>th</sup>		2.9	88.3

35



Levels @ 37th St from Alley between Logan & Florence  
North 934, 15 or to Alley bet 5 & Teak streets

34097 4107  
6407 725

88.10

18

36

B.M.	12.89	77.35	64.46	770	9.4	78.7
0+0		✓ 12.9		+50	7.0	81.1
+50		10.5	66.9	8	6.4	81.7
1		8.8	68.6	+50	5.1	83.0
+50		7.8	69.6	9	1.6	86.5
2		5.8	71.6	+50	0.1	88.0
+50		6.2	71.2	T.P.	4.86	92.80
3		6.5	70.9	+84 <sup>15</sup> Alley bet 5 & Teak	4.25	88.55
+99.7 = 4	Alley bet Florence & T.	5.42	71.93			
+50		4.8	72.6			
4		3.7	73.7			
+50		6.5	70.9			
+62		7.6	69.8			
5		6.7	70.7			
+50		4.7	72.7			
6		2.2	75.2			
T.P.	12.80	88.10	2.05	75.30		
+50		11.4	76.7			
+57 = 2	Alley bet T & S.	11.12	76.98			

Sheet 7



Levels of Alley bet. Florence & T from  $\pm$  37<sup>th</sup> St  
 East for 609.9 or 25' from 38<sup>th</sup> St

94.48

19  
37

13.01	12.30	84.23	71.93	47.25	6.2	88.3
0+0		✓ 12.3		+50	5.2	89.3
+38		10.5	73.7	5	3.8	90.7
+50		9.1	75.1	+50	3.0	91.5
+74		8.0	76.2	6	4.3	90.2
+87		8.2	76.0	+04 <sup>9</sup>	4.1	90.4
1		7.1	77.1			
+37	Sheet 7	4.5	79.7			
+50		2.5	81.4			
+54		2.2	82.0			
+70		1.3	82.9			
+83		2.1	82.1			
2		1.8	82.4			
T.P.		10.35	94.48	01.0	84.13	
+50			10.0	84.5		
3			9.8	84.7		
+25			10.2	84.3		
+50			9.7	84.8		
4			8.7	85.8		



Levels of Alley bet T & S streets from  $\Phi$  37<sup>th</sup> st  
East for 604.6 or 25' from 38<sup>th</sup> st

Levels of Alley bet S & Teak sts from  
 $\Phi$  37<sup>th</sup> st East for 390'

1?  
38

B.M.	11.96	88.94	76.85
0+0 = $\Phi$ 37 <sup>th</sup> st		12.0	
+13		11.3	77.6
+50		2.0	80.9
1 cut 10'		6.3	82.6
+25		5.5	83.4
+50		5.9	83.0
2 cut 6.5'		5.1	83.8
+50		5.7	83.2
3		5.6	83.3
+50		3.6	85.3
+80		1.0	87.9
T.P.	11.98	100.01	88.03
4		11.6	88.4
+28		11.3	88.7
+50		9.7	90.3
5		8.8	91.2
+50		7.7	92.3
+75		7.1	92.9
6		5.6	94.4
+04 <sup>6</sup> = 25' from 38 <sup>th</sup> st		5.7	94.3

Sheet 7

B.M.	10.29	92.84	82.55
0+0 = $\Phi$ 37 <sup>th</sup> st		10.3	
+50		9.5	89.3
1		8.1	90.7
+50		5.3	93.5
2		3.5	95.3
+50		4.4	94.4
+67		5.6	93.2
3		6.2	92.6
+50		6.6	92.2
+60		5.7	93.1
+90		5.8	93.0

Sheet 7

Note - lots 39 to 48 & 176 15 can be served  
in this line



Levels of Alley bet National & Logan from sta 21+08.5  
 "C" line East for 1467.4 or 25' from 39<sup>th</sup> St

36215

75.97

39

B.M.	12.86	51.48	38.62	5420		7.5	68.5	
0+0 = Sta 21+08.5 "C" line		12.9		+50		4.2	71.8	
+50		12.5	39.0	6		2.3	73.7	
+75		11.6	39.9	+50		1.6	74.4	
1		8.7	42.8	T.P.	8.11	82.64	1.44	74.53
+21		6.7	44.8	7		7.2	75.4	
T.P.	12.75	64.22	0.01	51.47		+50	7.4	75.2
+50		12.4	51.8	8		5.2	77.4	
2		7.5	56.7	T.P.	12.28	90.02	4.90	77.74
+14		6.0	58.2	+25		10.6	79.4	
+15		4.8	59.4	+50		10.1	79.9	
+50		4.7	59.5	9		7.2	82.8	
3		1.3	62.9	+50		5.7	84.3	
T.P.	12.17	75.97	0.42	63.80		+69	5.0	85.0
+50		10.7	65.3	+88		2.7	87.3	
4		7.7	68.3	10		3.7	86.3	
+30		6.0	70.0	+15		4.7	85.3	
+50		6.1	69.9	+50		4.0	86.0	
5		8.0	68.0	11		4.1	85.9	

Sheet 8



98		90.02		
11+50			4.4	85.6
12			3.8	86.2
T.P.	6.98	93.22	3.78	86.24
+50			7.7	85.5
13			7.2	86.0
+50			6.9	86.3
14			5.2	88.0
+50			3.2	90.0
+67 <sup>4</sup>	= 25' from 39 <sup>th</sup>		2.2	91.0

Levels for "D" Line

B.M.	11.73	26.05	14.32
0+0 = Sta 64+05 <sup>4</sup>	A Line Page 11		11.7
+50		✓	12.0 14.1
+67			12.6 13.5
+75			16.0 10.1
+81			20.6 5.5
+96			20.2 5.9
1			16.8 9.3
+15			14.9 11.2
+35			9.2 16.9
+50			8.5 17.6
+60			8.5 17.6
+75			10.1 16.0
+90 = 4" Z" st			7.58 18.47
2			7.0 19.1
+25			6.0 20.1
+50			4.3 21.8
+80			1.9 24.2
3			2.2 23.9
+50			3.9 22.2
+79 <sup>2</sup>	L 20° 57' Alley bet Z" & Boston		3.26 22.79

Sheet 8

20  
40



26.05

3+98			1.2	24.9
+70			3.2	22.9
+09			3.4	22.7
+13			5.0	21.1
T.P.	12.96	38.07	0.94	25.11
+25			11.4	26.7
+50			10.2	27.9
+90			7.3	30.8
5			6.0	32.1
+25			2.0	36.1
+43			1.3	36.8
+50			1.8	36.3
+75			3.5	34.6
6			2.4	35.7
+25			0.9	37.2
+35			1.2	36.9
+50			0.8	37.3
T.P.	12.64	50.49	0.22	37.85
+70			11.5	39.0

50.49

7+0				10.9	39.6
+30				7.2	43.3
+50				5.9	44.6
+65				4.5	46.0
L 9° 02'					
+87	Alley bet Boston & Newton			4.33	46.16
8				4.9	45.6
+19				4.6	45.9
+20				5.4	45.1
+50				4.4	46.1
T.P.	12.33	62.79	0.03	50.46	
9				11.2	51.6
+70				9.7	53.1
+50				9.0	53.8
+75				9.4	53.4
10				6.8	56.0
+50				4.2	58.6
+80				2.5	60.3
+86				5.1	57.7
+90				3.7	59.1
11+0				2.1	60.7
T.P.	12.17	72.53	0.43	62.36	



72.53

Levels of 2" st from  $\frac{1}{2}$  39<sup>th</sup> st west for 604.6'  
or 25' from 38<sup>th</sup> st

42

11+25	10.1	62.4
+50	7.7	64.8
+70	6.6	65.9
12	6.8	65.7
+25' = $\frac{1}{2}$ Alley bet Newton & National	4.86	67.67

B.M.	11.32	29.79	18.47
0+0 = $\frac{1}{2}$ 39 <sup>th</sup> st	14.90	"D" Line	11.3
+19		✓	13.2 16.6
+50			7.2 22.6
+55			6.2 23.6
1			5.0 24.8
+50			4.0 25.8
2			3.0 26.8
+50			2.6 27.2
3			1.6 28.2
+50			0.1 29.7
7.P	10.31	39.84	0.26 29.53
4			7.6 32.2
+50			6.5 33.3
5			5.3 34.5
+50			3.7 36.1
6			2.7 37.1
+04.6 = 25' E of 38 <sup>th</sup> st			2.6 37.2

Sheet 8



Levels of Alley bet "Z" & Boston from  $\Phi$  39<sup>th</sup> St  
 East for 609.2 or 25' W of 40<sup>th</sup> St

B.M.	5.10	27.89	22.79
0+0 = $\Phi$ 39 <sup>th</sup> or sta 3+79 <sup>8</sup> D'Line	5.1		
+10	V	7.8	20.1
+50		9.4	18.5
1		10.9	17.0
+50		10.6	17.3
2		10.3	17.6
+50		9.7	18.2
T.P.	5.76	24.00	9.65 18.24
3		5.9	18.1
+50		5.5	18.5
4		5.0	19.0
+21		5.0	19.0
+34		7.1	16.9
+39		12.3	11.7
+45		13.4	10.6
+50		17.2	6.8
+62		13.4	10.6
+70		12.9	11.1

Sheet 8

24.00

4+88	11.3	12.9
5	10.4	13.6
+17	11.6	12.4
+50	8.7	15.3
+72	6.4	17.6
6	6.2	17.8
+09 <sup>2</sup>	6.1	17.9

43



Levels of Alley bet "Z" & Boston from # 39<sup>th</sup> St or  
 573 3+798 D Line west for 604.9' or 25' E of 38<sup>th</sup> St,

70.83

44

B.M. 11.37 34.16 22.79

4+25 0.5 70.3

0+0 = # 39<sup>th</sup>

11.4

T.P. 4.98 75.43 0.38 70.45

+15

7.9 26.3

450 4.0 71.4

+50

7.8 26.4

5 4.1 71.3

1

7.0 27.2

+50 8.4 67.0

+50

0.1 34.1

6 11.3 64.1

T.P. 12.42 46.35 0.20 33.93

+047.25' from 38<sup>th</sup> St 11.2 64.2

2

5.6 40.8

+25

2.6 43.8

T.P. 12.64 58.71 0.28 46.07

+50

10.8 47.9

+75

5.6 53.1

3

1.5 57.2

T.P. 12.34 70.83 0.22 58.49

+25

9.5 61.3

+50

6.5 64.3

+75

2.5 68.3

4

1.9 68.9

+15

1.7 69.1

Sheet 8



Levels of Alley bet. Boston & Newton from Sta 7+87  
 "D" Line West for 459.2' or 25' E of 38th St

B.M.	8.90	55.06	46.16
0+0 = Sta 7+87 "D" Line		8.9	
+25		✓ 5.2	49.9
+50		1.5	53.6
T.P.	12.20	66.76	0.50 54.56
+75		8.6	58.2
1		6.2	60.6
+50 cut 10'		1.9	64.9
T.P.	11.06	76.95	0.87 65.89
2		10.4	66.6
+70		11.0	66.0
+40		9.6	67.4
+50 cut 10'		9.6	67.4
+68		9.3	67.7
3		6.2	70.8
+50 cut 7'		5.2	71.8
4		5.2	71.8
+50		2.7	74.3
+59 <sup>v</sup>		2.4	74.6

Sheet 9

Levels of Alley bet Boston & Newton from  
 Sta 7+87 "D" Line East for 90.6'

B.M.	8.90	55.06	46.16
0+0 = Sta 7+87		8.9	
+18		✓ 11.6	43.5
+25		14.1	41.0
734		12.9	42.2
+50		10.1	45.0
+75		3.6	51.5
T.P.	12.20	66.76	0.50 54.56
+90 <sup>6</sup>		11.1	55.7

Sheet 9



Levels of Alley bet Newton & National from Sta 12+25<sup>2</sup>  
 "D" Line west for 240.4 or 25' East of 38<sup>th</sup> St

B.M.	13.04	80.71	67.67
0+0 = Sta 12+25 <sup>2</sup> "D" Line		13.0	
+08	✓	11.7	69.0
+50		9.0	71.9
+76		5.4	75.3
1		7.2	76.5
+50		2.2	78.5
2		1.5	79.2
+40 <sup>4</sup>		3.4	77.3

Sheet 9

Levels of Alley bet National & Newton from  
 Sta 12+25<sup>2</sup> "D" Line East for 309.7 or 25' w. of 39<sup>th</sup> St

46

B.M.	13.04	80.71	67.67
0+0 = Sta 12+25 <sup>2</sup> "D" Line		13.0	
+03	✓	13.6	69.1
+12		12.0	68.7
+50		9.9	70.8
+75 cut 7'		8.4	72.3
1		5.3	75.4
+50		2.8	77.9
2 cut 8'		2.0	78.7
T.P.	3.67	82.91	1.47 79.24
+50		3.6	79.3
+63		3.3	79.6
+75		2.5	80.4
3 cut 6'		3.3	79.6
+09 <sup>7</sup>		3.4	79.5

Sheet 9



Levels & Alley bet Boston & Newton from 30' E  
of W.L. 41st st west for 605

B.M.	11.52	35.10	23.58
0+0	√	10.1	25.0
+15		10.4	24.7
+40		12.5	22.6
+50		12.4	22.7
+55		11.9	23.2
1		10.6	24.5
+50		10.4	24.7
2		10.9	24.2
+50		11.0	24.1
3		11.5	23.6
+25		11.5	23.6
+36		10.7	24.4
+50		9.0	26.1
+80		5.2	29.9
4		4.3	30.8
+50		3.7	31.4
5		2.8	32.3
+50		1.8	33.3
6		0.5	34.6
+05		0.4	34.7

Sheet 9

Levels & Alley bet Newton & National from 30' E of  
W.L. 41st st west for

B.M.	4.16	31.16	27.00
0+0	√	5.4	25.8
+50		5.2	26.0
+70		4.9	26.3
T.P.	12.21	43.05	0.32
+88		11.5	31.6
1		9.0	34.1
+15		7.3	35.8
+50		5.9	37.2
2		4.0	39.1
+50		2.6	40.5
3		1.1	42.0
T.P.	8.33	50.70	0.68
+50		7.4	43.3
+65		7.5	43.2
4		10.7	40.0
+33		13.2	37.5
+48		15.0	35.7
+43		13.7	37.0
+50		12.5	38.2
+73		9.0	41.7
5		6.4	44.3
+20		3.7	47.0
+50		2.4	48.3
6		0.6	50.1
+05		0.3	50.4

Sheet 9

41070



Levels of Alley bet National & Logan from 5/2  
92 + 72<sup>3</sup> "A" line west for 566.5'

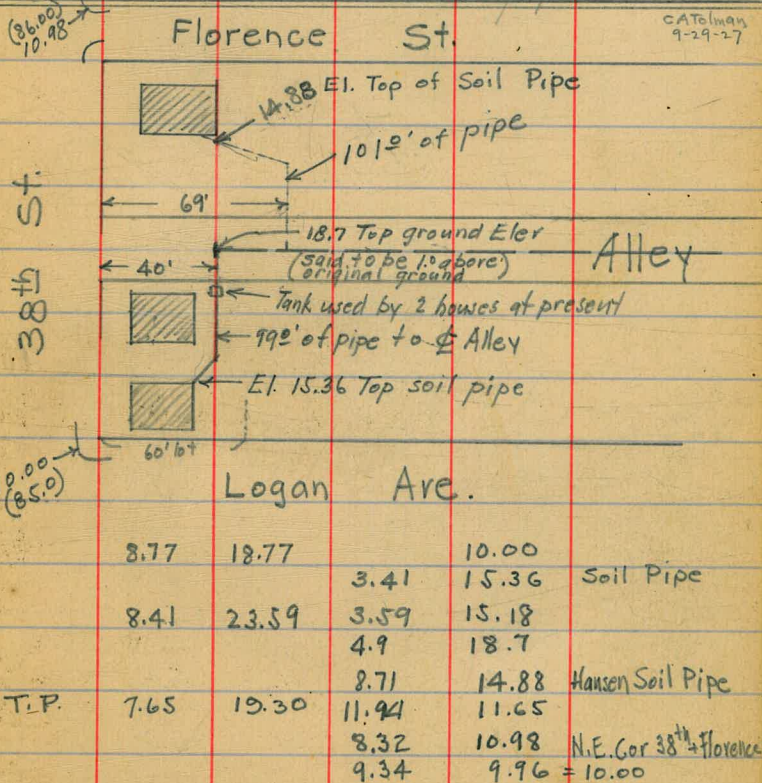
B.M.	1117	39.07		279.0
0+0		✓	9.3	29.8
+50			11.3	37.8
T.P.	1212	50.89	0.30	38.77
+68			9.3	41.6
1			8.1	42.8
+50			3.7	47.2
+75			11.0	49.9
T.P.	1211	62.61	0.39	50.50
2			8.6	54.0
+25			9.2	58.4
T.P.	856	70.63	0.54	62.07
+50			7.3	63.3
+65			5.0	65.6
3			5.1	65.5
+50			5.0	65.6
4			5.2	65.4
725			6.7	63.9
+50			7.6	63.0
+75			9.3	61.3
5			8.7	61.9
+50			10.4	60.2
+66 <sup>5</sup>			11.8	58.8

Sheet 9

Levels for Alley bet National  
& Logan from 4 36<sup>4</sup> of west for 1804  
48

B.M.	1142	51.72		40.30
0+0		36 <sup>4</sup>		11.9
+50				5.2 46.5
T.P.	695	58.42	0.25	51.47
1				5.9 52.5
+50				1.4 57.0
+20				0.5 57.9

Sheet 6



10.00  
(85.0)

	8.77	18.77	10.00	
			3.41	15.36 Soil Pipe
	8.41	23.59	3.59	15.18
			4.9	18.7
			8.71	14.88 Hansen Soil Pipe
T.P.	7.65	19.30	11.94	11.65
			8.32	10.98 N.E. Cor 38th + Florence
			9.34	9.96 = 10.00

These notes copied from notes taken by C.A. Tolman  
on Sept. 29, 1927 and turned in on a piece of  
card board shoe box.

G.R. H. 9-30-27

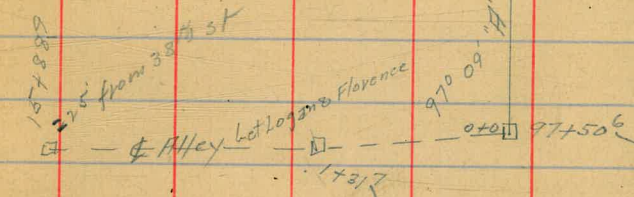


Levels for sewer see sketch opp page

B.M.	12.24	48.86	36.62	
0+0 = 97+50 6" H" Line		12.2	36.7	
0+10	✓	11.3	37.6	
+25		5.2	43.7	
T.P.	12.78	61.90	0.24	48.62
+50		6.4	55.0	
+61		3.4	58.0	
+70		2.9	58.5	
+74		0.7	60.7	
T.P.	12.76	74.14	0.02	61.38
+75		12.1	62.0	
1		5.0	69.1	
+25		0.1	74.0	
T.P.	9.69	83.65	0.18	73.96
+31.7		8.7	75.0	
+40		8.1	75.6	
+50		7.7	76.0	
2		8.0	75.7	
+50		6.2	77.5	
3		4.0	79.7	

Sheet 9

(See p 48 for notes  
on Surrounding houses)  
Talmans  
G.R.H. 9-30-27



3+50	1.7	82.0	
4	5.1	78.6	
+50	7.8	75.9	
5	9.6	74.1	
+50	9.7	74.0	
6	8.6	75.1	
+50	9.0	74.7	
7	8.9	74.8	
+50	6.8	76.9	
8	2.4	81.3	
11.51	92.81	2.35	81.30

53.65



Levels for proposed sewer see sketch page 51.

Note - shallow cut O.K. on this line where possible

25

50

8250		7.9	84.9
9		4.3	88.5
+28		2.0	90.8
+50		1.4	91.4
+55		1.7	91.1
+62		1.7	91.1
+64		2.3	90.5
10		1.7	91.1
+02		0.8	92.0
T.P.	8.36 100.59	0.58	92.23
+50		7.4	93.2
11		5.6	95.0
+50		4.8	95.8
12		5.4	95.2
+38		6.6	94.0
+50		6.7	93.9
13		6.2	94.4
+50		6.1	94.5
14		6.7	93.9
+50		6.3	94.3
+75		7.2	93.4
15		6.7	93.9
+50		7.4	93.2
+98.9 = 25' E of 38th st		7.1	93.5

B.M.	11.01	52.11		41.10
0+0 = Sta 100+27.4' Line			11.0	
+50	✓		10.2	41.9
+87			7.0	43.1
1			8.0	44.1
+25			3.6	48.5
+40			1.3	50.8
T.P.	12.69	64.66	0.14	51.97
+44			11.9	52.8
+50			10.8	53.9
+67			9.6	55.1
+75			8.1	56.6
2			4.1	60.6
T.P.	12.08	76.55	0.19	64.47
+44.6	2 DPT		11.6	65.0
+50			11.3	65.3
3			8.1	68.5
+50			3.3	73.3
T.P.	10.10	86.33	0.32	76.23

Sheet 10







38

96.22

13

9.2

87.0

+50

5.3

90.9

14

4.8

91.4

+50

5.6

90.6

15

6.4

89.8

+41

6.6

89.6

~~26~~  
52



Levels for sewer @ "T" st from sta 106+62.6 page 11  
 next for 550'

B.M. 11.10 69.40 58.30

0+0 = sta 106+62.6  
 +23 = 2' E of W.L. Lot "T"  
 +50 ✓  
 1 7.4 62.0  
 +50 5.9 63.5  
 2 4.6 64.8  
 +50 3.8 65.6  
 3 2.5 66.9  
 +50 1.2 68.2

Sheet 2

T.P. 11.76 81.04 0.12 69.28

4 10.5 70.5

+50 7.1 73.9

5 3.1 77.9

T.P. 11.64 92.06 0.62 80.42

+50 9.7 82.4

Levels for Line from Sta 0+23 "T" st 2' E of W.L. Lot "T"  
 North for 130' To Lot Line BK 3 Sierra Park Add.

B.M. 10.10 68.40 58.30

0+0 = sta 0+23 opp page 9.4 59.0  
 +21 ✓ 9.5 58.9  
 +25 10.2 58.2  
 +50 10.8 57.6  
 +75 10.9 57.5  
 1 9.5 58.9  
 +30 = Lot Line BK 3 5.06 63.34

Sheet 10

Levels Lot Line BK 3 Sierra Park from Sta 1+30 E for 303'

B.M. 68.40

0+0 ✓ 5.06 63.3

+20 4.9 63.5

+50 6.5 61.9

+70 7.7 60.7

+92 5.6 62.8

1 3.5 64.9

+50 1.3 67.1

2 0.3 68.1

+50 1.8 66.6

3 6.1 67.3

+03 6.5 61.9

Sheet 10

27  
53



Levels for "E" Line from sta 100+27 "H" Line

B.M.	12.54	53.65		41.11
R 3° 06' off sta 97+50 "H" Line				
0+0 = 100+27 "H" Line		✓	12.5	
+13			10.5	43.2
+50			8.1	45.6
1			7.3	46.4
+32			9.3	44.4
+50			7.6	46.1
+60			6.7	47.0
2			5.3	48.4
+50			4.4	49.3
3			3.1	50.6
+50			1.2	52.5
T.P.	10.91	64.32	0.18	53.47
4			10.5	53.9
+25			9.8	54.6
+42			8.7	55.7
+50			10.1	54.3
+62			9.3	55.1
5			9.6	55.8

Sheet 9

64.38

27  
54

+50			7.5	56.9
6			6.7	57.7
+50			5.2	59.2
+35			4.2	60.2
+89			5.1	59.3
7			4.8	59.6
+06			3.4	61.0
+30			1.5	62.9
+50			1.8	62.6
8			1.0	63.4
T.P.	12.08	76.08	0.38	64.00
+50			11.4	64.7
8786' L 84° 09'			10.3	65.8
9			10.4	65.7
+50			9.7	66.4
10			8.1	68.0
+22 1/2" = 10 1/2" st of alley			6.03	70.05
+50			6.3	69.8
11			3.7	72.4
T.P.	11.81	87.37	0.52	75.56



87.37

11+50	11.4	76.0
12	6.9	80.5
+30	4.8	82.6
+50	5.6	81.8
13	6.5	80.9
+50	5.9	81.5
+34 <sup>6</sup> = 40 <sup>th</sup> 8 <sup>th</sup> Ply of Redman & Oak	3.96	83.41

Levels Lot Line Bk 384 Sierra Park Add (Page 53)

from sta west for

~~28~~

55

		68.40		
0+0		5.1	63.3	
+50		6.4	62.0	
1		6.6	61.8	
+50		7.5	60.9	
2		6.7	61.7	
+35		2.9	65.5	
+50		1.5	66.9	
T.P.	12.28	50.28	0.40	68.00
+70		12.0	68.3	
3		7.9	72.4	
+10		7.3	73.0	
+12		7.6	72.7	
+31 <sup>8</sup> = 30 <sup>th</sup> st.		7.31	72.97	
+50		7.2	73.1	
+61		6.1	74.2	
+63		2.7	77.6	
T.P.	12.53	72.58	0.23	80.05
4		12.4	80.2	

Sheet 10



	92.58			
4+25		9.3	83.3	
+50		5.8	86.8	
+75		2.0	90.6	
T.P.	6.79	99.19	0.18	92.40
5		6.1	93.1	
+25		5.0	94.2	
+50		5.9	93.3	
+75		7.6	91.6	
6		8.3	90.9	
+50		6.6	92.6	
7		6.2	93.0	
+50		4.8	94.4	
8		4.1	95.1	
+50		4.0	95.2	
9		3.3	95.9	
+37		3.8	95.4	

Levels  $\phi$  39<sup>th</sup> St from Lot Line 384 Sierra Park or St 2  
 3+31<sup>2</sup> Page 55 North for 255.8 to Lot Line  
 182 Sierra Park

~~28~~  
56

B.M.	6.35	79.32	72.97
0+0		✓	6.4
+18			6.5
+50			8.4
1			10.6
+50			10.7
2			9.8
+55 <sup>8</sup>			8.2

Sheet 10

Levels Lot Line from St 27+55<sup>8</sup> E for 650'

0+0 $\phi$ 39 <sup>th</sup> St	79.32	8.2	71.1
+20		8.0	71.3
+50		✓	6.6
1 cut 6"		5.6	73.7
+37		2.7	76.6
+50		2.3	77.0
2		3.1	76.2
+50		1.9	77.4
3		1.2	78.1
T.P.	4.47	82.49	1.30
+50		4.6	77.9
4		5.6	76.9
+50 cut 3.5"		8.9	73.6
5		7.1	75.4
+50		4.6	77.9
6		4.6	77.9
+50		6.5	76.0

Sheet 10



Levels Lot Line from sta 2455<sup>2</sup> (page 56) west  
for 600'

		79.32		
0+0 = $\phi$ 39 <sup>th</sup> st			8.2	71.1
+30	✓		8.1	71.2
+33			8.9	70.4
+50			7.3	72.0
1 cut 6'			5.8	73.5
+5 " 6'			4.5	74.8
2			5.8	73.5
+50			4.6	74.7
3			4.0	75.3
+50			2.8	76.5
T.P.	9.81	86.39	2.74	76.58
4			9.7	76.7
+50			8.8	77.6
+70			8.2	78.2
+80			6.7	79.7
5			6.8	79.6
+50			5.0	81.4
T.P.	9.26	94.08	1.57	84.82
6+0			6.0	88.1

Sheet 10

Levels  $\phi$  Alley bet Teak & Woolman from  
 $\phi$  40<sup>th</sup> st west for

B.M.	12.52	82.57		70.05
0+0			✓	12.5
+10				12.0
+14				11.2
+50				8.9
+75				6.7
1 cut 6'				2.4
+10				1.5
+50				1.0
T.P.	12.20	94.58	0.19	82.38
2				9.1
+35				5.5
+50 cut 8'				4.5
3				3.3
+50 <sup>2</sup>				1.7

Sheet 9

~~29~~  
57



Levels of Alley bet Woodman B<sup>2</sup> from  
E. 40<sup>th</sup> west for 360'

B.M.	11.18	94.59		83.41
0+0	✓		11.2	
+50			10.1	84.5
1			5.8	88.8
T.P.	12.69	106.97	0.31	94.28
+50			10.5	96.5
2			3.4	103.6
+30			1.2	105.8
+50			1.2	105.8
3 cut 8'			3.6	103.4
+30			3.6	103.4
+50			1.9	105.1
+60			1.2	105.8

Sheet 9

~~29~~  
58



Levels of Alley bet Mainz Dälbergiz from  $\Phi$   
 Sine star station <sup>20</sup> "A" Line in Northwesternly direction  
 for 1265' or 25' from Photo 34

4.14

~~30~~  
59

B.M. S.P. S.M. Sire

2.63

4.14

-1.51

4+92

2.5 1.6

0+0 =  $\Phi$  Sire

4.4 -0.3

5+0

5.5 -1.4

+50

4.9 -0.8

+50

5.3 -1.2

1

4.9 -0.8

6

5.0 -0.9

+50

4.6 -0.5

+50

4.9 -0.8

2

3.9 0.2

7

5.0 -0.9

+50

4.1 0.0

+50

5.0 -0.9

+69

4.7 -0.6

T.P.

3.46

2.81

4.79 -0.65

+71

5.4 -1.3

+74

3.2 -0.4

3

5.0 -0.9

+92

2.0 0.8

+12

5.9 -1.8

8

2.1 0.9

+26

5.6 -1.4

+25

4.9 -2.1

+33

4.4 -0.3

+50

5.0 -2.2

+50

4.1 0.0

9

5.0 -2.2

4

4.3 -0.2

+32

5.0 -2.2

+50

4.8 -0.7

+41

6.3 -3.5

+68

5.3 -1.2

+50

5.4 -2.6

+75

2.7 1.4

10

5.3 -2.5

+81 = E.F. 21 / S.D. 88. E.Ry.

1.6 2.5

+50

4.8 -2.0



2.81

10+75	7.2	-4.4
+93	6.7	-3.9
11	5.4	-2.6
+25	5.6	-2.8
+32	7.4	-4.6
+50	7.3	-4.5
+60	7.0	-4.2
+64	5.6	-2.8
12	5.2	-2.4
+50	5.4	-2.6
+65	5.7	-2.9

Levels of Alley bet Daltbergia & Cottonwood from  
 of Side of Sta 25+63 "A" Line in Northwesterly direction  
 for 610' or 70' from Rigel St

~~30~~  
60

B.M.	4.55	5.97	1.42
0+0 = $\phi$ Side			4.6 1.4
+50			4.5 1.5
+90			5.1 0.9
1			6.0 0.0
+50			7.2 -1.2
+90			7.5 -1.5
2			6.3 -0.3
+12			6.5 -0.5
+25			4.9 1.1
+50			5.0 1.0
3			5.4 0.6
+50			6.0 0.0
4			6.2 -0.2
+50			5.3 0.7
+65			4.8 1.2
5			1.5 4.5
T.P.	8.47	12.82	1.62 4.35
+35			4.3 8.5
+50			3.8 9.0
6			4.0 8.8
+10 cut 10'			3.9 8.9

Sheet 17

Levels changed see page 68



Levels of Alley bet Cottonwood & Birch from &  
 Thor in North westerly direction for 1272

B.M.	6.57	9.17	2.60	6.750			6.0	3.2
010-4 Thor			6.6	7			6.8	2.4
+15			7.1	+35			6.6	2.6
716			6.7	+50			5.7	3.5
+50			6.8	8			1.8	7.4
1			6.2	T.P.	11.14	18.89	1.42	7.75
+50			6.0	+50			6.3	12.6
2			5.6	9			3.1	15.8
+50			5.5	+50			3.3	15.6
3			5.4	10			5.6	13.3
+50			5.0	+50			9.8	9.1
+72			9.2	T.P.	8.33	14.79	12.43	6.46
+8.1			8.9	+80			4.7	5.1
+84			8.0	11			10.2	4.6
4			4.8	+40			7.3	5.5
+50			5.5	+50			8.0	6.8
5			5.7	+75			2.8	12.0
+50			6.0	T.P.	8.59	21.97	1.41	13.38
6			6.6	12			6.9	15.1
				+50			3.3	18.7
				+72			2.3	19.7

Sheet 17  
 Levels changed see page 168

9.17

31  
 61



Levels of National Ave from Sta 19+18<sup>33</sup>  
 "C" line (page 27) East for 625'

B.M.	12.13	54.77		42.64
0+0 = Sta 19+18 <sup>33</sup>			12.1	42.6
+50			10.9	43.9
1			9.4	45.4
+50			8.0	46.8
2			6.8	48.0
+50			5.6	49.2
3			3.9	50.9
+50			2.4	52.4
4			0.6	54.2
T.P.	11.21	65.89	0.00	54.68
+10			11.4	54.5
+50			9.1	56.8
5			5.7	60.2
+50			2.6	63.3
T.P.	5.99	71.05	0.83	65.06
6			4.6	66.5
+25			2.9	68.2

Sheet 8

~~31~~  
62



Levels  $\phi$  Alpha st from  $\phi$  39<sup>th</sup> st East for 610'

15.1

32  
63

B.M. 1.80 20.27 18.47

0+0 =  $\phi$  39<sup>th</sup> 5.1 15.2

+50 5.2 15.1

1 5.5 14.8

+50 5.8 14.5

2 5.4 14.9

+50 5.1 15.2

3 4.7 15.6

+50 4.6 15.7

4 4.1 16.2

+50 3.8 16.5

T.P. 12.51 32.48 0.30 19.97

5 10.2 22.3

+10 5.3 27.2

+50 5.0 27.5

6 3.3 29.2

+10 2.7 29.8

Sheet 5



New Levels "A" Line (page 1) account of flood  
 from Sta 20+0 To Sta 43+42<sup>1</sup>

9/25/16 Dunkle  
 Shaw  
 Bunker

~~32~~

64

B.M. SPK SW Side & Main	1.51			8.09			
B.M. 416 5.67				24+87		7.1	1.0
30+0	5.6	0.1		+90		5.4	2.7
04	6.5	-0.8		25		5.3	2.8
+50	6.4	-0.7		+50		5.9	2.2
21+0	5.9	-0.2		+62 <sup>2</sup> = $\phi$ Alley & Side		5.2	2.9
+50	5.7	0.0		26		6.1	2.0
+62 <sup>6</sup> = $\phi$ Alley	5.5	0.2		+50		5.0	3.1
22	5.3	0.4		27		5.0	3.1
+50	4.9	0.8		+50		5.4	2.7
23	4.6	1.1		28		5.1	3.0
+50	5.6	0.1		+22		5.4	2.7
+57	2.9	2.8		+28		6.5	1.6
+68	2.9	2.8		+140		5.4	2.7
+75	6.0	-0.3		+50		5.7	2.4
+83	6.3	0.6		29		4.9	3.2
+87	4.8	0.9		T.P. 5.10 8.62		4.57	3.52
24	4.5	1.2		+25		5.9	2.7
+67	4.4	1.3		+30		5.1	3.5
+11	3.4	2.3		+50		5.4	3.2
+50	3.3	2.4					
T.P. 5.48 8.09	3.06	2.61					



	8.62		
30+0		5.6	3.0
+50		6.0	2.6
31+0		6.0	2.6
+50		5.6	3.0
+73		5.3	3.3
32		3.6	5.0
+7		3.4	5.2
+10		4.1	4.5
+22 <sup>9</sup> - 4 Thor st		3.5	5.1
+50		4.5	4.1
33		5.9	2.7
+50		5.7	2.9
34		5.1	3.5
+50		4.9	3.7
35		4.9	3.7
+50		4.8	3.8
T.P.	5.98	10.14	4.46
36		6.2	4.1

	10.14		
36+02 <sup>35</sup> = 4 Alley		5.88	4.26
+50		5.7	4.4
37		5.4	4.7
+50		5.4	4.7
+92 <sup>6</sup> = 4 Birch		5.2	4.9
38		5.1	5.0
+29 <sup>6</sup> = P.L.		5.3	4.8
+50		5.3	4.8
39		5.0	5.1
+50		5.0	5.1
40		5.0	5.1
T.P.	4.36	9.81	4.69
+50		4.3	5.5
41		4.5	5.3
+50		4.6	5.2
42		4.9	4.9
+50		5.0	4.8
43		4.9	4.9
+42 <sup>A</sup>		4.77	5.04

~~33~~  
65



New Levels part of "B" line - acct flood

	10.14		
0 to 2 of Thor	5.3	4.8	
+50	5.4	4.7	
1	5.6	4.5	
+50	5.8	4.3	
2	6.1	4.0	

New Levels (acct flood) & Alley bet  
Alpha & Beta - see page 24

~~35~~  
66

B.M.	7.59	12.63		5.04
0 to 30' W of F.L.	37 1/2		5.3	7.3
118			5.3	7.3
119			4.6	8.0
+50			5.0	7.6
1			5.3	7.3
+50			5.6	7.0
2			5.6	7.0
+50			6.0	6.6
3			5.9	6.7
+50			6.5	6.1
+60 <sup>17</sup>	4.63	11.05	6.21	6.42
4			5.0	6.0
+50			5.0	6.0
5			4.9	6.1
+50			5.0	6.0
6			4.8	6.2
+32			5.1	5.9
1147			7.0	4.0
+50			7.1	3.9
7			7.0	4.0
+10 <sup>3</sup>			6.6	4.4



New Levels of Alley bet Birch & Cottonwood  
 222<sup>nd</sup> flood - from  $\Phi$  Thor East for 100'  
 see page 16

B.M.	4.69	8.95	4.26
0+0 = $\Phi$ Thor st	4.69	4.8	
+50	5.2	3.7	
1	5.2	3.7	

New Levels for Part of "C" Line (acct flood,  
 see page 27

~~24~~  
67

B.M.	5.81	12.23	6.42
0+0 = st 3+60 <sup>th</sup> Alley Line	5.81	6.4	
+50	5.6	6.6	
1	4.7	7.5	
+36	5.9	6.3	
+50	5.5	6.7	
+57	5.7	6.5	
+62	7.7	4.5	
2	7.3	4.9	
+30	6.9	5.3	
+35	5.2	7.0	
+50	5.0	7.2	



New Levels of Alley bet Birch & Cottonwood  
(Acet flood) from the Thor west for  
see page 61

B.M.	4.69	2.95	4.26
0+0 = the Thor		4.69	4.26
+50		5.2	3.8
1		4.7	4.3
+50		5.2	3.8
2		4.9	4.1
+50		4.6	4.4
3		4.1	4.9
+50		4.3	4.7
T.P.	3.62	2.56	4.01
			4.94
+52		3.9	4.7
+53		5.2	3.4
+95		4.9	3.7
4		3.6	5.0
+50		4.7	3.9
5		4.6	4.0
+50		4.7	3.9
6		5.9	2.7
+50		6.1	2.5
7		5.4	3.2
+25		5.8	2.8

New Levels of Alley bet Dalbergia  
& Cottonwood (Acet flood) from the  
five N. west for  
see page 60

84  
68

B.M.	4.90	7.09	2.19
0+0 = Sta 25+62 <sup>8"</sup> H Line	4.2	2.9	
+50		4.6	2.5
1		4.9	2.2
+50		4.9	2.2
2		5.8	1.3
+30		5.2	1.9
+35		5.9	1.2
+50		6.1	1.0
+90		6.3	0.8
+83		4.9	2.2
3		4.7	2.4
+50		5.6	1.5
+98		5.5	1.6
4		6.3	0.8
+50		6.5	0.6

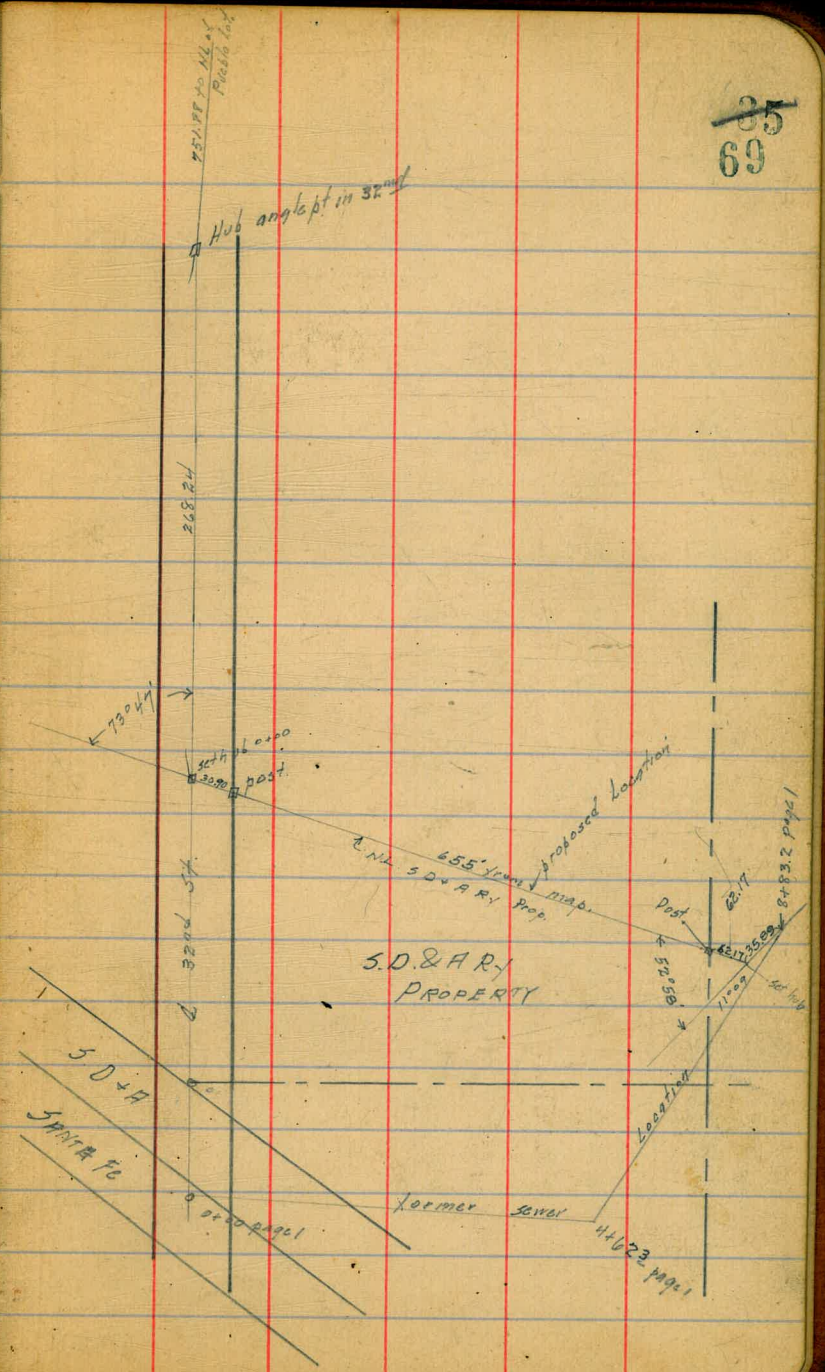


Relocation of Sewer Line  
 from Sta 0+00 to 8+ shown  
 on page 1

	307	522	2.15	Hub @ 4+62.3
6 32nd + 268.24 3.0x Angle pt S.W. Bridge = 0+00		1.37	3.85	on Hub
+ 5.0 = Eo of S.D. Electric Ry		1.2	4.0	
+ 30		1.3	3.7	
+ 55		9.0	-4.2	
1 -		8.6	-3.4	
+ 50		8.7	-3.5	
2		8.6	-3.4	
+ 30		9.0	-3.8	
+ 33		10.5	-5.3	
+ 50 Sett Mud No Bottom		12.0	-6.8	
+ 60		10.5	-5.3	
+ 65		8.8	-3.6	
3		8.7	-3.5	
+ 50		8.6	-3.4	
4		8.6	-3.4	
+ 50		8.5	-3.3	
5		8.5	-3.3	
+ 10		9.1	-3.9	
+ 20		8.5	-3.3	

Cont. page 70

~~85~~  
69





5.22

5 + 50

8.5 - 3.3

6 -

8.5 - 3.3

+ 50

8.6 - 3.4

7

8.5 - 3.3

+ 25

8.1 - 2.9

+ 35

4.9 + 0.3

+ 48.07 on Hub

373 + 4.9 2.2

25

70



Sewer Levels on rear line of lots in BIK I Emerson Hts  
 From S. Line lots 1414 to S. Line lots 4411

B.M. B.P.	1.17	27.83	36.66	SE. 3/4 National	18 E. of 0140	12.8	17.13
00 = S. Line Lots 1414		6.3	31.53		60 E. of 0140	12.7	17.23
+13		10.4	27.43		1400	8.3	21.63
+21		9.7	28.13		1450	3.5	26.43
+25		11.7	26.13		1470	5.2	24.73
+30		10.1	27.73		1485	5.1	24.83
+57		9.2	28.63		2400 = S. Line Lots 6411	6.43	23.50 on stub
T.P.	4.89	29.93	12.79	25.04	+35	14.2	15.73
1420 = S. Line Lots 4411		5.52	24.41	on stub.	+71	14.7	15.23

29.93

~~36~~  
71

Plotted

Sewer Levels on rear of lots in BIK 7 Emerson Hts  
 From S. Line Lots 649 N. to S. Line Lots 4411  
 29.93

00 = S. Line Lots 649		4.6	25.33
+40		5.2	24.73
+80 = S. Line Lots 4411		5.52	24.41

Plotted

Sewer Levels on rear of lots in BIK 4 Em. Hts  
 From S. Line Lots 7410 N. to S. Line Lots 6411  
 29.93

00 = S. Line Lots 7410		6.3	23.63
+5		8.6	21.33
+11		6.7	23.23
+27		6.8	23.13
+29		8.4	21.53
+34		6.6	23.33

Plotted

Sewer Levels on rear of lots in BIK 4 Em. Hts.  
 From S. Line Lots 1416 S. to S. Line Lots 6411  
 Then go East on line Bet Lots 11910

29.93

00 = S. Line Lots 1416		10.1	19.83
+25		10.3	19.63
+40		10.9	19.03

0440 = S. Line Lots 6411

T.P. 11.84 36.81 4.96 24.97



Sewer Levels on rear of lots in BIK<sup>3</sup> Emerson Hts  
 from S. Line Lots 7410 to S. Line Lots 5412

36.81 Page 71

29.93

~~36~~

00 = S. Line Lots 7410	3.3	33.51	3+15	9.57	20.36	on stub
+40	4.4	32.41	12' S of 3+15	9.5	20.43	
0+80 = S. Line Lots 5412	6.24	30.57	on stub	40' S of 3+15	5.8	24.13
			3+40	10.5	19.43	

Sewer Levels on rear of lots in BIK<sup>3</sup> Emerson Hts  
 from S. Line Lots 5416 S. to S. Line Lots 5412 - 5416  
 Thence W on Line Bet Lots 546 BIK<sup>3</sup> 12411 to S to H 440  
 36.81

00 = S. Line Lots 1416	1.42	35.39	on stub	3+90	11.7	18.23
+25	5.3	31.51	4+15	14.1	15.83	
+80	9.4	27.91	4+40	14.3	15.63	
1+00	9.6	27.21				

Sewer Levels on rear of lots in BIK<sup>2</sup> Emerson Hts  
 from S. Line Lots 649 N. to S. Line Lots 4411

36.81 see opposite Page

+45	7.6	29.21				
+55	6.2	30.61		T.P. 7.37	42.76	1.42 35.39
1+60	6.24	30.57	on stub	00 = S. Line Lots 649	2.4	40.36
+80	9.4	27.41		+25	2.8	39.96
2+00	10.8	26.01		+50	2.1	40.66
+12	12.6	24.21		+80 = S. Line Lots 4411	8.92	93.84 on stub
+35	12.6	24.21				

T.P. 4.96 29.93 11.84 24.97

+55 7.5 22.43

3+00 8.9 21.03

Plotted

Plotted

Plotted



Sewer Levels at rear of lots in BIK 2 Emerson Hts  
 from S. Line Lots 1414 S. to S. Line lots 4 + 11 sta 1 + 20  
 There is Walk Lot, Line Lot lots 11 + 5 BIK 2 & lots 11 + 10 BIK 2 row  
 Line Lots 11 + 10 42.76 Page 72

31.54

~~37~~  
73

000 S. Line Lots 1414	0.00	42.76	on stub	- 4 + 10	9.6	21.94
+25	1.5	41.26		+22	9.0	22.54
+85	10.2	32.56		+26	10.0	21.54
1410	10.5	32.26		+30	9.3	22.24
1420	8.92	33.84	on stub	4 + 61	7.11	24.43 = 24.10 on stub
+40	10.8	31.96				
+60	11.2	31.56				
+72	13.0	29.76				
2400	14.3	28.46				
+35	15.0	27.76				
T.P. 143	31.54	17.65	30.11			
2452	5.3	26.23				
+75	5.9	25.64				
+92	4.5	27.04				
3400	5.0	26.54				
+50	3.1	28.44				
+65	2.9	28.64				
4400	8.9	22.64				
+2	10.4	21.14				
+7	10.4	21.14				

Plotted



3/25/21

Sewer Levels & Alley bet Main + Dalbergia from & Yama East

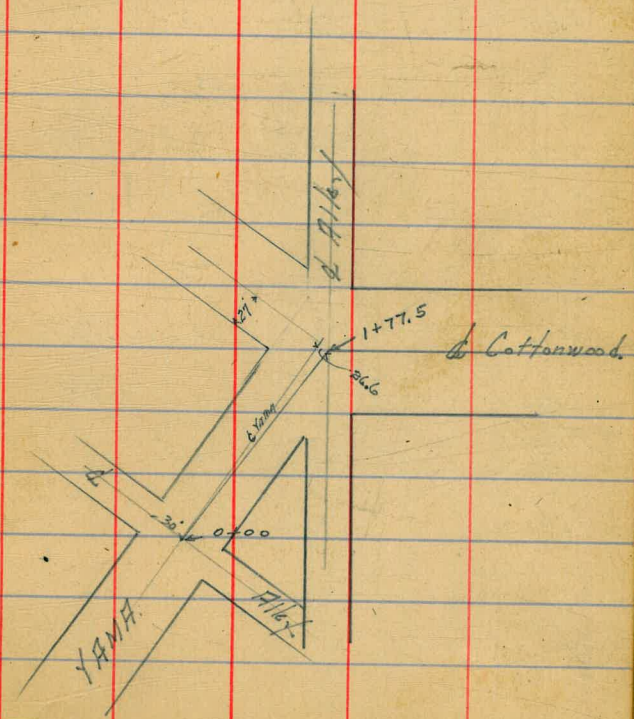
	Gregory	5.80	18.89	13.07	Max Main a Boundary
& Yama = 0+00			13.0	5.87	
+09.0			13.1	5.77	
+12.0			15.0	3.87	
+16.0			12.8	6.07	
+50			13.1	5.47	
1			14.0	4.87	
+50			14.1	4.77	
2			14.2	4.67	
+50			14.6	4.27	
3			15.1	3.77	
+40			13.8	5.07	
+50			10.8	8.07	
4			6.0	12.87	
+50			1.9	16.97	
5			+1.0	17.87	
TP	1.19	12.38	7.68	11.19	

3/25/21

Sewer Levels Yama ST from & Alley N. of Dalbergia To & Cottonwood

87  
74

Gregory	12.38 from opp. page	5.5	6.88
& Alley N. of Dalbergia = 0+00			
0+50		5.0	7.38
1		4.9	7.68
+40		4.5	7.88
+77.5 = & Alley Cottonwood		3.9	8.48





3/25/25

Gregory

Sewer Levels & Alloy  
bet Birch & Boston  
W. of Rigel

on B.M.	0.95	45.10	44.15	35 <sup>th</sup> + National
T.P.	1.07	33.00	13.17	31.93
150' W. of W.L. Rigel				
+0+00			7.5	25.50
+20			7.1	25.90
+43			8.7	24.30
+75			11.8	21.20
1			13.6	19.40
+20			17.5	15.50
+35			15.2	17.80
+70			13.9	19.10
2			12.0	21.00
+25			9.8	23.20
+40			10.0	23.00
+50			10.4	22.60
T.P.	4.49	25.18	12.31	20.69

Plotted Sheet 5

3/25/25

Gregory

Sewer Levels & Alloy bet  
Birch & Cottonwood  
from EL Rigel to

EL Rigel =	2518	from opp page		
+000			4.6	20.58
+30			4.0	21.18
+43			4.2	20.98
+50			3.7	21.48
1			3.3	21.88
+10		should be 5' deeper	3.6	21.58
+25			4.0	21.18
+60			6.4	18.78
+65			7.1	18.08
+80			7.6	17.58
2			9.2	14.98
	231	1468	1281	1237

Plotted Sheet 0



3/25/22

Sewer Levels & Elev  
bet. Cottonwood + Dalbergia  
from EL. Rigel

1468

EL. Rigel  
= 0+00

+08.0

+12.0

+30

+45

+50

+60

+70

1

+35 should be 4' deep.

6.6 8.08

6.8 7.88

7.7 6.98

8.0 6.68

8.4 6.28

8.8 5.88

9.1 5.58

8.6 6.08

8.6 6.08

8.4 6.28

Plotted  
Sheet 11/1004

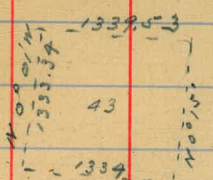
125.84  
20.00  
125.84  
60.00  
125.05  
20.00  
125.05  
601.78

600

492  
154.68  
20.00  
666.68

~~70~~  
76

601.77 601.68



7528  
4324  
3184

5728  
4324  
1334

662  
3299 | 3.75 | 197

12  
185  
171

190  
133

2

662 | 1970 | 3

1334  
3  
4002

662 | 19700 | 3

750  
14  
3000  
750

19 | 10500 | 553

100  
190

1334  
553  
190











36.8  
3.0  
39.8  
30.7  
9.1

69.2

100  
12.25  
11.50  
11.15  
10.40

325

280.00  
44.75  
33.60  
18.95

938  
425  
30  
1393  
1400

938  
30  
968  
60.58  
12.43  
50.15

36.75 9.5  
41.15 2.0  
flow 7.5  
well 0.6  
house 5.5

380  
36  
344

89 12  
35  
89.47

18.33  
47.67  
66.00

492  
154.5  
646.5

48  
35  
13

33.6

50.05  
300.00

36

307  
27  
334

89 12  
35  
88.37

2102.6  
390.  
2552.6

46.09  
51.94  
44.41

142.44

740  
642  
1882

23  
13  
10

370.88  
6.00  
310.88

386  
36  
344

79.75  
4.5  
17.4  
90.9

340  
27  
367

3rd

325.0  
33.6  
358.6  
288.0  
64.66  
6.969  
15.7  
4.2  
4  
123

250  
60  
430  
740

280  
37.96  
318.96

132  
320  
3960  
396  
43560

179.34  
20.00  
199.34  
99.00  
298.34

20  
160.83  
160.83  
20.00  
361.66

186 | 10.00 | 53  
930

538  
15  
2690  
538  
8070  
193  
1000

17 29.78  
1.40

220  
179.34  
399.34  
135.  
44.34

140  
20  
26  
992  
154.68  
20.00  
666.68

146.65  
80.00  
194.38  
2100

5  
3228  
1614

301.6  
1.9  
303.5

160.00  
125.84  
288.0  
125.84  
125.05  
125.05  
66178

46.09  
51.94  
44.41  
142.44

40

23.58  
11.52

193.68



174.76

6)300

$$\begin{array}{r} 84 \\ 23 \\ \hline 252 \\ 168 \\ \hline 1932 \end{array}$$

$$\begin{array}{r} 10.72 \\ 281.68 \\ 40 \\ \hline 2280. \\ \hline 01.7 \end{array}$$

$$\begin{array}{r} 50 \\ 17 \\ \hline 350 \\ 52 \\ \hline 558 \\ 38 \end{array}$$

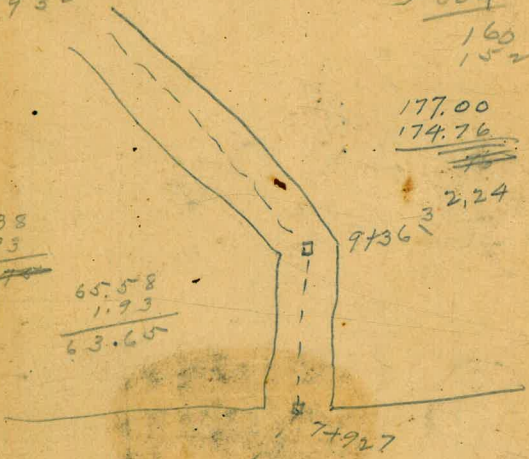
$$\begin{array}{r} 158.00 \\ 27.00 \\ \hline 177.00 \end{array}$$

$$\begin{array}{r} 320.84 \\ 304 \\ \hline 160 \\ 152 \end{array}$$

$$\begin{array}{r} 177.00 \\ 174.76 \\ \hline 2.24 \end{array}$$

$$\begin{array}{r} 62.38 \\ 1.93 \\ \hline \end{array}$$

$$\begin{array}{r} 65.58 \\ 1.93 \\ \hline 63.65 \end{array}$$



$$\begin{array}{r} 29.18 \\ 6.50 \\ \hline 22.68 \\ 1.63 \\ \hline 24.31 \\ 7.65 \\ \hline 16.66 \\ 6.30 \\ \hline 22.96 \\ 6.42 \\ \hline 16.54 \\ 1.80 \\ \hline 18.34 \\ 12.14 \end{array}$$

6.2 ground at lot  
37M ex 3. Cholla valley

$$\begin{array}{r} 6+46 = 605 \text{ to } 13 \text{ Line} \\ 17 \\ 73 \\ 30 \\ \hline 4.6 \end{array}$$

$$\begin{array}{r} 25.0 \\ 8.5 \\ \hline 16.5 \end{array}$$

13+432

$$\begin{array}{r} 285.00 \\ 47.77 \\ \hline 332.77 \end{array}$$

89 09

$$\begin{array}{r} 24.00 \\ 7.8 \\ \hline 16.2 \end{array}$$

-0.5

P.L. Cot to west 332.77

$$\begin{array}{r} 5.8 \\ 150 \\ \hline 208.1 \end{array}$$

$$\begin{array}{r} 150 \\ 53 \\ \hline 203 \end{array}$$

$$\begin{array}{r} 150 \\ 27 \\ \hline 177 \\ 203 \end{array}$$

5.90

21.83

$$\begin{array}{r} 80.7 \\ 3.5 \\ \hline 84.2 \end{array}$$

73.6

$$\begin{array}{r} 32.17 \\ 2.06 \\ \hline 29.21 \end{array}$$

30

660

690



$$\begin{array}{r} 4705.7 \\ 659.8 \\ \hline 5365.5 \end{array}$$

$$\begin{array}{r} 78.1 \\ 11.15 \\ \hline 64.28 \end{array}$$

5365.7

$$\begin{array}{r} 76.95 \\ 3.00 \\ \hline 74.00 \end{array}$$

21.83

13.73

8.1

$$\begin{array}{r} 4705.7 \\ 6025.4 \\ 4705.7 \\ \hline 11319.8 \\ 659.8 \end{array}$$

78.1

63.7

14.4

1290

25

1265